

Data Path : Z:\pestpcbsrv\HPCHEM1\ECD_0\Data\P0081222\
 Data File : P0088911.D
 Signal(s) : Signal #1: ECD1A.ch Signal #2: ECD2B.ch
 Acq On : 12 Aug 2022 16:09
 Operator : YP/AJ
 Sample : N4148-03MS
 Misc :
 ALS Vial : 13 Sample Multiplier: 1

Instrument :
 ECD_0
ClientSampleId :
 279650MS

Manual Integrations
APPROVED

Reviewed By :Yogesh Patel 08/15/2022
 Supervised By :Ankita Jodhani 08/15/2022

Integration File signal 1: autoint1.e
 Integration File signal 2: autoint2.e
 Quant Time: Aug 13 00:39:14 2022
 Quant Method : Z:\pestpcbsrv\HPCHEM1\ECD_0\methods\P0080422.M
 Quant Title : GC EXTRACTABLES
 QLast Update : Fri Aug 05 23:24:09 2022
 Response via : Initial Calibration
 Integrator: ChemStation

Volume Inj. : 2 µl
 Signal #1 Phase : ZB-MR2 Signal #2 Phase: ZB-MR2
 Signal #1 Info : 30Mx0.32mmx 0.50µ Signal #2 Info : 30M x 0.32mm x 0.25µm

Compound	RT#1	RT#2	Resp#1	Resp#2	ng/ml	ng/ml

System Monitoring Compounds						
1) SA Tetrachlo...	4.441	3.603	30453635	13193289	11.290	12.190
2) SA Decachlor...	10.280	8.587	38917544	20513877	20.168	16.927
Target Compounds						
3) L1 AR-1016-1	5.620	4.681	25513608	13029506	316.488m	349.599m
4) L1 AR-1016-2	5.643	4.700	34786973	17915862	301.601m	343.633
5) L1 AR-1016-3	5.705	4.874	21573290	9223373	298.532	315.248
6) L1 AR-1016-4	5.805	4.918	17743423	7733599	309.472	320.598
7) L1 AR-1016-5	6.100	5.129	15118588	10375745	263.566m	318.126
31) L7 AR-1260-1	7.232	6.158	38105941	21613923	368.720	340.087
32) L7 AR-1260-2	7.489	6.346	49402220	25865940	417.957	337.558
33) L7 AR-1260-3	7.850	6.497	29806847	24776200	339.326	344.874
34) L7 AR-1260-4	8.076	6.966	37613543	19073914	384.043	312.581
35) L7 AR-1260-5	8.404	7.210	73636032	47518564	399.767	336.910

(f)=RT Delta > 1/2 Window (#)=Amounts differ by > 25% (m)=manual int.

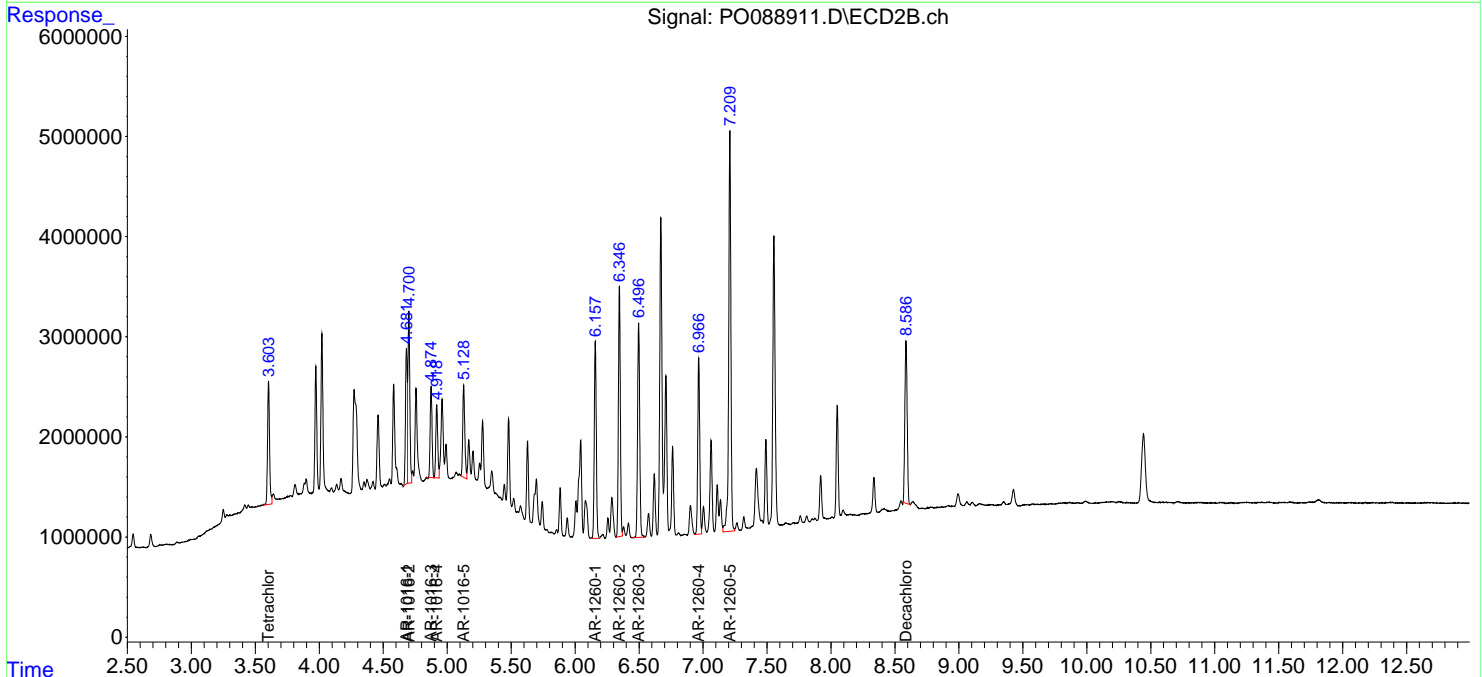
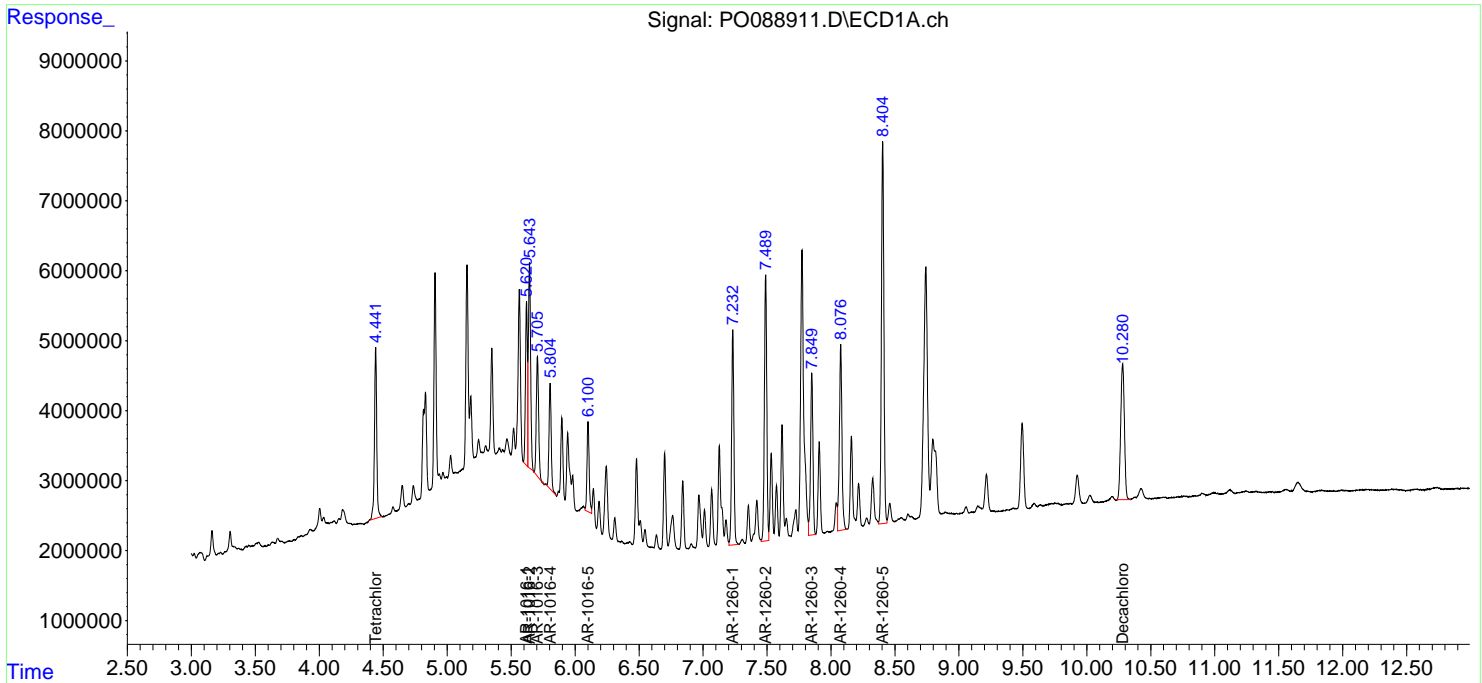
Data Path : Z:\pestpcbsrv\HPCHEM1\ECD_O\Data\PO081222\
 Data File : PO088911.D
 Signal(s) : Signal #1: ECD1A.ch Signal #2: ECD2B.ch
 Acq On : 12 Aug 2022 16:09
 Operator : YP/AJ
 Sample : N4148-03MS
 Misc :
 ALS Vial : 13 Sample Multiplier: 1

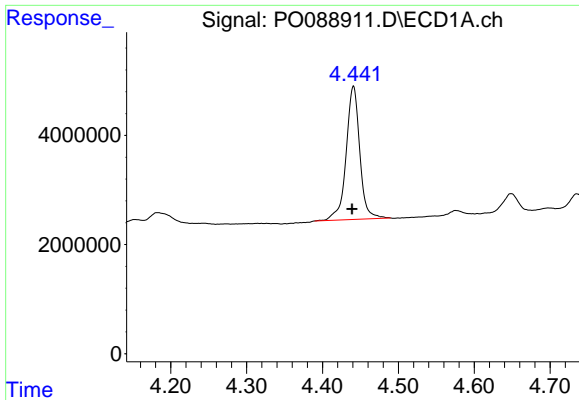
Instrument :
 ECD_O
ClientSampleId :
 279650MS

Manual Integrations
APPROVED
 Reviewed By :Yogesh Patel 08/15/2022
 Supervised By :Ankita Jodhani 08/15/2022

Integration File signal 1: autoint1.e
 Integration File signal 2: autoint2.e
 Quant Time: Aug 13 00:39:14 2022
 Quant Method : Z:\pestpcbsrv\HPCHEM1\ECD_O\methods\PO080422.M
 Quant Title : GC EXTRACTABLES
 QLast Update : Fri Aug 05 23:24:09 2022
 Response via : Initial Calibration
 Integrator: ChemStation

Volume Inj. : 2 µl
 Signal #1 Phase : ZB-MR1 Signal #2 Phase: ZB-MR2
 Signal #1 Info : 30Mx0.32mmx 0.50µ Signal #2 Info : 30M x 0.32mm x 0.25µm



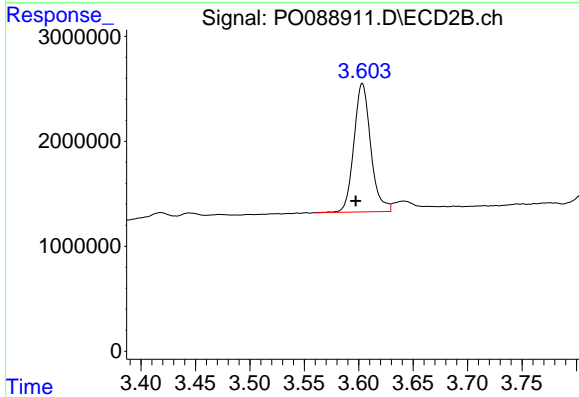


#1 Tetrachloro-m-xylene
 R.T.: 4.441 min
 Delta R.T.: 0.002 min
 Response: 30453635
 Conc: 11.29 ng/ml

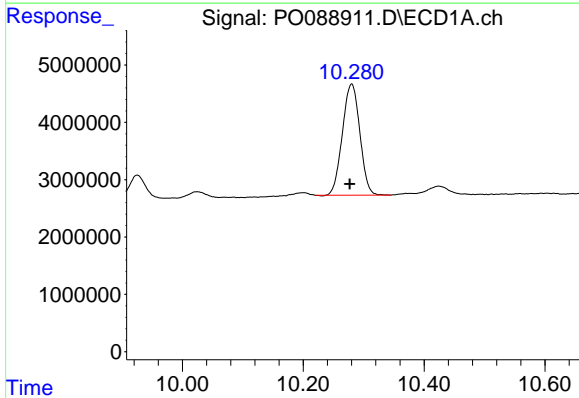
Instrument :
 ECD_O
 ClientSampleId :
 279650MS

Manual Integrations
 APPROVED

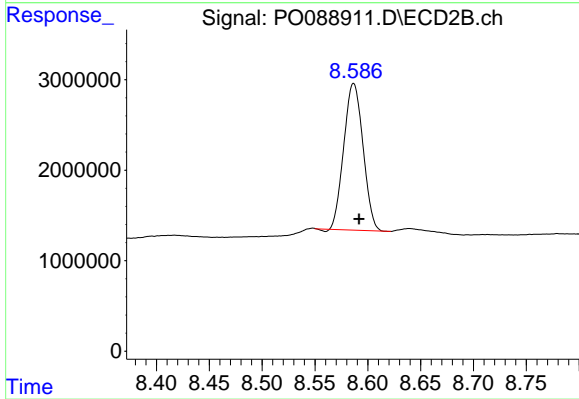
Reviewed By :Yogesh Patel 08/15/2022
 Supervised By :Ankita Jodhani 08/15/2022



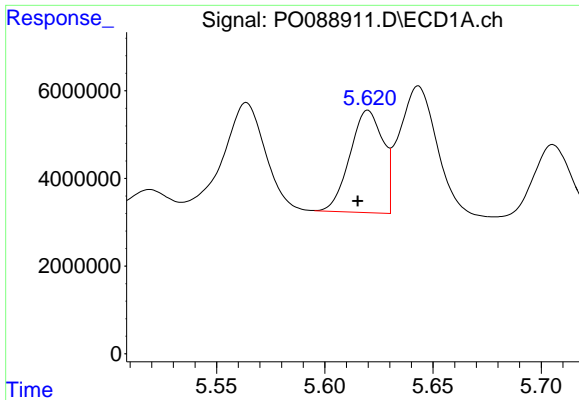
#1 Tetrachloro-m-xylene
 R.T.: 3.603 min
 Delta R.T.: 0.006 min
 Response: 13193289
 Conc: 12.19 ng/ml



#2 Decachlorobiphenyl
 R.T.: 10.280 min
 Delta R.T.: 0.003 min
 Response: 38917544
 Conc: 20.17 ng/ml



#2 Decachlorobiphenyl
 R.T.: 8.587 min
 Delta R.T.: -0.005 min
 Response: 20513877
 Conc: 16.93 ng/ml



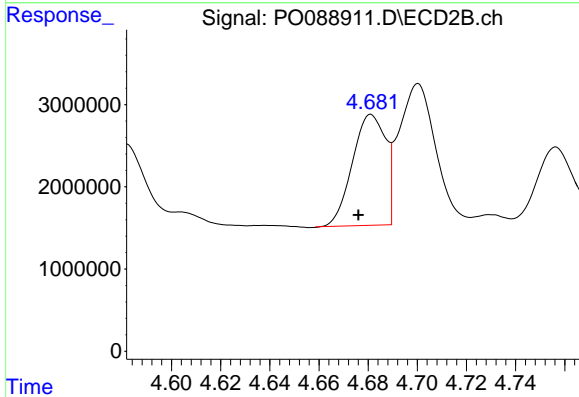
#3 AR-1016-1

R.T.: 5.620 min
 Delta R.T.: 0.004 min
 Response: 25513608
 Conc: 316.49 ng/ml

Instrument :
 ECD_O
 ClientSampleId :
 279650MS

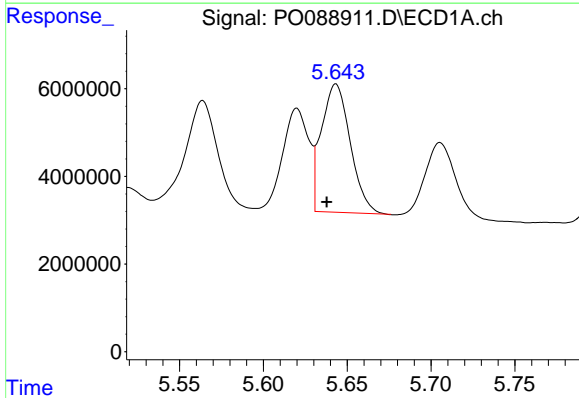
Manual Integrations
 APPROVED

Reviewed By :Yogesh Patel 08/15/2022
 Supervised By :Ankita Jodhani 08/15/2022



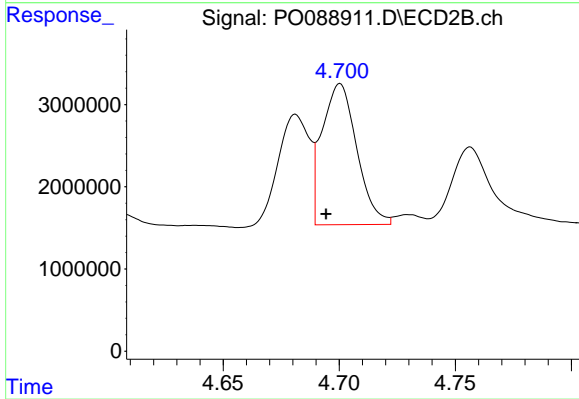
#3 AR-1016-1

R.T.: 4.681 min
 Delta R.T.: 0.005 min
 Response: 13029506
 Conc: 349.60 ng/ml m



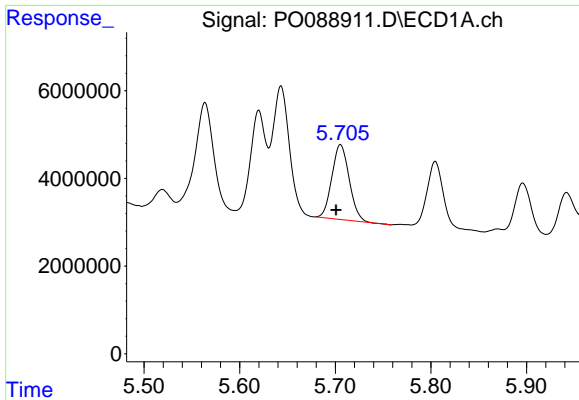
#4 AR-1016-2

R.T.: 5.643 min
 Delta R.T.: 0.005 min
 Response: 34786973
 Conc: 301.60 ng/ml m



#4 AR-1016-2

R.T.: 4.700 min
 Delta R.T.: 0.006 min
 Response: 17915862
 Conc: 343.63 ng/ml



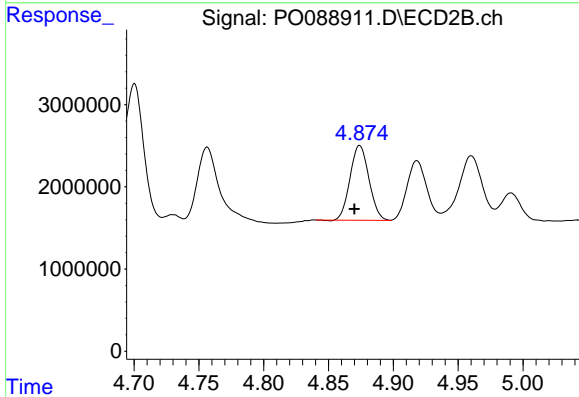
#5 AR-1016-3

R.T.: 5.705 min
 Delta R.T.: 0.005 min
 Response: 21573290
 Conc: 298.53 ng/ml

Instrument :
 ECD_O
 ClientSampleId :
 279650MS

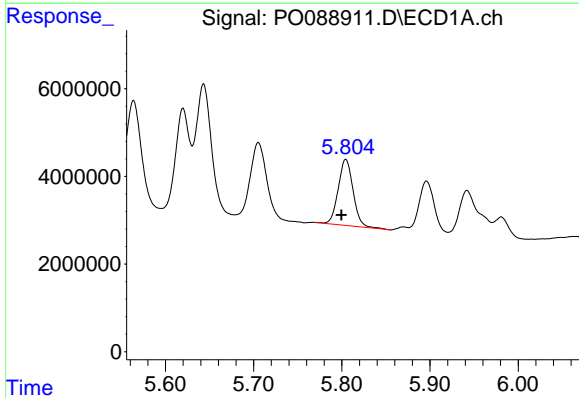
Manual Integrations
 APPROVED

Reviewed By :Yogesh Patel 08/15/2022
 Supervised By :Ankita Jodhani 08/15/2022



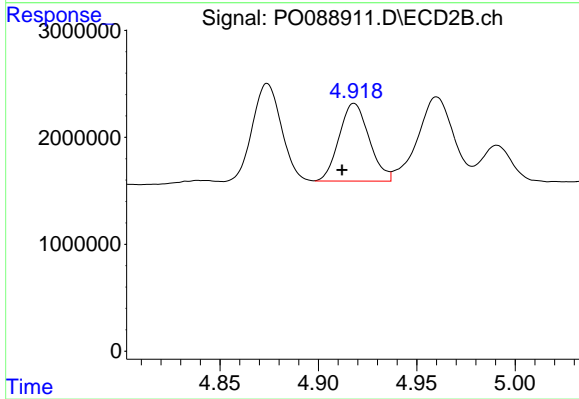
#5 AR-1016-3

R.T.: 4.874 min
 Delta R.T.: 0.004 min
 Response: 9223373
 Conc: 315.25 ng/ml



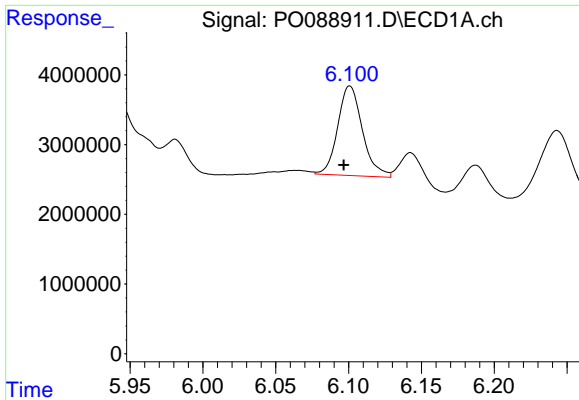
#6 AR-1016-4

R.T.: 5.805 min
 Delta R.T.: 0.005 min
 Response: 17743423
 Conc: 309.47 ng/ml



#6 AR-1016-4

R.T.: 4.918 min
 Delta R.T.: 0.006 min
 Response: 7733599
 Conc: 320.60 ng/ml



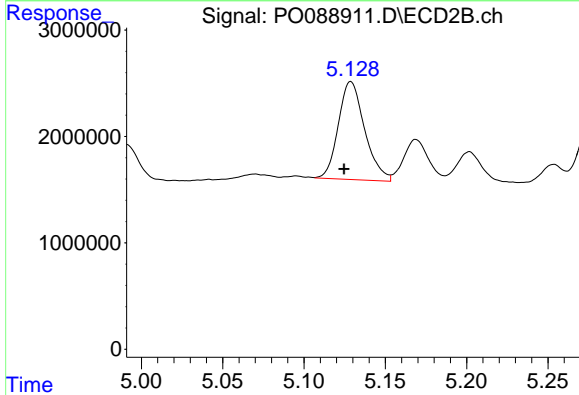
#7 AR-1016-5

R.T.: 6.100 min
 Delta R.T.: 0.004 min
 Response: 15118588
 Conc: 263.57 ng/ml

Instrument :
 ECD_O
 ClientSampleId :
 279650MS

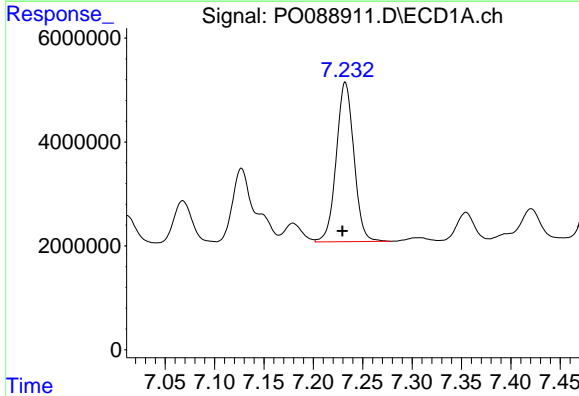
Manual Integrations
 APPROVED

Reviewed By :Yogesh Patel 08/15/2022
 Supervised By :Ankita Jodhani 08/15/2022



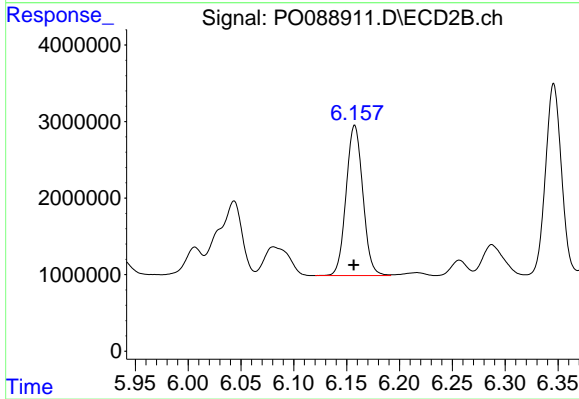
#7 AR-1016-5

R.T.: 5.129 min
 Delta R.T.: 0.004 min
 Response: 10375745
 Conc: 318.13 ng/ml



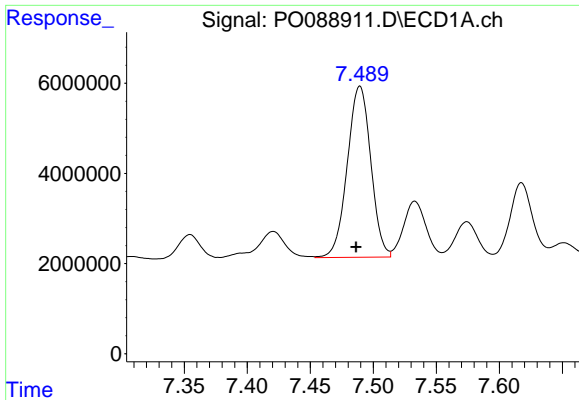
#31 AR-1260-1

R.T.: 7.232 min
 Delta R.T.: 0.003 min
 Response: 38105941
 Conc: 368.72 ng/ml



#31 AR-1260-1

R.T.: 6.158 min
 Delta R.T.: 0.000 min
 Response: 21613923
 Conc: 340.09 ng/ml



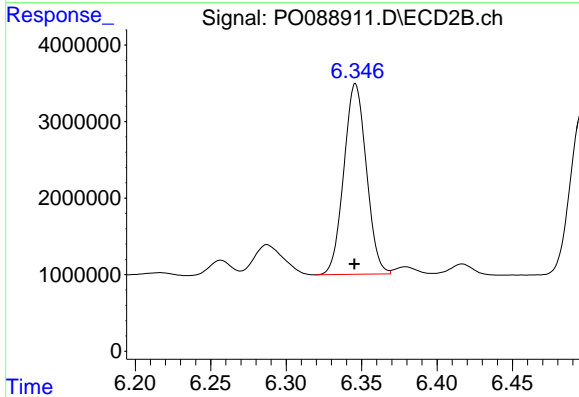
#32 AR-1260-2

R.T.: 7.489 min
 Delta R.T.: 0.003 min
 Response: 49402220
 Conc: 417.96 ng/ml

Instrument :
 ECD_O
 ClientSampleId :
 279650MS

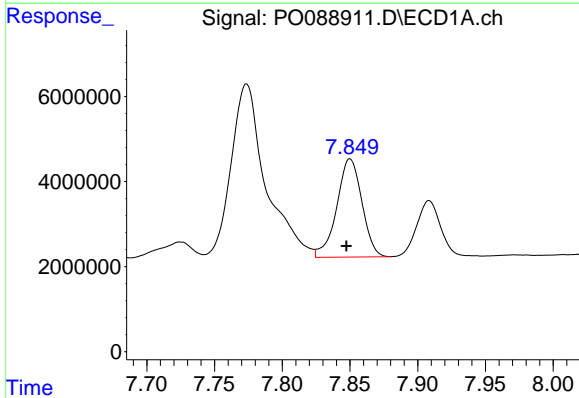
Manual Integrations
 APPROVED

Reviewed By :Yogesh Patel 08/15/2022
 Supervised By :Ankita Jodhani 08/15/2022



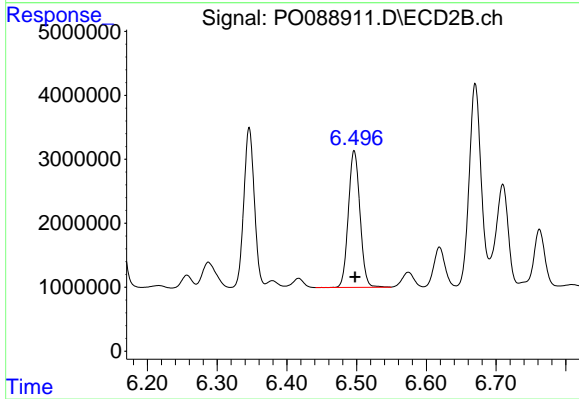
#32 AR-1260-2

R.T.: 6.346 min
 Delta R.T.: 0.000 min
 Response: 25865940
 Conc: 337.56 ng/ml



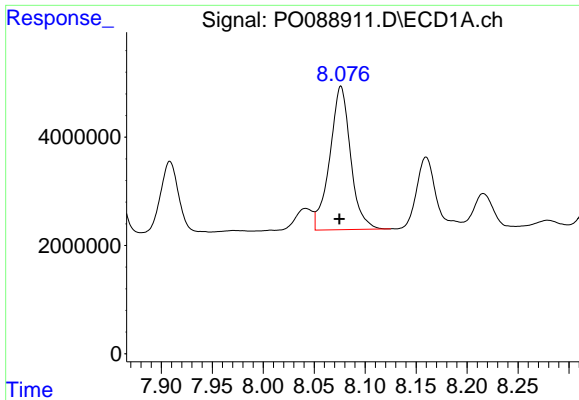
#33 AR-1260-3

R.T.: 7.850 min
 Delta R.T.: 0.003 min
 Response: 29806847
 Conc: 339.33 ng/ml



#33 AR-1260-3

R.T.: 6.497 min
 Delta R.T.: -0.001 min
 Response: 24776200
 Conc: 344.87 ng/ml



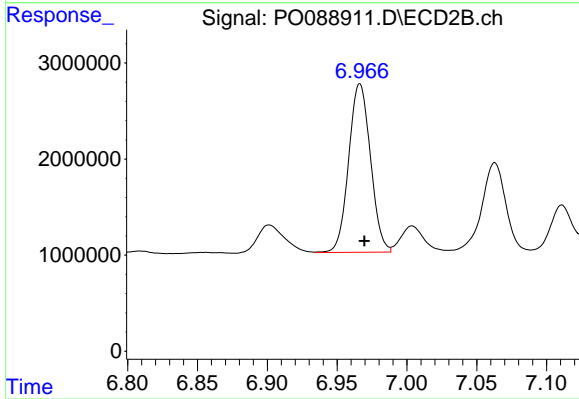
#34 AR-1260-4

R.T.: 8.076 min
 Delta R.T.: 0.002 min
 Response: 37613543
 Conc: 384.04 ng/ml

Instrument :
 ECD_O
 ClientSampleId :
 279650MS

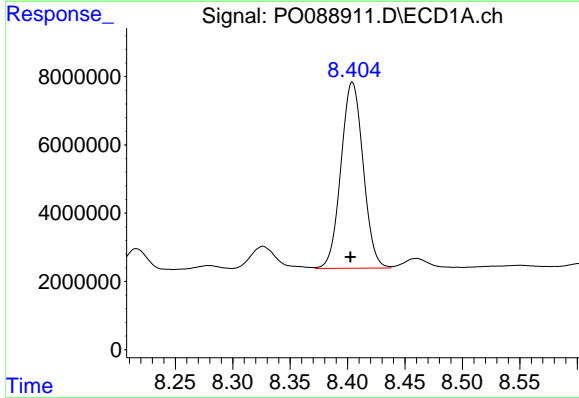
Manual Integrations
 APPROVED

Reviewed By :Yogesh Patel 08/15/2022
 Supervised By :Ankita Jodhani 08/15/2022



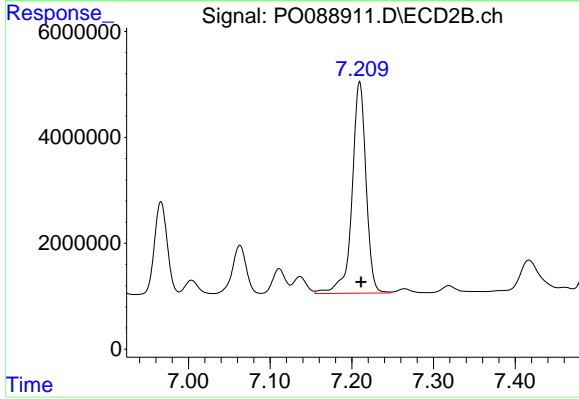
#34 AR-1260-4

R.T.: 6.966 min
 Delta R.T.: -0.003 min
 Response: 19073914
 Conc: 312.58 ng/ml



#35 AR-1260-5

R.T.: 8.404 min
 Delta R.T.: 0.002 min
 Response: 73636032
 Conc: 399.77 ng/ml



#35 AR-1260-5

R.T.: 7.210 min
 Delta R.T.: -0.002 min
 Response: 47518564
 Conc: 336.91 ng/ml