

Data Path : Z:\pestpcbsrv\HPCHEM1\ECD\_0\Data\P0081224\  
 Data File : PO105405.D  
 Signal(s) : Signal #1: ECD1A.ch Signal #2: ECD2B.ch  
 Acq On : 12 Aug 2024 11:30  
 Operator : YP/AJ  
 Sample : P3544-02 10X  
 Misc :  
 ALS Vial : 10 Sample Multiplier: 1

Instrument :  
 ECD\_0  
 ClientSampleId :  
 JEH690Y-1-2

Integration File signal 1: autoint1.e  
 Integration File signal 2: autoint2.e  
 Quant Time: Aug 12 12:29:13 2024  
 Quant Method : Z:\pestpcbsrv\HPCHEM1\ECD\_0\methods\P0081024.M  
 Quant Title : GC EXTRACTABLES  
 QLast Update : Sat Aug 10 04:08:56 2024  
 Response via : Initial Calibration  
 Integrator: ChemStation

Volume Inj. : 2 µl  
 Signal #1 Phase : ZB-MR1 Signal #2 Phase: ZB-MR2  
 Signal #1 Info : 30Mx0.32mmx 0.50µ Signal #2 Info : 30M x 0.32mm x 0.25µm

| Compound                    | RT#1   | RT#2  | Resp#1   | Resp#2  | ng/ml  | ng/ml   |
|-----------------------------|--------|-------|----------|---------|--------|---------|
| -----                       |        |       |          |         |        |         |
| System Monitoring Compounds |        |       |          |         |        |         |
| 1) SA Tetrachlo...          | 4.429  | 3.537 | 13835632 | 4865524 | 1.584  | 1.549   |
| 2) SA Decachlor...          | 10.218 | 8.428 | 12108699 | 2499702 | 2.105  | 1.412 # |
| Target Compounds            |        |       |          |         |        |         |
| 3) L1 AR-1016-1             | 5.600  | 4.588 | 286573   | 325629  | 0.947  | 2.897 # |
| 4) L1 AR-1016-2             | 5.626  | 4.608 | 693362   | 351432  | 1.622  | 2.257 # |
| 5) L1 AR-1016-3             | 5.692  | 4.779 | 917775   | 198676  | 3.577  | 2.372 # |
| 6) L1 AR-1016-4             | 5.811  | 4.821 | 2570858  | 409571  | 11.755 | 6.082 # |
| 7) L1 AR-1016-5             | 6.073  | 5.030 | 2309345  | 253175  | 10.794 | 3.025 # |
| 8) L2 AR-1221-1             | 0.000  | 3.752 | 0        | 12065   | N.D.   | 0.306 # |
| 9) L2 AR-1221-2             | 4.758f | 3.829 | 22756    | 162306  | 0.268  | 5.283 # |
| 10) L2 AR-1221-3            | 4.816  | 3.900 | 1227140  | 383335  | 5.044  | 4.284   |
| 11) L3 AR-1232-1            | 4.816  | 3.900 | 1227140  | 383335  | 6.138  | 5.249   |
| 12) L3 AR-1232-2            | 5.331  | 4.608 | 1956090  | 351432  | 18.480 | 5.005 # |
| 13) L3 AR-1232-3            | 5.626  | 4.779 | 693362   | 198676  | 3.622  | 5.199 # |
| 14) L3 AR-1232-4            | 5.811  | 4.862 | 2570858  | 288224  | 26.359 | 8.285 # |
| 15) L3 AR-1232-5            | 5.874  | 5.030 | 1168374  | 253175  | 16.213 | 7.172 # |
| 16) L4 AR-1242-1            | 5.600  | 4.588 | 286573   | 325629  | 1.233  | 3.692 # |
| 17) L4 AR-1242-2            | 5.626  | 4.608 | 693362   | 351432  | 2.127  | 2.960 # |
| 18) L4 AR-1242-3            | 5.692  | 4.779 | 917775   | 198676  | 4.652  | 3.060 # |
| 19) L4 AR-1242-4            | 5.811  | 4.862 | 2570858  | 288224  | 15.068 | 4.346 # |
| 20) L4 AR-1242-5            | 6.529  | 5.375 | 2198042  | 896679  | 12.577 | 10.912  |
| 21) L5 AR-1248-1            | 5.600  | 4.588 | 286573   | 325629  | 1.569  | 4.662 # |
| 22) L5 AR-1248-2            | 5.874  | 4.821 | 1168374  | 409571  | 4.639  | 4.316   |
| 23) L5 AR-1248-3            | 6.073  | 4.862 | 2309345  | 288224  | 8.170  | 2.887 # |
| 24) L5 AR-1248-4            | 6.488  | 5.030 | 2401471  | 253175  | 7.511  | 2.243 # |
| 25) L5 AR-1248-5            | 6.529  | 5.415 | 2198042  | 399596  | 7.106  | 3.549 # |
| 26) L6 AR-1254-1            | 6.459  | 5.375 | 3878297  | 896679  | 12.367 | 5.508 # |
| 27) L6 AR-1254-2            | 6.686  | 5.520 | 1232339  | 606421  | 2.731  | 4.146 # |
| 28) L6 AR-1254-3            | 7.052  | 5.917 | 4902591  | 810358  | 10.335 | 3.592 # |
| 29) L6 AR-1254-4            | 7.330  | 6.142 | 2439199  | 476285  | 6.809  | 3.375 # |
| 30) L6 AR-1254-5            | 7.760  | 6.552 | 18777812 | 581294  | 47.303 | 2.901 # |
| 31) L7 AR-1260-1            | 7.216  | 6.044 | 1287435  | 325713  | 3.513  | 2.087 # |
| 32) L7 AR-1260-2            | 7.505  | 6.231 | 476268   | 438390  | 1.144  | 2.320 # |
| 33) L7 AR-1260-3            | 7.854  | 6.388 | 2811901  | 2371344 | 10.864 | 12.837  |
| 34) L7 AR-1260-4            | 8.086  | 6.845 | 8881773  | 363463  | 26.920 | 2.974 # |
| 35) L7 AR-1260-5            | 8.401  | 7.090 | 4634032  | 338068  | 7.790  | 1.215 # |
| 36) L8 AR-1262-1            | 7.760  | 6.552 | 18777812 | 581294  | 59.118 | 5.463 # |
| 37) L8 AR-1262-2            | 8.401  | 6.845 | 4634032  | 363463  | 6.161  | 2.139 # |
| 38) L8 AR-1262-3            | 8.698  | 7.362 | 822408   | 402814  | 1.671  | 3.191 # |
| 39) L8 AR-1262-4            | 8.798  | 7.426 | 745814   | 1164716 | 2.031  | 5.031 # |
| 40) L8 AR-1262-5            | 9.516f | 7.927 | 552947   | 65802   | 2.065  | 0.655 # |
| 41) L9 AR-1268-1            | 8.698  | 7.362 | 822408   | 402814  | 1.011  | 1.154   |

Data Path : Z:\pestpcbsrv\HPCHEM1\ECD\_0\Data\P0081224\  
 Data File : P0105405.D  
 Signal(s) : Signal #1: ECD1A.ch Signal #2: ECD2B.ch  
 Acq On : 12 Aug 2024 11:30  
 Operator : YP/AJ  
 Sample : P3544-02 10X  
 Misc :  
 ALS Vial : 10 Sample Multiplier: 1

Instrument :  
 ECD\_0  
 ClientSampleId :  
 JEH690Y-1-2

Integration File signal 1: autoint1.e  
 Integration File signal 2: autoint2.e  
 Quant Time: Aug 12 12:29:13 2024  
 Quant Method : Z:\pestpcbsrv\HPCHEM1\ECD\_0\methods\P0081024.M  
 Quant Title : GC EXTRACTABLES  
 QLast Update : Sat Aug 10 04:08:56 2024  
 Response via : Initial Calibration  
 Integrator: ChemStation

Volume Inj. : 2 µl  
 Signal #1 Phase : ZB-MR1 Signal #2 Phase: ZB-MR2  
 Signal #1 Info : 30Mx0.32mmx 0.50µ Signal #2 Info : 30M x 0.32mm x 0.25µm

|     | Compound     | RT#1   | RT#2  | Resp#1  | Resp#2  | ng/ml | ng/ml   |
|-----|--------------|--------|-------|---------|---------|-------|---------|
| 42) | L9 AR-1268-2 | 8.798  | 7.426 | 745814  | 1164716 | 1.026 | 3.733 # |
| 43) | L9 AR-1268-3 | 9.026  | 7.636 | 576262  | 200801  | 0.893 | 0.794   |
| 44) | L9 AR-1268-4 | 9.516f | 7.927 | 552947  | 65802   | 1.986 | 0.612 # |
| 45) | L9 AR-1268-5 | 9.910  | 8.192 | 3367701 | -95795  | 1.611 | N.D. #  |

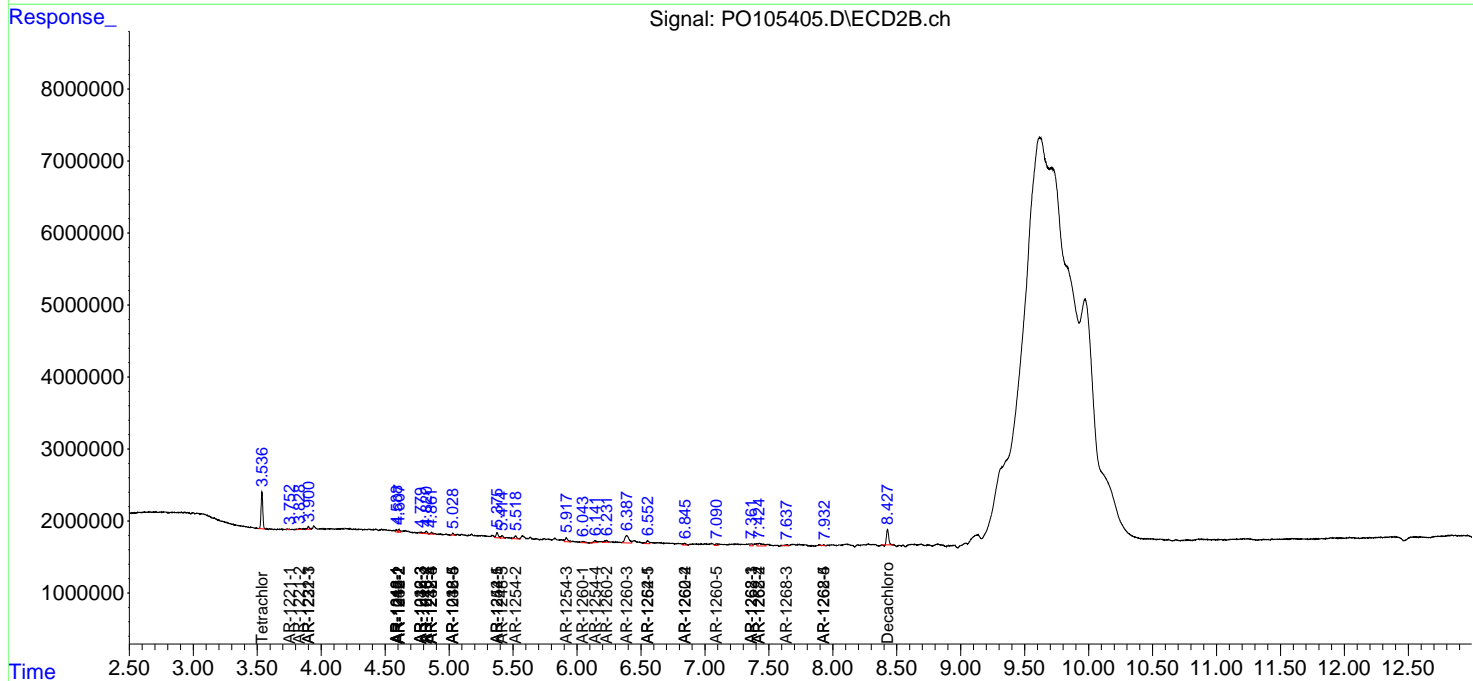
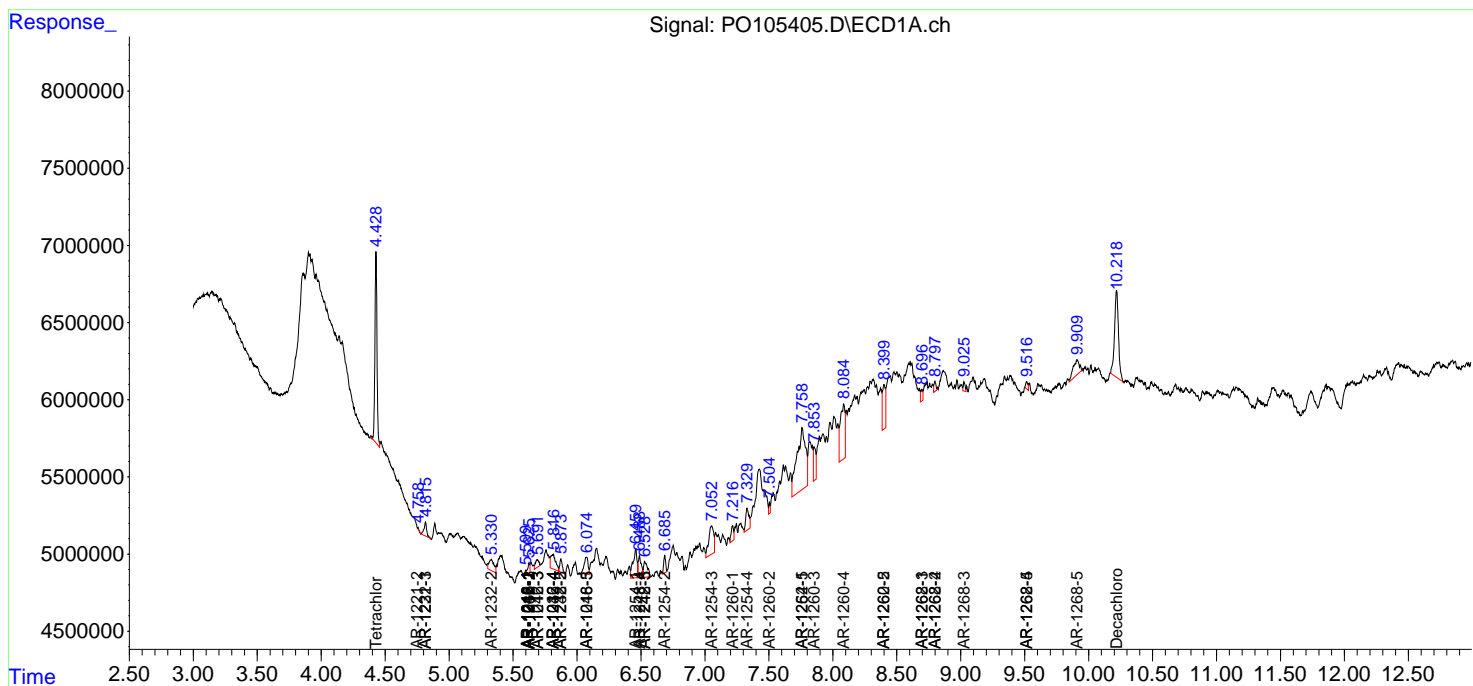
(f)=RT Delta > 1/2 Window (#)=Amounts differ by > 25% (m)=manual int.

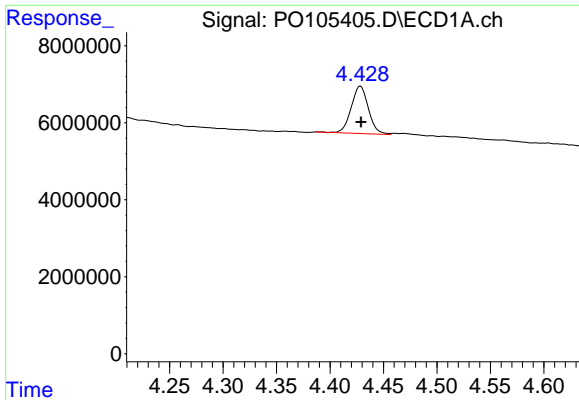
Data Path : Z:\pestpcbsrv\HPCHEM1\ECD\_O\Data\PO081224\  
 Data File : PO105405.D  
 Signal(s) : Signal #1: ECD1A.ch Signal #2: ECD2B.ch  
 Acq On : 12 Aug 2024 11:30  
 Operator : YP/AJ  
 Sample : P3544-02 10X  
 Misc :  
 ALS Vial : 10 Sample Multiplier: 1

Instrument :  
 ECD\_O  
 ClientSampleId :  
 JEH690Y-1-2

Integration File signal 1: autoint1.e  
 Integration File signal 2: autoint2.e  
 Quant Time: Aug 12 12:29:13 2024  
 Quant Method : Z:\pestpcbsrv\HPCHEM1\ECD\_O\methods\PO081024.M  
 Quant Title : GC EXTRACTABLES  
 QLast Update : Sat Aug 10 04:08:56 2024  
 Response via : Initial Calibration  
 Integrator: ChemStation

Volume Inj. : 2 µl  
 Signal #1 Phase : ZB-MR1 Signal #2 Phase: ZB-MR2  
 Signal #1 Info : 30Mx0.32mmx 0.50µ Signal #2 Info : 30M x 0.32mm x 0.25µm

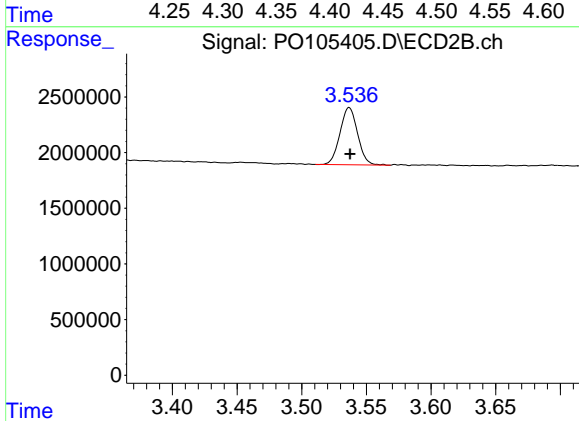




#1 Tetrachloro-m-xylene

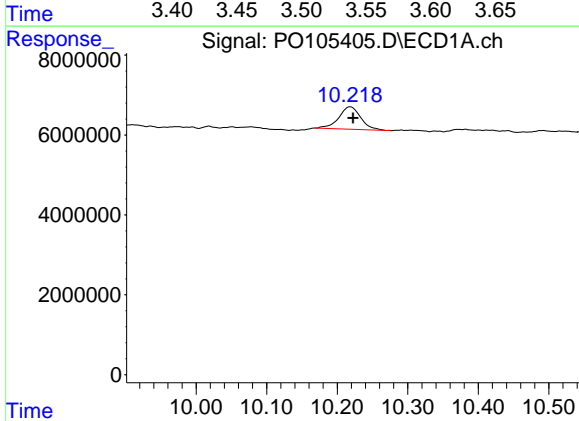
R.T.: 4.429 min  
 Delta R.T.: 0.000 min  
 Response: 13835632  
 Conc: 1.58 ng/ml

Instrument :  
 ECD\_O  
 ClientSampleId :  
 JEH690Y-1-2



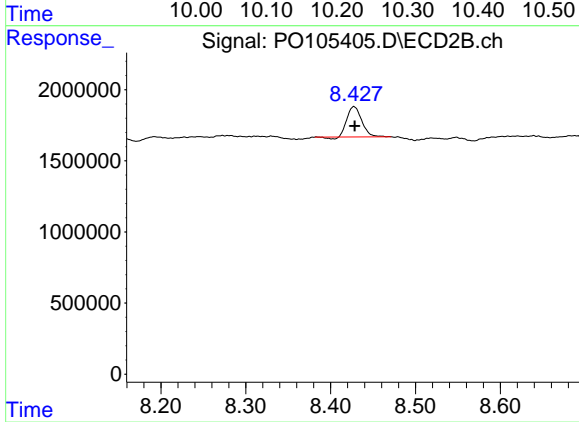
#1 Tetrachloro-m-xylene

R.T.: 3.537 min  
 Delta R.T.: 0.000 min  
 Response: 4865524  
 Conc: 1.55 ng/ml



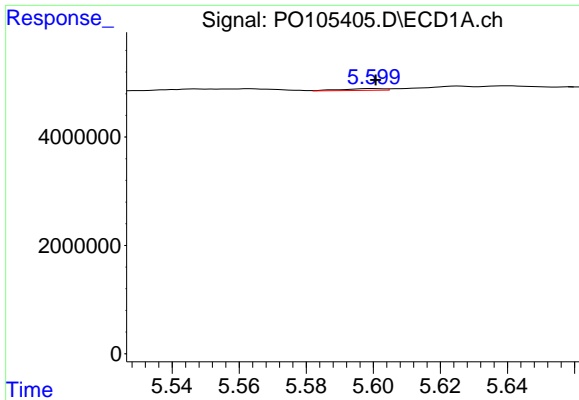
#2 Decachlorobiphenyl

R.T.: 10.218 min  
 Delta R.T.: -0.004 min  
 Response: 12108699  
 Conc: 2.10 ng/ml



#2 Decachlorobiphenyl

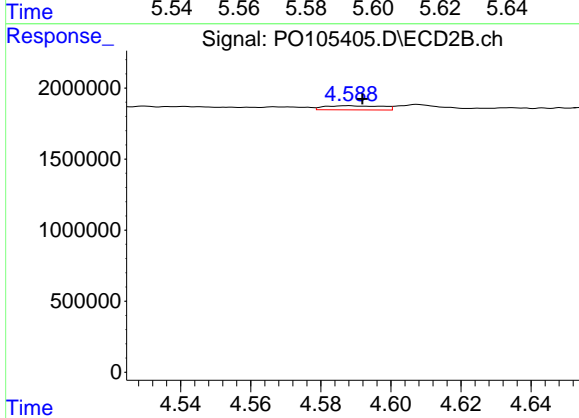
R.T.: 8.428 min  
 Delta R.T.: 0.000 min  
 Response: 2499702  
 Conc: 1.41 ng/ml



#3 AR-1016-1

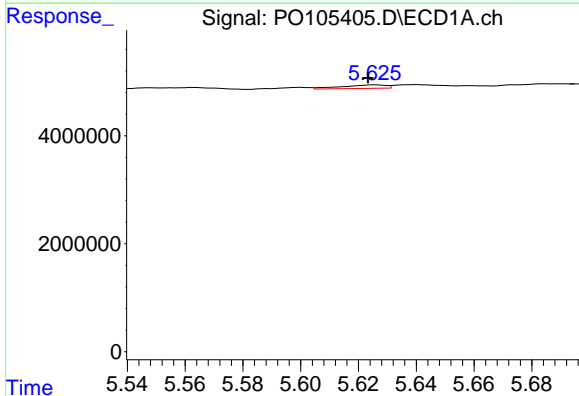
R.T.: 5.600 min  
 Delta R.T.: 0.000 min  
 Response: 286573  
 Conc: 0.95 ng/ml

Instrument :  
 ECD\_O  
 ClientSampleId :  
 JEH690Y-1-2



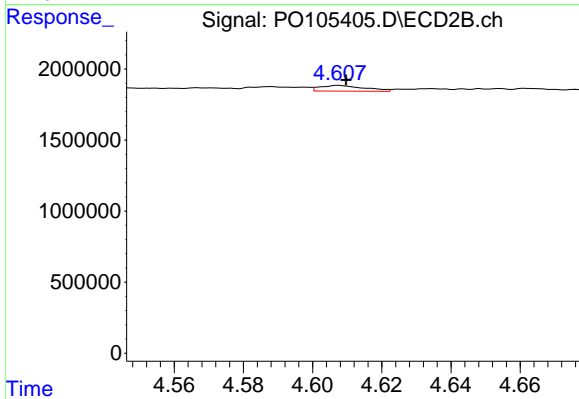
#3 AR-1016-1

R.T.: 4.588 min  
 Delta R.T.: -0.004 min  
 Response: 325629  
 Conc: 2.90 ng/ml



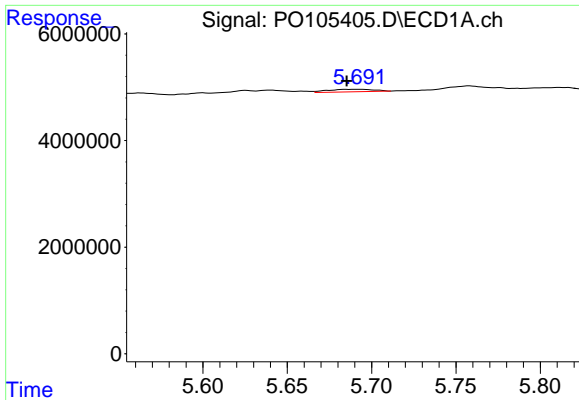
#4 AR-1016-2

R.T.: 5.626 min  
 Delta R.T.: 0.002 min  
 Response: 693362  
 Conc: 1.62 ng/ml



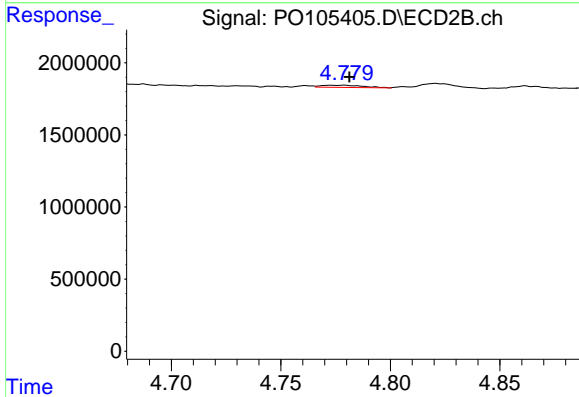
#4 AR-1016-2

R.T.: 4.608 min  
 Delta R.T.: -0.002 min  
 Response: 351432  
 Conc: 2.26 ng/ml

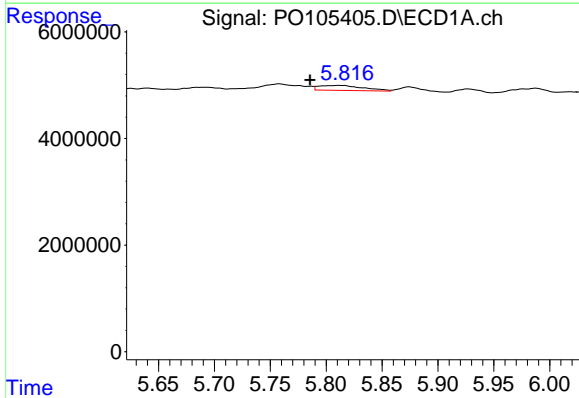


#5 AR-1016-3  
 R.T.: 5.692 min  
 Delta R.T.: 0.007 min  
 Response: 917775  
 Conc: 3.58 ng/ml

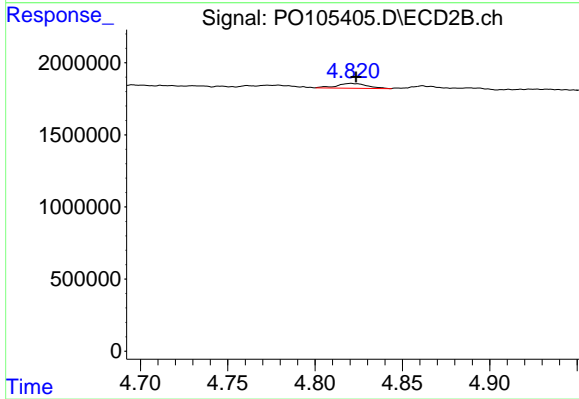
Instrument :  
 ECD\_O  
 ClientSampleId :  
 JEH690Y-1-2



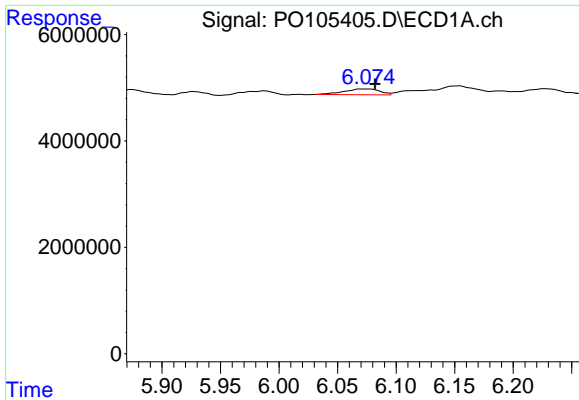
#5 AR-1016-3  
 R.T.: 4.779 min  
 Delta R.T.: -0.003 min  
 Response: 198676  
 Conc: 2.37 ng/ml



#6 AR-1016-4  
 R.T.: 5.811 min  
 Delta R.T.: 0.026 min  
 Response: 2570858  
 Conc: 11.75 ng/ml



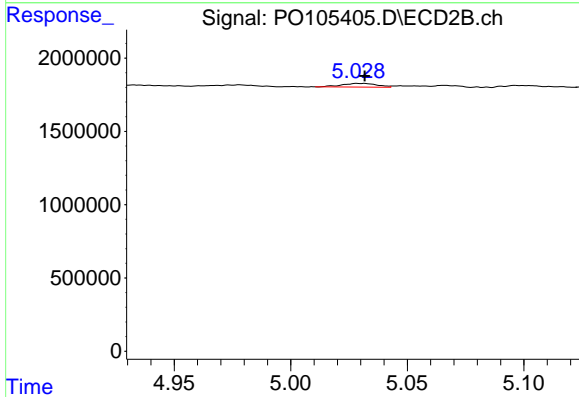
#6 AR-1016-4  
 R.T.: 4.821 min  
 Delta R.T.: -0.003 min  
 Response: 409571  
 Conc: 6.08 ng/ml



#7 AR-1016-5

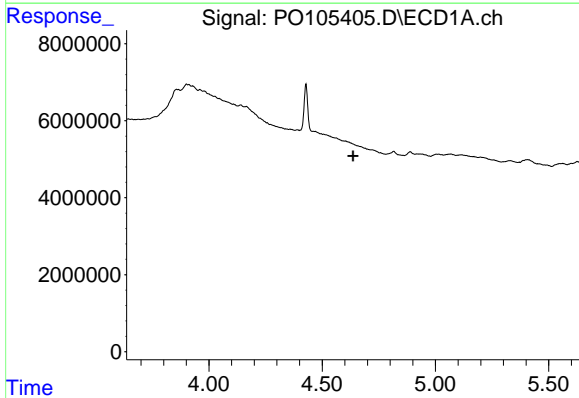
R.T.: 6.073 min  
 Delta R.T.: -0.009 min  
 Response: 2309345  
 Conc: 10.79 ng/ml

Instrument :  
 ECD\_O  
 ClientSampleId :  
 JEH690Y-1-2



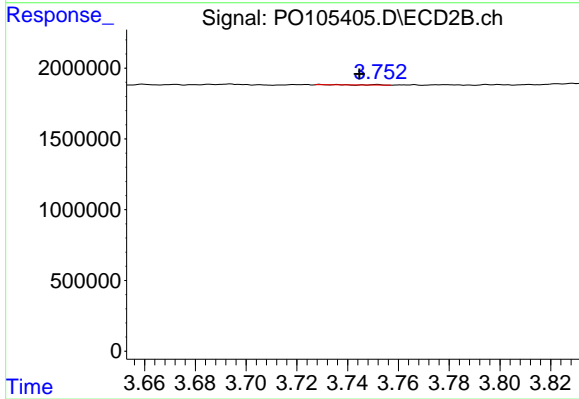
#7 AR-1016-5

R.T.: 5.030 min  
 Delta R.T.: -0.002 min  
 Response: 253175  
 Conc: 3.03 ng/ml



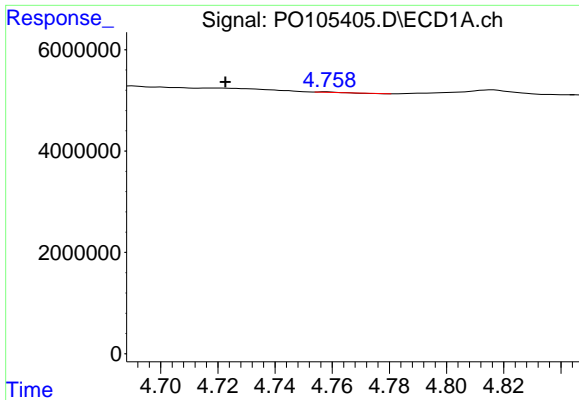
#8 AR-1221-1

R.T.: 0.000 min  
 Exp R.T. : 4.636 min  
 Response: 0  
 Conc: N.D.



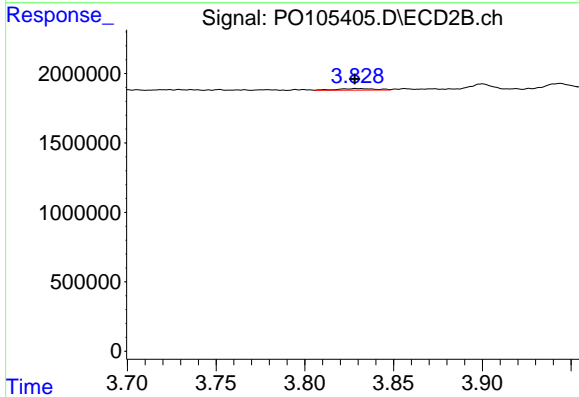
#8 AR-1221-1

R.T.: 3.752 min  
 Delta R.T.: 0.007 min  
 Response: 12065  
 Conc: 0.31 ng/ml

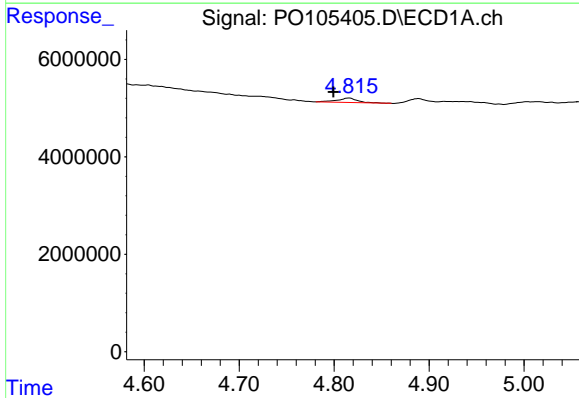


#9 AR-1221-2  
 R.T.: 4.758 min  
 Delta R.T.: 0.035 min  
 Response: 22756  
 Conc: 0.27 ng/ml

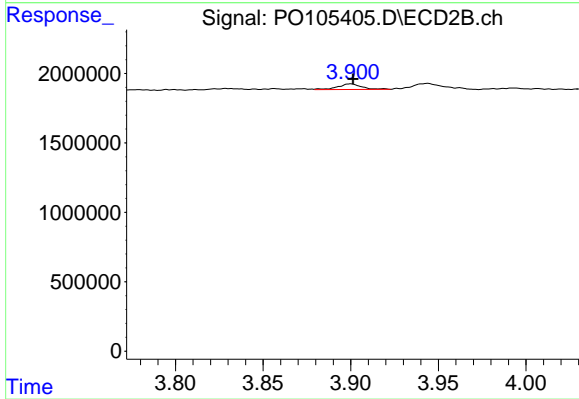
Instrument :  
 ECD\_O  
 ClientSampleId :  
 JEH690Y-1-2



#9 AR-1221-2  
 R.T.: 3.829 min  
 Delta R.T.: 0.001 min  
 Response: 162306  
 Conc: 5.28 ng/ml

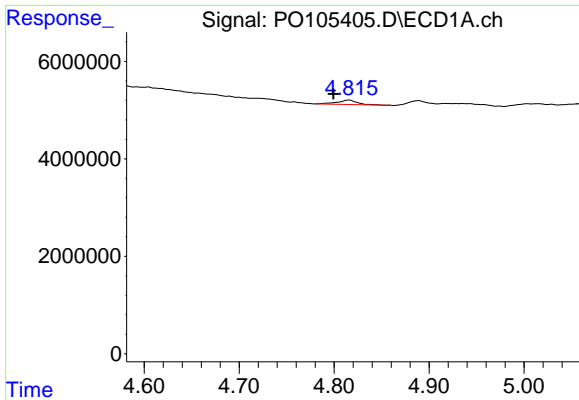


#10 AR-1221-3  
 R.T.: 4.816 min  
 Delta R.T.: 0.017 min  
 Response: 1227140  
 Conc: 5.04 ng/ml



#10 AR-1221-3  
 R.T.: 3.900 min  
 Delta R.T.: -0.002 min  
 Response: 383335  
 Conc: 4.28 ng/ml

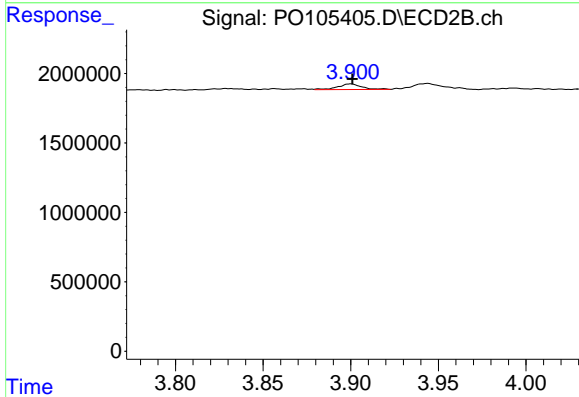




#11 AR-1232-1

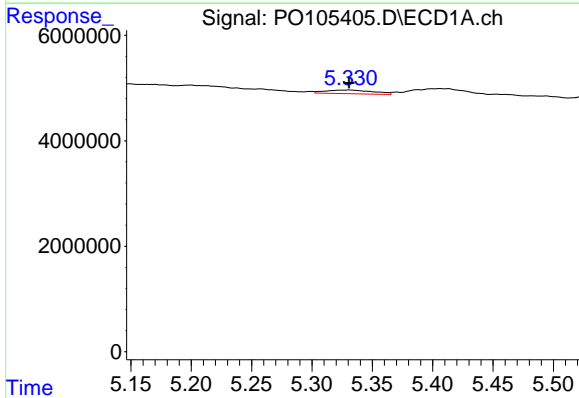
R.T.: 4.816 min  
 Delta R.T.: 0.017 min  
 Response: 1227140  
 Conc: 6.14 ng/ml

Instrument :  
 ECD\_O  
 ClientSampleId :  
 JEH690Y-1-2



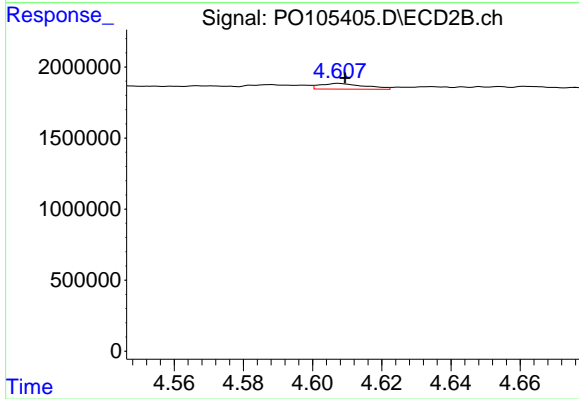
#11 AR-1232-1

R.T.: 3.900 min  
 Delta R.T.: -0.001 min  
 Response: 383335  
 Conc: 5.25 ng/ml



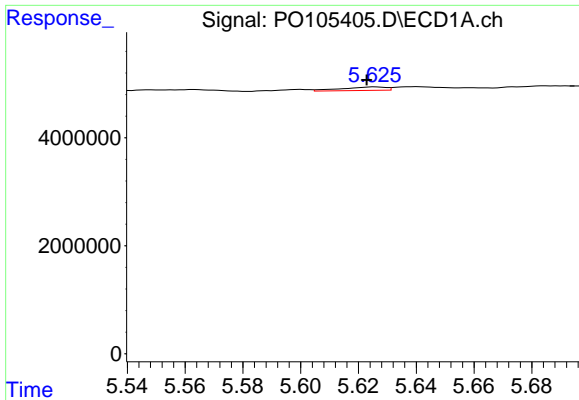
#12 AR-1232-2

R.T.: 5.331 min  
 Delta R.T.: 0.000 min  
 Response: 1956090  
 Conc: 18.48 ng/ml



#12 AR-1232-2

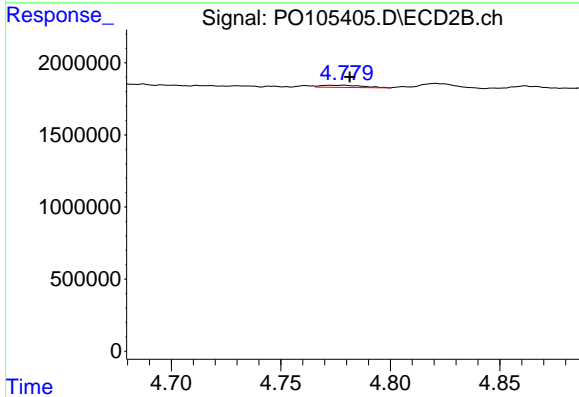
R.T.: 4.608 min  
 Delta R.T.: -0.002 min  
 Response: 351432  
 Conc: 5.01 ng/ml



#13 AR-1232-3

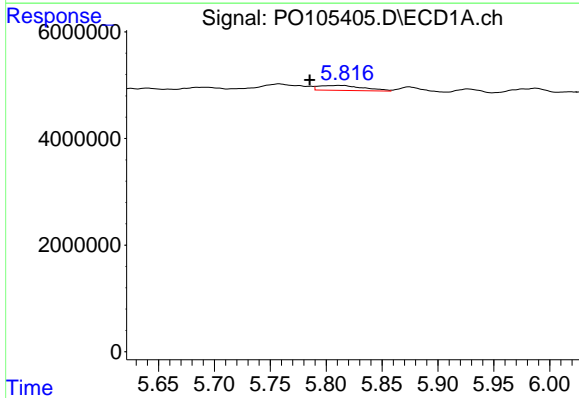
R.T.: 5.626 min  
 Delta R.T.: 0.003 min  
 Response: 693362  
 Conc: 3.62 ng/ml

Instrument :  
 ECD\_O  
 ClientSampleId :  
 JEH690Y-1-2



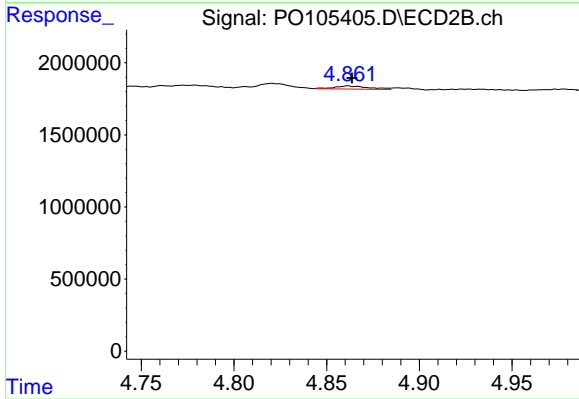
#13 AR-1232-3

R.T.: 4.779 min  
 Delta R.T.: -0.003 min  
 Response: 198676  
 Conc: 5.20 ng/ml



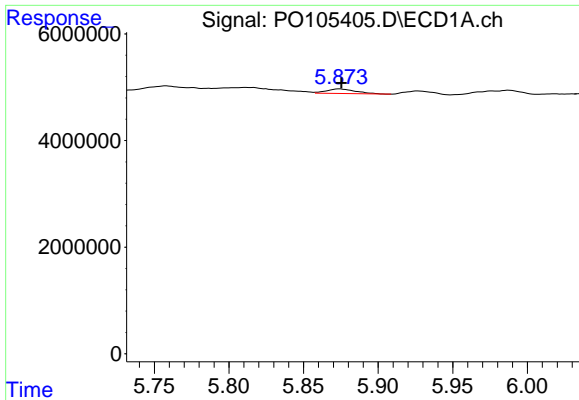
#14 AR-1232-4

R.T.: 5.811 min  
 Delta R.T.: 0.026 min  
 Response: 2570858  
 Conc: 26.36 ng/ml



#14 AR-1232-4

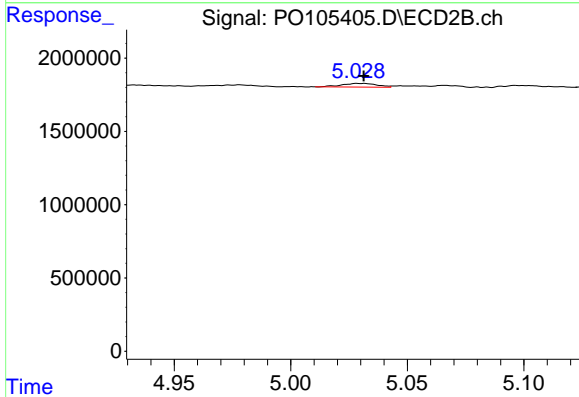
R.T.: 4.862 min  
 Delta R.T.: -0.002 min  
 Response: 288224  
 Conc: 8.28 ng/ml



#15 AR-1232-5

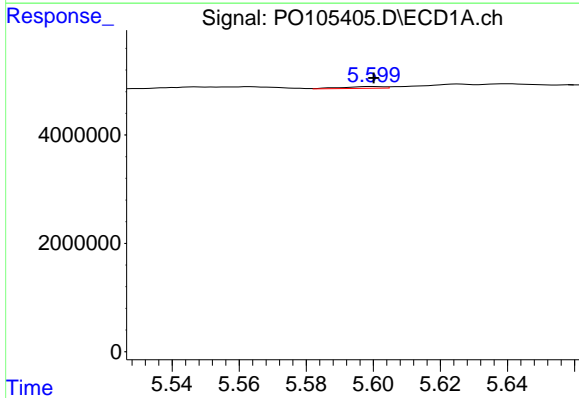
R.T.: 5.874 min  
 Delta R.T.: -0.002 min  
 Response: 1168374  
 Conc: 16.21 ng/ml

Instrument :  
 ECD\_O  
 ClientSampleId :  
 JEH690Y-1-2



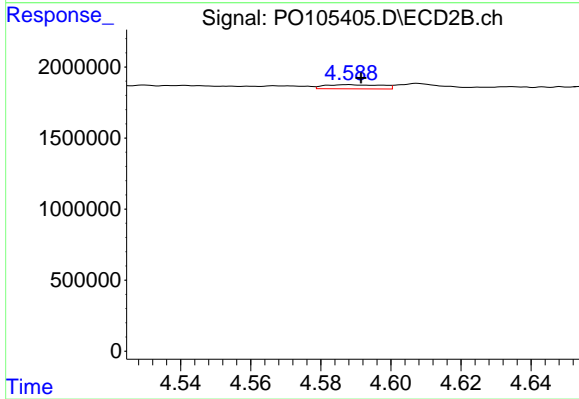
#15 AR-1232-5

R.T.: 5.030 min  
 Delta R.T.: -0.001 min  
 Response: 253175  
 Conc: 7.17 ng/ml



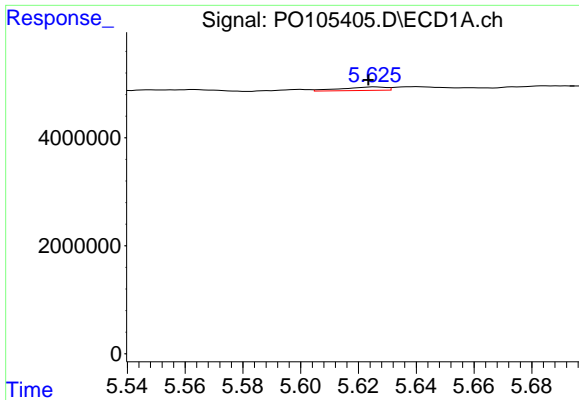
#16 AR-1242-1

R.T.: 5.600 min  
 Delta R.T.: 0.000 min  
 Response: 286573  
 Conc: 1.23 ng/ml



#16 AR-1242-1

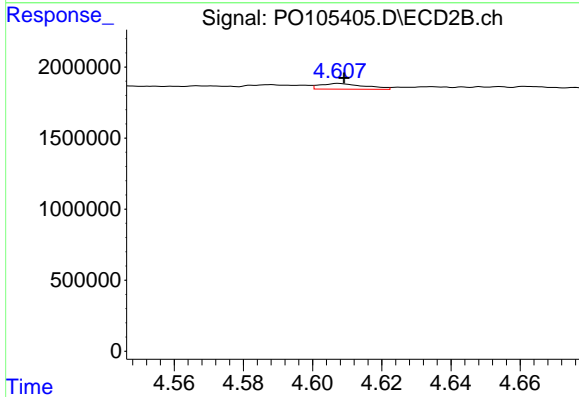
R.T.: 4.588 min  
 Delta R.T.: -0.004 min  
 Response: 325629  
 Conc: 3.69 ng/ml



#17 AR-1242-2

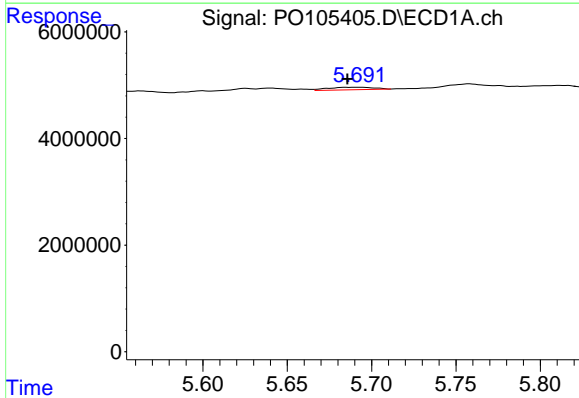
R.T.: 5.626 min  
 Delta R.T.: 0.002 min  
 Response: 693362  
 Conc: 2.13 ng/ml

Instrument :  
 ECD\_O  
 ClientSampleId :  
 JEH690Y-1-2



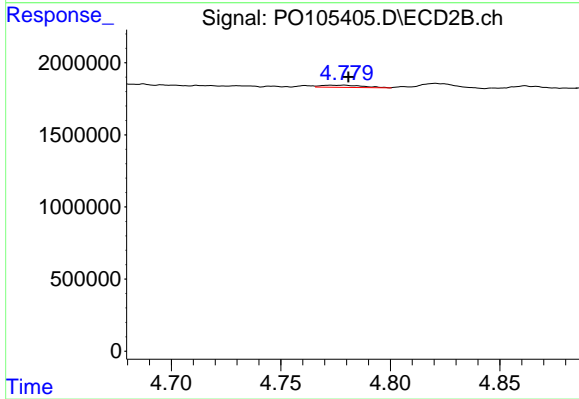
#17 AR-1242-2

R.T.: 4.608 min  
 Delta R.T.: -0.001 min  
 Response: 351432  
 Conc: 2.96 ng/ml



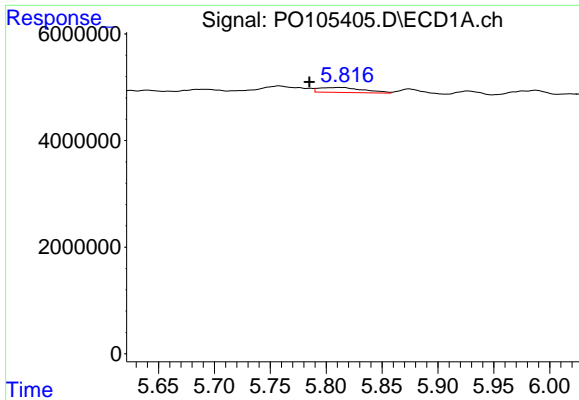
#18 AR-1242-3

R.T.: 5.692 min  
 Delta R.T.: 0.006 min  
 Response: 917775  
 Conc: 4.65 ng/ml



#18 AR-1242-3

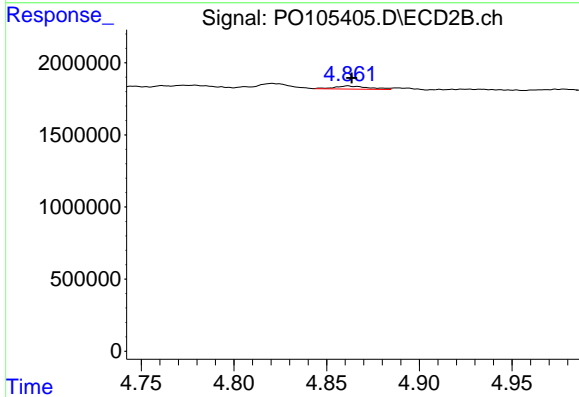
R.T.: 4.779 min  
 Delta R.T.: -0.002 min  
 Response: 198676  
 Conc: 3.06 ng/ml



#19 AR-1242-4

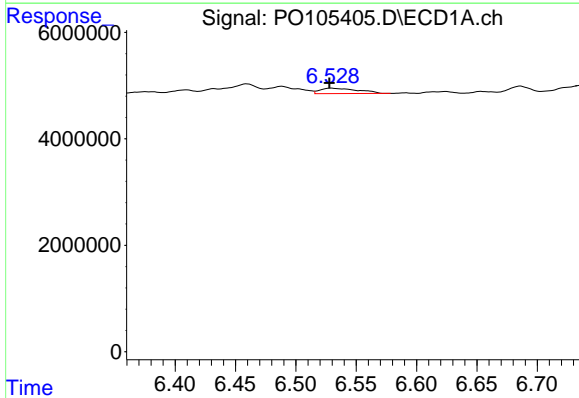
R.T.: 5.811 min  
 Delta R.T.: 0.027 min  
 Response: 2570858  
 Conc: 15.07 ng/ml

Instrument :  
 ECD\_O  
 ClientSampleId :  
 JEH690Y-1-2



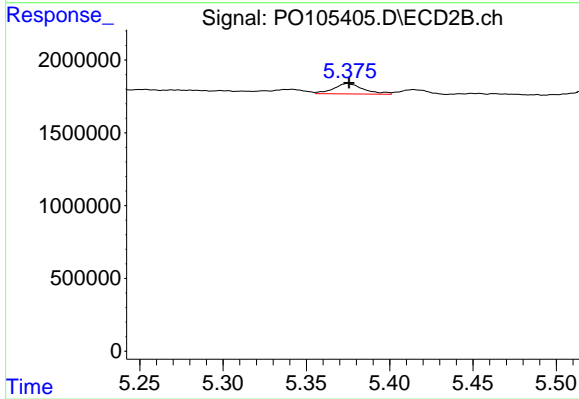
#19 AR-1242-4

R.T.: 4.862 min  
 Delta R.T.: -0.002 min  
 Response: 288224  
 Conc: 4.35 ng/ml



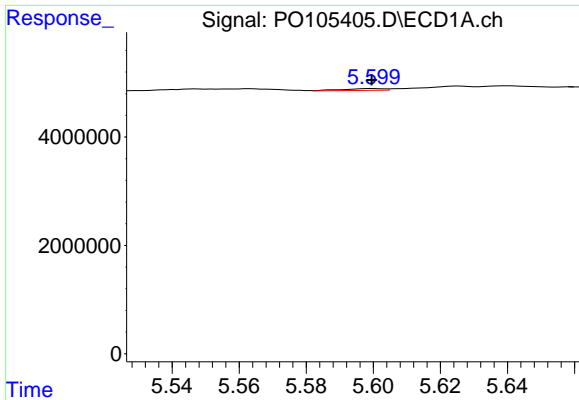
#20 AR-1242-5

R.T.: 6.529 min  
 Delta R.T.: 0.002 min  
 Response: 2198042  
 Conc: 12.58 ng/ml



#20 AR-1242-5

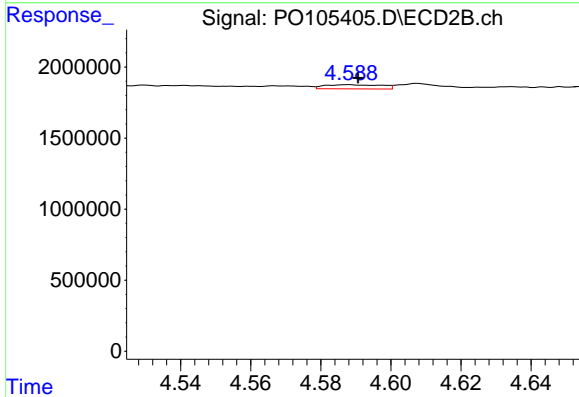
R.T.: 5.375 min  
 Delta R.T.: 0.000 min  
 Response: 896679  
 Conc: 10.91 ng/ml



#21 AR-1248-1

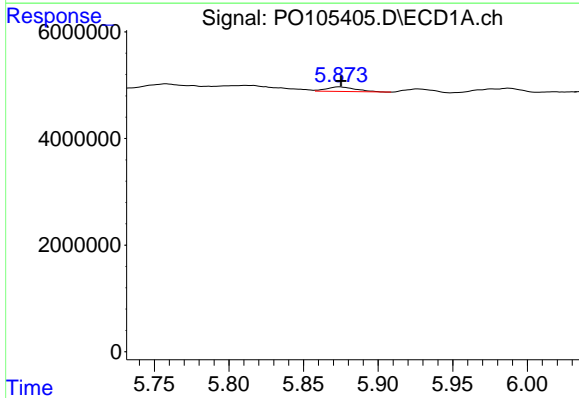
R.T.: 5.600 min  
 Delta R.T.: 0.000 min  
 Response: 286573  
 Conc: 1.57 ng/ml

Instrument :  
 ECD\_O  
 ClientSampleId :  
 JEH690Y-1-2



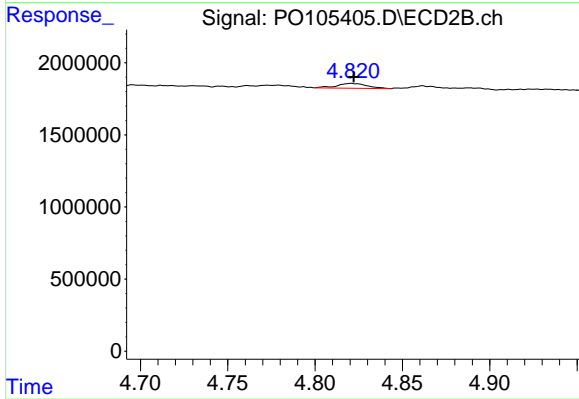
#21 AR-1248-1

R.T.: 4.588 min  
 Delta R.T.: -0.003 min  
 Response: 325629  
 Conc: 4.66 ng/ml



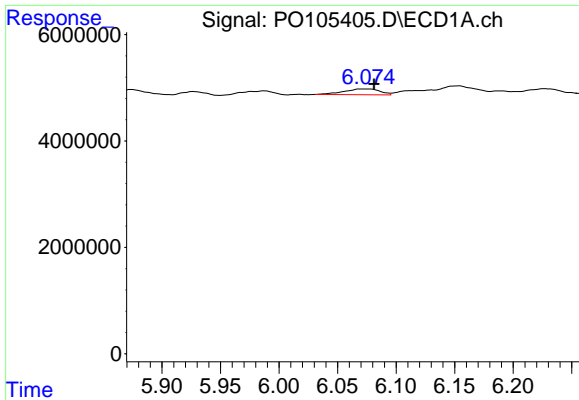
#22 AR-1248-2

R.T.: 5.874 min  
 Delta R.T.: -0.001 min  
 Response: 1168374  
 Conc: 4.64 ng/ml



#22 AR-1248-2

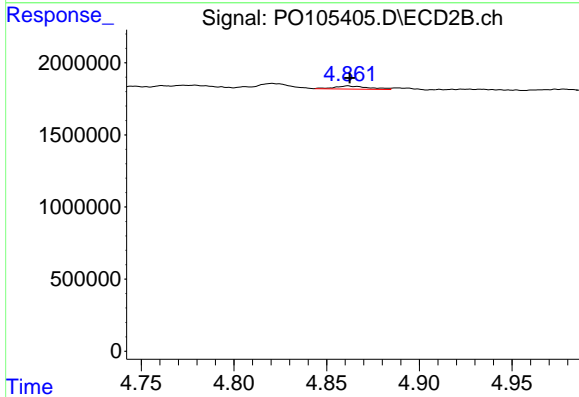
R.T.: 4.821 min  
 Delta R.T.: -0.002 min  
 Response: 409571  
 Conc: 4.32 ng/ml



#23 AR-1248-3

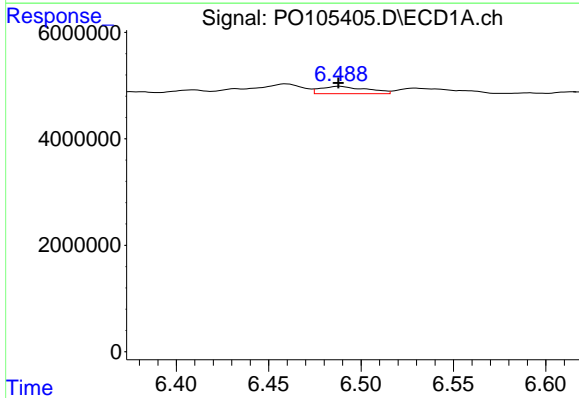
R.T.: 6.073 min  
 Delta R.T.: -0.008 min  
 Response: 2309345  
 Conc: 8.17 ng/ml

Instrument :  
 ECD\_O  
 ClientSampleId :  
 JEH690Y-1-2



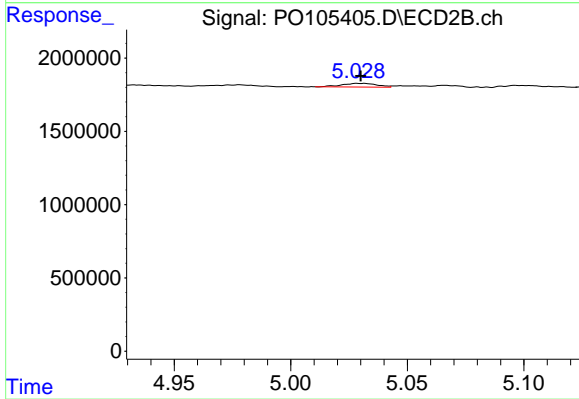
#23 AR-1248-3

R.T.: 4.862 min  
 Delta R.T.: 0.000 min  
 Response: 288224  
 Conc: 2.89 ng/ml



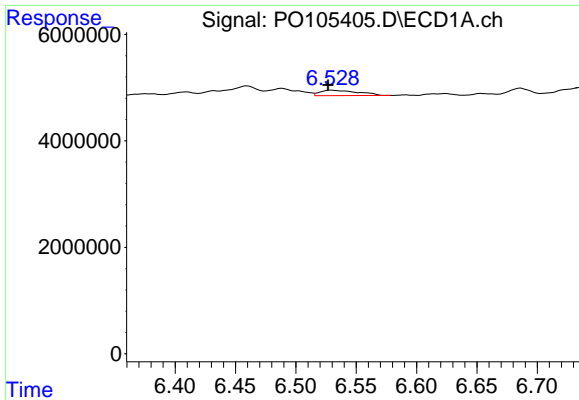
#24 AR-1248-4

R.T.: 6.488 min  
 Delta R.T.: 0.000 min  
 Response: 2401471  
 Conc: 7.51 ng/ml



#24 AR-1248-4

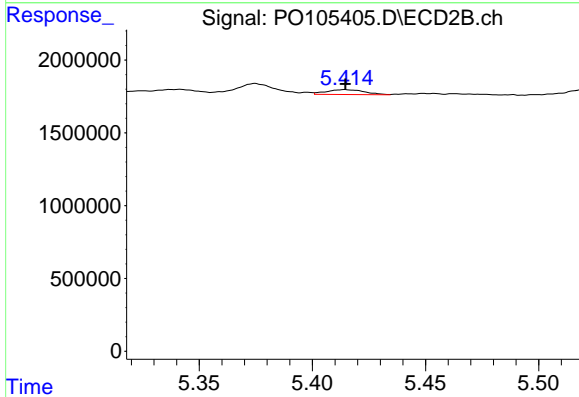
R.T.: 5.030 min  
 Delta R.T.: 0.000 min  
 Response: 253175  
 Conc: 2.24 ng/ml



#25 AR-1248-5

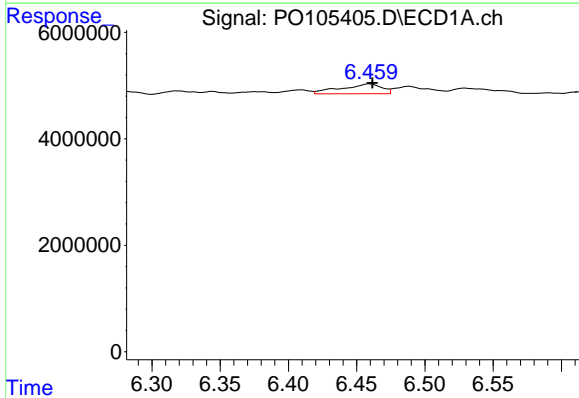
R.T.: 6.529 min  
 Delta R.T.: 0.003 min  
 Response: 2198042  
 Conc: 7.11 ng/ml

Instrument :  
 ECD\_O  
 ClientSampleId :  
 JEH690Y-1-2



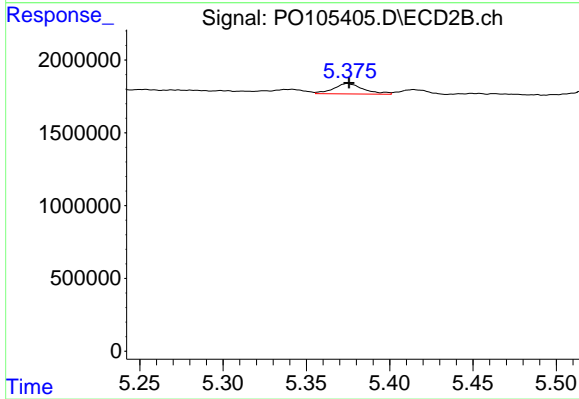
#25 AR-1248-5

R.T.: 5.415 min  
 Delta R.T.: 0.000 min  
 Response: 399596  
 Conc: 3.55 ng/ml



#26 AR-1254-1

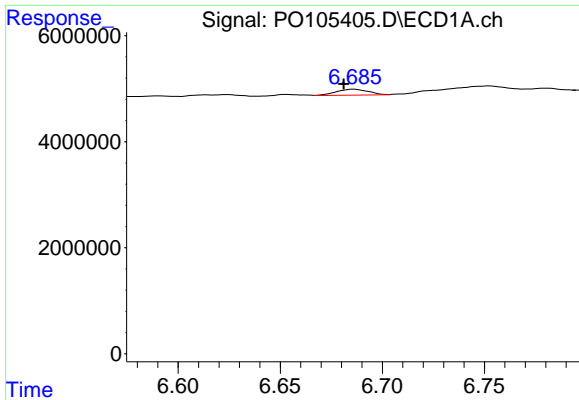
R.T.: 6.459 min  
 Delta R.T.: -0.002 min  
 Response: 3878297  
 Conc: 12.37 ng/ml



#26 AR-1254-1

R.T.: 5.375 min  
 Delta R.T.: 0.000 min  
 Response: 896679  
 Conc: 5.51 ng/ml

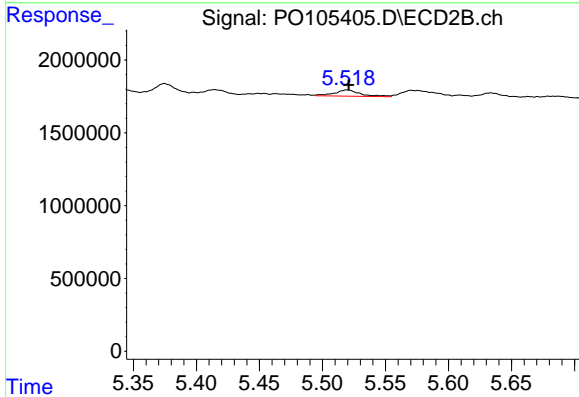




#27 AR-1254-2

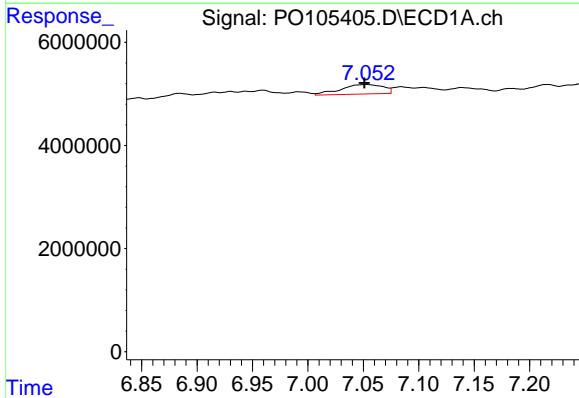
R.T.: 6.686 min  
 Delta R.T.: 0.005 min  
 Response: 1232339  
 Conc: 2.73 ng/ml

Instrument :  
 ECD\_O  
 ClientSampleId :  
 JEH690Y-1-2



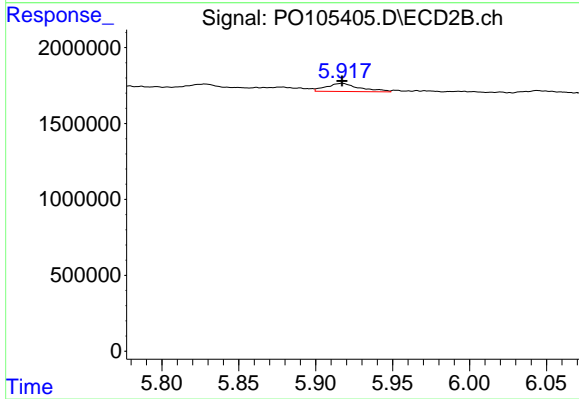
#27 AR-1254-2

R.T.: 5.520 min  
 Delta R.T.: -0.001 min  
 Response: 606421  
 Conc: 4.15 ng/ml



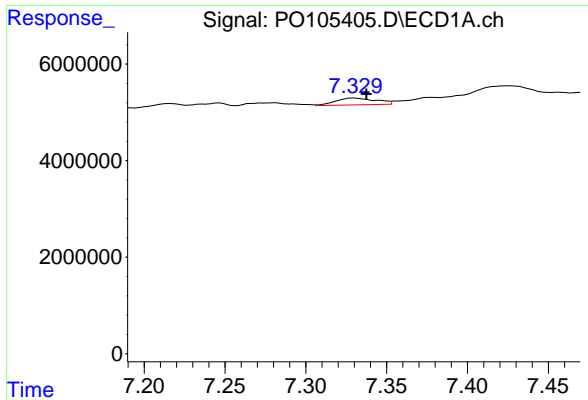
#28 AR-1254-3

R.T.: 7.052 min  
 Delta R.T.: 0.001 min  
 Response: 4902591  
 Conc: 10.33 ng/ml



#28 AR-1254-3

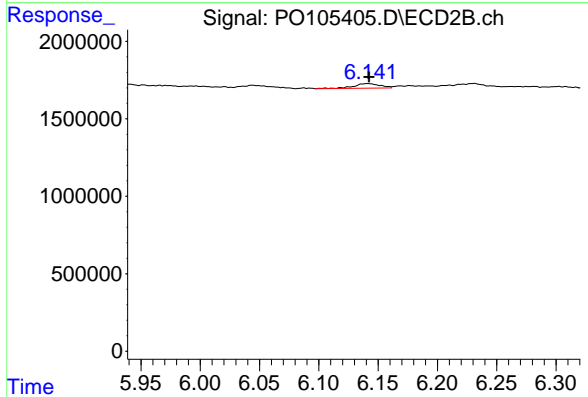
R.T.: 5.917 min  
 Delta R.T.: 0.000 min  
 Response: 810358  
 Conc: 3.59 ng/ml



#29 AR-1254-4

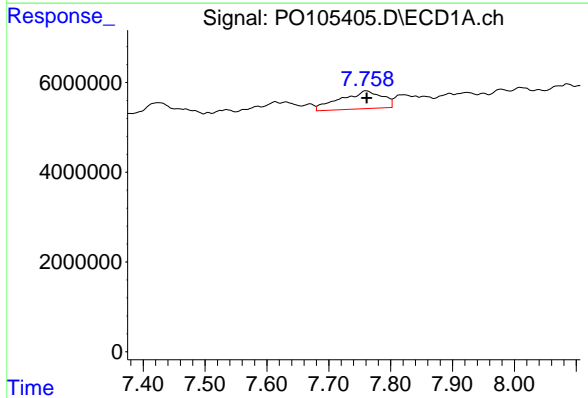
R.T.: 7.330 min  
 Delta R.T.: -0.008 min  
 Response: 2439199  
 Conc: 6.81 ng/ml

Instrument :  
 ECD\_O  
 ClientSampleId :  
 JEH690Y-1-2



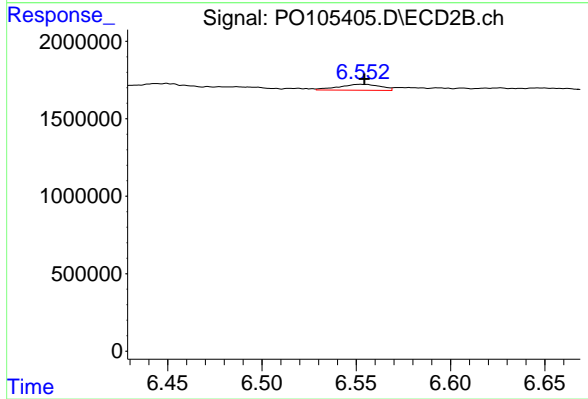
#29 AR-1254-4

R.T.: 6.142 min  
 Delta R.T.: 0.000 min  
 Response: 476285  
 Conc: 3.38 ng/ml



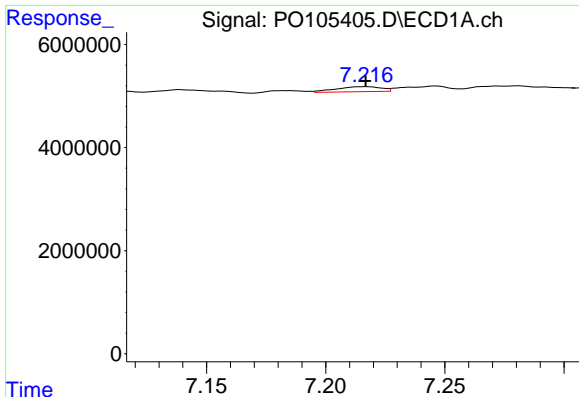
#30 AR-1254-5

R.T.: 7.760 min  
 Delta R.T.: -0.001 min  
 Response: 18777812  
 Conc: 47.30 ng/ml



#30 AR-1254-5

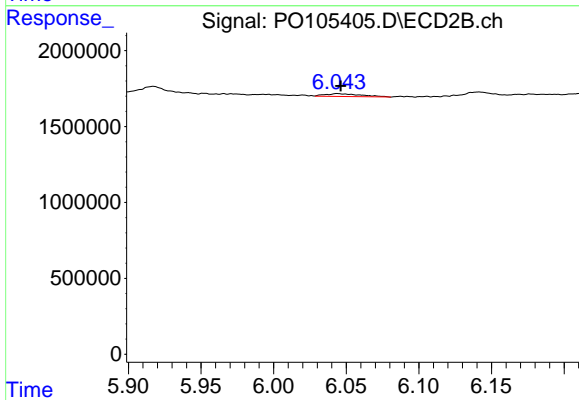
R.T.: 6.552 min  
 Delta R.T.: -0.002 min  
 Response: 581294  
 Conc: 2.90 ng/ml



#31 AR-1260-1

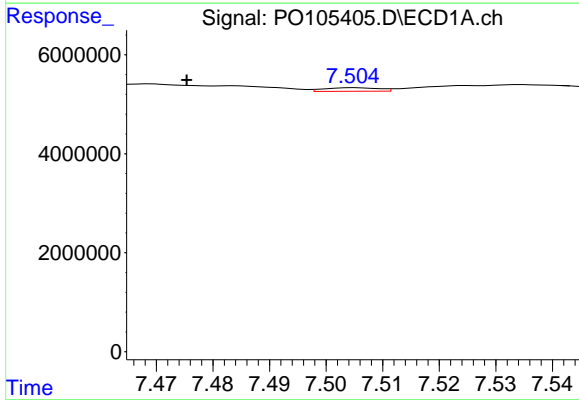
R.T.: 7.216 min  
 Delta R.T.: 0.000 min  
 Response: 1287435  
 Conc: 3.51 ng/ml

Instrument :  
 ECD\_O  
 ClientSampleId :  
 JEH690Y-1-2



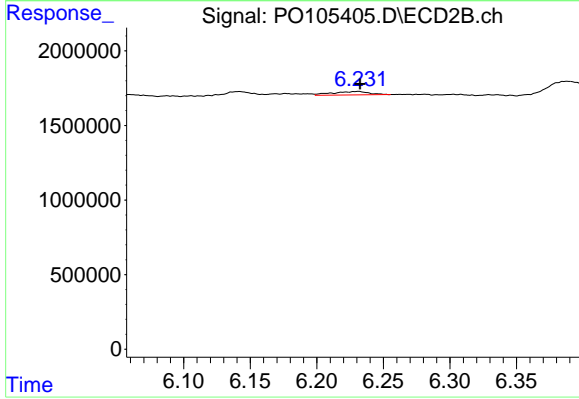
#31 AR-1260-1

R.T.: 6.044 min  
 Delta R.T.: -0.002 min  
 Response: 325713  
 Conc: 2.09 ng/ml



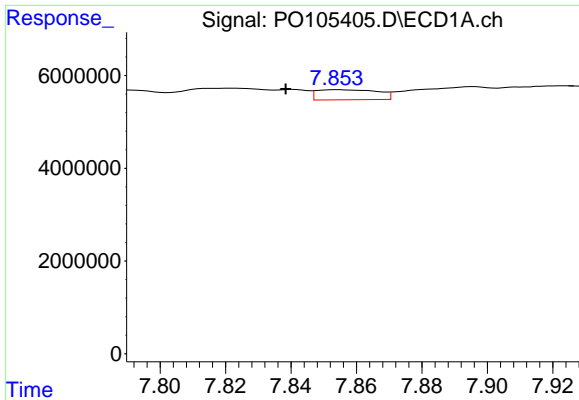
#32 AR-1260-2

R.T.: 7.505 min  
 Delta R.T.: 0.030 min  
 Response: 476268  
 Conc: 1.14 ng/ml



#32 AR-1260-2

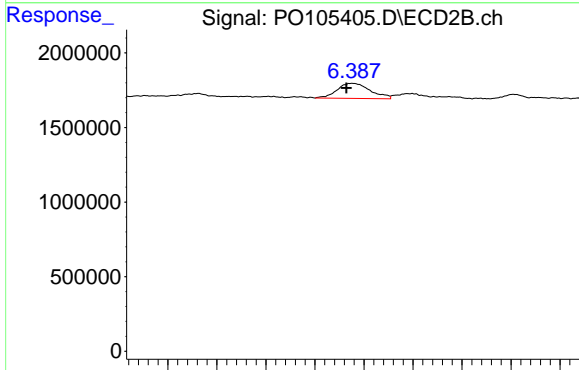
R.T.: 6.231 min  
 Delta R.T.: -0.001 min  
 Response: 438390  
 Conc: 2.32 ng/ml



#33 AR-1260-3

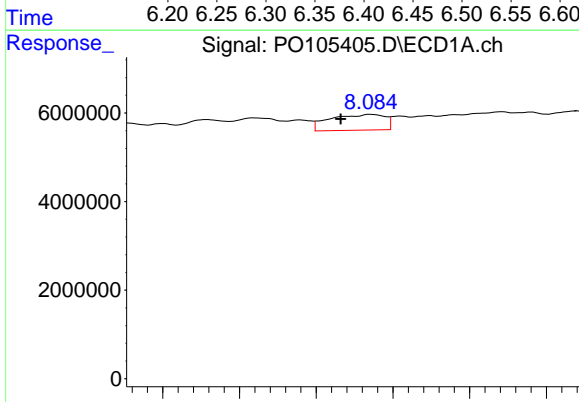
R.T.: 7.854 min  
 Delta R.T.: 0.016 min  
 Response: 2811901  
 Conc: 10.86 ng/ml

Instrument :  
 ECD\_O  
 ClientSampleId :  
 JEH690Y-1-2



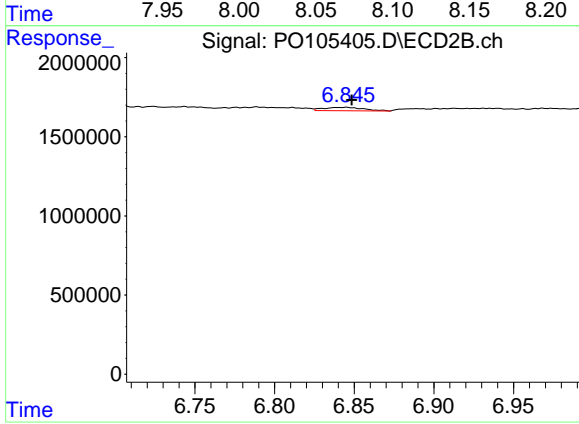
#33 AR-1260-3

R.T.: 6.388 min  
 Delta R.T.: 0.006 min  
 Response: 2371344  
 Conc: 12.84 ng/ml



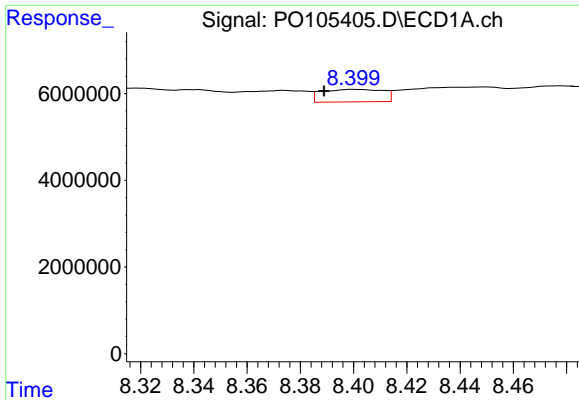
#34 AR-1260-4

R.T.: 8.086 min  
 Delta R.T.: 0.020 min  
 Response: 8881773  
 Conc: 26.92 ng/ml



#34 AR-1260-4

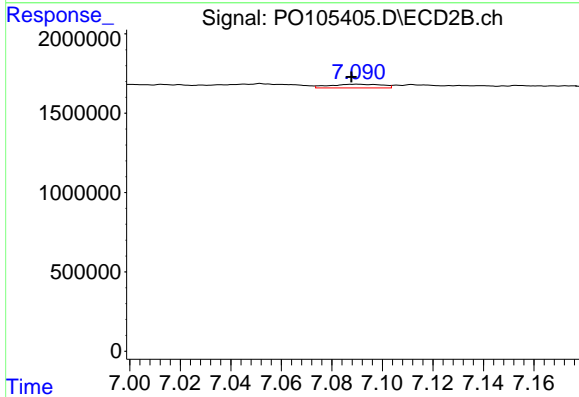
R.T.: 6.845 min  
 Delta R.T.: -0.003 min  
 Response: 363463  
 Conc: 2.97 ng/ml



#35 AR-1260-5

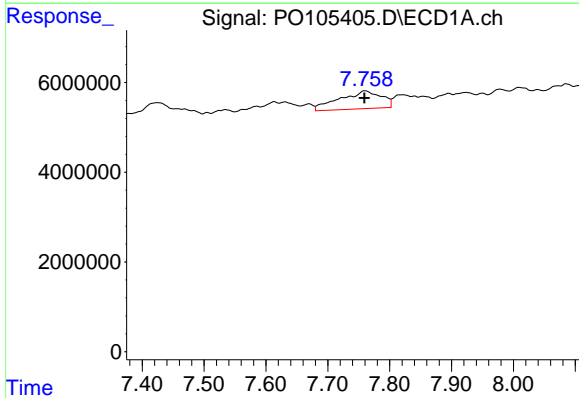
R.T.: 8.401 min  
 Delta R.T.: 0.012 min  
 Response: 4634032  
 Conc: 7.79 ng/ml

Instrument :  
 ECD\_O  
 ClientSampleId :  
 JEH690Y-1-2



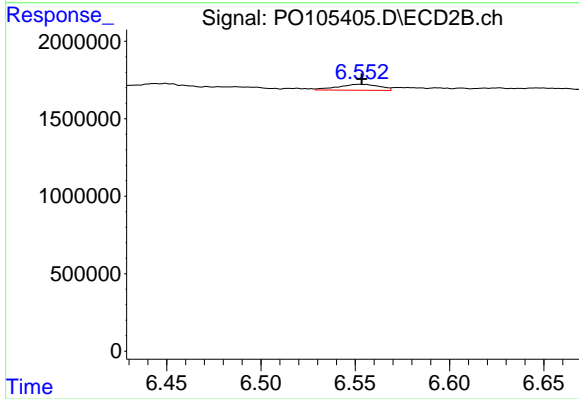
#35 AR-1260-5

R.T.: 7.090 min  
 Delta R.T.: 0.002 min  
 Response: 338068  
 Conc: 1.21 ng/ml



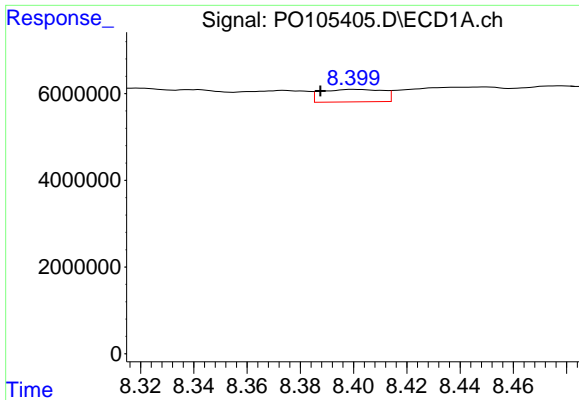
#36 AR-1262-1

R.T.: 7.760 min  
 Delta R.T.: 0.001 min  
 Response: 18777812  
 Conc: 59.12 ng/ml



#36 AR-1262-1

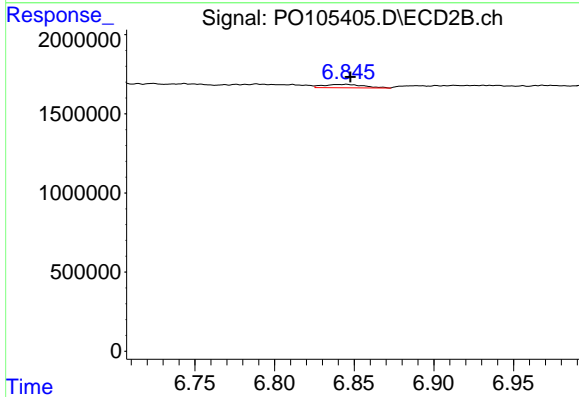
R.T.: 6.552 min  
 Delta R.T.: -0.001 min  
 Response: 581294  
 Conc: 5.46 ng/ml



#37 AR-1262-2

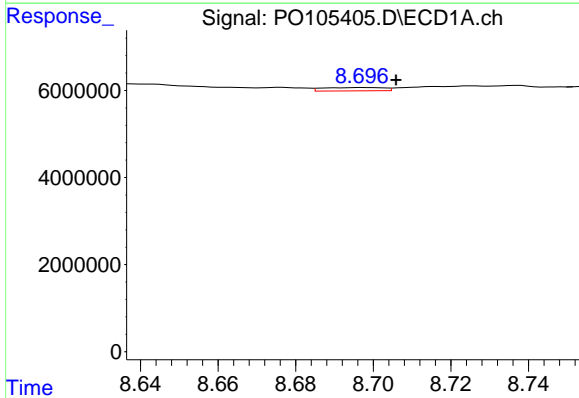
R.T.: 8.401 min  
 Delta R.T.: 0.013 min  
 Response: 4634032  
 Conc: 6.16 ng/ml

Instrument :  
 ECD\_O  
 ClientSampleId :  
 JEH690Y-1-2



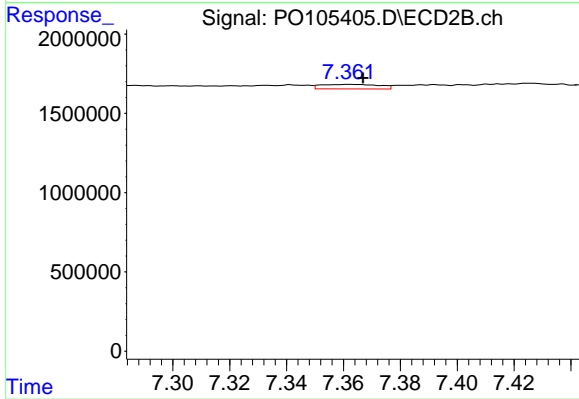
#37 AR-1262-2

R.T.: 6.845 min  
 Delta R.T.: -0.003 min  
 Response: 363463  
 Conc: 2.14 ng/ml



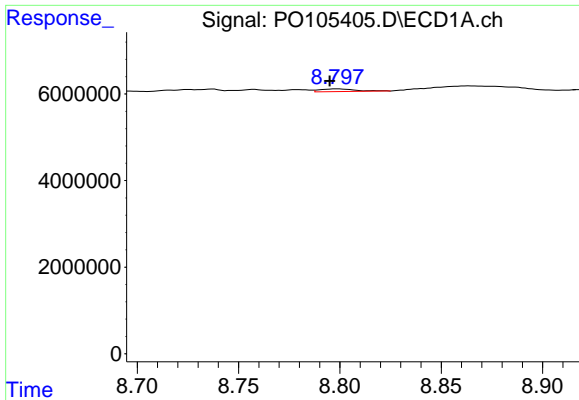
#38 AR-1262-3

R.T.: 8.698 min  
 Delta R.T.: -0.008 min  
 Response: 822408  
 Conc: 1.67 ng/ml



#38 AR-1262-3

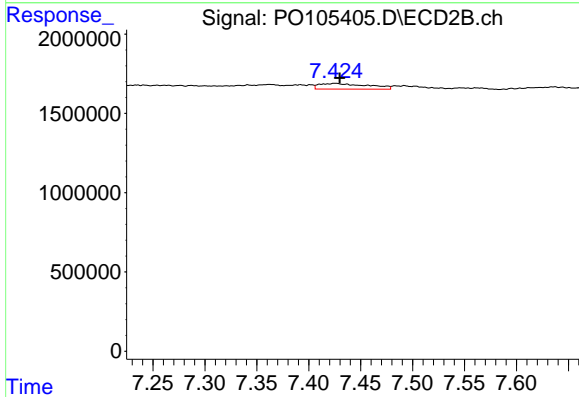
R.T.: 7.362 min  
 Delta R.T.: -0.005 min  
 Response: 402814  
 Conc: 3.19 ng/ml



#39 AR-1262-4

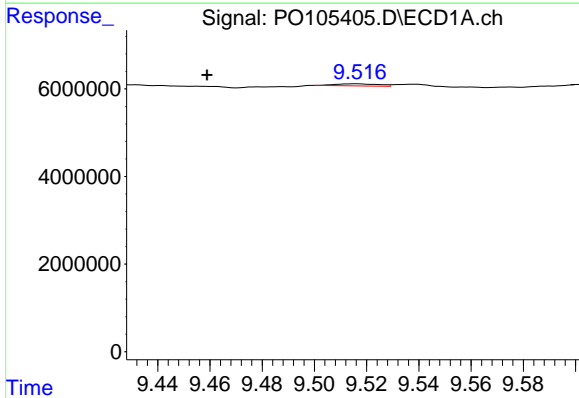
R.T.: 8.798 min  
 Delta R.T.: 0.003 min  
 Response: 745814  
 Conc: 2.03 ng/ml

Instrument :  
 ECD\_O  
 ClientSampleId :  
 JEH690Y-1-2



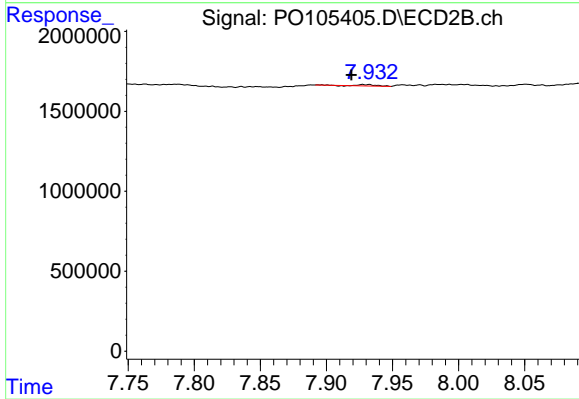
#39 AR-1262-4

R.T.: 7.426 min  
 Delta R.T.: -0.004 min  
 Response: 1164716  
 Conc: 5.03 ng/ml



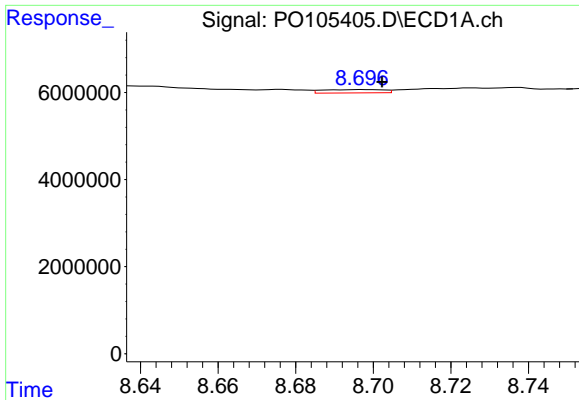
#40 AR-1262-5

R.T.: 9.516 min  
 Delta R.T.: 0.057 min  
 Response: 552947  
 Conc: 2.06 ng/ml



#40 AR-1262-5

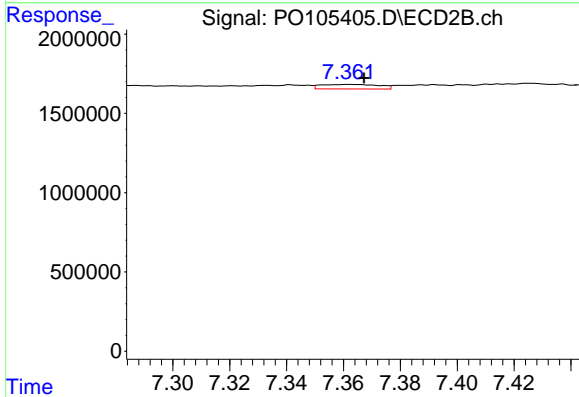
R.T.: 7.927 min  
 Delta R.T.: 0.009 min  
 Response: 65802  
 Conc: 0.65 ng/ml



#41 AR-1268-1

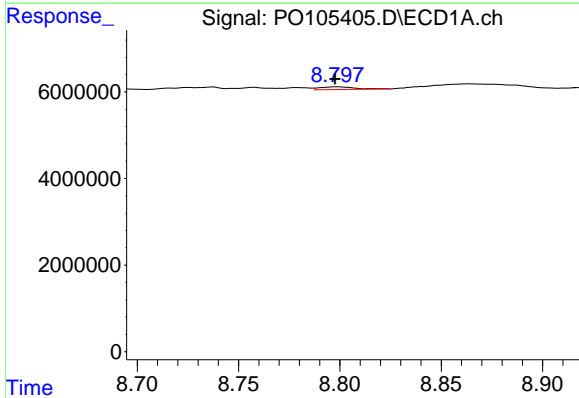
R.T.: 8.698 min  
 Delta R.T.: -0.005 min  
 Response: 822408  
 Conc: 1.01 ng/ml

Instrument :  
 ECD\_O  
 ClientSampleId :  
 JEH690Y-1-2



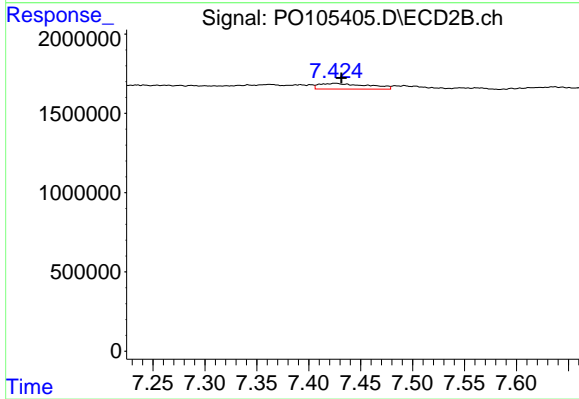
#41 AR-1268-1

R.T.: 7.362 min  
 Delta R.T.: -0.005 min  
 Response: 402814  
 Conc: 1.15 ng/ml



#42 AR-1268-2

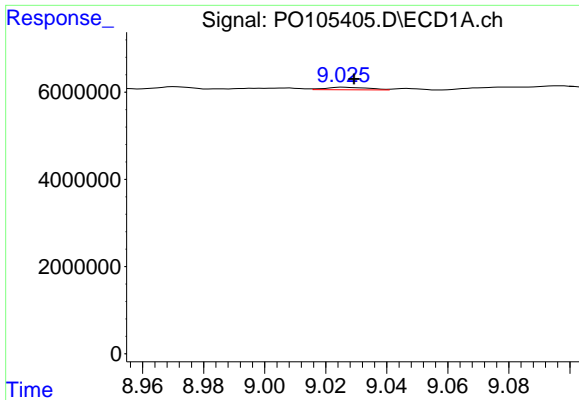
R.T.: 8.798 min  
 Delta R.T.: 0.000 min  
 Response: 745814  
 Conc: 1.03 ng/ml



#42 AR-1268-2

R.T.: 7.426 min  
 Delta R.T.: -0.006 min  
 Response: 1164716  
 Conc: 3.73 ng/ml

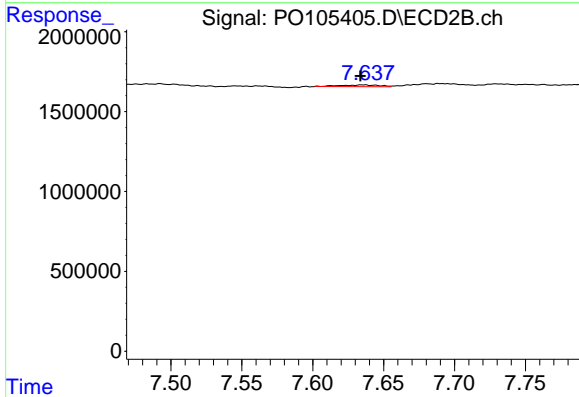




#43 AR-1268-3

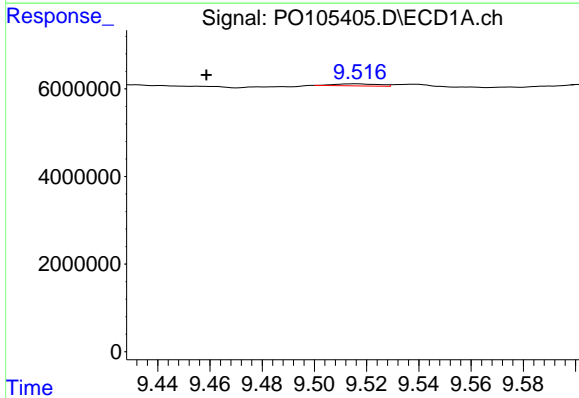
R.T.: 9.026 min  
 Delta R.T.: -0.003 min  
 Response: 576262  
 Conc: 0.89 ng/ml

Instrument :  
 ECD\_O  
 ClientSampleId :  
 JEH690Y-1-2



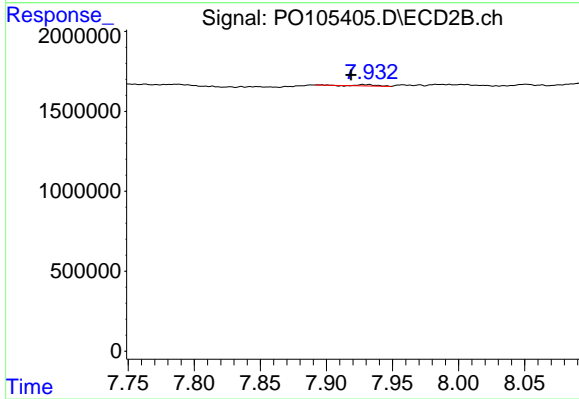
#43 AR-1268-3

R.T.: 7.636 min  
 Delta R.T.: 0.003 min  
 Response: 200801  
 Conc: 0.79 ng/ml



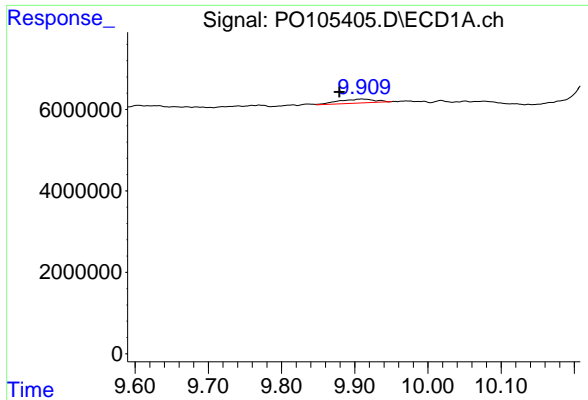
#44 AR-1268-4

R.T.: 9.516 min  
 Delta R.T.: 0.057 min  
 Response: 552947  
 Conc: 1.99 ng/ml



#44 AR-1268-4

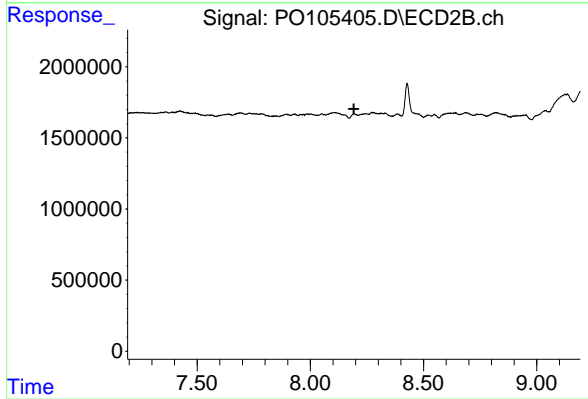
R.T.: 7.927 min  
 Delta R.T.: 0.009 min  
 Response: 65802  
 Conc: 0.61 ng/ml



#45 AR-1268-5

R.T.: 9.910 min  
 Delta R.T.: 0.031 min  
 Response: 3367701  
 Conc: 1.61 ng/ml

Instrument :  
 ECD\_O  
 ClientSampleId :  
 JEH690Y-1-2



#45 AR-1268-5

R.T.: 8.192 min  
 Delta R.T.: 0.000 min  
 Response: -95795  
 Conc: N.D.