

Data Path : Z:\pestpcbsrv\HPCHEM1\ECD_0\Data\P0081321\
 Data File : P0080420.D
 Signal(s) : Signal #1: ECD1A.CH Signal #2: ECD2B.CH
 Acq On : 13 Aug 2021 11:25
 Operator : DD\AJ
 Sample : M3386-01
 Misc :
 ALS Vial : 10 Sample Multiplier: 1

Instrument :
 ECD_0
 ClientSampleId :
 TRANSFO-MAIN-(21-04881)

Integration File signal 1: autoint1.e
 Integration File signal 2: autoint2.e
 Quant Time: Aug 14 01:58:44 2021
 Quant Method : Z:\pestpcbsrv\HPCHEM1\ECD_0\methods\P0081021.M
 Quant Title : GC EXTRACTABLES
 QLast Update : Wed Aug 11 05:48:32 2021
 Response via : Initial Calibration
 Integrator: ChemStation 6890 Scale Mode: Small noise peaks clipped

Volume Inj. : 2 µl
 Signal #1 Phase : ZB-MR1 Signal #2 Phase: ZB-MR2
 Signal #1 Info : 30Mx0.32mmx 0.50µ Signal #2 Info : 30M x 0.32mm x 0.25µm

Compound	RT#1	RT#2	Resp#1	Resp#2	ng/ml	ng/ml

System Monitoring Compounds						
1) SA Tetrachlo...	5.003	4.124	923504	381271	13.337	15.298
2) SA Decachlor...	11.100	9.512	878554	386367	16.973	17.035
Target Compounds						
3) L1 AR-1016-1	6.334	5.407f	16377	25419	6.393	24.706 #
4) L1 AR-1016-2	6.334	5.407	16377	25419	4.628	18.213 #
5) L1 AR-1016-3	6.418	5.609	35495	7742	16.459	10.402 #
6) L1 AR-1016-4	6.527	5.668	51600	48016	29.108	77.871 #
7) L1 AR-1016-5	6.842	0.000	33623	0	19.537	N.D. #
8) L2 AR-1221-1	5.258	4.397f	57382	12152	72.149	39.671 #
9) L2 AR-1221-2	5.363f	4.482	57447	35301	104.944	151.754 #
10) L2 AR-1221-3	0.000	4.549	0	25913	N.D.	37.212 #
11) L3 AR-1232-1	0.000	4.549	0	25913	N.D.	40.726 #
12) L3 AR-1232-2	6.018	5.407	39756	25419	47.260	40.416
13) L3 AR-1232-3	6.334	5.609	16377	7742	10.075	24.737 #
14) L3 AR-1232-4	6.527	5.668f	51600	48016	69.418	166.846 #
15) L3 AR-1232-5	6.621	0.000	94998	0	182.092	N.D. #
16) L4 AR-1242-1	6.334	5.407f	16377	25419	8.396	31.850 #
17) L4 AR-1242-2	6.334	5.407	16377	25419	6.074	23.401 #
18) L4 AR-1242-3	6.418	5.609	35495	7742	21.277	13.513 #
19) L4 AR-1242-4	6.527	5.668f	51600	48016	38.369	86.446 #
20) L4 AR-1242-5	7.297	6.289f	49975	19116	34.126	27.434
21) L5 AR-1248-1	6.334	5.407f	16377	25419	10.822	40.426 #
22) L5 AR-1248-2	6.621	5.668	94998	48016	46.833	55.381
23) L5 AR-1248-3	6.842	5.668f	33623	48016	14.207	53.756 #
24) L5 AR-1248-4	7.271	0.000	57027	0	20.970	N.D. #
25) L5 AR-1248-5	7.297	6.325	49975	30637	18.951	29.552 #
26) L6 AR-1254-1	0.000	6.289f	0	19116	N.D.	13.030 #
27) L6 AR-1254-2	7.463	6.447f	54563	11742	13.905	9.090 #
28) L6 AR-1254-3	7.826f	6.880f	14230	26352	3.486	13.069 #
29) L6 AR-1254-4	8.136	7.119f	44368	4630	14.861	3.558 #
30) L6 AR-1254-5	8.584	7.518f	44586	18934	14.410	10.792 #
31) L7 AR-1260-1	0.000	7.004	0	31299	N.D.	23.353 #
33) L7 AR-1260-3	8.664	7.380f	81007	2847348	32.377	1862.566 #
34) L7 AR-1260-4	8.899	7.824f	132219	14750	45.707	11.778 #
35) L7 AR-1260-5	0.000	8.070f	0	233996	N.D.	80.880 #
36) L8 AR-1262-1	8.664	7.518	81007	18934	21.185	18.863
37) L8 AR-1262-2	0.000	8.070f	0	233996	N.D.	73.284 #
38) L8 AR-1262-3	9.538	8.367	196359	14559	65.614	11.066 #
39) L8 AR-1262-4	9.645	8.446	129103	28986	73.414	12.282 #
40) L8 AR-1262-5	10.329	8.957	62710	153008	25.276	137.450 #
41) L9 AR-1268-1	9.538	8.367	196359	14559	24.592	3.898 #
42) L9 AR-1268-2	9.645	8.446	129103	28986	17.762	8.678 #
43) L9 AR-1268-3	9.864	8.651	264094	9204	43.167	3.233 #

Data Path : Z:\pestpcbsrv\HPCHEM1\ECD_0\Data\P0081321\
 Data File : P0080420.D
 Signal(s) : Signal #1: ECD1A.CH Signal #2: ECD2B.CH
 Acq On : 13 Aug 2021 11:25
 Operator : DD\AJ
 Sample : M3386-01
 Misc :
 ALS Vial : 10 Sample Multiplier: 1

Instrument :
 ECD_0
 ClientSampleId :
 TRANSFO-MAIN-(21-04881)

Integration File signal 1: autoint1.e
 Integration File signal 2: autoint2.e
 Quant Time: Aug 14 01:58:44 2021
 Quant Method : Z:\pestpcbsrv\HPCHEM1\ECD_0\methods\P0081021.M
 Quant Title : GC EXTRACTABLES
 QLast Update : Wed Aug 11 05:48:32 2021
 Response via : Initial Calibration
 Integrator: ChemStation 6890 Scale Mode: Small noise peaks clipped

Volume Inj. : 2 µl
 Signal #1 Phase : ZB-MR1 Signal #2 Phase: ZB-MR2
 Signal #1 Info : 30Mx0.32mmx 0.50µ Signal #2 Info : 30M x 0.32mm x 0.25µm

	Compound	RT#1	RT#2	Resp#1	Resp#2	ng/ml	ng/ml
44)	L9 AR-1268-4	10.329	8.957	62710	153008	22.481	124.556 #
45)	L9 AR-1268-5	0.000	9.234	0	70248	N.D.	8.252 #

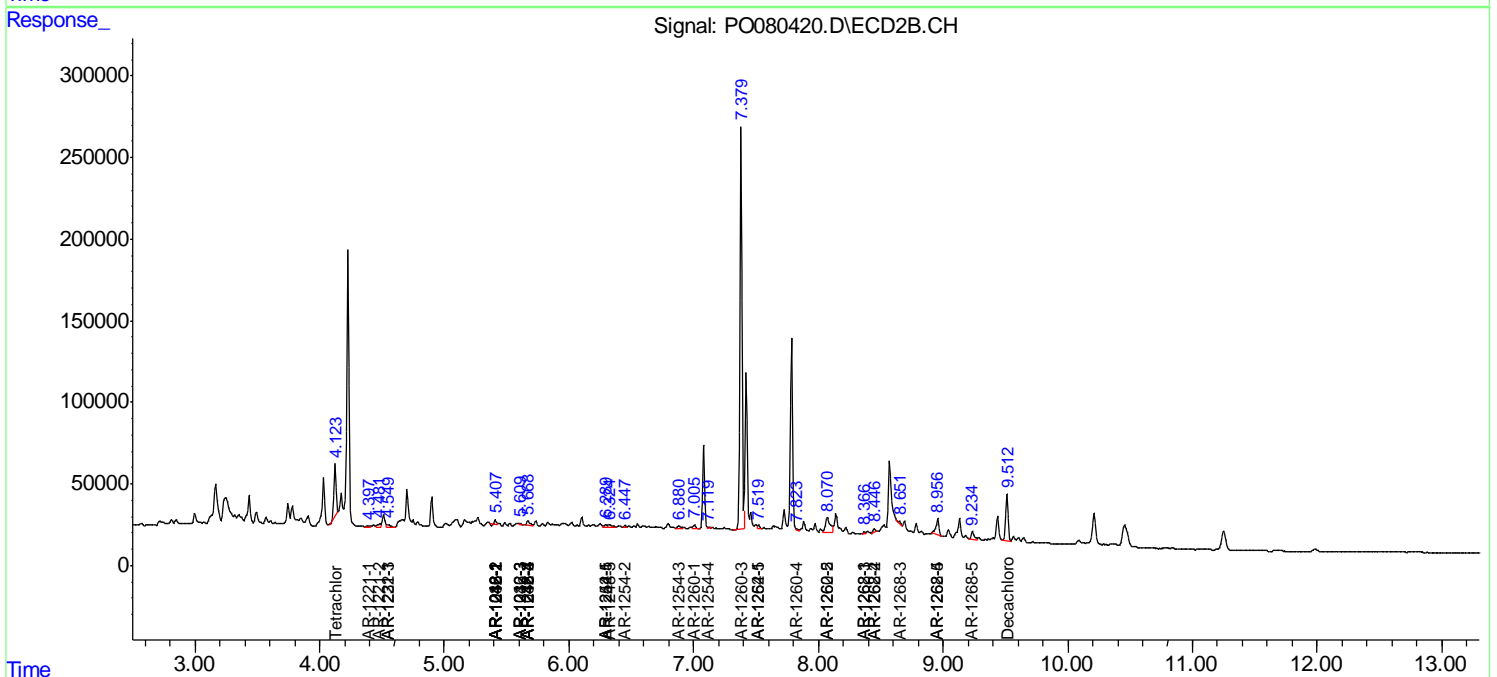
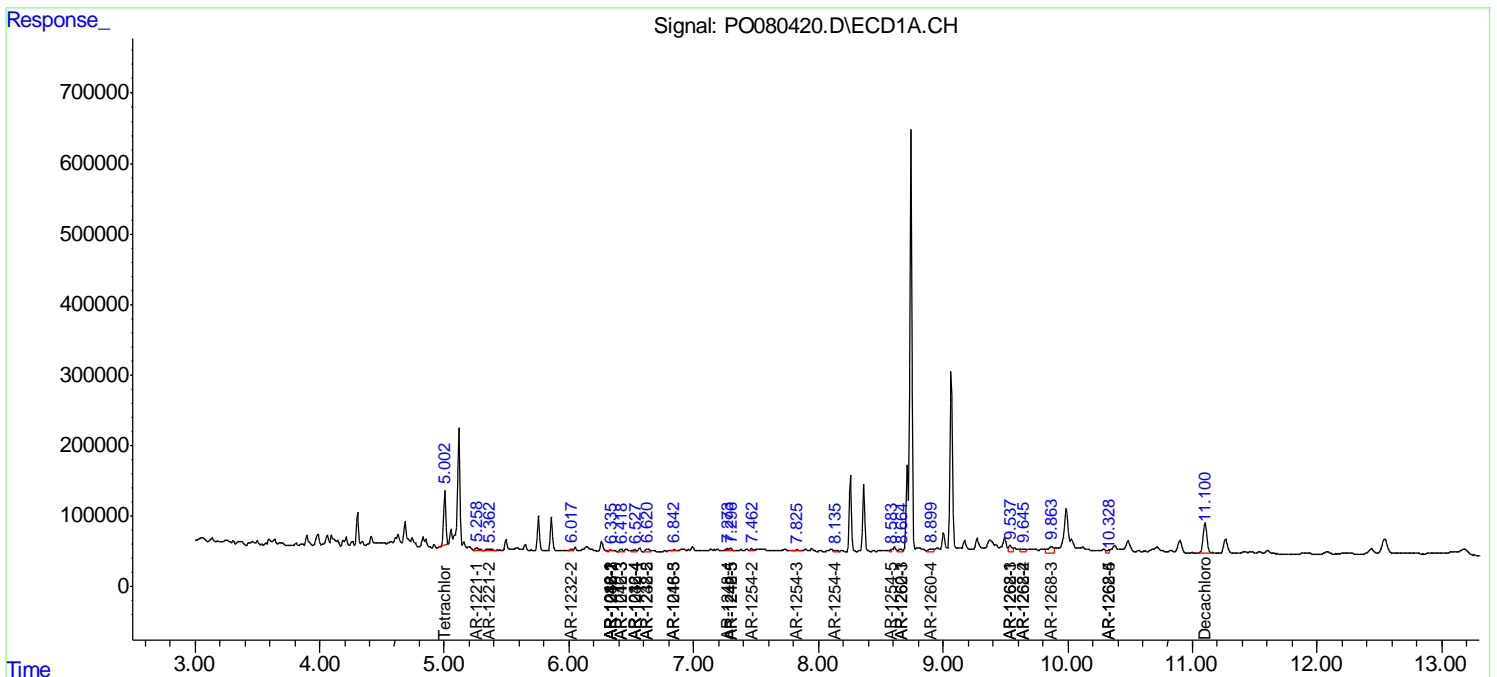
(f)=RT Delta > 1/2 Window (#)=Amounts differ by > 25% (m)=manual int.

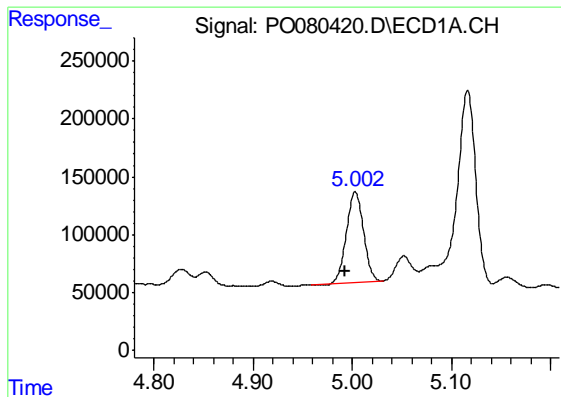
Data Path : Z:\pestpcbsrv\HPCHEM1\ECD_O\Data\PO081321\
 Data File : PO080420.D
 Signal(s) : Signal #1: ECD1A.CH Signal #2: ECD2B.CH
 Acq On : 13 Aug 2021 11:25
 Operator : DD\AJ
 Sample : M3386-01
 Misc :
 ALS Vial : 10 Sample Multiplier: 1

Instrument :
 ECD_O
Client Sampled :
 TRANSFO-MAIN-(21-04881)

Integration File signal 1: autoint1.e
 Integration File signal 2: autoint2.e
 Quant Time: Aug 14 01:58:44 2021
 Quant Method : Z:\pestpcbsrv\HPCHEM1\ECD_O\methods\PO081021.M
 Quant Title : GC EXTRACTABLES
 QLast Update : Wed Aug 11 05:48:32 2021
 Response via : Initial Calibration
 Integrator: ChemStation 6890 Scale Mode: Small noise peaks clipped

Volume Inj. : 2 µl
 Signal #1 Phase : ZB-MR1 Signal #2 Phase: ZB-MR2
 Signal #1 Info : 30Mx0.32mmx 0.50µ Signal #2 Info : 30M x 0.32mm x 0.25µm

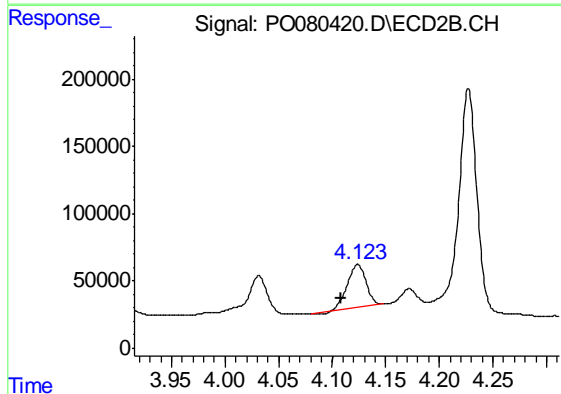




#1 Tetrachloro-m-xylene

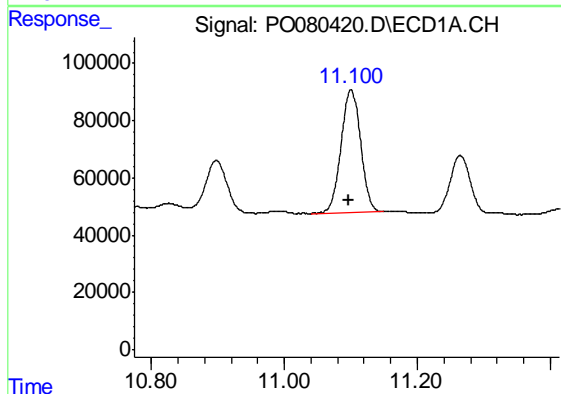
R.T.: 5.003 min
 Delta R.T.: 0.010 min
 Response: 923504
 Conc: 13.34 ng/ml

Instrument :
 ECD_O
 ClientSampleId :
 TRANSFO-MAIN-(21-04881)



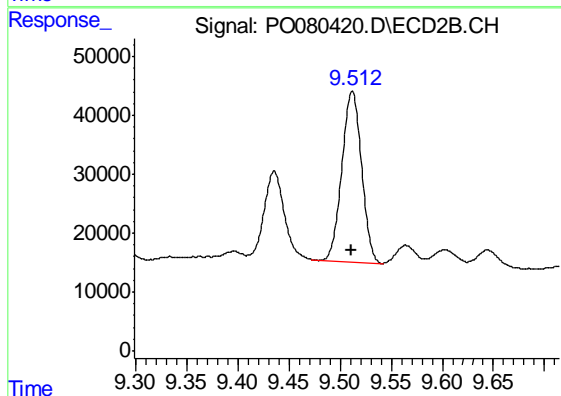
#1 Tetrachloro-m-xylene

R.T.: 4.124 min
 Delta R.T.: 0.015 min
 Response: 381271
 Conc: 15.30 ng/ml



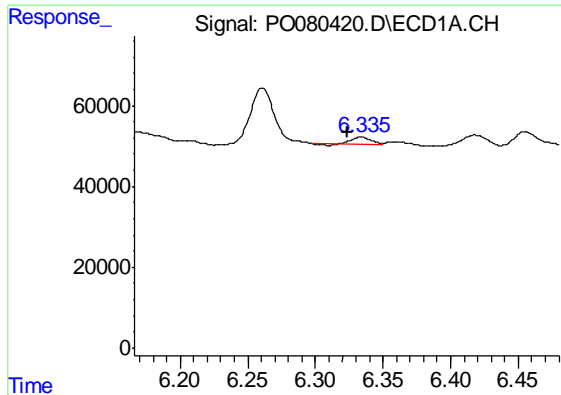
#2 Decachlorobiphenyl

R.T.: 11.100 min
 Delta R.T.: 0.004 min
 Response: 878554
 Conc: 16.97 ng/ml



#2 Decachlorobiphenyl

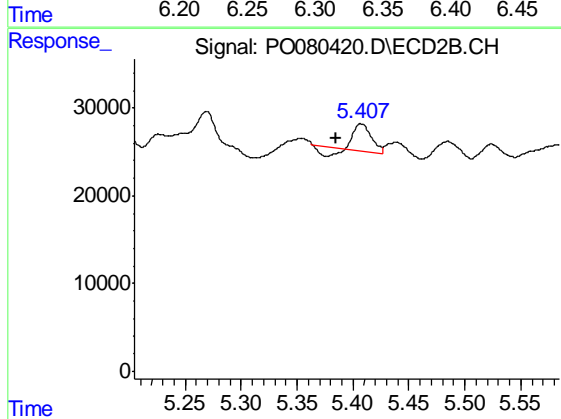
R.T.: 9.512 min
 Delta R.T.: 0.000 min
 Response: 386367
 Conc: 17.03 ng/ml



#3 AR-1016-1

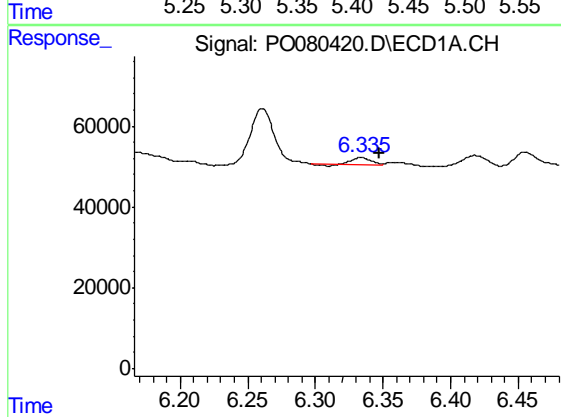
R.T.: 6.334 min
 Delta R.T.: 0.010 min
 Response: 16377
 Conc: 6.39 ng/ml

Instrument :
 ECD_O
 ClientSampleId :
 TRANSFO-MAIN-(21-04881)



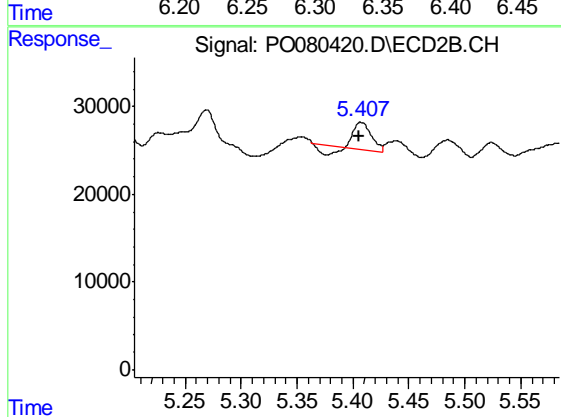
#3 AR-1016-1

R.T.: 5.407 min
 Delta R.T.: 0.022 min
 Response: 25419
 Conc: 24.71 ng/ml



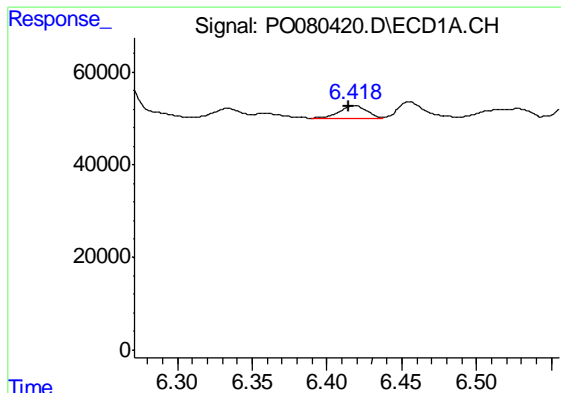
#4 AR-1016-2

R.T.: 6.334 min
 Delta R.T.: -0.014 min
 Response: 16377
 Conc: 4.63 ng/ml



#4 AR-1016-2

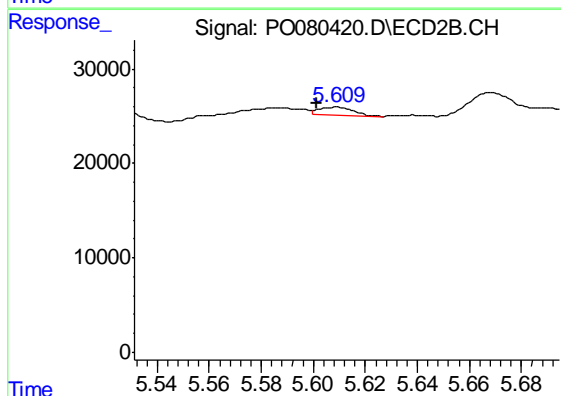
R.T.: 5.407 min
 Delta R.T.: 0.002 min
 Response: 25419
 Conc: 18.21 ng/ml



#5 AR-1016-3

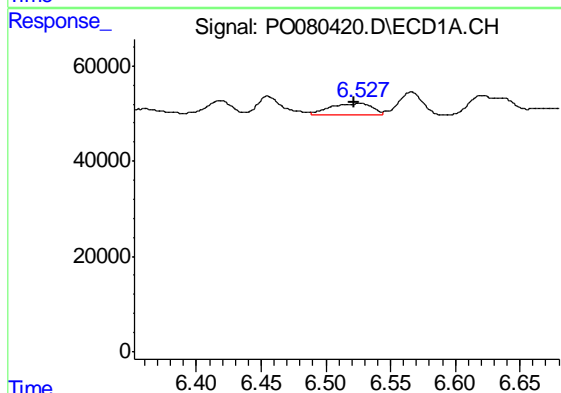
R.T.: 6.418 min
 Delta R.T.: 0.004 min
 Response: 35495
 Conc: 16.46 ng/ml

Instrument :
 ECD_O
 ClientSampleId :
 TRANSFO-MAIN-(21-04881)



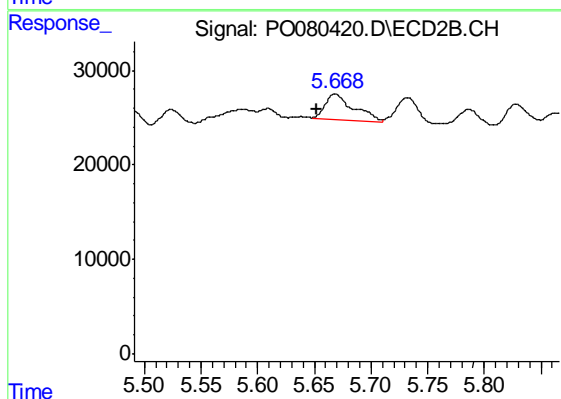
#5 AR-1016-3

R.T.: 5.609 min
 Delta R.T.: 0.008 min
 Response: 7742
 Conc: 10.40 ng/ml



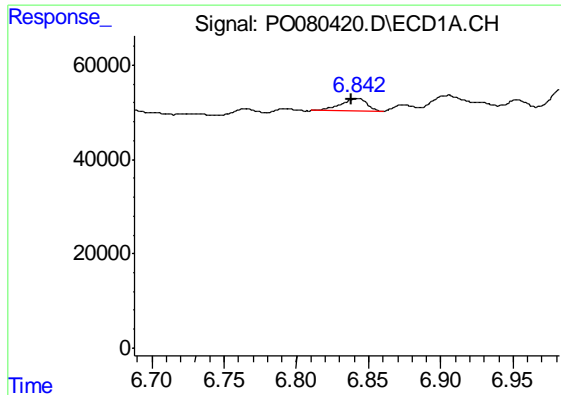
#6 AR-1016-4

R.T.: 6.527 min
 Delta R.T.: 0.005 min
 Response: 51600
 Conc: 29.11 ng/ml



#6 AR-1016-4

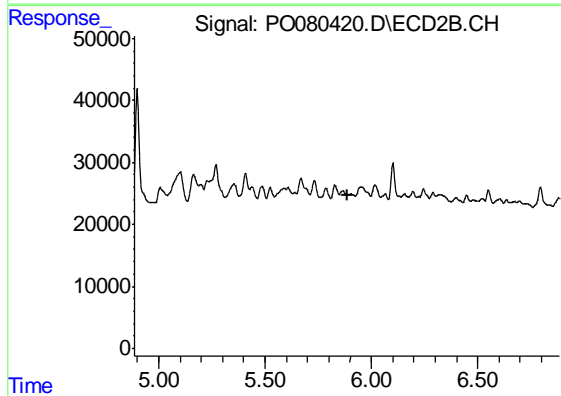
R.T.: 5.668 min
 Delta R.T.: 0.017 min
 Response: 48016
 Conc: 77.87 ng/ml



#7 AR-1016-5

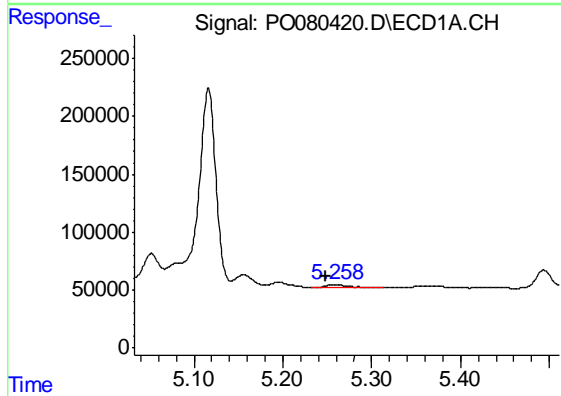
R.T.: 6.842 min
 Delta R.T.: 0.004 min
 Response: 33623
 Conc: 19.54 ng/ml

Instrument :
 ECD_O
 ClientSampleId :
 TRANSFO-MAIN-(21-04881)



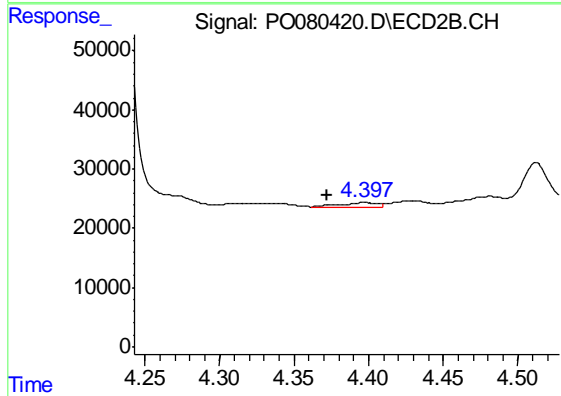
#7 AR-1016-5

R.T.: 0.000 min
 Exp R.T. : 5.885 min
 Response: 0
 Conc: N.D.



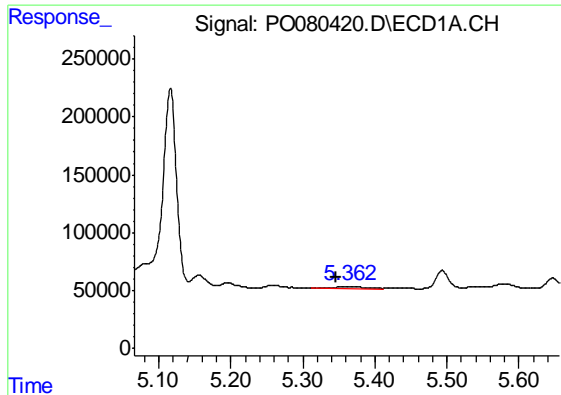
#8 AR-1221-1

R.T.: 5.258 min
 Delta R.T.: 0.011 min
 Response: 57382
 Conc: 72.15 ng/ml



#8 AR-1221-1

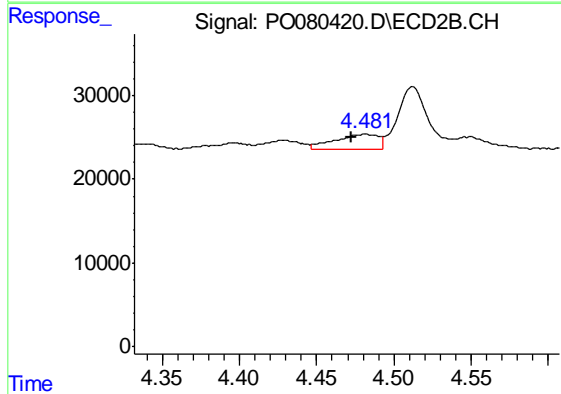
R.T.: 4.397 min
 Delta R.T.: 0.025 min
 Response: 12152
 Conc: 39.67 ng/ml



#9 AR-1221-2

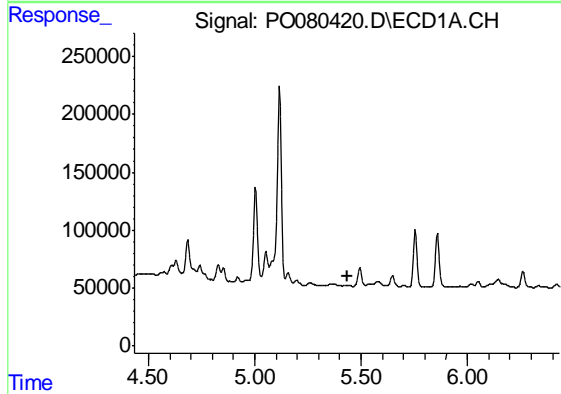
R.T.: 5.363 min
 Delta R.T.: 0.018 min
 Response: 57447
 Conc: 104.94 ng/ml

Instrument :
 ECD_O
 ClientSampleId :
 TRANSFO-MAIN-(21-04881)



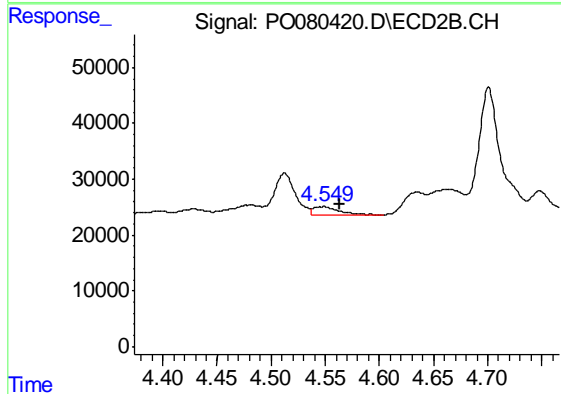
#9 AR-1221-2

R.T.: 4.482 min
 Delta R.T.: 0.009 min
 Response: 35301
 Conc: 151.75 ng/ml



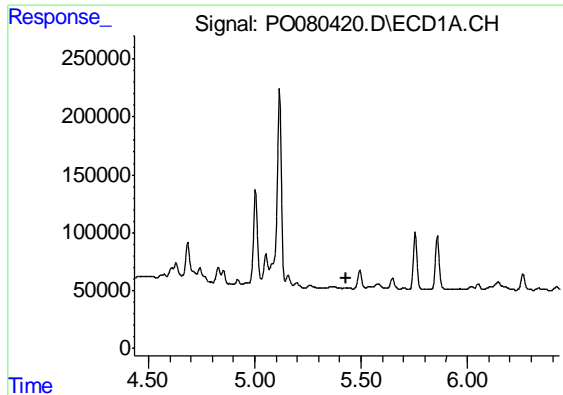
#10 AR-1221-3

R.T.: 0.000 min
 Exp R.T. : 5.433 min
 Response: 0
 Conc: N.D.



#10 AR-1221-3

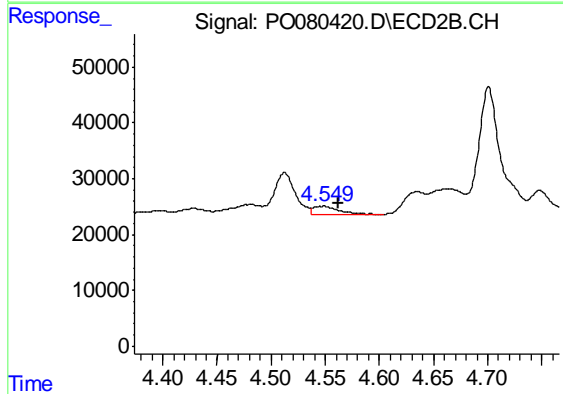
R.T.: 4.549 min
 Delta R.T.: -0.014 min
 Response: 25913
 Conc: 37.21 ng/ml



#11 AR-1232-1

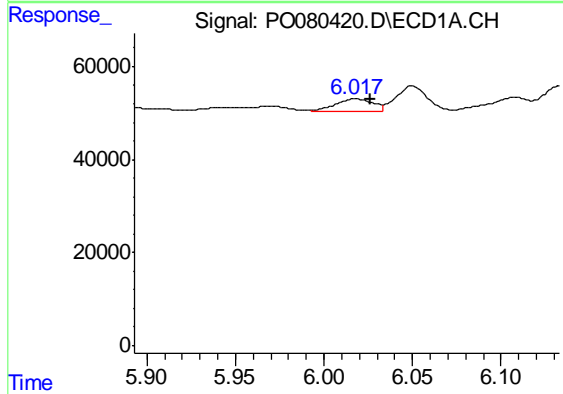
R.T.: 0.000 min
 Exp R.T. : 5.433 min
 Response: 0
 Conc: N.D.

Instrument :
 ECD_O
 ClientSampleId :
 TRANSFO-MAIN-(21-04881)



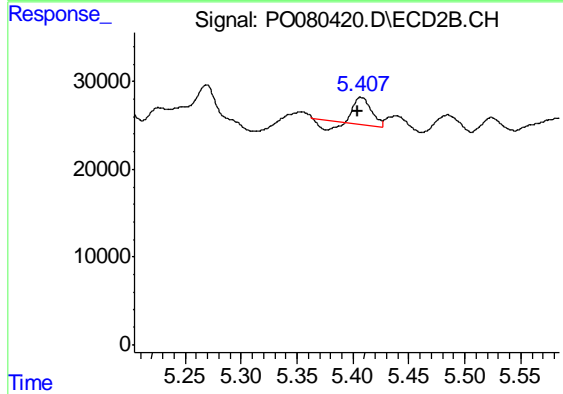
#11 AR-1232-1

R.T.: 4.549 min
 Delta R.T.: -0.013 min
 Response: 25913
 Conc: 40.73 ng/ml



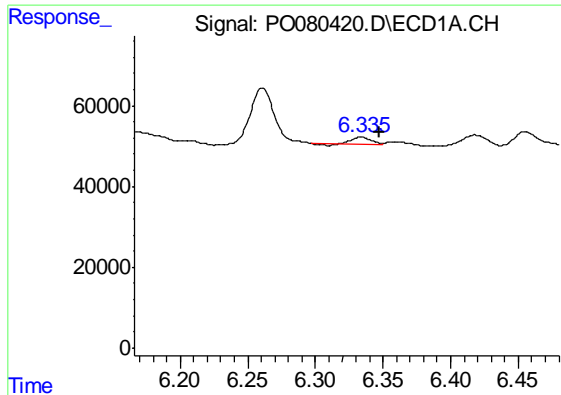
#12 AR-1232-2

R.T.: 6.018 min
 Delta R.T.: -0.009 min
 Response: 39756
 Conc: 47.26 ng/ml



#12 AR-1232-2

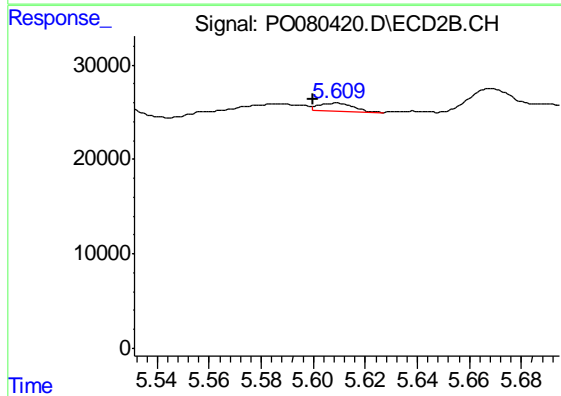
R.T.: 5.407 min
 Delta R.T.: 0.003 min
 Response: 25419
 Conc: 40.42 ng/ml



#13 AR-1232-3

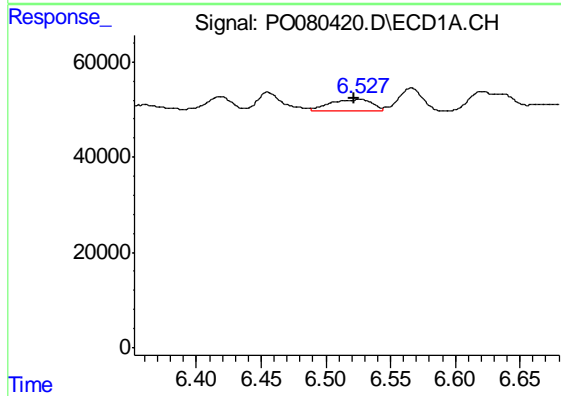
R.T.: 6.334 min
 Delta R.T.: -0.014 min
 Response: 16377
 Conc: 10.08 ng/ml

Instrument :
 ECD_O
 ClientSampleId :
 TRANSFO-MAIN-(21-04881)



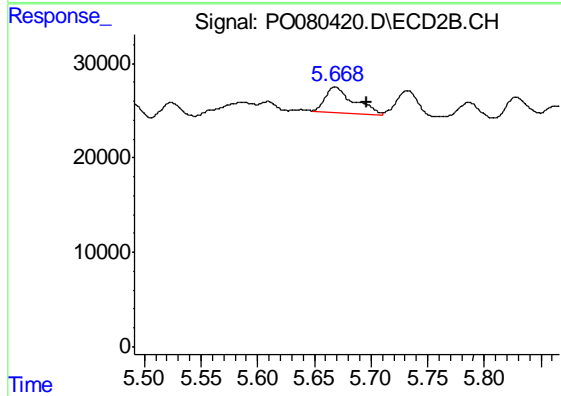
#13 AR-1232-3

R.T.: 5.609 min
 Delta R.T.: 0.009 min
 Response: 7742
 Conc: 24.74 ng/ml



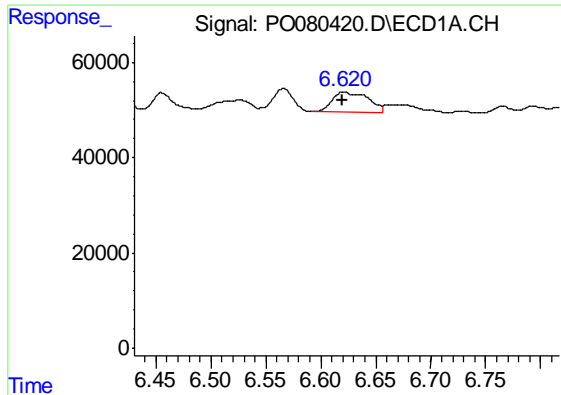
#14 AR-1232-4

R.T.: 6.527 min
 Delta R.T.: 0.005 min
 Response: 51600
 Conc: 69.42 ng/ml



#14 AR-1232-4

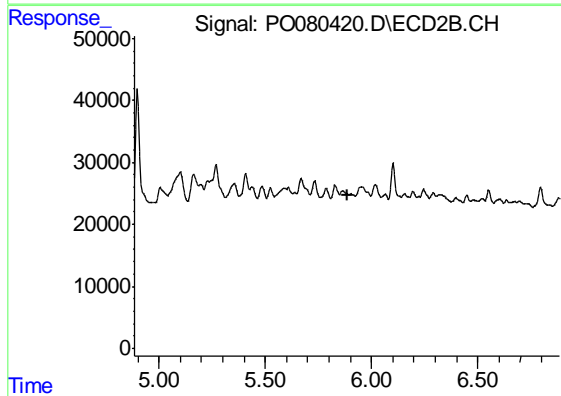
R.T.: 5.668 min
 Delta R.T.: -0.028 min
 Response: 48016
 Conc: 166.85 ng/ml



#15 AR-1232-5

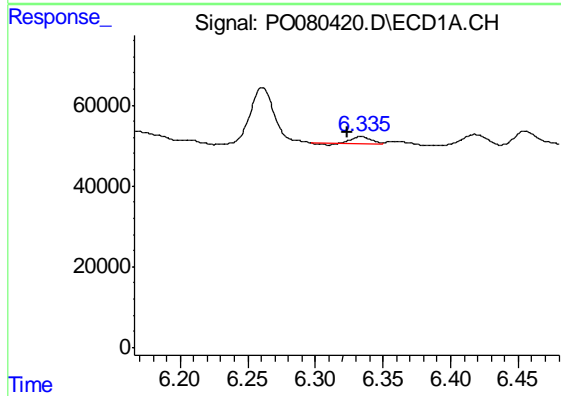
R.T.: 6.621 min
 Delta R.T.: 0.001 min
 Response: 94998
 Conc: 182.09 ng/ml

Instrument :
 ECD_O
 ClientSampleId :
 TRANSFO-MAIN-(21-04881)



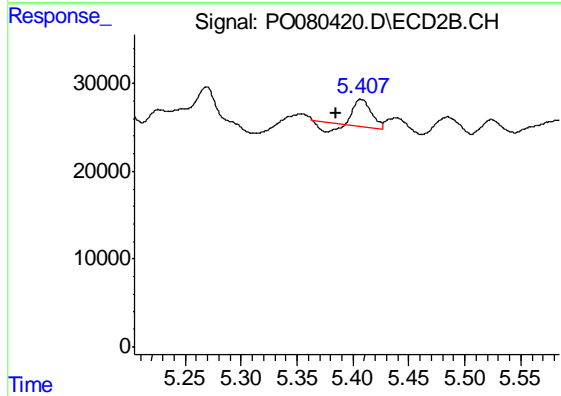
#15 AR-1232-5

R.T.: 0.000 min
 Exp R.T. : 5.884 min
 Response: 0
 Conc: N.D.



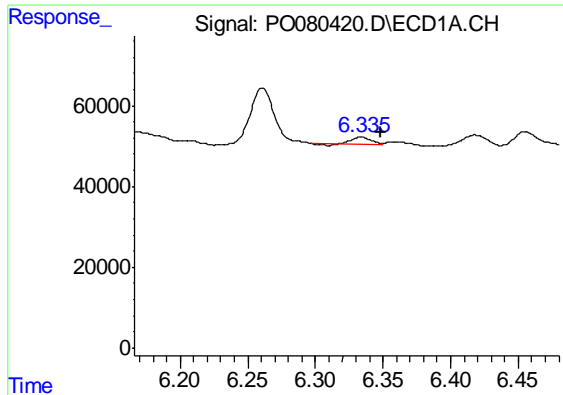
#16 AR-1242-1

R.T.: 6.334 min
 Delta R.T.: 0.010 min
 Response: 16377
 Conc: 8.40 ng/ml



#16 AR-1242-1

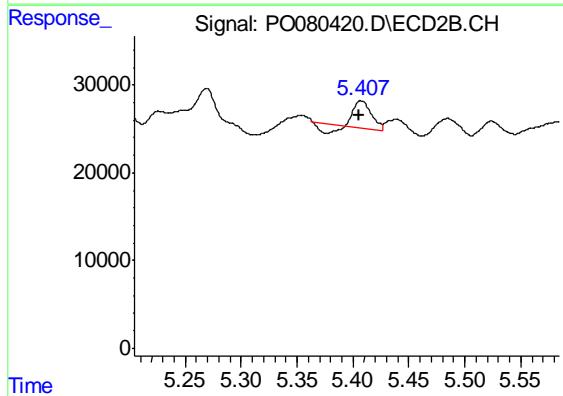
R.T.: 5.407 min
 Delta R.T.: 0.022 min
 Response: 25419
 Conc: 31.85 ng/ml



#17 AR-1242-2

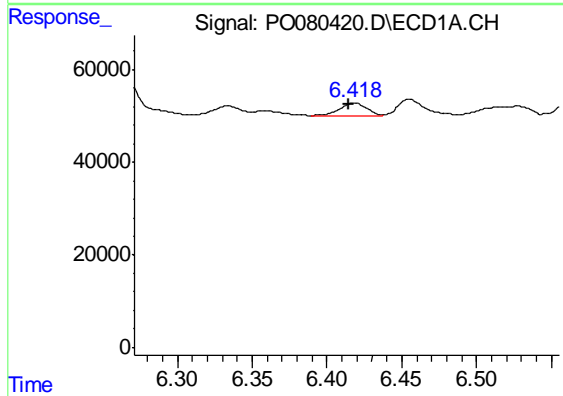
R.T.: 6.334 min
 Delta R.T.: -0.015 min
 Response: 16377
 Conc: 6.07 ng/ml

Instrument :
 ECD_O
 ClientSampleId :
 TRANSFO-MAIN-(21-04881)



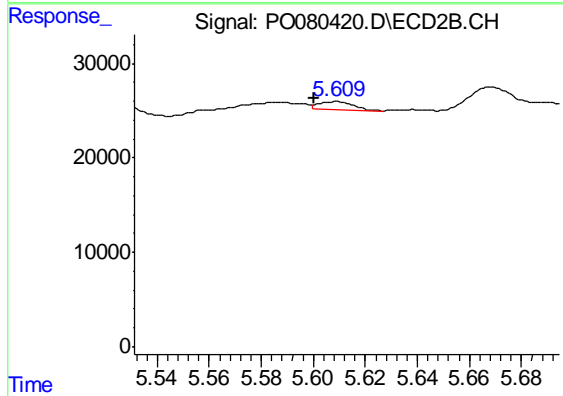
#17 AR-1242-2

R.T.: 5.407 min
 Delta R.T.: 0.002 min
 Response: 25419
 Conc: 23.40 ng/ml



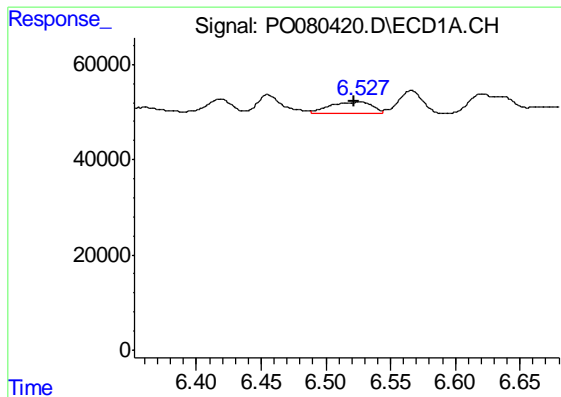
#18 AR-1242-3

R.T.: 6.418 min
 Delta R.T.: 0.004 min
 Response: 35495
 Conc: 21.28 ng/ml



#18 AR-1242-3

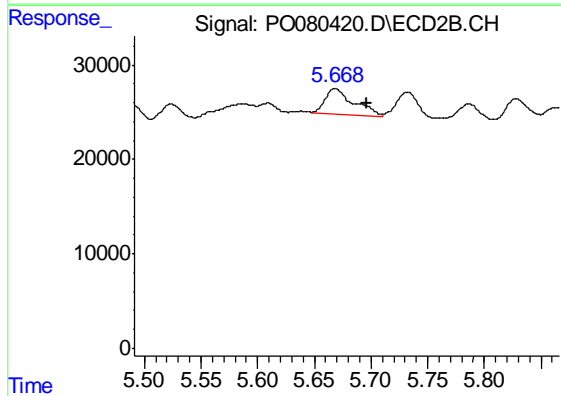
R.T.: 5.609 min
 Delta R.T.: 0.008 min
 Response: 7742
 Conc: 13.51 ng/ml



#19 AR-1242-4

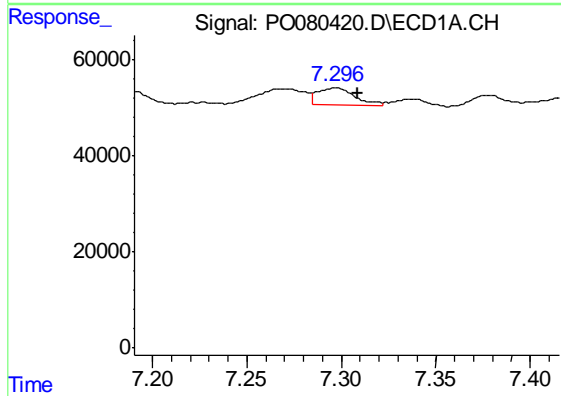
R.T.: 6.527 min
 Delta R.T.: 0.005 min
 Response: 51600
 Conc: 38.37 ng/ml

Instrument :
 ECD_O
 ClientSampleId :
 TRANSFO-MAIN-(21-04881)



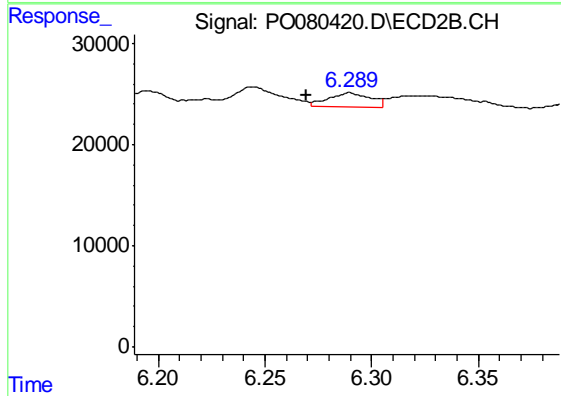
#19 AR-1242-4

R.T.: 5.668 min
 Delta R.T.: -0.028 min
 Response: 48016
 Conc: 86.45 ng/ml



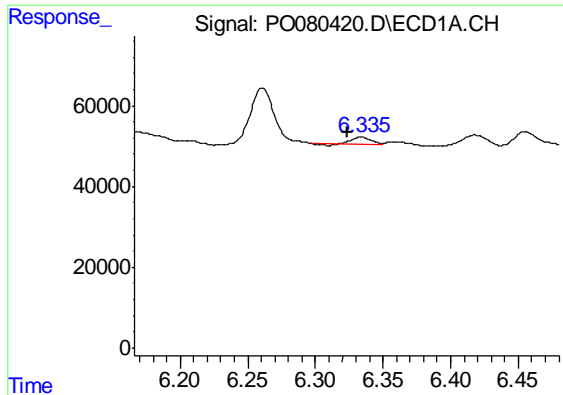
#20 AR-1242-5

R.T.: 7.297 min
 Delta R.T.: -0.011 min
 Response: 49975
 Conc: 34.13 ng/ml



#20 AR-1242-5

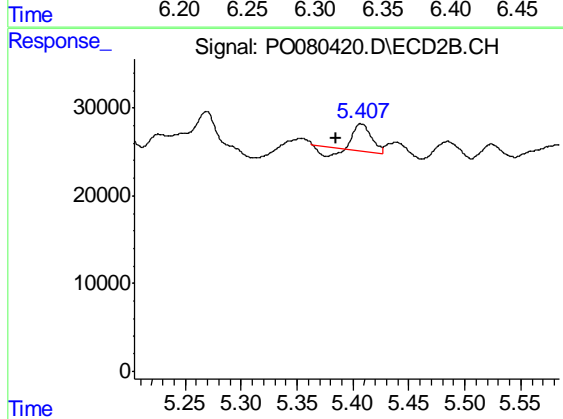
R.T.: 6.289 min
 Delta R.T.: 0.020 min
 Response: 19116
 Conc: 27.43 ng/ml



#21 AR-1248-1

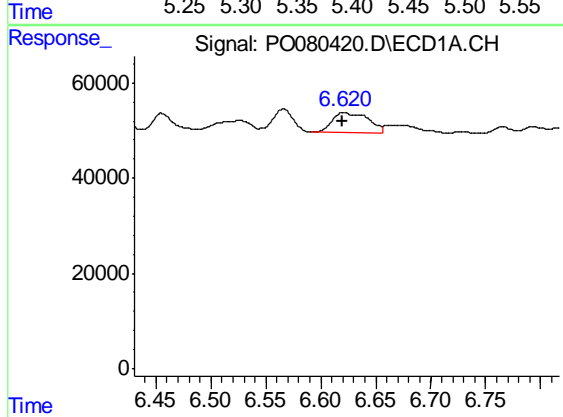
R.T.: 6.334 min
 Delta R.T.: 0.010 min
 Response: 16377
 Conc: 10.82 ng/ml

Instrument :
 ECD_O
 ClientSampleId :
 TRANSFO-MAIN-(21-04881)



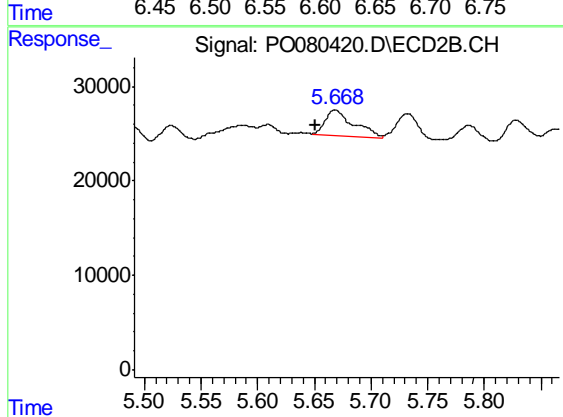
#21 AR-1248-1

R.T.: 5.407 min
 Delta R.T.: 0.023 min
 Response: 25419
 Conc: 40.43 ng/ml



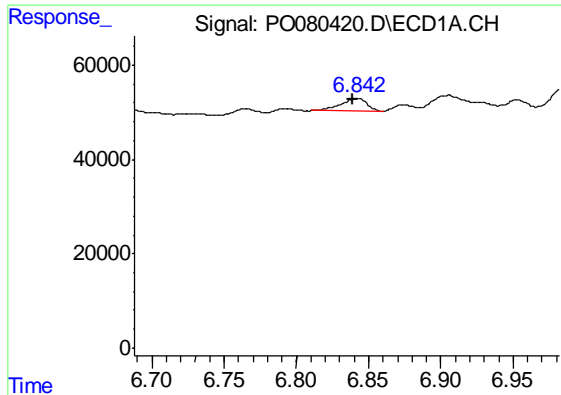
#22 AR-1248-2

R.T.: 6.621 min
 Delta R.T.: 0.000 min
 Response: 94998
 Conc: 46.83 ng/ml



#22 AR-1248-2

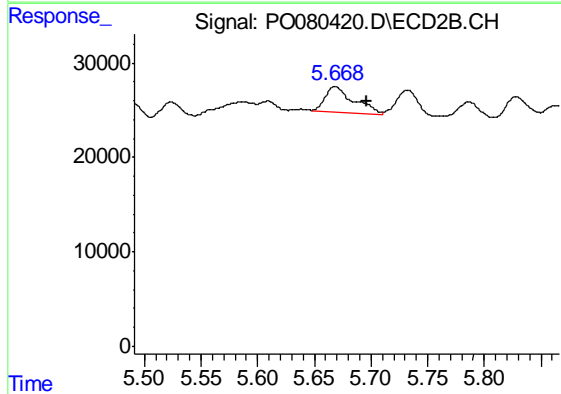
R.T.: 5.668 min
 Delta R.T.: 0.017 min
 Response: 48016
 Conc: 55.38 ng/ml



#23 AR-1248-3

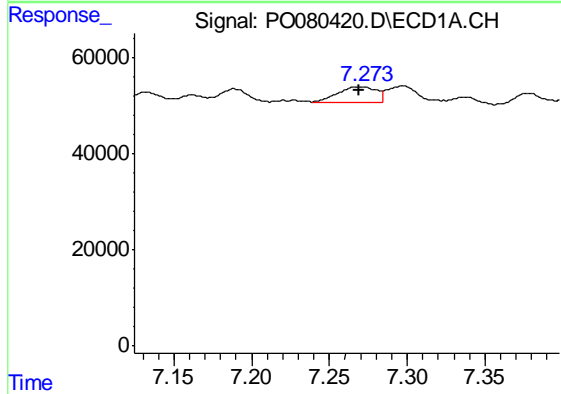
R.T.: 6.842 min
 Delta R.T.: 0.003 min
 Response: 33623
 Conc: 14.21 ng/ml

Instrument :
 ECD_O
 ClientSampleId :
 TRANSFO-MAIN-(21-04881)



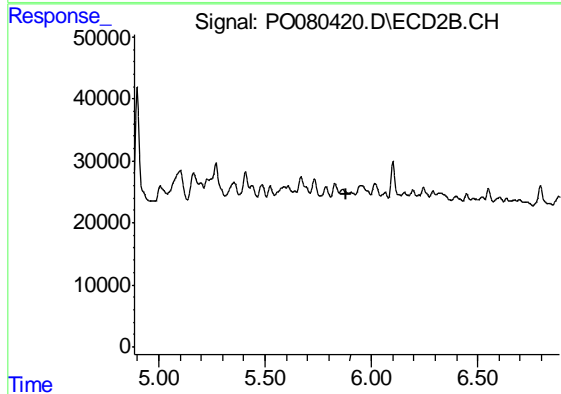
#23 AR-1248-3

R.T.: 5.668 min
 Delta R.T.: -0.028 min
 Response: 48016
 Conc: 53.76 ng/ml



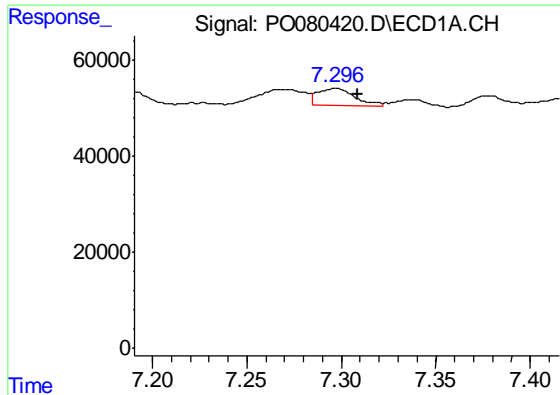
#24 AR-1248-4

R.T.: 7.271 min
 Delta R.T.: 0.002 min
 Response: 57027
 Conc: 20.97 ng/ml



#24 AR-1248-4

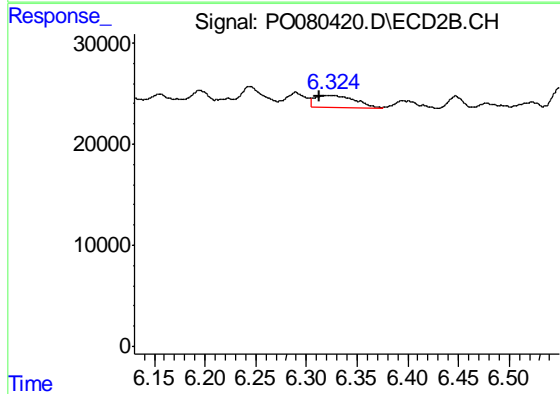
R.T.: 0.000 min
 Exp R.T. : 5.885 min
 Response: 0
 Conc: N.D.



#25 AR-1248-5

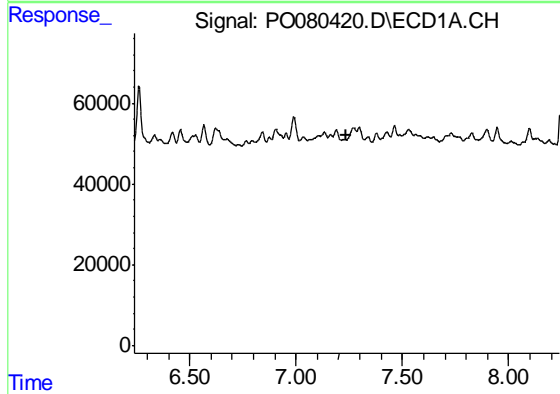
R.T.: 7.297 min
 Delta R.T.: -0.012 min
 Response: 49975
 Conc: 18.95 ng/ml

Instrument :
 ECD_O
 ClientSampleId :
 TRANSFO-MAIN-(21-04881)



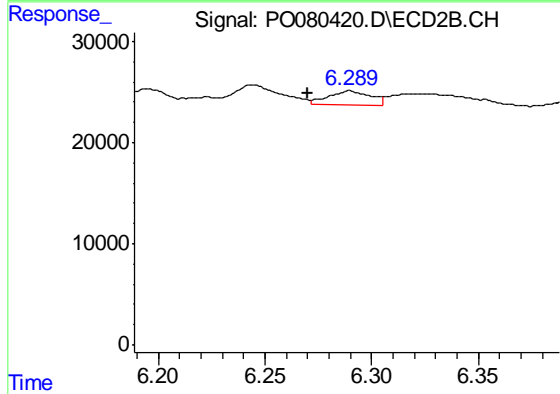
#25 AR-1248-5

R.T.: 6.325 min
 Delta R.T.: 0.012 min
 Response: 30637
 Conc: 29.55 ng/ml



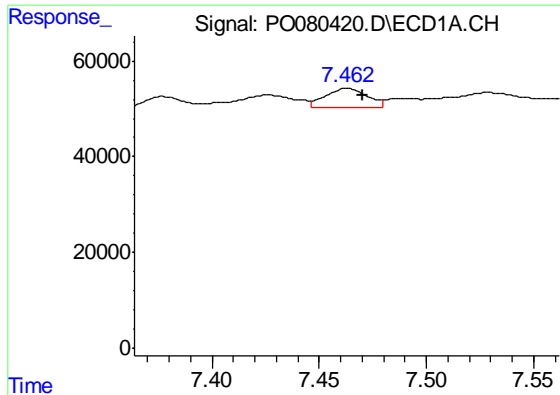
#26 AR-1254-1

R.T.: 0.000 min
 Exp R.T. : 7.239 min
 Response: 0
 Conc: N.D.



#26 AR-1254-1

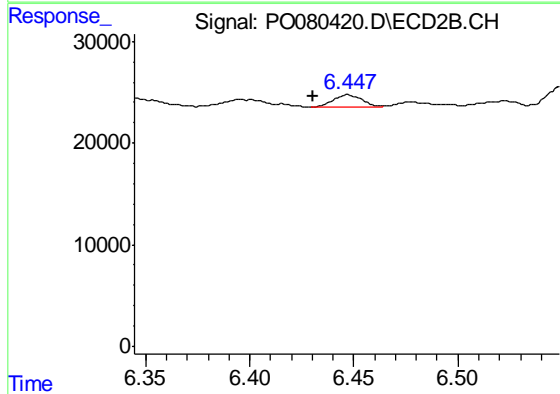
R.T.: 6.289 min
 Delta R.T.: 0.019 min
 Response: 19116
 Conc: 13.03 ng/ml



#27 AR-1254-2

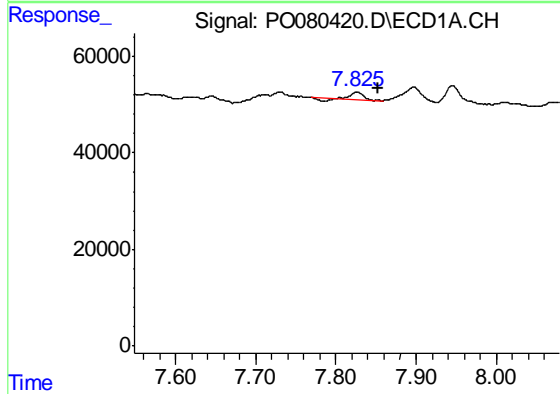
R.T.: 7.463 min
 Delta R.T.: -0.007 min
 Response: 54563
 Conc: 13.90 ng/ml

Instrument :
 ECD_O
 ClientSampleId :
 TRANSFO-MAIN-(21-04881)



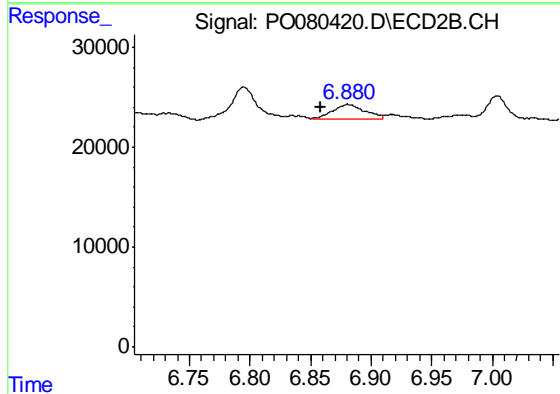
#27 AR-1254-2

R.T.: 6.447 min
 Delta R.T.: 0.017 min
 Response: 11742
 Conc: 9.09 ng/ml



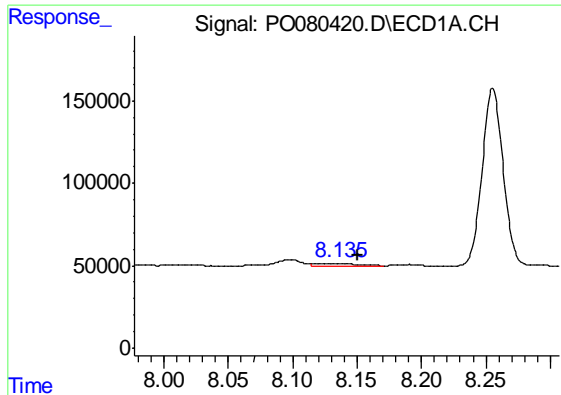
#28 AR-1254-3

R.T.: 7.826 min
 Delta R.T.: -0.027 min
 Response: 14230
 Conc: 3.49 ng/ml



#28 AR-1254-3

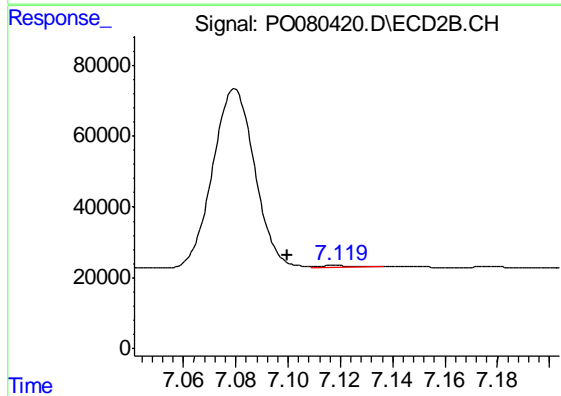
R.T.: 6.880 min
 Delta R.T.: 0.023 min
 Response: 26352
 Conc: 13.07 ng/ml



#29 AR-1254-4

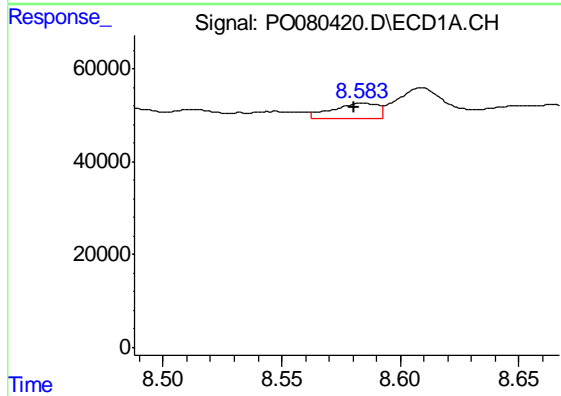
R.T.: 8.136 min
 Delta R.T.: -0.014 min
 Response: 44368
 Conc: 14.86 ng/ml

Instrument :
 ECD_O
 ClientSampleId :
 TRANSFO-MAIN-(21-04881)



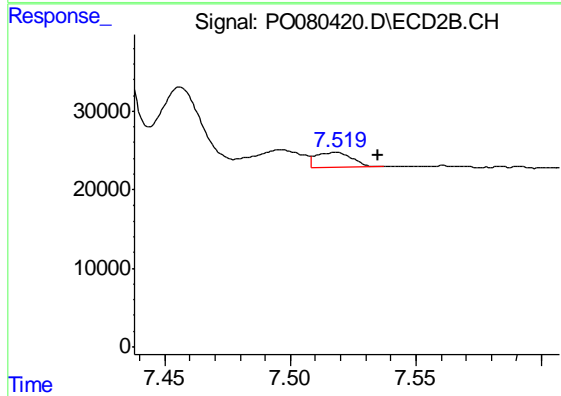
#29 AR-1254-4

R.T.: 7.119 min
 Delta R.T.: 0.020 min
 Response: 4630
 Conc: 3.56 ng/ml



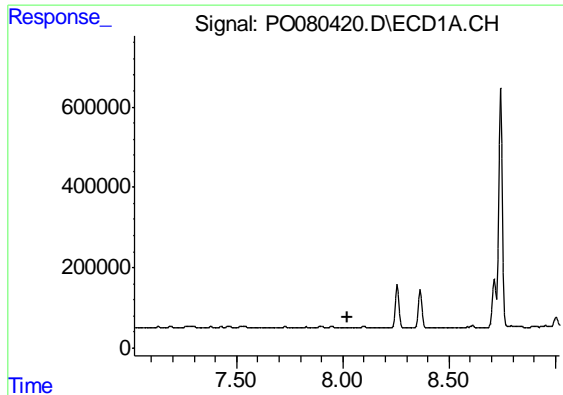
#30 AR-1254-5

R.T.: 8.584 min
 Delta R.T.: 0.003 min
 Response: 44586
 Conc: 14.41 ng/ml



#30 AR-1254-5

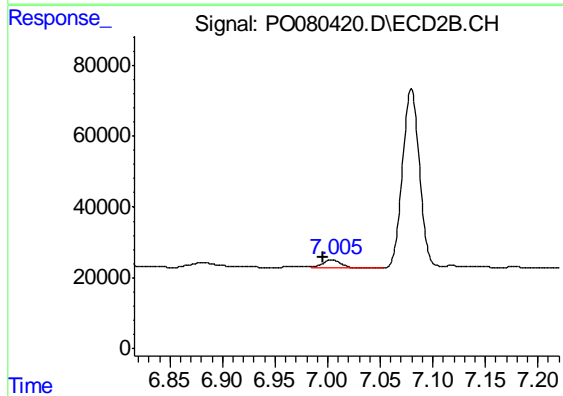
R.T.: 7.518 min
 Delta R.T.: -0.017 min
 Response: 18934
 Conc: 10.79 ng/ml



#31 AR-1260-1

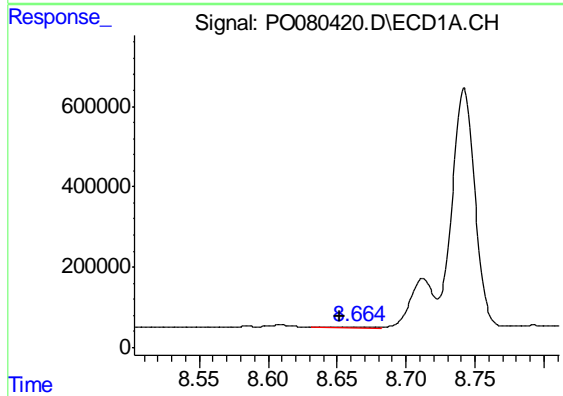
R.T.: 0.000 min
 Exp R.T. : 8.019 min
 Response: 0
 Conc: N.D.

Instrument :
 ECD_O
 ClientSampleId :
 TRANSFO-MAIN-(21-04881)



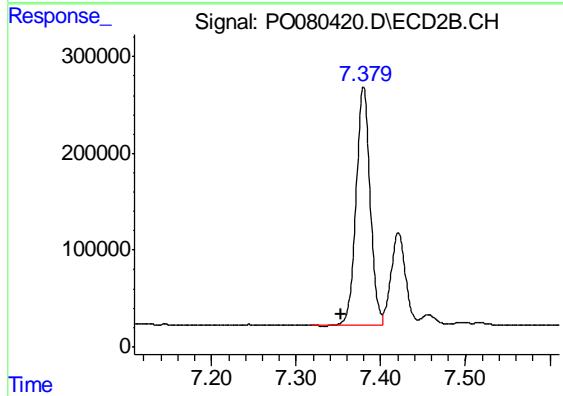
#31 AR-1260-1

R.T.: 7.004 min
 Delta R.T.: 0.008 min
 Response: 31299
 Conc: 23.35 ng/ml



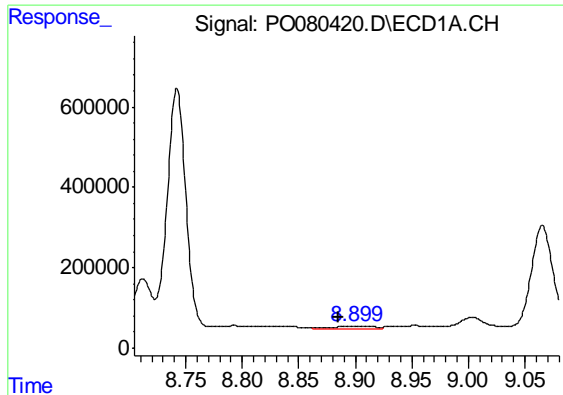
#33 AR-1260-3

R.T.: 8.664 min
 Delta R.T.: 0.012 min
 Response: 81007
 Conc: 32.38 ng/ml



#33 AR-1260-3

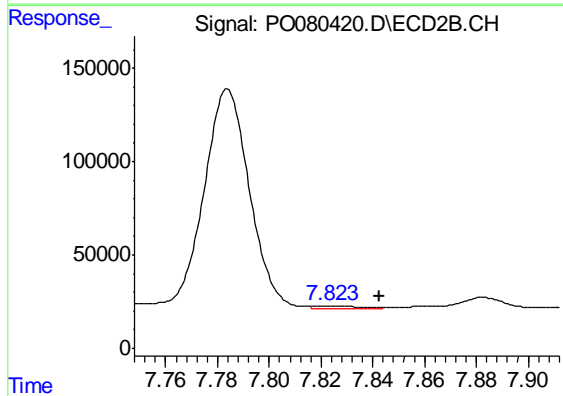
R.T.: 7.380 min
 Delta R.T.: 0.027 min
 Response: 2847348
 Conc: 1862.57 ng/ml



#34 AR-1260-4

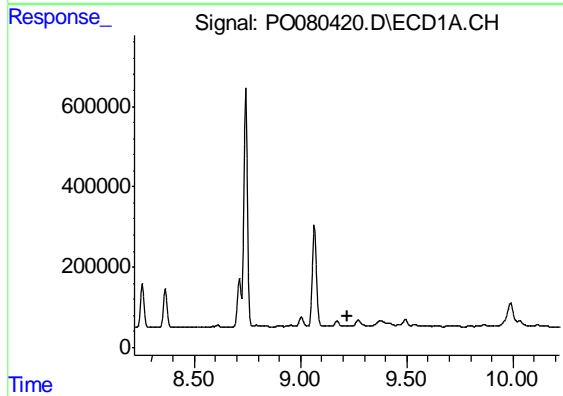
R.T.: 8.899 min
 Delta R.T.: 0.015 min
 Response: 132219
 Conc: 45.71 ng/ml

Instrument :
 ECD_O
 ClientSampleId :
 TRANSFO-MAIN-(21-04881)



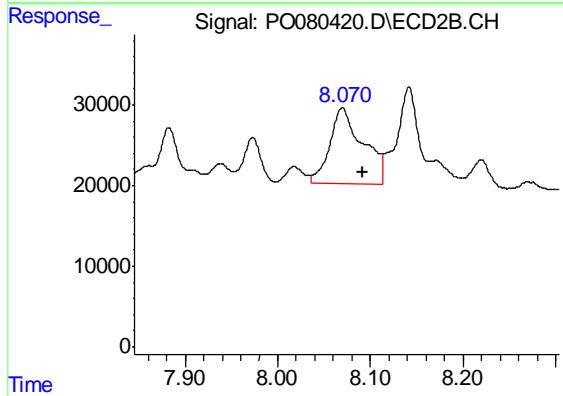
#34 AR-1260-4

R.T.: 7.824 min
 Delta R.T.: -0.018 min
 Response: 14750
 Conc: 11.78 ng/ml



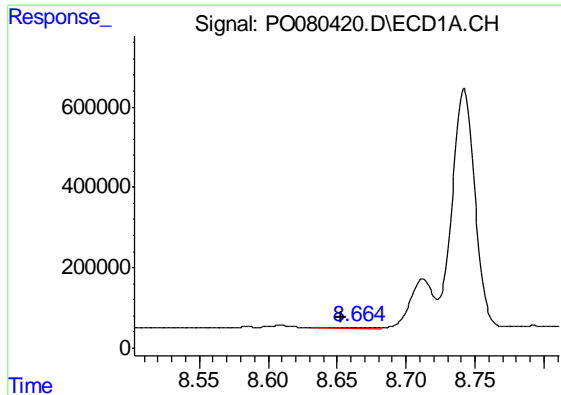
#35 AR-1260-5

R.T.: 0.000 min
 Exp R.T. : 9.219 min
 Response: 0
 Conc: N.D.



#35 AR-1260-5

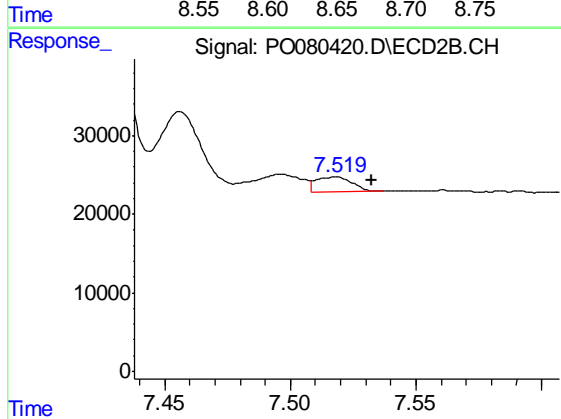
R.T.: 8.070 min
 Delta R.T.: -0.022 min
 Response: 233996
 Conc: 80.88 ng/ml



#36 AR-1262-1

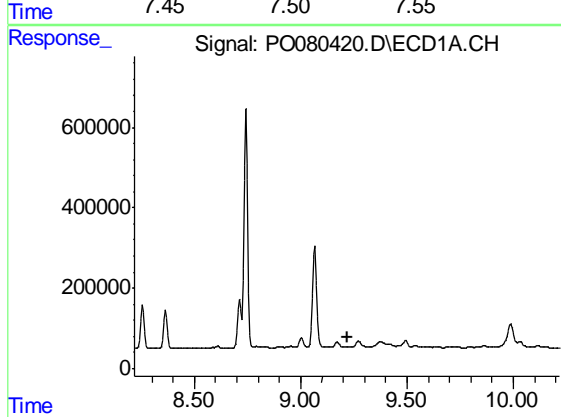
R.T.: 8.664 min
 Delta R.T.: 0.012 min
 Response: 81007
 Conc: 21.18 ng/ml

Instrument :
 ECD_O
 ClientSampleId :
 TRANSFO-MAIN-(21-04881)



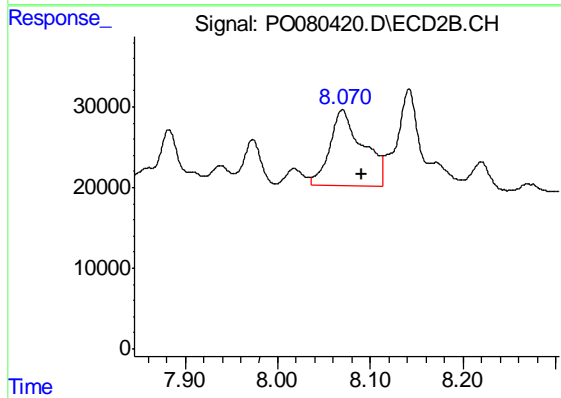
#36 AR-1262-1

R.T.: 7.518 min
 Delta R.T.: -0.014 min
 Response: 18934
 Conc: 18.86 ng/ml



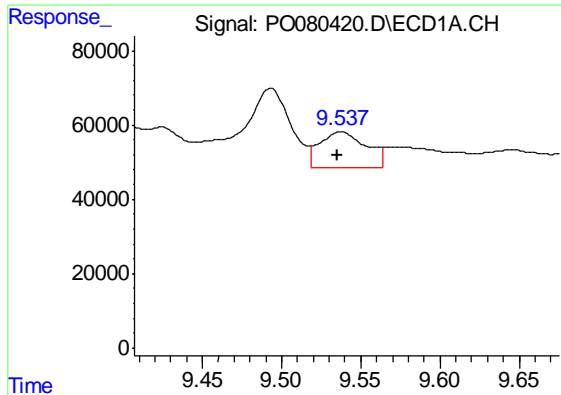
#37 AR-1262-2

R.T.: 0.000 min
 Exp R.T. : 9.218 min
 Response: 0
 Conc: N.D.



#37 AR-1262-2

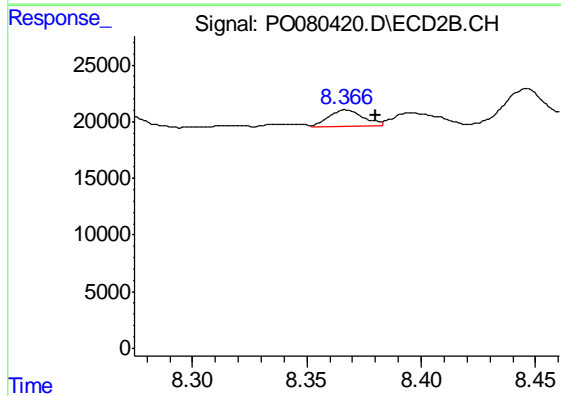
R.T.: 8.070 min
 Delta R.T.: -0.021 min
 Response: 233996
 Conc: 73.28 ng/ml



#38 AR-1262-3

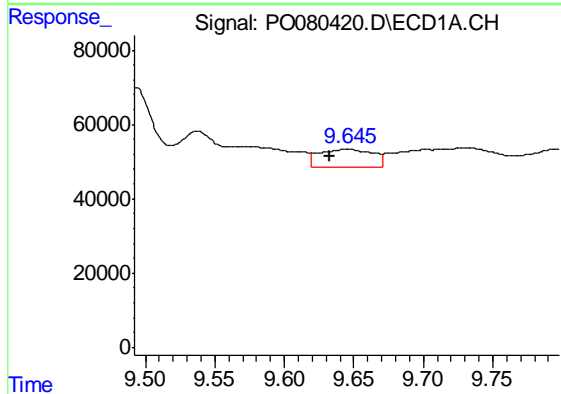
R.T.: 9.538 min
 Delta R.T.: 0.002 min
 Response: 196359
 Conc: 65.61 ng/ml

Instrument :
 ECD_O
 ClientSampleId :
 TRANSFO-MAIN-(21-04881)



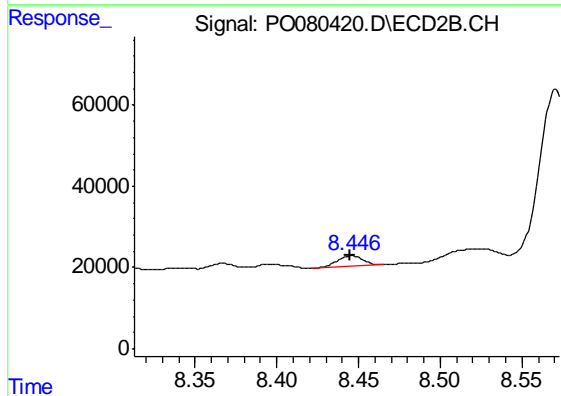
#38 AR-1262-3

R.T.: 8.367 min
 Delta R.T.: -0.013 min
 Response: 14559
 Conc: 11.07 ng/ml



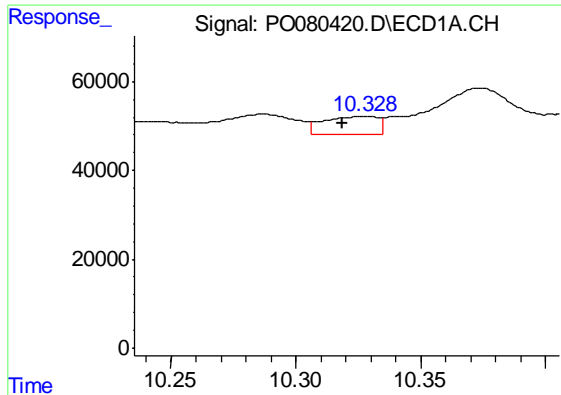
#39 AR-1262-4

R.T.: 9.645 min
 Delta R.T.: 0.013 min
 Response: 129103
 Conc: 73.41 ng/ml



#39 AR-1262-4

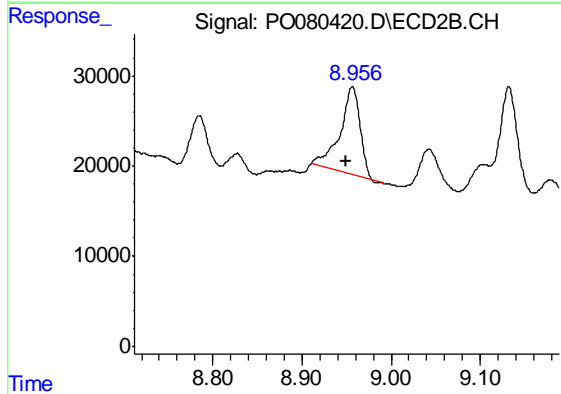
R.T.: 8.446 min
 Delta R.T.: 0.000 min
 Response: 28986
 Conc: 12.28 ng/ml



#40 AR-1262-5

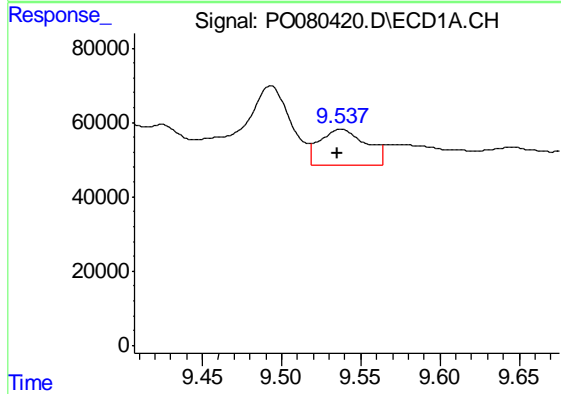
R.T.: 10.329 min
 Delta R.T.: 0.010 min
 Response: 62710
 Conc: 25.28 ng/ml

Instrument :
 ECD_O
 ClientSampleId :
 TRANSFO-MAIN-(21-04881)



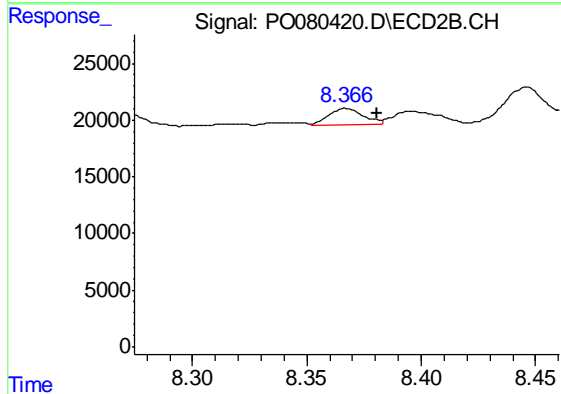
#40 AR-1262-5

R.T.: 8.957 min
 Delta R.T.: 0.006 min
 Response: 153008
 Conc: 137.45 ng/ml



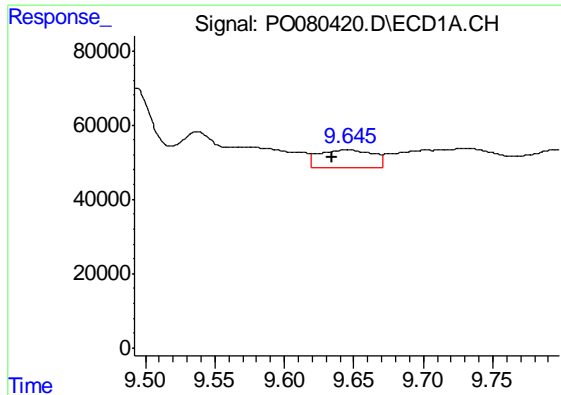
#41 AR-1268-1

R.T.: 9.538 min
 Delta R.T.: 0.002 min
 Response: 196359
 Conc: 24.59 ng/ml



#41 AR-1268-1

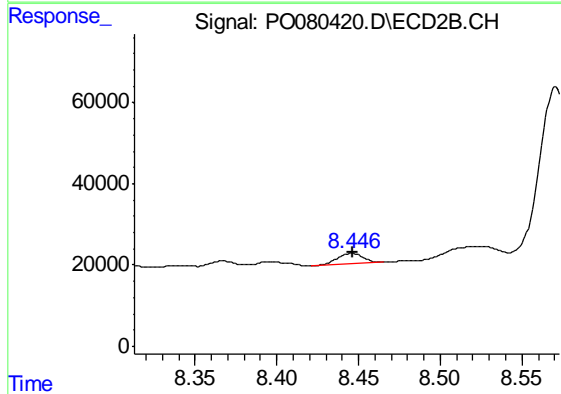
R.T.: 8.367 min
 Delta R.T.: -0.014 min
 Response: 14559
 Conc: 3.90 ng/ml



#42 AR-1268-2

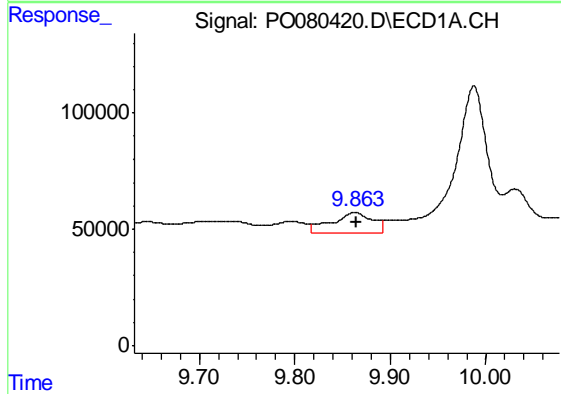
R.T.: 9.645 min
 Delta R.T.: 0.011 min
 Response: 129103
 Conc: 17.76 ng/ml

Instrument :
 ECD_O
 ClientSampleId :
 TRANSFO-MAIN-(21-04881)



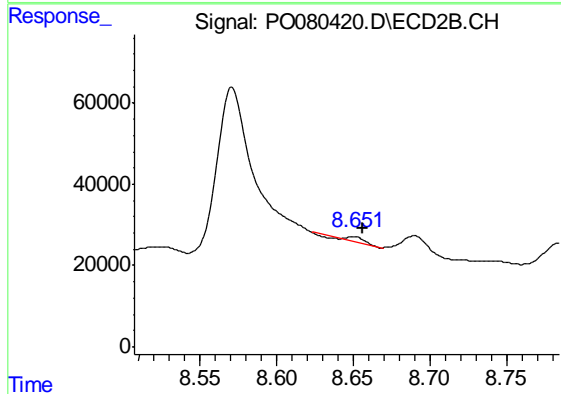
#42 AR-1268-2

R.T.: 8.446 min
 Delta R.T.: 0.000 min
 Response: 28986
 Conc: 8.68 ng/ml



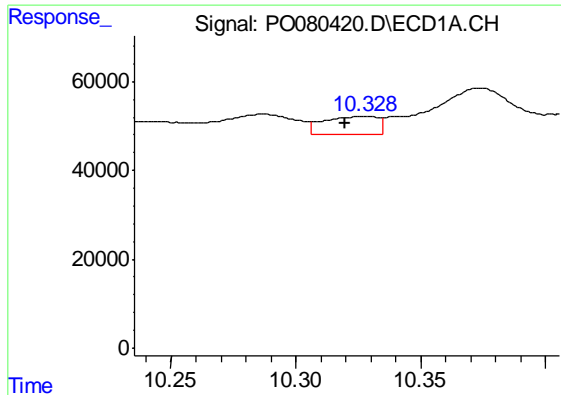
#43 AR-1268-3

R.T.: 9.864 min
 Delta R.T.: -0.002 min
 Response: 264094
 Conc: 43.17 ng/ml



#43 AR-1268-3

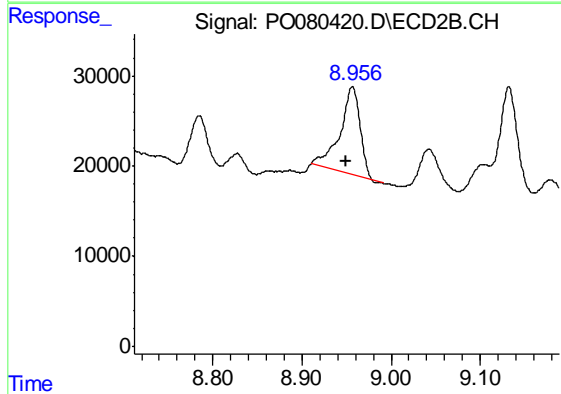
R.T.: 8.651 min
 Delta R.T.: -0.005 min
 Response: 9204
 Conc: 3.23 ng/ml



#44 AR-1268-4

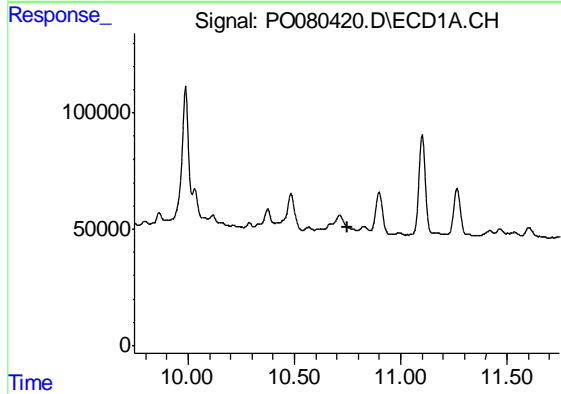
R.T.: 10.329 min
 Delta R.T.: 0.009 min
 Response: 62710
 Conc: 22.48 ng/ml

Instrument :
 ECD_O
 ClientSampleId :
 TRANSFO-MAIN-(21-04881)



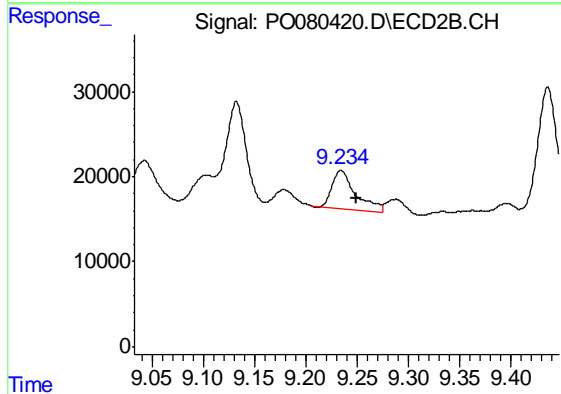
#44 AR-1268-4

R.T.: 8.957 min
 Delta R.T.: 0.006 min
 Response: 153008
 Conc: 124.56 ng/ml



#45 AR-1268-5

R.T.: 0.000 min
 Exp R.T. : 10.747 min
 Response: 0
 Conc: N.D.



#45 AR-1268-5

R.T.: 9.234 min
 Delta R.T.: -0.015 min
 Response: 70248
 Conc: 8.25 ng/ml