

Data Path : Z:\pestpcbsrv\HPCHEM1\ECD_0\Data\P0081321\
 Data File : P0080442.D
 Signal(s) : Signal #1: ECD1A.CH Signal #2: ECD2B.CH
 Acq On : 13 Aug 2021 18:31
 Operator : DD\AJ
 Sample : M3396-03
 Misc :
 ALS Vial : 30 Sample Multiplier: 1

Instrument :
 ECD_O
 ClientSampleId :
 PIPE-C

Integration File signal 1: autoint1.e
 Integration File signal 2: autoint2.e
 Quant Time: Aug 14 02:12:24 2021
 Quant Method : Z:\pestpcbsrv\HPCHEM1\ECD_0\methods\P0081021.M
 Quant Title : GC EXTRACTABLES
 QLast Update : Wed Aug 11 05:48:32 2021
 Response via : Initial Calibration
 Integrator: ChemStation 6890 Scale Mode: Small noise peaks clipped

Volume Inj. : 2 µl
 Signal #1 Phase : ZB-MR1 Signal #2 Phase: ZB-MR2
 Signal #1 Info : 30Mx0.32mmx 0.50µ Signal #2 Info : 30M x 0.32mm x 0.25µm

Compound	RT#1	RT#2	Resp#1	Resp#2	ng/ml	ng/ml

System Monitoring Compounds						
1) SA Tetrachlo...	4.994	4.108	1713399	598760	24.744	24.024
2) SA Decachlor...	11.099	9.509	1144466	486483	22.110	21.449
Target Compounds						
8) L2 AR-1221-1	5.247	4.392f	73695	11919	92.661	38.911 #
9) L2 AR-1221-2	5.350	4.466	29000	11434	52.977	49.151
10) L2 AR-1221-3	5.421	4.560	14712	17223	8.922	24.733 #
11) L3 AR-1232-1	5.421	4.560	14712	17223	9.368	27.069 #
12) L3 AR-1232-2	6.039	0.000	87407	0	103.905	N.D. #
20) L4 AR-1242-5	7.312	0.000	35588	0	24.302	N.D. #
24) L5 AR-1248-4	7.244f	0.000	40902	0	15.041	N.D. #
25) L5 AR-1248-5	7.312	0.000	35588	0	13.495	N.D. #
26) L6 AR-1254-1	7.244	0.000	40902	0	15.778	N.D. #
27) L6 AR-1254-2	7.465	0.000	14748	0	3.758	N.D. #
28) L6 AR-1254-3	7.872f	0.000	30422	0	7.454	N.D. #
30) L6 AR-1254-5	8.582	7.532	6098	6411	1.971	3.654 #
32) L7 AR-1260-2	8.287	7.172f	24498	3440	7.372	2.070 #
35) L7 AR-1260-5	0.000	8.066f	0	6176	N.D.	2.135 #
36) L8 AR-1262-1	0.000	7.532	0	6411	N.D.	6.387 #
37) L8 AR-1262-2	0.000	8.066f	0	6176	N.D.	1.934 #
39) L8 AR-1262-4	9.615f	0.000	15326	0	8.715	N.D. #
42) L9 AR-1268-2	9.615f	0.000	15326	0	2.108	N.D. #
45) L9 AR-1268-5	10.757	0.000	6816	0	0.339	N.D. #

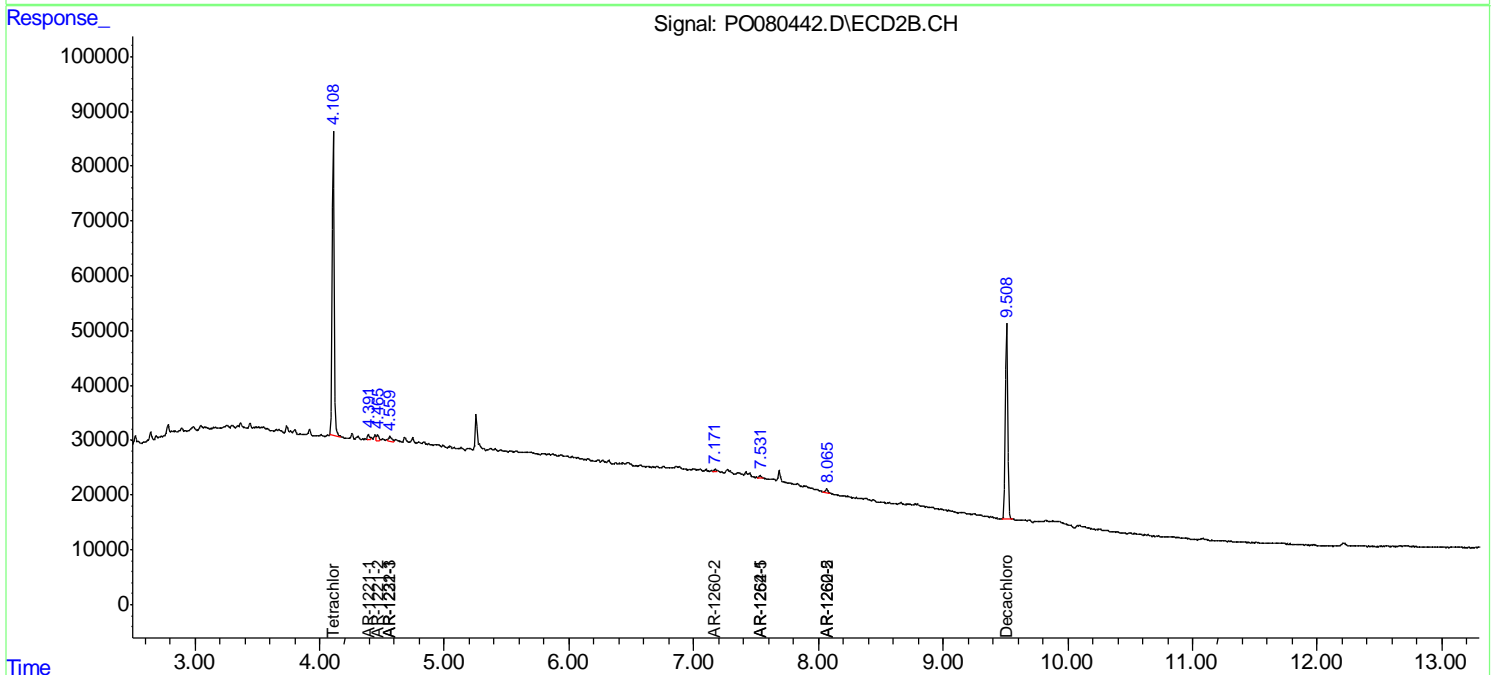
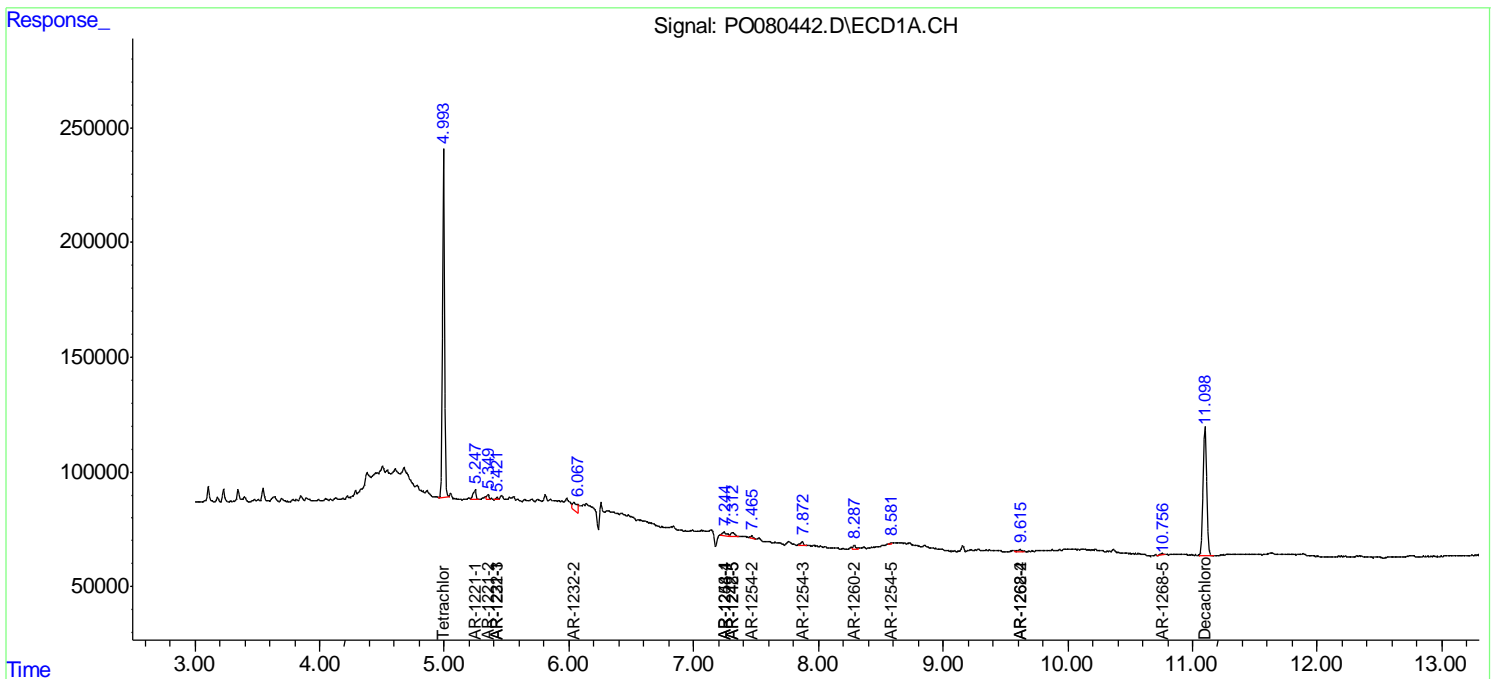
(f)=RT Delta > 1/2 Window (#)=Amounts differ by > 25% (m)=manual int.

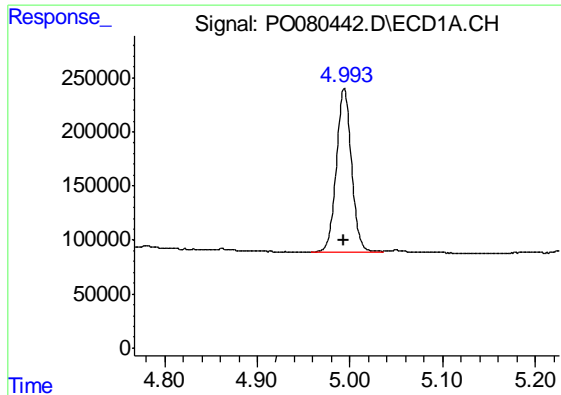
Data Path : Z:\pestpcbsrv\HPCHEM1\ECD_O\Data\PO081321\
 Data File : PO080442.D
 Signal(s) : Signal #1: ECD1A.CH Signal #2: ECD2B.CH
 Acq On : 13 Aug 2021 18:31
 Operator : DD\AJ
 Sample : M3396-03
 Misc :
 ALS Vial : 30 Sample Multiplier: 1

Instrument :
 ECD_O
 ClientSampled :
 PIPE-C

Integration File signal 1: autoint1.e
 Integration File signal 2: autoint2.e
 Quant Time: Aug 14 02:12:24 2021
 Quant Method : Z:\pestpcbsrv\HPCHEM1\ECD_O\methods\PO081021.M
 Quant Title : GC EXTRACTABLES
 QLast Update : Wed Aug 11 05:48:32 2021
 Response via : Initial Calibration
 Integrator: ChemStation 6890 Scale Mode: Small noise peaks clipped

Volume Inj. : 2 µl
 Signal #1 Phase : ZB-MR1 Signal #2 Phase: ZB-MR2
 Signal #1 Info : 30Mx0.32mmx 0.50µ Signal #2 Info : 30M x 0.32mm x 0.25µm

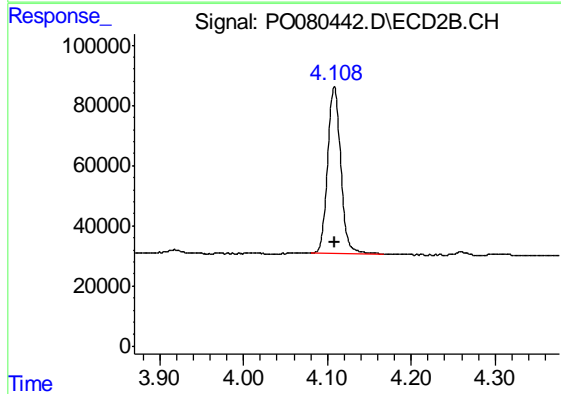




#1 Tetrachloro-m-xylene

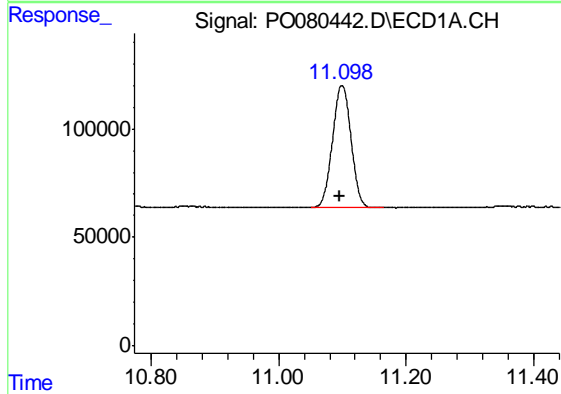
R.T.: 4.994 min
 Delta R.T.: 0.000 min
 Response: 1713399
 Conc: 24.74 ng/ml

Instrument :
 ECD_O
 ClientSampled :
 PIPE-C



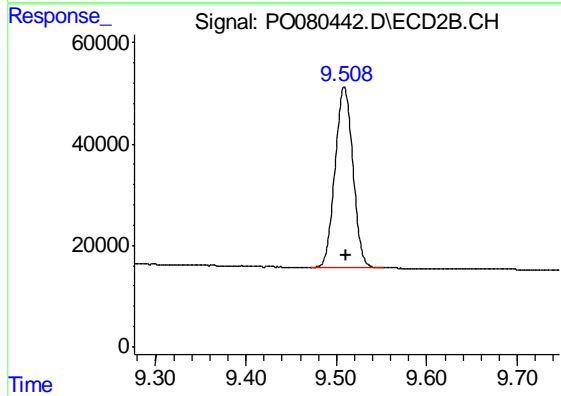
#1 Tetrachloro-m-xylene

R.T.: 4.108 min
 Delta R.T.: 0.000 min
 Response: 598760
 Conc: 24.02 ng/ml



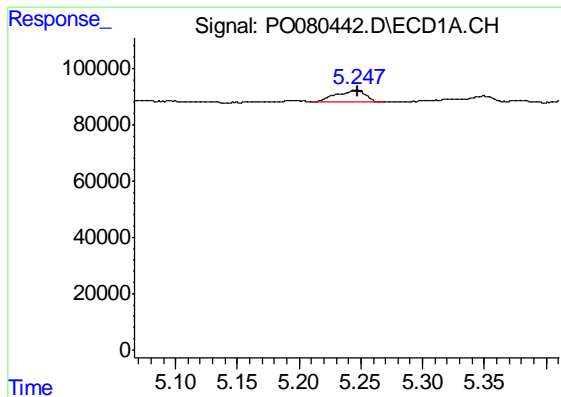
#2 Decachlorobiphenyl

R.T.: 11.099 min
 Delta R.T.: 0.003 min
 Response: 1144466
 Conc: 22.11 ng/ml



#2 Decachlorobiphenyl

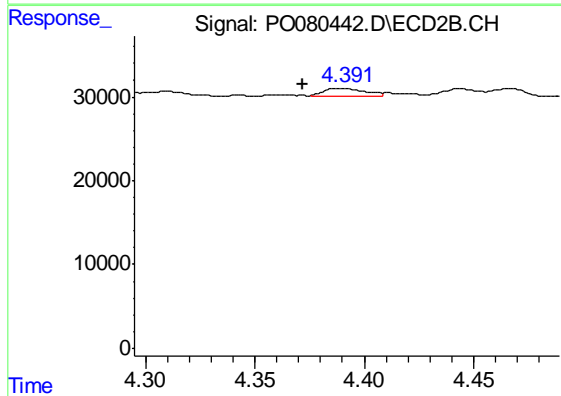
R.T.: 9.509 min
 Delta R.T.: -0.002 min
 Response: 486483
 Conc: 21.45 ng/ml



#8 AR-1221-1

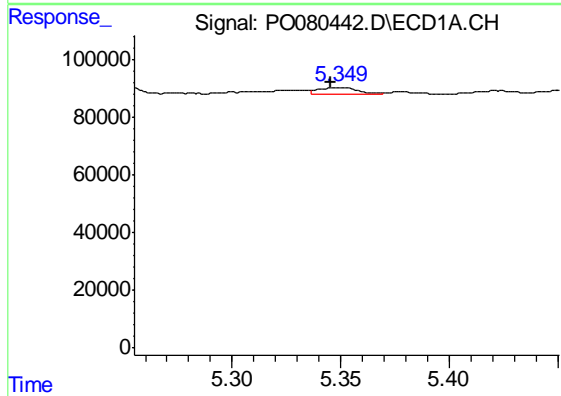
R.T.: 5.247 min
 Delta R.T.: 0.000 min
 Response: 73695
 Conc: 92.66 ng/ml

Instrument :
 ECD_O
 ClientSampleId :
 PIPE-C



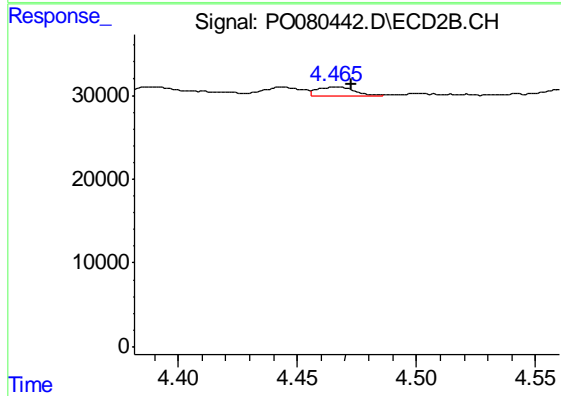
#8 AR-1221-1

R.T.: 4.392 min
 Delta R.T.: 0.020 min
 Response: 11919
 Conc: 38.91 ng/ml



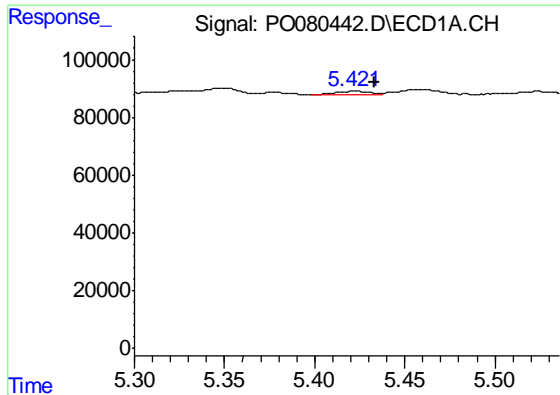
#9 AR-1221-2

R.T.: 5.350 min
 Delta R.T.: 0.004 min
 Response: 29000
 Conc: 52.98 ng/ml



#9 AR-1221-2

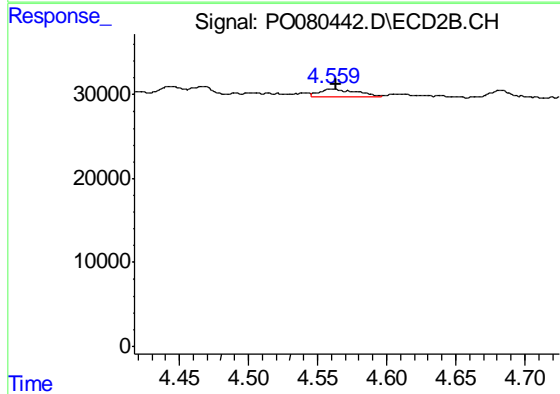
R.T.: 4.466 min
 Delta R.T.: -0.007 min
 Response: 11434
 Conc: 49.15 ng/ml



#10 AR-1221-3

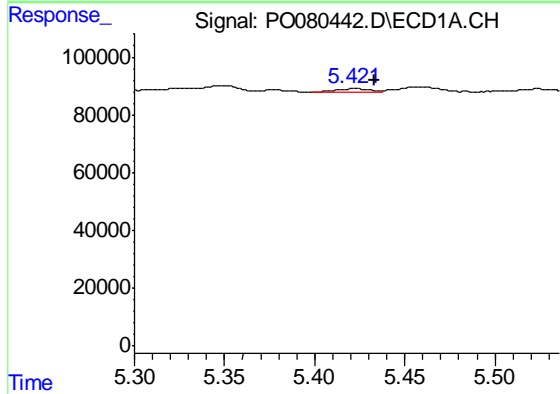
R.T.: 5.421 min
 Delta R.T.: -0.012 min
 Response: 14712
 Conc: 8.92 ng/ml

Instrument :
 ECD_O
 ClientSampleId :
 PIPE-C



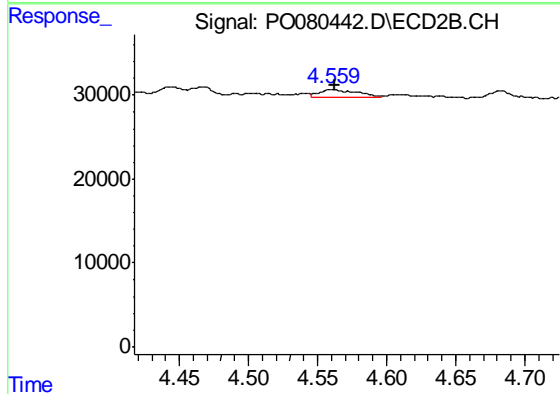
#10 AR-1221-3

R.T.: 4.560 min
 Delta R.T.: -0.003 min
 Response: 17223
 Conc: 24.73 ng/ml



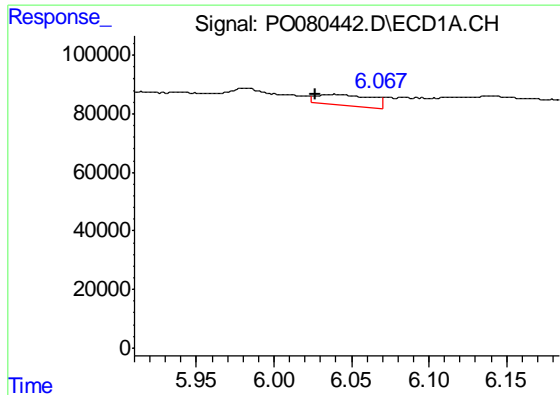
#11 AR-1232-1

R.T.: 5.421 min
 Delta R.T.: -0.012 min
 Response: 14712
 Conc: 9.37 ng/ml



#11 AR-1232-1

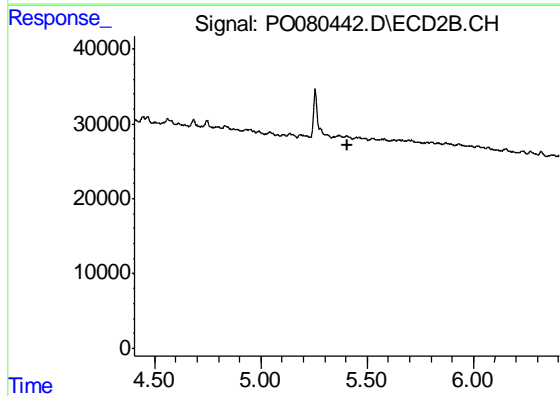
R.T.: 4.560 min
 Delta R.T.: -0.002 min
 Response: 17223
 Conc: 27.07 ng/ml



#12 AR-1232-2

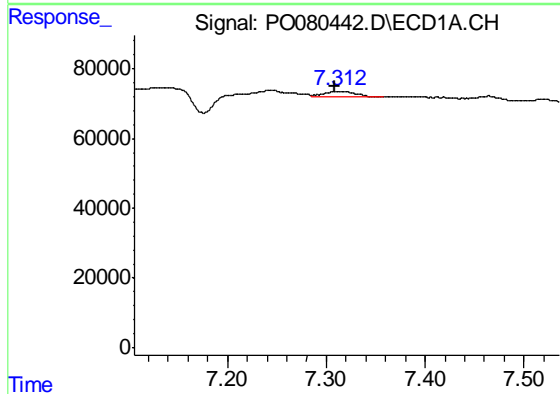
R.T.: 6.039 min
 Delta R.T.: 0.013 min
 Response: 87407
 Conc: 103.91 ng/ml

Instrument :
 ECD_O
 ClientSampled :
 PIPE-C



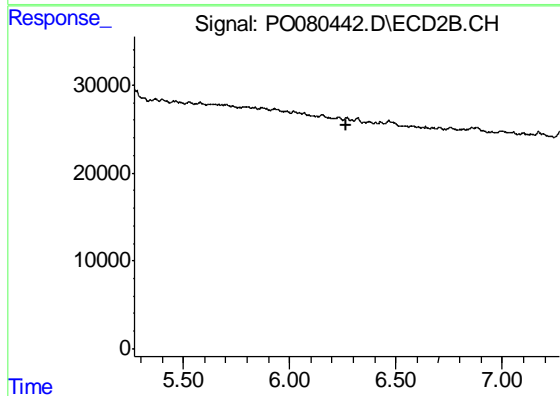
#12 AR-1232-2

R.T.: 0.000 min
 Exp R.T. : 5.405 min
 Response: 0
 Conc: N.D.



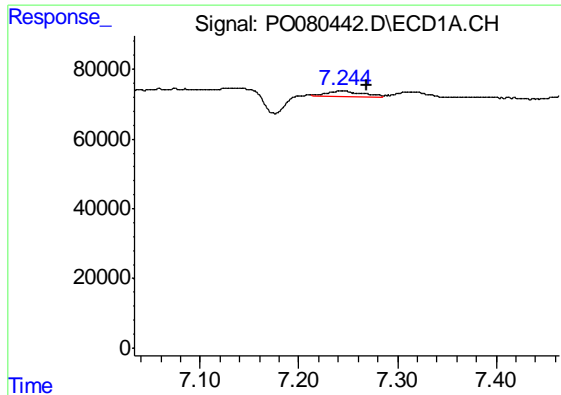
#20 AR-1242-5

R.T.: 7.312 min
 Delta R.T.: 0.004 min
 Response: 35588
 Conc: 24.30 ng/ml



#20 AR-1242-5

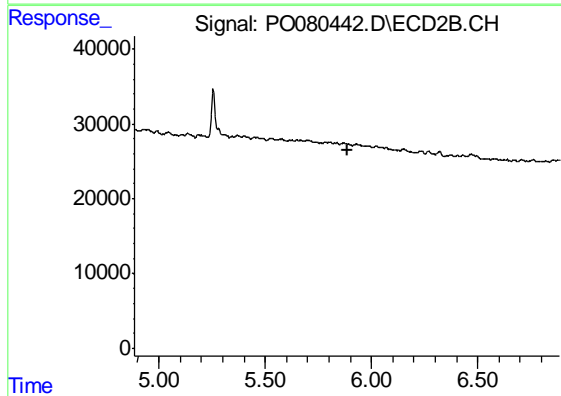
R.T.: 0.000 min
 Exp R.T. : 6.269 min
 Response: 0
 Conc: N.D.



#24 AR-1248-4

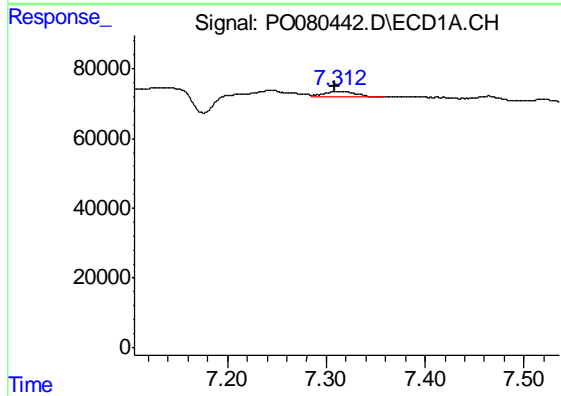
R.T.: 7.244 min
 Delta R.T.: -0.025 min
 Response: 40902
 Conc: 15.04 ng/ml

Instrument :
 ECD_O
 ClientSampled :
 PIPE-C



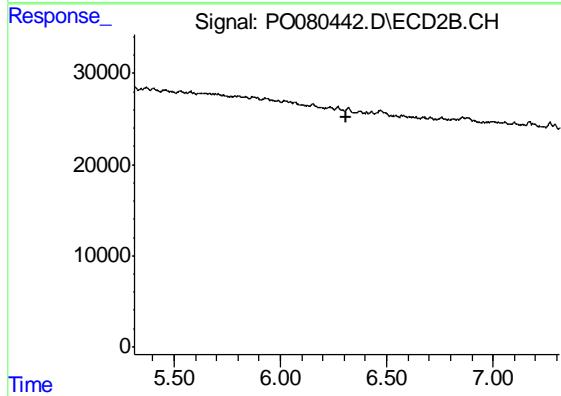
#24 AR-1248-4

R.T.: 0.000 min
 Exp R.T. : 5.885 min
 Response: 0
 Conc: N.D.



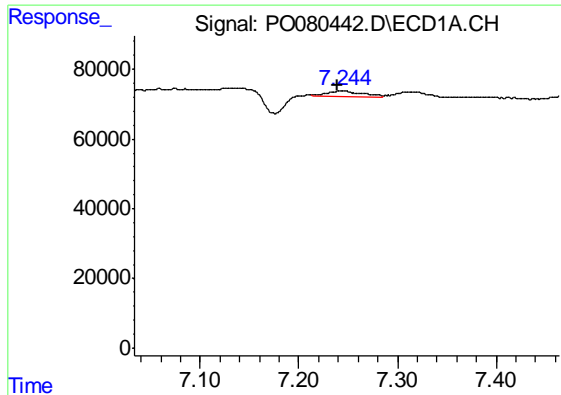
#25 AR-1248-5

R.T.: 7.312 min
 Delta R.T.: 0.004 min
 Response: 35588
 Conc: 13.50 ng/ml



#25 AR-1248-5

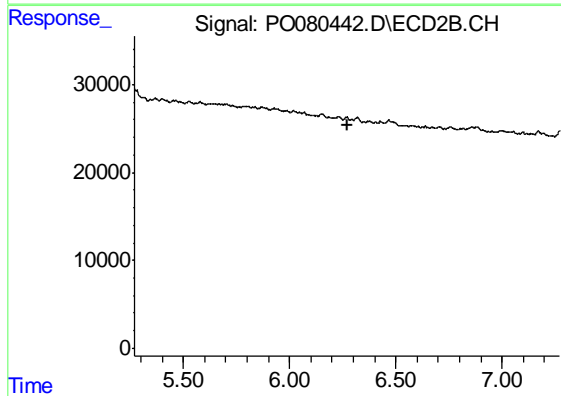
R.T.: 0.000 min
 Exp R.T. : 6.313 min
 Response: 0
 Conc: N.D.



#26 AR-1254-1

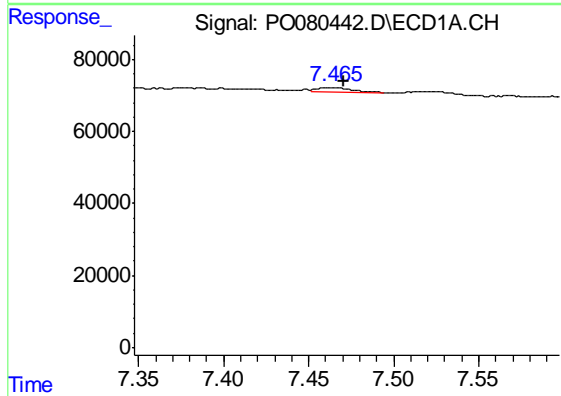
R.T.: 7.244 min
 Delta R.T.: 0.005 min
 Response: 40902
 Conc: 15.78 ng/ml

Instrument :
 ECD_O
 ClientSampleId :
 PIPE-C



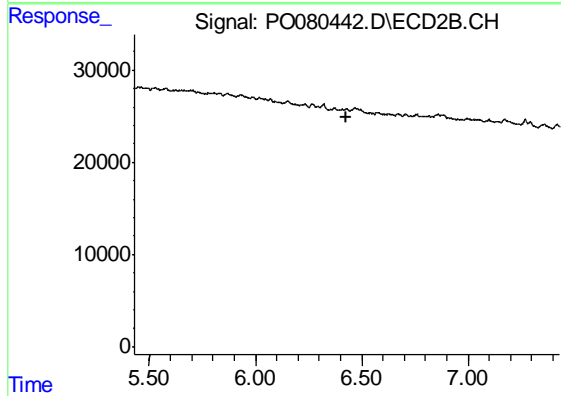
#26 AR-1254-1

R.T.: 0.000 min
 Exp R.T. : 6.270 min
 Response: 0
 Conc: N.D.



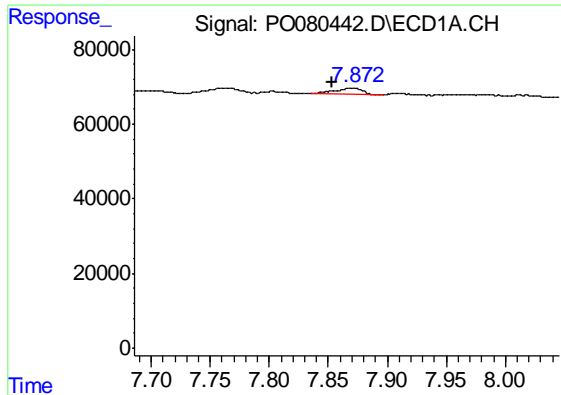
#27 AR-1254-2

R.T.: 7.465 min
 Delta R.T.: -0.005 min
 Response: 14748
 Conc: 3.76 ng/ml



#27 AR-1254-2

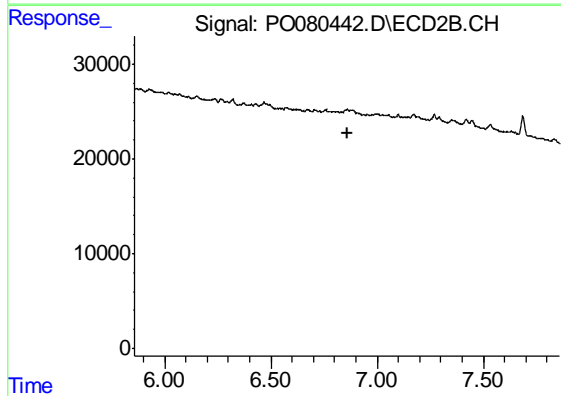
R.T.: 0.000 min
 Exp R.T. : 6.430 min
 Response: 0
 Conc: N.D.



#28 AR-1254-3

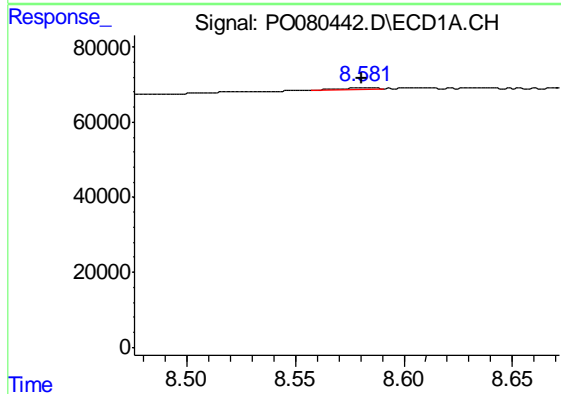
R.T.: 7.872 min
 Delta R.T.: 0.019 min
 Response: 30422
 Conc: 7.45 ng/ml

Instrument :
 ECD_O
 ClientSampleId :
 PIPE-C



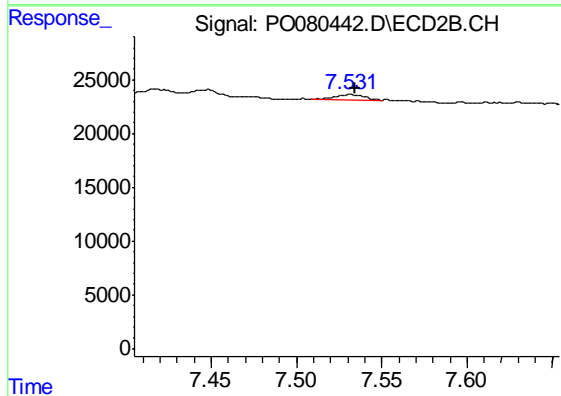
#28 AR-1254-3

R.T.: 0.000 min
 Exp R.T. : 6.858 min
 Response: 0
 Conc: N.D.



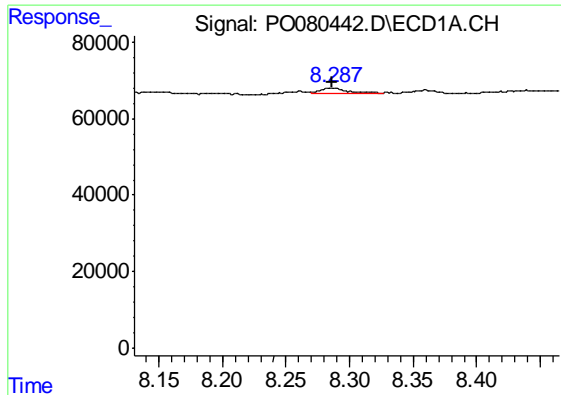
#30 AR-1254-5

R.T.: 8.582 min
 Delta R.T.: 0.000 min
 Response: 6098
 Conc: 1.97 ng/ml



#30 AR-1254-5

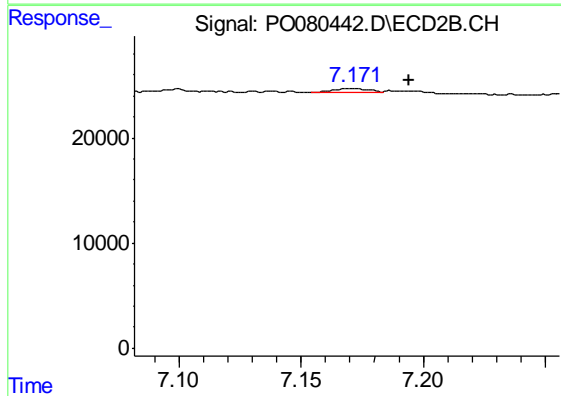
R.T.: 7.532 min
 Delta R.T.: -0.003 min
 Response: 6411
 Conc: 3.65 ng/ml



#32 AR-1260-2

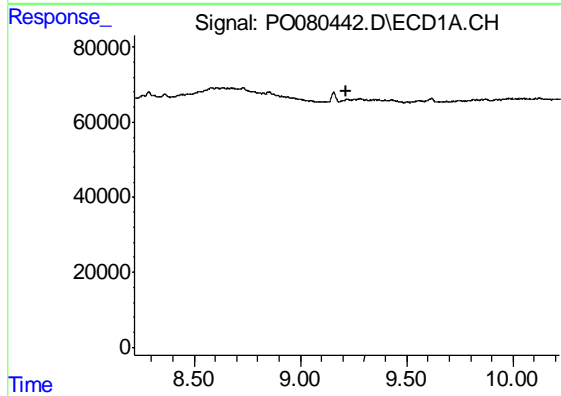
R.T.: 8.287 min
 Delta R.T.: 0.001 min
 Response: 24498
 Conc: 7.37 ng/ml

Instrument :
 ECD_O
 ClientSampled :
 PIPE-C



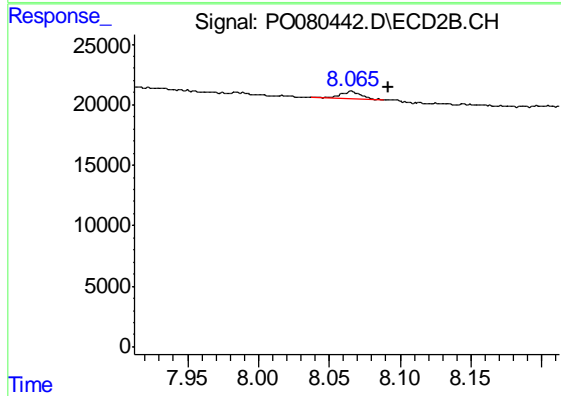
#32 AR-1260-2

R.T.: 7.172 min
 Delta R.T.: -0.023 min
 Response: 3440
 Conc: 2.07 ng/ml



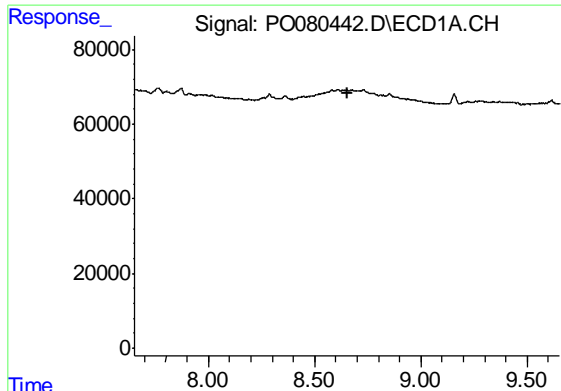
#35 AR-1260-5

R.T.: 0.000 min
 Exp R.T. : 9.219 min
 Response: 0
 Conc: N.D.



#35 AR-1260-5

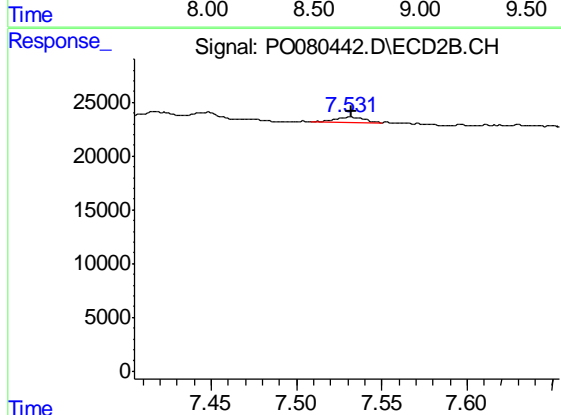
R.T.: 8.066 min
 Delta R.T.: -0.026 min
 Response: 6176
 Conc: 2.13 ng/ml



#36 AR-1262-1

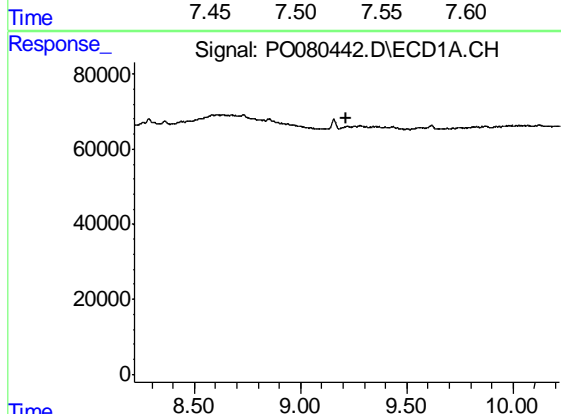
R.T.: 0.000 min
 Exp R.T. : 8.652 min
 Response: 0
 Conc: N.D.

Instrument :
 ECD_O
 ClientSampleId :
 PIPE-C



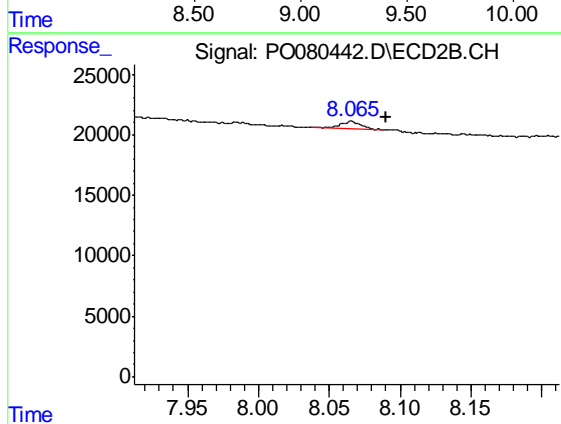
#36 AR-1262-1

R.T.: 7.532 min
 Delta R.T.: 0.000 min
 Response: 6411
 Conc: 6.39 ng/ml



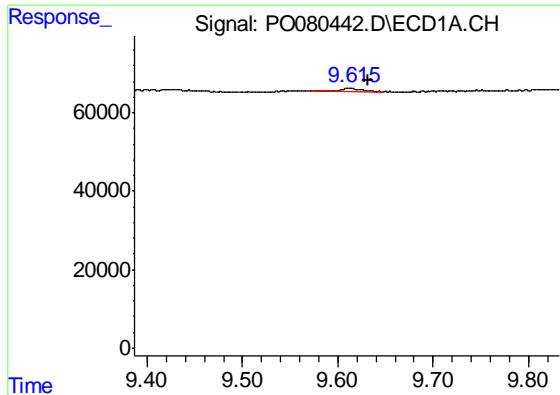
#37 AR-1262-2

R.T.: 0.000 min
 Exp R.T. : 9.218 min
 Response: 0
 Conc: N.D.



#37 AR-1262-2

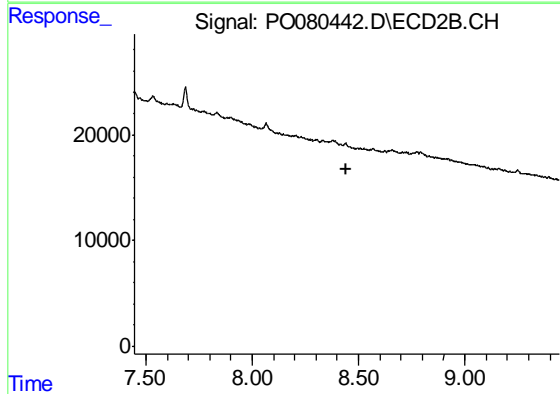
R.T.: 8.066 min
 Delta R.T.: -0.025 min
 Response: 6176
 Conc: 1.93 ng/ml



#39 AR-1262-4

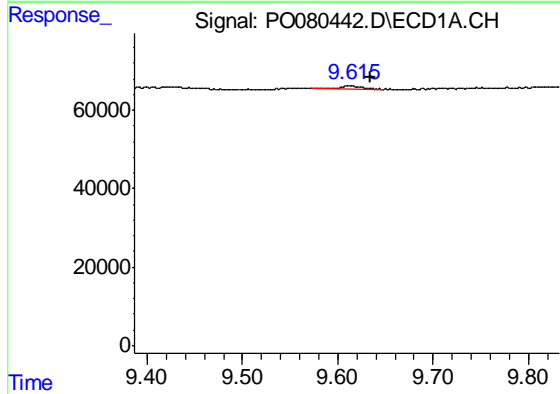
R.T.: 9.615 min
 Delta R.T.: -0.018 min
 Response: 15326
 Conc: 8.71 ng/ml

Instrument :
 ECD_O
 ClientSampled :
 PIPE-C



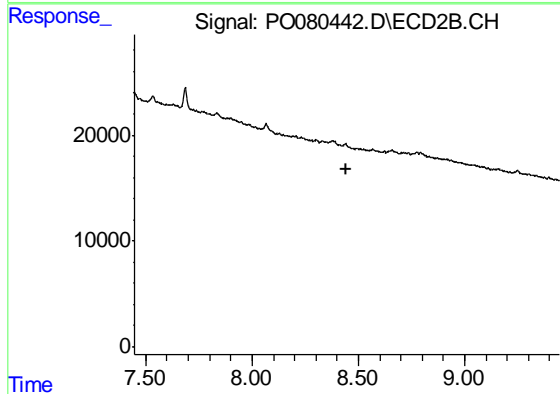
#39 AR-1262-4

R.T.: 0.000 min
 Exp R.T. : 8.445 min
 Response: 0
 Conc: N.D.



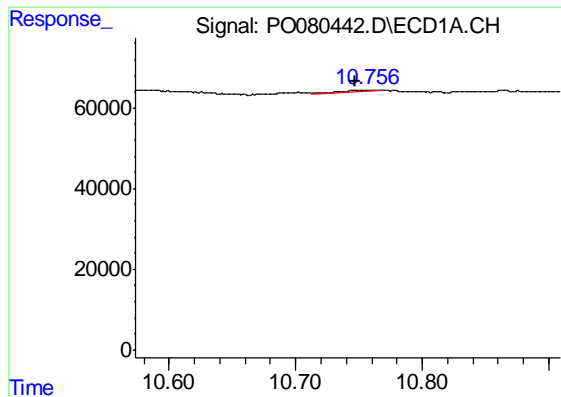
#42 AR-1268-2

R.T.: 9.615 min
 Delta R.T.: -0.020 min
 Response: 15326
 Conc: 2.11 ng/ml



#42 AR-1268-2

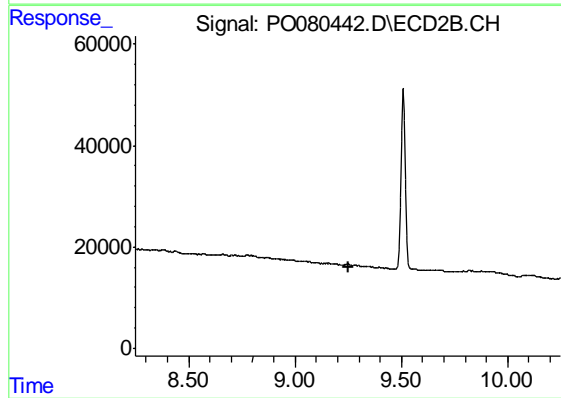
R.T.: 0.000 min
 Exp R.T. : 8.446 min
 Response: 0
 Conc: N.D.



#45 AR-1268-5

R.T.: 10.757 min
 Delta R.T.: 0.010 min
 Response: 6816
 Conc: 0.34 ng/ml

Instrument :
 ECD_O
 ClientSampleId :
 PIPE-C



#45 AR-1268-5

R.T.: 0.000 min
 Exp R.T. : 9.249 min
 Response: 0
 Conc: N.D.