

Data Path : Z:\pestpcbsrv\HPCHEM1\ECD\_0\Data\P0081324\  
 Data File : PO105492.D  
 Signal(s) : Signal #1: ECD1A.ch Signal #2: ECD2B.ch  
 Acq On : 13 Aug 2024 12:33  
 Operator : YP/AJ  
 Sample : P3390-09  
 Misc : AR1232 MDL 25 PPB  
 ALS Vial : 9 Sample Multiplier: 1

Instrument :  
 ECD\_0  
 ClientSampleId :  
 MDL-WATER-03-QT3-2024

Integration File signal 1: autoint1.e  
 Integration File signal 2: autoint2.e  
 Quant Time: Aug 14 02:05:50 2024  
 Quant Method : Z:\pestpcbsrv\HPCHEM1\ECD\_0\methods\P0081024.M  
 Quant Title : GC EXTRACTABLES  
 QLast Update : Sat Aug 10 04:08:56 2024  
 Response via : Initial Calibration  
 Integrator: ChemStation

Volume Inj. : 2 µl  
 Signal #1 Phase : ZB-MR1 Signal #2 Phase: ZB-MR2  
 Signal #1 Info : 30Mx0.32mmx 0.50µ Signal #2 Info : 30M x 0.32mm x 0.25µm

Compound	RT#1	RT#2	Resp#1	Resp#2	ng/ml	ng/ml
System Monitoring Compounds						
1) SA Tetrachlo...	4.427	3.535	118.4E6	52875667	13.551	16.834
2) SA Decachlor...	10.217	8.426	91920199	33073122	15.979	18.682
Target Compounds						
3) L1 AR-1016-1	5.597	4.590	2491579	1309006	8.236	11.648 #
4) L1 AR-1016-2	5.620	4.607	4015168	1749427	9.392	11.237
5) L1 AR-1016-3	5.682	4.779	2564137	810616	9.993	9.679
6) L1 AR-1016-4	5.782	4.822	2989112	582357	13.667	8.648 #
7) L1 AR-1016-5	6.079	5.029	2353795	1146018	11.001	13.693
8) L2 AR-1221-1	4.630	3.742	1724949	605866	15.382	15.349
9) L2 AR-1221-2	4.731	3.826	3303871	1476741	38.979	48.067
10) L2 AR-1221-3	4.796	3.900	4668304	1864836	19.189	20.841
11) L3 AR-1232-1	4.796	3.900	4668304	1864836	23.349	25.536
12) L3 AR-1232-2	5.328	4.607	2024119	1749427	19.122	24.915 #
13) L3 AR-1232-3	5.620	4.779	4015168	810616	20.977	21.211
14) L3 AR-1232-4	5.782	4.861	2989112	905918	30.647	26.040
15) L3 AR-1232-5	5.871	5.029	1307848	1146018	18.149	32.466 #
16) L4 AR-1242-1	5.597	4.590	2491579	1309006	10.721	14.841 #
17) L4 AR-1242-2	5.620	4.607	4015168	1749427	12.320	14.734
18) L4 AR-1242-3	5.682	4.779	2564137	810616	12.998	12.483
19) L4 AR-1242-4	5.782	4.861	2989112	905918	17.519	13.659
20) L4 AR-1242-5	6.524	5.373	3730484	1451158	21.346	17.660
21) L5 AR-1248-1	5.597	4.590	2491579	1309006	13.645	18.742 #
22) L5 AR-1248-2	5.871	4.822	1307848	582357	5.193	6.137
23) L5 AR-1248-3	6.079	4.861	2353795	905918	8.327	9.075
24) L5 AR-1248-4	6.485	5.029	2882599	1146018	9.015	10.153
25) L5 AR-1248-5	6.524	5.413	3730484	1620938	12.060	14.395
26) L6 AR-1254-1	6.459	5.373	2950296	1451158	9.408	8.913
27) L6 AR-1254-2	6.684	5.519	1870531	924455	4.145	6.320 #
28) L6 AR-1254-3	7.053	5.915	3118428	1401198	6.574	6.212
29) L6 AR-1254-4	7.334	6.137	2914127	1089882	8.135	7.724
30) L6 AR-1254-5	7.749	6.551	4218227	324251	10.626	1.618 #
31) L7 AR-1260-1	7.227	6.055	1357418	593171	3.704	3.800
32) L7 AR-1260-2	7.488	6.220	1936030	1020520	4.650	5.400
33) L7 AR-1260-3	7.830	6.391	2802183	3268758	10.827	17.694 #
34) L7 AR-1260-4	8.074	6.869	4748204	262606	14.392	2.148 #
35) L7 AR-1260-5	8.391	7.091	2585630	300247	4.347	1.079 #
36) L8 AR-1262-1	7.749	6.551	4218227	324251	13.280	3.047 #
37) L8 AR-1262-2	8.391	6.869	2585630	262606	3.438	1.545 #
38) L8 AR-1262-3	8.686	7.385	131759	593190	0.268	4.698 #
39) L8 AR-1262-4	8.785	7.423	689427	444864	1.877	1.922
40) L8 AR-1262-5	9.462	7.914	170924	71208	0.638	0.709
41) L9 AR-1268-1	8.686	7.385	131759	593190	0.162	1.699 #

Data Path : Z:\pestpcbsrv\HPCHEM1\ECD\_0\Data\P0081324\  
 Data File : P0105492.D  
 Signal(s) : Signal #1: ECD1A.ch Signal #2: ECD2B.ch  
 Acq On : 13 Aug 2024 12:33  
 Operator : YP/AJ  
 Sample : P3390-09  
 Misc : AR1232 MDL 25 PPB  
 ALS Vial : 9 Sample Multiplier: 1

Instrument :  
 ECD\_0  
 ClientSampleId :  
 MDL-WATER-03-QT3-2024

Integration File signal 1: autoint1.e  
 Integration File signal 2: autoint2.e  
 Quant Time: Aug 14 02:05:50 2024  
 Quant Method : Z:\pestpcbsrv\HPCHEM1\ECD\_0\methods\P0081024.M  
 Quant Title : GC EXTRACTABLES  
 QLast Update : Sat Aug 10 04:08:56 2024  
 Response via : Initial Calibration  
 Integrator: ChemStation

Volume Inj. : 2 µl  
 Signal #1 Phase : ZB-MR1 Signal #2 Phase: ZB-MR2  
 Signal #1 Info : 30Mx0.32mmx 0.50µ Signal #2 Info : 30M x 0.32mm x 0.25µm

	Compound	RT#1	RT#2	Resp#1	Resp#2	ng/ml	ng/ml
42)	L9 AR-1268-2	8.808	7.423	142138	444864	0.196	1.426 #
43)	L9 AR-1268-3	9.018	7.629	872534	970413	1.352	3.839 #
44)	L9 AR-1268-4	9.462	7.914	170924	71208	0.614	0.662
45)	L9 AR-1268-5	9.882	8.188	1845589	227759	0.883	0.340 #

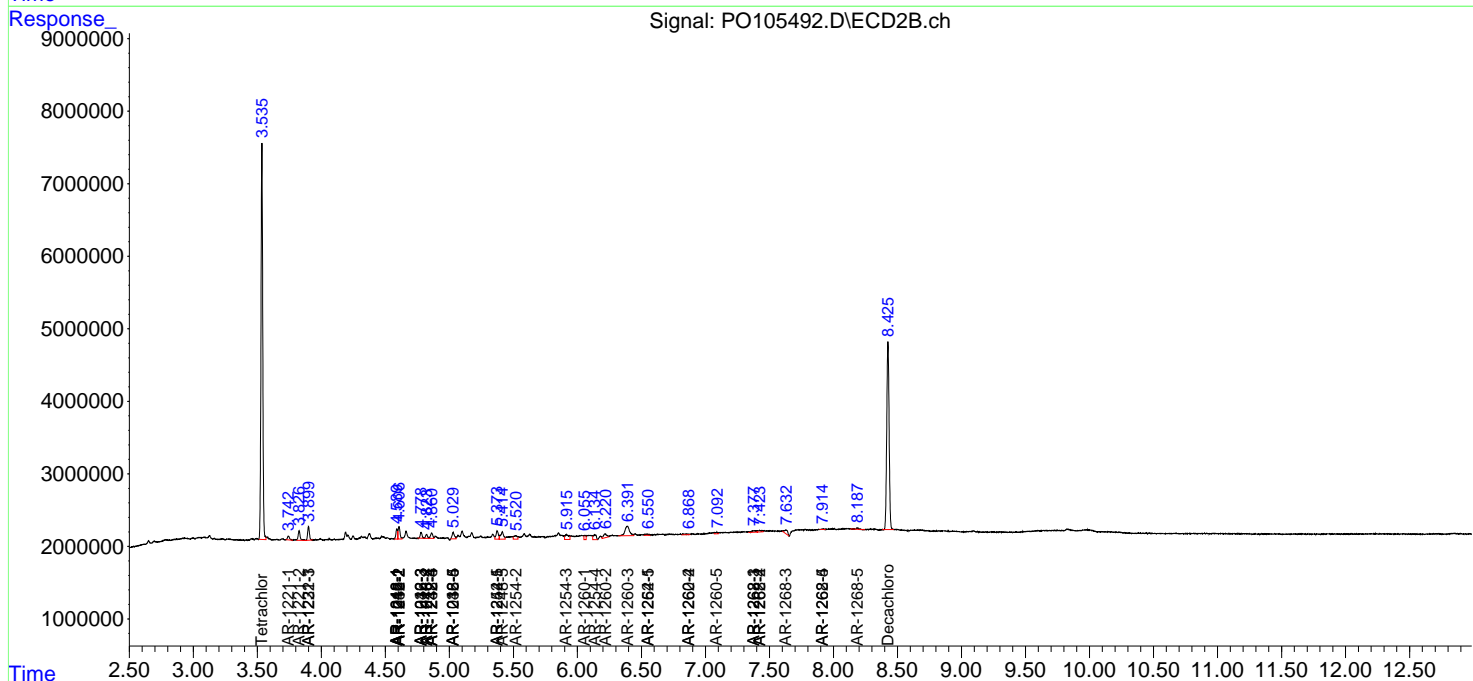
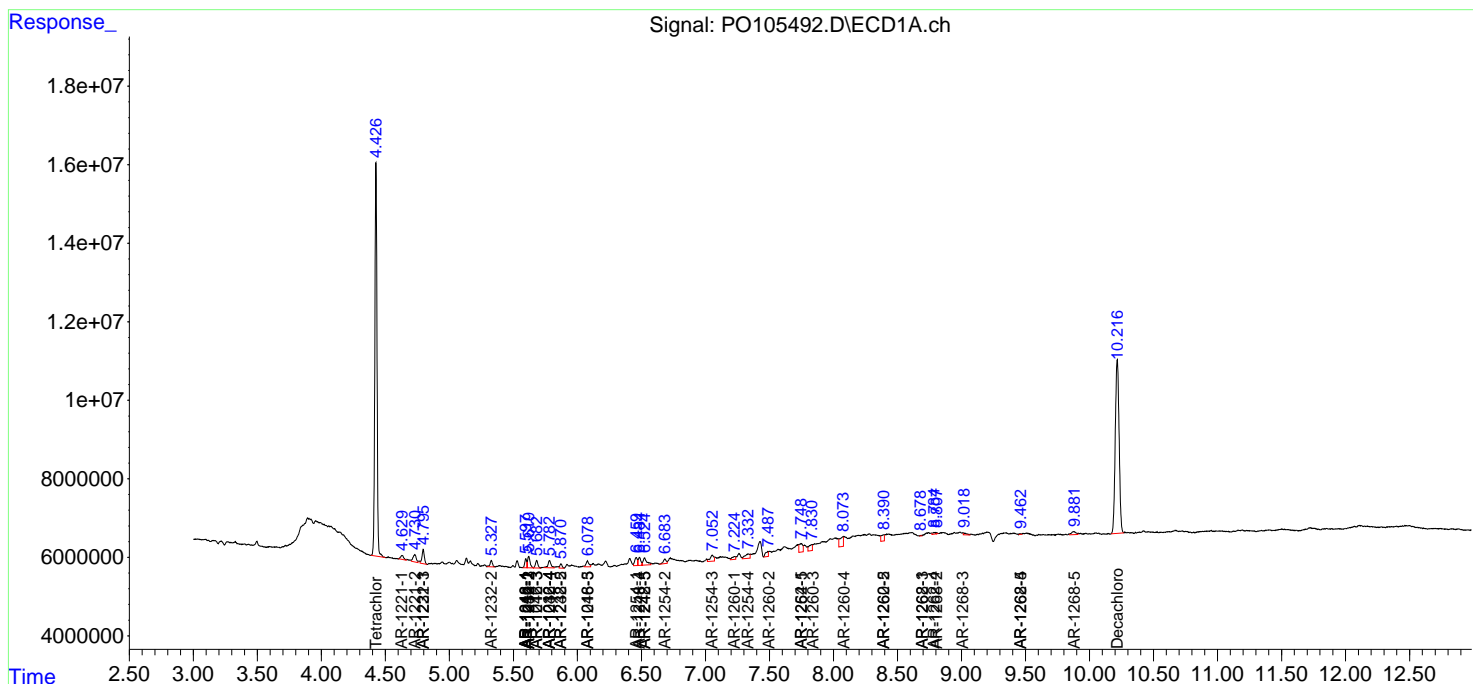
(f)=RT Delta > 1/2 Window (#)=Amounts differ by > 25% (m)=manual int.

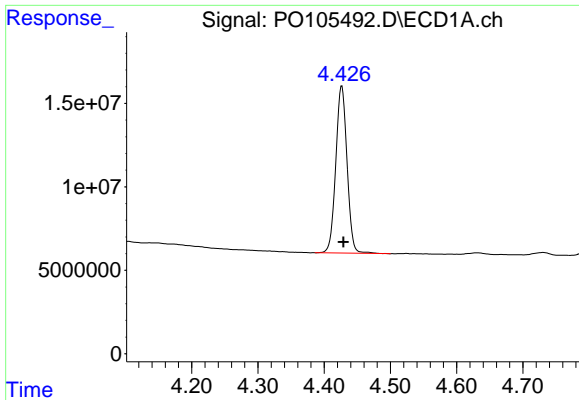
Data Path : Z:\pestpcbsrv\HPCHEM1\ECD\_O\Data\PO081324\  
 Data File : PO105492.D  
 Signal(s) : Signal #1: ECD1A.ch Signal #2: ECD2B.ch  
 Acq On : 13 Aug 2024 12:33  
 Operator : YP/AJ  
 Sample : P3390-09  
 Misc : AR1232 MDL 25 PPB  
 ALS Vial : 9 Sample Multiplier: 1

Instrument :  
 ECD\_O  
 ClientSampleId :  
 MDL-WATER-03-QT3-2024

Integration File signal 1: autoint1.e  
 Integration File signal 2: autoint2.e  
 Quant Time: Aug 14 02:05:50 2024  
 Quant Method : Z:\pestpcbsrv\HPCHEM1\ECD\_O\methods\PO081024.M  
 Quant Title : GC EXTRACTABLES  
 QLast Update : Sat Aug 10 04:08:56 2024  
 Response via : Initial Calibration  
 Integrator: ChemStation

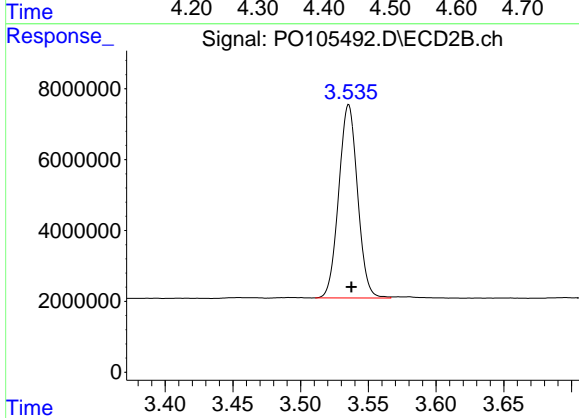
Volume Inj. : 2 µl  
 Signal #1 Phase : ZB-MR1 Signal #2 Phase: ZB-MR2  
 Signal #1 Info : 30Mx0.32mmx 0.50µ Signal #2 Info : 30M x 0.32mm x 0.25µm



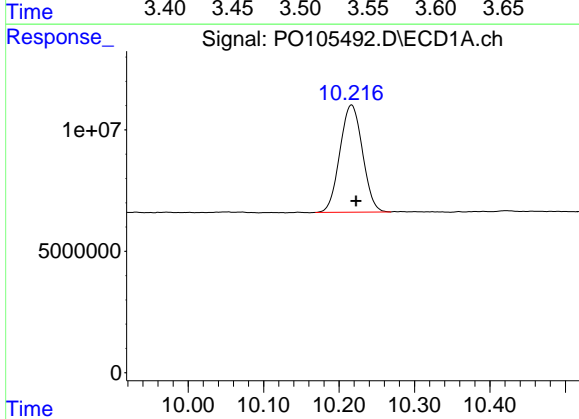


#1 Tetrachloro-m-xylene  
 R.T.: 4.427 min  
 Delta R.T.: -0.002 min  
 Response: 118362931  
 Conc: 13.55 ng/ml

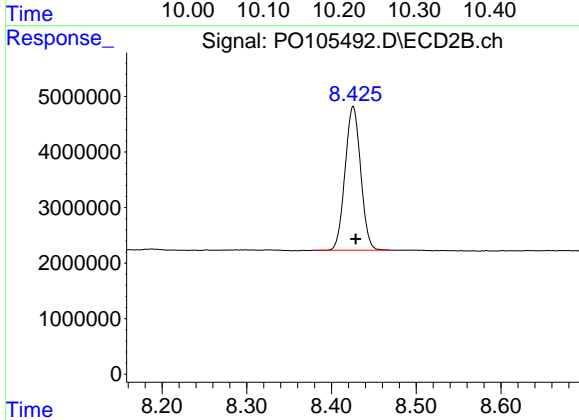
Instrument :  
 ECD\_O  
 ClientSampleId :  
 MDL-WATER-03-QT3-2024



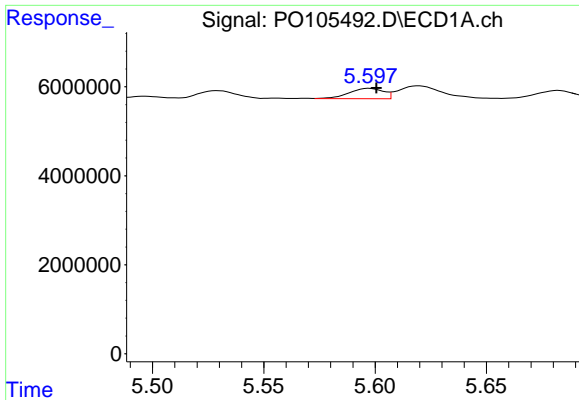
#1 Tetrachloro-m-xylene  
 R.T.: 3.535 min  
 Delta R.T.: -0.002 min  
 Response: 52875667  
 Conc: 16.83 ng/ml



#2 Decachlorobiphenyl  
 R.T.: 10.217 min  
 Delta R.T.: -0.006 min  
 Response: 91920199  
 Conc: 15.98 ng/ml

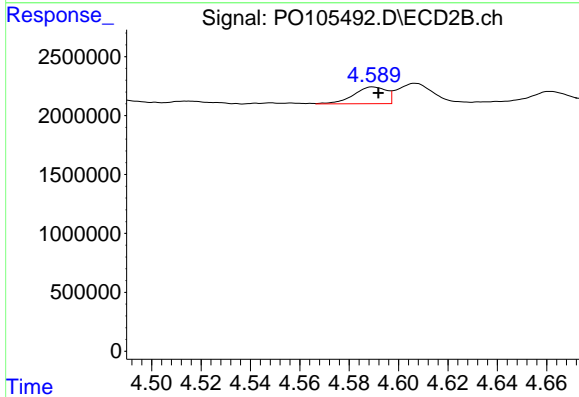


#2 Decachlorobiphenyl  
 R.T.: 8.426 min  
 Delta R.T.: -0.003 min  
 Response: 33073122  
 Conc: 18.68 ng/ml

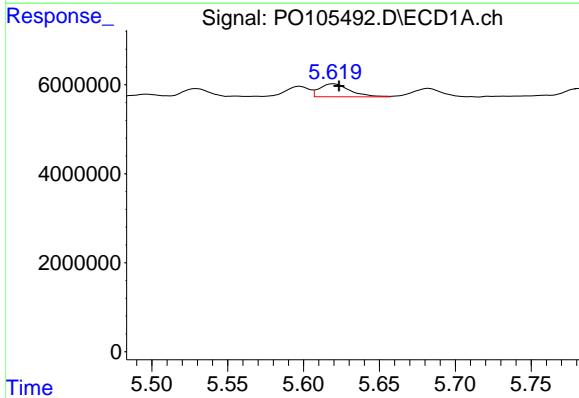


#3 AR-1016-1  
 R.T.: 5.597 min  
 Delta R.T.: -0.003 min  
 Response: 2491579  
 Conc: 8.24 ng/ml

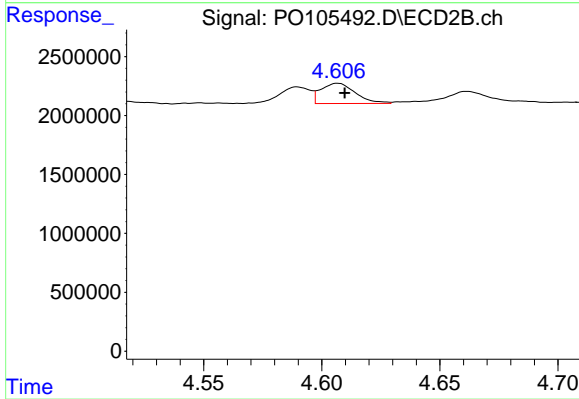
Instrument :  
 ECD\_O  
 ClientSampleId :  
 MDL-WATER-03-QT3-2024



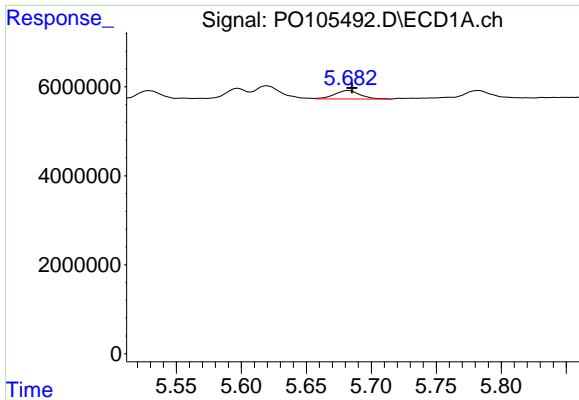
#3 AR-1016-1  
 R.T.: 4.590 min  
 Delta R.T.: -0.002 min  
 Response: 1309006  
 Conc: 11.65 ng/ml



#4 AR-1016-2  
 R.T.: 5.620 min  
 Delta R.T.: -0.004 min  
 Response: 4015168  
 Conc: 9.39 ng/ml



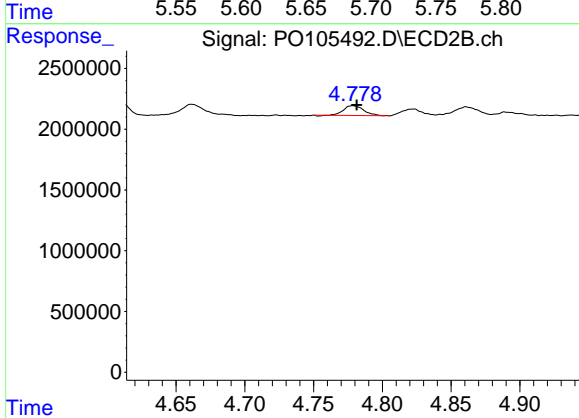
#4 AR-1016-2  
 R.T.: 4.607 min  
 Delta R.T.: -0.003 min  
 Response: 1749427  
 Conc: 11.24 ng/ml



#5 AR-1016-3

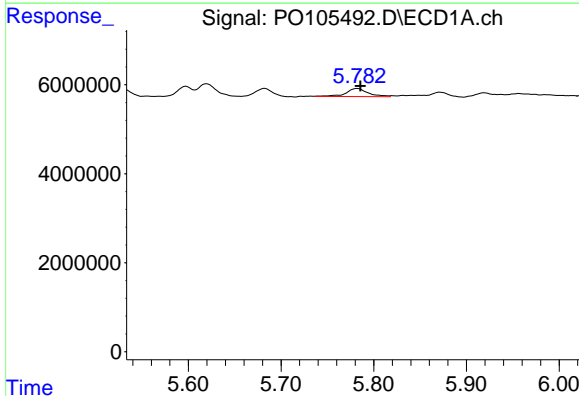
R.T.: 5.682 min  
 Delta R.T.: -0.003 min  
 Response: 2564137  
 Conc: 9.99 ng/ml

Instrument :  
 ECD\_O  
 ClientSampleId :  
 MDL-WATER-03-QT3-2024



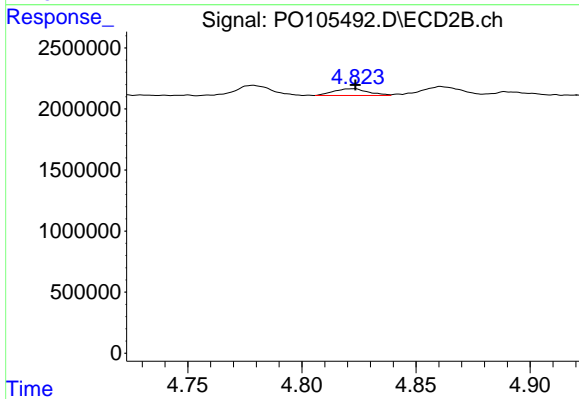
#5 AR-1016-3

R.T.: 4.779 min  
 Delta R.T.: -0.003 min  
 Response: 810616  
 Conc: 9.68 ng/ml



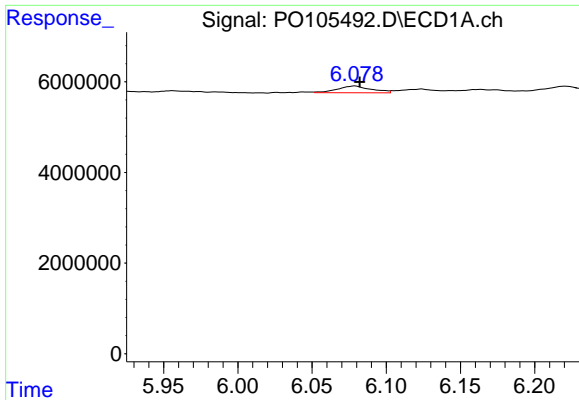
#6 AR-1016-4

R.T.: 5.782 min  
 Delta R.T.: -0.003 min  
 Response: 2989112  
 Conc: 13.67 ng/ml



#6 AR-1016-4

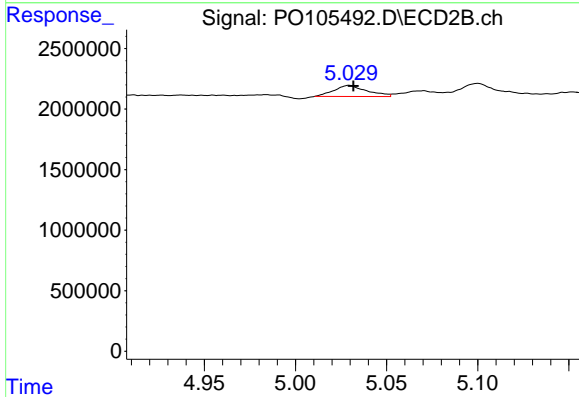
R.T.: 4.822 min  
 Delta R.T.: -0.001 min  
 Response: 582357  
 Conc: 8.65 ng/ml



#7 AR-1016-5

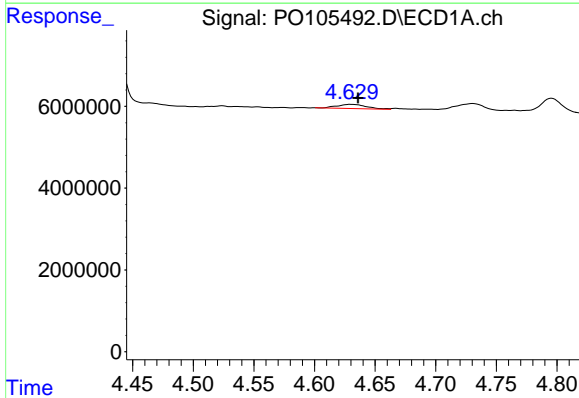
R.T.: 6.079 min  
 Delta R.T.: -0.003 min  
 Response: 2353795  
 Conc: 11.00 ng/ml

Instrument :  
 ECD\_O  
 ClientSampleId :  
 MDL-WATER-03-QT3-2024



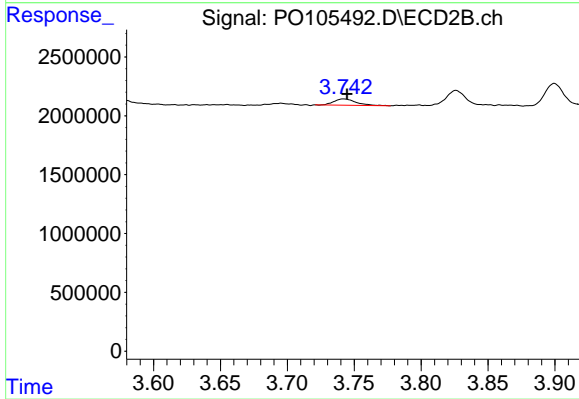
#7 AR-1016-5

R.T.: 5.029 min  
 Delta R.T.: -0.002 min  
 Response: 1146018  
 Conc: 13.69 ng/ml



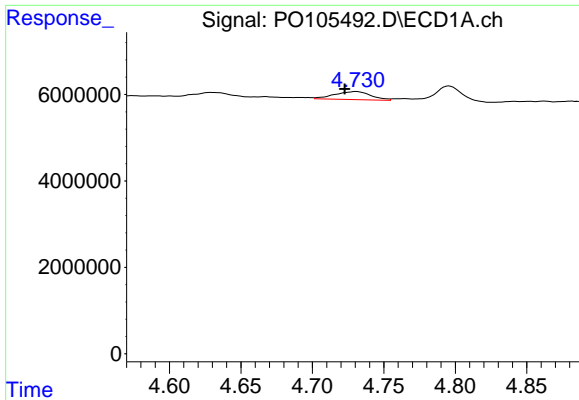
#8 AR-1221-1

R.T.: 4.630 min  
 Delta R.T.: -0.006 min  
 Response: 1724949  
 Conc: 15.38 ng/ml



#8 AR-1221-1

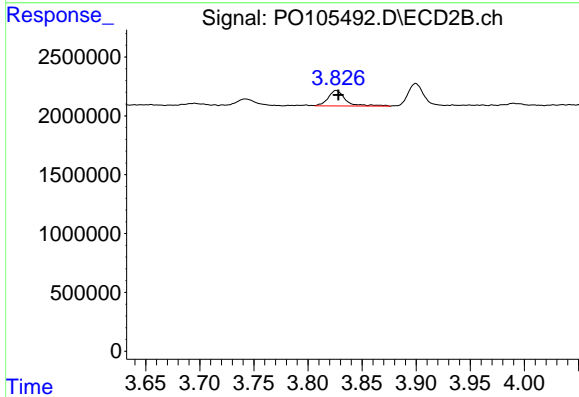
R.T.: 3.742 min  
 Delta R.T.: -0.002 min  
 Response: 605866  
 Conc: 15.35 ng/ml



#9 AR-1221-2

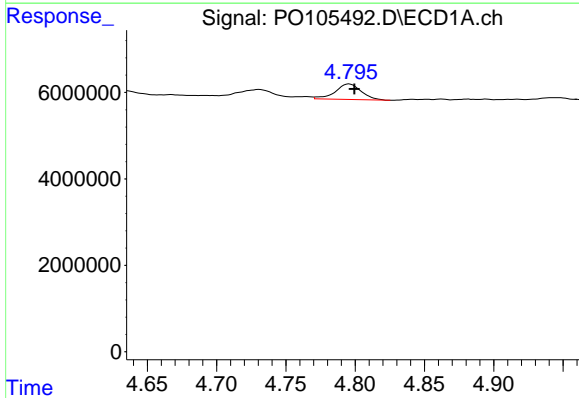
R.T.: 4.731 min  
 Delta R.T.: 0.008 min  
 Response: 3303871  
 Conc: 38.98 ng/ml

Instrument :  
 ECD\_O  
 ClientSampleId :  
 MDL-WATER-03-QT3-2024



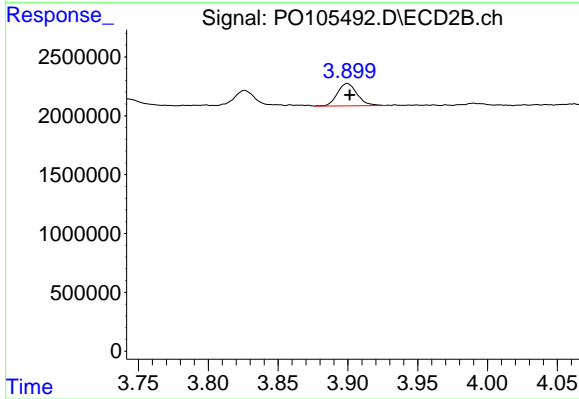
#9 AR-1221-2

R.T.: 3.826 min  
 Delta R.T.: -0.002 min  
 Response: 1476741  
 Conc: 48.07 ng/ml



#10 AR-1221-3

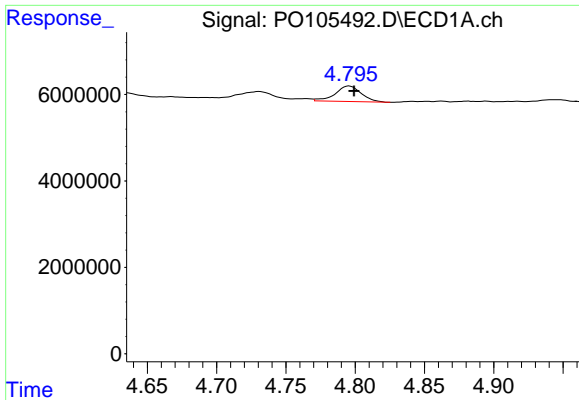
R.T.: 4.796 min  
 Delta R.T.: -0.004 min  
 Response: 4668304  
 Conc: 19.19 ng/ml



#10 AR-1221-3

R.T.: 3.900 min  
 Delta R.T.: -0.002 min  
 Response: 1864836  
 Conc: 20.84 ng/ml

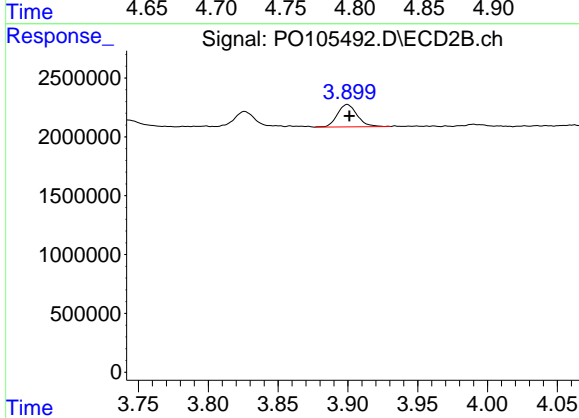




#11 AR-1232-1

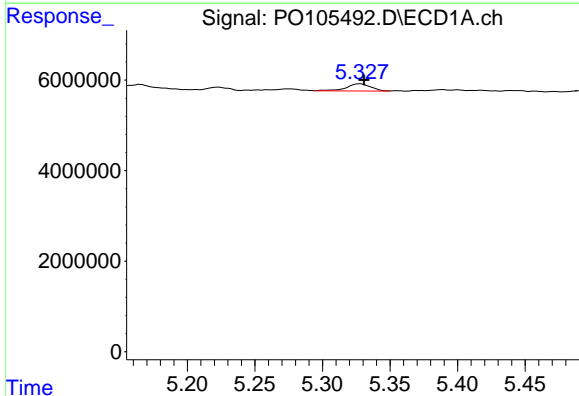
R.T.: 4.796 min  
 Delta R.T.: -0.003 min  
 Response: 4668304  
 Conc: 23.35 ng/ml

Instrument :  
 ECD\_O  
 ClientSampleId :  
 MDL-WATER-03-QT3-2024



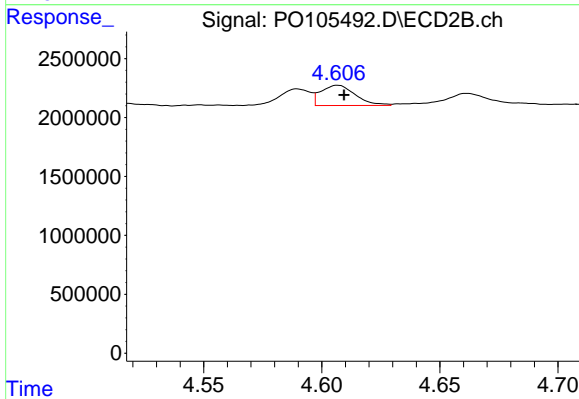
#11 AR-1232-1

R.T.: 3.900 min  
 Delta R.T.: -0.001 min  
 Response: 1864836  
 Conc: 25.54 ng/ml



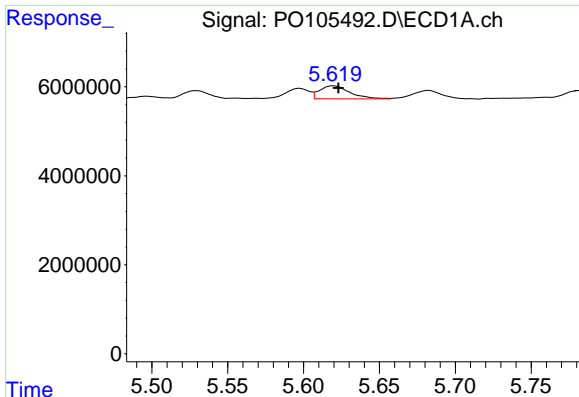
#12 AR-1232-2

R.T.: 5.328 min  
 Delta R.T.: -0.003 min  
 Response: 2024119  
 Conc: 19.12 ng/ml



#12 AR-1232-2

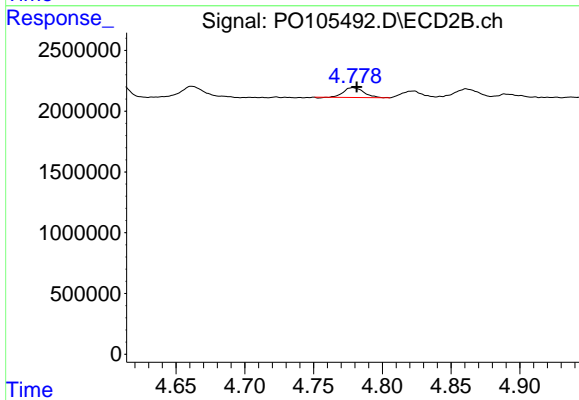
R.T.: 4.607 min  
 Delta R.T.: -0.003 min  
 Response: 1749427  
 Conc: 24.92 ng/ml



#13 AR-1232-3

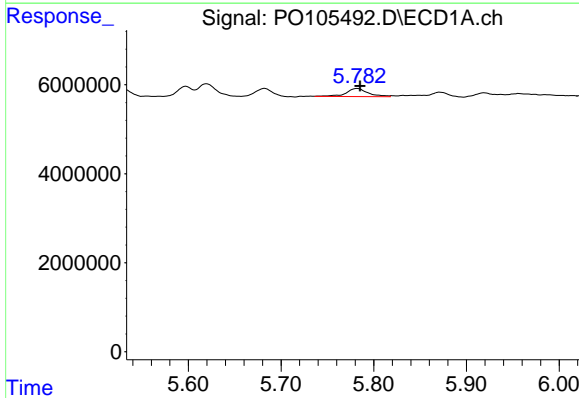
R.T.: 5.620 min  
 Delta R.T.: -0.003 min  
 Response: 4015168  
 Conc: 20.98 ng/ml

Instrument :  
 ECD\_O  
 ClientSampleId :  
 MDL-WATER-03-QT3-2024



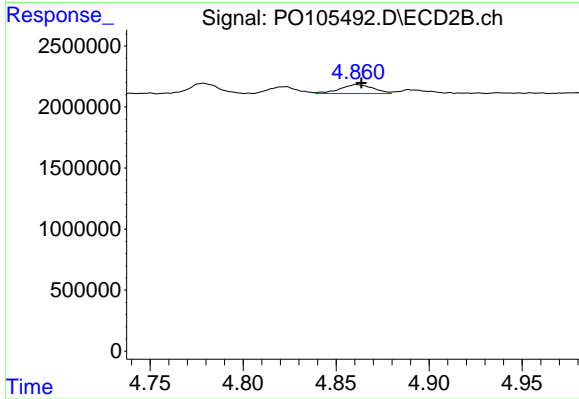
#13 AR-1232-3

R.T.: 4.779 min  
 Delta R.T.: -0.003 min  
 Response: 810616  
 Conc: 21.21 ng/ml



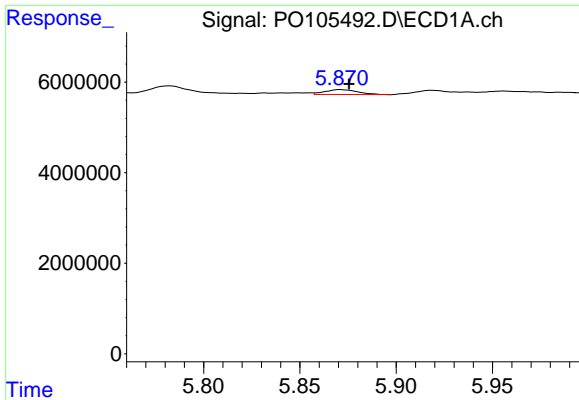
#14 AR-1232-4

R.T.: 5.782 min  
 Delta R.T.: -0.003 min  
 Response: 2989112  
 Conc: 30.65 ng/ml



#14 AR-1232-4

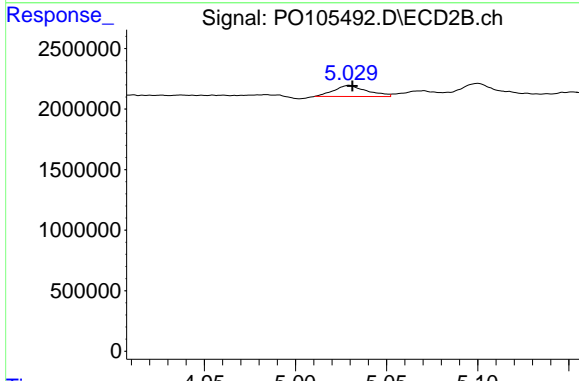
R.T.: 4.861 min  
 Delta R.T.: -0.003 min  
 Response: 905918  
 Conc: 26.04 ng/ml



#15 AR-1232-5

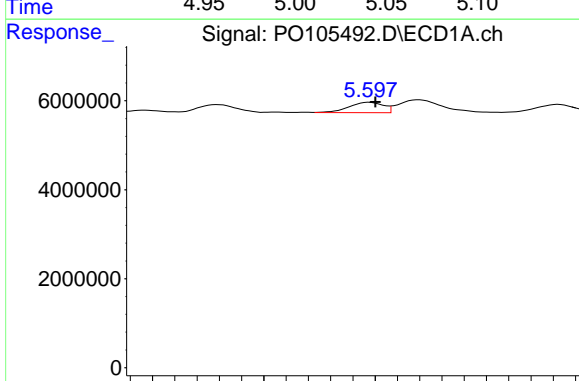
R.T.: 5.871 min  
 Delta R.T.: -0.004 min  
 Response: 1307848  
 Conc: 18.15 ng/ml

Instrument :  
 ECD\_O  
 ClientSampleId :  
 MDL-WATER-03-QT3-2024



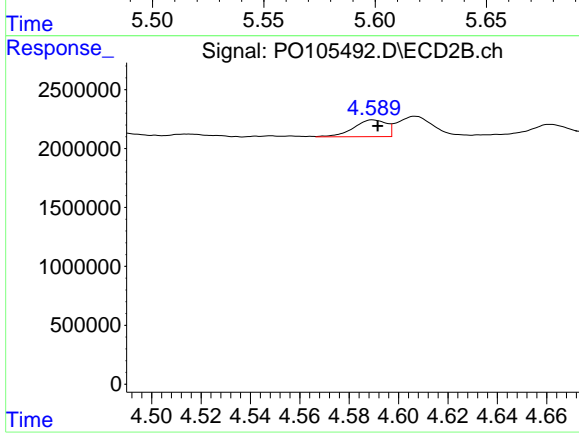
#15 AR-1232-5

R.T.: 5.029 min  
 Delta R.T.: -0.002 min  
 Response: 1146018  
 Conc: 32.47 ng/ml



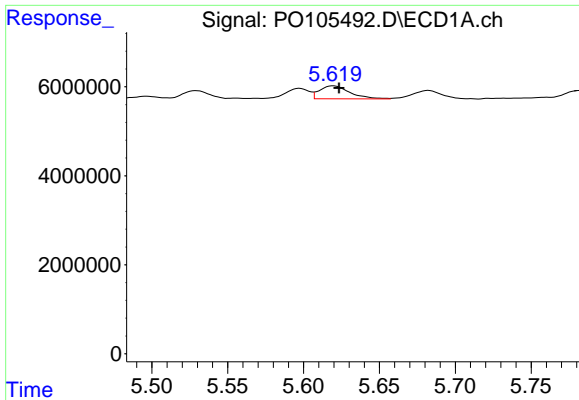
#16 AR-1242-1

R.T.: 5.597 min  
 Delta R.T.: -0.003 min  
 Response: 2491579  
 Conc: 10.72 ng/ml



#16 AR-1242-1

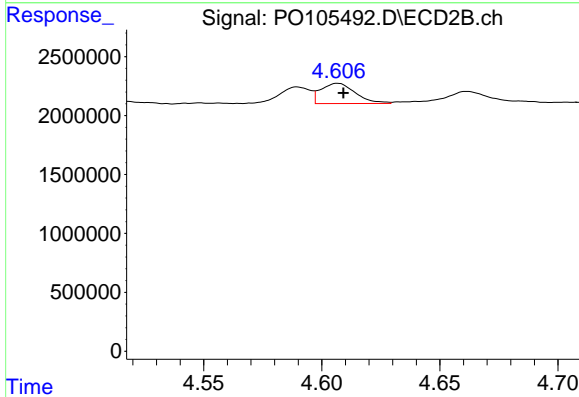
R.T.: 4.590 min  
 Delta R.T.: -0.002 min  
 Response: 1309006  
 Conc: 14.84 ng/ml



#17 AR-1242-2

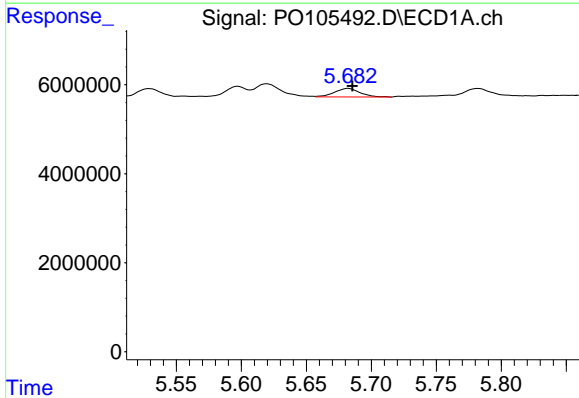
R.T.: 5.620 min  
 Delta R.T.: -0.004 min  
 Response: 4015168  
 Conc: 12.32 ng/ml

Instrument :  
 ECD\_O  
 ClientSampleId :  
 MDL-WATER-03-QT3-2024



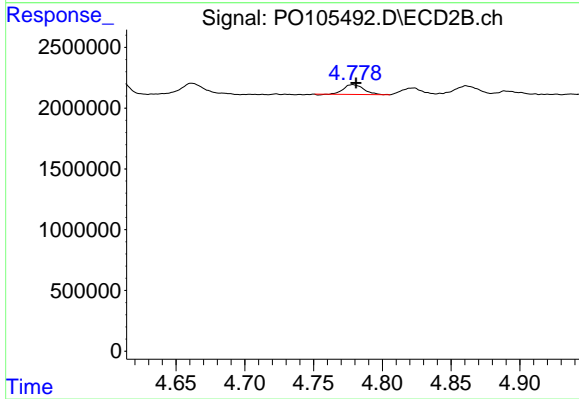
#17 AR-1242-2

R.T.: 4.607 min  
 Delta R.T.: -0.002 min  
 Response: 1749427  
 Conc: 14.73 ng/ml



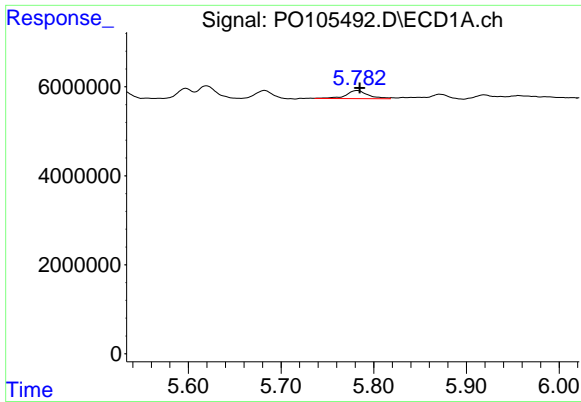
#18 AR-1242-3

R.T.: 5.682 min  
 Delta R.T.: -0.003 min  
 Response: 2564137  
 Conc: 13.00 ng/ml



#18 AR-1242-3

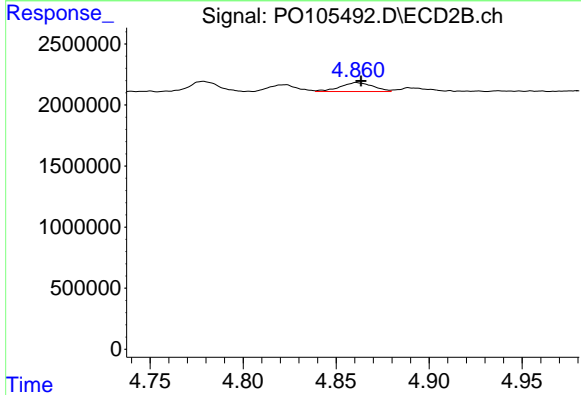
R.T.: 4.779 min  
 Delta R.T.: -0.002 min  
 Response: 810616  
 Conc: 12.48 ng/ml



#19 AR-1242-4

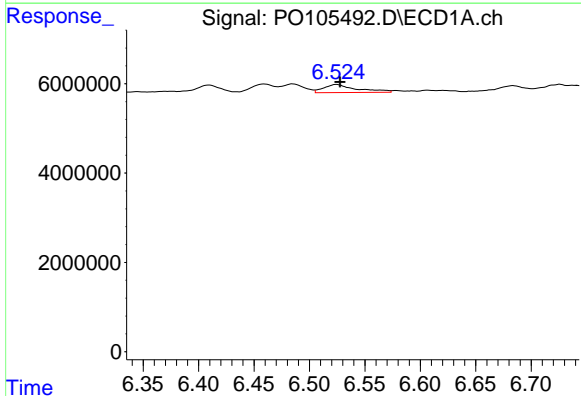
R.T.: 5.782 min  
 Delta R.T.: -0.003 min  
 Response: 2989112  
 Conc: 17.52 ng/ml

Instrument :  
 ECD\_O  
 ClientSampleId :  
 MDL-WATER-03-QT3-2024



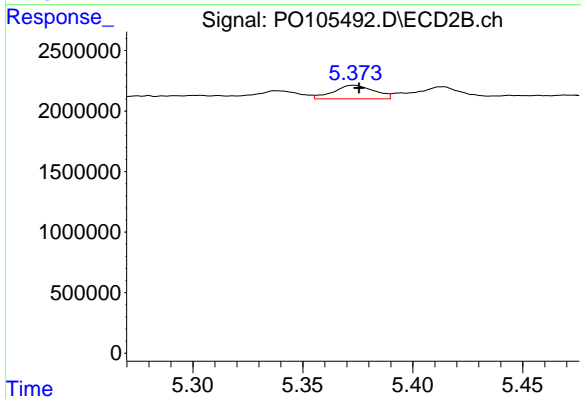
#19 AR-1242-4

R.T.: 4.861 min  
 Delta R.T.: -0.002 min  
 Response: 905918  
 Conc: 13.66 ng/ml



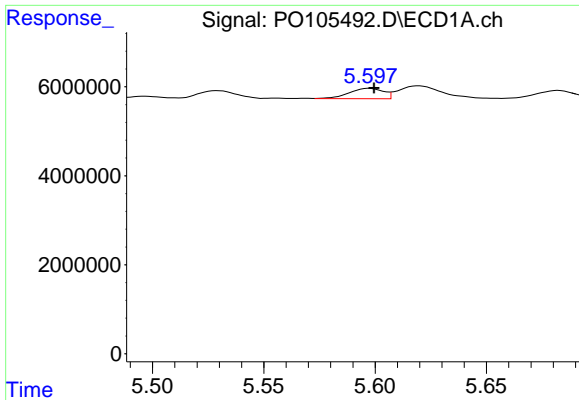
#20 AR-1242-5

R.T.: 6.524 min  
 Delta R.T.: -0.003 min  
 Response: 3730484  
 Conc: 21.35 ng/ml



#20 AR-1242-5

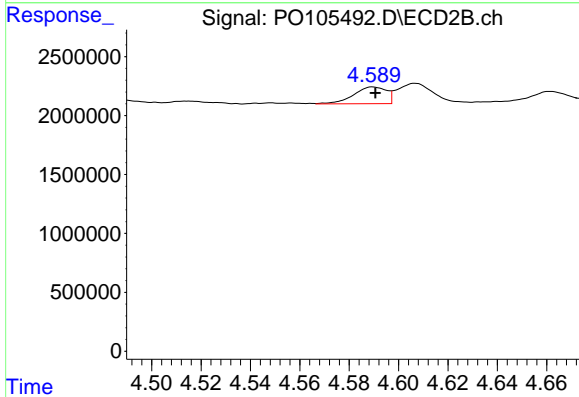
R.T.: 5.373 min  
 Delta R.T.: -0.002 min  
 Response: 1451158  
 Conc: 17.66 ng/ml



#21 AR-1248-1

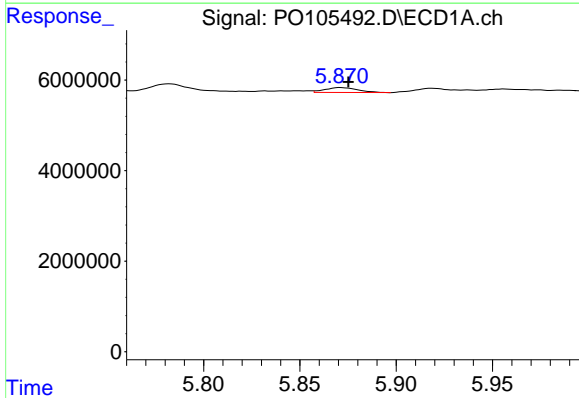
R.T.: 5.597 min  
 Delta R.T.: -0.002 min  
 Response: 2491579  
 Conc: 13.65 ng/ml

Instrument :  
 ECD\_O  
 ClientSampleId :  
 MDL-WATER-03-QT3-2024



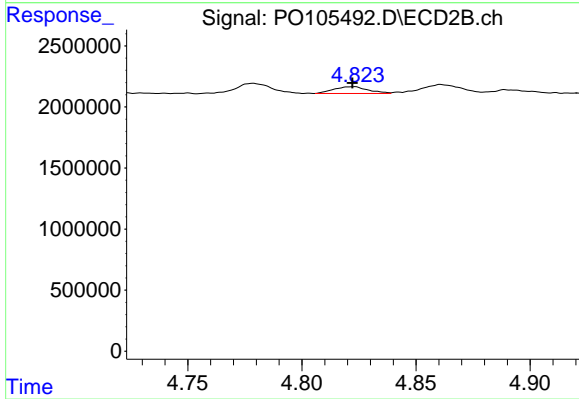
#21 AR-1248-1

R.T.: 4.590 min  
 Delta R.T.: 0.000 min  
 Response: 1309006  
 Conc: 18.74 ng/ml



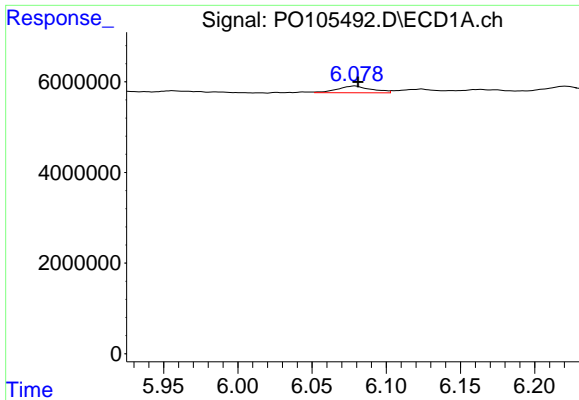
#22 AR-1248-2

R.T.: 5.871 min  
 Delta R.T.: -0.004 min  
 Response: 1307848  
 Conc: 5.19 ng/ml



#22 AR-1248-2

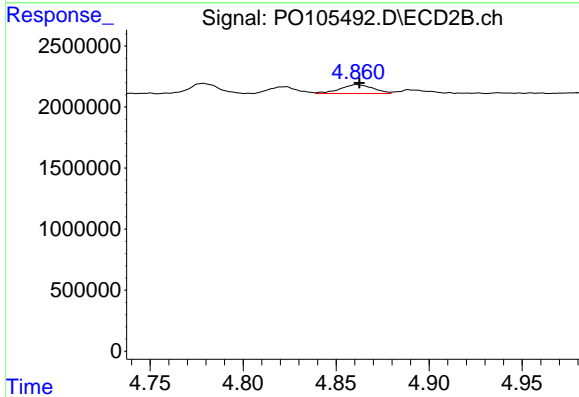
R.T.: 4.822 min  
 Delta R.T.: 0.000 min  
 Response: 582357  
 Conc: 6.14 ng/ml



#23 AR-1248-3

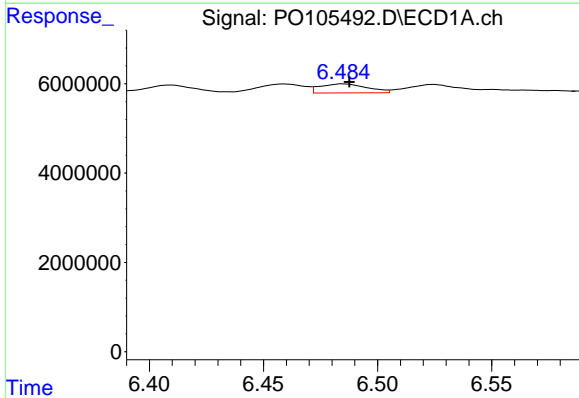
R.T.: 6.079 min  
 Delta R.T.: -0.002 min  
 Response: 2353795  
 Conc: 8.33 ng/ml

Instrument :  
 ECD\_O  
 ClientSampleId :  
 MDL-WATER-03-QT3-2024



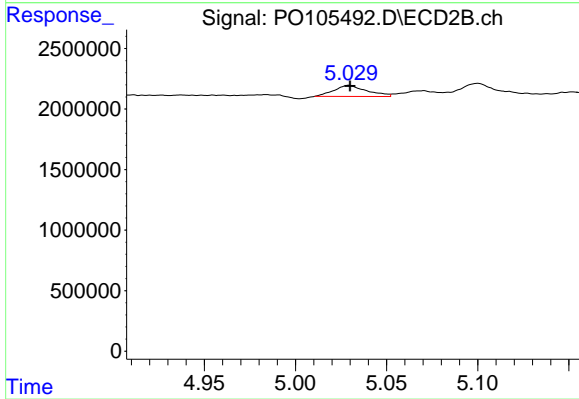
#23 AR-1248-3

R.T.: 4.861 min  
 Delta R.T.: -0.001 min  
 Response: 905918  
 Conc: 9.08 ng/ml



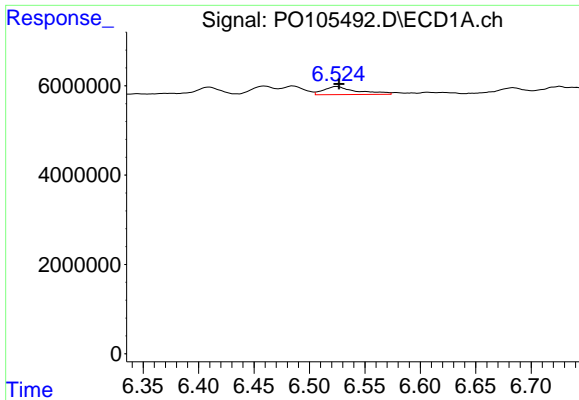
#24 AR-1248-4

R.T.: 6.485 min  
 Delta R.T.: -0.003 min  
 Response: 2882599  
 Conc: 9.02 ng/ml



#24 AR-1248-4

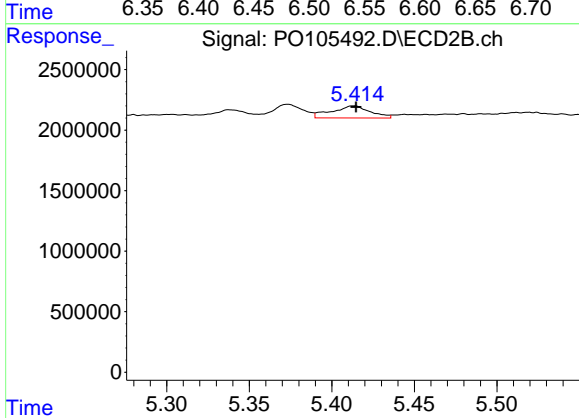
R.T.: 5.029 min  
 Delta R.T.: 0.000 min  
 Response: 1146018  
 Conc: 10.15 ng/ml



#25 AR-1248-5

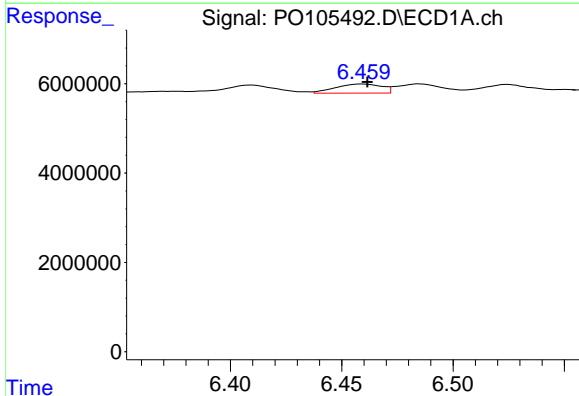
R.T.: 6.524 min  
 Delta R.T.: -0.002 min  
 Response: 3730484  
 Conc: 12.06 ng/ml

Instrument :  
 ECD\_O  
 ClientSampleId :  
 MDL-WATER-03-QT3-2024



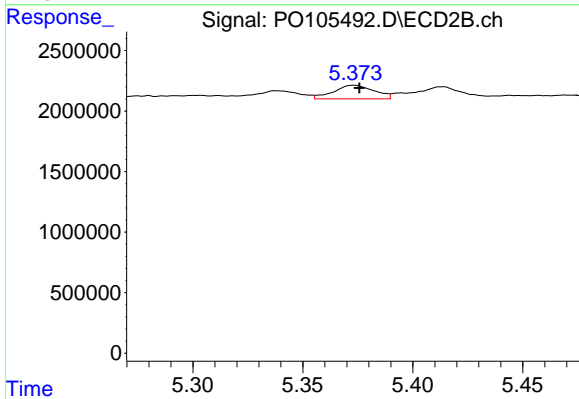
#25 AR-1248-5

R.T.: 5.413 min  
 Delta R.T.: -0.001 min  
 Response: 1620938  
 Conc: 14.40 ng/ml



#26 AR-1254-1

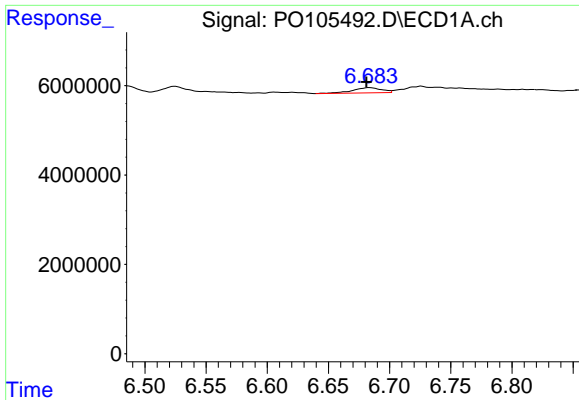
R.T.: 6.459 min  
 Delta R.T.: -0.002 min  
 Response: 2950296  
 Conc: 9.41 ng/ml



#26 AR-1254-1

R.T.: 5.373 min  
 Delta R.T.: -0.002 min  
 Response: 1451158  
 Conc: 8.91 ng/ml

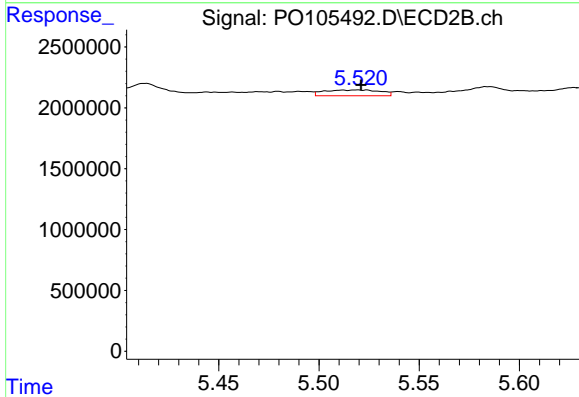




#27 AR-1254-2

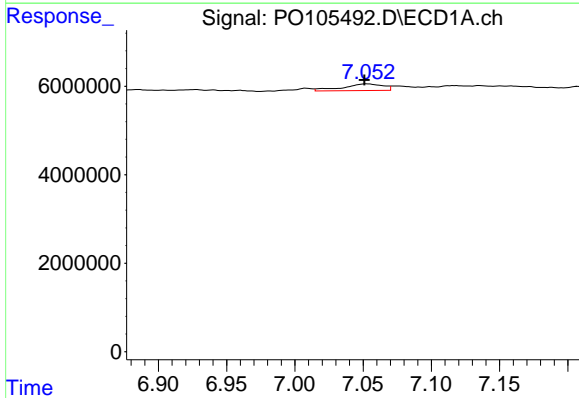
R.T.: 6.684 min  
 Delta R.T.: 0.003 min  
 Response: 1870531  
 Conc: 4.14 ng/ml

Instrument :  
 ECD\_O  
 ClientSampleId :  
 MDL-WATER-03-QT3-2024



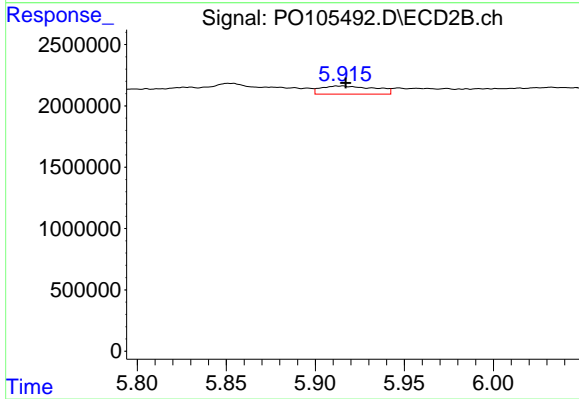
#27 AR-1254-2

R.T.: 5.519 min  
 Delta R.T.: -0.002 min  
 Response: 924455  
 Conc: 6.32 ng/ml



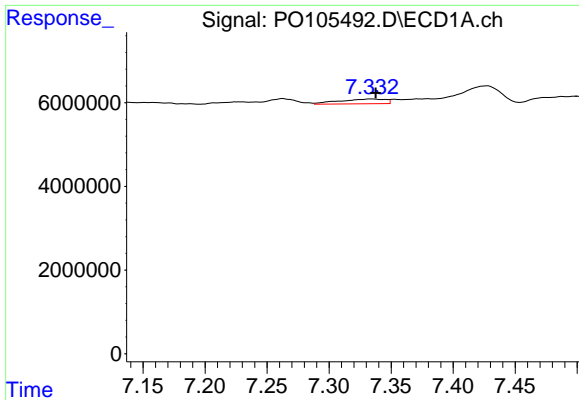
#28 AR-1254-3

R.T.: 7.053 min  
 Delta R.T.: 0.002 min  
 Response: 3118428  
 Conc: 6.57 ng/ml



#28 AR-1254-3

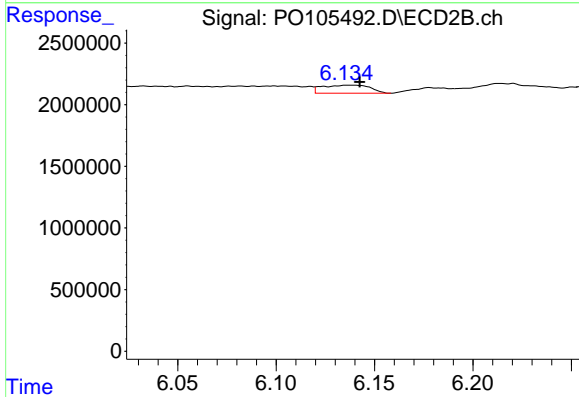
R.T.: 5.915 min  
 Delta R.T.: -0.003 min  
 Response: 1401198  
 Conc: 6.21 ng/ml



#29 AR-1254-4

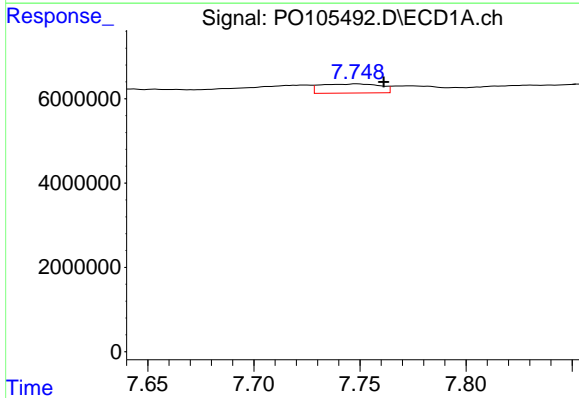
R.T.: 7.334 min  
 Delta R.T.: -0.004 min  
 Response: 2914127  
 Conc: 8.14 ng/ml

Instrument :  
 ECD\_O  
 ClientSampleId :  
 MDL-WATER-03-QT3-2024



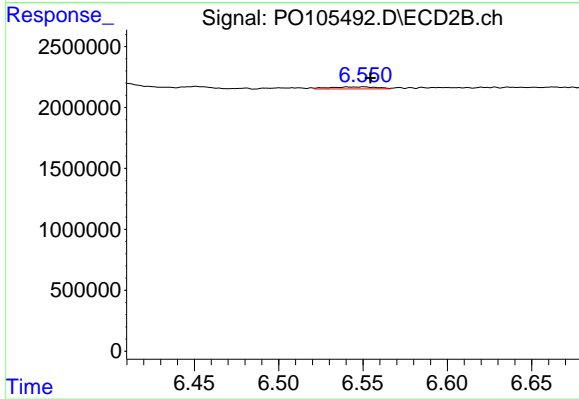
#29 AR-1254-4

R.T.: 6.137 min  
 Delta R.T.: -0.005 min  
 Response: 1089882  
 Conc: 7.72 ng/ml



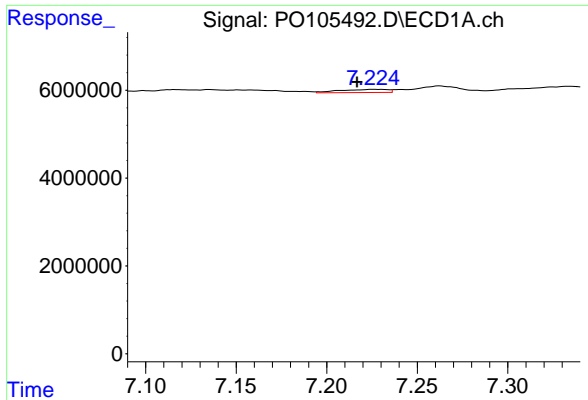
#30 AR-1254-5

R.T.: 7.749 min  
 Delta R.T.: -0.013 min  
 Response: 4218227  
 Conc: 10.63 ng/ml



#30 AR-1254-5

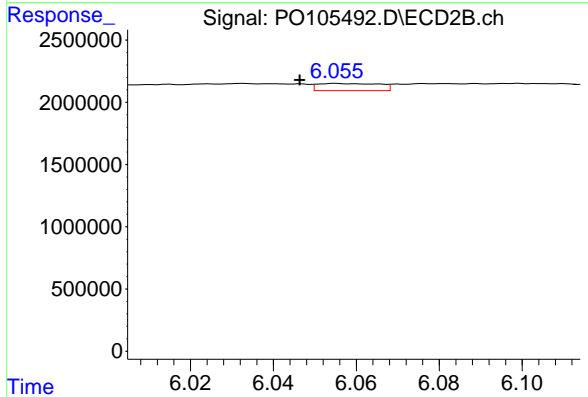
R.T.: 6.551 min  
 Delta R.T.: -0.004 min  
 Response: 324251  
 Conc: 1.62 ng/ml



#31 AR-1260-1

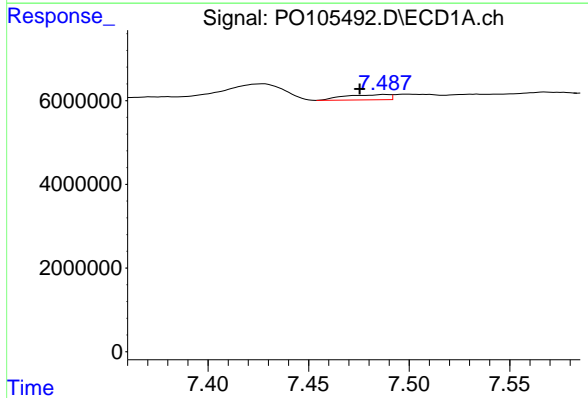
R.T.: 7.227 min  
 Delta R.T.: 0.010 min  
 Response: 1357418  
 Conc: 3.70 ng/ml

Instrument : ECD\_O  
 ClientSampleId : MDL-WATER-03-QT3-2024



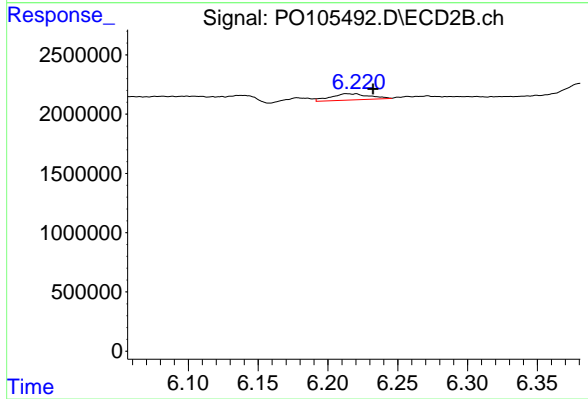
#31 AR-1260-1

R.T.: 6.055 min  
 Delta R.T.: 0.009 min  
 Response: 593171  
 Conc: 3.80 ng/ml



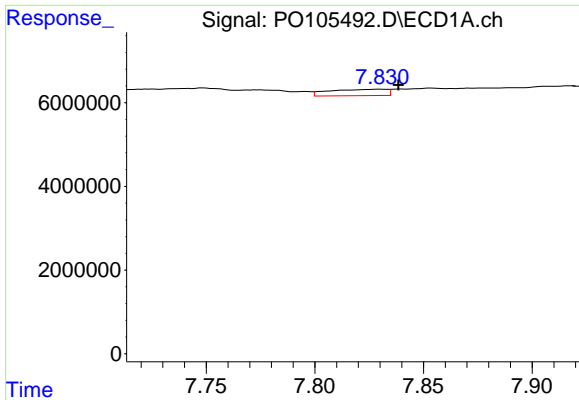
#32 AR-1260-2

R.T.: 7.488 min  
 Delta R.T.: 0.013 min  
 Response: 1936030  
 Conc: 4.65 ng/ml



#32 AR-1260-2

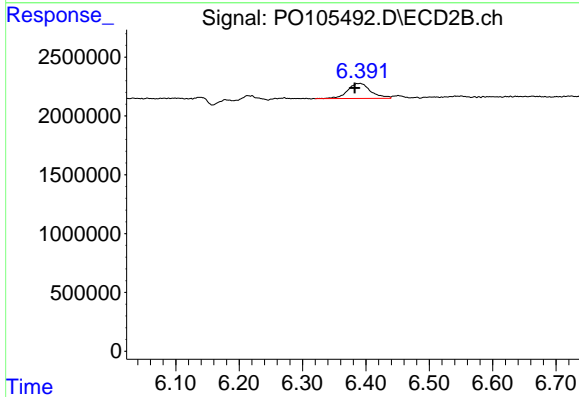
R.T.: 6.220 min  
 Delta R.T.: -0.012 min  
 Response: 1020520  
 Conc: 5.40 ng/ml



#33 AR-1260-3

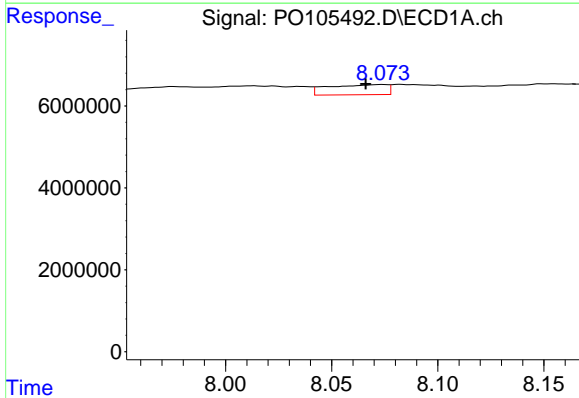
R.T.: 7.830 min  
 Delta R.T.: -0.008 min  
 Response: 2802183  
 Conc: 10.83 ng/ml

Instrument :  
 ECD\_O  
 ClientSampleId :  
 MDL-WATER-03-QT3-2024



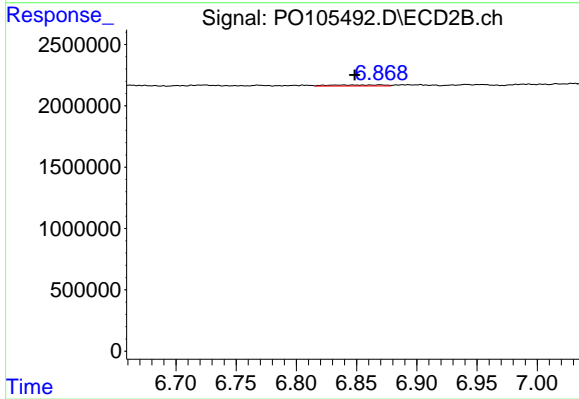
#33 AR-1260-3

R.T.: 6.391 min  
 Delta R.T.: 0.009 min  
 Response: 3268758  
 Conc: 17.69 ng/ml



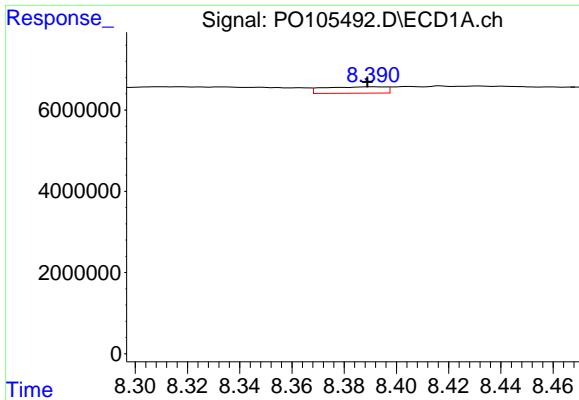
#34 AR-1260-4

R.T.: 8.074 min  
 Delta R.T.: 0.008 min  
 Response: 4748204  
 Conc: 14.39 ng/ml



#34 AR-1260-4

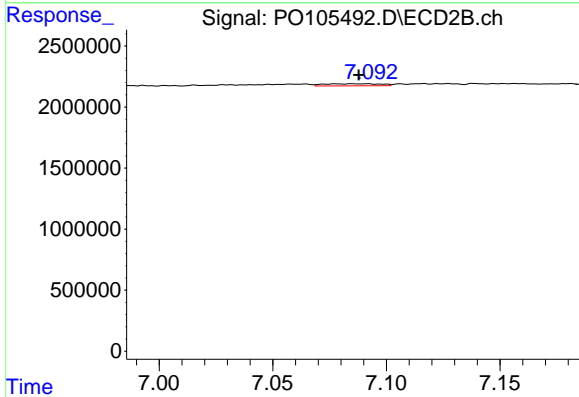
R.T.: 6.869 min  
 Delta R.T.: 0.021 min  
 Response: 262606  
 Conc: 2.15 ng/ml



#35 AR-1260-5

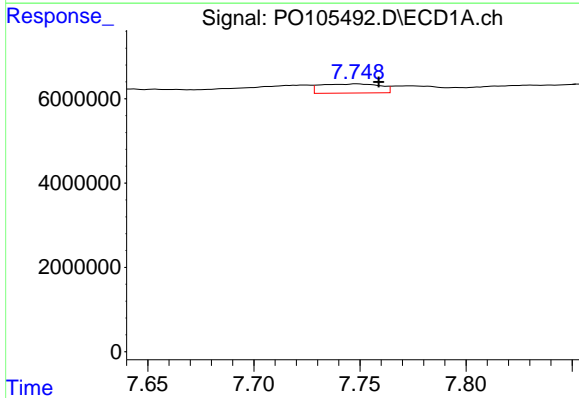
R.T.: 8.391 min  
 Delta R.T.: 0.002 min  
 Response: 2585630  
 Conc: 4.35 ng/ml

Instrument :  
 ECD\_O  
 ClientSampleId :  
 MDL-WATER-03-QT3-2024



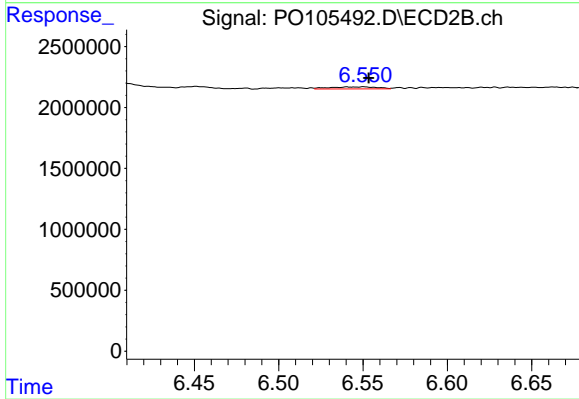
#35 AR-1260-5

R.T.: 7.091 min  
 Delta R.T.: 0.004 min  
 Response: 300247  
 Conc: 1.08 ng/ml



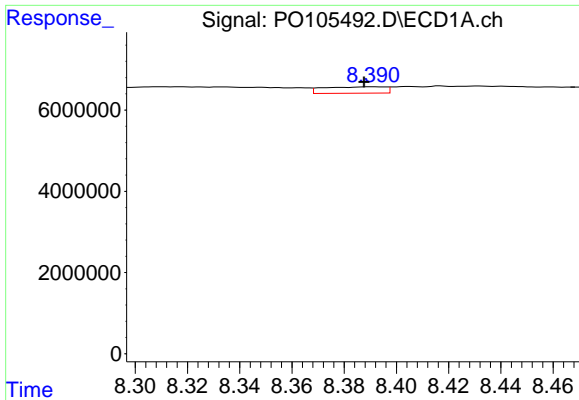
#36 AR-1262-1

R.T.: 7.749 min  
 Delta R.T.: -0.010 min  
 Response: 4218227  
 Conc: 13.28 ng/ml



#36 AR-1262-1

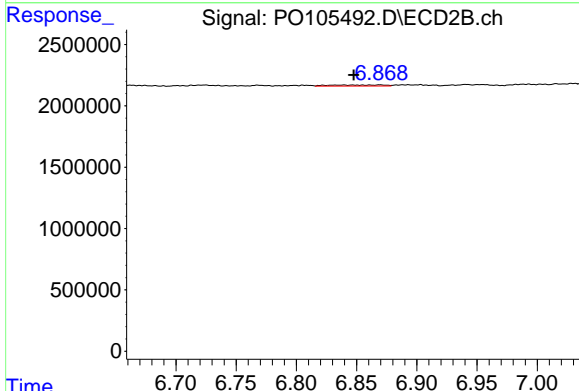
R.T.: 6.551 min  
 Delta R.T.: -0.003 min  
 Response: 324251  
 Conc: 3.05 ng/ml



#37 AR-1262-2

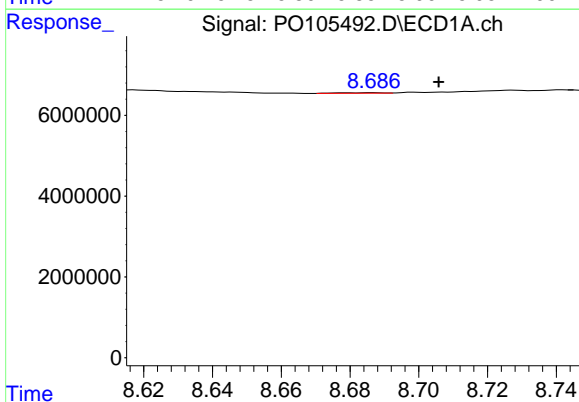
R.T.: 8.391 min  
 Delta R.T.: 0.003 min  
 Response: 2585630  
 Conc: 3.44 ng/ml

Instrument : ECD\_O  
 ClientSampleId : MDL-WATER-03-QT3-2024



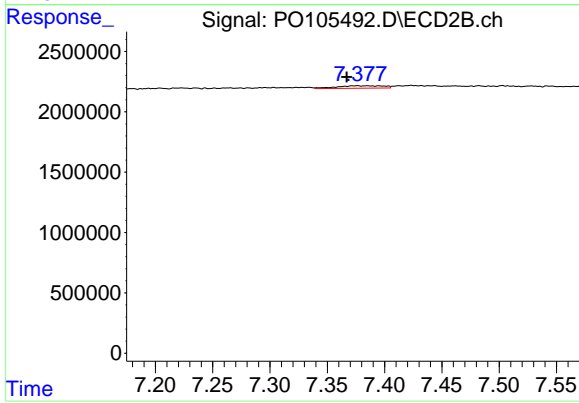
#37 AR-1262-2

R.T.: 6.869 min  
 Delta R.T.: 0.022 min  
 Response: 262606  
 Conc: 1.55 ng/ml



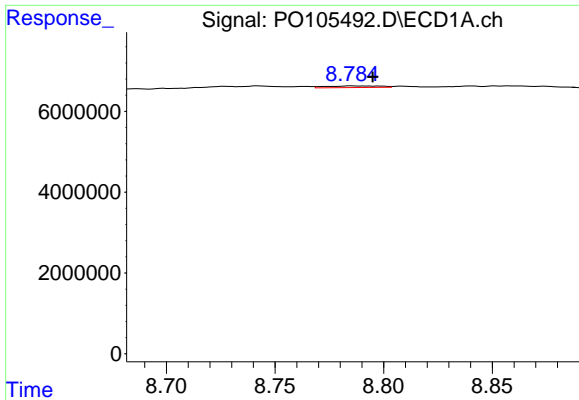
#38 AR-1262-3

R.T.: 8.686 min  
 Delta R.T.: -0.019 min  
 Response: 131759  
 Conc: 0.27 ng/ml



#38 AR-1262-3

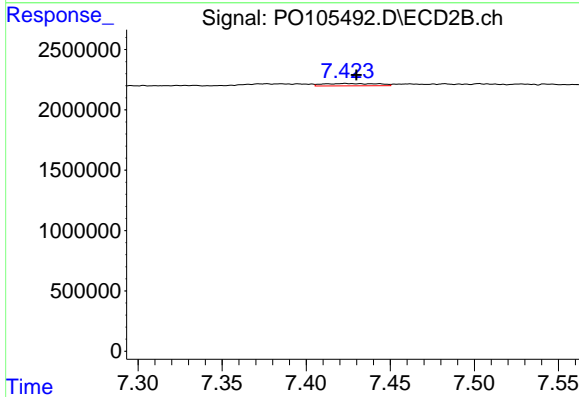
R.T.: 7.385 min  
 Delta R.T.: 0.018 min  
 Response: 593190  
 Conc: 4.70 ng/ml



#39 AR-1262-4

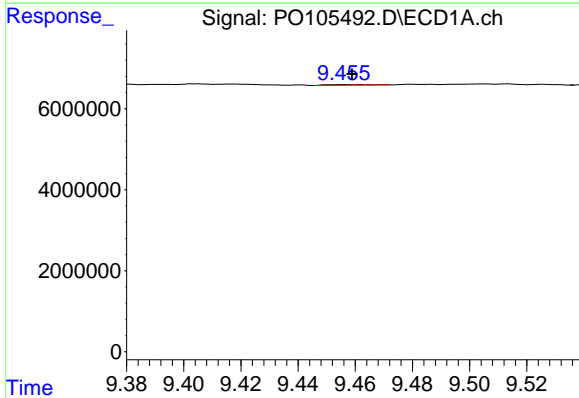
R.T.: 8.785 min  
 Delta R.T.: -0.010 min  
 Response: 689427  
 Conc: 1.88 ng/ml

Instrument :  
 ECD\_O  
 ClientSampleId :  
 MDL-WATER-03-QT3-2024



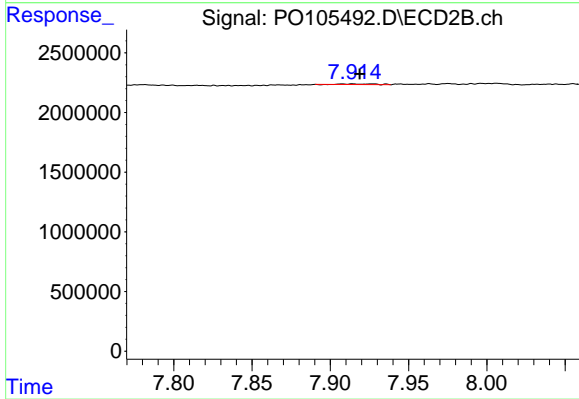
#39 AR-1262-4

R.T.: 7.423 min  
 Delta R.T.: -0.006 min  
 Response: 444864  
 Conc: 1.92 ng/ml



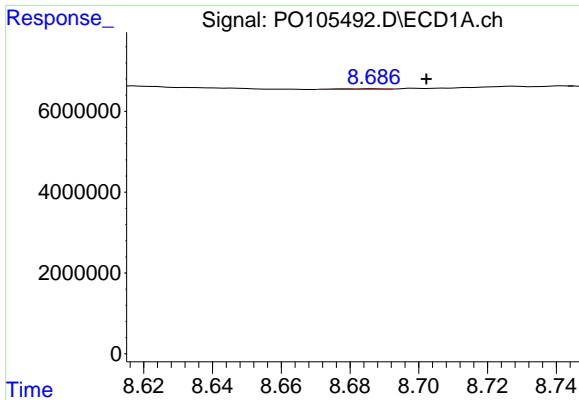
#40 AR-1262-5

R.T.: 9.462 min  
 Delta R.T.: 0.003 min  
 Response: 170924  
 Conc: 0.64 ng/ml



#40 AR-1262-5

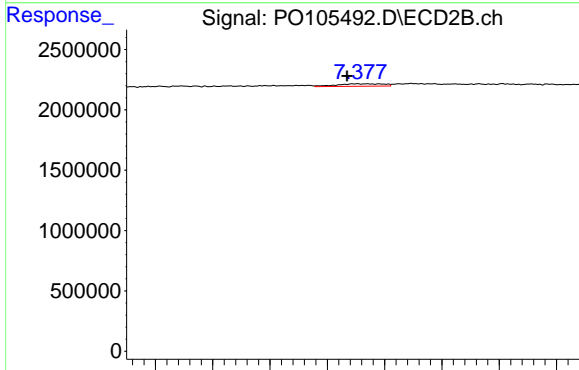
R.T.: 7.914 min  
 Delta R.T.: -0.005 min  
 Response: 71208  
 Conc: 0.71 ng/ml



#41 AR-1268-1

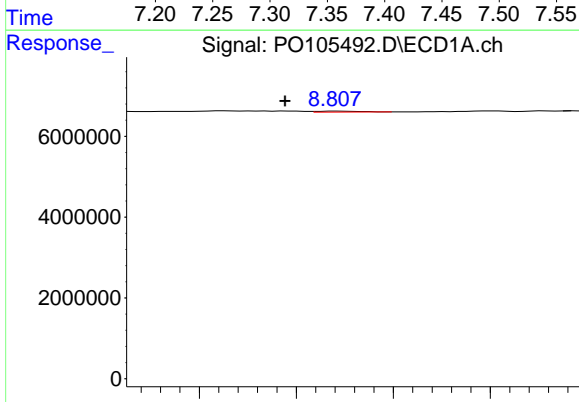
R.T.: 8.686 min  
 Delta R.T.: -0.016 min  
 Response: 131759  
 Conc: 0.16 ng/ml

Instrument :  
 ECD\_O  
 ClientSampleId :  
 MDL-WATER-03-QT3-2024



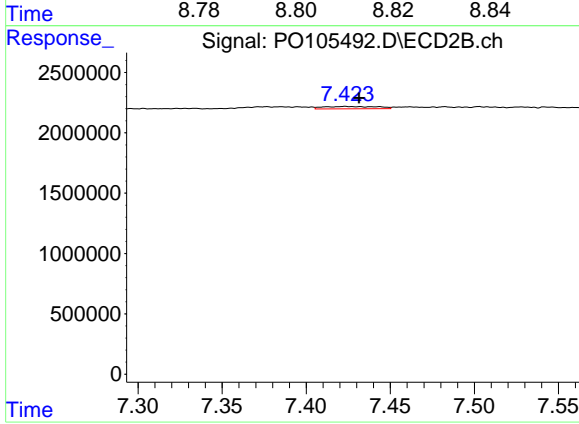
#41 AR-1268-1

R.T.: 7.385 min  
 Delta R.T.: 0.018 min  
 Response: 593190  
 Conc: 1.70 ng/ml



#42 AR-1268-2

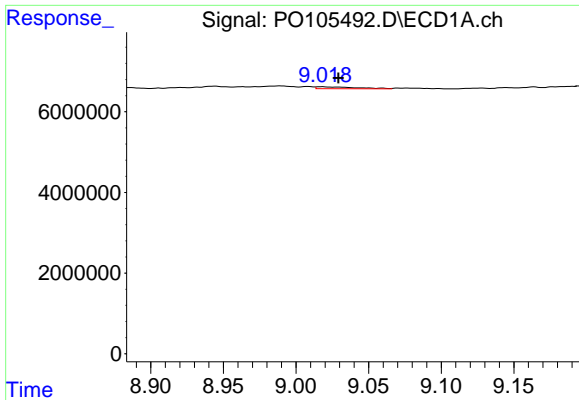
R.T.: 8.808 min  
 Delta R.T.: 0.011 min  
 Response: 142138  
 Conc: 0.20 ng/ml



#42 AR-1268-2

R.T.: 7.423 min  
 Delta R.T.: -0.008 min  
 Response: 444864  
 Conc: 1.43 ng/ml

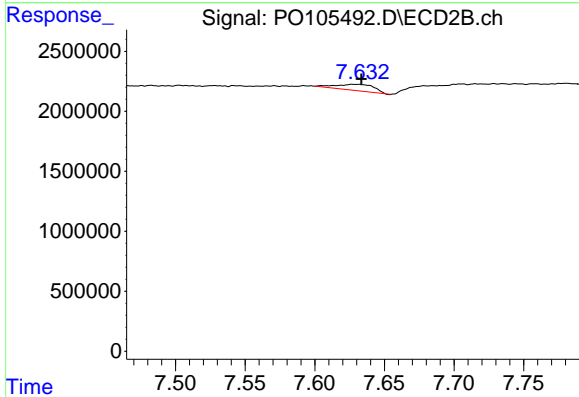




#43 AR-1268-3

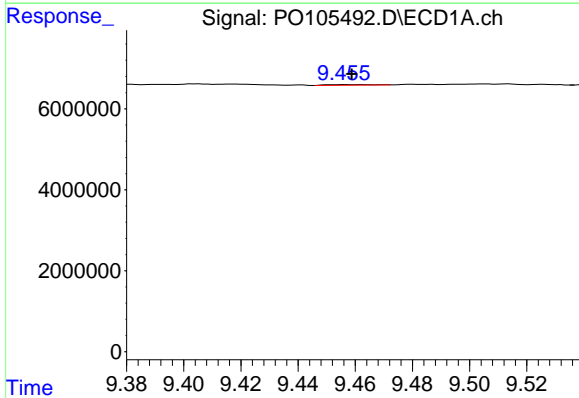
R.T.: 9.018 min  
 Delta R.T.: -0.011 min  
 Response: 872534  
 Conc: 1.35 ng/ml

Instrument :  
 ECD\_O  
 ClientSampleId :  
 MDL-WATER-03-QT3-2024



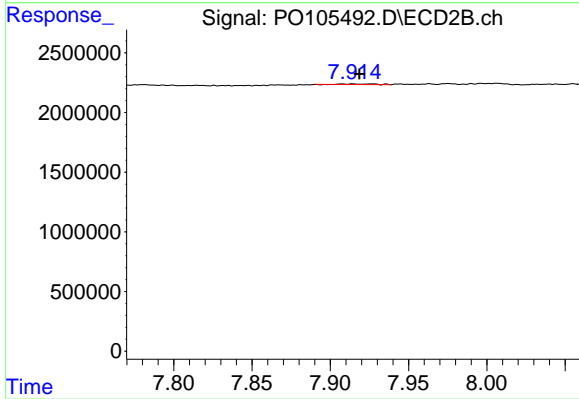
#43 AR-1268-3

R.T.: 7.629 min  
 Delta R.T.: -0.004 min  
 Response: 970413  
 Conc: 3.84 ng/ml



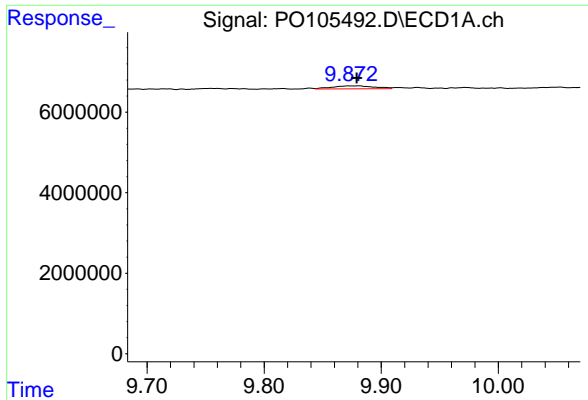
#44 AR-1268-4

R.T.: 9.462 min  
 Delta R.T.: 0.003 min  
 Response: 170924  
 Conc: 0.61 ng/ml



#44 AR-1268-4

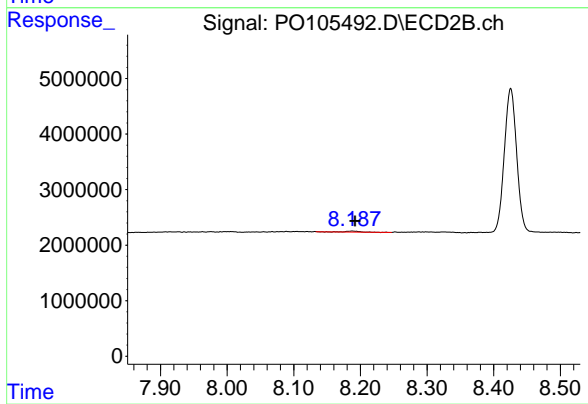
R.T.: 7.914 min  
 Delta R.T.: -0.005 min  
 Response: 71208  
 Conc: 0.66 ng/ml



#45 AR-1268-5

R.T.: 9.882 min  
 Delta R.T.: 0.002 min  
 Response: 1845589  
 Conc: 0.88 ng/ml

Instrument :  
 ECD\_O  
 ClientSampleId :  
 MDL-WATER-03-QT3-2024



#45 AR-1268-5

R.T.: 8.188 min  
 Delta R.T.: -0.005 min  
 Response: 227759  
 Conc: 0.34 ng/ml