

Data Path : Z:\pestpcbsrv\HPCHEM1\ECD_0\Data\P0081324\
 Data File : PO105501.D
 Signal(s) : Signal #1: ECD1A.ch Signal #2: ECD2B.ch
 Acq On : 13 Aug 2024 15:08
 Operator : YP/AJ
 Sample : P3390-03
 Misc : AR1221 MDL 25 PPB
 ALS Vial : 16 Sample Multiplier: 1

Instrument :
 ECD_0
 ClientSampleId :
 MDL-SOIL-03-QT3-2024

Integration File signal 1: autoint1.e
 Integration File signal 2: autoint2.e
 Quant Time: Aug 14 02:11:26 2024
 Quant Method : Z:\pestpcbsrv\HPCHEM1\ECD_0\methods\P0081024.M
 Quant Title : GC EXTRACTABLES
 QLast Update : Sat Aug 10 04:08:56 2024
 Response via : Initial Calibration
 Integrator: ChemStation

Volume Inj. : 2 µl
 Signal #1 Phase : ZB-MR1 Signal #2 Phase: ZB-MR2
 Signal #1 Info : 30Mx0.32mmx 0.50µ Signal #2 Info : 30M x 0.32mm x 0.25µm

Compound	RT#1	RT#2	Resp#1	Resp#2	ng/ml	ng/ml
System Monitoring Compounds						
1) SA Tetrachlo...	4.426	3.534	111.8E6	51690239	12.804	16.457 #
2) SA Decachlor...	10.217	8.426	86552088	32251405	15.046	18.217
Target Compounds						
3) L1 AR-1016-1	5.596	4.591	410964	252043	1.359	2.243 #
4) L1 AR-1016-2	5.621	4.604	719886	298002	1.684	1.914
5) L1 AR-1016-3	5.676	4.774	493665	161242	1.924	1.925
6) L1 AR-1016-4	5.782	4.808	1275188	32394	5.831	0.481 #
7) L1 AR-1016-5	6.095	5.028	79615	211407	0.372	2.526 #
8) L2 AR-1221-1	4.633	3.742	2569807	861534	22.916	21.826
9) L2 AR-1221-2	4.730	3.826	3244408	1603084	38.277	52.180 #
10) L2 AR-1221-3	4.796	3.899	4826943	2156304	19.841	24.098
11) L3 AR-1232-1	4.796	3.899	4826943	2156304	24.142	29.527
12) L3 AR-1232-2	5.324	4.604	571477	298002	5.399	4.244
13) L3 AR-1232-3	5.621	4.774	719886	161242	3.761	4.219
14) L3 AR-1232-4	5.782	4.859	1275188	43512	13.074	1.251 #
15) L3 AR-1232-5	5.868	5.028	266281	211407	3.695	5.989 #
16) L4 AR-1242-1	5.596	4.591	410964	252043	1.768	2.858 #
17) L4 AR-1242-2	5.621	4.604	719886	298002	2.209	2.510
18) L4 AR-1242-3	5.676	4.774	493665	161242	2.502	2.483
19) L4 AR-1242-4	5.782	4.859	1275188	43512	7.474	0.656 #
20) L4 AR-1242-5	6.517	5.394	565311	794669	3.235	9.671 #
21) L5 AR-1248-1	5.596	4.591	410964	252043	2.251	3.609 #
22) L5 AR-1248-2	5.868	4.808	266281	32394	1.057	0.341 #
23) L5 AR-1248-3	6.095	4.859	79615	43512	0.282	0.436 #
24) L5 AR-1248-4	6.483	5.028	996579	211407	3.117	1.873 #
25) L5 AR-1248-5	6.517	5.419	565311	243442	1.828	2.162
26) L6 AR-1254-1	6.465	5.394	1194686	794669	3.810	4.881 #
27) L6 AR-1254-2	6.688	5.532	860542	669431	1.907	4.576 #
28) L6 AR-1254-3	7.052	5.908	1480173	388643	3.120	1.723 #
29) L6 AR-1254-4	7.326	6.141	2005874	447434	5.600	3.171 #
30) L6 AR-1254-5	7.743	6.560	8647810	88562	21.785	0.442 #
31) L7 AR-1260-1	7.219	6.043	822837	379590	2.245	2.432
32) L7 AR-1260-2	7.471	6.235	476502	114619	1.144	0.606 #
33) L7 AR-1260-3	7.830	6.389	1697000	3402423	6.557	18.418 #
34) L7 AR-1260-4	8.067	6.841	2935027	73484	8.896	0.601 #
35) L7 AR-1260-5	8.406	7.095	4864174	149095	8.177	0.536 #
36) L8 AR-1262-1	7.743	6.560	8647810	88562	27.226	0.832 #
37) L8 AR-1262-2	8.406	6.841	4864174	73484	6.467	0.432 #
38) L8 AR-1262-3	8.689	7.381	81931	487498	0.166	3.861 #
39) L8 AR-1262-4	8.802	7.426	32582	449922	0.089	1.944 #
40) L8 AR-1262-5	9.462	7.918	-188044	115396	N.D.	1.148 #
41) L9 AR-1268-1	8.689	7.381	81931	487498	0.101	1.396 #

Data Path : Z:\pestpcbsrv\HPCHEM1\ECD_0\Data\P0081324\
 Data File : P0105501.D
 Signal(s) : Signal #1: ECD1A.ch Signal #2: ECD2B.ch
 Acq On : 13 Aug 2024 15:08
 Operator : YP/AJ
 Sample : P3390-03
 Misc : AR1221 MDL 25 PPB
 ALS Vial : 16 Sample Multiplier: 1

Instrument :
 ECD_0
ClientSampleId :
 MDL-SOIL-03-QT3-2024

Integration File signal 1: autoint1.e
 Integration File signal 2: autoint2.e
 Quant Time: Aug 14 02:11:26 2024
 Quant Method : Z:\pestpcbsrv\HPCHEM1\ECD_0\methods\P0081024.M
 Quant Title : GC EXTRACTABLES
 QLast Update : Sat Aug 10 04:08:56 2024
 Response via : Initial Calibration
 Integrator: ChemStation

Volume Inj. : 2 µl
 Signal #1 Phase : ZB-MR1 Signal #2 Phase: ZB-MR2
 Signal #1 Info : 30Mx0.32mmx 0.50µ Signal #2 Info : 30M x 0.32mm x 0.25µm

	Compound	RT#1	RT#2	Resp#1	Resp#2	ng/ml	ng/ml
42)	L9 AR-1268-2	8.802	7.426	32582	449922	0.045	1.442 #
43)	L9 AR-1268-3	9.030	7.628	204644	917101	0.317	3.629 #
44)	L9 AR-1268-4	9.462	7.918	-188044	115396	N.D.	1.073 #
45)	L9 AR-1268-5	9.885	8.191	2034036	337292	0.973	0.504 #

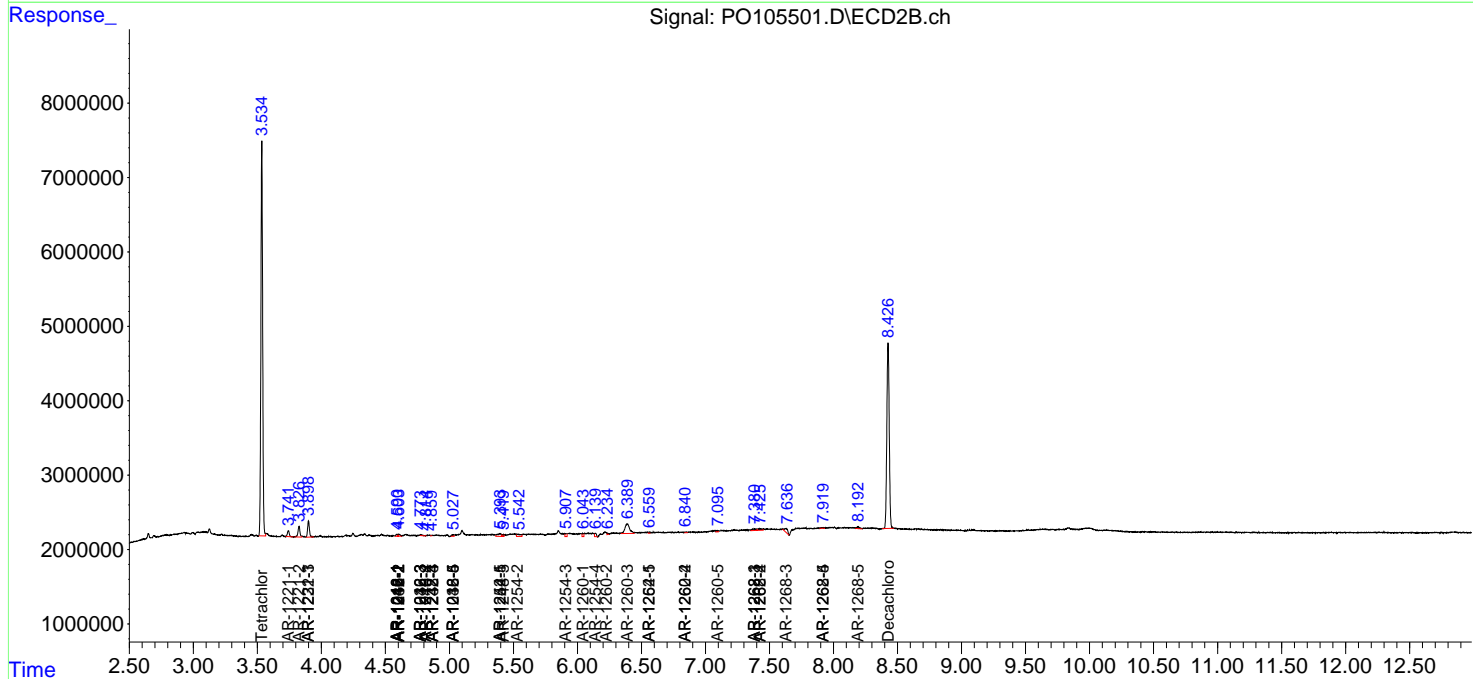
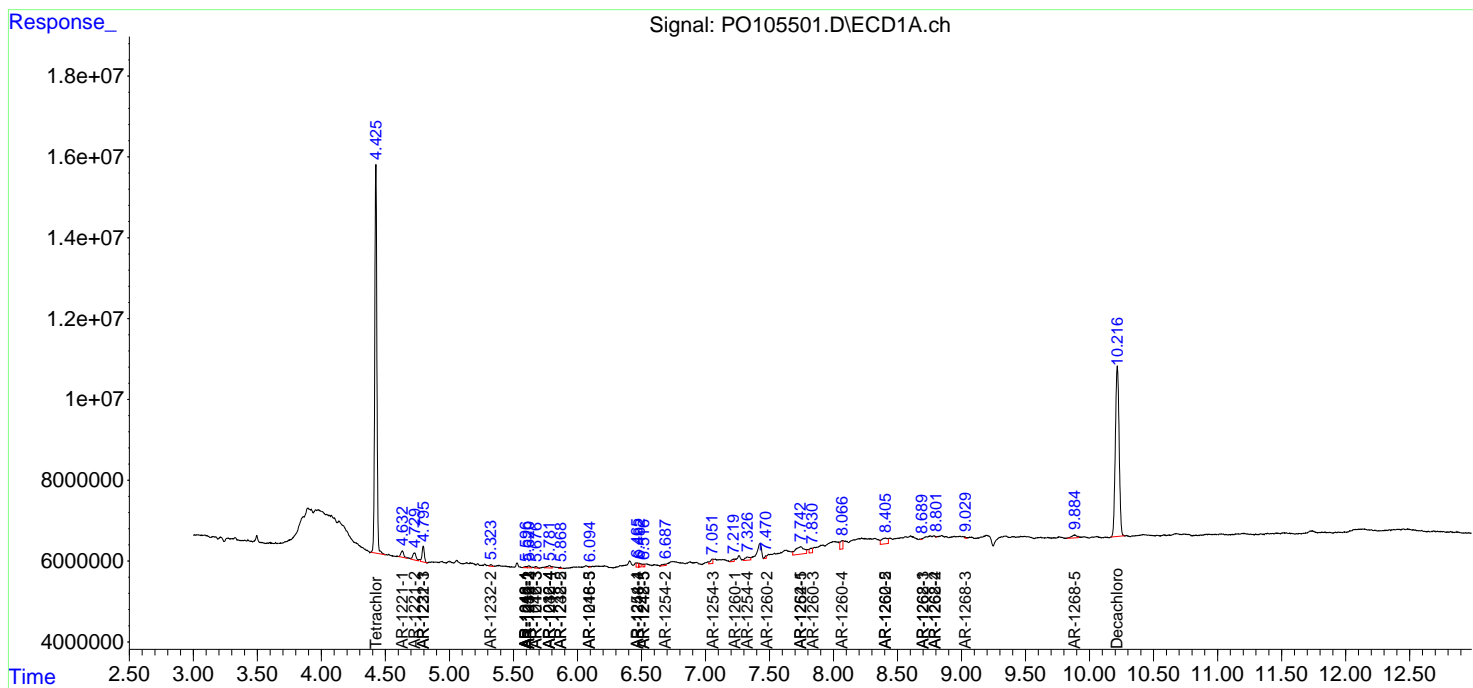
(f)=RT Delta > 1/2 Window (#)=Amounts differ by > 25% (m)=manual int.

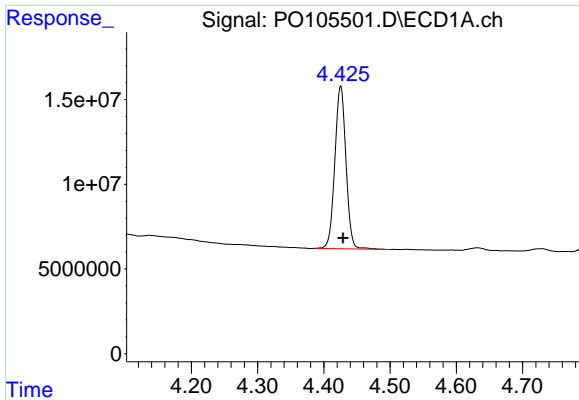
Data Path : Z:\pestpcbsrv\HPCHEM1\ECD_O\Data\PO081324\
 Data File : PO105501.D
 Signal(s) : Signal #1: ECD1A.ch Signal #2: ECD2B.ch
 Acq On : 13 Aug 2024 15:08
 Operator : YP/AJ
 Sample : P3390-03
 Misc : AR1221 MDL 25 PPB
 ALS Vial : 16 Sample Multiplier: 1

Instrument :
 ECD_O
 ClientSampleId :
 MDL-SOIL-03-QT3-2024

Integration File signal 1: autoint1.e
 Integration File signal 2: autoint2.e
 Quant Time: Aug 14 02:11:26 2024
 Quant Method : Z:\pestpcbsrv\HPCHEM1\ECD_O\methods\PO081024.M
 Quant Title : GC EXTRACTABLES
 QLast Update : Sat Aug 10 04:08:56 2024
 Response via : Initial Calibration
 Integrator: ChemStation

Volume Inj. : 2 µl
 Signal #1 Phase : ZB-MR1 Signal #2 Phase: ZB-MR2
 Signal #1 Info : 30Mx0.32mmx 0.50µ Signal #2 Info : 30M x 0.32mm x 0.25µm

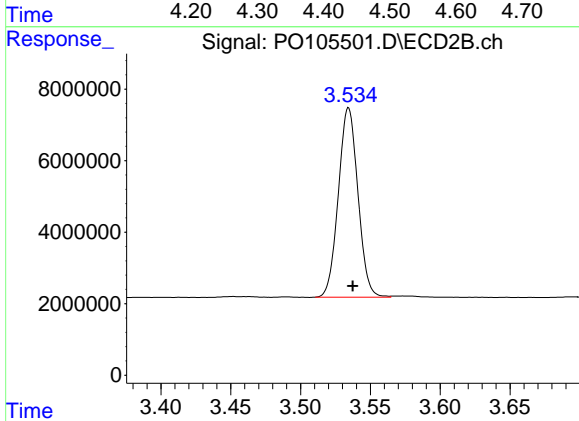




#1 Tetrachloro-m-xylene

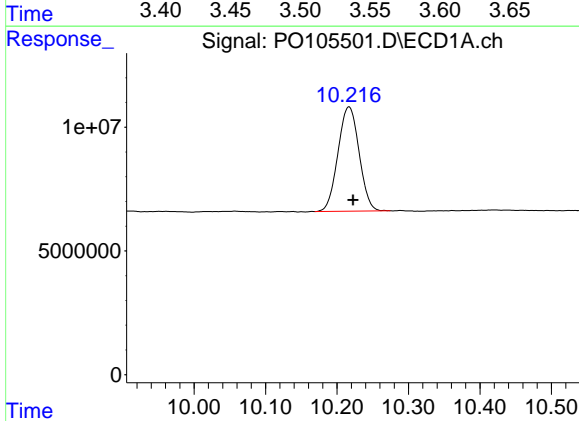
R.T.: 4.426 min
 Delta R.T.: -0.003 min
 Response: 111837041
 Conc: 12.80 ng/ml

Instrument :
 ECD_O
 ClientSampleId :
 MDL-SOIL-03-QT3-2024



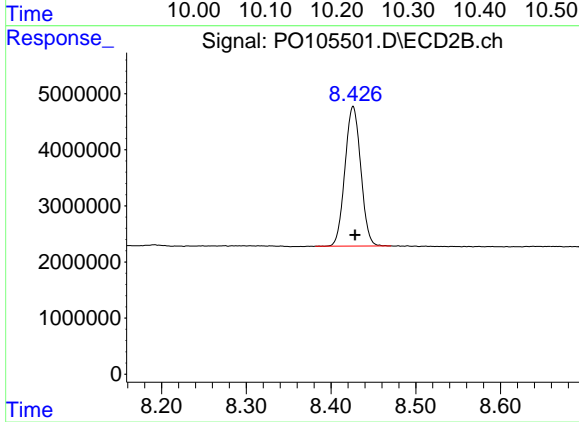
#1 Tetrachloro-m-xylene

R.T.: 3.534 min
 Delta R.T.: -0.003 min
 Response: 51690239
 Conc: 16.46 ng/ml



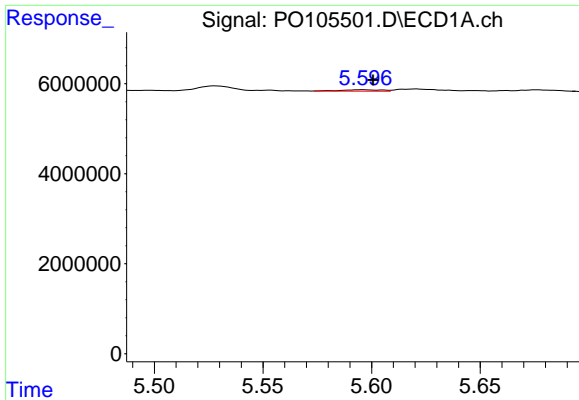
#2 Decachlorobiphenyl

R.T.: 10.217 min
 Delta R.T.: -0.006 min
 Response: 86552088
 Conc: 15.05 ng/ml



#2 Decachlorobiphenyl

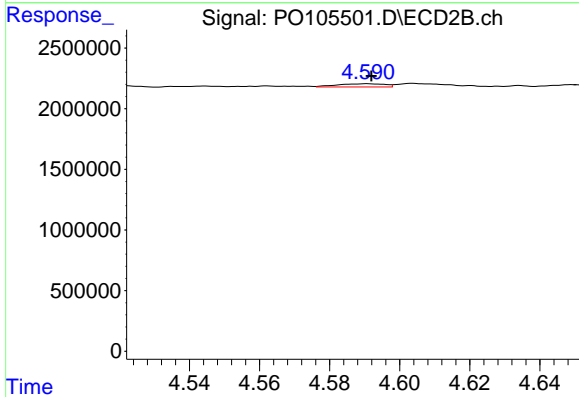
R.T.: 8.426 min
 Delta R.T.: -0.002 min
 Response: 32251405
 Conc: 18.22 ng/ml



#3 AR-1016-1

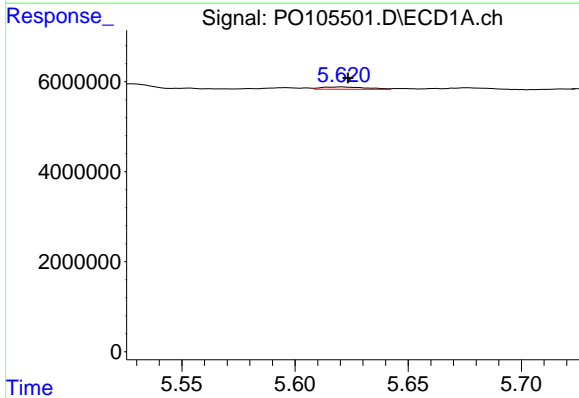
R.T.: 5.596 min
 Delta R.T.: -0.004 min
 Response: 410964
 Conc: 1.36 ng/ml

Instrument :
 ECD_O
 ClientSampleId :
 MDL-SOIL-03-QT3-2024



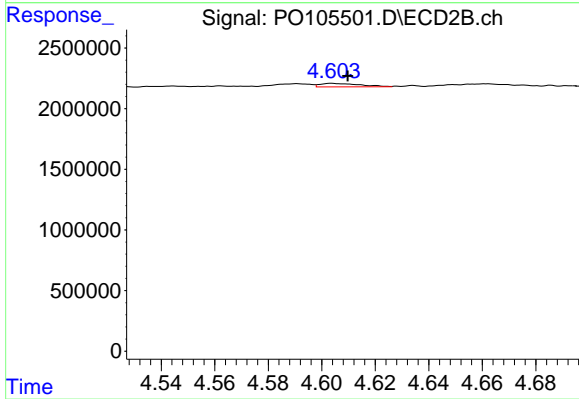
#3 AR-1016-1

R.T.: 4.591 min
 Delta R.T.: 0.000 min
 Response: 252043
 Conc: 2.24 ng/ml



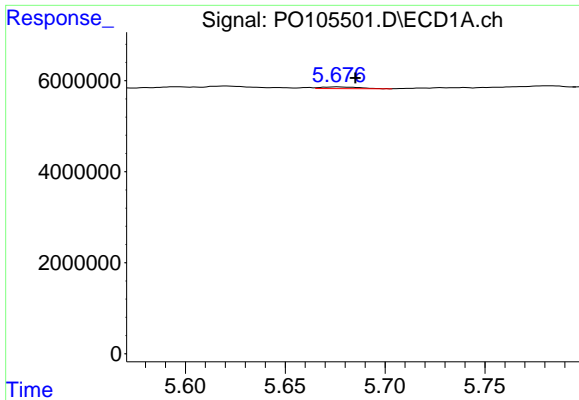
#4 AR-1016-2

R.T.: 5.621 min
 Delta R.T.: -0.002 min
 Response: 719886
 Conc: 1.68 ng/ml



#4 AR-1016-2

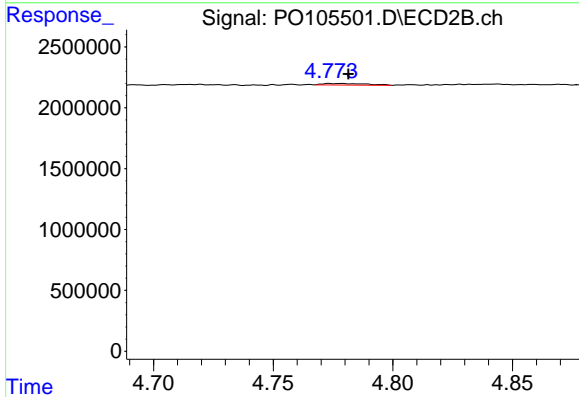
R.T.: 4.604 min
 Delta R.T.: -0.006 min
 Response: 298002
 Conc: 1.91 ng/ml



#5 AR-1016-3

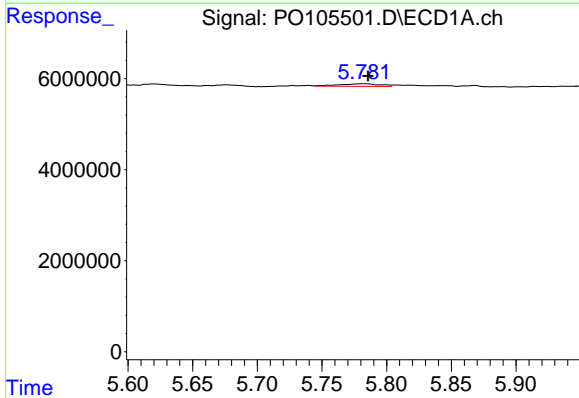
R.T.: 5.676 min
 Delta R.T.: -0.009 min
 Response: 493665
 Conc: 1.92 ng/ml

Instrument :
 ECD_O
 ClientSampleId :
 MDL-SOIL-03-QT3-2024



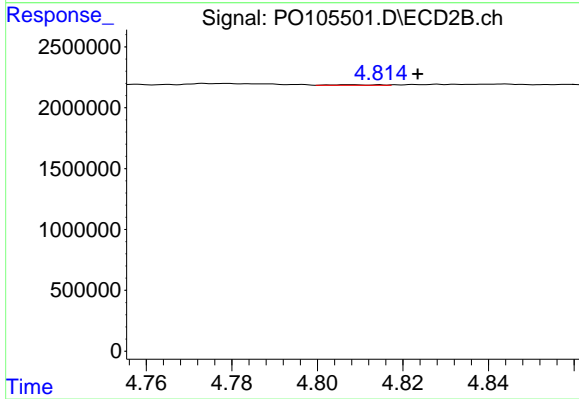
#5 AR-1016-3

R.T.: 4.774 min
 Delta R.T.: -0.007 min
 Response: 161242
 Conc: 1.93 ng/ml



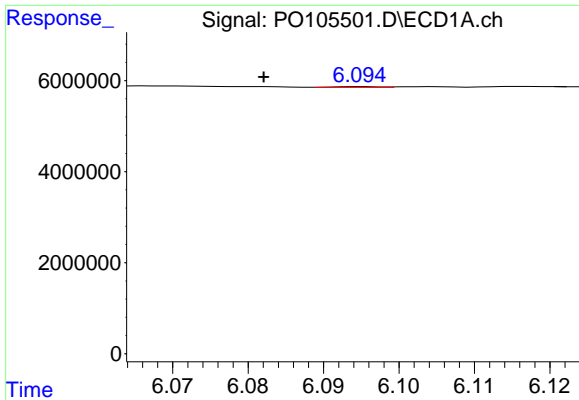
#6 AR-1016-4

R.T.: 5.782 min
 Delta R.T.: -0.004 min
 Response: 1275188
 Conc: 5.83 ng/ml



#6 AR-1016-4

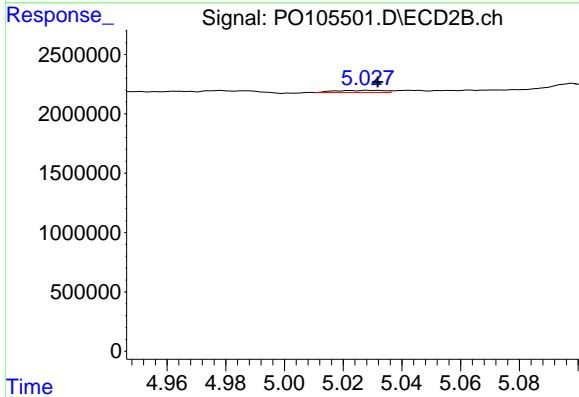
R.T.: 4.808 min
 Delta R.T.: -0.016 min
 Response: 32394
 Conc: 0.48 ng/ml



#7 AR-1016-5

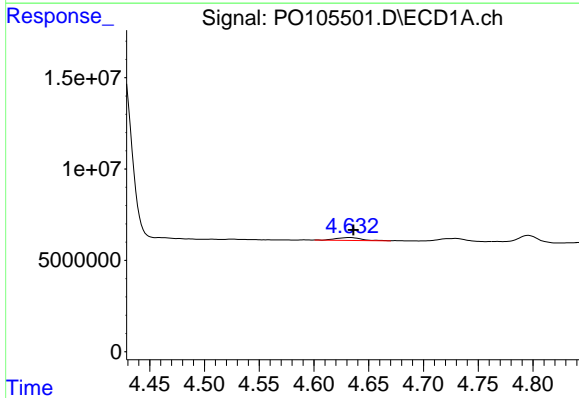
R.T.: 6.095 min
 Delta R.T.: 0.013 min
 Response: 79615
 Conc: 0.37 ng/ml

Instrument :
 ECD_O
 ClientSampleId :
 MDL-SOIL-03-QT3-2024



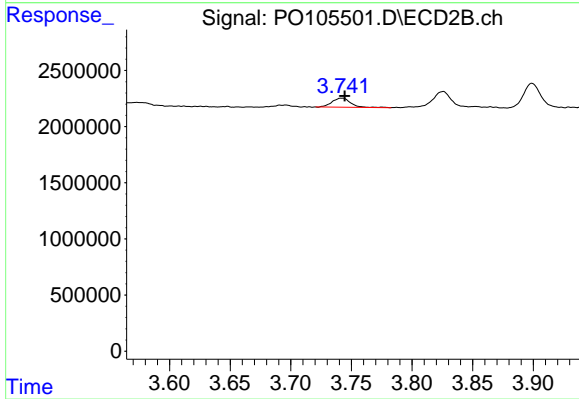
#7 AR-1016-5

R.T.: 5.028 min
 Delta R.T.: -0.003 min
 Response: 211407
 Conc: 2.53 ng/ml



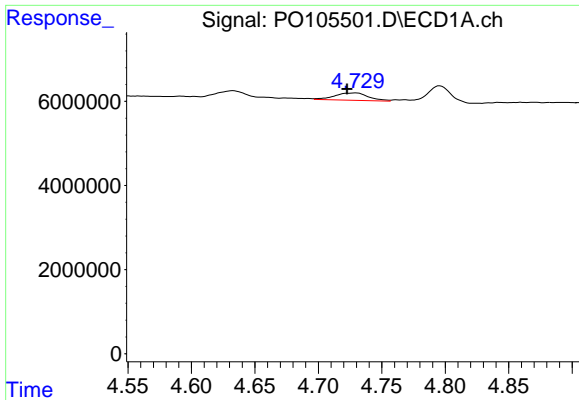
#8 AR-1221-1

R.T.: 4.633 min
 Delta R.T.: -0.003 min
 Response: 2569807
 Conc: 22.92 ng/ml



#8 AR-1221-1

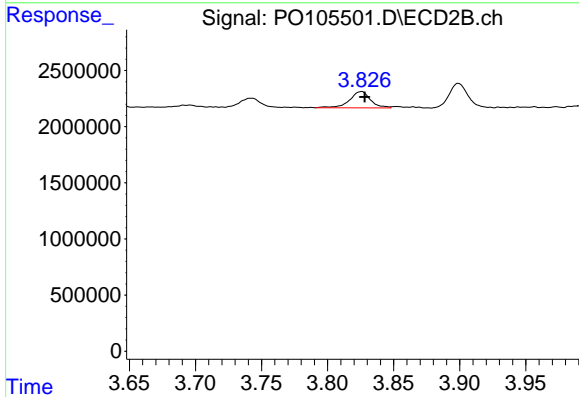
R.T.: 3.742 min
 Delta R.T.: -0.002 min
 Response: 861534
 Conc: 21.83 ng/ml



#9 AR-1221-2

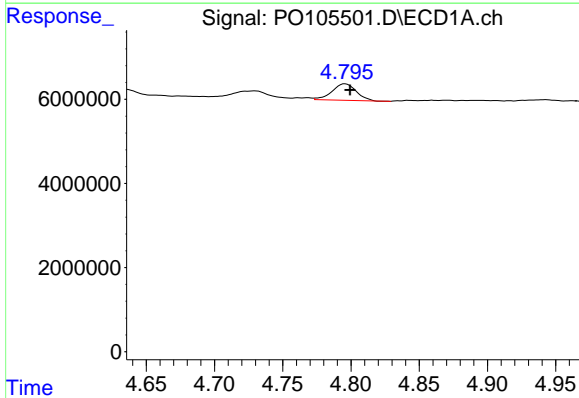
R.T.: 4.730 min
 Delta R.T.: 0.007 min
 Response: 3244408
 Conc: 38.28 ng/ml

Instrument :
 ECD_O
 ClientSampleId :
 MDL-SOIL-03-QT3-2024



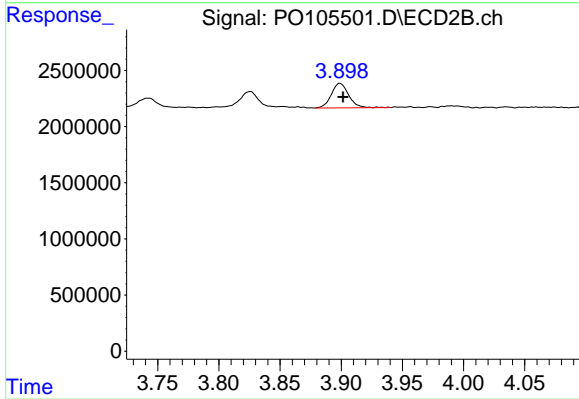
#9 AR-1221-2

R.T.: 3.826 min
 Delta R.T.: -0.003 min
 Response: 1603084
 Conc: 52.18 ng/ml



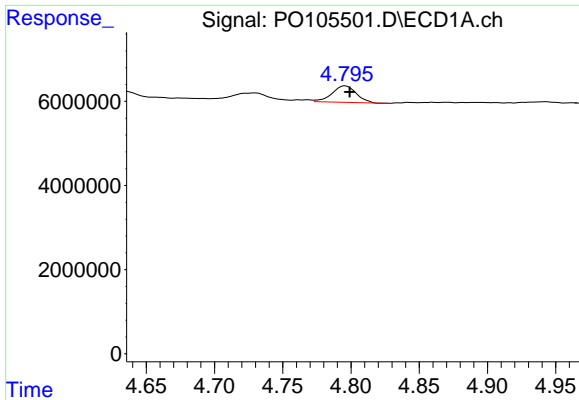
#10 AR-1221-3

R.T.: 4.796 min
 Delta R.T.: -0.004 min
 Response: 4826943
 Conc: 19.84 ng/ml



#10 AR-1221-3

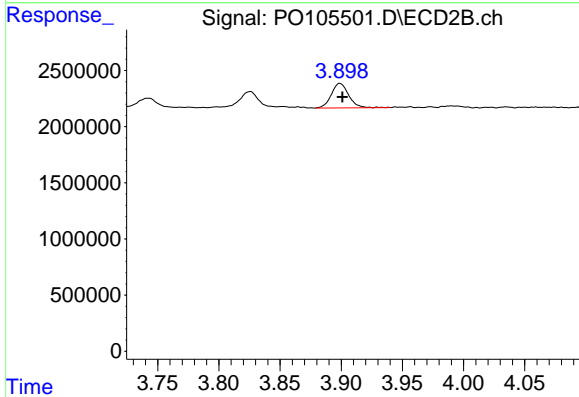
R.T.: 3.899 min
 Delta R.T.: -0.002 min
 Response: 2156304
 Conc: 24.10 ng/ml



#11 AR-1232-1

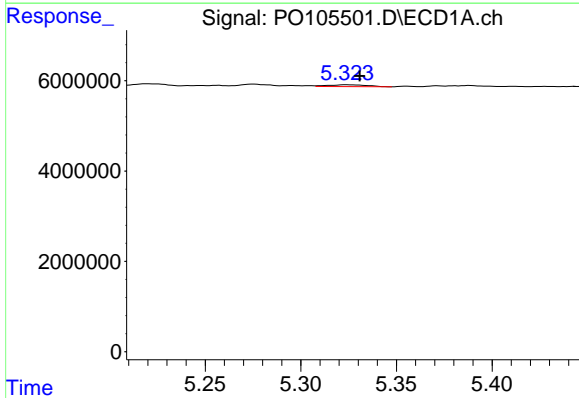
R.T.: 4.796 min
 Delta R.T.: -0.003 min
 Response: 4826943
 Conc: 24.14 ng/ml

Instrument :
 ECD_O
 ClientSampleId :
 MDL-SOIL-03-QT3-2024



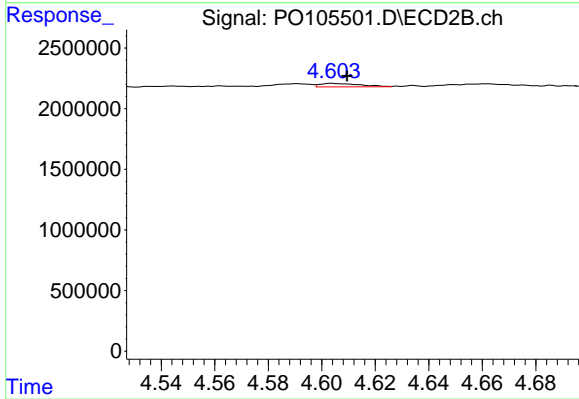
#11 AR-1232-1

R.T.: 3.899 min
 Delta R.T.: -0.002 min
 Response: 2156304
 Conc: 29.53 ng/ml



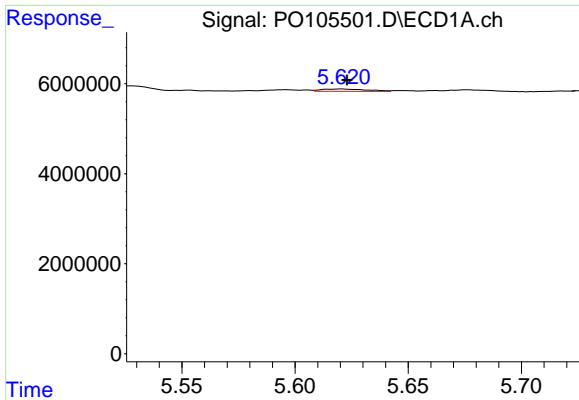
#12 AR-1232-2

R.T.: 5.324 min
 Delta R.T.: -0.007 min
 Response: 571477
 Conc: 5.40 ng/ml



#12 AR-1232-2

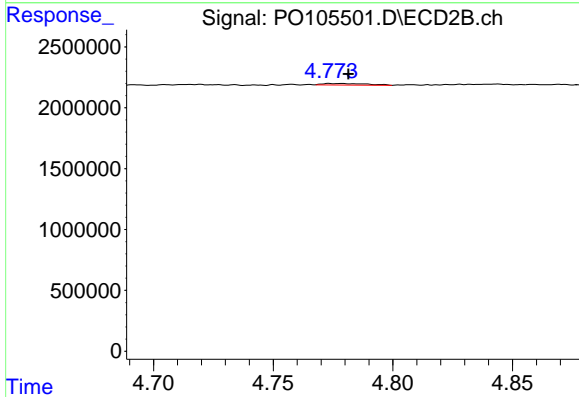
R.T.: 4.604 min
 Delta R.T.: -0.005 min
 Response: 298002
 Conc: 4.24 ng/ml



#13 AR-1232-3

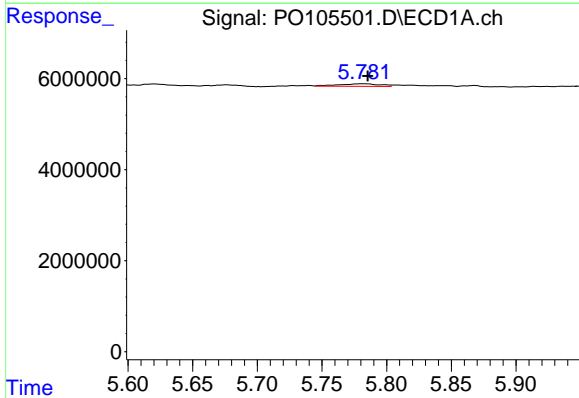
R.T.: 5.621 min
 Delta R.T.: -0.002 min
 Response: 719886
 Conc: 3.76 ng/ml

Instrument :
 ECD_O
 ClientSampleId :
 MDL-SOIL-03-QT3-2024



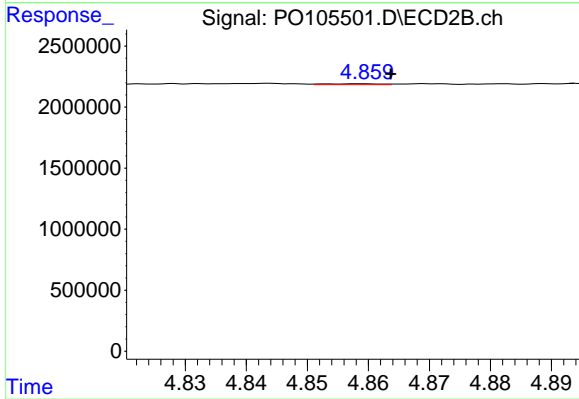
#13 AR-1232-3

R.T.: 4.774 min
 Delta R.T.: -0.007 min
 Response: 161242
 Conc: 4.22 ng/ml



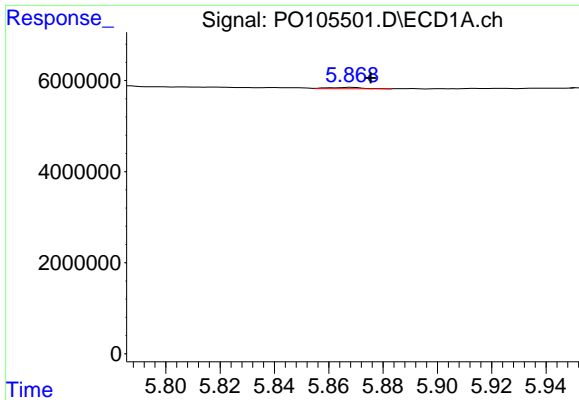
#14 AR-1232-4

R.T.: 5.782 min
 Delta R.T.: -0.003 min
 Response: 1275188
 Conc: 13.07 ng/ml



#14 AR-1232-4

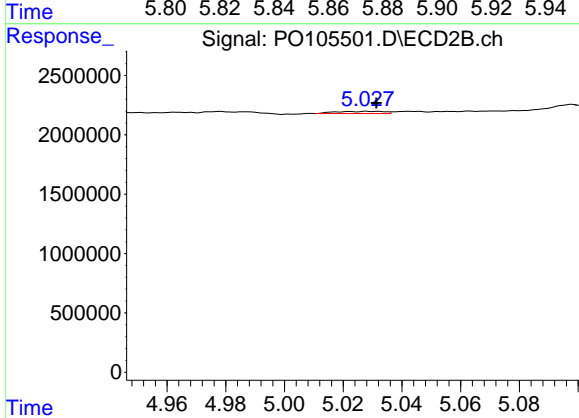
R.T.: 4.859 min
 Delta R.T.: -0.005 min
 Response: 43512
 Conc: 1.25 ng/ml



#15 AR-1232-5

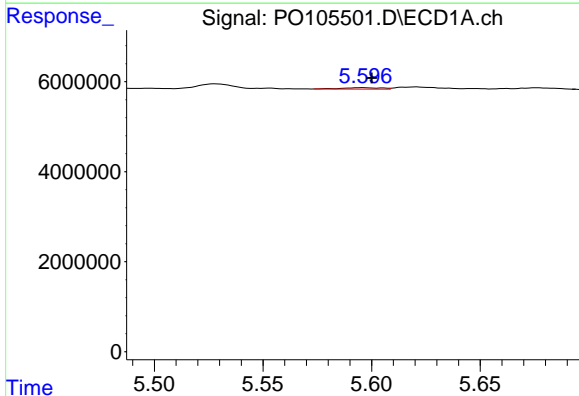
R.T.: 5.868 min
 Delta R.T.: -0.007 min
 Response: 266281
 Conc: 3.70 ng/ml

Instrument :
 ECD_O
 ClientSampleId :
 MDL-SOIL-03-QT3-2024



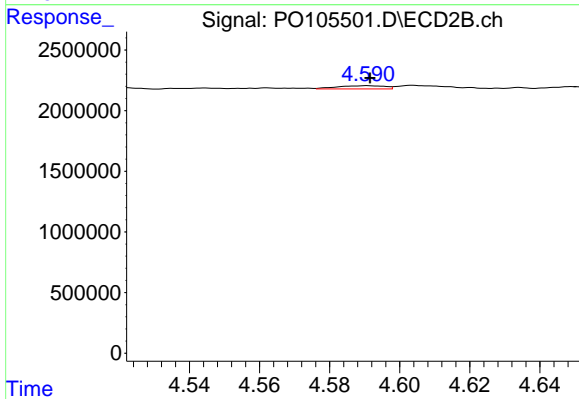
#15 AR-1232-5

R.T.: 5.028 min
 Delta R.T.: -0.003 min
 Response: 211407
 Conc: 5.99 ng/ml



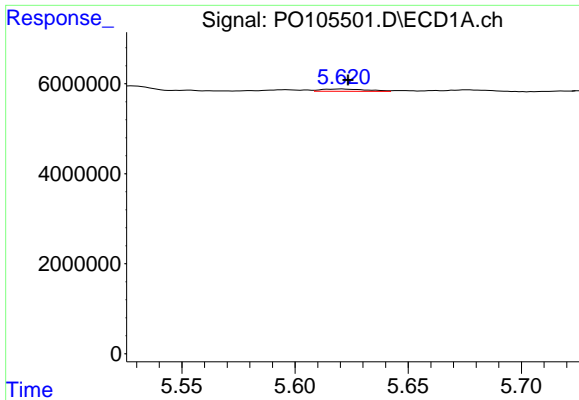
#16 AR-1242-1

R.T.: 5.596 min
 Delta R.T.: -0.004 min
 Response: 410964
 Conc: 1.77 ng/ml



#16 AR-1242-1

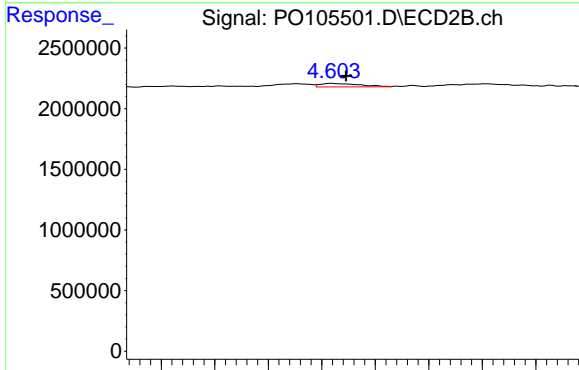
R.T.: 4.591 min
 Delta R.T.: 0.000 min
 Response: 252043
 Conc: 2.86 ng/ml



#17 AR-1242-2

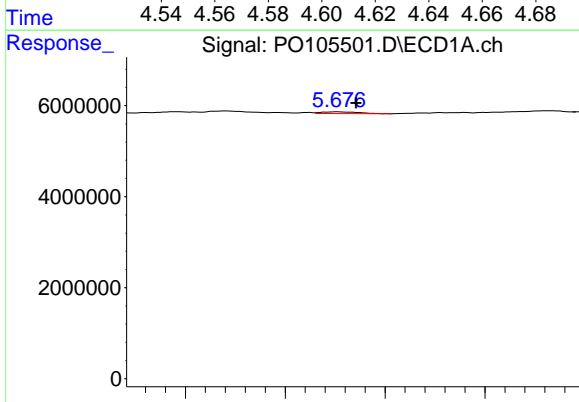
R.T.: 5.621 min
 Delta R.T.: -0.002 min
 Response: 719886
 Conc: 2.21 ng/ml

Instrument :
 ECD_O
 ClientSampleId :
 MDL-SOIL-03-QT3-2024



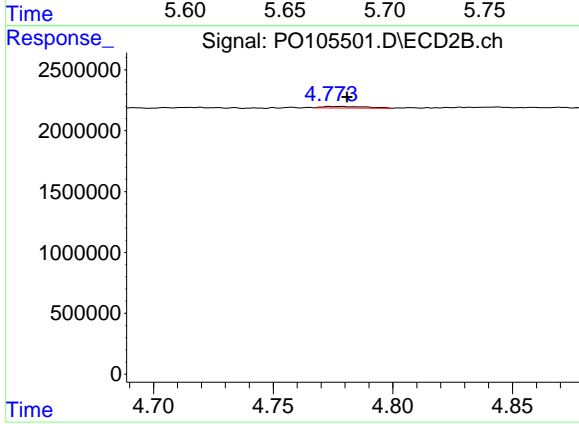
#17 AR-1242-2

R.T.: 4.604 min
 Delta R.T.: -0.005 min
 Response: 298002
 Conc: 2.51 ng/ml



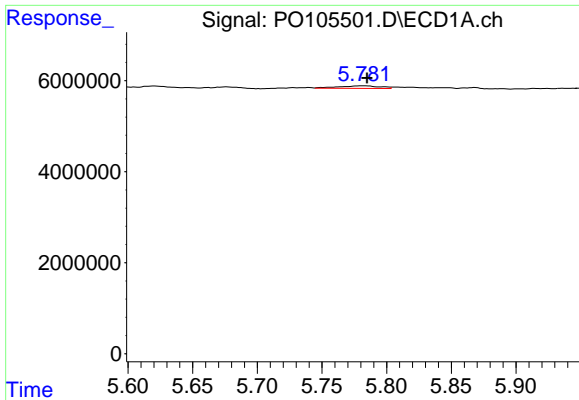
#18 AR-1242-3

R.T.: 5.676 min
 Delta R.T.: -0.009 min
 Response: 493665
 Conc: 2.50 ng/ml



#18 AR-1242-3

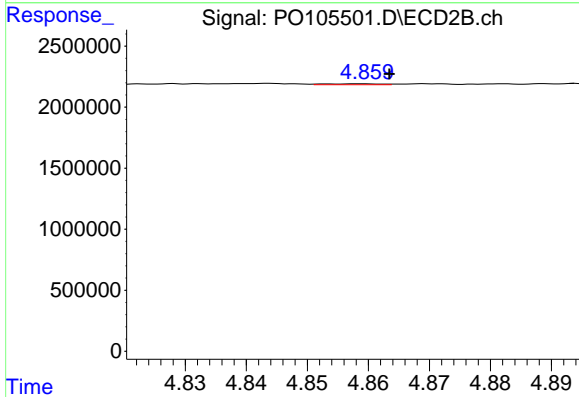
R.T.: 4.774 min
 Delta R.T.: -0.007 min
 Response: 161242
 Conc: 2.48 ng/ml



#19 AR-1242-4

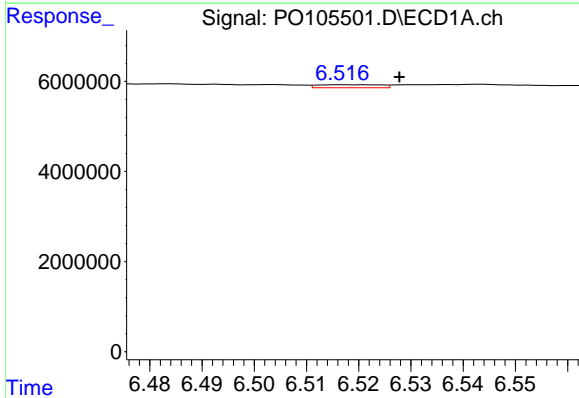
R.T.: 5.782 min
 Delta R.T.: -0.003 min
 Response: 1275188
 Conc: 7.47 ng/ml

Instrument :
 ECD_O
 ClientSampleId :
 MDL-SOIL-03-QT3-2024



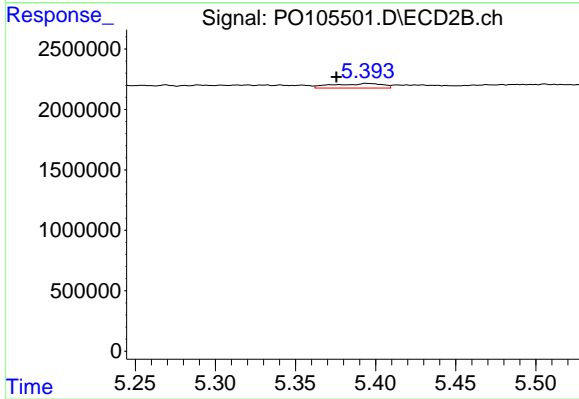
#19 AR-1242-4

R.T.: 4.859 min
 Delta R.T.: -0.005 min
 Response: 43512
 Conc: 0.66 ng/ml



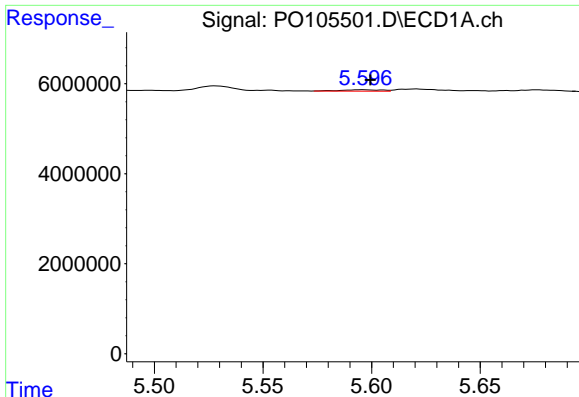
#20 AR-1242-5

R.T.: 6.517 min
 Delta R.T.: -0.011 min
 Response: 565311
 Conc: 3.23 ng/ml



#20 AR-1242-5

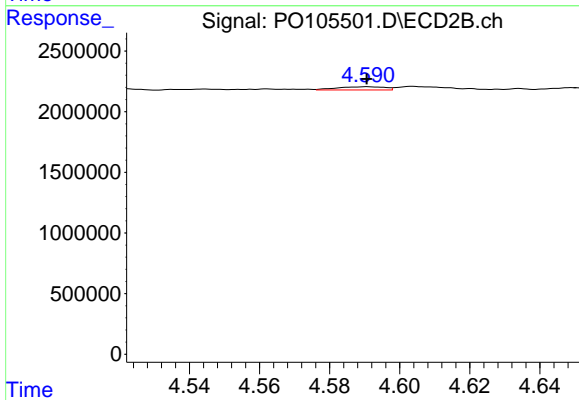
R.T.: 5.394 min
 Delta R.T.: 0.019 min
 Response: 794669
 Conc: 9.67 ng/ml



#21 AR-1248-1

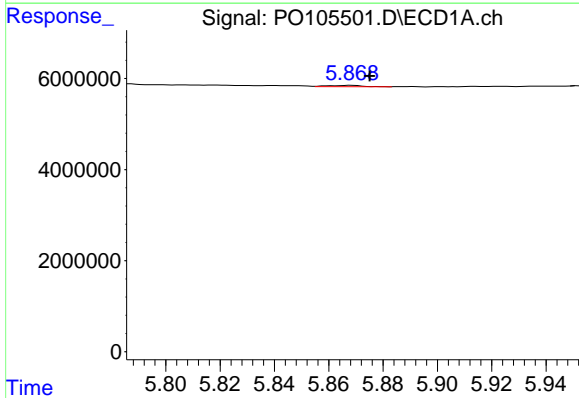
R.T.: 5.596 min
 Delta R.T.: -0.003 min
 Response: 410964
 Conc: 2.25 ng/ml

Instrument :
 ECD_O
 ClientSampleId :
 MDL-SOIL-03-QT3-2024



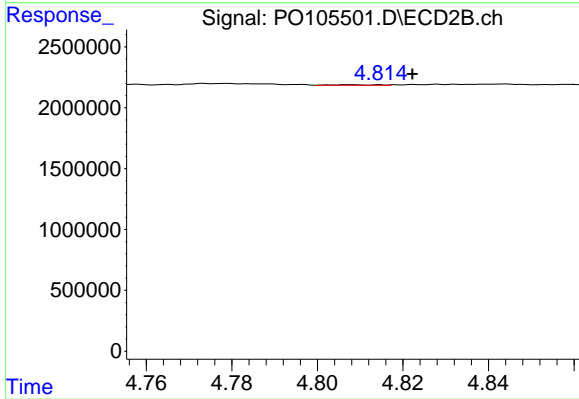
#21 AR-1248-1

R.T.: 4.591 min
 Delta R.T.: 0.000 min
 Response: 252043
 Conc: 3.61 ng/ml



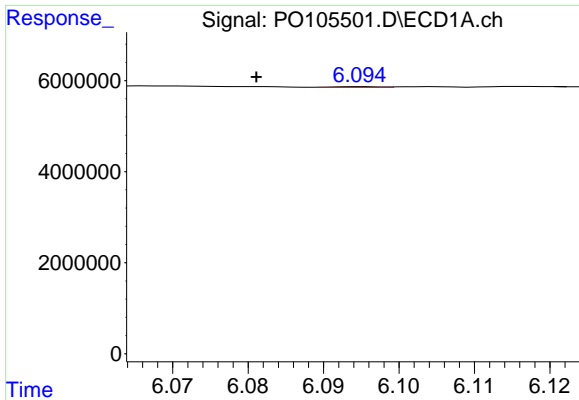
#22 AR-1248-2

R.T.: 5.868 min
 Delta R.T.: -0.007 min
 Response: 266281
 Conc: 1.06 ng/ml



#22 AR-1248-2

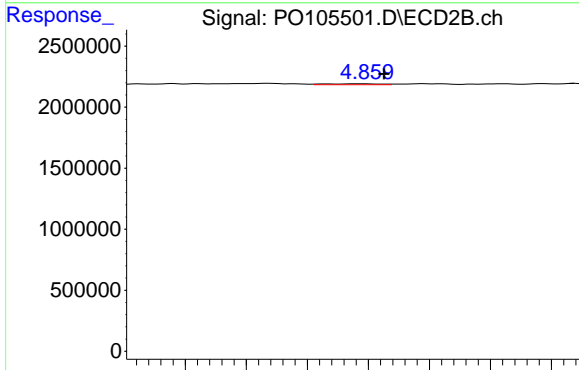
R.T.: 4.808 min
 Delta R.T.: -0.014 min
 Response: 32394
 Conc: 0.34 ng/ml



#23 AR-1248-3

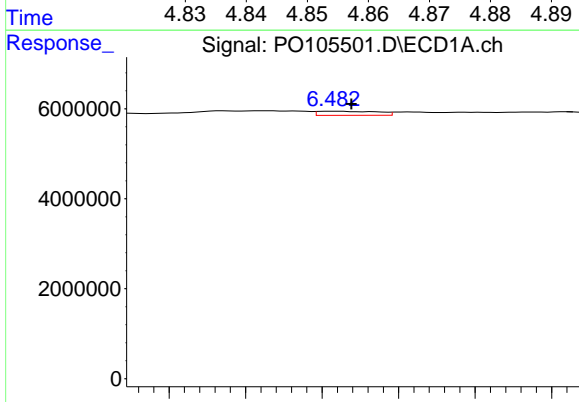
R.T.: 6.095 min
 Delta R.T.: 0.014 min
 Response: 79615
 Conc: 0.28 ng/ml

Instrument :
 ECD_O
 ClientSampleId :
 MDL-SOIL-03-QT3-2024



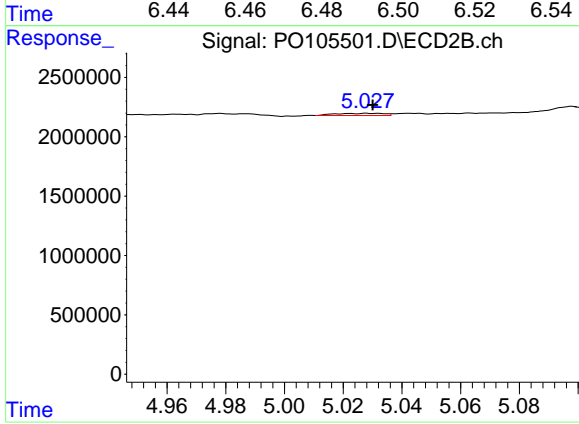
#23 AR-1248-3

R.T.: 4.859 min
 Delta R.T.: -0.004 min
 Response: 43512
 Conc: 0.44 ng/ml



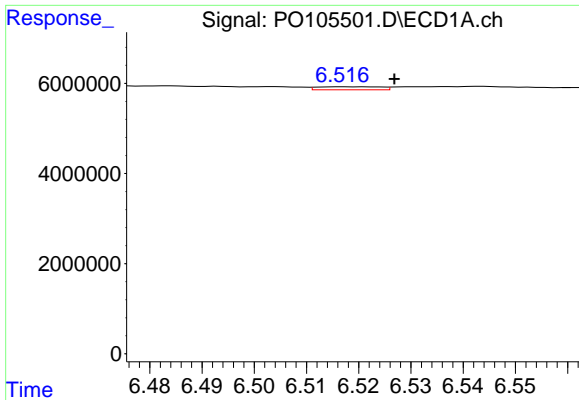
#24 AR-1248-4

R.T.: 6.483 min
 Delta R.T.: -0.004 min
 Response: 996579
 Conc: 3.12 ng/ml



#24 AR-1248-4

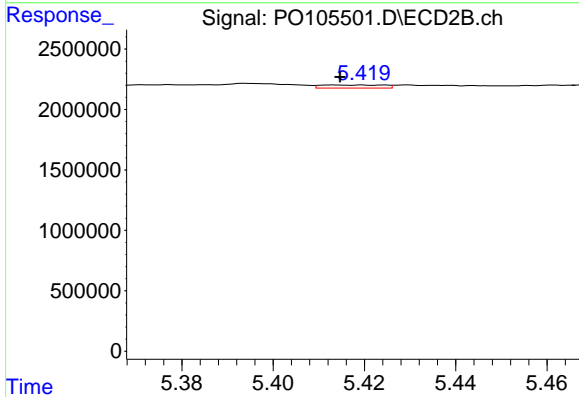
R.T.: 5.028 min
 Delta R.T.: -0.002 min
 Response: 211407
 Conc: 1.87 ng/ml



#25 AR-1248-5

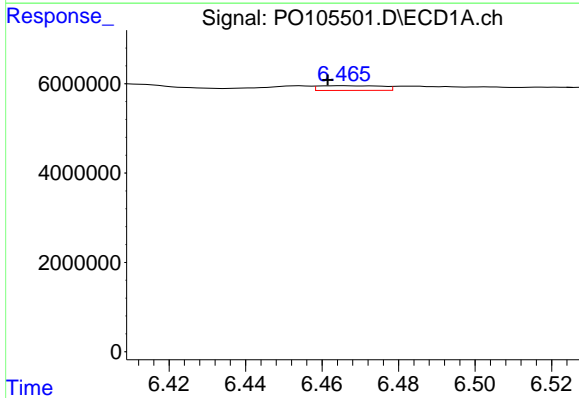
R.T.: 6.517 min
 Delta R.T.: -0.010 min
 Response: 565311
 Conc: 1.83 ng/ml

Instrument :
 ECD_O
 ClientSampleId :
 MDL-SOIL-03-QT3-2024



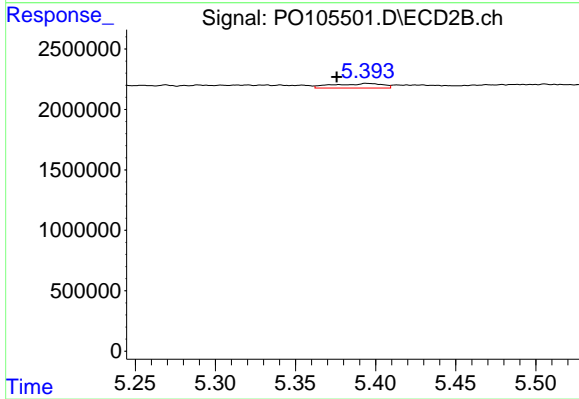
#25 AR-1248-5

R.T.: 5.419 min
 Delta R.T.: 0.004 min
 Response: 243442
 Conc: 2.16 ng/ml



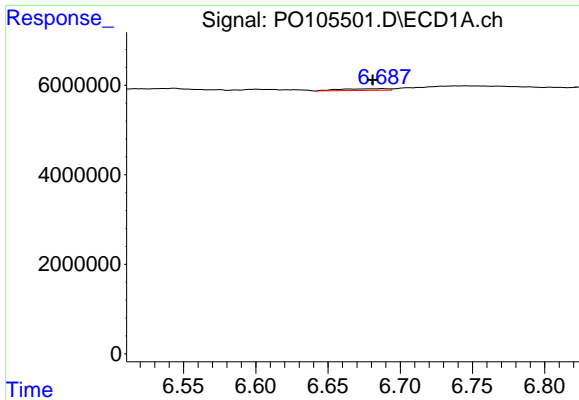
#26 AR-1254-1

R.T.: 6.465 min
 Delta R.T.: 0.004 min
 Response: 1194686
 Conc: 3.81 ng/ml



#26 AR-1254-1

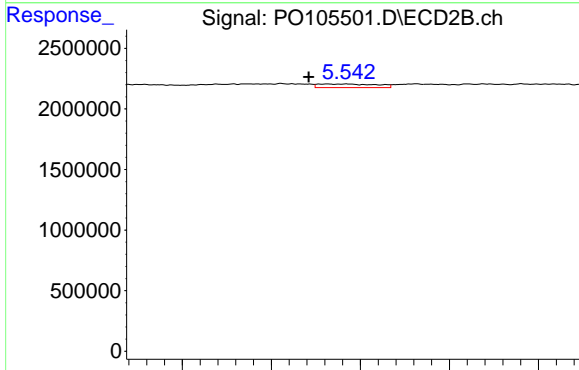
R.T.: 5.394 min
 Delta R.T.: 0.019 min
 Response: 794669
 Conc: 4.88 ng/ml



#27 AR-1254-2

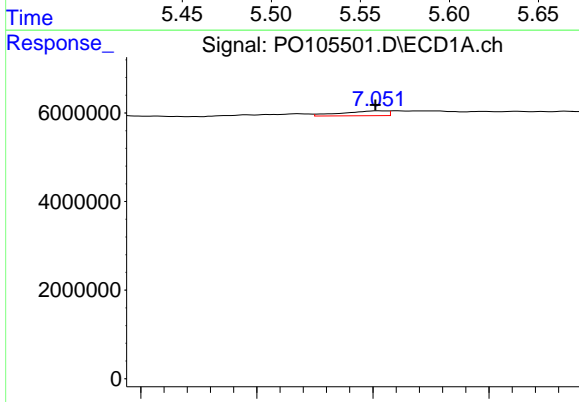
R.T.: 6.688 min
 Delta R.T.: 0.007 min
 Response: 860542
 Conc: 1.91 ng/ml

Instrument :
 ECD_O
 ClientSampleId :
 MDL-SOIL-03-QT3-2024



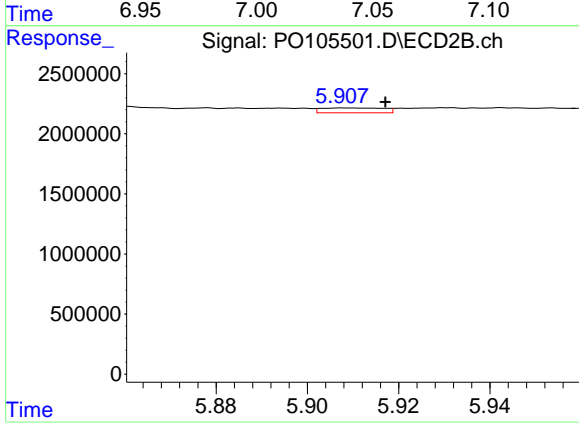
#27 AR-1254-2

R.T.: 5.532 min
 Delta R.T.: 0.011 min
 Response: 669431
 Conc: 4.58 ng/ml



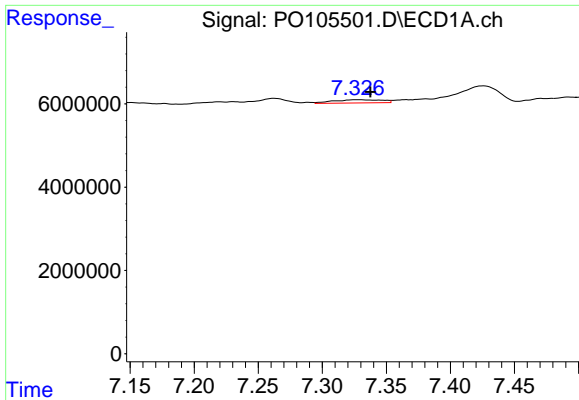
#28 AR-1254-3

R.T.: 7.052 min
 Delta R.T.: 0.001 min
 Response: 1480173
 Conc: 3.12 ng/ml



#28 AR-1254-3

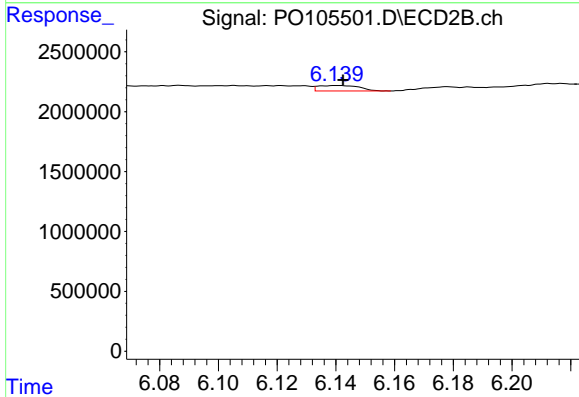
R.T.: 5.908 min
 Delta R.T.: -0.009 min
 Response: 388643
 Conc: 1.72 ng/ml



#29 AR-1254-4

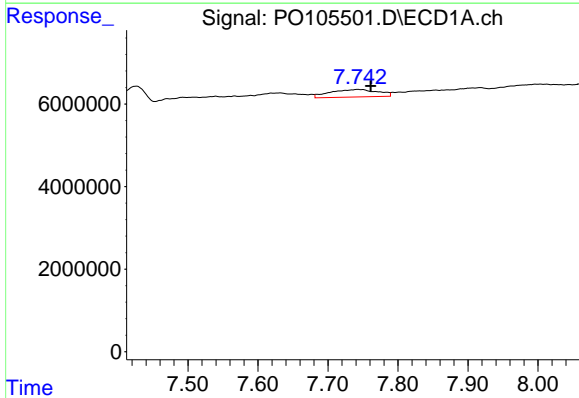
R.T.: 7.326 min
 Delta R.T.: -0.011 min
 Response: 2005874
 Conc: 5.60 ng/ml

Instrument :
 ECD_O
 ClientSampleId :
 MDL-SOIL-03-QT3-2024



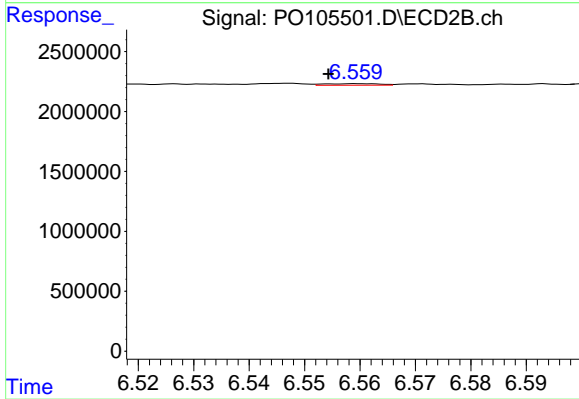
#29 AR-1254-4

R.T.: 6.141 min
 Delta R.T.: -0.002 min
 Response: 447434
 Conc: 3.17 ng/ml



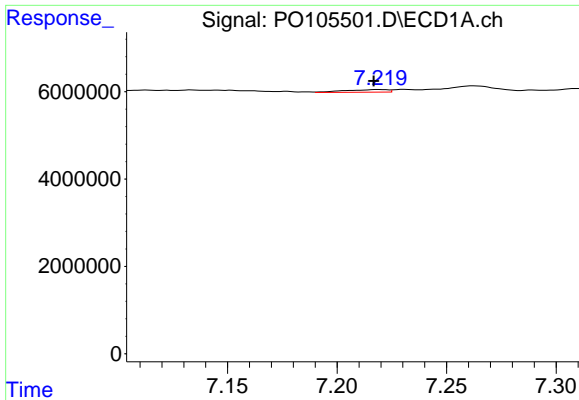
#30 AR-1254-5

R.T.: 7.743 min
 Delta R.T.: -0.019 min
 Response: 8647810
 Conc: 21.78 ng/ml



#30 AR-1254-5

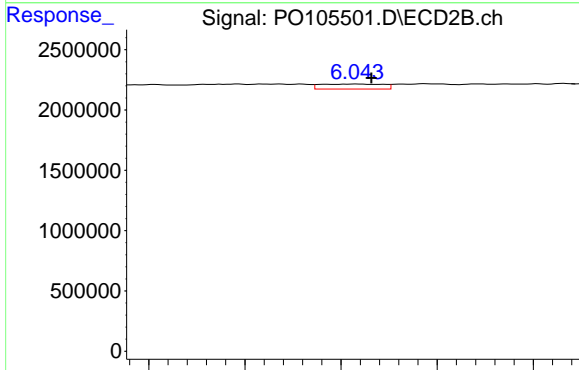
R.T.: 6.560 min
 Delta R.T.: 0.006 min
 Response: 88562
 Conc: 0.44 ng/ml



#31 AR-1260-1

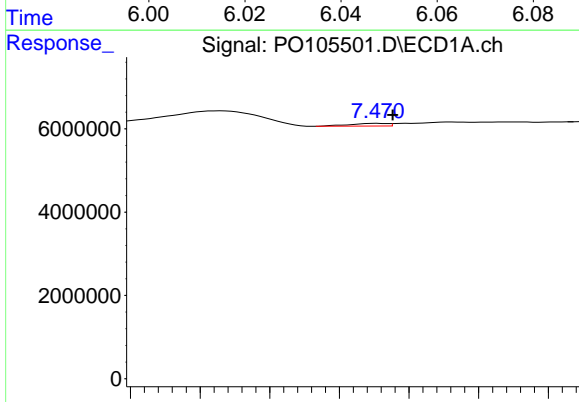
R.T.: 7.219 min
 Delta R.T.: 0.002 min
 Response: 822837
 Conc: 2.25 ng/ml

Instrument :
 ECD_O
 ClientSampleId :
 MDL-SOIL-03-QT3-2024



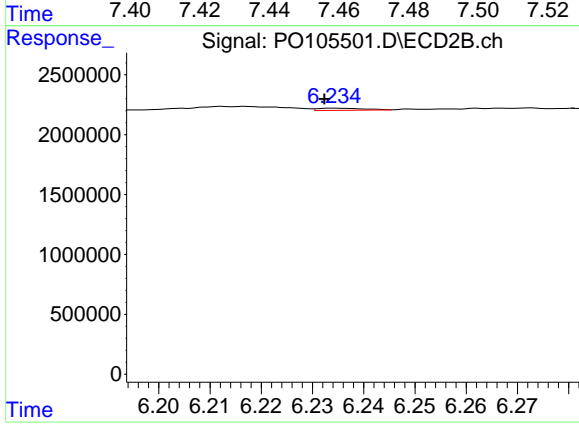
#31 AR-1260-1

R.T.: 6.043 min
 Delta R.T.: -0.003 min
 Response: 379590
 Conc: 2.43 ng/ml



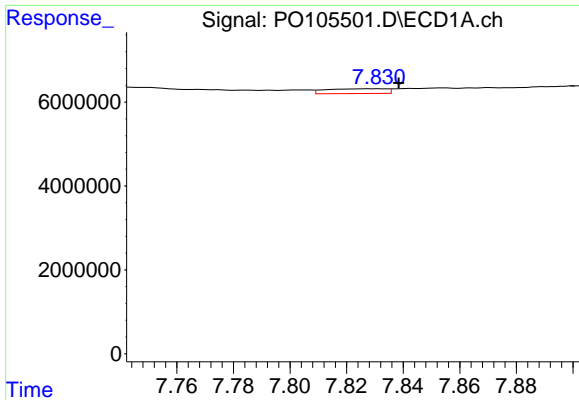
#32 AR-1260-2

R.T.: 7.471 min
 Delta R.T.: -0.004 min
 Response: 476502
 Conc: 1.14 ng/ml



#32 AR-1260-2

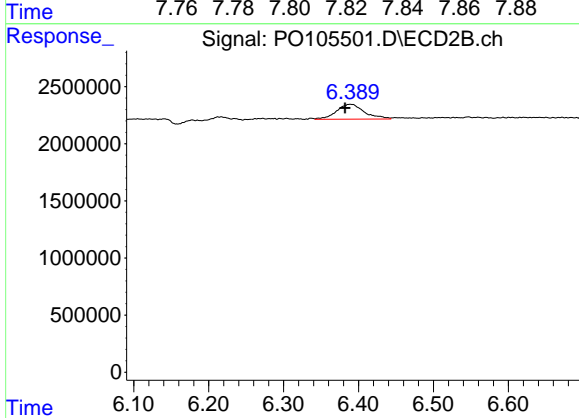
R.T.: 6.235 min
 Delta R.T.: 0.002 min
 Response: 114619
 Conc: 0.61 ng/ml



#33 AR-1260-3

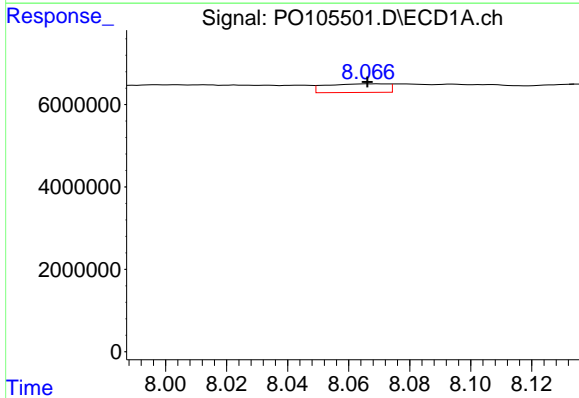
R.T.: 7.830 min
 Delta R.T.: -0.008 min
 Response: 1697000
 Conc: 6.56 ng/ml

Instrument :
 ECD_O
 ClientSampleId :
 MDL-SOIL-03-QT3-2024



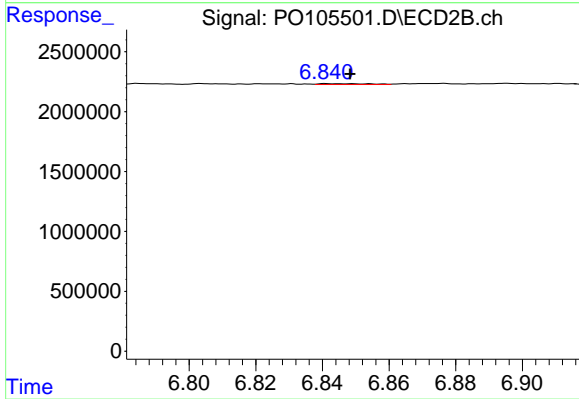
#33 AR-1260-3

R.T.: 6.389 min
 Delta R.T.: 0.007 min
 Response: 3402423
 Conc: 18.42 ng/ml



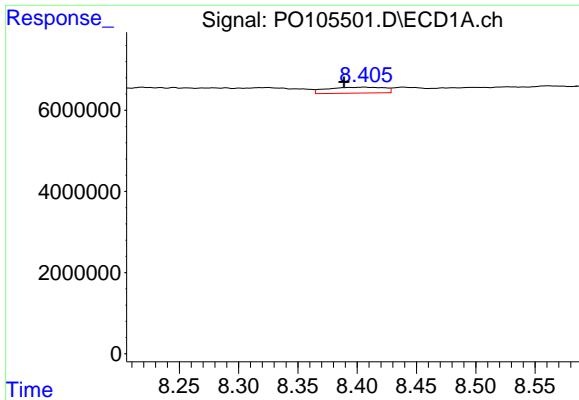
#34 AR-1260-4

R.T.: 8.067 min
 Delta R.T.: 0.001 min
 Response: 2935027
 Conc: 8.90 ng/ml



#34 AR-1260-4

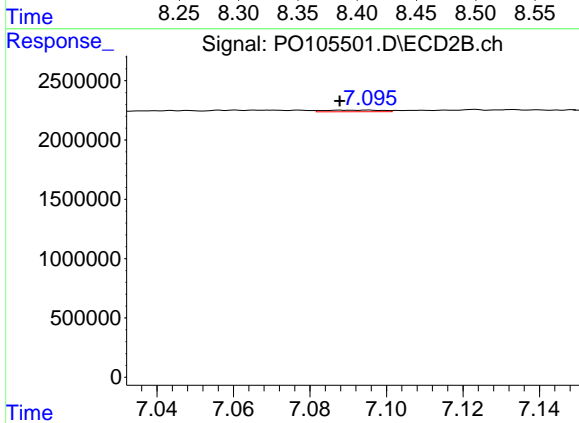
R.T.: 6.841 min
 Delta R.T.: -0.007 min
 Response: 73484
 Conc: 0.60 ng/ml



#35 AR-1260-5

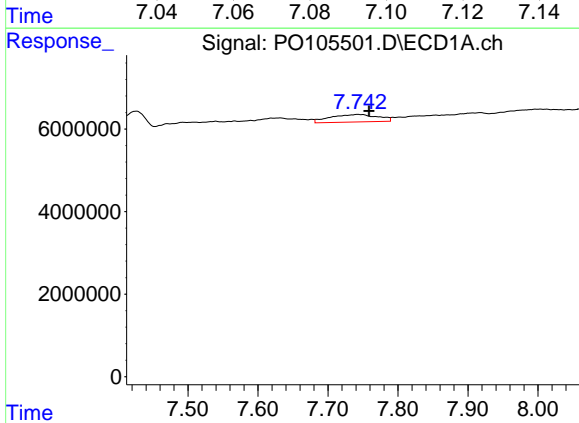
R.T.: 8.406 min
 Delta R.T.: 0.017 min
 Response: 4864174
 Conc: 8.18 ng/ml

Instrument :
 ECD_O
 ClientSampleId :
 MDL-SOIL-03-QT3-2024



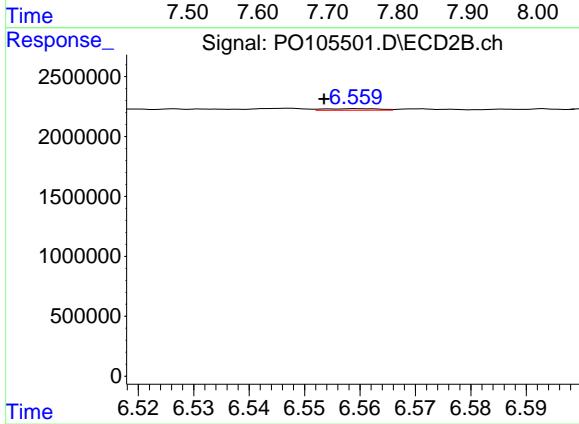
#35 AR-1260-5

R.T.: 7.095 min
 Delta R.T.: 0.007 min
 Response: 149095
 Conc: 0.54 ng/ml



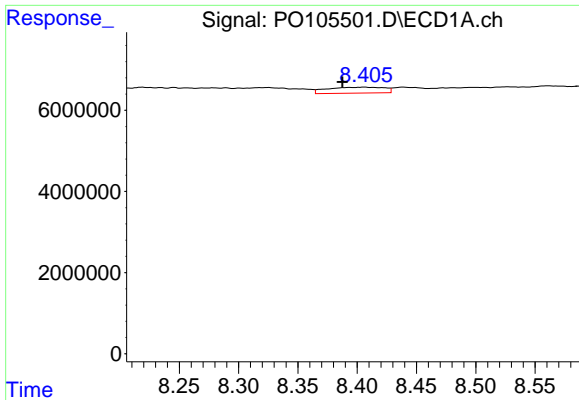
#36 AR-1262-1

R.T.: 7.743 min
 Delta R.T.: -0.016 min
 Response: 8647810
 Conc: 27.23 ng/ml



#36 AR-1262-1

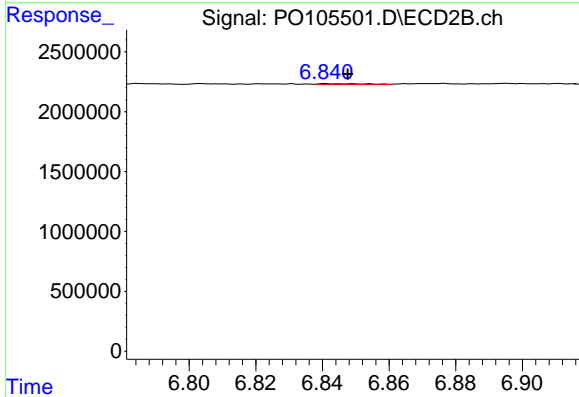
R.T.: 6.560 min
 Delta R.T.: 0.006 min
 Response: 88562
 Conc: 0.83 ng/ml



#37 AR-1262-2

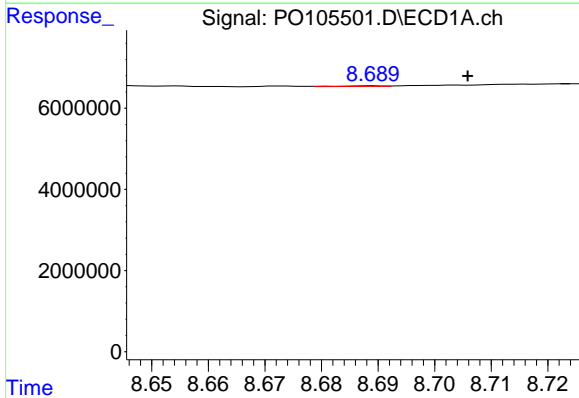
R.T.: 8.406 min
 Delta R.T.: 0.018 min
 Response: 4864174
 Conc: 6.47 ng/ml

Instrument :
 ECD_O
 ClientSampleId :
 MDL-SOIL-03-QT3-2024



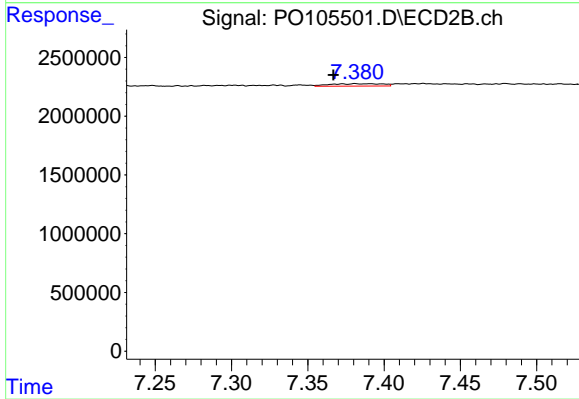
#37 AR-1262-2

R.T.: 6.841 min
 Delta R.T.: -0.006 min
 Response: 73484
 Conc: 0.43 ng/ml



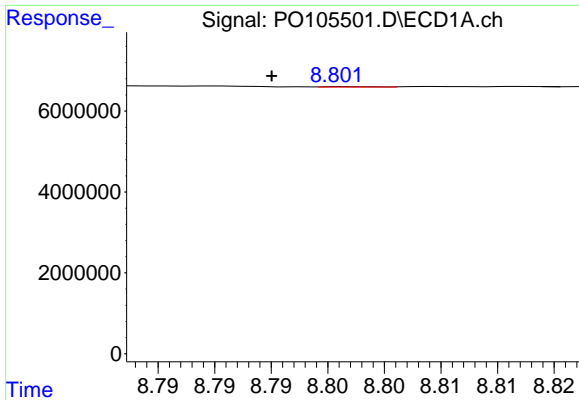
#38 AR-1262-3

R.T.: 8.689 min
 Delta R.T.: -0.017 min
 Response: 81931
 Conc: 0.17 ng/ml



#38 AR-1262-3

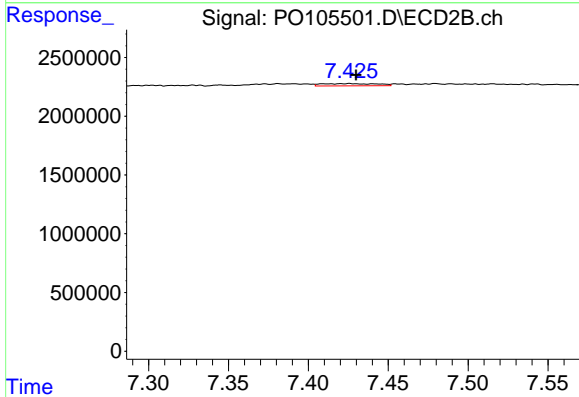
R.T.: 7.381 min
 Delta R.T.: 0.014 min
 Response: 487498
 Conc: 3.86 ng/ml



#39 AR-1262-4

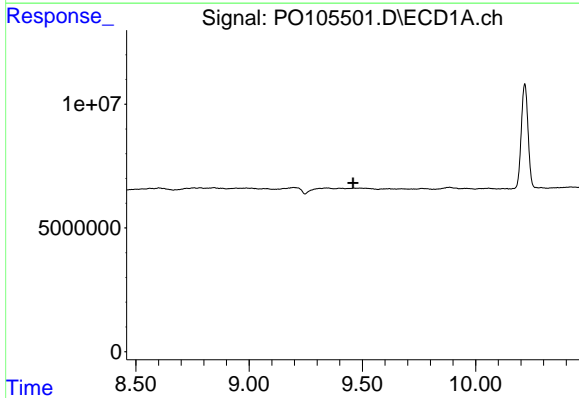
R.T.: 8.802 min
 Delta R.T.: 0.007 min
 Response: 32582
 Conc: 0.09 ng/ml

Instrument :
 ECD_O
 ClientSampleId :
 MDL-SOIL-03-QT3-2024



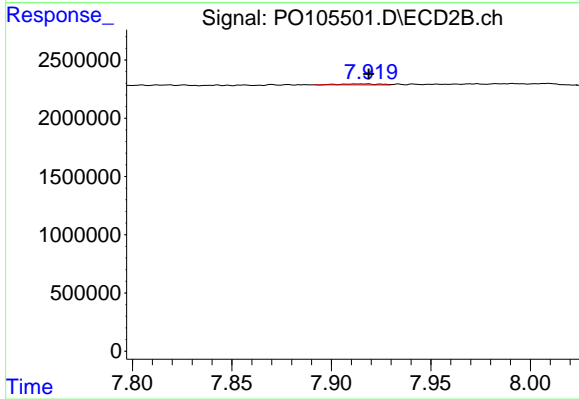
#39 AR-1262-4

R.T.: 7.426 min
 Delta R.T.: -0.004 min
 Response: 449922
 Conc: 1.94 ng/ml



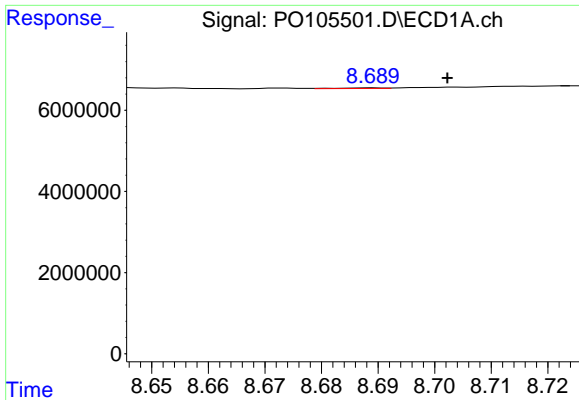
#40 AR-1262-5

R.T.: 9.462 min
 Delta R.T.: 0.004 min
 Response: -188044
 Conc: N.D.



#40 AR-1262-5

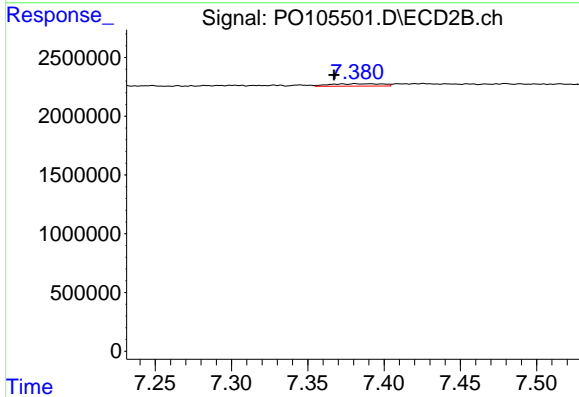
R.T.: 7.918 min
 Delta R.T.: -0.001 min
 Response: 115396
 Conc: 1.15 ng/ml



#41 AR-1268-1

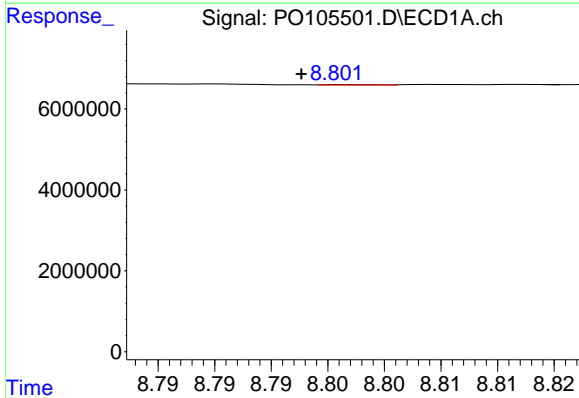
R.T.: 8.689 min
 Delta R.T.: -0.013 min
 Response: 81931
 Conc: 0.10 ng/ml

Instrument :
 ECD_O
 ClientSampleId :
 MDL-SOIL-03-QT3-2024



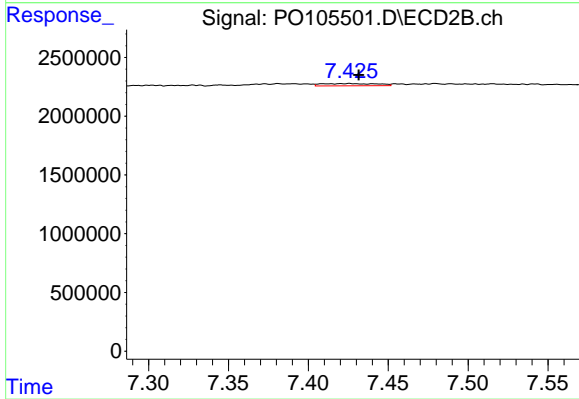
#41 AR-1268-1

R.T.: 7.381 min
 Delta R.T.: 0.014 min
 Response: 487498
 Conc: 1.40 ng/ml



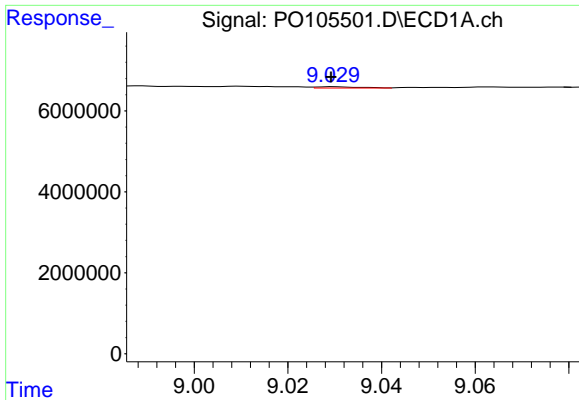
#42 AR-1268-2

R.T.: 8.802 min
 Delta R.T.: 0.004 min
 Response: 32582
 Conc: 0.04 ng/ml



#42 AR-1268-2

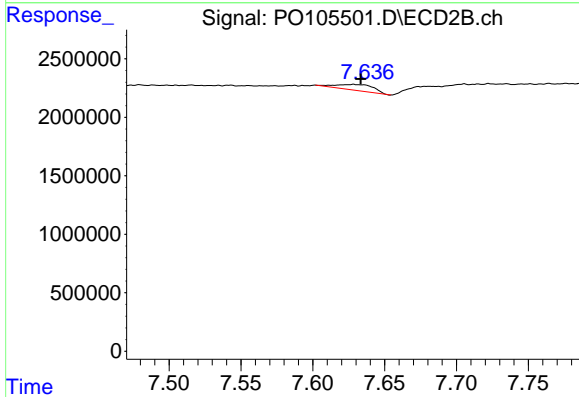
R.T.: 7.426 min
 Delta R.T.: -0.006 min
 Response: 449922
 Conc: 1.44 ng/ml



#43 AR-1268-3

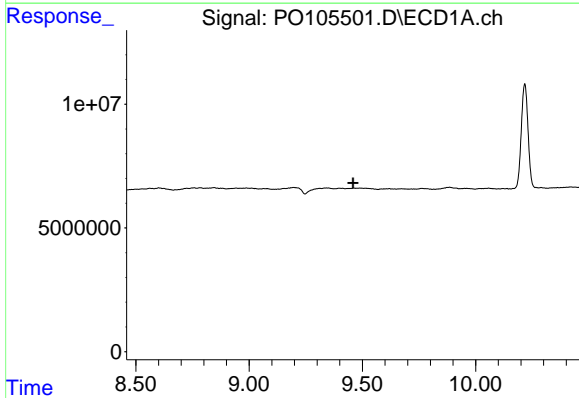
R.T.: 9.030 min
 Delta R.T.: 0.000 min
 Response: 204644
 Conc: 0.32 ng/ml

Instrument :
 ECD_O
 ClientSampleId :
 MDL-SOIL-03-QT3-2024



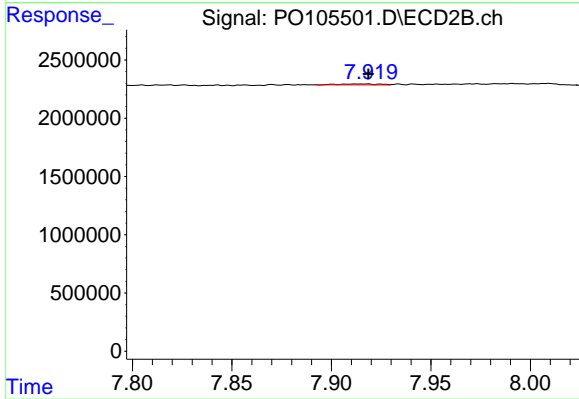
#43 AR-1268-3

R.T.: 7.628 min
 Delta R.T.: -0.005 min
 Response: 917101
 Conc: 3.63 ng/ml



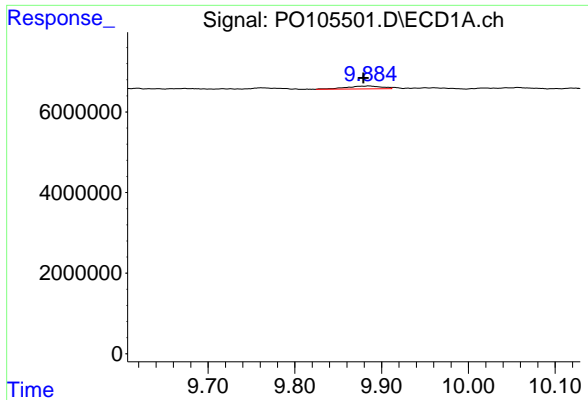
#44 AR-1268-4

R.T.: 9.462 min
 Delta R.T.: 0.004 min
 Response: -188044
 Conc: N.D.



#44 AR-1268-4

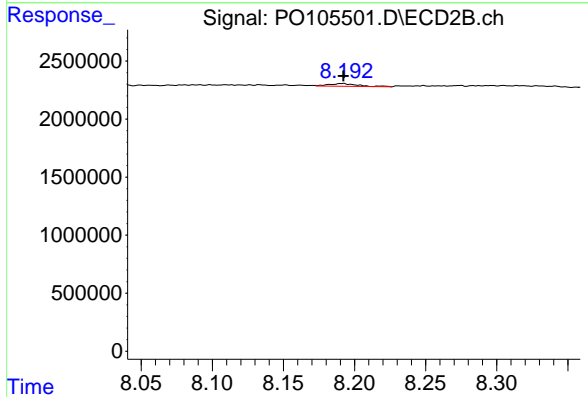
R.T.: 7.918 min
 Delta R.T.: 0.000 min
 Response: 115396
 Conc: 1.07 ng/ml



#45 AR-1268-5

R.T.: 9.885 min
 Delta R.T.: 0.006 min
 Response: 2034036
 Conc: 0.97 ng/ml

Instrument : ECD_O
 ClientSampleId : MDL-SOIL-03-QT3-2024



#45 AR-1268-5

R.T.: 8.191 min
 Delta R.T.: 0.000 min
 Response: 337292
 Conc: 0.50 ng/ml