

Data Path : Z:\pestpcbsrv\HPCHEM1\ECD O\Data\PO081418\
 Data File : PO048059.D
 Signal(s) : Signal #1: ECD1A.CH Signal #2: ECD2B.CH
 Acq On : 14 Aug 2018 18:35
 Operator : SM/SJ
 Sample : J4462-02
 Misc :
 ALS Vial : 10 Sample Multiplier: 1

Instrument :
 ECD_O
ClientSampleId :
 081318-TIPC-F-D-S

Manual Integrations
APPROVED
 Sohil
 8/16/2018 9:50:00 AM

Integration File signal 1: autoint1.e
 Integration File signal 2: autoint2.e
 Quant Time: Aug 15 09:04:19 2018
 Quant Method : Z:\pestpcbsrv\HPCHEM1\ECD_O\methods\PO072718.M
 Quant Title : GC EXTRACTABLES
 QLast Update : Fri Jul 27 02:33:29 2018
 Response via : Initial Calibration
 Integrator: ChemStation 6890 Scale Mode: Small noise peaks clipped

Volume Inj. : 2 µl
 Signal #1 Phase : ZB-MR1 Signal #2 Phase: ZB-MR2
 Signal #1 Info : 30Mx0.32mmx 0.50µ Signal #2 Info : 30M x 0.32mm x 0.25µm

Compound	RT#1	RT#2	Resp#1	Resp#2	nq/ml	nq/ml

System Monitoring Compounds						
1) SA Tetrachlo...	4.391	3.636	3332482	3649591	16.506m	14.853
2) SA Decachlor...	10.082	8.619	1963413	2153490	12.038	13.700m

Target Compounds

(f)=RT Delta > 1/2 Window (#)=Amounts differ by > 25% (m)=manual int.

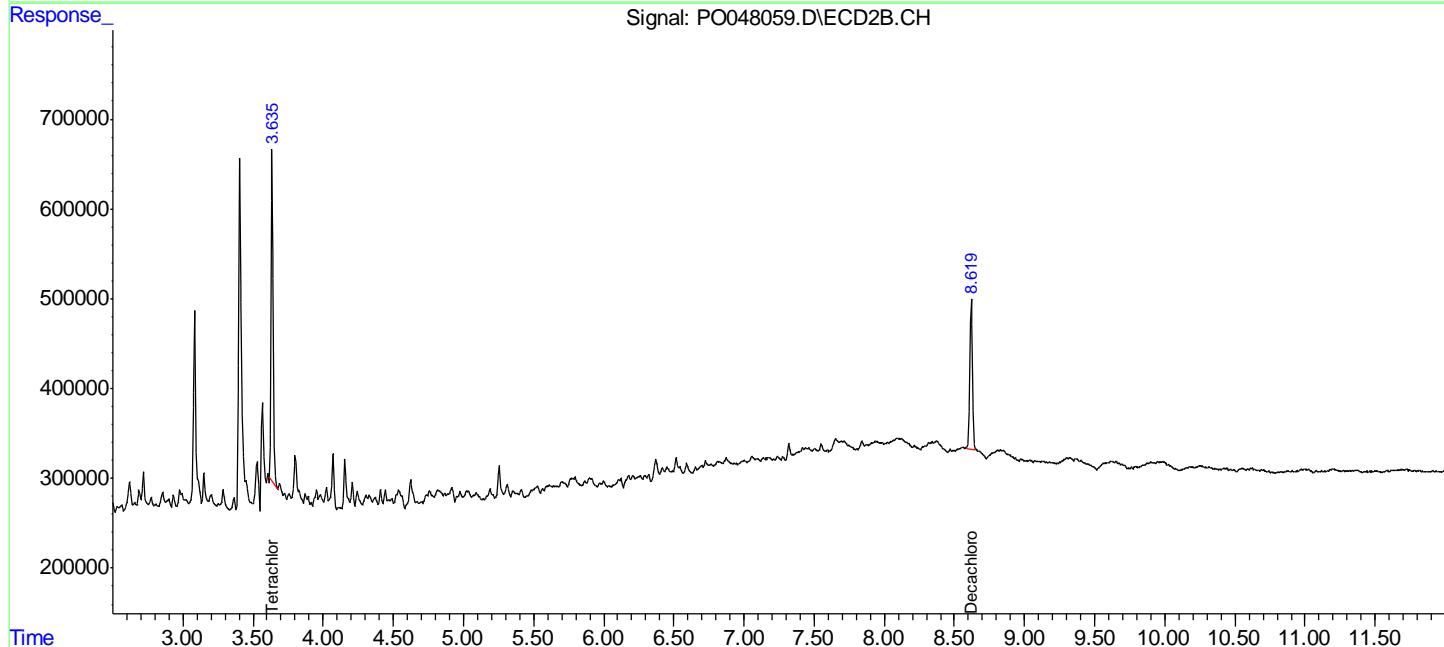
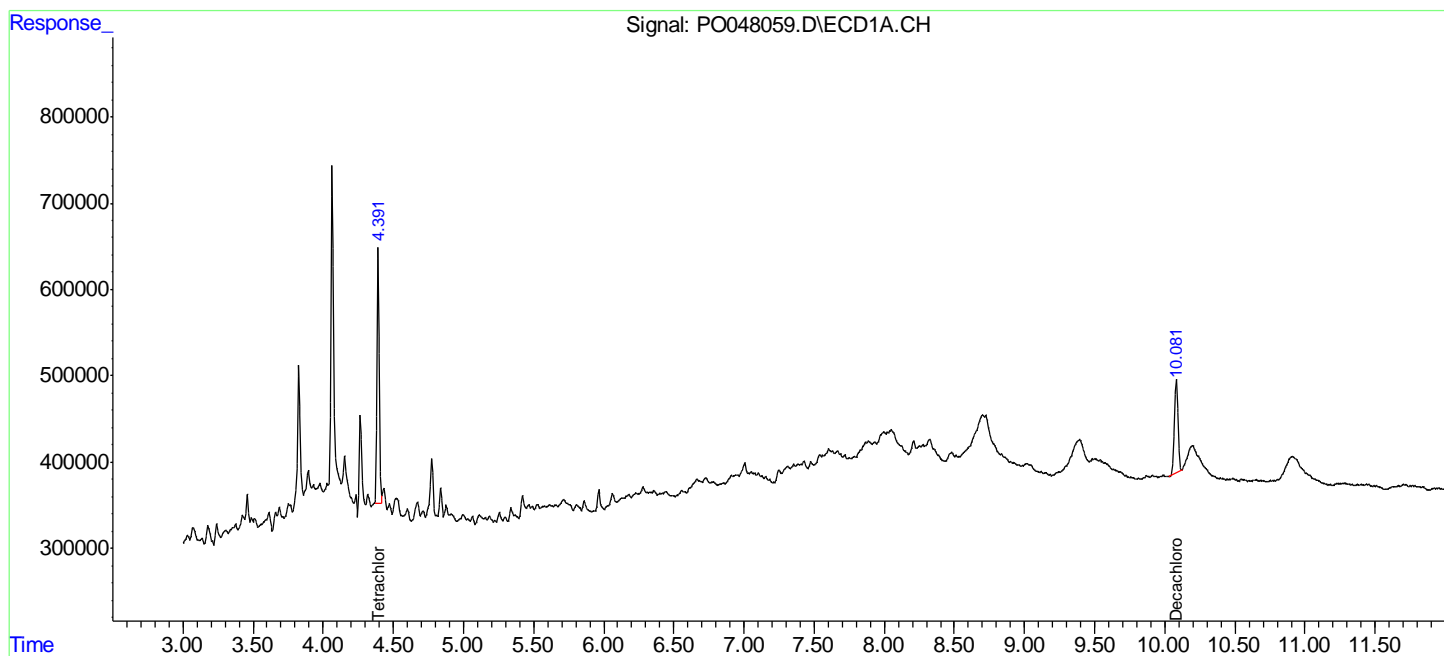
Data Path : Z:\pestpcbsrv\HPCHEM1\ECD O\Data\PO081418\
 Data File : PO048059.D
 Signal(s) : Signal #1: ECD1A.CH Signal #2: ECD2B.CH
 Acq On : 14 Aug 2018 18:35
 Operator : SM/SJ
 Sample : J4462-02
 Misc :
 ALS Vial : 10 Sample Multiplier: 1

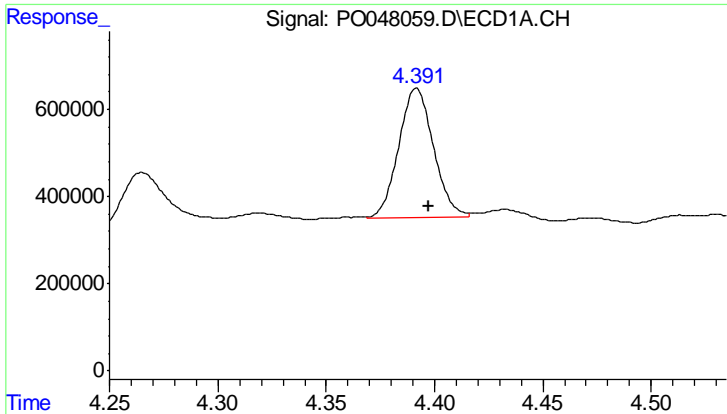
Instrument :
 ECD_O
ClientSampled :
 081318-TIPC-F-D-S

Manual Integrations
APPROVED
 Sohil
 8/16/2018 9:50:00 AM

Integration File signal 1: autoint1.e
 Integration File signal 2: autoint2.e
 Quant Time: Aug 15 09:04:19 2018
 Quant Method : Z:\pestpcbsrv\HPCHEM1\ECD_O\methods\PO072718.M
 Quant Title : GC EXTRACTABLES
 QLast Update : Fri Jul 27 02:33:29 2018
 Response via : Initial Calibration
 Integrator: ChemStation 6890 Scale Mode: Small noise peaks clipped

Volume Inj. : 2 ul
 Signal #1 Phase : ZB-MR1 Signal #2 Phase: ZB-MR2
 Signal #1 Info : 30Mx0.32mmx 0.50µ Signal #2 Info : 30M x 0.32mm x 0.25µm



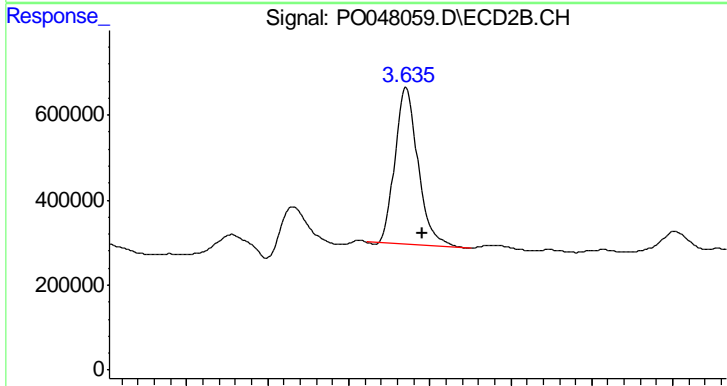


#1 Tetrachloro-m-xylene

R.T.: 4.391 min
 Delta R.T.: -0.006 min
 Response: 3332482
 Conc: 16.51 ng/ml

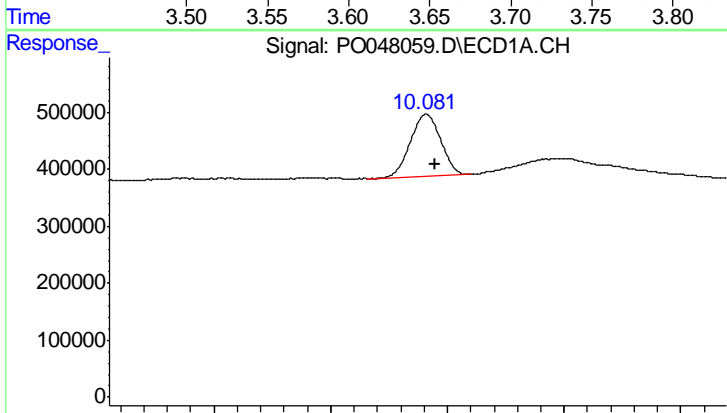
Instrument :
 ECD_O
ClientSampled :
 081318-TIPC-F-D-S

Manual Integrations
APPROVED
 Sohil
 8/16/2018 9:50:00 AM



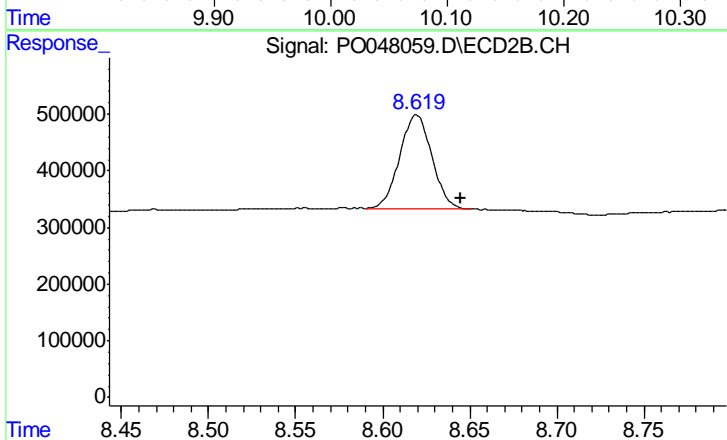
#1 Tetrachloro-m-xylene

R.T.: 3.636 min
 Delta R.T.: -0.010 min
 Response: 3649591
 Conc: 14.85 ng/ml



#2 Decachlorobiphenyl

R.T.: 10.082 min
 Delta R.T.: -0.008 min
 Response: 1963413
 Conc: 12.04 ng/ml



#2 Decachlorobiphenyl

R.T.: 8.619 min
 Delta R.T.: -0.026 min
 Response: 2153490
 Conc: 13.70 ng/ml m