

Data Path : Z:\pestpcbsrv\HPCHEM1\ECD_0\Data\P0081419\
 Data File : P0059286.D
 Signal(s) : Signal #1: ECD1A.CH Signal #2: ECD2B.CH
 Acq On : 14 Aug 2019 16:53
 Operator : SM/SJ
 Sample : PB122258BS
 Misc :
 ALS Vial : 20 Sample Multiplier: 1

Instrument :
 ECD_O
 ClientSampleId :
 PB122258BS

Integration File signal 1: autoint1.e
 Integration File signal 2: autoint2.e
 Quant Time: Aug 14 18:45:55 2019
 Quant Method : Z:\pestpcbsrv\HPCHEM1\ECD_0\methods\P0072819.M
 Quant Title : GC EXTRACTABLES
 QLast Update : Wed Aug 14 09:07:26 2019
 Response via : Initial Calibration
 Integrator: ChemStation 6890 Scale Mode: Small noise peaks clipped

Volume Inj. : 2 µl
 Signal #1 Phase : ZB-MR1 Signal #2 Phase: ZB-MR2
 Signal #1 Info : 30Mx0.32mmx 0.50µ Signal #2 Info : 30M x 0.32mm x 0.25µm

Compound	RT#1	RT#2	Resp#1	Resp#2	ng/ml	ng/ml

System Monitoring Compounds						
1) SA Tetrachlo...	4.147	3.512	955141	800889	22.632	20.047
2) SA Decachlor...	9.643	8.385	1152074	857935	21.273	21.735
Target Compounds						
3) L1 AR-1016-1	5.322	4.582	620160	430040	330.937	294.956
4) L1 AR-1016-2	5.383	4.582	381711	430040	138.727	200.336 #
5) L1 AR-1016-3	5.383	4.754	381711	225437	224.809	198.495
6) L1 AR-1016-4	5.482	4.796	301287	184047	215.328	195.109
7) L1 AR-1016-5	5.810	5.043	72335	64929	50.498	52.726
8) L2 AR-1221-1	4.355	3.717	32654	21664	71.882	53.780 #
9) L2 AR-1221-2	4.444	3.803	50051	35631	145.168	119.382
10) L2 AR-1221-3	4.520	3.875	192560	139609	175.599	145.942
11) L3 AR-1232-1	4.520	3.875	192560	139609	213.290	177.719
12) L3 AR-1232-2	5.078	4.582	2690	430040	5.469	508.634 #
13) L3 AR-1232-3	5.383	4.754	381711	225437	356.494	512.610 #
14) L3 AR-1232-4	5.482	4.865	301287	74541	565.150	188.582 #
15) L3 AR-1232-5	5.612	5.004	294804	192662	722.448	437.619 #
16) L4 AR-1242-1	5.322	4.582	620160	430040	484.291	423.615
17) L4 AR-1242-2	5.383	4.582	381711	430040	201.785	284.859 #
18) L4 AR-1242-3	5.383	4.754	381711	225437	325.402	276.819
19) L4 AR-1242-4	5.482	4.865	301287	74541	313.517	92.137 #
20) L4 AR-1242-5	6.208	5.389	49457	27008	42.106	25.178 #
21) L5 AR-1248-1	5.322	4.582	620160	430040	613.411	537.789
22) L5 AR-1248-2	5.612	4.796	294804	184047	203.933	166.108
23) L5 AR-1248-3	5.810	4.865	72335	74541	44.037	65.493 #
24) L5 AR-1248-4	6.208	5.004	49457	192662	24.420	137.913 #
25) L5 AR-1248-5	6.208	5.389	49457	27008	25.621	19.497
26) L6 AR-1254-1	6.171	5.389	56911	27008	24.102	10.426 #
27) L6 AR-1254-2	6.403	5.493	16362	194898	4.245	85.130 #
28) L6 AR-1254-3	6.775	5.900	463719	365163	114.509	99.246
29) L6 AR-1254-4	7.067	6.143	142928	124555	39.695	53.567 #
30) L6 AR-1254-5	7.451	6.559	125942	523891	34.745	151.872 #
31) L7 AR-1260-1	6.928	6.015	747	510262	0.260	214.392 #
32) L7 AR-1260-2	7.183	6.203	255872	642361	61.507	212.049 #
33) L7 AR-1260-3	7.493	6.352	632197	583526	169.764	216.133 #
34) L7 AR-1260-4	7.719	6.854	628659	47081	184.478	20.837 #
35) L7 AR-1260-5	8.071	7.058	100015	1027986	13.599	190.886 #
36) L8 AR-1262-1	7.493	6.559	632197	523891	125.429	146.677
37) L8 AR-1262-2	8.071	7.058	100015	1027986	12.566	182.074 #
38) L8 AR-1262-3	8.329	7.332	524267	217252	103.133	88.026
39) L8 AR-1262-4	8.375	7.398	464146	710580	122.479	167.346 #
40) L8 AR-1262-5	8.989	0.000	204580	0	89.043	N.D. #
41) L9 AR-1268-1	8.329	7.332	524267	217252	46.937	26.673 #
42) L9 AR-1268-2	8.375	7.398	464146	710580	49.414	93.780 #

Data Path : Z:\pestpcbsrv\HPCHEM1\ECD_0\Data\P0081419\
 Data File : P0059286.D
 Signal(s) : Signal #1: ECD1A.CH Signal #2: ECD2B.CH
 Acq On : 14 Aug 2019 16:53
 Operator : SM/SJ
 Sample : PB122258BS
 Misc :
 ALS Vial : 20 Sample Multiplier: 1

Instrument :
 ECD_0
 ClientSampleId :
 PB122258BS

Integration File signal 1: autoint1.e
 Integration File signal 2: autoint2.e
 Quant Time: Aug 14 18:45:55 2019
 Quant Method : Z:\pestpcbsrv\HPCHEM1\ECD_0\methods\P0072819.M
 Quant Title : GC EXTRACTABLES
 QLast Update : Wed Aug 14 09:07:26 2019
 Response via : Initial Calibration
 Integrator: ChemStation 6890 Scale Mode: Small noise peaks clipped

Volume Inj. : 2 µl
 Signal #1 Phase : ZB-MR1 Signal #2 Phase: ZB-MR2
 Signal #1 Info : 30Mx0.32mmx 0.50µ Signal #2 Info : 30M x 0.32mm x 0.25µm

	Compound	RT#1	RT#2	Resp#1	Resp#2	ng/ml	ng/ml
43)	L9 AR-1268-3	8.594	7.595	71479	15200	8.655	2.378 #
44)	L9 AR-1268-4	8.989	0.000	204580	0	68.438	N.D. #
45)	L9 AR-1268-5	9.354	0.000	104052	0	4.847	N.D. #

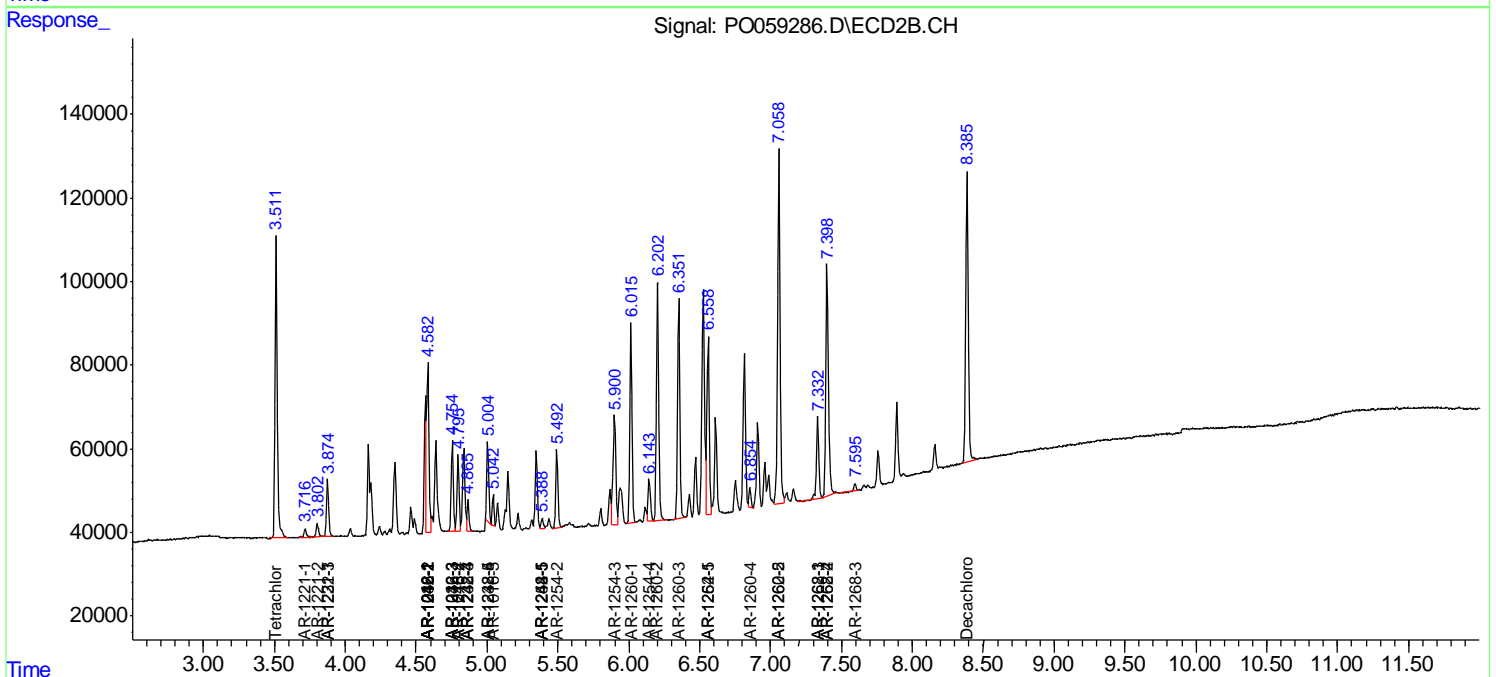
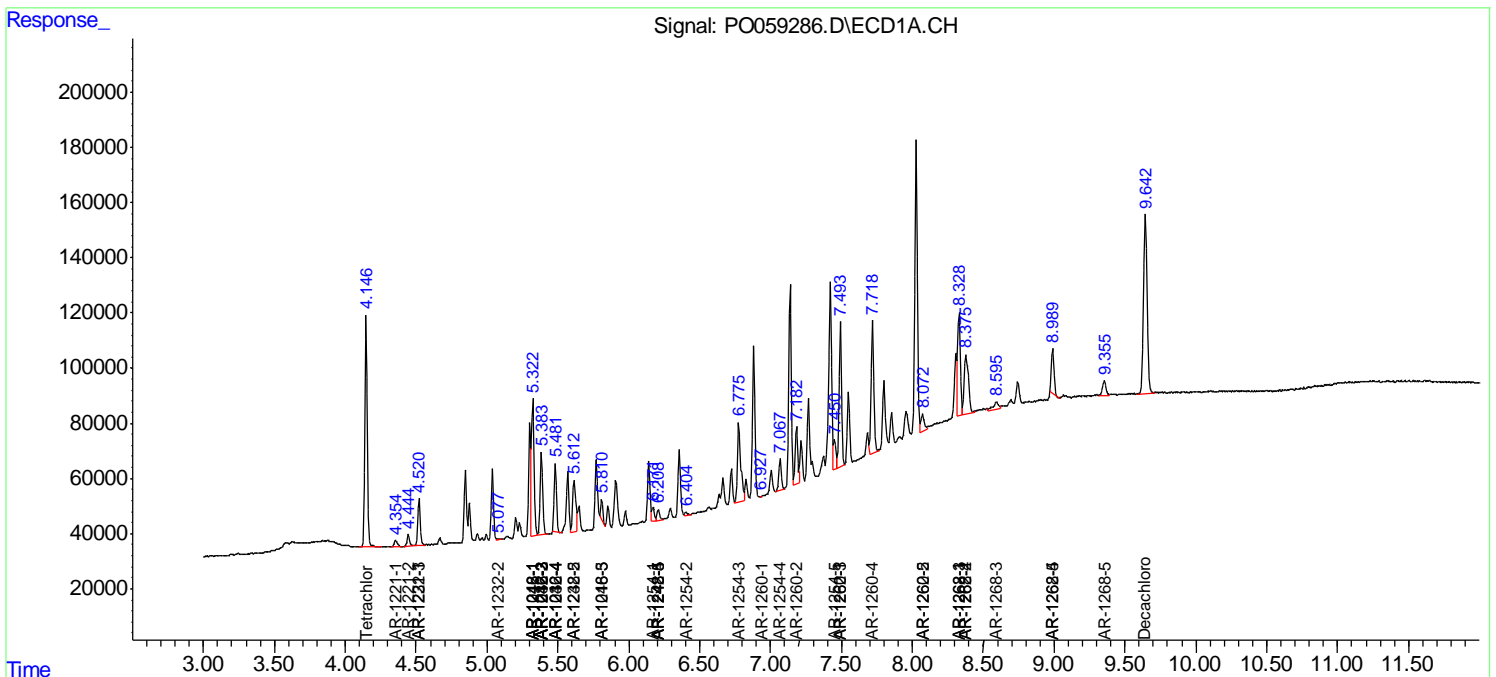
(f)=RT Delta > 1/2 Window (#)=Amounts differ by > 25% (m)=manual int.

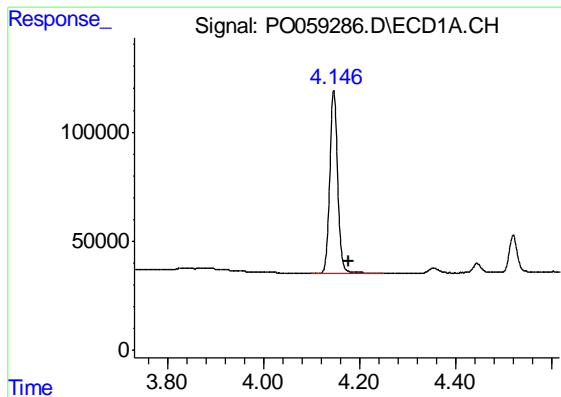
Data Path : Z:\pestpcbsrv\HPCHEM1\ECD_O\Data\PO081419\
 Data File : PO059286.D
 Signal(s) : Signal #1: ECD1A.CH Signal #2: ECD2B.CH
 Acq On : 14 Aug 2019 16:53
 Operator : SM/SJ
 Sample : PB122258BS
 Misc :
 ALS Vial : 20 Sample Multiplier: 1

Instrument :
 ECD_O
 ClientSampled :
 PB122258BS

Integration File signal 1: autoint1.e
 Integration File signal 2: autoint2.e
 Quant Time: Aug 14 18:45:55 2019
 Quant Method : Z:\pestpcbsrv\HPCHEM1\ECD_O\methods\PO072819.M
 Quant Title : GC EXTRACTABLES
 QLast Update : Wed Aug 14 09:07:26 2019
 Response via : Initial Calibration
 Integrator: ChemStation 6890 Scale Mode: Small noise peaks clipped

Volume Inj. : 2 µl
 Signal #1 Phase : ZB-MR1 Signal #2 Phase: ZB-MR2
 Signal #1 Info : 30Mx0.32mmx 0.50µm Signal #2 Info : 30M x 0.32mm x 0.25µm

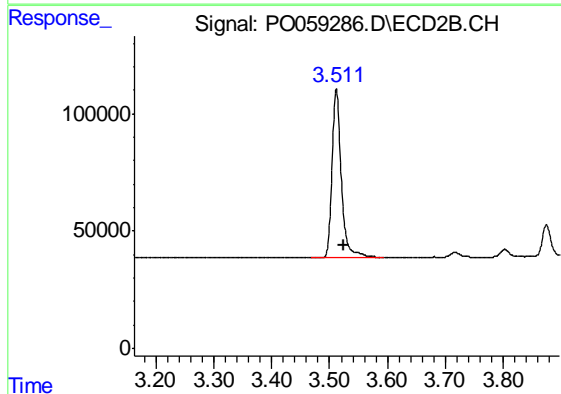




#1 Tetrachloro-m-xylene

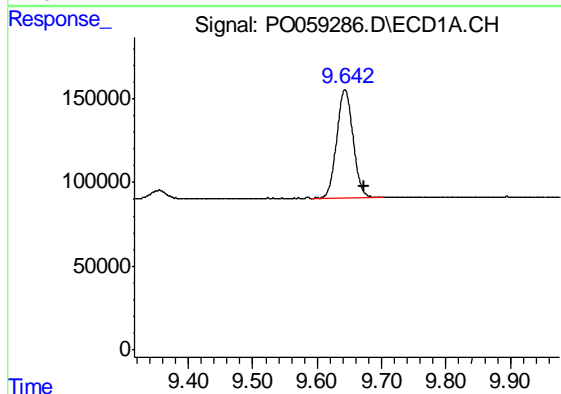
R.T.: 4.147 min
 Delta R.T.: -0.032 min
 Response: 955141
 Conc: 22.63 ng/ml

Instrument :
 ECD_O
 ClientSampleId :
 PB122258BS



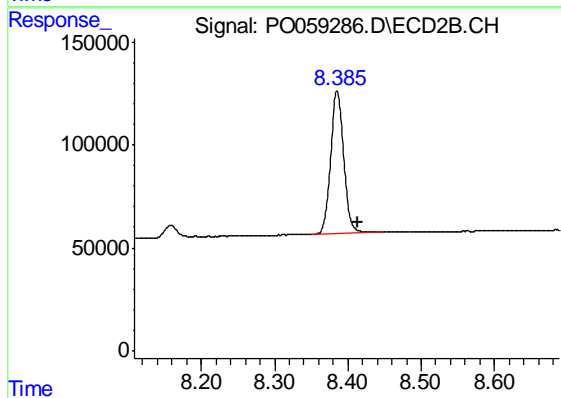
#1 Tetrachloro-m-xylene

R.T.: 3.512 min
 Delta R.T.: -0.013 min
 Response: 800889
 Conc: 20.05 ng/ml



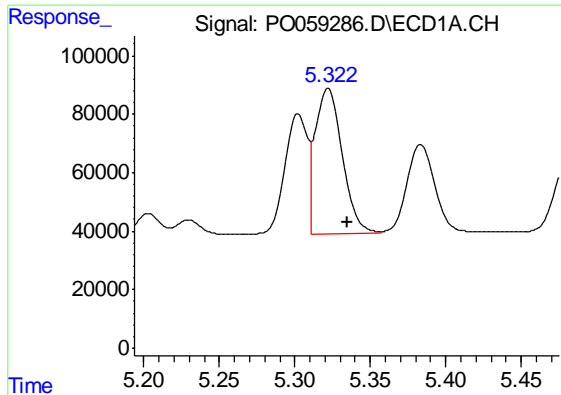
#2 Decachlorobiphenyl

R.T.: 9.643 min
 Delta R.T.: -0.030 min
 Response: 1152074
 Conc: 21.27 ng/ml



#2 Decachlorobiphenyl

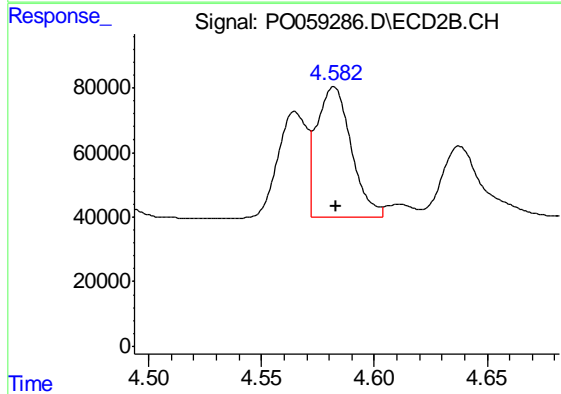
R.T.: 8.385 min
 Delta R.T.: -0.029 min
 Response: 857935
 Conc: 21.73 ng/ml



#3 AR-1016-1

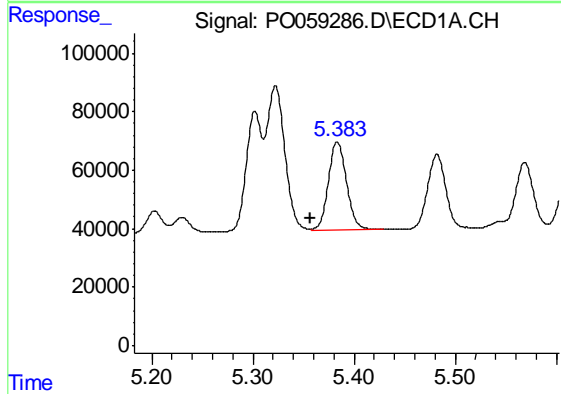
R.T.: 5.322 min
 Delta R.T.: -0.013 min
 Response: 620160
 Conc: 330.94 ng/ml

Instrument :
 ECD_O
 ClientSampleId :
 PB122258BS



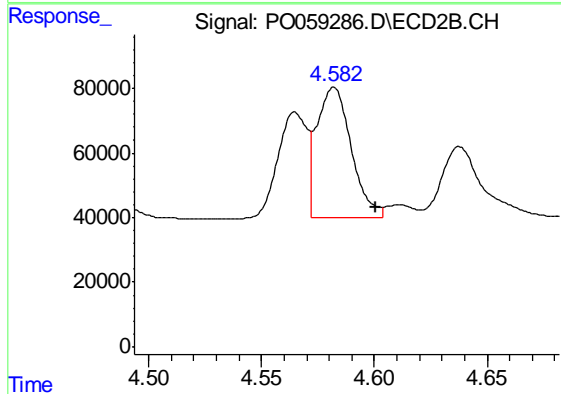
#3 AR-1016-1

R.T.: 4.582 min
 Delta R.T.: -0.001 min
 Response: 430040
 Conc: 294.96 ng/ml



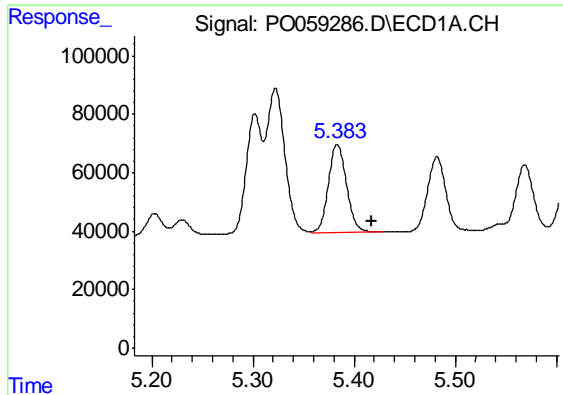
#4 AR-1016-2

R.T.: 5.383 min
 Delta R.T.: 0.027 min
 Response: 381711
 Conc: 138.73 ng/ml



#4 AR-1016-2

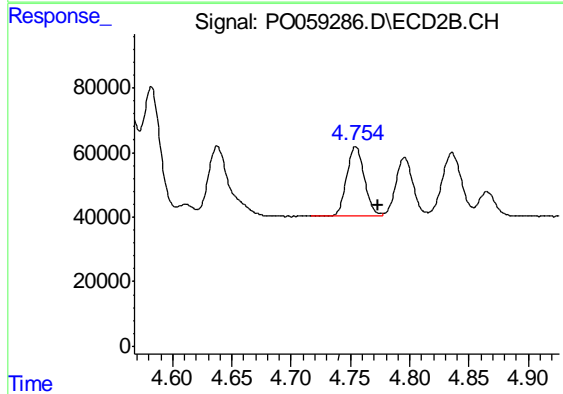
R.T.: 4.582 min
 Delta R.T.: -0.018 min
 Response: 430040
 Conc: 200.34 ng/ml



#5 AR-1016-3

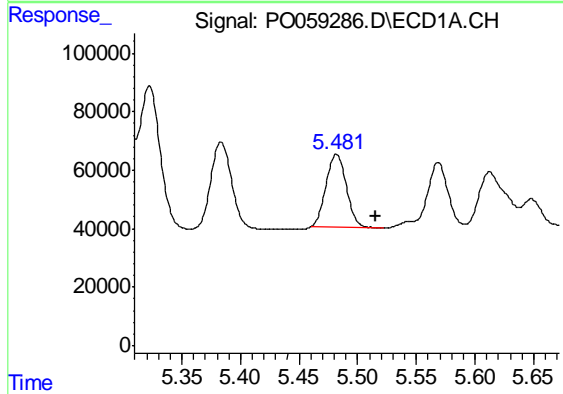
R.T.: 5.383 min
 Delta R.T.: -0.034 min
 Response: 381711
 Conc: 224.81 ng/ml

Instrument :
 ECD_O
 ClientSampleId :
 PB122258BS



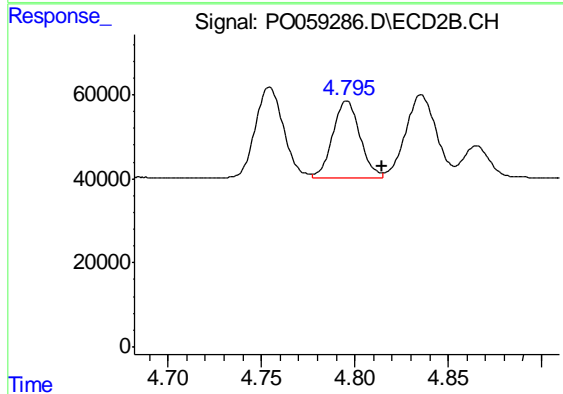
#5 AR-1016-3

R.T.: 4.754 min
 Delta R.T.: -0.019 min
 Response: 225437
 Conc: 198.50 ng/ml



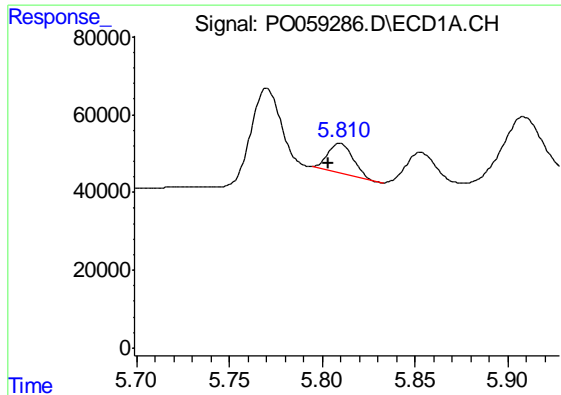
#6 AR-1016-4

R.T.: 5.482 min
 Delta R.T.: -0.033 min
 Response: 301287
 Conc: 215.33 ng/ml



#6 AR-1016-4

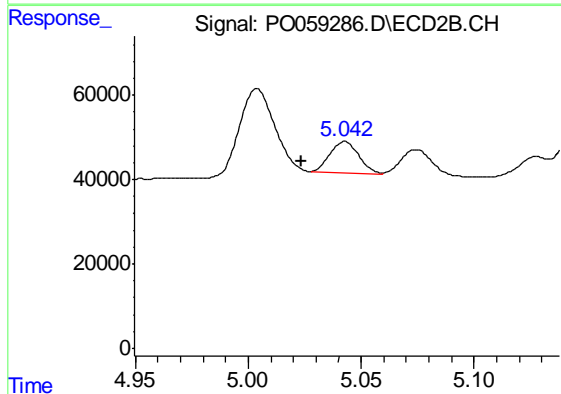
R.T.: 4.796 min
 Delta R.T.: -0.019 min
 Response: 184047
 Conc: 195.11 ng/ml



#7 AR-1016-5

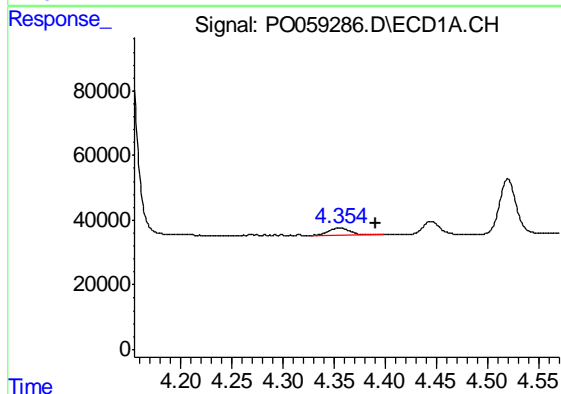
R.T.: 5.810 min
 Delta R.T.: 0.006 min
 Response: 72335
 Conc: 50.50 ng/ml

Instrument :
 ECD_O
 ClientSampleId :
 PB122258BS



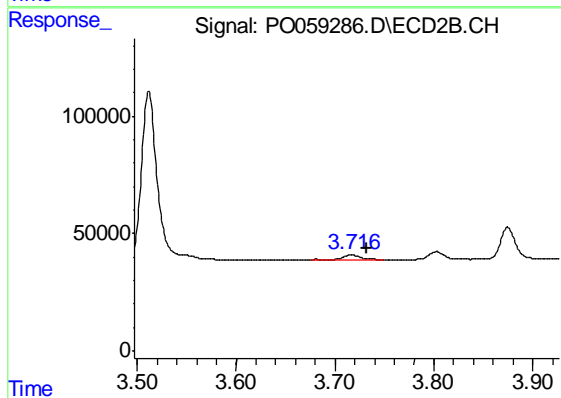
#7 AR-1016-5

R.T.: 5.043 min
 Delta R.T.: 0.019 min
 Response: 64929
 Conc: 52.73 ng/ml



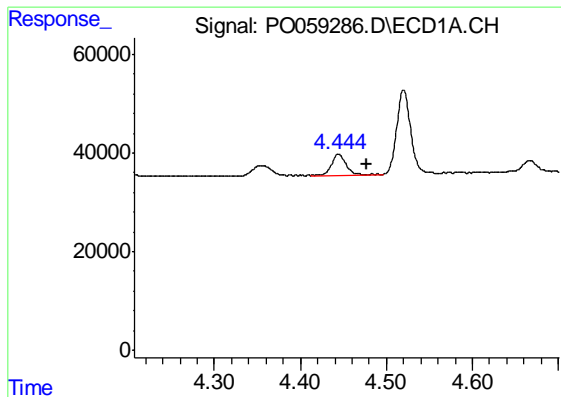
#8 AR-1221-1

R.T.: 4.355 min
 Delta R.T.: -0.036 min
 Response: 32654
 Conc: 71.88 ng/ml



#8 AR-1221-1

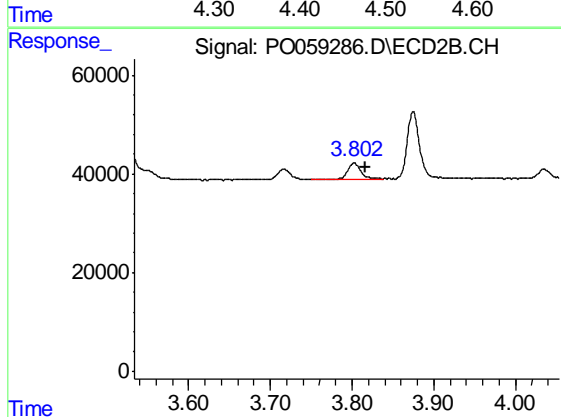
R.T.: 3.717 min
 Delta R.T.: -0.015 min
 Response: 21664
 Conc: 53.78 ng/ml



#9 AR-1221-2

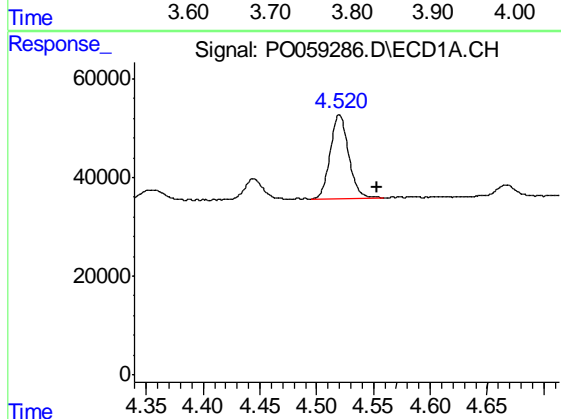
R.T.: 4.444 min
Delta R.T.: -0.033 min
Response: 50051
Conc: 145.17 ng/ml

Instrument :
ECD_O
ClientSampleId :
PB122258BS



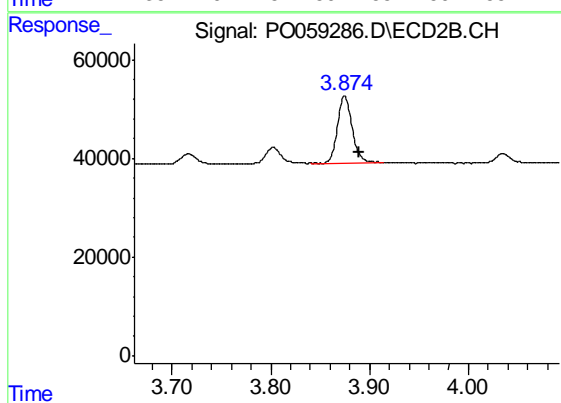
#9 AR-1221-2

R.T.: 3.803 min
Delta R.T.: -0.014 min
Response: 35631
Conc: 119.38 ng/ml



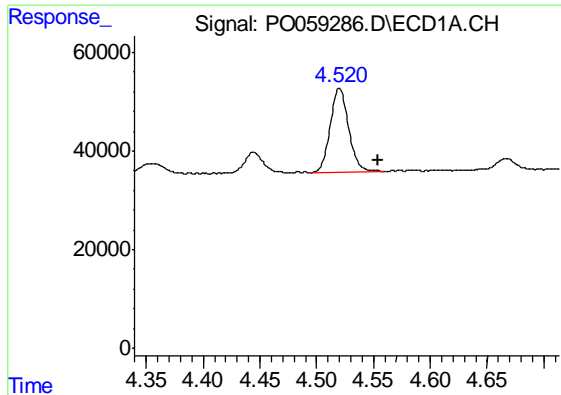
#10 AR-1221-3

R.T.: 4.520 min
Delta R.T.: -0.033 min
Response: 192560
Conc: 175.60 ng/ml



#10 AR-1221-3

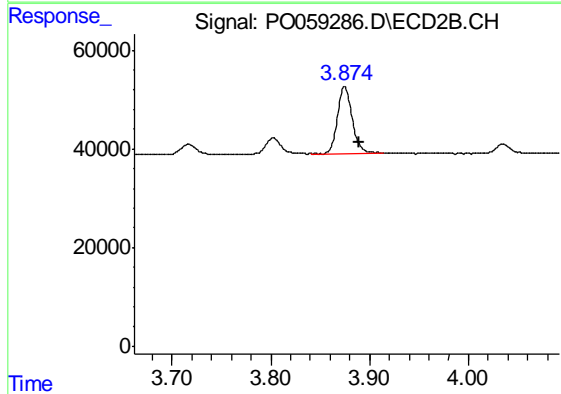
R.T.: 3.875 min
Delta R.T.: -0.015 min
Response: 139609
Conc: 145.94 ng/ml



#11 AR-1232-1

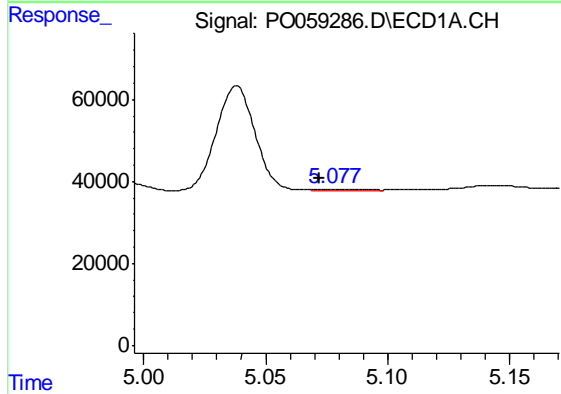
R.T.: 4.520 min
 Delta R.T.: -0.034 min
 Response: 192560
 Conc: 213.29 ng/ml

Instrument :
 ECD_O
 ClientSampleId :
 PB122258BS



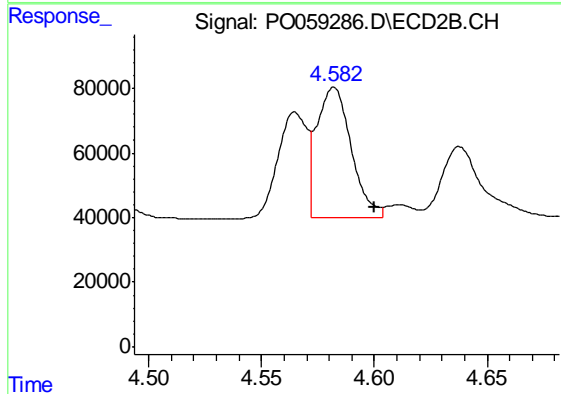
#11 AR-1232-1

R.T.: 3.875 min
 Delta R.T.: -0.015 min
 Response: 139609
 Conc: 177.72 ng/ml



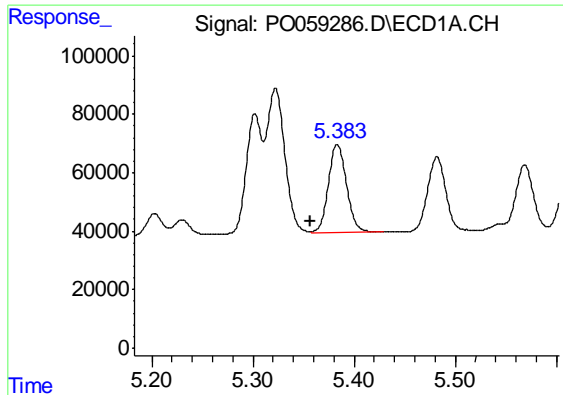
#12 AR-1232-2

R.T.: 5.078 min
 Delta R.T.: 0.006 min
 Response: 2690
 Conc: 5.47 ng/ml



#12 AR-1232-2

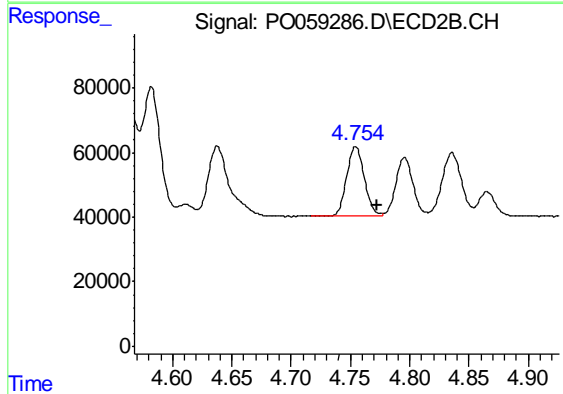
R.T.: 4.582 min
 Delta R.T.: -0.018 min
 Response: 430040
 Conc: 508.63 ng/ml



#13 AR-1232-3

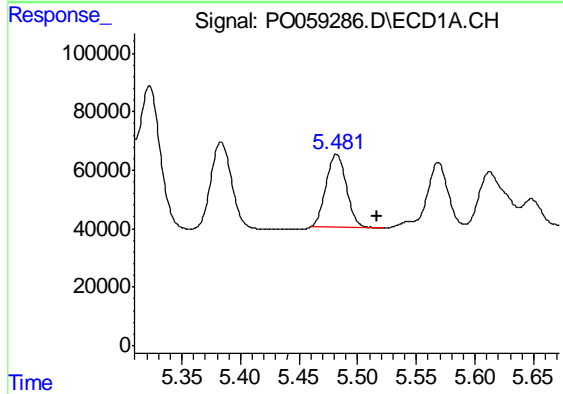
R.T.: 5.383 min
 Delta R.T.: 0.026 min
 Response: 381711
 Conc: 356.49 ng/ml

Instrument :
 ECD_O
 ClientSampleId :
 PB122258BS



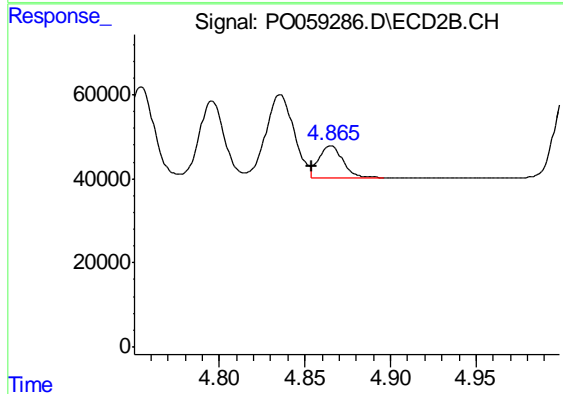
#13 AR-1232-3

R.T.: 4.754 min
 Delta R.T.: -0.018 min
 Response: 225437
 Conc: 512.61 ng/ml



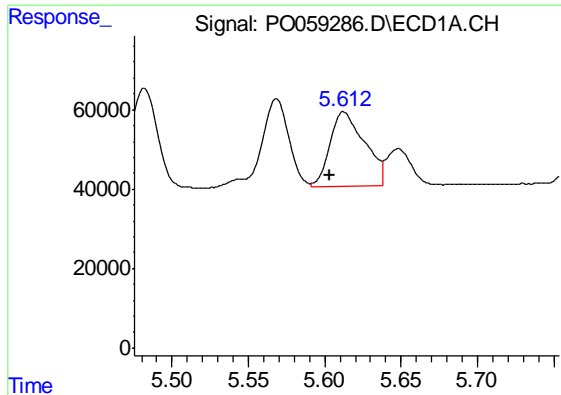
#14 AR-1232-4

R.T.: 5.482 min
 Delta R.T.: -0.034 min
 Response: 301287
 Conc: 565.15 ng/ml



#14 AR-1232-4

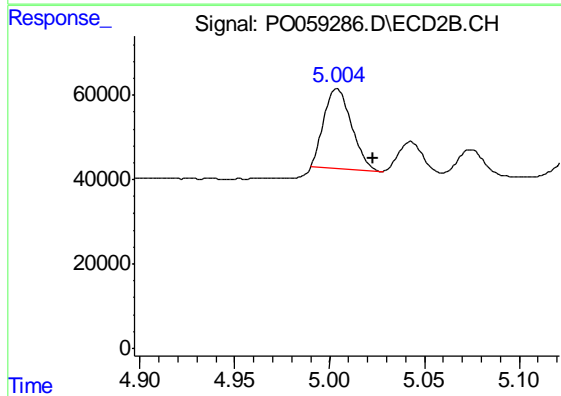
R.T.: 4.865 min
 Delta R.T.: 0.011 min
 Response: 74541
 Conc: 188.58 ng/ml



#15 AR-1232-5

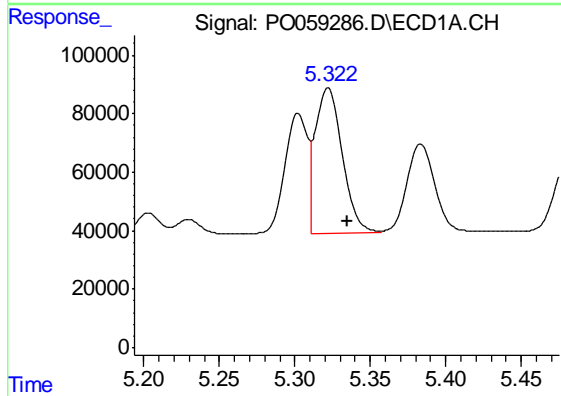
R.T.: 5.612 min
 Delta R.T.: 0.009 min
 Response: 294804
 Conc: 722.45 ng/ml

Instrument :
 ECD_O
 ClientSampleId :
 PB122258BS



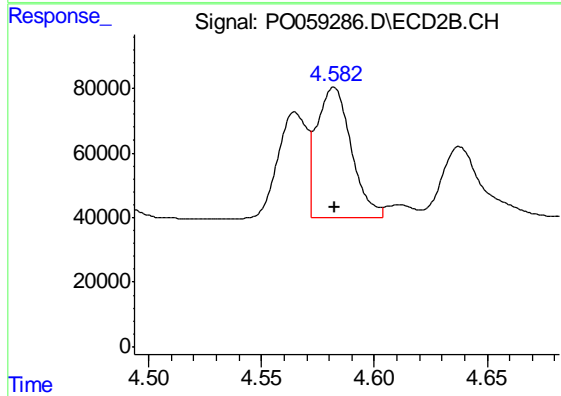
#15 AR-1232-5

R.T.: 5.004 min
 Delta R.T.: -0.019 min
 Response: 192662
 Conc: 437.62 ng/ml



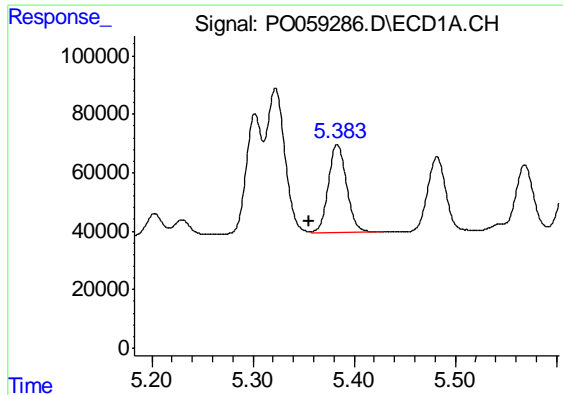
#16 AR-1242-1

R.T.: 5.322 min
 Delta R.T.: -0.013 min
 Response: 620160
 Conc: 484.29 ng/ml



#16 AR-1242-1

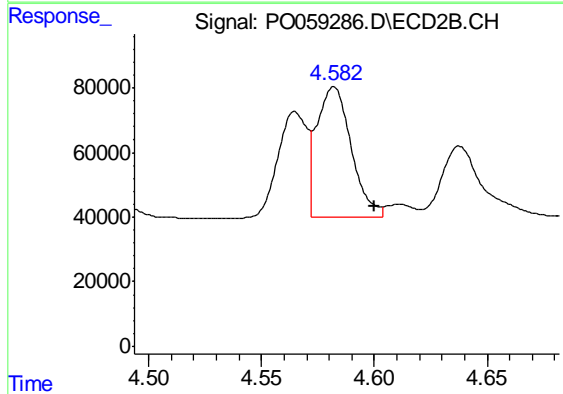
R.T.: 4.582 min
 Delta R.T.: 0.000 min
 Response: 430040
 Conc: 423.61 ng/ml



#17 AR-1242-2

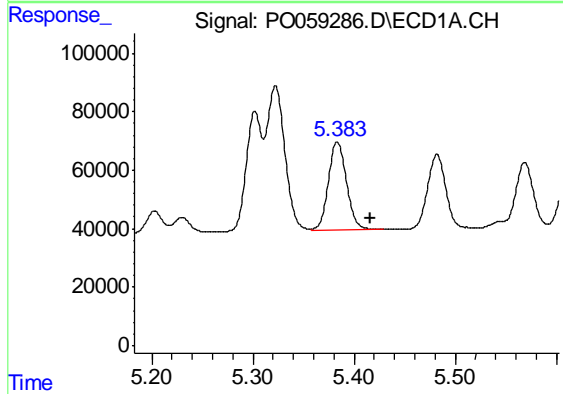
R.T.: 5.383 min
 Delta R.T.: 0.028 min
 Response: 381711
 Conc: 201.79 ng/ml

Instrument :
 ECD_O
 ClientSampleId :
 PB122258BS



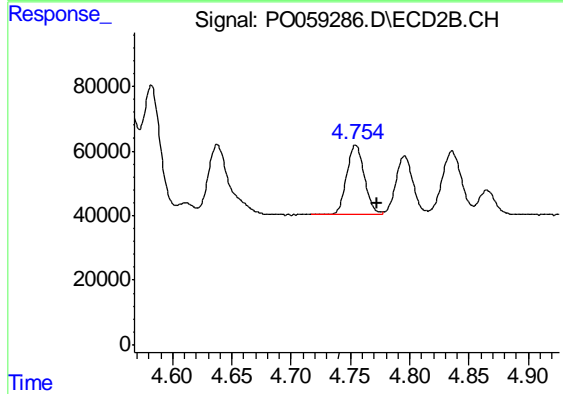
#17 AR-1242-2

R.T.: 4.582 min
 Delta R.T.: -0.018 min
 Response: 430040
 Conc: 284.86 ng/ml



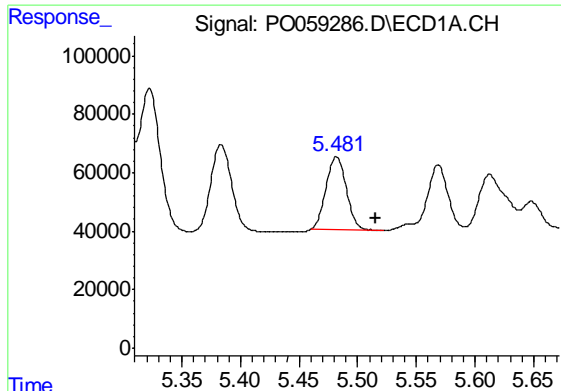
#18 AR-1242-3

R.T.: 5.383 min
 Delta R.T.: -0.033 min
 Response: 381711
 Conc: 325.40 ng/ml



#18 AR-1242-3

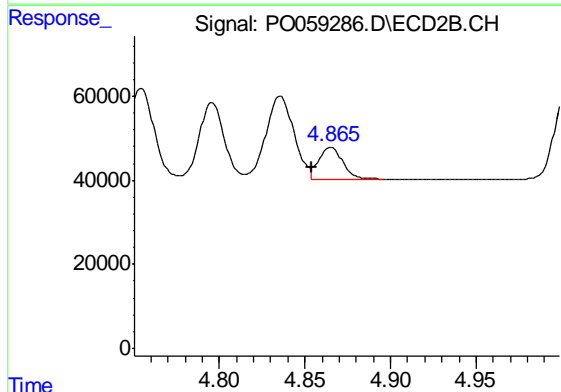
R.T.: 4.754 min
 Delta R.T.: -0.018 min
 Response: 225437
 Conc: 276.82 ng/ml



#19 AR-1242-4

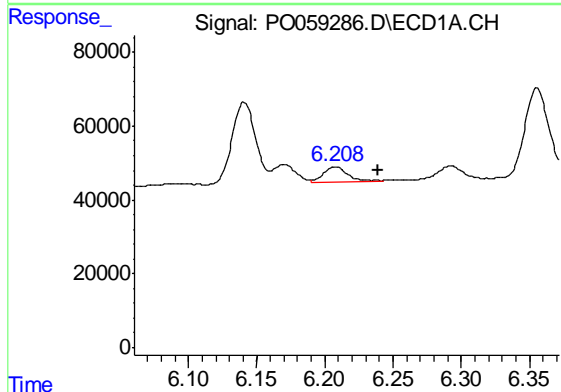
R.T.: 5.482 min
 Delta R.T.: -0.033 min
 Response: 301287
 Conc: 313.52 ng/ml

Instrument :
 ECD_O
 ClientSampleId :
 PB122258BS



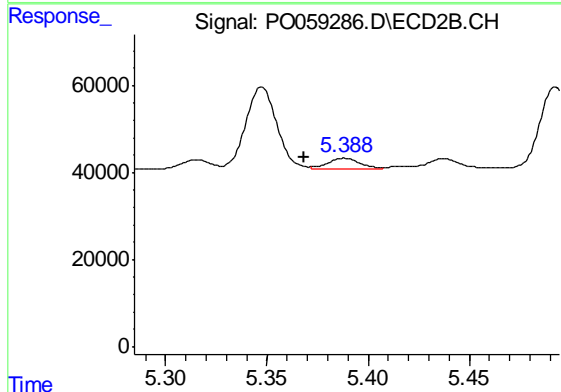
#19 AR-1242-4

R.T.: 4.865 min
 Delta R.T.: 0.011 min
 Response: 74541
 Conc: 92.14 ng/ml



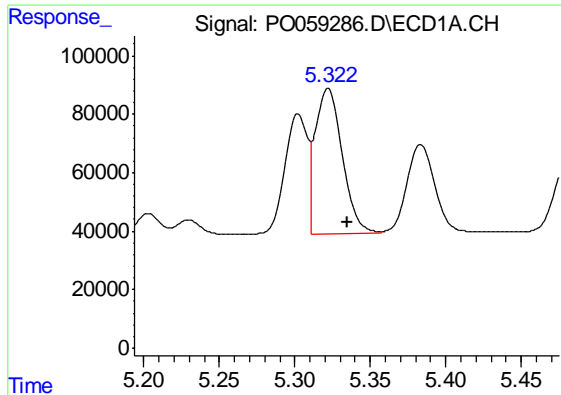
#20 AR-1242-5

R.T.: 6.208 min
 Delta R.T.: -0.032 min
 Response: 49457
 Conc: 42.11 ng/ml



#20 AR-1242-5

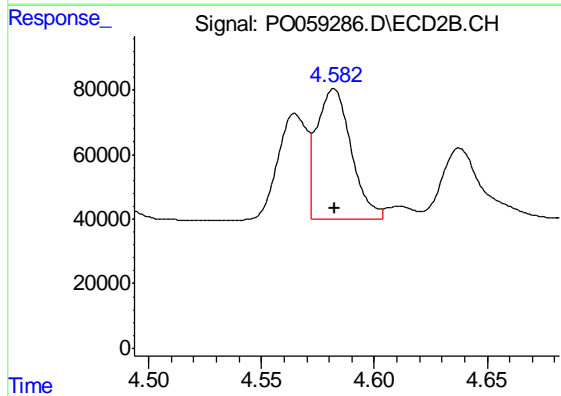
R.T.: 5.389 min
 Delta R.T.: 0.020 min
 Response: 27008
 Conc: 25.18 ng/ml



#21 AR-1248-1

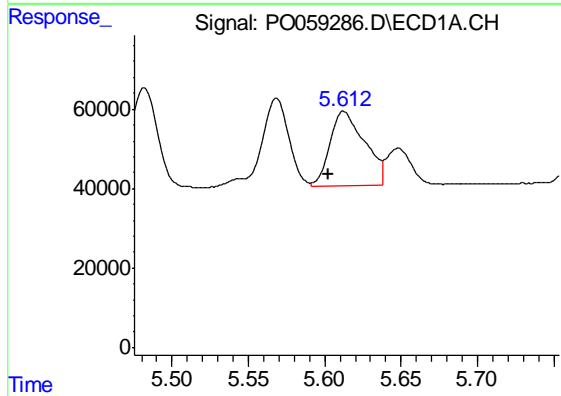
R.T.: 5.322 min
 Delta R.T.: -0.013 min
 Response: 620160
 Conc: 613.41 ng/ml

Instrument :
 ECD_O
 ClientSampleId :
 PB122258BS



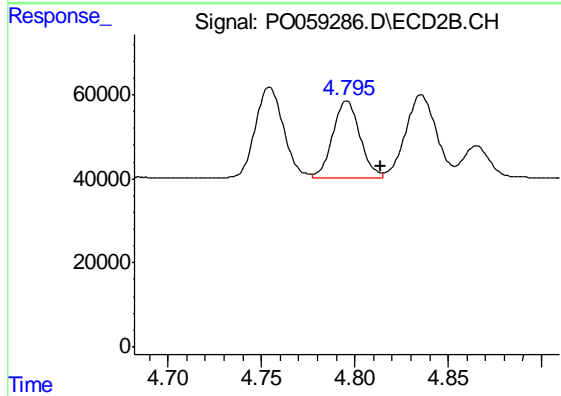
#21 AR-1248-1

R.T.: 4.582 min
 Delta R.T.: 0.000 min
 Response: 430040
 Conc: 537.79 ng/ml



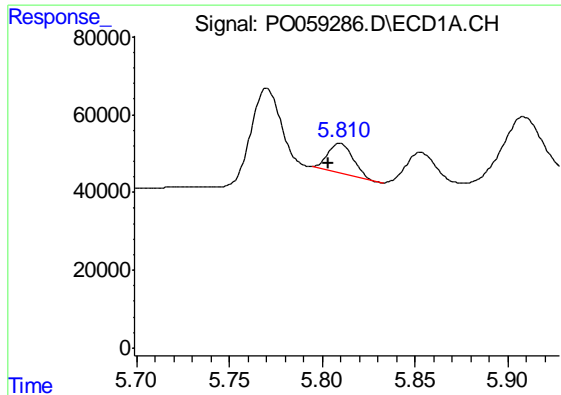
#22 AR-1248-2

R.T.: 5.612 min
 Delta R.T.: 0.010 min
 Response: 294804
 Conc: 203.93 ng/ml



#22 AR-1248-2

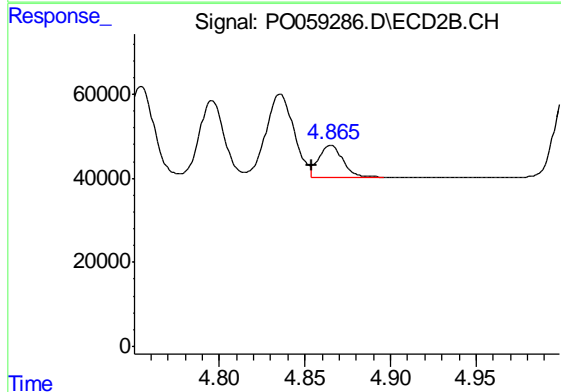
R.T.: 4.796 min
 Delta R.T.: -0.018 min
 Response: 184047
 Conc: 166.11 ng/ml



#23 AR-1248-3

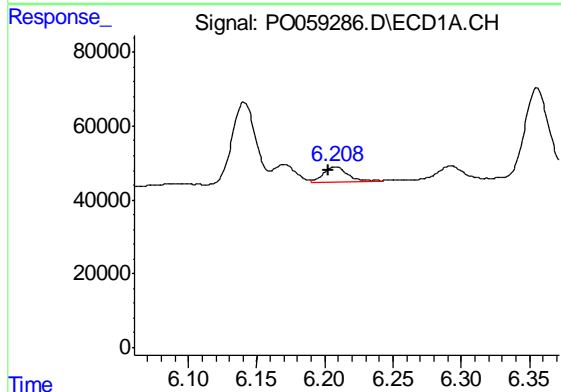
R.T.: 5.810 min
 Delta R.T.: 0.006 min
 Response: 72335
 Conc: 44.04 ng/ml

Instrument :
 ECD_O
 ClientSampleId :
 PB122258BS



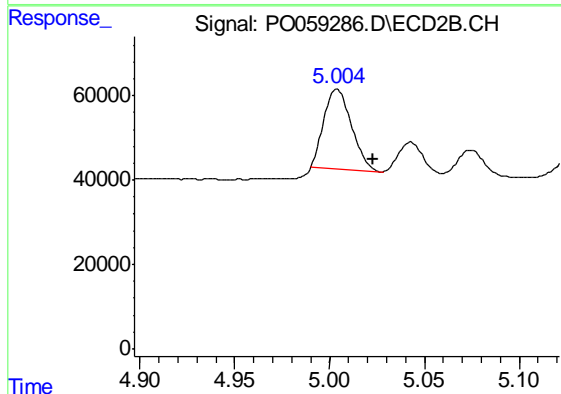
#23 AR-1248-3

R.T.: 4.865 min
 Delta R.T.: 0.012 min
 Response: 74541
 Conc: 65.49 ng/ml



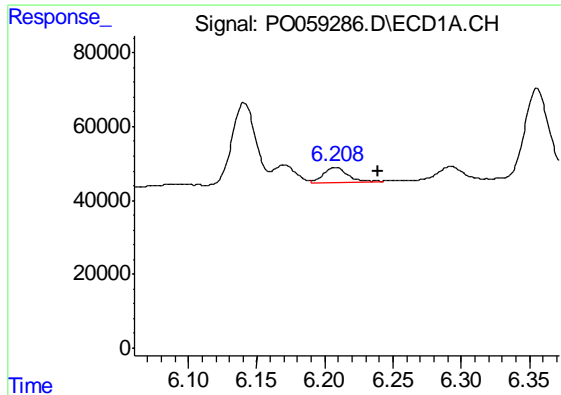
#24 AR-1248-4

R.T.: 6.208 min
 Delta R.T.: 0.005 min
 Response: 49457
 Conc: 24.42 ng/ml



#24 AR-1248-4

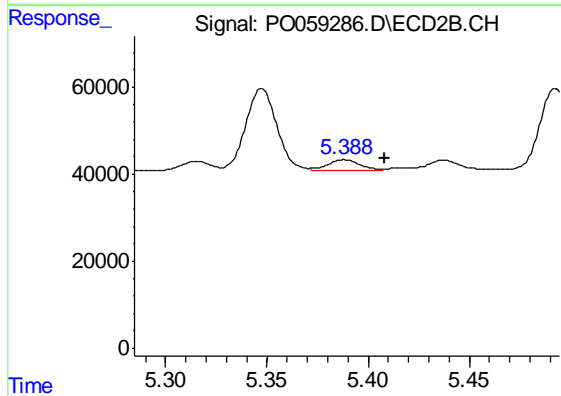
R.T.: 5.004 min
 Delta R.T.: -0.019 min
 Response: 192662
 Conc: 137.91 ng/ml



#25 AR-1248-5

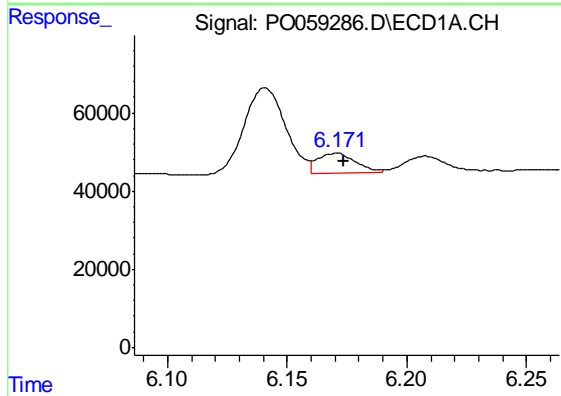
R.T.: 6.208 min
 Delta R.T.: -0.032 min
 Response: 49457
 Conc: 25.62 ng/ml

Instrument :
 ECD_O
 ClientSampleId :
 PB122258BS



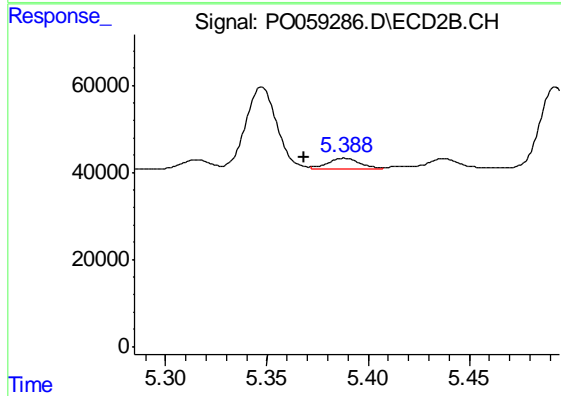
#25 AR-1248-5

R.T.: 5.389 min
 Delta R.T.: -0.020 min
 Response: 27008
 Conc: 19.50 ng/ml



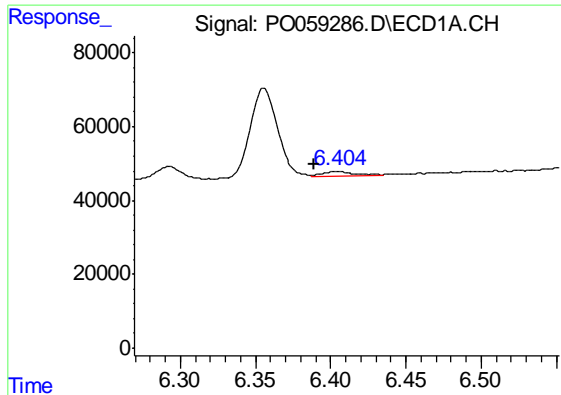
#26 AR-1254-1

R.T.: 6.171 min
 Delta R.T.: -0.003 min
 Response: 56911
 Conc: 24.10 ng/ml



#26 AR-1254-1

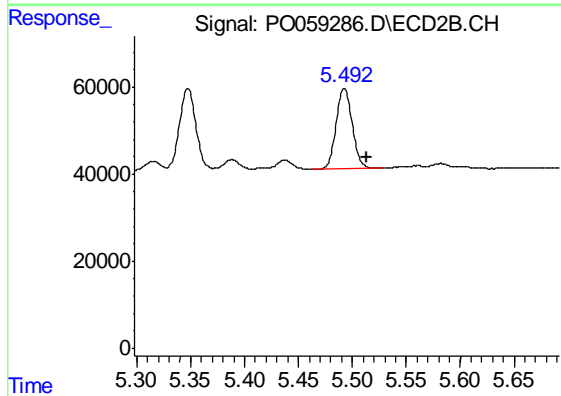
R.T.: 5.389 min
 Delta R.T.: 0.020 min
 Response: 27008
 Conc: 10.43 ng/ml



#27 AR-1254-2

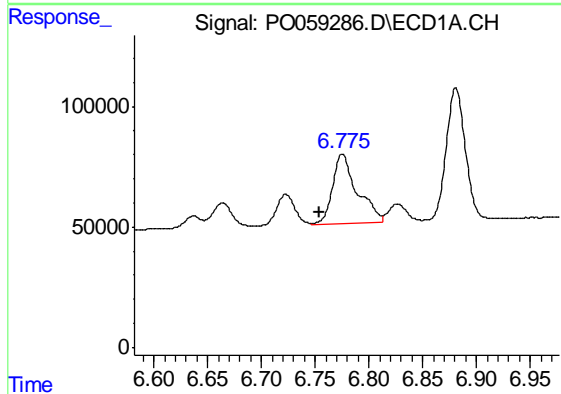
R.T.: 6.403 min
 Delta R.T.: 0.015 min
 Response: 16362
 Conc: 4.25 ng/ml

Instrument :
 ECD_O
 ClientSampleId :
 PB122258BS



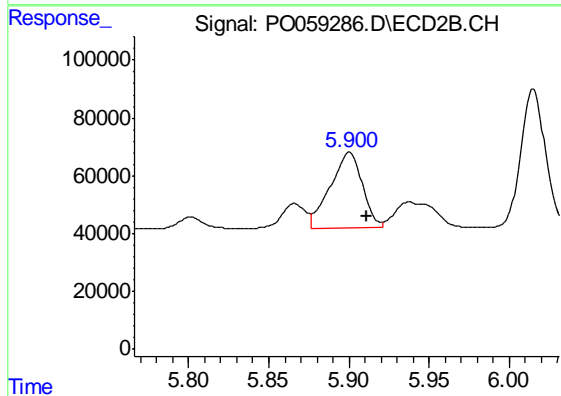
#27 AR-1254-2

R.T.: 5.493 min
 Delta R.T.: -0.021 min
 Response: 194898
 Conc: 85.13 ng/ml



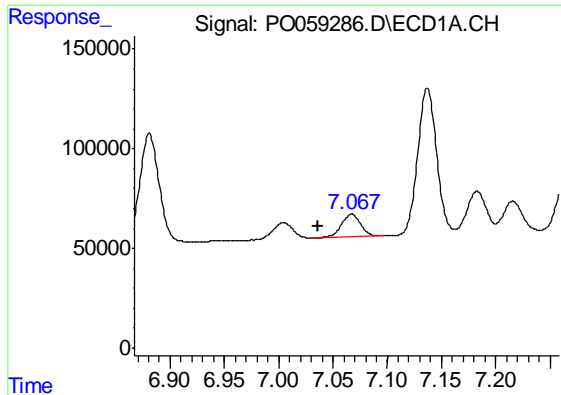
#28 AR-1254-3

R.T.: 6.775 min
 Delta R.T.: 0.021 min
 Response: 463719
 Conc: 114.51 ng/ml



#28 AR-1254-3

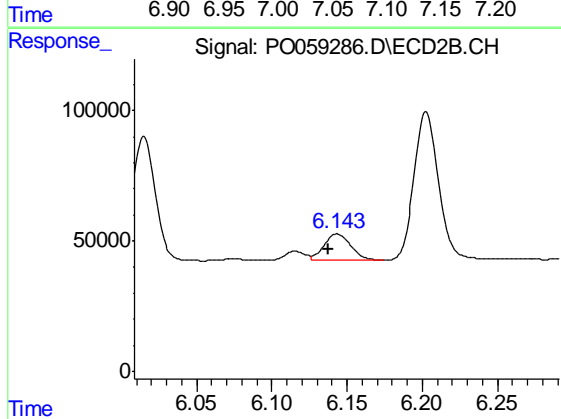
R.T.: 5.900 min
 Delta R.T.: -0.011 min
 Response: 365163
 Conc: 99.25 ng/ml



#29 AR-1254-4

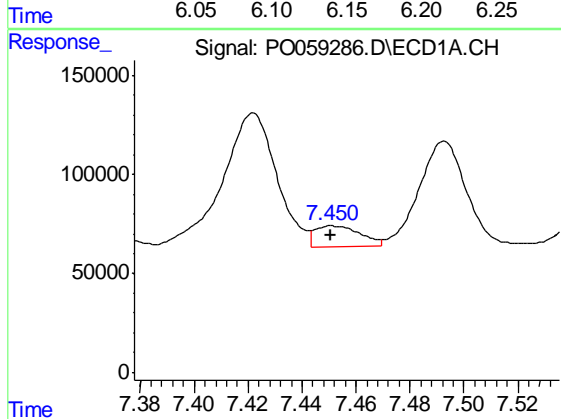
R.T.: 7.067 min
 Delta R.T.: 0.031 min
 Response: 142928
 Conc: 39.70 ng/ml

Instrument :
 ECD_O
 ClientSampleId :
 PB122258BS



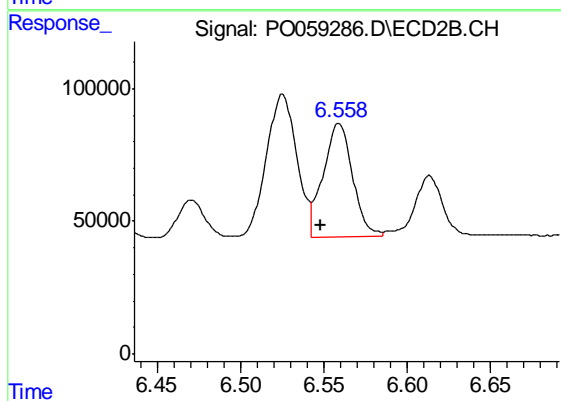
#29 AR-1254-4

R.T.: 6.143 min
 Delta R.T.: 0.005 min
 Response: 124555
 Conc: 53.57 ng/ml



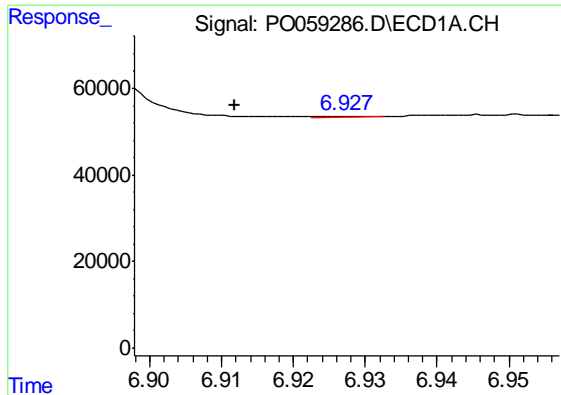
#30 AR-1254-5

R.T.: 7.451 min
 Delta R.T.: 0.000 min
 Response: 125942
 Conc: 34.74 ng/ml



#30 AR-1254-5

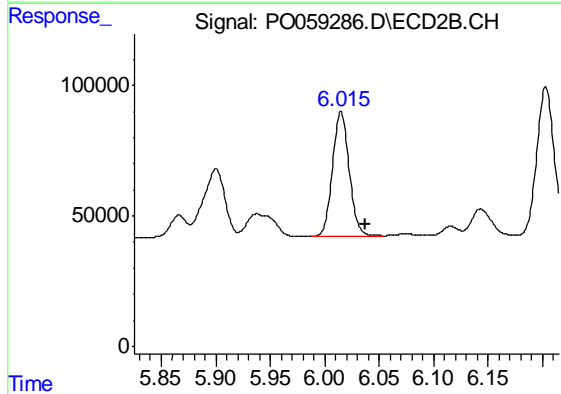
R.T.: 6.559 min
 Delta R.T.: 0.011 min
 Response: 523891
 Conc: 151.87 ng/ml



#31 AR-1260-1

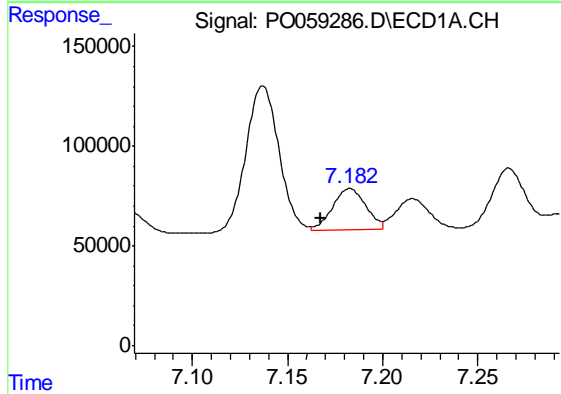
R.T.: 6.928 min
 Delta R.T.: 0.016 min
 Response: 747
 Conc: 0.26 ng/ml

Instrument :
 ECD_O
 ClientSampleId :
 PB122258BS



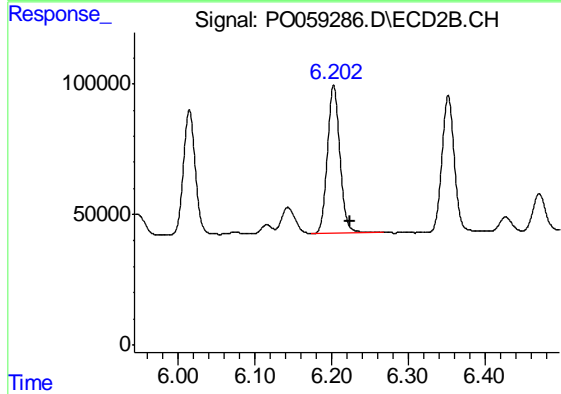
#31 AR-1260-1

R.T.: 6.015 min
 Delta R.T.: -0.022 min
 Response: 510262
 Conc: 214.39 ng/ml



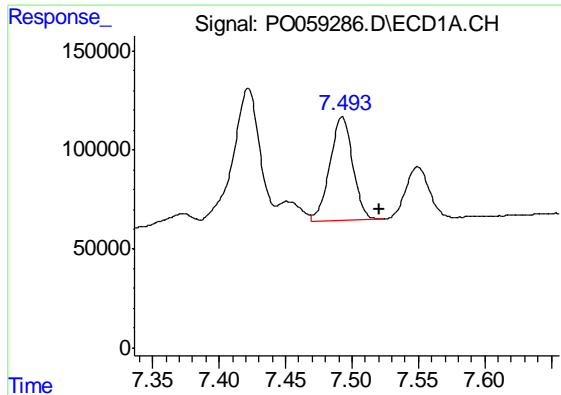
#32 AR-1260-2

R.T.: 7.183 min
 Delta R.T.: 0.015 min
 Response: 255872
 Conc: 61.51 ng/ml



#32 AR-1260-2

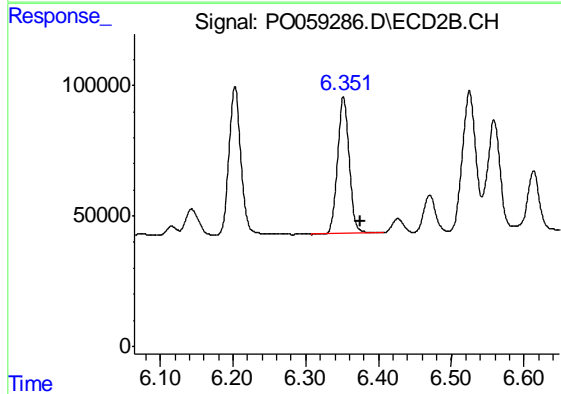
R.T.: 6.203 min
 Delta R.T.: -0.022 min
 Response: 642361
 Conc: 212.05 ng/ml



#33 AR-1260-3

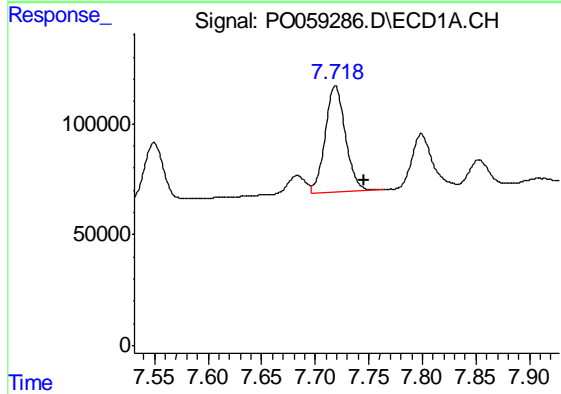
R.T.: 7.493 min
 Delta R.T.: -0.028 min
 Response: 632197
 Conc: 169.76 ng/ml

Instrument :
 ECD_O
 ClientSampleId :
 PB122258BS



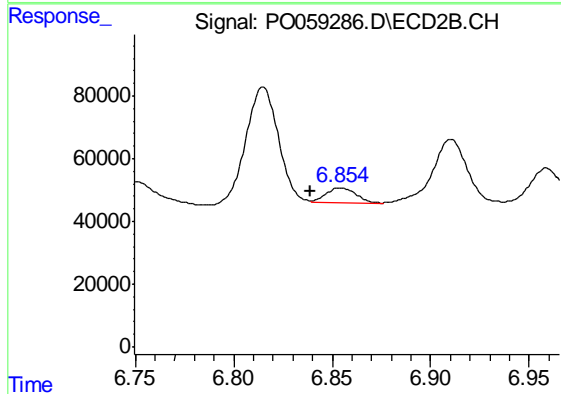
#33 AR-1260-3

R.T.: 6.352 min
 Delta R.T.: -0.023 min
 Response: 583526
 Conc: 216.13 ng/ml



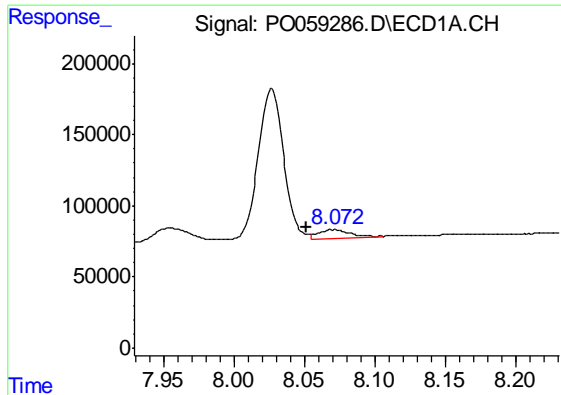
#34 AR-1260-4

R.T.: 7.719 min
 Delta R.T.: -0.027 min
 Response: 628659
 Conc: 184.48 ng/ml



#34 AR-1260-4

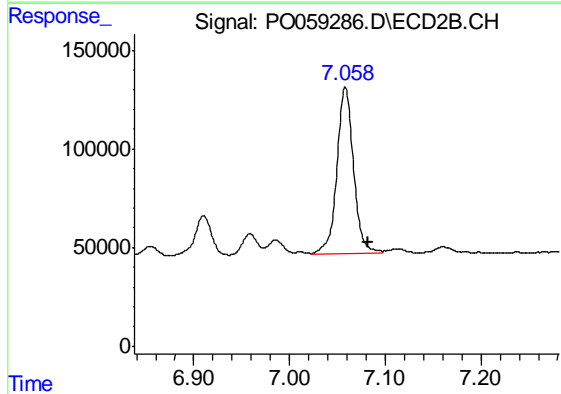
R.T.: 6.854 min
 Delta R.T.: 0.015 min
 Response: 47081
 Conc: 20.84 ng/ml



#35 AR-1260-5

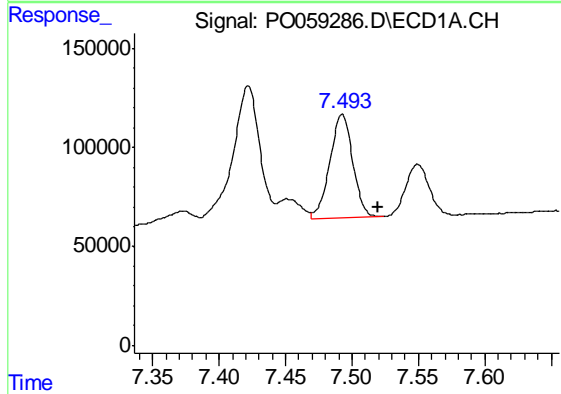
R.T.: 8.071 min
 Delta R.T.: 0.020 min
 Response: 100015
 Conc: 13.60 ng/ml

Instrument :
 ECD_O
 ClientSampleId :
 PB122258BS



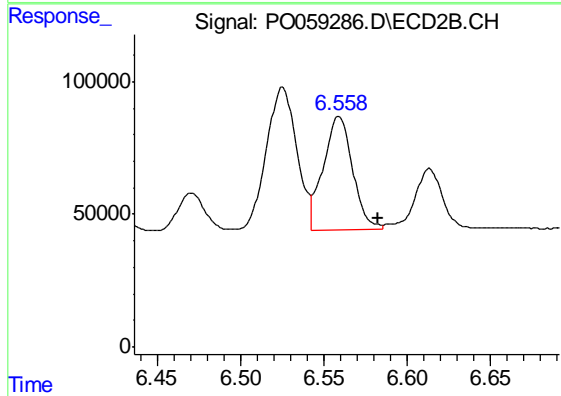
#35 AR-1260-5

R.T.: 7.058 min
 Delta R.T.: -0.024 min
 Response: 1027986
 Conc: 190.89 ng/ml



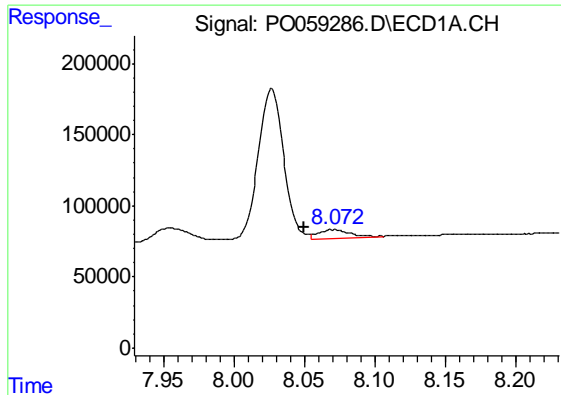
#36 AR-1262-1

R.T.: 7.493 min
 Delta R.T.: -0.027 min
 Response: 632197
 Conc: 125.43 ng/ml



#36 AR-1262-1

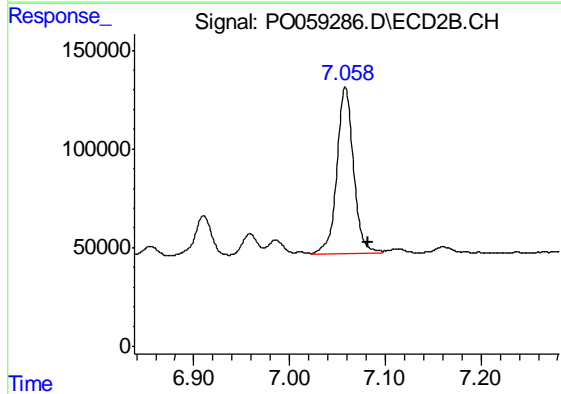
R.T.: 6.559 min
 Delta R.T.: -0.024 min
 Response: 523891
 Conc: 146.68 ng/ml



#37 AR-1262-2

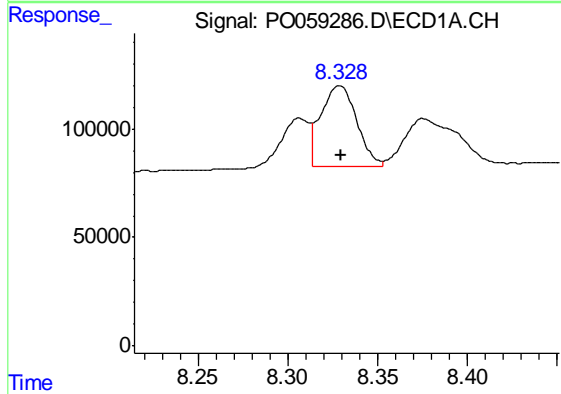
R.T.: 8.071 min
 Delta R.T.: 0.021 min
 Response: 100015
 Conc: 12.57 ng/ml

Instrument :
 ECD_O
 ClientSampleId :
 PB122258BS



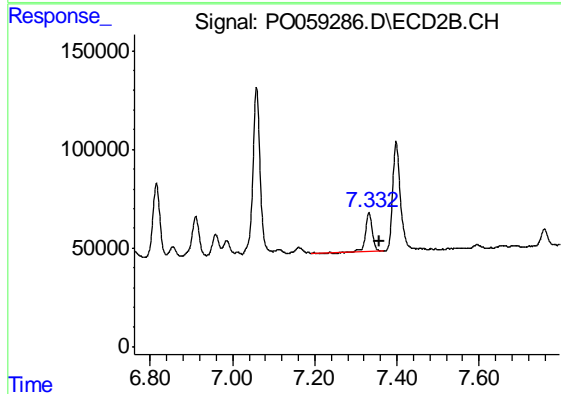
#37 AR-1262-2

R.T.: 7.058 min
 Delta R.T.: -0.023 min
 Response: 1027986
 Conc: 182.07 ng/ml



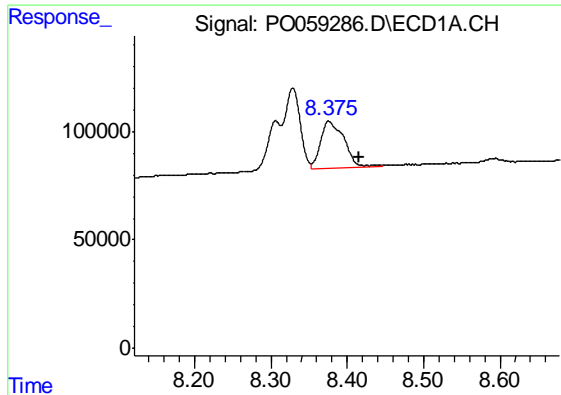
#38 AR-1262-3

R.T.: 8.329 min
 Delta R.T.: -0.001 min
 Response: 524267
 Conc: 103.13 ng/ml



#38 AR-1262-3

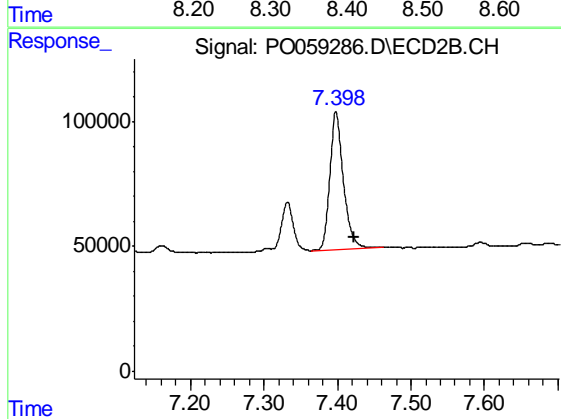
R.T.: 7.332 min
 Delta R.T.: -0.025 min
 Response: 217252
 Conc: 88.03 ng/ml



#39 AR-1262-4

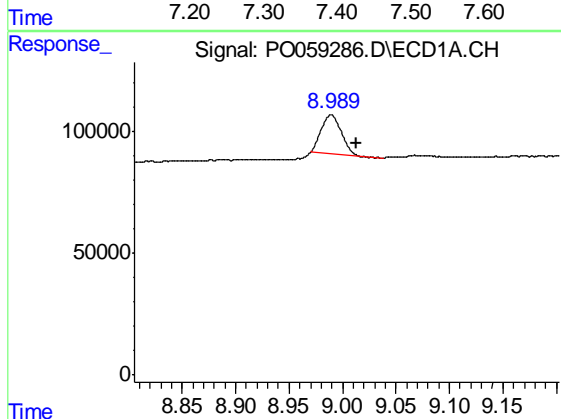
R.T.: 8.375 min
 Delta R.T.: -0.040 min
 Response: 464146
 Conc: 122.48 ng/ml

Instrument :
 ECD_O
 ClientSampleId :
 PB122258BS



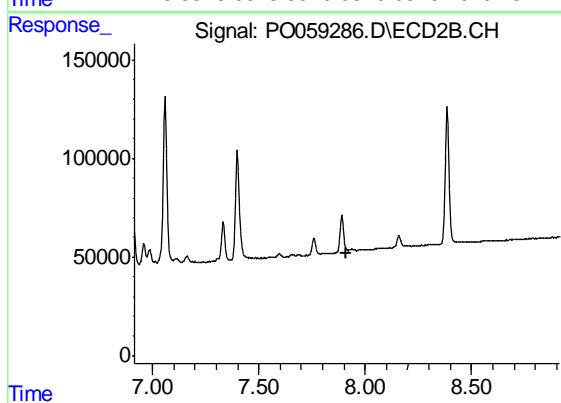
#39 AR-1262-4

R.T.: 7.398 min
 Delta R.T.: -0.024 min
 Response: 710580
 Conc: 167.35 ng/ml



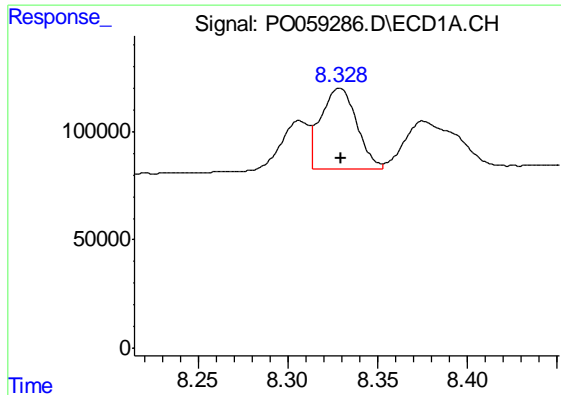
#40 AR-1262-5

R.T.: 8.989 min
 Delta R.T.: -0.024 min
 Response: 204580
 Conc: 89.04 ng/ml



#40 AR-1262-5

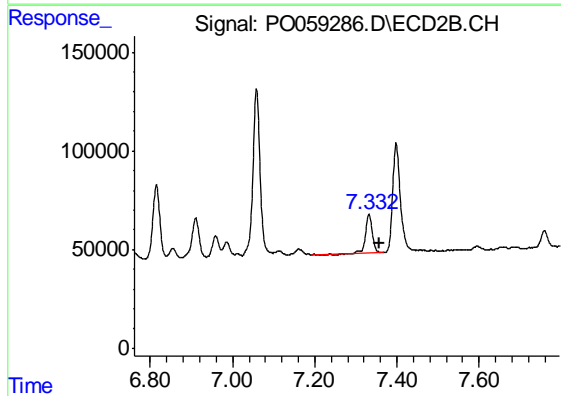
R.T.: 0.000 min
 Exp R.T. : 7.914 min
 Response: 0
 Conc: N.D.



#41 AR-1268-1

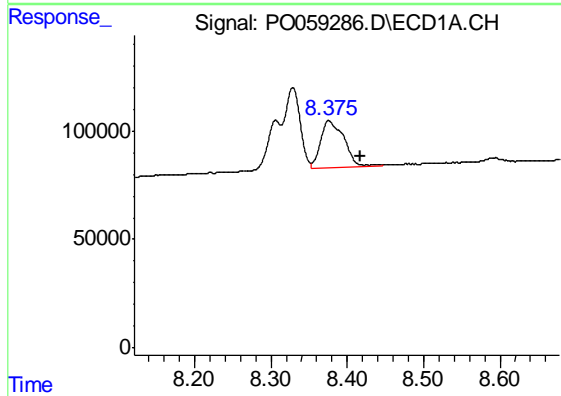
R.T.: 8.329 min
Delta R.T.: 0.000 min
Response: 524267
Conc: 46.94 ng/ml

Instrument :
ECD_O
ClientSampleId :
PB122258BS



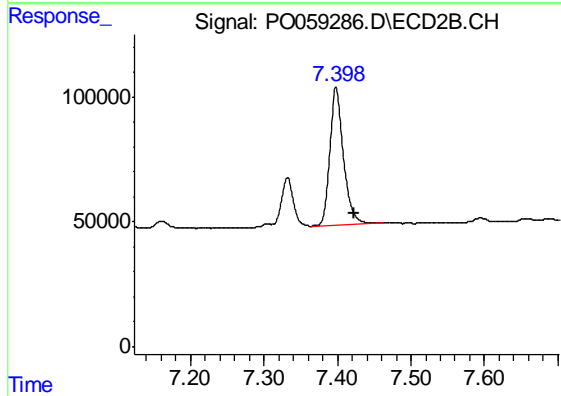
#41 AR-1268-1

R.T.: 7.332 min
Delta R.T.: -0.025 min
Response: 217252
Conc: 26.67 ng/ml



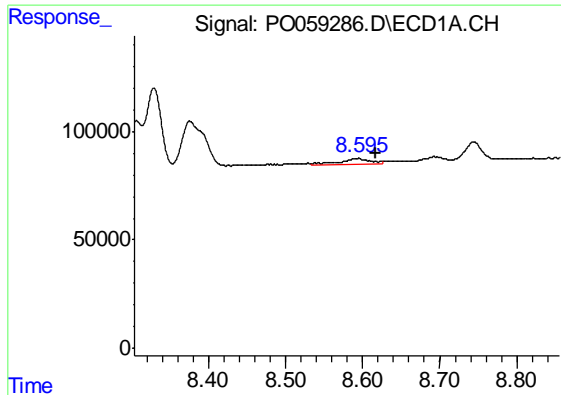
#42 AR-1268-2

R.T.: 8.375 min
Delta R.T.: -0.041 min
Response: 464146
Conc: 49.41 ng/ml



#42 AR-1268-2

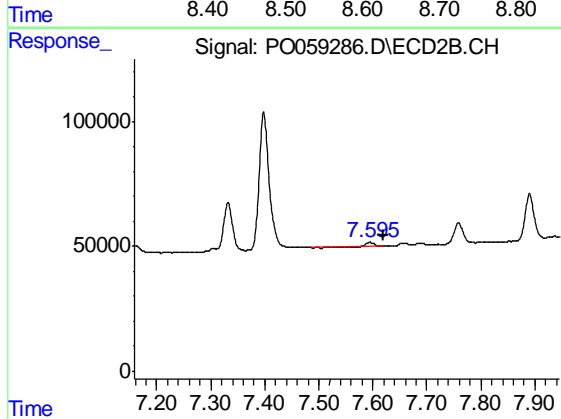
R.T.: 7.398 min
Delta R.T.: -0.024 min
Response: 710580
Conc: 93.78 ng/ml



#43 AR-1268-3

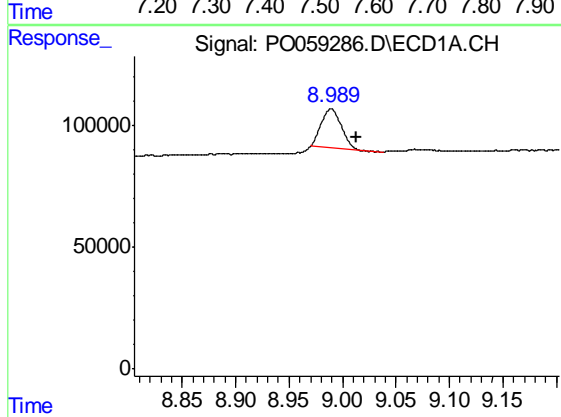
R.T.: 8.594 min
 Delta R.T.: -0.023 min
 Response: 71479
 Conc: 8.65 ng/ml

Instrument :
 ECD_O
 ClientSampleId :
 PB122258BS



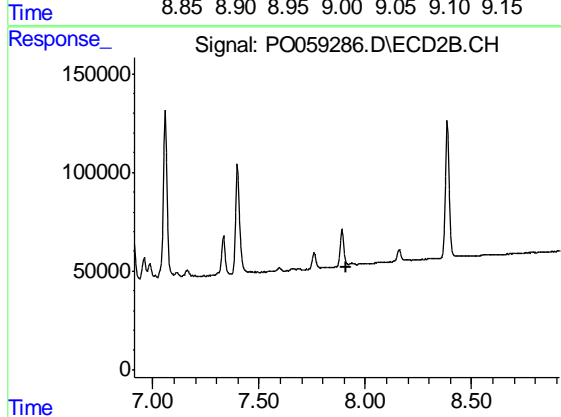
#43 AR-1268-3

R.T.: 7.595 min
 Delta R.T.: -0.024 min
 Response: 15200
 Conc: 2.38 ng/ml



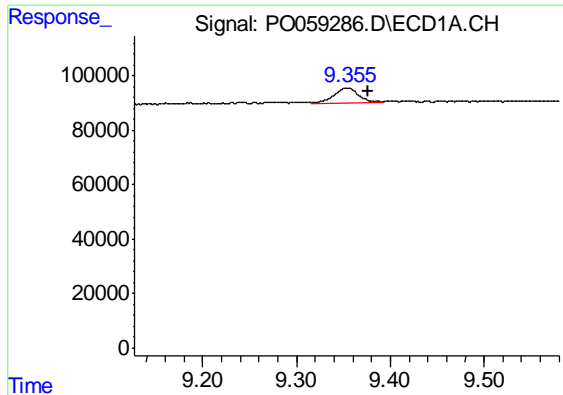
#44 AR-1268-4

R.T.: 8.989 min
 Delta R.T.: -0.024 min
 Response: 204580
 Conc: 68.44 ng/ml



#44 AR-1268-4

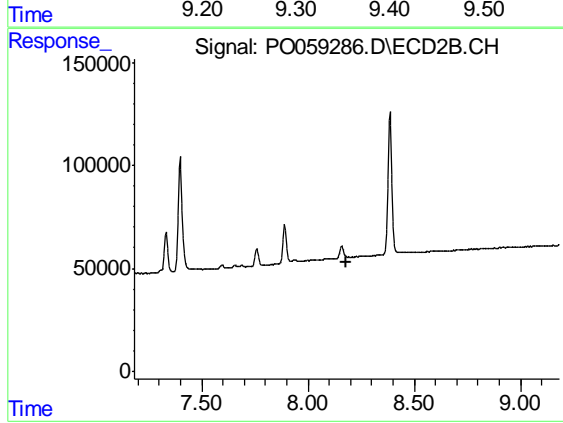
R.T.: 0.000 min
 Exp R.T. : 7.913 min
 Response: 0
 Conc: N.D.



#45 AR-1268-5

R.T.: 9.354 min
Delta R.T.: -0.022 min
Response: 104052
Conc: 4.85 ng/ml

Instrument :
ECD_O
ClientSampleId :
PB122258BS



#45 AR-1268-5

R.T.: 0.000 min
Exp R.T. : 8.183 min
Response: 0
Conc: N.D.