

Data Path : Z:\pestpcbsrv\HPCHEM1\ECD_O\Data\P0081425\
 Data File : PO112942.D
 Signal(s) : Signal #1: ECD1A.ch Signal #2: ECD2B.ch
 Acq On : 14 Aug 2025 13:40
 Operator : YP/AJ
 Sample : Q2857-06 10X
 Misc :
 ALS Vial : 14 Sample Multiplier: 1

Instrument :
 ECD_O
 ClientSampleId :

Integration File signal 1: autoint1.e
 Integration File signal 2: autoint2.e
 Quant Time: Aug 14 16:50:06 2025
 Quant Method : Z:\pestpcbsrv\HPCHEM1\ECD_O\methods\P0072325.M
 Quant Title : GC EXTRACTABLES
 QLast Update : Thu Jul 24 04:54:06 2025
 Response via : Initial Calibration
 Integrator: ChemStation

Volume Inj. : 2 µl
 Signal #1 Phase : ZB-MR1 Signal #2 Phase: ZB-MR2
 Signal #1 Info : 30Mx0.32mmx 0.50µ Signal #2 Info : 30M x 0.32mm x 0.25µm

Compound	RT#1	RT#2	Resp#1	Resp#2	ng/ml	ng/ml
System Monitoring Compounds						
1) SA Tetrachlo...	3.665	3.658	9491585	5362361	1.167	1.079
2) SA Decachlor...	8.686	8.632	7153795	2007825	0.978	1.136
Target Compounds						
3) L1 AR-1016-1	4.770	4.741	465648	376089	1.735	2.149
4) L1 AR-1016-2	4.770	4.756	465648	482716	1.147	1.853 #
5) L1 AR-1016-3	4.832	4.952	376244	162487	1.438	1.195
6) L1 AR-1016-4	4.967	4.979	2630872	554421	12.419	4.991 #
7) L1 AR-1016-5	5.196	5.177	5130702	1711194	23.378	11.941 #
8) L2 AR-1221-1	3.886	3.877	670177	296071	6.933	4.402 #
9) L2 AR-1221-2	3.999	3.936	4207557	462837	58.551	9.124 #
10) L2 AR-1221-3	4.049	4.029	263654	468812	1.109	2.957 #
11) L3 AR-1232-1	4.049	4.029	263654	468812	1.410	3.705 #
12) L3 AR-1232-2	4.508	4.756	377363	482716	3.506	3.681
13) L3 AR-1232-3	4.770	4.952	465648	162487	2.252	2.418
14) L3 AR-1232-4	4.967	5.010	2630872	425959	25.118	7.120 #
15) L3 AR-1232-5	5.002	5.177	2109823	1711194	31.081	26.244
16) L4 AR-1242-1	4.770	4.741	465648	376089	1.881	2.374 #
17) L4 AR-1242-2	4.770	4.756	465648	482716	1.259	2.066 #
18) L4 AR-1242-3	4.832	4.952	376244	162487	1.590	1.341
19) L4 AR-1242-4	4.967	5.010	2630872	425959	13.542	3.470 #
20) L4 AR-1242-5	5.597	5.508	16670739	2570514	77.931	15.969 #
21) L5 AR-1248-1	4.770	4.741	465648	376089	2.487	3.095
22) L5 AR-1248-2	5.002	4.979	2109823	554421	8.270	3.275 #
23) L5 AR-1248-3	5.196	5.010	5130702	425959	14.928	2.398 #
24) L5 AR-1248-4	5.530	5.177	6214532	1711194	12.231	8.213 #
25) L5 AR-1248-5	5.597	5.576	16670739	6520898	47.686	30.363 #
26) L6 AR-1254-1	5.530	5.508	6214532	2570514	11.321	7.822 #
27) L6 AR-1254-2	5.727	5.697	4081267	2803646	8.399	9.685
28) L6 AR-1254-3	6.094	6.059	4188931	3615873	5.628	8.459 #
29) L6 AR-1254-4	6.330	6.309	1743744	941185	3.172	3.448
30) L6 AR-1254-5	6.771	6.719	3100474	17133570	4.380	51.295 #
31) L7 AR-1260-1	6.203f	6.209	6768174	828509	15.406	3.334 #
32) L7 AR-1260-2	6.430	6.425	438772	-9609	0.638	N.D. #
33) L7 AR-1260-3	6.798	6.577	3380247	1134436	5.749	4.416
34) L7 AR-1260-4	7.066	7.025	1359749	358780	3.015	1.875 #
35) L7 AR-1260-5	7.307	7.259	2048197	2661719	1.653	6.457 #
36) L8 AR-1262-1	6.798	6.719f	3380247	17133570	3.638	41.303 #
37) L8 AR-1262-2	7.307	7.259	2048197	2661719	1.377	5.163 #
38) L8 AR-1262-3	7.582	7.523	2543751	247415	4.310	1.326 #
39) L8 AR-1262-4	7.668	7.595	741375	555903	0.746	1.930 #
40) L8 AR-1262-5	8.142	8.105	762834	169011	1.757	1.699
41) L9 AR-1268-1	7.582	7.523	2543751	247415	1.453	0.478 #

Data Path : Z:\pestpcbsrv\HPCHEM1\ECD_0\Data\P0081425\
 Data File : P0112942.D
 Signal(s) : Signal #1: ECD1A.ch Signal #2: ECD2B.ch
 Acq On : 14 Aug 2025 13:40
 Operator : YP/AJ
 Sample : Q2857-06 10X
 Misc :
 ALS Vial : 14 Sample Multiplier: 1

Instrument :
 ECD_0
 ClientSampleId :

Integration File signal 1: autoint1.e
 Integration File signal 2: autoint2.e
 Quant Time: Aug 14 16:50:06 2025
 Quant Method : Z:\pestpcbsrv\HPCHEM1\ECD_0\methods\P0072325.M
 Quant Title : GC EXTRACTABLES
 QLast Update : Thu Jul 24 04:54:06 2025
 Response via : Initial Calibration
 Integrator: ChemStation

Volume Inj. : 2 µl
 Signal #1 Phase : ZB-MR1 Signal #2 Phase: ZB-MR2
 Signal #1 Info : 30Mx0.32mmx 0.50µ Signal #2 Info : 30M x 0.32mm x 0.25µm

	Compound	RT#1	RT#2	Resp#1	Resp#2	ng/ml	ng/ml
42)	L9 AR-1268-2	7.668	7.595	741375	555903	0.503	1.308 #
43)	L9 AR-1268-3	7.856	7.817	598605	186487	0.478	0.580
44)	L9 AR-1268-4	8.142	8.105	762834	169011	1.583	1.519
45)	L9 AR-1268-5	8.440	8.382	319768	972927	0.095	1.330 #

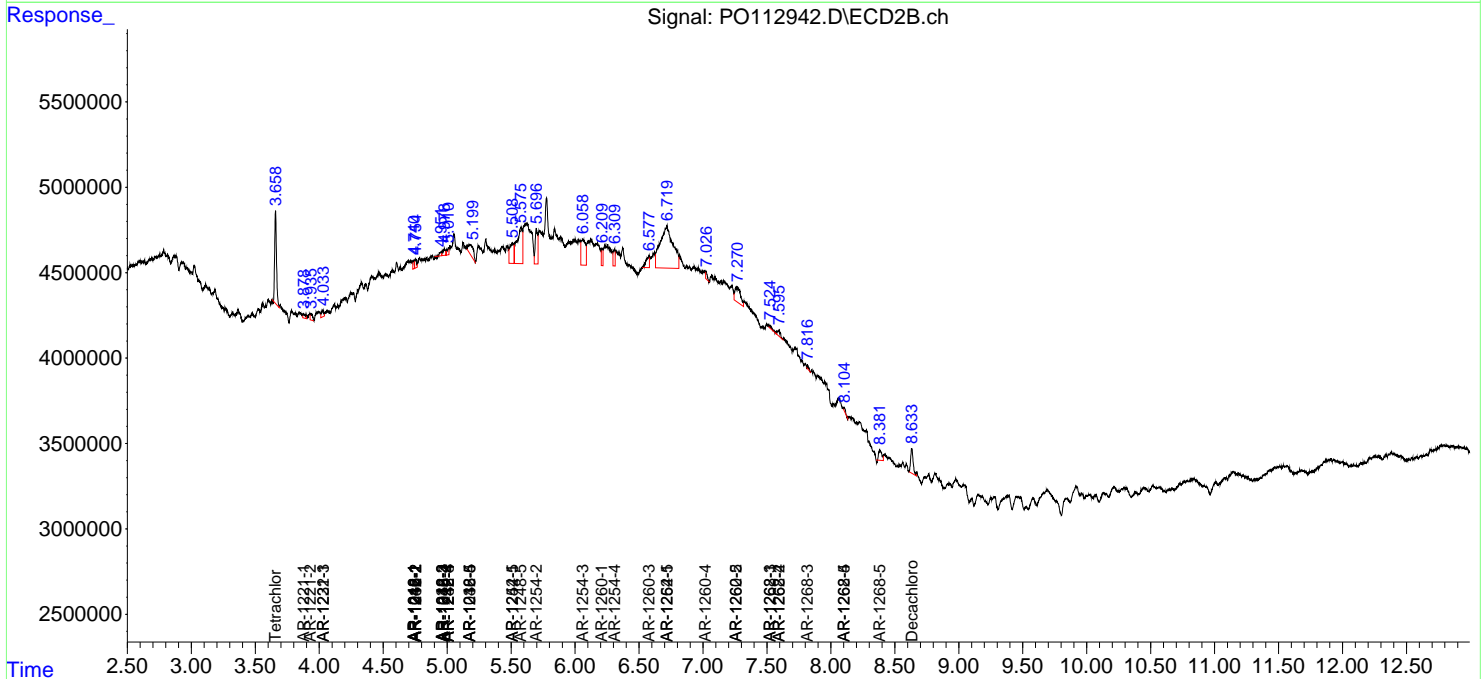
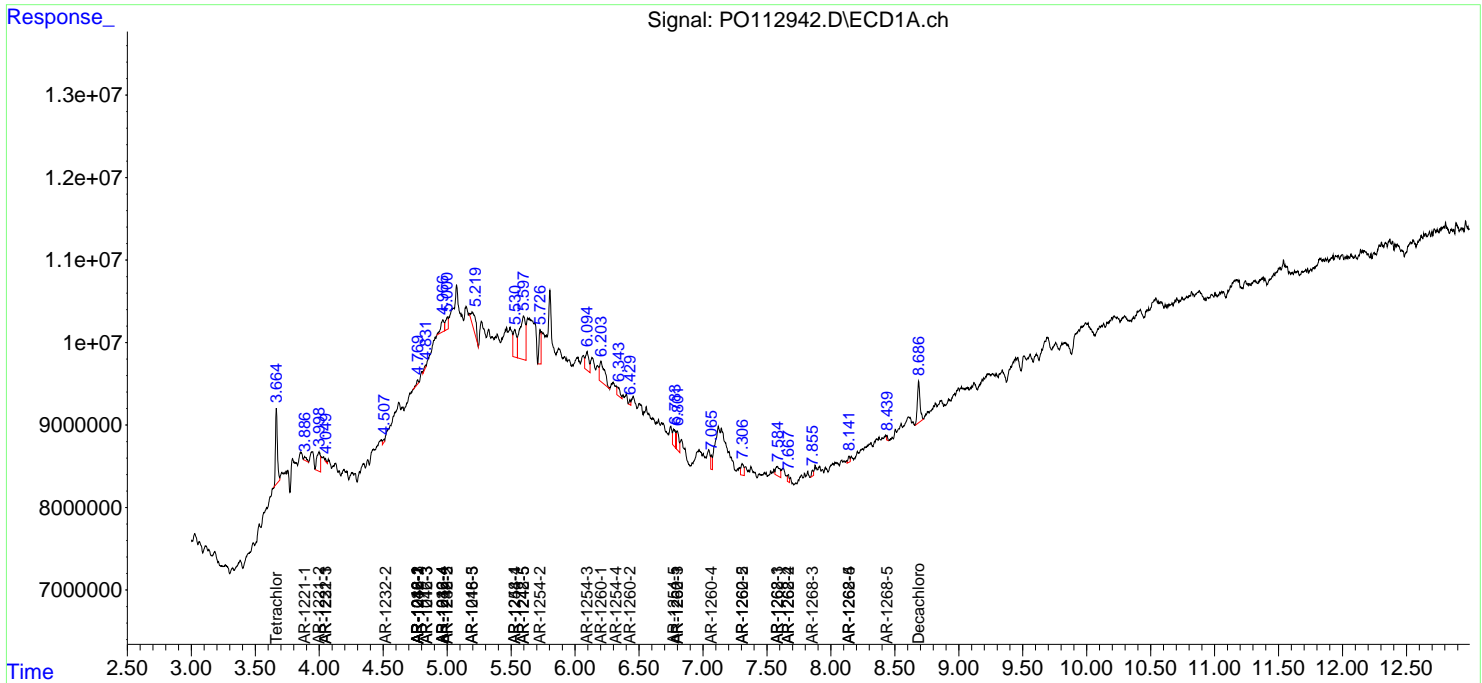
(f)=RT Delta > 1/2 Window (#)=Amounts differ by > 25% (m)=manual int.

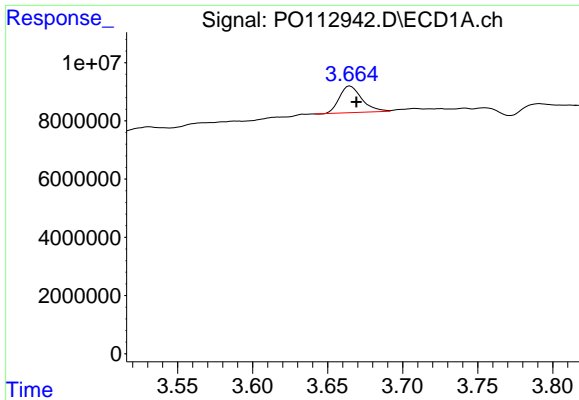
Data Path : Z:\pestpcbsrv\HPCHEM1\ECD_O\Data\PO081425\
 Data File : PO112942.D
 Signal(s) : Signal #1: ECD1A.ch Signal #2: ECD2B.ch
 Acq On : 14 Aug 2025 13:40
 Operator : YP/AJ
 Sample : Q2857-06 10X
 Misc :
 ALS Vial : 14 Sample Multiplier: 1

Instrument :
 ECD_O
 ClientSampleId :

Integration File signal 1: autoint1.e
 Integration File signal 2: autoint2.e
 Quant Time: Aug 14 16:50:06 2025
 Quant Method : Z:\pestpcbsrv\HPCHEM1\ECD_O\methods\PO072325.M
 Quant Title : GC EXTRACTABLES
 QLast Update : Thu Jul 24 04:54:06 2025
 Response via : Initial Calibration
 Integrator: ChemStation

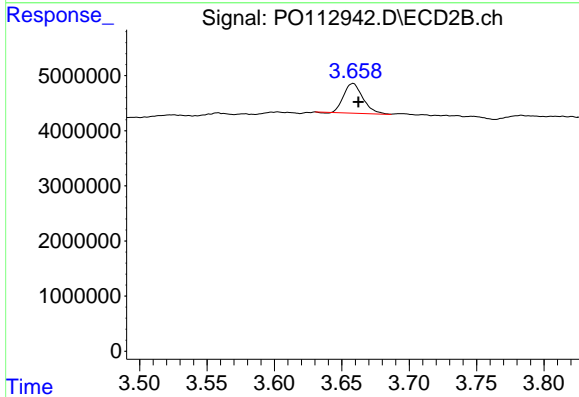
Volume Inj. : 2 µl
 Signal #1 Phase : ZB-MR1 Signal #2 Phase: ZB-MR2
 Signal #1 Info : 30Mx0.32mmx 0.50µ Signal #2 Info : 30M x 0.32mm x 0.25µm



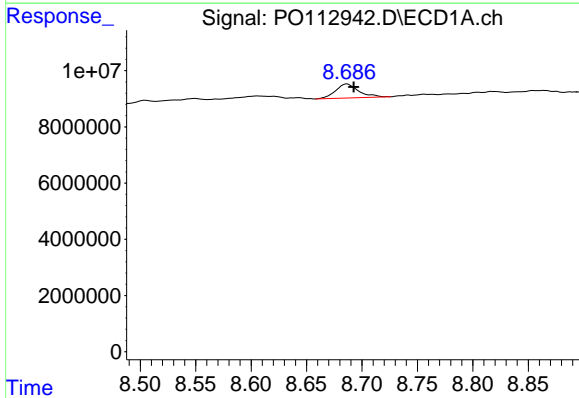


#1 Tetrachloro-m-xylene
 R.T.: 3.665 min
 Delta R.T.: -0.004 min
 Response: 9491585
 Conc: 1.17 ng/ml

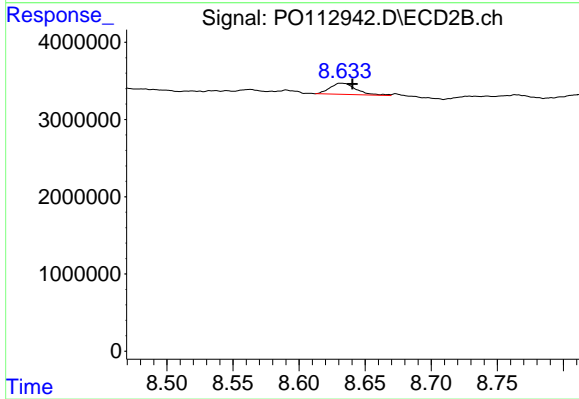
Instrument :
 ECD_O
 ClientSampleId :



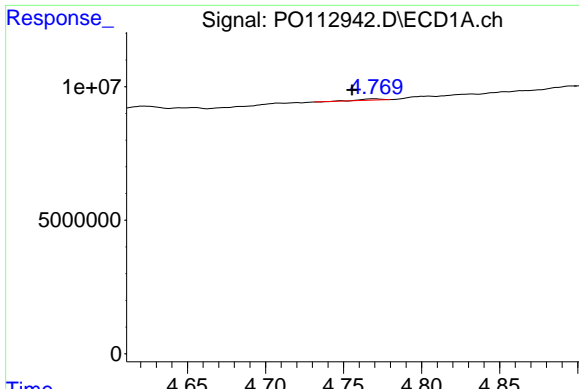
#1 Tetrachloro-m-xylene
 R.T.: 3.658 min
 Delta R.T.: -0.004 min
 Response: 5362361
 Conc: 1.08 ng/ml



#2 Decachlorobiphenyl
 R.T.: 8.686 min
 Delta R.T.: -0.006 min
 Response: 7153795
 Conc: 0.98 ng/ml



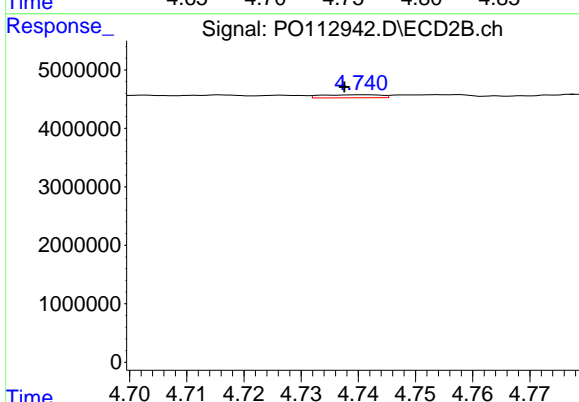
#2 Decachlorobiphenyl
 R.T.: 8.632 min
 Delta R.T.: -0.008 min
 Response: 2007825
 Conc: 1.14 ng/ml



#3 AR-1016-1

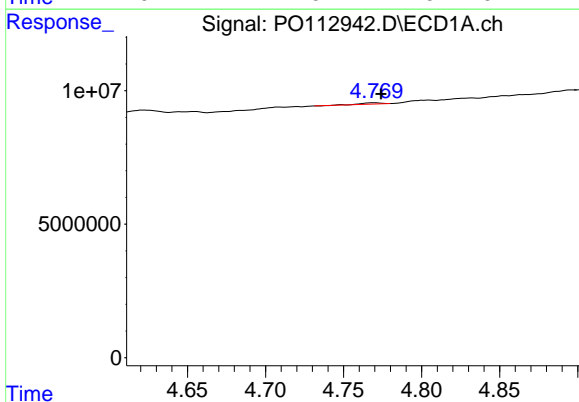
R.T.: 4.770 min
 Delta R.T.: 0.014 min
 Response: 465648
 Conc: 1.74 ng/ml

Instrument :
 ECD_O
 ClientSampleId :



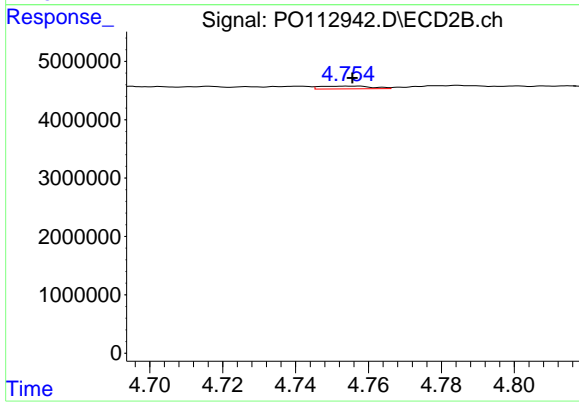
#3 AR-1016-1

R.T.: 4.741 min
 Delta R.T.: 0.003 min
 Response: 376089
 Conc: 2.15 ng/ml



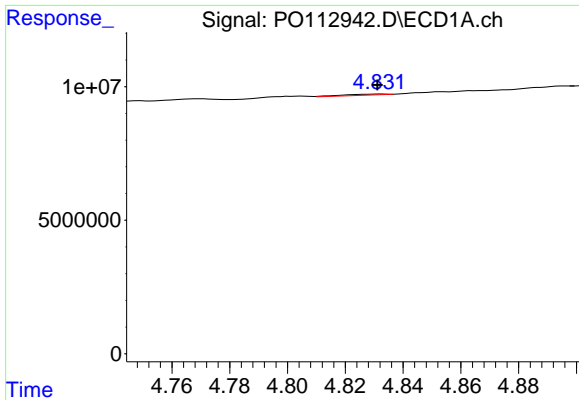
#4 AR-1016-2

R.T.: 4.770 min
 Delta R.T.: -0.004 min
 Response: 465648
 Conc: 1.15 ng/ml



#4 AR-1016-2

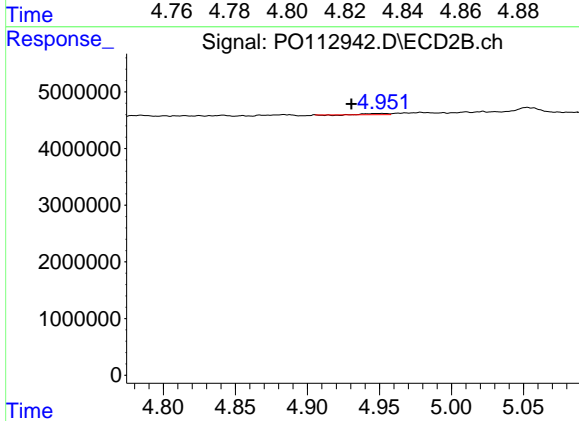
R.T.: 4.756 min
 Delta R.T.: 0.000 min
 Response: 482716
 Conc: 1.85 ng/ml



#5 AR-1016-3

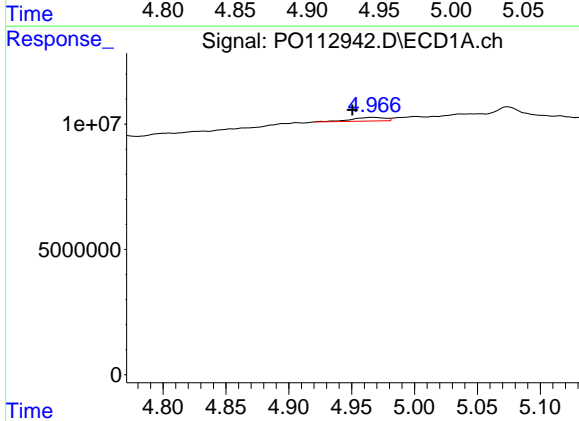
R.T.: 4.832 min
 Delta R.T.: 0.001 min
 Response: 376244
 Conc: 1.44 ng/ml

Instrument :
 ECD_O
 ClientSampleId :



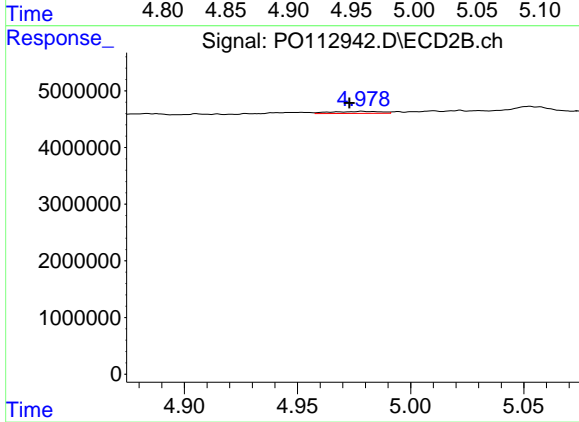
#5 AR-1016-3

R.T.: 4.952 min
 Delta R.T.: 0.021 min
 Response: 162487
 Conc: 1.20 ng/ml



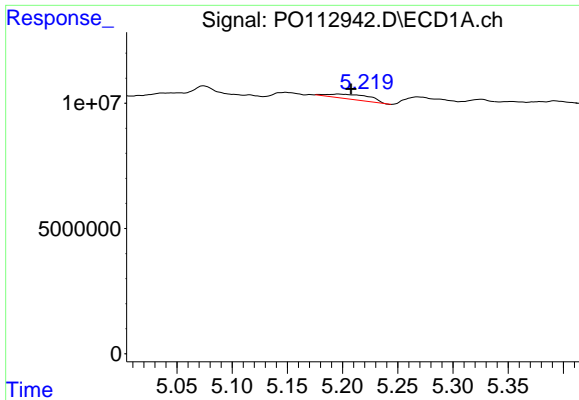
#6 AR-1016-4

R.T.: 4.967 min
 Delta R.T.: 0.016 min
 Response: 2630872
 Conc: 12.42 ng/ml



#6 AR-1016-4

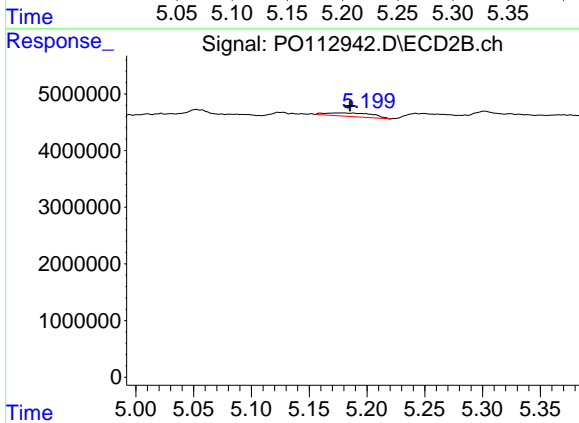
R.T.: 4.979 min
 Delta R.T.: 0.006 min
 Response: 554421
 Conc: 4.99 ng/ml



#7 AR-1016-5

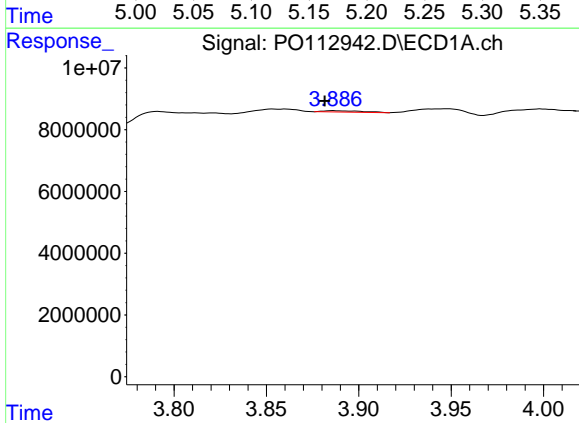
R.T.: 5.196 min
 Delta R.T.: -0.012 min
 Response: 5130702
 Conc: 23.38 ng/ml

Instrument :
 ECD_O
 ClientSampleId :



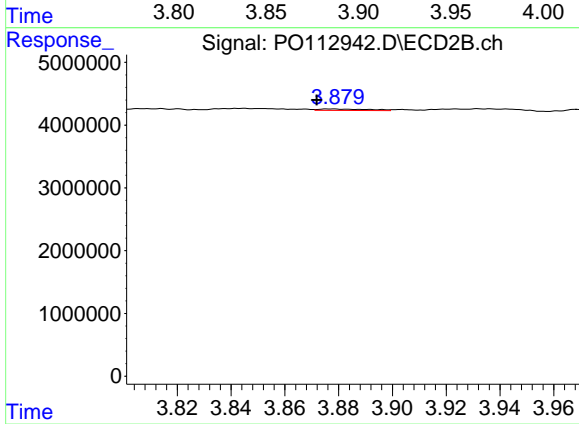
#7 AR-1016-5

R.T.: 5.177 min
 Delta R.T.: -0.009 min
 Response: 1711194
 Conc: 11.94 ng/ml



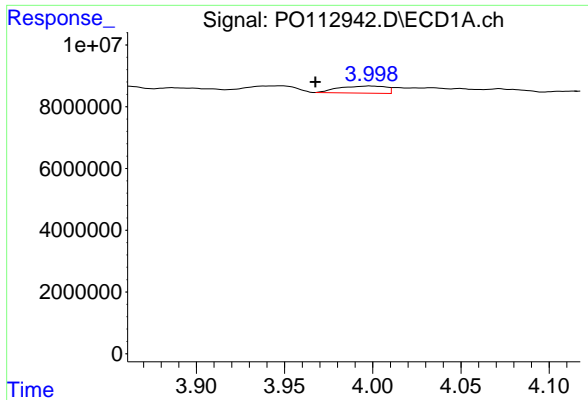
#8 AR-1221-1

R.T.: 3.886 min
 Delta R.T.: 0.005 min
 Response: 670177
 Conc: 6.93 ng/ml



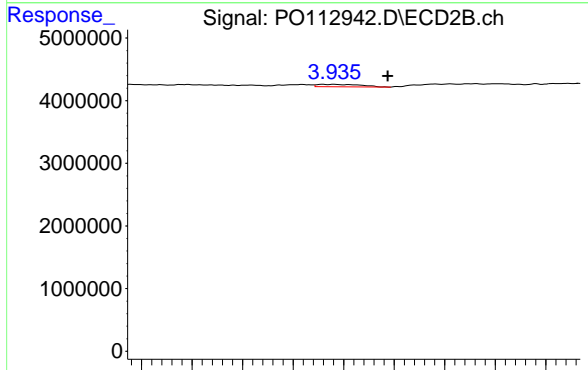
#8 AR-1221-1

R.T.: 3.877 min
 Delta R.T.: 0.005 min
 Response: 296071
 Conc: 4.40 ng/ml

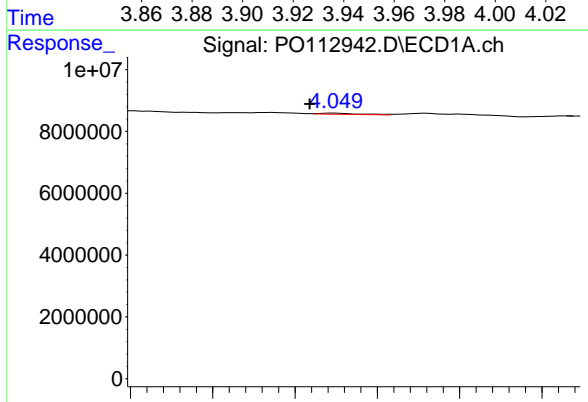


#9 AR-1221-2
 R.T.: 3.999 min
 Delta R.T.: 0.031 min
 Response: 4207557
 Conc: 58.55 ng/ml

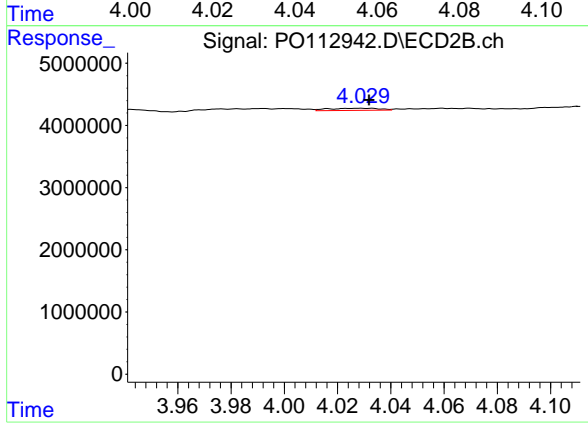
Instrument :
 ECD_O
 ClientSampleId :



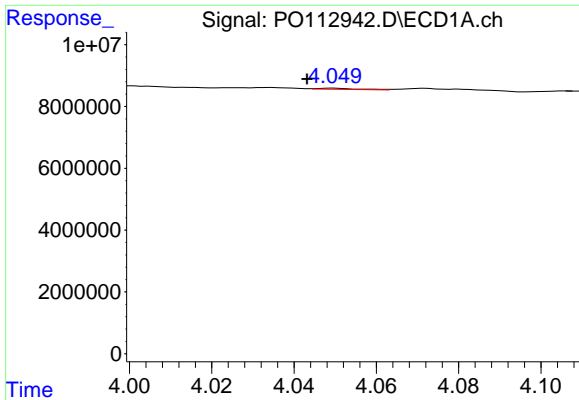
#9 AR-1221-2
 R.T.: 3.936 min
 Delta R.T.: -0.022 min
 Response: 462837
 Conc: 9.12 ng/ml



#10 AR-1221-3
 R.T.: 4.049 min
 Delta R.T.: 0.006 min
 Response: 263654
 Conc: 1.11 ng/ml



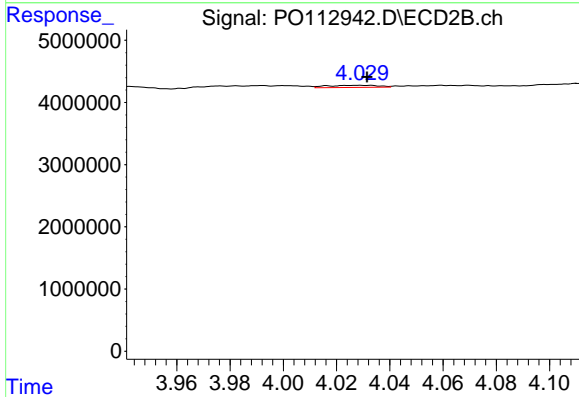
#10 AR-1221-3
 R.T.: 4.029 min
 Delta R.T.: -0.003 min
 Response: 468812
 Conc: 2.96 ng/ml



#11 AR-1232-1

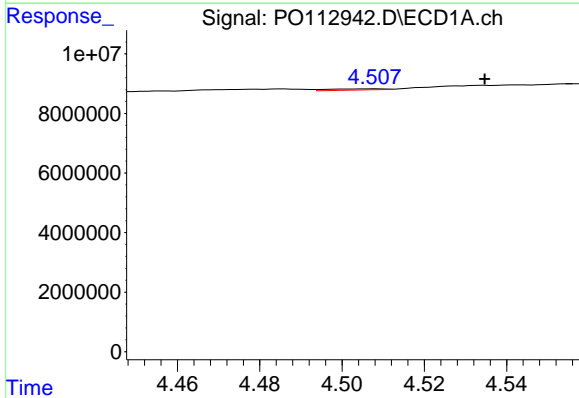
R.T.: 4.049 min
 Delta R.T.: 0.006 min
 Response: 263654
 Conc: 1.41 ng/ml

Instrument :
 ECD_O
 ClientSampleId :



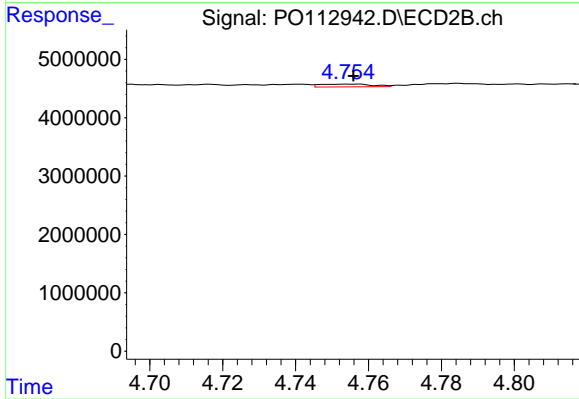
#11 AR-1232-1

R.T.: 4.029 min
 Delta R.T.: -0.003 min
 Response: 468812
 Conc: 3.70 ng/ml



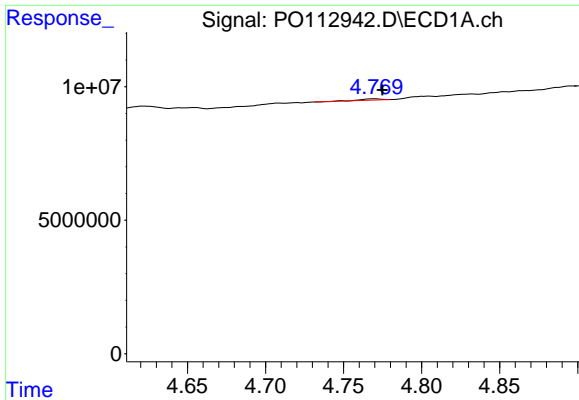
#12 AR-1232-2

R.T.: 4.508 min
 Delta R.T.: -0.027 min
 Response: 377363
 Conc: 3.51 ng/ml



#12 AR-1232-2

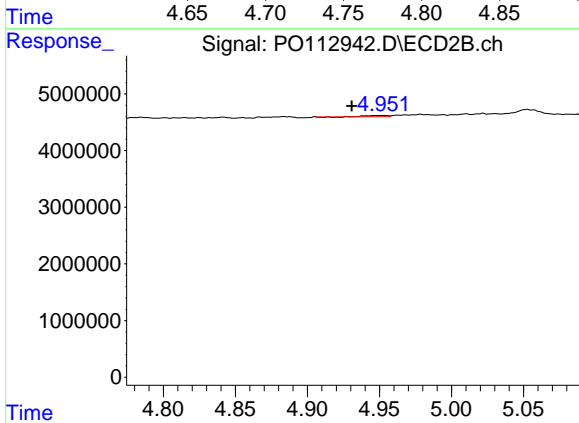
R.T.: 4.756 min
 Delta R.T.: 0.000 min
 Response: 482716
 Conc: 3.68 ng/ml



#13 AR-1232-3

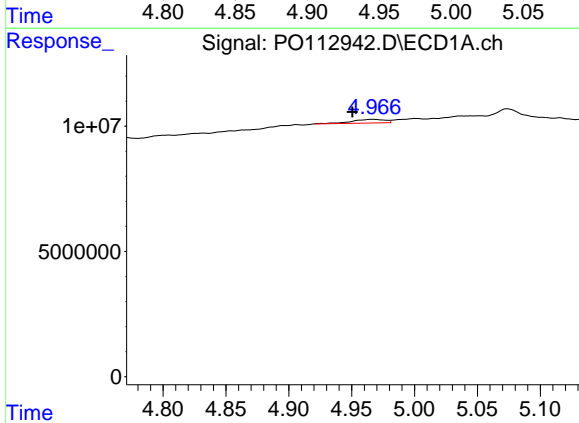
R.T.: 4.770 min
 Delta R.T.: -0.005 min
 Response: 465648
 Conc: 2.25 ng/ml

Instrument :
 ECD_O
 ClientSampleId :



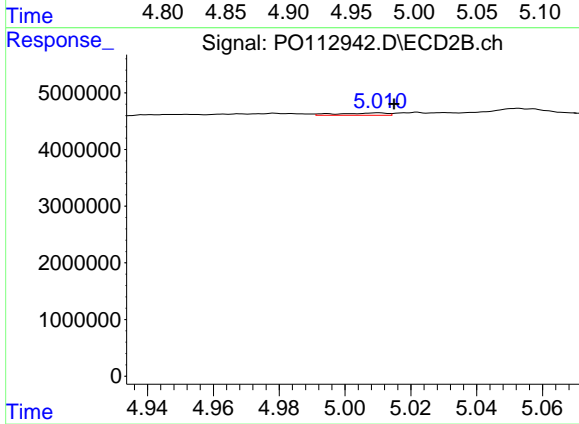
#13 AR-1232-3

R.T.: 4.952 min
 Delta R.T.: 0.021 min
 Response: 162487
 Conc: 2.42 ng/ml



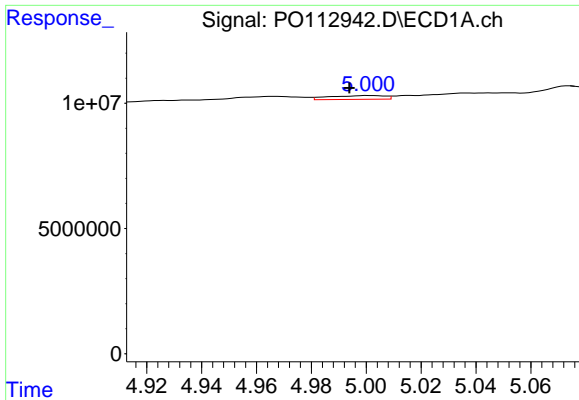
#14 AR-1232-4

R.T.: 4.967 min
 Delta R.T.: 0.016 min
 Response: 2630872
 Conc: 25.12 ng/ml



#14 AR-1232-4

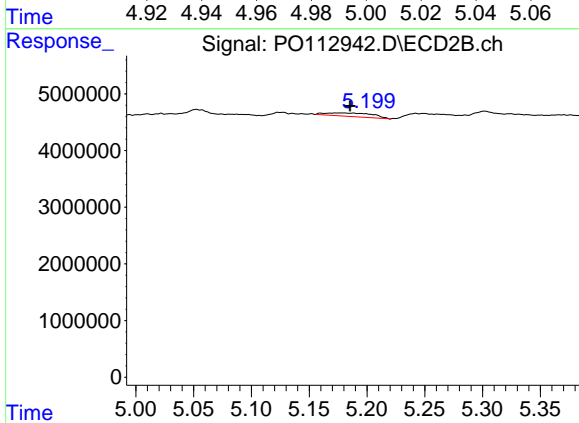
R.T.: 5.010 min
 Delta R.T.: -0.005 min
 Response: 425959
 Conc: 7.12 ng/ml



#15 AR-1232-5

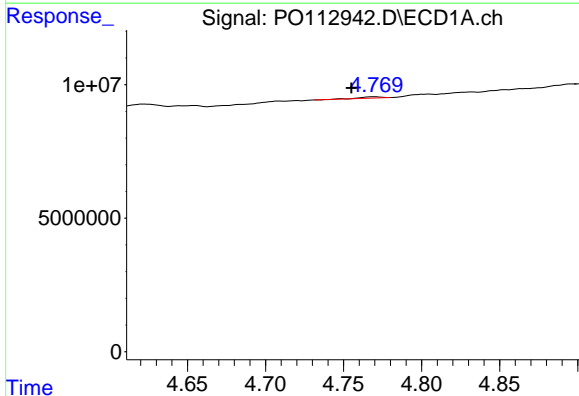
R.T.: 5.002 min
 Delta R.T.: 0.008 min
 Response: 2109823
 Conc: 31.08 ng/ml

Instrument :
 ECD_O
 ClientSampleId :



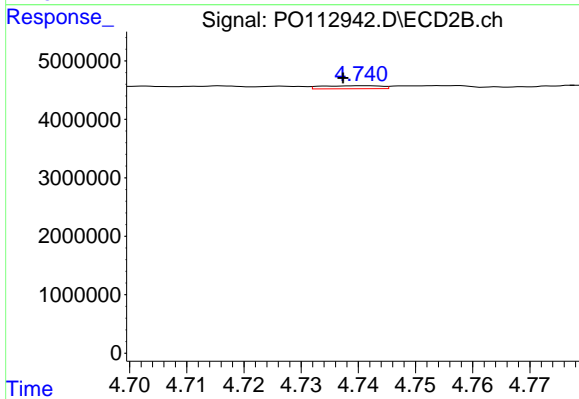
#15 AR-1232-5

R.T.: 5.177 min
 Delta R.T.: -0.009 min
 Response: 1711194
 Conc: 26.24 ng/ml



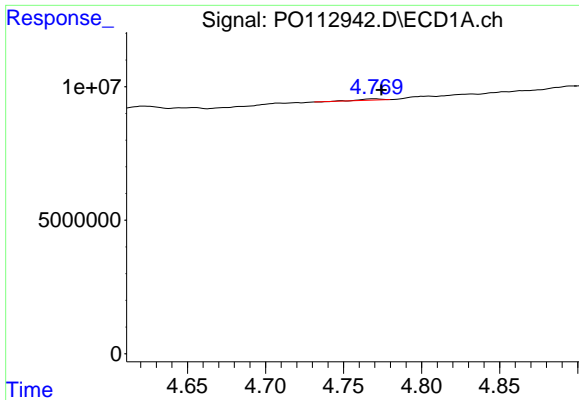
#16 AR-1242-1

R.T.: 4.770 min
 Delta R.T.: 0.015 min
 Response: 465648
 Conc: 1.88 ng/ml



#16 AR-1242-1

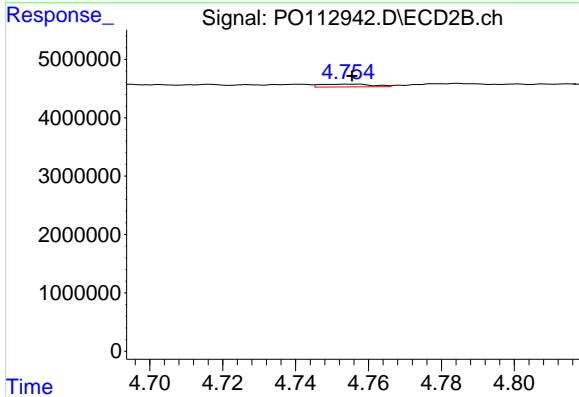
R.T.: 4.741 min
 Delta R.T.: 0.004 min
 Response: 376089
 Conc: 2.37 ng/ml



#17 AR-1242-2

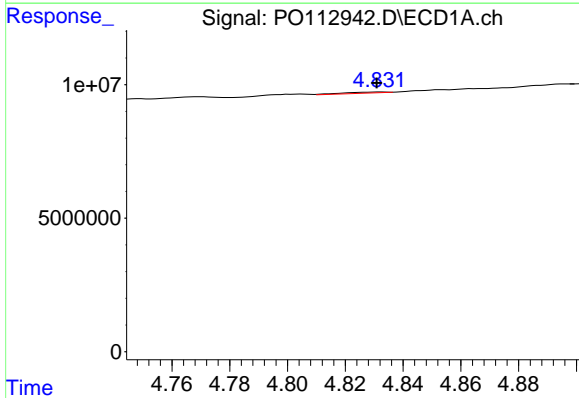
R.T.: 4.770 min
 Delta R.T.: -0.004 min
 Response: 465648
 Conc: 1.26 ng/ml

Instrument :
 ECD_O
 ClientSampleId :



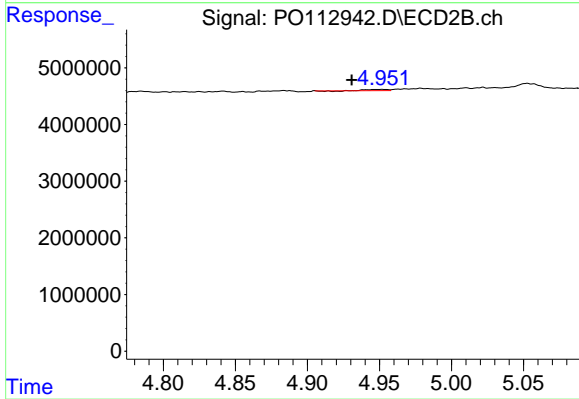
#17 AR-1242-2

R.T.: 4.756 min
 Delta R.T.: 0.000 min
 Response: 482716
 Conc: 2.07 ng/ml



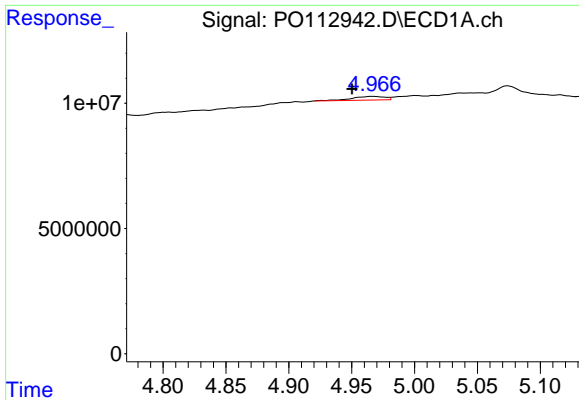
#18 AR-1242-3

R.T.: 4.832 min
 Delta R.T.: 0.001 min
 Response: 376244
 Conc: 1.59 ng/ml



#18 AR-1242-3

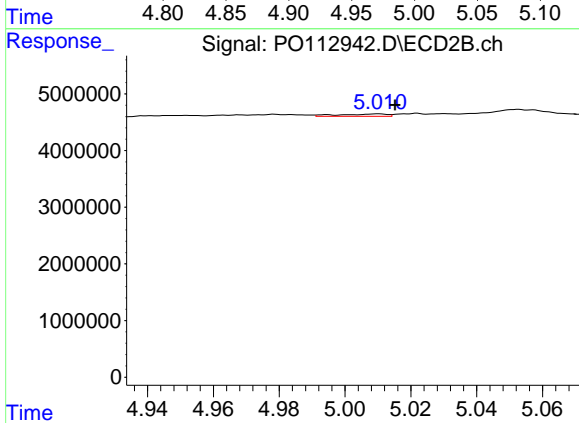
R.T.: 4.952 min
 Delta R.T.: 0.021 min
 Response: 162487
 Conc: 1.34 ng/ml



#19 AR-1242-4

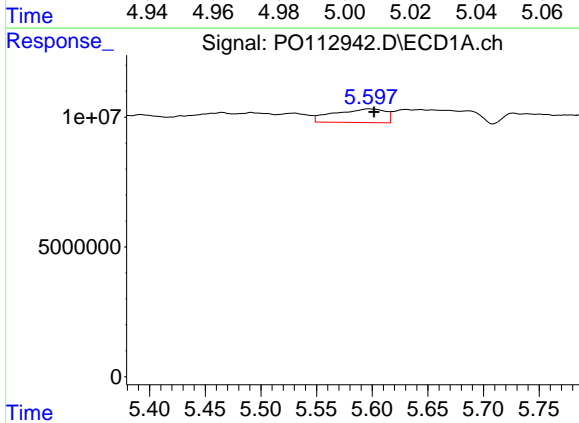
R.T.: 4.967 min
 Delta R.T.: 0.016 min
 Response: 2630872
 Conc: 13.54 ng/ml

Instrument :
 ECD_O
 ClientSampleId :



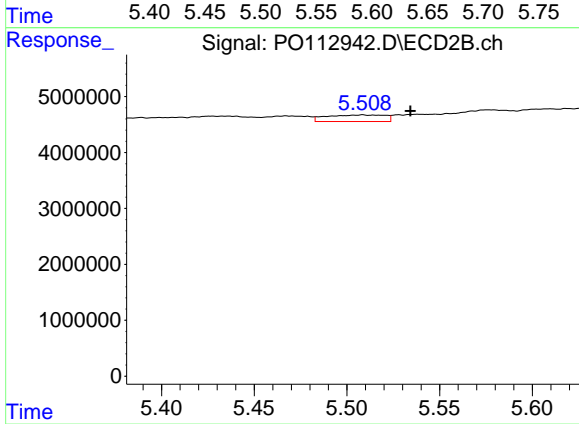
#19 AR-1242-4

R.T.: 5.010 min
 Delta R.T.: -0.005 min
 Response: 425959
 Conc: 3.47 ng/ml



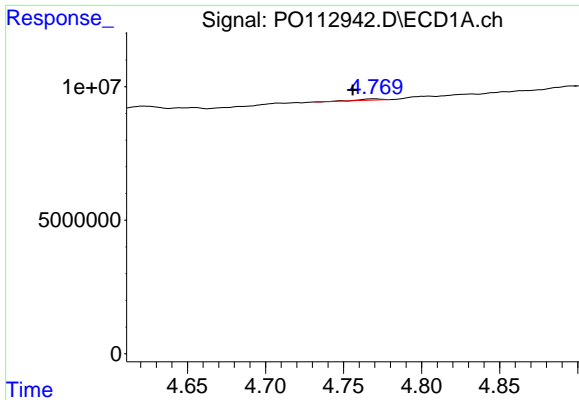
#20 AR-1242-5

R.T.: 5.597 min
 Delta R.T.: -0.004 min
 Response: 16670739
 Conc: 77.93 ng/ml



#20 AR-1242-5

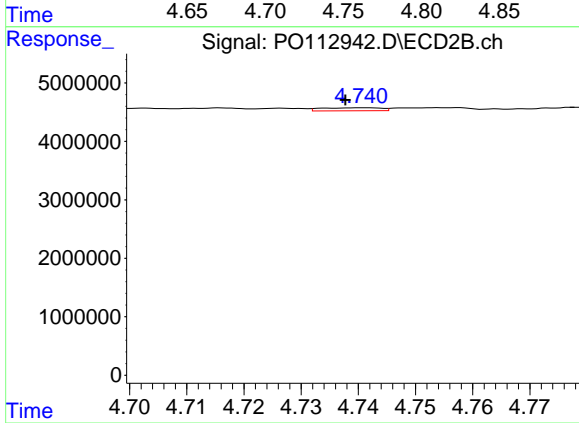
R.T.: 5.508 min
 Delta R.T.: -0.026 min
 Response: 2570514
 Conc: 15.97 ng/ml



#21 AR-1248-1

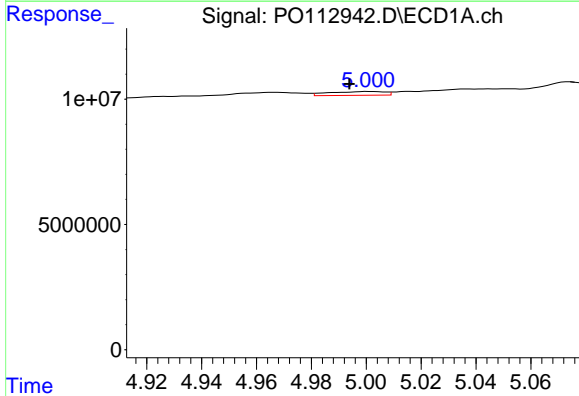
R.T.: 4.770 min
 Delta R.T.: 0.014 min
 Response: 465648
 Conc: 2.49 ng/ml

Instrument :
 ECD_O
 ClientSampleId :



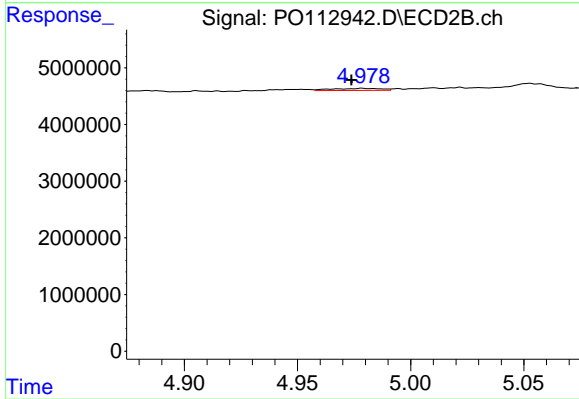
#21 AR-1248-1

R.T.: 4.741 min
 Delta R.T.: 0.003 min
 Response: 376089
 Conc: 3.10 ng/ml



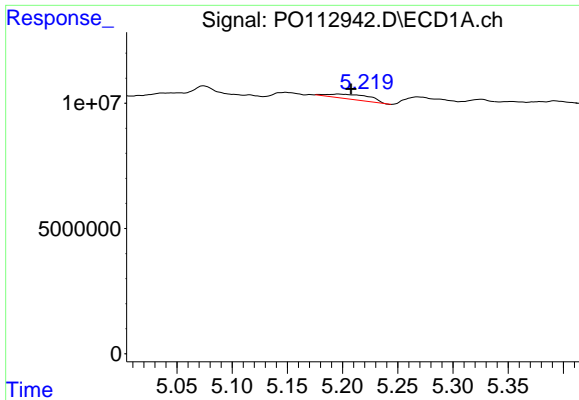
#22 AR-1248-2

R.T.: 5.002 min
 Delta R.T.: 0.008 min
 Response: 2109823
 Conc: 8.27 ng/ml



#22 AR-1248-2

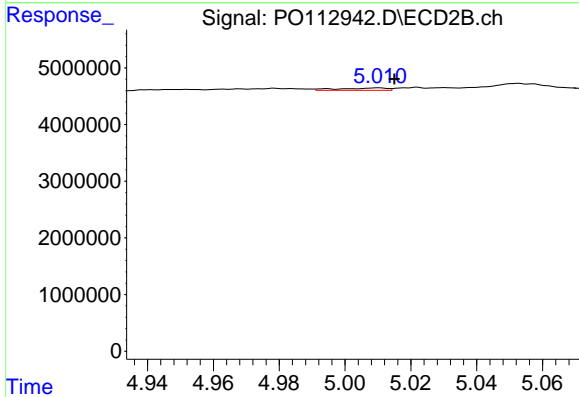
R.T.: 4.979 min
 Delta R.T.: 0.005 min
 Response: 554421
 Conc: 3.28 ng/ml



#23 AR-1248-3

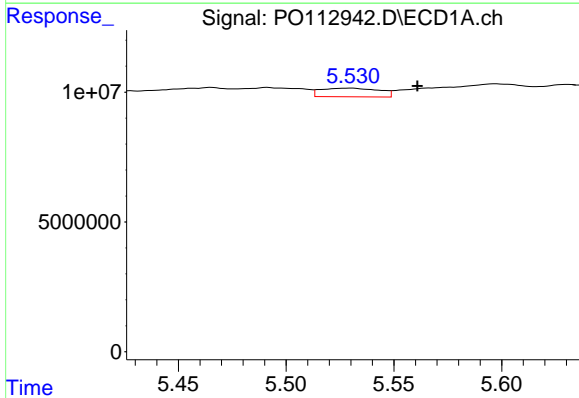
R.T.: 5.196 min
 Delta R.T.: -0.012 min
 Response: 5130702
 Conc: 14.93 ng/ml

Instrument :
 ECD_O
 ClientSampleId :



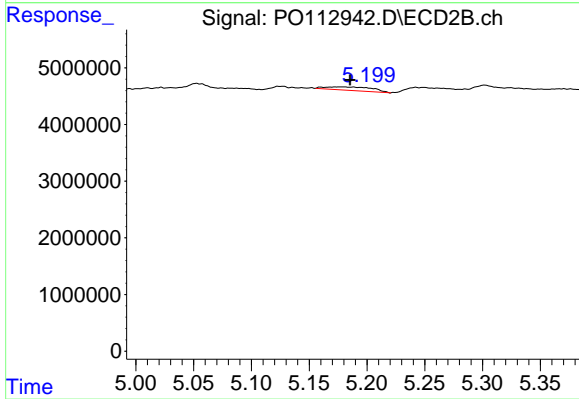
#23 AR-1248-3

R.T.: 5.010 min
 Delta R.T.: -0.005 min
 Response: 425959
 Conc: 2.40 ng/ml



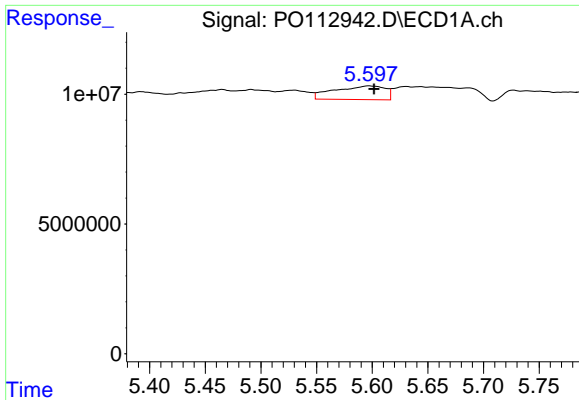
#24 AR-1248-4

R.T.: 5.530 min
 Delta R.T.: -0.031 min
 Response: 6214532
 Conc: 12.23 ng/ml



#24 AR-1248-4

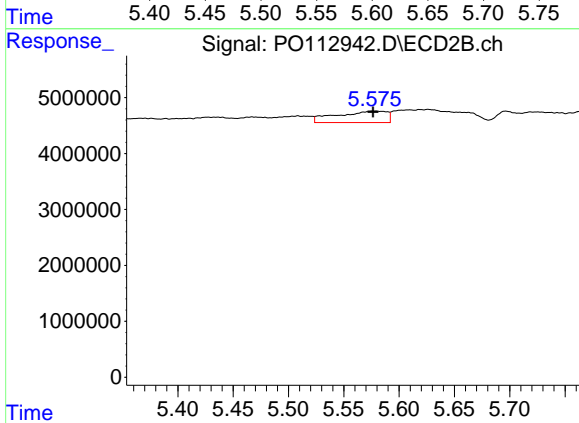
R.T.: 5.177 min
 Delta R.T.: -0.009 min
 Response: 1711194
 Conc: 8.21 ng/ml



#25 AR-1248-5

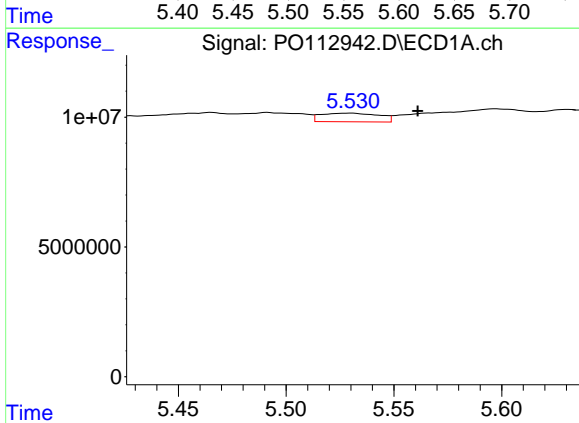
R.T.: 5.597 min
 Delta R.T.: -0.004 min
 Response: 16670739
 Conc: 47.69 ng/ml

Instrument :
 ECD_O
 ClientSampleId :



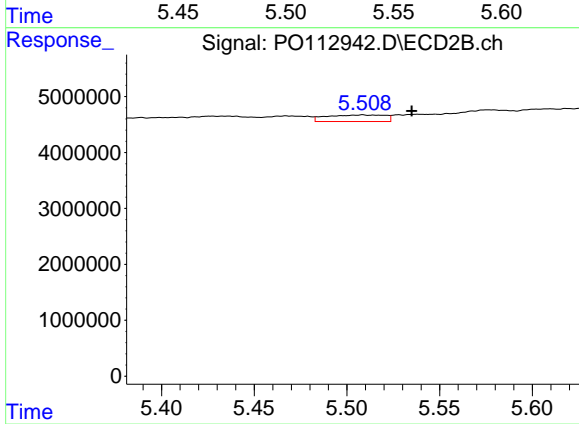
#25 AR-1248-5

R.T.: 5.576 min
 Delta R.T.: 0.000 min
 Response: 6520898
 Conc: 30.36 ng/ml



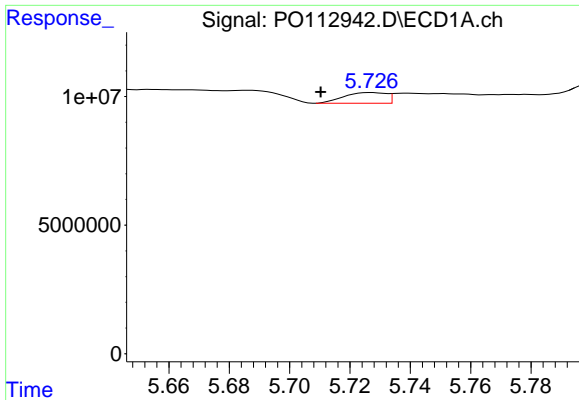
#26 AR-1254-1

R.T.: 5.530 min
 Delta R.T.: -0.031 min
 Response: 6214532
 Conc: 11.32 ng/ml



#26 AR-1254-1

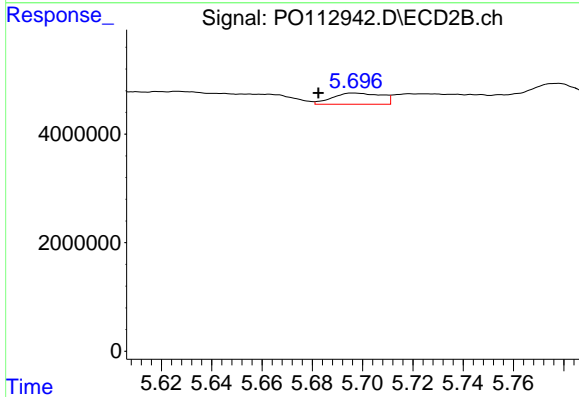
R.T.: 5.508 min
 Delta R.T.: -0.026 min
 Response: 2570514
 Conc: 7.82 ng/ml



#27 AR-1254-2

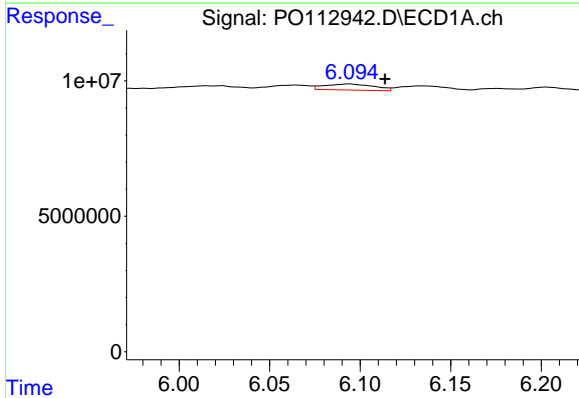
R.T.: 5.727 min
 Delta R.T.: 0.017 min
 Response: 4081267
 Conc: 8.40 ng/ml

Instrument :
 ECD_O
 ClientSampleId :



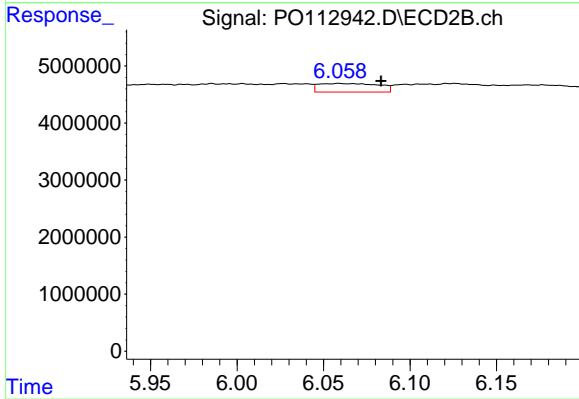
#27 AR-1254-2

R.T.: 5.697 min
 Delta R.T.: 0.014 min
 Response: 2803646
 Conc: 9.68 ng/ml



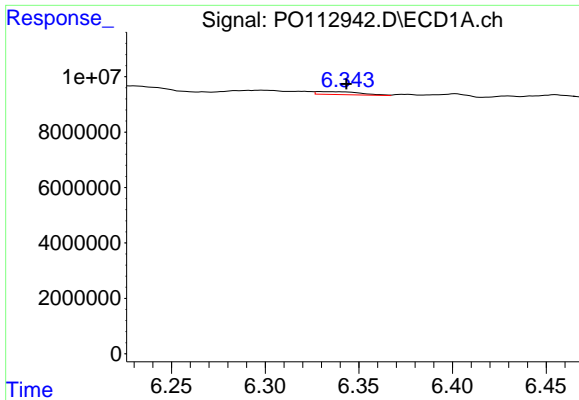
#28 AR-1254-3

R.T.: 6.094 min
 Delta R.T.: -0.019 min
 Response: 4188931
 Conc: 5.63 ng/ml



#28 AR-1254-3

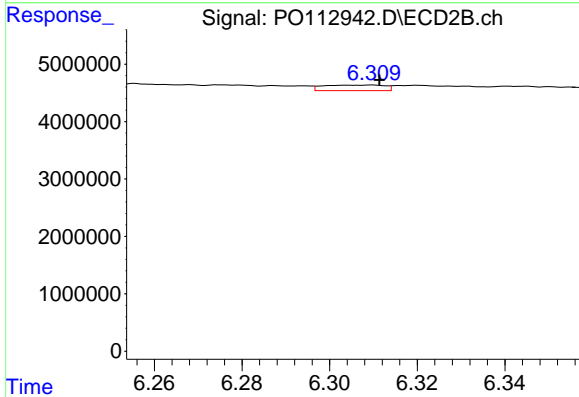
R.T.: 6.059 min
 Delta R.T.: -0.025 min
 Response: 3615873
 Conc: 8.46 ng/ml



#29 AR-1254-4

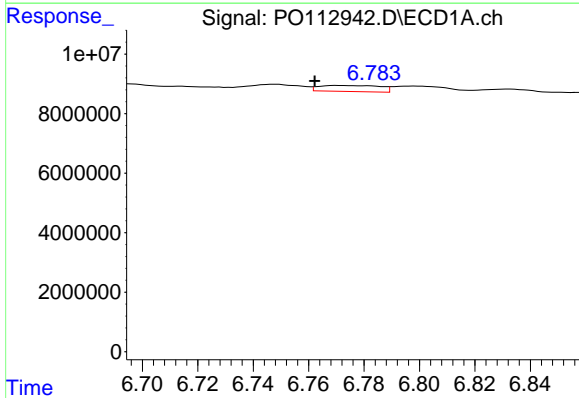
R.T.: 6.330 min
 Delta R.T.: -0.013 min
 Response: 1743744
 Conc: 3.17 ng/ml

Instrument :
 ECD_O
 ClientSampleId :



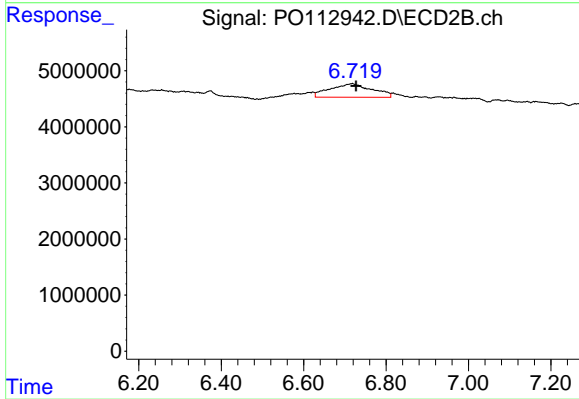
#29 AR-1254-4

R.T.: 6.309 min
 Delta R.T.: -0.002 min
 Response: 941185
 Conc: 3.45 ng/ml



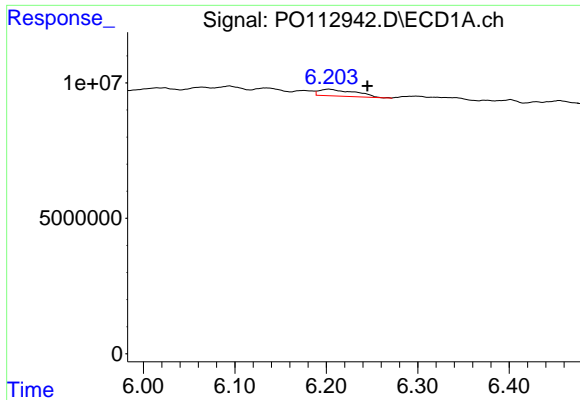
#30 AR-1254-5

R.T.: 6.771 min
 Delta R.T.: 0.008 min
 Response: 3100474
 Conc: 4.38 ng/ml



#30 AR-1254-5

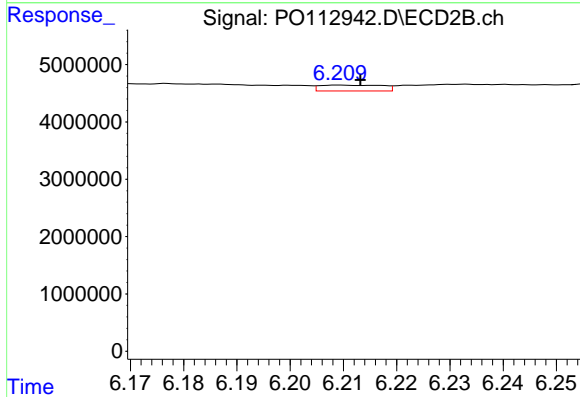
R.T.: 6.719 min
 Delta R.T.: -0.009 min
 Response: 17133570
 Conc: 51.30 ng/ml



#31 AR-1260-1

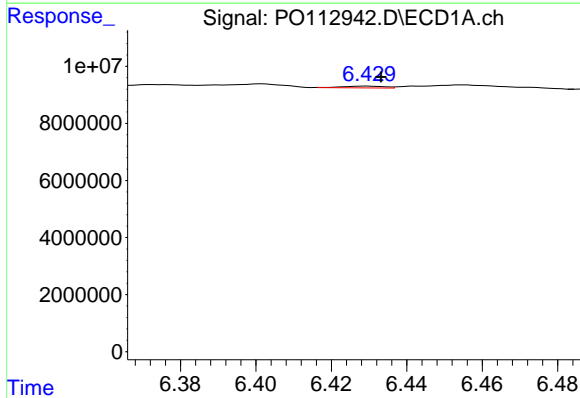
R.T.: 6.203 min
 Delta R.T.: -0.042 min
 Response: 6768174
 Conc: 15.41 ng/ml

Instrument :
 ECD_O
 ClientSampleId :



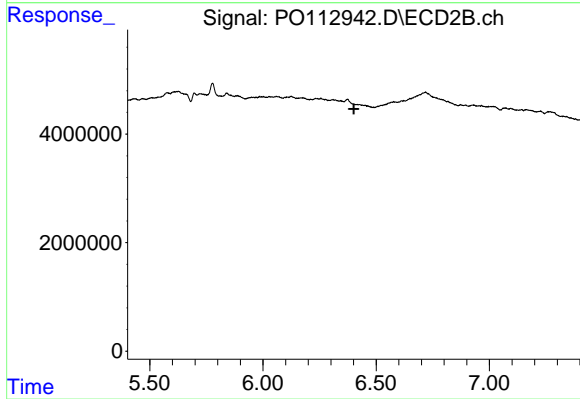
#31 AR-1260-1

R.T.: 6.209 min
 Delta R.T.: -0.004 min
 Response: 828509
 Conc: 3.33 ng/ml



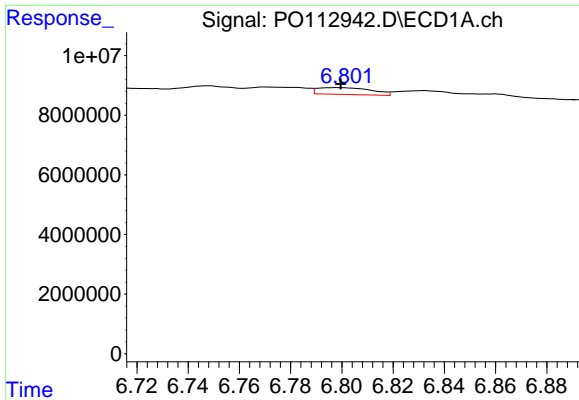
#32 AR-1260-2

R.T.: 6.430 min
 Delta R.T.: -0.004 min
 Response: 438772
 Conc: 0.64 ng/ml



#32 AR-1260-2

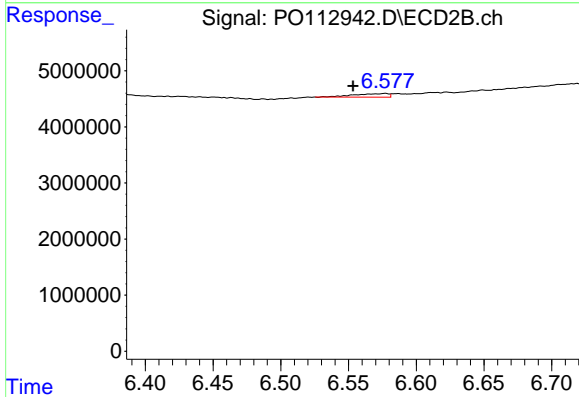
R.T.: 6.425 min
 Delta R.T.: 0.023 min
 Response: -9609
 Conc: N.D.



#33 AR-1260-3

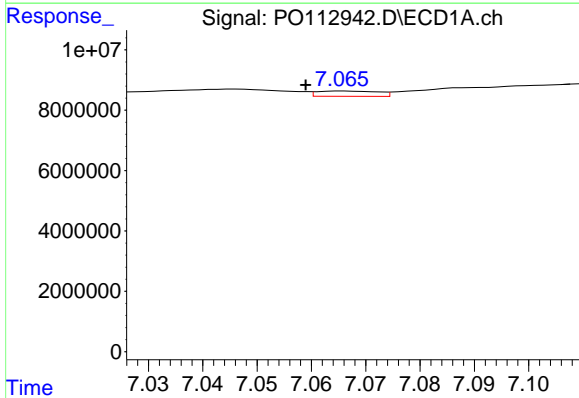
R.T.: 6.798 min
 Delta R.T.: -0.001 min
 Response: 3380247
 Conc: 5.75 ng/ml

Instrument :
 ECD_O
 ClientSampleId :



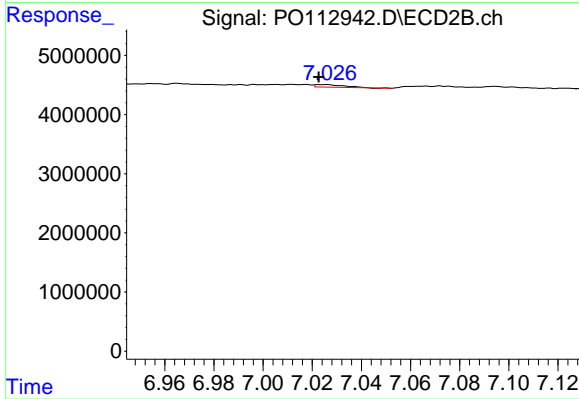
#33 AR-1260-3

R.T.: 6.577 min
 Delta R.T.: 0.024 min
 Response: 1134436
 Conc: 4.42 ng/ml



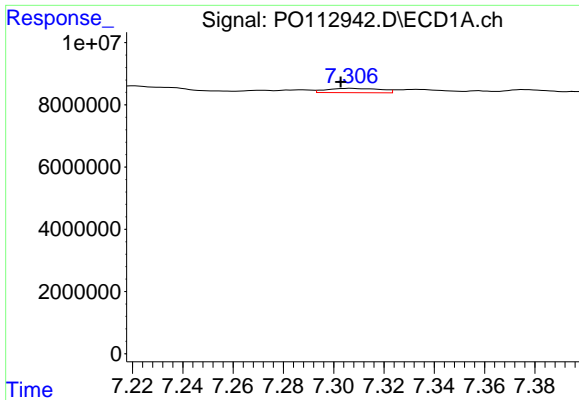
#34 AR-1260-4

R.T.: 7.066 min
 Delta R.T.: 0.007 min
 Response: 1359749
 Conc: 3.01 ng/ml



#34 AR-1260-4

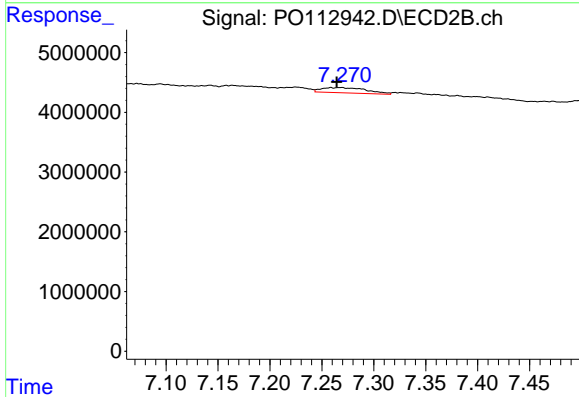
R.T.: 7.025 min
 Delta R.T.: 0.002 min
 Response: 358780
 Conc: 1.88 ng/ml



#35 AR-1260-5

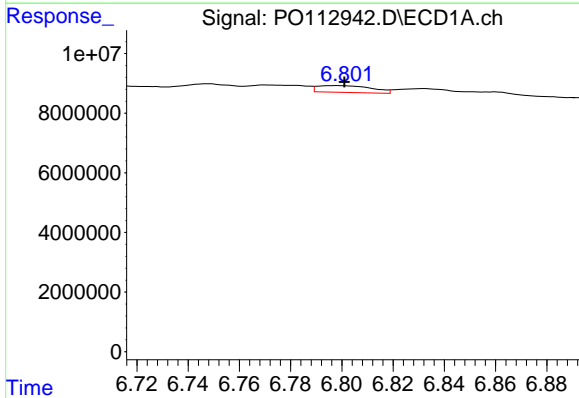
R.T.: 7.307 min
 Delta R.T.: 0.004 min
 Response: 2048197
 Conc: 1.65 ng/ml

Instrument :
 ECD_O
 ClientSampleId :



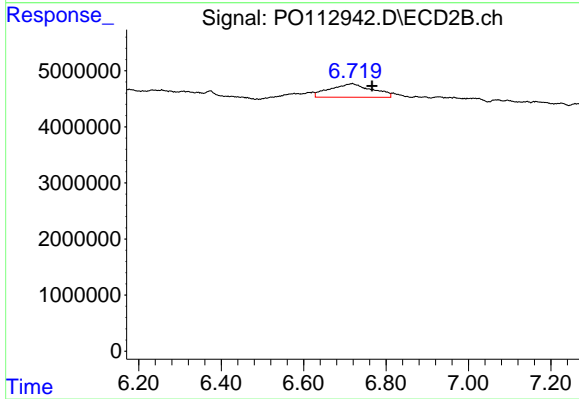
#35 AR-1260-5

R.T.: 7.259 min
 Delta R.T.: -0.006 min
 Response: 2661719
 Conc: 6.46 ng/ml



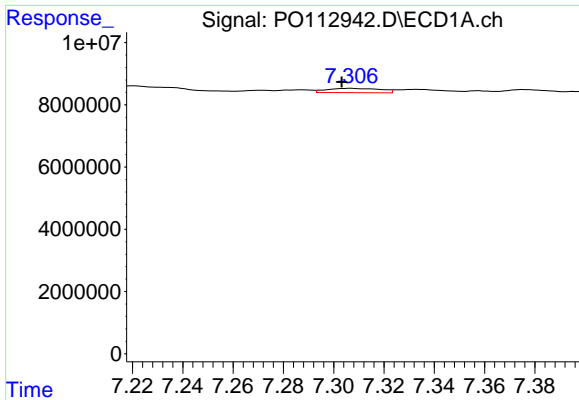
#36 AR-1262-1

R.T.: 6.798 min
 Delta R.T.: -0.003 min
 Response: 3380247
 Conc: 3.64 ng/ml



#36 AR-1262-1

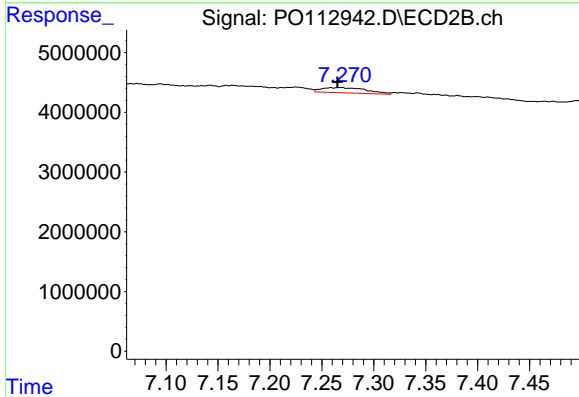
R.T.: 6.719 min
 Delta R.T.: -0.048 min
 Response: 17133570
 Conc: 41.30 ng/ml



#37 AR-1262-2

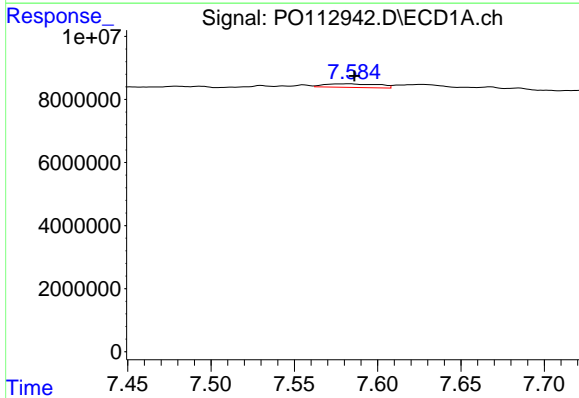
R.T.: 7.307 min
 Delta R.T.: 0.004 min
 Response: 2048197
 Conc: 1.38 ng/ml

Instrument :
 ECD_O
 ClientSampleId :



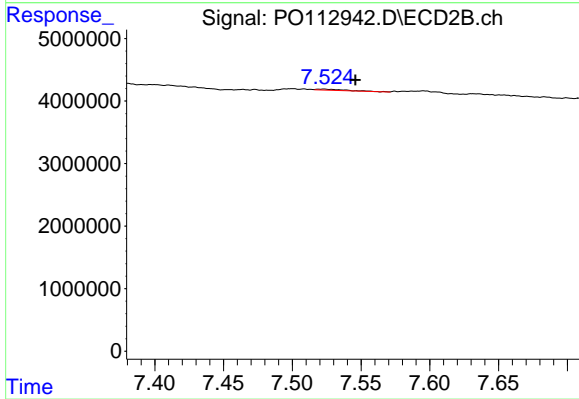
#37 AR-1262-2

R.T.: 7.259 min
 Delta R.T.: -0.006 min
 Response: 2661719
 Conc: 5.16 ng/ml



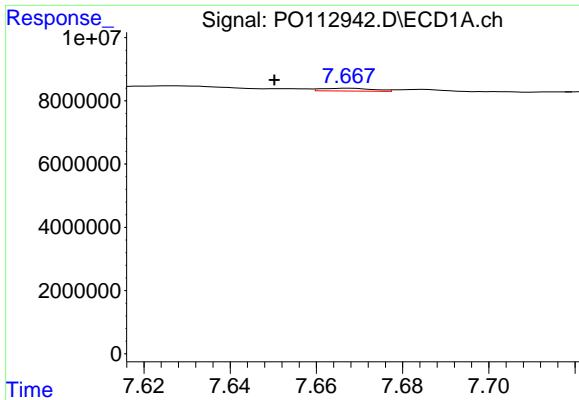
#38 AR-1262-3

R.T.: 7.582 min
 Delta R.T.: -0.004 min
 Response: 2543751
 Conc: 4.31 ng/ml



#38 AR-1262-3

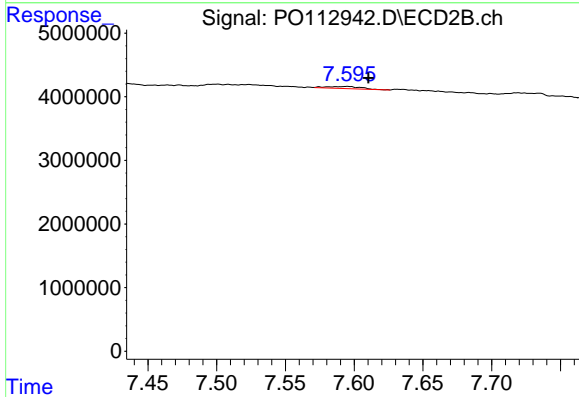
R.T.: 7.523 min
 Delta R.T.: -0.023 min
 Response: 247415
 Conc: 1.33 ng/ml



#39 AR-1262-4

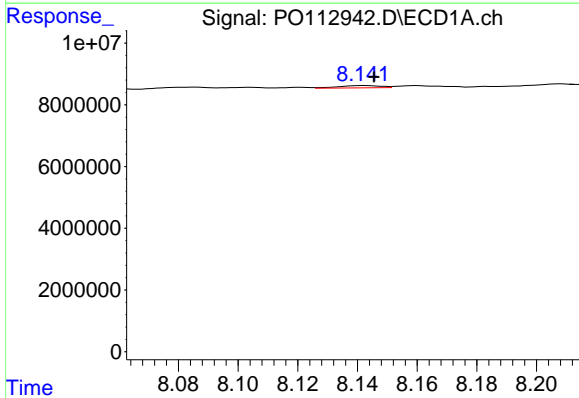
R.T.: 7.668 min
 Delta R.T.: 0.017 min
 Response: 741375
 Conc: 0.75 ng/ml

Instrument :
 ECD_O
 ClientSampleId :



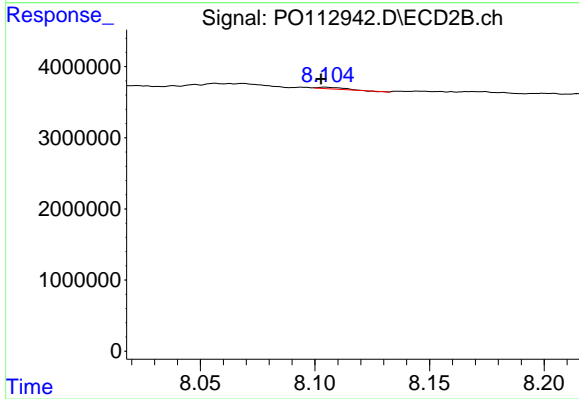
#39 AR-1262-4

R.T.: 7.595 min
 Delta R.T.: -0.015 min
 Response: 555903
 Conc: 1.93 ng/ml



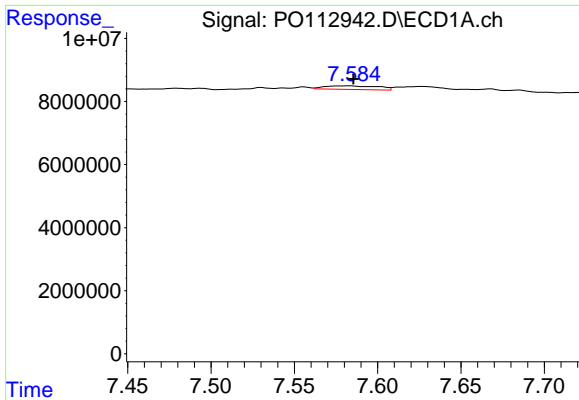
#40 AR-1262-5

R.T.: 8.142 min
 Delta R.T.: -0.003 min
 Response: 762834
 Conc: 1.76 ng/ml



#40 AR-1262-5

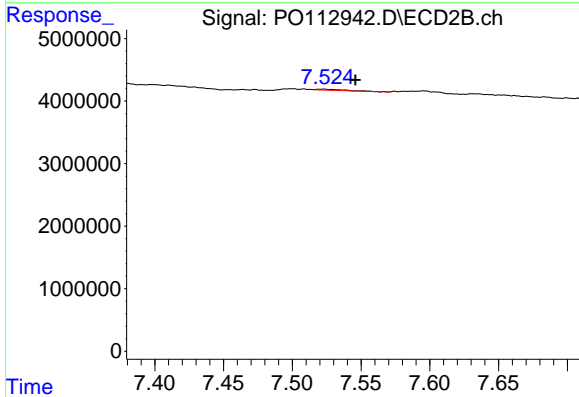
R.T.: 8.105 min
 Delta R.T.: 0.002 min
 Response: 169011
 Conc: 1.70 ng/ml



#41 AR-1268-1

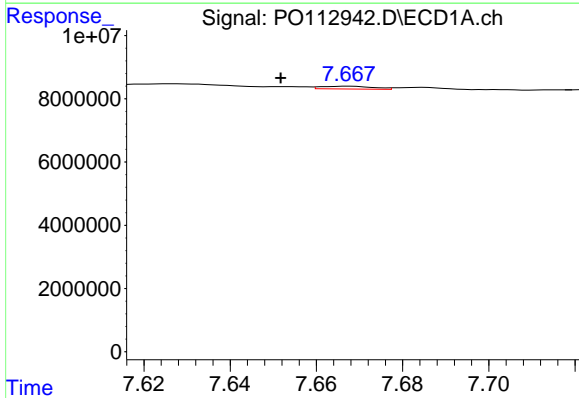
R.T.: 7.582 min
 Delta R.T.: -0.003 min
 Response: 2543751
 Conc: 1.45 ng/ml

Instrument :
 ECD_O
 ClientSampleId :



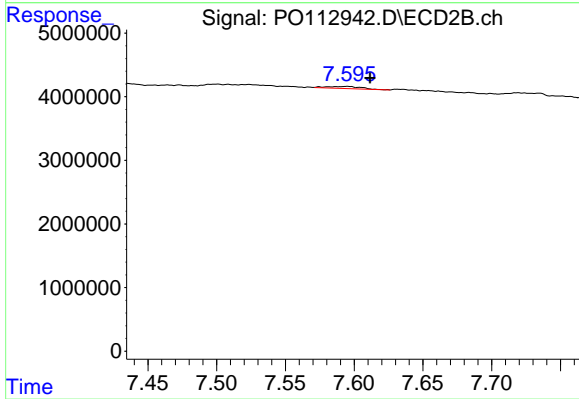
#41 AR-1268-1

R.T.: 7.523 min
 Delta R.T.: -0.023 min
 Response: 247415
 Conc: 0.48 ng/ml



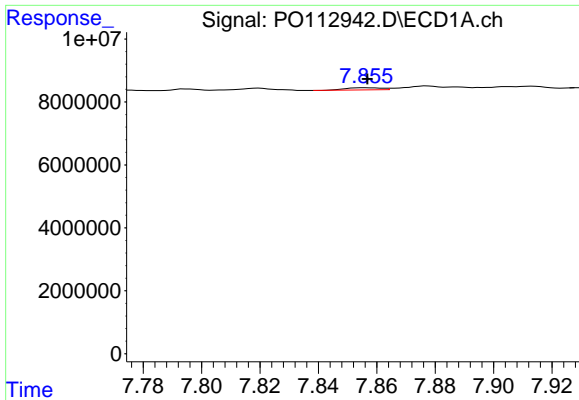
#42 AR-1268-2

R.T.: 7.668 min
 Delta R.T.: 0.016 min
 Response: 741375
 Conc: 0.50 ng/ml



#42 AR-1268-2

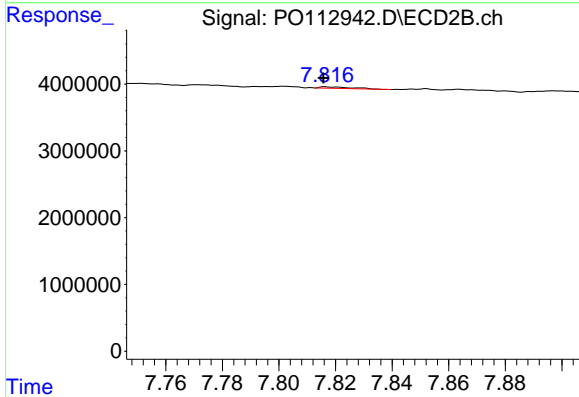
R.T.: 7.595 min
 Delta R.T.: -0.016 min
 Response: 555903
 Conc: 1.31 ng/ml



#43 AR-1268-3

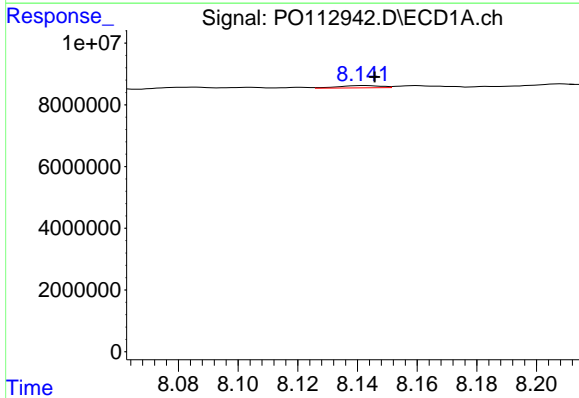
R.T.: 7.856 min
 Delta R.T.: 0.000 min
 Response: 598605
 Conc: 0.48 ng/ml

Instrument :
 ECD_O
 ClientSampleId :



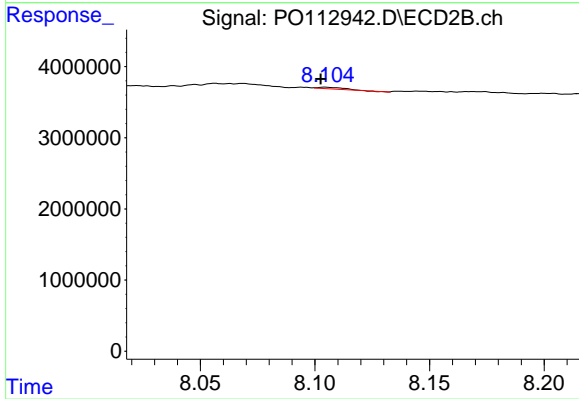
#43 AR-1268-3

R.T.: 7.817 min
 Delta R.T.: 0.001 min
 Response: 186487
 Conc: 0.58 ng/ml



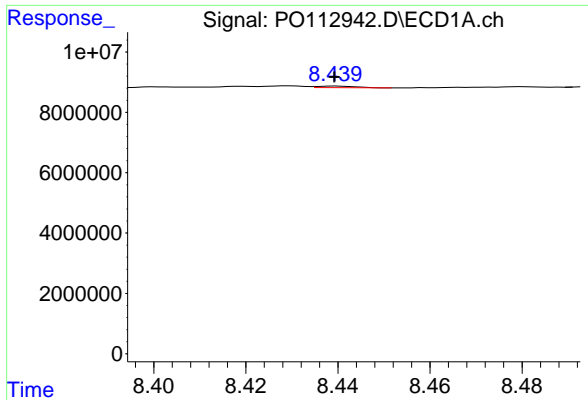
#44 AR-1268-4

R.T.: 8.142 min
 Delta R.T.: -0.003 min
 Response: 762834
 Conc: 1.58 ng/ml



#44 AR-1268-4

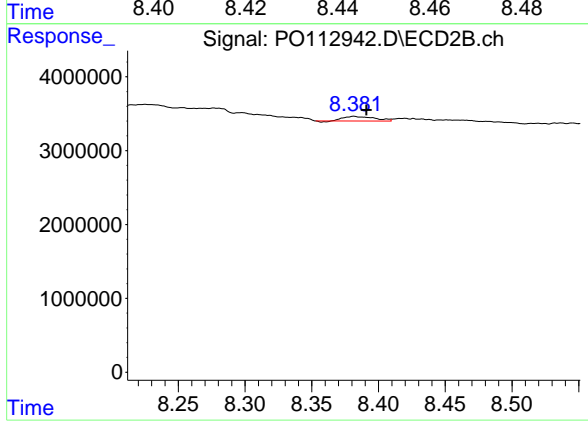
R.T.: 8.105 min
 Delta R.T.: 0.002 min
 Response: 169011
 Conc: 1.52 ng/ml



#45 AR-1268-5

R.T.: 8.440 min
 Delta R.T.: 0.000 min
 Response: 319768
 Conc: 0.10 ng/ml

Instrument :
 ECD_O
 ClientSampleId :



#45 AR-1268-5

R.T.: 8.382 min
 Delta R.T.: -0.009 min
 Response: 972927
 Conc: 1.33 ng/ml