

Data Path : Z:\pestpcbsrv\HPCHEM1\ECD_0\Data\P0081425\
 Data File : PO112936.D
 Signal(s) : Signal #1: ECD1A.ch Signal #2: ECD2B.ch
 Acq On : 14 Aug 2025 10:23
 Operator : YP/AJ
 Sample : Q2814-17
 Misc :
 ALS Vial : 8 Sample Multiplier: 1

Instrument :
 ECD_0
ClientSampleId :
 TW-518R-S

Manual Integrations
APPROVED
 Reviewed By :Yogesh Patel 08/14/2025
 Supervised By :mohammad ahmed 08/18/2025

Integration File signal 1: autoint1.e
 Integration File signal 2: autoint2.e
 Quant Time: Aug 14 10:47:11 2025
 Quant Method : Z:\pestpcbsrv\HPCHEM1\ECD_0\methods\P0072325.M
 Quant Title : GC EXTRACTABLES
 QLast Update : Thu Jul 24 04:54:06 2025
 Response via : Initial Calibration
 Integrator: ChemStation

Volume Inj. : 2 µl
 Signal #1 Phase : ZB-MR1 Signal #2 Phase: ZB-MR2
 Signal #1 Info : 30Mx0.32mmx 0.50µ Signal #2 Info : 30M x 0.32mm x 0.25µm

Compound	RT#1	RT#2	Resp#1	Resp#2	ng/ml	ng/ml

System Monitoring Compounds						
1) SA Tetrachlo...	3.668	3.659	94416774	50378370	11.611	10.138
2) SA Decachlor...	8.687	8.632	98475019	25161002	13.468	14.238
Target Compounds						
26) L6 AR-1254-1	5.558	5.530	13573858	5548470	24.727m	16.884m#
27) L6 AR-1254-2	5.709	5.679	16218435	9953084	33.377m	34.381m
28) L6 AR-1254-3	6.116	6.082	31791555	17236778	42.714	40.324m
29) L6 AR-1254-4	6.337	6.305	11916425	4862204	21.678	17.813
30) L6 AR-1254-5	6.757	6.720	17764808	8798130	25.098m	26.340

(f)=RT Delta > 1/2 Window (#)=Amounts differ by > 25% (m)=manual int.

Data Path : Z:\pestpcbsrv\HPCHEM1\ECD_O\Data\PO081425\
 Data File : PO112936.D
 Signal(s) : Signal #1: ECD1A.ch Signal #2: ECD2B.ch
 Acq On : 14 Aug 2025 10:23
 Operator : YP/AJ
 Sample : Q2814-17
 Misc :
 ALS Vial : 8 Sample Multiplier: 1

Instrument :

ECD_O

ClientSampleId :

TW-518R-S

Manual Integrations

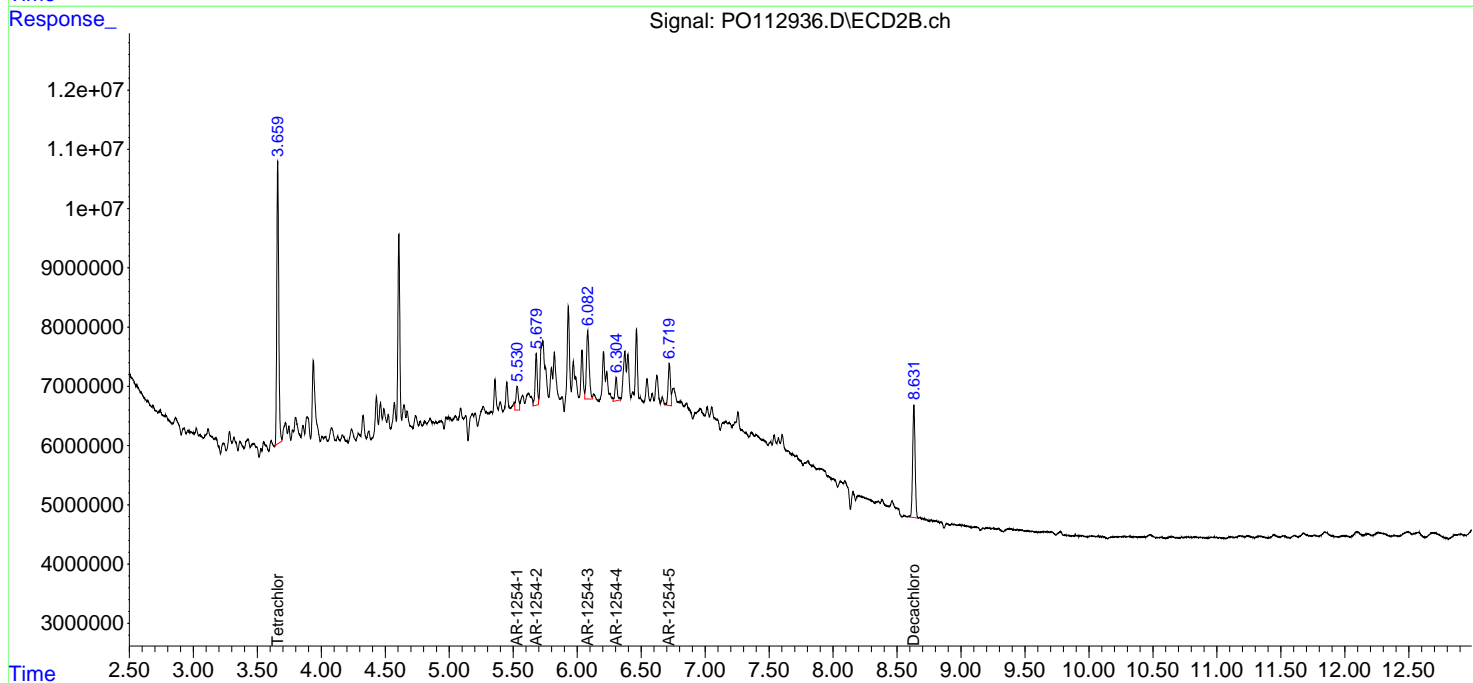
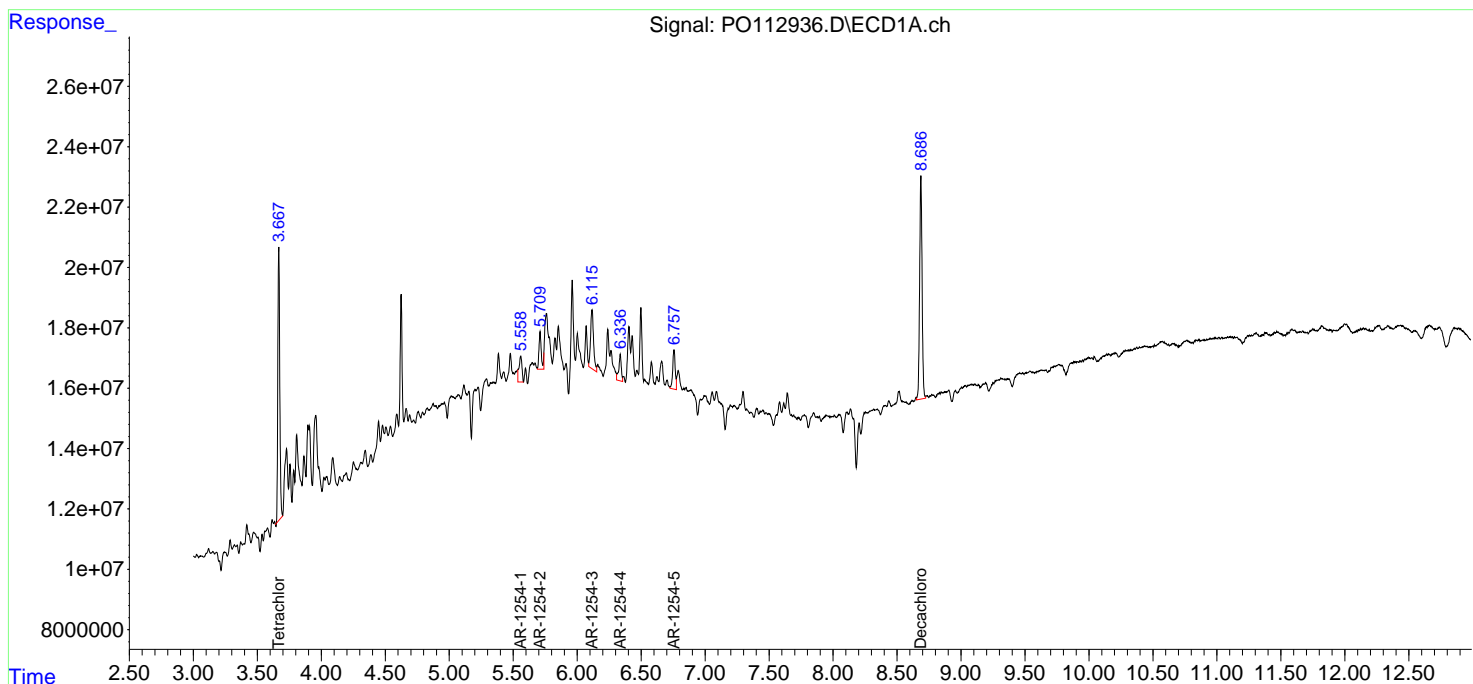
APPROVED

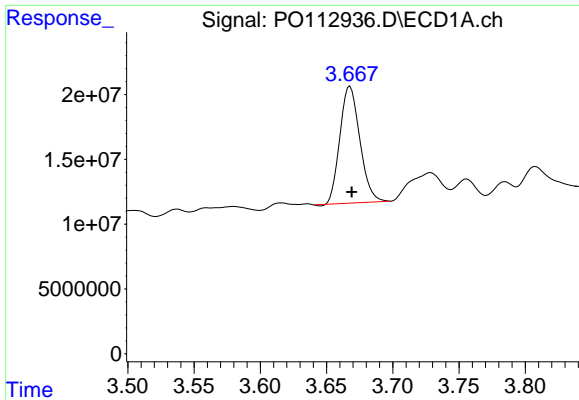
Reviewed By :Yogesh Patel 08/14/2025

Supervised By :mohammad ahmed 08/18/2025

Integration File signal 1: autoint1.e
 Integration File signal 2: autoint2.e
 Quant Time: Aug 14 10:47:11 2025
 Quant Method : Z:\pestpcbsrv\HPCHEM1\ECD_O\methods\PO072325.M
 Quant Title : GC EXTRACTABLES
 QLast Update : Thu Jul 24 04:54:06 2025
 Response via : Initial Calibration
 Integrator: ChemStation

Volume Inj. : 2 µl
 Signal #1 Phase : ZB-MR1 Signal #2 Phase: ZB-MR2
 Signal #1 Info : 30Mx0.32mmx 0.50µ Signal #2 Info : 30M x 0.32mm x 0.25µm



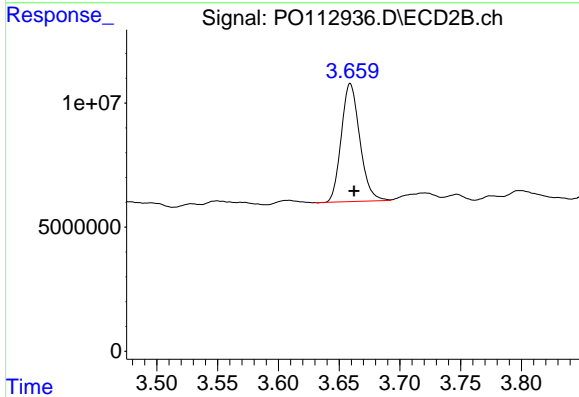


#1 Tetrachloro-m-xylene
 R.T.: 3.668 min
 Delta R.T.: -0.001 min
 Response: 94416774
 Conc: 11.61 ng/ml

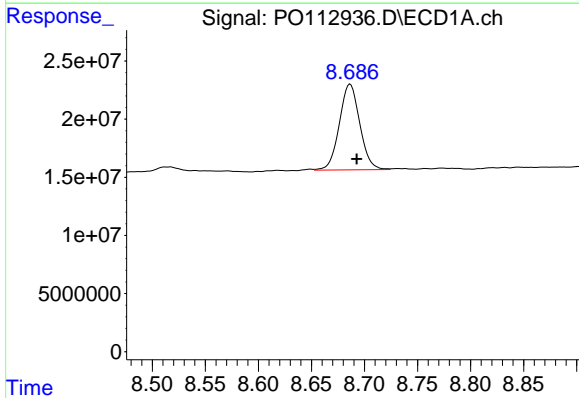
Instrument :
 ECD_O
 ClientSampleId :
 TW-518R-S

Manual Integrations
 APPROVED

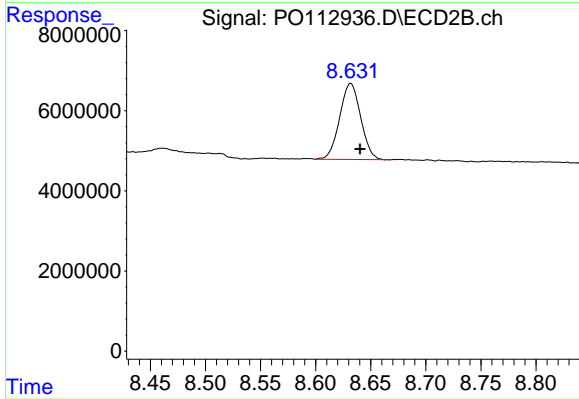
Reviewed By :Yogesh Patel 08/14/2025
 Supervised By :mohammad ahmed 08/18/2025



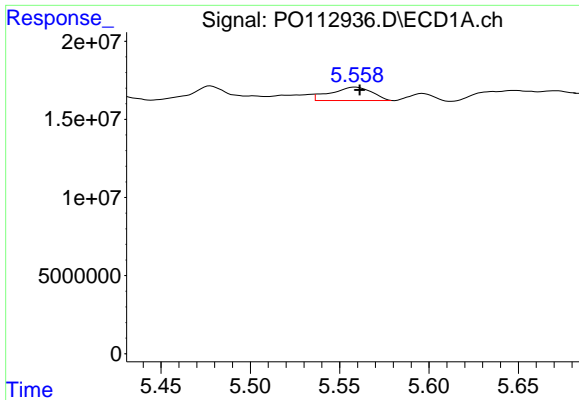
#1 Tetrachloro-m-xylene
 R.T.: 3.659 min
 Delta R.T.: -0.003 min
 Response: 50378370
 Conc: 10.14 ng/ml



#2 Decachlorobiphenyl
 R.T.: 8.687 min
 Delta R.T.: -0.006 min
 Response: 98475019
 Conc: 13.47 ng/ml



#2 Decachlorobiphenyl
 R.T.: 8.632 min
 Delta R.T.: -0.009 min
 Response: 25161002
 Conc: 14.24 ng/ml



#26 AR-1254-1

R.T.: 5.558 min
 Delta R.T.: -0.003 min
 Response: 13573858
 Conc: 24.73 ng/ml

Instrument :

ECD_O

ClientSampleId :

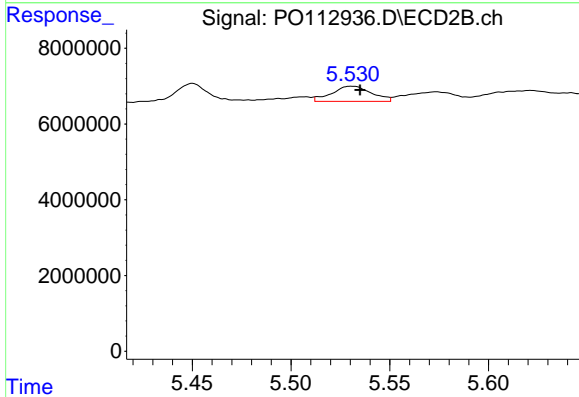
TW-518R-S

Manual Integrations

APPROVED

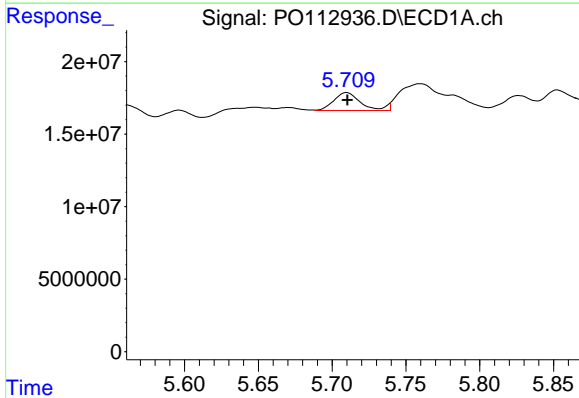
Reviewed By :Yogesh Patel 08/14/2025

Supervised By :mohammad ahmed 08/18/2025



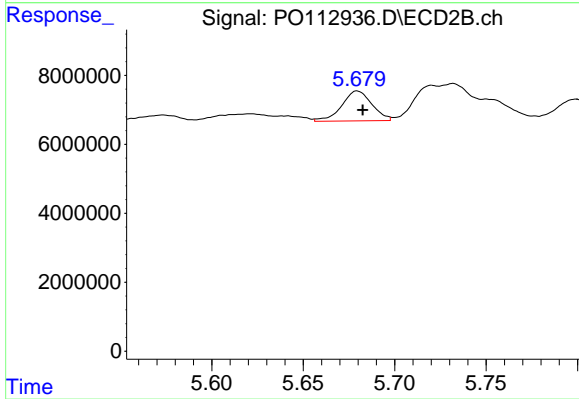
#26 AR-1254-1

R.T.: 5.530 min
 Delta R.T.: -0.005 min
 Response: 5548470
 Conc: 16.88 ng/ml m



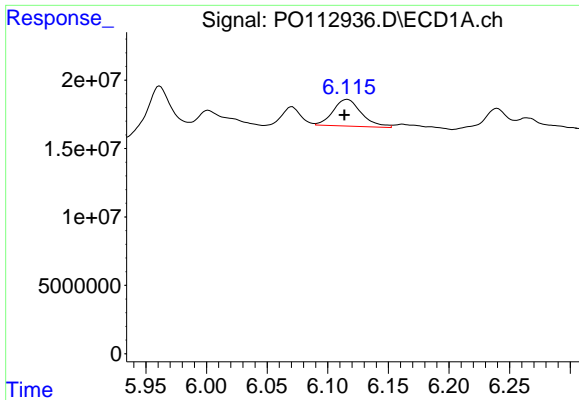
#27 AR-1254-2

R.T.: 5.709 min
 Delta R.T.: -0.001 min
 Response: 16218435
 Conc: 33.38 ng/ml m



#27 AR-1254-2

R.T.: 5.679 min
 Delta R.T.: -0.003 min
 Response: 9953084
 Conc: 34.38 ng/ml m



#28 AR-1254-3

R.T.: 6.116 min
 Delta R.T.: 0.002 min
 Response: 31791555
 Conc: 42.71 ng/ml

Instrument :

ECD_O

ClientSampleId :

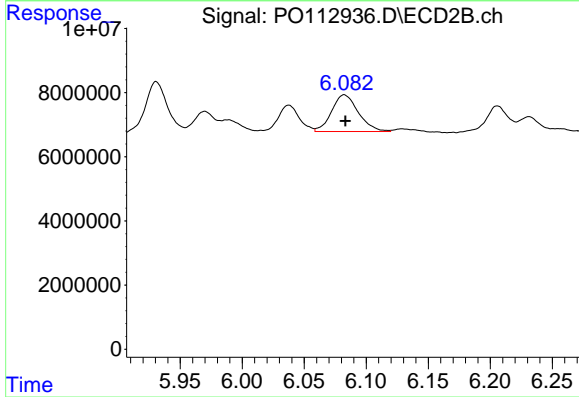
TW-518R-S

Manual Integrations

APPROVED

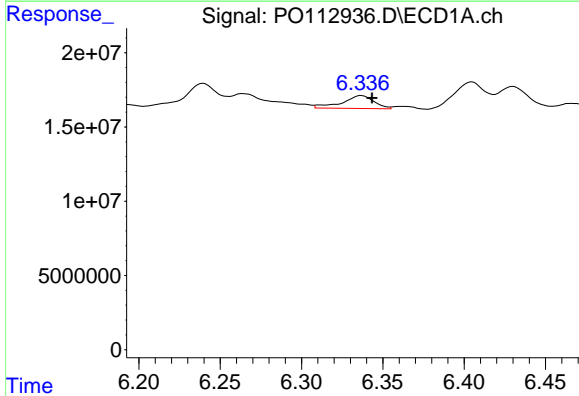
Reviewed By :Yogesh Patel 08/14/2025

Supervised By :mohammad ahmed 08/18/2025



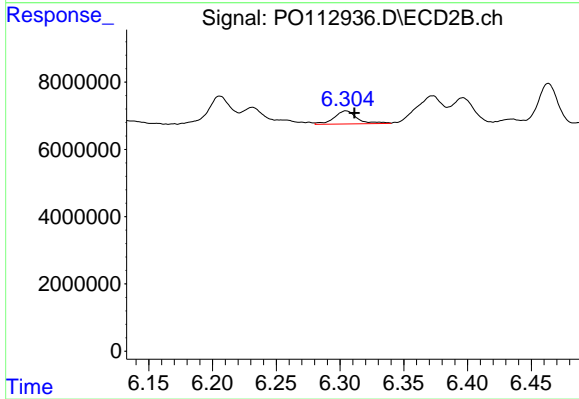
#28 AR-1254-3

R.T.: 6.082 min
 Delta R.T.: -0.001 min
 Response: 17236778
 Conc: 40.32 ng/ml m



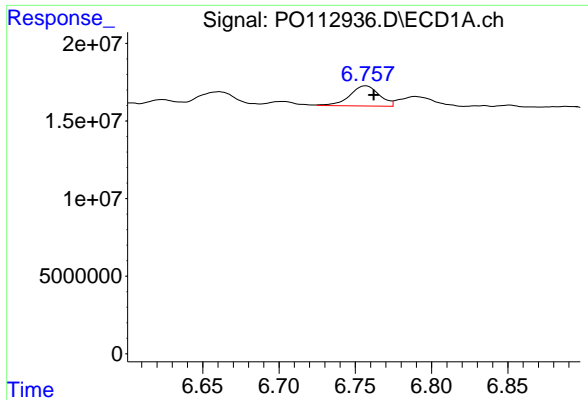
#29 AR-1254-4

R.T.: 6.337 min
 Delta R.T.: -0.006 min
 Response: 11916425
 Conc: 21.68 ng/ml



#29 AR-1254-4

R.T.: 6.305 min
 Delta R.T.: -0.007 min
 Response: 4862204
 Conc: 17.81 ng/ml



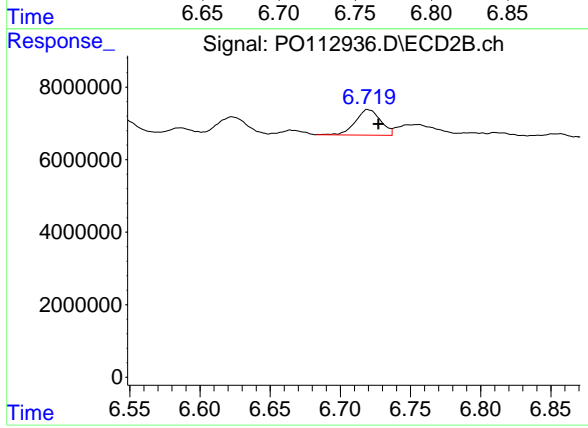
#30 AR-1254-5

R.T.: 6.757 min
Delta R.T.: -0.006 min
Response: 17764808
Conc: 25.10 ng/ml

Instrument :
ECD_O
ClientSampleId :
TW-518R-S

Manual Integrations
APPROVED

Reviewed By :Yogesh Patel 08/14/2025
Supervised By :mohammad ahmed 08/18/2025



#30 AR-1254-5

R.T.: 6.720 min
Delta R.T.: -0.007 min
Response: 8798130
Conc: 26.34 ng/ml