

Data Path : Z:\pestpcbsrv\HPCHEM1\ECD\_O\Data\P0081425\  
 Data File : PO112948.D  
 Signal(s) : Signal #1: ECD1A.ch Signal #2: ECD2B.ch  
 Acq On : 14 Aug 2025 16:20  
 Operator : YP/AJ  
 Sample : AR1254CCC500  
 Misc :  
 ALS Vial : 6 Sample Multiplier: 1

**Instrument :**  
 ECD\_O  
**ClientSampleId :**  
 AR1254CCC500

Integration File signal 1: autoint1.e  
 Integration File signal 2: autoint2.e  
 Quant Time: Aug 14 16:54:54 2025  
 Quant Method : Z:\pestpcbsrv\HPCHEM1\ECD\_O\methods\P0072325.M  
 Quant Title : GC EXTRACTABLES  
 QLast Update : Thu Jul 24 04:54:06 2025  
 Response via : Initial Calibration  
 Integrator: ChemStation

Volume Inj. : 2 µl  
 Signal #1 Phase : ZB-MR1 Signal #2 Phase: ZB-MR2  
 Signal #1 Info : 30Mx0.32mmx 0.50µ Signal #2 Info : 30M x 0.32mm x 0.25µm

Compound	RT#1	RT#2	Resp#1	Resp#2	ng/ml	ng/ml
-----						
System Monitoring Compounds						
1) SA Tetrachlo...	3.665	3.659	447.6E6	262.3E6	55.047	52.776
2) SA Decachlor...	8.686	8.632	341.0E6	90525587	46.635	51.228
Target Compounds						
26) L6 AR-1254-1	5.554	5.530	281.3E6	156.8E6	512.347	477.220
27) L6 AR-1254-2	5.703	5.677	254.7E6	138.5E6	524.125	478.261
28) L6 AR-1254-3	6.106	6.077	360.1E6	203.5E6	483.809	476.062
29) L6 AR-1254-4	6.336	6.305	265.4E6	128.2E6	482.874	469.553
30) L6 AR-1254-5	6.754	6.720	346.9E6	162.1E6	490.048	485.160
-----						

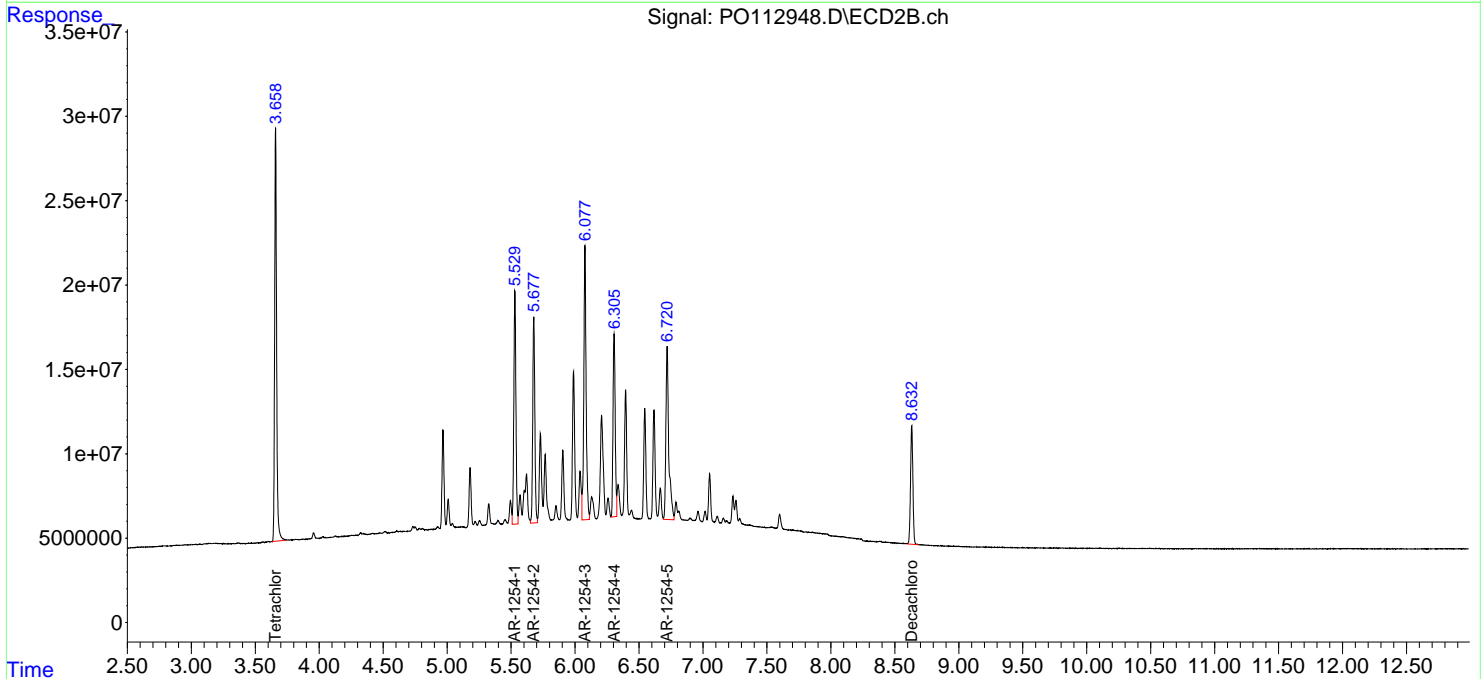
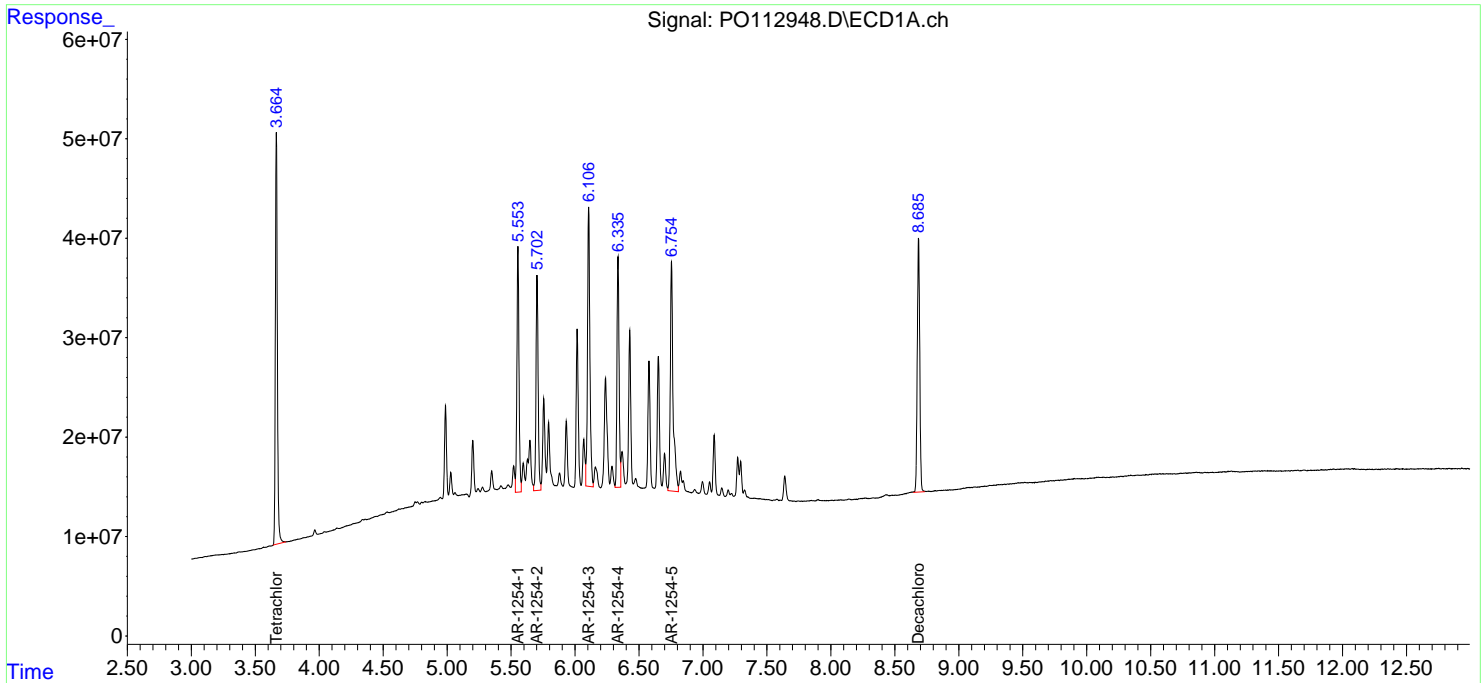
(f)=RT Delta > 1/2 Window (#)=Amounts differ by > 25% (m)=manual int.

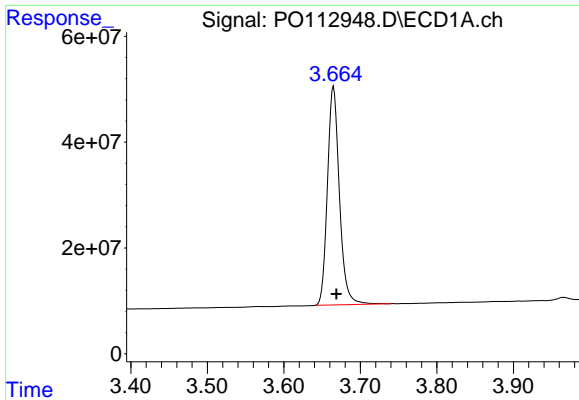
Data Path : Z:\pestpcbsrv\HPCHEM1\ECD\_O\Data\PO081425\  
 Data File : PO112948.D  
 Signal(s) : Signal #1: ECD1A.ch Signal #2: ECD2B.ch  
 Acq On : 14 Aug 2025 16:20  
 Operator : YP/AJ  
 Sample : AR1254CCC500  
 Misc :  
 ALS Vial : 6 Sample Multiplier: 1

Instrument :  
 ECD\_O  
 ClientSampleId :  
 AR1254CCC500

Integration File signal 1: autoint1.e  
 Integration File signal 2: autoint2.e  
 Quant Time: Aug 14 16:54:54 2025  
 Quant Method : Z:\pestpcbsrv\HPCHEM1\ECD\_O\methods\PO072325.M  
 Quant Title : GC EXTRACTABLES  
 QLast Update : Thu Jul 24 04:54:06 2025  
 Response via : Initial Calibration  
 Integrator: ChemStation

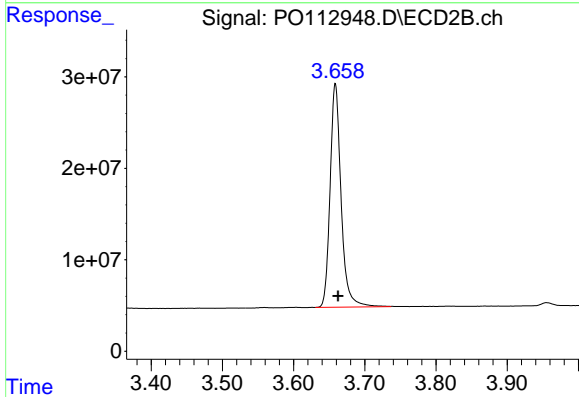
Volume Inj. : 2 µl  
 Signal #1 Phase : ZB-MR1 Signal #2 Phase: ZB-MR2  
 Signal #1 Info : 30Mx0.32mmx 0.50µm Signal #2 Info : 30M x 0.32mm x 0.25µm



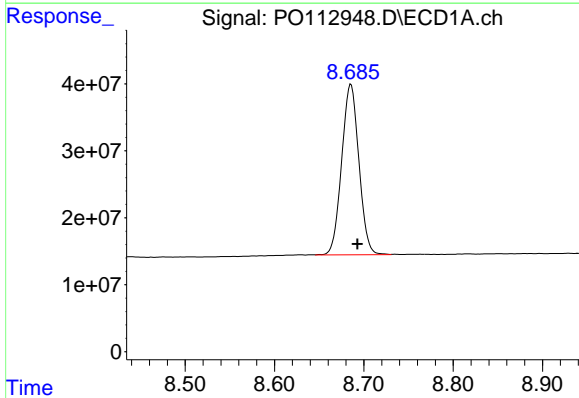


#1 Tetrachloro-m-xylene  
 R.T.: 3.665 min  
 Delta R.T.: -0.004 min  
 Response: 447618683  
 Conc: 55.05 ng/ml

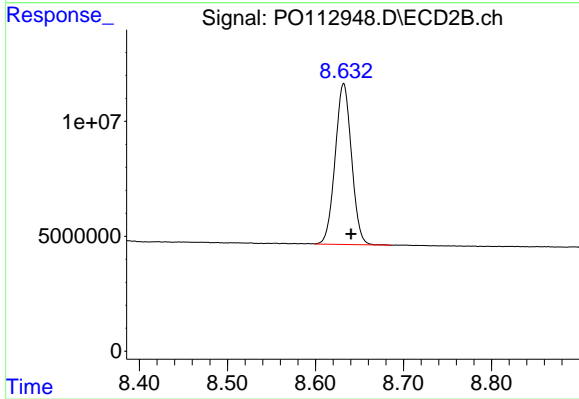
Instrument :  
 ECD\_O  
 ClientSampleId :  
 AR1254CCC500



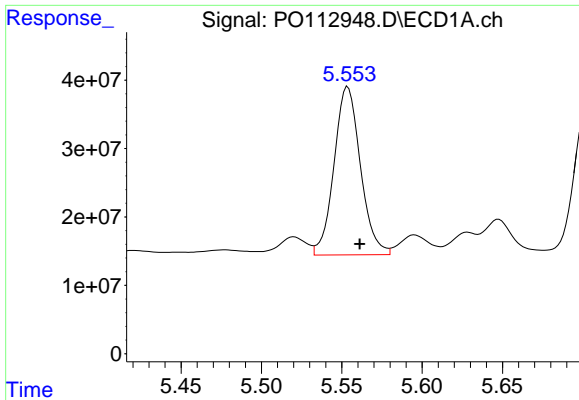
#1 Tetrachloro-m-xylene  
 R.T.: 3.659 min  
 Delta R.T.: -0.004 min  
 Response: 262253726  
 Conc: 52.78 ng/ml



#2 Decachlorobiphenyl  
 R.T.: 8.686 min  
 Delta R.T.: -0.007 min  
 Response: 340983830  
 Conc: 46.63 ng/ml



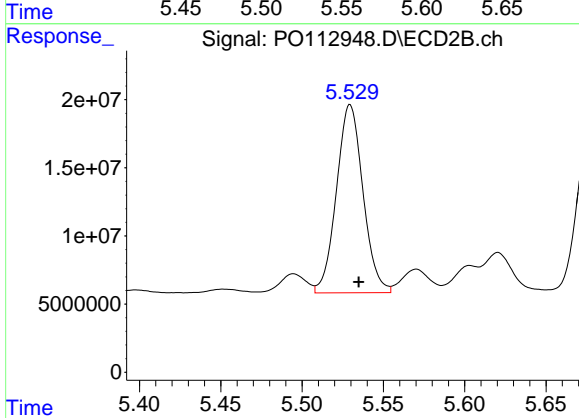
#2 Decachlorobiphenyl  
 R.T.: 8.632 min  
 Delta R.T.: -0.008 min  
 Response: 90525587  
 Conc: 51.23 ng/ml



#26 AR-1254-1

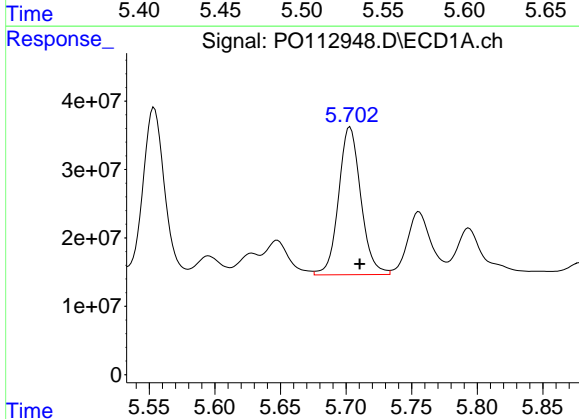
R.T.: 5.554 min  
 Delta R.T.: -0.007 min  
 Response: 281257095  
 Conc: 512.35 ng/ml

Instrument :  
 ECD\_O  
 ClientSampleId :  
 AR1254CCC500



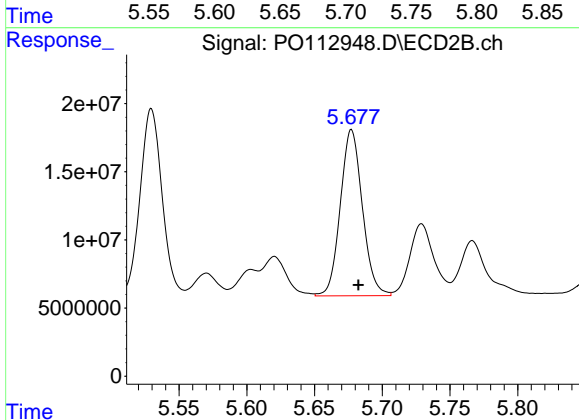
#26 AR-1254-1

R.T.: 5.530 min  
 Delta R.T.: -0.005 min  
 Response: 156824597  
 Conc: 477.22 ng/ml



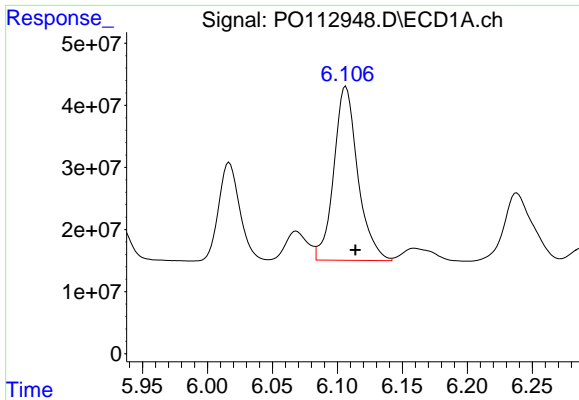
#27 AR-1254-2

R.T.: 5.703 min  
 Delta R.T.: -0.007 min  
 Response: 254682016  
 Conc: 524.12 ng/ml



#27 AR-1254-2

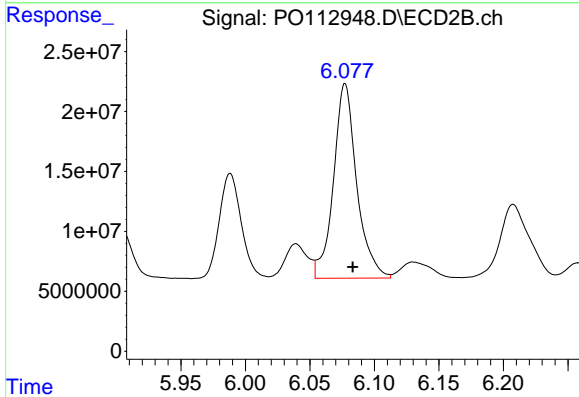
R.T.: 5.677 min  
 Delta R.T.: -0.005 min  
 Response: 138452119  
 Conc: 478.26 ng/ml



#28 AR-1254-3

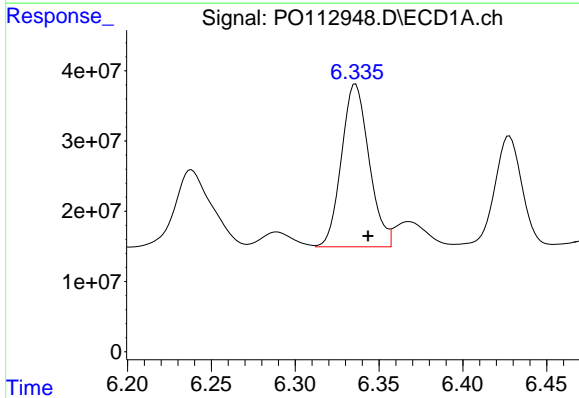
R.T.: 6.106 min  
 Delta R.T.: -0.007 min  
 Response: 360092590  
 Conc: 483.81 ng/ml

Instrument :  
 ECD\_O  
 ClientSampleId :  
 AR1254CCC500



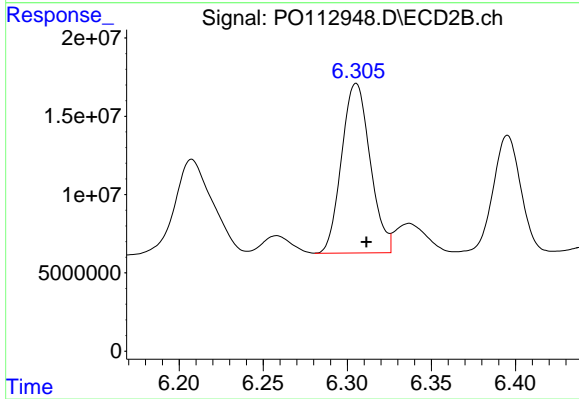
#28 AR-1254-3

R.T.: 6.077 min  
 Delta R.T.: -0.006 min  
 Response: 203497961  
 Conc: 476.06 ng/ml



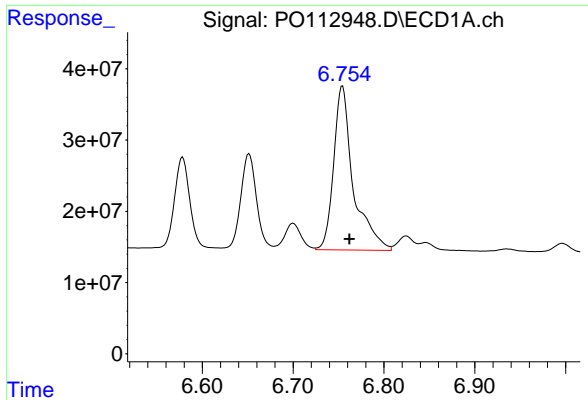
#29 AR-1254-4

R.T.: 6.336 min  
 Delta R.T.: -0.007 min  
 Response: 265437770  
 Conc: 482.87 ng/ml



#29 AR-1254-4

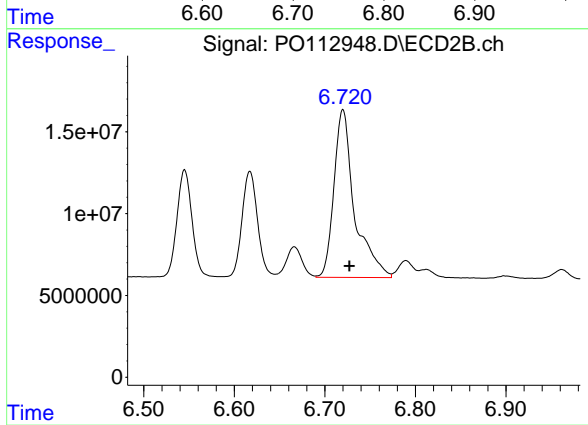
R.T.: 6.305 min  
 Delta R.T.: -0.006 min  
 Response: 128170593  
 Conc: 469.55 ng/ml



#30 AR-1254-5

R.T.: 6.754 min  
Delta R.T.: -0.008 min  
Response: 346868040  
Conc: 490.05 ng/ml

Instrument :  
ECD\_O  
ClientSampleId :  
AR1254CCC500



#30 AR-1254-5

R.T.: 6.720 min  
Delta R.T.: -0.007 min  
Response: 162053022  
Conc: 485.16 ng/ml