

Data Path : Z:\pestpcbsrv\HPCHEM1\ECD_0\Data\P0081523\
 Data File : P0097101.D
 Signal(s) : Signal #1: ECD1A.ch Signal #2: ECD2B.ch
 Acq On : 15 Aug 2023 19:50
 Operator : YP/AJ
 Sample : 03982-01
 Misc :
 ALS Vial : 27 Sample Multiplier: 1

Instrument :
 ECD_0
ClientSampleId :
 1769

Manual Integrations
APPROVED
 Reviewed By :Yogesh Patel 08/16/2023
 Supervised By :Ankita Jodhani 08/16/2023

Integration File signal 1: autoint1.e
 Integration File signal 2: autoint2.e
 Quant Time: Aug 16 02:27:38 2023
 Quant Method : Z:\pestpcbsrv\HPCHEM1\ECD_0\methods\P0080723.M
 Quant Title : GC EXTRACTABLES
 QLast Update : Tue Aug 08 04:34:41 2023
 Response via : Initial Calibration
 Integrator: ChemStation

Volume Inj. : 2 µl
 Signal #1 Phase : ZB-MR1 Signal #2 Phase: ZB-MR2
 Signal #1 Info : 30Mx0.32mmx 0.50µ Signal #2 Info : 30M x 0.32mm x 0.25µm

Compound	RT#1	RT#2	Resp#1	Resp#2	ng/ml	ng/ml

System Monitoring Compounds						
1) SA Tetrachlo...	4.411	3.616	57112828	22879142	17.254	17.283
2) SA Decachlor...	10.352	8.633	43790953	19944152	20.012	17.239
Target Compounds						
16) L4 AR-1242-1	5.597	4.702	185.4E6	77199724	2211.372	1958.143
17) L4 AR-1242-2	5.620	4.720	287.2E6	110.9E6	2438.861	2035.925
18) L4 AR-1242-3	5.683	4.896	158.6E6	58555796	2146.545	1980.339
19) L4 AR-1242-4	5.783	4.980	143.6E6	66038718	2412.395m	2095.543
20) L4 AR-1242-5	6.538	5.505	64884033	35966337	1179.287	987.105

(f)=RT Delta > 1/2 Window (#)=Amounts differ by > 25% (m)=manual int.

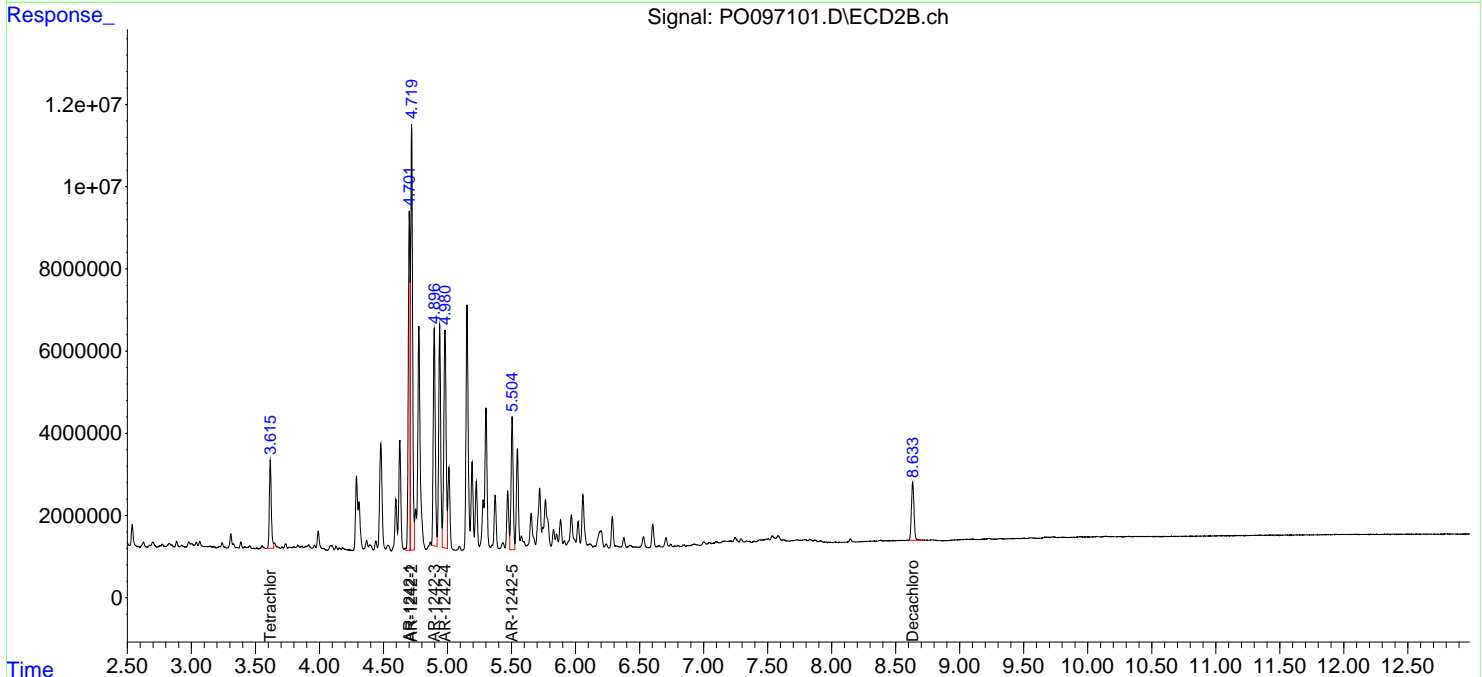
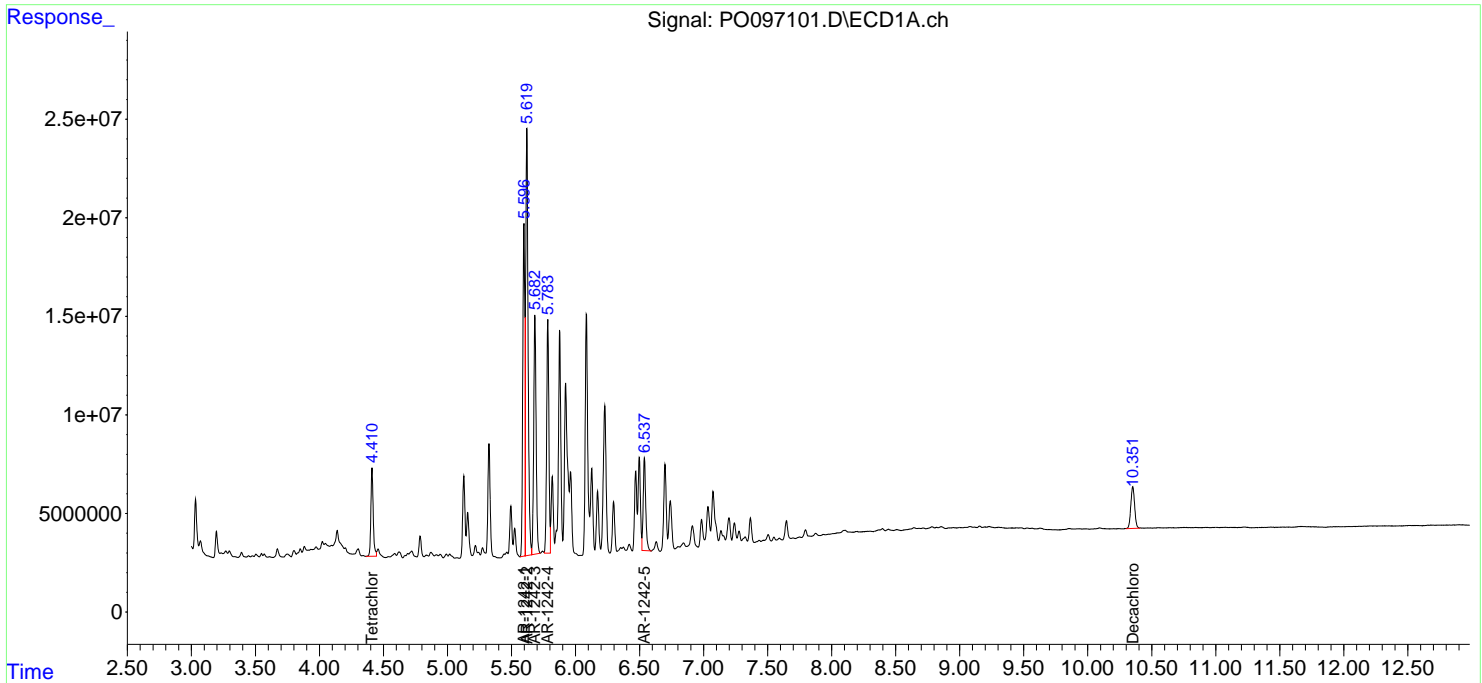
Data Path : Z:\pestpcbsrv\HPCHEM1\ECD_O\Data\PO081523\
 Data File : PO097101.D
 Signal(s) : Signal #1: ECD1A.ch Signal #2: ECD2B.ch
 Acq On : 15 Aug 2023 19:50
 Operator : YP/AJ
 Sample : 03982-01
 Misc :
 ALS Vial : 27 Sample Multiplier: 1

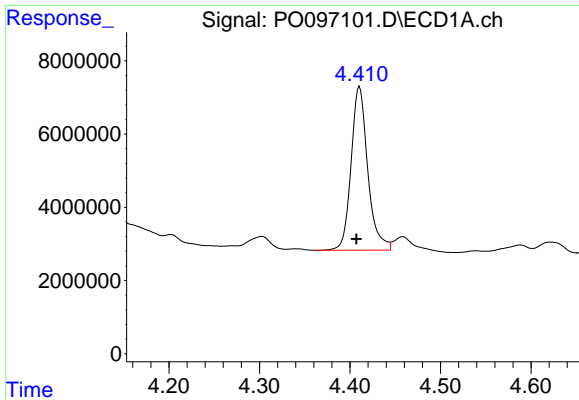
Instrument :
 ECD_O
ClientSampleId :
 1769

Manual Integrations
APPROVED
 Reviewed By :Yogesh Patel 08/16/2023
 Supervised By :Ankita Jodhani 08/16/2023

Integration File signal 1: autoint1.e
 Integration File signal 2: autoint2.e
 Quant Time: Aug 16 02:27:38 2023
 Quant Method : Z:\pestpcbsrv\HPCHEM1\ECD_O\methods\PO080723.M
 Quant Title : GC EXTRACTABLES
 QLast Update : Tue Aug 08 04:34:41 2023
 Response via : Initial Calibration
 Integrator: ChemStation

Volume Inj. : 2 µl
 Signal #1 Phase : ZB-MR1 Signal #2 Phase: ZB-MR2
 Signal #1 Info : 30Mx0.32mmx 0.50µ Signal #2 Info : 30M x 0.32mm x 0.25µm

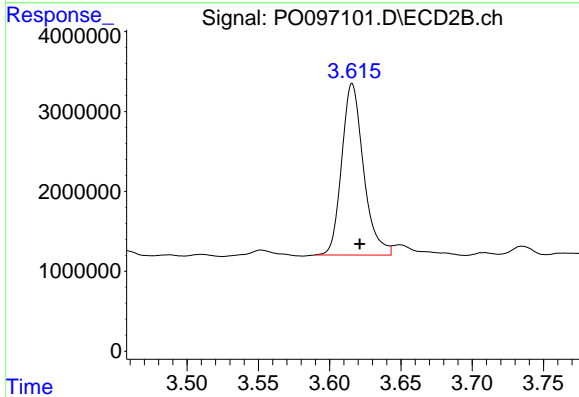




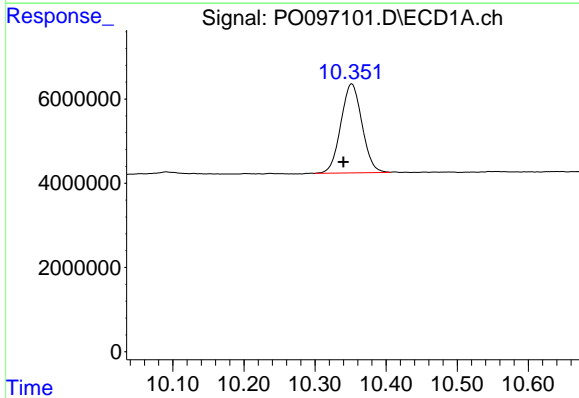
#1 Tetrachloro-m-xylene
 R.T.: 4.411 min
 Delta R.T.: 0.004 min
 Response: 57112828
 Conc: 17.25 ng/ml

Instrument :
 ECD_O
 ClientSampleId :
 1769

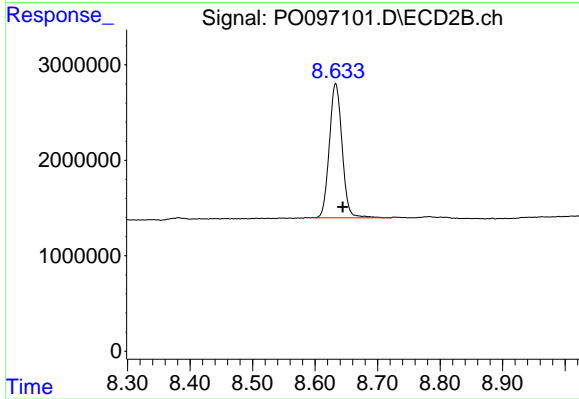
Manual Integrations
APPROVED
 Reviewed By :Yogesh Patel 08/16/2023
 Supervised By :Ankita Jodhani 08/16/2023



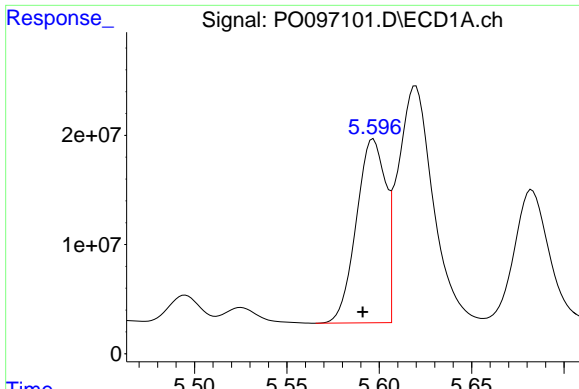
#1 Tetrachloro-m-xylene
 R.T.: 3.616 min
 Delta R.T.: -0.005 min
 Response: 22879142
 Conc: 17.28 ng/ml



#2 Decachlorobiphenyl
 R.T.: 10.352 min
 Delta R.T.: 0.012 min
 Response: 43790953
 Conc: 20.01 ng/ml



#2 Decachlorobiphenyl
 R.T.: 8.633 min
 Delta R.T.: -0.011 min
 Response: 19944152
 Conc: 17.24 ng/ml



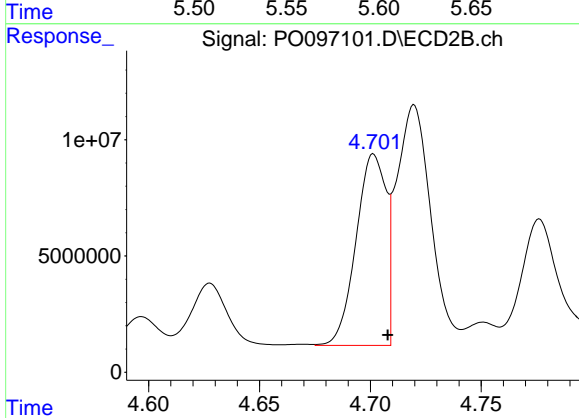
#16 AR-1242-1

R.T.: 5.597 min
 Delta R.T.: 0.006 min
 Response: 185350398
 Conc: 2211.37 ng/ml

Instrument :
 ECD_O
 ClientSampleId :
 1769

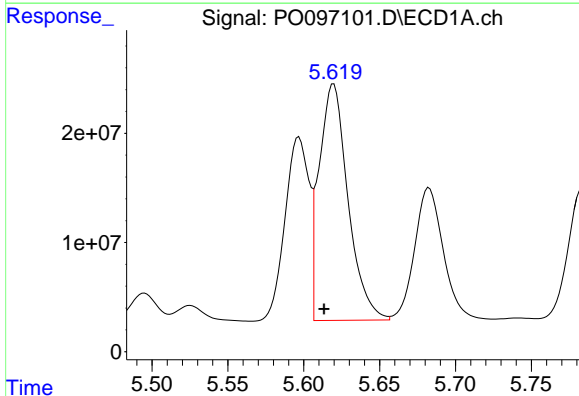
Manual Integrations
 APPROVED

Reviewed By :Yogesh Patel 08/16/2023
 Supervised By :Ankita Jodhani 08/16/2023



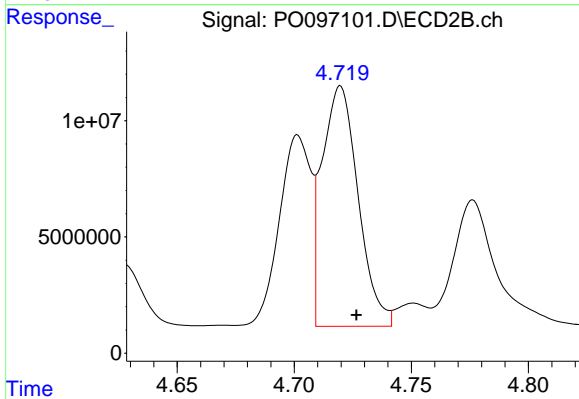
#16 AR-1242-1

R.T.: 4.702 min
 Delta R.T.: -0.006 min
 Response: 77199724
 Conc: 1958.14 ng/ml



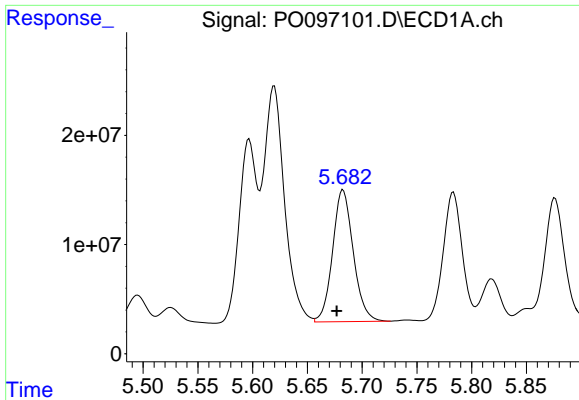
#17 AR-1242-2

R.T.: 5.620 min
 Delta R.T.: 0.006 min
 Response: 287204702
 Conc: 2438.86 ng/ml



#17 AR-1242-2

R.T.: 4.720 min
 Delta R.T.: -0.007 min
 Response: 110939341
 Conc: 2035.93 ng/ml

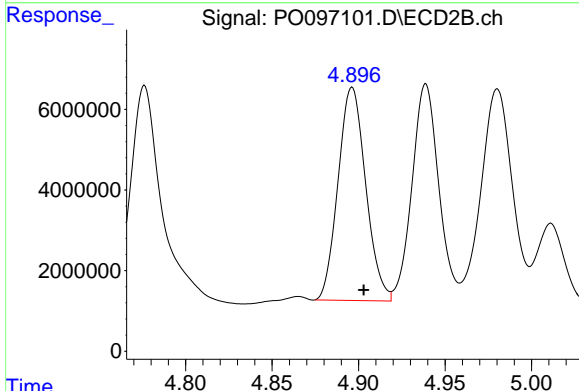


#18 AR-1242-3

R.T.: 5.683 min
 Delta R.T.: 0.006 min
 Response: 158570475
 Conc: 2146.54 ng/ml

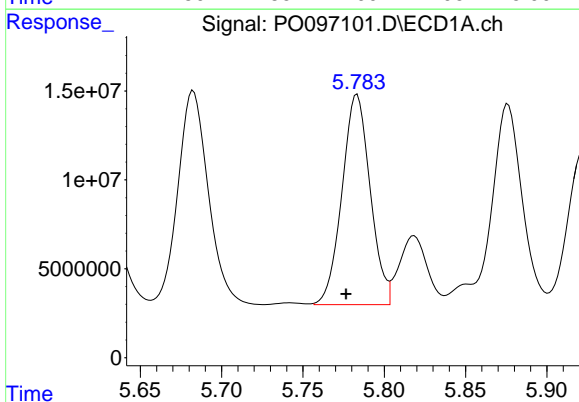
Instrument : ECD_O
 ClientSampleId : 1769

Manual Integrations
APPROVED
 Reviewed By :Yogesh Patel 08/16/2023
 Supervised By :Ankita Jodhani 08/16/2023



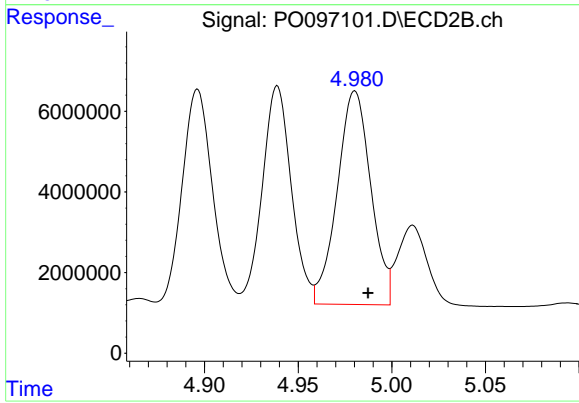
#18 AR-1242-3

R.T.: 4.896 min
 Delta R.T.: -0.007 min
 Response: 58555796
 Conc: 1980.34 ng/ml



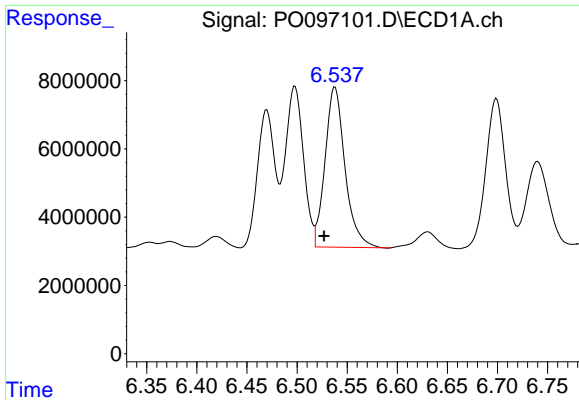
#19 AR-1242-4

R.T.: 5.783 min
 Delta R.T.: 0.006 min
 Response: 143610664
 Conc: 2412.40 ng/ml m



#19 AR-1242-4

R.T.: 4.980 min
 Delta R.T.: -0.007 min
 Response: 66038718
 Conc: 2095.54 ng/ml



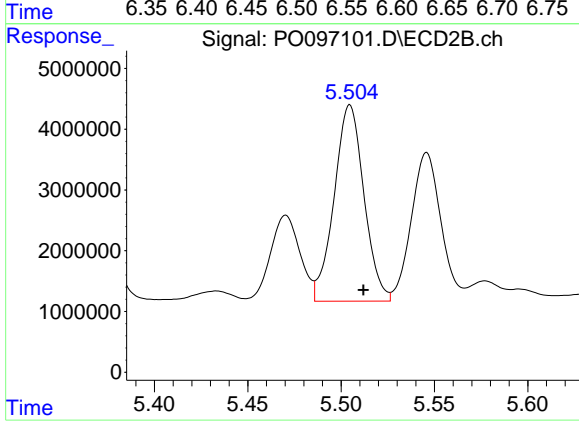
#20 AR-1242-5

R.T.: 6.538 min
 Delta R.T.: 0.011 min
 Response: 64884033
 Conc: 1179.29 ng/ml

Instrument :
 ECD_O
 ClientSampleId :
 1769

Manual Integrations
 APPROVED

Reviewed By :Yogesh Patel 08/16/2023
 Supervised By :Ankita Jodhani 08/16/2023



#20 AR-1242-5

R.T.: 5.505 min
 Delta R.T.: -0.007 min
 Response: 35966337
 Conc: 987.10 ng/ml