

Data Path : Z:\pestpcbsrv\HPCHEM1\ECD_O\Data\PO081618\
 Data File : PO048175.D
 Signal(s) : Signal #1: ECD1A.CH Signal #2: ECD2B.CH
 Acq On : 16 Aug 2018 22:36
 Operator : SM/SJ
 Sample : J4504-03
 Misc :
 ALS Vial : 23 Sample Multiplier: 1

Instrument :
 ECD_O
 ClientSampleId :
 081418-DBRI-F-U-B

Integration File signal 1: autoint1.e
 Integration File signal 2: autoint2.e
 Quant Time: Aug 17 04:09:46 2018
 Quant Method : Z:\pestpcbsrv\HPCHEM1\ECD_O\methods\PO072718.M
 Quant Title : GC EXTRACTABLES
 QLast Update : Fri Jul 27 02:33:29 2018
 Response via : Initial Calibration
 Integrator: ChemStation 6890 Scale Mode: Small noise peaks clipped

Volume Inj. : 2 µl
 Signal #1 Phase : ZB-MR1 Signal #2 Phase: ZB-MR2
 Signal #1 Info : 30Mx0.32mmx 0.50µ Signal #2 Info : 30M x 0.32mm x 0.25µm

Compound	RT#1	RT#2	Resp#1	Resp#2	ng/ml	ng/ml

System Monitoring Compounds						
1) SA Tetrachlo...	4.389	3.632	3901772	3628857	19.325	14.769
2) SA Decachlor...	10.074	8.614	3074663	2954728	18.851	18.797
Target Compounds						
3) L1 AR-1016-1	5.291	4.489	75116	206945	15.726	36.198 #
4) L1 AR-1016-2	5.649	4.916	38493	591096	6.539	112.578 #
5) L1 AR-1016-3	5.714	4.973	912256	198129	183.950	45.123 #
6) L1 AR-1016-4	6.057	5.025	328518	236039	70.629	45.519 #
7) L1 AR-1016-5	6.172	5.186	95615	237323	18.342	40.460 #
8) L2 AR-1221-1	4.596	3.869	182458	-9476	82.505	N.D. #
9) L2 AR-1221-2	4.677	3.949	1005178	299549	614.714	165.126 #
10) L2 AR-1221-3	4.769	4.018	1237858	396841	239.764	68.651 #
11) L3 AR-1232-1	5.108	4.307	268445	672782	124.827	286.079 #
12) L3 AR-1232-2	5.558	4.748	139008	378985	47.242	124.018 #
13) L3 AR-1232-3	5.604	4.748	95107	378985	22.137	82.070 #
14) L3 AR-1232-4	5.649	4.807	38493	326347	13.907	105.567 #
15) L3 AR-1232-5	5.714	4.973	912256	198129	408.511	110.704 #
16) L4 AR-1242-1	5.604	4.748	95107	378985	12.940	47.324 #
17) L4 AR-1242-2	5.649	4.916	38493	591096	8.317	143.482 #
18) L4 AR-1242-3	5.714	5.025	912256	236039	237.441	56.283 #
19) L4 AR-1242-4	6.057	5.186	328518	237323	85.457	50.257 #
20) L4 AR-1242-5	6.172	5.311	95615	348784	22.337	90.086 #
21) L5 AR-1248-1	6.057	5.186	328518	237323	52.537	31.812 #
22) L5 AR-1248-2	6.172	5.311	95615	348784	17.552	65.194 #
23) L5 AR-1248-3	6.437	5.515	89479	441247	12.715	44.345 #
24) L5 AR-1248-4	6.489	5.560	11957	49182	1.781	7.018 #
25) L5 AR-1248-5	6.631	6.076	151638	270336	21.425	56.725 #
26) L6 AR-1254-1	6.631	5.515	151638	441247	12.400	35.859 #
27) L6 AR-1254-2	6.932	5.660	81041	59356	10.867	5.702 #
28) L6 AR-1254-3	7.001	6.076	755451	270336	57.927	15.577 #
29) L6 AR-1254-4	7.278	6.314	217107	116501	22.276	10.752 #
30) L6 AR-1254-5	7.535	6.650	214433	99541	29.025	13.016 #
31) L7 AR-1260-1	7.152	6.189	194327	714977	20.724	64.703 #
32) L7 AR-1260-2	7.410	6.414	225007	79835	20.178	5.954 #
33) L7 AR-1260-3	7.691	6.700	336874	562905	26.183	38.720 #
34) L7 AR-1260-4	8.313	7.273	590529	95315	33.198	4.332 #
35) L7 AR-1260-5	8.626	7.585	259513	353464	22.726	22.658
36) L8 AR-1262-1	7.152	6.414	194327	79835	23.457	7.041 #
37) L8 AR-1262-2	7.410	6.588	225007	278086	23.216	24.643
38) L8 AR-1262-3	7.767	6.796	203754	87210	16.603	5.779 #

Data Path : Z:\pestpcbsrv\HPCHEM1\ECD_O\Data\PO081618\
 Data File : PO048175.D
 Signal(s) : Signal #1: ECD1A.CH Signal #2: ECD2B.CH
 Acq On : 16 Aug 2018 22:36
 Operator : SM/SJ
 Sample : J4504-03
 Misc :
 ALS Vial : 23 Sample Multiplier: 1

Instrument :
 ECD_O
 ClientSampleId :
 081418-DBRI-F-U-B

Integration File signal 1: autoint1.e
 Integration File signal 2: autoint2.e
 Quant Time: Aug 17 04:09:46 2018
 Quant Method : Z:\pestpcbsrv\HPCHEM1\ECD_O\methods\PO072718.M
 Quant Title : GC EXTRACTABLES
 QLast Update : Fri Jul 27 02:33:29 2018
 Response via : Initial Calibration
 Integrator: ChemStation 6890 Scale Mode: Small noise peaks clipped

Volume Inj. : 2 µl
 Signal #1 Phase : ZB-MR1 Signal #2 Phase: ZB-MR2
 Signal #1 Info : 30Mx0.32mmx 0.50µ Signal #2 Info : 30M x 0.32mm x 0.25µm

	Compound	RT#1	RT#2	Resp#1	Resp#2	ng/ml	ng/ml
39)	L8 AR-1262-4	7.990	6.998	218806	221589	18.581	16.827
40)	L8 AR-1262-5	8.313	7.273	590529	95315	27.485	3.690 #
41)	L9 AR-1268-1	8.626	7.547	259513	499560	11.181	19.214 #
42)	L9 AR-1268-2	8.718	7.585	187736	353464	8.762	14.188 #
43)	L9 AR-1268-3	8.936	7.834	53474	213269	2.962	10.807 #
44)	L9 AR-1268-4	9.343	8.117	110583	16137	13.868	1.924 #
45)	L9 AR-1268-5	9.742	8.367	115323	160338	2.117	2.937 #

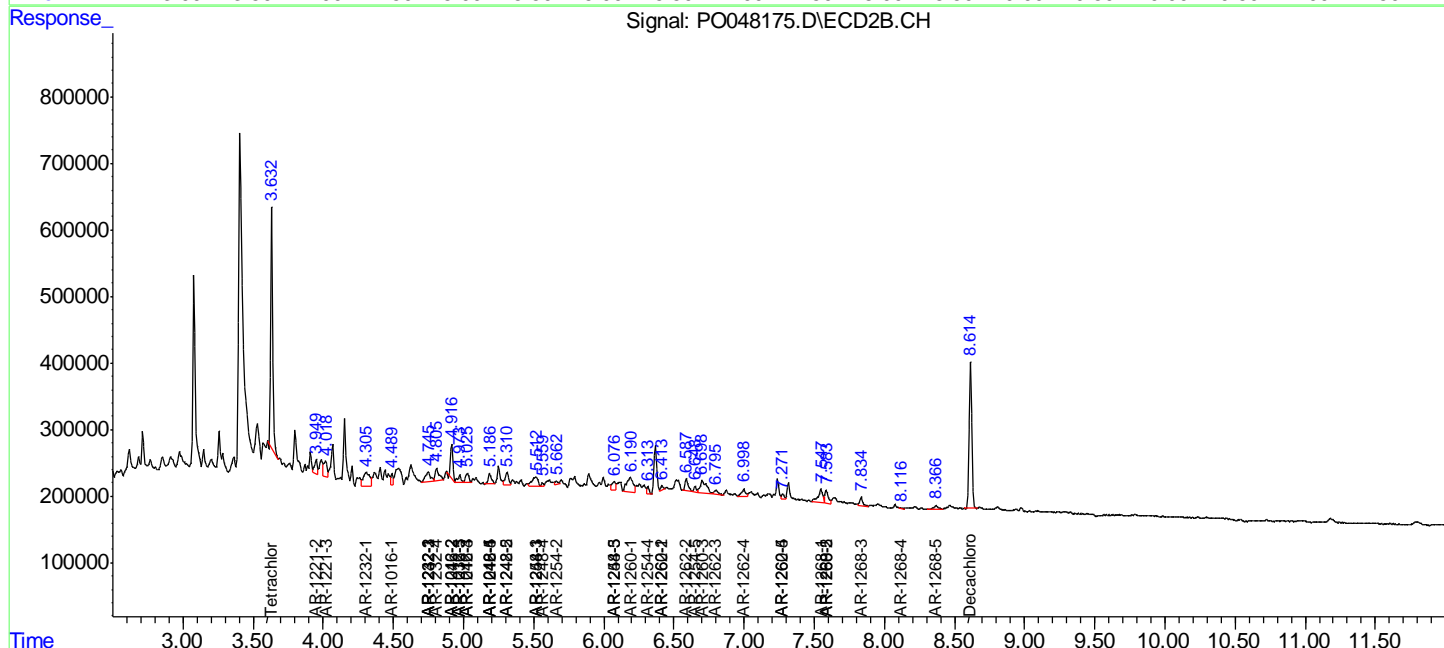
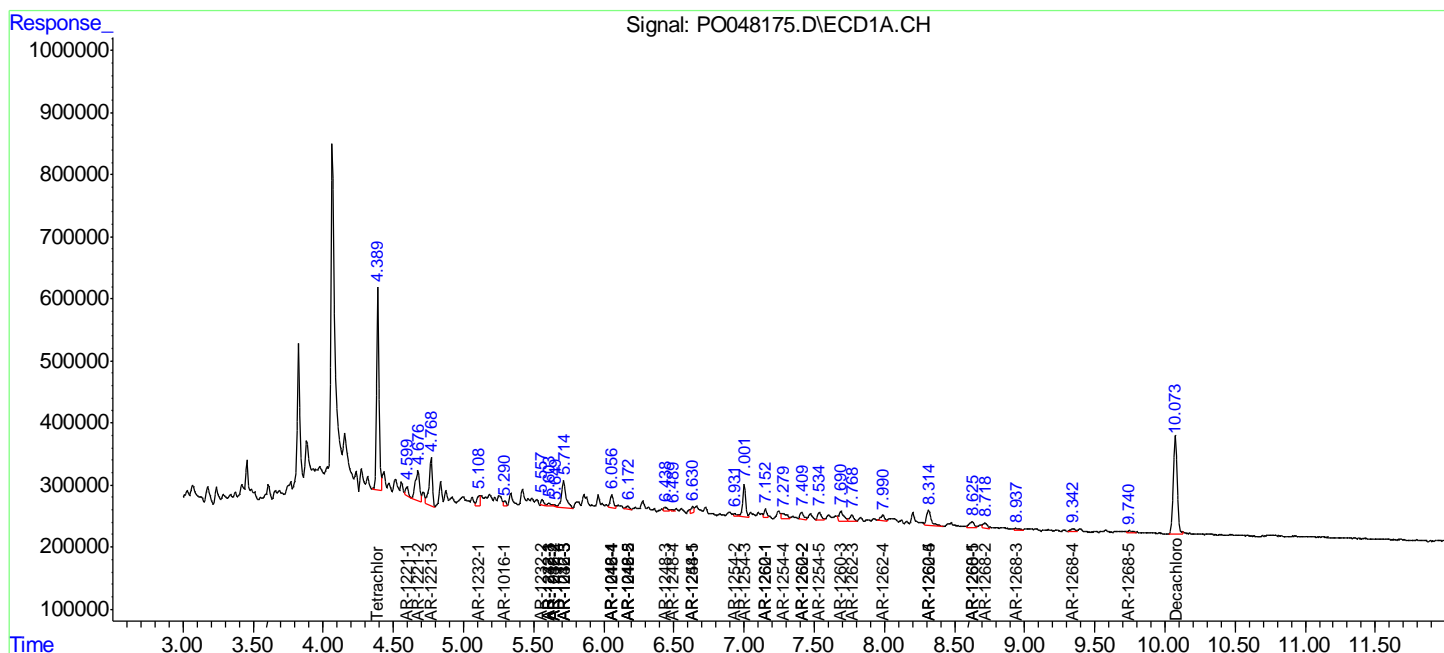
(f)=RT Delta > 1/2 Window (#)=Amounts differ by > 25% (m)=manual int.

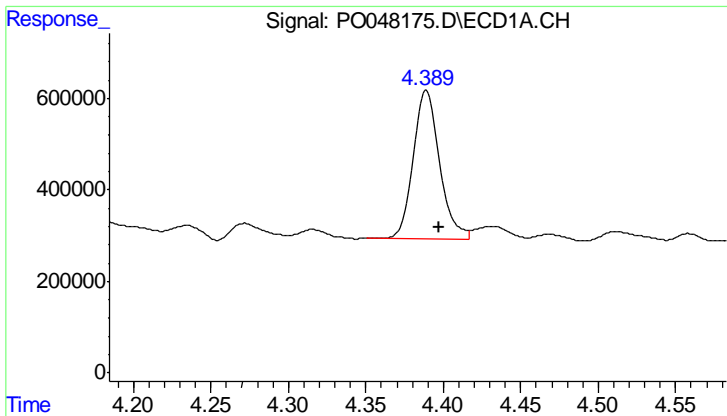
Data Path : Z:\pestpcbsrv\HPCHEM1\ECD_O\Data\PO081618\
 Data File : PO048175.D
 Signal(s) : Signal #1: ECD1A.CH Signal #2: ECD2B.CH
 Acq On : 16 Aug 2018 22:36
 Operator : SM/SJ
 Sample : J4504-03
 Misc :
 ALS Vial : 23 Sample Multiplier: 1

Instrument :
 ECD_O
 ClientSampleId :
 081418-DBRI-F-U-B

Integration File signal 1: autoint1.e
 Integration File signal 2: autoint2.e
 Quant Time: Aug 17 04:09:46 2018
 Quant Method : Z:\pestpcbsrv\HPCHEM1\ECD_O\methods\PO072718.M
 Quant Title : GC EXTRACTABLES
 QLast Update : Fri Jul 27 02:33:29 2018
 Response via : Initial Calibration
 Integrator: ChemStation 6890 Scale Mode: Small noise peaks clipped

Volume Inj. : 2 µl
 Signal #1 Phase : ZB-MR1 Signal #2 Phase: ZB-MR2
 Signal #1 Info : 30Mx0.32mmx 0.50µ Signal #2 Info : 30M x 0.32mm x 0.25µm

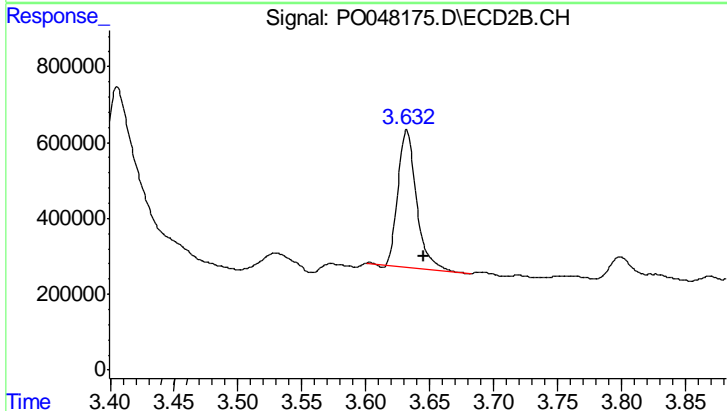




#1 Tetrachloro-m-xylene

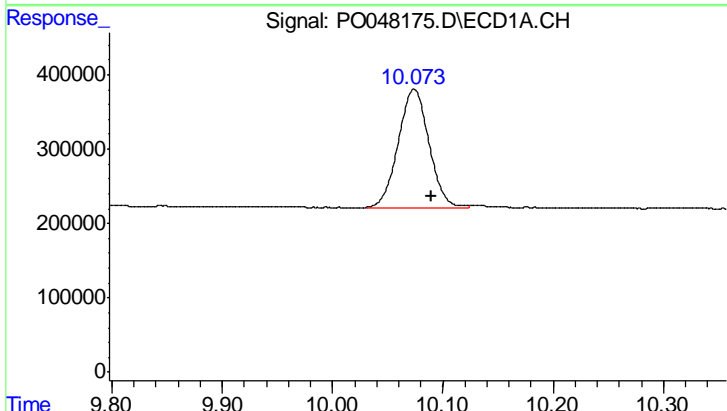
R.T.: 4.389 min
 Delta R.T.: -0.008 min
 Response: 3901772
 Conc: 19.33 ng/ml

Instrument :
 ECD_O
 ClientSampleId :
 081418-DBRI-F-U-B



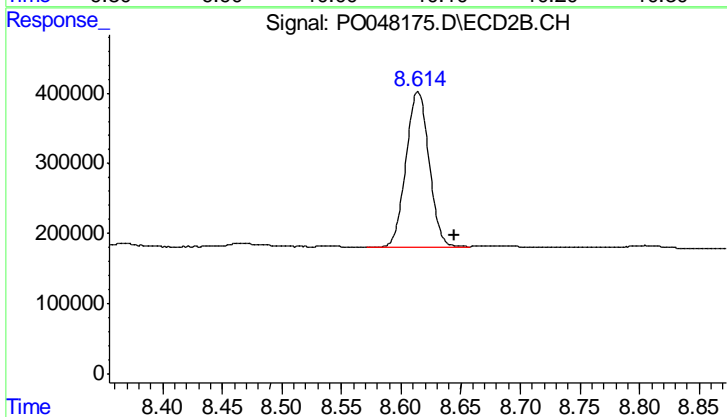
#1 Tetrachloro-m-xylene

R.T.: 3.632 min
 Delta R.T.: -0.013 min
 Response: 3628857
 Conc: 14.77 ng/ml



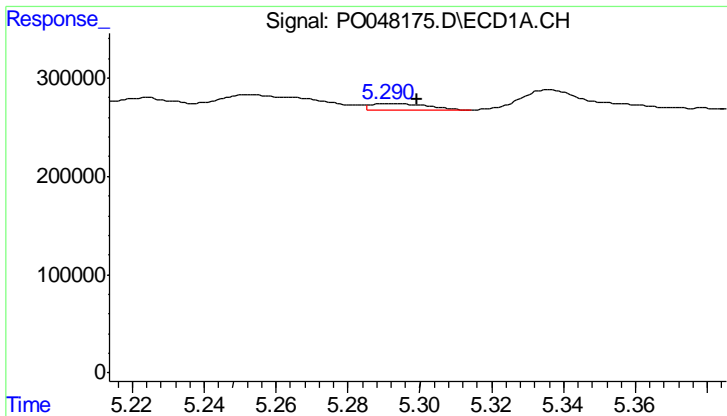
#2 Decachlorobiphenyl

R.T.: 10.074 min
 Delta R.T.: -0.016 min
 Response: 3074663
 Conc: 18.85 ng/ml



#2 Decachlorobiphenyl

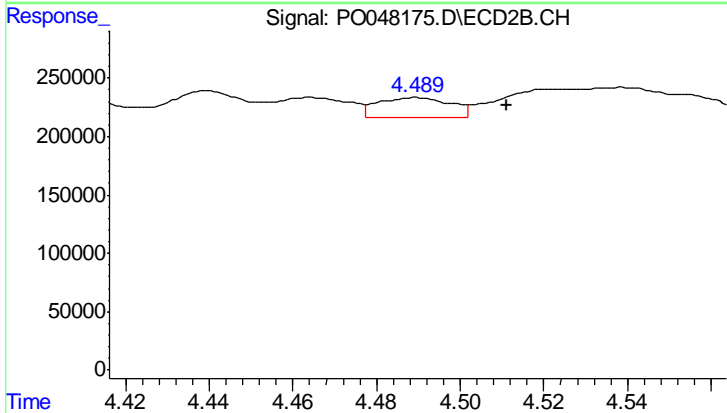
R.T.: 8.614 min
 Delta R.T.: -0.030 min
 Response: 2954728
 Conc: 18.80 ng/ml



#3 AR-1016-1

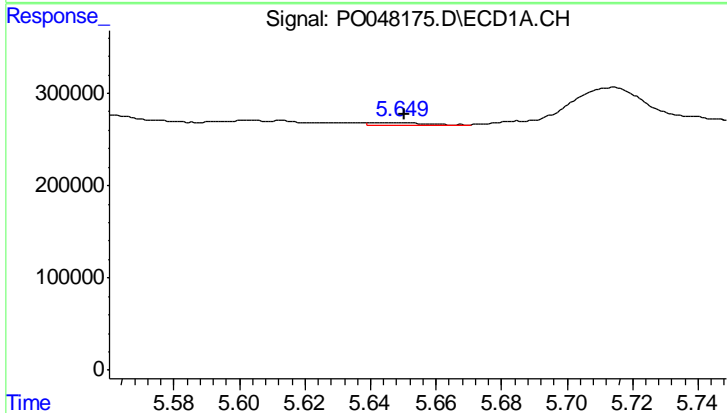
R.T.: 5.291 min
 Delta R.T.: -0.008 min
 Response: 75116
 Conc: 15.73 ng/ml

Instrument :
 ECD_O
 ClientSampleId :
 081418-DBRI-F-U-B



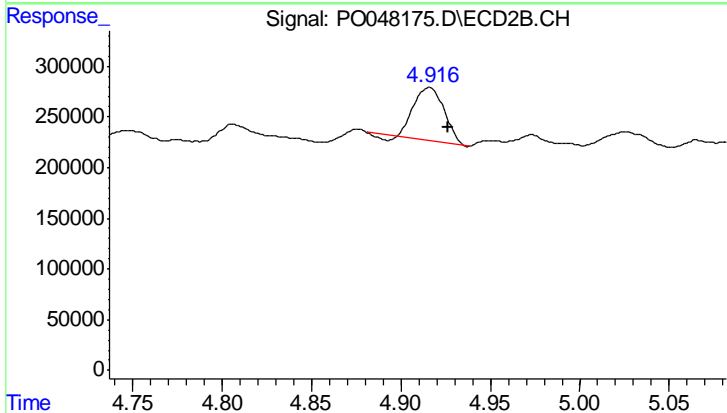
#3 AR-1016-1

R.T.: 4.489 min
 Delta R.T.: -0.022 min
 Response: 206945
 Conc: 36.20 ng/ml



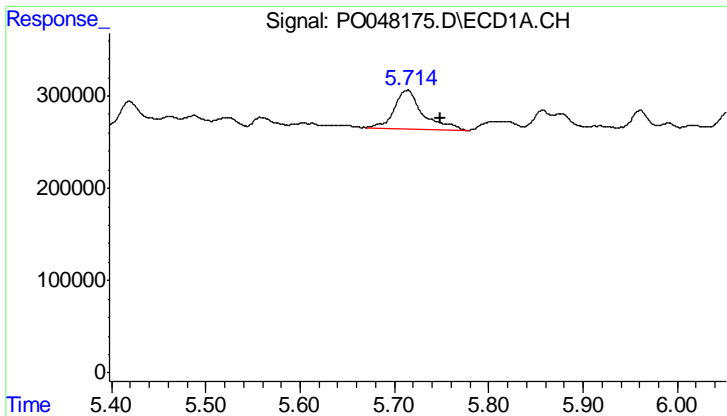
#4 AR-1016-2

R.T.: 5.649 min
 Delta R.T.: -0.001 min
 Response: 38493
 Conc: 6.54 ng/ml



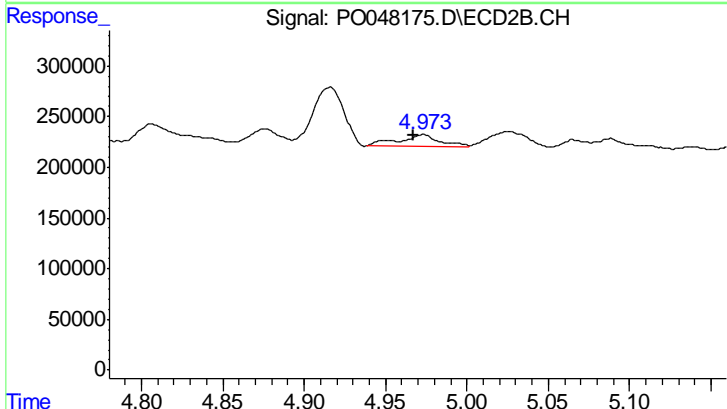
#4 AR-1016-2

R.T.: 4.916 min
 Delta R.T.: -0.011 min
 Response: 591096
 Conc: 112.58 ng/ml

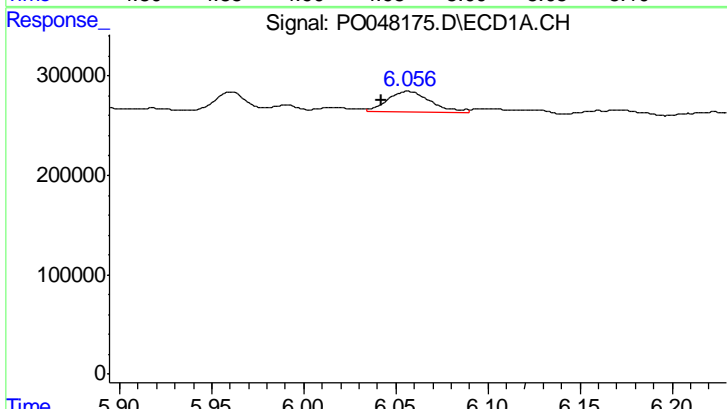


#5 AR-1016-3
 R.T.: 5.714 min
 Delta R.T.: -0.035 min
 Response: 912256
 Conc: 183.95 ng/ml

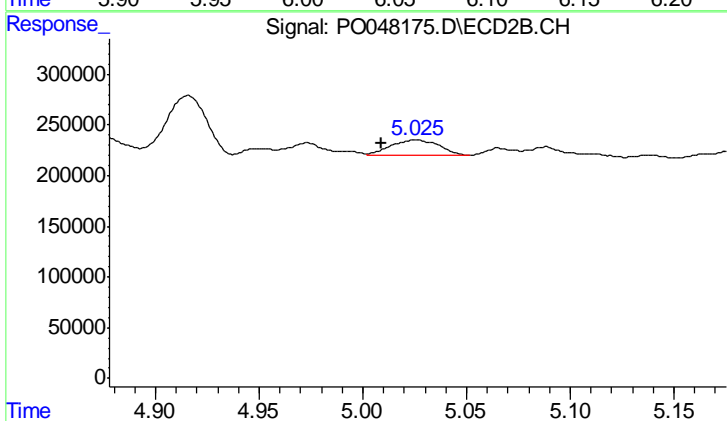
Instrument :
 ECD_O
 ClientSampleId :
 081418-DBRI-F-U-B



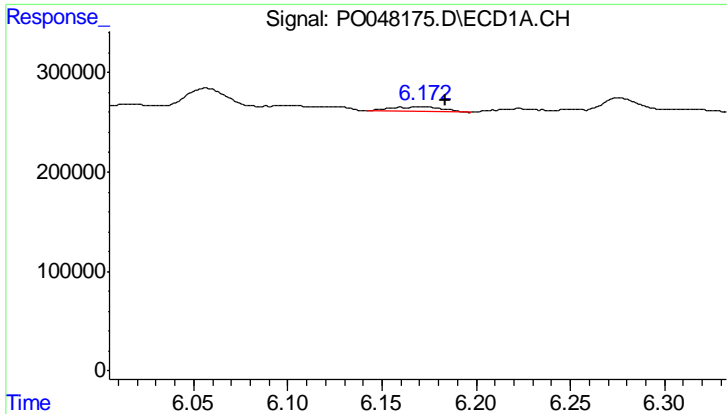
#5 AR-1016-3
 R.T.: 4.973 min
 Delta R.T.: 0.006 min
 Response: 198129
 Conc: 45.12 ng/ml



#6 AR-1016-4
 R.T.: 6.057 min
 Delta R.T.: 0.015 min
 Response: 328518
 Conc: 70.63 ng/ml



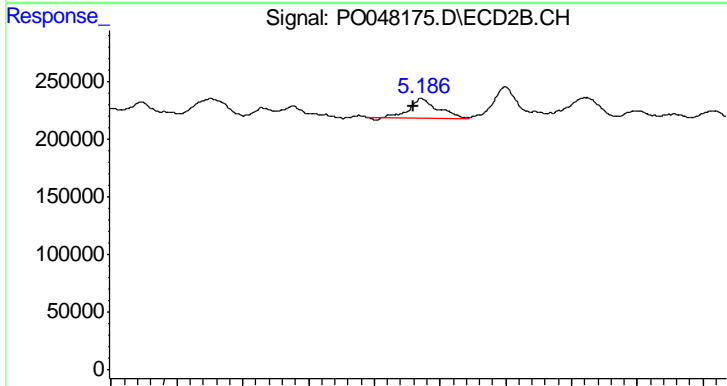
#6 AR-1016-4
 R.T.: 5.025 min
 Delta R.T.: 0.016 min
 Response: 236039
 Conc: 45.52 ng/ml



#7 AR-1016-5

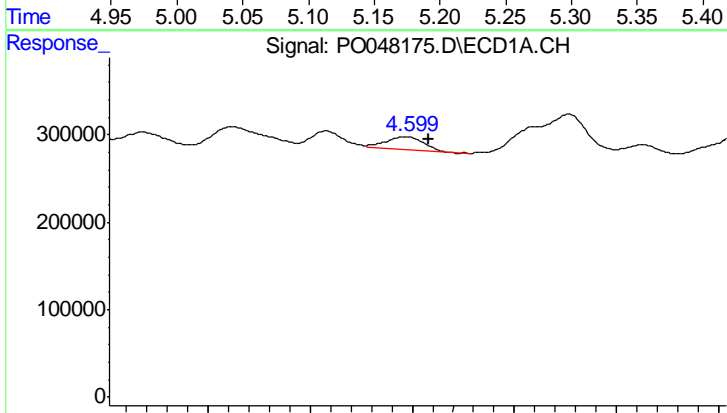
R.T.: 6.172 min
 Delta R.T.: -0.011 min
 Response: 95615
 Conc: 18.34 ng/ml

Instrument :
 ECD_O
 ClientSampleId :
 081418-DBRI-F-U-B



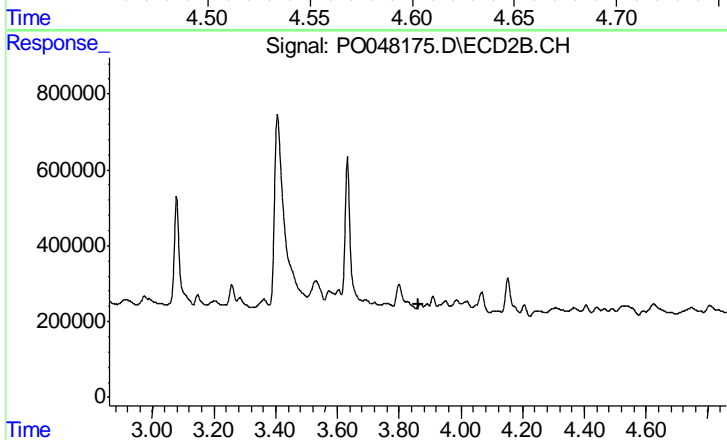
#7 AR-1016-5

R.T.: 5.186 min
 Delta R.T.: 0.006 min
 Response: 237323
 Conc: 40.46 ng/ml



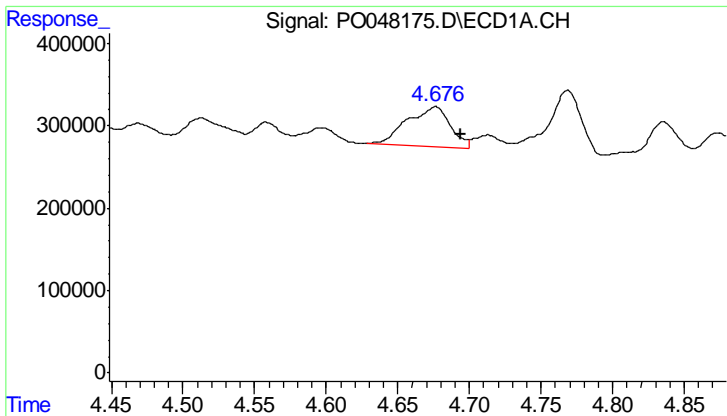
#8 AR-1221-1

R.T.: 4.596 min
 Delta R.T.: -0.012 min
 Response: 182458
 Conc: 82.50 ng/ml



#8 AR-1221-1

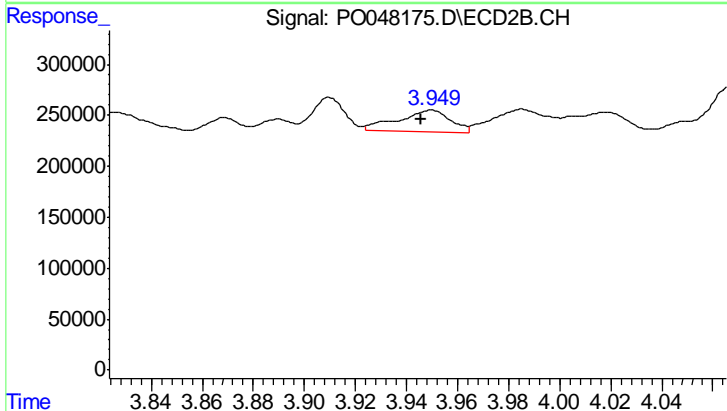
R.T.: 3.869 min
 Delta R.T.: 0.008 min
 Response: -9476
 Conc: N.D.



#9 AR-1221-2

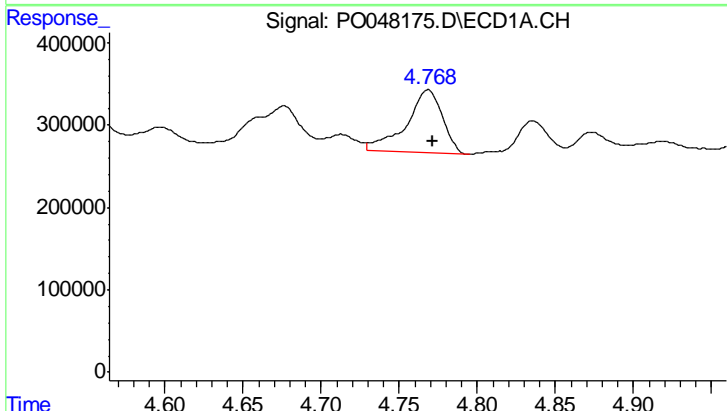
R.T.: 4.677 min
 Delta R.T.: -0.017 min
 Response: 1005178
 Conc: 614.71 ng/ml

Instrument :
 ECD_O
 ClientSampleId :
 081418-DBRI-F-U-B



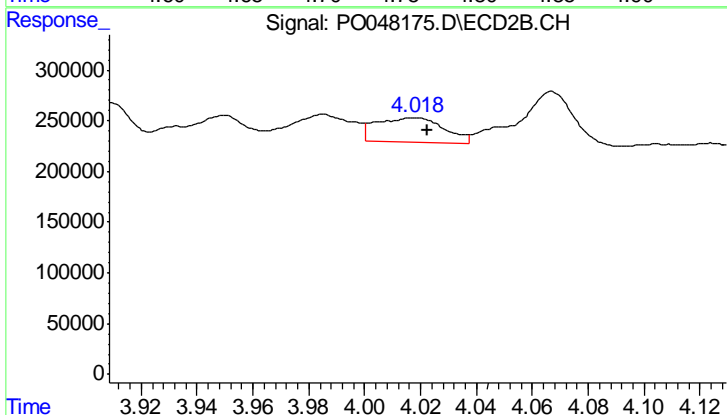
#9 AR-1221-2

R.T.: 3.949 min
 Delta R.T.: 0.003 min
 Response: 299549
 Conc: 165.13 ng/ml



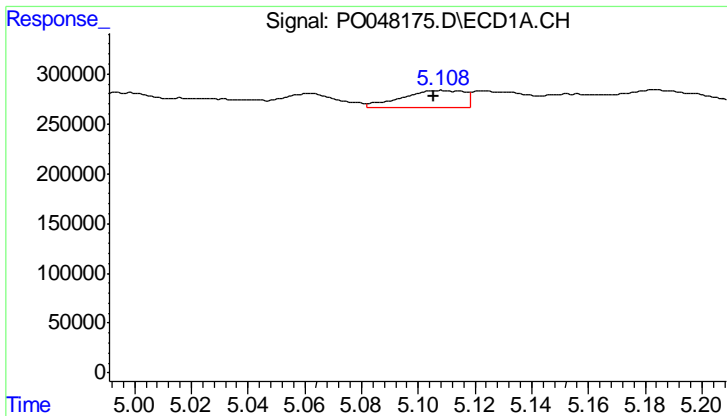
#10 AR-1221-3

R.T.: 4.769 min
 Delta R.T.: -0.003 min
 Response: 1237858
 Conc: 239.76 ng/ml



#10 AR-1221-3

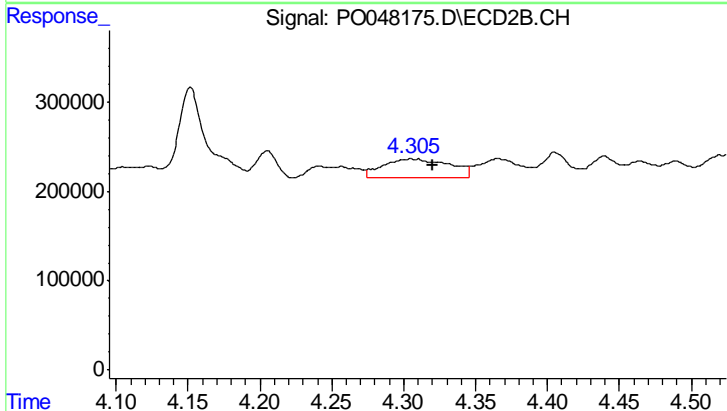
R.T.: 4.018 min
 Delta R.T.: -0.005 min
 Response: 396841
 Conc: 68.65 ng/ml



#11 AR-1232-1

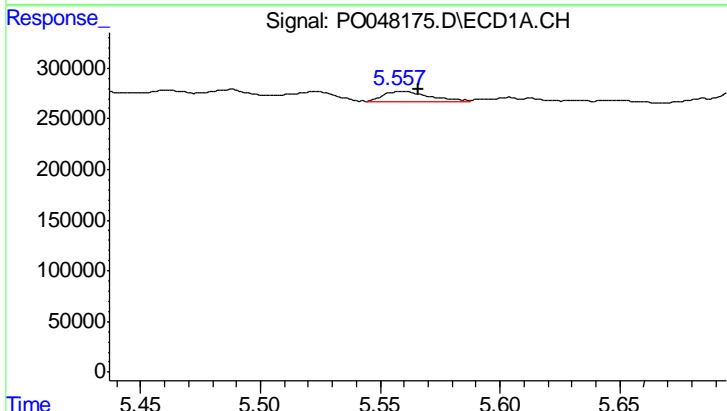
R.T.: 5.108 min
 Delta R.T.: 0.003 min
 Response: 268445
 Conc: 124.83 ng/ml

Instrument :
 ECD_O
 ClientSampleId :
 081418-DBRI-F-U-B



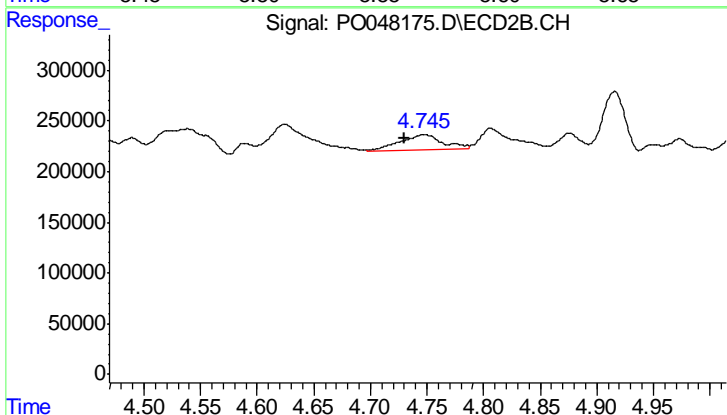
#11 AR-1232-1

R.T.: 4.307 min
 Delta R.T.: -0.013 min
 Response: 672782
 Conc: 286.08 ng/ml



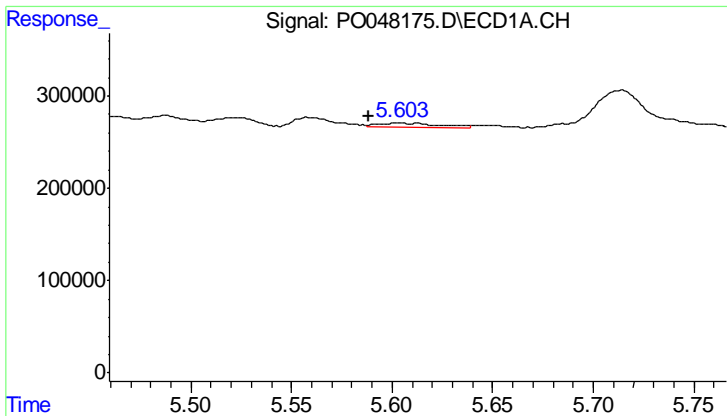
#12 AR-1232-2

R.T.: 5.558 min
 Delta R.T.: -0.008 min
 Response: 139008
 Conc: 47.24 ng/ml



#12 AR-1232-2

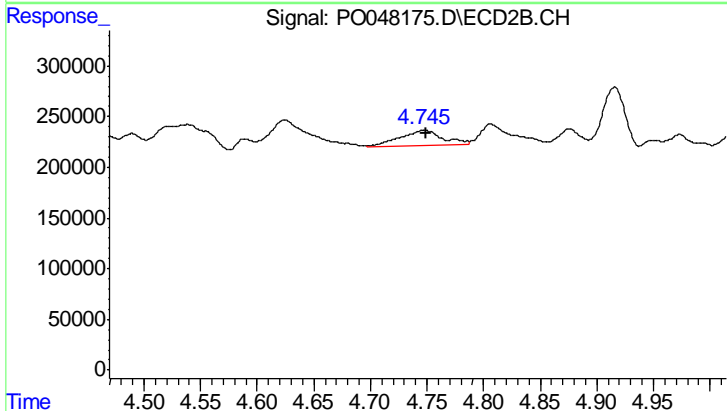
R.T.: 4.748 min
 Delta R.T.: 0.018 min
 Response: 378985
 Conc: 124.02 ng/ml



#13 AR-1232-3

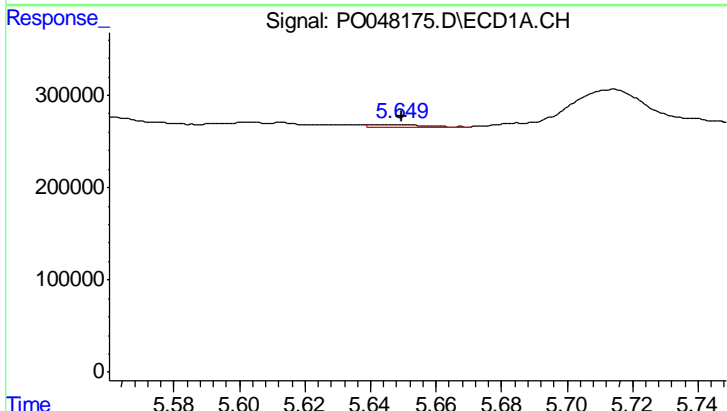
R.T.: 5.604 min
 Delta R.T.: 0.015 min
 Response: 95107
 Conc: 22.14 ng/ml

Instrument :
 ECD_O
 ClientSampleId :
 081418-DBRI-F-U-B



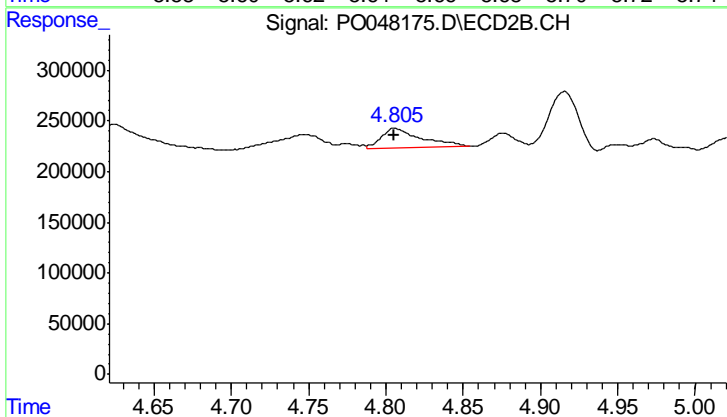
#13 AR-1232-3

R.T.: 4.748 min
 Delta R.T.: -0.002 min
 Response: 378985
 Conc: 82.07 ng/ml



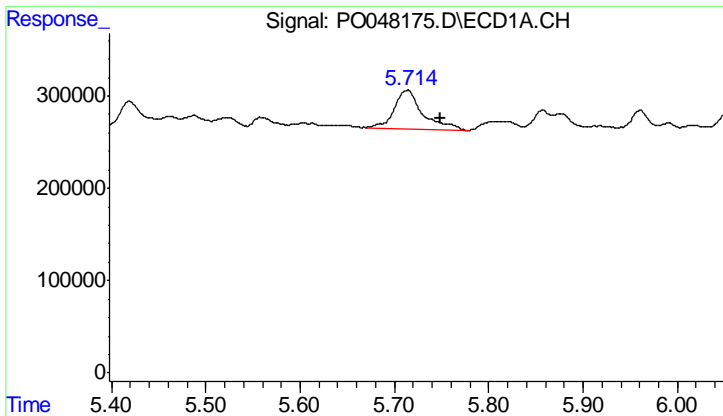
#14 AR-1232-4

R.T.: 5.649 min
 Delta R.T.: 0.000 min
 Response: 38493
 Conc: 13.91 ng/ml



#14 AR-1232-4

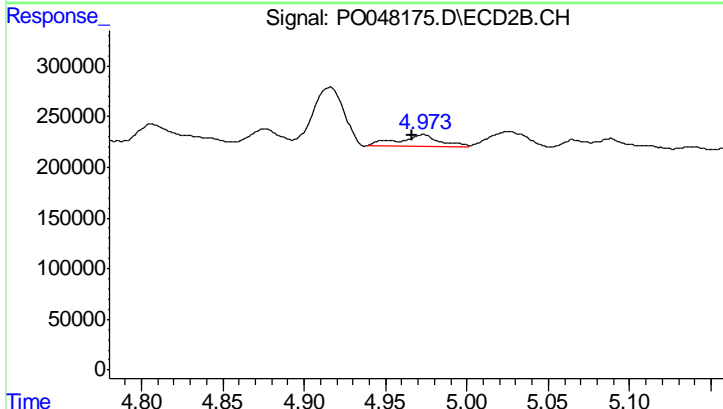
R.T.: 4.807 min
 Delta R.T.: 0.001 min
 Response: 326347
 Conc: 105.57 ng/ml



#15 AR-1232-5

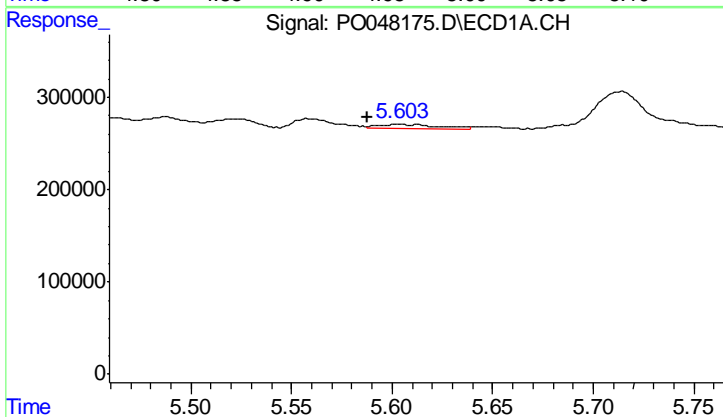
R.T.: 5.714 min
 Delta R.T.: -0.035 min
 Response: 912256
 Conc: 408.51 ng/ml

Instrument :
 ECD_O
 ClientSampleId :
 081418-DBRI-F-U-B



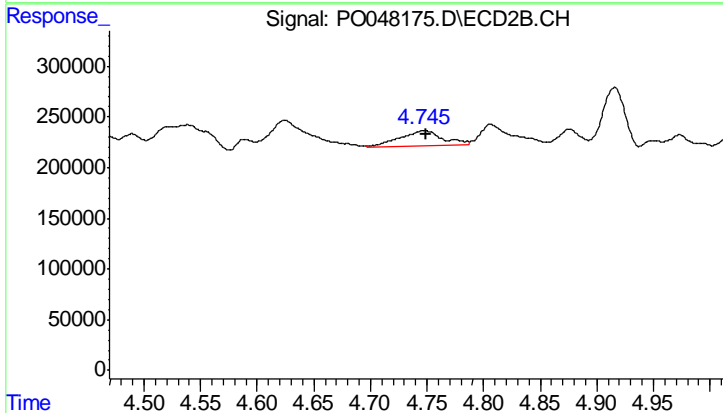
#15 AR-1232-5

R.T.: 4.973 min
 Delta R.T.: 0.006 min
 Response: 198129
 Conc: 110.70 ng/ml



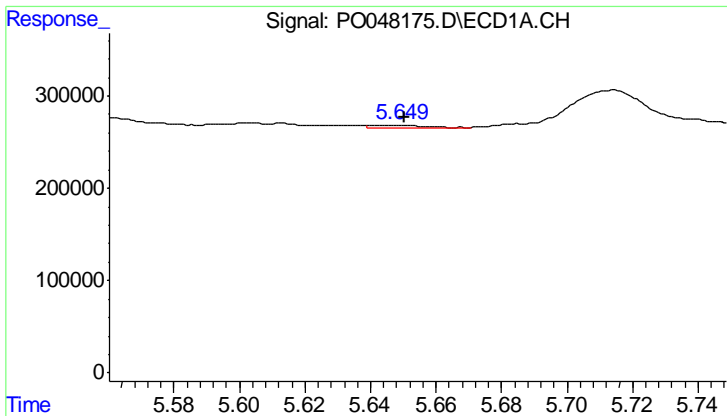
#16 AR-1242-1

R.T.: 5.604 min
 Delta R.T.: 0.016 min
 Response: 95107
 Conc: 12.94 ng/ml



#16 AR-1242-1

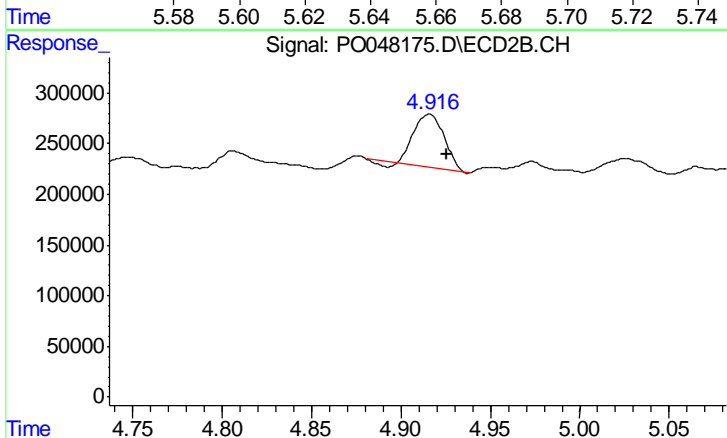
R.T.: 4.748 min
 Delta R.T.: -0.001 min
 Response: 378985
 Conc: 47.32 ng/ml



#17 AR-1242-2

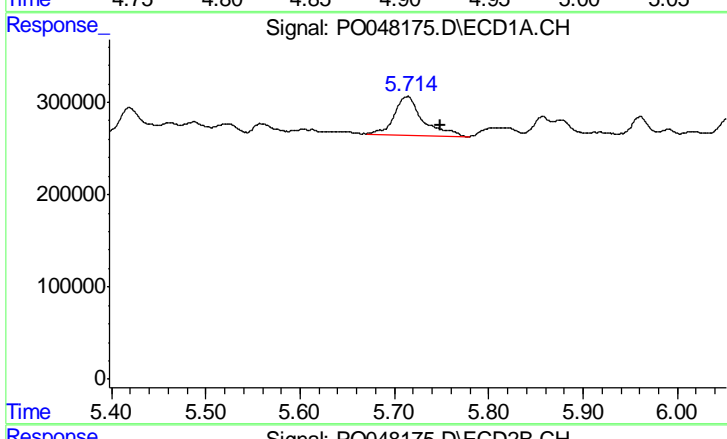
R.T.: 5.649 min
 Delta R.T.: -0.001 min
 Response: 38493
 Conc: 8.32 ng/ml

Instrument :
 ECD_O
 ClientSampleId :
 081418-DBRI-F-U-B



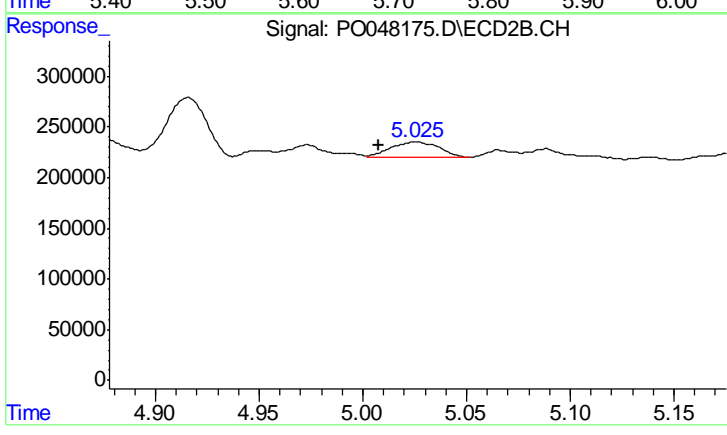
#17 AR-1242-2

R.T.: 4.916 min
 Delta R.T.: -0.010 min
 Response: 591096
 Conc: 143.48 ng/ml



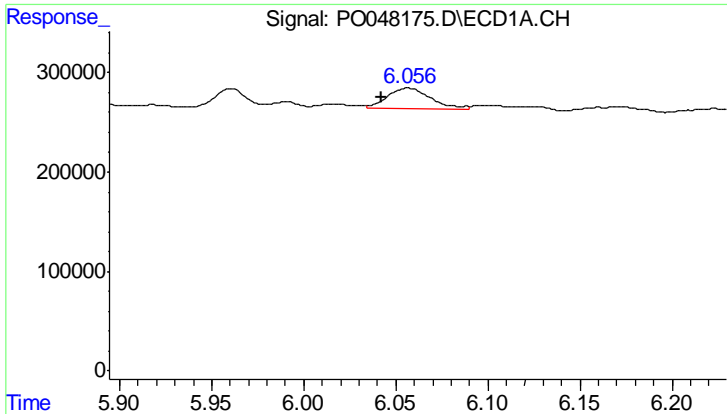
#18 AR-1242-3

R.T.: 5.714 min
 Delta R.T.: -0.035 min
 Response: 912256
 Conc: 237.44 ng/ml



#18 AR-1242-3

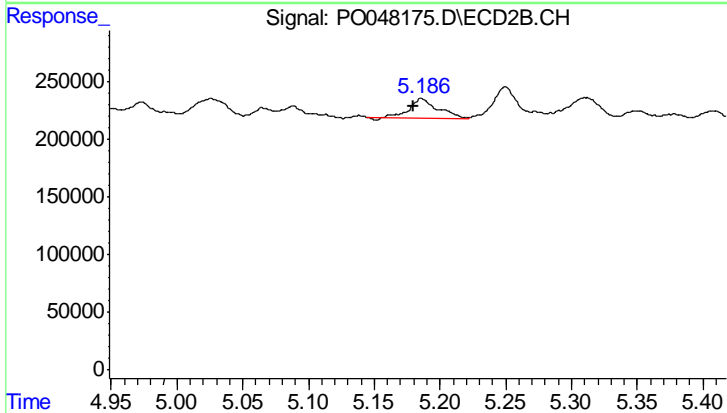
R.T.: 5.025 min
 Delta R.T.: 0.017 min
 Response: 236039
 Conc: 56.28 ng/ml



#19 AR-1242-4

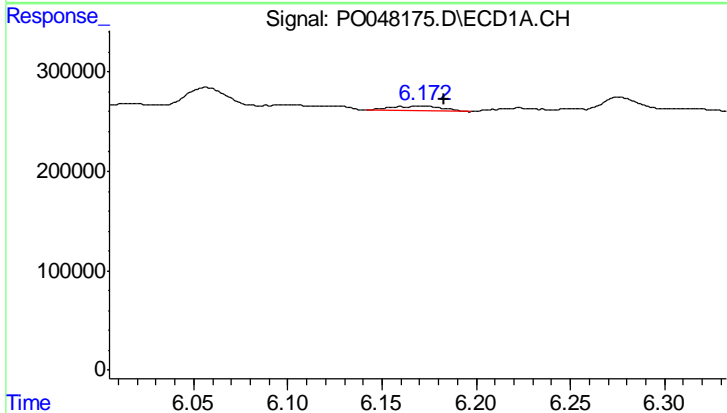
R.T.: 6.057 min
 Delta R.T.: 0.015 min
 Response: 328518
 Conc: 85.46 ng/ml

Instrument :
 ECD_O
 ClientSampleId :
 081418-DBRI-F-U-B



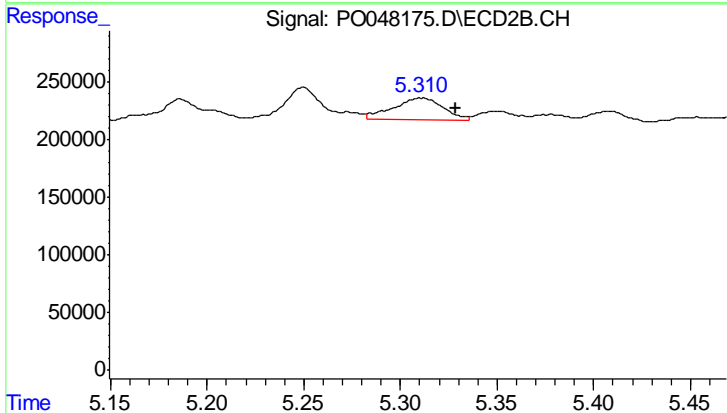
#19 AR-1242-4

R.T.: 5.186 min
 Delta R.T.: 0.006 min
 Response: 237323
 Conc: 50.26 ng/ml



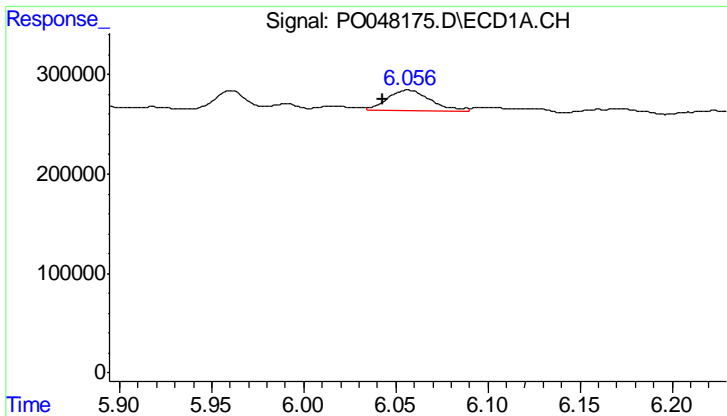
#20 AR-1242-5

R.T.: 6.172 min
 Delta R.T.: -0.011 min
 Response: 95615
 Conc: 22.34 ng/ml



#20 AR-1242-5

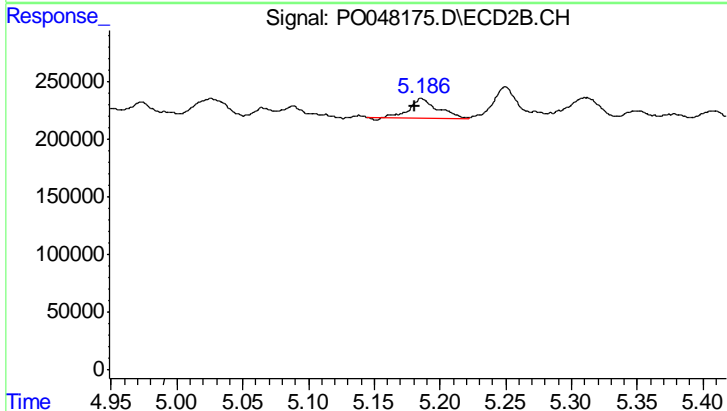
R.T.: 5.311 min
 Delta R.T.: -0.018 min
 Response: 348784
 Conc: 90.09 ng/ml



#21 AR-1248-1

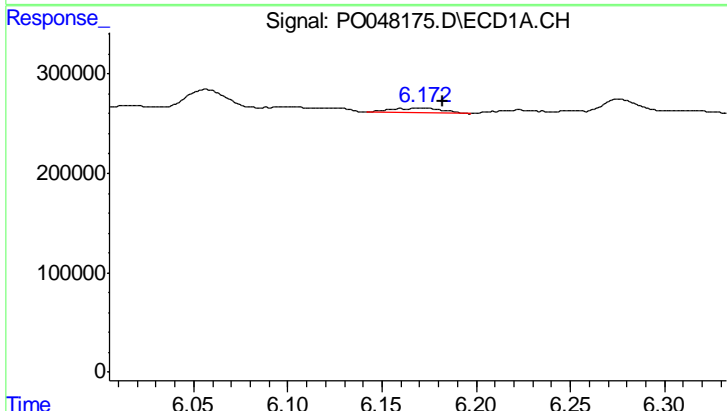
R.T.: 6.057 min
 Delta R.T.: 0.014 min
 Response: 328518
 Conc: 52.54 ng/ml

Instrument :
 ECD_O
 ClientSampleId :
 081418-DBRI-F-U-B



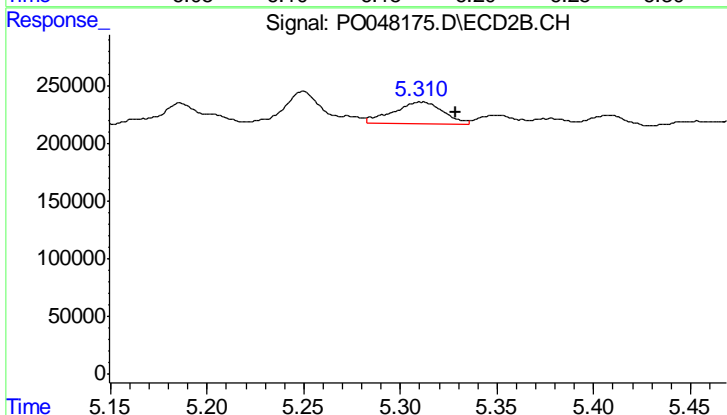
#21 AR-1248-1

R.T.: 5.186 min
 Delta R.T.: 0.006 min
 Response: 237323
 Conc: 31.81 ng/ml



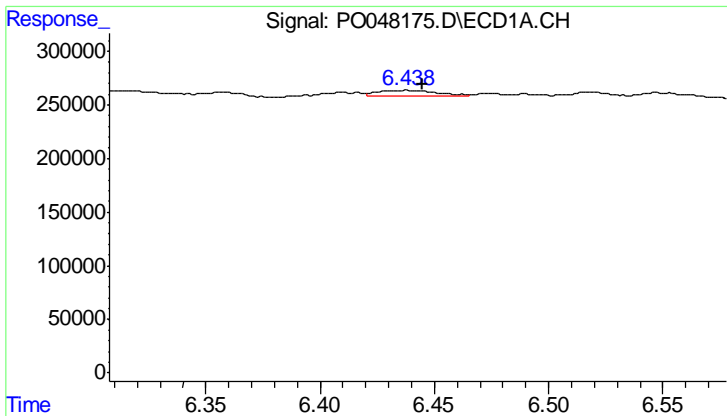
#22 AR-1248-2

R.T.: 6.172 min
 Delta R.T.: -0.010 min
 Response: 95615
 Conc: 17.55 ng/ml



#22 AR-1248-2

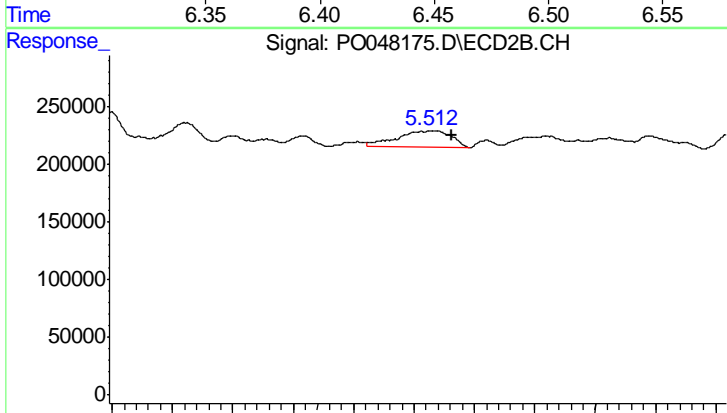
R.T.: 5.311 min
 Delta R.T.: -0.018 min
 Response: 348784
 Conc: 65.19 ng/ml



#23 AR-1248-3

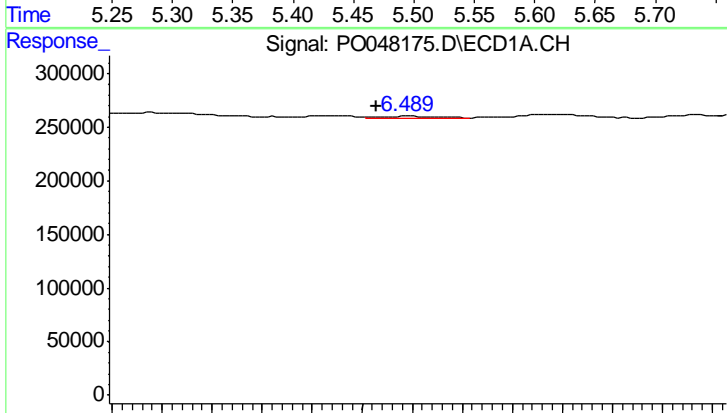
R.T.: 6.437 min
 Delta R.T.: -0.008 min
 Response: 89479
 Conc: 12.71 ng/ml

Instrument :
 ECD_O
 ClientSampleId :
 081418-DBRI-F-U-B



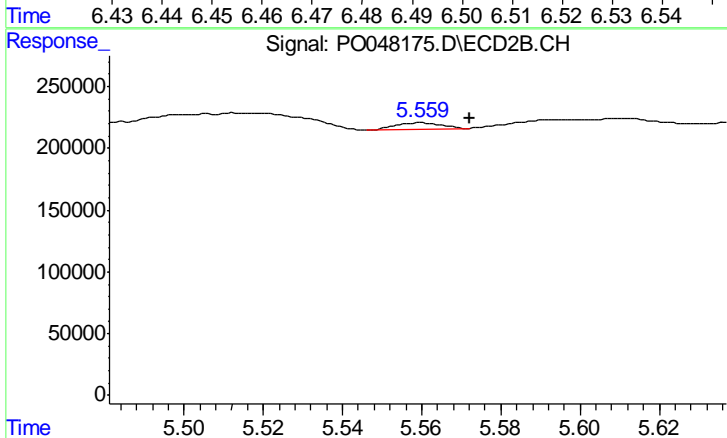
#23 AR-1248-3

R.T.: 5.515 min
 Delta R.T.: -0.015 min
 Response: 441247
 Conc: 44.34 ng/ml



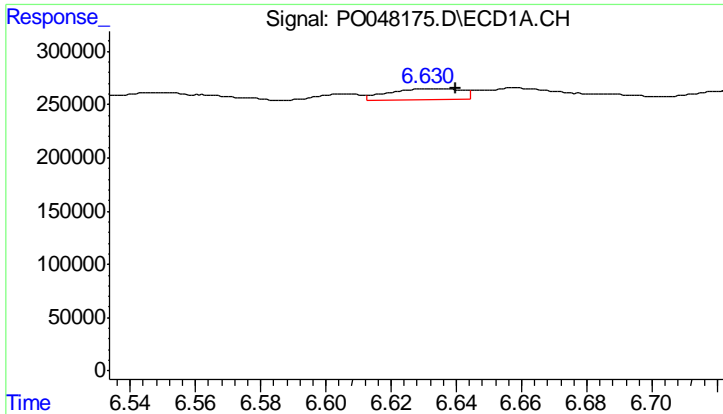
#24 AR-1248-4

R.T.: 6.489 min
 Delta R.T.: 0.006 min
 Response: 11957
 Conc: 1.78 ng/ml



#24 AR-1248-4

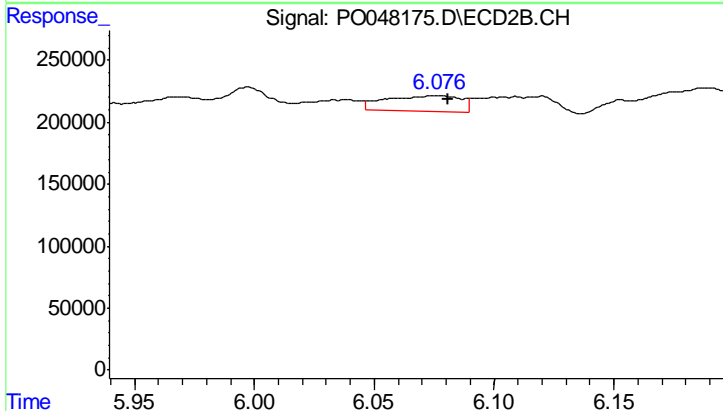
R.T.: 5.560 min
 Delta R.T.: -0.012 min
 Response: 49182
 Conc: 7.02 ng/ml



#25 AR-1248-5

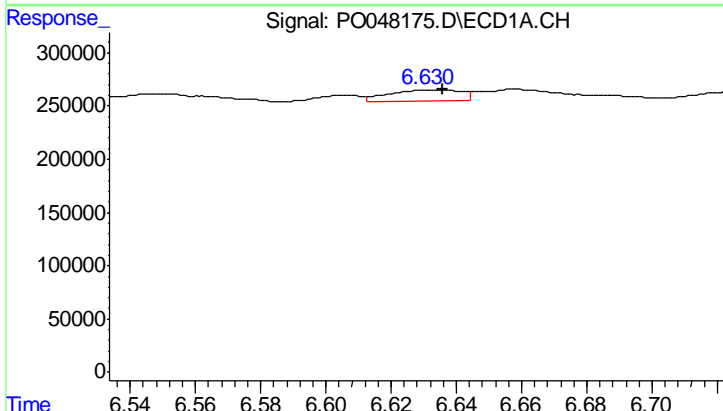
R.T.: 6.631 min
 Delta R.T.: -0.009 min
 Response: 151638
 Conc: 21.42 ng/ml

Instrument :
 ECD_O
 ClientSampleId :
 081418-DBRI-F-U-B



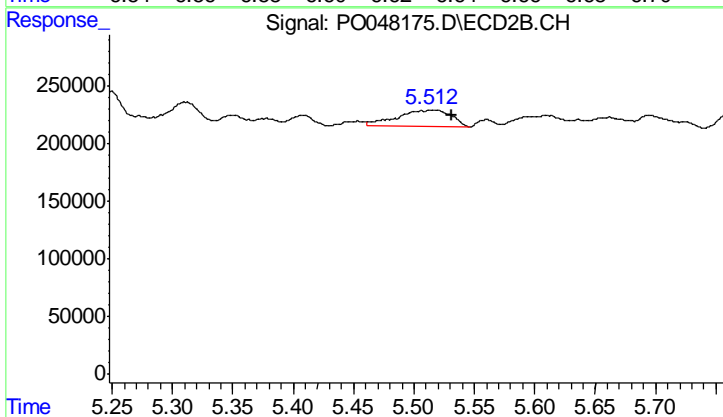
#25 AR-1248-5

R.T.: 6.076 min
 Delta R.T.: -0.005 min
 Response: 270336
 Conc: 56.72 ng/ml



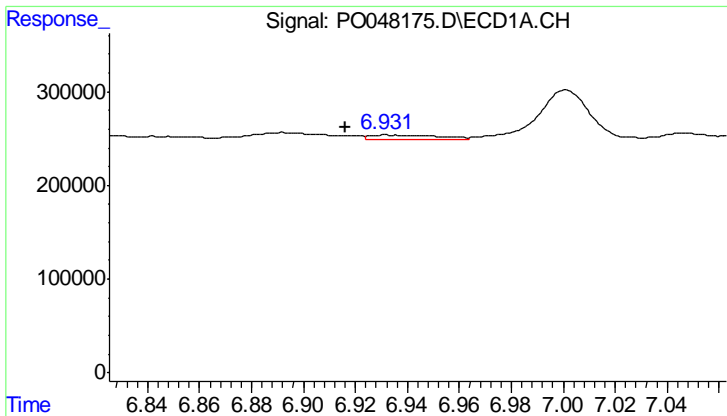
#26 AR-1254-1

R.T.: 6.631 min
 Delta R.T.: -0.005 min
 Response: 151638
 Conc: 12.40 ng/ml



#26 AR-1254-1

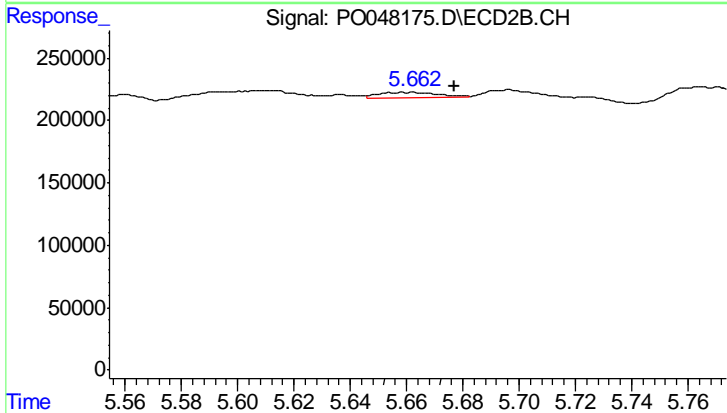
R.T.: 5.515 min
 Delta R.T.: -0.016 min
 Response: 441247
 Conc: 35.86 ng/ml



#27 AR-1254-2

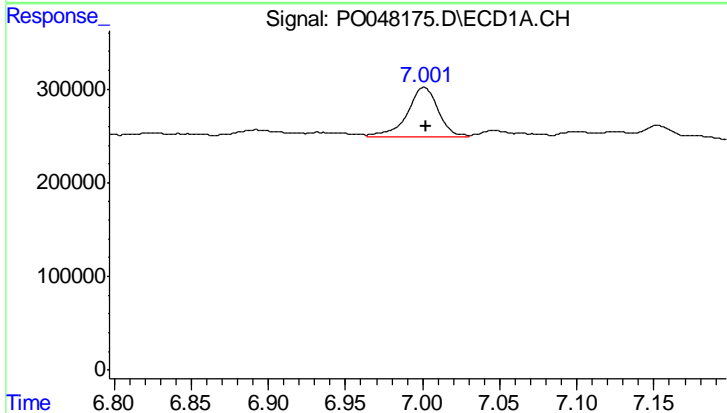
R.T.: 6.932 min
 Delta R.T.: 0.016 min
 Response: 81041
 Conc: 10.87 ng/ml

Instrument :
 ECD_O
 ClientSampleId :
 081418-DBRI-F-U-B



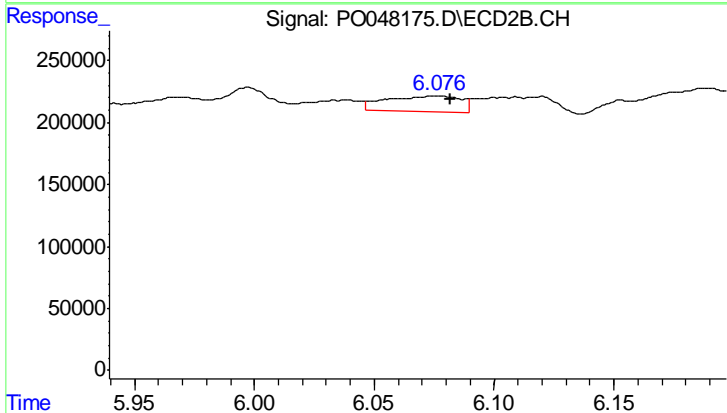
#27 AR-1254-2

R.T.: 5.660 min
 Delta R.T.: -0.018 min
 Response: 59356
 Conc: 5.70 ng/ml



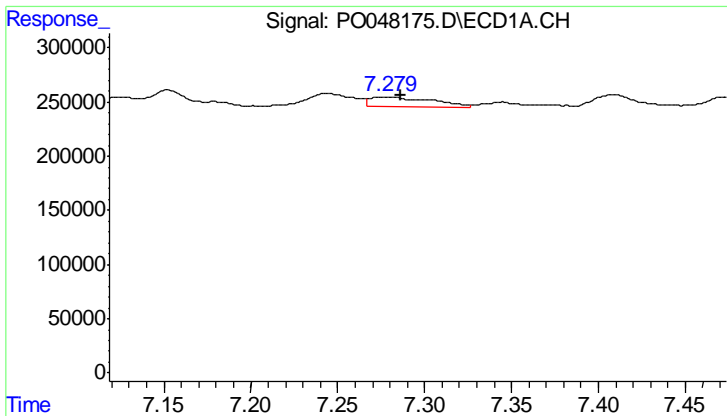
#28 AR-1254-3

R.T.: 7.001 min
 Delta R.T.: -0.001 min
 Response: 755451
 Conc: 57.93 ng/ml



#28 AR-1254-3

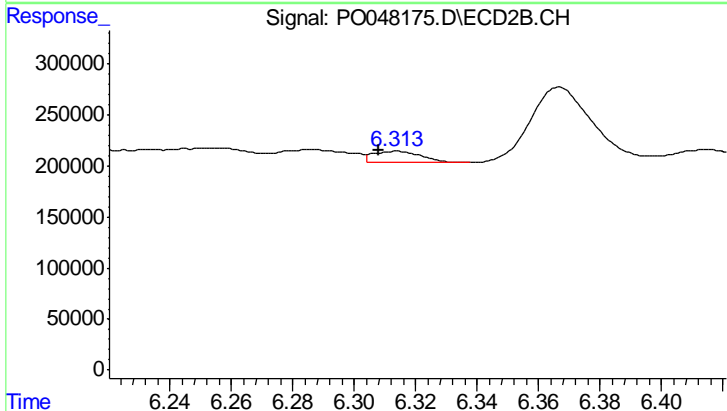
R.T.: 6.076 min
 Delta R.T.: -0.006 min
 Response: 270336
 Conc: 15.58 ng/ml



#29 AR-1254-4

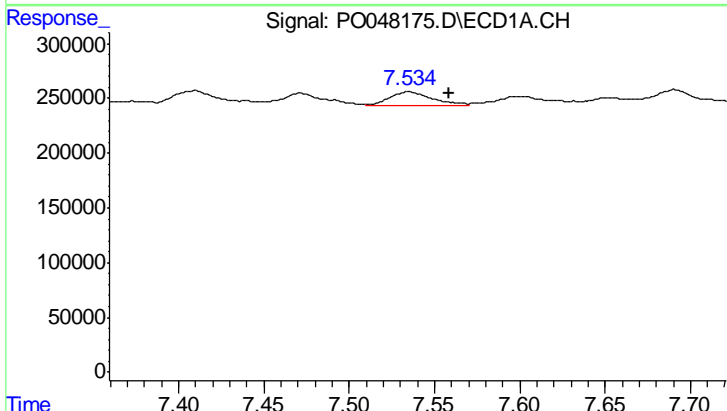
R.T.: 7.278 min
 Delta R.T.: -0.008 min
 Response: 217107
 Conc: 22.28 ng/ml

Instrument :
 ECD_O
 ClientSampleId :
 081418-DBRI-F-U-B



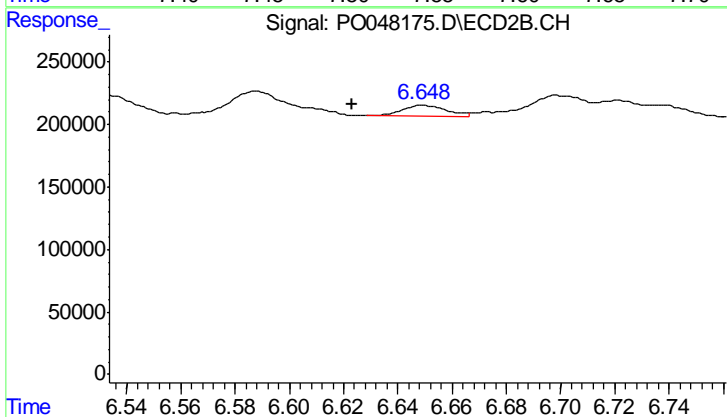
#29 AR-1254-4

R.T.: 6.314 min
 Delta R.T.: 0.006 min
 Response: 116501
 Conc: 10.75 ng/ml



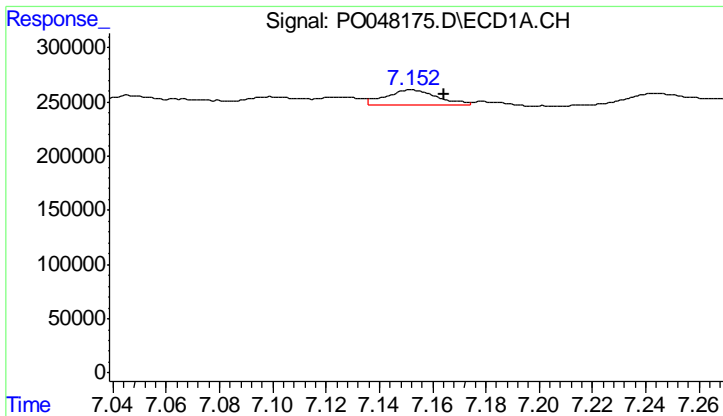
#30 AR-1254-5

R.T.: 7.535 min
 Delta R.T.: -0.024 min
 Response: 214433
 Conc: 29.03 ng/ml



#30 AR-1254-5

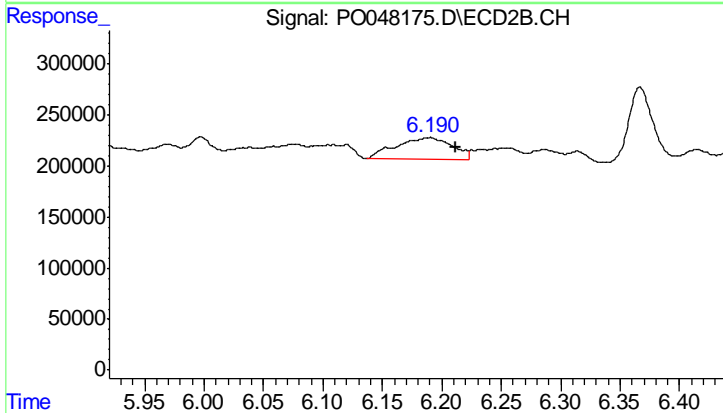
R.T.: 6.650 min
 Delta R.T.: 0.026 min
 Response: 99541
 Conc: 13.02 ng/ml



#31 AR-1260-1

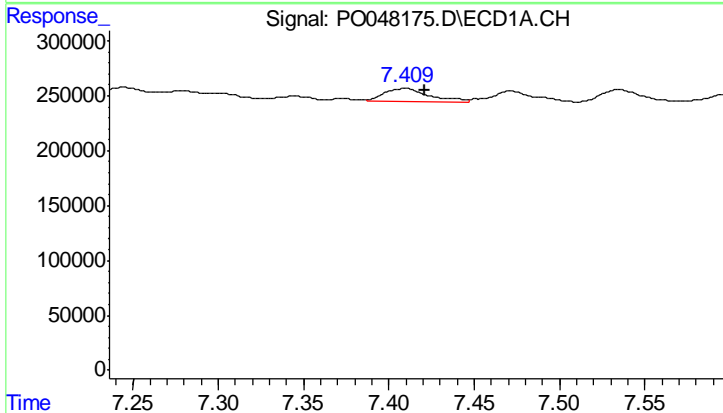
R.T.: 7.152 min
 Delta R.T.: -0.012 min
 Response: 194327
 Conc: 20.72 ng/ml

Instrument :
 ECD_O
 ClientSampleId :
 081418-DBRI-F-U-B



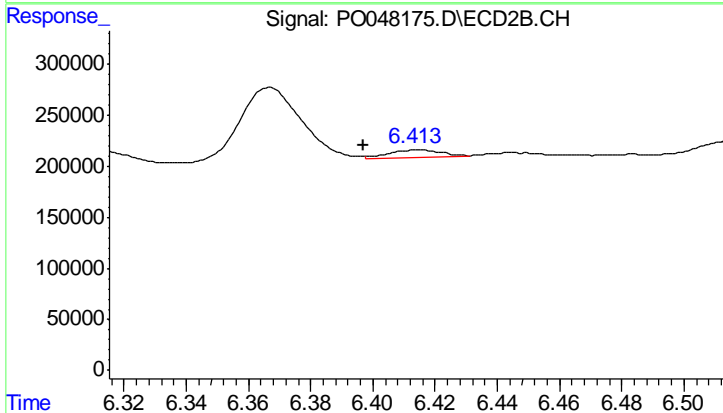
#31 AR-1260-1

R.T.: 6.189 min
 Delta R.T.: -0.022 min
 Response: 714977
 Conc: 64.70 ng/ml



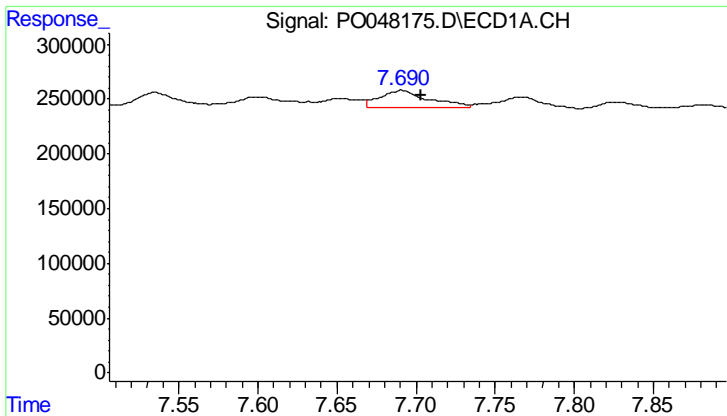
#32 AR-1260-2

R.T.: 7.410 min
 Delta R.T.: -0.011 min
 Response: 225007
 Conc: 20.18 ng/ml



#32 AR-1260-2

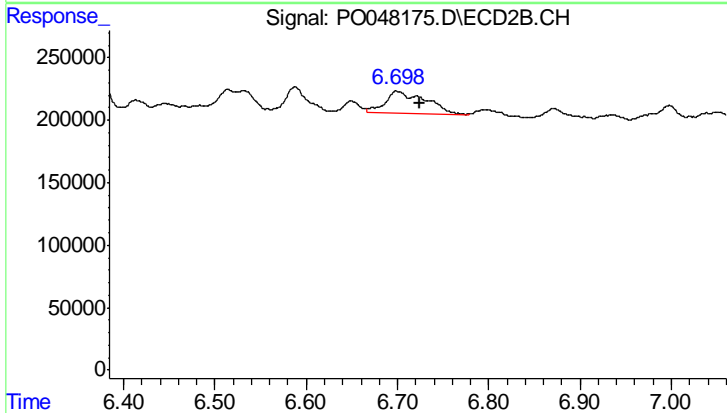
R.T.: 6.414 min
 Delta R.T.: 0.017 min
 Response: 79835
 Conc: 5.95 ng/ml



#33 AR-1260-3

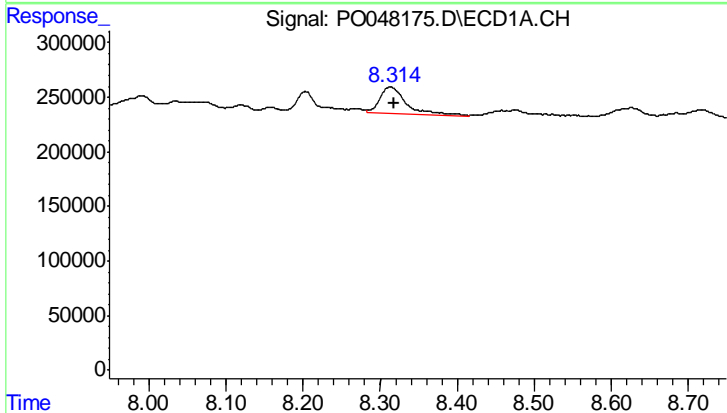
R.T.: 7.691 min
 Delta R.T.: -0.013 min
 Response: 336874
 Conc: 26.18 ng/ml

Instrument :
 ECD_O
 ClientSampleId :
 081418-DBRI-F-U-B



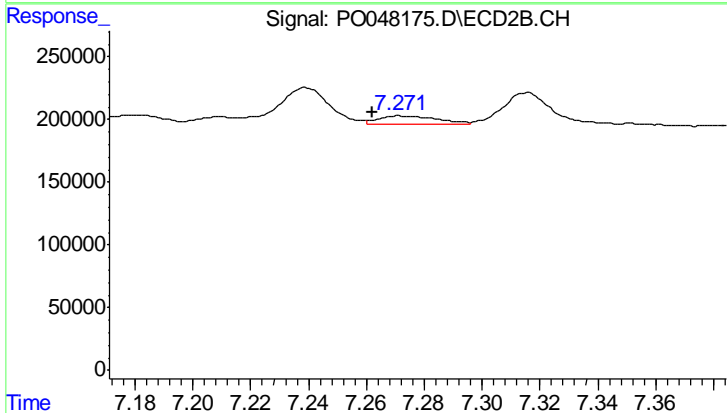
#33 AR-1260-3

R.T.: 6.700 min
 Delta R.T.: -0.025 min
 Response: 562905
 Conc: 38.72 ng/ml



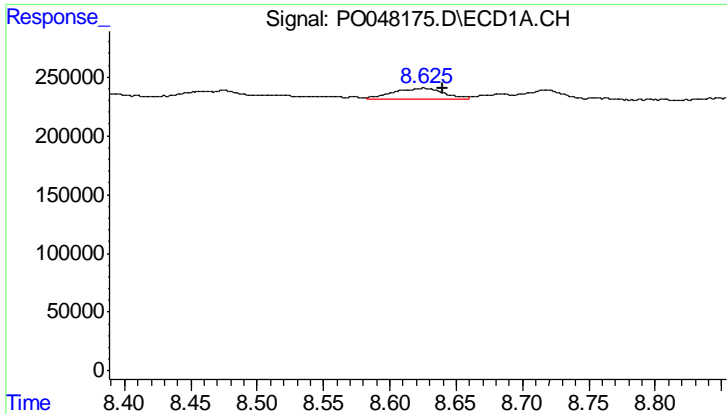
#34 AR-1260-4

R.T.: 8.313 min
 Delta R.T.: -0.005 min
 Response: 590529
 Conc: 33.20 ng/ml



#34 AR-1260-4

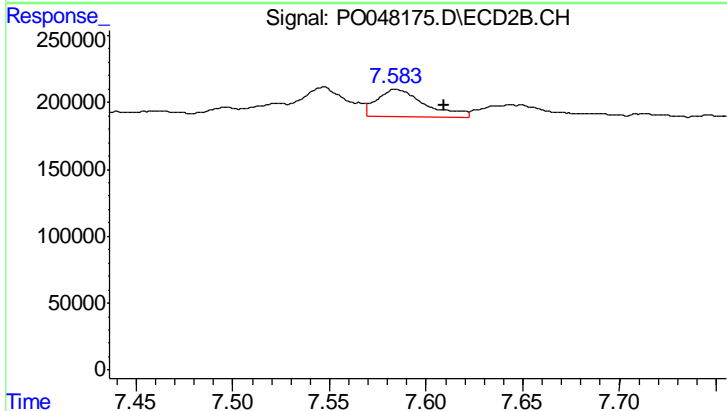
R.T.: 7.273 min
 Delta R.T.: 0.011 min
 Response: 95315
 Conc: 4.33 ng/ml



#35 AR-1260-5

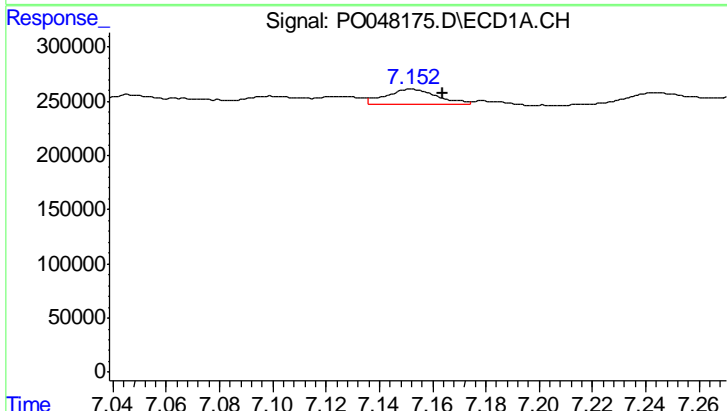
R.T.: 8.626 min
 Delta R.T.: -0.014 min
 Response: 259513
 Conc: 22.73 ng/ml

Instrument :
 ECD_O
 ClientSampleId :
 081418-DBRI-F-U-B



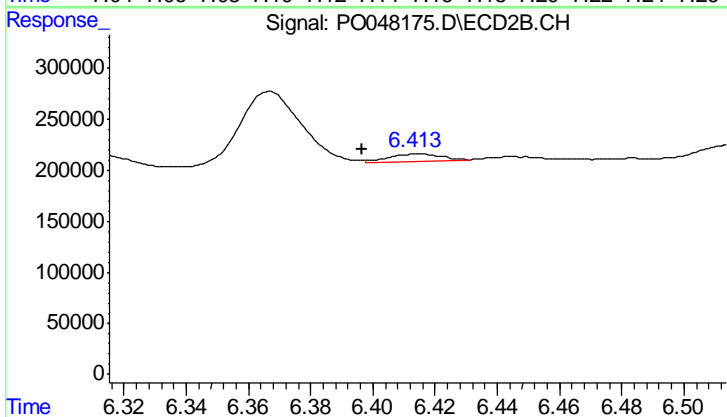
#35 AR-1260-5

R.T.: 7.585 min
 Delta R.T.: -0.024 min
 Response: 353464
 Conc: 22.66 ng/ml



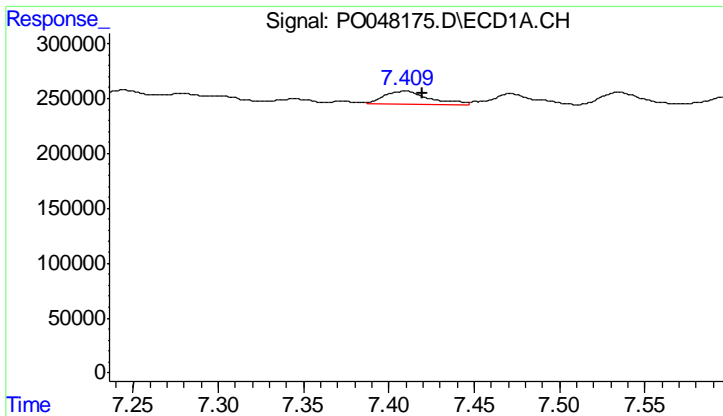
#36 AR-1262-1

R.T.: 7.152 min
 Delta R.T.: -0.012 min
 Response: 194327
 Conc: 23.46 ng/ml



#36 AR-1262-1

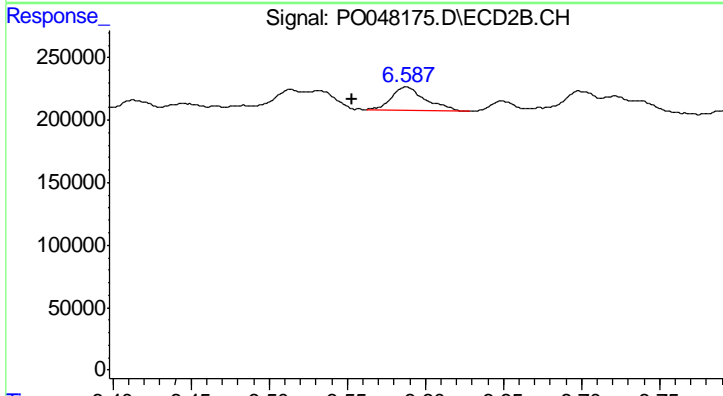
R.T.: 6.414 min
 Delta R.T.: 0.018 min
 Response: 79835
 Conc: 7.04 ng/ml



#37 AR-1262-2

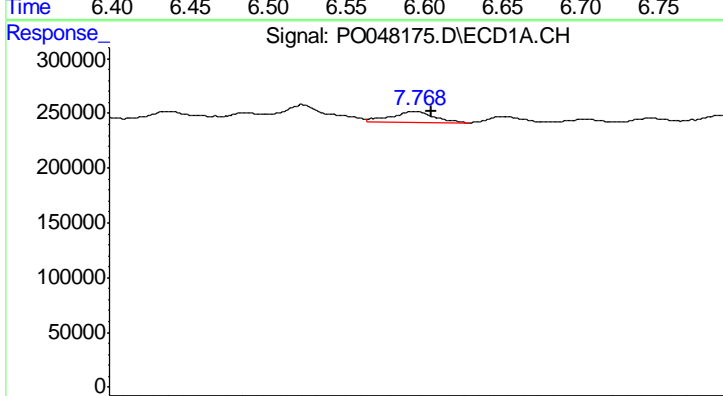
R.T.: 7.410 min
 Delta R.T.: -0.010 min
 Response: 225007
 Conc: 23.22 ng/ml

Instrument :
 ECD_O
 ClientSampleId :
 081418-DBRI-F-U-B



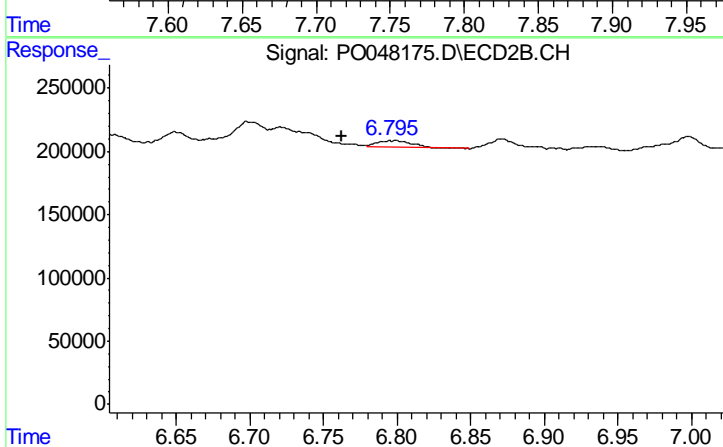
#37 AR-1262-2

R.T.: 6.588 min
 Delta R.T.: 0.035 min
 Response: 278086
 Conc: 24.64 ng/ml



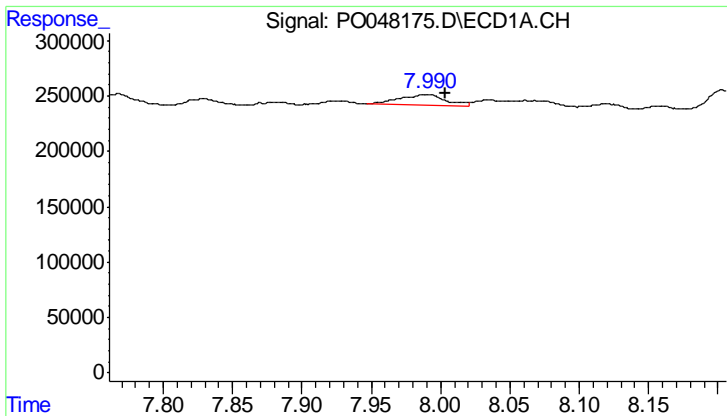
#38 AR-1262-3

R.T.: 7.767 min
 Delta R.T.: -0.010 min
 Response: 203754
 Conc: 16.60 ng/ml



#38 AR-1262-3

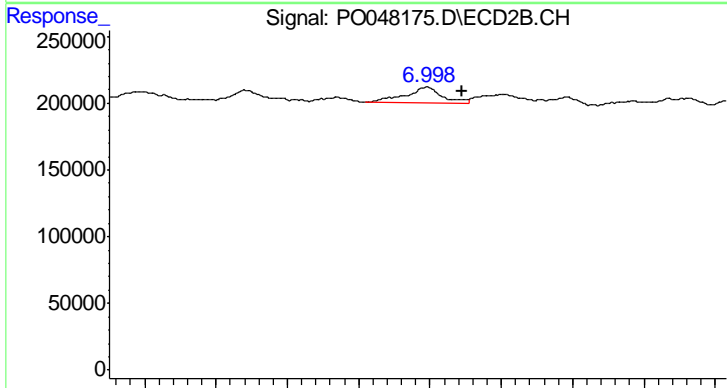
R.T.: 6.796 min
 Delta R.T.: 0.034 min
 Response: 87210
 Conc: 5.78 ng/ml



#39 AR-1262-4

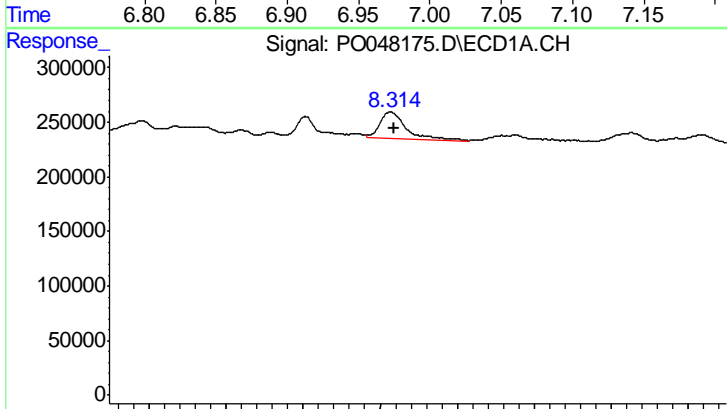
R.T.: 7.990 min
 Delta R.T.: -0.013 min
 Response: 218806
 Conc: 18.58 ng/ml

Instrument :
 ECD_O
 ClientSampleId :
 081418-DBRI-F-U-B



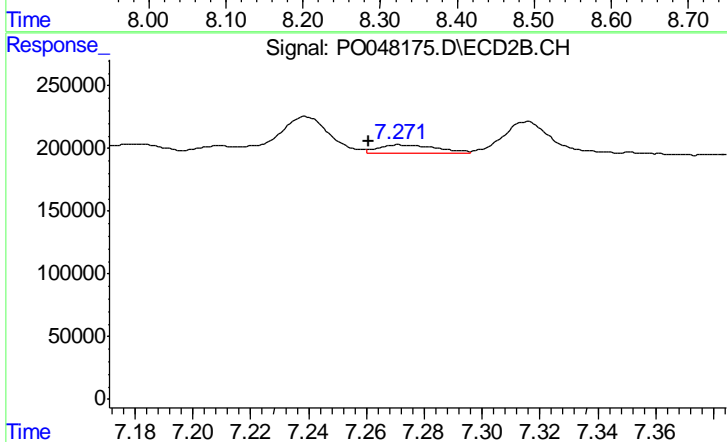
#39 AR-1262-4

R.T.: 6.998 min
 Delta R.T.: -0.025 min
 Response: 221589
 Conc: 16.83 ng/ml



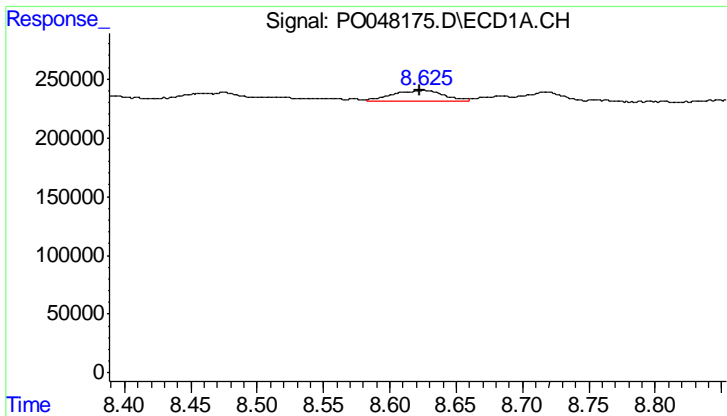
#40 AR-1262-5

R.T.: 8.313 min
 Delta R.T.: -0.005 min
 Response: 590529
 Conc: 27.48 ng/ml



#40 AR-1262-5

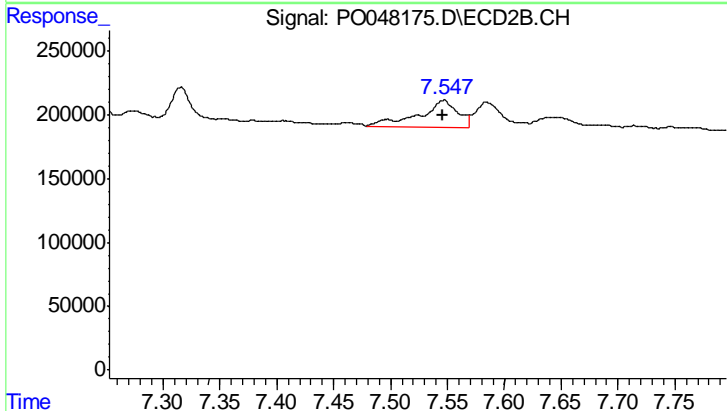
R.T.: 7.273 min
 Delta R.T.: 0.012 min
 Response: 95315
 Conc: 3.69 ng/ml



#41 AR-1268-1

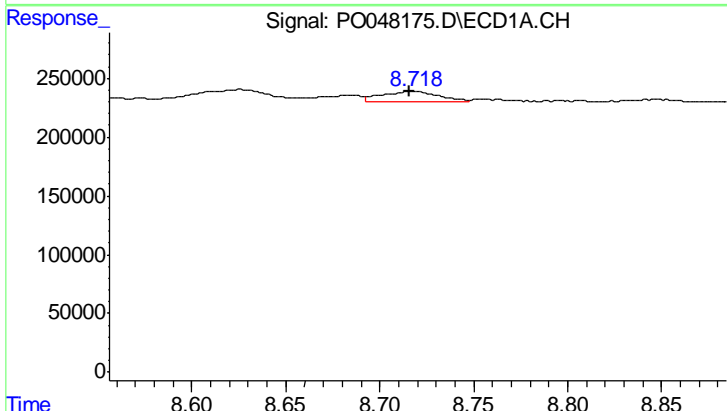
R.T.: 8.626 min
 Delta R.T.: 0.003 min
 Response: 259513
 Conc: 11.18 ng/ml

Instrument :
 ECD_O
 ClientSampleId :
 081418-DBRI-F-U-B



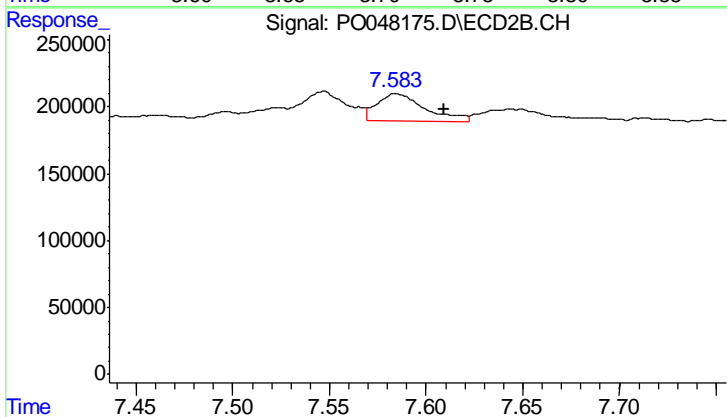
#41 AR-1268-1

R.T.: 7.547 min
 Delta R.T.: 0.001 min
 Response: 499560
 Conc: 19.21 ng/ml



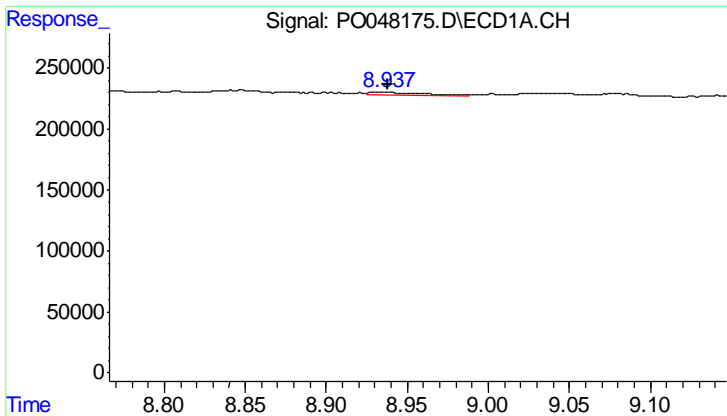
#42 AR-1268-2

R.T.: 8.718 min
 Delta R.T.: 0.002 min
 Response: 187736
 Conc: 8.76 ng/ml



#42 AR-1268-2

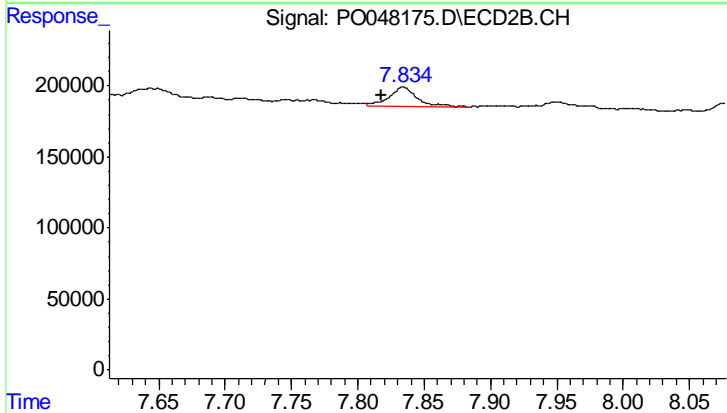
R.T.: 7.585 min
 Delta R.T.: -0.025 min
 Response: 353464
 Conc: 14.19 ng/ml



#43 AR-1268-3

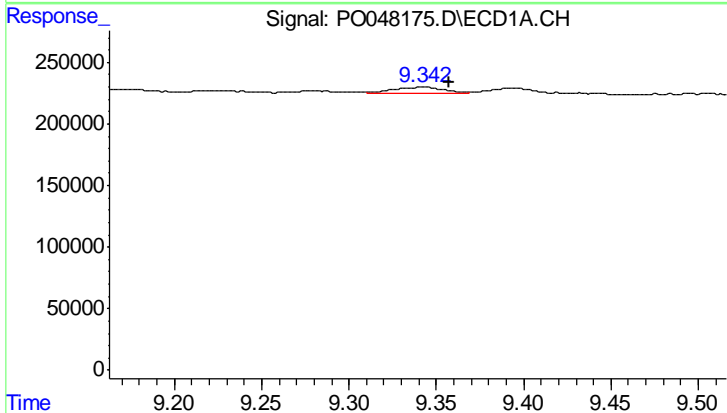
R.T.: 8.936 min
 Delta R.T.: -0.001 min
 Response: 53474
 Conc: 2.96 ng/ml

Instrument :
 ECD_O
 ClientSampleId :
 081418-DBRI-F-U-B



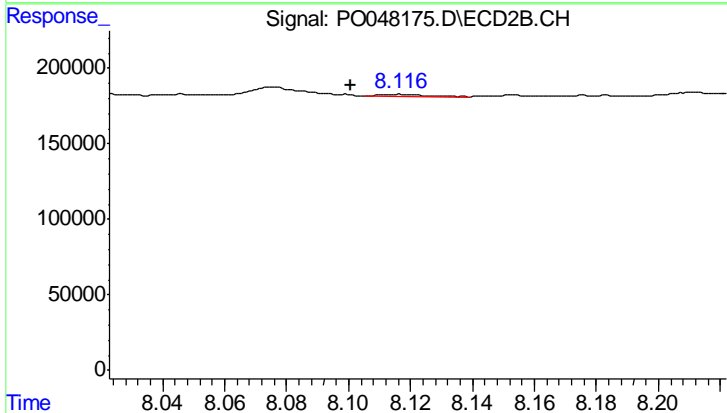
#43 AR-1268-3

R.T.: 7.834 min
 Delta R.T.: 0.017 min
 Response: 213269
 Conc: 10.81 ng/ml



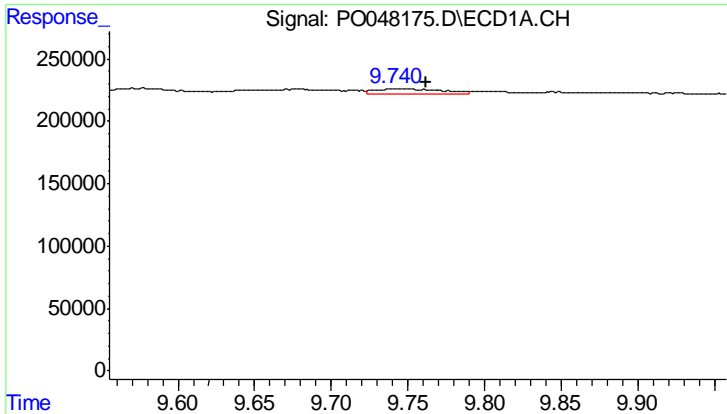
#44 AR-1268-4

R.T.: 9.343 min
 Delta R.T.: -0.014 min
 Response: 110583
 Conc: 13.87 ng/ml



#44 AR-1268-4

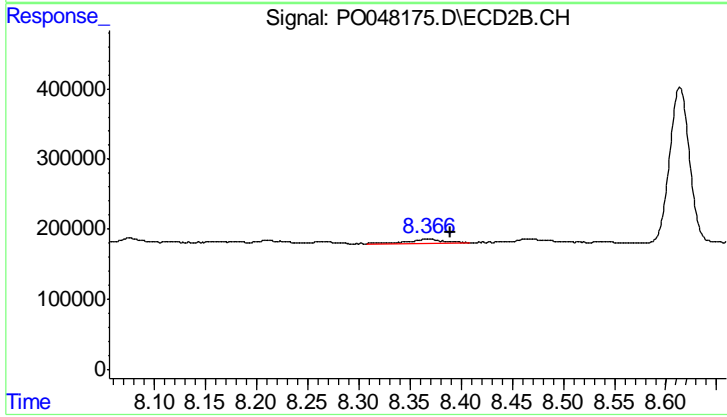
R.T.: 8.117 min
 Delta R.T.: 0.016 min
 Response: 16137
 Conc: 1.92 ng/ml



#45 AR-1268-5

R.T.: 9.742 min
 Delta R.T.: -0.020 min
 Response: 115323
 Conc: 2.12 ng/ml

Instrument :
 ECD_O
 ClientSampleId :
 081418-DBRI-F-U-B



#45 AR-1268-5

R.T.: 8.367 min
 Delta R.T.: -0.023 min
 Response: 160338
 Conc: 2.94 ng/ml