

Data Path : Z:\pestpcbsrv\HPCHEM1\ECD\_O\Data\PO081618\  
 Data File : PO048206.D  
 Signal(s) : Signal #1: ECD1A.CH Signal #2: ECD2B.CH  
 Acq On : 17 Aug 2018 9:38  
 Operator : SM/SJ  
 Sample : J4499-09MSD  
 Misc :  
 ALS Vial : 49 Sample Multiplier: 1

Instrument :  
 ECD\_O  
 ClientSampleId :  
 LSB-07(0-1)MSD

Integration File signal 1: autoint1.e  
 Integration File signal 2: autoint2.e  
 Quant Time: Aug 17 14:06:50 2018  
 Quant Method : Z:\pestpcbsrv\HPCHEM1\ECD\_O\methods\PO072718.M  
 Quant Title : GC EXTRACTABLES  
 QLast Update : Fri Jul 27 02:33:29 2018  
 Response via : Initial Calibration  
 Integrator: ChemStation 6890 Scale Mode: Small noise peaks clipped

Volume Inj. : 2 µl  
 Signal #1 Phase : ZB-MR1 Signal #2 Phase: ZB-MR2  
 Signal #1 Info : 30Mx0.32mmx 0.50µ Signal #2 Info : 30M x 0.32mm x 0.25µm

| Compound | RT#1 | RT#2 | Resp#1 | Resp#2 | ng/ml | ng/ml |
|----------|------|------|--------|--------|-------|-------|
|----------|------|------|--------|--------|-------|-------|

System Monitoring Compounds

|                    |        |       |         |         |        |        |
|--------------------|--------|-------|---------|---------|--------|--------|
| 1) SA Tetrachlo... | 4.388  | 3.631 | 4001119 | 4058131 | 19.818 | 16.516 |
| 2) SA Decachlor... | 10.074 | 8.613 | 2416703 | 2287290 | 14.817 | 14.551 |

Target Compounds

|                  |       |       |         |         |         |           |
|------------------|-------|-------|---------|---------|---------|-----------|
| 3) L1 AR-1016-1  | 5.289 | 4.493 | 2328200 | 2853603 | 487.430 | 499.140   |
| 4) L1 AR-1016-2  | 5.640 | 4.907 | 1010794 | 908284  | 171.698 | 172.989   |
| 5) L1 AR-1016-3  | 5.739 | 4.948 | 895776  | 943900  | 180.627 | 214.970   |
| 6) L1 AR-1016-4  | 6.032 | 5.018 | 984549  | 446859  | 211.669 | 86.175 #  |
| 7) L1 AR-1016-5  | 6.173 | 5.200 | 828590  | 537158  | 158.947 | 91.578 #  |
| 8) L2 AR-1221-1  | 4.589 | 3.841 | 128117  | 324396  | 57.933  | 137.471 # |
| 9) L2 AR-1221-2  | 4.686 | 3.930 | 521923  | 710769  | 319.180 | 391.811   |
| 10) L2 AR-1221-3 | 4.761 | 4.005 | 1121322 | 1094862 | 217.192 | 189.403   |
| 11) L3 AR-1232-1 | 5.095 | 4.322 | 1803554 | 1550410 | 838.656 | 659.263   |
| 12) L3 AR-1232-2 | 5.556 | 4.731 | 1036294 | 1888552 | 352.186 | 618.003 # |
| 13) L3 AR-1232-3 | 5.578 | 4.762 | 1519238 | 294342  | 353.621 | 63.741 #  |
| 14) L3 AR-1232-4 | 5.640 | 4.787 | 1010794 | 1356576 | 365.187 | 438.826   |
| 15) L3 AR-1232-5 | 5.739 | 4.948 | 895776  | 943900  | 401.131 | 527.401 # |
| 16) L4 AR-1242-1 | 5.578 | 4.762 | 1519238 | 294342  | 206.696 | 36.755 #  |
| 17) L4 AR-1242-2 | 5.640 | 4.907 | 1010794 | 908284  | 218.392 | 220.475   |
| 18) L4 AR-1242-3 | 5.739 | 5.018 | 895776  | 446859  | 233.152 | 106.552 # |
| 19) L4 AR-1242-4 | 6.032 | 5.200 | 984549  | 537158  | 256.110 | 113.751 # |
| 20) L4 AR-1242-5 | 6.173 | 5.308 | 828590  | 826634  | 193.570 | 213.507   |
| 21) L5 AR-1248-1 | 6.032 | 5.200 | 984549  | 537158  | 157.450 | 72.003 #  |
| 22) L5 AR-1248-2 | 6.173 | 5.308 | 828590  | 826634  | 152.103 | 154.512   |
| 23) L5 AR-1248-3 | 6.437 | 5.511 | 100775  | 972393  | 14.320  | 97.724 #  |
| 24) L5 AR-1248-4 | 6.473 | 5.555 | 132346  | 196381  | 19.714  | 28.022 #  |
| 25) L5 AR-1248-5 | 6.625 | 6.073 | 1830538 | 3932917 | 258.636 | 825.243 # |
| 26) L6 AR-1254-1 | 6.625 | 5.511 | 1830538 | 972393  | 149.690 | 79.024 #  |
| 27) L6 AR-1254-2 | 6.937 | 5.657 | 717940  | 640526  | 96.267  | 61.531 #  |
| 28) L6 AR-1254-3 | 6.996 | 6.073 | 1516576 | 3932917 | 116.289 | 226.611 # |
| 29) L6 AR-1254-4 | 7.275 | 6.286 | 458464  | 868838  | 47.039  | 80.186 #  |
| 30) L6 AR-1254-5 | 7.568 | 6.604 | 122674  | 537664  | 16.605  | 70.304 #  |
| 31) L7 AR-1260-1 | 7.154 | 6.188 | 2207054 | 2726301 | 235.367 | 246.723   |
| 32) L7 AR-1260-2 | 7.406 | 6.374 | 2988175 | 2630611 | 267.969 | 196.196 # |
| 33) L7 AR-1260-3 | 7.693 | 6.738 | 2107982 | 1674715 | 163.840 | 115.197 # |
| 34) L7 AR-1260-4 | 8.307 | 7.239 | 2435363 | 4213361 | 136.912 | 191.484 # |
| 35) L7 AR-1260-5 | 8.627 | 7.586 | 2120303 | 2423263 | 185.675 | 155.341   |
| 36) L8 AR-1262-1 | 7.154 | 6.374 | 2207054 | 2630611 | 266.407 | 232.017   |
| 37) L8 AR-1262-2 | 7.406 | 6.529 | 2988175 | 1188670 | 308.324 | 105.336 # |
| 38) L8 AR-1262-3 | 7.767 | 6.738 | 1242911 | 1674715 | 101.277 | 110.967   |

Data Path : Z:\pestpcbsrv\HPCHEM1\ECD\_O\Data\PO081618\  
 Data File : PO048206.D  
 Signal(s) : Signal #1: ECD1A.CH Signal #2: ECD2B.CH  
 Acq On : 17 Aug 2018 9:38  
 Operator : SM/SJ  
 Sample : J4499-09MSD  
 Misc :  
 ALS Vial : 49 Sample Multiplier: 1

Instrument :  
 ECD\_O  
 ClientSampleId :  
 LSB-07(0-1)MSD

Integration File signal 1: autoint1.e  
 Integration File signal 2: autoint2.e  
 Quant Time: Aug 17 14:06:50 2018  
 Quant Method : Z:\pestpcbsrv\HPCHEM1\ECD\_O\methods\PO072718.M  
 Quant Title : GC EXTRACTABLES  
 QLast Update : Fri Jul 27 02:33:29 2018  
 Response via : Initial Calibration  
 Integrator: ChemStation 6890 Scale Mode: Small noise peaks clipped

Volume Inj. : 2 µl  
 Signal #1 Phase : ZB-MR1 Signal #2 Phase: ZB-MR2  
 Signal #1 Info : 30Mx0.32mmx 0.50µ Signal #2 Info : 30M x 0.32mm x 0.25µm

|     | Compound     | RT#1  | RT#2  | Resp#1  | Resp#2  | ng/ml   | ng/ml     |
|-----|--------------|-------|-------|---------|---------|---------|-----------|
| 39) | L8 AR-1262-4 | 7.991 | 7.041 | 1330111 | 796473  | 112.954 | 60.484 #  |
| 40) | L8 AR-1262-5 | 8.307 | 7.239 | 2435363 | 4213361 | 113.349 | 163.128 # |
| 41) | L9 AR-1268-1 | 8.627 | 7.521 | 2120303 | 962108  | 91.355  | 37.005 #  |
| 42) | L9 AR-1268-2 | 8.700 | 7.586 | 760100  | 2423263 | 35.475  | 97.270 #  |
| 43) | L9 AR-1268-3 | 8.925 | 7.790 | 311243  | 1179808 | 17.240  | 59.783 #  |
| 44) | L9 AR-1268-4 | 9.343 | 8.082 | 842384  | 1597920 | 105.643 | 190.488 # |
| 45) | L9 AR-1268-5 | 9.747 | 8.362 | 923017  | 741804  | 16.940  | 13.587    |

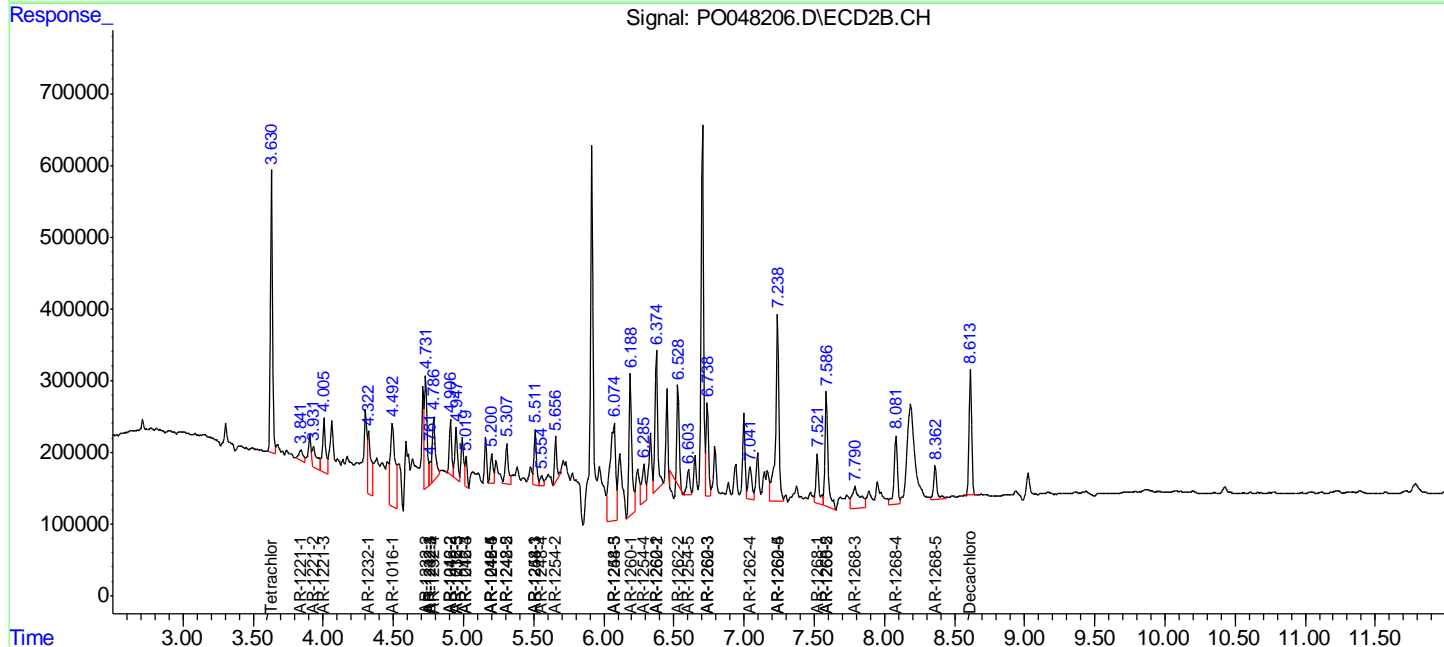
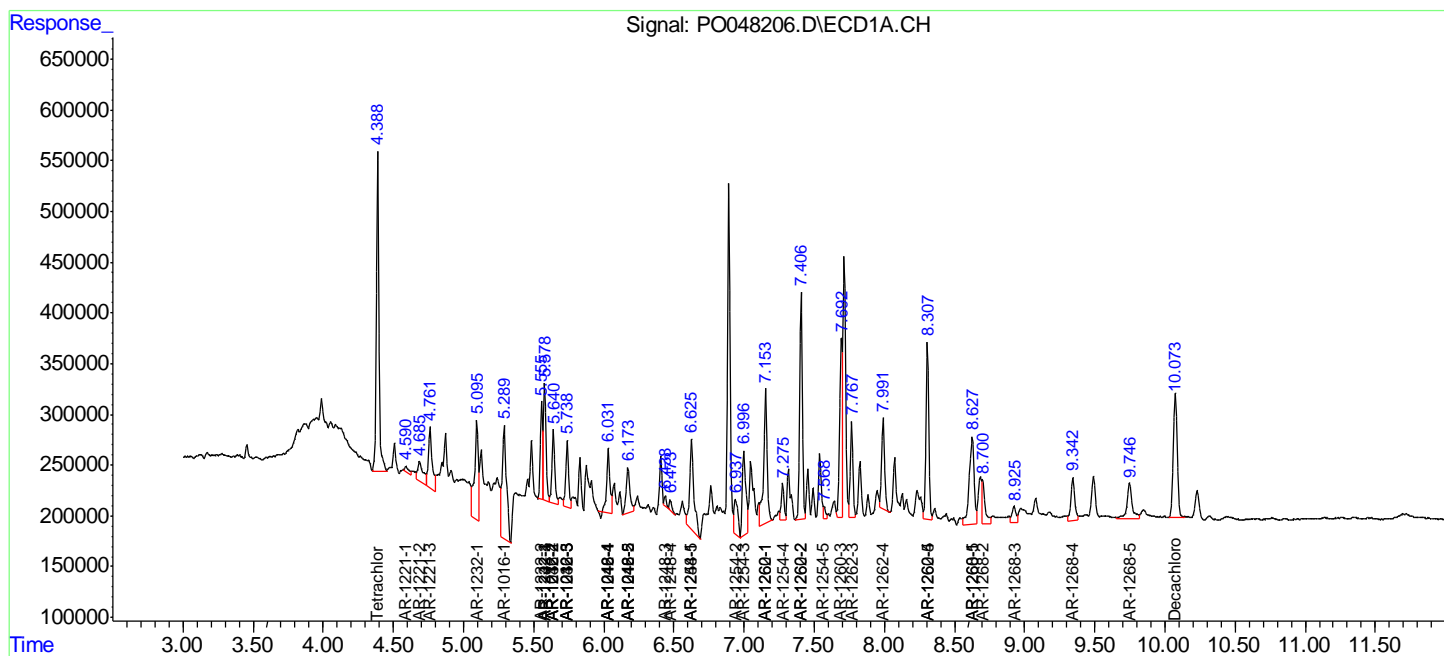
(f)=RT Delta > 1/2 Window (#)=Amounts differ by > 25% (m)=manual int.

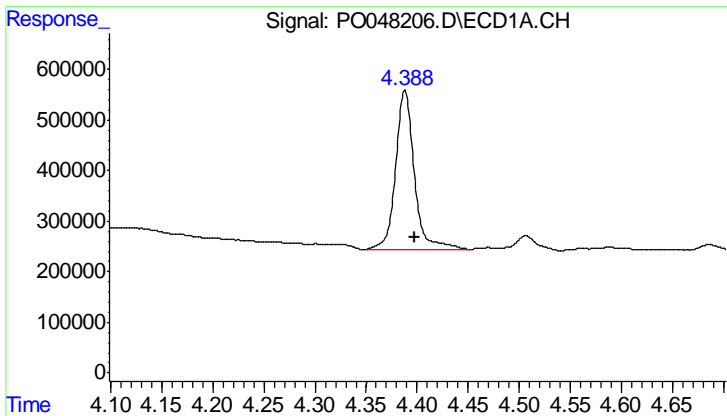
Data Path : Z:\pestpcbsrv\HPCHEM1\ECD\_O\Data\PO081618\  
 Data File : PO048206.D  
 Signal(s) : Signal #1: ECD1A.CH Signal #2: ECD2B.CH  
 Acq On : 17 Aug 2018 9:38  
 Operator : SM/SJ  
 Sample : J4499-09MSD  
 Misc :  
 ALS Vial : 49 Sample Multiplier: 1

Instrument :  
 ECD\_O  
 ClientSampled :  
 LSB-07(0-1)MSD

Integration File signal 1: autoint1.e  
 Integration File signal 2: autoint2.e  
 Quant Time: Aug 17 14:06:50 2018  
 Quant Method : Z:\pestpcbsrv\HPCHEM1\ECD\_O\methods\PO072718.M  
 Quant Title : GC EXTRACTABLES  
 QLast Update : Fri Jul 27 02:33:29 2018  
 Response via : Initial Calibration  
 Integrator: ChemStation 6890 Scale Mode: Small noise peaks clipped

Volume Inj. : 2 µl  
 Signal #1 Phase : ZB-MR1 Signal #2 Phase: ZB-MR2  
 Signal #1 Info : 30Mx0.32mmx 0.50µ Signal #2 Info : 30M x 0.32mm x 0.25µm

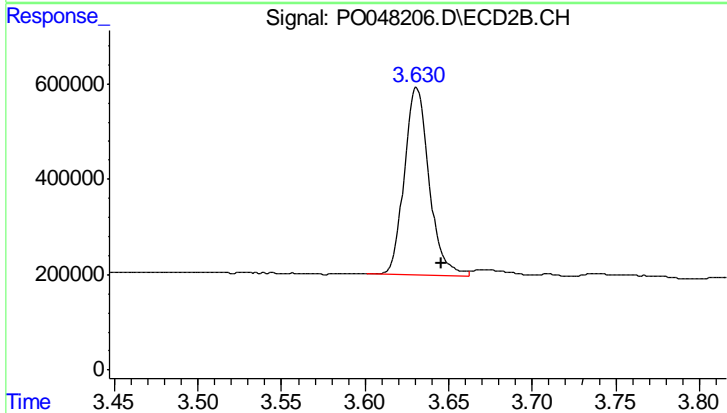




#1 Tetrachloro-m-xylene

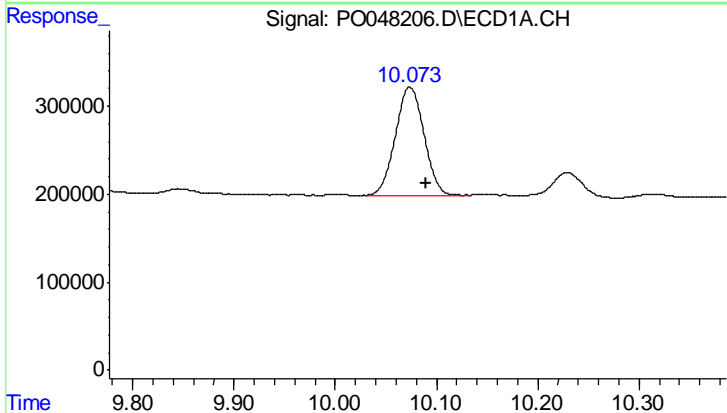
R.T.: 4.388 min  
 Delta R.T.: -0.009 min  
 Response: 4001119  
 Conc: 19.82 ng/ml

Instrument :  
 ECD\_O  
 ClientSampleId :  
 LSB-07(0-1)MSD



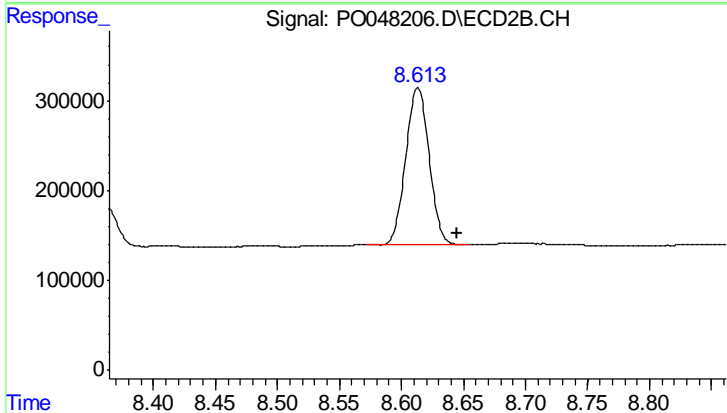
#1 Tetrachloro-m-xylene

R.T.: 3.631 min  
 Delta R.T.: -0.015 min  
 Response: 4058131  
 Conc: 16.52 ng/ml



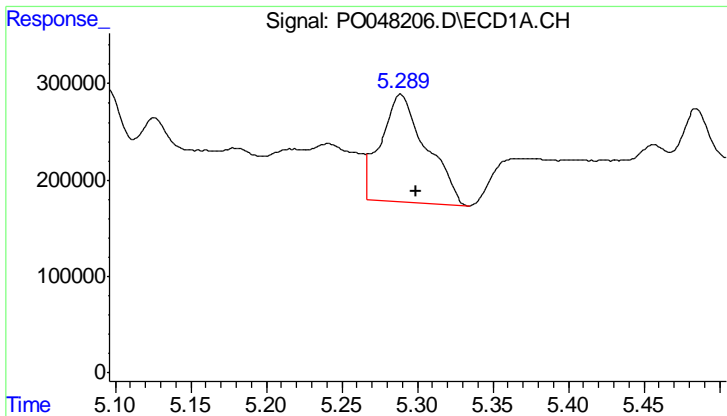
#2 Decachlorobiphenyl

R.T.: 10.074 min  
 Delta R.T.: -0.016 min  
 Response: 2416703  
 Conc: 14.82 ng/ml



#2 Decachlorobiphenyl

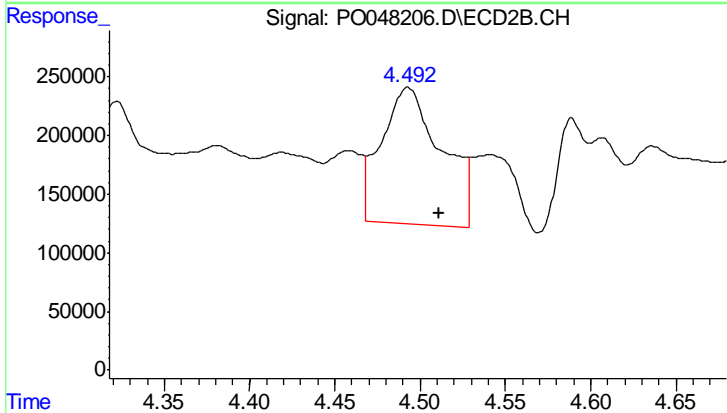
R.T.: 8.613 min  
 Delta R.T.: -0.031 min  
 Response: 2287290  
 Conc: 14.55 ng/ml



#3 AR-1016-1

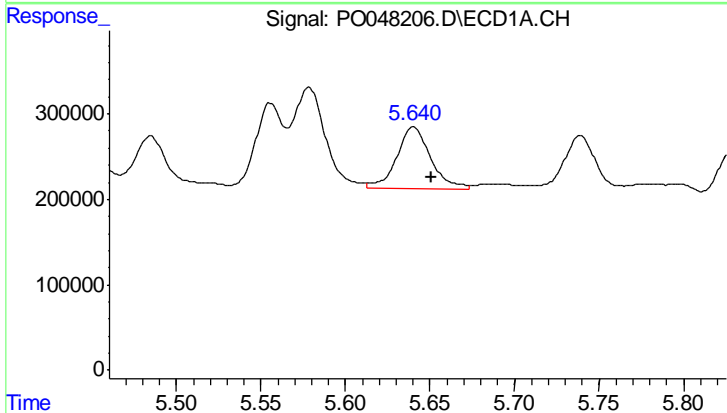
R.T.: 5.289 min  
 Delta R.T.: -0.010 min  
 Response: 2328200  
 Conc: 487.43 ng/ml

Instrument :  
 ECD\_O  
 ClientSampleId :  
 LSB-07(0-1)MSD



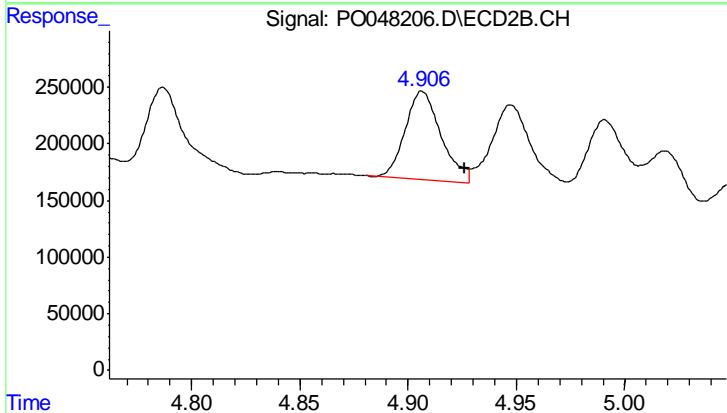
#3 AR-1016-1

R.T.: 4.493 min  
 Delta R.T.: -0.018 min  
 Response: 2853603  
 Conc: 499.14 ng/ml



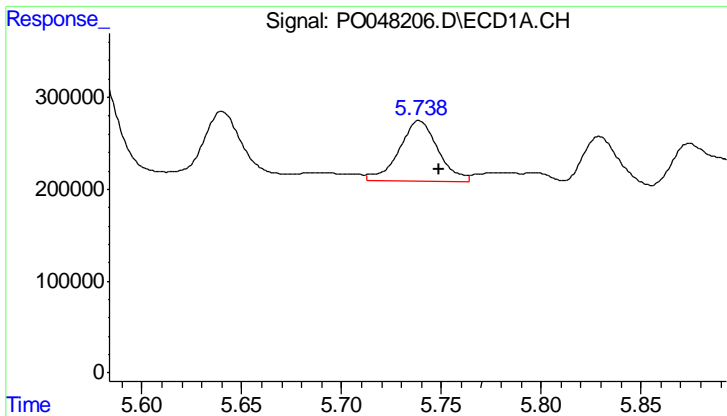
#4 AR-1016-2

R.T.: 5.640 min  
 Delta R.T.: -0.010 min  
 Response: 1010794  
 Conc: 171.70 ng/ml



#4 AR-1016-2

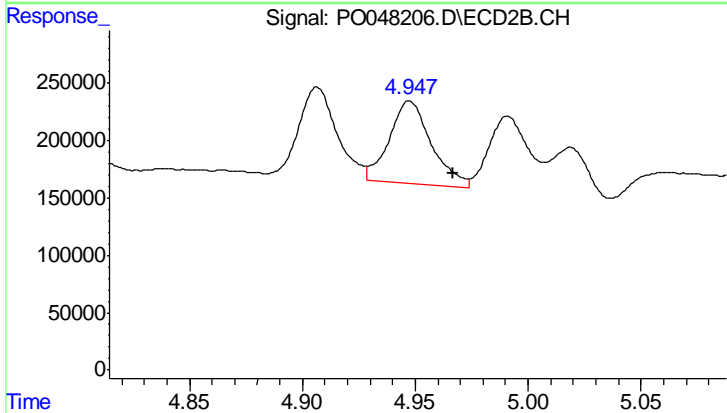
R.T.: 4.907 min  
 Delta R.T.: -0.020 min  
 Response: 908284  
 Conc: 172.99 ng/ml



#5 AR-1016-3

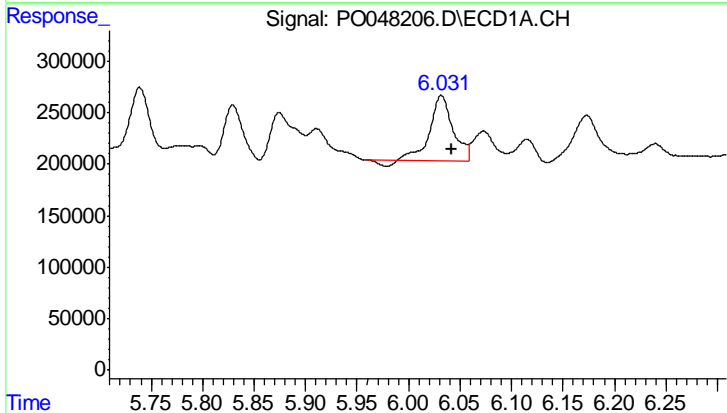
R.T.: 5.739 min  
 Delta R.T.: -0.010 min  
 Response: 895776  
 Conc: 180.63 ng/ml

Instrument :  
 ECD\_O  
 ClientSampleId :  
 LSB-07(0-1)MSD



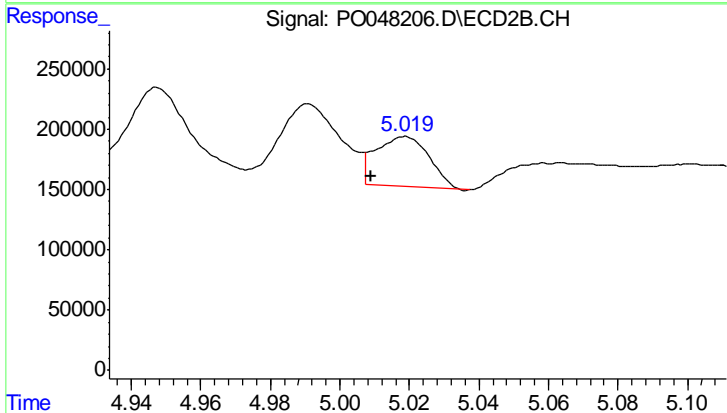
#5 AR-1016-3

R.T.: 4.948 min  
 Delta R.T.: -0.019 min  
 Response: 943900  
 Conc: 214.97 ng/ml



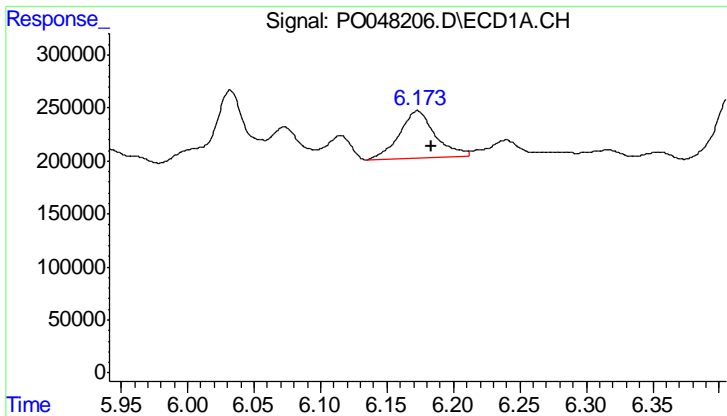
#6 AR-1016-4

R.T.: 6.032 min  
 Delta R.T.: -0.010 min  
 Response: 984549  
 Conc: 211.67 ng/ml



#6 AR-1016-4

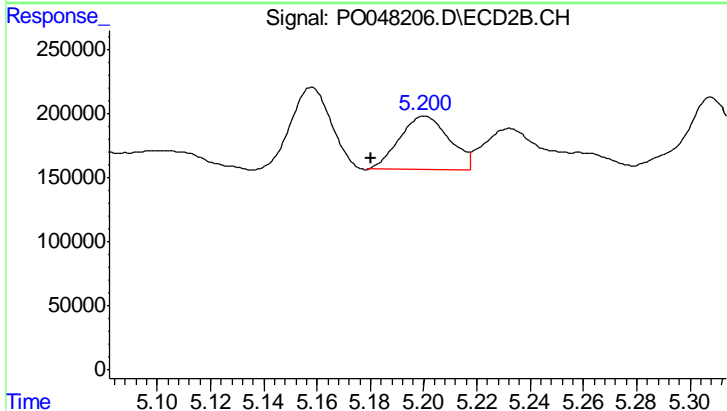
R.T.: 5.018 min  
 Delta R.T.: 0.010 min  
 Response: 446859  
 Conc: 86.18 ng/ml



#7 AR-1016-5

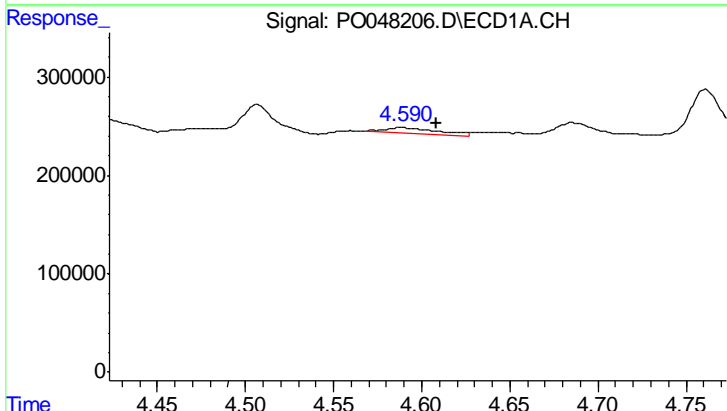
R.T.: 6.173 min  
 Delta R.T.: -0.010 min  
 Response: 828590  
 Conc: 158.95 ng/ml

Instrument :  
 ECD\_O  
 ClientSampleId :  
 LSB-07(0-1)MSD



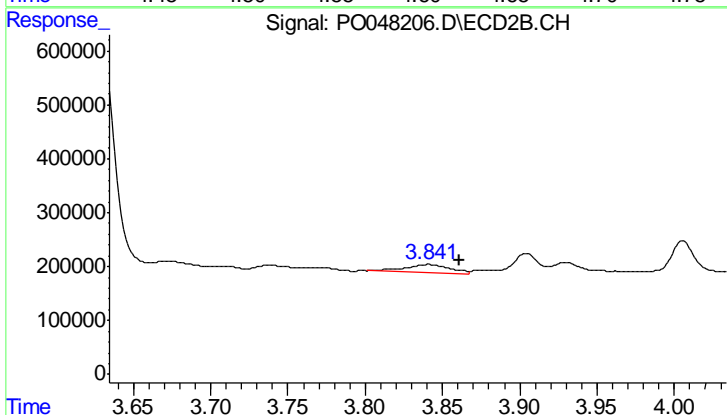
#7 AR-1016-5

R.T.: 5.200 min  
 Delta R.T.: 0.020 min  
 Response: 537158  
 Conc: 91.58 ng/ml



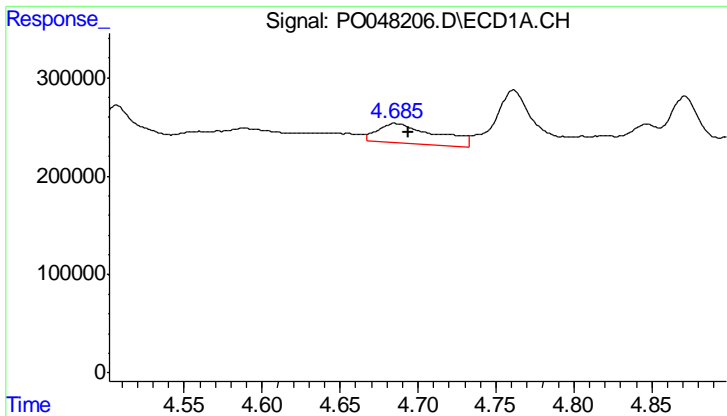
#8 AR-1221-1

R.T.: 4.589 min  
 Delta R.T.: -0.020 min  
 Response: 128117  
 Conc: 57.93 ng/ml



#8 AR-1221-1

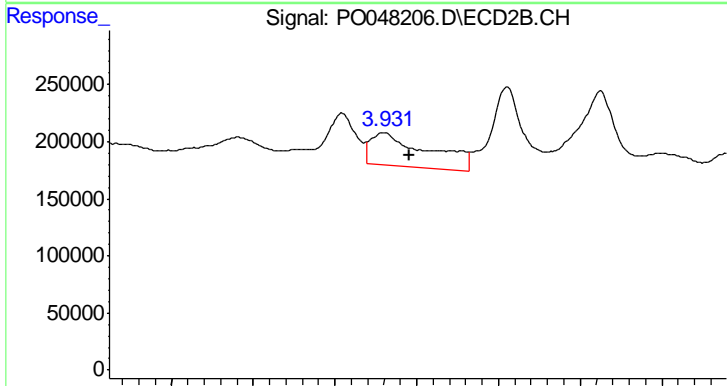
R.T.: 3.841 min  
 Delta R.T.: -0.020 min  
 Response: 324396  
 Conc: 137.47 ng/ml



#9 AR-1221-2

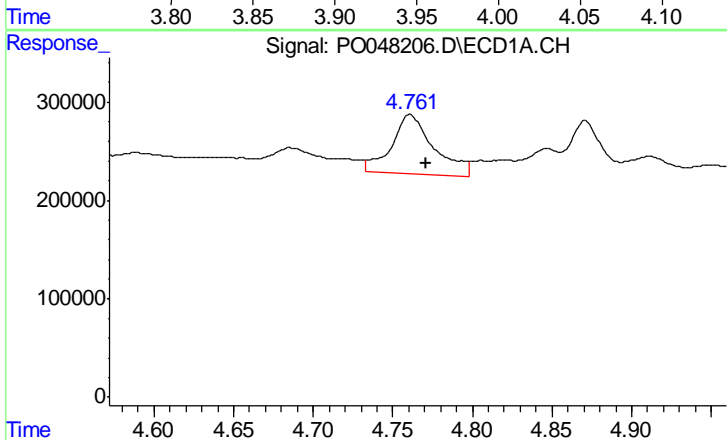
R.T.: 4.686 min  
 Delta R.T.: -0.008 min  
 Response: 521923  
 Conc: 319.18 ng/ml

Instrument :  
 ECD\_O  
 ClientSampled :  
 LSB-07(0-1)MSD



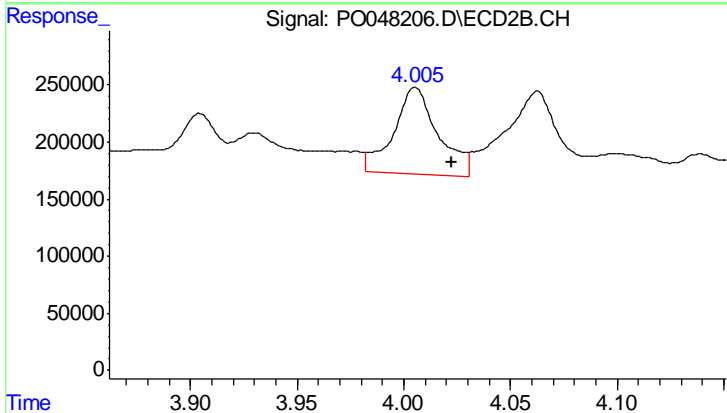
#9 AR-1221-2

R.T.: 3.930 min  
 Delta R.T.: -0.016 min  
 Response: 710769  
 Conc: 391.81 ng/ml



#10 AR-1221-3

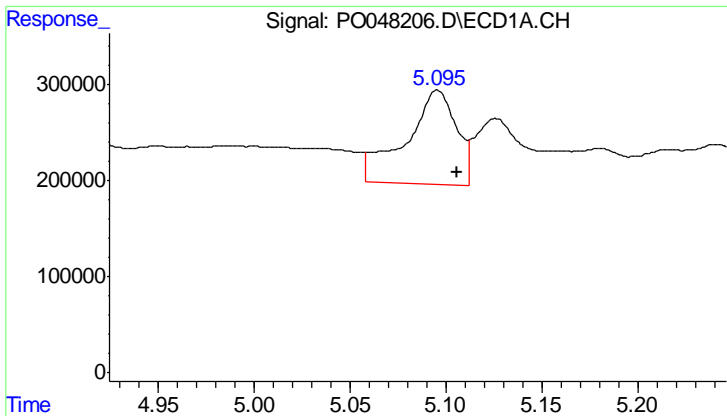
R.T.: 4.761 min  
 Delta R.T.: -0.010 min  
 Response: 1121322  
 Conc: 217.19 ng/ml



#10 AR-1221-3

R.T.: 4.005 min  
 Delta R.T.: -0.017 min  
 Response: 1094862  
 Conc: 189.40 ng/ml

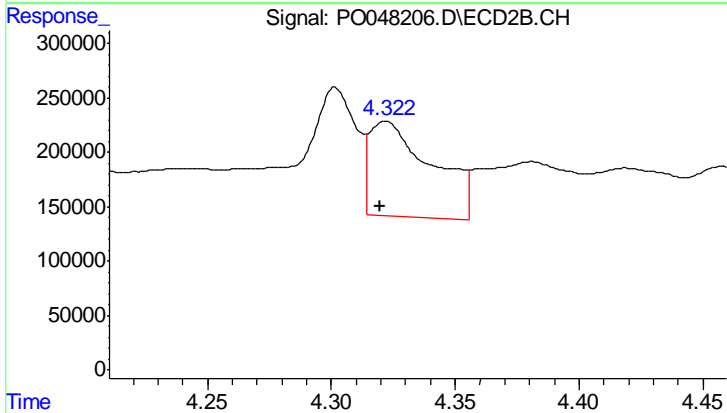




#11 AR-1232-1

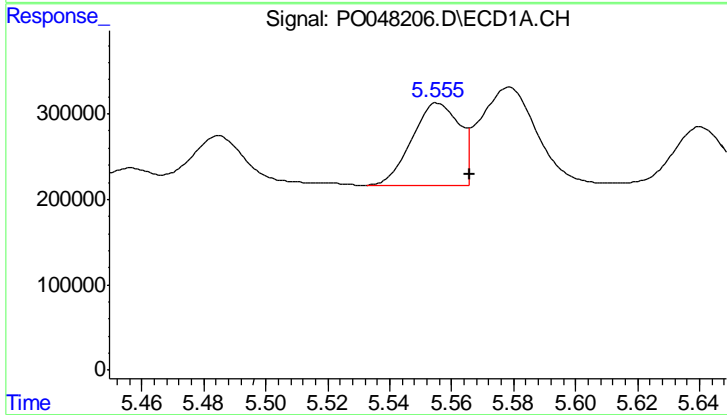
R.T.: 5.095 min  
 Delta R.T.: -0.010 min  
 Response: 1803554  
 Conc: 838.66 ng/ml

Instrument :  
 ECD\_O  
 ClientSampleId :  
 LSB-07(0-1)MSD



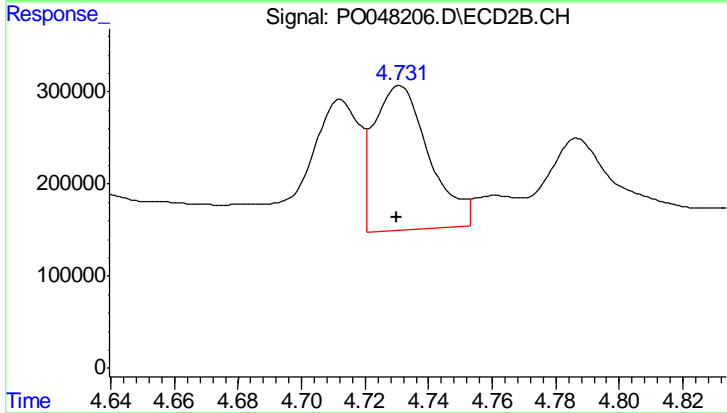
#11 AR-1232-1

R.T.: 4.322 min  
 Delta R.T.: 0.002 min  
 Response: 1550410  
 Conc: 659.26 ng/ml



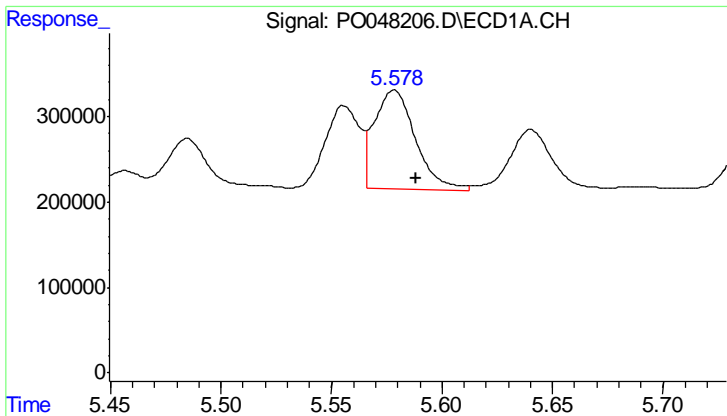
#12 AR-1232-2

R.T.: 5.556 min  
 Delta R.T.: -0.010 min  
 Response: 1036294  
 Conc: 352.19 ng/ml



#12 AR-1232-2

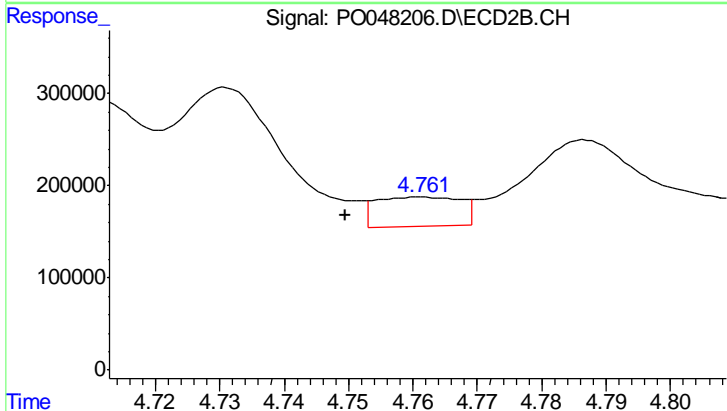
R.T.: 4.731 min  
 Delta R.T.: 0.000 min  
 Response: 1888552  
 Conc: 618.00 ng/ml



#13 AR-1232-3

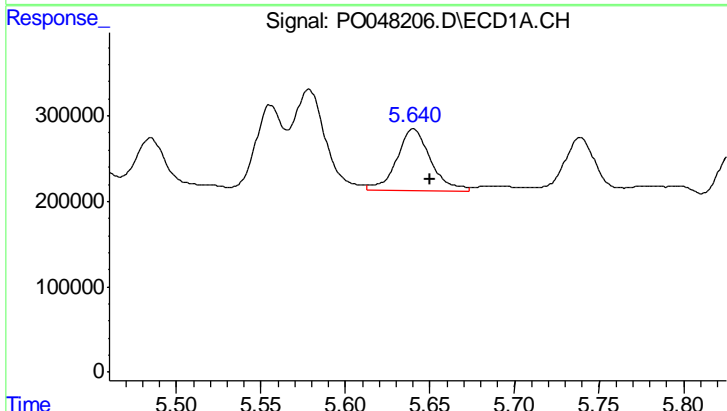
R.T.: 5.578 min  
 Delta R.T.: -0.010 min  
 Response: 1519238  
 Conc: 353.62 ng/ml

Instrument :  
 ECD\_O  
 ClientSampled :  
 LSB-07(0-1)MSD



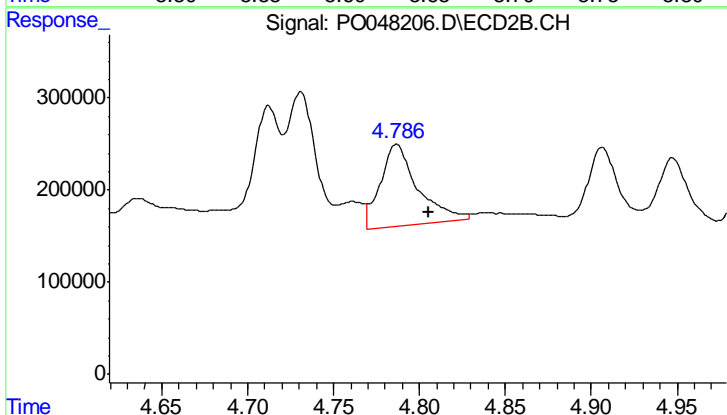
#13 AR-1232-3

R.T.: 4.762 min  
 Delta R.T.: 0.012 min  
 Response: 294342  
 Conc: 63.74 ng/ml



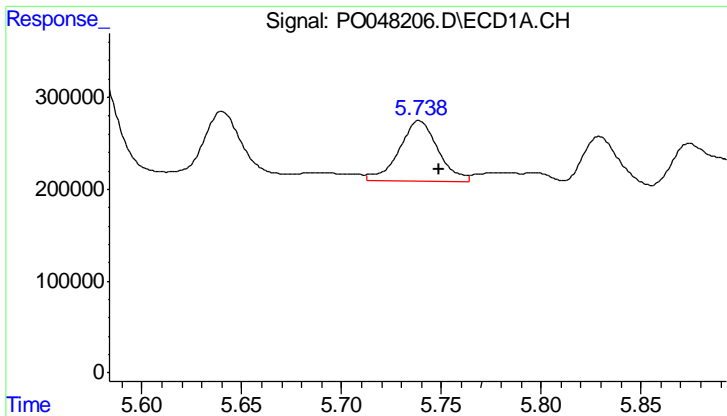
#14 AR-1232-4

R.T.: 5.640 min  
 Delta R.T.: -0.009 min  
 Response: 1010794  
 Conc: 365.19 ng/ml



#14 AR-1232-4

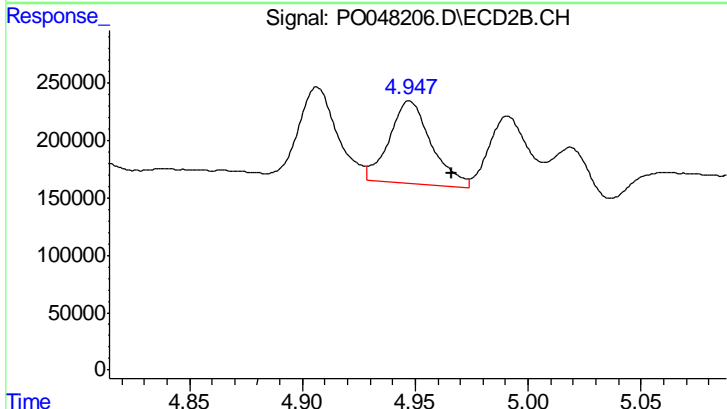
R.T.: 4.787 min  
 Delta R.T.: -0.019 min  
 Response: 1356576  
 Conc: 438.83 ng/ml



#15 AR-1232-5

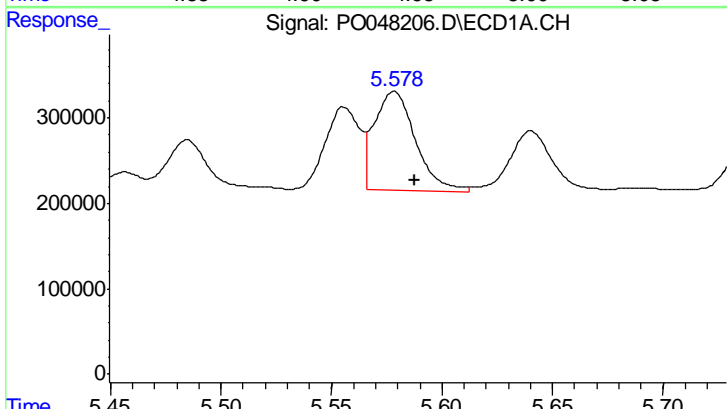
R.T.: 5.739 min  
 Delta R.T.: -0.010 min  
 Response: 895776  
 Conc: 401.13 ng/ml

Instrument :  
 ECD\_O  
 ClientSampleId :  
 LSB-07(0-1)MSD



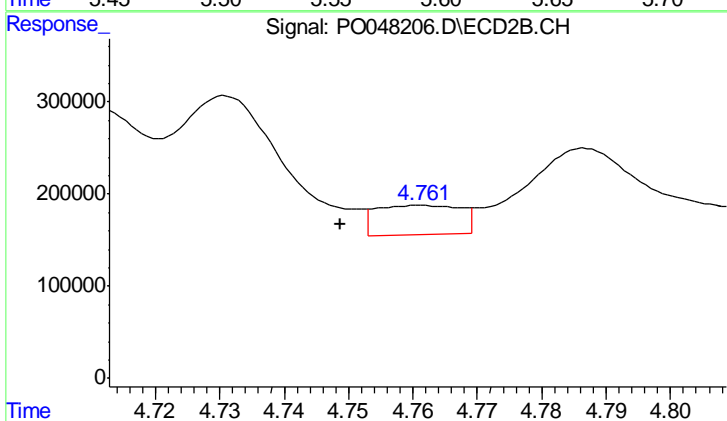
#15 AR-1232-5

R.T.: 4.948 min  
 Delta R.T.: -0.019 min  
 Response: 943900  
 Conc: 527.40 ng/ml



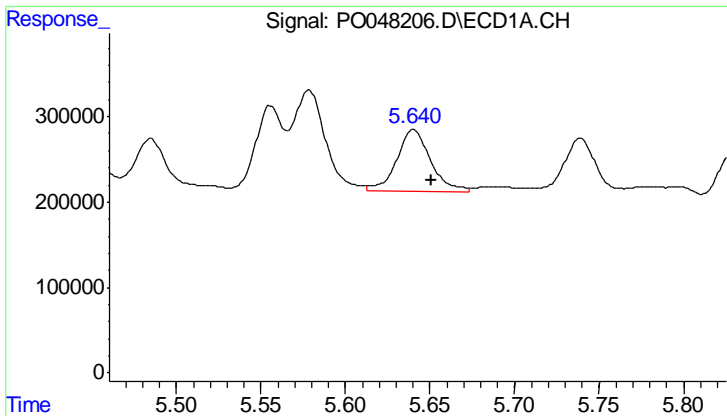
#16 AR-1242-1

R.T.: 5.578 min  
 Delta R.T.: -0.009 min  
 Response: 1519238  
 Conc: 206.70 ng/ml



#16 AR-1242-1

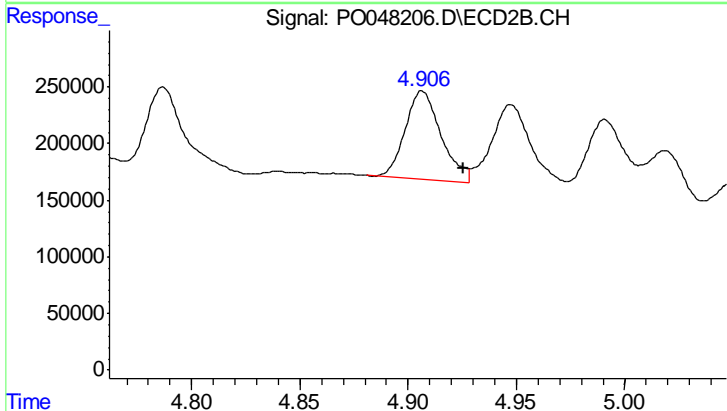
R.T.: 4.762 min  
 Delta R.T.: 0.013 min  
 Response: 294342  
 Conc: 36.75 ng/ml



#17 AR-1242-2

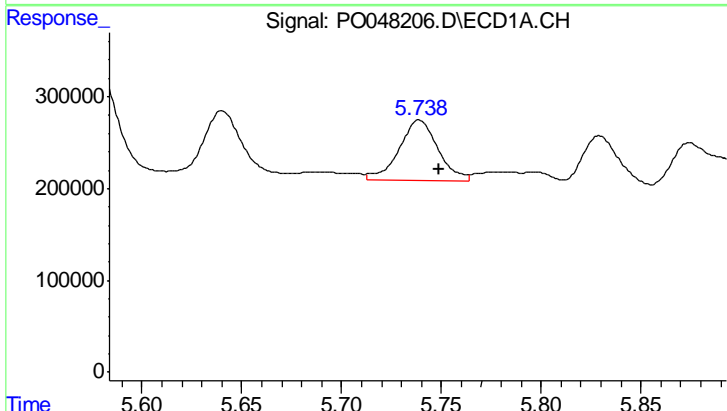
R.T.: 5.640 min  
 Delta R.T.: -0.010 min  
 Response: 1010794  
 Conc: 218.39 ng/ml

Instrument :  
 ECD\_O  
 ClientSampled :  
 LSB-07(0-1)MSD



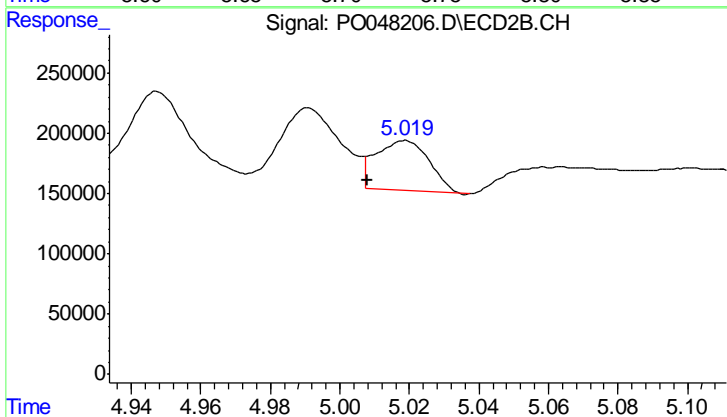
#17 AR-1242-2

R.T.: 4.907 min  
 Delta R.T.: -0.019 min  
 Response: 908284  
 Conc: 220.48 ng/ml



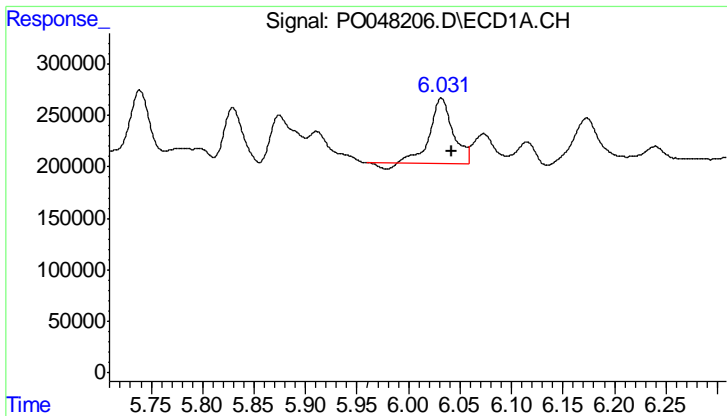
#18 AR-1242-3

R.T.: 5.739 min  
 Delta R.T.: -0.010 min  
 Response: 895776  
 Conc: 233.15 ng/ml



#18 AR-1242-3

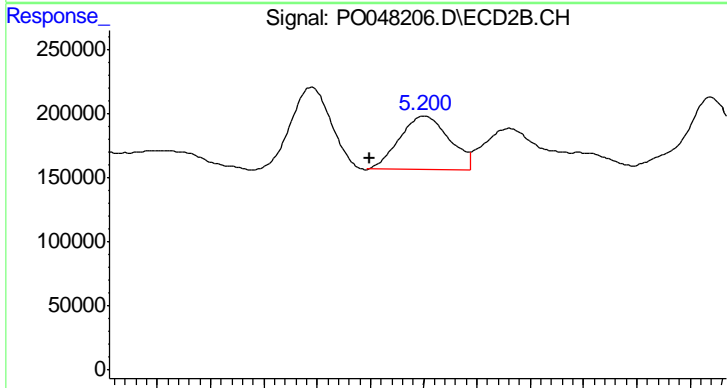
R.T.: 5.018 min  
 Delta R.T.: 0.010 min  
 Response: 446859  
 Conc: 106.55 ng/ml



#19 AR-1242-4

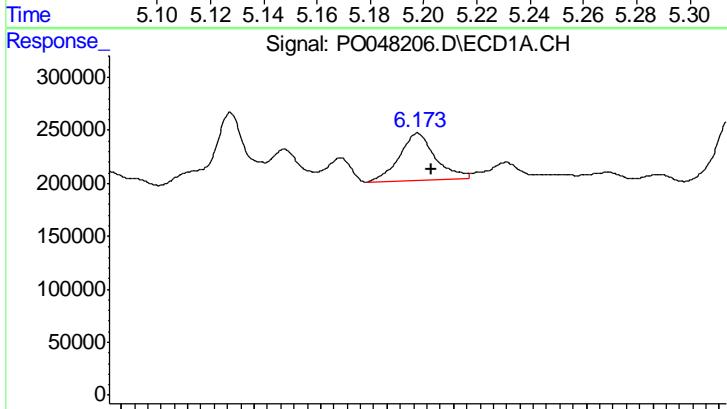
R.T.: 6.032 min  
 Delta R.T.: -0.010 min  
 Response: 984549  
 Conc: 256.11 ng/ml

Instrument :  
 ECD\_O  
 ClientSampleId :  
 LSB-07(0-1)MSD



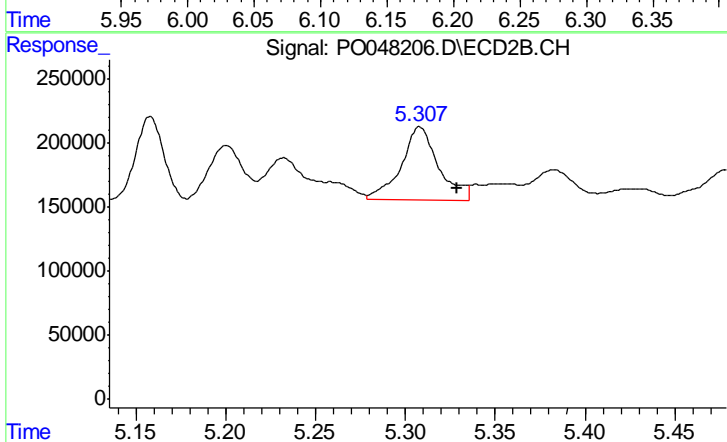
#19 AR-1242-4

R.T.: 5.200 min  
 Delta R.T.: 0.021 min  
 Response: 537158  
 Conc: 113.75 ng/ml



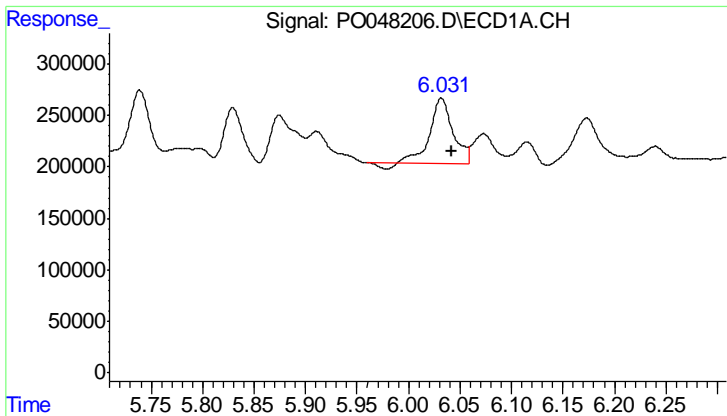
#20 AR-1242-5

R.T.: 6.173 min  
 Delta R.T.: -0.010 min  
 Response: 828590  
 Conc: 193.57 ng/ml



#20 AR-1242-5

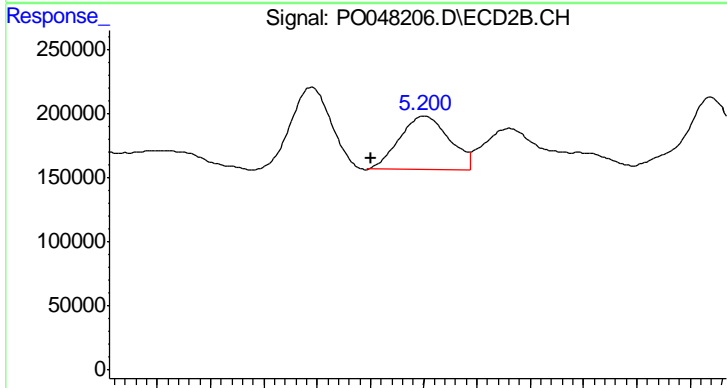
R.T.: 5.308 min  
 Delta R.T.: -0.020 min  
 Response: 826634  
 Conc: 213.51 ng/ml



#21 AR-1248-1

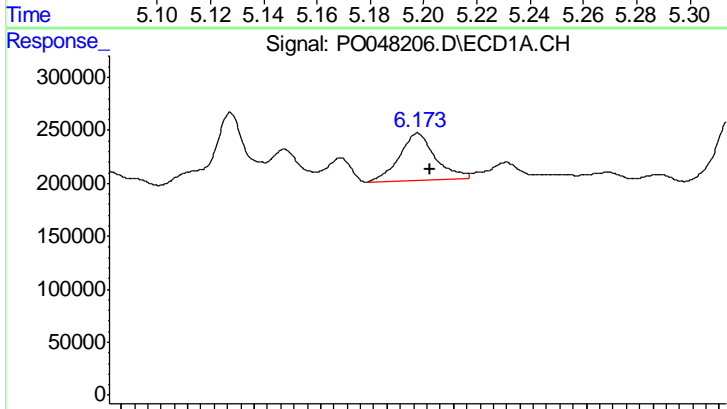
R.T.: 6.032 min  
 Delta R.T.: -0.011 min  
 Response: 984549  
 Conc: 157.45 ng/ml

Instrument :  
 ECD\_O  
 ClientSampleId :  
 LSB-07(0-1)MSD



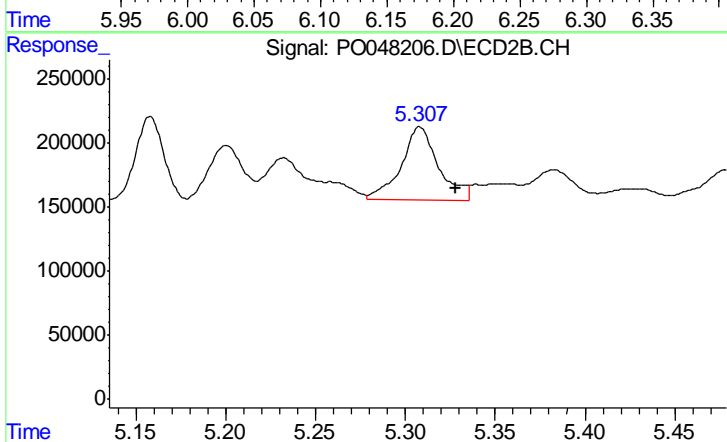
#21 AR-1248-1

R.T.: 5.200 min  
 Delta R.T.: 0.020 min  
 Response: 537158  
 Conc: 72.00 ng/ml



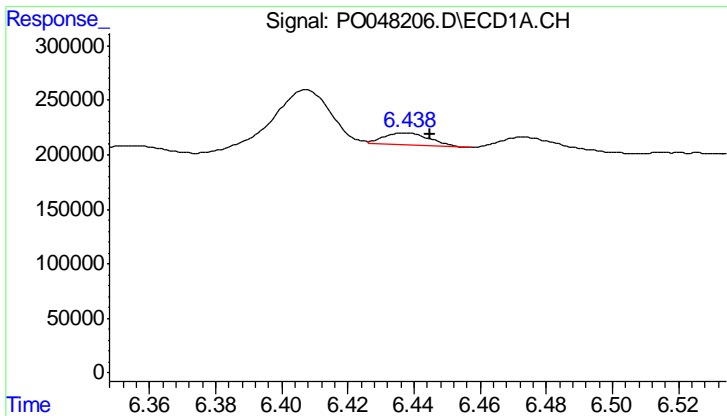
#22 AR-1248-2

R.T.: 6.173 min  
 Delta R.T.: -0.009 min  
 Response: 828590  
 Conc: 152.10 ng/ml



#22 AR-1248-2

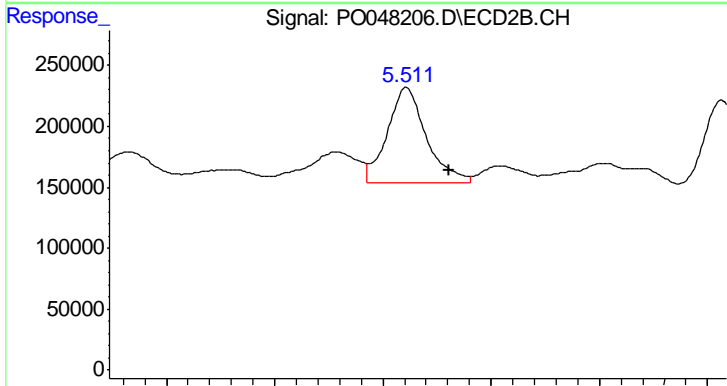
R.T.: 5.308 min  
 Delta R.T.: -0.020 min  
 Response: 826634  
 Conc: 154.51 ng/ml



#23 AR-1248-3

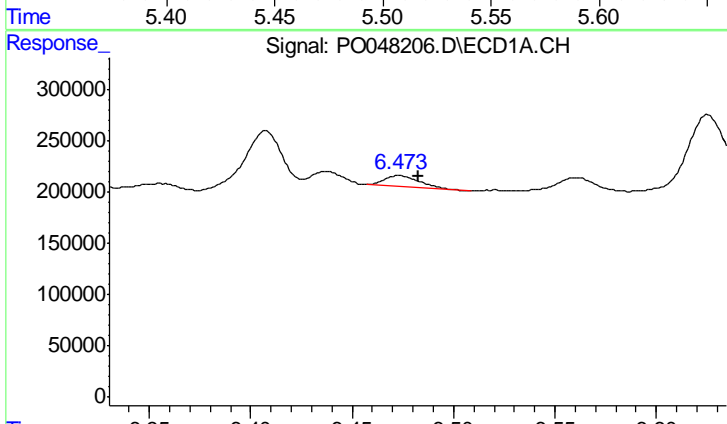
R.T.: 6.437 min  
 Delta R.T.: -0.007 min  
 Response: 100775  
 Conc: 14.32 ng/ml

Instrument :  
 ECD\_O  
 ClientSampleId :  
 LSB-07(0-1)MSD



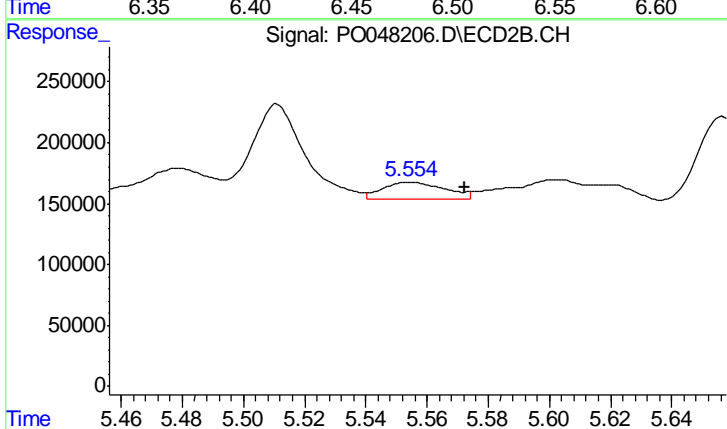
#23 AR-1248-3

R.T.: 5.511 min  
 Delta R.T.: -0.020 min  
 Response: 972393  
 Conc: 97.72 ng/ml



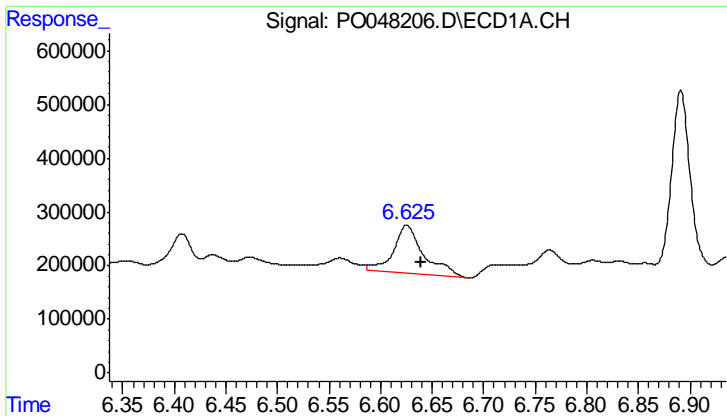
#24 AR-1248-4

R.T.: 6.473 min  
 Delta R.T.: -0.009 min  
 Response: 132346  
 Conc: 19.71 ng/ml



#24 AR-1248-4

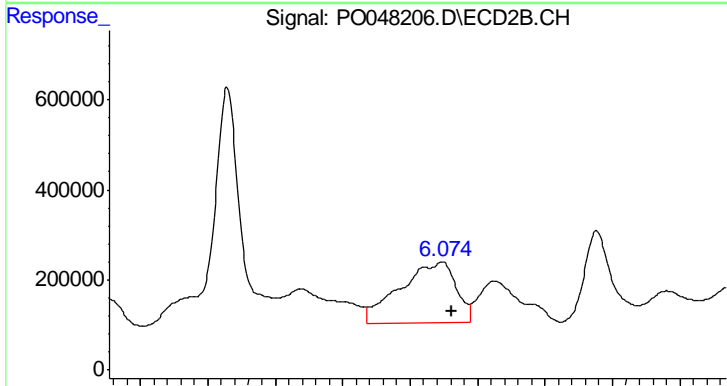
R.T.: 5.555 min  
 Delta R.T.: -0.017 min  
 Response: 196381  
 Conc: 28.02 ng/ml



#25 AR-1248-5

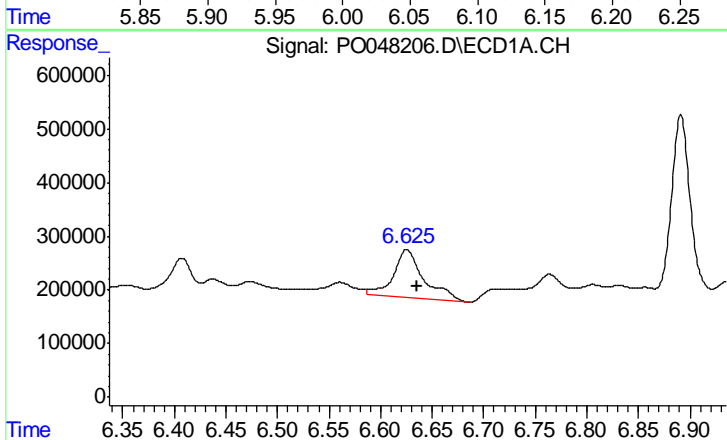
R.T.: 6.625 min  
 Delta R.T.: -0.014 min  
 Response: 1830538  
 Conc: 258.64 ng/ml

Instrument :  
 ECD\_O  
 ClientSampled :  
 LSB-07(0-1)MSD



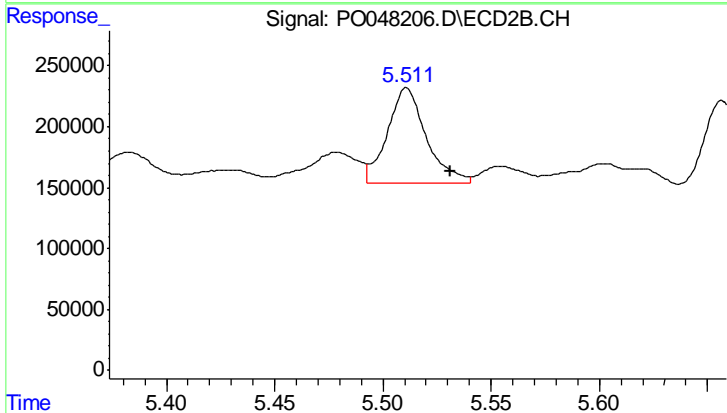
#25 AR-1248-5

R.T.: 6.073 min  
 Delta R.T.: -0.008 min  
 Response: 3932917  
 Conc: 825.24 ng/ml



#26 AR-1254-1

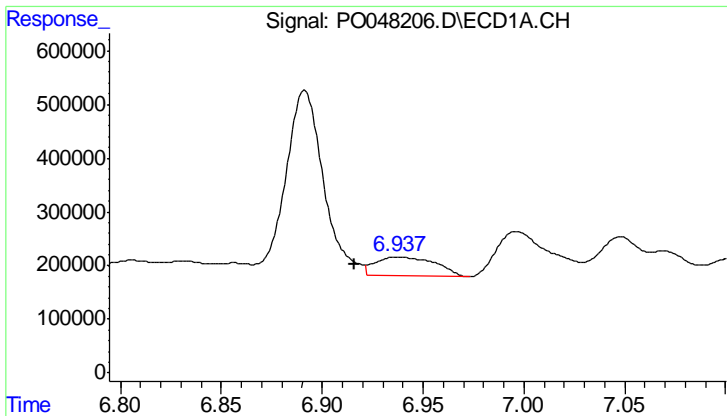
R.T.: 6.625 min  
 Delta R.T.: -0.011 min  
 Response: 1830538  
 Conc: 149.69 ng/ml



#26 AR-1254-1

R.T.: 5.511 min  
 Delta R.T.: -0.021 min  
 Response: 972393  
 Conc: 79.02 ng/ml

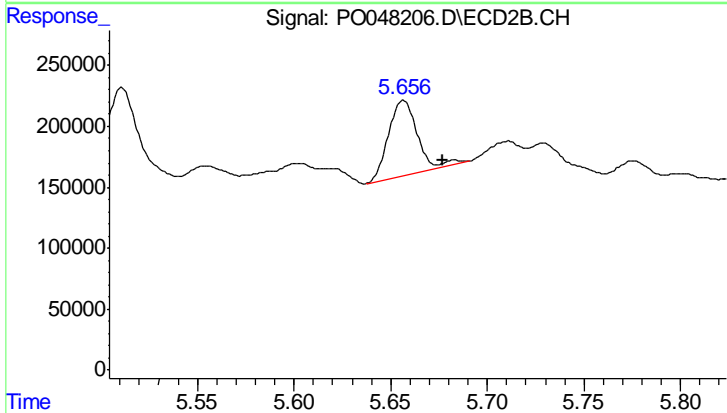




#27 AR-1254-2

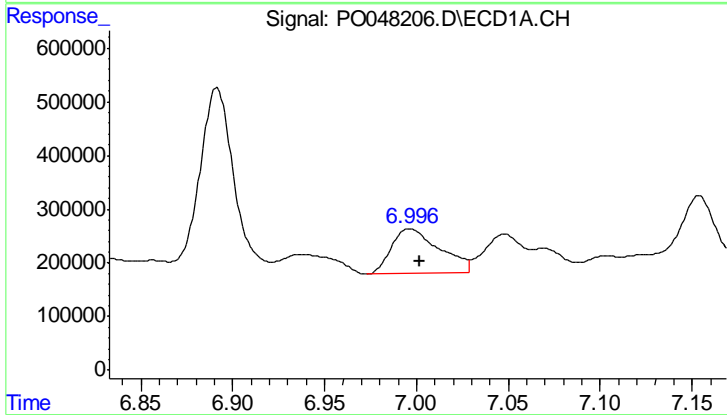
R.T.: 6.937 min  
 Delta R.T.: 0.021 min  
 Response: 717940  
 Conc: 96.27 ng/ml

Instrument :  
 ECD\_O  
 ClientSampleId :  
 LSB-07(0-1)MSD



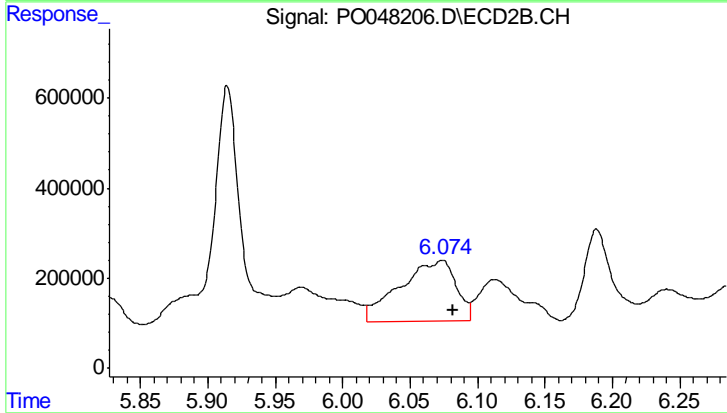
#27 AR-1254-2

R.T.: 5.657 min  
 Delta R.T.: -0.021 min  
 Response: 640526  
 Conc: 61.53 ng/ml



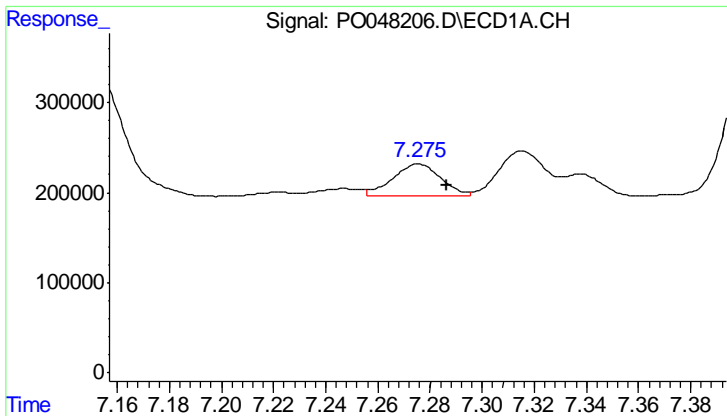
#28 AR-1254-3

R.T.: 6.996 min  
 Delta R.T.: -0.006 min  
 Response: 1516576  
 Conc: 116.29 ng/ml



#28 AR-1254-3

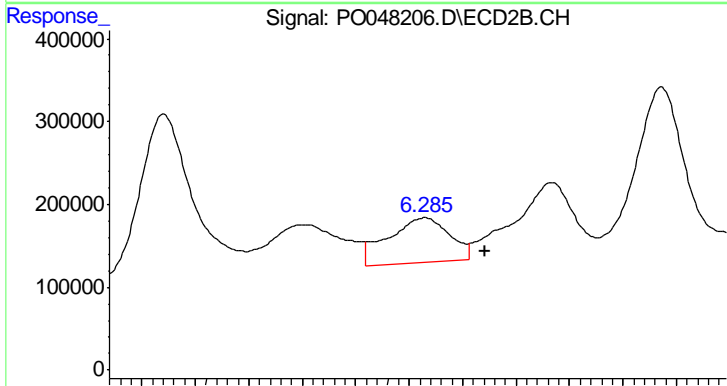
R.T.: 6.073 min  
 Delta R.T.: -0.009 min  
 Response: 3932917  
 Conc: 226.61 ng/ml



#29 AR-1254-4

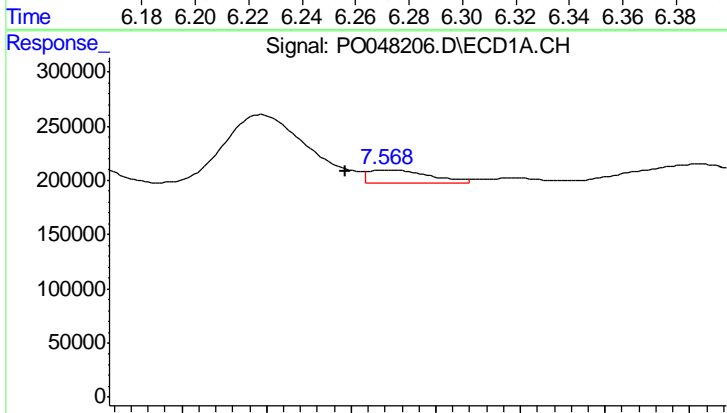
R.T.: 7.275 min  
 Delta R.T.: -0.011 min  
 Response: 458464  
 Conc: 47.04 ng/ml

Instrument :  
 ECD\_O  
 ClientSampled :  
 LSB-07(0-1)MSD



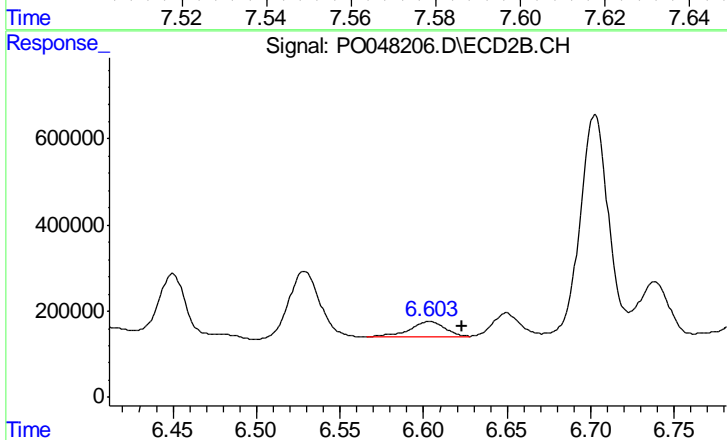
#29 AR-1254-4

R.T.: 6.286 min  
 Delta R.T.: -0.022 min  
 Response: 868838  
 Conc: 80.19 ng/ml



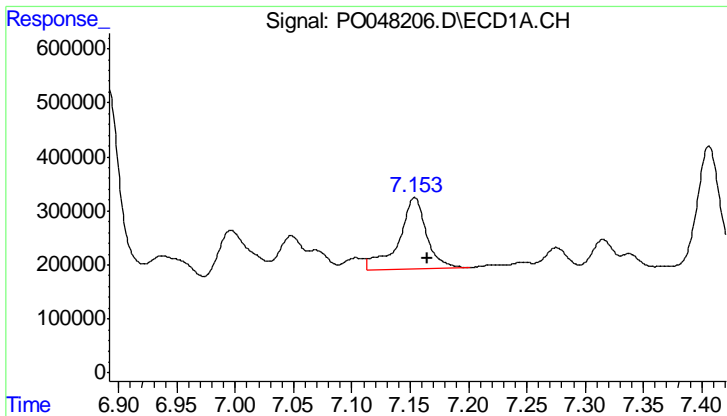
#30 AR-1254-5

R.T.: 7.568 min  
 Delta R.T.: 0.010 min  
 Response: 122674  
 Conc: 16.61 ng/ml



#30 AR-1254-5

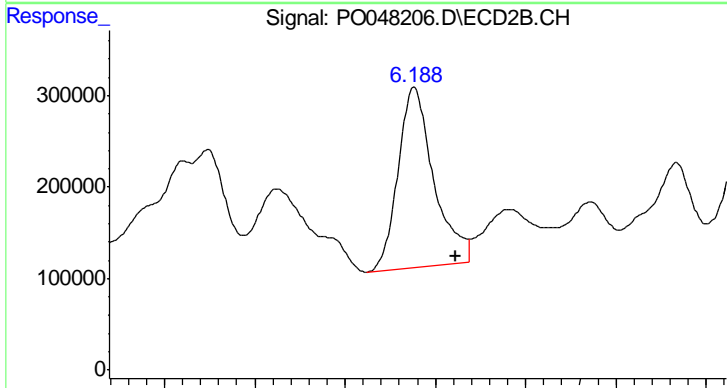
R.T.: 6.604 min  
 Delta R.T.: -0.020 min  
 Response: 537664  
 Conc: 70.30 ng/ml



#31 AR-1260-1

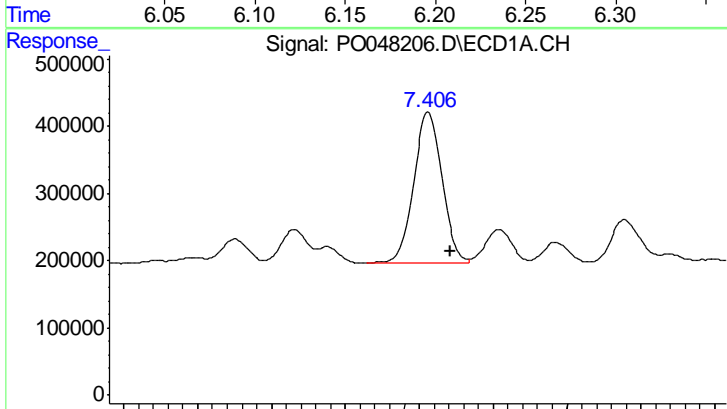
R.T.: 7.154 min  
 Delta R.T.: -0.011 min  
 Response: 2207054  
 Conc: 235.37 ng/ml

Instrument :  
 ECD\_O  
 ClientSampled :  
 LSB-07(0-1)MSD



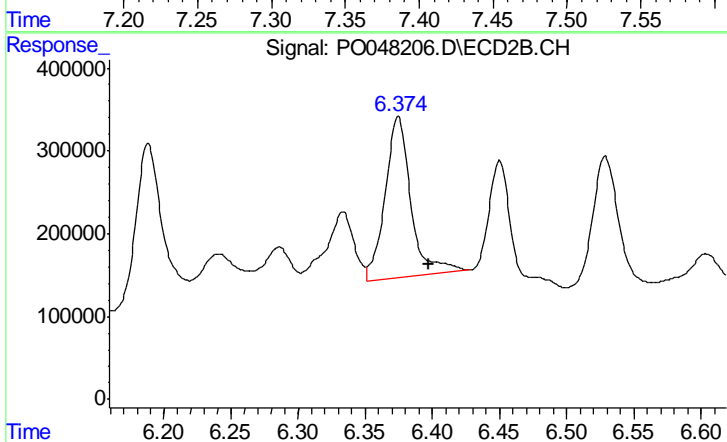
#31 AR-1260-1

R.T.: 6.188 min  
 Delta R.T.: -0.023 min  
 Response: 2726301  
 Conc: 246.72 ng/ml



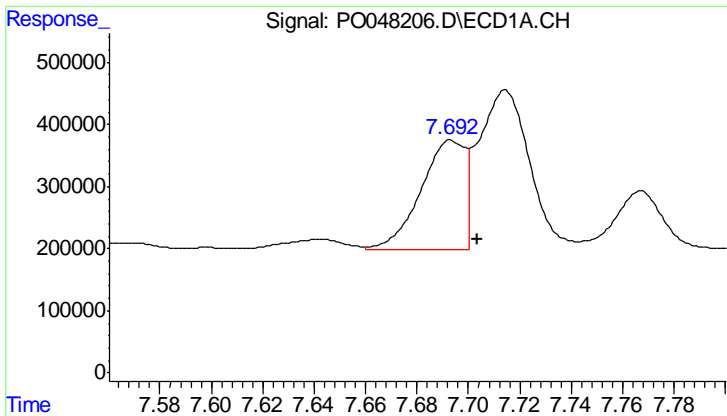
#32 AR-1260-2

R.T.: 7.406 min  
 Delta R.T.: -0.015 min  
 Response: 2988175  
 Conc: 267.97 ng/ml



#32 AR-1260-2

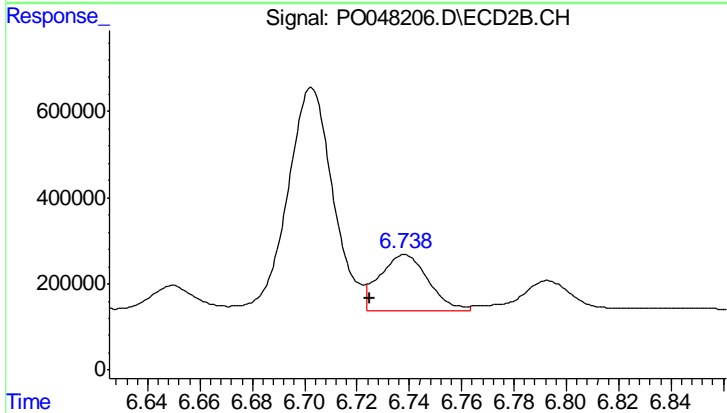
R.T.: 6.374 min  
 Delta R.T.: -0.023 min  
 Response: 2630611  
 Conc: 196.20 ng/ml



#33 AR-1260-3

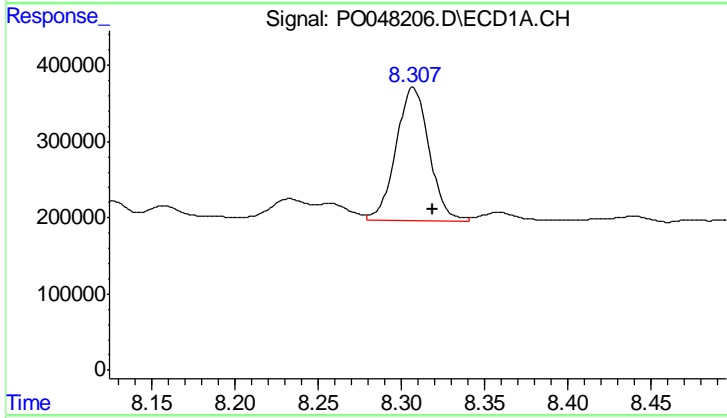
R.T.: 7.693 min  
 Delta R.T.: -0.010 min  
 Response: 2107982  
 Conc: 163.84 ng/ml

Instrument :  
 ECD\_O  
 ClientSampleId :  
 LSB-07(0-1)MSD



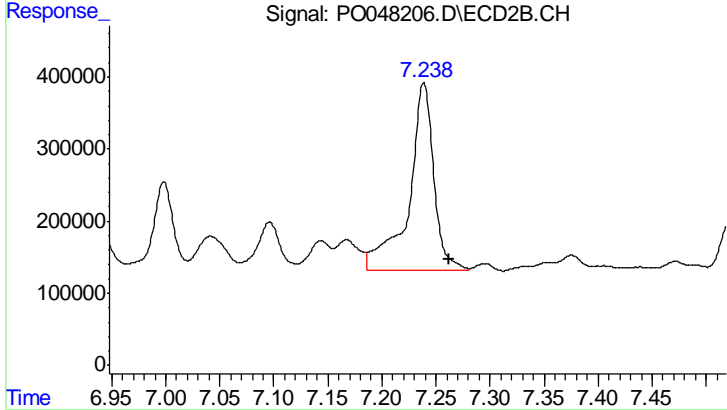
#33 AR-1260-3

R.T.: 6.738 min  
 Delta R.T.: 0.013 min  
 Response: 1674715  
 Conc: 115.20 ng/ml



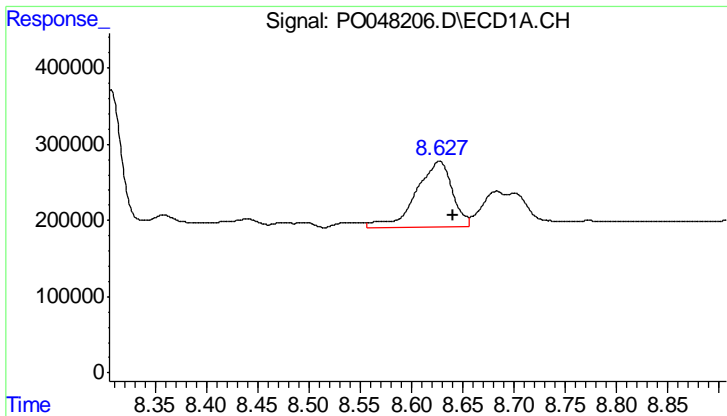
#34 AR-1260-4

R.T.: 8.307 min  
 Delta R.T.: -0.011 min  
 Response: 2435363  
 Conc: 136.91 ng/ml



#34 AR-1260-4

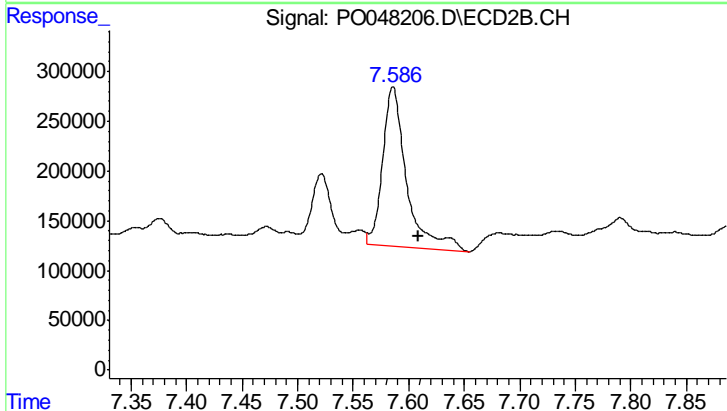
R.T.: 7.239 min  
 Delta R.T.: -0.023 min  
 Response: 4213361  
 Conc: 191.48 ng/ml



#35 AR-1260-5

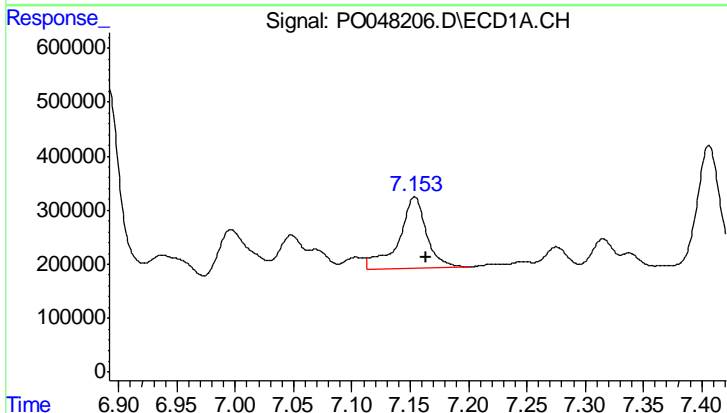
R.T.: 8.627 min  
 Delta R.T.: -0.013 min  
 Response: 2120303  
 Conc: 185.68 ng/ml

Instrument :  
 ECD\_O  
 ClientSampleId :  
 LSB-07(0-1)MSD



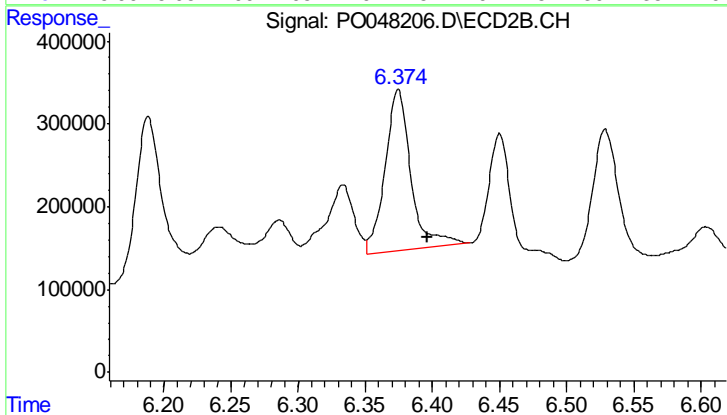
#35 AR-1260-5

R.T.: 7.586 min  
 Delta R.T.: -0.023 min  
 Response: 2423263  
 Conc: 155.34 ng/ml



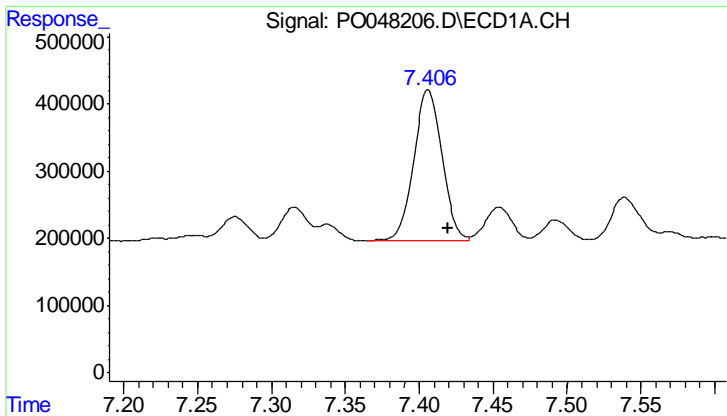
#36 AR-1262-1

R.T.: 7.154 min  
 Delta R.T.: -0.010 min  
 Response: 2207054  
 Conc: 266.41 ng/ml



#36 AR-1262-1

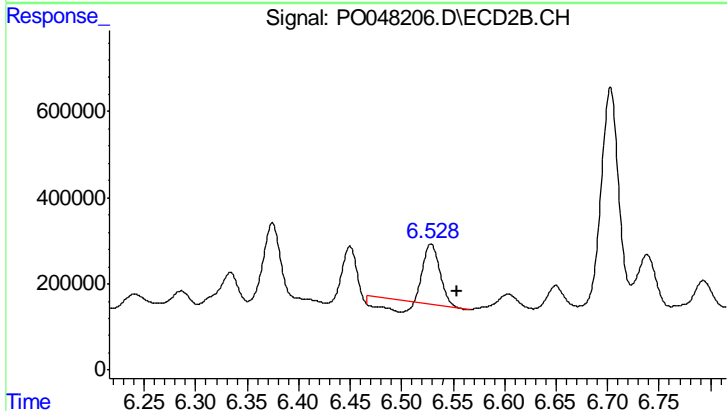
R.T.: 6.374 min  
 Delta R.T.: -0.022 min  
 Response: 2630611  
 Conc: 232.02 ng/ml



#37 AR-1262-2

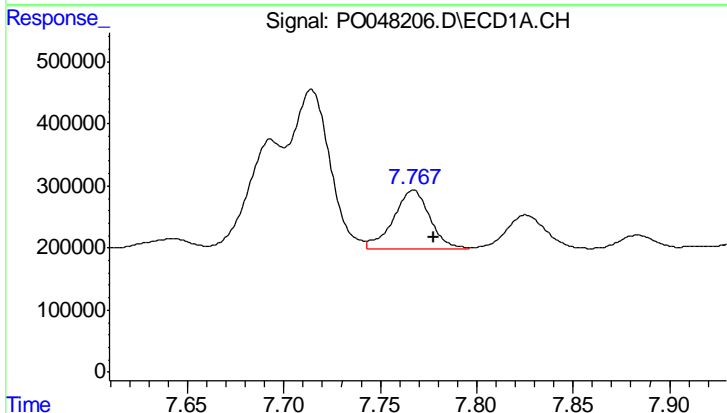
R.T.: 7.406 min  
 Delta R.T.: -0.014 min  
 Response: 2988175  
 Conc: 308.32 ng/ml

Instrument :  
 ECD\_O  
 ClientSampled :  
 LSB-07(0-1)MSD



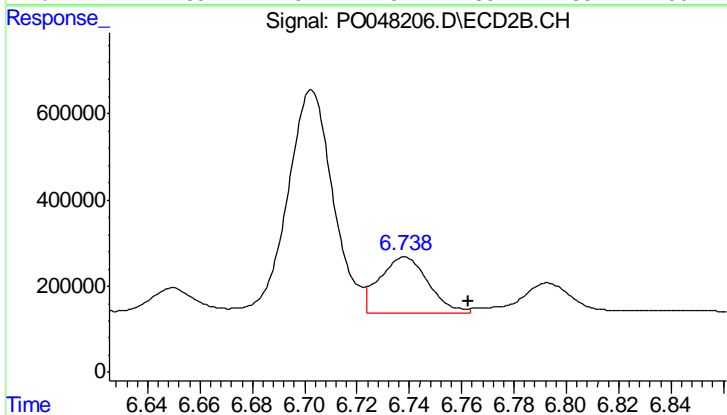
#37 AR-1262-2

R.T.: 6.529 min  
 Delta R.T.: -0.025 min  
 Response: 1188670  
 Conc: 105.34 ng/ml



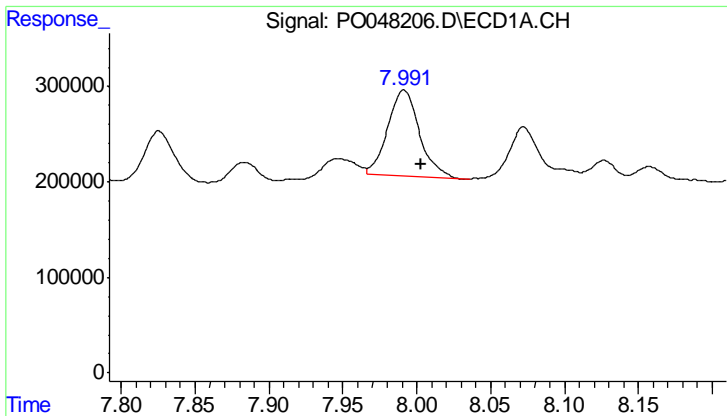
#38 AR-1262-3

R.T.: 7.767 min  
 Delta R.T.: -0.011 min  
 Response: 1242911  
 Conc: 101.28 ng/ml



#38 AR-1262-3

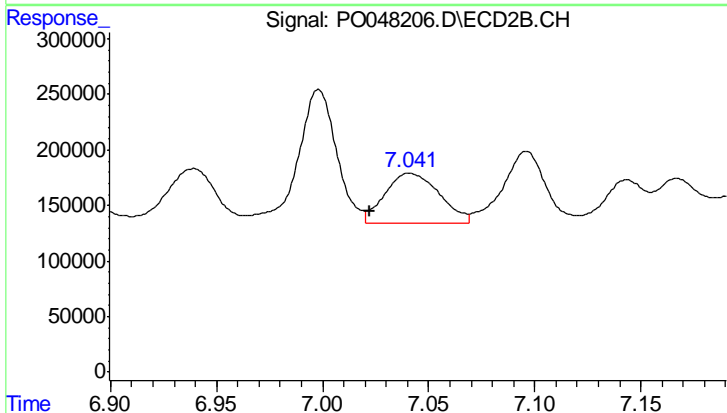
R.T.: 6.738 min  
 Delta R.T.: -0.024 min  
 Response: 1674715  
 Conc: 110.97 ng/ml



#39 AR-1262-4

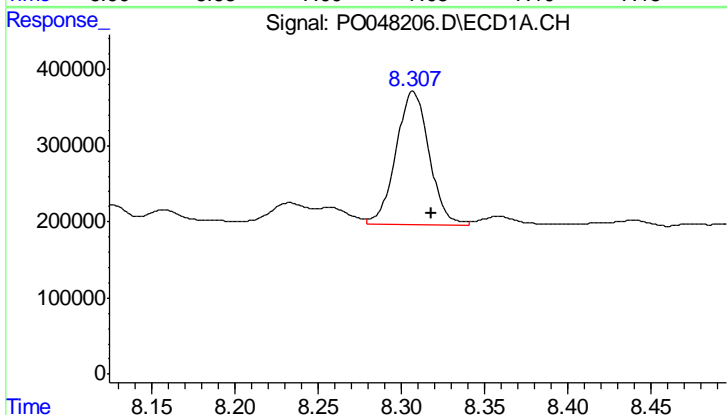
R.T.: 7.991 min  
 Delta R.T.: -0.012 min  
 Response: 1330111  
 Conc: 112.95 ng/ml

Instrument :  
 ECD\_O  
 ClientSampleId :  
 LSB-07(0-1)MSD



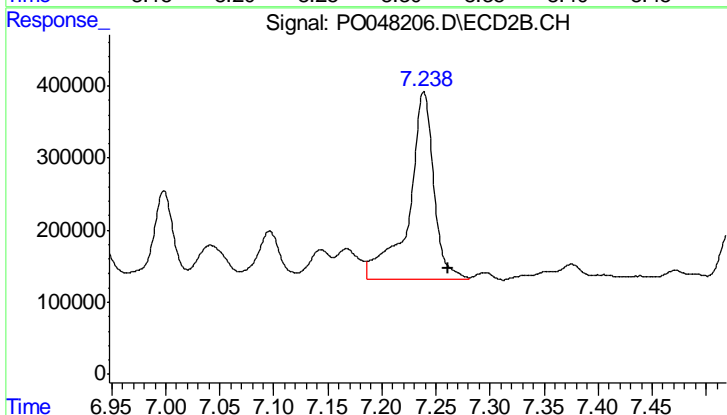
#39 AR-1262-4

R.T.: 7.041 min  
 Delta R.T.: 0.019 min  
 Response: 796473  
 Conc: 60.48 ng/ml



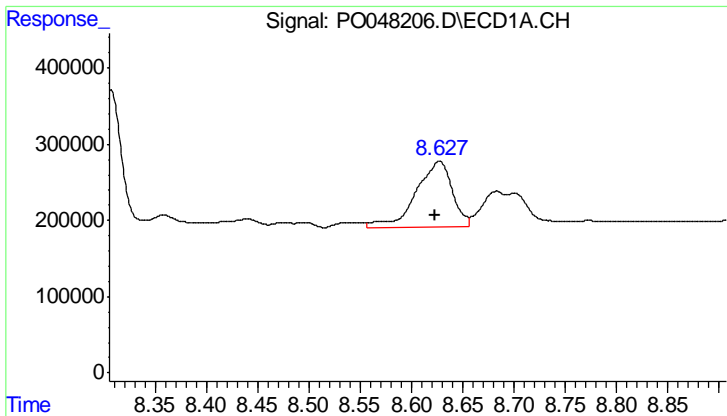
#40 AR-1262-5

R.T.: 8.307 min  
 Delta R.T.: -0.011 min  
 Response: 2435363  
 Conc: 113.35 ng/ml



#40 AR-1262-5

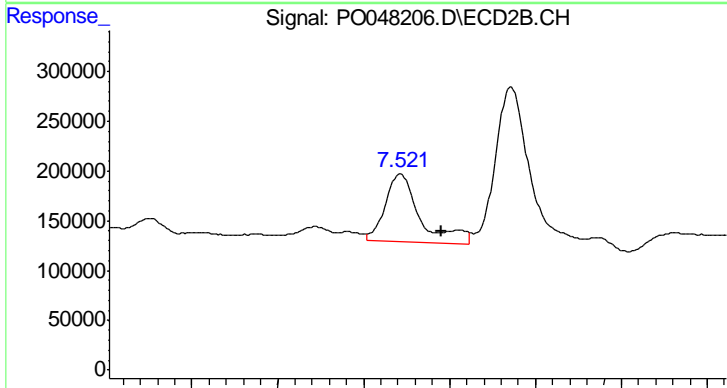
R.T.: 7.239 min  
 Delta R.T.: -0.022 min  
 Response: 4213361  
 Conc: 163.13 ng/ml



#41 AR-1268-1

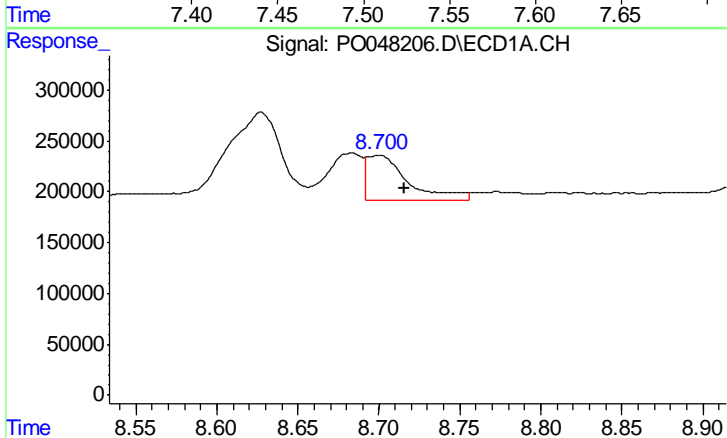
R.T.: 8.627 min  
 Delta R.T.: 0.004 min  
 Response: 2120303  
 Conc: 91.36 ng/ml

Instrument :  
 ECD\_O  
 ClientSampled :  
 LSB-07(0-1)MSD



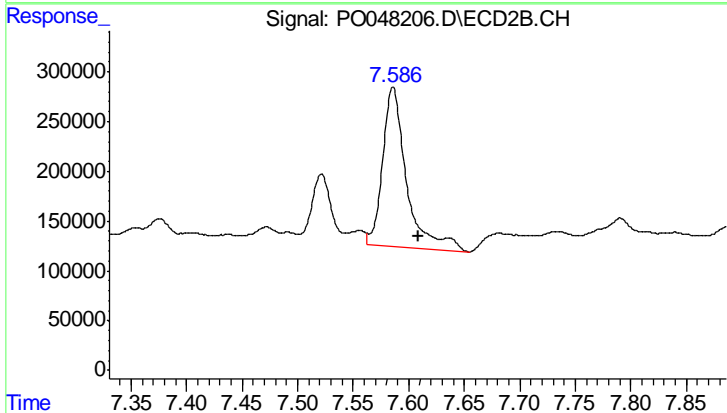
#41 AR-1268-1

R.T.: 7.521 min  
 Delta R.T.: -0.024 min  
 Response: 962108  
 Conc: 37.00 ng/ml



#42 AR-1268-2

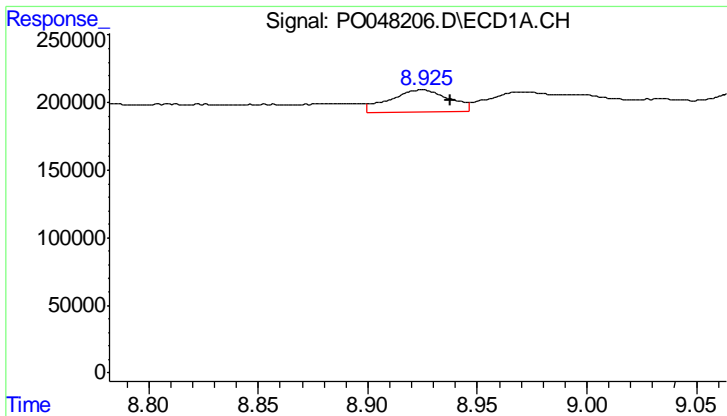
R.T.: 8.700 min  
 Delta R.T.: -0.016 min  
 Response: 760100  
 Conc: 35.47 ng/ml



#42 AR-1268-2

R.T.: 7.586 min  
 Delta R.T.: -0.023 min  
 Response: 2423263  
 Conc: 97.27 ng/ml

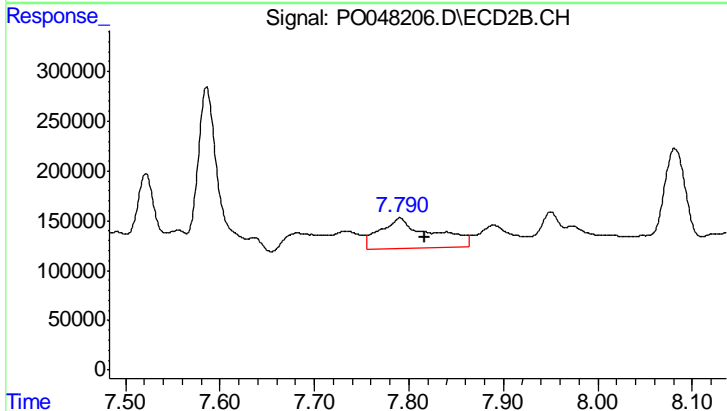




#43 AR-1268-3

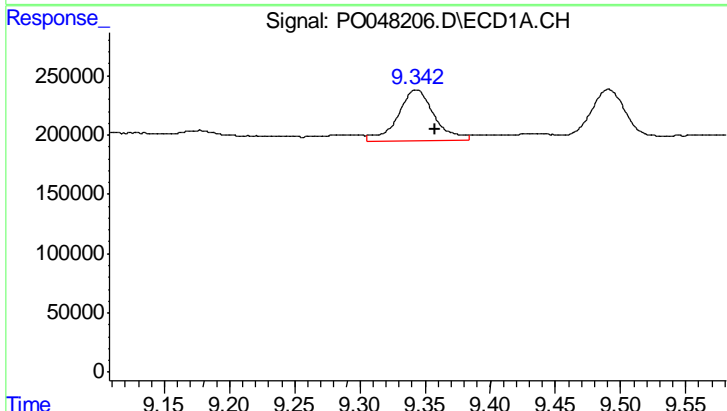
R.T.: 8.925 min  
 Delta R.T.: -0.013 min  
 Response: 311243  
 Conc: 17.24 ng/ml

Instrument :  
 ECD\_O  
 ClientSampleId :  
 LSB-07(0-1)MSD



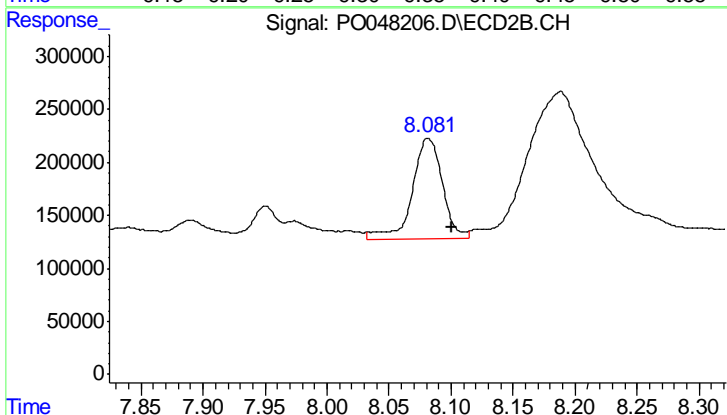
#43 AR-1268-3

R.T.: 7.790 min  
 Delta R.T.: -0.027 min  
 Response: 1179808  
 Conc: 59.78 ng/ml



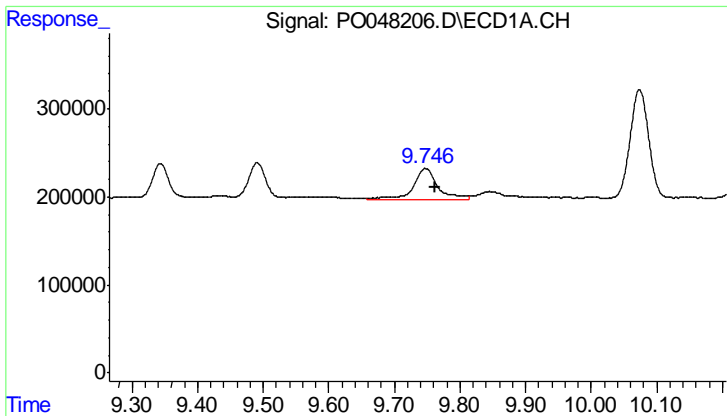
#44 AR-1268-4

R.T.: 9.343 min  
 Delta R.T.: -0.015 min  
 Response: 842384  
 Conc: 105.64 ng/ml



#44 AR-1268-4

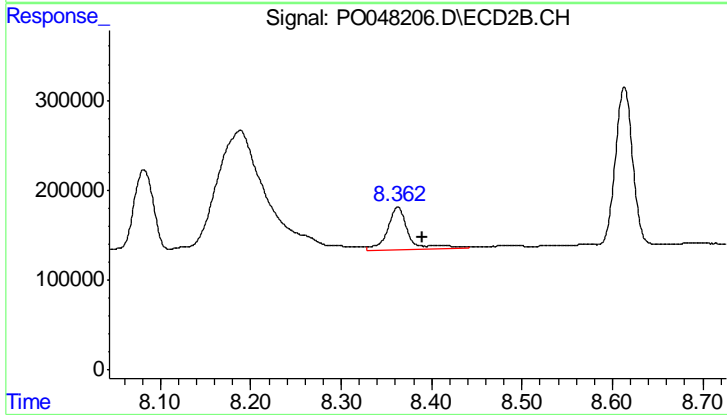
R.T.: 8.082 min  
 Delta R.T.: -0.019 min  
 Response: 1597920  
 Conc: 190.49 ng/ml



#45 AR-1268-5

R.T.: 9.747 min  
Delta R.T.: -0.015 min  
Response: 923017  
Conc: 16.94 ng/ml

Instrument :  
ECD\_O  
ClientSampled :  
LSB-07(0-1)MSD



#45 AR-1268-5

R.T.: 8.362 min  
Delta R.T.: -0.027 min  
Response: 741804  
Conc: 13.59 ng/ml