

Data Path : Z:\pestpcbsrv\HPCHEM1\ECD_0\Data\P0081621\
 Data File : P0080455.D
 Signal(s) : Signal #1: ECD1A.CH Signal #2: ECD2B.CH
 Acq On : 16 Aug 2021 10:39
 Operator : DD\AJ
 Sample : M3407-08
 Misc :
 ALS Vial : 9 Sample Multiplier: 1

Instrument :
 ECD_O
 ClientSampled :
 26N

Integration File signal 1: autoint1.e
 Integration File signal 2: autoint2.e
 Quant Time: Aug 17 01:45:13 2021
 Quant Method : Z:\pestpcbsrv\HPCHEM1\ECD_0\methods\P0081021.M
 Quant Title : GC EXTRACTABLES
 QLast Update : Wed Aug 11 05:48:32 2021
 Response via : Initial Calibration
 Integrator: ChemStation 6890 Scale Mode: Small noise peaks clipped

Volume Inj. : 2 µl
 Signal #1 Phase : ZB-MR1 Signal #2 Phase: ZB-MR2
 Signal #1 Info : 30Mx0.32mmx 0.50µ Signal #2 Info : 30M x 0.32mm x 0.25µm

Compound	RT#1	RT#2	Resp#1	Resp#2	ng/ml	ng/ml
System Monitoring Compounds						
1) SA Tetrachlo...	4.991	4.107	1640939	553409	23.697	22.204
2) SA Decachlor...	11.092	9.506	985256	396909	19.034	17.499
Target Compounds						
3) L1 AR-1016-1	6.318	0.000	16187	0	6.318	N.D. #
4) L1 AR-1016-2	6.351	0.000	26376	0	7.453	N.D. #
5) L1 AR-1016-3	6.413	0.000	39387	0	18.263	N.D. #
8) L2 AR-1221-1	5.245	0.000	184674	0	232.200	N.D. #
9) L2 AR-1221-2	5.345	4.443f	20381	38899	37.231	167.220 #
13) L3 AR-1232-3	6.351	0.000	26376	0	16.226	N.D. #
15) L3 AR-1232-5	6.623	0.000	73203	0	140.315	N.D. #
16) L4 AR-1242-1	6.318	0.000	16187	0	8.298	N.D. #
17) L4 AR-1242-2	6.351	0.000	26376	0	9.782	N.D. #
18) L4 AR-1242-3	6.413	0.000	39387	0	23.610	N.D. #
20) L4 AR-1242-5	7.317	6.266	74571	18444	50.920	26.469 #
21) L5 AR-1248-1	6.318	0.000	16187	0	10.696	N.D. #
22) L5 AR-1248-2	6.623	0.000	73203	0	36.089	N.D. #
24) L5 AR-1248-4	7.275	0.000	31711	0	11.661	N.D. #
25) L5 AR-1248-5	7.317	0.000	74571	0	28.278	N.D. #
26) L6 AR-1254-1	7.237	6.266	63920	18444	24.658	12.572 #
27) L6 AR-1254-2	7.470	0.000	277042	0	70.601	N.D. #
28) L6 AR-1254-3	7.867	6.872	310006	80303	75.955	39.826 #
29) L6 AR-1254-4	8.148	7.098	154756	18235	51.835	14.011 #
30) L6 AR-1254-5	8.575	7.530	277919	100663	89.825	57.376 #
31) L7 AR-1260-1	8.016	6.991	639512	108211	223.798	80.737 #
32) L7 AR-1260-2	8.284	7.192	437327	96056	131.598	57.795 #
33) L7 AR-1260-3	8.651	7.349	324395	62343	129.656	40.781 #
34) L7 AR-1260-4	8.883	7.838	305720	81841	105.685	65.349 #
35) L7 AR-1260-5	9.216	8.087	376416	209054	66.082	72.259
36) L8 AR-1262-1	8.651	7.530	324395	100663	84.836	100.286
37) L8 AR-1262-2	9.216	8.087	376416	209054	55.642	65.473
38) L8 AR-1262-3	9.534	8.378	329121	97520	109.977	74.127 #
39) L8 AR-1262-4	9.632	8.443	304455	148808	173.126	63.054 #
40) L8 AR-1262-5	10.317	8.949	127800	50866	51.510	45.694
41) L9 AR-1268-1	9.534	8.378	329121	97520	41.219	26.108 #
42) L9 AR-1268-2	9.632	8.443	304455	148808	41.887	44.552
43) L9 AR-1268-3	9.864	8.653	47681	30908	7.794	10.857 #
44) L9 AR-1268-4	10.317	8.949	127800	50866	45.814	41.408
45) L9 AR-1268-5	10.745	9.246	173999	67664	8.660	7.948

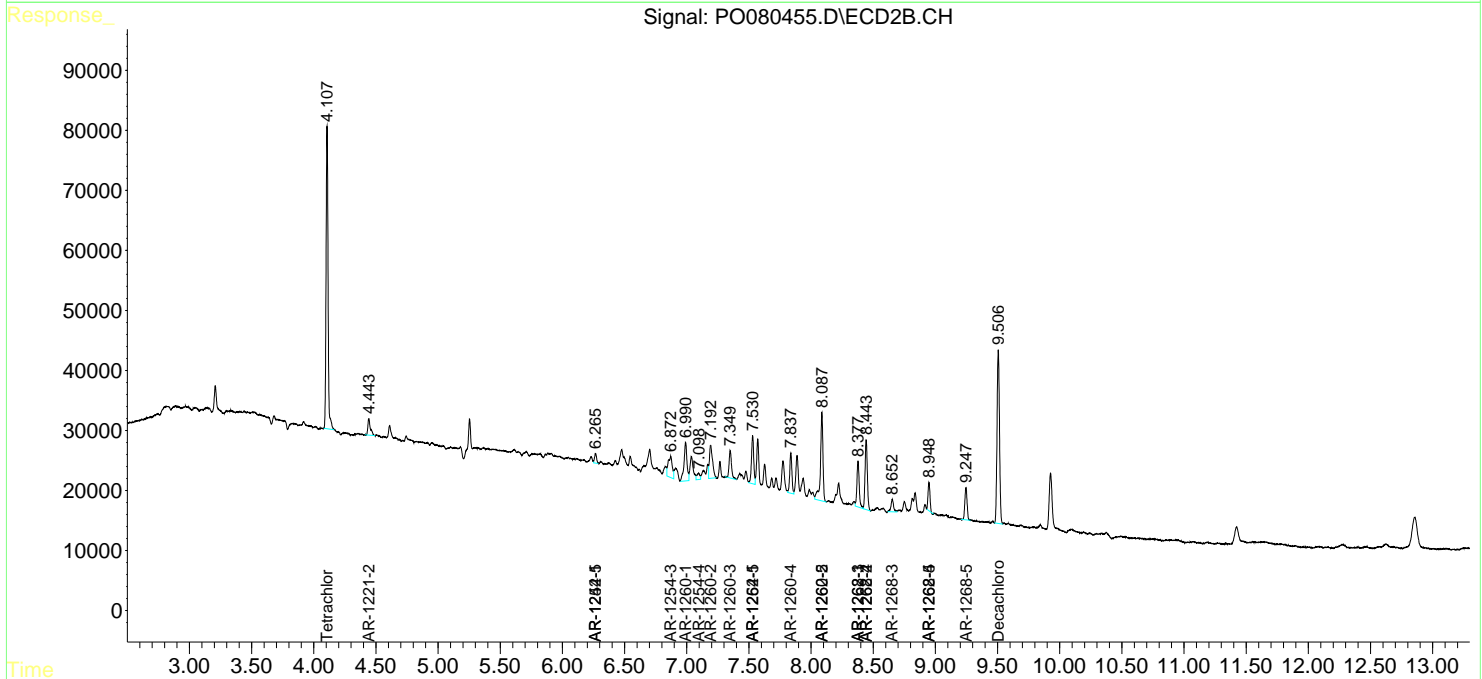
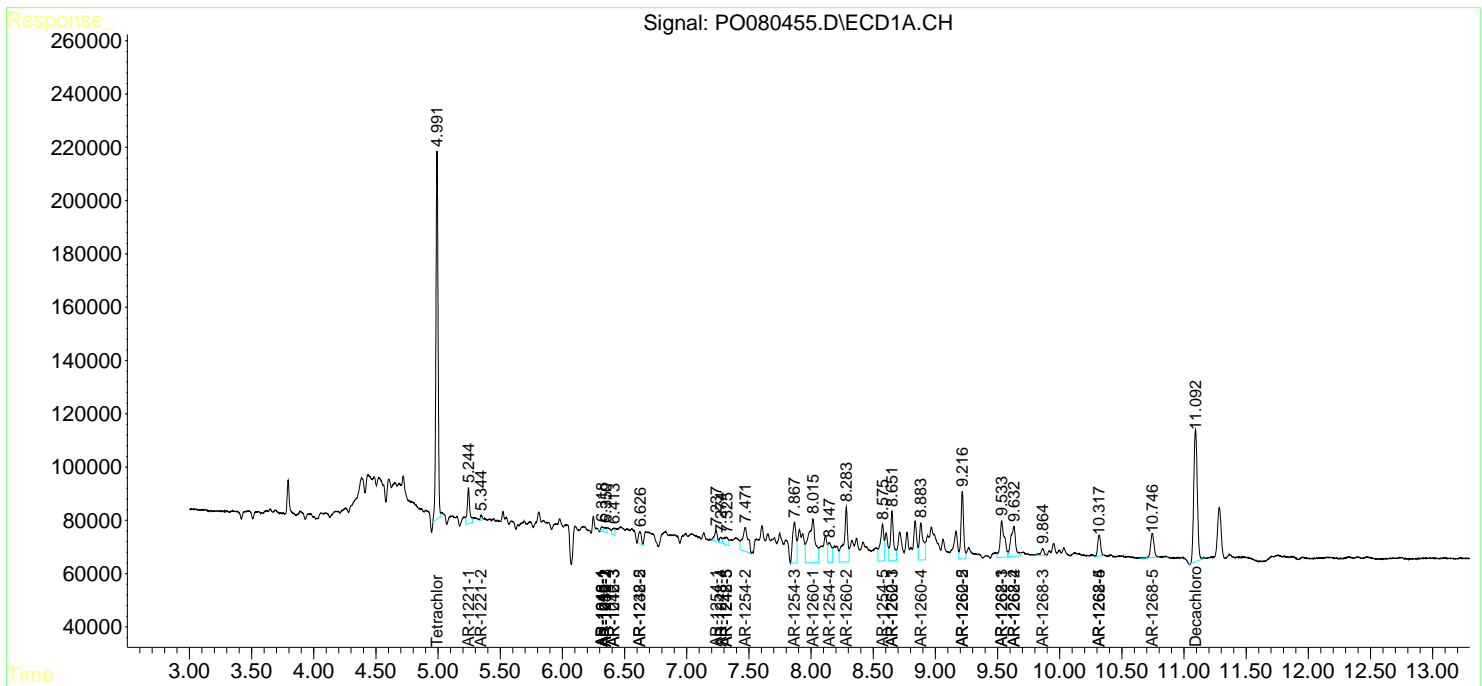
(f)=RT Delta > 1/2 Window (#)=Amounts differ by > 25% (m)=manual int.

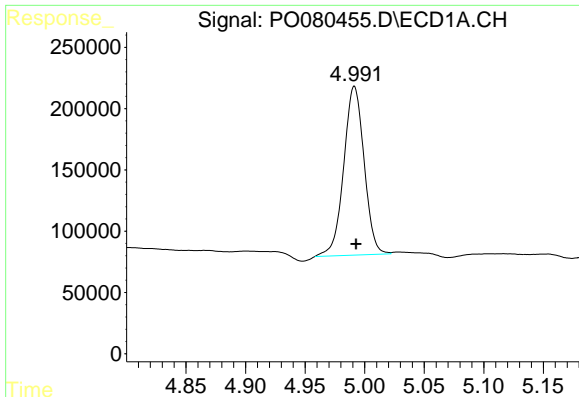
Data Path : Z:\pestpcbsrv\HPCHEM1\ECD_0\Data\P0081621\
 Data File : P0080455.D
 Signal(s) : Signal #1: ECD1A.CH Signal #2: ECD2B.CH
 Acq On : 16 Aug 2021 10:39
 Operator : DD\AJ
 Sample : M3407-08
 Misc :
 ALS Vial : 9 Sample Multiplier: 1

Instrument :
 ECD_O
 ClientSampled :
 26N

Integration File signal 1: autoint1.e
 Integration File signal 2: autoint2.e
 Quant Time: Aug 17 01:45:13 2021
 Quant Method : Z:\pestpcbsrv\HPCHEM1\ECD_0\methods\P0081021.M
 Quant Title : GC EXTRACTABLES
 QLast Update : Wed Aug 11 05:48:32 2021
 Response via : Initial Calibration
 Integrator: ChemStation 6890 Scale Mode: Small noise peaks clipped

Volume Inj. : 2 µl
 Signal #1 Phase : ZB-MR1 Signal #2 Phase: ZB-MR2
 Signal #1 Info : 30Mx0.32mmx 0.50µ Signal #2 Info : 30M x 0.32mm x 0.25µm

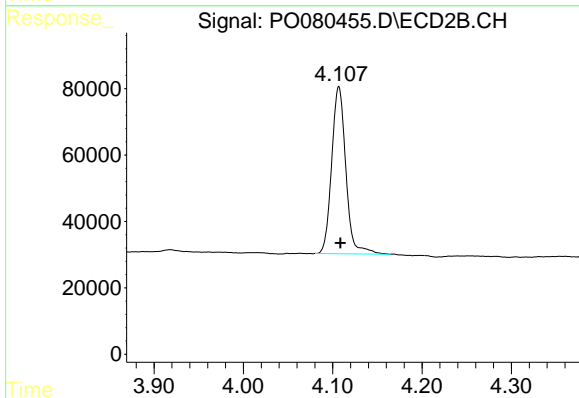




#1 Tetrachloro-m-xylene

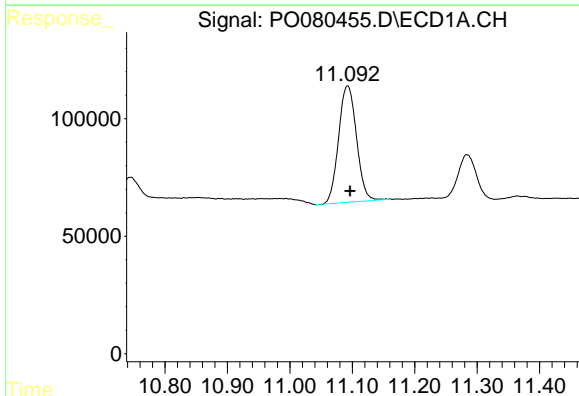
R.T.: 4.991 min
 Delta R.T.: -0.002 min
 Response: 1640939
 Conc: 23.70 ng/ml

Instrument :
 ECD_O
 ClientSampled :
 26N



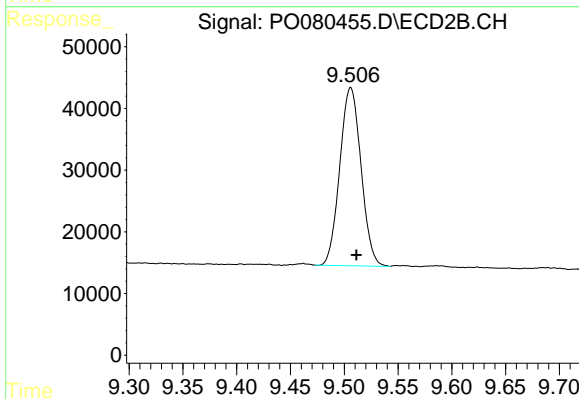
#1 Tetrachloro-m-xylene

R.T.: 4.107 min
 Delta R.T.: -0.002 min
 Response: 553409
 Conc: 22.20 ng/ml



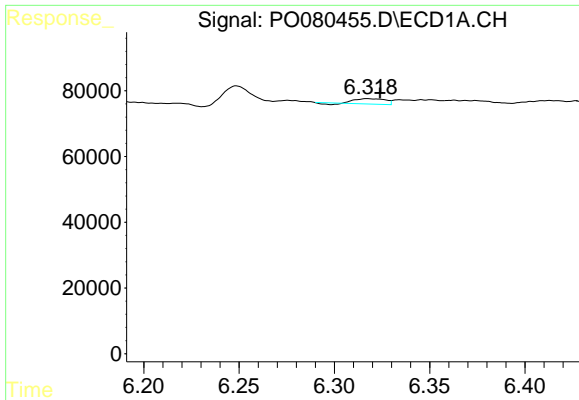
#2 Decachlorobiphenyl

R.T.: 11.092 min
 Delta R.T.: -0.004 min
 Response: 985256
 Conc: 19.03 ng/ml



#2 Decachlorobiphenyl

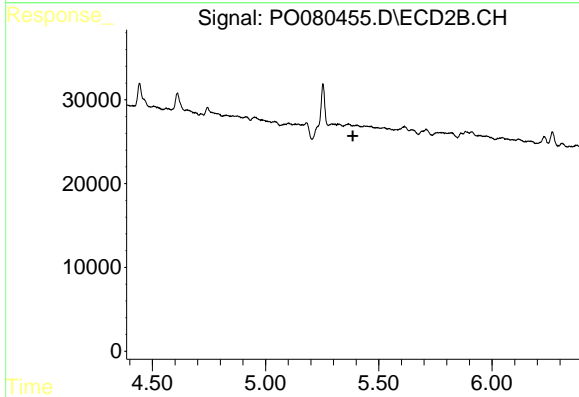
R.T.: 9.506 min
 Delta R.T.: -0.005 min
 Response: 396909
 Conc: 17.50 ng/ml



#3 AR-1016-1

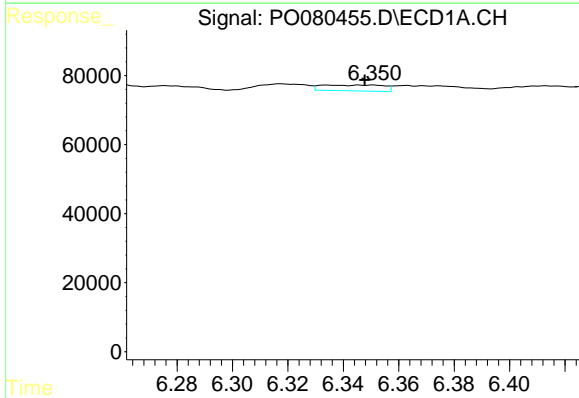
R.T.: 6.318 min
 Delta R.T.: -0.006 min
 Response: 16187
 Conc: 6.32 ng/ml

Instrument :
 ECD_O
 ClientSampled :
 26N



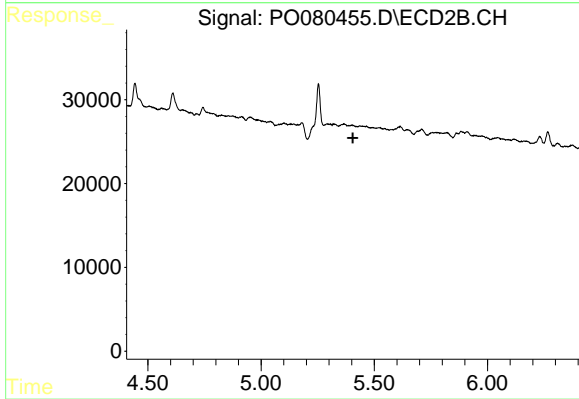
#3 AR-1016-1

R.T.: 0.000 min
 Exp R.T. : 5.385 min
 Response: 0
 Conc: N.D.



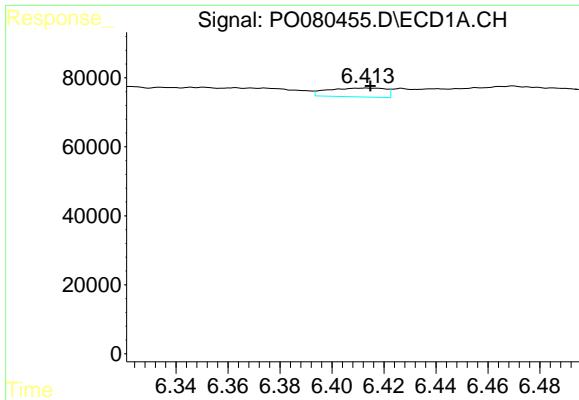
#4 AR-1016-2

R.T.: 6.351 min
 Delta R.T.: 0.003 min
 Response: 26376
 Conc: 7.45 ng/ml



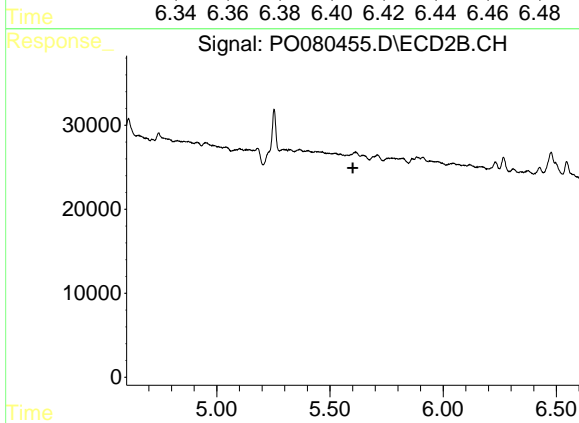
#4 AR-1016-2

R.T.: 0.000 min
 Exp R.T. : 5.406 min
 Response: 0
 Conc: N.D.

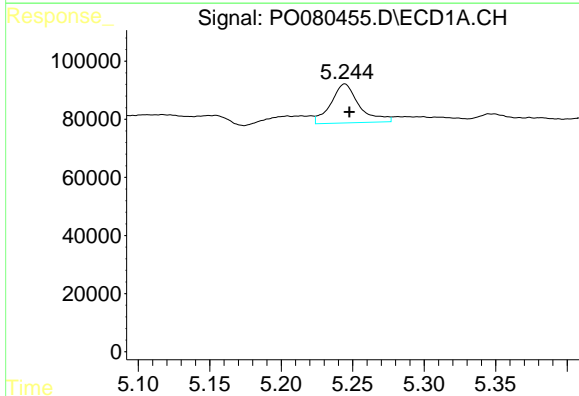


#5 AR-1016-3
 R.T.: 6.413 min
 Delta R.T.: -0.001 min
 Response: 39387
 Conc: 18.26 ng/ml

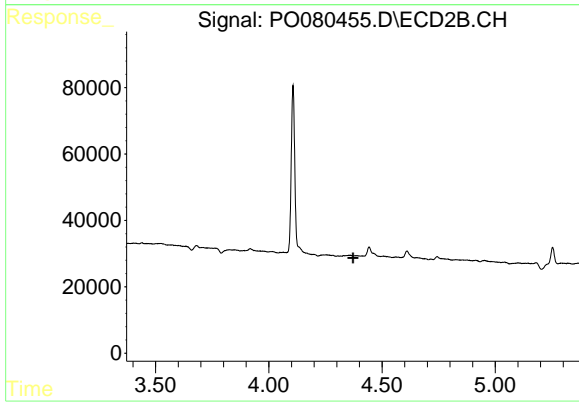
Instrument :
 ECD_O
 ClientSampled :
 26N



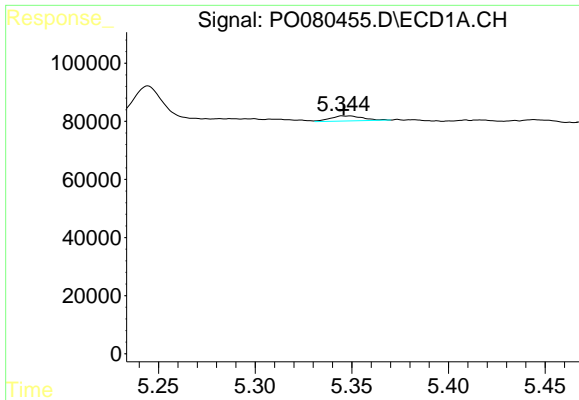
#5 AR-1016-3
 R.T.: 0.000 min
 Exp R.T. : 5.601 min
 Response: 0
 Conc: N.D.



#8 AR-1221-1
 R.T.: 5.245 min
 Delta R.T.: -0.003 min
 Response: 184674
 Conc: 232.20 ng/ml

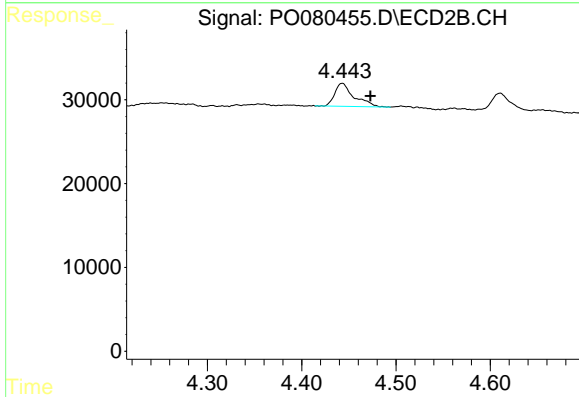


#8 AR-1221-1
 R.T.: 0.000 min
 Exp R.T. : 4.372 min
 Response: 0
 Conc: N.D.

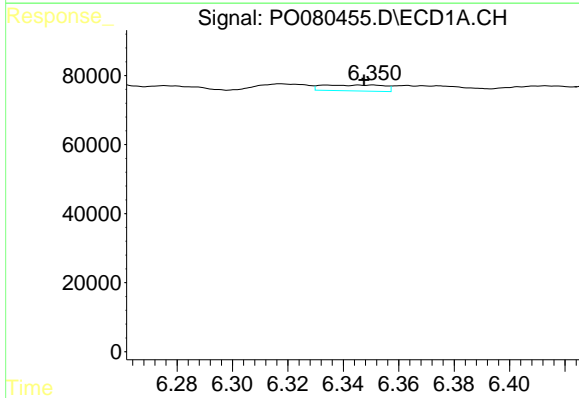


#9 AR-1221-2
 R.T.: 5.345 min
 Delta R.T.: 0.000 min
 Response: 20381
 Conc: 37.23 ng/ml

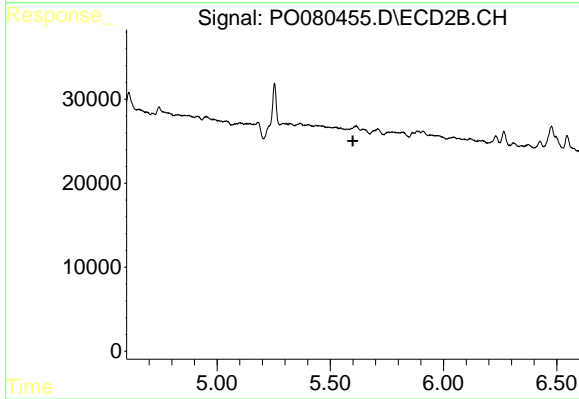
Instrument :
 ECD_O
 ClientSampled :
 26N



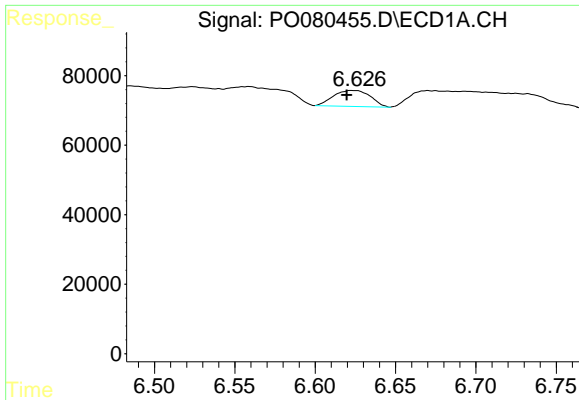
#9 AR-1221-2
 R.T.: 4.443 min
 Delta R.T.: -0.030 min
 Response: 38899
 Conc: 167.22 ng/ml



#13 AR-1232-3
 R.T.: 6.351 min
 Delta R.T.: 0.003 min
 Response: 26376
 Conc: 16.23 ng/ml



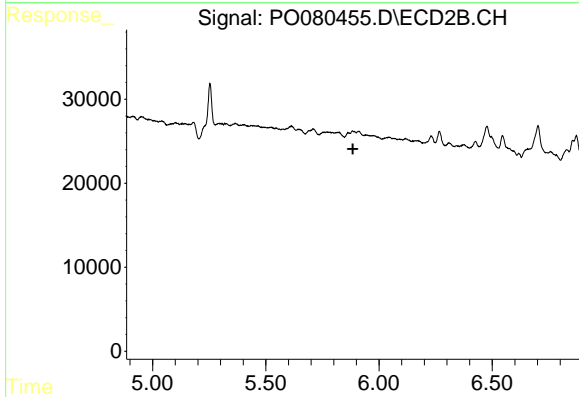
#13 AR-1232-3
 R.T.: 0.000 min
 Exp R.T.: 5.600 min
 Response: 0
 Conc: N.D.



#15 AR-1232-5

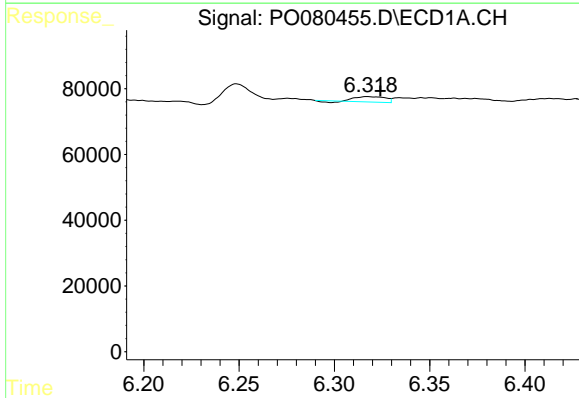
R.T.: 6.623 min
 Delta R.T.: 0.004 min
 Response: 73203
 Conc: 140.32 ng/ml

Instrument :
 ECD_O
 ClientSampled :
 26N



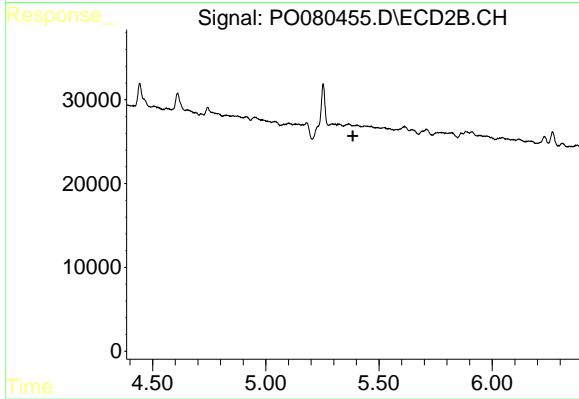
#15 AR-1232-5

R.T.: 0.000 min
 Exp R.T. : 5.884 min
 Response: 0
 Conc: N.D.



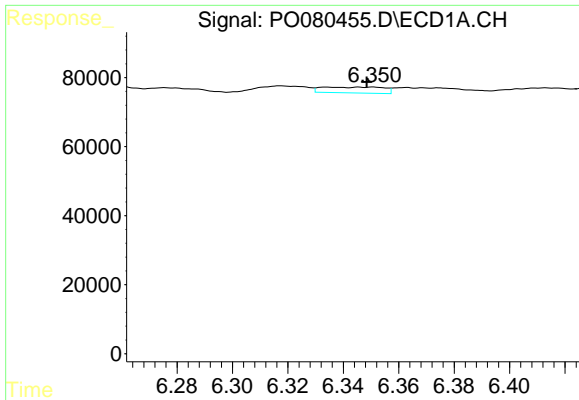
#16 AR-1242-1

R.T.: 6.318 min
 Delta R.T.: -0.007 min
 Response: 16187
 Conc: 8.30 ng/ml



#16 AR-1242-1

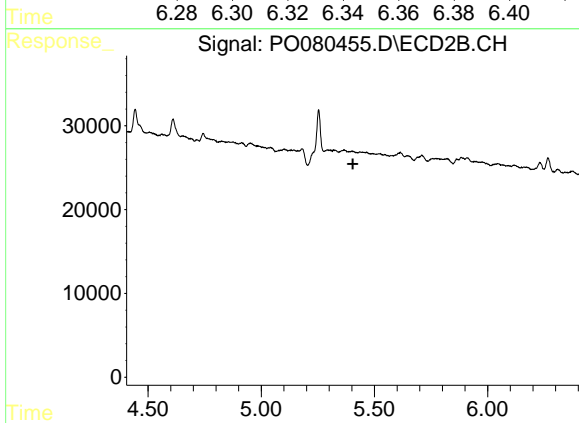
R.T.: 0.000 min
 Exp R.T. : 5.385 min
 Response: 0
 Conc: N.D.



#17 AR-1242-2

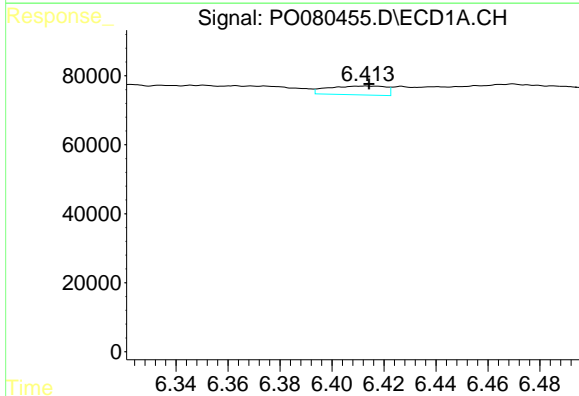
R.T.: 6.351 min
 Delta R.T.: 0.002 min
 Response: 26376
 Conc: 9.78 ng/ml

Instrument :
 ECD_O
 ClientSampled :
 26N



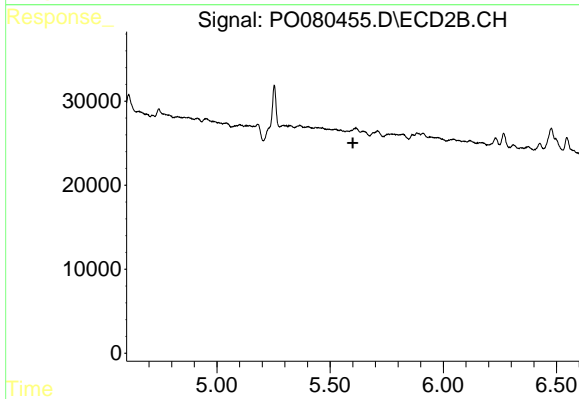
#17 AR-1242-2

R.T.: 0.000 min
 Exp R.T. : 5.405 min
 Response: 0
 Conc: N.D.



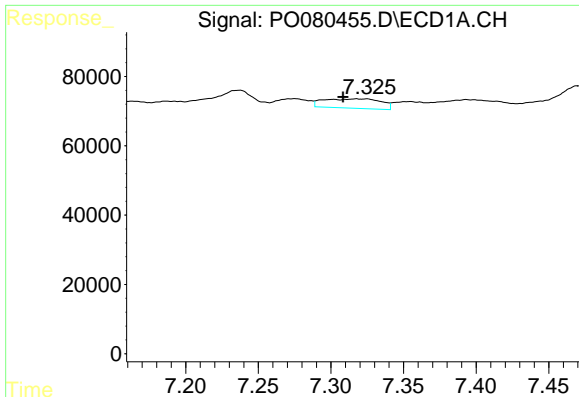
#18 AR-1242-3

R.T.: 6.413 min
 Delta R.T.: -0.001 min
 Response: 39387
 Conc: 23.61 ng/ml



#18 AR-1242-3

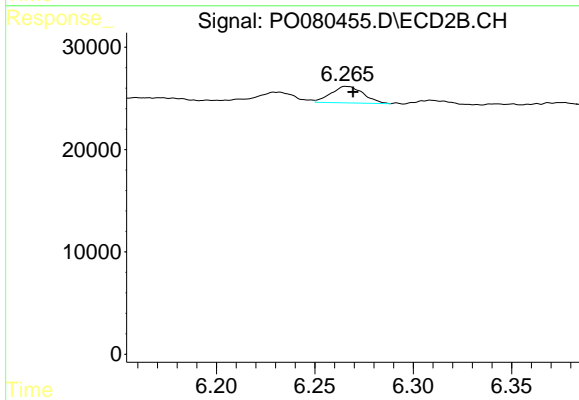
R.T.: 0.000 min
 Exp R.T. : 5.601 min
 Response: 0
 Conc: N.D.



#20 AR-1242-5

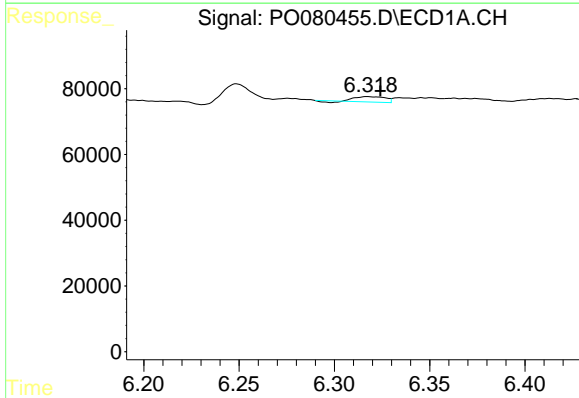
R.T.: 7.317 min
 Delta R.T.: 0.009 min
 Response: 74571
 Conc: 50.92 ng/ml

Instrument :
 ECD_O
 ClientSampleId :
 26N



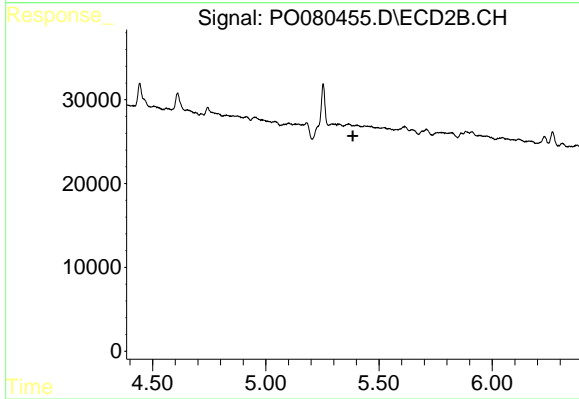
#20 AR-1242-5

R.T.: 6.266 min
 Delta R.T.: -0.004 min
 Response: 18444
 Conc: 26.47 ng/ml



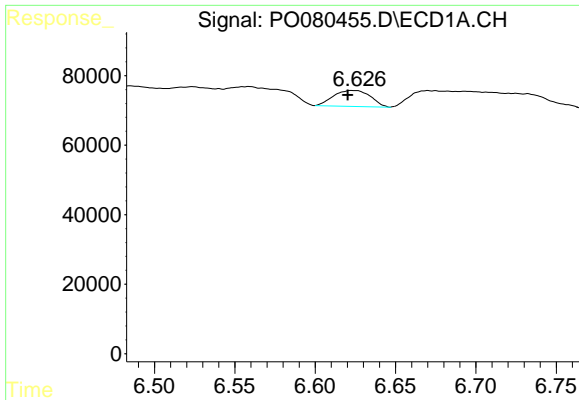
#21 AR-1248-1

R.T.: 6.318 min
 Delta R.T.: -0.007 min
 Response: 16187
 Conc: 10.70 ng/ml



#21 AR-1248-1

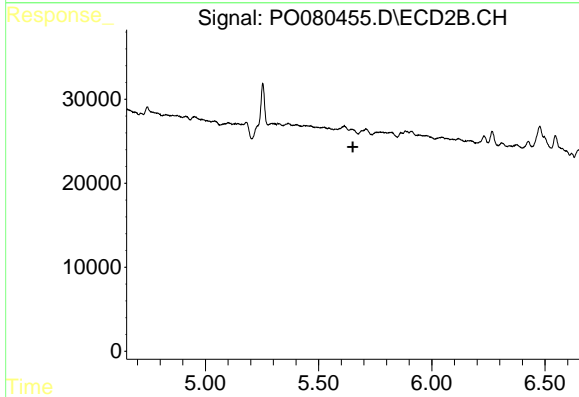
R.T.: 0.000 min
 Exp R.T. : 5.385 min
 Response: 0
 Conc: N.D.



#22 AR-1248-2

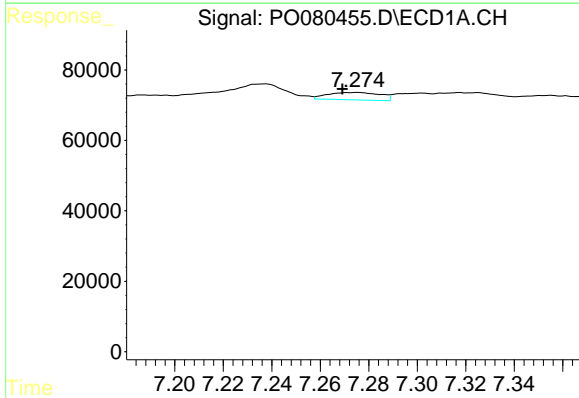
R.T.: 6.623 min
 Delta R.T.: 0.003 min
 Response: 73203
 Conc: 36.09 ng/ml

Instrument :
 ECD_O
 ClientSampled :
 26N



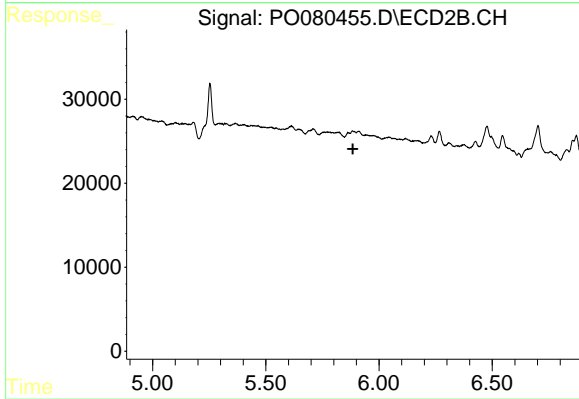
#22 AR-1248-2

R.T.: 0.000 min
 Exp R.T. : 5.651 min
 Response: 0
 Conc: N.D.



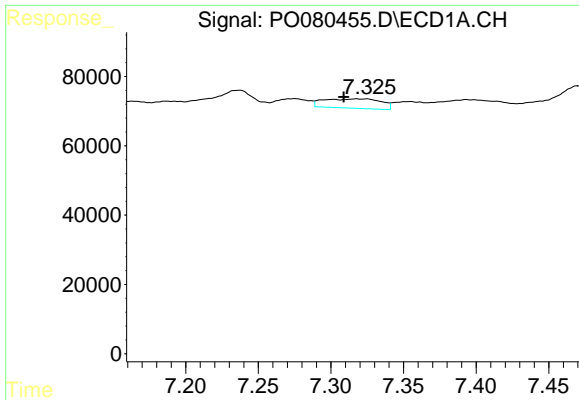
#24 AR-1248-4

R.T.: 7.275 min
 Delta R.T.: 0.006 min
 Response: 31711
 Conc: 11.66 ng/ml



#24 AR-1248-4

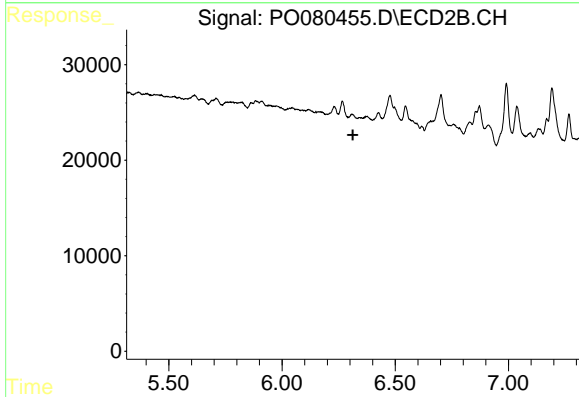
R.T.: 0.000 min
 Exp R.T. : 5.885 min
 Response: 0
 Conc: N.D.



#25 AR-1248-5

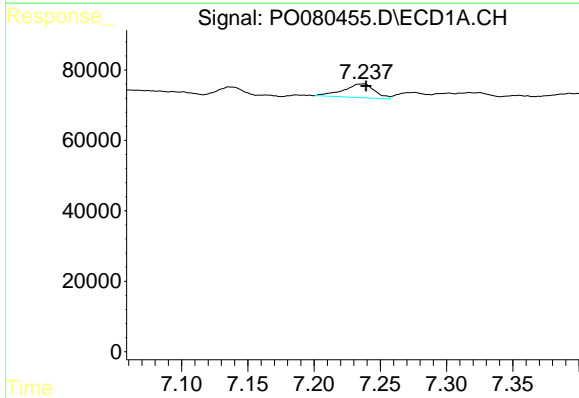
R.T.: 7.317 min
 Delta R.T.: 0.009 min
 Response: 74571
 Conc: 28.28 ng/ml

Instrument :
 ECD_O
 ClientSampleId :
 26N



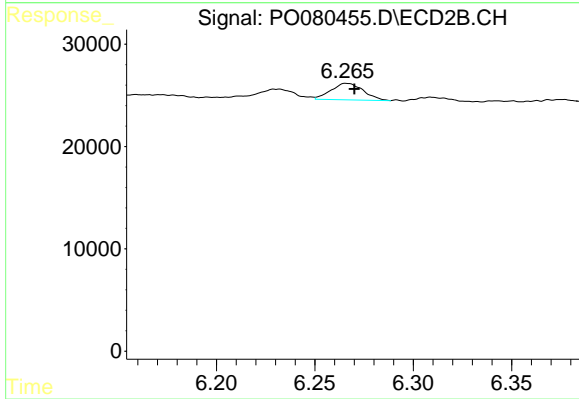
#25 AR-1248-5

R.T.: 0.000 min
 Exp R.T. : 6.313 min
 Response: 0
 Conc: N.D.



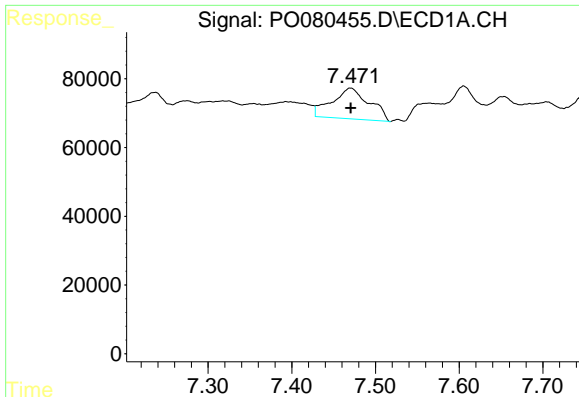
#26 AR-1254-1

R.T.: 7.237 min
 Delta R.T.: -0.002 min
 Response: 63920
 Conc: 24.66 ng/ml



#26 AR-1254-1

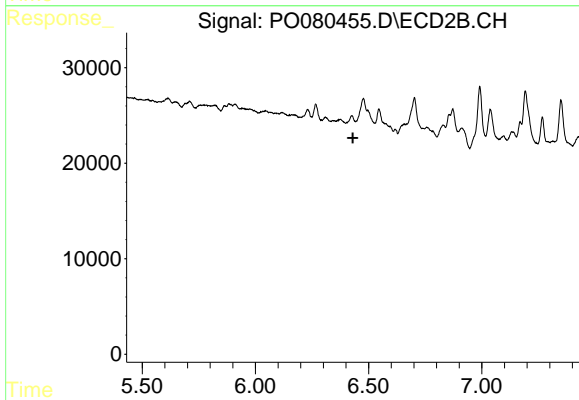
R.T.: 6.266 min
 Delta R.T.: -0.004 min
 Response: 18444
 Conc: 12.57 ng/ml



#27 AR-1254-2

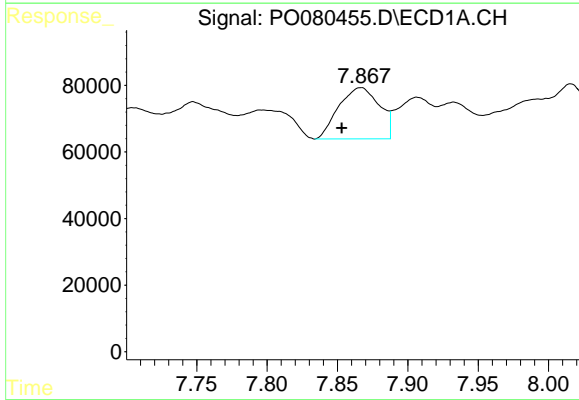
R.T.: 7.470 min
 Delta R.T.: 0.000 min
 Response: 277042
 Conc: 70.60 ng/ml

Instrument :
 ECD_O
 ClientSampleId :
 26N



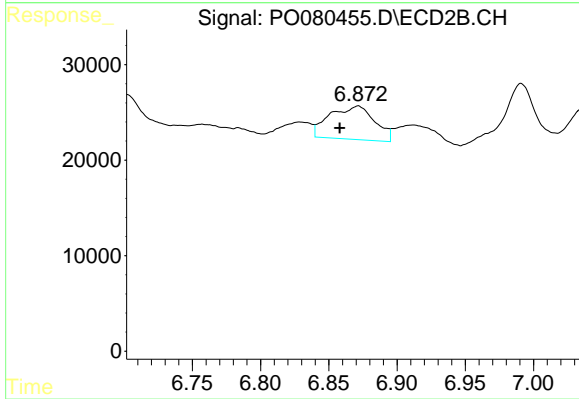
#27 AR-1254-2

R.T.: 0.000 min
 Exp R.T. : 6.430 min
 Response: 0
 Conc: N.D.



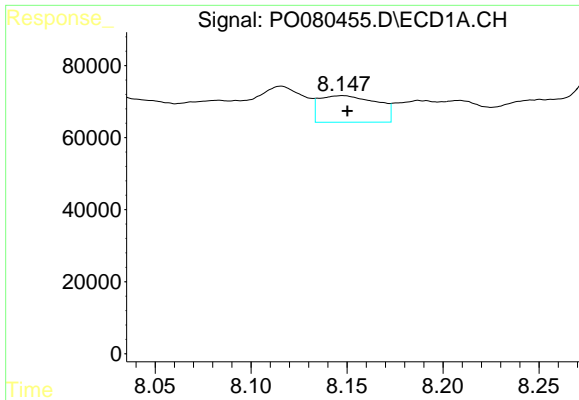
#28 AR-1254-3

R.T.: 7.867 min
 Delta R.T.: 0.014 min
 Response: 310006
 Conc: 75.95 ng/ml



#28 AR-1254-3

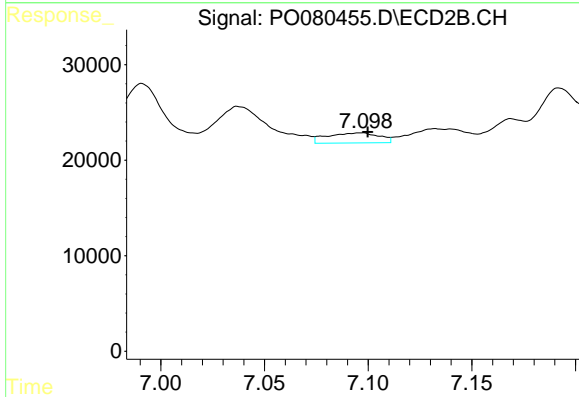
R.T.: 6.872 min
 Delta R.T.: 0.014 min
 Response: 80303
 Conc: 39.83 ng/ml



#29 AR-1254-4

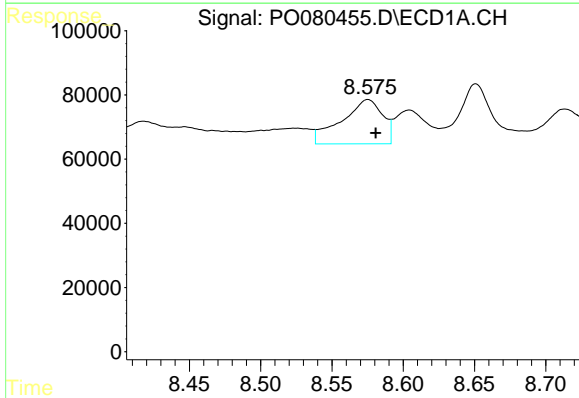
R.T.: 8.148 min
 Delta R.T.: -0.003 min
 Response: 154756
 Conc: 51.84 ng/ml

Instrument :
 ECD_O
ClientSampled :
 26N



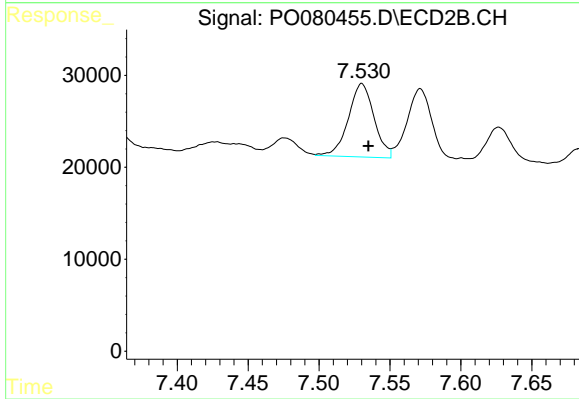
#29 AR-1254-4

R.T.: 7.098 min
 Delta R.T.: -0.002 min
 Response: 18235
 Conc: 14.01 ng/ml



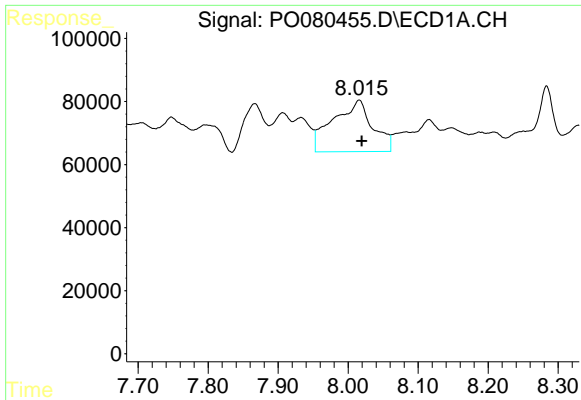
#30 AR-1254-5

R.T.: 8.575 min
 Delta R.T.: -0.005 min
 Response: 277919
 Conc: 89.83 ng/ml



#30 AR-1254-5

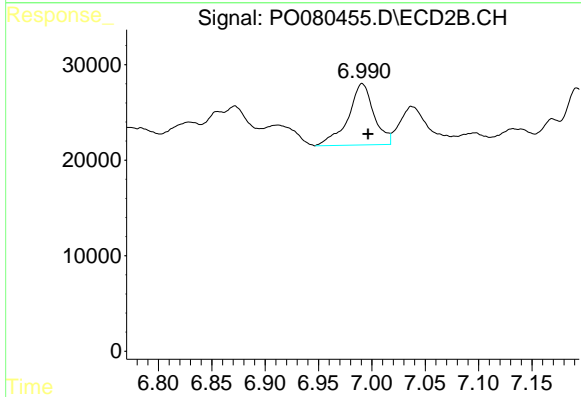
R.T.: 7.530 min
 Delta R.T.: -0.005 min
 Response: 100663
 Conc: 57.38 ng/ml



#31 AR-1260-1

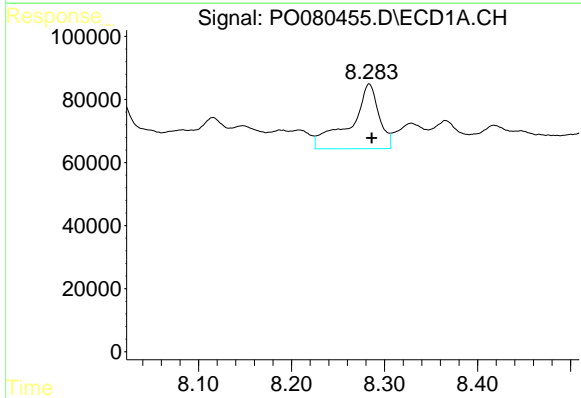
R.T.: 8.016 min
 Delta R.T.: -0.004 min
 Response: 639512
 Conc: 223.80 ng/ml

Instrument :
 ECD_O
 ClientSampleId :
 26N



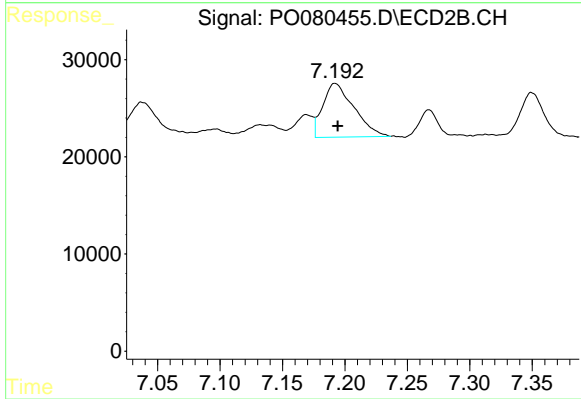
#31 AR-1260-1

R.T.: 6.991 min
 Delta R.T.: -0.006 min
 Response: 108211
 Conc: 80.74 ng/ml



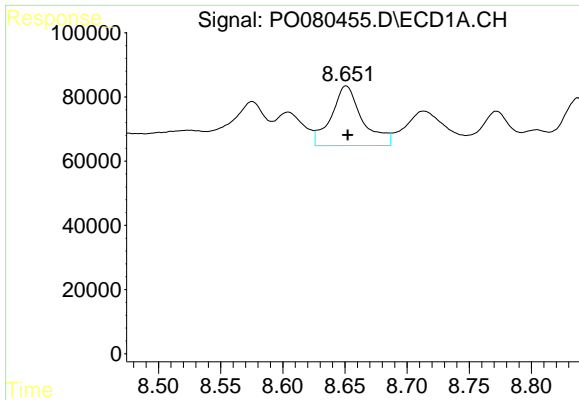
#32 AR-1260-2

R.T.: 8.284 min
 Delta R.T.: -0.003 min
 Response: 437327
 Conc: 131.60 ng/ml



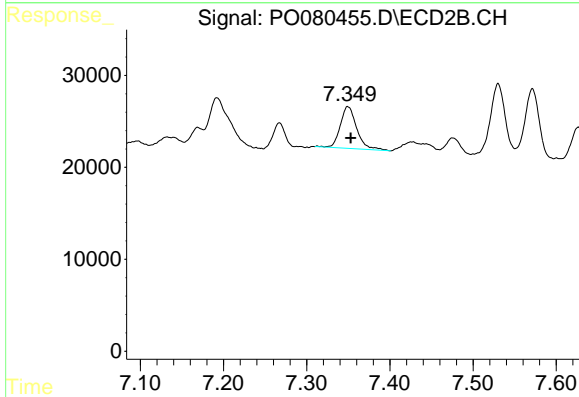
#32 AR-1260-2

R.T.: 7.192 min
 Delta R.T.: -0.002 min
 Response: 96056
 Conc: 57.80 ng/ml

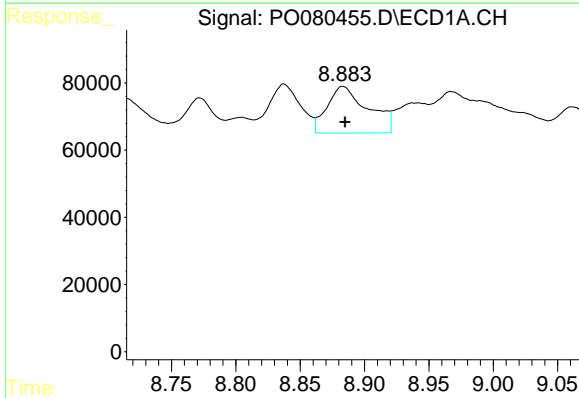


#33 AR-1260-3
 R.T.: 8.651 min
 Delta R.T.: -0.001 min
 Response: 324395
 Conc: 129.66 ng/ml

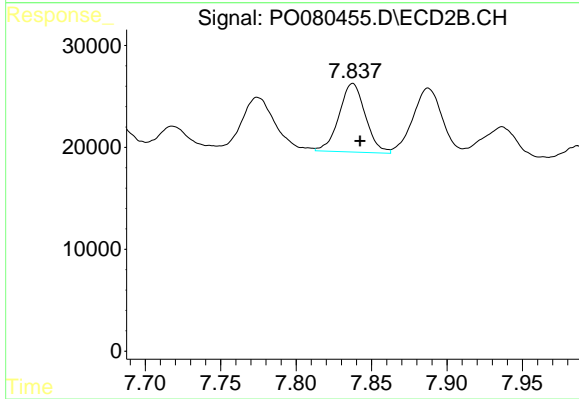
Instrument :
 ECD_O
 ClientSampleId :
 26N



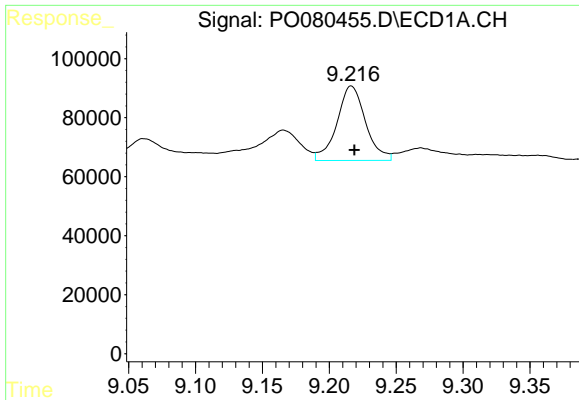
#33 AR-1260-3
 R.T.: 7.349 min
 Delta R.T.: -0.004 min
 Response: 62343
 Conc: 40.78 ng/ml



#34 AR-1260-4
 R.T.: 8.883 min
 Delta R.T.: -0.002 min
 Response: 305720
 Conc: 105.68 ng/ml



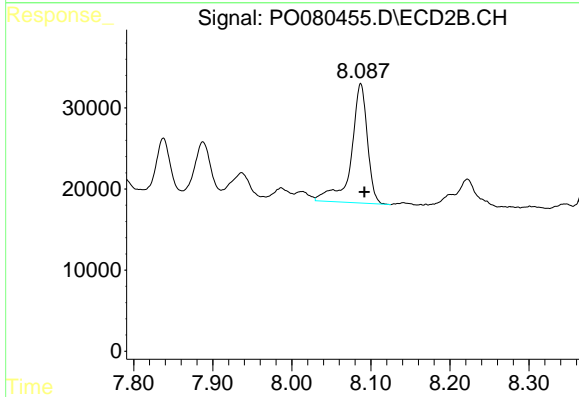
#34 AR-1260-4
 R.T.: 7.838 min
 Delta R.T.: -0.005 min
 Response: 81841
 Conc: 65.35 ng/ml



#35 AR-1260-5

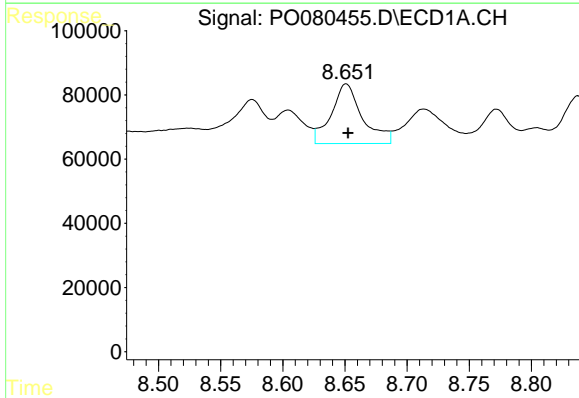
R.T.: 9.216 min
 Delta R.T.: -0.002 min
 Response: 376416
 Conc: 66.08 ng/ml

Instrument :
 ECD_O
 ClientSampleId :
 26N



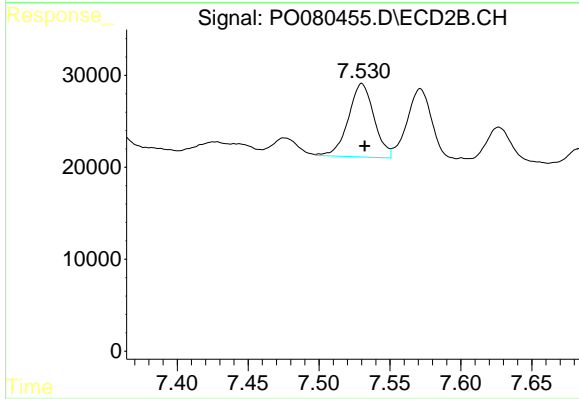
#35 AR-1260-5

R.T.: 8.087 min
 Delta R.T.: -0.005 min
 Response: 209054
 Conc: 72.26 ng/ml



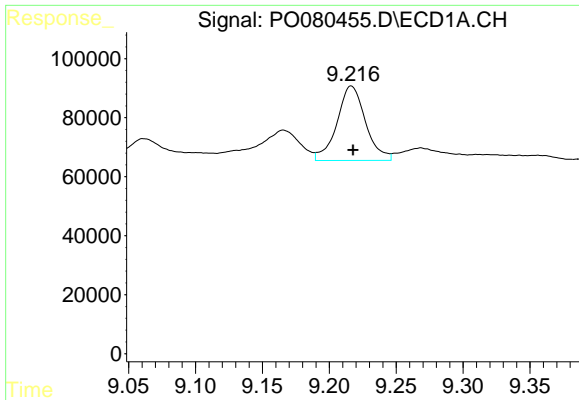
#36 AR-1262-1

R.T.: 8.651 min
 Delta R.T.: -0.002 min
 Response: 324395
 Conc: 84.84 ng/ml



#36 AR-1262-1

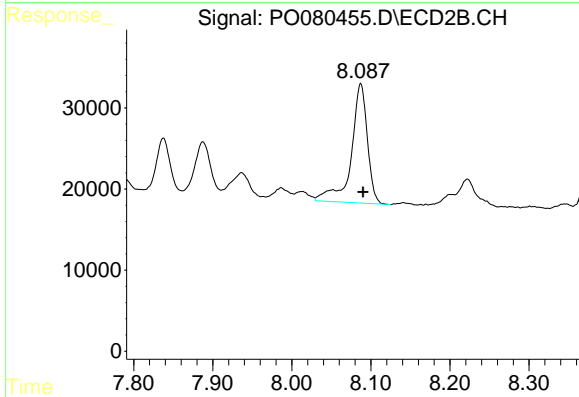
R.T.: 7.530 min
 Delta R.T.: -0.002 min
 Response: 100663
 Conc: 100.29 ng/ml



#37 AR-1262-2

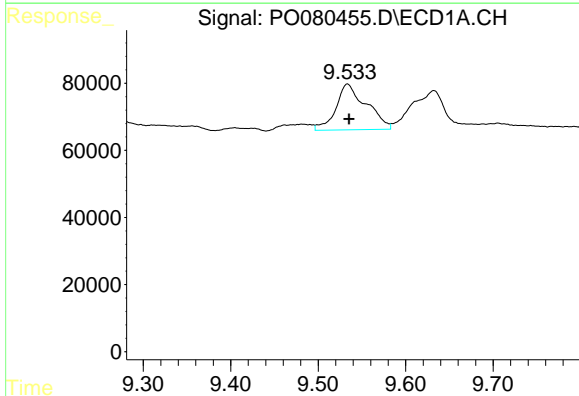
R.T.: 9.216 min
 Delta R.T.: -0.001 min
 Response: 376416
 Conc: 55.64 ng/ml

Instrument :
 ECD_O
 ClientSampled :
 26N



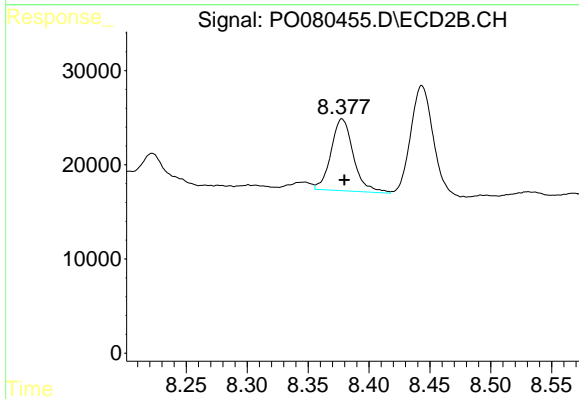
#37 AR-1262-2

R.T.: 8.087 min
 Delta R.T.: -0.003 min
 Response: 209054
 Conc: 65.47 ng/ml



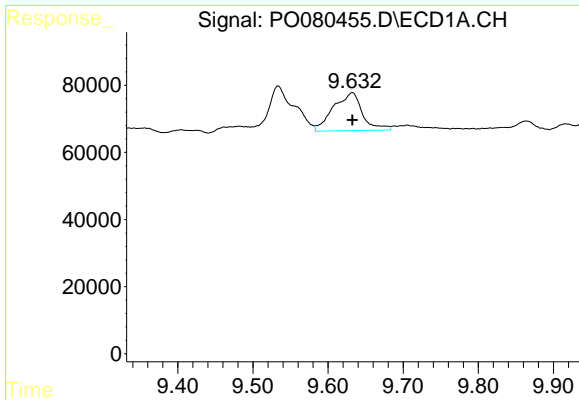
#38 AR-1262-3

R.T.: 9.534 min
 Delta R.T.: -0.002 min
 Response: 329121
 Conc: 109.98 ng/ml



#38 AR-1262-3

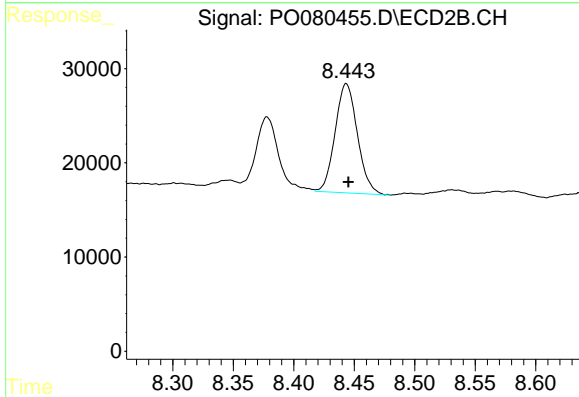
R.T.: 8.378 min
 Delta R.T.: -0.002 min
 Response: 97520
 Conc: 74.13 ng/ml



#39 AR-1262-4

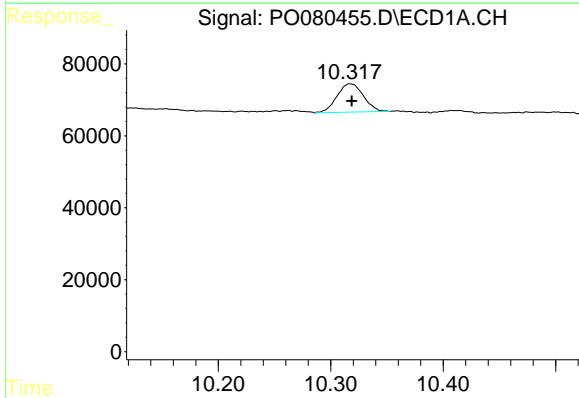
R.T.: 9.632 min
 Delta R.T.: 0.000 min
 Response: 304455
 Conc: 173.13 ng/ml

Instrument :
 ECD_O
 ClientSampleId :
 26N



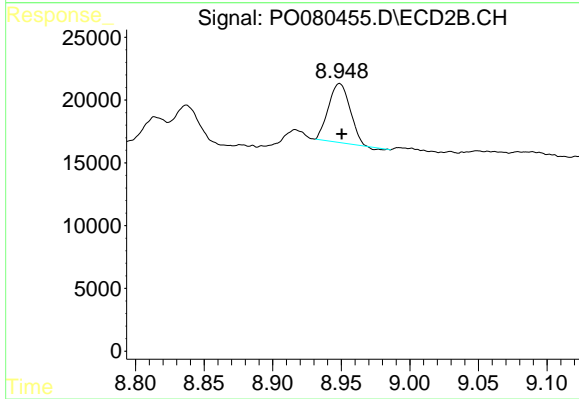
#39 AR-1262-4

R.T.: 8.443 min
 Delta R.T.: -0.002 min
 Response: 148808
 Conc: 63.05 ng/ml



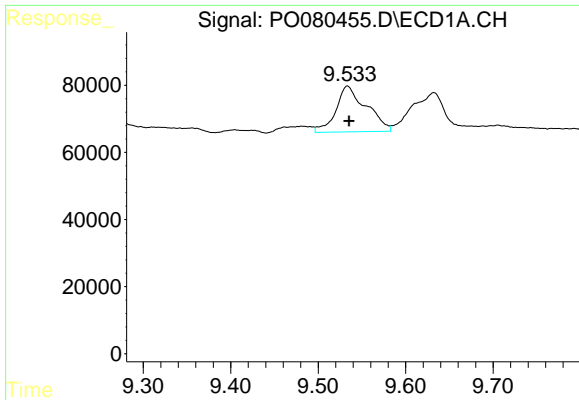
#40 AR-1262-5

R.T.: 10.317 min
 Delta R.T.: -0.001 min
 Response: 127800
 Conc: 51.51 ng/ml



#40 AR-1262-5

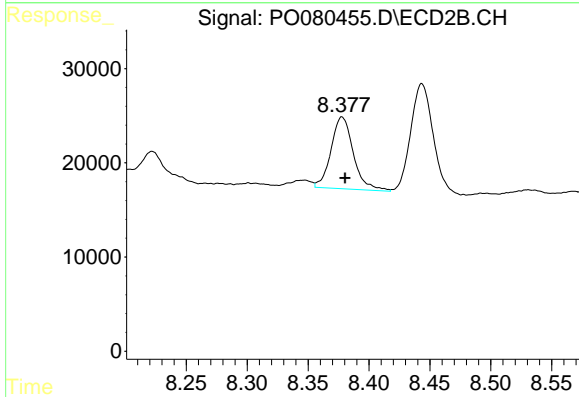
R.T.: 8.949 min
 Delta R.T.: -0.002 min
 Response: 50866
 Conc: 45.69 ng/ml



#41 AR-1268-1

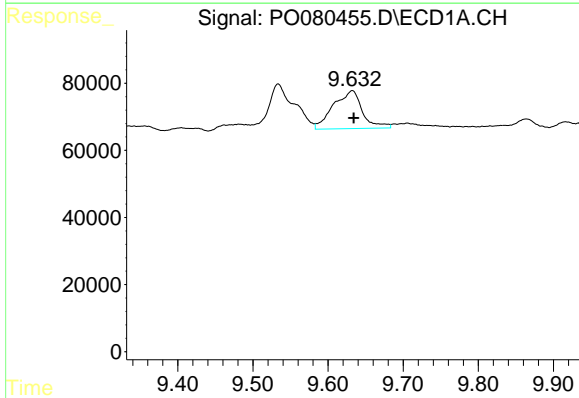
R.T.: 9.534 min
 Delta R.T.: -0.002 min
 Response: 329121
 Conc: 41.22 ng/ml

Instrument :
 ECD_O
 ClientSampleId :
 26N



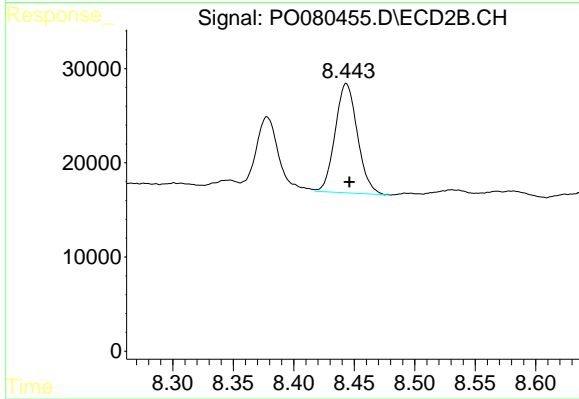
#41 AR-1268-1

R.T.: 8.378 min
 Delta R.T.: -0.002 min
 Response: 97520
 Conc: 26.11 ng/ml



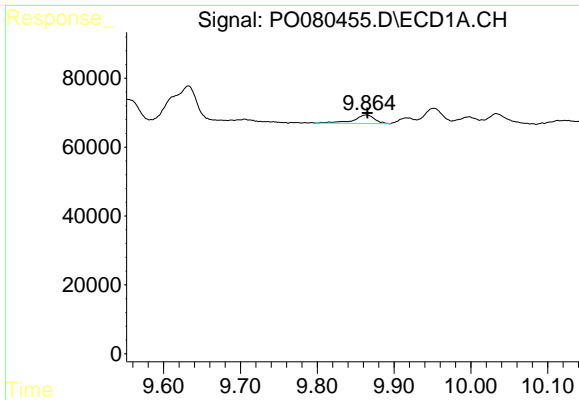
#42 AR-1268-2

R.T.: 9.632 min
 Delta R.T.: -0.002 min
 Response: 304455
 Conc: 41.89 ng/ml



#42 AR-1268-2

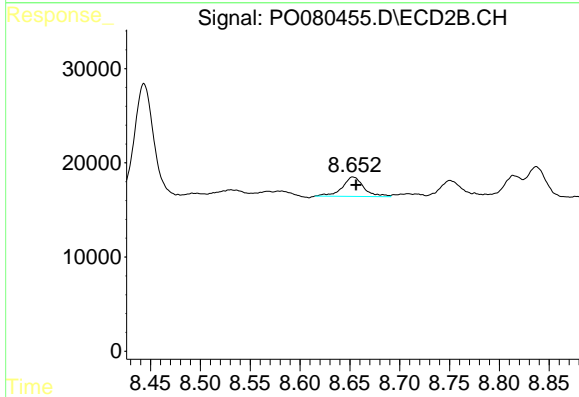
R.T.: 8.443 min
 Delta R.T.: -0.003 min
 Response: 148808
 Conc: 44.55 ng/ml



#43 AR-1268-3

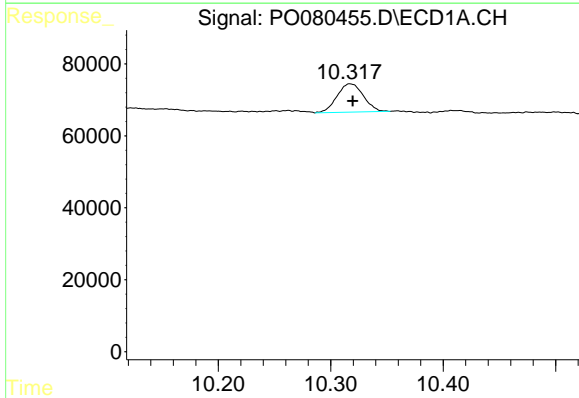
R.T.: 9.864 min
 Delta R.T.: -0.002 min
 Response: 47681
 Conc: 7.79 ng/ml

Instrument :
 ECD_O
 ClientSampled :
 26N



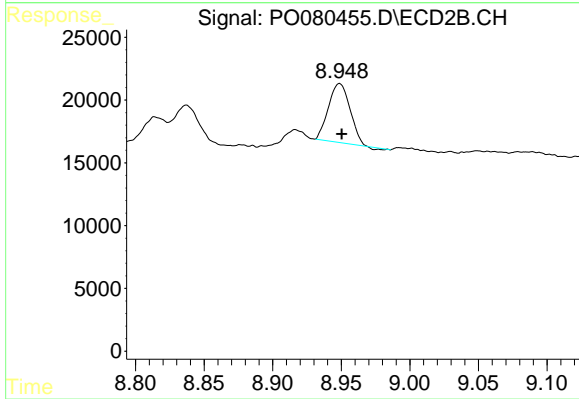
#43 AR-1268-3

R.T.: 8.653 min
 Delta R.T.: -0.003 min
 Response: 30908
 Conc: 10.86 ng/ml



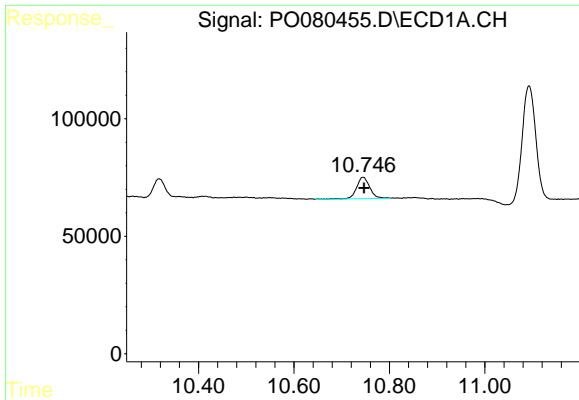
#44 AR-1268-4

R.T.: 10.317 min
 Delta R.T.: -0.002 min
 Response: 127800
 Conc: 45.81 ng/ml



#44 AR-1268-4

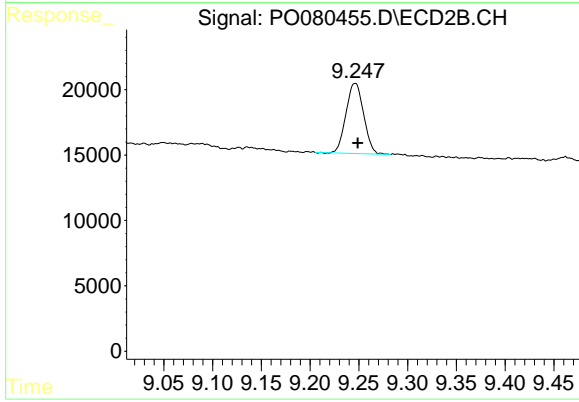
R.T.: 8.949 min
 Delta R.T.: -0.001 min
 Response: 50866
 Conc: 41.41 ng/ml



#45 AR-1268-5

R.T.: 10.745 min
Delta R.T.: -0.002 min
Response: 173999
Conc: 8.66 ng/ml

Instrument :
ECD_O
ClientSampleId :
26N



#45 AR-1268-5

R.T.: 9.246 min
Delta R.T.: -0.003 min
Response: 67664
Conc: 7.95 ng/ml