

Data Path : Z:\pestpcbsrv\HPCHEM1\ECD_0\Data\P0081621\
 Data File : P0080481.D
 Signal(s) : Signal #1: ECD1A.CH Signal #2: ECD2B.CH
 Acq On : 16 Aug 2021 18:09
 Operator : DD\AJ
 Sample : M3404-07
 Misc :
 ALS Vial : 51 Sample Multiplier: 1

Instrument :
 ECD_O
 ClientSampled :
 TP3-1-6FT

Integration File signal 1: autoint1.e
 Integration File signal 2: autoint2.e
 Quant Time: Aug 17 01:55:29 2021
 Quant Method : Z:\pestpcbsrv\HPCHEM1\ECD_0\methods\P0081021.M
 Quant Title : GC EXTRACTABLES
 QLast Update : Wed Aug 11 05:48:32 2021
 Response via : Initial Calibration
 Integrator: ChemStation 6890 Scale Mode: Small noise peaks clipped

Volume Inj. : 2 µl
 Signal #1 Phase : ZB-MR1 Signal #2 Phase: ZB-MR2
 Signal #1 Info : 30Mx0.32mmx 0.50µ Signal #2 Info : 30M x 0.32mm x 0.25µm

Compound	RT#1	RT#2	Resp#1	Resp#2	ng/ml	ng/ml
System Monitoring Compounds						
1) SA Tetrachlo...	4.993	4.108	1799552	599467	25.988	24.052
2) SA Decachlor...	11.094	9.507	1117846	457927	21.596	20.190
Target Compounds						
3) L1 AR-1016-1	6.324	5.403	12947	27741	5.054	26.962 #
4) L1 AR-1016-2	6.347	5.403	67062	27741	18.949	19.876
5) L1 AR-1016-3	0.000	5.599	0	16707	N.D.	22.447 #
6) L1 AR-1016-4	6.521	0.000	39144	0	22.081	N.D. #
7) L1 AR-1016-5	6.837	5.884	31675	10205	18.405	13.691 #
8) L2 AR-1221-1	5.246	0.000	173281	0	217.875	N.D. #
9) L2 AR-1221-2	5.348	4.444f	24171	45337	44.156	194.897 #
12) L3 AR-1232-2	6.039	5.403	55851	27741	66.393	44.108 #
13) L3 AR-1232-3	6.347	5.599	67062	16707	41.255	53.383 #
14) L3 AR-1232-4	6.521	5.695	39144	13086	52.660	45.473
15) L3 AR-1232-5	6.620	5.884	23777	10205	45.576	33.611 #
16) L4 AR-1242-1	6.324	5.403	12947	27741	6.637	34.759 #
17) L4 AR-1242-2	6.347	5.403	67062	27741	24.872	25.538
18) L4 AR-1242-3	0.000	5.599	0	16707	N.D.	29.161 #
19) L4 AR-1242-4	6.521	5.695	39144	13086	29.107	23.560
20) L4 AR-1242-5	7.307	6.267	66226	22469	45.222	32.245 #
21) L5 AR-1248-1	6.324	5.403	12947	27741	8.555	44.118 #
22) L5 AR-1248-2	6.620	0.000	23777	0	11.722	N.D. #
23) L5 AR-1248-3	6.837	5.695	31675	13086	13.384	14.651
24) L5 AR-1248-4	7.268	5.884	50737	10205	18.657	9.988 #
25) L5 AR-1248-5	7.307	6.310	66226	24911	25.113	24.029
26) L6 AR-1254-1	7.239	6.267	65052	22469	25.094	15.315 #
27) L6 AR-1254-2	7.472	0.000	55866	0	14.237	N.D. #
28) L6 AR-1254-3	7.867	6.855	47917	13924	11.740	6.905 #
29) L6 AR-1254-4	8.150	0.000	15036	0	5.036	N.D. #
33) L7 AR-1260-3	8.649	0.000	13413	0	5.361	N.D. #
36) L8 AR-1262-1	8.649	0.000	13413	0	3.508	N.D. #

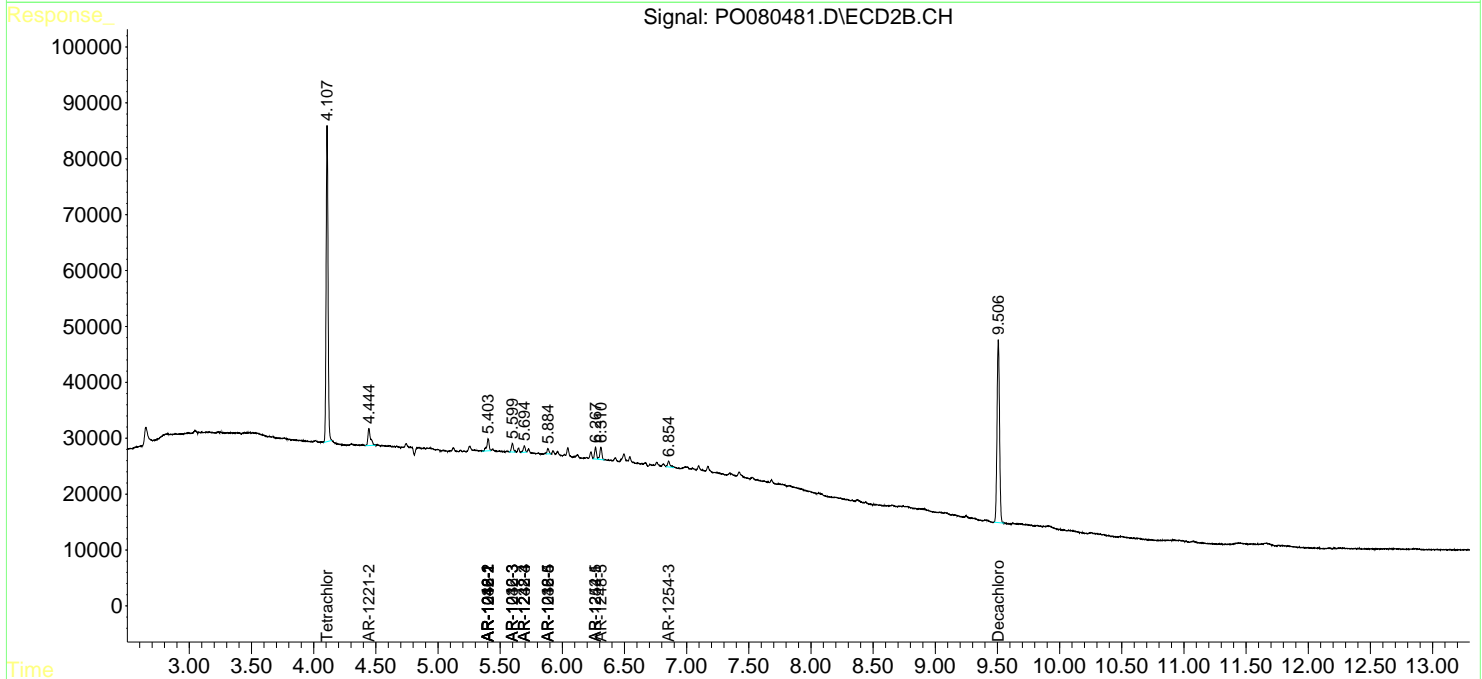
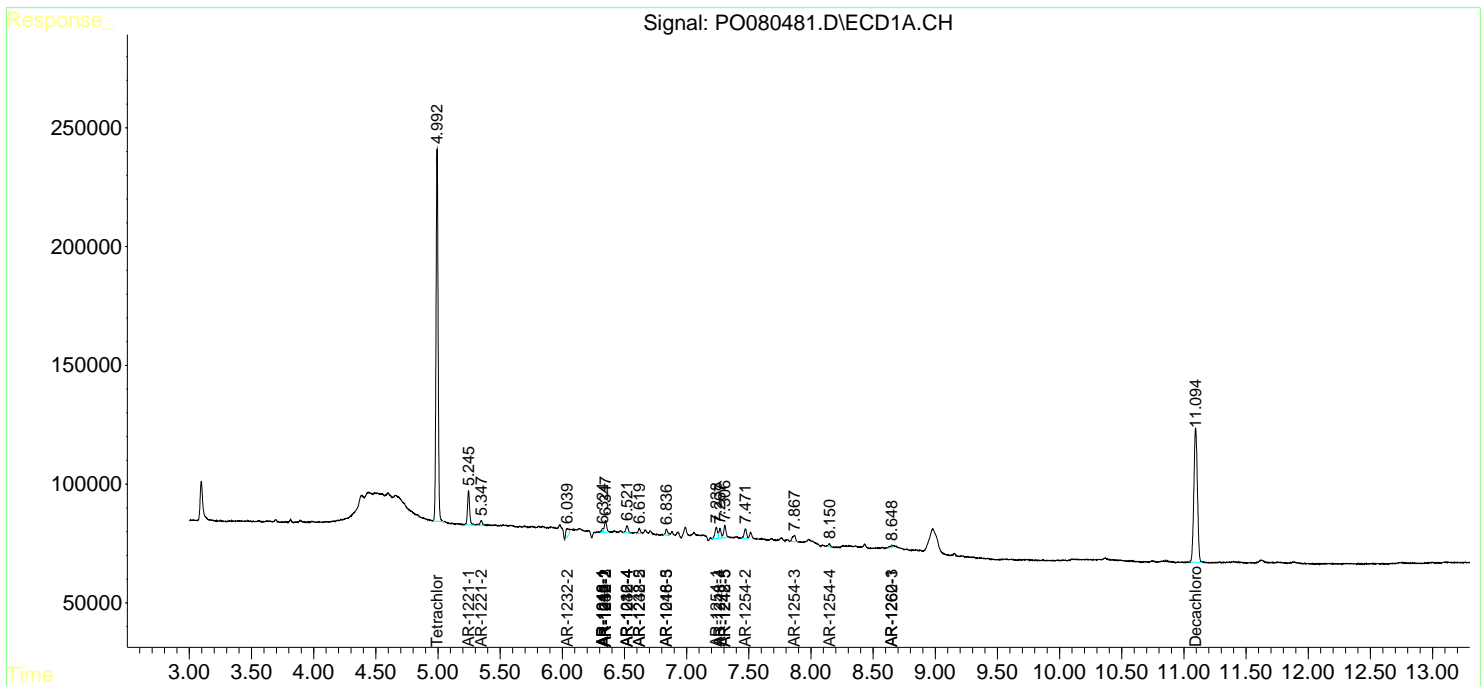
(f)=RT Delta > 1/2 Window (#)=Amounts differ by > 25% (m)=manual int.

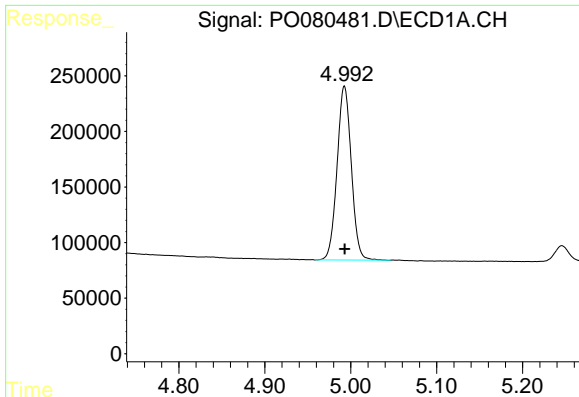
Data Path : Z:\pestpcbsrv\HPCHEM1\ECD_0\Data\P0081621\
 Data File : P0080481.D
 Signal(s) : Signal #1: ECD1A.CH Signal #2: ECD2B.CH
 Acq On : 16 Aug 2021 18:09
 Operator : DD\AJ
 Sample : M3404-07
 Misc :
 ALS Vial : 51 Sample Multiplier: 1

Instrument :
 ECD_O
 ClientSampled :
 TP3-1-6FT

Integration File signal 1: autoint1.e
 Integration File signal 2: autoint2.e
 Quant Time: Aug 17 01:55:29 2021
 Quant Method : Z:\pestpcbsrv\HPCHEM1\ECD_0\methods\P0081021.M
 Quant Title : GC EXTRACTABLES
 QLast Update : Wed Aug 11 05:48:32 2021
 Response via : Initial Calibration
 Integrator: ChemStation 6890 Scale Mode: Small noise peaks clipped

Volume Inj. : 2 µl
 Signal #1 Phase : ZB-MR1 Signal #2 Phase: ZB-MR2
 Signal #1 Info : 30Mx0.32mmx 0.50µ Signal #2 Info : 30M x 0.32mm x 0.25µm

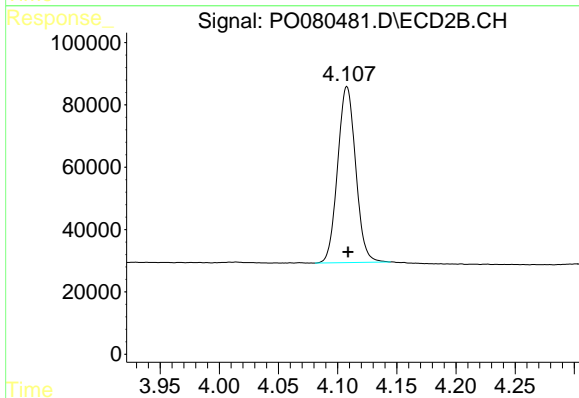




#1 Tetrachloro-m-xylene

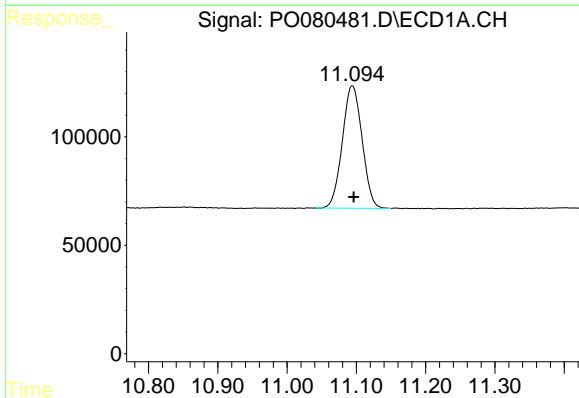
R.T.: 4.993 min
 Delta R.T.: 0.000 min
 Response: 1799552
 Conc: 25.99 ng/ml

Instrument :
 ECD_O
 ClientSampled :
 TP3-1-6FT



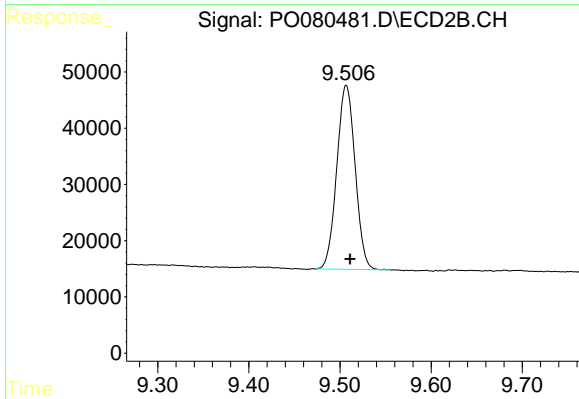
#1 Tetrachloro-m-xylene

R.T.: 4.108 min
 Delta R.T.: 0.000 min
 Response: 599467
 Conc: 24.05 ng/ml



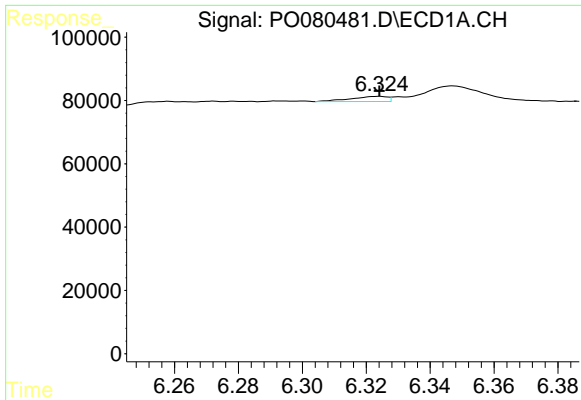
#2 Decachlorobiphenyl

R.T.: 11.094 min
 Delta R.T.: -0.002 min
 Response: 1117846
 Conc: 21.60 ng/ml



#2 Decachlorobiphenyl

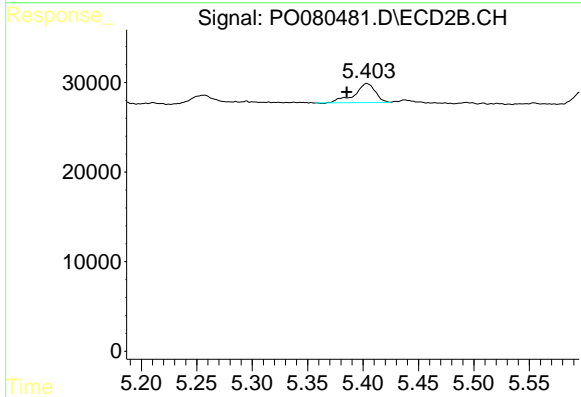
R.T.: 9.507 min
 Delta R.T.: -0.004 min
 Response: 457927
 Conc: 20.19 ng/ml



#3 AR-1016-1

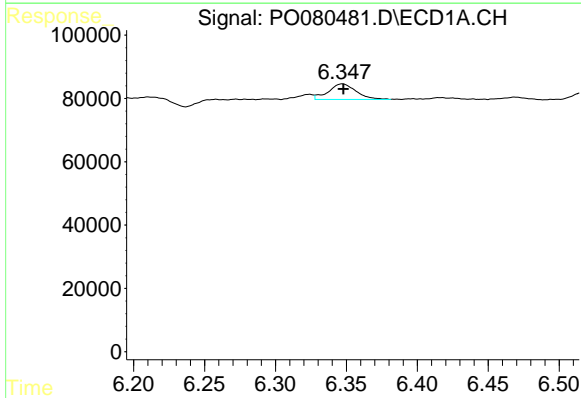
R.T.: 6.324 min
 Delta R.T.: 0.000 min
 Response: 12947
 Conc: 5.05 ng/ml

Instrument :
 ECD_O
 ClientSampled :
 TP3-1-6FT



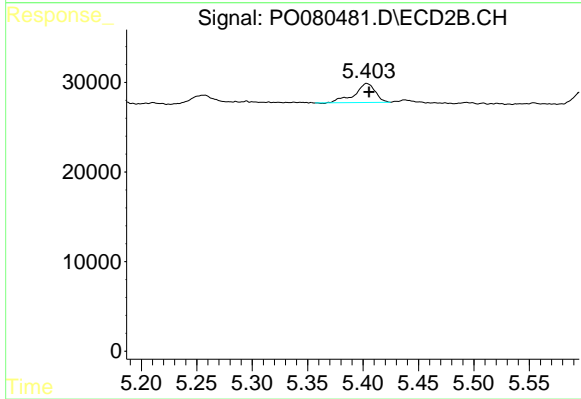
#3 AR-1016-1

R.T.: 5.403 min
 Delta R.T.: 0.018 min
 Response: 27741
 Conc: 26.96 ng/ml



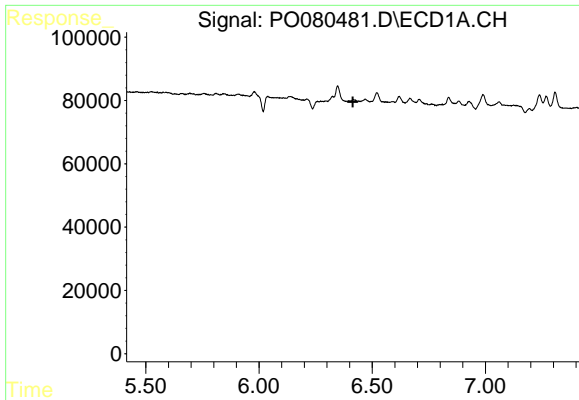
#4 AR-1016-2

R.T.: 6.347 min
 Delta R.T.: 0.000 min
 Response: 67062
 Conc: 18.95 ng/ml



#4 AR-1016-2

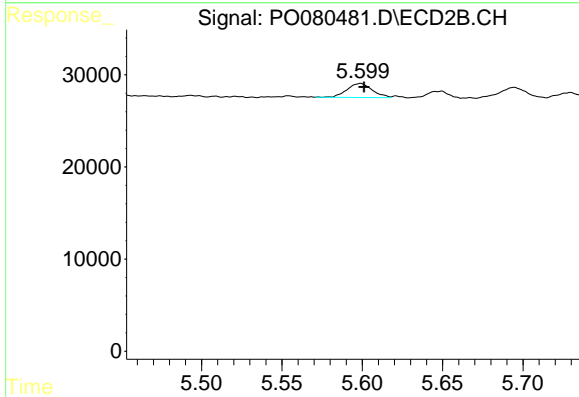
R.T.: 5.403 min
 Delta R.T.: -0.002 min
 Response: 27741
 Conc: 19.88 ng/ml



#5 AR-1016-3

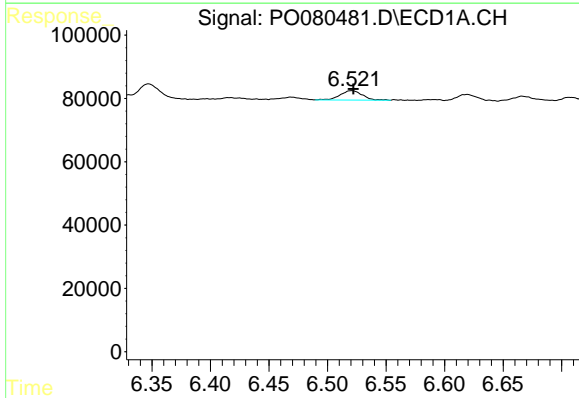
R.T.: 0.000 min
 Exp R.T.: 6.415 min
 Response: 0
 Conc: N.D.

Instrument :
 ECD_O
ClientSampled :
 TP3-1-6FT



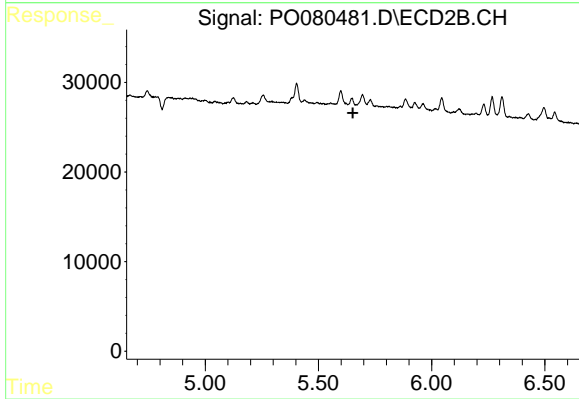
#5 AR-1016-3

R.T.: 5.599 min
 Delta R.T.: -0.002 min
 Response: 16707
 Conc: 22.45 ng/ml



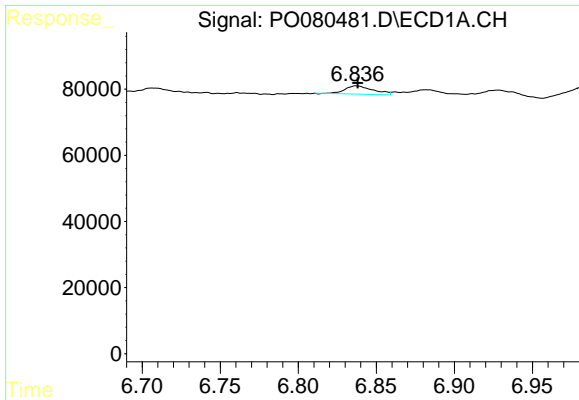
#6 AR-1016-4

R.T.: 6.521 min
 Delta R.T.: -0.001 min
 Response: 39144
 Conc: 22.08 ng/ml



#6 AR-1016-4

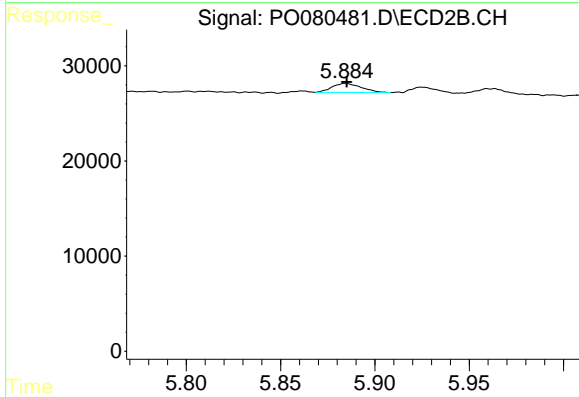
R.T.: 0.000 min
 Exp R.T.: 5.652 min
 Response: 0
 Conc: N.D.



#7 AR-1016-5

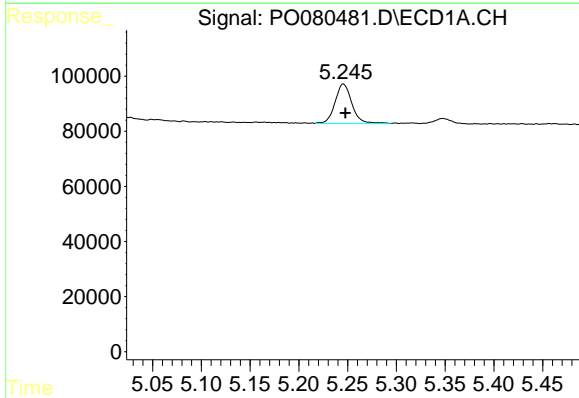
R.T.: 6.837 min
 Delta R.T.: -0.001 min
 Response: 31675
 Conc: 18.41 ng/ml

Instrument :
 ECD_O
ClientSampled :
 TP3-1-6FT



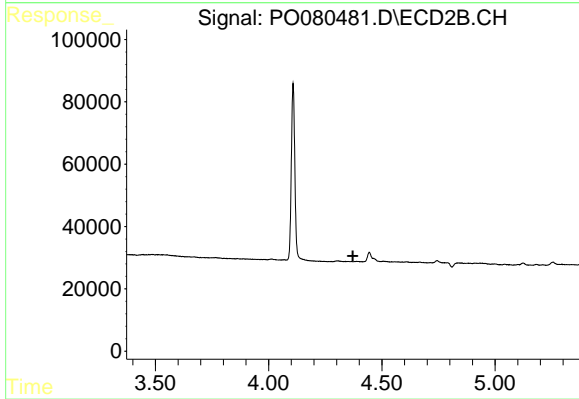
#7 AR-1016-5

R.T.: 5.884 min
 Delta R.T.: 0.000 min
 Response: 10205
 Conc: 13.69 ng/ml



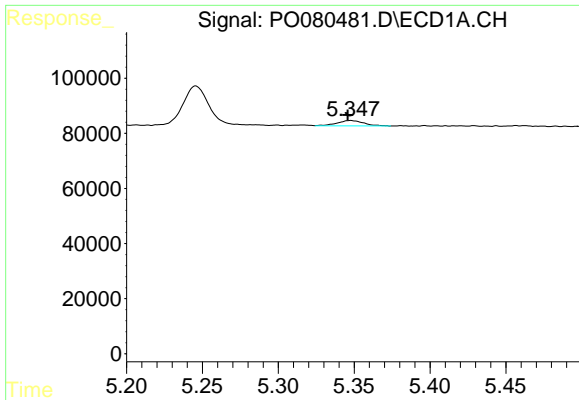
#8 AR-1221-1

R.T.: 5.246 min
 Delta R.T.: -0.002 min
 Response: 173281
 Conc: 217.87 ng/ml



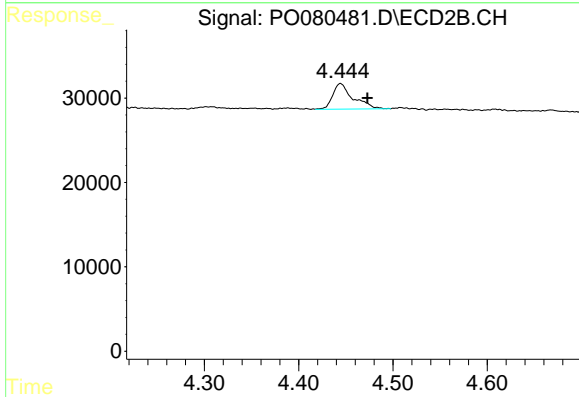
#8 AR-1221-1

R.T.: 0.000 min
 Exp R.T. : 4.372 min
 Response: 0
 Conc: N.D.

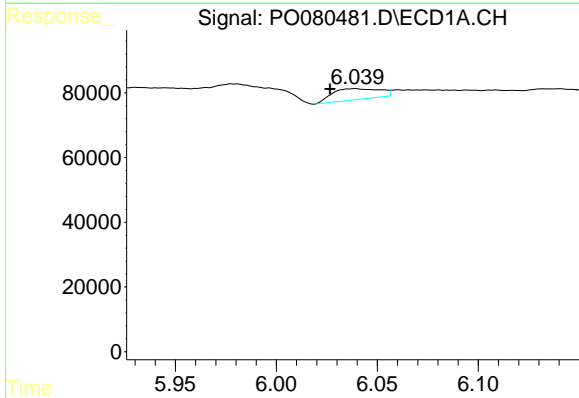


#9 AR-1221-2
 R.T.: 5.348 min
 Delta R.T.: 0.002 min
 Response: 24171
 Conc: 44.16 ng/ml

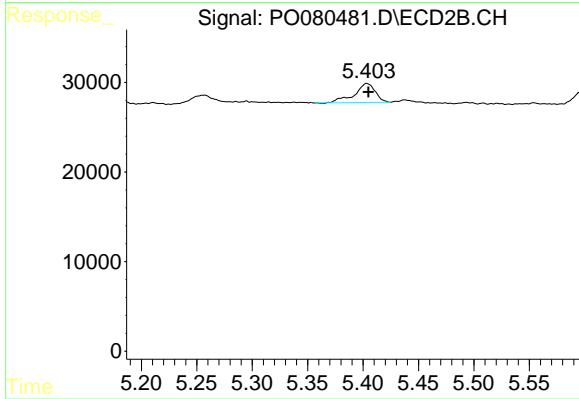
Instrument :
 ECD_O
 ClientSampleId :
 TP3-1-6FT



#9 AR-1221-2
 R.T.: 4.444 min
 Delta R.T.: -0.028 min
 Response: 45337
 Conc: 194.90 ng/ml



#12 AR-1232-2
 R.T.: 6.039 min
 Delta R.T.: 0.013 min
 Response: 55851
 Conc: 66.39 ng/ml



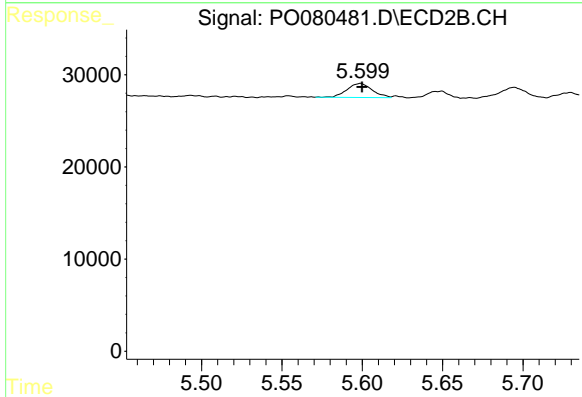
#12 AR-1232-2
 R.T.: 5.403 min
 Delta R.T.: -0.001 min
 Response: 27741
 Conc: 44.11 ng/ml



#13 AR-1232-3

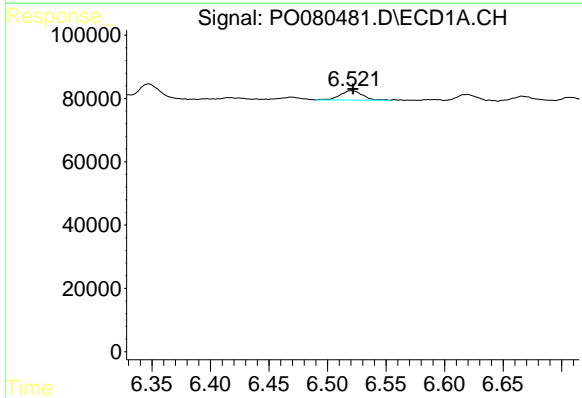
R.T.: 6.347 min
 Delta R.T.: 0.000 min
 Response: 67062
 Conc: 41.26 ng/ml

Instrument :
 ECD_O
 ClientSampleId :
 TP3-1-6FT



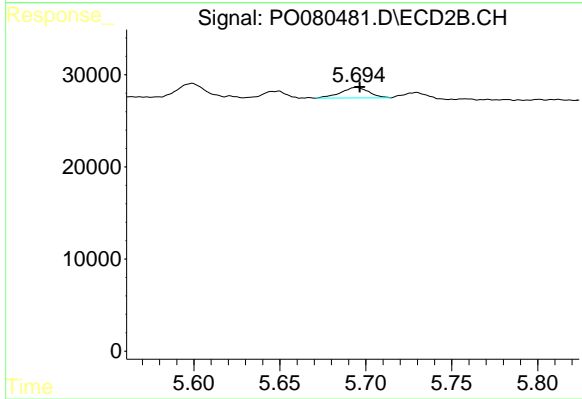
#13 AR-1232-3

R.T.: 5.599 min
 Delta R.T.: 0.000 min
 Response: 16707
 Conc: 53.38 ng/ml



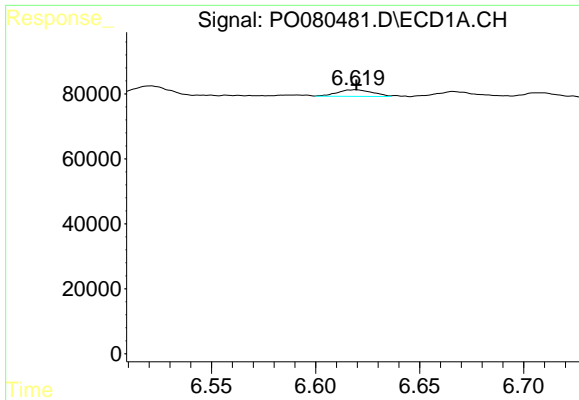
#14 AR-1232-4

R.T.: 6.521 min
 Delta R.T.: 0.000 min
 Response: 39144
 Conc: 52.66 ng/ml



#14 AR-1232-4

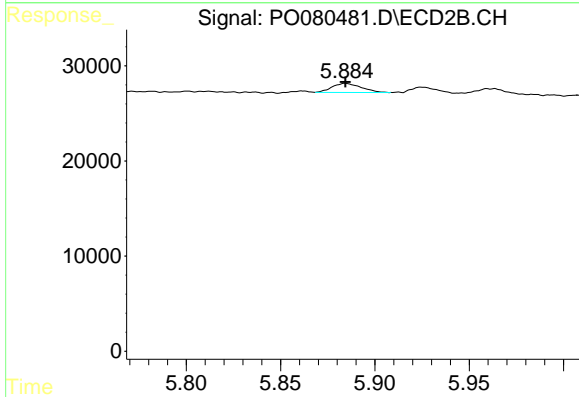
R.T.: 5.695 min
 Delta R.T.: -0.002 min
 Response: 13086
 Conc: 45.47 ng/ml



#15 AR-1232-5

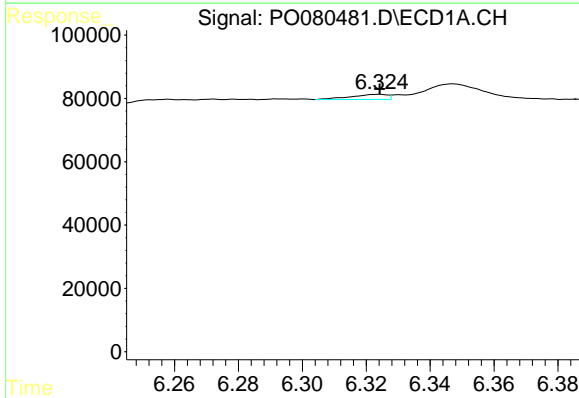
R.T.: 6.620 min
 Delta R.T.: 0.000 min
 Response: 23777
 Conc: 45.58 ng/ml

Instrument :
 ECD_O
ClientSampleId :
 TP3-1-6FT



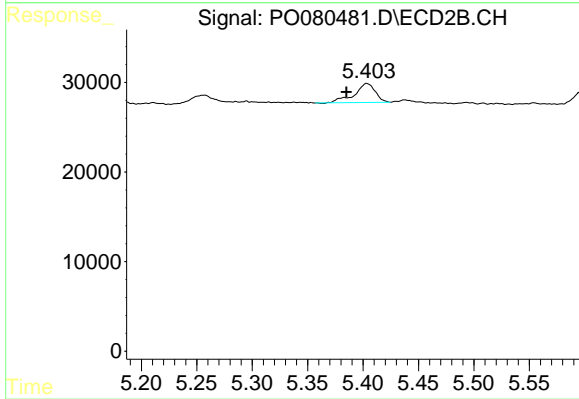
#15 AR-1232-5

R.T.: 5.884 min
 Delta R.T.: 0.000 min
 Response: 10205
 Conc: 33.61 ng/ml



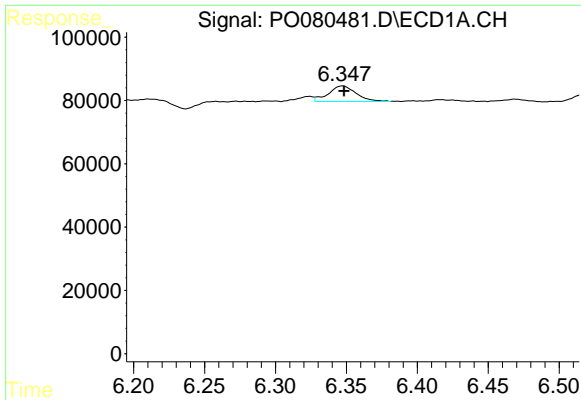
#16 AR-1242-1

R.T.: 6.324 min
 Delta R.T.: 0.000 min
 Response: 12947
 Conc: 6.64 ng/ml



#16 AR-1242-1

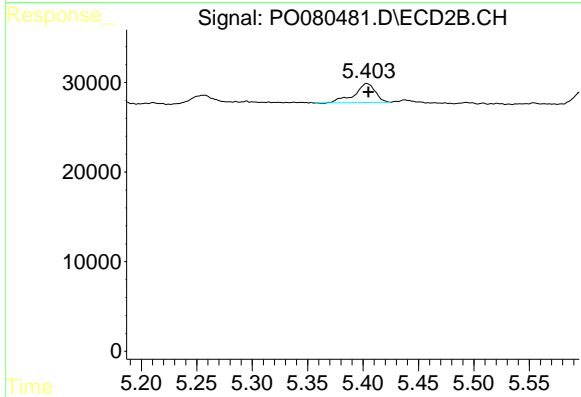
R.T.: 5.403 min
 Delta R.T.: 0.018 min
 Response: 27741
 Conc: 34.76 ng/ml



#17 AR-1242-2

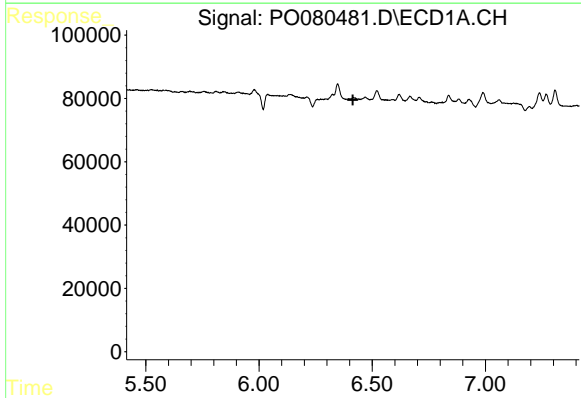
R.T.: 6.347 min
 Delta R.T.: -0.001 min
 Response: 67062
 Conc: 24.87 ng/ml

Instrument :
 ECD_O
 ClientSampleId :
 TP3-1-6FT



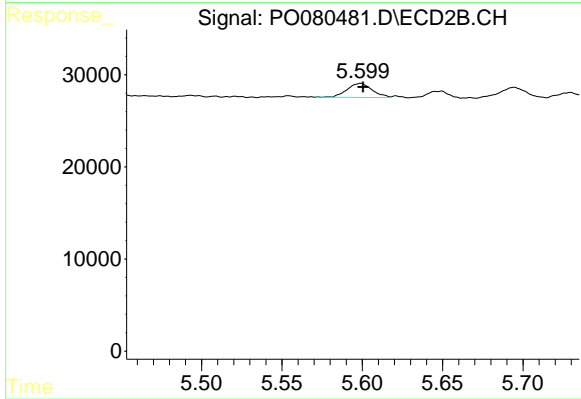
#17 AR-1242-2

R.T.: 5.403 min
 Delta R.T.: -0.002 min
 Response: 27741
 Conc: 25.54 ng/ml



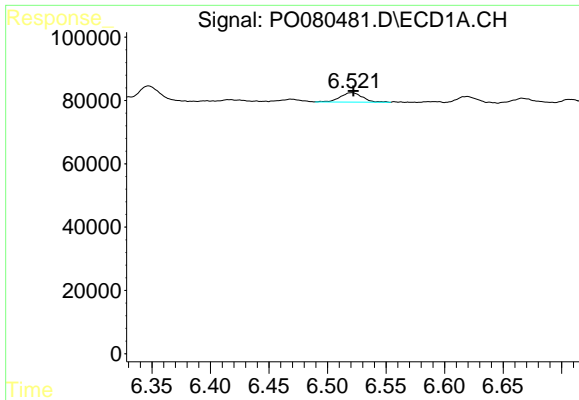
#18 AR-1242-3

R.T.: 0.000 min
 Exp R.T. : 6.414 min
 Response: 0
 Conc: N.D.



#18 AR-1242-3

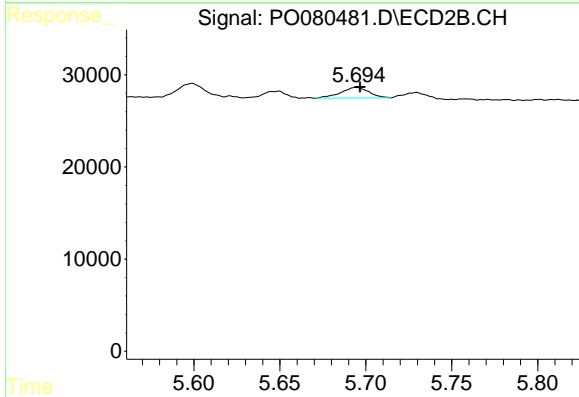
R.T.: 5.599 min
 Delta R.T.: -0.001 min
 Response: 16707
 Conc: 29.16 ng/ml



#19 AR-1242-4

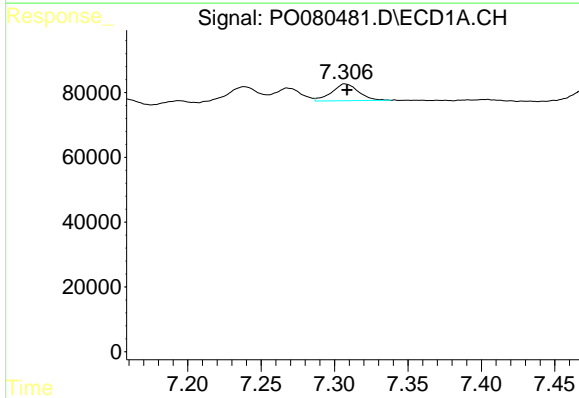
R.T.: 6.521 min
 Delta R.T.: -0.001 min
 Response: 39144
 Conc: 29.11 ng/ml

Instrument :
 ECD_O
ClientSampleId :
 TP3-1-6FT



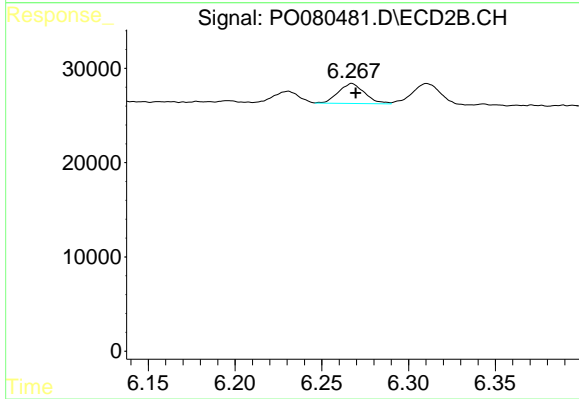
#19 AR-1242-4

R.T.: 5.695 min
 Delta R.T.: -0.002 min
 Response: 13086
 Conc: 23.56 ng/ml



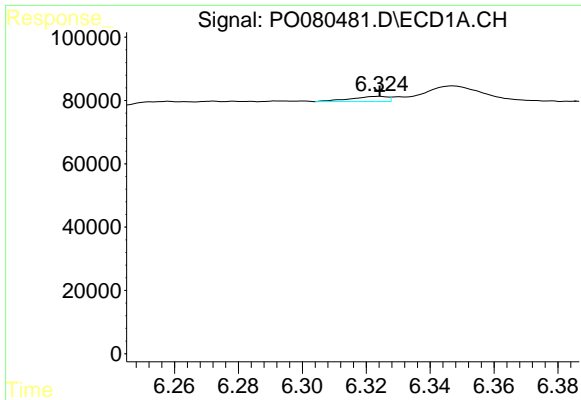
#20 AR-1242-5

R.T.: 7.307 min
 Delta R.T.: -0.002 min
 Response: 66226
 Conc: 45.22 ng/ml



#20 AR-1242-5

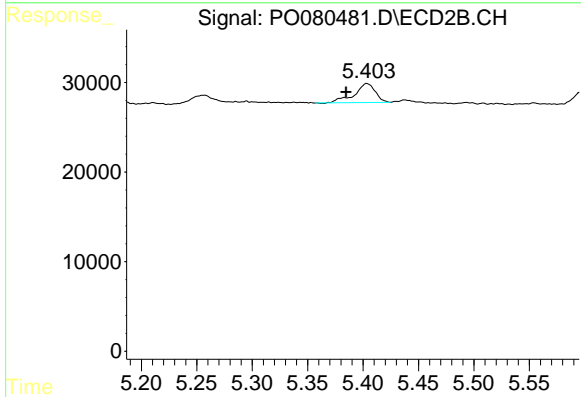
R.T.: 6.267 min
 Delta R.T.: -0.002 min
 Response: 22469
 Conc: 32.24 ng/ml



#21 AR-1248-1

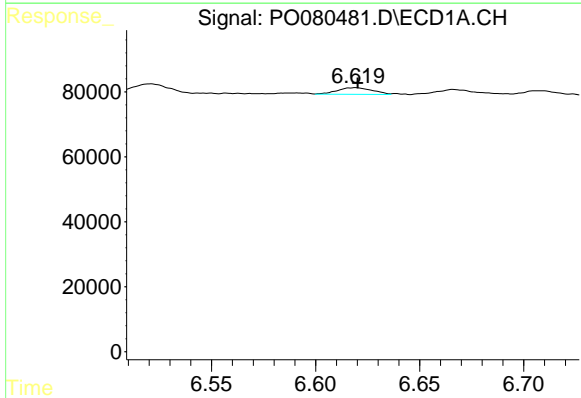
R.T.: 6.324 min
 Delta R.T.: 0.000 min
 Response: 12947
 Conc: 8.56 ng/ml

Instrument :
 ECD_O
 ClientSampled :
 TP3-1-6FT



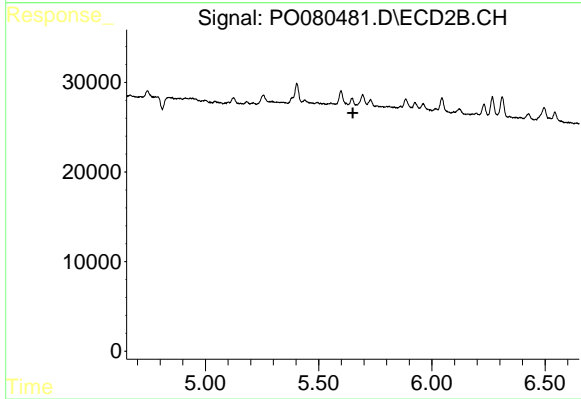
#21 AR-1248-1

R.T.: 5.403 min
 Delta R.T.: 0.019 min
 Response: 27741
 Conc: 44.12 ng/ml



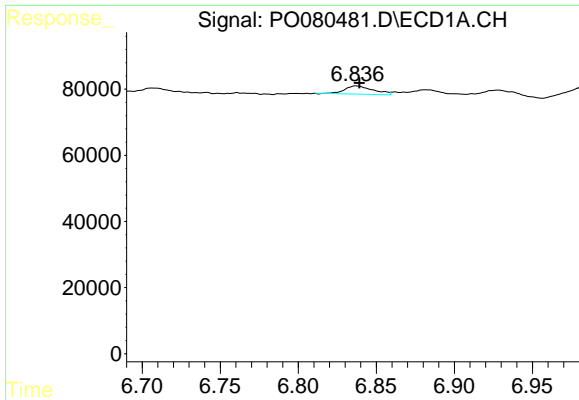
#22 AR-1248-2

R.T.: 6.620 min
 Delta R.T.: 0.000 min
 Response: 23777
 Conc: 11.72 ng/ml



#22 AR-1248-2

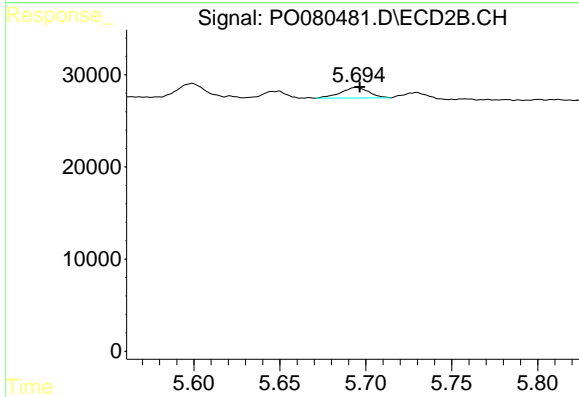
R.T.: 0.000 min
 Exp R.T. : 5.651 min
 Response: 0
 Conc: N.D.



#23 AR-1248-3

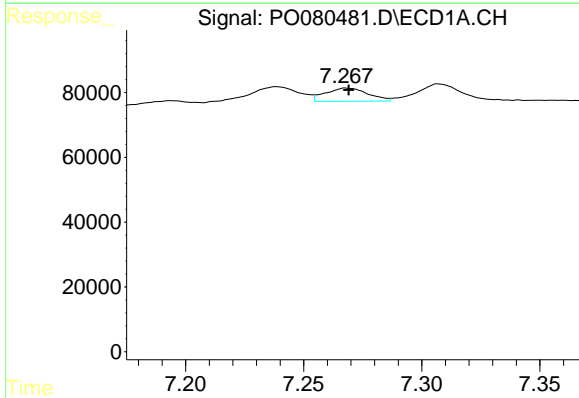
R.T.: 6.837 min
 Delta R.T.: -0.002 min
 Response: 31675
 Conc: 13.38 ng/ml

Instrument :
 ECD_O
 ClientSampleId :
 TP3-1-6FT



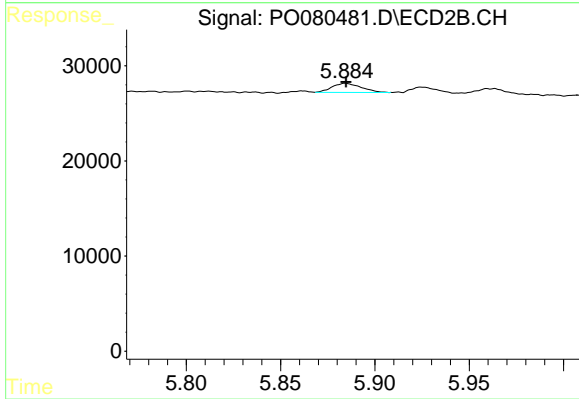
#23 AR-1248-3

R.T.: 5.695 min
 Delta R.T.: -0.002 min
 Response: 13086
 Conc: 14.65 ng/ml



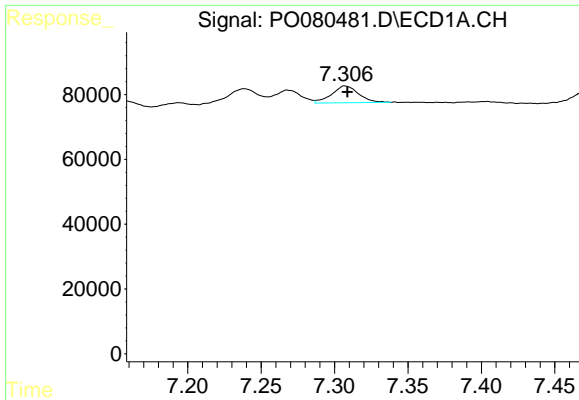
#24 AR-1248-4

R.T.: 7.268 min
 Delta R.T.: -0.002 min
 Response: 50737
 Conc: 18.66 ng/ml



#24 AR-1248-4

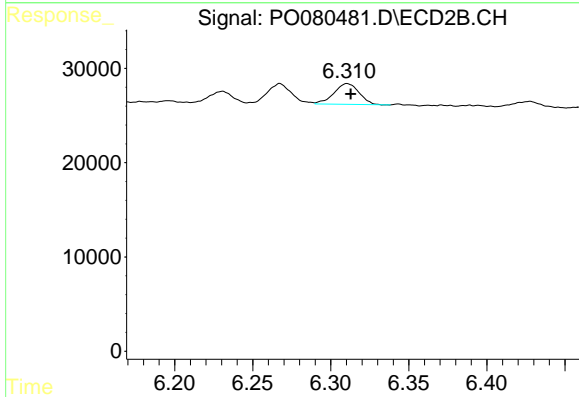
R.T.: 5.884 min
 Delta R.T.: 0.000 min
 Response: 10205
 Conc: 9.99 ng/ml



#25 AR-1248-5

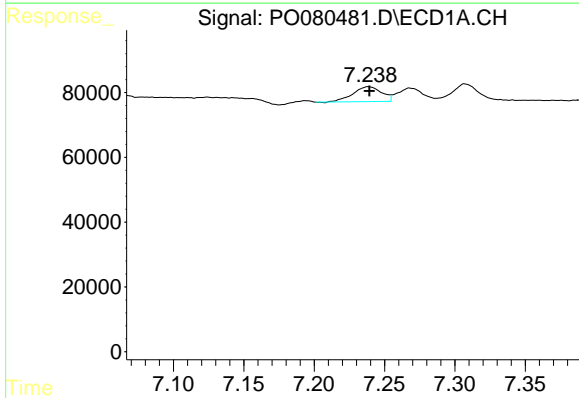
R.T.: 7.307 min
 Delta R.T.: -0.002 min
 Response: 66226
 Conc: 25.11 ng/ml

Instrument :
 ECD_O
ClientSampleId :
 TP3-1-6FT



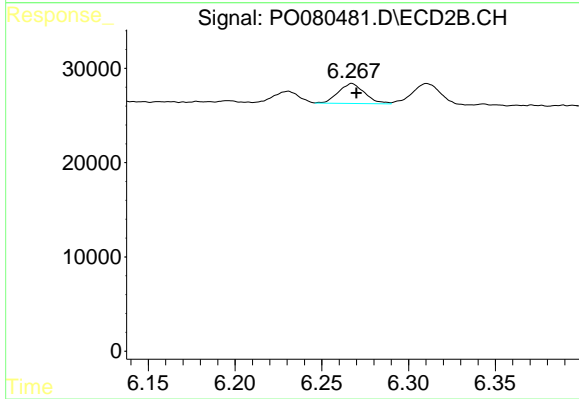
#25 AR-1248-5

R.T.: 6.310 min
 Delta R.T.: -0.002 min
 Response: 24911
 Conc: 24.03 ng/ml



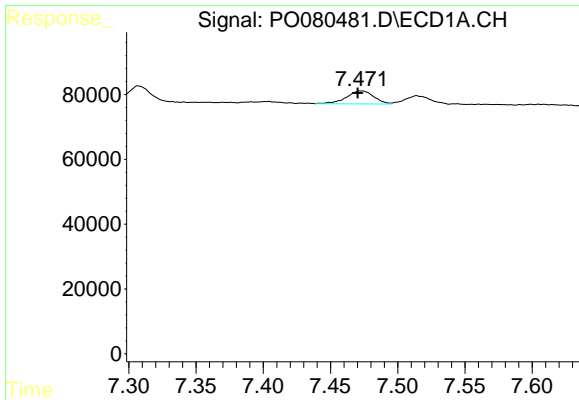
#26 AR-1254-1

R.T.: 7.239 min
 Delta R.T.: 0.000 min
 Response: 65052
 Conc: 25.09 ng/ml



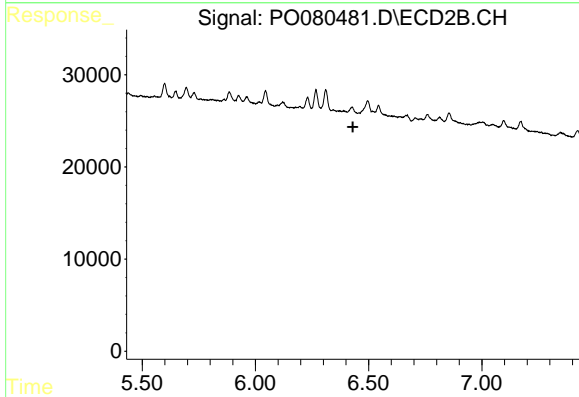
#26 AR-1254-1

R.T.: 6.267 min
 Delta R.T.: -0.003 min
 Response: 22469
 Conc: 15.32 ng/ml

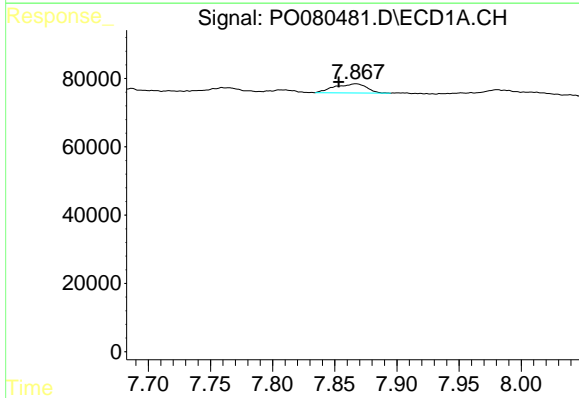


#27 AR-1254-2
 R.T.: 7.472 min
 Delta R.T.: 0.002 min
 Response: 55866
 Conc: 14.24 ng/ml

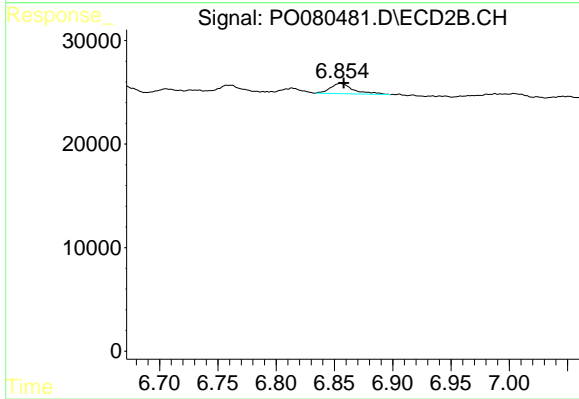
Instrument :
 ECD_O
 ClientSampleId :
 TP3-1-6FT



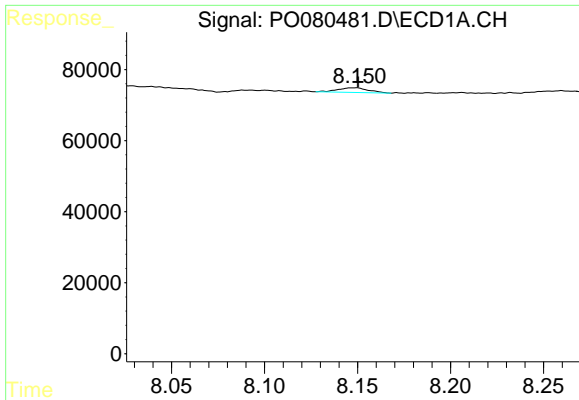
#27 AR-1254-2
 R.T.: 0.000 min
 Exp R.T. : 6.430 min
 Response: 0
 Conc: N.D.



#28 AR-1254-3
 R.T.: 7.867 min
 Delta R.T.: 0.014 min
 Response: 47917
 Conc: 11.74 ng/ml



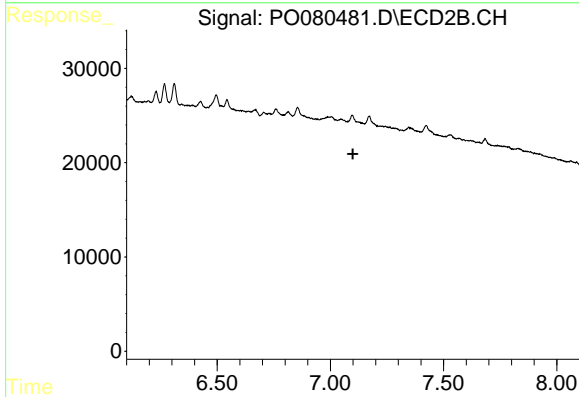
#28 AR-1254-3
 R.T.: 6.855 min
 Delta R.T.: -0.003 min
 Response: 13924
 Conc: 6.91 ng/ml



#29 AR-1254-4

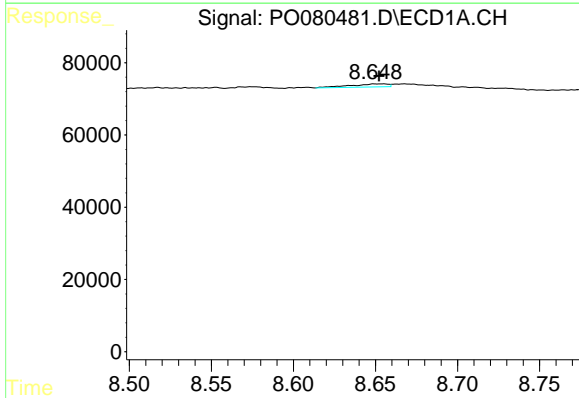
R.T.: 8.150 min
 Delta R.T.: 0.000 min
 Response: 15036
 Conc: 5.04 ng/ml

Instrument :
 ECD_O
 ClientSampleId :
 TP3-1-6FT



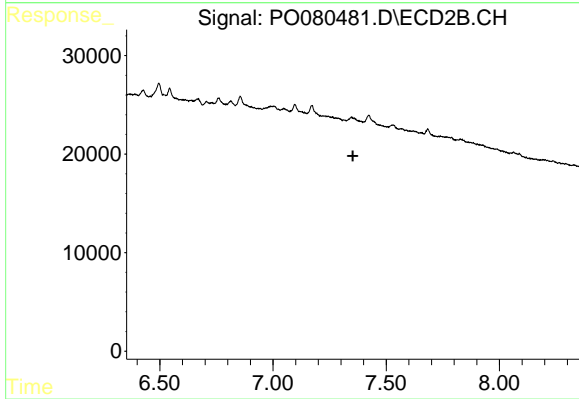
#29 AR-1254-4

R.T.: 0.000 min
 Exp R.T. : 7.100 min
 Response: 0
 Conc: N.D.



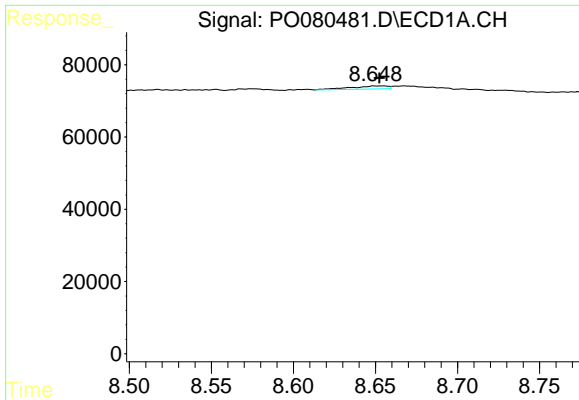
#33 AR-1260-3

R.T.: 8.649 min
 Delta R.T.: -0.003 min
 Response: 13413
 Conc: 5.36 ng/ml



#33 AR-1260-3

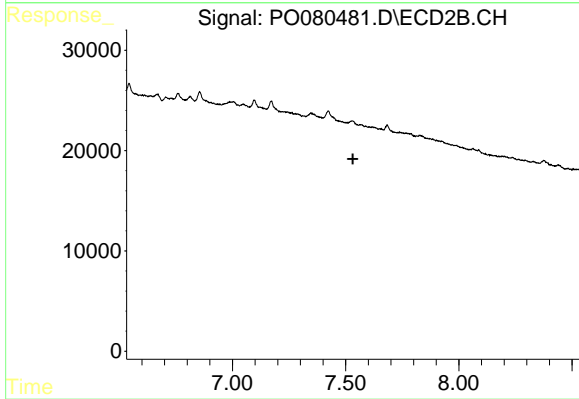
R.T.: 0.000 min
 Exp R.T. : 7.353 min
 Response: 0
 Conc: N.D.



#36 AR-1262-1

R.T.: 8.649 min
Delta R.T.: -0.003 min
Response: 13413
Conc: 3.51 ng/ml

Instrument :
ECD_O
ClientSampleId :
TP3-1-6FT



#36 AR-1262-1

R.T.: 0.000 min
Exp R.T. : 7.532 min
Response: 0
Conc: N.D.