

Data Path : Z:\pestpcbsrv\HPCHEM1\ECD\_0\Data\P0081622\  
 Data File : P0089030.D  
 Signal(s) : Signal #1: ECD1A.ch Signal #2: ECD2B.ch  
 Acq On : 16 Aug 2022 16:30  
 Operator : YP/AJ  
 Sample : AR1242CCC500  
 Misc :  
 ALS Vial : 4 Sample Multiplier: 1

Instrument :  
 ECD\_0  
 ClientSampleId :  
 AR1242CCC500

Integration File signal 1: autoint1.e  
 Integration File signal 2: autoint2.e  
 Quant Time: Aug 17 00:05:39 2022  
 Quant Method : Z:\pestpcbsrv\HPCHEM1\ECD\_0\methods\P0080422.M  
 Quant Title : GC EXTRACTABLES  
 QLast Update : Fri Aug 05 23:24:09 2022  
 Response via : Initial Calibration  
 Integrator: ChemStation

Volume Inj. : 2 µl  
 Signal #1 Phase : ZB-MR1 Signal #2 Phase: ZB-MR2  
 Signal #1 Info : 30Mx0.32mmx 0.50µ Signal #2 Info : 30M x 0.32mm x 0.25µm

Compound	RT#1	RT#2	Resp#1	Resp#2	ng/ml	ng/ml
-----						
System Monitoring Compounds						
1) SA Tetrachlo...	4.433	3.592	134.3E6	47201657	49.795	43.612
2) SA Decachlor...	10.273	8.581	96666337	49728632	50.094	41.033
Target Compounds						
16) L4 AR-1242-1	5.610	4.669	34184190	14870891	508.617	485.022
17) L4 AR-1242-2	5.633	4.687	48218600	20812287	499.640	483.042
18) L4 AR-1242-3	5.695	4.862	30757682	11685156	509.599	486.723
19) L4 AR-1242-4	5.795	4.946	24915536	12206862	516.878	484.150
20) L4 AR-1242-5	6.536	5.468	26925715	14976234	518.823	470.374
-----						

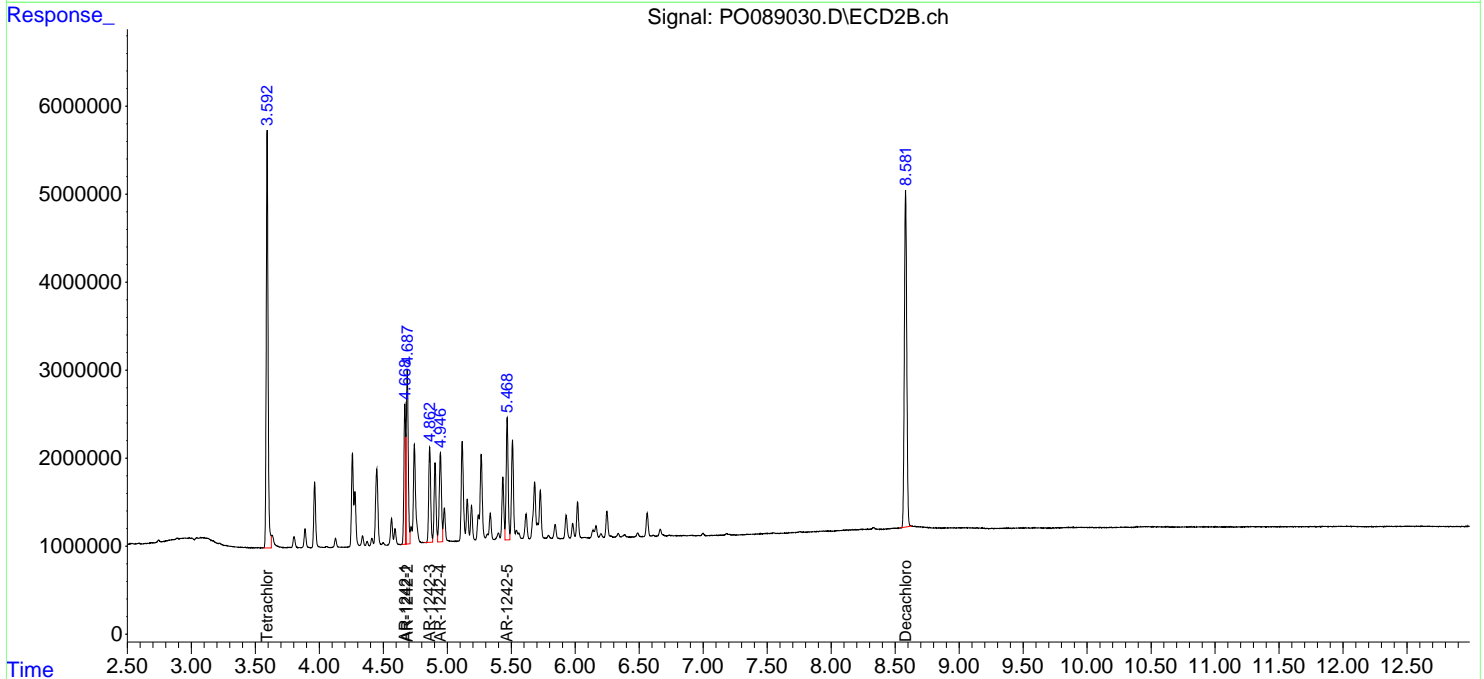
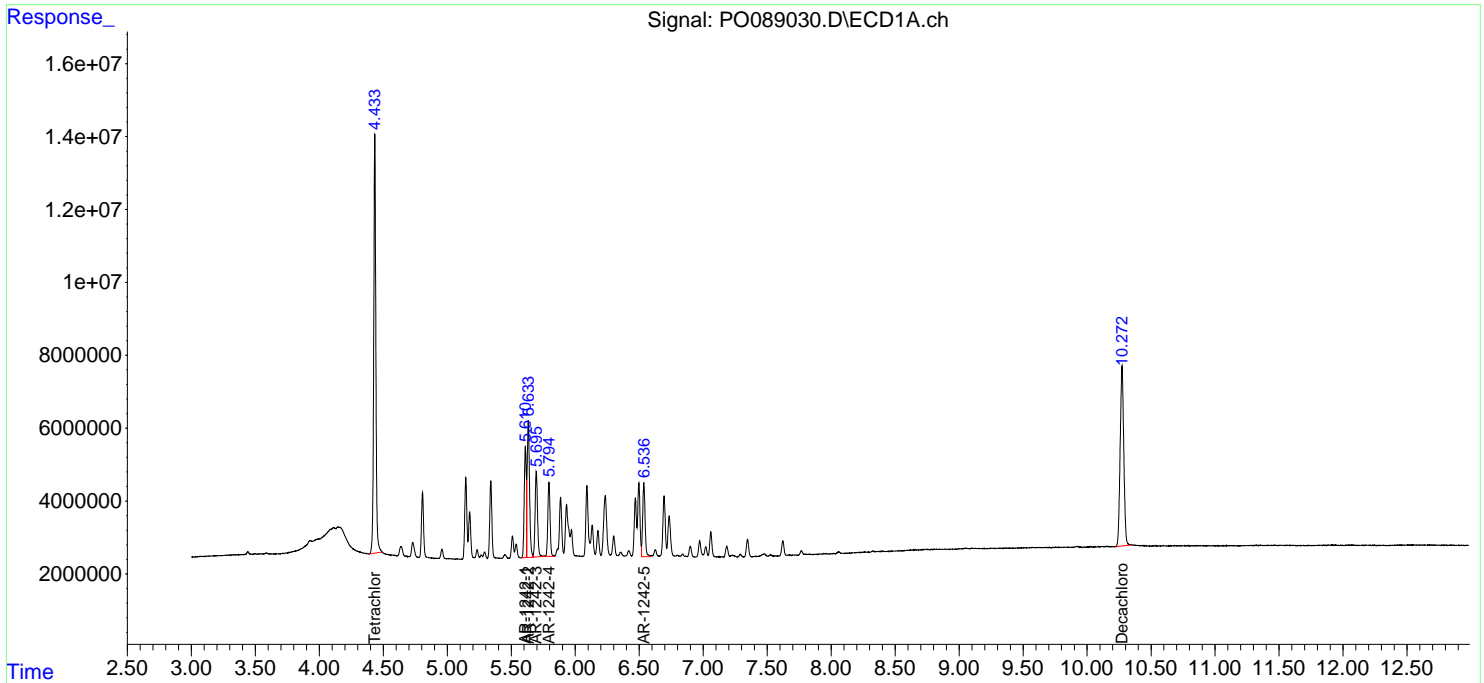
(f)=RT Delta > 1/2 Window (#)=Amounts differ by > 25% (m)=manual int.

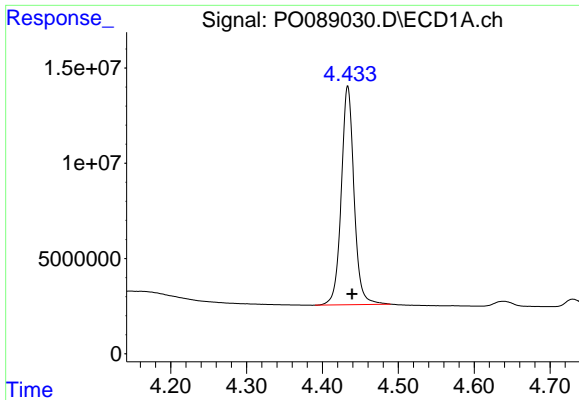
Data Path : Z:\pestpcbsrv\HPCHEM1\ECD\_O\Data\PO081622\  
 Data File : PO089030.D  
 Signal(s) : Signal #1: ECD1A.ch Signal #2: ECD2B.ch  
 Acq On : 16 Aug 2022 16:30  
 Operator : YP/AJ  
 Sample : AR1242CCC500  
 Misc :  
 ALS Vial : 4 Sample Multiplier: 1

Instrument :  
 ECD\_O  
 ClientSampleId :  
 AR1242CCC500

Integration File signal 1: autoint1.e  
 Integration File signal 2: autoint2.e  
 Quant Time: Aug 17 00:05:39 2022  
 Quant Method : Z:\pestpcbsrv\HPCHEM1\ECD\_O\methods\PO080422.M  
 Quant Title : GC EXTRACTABLES  
 QLast Update : Fri Aug 05 23:24:09 2022  
 Response via : Initial Calibration  
 Integrator: ChemStation

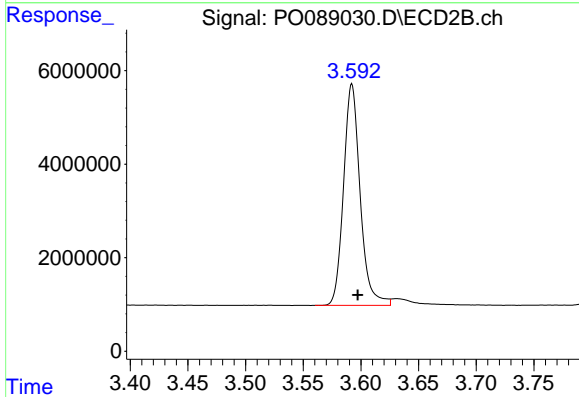
Volume Inj. : 2 µl  
 Signal #1 Phase : ZB-MR1 Signal #2 Phase: ZB-MR2  
 Signal #1 Info : 30Mx0.32mmx 0.50µ Signal #2 Info : 30M x 0.32mm x 0.25µm



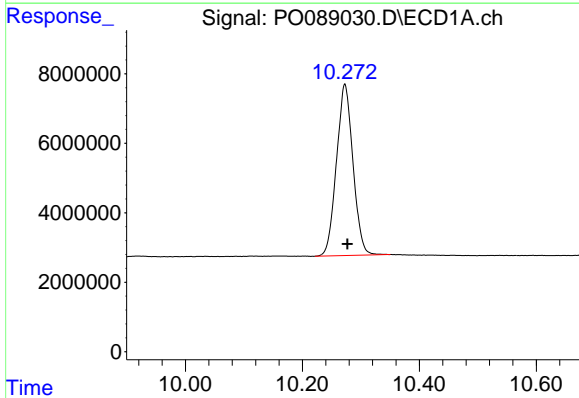


#1 Tetrachloro-m-xylene  
 R.T.: 4.433 min  
 Delta R.T.: -0.006 min  
 Response: 134314909  
 Conc: 49.80 ng/ml

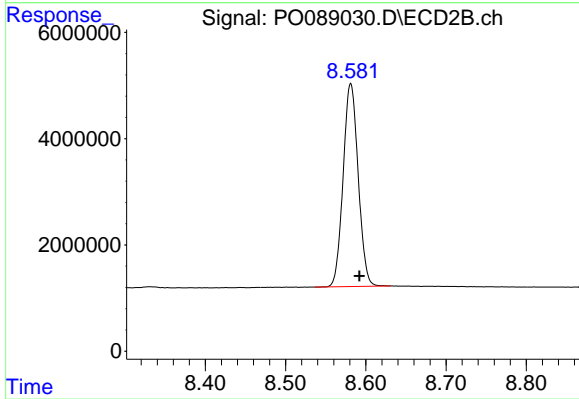
Instrument :  
 ECD\_O  
 ClientSampleId :  
 AR1242CCC500



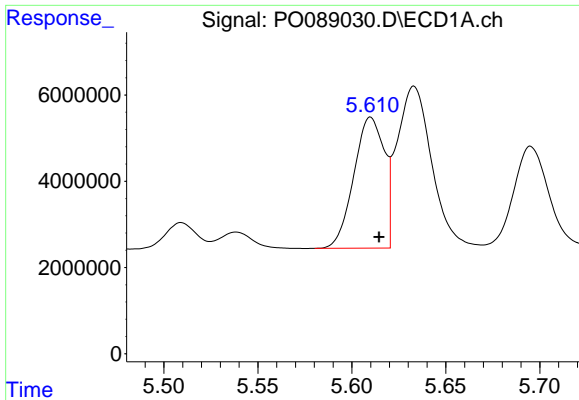
#1 Tetrachloro-m-xylene  
 R.T.: 3.592 min  
 Delta R.T.: -0.005 min  
 Response: 47201657  
 Conc: 43.61 ng/ml



#2 Decachlorobiphenyl  
 R.T.: 10.273 min  
 Delta R.T.: -0.004 min  
 Response: 96666337  
 Conc: 50.09 ng/ml



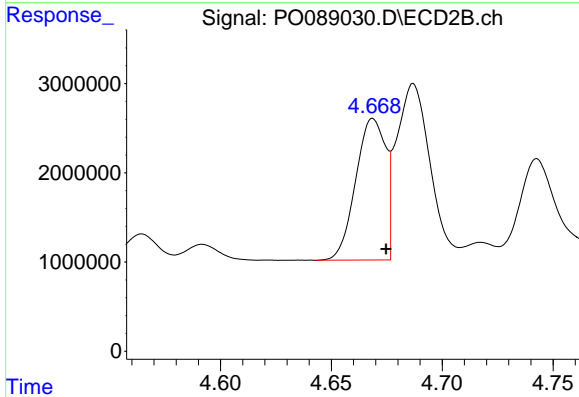
#2 Decachlorobiphenyl  
 R.T.: 8.581 min  
 Delta R.T.: -0.011 min  
 Response: 49728632  
 Conc: 41.03 ng/ml



#16 AR-1242-1

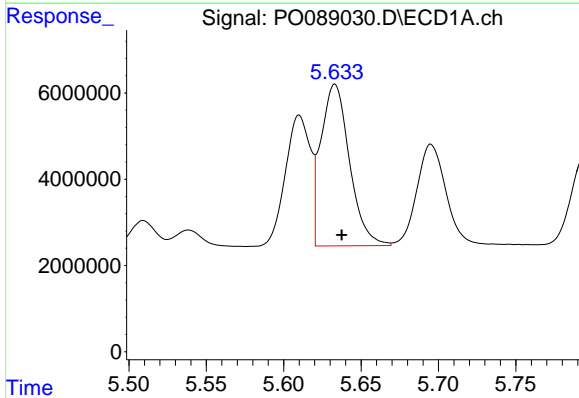
R.T.: 5.610 min  
 Delta R.T.: -0.005 min  
 Response: 34184190  
 Conc: 508.62 ng/ml

Instrument :  
 ECD\_O  
 ClientSampleId :  
 AR1242CCC500



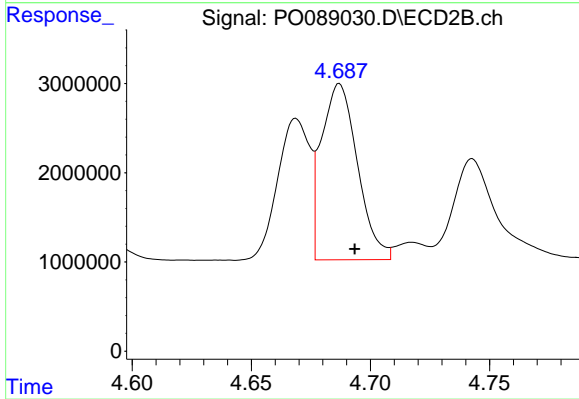
#16 AR-1242-1

R.T.: 4.669 min  
 Delta R.T.: -0.006 min  
 Response: 14870891  
 Conc: 485.02 ng/ml



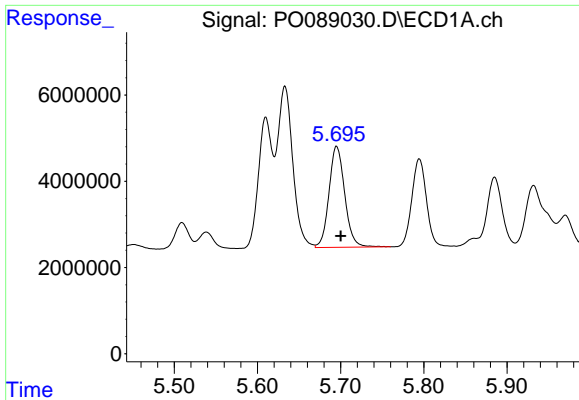
#17 AR-1242-2

R.T.: 5.633 min  
 Delta R.T.: -0.004 min  
 Response: 48218600  
 Conc: 499.64 ng/ml



#17 AR-1242-2

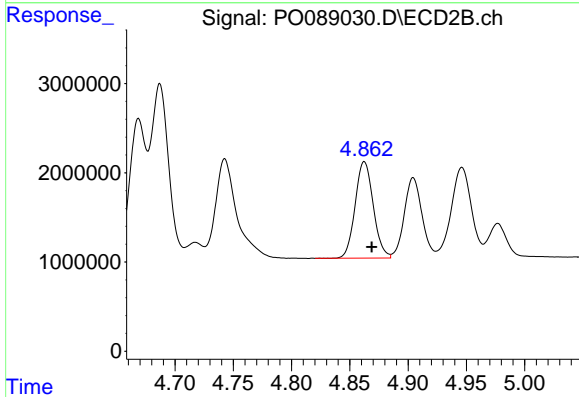
R.T.: 4.687 min  
 Delta R.T.: -0.006 min  
 Response: 20812287  
 Conc: 483.04 ng/ml



#18 AR-1242-3

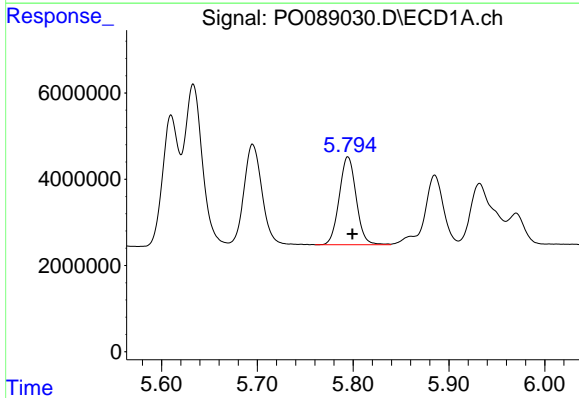
R.T.: 5.695 min  
 Delta R.T.: -0.005 min  
 Response: 30757682  
 Conc: 509.60 ng/ml

Instrument :  
 ECD\_O  
 ClientSampleId :  
 AR1242CCC500



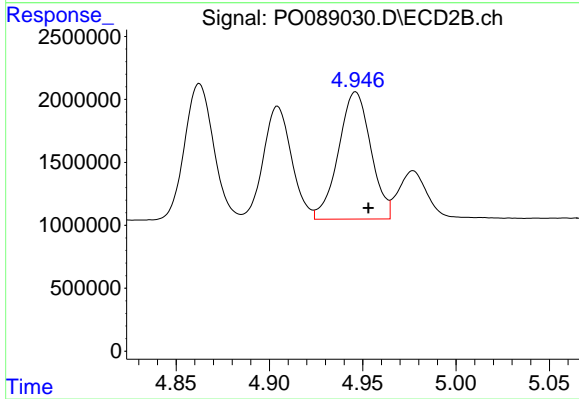
#18 AR-1242-3

R.T.: 4.862 min  
 Delta R.T.: -0.006 min  
 Response: 11685156  
 Conc: 486.72 ng/ml



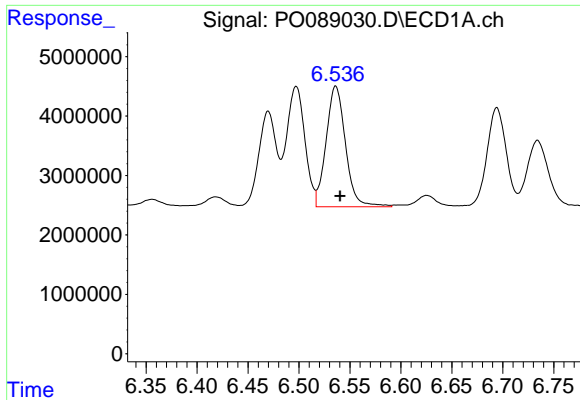
#19 AR-1242-4

R.T.: 5.795 min  
 Delta R.T.: -0.005 min  
 Response: 24915536  
 Conc: 516.88 ng/ml



#19 AR-1242-4

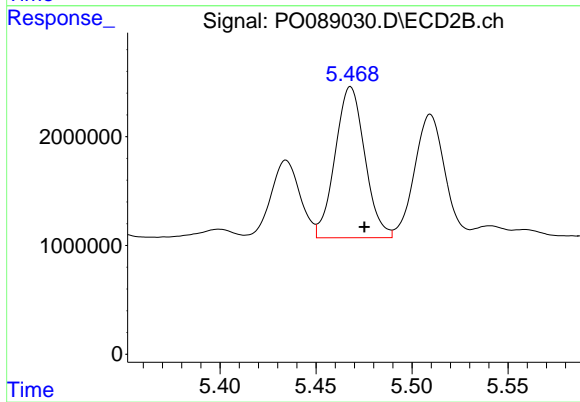
R.T.: 4.946 min  
 Delta R.T.: -0.007 min  
 Response: 12206862  
 Conc: 484.15 ng/ml



#20 AR-1242-5

R.T.: 6.536 min  
Delta R.T.: -0.004 min  
Response: 26925715  
Conc: 518.82 ng/ml

Instrument :  
ECD\_O  
ClientSampleId :  
AR1242CCC500



#20 AR-1242-5

R.T.: 5.468 min  
Delta R.T.: -0.007 min  
Response: 14976234  
Conc: 470.37 ng/ml