

Data Path : Z:\pestpcbsrv\HPCHEM1\ECD\_O\Data\P0081622\  
 Data File : P0089046.D  
 Signal(s) : Signal #1: ECD1A.ch Signal #2: ECD2B.ch  
 Acq On : 16 Aug 2022 21:52  
 Operator : YP/AJ  
 Sample : AR1254CCC500  
 Misc :  
 ALS Vial : 6 Sample Multiplier: 1

**Instrument :**  
 ECD\_O  
**ClientSampleId :**  
 AR1254CCC500

Integration File signal 1: autoint1.e  
 Integration File signal 2: autoint2.e  
 Quant Time: Aug 17 00:14:52 2022  
 Quant Method : Z:\pestpcbsrv\HPCHEM1\ECD\_O\methods\P0080422.M  
 Quant Title : GC EXTRACTABLES  
 QLast Update : Fri Aug 05 23:24:09 2022  
 Response via : Initial Calibration  
 Integrator: ChemStation

Volume Inj. : 2 µl  
 Signal #1 Phase : ZB-MR1 Signal #2 Phase: ZB-MR2  
 Signal #1 Info : 30Mx0.32mmx 0.50µ Signal #2 Info : 30M x 0.32mm x 0.25µm

Compound	RT#1	RT#2	Resp#1	Resp#2	ng/ml	ng/ml
-----						
System Monitoring Compounds						
1) SA Tetrachlo...	4.432	3.590	144.6E6	52316868	53.611	48.339
2) SA Decachlor...	10.265	8.578	109.3E6	55503836	56.648	45.799
Target Compounds						
26) L6 AR-1254-1	6.468	5.465	48895378	34364765	535.270	498.948
27) L6 AR-1254-2	6.688	5.613	72557641	29476750	530.573	497.748
28) L6 AR-1254-3	7.056	6.016	73435989	46925907	521.836	504.643
29) L6 AR-1254-4	7.343	6.245	53266368	28784108	527.155	508.098
30) L6 AR-1254-5	7.764	6.661	57698760	42120955	541.827	516.017
-----						

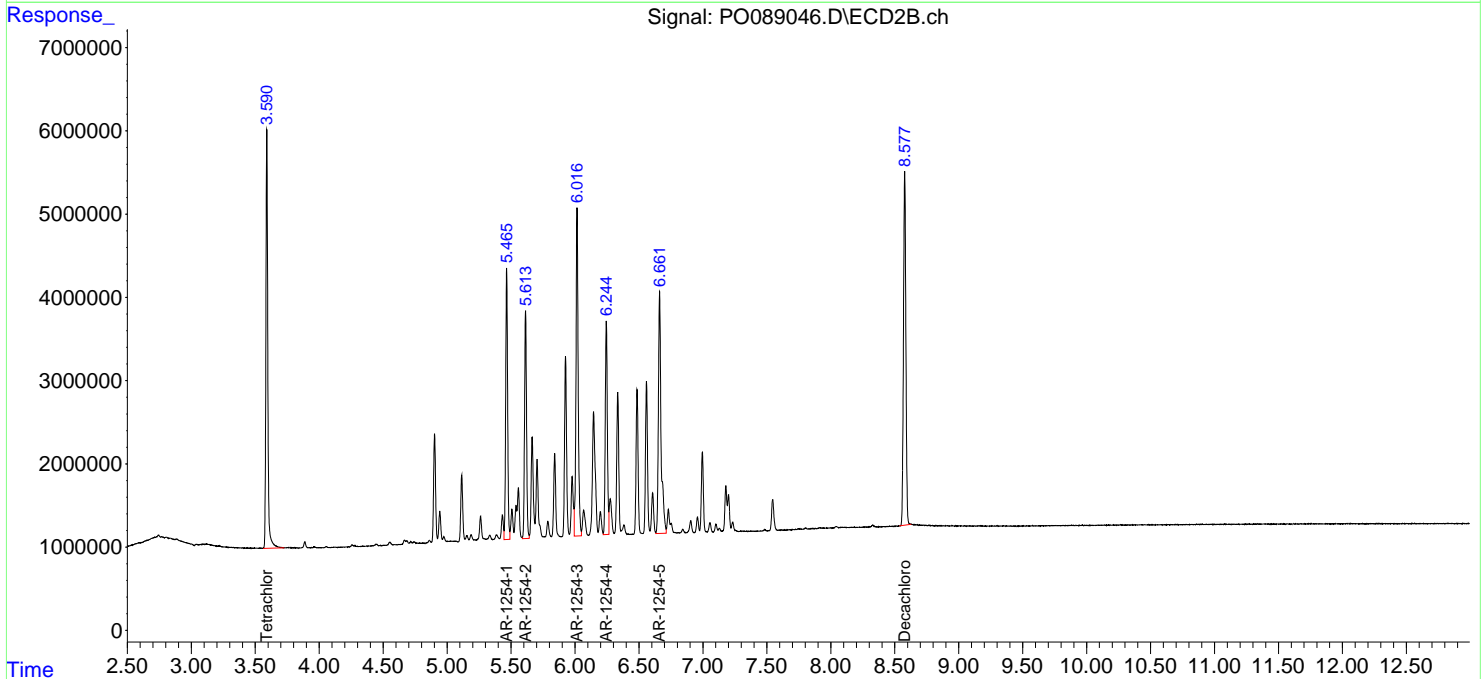
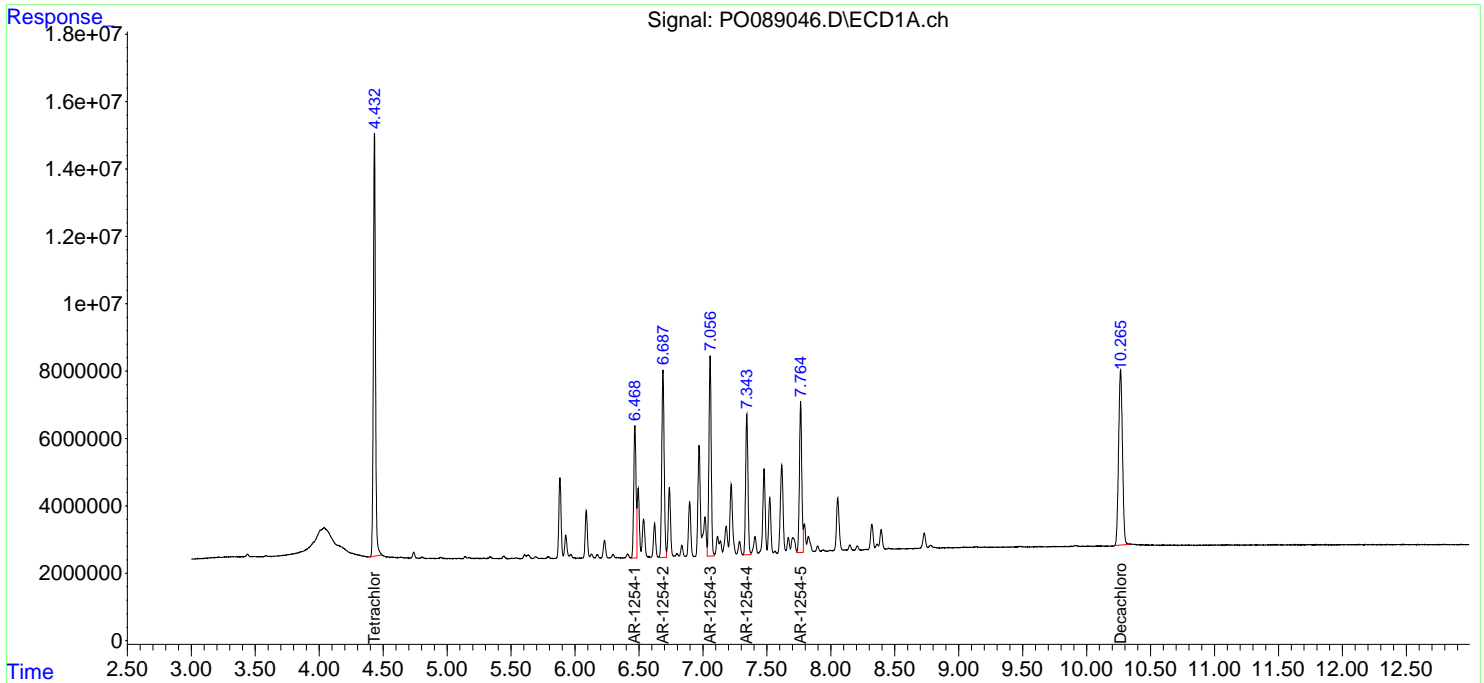
(f)=RT Delta > 1/2 Window (#)=Amounts differ by > 25% (m)=manual int.

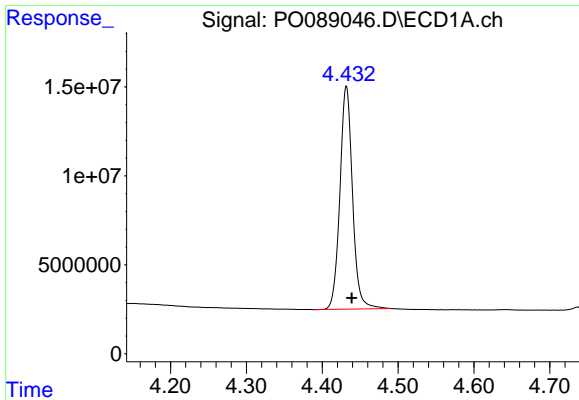
Data Path : Z:\pestpcbsrv\HPCHEM1\ECD\_O\Data\PO081622\  
 Data File : PO089046.D  
 Signal(s) : Signal #1: ECD1A.ch Signal #2: ECD2B.ch  
 Acq On : 16 Aug 2022 21:52  
 Operator : YP/AJ  
 Sample : AR1254CCC500  
 Misc :  
 ALS Vial : 6 Sample Multiplier: 1

Instrument :  
 ECD\_O  
 ClientSampleId :  
 AR1254CCC500

Integration File signal 1: autoint1.e  
 Integration File signal 2: autoint2.e  
 Quant Time: Aug 17 00:14:52 2022  
 Quant Method : Z:\pestpcbsrv\HPCHEM1\ECD\_O\methods\PO080422.M  
 Quant Title : GC EXTRACTABLES  
 QLast Update : Fri Aug 05 23:24:09 2022  
 Response via : Initial Calibration  
 Integrator: ChemStation

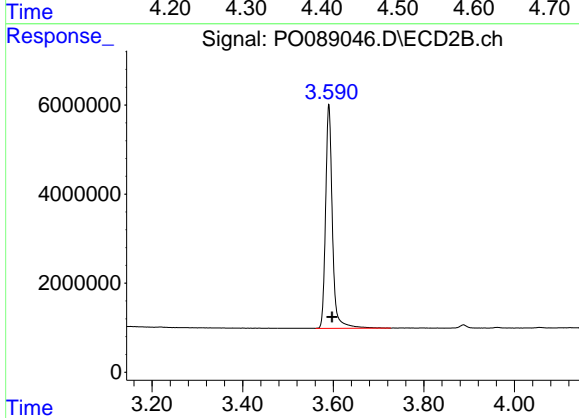
Volume Inj. : 2 µl  
 Signal #1 Phase : ZB-MR1 Signal #2 Phase: ZB-MR2  
 Signal #1 Info : 30Mx0.32mmx 0.50µm Signal #2 Info : 30M x 0.32mm x 0.25µm



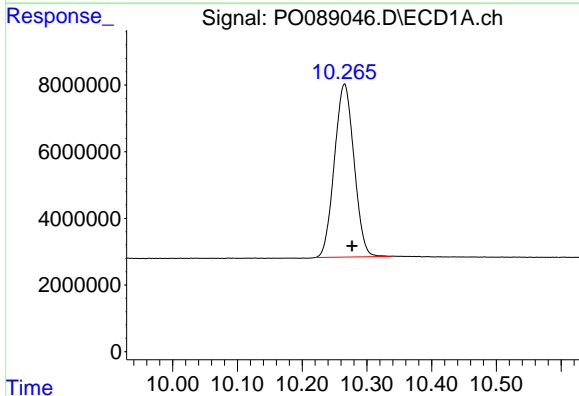


#1 Tetrachloro-m-xylene  
 R.T.: 4.432 min  
 Delta R.T.: -0.007 min  
 Response: 144607521  
 Conc: 53.61 ng/ml

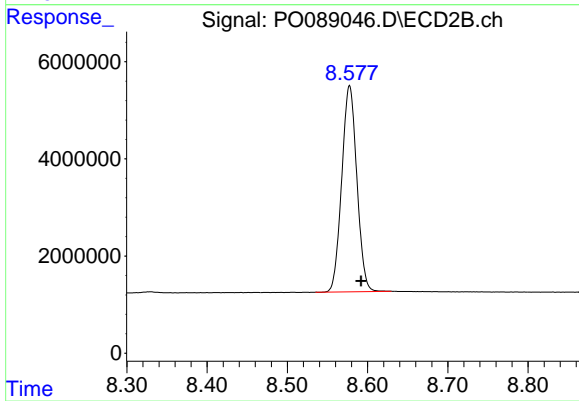
Instrument :  
 ECD\_O  
 ClientSampleId :  
 AR1254CCC500



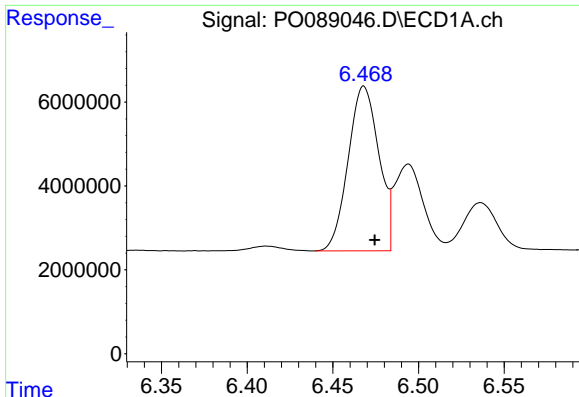
#1 Tetrachloro-m-xylene  
 R.T.: 3.590 min  
 Delta R.T.: -0.007 min  
 Response: 52316868  
 Conc: 48.34 ng/ml



#2 Decachlorobiphenyl  
 R.T.: 10.265 min  
 Delta R.T.: -0.011 min  
 Response: 109312036  
 Conc: 56.65 ng/ml



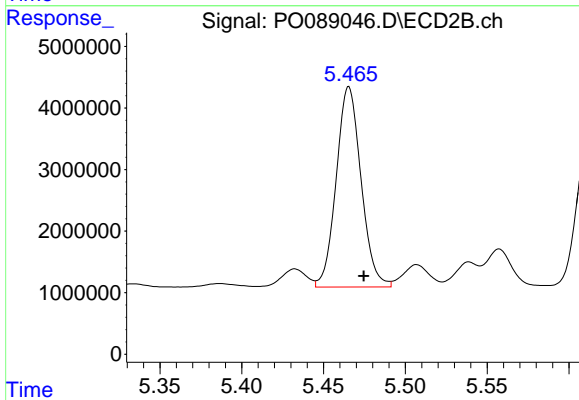
#2 Decachlorobiphenyl  
 R.T.: 8.578 min  
 Delta R.T.: -0.014 min  
 Response: 55503836  
 Conc: 45.80 ng/ml



#26 AR-1254-1

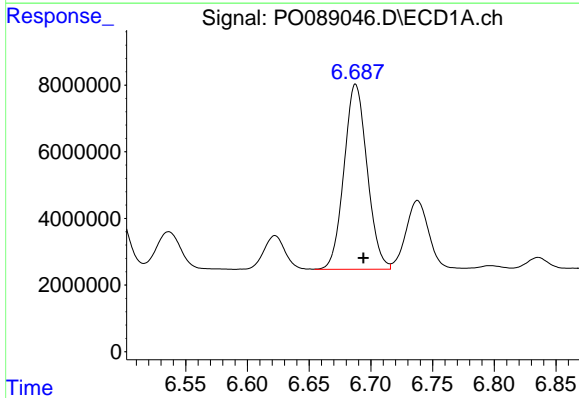
R.T.: 6.468 min  
 Delta R.T.: -0.006 min  
 Response: 48895378  
 Conc: 535.27 ng/ml

Instrument :  
 ECD\_O  
 ClientSampleId :  
 AR1254CCC500



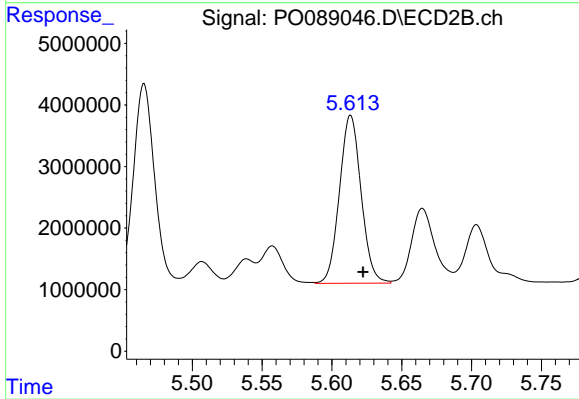
#26 AR-1254-1

R.T.: 5.465 min  
 Delta R.T.: -0.009 min  
 Response: 34364765  
 Conc: 498.95 ng/ml



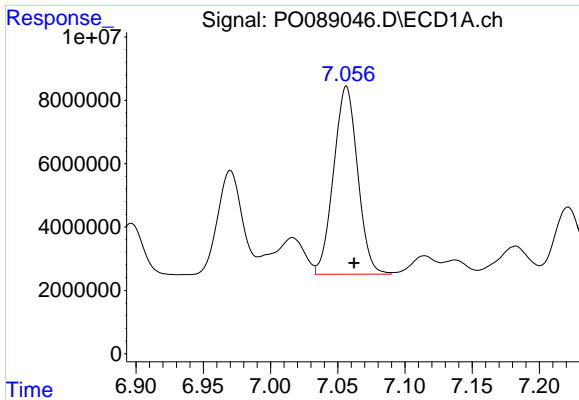
#27 AR-1254-2

R.T.: 6.688 min  
 Delta R.T.: -0.006 min  
 Response: 72557641  
 Conc: 530.57 ng/ml



#27 AR-1254-2

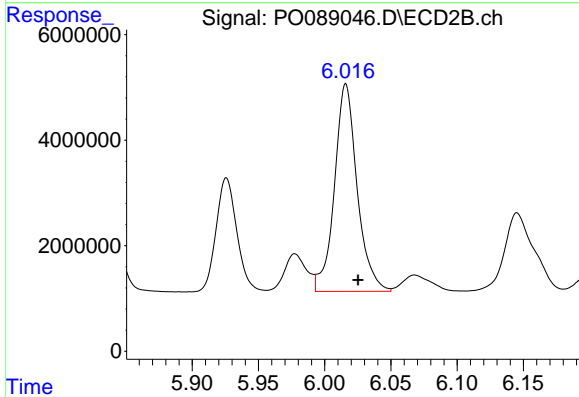
R.T.: 5.613 min  
 Delta R.T.: -0.009 min  
 Response: 29476750  
 Conc: 497.75 ng/ml



#28 AR-1254-3

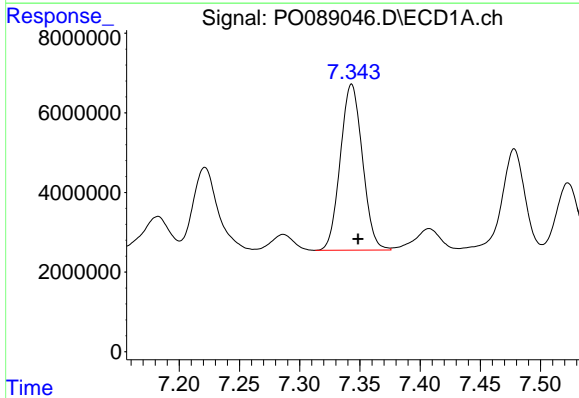
R.T.: 7.056 min  
 Delta R.T.: -0.006 min  
 Response: 73435989  
 Conc: 521.84 ng/ml

Instrument :  
 ECD\_O  
 ClientSampleId :  
 AR1254CCC500



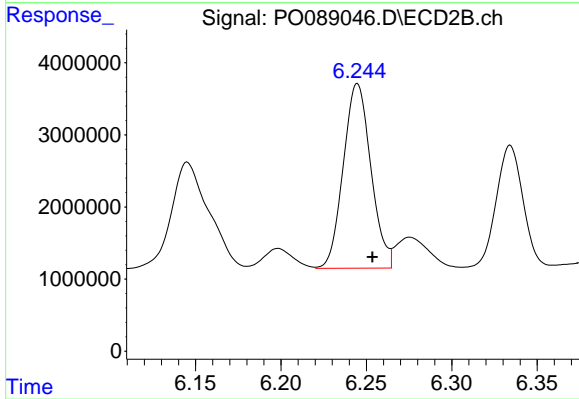
#28 AR-1254-3

R.T.: 6.016 min  
 Delta R.T.: -0.009 min  
 Response: 46925907  
 Conc: 504.64 ng/ml



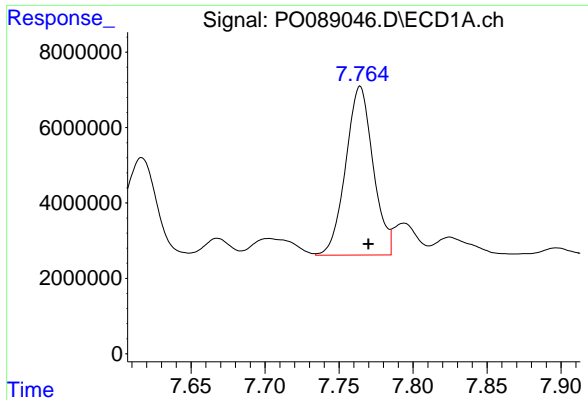
#29 AR-1254-4

R.T.: 7.343 min  
 Delta R.T.: -0.005 min  
 Response: 53266368  
 Conc: 527.15 ng/ml



#29 AR-1254-4

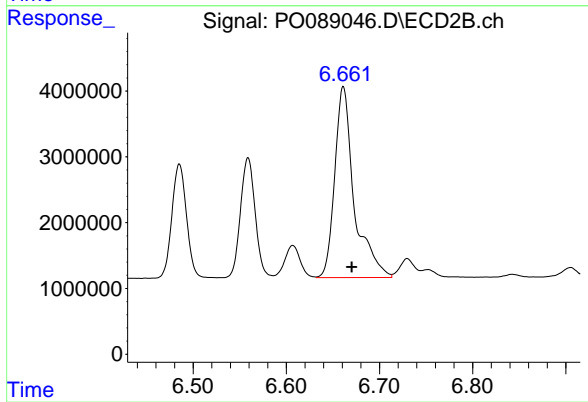
R.T.: 6.245 min  
 Delta R.T.: -0.009 min  
 Response: 28784108  
 Conc: 508.10 ng/ml



#30 AR-1254-5

R.T.: 7.764 min  
Delta R.T.: -0.005 min  
Response: 57698760  
Conc: 541.83 ng/ml

Instrument :  
ECD\_O  
ClientSampleId :  
AR1254CCC500



#30 AR-1254-5

R.T.: 6.661 min  
Delta R.T.: -0.009 min  
Response: 42120955  
Conc: 516.02 ng/ml