

Data Path : Z:\pestpcbsrv\HPCHEM1\ECD_0\Data\P0081624\
 Data File : P0105615.D
 Signal(s) : Signal #1: ECD1A.ch Signal #2: ECD2B.ch
 Acq On : 16 Aug 2024 20:00
 Operator : YP/AJ
 Sample : P3631-01
 Misc :
 ALS Vial : 20 Sample Multiplier: 1

Instrument :
 ECD_0
 ClientSampleId :
 358

Integration File signal 1: autoint1.e
 Integration File signal 2: autoint2.e
 Quant Time: Aug 17 05:51:50 2024
 Quant Method : Z:\pestpcbsrv\HPCHEM1\ECD_0\methods\P0081524.M
 Quant Title : GC EXTRACTABLES
 QLast Update : Thu Aug 15 11:44:23 2024
 Response via : Initial Calibration
 Integrator: ChemStation

Volume Inj. : 2 µl
 Signal #1 Phase : ZB-MR1 Signal #2 Phase: ZB-MR2
 Signal #1 Info : 30Mx0.32mmx 0.50µ Signal #2 Info : 30M x 0.32mm x 0.25µm

Compound	RT#1	RT#2	Resp#1	Resp#2	ng/ml	ng/ml

System Monitoring Compounds						
1) SA Tetrachlo...	4.456	3.729	80144849	26180098	8.572	10.264
2) SA Decachlor...	10.199	8.771	89936483	29874580	15.494	15.138
Target Compounds						
3) L1 AR-1016-1	5.620	4.828	80176	1194701	0.258	13.699 #
4) L1 AR-1016-2	5.648	4.828	571070	1194701	1.316	10.178 #
5) L1 AR-1016-3	5.685	5.021	4040054	246550	15.196	3.988 #
6) L1 AR-1016-4	5.780	5.060	550608	1769784	2.501	37.331 #
7) L1 AR-1016-5	6.095	5.273	1736483	405015	8.316	6.378
8) L2 AR-1221-1	4.663	3.948	388112	105016	3.428	3.587
9) L2 AR-1221-2	4.761	4.032	1706287	351365	19.246	16.151
10) L2 AR-1221-3	4.841	4.105	1452939	485352	5.688	7.056
11) L3 AR-1232-1	4.841	4.105	1452939	485352	6.968	8.770 #
12) L3 AR-1232-2	5.345	4.828	1876764	1194701	17.455	22.983 #
13) L3 AR-1232-3	5.648	5.021	571070	246550	2.900	8.984 #
14) L3 AR-1232-4	5.780	5.103	550608	810406	5.663	32.542 #
15) L3 AR-1232-5	5.892	5.273	4860662	405015	66.815	14.323 #
16) L4 AR-1242-1	5.620	4.828	80176	1194701	0.322	17.216 #
17) L4 AR-1242-2	5.648	4.828	571070	1194701	1.674	13.012 #
18) L4 AR-1242-3	5.685	5.021	4040054	246550	19.263	5.040 #
19) L4 AR-1242-4	5.780	5.103	550608	810406	3.146	16.425 #
20) L4 AR-1242-5	6.538	5.628	2592417	4364449	14.389	69.692 #
21) L5 AR-1248-1	5.620	4.828	80176	1194701	0.416	22.519 #
22) L5 AR-1248-2	5.892	5.060	4860662	1769784	18.465	25.376 #
23) L5 AR-1248-3	6.095	5.103	1736483	810406	5.919	10.908 #
24) L5 AR-1248-4	6.509	5.273	9175956	405015	28.285	4.553 #
25) L5 AR-1248-5	6.538	5.668	2592417	548659	8.305	6.260
26) L6 AR-1254-1	6.472	5.628	13722711	4364449	43.361	34.677
27) L6 AR-1254-2	6.693	5.775	17893243	2933016	37.986	26.322 #
28) L6 AR-1254-3	7.056	6.181	15922239	5958409	33.227	33.205
29) L6 AR-1254-4	7.341	6.407	15252318	2689283	43.319	24.217 #
30) L6 AR-1254-5	7.758	6.826	41981941	7185714	110.100	44.684 #
31) L7 AR-1260-1	7.221	6.311	9326872	2352012	25.247	19.855
32) L7 AR-1260-2	7.476	6.497	27526378	3158671	63.722	21.529 #
33) L7 AR-1260-3	7.816	6.653	18174003	5029683	67.102	32.743 #
34) L7 AR-1260-4	8.049	7.124	29460149	1082737	92.529	11.032 #
35) L7 AR-1260-5	8.379	7.364	9824722	1418704	15.772	5.864 #
36) L8 AR-1262-1	7.758	6.826	41981941	7185714	145.244	88.104 #
37) L8 AR-1262-2	8.379	7.124	9824722	1082737	12.790	7.693 #
38) L8 AR-1262-3	8.701	7.693f	32486203	12943579	64.545	120.214 #
39) L8 AR-1262-4	8.768	7.693	4398911	12943579	11.853	62.174 #
40) L8 AR-1262-5	9.435	8.216	599275	421674	2.297	4.518 #
41) L9 AR-1268-1	8.701	7.693f	32486203	12943579	38.564	41.505

Data Path : Z:\pestpcbsrv\HPCHEM1\ECD_0\Data\P0081624\
 Data File : P0105615.D
 Signal(s) : Signal #1: ECD1A.ch Signal #2: ECD2B.ch
 Acq On : 16 Aug 2024 20:00
 Operator : YP/AJ
 Sample : P3631-01
 Misc :
 ALS Vial : 20 Sample Multiplier: 1

Instrument :
 ECD_0
 ClientSampleId :
 358

Integration File signal 1: autoint1.e
 Integration File signal 2: autoint2.e
 Quant Time: Aug 17 05:51:50 2024
 Quant Method : Z:\pestpcbsrv\HPCHEM1\ECD_0\methods\P0081524.M
 Quant Title : GC EXTRACTABLES
 QLast Update : Thu Aug 15 11:44:23 2024
 Response via : Initial Calibration
 Integrator: ChemStation

Volume Inj. : 2 µl
 Signal #1 Phase : ZB-MR1 Signal #2 Phase: ZB-MR2
 Signal #1 Info : 30Mx0.32mmx 0.50µ Signal #2 Info : 30M x 0.32mm x 0.25µm

	Compound	RT#1	RT#2	Resp#1	Resp#2	ng/ml	ng/ml
42)	L9 AR-1268-2	8.768	7.693	4398911	12943579	5.840	45.883 #
43)	L9 AR-1268-3	9.022	7.985f	222390	2810368	0.350	12.068 #
44)	L9 AR-1268-4	9.435	8.216	599275	421674	2.179	4.288 #
45)	L9 AR-1268-5	9.880	8.505	2001907	362478	0.958	0.480 #

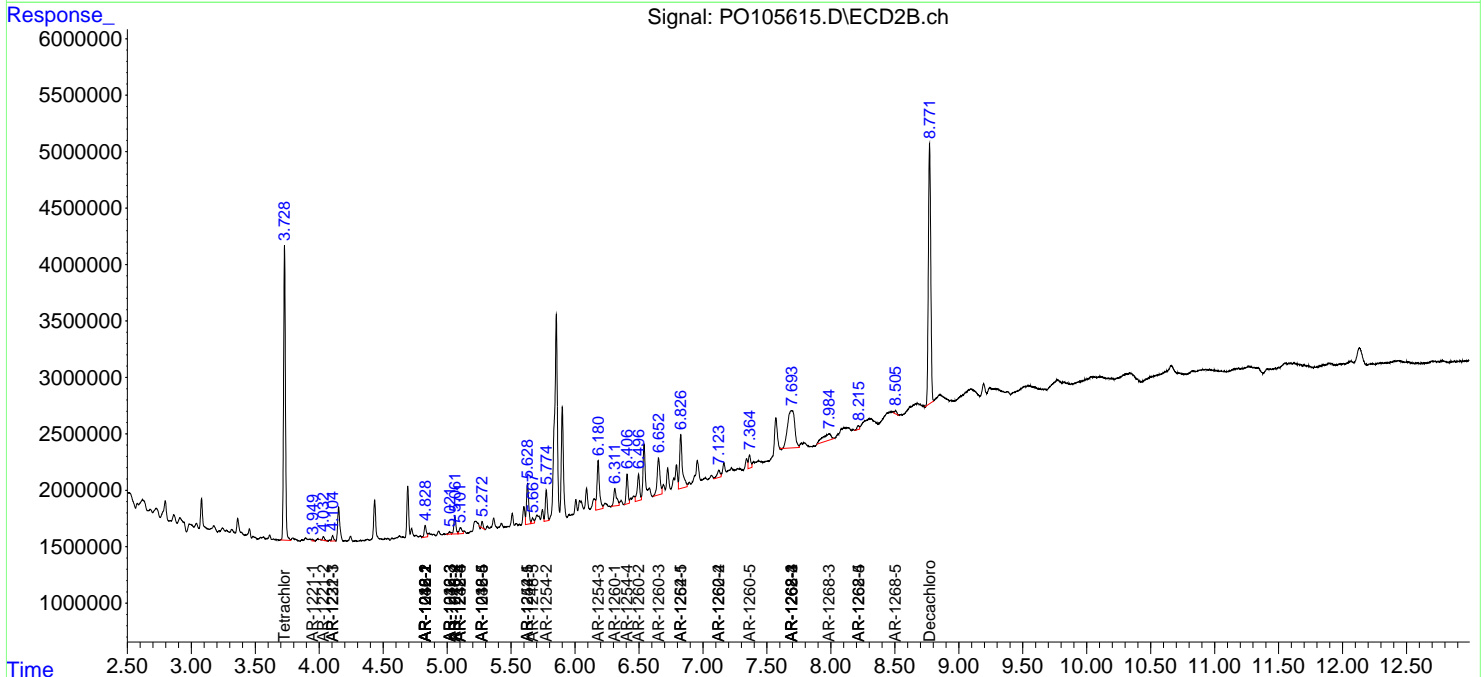
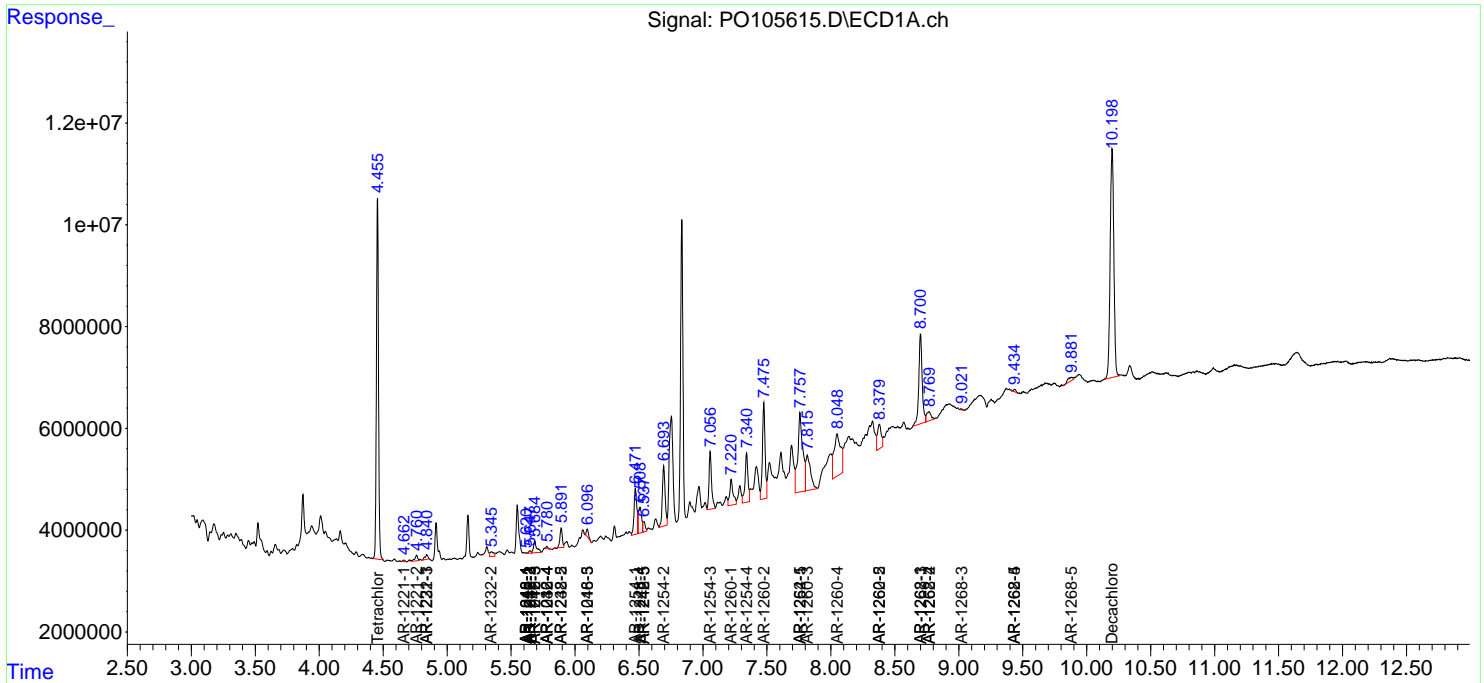
(f)=RT Delta > 1/2 Window (#)=Amounts differ by > 25% (m)=manual int.

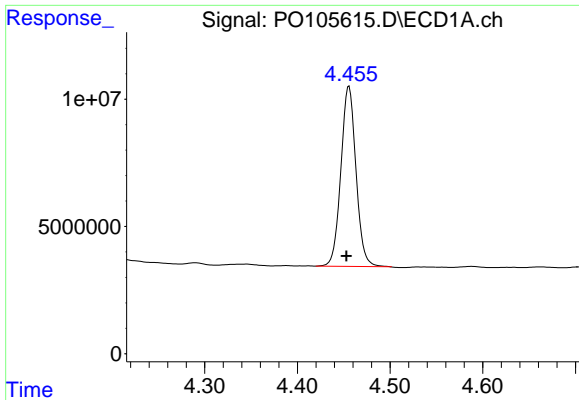
Data Path : Z:\pestpcbsrv\HPCHEM1\ECD_O\Data\PO081624\
 Data File : PO105615.D
 Signal(s) : Signal #1: ECD1A.ch Signal #2: ECD2B.ch
 Acq On : 16 Aug 2024 20:00
 Operator : YP/AJ
 Sample : P3631-01
 Misc :
 ALS Vial : 20 Sample Multiplier: 1

Instrument :
 ECD_O
 ClientSampleId :
 358

Integration File signal 1: autoint1.e
 Integration File signal 2: autoint2.e
 Quant Time: Aug 17 05:51:50 2024
 Quant Method : Z:\pestpcbsrv\HPCHEM1\ECD_O\methods\PO081524.M
 Quant Title : GC EXTRACTABLES
 QLast Update : Thu Aug 15 11:44:23 2024
 Response via : Initial Calibration
 Integrator: ChemStation

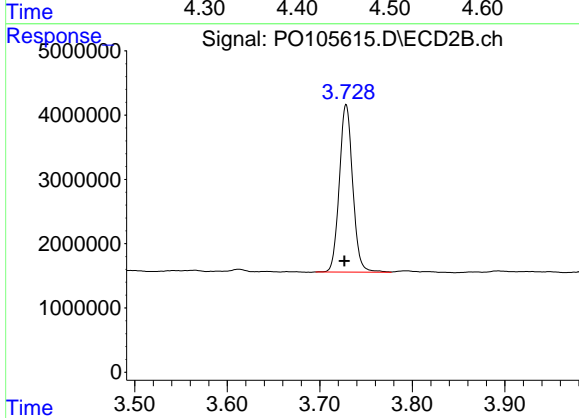
Volume Inj. : 2 µl
 Signal #1 Phase : ZB-MR1 Signal #2 Phase: ZB-MR2
 Signal #1 Info : 30Mx0.32mmx 0.50µ Signal #2 Info : 30M x 0.32mm x 0.25µm



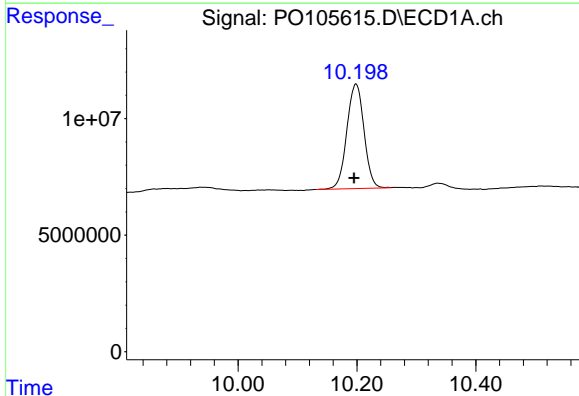


#1 Tetrachloro-m-xylene
 R.T.: 4.456 min
 Delta R.T.: 0.003 min
 Response: 80144849
 Conc: 8.57 ng/ml

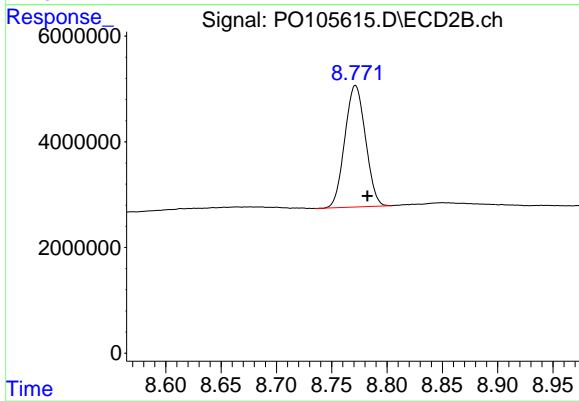
Instrument :
 ECD_O
 ClientSampleId :
 358



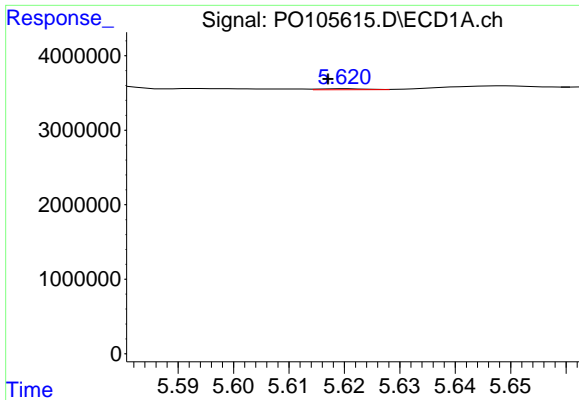
#1 Tetrachloro-m-xylene
 R.T.: 3.729 min
 Delta R.T.: 0.002 min
 Response: 26180098
 Conc: 10.26 ng/ml



#2 Decachlorobiphenyl
 R.T.: 10.199 min
 Delta R.T.: 0.003 min
 Response: 89936483
 Conc: 15.49 ng/ml



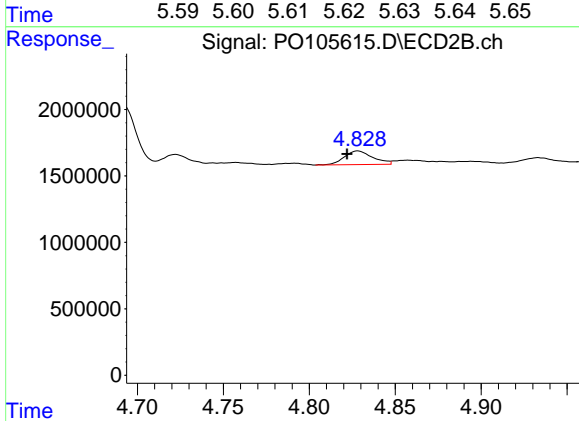
#2 Decachlorobiphenyl
 R.T.: 8.771 min
 Delta R.T.: -0.011 min
 Response: 29874580
 Conc: 15.14 ng/ml



#3 AR-1016-1

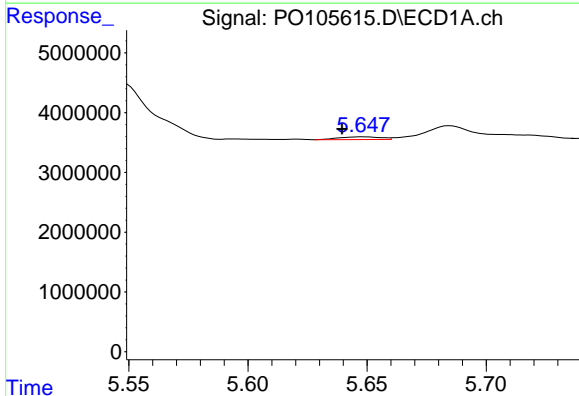
R.T.: 5.620 min
 Delta R.T.: 0.003 min
 Response: 80176
 Conc: 0.26 ng/ml

Instrument :
 ECD_O
 ClientSampleId :
 358



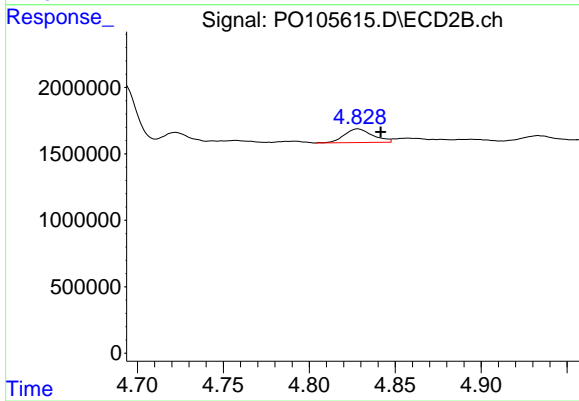
#3 AR-1016-1

R.T.: 4.828 min
 Delta R.T.: 0.006 min
 Response: 1194701
 Conc: 13.70 ng/ml



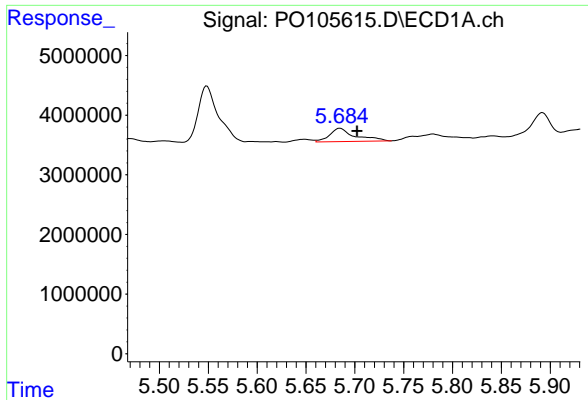
#4 AR-1016-2

R.T.: 5.648 min
 Delta R.T.: 0.009 min
 Response: 571070
 Conc: 1.32 ng/ml



#4 AR-1016-2

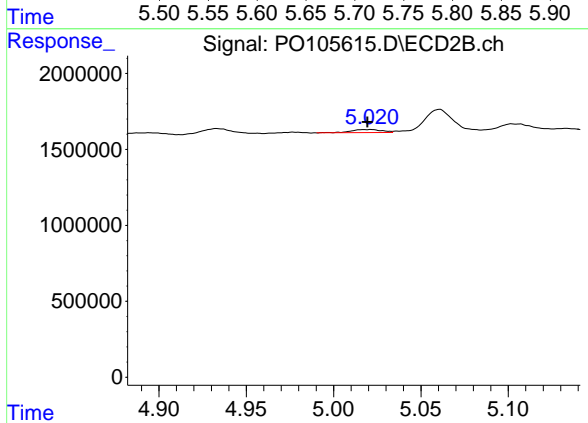
R.T.: 4.828 min
 Delta R.T.: -0.013 min
 Response: 1194701
 Conc: 10.18 ng/ml



#5 AR-1016-3

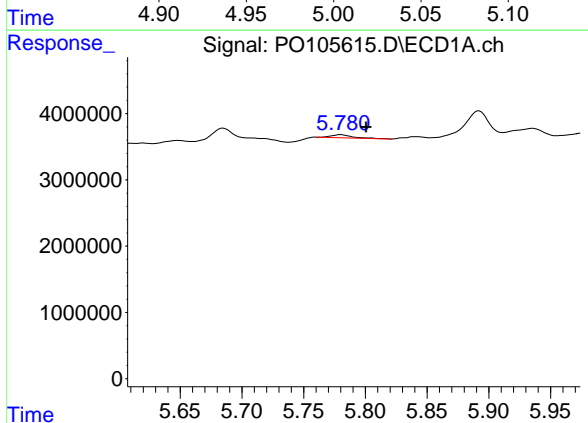
R.T.: 5.685 min
 Delta R.T.: -0.017 min
 Response: 4040054
 Conc: 15.20 ng/ml

Instrument :
 ECD_O
 ClientSampleId :
 358



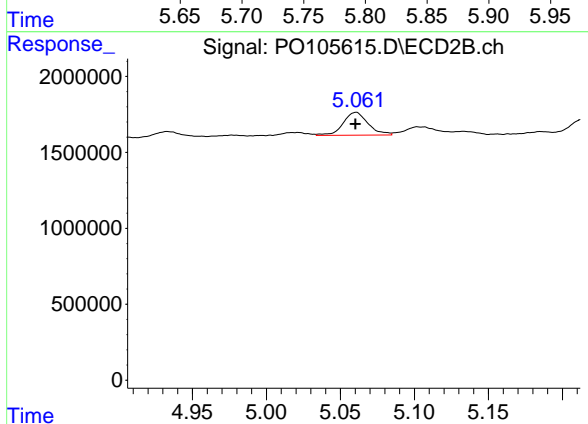
#5 AR-1016-3

R.T.: 5.021 min
 Delta R.T.: 0.002 min
 Response: 246550
 Conc: 3.99 ng/ml



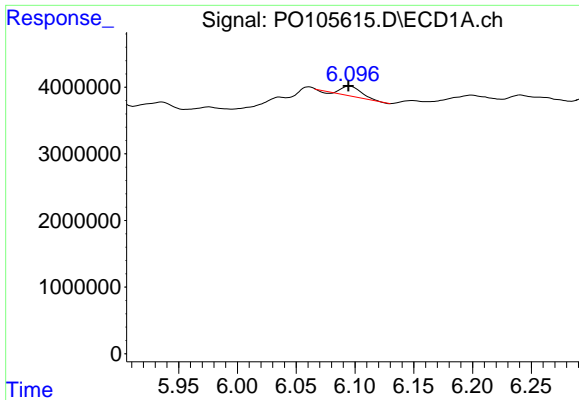
#6 AR-1016-4

R.T.: 5.780 min
 Delta R.T.: -0.020 min
 Response: 550608
 Conc: 2.50 ng/ml



#6 AR-1016-4

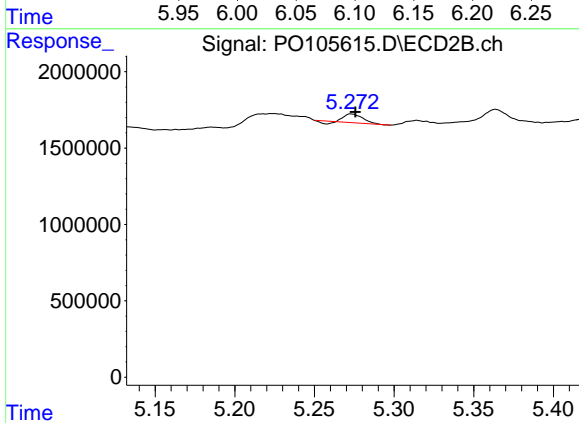
R.T.: 5.060 min
 Delta R.T.: 0.000 min
 Response: 1769784
 Conc: 37.33 ng/ml



#7 AR-1016-5

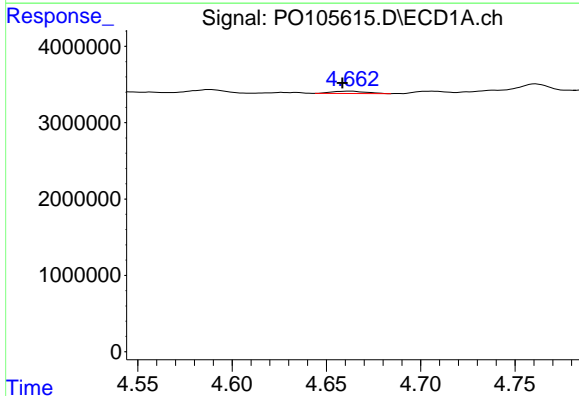
R.T.: 6.095 min
 Delta R.T.: 0.000 min
 Response: 1736483
 Conc: 8.32 ng/ml

Instrument :
 ECD_O
 ClientSampleId :
 358



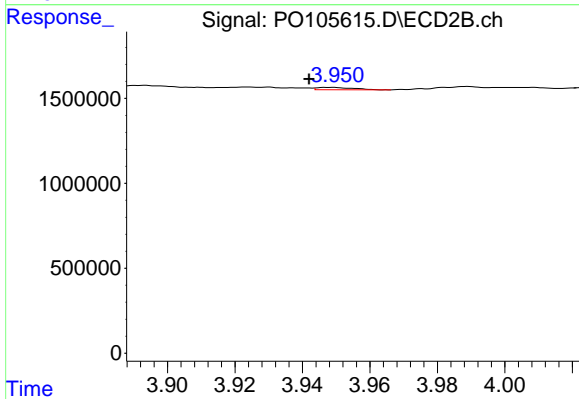
#7 AR-1016-5

R.T.: 5.273 min
 Delta R.T.: -0.003 min
 Response: 405015
 Conc: 6.38 ng/ml



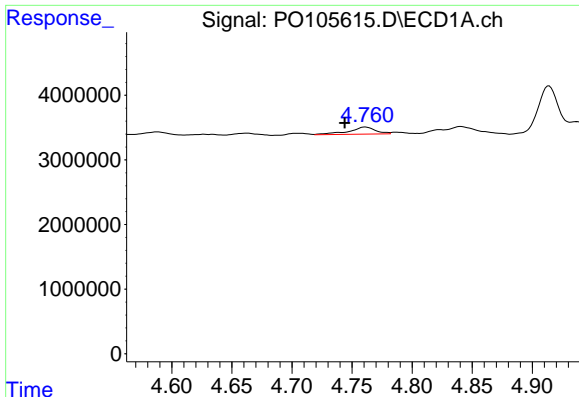
#8 AR-1221-1

R.T.: 4.663 min
 Delta R.T.: 0.004 min
 Response: 388112
 Conc: 3.43 ng/ml



#8 AR-1221-1

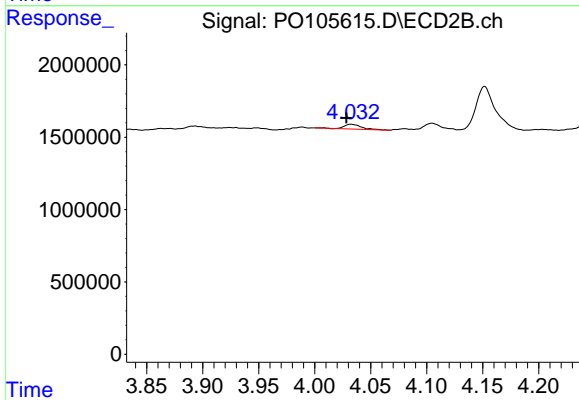
R.T.: 3.948 min
 Delta R.T.: 0.006 min
 Response: 105016
 Conc: 3.59 ng/ml



#9 AR-1221-2

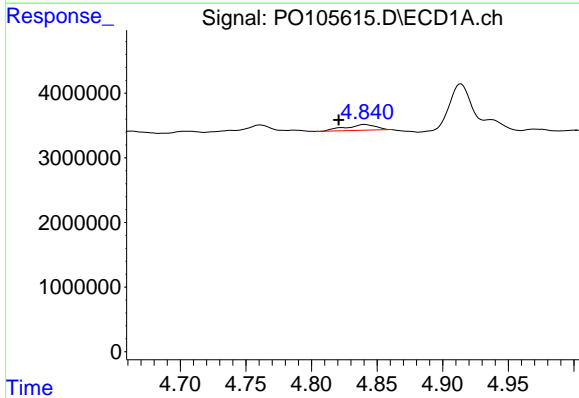
R.T.: 4.761 min
 Delta R.T.: 0.017 min
 Response: 1706287
 Conc: 19.25 ng/ml

Instrument :
 ECD_O
 ClientSampleId :
 358



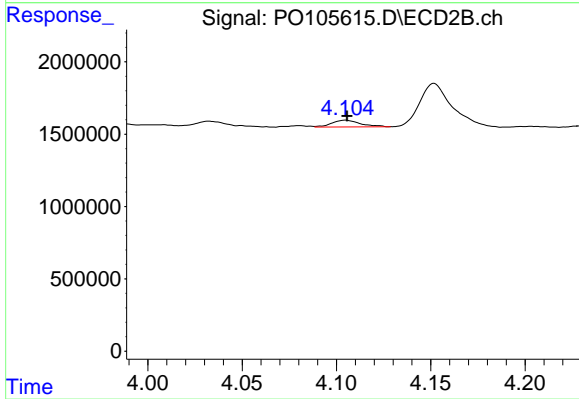
#9 AR-1221-2

R.T.: 4.032 min
 Delta R.T.: 0.004 min
 Response: 351365
 Conc: 16.15 ng/ml



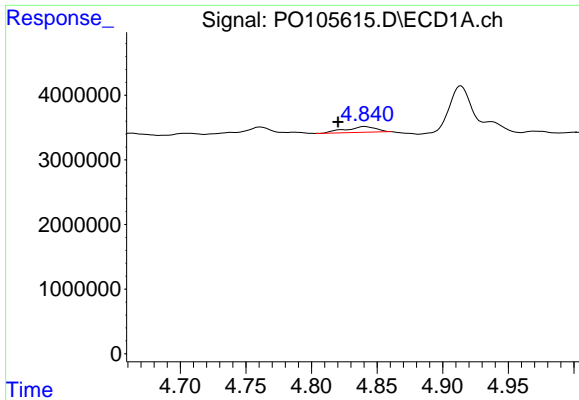
#10 AR-1221-3

R.T.: 4.841 min
 Delta R.T.: 0.020 min
 Response: 1452939
 Conc: 5.69 ng/ml



#10 AR-1221-3

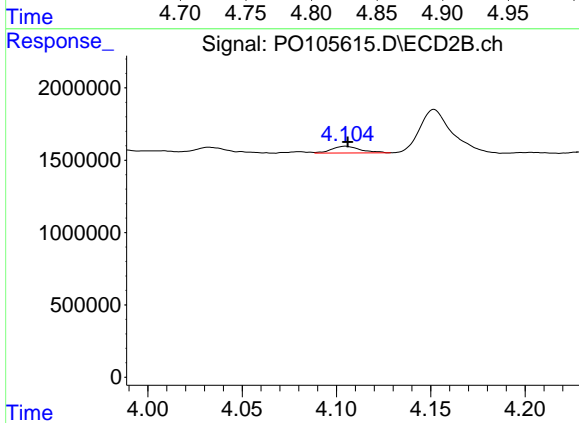
R.T.: 4.105 min
 Delta R.T.: 0.000 min
 Response: 485352
 Conc: 7.06 ng/ml



#11 AR-1232-1

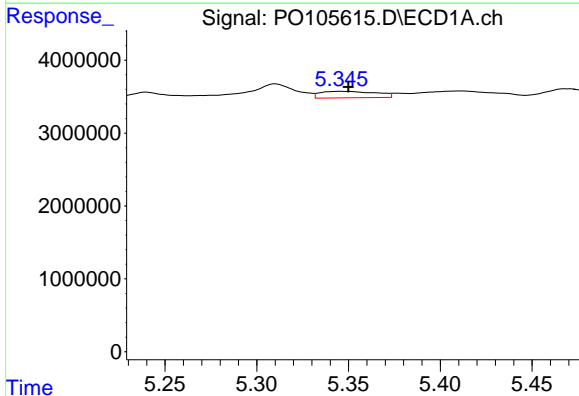
R.T.: 4.841 min
 Delta R.T.: 0.020 min
 Response: 1452939
 Conc: 6.97 ng/ml

Instrument :
 ECD_O
 ClientSampleId :
 358



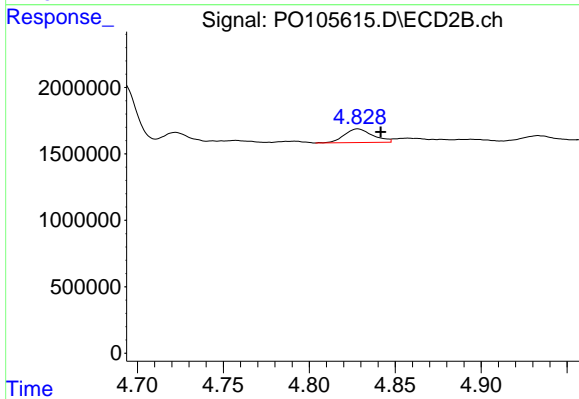
#11 AR-1232-1

R.T.: 4.105 min
 Delta R.T.: -0.001 min
 Response: 485352
 Conc: 8.77 ng/ml



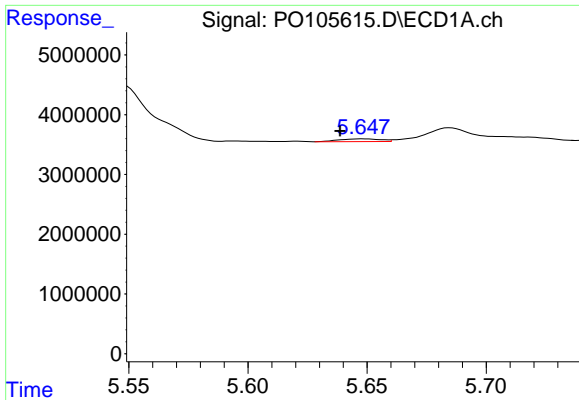
#12 AR-1232-2

R.T.: 5.345 min
 Delta R.T.: -0.005 min
 Response: 1876764
 Conc: 17.45 ng/ml



#12 AR-1232-2

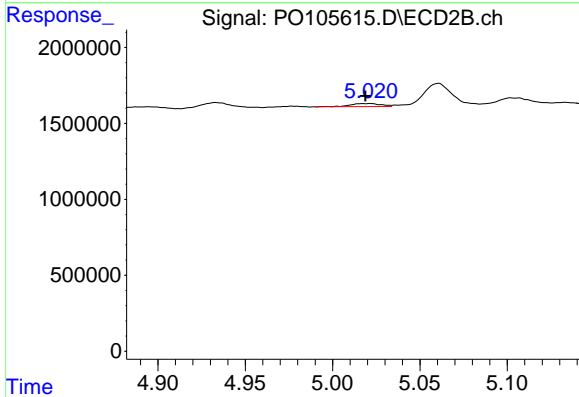
R.T.: 4.828 min
 Delta R.T.: -0.013 min
 Response: 1194701
 Conc: 22.98 ng/ml



#13 AR-1232-3

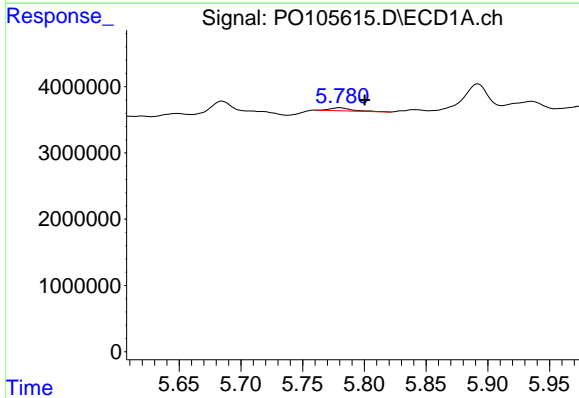
R.T.: 5.648 min
 Delta R.T.: 0.010 min
 Response: 571070
 Conc: 2.90 ng/ml

Instrument :
 ECD_O
 ClientSampleId :
 358



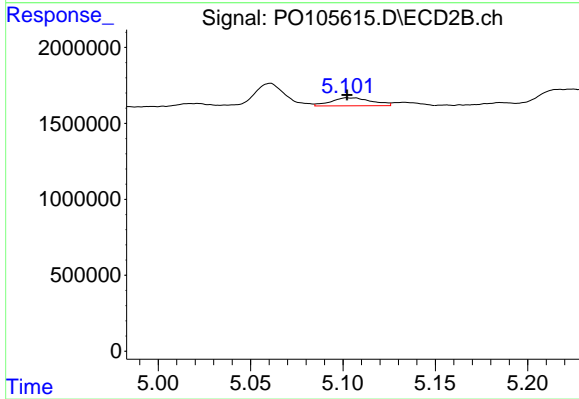
#13 AR-1232-3

R.T.: 5.021 min
 Delta R.T.: 0.002 min
 Response: 246550
 Conc: 8.98 ng/ml



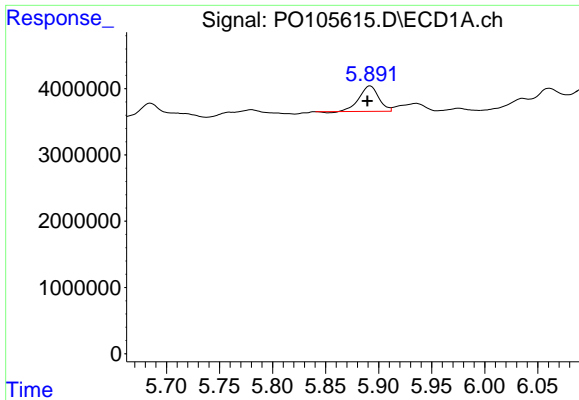
#14 AR-1232-4

R.T.: 5.780 min
 Delta R.T.: -0.020 min
 Response: 550608
 Conc: 5.66 ng/ml



#14 AR-1232-4

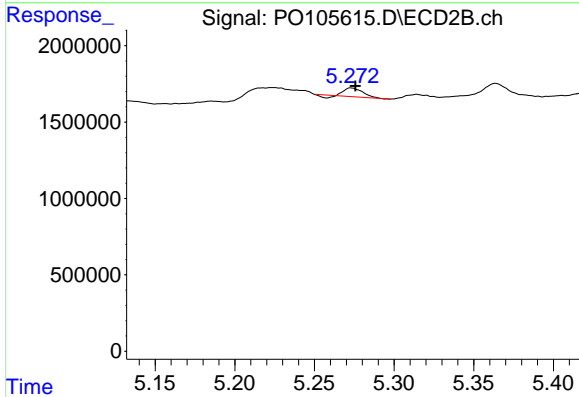
R.T.: 5.103 min
 Delta R.T.: 0.000 min
 Response: 810406
 Conc: 32.54 ng/ml



#15 AR-1232-5

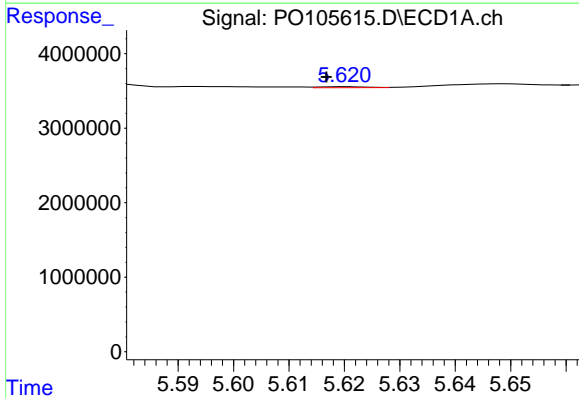
R.T.: 5.892 min
 Delta R.T.: 0.003 min
 Response: 4860662
 Conc: 66.82 ng/ml

Instrument :
 ECD_O
 ClientSampleId :
 358



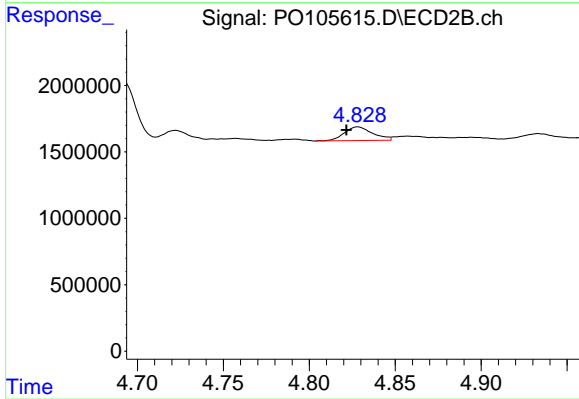
#15 AR-1232-5

R.T.: 5.273 min
 Delta R.T.: -0.002 min
 Response: 405015
 Conc: 14.32 ng/ml



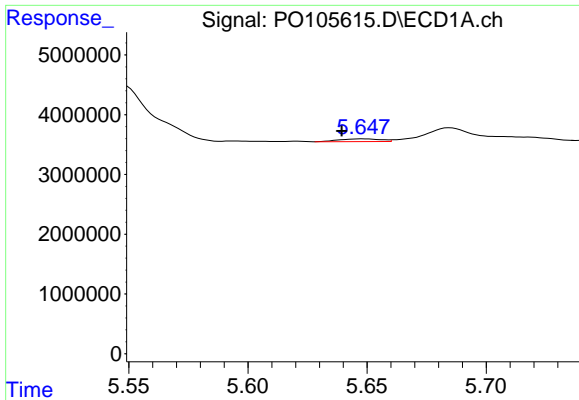
#16 AR-1242-1

R.T.: 5.620 min
 Delta R.T.: 0.004 min
 Response: 80176
 Conc: 0.32 ng/ml



#16 AR-1242-1

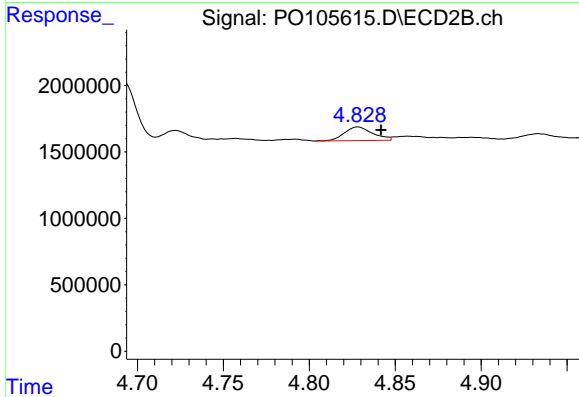
R.T.: 4.828 min
 Delta R.T.: 0.007 min
 Response: 1194701
 Conc: 17.22 ng/ml



#17 AR-1242-2

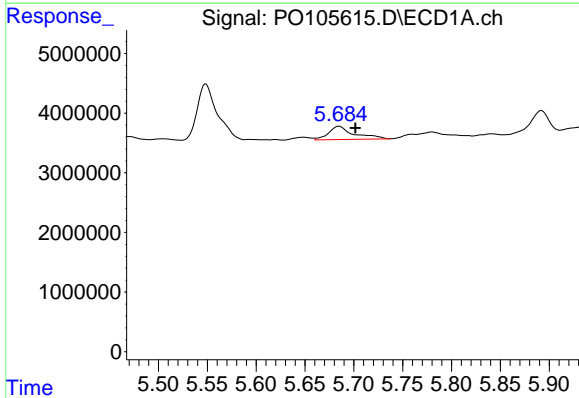
R.T.: 5.648 min
 Delta R.T.: 0.009 min
 Response: 571070
 Conc: 1.67 ng/ml

Instrument :
 ECD_O
 ClientSampleId :
 358



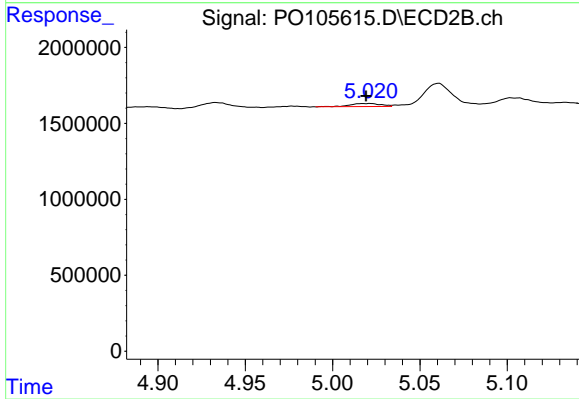
#17 AR-1242-2

R.T.: 4.828 min
 Delta R.T.: -0.013 min
 Response: 1194701
 Conc: 13.01 ng/ml



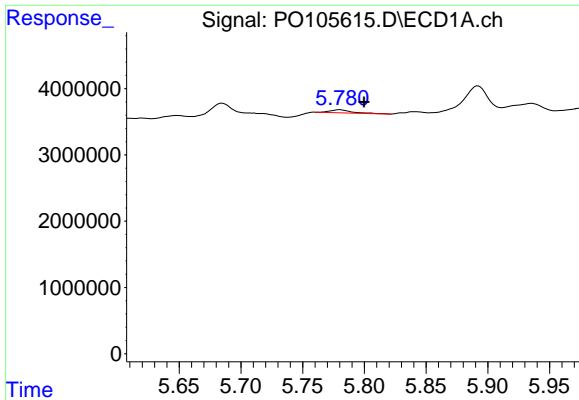
#18 AR-1242-3

R.T.: 5.685 min
 Delta R.T.: -0.017 min
 Response: 4040054
 Conc: 19.26 ng/ml



#18 AR-1242-3

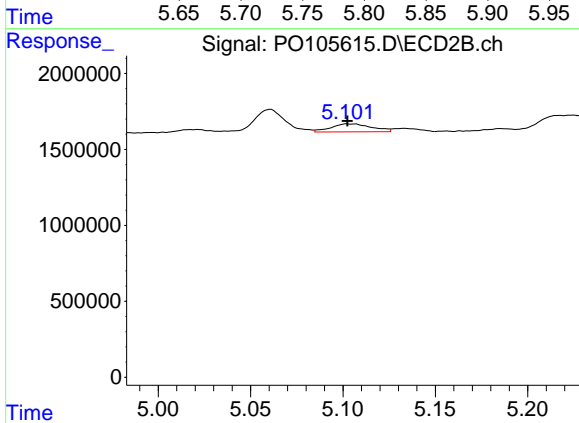
R.T.: 5.021 min
 Delta R.T.: 0.002 min
 Response: 246550
 Conc: 5.04 ng/ml



#19 AR-1242-4

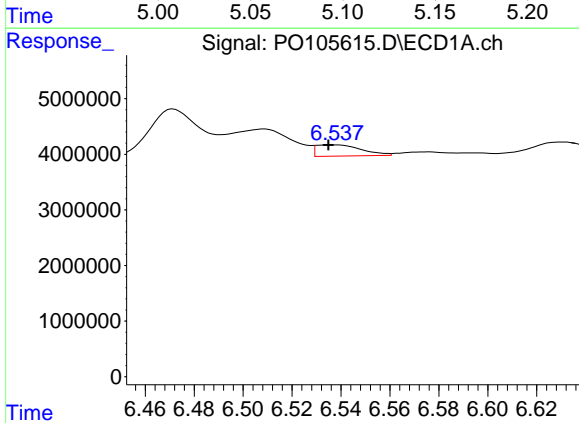
R.T.: 5.780 min
 Delta R.T.: -0.020 min
 Response: 550608
 Conc: 3.15 ng/ml

Instrument :
 ECD_O
 ClientSampleId :
 358



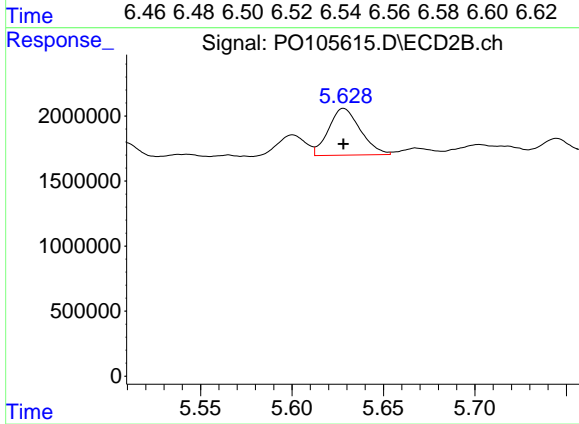
#19 AR-1242-4

R.T.: 5.103 min
 Delta R.T.: 0.000 min
 Response: 810406
 Conc: 16.42 ng/ml



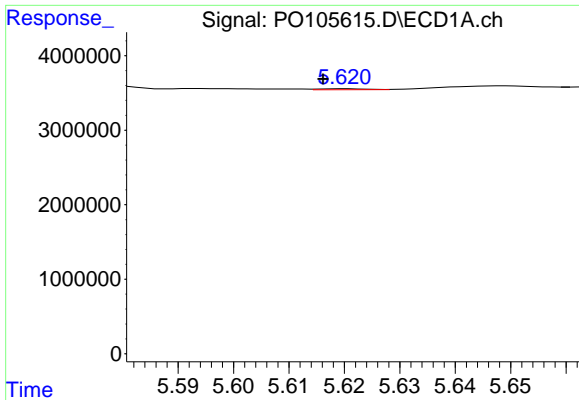
#20 AR-1242-5

R.T.: 6.538 min
 Delta R.T.: 0.003 min
 Response: 2592417
 Conc: 14.39 ng/ml



#20 AR-1242-5

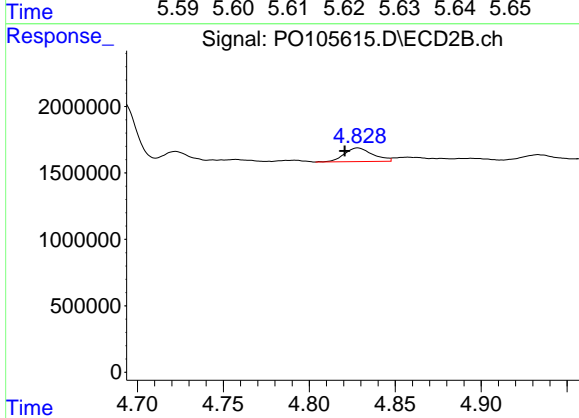
R.T.: 5.628 min
 Delta R.T.: 0.000 min
 Response: 4364449
 Conc: 69.69 ng/ml



#21 AR-1248-1

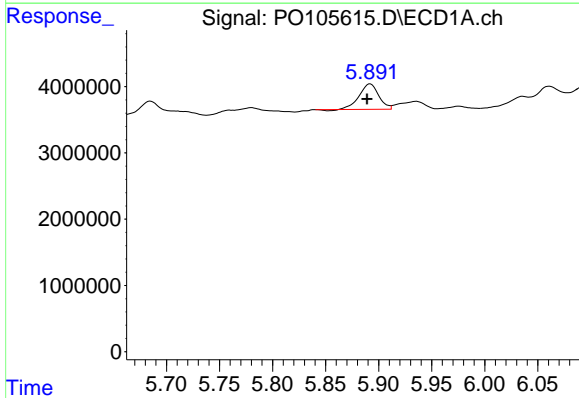
R.T.: 5.620 min
 Delta R.T.: 0.004 min
 Response: 80176
 Conc: 0.42 ng/ml

Instrument :
 ECD_O
 ClientSampleId :
 358



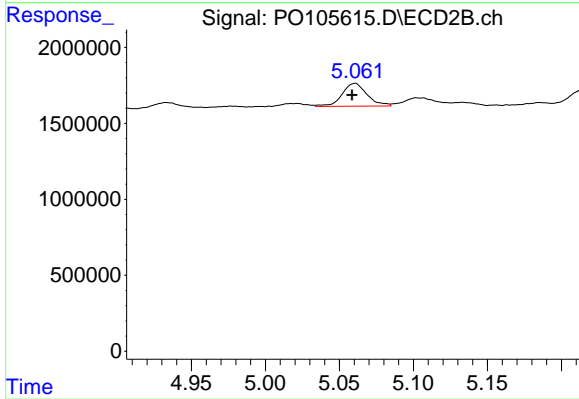
#21 AR-1248-1

R.T.: 4.828 min
 Delta R.T.: 0.008 min
 Response: 1194701
 Conc: 22.52 ng/ml



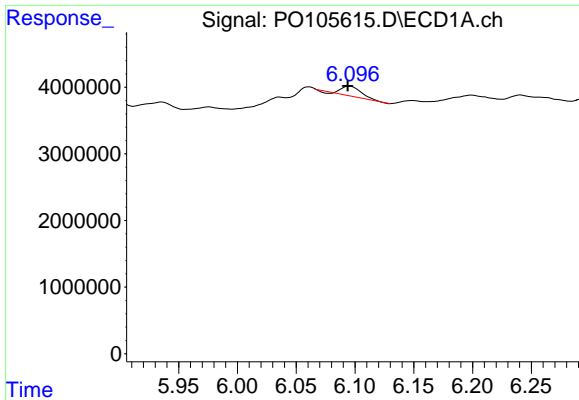
#22 AR-1248-2

R.T.: 5.892 min
 Delta R.T.: 0.003 min
 Response: 4860662
 Conc: 18.46 ng/ml



#22 AR-1248-2

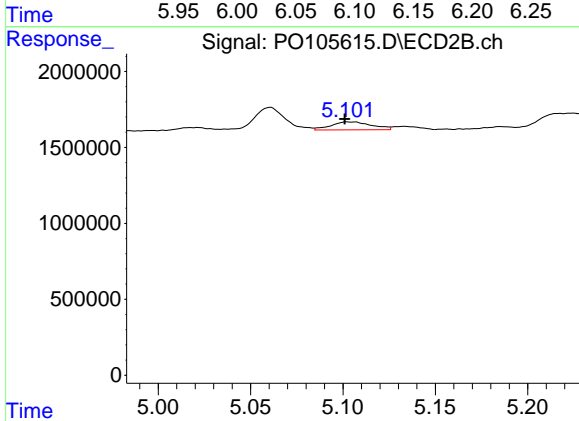
R.T.: 5.060 min
 Delta R.T.: 0.002 min
 Response: 1769784
 Conc: 25.38 ng/ml



#23 AR-1248-3

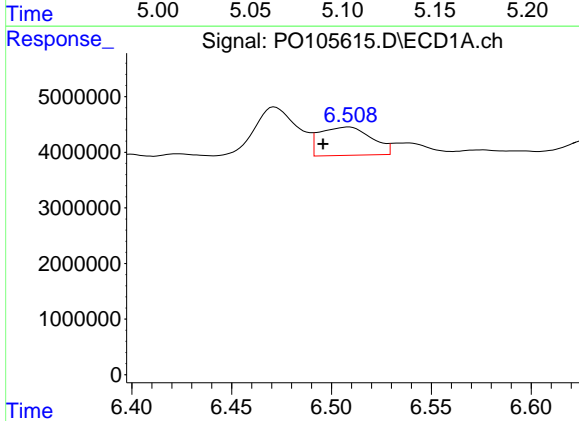
R.T.: 6.095 min
 Delta R.T.: 0.002 min
 Response: 1736483
 Conc: 5.92 ng/ml

Instrument :
 ECD_O
 ClientSampleId :
 358



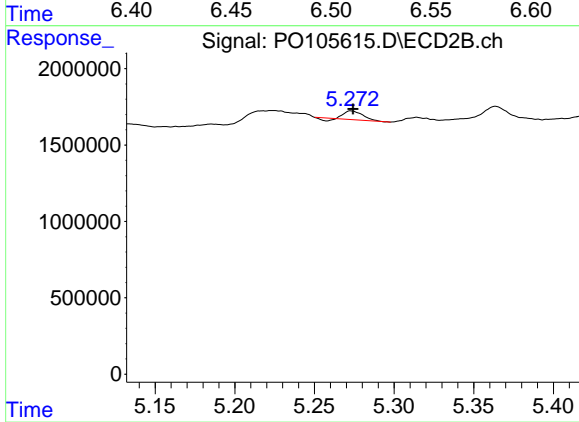
#23 AR-1248-3

R.T.: 5.103 min
 Delta R.T.: 0.001 min
 Response: 810406
 Conc: 10.91 ng/ml



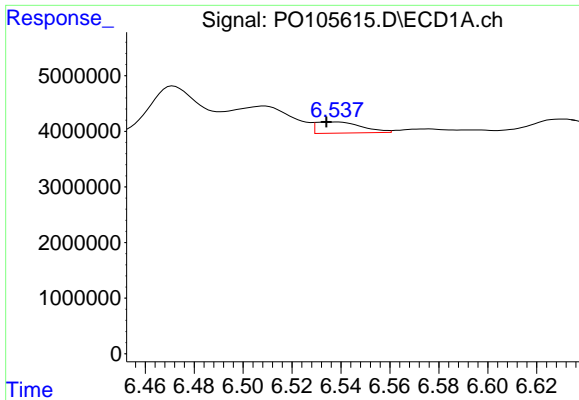
#24 AR-1248-4

R.T.: 6.509 min
 Delta R.T.: 0.013 min
 Response: 9175956
 Conc: 28.28 ng/ml



#24 AR-1248-4

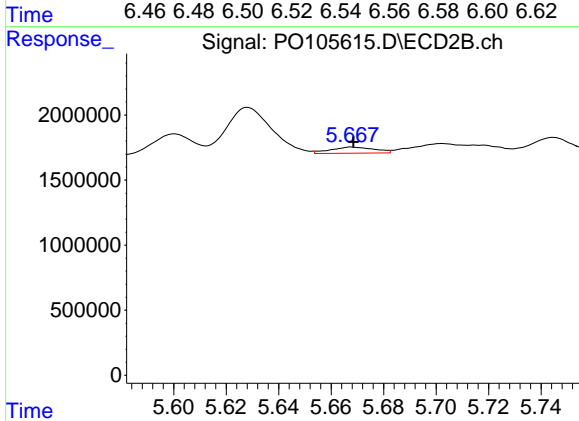
R.T.: 5.273 min
 Delta R.T.: -0.001 min
 Response: 405015
 Conc: 4.55 ng/ml



#25 AR-1248-5

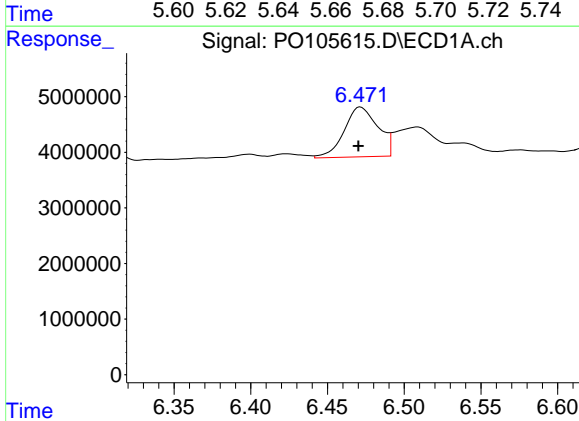
R.T.: 6.538 min
 Delta R.T.: 0.004 min
 Response: 2592417
 Conc: 8.30 ng/ml

Instrument :
 ECD_O
 ClientSampleId :
 358



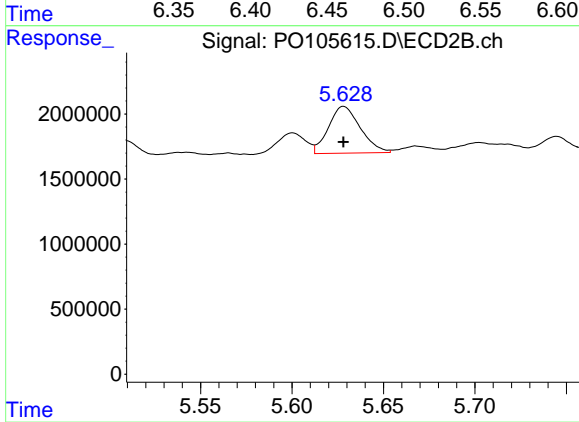
#25 AR-1248-5

R.T.: 5.668 min
 Delta R.T.: 0.000 min
 Response: 548659
 Conc: 6.26 ng/ml



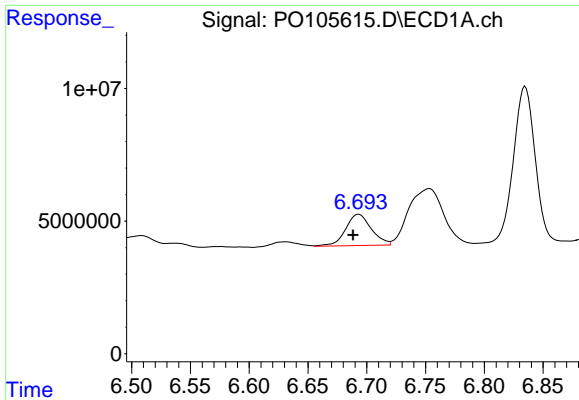
#26 AR-1254-1

R.T.: 6.472 min
 Delta R.T.: 0.001 min
 Response: 13722711
 Conc: 43.36 ng/ml



#26 AR-1254-1

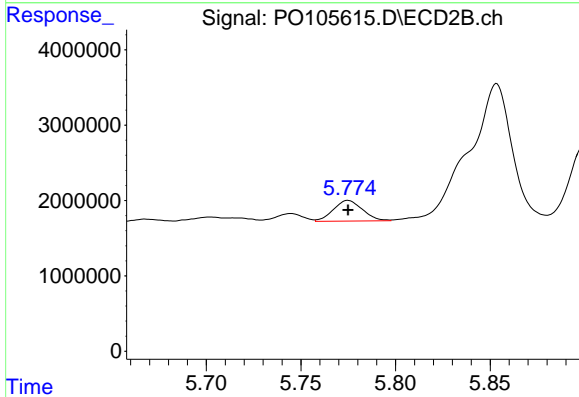
R.T.: 5.628 min
 Delta R.T.: 0.000 min
 Response: 4364449
 Conc: 34.68 ng/ml



#27 AR-1254-2

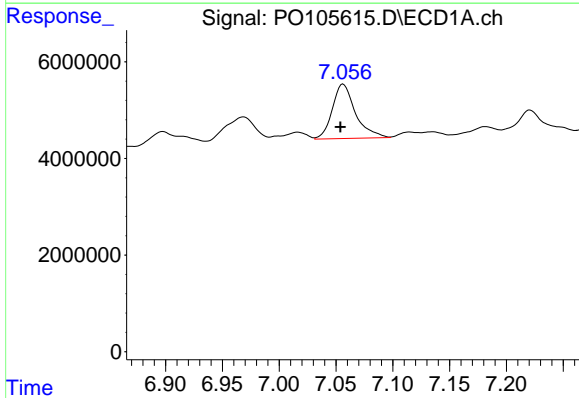
R.T.: 6.693 min
 Delta R.T.: 0.005 min
 Response: 17893243
 Conc: 37.99 ng/ml

Instrument :
 ECD_O
 ClientSampleId :
 358



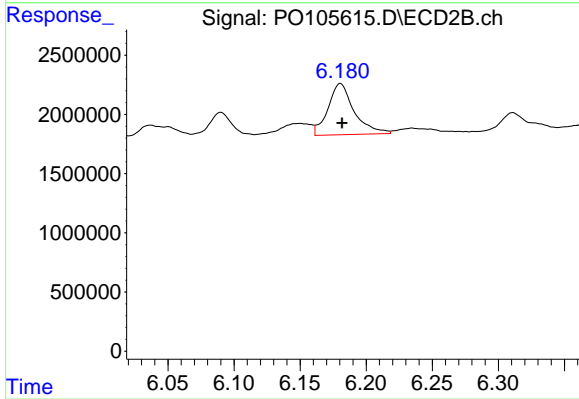
#27 AR-1254-2

R.T.: 5.775 min
 Delta R.T.: 0.000 min
 Response: 2933016
 Conc: 26.32 ng/ml



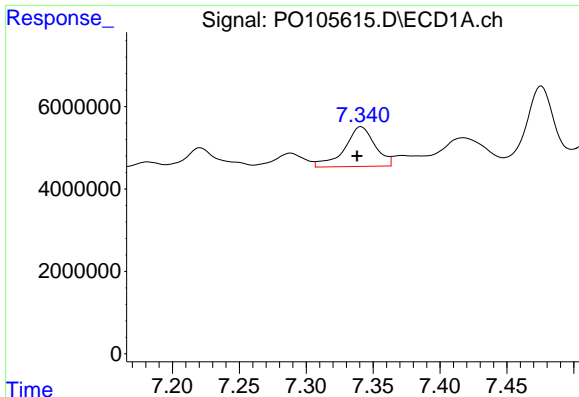
#28 AR-1254-3

R.T.: 7.056 min
 Delta R.T.: 0.003 min
 Response: 15922239
 Conc: 33.23 ng/ml



#28 AR-1254-3

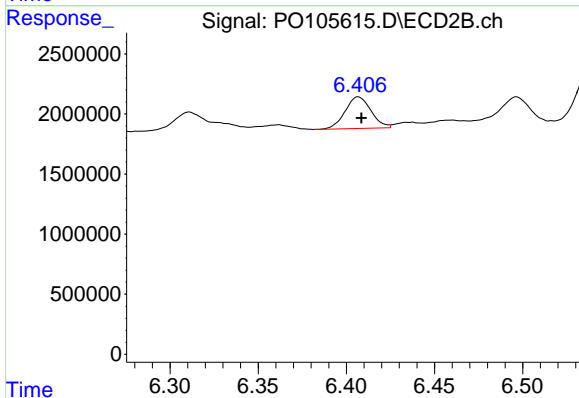
R.T.: 6.181 min
 Delta R.T.: -0.001 min
 Response: 5958409
 Conc: 33.20 ng/ml



#29 AR-1254-4

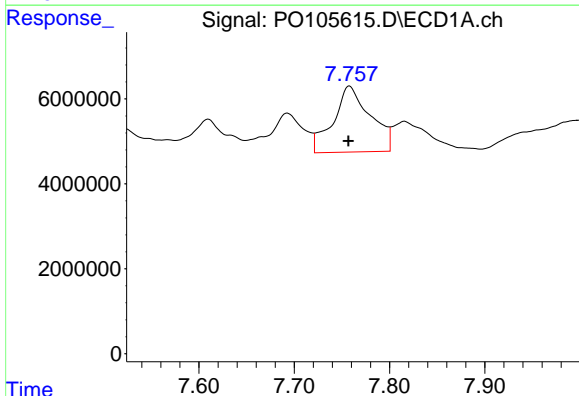
R.T.: 7.341 min
 Delta R.T.: 0.003 min
 Response: 15252318
 Conc: 43.32 ng/ml

Instrument :
 ECD_O
 ClientSampleId :
 358



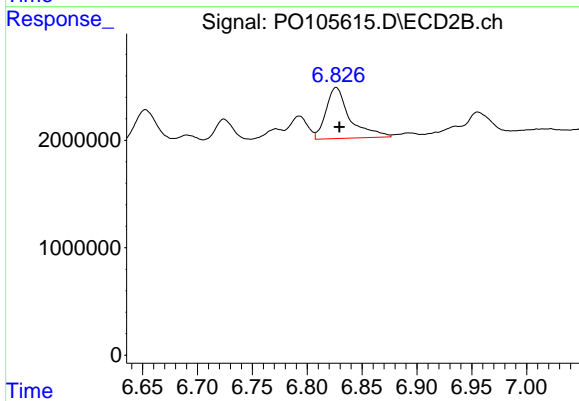
#29 AR-1254-4

R.T.: 6.407 min
 Delta R.T.: -0.002 min
 Response: 2689283
 Conc: 24.22 ng/ml



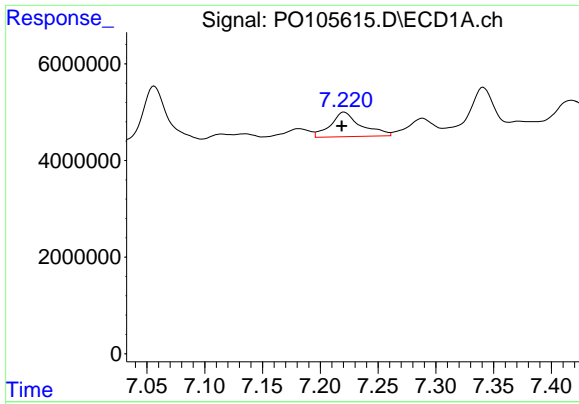
#30 AR-1254-5

R.T.: 7.758 min
 Delta R.T.: 0.001 min
 Response: 41981941
 Conc: 110.10 ng/ml



#30 AR-1254-5

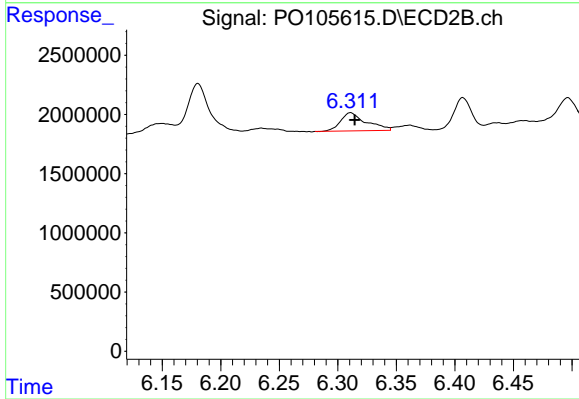
R.T.: 6.826 min
 Delta R.T.: -0.003 min
 Response: 7185714
 Conc: 44.68 ng/ml



#31 AR-1260-1

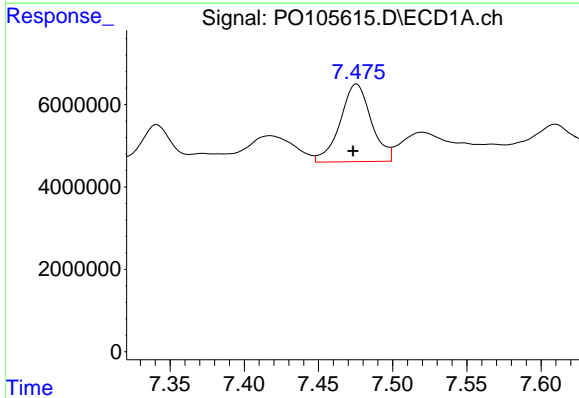
R.T.: 7.221 min
 Delta R.T.: 0.002 min
 Response: 9326872
 Conc: 25.25 ng/ml

Instrument :
 ECD_O
 ClientSampleId :
 358



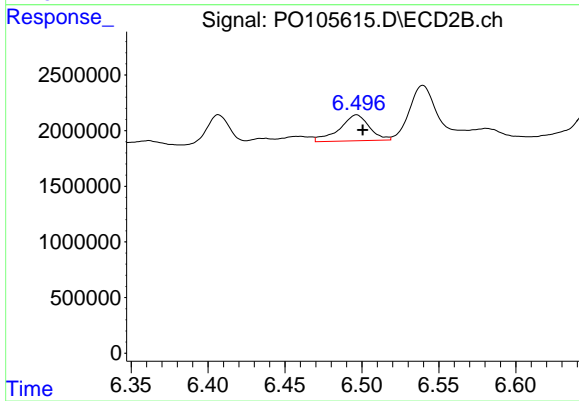
#31 AR-1260-1

R.T.: 6.311 min
 Delta R.T.: -0.004 min
 Response: 2352012
 Conc: 19.86 ng/ml



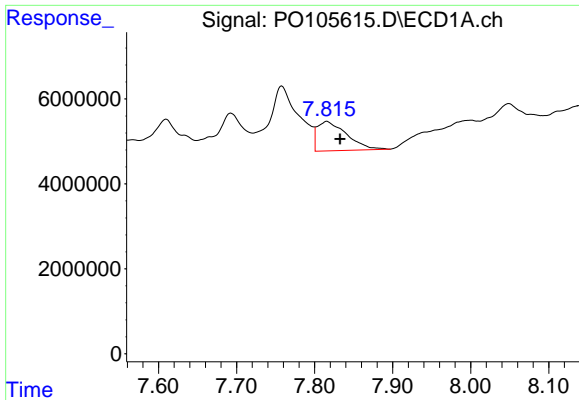
#32 AR-1260-2

R.T.: 7.476 min
 Delta R.T.: 0.002 min
 Response: 27526378
 Conc: 63.72 ng/ml



#32 AR-1260-2

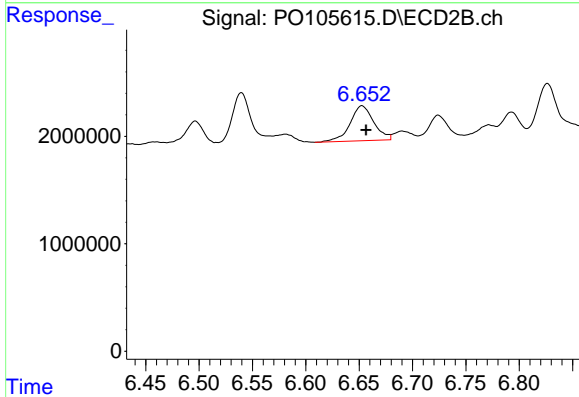
R.T.: 6.497 min
 Delta R.T.: -0.004 min
 Response: 3158671
 Conc: 21.53 ng/ml



#33 AR-1260-3

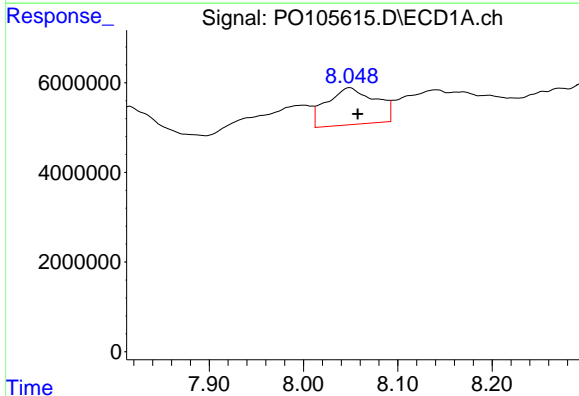
R.T.: 7.816 min
 Delta R.T.: -0.017 min
 Response: 18174003
 Conc: 67.10 ng/ml

Instrument :
 ECD_O
 ClientSampleId :
 358



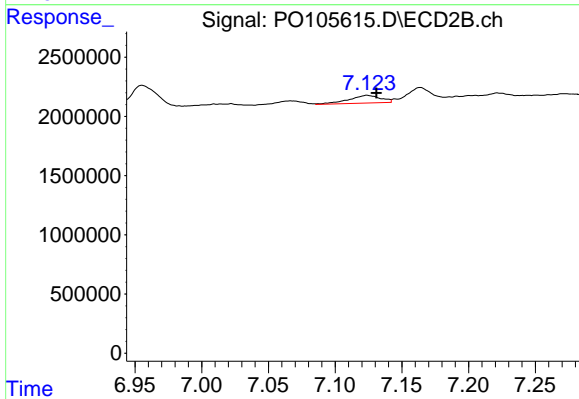
#33 AR-1260-3

R.T.: 6.653 min
 Delta R.T.: -0.004 min
 Response: 5029683
 Conc: 32.74 ng/ml



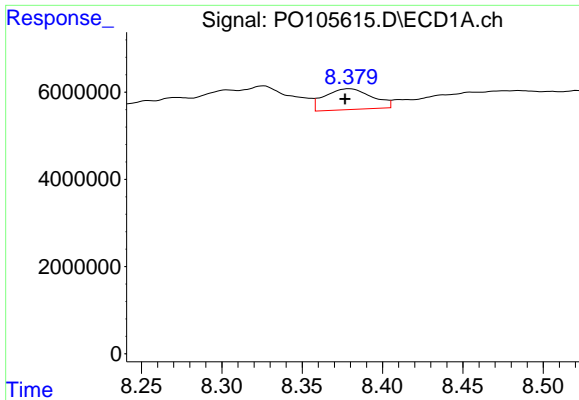
#34 AR-1260-4

R.T.: 8.049 min
 Delta R.T.: -0.009 min
 Response: 29460149
 Conc: 92.53 ng/ml



#34 AR-1260-4

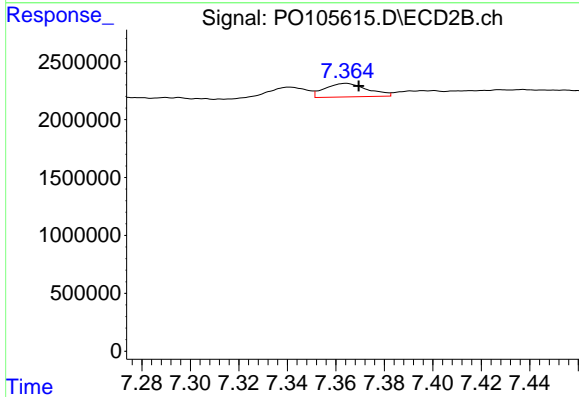
R.T.: 7.124 min
 Delta R.T.: -0.007 min
 Response: 1082737
 Conc: 11.03 ng/ml



#35 AR-1260-5

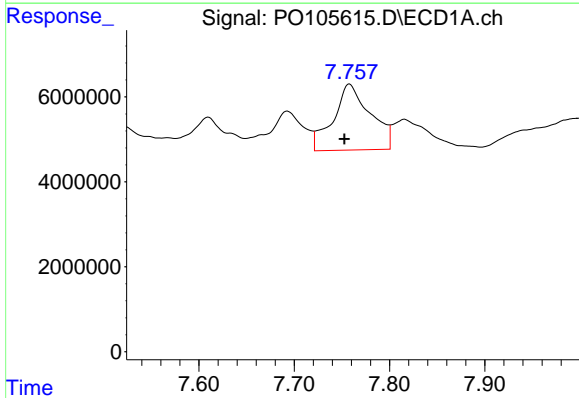
R.T.: 8.379 min
 Delta R.T.: 0.002 min
 Response: 9824722
 Conc: 15.77 ng/ml

Instrument :
 ECD_O
 ClientSampleId :
 358



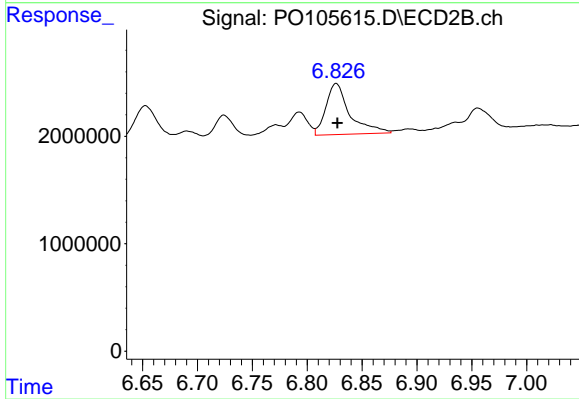
#35 AR-1260-5

R.T.: 7.364 min
 Delta R.T.: -0.005 min
 Response: 1418704
 Conc: 5.86 ng/ml



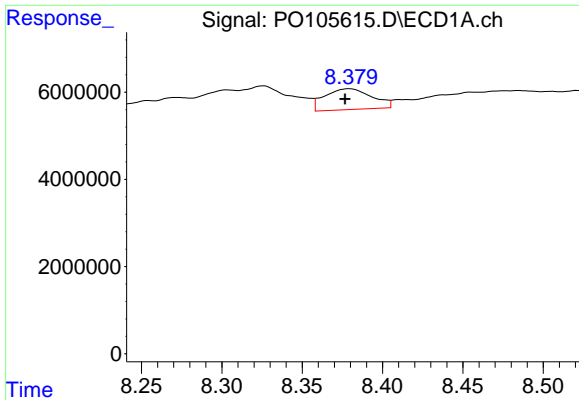
#36 AR-1262-1

R.T.: 7.758 min
 Delta R.T.: 0.005 min
 Response: 41981941
 Conc: 145.24 ng/ml



#36 AR-1262-1

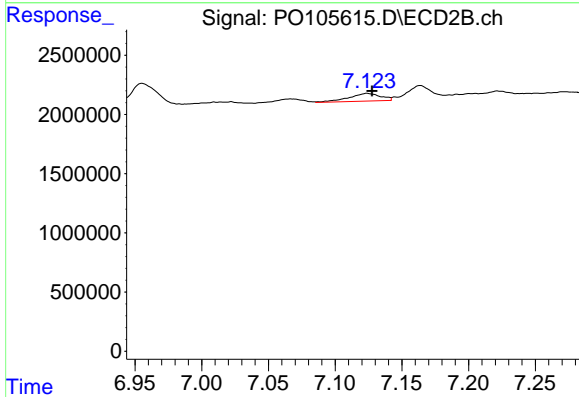
R.T.: 6.826 min
 Delta R.T.: -0.001 min
 Response: 7185714
 Conc: 88.10 ng/ml



#37 AR-1262-2

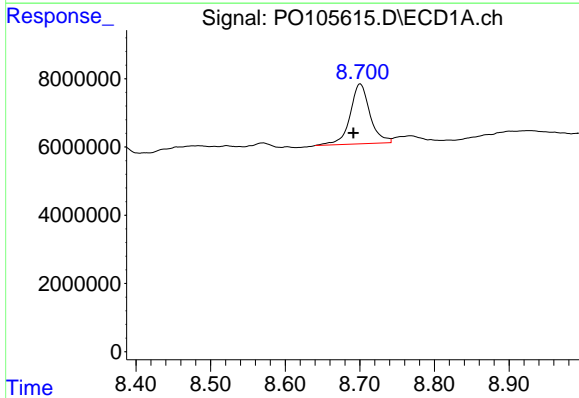
R.T.: 8.379 min
 Delta R.T.: 0.003 min
 Response: 9824722
 Conc: 12.79 ng/ml

Instrument :
 ECD_O
 ClientSampleId :
 358



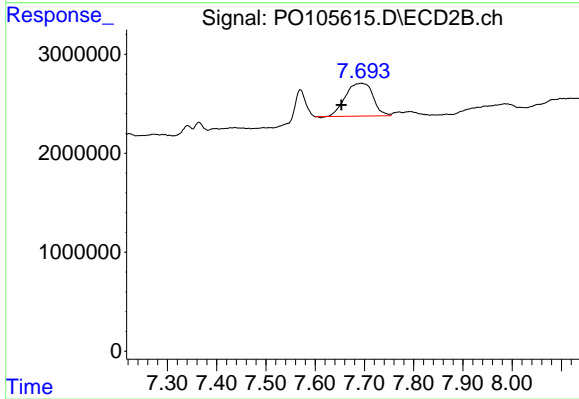
#37 AR-1262-2

R.T.: 7.124 min
 Delta R.T.: -0.004 min
 Response: 1082737
 Conc: 7.69 ng/ml



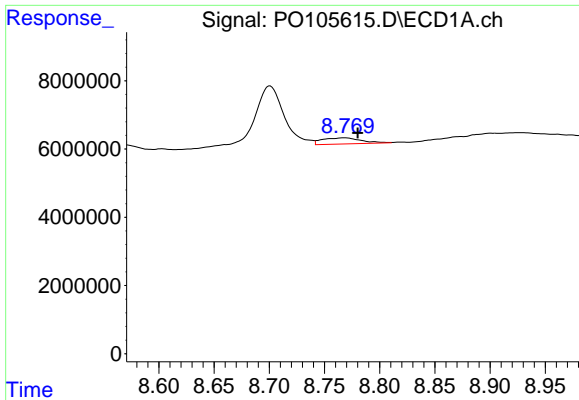
#38 AR-1262-3

R.T.: 8.701 min
 Delta R.T.: 0.009 min
 Response: 32486203
 Conc: 64.55 ng/ml



#38 AR-1262-3

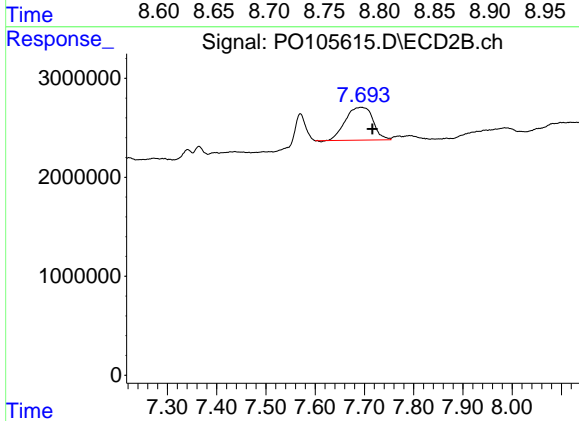
R.T.: 7.693 min
 Delta R.T.: 0.040 min
 Response: 12943579
 Conc: 120.21 ng/ml



#39 AR-1262-4

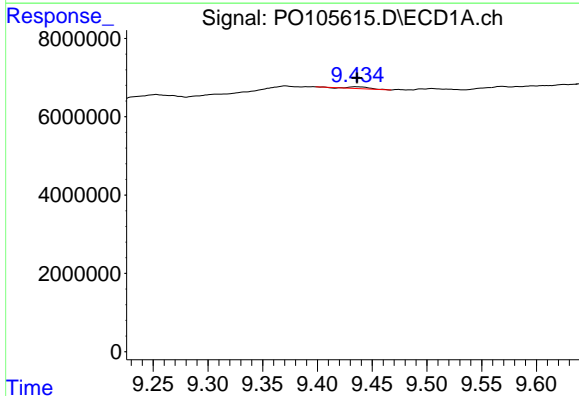
R.T.: 8.768 min
 Delta R.T.: -0.012 min
 Response: 4398911
 Conc: 11.85 ng/ml

Instrument :
 ECD_O
 ClientSampleId :
 358



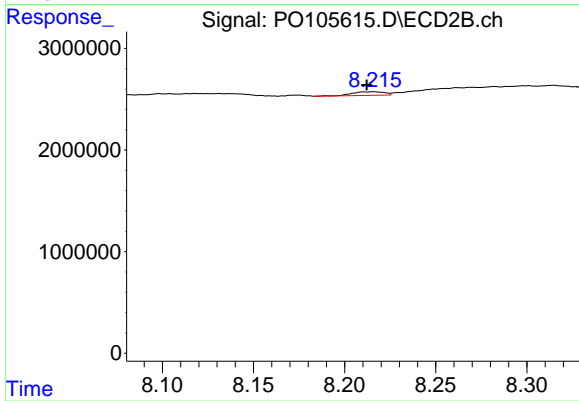
#39 AR-1262-4

R.T.: 7.693 min
 Delta R.T.: -0.023 min
 Response: 12943579
 Conc: 62.17 ng/ml



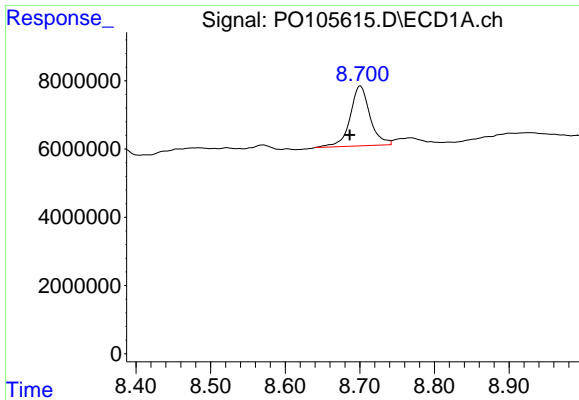
#40 AR-1262-5

R.T.: 9.435 min
 Delta R.T.: 0.000 min
 Response: 599275
 Conc: 2.30 ng/ml



#40 AR-1262-5

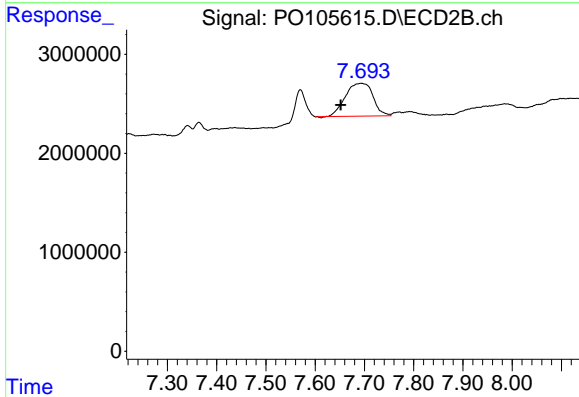
R.T.: 8.216 min
 Delta R.T.: 0.004 min
 Response: 421674
 Conc: 4.52 ng/ml



#41 AR-1268-1

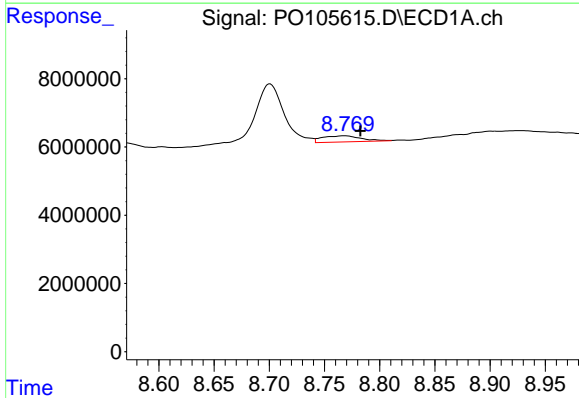
R.T.: 8.701 min
 Delta R.T.: 0.014 min
 Response: 32486203
 Conc: 38.56 ng/ml

Instrument :
 ECD_O
 ClientSampleId :
 358



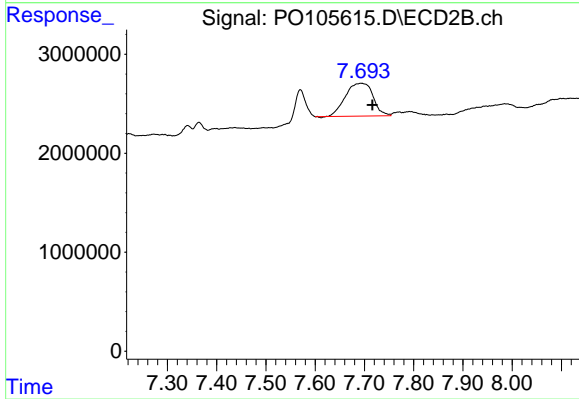
#41 AR-1268-1

R.T.: 7.693 min
 Delta R.T.: 0.041 min
 Response: 12943579
 Conc: 41.51 ng/ml



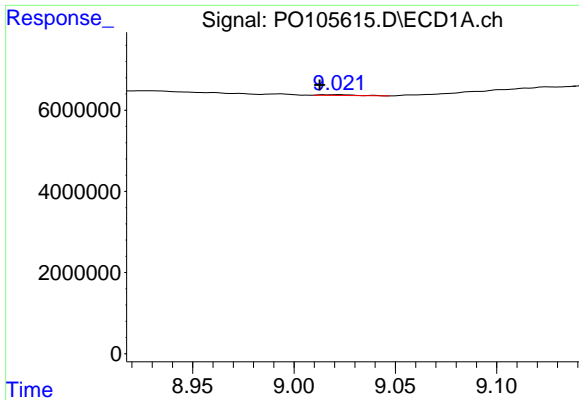
#42 AR-1268-2

R.T.: 8.768 min
 Delta R.T.: -0.014 min
 Response: 4398911
 Conc: 5.84 ng/ml



#42 AR-1268-2

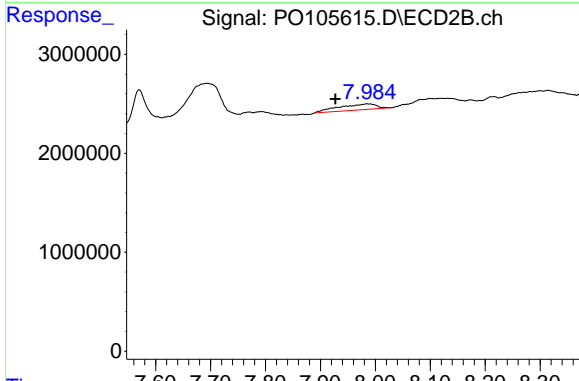
R.T.: 7.693 min
 Delta R.T.: -0.023 min
 Response: 12943579
 Conc: 45.88 ng/ml



#43 AR-1268-3

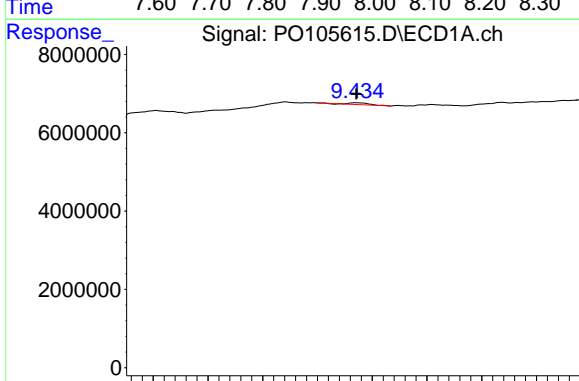
R.T.: 9.022 min
 Delta R.T.: 0.009 min
 Response: 222390
 Conc: 0.35 ng/ml

Instrument :
 ECD_O
 ClientSampleId :
 358



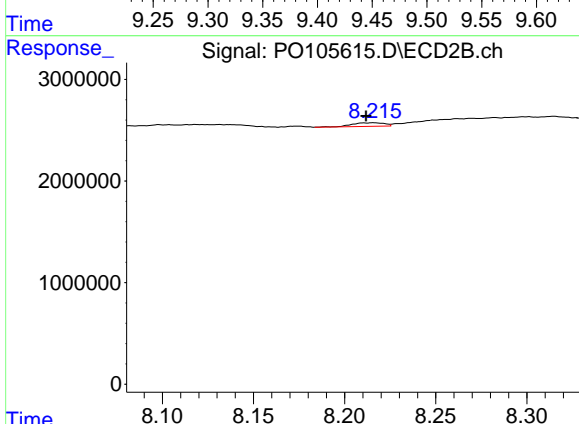
#43 AR-1268-3

R.T.: 7.985 min
 Delta R.T.: 0.057 min
 Response: 2810368
 Conc: 12.07 ng/ml



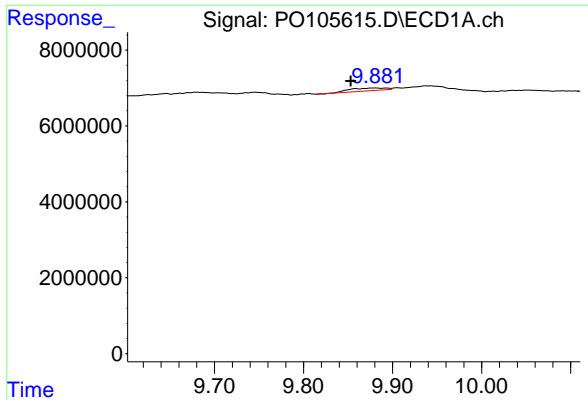
#44 AR-1268-4

R.T.: 9.435 min
 Delta R.T.: 0.000 min
 Response: 599275
 Conc: 2.18 ng/ml



#44 AR-1268-4

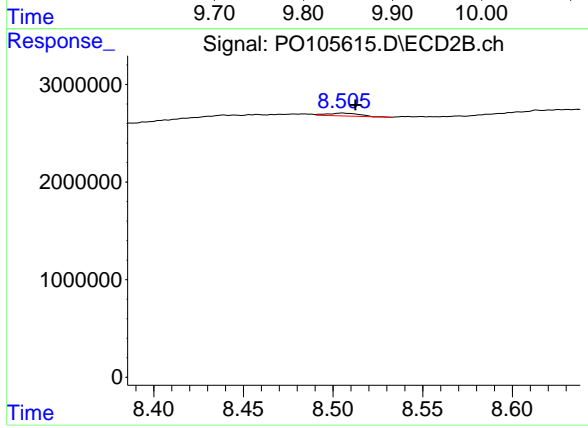
R.T.: 8.216 min
 Delta R.T.: 0.004 min
 Response: 421674
 Conc: 4.29 ng/ml



#45 AR-1268-5

R.T.: 9.880 min
 Delta R.T.: 0.027 min
 Response: 2001907
 Conc: 0.96 ng/ml

Instrument :
 ECD_O
 ClientSampleId :
 358



#45 AR-1268-5

R.T.: 8.505 min
 Delta R.T.: -0.007 min
 Response: 362478
 Conc: 0.48 ng/ml