

Data Path : Z:\pestpcbsrv\HPCHEM1\ECD\_0\Data\P0081721\  
 Data File : P0080594.D  
 Signal(s) : Signal #1: ECD1A.CH Signal #2: ECD2B.CH  
 Acq On : 18 Aug 2021 8:08  
 Operator : DD\AJ  
 Sample : M3435-37  
 Misc :  
 ALS Vial : 54 Sample Multiplier: 1

**Instrument :**  
 ECD\_0  
**ClientSampleId :**  
 2021-08-13-EB-04

**Manual Integrations**  
**APPROVED**  
 mohammad  
 8/18/2021 2:07:26 PM

Integration File signal 1: autoint1.e  
 Integration File signal 2: autoint2.e  
 Quant Time: Aug 18 08:38:07 2021  
 Quant Method : Z:\pestpcbsrv\HPCHEM1\ECD\_0\methods\P0081021.M  
 Quant Title : GC EXTRACTABLES  
 QLast Update : Wed Aug 11 05:48:32 2021  
 Response via : Initial Calibration  
 Integrator: ChemStation 6890 Scale Mode: Small noise peaks clipped

Volume Inj. : 2 µl  
 Signal #1 Phase : ZB-MR1 Signal #2 Phase: ZB-MR2  
 Signal #1 Info : 30Mx0.32mmx 0.50µ Signal #2 Info : 30M x 0.32mm x 0.25µm

Compound	RT#1	RT#2	Resp#1	Resp#2	ng/ml	ng/ml
-----						
System Monitoring Compounds						
1) SA Tetrachlo...	4.991	4.106	1711896	562170	24.722m	22.556
2) SA Decachlor...	11.089	9.502	1078263	435084	20.831	19.182

Target Compounds

(f)=RT Delta > 1/2 Window (#)=Amounts differ by > 25% (m)=manual int.

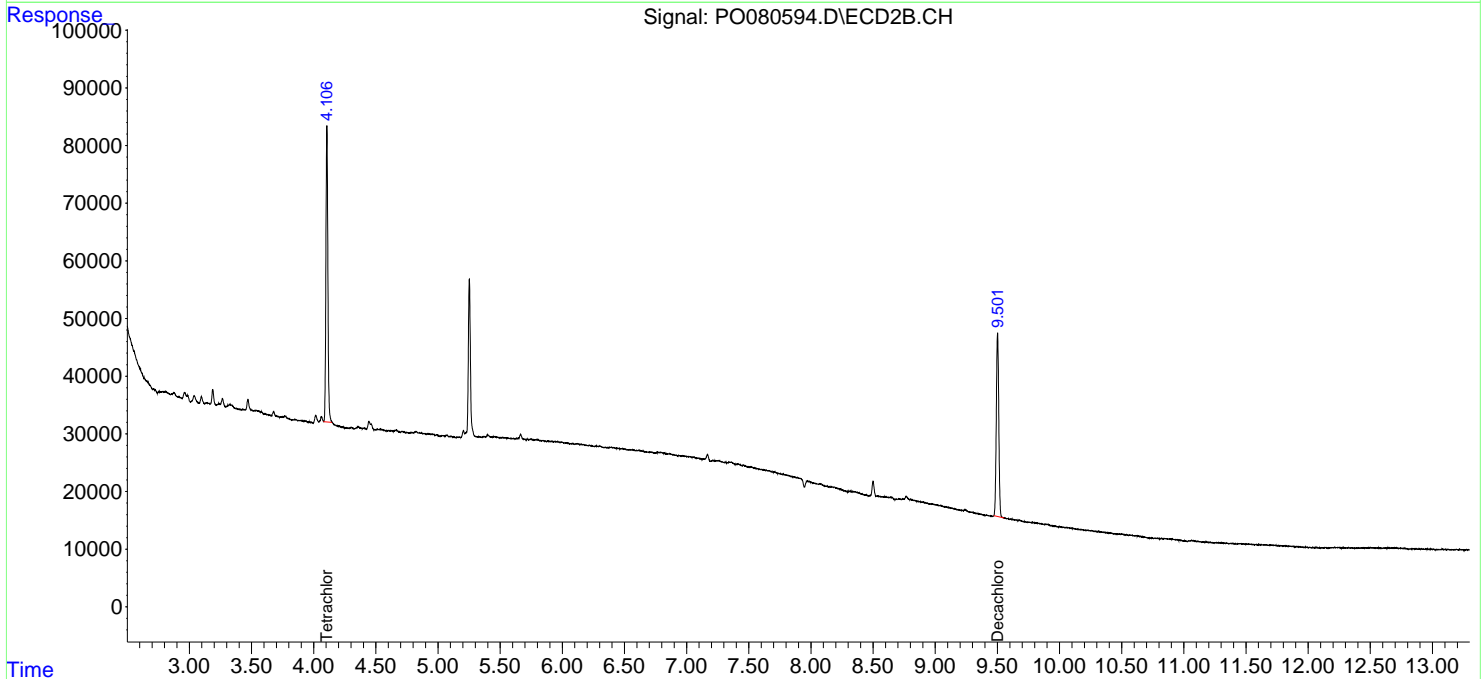
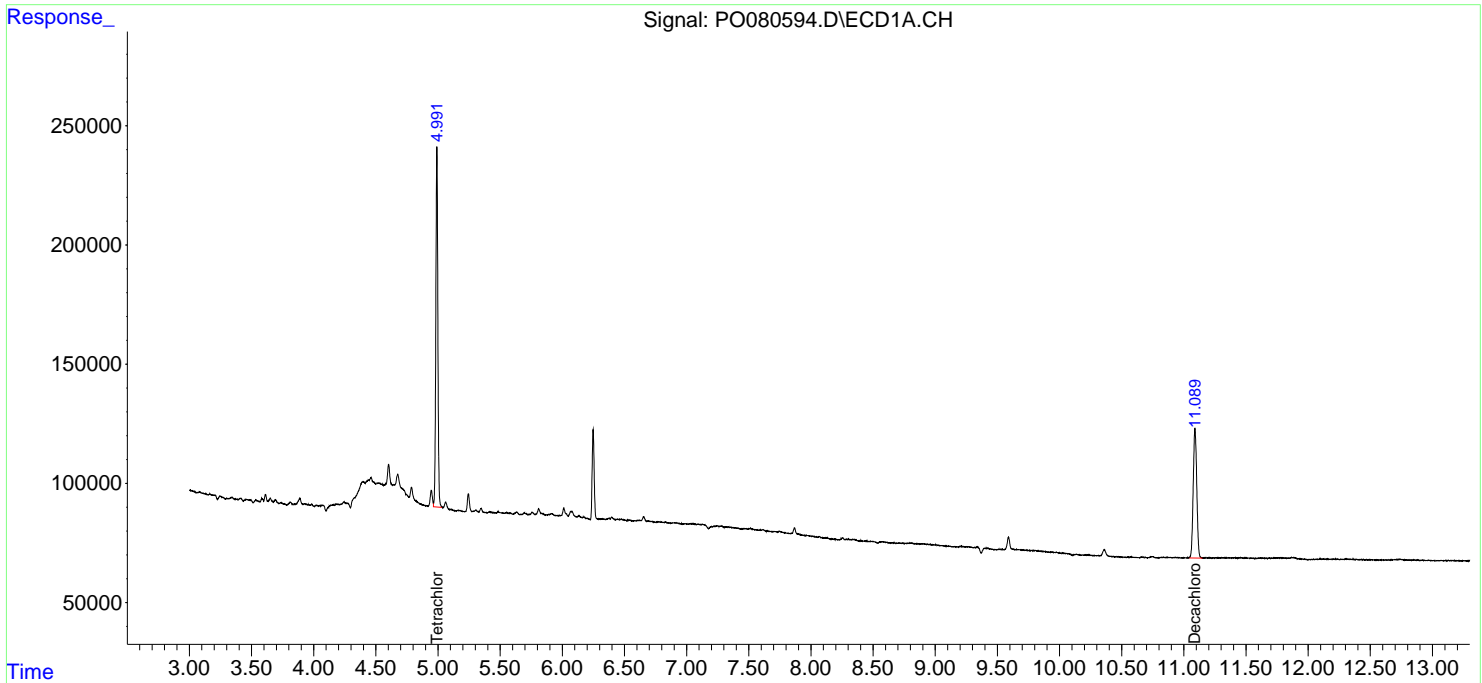
Data Path : Z:\pestpcbsrv\HPCHEM1\ECD\_0\Data\P0081721\  
 Data File : P0080594.D  
 Signal(s) : Signal #1: ECD1A.CH Signal #2: ECD2B.CH  
 Acq On : 18 Aug 2021 8:08  
 Operator : DD\AJ  
 Sample : M3435-37  
 Misc :  
 ALS Vial : 54 Sample Multiplier: 1

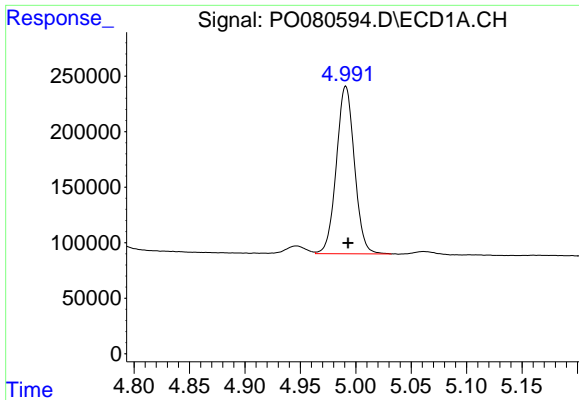
**Instrument :**  
 ECD\_O  
**Client Sampled :**  
 2021-08-13-EB-04

**Manual Integrations**  
**APPROVED**  
 mohammad  
 8/18/2021 2:07:26 PM

Integration File signal 1: autoint1.e  
 Integration File signal 2: autoint2.e  
 Quant Time: Aug 18 08:38:07 2021  
 Quant Method : Z:\pestpcbsrv\HPCHEM1\ECD\_0\methods\P0081021.M  
 Quant Title : GC EXTRACTABLES  
 QLast Update : Wed Aug 11 05:48:32 2021  
 Response via : Initial Calibration  
 Integrator: ChemStation 6890 Scale Mode: Small noise peaks clipped

Volume Inj. : 2 µl  
 Signal #1 Phase : ZB-MR1 Signal #2 Phase: ZB-MR2  
 Signal #1 Info : 30Mx0.32mmx 0.50µ Signal #2 Info : 30M x 0.32mm x 0.25µm

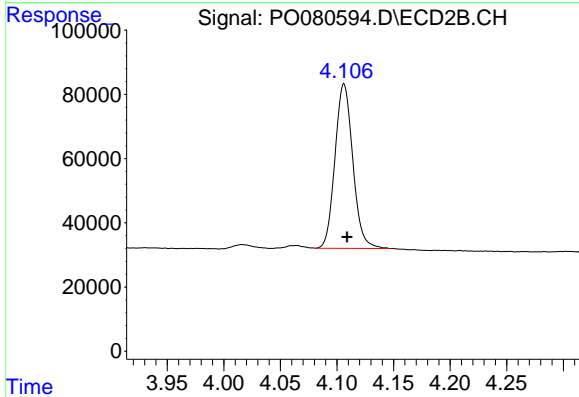




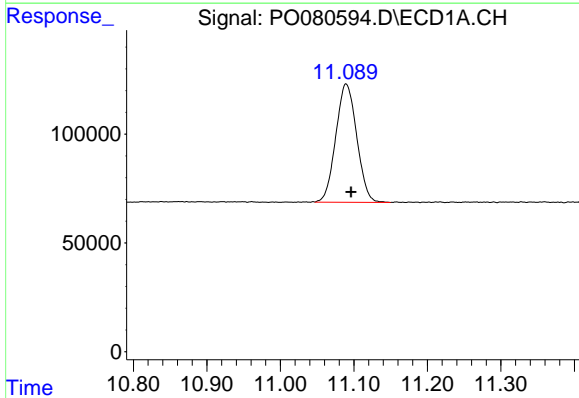
#1 Tetrachloro-m-xylene  
 R.T.: 4.991 min  
 Delta R.T.: -0.002 min  
 Response: 1711896  
 Conc: 24.72 ng/ml m

Instrument :  
 ECD\_O  
 ClientSampled :  
 2021-08-13-EB-04

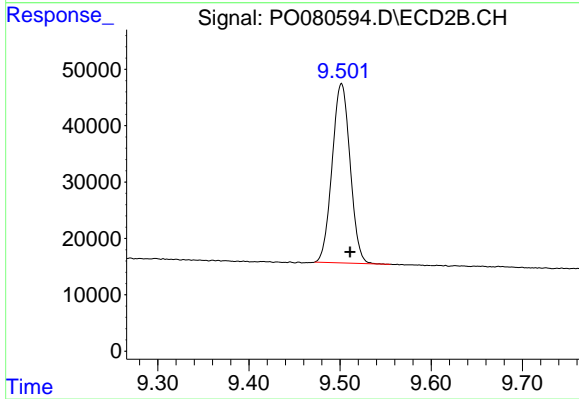
Manual Integrations  
 APPROVED  
 mohammad  
 8/18/2021 2:07:26 PM



#1 Tetrachloro-m-xylene  
 R.T.: 4.106 min  
 Delta R.T.: -0.003 min  
 Response: 562170  
 Conc: 22.56 ng/ml



#2 Decachlorobiphenyl  
 R.T.: 11.089 min  
 Delta R.T.: -0.007 min  
 Response: 1078263  
 Conc: 20.83 ng/ml



#2 Decachlorobiphenyl  
 R.T.: 9.502 min  
 Delta R.T.: -0.010 min  
 Response: 435084  
 Conc: 19.18 ng/ml