

Data Path : Z:\pestpcbsrv\HPCHEM1\ECD_O\Data\P0081723\
 Data File : P0097188.D
 Signal(s) : Signal #1: ECD1A.ch Signal #2: ECD2B.ch
 Acq On : 17 Aug 2023 13:09
 Operator : YP/AJ
 Sample : PB154880BL
 Misc :
 ALS Vial : 7 Sample Multiplier: 1

Instrument :
 ECD_O
 ClientSampleId :
 PB154880BL

Integration File signal 1: autoint1.e
 Integration File signal 2: autoint2.e
 Quant Time: Aug 18 01:16:13 2023
 Quant Method : Z:\pestpcbsrv\HPCHEM1\ECD_O\methods\P0080723.M
 Quant Title : GC EXTRACTABLES
 QLast Update : Tue Aug 08 04:34:41 2023
 Response via : Initial Calibration
 Integrator: ChemStation

Volume Inj. : 2 µl
 Signal #1 Phase : ZB-MR1 Signal #2 Phase: ZB-MR2
 Signal #1 Info : 30Mx0.32mmx 0.50µ Signal #2 Info : 30M x 0.32mm x 0.25µm

Compound	RT#1	RT#2	Resp#1	Resp#2	ng/ml	ng/ml

System Monitoring Compounds						
1) SA Tetrachlo...	4.411	3.614	66956732	25379724	20.227	19.172
2) SA Decachlor...	10.353	8.629	49910593	24345160	22.809	21.043
Target Compounds						
3) L1 AR-1016-1	5.590	0.000	63112	0	0.670	N.D. #
4) L1 AR-1016-2	5.609	0.000	42324	0	0.316	N.D. #
5) L1 AR-1016-3	5.687	0.000	171427	0	1.970	N.D. #
6) L1 AR-1016-4	5.803	0.000	70531	0	1.050	N.D. #
7) L1 AR-1016-5	6.078	5.216f	12634	388708	0.181	10.110 #
8) L2 AR-1221-1	4.614	3.894f	666318	110808	16.349	6.384 #
9) L2 AR-1221-2	4.723	3.914	1366315	350888	44.974	27.157 #
10) L2 AR-1221-3	4.799	3.958f	10346	86976	0.118	2.191 #
11) L3 AR-1232-1	4.799	3.958f	10346	86976	0.142	2.689 #
12) L3 AR-1232-2	5.319	0.000	70314	0	1.774	N.D. #
13) L3 AR-1232-3	5.609	0.000	42324	0	0.692	N.D. #
14) L3 AR-1232-4	5.803	0.000	70531	0	2.311	N.D. #
15) L3 AR-1232-5	5.856	5.216f	18111	388708	0.647	23.779 #
16) L4 AR-1242-1	5.590	0.000	63112	0	0.753	N.D. #
17) L4 AR-1242-2	5.609	0.000	42324	0	0.359	N.D. #
18) L4 AR-1242-3	5.687	0.000	171427	0	2.321	N.D. #
19) L4 AR-1242-4	5.803	0.000	70531	0	1.185	N.D. #
20) L4 AR-1242-5	6.525	5.575f	52021	633929	0.946	17.398 #
21) L5 AR-1248-1	5.590	0.000	63112	0	1.077	N.D. #
22) L5 AR-1248-2	5.856	0.000	18111	0	0.193	N.D. #
23) L5 AR-1248-3	6.078	0.000	12634	0	0.129	N.D. #
24) L5 AR-1248-4	6.478	5.216f	61881	388708	0.681	7.614 #
25) L5 AR-1248-5	6.525	5.575	52021	633929	0.591	13.559 #
26) L6 AR-1254-1	6.467	5.575f	-91167	633929	N.D.	8.590 #
27) L6 AR-1254-2	6.699	5.594f	145062	633727	0.900	9.619 #
28) L6 AR-1254-3	7.077	6.034	1494513	37281	9.538	0.369 #
29) L6 AR-1254-4	7.362	6.258f	236463	398735	2.345	6.890 #
30) L6 AR-1254-5	7.782	0.000	468039	0	4.171	N.D. #
31) L7 AR-1260-1	7.194f	6.258f	23052	398735	0.183	5.666 #
32) L7 AR-1260-2	7.459	6.359	506029	878596	3.756	10.527 #
33) L7 AR-1260-3	7.896	0.000	1272127	0	12.259	N.D. #
34) L7 AR-1260-4	8.082	0.000	211752	0	1.894	N.D. #
35) L7 AR-1260-5	8.424	7.241	253828	100353	1.209	0.724 #
36) L8 AR-1262-1	7.896	0.000	1272127	0	8.565	N.D. #
37) L8 AR-1262-2	8.424	0.000	253828	0	1.097	N.D. #
38) L8 AR-1262-3	8.812f	7.532	1215897	103066	7.290	1.606 #
39) L8 AR-1262-4	8.851	7.609	68082	38563	0.934	0.339 #
40) L8 AR-1262-5	9.529	0.000	130570	0	1.568	N.D. #
41) L9 AR-1268-1	8.812f	7.532	1215897	103066	3.955	0.556 #

Data Path : Z:\pestpcbsrv\HPCHEM1\ECD_O\Data\P0081723\
 Data File : P0097188.D
 Signal(s) : Signal #1: ECD1A.ch Signal #2: ECD2B.ch
 Acq On : 17 Aug 2023 13:09
 Operator : YP/AJ
 Sample : PB154880BL
 Misc :
 ALS Vial : 7 Sample Multiplier: 1

Instrument :
 ECD_O
 ClientSampleId :
 PB154880BL

Integration File signal 1: autoint1.e
 Integration File signal 2: autoint2.e
 Quant Time: Aug 18 01:16:13 2023
 Quant Method : Z:\pestpcbsrv\HPCHEM1\ECD_O\methods\P0080723.M
 Quant Title : GC EXTRACTABLES
 QLast Update : Tue Aug 08 04:34:41 2023
 Response via : Initial Calibration
 Integrator: ChemStation

Volume Inj. : 2 µl
 Signal #1 Phase : ZB-MR1 Signal #2 Phase: ZB-MR2
 Signal #1 Info : 30Mx0.32mmx 0.50µ Signal #2 Info : 30M x 0.32mm x 0.25µm

	Compound	RT#1	RT#2	Resp#1	Resp#2	ng/ml	ng/ml
42)	L9 AR-1268-2	8.851	7.609	68082	38563	0.248	0.230
43)	L9 AR-1268-3	9.104	7.853f	558662	71536	2.187	0.495 #
44)	L9 AR-1268-4	9.557	0.000	28281	0	0.305	N.D. #
45)	L9 AR-1268-5	9.990	0.000	211457	0	0.262	N.D. #

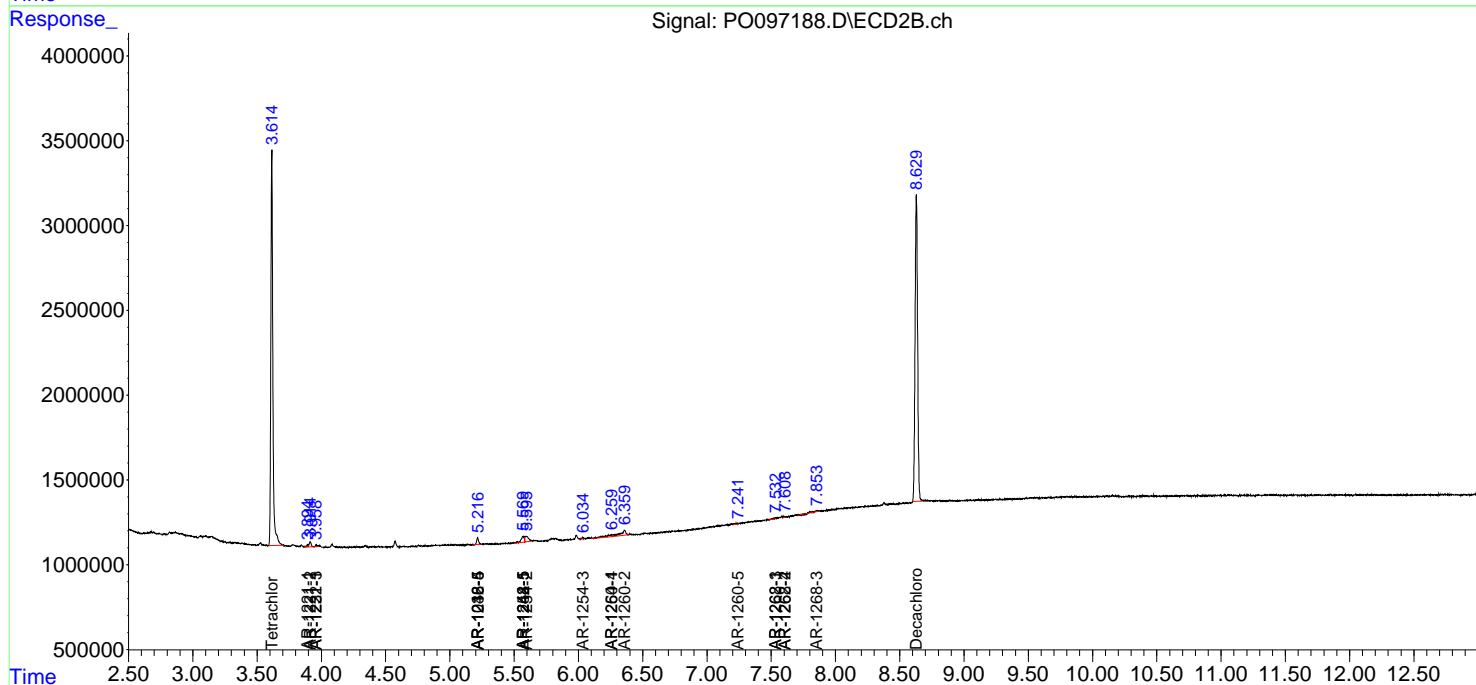
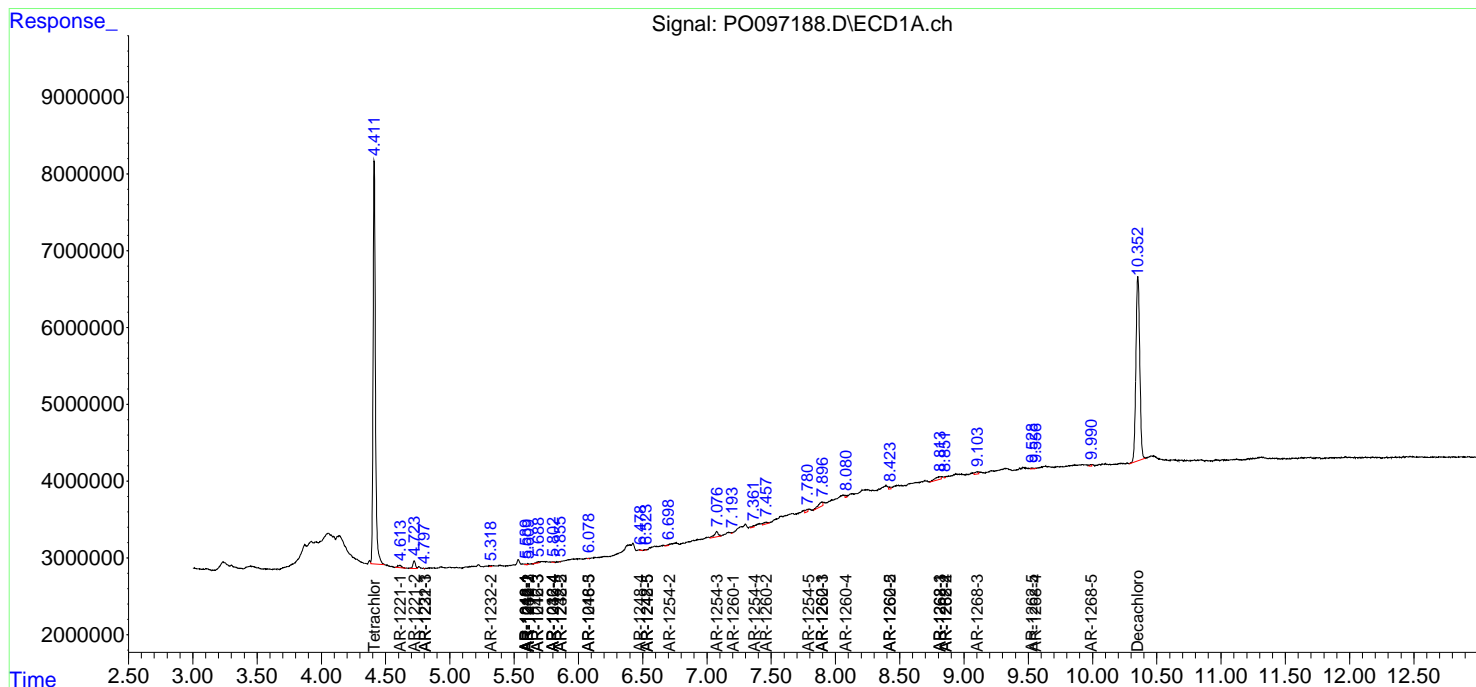
(f)=RT Delta > 1/2 Window (#)=Amounts differ by > 25% (m)=manual int.

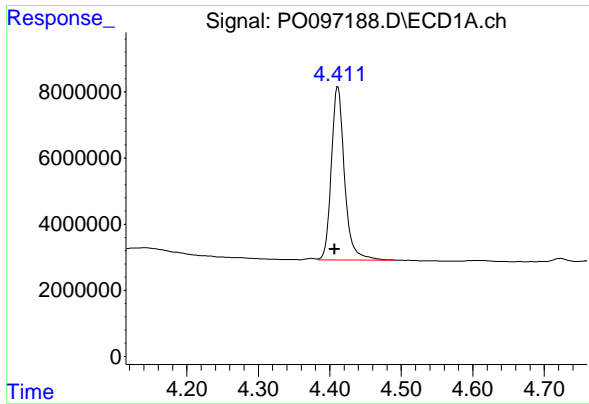
Data Path : Z:\pestpcbsrv\HPCHEM1\ECD_O\Data\PO081723\
 Data File : PO097188.D
 Signal(s) : Signal #1: ECD1A.ch Signal #2: ECD2B.ch
 Acq On : 17 Aug 2023 13:09
 Operator : YP/AJ
 Sample : PB154880BL
 Misc :
 ALS Vial : 7 Sample Multiplier: 1

Instrument :
 ECD_O
 ClientSampleId :
 PB154880BL

Integration File signal 1: autoint1.e
 Integration File signal 2: autoint2.e
 Quant Time: Aug 18 01:16:13 2023
 Quant Method : Z:\pestpcbsrv\HPCHEM1\ECD_O\methods\PO080723.M
 Quant Title : GC EXTRACTABLES
 QLast Update : Tue Aug 08 04:34:41 2023
 Response via : Initial Calibration
 Integrator: ChemStation

Volume Inj. : 2 µl
 Signal #1 Phase : ZB-MR1 Signal #2 Phase: ZB-MR2
 Signal #1 Info : 30Mx0.32mmx 0.50µ Signal #2 Info : 30M x 0.32mm x 0.25µm

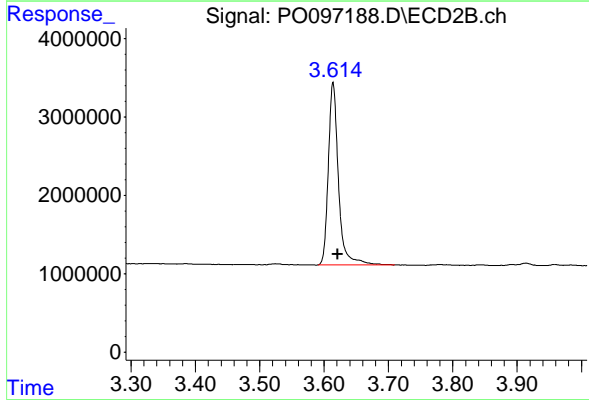




#1 Tetrachloro-m-xylene

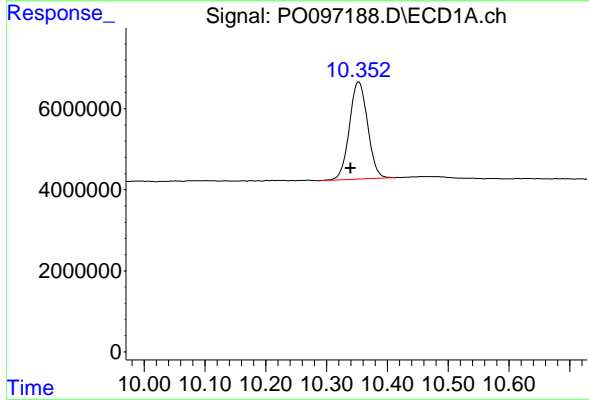
R.T.: 4.411 min
 Delta R.T.: 0.004 min
 Response: 66956732
 Conc: 20.23 ng/ml

Instrument :
 ECD_O
 ClientSampleId :
 PB154880BL



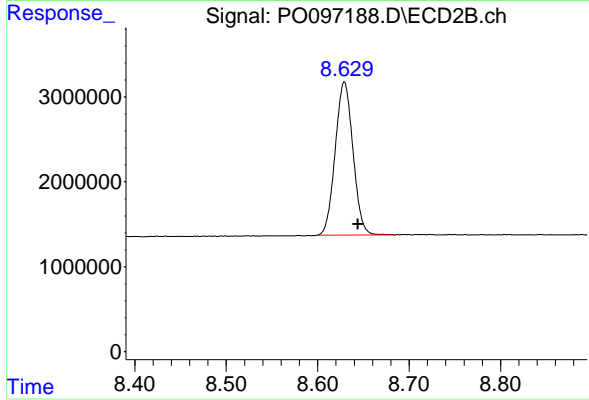
#1 Tetrachloro-m-xylene

R.T.: 3.614 min
 Delta R.T.: -0.007 min
 Response: 25379724
 Conc: 19.17 ng/ml



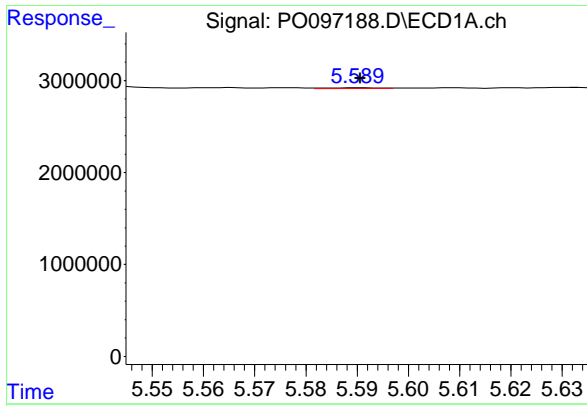
#2 Decachlorobiphenyl

R.T.: 10.353 min
 Delta R.T.: 0.013 min
 Response: 49910593
 Conc: 22.81 ng/ml



#2 Decachlorobiphenyl

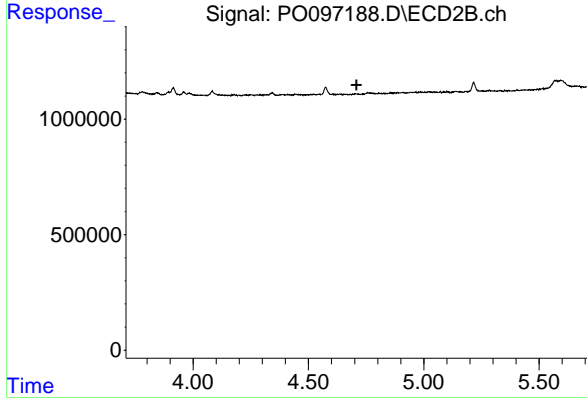
R.T.: 8.629 min
 Delta R.T.: -0.015 min
 Response: 24345160
 Conc: 21.04 ng/ml



#3 AR-1016-1

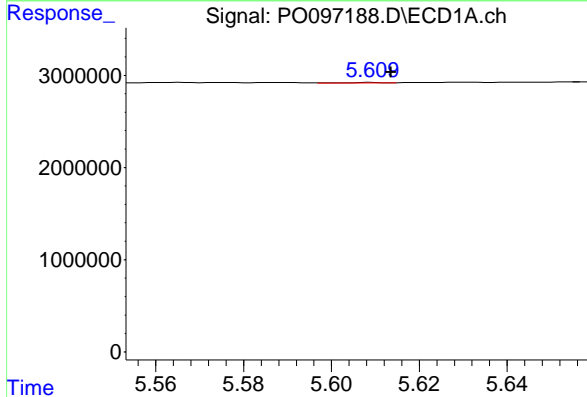
R.T.: 5.590 min
 Delta R.T.: 0.000 min
 Response: 63112
 Conc: 0.67 ng/ml

Instrument :
 ECD_O
 ClientSampleId :
 PB154880BL



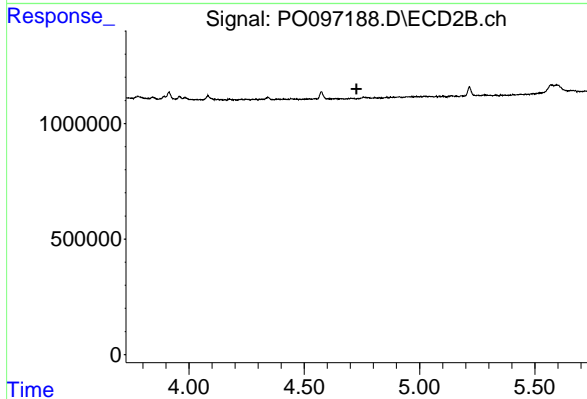
#3 AR-1016-1

R.T.: 0.000 min
 Exp R.T. : 4.708 min
 Response: 0
 Conc: N.D.



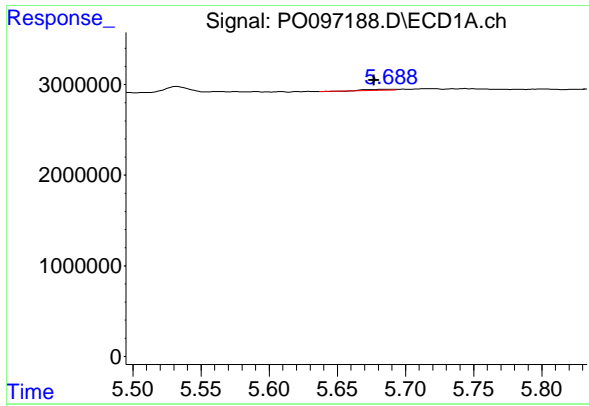
#4 AR-1016-2

R.T.: 5.609 min
 Delta R.T.: -0.004 min
 Response: 42324
 Conc: 0.32 ng/ml



#4 AR-1016-2

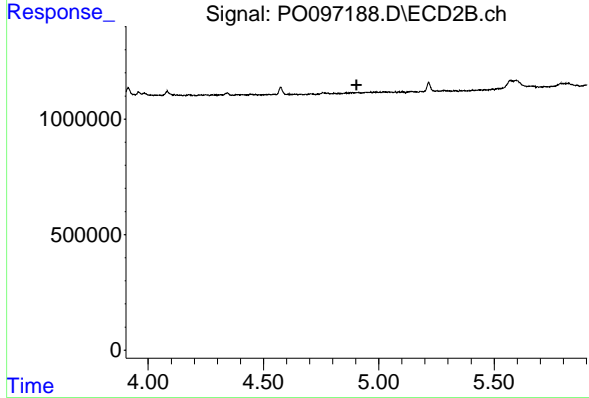
R.T.: 0.000 min
 Exp R.T. : 4.726 min
 Response: 0
 Conc: N.D.



#5 AR-1016-3

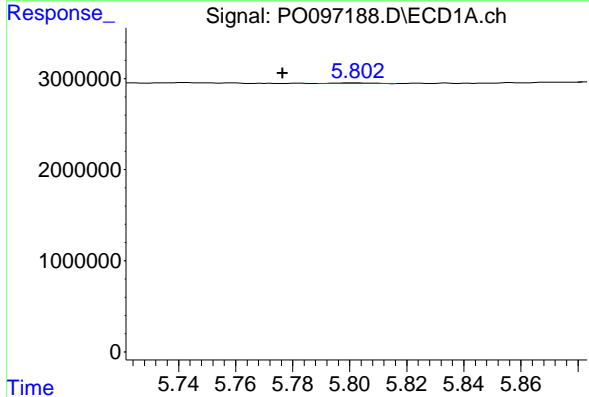
R.T.: 5.687 min
 Delta R.T.: 0.010 min
 Response: 171427
 Conc: 1.97 ng/ml

Instrument :
 ECD_O
 ClientSampleId :
 PB154880BL



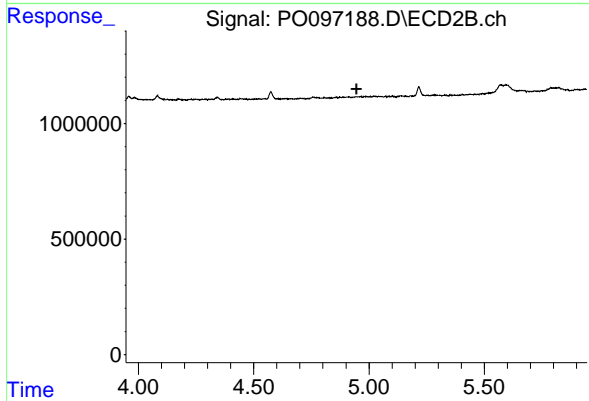
#5 AR-1016-3

R.T.: 0.000 min
 Exp R.T. : 4.903 min
 Response: 0
 Conc: N.D.



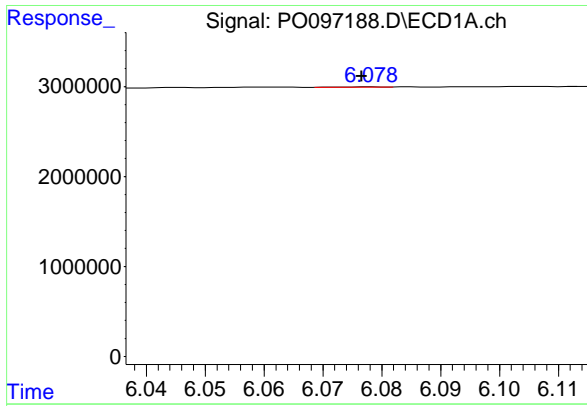
#6 AR-1016-4

R.T.: 5.803 min
 Delta R.T.: 0.026 min
 Response: 70531
 Conc: 1.05 ng/ml



#6 AR-1016-4

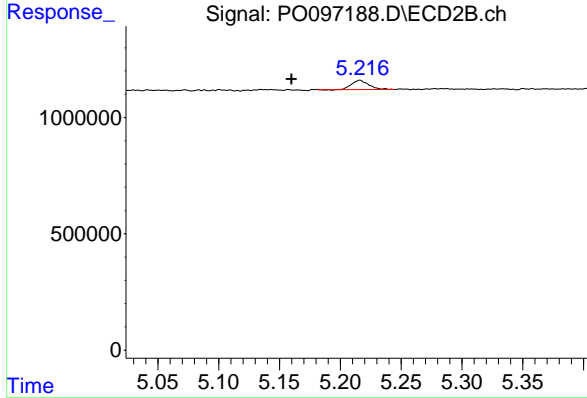
R.T.: 0.000 min
 Exp R.T. : 4.946 min
 Response: 0
 Conc: N.D.



#7 AR-1016-5

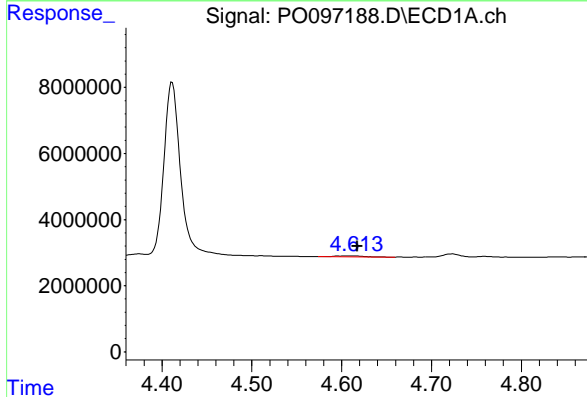
R.T.: 6.078 min
 Delta R.T.: 0.002 min
 Response: 12634
 Conc: 0.18 ng/ml

Instrument :
 ECD_O
 ClientSampleId :
 PB154880BL



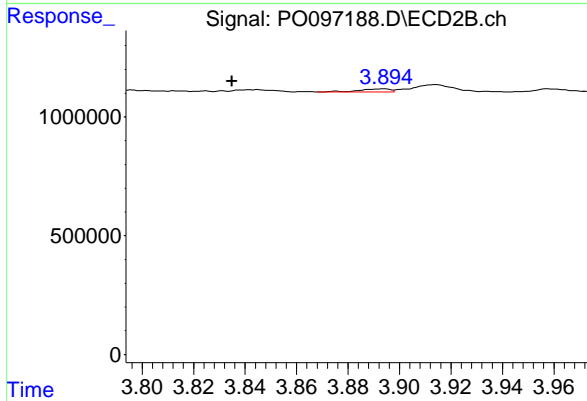
#7 AR-1016-5

R.T.: 5.216 min
 Delta R.T.: 0.056 min
 Response: 388708
 Conc: 10.11 ng/ml



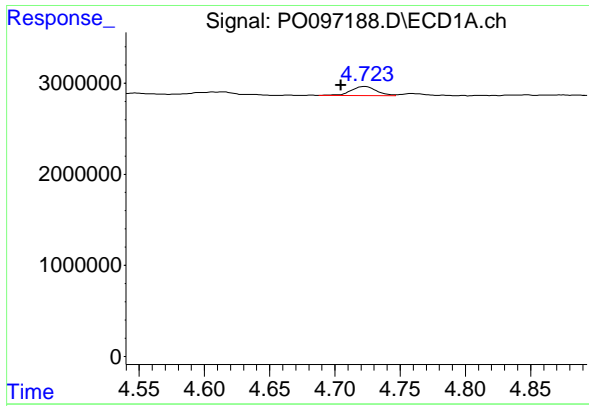
#8 AR-1221-1

R.T.: 4.614 min
 Delta R.T.: -0.003 min
 Response: 666318
 Conc: 16.35 ng/ml



#8 AR-1221-1

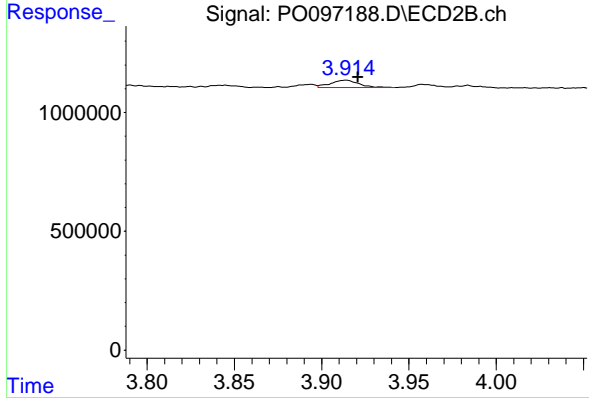
R.T.: 3.894 min
 Delta R.T.: 0.059 min
 Response: 110808
 Conc: 6.38 ng/ml



#9 AR-1221-2

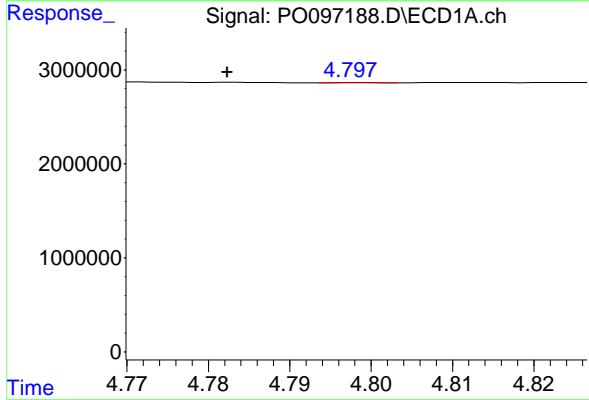
R.T.: 4.723 min
 Delta R.T.: 0.018 min
 Response: 1366315
 Conc: 44.97 ng/ml

Instrument :
 ECD_O
 ClientSampleId :
 PB154880BL



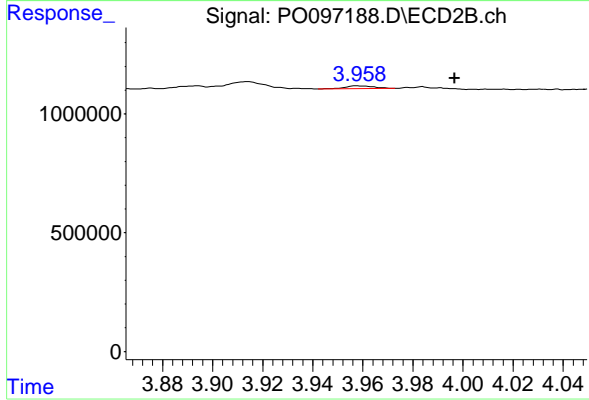
#9 AR-1221-2

R.T.: 3.914 min
 Delta R.T.: -0.007 min
 Response: 350888
 Conc: 27.16 ng/ml



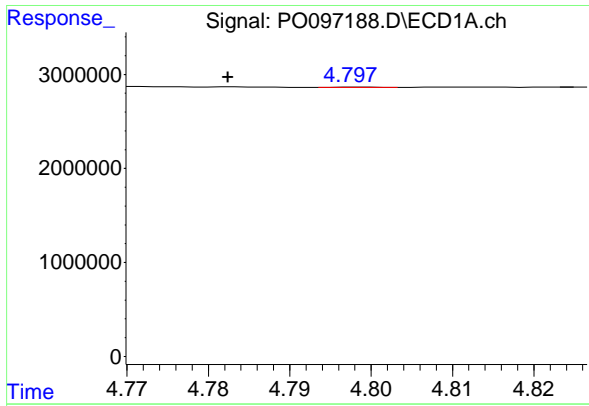
#10 AR-1221-3

R.T.: 4.799 min
 Delta R.T.: 0.016 min
 Response: 10346
 Conc: 0.12 ng/ml



#10 AR-1221-3

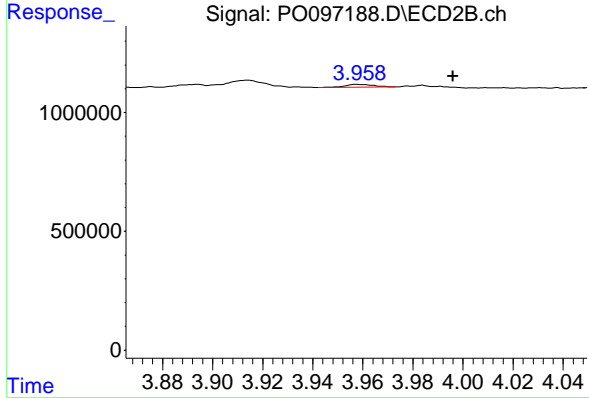
R.T.: 3.958 min
 Delta R.T.: -0.039 min
 Response: 86976
 Conc: 2.19 ng/ml



#11 AR-1232-1

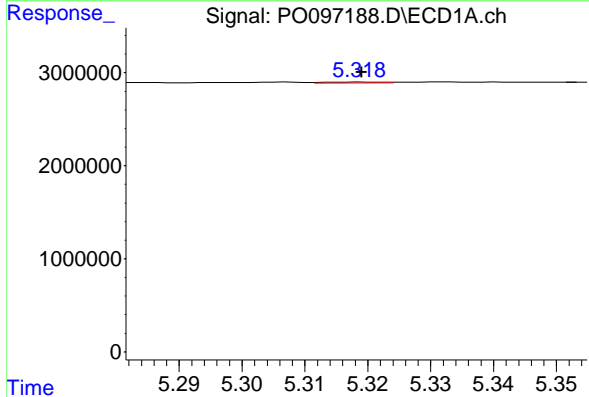
R.T.: 4.799 min
 Delta R.T.: 0.016 min
 Response: 10346
 Conc: 0.14 ng/ml

Instrument :
 ECD_O
 ClientSampleId :
 PB154880BL



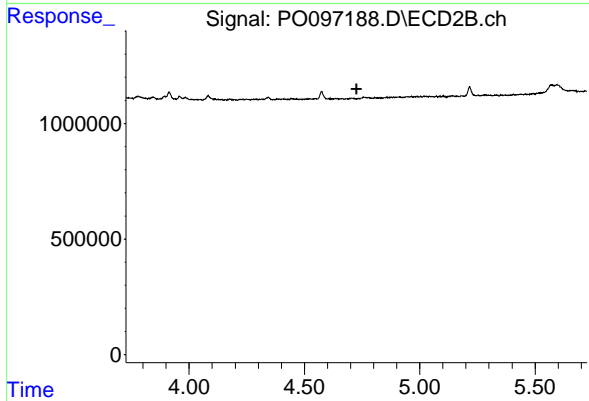
#11 AR-1232-1

R.T.: 3.958 min
 Delta R.T.: -0.038 min
 Response: 86976
 Conc: 2.69 ng/ml



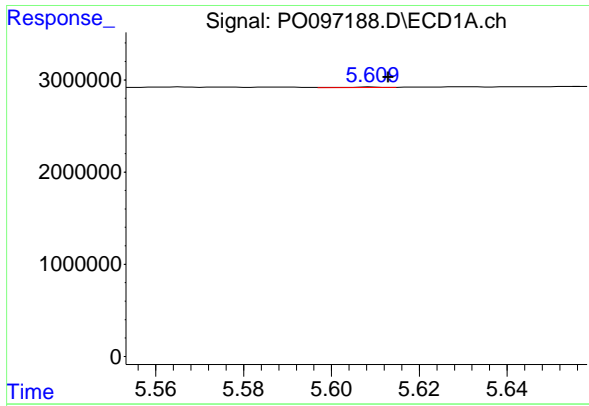
#12 AR-1232-2

R.T.: 5.319 min
 Delta R.T.: 0.000 min
 Response: 70314
 Conc: 1.77 ng/ml



#12 AR-1232-2

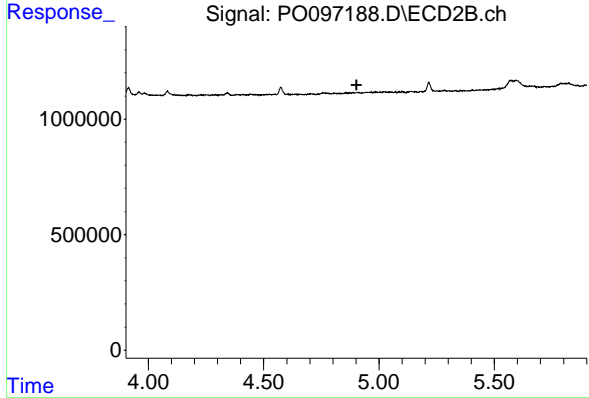
R.T.: 0.000 min
 Exp R.T. : 4.726 min
 Response: 0
 Conc: N.D.



#13 AR-1232-3

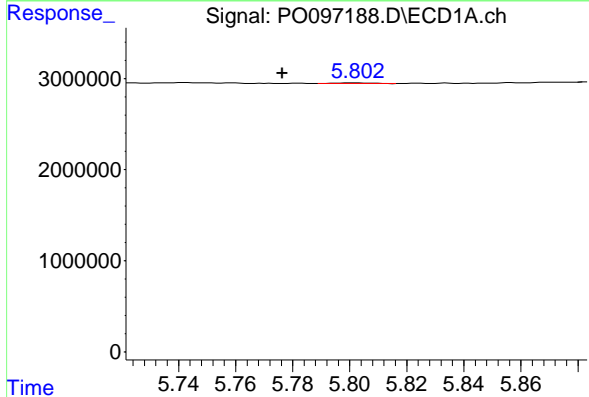
R.T.: 5.609 min
 Delta R.T.: -0.004 min
 Response: 42324
 Conc: 0.69 ng/ml

Instrument :
 ECD_O
 ClientSampleId :
 PB154880BL



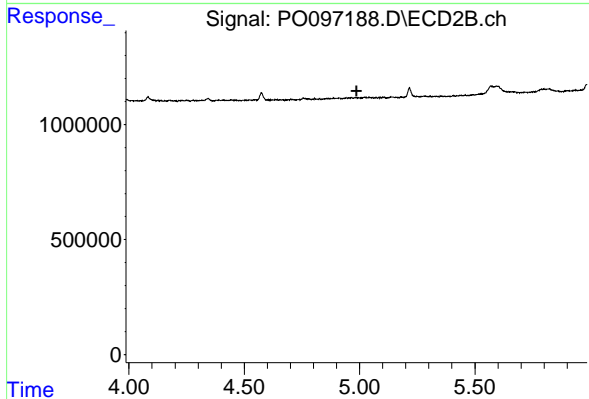
#13 AR-1232-3

R.T.: 0.000 min
 Exp R.T. : 4.902 min
 Response: 0
 Conc: N.D.



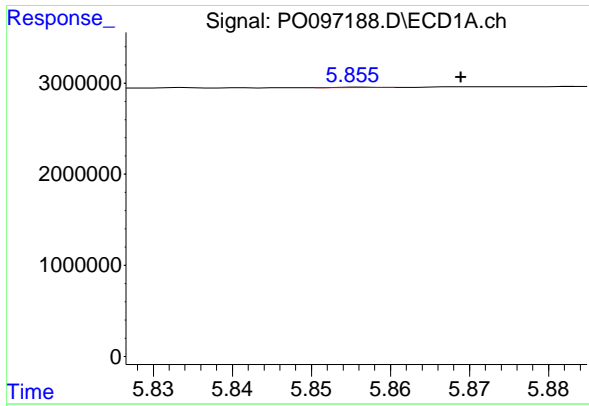
#14 AR-1232-4

R.T.: 5.803 min
 Delta R.T.: 0.026 min
 Response: 70531
 Conc: 2.31 ng/ml



#14 AR-1232-4

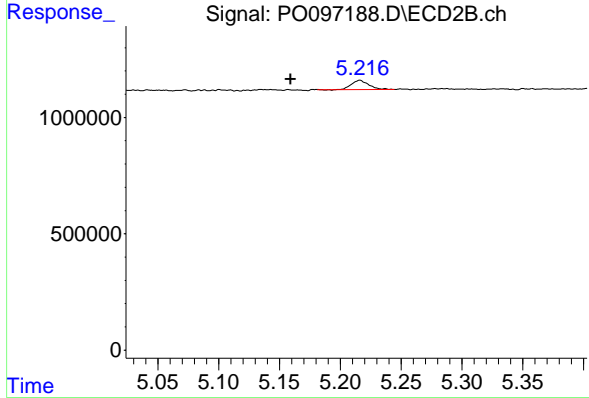
R.T.: 0.000 min
 Exp R.T. : 4.987 min
 Response: 0
 Conc: N.D.



#15 AR-1232-5

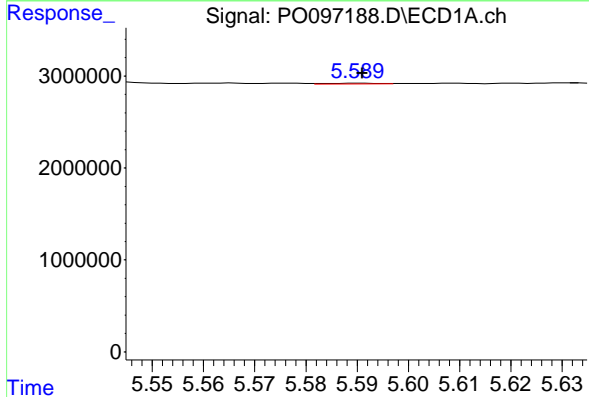
R.T.: 5.856 min
 Delta R.T.: -0.013 min
 Response: 18111
 Conc: 0.65 ng/ml

Instrument :
 ECD_O
 ClientSampleId :
 PB154880BL



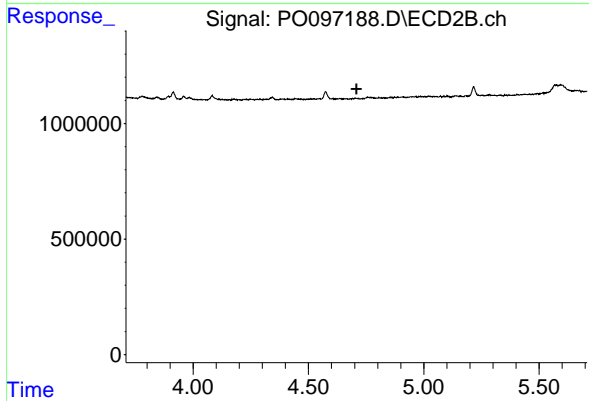
#15 AR-1232-5

R.T.: 5.216 min
 Delta R.T.: 0.057 min
 Response: 388708
 Conc: 23.78 ng/ml



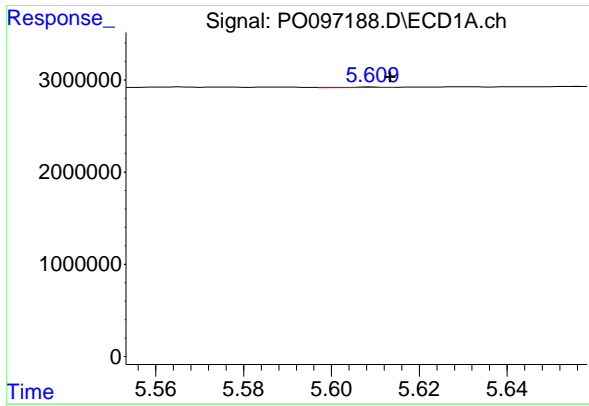
#16 AR-1242-1

R.T.: 5.590 min
 Delta R.T.: 0.000 min
 Response: 63112
 Conc: 0.75 ng/ml



#16 AR-1242-1

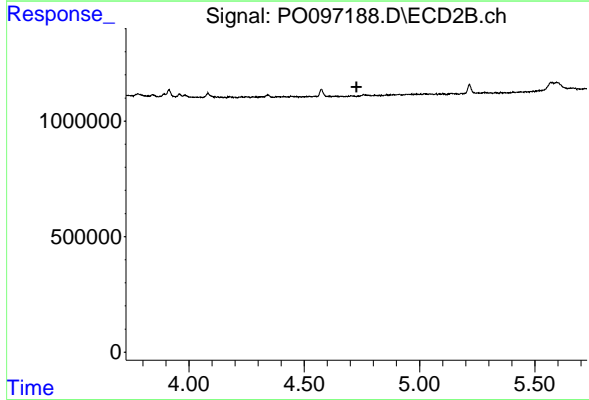
R.T.: 0.000 min
 Exp R.T. : 4.708 min
 Response: 0
 Conc: N.D.



#17 AR-1242-2

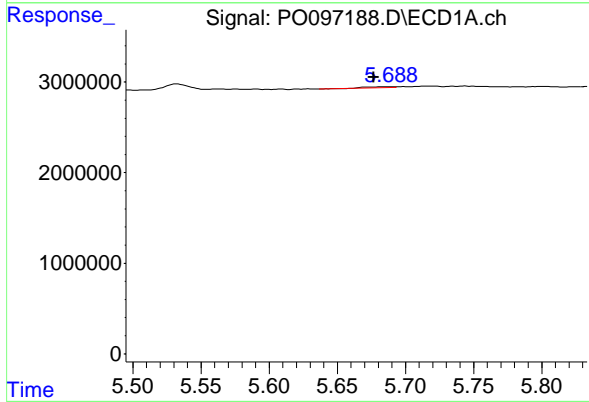
R.T.: 5.609 min
 Delta R.T.: -0.004 min
 Response: 42324
 Conc: 0.36 ng/ml

Instrument :
 ECD_O
 ClientSampleId :
 PB154880BL



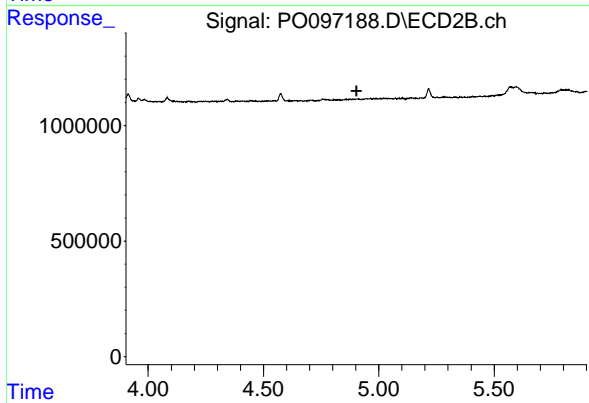
#17 AR-1242-2

R.T.: 0.000 min
 Exp R.T. : 4.727 min
 Response: 0
 Conc: N.D.



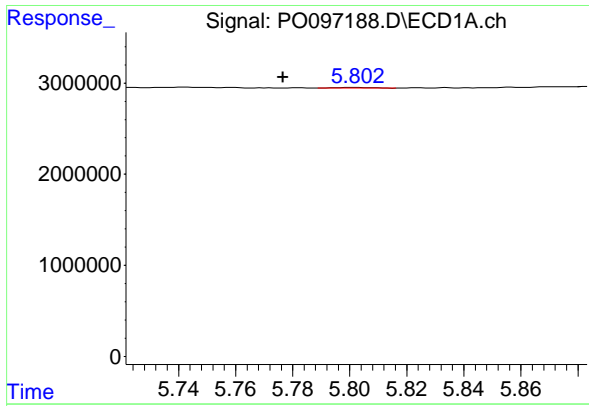
#18 AR-1242-3

R.T.: 5.687 min
 Delta R.T.: 0.010 min
 Response: 171427
 Conc: 2.32 ng/ml



#18 AR-1242-3

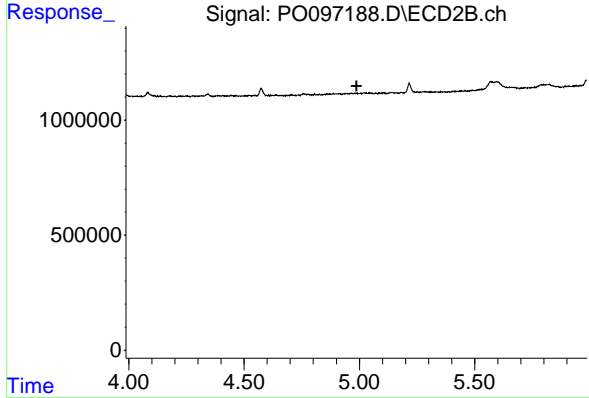
R.T.: 0.000 min
 Exp R.T. : 4.903 min
 Response: 0
 Conc: N.D.



#19 AR-1242-4

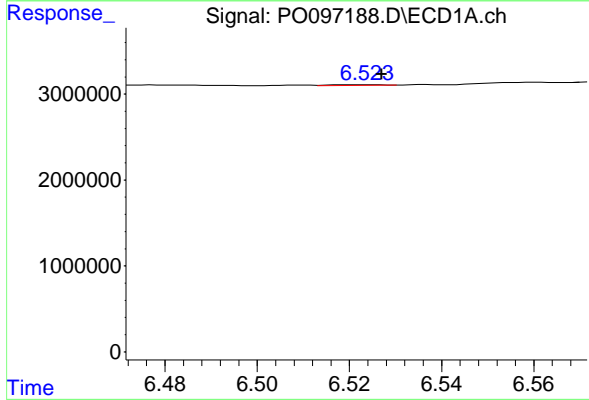
R.T.: 5.803 min
 Delta R.T.: 0.026 min
 Response: 70531
 Conc: 1.18 ng/ml

Instrument :
 ECD_O
 ClientSampleId :
 PB154880BL



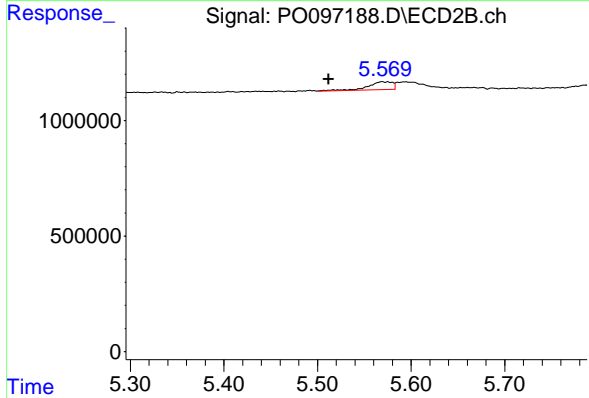
#19 AR-1242-4

R.T.: 0.000 min
 Exp R.T. : 4.987 min
 Response: 0
 Conc: N.D.



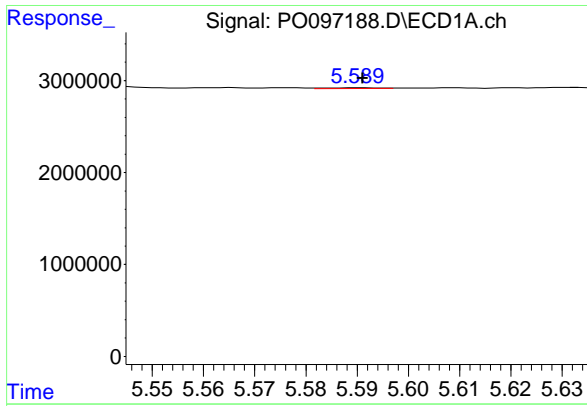
#20 AR-1242-5

R.T.: 6.525 min
 Delta R.T.: -0.002 min
 Response: 52021
 Conc: 0.95 ng/ml



#20 AR-1242-5

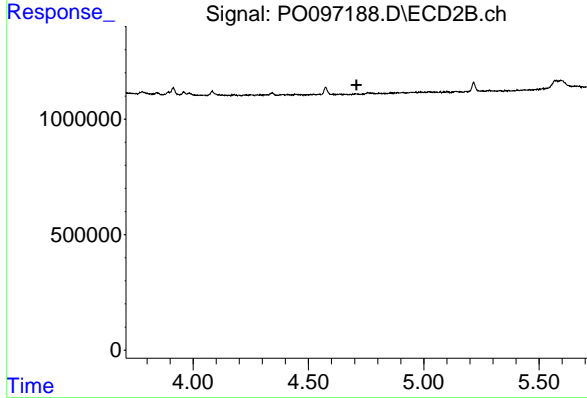
R.T.: 5.575 min
 Delta R.T.: 0.063 min
 Response: 633929
 Conc: 17.40 ng/ml



#21 AR-1248-1

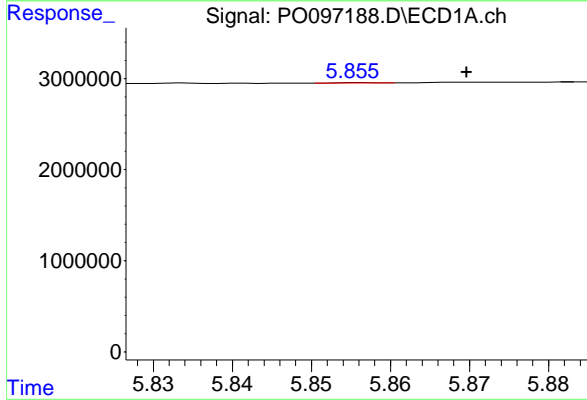
R.T.: 5.590 min
 Delta R.T.: 0.000 min
 Response: 63112
 Conc: 1.08 ng/ml

Instrument :
 ECD_O
 ClientSampleId :
 PB154880BL



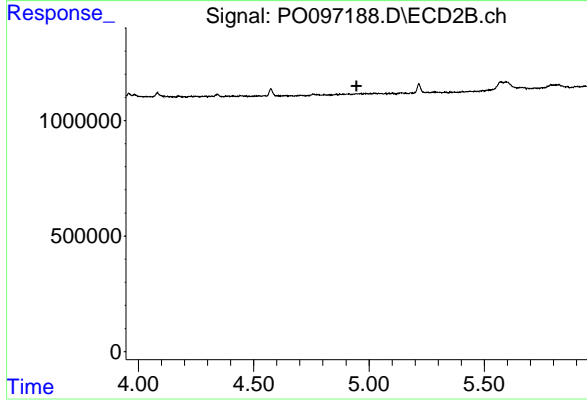
#21 AR-1248-1

R.T.: 0.000 min
 Exp R.T. : 4.708 min
 Response: 0
 Conc: N.D.



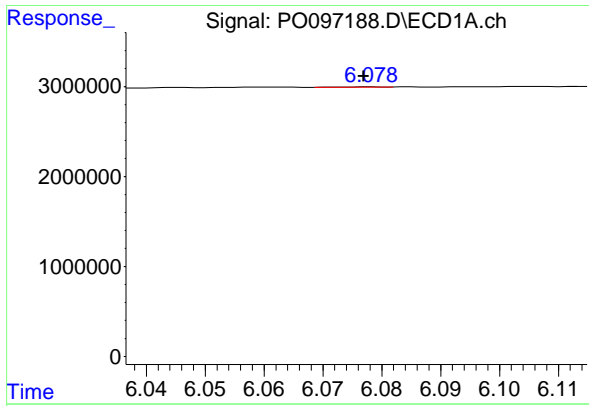
#22 AR-1248-2

R.T.: 5.856 min
 Delta R.T.: -0.013 min
 Response: 18111
 Conc: 0.19 ng/ml



#22 AR-1248-2

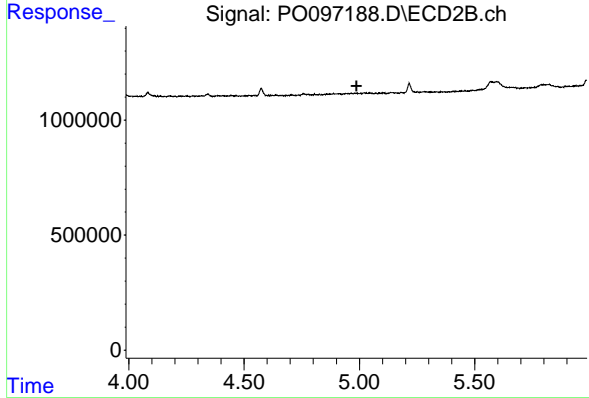
R.T.: 0.000 min
 Exp R.T. : 4.946 min
 Response: 0
 Conc: N.D.



#23 AR-1248-3

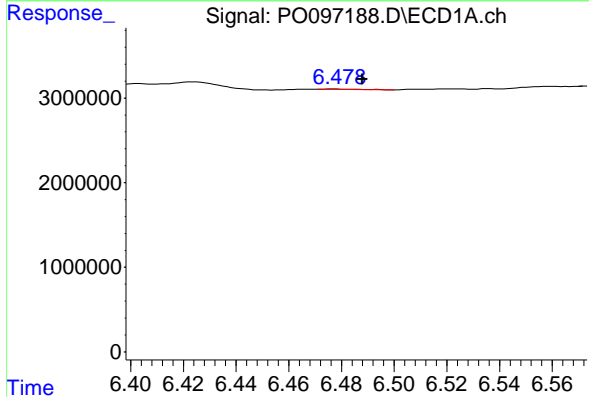
R.T.: 6.078 min
 Delta R.T.: 0.002 min
 Response: 12634
 Conc: 0.13 ng/ml

Instrument :
 ECD_O
 ClientSampleId :
 PB154880BL



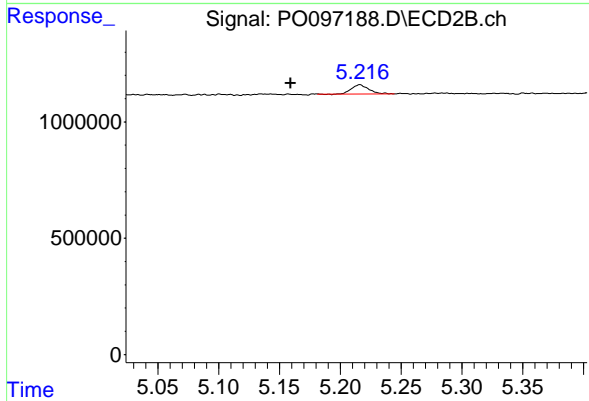
#23 AR-1248-3

R.T.: 0.000 min
 Exp R.T. : 4.987 min
 Response: 0
 Conc: N.D.



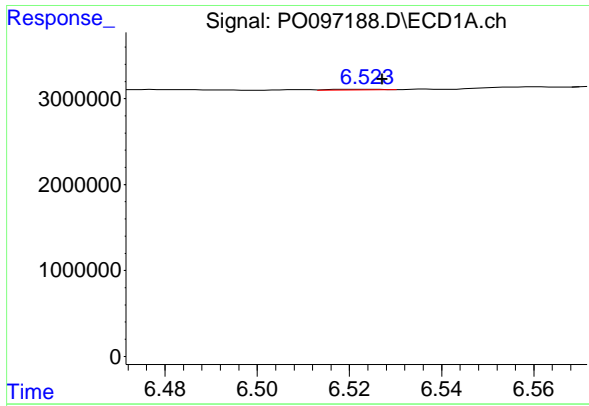
#24 AR-1248-4

R.T.: 6.478 min
 Delta R.T.: -0.010 min
 Response: 61881
 Conc: 0.68 ng/ml



#24 AR-1248-4

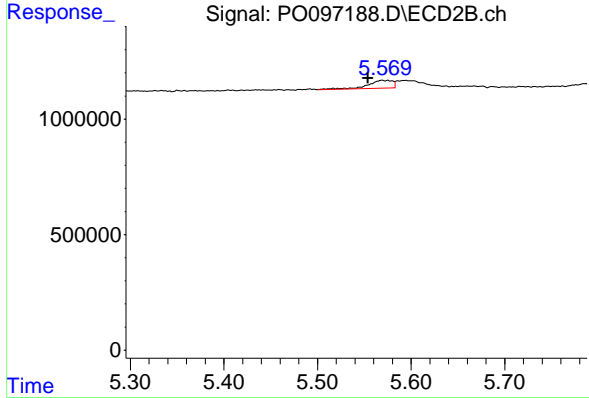
R.T.: 5.216 min
 Delta R.T.: 0.057 min
 Response: 388708
 Conc: 7.61 ng/ml



#25 AR-1248-5

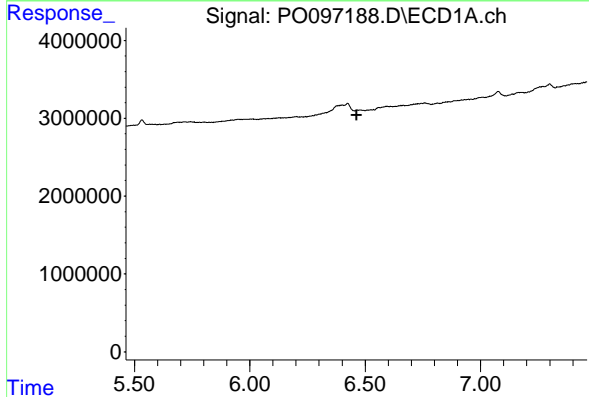
R.T.: 6.525 min
 Delta R.T.: -0.002 min
 Response: 52021
 Conc: 0.59 ng/ml

Instrument :
 ECD_O
 ClientSampleId :
 PB154880BL



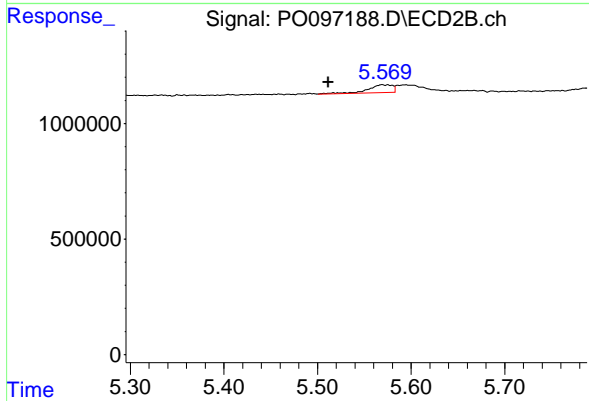
#25 AR-1248-5

R.T.: 5.575 min
 Delta R.T.: 0.021 min
 Response: 633929
 Conc: 13.56 ng/ml



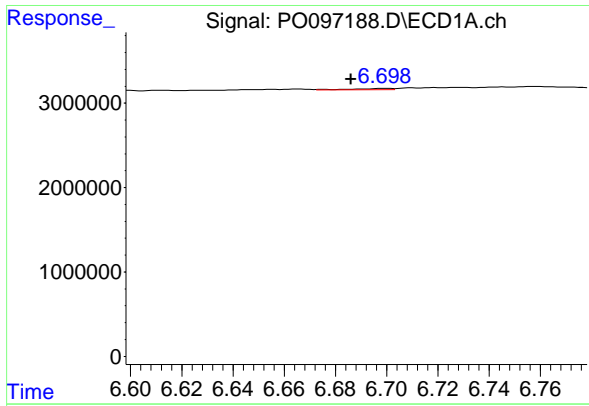
#26 AR-1254-1

R.T.: 6.467 min
 Delta R.T.: 0.004 min
 Response: -91167
 Conc: N.D.



#26 AR-1254-1

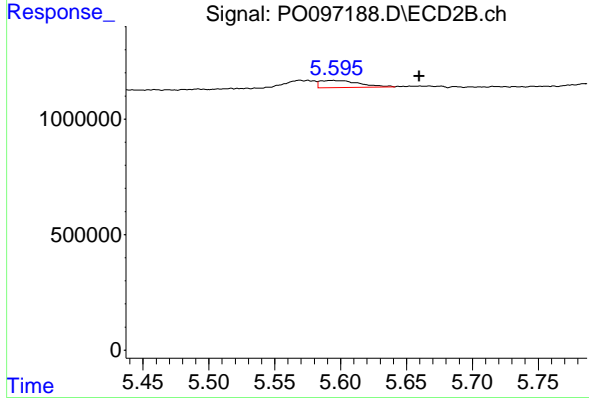
R.T.: 5.575 min
 Delta R.T.: 0.064 min
 Response: 633929
 Conc: 8.59 ng/ml



#27 AR-1254-2

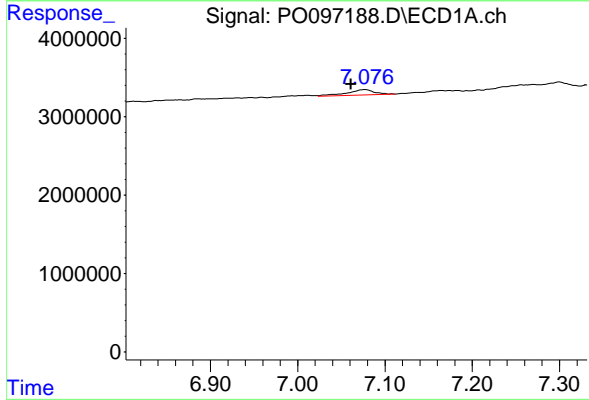
R.T.: 6.699 min
 Delta R.T.: 0.013 min
 Response: 145062
 Conc: 0.90 ng/ml

Instrument :
 ECD_O
 ClientSampleId :
 PB154880BL



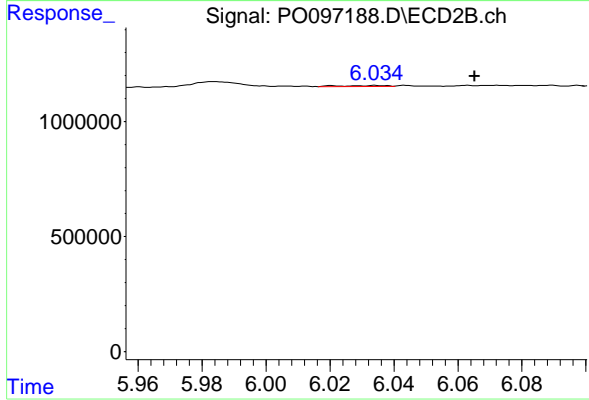
#27 AR-1254-2

R.T.: 5.594 min
 Delta R.T.: -0.065 min
 Response: 633727
 Conc: 9.62 ng/ml



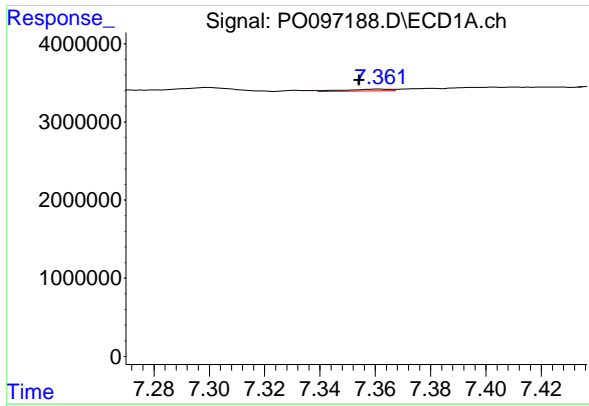
#28 AR-1254-3

R.T.: 7.077 min
 Delta R.T.: 0.015 min
 Response: 1494513
 Conc: 9.54 ng/ml



#28 AR-1254-3

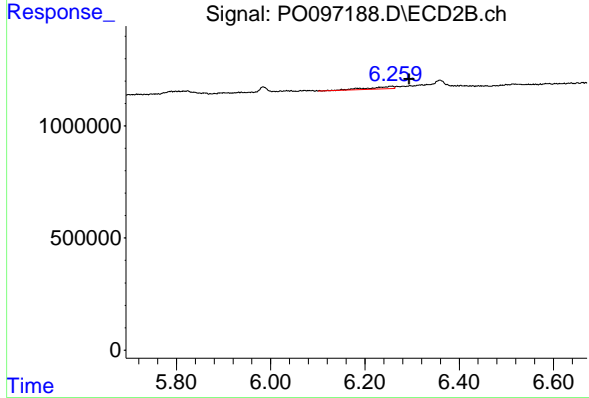
R.T.: 6.034 min
 Delta R.T.: -0.031 min
 Response: 37281
 Conc: 0.37 ng/ml



#29 AR-1254-4

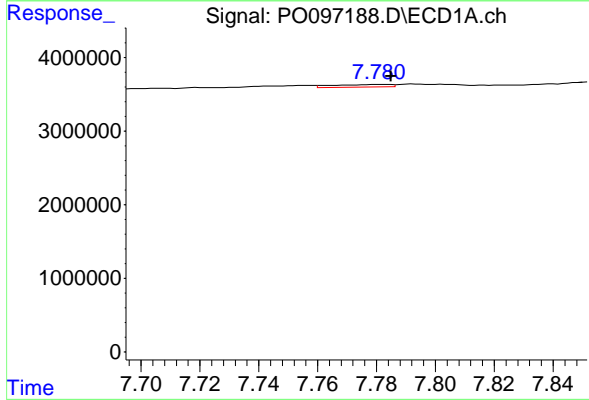
R.T.: 7.362 min
 Delta R.T.: 0.008 min
 Response: 236463
 Conc: 2.35 ng/ml

Instrument :
 ECD_O
 ClientSampleId :
 PB154880BL



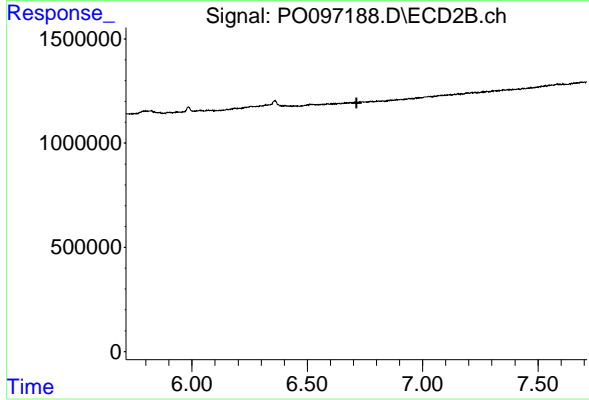
#29 AR-1254-4

R.T.: 6.258 min
 Delta R.T.: -0.036 min
 Response: 398735
 Conc: 6.89 ng/ml



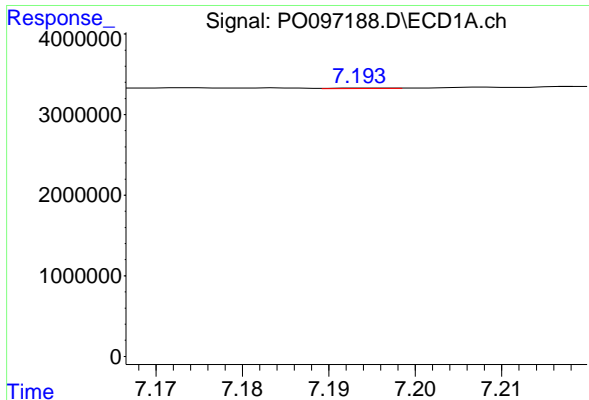
#30 AR-1254-5

R.T.: 7.782 min
 Delta R.T.: -0.003 min
 Response: 468039
 Conc: 4.17 ng/ml



#30 AR-1254-5

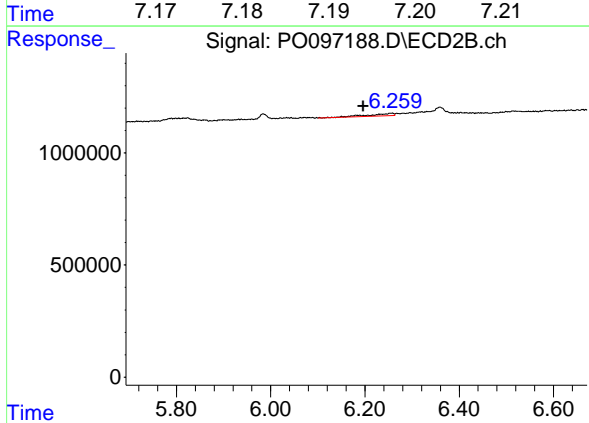
R.T.: 0.000 min
 Exp R.T. : 6.713 min
 Response: 0
 Conc: N.D.



#31 AR-1260-1

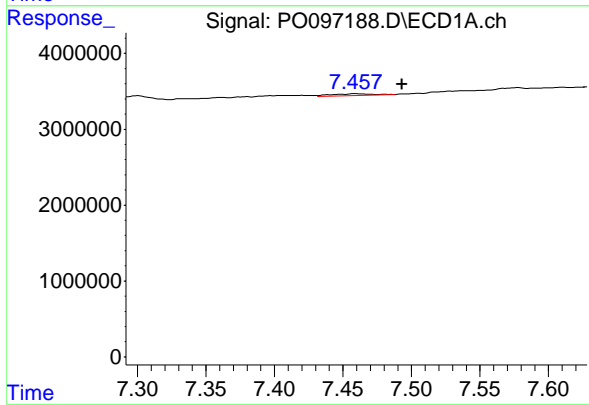
R.T.: 7.194 min
 Delta R.T.: -0.036 min
 Response: 23052
 Conc: 0.18 ng/ml

Instrument :
 ECD_O
 ClientSampleId :
 PB154880BL



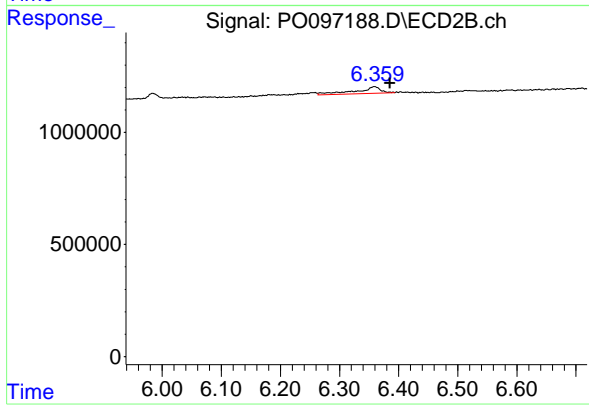
#31 AR-1260-1

R.T.: 6.258 min
 Delta R.T.: 0.062 min
 Response: 398735
 Conc: 5.67 ng/ml



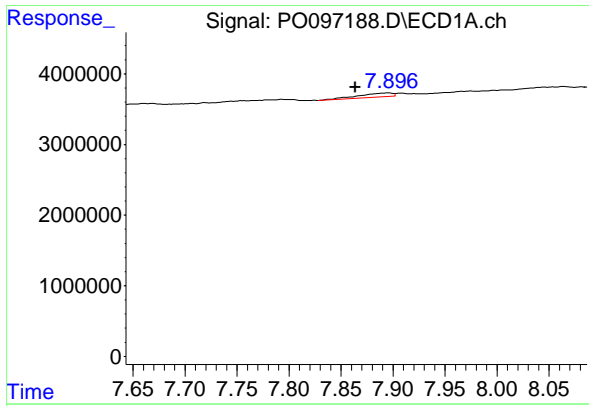
#32 AR-1260-2

R.T.: 7.459 min
 Delta R.T.: -0.034 min
 Response: 506029
 Conc: 3.76 ng/ml



#32 AR-1260-2

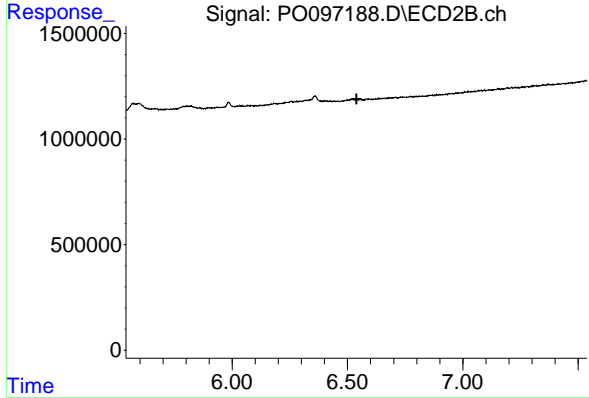
R.T.: 6.359 min
 Delta R.T.: -0.026 min
 Response: 878596
 Conc: 10.53 ng/ml



#33 AR-1260-3

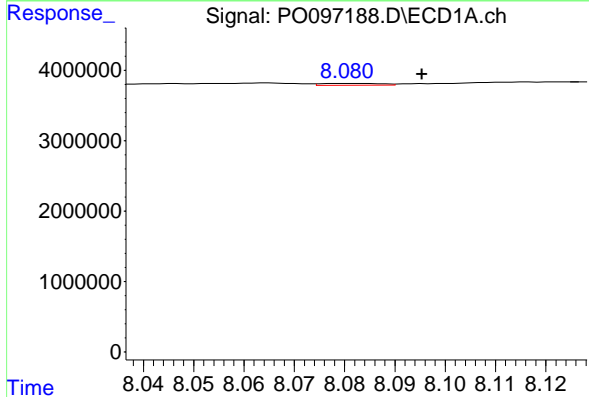
R.T.: 7.896 min
 Delta R.T.: 0.032 min
 Response: 1272127
 Conc: 12.26 ng/ml

Instrument :
 ECD_O
 ClientSampleId :
 PB154880BL



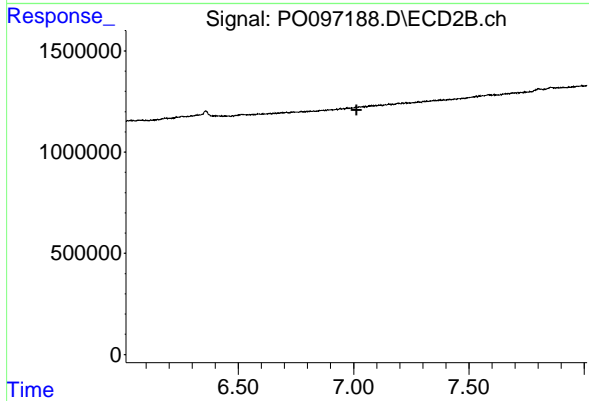
#33 AR-1260-3

R.T.: 0.000 min
 Exp R.T. : 6.539 min
 Response: 0
 Conc: N.D.



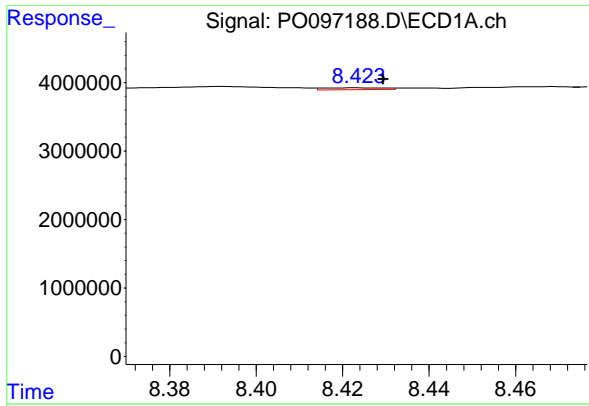
#34 AR-1260-4

R.T.: 8.082 min
 Delta R.T.: -0.014 min
 Response: 211752
 Conc: 1.89 ng/ml



#34 AR-1260-4

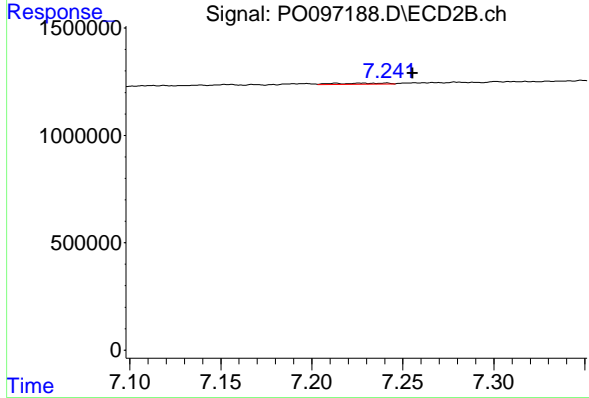
R.T.: 0.000 min
 Exp R.T. : 7.012 min
 Response: 0
 Conc: N.D.



#35 AR-1260-5

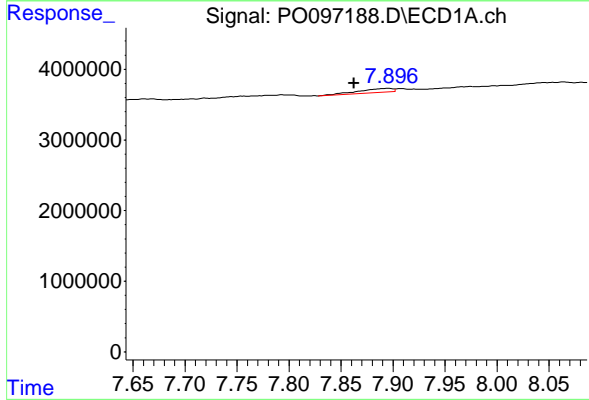
R.T.: 8.424 min
 Delta R.T.: -0.006 min
 Response: 253828
 Conc: 1.21 ng/ml

Instrument :
 ECD_O
 ClientSampleId :
 PB154880BL



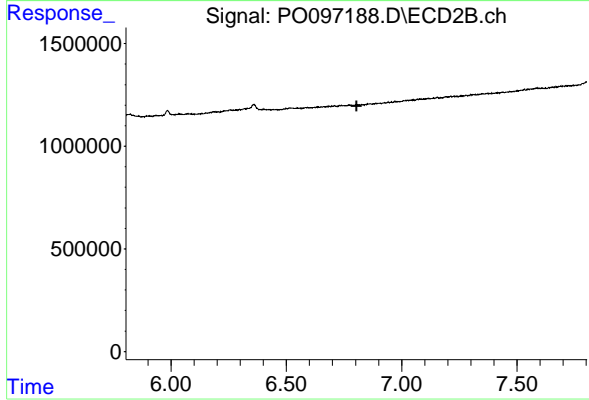
#35 AR-1260-5

R.T.: 7.241 min
 Delta R.T.: -0.014 min
 Response: 100353
 Conc: 0.72 ng/ml



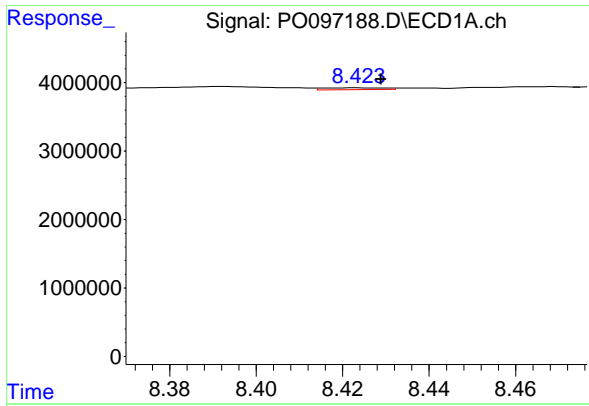
#36 AR-1262-1

R.T.: 7.896 min
 Delta R.T.: 0.033 min
 Response: 1272127
 Conc: 8.56 ng/ml



#36 AR-1262-1

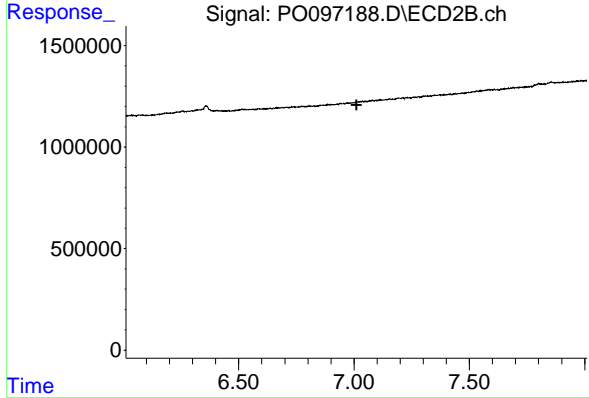
R.T.: 0.000 min
 Exp R.T.: 6.804 min
 Response: 0
 Conc: N.D.



#37 AR-1262-2

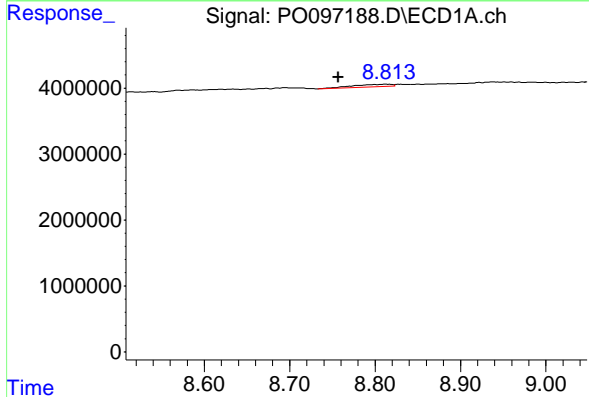
R.T.: 8.424 min
 Delta R.T.: -0.005 min
 Response: 253828
 Conc: 1.10 ng/ml

Instrument :
 ECD_O
 ClientSampleId :
 PB154880BL



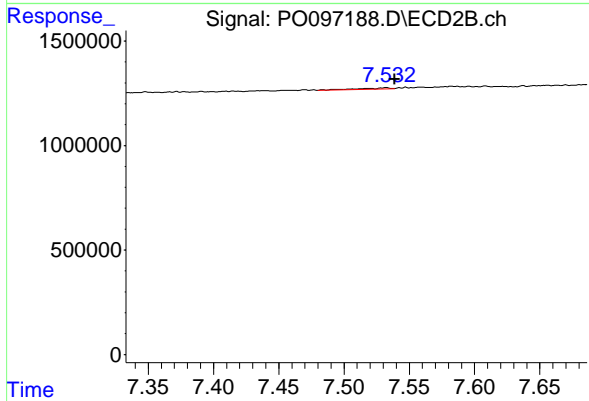
#37 AR-1262-2

R.T.: 0.000 min
 Exp R.T. : 7.011 min
 Response: 0
 Conc: N.D.



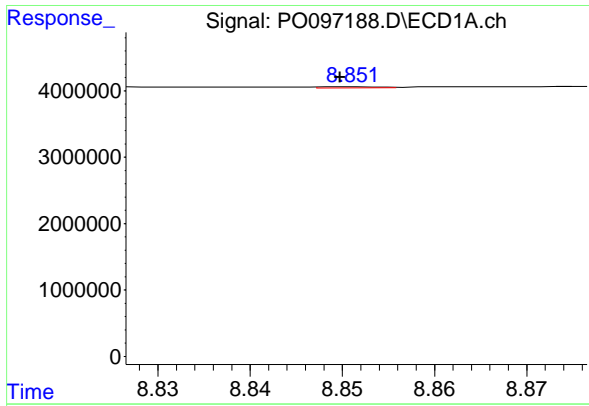
#38 AR-1262-3

R.T.: 8.812 min
 Delta R.T.: 0.056 min
 Response: 1215897
 Conc: 7.29 ng/ml



#38 AR-1262-3

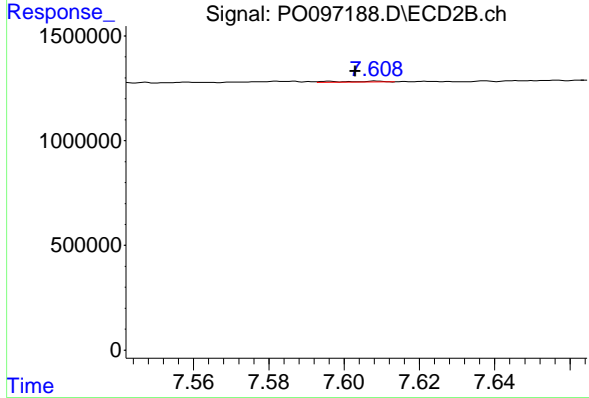
R.T.: 7.532 min
 Delta R.T.: -0.006 min
 Response: 103066
 Conc: 1.61 ng/ml



#39 AR-1262-4

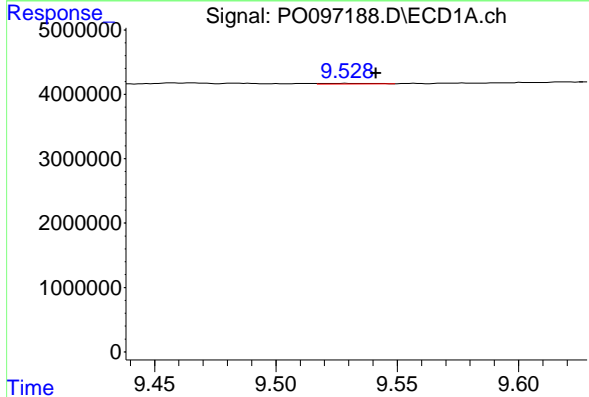
R.T.: 8.851 min
 Delta R.T.: 0.000 min
 Response: 68082
 Conc: 0.93 ng/ml

Instrument :
 ECD_O
 ClientSampleId :
 PB154880BL



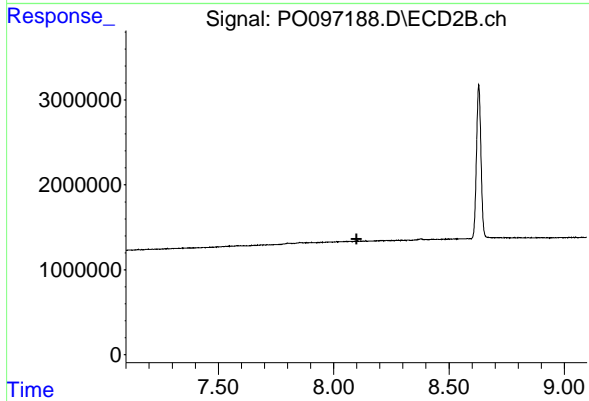
#39 AR-1262-4

R.T.: 7.609 min
 Delta R.T.: 0.006 min
 Response: 38563
 Conc: 0.34 ng/ml



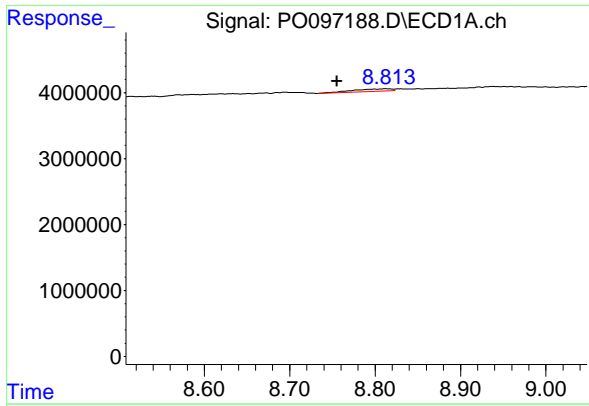
#40 AR-1262-5

R.T.: 9.529 min
 Delta R.T.: -0.012 min
 Response: 130570
 Conc: 1.57 ng/ml



#40 AR-1262-5

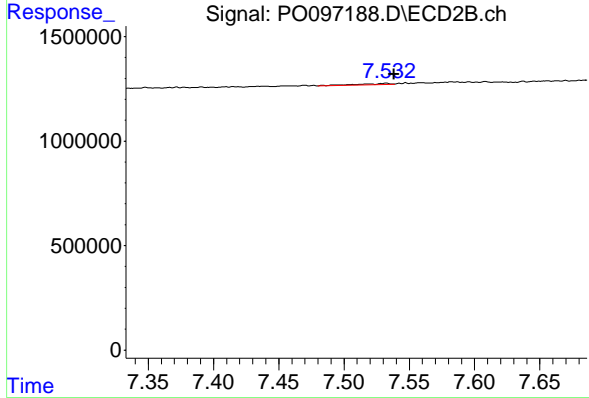
R.T.: 0.000 min
 Exp R.T. : 8.099 min
 Response: 0
 Conc: N.D.



#41 AR-1268-1

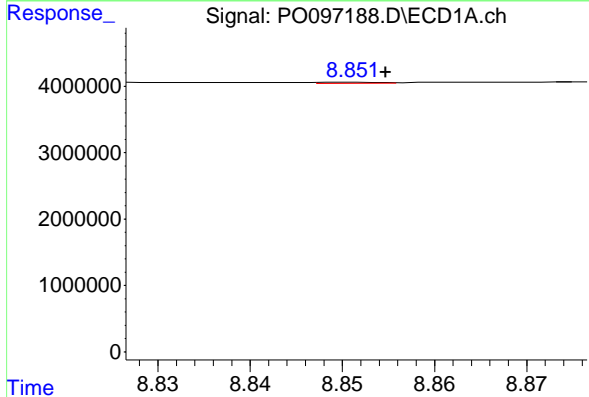
R.T.: 8.812 min
 Delta R.T.: 0.057 min
 Response: 1215897
 Conc: 3.96 ng/ml

Instrument :
 ECD_O
 ClientSampleId :
 PB154880BL



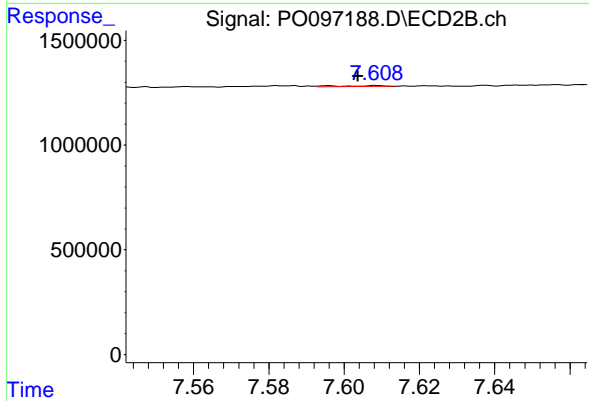
#41 AR-1268-1

R.T.: 7.532 min
 Delta R.T.: -0.006 min
 Response: 103066
 Conc: 0.56 ng/ml



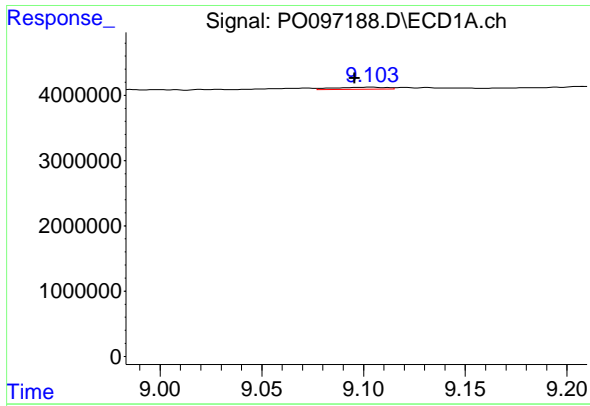
#42 AR-1268-2

R.T.: 8.851 min
 Delta R.T.: -0.004 min
 Response: 68082
 Conc: 0.25 ng/ml



#42 AR-1268-2

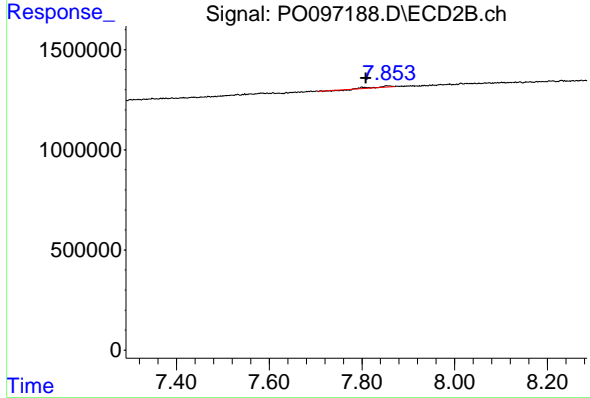
R.T.: 7.609 min
 Delta R.T.: 0.005 min
 Response: 38563
 Conc: 0.23 ng/ml



#43 AR-1268-3

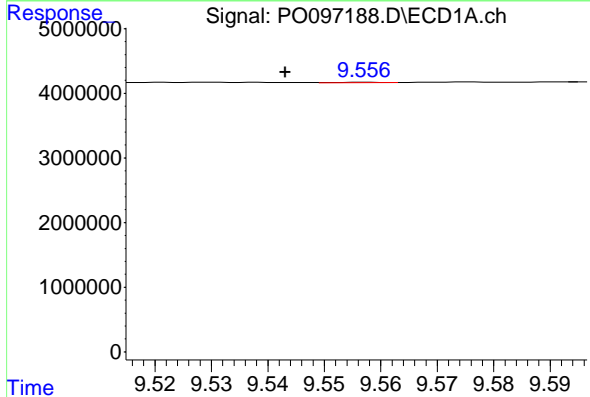
R.T.: 9.104 min
 Delta R.T.: 0.008 min
 Response: 558662
 Conc: 2.19 ng/ml

Instrument :
 ECD_O
 ClientSampleId :
 PB154880BL



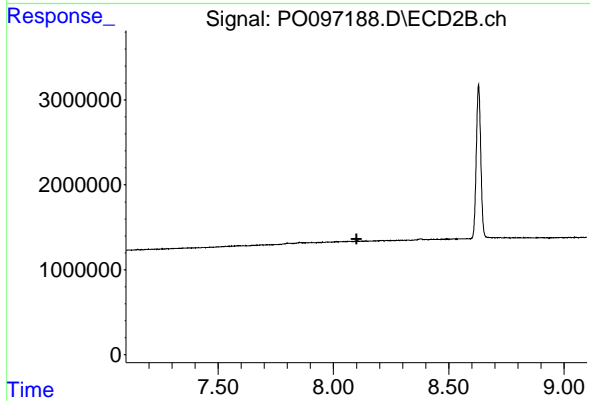
#43 AR-1268-3

R.T.: 7.853 min
 Delta R.T.: 0.044 min
 Response: 71536
 Conc: 0.50 ng/ml



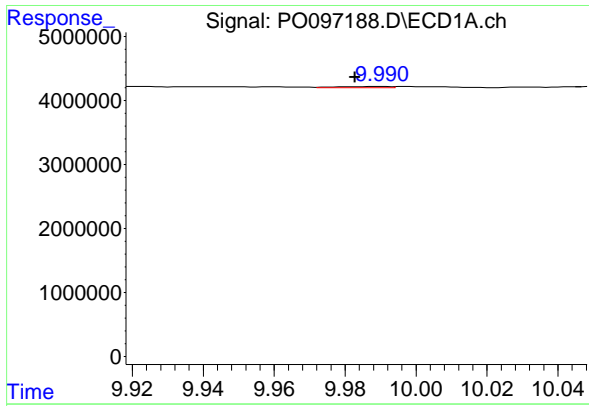
#44 AR-1268-4

R.T.: 9.557 min
 Delta R.T.: 0.014 min
 Response: 28281
 Conc: 0.31 ng/ml



#44 AR-1268-4

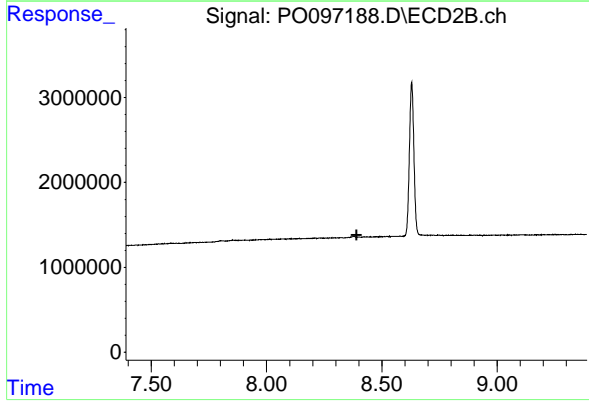
R.T.: 0.000 min
 Exp R.T. : 8.100 min
 Response: 0
 Conc: N.D.



#45 AR-1268-5

R.T.: 9.990 min
Delta R.T.: 0.008 min
Response: 211457
Conc: 0.26 ng/ml

Instrument :
ECD_O
ClientSampleId :
PB154880BL



#45 AR-1268-5

R.T.: 0.000 min
Exp R.T. : 8.390 min
Response: 0
Conc: N.D.