

Data Path : Z:\pestpcbsrv\HPCHEM1\ECD_0\Data\P0081723\
 Data File : P0097234.D
 Signal(s) : Signal #1: ECD1A.ch Signal #2: ECD2B.ch
 Acq On : 18 Aug 2023 02:38
 Operator : YP/AJ
 Sample : 04057-23
 Misc :
 ALS Vial : 48 Sample Multiplier: 1

Instrument :
 ECD_0
 ClientSampleId :

Integration File signal 1: autoint1.e
 Integration File signal 2: autoint2.e
 Quant Time: Aug 18 03:21:23 2023
 Quant Method : Z:\pestpcbsrv\HPCHEM1\ECD_0\methods\P0080723.M
 Quant Title : GC EXTRACTABLES
 QLast Update : Tue Aug 08 04:34:41 2023
 Response via : Initial Calibration
 Integrator: ChemStation

Volume Inj. : 2 µl
 Signal #1 Phase : ZB-MR1 Signal #2 Phase: ZB-MR2
 Signal #1 Info : 30Mx0.32mmx 0.50µ Signal #2 Info : 30M x 0.32mm x 0.25µm

Compound	RT#1	RT#2	Resp#1	Resp#2	ng/ml	ng/ml

System Monitoring Compounds						
1) SA Tetrachlo...	4.409	3.614	50956698	20128812	15.394	15.205
2) SA Decachlor...	10.351	8.629	27116478	14071329	12.392	12.163
Target Compounds						
3) L1 AR-1016-1	5.569	4.717	1752809	1392940	18.611	31.418 #
4) L1 AR-1016-2	5.618	4.717	2945017	1392940	22.015	22.771
5) L1 AR-1016-3	5.678	4.893	738947	485709	8.492	14.868 #
6) L1 AR-1016-4	5.783	4.936	1129250	1077045	16.812	37.677 #
7) L1 AR-1016-5	6.084	5.148	1347876	1038601	19.306	27.014 #
8) L2 AR-1221-1	4.618	0.000	529052	0	12.981	N.D. #
9) L2 AR-1221-2	4.720	3.916	713788	697821	23.495	54.008 #
10) L2 AR-1221-3	4.802	3.987	3219260	1263882	36.778	31.841
11) L3 AR-1232-1	4.802	3.987	3219260	1263882	44.140	39.072
12) L3 AR-1232-2	5.335	4.717	764617	1392940	19.286	48.278 #
13) L3 AR-1232-3	5.618	4.893	2945017	485709	48.143	32.035 #
14) L3 AR-1232-4	5.783	4.976	1129250	938988	37.008	62.831 #
15) L3 AR-1232-5	5.876	5.148	2270367	1038601	81.133	63.536
16) L4 AR-1242-1	5.569	4.717	1752809	1392940	20.912	35.331 #
17) L4 AR-1242-2	5.618	4.717	2945017	1392940	25.008	25.563
18) L4 AR-1242-3	5.678	4.893	738947	485709	10.003	16.427 #
19) L4 AR-1242-4	5.783	4.976	1129250	938988	18.969	29.796 #
20) L4 AR-1242-5	6.537	5.502	4611844	1844807	83.822	50.631 #
21) L5 AR-1248-1	5.569	4.717	1752809	1392940	29.914	49.637 #
22) L5 AR-1248-2	5.876	4.936	2270367	1077045	24.148	25.413
23) L5 AR-1248-3	6.084	4.976	1347876	938988	13.781	21.406 #
24) L5 AR-1248-4	6.497	5.148	1628803	1038601	17.930	20.345
25) L5 AR-1248-5	6.537	5.543	4611844	2857430	52.356	61.119
26) L6 AR-1254-1	6.469	5.502	2213722	1844807	20.255	24.999
27) L6 AR-1254-2	6.697	5.651	5187049	1415933	32.172	21.493 #
28) L6 AR-1254-3	7.071	6.055	4833247	2965659	30.845	29.345
29) L6 AR-1254-4	7.365	6.284	2403348	1590048	23.838	27.474
30) L6 AR-1254-5	7.796	6.703	1455610	1295848	12.972	14.740
31) L7 AR-1260-1	7.243	6.196	778260	1990797	6.192	28.291 #
32) L7 AR-1260-2	7.504	6.378	1076613	846153	7.991	10.138 #
33) L7 AR-1260-3	7.876	6.549	1616609	357823	15.578	4.634 #
34) L7 AR-1260-4	8.090	7.025	2419665	1179868	21.642	18.412
35) L7 AR-1260-5	8.444	7.244	1299371	612277	6.188	4.416 #
36) L8 AR-1262-1	7.876	6.793	1616609	436457	10.884	11.086
37) L8 AR-1262-2	8.444	7.025	1299371	1179868	5.614	14.547 #
38) L8 AR-1262-3	8.766	7.530	2059262	1810744	12.346	28.217 #
39) L8 AR-1262-4	8.836	7.593	187130	996851	2.567	8.775 #
40) L8 AR-1262-5	9.553	8.089	644399	236752	7.738	4.508 #
41) L9 AR-1268-1	8.766	7.530	2059262	1810744	6.699	9.772 #

Data Path : Z:\pestpcbsrv\HPCHEM1\ECD_O\Data\P0081723\
 Data File : P0097234.D
 Signal(s) : Signal #1: ECD1A.ch Signal #2: ECD2B.ch
 Acq On : 18 Aug 2023 02:38
 Operator : YP/AJ
 Sample : 04057-23
 Misc :
 ALS Vial : 48 Sample Multiplier: 1

Instrument :
 ECD_O
 ClientSampleId :

Integration File signal 1: autoint1.e
 Integration File signal 2: autoint2.e
 Quant Time: Aug 18 03:21:23 2023
 Quant Method : Z:\pestpcbsrv\HPCHEM1\ECD_O\methods\P0080723.M
 Quant Title : GC EXTRACTABLES
 QLast Update : Tue Aug 08 04:34:41 2023
 Response via : Initial Calibration
 Integrator: ChemStation

Volume Inj. : 2 µl
 Signal #1 Phase : ZB-MR1 Signal #2 Phase: ZB-MR2
 Signal #1 Info : 30Mx0.32mmx 0.50µ Signal #2 Info : 30M x 0.32mm x 0.25µm

	Compound	RT#1	RT#2	Resp#1	Resp#2	ng/ml	ng/ml
42)	L9 AR-1268-2	8.863	7.613	1386365	1107704	5.056	6.606 #
43)	L9 AR-1268-3	9.104	7.799	1336382	953471	5.233	6.599 #
44)	L9 AR-1268-4	9.553	8.089	644399	236752	6.950	3.974 #
45)	L9 AR-1268-5	9.993	8.378	2317219	1106302	2.869	2.660

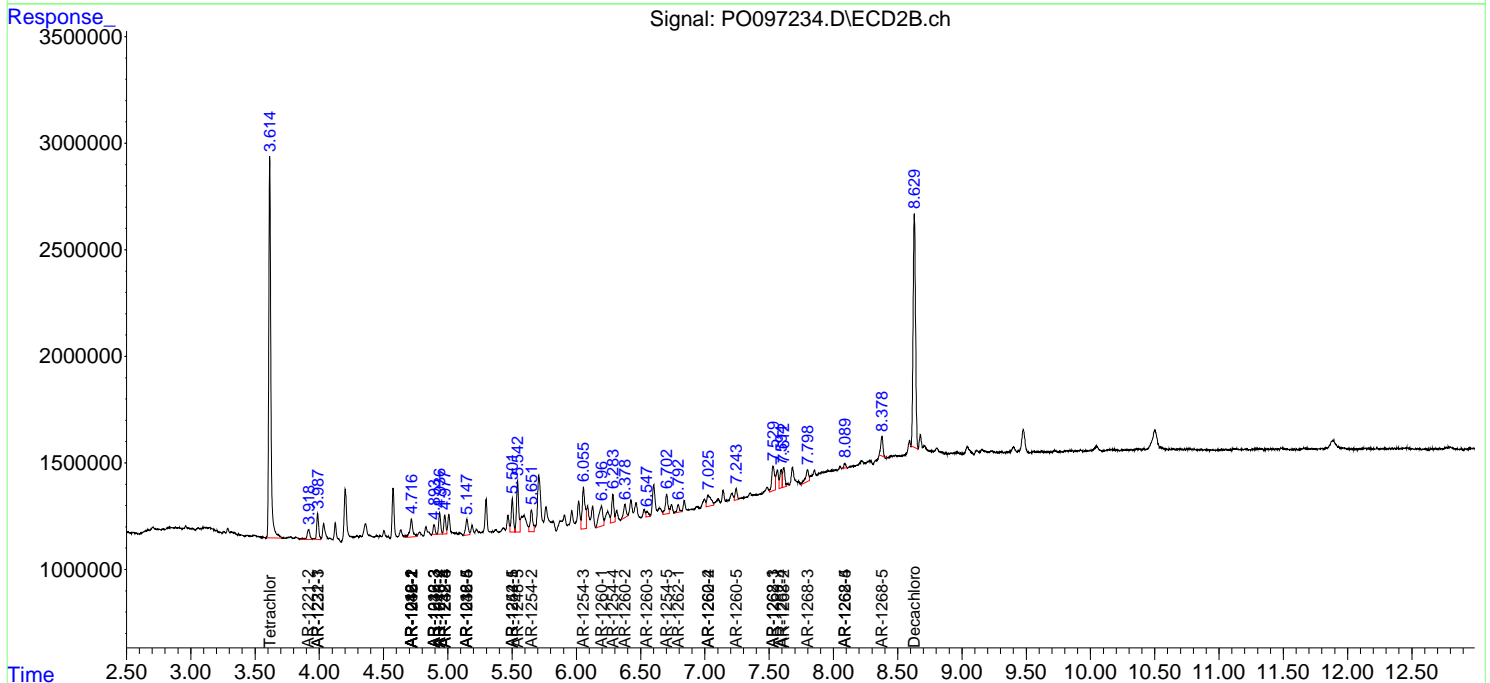
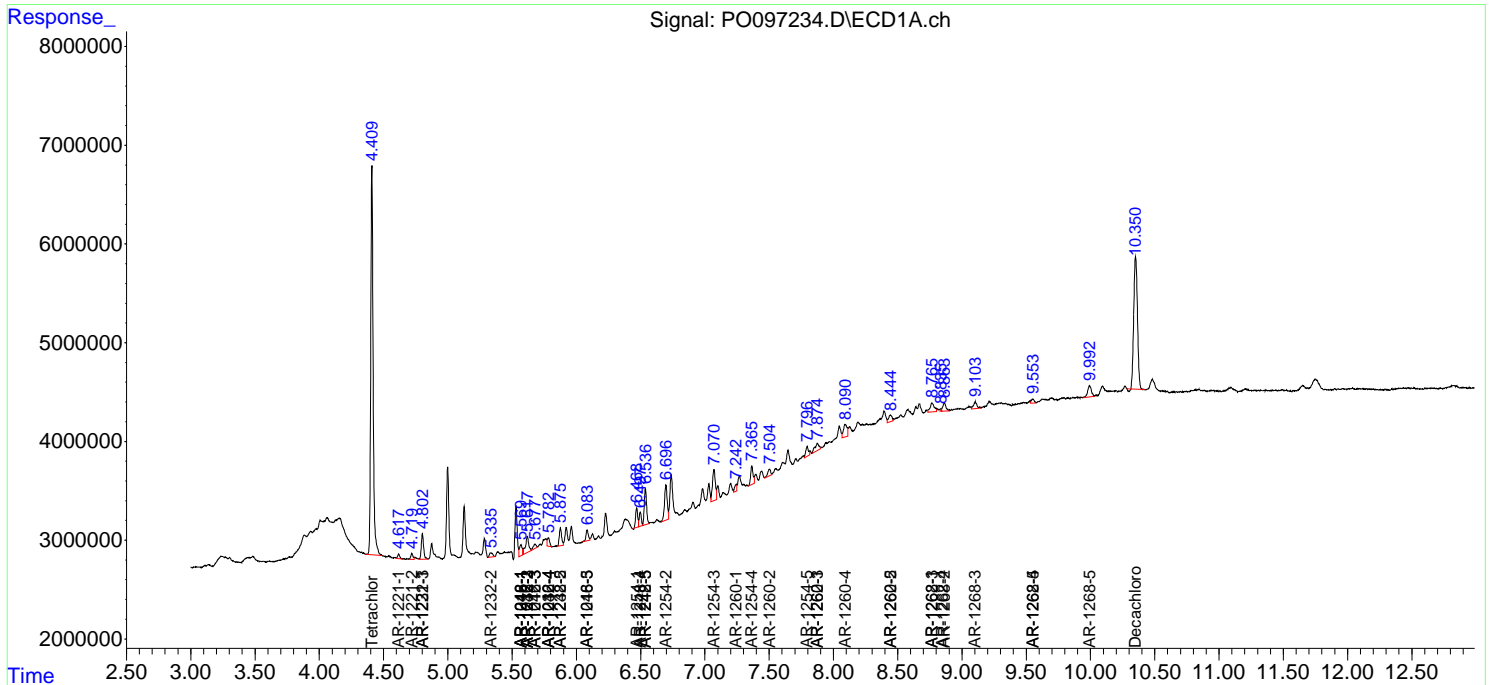
(f)=RT Delta > 1/2 Window (#)=Amounts differ by > 25% (m)=manual int.

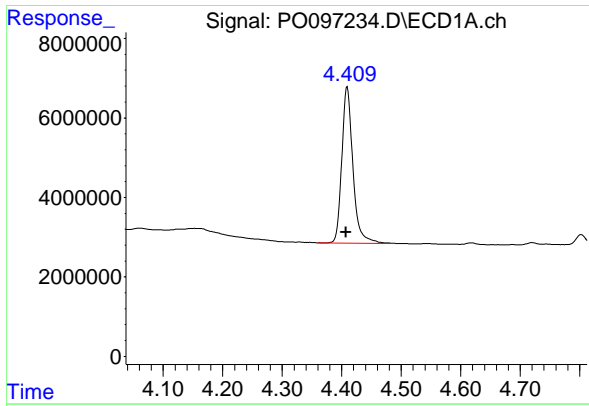
Data Path : Z:\pestpcbsrv\HPCHEM1\ECD_O\Data\PO081723\
 Data File : PO097234.D
 Signal(s) : Signal #1: ECD1A.ch Signal #2: ECD2B.ch
 Acq On : 18 Aug 2023 02:38
 Operator : YP/AJ
 Sample : 04057-23
 Misc :
 ALS Vial : 48 Sample Multiplier: 1

Instrument :
 ECD_O
 ClientSampleId :

Integration File signal 1: autoint1.e
 Integration File signal 2: autoint2.e
 Quant Time: Aug 18 03:21:23 2023
 Quant Method : Z:\pestpcbsrv\HPCHEM1\ECD_O\methods\PO080723.M
 Quant Title : GC EXTRACTABLES
 QLast Update : Tue Aug 08 04:34:41 2023
 Response via : Initial Calibration
 Integrator: ChemStation

Volume Inj. : 2 µl
 Signal #1 Phase : ZB-MR1 Signal #2 Phase: ZB-MR2
 Signal #1 Info : 30Mx0.32mmx 0.50µm Signal #2 Info : 30M x 0.32mm x 0.25µm

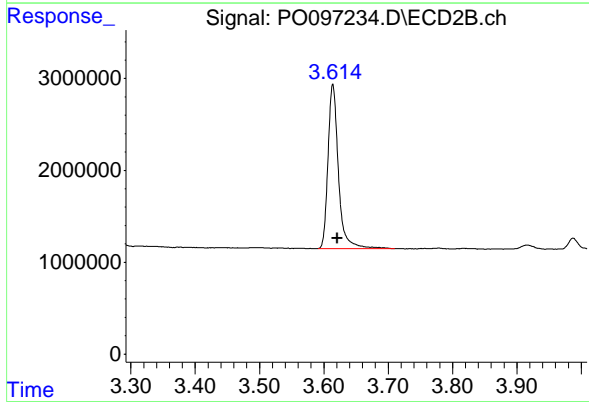




#1 Tetrachloro-m-xylene

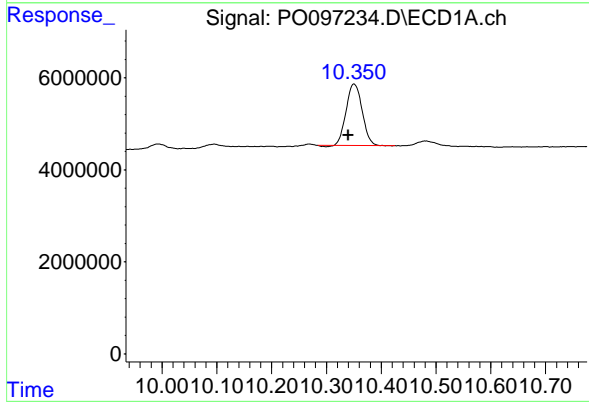
R.T.: 4.409 min
 Delta R.T.: 0.002 min
 Response: 50956698
 Conc: 15.39 ng/ml

Instrument :
 ECD_O
 ClientSampleId :



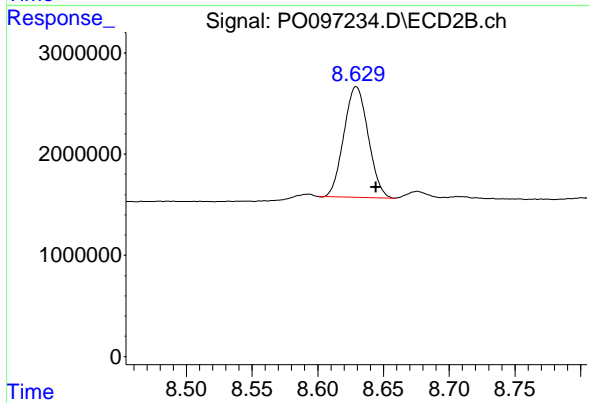
#1 Tetrachloro-m-xylene

R.T.: 3.614 min
 Delta R.T.: -0.007 min
 Response: 20128812
 Conc: 15.21 ng/ml



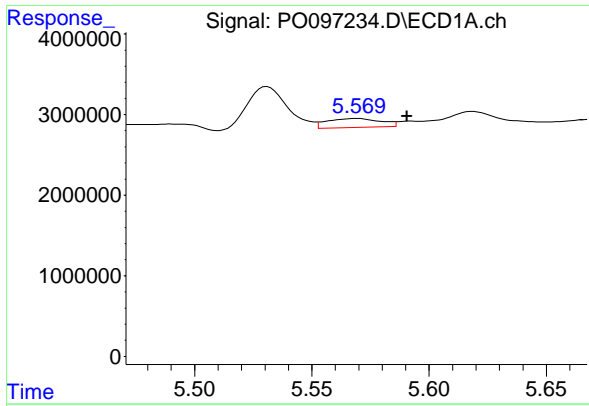
#2 Decachlorobiphenyl

R.T.: 10.351 min
 Delta R.T.: 0.011 min
 Response: 27116478
 Conc: 12.39 ng/ml



#2 Decachlorobiphenyl

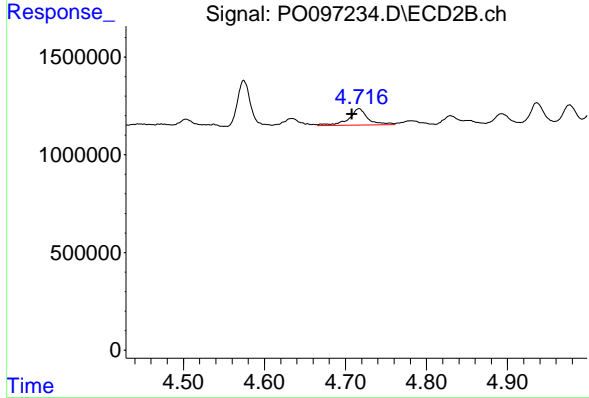
R.T.: 8.629 min
 Delta R.T.: -0.015 min
 Response: 14071329
 Conc: 12.16 ng/ml



#3 AR-1016-1

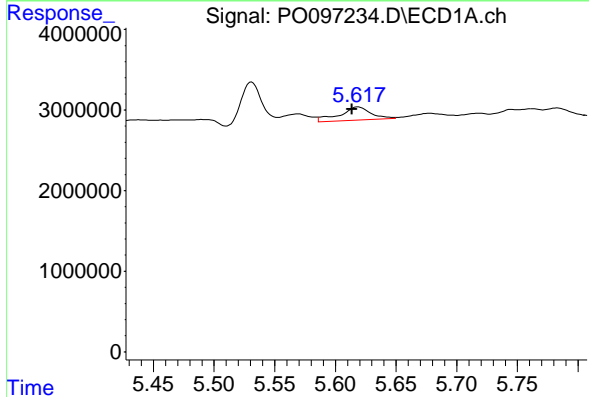
R.T.: 5.569 min
 Delta R.T.: -0.021 min
 Response: 1752809
 Conc: 18.61 ng/ml

Instrument :
 ECD_O
 ClientSampleId :



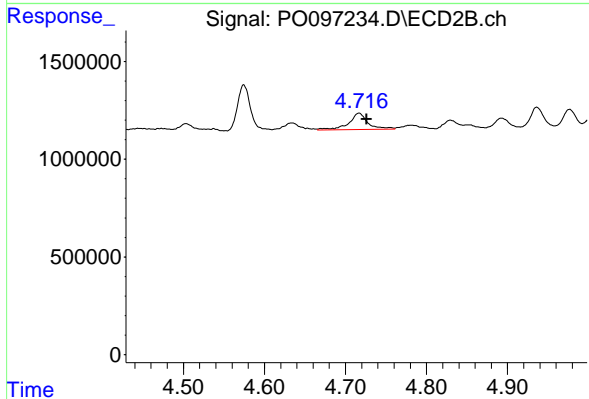
#3 AR-1016-1

R.T.: 4.717 min
 Delta R.T.: 0.009 min
 Response: 1392940
 Conc: 31.42 ng/ml



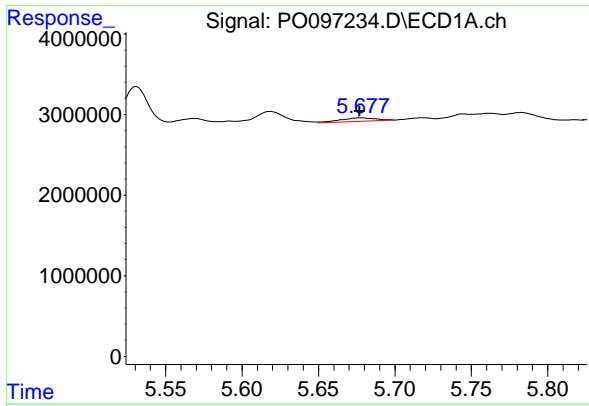
#4 AR-1016-2

R.T.: 5.618 min
 Delta R.T.: 0.005 min
 Response: 2945017
 Conc: 22.01 ng/ml



#4 AR-1016-2

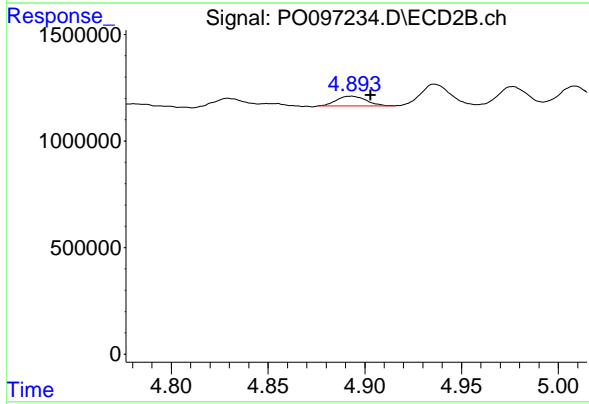
R.T.: 4.717 min
 Delta R.T.: -0.010 min
 Response: 1392940
 Conc: 22.77 ng/ml



#5 AR-1016-3

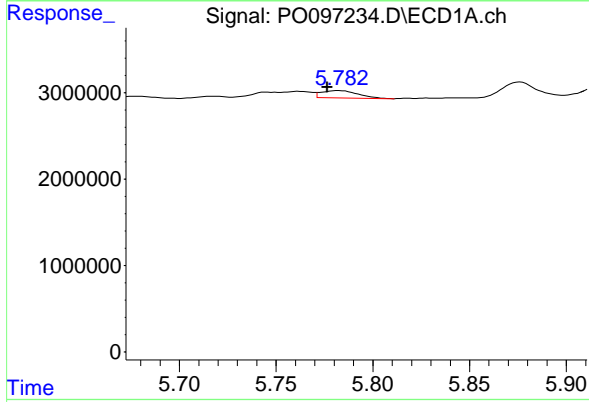
R.T.: 5.678 min
 Delta R.T.: 0.001 min
 Response: 738947
 Conc: 8.49 ng/ml

Instrument :
 ECD_O
 ClientSampleId :



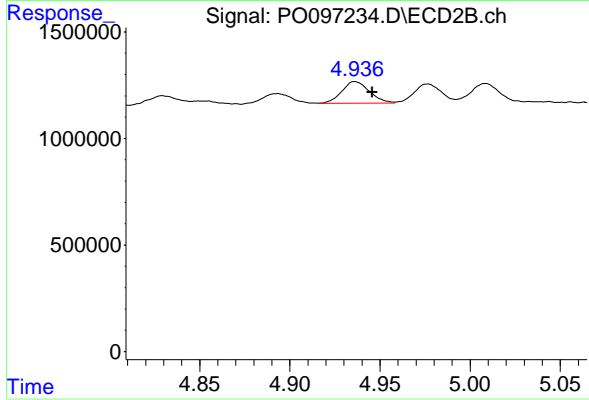
#5 AR-1016-3

R.T.: 4.893 min
 Delta R.T.: -0.010 min
 Response: 485709
 Conc: 14.87 ng/ml



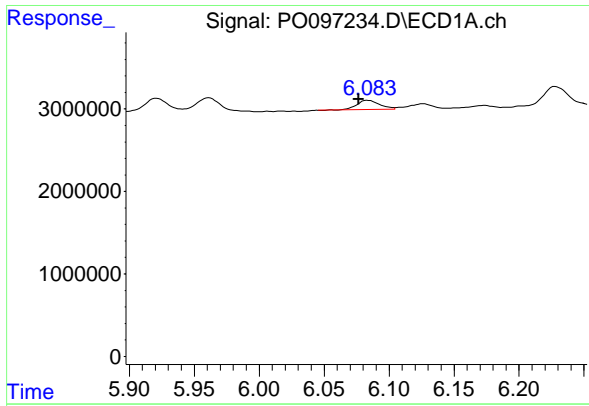
#6 AR-1016-4

R.T.: 5.783 min
 Delta R.T.: 0.006 min
 Response: 1129250
 Conc: 16.81 ng/ml



#6 AR-1016-4

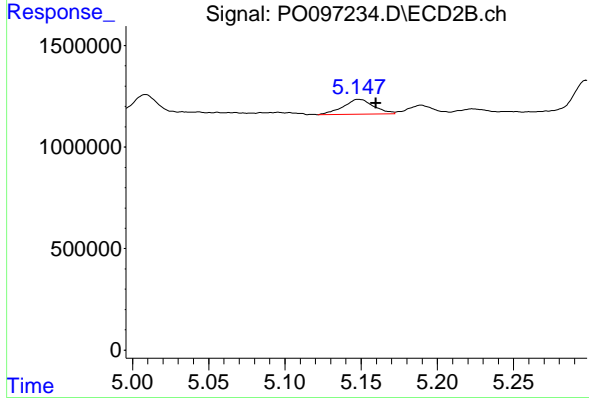
R.T.: 4.936 min
 Delta R.T.: -0.009 min
 Response: 1077045
 Conc: 37.68 ng/ml



#7 AR-1016-5

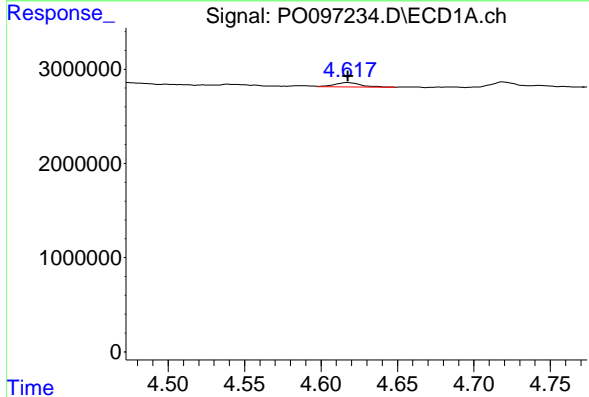
R.T.: 6.084 min
 Delta R.T.: 0.007 min
 Response: 1347876
 Conc: 19.31 ng/ml

Instrument :
 ECD_O
 ClientSampleId :



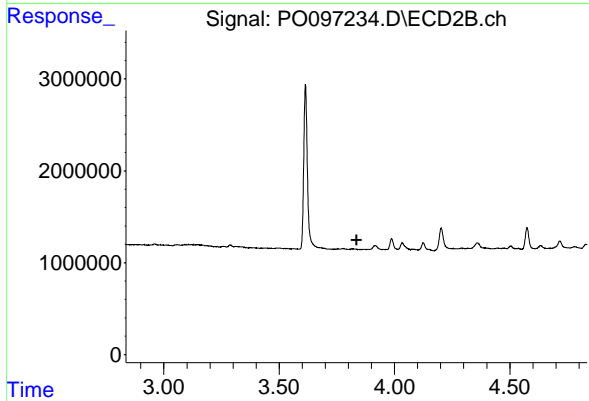
#7 AR-1016-5

R.T.: 5.148 min
 Delta R.T.: -0.011 min
 Response: 1038601
 Conc: 27.01 ng/ml



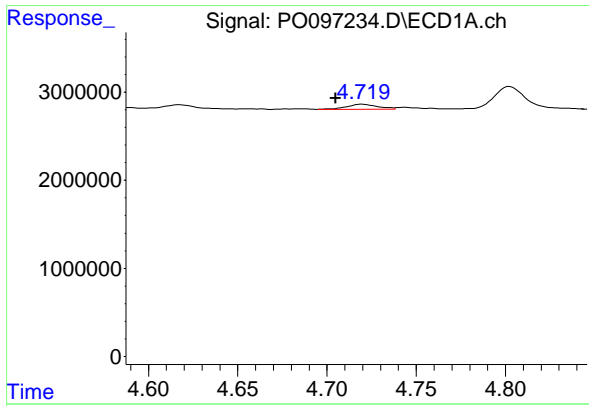
#8 AR-1221-1

R.T.: 4.618 min
 Delta R.T.: 0.000 min
 Response: 529052
 Conc: 12.98 ng/ml



#8 AR-1221-1

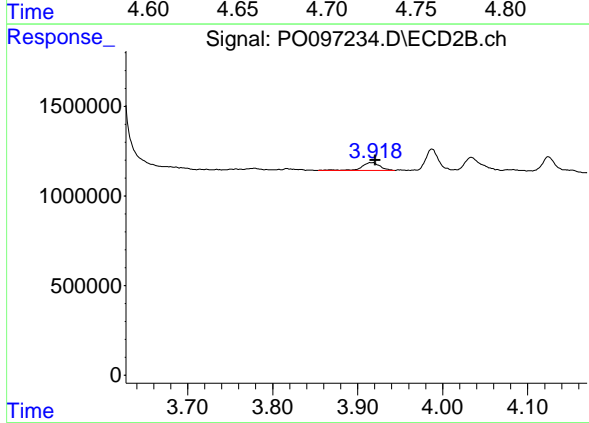
R.T.: 0.000 min
 Exp R.T. : 3.835 min
 Response: 0
 Conc: N.D.



#9 AR-1221-2

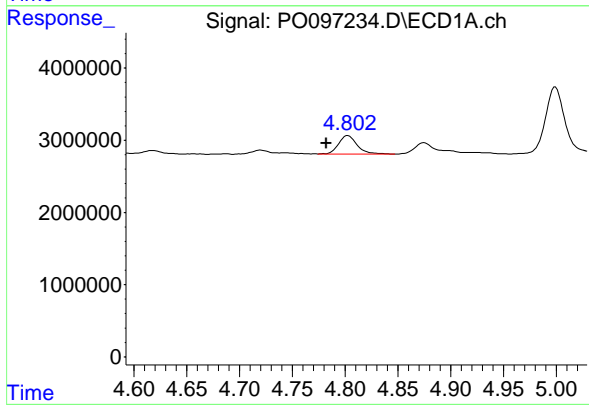
R.T.: 4.720 min
 Delta R.T.: 0.015 min
 Response: 713788
 Conc: 23.50 ng/ml

Instrument :
 ECD_O
 ClientSampleId :



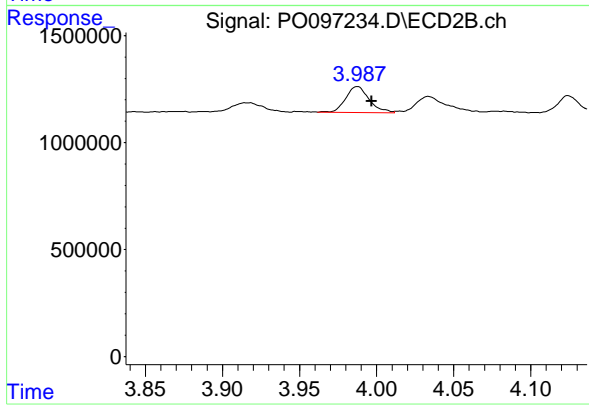
#9 AR-1221-2

R.T.: 3.916 min
 Delta R.T.: -0.005 min
 Response: 697821
 Conc: 54.01 ng/ml



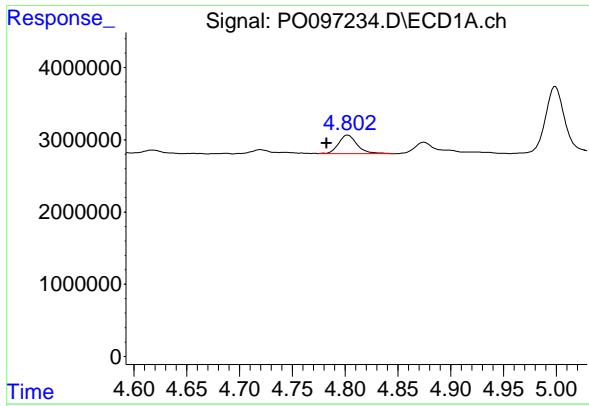
#10 AR-1221-3

R.T.: 4.802 min
 Delta R.T.: 0.020 min
 Response: 3219260
 Conc: 36.78 ng/ml



#10 AR-1221-3

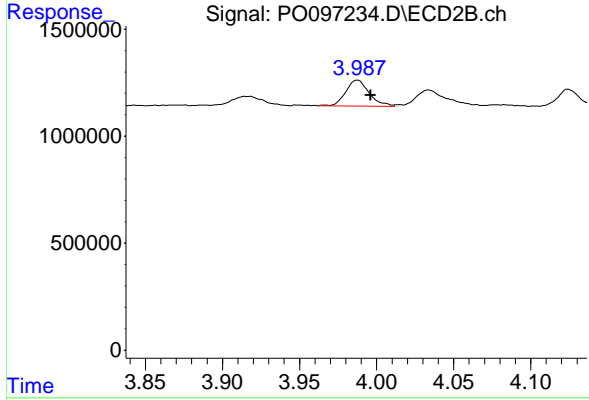
R.T.: 3.987 min
 Delta R.T.: -0.009 min
 Response: 1263882
 Conc: 31.84 ng/ml



#11 AR-1232-1

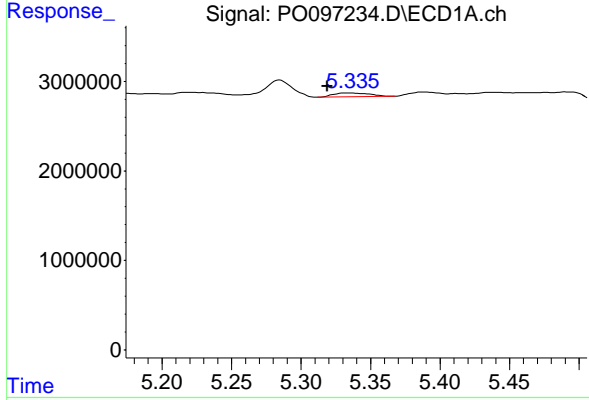
R.T.: 4.802 min
 Delta R.T.: 0.020 min
 Response: 3219260
 Conc: 44.14 ng/ml

Instrument :
 ECD_O
 ClientSampleId :



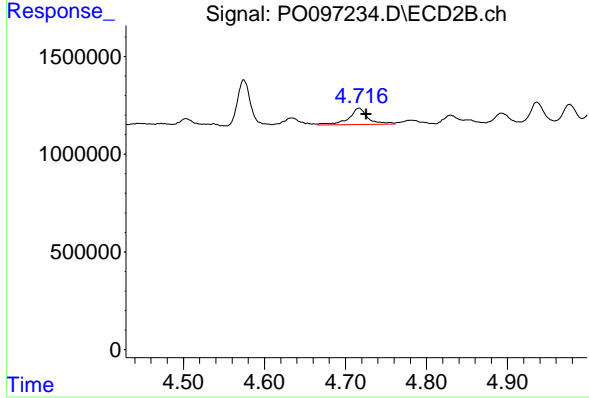
#11 AR-1232-1

R.T.: 3.987 min
 Delta R.T.: -0.009 min
 Response: 1263882
 Conc: 39.07 ng/ml



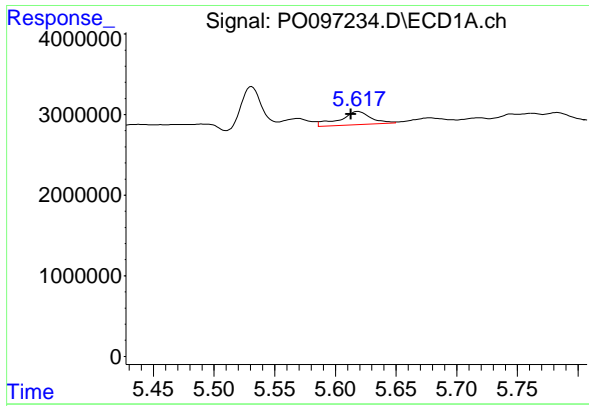
#12 AR-1232-2

R.T.: 5.335 min
 Delta R.T.: 0.016 min
 Response: 764617
 Conc: 19.29 ng/ml



#12 AR-1232-2

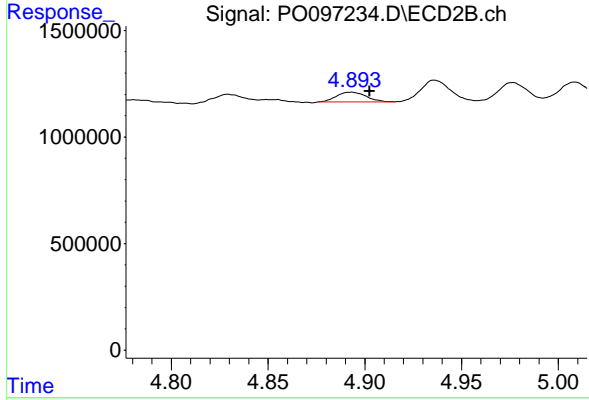
R.T.: 4.717 min
 Delta R.T.: -0.009 min
 Response: 1392940
 Conc: 48.28 ng/ml



#13 AR-1232-3

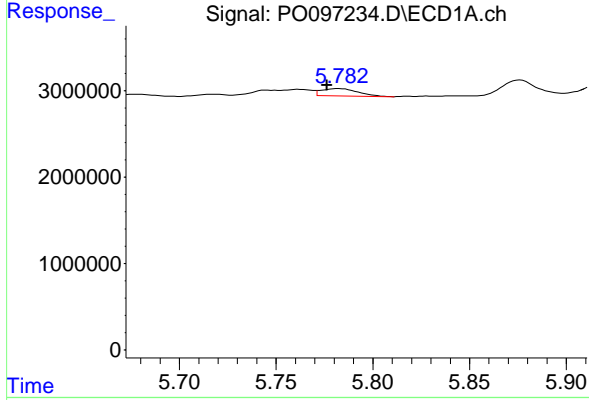
R.T.: 5.618 min
 Delta R.T.: 0.005 min
 Response: 2945017
 Conc: 48.14 ng/ml

Instrument :
 ECD_O
 ClientSampleId :



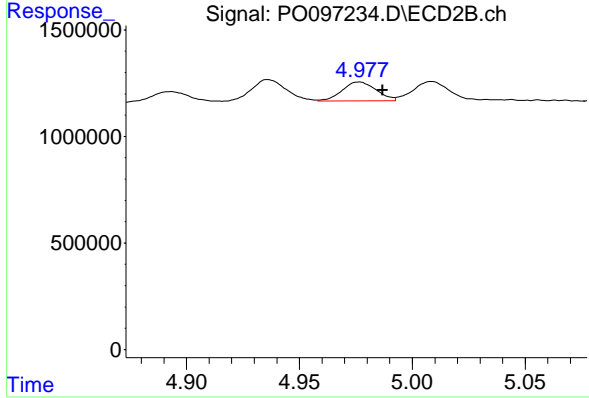
#13 AR-1232-3

R.T.: 4.893 min
 Delta R.T.: -0.010 min
 Response: 485709
 Conc: 32.03 ng/ml



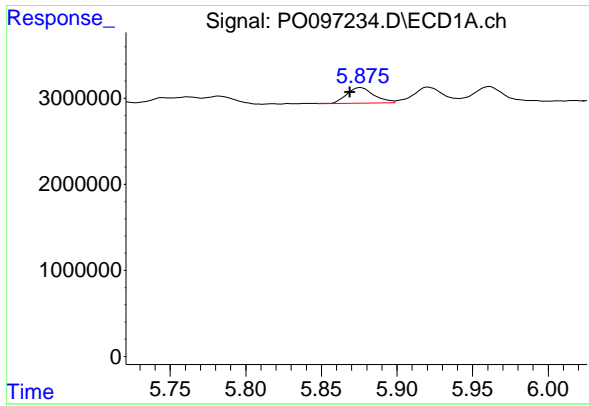
#14 AR-1232-4

R.T.: 5.783 min
 Delta R.T.: 0.006 min
 Response: 1129250
 Conc: 37.01 ng/ml



#14 AR-1232-4

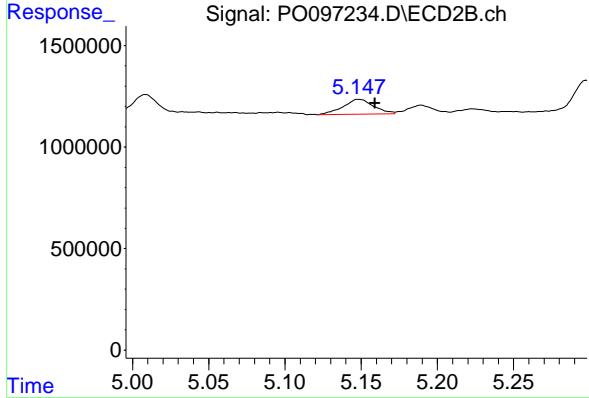
R.T.: 4.976 min
 Delta R.T.: -0.010 min
 Response: 938988
 Conc: 62.83 ng/ml



#15 AR-1232-5

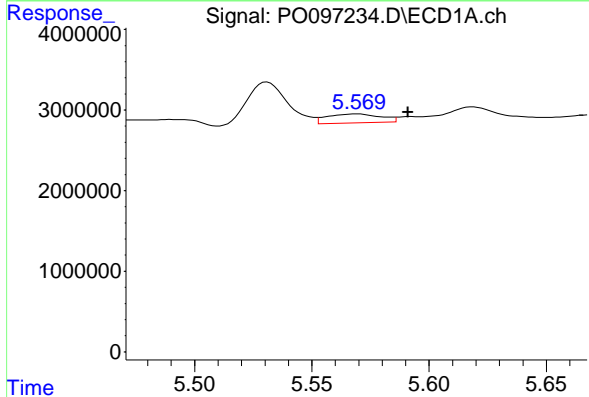
R.T.: 5.876 min
 Delta R.T.: 0.007 min
 Response: 2270367
 Conc: 81.13 ng/ml

Instrument :
 ECD_O
 ClientSampleId :



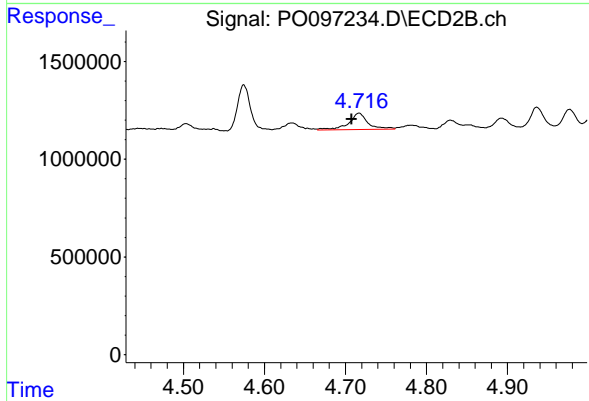
#15 AR-1232-5

R.T.: 5.148 min
 Delta R.T.: -0.011 min
 Response: 1038601
 Conc: 63.54 ng/ml



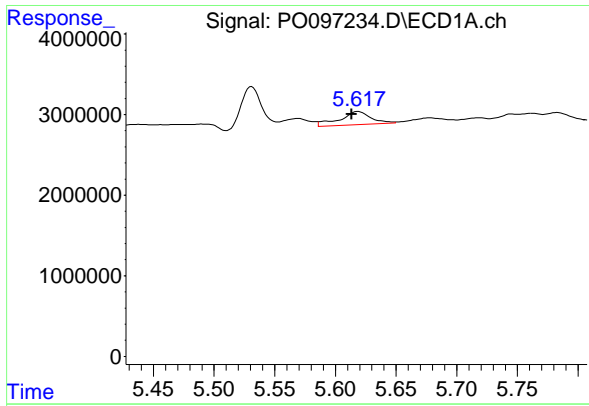
#16 AR-1242-1

R.T.: 5.569 min
 Delta R.T.: -0.022 min
 Response: 1752809
 Conc: 20.91 ng/ml



#16 AR-1242-1

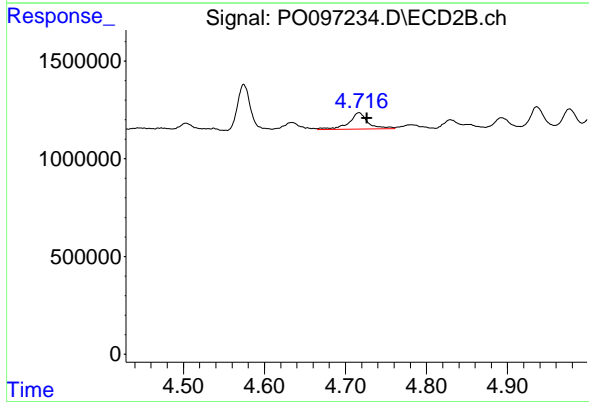
R.T.: 4.717 min
 Delta R.T.: 0.009 min
 Response: 1392940
 Conc: 35.33 ng/ml



#17 AR-1242-2

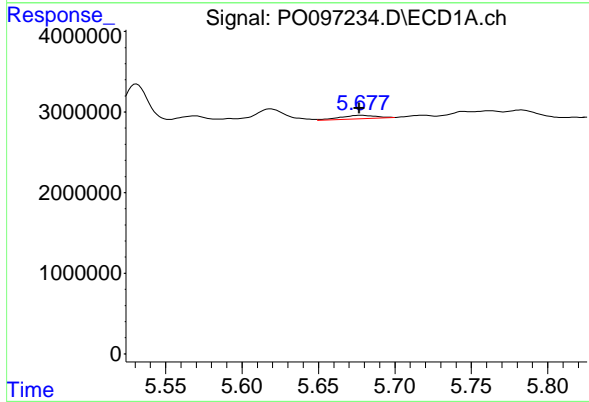
R.T.: 5.618 min
 Delta R.T.: 0.005 min
 Response: 2945017
 Conc: 25.01 ng/ml

Instrument :
 ECD_O
 ClientSampleId :



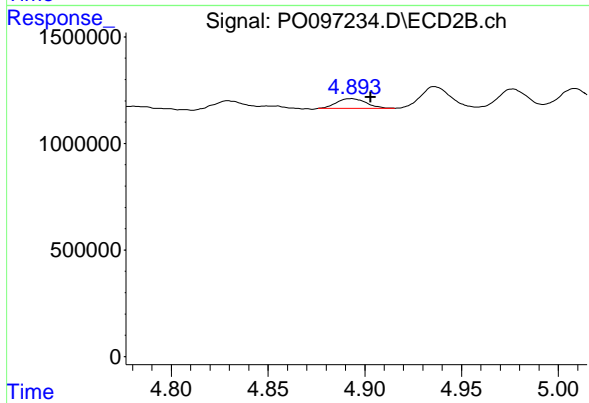
#17 AR-1242-2

R.T.: 4.717 min
 Delta R.T.: -0.010 min
 Response: 1392940
 Conc: 25.56 ng/ml



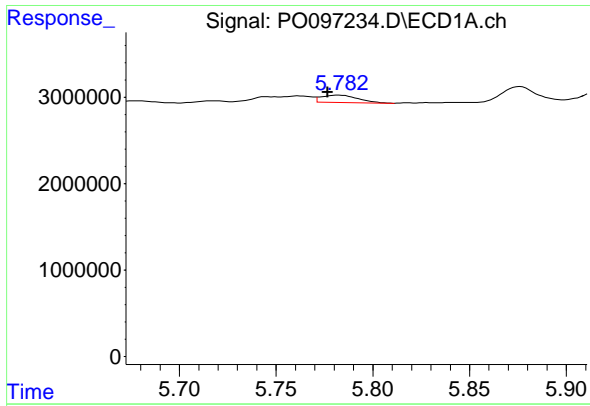
#18 AR-1242-3

R.T.: 5.678 min
 Delta R.T.: 0.002 min
 Response: 738947
 Conc: 10.00 ng/ml



#18 AR-1242-3

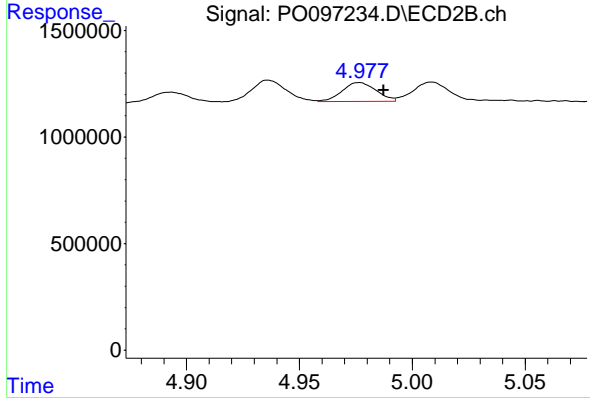
R.T.: 4.893 min
 Delta R.T.: -0.010 min
 Response: 485709
 Conc: 16.43 ng/ml



#19 AR-1242-4

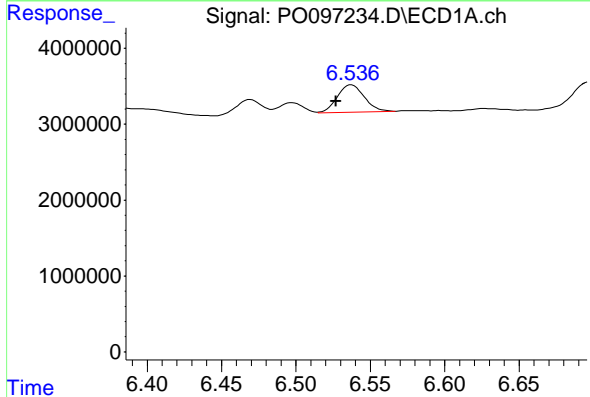
R.T.: 5.783 min
 Delta R.T.: 0.006 min
 Response: 1129250
 Conc: 18.97 ng/ml

Instrument :
 ECD_O
 ClientSampleId :



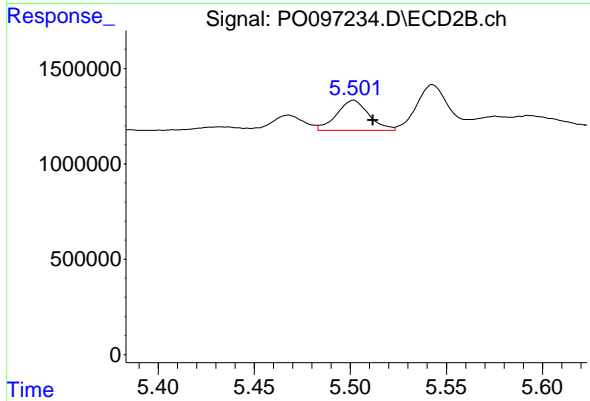
#19 AR-1242-4

R.T.: 4.976 min
 Delta R.T.: -0.011 min
 Response: 938988
 Conc: 29.80 ng/ml



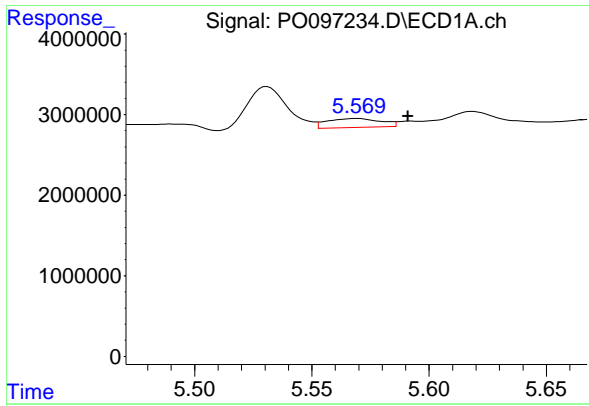
#20 AR-1242-5

R.T.: 6.537 min
 Delta R.T.: 0.010 min
 Response: 4611844
 Conc: 83.82 ng/ml



#20 AR-1242-5

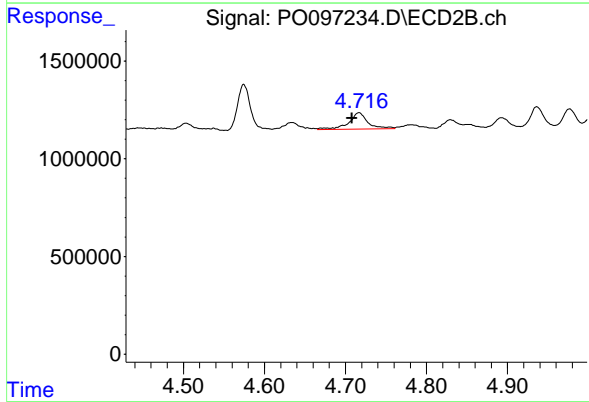
R.T.: 5.502 min
 Delta R.T.: -0.010 min
 Response: 1844807
 Conc: 50.63 ng/ml



#21 AR-1248-1

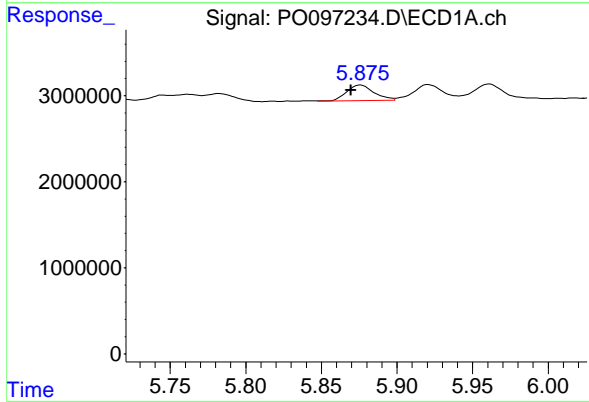
R.T.: 5.569 min
 Delta R.T.: -0.022 min
 Response: 1752809
 Conc: 29.91 ng/ml

Instrument :
 ECD_O
 ClientSampleId :



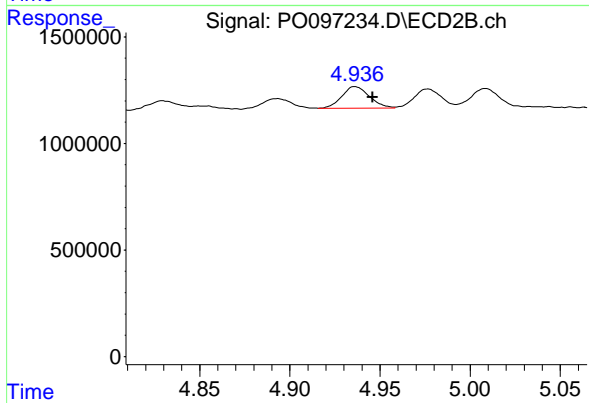
#21 AR-1248-1

R.T.: 4.717 min
 Delta R.T.: 0.009 min
 Response: 1392940
 Conc: 49.64 ng/ml



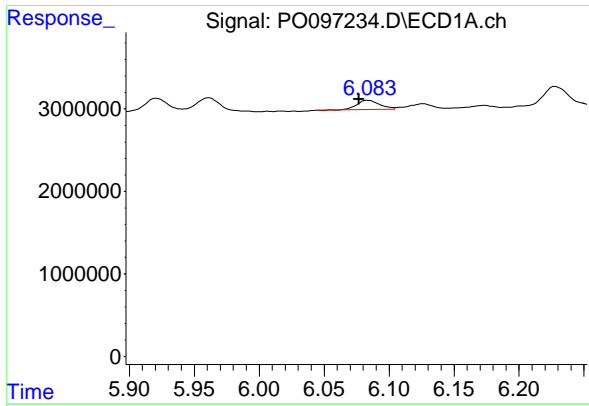
#22 AR-1248-2

R.T.: 5.876 min
 Delta R.T.: 0.006 min
 Response: 2270367
 Conc: 24.15 ng/ml



#22 AR-1248-2

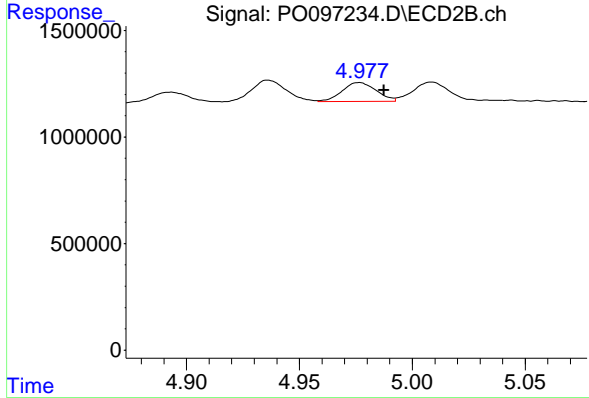
R.T.: 4.936 min
 Delta R.T.: -0.010 min
 Response: 1077045
 Conc: 25.41 ng/ml



#23 AR-1248-3

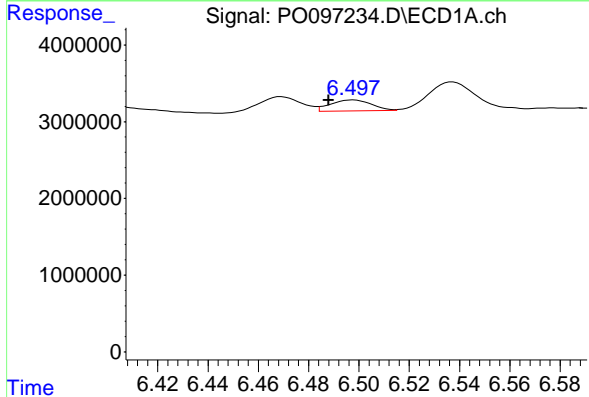
R.T.: 6.084 min
 Delta R.T.: 0.007 min
 Response: 1347876
 Conc: 13.78 ng/ml

Instrument :
 ECD_O
 ClientSampleId :



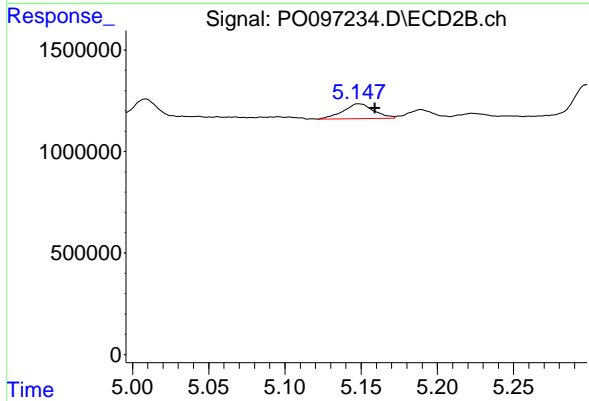
#23 AR-1248-3

R.T.: 4.976 min
 Delta R.T.: -0.011 min
 Response: 938988
 Conc: 21.41 ng/ml



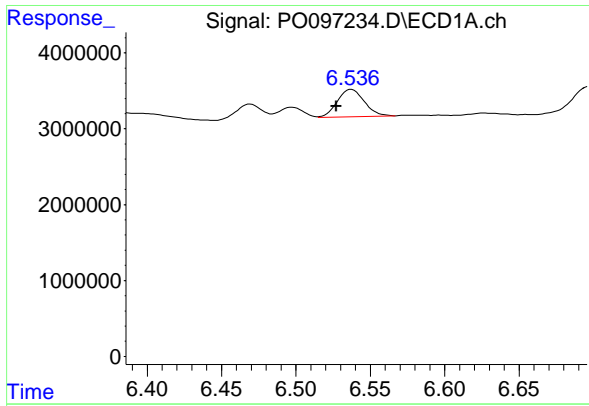
#24 AR-1248-4

R.T.: 6.497 min
 Delta R.T.: 0.009 min
 Response: 1628803
 Conc: 17.93 ng/ml



#24 AR-1248-4

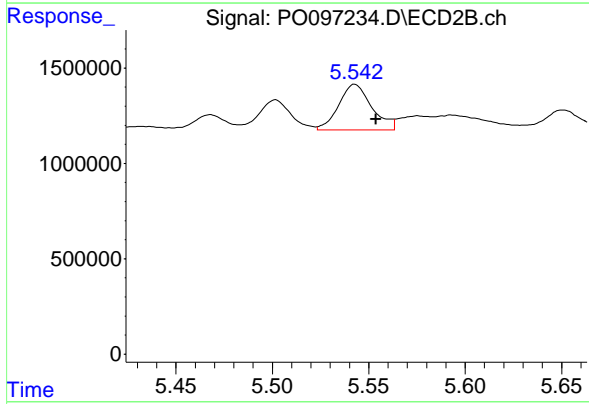
R.T.: 5.148 min
 Delta R.T.: -0.011 min
 Response: 1038601
 Conc: 20.34 ng/ml



#25 AR-1248-5

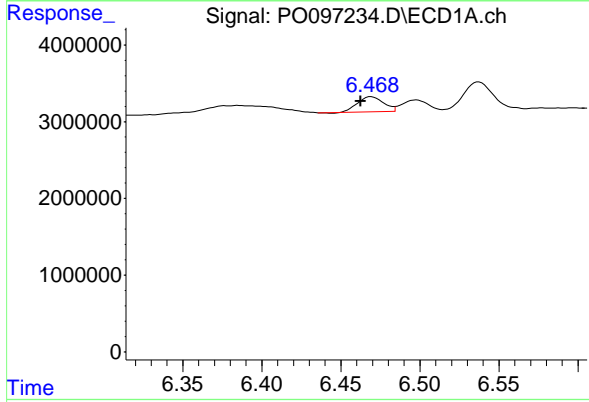
R.T.: 6.537 min
 Delta R.T.: 0.010 min
 Response: 4611844
 Conc: 52.36 ng/ml

Instrument :
 ECD_O
 ClientSampleId :



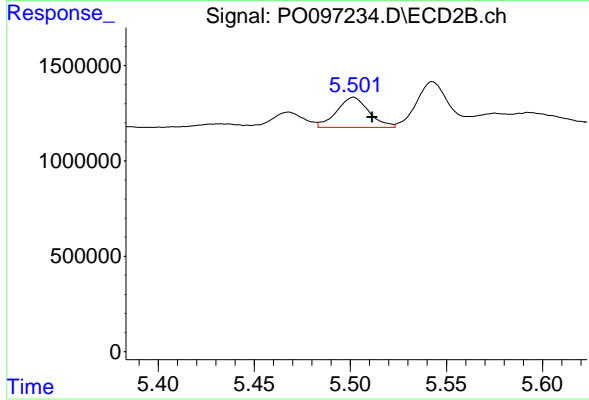
#25 AR-1248-5

R.T.: 5.543 min
 Delta R.T.: -0.011 min
 Response: 2857430
 Conc: 61.12 ng/ml



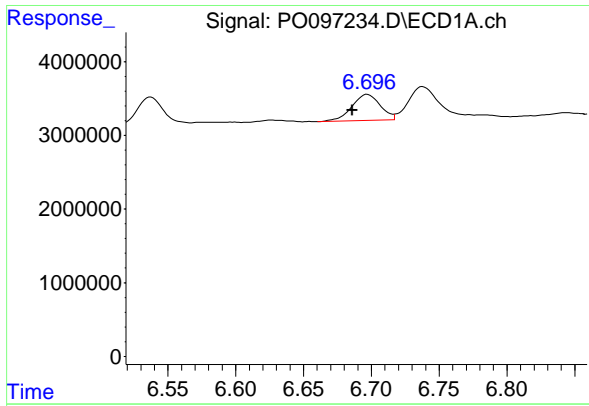
#26 AR-1254-1

R.T.: 6.469 min
 Delta R.T.: 0.007 min
 Response: 2213722
 Conc: 20.26 ng/ml



#26 AR-1254-1

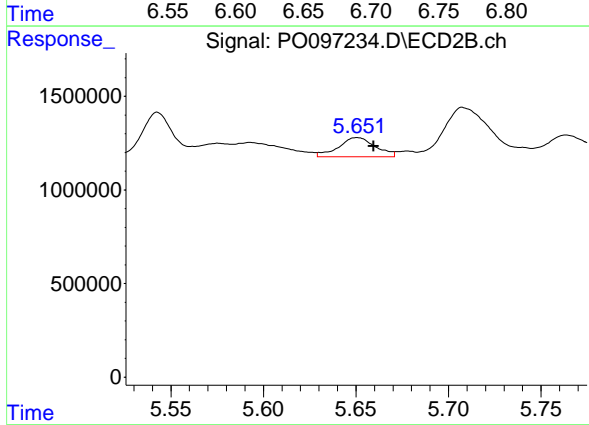
R.T.: 5.502 min
 Delta R.T.: -0.010 min
 Response: 1844807
 Conc: 25.00 ng/ml



#27 AR-1254-2

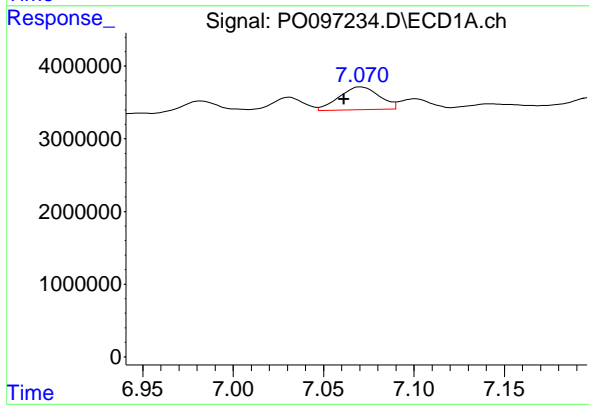
R.T.: 6.697 min
 Delta R.T.: 0.011 min
 Response: 5187049
 Conc: 32.17 ng/ml

Instrument :
 ECD_O
 ClientSampleId :



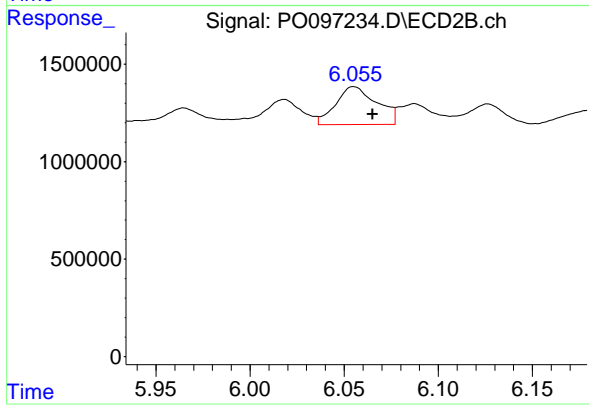
#27 AR-1254-2

R.T.: 5.651 min
 Delta R.T.: -0.009 min
 Response: 1415933
 Conc: 21.49 ng/ml



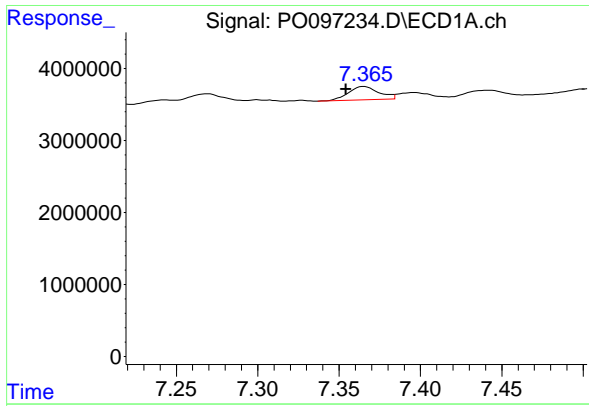
#28 AR-1254-3

R.T.: 7.071 min
 Delta R.T.: 0.009 min
 Response: 4833247
 Conc: 30.84 ng/ml



#28 AR-1254-3

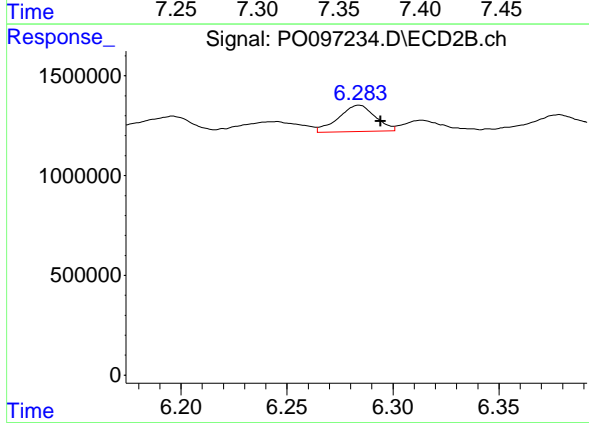
R.T.: 6.055 min
 Delta R.T.: -0.010 min
 Response: 2965659
 Conc: 29.34 ng/ml



#29 AR-1254-4

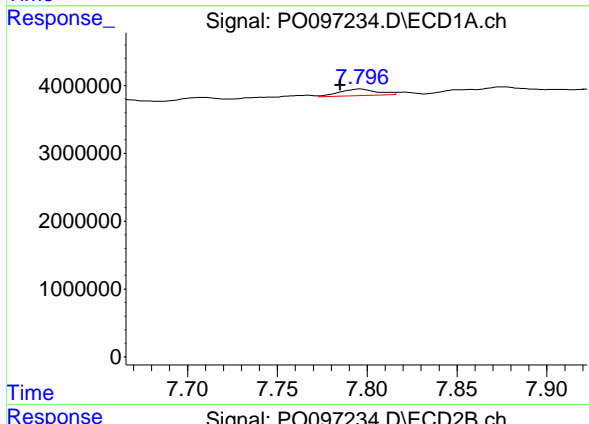
R.T.: 7.365 min
 Delta R.T.: 0.011 min
 Response: 2403348
 Conc: 23.84 ng/ml

Instrument :
 ECD_O
 ClientSampleId :



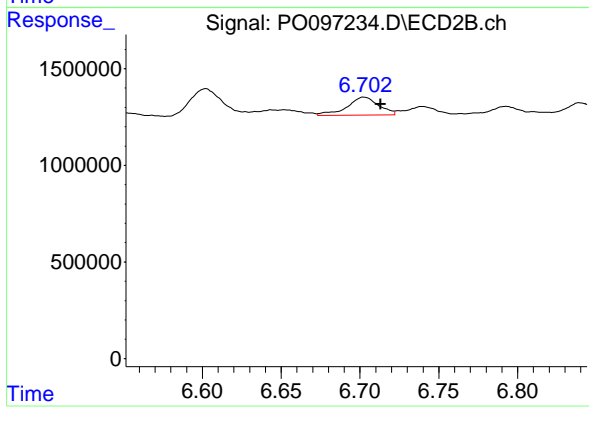
#29 AR-1254-4

R.T.: 6.284 min
 Delta R.T.: -0.010 min
 Response: 1590048
 Conc: 27.47 ng/ml



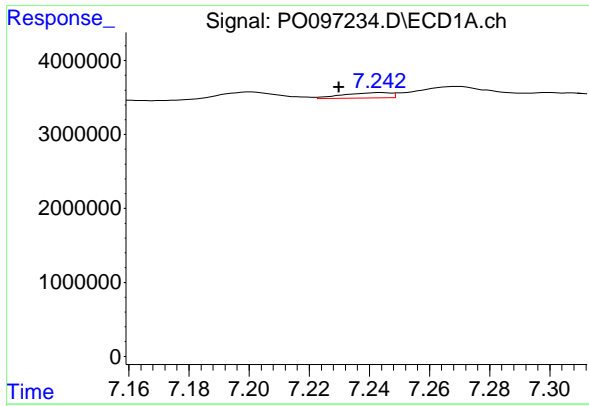
#30 AR-1254-5

R.T.: 7.796 min
 Delta R.T.: 0.011 min
 Response: 1455610
 Conc: 12.97 ng/ml



#30 AR-1254-5

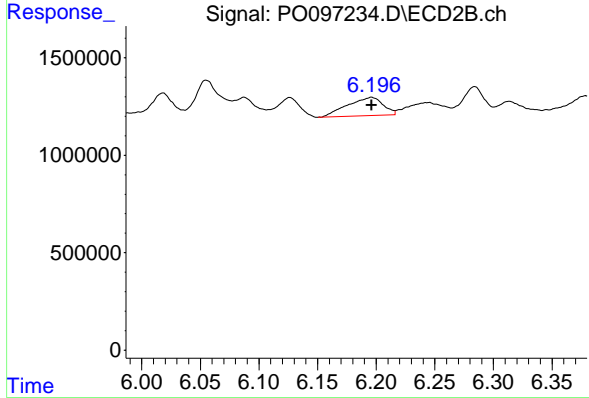
R.T.: 6.703 min
 Delta R.T.: -0.010 min
 Response: 1295848
 Conc: 14.74 ng/ml



#31 AR-1260-1

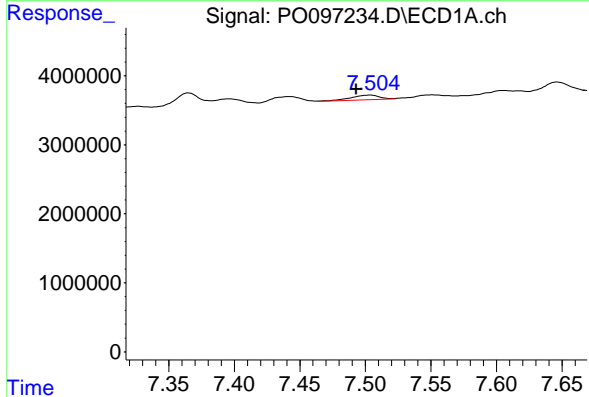
R.T.: 7.243 min
 Delta R.T.: 0.014 min
 Response: 778260
 Conc: 6.19 ng/ml

Instrument :
 ECD_O
 ClientSampleId :



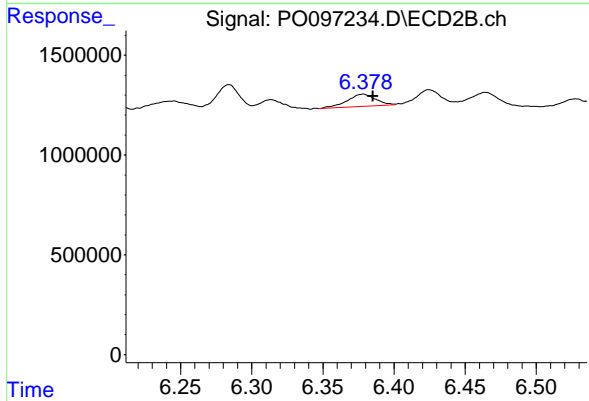
#31 AR-1260-1

R.T.: 6.196 min
 Delta R.T.: 0.000 min
 Response: 1990797
 Conc: 28.29 ng/ml



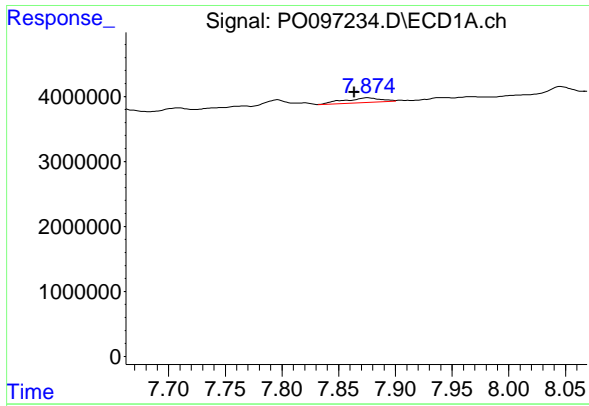
#32 AR-1260-2

R.T.: 7.504 min
 Delta R.T.: 0.011 min
 Response: 1076613
 Conc: 7.99 ng/ml



#32 AR-1260-2

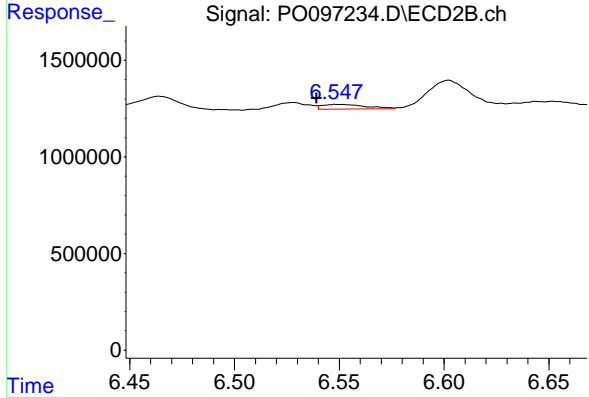
R.T.: 6.378 min
 Delta R.T.: -0.007 min
 Response: 846153
 Conc: 10.14 ng/ml



#33 AR-1260-3

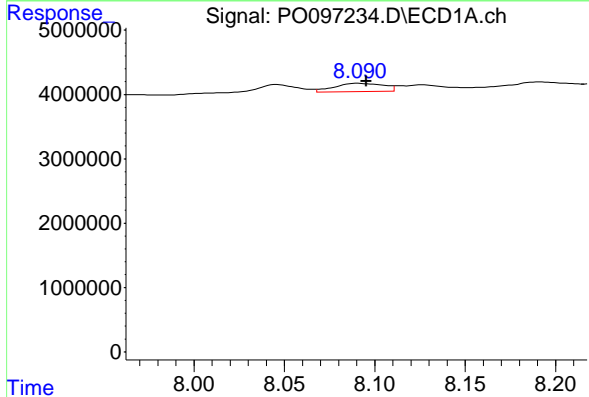
R.T.: 7.876 min
 Delta R.T.: 0.012 min
 Response: 1616609
 Conc: 15.58 ng/ml

Instrument :
 ECD_O
 ClientSampleId :



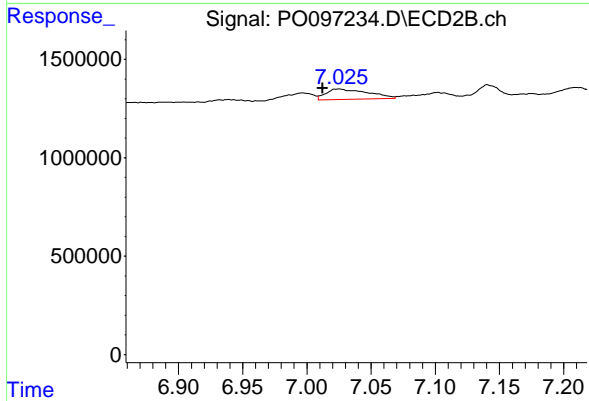
#33 AR-1260-3

R.T.: 6.549 min
 Delta R.T.: 0.010 min
 Response: 357823
 Conc: 4.63 ng/ml



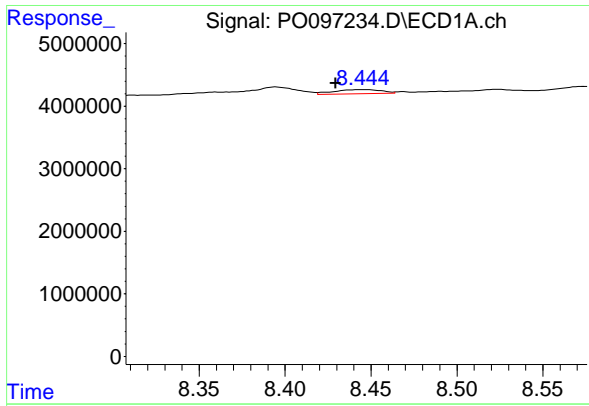
#34 AR-1260-4

R.T.: 8.090 min
 Delta R.T.: -0.005 min
 Response: 2419665
 Conc: 21.64 ng/ml



#34 AR-1260-4

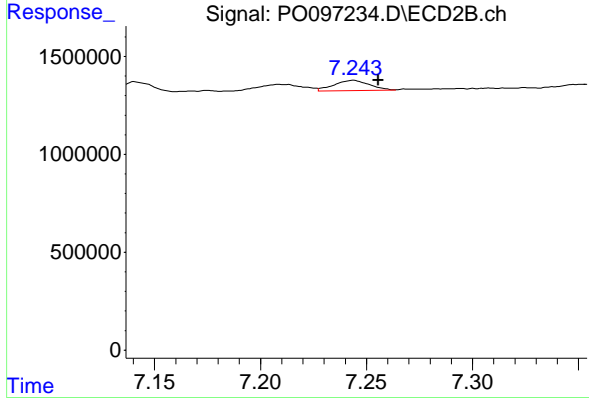
R.T.: 7.025 min
 Delta R.T.: 0.013 min
 Response: 1179868
 Conc: 18.41 ng/ml



#35 AR-1260-5

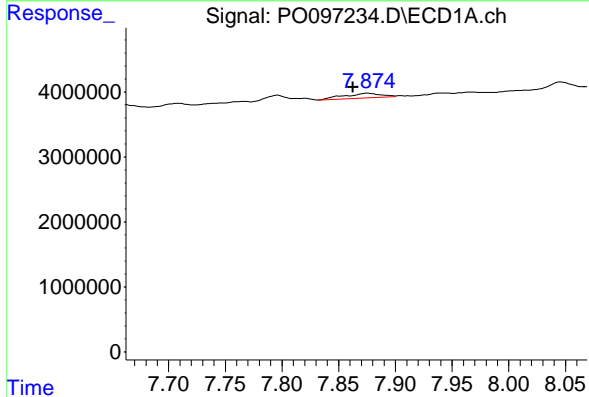
R.T.: 8.444 min
 Delta R.T.: 0.015 min
 Response: 1299371
 Conc: 6.19 ng/ml

Instrument :
 ECD_O
 ClientSampleId :



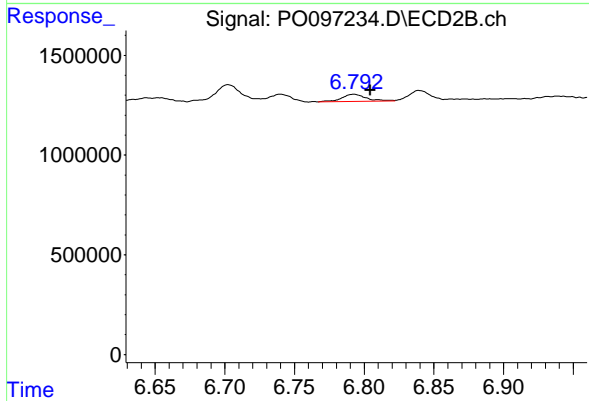
#35 AR-1260-5

R.T.: 7.244 min
 Delta R.T.: -0.012 min
 Response: 612277
 Conc: 4.42 ng/ml



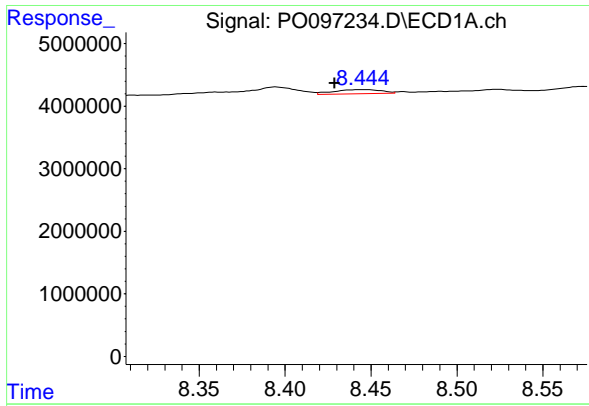
#36 AR-1262-1

R.T.: 7.876 min
 Delta R.T.: 0.013 min
 Response: 1616609
 Conc: 10.88 ng/ml



#36 AR-1262-1

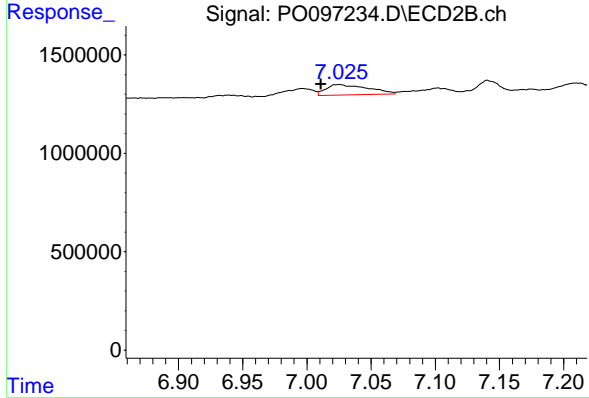
R.T.: 6.793 min
 Delta R.T.: -0.012 min
 Response: 436457
 Conc: 11.09 ng/ml



#37 AR-1262-2

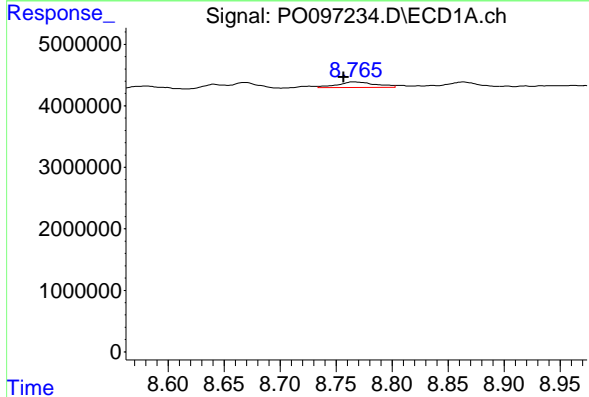
R.T.: 8.444 min
 Delta R.T.: 0.015 min
 Response: 1299371
 Conc: 5.61 ng/ml

Instrument :
 ECD_O
 ClientSampleId :



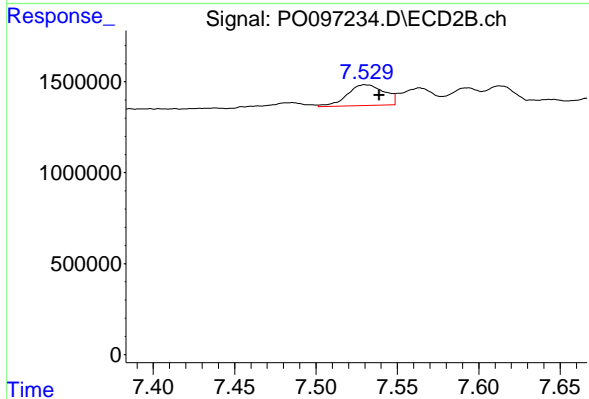
#37 AR-1262-2

R.T.: 7.025 min
 Delta R.T.: 0.014 min
 Response: 1179868
 Conc: 14.55 ng/ml



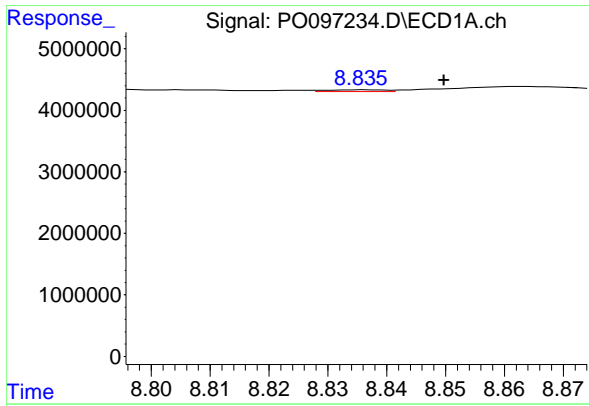
#38 AR-1262-3

R.T.: 8.766 min
 Delta R.T.: 0.009 min
 Response: 2059262
 Conc: 12.35 ng/ml



#38 AR-1262-3

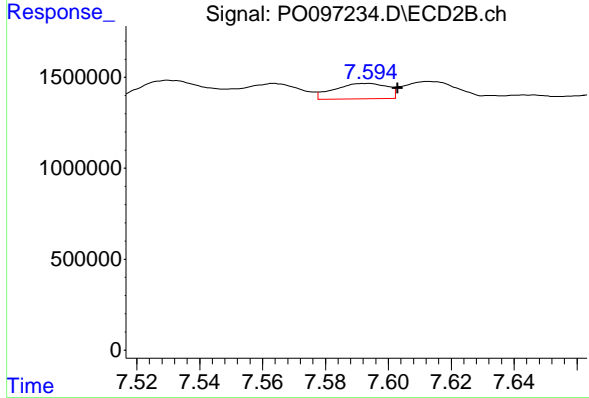
R.T.: 7.530 min
 Delta R.T.: -0.008 min
 Response: 1810744
 Conc: 28.22 ng/ml



#39 AR-1262-4

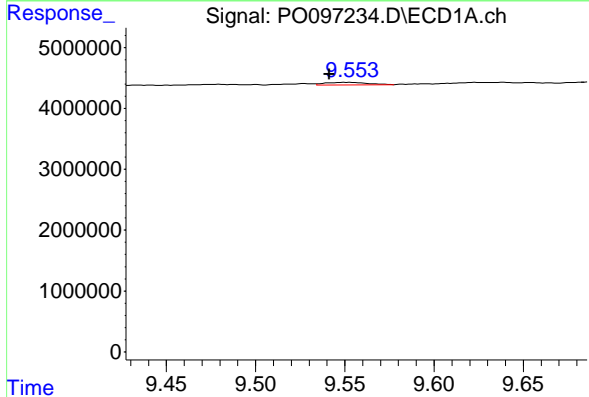
R.T.: 8.836 min
 Delta R.T.: -0.014 min
 Response: 187130
 Conc: 2.57 ng/ml

Instrument :
 ECD_O
 ClientSampleId :



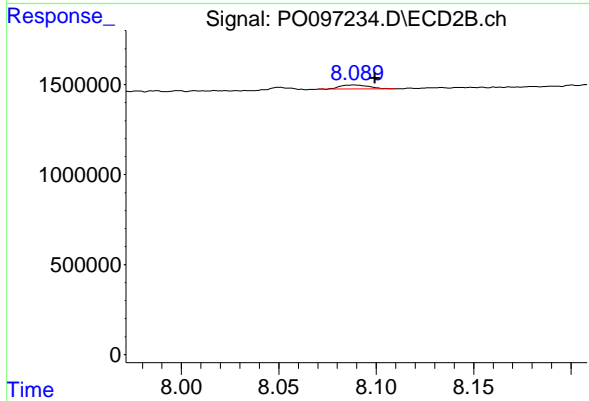
#39 AR-1262-4

R.T.: 7.593 min
 Delta R.T.: -0.010 min
 Response: 996851
 Conc: 8.78 ng/ml



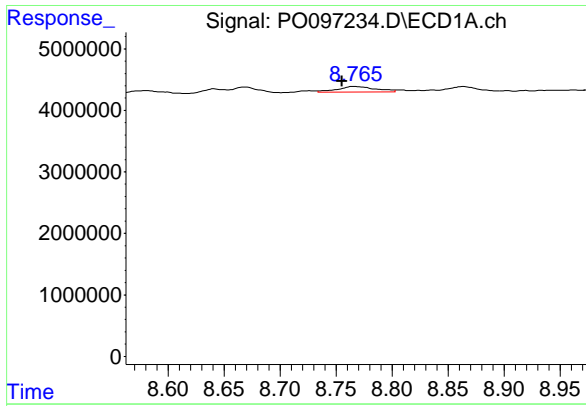
#40 AR-1262-5

R.T.: 9.553 min
 Delta R.T.: 0.012 min
 Response: 644399
 Conc: 7.74 ng/ml



#40 AR-1262-5

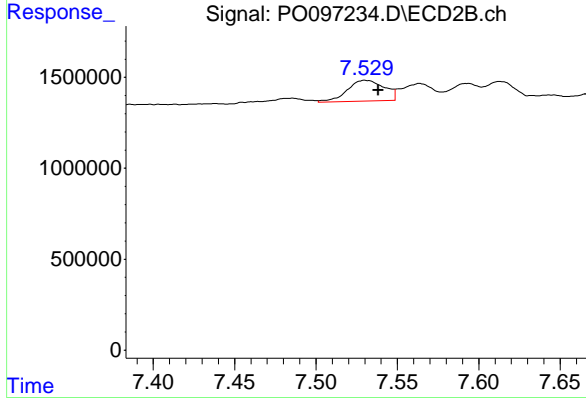
R.T.: 8.089 min
 Delta R.T.: -0.010 min
 Response: 236752
 Conc: 4.51 ng/ml



#41 AR-1268-1

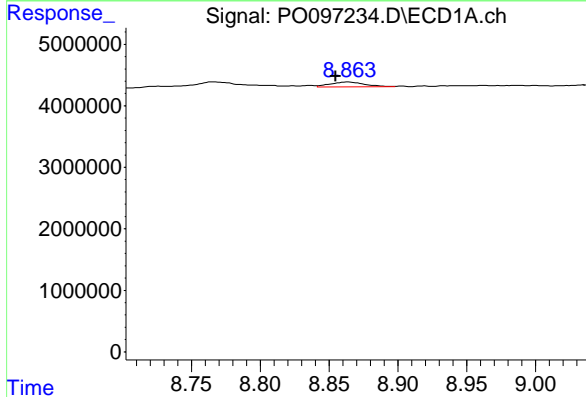
R.T.: 8.766 min
 Delta R.T.: 0.010 min
 Response: 2059262
 Conc: 6.70 ng/ml

Instrument :
 ECD_O
 ClientSampleId :



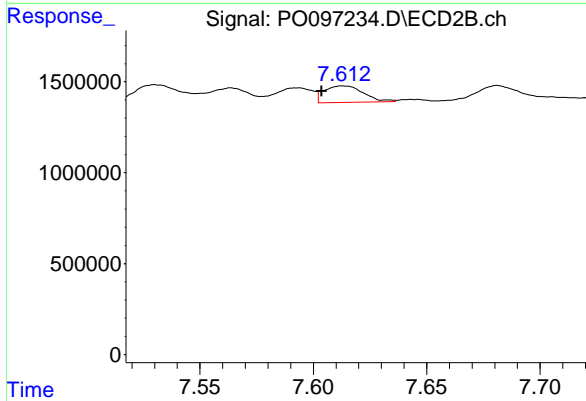
#41 AR-1268-1

R.T.: 7.530 min
 Delta R.T.: -0.008 min
 Response: 1810744
 Conc: 9.77 ng/ml



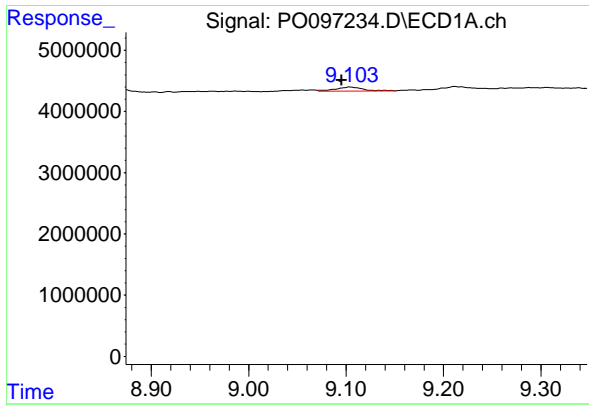
#42 AR-1268-2

R.T.: 8.863 min
 Delta R.T.: 0.009 min
 Response: 1386365
 Conc: 5.06 ng/ml



#42 AR-1268-2

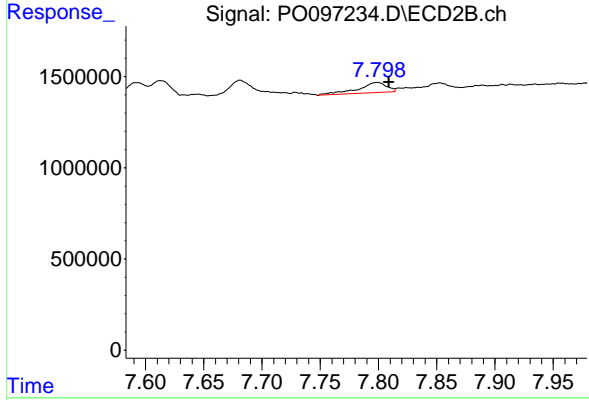
R.T.: 7.613 min
 Delta R.T.: 0.009 min
 Response: 1107704
 Conc: 6.61 ng/ml



#43 AR-1268-3

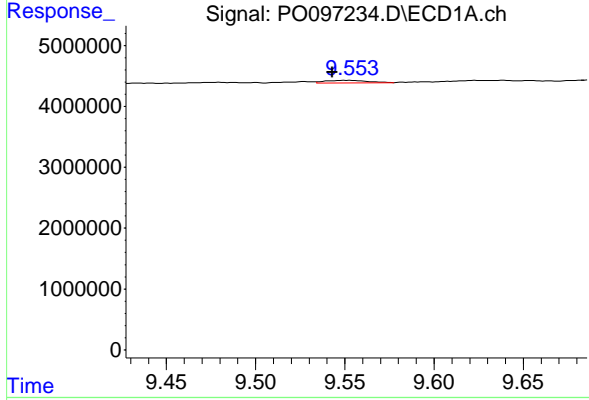
R.T.: 9.104 min
 Delta R.T.: 0.009 min
 Response: 1336382
 Conc: 5.23 ng/ml

Instrument :
 ECD_O
 ClientSampleId :



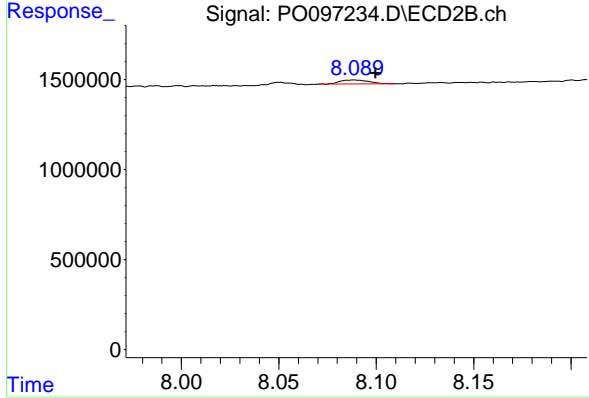
#43 AR-1268-3

R.T.: 7.799 min
 Delta R.T.: -0.010 min
 Response: 953471
 Conc: 6.60 ng/ml



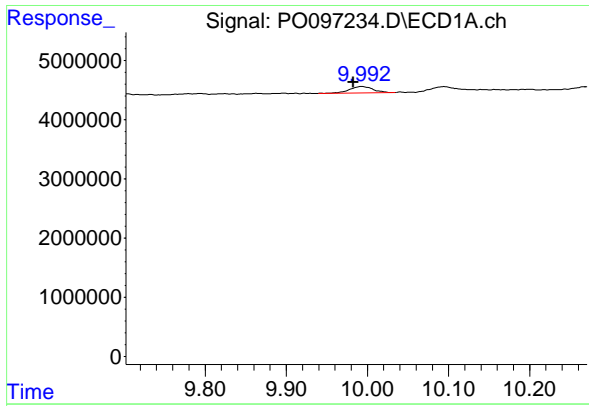
#44 AR-1268-4

R.T.: 9.553 min
 Delta R.T.: 0.010 min
 Response: 644399
 Conc: 6.95 ng/ml



#44 AR-1268-4

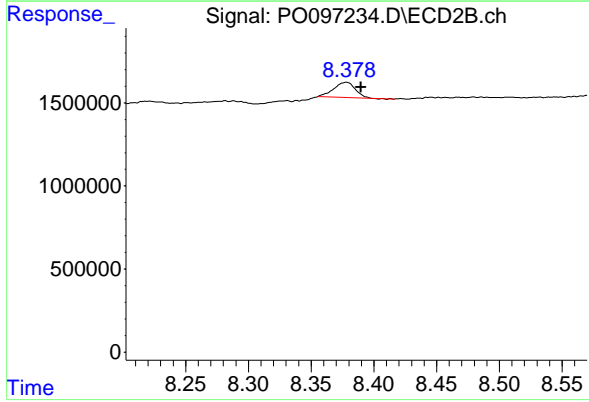
R.T.: 8.089 min
 Delta R.T.: -0.011 min
 Response: 236752
 Conc: 3.97 ng/ml



#45 AR-1268-5

R.T.: 9.993 min
Delta R.T.: 0.010 min
Response: 2317219
Conc: 2.87 ng/ml

Instrument :
ECD_O
ClientSampleId :



#45 AR-1268-5

R.T.: 8.378 min
Delta R.T.: -0.012 min
Response: 1106302
Conc: 2.66 ng/ml