

Data Path : Z:\pestpcbsrv\HPCHEM1\ECD_O\Data\P0081823\
 Data File : P0097245.D
 Signal(s) : Signal #1: ECD1A.ch Signal #2: ECD2B.ch
 Acq On : 18 Aug 2023 11:18
 Operator : YP/AJ
 Sample : I.BLK
 Misc :
 ALS Vial : 2 Sample Multiplier: 1

Instrument :
 ECD_O
 ClientSampleId :

Integration File signal 1: autoint1.e
 Integration File signal 2: autoint2.e
 Quant Time: Aug 19 00:03:36 2023
 Quant Method : Z:\pestpcbsrv\HPCHEM1\ECD_O\methods\P0080723.M
 Quant Title : GC EXTRACTABLES
 QLast Update : Tue Aug 08 04:34:41 2023
 Response via : Initial Calibration
 Integrator: ChemStation

Volume Inj. : 2 µl
 Signal #1 Phase : ZB-MR2 Signal #2 Phase: ZB-MR2
 Signal #1 Info : 30Mx0.32mmx 0.50µ Signal #2 Info : 30M x 0.32mm x 0.25µm

Compound	RT#1	RT#2	Resp#1	Resp#2	ng/ml	ng/ml

System Monitoring Compounds						
1) SA Tetrachlo...	4.410	3.615	74803113	28684908	22.598	21.669
2) SA Decachlor...	10.351	8.630	55984748	27309953	25.585	23.606
Target Compounds						
3) L1 AR-1016-1	5.588	4.710	66244	169055	0.703	3.813 #
4) L1 AR-1016-2	5.609	4.710	51062	169055	0.382	2.764 #
5) L1 AR-1016-3	5.671	0.000	351229	0	4.036	N.D. #
6) L1 AR-1016-4	5.796	0.000	28822	0	0.429	N.D. #
7) L1 AR-1016-5	6.065	5.217f	57200	2695965	0.819	70.123 #
8) L2 AR-1221-1	4.596	3.845	423743	176700	10.397	10.180
9) L2 AR-1221-2	4.723	3.914	1685989	472538	55.497	36.572 #
10) L2 AR-1221-3	4.800	3.960f	94257	278038	1.077	7.005 #
11) L3 AR-1232-1	4.800	3.960f	94257	278038	1.292	8.595 #
12) L3 AR-1232-2	5.317	4.710	149721	169055	3.776	5.859 #
13) L3 AR-1232-3	5.609	0.000	51062	0	0.835	N.D. #
14) L3 AR-1232-4	5.796	5.047f	28822	1512120	0.945	101.181 #
15) L3 AR-1232-5	5.853	5.217f	28397	2695965	1.015	164.923 #
16) L4 AR-1242-1	5.588	4.710	66244	169055	0.790	4.288 #
17) L4 AR-1242-2	5.609	4.710	51062	169055	0.434	3.102 #
18) L4 AR-1242-3	5.671	0.000	351229	0	4.755	N.D. #
19) L4 AR-1242-4	5.796	5.047f	28822	1512120	0.484	47.983 #
20) L4 AR-1242-5	6.532	5.576f	16016	1532287	0.291	42.054 #
21) L5 AR-1248-1	5.588	4.710	66244	169055	1.131	6.024 #
22) L5 AR-1248-2	5.853	0.000	28397	0	0.302	N.D. #
23) L5 AR-1248-3	6.065	5.047f	57200	1512120	0.585	34.472 #
24) L5 AR-1248-4	6.481	5.217f	-534807	2695965	N.D.	52.810 #
25) L5 AR-1248-5	6.532	5.576	16016	1532287	0.182	32.775 #
26) L6 AR-1254-1	6.481	5.576f	-534807	1532287	N.D.	20.764 #
27) L6 AR-1254-2	6.692	5.603f	206312	876618	1.280	13.306 #
28) L6 AR-1254-3	7.075	6.079	2125062	411995	13.562	4.077 #
29) L6 AR-1254-4	7.297f	6.320	1145999	370609	11.367	6.404 #
30) L6 AR-1254-5	7.801	0.000	554795	0	4.944	N.D. #
31) L7 AR-1260-1	7.244	0.000	1194675	0	9.505	N.D. #
32) L7 AR-1260-2	7.483	6.361	163750	697860	1.215	8.361 #
33) L7 AR-1260-3	7.899f	0.000	968087	0	9.329	N.D. #
34) L7 AR-1260-4	8.076	7.041	149705	68190	1.339	1.064
35) L7 AR-1260-5	8.395	7.240	1147978	24914	5.467	0.180 #
36) L8 AR-1262-1	7.899f	0.000	968087	0	6.518	N.D. #
37) L8 AR-1262-2	8.395	7.041	1147978	68190	4.960	0.841 #
38) L8 AR-1262-3	8.752	7.542	114176	70143	0.685	1.093 #
39) L8 AR-1262-4	8.863	7.619	80150	103066	1.099	0.907
40) L8 AR-1262-5	9.543	0.000	70490	0	0.846	N.D. #
41) L9 AR-1268-1	8.752	7.542	114176	70143	0.371	0.379

Data Path : Z:\pestpcbsrv\HPCHEM1\ECD_O\Data\P0081823\
 Data File : P0097245.D
 Signal(s) : Signal #1: ECD1A.ch Signal #2: ECD2B.ch
 Acq On : 18 Aug 2023 11:18
 Operator : YP/AJ
 Sample : I.BLK
 Misc :
 ALS Vial : 2 Sample Multiplier: 1

Instrument :
 ECD_O
 ClientSampleId :

Integration File signal 1: autoint1.e
 Integration File signal 2: autoint2.e
 Quant Time: Aug 19 00:03:36 2023
 Quant Method : Z:\pestpcbsrv\HPCHEM1\ECD_O\methods\P0080723.M
 Quant Title : GC EXTRACTABLES
 QLast Update : Tue Aug 08 04:34:41 2023
 Response via : Initial Calibration
 Integrator: ChemStation

Volume Inj. : 2 µl
 Signal #1 Phase : ZB-MR1 Signal #2 Phase: ZB-MR2
 Signal #1 Info : 30Mx0.32mmx 0.50µ Signal #2 Info : 30M x 0.32mm x 0.25µm

	Compound	RT#1	RT#2	Resp#1	Resp#2	ng/ml	ng/ml
42)	L9 AR-1268-2	8.863	7.619	80150	103066	0.292	0.615 #
43)	L9 AR-1268-3	9.087	7.804	64000	137697	0.251	0.953 #
44)	L9 AR-1268-4	9.543	0.000	70490	0	0.760	N.D. #
45)	L9 AR-1268-5	9.989	8.380	347762	211828	0.431	0.509

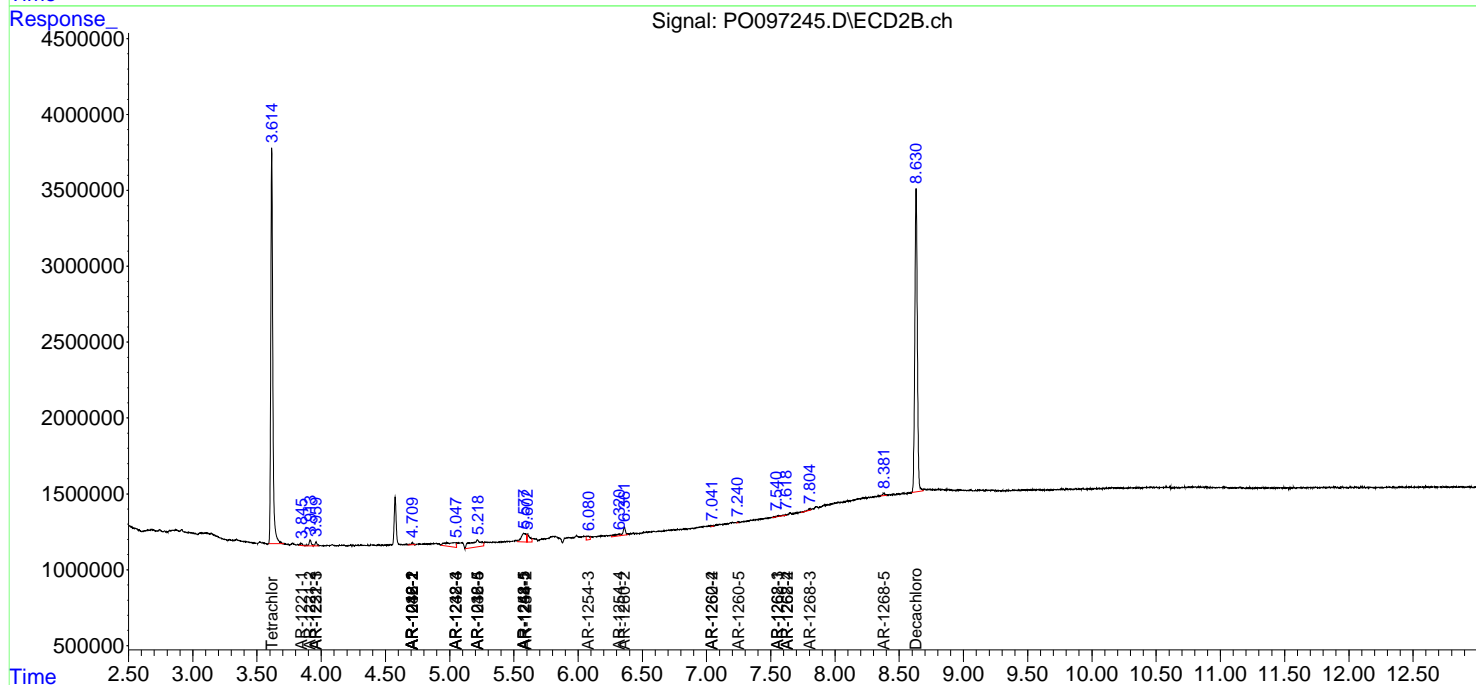
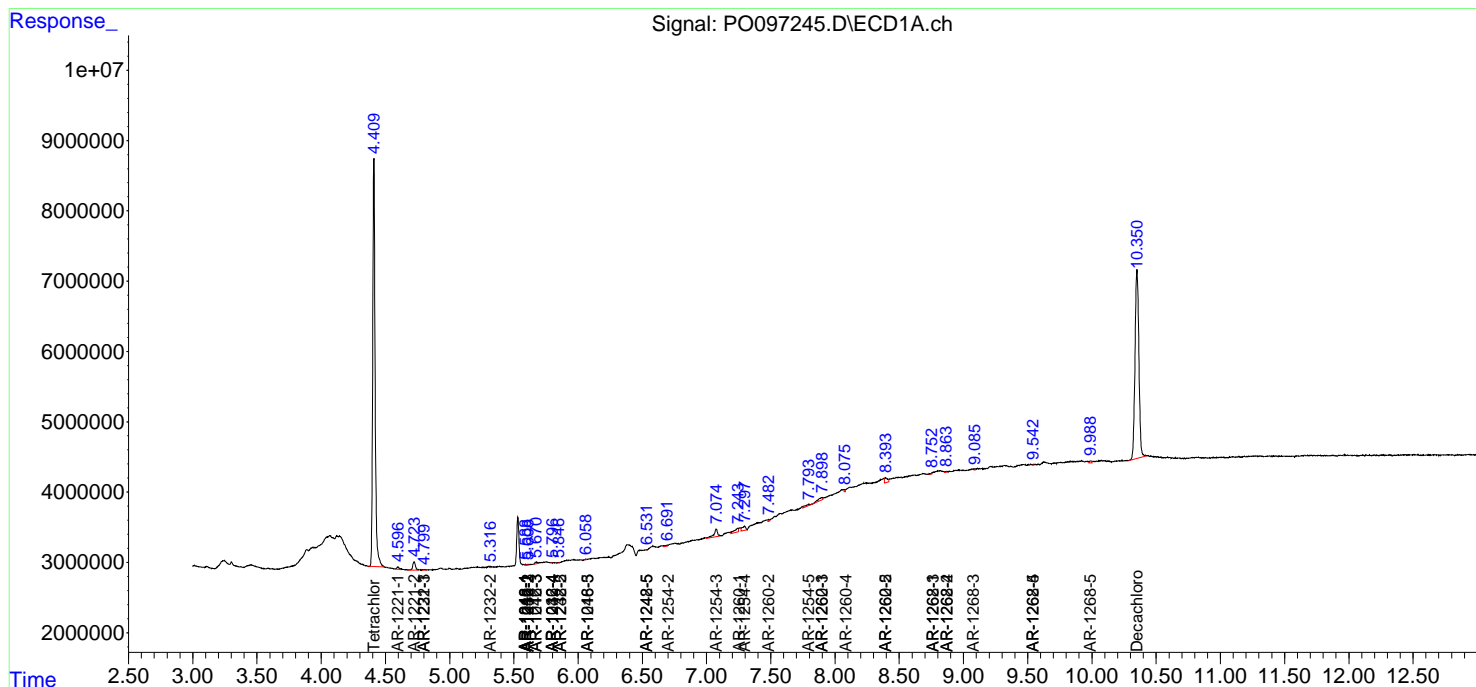
(f)=RT Delta > 1/2 Window (#)=Amounts differ by > 25% (m)=manual int.

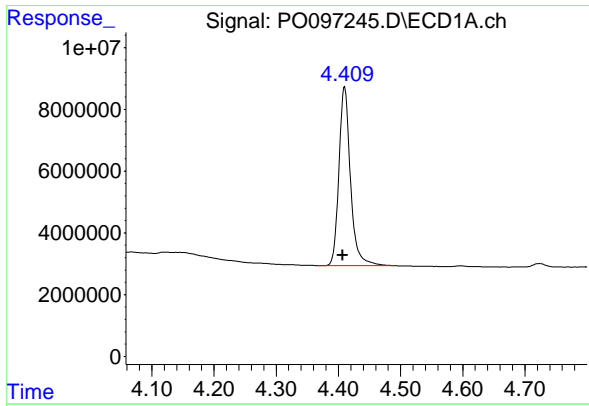
Data Path : Z:\pestpcbsrv\HPCHEM1\ECD_O\Data\PO081823\
 Data File : PO097245.D
 Signal(s) : Signal #1: ECD1A.ch Signal #2: ECD2B.ch
 Acq On : 18 Aug 2023 11:18
 Operator : YP/AJ
 Sample : I.BLK
 Misc :
 ALS Vial : 2 Sample Multiplier: 1

Instrument :
 ECD_O
 ClientSampleId :

Integration File signal 1: autoint1.e
 Integration File signal 2: autoint2.e
 Quant Time: Aug 19 00:03:36 2023
 Quant Method : Z:\pestpcbsrv\HPCHEM1\ECD_O\methods\PO080723.M
 Quant Title : GC EXTRACTABLES
 QLast Update : Tue Aug 08 04:34:41 2023
 Response via : Initial Calibration
 Integrator: ChemStation

Volume Inj. : 2 µl
 Signal #1 Phase : ZB-MR1 Signal #2 Phase: ZB-MR2
 Signal #1 Info : 30Mx0.32mmx 0.50µ Signal #2 Info : 30M x 0.32mm x 0.25µm

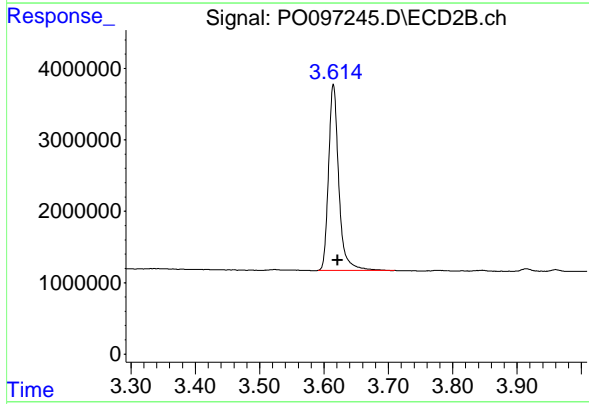




#1 Tetrachloro-m-xylene

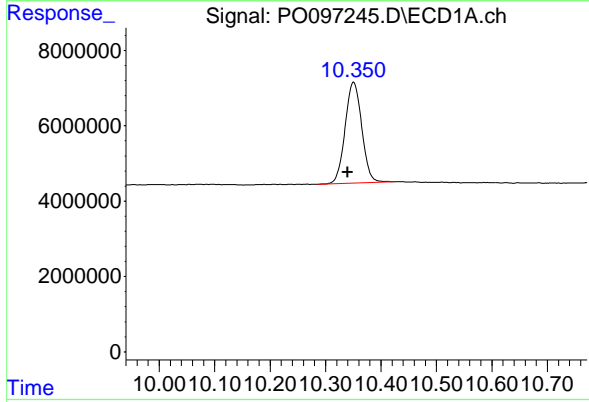
R.T.: 4.410 min
 Delta R.T.: 0.003 min
 Response: 74803113
 Conc: 22.60 ng/ml

Instrument :
 ECD_O
 ClientSampleId :



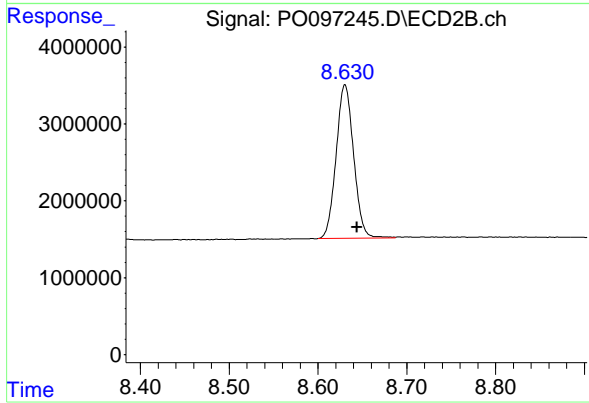
#1 Tetrachloro-m-xylene

R.T.: 3.615 min
 Delta R.T.: -0.006 min
 Response: 28684908
 Conc: 21.67 ng/ml



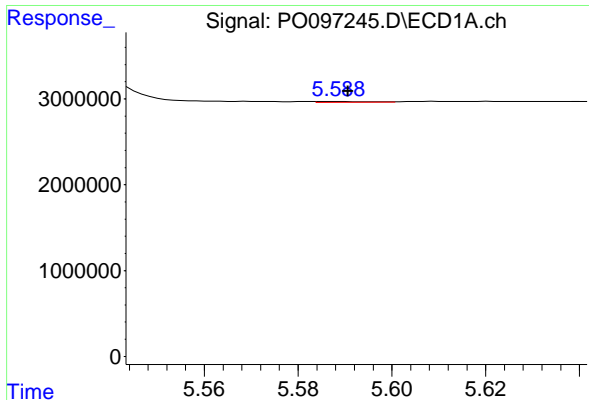
#2 Decachlorobiphenyl

R.T.: 10.351 min
 Delta R.T.: 0.011 min
 Response: 55984748
 Conc: 25.58 ng/ml



#2 Decachlorobiphenyl

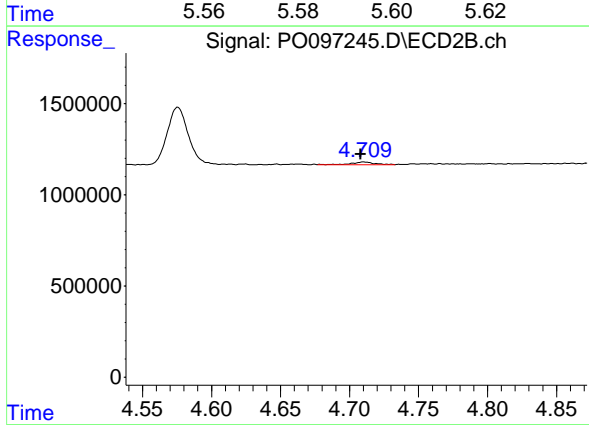
R.T.: 8.630 min
 Delta R.T.: -0.014 min
 Response: 27309953
 Conc: 23.61 ng/ml



#3 AR-1016-1

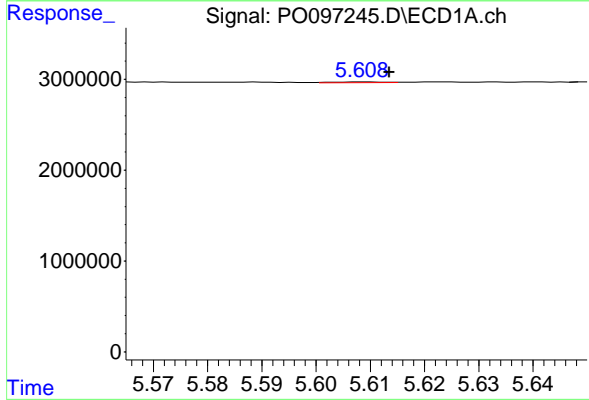
R.T.: 5.588 min
 Delta R.T.: -0.002 min
 Response: 66244
 Conc: 0.70 ng/ml

Instrument :
 ECD_O
 ClientSampleId :



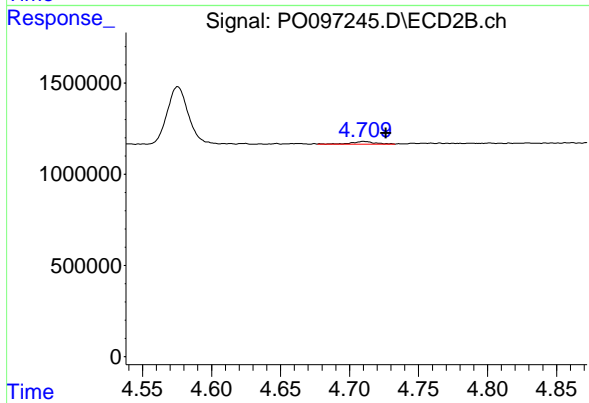
#3 AR-1016-1

R.T.: 4.710 min
 Delta R.T.: 0.002 min
 Response: 169055
 Conc: 3.81 ng/ml



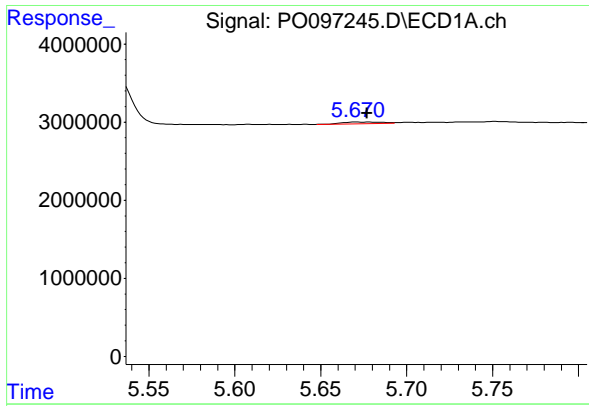
#4 AR-1016-2

R.T.: 5.609 min
 Delta R.T.: -0.005 min
 Response: 51062
 Conc: 0.38 ng/ml



#4 AR-1016-2

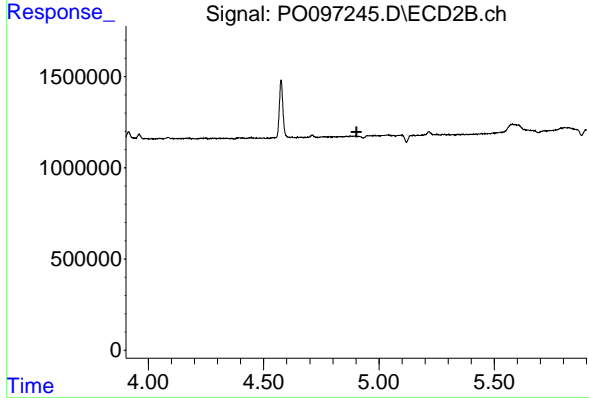
R.T.: 4.710 min
 Delta R.T.: -0.016 min
 Response: 169055
 Conc: 2.76 ng/ml



#5 AR-1016-3

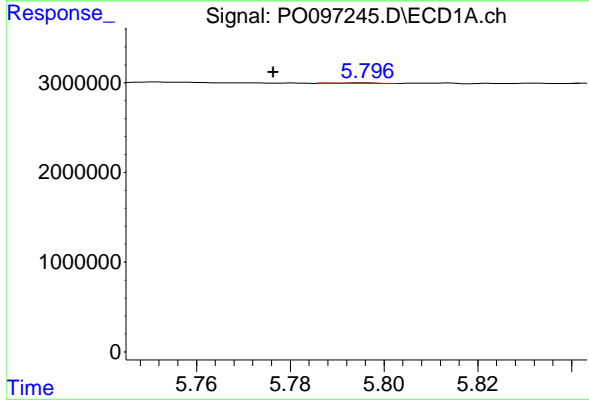
R.T.: 5.671 min
 Delta R.T.: -0.006 min
 Response: 351229
 Conc: 4.04 ng/ml

Instrument :
 ECD_O
 ClientSampleId :



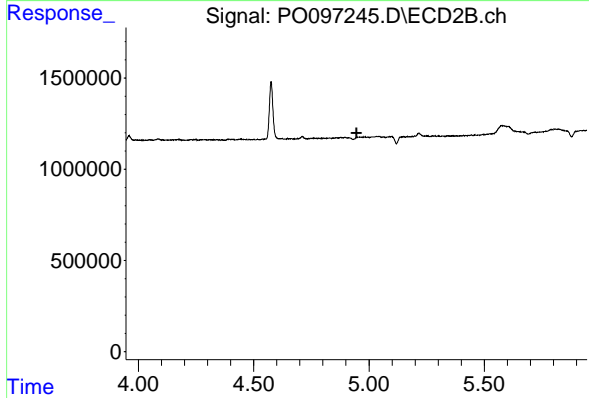
#5 AR-1016-3

R.T.: 0.000 min
 Exp R.T. : 4.903 min
 Response: 0
 Conc: N.D.



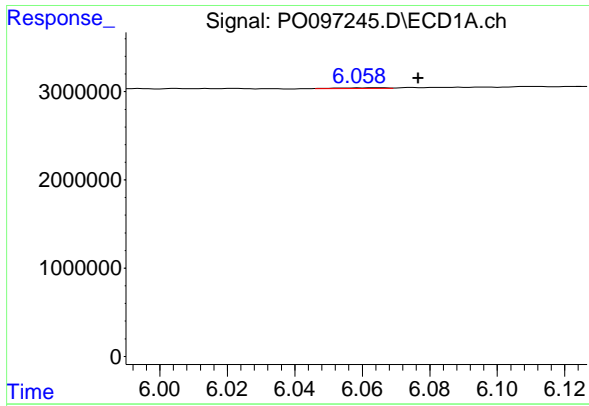
#6 AR-1016-4

R.T.: 5.796 min
 Delta R.T.: 0.019 min
 Response: 28822
 Conc: 0.43 ng/ml



#6 AR-1016-4

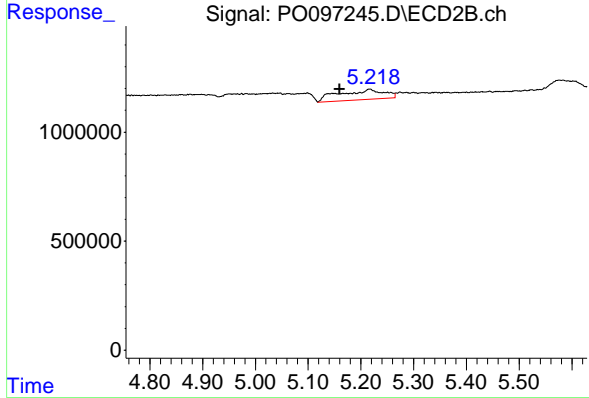
R.T.: 0.000 min
 Exp R.T. : 4.946 min
 Response: 0
 Conc: N.D.



#7 AR-1016-5

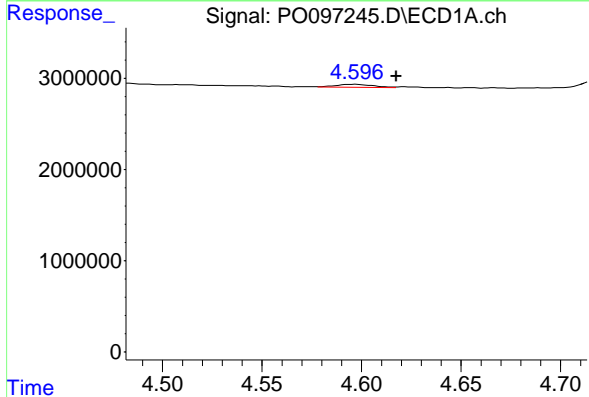
R.T.: 6.065 min
 Delta R.T.: -0.011 min
 Response: 57200
 Conc: 0.82 ng/ml

Instrument :
 ECD_O
 ClientSampleId :



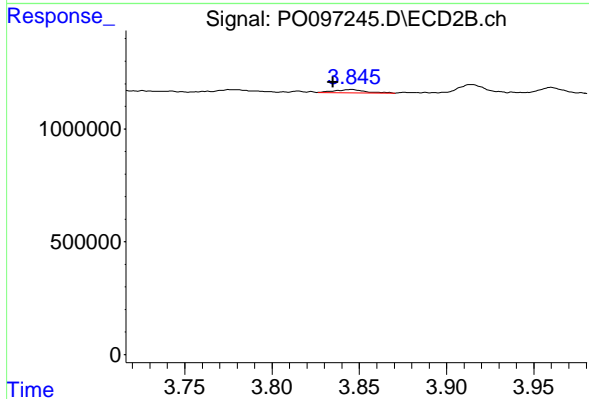
#7 AR-1016-5

R.T.: 5.217 min
 Delta R.T.: 0.057 min
 Response: 2695965
 Conc: 70.12 ng/ml



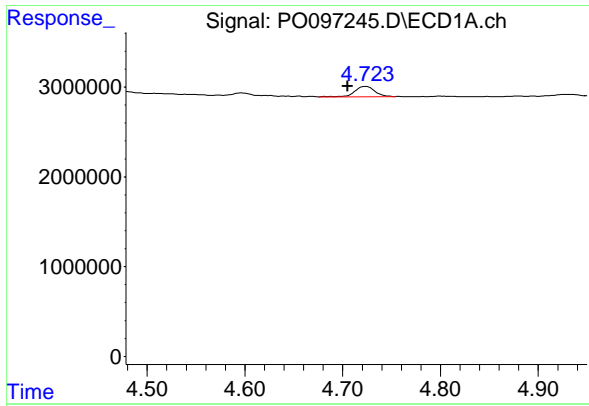
#8 AR-1221-1

R.T.: 4.596 min
 Delta R.T.: -0.021 min
 Response: 423743
 Conc: 10.40 ng/ml



#8 AR-1221-1

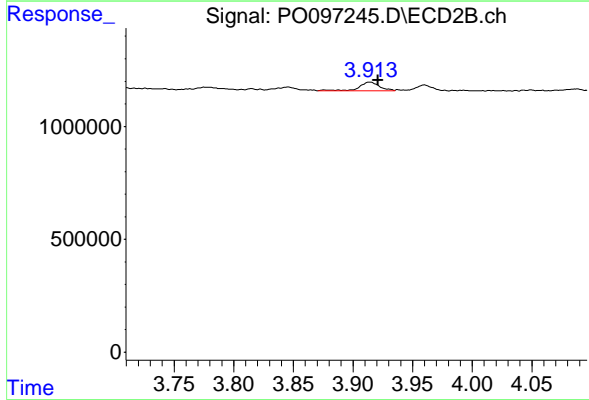
R.T.: 3.845 min
 Delta R.T.: 0.011 min
 Response: 176700
 Conc: 10.18 ng/ml



#9 AR-1221-2

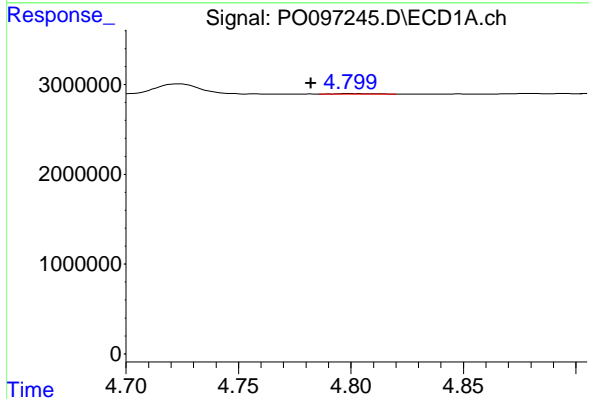
R.T.: 4.723 min
 Delta R.T.: 0.018 min
 Response: 1685989
 Conc: 55.50 ng/ml

Instrument :
 ECD_O
 ClientSampleId :



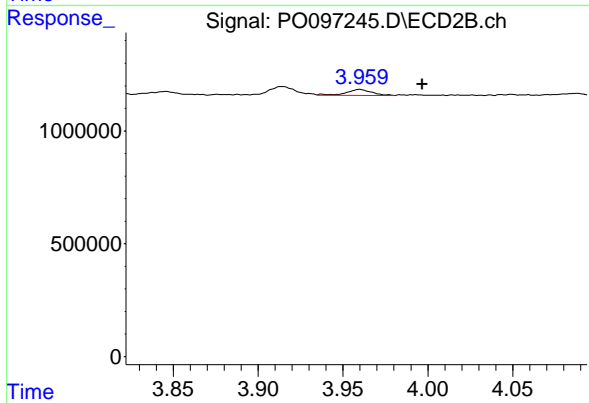
#9 AR-1221-2

R.T.: 3.914 min
 Delta R.T.: -0.007 min
 Response: 472538
 Conc: 36.57 ng/ml



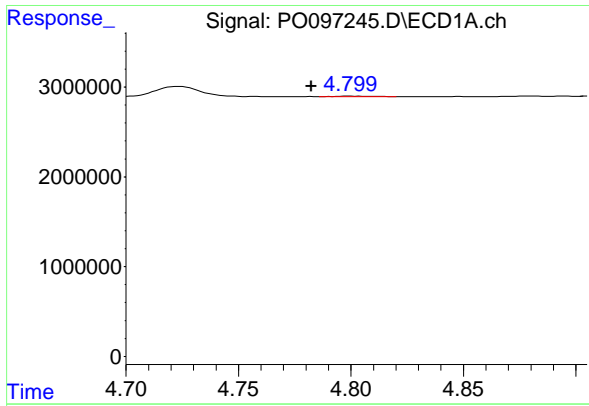
#10 AR-1221-3

R.T.: 4.800 min
 Delta R.T.: 0.017 min
 Response: 94257
 Conc: 1.08 ng/ml



#10 AR-1221-3

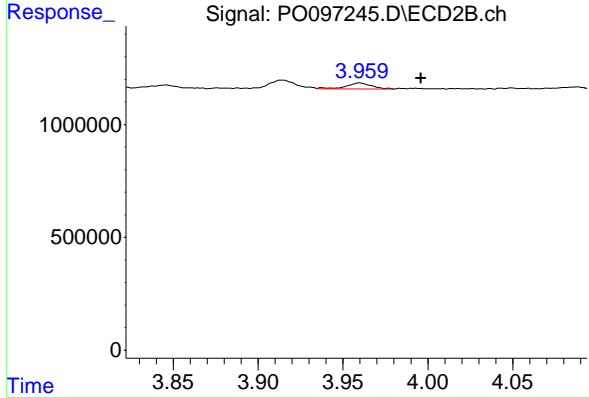
R.T.: 3.960 min
 Delta R.T.: -0.037 min
 Response: 278038
 Conc: 7.00 ng/ml



#11 AR-1232-1

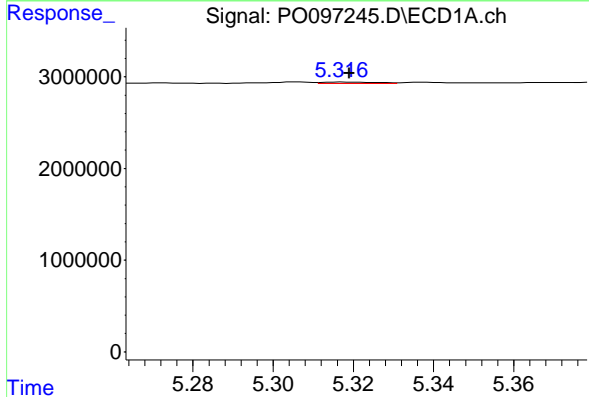
R.T.: 4.800 min
 Delta R.T.: 0.017 min
 Response: 94257
 Conc: 1.29 ng/ml

Instrument :
 ECD_O
 ClientSampleId :



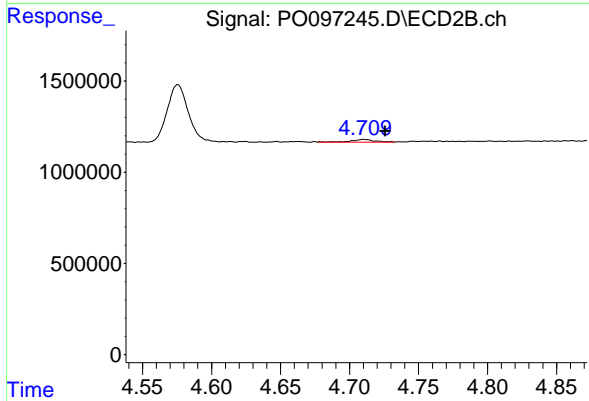
#11 AR-1232-1

R.T.: 3.960 min
 Delta R.T.: -0.036 min
 Response: 278038
 Conc: 8.60 ng/ml



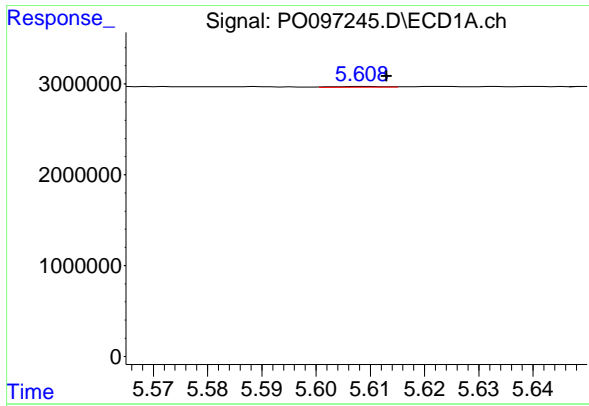
#12 AR-1232-2

R.T.: 5.317 min
 Delta R.T.: -0.002 min
 Response: 149721
 Conc: 3.78 ng/ml



#12 AR-1232-2

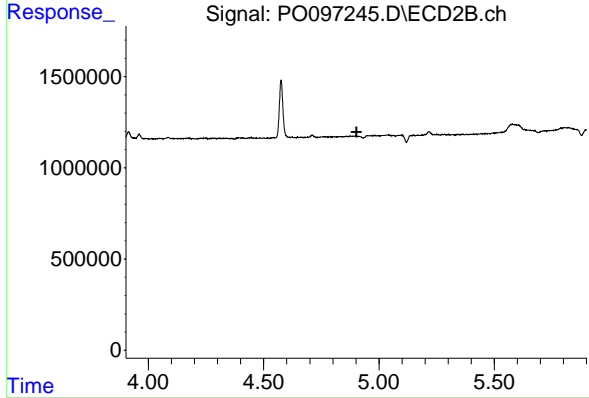
R.T.: 4.710 min
 Delta R.T.: -0.016 min
 Response: 169055
 Conc: 5.86 ng/ml



#13 AR-1232-3

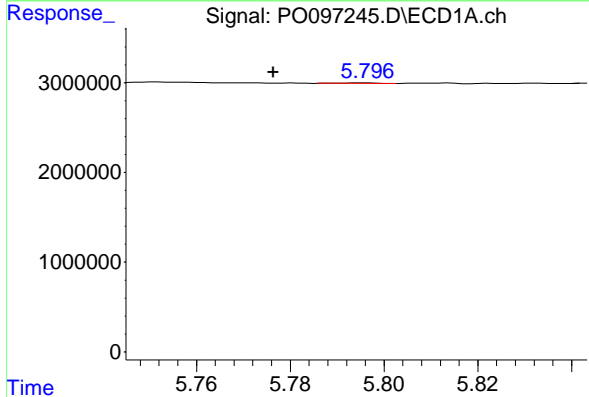
R.T.: 5.609 min
 Delta R.T.: -0.004 min
 Response: 51062
 Conc: 0.83 ng/ml

Instrument :
 ECD_O
 ClientSampleId :



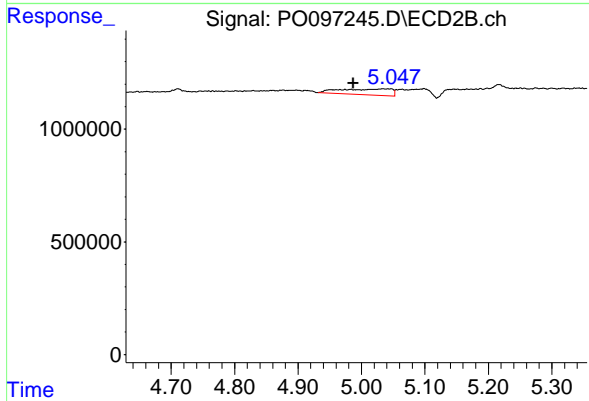
#13 AR-1232-3

R.T.: 0.000 min
 Exp R.T. : 4.902 min
 Response: 0
 Conc: N.D.



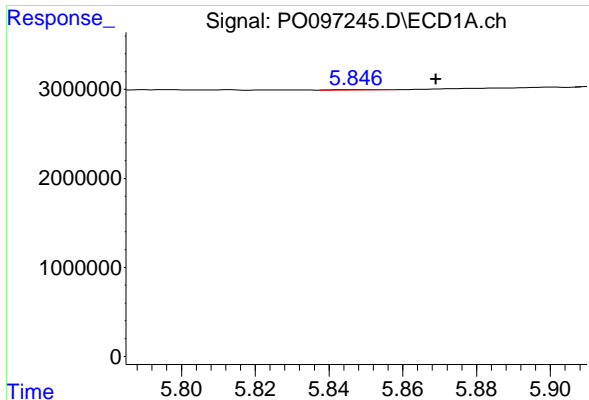
#14 AR-1232-4

R.T.: 5.796 min
 Delta R.T.: 0.019 min
 Response: 28822
 Conc: 0.94 ng/ml



#14 AR-1232-4

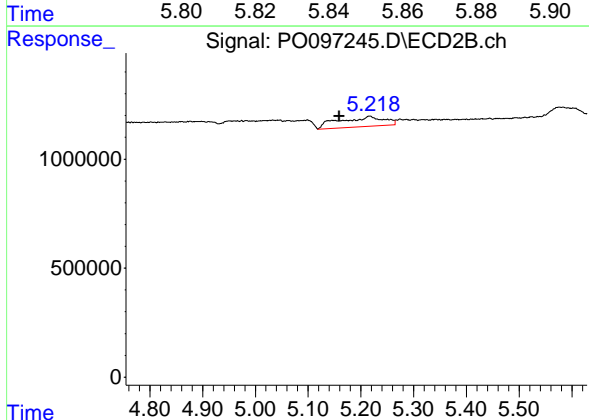
R.T.: 5.047 min
 Delta R.T.: 0.060 min
 Response: 1512120
 Conc: 101.18 ng/ml



#15 AR-1232-5

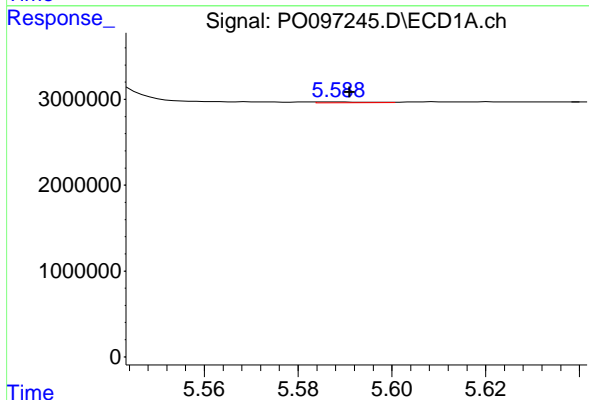
R.T.: 5.853 min
 Delta R.T.: -0.016 min
 Response: 28397
 Conc: 1.01 ng/ml

Instrument :
 ECD_O
 ClientSampleId :



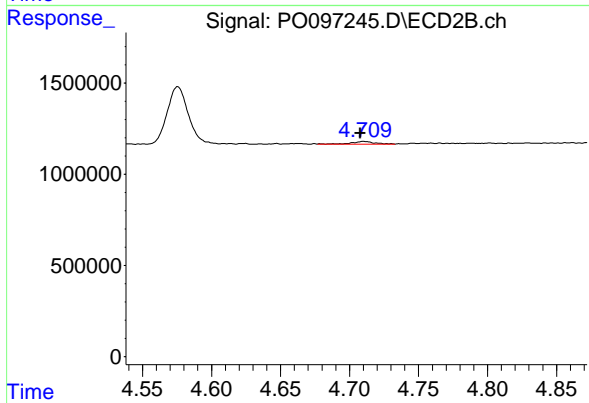
#15 AR-1232-5

R.T.: 5.217 min
 Delta R.T.: 0.058 min
 Response: 2695965
 Conc: 164.92 ng/ml



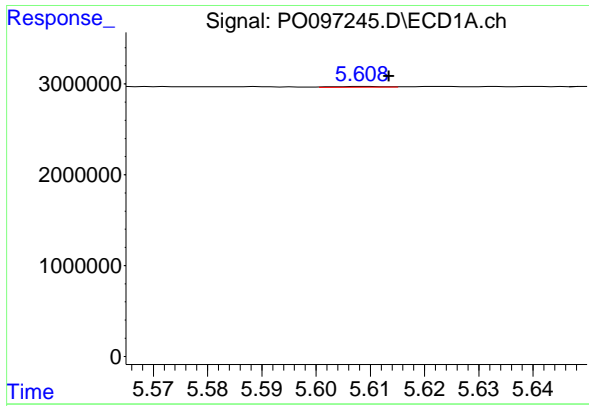
#16 AR-1242-1

R.T.: 5.588 min
 Delta R.T.: -0.003 min
 Response: 66244
 Conc: 0.79 ng/ml



#16 AR-1242-1

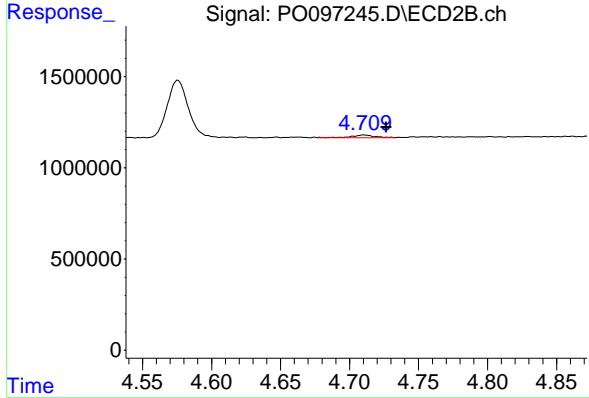
R.T.: 4.710 min
 Delta R.T.: 0.003 min
 Response: 169055
 Conc: 4.29 ng/ml



#17 AR-1242-2

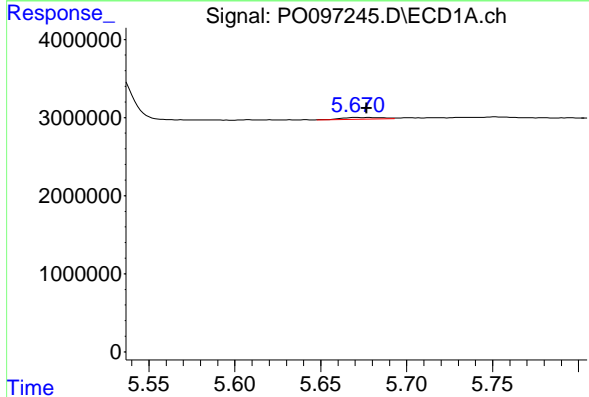
R.T.: 5.609 min
 Delta R.T.: -0.005 min
 Response: 51062
 Conc: 0.43 ng/ml

Instrument :
 ECD_O
 ClientSampleId :



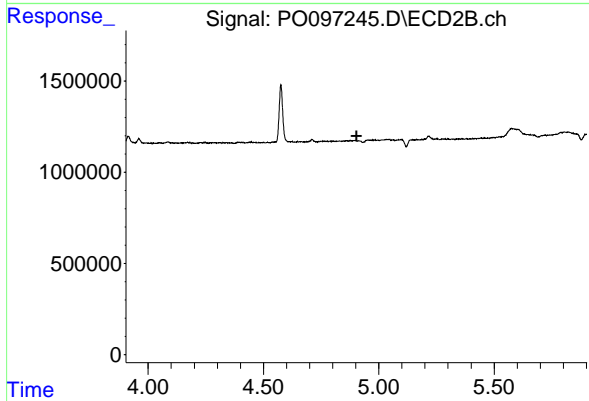
#17 AR-1242-2

R.T.: 4.710 min
 Delta R.T.: -0.016 min
 Response: 169055
 Conc: 3.10 ng/ml



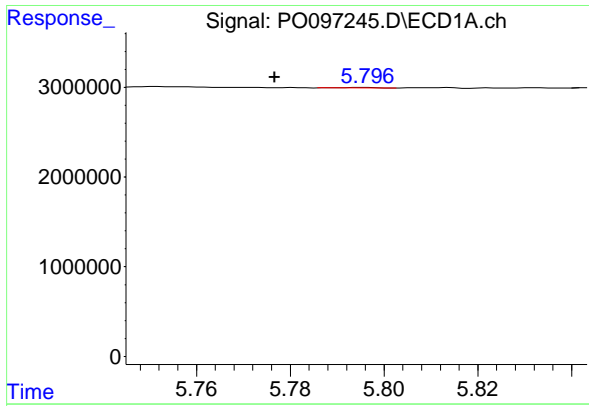
#18 AR-1242-3

R.T.: 5.671 min
 Delta R.T.: -0.006 min
 Response: 351229
 Conc: 4.75 ng/ml



#18 AR-1242-3

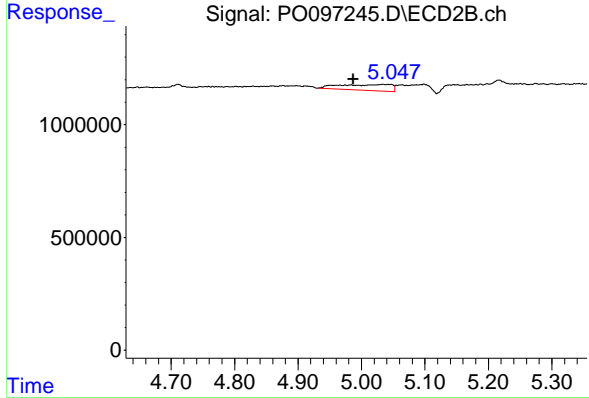
R.T.: 0.000 min
 Exp R.T. : 4.903 min
 Response: 0
 Conc: N.D.



#19 AR-1242-4

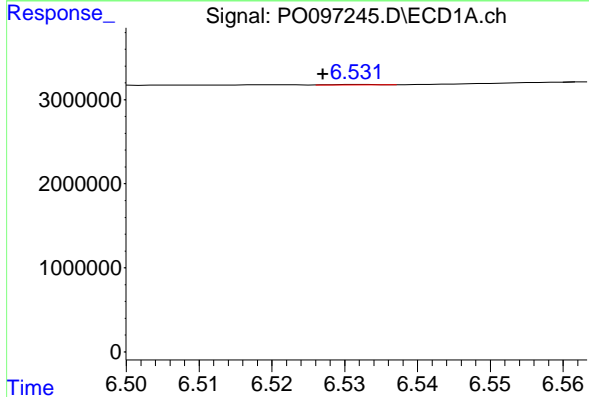
R.T.: 5.796 min
 Delta R.T.: 0.019 min
 Response: 28822
 Conc: 0.48 ng/ml

Instrument :
 ECD_O
 ClientSampleId :



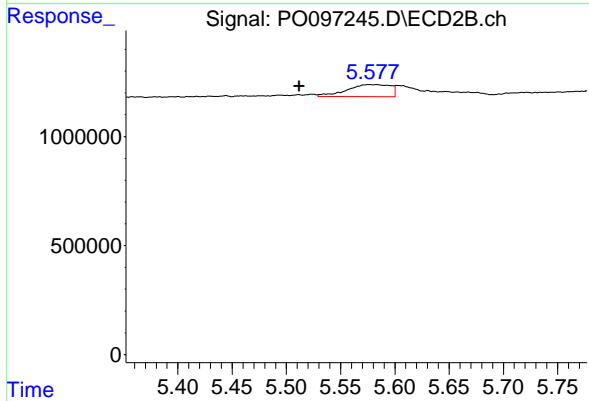
#19 AR-1242-4

R.T.: 5.047 min
 Delta R.T.: 0.059 min
 Response: 1512120
 Conc: 47.98 ng/ml



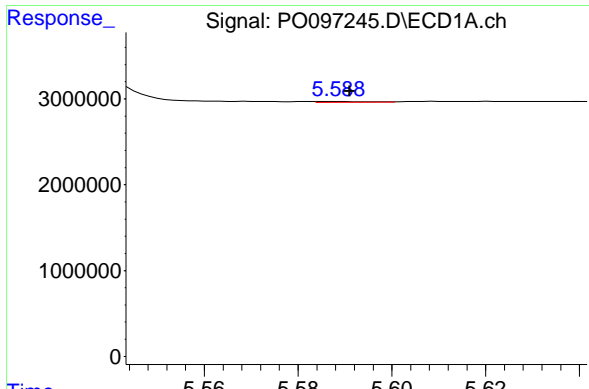
#20 AR-1242-5

R.T.: 6.532 min
 Delta R.T.: 0.005 min
 Response: 16016
 Conc: 0.29 ng/ml



#20 AR-1242-5

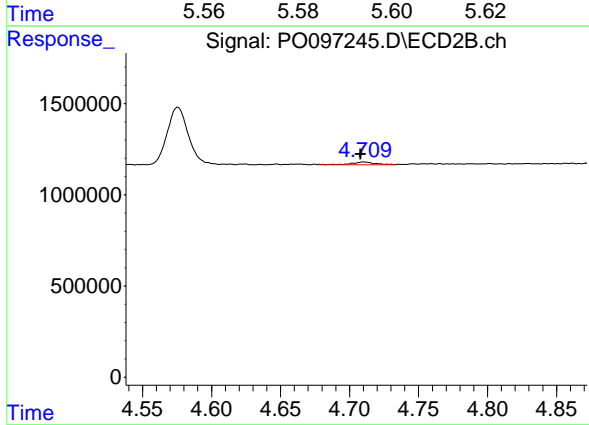
R.T.: 5.576 min
 Delta R.T.: 0.064 min
 Response: 1532287
 Conc: 42.05 ng/ml



#21 AR-1248-1

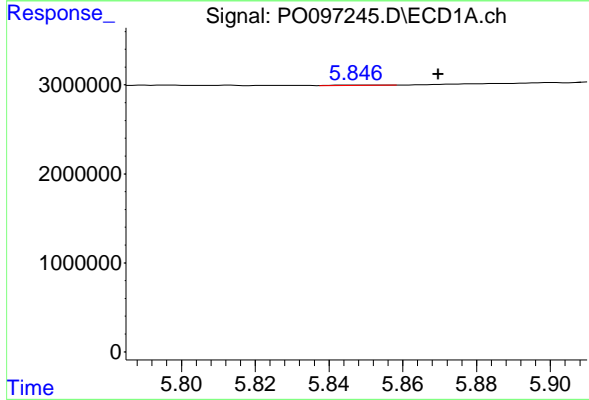
R.T.: 5.588 min
 Delta R.T.: -0.003 min
 Response: 66244
 Conc: 1.13 ng/ml

Instrument :
 ECD_O
 ClientSampleId :



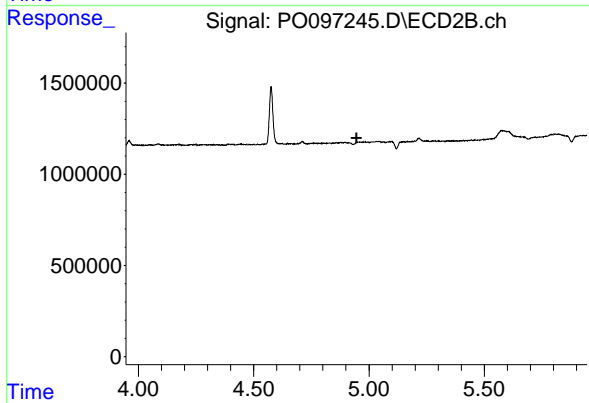
#21 AR-1248-1

R.T.: 4.710 min
 Delta R.T.: 0.002 min
 Response: 169055
 Conc: 6.02 ng/ml



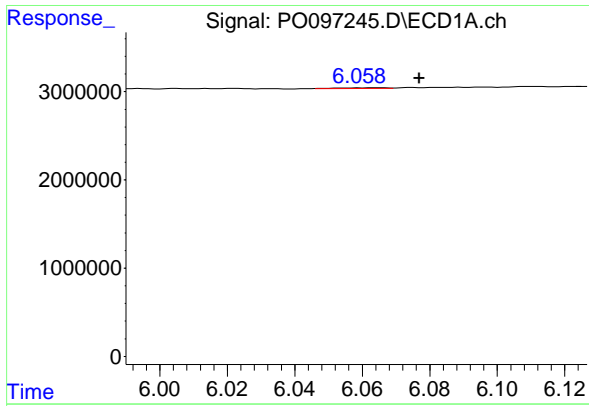
#22 AR-1248-2

R.T.: 5.853 min
 Delta R.T.: -0.017 min
 Response: 28397
 Conc: 0.30 ng/ml



#22 AR-1248-2

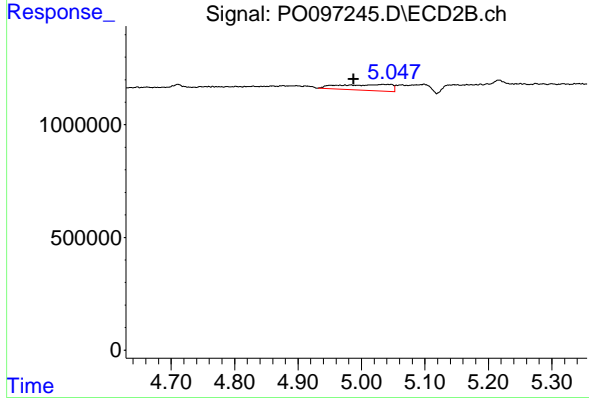
R.T.: 0.000 min
 Exp R.T. : 4.946 min
 Response: 0
 Conc: N.D.



#23 AR-1248-3

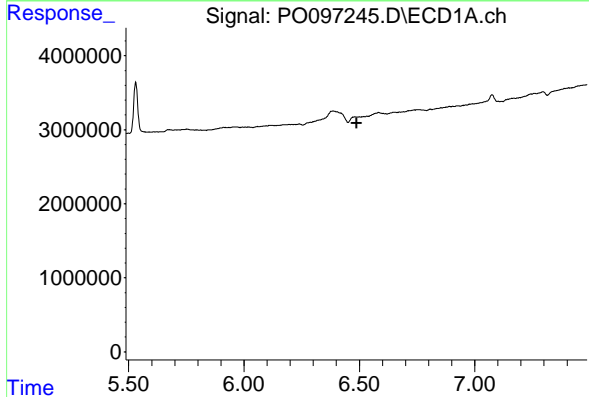
R.T.: 6.065 min
 Delta R.T.: -0.012 min
 Response: 57200
 Conc: 0.58 ng/ml

Instrument :
 ECD_O
 ClientSampleId :



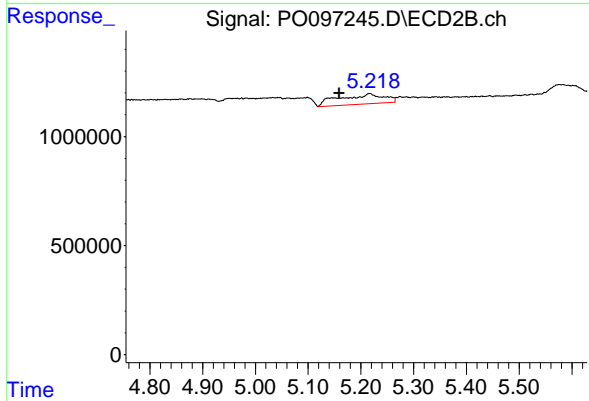
#23 AR-1248-3

R.T.: 5.047 min
 Delta R.T.: 0.059 min
 Response: 1512120
 Conc: 34.47 ng/ml



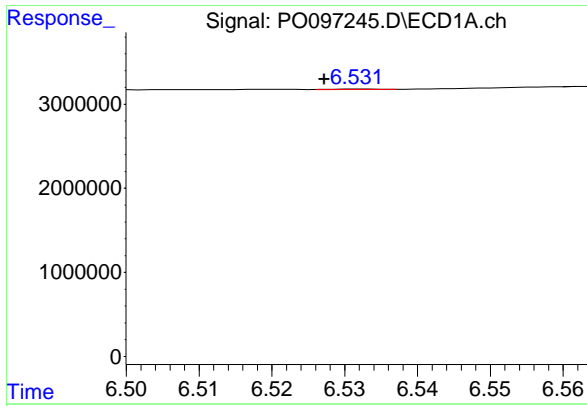
#24 AR-1248-4

R.T.: 6.481 min
 Delta R.T.: -0.007 min
 Response: -534807
 Conc: N.D.



#24 AR-1248-4

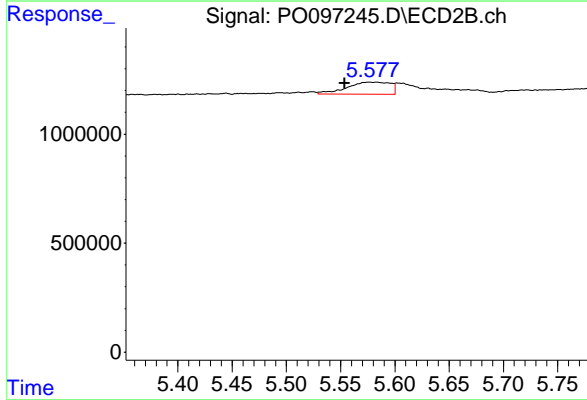
R.T.: 5.217 min
 Delta R.T.: 0.058 min
 Response: 2695965
 Conc: 52.81 ng/ml



#25 AR-1248-5

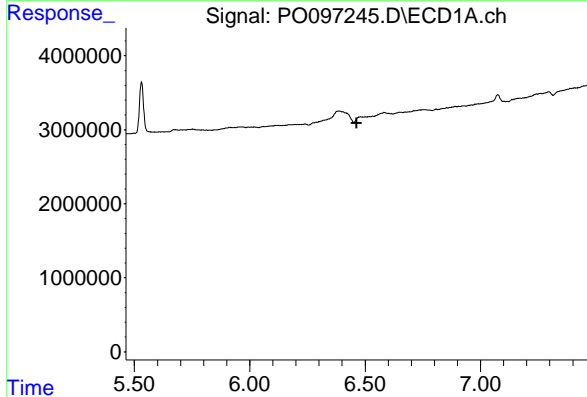
R.T.: 6.532 min
 Delta R.T.: 0.005 min
 Response: 16016
 Conc: 0.18 ng/ml

Instrument :
 ECD_O
 ClientSampleId :



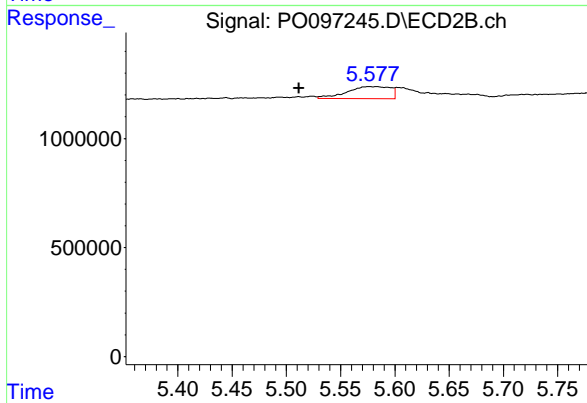
#25 AR-1248-5

R.T.: 5.576 min
 Delta R.T.: 0.023 min
 Response: 1532287
 Conc: 32.77 ng/ml



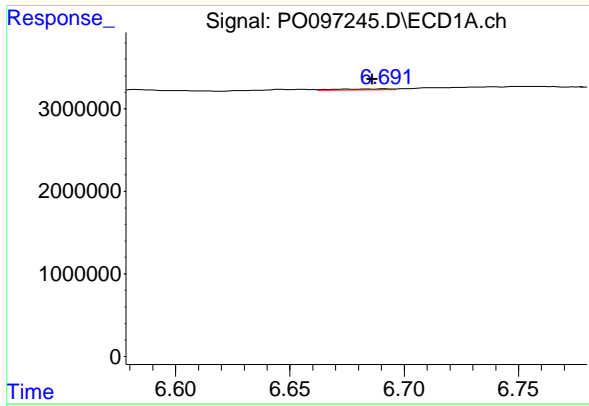
#26 AR-1254-1

R.T.: 6.481 min
 Delta R.T.: 0.018 min
 Response: -534807
 Conc: N.D.



#26 AR-1254-1

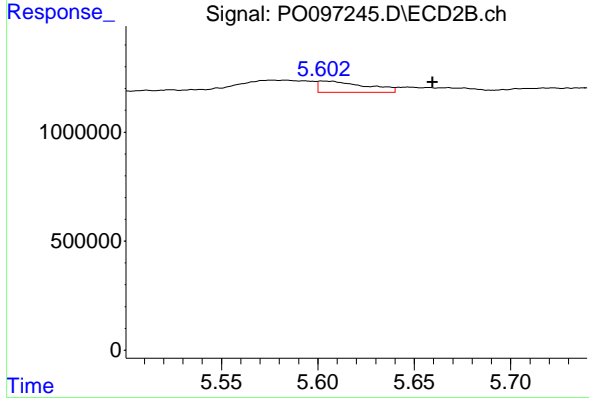
R.T.: 5.576 min
 Delta R.T.: 0.065 min
 Response: 1532287
 Conc: 20.76 ng/ml



#27 AR-1254-2

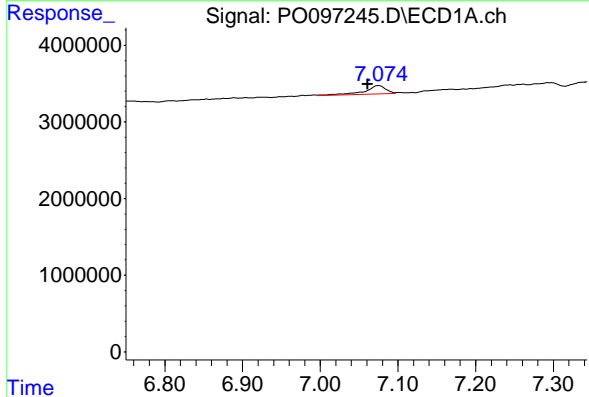
R.T.: 6.692 min
 Delta R.T.: 0.006 min
 Response: 206312
 Conc: 1.28 ng/ml

Instrument :
 ECD_O
 ClientSampleId :



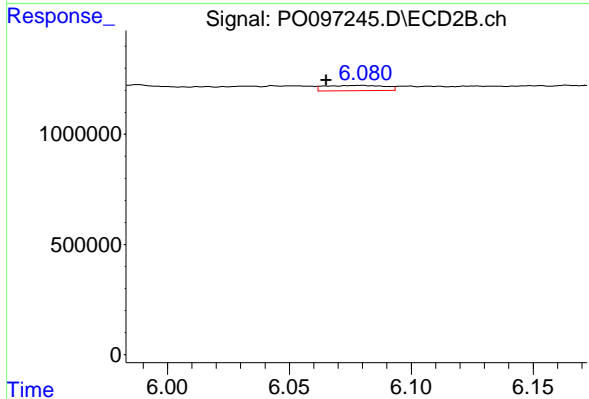
#27 AR-1254-2

R.T.: 5.603 min
 Delta R.T.: -0.056 min
 Response: 876618
 Conc: 13.31 ng/ml



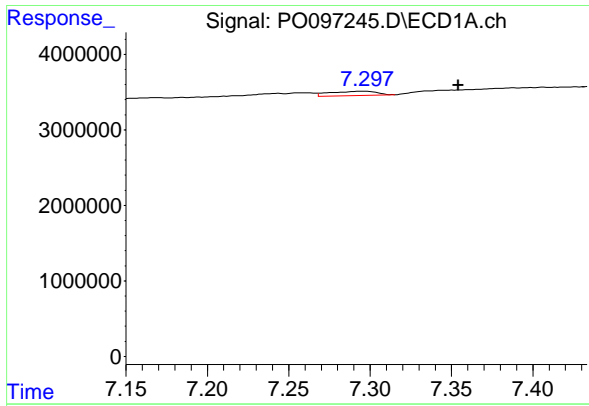
#28 AR-1254-3

R.T.: 7.075 min
 Delta R.T.: 0.014 min
 Response: 2125062
 Conc: 13.56 ng/ml



#28 AR-1254-3

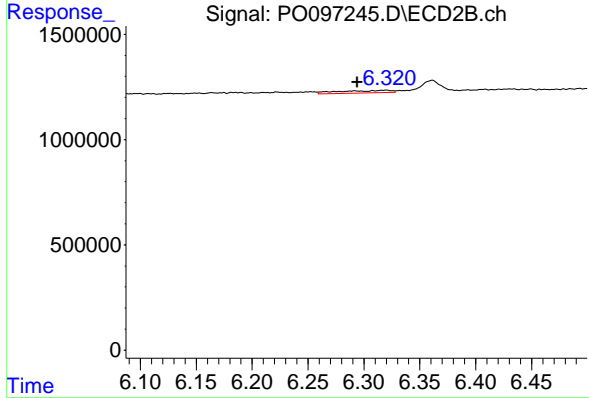
R.T.: 6.079 min
 Delta R.T.: 0.014 min
 Response: 411995
 Conc: 4.08 ng/ml



#29 AR-1254-4

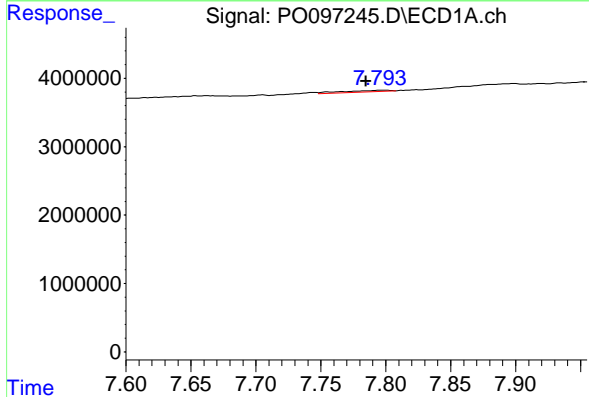
R.T.: 7.297 min
 Delta R.T.: -0.057 min
 Response: 1145999
 Conc: 11.37 ng/ml

Instrument :
 ECD_O
 ClientSampleId :



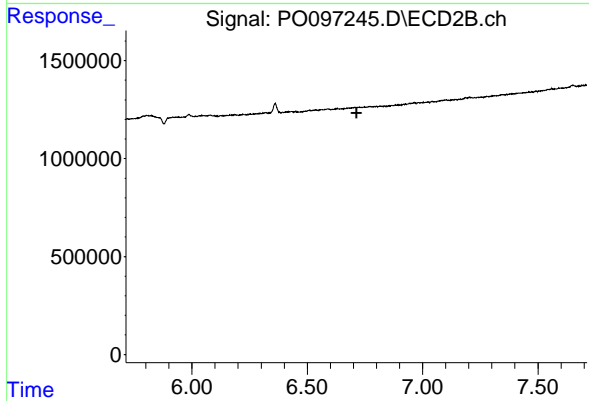
#29 AR-1254-4

R.T.: 6.320 min
 Delta R.T.: 0.026 min
 Response: 370609
 Conc: 6.40 ng/ml



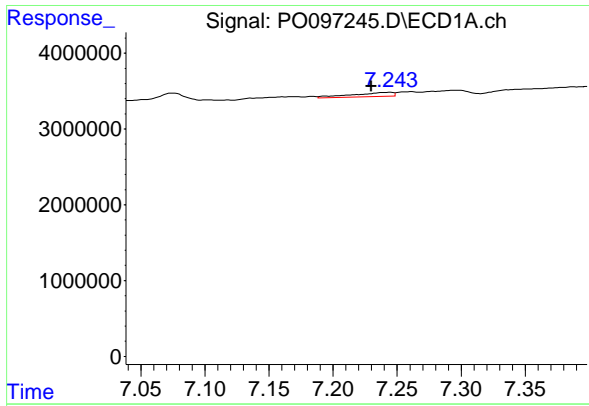
#30 AR-1254-5

R.T.: 7.801 min
 Delta R.T.: 0.016 min
 Response: 554795
 Conc: 4.94 ng/ml



#30 AR-1254-5

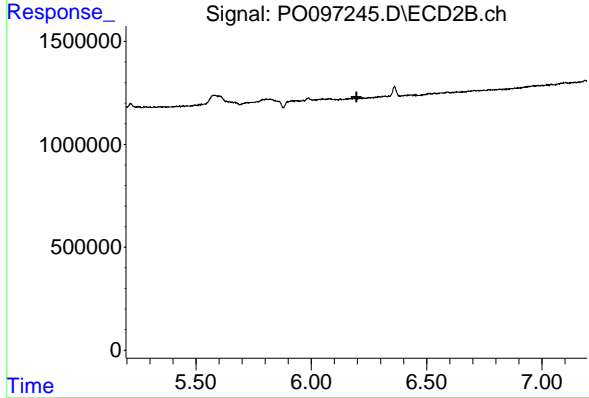
R.T.: 0.000 min
 Exp R.T. : 6.713 min
 Response: 0
 Conc: N.D.



#31 AR-1260-1

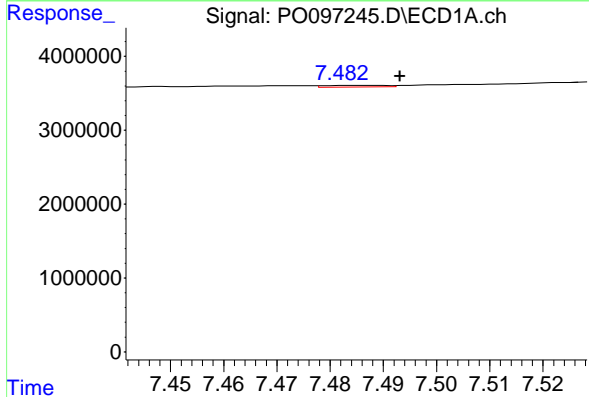
R.T.: 7.244 min
 Delta R.T.: 0.014 min
 Response: 1194675
 Conc: 9.51 ng/ml

Instrument :
 ECD_O
 ClientSampleId :



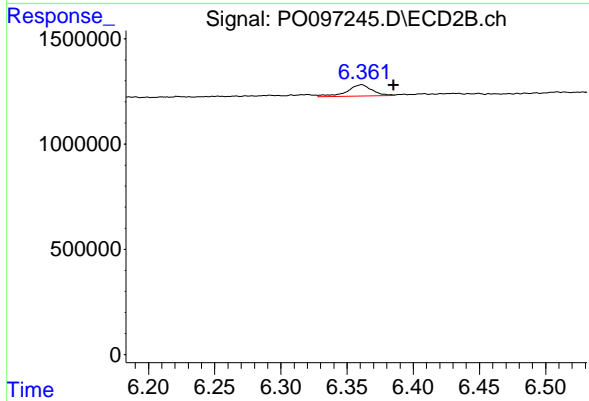
#31 AR-1260-1

R.T.: 0.000 min
 Exp R.T. : 6.196 min
 Response: 0
 Conc: N.D.



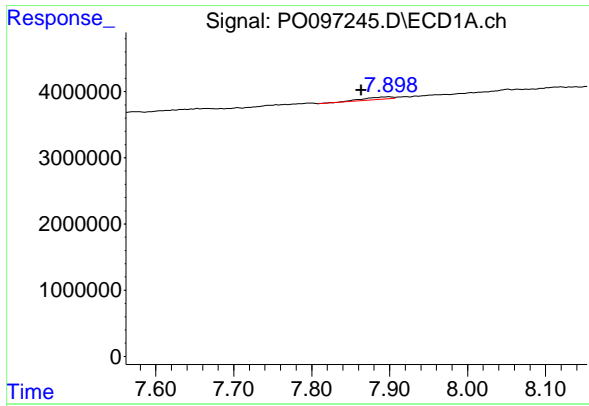
#32 AR-1260-2

R.T.: 7.483 min
 Delta R.T.: -0.010 min
 Response: 163750
 Conc: 1.22 ng/ml



#32 AR-1260-2

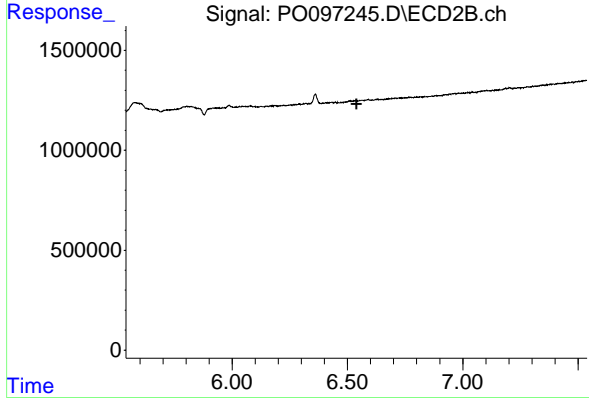
R.T.: 6.361 min
 Delta R.T.: -0.024 min
 Response: 697860
 Conc: 8.36 ng/ml



#33 AR-1260-3

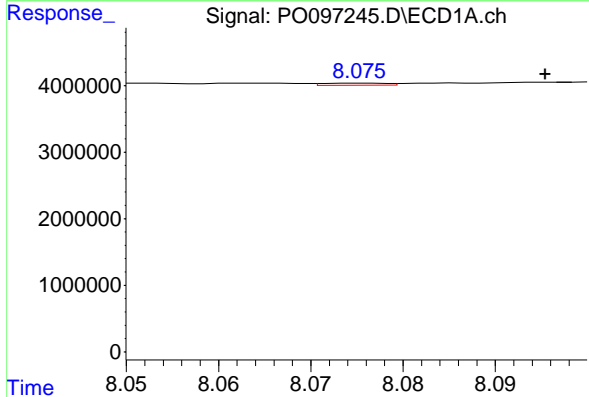
R.T.: 7.899 min
 Delta R.T.: 0.035 min
 Response: 968087
 Conc: 9.33 ng/ml

Instrument :
 ECD_O
 ClientSampleId :



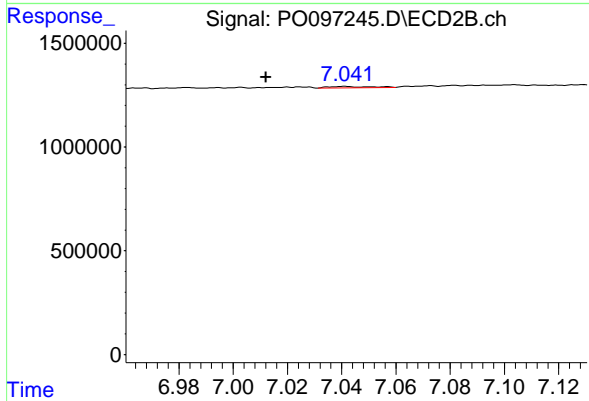
#33 AR-1260-3

R.T.: 0.000 min
 Exp R.T. : 6.539 min
 Response: 0
 Conc: N.D.



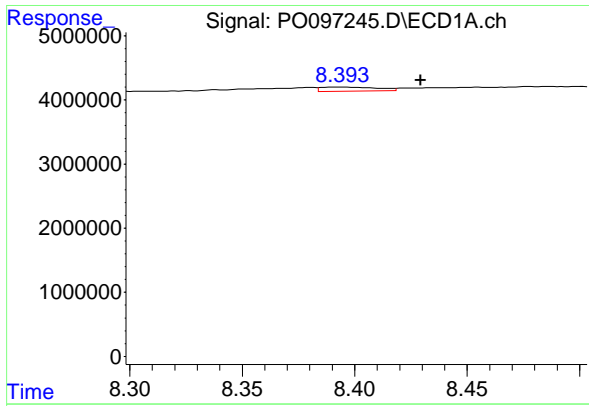
#34 AR-1260-4

R.T.: 8.076 min
 Delta R.T.: -0.020 min
 Response: 149705
 Conc: 1.34 ng/ml



#34 AR-1260-4

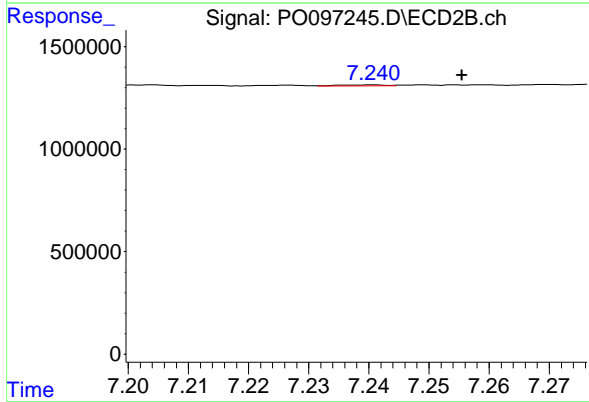
R.T.: 7.041 min
 Delta R.T.: 0.029 min
 Response: 68190
 Conc: 1.06 ng/ml



#35 AR-1260-5

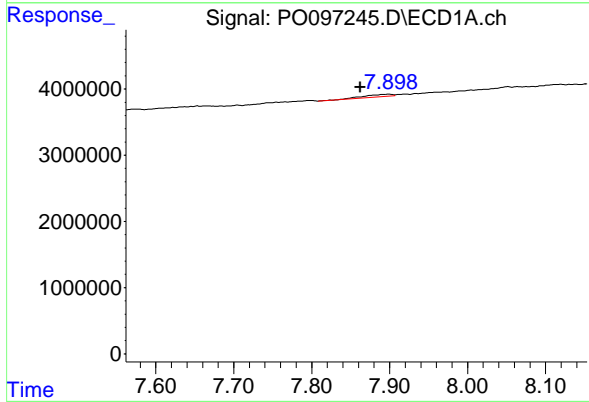
R.T.: 8.395 min
 Delta R.T.: -0.034 min
 Response: 1147978
 Conc: 5.47 ng/ml

Instrument :
 ECD_O
 ClientSampleId :



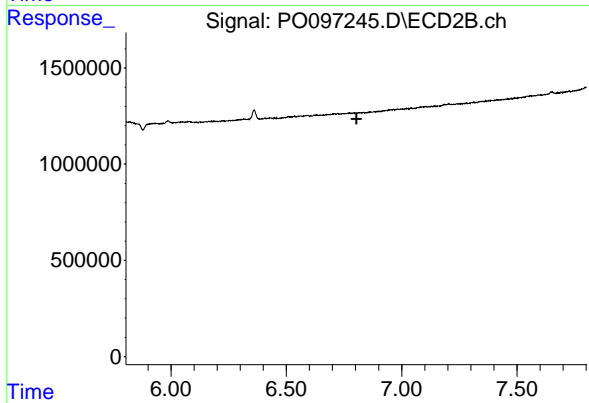
#35 AR-1260-5

R.T.: 7.240 min
 Delta R.T.: -0.016 min
 Response: 24914
 Conc: 0.18 ng/ml



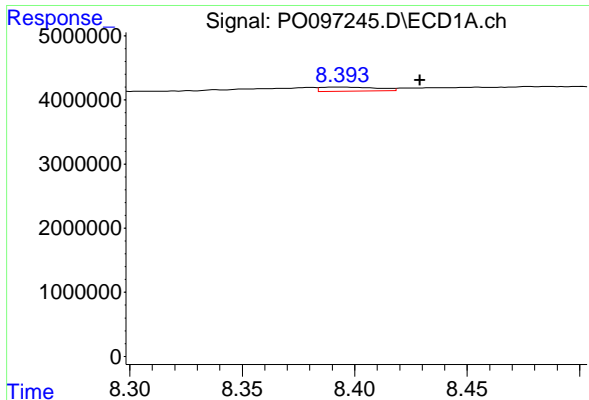
#36 AR-1262-1

R.T.: 7.899 min
 Delta R.T.: 0.036 min
 Response: 968087
 Conc: 6.52 ng/ml



#36 AR-1262-1

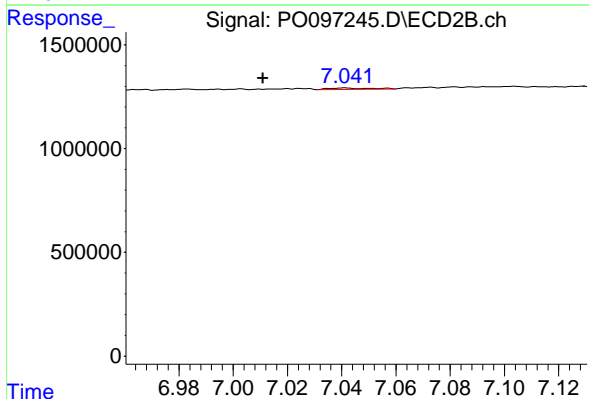
R.T.: 0.000 min
 Exp R.T. : 6.804 min
 Response: 0
 Conc: N.D.



#37 AR-1262-2

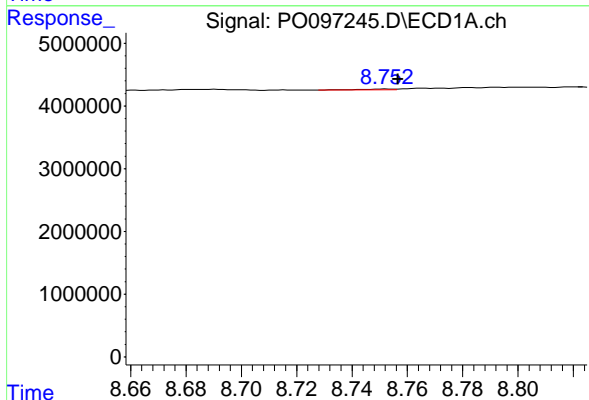
R.T.: 8.395 min
 Delta R.T.: -0.034 min
 Response: 1147978
 Conc: 4.96 ng/ml

Instrument :
 ECD_O
 ClientSampleId :



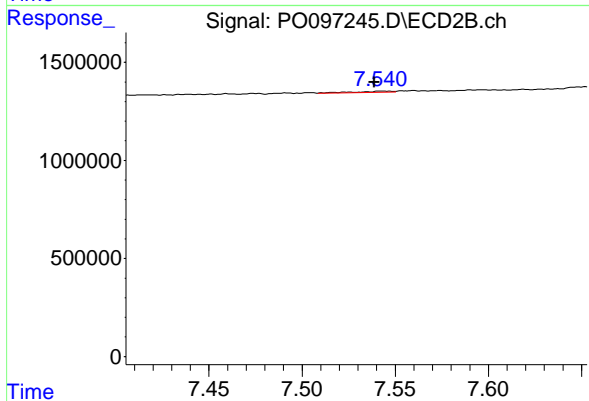
#37 AR-1262-2

R.T.: 7.041 min
 Delta R.T.: 0.030 min
 Response: 68190
 Conc: 0.84 ng/ml



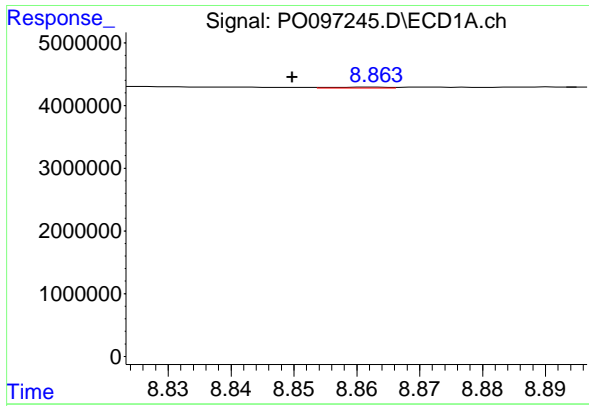
#38 AR-1262-3

R.T.: 8.752 min
 Delta R.T.: -0.004 min
 Response: 114176
 Conc: 0.68 ng/ml



#38 AR-1262-3

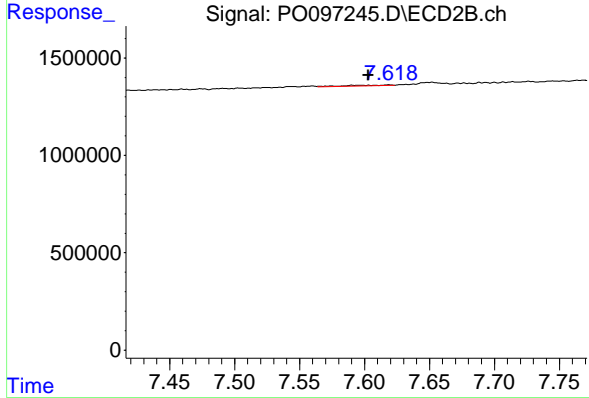
R.T.: 7.542 min
 Delta R.T.: 0.004 min
 Response: 70143
 Conc: 1.09 ng/ml



#39 AR-1262-4

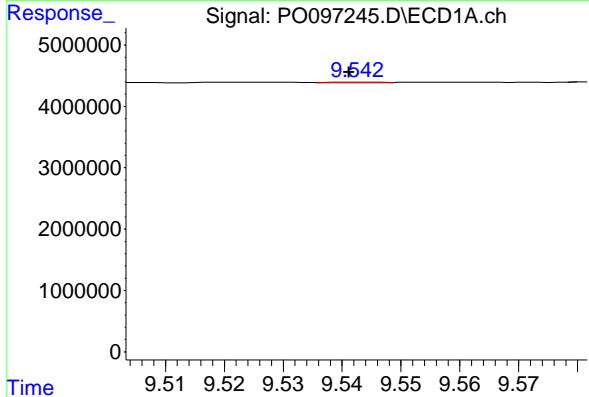
R.T.: 8.863 min
 Delta R.T.: 0.013 min
 Response: 80150
 Conc: 1.10 ng/ml

Instrument :
 ECD_O
 ClientSampleId :



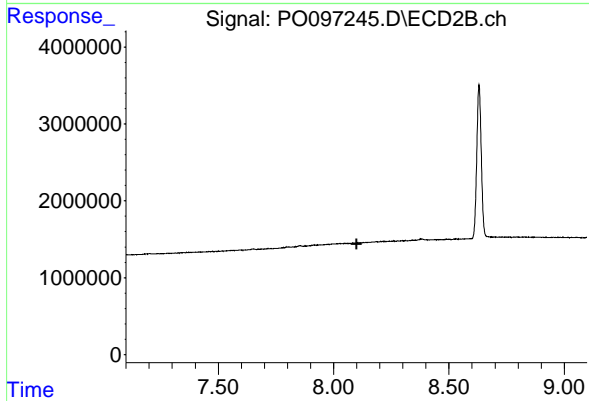
#39 AR-1262-4

R.T.: 7.619 min
 Delta R.T.: 0.016 min
 Response: 103066
 Conc: 0.91 ng/ml



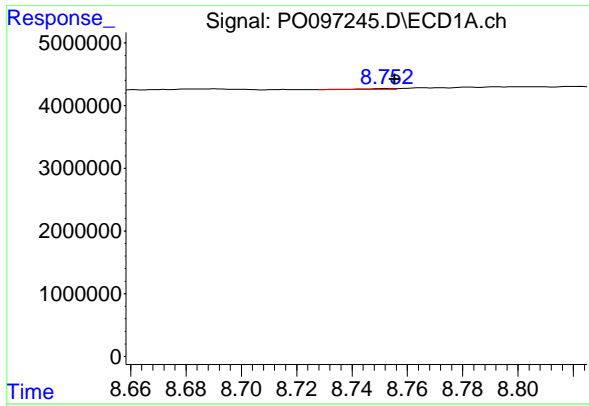
#40 AR-1262-5

R.T.: 9.543 min
 Delta R.T.: 0.002 min
 Response: 70490
 Conc: 0.85 ng/ml



#40 AR-1262-5

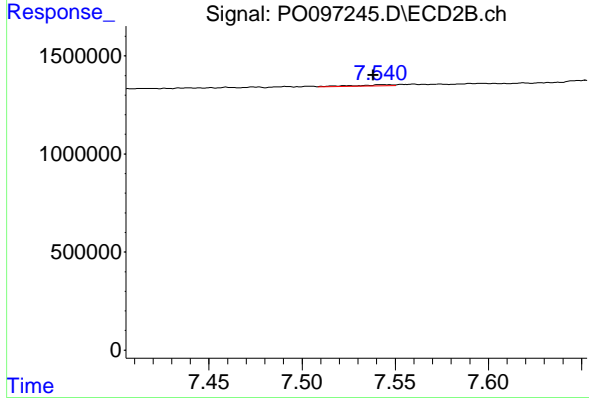
R.T.: 0.000 min
 Exp R.T. : 8.099 min
 Response: 0
 Conc: N.D.



#41 AR-1268-1

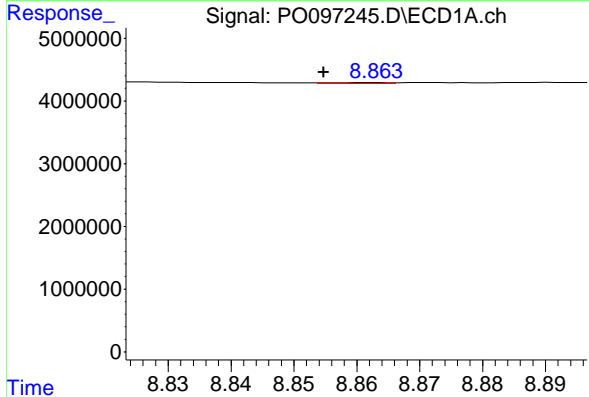
R.T.: 8.752 min
 Delta R.T.: -0.003 min
 Response: 114176
 Conc: 0.37 ng/ml

Instrument :
 ECD_O
 ClientSampleId :



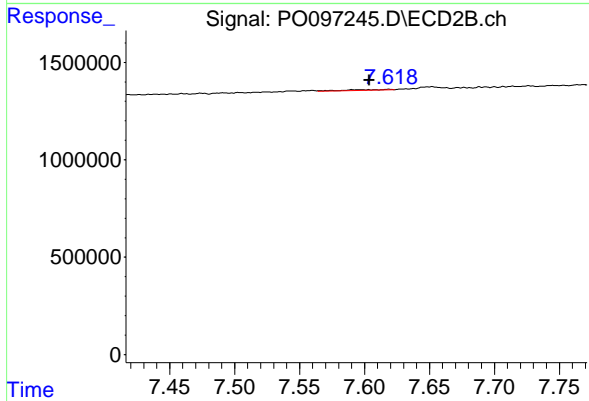
#41 AR-1268-1

R.T.: 7.542 min
 Delta R.T.: 0.004 min
 Response: 70143
 Conc: 0.38 ng/ml



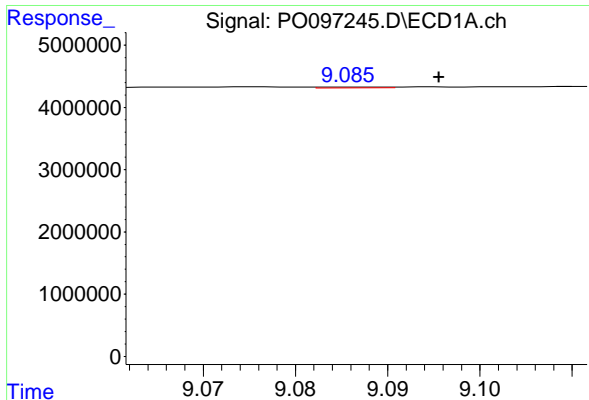
#42 AR-1268-2

R.T.: 8.863 min
 Delta R.T.: 0.008 min
 Response: 80150
 Conc: 0.29 ng/ml



#42 AR-1268-2

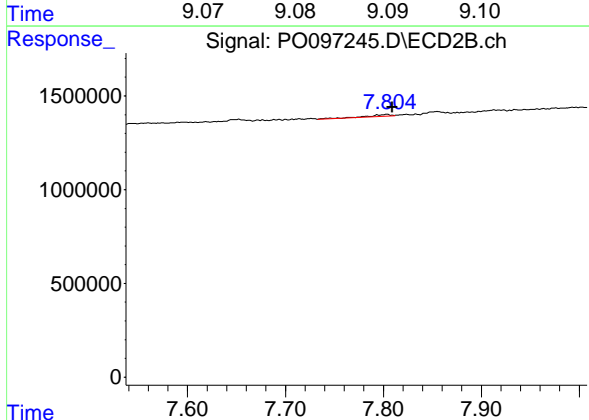
R.T.: 7.619 min
 Delta R.T.: 0.015 min
 Response: 103066
 Conc: 0.61 ng/ml



#43 AR-1268-3

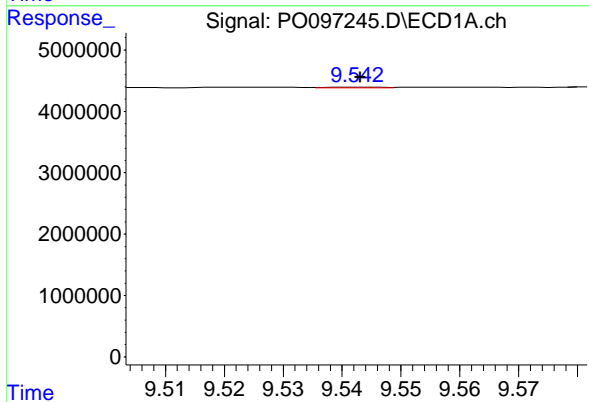
R.T.: 9.087 min
 Delta R.T.: -0.009 min
 Response: 64000
 Conc: 0.25 ng/ml

Instrument :
 ECD_O
 ClientSampleId :



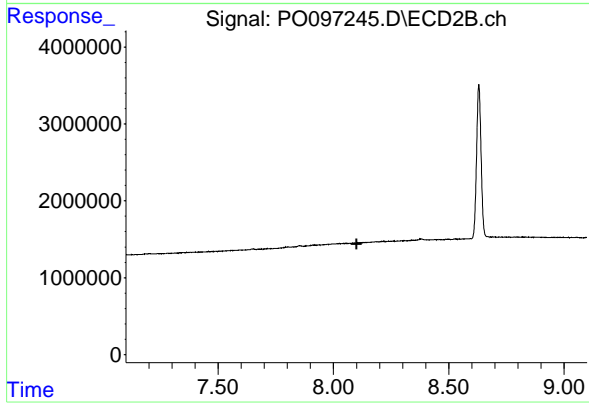
#43 AR-1268-3

R.T.: 7.804 min
 Delta R.T.: -0.006 min
 Response: 137697
 Conc: 0.95 ng/ml



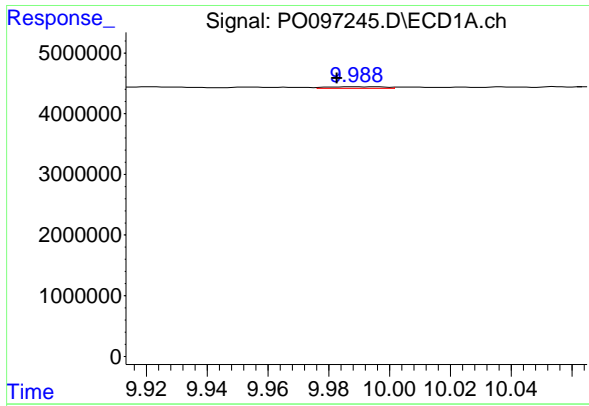
#44 AR-1268-4

R.T.: 9.543 min
 Delta R.T.: 0.000 min
 Response: 70490
 Conc: 0.76 ng/ml



#44 AR-1268-4

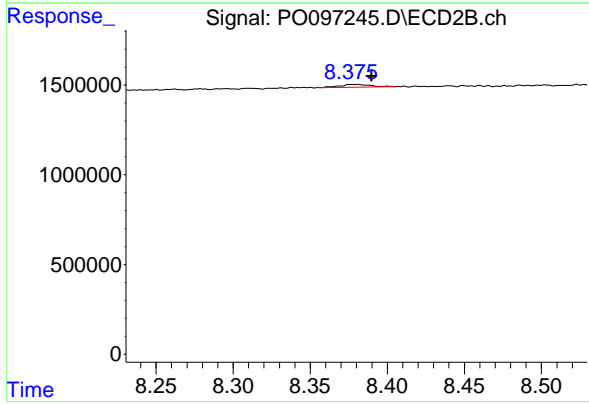
R.T.: 0.000 min
 Exp R.T. : 8.100 min
 Response: 0
 Conc: N.D.



#45 AR-1268-5

R.T.: 9.989 min
 Delta R.T.: 0.006 min
 Response: 347762
 Conc: 0.43 ng/ml

Instrument :
 ECD_O
 ClientSampleId :



#45 AR-1268-5

R.T.: 8.380 min
 Delta R.T.: -0.010 min
 Response: 211828
 Conc: 0.51 ng/ml