

Data Path : Z:\pestpcbsrv\HPCHEM1\ECD\_0\Data\P0081823\  
 Data File : P0097251.D  
 Signal(s) : Signal #1: ECD1A.ch Signal #2: ECD2B.ch  
 Acq On : 18 Aug 2023 14:40  
 Operator : YP/AJ  
 Sample : 04060-01  
 Misc :  
 ALS Vial : 13 Sample Multiplier: 1

Instrument :  
 ECD\_0  
 ClientSampleId :  
 AUD-1002

Integration File signal 1: autoint1.e  
 Integration File signal 2: autoint2.e  
 Quant Time: Aug 19 00:05:35 2023  
 Quant Method : Z:\pestpcbsrv\HPCHEM1\ECD\_0\methods\P0080723.M  
 Quant Title : GC EXTRACTABLES  
 QLast Update : Tue Aug 08 04:34:41 2023  
 Response via : Initial Calibration  
 Integrator: ChemStation

Volume Inj. : 2 µl  
 Signal #1 Phase : ZB-MR1 Signal #2 Phase: ZB-MR2  
 Signal #1 Info : 30Mx0.32mmx 0.50µ Signal #2 Info : 30M x 0.32mm x 0.25µm

Compound	RT#1	RT#2	Resp#1	Resp#2	ng/ml	ng/ml
-----						
System Monitoring Compounds						
1) SA Tetrachlo...	4.410	3.614	39964655	14614462	12.073	11.040
2) SA Decachlor...	10.351	8.631	33175374	15340439	15.161	13.260
Target Compounds						
26) L6 AR-1254-1	6.471	5.503	45127249	30261179	412.910	410.064
27) L6 AR-1254-2	6.696	5.651	90524377	33365170	561.470	506.451
28) L6 AR-1254-3	7.073	6.056	109.0E6	62293782	695.859	616.389
29) L6 AR-1254-4	7.366	6.286	84824232	40424885	841.359	698.488
30) L6 AR-1254-5	7.796	6.705	110.2E6	66400978	981.840	755.285
-----						

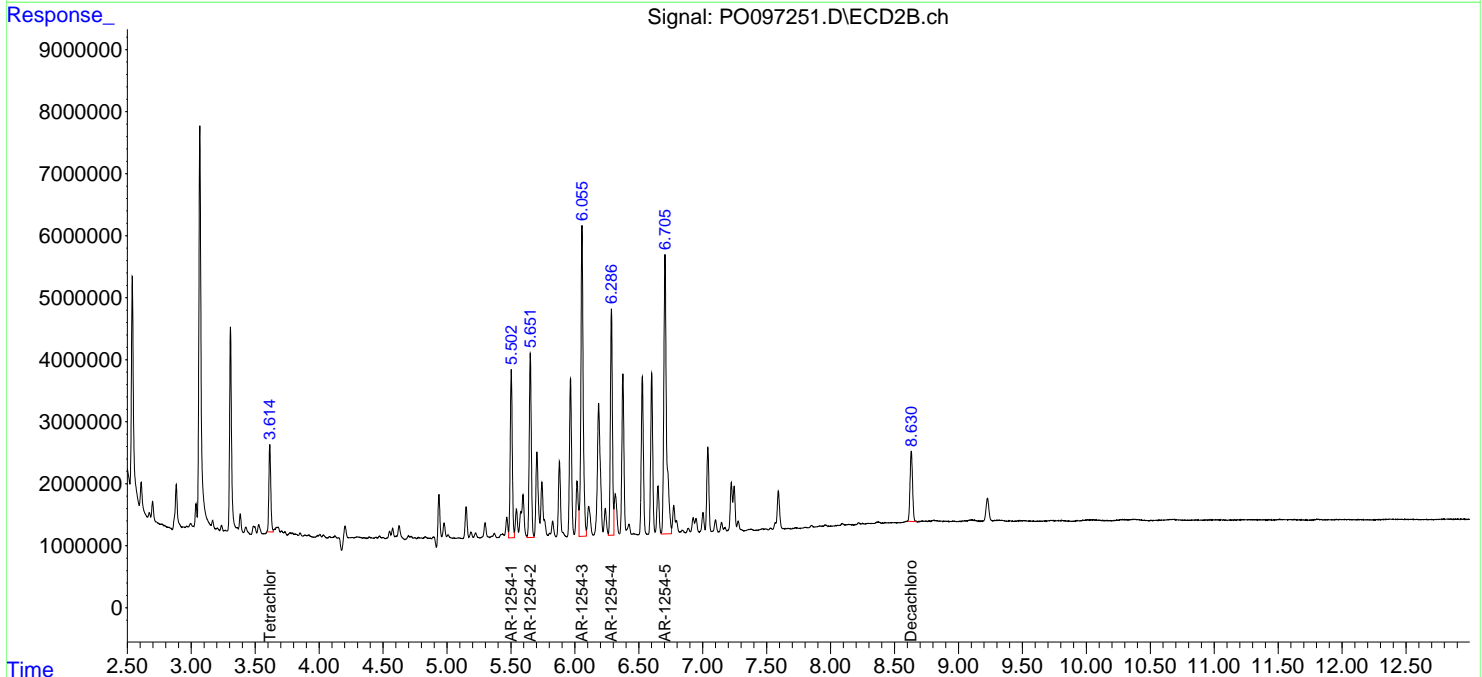
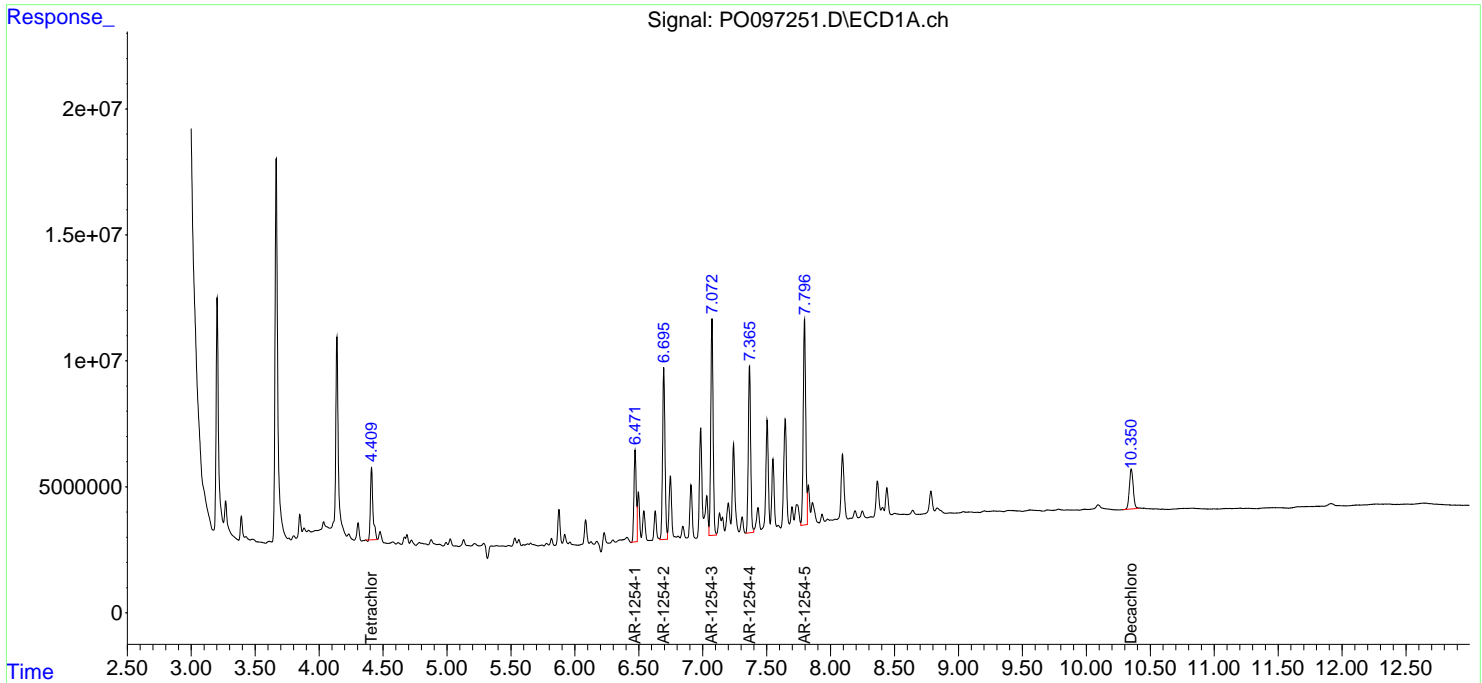
(f)=RT Delta > 1/2 Window (#)=Amounts differ by > 25% (m)=manual int.

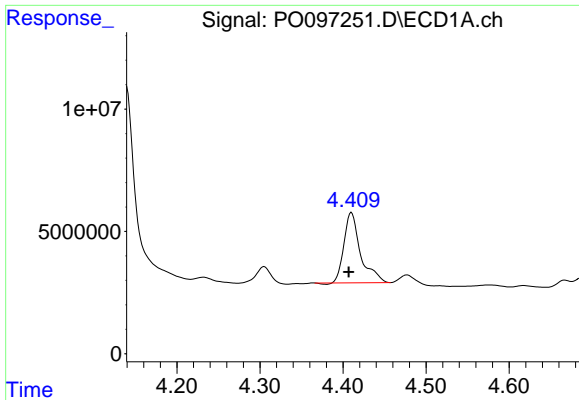
Data Path : Z:\pestpcbsrv\HPCHEM1\ECD\_O\Data\P0081823\  
 Data File : P0097251.D  
 Signal(s) : Signal #1: ECD1A.ch Signal #2: ECD2B.ch  
 Acq On : 18 Aug 2023 14:40  
 Operator : YP/AJ  
 Sample : 04060-01  
 Misc :  
 ALS Vial : 13 Sample Multiplier: 1

Instrument :  
 ECD\_O  
 ClientSampleId :  
 AUD-1002

Integration File signal 1: autoint1.e  
 Integration File signal 2: autoint2.e  
 Quant Time: Aug 19 00:05:35 2023  
 Quant Method : Z:\pestpcbsrv\HPCHEM1\ECD\_O\methods\P0080723.M  
 Quant Title : GC EXTRACTABLES  
 QLast Update : Tue Aug 08 04:34:41 2023  
 Response via : Initial Calibration  
 Integrator: ChemStation

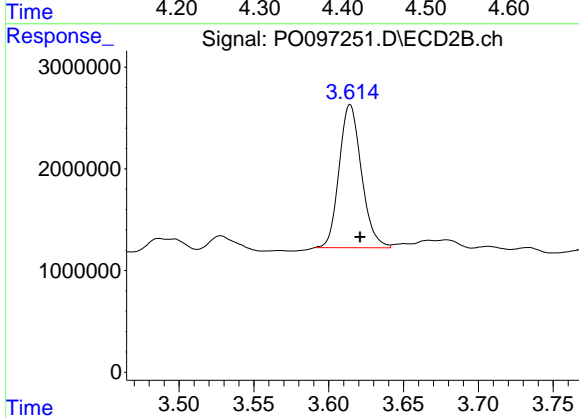
Volume Inj. : 2 µl  
 Signal #1 Phase : ZB-MR1 Signal #2 Phase: ZB-MR2  
 Signal #1 Info : 30Mx0.32mmx 0.50µ Signal #2 Info : 30M x 0.32mm x 0.25µm



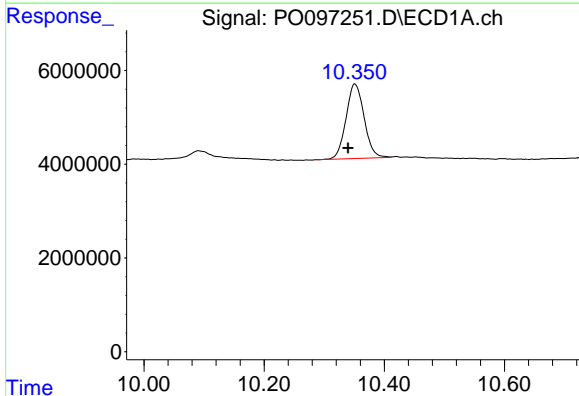


#1 Tetrachloro-m-xylene  
 R.T.: 4.410 min  
 Delta R.T.: 0.003 min  
 Response: 39964655  
 Conc: 12.07 ng/ml

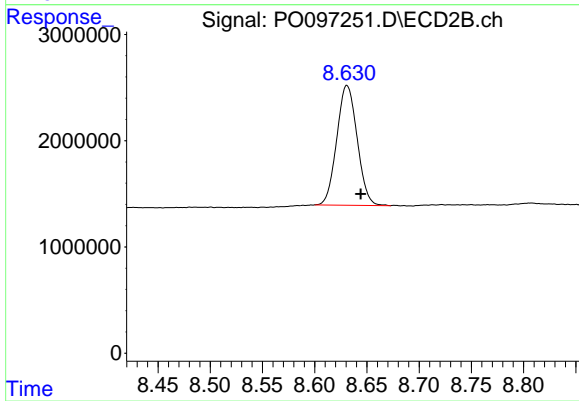
Instrument :  
 ECD\_O  
 ClientSampleId :  
 AUD-1002



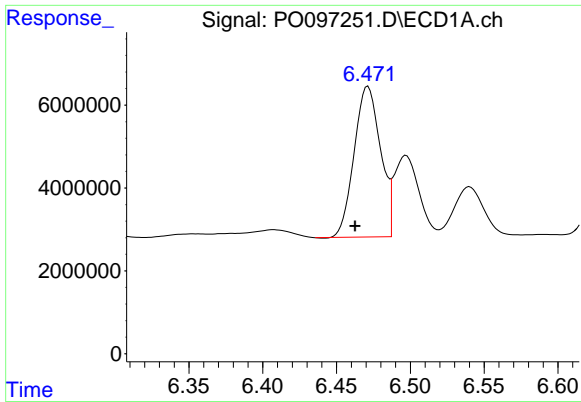
#1 Tetrachloro-m-xylene  
 R.T.: 3.614 min  
 Delta R.T.: -0.007 min  
 Response: 14614462  
 Conc: 11.04 ng/ml



#2 Decachlorobiphenyl  
 R.T.: 10.351 min  
 Delta R.T.: 0.011 min  
 Response: 33175374  
 Conc: 15.16 ng/ml



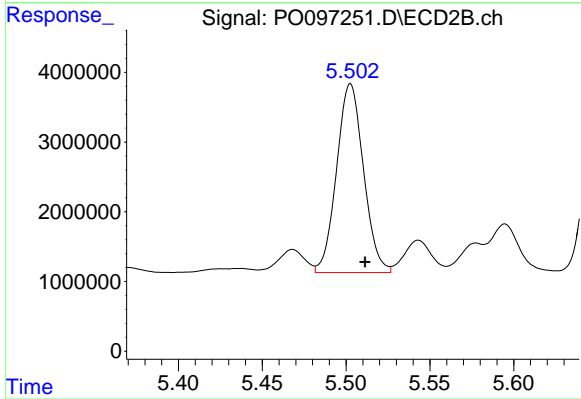
#2 Decachlorobiphenyl  
 R.T.: 8.631 min  
 Delta R.T.: -0.013 min  
 Response: 15340439  
 Conc: 13.26 ng/ml



#26 AR-1254-1

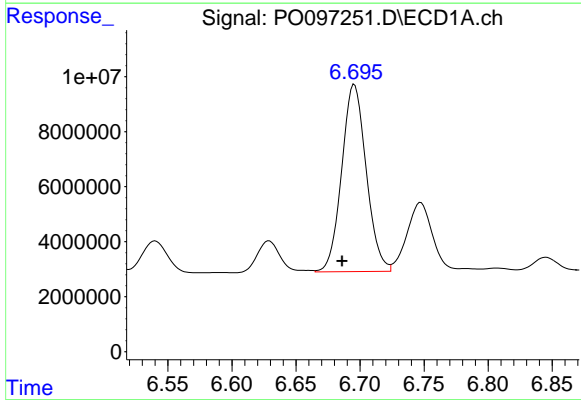
R.T.: 6.471 min  
 Delta R.T.: 0.009 min  
 Response: 45127249  
 Conc: 412.91 ng/ml

Instrument :  
 ECD\_O  
 ClientSampleId :  
 AUD-1002



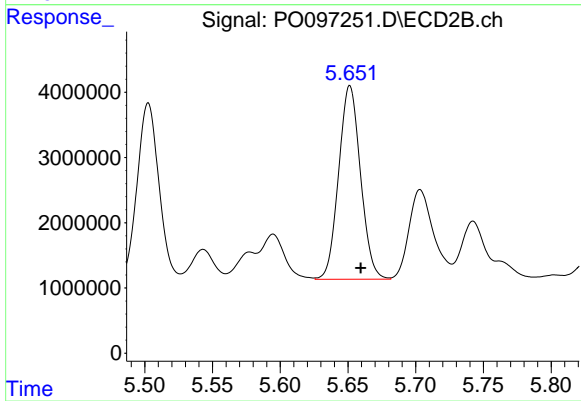
#26 AR-1254-1

R.T.: 5.503 min  
 Delta R.T.: -0.009 min  
 Response: 30261179  
 Conc: 410.06 ng/ml



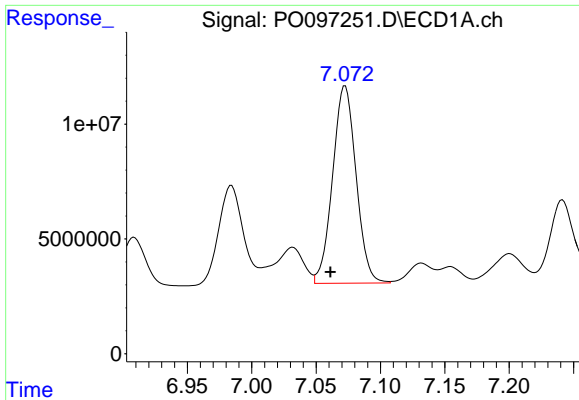
#27 AR-1254-2

R.T.: 6.696 min  
 Delta R.T.: 0.010 min  
 Response: 90524377  
 Conc: 561.47 ng/ml



#27 AR-1254-2

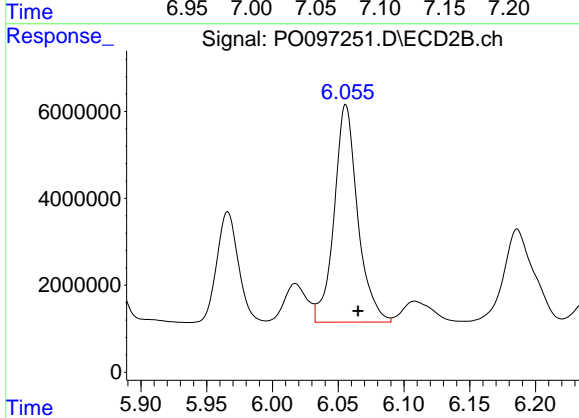
R.T.: 5.651 min  
 Delta R.T.: -0.008 min  
 Response: 33365170  
 Conc: 506.45 ng/ml



#28 AR-1254-3

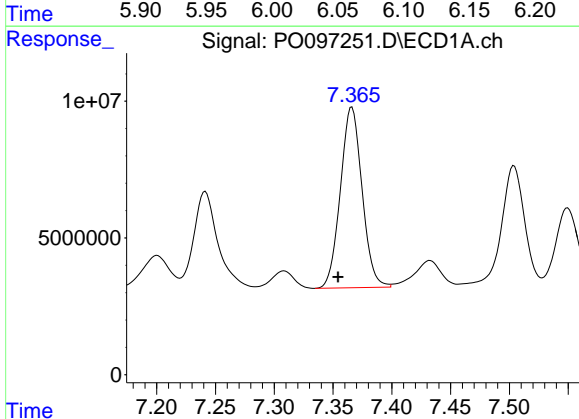
R.T.: 7.073 min  
 Delta R.T.: 0.011 min  
 Response: 109038861  
 Conc: 695.86 ng/ml

Instrument :  
 ECD\_O  
 ClientSampleId :  
 AUD-1002



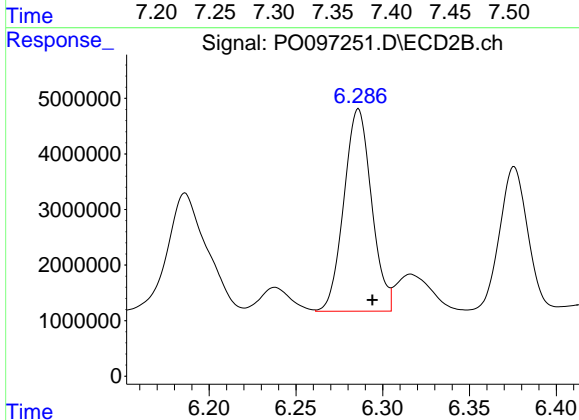
#28 AR-1254-3

R.T.: 6.056 min  
 Delta R.T.: -0.009 min  
 Response: 62293782  
 Conc: 616.39 ng/ml



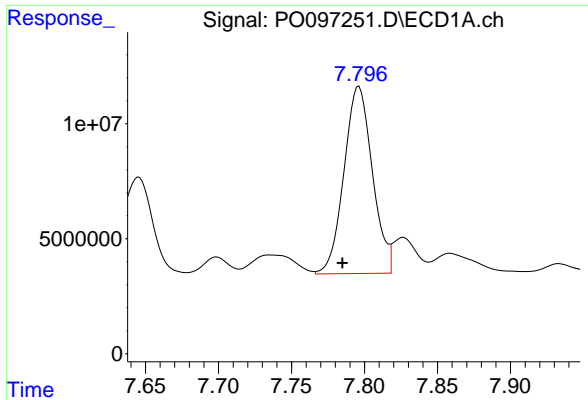
#29 AR-1254-4

R.T.: 7.366 min  
 Delta R.T.: 0.012 min  
 Response: 84824232  
 Conc: 841.36 ng/ml



#29 AR-1254-4

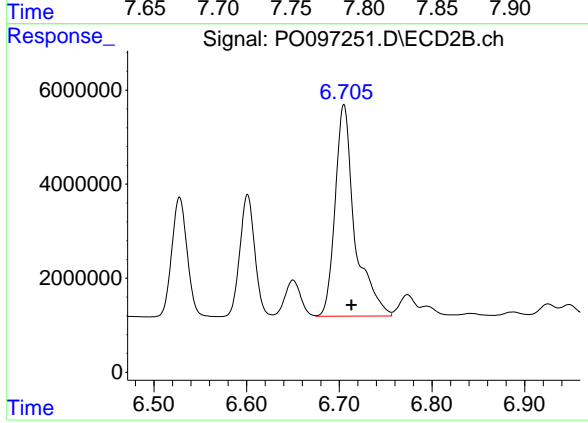
R.T.: 6.286 min  
 Delta R.T.: -0.008 min  
 Response: 40424885  
 Conc: 698.49 ng/ml



#30 AR-1254-5

R.T.: 7.796 min  
Delta R.T.: 0.011 min  
Response: 110176602  
Conc: 981.84 ng/ml

Instrument :  
ECD\_O  
ClientSampleId :  
AUD-1002



#30 AR-1254-5

R.T.: 6.705 min  
Delta R.T.: -0.008 min  
Response: 66400978  
Conc: 755.29 ng/ml