

Data Path : Z:\pestpcbsrv\HPCHEM1\ECD_0\Data\P0081825\
 Data File : PO113003.D
 Signal(s) : Signal #1: ECD1A.ch Signal #2: ECD2B.ch
 Acq On : 18 Aug 2025 09:53
 Operator : YP/AJ
 Sample : AR1660ICC1000
 Misc :
 ALS Vial : 3 Sample Multiplier: 1

Instrument :
 ECD_0
 ClientSampleId :
 AR1660ICC1000

Integration File signal 1: autoint1.e
 Integration File signal 2: autoint2.e
 Quant Time: Aug 18 10:58:58 2025
 Quant Method : Z:\pestpcbsrv\HPCHEM1\ECD_0\methods\P0081825.M
 Quant Title : GC EXTRACTABLES
 QLast Update : Mon Aug 18 10:55:18 2025
 Response via : Initial Calibration
 Integrator: ChemStation

Volume Inj. : 2 µl
 Signal #1 Phase : ZB-MR1 Signal #2 Phase: ZB-MR2
 Signal #1 Info : 30Mx0.32mmx 0.50µ Signal #2 Info : 30M x 0.32mm x 0.25µm

Compound	RT#1	RT#2	Resp#1	Resp#2	ng/ml	ng/ml

System Monitoring Compounds						
1) SA Tetrachlo...	3.663	3.655	803.0E6	491.7E6	97.501	97.323
2) SA Decachlor...	8.682	8.628	669.0E6	183.1E6	96.739	95.945
Target Compounds						
3) L1 AR-1016-1	4.748	4.729	255.4E6	157.6E6	961.297	947.754
4) L1 AR-1016-2	4.767	4.747	386.6E6	242.7E6	963.187	965.051
5) L1 AR-1016-3	4.823	4.922	240.7E6	127.0E6	961.204	957.007
6) L1 AR-1016-4	4.943	4.964	200.5E6	100.5E6	959.539	943.596
7) L1 AR-1016-5	5.200	5.176	201.8E6	128.1E6	948.361	947.557
31) L7 AR-1260-1	6.236	6.204	410.4E6	228.9E6	955.842	950.890
32) L7 AR-1260-2	6.425	6.393	647.9E6	313.9E6	965.242	954.408
33) L7 AR-1260-3	6.792	6.544	589.7E6	262.5E6	956.817	944.072
34) L7 AR-1260-4	7.050	7.013	414.1E6	185.9E6	955.502	953.066
35) L7 AR-1260-5	7.294	7.255	1160.2E6	426.0E6	967.280	955.215

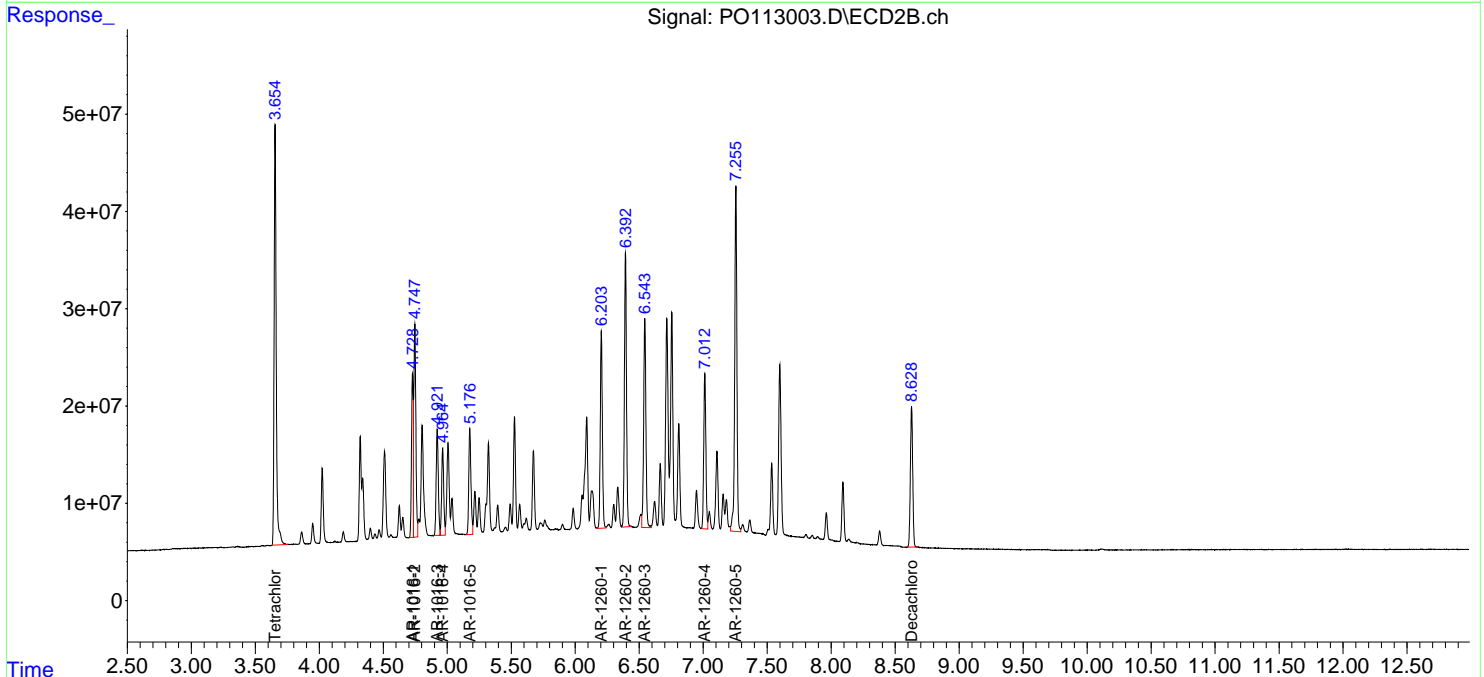
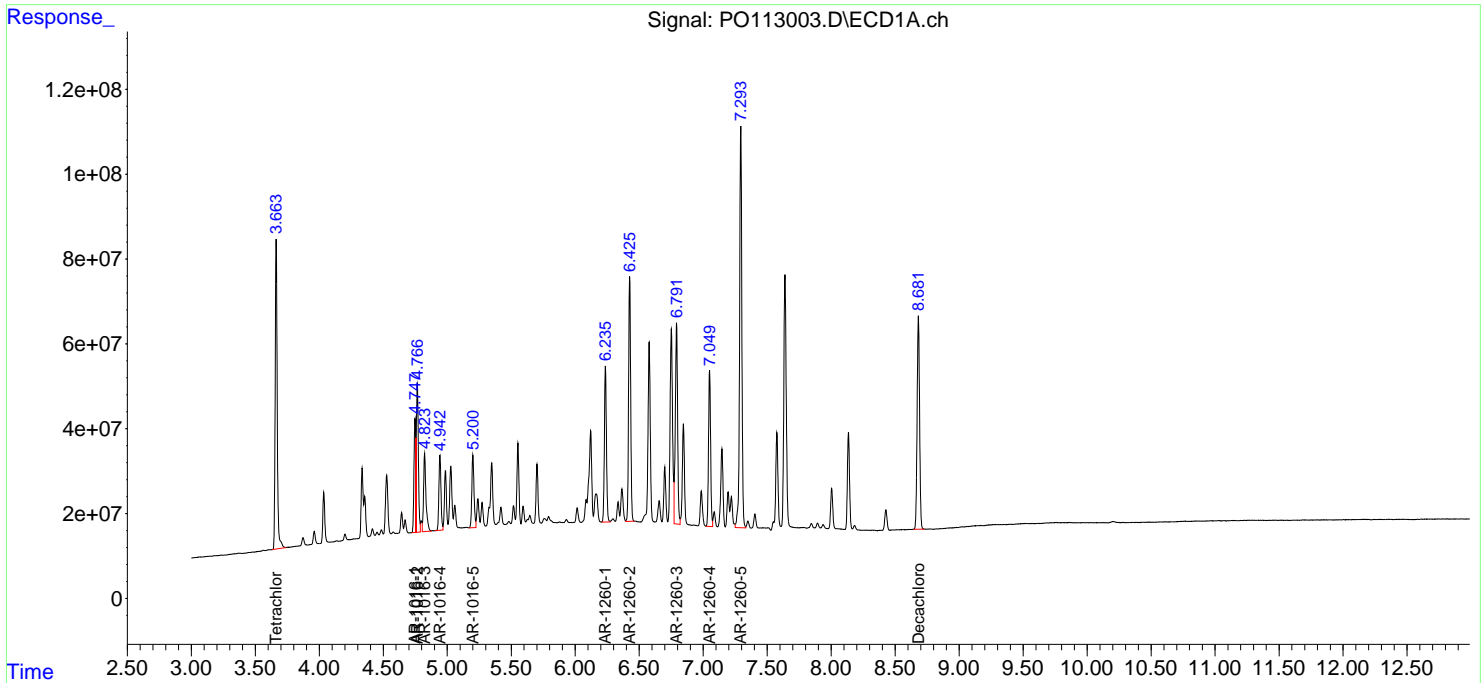
(f)=RT Delta > 1/2 Window (#)=Amounts differ by > 25% (m)=manual int.

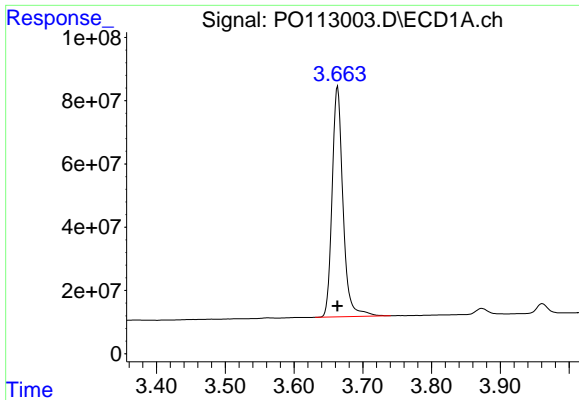
Data Path : Z:\pestpcbsrv\HPCHEM1\ECD_O\Data\PO081825\
 Data File : PO113003.D
 Signal(s) : Signal #1: ECD1A.ch Signal #2: ECD2B.ch
 Acq On : 18 Aug 2025 09:53
 Operator : YP/AJ
 Sample : AR1660ICC1000
 Misc :
 ALS Vial : 3 Sample Multiplier: 1

Instrument :
 ECD_O
 ClientSampleId :
 AR1660ICC1000

Integration File signal 1: autoint1.e
 Integration File signal 2: autoint2.e
 Quant Time: Aug 18 10:58:58 2025
 Quant Method : Z:\pestpcbsrv\HPCHEM1\ECD_O\methods\PO081825.M
 Quant Title : GC EXTRACTABLES
 QLast Update : Mon Aug 18 10:55:18 2025
 Response via : Initial Calibration
 Integrator: ChemStation

Volume Inj. : 2 µl
 Signal #1 Phase : ZB-MR1 Signal #2 Phase: ZB-MR2
 Signal #1 Info : 30Mx0.32mmx 0.50µ Signal #2 Info : 30M x 0.32mm x 0.25µm

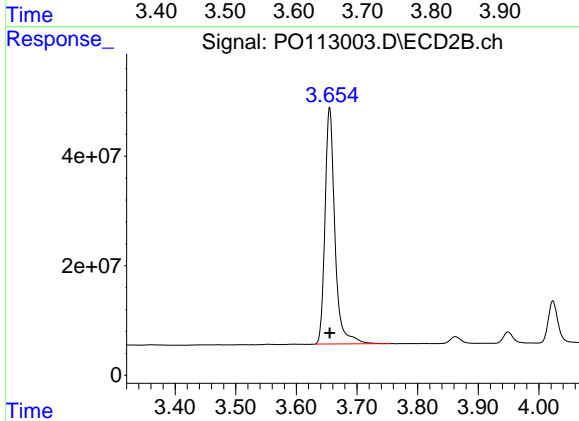




#1 Tetrachloro-m-xylene

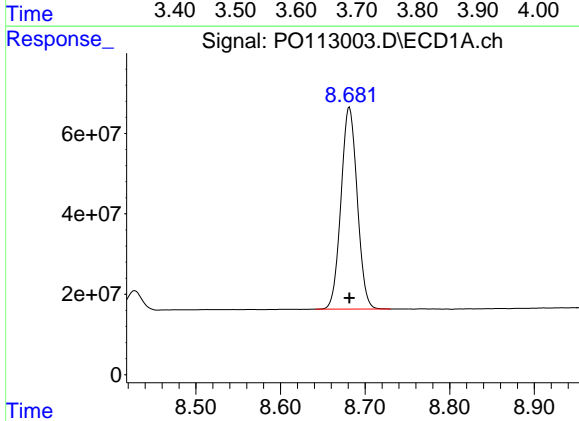
R.T.: 3.663 min
Delta R.T.: 0.000 min
Response: 802967434
Conc: 97.50 ng/ml

Instrument :
ECD_O
ClientSampleId :
AR1660ICC1000



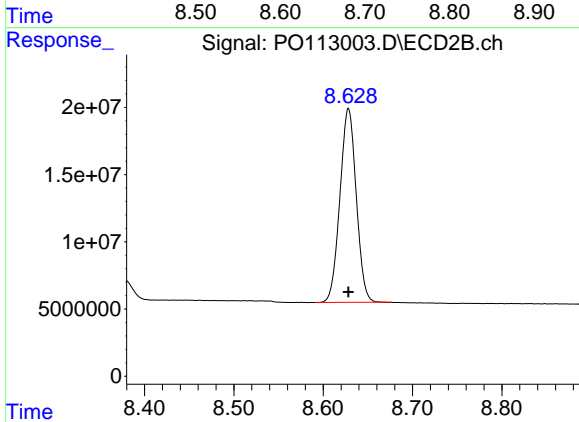
#1 Tetrachloro-m-xylene

R.T.: 3.655 min
Delta R.T.: 0.000 min
Response: 491676896
Conc: 97.32 ng/ml



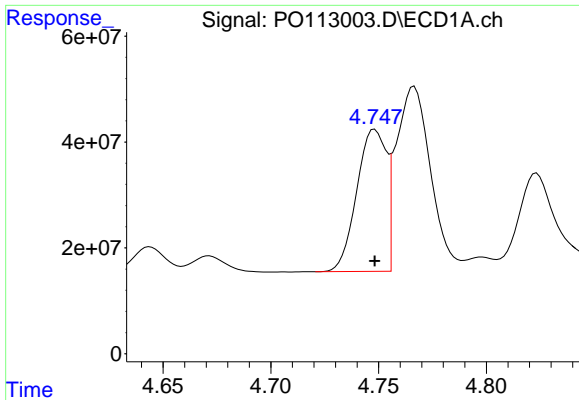
#2 Decachlorobiphenyl

R.T.: 8.682 min
Delta R.T.: 0.000 min
Response: 669021269
Conc: 96.74 ng/ml



#2 Decachlorobiphenyl

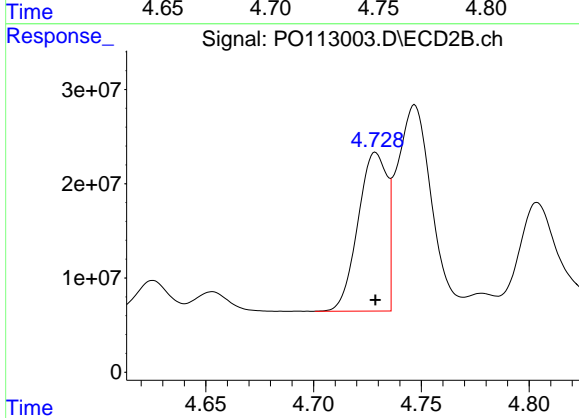
R.T.: 8.628 min
Delta R.T.: 0.000 min
Response: 183106410
Conc: 95.94 ng/ml



#3 AR-1016-1

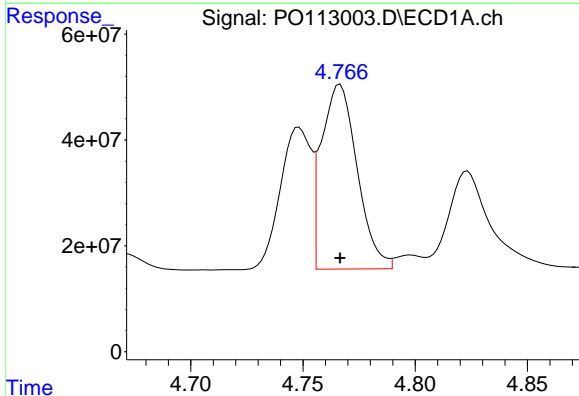
R.T.: 4.748 min
 Delta R.T.: 0.000 min
 Response: 255371052
 Conc: 961.30 ng/ml

Instrument :
 ECD_O
 ClientSampleId :
 AR1660ICC1000



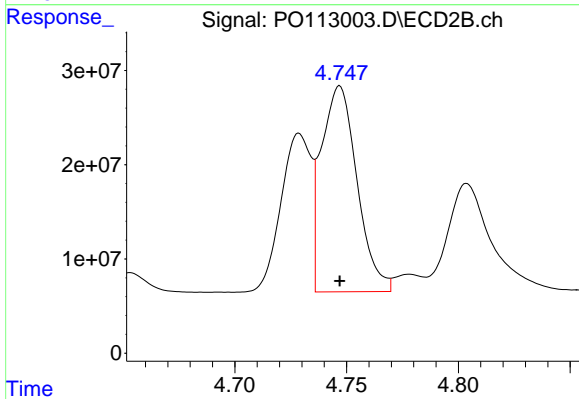
#3 AR-1016-1

R.T.: 4.729 min
 Delta R.T.: 0.000 min
 Response: 157648421
 Conc: 947.75 ng/ml



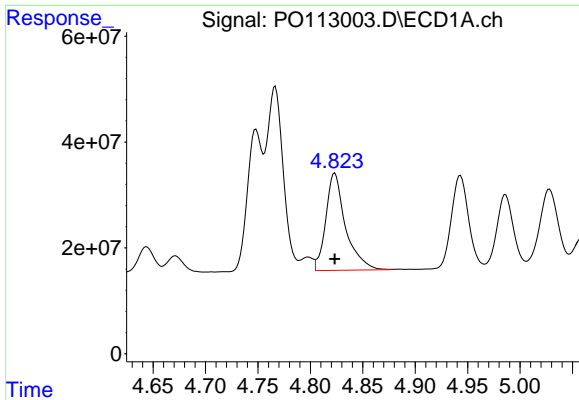
#4 AR-1016-2

R.T.: 4.767 min
 Delta R.T.: 0.000 min
 Response: 386597005
 Conc: 963.19 ng/ml



#4 AR-1016-2

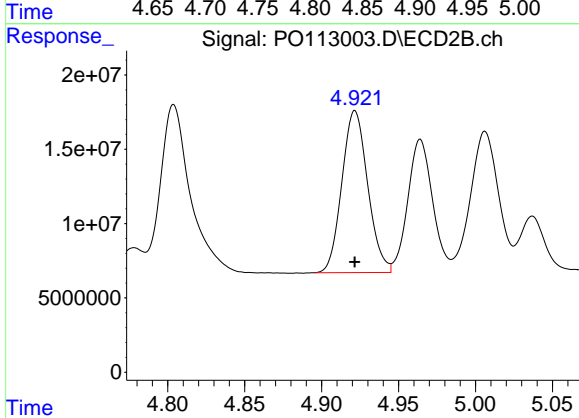
R.T.: 4.747 min
 Delta R.T.: 0.000 min
 Response: 242743120
 Conc: 965.05 ng/ml



#5 AR-1016-3

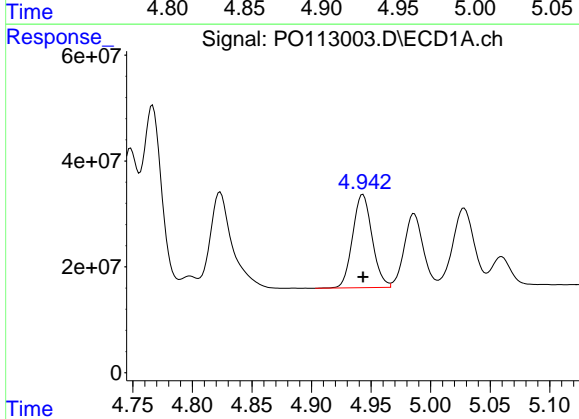
R.T.: 4.823 min
 Delta R.T.: 0.000 min
 Response: 240674907
 Conc: 961.20 ng/ml

Instrument :
 ECD_O
 ClientSampleId :
 AR1660ICC1000



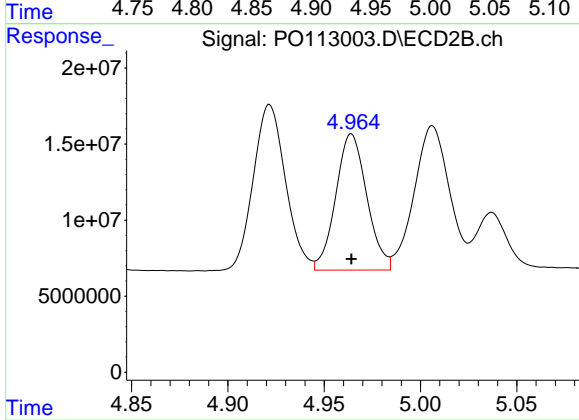
#5 AR-1016-3

R.T.: 4.922 min
 Delta R.T.: 0.000 min
 Response: 126993760
 Conc: 957.01 ng/ml



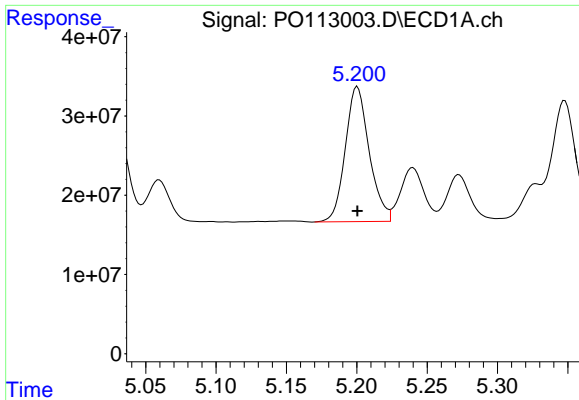
#6 AR-1016-4

R.T.: 4.943 min
 Delta R.T.: 0.000 min
 Response: 200488933
 Conc: 959.54 ng/ml



#6 AR-1016-4

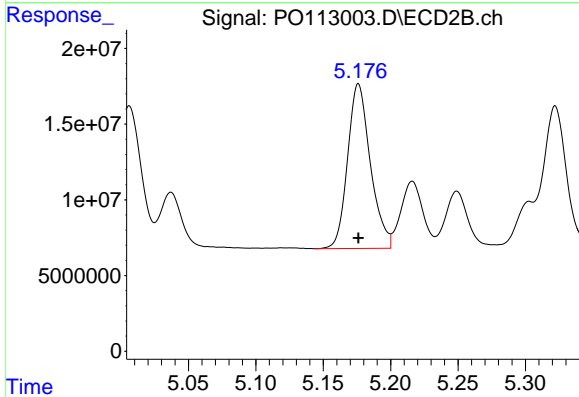
R.T.: 4.964 min
 Delta R.T.: 0.000 min
 Response: 100459724
 Conc: 943.60 ng/ml



#7 AR-1016-5

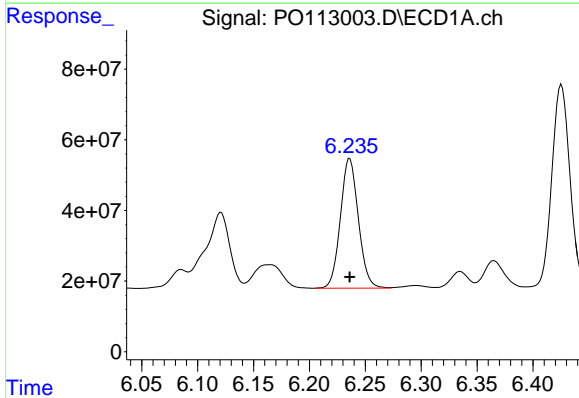
R.T.: 5.200 min
 Delta R.T.: 0.000 min
 Response: 201770173
 Conc: 948.36 ng/ml

Instrument :
 ECD_O
 ClientSampleId :
 AR1660ICC1000



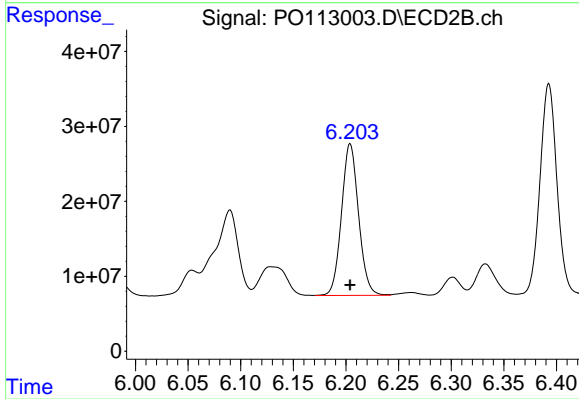
#7 AR-1016-5

R.T.: 5.176 min
 Delta R.T.: 0.000 min
 Response: 128106279
 Conc: 947.56 ng/ml



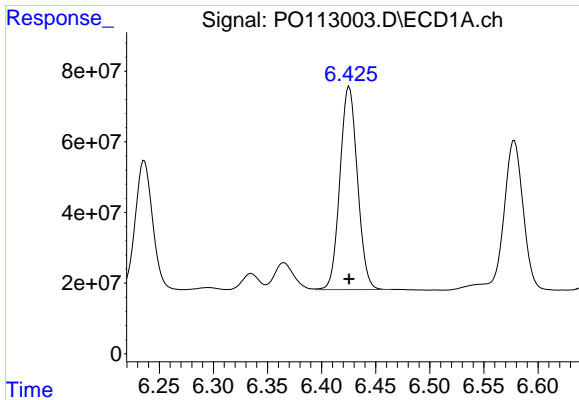
#31 AR-1260-1

R.T.: 6.236 min
 Delta R.T.: 0.000 min
 Response: 410428218
 Conc: 955.84 ng/ml



#31 AR-1260-1

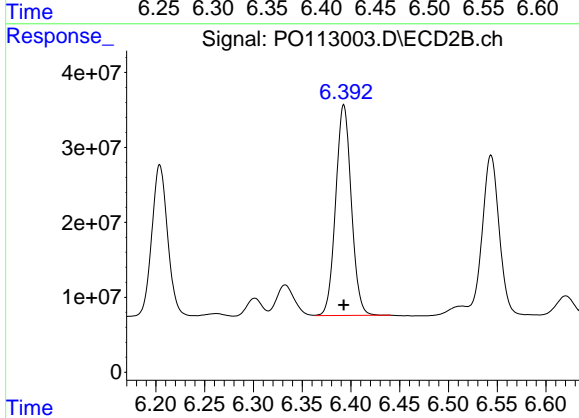
R.T.: 6.204 min
 Delta R.T.: 0.000 min
 Response: 228928107
 Conc: 950.89 ng/ml



#32 AR-1260-2

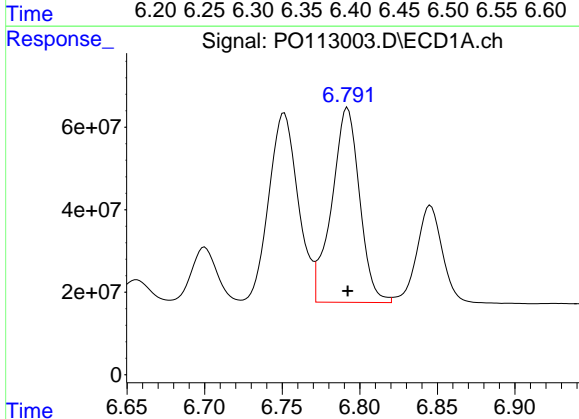
R.T.: 6.425 min
 Delta R.T.: 0.000 min
 Response: 647927331
 Conc: 965.24 ng/ml

Instrument :
 ECD_O
 ClientSampleId :
 AR1660ICC1000



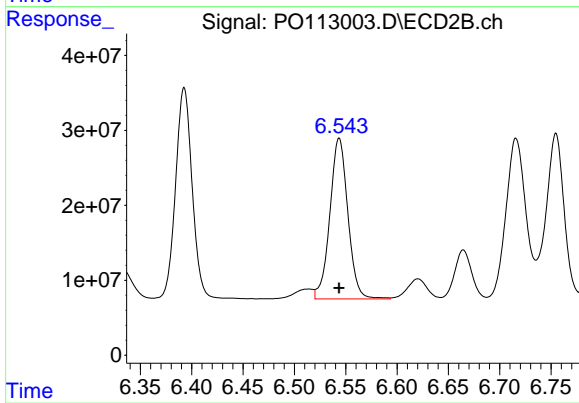
#32 AR-1260-2

R.T.: 6.393 min
 Delta R.T.: 0.000 min
 Response: 313918308
 Conc: 954.41 ng/ml



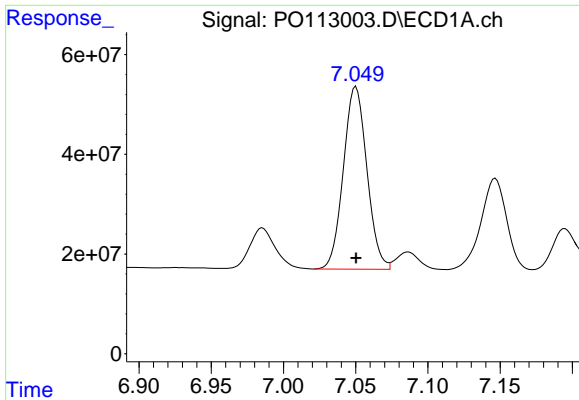
#33 AR-1260-3

R.T.: 6.792 min
 Delta R.T.: 0.000 min
 Response: 589701211
 Conc: 956.82 ng/ml



#33 AR-1260-3

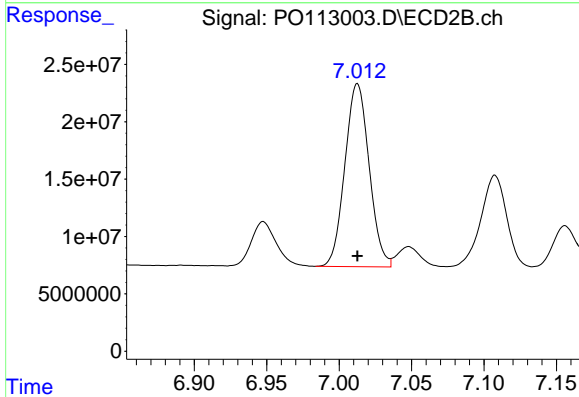
R.T.: 6.544 min
 Delta R.T.: 0.000 min
 Response: 262510074
 Conc: 944.07 ng/ml



#34 AR-1260-4

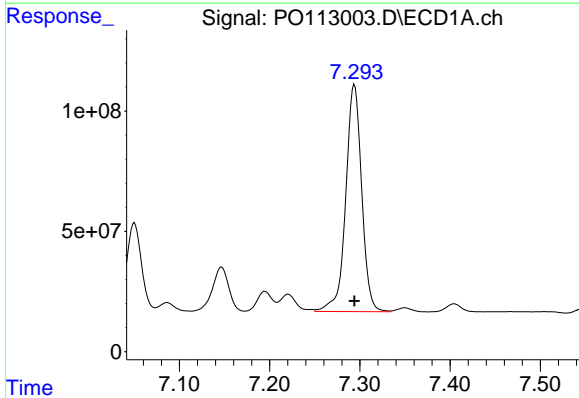
R.T.: 7.050 min
 Delta R.T.: 0.000 min
 Response: 414110693
 Conc: 955.50 ng/ml

Instrument :
 ECD_O
 ClientSampleId :
 AR1660ICC1000



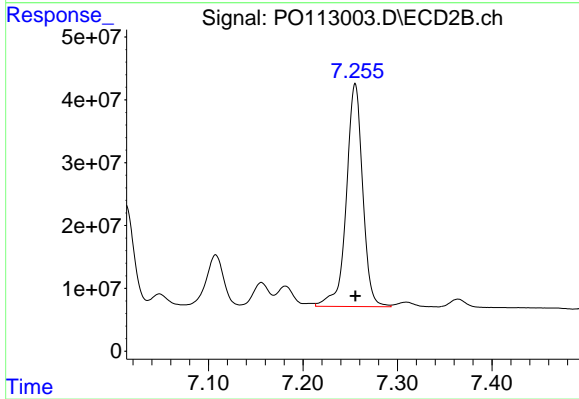
#34 AR-1260-4

R.T.: 7.013 min
 Delta R.T.: 0.000 min
 Response: 185941664
 Conc: 953.07 ng/ml



#35 AR-1260-5

R.T.: 7.294 min
 Delta R.T.: 0.000 min
 Response: 1160238835
 Conc: 967.28 ng/ml



#35 AR-1260-5

R.T.: 7.255 min
 Delta R.T.: 0.000 min
 Response: 425960236
 Conc: 955.21 ng/ml