

Data Path : Z:\pestpcbsrv\HPCHEM1\ECD_0\Data\P0081825\
 Data File : PO113007.D
 Signal(s) : Signal #1: ECD1A.ch Signal #2: ECD2B.ch
 Acq On : 18 Aug 2025 11:06
 Operator : YP/AJ
 Sample : AR1660ICC050
 Misc :
 ALS Vial : 7 Sample Multiplier: 1

Instrument :
 ECD_0
 ClientSampleId :
 AR1660ICC050

Integration File signal 1: autoint1.e
 Integration File signal 2: autoint2.e
 Quant Time: Aug 18 11:21:45 2025
 Quant Method : Z:\pestpcbsrv\HPCHEM1\ECD_0\methods\P0081825.M
 Quant Title : GC EXTRACTABLES
 QLast Update : Mon Aug 18 11:21:34 2025
 Response via : Initial Calibration
 Integrator: ChemStation

Volume Inj. : 2 µl
 Signal #1 Phase : ZB-MR1 Signal #2 Phase: ZB-MR2
 Signal #1 Info : 30Mx0.32mmx 0.50µ Signal #2 Info : 30M x 0.32mm x 0.25µm

Compound	RT#1	RT#2	Resp#1	Resp#2	ng/ml	ng/ml

System Monitoring Compounds						
1) SA Tetrachlo...	3.663	3.654	38705497	24699023	4.728	4.881
2) SA Decachlor...	8.681	8.626	33724342	8728376	4.865	4.606
Target Compounds						
3) L1 AR-1016-1	4.747	4.728	12924748	8716922	48.963	51.104
4) L1 AR-1016-2	4.765	4.747	18948771	13256000	47.203	51.448
5) L1 AR-1016-3	4.823	4.922	13003930	7770949	50.991	55.660
6) L1 AR-1016-4	4.942	4.964	12149479	7218889	55.714	61.859
7) L1 AR-1016-5	5.199	5.176	12331019	7956952	55.638	55.827
31) L7 AR-1260-1	6.235	6.203	30102204	14036794	67.214	55.031
32) L7 AR-1260-2	6.424	6.391	38557140	19279056	55.026	55.766
33) L7 AR-1260-3	6.790	6.542	29698822	21018087	48.097	70.832 #
34) L7 AR-1260-4	7.049	7.011	23055337	12235910	51.477	59.040
35) L7 AR-1260-5	7.292	7.253	59416722	27062013	49.077	57.772

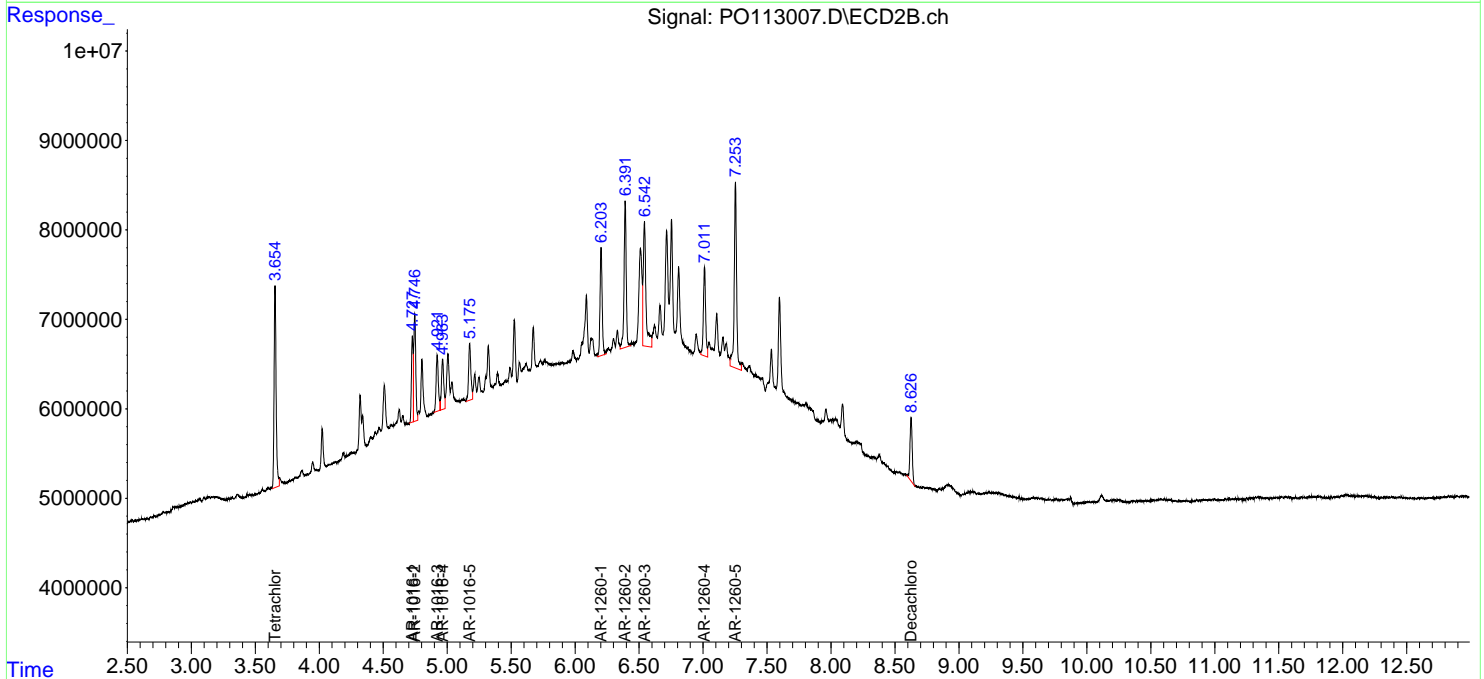
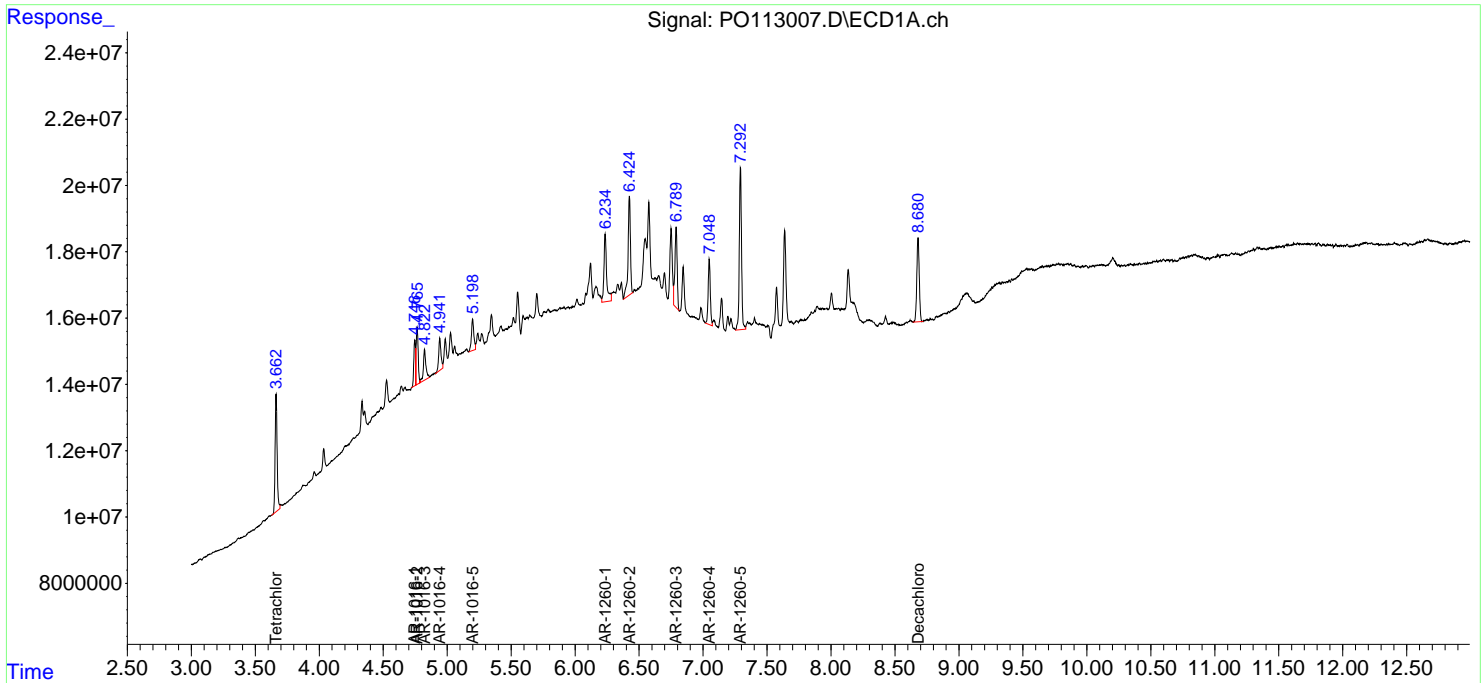
(f)=RT Delta > 1/2 Window (#)=Amounts differ by > 25% (m)=manual int.

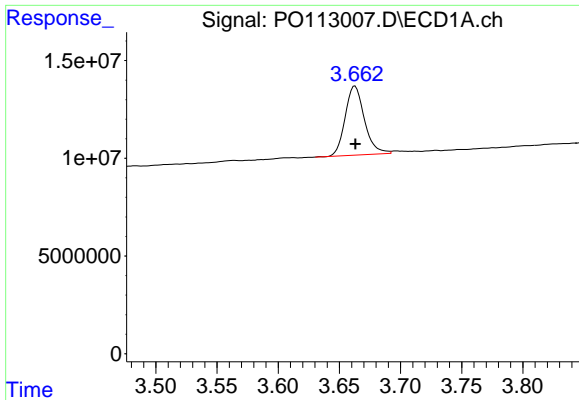
Data Path : Z:\pestpcbsrv\HPCHEM1\ECD_O\Data\PO081825\
 Data File : PO113007.D
 Signal(s) : Signal #1: ECD1A.ch Signal #2: ECD2B.ch
 Acq On : 18 Aug 2025 11:06
 Operator : YP/AJ
 Sample : AR1660ICC050
 Misc :
 ALS Vial : 7 Sample Multiplier: 1

Instrument :
 ECD_O
 ClientSampleId :
 AR1660ICC050

Integration File signal 1: autoint1.e
 Integration File signal 2: autoint2.e
 Quant Time: Aug 18 11:21:45 2025
 Quant Method : Z:\pestpcbsrv\HPCHEM1\ECD_O\methods\PO081825.M
 Quant Title : GC EXTRACTABLES
 QLast Update : Mon Aug 18 11:21:34 2025
 Response via : Initial Calibration
 Integrator: ChemStation

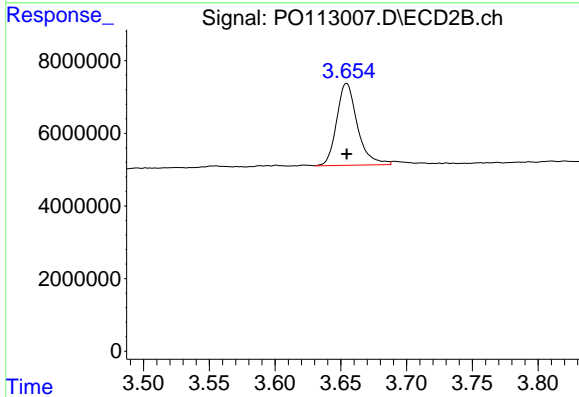
Volume Inj. : 2 µl
 Signal #1 Phase : ZB-MR1 Signal #2 Phase: ZB-MR2
 Signal #1 Info : 30Mx0.32mmx 0.50µ Signal #2 Info : 30M x 0.32mm x 0.25µm



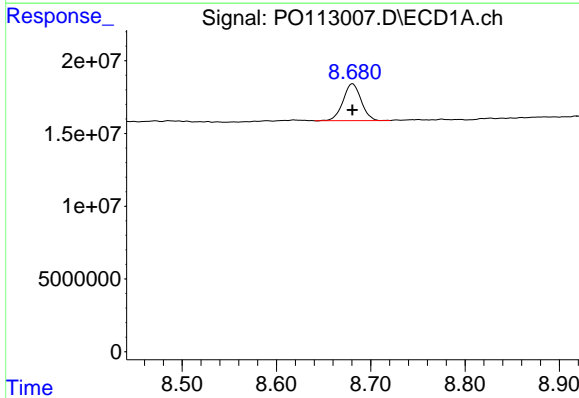


#1 Tetrachloro-m-xylene
 R.T.: 3.663 min
 Delta R.T.: 0.000 min
 Response: 38705497
 Conc: 4.73 ng/ml

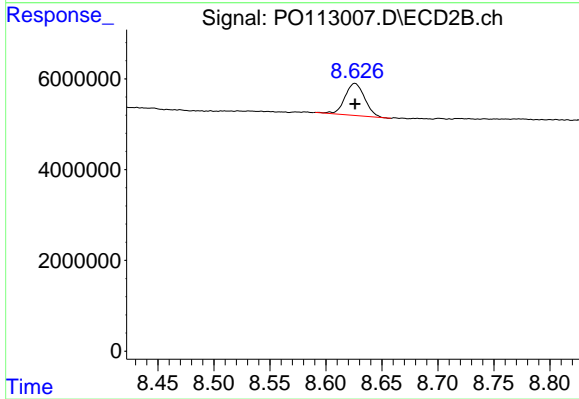
Instrument :
 ECD_O
 ClientSampleId :
 AR1660ICC050



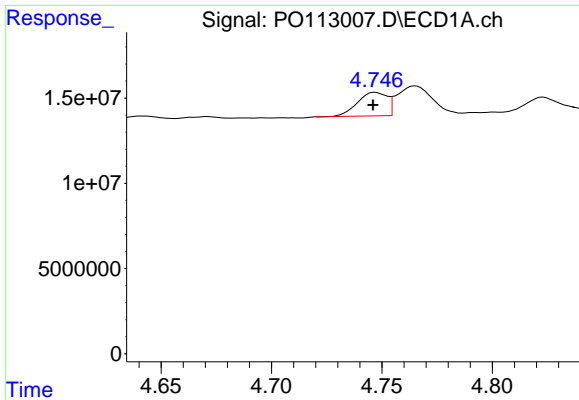
#1 Tetrachloro-m-xylene
 R.T.: 3.654 min
 Delta R.T.: 0.000 min
 Response: 24699023
 Conc: 4.88 ng/ml



#2 Decachlorobiphenyl
 R.T.: 8.681 min
 Delta R.T.: 0.000 min
 Response: 33724342
 Conc: 4.87 ng/ml



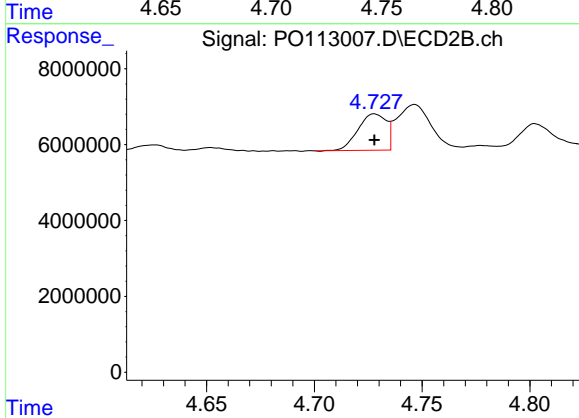
#2 Decachlorobiphenyl
 R.T.: 8.626 min
 Delta R.T.: 0.000 min
 Response: 8728376
 Conc: 4.61 ng/ml



#3 AR-1016-1

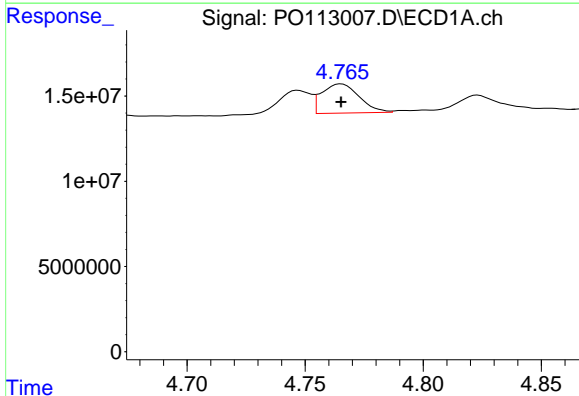
R.T.: 4.747 min
 Delta R.T.: 0.000 min
 Response: 12924748
 Conc: 48.96 ng/ml

Instrument :
 ECD_O
 ClientSampleId :
 AR1660ICC050



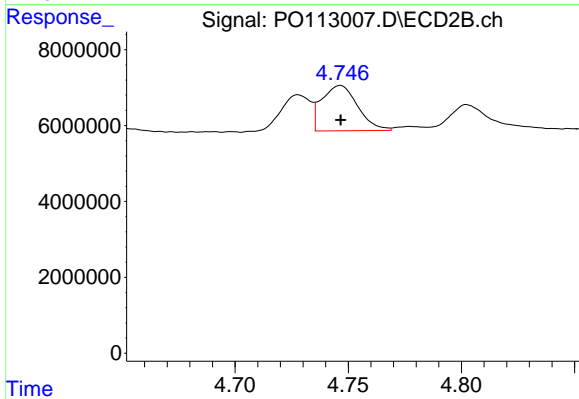
#3 AR-1016-1

R.T.: 4.728 min
 Delta R.T.: 0.000 min
 Response: 8716922
 Conc: 51.10 ng/ml



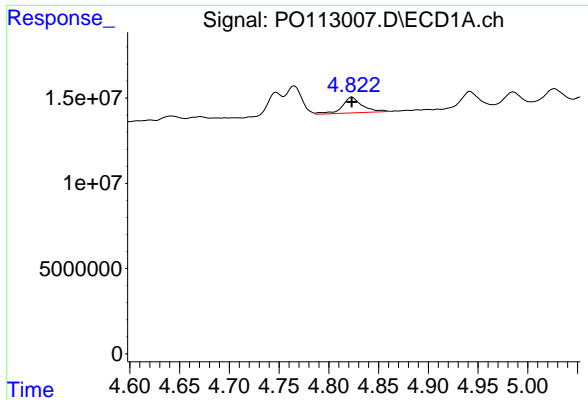
#4 AR-1016-2

R.T.: 4.765 min
 Delta R.T.: 0.000 min
 Response: 18948771
 Conc: 47.20 ng/ml



#4 AR-1016-2

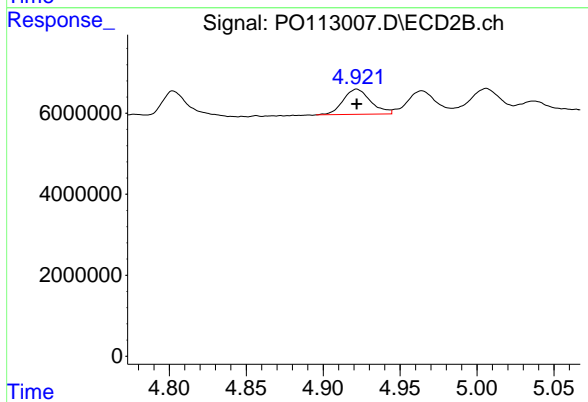
R.T.: 4.747 min
 Delta R.T.: 0.000 min
 Response: 13256000
 Conc: 51.45 ng/ml



#5 AR-1016-3

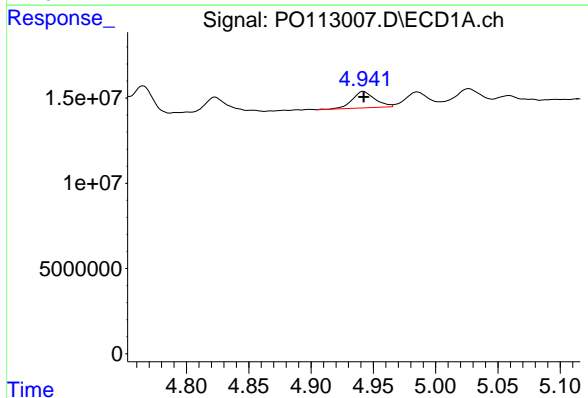
R.T.: 4.823 min
 Delta R.T.: 0.000 min
 Response: 13003930
 Conc: 50.99 ng/ml

Instrument :
 ECD_O
 ClientSampleId :
 AR1660ICC050



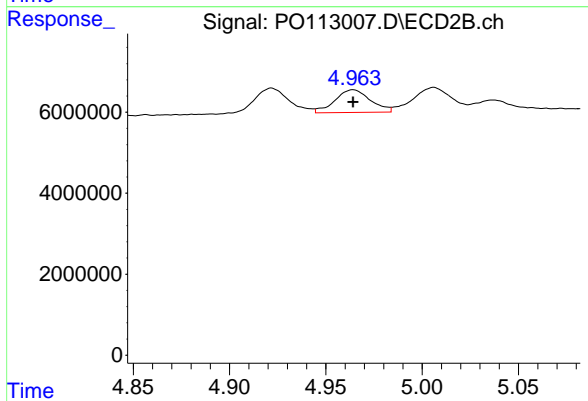
#5 AR-1016-3

R.T.: 4.922 min
 Delta R.T.: 0.000 min
 Response: 7770949
 Conc: 55.66 ng/ml



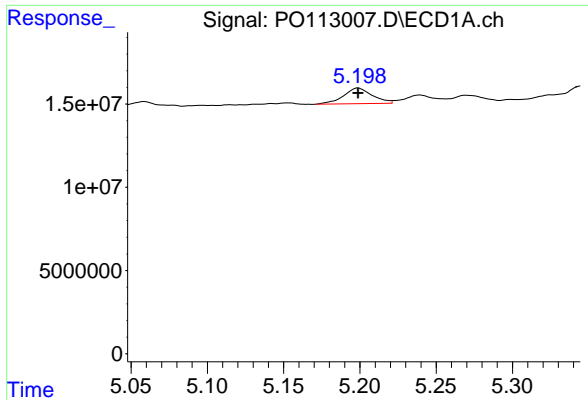
#6 AR-1016-4

R.T.: 4.942 min
 Delta R.T.: 0.000 min
 Response: 12149479
 Conc: 55.71 ng/ml



#6 AR-1016-4

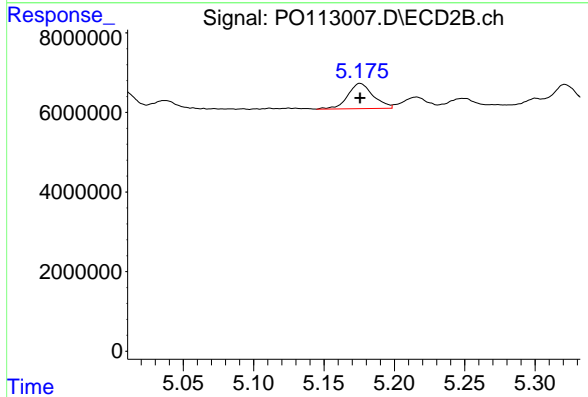
R.T.: 4.964 min
 Delta R.T.: 0.000 min
 Response: 7218889
 Conc: 61.86 ng/ml



#7 AR-1016-5

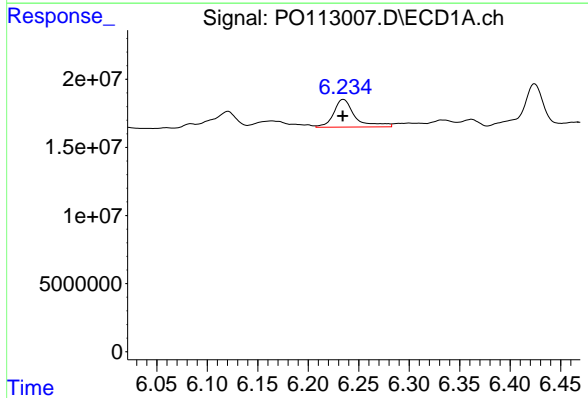
R.T.: 5.199 min
Delta R.T.: 0.000 min
Response: 12331019
Conc: 55.64 ng/ml

Instrument :
ECD_O
ClientSampleId :
AR1660ICC050



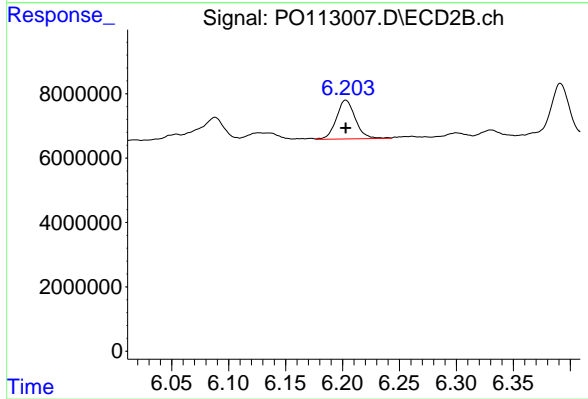
#7 AR-1016-5

R.T.: 5.176 min
Delta R.T.: 0.000 min
Response: 7956952
Conc: 55.83 ng/ml



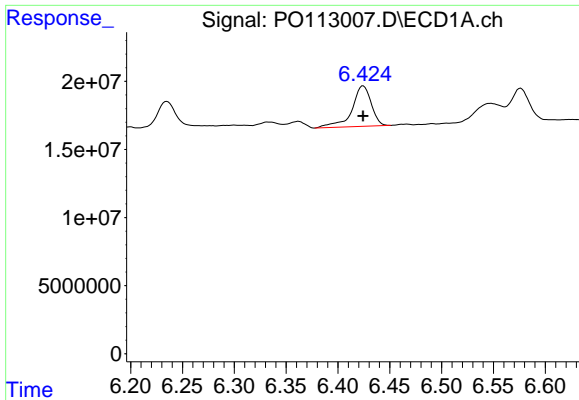
#31 AR-1260-1

R.T.: 6.235 min
Delta R.T.: 0.000 min
Response: 30102204
Conc: 67.21 ng/ml



#31 AR-1260-1

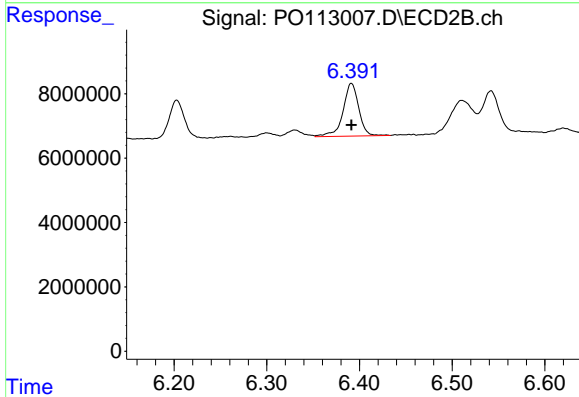
R.T.: 6.203 min
Delta R.T.: 0.000 min
Response: 14036794
Conc: 55.03 ng/ml



#32 AR-1260-2

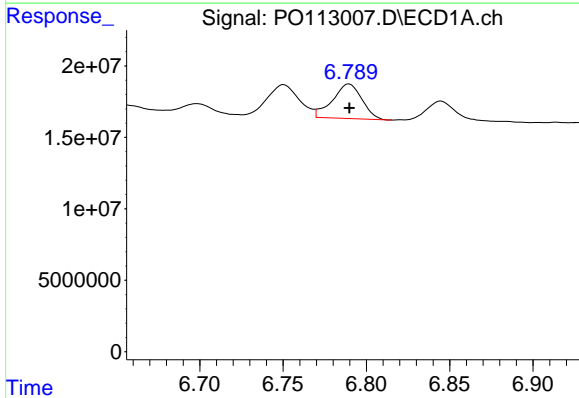
R.T.: 6.424 min
 Delta R.T.: 0.000 min
 Response: 38557140
 Conc: 55.03 ng/ml

Instrument :
 ECD_O
 ClientSampleId :
 AR1660ICC050



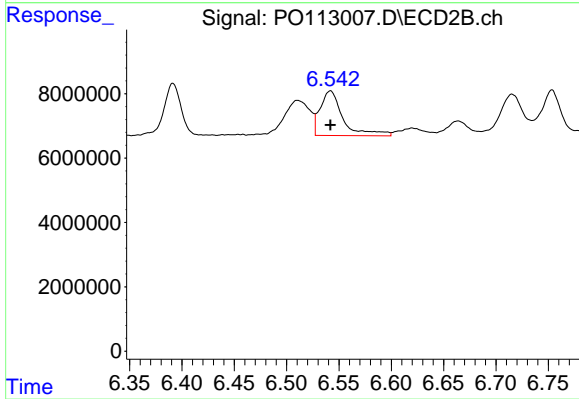
#32 AR-1260-2

R.T.: 6.391 min
 Delta R.T.: 0.000 min
 Response: 19279056
 Conc: 55.77 ng/ml



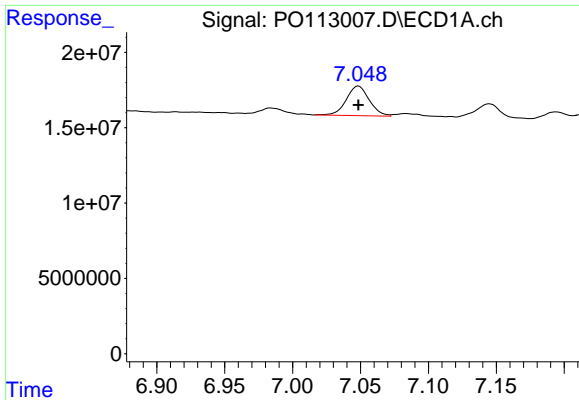
#33 AR-1260-3

R.T.: 6.790 min
 Delta R.T.: 0.000 min
 Response: 29698822
 Conc: 48.10 ng/ml



#33 AR-1260-3

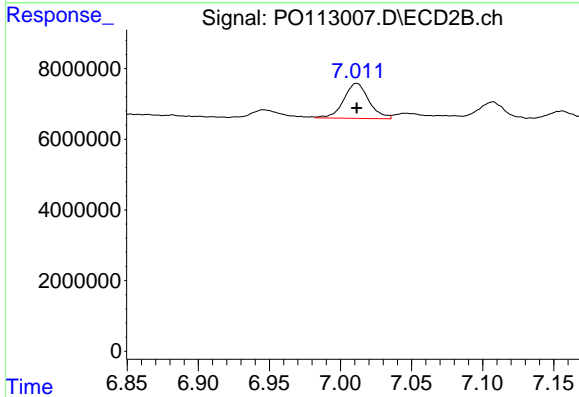
R.T.: 6.542 min
 Delta R.T.: 0.000 min
 Response: 21018087
 Conc: 70.83 ng/ml



#34 AR-1260-4

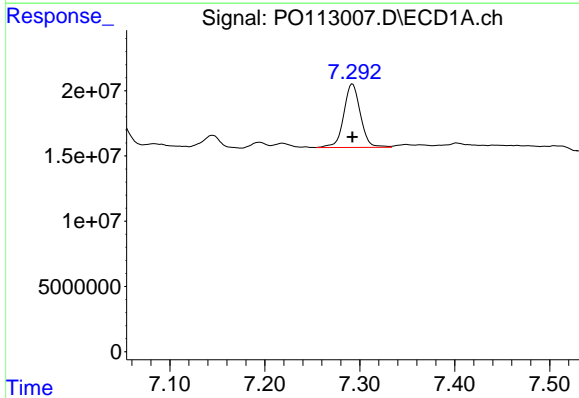
R.T.: 7.049 min
 Delta R.T.: 0.000 min
 Response: 23055337
 Conc: 51.48 ng/ml

Instrument :
 ECD_O
 ClientSampleId :
 AR1660ICC050



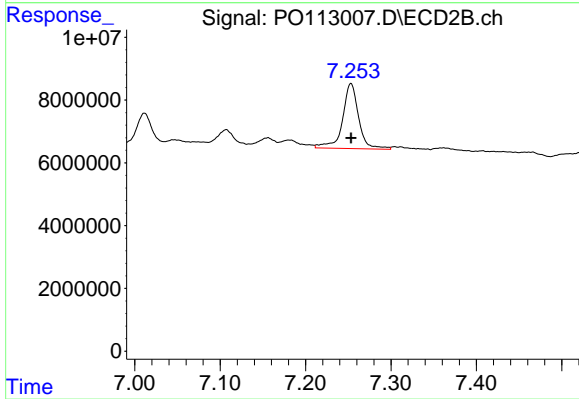
#34 AR-1260-4

R.T.: 7.011 min
 Delta R.T.: 0.000 min
 Response: 12235910
 Conc: 59.04 ng/ml



#35 AR-1260-5

R.T.: 7.292 min
 Delta R.T.: 0.000 min
 Response: 59416722
 Conc: 49.08 ng/ml



#35 AR-1260-5

R.T.: 7.253 min
 Delta R.T.: 0.000 min
 Response: 27062013
 Conc: 57.77 ng/ml