

Data Path : Z:\pestpcbsrv\HPCHEM1\ECD\_O\Data\P0081825\  
 Data File : PO113032.D  
 Signal(s) : Signal #1: ECD1A.ch Signal #2: ECD2B.ch  
 Acq On : 18 Aug 2025 19:37  
 Operator : YP/AJ  
 Sample : AR1242ICV500  
 Misc :  
 ALS Vial : 12 Sample Multiplier: 1

Instrument :  
 ECD\_O  
 ClientSampleId :  
 ICVPO081825AR1242

Integration File signal 1: autoint1.e  
 Integration File signal 2: autoint2.e  
 Quant Time: Aug 19 06:20:37 2025  
 Quant Method : Z:\pestpcbsrv\HPCHEM1\ECD\_O\methods\P0081825.M  
 Quant Title : GC EXTRACTABLES  
 QLast Update : Tue Aug 19 06:08:32 2025  
 Response via : Initial Calibration  
 Integrator: ChemStation

Volume Inj. : 2 µl  
 Signal #1 Phase : ZB-MR1 Signal #2 Phase: ZB-MR2  
 Signal #1 Info : 30Mx0.32mmx 0.50µ Signal #2 Info : 30M x 0.32mm x 0.25µm

Compound	RT#1	RT#2	Resp#1	Resp#2	ng/ml	ng/ml
System Monitoring Compounds						
1) SA Tetrachlo...	3.664	3.656	429.6E6	262.9E6	52.476	51.959
2) SA Decachlor...	8.682	8.627	379.6E6	100.8E6	54.772	53.212
Target Compounds						
3) L1 AR-1016-1	4.750	4.730	118.2E6	75544744	442.621	442.886
4) L1 AR-1016-2	4.767	4.748	180.5E6	112.1E6	449.751	435.241
5) L1 AR-1016-3	4.825	4.923	114.2E6	58830110	447.646	421.376
6) L1 AR-1016-4	4.944	4.966	91221670	45370916	418.317	388.786
7) L1 AR-1016-5	5.201	5.177	97434228	62072541	439.630	435.505
8) L2 AR-1221-1	3.874	3.864	10199443	7685749	109.000	121.762
9) L2 AR-1221-2	3.962	3.951	16904543	11775367	250.250	252.294
10) L2 AR-1221-3	4.037	4.024	61920691	42024547	279.740	283.041
11) L3 AR-1232-1	4.037	4.024	61920691	42024547	355.853	357.952
12) L3 AR-1232-2	4.528	4.748	88923857	112.1E6	890.552	915.111
13) L3 AR-1232-3	4.767	4.923	180.5E6	58830110	952.863	928.716
14) L3 AR-1232-4	4.944	5.008	91221670	57727565	968.696	1026.794
15) L3 AR-1232-5	4.987	5.177	66815251	62072541	1078.658	1036.900
16) L4 AR-1242-1	4.750	4.730	118.2E6	75544744	513.948	522.785
17) L4 AR-1242-2	4.767	4.748	180.5E6	112.1E6	525.410	516.997
18) L4 AR-1242-3	4.825	4.923	114.2E6	58830110	514.501	502.975
19) L4 AR-1242-4	4.944	5.008	91221670	57727565	525.886	490.725
20) L4 AR-1242-5	5.594	5.526	103.3E6	75933701	515.841	509.168
21) L5 AR-1248-1	4.750	4.730	118.2E6	75544744	677.340	677.459
22) L5 AR-1248-2	4.987	4.966	66815251	45370916	276.249	282.335
23) L5 AR-1248-3	5.201	5.008	97434228	57727565	305.567	340.253
24) L5 AR-1248-4	5.553	5.177	124.9E6	62072541	249.930	311.578
25) L5 AR-1248-5	5.594	5.567	103.3E6	64844947	302.356	305.445
26) L6 AR-1254-1	5.553	5.526	124.9E6	75933701	231.243	240.789
27) L6 AR-1254-2	5.703	5.674	35829110	23732343	72.609	84.656
28) L6 AR-1254-3	6.105	6.074	37859986	25807712	51.240	61.901
29) L6 AR-1254-4	6.335	6.302	37973386	19192149	68.175	69.831
30) L6 AR-1254-5	6.753	6.718	9465610	8078927	13.504	22.599 #
31) L7 AR-1260-1	6.225	6.217	9386897	9625151	21.048	37.736 #
32) L7 AR-1260-2	6.424	6.392	5873167	2299064	8.552	6.650
33) L7 AR-1260-3	6.774	6.541	3573448	3410698	5.787	11.467 #
34) L7 AR-1260-4	7.046	7.023	1350431	343007	3.015	1.655 #
35) L7 AR-1260-5	7.295	7.270	1620768	282374	1.339	0.603 #
36) L8 AR-1262-1	6.774	6.718f	3573448	8078927	3.902	19.485 #
37) L8 AR-1262-2	7.295	7.270	1620768	282374	1.072	0.545 #
38) L8 AR-1262-3	7.579	7.527	987737	146234	1.783	0.814 #
39) L8 AR-1262-4	7.639	7.591	2763503	642555	2.826	2.216
40) L8 AR-1262-5	8.142	8.100	371692	431115	0.892	3.980 #
41) L9 AR-1268-1	7.579	7.545	987737	92765	0.574	0.182 #

Data Path : Z:\pestpcbsrv\HPCHEM1\ECD\_0\Data\P0081825\  
 Data File : P0113032.D  
 Signal(s) : Signal #1: ECD1A.ch Signal #2: ECD2B.ch  
 Acq On : 18 Aug 2025 19:37  
 Operator : YP/AJ  
 Sample : AR1242ICV500  
 Misc :  
 ALS Vial : 12 Sample Multiplier: 1

Instrument :  
 ECD\_0  
 ClientSampleId :  
 ICVPO081825AR1242

Integration File signal 1: autoint1.e  
 Integration File signal 2: autoint2.e  
 Quant Time: Aug 19 06:20:37 2025  
 Quant Method : Z:\pestpcbsrv\HPCHEM1\ECD\_0\methods\P0081825.M  
 Quant Title : GC EXTRACTABLES  
 QLast Update : Tue Aug 19 06:08:32 2025  
 Response via : Initial Calibration  
 Integrator: ChemStation

Volume Inj. : 2 µl  
 Signal #1 Phase : ZB-MR1 Signal #2 Phase: ZB-MR2  
 Signal #1 Info : 30Mx0.32mmx 0.50µ Signal #2 Info : 30M x 0.32mm x 0.25µm

	Compound	RT#1	RT#2	Resp#1	Resp#2	ng/ml	ng/ml
42)	L9 AR-1268-2	7.639	7.591	2763503	642555	1.908	1.547
43)	L9 AR-1268-3	7.845	7.794	2647177	574184	2.194	1.759
44)	L9 AR-1268-4	8.142	8.100	371692	431115	0.807	3.580 #
45)	L9 AR-1268-5	8.429	8.374	2739849	322677	0.859	0.413 #

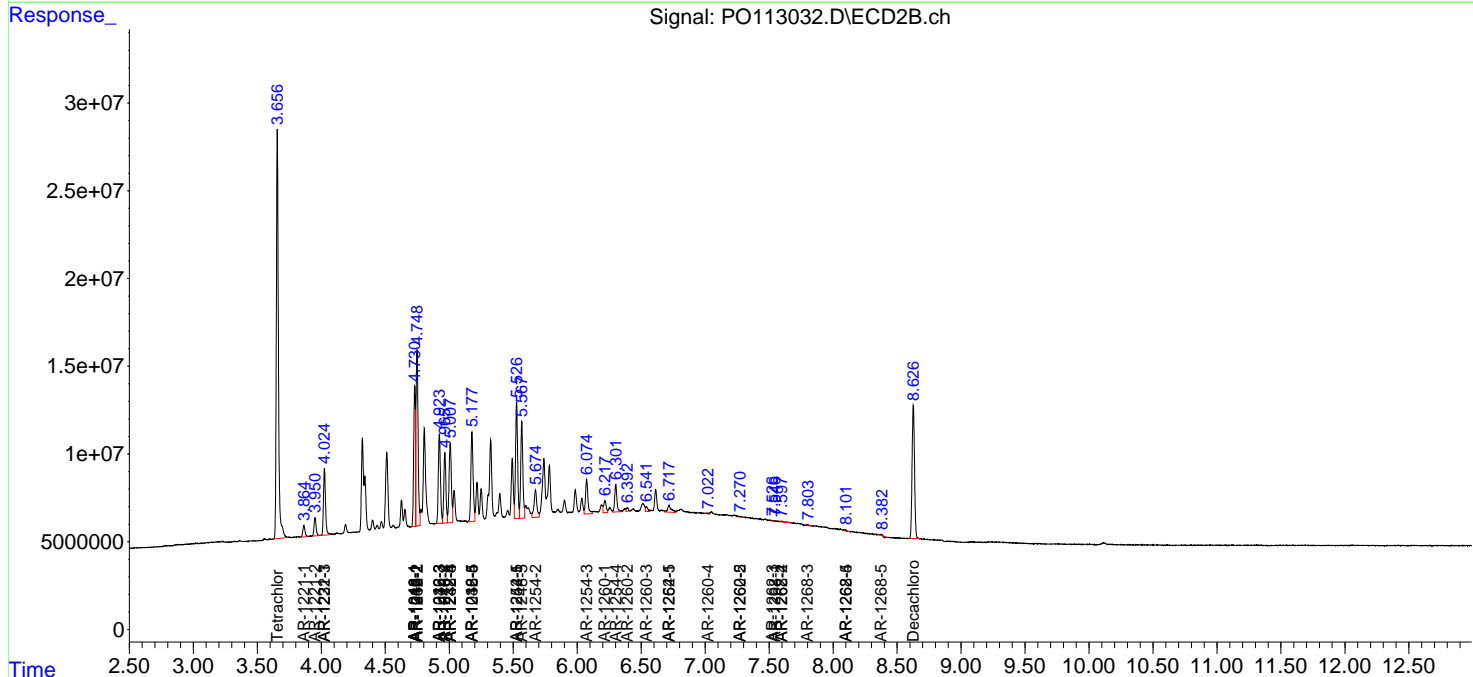
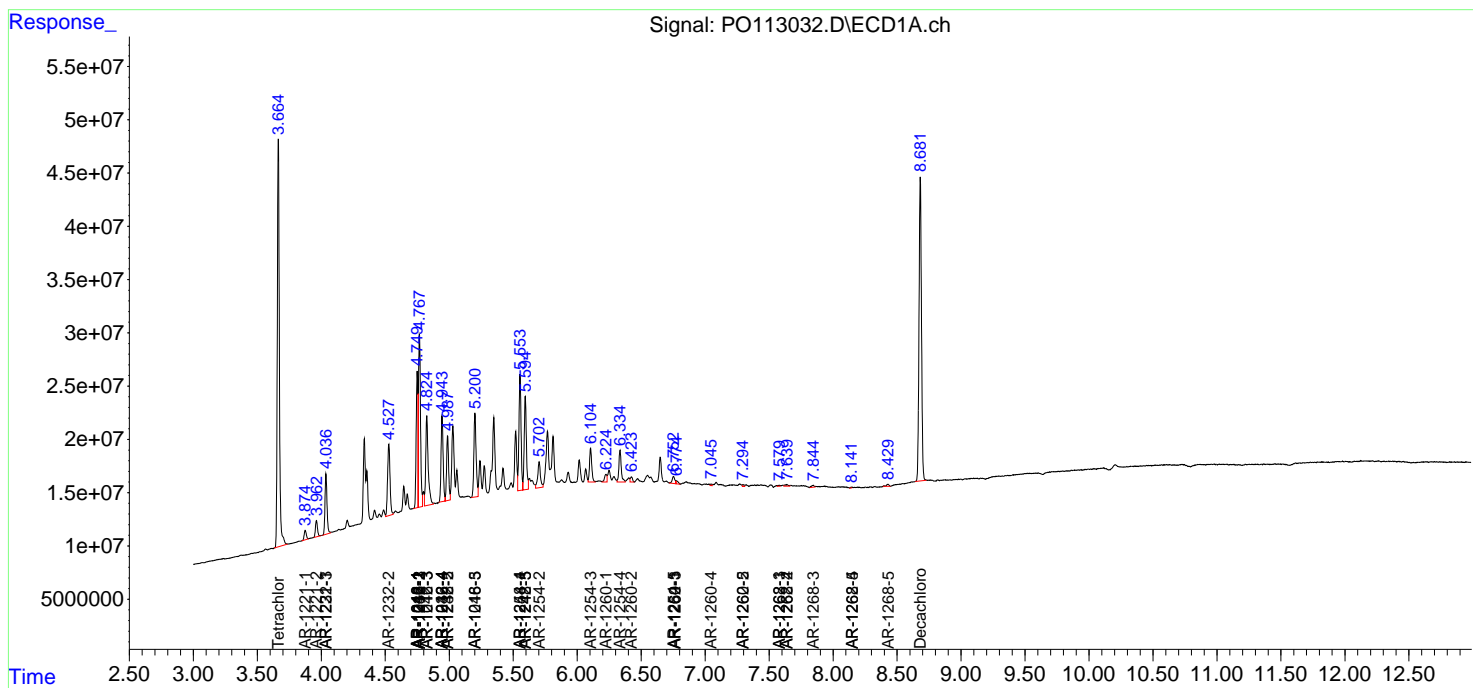
(f)=RT Delta > 1/2 Window (#)=Amounts differ by > 25% (m)=manual int.

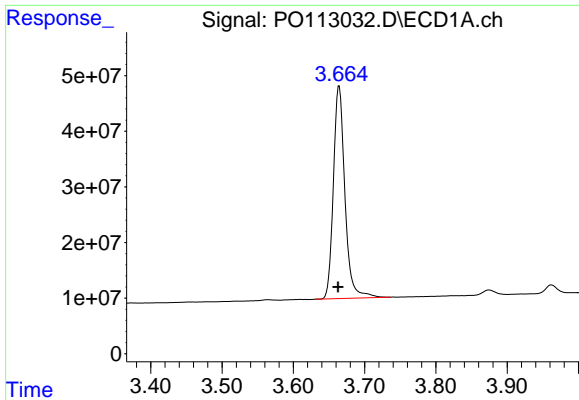
Data Path : Z:\pestpcbsrv\HPCHEM1\ECD\_O\Data\PO081825\  
 Data File : PO113032.D  
 Signal(s) : Signal #1: ECD1A.ch Signal #2: ECD2B.ch  
 Acq On : 18 Aug 2025 19:37  
 Operator : YP/AJ  
 Sample : AR1242ICV500  
 Misc :  
 ALS Vial : 12 Sample Multiplier: 1

Instrument :  
 ECD\_O  
 ClientSampleId :  
 ICVPO081825AR1242

Integration File signal 1: autoint1.e  
 Integration File signal 2: autoint2.e  
 Quant Time: Aug 19 06:20:37 2025  
 Quant Method : Z:\pestpcbsrv\HPCHEM1\ECD\_O\methods\PO081825.M  
 Quant Title : GC EXTRACTABLES  
 QLast Update : Tue Aug 19 06:08:32 2025  
 Response via : Initial Calibration  
 Integrator: ChemStation

Volume Inj. : 2 µl  
 Signal #1 Phase : ZB-MR1 Signal #2 Phase: ZB-MR2  
 Signal #1 Info : 30Mx0.32mmx 0.50µ Signal #2 Info : 30M x 0.32mm x 0.25µm

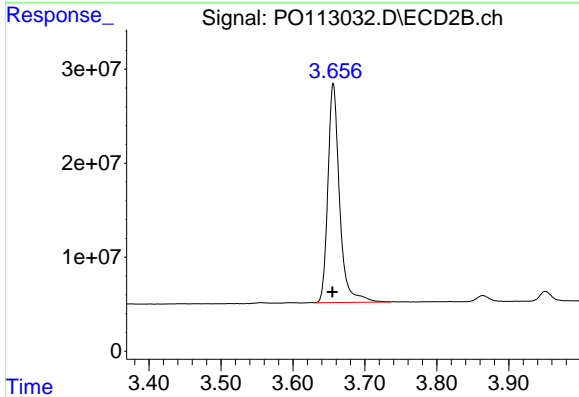




#1 Tetrachloro-m-xylene

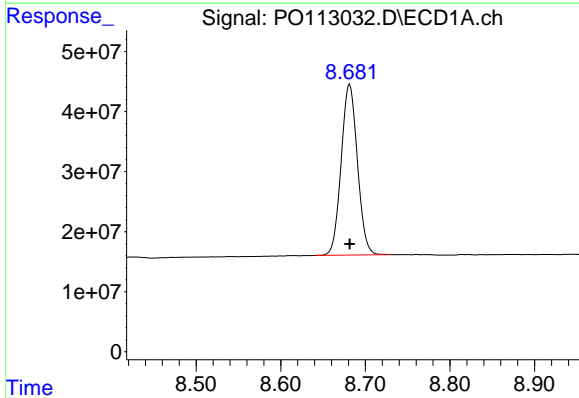
R.T.: 3.664 min  
 Delta R.T.: 0.001 min  
 Response: 429595535  
 Conc: 52.48 ng/ml

Instrument :  
 ECD\_O  
 ClientSampleId :  
 ICVPO081825AR1242



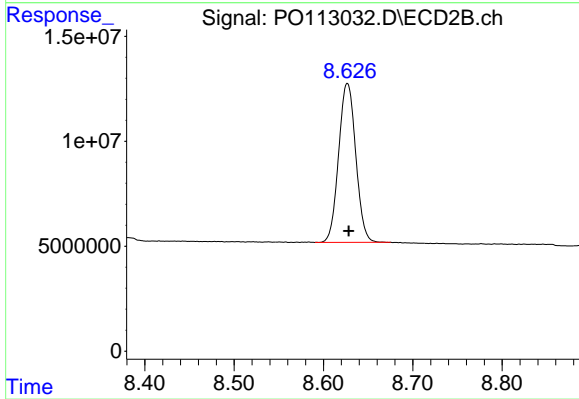
#1 Tetrachloro-m-xylene

R.T.: 3.656 min  
 Delta R.T.: 0.001 min  
 Response: 262944810  
 Conc: 51.96 ng/ml



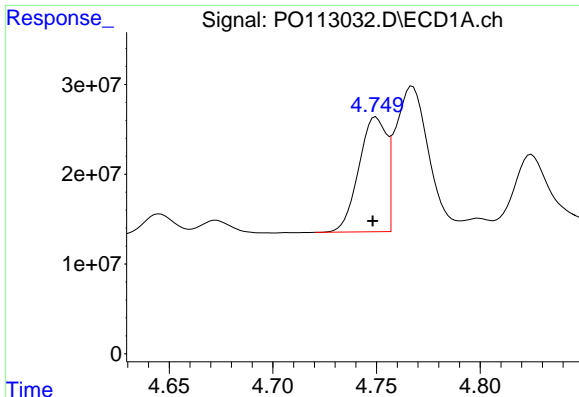
#2 Decachlorobiphenyl

R.T.: 8.682 min  
 Delta R.T.: 0.000 min  
 Response: 379648194  
 Conc: 54.77 ng/ml



#2 Decachlorobiphenyl

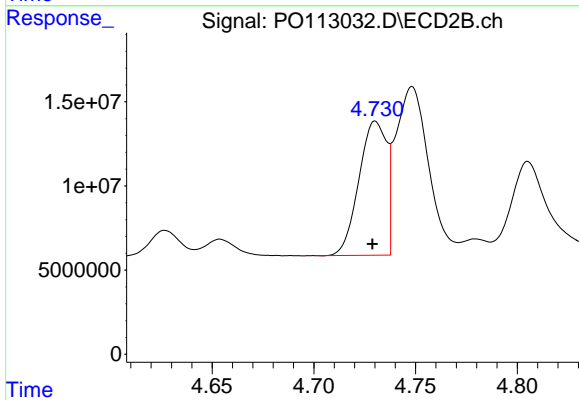
R.T.: 8.627 min  
 Delta R.T.: -0.002 min  
 Response: 100827827  
 Conc: 53.21 ng/ml



#3 AR-1016-1

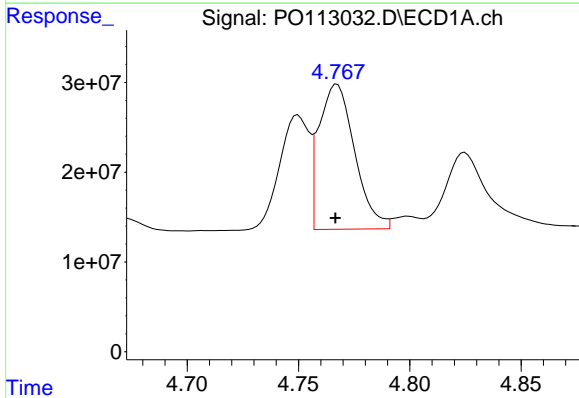
R.T.: 4.750 min  
 Delta R.T.: 0.002 min  
 Response: 118173090  
 Conc: 442.62 ng/ml

Instrument :  
 ECD\_O  
 ClientSampleId :  
 ICVPO081825AR1242



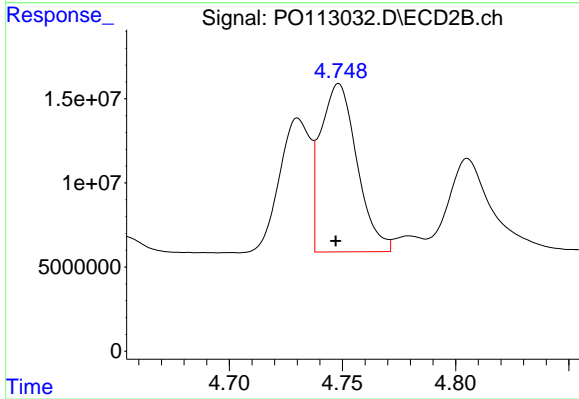
#3 AR-1016-1

R.T.: 4.730 min  
 Delta R.T.: 0.001 min  
 Response: 75544744  
 Conc: 442.89 ng/ml



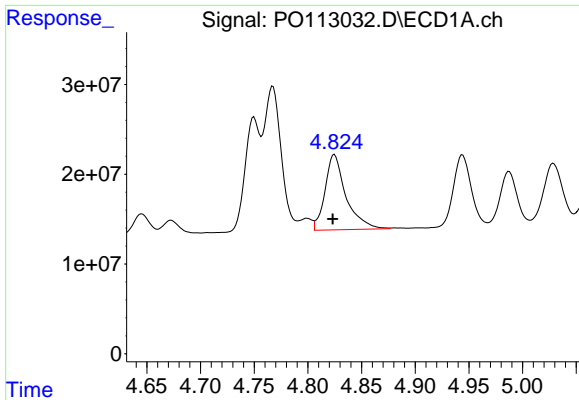
#4 AR-1016-2

R.T.: 4.767 min  
 Delta R.T.: 0.000 min  
 Response: 180544145  
 Conc: 449.75 ng/ml



#4 AR-1016-2

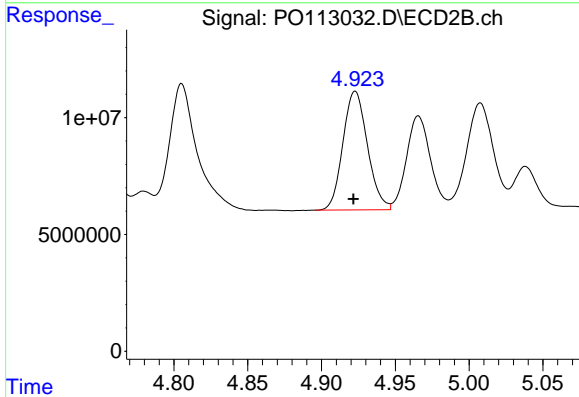
R.T.: 4.748 min  
 Delta R.T.: 0.001 min  
 Response: 112142400  
 Conc: 435.24 ng/ml



#5 AR-1016-3

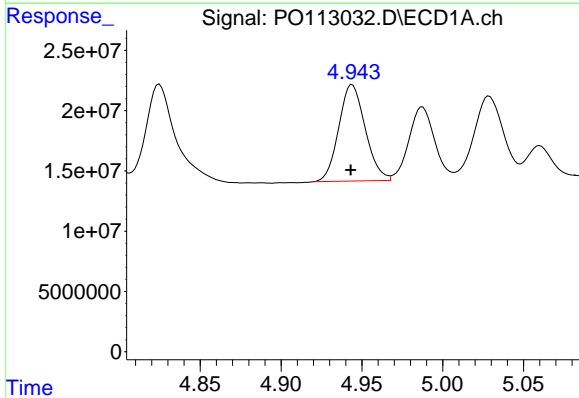
R.T.: 4.825 min  
 Delta R.T.: 0.001 min  
 Response: 114159730  
 Conc: 447.65 ng/ml

Instrument :  
 ECD\_O  
 ClientSampleId :  
 ICVPO081825AR1242



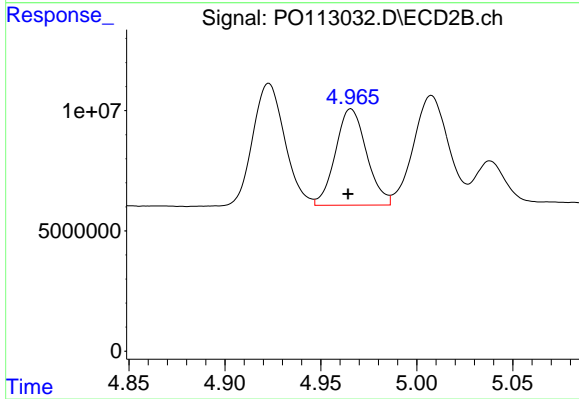
#5 AR-1016-3

R.T.: 4.923 min  
 Delta R.T.: 0.001 min  
 Response: 58830110  
 Conc: 421.38 ng/ml



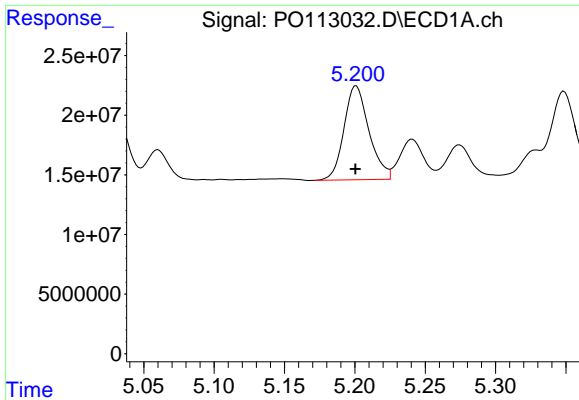
#6 AR-1016-4

R.T.: 4.944 min  
 Delta R.T.: 0.000 min  
 Response: 91221670  
 Conc: 418.32 ng/ml



#6 AR-1016-4

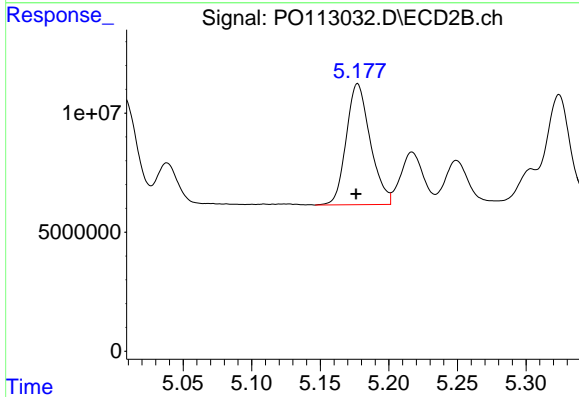
R.T.: 4.966 min  
 Delta R.T.: 0.002 min  
 Response: 45370916  
 Conc: 388.79 ng/ml



#7 AR-1016-5

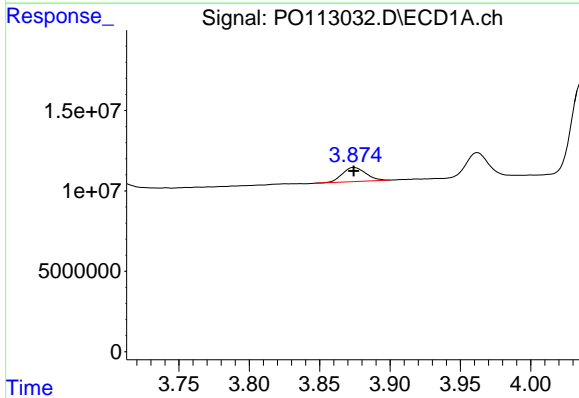
R.T.: 5.201 min  
 Delta R.T.: 0.000 min  
 Response: 97434228  
 Conc: 439.63 ng/ml

Instrument :  
 ECD\_O  
 ClientSampleId :  
 ICVPO081825AR1242



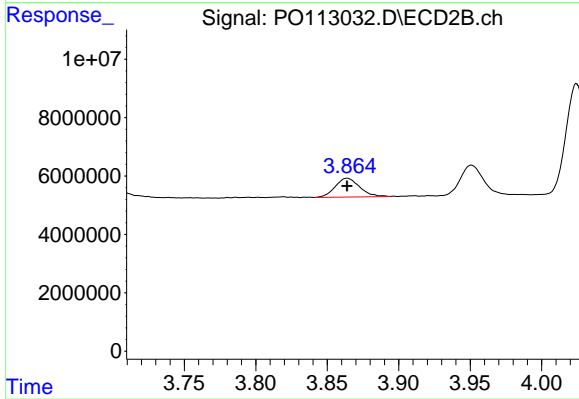
#7 AR-1016-5

R.T.: 5.177 min  
 Delta R.T.: 0.001 min  
 Response: 62072541  
 Conc: 435.51 ng/ml



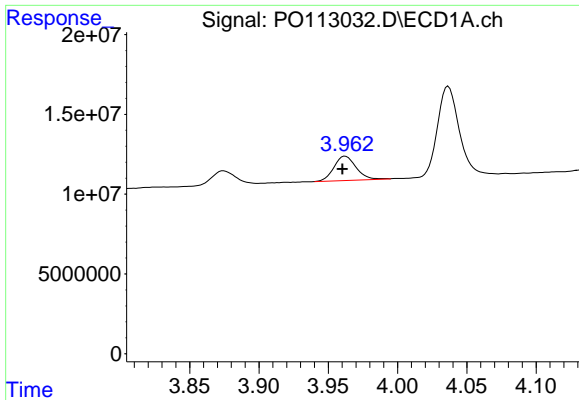
#8 AR-1221-1

R.T.: 3.874 min  
 Delta R.T.: 0.000 min  
 Response: 10199443  
 Conc: 109.00 ng/ml



#8 AR-1221-1

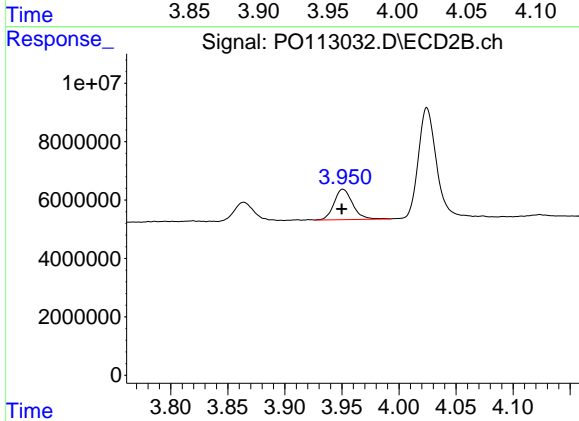
R.T.: 3.864 min  
 Delta R.T.: 0.000 min  
 Response: 7685749  
 Conc: 121.76 ng/ml



#9 AR-1221-2

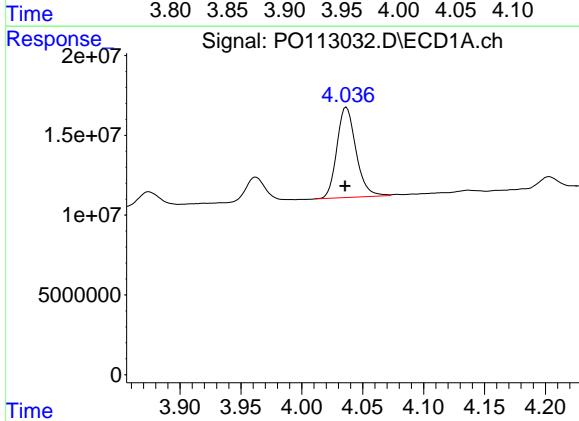
R.T.: 3.962 min  
 Delta R.T.: 0.002 min  
 Response: 16904543  
 Conc: 250.25 ng/ml

Instrument :  
 ECD\_O  
 ClientSampleId :  
 ICVPO081825AR1242



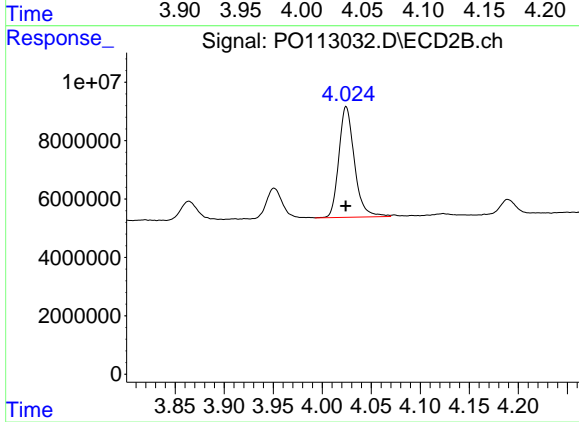
#9 AR-1221-2

R.T.: 3.951 min  
 Delta R.T.: 0.001 min  
 Response: 11775367  
 Conc: 252.29 ng/ml



#10 AR-1221-3

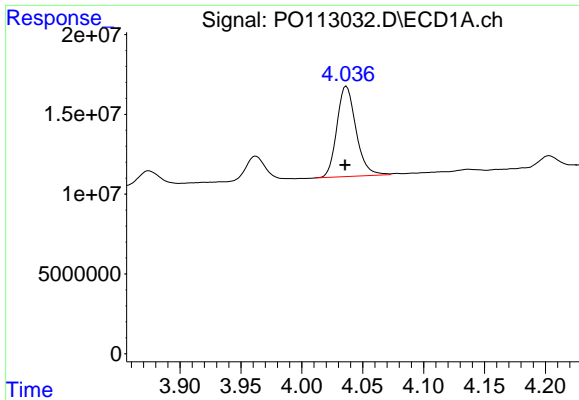
R.T.: 4.037 min  
 Delta R.T.: 0.001 min  
 Response: 61920691  
 Conc: 279.74 ng/ml



#10 AR-1221-3

R.T.: 4.024 min  
 Delta R.T.: 0.000 min  
 Response: 42024547  
 Conc: 283.04 ng/ml

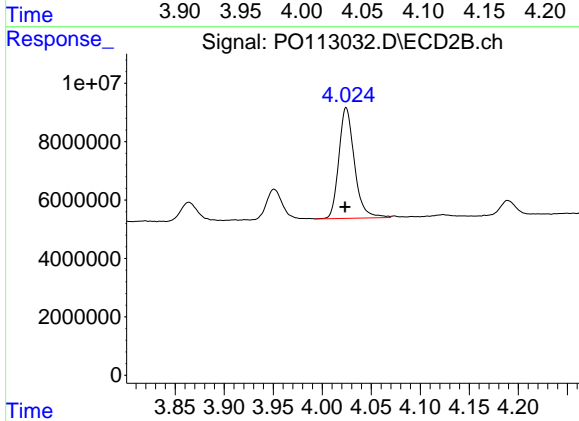




#11 AR-1232-1

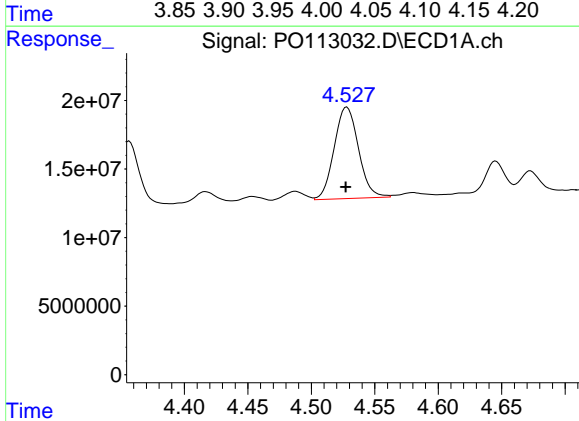
R.T.: 4.037 min  
 Delta R.T.: 0.001 min  
 Response: 61920691  
 Conc: 355.85 ng/ml

Instrument :  
 ECD\_O  
 ClientSampleId :  
 ICVPO081825AR1242



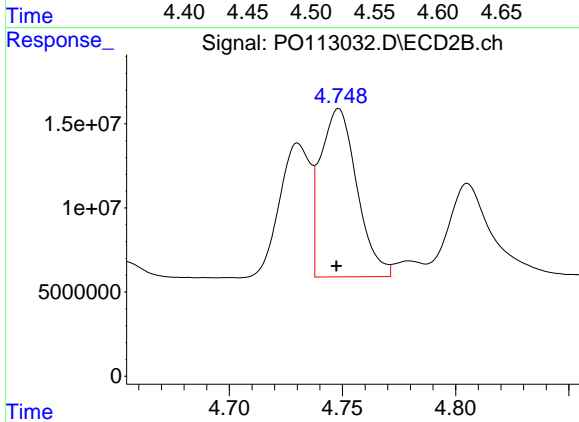
#11 AR-1232-1

R.T.: 4.024 min  
 Delta R.T.: 0.000 min  
 Response: 42024547  
 Conc: 357.95 ng/ml



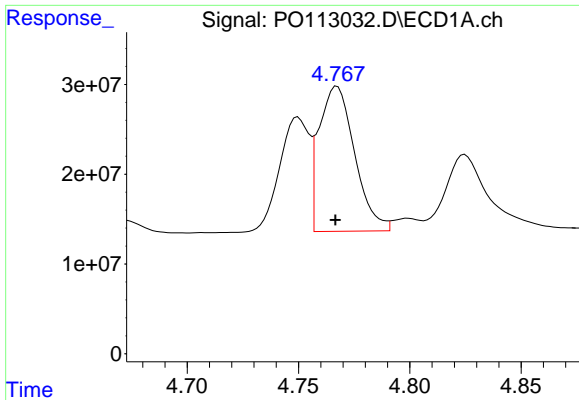
#12 AR-1232-2

R.T.: 4.528 min  
 Delta R.T.: 0.000 min  
 Response: 88923857  
 Conc: 890.55 ng/ml



#12 AR-1232-2

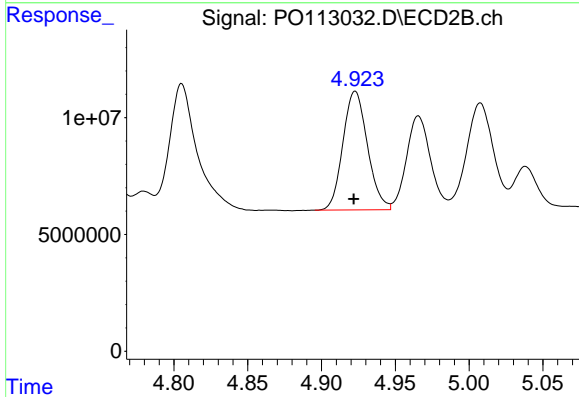
R.T.: 4.748 min  
 Delta R.T.: 0.001 min  
 Response: 112142400  
 Conc: 915.11 ng/ml



#13 AR-1232-3

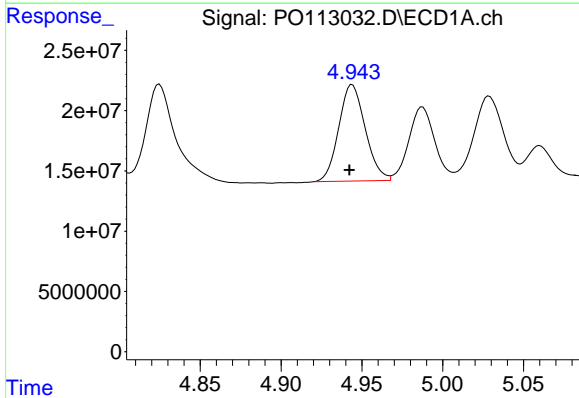
R.T.: 4.767 min  
 Delta R.T.: 0.000 min  
 Response: 180544145  
 Conc: 952.86 ng/ml

Instrument :  
 ECD\_O  
 ClientSampleId :  
 ICVPO081825AR1242



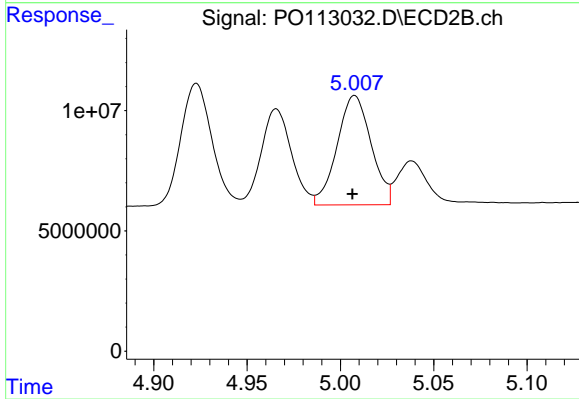
#13 AR-1232-3

R.T.: 4.923 min  
 Delta R.T.: 0.001 min  
 Response: 58830110  
 Conc: 928.72 ng/ml



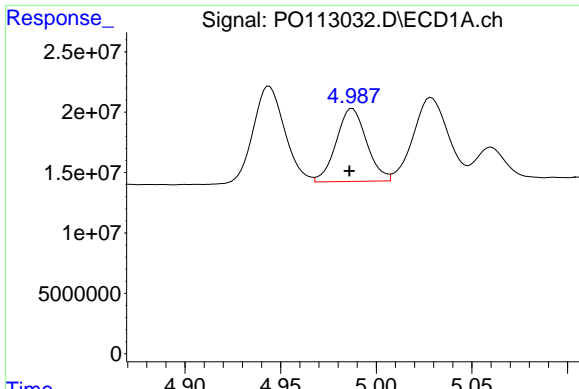
#14 AR-1232-4

R.T.: 4.944 min  
 Delta R.T.: 0.002 min  
 Response: 91221670  
 Conc: 968.70 ng/ml



#14 AR-1232-4

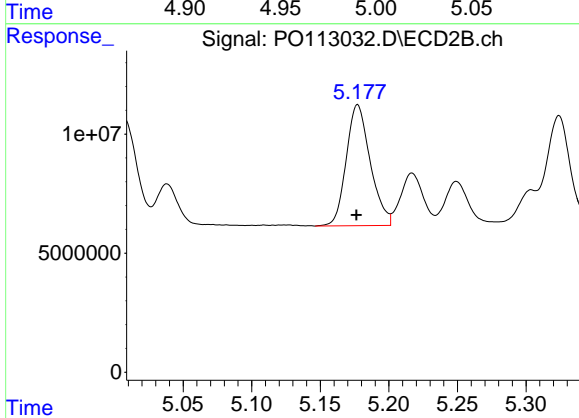
R.T.: 5.008 min  
 Delta R.T.: 0.001 min  
 Response: 57727565  
 Conc: 1026.79 ng/ml



#15 AR-1232-5

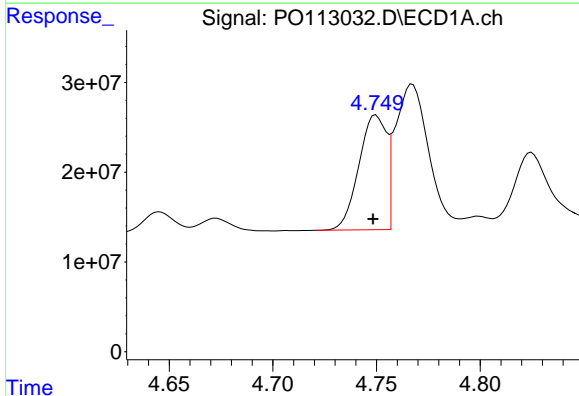
R.T.: 4.987 min  
 Delta R.T.: 0.001 min  
 Response: 66815251  
 Conc: 1078.66 ng/ml

Instrument :  
 ECD\_O  
 ClientSampleId :  
 ICVPO081825AR1242



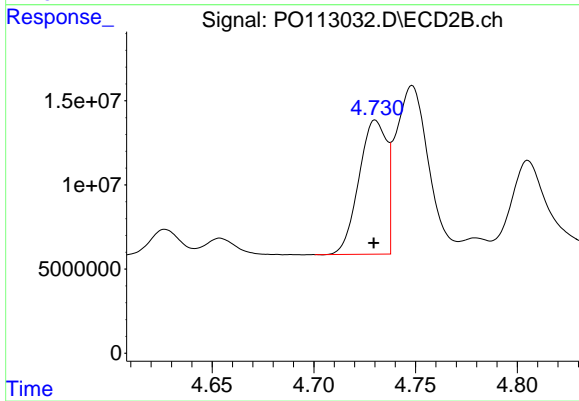
#15 AR-1232-5

R.T.: 5.177 min  
 Delta R.T.: 0.000 min  
 Response: 62072541  
 Conc: 1036.90 ng/ml



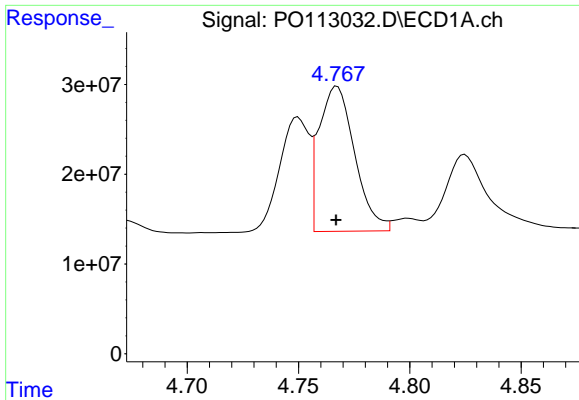
#16 AR-1242-1

R.T.: 4.750 min  
 Delta R.T.: 0.001 min  
 Response: 118173090  
 Conc: 513.95 ng/ml



#16 AR-1242-1

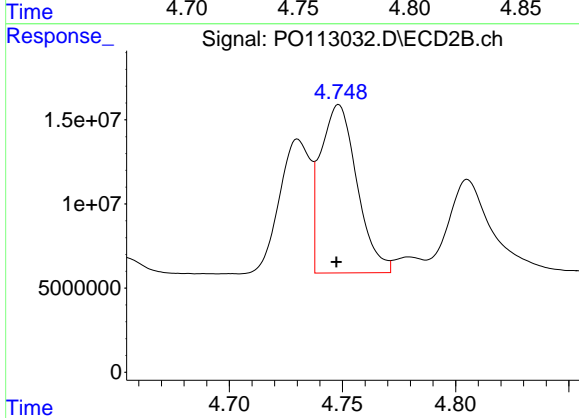
R.T.: 4.730 min  
 Delta R.T.: 0.000 min  
 Response: 75544744  
 Conc: 522.79 ng/ml



#17 AR-1242-2

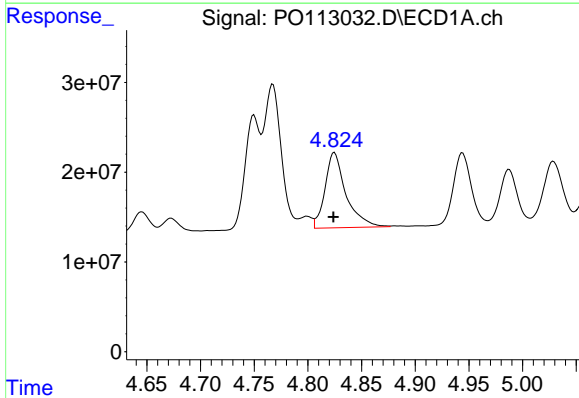
R.T.: 4.767 min  
 Delta R.T.: 0.000 min  
 Response: 180544145  
 Conc: 525.41 ng/ml

Instrument :  
 ECD\_O  
 ClientSampleId :  
 ICVPO081825AR1242



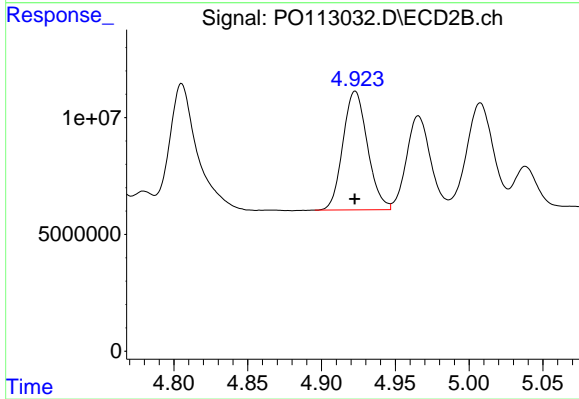
#17 AR-1242-2

R.T.: 4.748 min  
 Delta R.T.: 0.001 min  
 Response: 112142400  
 Conc: 517.00 ng/ml



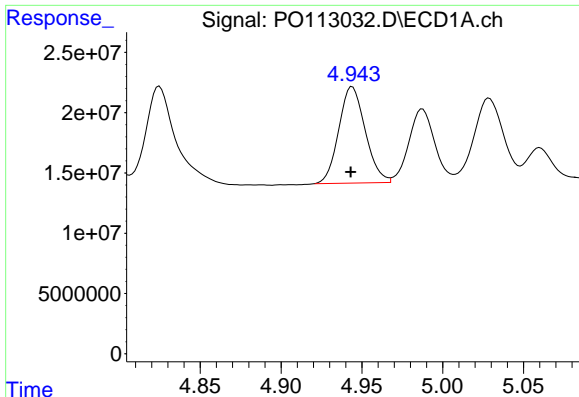
#18 AR-1242-3

R.T.: 4.825 min  
 Delta R.T.: 0.000 min  
 Response: 114159730  
 Conc: 514.50 ng/ml



#18 AR-1242-3

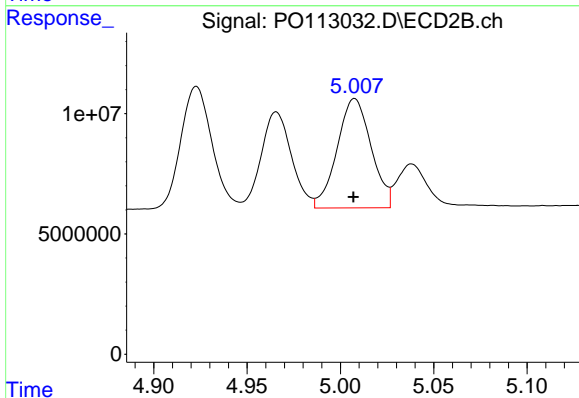
R.T.: 4.923 min  
 Delta R.T.: 0.000 min  
 Response: 58830110  
 Conc: 502.97 ng/ml



#19 AR-1242-4

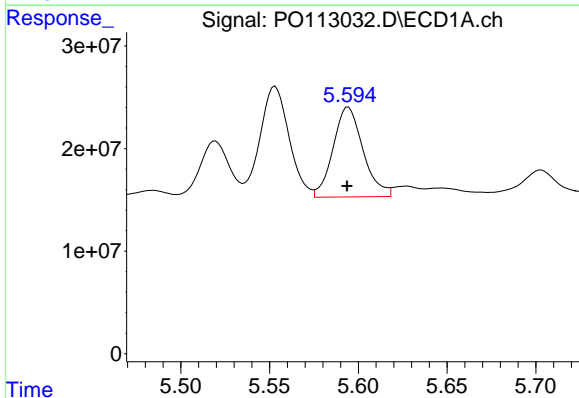
R.T.: 4.944 min  
 Delta R.T.: 0.001 min  
 Response: 91221670  
 Conc: 525.89 ng/ml

Instrument :  
 ECD\_O  
 ClientSampleId :  
 ICVPO081825AR1242



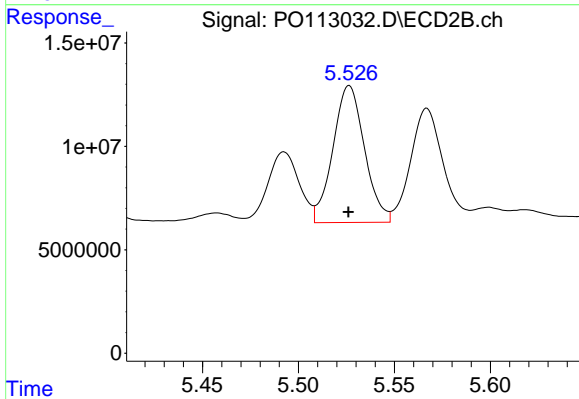
#19 AR-1242-4

R.T.: 5.008 min  
 Delta R.T.: 0.000 min  
 Response: 57727565  
 Conc: 490.72 ng/ml



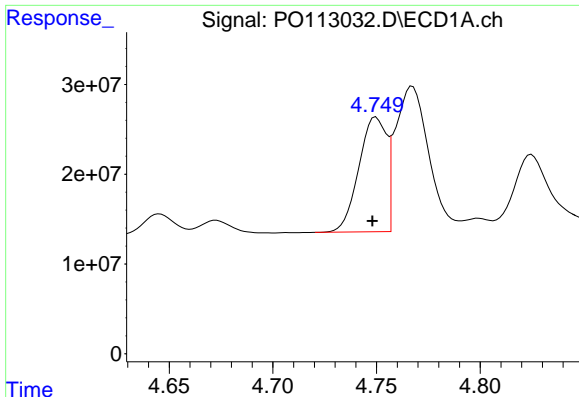
#20 AR-1242-5

R.T.: 5.594 min  
 Delta R.T.: 0.000 min  
 Response: 103251947  
 Conc: 515.84 ng/ml



#20 AR-1242-5

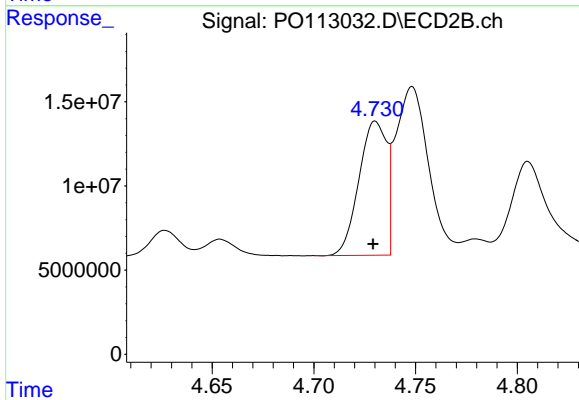
R.T.: 5.526 min  
 Delta R.T.: 0.000 min  
 Response: 75933701  
 Conc: 509.17 ng/ml



#21 AR-1248-1

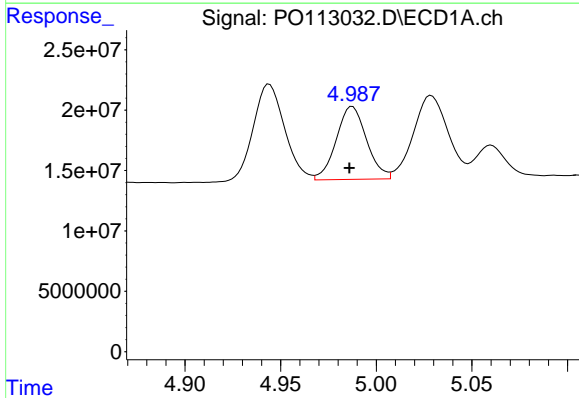
R.T.: 4.750 min  
 Delta R.T.: 0.002 min  
 Response: 118173090  
 Conc: 677.34 ng/ml

Instrument :  
 ECD\_O  
 ClientSampleId :  
 ICVPO081825AR1242



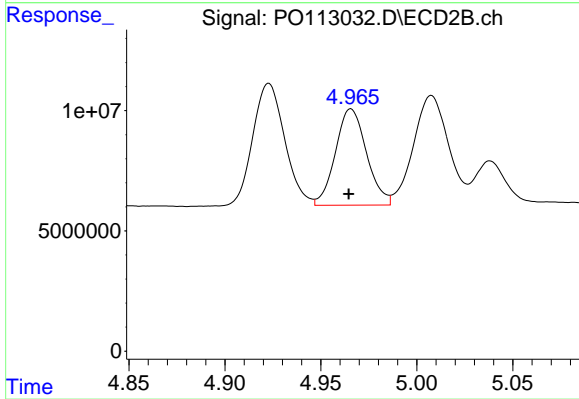
#21 AR-1248-1

R.T.: 4.730 min  
 Delta R.T.: 0.001 min  
 Response: 75544744  
 Conc: 677.46 ng/ml



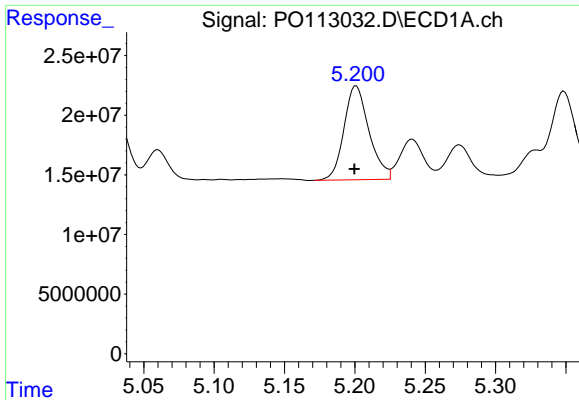
#22 AR-1248-2

R.T.: 4.987 min  
 Delta R.T.: 0.002 min  
 Response: 66815251  
 Conc: 276.25 ng/ml



#22 AR-1248-2

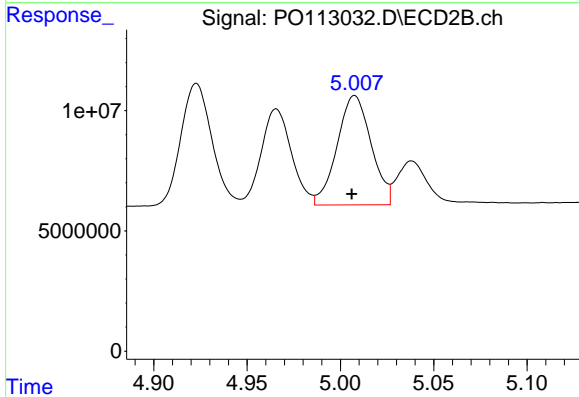
R.T.: 4.966 min  
 Delta R.T.: 0.001 min  
 Response: 45370916  
 Conc: 282.33 ng/ml



#23 AR-1248-3

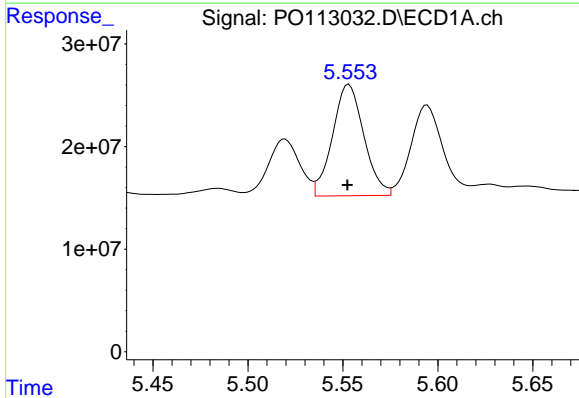
R.T.: 5.201 min  
 Delta R.T.: 0.001 min  
 Response: 97434228  
 Conc: 305.57 ng/ml

Instrument :  
 ECD\_O  
 ClientSampleId :  
 ICVPO081825AR1242



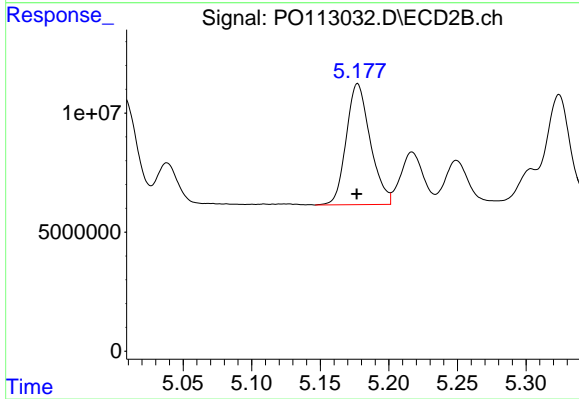
#23 AR-1248-3

R.T.: 5.008 min  
 Delta R.T.: 0.002 min  
 Response: 57727565  
 Conc: 340.25 ng/ml



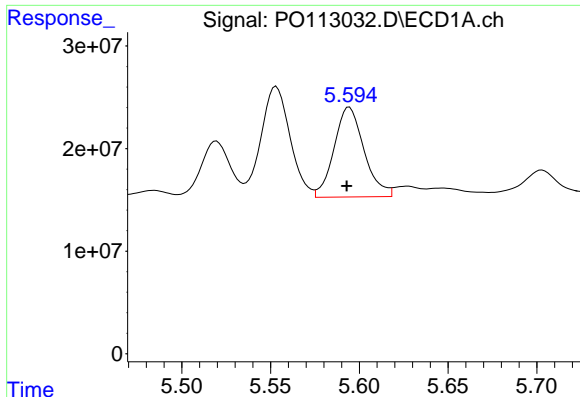
#24 AR-1248-4

R.T.: 5.553 min  
 Delta R.T.: 0.000 min  
 Response: 124865991  
 Conc: 249.93 ng/ml



#24 AR-1248-4

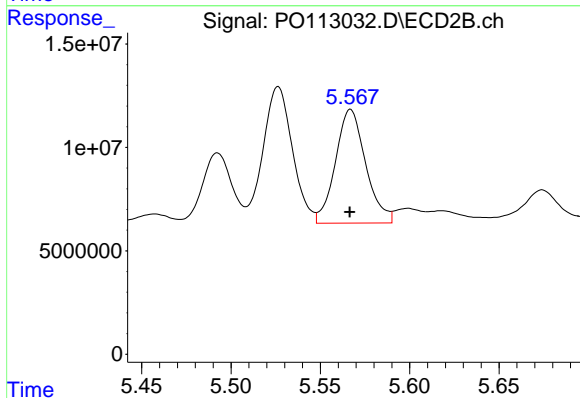
R.T.: 5.177 min  
 Delta R.T.: 0.000 min  
 Response: 62072541  
 Conc: 311.58 ng/ml



#25 AR-1248-5

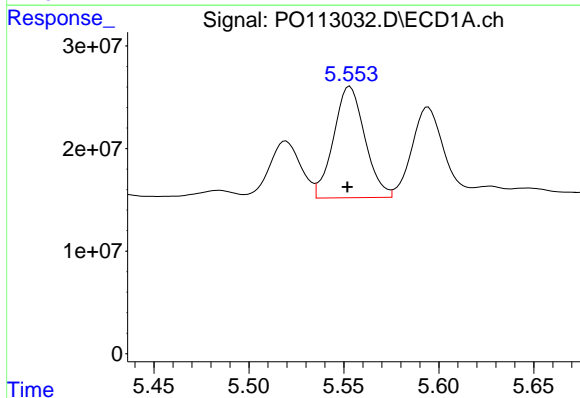
R.T.: 5.594 min  
 Delta R.T.: 0.001 min  
 Response: 103251947  
 Conc: 302.36 ng/ml

Instrument :  
 ECD\_O  
 ClientSampleId :  
 ICVPO081825AR1242



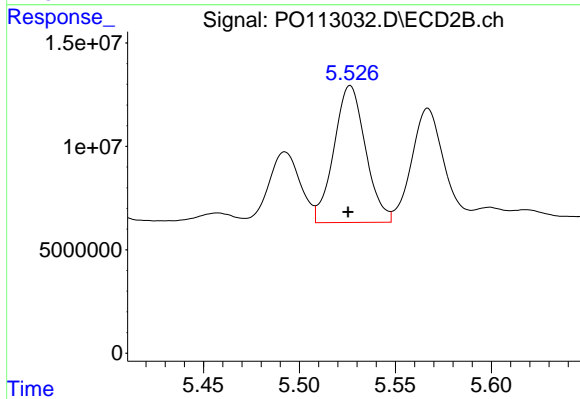
#25 AR-1248-5

R.T.: 5.567 min  
 Delta R.T.: 0.000 min  
 Response: 64844947  
 Conc: 305.45 ng/ml



#26 AR-1254-1

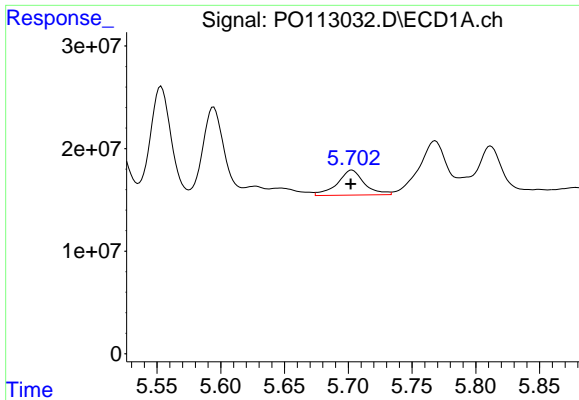
R.T.: 5.553 min  
 Delta R.T.: 0.001 min  
 Response: 124865991  
 Conc: 231.24 ng/ml



#26 AR-1254-1

R.T.: 5.526 min  
 Delta R.T.: 0.001 min  
 Response: 75933701  
 Conc: 240.79 ng/ml

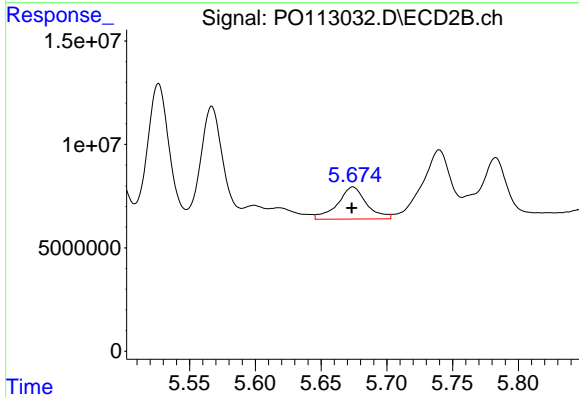




#27 AR-1254-2

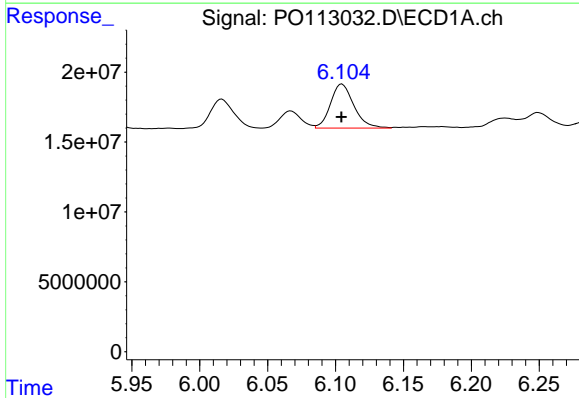
R.T.: 5.703 min  
 Delta R.T.: 0.001 min  
 Response: 35829110  
 Conc: 72.61 ng/ml

Instrument :  
 ECD\_O  
 ClientSampleId :  
 ICVPO081825AR1242



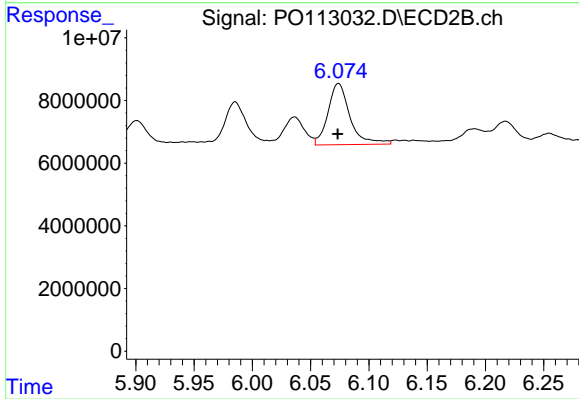
#27 AR-1254-2

R.T.: 5.674 min  
 Delta R.T.: 0.000 min  
 Response: 23732343  
 Conc: 84.66 ng/ml



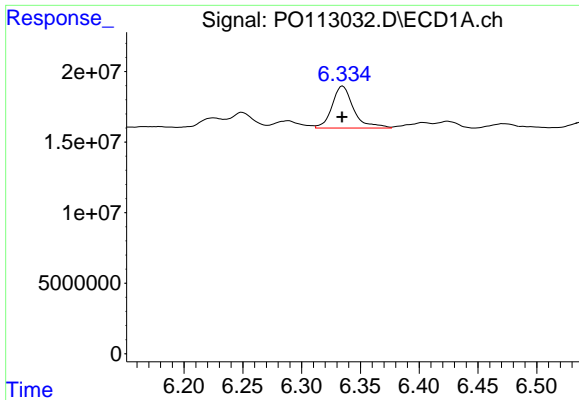
#28 AR-1254-3

R.T.: 6.105 min  
 Delta R.T.: 0.000 min  
 Response: 37859986  
 Conc: 51.24 ng/ml



#28 AR-1254-3

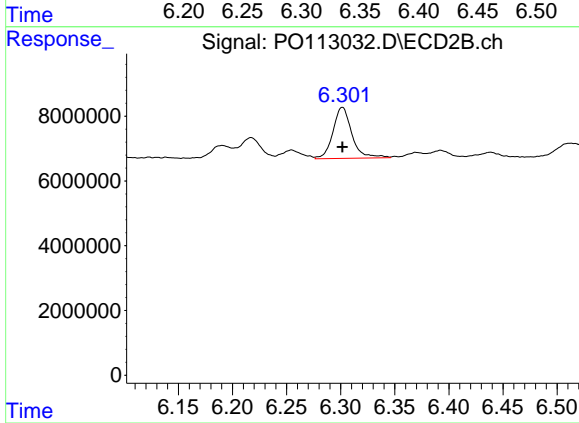
R.T.: 6.074 min  
 Delta R.T.: 0.000 min  
 Response: 25807712  
 Conc: 61.90 ng/ml



#29 AR-1254-4

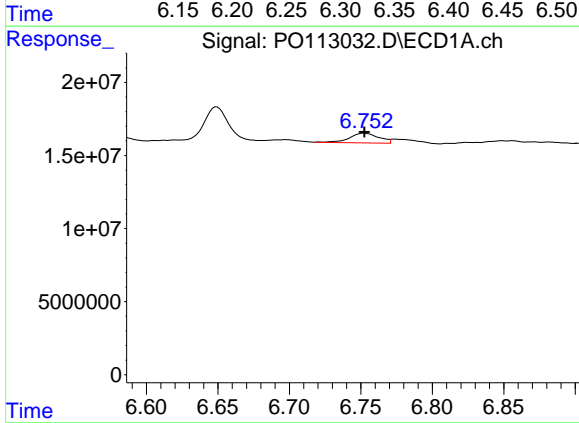
R.T.: 6.335 min  
 Delta R.T.: 0.000 min  
 Response: 37973386  
 Conc: 68.17 ng/ml

Instrument :  
 ECD\_O  
 ClientSampleId :  
 ICVPO081825AR1242



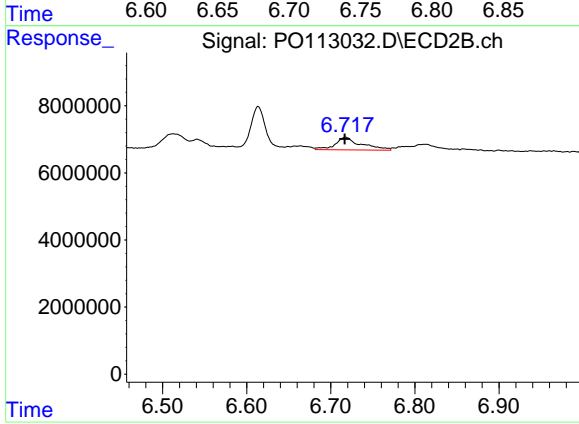
#29 AR-1254-4

R.T.: 6.302 min  
 Delta R.T.: 0.000 min  
 Response: 19192149  
 Conc: 69.83 ng/ml



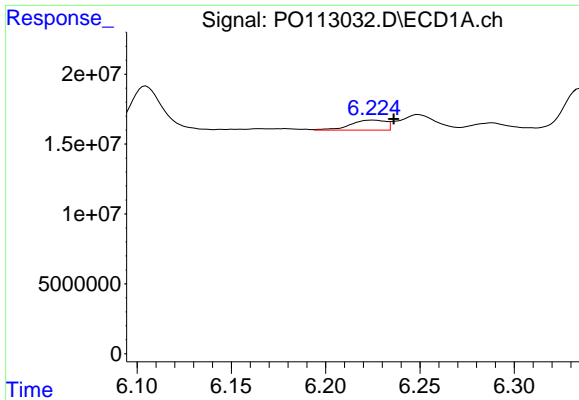
#30 AR-1254-5

R.T.: 6.753 min  
 Delta R.T.: 0.000 min  
 Response: 9465610  
 Conc: 13.50 ng/ml



#30 AR-1254-5

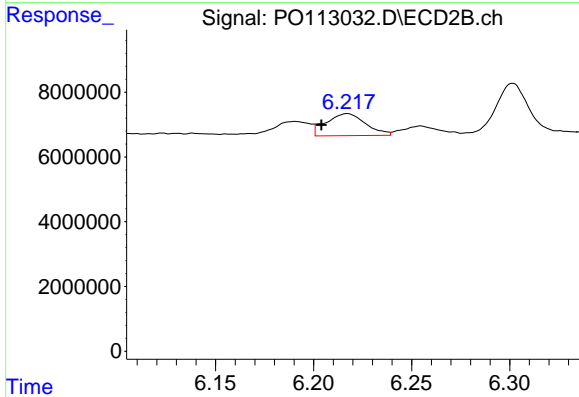
R.T.: 6.718 min  
 Delta R.T.: 0.000 min  
 Response: 8078927  
 Conc: 22.60 ng/ml



#31 AR-1260-1

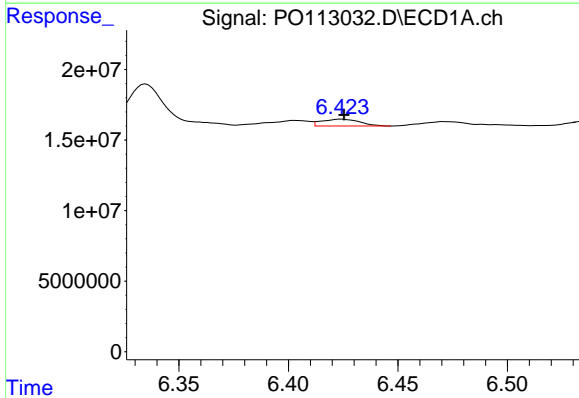
R.T.: 6.225 min  
 Delta R.T.: -0.011 min  
 Response: 9386897  
 Conc: 21.05 ng/ml

Instrument :  
 ECD\_O  
 ClientSampleId :  
 ICVPO081825AR1242



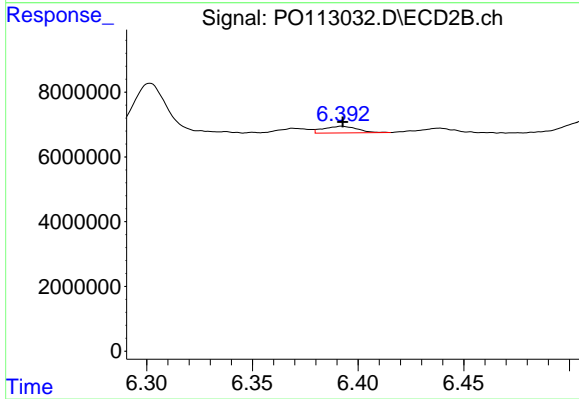
#31 AR-1260-1

R.T.: 6.217 min  
 Delta R.T.: 0.013 min  
 Response: 9625151  
 Conc: 37.74 ng/ml



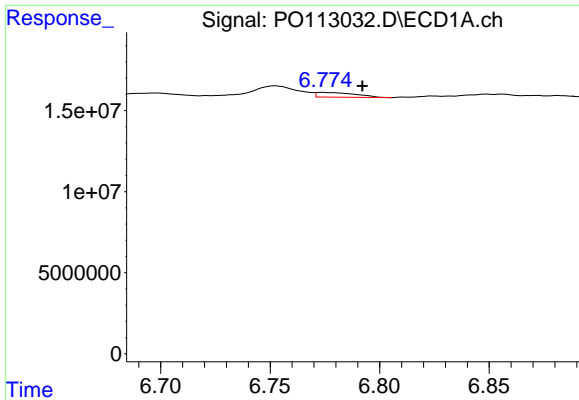
#32 AR-1260-2

R.T.: 6.424 min  
 Delta R.T.: -0.001 min  
 Response: 5873167  
 Conc: 8.55 ng/ml



#32 AR-1260-2

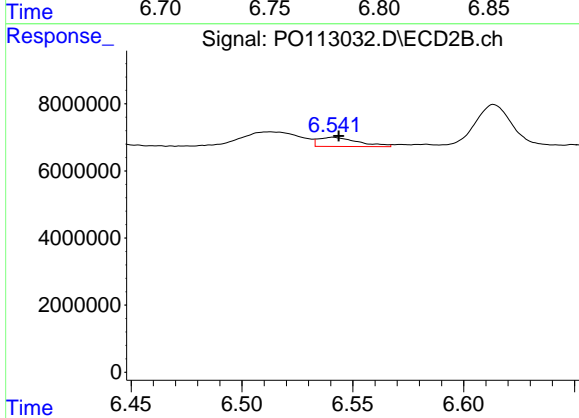
R.T.: 6.392 min  
 Delta R.T.: 0.000 min  
 Response: 2299064  
 Conc: 6.65 ng/ml



#33 AR-1260-3

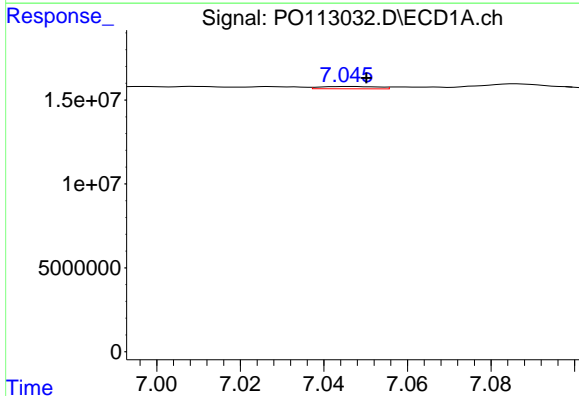
R.T.: 6.774 min  
 Delta R.T.: -0.018 min  
 Response: 3573448  
 Conc: 5.79 ng/ml

Instrument :  
 ECD\_O  
 ClientSampleId :  
 ICVPO081825AR1242



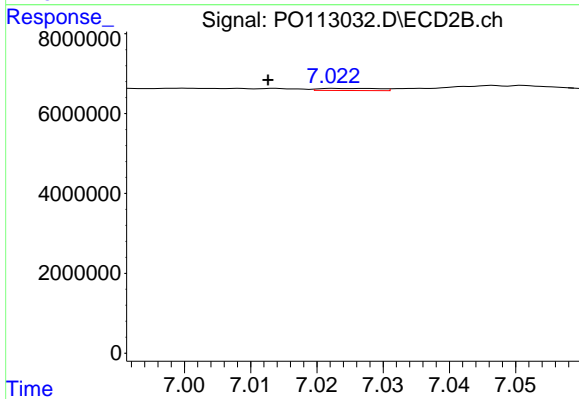
#33 AR-1260-3

R.T.: 6.541 min  
 Delta R.T.: -0.003 min  
 Response: 3410698  
 Conc: 11.47 ng/ml



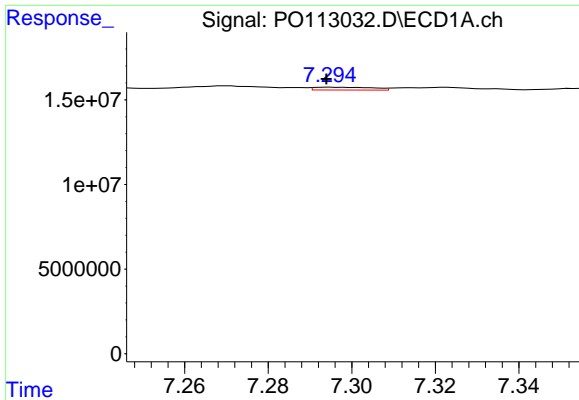
#34 AR-1260-4

R.T.: 7.046 min  
 Delta R.T.: -0.004 min  
 Response: 1350431  
 Conc: 3.02 ng/ml



#34 AR-1260-4

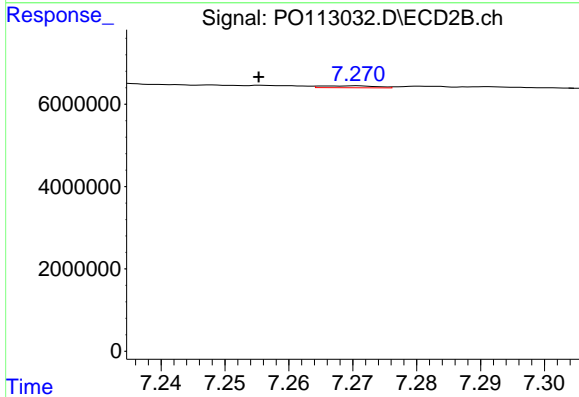
R.T.: 7.023 min  
 Delta R.T.: 0.011 min  
 Response: 343007  
 Conc: 1.66 ng/ml



#35 AR-1260-5

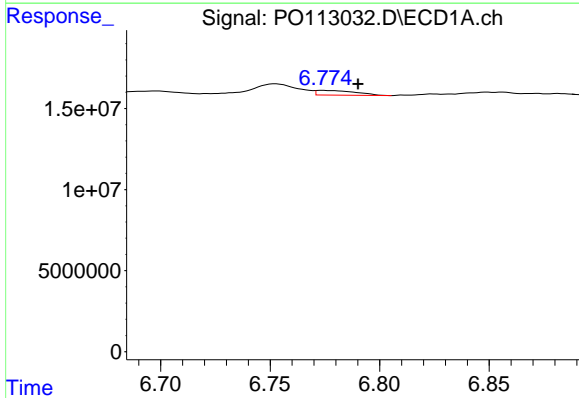
R.T.: 7.295 min  
 Delta R.T.: 0.000 min  
 Response: 1620768  
 Conc: 1.34 ng/ml

Instrument :  
 ECD\_O  
 ClientSampleId :  
 ICVPO081825AR1242



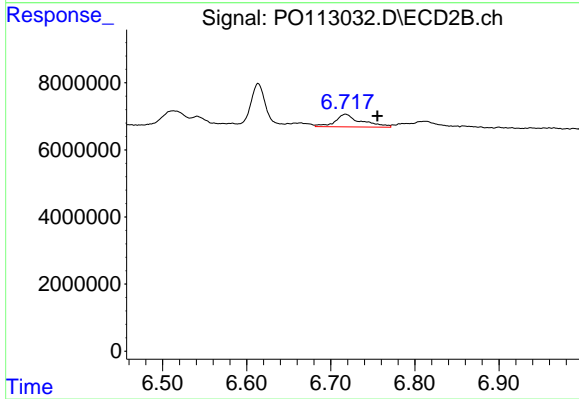
#35 AR-1260-5

R.T.: 7.270 min  
 Delta R.T.: 0.015 min  
 Response: 282374  
 Conc: 0.60 ng/ml



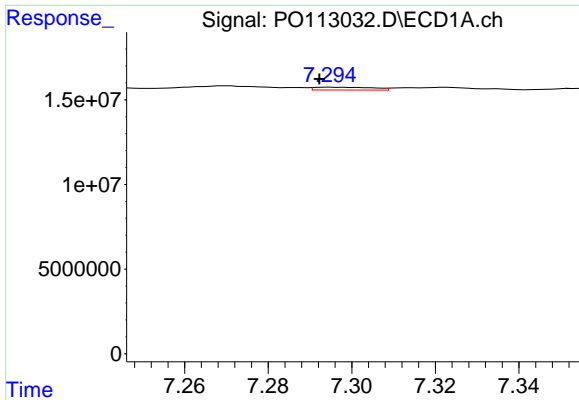
#36 AR-1262-1

R.T.: 6.774 min  
 Delta R.T.: -0.016 min  
 Response: 3573448  
 Conc: 3.90 ng/ml



#36 AR-1262-1

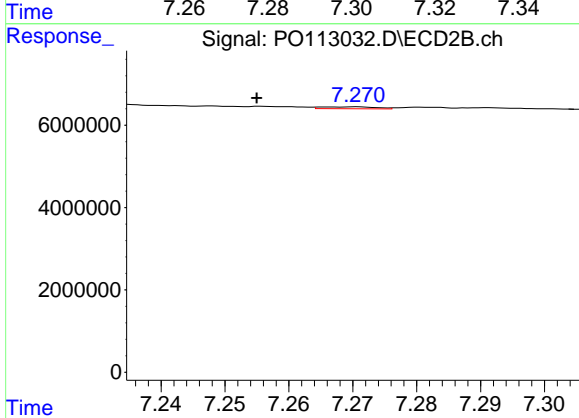
R.T.: 6.718 min  
 Delta R.T.: -0.038 min  
 Response: 8078927  
 Conc: 19.49 ng/ml



#37 AR-1262-2

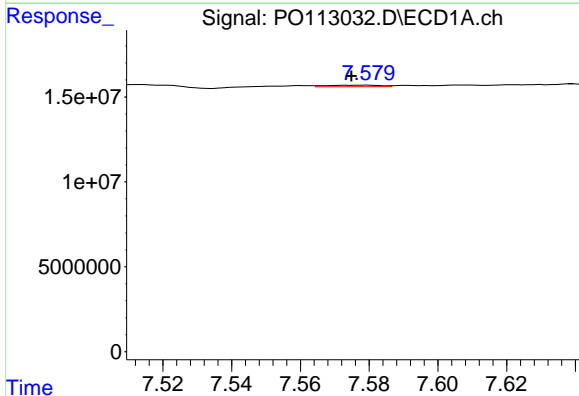
R.T.: 7.295 min  
 Delta R.T.: 0.002 min  
 Response: 1620768  
 Conc: 1.07 ng/ml

Instrument :  
 ECD\_O  
 ClientSampleId :  
 ICVPO081825AR1242



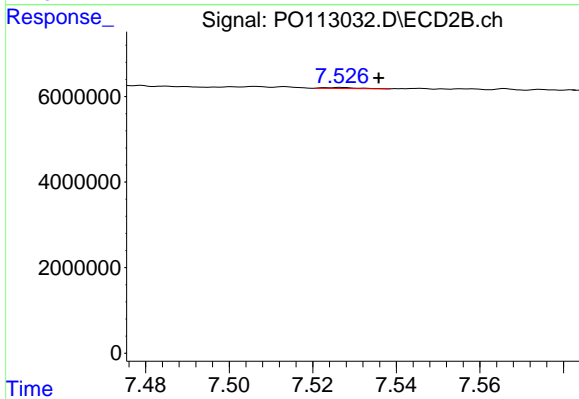
#37 AR-1262-2

R.T.: 7.270 min  
 Delta R.T.: 0.015 min  
 Response: 282374  
 Conc: 0.55 ng/ml



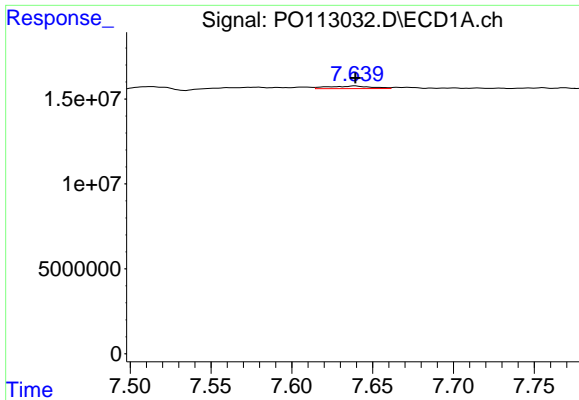
#38 AR-1262-3

R.T.: 7.579 min  
 Delta R.T.: 0.004 min  
 Response: 987737  
 Conc: 1.78 ng/ml



#38 AR-1262-3

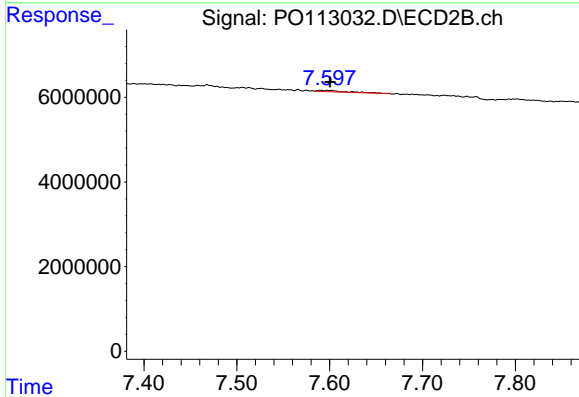
R.T.: 7.527 min  
 Delta R.T.: -0.009 min  
 Response: 146234  
 Conc: 0.81 ng/ml



#39 AR-1262-4

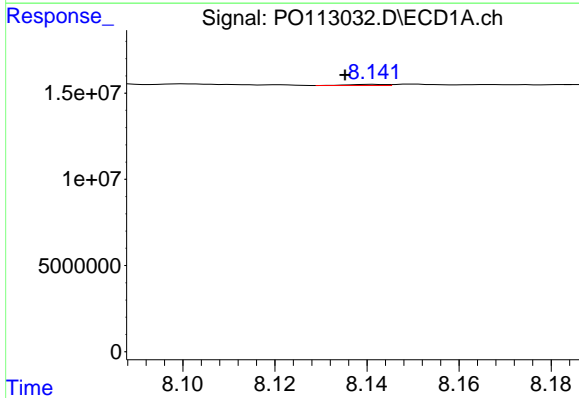
R.T.: 7.639 min  
 Delta R.T.: 0.000 min  
 Response: 2763503  
 Conc: 2.83 ng/ml

Instrument :  
 ECD\_O  
 ClientSampleId :  
 ICVPO081825AR1242



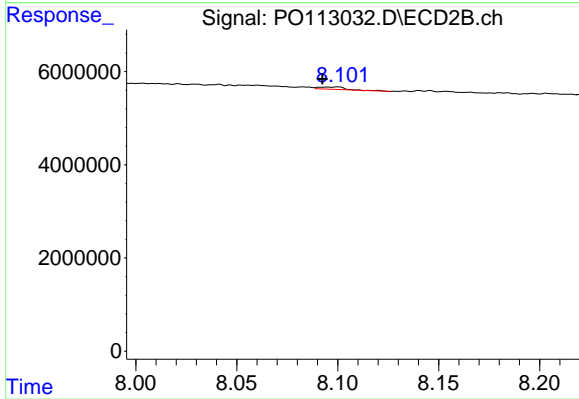
#39 AR-1262-4

R.T.: 7.591 min  
 Delta R.T.: -0.010 min  
 Response: 642555  
 Conc: 2.22 ng/ml



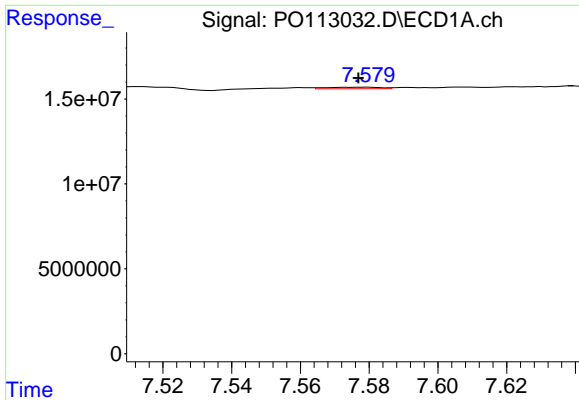
#40 AR-1262-5

R.T.: 8.142 min  
 Delta R.T.: 0.006 min  
 Response: 371692  
 Conc: 0.89 ng/ml



#40 AR-1262-5

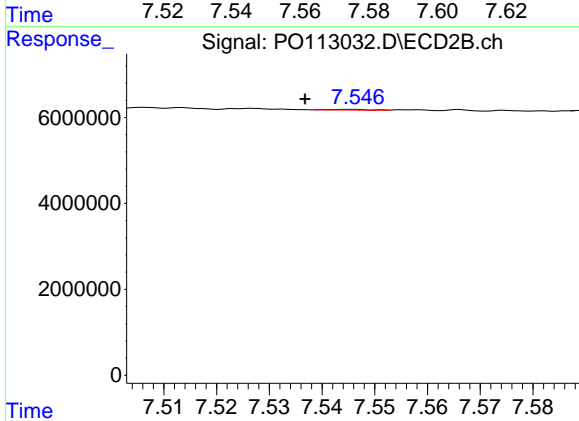
R.T.: 8.100 min  
 Delta R.T.: 0.008 min  
 Response: 431115  
 Conc: 3.98 ng/ml



#41 AR-1268-1

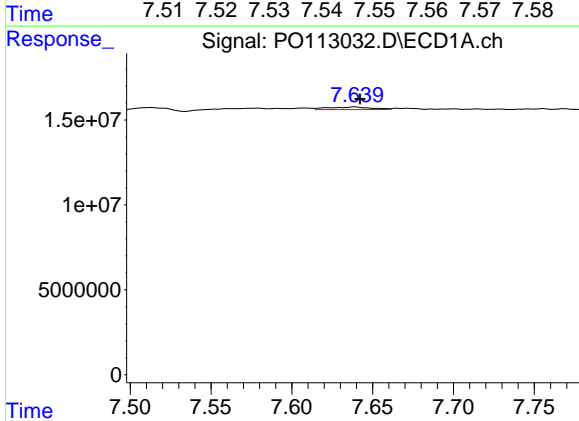
R.T.: 7.579 min  
 Delta R.T.: 0.002 min  
 Response: 987737  
 Conc: 0.57 ng/ml

Instrument :  
 ECD\_O  
 ClientSampleId :  
 ICVPO081825AR1242



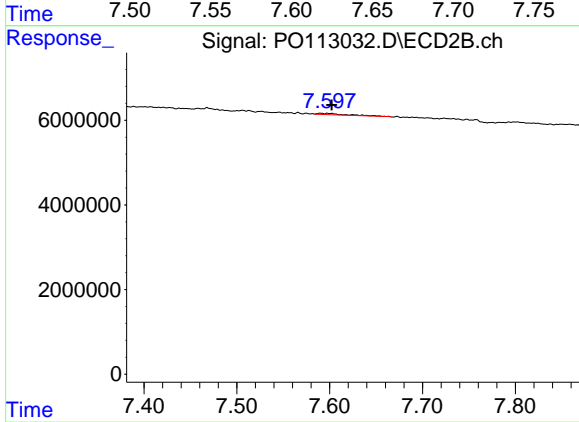
#41 AR-1268-1

R.T.: 7.545 min  
 Delta R.T.: 0.009 min  
 Response: 92765  
 Conc: 0.18 ng/ml



#42 AR-1268-2

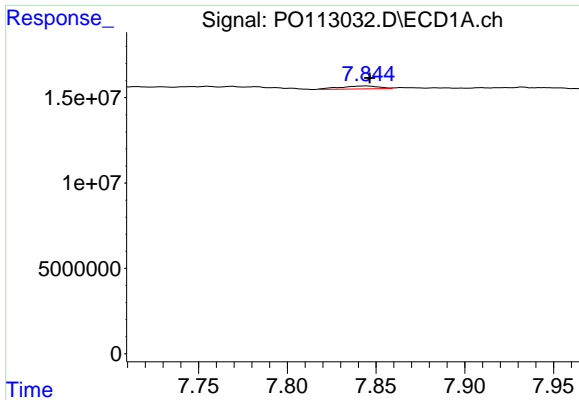
R.T.: 7.639 min  
 Delta R.T.: -0.003 min  
 Response: 2763503  
 Conc: 1.91 ng/ml



#42 AR-1268-2

R.T.: 7.591 min  
 Delta R.T.: -0.011 min  
 Response: 642555  
 Conc: 1.55 ng/ml

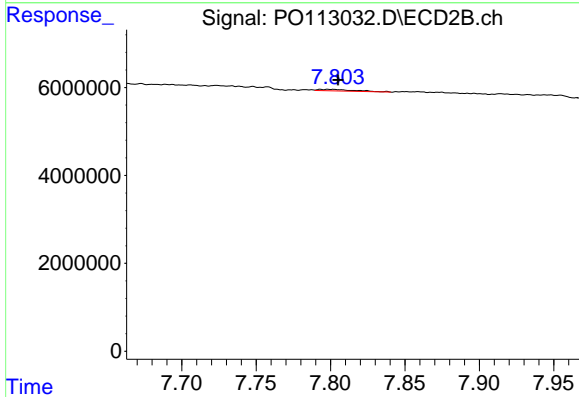




#43 AR-1268-3

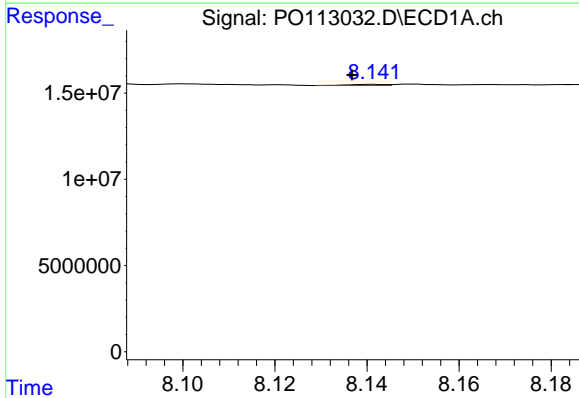
R.T.: 7.845 min  
 Delta R.T.: -0.002 min  
 Response: 2647177  
 Conc: 2.19 ng/ml

Instrument :  
 ECD\_O  
 ClientSampleId :  
 ICVPO081825AR1242



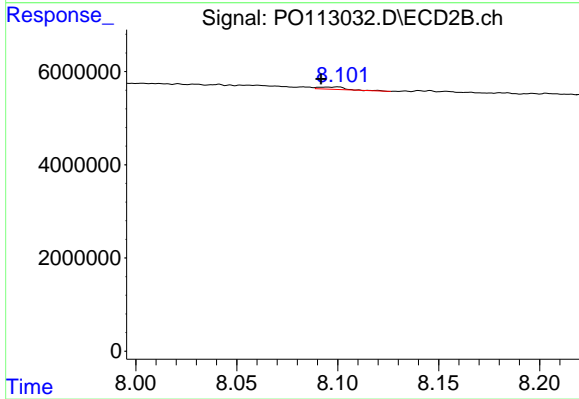
#43 AR-1268-3

R.T.: 7.794 min  
 Delta R.T.: -0.012 min  
 Response: 574184  
 Conc: 1.76 ng/ml



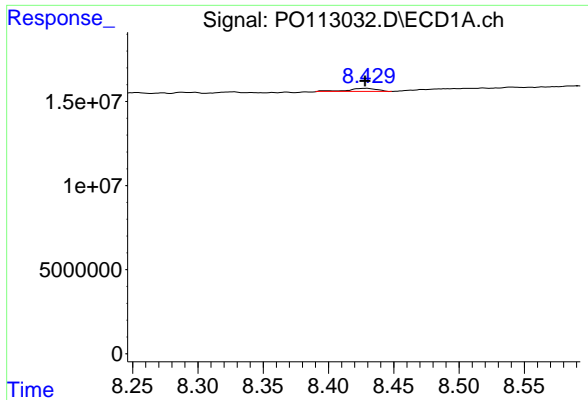
#44 AR-1268-4

R.T.: 8.142 min  
 Delta R.T.: 0.005 min  
 Response: 371692  
 Conc: 0.81 ng/ml



#44 AR-1268-4

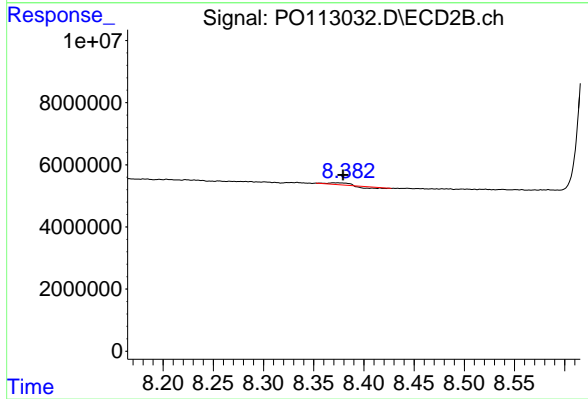
R.T.: 8.100 min  
 Delta R.T.: 0.008 min  
 Response: 431115  
 Conc: 3.58 ng/ml



#45 AR-1268-5

R.T.: 8.429 min  
 Delta R.T.: 0.000 min  
 Response: 2739849  
 Conc: 0.86 ng/ml

Instrument :  
 ECD\_O  
 ClientSampleId :  
 ICVPO081825AR1242



#45 AR-1268-5

R.T.: 8.374 min  
 Delta R.T.: -0.005 min  
 Response: 322677  
 Conc: 0.41 ng/ml