

Data Path : Z:\pestpcbsrv\HPCHEM1\ECD\_0\Data\P0081925\  
 Data File : P0113048.D  
 Signal(s) : Signal #1: ECD1A.ch Signal #2: ECD2B.ch  
 Acq On : 19 Aug 2025 13:17  
 Operator : YP/AJ  
 Sample : Q2895-03 10X  
 Misc :  
 ALS Vial : 12 Sample Multiplier: 1

Instrument :  
 ECD\_0  
 ClientSampleId :

Integration File signal 1: autoint1.e  
 Integration File signal 2: autoint2.e  
 Quant Time: Aug 19 13:39:28 2025  
 Quant Method : Z:\pestpcbsrv\HPCHEM1\ECD\_0\methods\P0081825.M  
 Quant Title : GC EXTRACTABLES  
 QLast Update : Tue Aug 19 06:08:32 2025  
 Response via : Initial Calibration  
 Integrator: ChemStation

Volume Inj. : 2 µl  
 Signal #1 Phase : ZB-MR1 Signal #2 Phase: ZB-MR2  
 Signal #1 Info : 30Mx0.32mmx 0.50µ Signal #2 Info : 30M x 0.32mm x 0.25µm

Compound	RT#1	RT#2	Resp#1	Resp#2	ng/ml	ng/ml
System Monitoring Compounds						
1) SA Tetrachlo...	3.663	3.654	8682153	5680194	1.061	1.122
2) SA Decachlor...	8.680	8.626	15389250	4181242	2.220	2.207
Target Compounds						
3) L1 AR-1016-1	4.762	4.738	171160	450445	0.641	2.641 #
4) L1 AR-1016-2	4.762	4.745	171160	521290	0.426	2.023 #
5) L1 AR-1016-3	4.817	4.919	86116	877959	0.338	6.288 #
6) L1 AR-1016-4	4.945	4.964	1242472	11250547	5.698	96.407 #
7) L1 AR-1016-5	5.199	5.175	11158811	8097500	50.349	56.813
8) L2 AR-1221-1	3.882	3.869	552063	498316	5.900	7.895 #
9) L2 AR-1221-2	0.000	3.932	0	70763140	N.D.	1516.140 #
10) L2 AR-1221-3	4.040	4.026	-918848	896901	N.D.	6.041 #
11) L3 AR-1232-1	4.040	4.026	-918848	896901	N.D.	7.640 #
12) L3 AR-1232-2	4.545	4.745	13918755	521290	139.393	4.254 #
13) L3 AR-1232-3	4.762	4.919	171160	877959	0.903	13.860 #
14) L3 AR-1232-4	4.945	5.004	1242472	4240830	13.194	75.431 #
15) L3 AR-1232-5	4.986	5.175	14990094	8097500	241.998	135.266 #
16) L4 AR-1242-1	4.762	4.738	171160	450445	0.744	3.117 #
17) L4 AR-1242-2	4.762	4.745	171160	521290	0.498	2.403 #
18) L4 AR-1242-3	4.817	4.919	86116	877959	0.388	7.506 #
19) L4 AR-1242-4	4.945	5.004	1242472	4240830	7.163	36.050 #
20) L4 AR-1242-5	5.592	5.526	10096754	37462598	50.443	251.203 #
21) L5 AR-1248-1	4.762	4.738	171160	450445	0.981	4.039 #
22) L5 AR-1248-2	4.986	4.964	14990094	11250547	61.977	70.010
23) L5 AR-1248-3	5.199	5.004	11158811	4240830	34.996	24.996 #
24) L5 AR-1248-4	5.552	5.175	55311969	8097500	110.712	40.646 #
25) L5 AR-1248-5	5.592	5.564	10096754	8488614	29.567	39.985 #
26) L6 AR-1254-1	5.552	5.526	55311969	37462598	102.434	118.795
27) L6 AR-1254-2	5.701	5.673	56231908	36612635	113.956	130.601
28) L6 AR-1254-3	6.104	6.072	99984844	61535534	135.320	147.595
29) L6 AR-1254-4	6.334	6.300	71723705	38079482	128.768	138.554
30) L6 AR-1254-5	6.751	6.716	112.7E6	56516981	160.787	158.094
31) L7 AR-1260-1	6.236	6.203	53205534	32985762	119.300	129.321
32) L7 AR-1260-2	6.425	6.391	55974675	27959188	81.510	80.874
33) L7 AR-1260-3	6.822	6.541	6525646	27559501	10.568	92.658 #
34) L7 AR-1260-4	7.049	7.012	9493856	4066469	21.198	19.621
35) L7 AR-1260-5	7.292	7.253	27213105	11113266	22.477	23.725
36) L8 AR-1262-1	6.822	6.785	6525646	3595730	7.126	8.672
37) L8 AR-1262-2	7.292	7.253	27213105	11113266	17.996	21.468
38) L8 AR-1262-3	7.577	7.536	16673078	2156517	30.090	12.008 #
39) L8 AR-1262-4	7.637	7.597	30576892	7233881	31.266	24.953
40) L8 AR-1262-5	8.137	8.091	5219865	1238658	12.521	11.434
41) L9 AR-1268-1	7.577	7.536	16673078	2156517	9.689	4.233 #

Data Path : Z:\pestpcbsrv\HPCHEM1\ECD\_0\Data\P0081925\  
 Data File : P0113048.D  
 Signal(s) : Signal #1: ECD1A.ch Signal #2: ECD2B.ch  
 Acq On : 19 Aug 2025 13:17  
 Operator : YP/AJ  
 Sample : Q2895-03 10X  
 Misc :  
 ALS Vial : 12 Sample Multiplier: 1

Instrument :  
 ECD\_0  
 ClientSampleId :

Integration File signal 1: autoint1.e  
 Integration File signal 2: autoint2.e  
 Quant Time: Aug 19 13:39:28 2025  
 Quant Method : Z:\pestpcbsrv\HPCHEM1\ECD\_0\methods\P0081825.M  
 Quant Title : GC EXTRACTABLES  
 QLast Update : Tue Aug 19 06:08:32 2025  
 Response via : Initial Calibration  
 Integrator: ChemStation

Volume Inj. : 2 µl  
 Signal #1 Phase : ZB-MR1 Signal #2 Phase: ZB-MR2  
 Signal #1 Info : 30Mx0.32mmx 0.50µ Signal #2 Info : 30M x 0.32mm x 0.25µm

	Compound	RT#1	RT#2	Resp#1	Resp#2	ng/ml	ng/ml
42)	L9 AR-1268-2	7.637	7.597	30576892	7233881	21.114	17.414
43)	L9 AR-1268-3	7.844	7.801	3907773	703049	3.239	2.153 #
44)	L9 AR-1268-4	8.137	8.091	5219865	1238658	11.331	10.285
45)	L9 AR-1268-5	8.429	8.376	3162170	486046	0.992	0.622 #

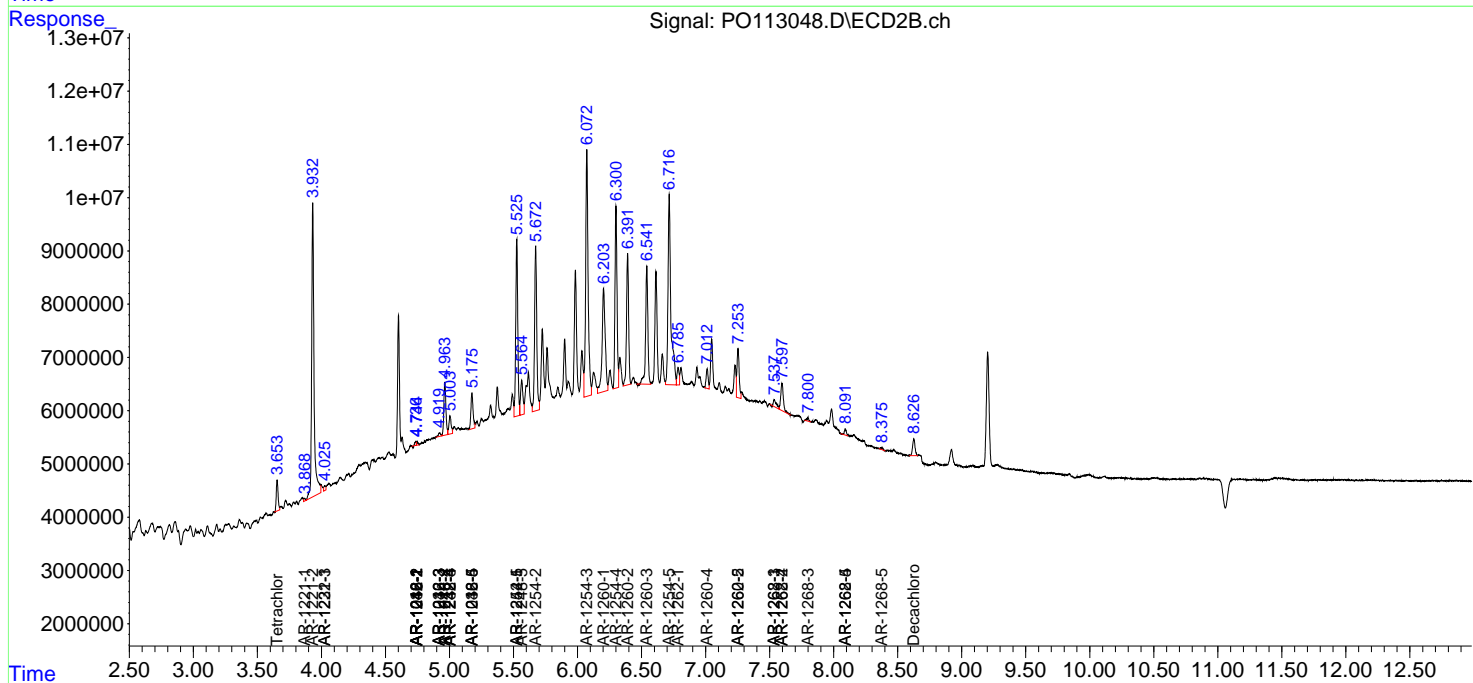
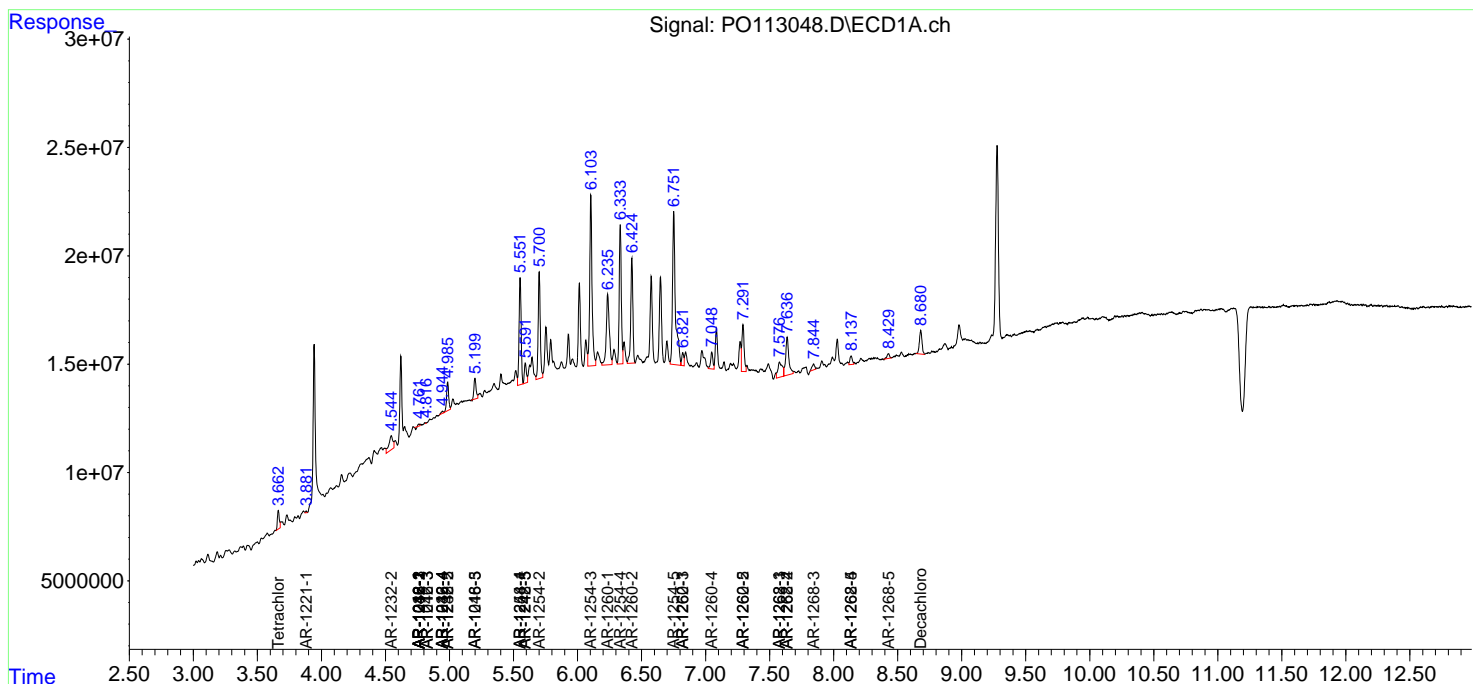
(f)=RT Delta > 1/2 Window (#)=Amounts differ by > 25% (m)=manual int.

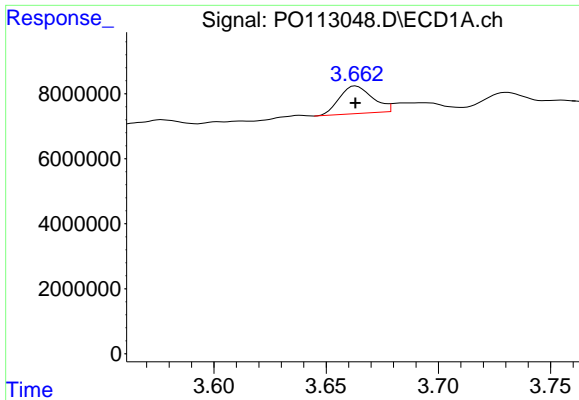
Data Path : Z:\pestpcbsrv\HPCHEM1\ECD\_O\Data\PO081925\  
 Data File : PO113048.D  
 Signal(s) : Signal #1: ECD1A.ch Signal #2: ECD2B.ch  
 Acq On : 19 Aug 2025 13:17  
 Operator : YP/AJ  
 Sample : Q2895-03 10X  
 Misc :  
 ALS Vial : 12 Sample Multiplier: 1

Instrument :  
 ECD\_O  
 ClientSampleId :

Integration File signal 1: autoint1.e  
 Integration File signal 2: autoint2.e  
 Quant Time: Aug 19 13:39:28 2025  
 Quant Method : Z:\pestpcbsrv\HPCHEM1\ECD\_O\methods\PO081825.M  
 Quant Title : GC EXTRACTABLES  
 QLast Update : Tue Aug 19 06:08:32 2025  
 Response via : Initial Calibration  
 Integrator: ChemStation

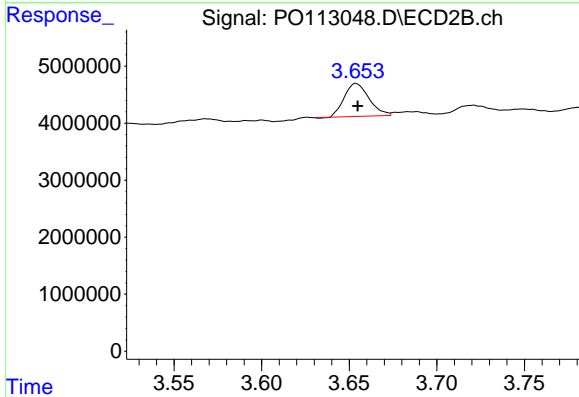
Volume Inj. : 2 µl  
 Signal #1 Phase : ZB-MR1 Signal #2 Phase: ZB-MR2  
 Signal #1 Info : 30Mx0.32mmx 0.50µ Signal #2 Info : 30M x 0.32mm x 0.25µm



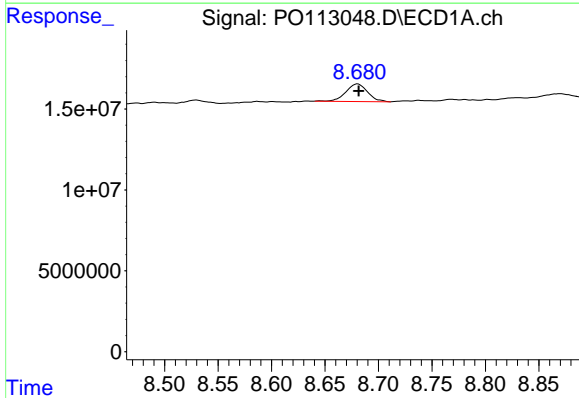


#1 Tetrachloro-m-xylene  
 R.T.: 3.663 min  
 Delta R.T.: 0.000 min  
 Response: 8682153  
 Conc: 1.06 ng/ml

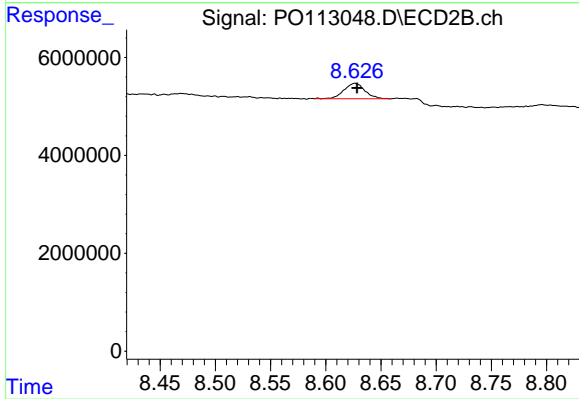
Instrument :  
 ECD\_O  
 ClientSampleId :



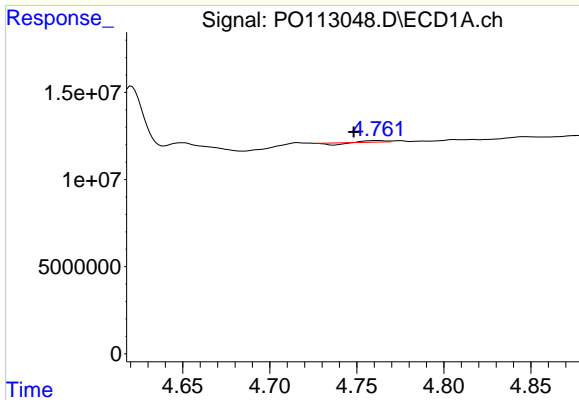
#1 Tetrachloro-m-xylene  
 R.T.: 3.654 min  
 Delta R.T.: -0.001 min  
 Response: 5680194  
 Conc: 1.12 ng/ml



#2 Decachlorobiphenyl  
 R.T.: 8.680 min  
 Delta R.T.: -0.001 min  
 Response: 15389250  
 Conc: 2.22 ng/ml



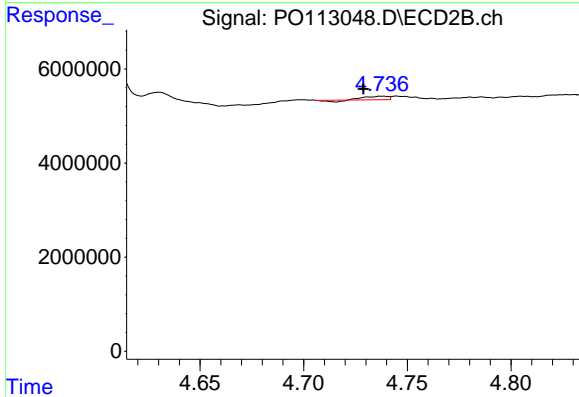
#2 Decachlorobiphenyl  
 R.T.: 8.626 min  
 Delta R.T.: -0.002 min  
 Response: 4181242  
 Conc: 2.21 ng/ml



#3 AR-1016-1

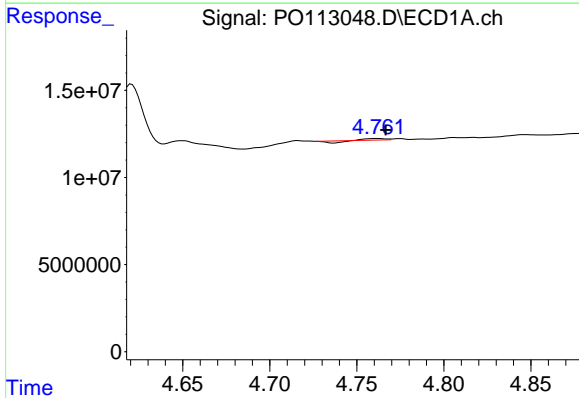
R.T.: 4.762 min  
 Delta R.T.: 0.014 min  
 Response: 171160  
 Conc: 0.64 ng/ml

Instrument :  
 ECD\_O  
 ClientSampleId :



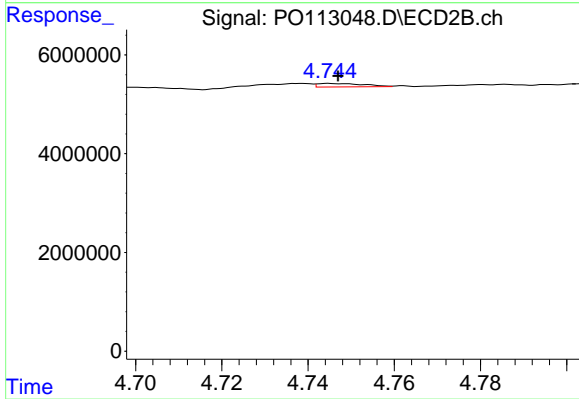
#3 AR-1016-1

R.T.: 4.738 min  
 Delta R.T.: 0.009 min  
 Response: 450445  
 Conc: 2.64 ng/ml



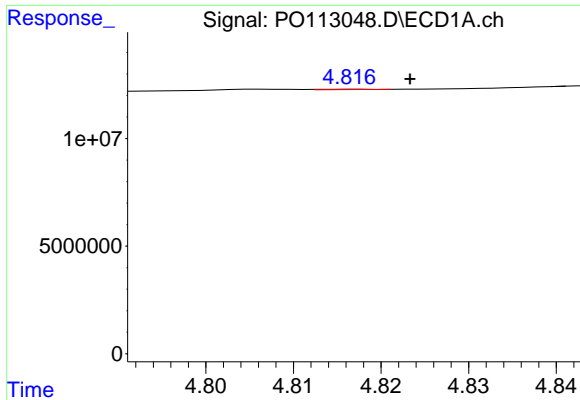
#4 AR-1016-2

R.T.: 4.762 min  
 Delta R.T.: -0.005 min  
 Response: 171160  
 Conc: 0.43 ng/ml



#4 AR-1016-2

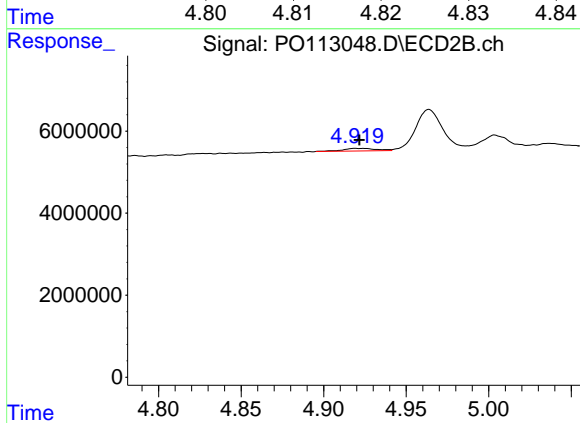
R.T.: 4.745 min  
 Delta R.T.: -0.002 min  
 Response: 521290  
 Conc: 2.02 ng/ml



#5 AR-1016-3

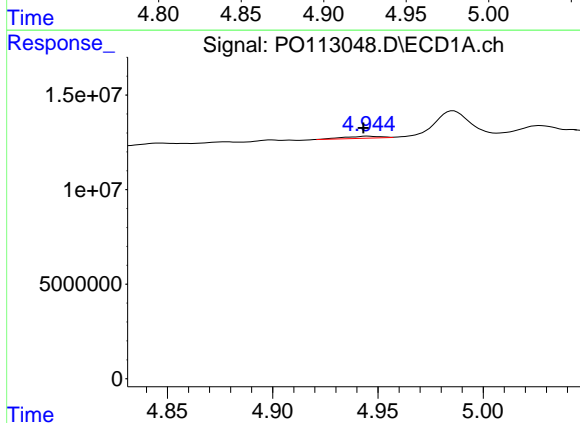
R.T.: 4.817 min  
 Delta R.T.: -0.006 min  
 Response: 86116  
 Conc: 0.34 ng/ml

Instrument :  
 ECD\_O  
 ClientSampleId :



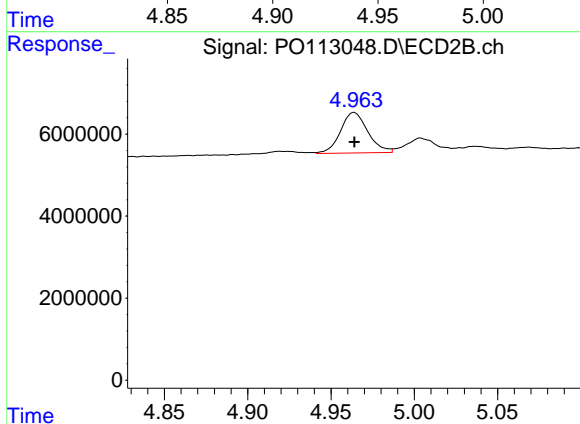
#5 AR-1016-3

R.T.: 4.919 min  
 Delta R.T.: -0.002 min  
 Response: 877959  
 Conc: 6.29 ng/ml



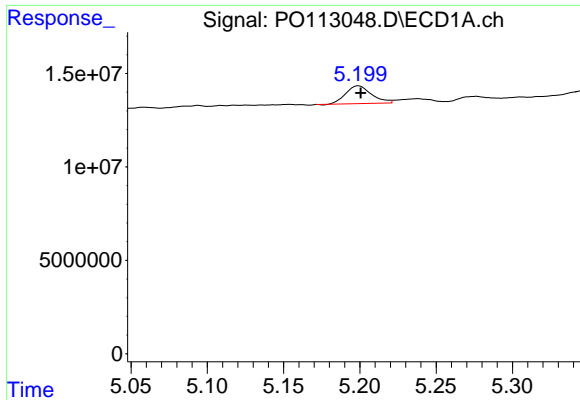
#6 AR-1016-4

R.T.: 4.945 min  
 Delta R.T.: 0.002 min  
 Response: 1242472  
 Conc: 5.70 ng/ml



#6 AR-1016-4

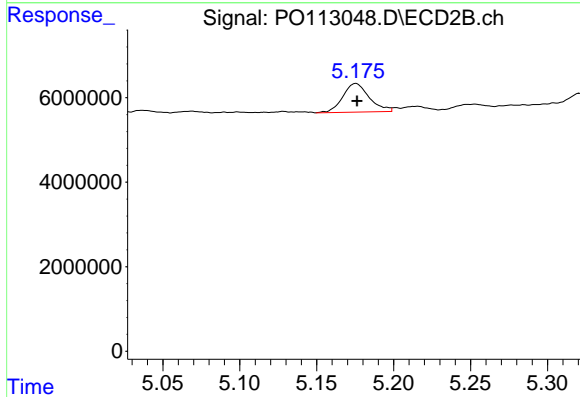
R.T.: 4.964 min  
 Delta R.T.: 0.000 min  
 Response: 11250547  
 Conc: 96.41 ng/ml



#7 AR-1016-5

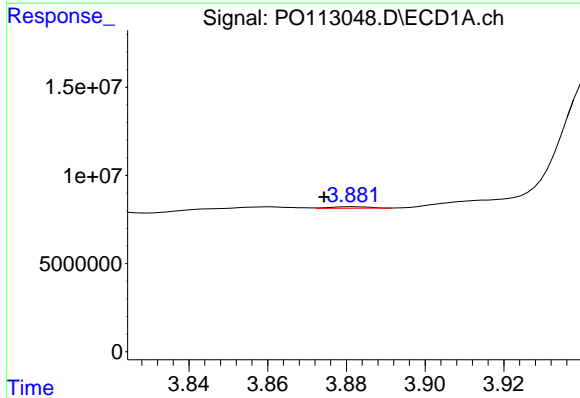
R.T.: 5.199 min  
 Delta R.T.: -0.001 min  
 Response: 11158811  
 Conc: 50.35 ng/ml

Instrument :  
 ECD\_O  
 ClientSampleId :



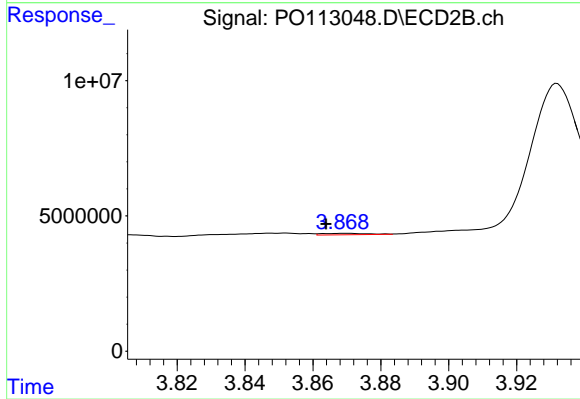
#7 AR-1016-5

R.T.: 5.175 min  
 Delta R.T.: 0.000 min  
 Response: 8097500  
 Conc: 56.81 ng/ml



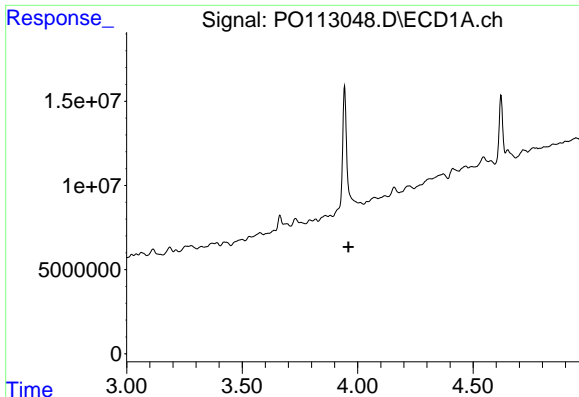
#8 AR-1221-1

R.T.: 3.882 min  
 Delta R.T.: 0.008 min  
 Response: 552063  
 Conc: 5.90 ng/ml



#8 AR-1221-1

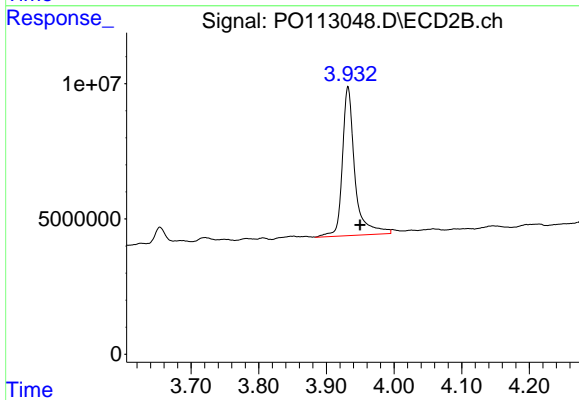
R.T.: 3.869 min  
 Delta R.T.: 0.005 min  
 Response: 498316  
 Conc: 7.89 ng/ml



#9 AR-1221-2

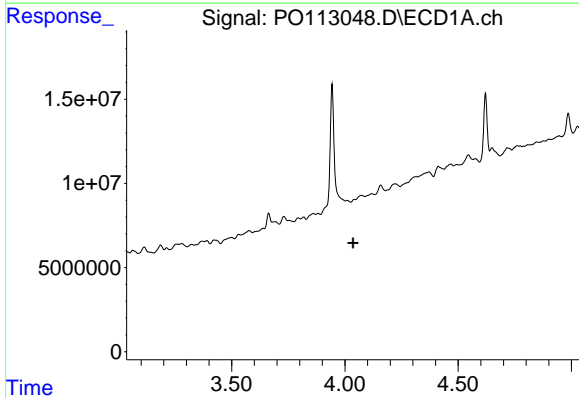
R.T.: 0.000 min  
 Exp R.T.: 3.960 min  
 Response: 0  
 Conc: N.D.

Instrument :  
 ECD\_O  
 ClientSampleId :



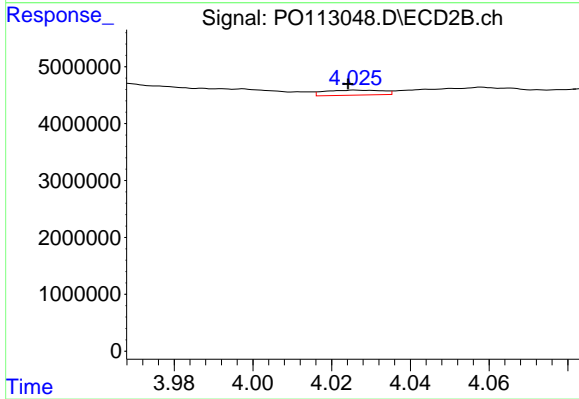
#9 AR-1221-2

R.T.: 3.932 min  
 Delta R.T.: -0.018 min  
 Response: 70763140  
 Conc: 1516.14 ng/ml



#10 AR-1221-3

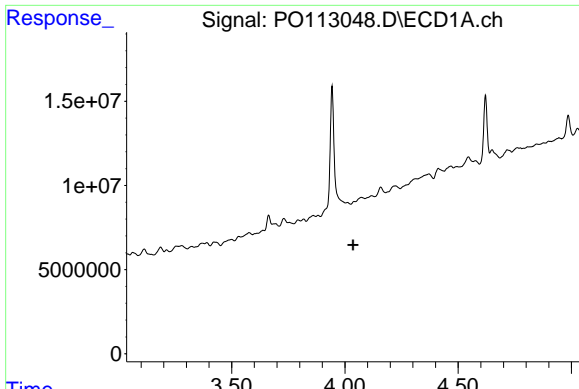
R.T.: 4.040 min  
 Delta R.T.: 0.005 min  
 Response: -918848  
 Conc: N.D.



#10 AR-1221-3

R.T.: 4.026 min  
 Delta R.T.: 0.002 min  
 Response: 896901  
 Conc: 6.04 ng/ml

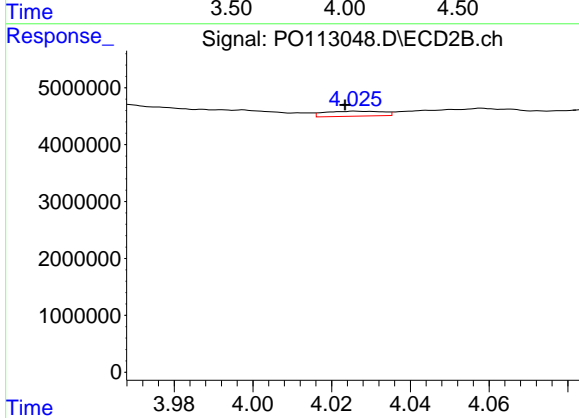




#11 AR-1232-1

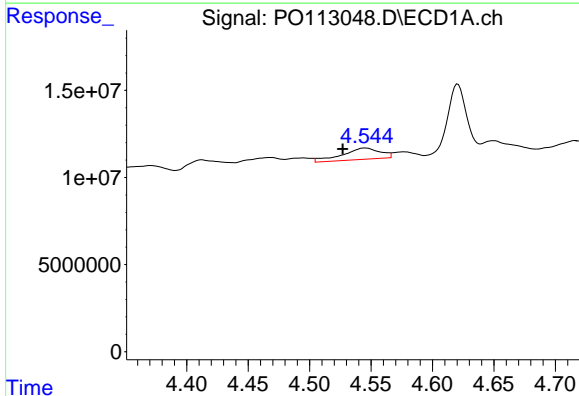
R.T.: 4.040 min  
 Delta R.T.: 0.005 min  
 Response: -918848  
 Conc: N.D.

Instrument :  
 ECD\_O  
 ClientSampleId :



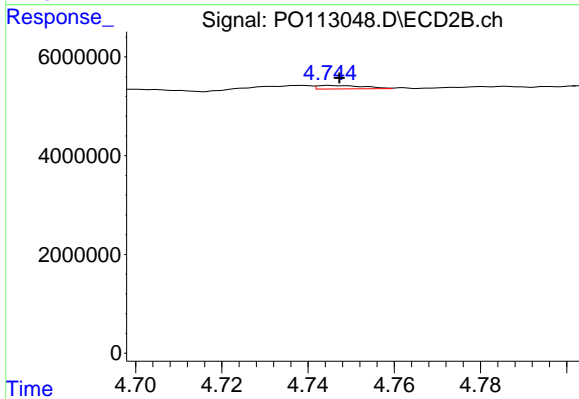
#11 AR-1232-1

R.T.: 4.026 min  
 Delta R.T.: 0.003 min  
 Response: 896901  
 Conc: 7.64 ng/ml



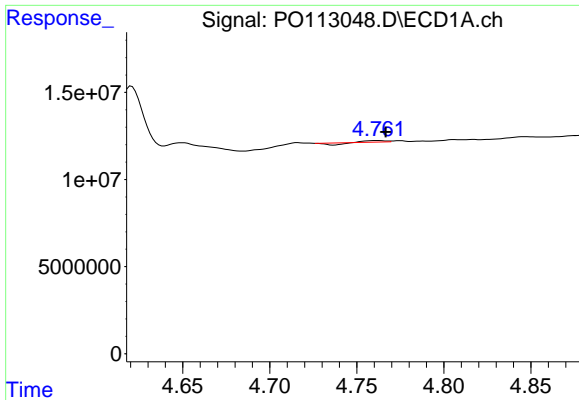
#12 AR-1232-2

R.T.: 4.545 min  
 Delta R.T.: 0.018 min  
 Response: 13918755  
 Conc: 139.39 ng/ml



#12 AR-1232-2

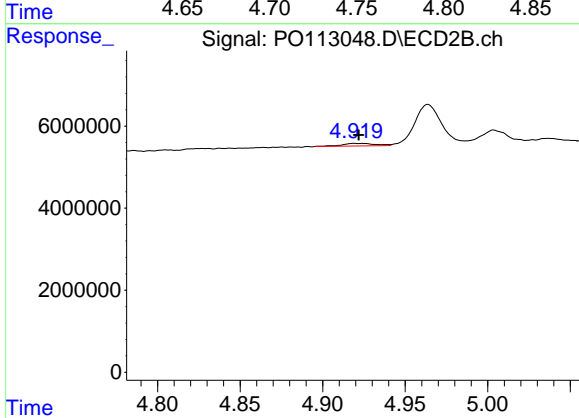
R.T.: 4.745 min  
 Delta R.T.: -0.002 min  
 Response: 521290  
 Conc: 4.25 ng/ml



#13 AR-1232-3

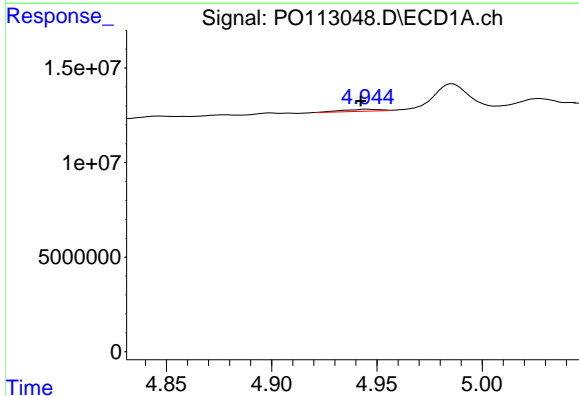
R.T.: 4.762 min  
 Delta R.T.: -0.005 min  
 Response: 171160  
 Conc: 0.90 ng/ml

Instrument :  
 ECD\_O  
 ClientSampleId :



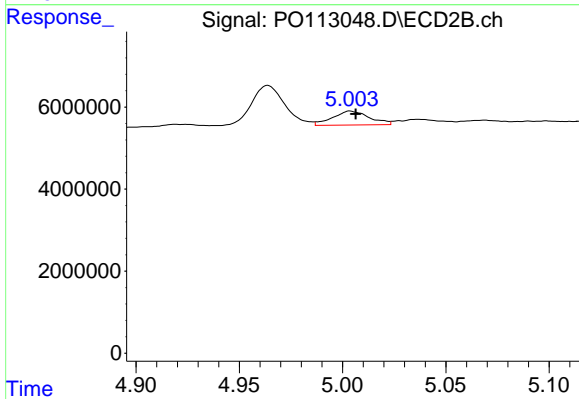
#13 AR-1232-3

R.T.: 4.919 min  
 Delta R.T.: -0.003 min  
 Response: 877959  
 Conc: 13.86 ng/ml



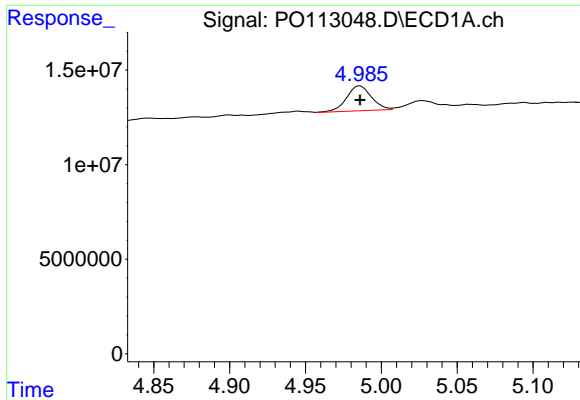
#14 AR-1232-4

R.T.: 4.945 min  
 Delta R.T.: 0.003 min  
 Response: 1242472  
 Conc: 13.19 ng/ml



#14 AR-1232-4

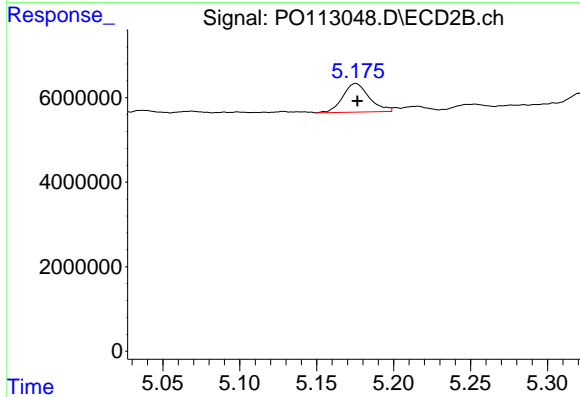
R.T.: 5.004 min  
 Delta R.T.: -0.003 min  
 Response: 4240830  
 Conc: 75.43 ng/ml



#15 AR-1232-5

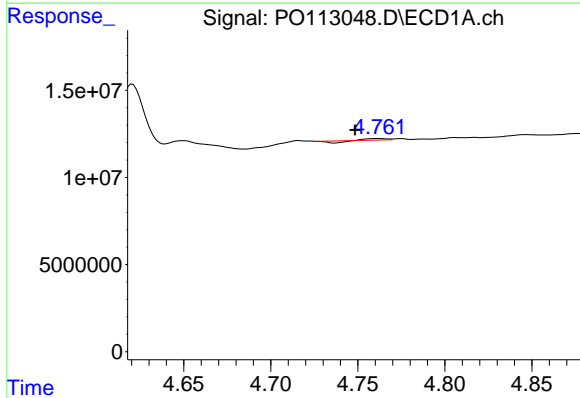
R.T.: 4.986 min  
 Delta R.T.: 0.000 min  
 Response: 14990094  
 Conc: 242.00 ng/ml

Instrument :  
 ECD\_O  
 ClientSampleId :



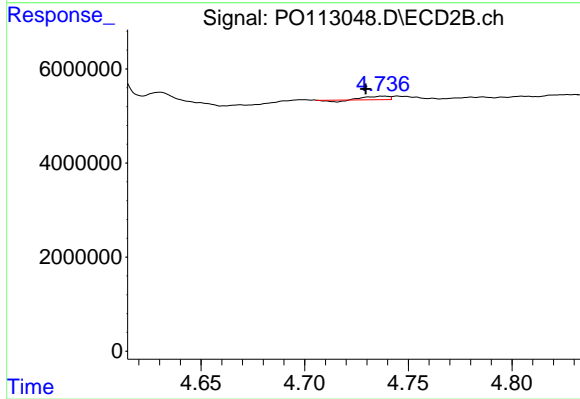
#15 AR-1232-5

R.T.: 5.175 min  
 Delta R.T.: 0.000 min  
 Response: 8097500  
 Conc: 135.27 ng/ml



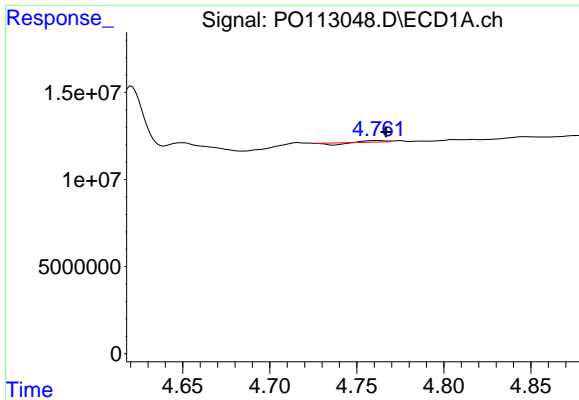
#16 AR-1242-1

R.T.: 4.762 min  
 Delta R.T.: 0.014 min  
 Response: 171160  
 Conc: 0.74 ng/ml



#16 AR-1242-1

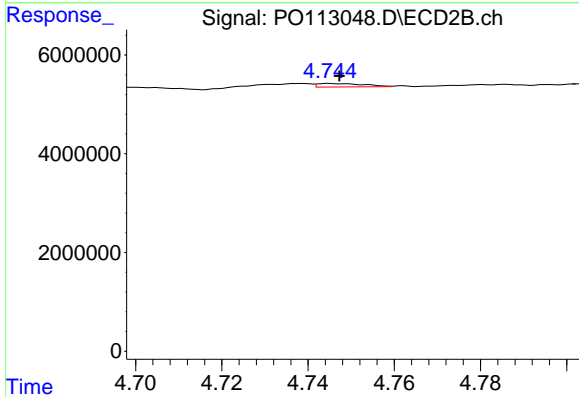
R.T.: 4.738 min  
 Delta R.T.: 0.009 min  
 Response: 450445  
 Conc: 3.12 ng/ml



#17 AR-1242-2

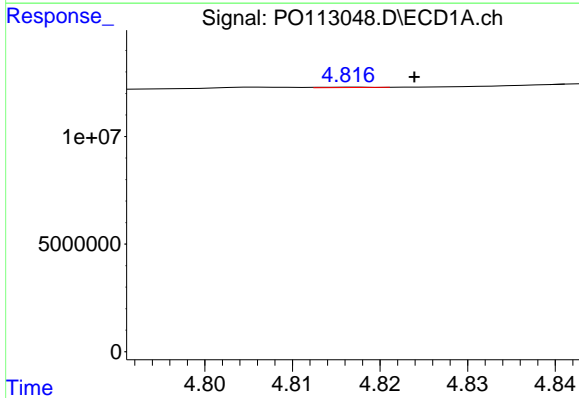
R.T.: 4.762 min  
 Delta R.T.: -0.005 min  
 Response: 171160  
 Conc: 0.50 ng/ml

Instrument :  
 ECD\_O  
 ClientSampleId :



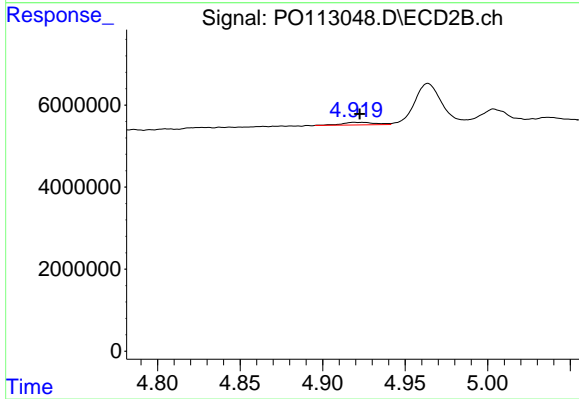
#17 AR-1242-2

R.T.: 4.745 min  
 Delta R.T.: -0.002 min  
 Response: 521290  
 Conc: 2.40 ng/ml



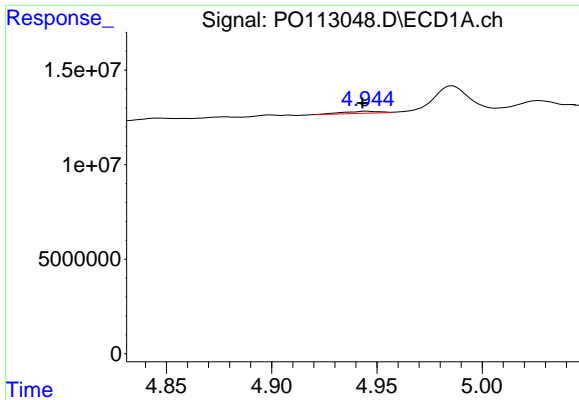
#18 AR-1242-3

R.T.: 4.817 min  
 Delta R.T.: -0.007 min  
 Response: 86116  
 Conc: 0.39 ng/ml



#18 AR-1242-3

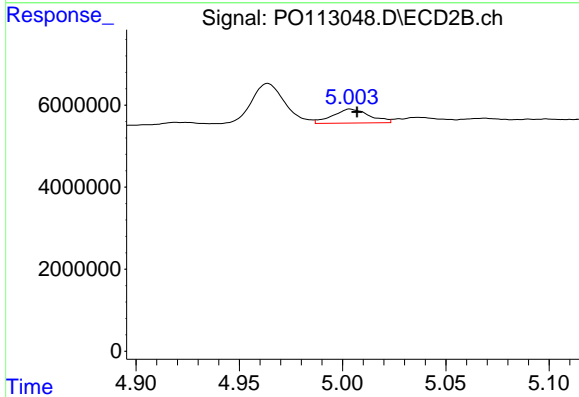
R.T.: 4.919 min  
 Delta R.T.: -0.003 min  
 Response: 877959  
 Conc: 7.51 ng/ml



#19 AR-1242-4

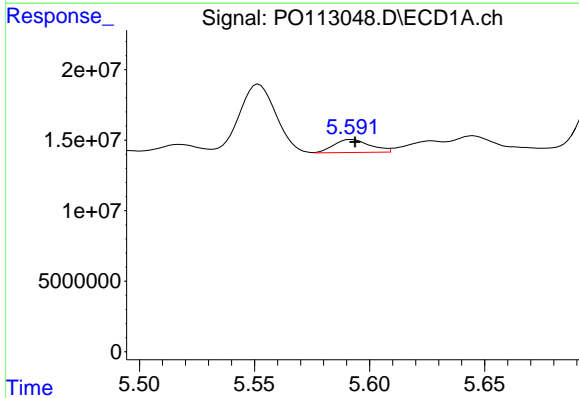
R.T.: 4.945 min  
 Delta R.T.: 0.002 min  
 Response: 1242472  
 Conc: 7.16 ng/ml

Instrument :  
 ECD\_O  
 ClientSampleId :



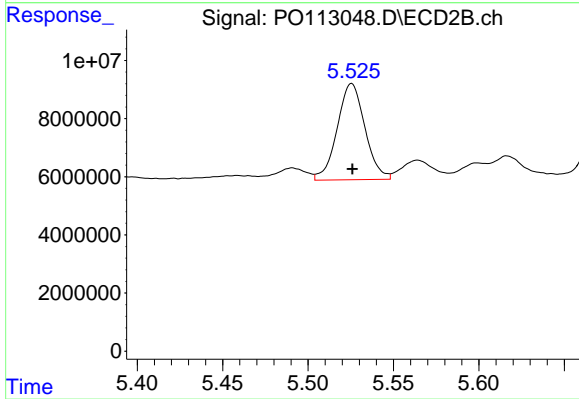
#19 AR-1242-4

R.T.: 5.004 min  
 Delta R.T.: -0.003 min  
 Response: 4240830  
 Conc: 36.05 ng/ml



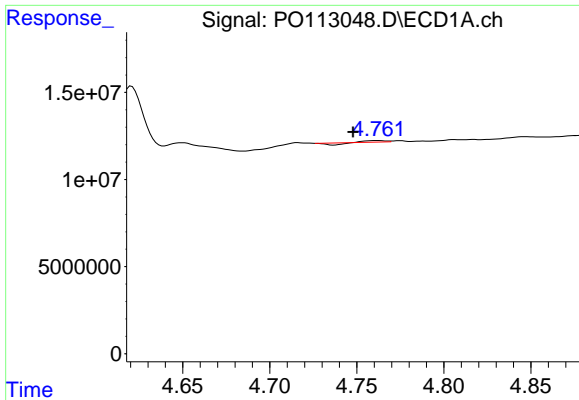
#20 AR-1242-5

R.T.: 5.592 min  
 Delta R.T.: -0.001 min  
 Response: 10096754  
 Conc: 50.44 ng/ml



#20 AR-1242-5

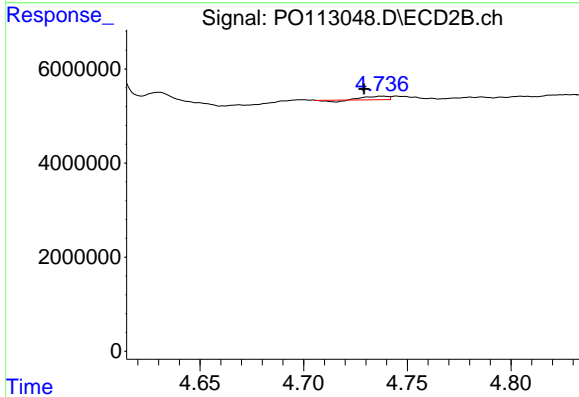
R.T.: 5.526 min  
 Delta R.T.: 0.000 min  
 Response: 37462598  
 Conc: 251.20 ng/ml



#21 AR-1248-1

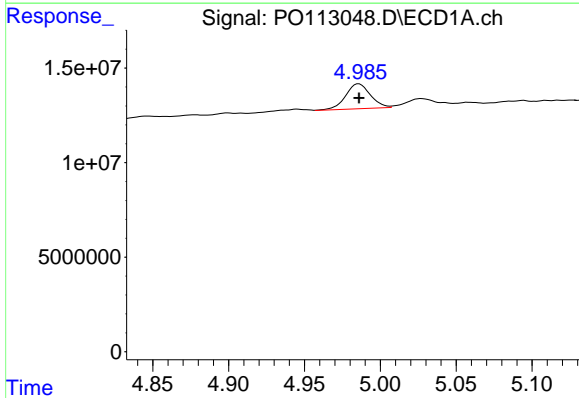
R.T.: 4.762 min  
 Delta R.T.: 0.014 min  
 Response: 171160  
 Conc: 0.98 ng/ml

Instrument :  
 ECD\_O  
 ClientSampleId :



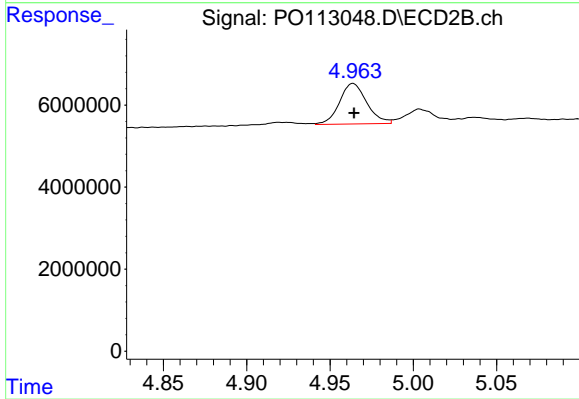
#21 AR-1248-1

R.T.: 4.738 min  
 Delta R.T.: 0.009 min  
 Response: 450445  
 Conc: 4.04 ng/ml



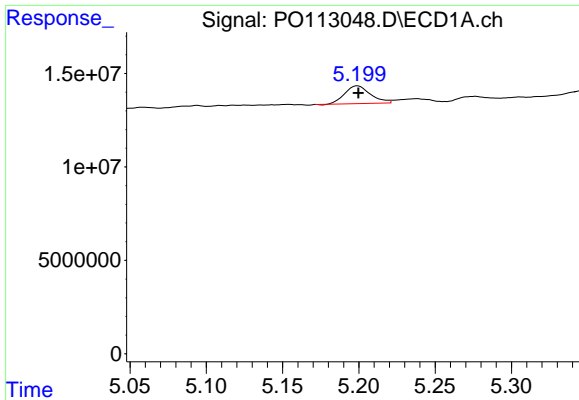
#22 AR-1248-2

R.T.: 4.986 min  
 Delta R.T.: 0.000 min  
 Response: 14990094  
 Conc: 61.98 ng/ml



#22 AR-1248-2

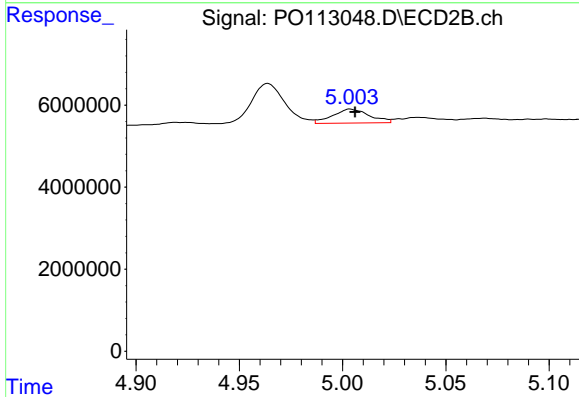
R.T.: 4.964 min  
 Delta R.T.: 0.000 min  
 Response: 11250547  
 Conc: 70.01 ng/ml



#23 AR-1248-3

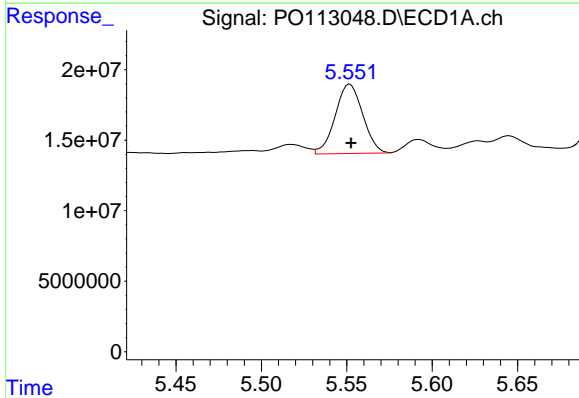
R.T.: 5.199 min  
 Delta R.T.: 0.000 min  
 Response: 11158811  
 Conc: 35.00 ng/ml

Instrument :  
 ECD\_O  
 ClientSampleId :



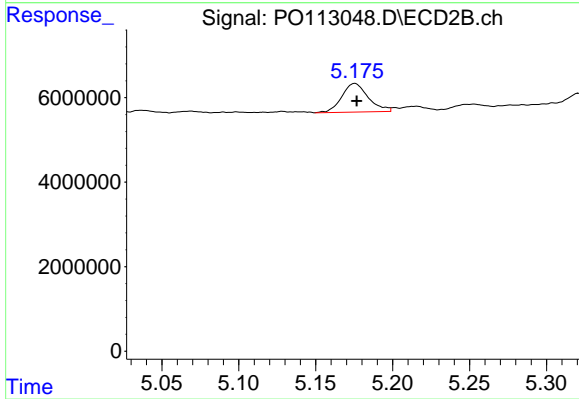
#23 AR-1248-3

R.T.: 5.004 min  
 Delta R.T.: -0.002 min  
 Response: 4240830  
 Conc: 25.00 ng/ml



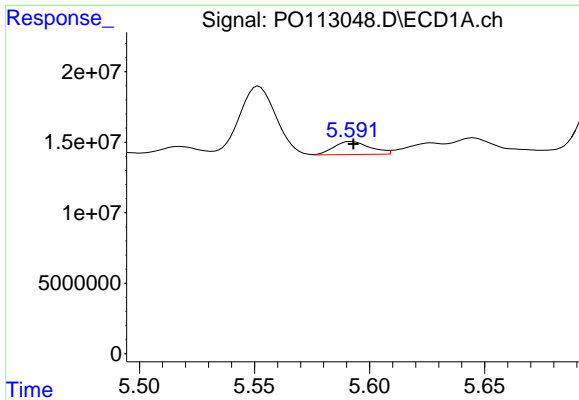
#24 AR-1248-4

R.T.: 5.552 min  
 Delta R.T.: 0.000 min  
 Response: 55311969  
 Conc: 110.71 ng/ml



#24 AR-1248-4

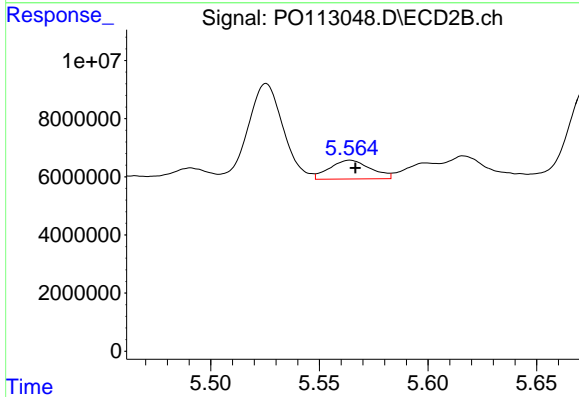
R.T.: 5.175 min  
 Delta R.T.: -0.001 min  
 Response: 8097500  
 Conc: 40.65 ng/ml



#25 AR-1248-5

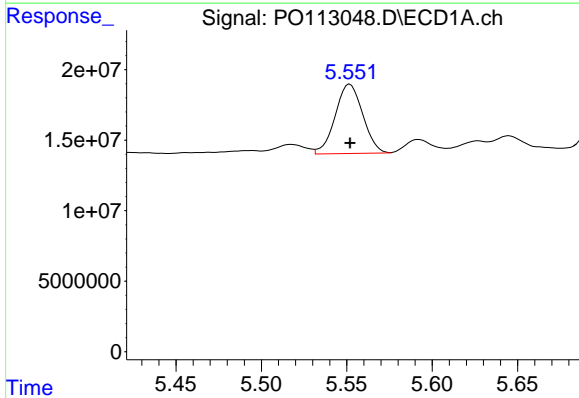
R.T.: 5.592 min  
 Delta R.T.: 0.000 min  
 Response: 10096754  
 Conc: 29.57 ng/ml

Instrument :  
 ECD\_O  
 ClientSampleId :



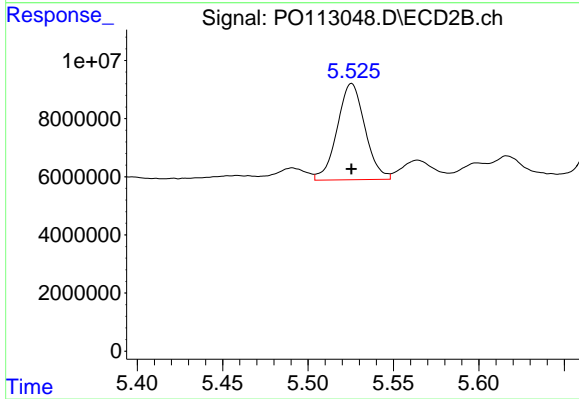
#25 AR-1248-5

R.T.: 5.564 min  
 Delta R.T.: -0.002 min  
 Response: 8488614  
 Conc: 39.98 ng/ml



#26 AR-1254-1

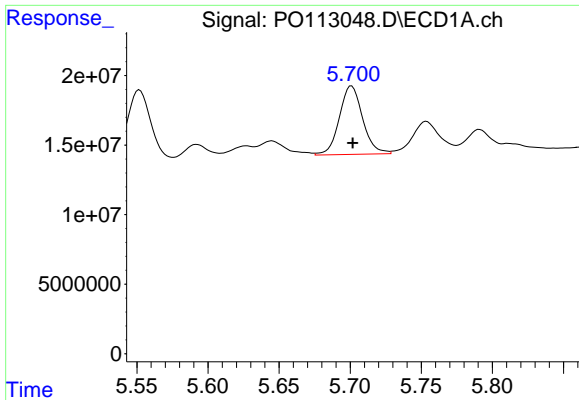
R.T.: 5.552 min  
 Delta R.T.: 0.000 min  
 Response: 55311969  
 Conc: 102.43 ng/ml



#26 AR-1254-1

R.T.: 5.526 min  
 Delta R.T.: 0.000 min  
 Response: 37462598  
 Conc: 118.80 ng/ml

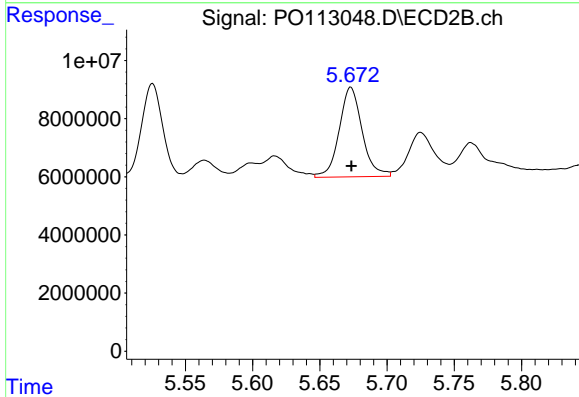




#27 AR-1254-2

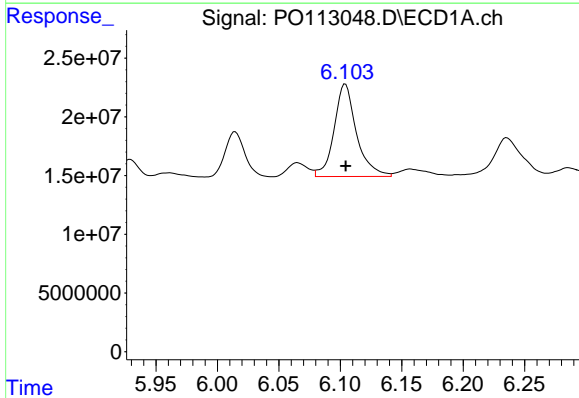
R.T.: 5.701 min  
Delta R.T.: 0.000 min  
Response: 56231908  
Conc: 113.96 ng/ml

Instrument :  
ECD\_O  
ClientSampleId :



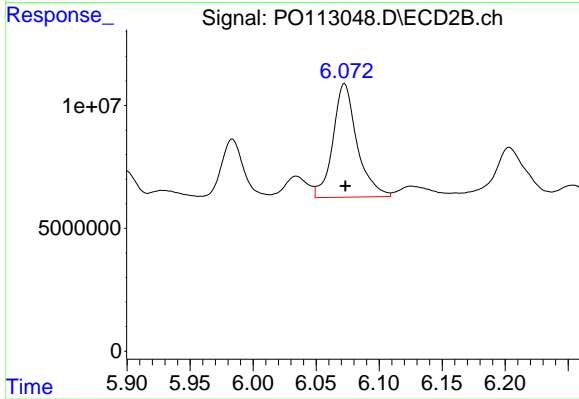
#27 AR-1254-2

R.T.: 5.673 min  
Delta R.T.: 0.000 min  
Response: 36612635  
Conc: 130.60 ng/ml



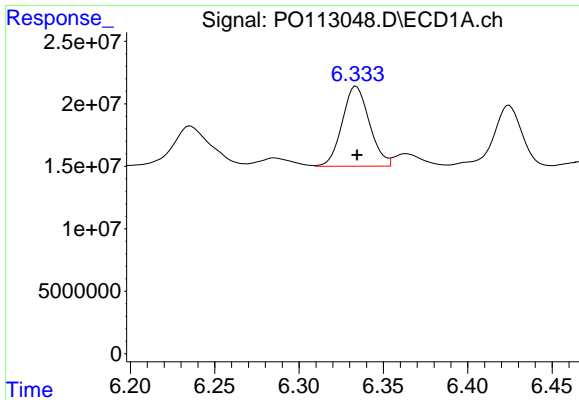
#28 AR-1254-3

R.T.: 6.104 min  
Delta R.T.: 0.000 min  
Response: 99984844  
Conc: 135.32 ng/ml



#28 AR-1254-3

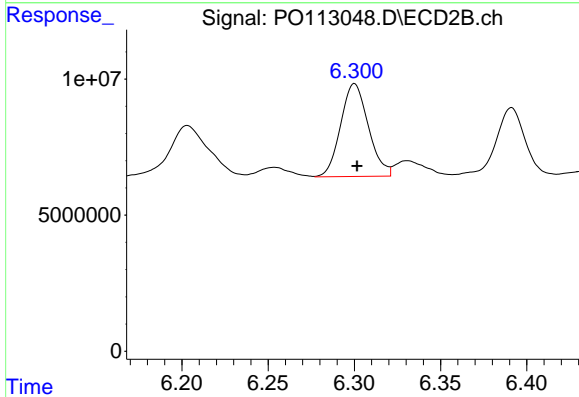
R.T.: 6.072 min  
Delta R.T.: 0.000 min  
Response: 61535534  
Conc: 147.59 ng/ml



#29 AR-1254-4

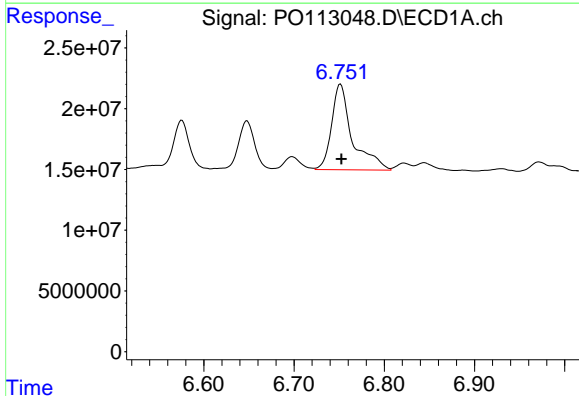
R.T.: 6.334 min  
Delta R.T.: 0.000 min  
Response: 71723705  
Conc: 128.77 ng/ml

Instrument :  
ECD\_O  
ClientSampleId :



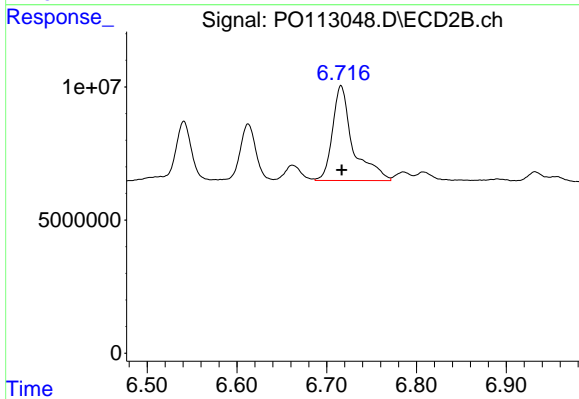
#29 AR-1254-4

R.T.: 6.300 min  
Delta R.T.: -0.002 min  
Response: 38079482  
Conc: 138.55 ng/ml



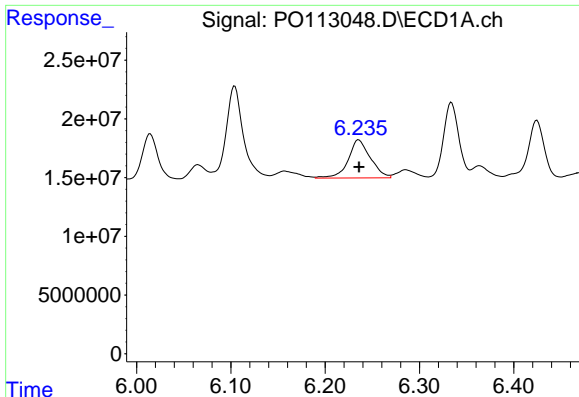
#30 AR-1254-5

R.T.: 6.751 min  
Delta R.T.: 0.000 min  
Response: 112707289  
Conc: 160.79 ng/ml



#30 AR-1254-5

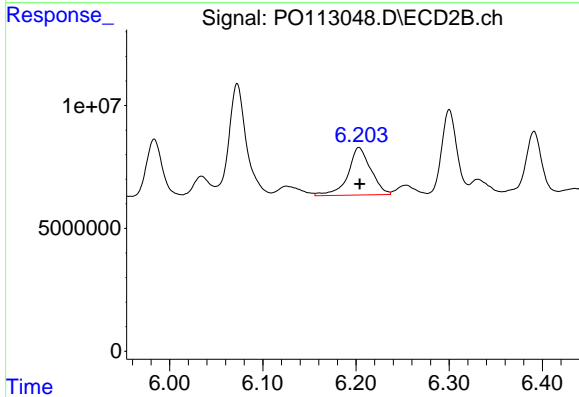
R.T.: 6.716 min  
Delta R.T.: 0.000 min  
Response: 56516981  
Conc: 158.09 ng/ml



#31 AR-1260-1

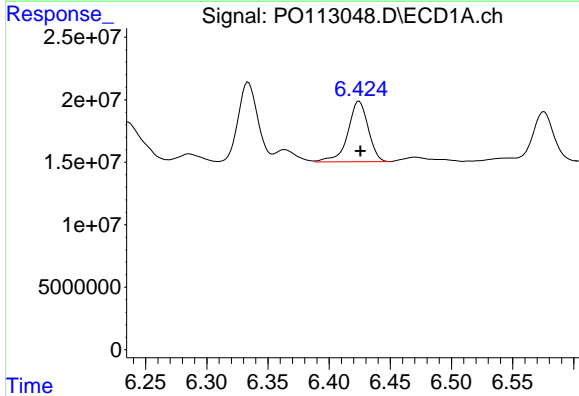
R.T.: 6.236 min  
 Delta R.T.: 0.000 min  
 Response: 53205534  
 Conc: 119.30 ng/ml

Instrument :  
 ECD\_O  
 ClientSampleId :



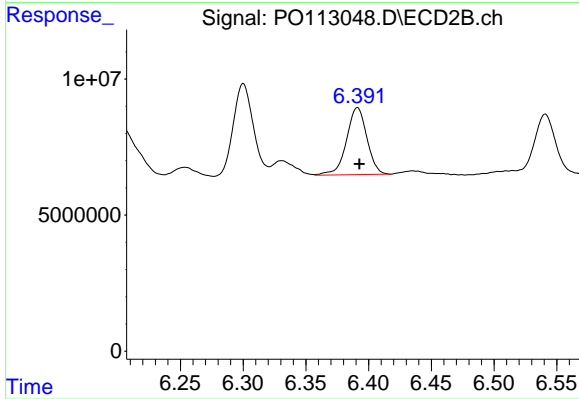
#31 AR-1260-1

R.T.: 6.203 min  
 Delta R.T.: 0.000 min  
 Response: 32985762  
 Conc: 129.32 ng/ml



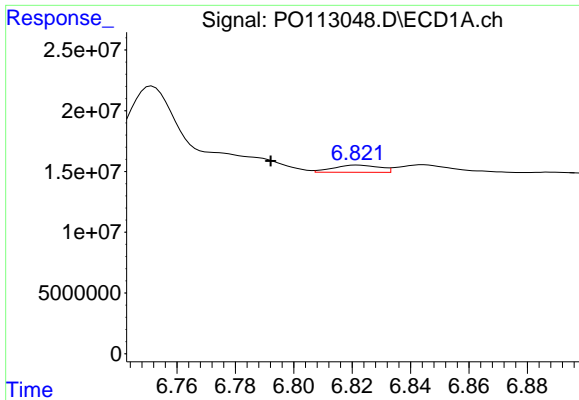
#32 AR-1260-2

R.T.: 6.425 min  
 Delta R.T.: 0.000 min  
 Response: 55974675  
 Conc: 81.51 ng/ml



#32 AR-1260-2

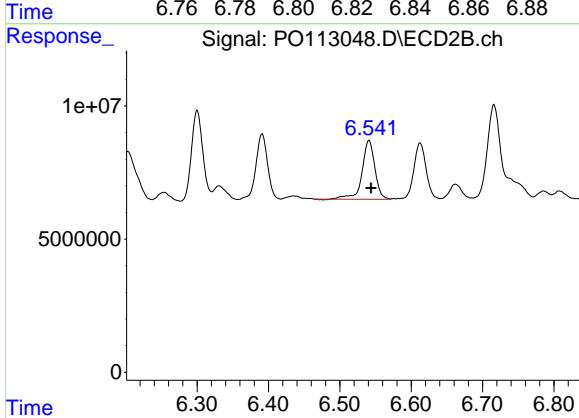
R.T.: 6.391 min  
 Delta R.T.: -0.002 min  
 Response: 27959188  
 Conc: 80.87 ng/ml



#33 AR-1260-3

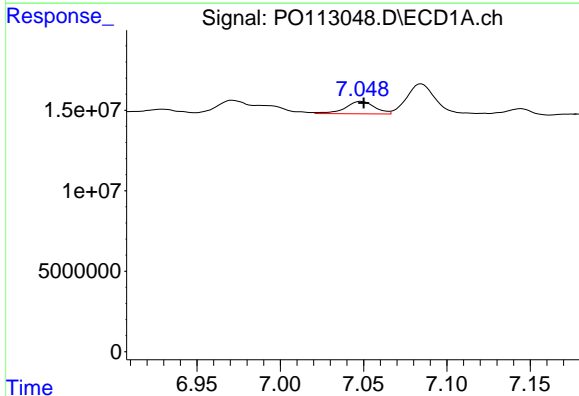
R.T.: 6.822 min  
 Delta R.T.: 0.030 min  
 Response: 6525646  
 Conc: 10.57 ng/ml

Instrument :  
 ECD\_O  
 ClientSampleId :



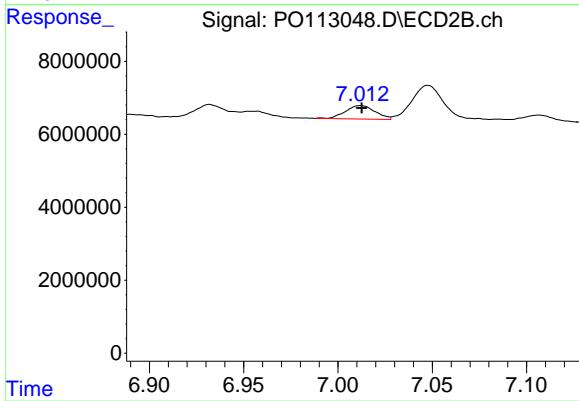
#33 AR-1260-3

R.T.: 6.541 min  
 Delta R.T.: -0.003 min  
 Response: 27559501  
 Conc: 92.66 ng/ml



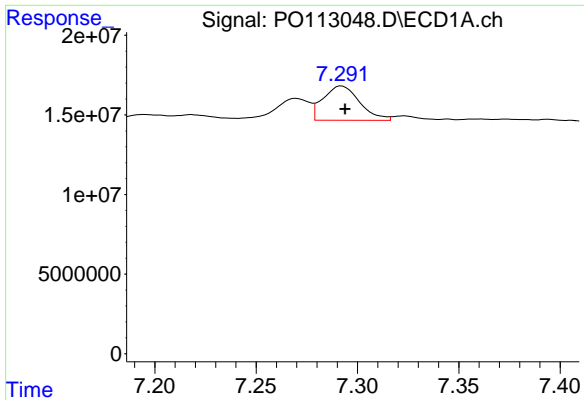
#34 AR-1260-4

R.T.: 7.049 min  
 Delta R.T.: -0.002 min  
 Response: 9493856  
 Conc: 21.20 ng/ml



#34 AR-1260-4

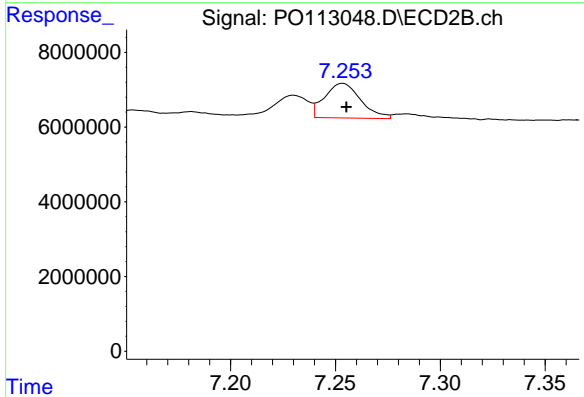
R.T.: 7.012 min  
 Delta R.T.: 0.000 min  
 Response: 4066469  
 Conc: 19.62 ng/ml



#35 AR-1260-5

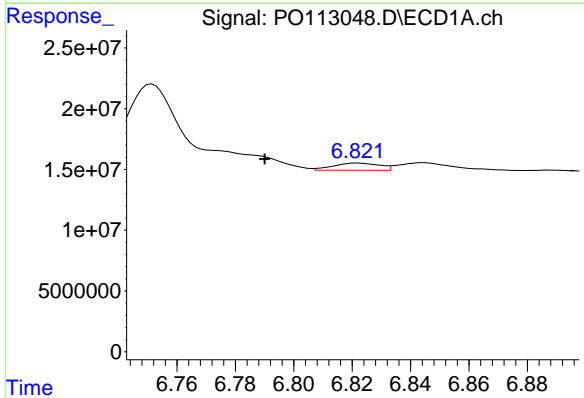
R.T.: 7.292 min  
 Delta R.T.: -0.002 min  
 Response: 27213105  
 Conc: 22.48 ng/ml

Instrument :  
 ECD\_O  
 ClientSampleId :



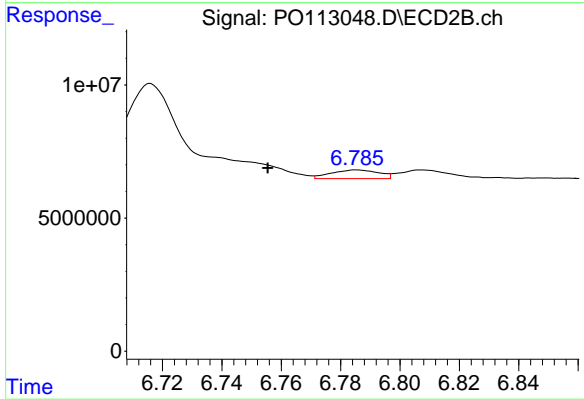
#35 AR-1260-5

R.T.: 7.253 min  
 Delta R.T.: -0.002 min  
 Response: 11113266  
 Conc: 23.72 ng/ml



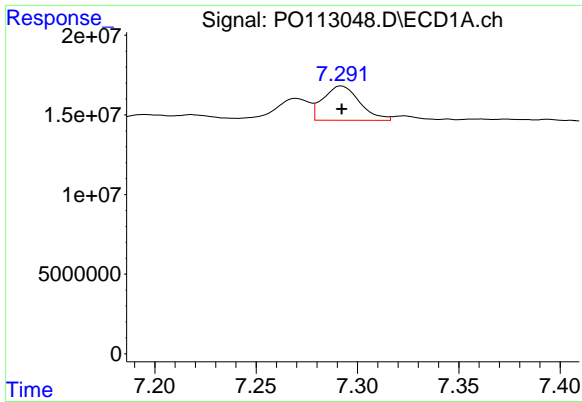
#36 AR-1262-1

R.T.: 6.822 min  
 Delta R.T.: 0.032 min  
 Response: 6525646  
 Conc: 7.13 ng/ml



#36 AR-1262-1

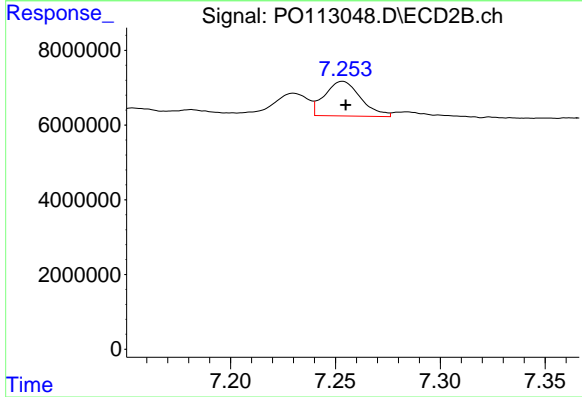
R.T.: 6.785 min  
 Delta R.T.: 0.030 min  
 Response: 3595730  
 Conc: 8.67 ng/ml



#37 AR-1262-2

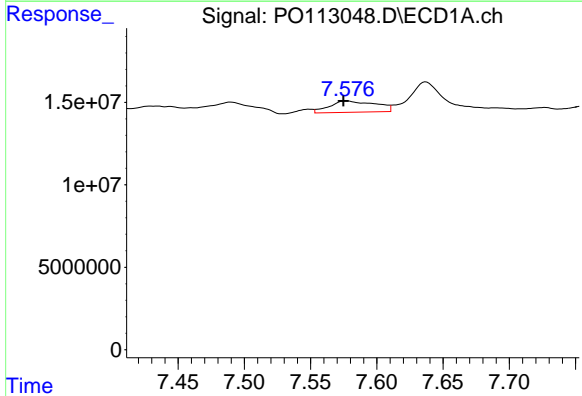
R.T.: 7.292 min  
 Delta R.T.: 0.000 min  
 Response: 27213105  
 Conc: 18.00 ng/ml

Instrument :  
 ECD\_O  
 ClientSampleId :



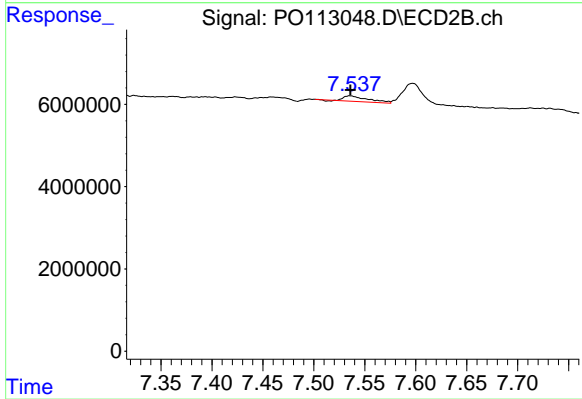
#37 AR-1262-2

R.T.: 7.253 min  
 Delta R.T.: -0.002 min  
 Response: 11113266  
 Conc: 21.47 ng/ml



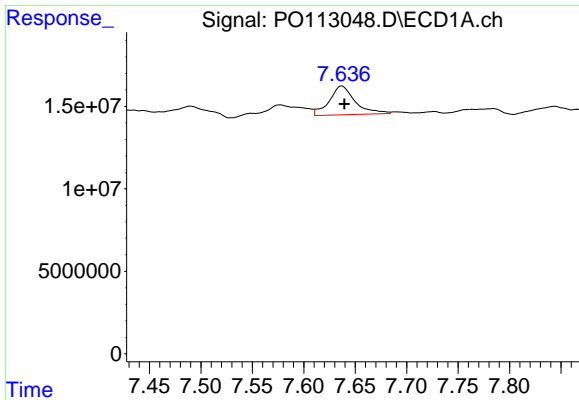
#38 AR-1262-3

R.T.: 7.577 min  
 Delta R.T.: 0.002 min  
 Response: 16673078  
 Conc: 30.09 ng/ml



#38 AR-1262-3

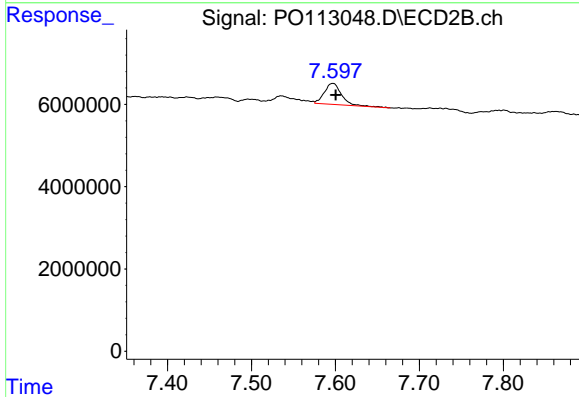
R.T.: 7.536 min  
 Delta R.T.: 0.000 min  
 Response: 2156517  
 Conc: 12.01 ng/ml



#39 AR-1262-4

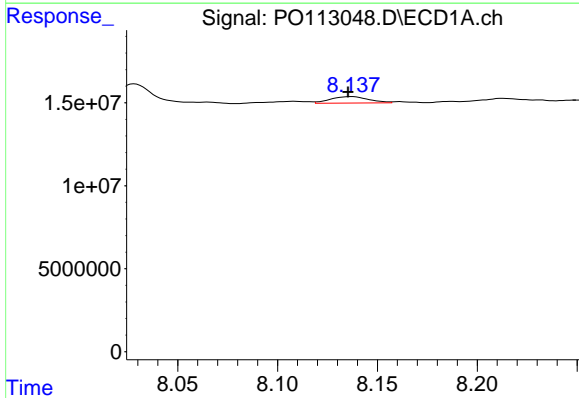
R.T.: 7.637 min  
 Delta R.T.: -0.002 min  
 Response: 30576892  
 Conc: 31.27 ng/ml

Instrument :  
 ECD\_O  
 ClientSampleId :



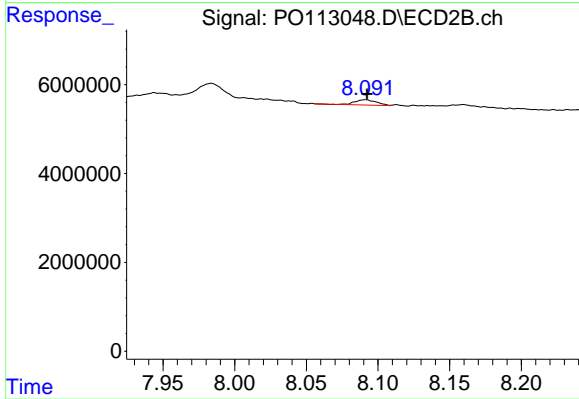
#39 AR-1262-4

R.T.: 7.597 min  
 Delta R.T.: -0.003 min  
 Response: 7233881  
 Conc: 24.95 ng/ml



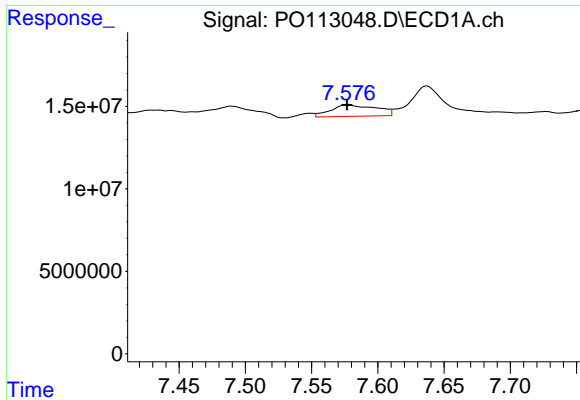
#40 AR-1262-5

R.T.: 8.137 min  
 Delta R.T.: 0.002 min  
 Response: 5219865  
 Conc: 12.52 ng/ml



#40 AR-1262-5

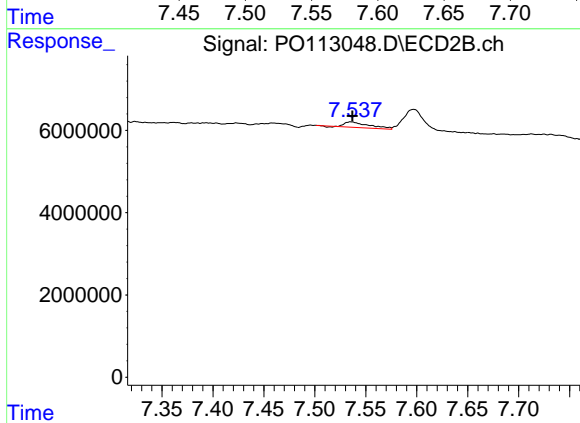
R.T.: 8.091 min  
 Delta R.T.: -0.001 min  
 Response: 1238658  
 Conc: 11.43 ng/ml



#41 AR-1268-1

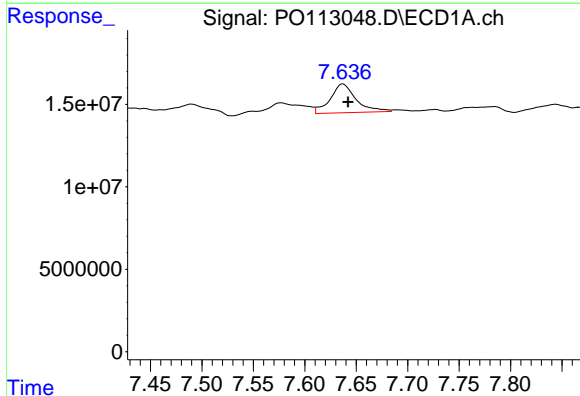
R.T.: 7.577 min  
 Delta R.T.: 0.000 min  
 Response: 16673078  
 Conc: 9.69 ng/ml

Instrument :  
 ECD\_O  
 ClientSampleId :



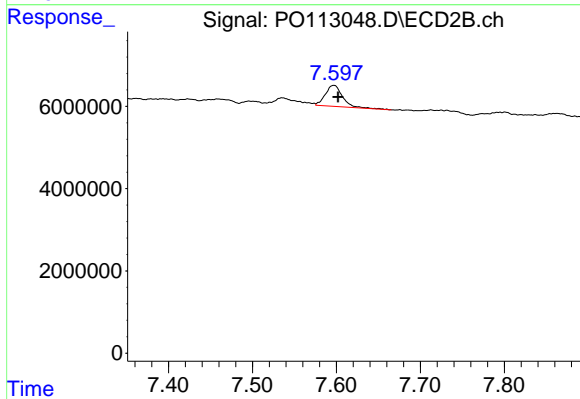
#41 AR-1268-1

R.T.: 7.536 min  
 Delta R.T.: -0.001 min  
 Response: 2156517  
 Conc: 4.23 ng/ml



#42 AR-1268-2

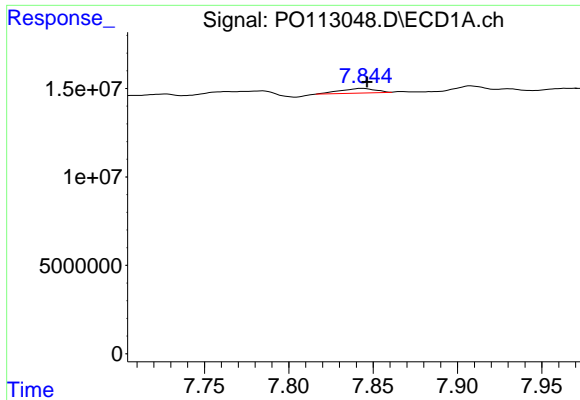
R.T.: 7.637 min  
 Delta R.T.: -0.005 min  
 Response: 30576892  
 Conc: 21.11 ng/ml



#42 AR-1268-2

R.T.: 7.597 min  
 Delta R.T.: -0.005 min  
 Response: 7233881  
 Conc: 17.41 ng/ml

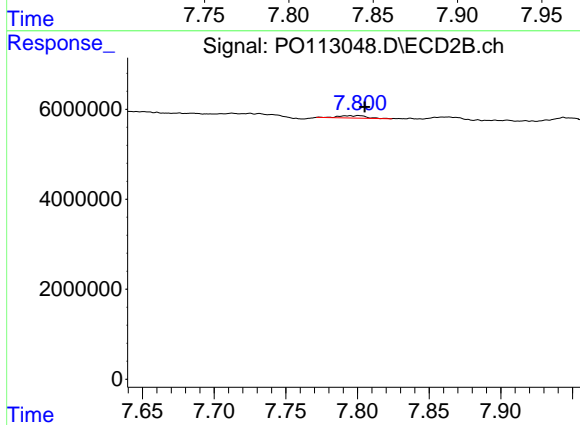




#43 AR-1268-3

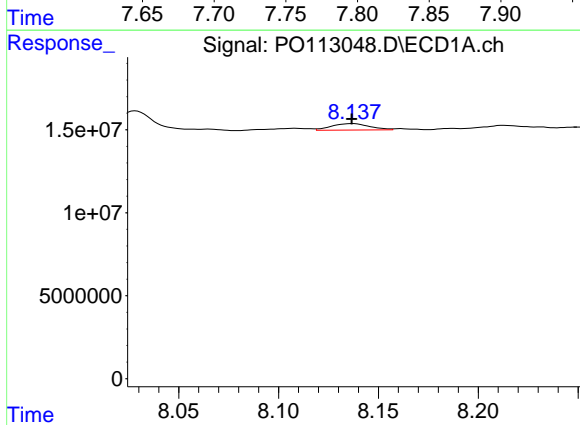
R.T.: 7.844 min  
 Delta R.T.: -0.002 min  
 Response: 3907773  
 Conc: 3.24 ng/ml

Instrument :  
 ECD\_O  
 ClientSampleId :



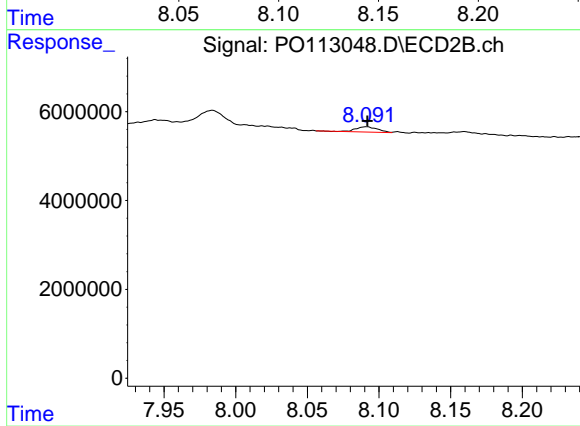
#43 AR-1268-3

R.T.: 7.801 min  
 Delta R.T.: -0.004 min  
 Response: 703049  
 Conc: 2.15 ng/ml



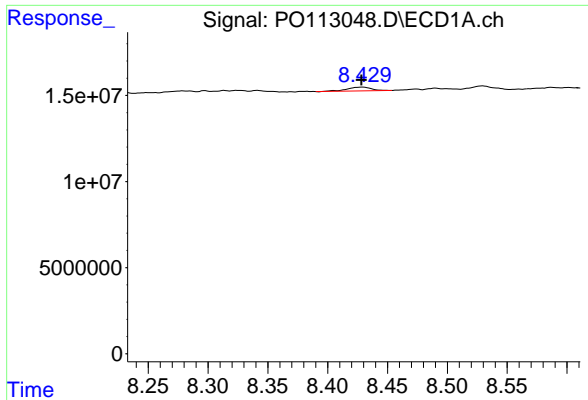
#44 AR-1268-4

R.T.: 8.137 min  
 Delta R.T.: 0.000 min  
 Response: 5219865  
 Conc: 11.33 ng/ml



#44 AR-1268-4

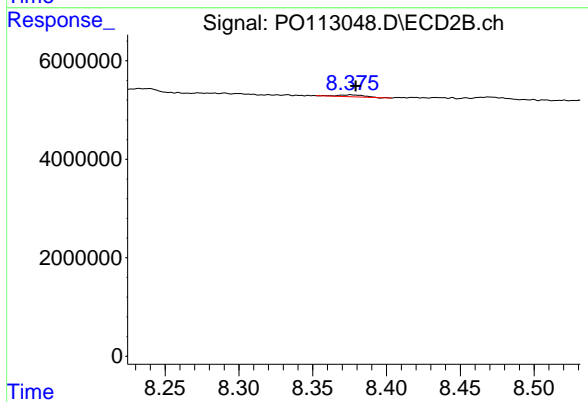
R.T.: 8.091 min  
 Delta R.T.: 0.000 min  
 Response: 1238658  
 Conc: 10.29 ng/ml



#45 AR-1268-5

R.T.: 8.429 min  
Delta R.T.: 0.000 min  
Response: 3162170  
Conc: 0.99 ng/ml

Instrument :  
ECD\_O  
ClientSampleId :



#45 AR-1268-5

R.T.: 8.376 min  
Delta R.T.: -0.003 min  
Response: 486046  
Conc: 0.62 ng/ml