

Data Path : Z:\pestpcbsrv\HPCHEM1\ECD\_0\Data\P0081925\  
 Data File : PO113054.D  
 Signal(s) : Signal #1: ECD1A.ch Signal #2: ECD2B.ch  
 Acq On : 19 Aug 2025 16:01  
 Operator : YP/AJ  
 Sample : AR1242CCC500  
 Misc :  
 ALS Vial : 4 Sample Multiplier: 1

Instrument :  
 ECD\_0  
 ClientSampleId :  
 AR1242CCC500

Integration File signal 1: autoint1.e  
 Integration File signal 2: autoint2.e  
 Quant Time: Aug 20 05:38:29 2025  
 Quant Method : Z:\pestpcbsrv\HPCHEM1\ECD\_0\methods\P0081825.M  
 Quant Title : GC EXTRACTABLES  
 QLast Update : Tue Aug 19 06:08:32 2025  
 Response via : Initial Calibration  
 Integrator: ChemStation

Volume Inj. : 2 µl  
 Signal #1 Phase : ZB-MR1 Signal #2 Phase: ZB-MR2  
 Signal #1 Info : 30Mx0.32mmx 0.50µ Signal #2 Info : 30M x 0.32mm x 0.25µm

Compound	RT#1	RT#2	Resp#1	Resp#2	ng/ml	ng/ml
System Monitoring Compounds						
1) SA Tetrachlo...	3.664	3.656	417.1E6	248.2E6	50.952	49.039
2) SA Decachlor...	8.682	8.627	359.8E6	94076740	51.911	49.649
Target Compounds						
3) L1 AR-1016-1	4.748	4.729	117.6E6	71257553	440.325	417.752
4) L1 AR-1016-2	4.767	4.748	178.3E6	107.4E6	444.217	416.946
5) L1 AR-1016-3	4.824	4.923	114.4E6	56648576	448.663	405.750
6) L1 AR-1016-4	4.943	4.965	88726623	43598515	406.876	373.598
7) L1 AR-1016-5	5.200	5.177	98844951	60309438	445.995	423.135
8) L2 AR-1221-1	3.874	3.863	10089245	7777158	107.822	123.210
9) L2 AR-1221-2	3.962	3.950	16550623	11649161	245.011	249.590
10) L2 AR-1221-3	4.037	4.024	60272510	40628203	272.294	273.637
11) L3 AR-1232-1	4.037	4.024	60272510	40628203	346.381	346.059
12) L3 AR-1232-2	4.528	4.748	86767355	107.4E6	868.956	876.645
13) L3 AR-1232-3	4.767	4.923	178.3E6	56648576	941.140	894.278
14) L3 AR-1232-4	4.943	5.007	88726623	55618985	942.201	989.289
15) L3 AR-1232-5	4.987	5.177	64789761	60309438	1045.958	1007.448
16) L4 AR-1242-1	4.748	4.729	117.6E6	71257553	511.283	493.117
17) L4 AR-1242-2	4.767	4.748	178.3E6	107.4E6	518.946	495.265
18) L4 AR-1242-3	4.824	4.923	114.4E6	56648576	515.670	484.324
19) L4 AR-1242-4	4.943	5.007	88726623	55618985	511.503	472.800
20) L4 AR-1242-5	5.594	5.526	100.2E6	73045030	500.734	489.798
21) L5 AR-1248-1	4.748	4.729	117.6E6	71257553	673.827	639.013
22) L5 AR-1248-2	4.987	4.965	64789761	43598515	267.875	271.305
23) L5 AR-1248-3	5.200	5.007	98844951	55618985	309.991	327.825
24) L5 AR-1248-4	5.552	5.177	125.8E6	60309438	251.763	302.728
25) L5 AR-1248-5	5.594	5.566	100.2E6	61548742	293.501	289.919
26) L6 AR-1254-1	5.552	5.526	125.8E6	73045030	232.939	231.629
27) L6 AR-1254-2	5.702	5.674	35816424	22677142	72.583	80.892
28) L6 AR-1254-3	6.105	6.074	40269900	24355575	54.501	58.418
29) L6 AR-1254-4	6.335	6.302	46705213	17958116	83.851	65.341
30) L6 AR-1254-5	6.752	6.717	11792793	6088595	16.823	17.031
31) L7 AR-1260-1	6.223	6.191	11102724	6362836	24.895	24.946
32) L7 AR-1260-2	6.424	6.392	8008000	2310631	11.661	6.684 #
33) L7 AR-1260-3	6.752f	6.540	11792793	2956060	19.098	9.939 #
34) L7 AR-1260-4	7.061	7.011	564369	391453	1.260	1.889 #
35) L7 AR-1260-5	7.291	7.252	1502191	798724	1.241	1.705 #
36) L8 AR-1262-1	6.752f	6.788	11792793	871272	12.878	2.101 #
37) L8 AR-1262-2	7.291	7.252	1502191	798724	0.993	1.543 #
38) L8 AR-1262-3	7.580	7.537	342910	300635	0.619	1.674 #
39) L8 AR-1262-4	7.638	7.595	1432050	908302	1.464	3.133 #
40) L8 AR-1262-5	8.138	8.127	221251	74252	0.531	0.685 #
41) L9 AR-1268-1	7.580	7.537	342910	300635	0.199	0.590 #

Data Path : Z:\pestpcbsrv\HPCHEM1\ECD\_0\Data\P0081925\  
 Data File : P0113054.D  
 Signal(s) : Signal #1: ECD1A.ch Signal #2: ECD2B.ch  
 Acq On : 19 Aug 2025 16:01  
 Operator : YP/AJ  
 Sample : AR1242CCC500  
 Misc :  
 ALS Vial : 4 Sample Multiplier: 1

Instrument :  
 ECD\_0  
 ClientSampleId :  
 AR1242CCC500

Integration File signal 1: autoint1.e  
 Integration File signal 2: autoint2.e  
 Quant Time: Aug 20 05:38:29 2025  
 Quant Method : Z:\pestpcbsrv\HPCHEM1\ECD\_0\methods\P0081825.M  
 Quant Title : GC EXTRACTABLES  
 QLast Update : Tue Aug 19 06:08:32 2025  
 Response via : Initial Calibration  
 Integrator: ChemStation

Volume Inj. : 2 µl  
 Signal #1 Phase : ZB-MR1 Signal #2 Phase: ZB-MR2  
 Signal #1 Info : 30Mx0.32mmx 0.50µ Signal #2 Info : 30M x 0.32mm x 0.25µm

	Compound	RT#1	RT#2	Resp#1	Resp#2	ng/ml	ng/ml
42)	L9 AR-1268-2	7.638	7.595	1432050	908302	0.989	2.187 #
43)	L9 AR-1268-3	7.843	7.804	1688568	253013	1.400	0.775 #
44)	L9 AR-1268-4	8.138	8.127f	221251	74252	0.480	0.617 #
45)	L9 AR-1268-5	8.429	8.377	2698165	721248	0.846	0.924

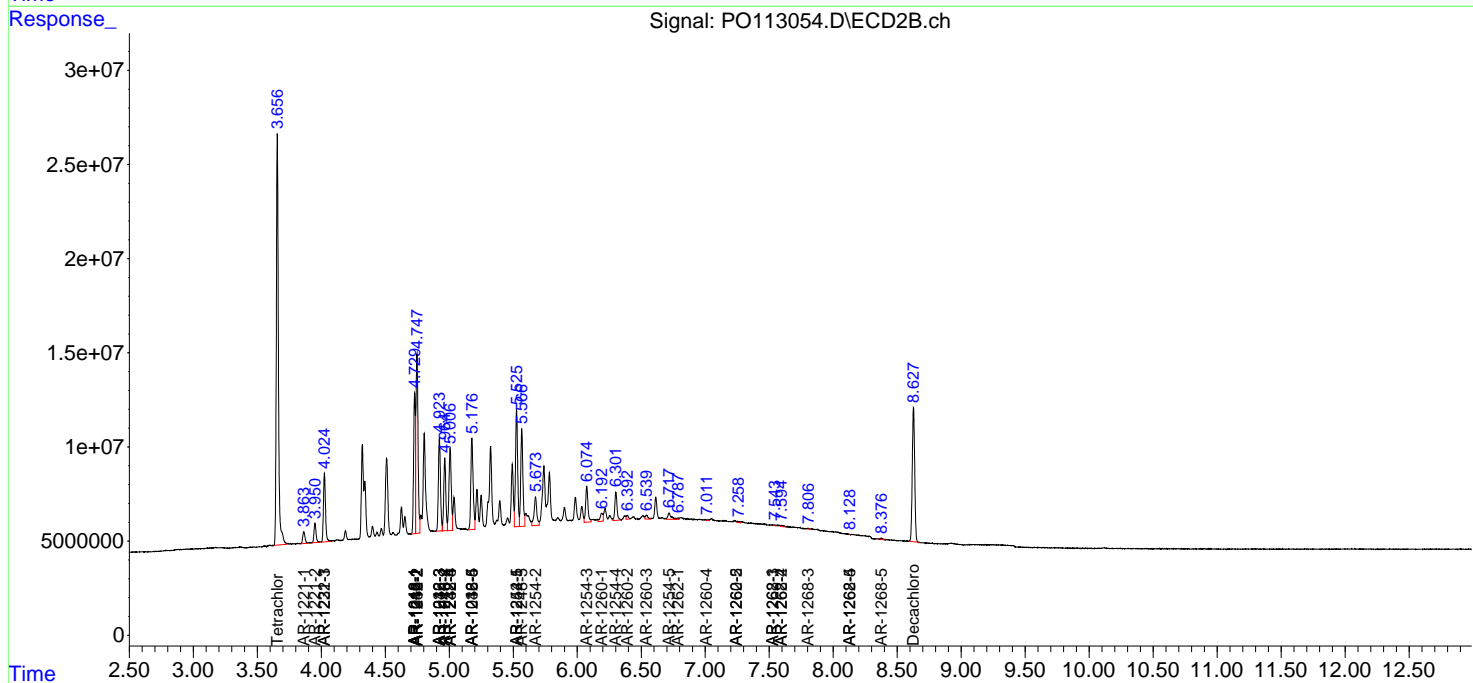
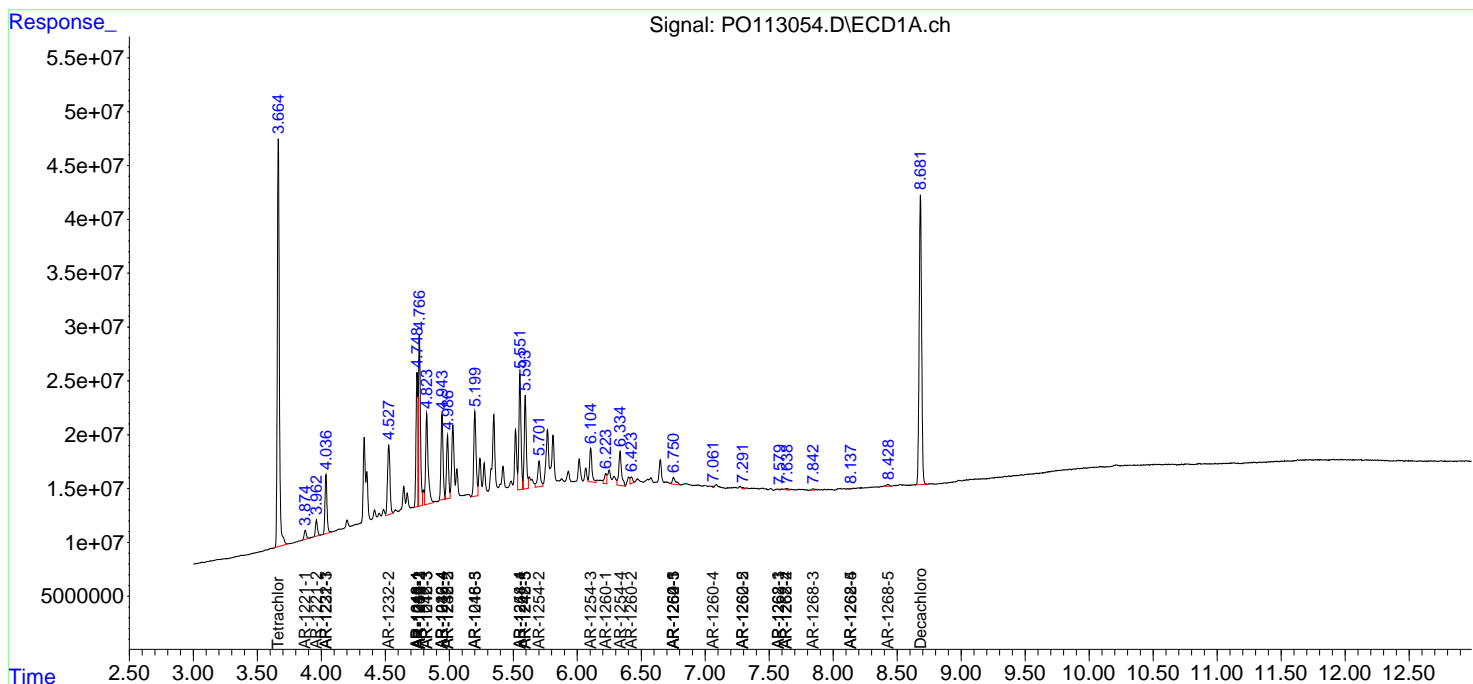
(f)=RT Delta > 1/2 Window (#)=Amounts differ by > 25% (m)=manual int.

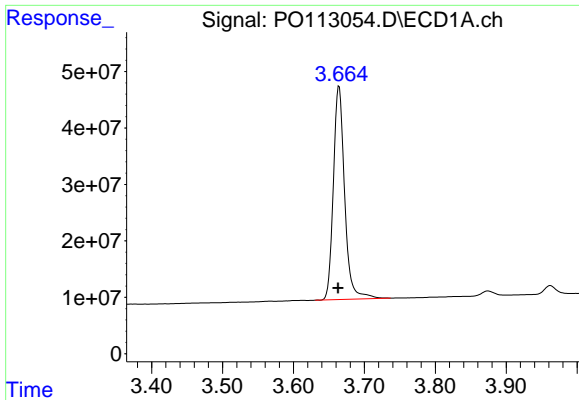
Data Path : Z:\pestpcbsrv\HPCHEM1\ECD\_O\Data\PO081925\  
 Data File : PO113054.D  
 Signal(s) : Signal #1: ECD1A.ch Signal #2: ECD2B.ch  
 Acq On : 19 Aug 2025 16:01  
 Operator : YP/AJ  
 Sample : AR1242CCC500  
 Misc :  
 ALS Vial : 4 Sample Multiplier: 1

Instrument :  
 ECD\_O  
 ClientSampleId :  
 AR1242CCC500

Integration File signal 1: autoint1.e  
 Integration File signal 2: autoint2.e  
 Quant Time: Aug 20 05:38:29 2025  
 Quant Method : Z:\pestpcbsrv\HPCHEM1\ECD\_O\methods\PO081825.M  
 Quant Title : GC EXTRACTABLES  
 QLast Update : Tue Aug 19 06:08:32 2025  
 Response via : Initial Calibration  
 Integrator: ChemStation

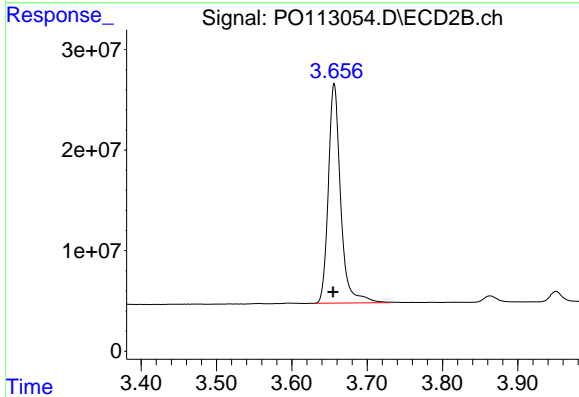
Volume Inj. : 2 µl  
 Signal #1 Phase : ZB-MR1 Signal #2 Phase: ZB-MR2  
 Signal #1 Info : 30Mx0.32mmx 0.50µ Signal #2 Info : 30M x 0.32mm x 0.25µm



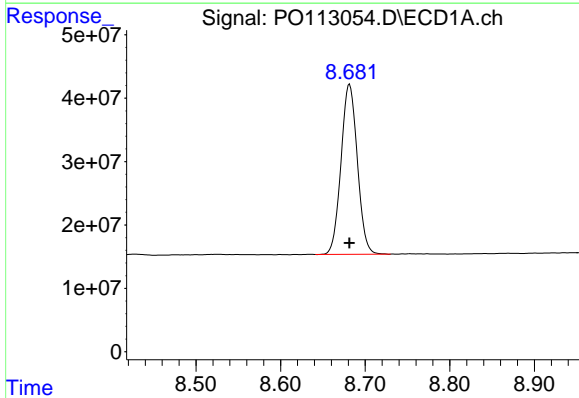


#1 Tetrachloro-m-xylene  
 R.T.: 3.664 min  
 Delta R.T.: 0.001 min  
 Response: 417124636  
 Conc: 50.95 ng/ml

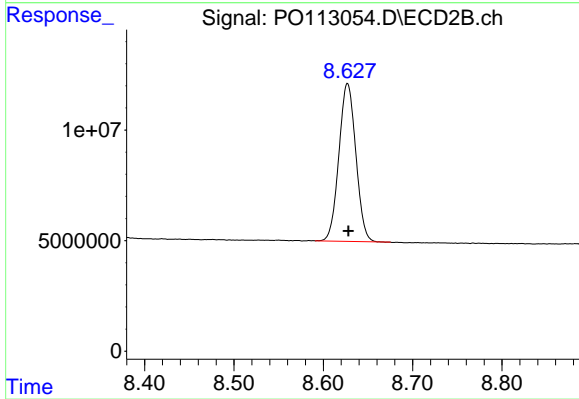
Instrument :  
 ECD\_O  
 ClientSampleId :  
 AR1242CCC500



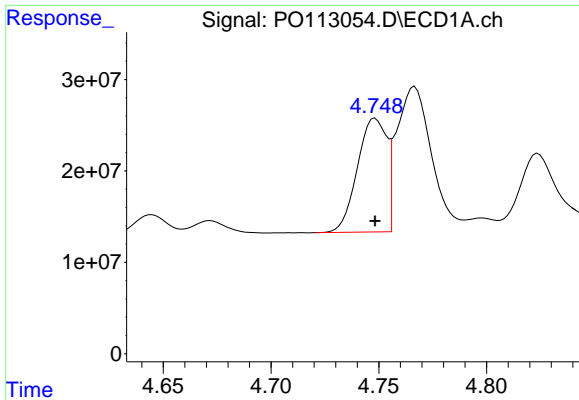
#1 Tetrachloro-m-xylene  
 R.T.: 3.656 min  
 Delta R.T.: 0.001 min  
 Response: 248169897  
 Conc: 49.04 ng/ml



#2 Decachlorobiphenyl  
 R.T.: 8.682 min  
 Delta R.T.: 0.000 min  
 Response: 359817860  
 Conc: 51.91 ng/ml



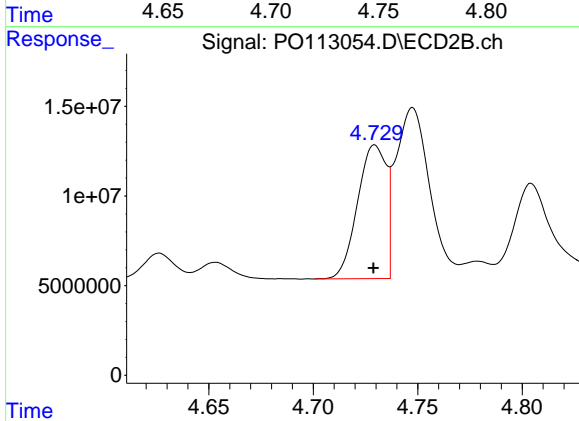
#2 Decachlorobiphenyl  
 R.T.: 8.627 min  
 Delta R.T.: -0.001 min  
 Response: 94076740  
 Conc: 49.65 ng/ml



#3 AR-1016-1

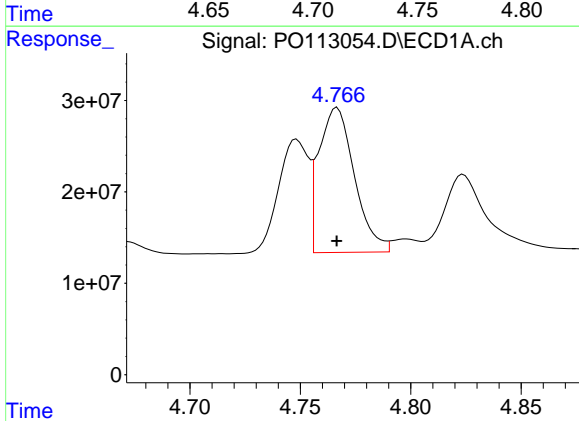
R.T.: 4.748 min  
 Delta R.T.: 0.000 min  
 Response: 117560158  
 Conc: 440.33 ng/ml

Instrument :  
 ECD\_O  
 ClientSampleId :  
 AR1242CCC500



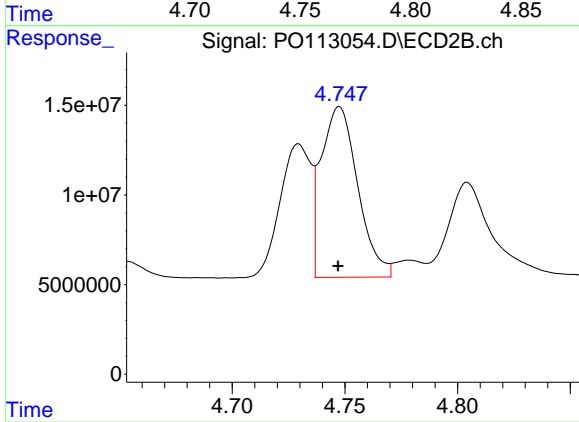
#3 AR-1016-1

R.T.: 4.729 min  
 Delta R.T.: 0.000 min  
 Response: 71257553  
 Conc: 417.75 ng/ml



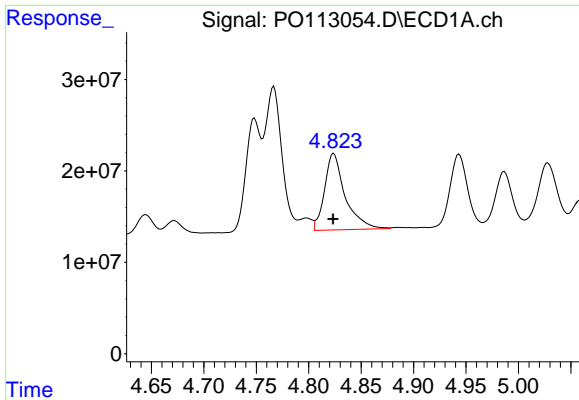
#4 AR-1016-2

R.T.: 4.767 min  
 Delta R.T.: 0.000 min  
 Response: 178322918  
 Conc: 444.22 ng/ml



#4 AR-1016-2

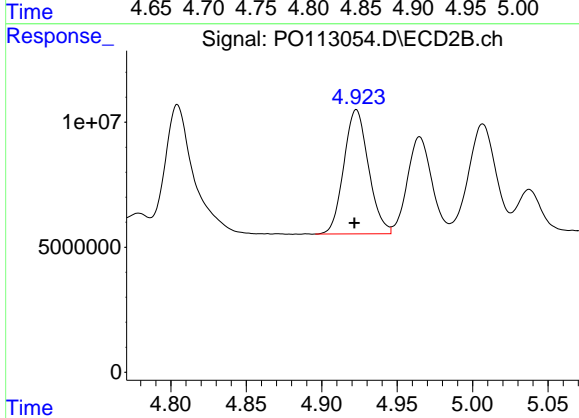
R.T.: 4.748 min  
 Delta R.T.: 0.000 min  
 Response: 107428544  
 Conc: 416.95 ng/ml



#5 AR-1016-3

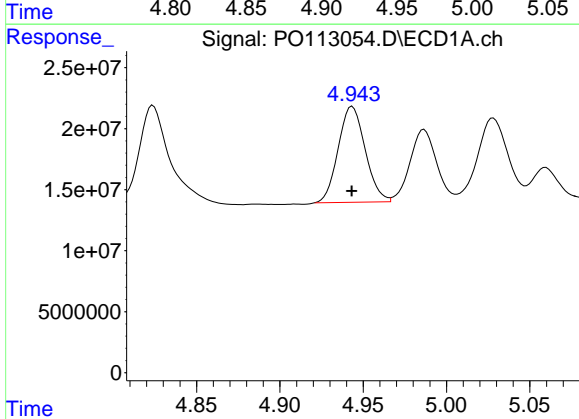
R.T.: 4.824 min  
 Delta R.T.: 0.000 min  
 Response: 114419035  
 Conc: 448.66 ng/ml

Instrument :  
 ECD\_O  
 ClientSampleId :  
 AR1242CCC500



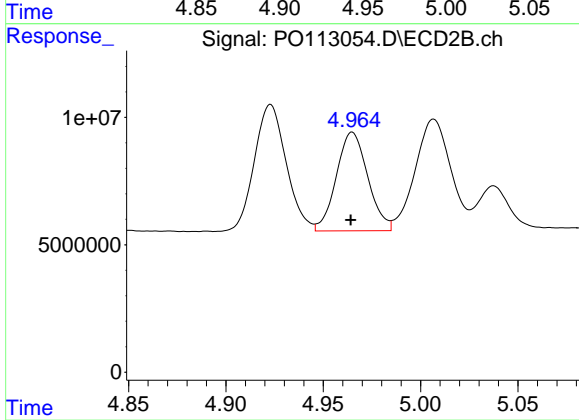
#5 AR-1016-3

R.T.: 4.923 min  
 Delta R.T.: 0.001 min  
 Response: 56648576  
 Conc: 405.75 ng/ml



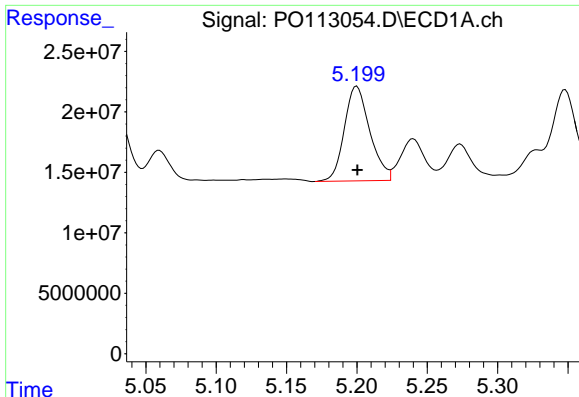
#6 AR-1016-4

R.T.: 4.943 min  
 Delta R.T.: 0.000 min  
 Response: 88726623  
 Conc: 406.88 ng/ml



#6 AR-1016-4

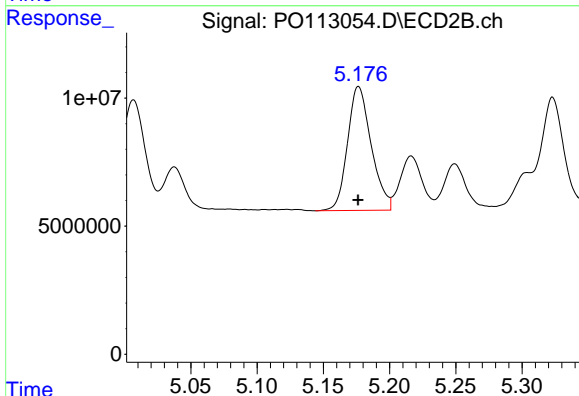
R.T.: 4.965 min  
 Delta R.T.: 0.000 min  
 Response: 43598515  
 Conc: 373.60 ng/ml



#7 AR-1016-5

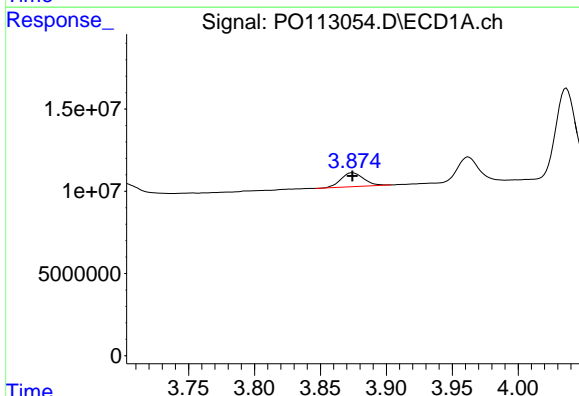
R.T.: 5.200 min  
 Delta R.T.: 0.000 min  
 Response: 98844951  
 Conc: 446.00 ng/ml

Instrument :  
 ECD\_O  
 ClientSampleId :  
 AR1242CCC500



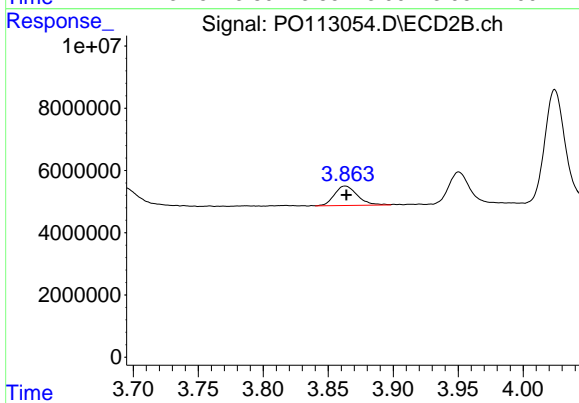
#7 AR-1016-5

R.T.: 5.177 min  
 Delta R.T.: 0.000 min  
 Response: 60309438  
 Conc: 423.14 ng/ml



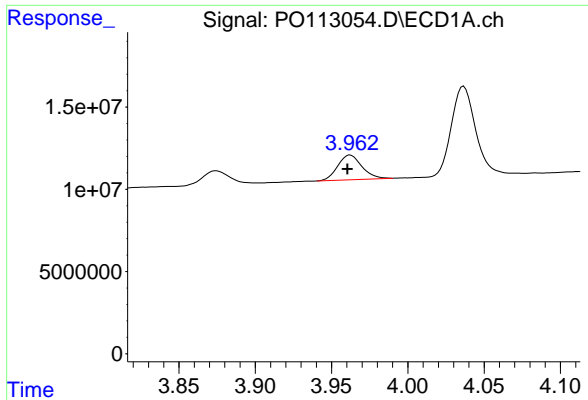
#8 AR-1221-1

R.T.: 3.874 min  
 Delta R.T.: 0.000 min  
 Response: 10089245  
 Conc: 107.82 ng/ml



#8 AR-1221-1

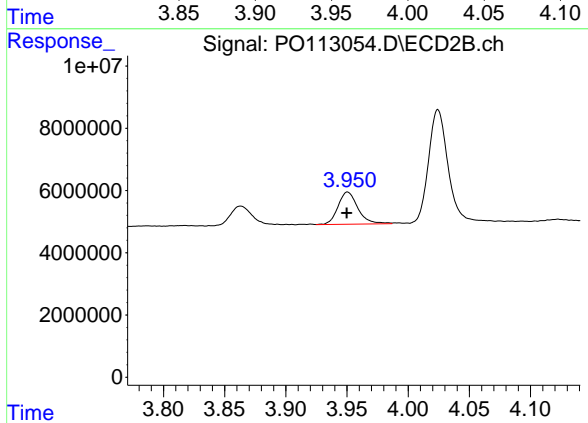
R.T.: 3.863 min  
 Delta R.T.: 0.000 min  
 Response: 7777158  
 Conc: 123.21 ng/ml



#9 AR-1221-2

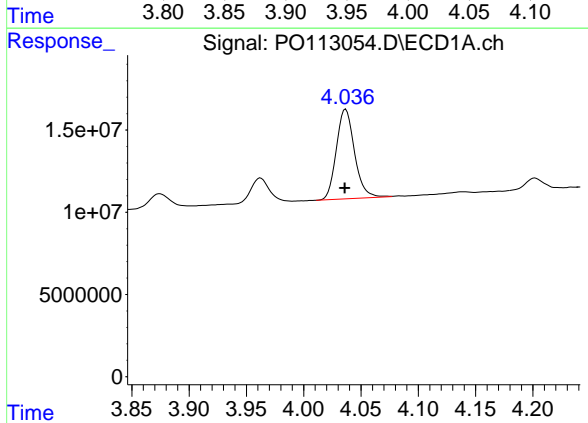
R.T.: 3.962 min  
 Delta R.T.: 0.002 min  
 Response: 16550623  
 Conc: 245.01 ng/ml

Instrument :  
 ECD\_O  
 ClientSampleId :  
 AR1242CCC500



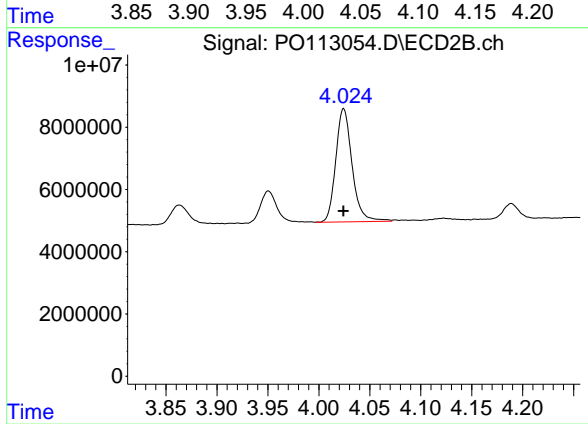
#9 AR-1221-2

R.T.: 3.950 min  
 Delta R.T.: 0.000 min  
 Response: 11649161  
 Conc: 249.59 ng/ml



#10 AR-1221-3

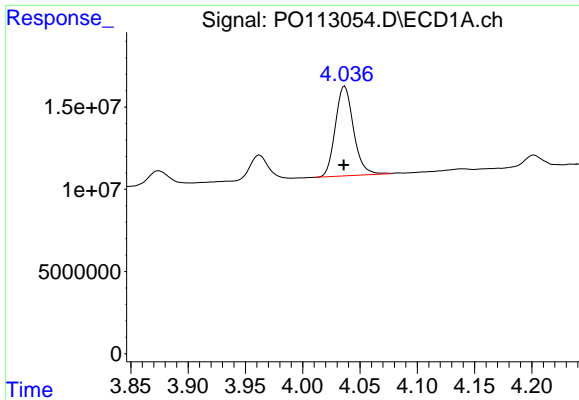
R.T.: 4.037 min  
 Delta R.T.: 0.001 min  
 Response: 60272510  
 Conc: 272.29 ng/ml



#10 AR-1221-3

R.T.: 4.024 min  
 Delta R.T.: 0.000 min  
 Response: 40628203  
 Conc: 273.64 ng/ml

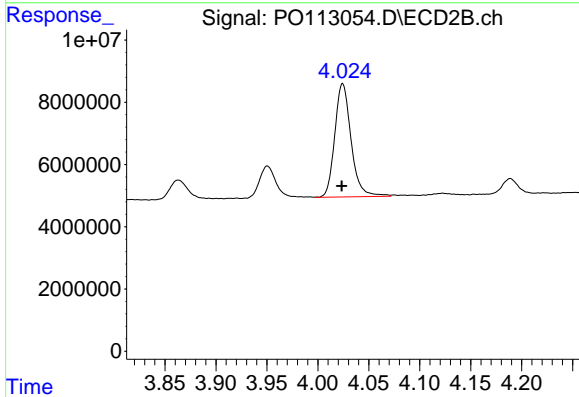




#11 AR-1232-1

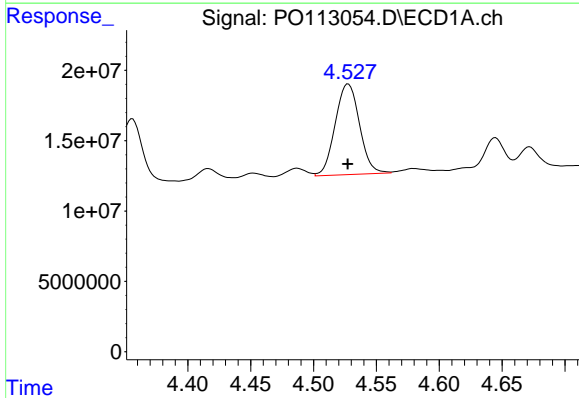
R.T.: 4.037 min  
 Delta R.T.: 0.000 min  
 Response: 60272510  
 Conc: 346.38 ng/ml

Instrument :  
 ECD\_O  
 ClientSampleId :  
 AR1242CCC500



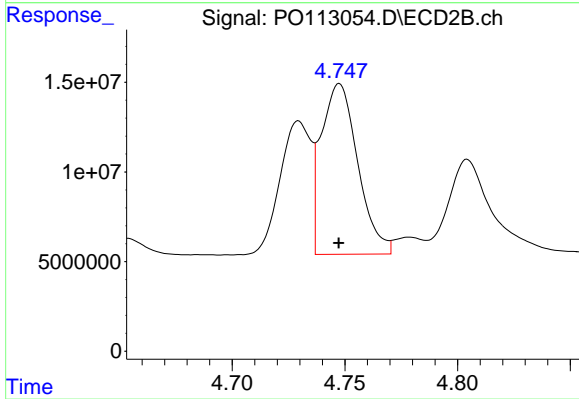
#11 AR-1232-1

R.T.: 4.024 min  
 Delta R.T.: 0.000 min  
 Response: 40628203  
 Conc: 346.06 ng/ml



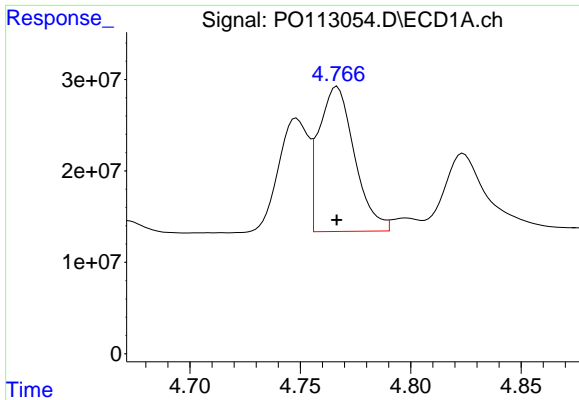
#12 AR-1232-2

R.T.: 4.528 min  
 Delta R.T.: 0.000 min  
 Response: 86767355  
 Conc: 868.96 ng/ml



#12 AR-1232-2

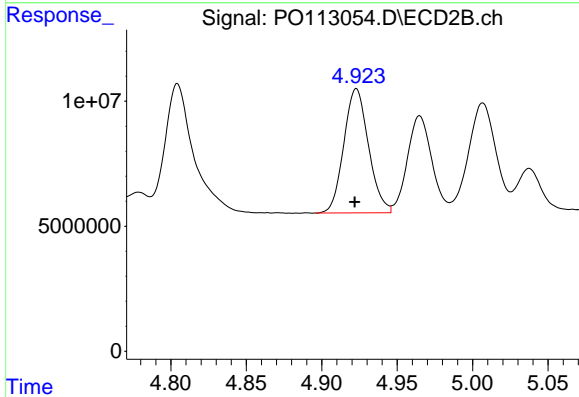
R.T.: 4.748 min  
 Delta R.T.: 0.000 min  
 Response: 107428544  
 Conc: 876.64 ng/ml



#13 AR-1232-3

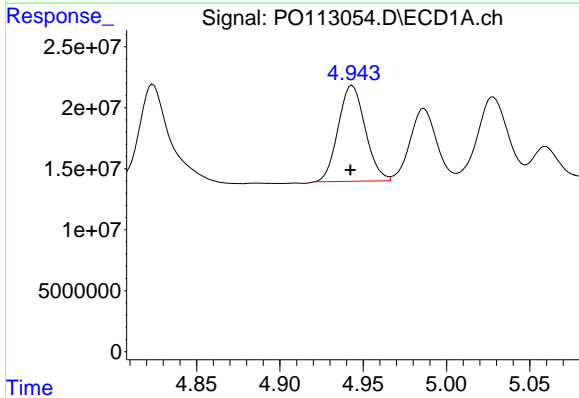
R.T.: 4.767 min  
 Delta R.T.: 0.000 min  
 Response: 178322918  
 Conc: 941.14 ng/ml

Instrument :  
 ECD\_O  
 ClientSampleId :  
 AR1242CCC500



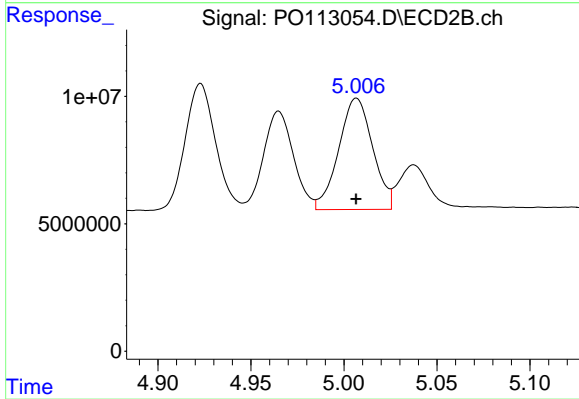
#13 AR-1232-3

R.T.: 4.923 min  
 Delta R.T.: 0.001 min  
 Response: 56648576  
 Conc: 894.28 ng/ml



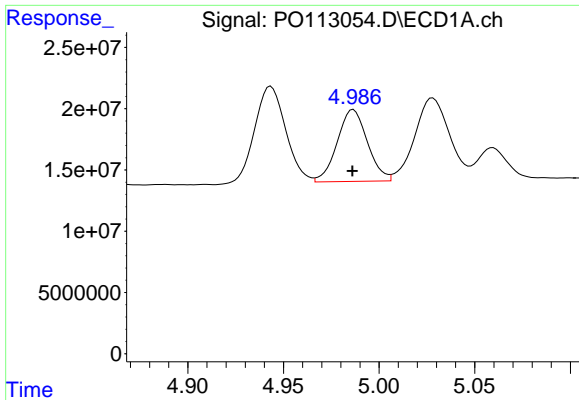
#14 AR-1232-4

R.T.: 4.943 min  
 Delta R.T.: 0.001 min  
 Response: 88726623  
 Conc: 942.20 ng/ml



#14 AR-1232-4

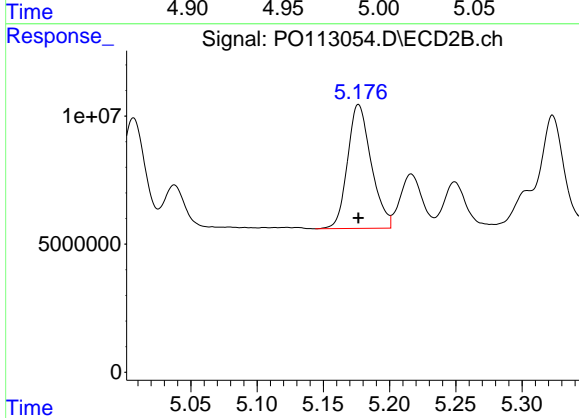
R.T.: 5.007 min  
 Delta R.T.: 0.000 min  
 Response: 55618985  
 Conc: 989.29 ng/ml



#15 AR-1232-5

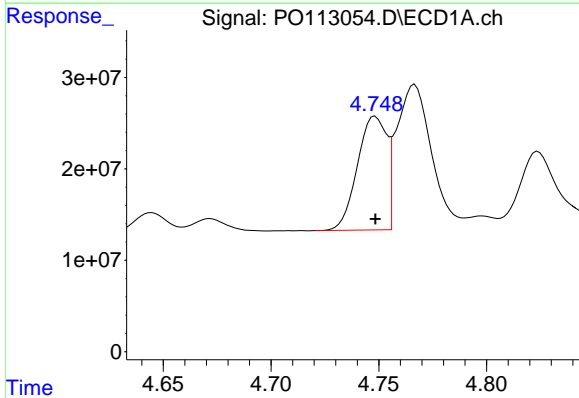
R.T.: 4.987 min  
 Delta R.T.: 0.000 min  
 Response: 64789761  
 Conc: 1045.96 ng/ml

Instrument :  
 ECD\_O  
 ClientSampleId :  
 AR1242CCC500



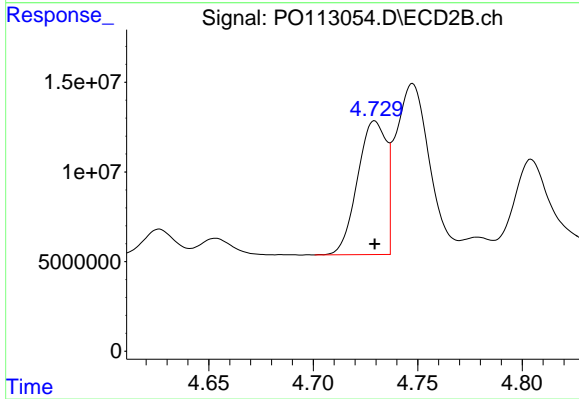
#15 AR-1232-5

R.T.: 5.177 min  
 Delta R.T.: 0.000 min  
 Response: 60309438  
 Conc: 1007.45 ng/ml



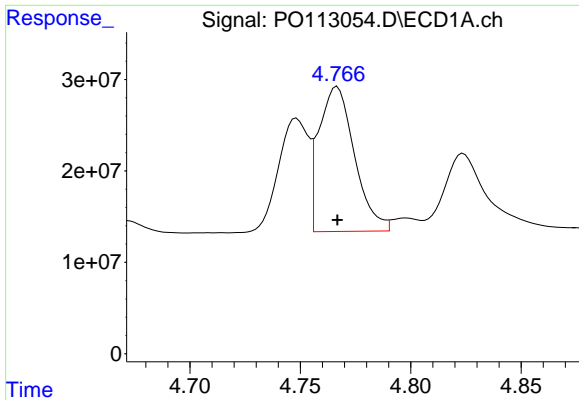
#16 AR-1242-1

R.T.: 4.748 min  
 Delta R.T.: 0.000 min  
 Response: 117560158  
 Conc: 511.28 ng/ml



#16 AR-1242-1

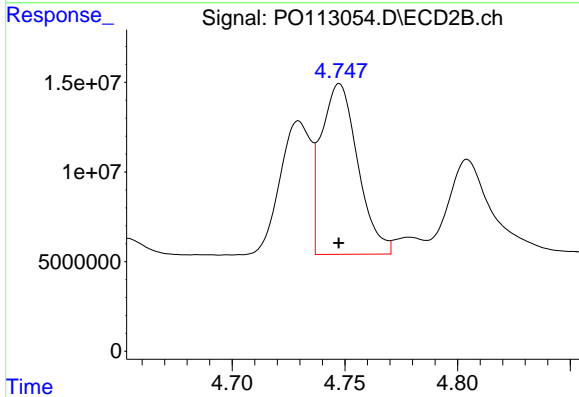
R.T.: 4.729 min  
 Delta R.T.: 0.000 min  
 Response: 71257553  
 Conc: 493.12 ng/ml



#17 AR-1242-2

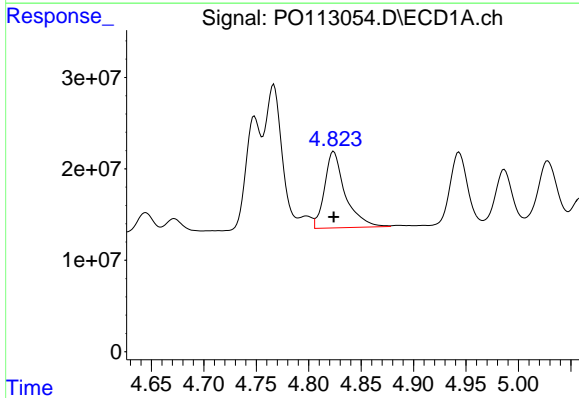
R.T.: 4.767 min  
 Delta R.T.: 0.000 min  
 Response: 178322918  
 Conc: 518.95 ng/ml

Instrument :  
 ECD\_O  
 ClientSampleId :  
 AR1242CCC500



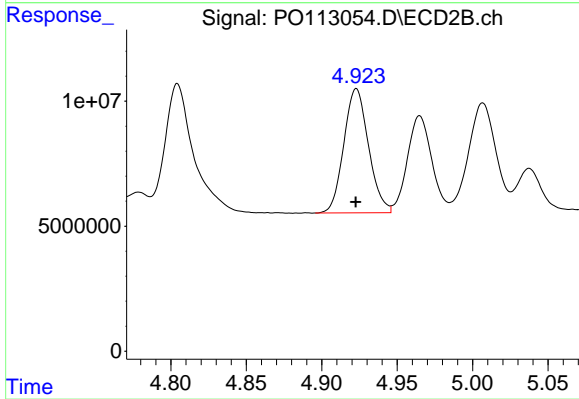
#17 AR-1242-2

R.T.: 4.748 min  
 Delta R.T.: 0.000 min  
 Response: 107428544  
 Conc: 495.27 ng/ml



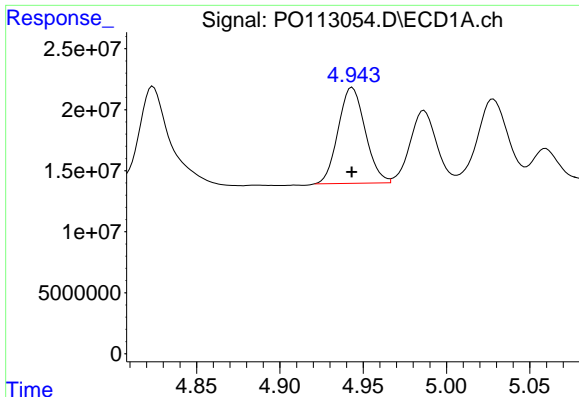
#18 AR-1242-3

R.T.: 4.824 min  
 Delta R.T.: 0.000 min  
 Response: 114419035  
 Conc: 515.67 ng/ml



#18 AR-1242-3

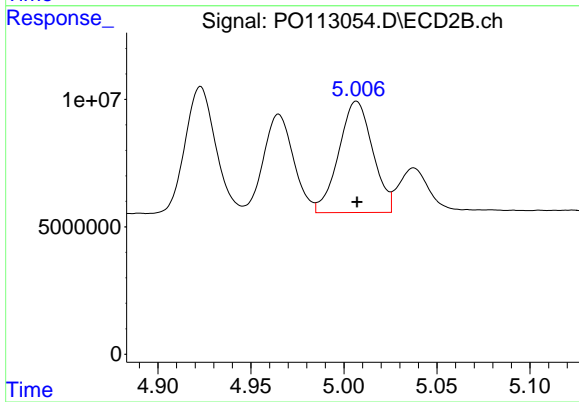
R.T.: 4.923 min  
 Delta R.T.: 0.000 min  
 Response: 56648576  
 Conc: 484.32 ng/ml



#19 AR-1242-4

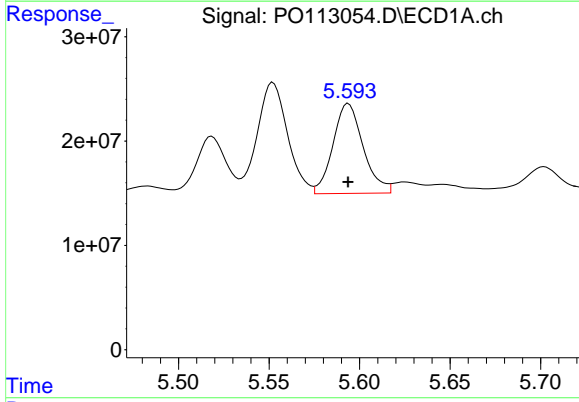
R.T.: 4.943 min  
 Delta R.T.: 0.000 min  
 Response: 88726623  
 Conc: 511.50 ng/ml

Instrument :  
 ECD\_O  
 ClientSampleId :  
 AR1242CCC500



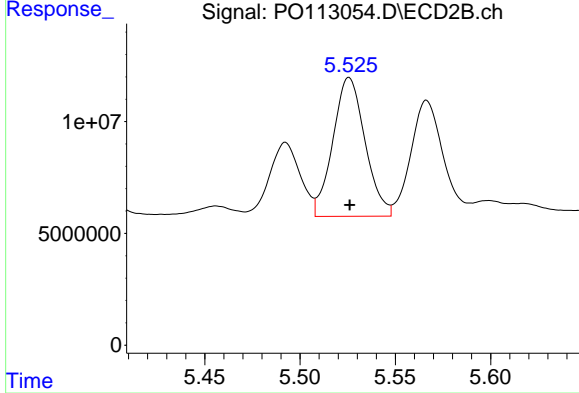
#19 AR-1242-4

R.T.: 5.007 min  
 Delta R.T.: 0.000 min  
 Response: 55618985  
 Conc: 472.80 ng/ml



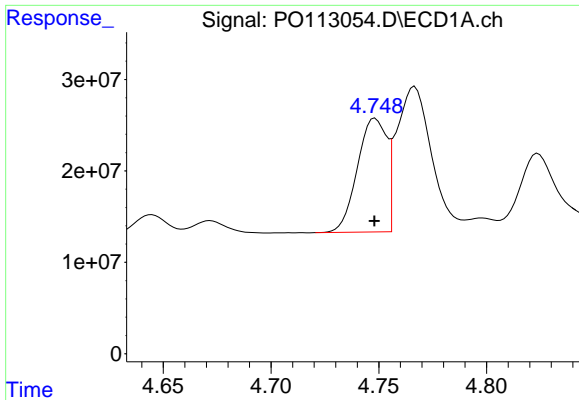
#20 AR-1242-5

R.T.: 5.594 min  
 Delta R.T.: 0.000 min  
 Response: 100228092  
 Conc: 500.73 ng/ml



#20 AR-1242-5

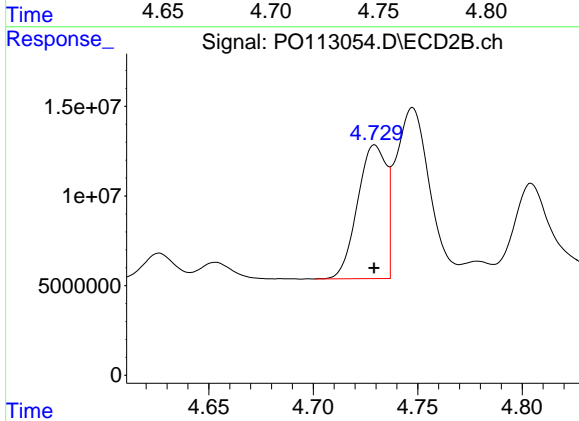
R.T.: 5.526 min  
 Delta R.T.: 0.000 min  
 Response: 73045030  
 Conc: 489.80 ng/ml



#21 AR-1248-1

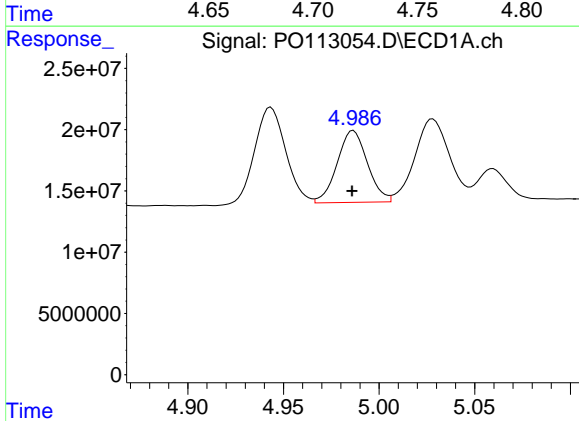
R.T.: 4.748 min  
 Delta R.T.: 0.000 min  
 Response: 117560158  
 Conc: 673.83 ng/ml

Instrument :  
 ECD\_O  
 ClientSampleId :  
 AR1242CCC500



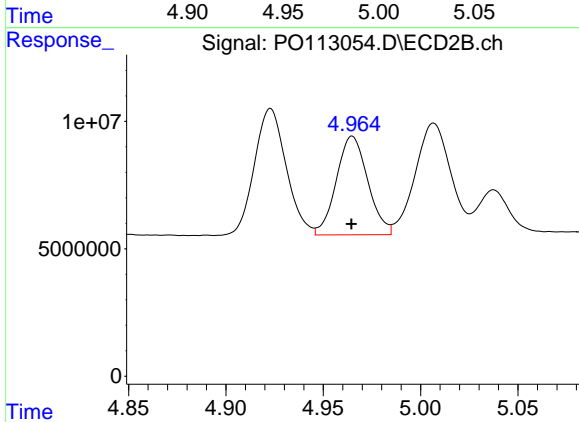
#21 AR-1248-1

R.T.: 4.729 min  
 Delta R.T.: 0.000 min  
 Response: 71257553  
 Conc: 639.01 ng/ml



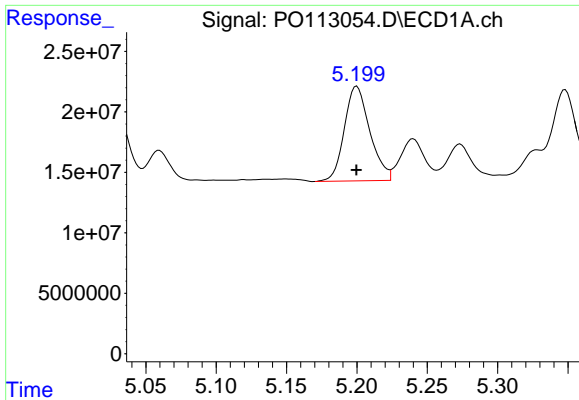
#22 AR-1248-2

R.T.: 4.987 min  
 Delta R.T.: 0.000 min  
 Response: 64789761  
 Conc: 267.88 ng/ml



#22 AR-1248-2

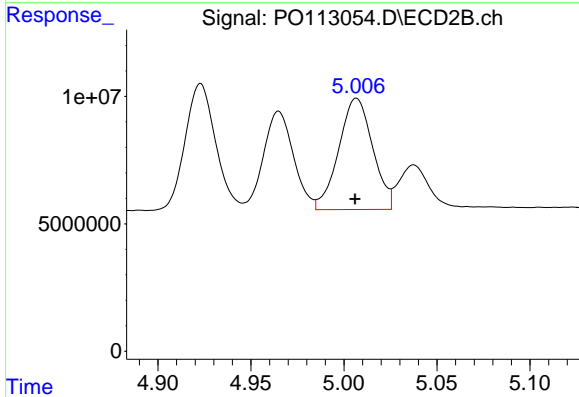
R.T.: 4.965 min  
 Delta R.T.: 0.000 min  
 Response: 43598515  
 Conc: 271.31 ng/ml



#23 AR-1248-3

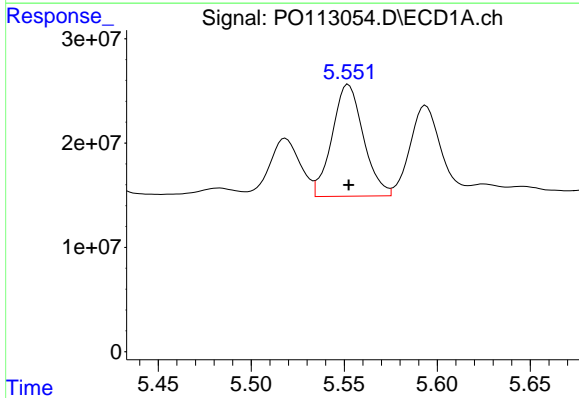
R.T.: 5.200 min  
 Delta R.T.: 0.000 min  
 Response: 98844951  
 Conc: 309.99 ng/ml

Instrument :  
 ECD\_O  
 ClientSampleId :  
 AR1242CCC500



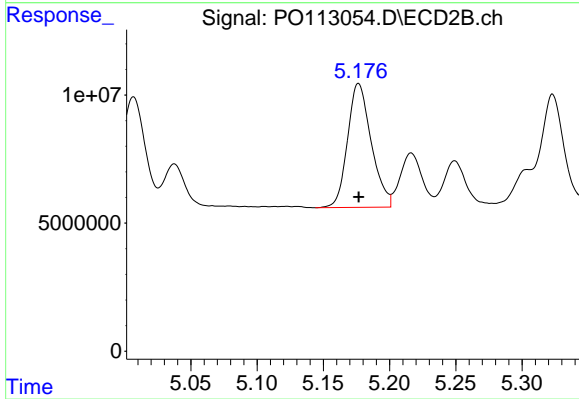
#23 AR-1248-3

R.T.: 5.007 min  
 Delta R.T.: 0.000 min  
 Response: 55618985  
 Conc: 327.82 ng/ml



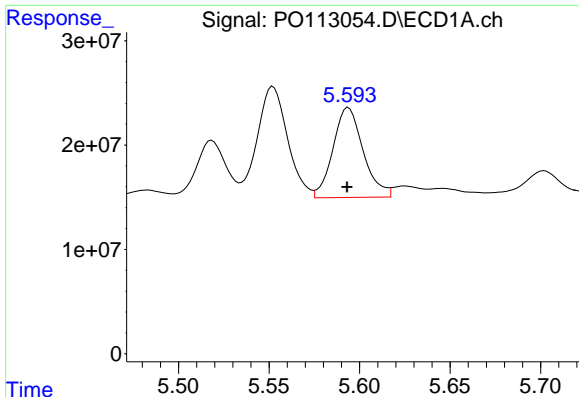
#24 AR-1248-4

R.T.: 5.552 min  
 Delta R.T.: 0.000 min  
 Response: 125782105  
 Conc: 251.76 ng/ml



#24 AR-1248-4

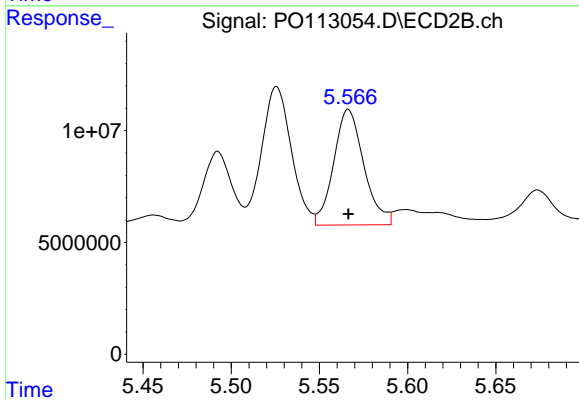
R.T.: 5.177 min  
 Delta R.T.: 0.000 min  
 Response: 60309438  
 Conc: 302.73 ng/ml



#25 AR-1248-5

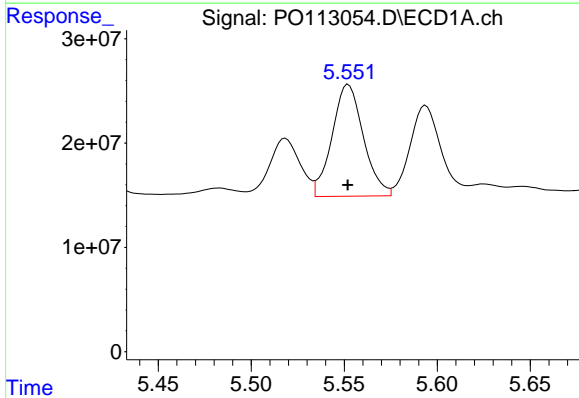
R.T.: 5.594 min  
 Delta R.T.: 0.000 min  
 Response: 100228092  
 Conc: 293.50 ng/ml

Instrument :  
 ECD\_O  
 ClientSampleId :  
 AR1242CCC500



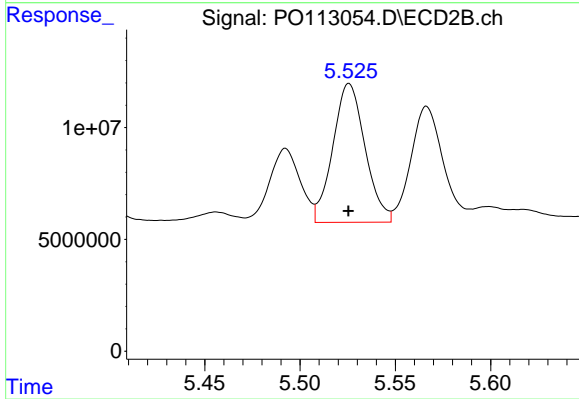
#25 AR-1248-5

R.T.: 5.566 min  
 Delta R.T.: 0.000 min  
 Response: 61548742  
 Conc: 289.92 ng/ml



#26 AR-1254-1

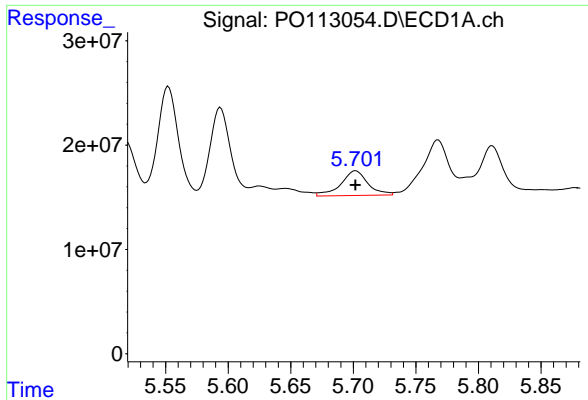
R.T.: 5.552 min  
 Delta R.T.: 0.000 min  
 Response: 125782105  
 Conc: 232.94 ng/ml



#26 AR-1254-1

R.T.: 5.526 min  
 Delta R.T.: 0.000 min  
 Response: 73045030  
 Conc: 231.63 ng/ml

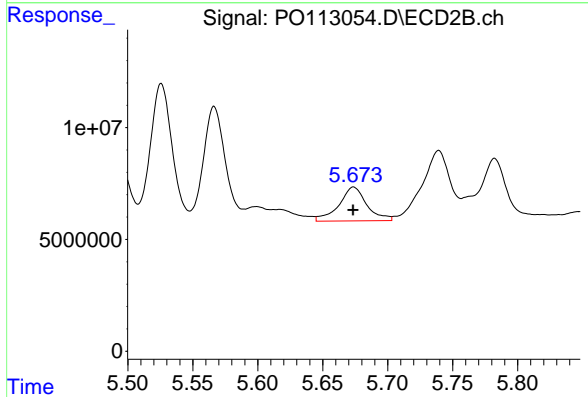




#27 AR-1254-2

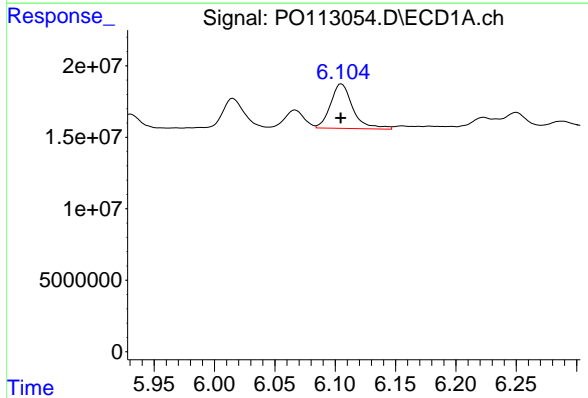
R.T.: 5.702 min  
 Delta R.T.: 0.000 min  
 Response: 35816424  
 Conc: 72.58 ng/ml

Instrument :  
 ECD\_O  
 ClientSampleId :  
 AR1242CCC500



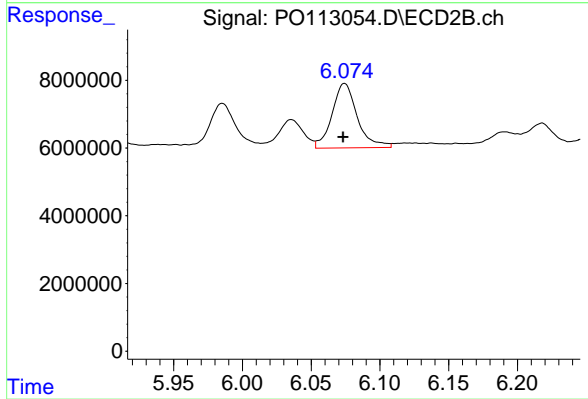
#27 AR-1254-2

R.T.: 5.674 min  
 Delta R.T.: 0.000 min  
 Response: 22677142  
 Conc: 80.89 ng/ml



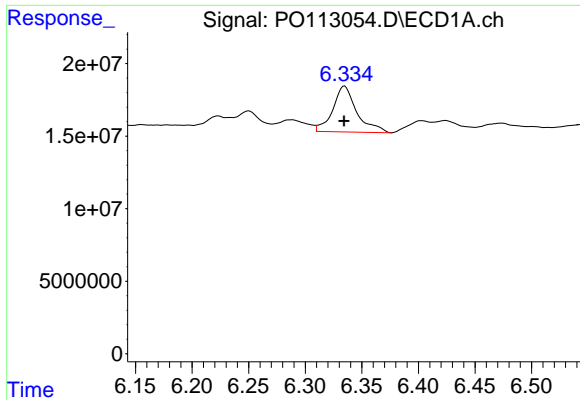
#28 AR-1254-3

R.T.: 6.105 min  
 Delta R.T.: 0.000 min  
 Response: 40269900  
 Conc: 54.50 ng/ml



#28 AR-1254-3

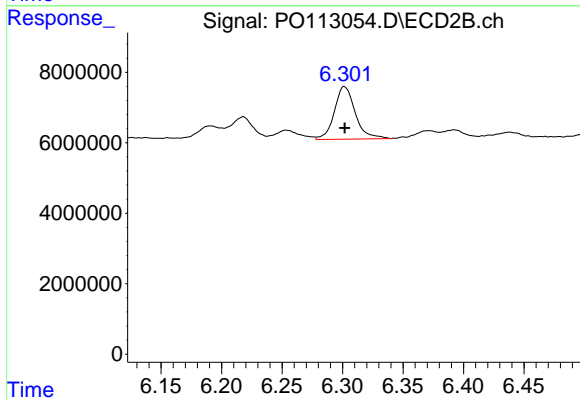
R.T.: 6.074 min  
 Delta R.T.: 0.001 min  
 Response: 24355575  
 Conc: 58.42 ng/ml



#29 AR-1254-4

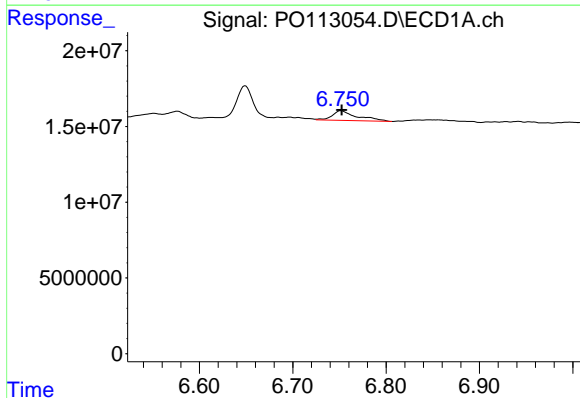
R.T.: 6.335 min  
 Delta R.T.: 0.000 min  
 Response: 46705213  
 Conc: 83.85 ng/ml

Instrument :  
 ECD\_O  
 ClientSampleId :  
 AR1242CCC500



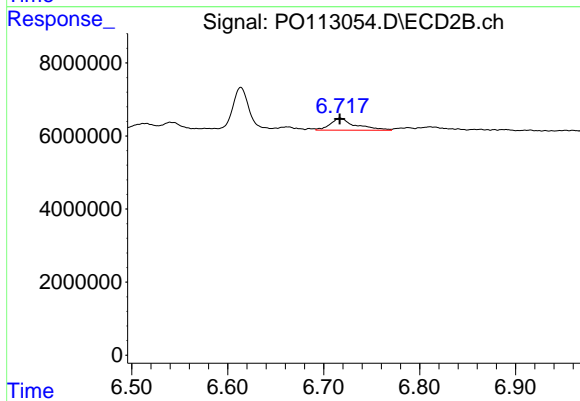
#29 AR-1254-4

R.T.: 6.302 min  
 Delta R.T.: 0.000 min  
 Response: 17958116  
 Conc: 65.34 ng/ml



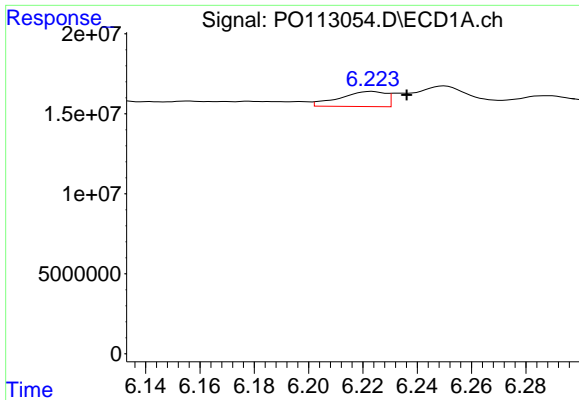
#30 AR-1254-5

R.T.: 6.752 min  
 Delta R.T.: 0.000 min  
 Response: 11792793  
 Conc: 16.82 ng/ml



#30 AR-1254-5

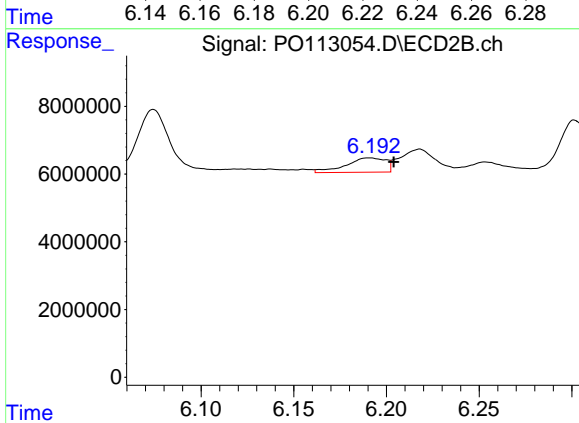
R.T.: 6.717 min  
 Delta R.T.: 0.000 min  
 Response: 6088595  
 Conc: 17.03 ng/ml



#31 AR-1260-1

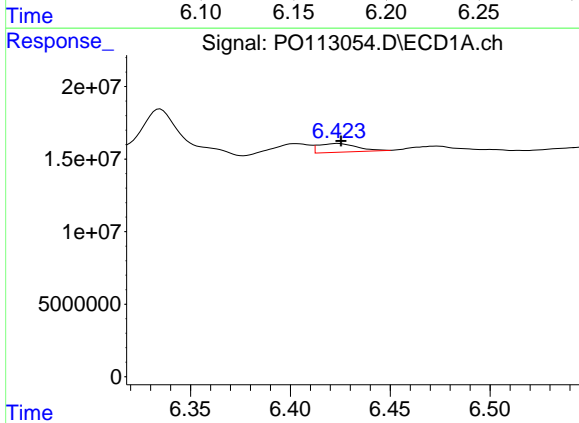
R.T.: 6.223 min  
 Delta R.T.: -0.013 min  
 Response: 11102724  
 Conc: 24.90 ng/ml

Instrument :  
 ECD\_O  
 ClientSampleId :  
 AR1242CCC500



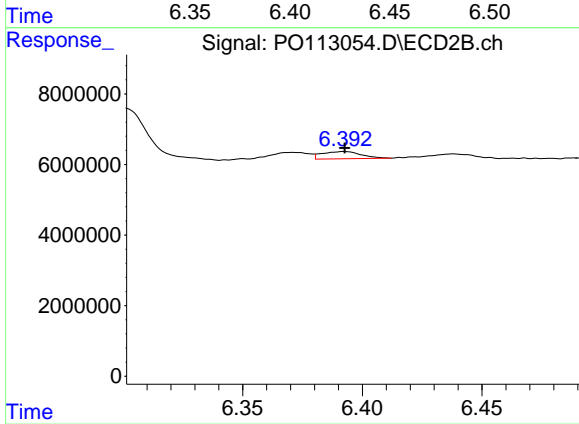
#31 AR-1260-1

R.T.: 6.191 min  
 Delta R.T.: -0.013 min  
 Response: 6362836  
 Conc: 24.95 ng/ml



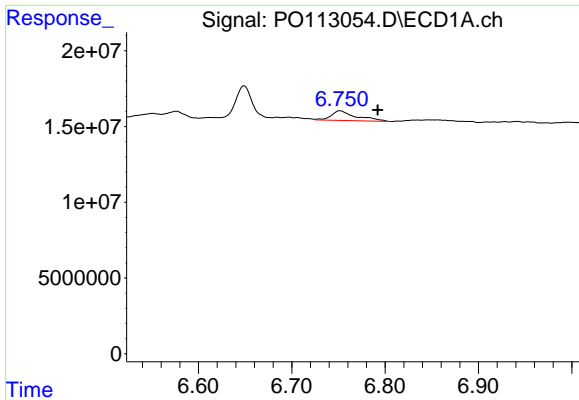
#32 AR-1260-2

R.T.: 6.424 min  
 Delta R.T.: -0.001 min  
 Response: 8008000  
 Conc: 11.66 ng/ml



#32 AR-1260-2

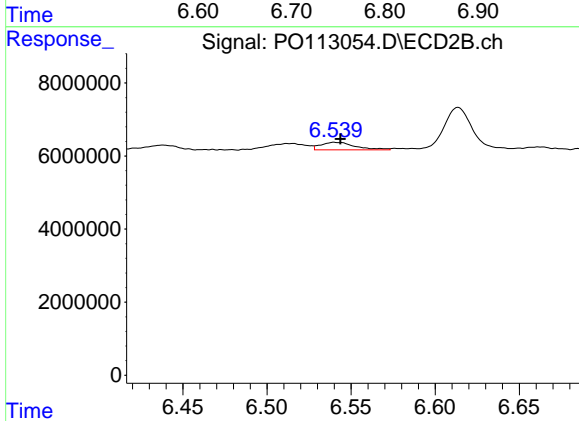
R.T.: 6.392 min  
 Delta R.T.: 0.000 min  
 Response: 2310631  
 Conc: 6.68 ng/ml



#33 AR-1260-3

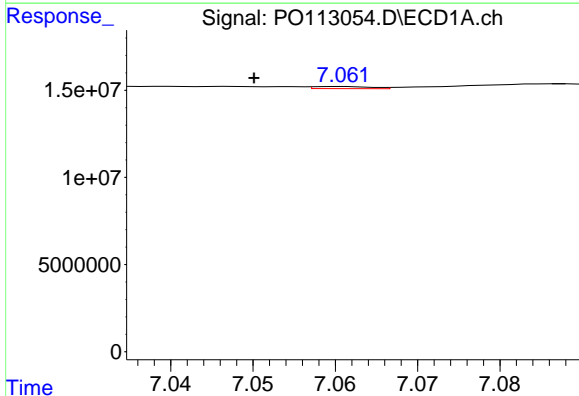
R.T.: 6.752 min  
 Delta R.T.: -0.040 min  
 Response: 11792793  
 Conc: 19.10 ng/ml

Instrument :  
 ECD\_O  
 ClientSampleId :  
 AR1242CCC500



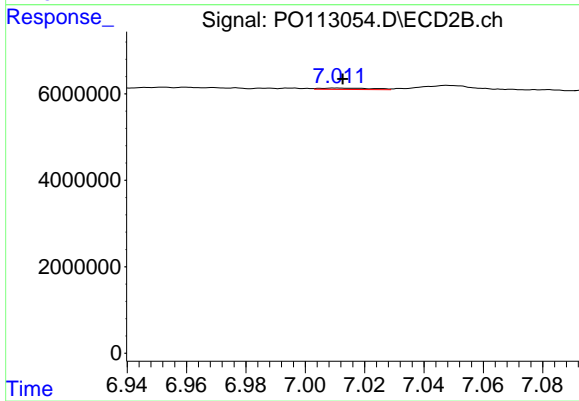
#33 AR-1260-3

R.T.: 6.540 min  
 Delta R.T.: -0.003 min  
 Response: 2956060  
 Conc: 9.94 ng/ml



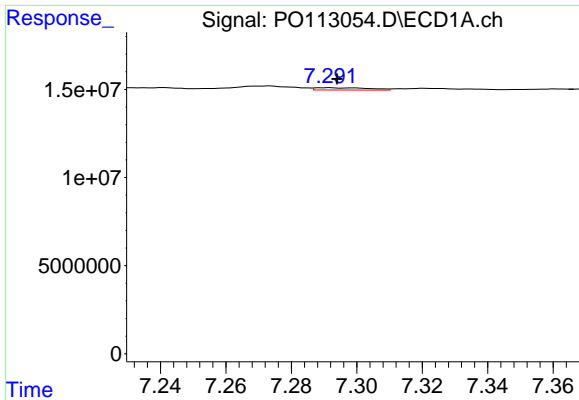
#34 AR-1260-4

R.T.: 7.061 min  
 Delta R.T.: 0.011 min  
 Response: 564369  
 Conc: 1.26 ng/ml



#34 AR-1260-4

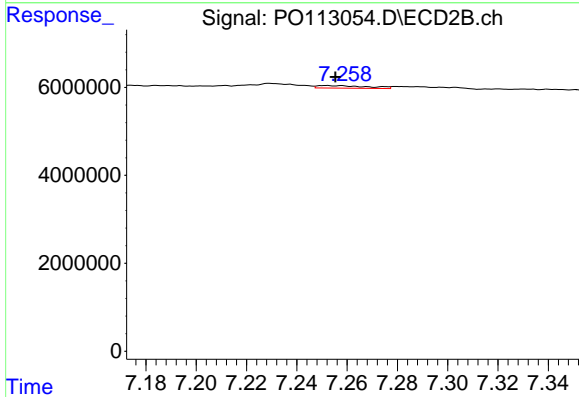
R.T.: 7.011 min  
 Delta R.T.: -0.002 min  
 Response: 391453  
 Conc: 1.89 ng/ml



#35 AR-1260-5

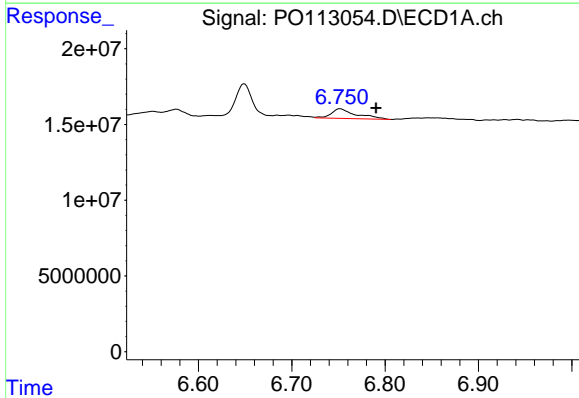
R.T.: 7.291 min  
 Delta R.T.: -0.002 min  
 Response: 1502191  
 Conc: 1.24 ng/ml

Instrument :  
 ECD\_O  
 ClientSampleId :  
 AR1242CCC500



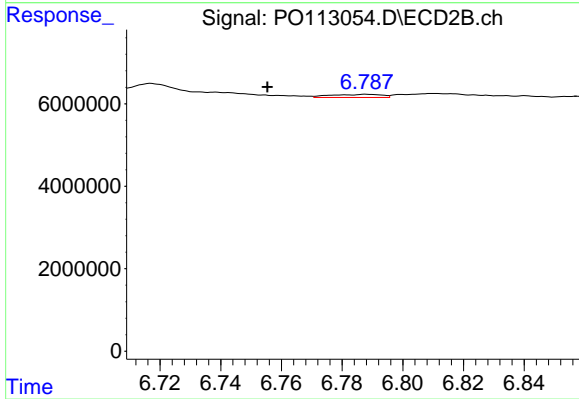
#35 AR-1260-5

R.T.: 7.252 min  
 Delta R.T.: -0.004 min  
 Response: 798724  
 Conc: 1.71 ng/ml



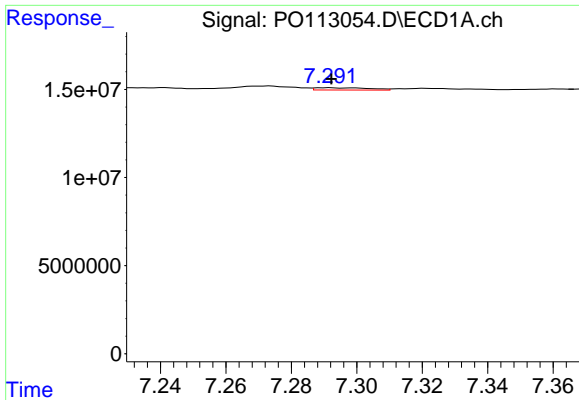
#36 AR-1262-1

R.T.: 6.752 min  
 Delta R.T.: -0.038 min  
 Response: 11792793  
 Conc: 12.88 ng/ml



#36 AR-1262-1

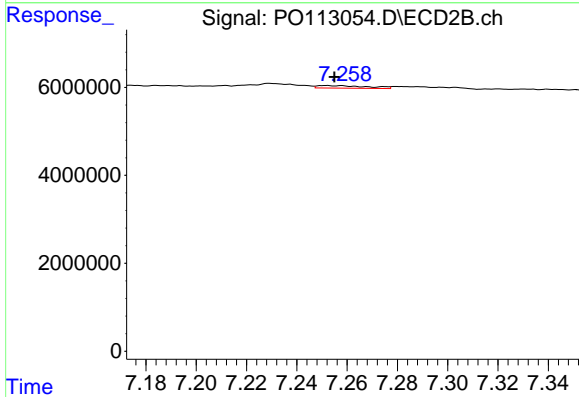
R.T.: 6.788 min  
 Delta R.T.: 0.033 min  
 Response: 871272  
 Conc: 2.10 ng/ml



#37 AR-1262-2

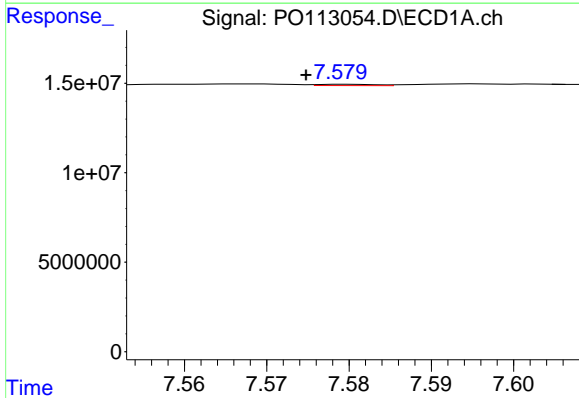
R.T.: 7.291 min  
 Delta R.T.: 0.000 min  
 Response: 1502191  
 Conc: 0.99 ng/ml

Instrument :  
 ECD\_O  
 ClientSampleId :  
 AR1242CCC500



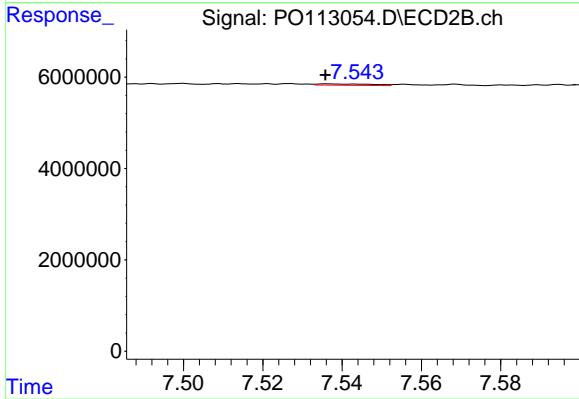
#37 AR-1262-2

R.T.: 7.252 min  
 Delta R.T.: -0.003 min  
 Response: 798724  
 Conc: 1.54 ng/ml



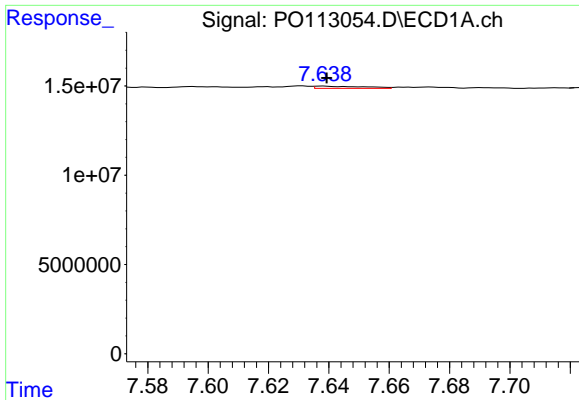
#38 AR-1262-3

R.T.: 7.580 min  
 Delta R.T.: 0.005 min  
 Response: 342910  
 Conc: 0.62 ng/ml



#38 AR-1262-3

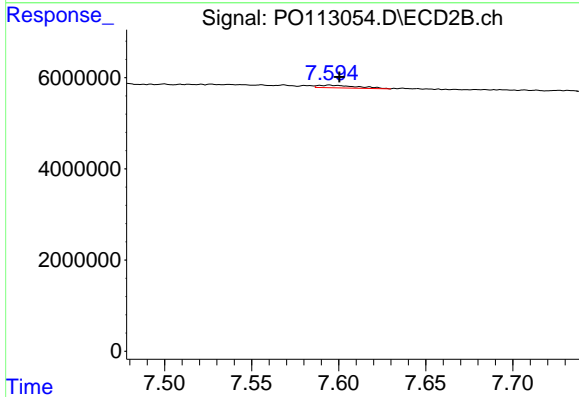
R.T.: 7.537 min  
 Delta R.T.: 0.001 min  
 Response: 300635  
 Conc: 1.67 ng/ml



#39 AR-1262-4

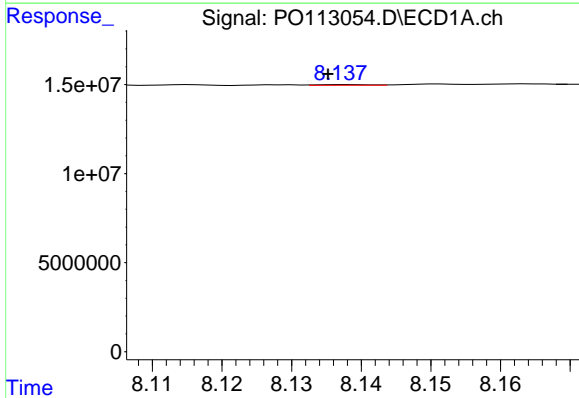
R.T.: 7.638 min  
 Delta R.T.: -0.001 min  
 Response: 1432050  
 Conc: 1.46 ng/ml

Instrument :  
 ECD\_O  
 ClientSampleId :  
 AR1242CCC500



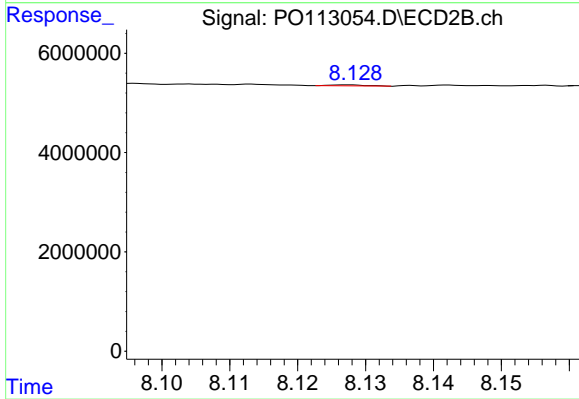
#39 AR-1262-4

R.T.: 7.595 min  
 Delta R.T.: -0.006 min  
 Response: 908302  
 Conc: 3.13 ng/ml



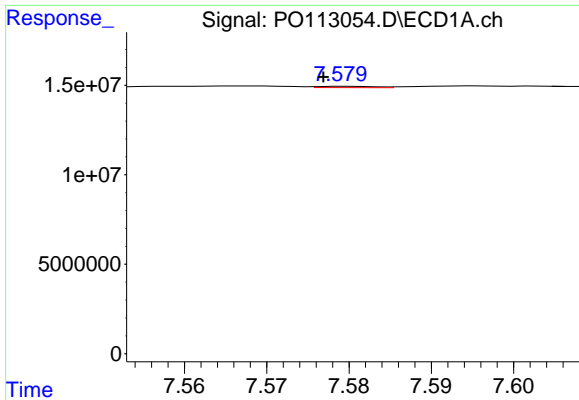
#40 AR-1262-5

R.T.: 8.138 min  
 Delta R.T.: 0.002 min  
 Response: 221251  
 Conc: 0.53 ng/ml



#40 AR-1262-5

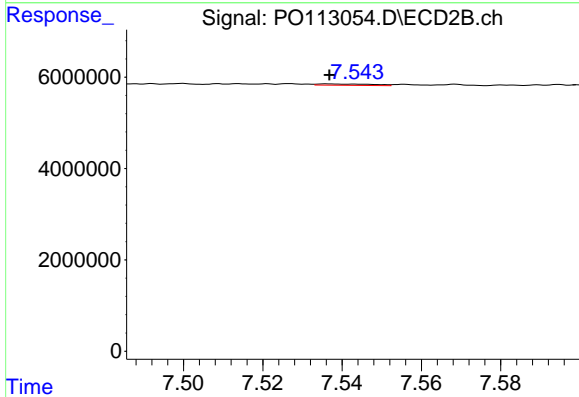
R.T.: 8.127 min  
 Delta R.T.: 0.035 min  
 Response: 74252  
 Conc: 0.69 ng/ml



#41 AR-1268-1

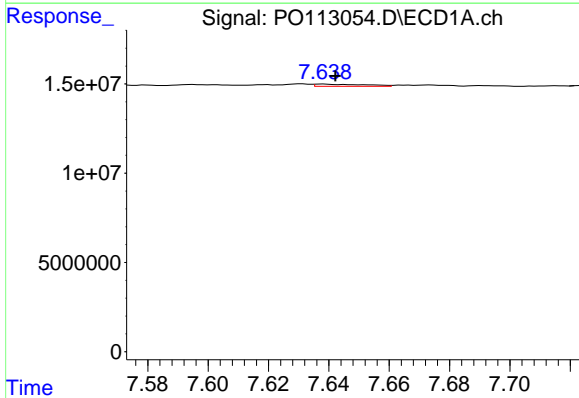
R.T.: 7.580 min  
 Delta R.T.: 0.003 min  
 Response: 342910  
 Conc: 0.20 ng/ml

Instrument :  
 ECD\_O  
 ClientSampleId :  
 AR1242CCC500



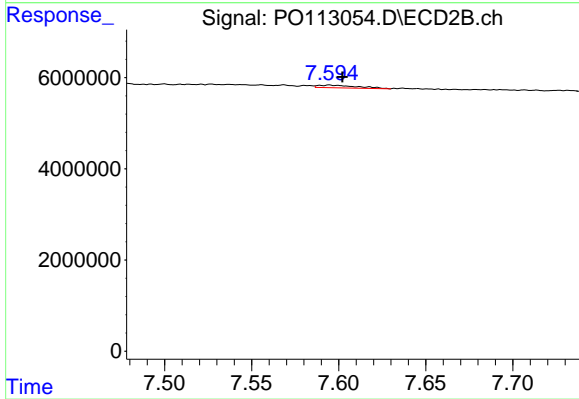
#41 AR-1268-1

R.T.: 7.537 min  
 Delta R.T.: 0.000 min  
 Response: 300635  
 Conc: 0.59 ng/ml



#42 AR-1268-2

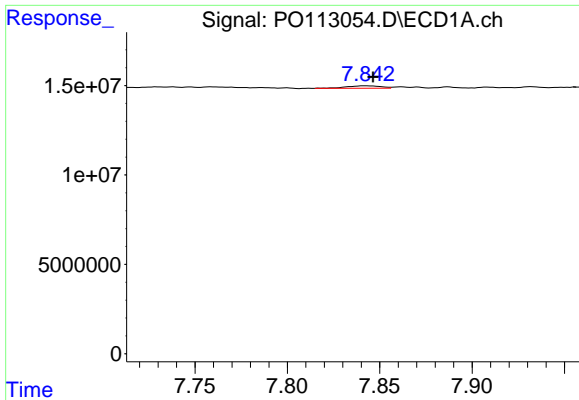
R.T.: 7.638 min  
 Delta R.T.: -0.004 min  
 Response: 1432050  
 Conc: 0.99 ng/ml



#42 AR-1268-2

R.T.: 7.595 min  
 Delta R.T.: -0.007 min  
 Response: 908302  
 Conc: 2.19 ng/ml

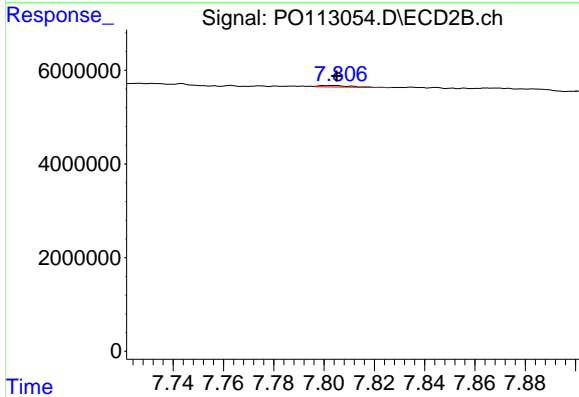




#43 AR-1268-3

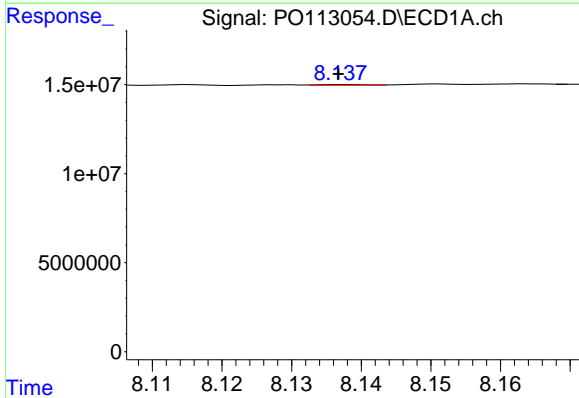
R.T.: 7.843 min  
 Delta R.T.: -0.004 min  
 Response: 1688568  
 Conc: 1.40 ng/ml

Instrument :  
 ECD\_O  
 ClientSampleId :  
 AR1242CCC500



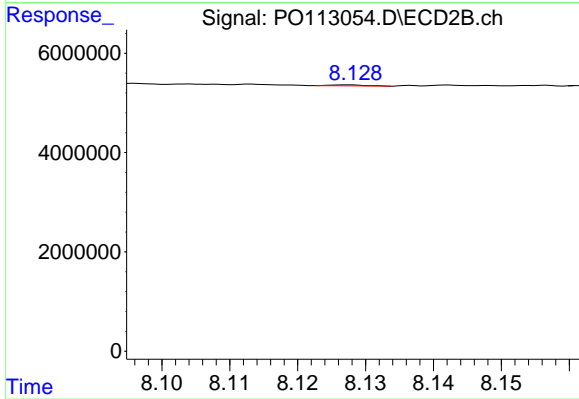
#43 AR-1268-3

R.T.: 7.804 min  
 Delta R.T.: -0.001 min  
 Response: 253013  
 Conc: 0.77 ng/ml



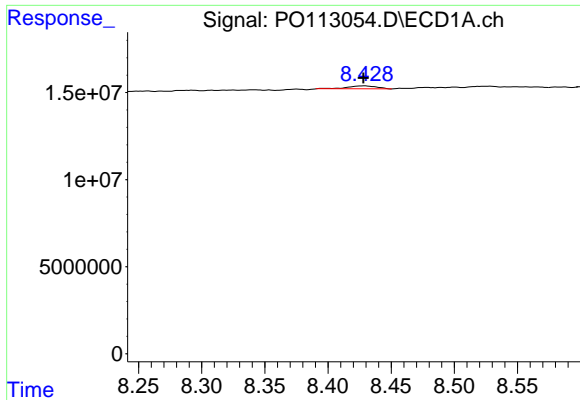
#44 AR-1268-4

R.T.: 8.138 min  
 Delta R.T.: 0.000 min  
 Response: 221251  
 Conc: 0.48 ng/ml



#44 AR-1268-4

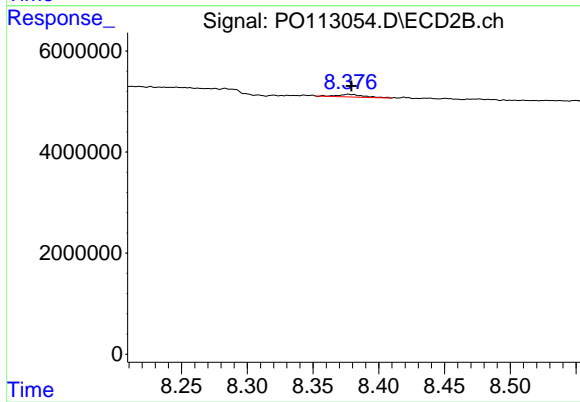
R.T.: 8.127 min  
 Delta R.T.: 0.035 min  
 Response: 74252  
 Conc: 0.62 ng/ml



#45 AR-1268-5

R.T.: 8.429 min  
Delta R.T.: 0.000 min  
Response: 2698165  
Conc: 0.85 ng/ml

Instrument :  
ECD\_O  
ClientSampleId :  
AR1242CCC500



#45 AR-1268-5

R.T.: 8.377 min  
Delta R.T.: -0.003 min  
Response: 721248  
Conc: 0.92 ng/ml