

Data Path : Z:\pestpcbsrv\HPCHEM1\ECD_0\Data\P0081925\
 Data File : PO113060.D
 Signal(s) : Signal #1: ECD1A.ch Signal #2: ECD2B.ch
 Acq On : 19 Aug 2025 17:51
 Operator : YP/AJ
 Sample : Q2892-06
 Misc :
 ALS Vial : 19 Sample Multiplier: 1

Instrument :
 ECD_0
ClientSampleId :
 BACK-1-FLOOR-CENTER-MIDDLE-C

Integration File signal 1: autoint1.e
 Integration File signal 2: autoint2.e
 Quant Time: Aug 20 05:39:59 2025
 Quant Method : Z:\pestpcbsrv\HPCHEM1\ECD_0\methods\P0081825.M
 Quant Title : GC EXTRACTABLES
 QLast Update : Tue Aug 19 06:08:32 2025
 Response via : Initial Calibration
 Integrator: ChemStation

Volume Inj. : 2 µl
 Signal #1 Phase : ZB-MR1 Signal #2 Phase: ZB-MR2
 Signal #1 Info : 30Mx0.32mmx 0.50µ Signal #2 Info : 30M x 0.32mm x 0.25µm

Compound	RT#1	RT#2	Resp#1	Resp#2	ng/ml	ng/ml
System Monitoring Compounds						
1) SA Tetrachlo...	3.664	3.655	152.2E6	92738187	18.594	18.325
2) SA Decachlor...	8.680	8.626	116.8E6	31296748	16.849	16.517
Target Compounds						
3) L1 AR-1016-1	4.732	4.736	137824	378895	0.516	2.221 #
4) L1 AR-1016-2	4.787	4.750	1156119	135242	2.880	0.525 #
5) L1 AR-1016-3	4.821	4.925	512953	143426	2.011	1.027 #
6) L1 AR-1016-4	4.930	4.968	167616	458282	0.769	3.927 #
7) L1 AR-1016-5	5.194	5.173	4937089	826081	22.276	5.796 #
8) L2 AR-1221-1	3.868	3.871	-16023	120345	N.D.	1.907 #
9) L2 AR-1221-2	3.964	3.953	196462	1815432	2.908	38.897 #
10) L2 AR-1221-3	4.034	4.026	161658	108183	0.730	0.729
11) L3 AR-1232-1	4.034	4.026	161658	108183	0.929	0.921
12) L3 AR-1232-2	4.525	4.750	1100837	135242	11.025	1.104 #
13) L3 AR-1232-3	4.787	4.925	1156119	143426	6.102	2.264 #
14) L3 AR-1232-4	4.930	5.008	167616	292038	1.780	5.194 #
15) L3 AR-1232-5	4.973	5.173	1046539	826081	16.895	13.799
16) L4 AR-1242-1	4.732	4.736	137824	378895	0.599	2.622 #
17) L4 AR-1242-2	4.787	4.750	1156119	135242	3.364	0.623 #
18) L4 AR-1242-3	4.821	4.925	512953	143426	2.312	1.226 #
19) L4 AR-1242-4	4.930	5.008	167616	292038	0.966	2.483 #
20) L4 AR-1242-5	5.610	5.527	7340007	2329044	36.670	15.617 #
21) L5 AR-1248-1	4.732	4.736	137824	378895	0.790	3.398 #
22) L5 AR-1248-2	4.973	4.968	1046539	458282	4.327	2.852 #
23) L5 AR-1248-3	5.194	5.008	4937089	292038	15.483	1.721 #
24) L5 AR-1248-4	5.559	5.173	15691330	826081	31.408	4.147 #
25) L5 AR-1248-5	5.610	5.569	7340007	2039755	21.494	9.608 #
26) L6 AR-1254-1	5.559	5.527	15691330	2329044	29.059	7.385 #
27) L6 AR-1254-2	5.683	5.672	1437870	1535394	2.914	5.477 #
28) L6 AR-1254-3	6.101	6.075	1592683	806758	2.156	1.935
29) L6 AR-1254-4	6.329	6.299	1751066	151205	3.144	0.550 #
30) L6 AR-1254-5	6.751	6.713	5260717	2786060	7.505	7.793
31) L7 AR-1260-1	6.234	6.199	3220332	1588092	7.221	6.226
32) L7 AR-1260-2	6.418	6.390	2858087	748886	4.162	2.166 #
33) L7 AR-1260-3	6.789	6.542	2637683	658025	4.272	2.212 #
34) L7 AR-1260-4	7.047	7.016	2701355	646396	6.032	3.119 #
35) L7 AR-1260-5	7.291	7.252	3598300	1173255	2.972	2.505
36) L8 AR-1262-1	6.789	6.758	2637683	589196	2.880	1.421 #
37) L8 AR-1262-2	7.291	7.252	3598300	1173255	2.380	2.266
38) L8 AR-1262-3	7.577	7.535	3134350	488873	5.657	2.722 #
39) L8 AR-1262-4	7.636	7.599	3175889	298582	3.247	1.030 #
40) L8 AR-1262-5	8.133	8.130f	713565	71388	1.712	0.659 #
41) L9 AR-1268-1	7.577	7.535	3134350	488873	1.821	0.960 #

Data Path : Z:\pestpcbsrv\HPCHEM1\ECD_0\Data\P0081925\
 Data File : P0113060.D
 Signal(s) : Signal #1: ECD1A.ch Signal #2: ECD2B.ch
 Acq On : 19 Aug 2025 17:51
 Operator : YP/AJ
 Sample : Q2892-06
 Misc :
 ALS Vial : 19 Sample Multiplier: 1

Instrument :
 ECD_0
ClientSampleId :
 BACK-1-FLOOR-CENTER-MIDDLE-C

Integration File signal 1: autoint1.e
 Integration File signal 2: autoint2.e
 Quant Time: Aug 20 05:39:59 2025
 Quant Method : Z:\pestpcbsrv\HPCHEM1\ECD_0\methods\P0081825.M
 Quant Title : GC EXTRACTABLES
 QLast Update : Tue Aug 19 06:08:32 2025
 Response via : Initial Calibration
 Integrator: ChemStation

Volume Inj. : 2 µl
 Signal #1 Phase : ZB-MR1 Signal #2 Phase: ZB-MR2
 Signal #1 Info : 30Mx0.32mmx 0.50µ Signal #2 Info : 30M x 0.32mm x 0.25µm

	Compound	RT#1	RT#2	Resp#1	Resp#2	ng/ml	ng/ml
42)	L9 AR-1268-2	7.636	7.599	3175889	298582	2.193	0.719 #
43)	L9 AR-1268-3	7.848	7.806	1941195	267079	1.609	0.818 #
44)	L9 AR-1268-4	8.133	8.130f	713565	71388	1.549	0.593 #
45)	L9 AR-1268-5	8.430	8.373	1371787	1067468	0.430	1.367 #

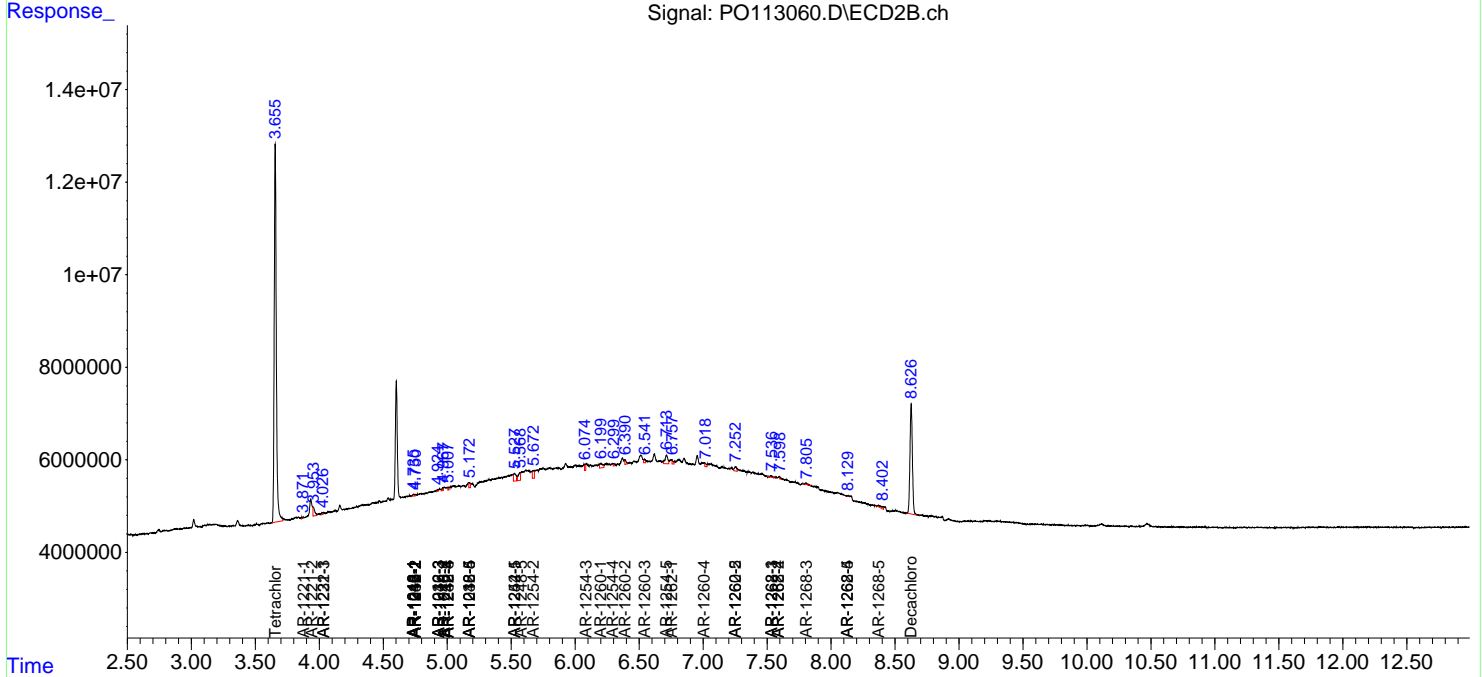
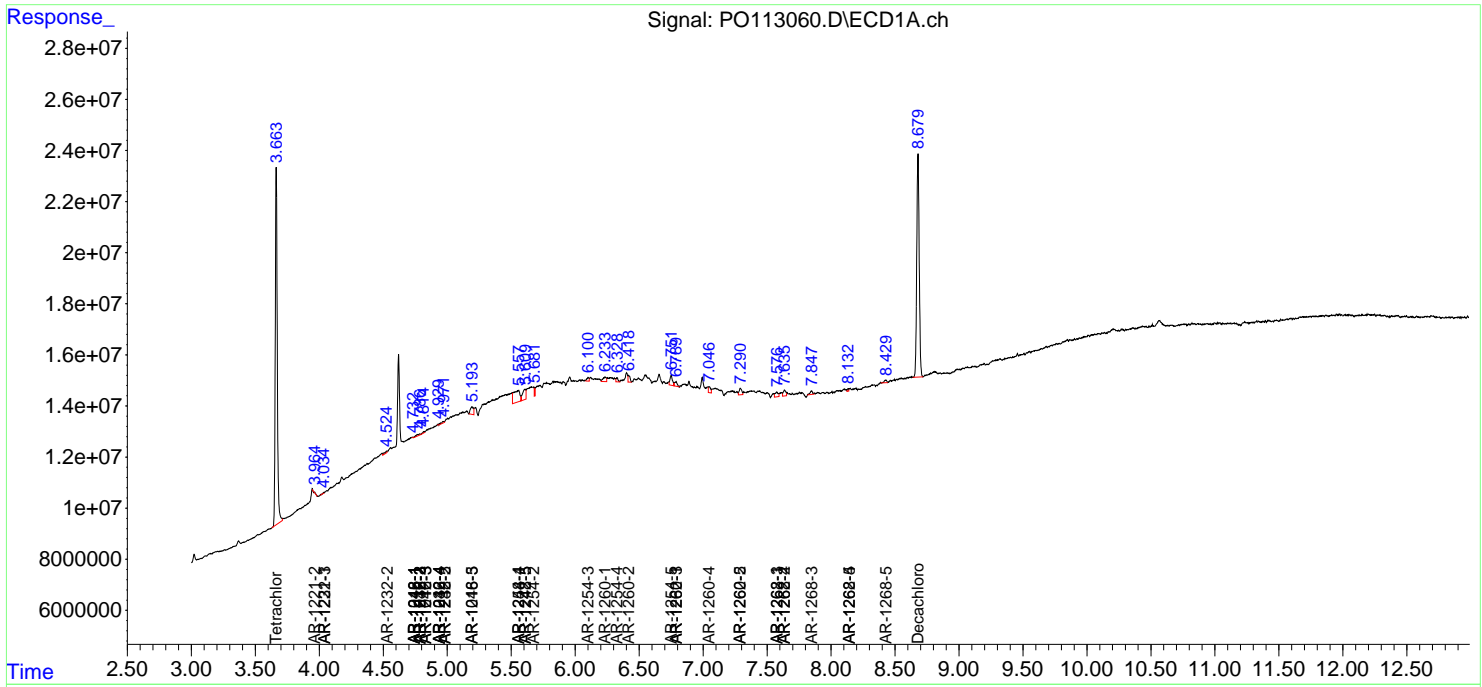
(f)=RT Delta > 1/2 Window (#)=Amounts differ by > 25% (m)=manual int.

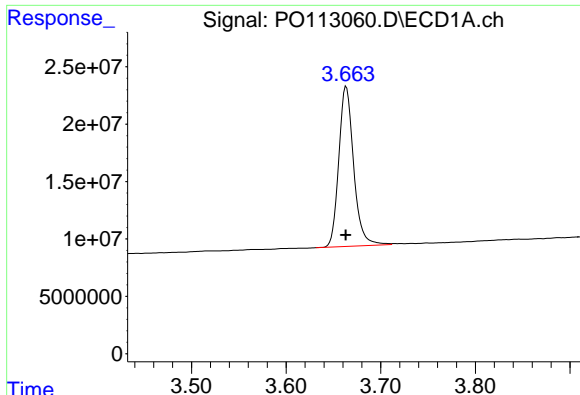
Data Path : Z:\pestpcbsrv\HPCHEM1\ECD_0\Data\PO081925\
 Data File : PO113060.D
 Signal(s) : Signal #1: ECD1A.ch Signal #2: ECD2B.ch
 Acq On : 19 Aug 2025 17:51
 Operator : YP/AJ
 Sample : Q2892-06
 Misc :
 ALS Vial : 19 Sample Multiplier: 1

Instrument :
 ECD_0
ClientSampleId :
 BACK-1-FLOOR-CENTER-MIDDLE-C

Integration File signal 1: autoint1.e
 Integration File signal 2: autoint2.e
 Quant Time: Aug 20 05:39:59 2025
 Quant Method : Z:\pestpcbsrv\HPCHEM1\ECD_0\methods\PO081825.M
 Quant Title : GC EXTRACTABLES
 QLast Update : Tue Aug 19 06:08:32 2025
 Response via : Initial Calibration
 Integrator: ChemStation

Volume Inj. : 2 µl
 Signal #1 Phase : ZB-MR1 Signal #2 Phase: ZB-MR2
 Signal #1 Info : 30Mx0.32mmx 0.50µ Signal #2 Info : 30M x 0.32mm x 0.25µm

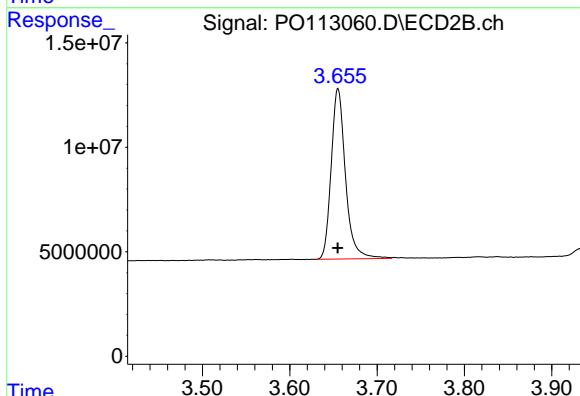




#1 Tetrachloro-m-xylene

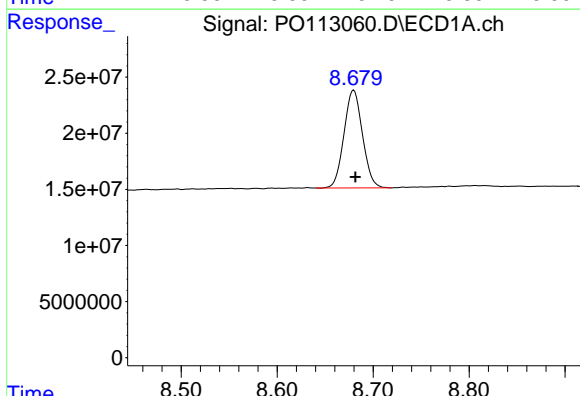
R.T.: 3.664 min
 Delta R.T.: 0.000 min
 Response: 152219119
 Conc: 18.59 ng/ml

Instrument :
 ECD_O
 ClientSampleId :
 BACK-1-FLOOR-CENTER-MIDDLE-C



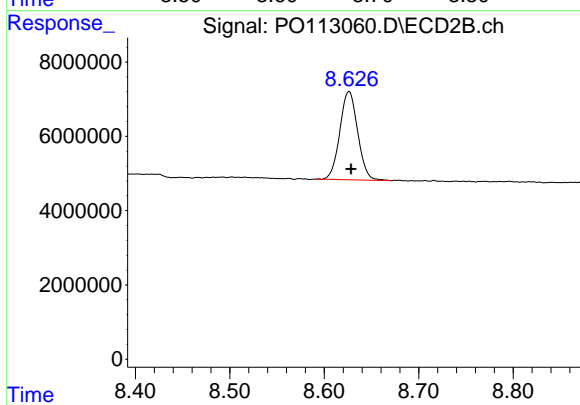
#1 Tetrachloro-m-xylene

R.T.: 3.655 min
 Delta R.T.: 0.000 min
 Response: 92738187
 Conc: 18.33 ng/ml



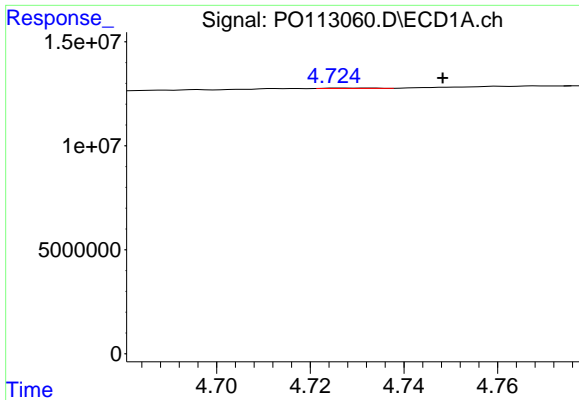
#2 Decachlorobiphenyl

R.T.: 8.680 min
 Delta R.T.: -0.002 min
 Response: 116789858
 Conc: 16.85 ng/ml



#2 Decachlorobiphenyl

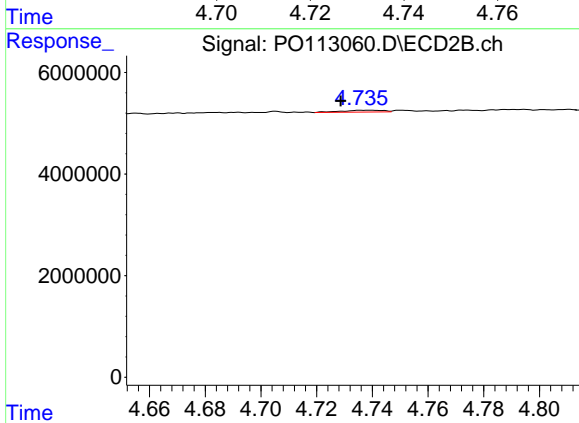
R.T.: 8.626 min
 Delta R.T.: -0.002 min
 Response: 31296748
 Conc: 16.52 ng/ml



#3 AR-1016-1

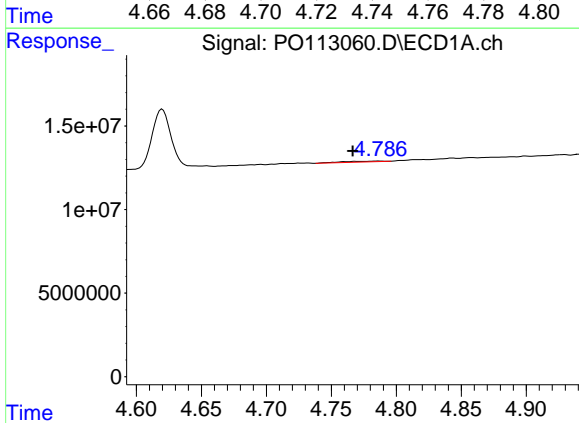
R.T.: 4.732 min
 Delta R.T.: -0.016 min
 Response: 137824
 Conc: 0.52 ng/ml

Instrument :
 ECD_O
 ClientSampleId :
 BACK-1-FLOOR-CENTER-MIDDLE-C



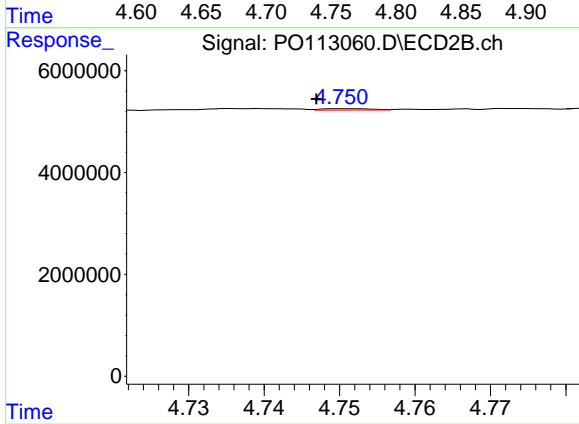
#3 AR-1016-1

R.T.: 4.736 min
 Delta R.T.: 0.007 min
 Response: 378895
 Conc: 2.22 ng/ml



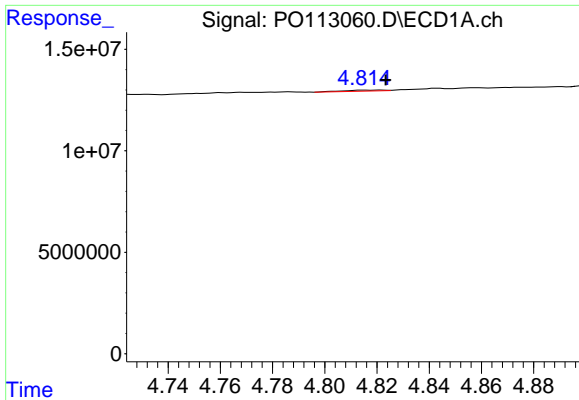
#4 AR-1016-2

R.T.: 4.787 min
 Delta R.T.: 0.020 min
 Response: 1156119
 Conc: 2.88 ng/ml



#4 AR-1016-2

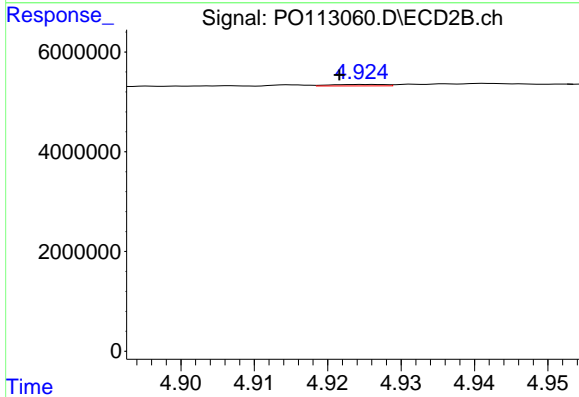
R.T.: 4.750 min
 Delta R.T.: 0.003 min
 Response: 135242
 Conc: 0.52 ng/ml



#5 AR-1016-3

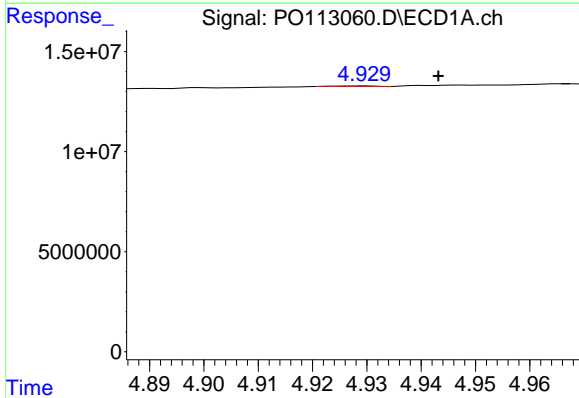
R.T.: 4.821 min
 Delta R.T.: -0.002 min
 Response: 512953
 Conc: 2.01 ng/ml

Instrument :
 ECD_O
 ClientSampleId :
 BACK-1-FLOOR-CENTER-MIDDLE-C



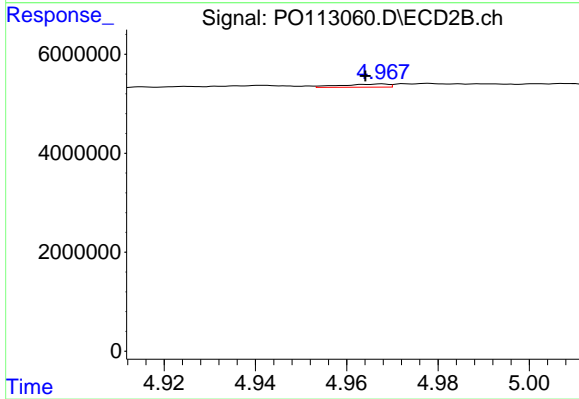
#5 AR-1016-3

R.T.: 4.925 min
 Delta R.T.: 0.003 min
 Response: 143426
 Conc: 1.03 ng/ml



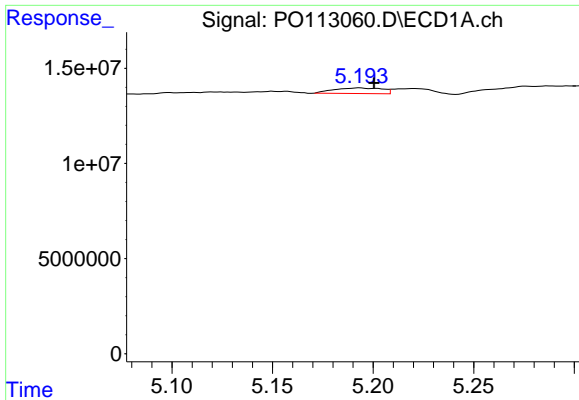
#6 AR-1016-4

R.T.: 4.930 min
 Delta R.T.: -0.014 min
 Response: 167616
 Conc: 0.77 ng/ml



#6 AR-1016-4

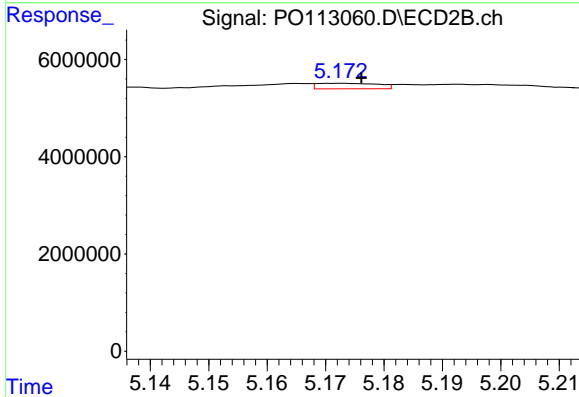
R.T.: 4.968 min
 Delta R.T.: 0.004 min
 Response: 458282
 Conc: 3.93 ng/ml



#7 AR-1016-5

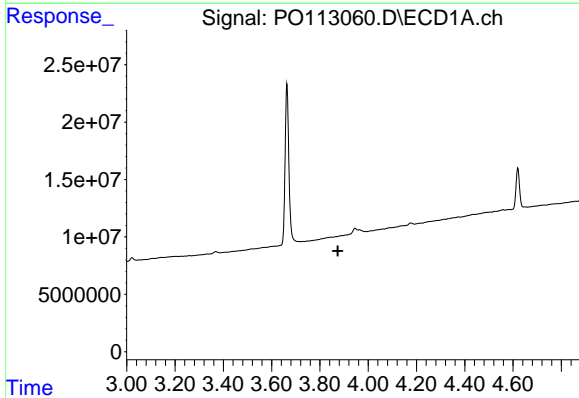
R.T.: 5.194 min
 Delta R.T.: -0.007 min
 Response: 4937089
 Conc: 22.28 ng/ml

Instrument :
 ECD_O
 ClientSampleId :
 BACK-1-FLOOR-CENTER-MIDDLE-C



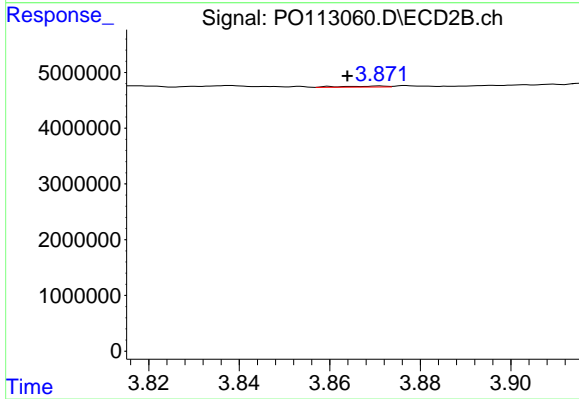
#7 AR-1016-5

R.T.: 5.173 min
 Delta R.T.: -0.004 min
 Response: 826081
 Conc: 5.80 ng/ml



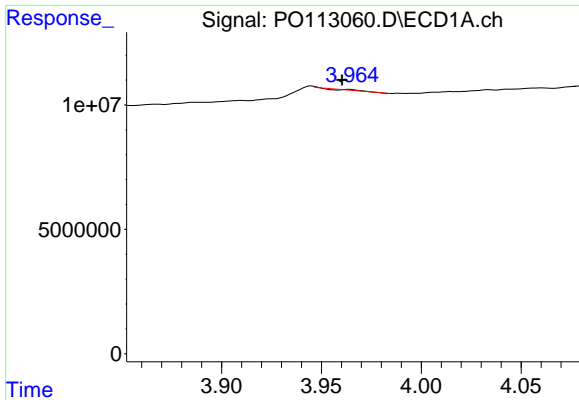
#8 AR-1221-1

R.T.: 3.868 min
 Delta R.T.: -0.007 min
 Response: -16023
 Conc: N.D.



#8 AR-1221-1

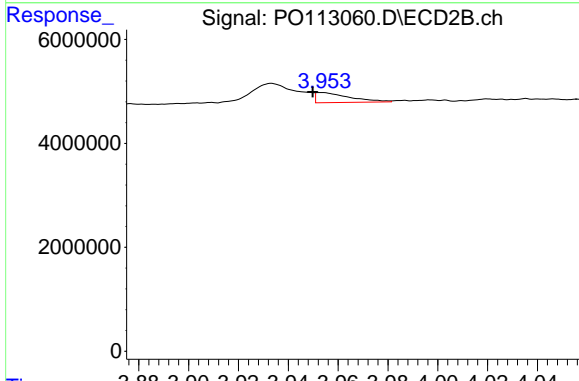
R.T.: 3.871 min
 Delta R.T.: 0.007 min
 Response: 120345
 Conc: 1.91 ng/ml



#9 AR-1221-2

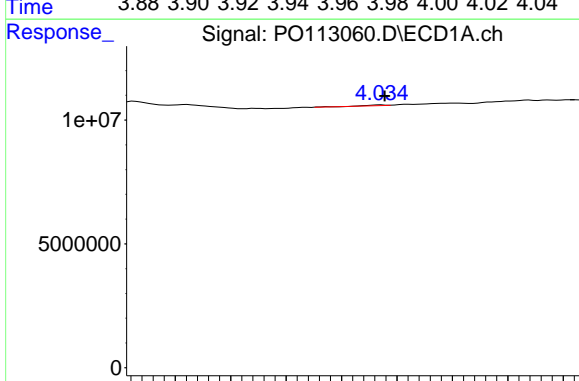
R.T.: 3.964 min
 Delta R.T.: 0.004 min
 Response: 196462
 Conc: 2.91 ng/ml

Instrument :
 ECD_O
ClientSampleId :
 BACK-1-FLOOR-CENTER-MIDDLE-C



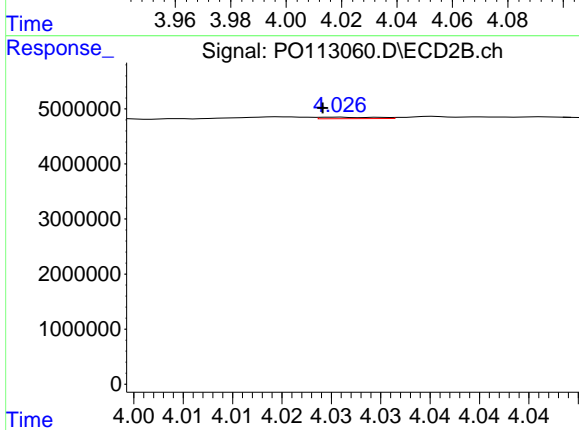
#9 AR-1221-2

R.T.: 3.953 min
 Delta R.T.: 0.004 min
 Response: 1815432
 Conc: 38.90 ng/ml



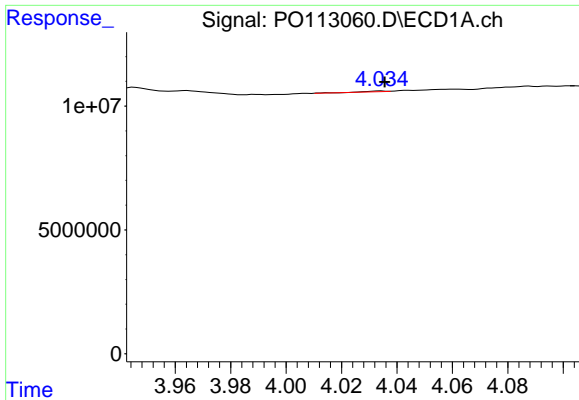
#10 AR-1221-3

R.T.: 4.034 min
 Delta R.T.: -0.002 min
 Response: 161658
 Conc: 0.73 ng/ml



#10 AR-1221-3

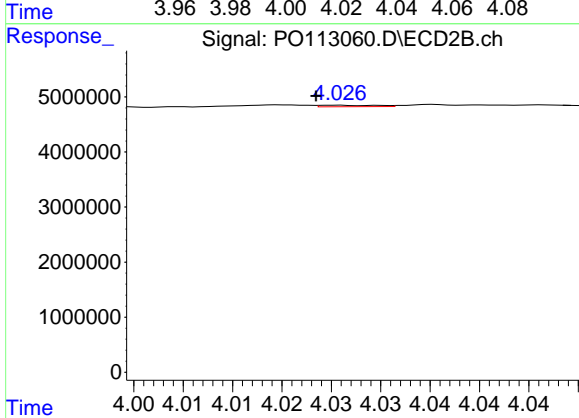
R.T.: 4.026 min
 Delta R.T.: 0.002 min
 Response: 108183
 Conc: 0.73 ng/ml



#11 AR-1232-1

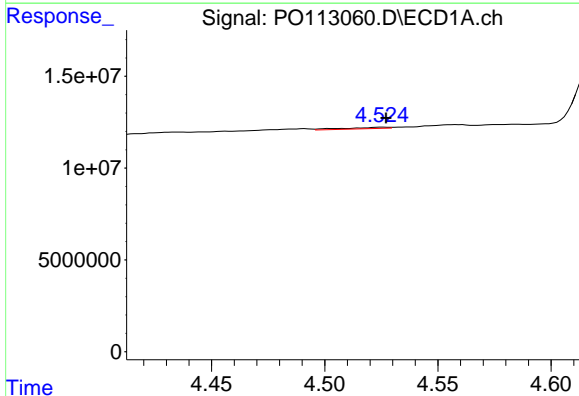
R.T.: 4.034 min
 Delta R.T.: -0.002 min
 Response: 161658
 Conc: 0.93 ng/ml

Instrument :
 ECD_O
ClientSampleId :
 BACK-1-FLOOR-CENTER-MIDDLE-C



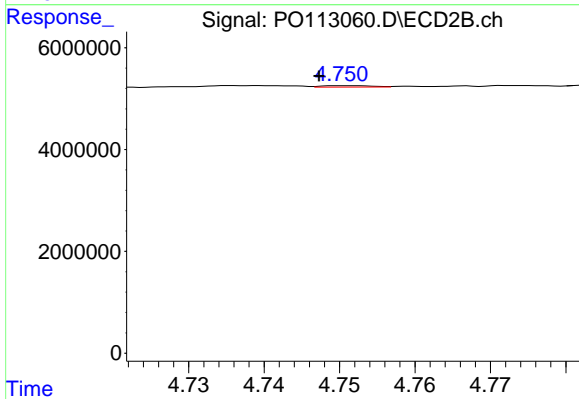
#11 AR-1232-1

R.T.: 4.026 min
 Delta R.T.: 0.002 min
 Response: 108183
 Conc: 0.92 ng/ml



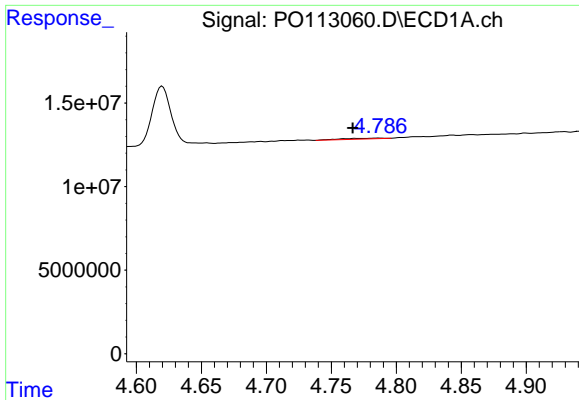
#12 AR-1232-2

R.T.: 4.525 min
 Delta R.T.: -0.002 min
 Response: 1100837
 Conc: 11.02 ng/ml



#12 AR-1232-2

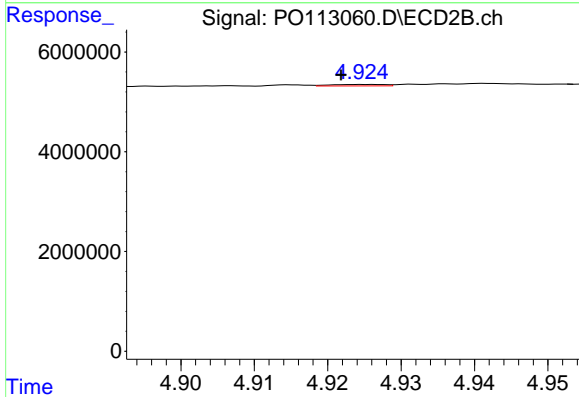
R.T.: 4.750 min
 Delta R.T.: 0.003 min
 Response: 135242
 Conc: 1.10 ng/ml



#13 AR-1232-3

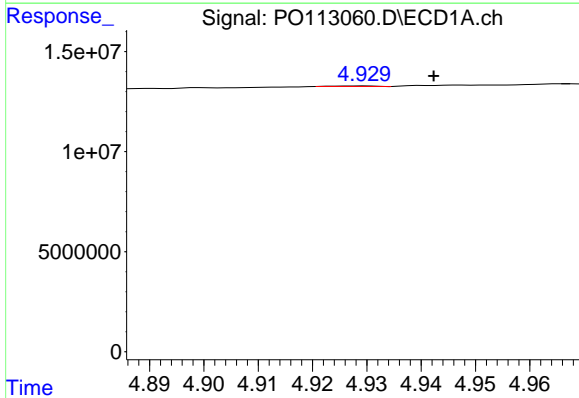
R.T.: 4.787 min
 Delta R.T.: 0.020 min
 Response: 1156119
 Conc: 6.10 ng/ml

Instrument :
 ECD_O
 ClientSampleId :
 BACK-1-FLOOR-CENTER-MIDDLE-C



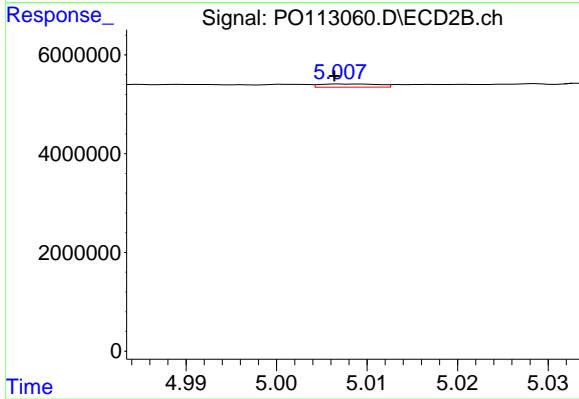
#13 AR-1232-3

R.T.: 4.925 min
 Delta R.T.: 0.003 min
 Response: 143426
 Conc: 2.26 ng/ml



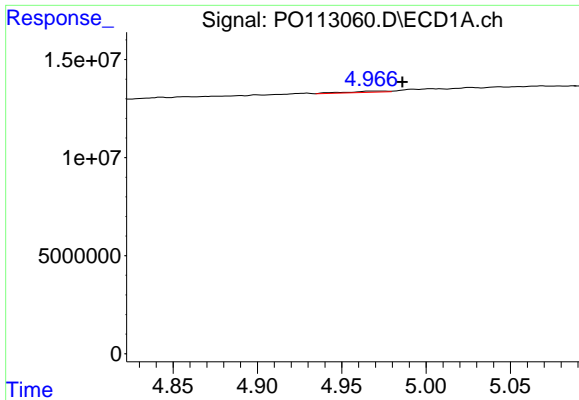
#14 AR-1232-4

R.T.: 4.930 min
 Delta R.T.: -0.013 min
 Response: 167616
 Conc: 1.78 ng/ml



#14 AR-1232-4

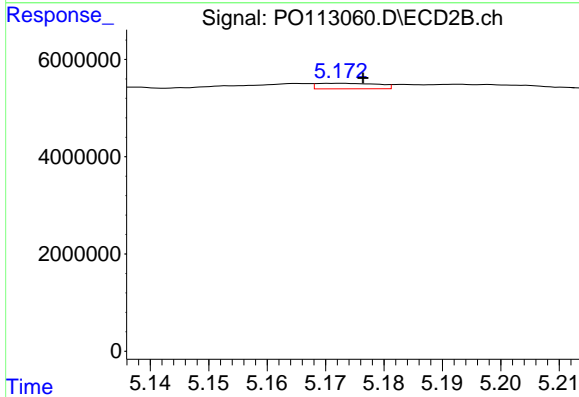
R.T.: 5.008 min
 Delta R.T.: 0.001 min
 Response: 292038
 Conc: 5.19 ng/ml



#15 AR-1232-5

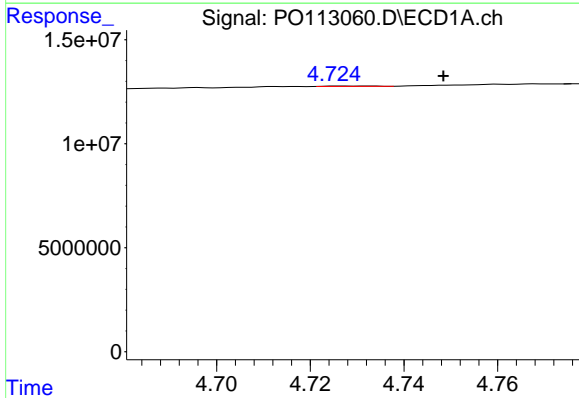
R.T.: 4.973 min
 Delta R.T.: -0.013 min
 Response: 1046539
 Conc: 16.90 ng/ml

Instrument :
 ECD_O
ClientSampleId :
 BACK-1-FLOOR-CENTER-MIDDLE-C



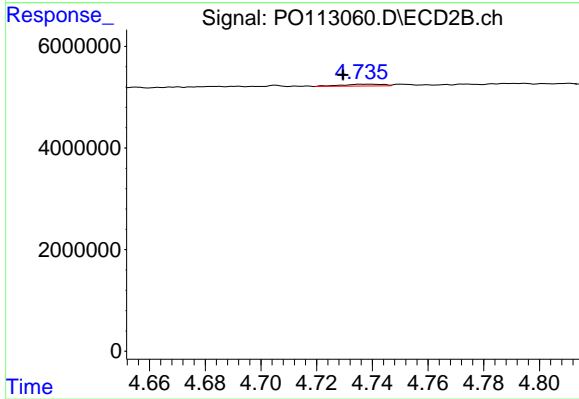
#15 AR-1232-5

R.T.: 5.173 min
 Delta R.T.: -0.004 min
 Response: 826081
 Conc: 13.80 ng/ml



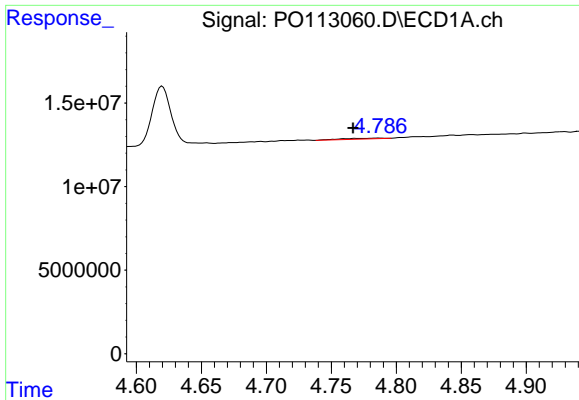
#16 AR-1242-1

R.T.: 4.732 min
 Delta R.T.: -0.016 min
 Response: 137824
 Conc: 0.60 ng/ml



#16 AR-1242-1

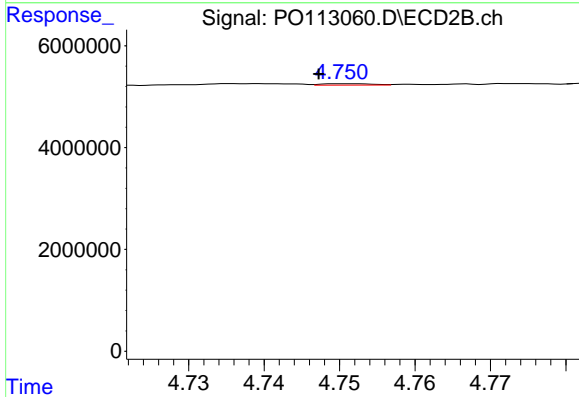
R.T.: 4.736 min
 Delta R.T.: 0.006 min
 Response: 378895
 Conc: 2.62 ng/ml



#17 AR-1242-2

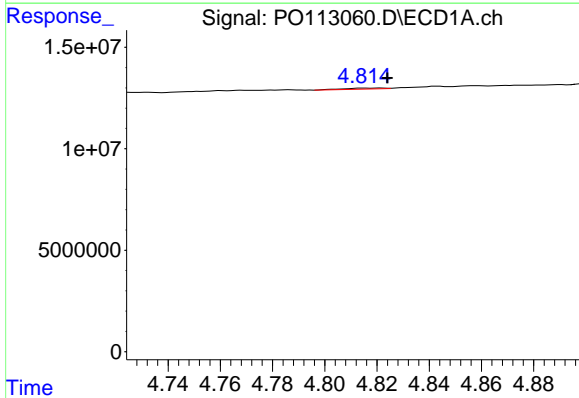
R.T.: 4.787 min
 Delta R.T.: 0.020 min
 Response: 1156119
 Conc: 3.36 ng/ml

Instrument :
 ECD_O
 ClientSampleId :
 BACK-1-FLOOR-CENTER-MIDDLE-C



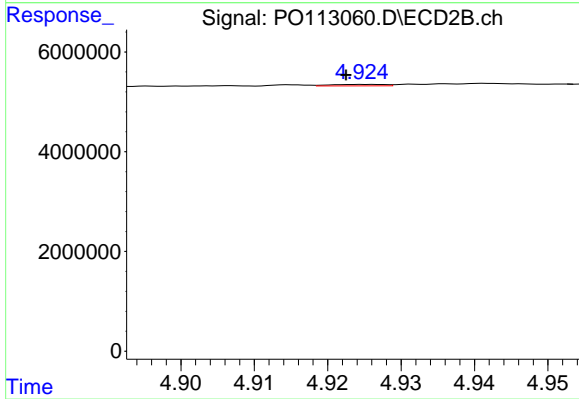
#17 AR-1242-2

R.T.: 4.750 min
 Delta R.T.: 0.003 min
 Response: 135242
 Conc: 0.62 ng/ml



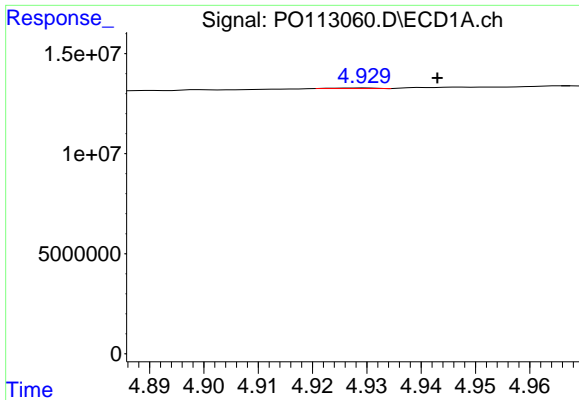
#18 AR-1242-3

R.T.: 4.821 min
 Delta R.T.: -0.003 min
 Response: 512953
 Conc: 2.31 ng/ml



#18 AR-1242-3

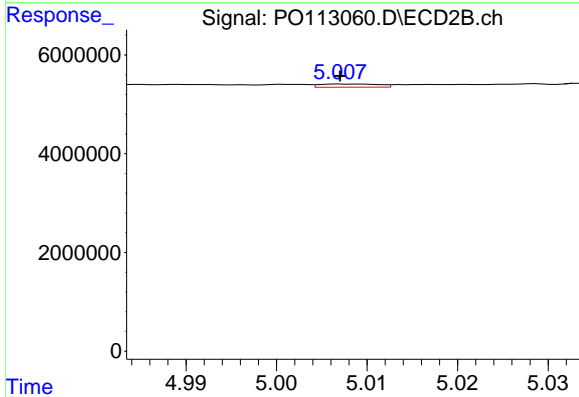
R.T.: 4.925 min
 Delta R.T.: 0.002 min
 Response: 143426
 Conc: 1.23 ng/ml



#19 AR-1242-4

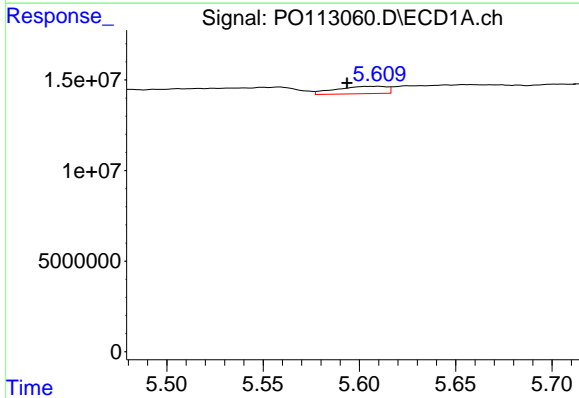
R.T.: 4.930 min
 Delta R.T.: -0.014 min
 Response: 167616
 Conc: 0.97 ng/ml

Instrument :
 ECD_O
 ClientSampleId :
 BACK-1-FLOOR-CENTER-MIDDLE-C



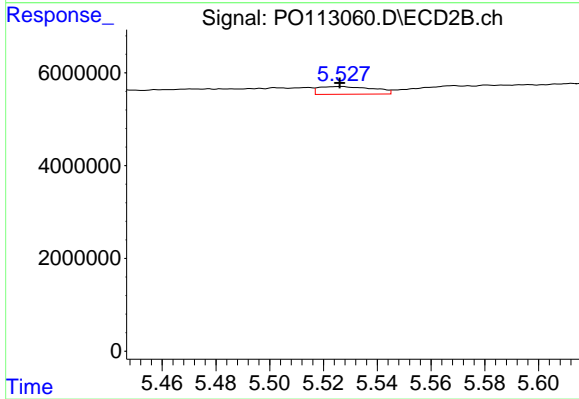
#19 AR-1242-4

R.T.: 5.008 min
 Delta R.T.: 0.000 min
 Response: 292038
 Conc: 2.48 ng/ml



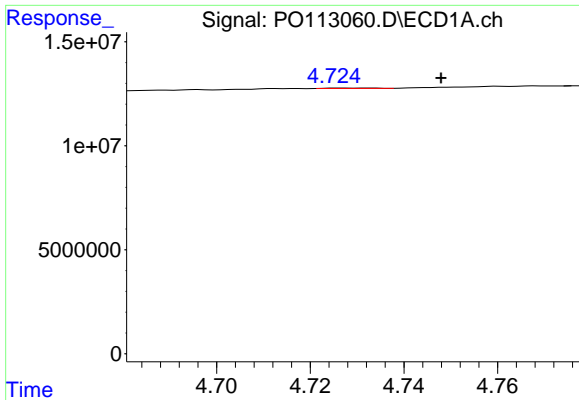
#20 AR-1242-5

R.T.: 5.610 min
 Delta R.T.: 0.016 min
 Response: 7340007
 Conc: 36.67 ng/ml



#20 AR-1242-5

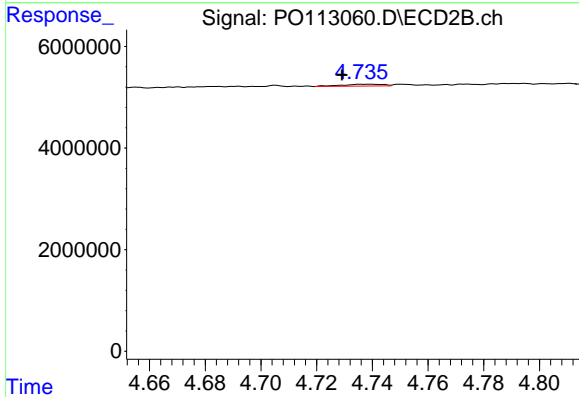
R.T.: 5.527 min
 Delta R.T.: 0.000 min
 Response: 2329044
 Conc: 15.62 ng/ml



#21 AR-1248-1

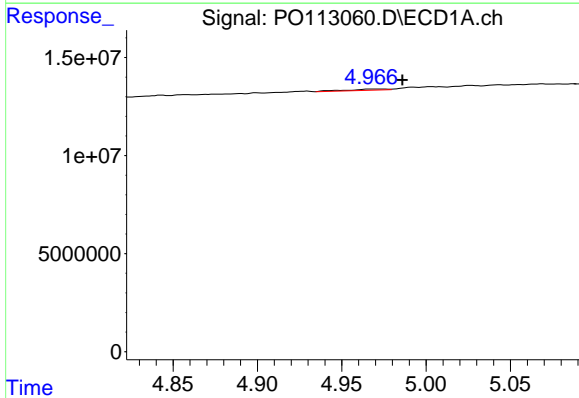
R.T.: 4.732 min
 Delta R.T.: -0.016 min
 Response: 137824
 Conc: 0.79 ng/ml

Instrument : ECD_O
 ClientSampleId : BACK-1-FLOOR-CENTER-MIDDLE-C



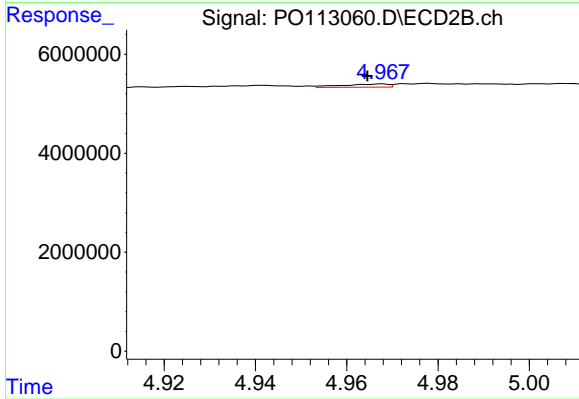
#21 AR-1248-1

R.T.: 4.736 min
 Delta R.T.: 0.007 min
 Response: 378895
 Conc: 3.40 ng/ml



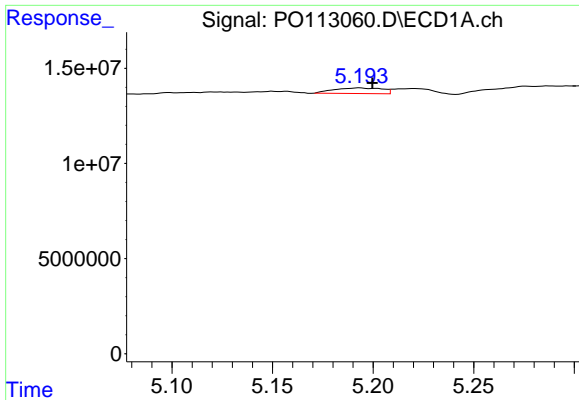
#22 AR-1248-2

R.T.: 4.973 min
 Delta R.T.: -0.013 min
 Response: 1046539
 Conc: 4.33 ng/ml



#22 AR-1248-2

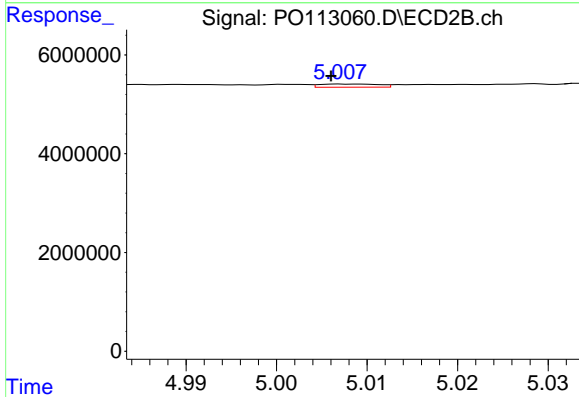
R.T.: 4.968 min
 Delta R.T.: 0.003 min
 Response: 458282
 Conc: 2.85 ng/ml



#23 AR-1248-3

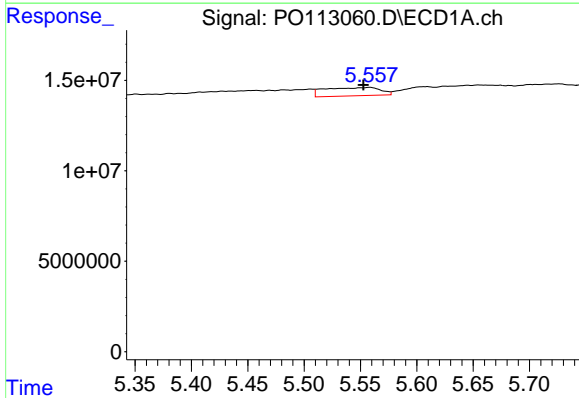
R.T.: 5.194 min
 Delta R.T.: -0.006 min
 Response: 4937089
 Conc: 15.48 ng/ml

Instrument :
 ECD_O
ClientSampleId :
 BACK-1-FLOOR-CENTER-MIDDLE-C



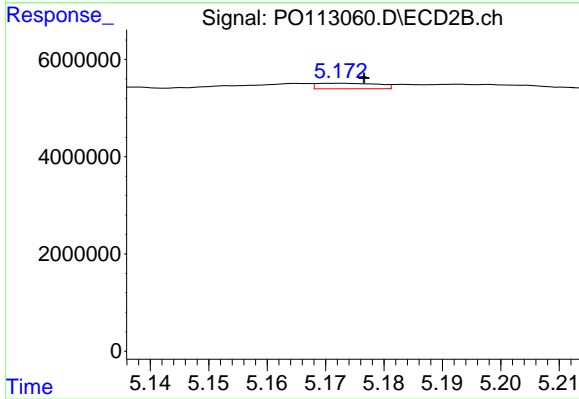
#23 AR-1248-3

R.T.: 5.008 min
 Delta R.T.: 0.001 min
 Response: 292038
 Conc: 1.72 ng/ml



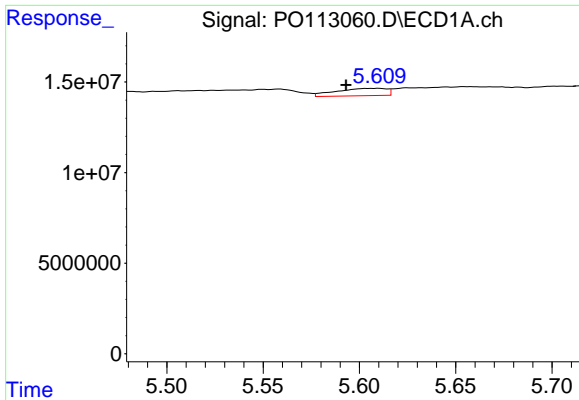
#24 AR-1248-4

R.T.: 5.559 min
 Delta R.T.: 0.006 min
 Response: 15691330
 Conc: 31.41 ng/ml



#24 AR-1248-4

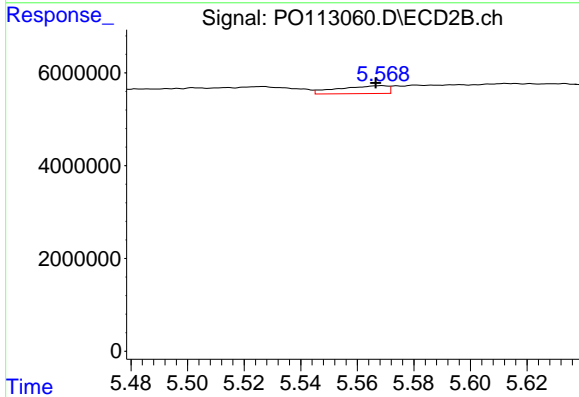
R.T.: 5.173 min
 Delta R.T.: -0.004 min
 Response: 826081
 Conc: 4.15 ng/ml



#25 AR-1248-5

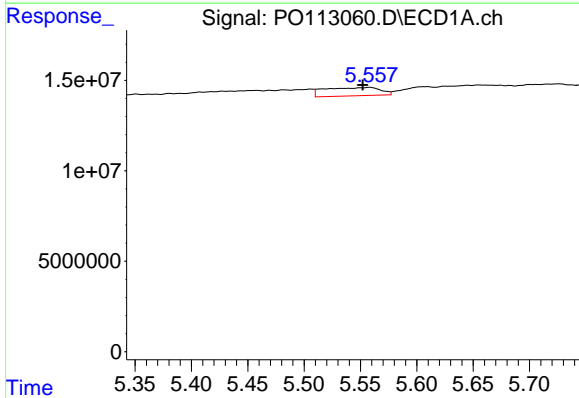
R.T.: 5.610 min
 Delta R.T.: 0.017 min
 Response: 7340007
 Conc: 21.49 ng/ml

Instrument :
 ECD_O
 ClientSampleId :
 BACK-1-FLOOR-CENTER-MIDDLE-C



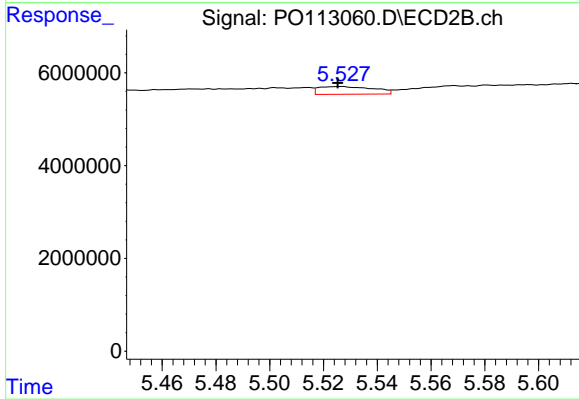
#25 AR-1248-5

R.T.: 5.569 min
 Delta R.T.: 0.002 min
 Response: 2039755
 Conc: 9.61 ng/ml



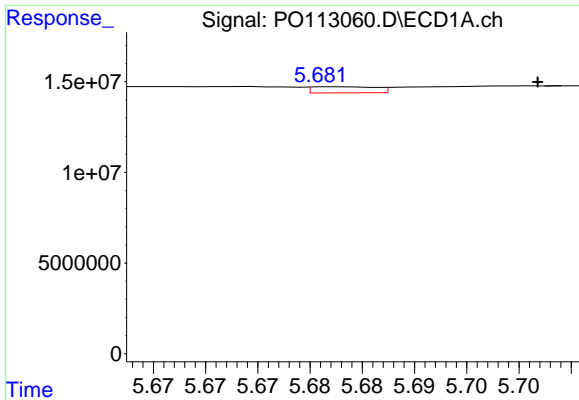
#26 AR-1254-1

R.T.: 5.559 min
 Delta R.T.: 0.007 min
 Response: 15691330
 Conc: 29.06 ng/ml



#26 AR-1254-1

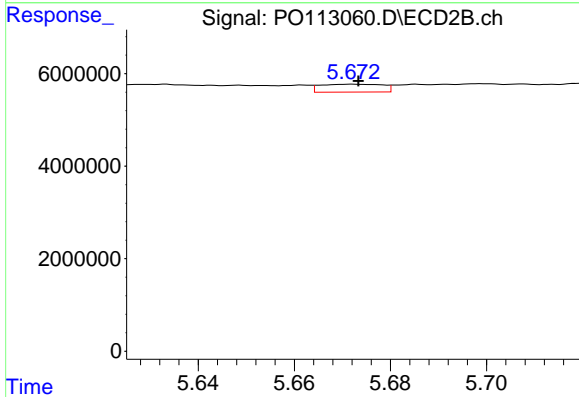
R.T.: 5.527 min
 Delta R.T.: 0.001 min
 Response: 2329044
 Conc: 7.39 ng/ml



#27 AR-1254-2

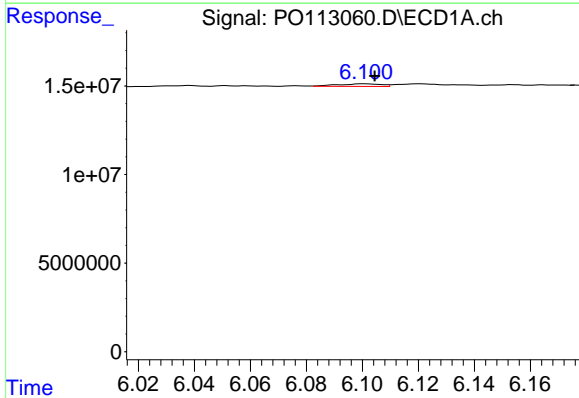
R.T.: 5.683 min
 Delta R.T.: -0.019 min
 Response: 1437870
 Conc: 2.91 ng/ml

Instrument :
 ECD_O
 ClientSampleId :
 BACK-1-FLOOR-CENTER-MIDDLE-C



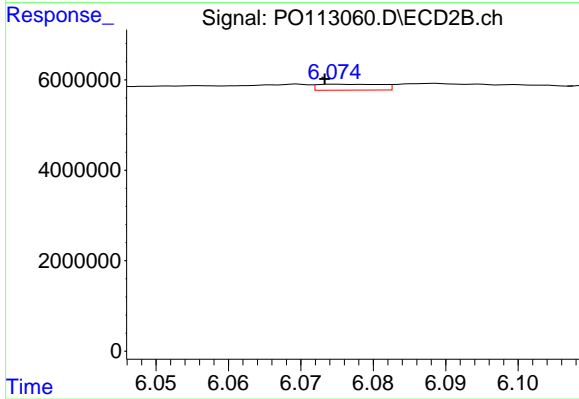
#27 AR-1254-2

R.T.: 5.672 min
 Delta R.T.: -0.001 min
 Response: 1535394
 Conc: 5.48 ng/ml



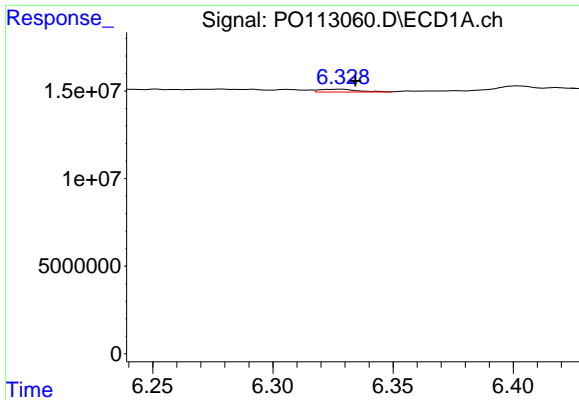
#28 AR-1254-3

R.T.: 6.101 min
 Delta R.T.: -0.004 min
 Response: 1592683
 Conc: 2.16 ng/ml



#28 AR-1254-3

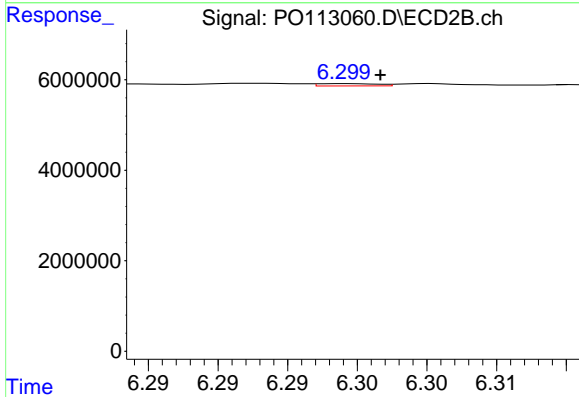
R.T.: 6.075 min
 Delta R.T.: 0.002 min
 Response: 806758
 Conc: 1.94 ng/ml



#29 AR-1254-4

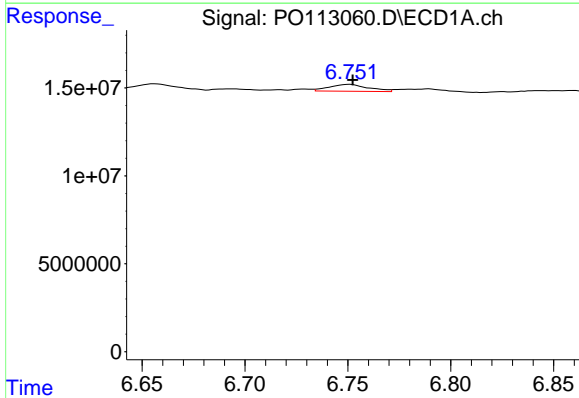
R.T.: 6.329 min
 Delta R.T.: -0.006 min
 Response: 1751066
 Conc: 3.14 ng/ml

Instrument :
 ECD_O
 ClientSampleId :
 BACK-1-FLOOR-CENTER-MIDDLE-C



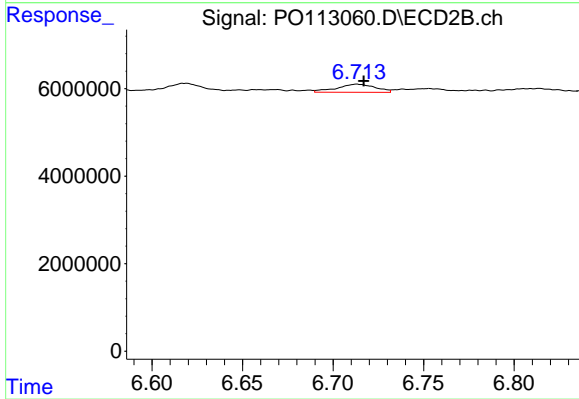
#29 AR-1254-4

R.T.: 6.299 min
 Delta R.T.: -0.002 min
 Response: 151205
 Conc: 0.55 ng/ml



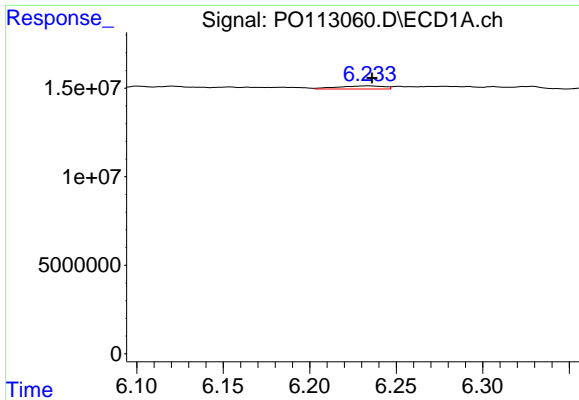
#30 AR-1254-5

R.T.: 6.751 min
 Delta R.T.: -0.001 min
 Response: 5260717
 Conc: 7.50 ng/ml



#30 AR-1254-5

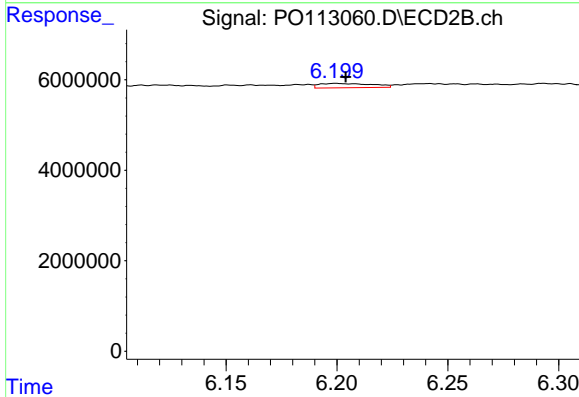
R.T.: 6.713 min
 Delta R.T.: -0.004 min
 Response: 2786060
 Conc: 7.79 ng/ml



#31 AR-1260-1

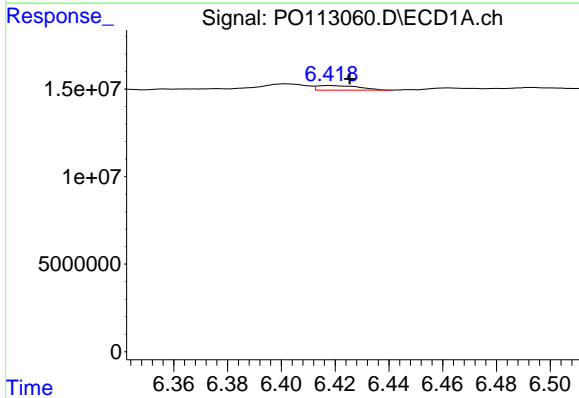
R.T.: 6.234 min
 Delta R.T.: -0.002 min
 Response: 3220332
 Conc: 7.22 ng/ml

Instrument :
 ECD_O
 ClientSampleId :
 BACK-1-FLOOR-CENTER-MIDDLE-C



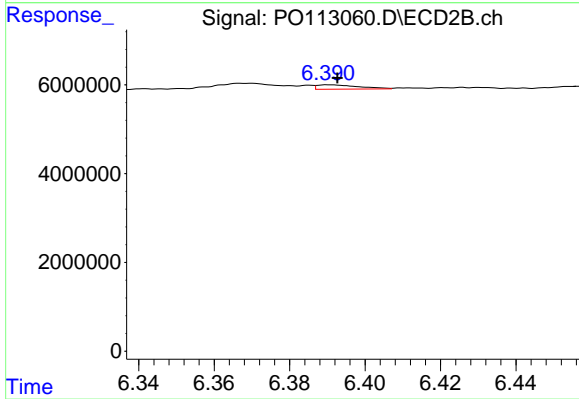
#31 AR-1260-1

R.T.: 6.199 min
 Delta R.T.: -0.005 min
 Response: 1588092
 Conc: 6.23 ng/ml



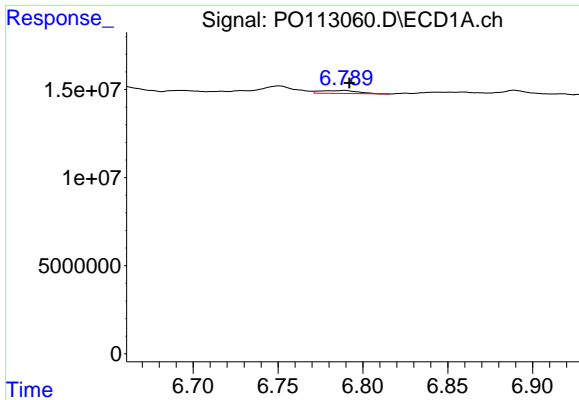
#32 AR-1260-2

R.T.: 6.418 min
 Delta R.T.: -0.007 min
 Response: 2858087
 Conc: 4.16 ng/ml



#32 AR-1260-2

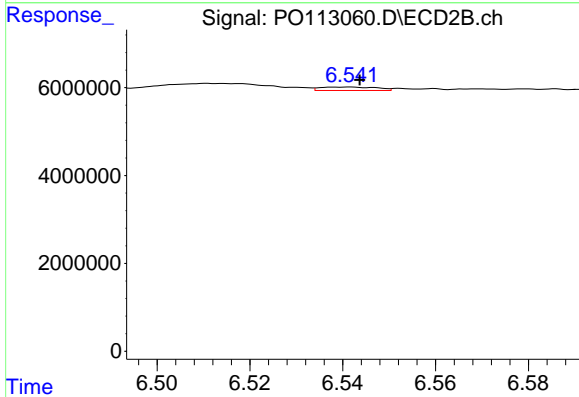
R.T.: 6.390 min
 Delta R.T.: -0.002 min
 Response: 748886
 Conc: 2.17 ng/ml



#33 AR-1260-3

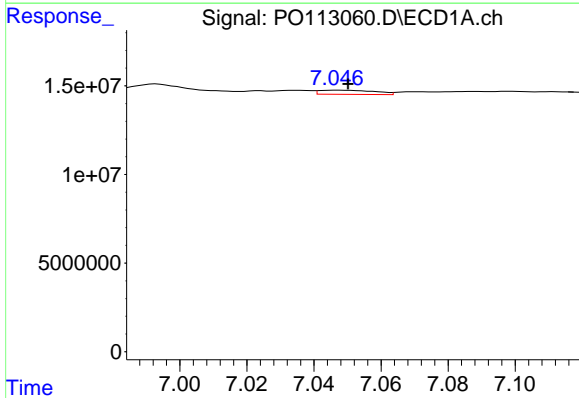
R.T.: 6.789 min
 Delta R.T.: -0.003 min
 Response: 2637683
 Conc: 4.27 ng/ml

Instrument :
 ECD_O
 ClientSampleId :
 BACK-1-FLOOR-CENTER-MIDDLE-C



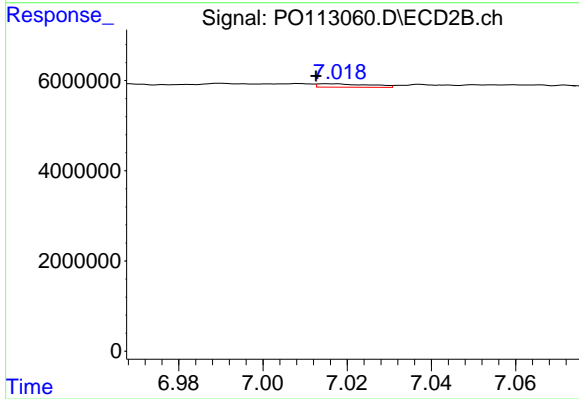
#33 AR-1260-3

R.T.: 6.542 min
 Delta R.T.: -0.002 min
 Response: 658025
 Conc: 2.21 ng/ml



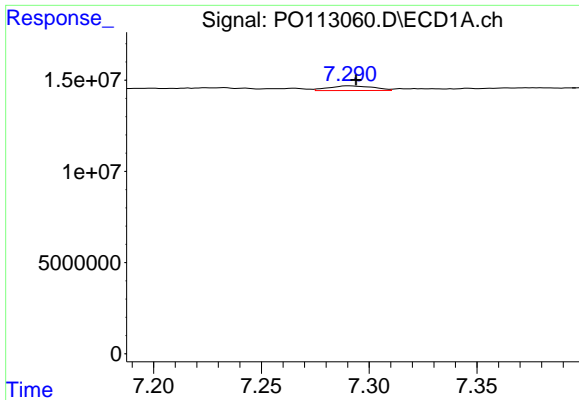
#34 AR-1260-4

R.T.: 7.047 min
 Delta R.T.: -0.003 min
 Response: 2701355
 Conc: 6.03 ng/ml



#34 AR-1260-4

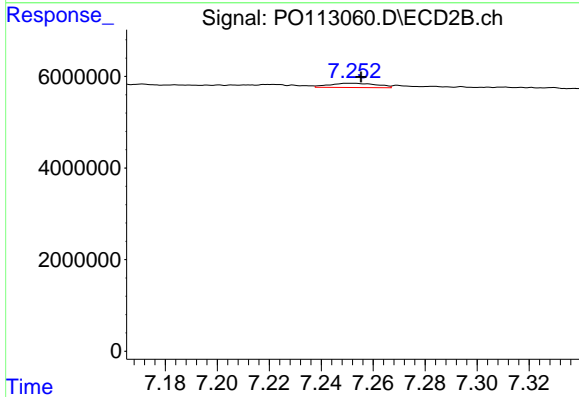
R.T.: 7.016 min
 Delta R.T.: 0.003 min
 Response: 646396
 Conc: 3.12 ng/ml



#35 AR-1260-5

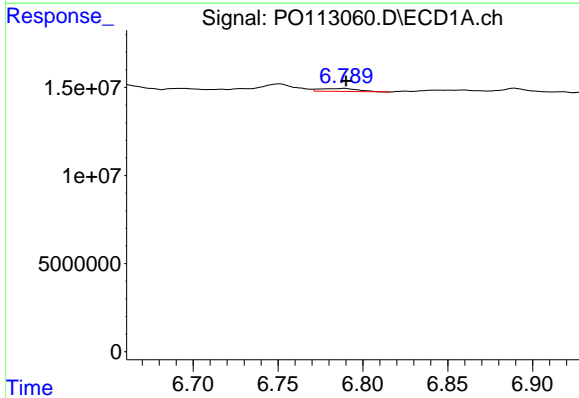
R.T.: 7.291 min
 Delta R.T.: -0.003 min
 Response: 3598300
 Conc: 2.97 ng/ml

Instrument :
 ECD_O
 ClientSampleId :
 BACK-1-FLOOR-CENTER-MIDDLE-C



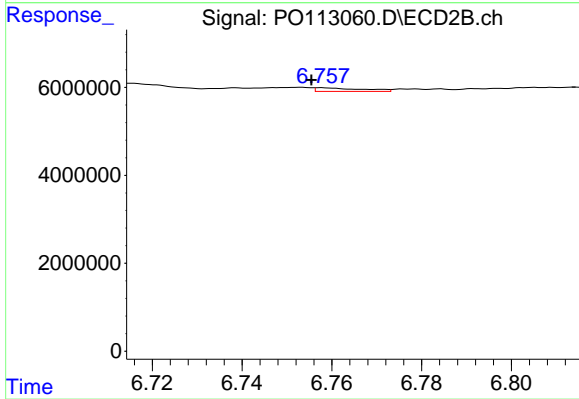
#35 AR-1260-5

R.T.: 7.252 min
 Delta R.T.: -0.004 min
 Response: 1173255
 Conc: 2.50 ng/ml



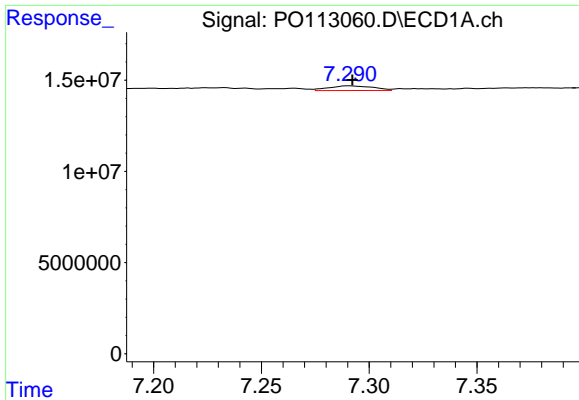
#36 AR-1262-1

R.T.: 6.789 min
 Delta R.T.: 0.000 min
 Response: 2637683
 Conc: 2.88 ng/ml



#36 AR-1262-1

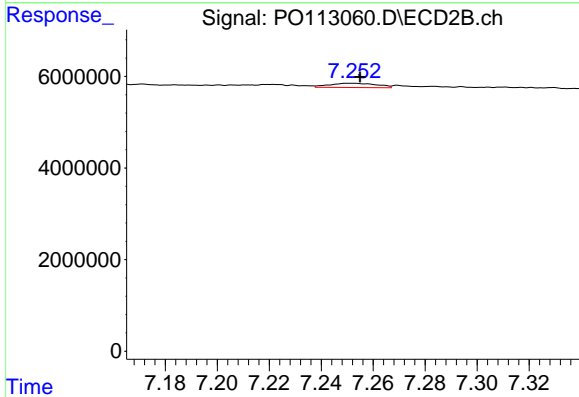
R.T.: 6.758 min
 Delta R.T.: 0.002 min
 Response: 589196
 Conc: 1.42 ng/ml



#37 AR-1262-2

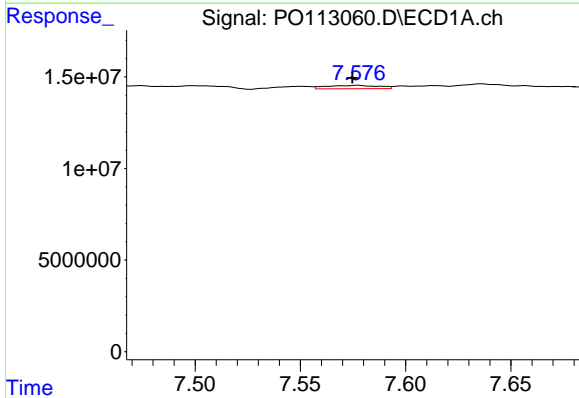
R.T.: 7.291 min
 Delta R.T.: -0.001 min
 Response: 3598300
 Conc: 2.38 ng/ml

Instrument :
 ECD_O
 ClientSampleId :
 BACK-1-FLOOR-CENTER-MIDDLE-C



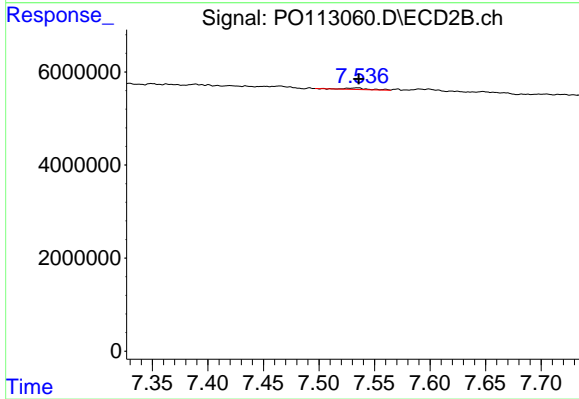
#37 AR-1262-2

R.T.: 7.252 min
 Delta R.T.: -0.003 min
 Response: 1173255
 Conc: 2.27 ng/ml



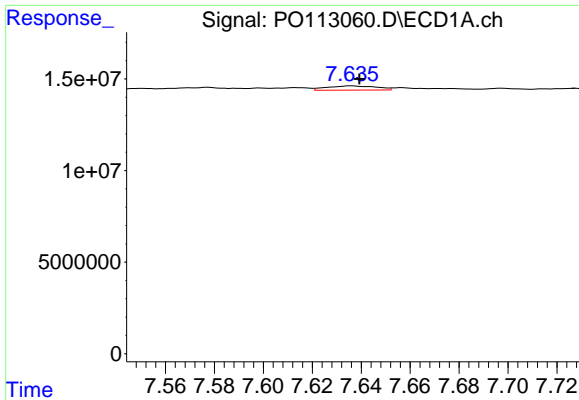
#38 AR-1262-3

R.T.: 7.577 min
 Delta R.T.: 0.003 min
 Response: 3134350
 Conc: 5.66 ng/ml



#38 AR-1262-3

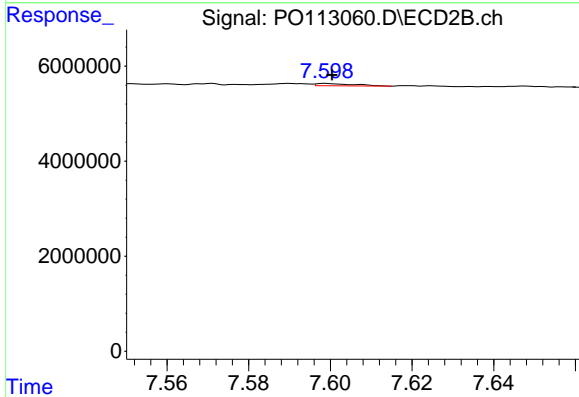
R.T.: 7.535 min
 Delta R.T.: 0.000 min
 Response: 488873
 Conc: 2.72 ng/ml



#39 AR-1262-4

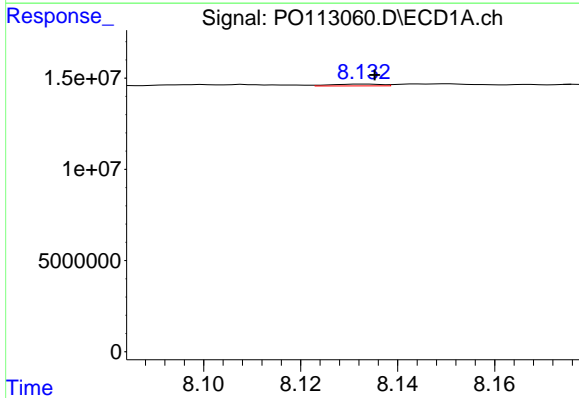
R.T.: 7.636 min
 Delta R.T.: -0.003 min
 Response: 3175889
 Conc: 3.25 ng/ml

Instrument :
 ECD_O
 ClientSampleId :
 BACK-1-FLOOR-CENTER-MIDDLE-C



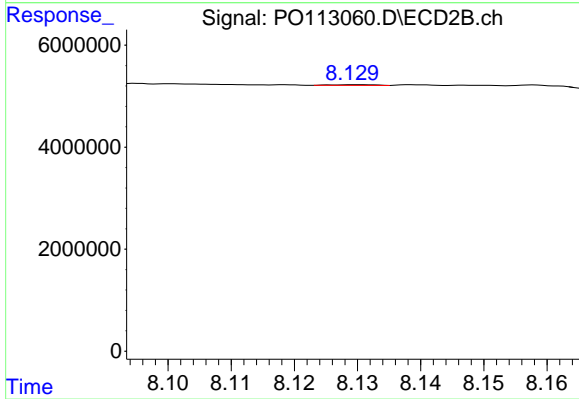
#39 AR-1262-4

R.T.: 7.599 min
 Delta R.T.: -0.001 min
 Response: 298582
 Conc: 1.03 ng/ml



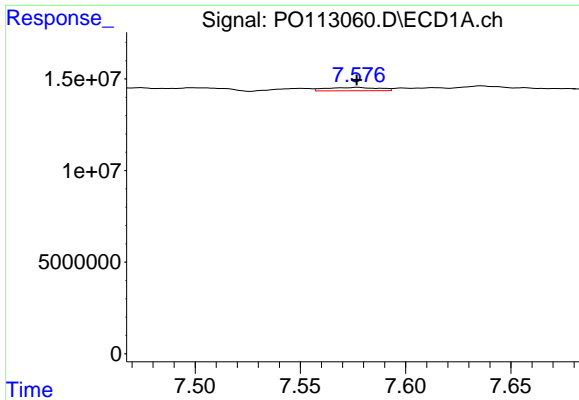
#40 AR-1262-5

R.T.: 8.133 min
 Delta R.T.: -0.002 min
 Response: 713565
 Conc: 1.71 ng/ml



#40 AR-1262-5

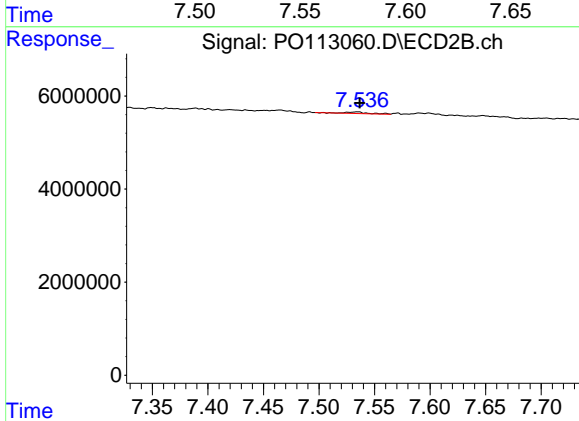
R.T.: 8.130 min
 Delta R.T.: 0.038 min
 Response: 71388
 Conc: 0.66 ng/ml



#41 AR-1268-1

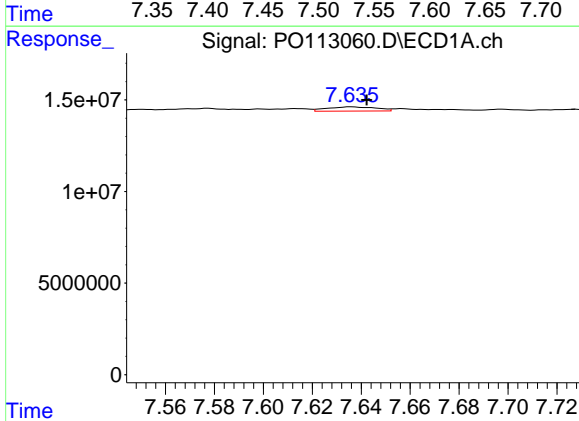
R.T.: 7.577 min
 Delta R.T.: 0.000 min
 Response: 3134350
 Conc: 1.82 ng/ml

Instrument :
 ECD_O
 ClientSampleId :
 BACK-1-FLOOR-CENTER-MIDDLE-C



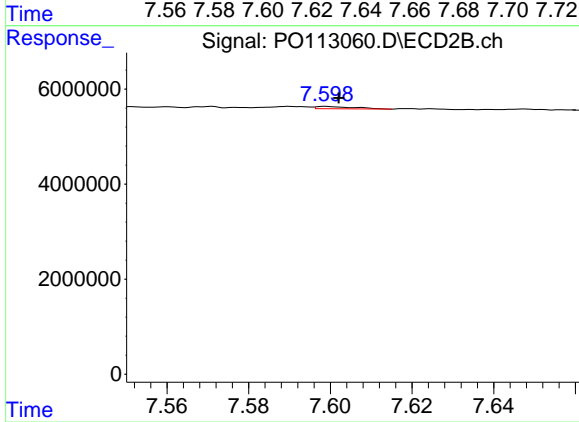
#41 AR-1268-1

R.T.: 7.535 min
 Delta R.T.: -0.002 min
 Response: 488873
 Conc: 0.96 ng/ml



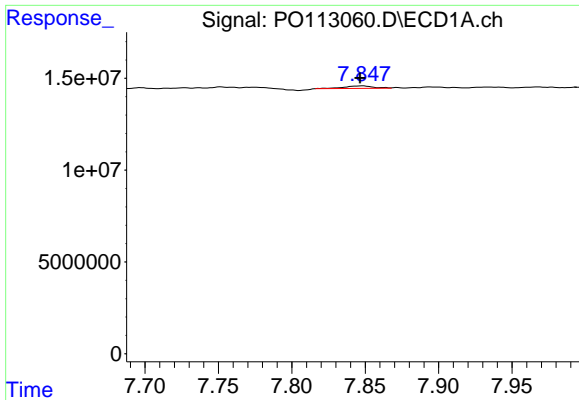
#42 AR-1268-2

R.T.: 7.636 min
 Delta R.T.: -0.006 min
 Response: 3175889
 Conc: 2.19 ng/ml



#42 AR-1268-2

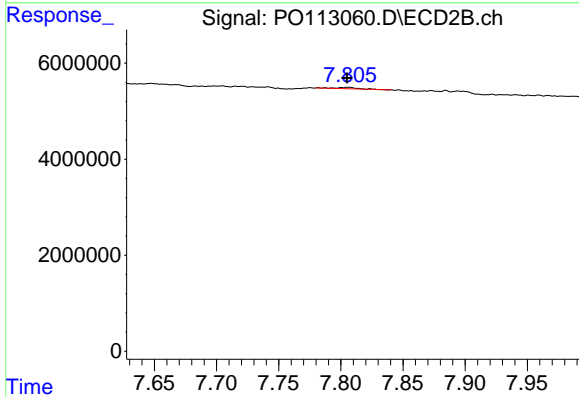
R.T.: 7.599 min
 Delta R.T.: -0.003 min
 Response: 298582
 Conc: 0.72 ng/ml



#43 AR-1268-3

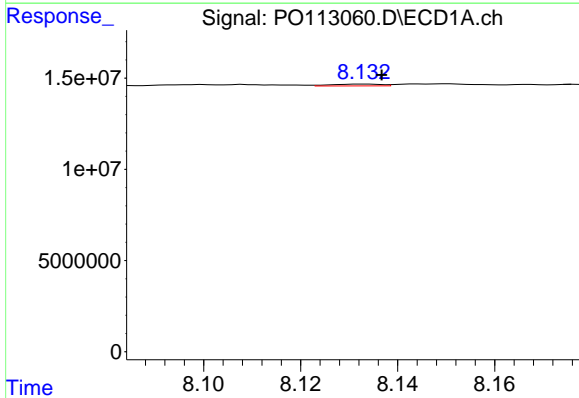
R.T.: 7.848 min
 Delta R.T.: 0.002 min
 Response: 1941195
 Conc: 1.61 ng/ml

Instrument :
 ECD_O
 ClientSampleId :
 BACK-1-FLOOR-CENTER-MIDDLE-C



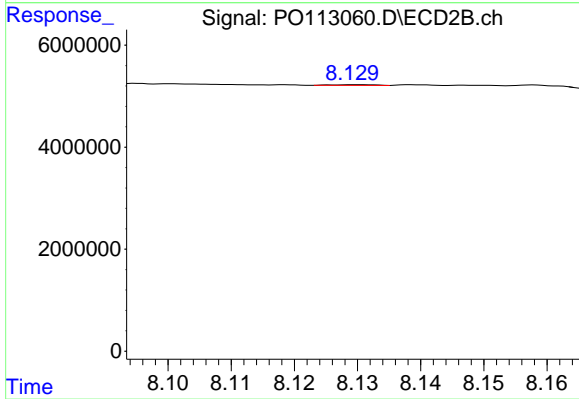
#43 AR-1268-3

R.T.: 7.806 min
 Delta R.T.: 0.001 min
 Response: 267079
 Conc: 0.82 ng/ml



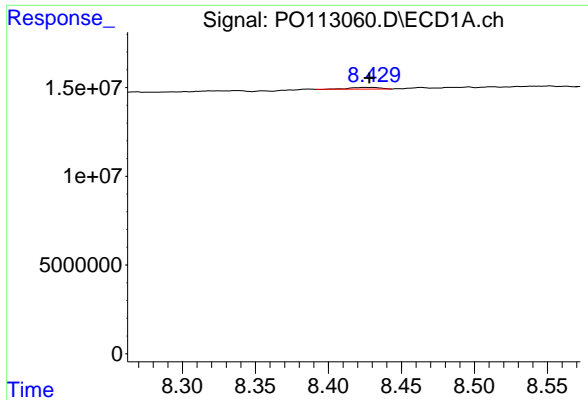
#44 AR-1268-4

R.T.: 8.133 min
 Delta R.T.: -0.003 min
 Response: 713565
 Conc: 1.55 ng/ml



#44 AR-1268-4

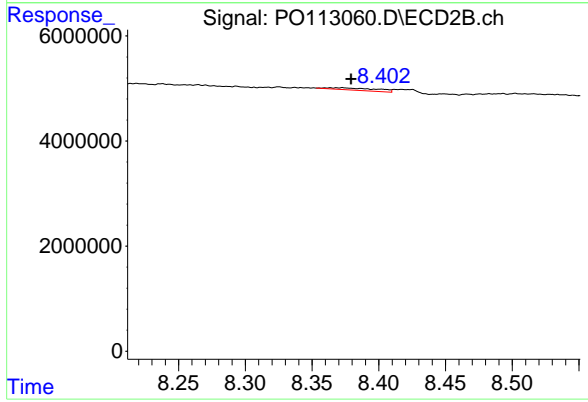
R.T.: 8.130 min
 Delta R.T.: 0.038 min
 Response: 71388
 Conc: 0.59 ng/ml



#45 AR-1268-5

R.T.: 8.430 min
Delta R.T.: 0.002 min
Response: 1371787
Conc: 0.43 ng/ml

Instrument :
ECD_O
ClientSampleId :
BACK-1-FLOOR-CENTER-MIDDLE-C



#45 AR-1268-5

R.T.: 8.373 min
Delta R.T.: -0.006 min
Response: 1067468
Conc: 1.37 ng/ml