

Data Path : Z:\pestpcbsrv\HPCHEM1\ECD_0\Data\P0081925\
 Data File : PO113065.D
 Signal(s) : Signal #1: ECD1A.ch Signal #2: ECD2B.ch
 Acq On : 19 Aug 2025 19:23
 Operator : YP/AJ
 Sample : Q2897-01MS
 Misc :
 ALS Vial : 24 Sample Multiplier: 1

Instrument :
 ECD_0
 ClientSampleId :
 HD-02-08182025MS

Integration File signal 1: autoint1.e
 Integration File signal 2: autoint2.e
 Quant Time: Aug 20 05:41:10 2025
 Quant Method : Z:\pestpcbsrv\HPCHEM1\ECD_0\methods\P0081825.M
 Quant Title : GC EXTRACTABLES
 QLast Update : Tue Aug 19 06:08:32 2025
 Response via : Initial Calibration
 Integrator: ChemStation

Volume Inj. : 2 µl
 Signal #1 Phase : ZB-MR1 Signal #2 Phase: ZB-MR2
 Signal #1 Info : 30Mx0.32mmx 0.50µ Signal #2 Info : 30M x 0.32mm x 0.25µm

| Compound | RT#1 | RT#2 | Resp#1 | Resp#2 | ng/ml | ng/ml |
|-----------------------------|-------|-------|----------|----------|----------|-----------|
| System Monitoring Compounds | | | | | | |
| 1) SA Tetrachlo... | 3.664 | 3.655 | 129.1E6 | 79356626 | 15.775 | 15.681 |
| 2) SA Decachlor... | 8.681 | 8.626 | 75636185 | 22658518 | 10.912 | 11.958 |
| Target Compounds | | | | | | |
| 3) L1 AR-1016-1 | 4.747 | 4.729 | 101.1E6 | 72283976 | 378.534 | 423.770 |
| 4) L1 AR-1016-2 | 4.766 | 4.747 | 156.4E6 | 108.9E6 | 389.552 | 422.848 |
| 5) L1 AR-1016-3 | 4.823 | 4.921 | 100.7E6 | 58002485 | 394.978 | 415.448 |
| 6) L1 AR-1016-4 | 4.942 | 4.964 | 83332012 | 46547672 | 382.138 | 398.870 |
| 7) L1 AR-1016-5 | 5.199 | 5.176 | 80648992 | 58638711 | 363.894 | 411.413 |
| 8) L2 AR-1221-1 | 3.872 | 3.863 | 9543527 | 6729039 | 101.990 | 106.605 |
| 9) L2 AR-1221-2 | 3.961 | 3.949 | 9945237 | 11134419 | 147.226 | 238.561 # |
| 10) L2 AR-1221-3 | 4.036 | 4.024 | 58656999 | 40249267 | 264.995 | 271.084 |
| 11) L3 AR-1232-1 | 4.036 | 4.024 | 58656999 | 40249267 | 337.097 | 342.831 |
| 12) L3 AR-1232-2 | 4.527 | 4.747 | 92440879 | 108.9E6 | 925.775 | 889.055 |
| 13) L3 AR-1232-3 | 4.766 | 4.921 | 156.4E6 | 58002485 | 825.323 | 915.651 |
| 14) L3 AR-1232-4 | 4.942 | 5.006 | 83332012 | 55564541 | 884.915 | 988.320 |
| 15) L3 AR-1232-5 | 4.986 | 5.176 | 65036962 | 58638711 | 1049.949 | 979.539 |
| 16) L4 AR-1242-1 | 4.747 | 4.729 | 101.1E6 | 72283976 | 439.534 | 500.220 |
| 17) L4 AR-1242-2 | 4.766 | 4.747 | 156.4E6 | 108.9E6 | 455.085 | 502.276 |
| 18) L4 AR-1242-3 | 4.823 | 4.921 | 100.7E6 | 58002485 | 453.968 | 495.899 |
| 19) L4 AR-1242-4 | 4.942 | 5.006 | 83332012 | 55564541 | 480.403 | 472.337 |
| 20) L4 AR-1242-5 | 5.594 | 5.526 | 14125746 | 50137634 | 70.571 | 336.194 # |
| 21) L5 AR-1248-1 | 4.747 | 4.729 | 101.1E6 | 72283976 | 579.268 | 648.218 |
| 22) L5 AR-1248-2 | 4.986 | 4.964 | 65036962 | 46547672 | 268.897 | 289.657 |
| 23) L5 AR-1248-3 | 5.199 | 5.006 | 80648992 | 55564541 | 252.926 | 327.504 # |
| 24) L5 AR-1248-4 | 5.552 | 5.176 | 68957691 | 58638711 | 138.025 | 294.341 # |
| 25) L5 AR-1248-5 | 5.594 | 5.565 | 14125746 | 11324357 | 41.365 | 53.342 # |
| 26) L6 AR-1254-1 | 5.552 | 5.526 | 68957691 | 50137634 | 127.705 | 158.989 |
| 27) L6 AR-1254-2 | 5.701 | 5.673 | 76676888 | 49486460 | 155.388 | 176.524 |
| 28) L6 AR-1254-3 | 6.120 | 6.089 | 115.2E6 | 74135240 | 155.976 | 177.815 |
| 29) L6 AR-1254-4 | 6.334 | 6.301 | 12244081 | 7841335 | 21.982 | 28.531 # |
| 30) L6 AR-1254-5 | 6.751 | 6.716 | 210.7E6 | 118.3E6 | 300.642 | 330.963 |
| 31) L7 AR-1260-1 | 6.236 | 6.204 | 142.8E6 | 91591176 | 320.108 | 359.084 |
| 32) L7 AR-1260-2 | 6.425 | 6.392 | 209.8E6 | 117.8E6 | 305.551 | 340.821 |
| 33) L7 AR-1260-3 | 6.791 | 6.543 | 161.4E6 | 94941238 | 261.346 | 319.201 |
| 34) L7 AR-1260-4 | 7.050 | 7.012 | 116.9E6 | 60660563 | 261.032 | 292.693 |
| 35) L7 AR-1260-5 | 7.293 | 7.254 | 336.1E6 | 140.5E6 | 277.648 | 300.035 |
| 36) L8 AR-1262-1 | 6.791 | 6.755 | 161.4E6 | 86161386 | 176.218 | 207.811 |
| 37) L8 AR-1262-2 | 7.293 | 7.254 | 336.1E6 | 140.5E6 | 222.295 | 271.496 |
| 38) L8 AR-1262-3 | 7.575 | 7.535 | 60447211 | 22815313 | 109.089 | 127.041 |
| 39) L8 AR-1262-4 | 7.639 | 7.597 | 211.1E6 | 75724240 | 215.887 | 261.207 |
| 40) L8 AR-1262-5 | 8.135 | 8.091 | 66248736 | 20366096 | 158.916 | 187.998 |
| 41) L9 AR-1268-1 | 7.575 | 7.535 | 60447211 | 22815313 | 35.126 | 44.783 # |

Data Path : Z:\pestpcbsrv\HPCHEM1\ECD_0\Data\P0081925\
 Data File : P0113065.D
 Signal(s) : Signal #1: ECD1A.ch Signal #2: ECD2B.ch
 Acq On : 19 Aug 2025 19:23
 Operator : YP/AJ
 Sample : Q2897-01MS
 Misc :
 ALS Vial : 24 Sample Multiplier: 1

Instrument :
 ECD_0
 ClientSampleId :
 HD-02-08182025MS

Integration File signal 1: autoint1.e
 Integration File signal 2: autoint2.e
 Quant Time: Aug 20 05:41:10 2025
 Quant Method : Z:\pestpcbsrv\HPCHEM1\ECD_0\methods\P0081825.M
 Quant Title : GC EXTRACTABLES
 QLast Update : Tue Aug 19 06:08:32 2025
 Response via : Initial Calibration
 Integrator: ChemStation

Volume Inj. : 2 µl
 Signal #1 Phase : ZB-MR1 Signal #2 Phase: ZB-MR2
 Signal #1 Info : 30Mx0.32mmx 0.50µ Signal #2 Info : 30M x 0.32mm x 0.25µm

| | Compound | RT#1 | RT#2 | Resp#1 | Resp#2 | ng/ml | ng/ml |
|-----|--------------|-------|-------|----------|----------|---------|-----------|
| 42) | L9 AR-1268-2 | 7.639 | 7.597 | 211.1E6 | 75724240 | 145.793 | 182.291 # |
| 43) | L9 AR-1268-3 | 7.846 | 7.803 | 4347505 | 1968833 | 3.604 | 6.030 # |
| 44) | L9 AR-1268-4 | 8.135 | 8.091 | 66248736 | 20366096 | 143.811 | 169.108 |
| 45) | L9 AR-1268-5 | 8.427 | 8.378 | 17556690 | 7469840 | 5.506 | 9.565 # |

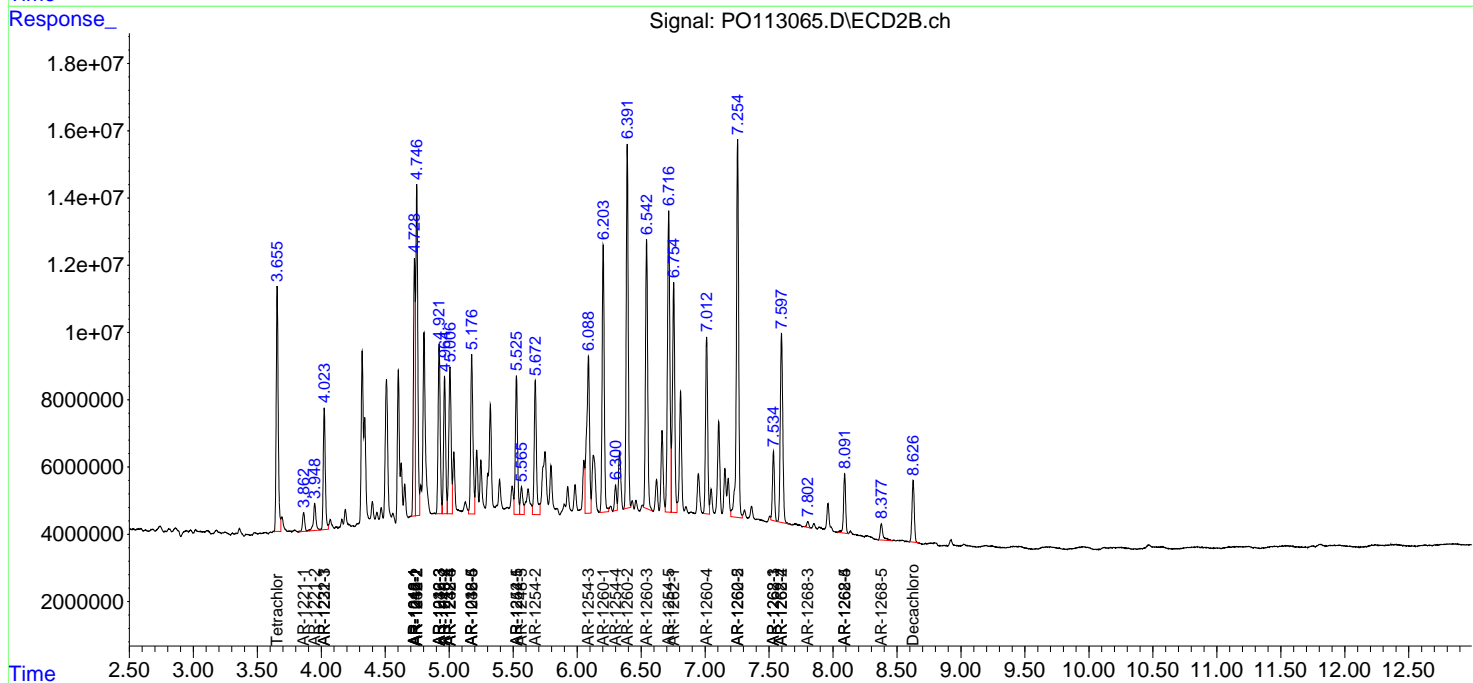
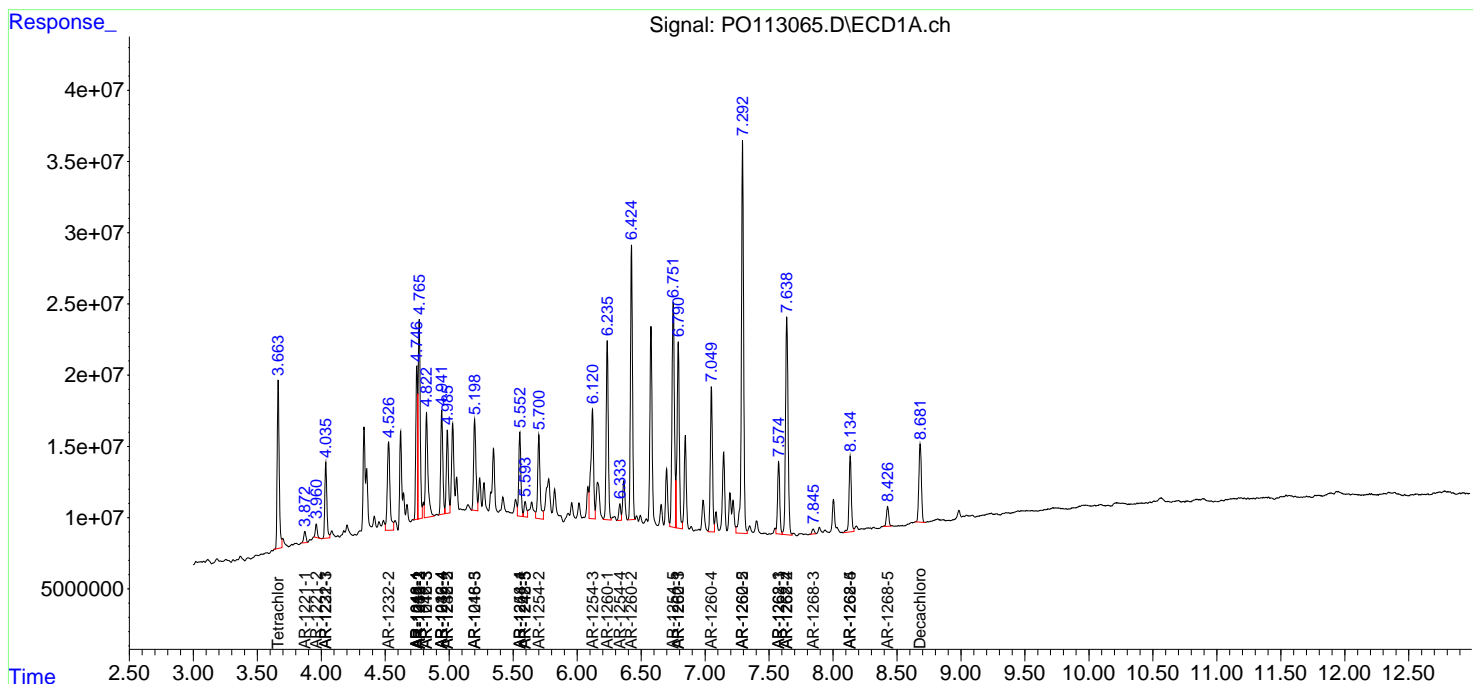
(f)=RT Delta > 1/2 Window (#)=Amounts differ by > 25% (m)=manual int.

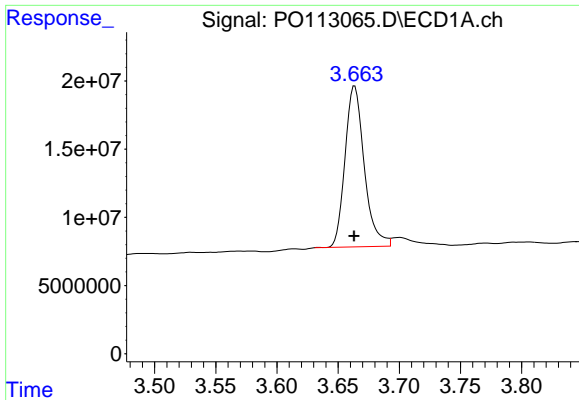
Data Path : Z:\pestpcbsrv\HPCHEM1\ECD_O\Data\PO081925\
 Data File : PO113065.D
 Signal(s) : Signal #1: ECD1A.ch Signal #2: ECD2B.ch
 Acq On : 19 Aug 2025 19:23
 Operator : YP/AJ
 Sample : Q2897-01MS
 Misc :
 ALS Vial : 24 Sample Multiplier: 1

Instrument :
 ECD_O
 ClientSampleId :
 HD-02-08182025MS

Integration File signal 1: autoint1.e
 Integration File signal 2: autoint2.e
 Quant Time: Aug 20 05:41:10 2025
 Quant Method : Z:\pestpcbsrv\HPCHEM1\ECD_O\methods\PO081825.M
 Quant Title : GC EXTRACTABLES
 QLast Update : Tue Aug 19 06:08:32 2025
 Response via : Initial Calibration
 Integrator: ChemStation

Volume Inj. : 2 µl
 Signal #1 Phase : ZB-MR1 Signal #2 Phase: ZB-MR2
 Signal #1 Info : 30Mx0.32mmx 0.50µ Signal #2 Info : 30M x 0.32mm x 0.25µm

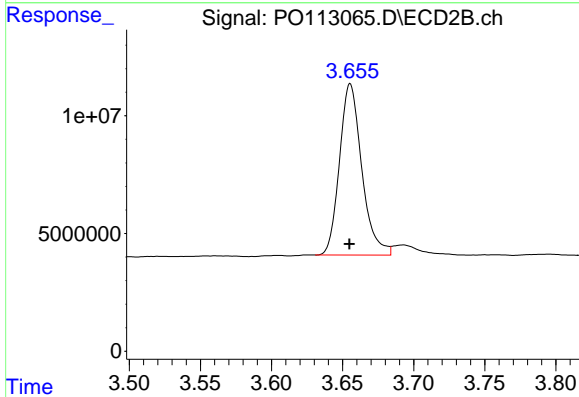




#1 Tetrachloro-m-xylene

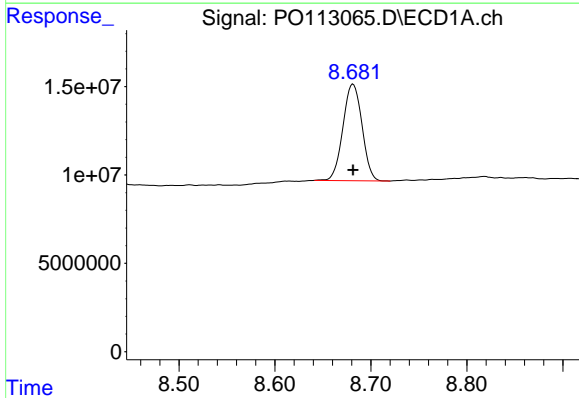
R.T.: 3.664 min
 Delta R.T.: 0.000 min
 Response: 129144872
 Conc: 15.78 ng/ml

Instrument :
 ECD_O
 ClientSampleId :
 HD-02-08182025MS



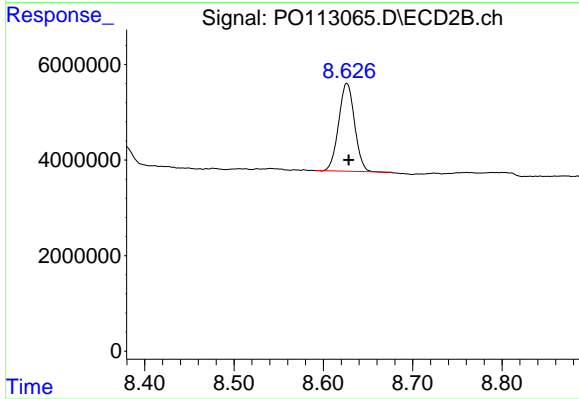
#1 Tetrachloro-m-xylene

R.T.: 3.655 min
 Delta R.T.: 0.000 min
 Response: 79356626
 Conc: 15.68 ng/ml



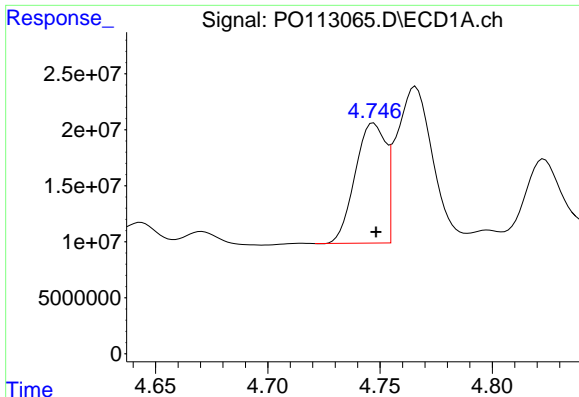
#2 Decachlorobiphenyl

R.T.: 8.681 min
 Delta R.T.: 0.000 min
 Response: 75636185
 Conc: 10.91 ng/ml



#2 Decachlorobiphenyl

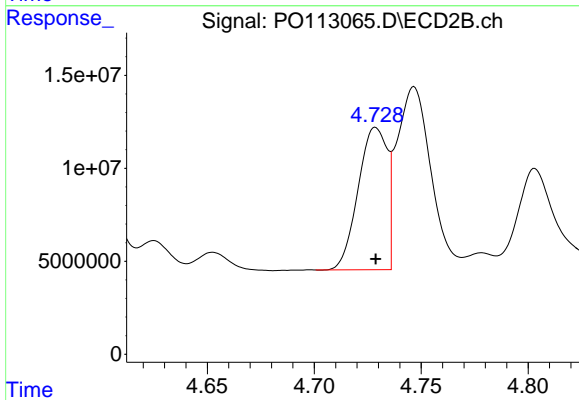
R.T.: 8.626 min
 Delta R.T.: -0.002 min
 Response: 22658518
 Conc: 11.96 ng/ml



#3 AR-1016-1

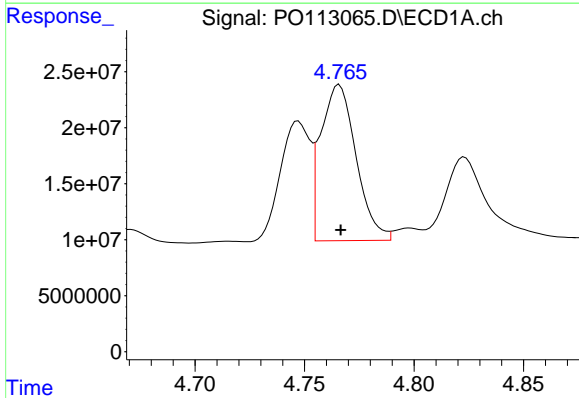
R.T.: 4.747 min
 Delta R.T.: -0.001 min
 Response: 101062783
 Conc: 378.53 ng/ml

Instrument :
 ECD_O
 ClientSampleId :
 HD-02-08182025MS



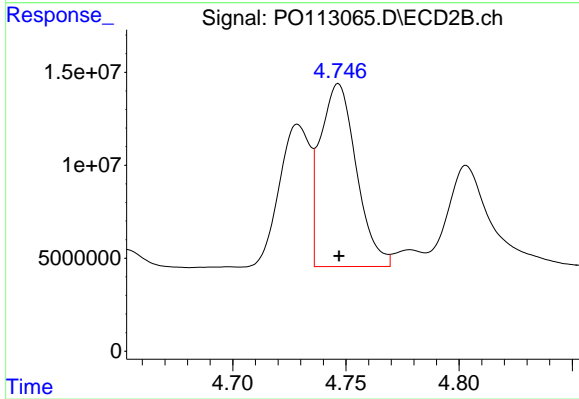
#3 AR-1016-1

R.T.: 4.729 min
 Delta R.T.: 0.000 min
 Response: 72283976
 Conc: 423.77 ng/ml



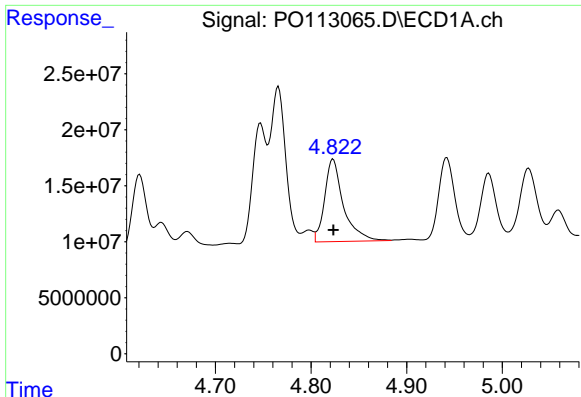
#4 AR-1016-2

R.T.: 4.766 min
 Delta R.T.: 0.000 min
 Response: 156378475
 Conc: 389.55 ng/ml



#4 AR-1016-2

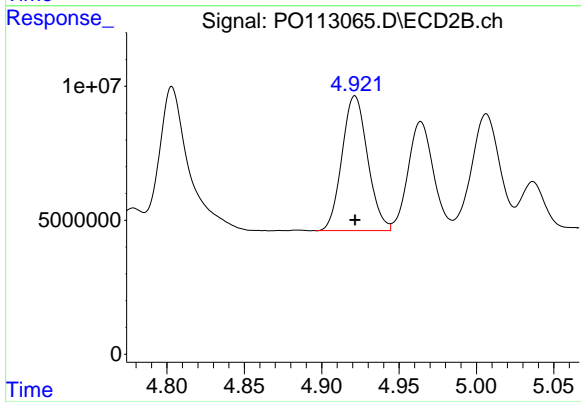
R.T.: 4.747 min
 Delta R.T.: 0.000 min
 Response: 108949342
 Conc: 422.85 ng/ml



#5 AR-1016-3

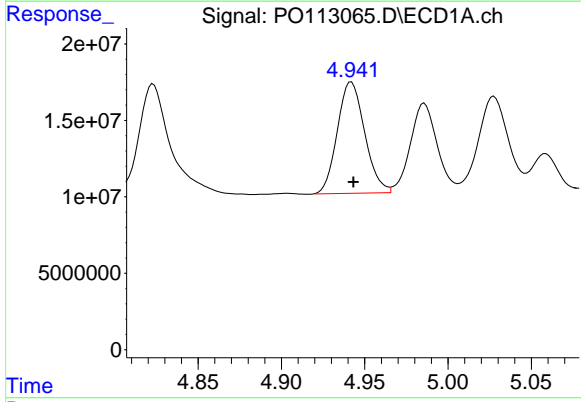
R.T.: 4.823 min
 Delta R.T.: 0.000 min
 Response: 100728344
 Conc: 394.98 ng/ml

Instrument :
 ECD_O
 ClientSampleId :
 HD-02-08182025MS



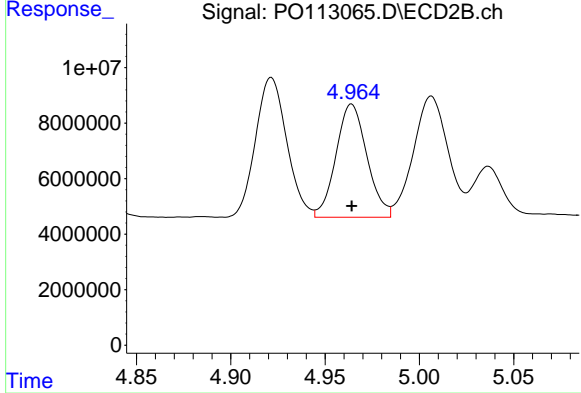
#5 AR-1016-3

R.T.: 4.921 min
 Delta R.T.: 0.000 min
 Response: 58002485
 Conc: 415.45 ng/ml



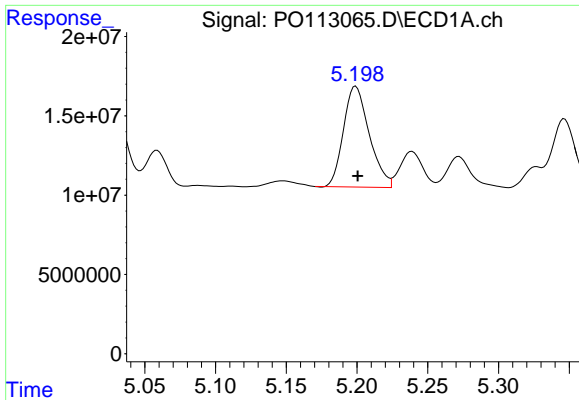
#6 AR-1016-4

R.T.: 4.942 min
 Delta R.T.: -0.001 min
 Response: 83332012
 Conc: 382.14 ng/ml



#6 AR-1016-4

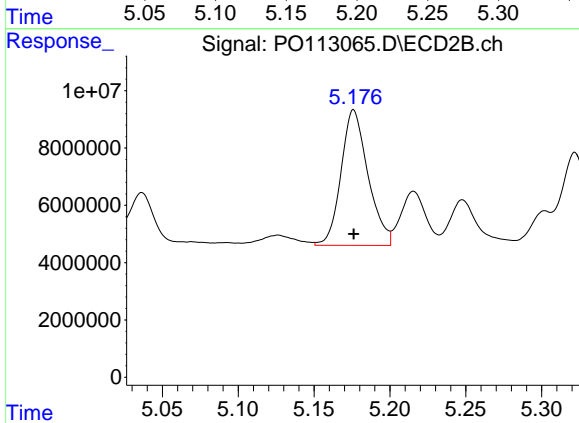
R.T.: 4.964 min
 Delta R.T.: 0.000 min
 Response: 46547672
 Conc: 398.87 ng/ml



#7 AR-1016-5

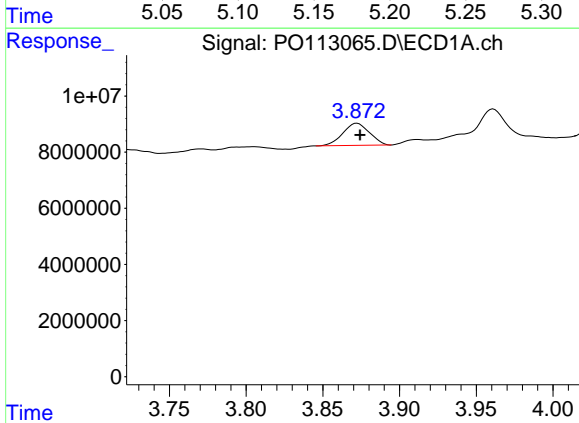
R.T.: 5.199 min
 Delta R.T.: -0.001 min
 Response: 80648992
 Conc: 363.89 ng/ml

Instrument :
 ECD_O
 ClientSampleId :
 HD-02-08182025MS



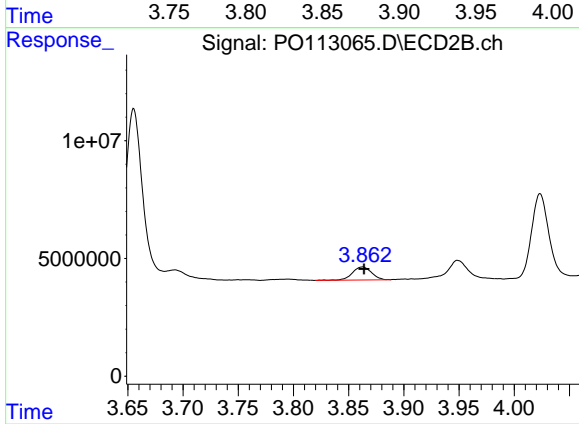
#7 AR-1016-5

R.T.: 5.176 min
 Delta R.T.: 0.000 min
 Response: 58638711
 Conc: 411.41 ng/ml



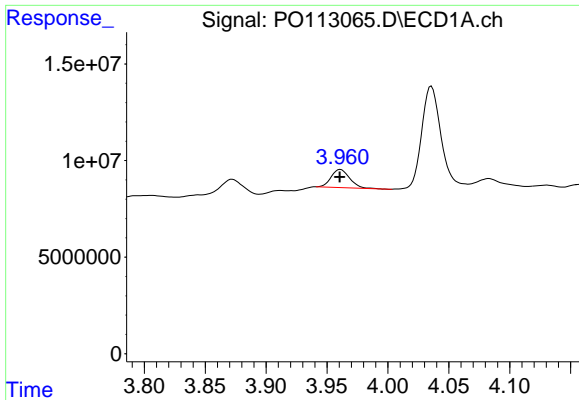
#8 AR-1221-1

R.T.: 3.872 min
 Delta R.T.: -0.002 min
 Response: 9543527
 Conc: 101.99 ng/ml



#8 AR-1221-1

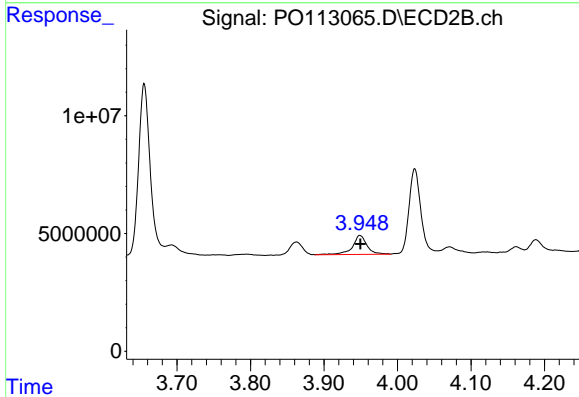
R.T.: 3.863 min
 Delta R.T.: -0.001 min
 Response: 6729039
 Conc: 106.61 ng/ml



#9 AR-1221-2

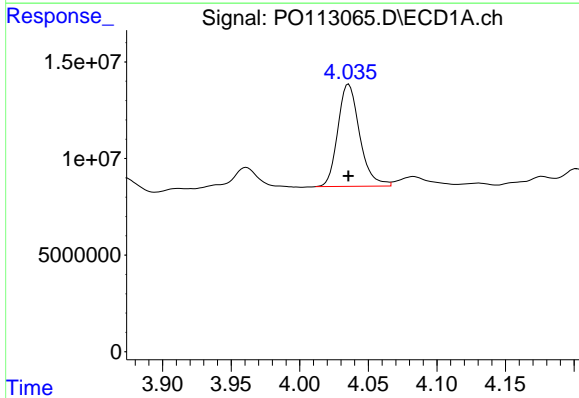
R.T.: 3.961 min
 Delta R.T.: 0.000 min
 Response: 9945237
 Conc: 147.23 ng/ml

Instrument :
 ECD_O
 ClientSampleId :
 HD-02-08182025MS



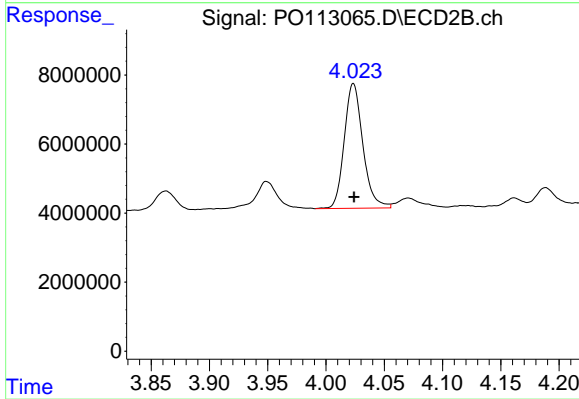
#9 AR-1221-2

R.T.: 3.949 min
 Delta R.T.: 0.000 min
 Response: 11134419
 Conc: 238.56 ng/ml



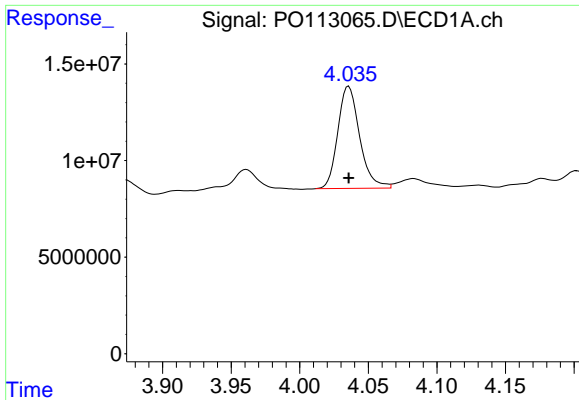
#10 AR-1221-3

R.T.: 4.036 min
 Delta R.T.: 0.000 min
 Response: 58656999
 Conc: 265.00 ng/ml



#10 AR-1221-3

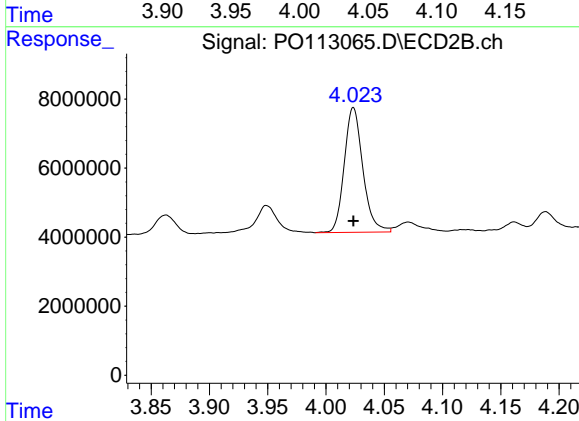
R.T.: 4.024 min
 Delta R.T.: 0.000 min
 Response: 40249267
 Conc: 271.08 ng/ml



#11 AR-1232-1

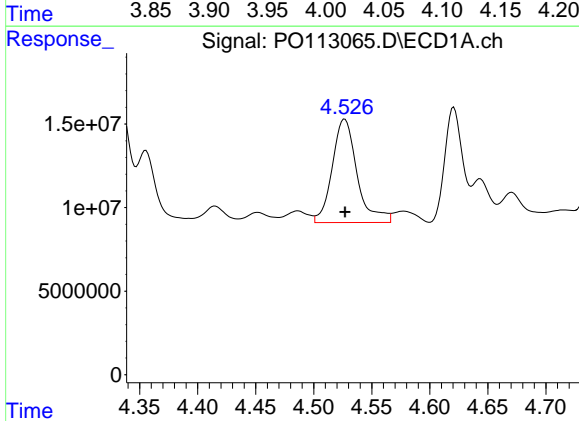
R.T.: 4.036 min
 Delta R.T.: 0.000 min
 Response: 58656999
 Conc: 337.10 ng/ml

Instrument :
 ECD_O
 ClientSampleId :
 HD-02-08182025MS



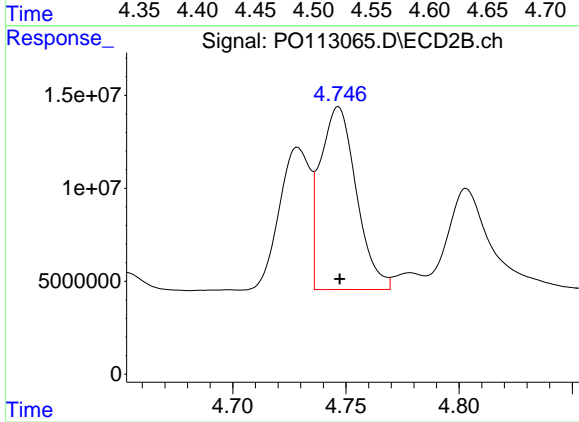
#11 AR-1232-1

R.T.: 4.024 min
 Delta R.T.: 0.000 min
 Response: 40249267
 Conc: 342.83 ng/ml



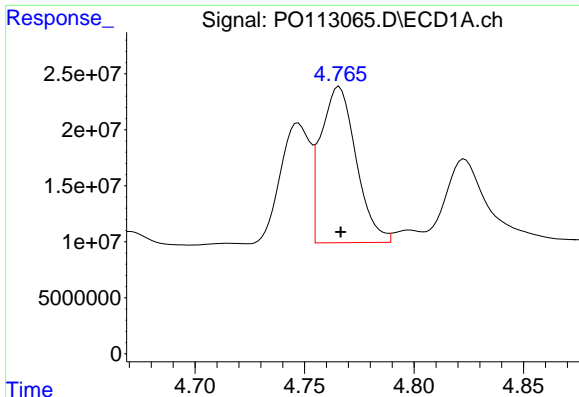
#12 AR-1232-2

R.T.: 4.527 min
 Delta R.T.: 0.000 min
 Response: 92440879
 Conc: 925.77 ng/ml



#12 AR-1232-2

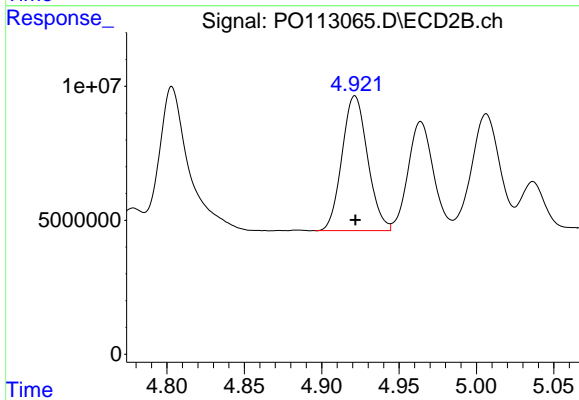
R.T.: 4.747 min
 Delta R.T.: 0.000 min
 Response: 108949342
 Conc: 889.06 ng/ml



#13 AR-1232-3

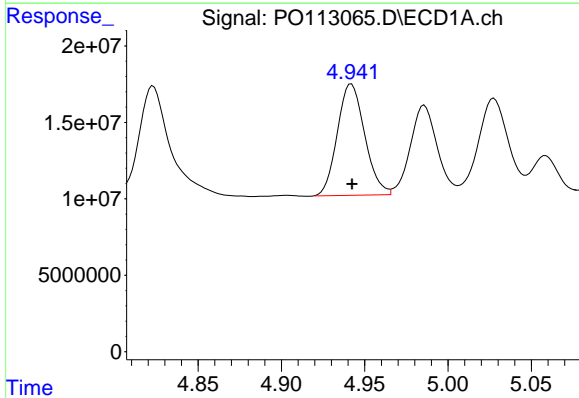
R.T.: 4.766 min
 Delta R.T.: 0.000 min
 Response: 156378475
 Conc: 825.32 ng/ml

Instrument :
 ECD_O
 ClientSampleId :
 HD-02-08182025MS



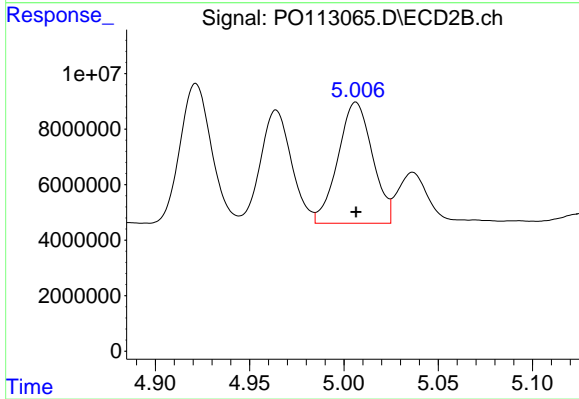
#13 AR-1232-3

R.T.: 4.921 min
 Delta R.T.: 0.000 min
 Response: 58002485
 Conc: 915.65 ng/ml



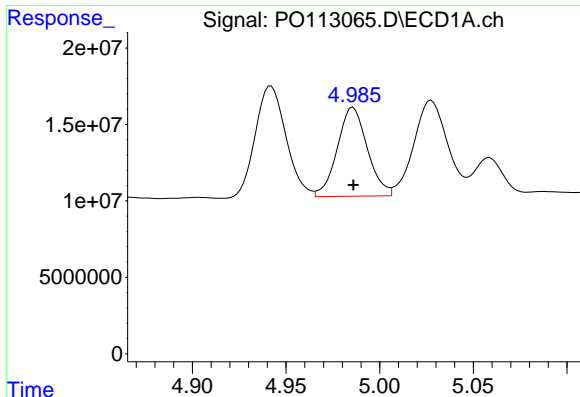
#14 AR-1232-4

R.T.: 4.942 min
 Delta R.T.: 0.000 min
 Response: 83332012
 Conc: 884.91 ng/ml



#14 AR-1232-4

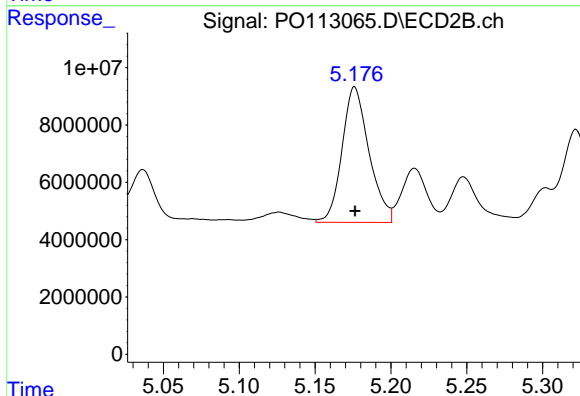
R.T.: 5.006 min
 Delta R.T.: 0.000 min
 Response: 55564541
 Conc: 988.32 ng/ml



#15 AR-1232-5

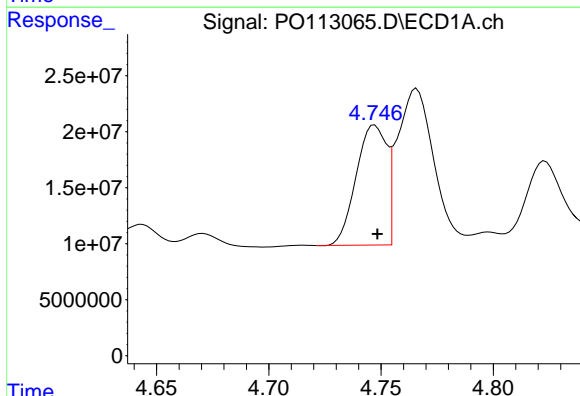
R.T.: 4.986 min
 Delta R.T.: 0.000 min
 Response: 65036962
 Conc: 1049.95 ng/ml

Instrument :
 ECD_O
 ClientSampleId :
 HD-02-08182025MS



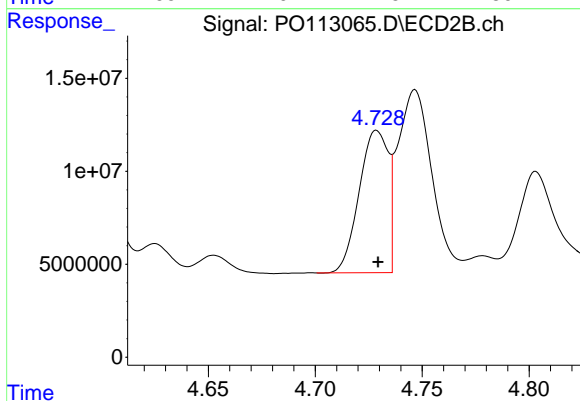
#15 AR-1232-5

R.T.: 5.176 min
 Delta R.T.: 0.000 min
 Response: 58638711
 Conc: 979.54 ng/ml



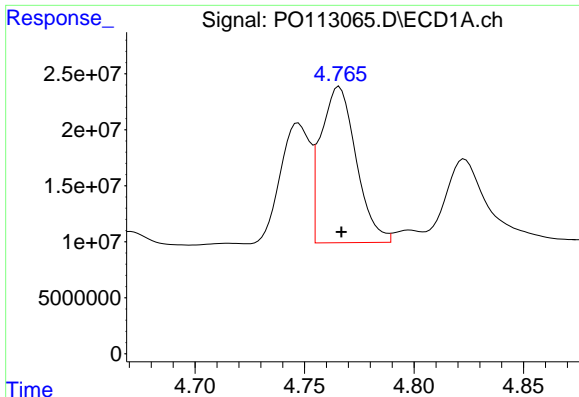
#16 AR-1242-1

R.T.: 4.747 min
 Delta R.T.: -0.001 min
 Response: 101062783
 Conc: 439.53 ng/ml



#16 AR-1242-1

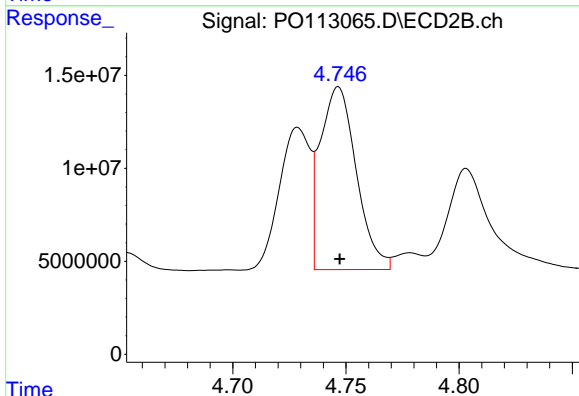
R.T.: 4.729 min
 Delta R.T.: 0.000 min
 Response: 72283976
 Conc: 500.22 ng/ml



#17 AR-1242-2

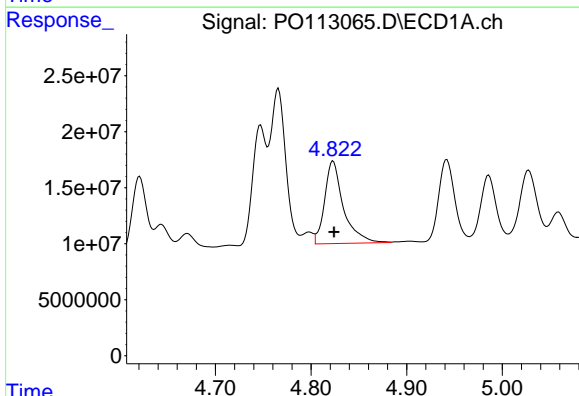
R.T.: 4.766 min
 Delta R.T.: 0.000 min
 Response: 156378475
 Conc: 455.08 ng/ml

Instrument :
 ECD_O
 ClientSampleId :
 HD-02-08182025MS



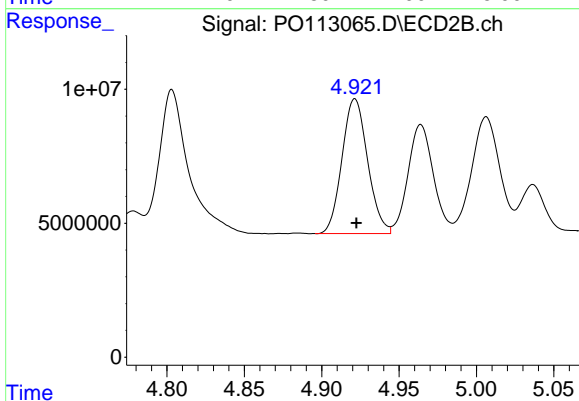
#17 AR-1242-2

R.T.: 4.747 min
 Delta R.T.: 0.000 min
 Response: 108949342
 Conc: 502.28 ng/ml



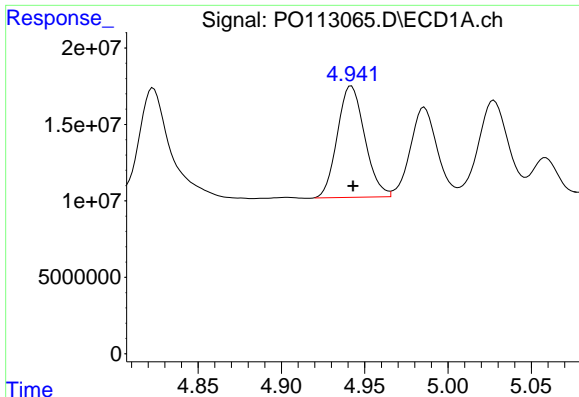
#18 AR-1242-3

R.T.: 4.823 min
 Delta R.T.: 0.000 min
 Response: 100728344
 Conc: 453.97 ng/ml



#18 AR-1242-3

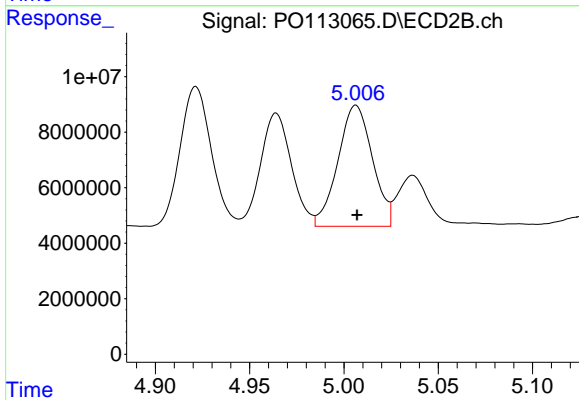
R.T.: 4.921 min
 Delta R.T.: -0.001 min
 Response: 58002485
 Conc: 495.90 ng/ml



#19 AR-1242-4

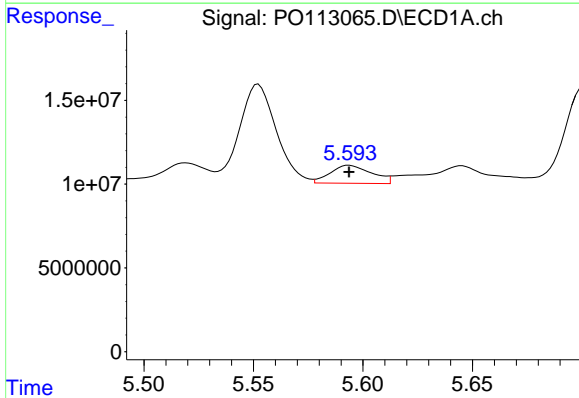
R.T.: 4.942 min
 Delta R.T.: -0.001 min
 Response: 83332012
 Conc: 480.40 ng/ml

Instrument :
 ECD_O
 ClientSampleId :
 HD-02-08182025MS



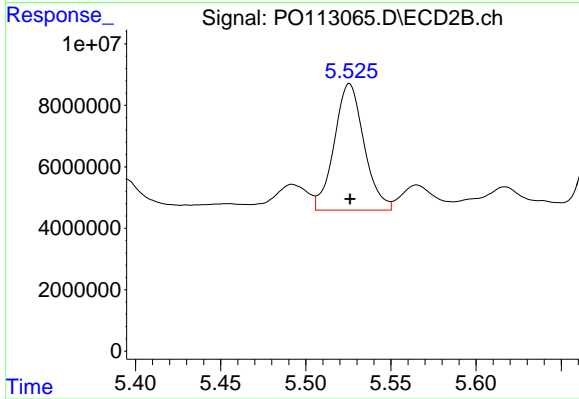
#19 AR-1242-4

R.T.: 5.006 min
 Delta R.T.: 0.000 min
 Response: 55564541
 Conc: 472.34 ng/ml



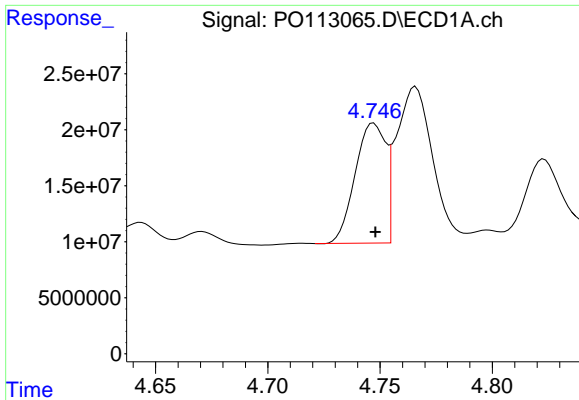
#20 AR-1242-5

R.T.: 5.594 min
 Delta R.T.: 0.000 min
 Response: 14125746
 Conc: 70.57 ng/ml



#20 AR-1242-5

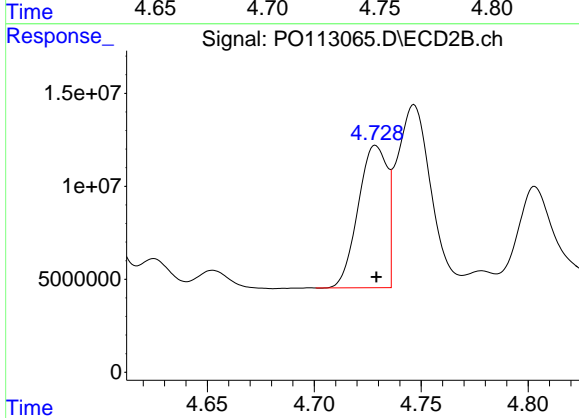
R.T.: 5.526 min
 Delta R.T.: 0.000 min
 Response: 50137634
 Conc: 336.19 ng/ml



#21 AR-1248-1

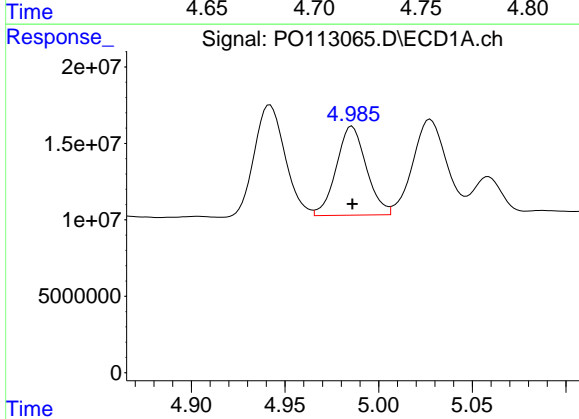
R.T.: 4.747 min
 Delta R.T.: 0.000 min
 Response: 101062783
 Conc: 579.27 ng/ml

Instrument :
 ECD_O
 ClientSampleId :
 HD-02-08182025MS



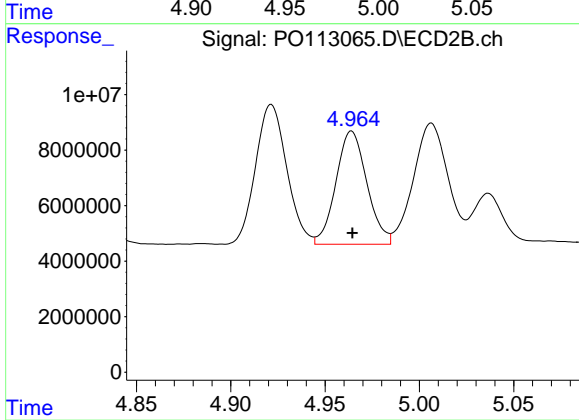
#21 AR-1248-1

R.T.: 4.729 min
 Delta R.T.: 0.000 min
 Response: 72283976
 Conc: 648.22 ng/ml



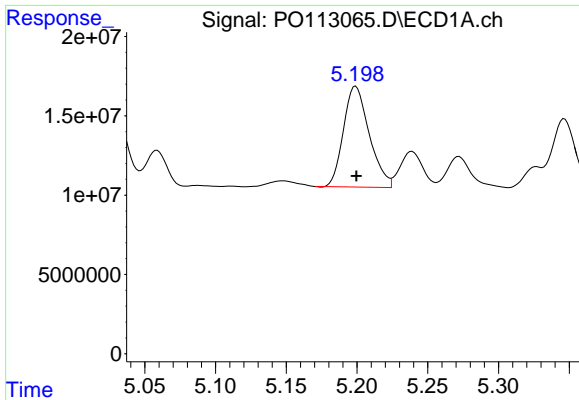
#22 AR-1248-2

R.T.: 4.986 min
 Delta R.T.: 0.000 min
 Response: 65036962
 Conc: 268.90 ng/ml



#22 AR-1248-2

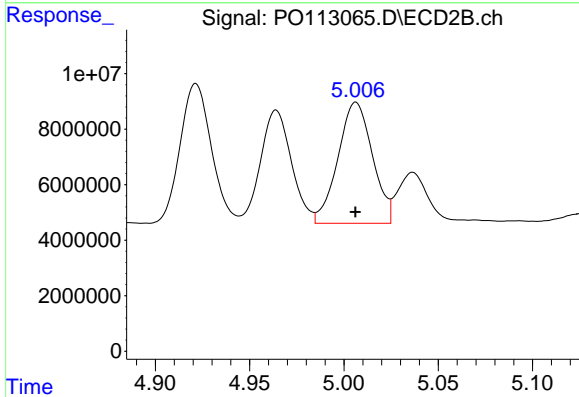
R.T.: 4.964 min
 Delta R.T.: 0.000 min
 Response: 46547672
 Conc: 289.66 ng/ml



#23 AR-1248-3

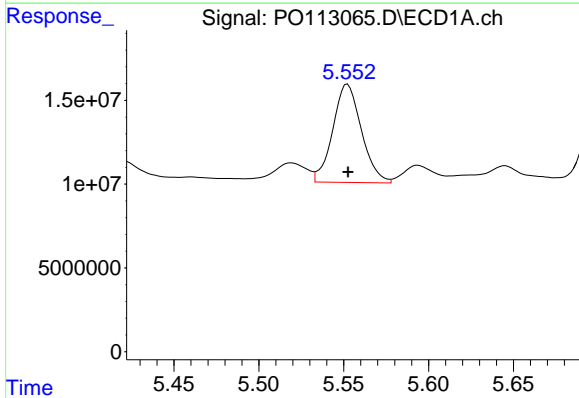
R.T.: 5.199 min
 Delta R.T.: 0.000 min
 Response: 80648992
 Conc: 252.93 ng/ml

Instrument :
 ECD_O
 ClientSampleId :
 HD-02-08182025MS



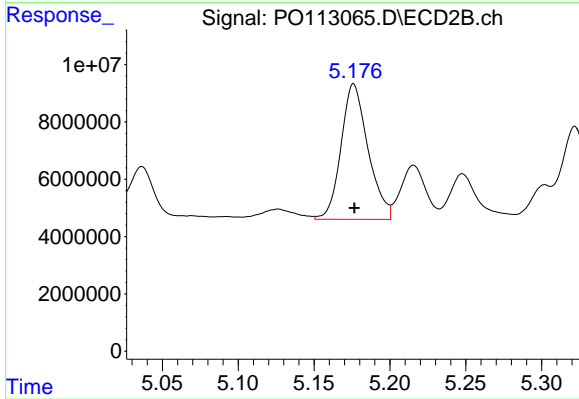
#23 AR-1248-3

R.T.: 5.006 min
 Delta R.T.: 0.000 min
 Response: 55564541
 Conc: 327.50 ng/ml



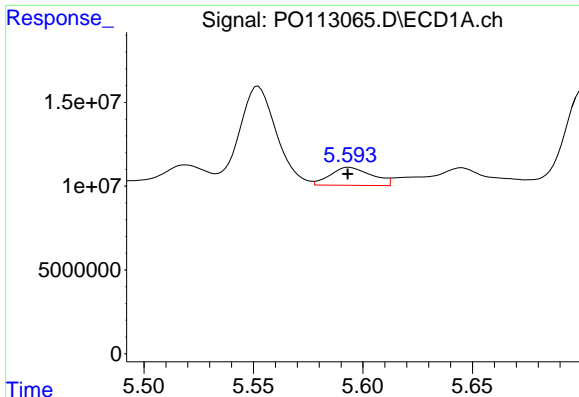
#24 AR-1248-4

R.T.: 5.552 min
 Delta R.T.: 0.000 min
 Response: 68957691
 Conc: 138.02 ng/ml



#24 AR-1248-4

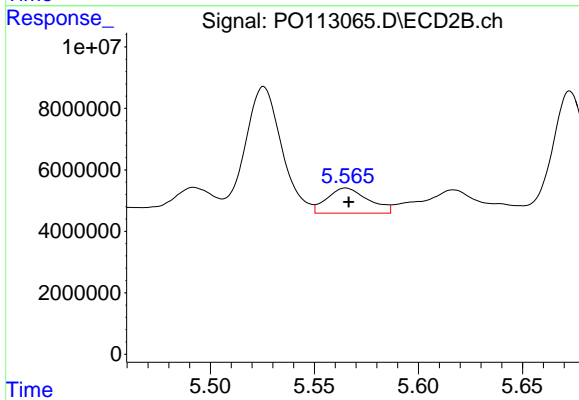
R.T.: 5.176 min
 Delta R.T.: 0.000 min
 Response: 58638711
 Conc: 294.34 ng/ml



#25 AR-1248-5

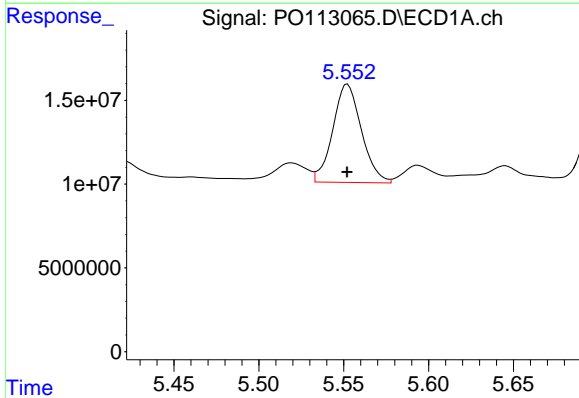
R.T.: 5.594 min
 Delta R.T.: 0.000 min
 Response: 14125746
 Conc: 41.36 ng/ml

Instrument :
 ECD_O
 ClientSampleId :
 HD-02-08182025MS



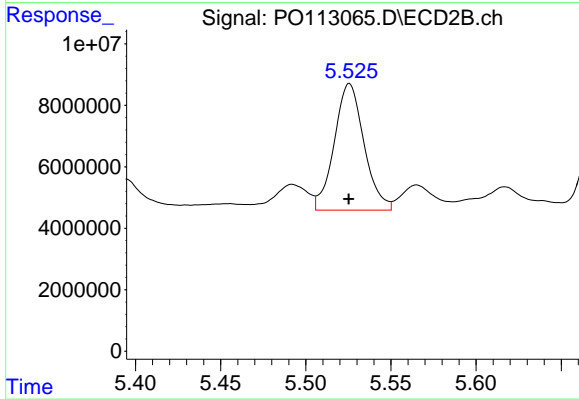
#25 AR-1248-5

R.T.: 5.565 min
 Delta R.T.: -0.001 min
 Response: 11324357
 Conc: 53.34 ng/ml



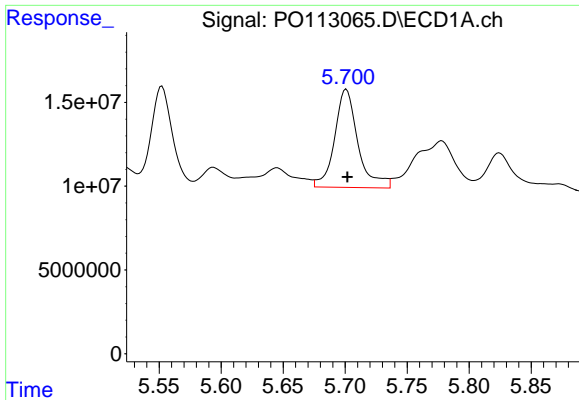
#26 AR-1254-1

R.T.: 5.552 min
 Delta R.T.: 0.000 min
 Response: 68957691
 Conc: 127.70 ng/ml



#26 AR-1254-1

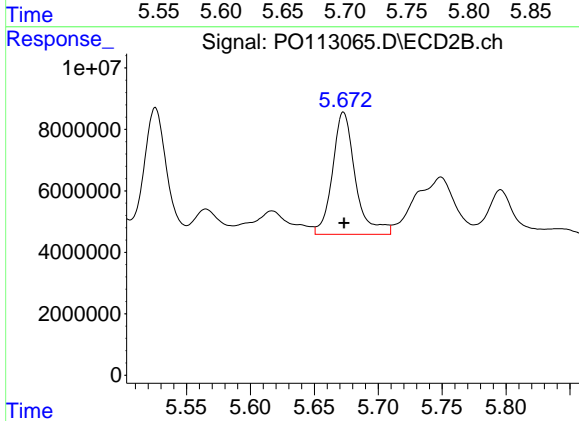
R.T.: 5.526 min
 Delta R.T.: 0.000 min
 Response: 50137634
 Conc: 158.99 ng/ml



#27 AR-1254-2

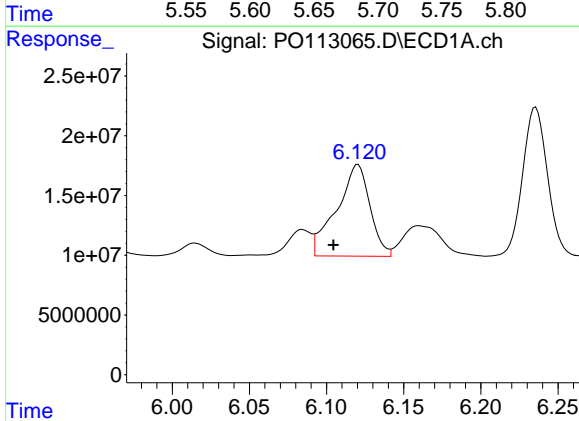
R.T.: 5.701 min
 Delta R.T.: 0.000 min
 Response: 76676888
 Conc: 155.39 ng/ml

Instrument :
 ECD_O
 ClientSampleId :
 HD-02-08182025MS



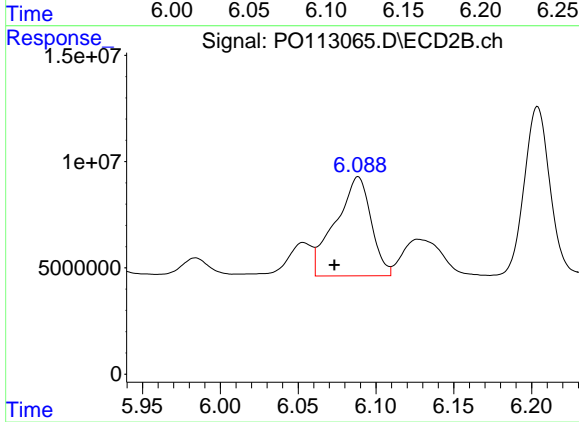
#27 AR-1254-2

R.T.: 5.673 min
 Delta R.T.: 0.000 min
 Response: 49486460
 Conc: 176.52 ng/ml



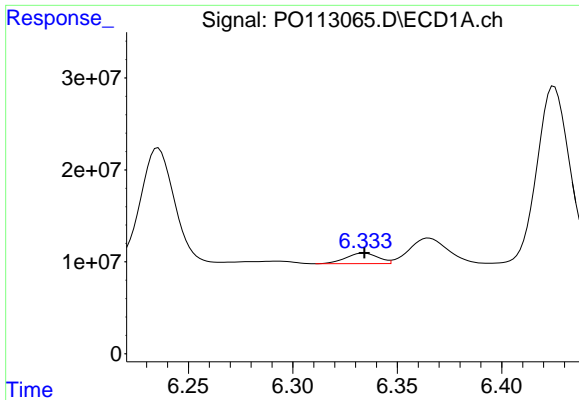
#28 AR-1254-3

R.T.: 6.120 min
 Delta R.T.: 0.016 min
 Response: 115247227
 Conc: 155.98 ng/ml



#28 AR-1254-3

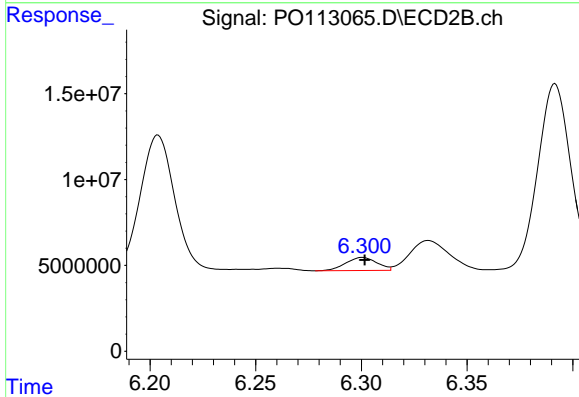
R.T.: 6.089 min
 Delta R.T.: 0.015 min
 Response: 74135240
 Conc: 177.82 ng/ml



#29 AR-1254-4

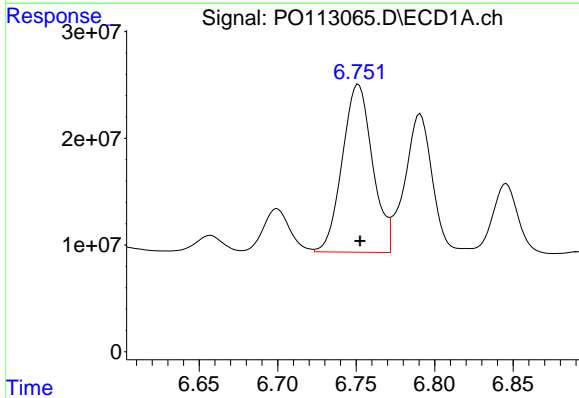
R.T.: 6.334 min
 Delta R.T.: 0.000 min
 Response: 12244081
 Conc: 21.98 ng/ml

Instrument :
 ECD_O
 ClientSampleId :
 HD-02-08182025MS



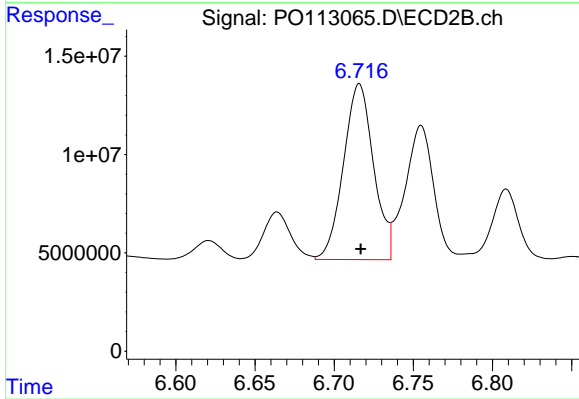
#29 AR-1254-4

R.T.: 6.301 min
 Delta R.T.: -0.001 min
 Response: 7841335
 Conc: 28.53 ng/ml



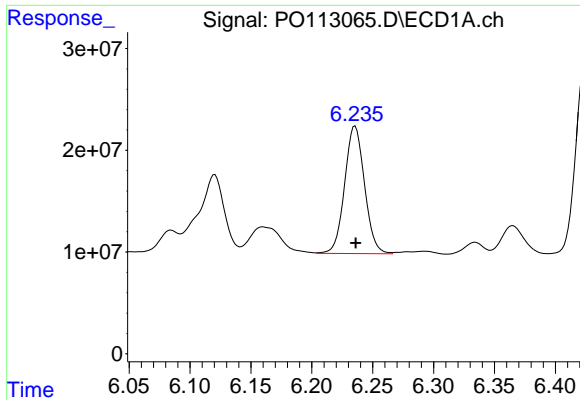
#30 AR-1254-5

R.T.: 6.751 min
 Delta R.T.: 0.000 min
 Response: 210742192
 Conc: 300.64 ng/ml



#30 AR-1254-5

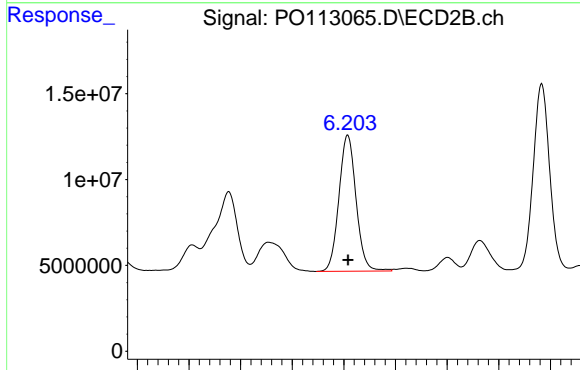
R.T.: 6.716 min
 Delta R.T.: 0.000 min
 Response: 118316004
 Conc: 330.96 ng/ml



#31 AR-1260-1

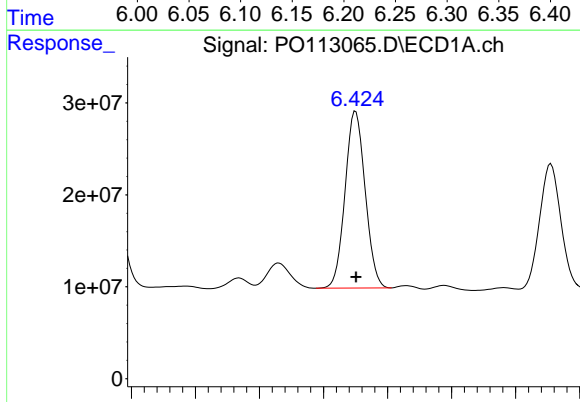
R.T.: 6.236 min
 Delta R.T.: 0.000 min
 Response: 142761808
 Conc: 320.11 ng/ml

Instrument :
 ECD_O
 ClientSampleId :
 HD-02-08182025MS



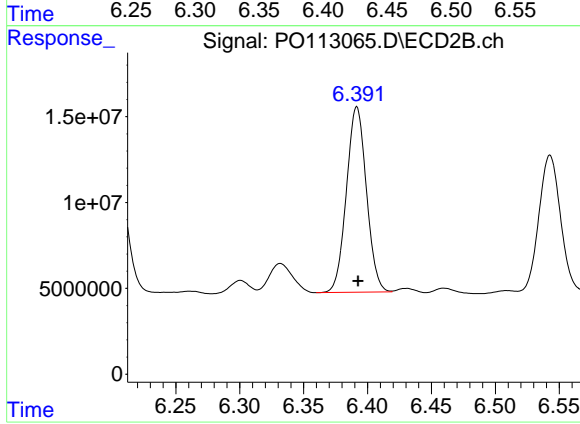
#31 AR-1260-1

R.T.: 6.204 min
 Delta R.T.: 0.000 min
 Response: 91591176
 Conc: 359.08 ng/ml



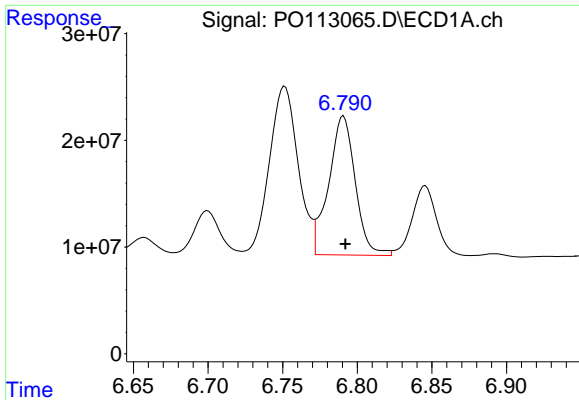
#32 AR-1260-2

R.T.: 6.425 min
 Delta R.T.: 0.000 min
 Response: 209828518
 Conc: 305.55 ng/ml



#32 AR-1260-2

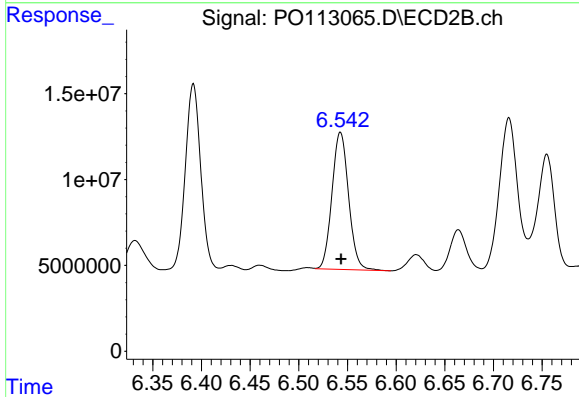
R.T.: 6.392 min
 Delta R.T.: -0.001 min
 Response: 117825845
 Conc: 340.82 ng/ml



#33 AR-1260-3

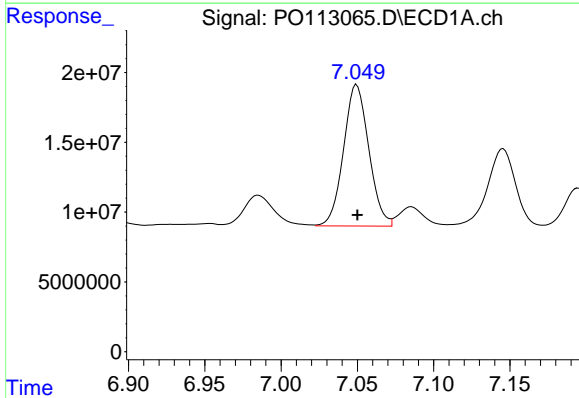
R.T.: 6.791 min
 Delta R.T.: -0.001 min
 Response: 161374374
 Conc: 261.35 ng/ml

Instrument :
 ECD_O
 ClientSampleId :
 HD-02-08182025MS



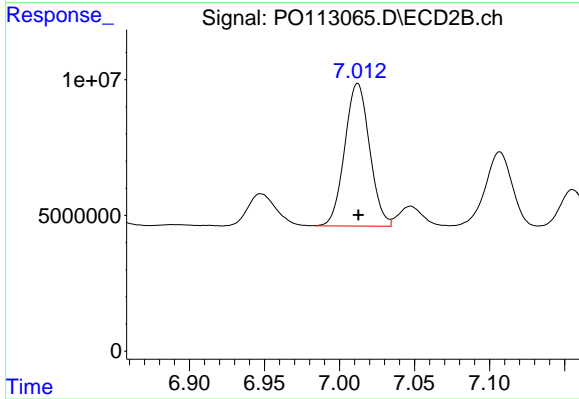
#33 AR-1260-3

R.T.: 6.543 min
 Delta R.T.: 0.000 min
 Response: 94941238
 Conc: 319.20 ng/ml



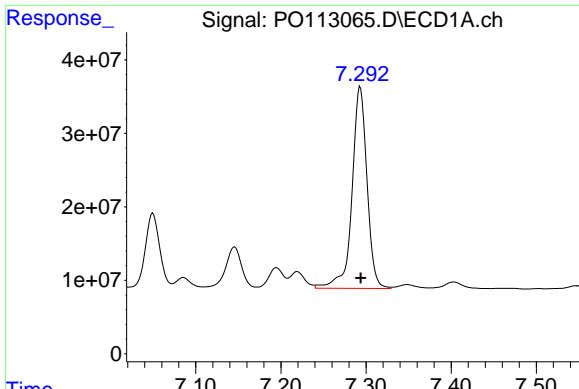
#34 AR-1260-4

R.T.: 7.050 min
 Delta R.T.: 0.000 min
 Response: 116909619
 Conc: 261.03 ng/ml



#34 AR-1260-4

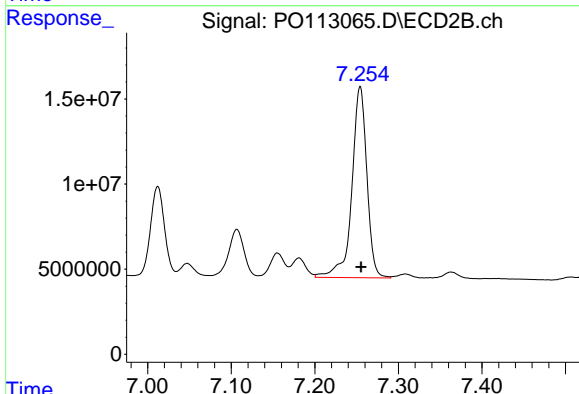
R.T.: 7.012 min
 Delta R.T.: 0.000 min
 Response: 60660563
 Conc: 292.69 ng/ml



#35 AR-1260-5

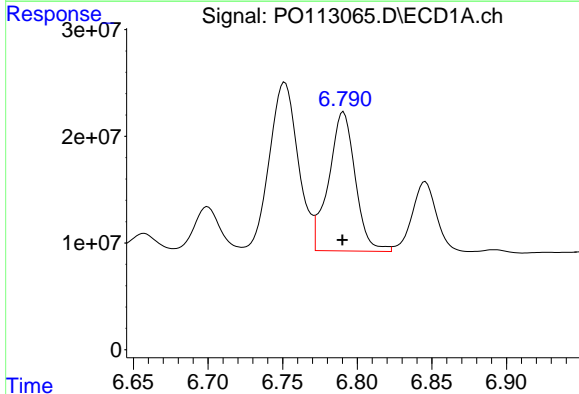
R.T.: 7.293 min
 Delta R.T.: 0.000 min
 Response: 336144180
 Conc: 277.65 ng/ml

Instrument :
 ECD_O
 ClientSampleId :
 HD-02-08182025MS



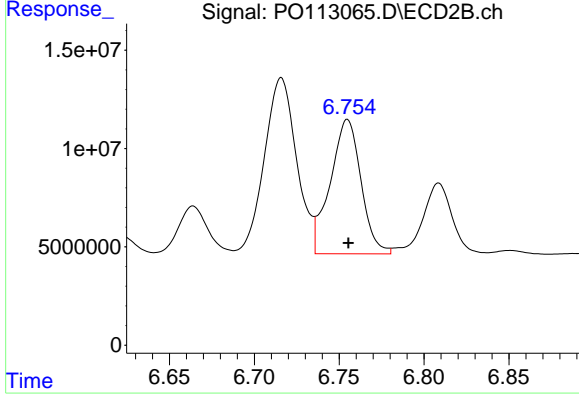
#35 AR-1260-5

R.T.: 7.254 min
 Delta R.T.: 0.000 min
 Response: 140545227
 Conc: 300.04 ng/ml



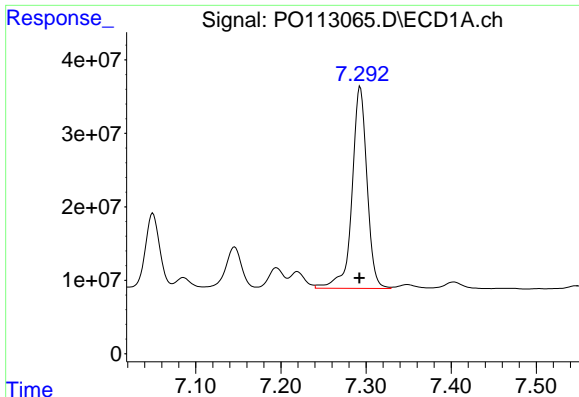
#36 AR-1262-1

R.T.: 6.791 min
 Delta R.T.: 0.000 min
 Response: 161374374
 Conc: 176.22 ng/ml



#36 AR-1262-1

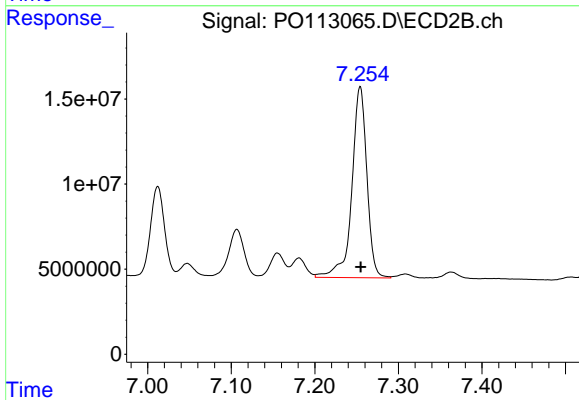
R.T.: 6.755 min
 Delta R.T.: 0.000 min
 Response: 86161386
 Conc: 207.81 ng/ml



#37 AR-1262-2

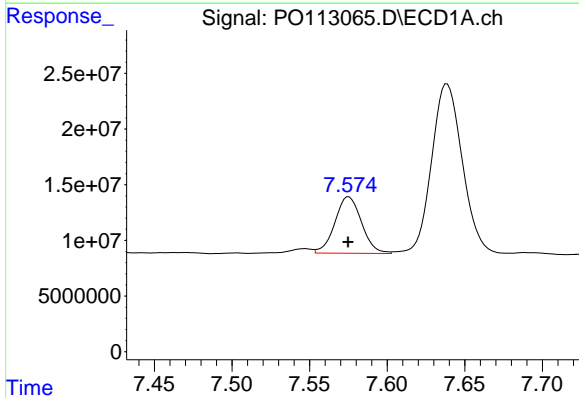
R.T.: 7.293 min
 Delta R.T.: 0.000 min
 Response: 336144180
 Conc: 222.29 ng/ml

Instrument :
 ECD_O
 ClientSampleId :
 HD-02-08182025MS



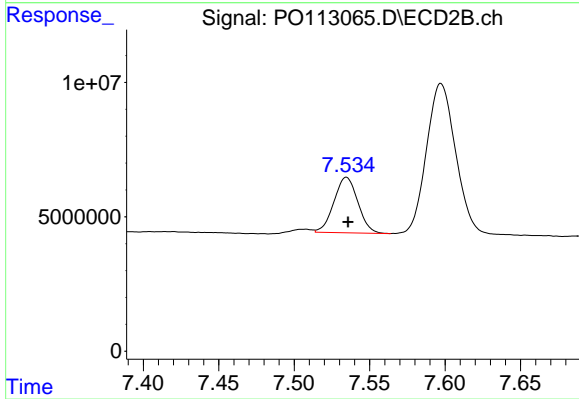
#37 AR-1262-2

R.T.: 7.254 min
 Delta R.T.: 0.000 min
 Response: 140545227
 Conc: 271.50 ng/ml



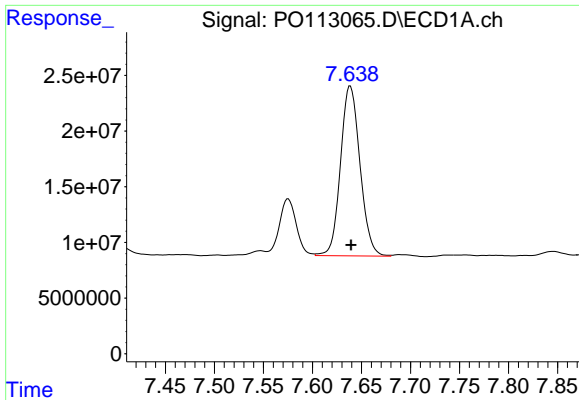
#38 AR-1262-3

R.T.: 7.575 min
 Delta R.T.: 0.000 min
 Response: 60447211
 Conc: 109.09 ng/ml



#38 AR-1262-3

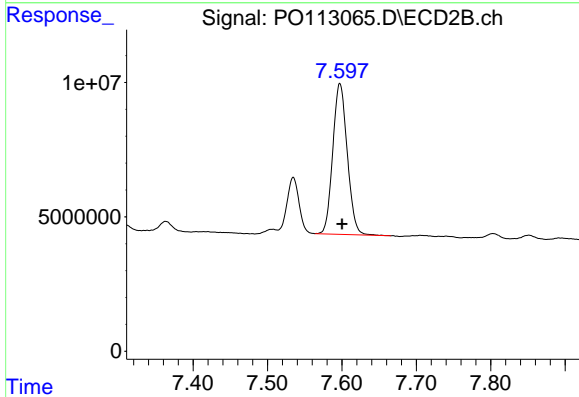
R.T.: 7.535 min
 Delta R.T.: -0.001 min
 Response: 22815313
 Conc: 127.04 ng/ml



#39 AR-1262-4

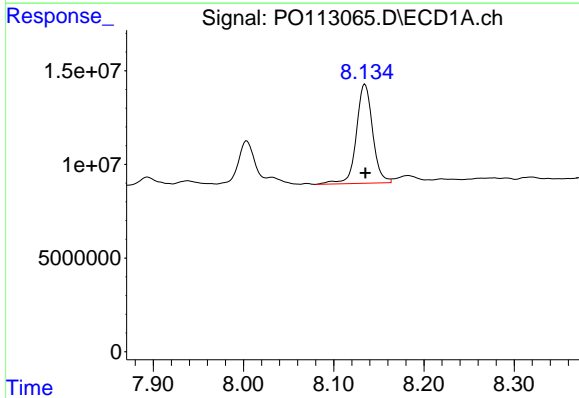
R.T.: 7.639 min
 Delta R.T.: 0.000 min
 Response: 211130433
 Conc: 215.89 ng/ml

Instrument :
 ECD_O
 ClientSampleId :
 HD-02-08182025MS



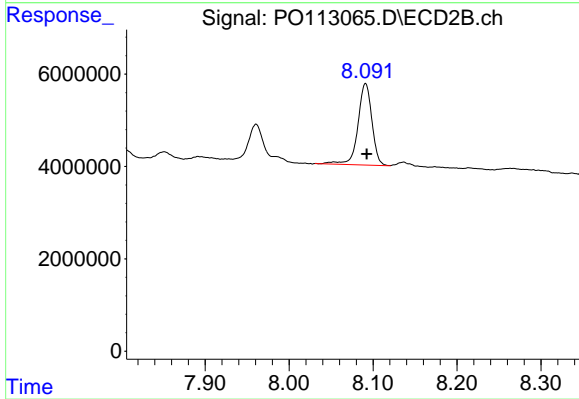
#39 AR-1262-4

R.T.: 7.597 min
 Delta R.T.: -0.003 min
 Response: 75724240
 Conc: 261.21 ng/ml



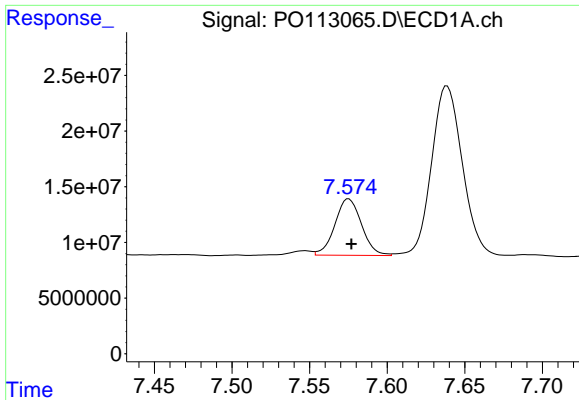
#40 AR-1262-5

R.T.: 8.135 min
 Delta R.T.: 0.000 min
 Response: 66248736
 Conc: 158.92 ng/ml



#40 AR-1262-5

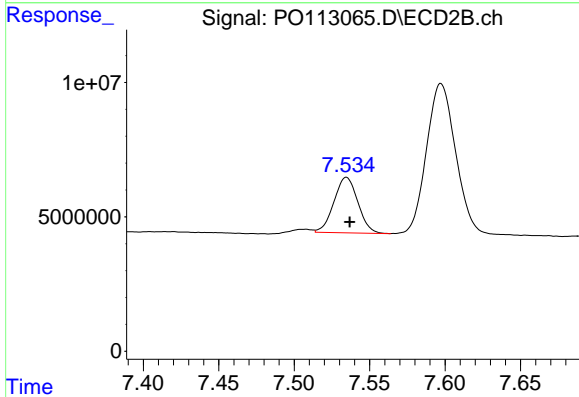
R.T.: 8.091 min
 Delta R.T.: -0.001 min
 Response: 20366096
 Conc: 188.00 ng/ml



#41 AR-1268-1

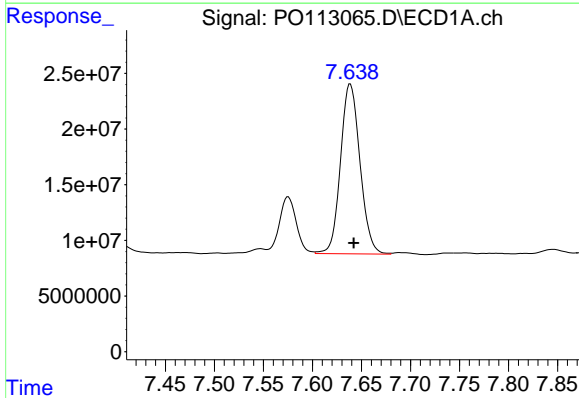
R.T.: 7.575 min
 Delta R.T.: -0.002 min
 Response: 60447211
 Conc: 35.13 ng/ml

Instrument :
 ECD_O
 ClientSampleId :
 HD-02-08182025MS



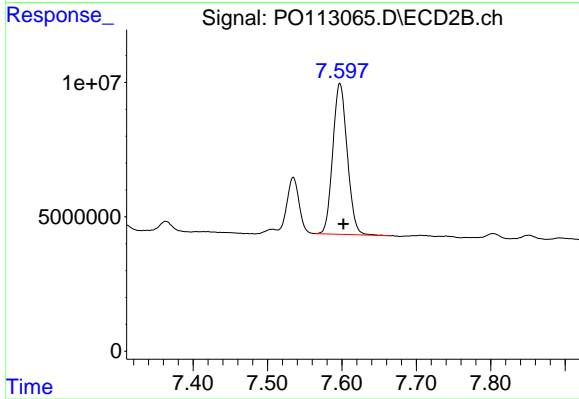
#41 AR-1268-1

R.T.: 7.535 min
 Delta R.T.: -0.002 min
 Response: 22815313
 Conc: 44.78 ng/ml



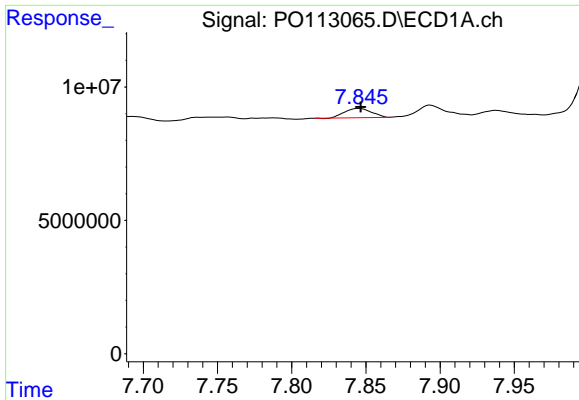
#42 AR-1268-2

R.T.: 7.639 min
 Delta R.T.: -0.004 min
 Response: 211130433
 Conc: 145.79 ng/ml



#42 AR-1268-2

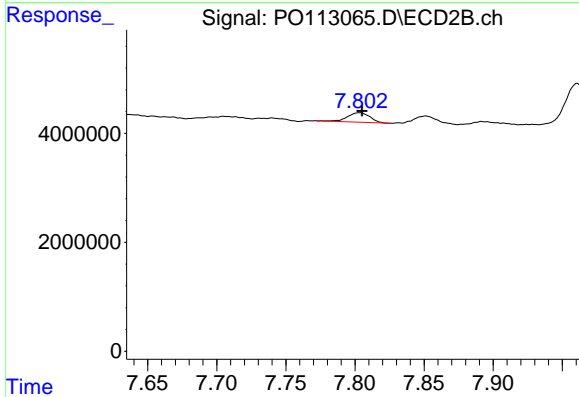
R.T.: 7.597 min
 Delta R.T.: -0.005 min
 Response: 75724240
 Conc: 182.29 ng/ml



#43 AR-1268-3

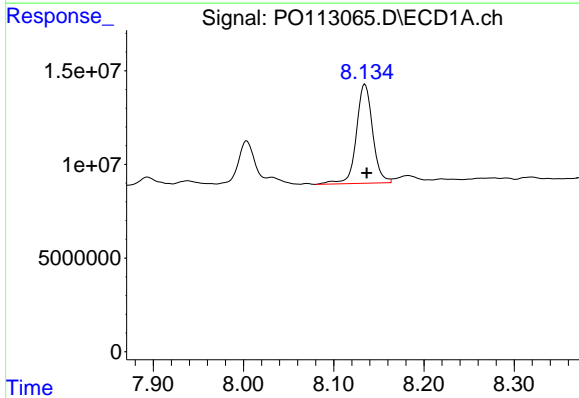
R.T.: 7.846 min
 Delta R.T.: 0.000 min
 Response: 4347505
 Conc: 3.60 ng/ml

Instrument :
 ECD_O
 ClientSampleId :
 HD-02-08182025MS



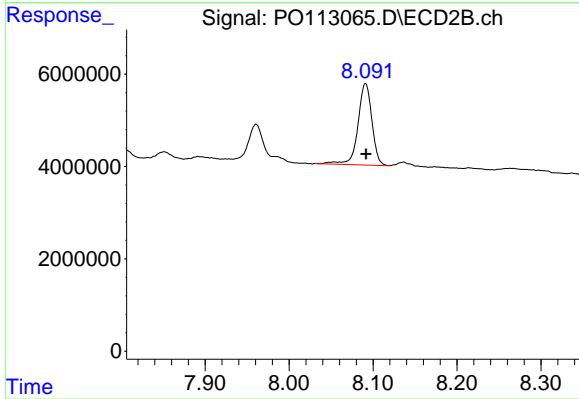
#43 AR-1268-3

R.T.: 7.803 min
 Delta R.T.: -0.002 min
 Response: 1968833
 Conc: 6.03 ng/ml



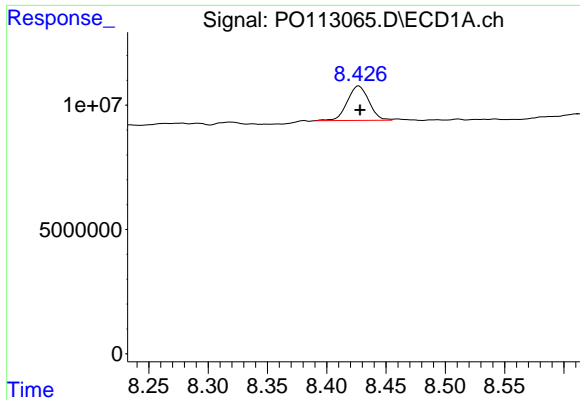
#44 AR-1268-4

R.T.: 8.135 min
 Delta R.T.: -0.002 min
 Response: 66248736
 Conc: 143.81 ng/ml



#44 AR-1268-4

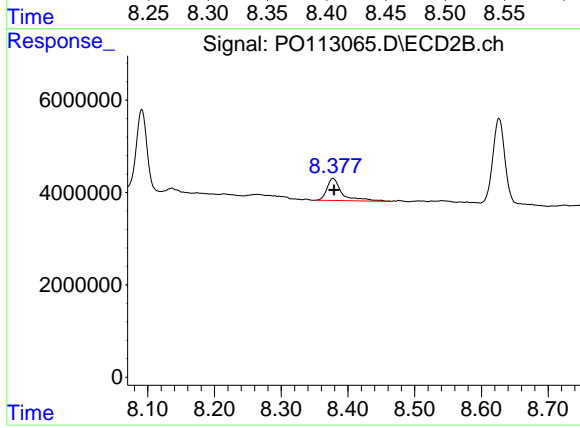
R.T.: 8.091 min
 Delta R.T.: 0.000 min
 Response: 20366096
 Conc: 169.11 ng/ml



#45 AR-1268-5

R.T.: 8.427 min
 Delta R.T.: -0.001 min
 Response: 17556690
 Conc: 5.51 ng/ml

Instrument :
 ECD_O
 ClientSampleId :
 HD-02-08182025MS



#45 AR-1268-5

R.T.: 8.378 min
 Delta R.T.: -0.002 min
 Response: 7469840
 Conc: 9.56 ng/ml