

Data Path : Z:\pestpcbsrv\HPCHEM1\ECD\_0\Data\P0082025\  
 Data File : PO113073.D  
 Signal(s) : Signal #1: ECD1A.ch Signal #2: ECD2B.ch  
 Acq On : 20 Aug 2025 09:16  
 Operator : YP/AJ  
 Sample : HEXANE  
 Misc :  
 ALS Vial : 1 Sample Multiplier: 1

Instrument :  
 ECD\_0  
 ClientSampleId :  
 HEXANE

Integration File signal 1: autoint1.e  
 Integration File signal 2: autoint2.e  
 Quant Time: Aug 20 12:58:49 2025  
 Quant Method : Z:\pestpcbsrv\HPCHEM1\ECD\_0\methods\P0081825.M  
 Quant Title : GC EXTRACTABLES  
 QLast Update : Tue Aug 19 06:08:32 2025  
 Response via : Initial Calibration  
 Integrator: ChemStation

Volume Inj. : 2 µl  
 Signal #1 Phase : ZB-MR1 Signal #2 Phase: ZB-MR2  
 Signal #1 Info : 30Mx0.32mmx 0.50µ Signal #2 Info : 30M x 0.32mm x 0.25µm

Compound	RT#1	RT#2	Resp#1	Resp#2	ng/ml	ng/ml
System Monitoring Compounds						
1) SA Tetrachlo...	3.671	3.653	87484	27502	0.011	0.005 #
2) SA Decachlor...	8.675	8.634	451358	217615	0.065	0.115 #
Target Compounds						
3) L1 AR-1016-1	4.762	4.740	265255	82472	0.994	0.483 #
4) L1 AR-1016-2	4.762	4.749	265255	68269	0.661	0.265 #
5) L1 AR-1016-3	4.828	4.937	913929	381235	3.584	2.731
6) L1 AR-1016-4	4.930	4.937	140047	381235	0.642	3.267 #
7) L1 AR-1016-5	5.205	5.209	9560377	5926509	43.137	41.581
8) L2 AR-1221-1	3.827f	3.863	161741	55076	1.728	0.873 #
9) L2 AR-1221-2	3.959	3.956	153629	272559	2.274	5.840 #
10) L2 AR-1221-3	4.036	4.024	1894	38401	0.009	0.259 #
11) L3 AR-1232-1	4.036	4.024	1894	38401	0.011	0.327 #
12) L3 AR-1232-2	4.490f	4.749	1032062	68269	10.336	0.557 #
13) L3 AR-1232-3	4.762	4.937	265255	381235	1.400	6.018 #
14) L3 AR-1232-4	4.930	5.001	140047	1671714	1.487	29.735 #
15) L3 AR-1232-5	4.967	5.209	867432	5926509	14.004	99.000 #
16) L4 AR-1242-1	4.762	4.740	265255	82472	1.154	0.571 #
17) L4 AR-1242-2	4.762	4.749	265255	68269	0.772	0.315 #
18) L4 AR-1242-3	4.828	4.937	913929	381235	4.119	3.259
19) L4 AR-1242-4	4.930	5.001	140047	1671714	0.807	14.211 #
20) L4 AR-1242-5	5.619	5.527	20259239	4350455	101.214	29.172 #
21) L5 AR-1248-1	4.762	4.740	265255	82472	1.520	0.740 #
22) L5 AR-1248-2	4.967	4.937	867432	381235	3.586	2.372 #
23) L5 AR-1248-3	5.205	5.001	9560377	1671714	29.983	9.853 #
24) L5 AR-1248-4	5.556	5.209	9762223	5926509	19.540	29.749 #
25) L5 AR-1248-5	5.619	5.599	20259239	9114574	59.326	42.933 #
26) L6 AR-1254-1	5.556	5.527	9762223	4350455	18.079	13.795
27) L6 AR-1254-2	5.720	5.686	19669288	10099527	39.860	36.026
28) L6 AR-1254-3	6.112	6.096	7439029	9434355	10.068	22.629 #
29) L6 AR-1254-4	6.307	6.266f	18582720	12967634	33.362	47.183 #
30) L6 AR-1254-5	6.717f	6.708	2339292	830116	3.337	2.322 #
31) L7 AR-1260-1	6.229	6.211	8823324	4644059	19.784	18.207
32) L7 AR-1260-2	6.401	6.402	27162148	623629	39.553	1.804 #
33) L7 AR-1260-3	6.811	6.554	98175	2467582	0.159	8.296 #
34) L7 AR-1260-4	7.044	7.027	429171	186368	0.958	0.899
35) L7 AR-1260-5	7.284	7.254	21247728	95790	17.550	0.204 #
36) L8 AR-1262-1	6.811	6.740	98175	1161696	0.107	2.802 #
37) L8 AR-1262-2	7.284	7.254	21247728	95790	14.051	0.185 #
38) L8 AR-1262-3	7.552	7.546	4987144	406690	9.000	2.265 #
39) L8 AR-1262-4	0.000	7.634	0	63467	N.D.	0.219 #
40) L8 AR-1262-5	8.141	8.090	458433	261508	1.100	2.414 #
41) L9 AR-1268-1	7.552	7.546	4987144	406690	2.898	0.798 #

Data Path : Z:\pestpcbsrv\HPCHEM1\ECD\_0\Data\P0082025\  
 Data File : P0113073.D  
 Signal(s) : Signal #1: ECD1A.ch Signal #2: ECD2B.ch  
 Acq On : 20 Aug 2025 09:16  
 Operator : YP/AJ  
 Sample : HEXANE  
 Misc :  
 ALS Vial : 1 Sample Multiplier: 1

Instrument :  
 ECD\_0  
 ClientSampleId :  
 HEXANE

Integration File signal 1: autoint1.e  
 Integration File signal 2: autoint2.e  
 Quant Time: Aug 20 12:58:49 2025  
 Quant Method : Z:\pestpcbsrv\HPCHEM1\ECD\_0\methods\P0081825.M  
 Quant Title : GC EXTRACTABLES  
 QLast Update : Tue Aug 19 06:08:32 2025  
 Response via : Initial Calibration  
 Integrator: ChemStation

Volume Inj. : 2 µl  
 Signal #1 Phase : ZB-MR1 Signal #2 Phase: ZB-MR2  
 Signal #1 Info : 30Mx0.32mmx 0.50µ Signal #2 Info : 30M x 0.32mm x 0.25µm

	Compound	RT#1	RT#2	Resp#1	Resp#2	ng/ml	ng/ml
42)	L9 AR-1268-2	0.000	7.634	0	63467	N.D.	0.153 #
43)	L9 AR-1268-3	7.865	7.801	-39280	178031	N.D.	0.545 #
44)	L9 AR-1268-4	8.141	8.090	458433	261508	0.995	2.171 #
45)	L9 AR-1268-5	8.428	8.379	219749	46751	0.069	0.060

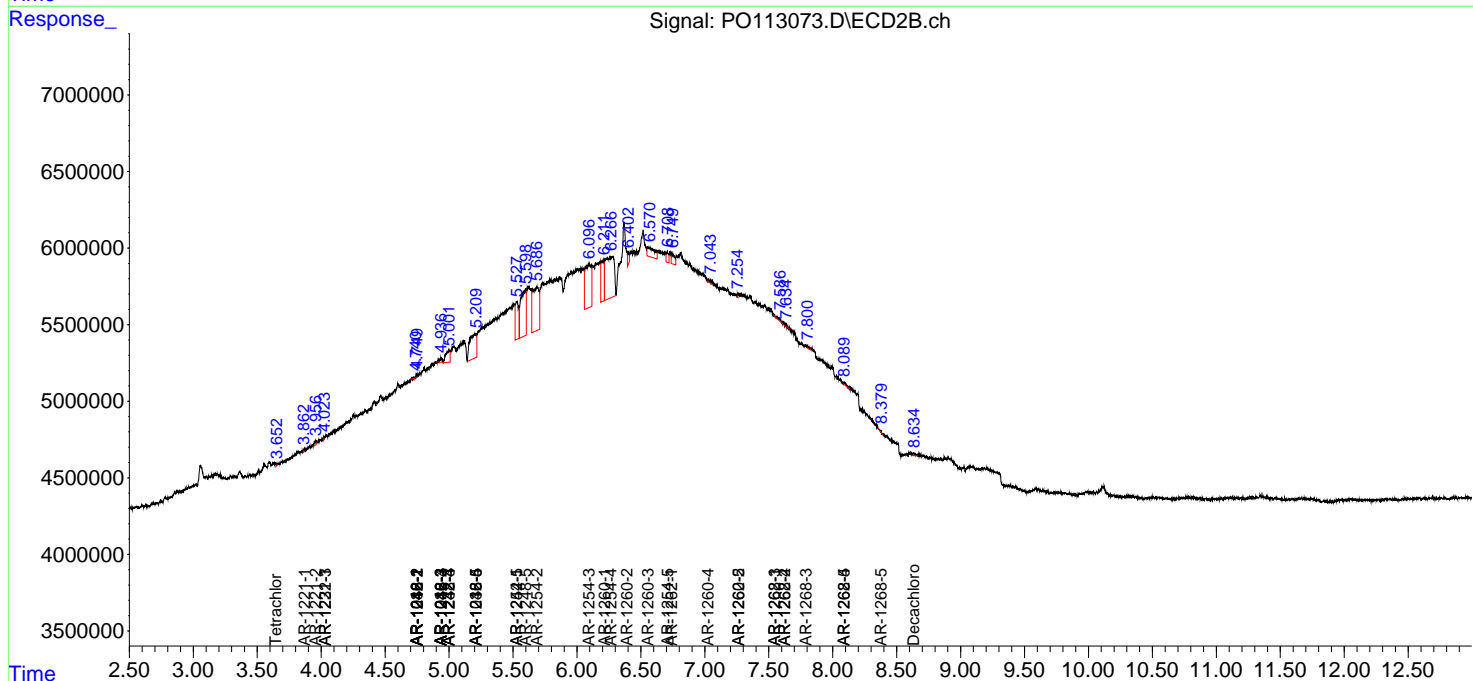
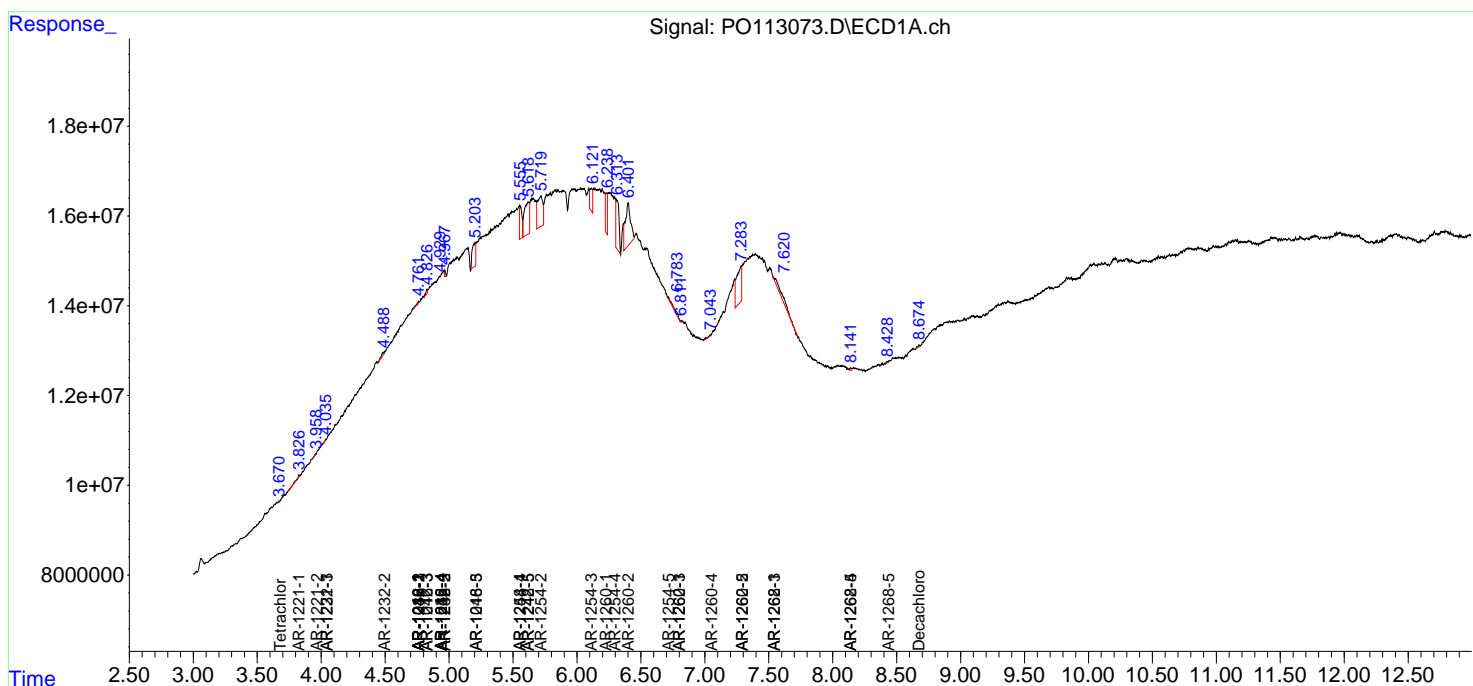
(f)=RT Delta > 1/2 Window (#)=Amounts differ by > 25% (m)=manual int.

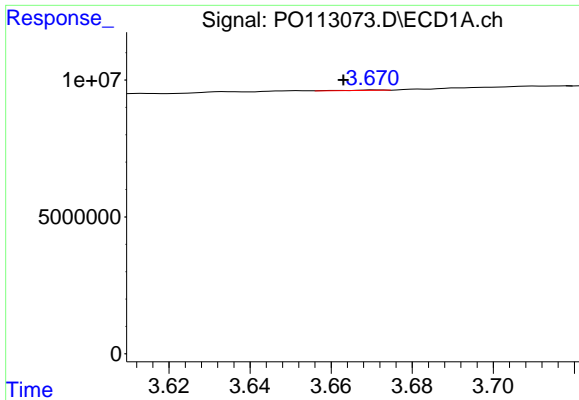
Data Path : Z:\pestpcbsrv\HPCHEM1\ECD\_O\Data\PO082025\  
 Data File : PO113073.D  
 Signal(s) : Signal #1: ECD1A.ch Signal #2: ECD2B.ch  
 Acq On : 20 Aug 2025 09:16  
 Operator : YP/AJ  
 Sample : HEXANE  
 Misc :  
 ALS Vial : 1 Sample Multiplier: 1

Instrument :  
 ECD\_O  
 ClientSampleId :  
 HEXANE

Integration File signal 1: autoint1.e  
 Integration File signal 2: autoint2.e  
 Quant Time: Aug 20 12:58:49 2025  
 Quant Method : Z:\pestpcbsrv\HPCHEM1\ECD\_O\methods\PO081825.M  
 Quant Title : GC EXTRACTABLES  
 QLast Update : Tue Aug 19 06:08:32 2025  
 Response via : Initial Calibration  
 Integrator: ChemStation

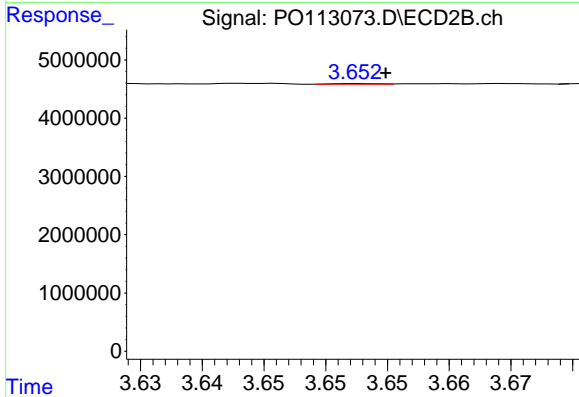
Volume Inj. : 2 µl  
 Signal #1 Phase : ZB-MR1 Signal #2 Phase: ZB-MR2  
 Signal #1 Info : 30Mx0.32mmx 0.50µ Signal #2 Info : 30M x 0.32mm x 0.25µm



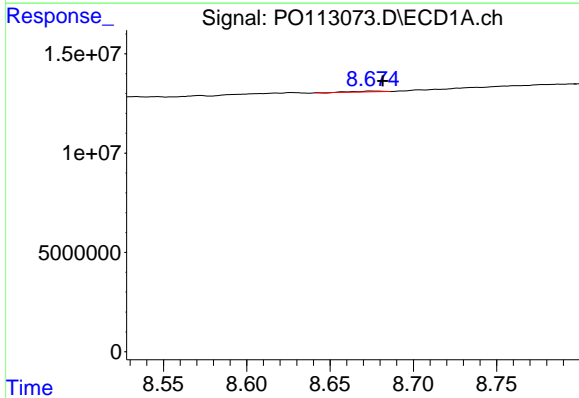


#1 Tetrachloro-m-xylene  
 R.T.: 3.671 min  
 Delta R.T.: 0.008 min  
 Response: 87484  
 Conc: 0.01 ng/ml

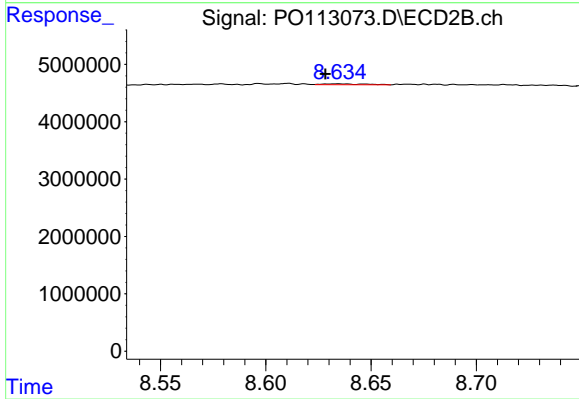
Instrument :  
 ECD\_O  
 ClientSampleId :  
 HEXANE



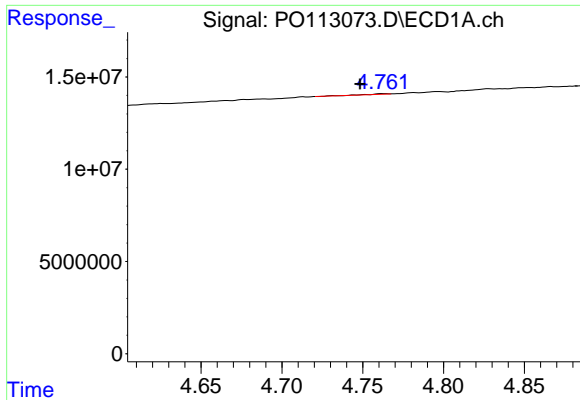
#1 Tetrachloro-m-xylene  
 R.T.: 3.653 min  
 Delta R.T.: -0.002 min  
 Response: 27502  
 Conc: 0.01 ng/ml



#2 Decachlorobiphenyl  
 R.T.: 8.675 min  
 Delta R.T.: -0.007 min  
 Response: 451358  
 Conc: 0.07 ng/ml



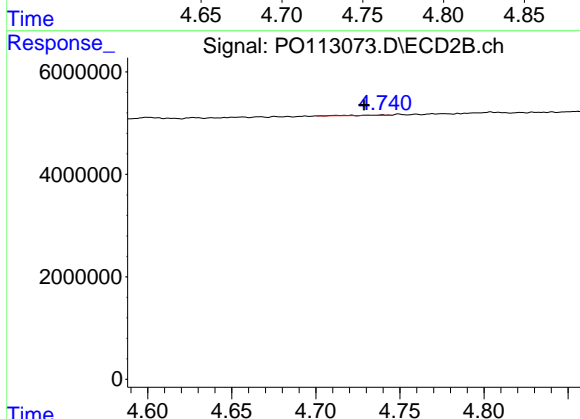
#2 Decachlorobiphenyl  
 R.T.: 8.634 min  
 Delta R.T.: 0.006 min  
 Response: 217615  
 Conc: 0.11 ng/ml



#3 AR-1016-1

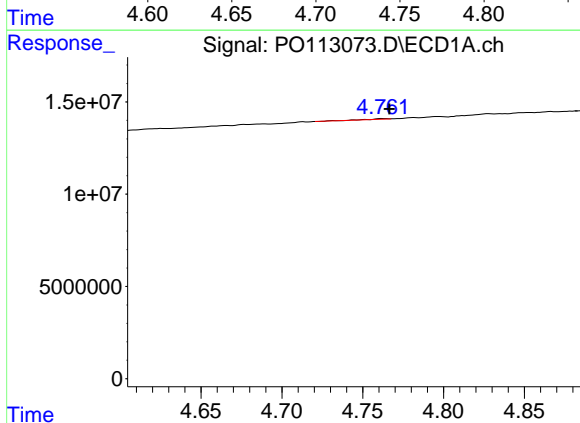
R.T.: 4.762 min  
 Delta R.T.: 0.014 min  
 Response: 265255  
 Conc: 0.99 ng/ml

Instrument :  
 ECD\_O  
 ClientSampleId :  
 HEXANE



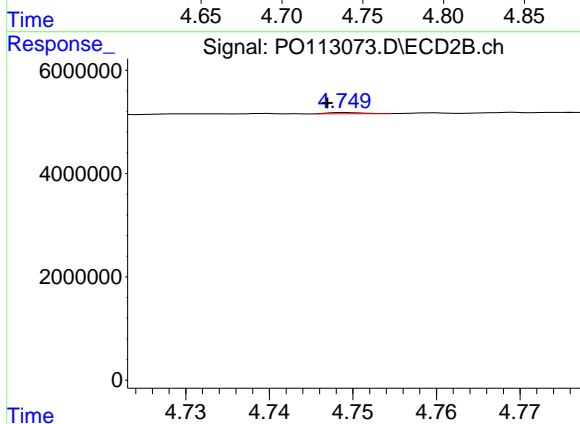
#3 AR-1016-1

R.T.: 4.740 min  
 Delta R.T.: 0.011 min  
 Response: 82472  
 Conc: 0.48 ng/ml



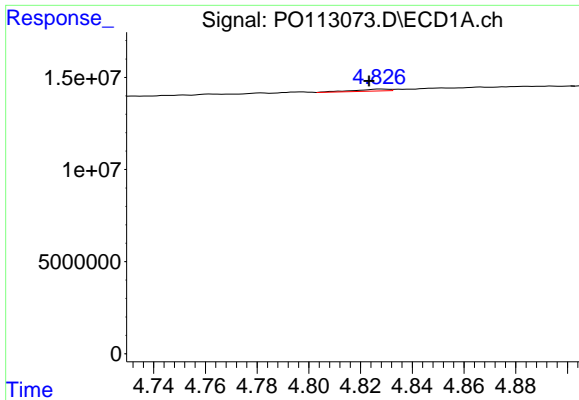
#4 AR-1016-2

R.T.: 4.762 min  
 Delta R.T.: -0.004 min  
 Response: 265255  
 Conc: 0.66 ng/ml



#4 AR-1016-2

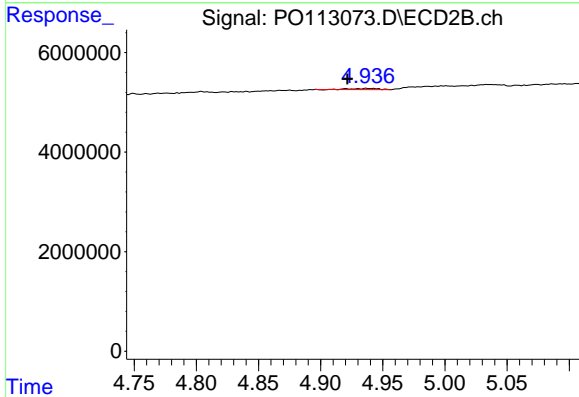
R.T.: 4.749 min  
 Delta R.T.: 0.002 min  
 Response: 68269  
 Conc: 0.26 ng/ml



#5 AR-1016-3

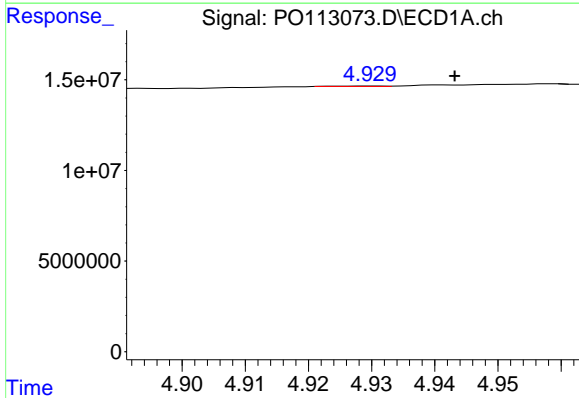
R.T.: 4.828 min  
 Delta R.T.: 0.005 min  
 Response: 913929  
 Conc: 3.58 ng/ml

Instrument :  
 ECD\_O  
 ClientSampleId :  
 HEXANE



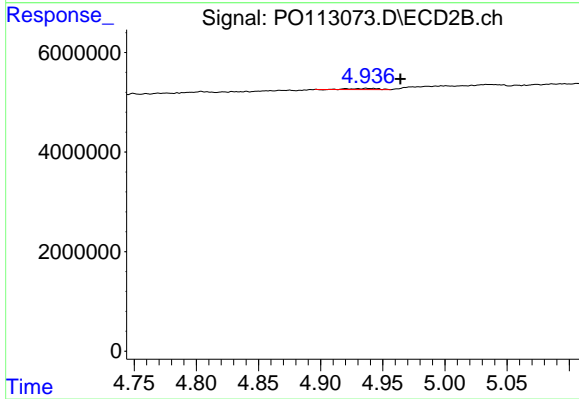
#5 AR-1016-3

R.T.: 4.937 min  
 Delta R.T.: 0.015 min  
 Response: 381235  
 Conc: 2.73 ng/ml



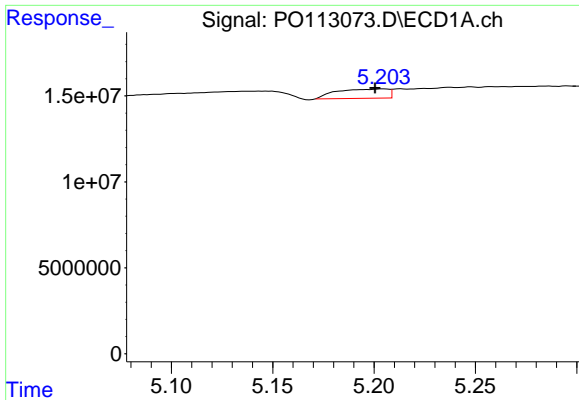
#6 AR-1016-4

R.T.: 4.930 min  
 Delta R.T.: -0.013 min  
 Response: 140047  
 Conc: 0.64 ng/ml



#6 AR-1016-4

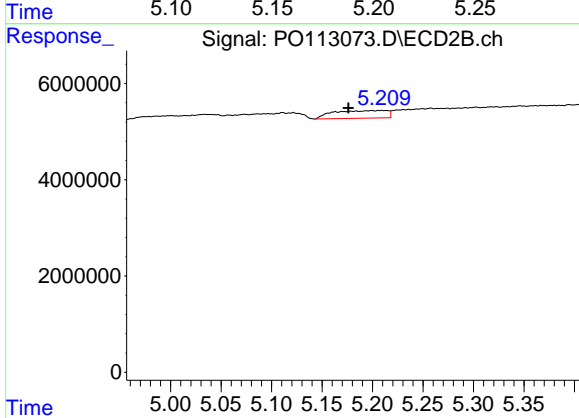
R.T.: 4.937 min  
 Delta R.T.: -0.027 min  
 Response: 381235  
 Conc: 3.27 ng/ml



#7 AR-1016-5

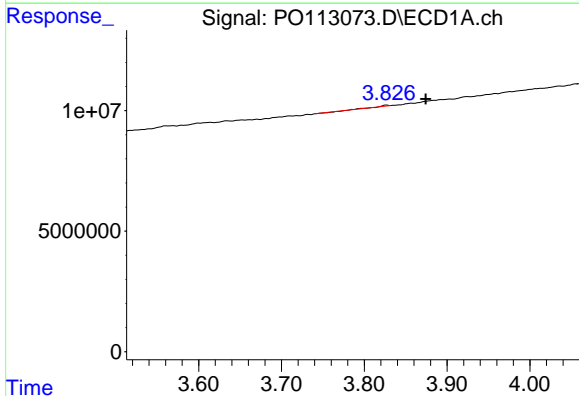
R.T.: 5.205 min  
 Delta R.T.: 0.004 min  
 Response: 9560377  
 Conc: 43.14 ng/ml

Instrument :  
 ECD\_O  
 ClientSampleId :  
 HEXANE



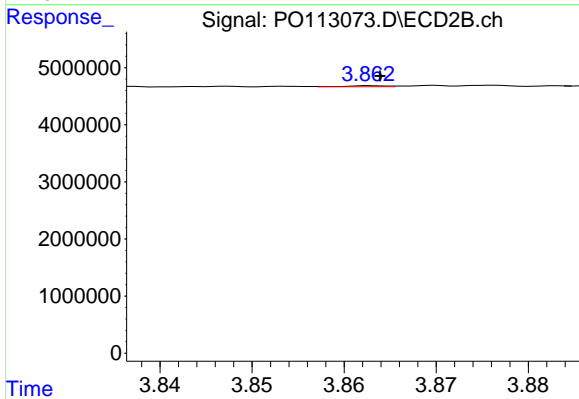
#7 AR-1016-5

R.T.: 5.209 min  
 Delta R.T.: 0.033 min  
 Response: 5926509  
 Conc: 41.58 ng/ml



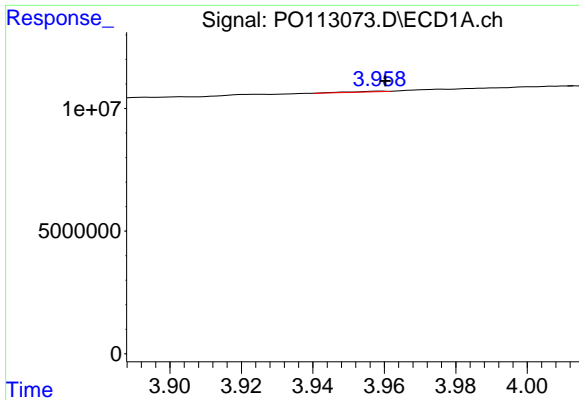
#8 AR-1221-1

R.T.: 3.827 min  
 Delta R.T.: -0.047 min  
 Response: 161741  
 Conc: 1.73 ng/ml



#8 AR-1221-1

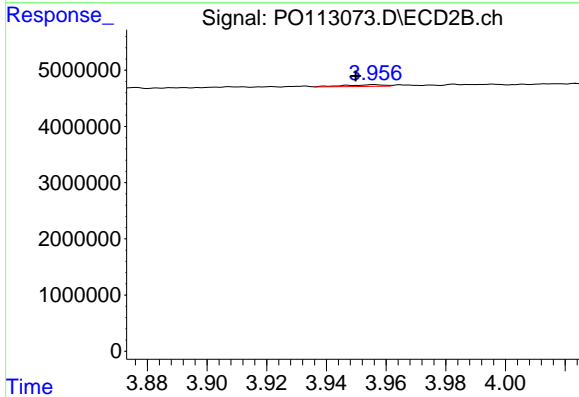
R.T.: 3.863 min  
 Delta R.T.: 0.000 min  
 Response: 55076  
 Conc: 0.87 ng/ml



#9 AR-1221-2

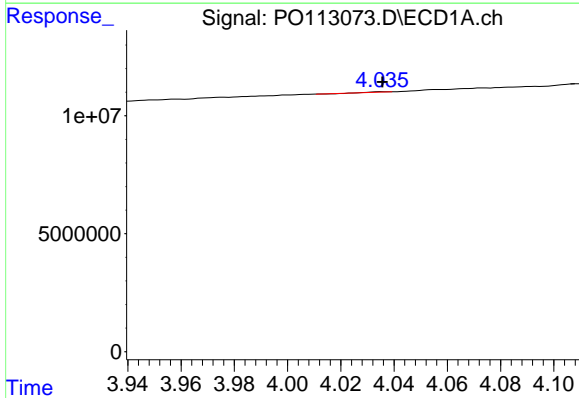
R.T.: 3.959 min  
 Delta R.T.: -0.002 min  
 Response: 153629  
 Conc: 2.27 ng/ml

Instrument :  
 ECD\_O  
 ClientSampleId :  
 HEXANE



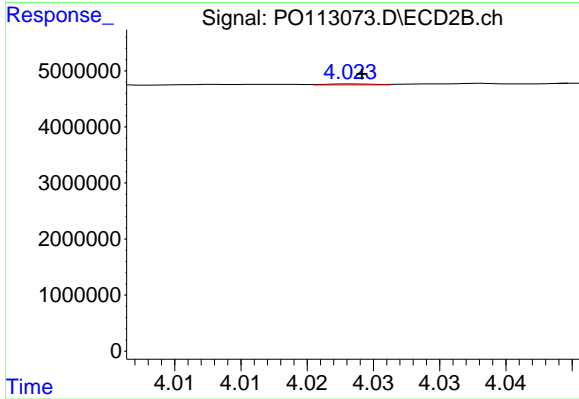
#9 AR-1221-2

R.T.: 3.956 min  
 Delta R.T.: 0.006 min  
 Response: 272559  
 Conc: 5.84 ng/ml



#10 AR-1221-3

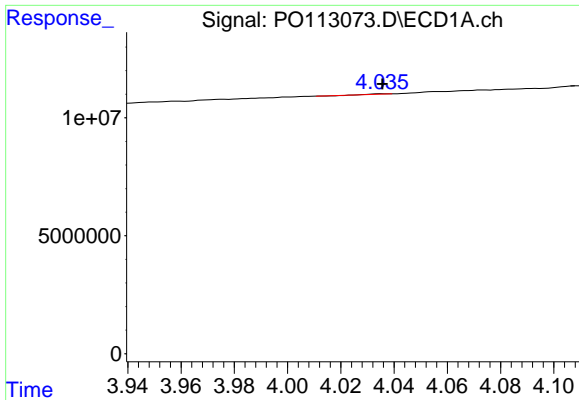
R.T.: 4.036 min  
 Delta R.T.: 0.000 min  
 Response: 1894  
 Conc: 0.01 ng/ml



#10 AR-1221-3

R.T.: 4.024 min  
 Delta R.T.: 0.000 min  
 Response: 38401  
 Conc: 0.26 ng/ml

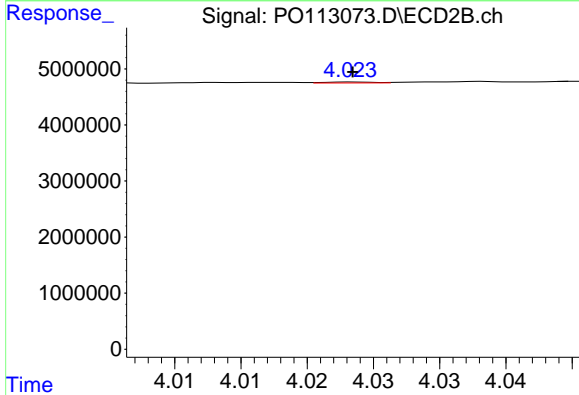




#11 AR-1232-1

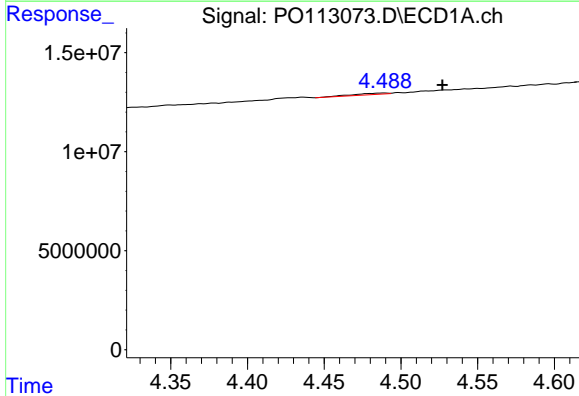
R.T.: 4.036 min  
 Delta R.T.: 0.000 min  
 Response: 1894  
 Conc: 0.01 ng/ml

Instrument :  
 ECD\_O  
 ClientSampleId :  
 HEXANE



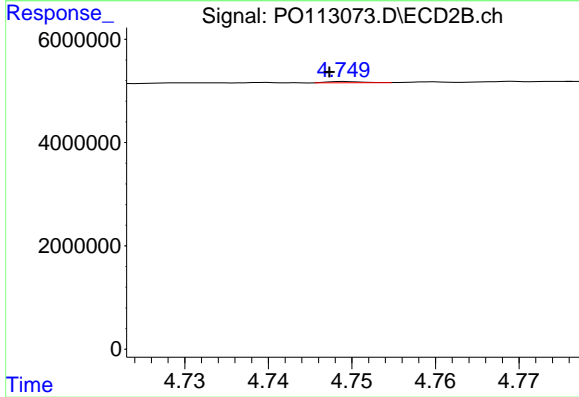
#11 AR-1232-1

R.T.: 4.024 min  
 Delta R.T.: 0.000 min  
 Response: 38401  
 Conc: 0.33 ng/ml



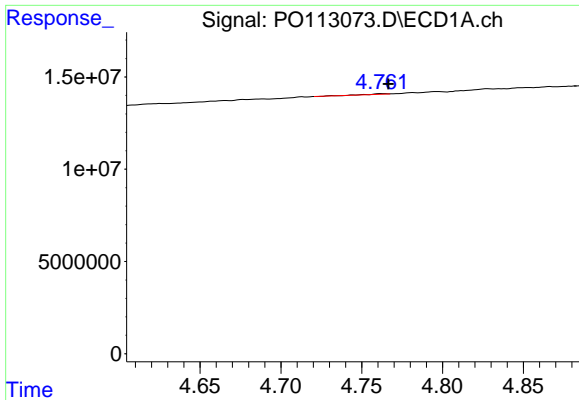
#12 AR-1232-2

R.T.: 4.490 min  
 Delta R.T.: -0.037 min  
 Response: 1032062  
 Conc: 10.34 ng/ml



#12 AR-1232-2

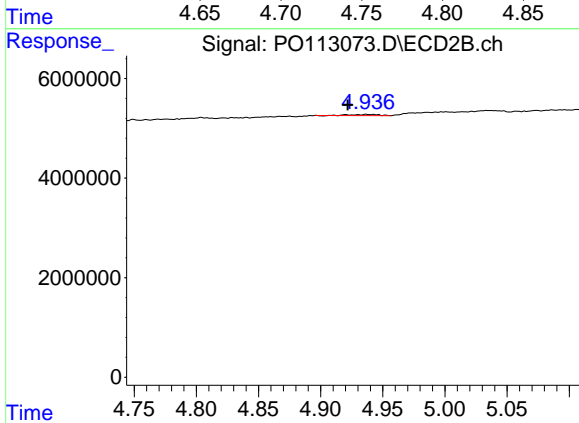
R.T.: 4.749 min  
 Delta R.T.: 0.002 min  
 Response: 68269  
 Conc: 0.56 ng/ml



#13 AR-1232-3

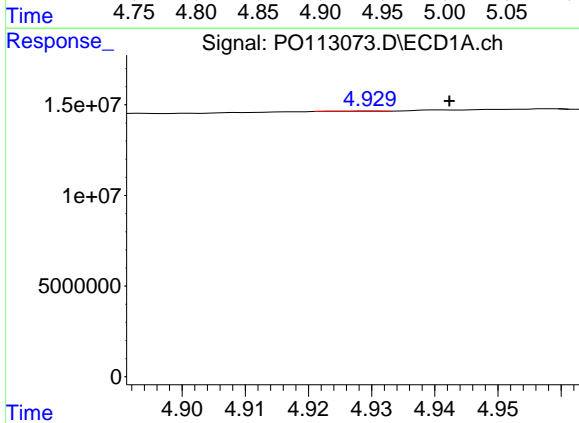
R.T.: 4.762 min  
 Delta R.T.: -0.005 min  
 Response: 265255  
 Conc: 1.40 ng/ml

Instrument :  
 ECD\_O  
 ClientSampleId :  
 HEXANE



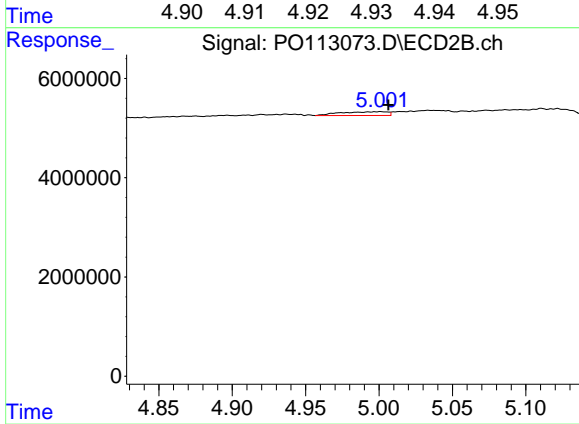
#13 AR-1232-3

R.T.: 4.937 min  
 Delta R.T.: 0.015 min  
 Response: 381235  
 Conc: 6.02 ng/ml



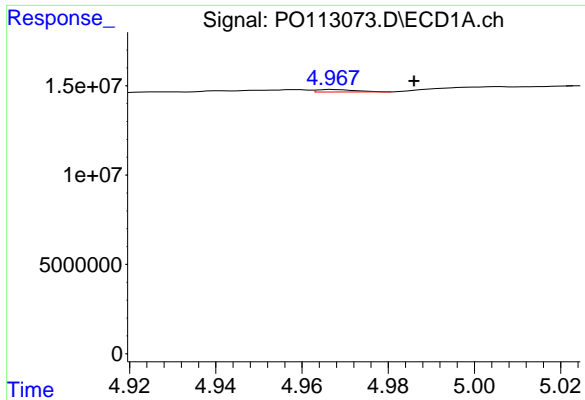
#14 AR-1232-4

R.T.: 4.930 min  
 Delta R.T.: -0.012 min  
 Response: 140047  
 Conc: 1.49 ng/ml



#14 AR-1232-4

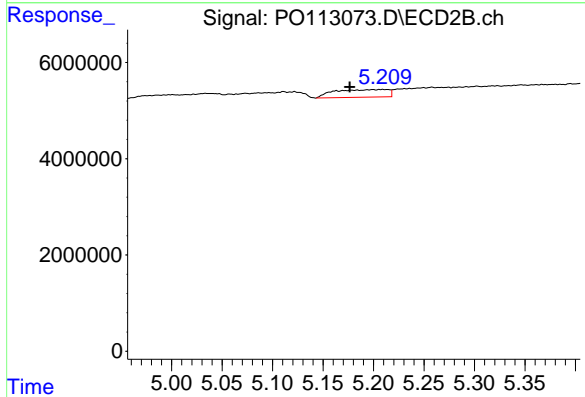
R.T.: 5.001 min  
 Delta R.T.: -0.006 min  
 Response: 1671714  
 Conc: 29.73 ng/ml



#15 AR-1232-5

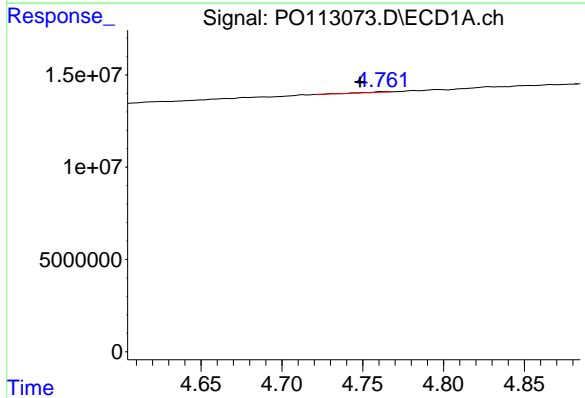
R.T.: 4.967 min  
 Delta R.T.: -0.019 min  
 Response: 867432  
 Conc: 14.00 ng/ml

Instrument :  
 ECD\_O  
 ClientSampleId :  
 HEXANE



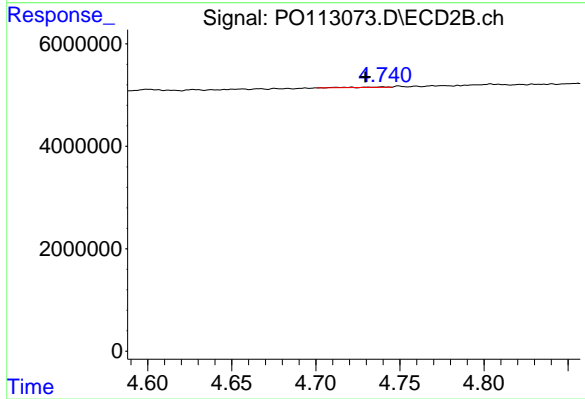
#15 AR-1232-5

R.T.: 5.209 min  
 Delta R.T.: 0.032 min  
 Response: 5926509  
 Conc: 99.00 ng/ml



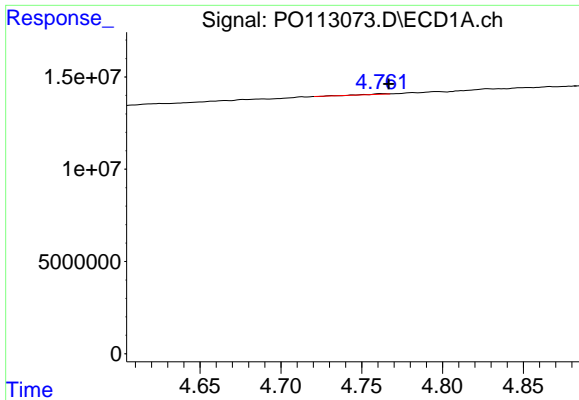
#16 AR-1242-1

R.T.: 4.762 min  
 Delta R.T.: 0.014 min  
 Response: 265255  
 Conc: 1.15 ng/ml



#16 AR-1242-1

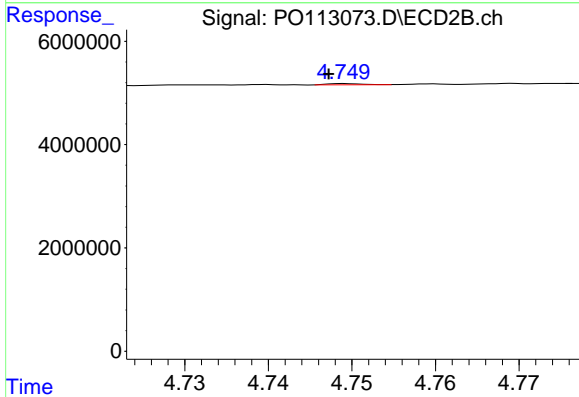
R.T.: 4.740 min  
 Delta R.T.: 0.010 min  
 Response: 82472  
 Conc: 0.57 ng/ml



#17 AR-1242-2

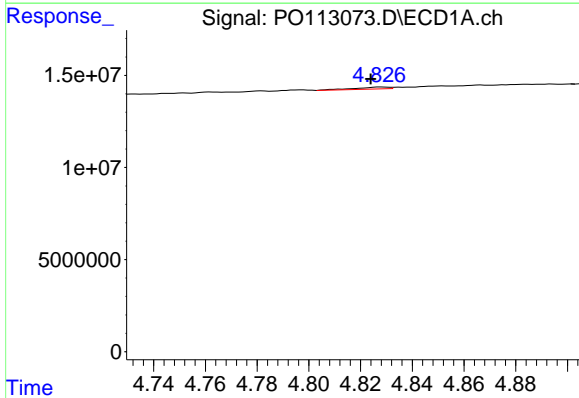
R.T.: 4.762 min  
 Delta R.T.: -0.005 min  
 Response: 265255  
 Conc: 0.77 ng/ml

Instrument :  
 ECD\_O  
 ClientSampleId :  
 HEXANE



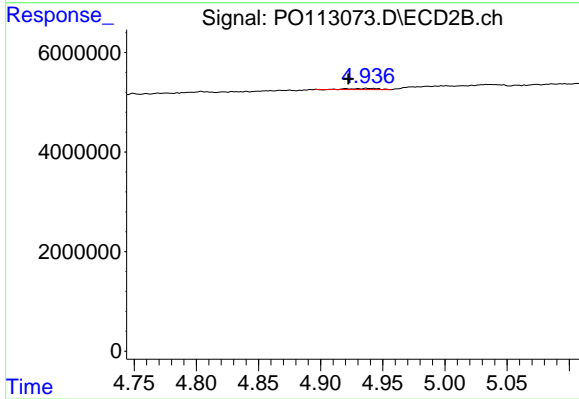
#17 AR-1242-2

R.T.: 4.749 min  
 Delta R.T.: 0.002 min  
 Response: 68269  
 Conc: 0.31 ng/ml



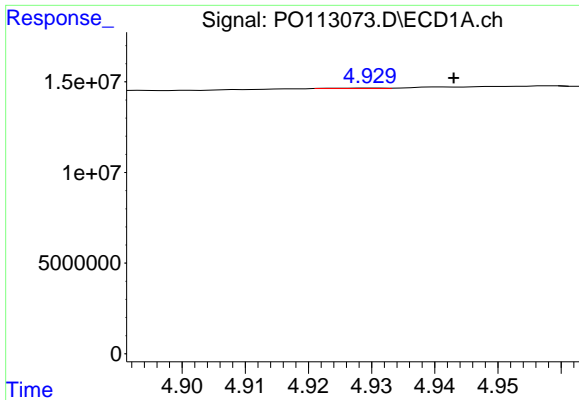
#18 AR-1242-3

R.T.: 4.828 min  
 Delta R.T.: 0.004 min  
 Response: 913929  
 Conc: 4.12 ng/ml



#18 AR-1242-3

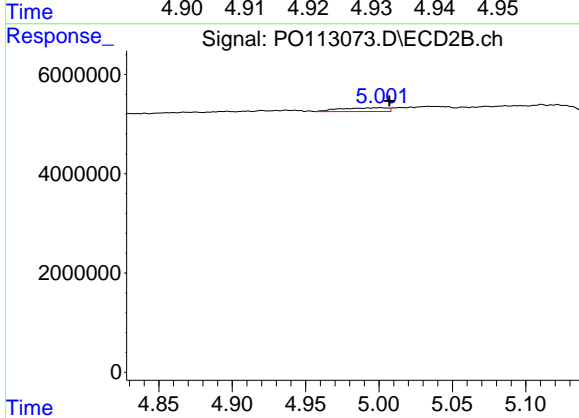
R.T.: 4.937 min  
 Delta R.T.: 0.014 min  
 Response: 381235  
 Conc: 3.26 ng/ml



#19 AR-1242-4

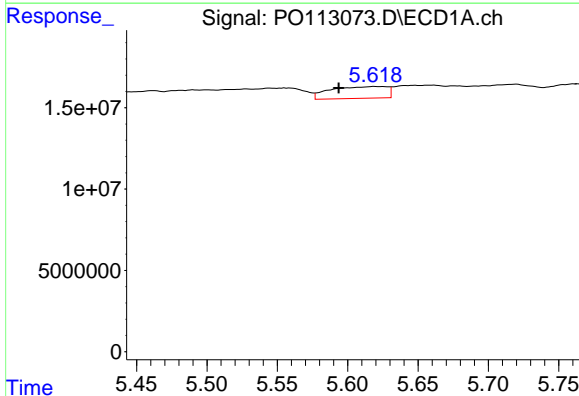
R.T.: 4.930 min  
 Delta R.T.: -0.013 min  
 Response: 140047  
 Conc: 0.81 ng/ml

Instrument :  
 ECD\_O  
 ClientSampleId :  
 HEXANE



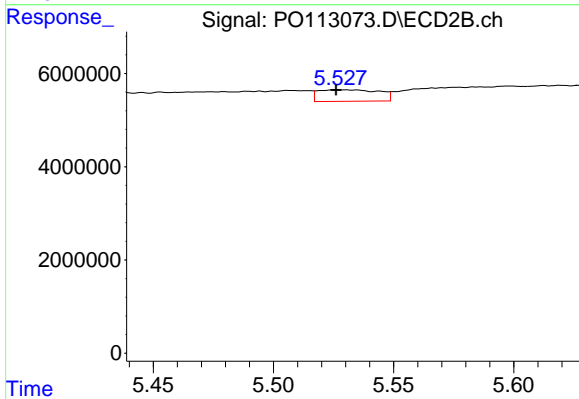
#19 AR-1242-4

R.T.: 5.001 min  
 Delta R.T.: -0.006 min  
 Response: 1671714  
 Conc: 14.21 ng/ml



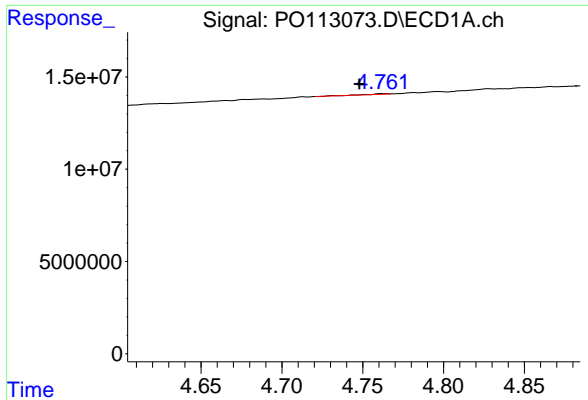
#20 AR-1242-5

R.T.: 5.619 min  
 Delta R.T.: 0.026 min  
 Response: 20259239  
 Conc: 101.21 ng/ml



#20 AR-1242-5

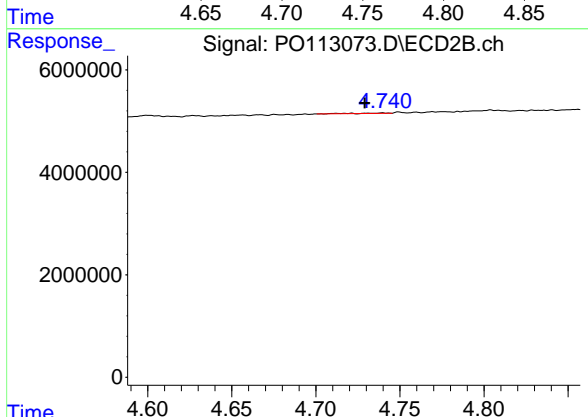
R.T.: 5.527 min  
 Delta R.T.: 0.000 min  
 Response: 4350455  
 Conc: 29.17 ng/ml



#21 AR-1248-1

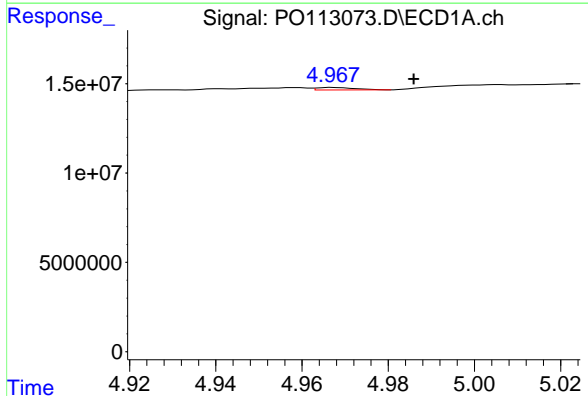
R.T.: 4.762 min  
 Delta R.T.: 0.014 min  
 Response: 265255  
 Conc: 1.52 ng/ml

Instrument :  
 ECD\_O  
 ClientSampleId :  
 HEXANE



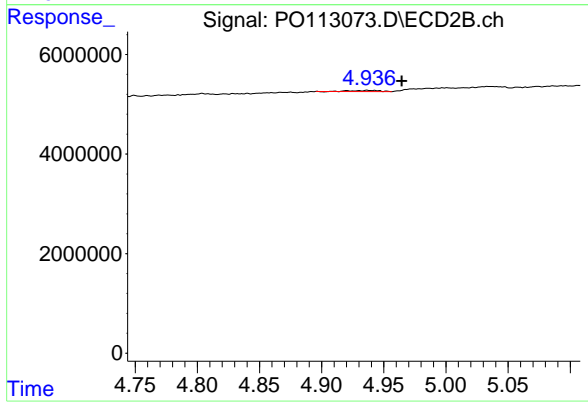
#21 AR-1248-1

R.T.: 4.740 min  
 Delta R.T.: 0.011 min  
 Response: 82472  
 Conc: 0.74 ng/ml



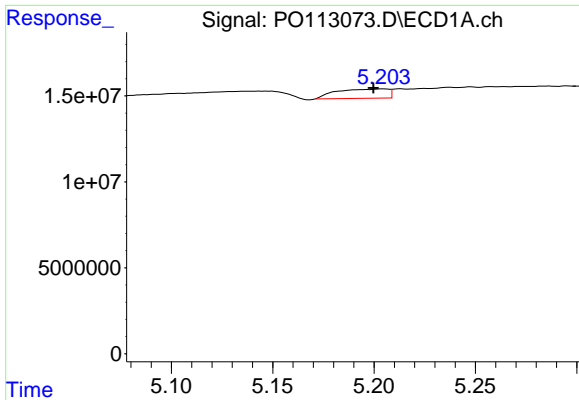
#22 AR-1248-2

R.T.: 4.967 min  
 Delta R.T.: -0.018 min  
 Response: 867432  
 Conc: 3.59 ng/ml



#22 AR-1248-2

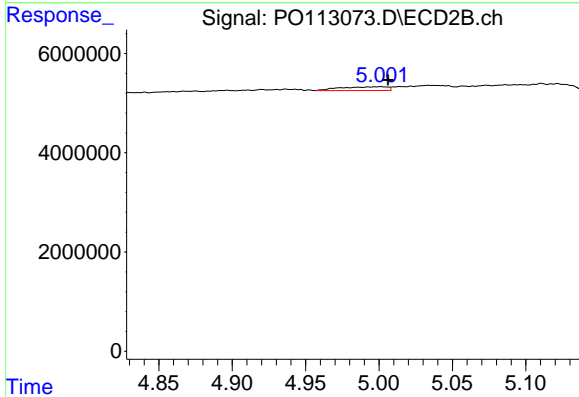
R.T.: 4.937 min  
 Delta R.T.: -0.028 min  
 Response: 381235  
 Conc: 2.37 ng/ml



#23 AR-1248-3

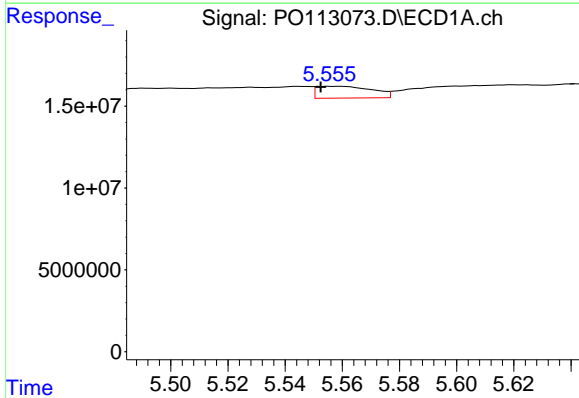
R.T.: 5.205 min  
 Delta R.T.: 0.005 min  
 Response: 9560377  
 Conc: 29.98 ng/ml

Instrument :  
 ECD\_O  
 ClientSampleId :  
 HEXANE



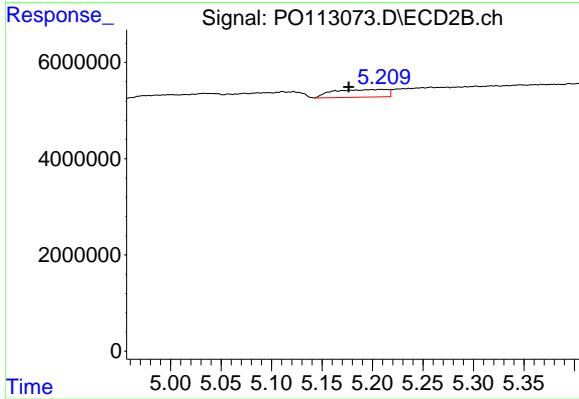
#23 AR-1248-3

R.T.: 5.001 min  
 Delta R.T.: -0.005 min  
 Response: 1671714  
 Conc: 9.85 ng/ml



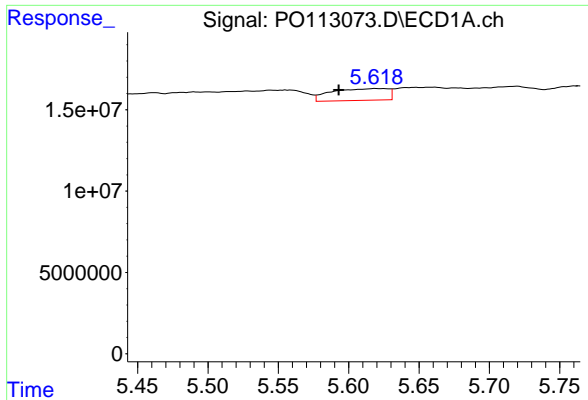
#24 AR-1248-4

R.T.: 5.556 min  
 Delta R.T.: 0.003 min  
 Response: 9762223  
 Conc: 19.54 ng/ml



#24 AR-1248-4

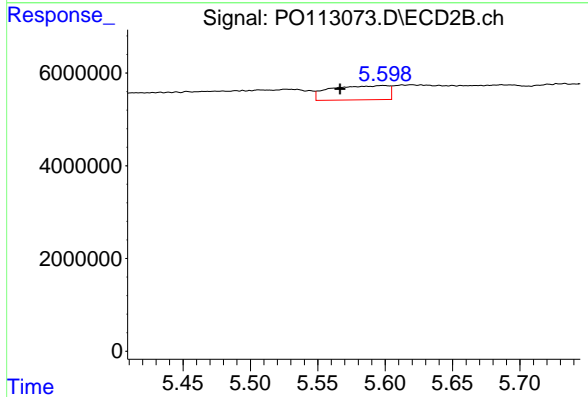
R.T.: 5.209 min  
 Delta R.T.: 0.032 min  
 Response: 5926509  
 Conc: 29.75 ng/ml



#25 AR-1248-5

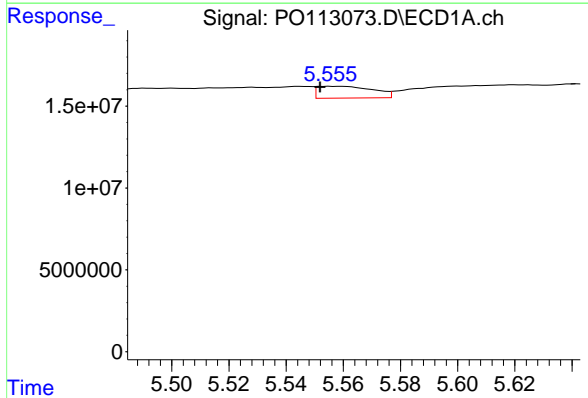
R.T.: 5.619 min  
 Delta R.T.: 0.026 min  
 Response: 20259239  
 Conc: 59.33 ng/ml

Instrument :  
 ECD\_O  
 ClientSampleId :  
 HEXANE



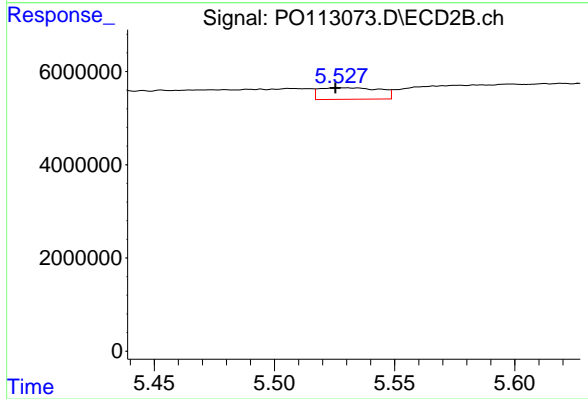
#25 AR-1248-5

R.T.: 5.599 min  
 Delta R.T.: 0.032 min  
 Response: 9114574  
 Conc: 42.93 ng/ml



#26 AR-1254-1

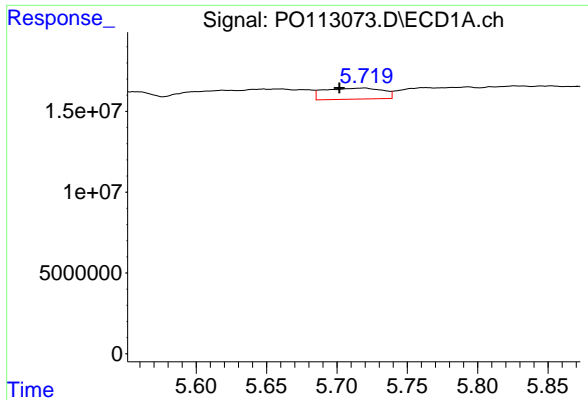
R.T.: 5.556 min  
 Delta R.T.: 0.004 min  
 Response: 9762223  
 Conc: 18.08 ng/ml



#26 AR-1254-1

R.T.: 5.527 min  
 Delta R.T.: 0.002 min  
 Response: 4350455  
 Conc: 13.80 ng/ml

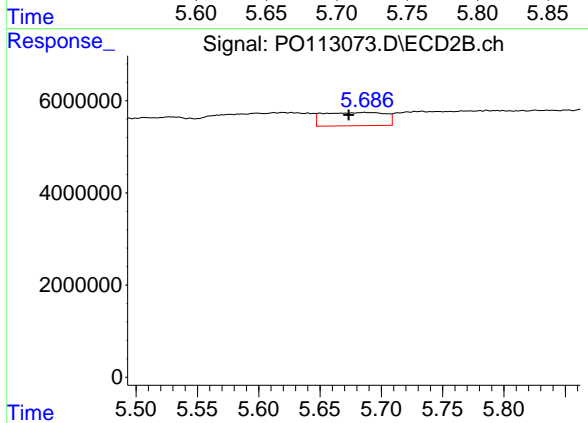




#27 AR-1254-2

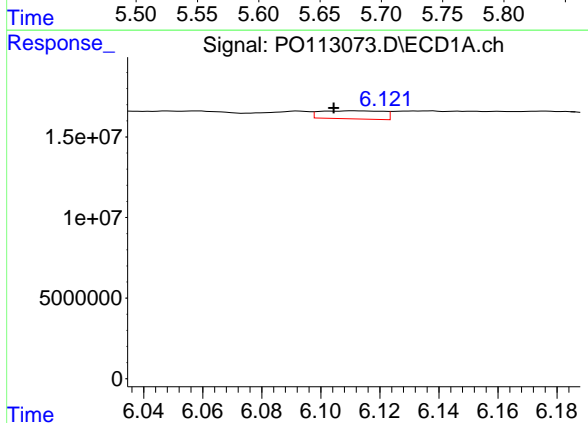
R.T.: 5.720 min  
 Delta R.T.: 0.018 min  
 Response: 19669288  
 Conc: 39.86 ng/ml

Instrument :  
 ECD\_O  
 ClientSampleId :  
 HEXANE



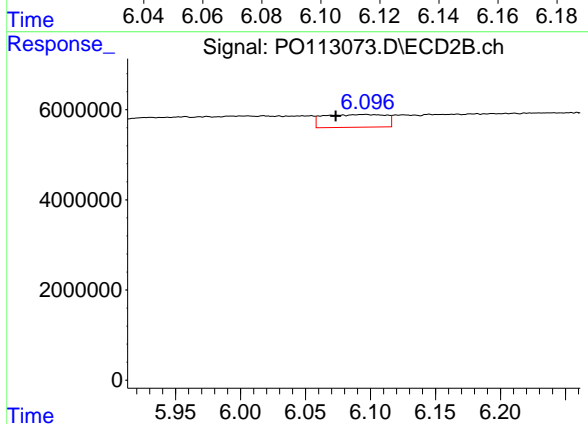
#27 AR-1254-2

R.T.: 5.686 min  
 Delta R.T.: 0.013 min  
 Response: 10099527  
 Conc: 36.03 ng/ml



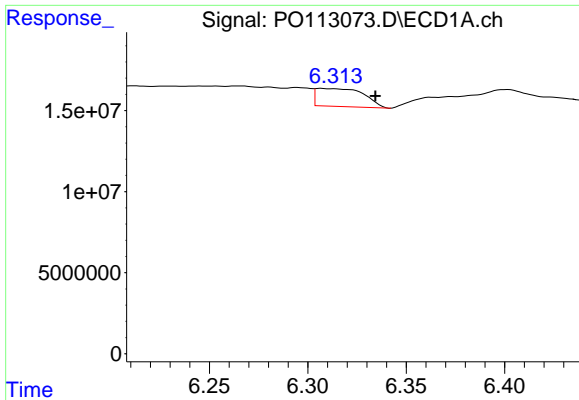
#28 AR-1254-3

R.T.: 6.112 min  
 Delta R.T.: 0.007 min  
 Response: 7439029  
 Conc: 10.07 ng/ml



#28 AR-1254-3

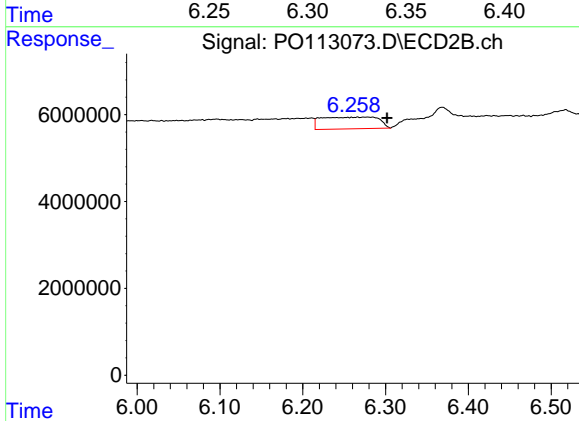
R.T.: 6.096 min  
 Delta R.T.: 0.023 min  
 Response: 9434355  
 Conc: 22.63 ng/ml



#29 AR-1254-4

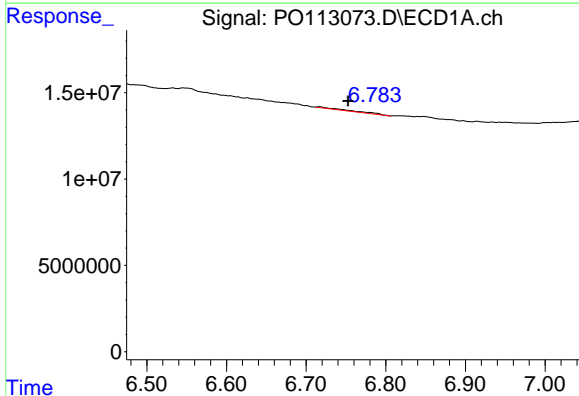
R.T.: 6.307 min  
 Delta R.T.: -0.028 min  
 Response: 18582720  
 Conc: 33.36 ng/ml

Instrument :  
 ECD\_O  
 ClientSampleId :  
 HEXANE



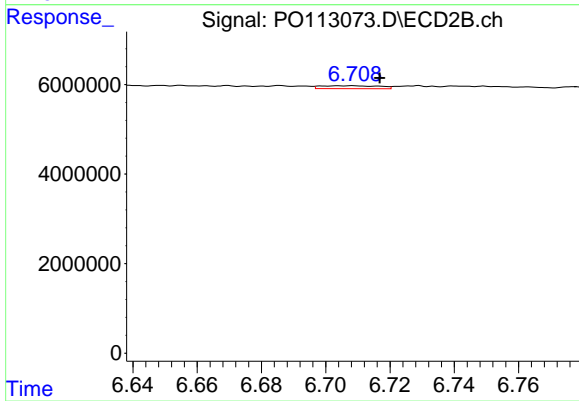
#29 AR-1254-4

R.T.: 6.266 min  
 Delta R.T.: -0.035 min  
 Response: 12967634  
 Conc: 47.18 ng/ml



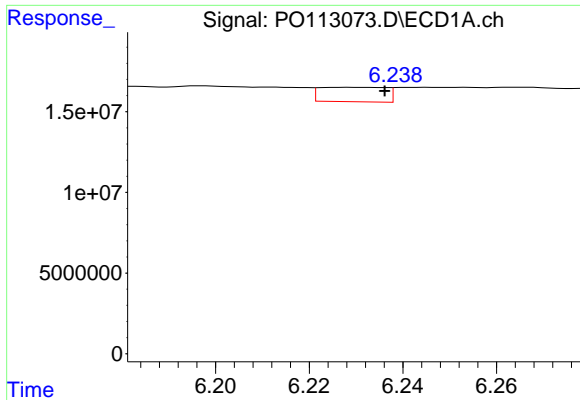
#30 AR-1254-5

R.T.: 6.717 min  
 Delta R.T.: -0.036 min  
 Response: 2339292  
 Conc: 3.34 ng/ml



#30 AR-1254-5

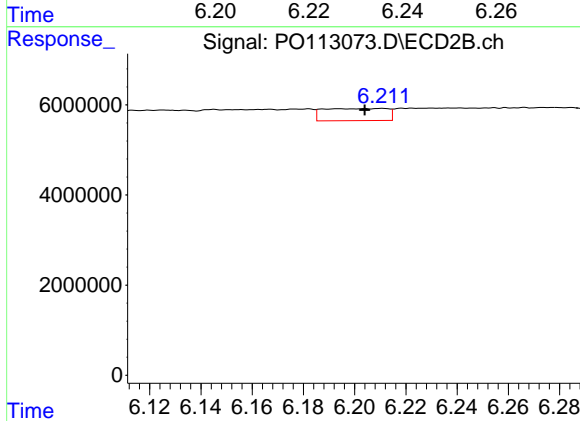
R.T.: 6.708 min  
 Delta R.T.: -0.009 min  
 Response: 830116  
 Conc: 2.32 ng/ml



#31 AR-1260-1

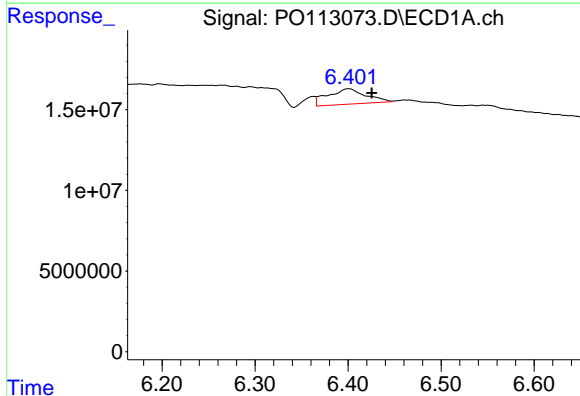
R.T.: 6.229 min  
 Delta R.T.: -0.008 min  
 Response: 8823324  
 Conc: 19.78 ng/ml

Instrument :  
 ECD\_O  
 ClientSampleId :  
 HEXANE



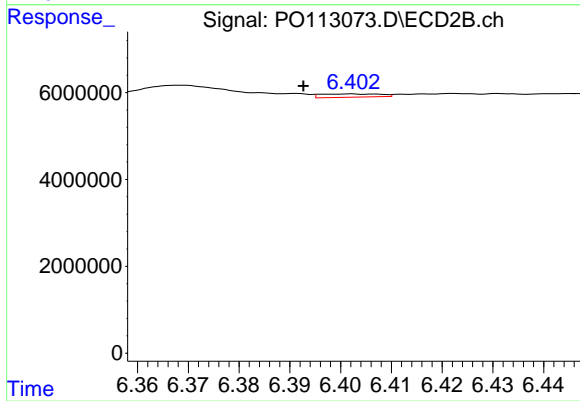
#31 AR-1260-1

R.T.: 6.211 min  
 Delta R.T.: 0.007 min  
 Response: 4644059  
 Conc: 18.21 ng/ml



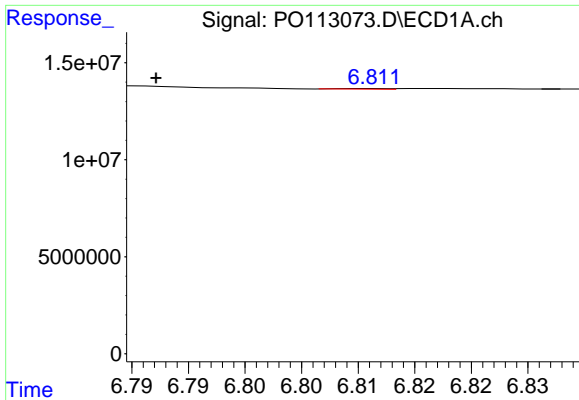
#32 AR-1260-2

R.T.: 6.401 min  
 Delta R.T.: -0.024 min  
 Response: 27162148  
 Conc: 39.55 ng/ml



#32 AR-1260-2

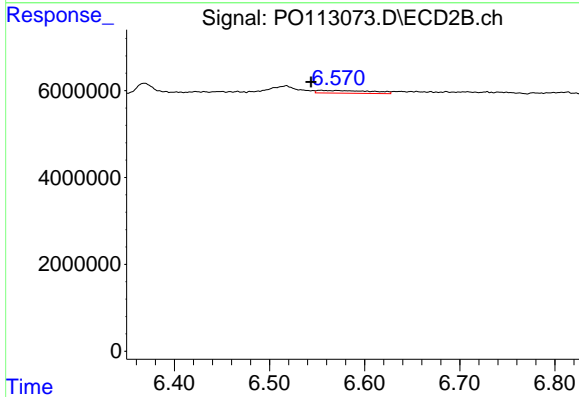
R.T.: 6.402 min  
 Delta R.T.: 0.009 min  
 Response: 623629  
 Conc: 1.80 ng/ml



#33 AR-1260-3

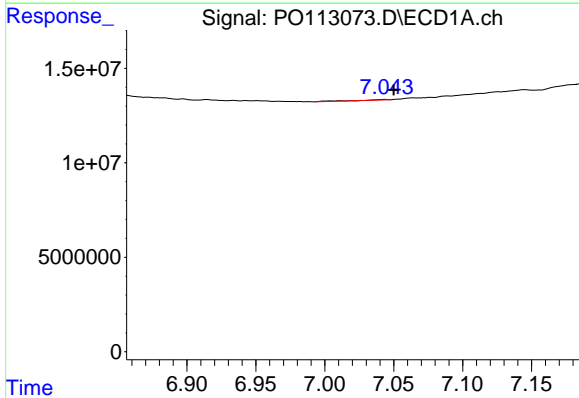
R.T.: 6.811 min  
 Delta R.T.: 0.019 min  
 Response: 98175  
 Conc: 0.16 ng/ml

Instrument :  
 ECD\_O  
 ClientSampleId :  
 HEXANE



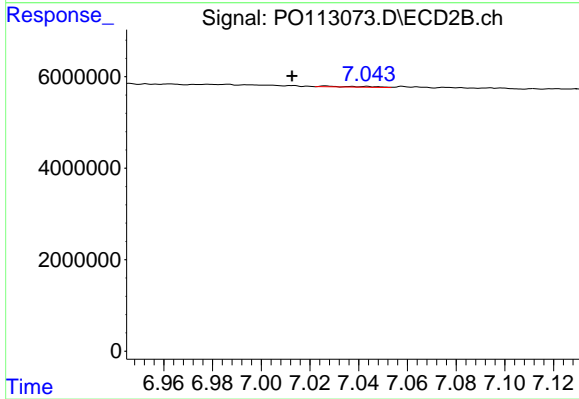
#33 AR-1260-3

R.T.: 6.554 min  
 Delta R.T.: 0.010 min  
 Response: 2467582  
 Conc: 8.30 ng/ml



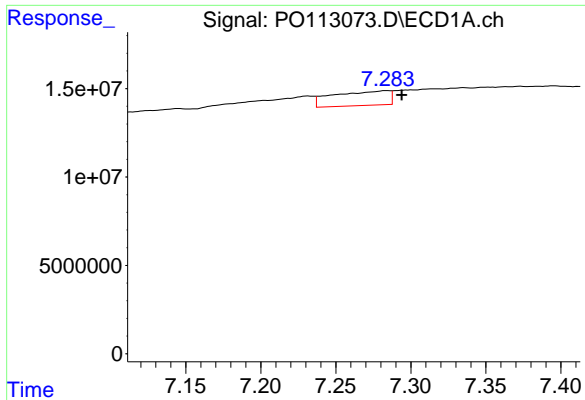
#34 AR-1260-4

R.T.: 7.044 min  
 Delta R.T.: -0.006 min  
 Response: 429171  
 Conc: 0.96 ng/ml



#34 AR-1260-4

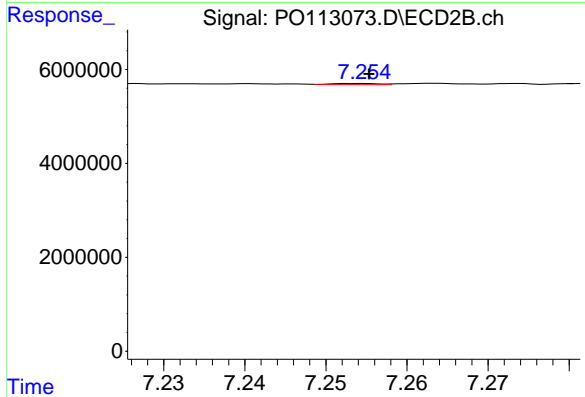
R.T.: 7.027 min  
 Delta R.T.: 0.014 min  
 Response: 186368  
 Conc: 0.90 ng/ml



#35 AR-1260-5

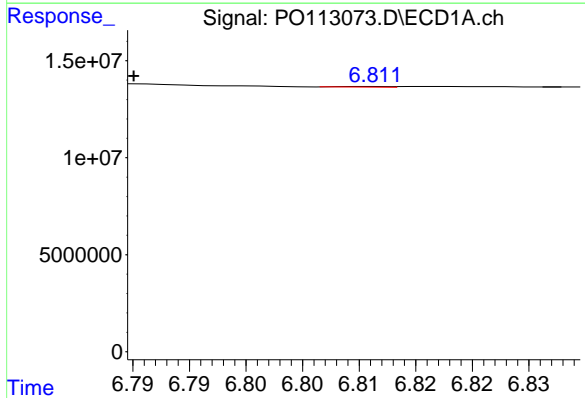
R.T.: 7.284 min  
 Delta R.T.: -0.010 min  
 Response: 21247728  
 Conc: 17.55 ng/ml

Instrument :  
 ECD\_O  
 ClientSampleId :  
 HEXANE



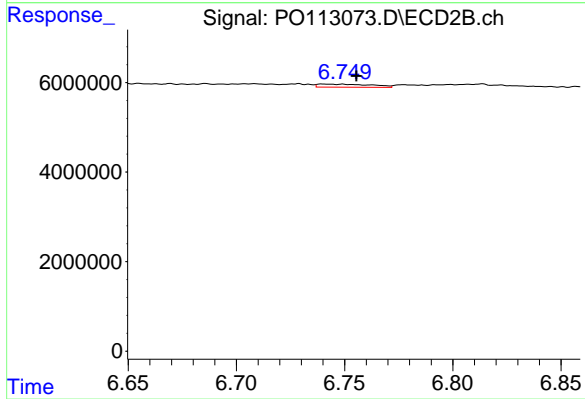
#35 AR-1260-5

R.T.: 7.254 min  
 Delta R.T.: -0.001 min  
 Response: 95790  
 Conc: 0.20 ng/ml



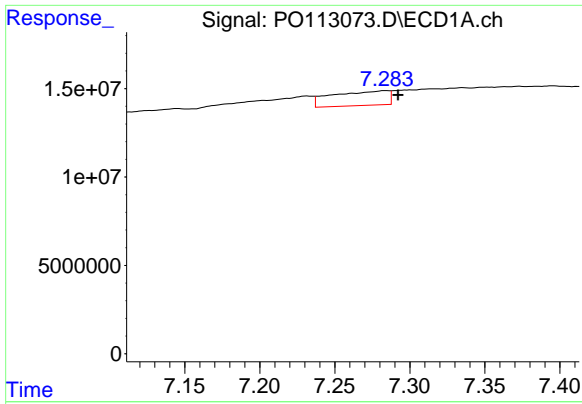
#36 AR-1262-1

R.T.: 6.811 min  
 Delta R.T.: 0.021 min  
 Response: 98175  
 Conc: 0.11 ng/ml



#36 AR-1262-1

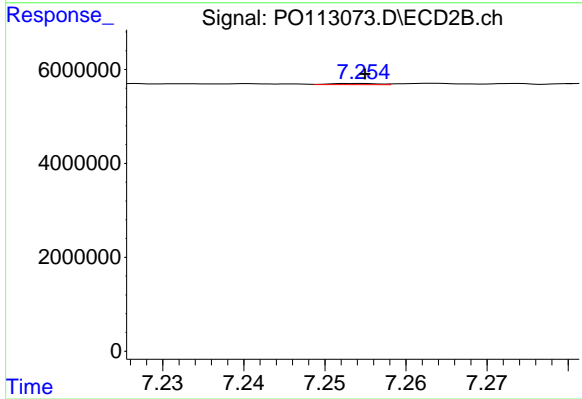
R.T.: 6.740 min  
 Delta R.T.: -0.015 min  
 Response: 1161696  
 Conc: 2.80 ng/ml



#37 AR-1262-2

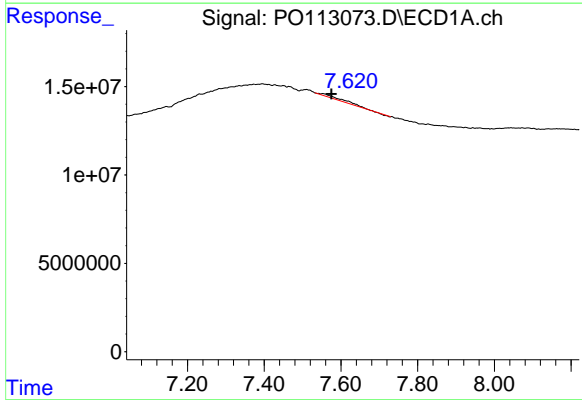
R.T.: 7.284 min  
 Delta R.T.: -0.008 min  
 Response: 21247728  
 Conc: 14.05 ng/ml

Instrument :  
 ECD\_O  
 ClientSampleId :  
 HEXANE



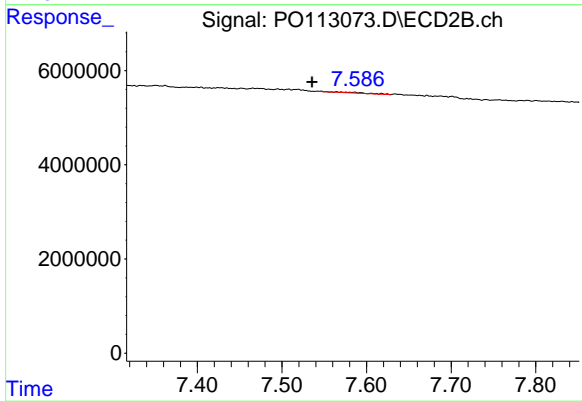
#37 AR-1262-2

R.T.: 7.254 min  
 Delta R.T.: 0.000 min  
 Response: 95790  
 Conc: 0.19 ng/ml



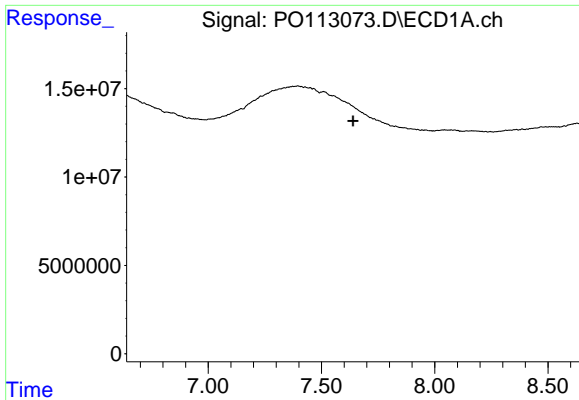
#38 AR-1262-3

R.T.: 7.552 min  
 Delta R.T.: -0.022 min  
 Response: 4987144  
 Conc: 9.00 ng/ml



#38 AR-1262-3

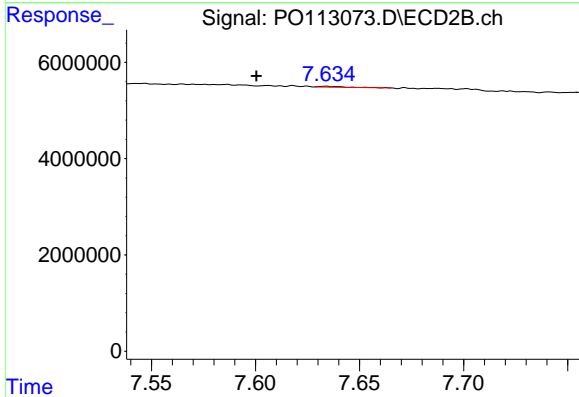
R.T.: 7.546 min  
 Delta R.T.: 0.010 min  
 Response: 406690  
 Conc: 2.26 ng/ml



#39 AR-1262-4

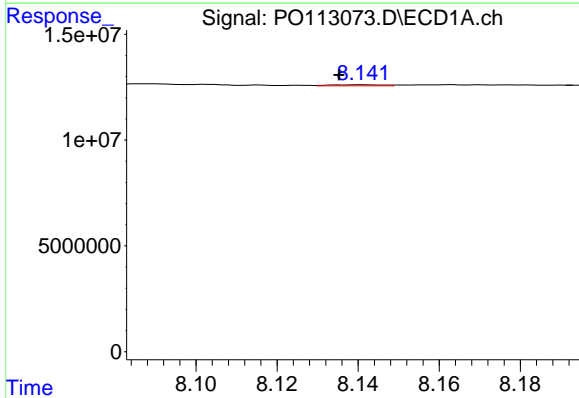
R.T.: 0.000 min  
 Exp R.T.: 7.639 min  
 Response: 0  
 Conc: N.D.

Instrument :  
 ECD\_O  
 ClientSampleId :  
 HEXANE



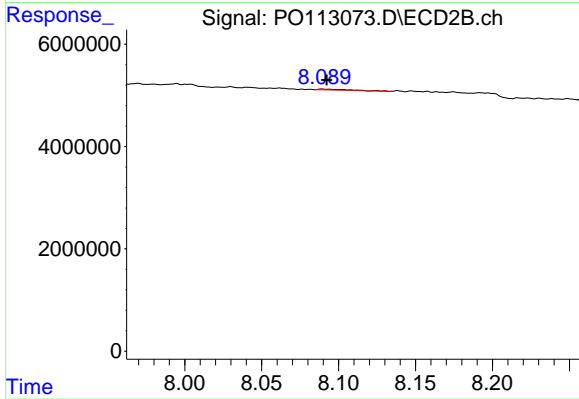
#39 AR-1262-4

R.T.: 7.634 min  
 Delta R.T.: 0.033 min  
 Response: 63467  
 Conc: 0.22 ng/ml



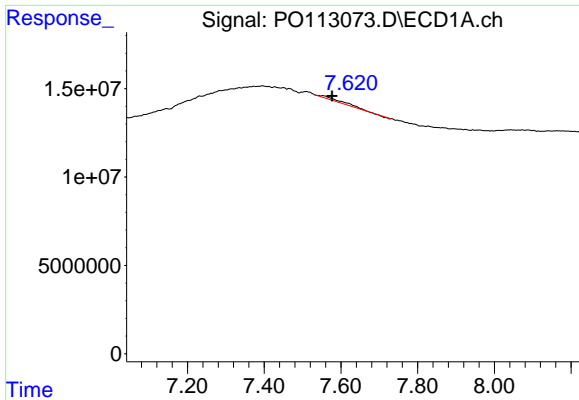
#40 AR-1262-5

R.T.: 8.141 min  
 Delta R.T.: 0.006 min  
 Response: 458433  
 Conc: 1.10 ng/ml



#40 AR-1262-5

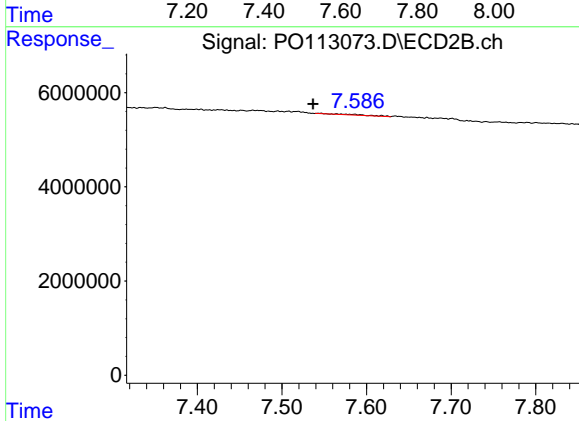
R.T.: 8.090 min  
 Delta R.T.: -0.003 min  
 Response: 261508  
 Conc: 2.41 ng/ml



#41 AR-1268-1

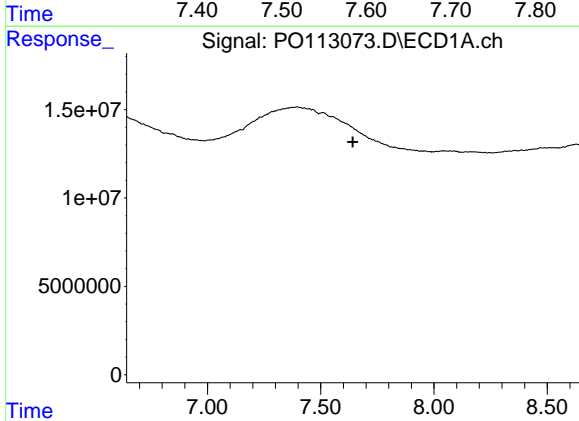
R.T.: 7.552 min  
 Delta R.T.: -0.024 min  
 Response: 4987144  
 Conc: 2.90 ng/ml

Instrument :  
 ECD\_O  
 ClientSampleId :  
 HEXANE



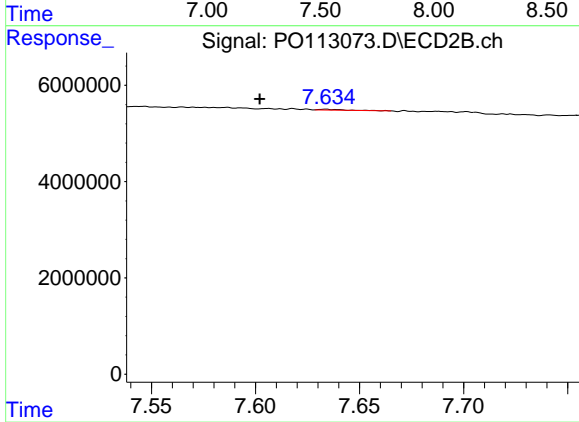
#41 AR-1268-1

R.T.: 7.546 min  
 Delta R.T.: 0.009 min  
 Response: 406690  
 Conc: 0.80 ng/ml



#42 AR-1268-2

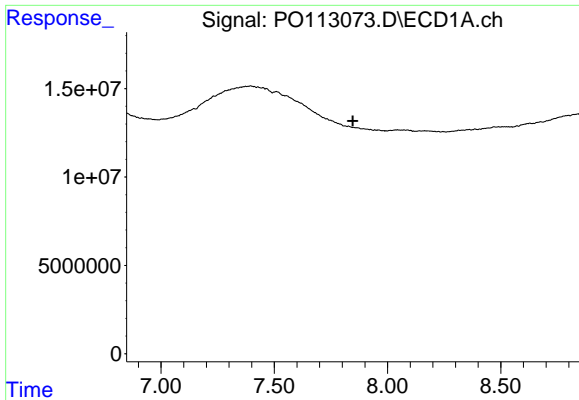
R.T.: 0.000 min  
 Exp R.T. : 7.642 min  
 Response: 0  
 Conc: N.D.



#42 AR-1268-2

R.T.: 7.634 min  
 Delta R.T.: 0.032 min  
 Response: 63467  
 Conc: 0.15 ng/ml

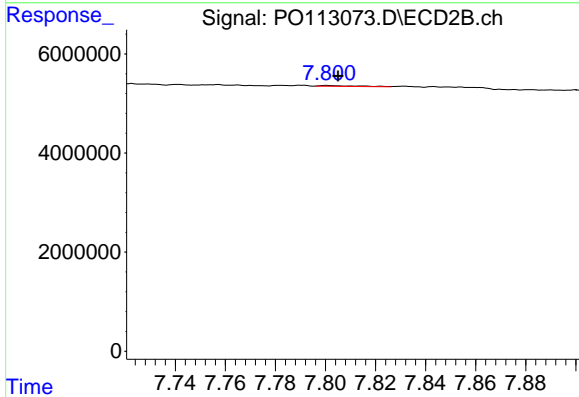




#43 AR-1268-3

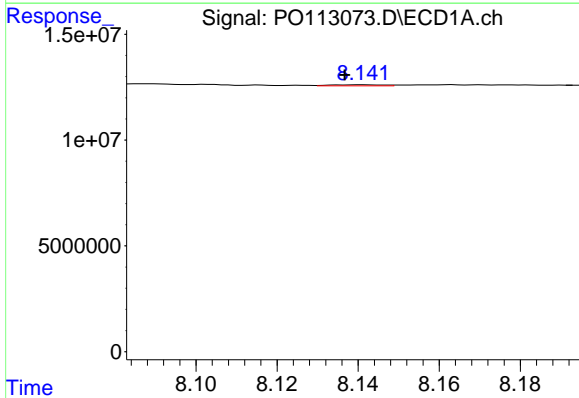
R.T.: 7.865 min  
 Delta R.T.: 0.019 min  
 Response: -39280  
 Conc: N.D.

Instrument :  
 ECD\_O  
 ClientSampleId :  
 HEXANE



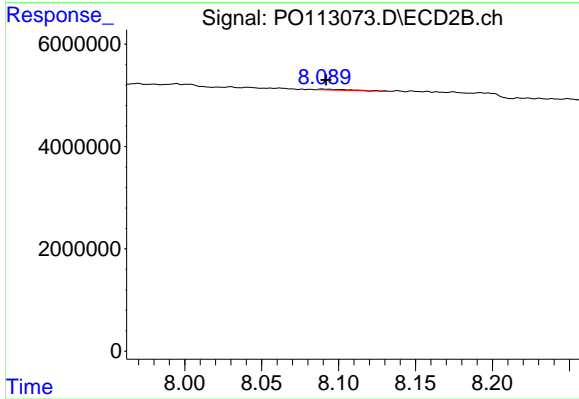
#43 AR-1268-3

R.T.: 7.801 min  
 Delta R.T.: -0.004 min  
 Response: 178031  
 Conc: 0.55 ng/ml



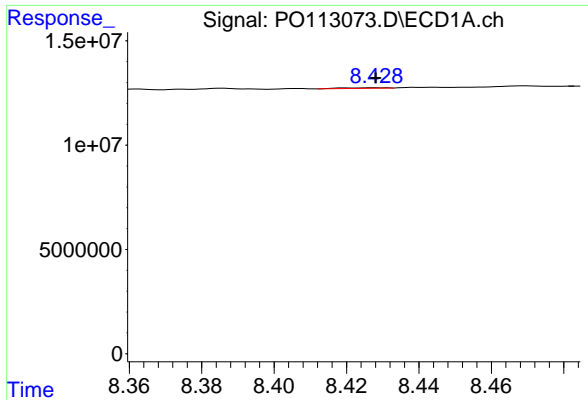
#44 AR-1268-4

R.T.: 8.141 min  
 Delta R.T.: 0.004 min  
 Response: 458433  
 Conc: 1.00 ng/ml



#44 AR-1268-4

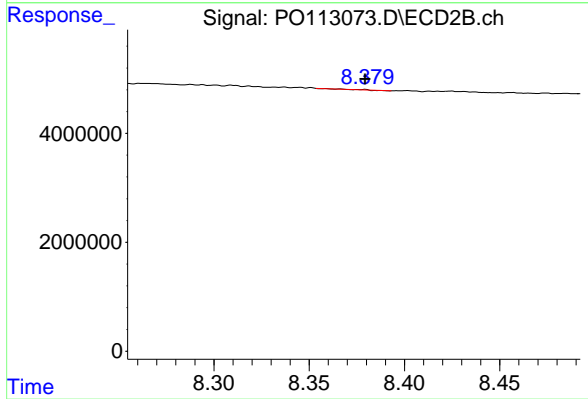
R.T.: 8.090 min  
 Delta R.T.: -0.002 min  
 Response: 261508  
 Conc: 2.17 ng/ml



#45 AR-1268-5

R.T.: 8.428 min  
Delta R.T.: 0.000 min  
Response: 219749  
Conc: 0.07 ng/ml

Instrument :  
ECD\_O  
ClientSampleId :  
HEXANE



#45 AR-1268-5

R.T.: 8.379 min  
Delta R.T.: 0.000 min  
Response: 46751  
Conc: 0.06 ng/ml