

Data Path : Z:\pestpcbsrv\HPCHEM1\ECD\_O\Data\P0082025\  
 Data File : PO113075.D  
 Signal(s) : Signal #1: ECD1A.ch Signal #2: ECD2B.ch  
 Acq On : 20 Aug 2025 09:52  
 Operator : YP/AJ  
 Sample : AR1242CCC500  
 Misc :  
 ALS Vial : 4 Sample Multiplier: 1

Instrument :  
 ECD\_O  
 ClientSampleId :  
 AR1242CCC500

Integration File signal 1: autoint1.e  
 Integration File signal 2: autoint2.e  
 Quant Time: Aug 20 13:01:24 2025  
 Quant Method : Z:\pestpcbsrv\HPCHEM1\ECD\_O\methods\P0081825.M  
 Quant Title : GC EXTRACTABLES  
 QLast Update : Tue Aug 19 06:08:32 2025  
 Response via : Initial Calibration  
 Integrator: ChemStation

Volume Inj. : 2 µl  
 Signal #1 Phase : ZB-MR1 Signal #2 Phase: ZB-MR2  
 Signal #1 Info : 30Mx0.32mmx 0.50µ Signal #2 Info : 30M x 0.32mm x 0.25µm

Compound	RT#1	RT#2	Resp#1	Resp#2	ng/ml	ng/ml
System Monitoring Compounds						
1) SA Tetrachlo...	3.664	3.655	468.9E6	274.7E6	57.275	54.277
2) SA Decachlor...	8.681	8.627	320.4E6	94882607	46.220	50.074
Target Compounds						
3) L1 AR-1016-1	4.748	4.728	132.9E6	79779314	497.910	467.712
4) L1 AR-1016-2	4.767	4.747	198.4E6	118.6E6	494.213	460.469
5) L1 AR-1016-3	4.824	4.921	125.2E6	62949364	490.977	450.880
6) L1 AR-1016-4	4.942	4.964	100.2E6	48256203	459.499	413.510
7) L1 AR-1016-5	5.199	5.176	109.1E6	66722114	492.380	468.127
8) L2 AR-1221-1	3.874	3.862	11495144	8750945	122.846	138.637
9) L2 AR-1221-2	3.961	3.950	18330008	12807240	271.352	274.402
10) L2 AR-1221-3	4.036	4.023	67314480	45435971	304.107	306.018
11) L3 AR-1232-1	4.036	4.023	67314480	45435971	386.851	387.010
12) L3 AR-1232-2	4.527	4.747	98554882	118.6E6	987.005	968.156
13) L3 AR-1232-3	4.767	4.921	198.4E6	62949364	1047.063	993.744
14) L3 AR-1232-4	4.942	5.006	100.2E6	61503268	1064.061	1093.952
15) L3 AR-1232-5	4.986	5.176	73508200	66722114	1186.708	1114.570
16) L4 AR-1242-1	4.748	4.728	132.9E6	79779314	578.147	552.089
17) L4 AR-1242-2	4.767	4.747	198.4E6	118.6E6	577.352	546.965
18) L4 AR-1242-3	4.824	4.921	125.2E6	62949364	564.304	538.193
19) L4 AR-1242-4	4.942	5.006	100.2E6	61503268	577.658	522.821
20) L4 AR-1242-5	5.593	5.525	114.4E6	80870857	571.514	542.274
21) L5 AR-1248-1	4.748	4.728	132.9E6	79779314	761.949	715.434
22) L5 AR-1248-2	4.986	4.964	73508200	48256203	303.922	300.289
23) L5 AR-1248-3	5.199	5.006	109.1E6	61503268	342.231	362.507
24) L5 AR-1248-4	5.552	5.176	140.1E6	66722114	280.338	334.917
25) L5 AR-1248-5	5.593	5.565	114.4E6	68405435	334.988	322.217
26) L6 AR-1254-1	5.552	5.525	140.1E6	80870857	259.377	256.445
27) L6 AR-1254-2	5.702	5.672	40431067	23989717	81.935	85.574
28) L6 AR-1254-3	6.105	6.073	44640089	26465105	60.416	63.477
29) L6 AR-1254-4	6.333	6.300	33780359	16133319	60.647	58.702
30) L6 AR-1254-5	6.752	6.716	9259539	8259830	13.210	23.105 #
31) L7 AR-1260-1	6.224	6.216	15163617	9566099	34.001	37.504
32) L7 AR-1260-2	6.424	6.391	6891091	2360889	10.035	6.829 #
33) L7 AR-1260-3	6.824	6.540	1408310	4056934	2.281	13.640 #
34) L7 AR-1260-4	7.055	7.013	184531	360009	0.412	1.737 #
35) L7 AR-1260-5	7.276	7.250	-136141	795410	N.D.	1.698 #
36) L8 AR-1262-1	6.824	6.789	1408310	1860413	1.538	4.487 #
37) L8 AR-1262-2	7.276	7.250	-136141	795410	N.D.	1.537 #
38) L8 AR-1262-3	7.578	7.546	1584209	173568	2.859	0.966 #
39) L8 AR-1262-4	7.639	7.589	6854906	1049633	7.009	3.621 #
40) L8 AR-1262-5	8.134	8.084	369575	283977	0.887	2.621 #
41) L9 AR-1268-1	7.578	7.546	1584209	173568	0.921	0.341 #

Data Path : Z:\pestpcbsrv\HPCHEM1\ECD\_0\Data\P0082025\  
 Data File : P0113075.D  
 Signal(s) : Signal #1: ECD1A.ch Signal #2: ECD2B.ch  
 Acq On : 20 Aug 2025 09:52  
 Operator : YP/AJ  
 Sample : AR1242CCC500  
 Misc :  
 ALS Vial : 4 Sample Multiplier: 1

Instrument :  
 ECD\_0  
 ClientSampleId :  
 AR1242CCC500

Integration File signal 1: autoint1.e  
 Integration File signal 2: autoint2.e  
 Quant Time: Aug 20 13:01:24 2025  
 Quant Method : Z:\pestpcbsrv\HPCHEM1\ECD\_0\methods\P0081825.M  
 Quant Title : GC EXTRACTABLES  
 QLast Update : Tue Aug 19 06:08:32 2025  
 Response via : Initial Calibration  
 Integrator: ChemStation

Volume Inj. : 2 µl  
 Signal #1 Phase : ZB-MR1 Signal #2 Phase: ZB-MR2  
 Signal #1 Info : 30Mx0.32mmx 0.50µ Signal #2 Info : 30M x 0.32mm x 0.25µm

	Compound	RT#1	RT#2	Resp#1	Resp#2	ng/ml	ng/ml
42)	L9 AR-1268-2	7.639	7.589	6854906	1049633	4.734	2.527 #
43)	L9 AR-1268-3	7.832	7.802	827513	202682	0.686	0.621
44)	L9 AR-1268-4	8.134	8.084	369575	283977	0.802	2.358 #
45)	L9 AR-1268-5	8.426	8.378	1247726	477399	0.391	0.611 #

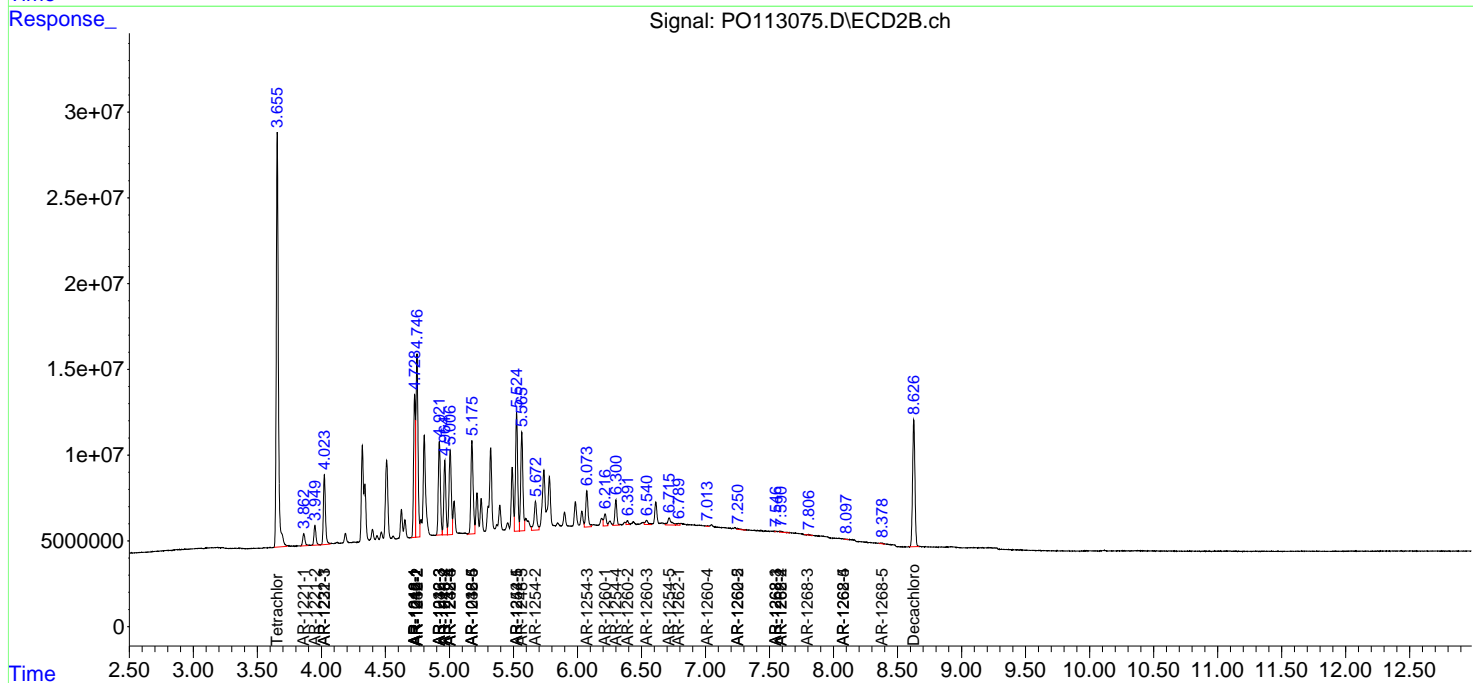
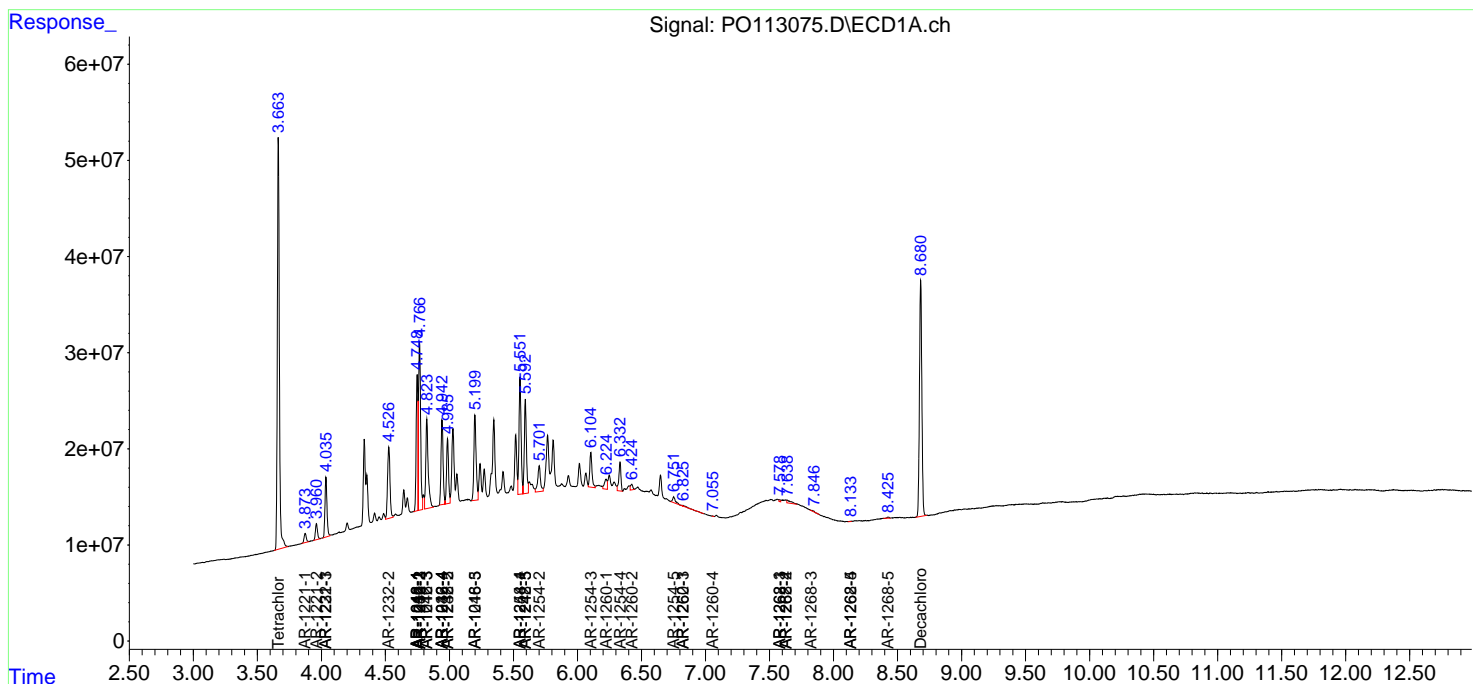
(f)=RT Delta > 1/2 Window (#)=Amounts differ by > 25% (m)=manual int.

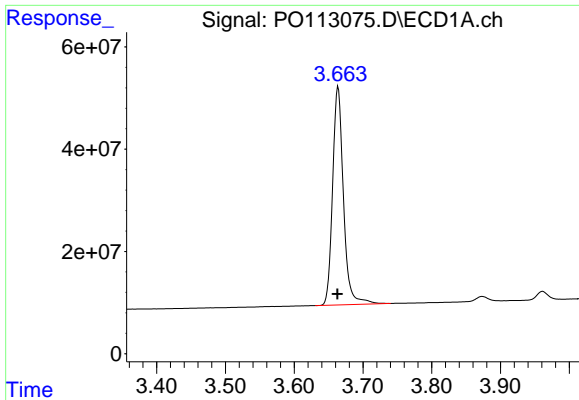
Data Path : Z:\pestpcbsrv\HPCHEM1\ECD\_O\Data\PO082025\  
 Data File : PO113075.D  
 Signal(s) : Signal #1: ECD1A.ch Signal #2: ECD2B.ch  
 Acq On : 20 Aug 2025 09:52  
 Operator : YP/AJ  
 Sample : AR1242CCC500  
 Misc :  
 ALS Vial : 4 Sample Multiplier: 1

Instrument :  
 ECD\_O  
 ClientSampleId :  
 AR1242CCC500

Integration File signal 1: autoint1.e  
 Integration File signal 2: autoint2.e  
 Quant Time: Aug 20 13:01:24 2025  
 Quant Method : Z:\pestpcbsrv\HPCHEM1\ECD\_O\methods\PO081825.M  
 Quant Title : GC EXTRACTABLES  
 QLast Update : Tue Aug 19 06:08:32 2025  
 Response via : Initial Calibration  
 Integrator: ChemStation

Volume Inj. : 2 µl  
 Signal #1 Phase : ZB-MR1 Signal #2 Phase: ZB-MR2  
 Signal #1 Info : 30Mx0.32mmx 0.50µ Signal #2 Info : 30M x 0.32mm x 0.25µm

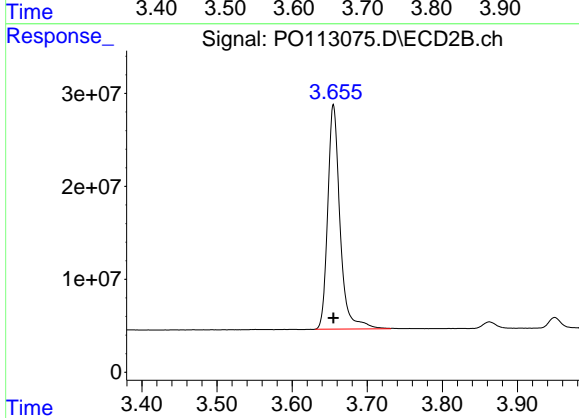




#1 Tetrachloro-m-xylene

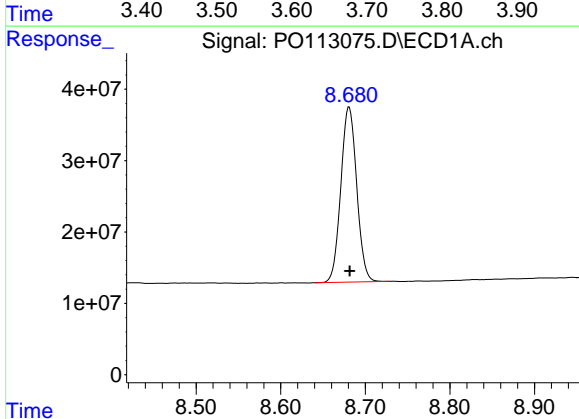
R.T.: 3.664 min  
 Delta R.T.: 0.000 min  
 Response: 468889512  
 Conc: 57.28 ng/ml

Instrument :  
 ECD\_O  
 ClientSampleId :  
 AR1242CCC500



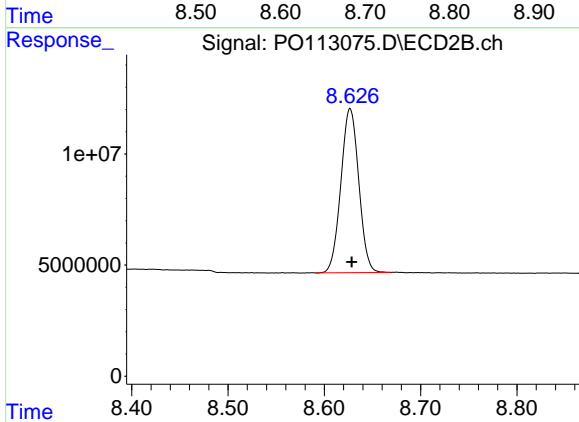
#1 Tetrachloro-m-xylene

R.T.: 3.655 min  
 Delta R.T.: 0.000 min  
 Response: 274676260  
 Conc: 54.28 ng/ml



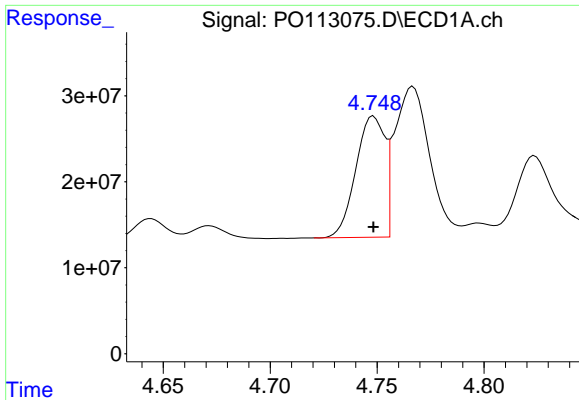
#2 Decachlorobiphenyl

R.T.: 8.681 min  
 Delta R.T.: 0.000 min  
 Response: 320367712  
 Conc: 46.22 ng/ml



#2 Decachlorobiphenyl

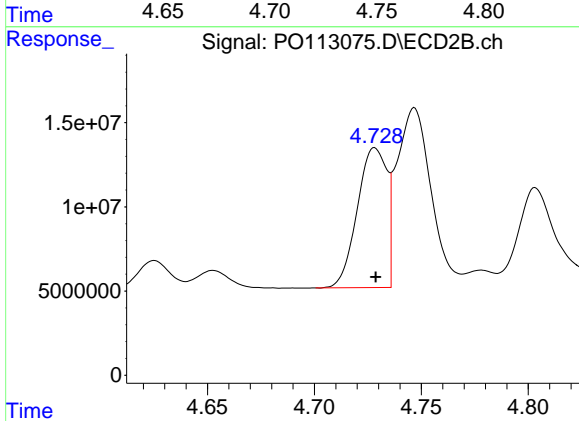
R.T.: 8.627 min  
 Delta R.T.: -0.001 min  
 Response: 94882607  
 Conc: 50.07 ng/ml



#3 AR-1016-1

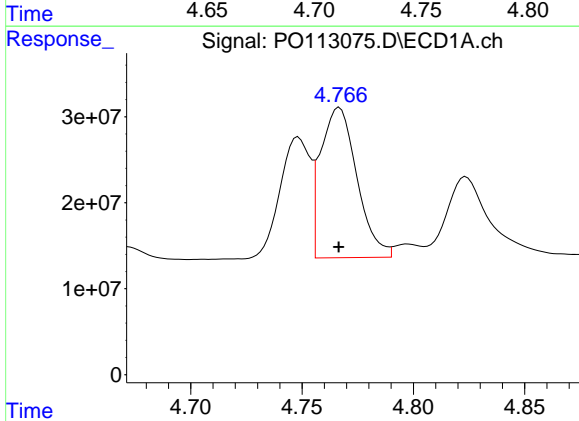
R.T.: 4.748 min  
 Delta R.T.: 0.000 min  
 Response: 132934515  
 Conc: 497.91 ng/ml

Instrument :  
 ECD\_O  
 ClientSampleId :  
 AR1242CCC500



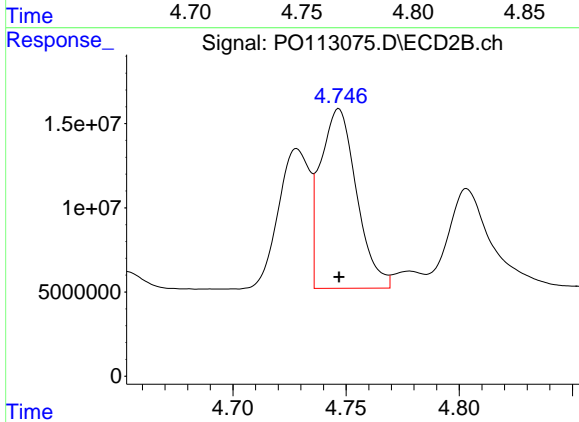
#3 AR-1016-1

R.T.: 4.728 min  
 Delta R.T.: 0.000 min  
 Response: 79779314  
 Conc: 467.71 ng/ml



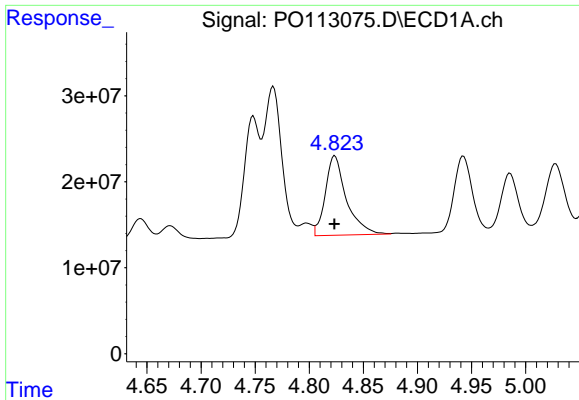
#4 AR-1016-2

R.T.: 4.767 min  
 Delta R.T.: 0.000 min  
 Response: 198392775  
 Conc: 494.21 ng/ml



#4 AR-1016-2

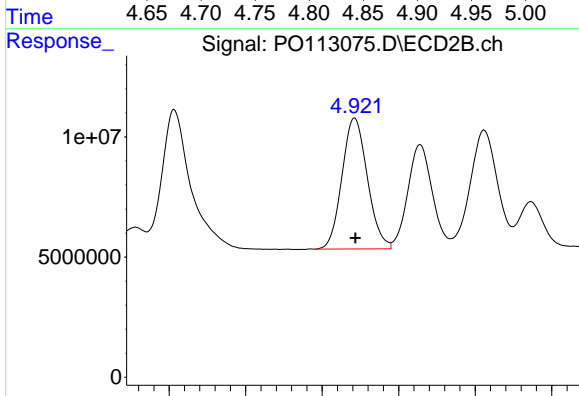
R.T.: 4.747 min  
 Delta R.T.: 0.000 min  
 Response: 118642726  
 Conc: 460.47 ng/ml



#5 AR-1016-3

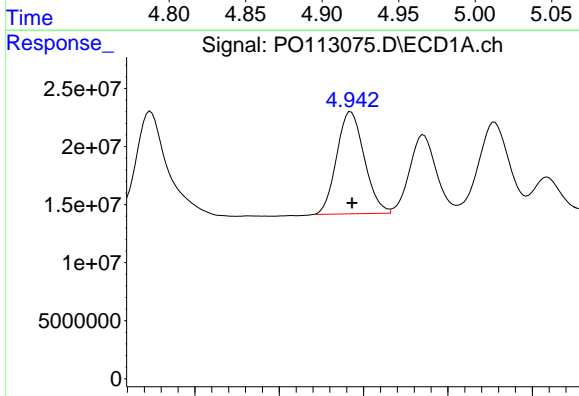
R.T.: 4.824 min  
 Delta R.T.: 0.000 min  
 Response: 125210112  
 Conc: 490.98 ng/ml

Instrument :  
 ECD\_O  
 ClientSampleId :  
 AR1242CCC500



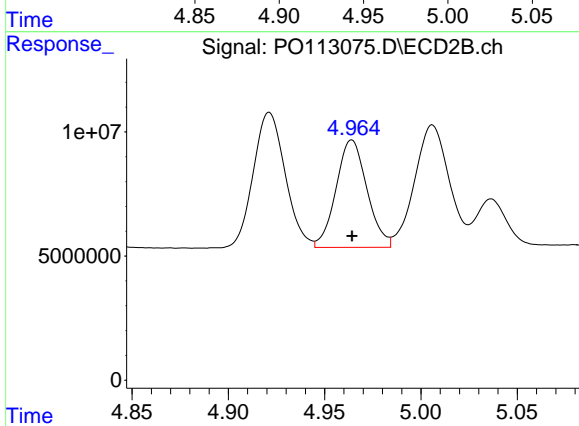
#5 AR-1016-3

R.T.: 4.921 min  
 Delta R.T.: 0.000 min  
 Response: 62949364  
 Conc: 450.88 ng/ml



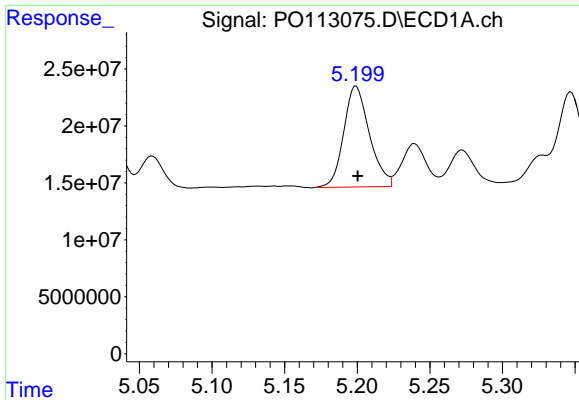
#6 AR-1016-4

R.T.: 4.942 min  
 Delta R.T.: 0.000 min  
 Response: 100202140  
 Conc: 459.50 ng/ml



#6 AR-1016-4

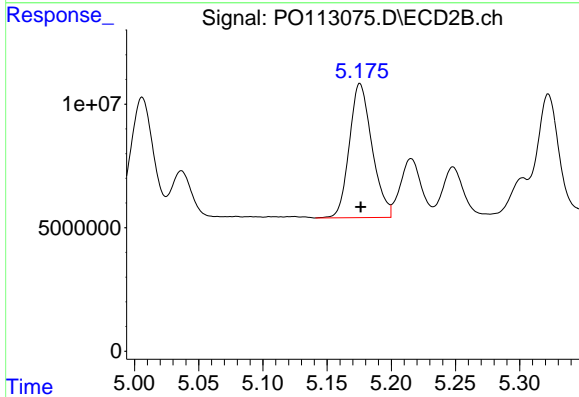
R.T.: 4.964 min  
 Delta R.T.: 0.000 min  
 Response: 48256203  
 Conc: 413.51 ng/ml



#7 AR-1016-5

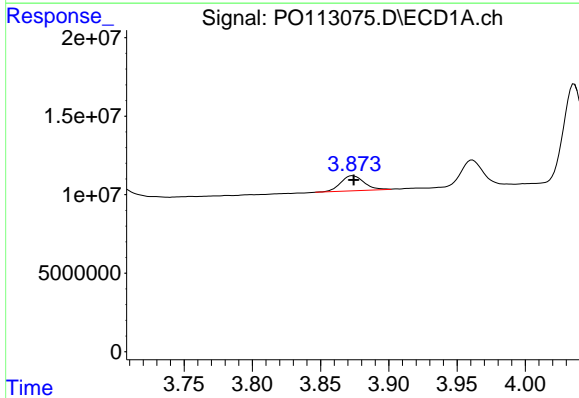
R.T.: 5.199 min  
 Delta R.T.: -0.001 min  
 Response: 109125104  
 Conc: 492.38 ng/ml

Instrument :  
 ECD\_O  
 ClientSampleId :  
 AR1242CCC500



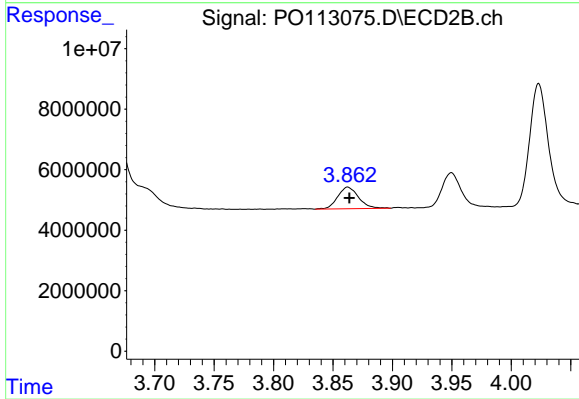
#7 AR-1016-5

R.T.: 5.176 min  
 Delta R.T.: 0.000 min  
 Response: 66722114  
 Conc: 468.13 ng/ml



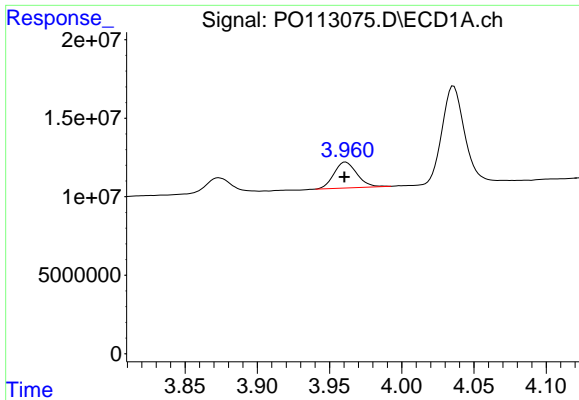
#8 AR-1221-1

R.T.: 3.874 min  
 Delta R.T.: 0.000 min  
 Response: 11495144  
 Conc: 122.85 ng/ml



#8 AR-1221-1

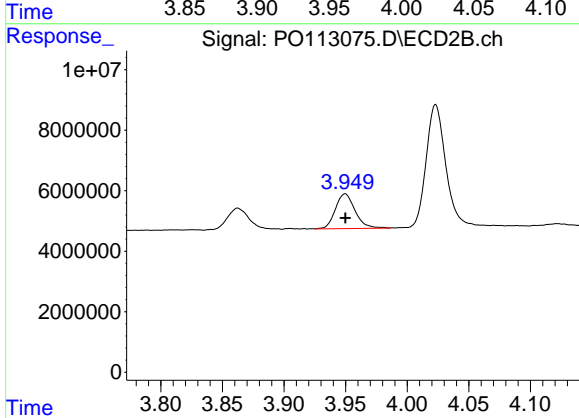
R.T.: 3.862 min  
 Delta R.T.: -0.001 min  
 Response: 8750945  
 Conc: 138.64 ng/ml



#9 AR-1221-2

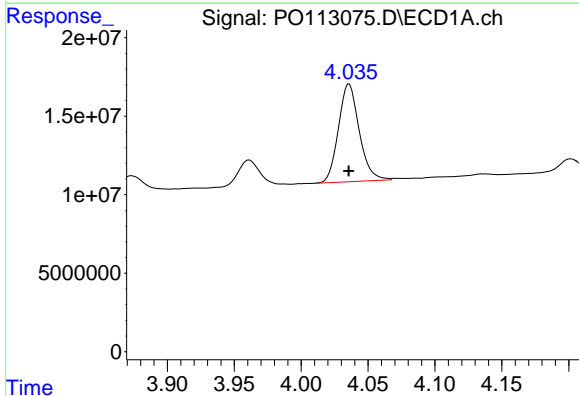
R.T.: 3.961 min  
 Delta R.T.: 0.000 min  
 Response: 18330008  
 Conc: 271.35 ng/ml

Instrument :  
 ECD\_O  
 ClientSampleId :  
 AR1242CCC500



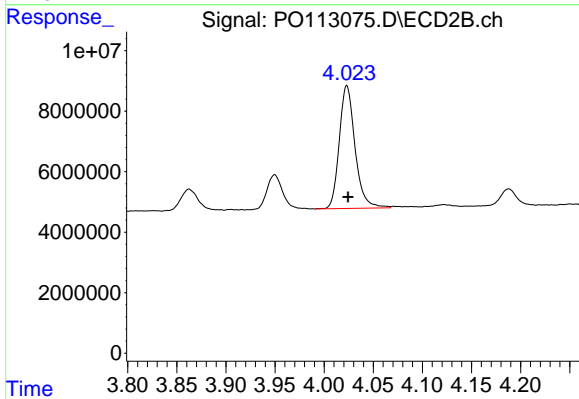
#9 AR-1221-2

R.T.: 3.950 min  
 Delta R.T.: 0.000 min  
 Response: 12807240  
 Conc: 274.40 ng/ml



#10 AR-1221-3

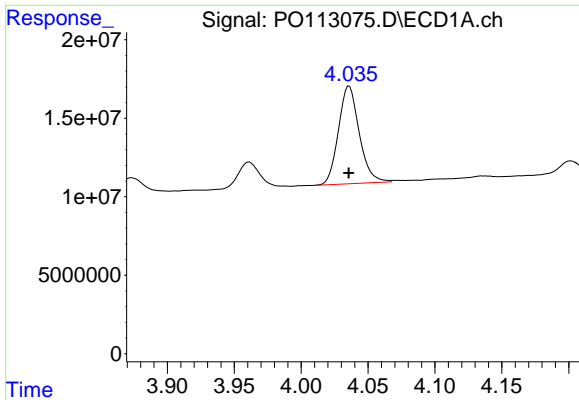
R.T.: 4.036 min  
 Delta R.T.: 0.000 min  
 Response: 67314480  
 Conc: 304.11 ng/ml



#10 AR-1221-3

R.T.: 4.023 min  
 Delta R.T.: -0.001 min  
 Response: 45435971  
 Conc: 306.02 ng/ml

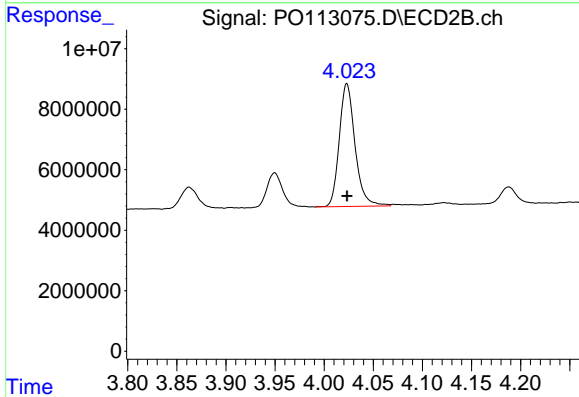




#11 AR-1232-1

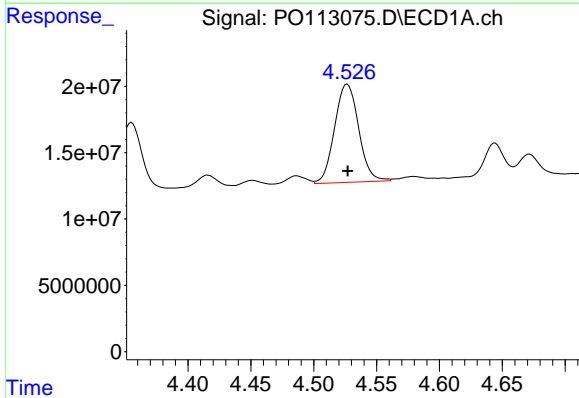
R.T.: 4.036 min  
 Delta R.T.: 0.000 min  
 Response: 67314480  
 Conc: 386.85 ng/ml

Instrument :  
 ECD\_O  
 ClientSampleId :  
 AR1242CCC500



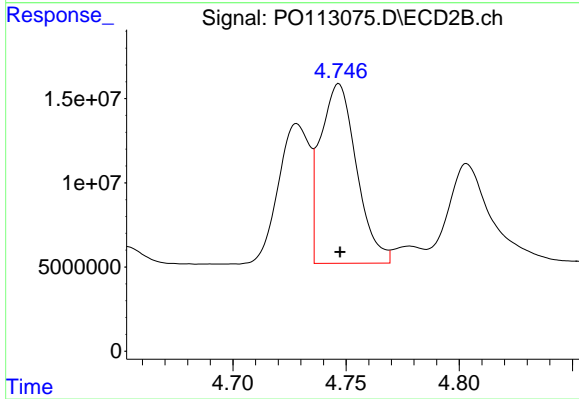
#11 AR-1232-1

R.T.: 4.023 min  
 Delta R.T.: 0.000 min  
 Response: 45435971  
 Conc: 387.01 ng/ml



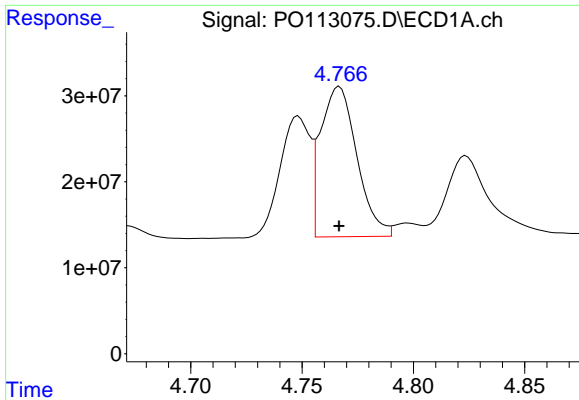
#12 AR-1232-2

R.T.: 4.527 min  
 Delta R.T.: 0.000 min  
 Response: 98554882  
 Conc: 987.01 ng/ml



#12 AR-1232-2

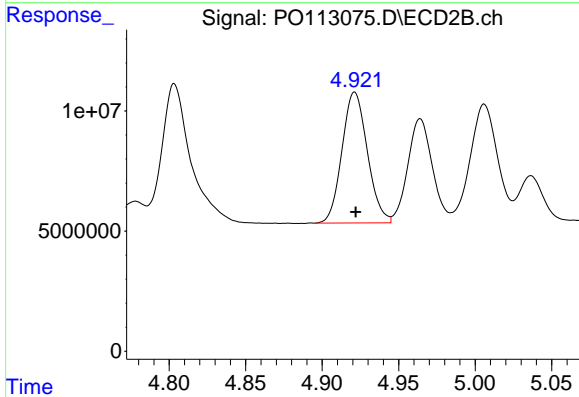
R.T.: 4.747 min  
 Delta R.T.: 0.000 min  
 Response: 118642726  
 Conc: 968.16 ng/ml



#13 AR-1232-3

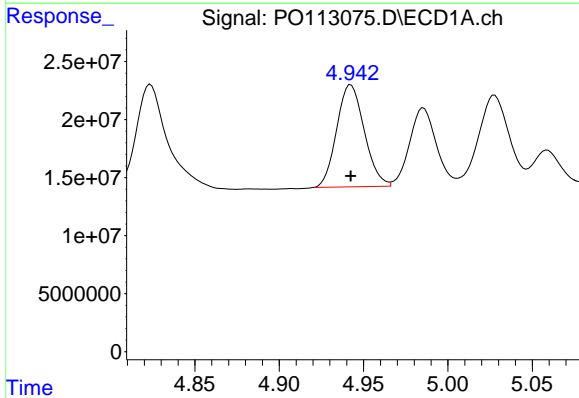
R.T.: 4.767 min  
 Delta R.T.: 0.000 min  
 Response: 198392775  
 Conc: 1047.06 ng/ml

Instrument :  
 ECD\_O  
 ClientSampleId :  
 AR1242CCC500



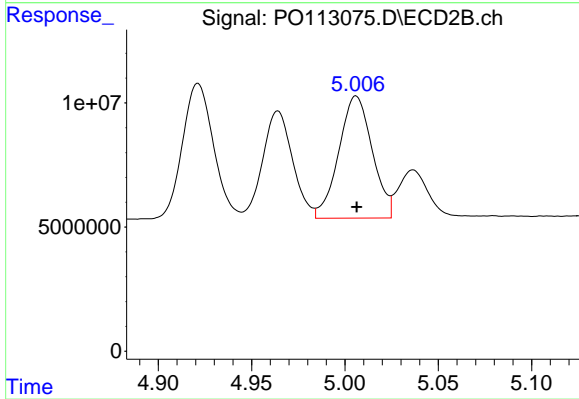
#13 AR-1232-3

R.T.: 4.921 min  
 Delta R.T.: 0.000 min  
 Response: 62949364  
 Conc: 993.74 ng/ml



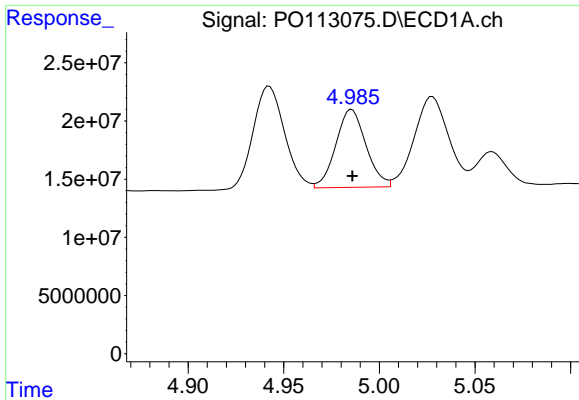
#14 AR-1232-4

R.T.: 4.942 min  
 Delta R.T.: 0.000 min  
 Response: 100202140  
 Conc: 1064.06 ng/ml



#14 AR-1232-4

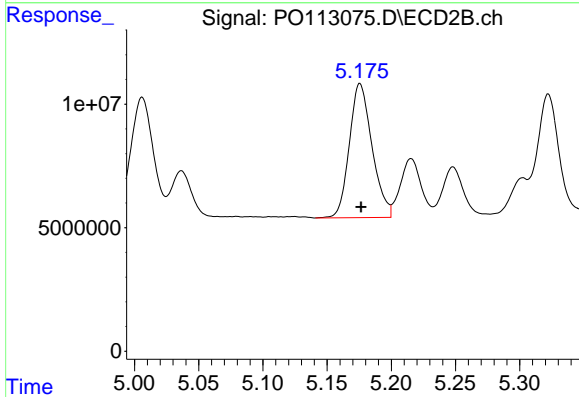
R.T.: 5.006 min  
 Delta R.T.: 0.000 min  
 Response: 61503268  
 Conc: 1093.95 ng/ml



#15 AR-1232-5

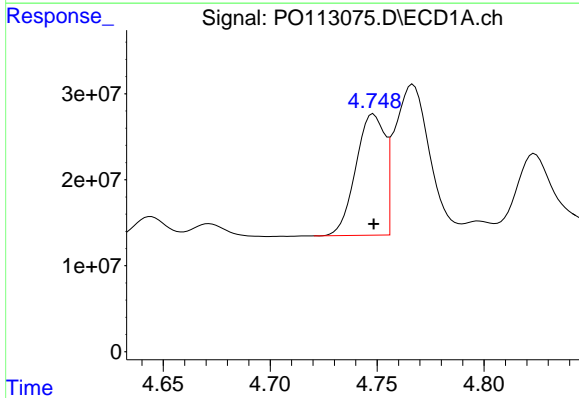
R.T.: 4.986 min  
 Delta R.T.: 0.000 min  
 Response: 73508200  
 Conc: 1186.71 ng/ml

Instrument :  
 ECD\_O  
 ClientSampleId :  
 AR1242CCC500



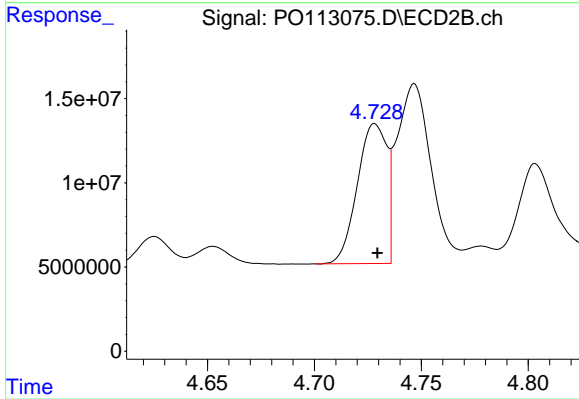
#15 AR-1232-5

R.T.: 5.176 min  
 Delta R.T.: 0.000 min  
 Response: 66722114  
 Conc: 1114.57 ng/ml



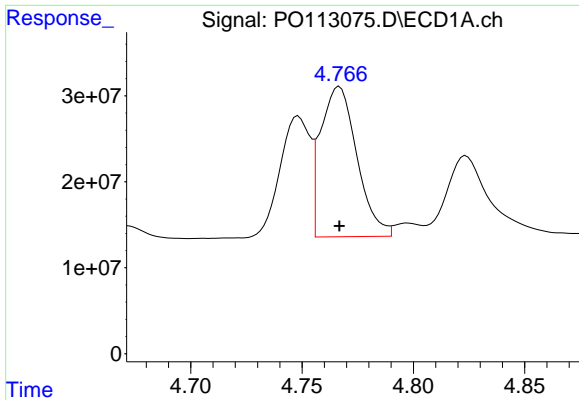
#16 AR-1242-1

R.T.: 4.748 min  
 Delta R.T.: 0.000 min  
 Response: 132934515  
 Conc: 578.15 ng/ml



#16 AR-1242-1

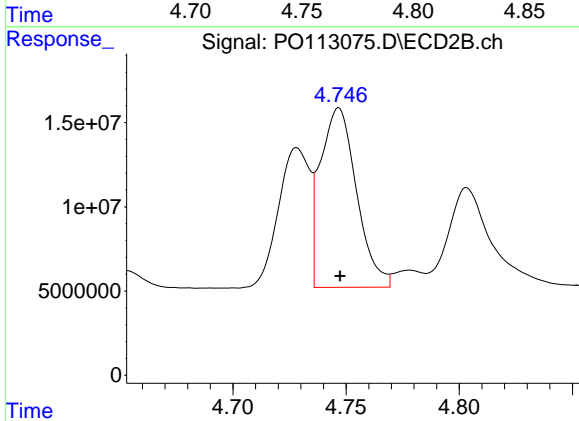
R.T.: 4.728 min  
 Delta R.T.: -0.001 min  
 Response: 79779314  
 Conc: 552.09 ng/ml



#17 AR-1242-2

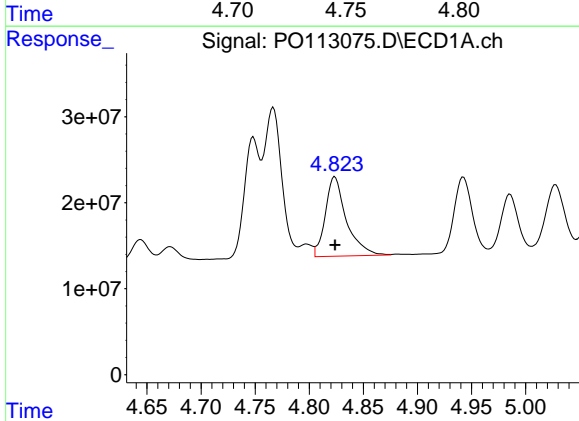
R.T.: 4.767 min  
 Delta R.T.: 0.000 min  
 Response: 198392775  
 Conc: 577.35 ng/ml

Instrument :  
 ECD\_O  
 ClientSampleId :  
 AR1242CCC500



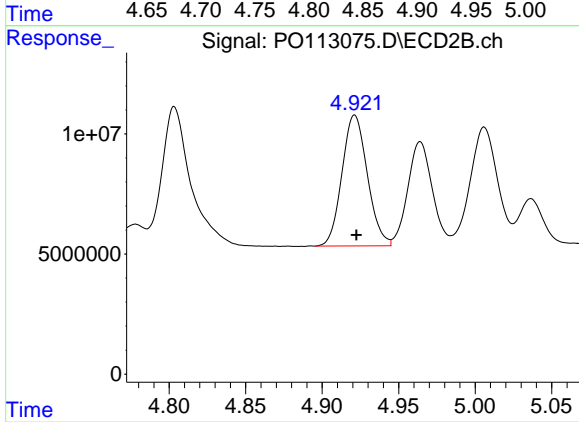
#17 AR-1242-2

R.T.: 4.747 min  
 Delta R.T.: 0.000 min  
 Response: 118642726  
 Conc: 546.96 ng/ml



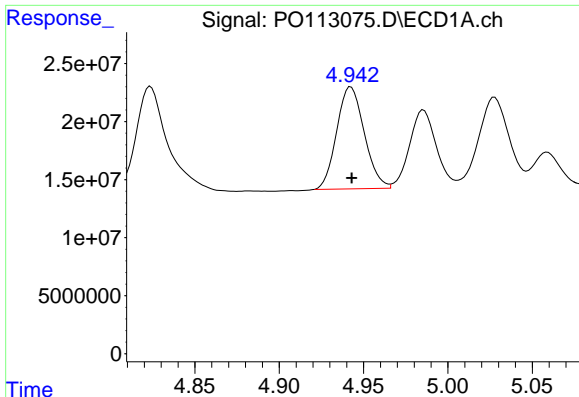
#18 AR-1242-3

R.T.: 4.824 min  
 Delta R.T.: 0.000 min  
 Response: 125210112  
 Conc: 564.30 ng/ml



#18 AR-1242-3

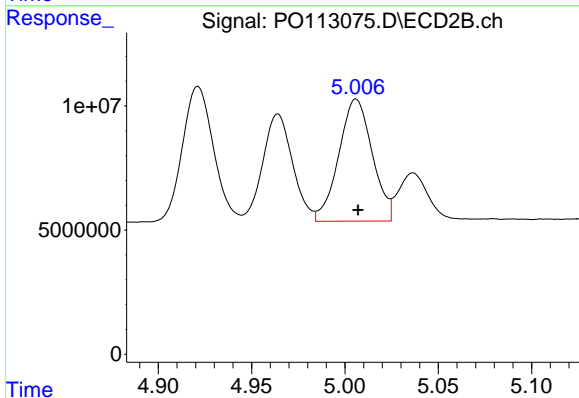
R.T.: 4.921 min  
 Delta R.T.: -0.001 min  
 Response: 62949364  
 Conc: 538.19 ng/ml



#19 AR-1242-4

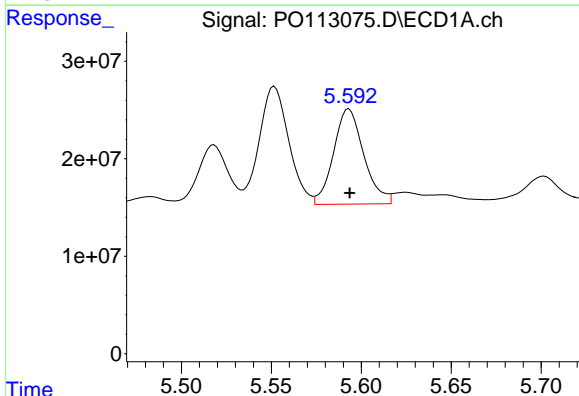
R.T.: 4.942 min  
 Delta R.T.: 0.000 min  
 Response: 100202140  
 Conc: 577.66 ng/ml

Instrument :  
 ECD\_O  
 ClientSampleId :  
 AR1242CCC500



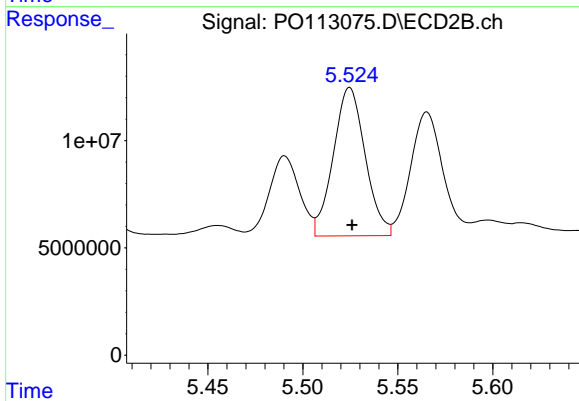
#19 AR-1242-4

R.T.: 5.006 min  
 Delta R.T.: 0.000 min  
 Response: 61503268  
 Conc: 522.82 ng/ml



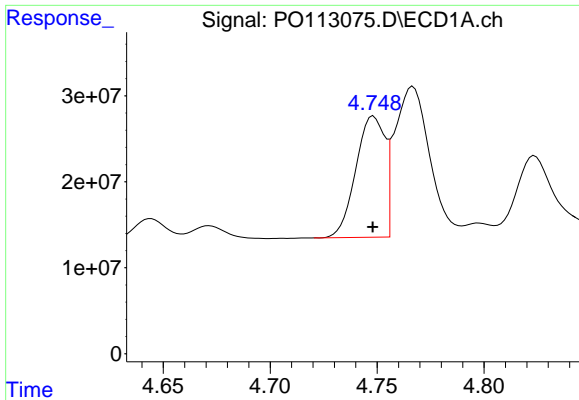
#20 AR-1242-5

R.T.: 5.593 min  
 Delta R.T.: 0.000 min  
 Response: 114395596  
 Conc: 571.51 ng/ml



#20 AR-1242-5

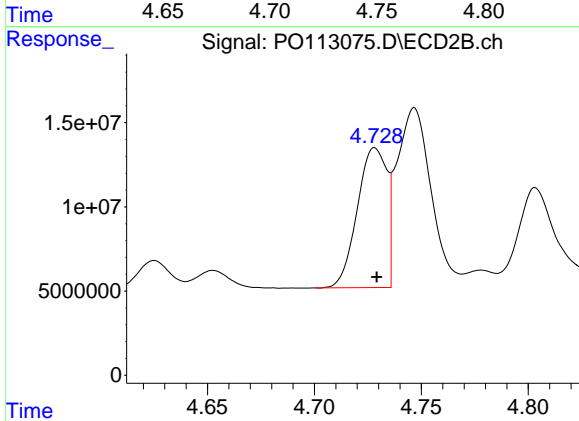
R.T.: 5.525 min  
 Delta R.T.: -0.001 min  
 Response: 80870857  
 Conc: 542.27 ng/ml



#21 AR-1248-1

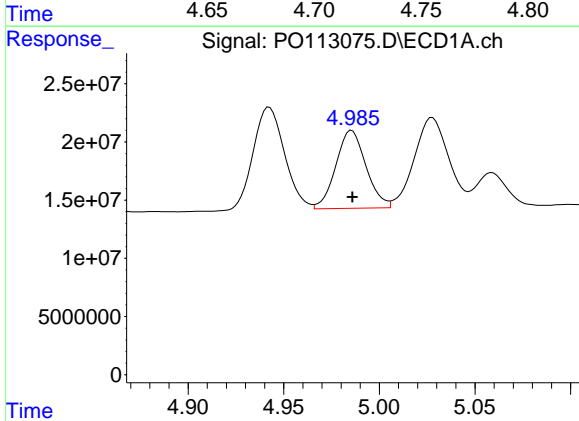
R.T.: 4.748 min  
 Delta R.T.: 0.000 min  
 Response: 132934515  
 Conc: 761.95 ng/ml

Instrument :  
 ECD\_O  
 ClientSampleId :  
 AR1242CCC500



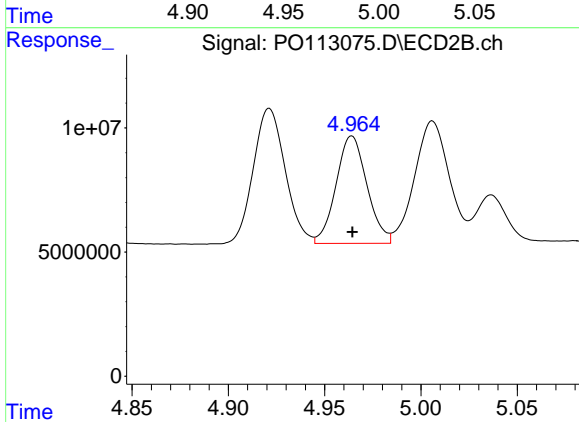
#21 AR-1248-1

R.T.: 4.728 min  
 Delta R.T.: 0.000 min  
 Response: 79779314  
 Conc: 715.43 ng/ml



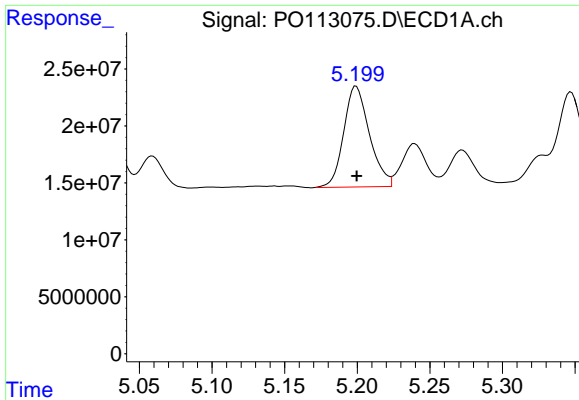
#22 AR-1248-2

R.T.: 4.986 min  
 Delta R.T.: 0.000 min  
 Response: 73508200  
 Conc: 303.92 ng/ml



#22 AR-1248-2

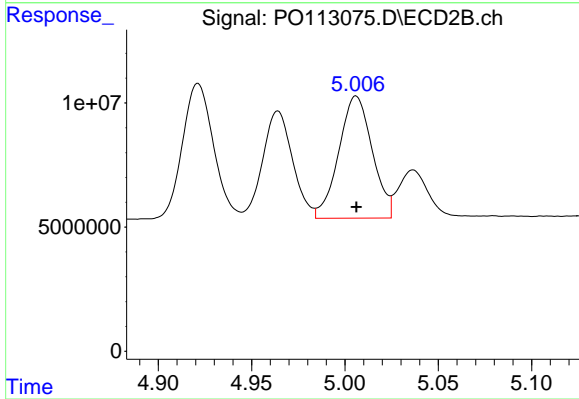
R.T.: 4.964 min  
 Delta R.T.: 0.000 min  
 Response: 48256203  
 Conc: 300.29 ng/ml



#23 AR-1248-3

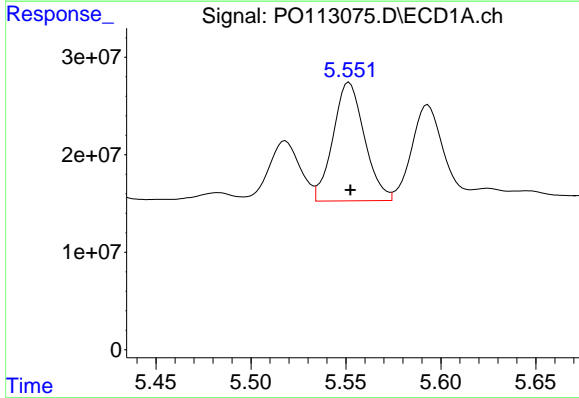
R.T.: 5.199 min  
 Delta R.T.: 0.000 min  
 Response: 109125104  
 Conc: 342.23 ng/ml

Instrument :  
 ECD\_O  
 ClientSampleId :  
 AR1242CCC500



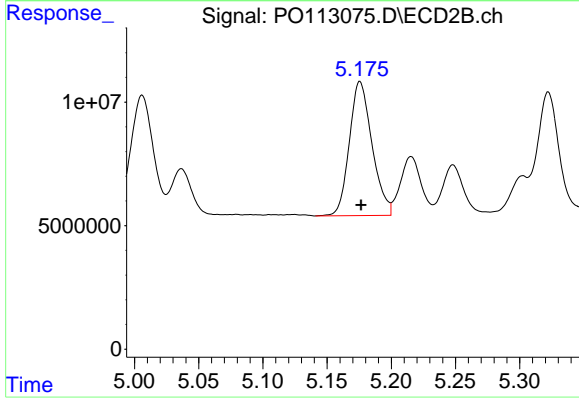
#23 AR-1248-3

R.T.: 5.006 min  
 Delta R.T.: 0.000 min  
 Response: 61503268  
 Conc: 362.51 ng/ml



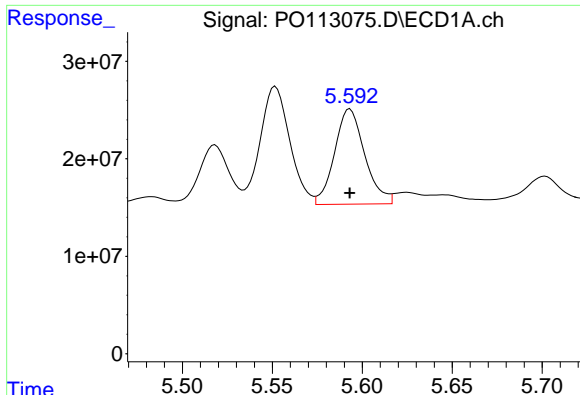
#24 AR-1248-4

R.T.: 5.552 min  
 Delta R.T.: 0.000 min  
 Response: 140058033  
 Conc: 280.34 ng/ml



#24 AR-1248-4

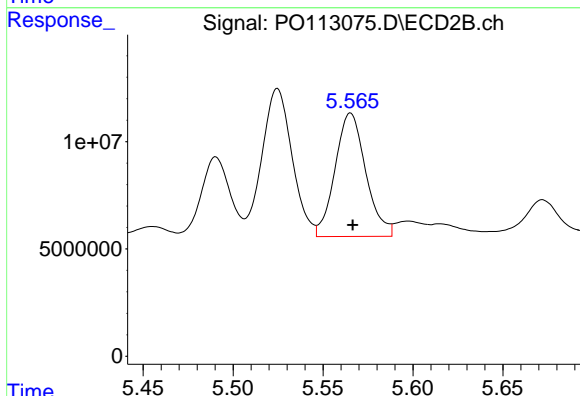
R.T.: 5.176 min  
 Delta R.T.: 0.000 min  
 Response: 66722114  
 Conc: 334.92 ng/ml



#25 AR-1248-5

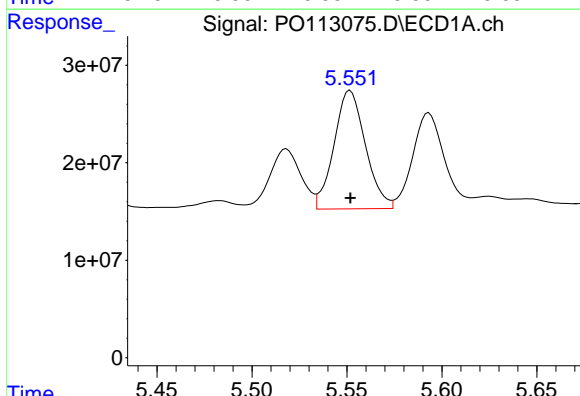
R.T.: 5.593 min  
 Delta R.T.: 0.000 min  
 Response: 114395596  
 Conc: 334.99 ng/ml

Instrument :  
 ECD\_O  
 ClientSampleId :  
 AR1242CCC500



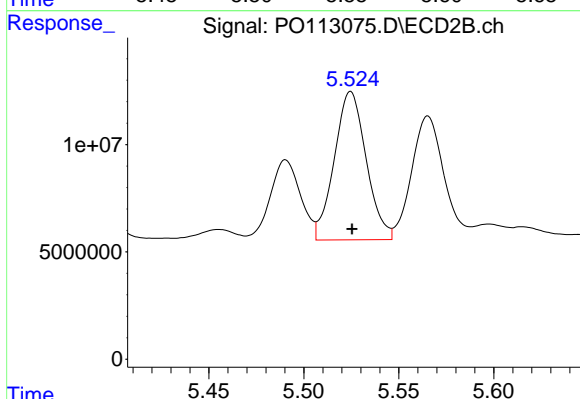
#25 AR-1248-5

R.T.: 5.565 min  
 Delta R.T.: -0.001 min  
 Response: 68405435  
 Conc: 322.22 ng/ml



#26 AR-1254-1

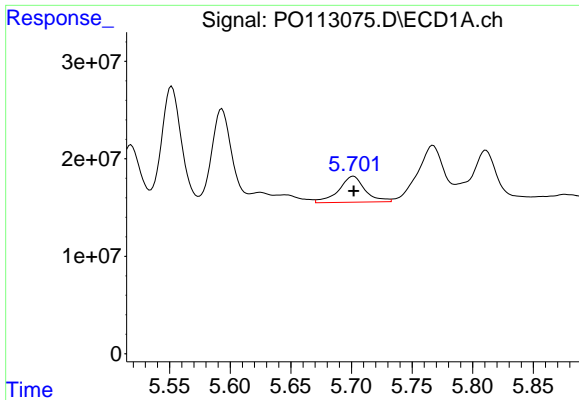
R.T.: 5.552 min  
 Delta R.T.: 0.000 min  
 Response: 140058033  
 Conc: 259.38 ng/ml



#26 AR-1254-1

R.T.: 5.525 min  
 Delta R.T.: 0.000 min  
 Response: 80870857  
 Conc: 256.44 ng/ml

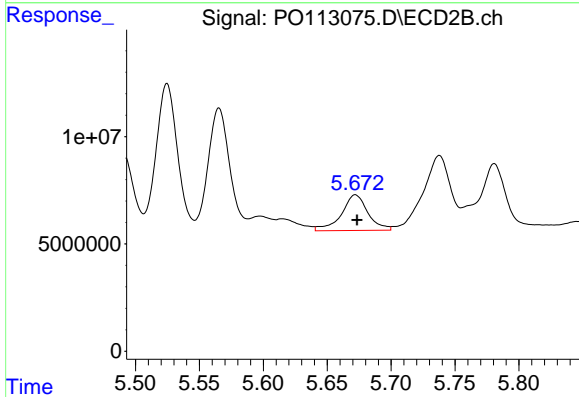




#27 AR-1254-2

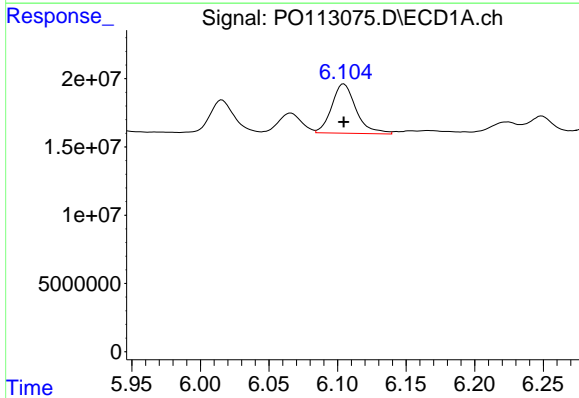
R.T.: 5.702 min  
 Delta R.T.: 0.000 min  
 Response: 40431067  
 Conc: 81.93 ng/ml

Instrument :  
 ECD\_O  
 ClientSampleId :  
 AR1242CCC500



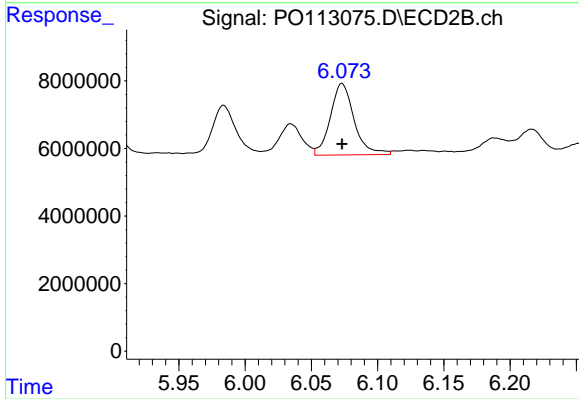
#27 AR-1254-2

R.T.: 5.672 min  
 Delta R.T.: -0.001 min  
 Response: 23989717  
 Conc: 85.57 ng/ml



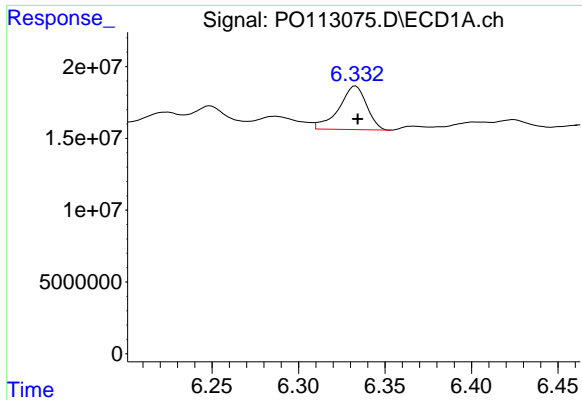
#28 AR-1254-3

R.T.: 6.105 min  
 Delta R.T.: 0.000 min  
 Response: 44640089  
 Conc: 60.42 ng/ml



#28 AR-1254-3

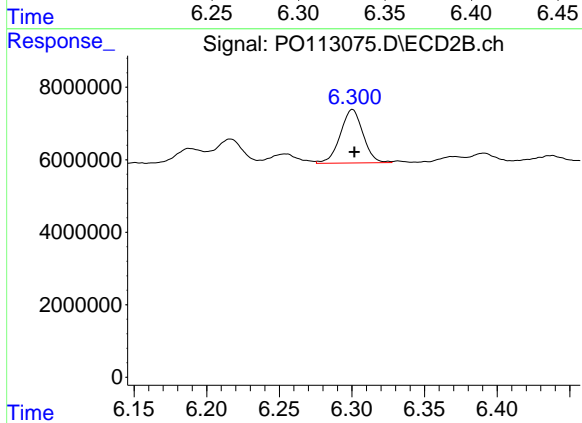
R.T.: 6.073 min  
 Delta R.T.: 0.000 min  
 Response: 26465105  
 Conc: 63.48 ng/ml



#29 AR-1254-4

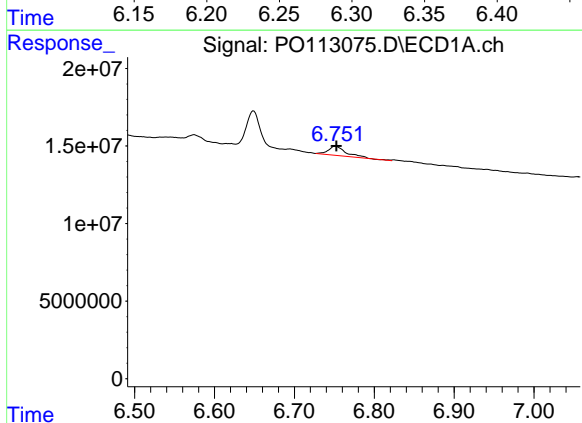
R.T.: 6.333 min  
 Delta R.T.: -0.001 min  
 Response: 33780359  
 Conc: 60.65 ng/ml

Instrument :  
 ECD\_O  
 ClientSampleId :  
 AR1242CCC500



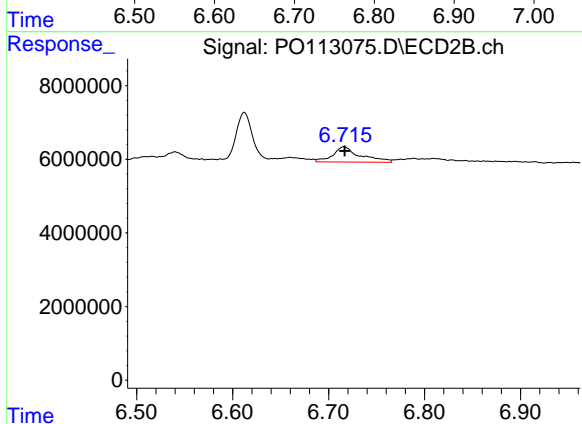
#29 AR-1254-4

R.T.: 6.300 min  
 Delta R.T.: -0.001 min  
 Response: 16133319  
 Conc: 58.70 ng/ml



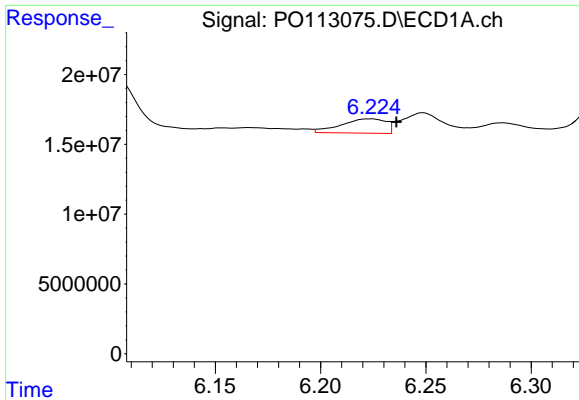
#30 AR-1254-5

R.T.: 6.752 min  
 Delta R.T.: 0.000 min  
 Response: 9259539  
 Conc: 13.21 ng/ml



#30 AR-1254-5

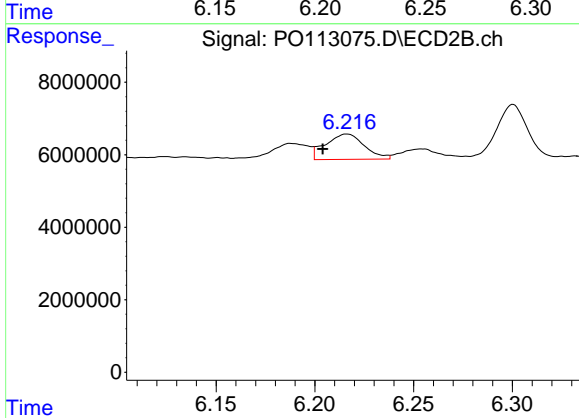
R.T.: 6.716 min  
 Delta R.T.: 0.000 min  
 Response: 8259830  
 Conc: 23.11 ng/ml



#31 AR-1260-1

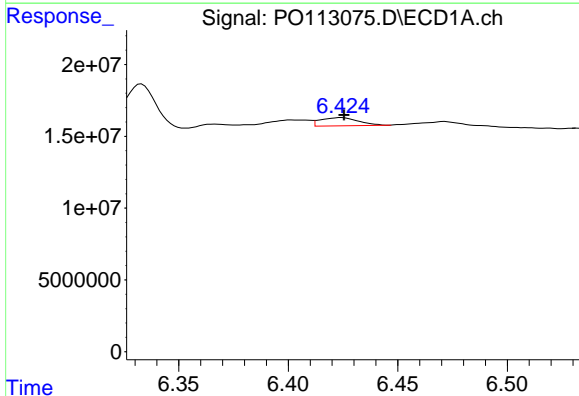
R.T.: 6.224 min  
 Delta R.T.: -0.012 min  
 Response: 15163617  
 Conc: 34.00 ng/ml

Instrument :  
 ECD\_O  
 ClientSampleId :  
 AR1242CCC500



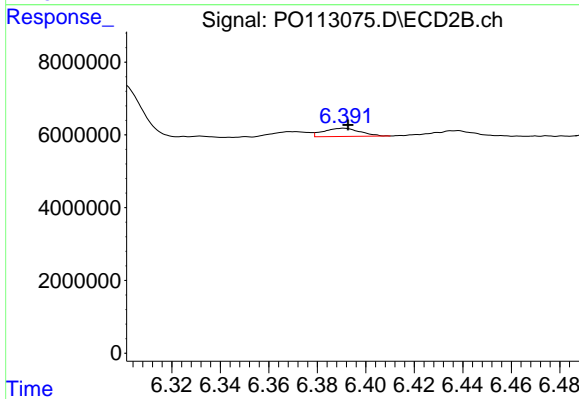
#31 AR-1260-1

R.T.: 6.216 min  
 Delta R.T.: 0.012 min  
 Response: 9566099  
 Conc: 37.50 ng/ml



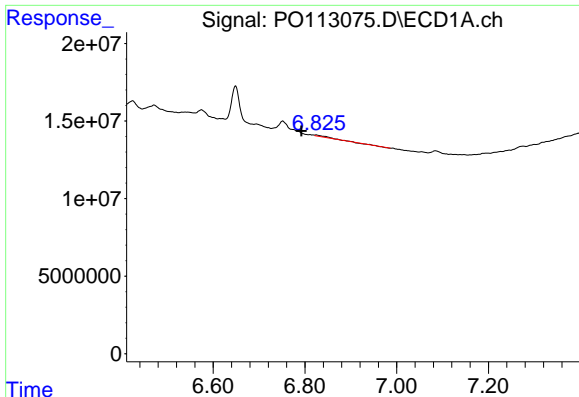
#32 AR-1260-2

R.T.: 6.424 min  
 Delta R.T.: -0.001 min  
 Response: 6891091  
 Conc: 10.03 ng/ml



#32 AR-1260-2

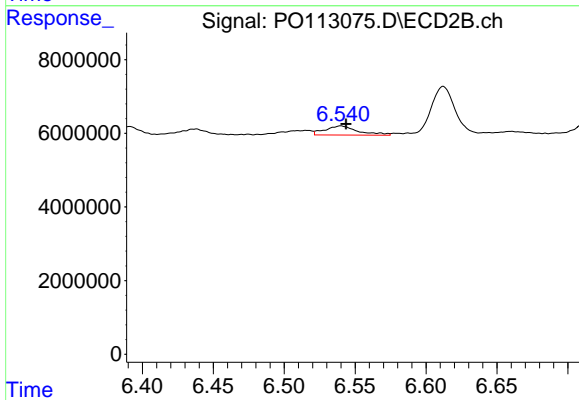
R.T.: 6.391 min  
 Delta R.T.: -0.002 min  
 Response: 2360889  
 Conc: 6.83 ng/ml



#33 AR-1260-3

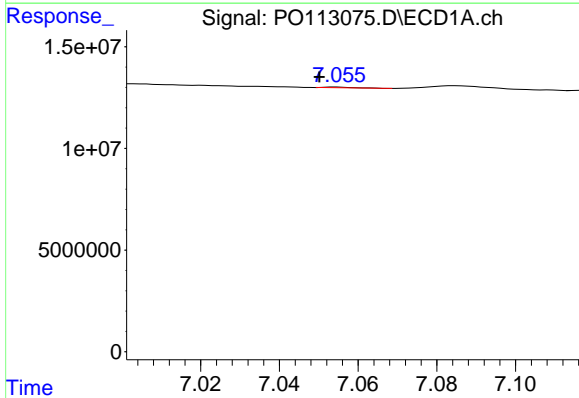
R.T.: 6.824 min  
 Delta R.T.: 0.032 min  
 Response: 1408310  
 Conc: 2.28 ng/ml

Instrument :  
 ECD\_O  
 ClientSampleId :  
 AR1242CCC500



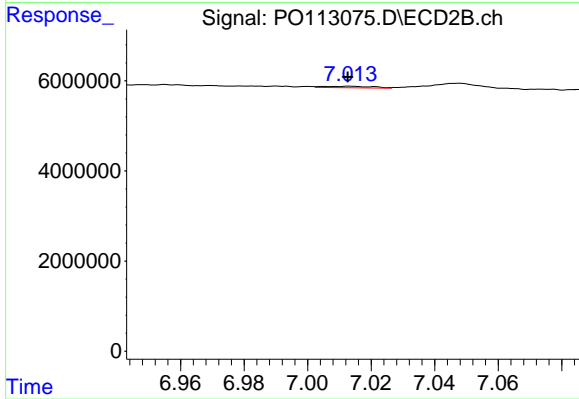
#33 AR-1260-3

R.T.: 6.540 min  
 Delta R.T.: -0.004 min  
 Response: 4056934  
 Conc: 13.64 ng/ml



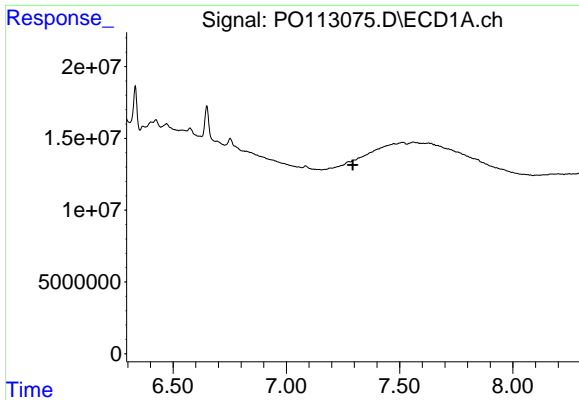
#34 AR-1260-4

R.T.: 7.055 min  
 Delta R.T.: 0.004 min  
 Response: 184531  
 Conc: 0.41 ng/ml



#34 AR-1260-4

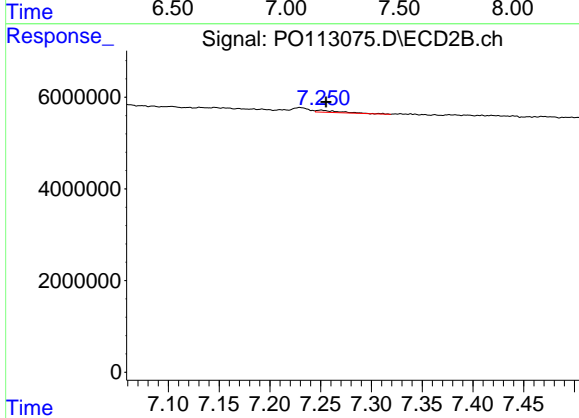
R.T.: 7.013 min  
 Delta R.T.: 0.000 min  
 Response: 360009  
 Conc: 1.74 ng/ml



#35 AR-1260-5

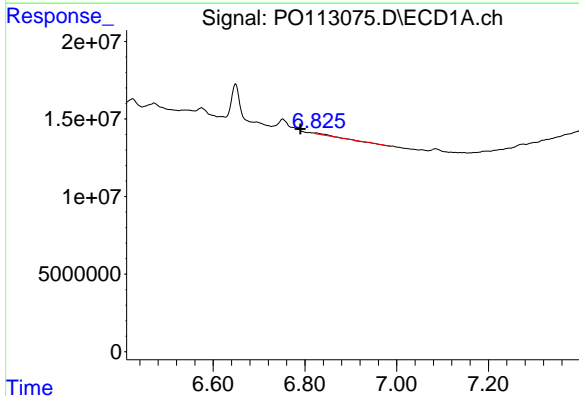
R.T.: 7.276 min  
 Delta R.T.: -0.018 min  
 Response: -136141  
 Conc: N.D.

Instrument :  
 ECD\_O  
 ClientSampleId :  
 AR1242CCC500



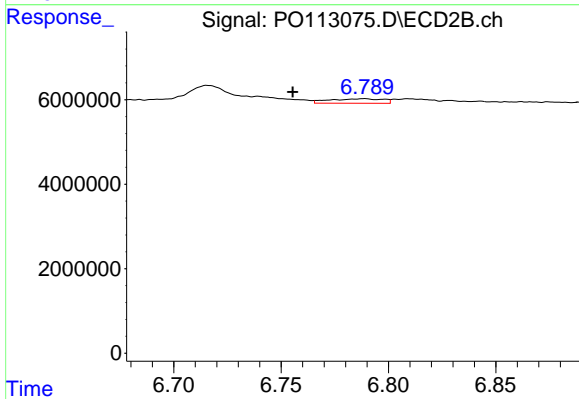
#35 AR-1260-5

R.T.: 7.250 min  
 Delta R.T.: -0.005 min  
 Response: 795410  
 Conc: 1.70 ng/ml



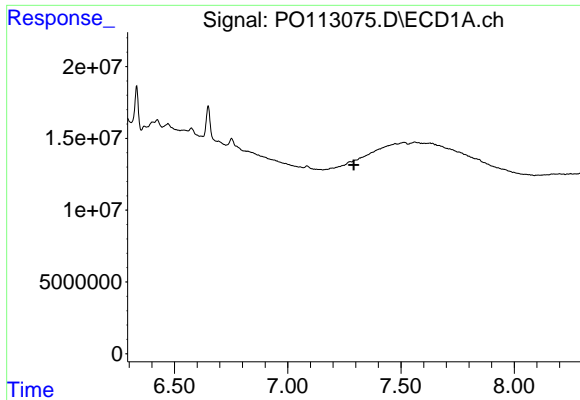
#36 AR-1262-1

R.T.: 6.824 min  
 Delta R.T.: 0.034 min  
 Response: 1408310  
 Conc: 1.54 ng/ml



#36 AR-1262-1

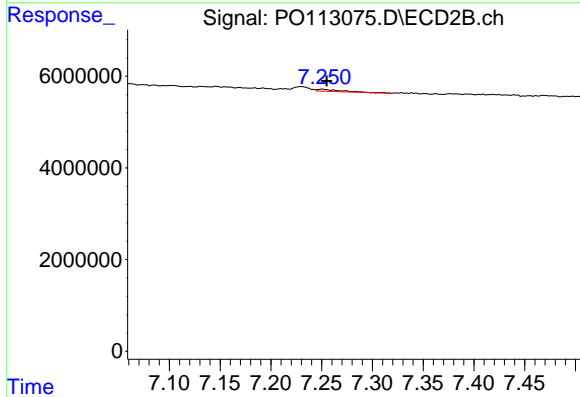
R.T.: 6.789 min  
 Delta R.T.: 0.033 min  
 Response: 1860413  
 Conc: 4.49 ng/ml



#37 AR-1262-2

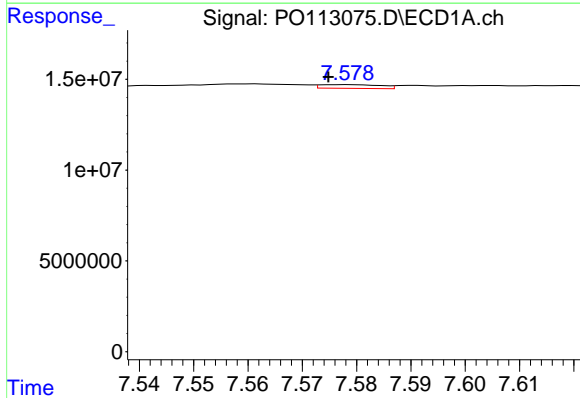
R.T.: 7.276 min  
 Delta R.T.: -0.017 min  
 Response: -136141  
 Conc: N.D.

Instrument :  
 ECD\_O  
 ClientSampleId :  
 AR1242CCC500



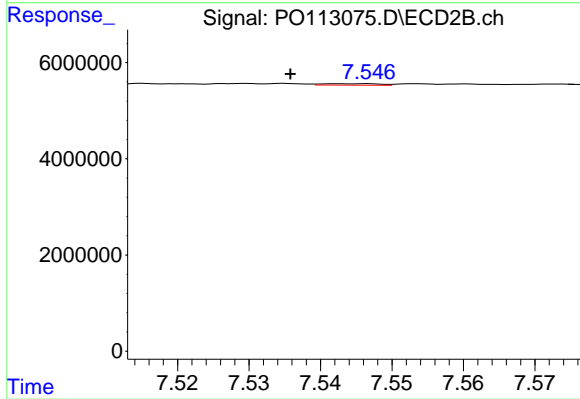
#37 AR-1262-2

R.T.: 7.250 min  
 Delta R.T.: -0.005 min  
 Response: 795410  
 Conc: 1.54 ng/ml



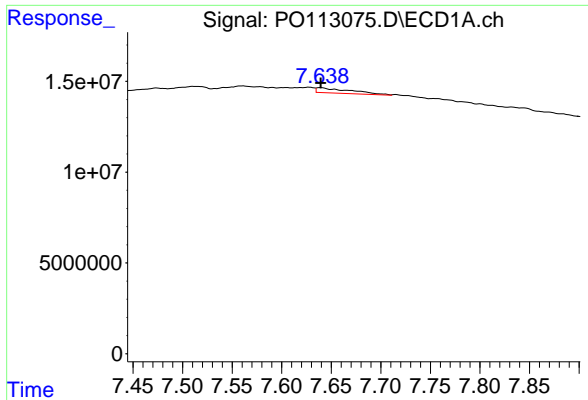
#38 AR-1262-3

R.T.: 7.578 min  
 Delta R.T.: 0.003 min  
 Response: 1584209  
 Conc: 2.86 ng/ml



#38 AR-1262-3

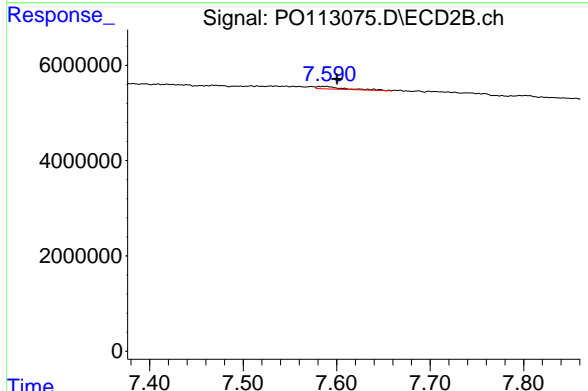
R.T.: 7.546 min  
 Delta R.T.: 0.010 min  
 Response: 173568  
 Conc: 0.97 ng/ml



#39 AR-1262-4

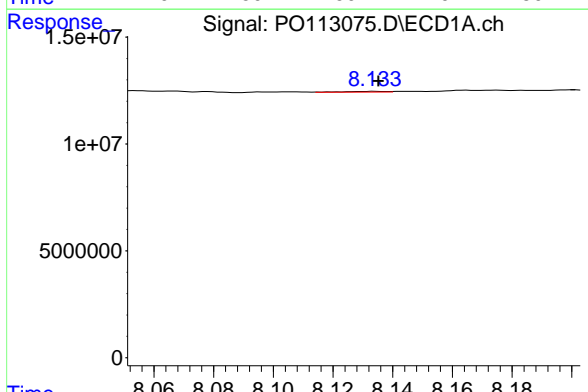
R.T.: 7.639 min  
 Delta R.T.: 0.000 min  
 Response: 6854906  
 Conc: 7.01 ng/ml

Instrument :  
 ECD\_O  
 ClientSampleId :  
 AR1242CCC500



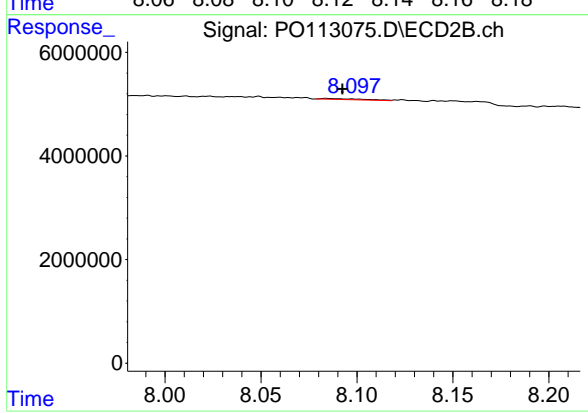
#39 AR-1262-4

R.T.: 7.589 min  
 Delta R.T.: -0.011 min  
 Response: 1049633  
 Conc: 3.62 ng/ml



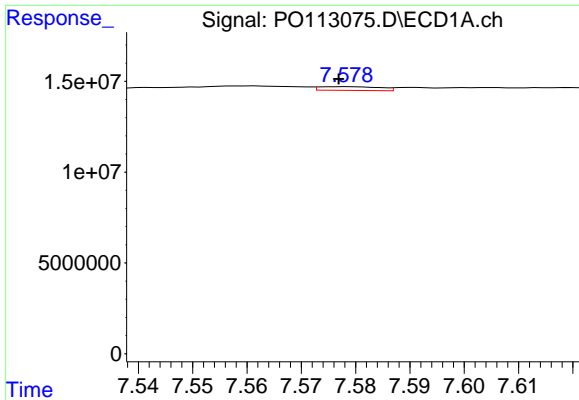
#40 AR-1262-5

R.T.: 8.134 min  
 Delta R.T.: -0.001 min  
 Response: 369575  
 Conc: 0.89 ng/ml



#40 AR-1262-5

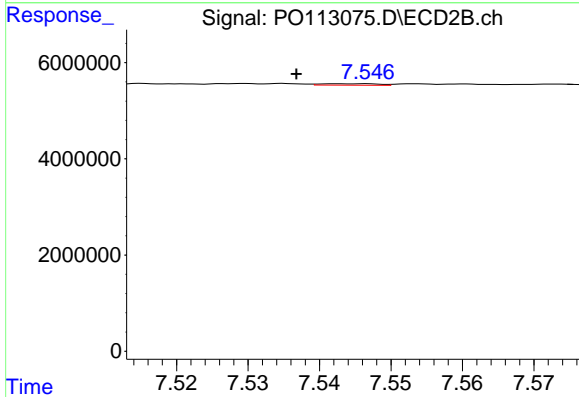
R.T.: 8.084 min  
 Delta R.T.: -0.008 min  
 Response: 283977  
 Conc: 2.62 ng/ml



#41 AR-1268-1

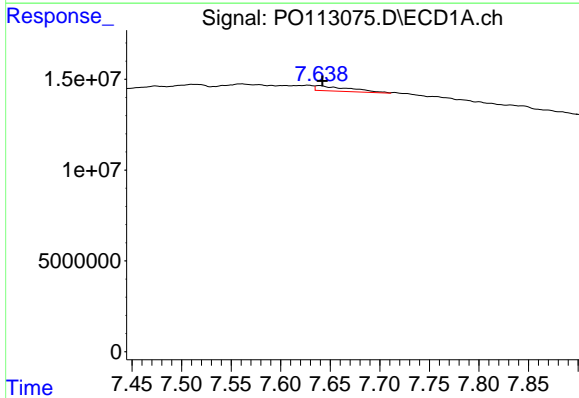
R.T.: 7.578 min  
 Delta R.T.: 0.001 min  
 Response: 1584209  
 Conc: 0.92 ng/ml

Instrument :  
 ECD\_O  
 ClientSampleId :  
 AR1242CCC500



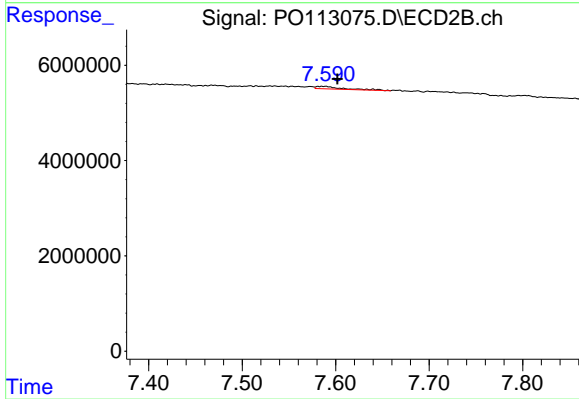
#41 AR-1268-1

R.T.: 7.546 min  
 Delta R.T.: 0.009 min  
 Response: 173568  
 Conc: 0.34 ng/ml



#42 AR-1268-2

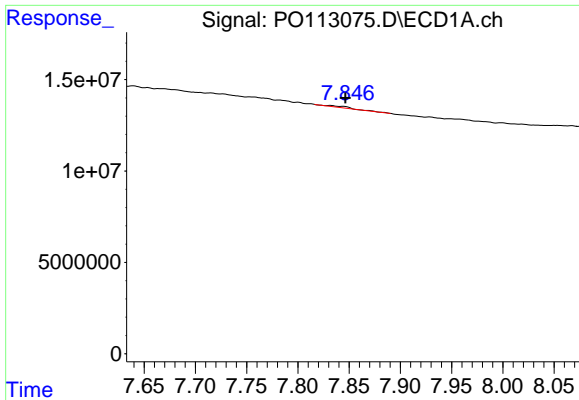
R.T.: 7.639 min  
 Delta R.T.: -0.003 min  
 Response: 6854906  
 Conc: 4.73 ng/ml



#42 AR-1268-2

R.T.: 7.589 min  
 Delta R.T.: -0.013 min  
 Response: 1049633  
 Conc: 2.53 ng/ml

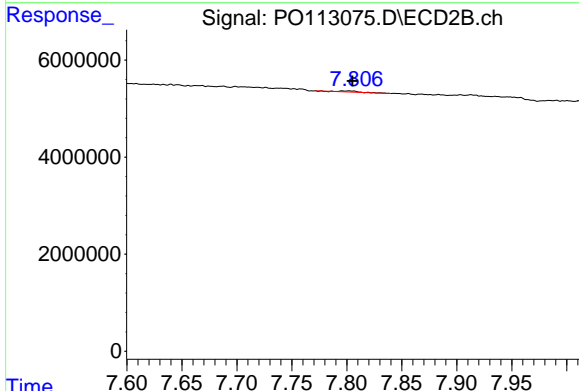




#43 AR-1268-3

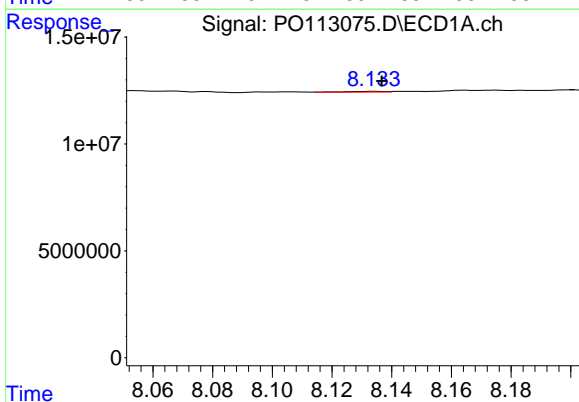
R.T.: 7.832 min  
 Delta R.T.: -0.015 min  
 Response: 827513  
 Conc: 0.69 ng/ml

Instrument :  
 ECD\_O  
 ClientSampleId :  
 AR1242CCC500



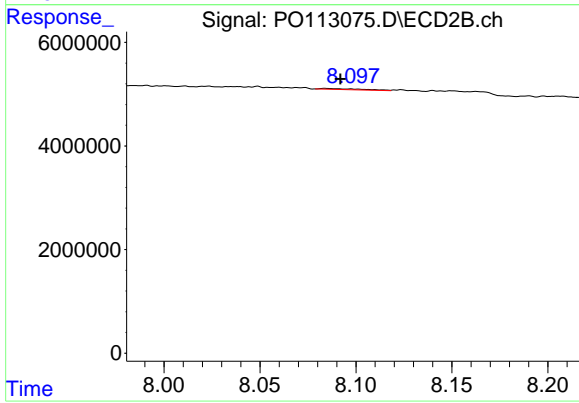
#43 AR-1268-3

R.T.: 7.802 min  
 Delta R.T.: -0.003 min  
 Response: 202682  
 Conc: 0.62 ng/ml



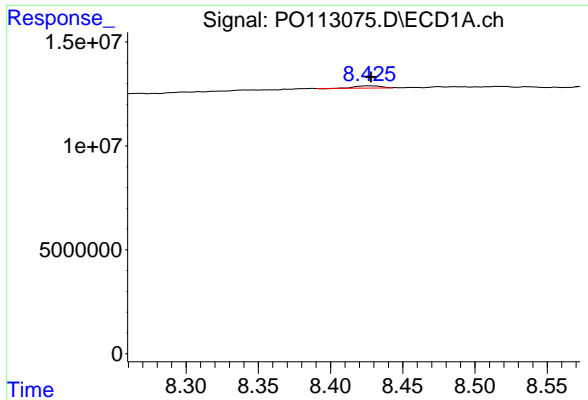
#44 AR-1268-4

R.T.: 8.134 min  
 Delta R.T.: -0.003 min  
 Response: 369575  
 Conc: 0.80 ng/ml



#44 AR-1268-4

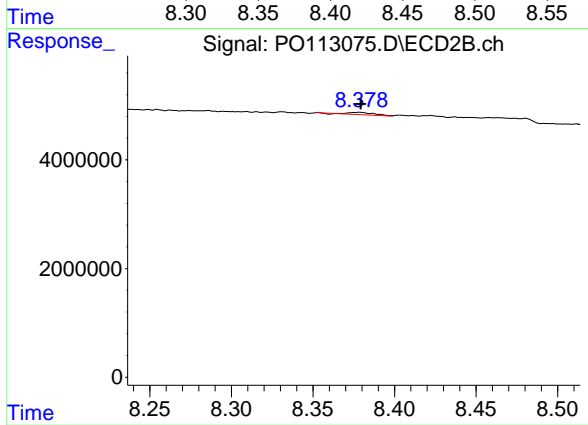
R.T.: 8.084 min  
 Delta R.T.: -0.008 min  
 Response: 283977  
 Conc: 2.36 ng/ml



#45 AR-1268-5

R.T.: 8.426 min  
 Delta R.T.: -0.002 min  
 Response: 1247726  
 Conc: 0.39 ng/ml

Instrument :  
 ECD\_O  
 ClientSampleId :  
 AR1242CCC500



#45 AR-1268-5

R.T.: 8.378 min  
 Delta R.T.: 0.000 min  
 Response: 477399  
 Conc: 0.61 ng/ml