

Data Path : Z:\pestpcbsrv\HPCHEM1\ECD_O\Data\P0082025\
 Data File : PO113076.D
 Signal(s) : Signal #1: ECD1A.ch Signal #2: ECD2B.ch
 Acq On : 20 Aug 2025 10:10
 Operator : YP/AJ
 Sample : AR1248CCC500
 Misc :
 ALS Vial : 5 Sample Multiplier: 1

Instrument :
 ECD_O
 ClientSampleId :
 AR1248CCC500

Integration File signal 1: autoint1.e
 Integration File signal 2: autoint2.e
 Quant Time: Aug 20 13:02:03 2025
 Quant Method : Z:\pestpcbsrv\HPCHEM1\ECD_O\methods\P0081825.M
 Quant Title : GC EXTRACTABLES
 QLast Update : Tue Aug 19 06:08:32 2025
 Response via : Initial Calibration
 Integrator: ChemStation

Volume Inj. : 2 µl
 Signal #1 Phase : ZB-MR1 Signal #2 Phase: ZB-MR2
 Signal #1 Info : 30Mx0.32mmx 0.50µ Signal #2 Info : 30M x 0.32mm x 0.25µm

Compound	RT#1	RT#2	Resp#1	Resp#2	ng/ml	ng/ml
System Monitoring Compounds						
1) SA Tetrachlo...	3.664	3.656	441.6E6	259.9E6	53.936	51.353
2) SA Decachlor...	8.681	8.626	304.7E6	90005685	43.959	47.500
Target Compounds						
3) L1 AR-1016-1	4.748	4.728	94508931	58346329	353.986	342.059
4) L1 AR-1016-2	4.766	4.746	102.1E6	63250319	254.279	245.484
5) L1 AR-1016-3	4.823	4.923	56535215	40237383	221.687	288.204 #
6) L1 AR-1016-4	4.944	4.963	62823977	81475789	288.093	698.171 #
7) L1 AR-1016-5	5.199	5.175	169.1E6	101.9E6	762.817	714.837
8) L2 AR-1221-1	3.879	3.864	414708	712549	4.432	11.289 #
9) L2 AR-1221-2	3.964	3.952	6161697	4426867	91.216	94.848
10) L2 AR-1221-3	4.036	4.024	5723651	4870680	25.858	32.805 #
11) L3 AR-1232-1	4.036	4.024	5723651	4870680	32.893	41.487 #
12) L3 AR-1232-2	4.526	4.746	39064692	63250319	391.224	516.139 #
13) L3 AR-1232-3	4.766	4.923	102.1E6	40237383	538.726	635.204
14) L3 AR-1232-4	4.944	5.005	62823977	85920248	667.137	1528.254 #
15) L3 AR-1232-5	4.985	5.175	128.8E6	101.9E6	2079.297	1701.966
16) L4 AR-1242-1	4.748	4.728	94508931	58346329	411.030	403.769
17) L4 AR-1242-2	4.766	4.746	102.1E6	63250319	297.055	291.595
18) L4 AR-1242-3	4.823	4.923	56535215	40237383	254.796	344.014 #
19) L4 AR-1242-4	4.944	5.005	62823977	85920248	362.176	730.382 #
20) L4 AR-1242-5	5.593	5.524	174.7E6	146.1E6	872.842	979.686
21) L5 AR-1248-1	4.748	4.728	94508931	58346329	541.703	523.230
22) L5 AR-1248-2	4.985	4.963	128.8E6	81475789	532.518	507.009
23) L5 AR-1248-3	5.199	5.005	169.1E6	85920248	530.200	506.424
24) L5 AR-1248-4	5.551	5.175	258.2E6	101.9E6	516.838	511.423
25) L5 AR-1248-5	5.593	5.565	174.7E6	103.5E6	511.609	487.450
26) L6 AR-1254-1	5.551	5.524	258.2E6	146.1E6	478.194	463.300
27) L6 AR-1254-2	5.701	5.672	79448521	47242577	161.005	168.519
28) L6 AR-1254-3	6.104	6.072	111.5E6	64216361	150.888	154.025
29) L6 AR-1254-4	6.332	6.299	73949815	40057444	132.765	145.751
30) L6 AR-1254-5	6.751	6.715	21342674	13510145	30.447	37.792
31) L7 AR-1260-1	6.248	6.216	58129313	30834970	130.340	120.889
32) L7 AR-1260-2	6.424	6.391	14836186	5994605	21.604	17.340
33) L7 AR-1260-3	6.818	6.540	3360439	8634180	5.442	29.029 #
34) L7 AR-1260-4	7.043	7.010	827735	900451	1.848	4.345 #
35) L7 AR-1260-5	7.291	7.253	2463393	1749306	2.035	3.734 #
36) L8 AR-1262-1	6.818	6.784	3360439	1787299	3.670	4.311
37) L8 AR-1262-2	7.291	7.253	2463393	1749306	1.629	3.379 #
38) L8 AR-1262-3	7.570	7.533	3231233	417053	5.831	2.322 #
39) L8 AR-1262-4	7.637	7.595	14450650	1479571	14.776	5.104 #
40) L8 AR-1262-5	8.131	8.091	559171	1310796	1.341	12.100 #
41) L9 AR-1268-1	7.583	7.533	2194783	417053	1.275	0.819 #

Data Path : Z:\pestpcbsrv\HPCHEM1\ECD_0\Data\P0082025\
 Data File : P0113076.D
 Signal(s) : Signal #1: ECD1A.ch Signal #2: ECD2B.ch
 Acq On : 20 Aug 2025 10:10
 Operator : YP/AJ
 Sample : AR1248CCC500
 Misc :
 ALS Vial : 5 Sample Multiplier: 1

Instrument :
 ECD_0
 ClientSampleId :
 AR1248CCC500

Integration File signal 1: autoint1.e
 Integration File signal 2: autoint2.e
 Quant Time: Aug 20 13:02:03 2025
 Quant Method : Z:\pestpcbsrv\HPCHEM1\ECD_0\methods\P0081825.M
 Quant Title : GC EXTRACTABLES
 QLast Update : Tue Aug 19 06:08:32 2025
 Response via : Initial Calibration
 Integrator: ChemStation

Volume Inj. : 2 µl
 Signal #1 Phase : ZB-MR1 Signal #2 Phase: ZB-MR2
 Signal #1 Info : 30Mx0.32mmx 0.50µ Signal #2 Info : 30M x 0.32mm x 0.25µm

	Compound	RT#1	RT#2	Resp#1	Resp#2	ng/ml	ng/ml
42)	L9 AR-1268-2	7.637	7.595	14450650	1479571	9.979	3.562 #
43)	L9 AR-1268-3	7.841	7.801	644800	591258	0.535	1.811 #
44)	L9 AR-1268-4	8.131	8.091	559171	1310796	1.214	10.884 #
45)	L9 AR-1268-5	8.428	8.377	2625024	1359326	0.823	1.741 #

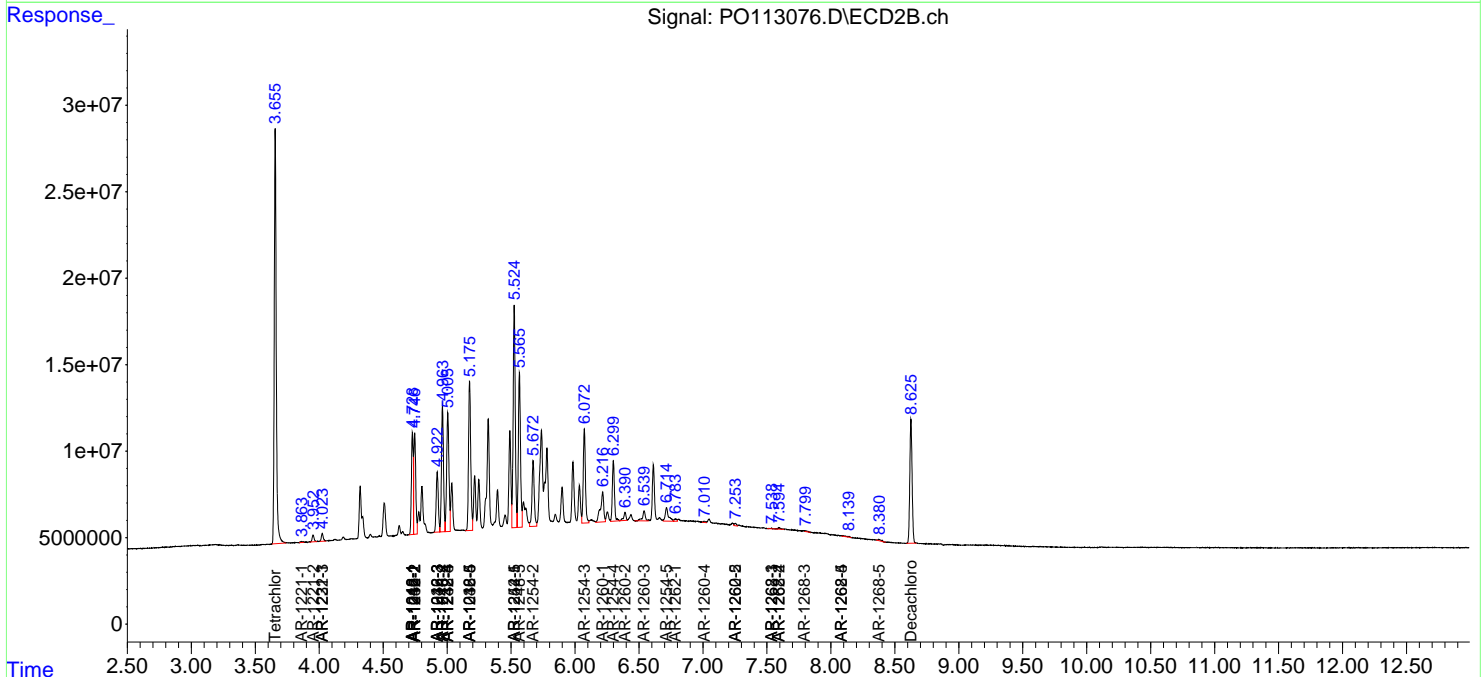
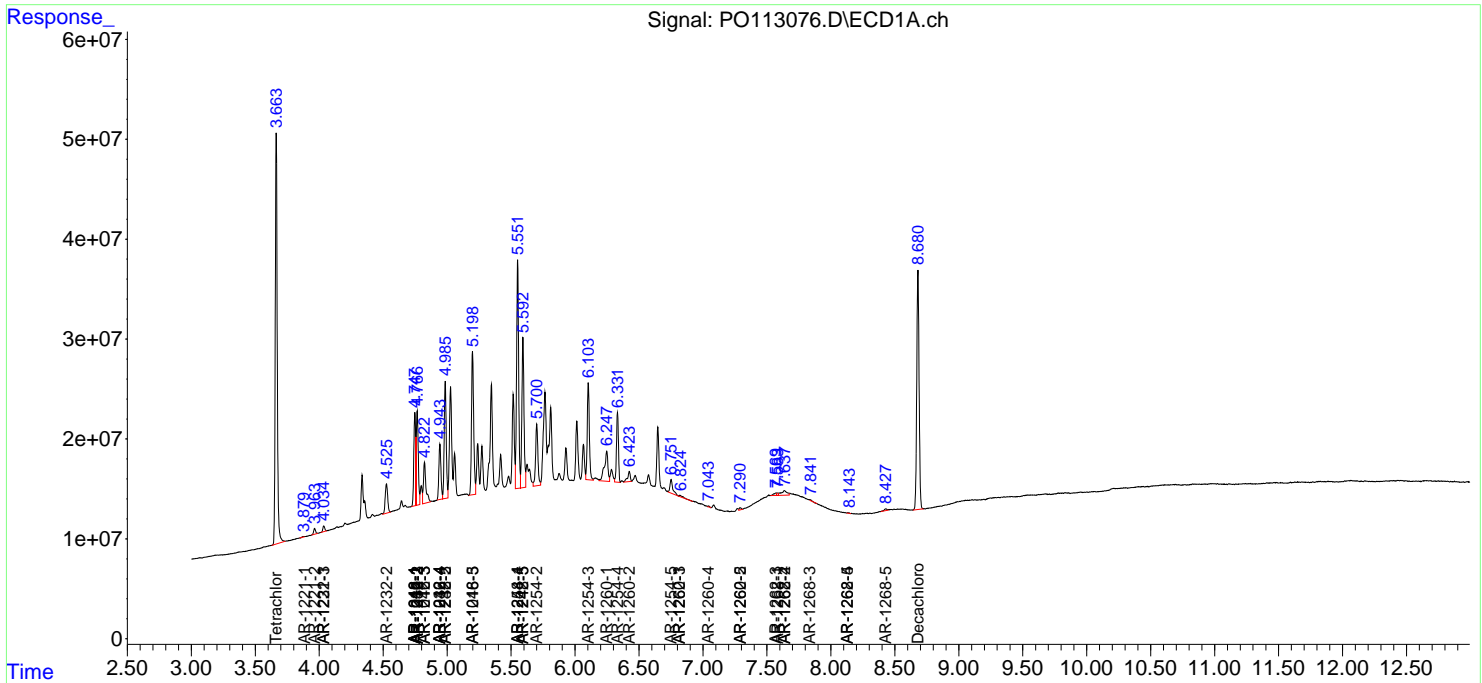
(f)=RT Delta > 1/2 Window (#)=Amounts differ by > 25% (m)=manual int.

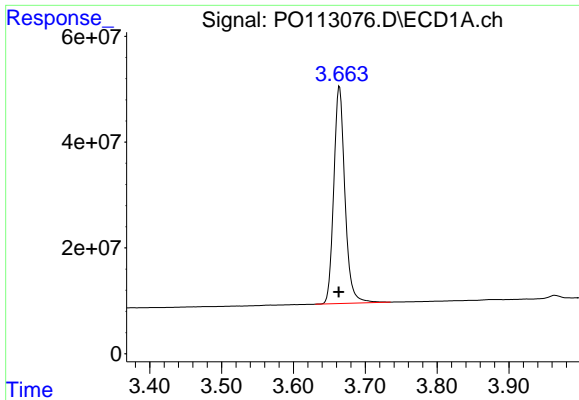
Data Path : Z:\pestpcbsrv\HPCHEM1\ECD_O\Data\PO082025\
 Data File : PO113076.D
 Signal(s) : Signal #1: ECD1A.ch Signal #2: ECD2B.ch
 Acq On : 20 Aug 2025 10:10
 Operator : YP/AJ
 Sample : AR1248CCC500
 Misc :
 ALS Vial : 5 Sample Multiplier: 1

Instrument :
 ECD_O
 ClientSampleId :
 AR1248CCC500

Integration File signal 1: autoint1.e
 Integration File signal 2: autoint2.e
 Quant Time: Aug 20 13:02:03 2025
 Quant Method : Z:\pestpcbsrv\HPCHEM1\ECD_O\methods\PO081825.M
 Quant Title : GC EXTRACTABLES
 QLast Update : Tue Aug 19 06:08:32 2025
 Response via : Initial Calibration
 Integrator: ChemStation

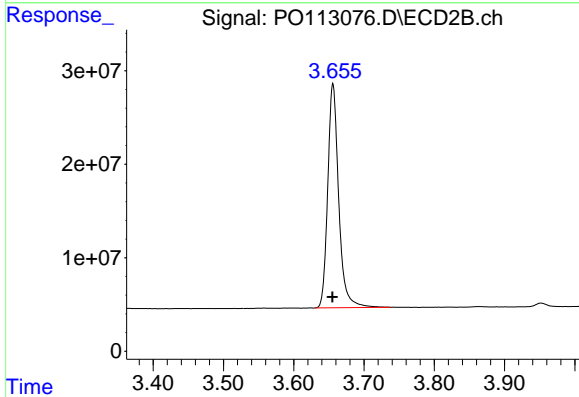
Volume Inj. : 2 µl
 Signal #1 Phase : ZB-MR1 Signal #2 Phase: ZB-MR2
 Signal #1 Info : 30Mx0.32mmx 0.50µ Signal #2 Info : 30M x 0.32mm x 0.25µm



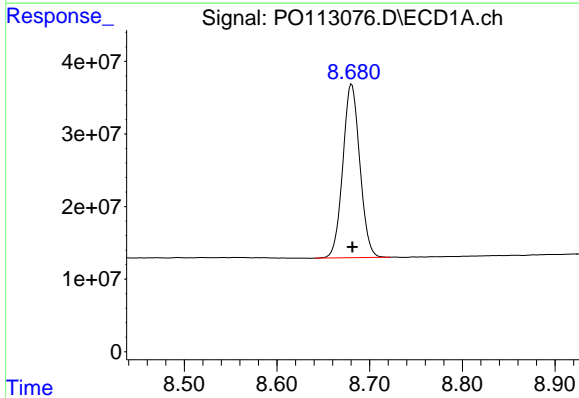


#1 Tetrachloro-m-xylene
R.T.: 3.664 min
Delta R.T.: 0.001 min
Response: 441554819
Conc: 53.94 ng/ml

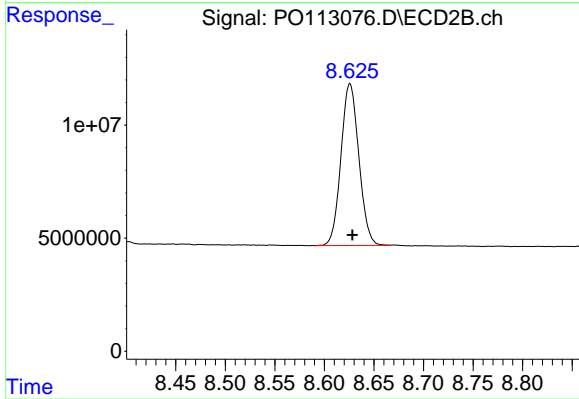
Instrument :
ECD_O
ClientSampleId :
AR1248CCC500



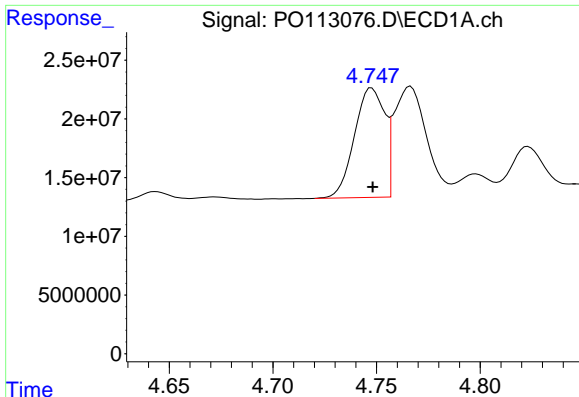
#1 Tetrachloro-m-xylene
R.T.: 3.656 min
Delta R.T.: 0.000 min
Response: 259880585
Conc: 51.35 ng/ml



#2 Decachlorobiphenyl
R.T.: 8.681 min
Delta R.T.: 0.000 min
Response: 304702278
Conc: 43.96 ng/ml



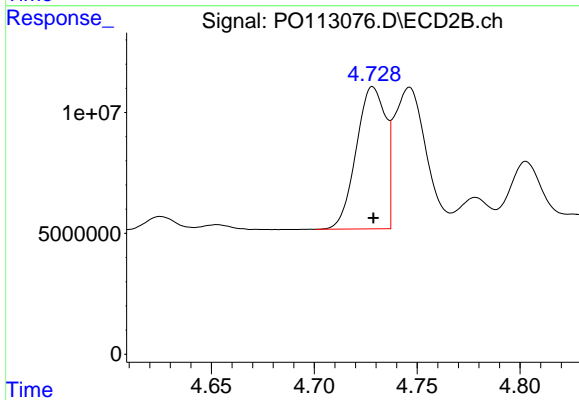
#2 Decachlorobiphenyl
R.T.: 8.626 min
Delta R.T.: -0.003 min
Response: 90005685
Conc: 47.50 ng/ml



#3 AR-1016-1

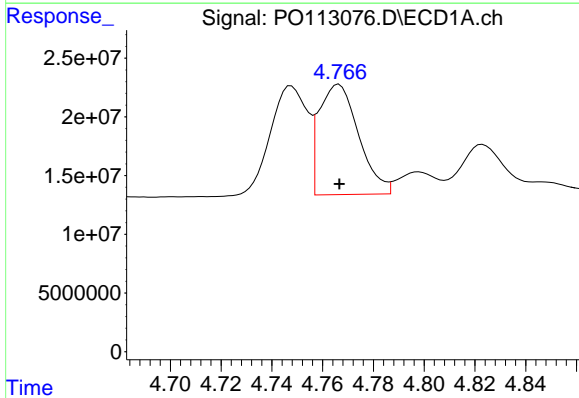
R.T.: 4.748 min
 Delta R.T.: 0.000 min
 Response: 94508931
 Conc: 353.99 ng/ml

Instrument :
 ECD_O
 ClientSampleId :
 AR1248CCC500



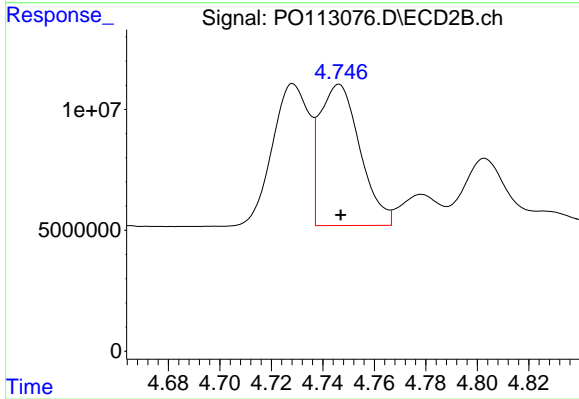
#3 AR-1016-1

R.T.: 4.728 min
 Delta R.T.: 0.000 min
 Response: 58346329
 Conc: 342.06 ng/ml



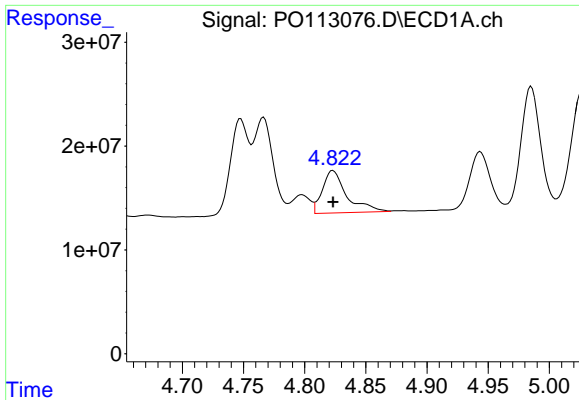
#4 AR-1016-2

R.T.: 4.766 min
 Delta R.T.: 0.000 min
 Response: 102075456
 Conc: 254.28 ng/ml



#4 AR-1016-2

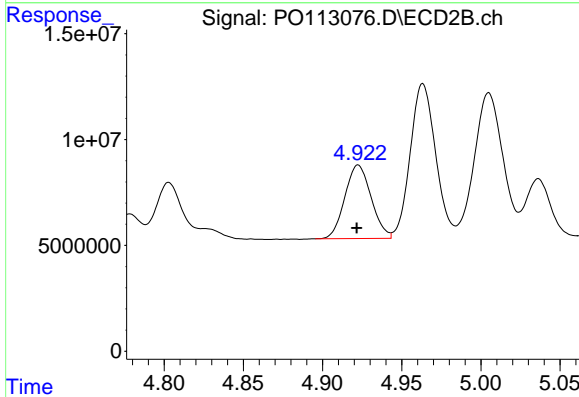
R.T.: 4.746 min
 Delta R.T.: 0.000 min
 Response: 63250319
 Conc: 245.48 ng/ml



#5 AR-1016-3

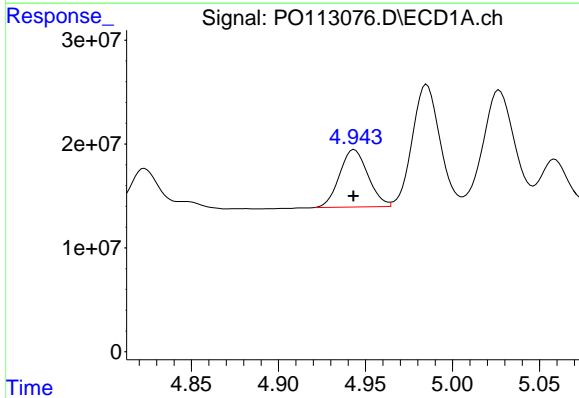
R.T.: 4.823 min
 Delta R.T.: 0.000 min
 Response: 56535215
 Conc: 221.69 ng/ml

Instrument :
 ECD_O
 ClientSampleId :
 AR1248CCC500



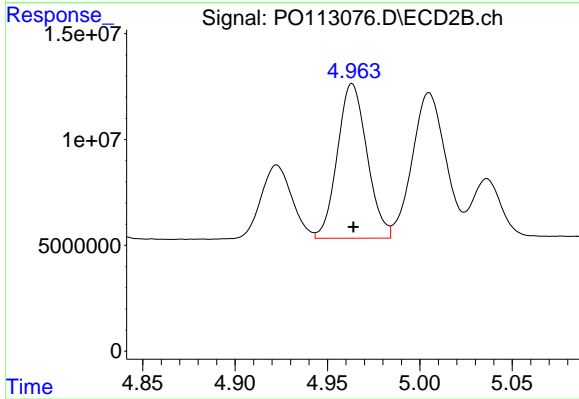
#5 AR-1016-3

R.T.: 4.923 min
 Delta R.T.: 0.000 min
 Response: 40237383
 Conc: 288.20 ng/ml



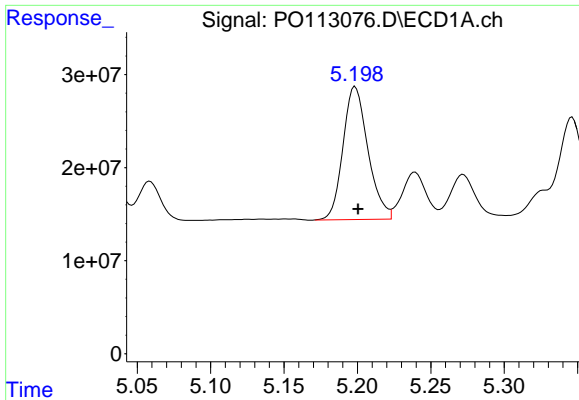
#6 AR-1016-4

R.T.: 4.944 min
 Delta R.T.: 0.000 min
 Response: 62823977
 Conc: 288.09 ng/ml



#6 AR-1016-4

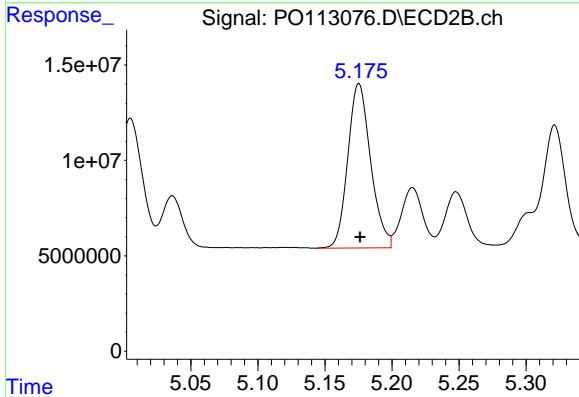
R.T.: 4.963 min
 Delta R.T.: 0.000 min
 Response: 81475789
 Conc: 698.17 ng/ml



#7 AR-1016-5

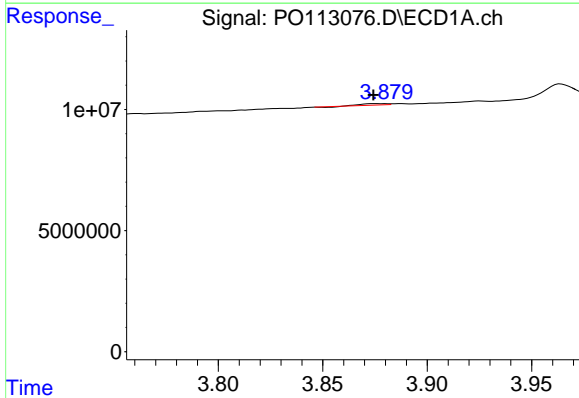
R.T.: 5.199 min
 Delta R.T.: -0.002 min
 Response: 169061482
 Conc: 762.82 ng/ml

Instrument :
 ECD_O
 ClientSampleId :
 AR1248CCC500



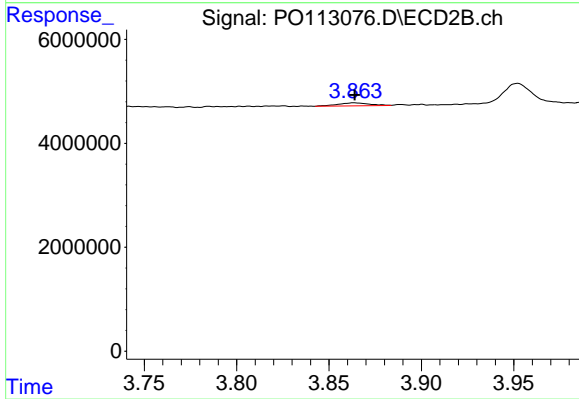
#7 AR-1016-5

R.T.: 5.175 min
 Delta R.T.: 0.000 min
 Response: 101885747
 Conc: 714.84 ng/ml



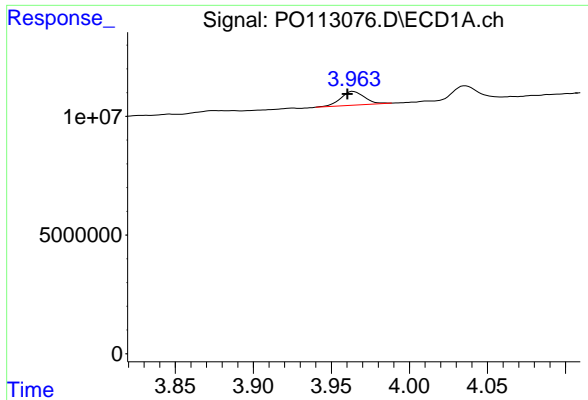
#8 AR-1221-1

R.T.: 3.879 min
 Delta R.T.: 0.004 min
 Response: 414708
 Conc: 4.43 ng/ml



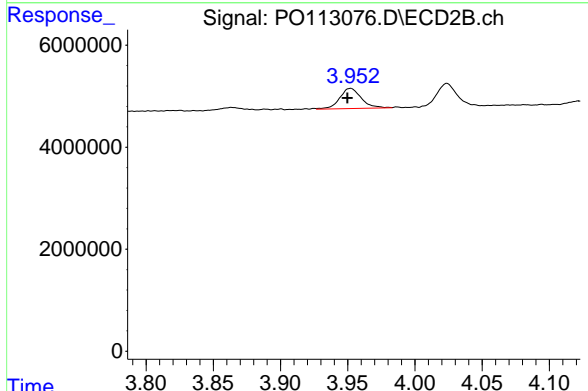
#8 AR-1221-1

R.T.: 3.864 min
 Delta R.T.: 0.000 min
 Response: 712549
 Conc: 11.29 ng/ml

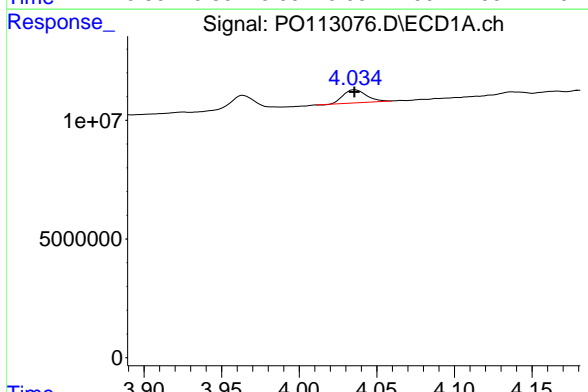


#9 AR-1221-2
 R.T.: 3.964 min
 Delta R.T.: 0.004 min
 Response: 6161697
 Conc: 91.22 ng/ml

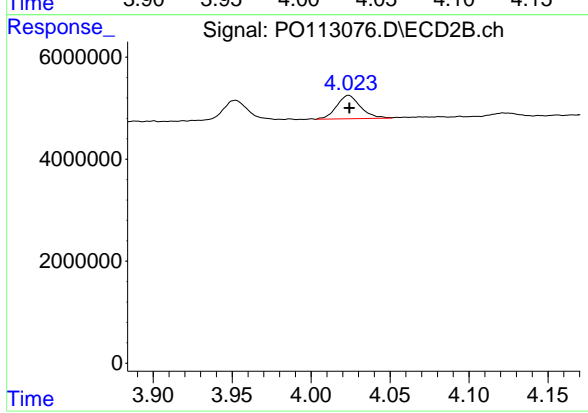
Instrument :
 ECD_O
 ClientSampleId :
 AR1248CCC500



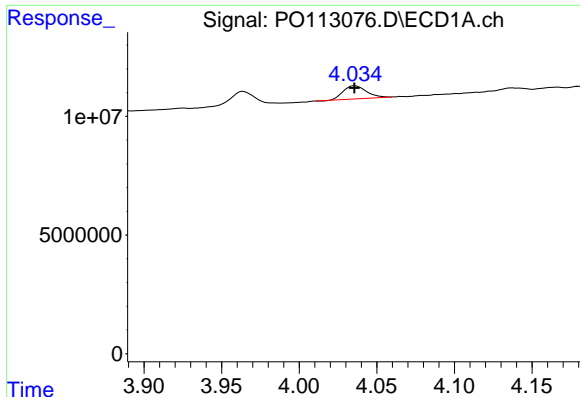
#9 AR-1221-2
 R.T.: 3.952 min
 Delta R.T.: 0.002 min
 Response: 4426867
 Conc: 94.85 ng/ml



#10 AR-1221-3
 R.T.: 4.036 min
 Delta R.T.: 0.000 min
 Response: 5723651
 Conc: 25.86 ng/ml



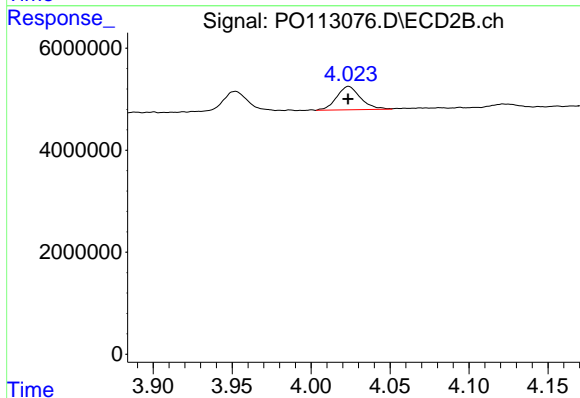
#10 AR-1221-3
 R.T.: 4.024 min
 Delta R.T.: 0.000 min
 Response: 4870680
 Conc: 32.80 ng/ml



#11 AR-1232-1

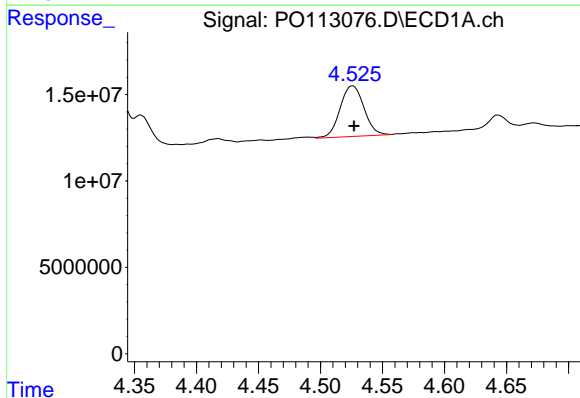
R.T.: 4.036 min
 Delta R.T.: 0.000 min
 Response: 5723651
 Conc: 32.89 ng/ml

Instrument :
 ECD_O
 ClientSampleId :
 AR1248CCC500



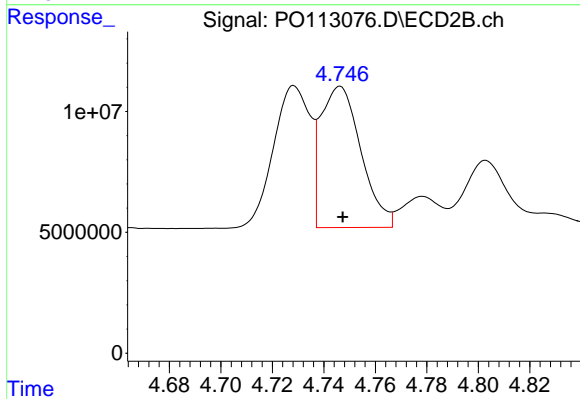
#11 AR-1232-1

R.T.: 4.024 min
 Delta R.T.: 0.000 min
 Response: 4870680
 Conc: 41.49 ng/ml



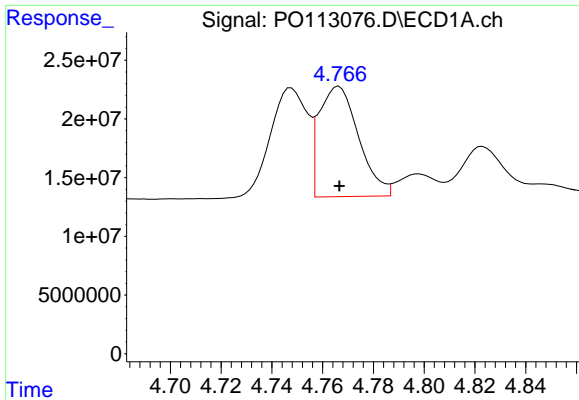
#12 AR-1232-2

R.T.: 4.526 min
 Delta R.T.: -0.001 min
 Response: 39064692
 Conc: 391.22 ng/ml



#12 AR-1232-2

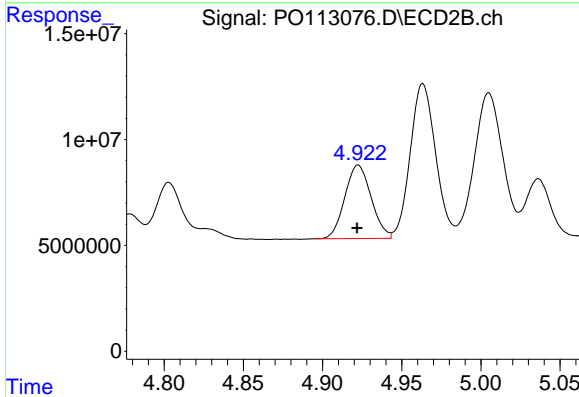
R.T.: 4.746 min
 Delta R.T.: 0.000 min
 Response: 63250319
 Conc: 516.14 ng/ml



#13 AR-1232-3

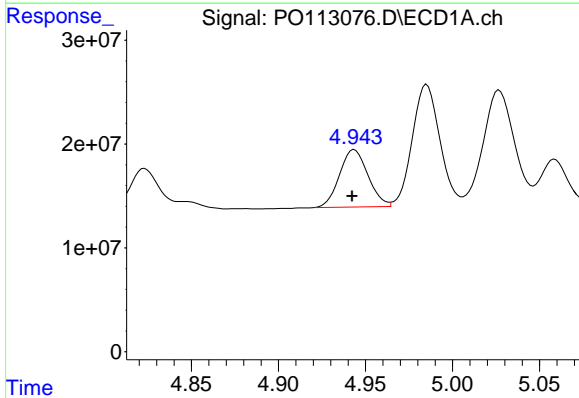
R.T.: 4.766 min
 Delta R.T.: 0.000 min
 Response: 102075456
 Conc: 538.73 ng/ml

Instrument :
 ECD_O
 ClientSampleId :
 AR1248CCC500



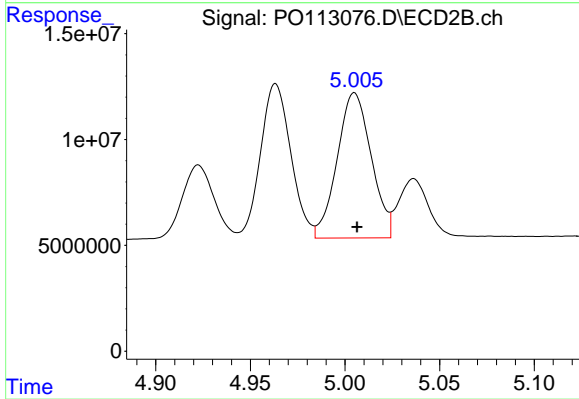
#13 AR-1232-3

R.T.: 4.923 min
 Delta R.T.: 0.000 min
 Response: 40237383
 Conc: 635.20 ng/ml



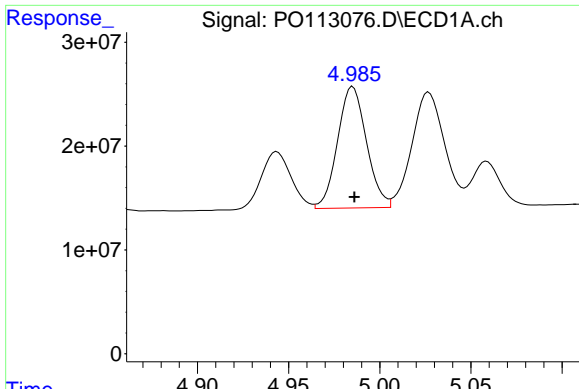
#14 AR-1232-4

R.T.: 4.944 min
 Delta R.T.: 0.001 min
 Response: 62823977
 Conc: 667.14 ng/ml



#14 AR-1232-4

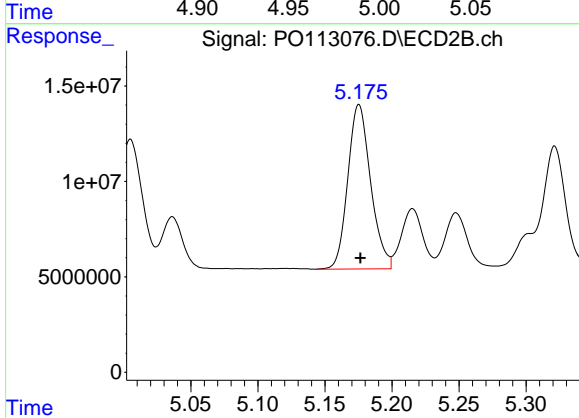
R.T.: 5.005 min
 Delta R.T.: -0.001 min
 Response: 85920248
 Conc: 1528.25 ng/ml



#15 AR-1232-5

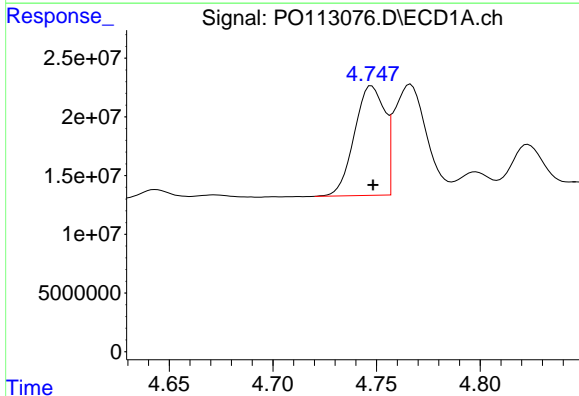
R.T.: 4.985 min
 Delta R.T.: 0.000 min
 Response: 128797810
 Conc: 2079.30 ng/ml

Instrument :
 ECD_O
 ClientSampleId :
 AR1248CCC500



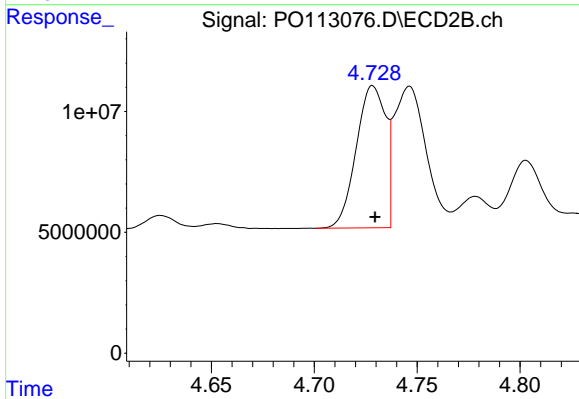
#15 AR-1232-5

R.T.: 5.175 min
 Delta R.T.: -0.001 min
 Response: 101885747
 Conc: 1701.97 ng/ml



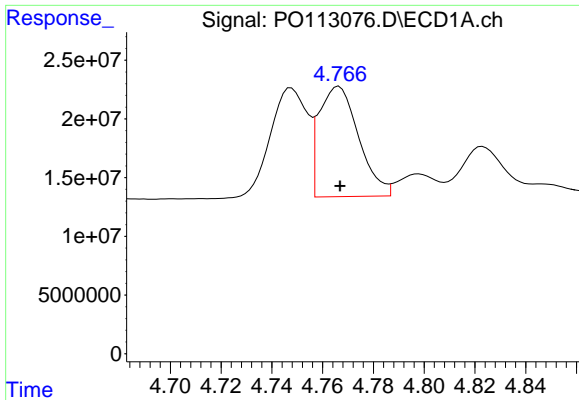
#16 AR-1242-1

R.T.: 4.748 min
 Delta R.T.: 0.000 min
 Response: 94508931
 Conc: 411.03 ng/ml



#16 AR-1242-1

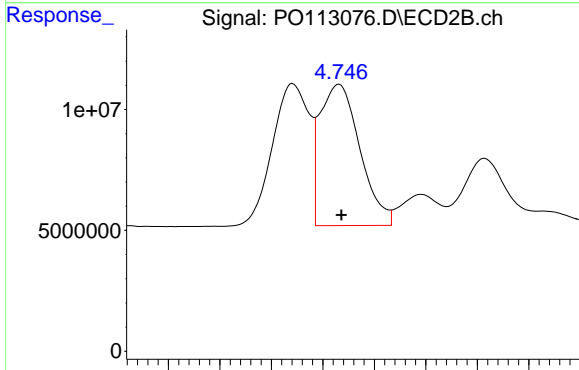
R.T.: 4.728 min
 Delta R.T.: -0.001 min
 Response: 58346329
 Conc: 403.77 ng/ml



#17 AR-1242-2

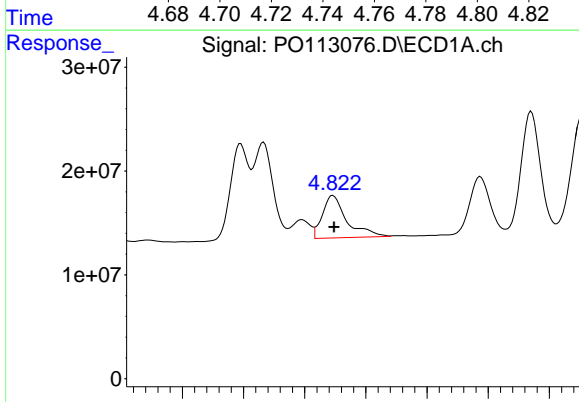
R.T.: 4.766 min
 Delta R.T.: 0.000 min
 Response: 102075456
 Conc: 297.05 ng/ml

Instrument :
 ECD_O
 ClientSampleId :
 AR1248CCC500



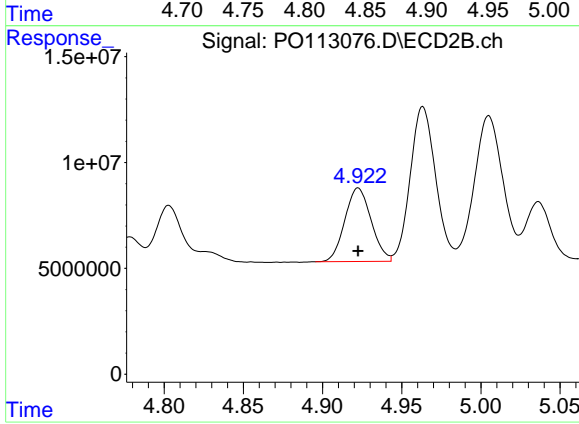
#17 AR-1242-2

R.T.: 4.746 min
 Delta R.T.: 0.000 min
 Response: 63250319
 Conc: 291.60 ng/ml



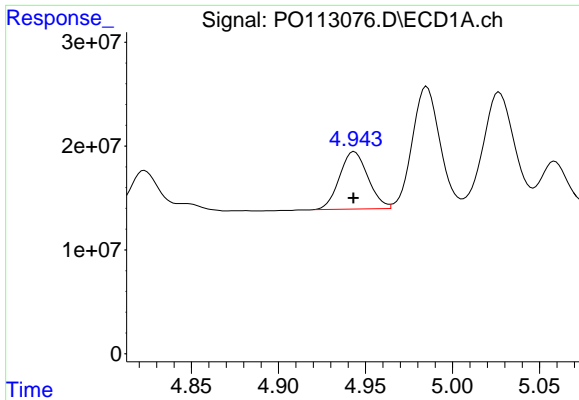
#18 AR-1242-3

R.T.: 4.823 min
 Delta R.T.: 0.000 min
 Response: 56535215
 Conc: 254.80 ng/ml



#18 AR-1242-3

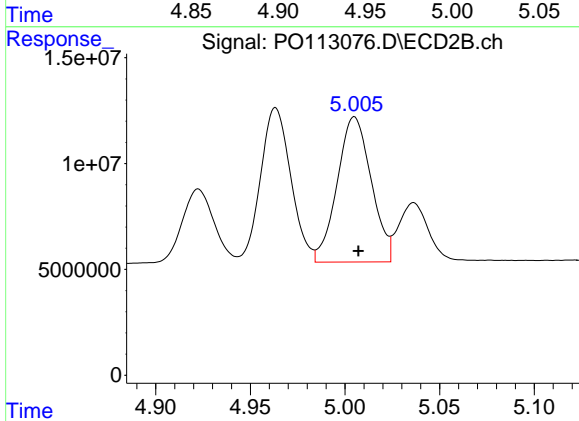
R.T.: 4.923 min
 Delta R.T.: 0.000 min
 Response: 40237383
 Conc: 344.01 ng/ml



#19 AR-1242-4

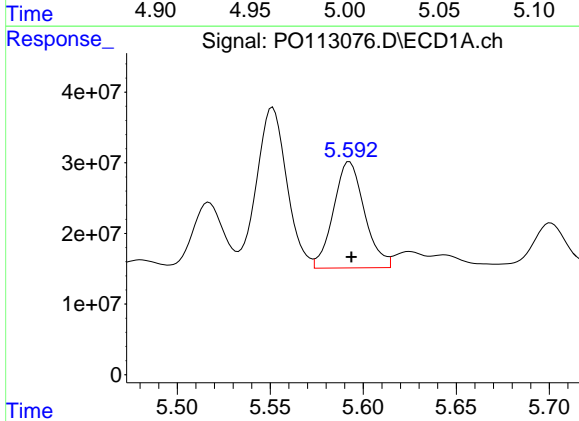
R.T.: 4.944 min
 Delta R.T.: 0.000 min
 Response: 62823977
 Conc: 362.18 ng/ml

Instrument :
 ECD_O
 ClientSampleId :
 AR1248CCC500



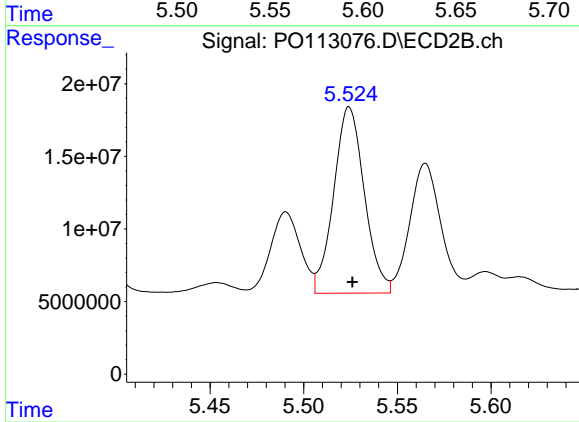
#19 AR-1242-4

R.T.: 5.005 min
 Delta R.T.: -0.002 min
 Response: 85920248
 Conc: 730.38 ng/ml



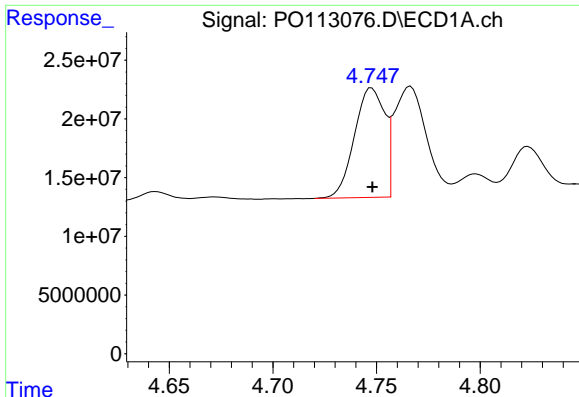
#20 AR-1242-5

R.T.: 5.593 min
 Delta R.T.: -0.001 min
 Response: 174710029
 Conc: 872.84 ng/ml



#20 AR-1242-5

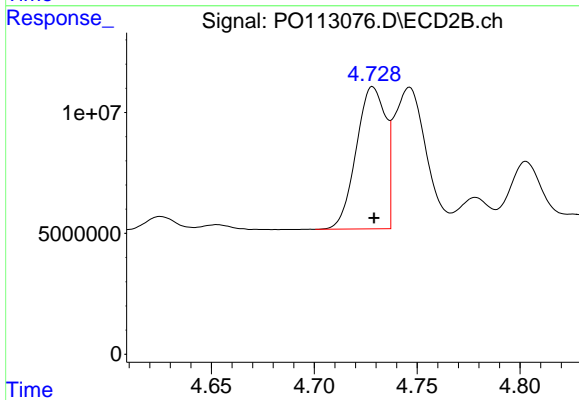
R.T.: 5.524 min
 Delta R.T.: -0.002 min
 Response: 146103425
 Conc: 979.69 ng/ml



#21 AR-1248-1

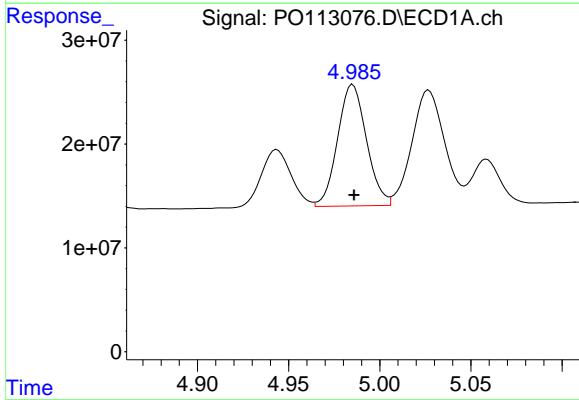
R.T.: 4.748 min
 Delta R.T.: 0.000 min
 Response: 94508931
 Conc: 541.70 ng/ml

Instrument :
 ECD_O
 ClientSampleId :
 AR1248CCC500



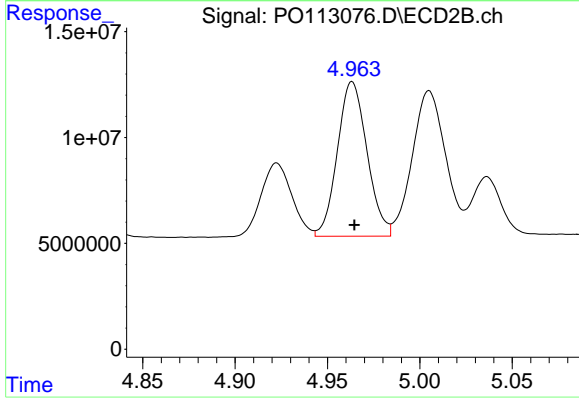
#21 AR-1248-1

R.T.: 4.728 min
 Delta R.T.: 0.000 min
 Response: 58346329
 Conc: 523.23 ng/ml



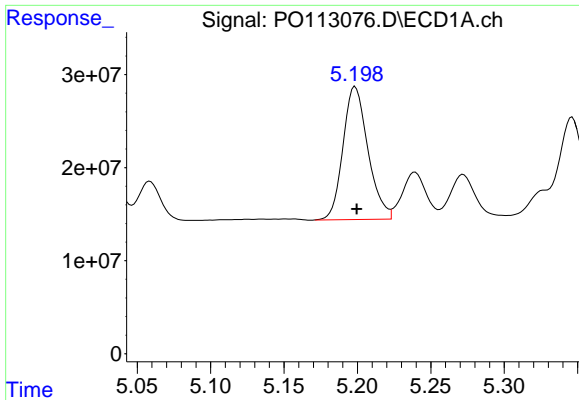
#22 AR-1248-2

R.T.: 4.985 min
 Delta R.T.: 0.000 min
 Response: 128797810
 Conc: 532.52 ng/ml



#22 AR-1248-2

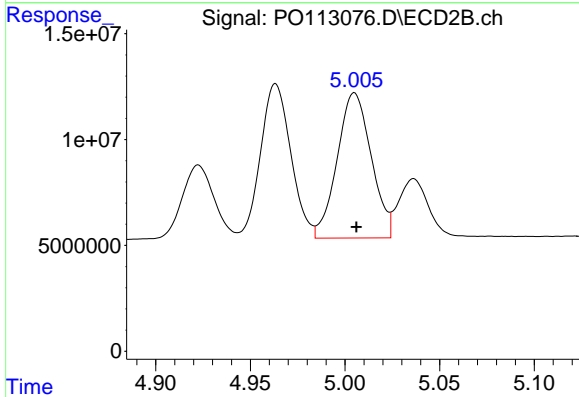
R.T.: 4.963 min
 Delta R.T.: -0.001 min
 Response: 81475789
 Conc: 507.01 ng/ml



#23 AR-1248-3

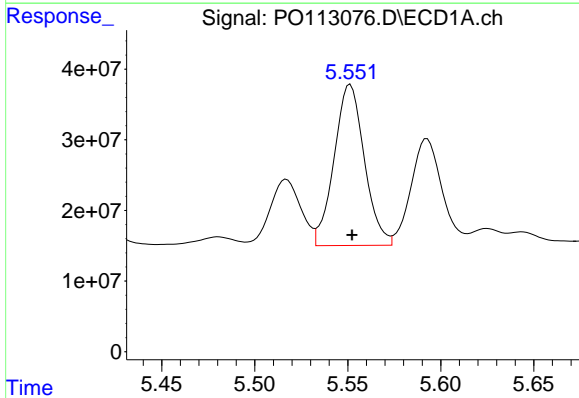
R.T.: 5.199 min
 Delta R.T.: -0.001 min
 Response: 169061482
 Conc: 530.20 ng/ml

Instrument :
 ECD_O
 ClientSampleId :
 AR1248CCC500



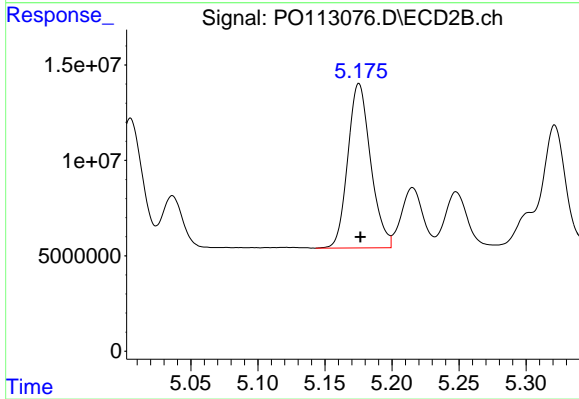
#23 AR-1248-3

R.T.: 5.005 min
 Delta R.T.: -0.001 min
 Response: 85920248
 Conc: 506.42 ng/ml



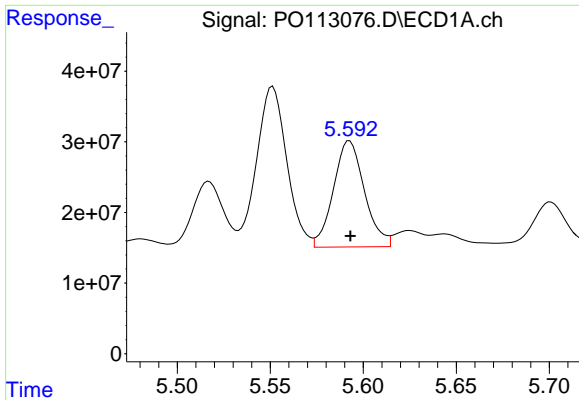
#24 AR-1248-4

R.T.: 5.551 min
 Delta R.T.: -0.001 min
 Response: 258214562
 Conc: 516.84 ng/ml



#24 AR-1248-4

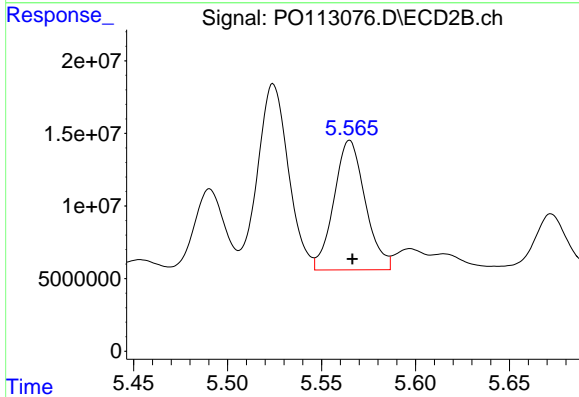
R.T.: 5.175 min
 Delta R.T.: -0.001 min
 Response: 101885747
 Conc: 511.42 ng/ml



#25 AR-1248-5

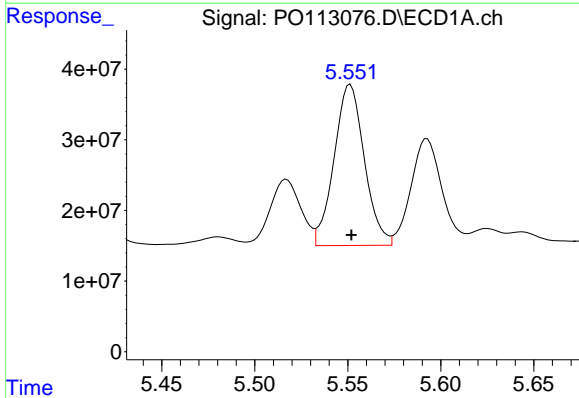
R.T.: 5.593 min
 Delta R.T.: 0.000 min
 Response: 174710029
 Conc: 511.61 ng/ml

Instrument :
 ECD_O
 ClientSampleId :
 AR1248CCC500



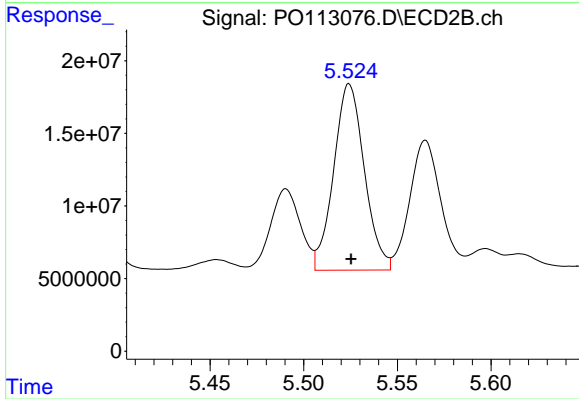
#25 AR-1248-5

R.T.: 5.565 min
 Delta R.T.: -0.002 min
 Response: 103483839
 Conc: 487.45 ng/ml



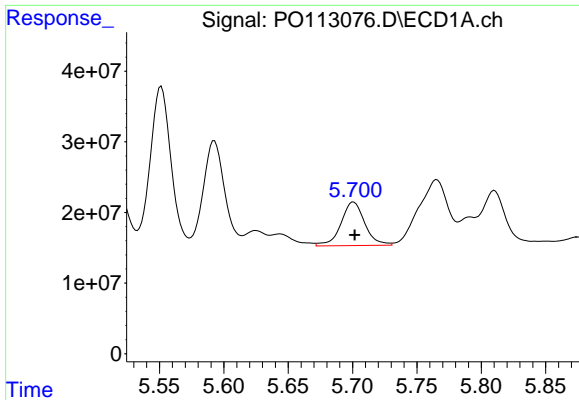
#26 AR-1254-1

R.T.: 5.551 min
 Delta R.T.: 0.000 min
 Response: 258214562
 Conc: 478.19 ng/ml



#26 AR-1254-1

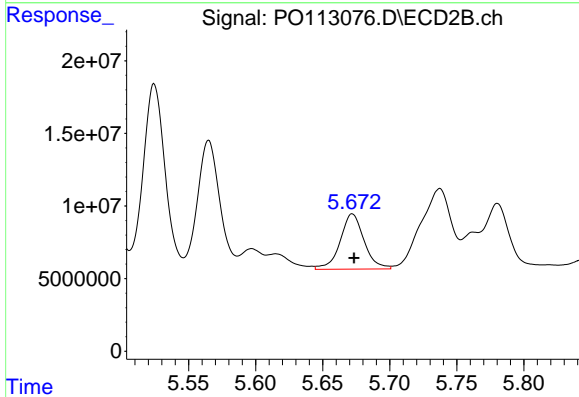
R.T.: 5.524 min
 Delta R.T.: -0.001 min
 Response: 146103425
 Conc: 463.30 ng/ml



#27 AR-1254-2

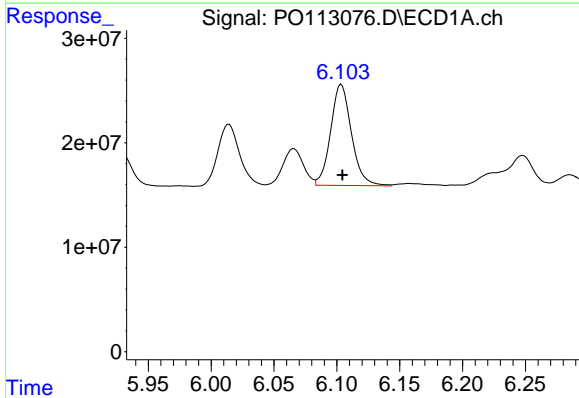
R.T.: 5.701 min
 Delta R.T.: -0.001 min
 Response: 79448521
 Conc: 161.00 ng/ml

Instrument :
 ECD_O
 ClientSampleId :
 AR1248CCC500



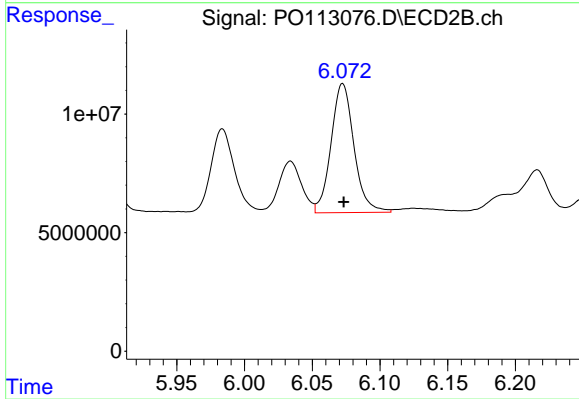
#27 AR-1254-2

R.T.: 5.672 min
 Delta R.T.: -0.001 min
 Response: 47242577
 Conc: 168.52 ng/ml



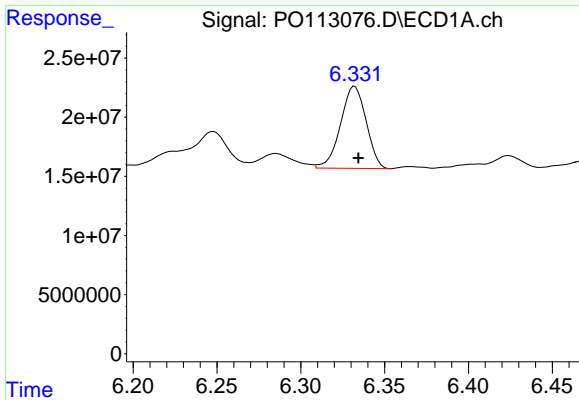
#28 AR-1254-3

R.T.: 6.104 min
 Delta R.T.: 0.000 min
 Response: 111487628
 Conc: 150.89 ng/ml



#28 AR-1254-3

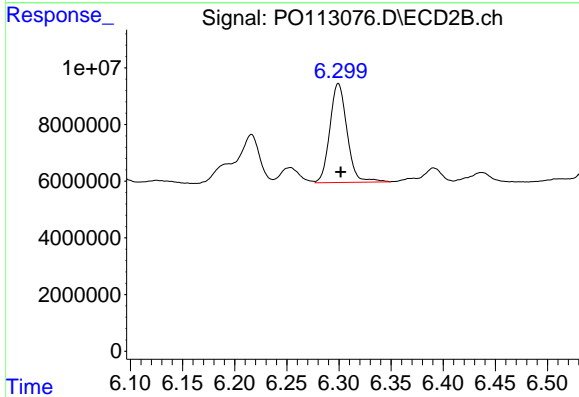
R.T.: 6.072 min
 Delta R.T.: 0.000 min
 Response: 64216361
 Conc: 154.02 ng/ml



#29 AR-1254-4

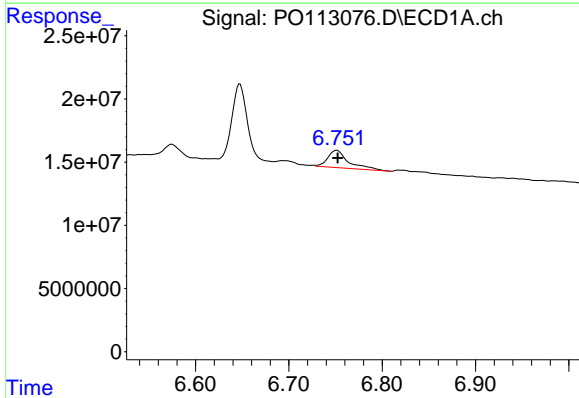
R.T.: 6.332 min
 Delta R.T.: -0.002 min
 Response: 73949815
 Conc: 132.76 ng/ml

Instrument :
 ECD_O
 ClientSampleId :
 AR1248CCC500



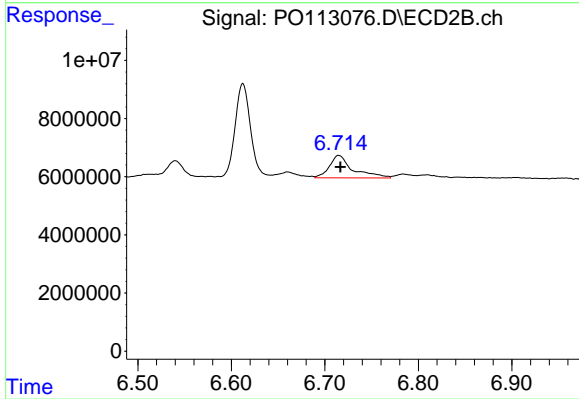
#29 AR-1254-4

R.T.: 6.299 min
 Delta R.T.: -0.002 min
 Response: 40057444
 Conc: 145.75 ng/ml



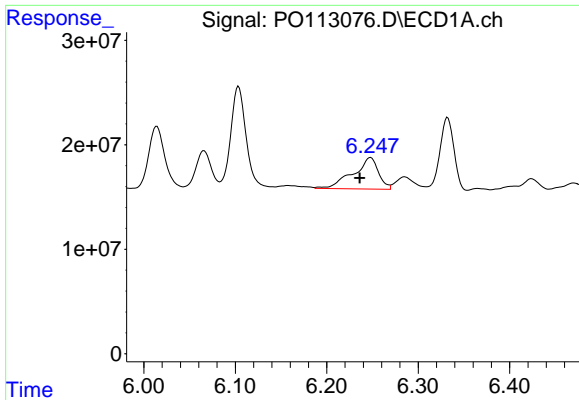
#30 AR-1254-5

R.T.: 6.751 min
 Delta R.T.: -0.001 min
 Response: 21342674
 Conc: 30.45 ng/ml



#30 AR-1254-5

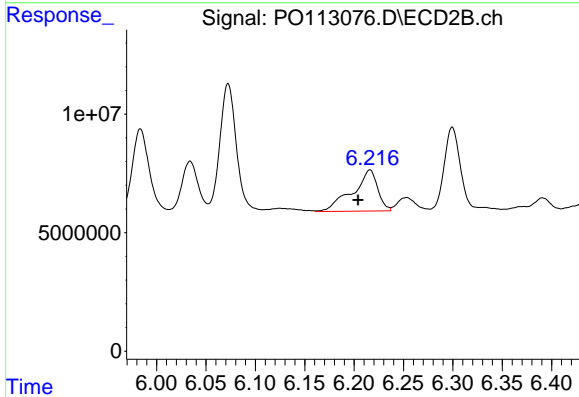
R.T.: 6.715 min
 Delta R.T.: -0.002 min
 Response: 13510145
 Conc: 37.79 ng/ml



#31 AR-1260-1

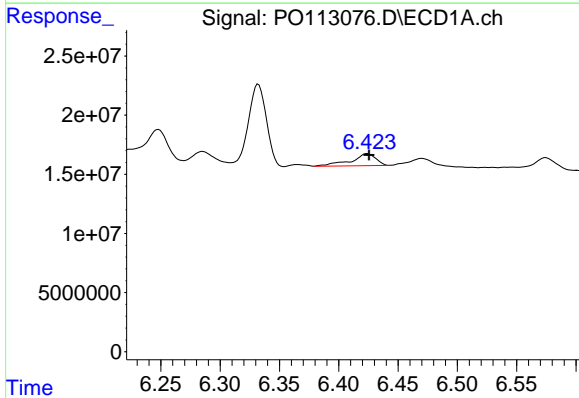
R.T.: 6.248 min
 Delta R.T.: 0.012 min
 Response: 58129313
 Conc: 130.34 ng/ml

Instrument :
 ECD_O
 ClientSampleId :
 AR1248CCC500



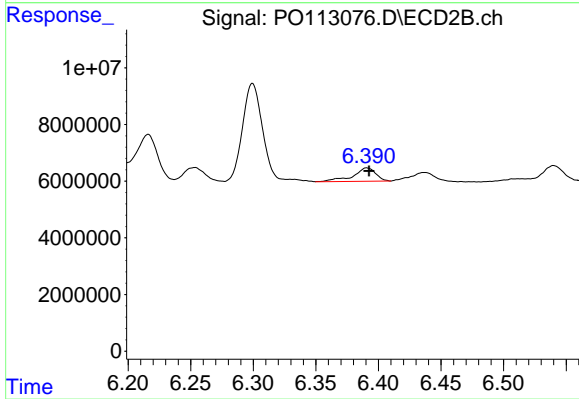
#31 AR-1260-1

R.T.: 6.216 min
 Delta R.T.: 0.012 min
 Response: 30834970
 Conc: 120.89 ng/ml



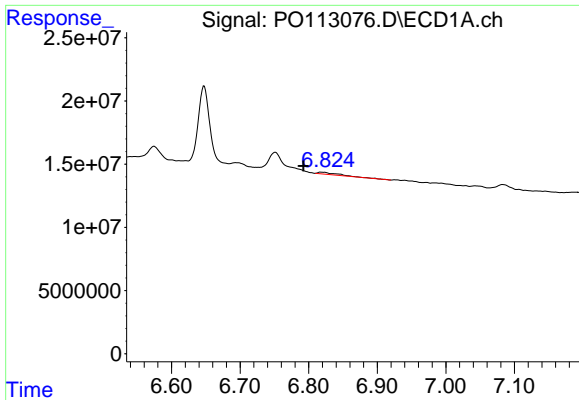
#32 AR-1260-2

R.T.: 6.424 min
 Delta R.T.: -0.001 min
 Response: 14836186
 Conc: 21.60 ng/ml



#32 AR-1260-2

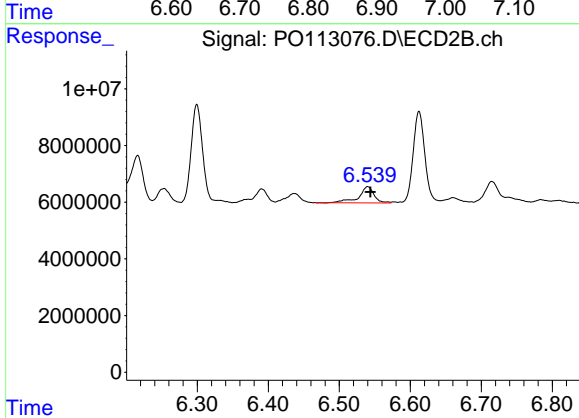
R.T.: 6.391 min
 Delta R.T.: -0.002 min
 Response: 5994605
 Conc: 17.34 ng/ml



#33 AR-1260-3

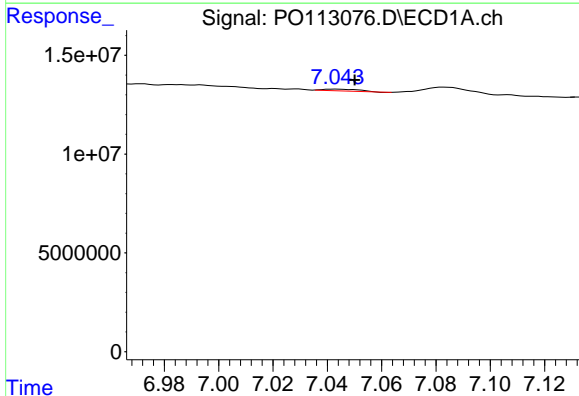
R.T.: 6.818 min
 Delta R.T.: 0.026 min
 Response: 3360439
 Conc: 5.44 ng/ml

Instrument :
 ECD_O
 ClientSampleId :
 AR1248CCC500



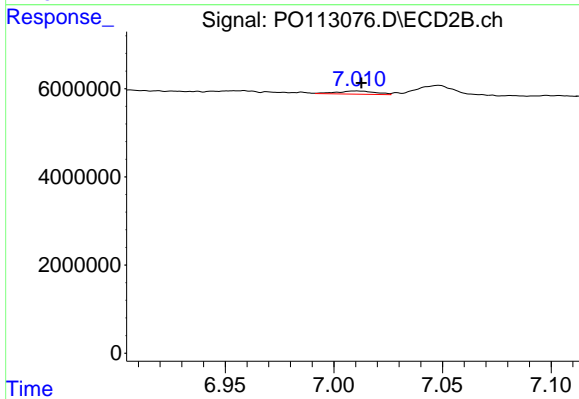
#33 AR-1260-3

R.T.: 6.540 min
 Delta R.T.: -0.004 min
 Response: 8634180
 Conc: 29.03 ng/ml



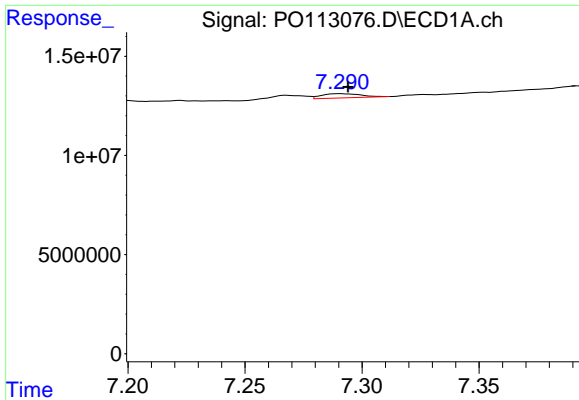
#34 AR-1260-4

R.T.: 7.043 min
 Delta R.T.: -0.007 min
 Response: 827735
 Conc: 1.85 ng/ml



#34 AR-1260-4

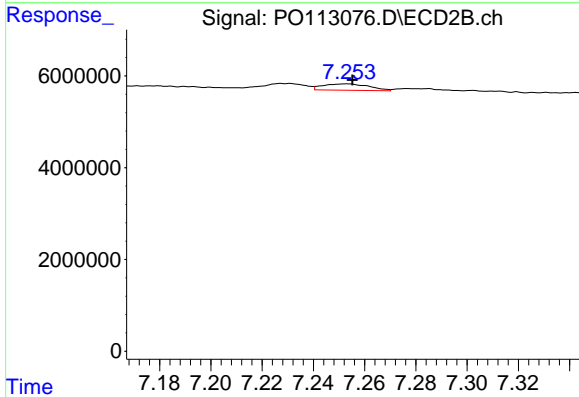
R.T.: 7.010 min
 Delta R.T.: -0.003 min
 Response: 900451
 Conc: 4.34 ng/ml



#35 AR-1260-5

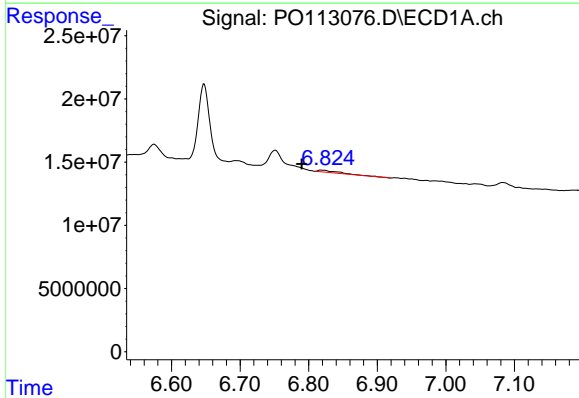
R.T.: 7.291 min
 Delta R.T.: -0.003 min
 Response: 2463393
 Conc: 2.03 ng/ml

Instrument :
 ECD_O
 ClientSampleId :
 AR1248CCC500



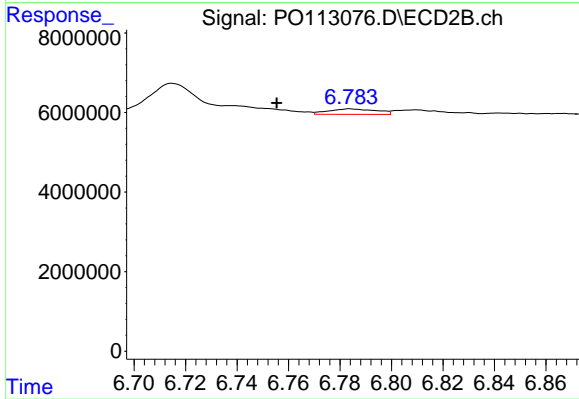
#35 AR-1260-5

R.T.: 7.253 min
 Delta R.T.: -0.002 min
 Response: 1749306
 Conc: 3.73 ng/ml



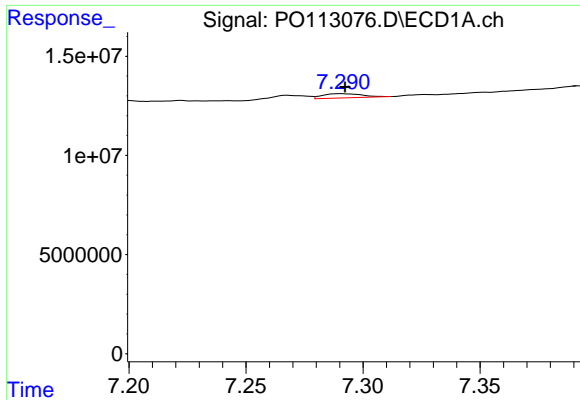
#36 AR-1262-1

R.T.: 6.818 min
 Delta R.T.: 0.028 min
 Response: 3360439
 Conc: 3.67 ng/ml



#36 AR-1262-1

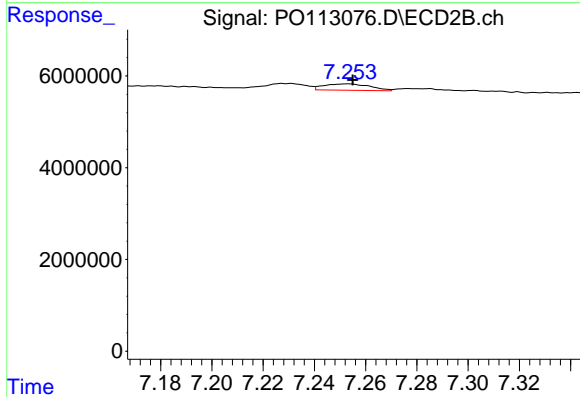
R.T.: 6.784 min
 Delta R.T.: 0.028 min
 Response: 1787299
 Conc: 4.31 ng/ml



#37 AR-1262-2

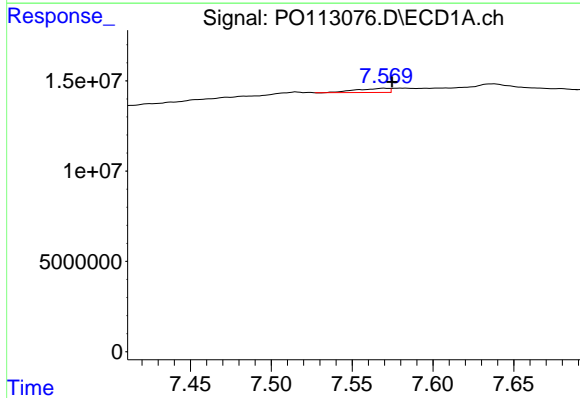
R.T.: 7.291 min
 Delta R.T.: -0.002 min
 Response: 2463393
 Conc: 1.63 ng/ml

Instrument :
 ECD_O
 ClientSampleId :
 AR1248CCC500



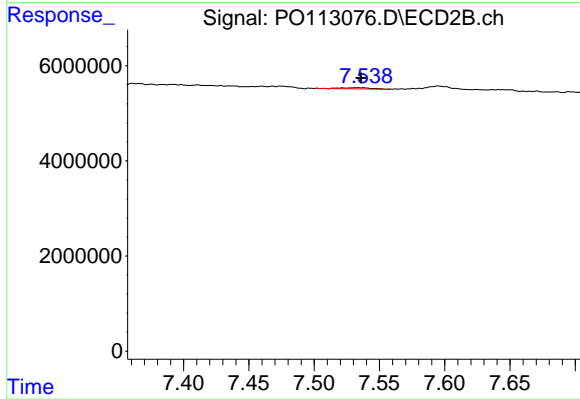
#37 AR-1262-2

R.T.: 7.253 min
 Delta R.T.: -0.002 min
 Response: 1749306
 Conc: 3.38 ng/ml



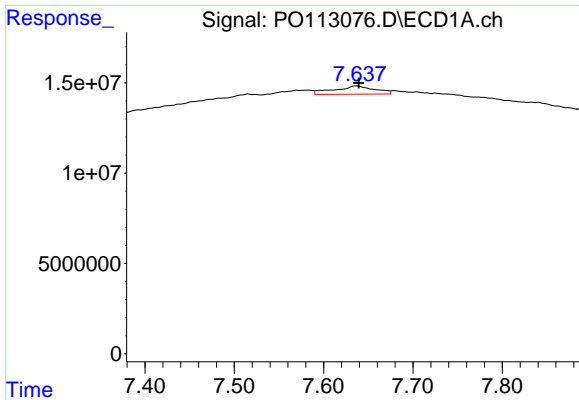
#38 AR-1262-3

R.T.: 7.570 min
 Delta R.T.: -0.005 min
 Response: 3231233
 Conc: 5.83 ng/ml



#38 AR-1262-3

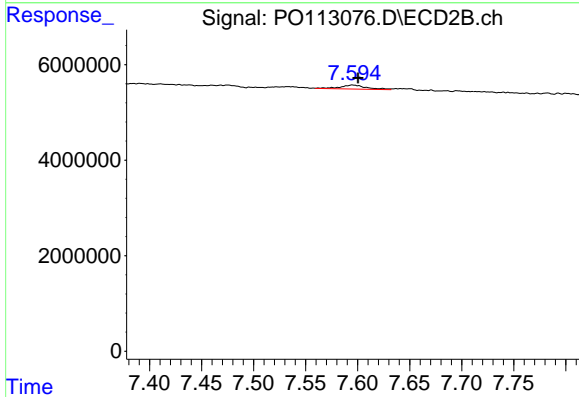
R.T.: 7.533 min
 Delta R.T.: -0.003 min
 Response: 417053
 Conc: 2.32 ng/ml



#39 AR-1262-4

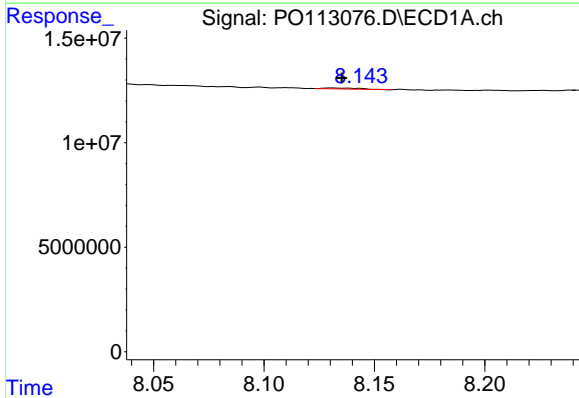
R.T.: 7.637 min
 Delta R.T.: -0.002 min
 Response: 14450650
 Conc: 14.78 ng/ml

Instrument :
 ECD_O
 ClientSampleId :
 AR1248CCC500



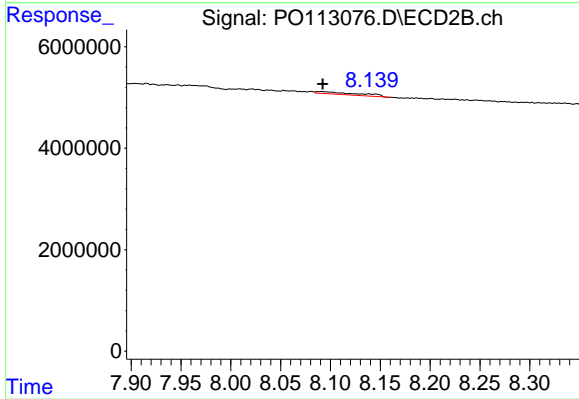
#39 AR-1262-4

R.T.: 7.595 min
 Delta R.T.: -0.005 min
 Response: 1479571
 Conc: 5.10 ng/ml



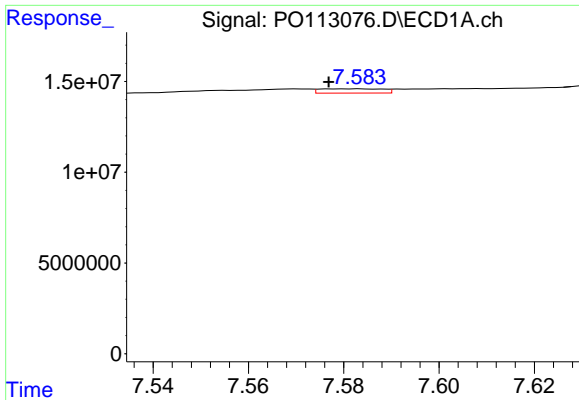
#40 AR-1262-5

R.T.: 8.131 min
 Delta R.T.: -0.005 min
 Response: 559171
 Conc: 1.34 ng/ml



#40 AR-1262-5

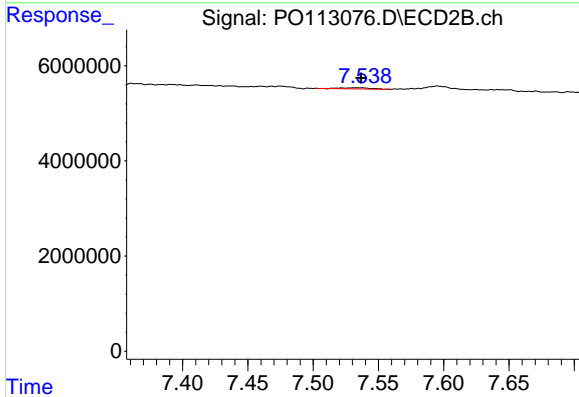
R.T.: 8.091 min
 Delta R.T.: -0.001 min
 Response: 1310796
 Conc: 12.10 ng/ml



#41 AR-1268-1

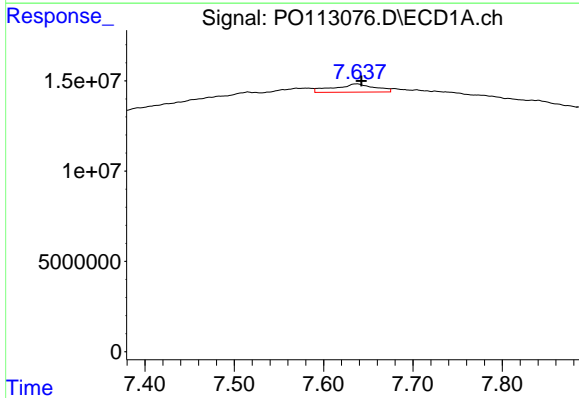
R.T.: 7.583 min
 Delta R.T.: 0.006 min
 Response: 2194783
 Conc: 1.28 ng/ml

Instrument :
 ECD_O
 ClientSampleId :
 AR1248CCC500



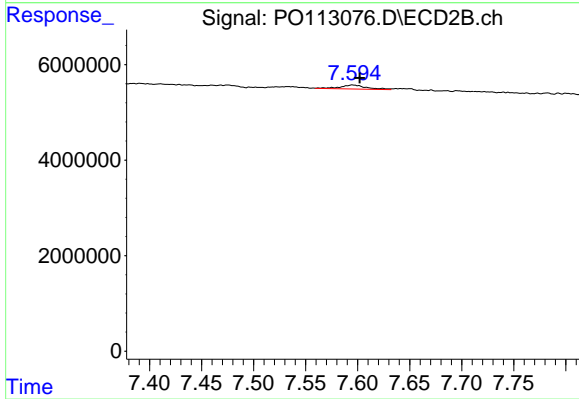
#41 AR-1268-1

R.T.: 7.533 min
 Delta R.T.: -0.004 min
 Response: 417053
 Conc: 0.82 ng/ml



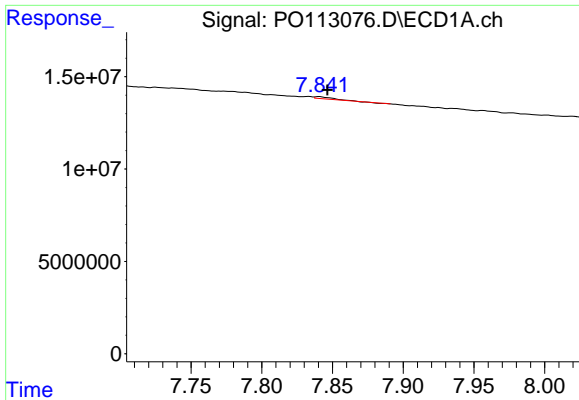
#42 AR-1268-2

R.T.: 7.637 min
 Delta R.T.: -0.005 min
 Response: 14450650
 Conc: 9.98 ng/ml



#42 AR-1268-2

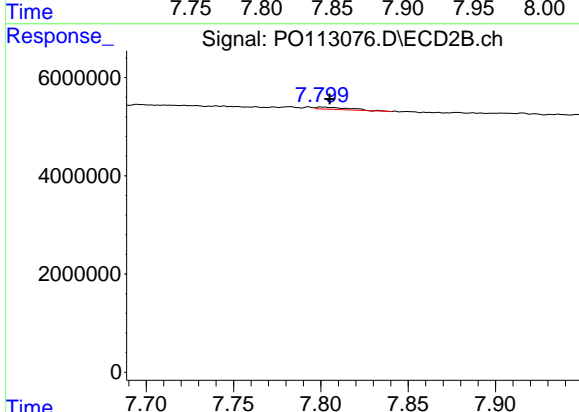
R.T.: 7.595 min
 Delta R.T.: -0.007 min
 Response: 1479571
 Conc: 3.56 ng/ml



#43 AR-1268-3

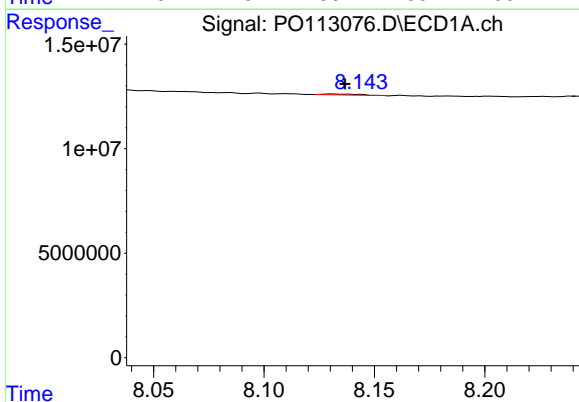
R.T.: 7.841 min
 Delta R.T.: -0.006 min
 Response: 644800
 Conc: 0.53 ng/ml

Instrument : ECD_O
 ClientSampleId : AR1248CCC500



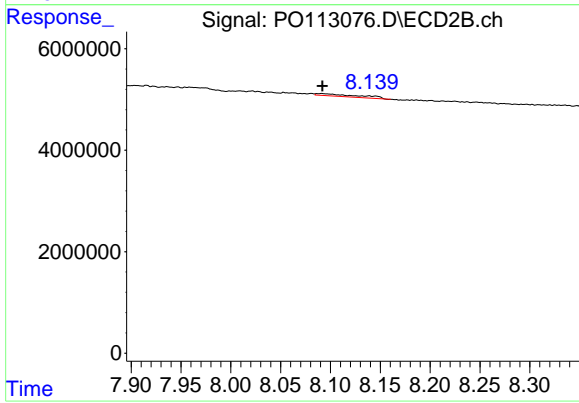
#43 AR-1268-3

R.T.: 7.801 min
 Delta R.T.: -0.004 min
 Response: 591258
 Conc: 1.81 ng/ml



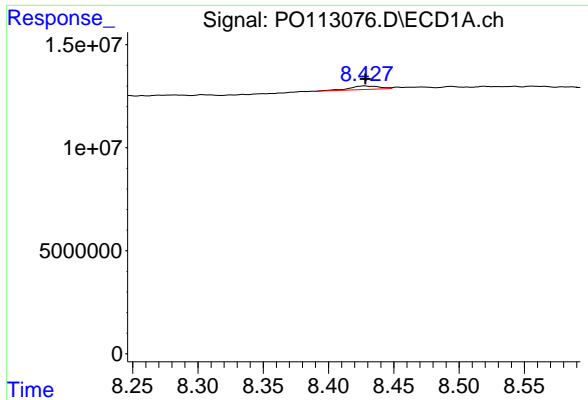
#44 AR-1268-4

R.T.: 8.131 min
 Delta R.T.: -0.006 min
 Response: 559171
 Conc: 1.21 ng/ml



#44 AR-1268-4

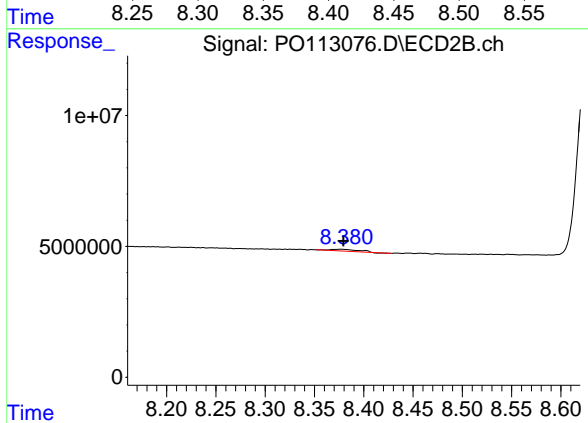
R.T.: 8.091 min
 Delta R.T.: 0.000 min
 Response: 1310796
 Conc: 10.88 ng/ml



#45 AR-1268-5

R.T.: 8.428 min
 Delta R.T.: 0.000 min
 Response: 2625024
 Conc: 0.82 ng/ml

Instrument :
 ECD_O
 ClientSampleId :
 AR1248CCC500



#45 AR-1268-5

R.T.: 8.377 min
 Delta R.T.: -0.002 min
 Response: 1359326
 Conc: 1.74 ng/ml