

Data Path : Z:\pestpcbsrv\HPCHEM1\ECD_0\Data\P0082025\
 Data File : PO113079.D
 Signal(s) : Signal #1: ECD1A.ch Signal #2: ECD2B.ch
 Acq On : 20 Aug 2025 11:05
 Operator : YP/AJ
 Sample : DDT ANALOG
 Misc :
 ALS Vial : 7 Sample Multiplier: 1

Instrument :
 ECD_0
 ClientSampleId :
 DDT ANALOG

Integration File signal 1: autoint1.e
 Integration File signal 2: autoint2.e
 Quant Time: Aug 20 13:04:17 2025
 Quant Method : Z:\pestpcbsrv\HPCHEM1\ECD_0\methods\P0081825.M
 Quant Title : GC EXTRACTABLES
 QLast Update : Tue Aug 19 06:08:32 2025
 Response via : Initial Calibration
 Integrator: ChemStation

Volume Inj. : 2 µl
 Signal #1 Phase : ZB-MR1 Signal #2 Phase: ZB-MR2
 Signal #1 Info : 30Mx0.32mmx 0.50µ Signal #2 Info : 30M x 0.32mm x 0.25µm

Compound	RT#1	RT#2	Resp#1	Resp#2	ng/ml	ng/ml
System Monitoring Compounds						
1) SA Tetrachlo...	3.620f	3.665	131532	70989	0.016	0.014
2) SA Decachlor...	8.673	8.615	520395	87216	0.075	0.046 #
Target Compounds						
3) L1 AR-1016-1	4.752	4.730	326839	238252	1.224	1.397
4) L1 AR-1016-2	4.773	4.746	206775	56217	0.515	0.218 #
5) L1 AR-1016-3	4.849	4.928	1419762	408900	5.567	2.929 #
6) L1 AR-1016-4	4.948	4.970	2906900	1818610	13.330	15.584
7) L1 AR-1016-5	5.205	5.176	5324184	1400990	24.023	9.829 #
8) L2 AR-1221-1	3.876	3.866	-189536	170645	N.D.	2.703 #
9) L2 AR-1221-2	3.977	3.945	459445	114493	6.801	2.453 #
10) L2 AR-1221-3	4.004	4.025	314216	49231	1.420	0.332 #
11) L3 AR-1232-1	4.004	4.025	314216	49231	1.806	0.419 #
12) L3 AR-1232-2	4.503	4.746	360148	56217	3.607	0.459 #
13) L3 AR-1232-3	4.773	4.928	206775	408900	1.091	6.455 #
14) L3 AR-1232-4	4.948	5.008	2906900	699407	30.869	12.440 #
15) L3 AR-1232-5	4.996	5.176	3140649	1400990	50.702	23.403 #
16) L4 AR-1242-1	4.752	4.730	326839	238252	1.421	1.649
17) L4 AR-1242-2	4.773	4.746	206775	56217	0.602	0.259 #
18) L4 AR-1242-3	4.849	4.928	1419762	408900	6.399	3.496 #
19) L4 AR-1242-4	4.948	5.008	2906900	699407	16.758	5.945 #
20) L4 AR-1242-5	5.596	5.529	10007121	1203255	49.995	8.068 #
21) L5 AR-1248-1	4.752	4.730	326839	238252	1.873	2.137
22) L5 AR-1248-2	4.996	4.970	3140649	1818610	12.985	11.317
23) L5 AR-1248-3	5.194	5.008	8775296	699407	27.521	4.122 #
24) L5 AR-1248-4	5.564	5.176	9787710	1400990	19.591	7.032 #
25) L5 AR-1248-5	5.596	5.569	10007121	1325304	29.304	6.243 #
26) L6 AR-1254-1	5.564	5.529	9787710	1203255	18.126	3.816 #
27) L6 AR-1254-2	5.690	5.693	4543952	30521089	9.208	108.872 #
28) L6 AR-1254-3	6.094	6.089	413924	15888863	0.560	38.110 #
29) L6 AR-1254-4	6.336	6.316	186685	878967	0.335	3.198 #
30) L6 AR-1254-5	6.750	6.714	3716.5E6	1760.4E6	5301.942	4924.339
31) L7 AR-1260-1	6.230	6.199	435839	2550758	0.977	10.000 #
32) L7 AR-1260-2	6.428	6.392	26783351	14397288	39.002	41.645
33) L7 AR-1260-3	6.750f	6.520	3716.5E6	-4298241	6018.917	N.D. #
34) L7 AR-1260-4	7.118f	7.028	-121318	433231	N.D.	2.090 #
35) L7 AR-1260-5	7.288	7.234	676489	1492682	0.559	3.187 #
36) L8 AR-1262-1	6.750f	6.714f	3716.5E6	1760.4E6	4058.388	4245.886
37) L8 AR-1262-2	7.288	7.234	676489	1492682	0.447	2.883 #
38) L8 AR-1262-3	7.521f	7.530	607225	236287	1.096	1.316
39) L8 AR-1262-4	0.000	7.587	0	425218	N.D.	1.467 #
40) L8 AR-1262-5	8.196f	8.050f	135604	141915	0.325	1.310 #
41) L9 AR-1268-1	7.521f	7.530	607225	236287	0.353	0.464 #

Data Path : Z:\pestpcbsrv\HPCHEM1\ECD_0\Data\P0082025\
 Data File : P0113079.D
 Signal(s) : Signal #1: ECD1A.ch Signal #2: ECD2B.ch
 Acq On : 20 Aug 2025 11:05
 Operator : YP/AJ
 Sample : DDT ANALOG
 Misc :
 ALS Vial : 7 Sample Multiplier: 1

Instrument :
 ECD_0
ClientSampleId :
 DDT ANALOG

Integration File signal 1: autoint1.e
 Integration File signal 2: autoint2.e
 Quant Time: Aug 20 13:04:17 2025
 Quant Method : Z:\pestpcbsrv\HPCHEM1\ECD_0\methods\P0081825.M
 Quant Title : GC EXTRACTABLES
 QLast Update : Tue Aug 19 06:08:32 2025
 Response via : Initial Calibration
 Integrator: ChemStation

Volume Inj. : 2 µl
 Signal #1 Phase : ZB-MR1 Signal #2 Phase: ZB-MR2
 Signal #1 Info : 30Mx0.32mmx 0.50µ Signal #2 Info : 30M x 0.32mm x 0.25µm

	Compound	RT#1	RT#2	Resp#1	Resp#2	ng/ml	ng/ml
42)	L9 AR-1268-2	0.000	7.587	0	425218	N.D.	1.024 #
43)	L9 AR-1268-3	7.843	7.826	613105	90379	0.508	0.277 #
44)	L9 AR-1268-4	8.196f	8.050f	135604	141915	0.294	1.178 #
45)	L9 AR-1268-5	8.419	8.418f	250488	87410	0.079	0.112 #

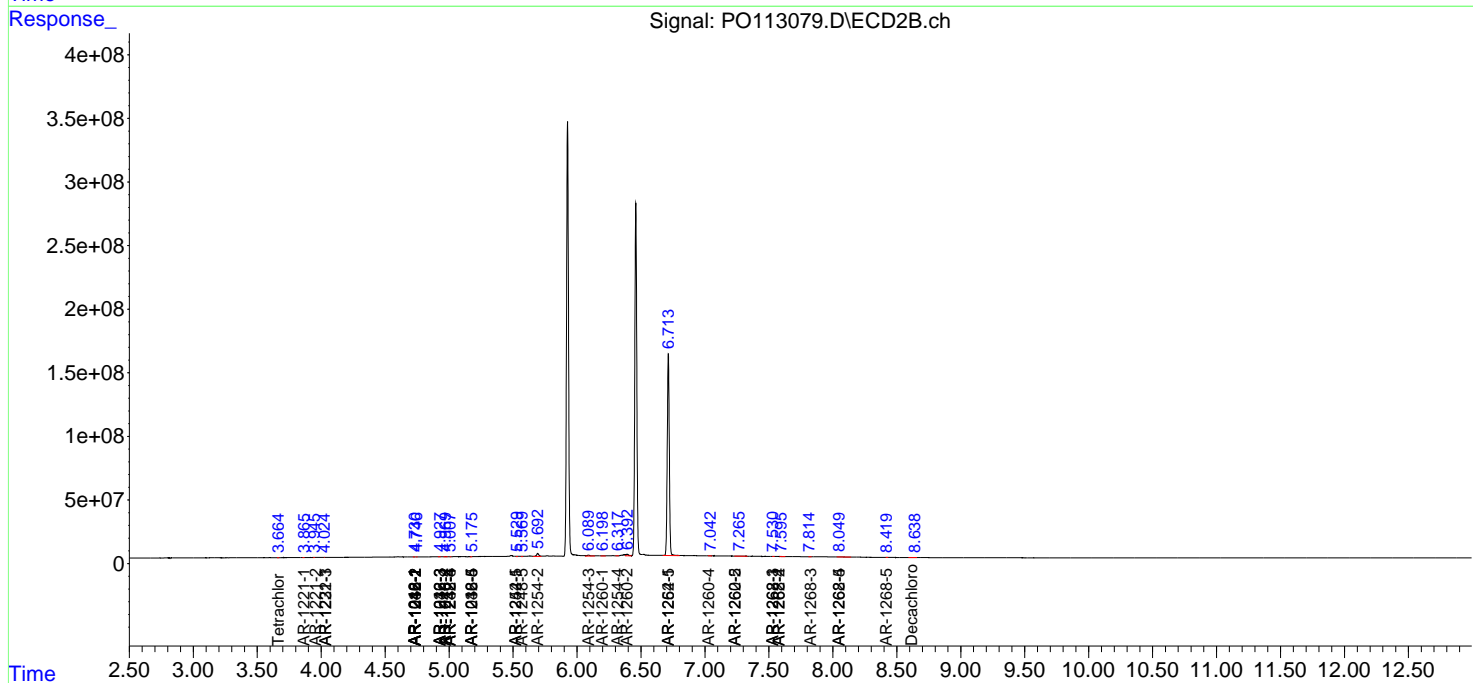
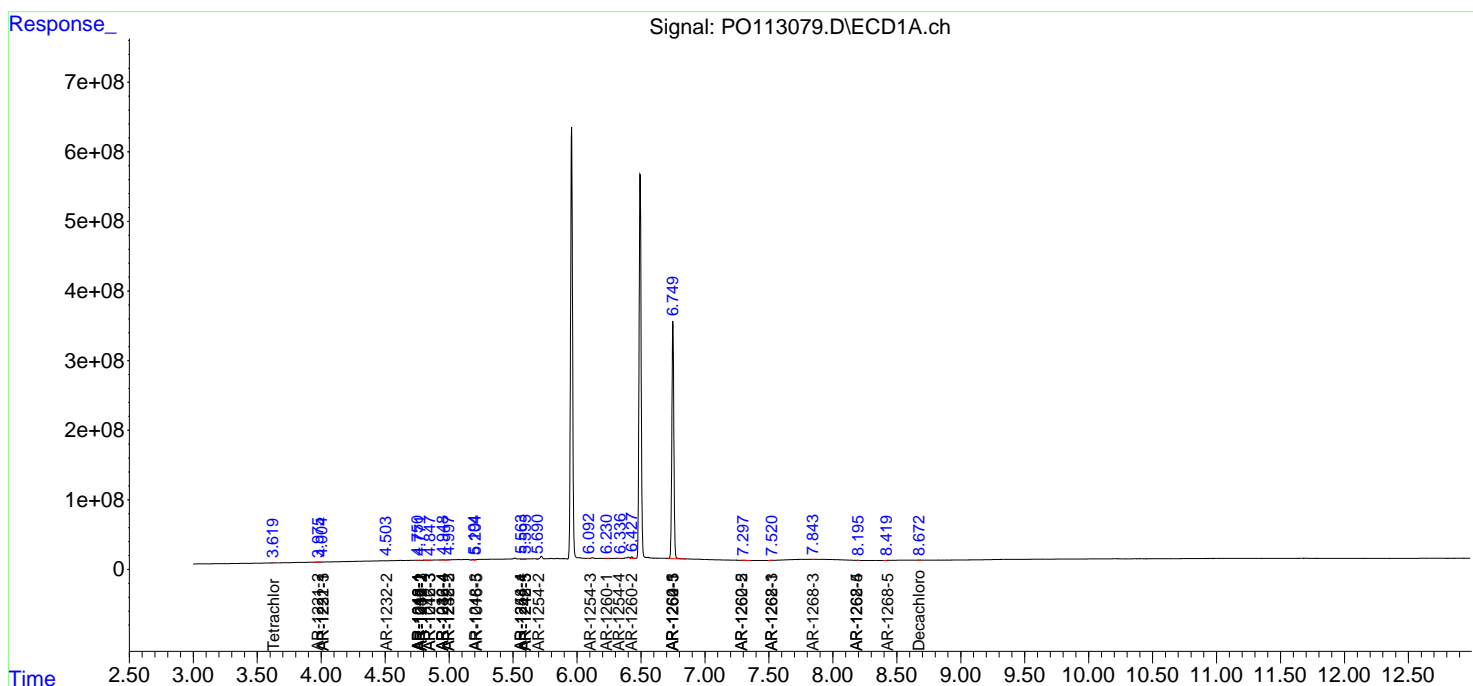
(f)=RT Delta > 1/2 Window (#)=Amounts differ by > 25% (m)=manual int.

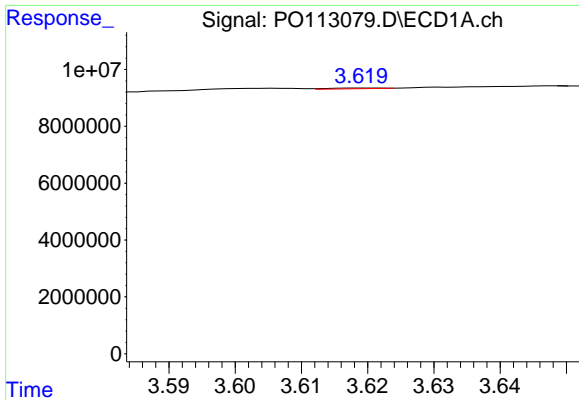
Data Path : Z:\pestpcbsrv\HPCHEM1\ECD_O\Data\PO082025\
 Data File : PO113079.D
 Signal(s) : Signal #1: ECD1A.ch Signal #2: ECD2B.ch
 Acq On : 20 Aug 2025 11:05
 Operator : YP/AJ
 Sample : DDT ANALOG
 Misc :
 ALS Vial : 7 Sample Multiplier: 1

Instrument :
 ECD_O
 ClientSampleId :
 DDT ANALOG

Integration File signal 1: autoint1.e
 Integration File signal 2: autoint2.e
 Quant Time: Aug 20 13:04:17 2025
 Quant Method : Z:\pestpcbsrv\HPCHEM1\ECD_O\methods\PO081825.M
 Quant Title : GC EXTRACTABLES
 QLast Update : Tue Aug 19 06:08:32 2025
 Response via : Initial Calibration
 Integrator: ChemStation

Volume Inj. : 2 µl
 Signal #1 Phase : ZB-MR1 Signal #2 Phase: ZB-MR2
 Signal #1 Info : 30Mx0.32mmx 0.50µ Signal #2 Info : 30M x 0.32mm x 0.25µm

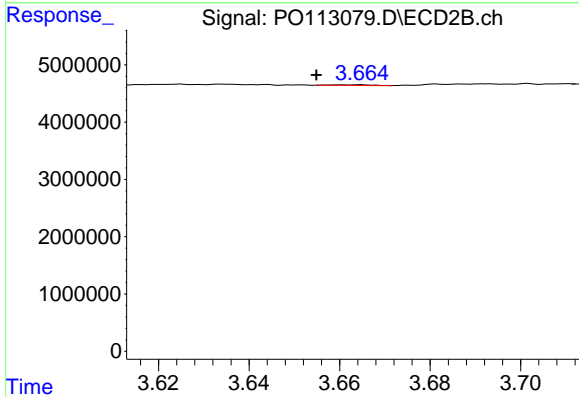




#1 Tetrachloro-m-xylene

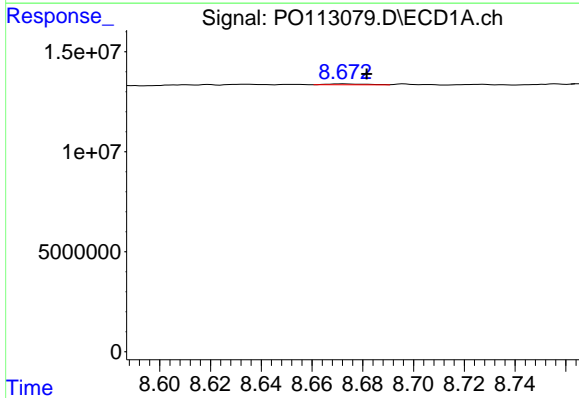
R.T.: 3.620 min
 Delta R.T.: -0.043 min
 Response: 131532
 Conc: 0.02 ng/ml

Instrument :
 ECD_O
 ClientSampleId :
 DDT ANALOG



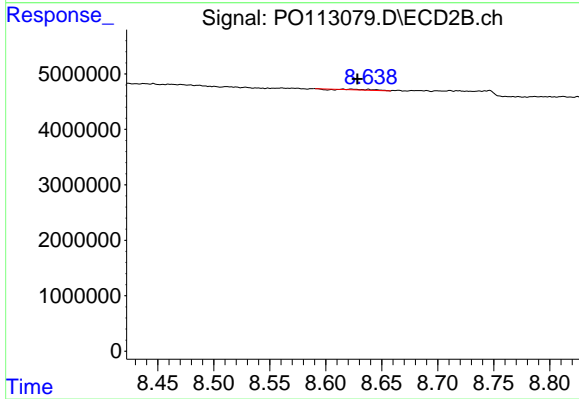
#1 Tetrachloro-m-xylene

R.T.: 3.665 min
 Delta R.T.: 0.010 min
 Response: 70989
 Conc: 0.01 ng/ml



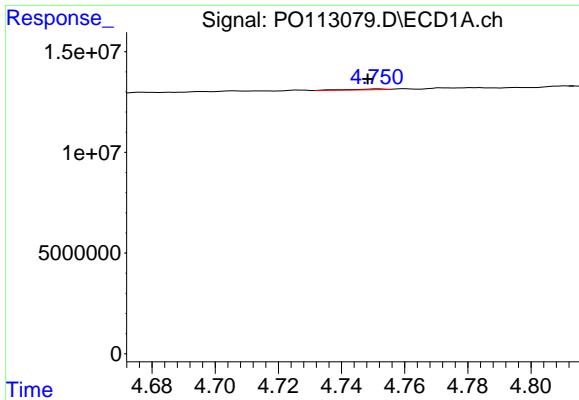
#2 Decachlorobiphenyl

R.T.: 8.673 min
 Delta R.T.: -0.009 min
 Response: 520395
 Conc: 0.08 ng/ml



#2 Decachlorobiphenyl

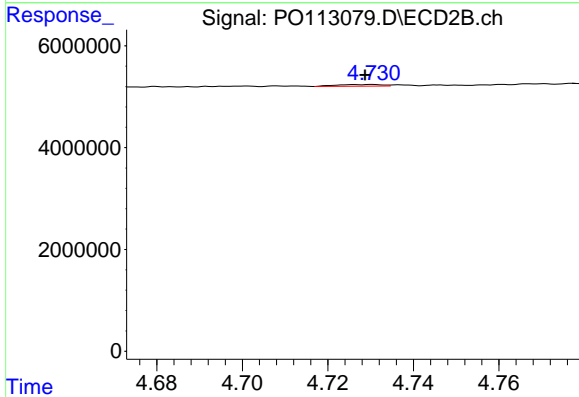
R.T.: 8.615 min
 Delta R.T.: -0.013 min
 Response: 87216
 Conc: 0.05 ng/ml



#3 AR-1016-1

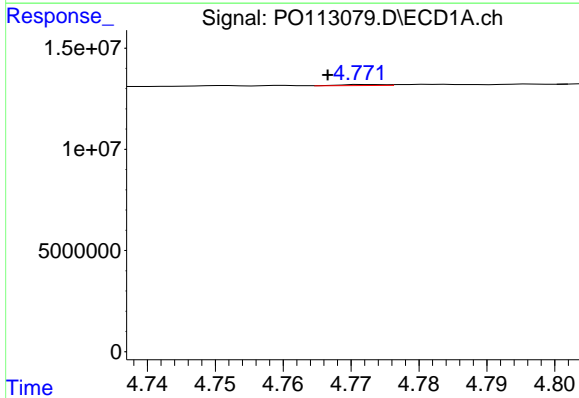
R.T.: 4.752 min
 Delta R.T.: 0.003 min
 Response: 326839
 Conc: 1.22 ng/ml

Instrument :
 ECD_O
 ClientSampleId :
 DDT ANALOG



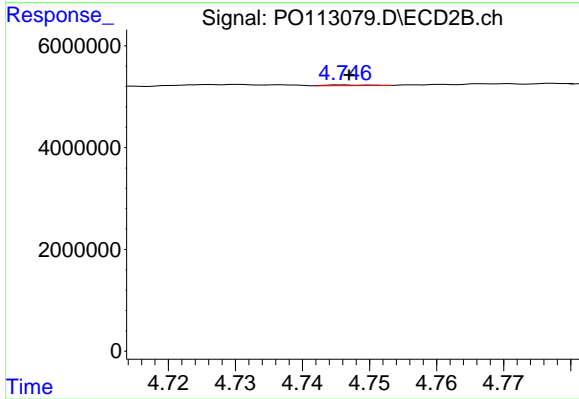
#3 AR-1016-1

R.T.: 4.730 min
 Delta R.T.: 0.002 min
 Response: 238252
 Conc: 1.40 ng/ml



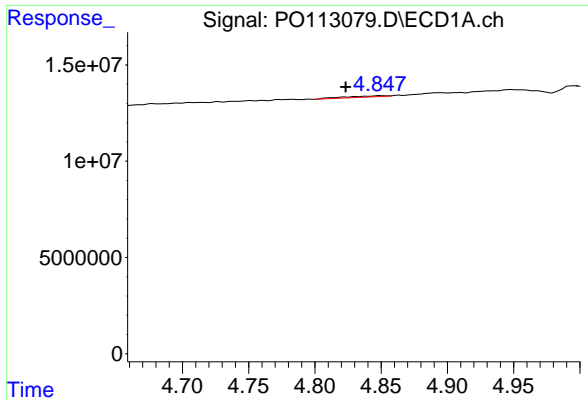
#4 AR-1016-2

R.T.: 4.773 min
 Delta R.T.: 0.006 min
 Response: 206775
 Conc: 0.52 ng/ml



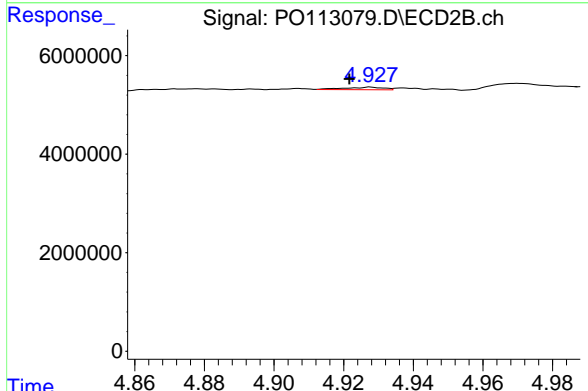
#4 AR-1016-2

R.T.: 4.746 min
 Delta R.T.: -0.001 min
 Response: 56217
 Conc: 0.22 ng/ml

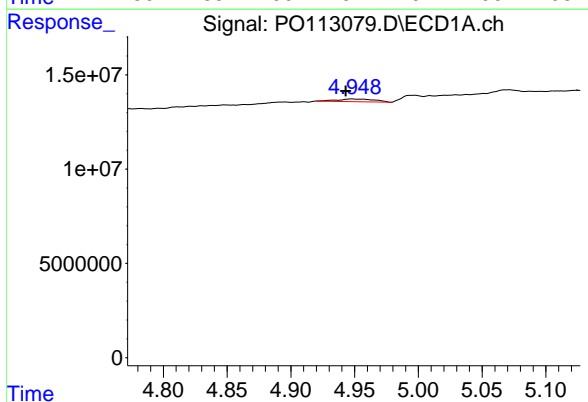


#5 AR-1016-3
 R.T.: 4.849 min
 Delta R.T.: 0.025 min
 Response: 1419762
 Conc: 5.57 ng/ml

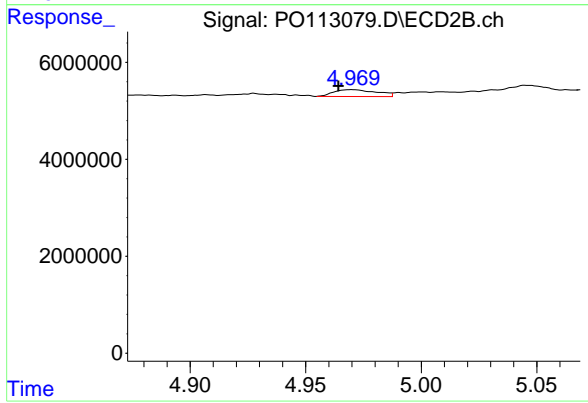
Instrument :
 ECD_O
 ClientSampleId :
 DDT ANALOG



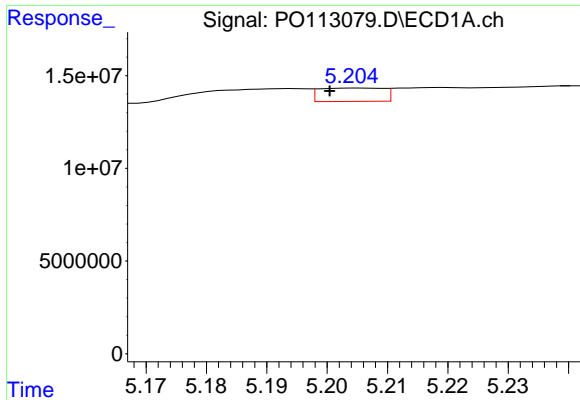
#5 AR-1016-3
 R.T.: 4.928 min
 Delta R.T.: 0.006 min
 Response: 408900
 Conc: 2.93 ng/ml



#6 AR-1016-4
 R.T.: 4.948 min
 Delta R.T.: 0.005 min
 Response: 2906900
 Conc: 13.33 ng/ml



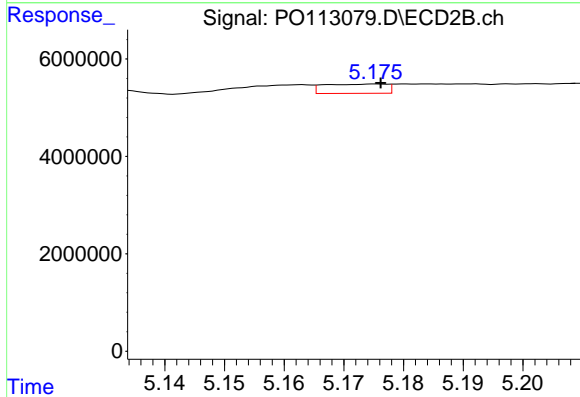
#6 AR-1016-4
 R.T.: 4.970 min
 Delta R.T.: 0.006 min
 Response: 1818610
 Conc: 15.58 ng/ml



#7 AR-1016-5

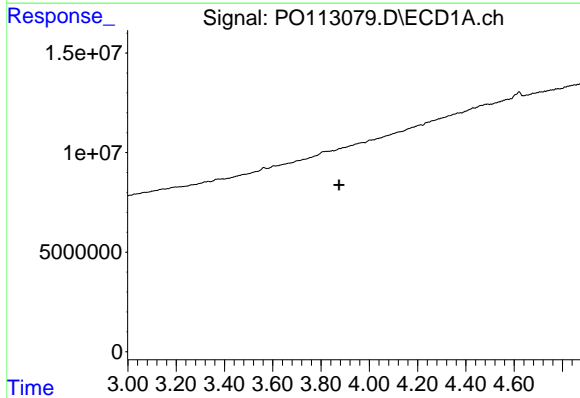
R.T.: 5.205 min
 Delta R.T.: 0.004 min
 Response: 5324184
 Conc: 24.02 ng/ml

Instrument :
 ECD_O
 ClientSampleId :
 DDT ANALOG



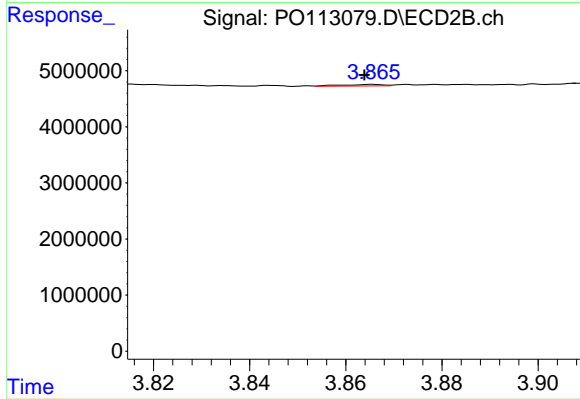
#7 AR-1016-5

R.T.: 5.176 min
 Delta R.T.: 0.000 min
 Response: 1400990
 Conc: 9.83 ng/ml



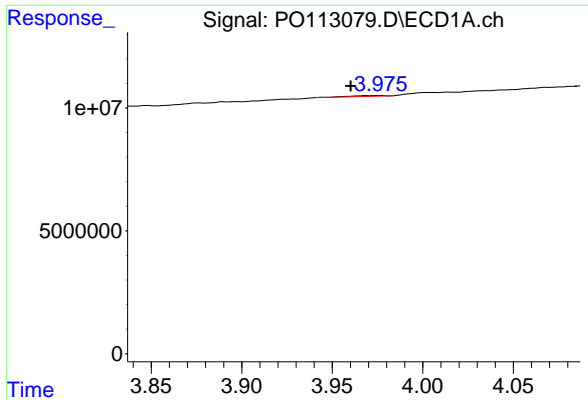
#8 AR-1221-1

R.T.: 3.876 min
 Delta R.T.: 0.002 min
 Response: -189536
 Conc: N.D.



#8 AR-1221-1

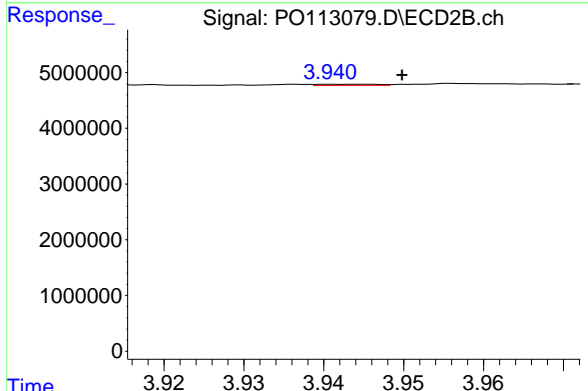
R.T.: 3.866 min
 Delta R.T.: 0.002 min
 Response: 170645
 Conc: 2.70 ng/ml



#9 AR-1221-2

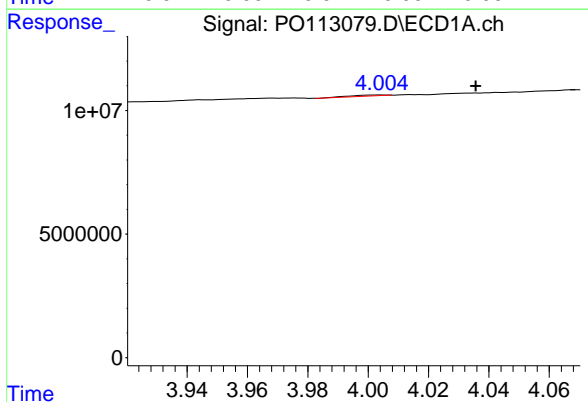
R.T.: 3.977 min
 Delta R.T.: 0.016 min
 Response: 459445
 Conc: 6.80 ng/ml

Instrument :
 ECD_O
 ClientSampleId :
 DDT ANALOG



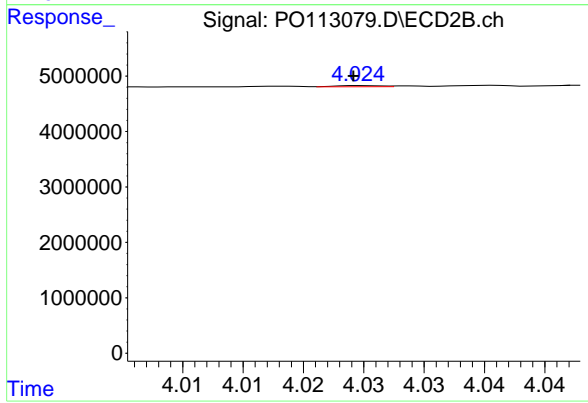
#9 AR-1221-2

R.T.: 3.945 min
 Delta R.T.: -0.004 min
 Response: 114493
 Conc: 2.45 ng/ml



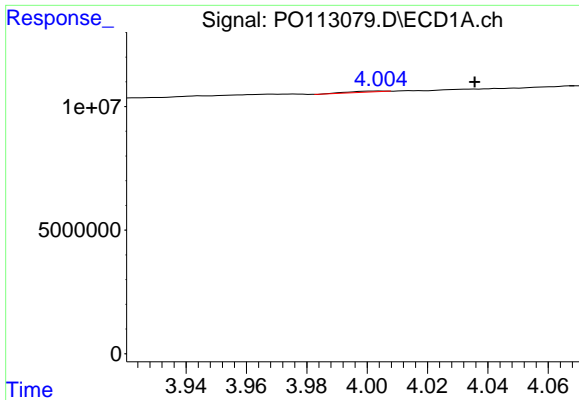
#10 AR-1221-3

R.T.: 4.004 min
 Delta R.T.: -0.032 min
 Response: 314216
 Conc: 1.42 ng/ml



#10 AR-1221-3

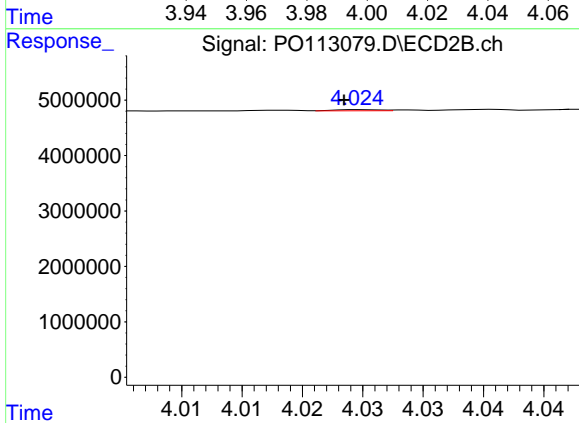
R.T.: 4.025 min
 Delta R.T.: 0.000 min
 Response: 49231
 Conc: 0.33 ng/ml



#11 AR-1232-1

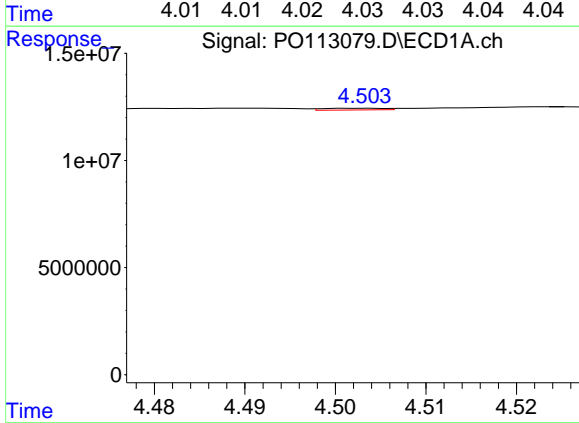
R.T.: 4.004 min
 Delta R.T.: -0.032 min
 Response: 314216
 Conc: 1.81 ng/ml

Instrument :
 ECD_O
 ClientSampleId :
 DDT ANALOG



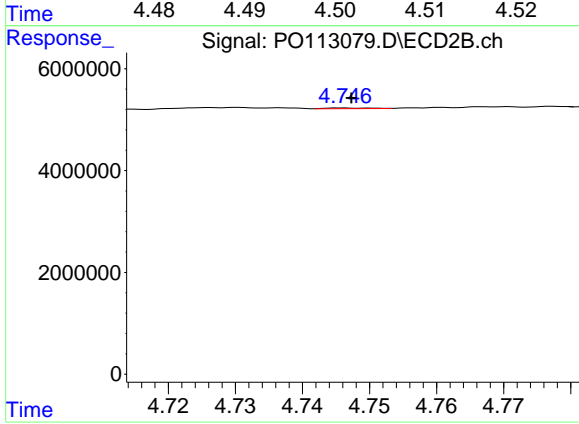
#11 AR-1232-1

R.T.: 4.025 min
 Delta R.T.: 0.001 min
 Response: 49231
 Conc: 0.42 ng/ml



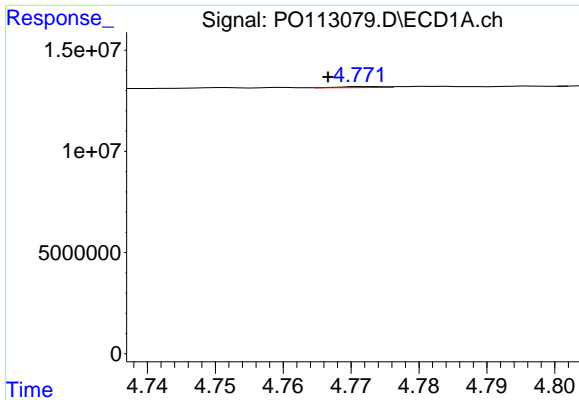
#12 AR-1232-2

R.T.: 4.503 min
 Delta R.T.: -0.024 min
 Response: 360148
 Conc: 3.61 ng/ml



#12 AR-1232-2

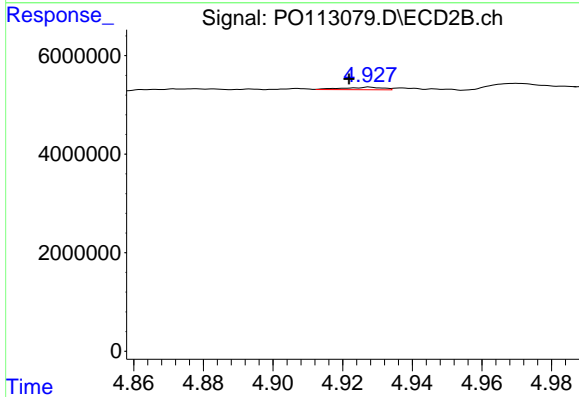
R.T.: 4.746 min
 Delta R.T.: -0.001 min
 Response: 56217
 Conc: 0.46 ng/ml



#13 AR-1232-3

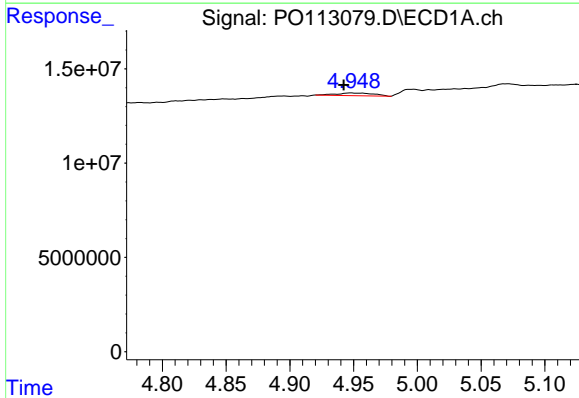
R.T.: 4.773 min
 Delta R.T.: 0.006 min
 Response: 206775
 Conc: 1.09 ng/ml

Instrument :
 ECD_O
 ClientSampleId :
 DDT ANALOG



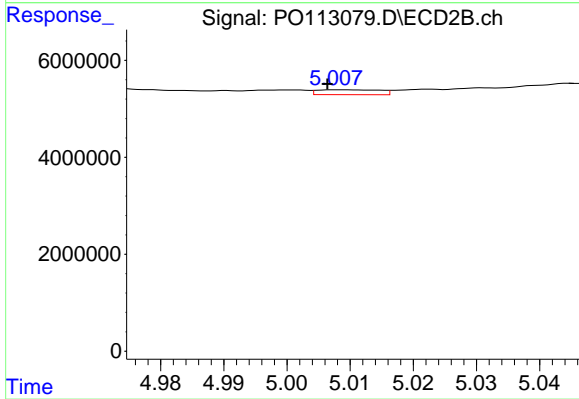
#13 AR-1232-3

R.T.: 4.928 min
 Delta R.T.: 0.006 min
 Response: 408900
 Conc: 6.46 ng/ml



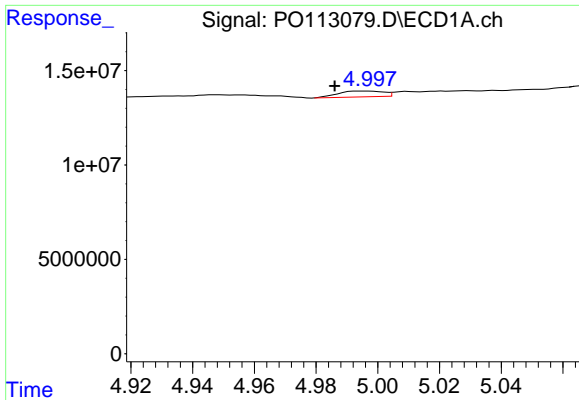
#14 AR-1232-4

R.T.: 4.948 min
 Delta R.T.: 0.006 min
 Response: 2906900
 Conc: 30.87 ng/ml



#14 AR-1232-4

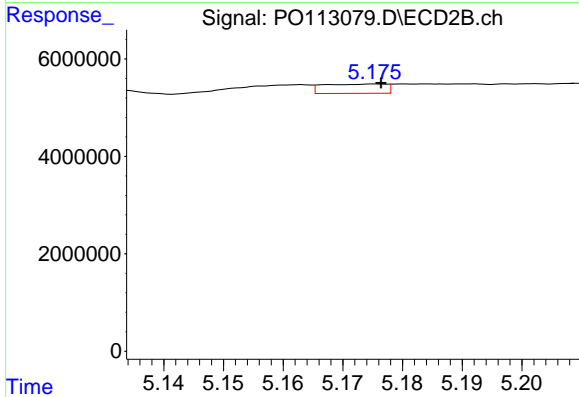
R.T.: 5.008 min
 Delta R.T.: 0.002 min
 Response: 699407
 Conc: 12.44 ng/ml



#15 AR-1232-5

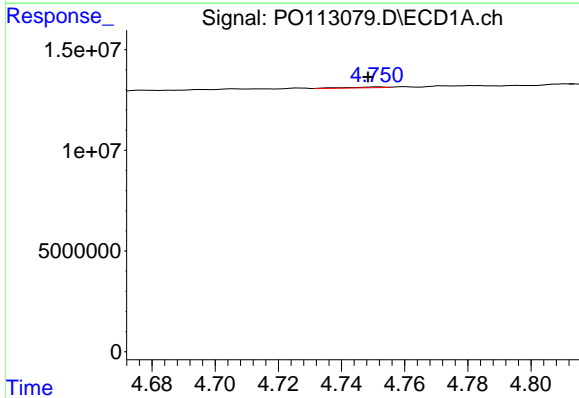
R.T.: 4.996 min
 Delta R.T.: 0.010 min
 Response: 3140649
 Conc: 50.70 ng/ml

Instrument :
 ECD_O
 ClientSampleId :
 DDT ANALOG



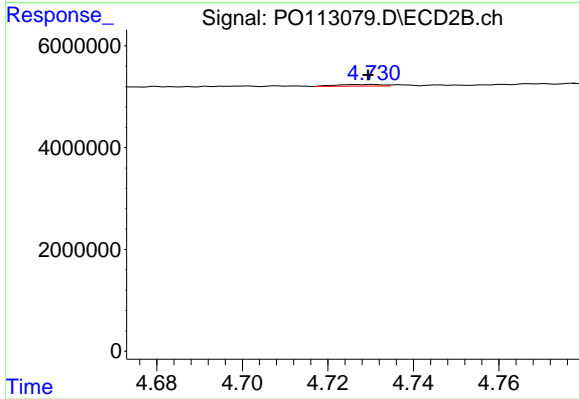
#15 AR-1232-5

R.T.: 5.176 min
 Delta R.T.: 0.000 min
 Response: 1400990
 Conc: 23.40 ng/ml



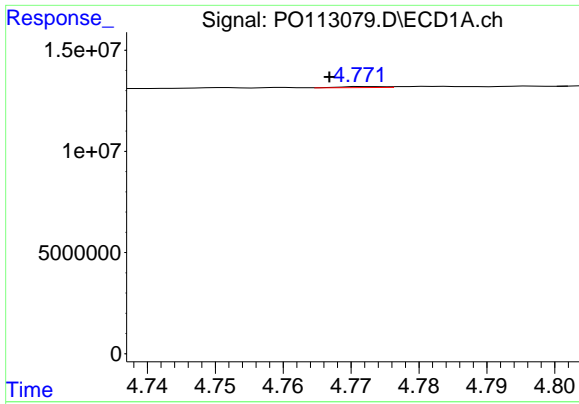
#16 AR-1242-1

R.T.: 4.752 min
 Delta R.T.: 0.003 min
 Response: 326839
 Conc: 1.42 ng/ml



#16 AR-1242-1

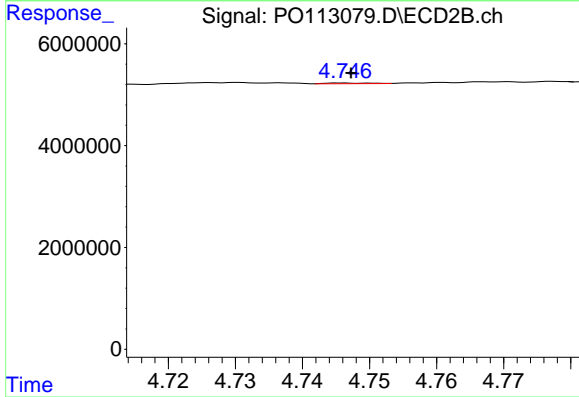
R.T.: 4.730 min
 Delta R.T.: 0.000 min
 Response: 238252
 Conc: 1.65 ng/ml



#17 AR-1242-2

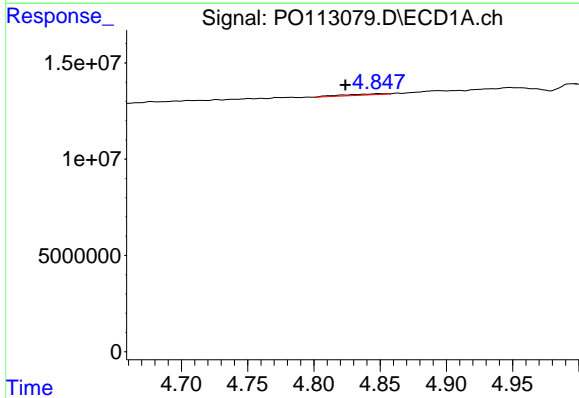
R.T.: 4.773 min
 Delta R.T.: 0.006 min
 Response: 206775
 Conc: 0.60 ng/ml

Instrument :
 ECD_O
 ClientSampleId :
 DDT ANALOG



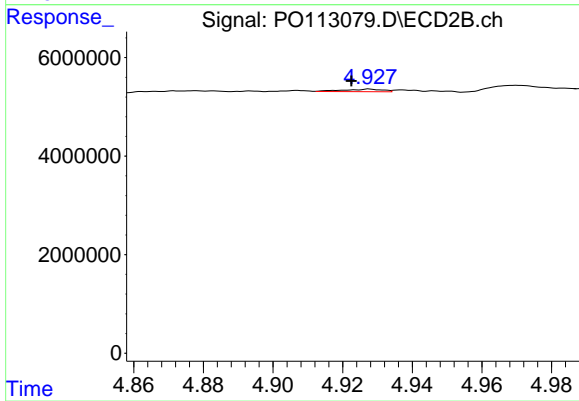
#17 AR-1242-2

R.T.: 4.746 min
 Delta R.T.: -0.001 min
 Response: 56217
 Conc: 0.26 ng/ml



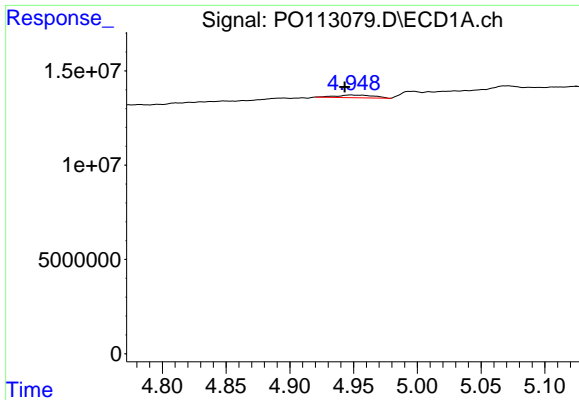
#18 AR-1242-3

R.T.: 4.849 min
 Delta R.T.: 0.025 min
 Response: 1419762
 Conc: 6.40 ng/ml



#18 AR-1242-3

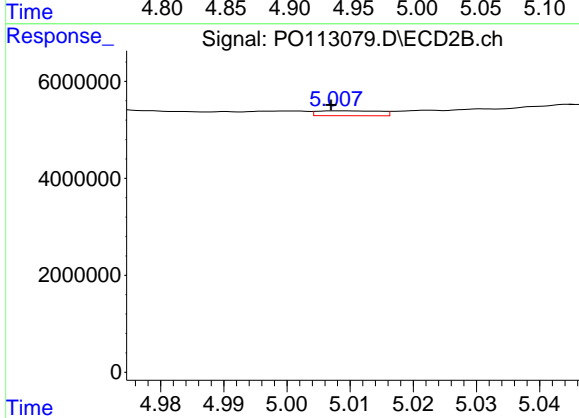
R.T.: 4.928 min
 Delta R.T.: 0.005 min
 Response: 408900
 Conc: 3.50 ng/ml



#19 AR-1242-4

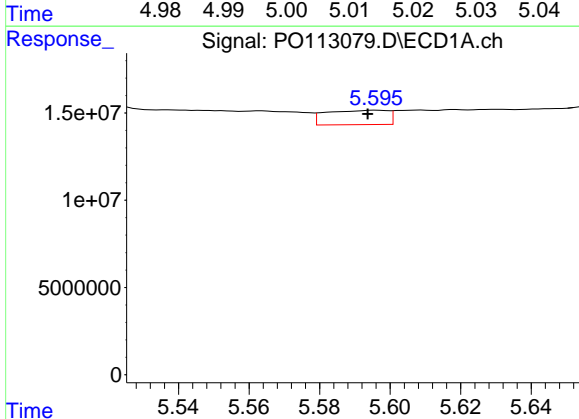
R.T.: 4.948 min
 Delta R.T.: 0.005 min
 Response: 2906900
 Conc: 16.76 ng/ml

Instrument :
 ECD_O
 ClientSampleId :
 DDT ANALOG



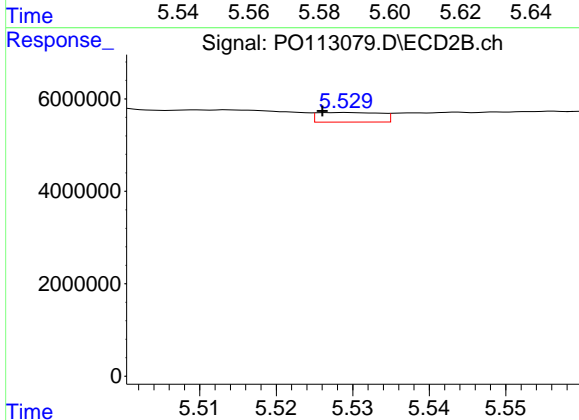
#19 AR-1242-4

R.T.: 5.008 min
 Delta R.T.: 0.001 min
 Response: 699407
 Conc: 5.95 ng/ml



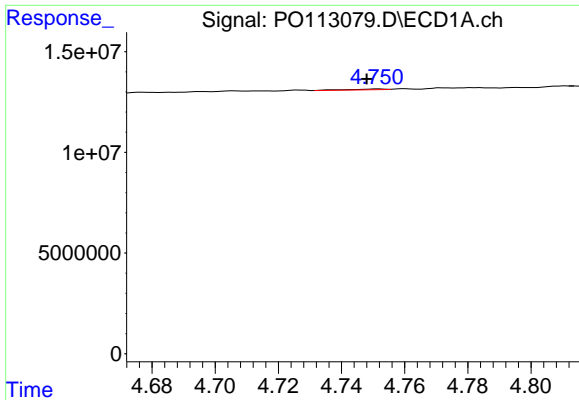
#20 AR-1242-5

R.T.: 5.596 min
 Delta R.T.: 0.002 min
 Response: 10007121
 Conc: 50.00 ng/ml



#20 AR-1242-5

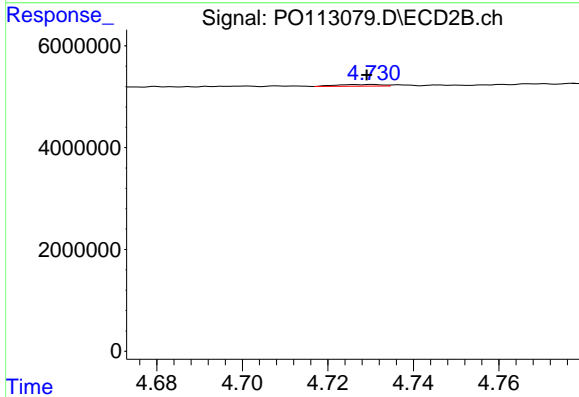
R.T.: 5.529 min
 Delta R.T.: 0.003 min
 Response: 1203255
 Conc: 8.07 ng/ml



#21 AR-1248-1

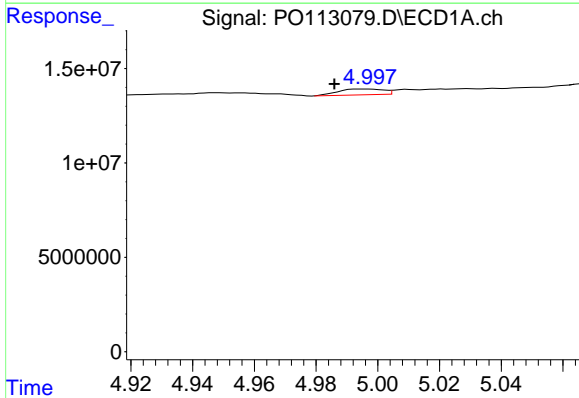
R.T.: 4.752 min
 Delta R.T.: 0.004 min
 Response: 326839
 Conc: 1.87 ng/ml

Instrument :
 ECD_O
 ClientSampleId :
 DDT ANALOG



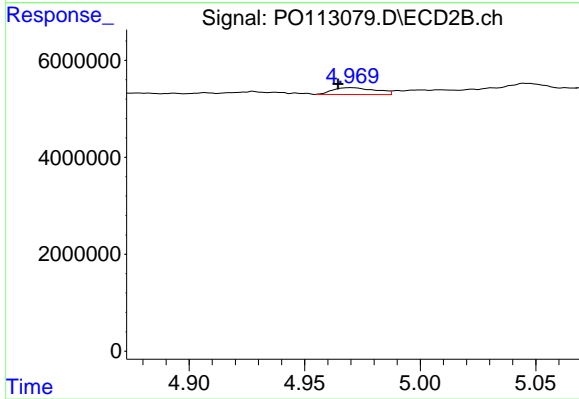
#21 AR-1248-1

R.T.: 4.730 min
 Delta R.T.: 0.001 min
 Response: 238252
 Conc: 2.14 ng/ml



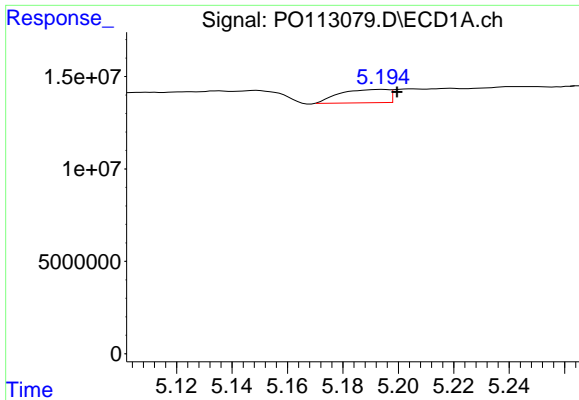
#22 AR-1248-2

R.T.: 4.996 min
 Delta R.T.: 0.010 min
 Response: 3140649
 Conc: 12.99 ng/ml



#22 AR-1248-2

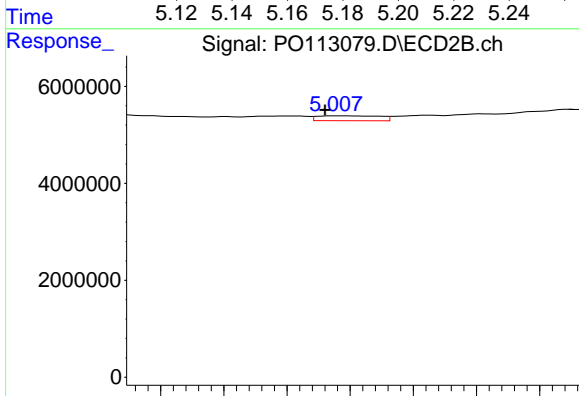
R.T.: 4.970 min
 Delta R.T.: 0.005 min
 Response: 1818610
 Conc: 11.32 ng/ml



#23 AR-1248-3

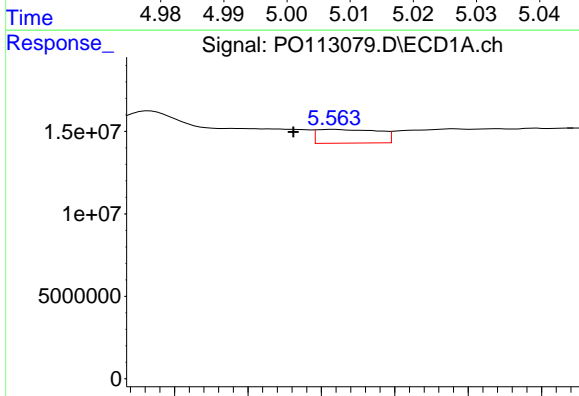
R.T.: 5.194 min
 Delta R.T.: -0.005 min
 Response: 8775296
 Conc: 27.52 ng/ml

Instrument :
 ECD_O
 ClientSampleId :
 DDT ANALOG



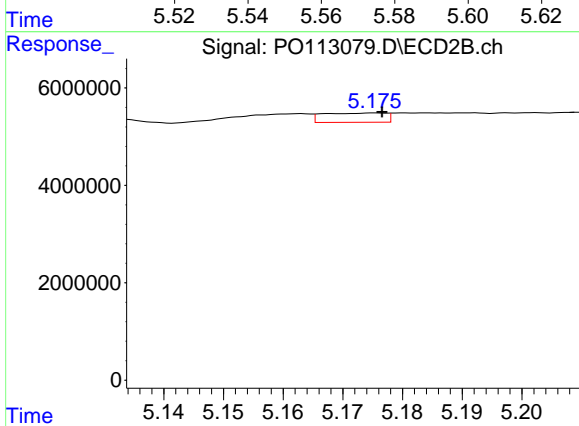
#23 AR-1248-3

R.T.: 5.008 min
 Delta R.T.: 0.002 min
 Response: 699407
 Conc: 4.12 ng/ml



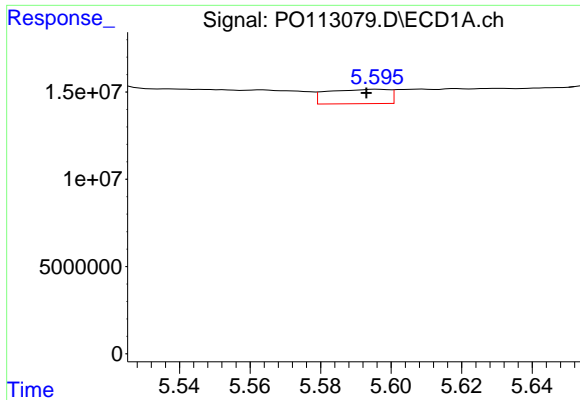
#24 AR-1248-4

R.T.: 5.564 min
 Delta R.T.: 0.011 min
 Response: 9787710
 Conc: 19.59 ng/ml



#24 AR-1248-4

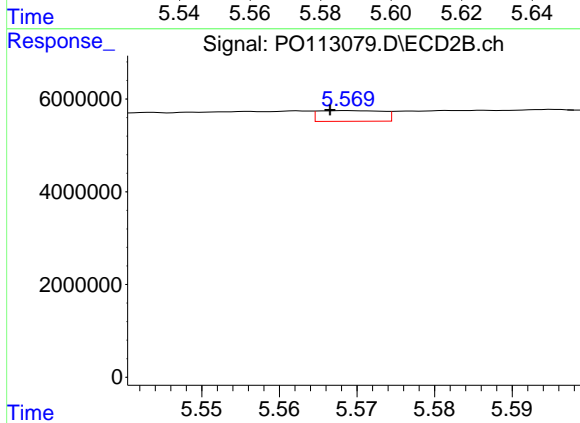
R.T.: 5.176 min
 Delta R.T.: 0.000 min
 Response: 1400990
 Conc: 7.03 ng/ml



#25 AR-1248-5

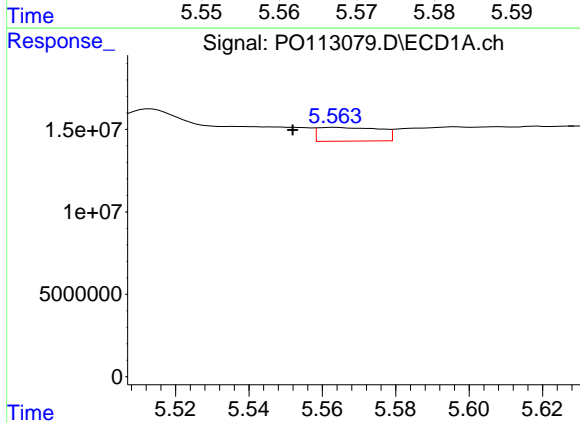
R.T.: 5.596 min
 Delta R.T.: 0.003 min
 Response: 10007121
 Conc: 29.30 ng/ml

Instrument :
 ECD_O
 ClientSampleId :
 DDT ANALOG



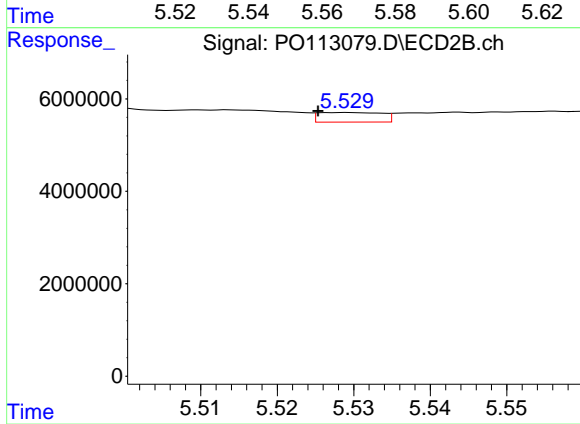
#25 AR-1248-5

R.T.: 5.569 min
 Delta R.T.: 0.002 min
 Response: 1325304
 Conc: 6.24 ng/ml



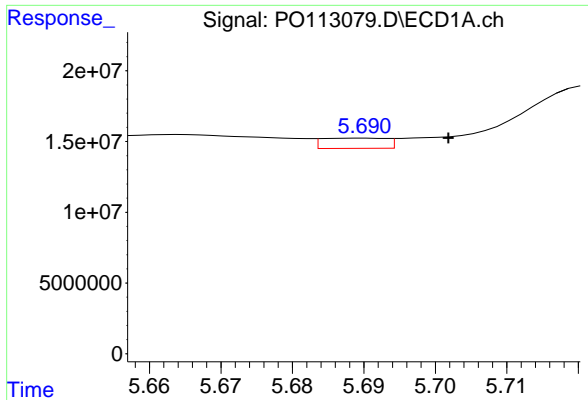
#26 AR-1254-1

R.T.: 5.564 min
 Delta R.T.: 0.012 min
 Response: 9787710
 Conc: 18.13 ng/ml



#26 AR-1254-1

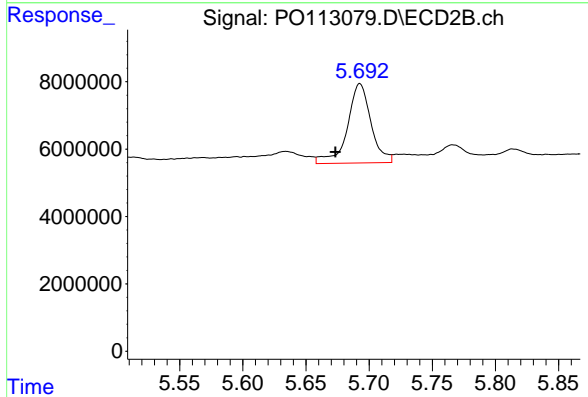
R.T.: 5.529 min
 Delta R.T.: 0.004 min
 Response: 1203255
 Conc: 3.82 ng/ml



#27 AR-1254-2

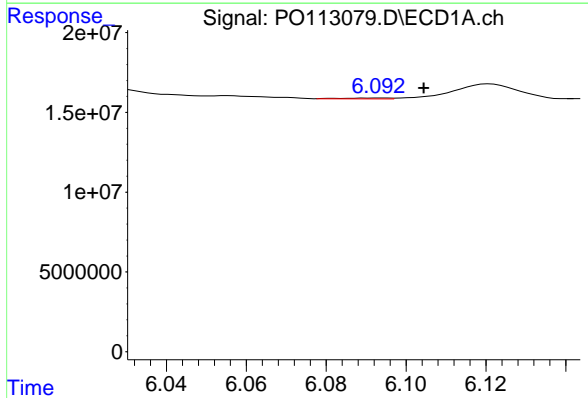
R.T.: 5.690 min
 Delta R.T.: -0.012 min
 Response: 4543952
 Conc: 9.21 ng/ml

Instrument :
 ECD_O
 ClientSampleId :
 DDT ANALOG



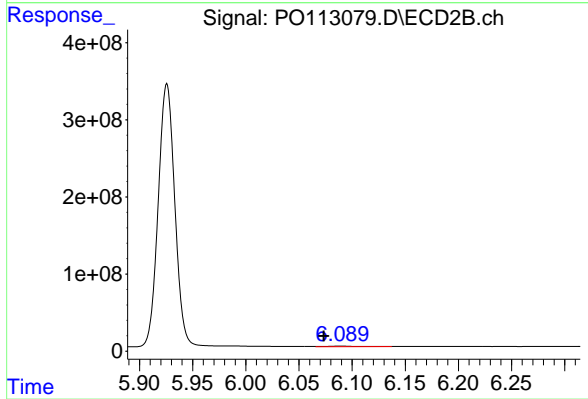
#27 AR-1254-2

R.T.: 5.693 min
 Delta R.T.: 0.019 min
 Response: 30521089
 Conc: 108.87 ng/ml



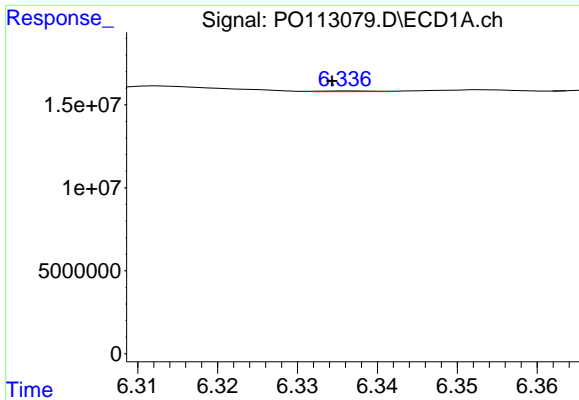
#28 AR-1254-3

R.T.: 6.094 min
 Delta R.T.: -0.011 min
 Response: 413924
 Conc: 0.56 ng/ml



#28 AR-1254-3

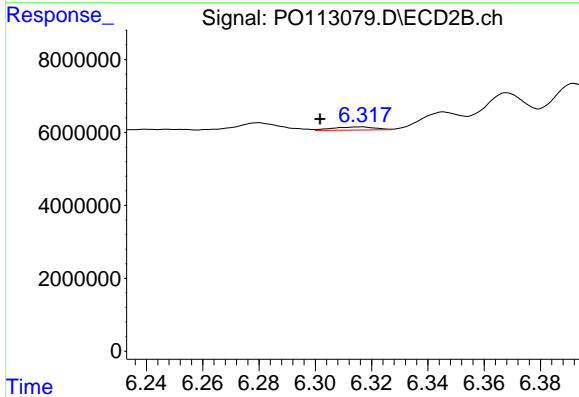
R.T.: 6.089 min
 Delta R.T.: 0.016 min
 Response: 15888863
 Conc: 38.11 ng/ml



#29 AR-1254-4

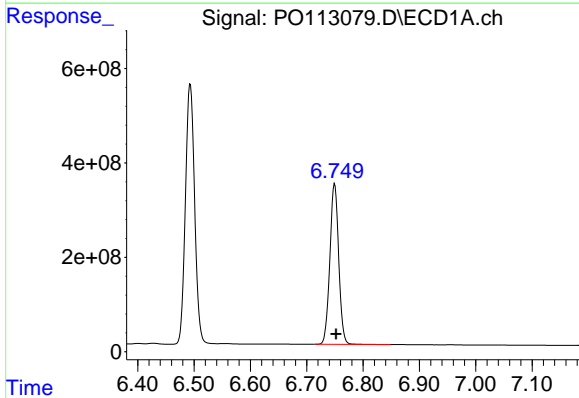
R.T.: 6.336 min
 Delta R.T.: 0.002 min
 Response: 186685
 Conc: 0.34 ng/ml

Instrument :
 ECD_O
 ClientSampleId :
 DDT ANALOG



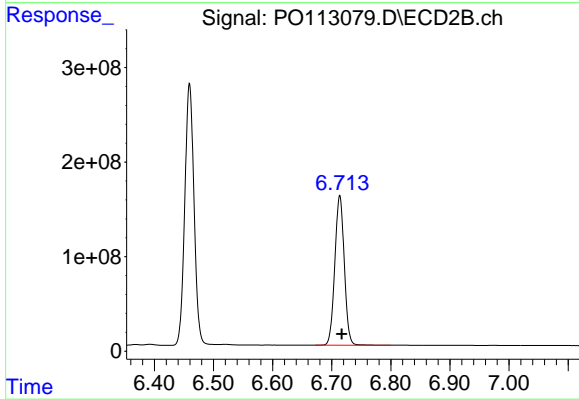
#29 AR-1254-4

R.T.: 6.316 min
 Delta R.T.: 0.014 min
 Response: 878967
 Conc: 3.20 ng/ml



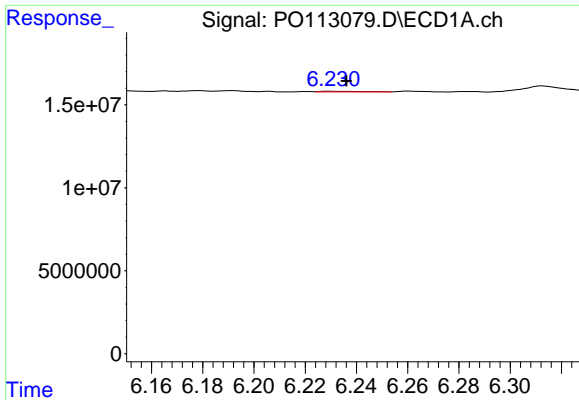
#30 AR-1254-5

R.T.: 6.750 min
 Delta R.T.: -0.003 min
 Response: 3716522219
 Conc: 5301.94 ng/ml



#30 AR-1254-5

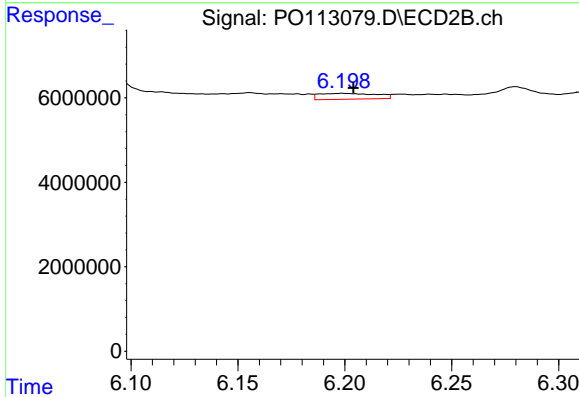
R.T.: 6.714 min
 Delta R.T.: -0.003 min
 Response: 1760404667
 Conc: 4924.34 ng/ml



#31 AR-1260-1

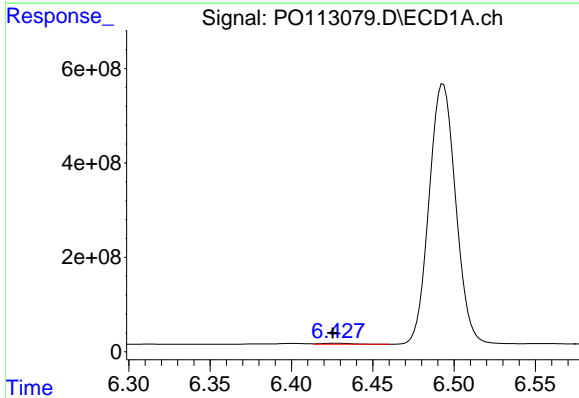
R.T.: 6.230 min
 Delta R.T.: -0.006 min
 Response: 435839
 Conc: 0.98 ng/ml

Instrument :
 ECD_O
 ClientSampleId :
 DDT ANALOG



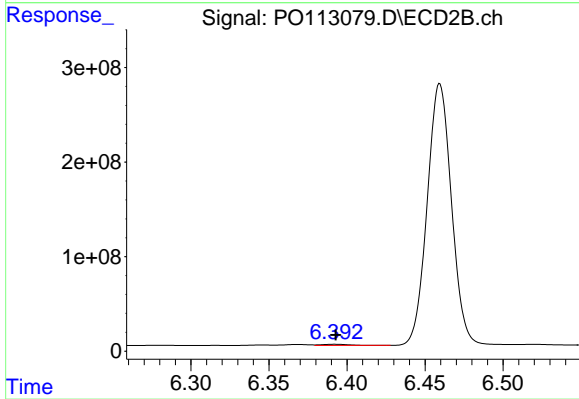
#31 AR-1260-1

R.T.: 6.199 min
 Delta R.T.: -0.005 min
 Response: 2550758
 Conc: 10.00 ng/ml



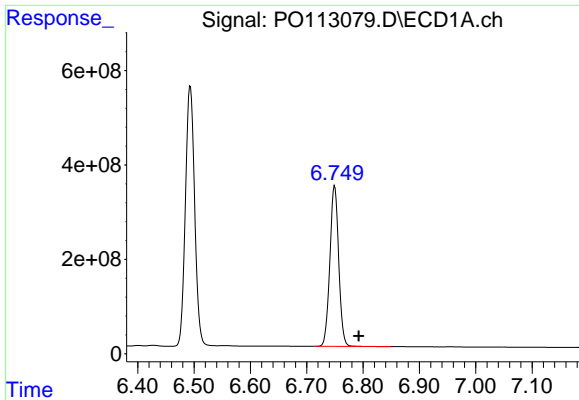
#32 AR-1260-2

R.T.: 6.428 min
 Delta R.T.: 0.002 min
 Response: 26783351
 Conc: 39.00 ng/ml



#32 AR-1260-2

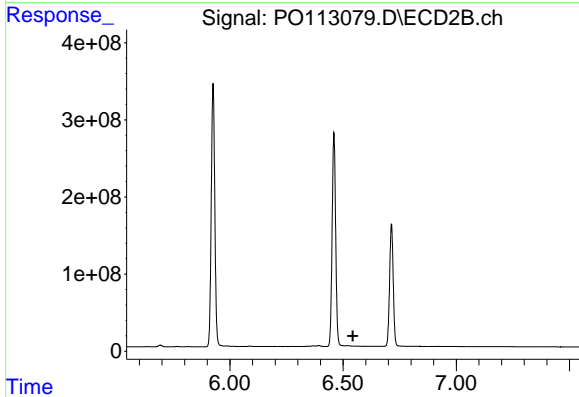
R.T.: 6.392 min
 Delta R.T.: 0.000 min
 Response: 14397288
 Conc: 41.65 ng/ml



#33 AR-1260-3

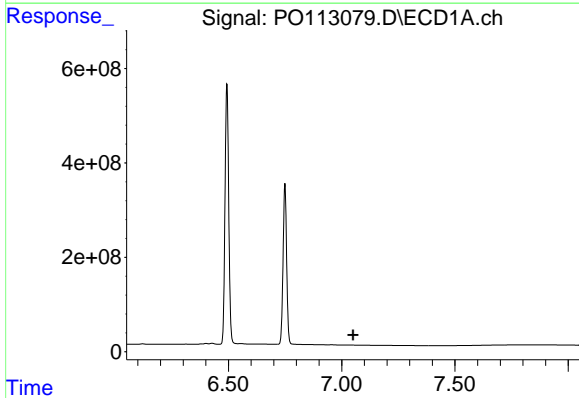
R.T.: 6.750 min
Delta R.T.: -0.043 min
Response: 3716522219
Conc: 6018.92 ng/m

Instrument :
ECD_O
ClientSampleId :
DDT ANALOG



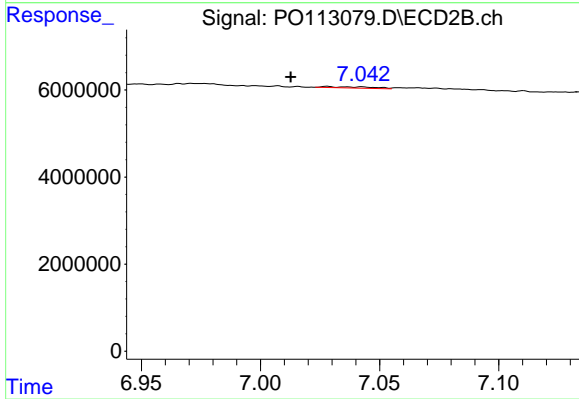
#33 AR-1260-3

R.T.: 6.520 min
Delta R.T.: -0.024 min
Response: -4298241
Conc: N.D.



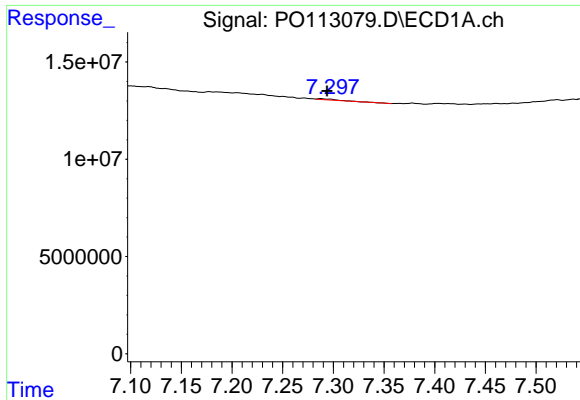
#34 AR-1260-4

R.T.: 7.118 min
Delta R.T.: 0.068 min
Response: -121318
Conc: N.D.



#34 AR-1260-4

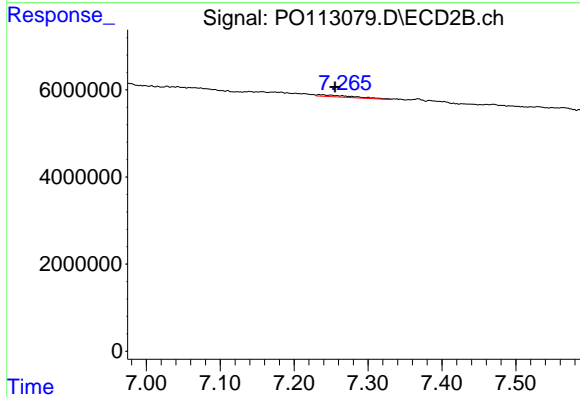
R.T.: 7.028 min
Delta R.T.: 0.015 min
Response: 433231
Conc: 2.09 ng/ml



#35 AR-1260-5

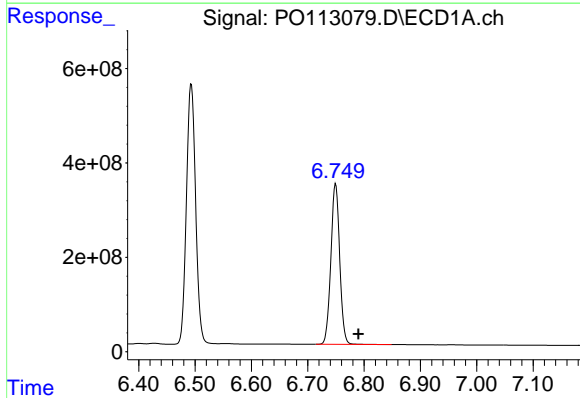
R.T.: 7.288 min
 Delta R.T.: -0.006 min
 Response: 676489
 Conc: 0.56 ng/ml

Instrument :
 ECD_O
 ClientSampleId :
 DDT ANALOG



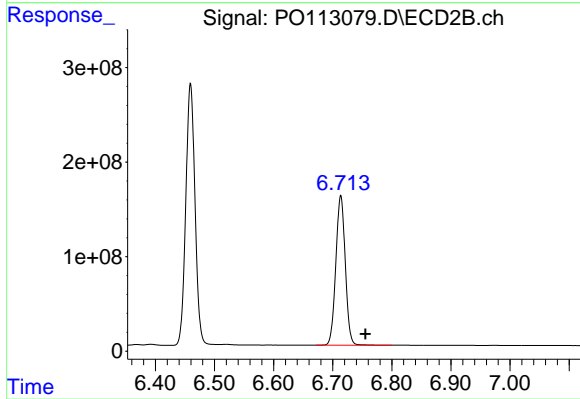
#35 AR-1260-5

R.T.: 7.234 min
 Delta R.T.: -0.022 min
 Response: 1492682
 Conc: 3.19 ng/ml



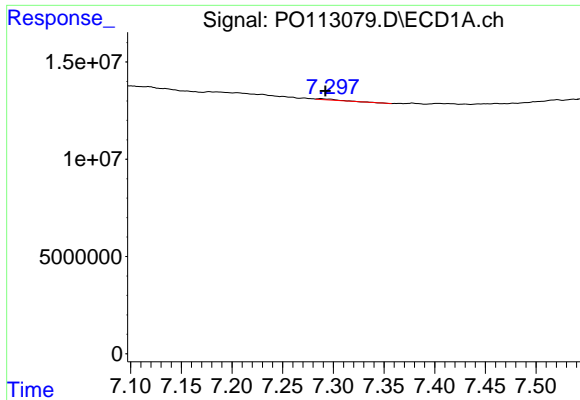
#36 AR-1262-1

R.T.: 6.750 min
 Delta R.T.: -0.041 min
 Response: 3716522219
 Conc: 4058.39 ng/ml



#36 AR-1262-1

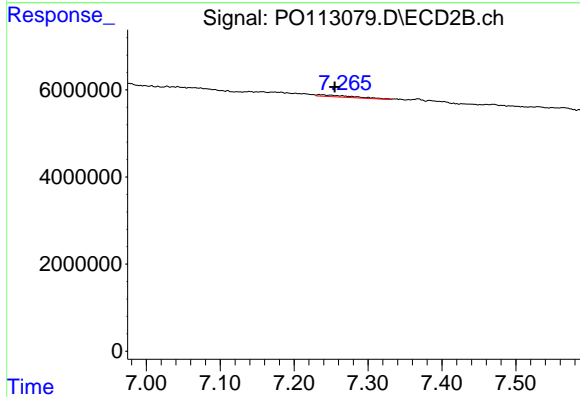
R.T.: 6.714 min
 Delta R.T.: -0.042 min
 Response: 1760404667
 Conc: 4245.89 ng/ml



#37 AR-1262-2

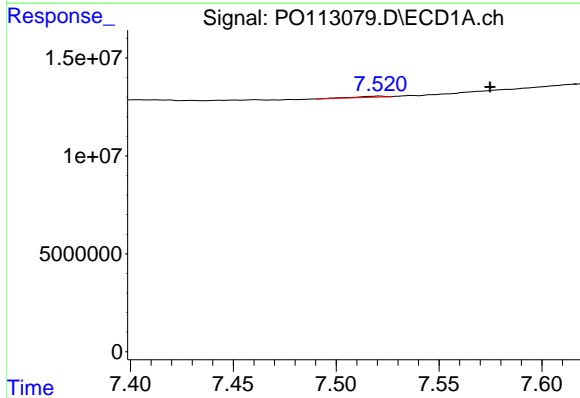
R.T.: 7.288 min
 Delta R.T.: -0.004 min
 Response: 676489
 Conc: 0.45 ng/ml

Instrument :
 ECD_O
 ClientSampleId :
 DDT ANALOG



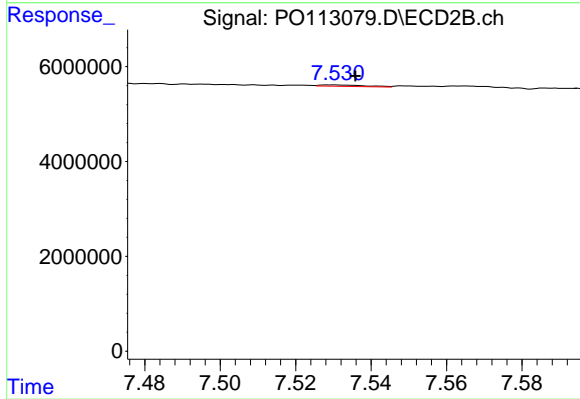
#37 AR-1262-2

R.T.: 7.234 min
 Delta R.T.: -0.021 min
 Response: 1492682
 Conc: 2.88 ng/ml



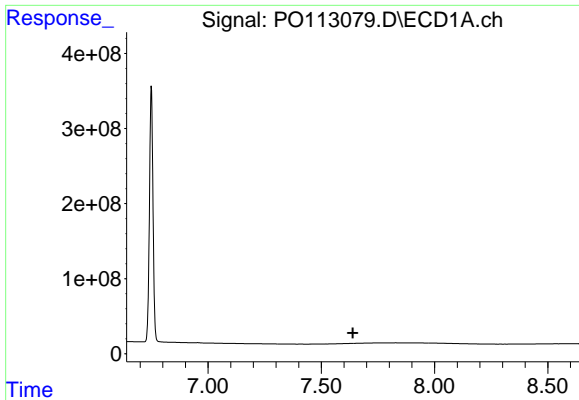
#38 AR-1262-3

R.T.: 7.521 min
 Delta R.T.: -0.053 min
 Response: 607225
 Conc: 1.10 ng/ml



#38 AR-1262-3

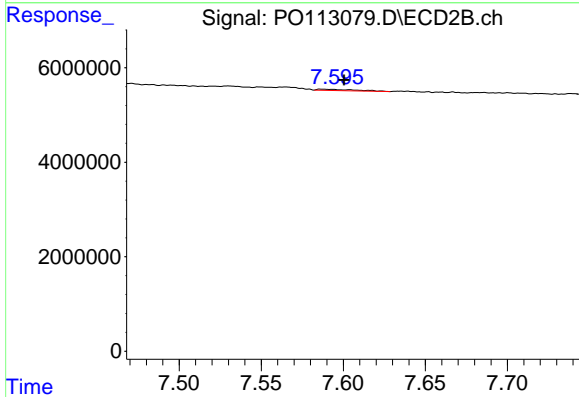
R.T.: 7.530 min
 Delta R.T.: -0.006 min
 Response: 236287
 Conc: 1.32 ng/ml



#39 AR-1262-4

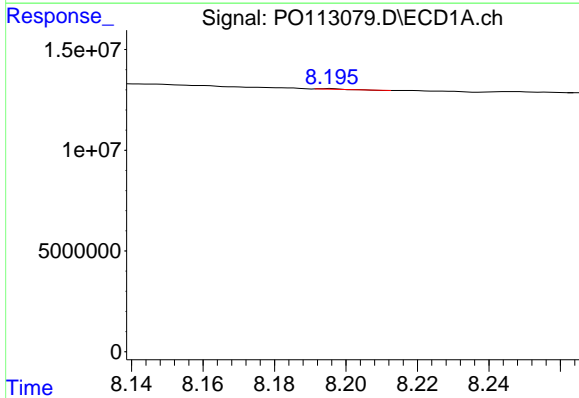
R.T.: 0.000 min
 Exp R.T.: 7.639 min
 Response: 0
 Conc: N.D.

Instrument :
 ECD_O
 ClientSampleId :
 DDT ANALOG



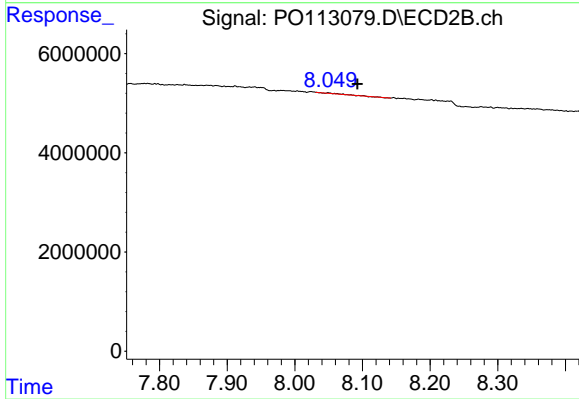
#39 AR-1262-4

R.T.: 7.587 min
 Delta R.T.: -0.013 min
 Response: 425218
 Conc: 1.47 ng/ml



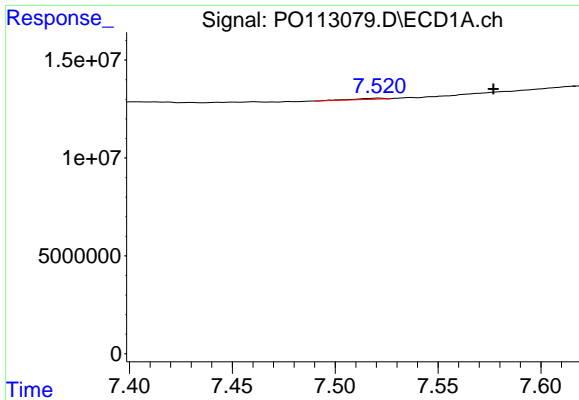
#40 AR-1262-5

R.T.: 8.196 min
 Delta R.T.: 0.060 min
 Response: 135604
 Conc: 0.33 ng/ml



#40 AR-1262-5

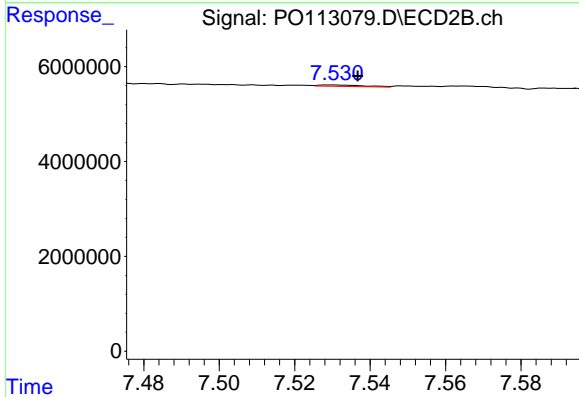
R.T.: 8.050 min
 Delta R.T.: -0.043 min
 Response: 141915
 Conc: 1.31 ng/ml



#41 AR-1268-1

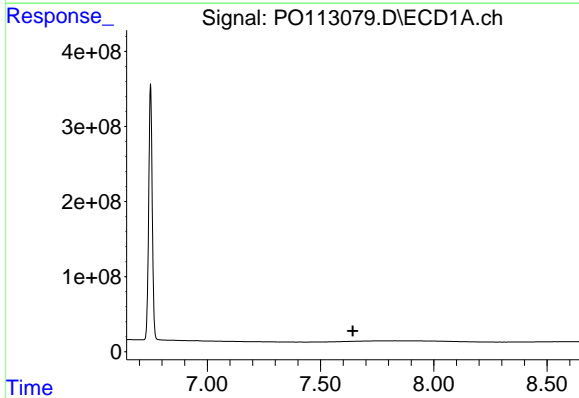
R.T.: 7.521 min
 Delta R.T.: -0.056 min
 Response: 607225
 Conc: 0.35 ng/ml

Instrument :
 ECD_O
 ClientSampleId :
 DDT ANALOG



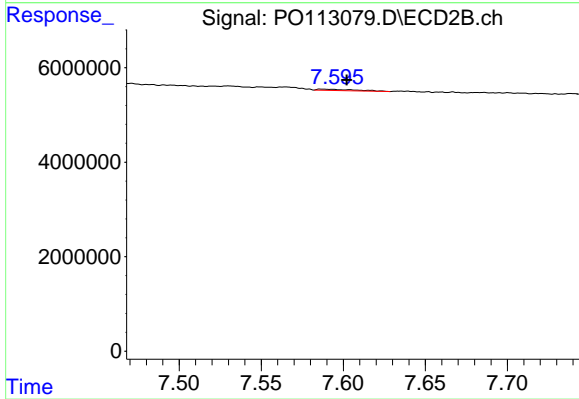
#41 AR-1268-1

R.T.: 7.530 min
 Delta R.T.: -0.007 min
 Response: 236287
 Conc: 0.46 ng/ml



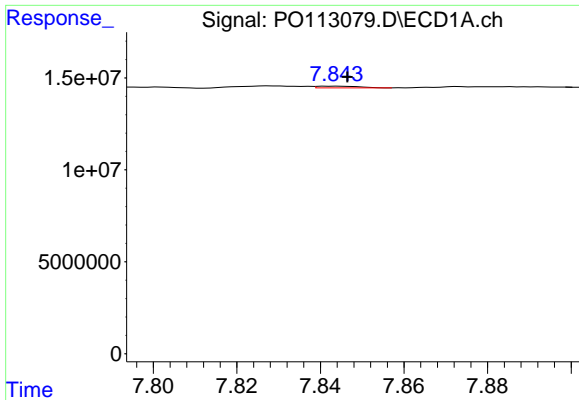
#42 AR-1268-2

R.T.: 0.000 min
 Exp R.T. : 7.642 min
 Response: 0
 Conc: N.D.



#42 AR-1268-2

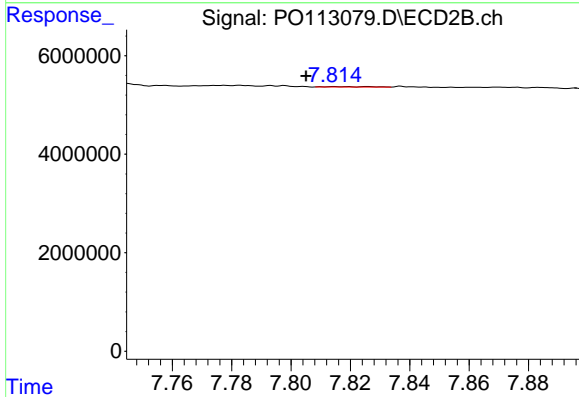
R.T.: 7.587 min
 Delta R.T.: -0.015 min
 Response: 425218
 Conc: 1.02 ng/ml



#43 AR-1268-3

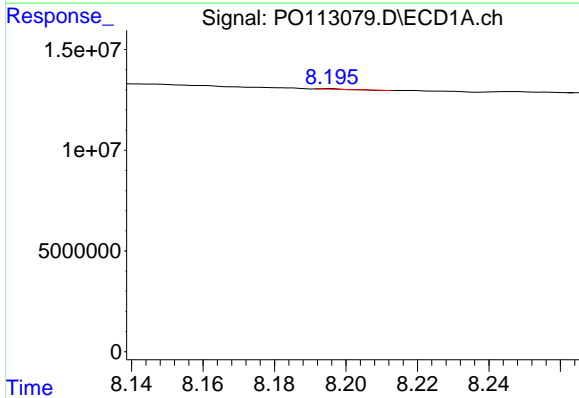
R.T.: 7.843 min
 Delta R.T.: -0.003 min
 Response: 613105
 Conc: 0.51 ng/ml

Instrument :
 ECD_O
 ClientSampleId :
 DDT ANALOG



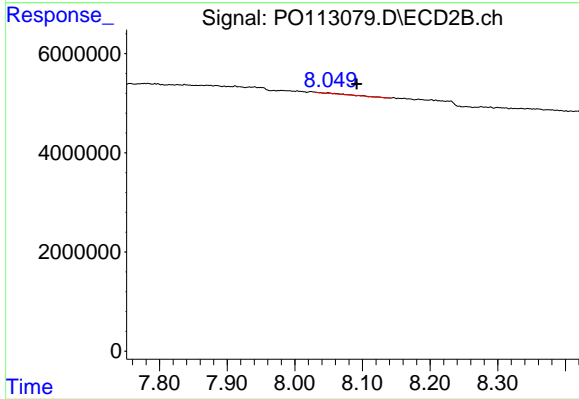
#43 AR-1268-3

R.T.: 7.826 min
 Delta R.T.: 0.021 min
 Response: 90379
 Conc: 0.28 ng/ml



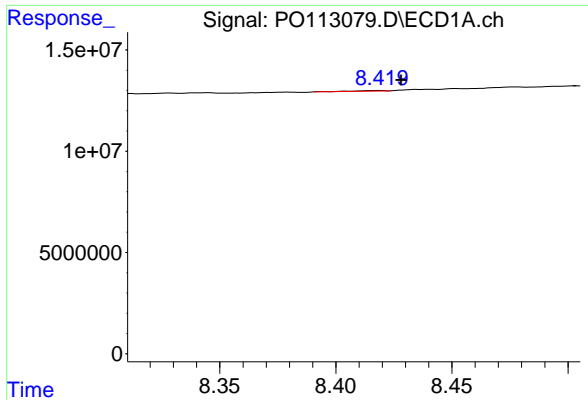
#44 AR-1268-4

R.T.: 8.196 min
 Delta R.T.: 0.059 min
 Response: 135604
 Conc: 0.29 ng/ml



#44 AR-1268-4

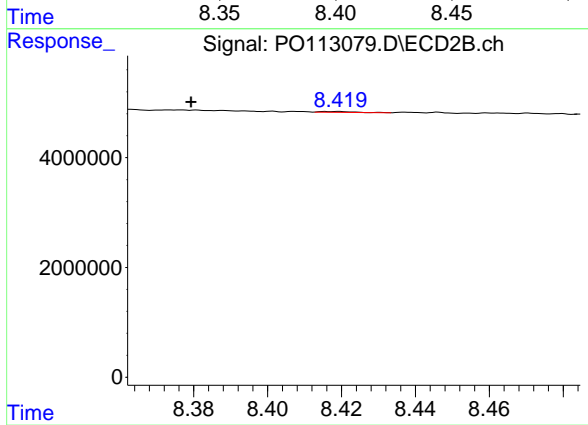
R.T.: 8.050 min
 Delta R.T.: -0.042 min
 Response: 141915
 Conc: 1.18 ng/ml



#45 AR-1268-5

R.T.: 8.419 min
 Delta R.T.: -0.009 min
 Response: 250488
 Conc: 0.08 ng/ml

Instrument :
 ECD_O
 ClientSampleId :
 DDT ANALOG



#45 AR-1268-5

R.T.: 8.418 min
 Delta R.T.: 0.039 min
 Response: 87410
 Conc: 0.11 ng/ml