

Data Path : Z:\pestpcbsrv\HPCHEM1\ECD_0\Data\P0082025\
 Data File : PO113089.D
 Signal(s) : Signal #1: ECD1A.ch Signal #2: ECD2B.ch
 Acq On : 20 Aug 2025 15:39
 Operator : YP/AJ
 Sample : AR1660CCC500
 Misc :
 ALS Vial : 3 Sample Multiplier: 1

Instrument :
 ECD_0
 ClientSampleId :
 AR1660CCC500

Integration File signal 1: autoint1.e
 Integration File signal 2: autoint2.e
 Quant Time: Aug 21 01:40:07 2025
 Quant Method : Z:\pestpcbsrv\HPCHEM1\ECD_0\methods\P0081825.M
 Quant Title : GC EXTRACTABLES
 QLast Update : Tue Aug 19 06:08:32 2025
 Response via : Initial Calibration
 Integrator: ChemStation

Volume Inj. : 2 µl
 Signal #1 Phase : ZB-MR1 Signal #2 Phase: ZB-MR2
 Signal #1 Info : 30Mx0.32mmx 0.50µ Signal #2 Info : 30M x 0.32mm x 0.25µm

Compound	RT#1	RT#2	Resp#1	Resp#2	ng/ml	ng/ml
System Monitoring Compounds						
1) SA Tetrachlo...	3.662	3.655	450.5E6	270.2E6	55.023	53.391
2) SA Decachlor...	8.680	8.627	371.3E6	97608949	53.564	51.513
Target Compounds						
3) L1 AR-1016-1	4.745	4.728	146.8E6	89689850	549.719	525.813
4) L1 AR-1016-2	4.764	4.747	223.9E6	136.2E6	557.772	528.736
5) L1 AR-1016-3	4.821	4.921	142.8E6	72267074	560.018	517.619
6) L1 AR-1016-4	4.940	4.964	109.1E6	58023335	500.488	497.205
7) L1 AR-1016-5	5.197	5.176	130.4E6	78805833	588.174	552.907
8) L2 AR-1221-1	3.871	3.862	12549630	9513506	134.116	150.718
9) L2 AR-1221-2	3.959	3.950	18468499	13884152	273.402	297.476
10) L2 AR-1221-3	4.034	4.024	74363955	50584725	335.955	340.695
11) L3 AR-1232-1	4.034	4.024	74363955	50584725	427.363	430.865
12) L3 AR-1232-2	4.525	4.747	108.1E6	136.2E6	1082.847	1111.689
13) L3 AR-1232-3	4.764	4.921	223.9E6	72267074	1181.722	1140.838
14) L3 AR-1232-4	4.940	5.005	109.1E6	70912904	1158.977	1261.320
15) L3 AR-1232-5	4.983	5.176	82721659	78805833	1335.449	1316.424
16) L4 AR-1242-1	4.745	4.728	146.8E6	89689850	638.304	620.672
17) L4 AR-1242-2	4.764	4.747	223.9E6	136.2E6	651.604	628.054
18) L4 AR-1242-3	4.821	4.921	142.8E6	72267074	643.656	617.856
19) L4 AR-1242-4	4.940	5.005	109.1E6	70912904	629.186	602.809
20) L4 AR-1242-5	5.591	5.525	33712984	78406444	168.428	525.749 #
21) L5 AR-1248-1	4.745	4.728	146.8E6	89689850	841.231	804.308
22) L5 AR-1248-2	4.983	4.964	82721659	58023335	342.015	361.068
23) L5 AR-1248-3	5.197	5.005	130.4E6	70912904	408.813	417.969
24) L5 AR-1248-4	5.550	5.176	133.1E6	78805833	266.449	395.572 #
25) L5 AR-1248-5	5.591	5.566	33712984	21151766	98.723	99.633
26) L6 AR-1254-1	5.550	5.525	133.1E6	78406444	246.526	248.630
27) L6 AR-1254-2	5.699	5.673	100.6E6	57743743	203.917	205.978
28) L6 AR-1254-3	6.118	6.089	195.9E6	103.4E6	265.128	248.086
29) L6 AR-1254-4	6.330	6.299	25456566	10086139	45.703	36.699
30) L6 AR-1254-5	6.749	6.716	341.0E6	158.8E6	486.431	444.346
31) L7 AR-1260-1	6.233	6.203	257.8E6	130.7E6	578.098	512.481
32) L7 AR-1260-2	6.423	6.391	380.2E6	176.0E6	553.586	509.068
33) L7 AR-1260-3	6.789	6.543	338.4E6	142.5E6	548.020	478.953
34) L7 AR-1260-4	7.048	7.012	247.7E6	103.2E6	553.145	498.111
35) L7 AR-1260-5	7.291	7.254	677.1E6	229.6E6	559.301	490.135
36) L8 AR-1262-1	6.789	6.754	338.4E6	150.3E6	369.515	362.532
37) L8 AR-1262-2	7.291	7.254	677.1E6	229.6E6	447.796	443.513
38) L8 AR-1262-3	7.574	7.535	141.9E6	46216153	256.109	257.342
39) L8 AR-1262-4	7.638	7.598	407.6E6	128.0E6	416.756	441.616
40) L8 AR-1262-5	8.134	8.091	134.9E6	38909166	323.683	359.168
41) L9 AR-1268-1	7.574	7.535	141.9E6	46216153	82.464	90.715

Data Path : Z:\pestpcbsrv\HPCHEM1\ECD_0\Data\P0082025\
 Data File : P0113089.D
 Signal(s) : Signal #1: ECD1A.ch Signal #2: ECD2B.ch
 Acq On : 20 Aug 2025 15:39
 Operator : YP/AJ
 Sample : AR1660CCC500
 Misc :
 ALS Vial : 3 Sample Multiplier: 1

Instrument :
 ECD_0
 ClientSampleId :
 AR1660CCC500

Integration File signal 1: autoint1.e
 Integration File signal 2: autoint2.e
 Quant Time: Aug 21 01:40:07 2025
 Quant Method : Z:\pestpcbsrv\HPCHEM1\ECD_0\methods\P0081825.M
 Quant Title : GC EXTRACTABLES
 QLast Update : Tue Aug 19 06:08:32 2025
 Response via : Initial Calibration
 Integrator: ChemStation

Volume Inj. : 2 µl
 Signal #1 Phase : ZB-MR1 Signal #2 Phase: ZB-MR2
 Signal #1 Info : 30Mx0.32mmx 0.50µ Signal #2 Info : 30M x 0.32mm x 0.25µm

	Compound	RT#1	RT#2	Resp#1	Resp#2	ng/ml	ng/ml
42)	L9 AR-1268-2	7.638	7.598	407.6E6	128.0E6	281.445	308.195
43)	L9 AR-1268-3	7.844	7.802	6587038	1764073	5.460	5.403
44)	L9 AR-1268-4	8.134	8.091	134.9E6	38909166	292.917	323.078
45)	L9 AR-1268-5	8.427	8.378	33730563	9274171	10.579	11.875

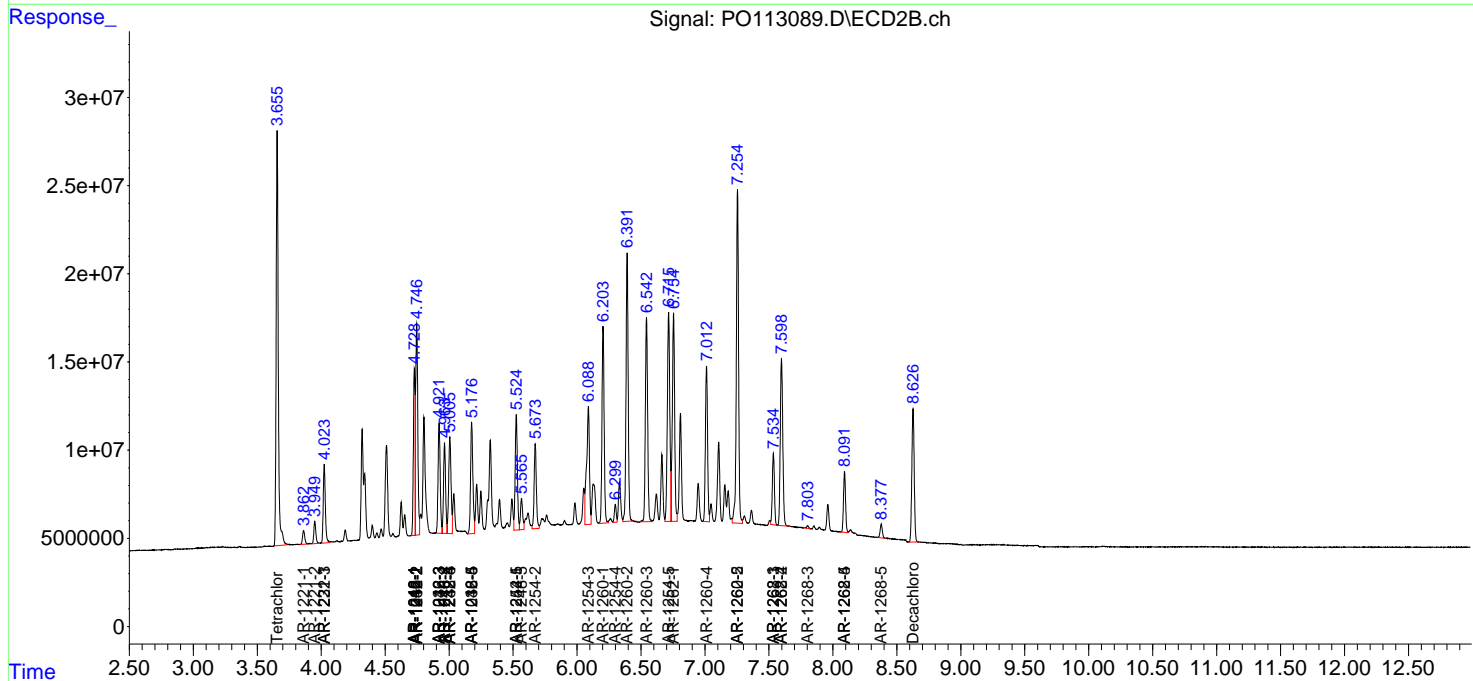
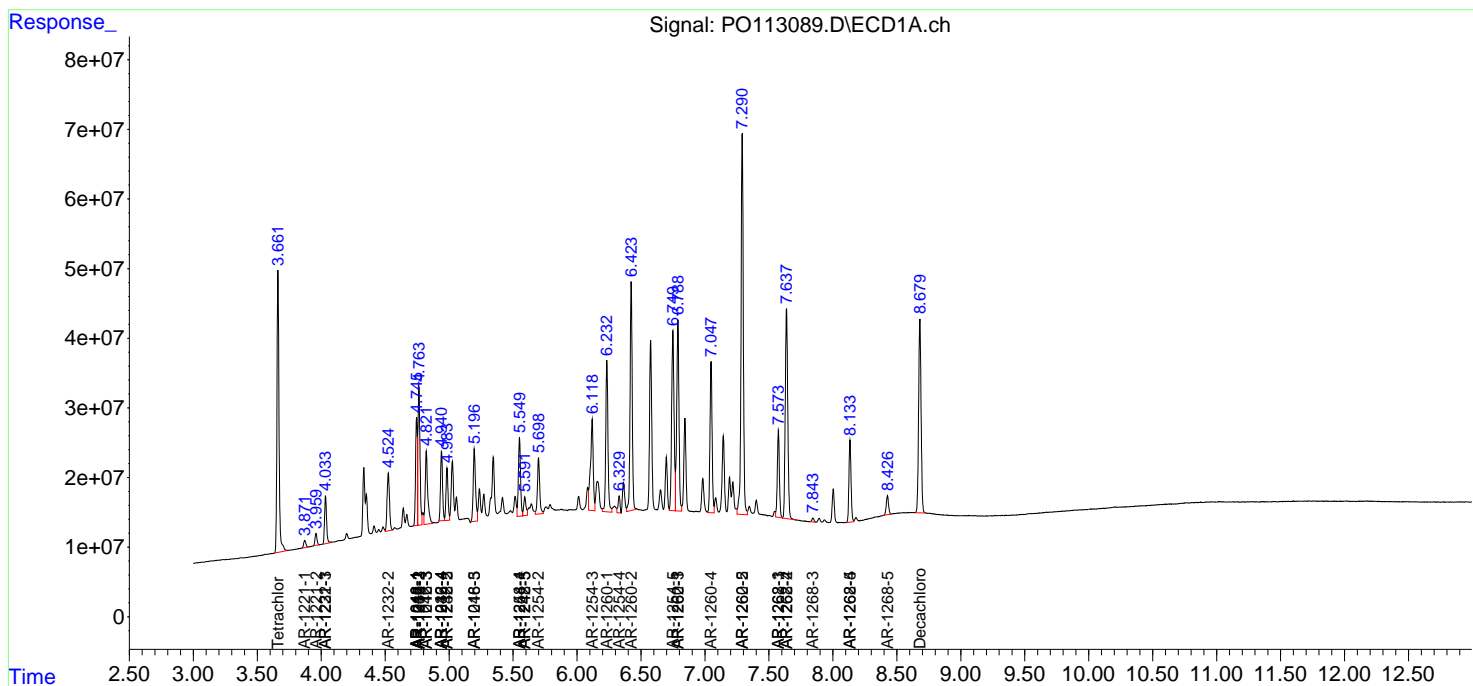
(f)=RT Delta > 1/2 Window (#)=Amounts differ by > 25% (m)=manual int.

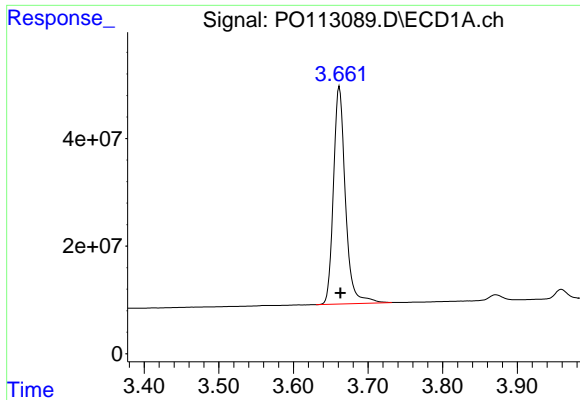
Data Path : Z:\pestpcbsrv\HPCHEM1\ECD_O\Data\P0082025\
 Data File : P0113089.D
 Signal(s) : Signal #1: ECD1A.ch Signal #2: ECD2B.ch
 Acq On : 20 Aug 2025 15:39
 Operator : YP/AJ
 Sample : AR1660CCC500
 Misc :
 ALS Vial : 3 Sample Multiplier: 1

Instrument :
 ECD_O
 ClientSampleId :
 AR1660CCC500

Integration File signal 1: autoint1.e
 Integration File signal 2: autoint2.e
 Quant Time: Aug 21 01:40:07 2025
 Quant Method : Z:\pestpcbsrv\HPCHEM1\ECD_O\methods\P0081825.M
 Quant Title : GC EXTRACTABLES
 QLast Update : Tue Aug 19 06:08:32 2025
 Response via : Initial Calibration
 Integrator: ChemStation

Volume Inj. : 2 µl
 Signal #1 Phase : ZB-MR1 Signal #2 Phase: ZB-MR2
 Signal #1 Info : 30Mx0.32mmx 0.50µ Signal #2 Info : 30M x 0.32mm x 0.25µm

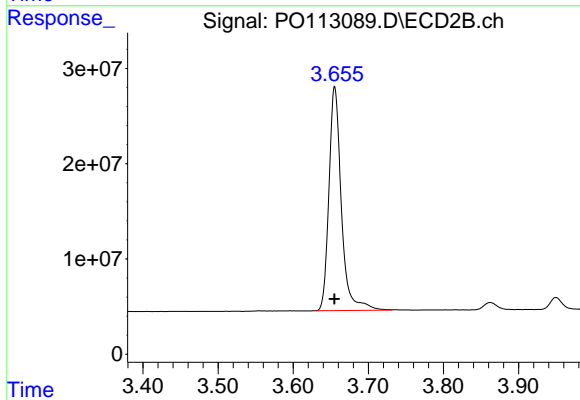




#1 Tetrachloro-m-xylene

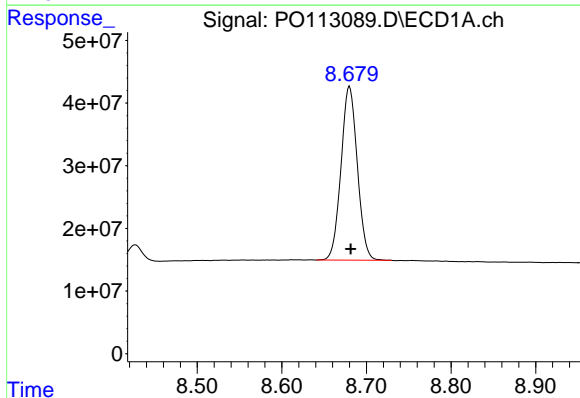
R.T.: 3.662 min
 Delta R.T.: -0.001 min
 Response: 450451021
 Conc: 55.02 ng/ml

Instrument :
 ECD_O
 ClientSampleId :
 AR1660CCC500



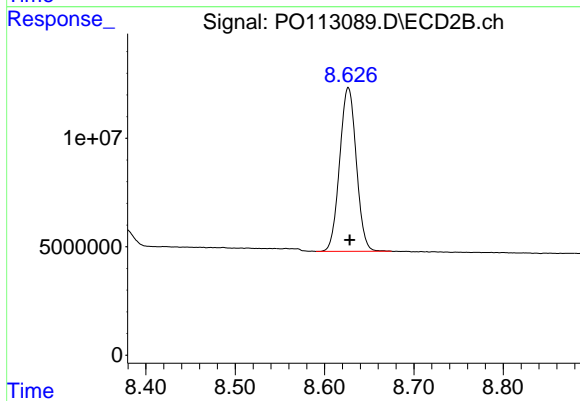
#1 Tetrachloro-m-xylene

R.T.: 3.655 min
 Delta R.T.: 0.000 min
 Response: 270193157
 Conc: 53.39 ng/ml



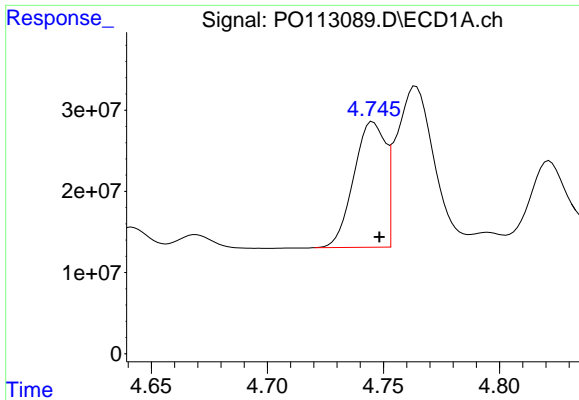
#2 Decachlorobiphenyl

R.T.: 8.680 min
 Delta R.T.: -0.002 min
 Response: 371272242
 Conc: 53.56 ng/ml



#2 Decachlorobiphenyl

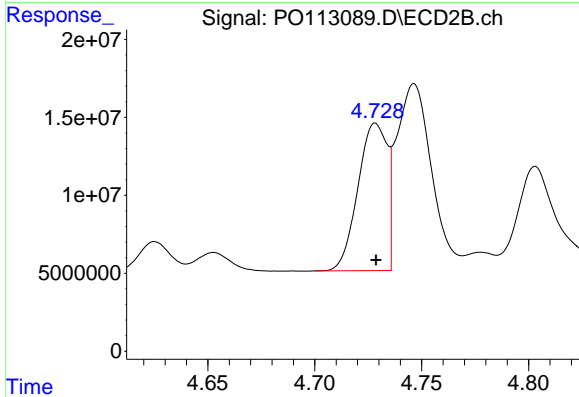
R.T.: 8.627 min
 Delta R.T.: -0.002 min
 Response: 97608949
 Conc: 51.51 ng/ml



#3 AR-1016-1

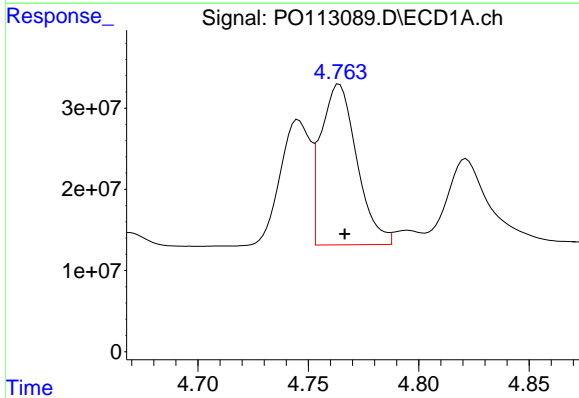
R.T.: 4.745 min
 Delta R.T.: -0.003 min
 Response: 146766539
 Conc: 549.72 ng/ml

Instrument :
 ECD_O
 ClientSampleId :
 AR1660CCC500



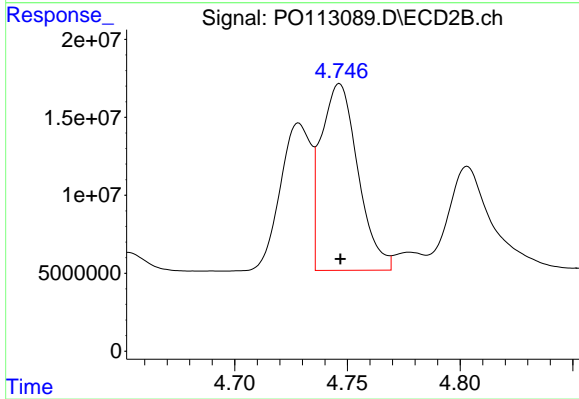
#3 AR-1016-1

R.T.: 4.728 min
 Delta R.T.: 0.000 min
 Response: 89689850
 Conc: 525.81 ng/ml



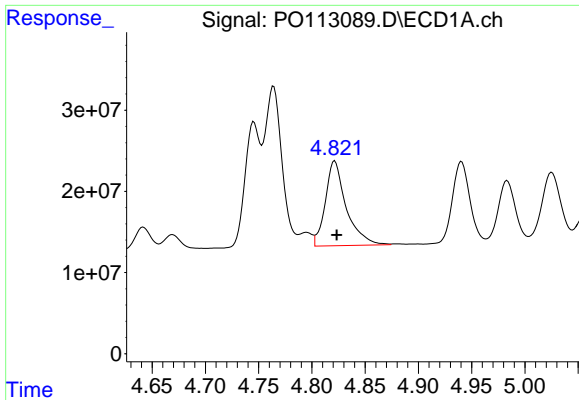
#4 AR-1016-2

R.T.: 4.764 min
 Delta R.T.: -0.003 min
 Response: 223907415
 Conc: 557.77 ng/ml



#4 AR-1016-2

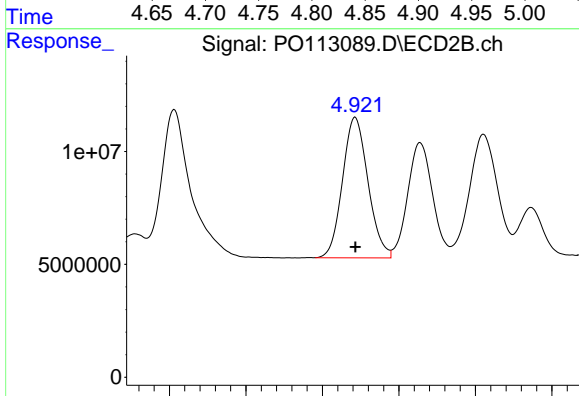
R.T.: 4.747 min
 Delta R.T.: 0.000 min
 Response: 136232023
 Conc: 528.74 ng/ml



#5 AR-1016-3

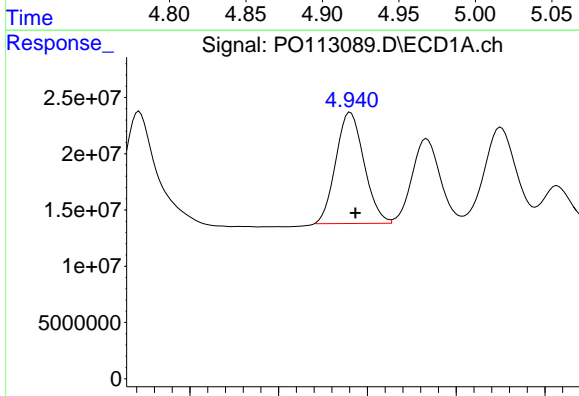
R.T.: 4.821 min
 Delta R.T.: -0.002 min
 Response: 142817072
 Conc: 560.02 ng/ml

Instrument :
 ECD_O
 ClientSampleId :
 AR1660CCC500



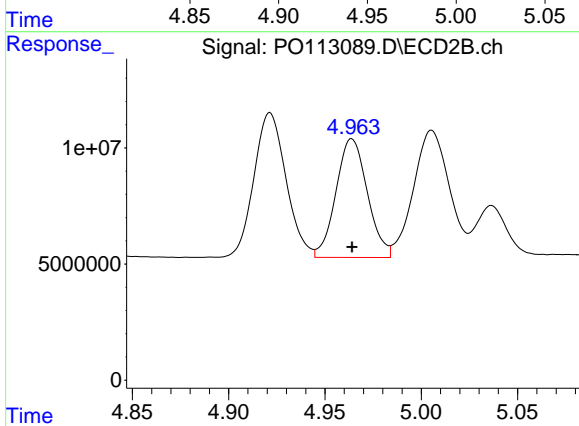
#5 AR-1016-3

R.T.: 4.921 min
 Delta R.T.: 0.000 min
 Response: 72267074
 Conc: 517.62 ng/ml



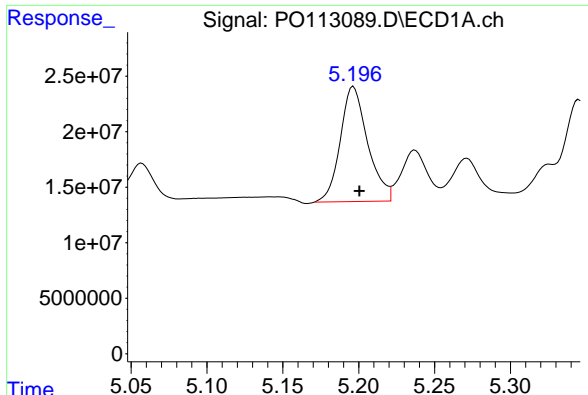
#6 AR-1016-4

R.T.: 4.940 min
 Delta R.T.: -0.003 min
 Response: 109140347
 Conc: 500.49 ng/ml



#6 AR-1016-4

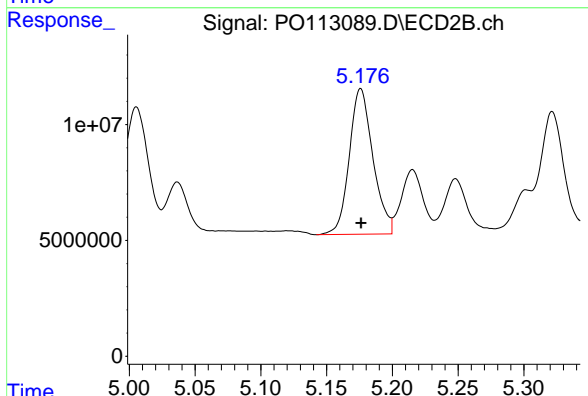
R.T.: 4.964 min
 Delta R.T.: 0.000 min
 Response: 58023335
 Conc: 497.21 ng/ml



#7 AR-1016-5

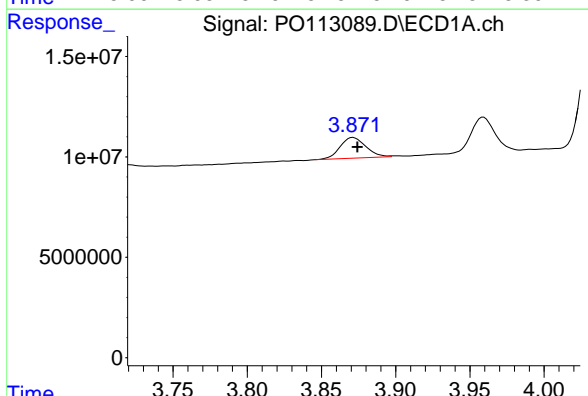
R.T.: 5.197 min
 Delta R.T.: -0.004 min
 Response: 130355712
 Conc: 588.17 ng/ml

Instrument :
 ECD_O
 ClientSampleId :
 AR1660CCC500



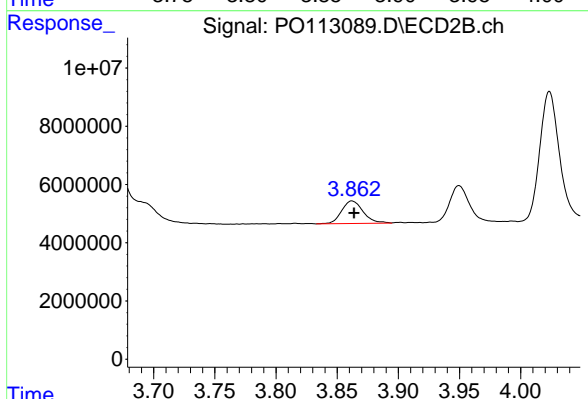
#7 AR-1016-5

R.T.: 5.176 min
 Delta R.T.: 0.000 min
 Response: 78805833
 Conc: 552.91 ng/ml



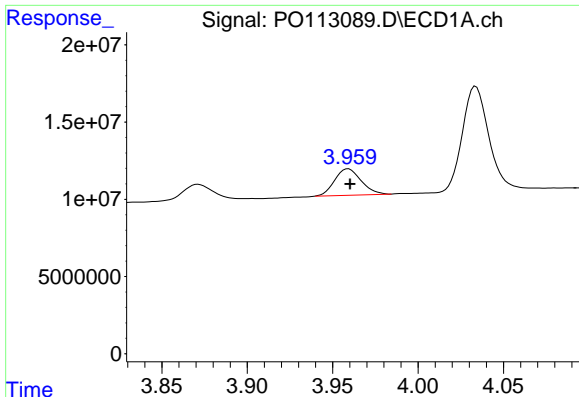
#8 AR-1221-1

R.T.: 3.871 min
 Delta R.T.: -0.003 min
 Response: 12549630
 Conc: 134.12 ng/ml



#8 AR-1221-1

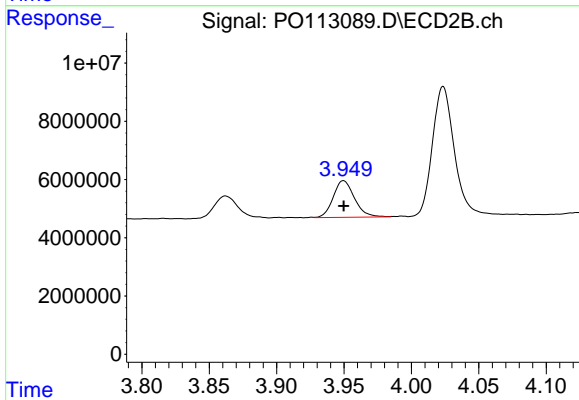
R.T.: 3.862 min
 Delta R.T.: -0.002 min
 Response: 9513506
 Conc: 150.72 ng/ml



#9 AR-1221-2

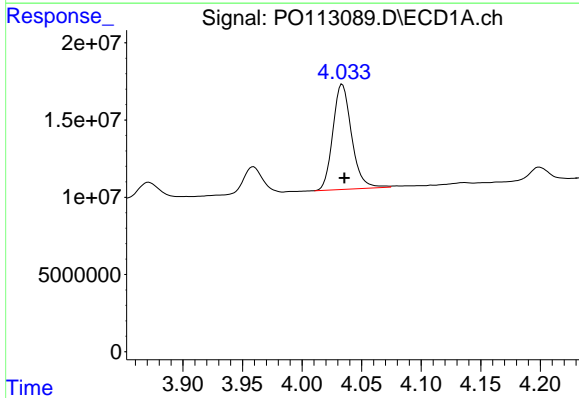
R.T.: 3.959 min
 Delta R.T.: -0.001 min
 Response: 18468499
 Conc: 273.40 ng/ml

Instrument :
 ECD_O
 ClientSampleId :
 AR1660CCC500



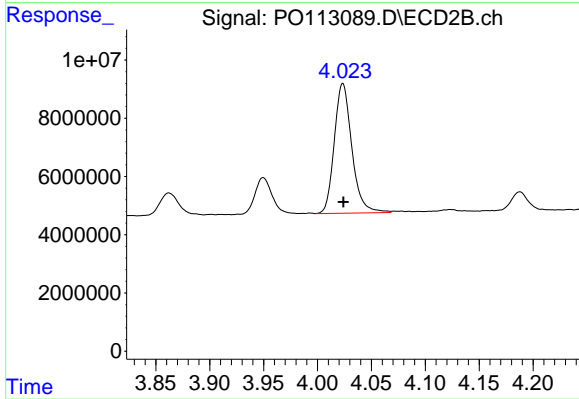
#9 AR-1221-2

R.T.: 3.950 min
 Delta R.T.: 0.000 min
 Response: 13884152
 Conc: 297.48 ng/ml



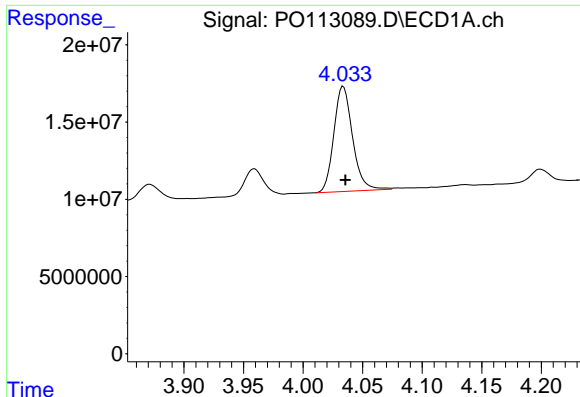
#10 AR-1221-3

R.T.: 4.034 min
 Delta R.T.: -0.002 min
 Response: 74363955
 Conc: 335.95 ng/ml



#10 AR-1221-3

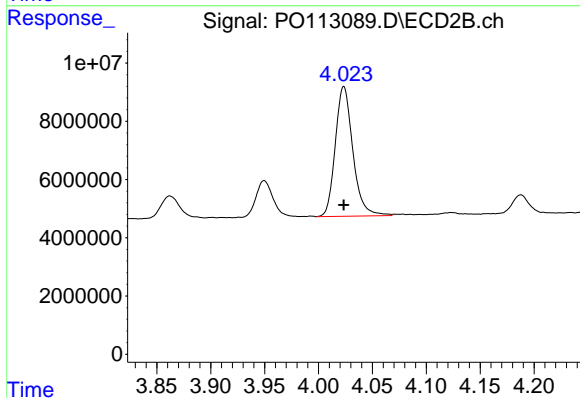
R.T.: 4.024 min
 Delta R.T.: 0.000 min
 Response: 50584725
 Conc: 340.70 ng/ml



#11 AR-1232-1

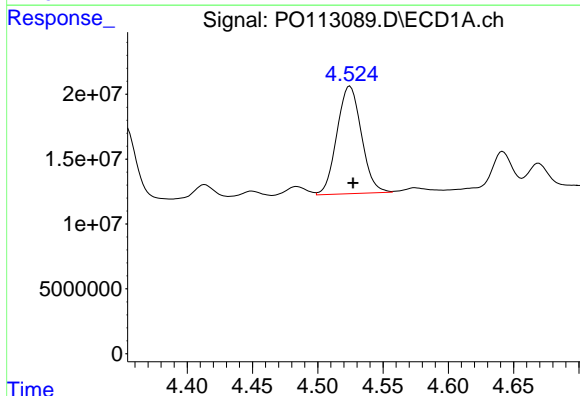
R.T.: 4.034 min
 Delta R.T.: -0.002 min
 Response: 74363955
 Conc: 427.36 ng/ml

Instrument :
 ECD_O
 ClientSampleId :
 AR1660CCC500



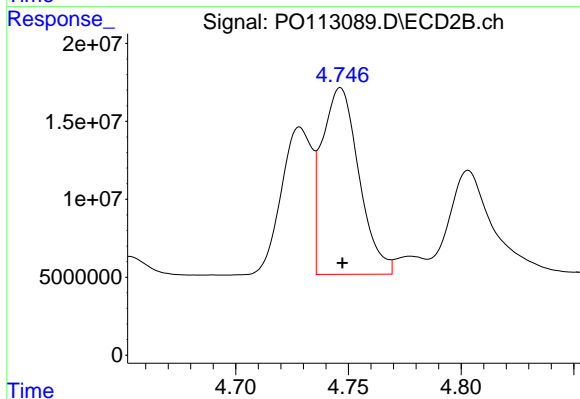
#11 AR-1232-1

R.T.: 4.024 min
 Delta R.T.: 0.000 min
 Response: 50584725
 Conc: 430.87 ng/ml



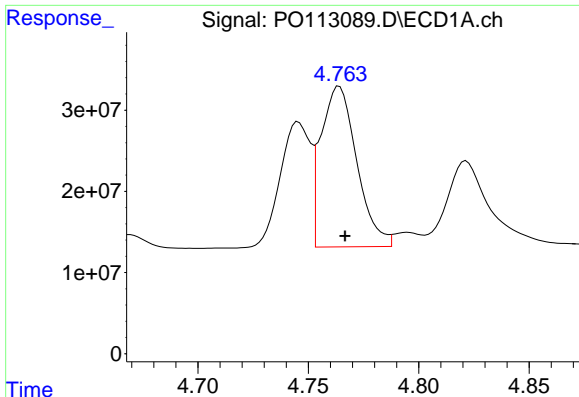
#12 AR-1232-2

R.T.: 4.525 min
 Delta R.T.: -0.002 min
 Response: 108124951
 Conc: 1082.85 ng/ml



#12 AR-1232-2

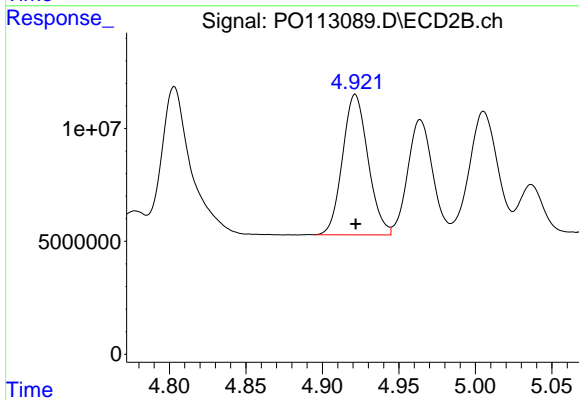
R.T.: 4.747 min
 Delta R.T.: 0.000 min
 Response: 136232023
 Conc: 1111.69 ng/ml



#13 AR-1232-3

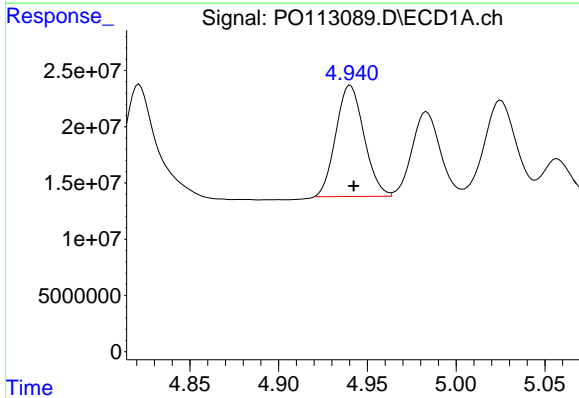
R.T.: 4.764 min
 Delta R.T.: -0.003 min
 Response: 223907415
 Conc: 1181.72 ng/ml

Instrument :
 ECD_O
 ClientSampleId :
 AR1660CCC500



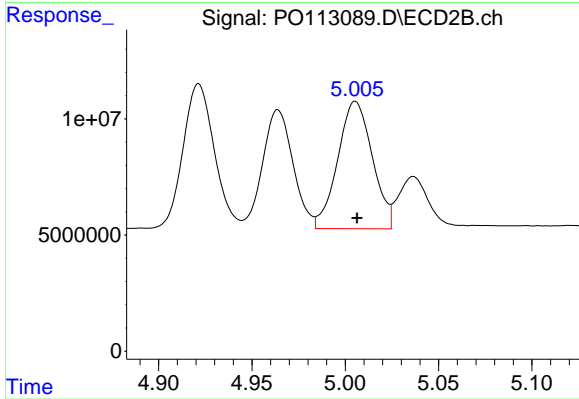
#13 AR-1232-3

R.T.: 4.921 min
 Delta R.T.: 0.000 min
 Response: 72267074
 Conc: 1140.84 ng/ml



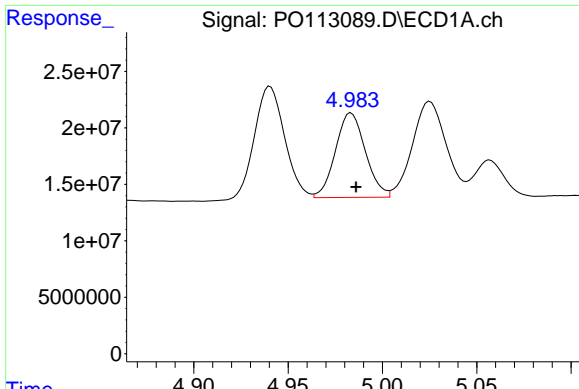
#14 AR-1232-4

R.T.: 4.940 min
 Delta R.T.: -0.002 min
 Response: 109140347
 Conc: 1158.98 ng/ml



#14 AR-1232-4

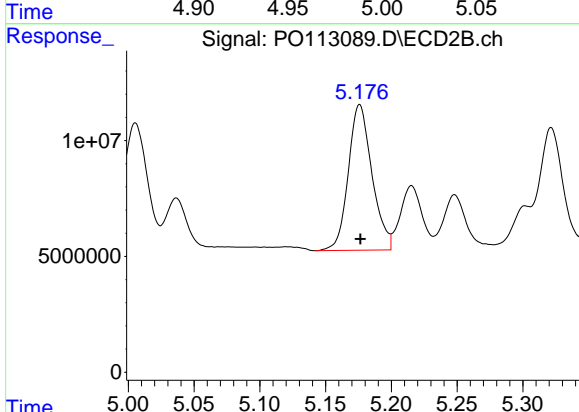
R.T.: 5.005 min
 Delta R.T.: 0.000 min
 Response: 70912904
 Conc: 1261.32 ng/ml



#15 AR-1232-5

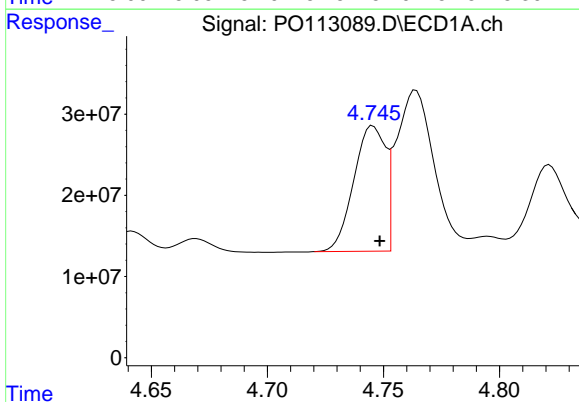
R.T.: 4.983 min
 Delta R.T.: -0.003 min
 Response: 82721659
 Conc: 1335.45 ng/ml

Instrument :
 ECD_O
 ClientSampleId :
 AR1660CCC500



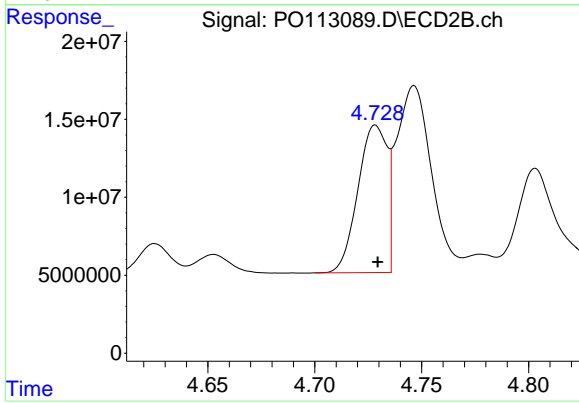
#15 AR-1232-5

R.T.: 5.176 min
 Delta R.T.: 0.000 min
 Response: 78805833
 Conc: 1316.42 ng/ml



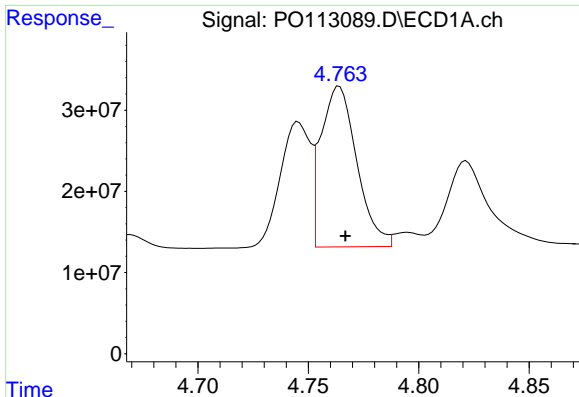
#16 AR-1242-1

R.T.: 4.745 min
 Delta R.T.: -0.003 min
 Response: 146766539
 Conc: 638.30 ng/ml



#16 AR-1242-1

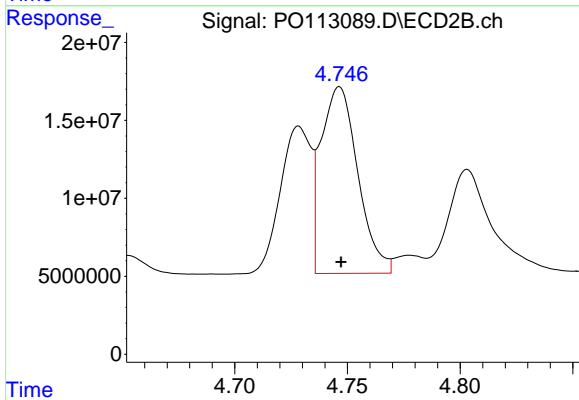
R.T.: 4.728 min
 Delta R.T.: -0.001 min
 Response: 89689850
 Conc: 620.67 ng/ml



#17 AR-1242-2

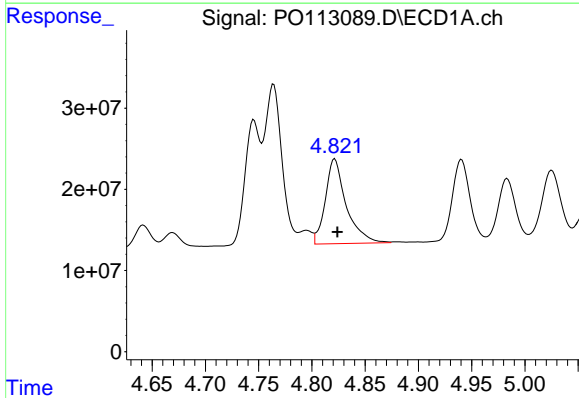
R.T.: 4.764 min
 Delta R.T.: -0.003 min
 Response: 223907415
 Conc: 651.60 ng/ml

Instrument :
 ECD_O
 ClientSampleId :
 AR1660CCC500



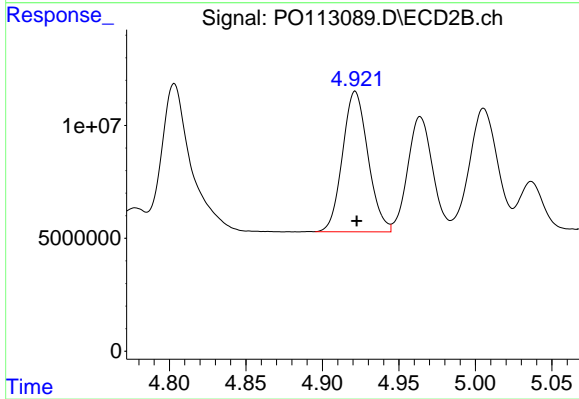
#17 AR-1242-2

R.T.: 4.747 min
 Delta R.T.: 0.000 min
 Response: 136232023
 Conc: 628.05 ng/ml



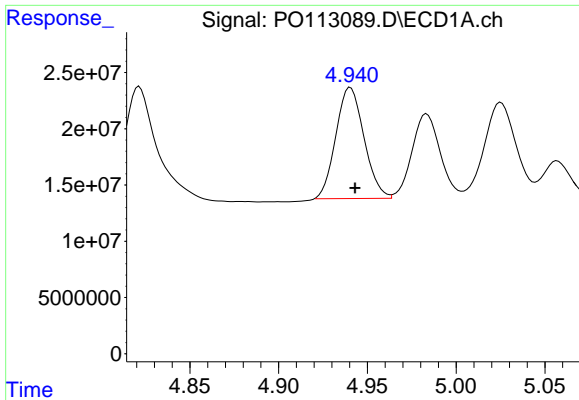
#18 AR-1242-3

R.T.: 4.821 min
 Delta R.T.: -0.002 min
 Response: 142817072
 Conc: 643.66 ng/ml



#18 AR-1242-3

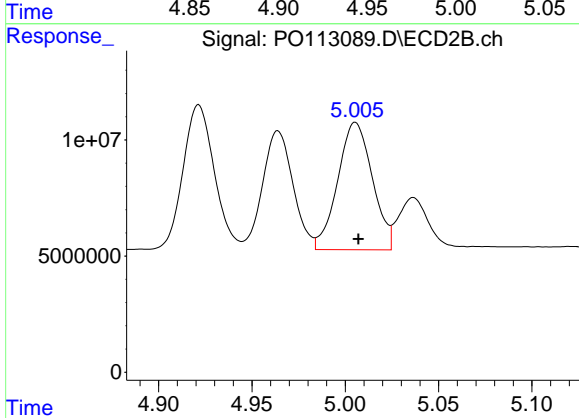
R.T.: 4.921 min
 Delta R.T.: -0.001 min
 Response: 72267074
 Conc: 617.86 ng/ml



#19 AR-1242-4

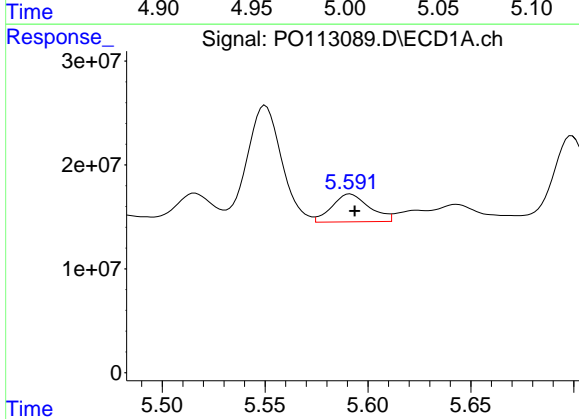
R.T.: 4.940 min
 Delta R.T.: -0.003 min
 Response: 109140347
 Conc: 629.19 ng/ml

Instrument :
 ECD_O
 ClientSampleId :
 AR1660CCC500



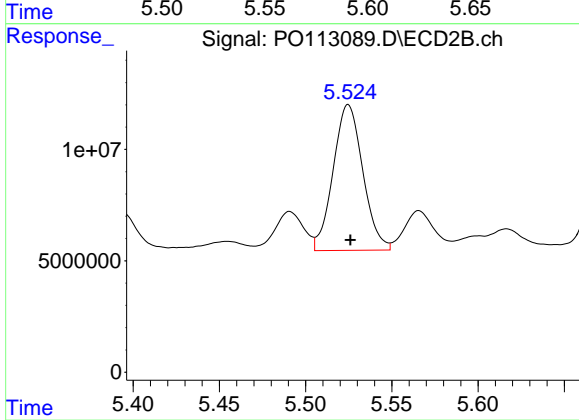
#19 AR-1242-4

R.T.: 5.005 min
 Delta R.T.: -0.002 min
 Response: 70912904
 Conc: 602.81 ng/ml



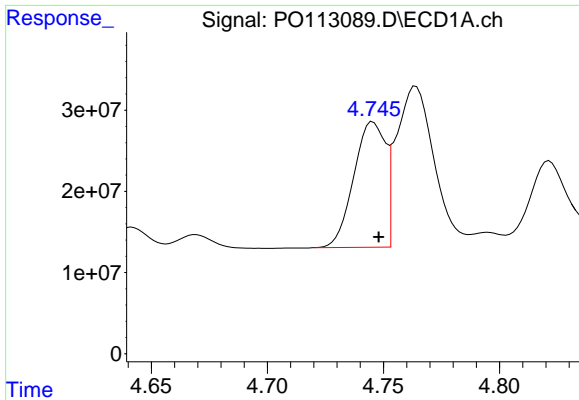
#20 AR-1242-5

R.T.: 5.591 min
 Delta R.T.: -0.002 min
 Response: 33712984
 Conc: 168.43 ng/ml



#20 AR-1242-5

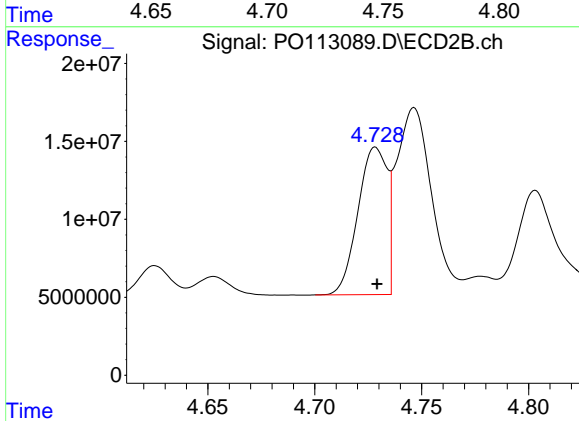
R.T.: 5.525 min
 Delta R.T.: -0.001 min
 Response: 78406444
 Conc: 525.75 ng/ml



#21 AR-1248-1

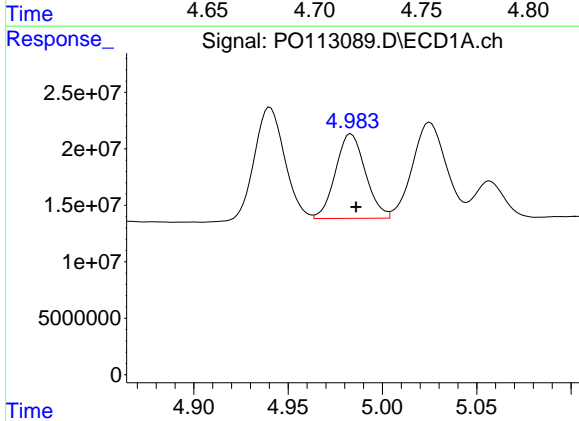
R.T.: 4.745 min
 Delta R.T.: -0.002 min
 Response: 146766539
 Conc: 841.23 ng/ml

Instrument :
 ECD_O
 ClientSampleId :
 AR1660CCC500



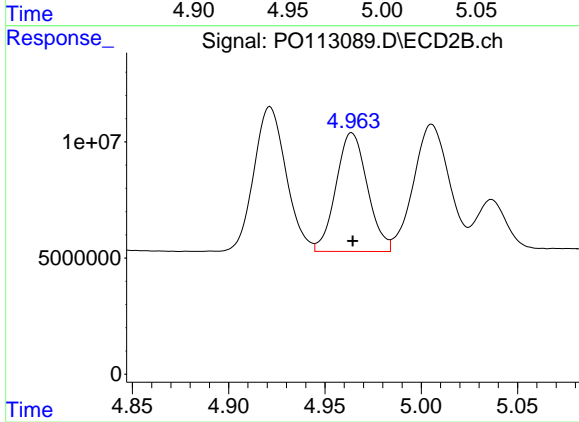
#21 AR-1248-1

R.T.: 4.728 min
 Delta R.T.: 0.000 min
 Response: 89689850
 Conc: 804.31 ng/ml



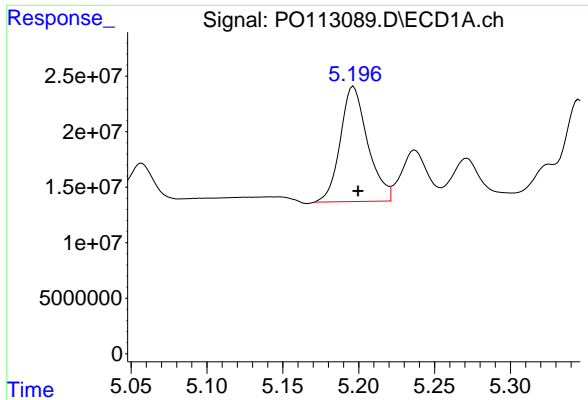
#22 AR-1248-2

R.T.: 4.983 min
 Delta R.T.: -0.003 min
 Response: 82721659
 Conc: 342.01 ng/ml



#22 AR-1248-2

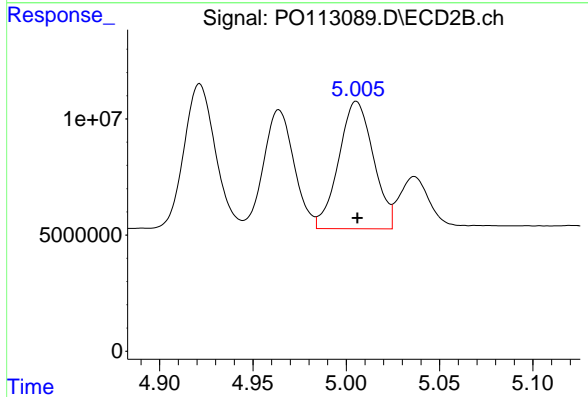
R.T.: 4.964 min
 Delta R.T.: 0.000 min
 Response: 58023335
 Conc: 361.07 ng/ml



#23 AR-1248-3

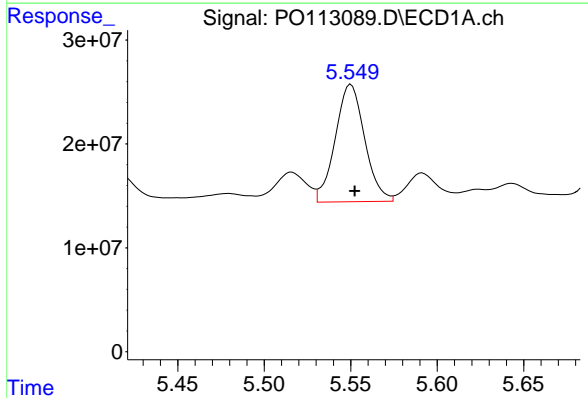
R.T.: 5.197 min
 Delta R.T.: -0.003 min
 Response: 130355712
 Conc: 408.81 ng/ml

Instrument :
 ECD_O
 ClientSampleId :
 AR1660CCC500



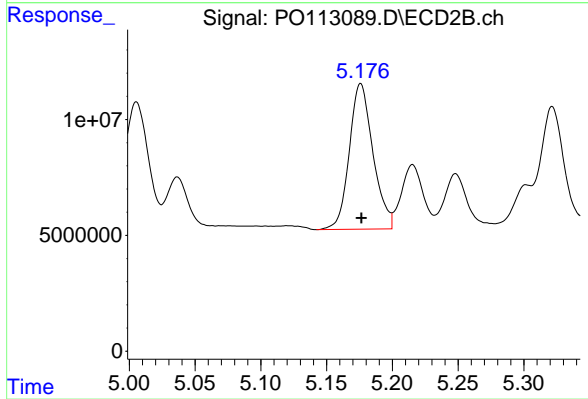
#23 AR-1248-3

R.T.: 5.005 min
 Delta R.T.: 0.000 min
 Response: 70912904
 Conc: 417.97 ng/ml



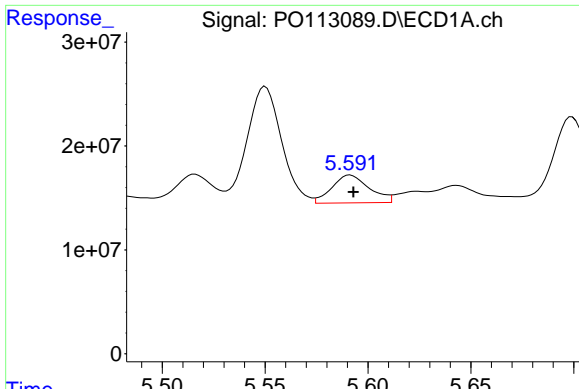
#24 AR-1248-4

R.T.: 5.550 min
 Delta R.T.: -0.002 min
 Response: 133118869
 Conc: 266.45 ng/ml



#24 AR-1248-4

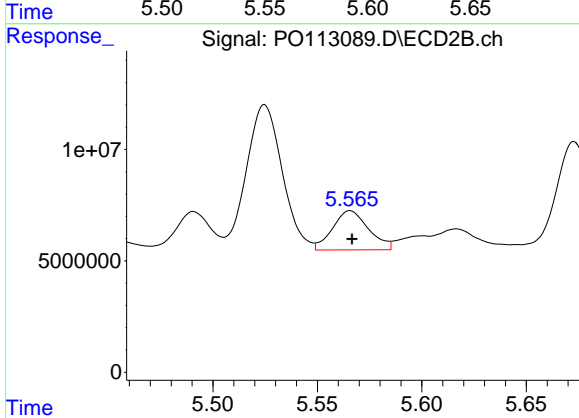
R.T.: 5.176 min
 Delta R.T.: 0.000 min
 Response: 78805833
 Conc: 395.57 ng/ml



#25 AR-1248-5

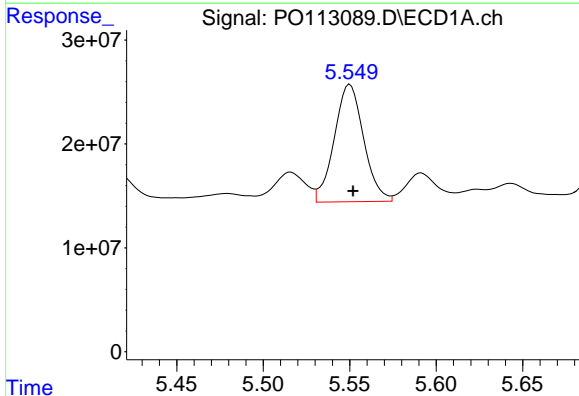
R.T.: 5.591 min
 Delta R.T.: -0.002 min
 Response: 33712984
 Conc: 98.72 ng/ml

Instrument :
 ECD_O
 ClientSampleId :
 AR1660CCC500



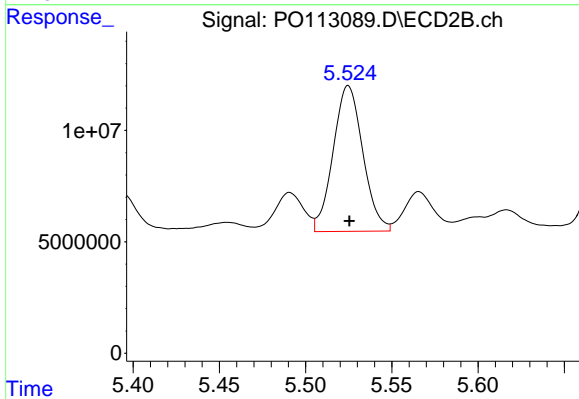
#25 AR-1248-5

R.T.: 5.566 min
 Delta R.T.: 0.000 min
 Response: 21151766
 Conc: 99.63 ng/ml



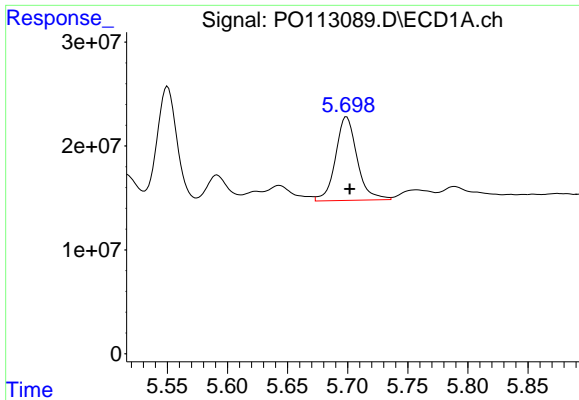
#26 AR-1254-1

R.T.: 5.550 min
 Delta R.T.: -0.002 min
 Response: 133118869
 Conc: 246.53 ng/ml



#26 AR-1254-1

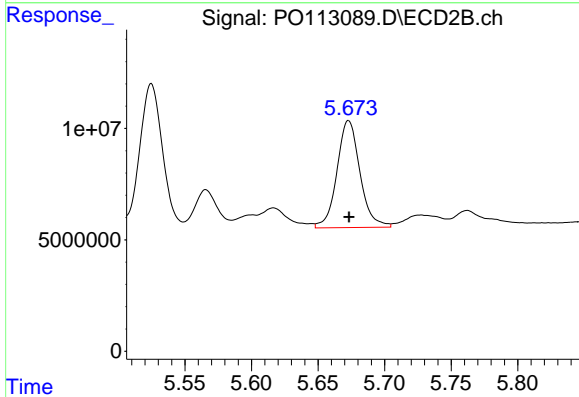
R.T.: 5.525 min
 Delta R.T.: 0.000 min
 Response: 78406444
 Conc: 248.63 ng/ml



#27 AR-1254-2

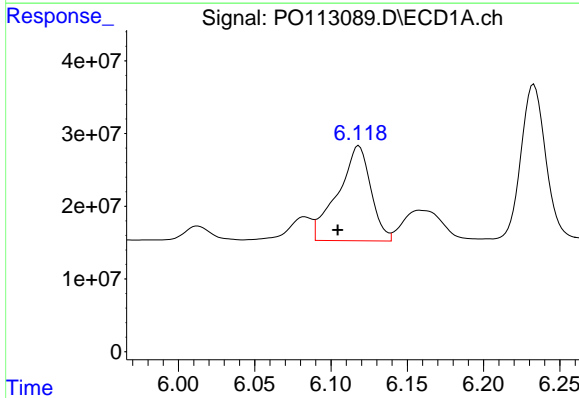
R.T.: 5.699 min
 Delta R.T.: -0.003 min
 Response: 100623430
 Conc: 203.92 ng/ml

Instrument :
 ECD_O
 ClientSampleId :
 AR1660CCC500



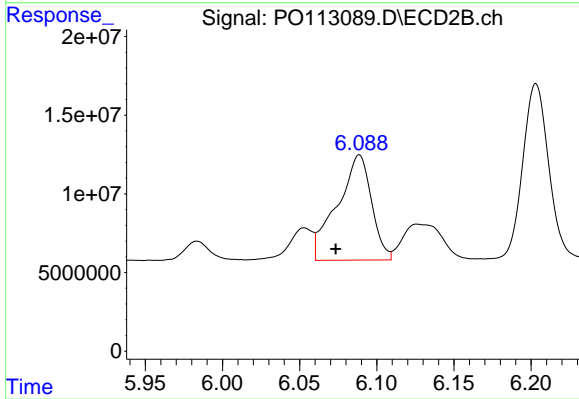
#27 AR-1254-2

R.T.: 5.673 min
 Delta R.T.: 0.000 min
 Response: 57743743
 Conc: 205.98 ng/ml



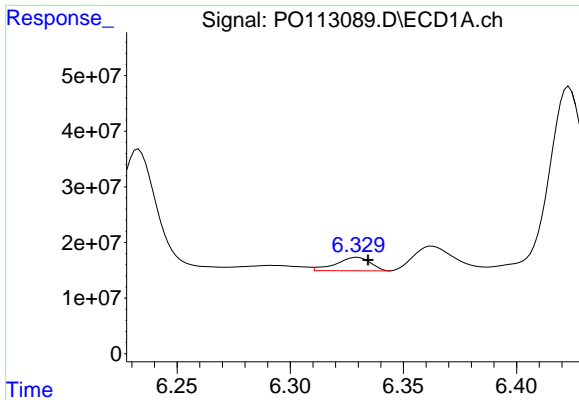
#28 AR-1254-3

R.T.: 6.118 min
 Delta R.T.: 0.014 min
 Response: 195897122
 Conc: 265.13 ng/ml



#28 AR-1254-3

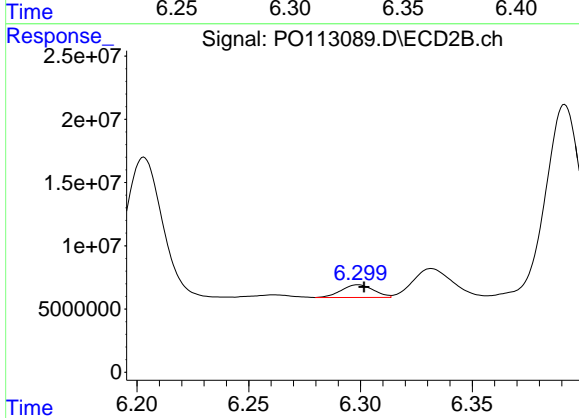
R.T.: 6.089 min
 Delta R.T.: 0.015 min
 Response: 103432667
 Conc: 248.09 ng/ml



#29 AR-1254-4

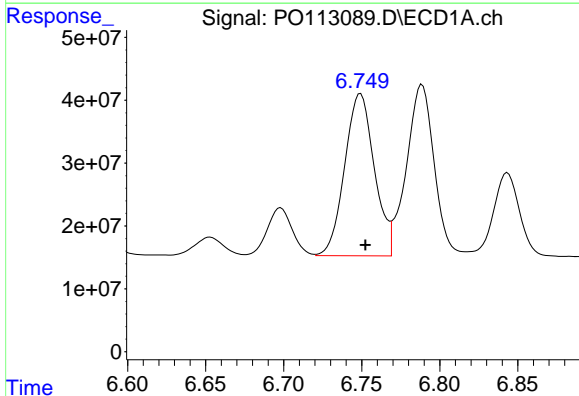
R.T.: 6.330 min
 Delta R.T.: -0.005 min
 Response: 25456566
 Conc: 45.70 ng/ml

Instrument :
 ECD_O
 ClientSampleId :
 AR1660CCC500



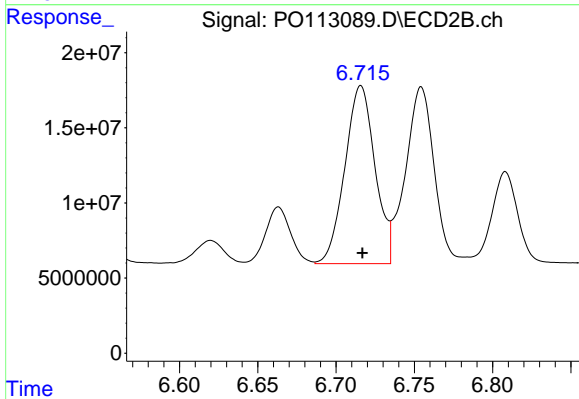
#29 AR-1254-4

R.T.: 6.299 min
 Delta R.T.: -0.003 min
 Response: 10086139
 Conc: 36.70 ng/ml



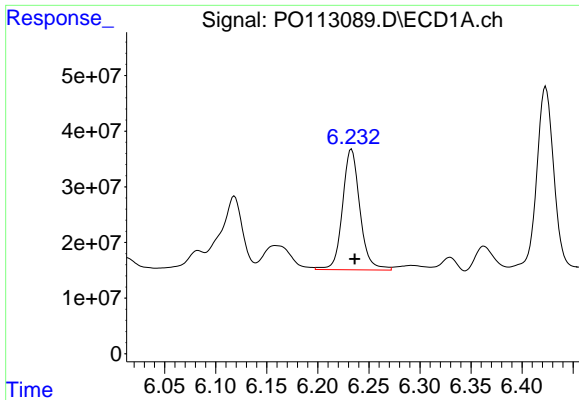
#30 AR-1254-5

R.T.: 6.749 min
 Delta R.T.: -0.003 min
 Response: 340975564
 Conc: 486.43 ng/ml



#30 AR-1254-5

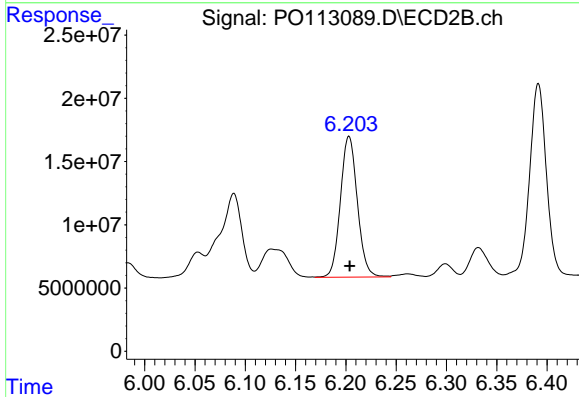
R.T.: 6.716 min
 Delta R.T.: 0.000 min
 Response: 158849430
 Conc: 444.35 ng/ml



#31 AR-1260-1

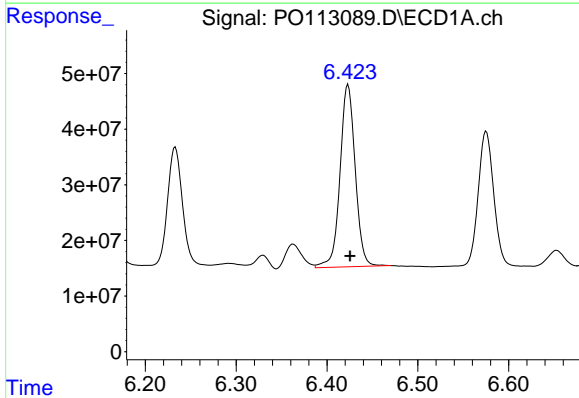
R.T.: 6.233 min
 Delta R.T.: -0.003 min
 Response: 257820681
 Conc: 578.10 ng/ml

Instrument :
 ECD_O
 ClientSampleId :
 AR1660CCC500



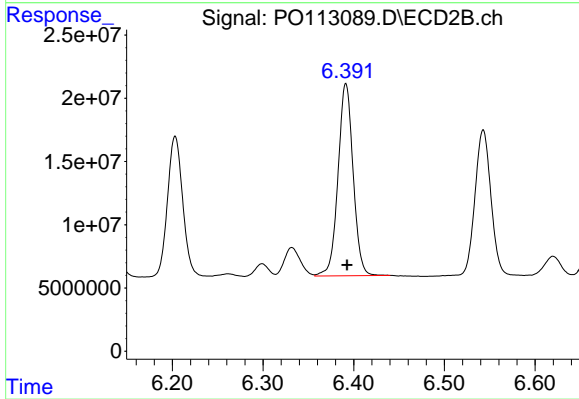
#31 AR-1260-1

R.T.: 6.203 min
 Delta R.T.: 0.000 min
 Response: 130717809
 Conc: 512.48 ng/ml



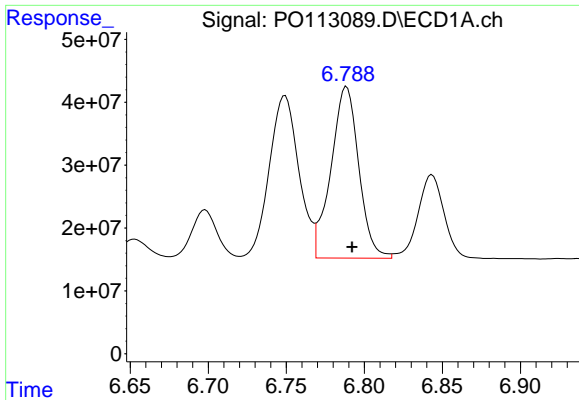
#32 AR-1260-2

R.T.: 6.423 min
 Delta R.T.: -0.002 min
 Response: 380159149
 Conc: 553.59 ng/ml



#32 AR-1260-2

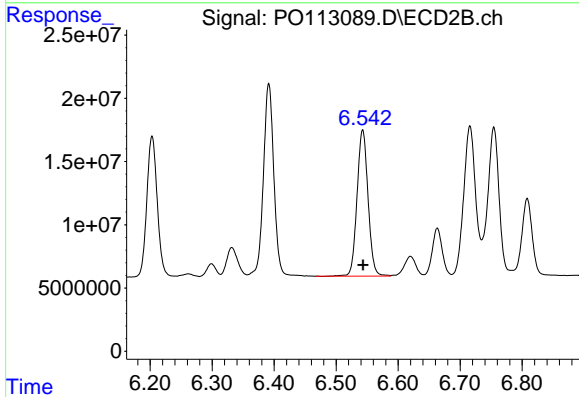
R.T.: 6.391 min
 Delta R.T.: -0.001 min
 Response: 175990955
 Conc: 509.07 ng/ml



#33 AR-1260-3

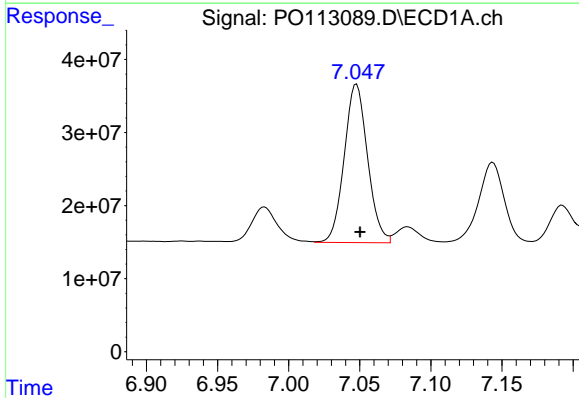
R.T.: 6.789 min
 Delta R.T.: -0.003 min
 Response: 338388144
 Conc: 548.02 ng/ml

Instrument :
 ECD_O
 ClientSampleId :
 AR1660CCC500



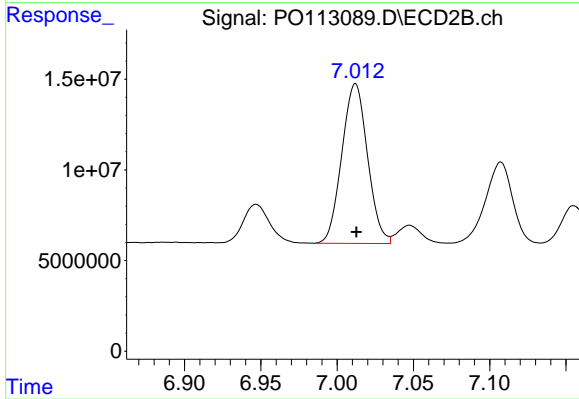
#33 AR-1260-3

R.T.: 6.543 min
 Delta R.T.: 0.000 min
 Response: 142456820
 Conc: 478.95 ng/ml



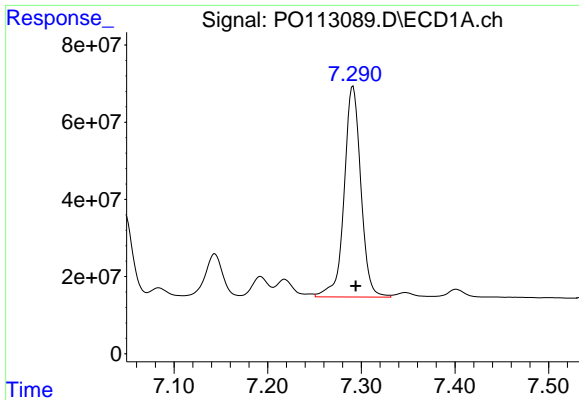
#34 AR-1260-4

R.T.: 7.048 min
 Delta R.T.: -0.002 min
 Response: 247739277
 Conc: 553.14 ng/ml



#34 AR-1260-4

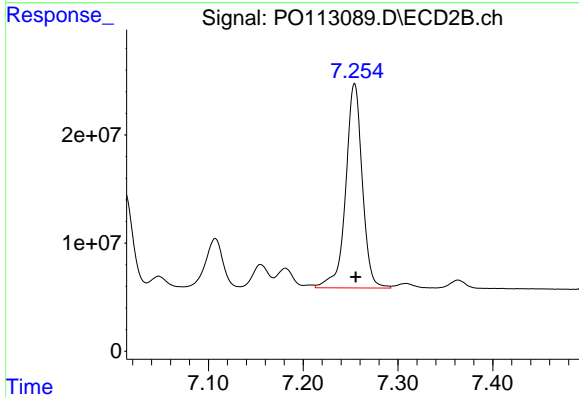
R.T.: 7.012 min
 Delta R.T.: 0.000 min
 Response: 103233236
 Conc: 498.11 ng/ml



#35 AR-1260-5

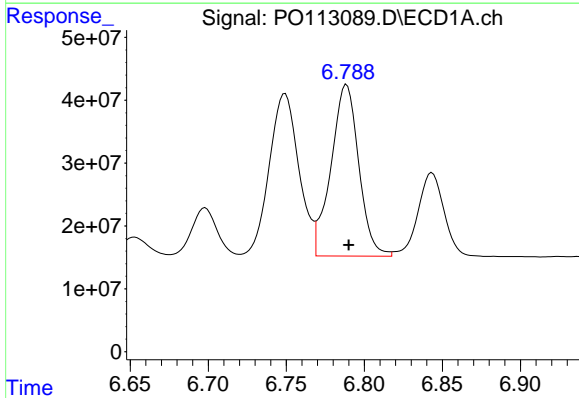
R.T.: 7.291 min
 Delta R.T.: -0.003 min
 Response: 677136593
 Conc: 559.30 ng/ml

Instrument :
 ECD_O
 ClientSampleId :
 AR1660CCC500



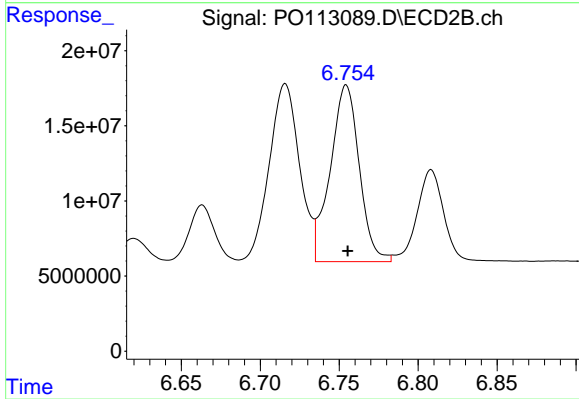
#35 AR-1260-5

R.T.: 7.254 min
 Delta R.T.: -0.001 min
 Response: 229593579
 Conc: 490.13 ng/ml



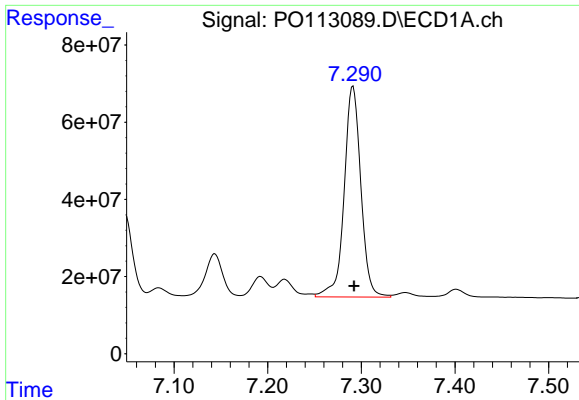
#36 AR-1262-1

R.T.: 6.789 min
 Delta R.T.: -0.001 min
 Response: 338388144
 Conc: 369.51 ng/ml



#36 AR-1262-1

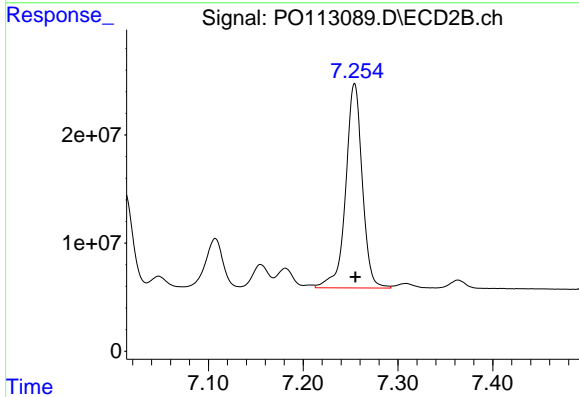
R.T.: 6.754 min
 Delta R.T.: -0.001 min
 Response: 150310816
 Conc: 362.53 ng/ml



#37 AR-1262-2

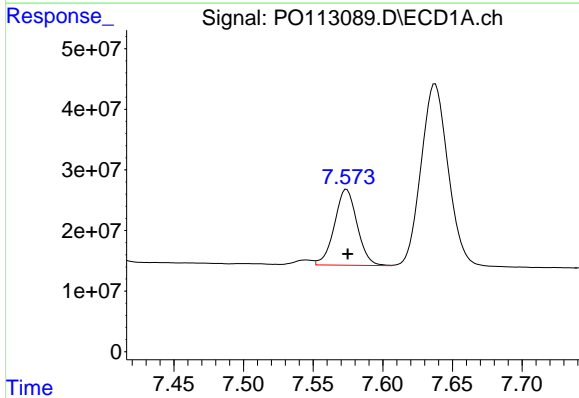
R.T.: 7.291 min
 Delta R.T.: -0.001 min
 Response: 677136593
 Conc: 447.80 ng/ml

Instrument :
 ECD_O
 ClientSampleId :
 AR1660CCC500



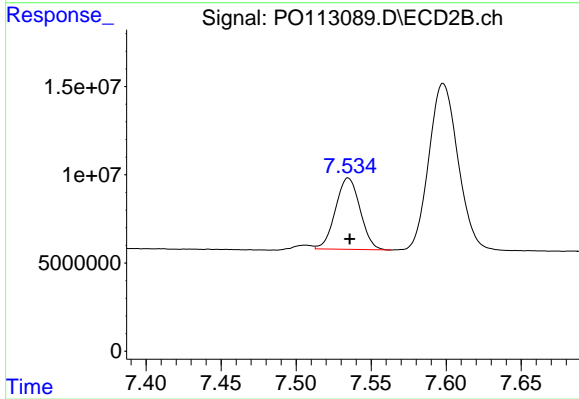
#37 AR-1262-2

R.T.: 7.254 min
 Delta R.T.: 0.000 min
 Response: 229593579
 Conc: 443.51 ng/ml



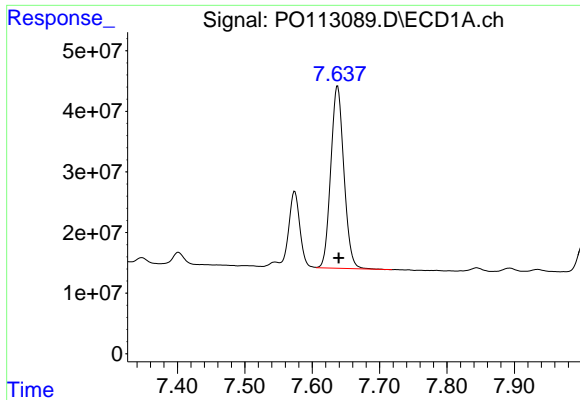
#38 AR-1262-3

R.T.: 7.574 min
 Delta R.T.: 0.000 min
 Response: 141911822
 Conc: 256.11 ng/ml



#38 AR-1262-3

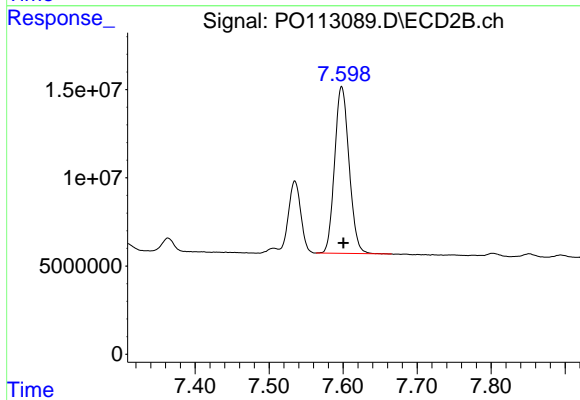
R.T.: 7.535 min
 Delta R.T.: -0.001 min
 Response: 46216153
 Conc: 257.34 ng/ml



#39 AR-1262-4

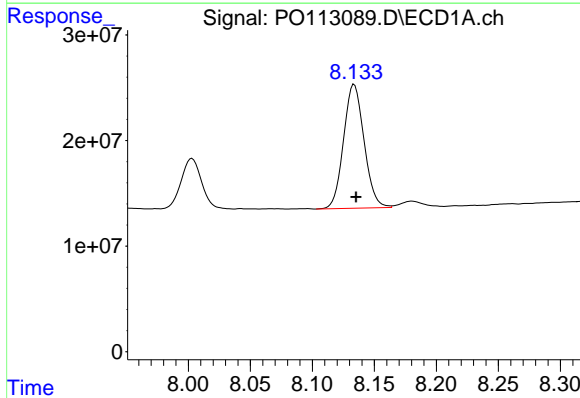
R.T.: 7.638 min
 Delta R.T.: -0.002 min
 Response: 407573764
 Conc: 416.76 ng/ml

Instrument :
 ECD_O
 ClientSampleId :
 AR1660CCC500



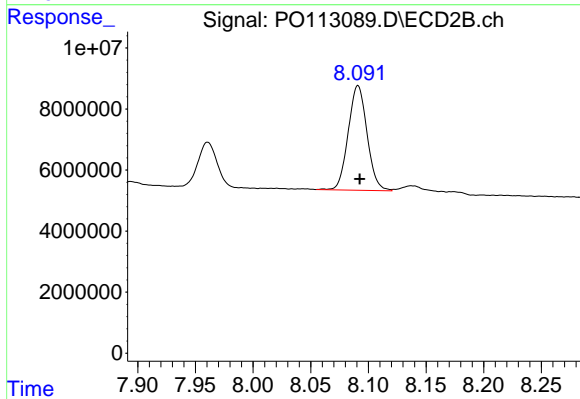
#39 AR-1262-4

R.T.: 7.598 min
 Delta R.T.: -0.002 min
 Response: 128024892
 Conc: 441.62 ng/ml



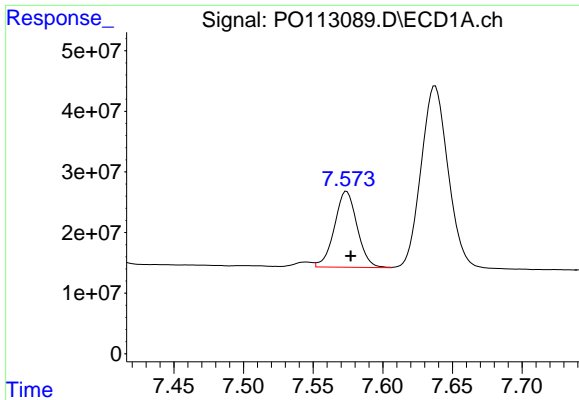
#40 AR-1262-5

R.T.: 8.134 min
 Delta R.T.: -0.001 min
 Response: 134936266
 Conc: 323.68 ng/ml



#40 AR-1262-5

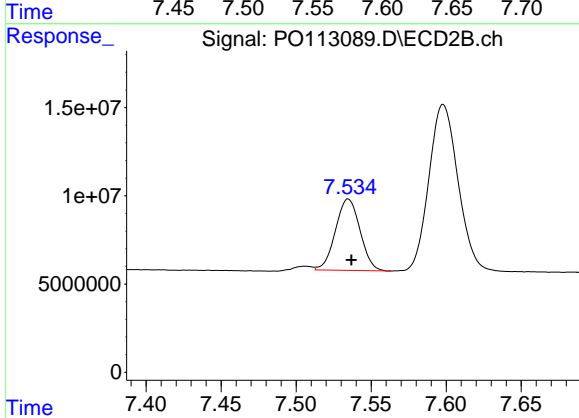
R.T.: 8.091 min
 Delta R.T.: -0.001 min
 Response: 38909166
 Conc: 359.17 ng/ml



#41 AR-1268-1

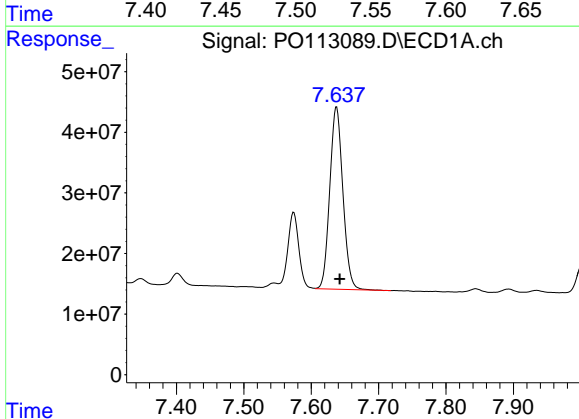
R.T.: 7.574 min
 Delta R.T.: -0.003 min
 Response: 141911822
 Conc: 82.46 ng/ml

Instrument :
 ECD_O
 ClientSampleId :
 AR1660CCC500



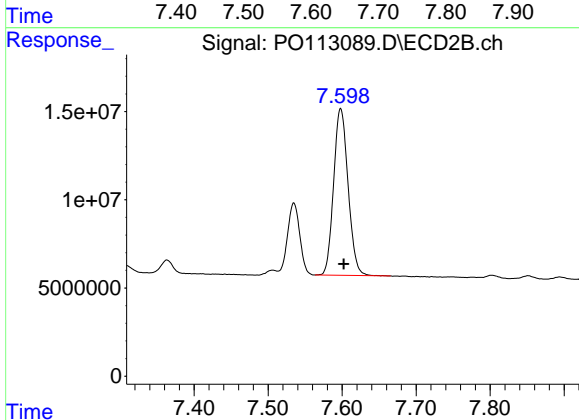
#41 AR-1268-1

R.T.: 7.535 min
 Delta R.T.: -0.002 min
 Response: 46216153
 Conc: 90.72 ng/ml



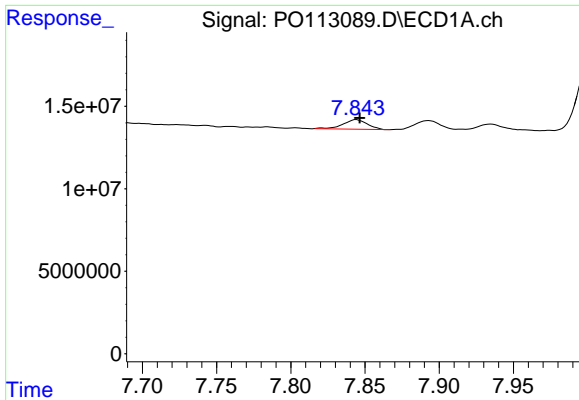
#42 AR-1268-2

R.T.: 7.638 min
 Delta R.T.: -0.005 min
 Response: 407573764
 Conc: 281.44 ng/ml



#42 AR-1268-2

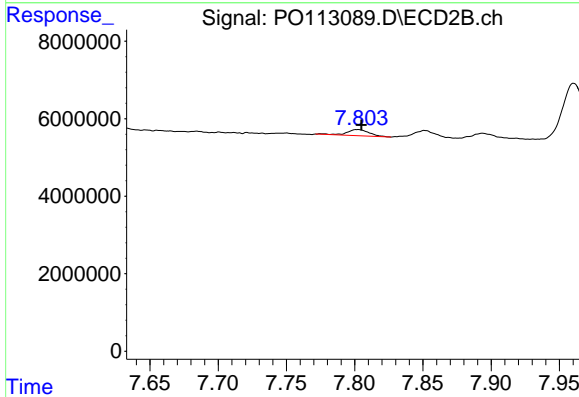
R.T.: 7.598 min
 Delta R.T.: -0.004 min
 Response: 128024892
 Conc: 308.19 ng/ml



#43 AR-1268-3

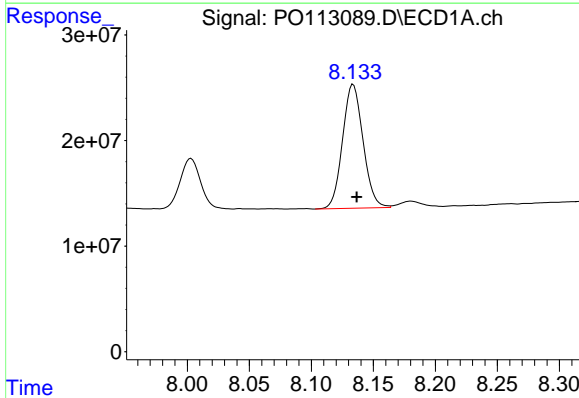
R.T.: 7.844 min
 Delta R.T.: -0.002 min
 Response: 6587038
 Conc: 5.46 ng/ml

Instrument :
 ECD_O
 ClientSampleId :
 AR1660CCC500



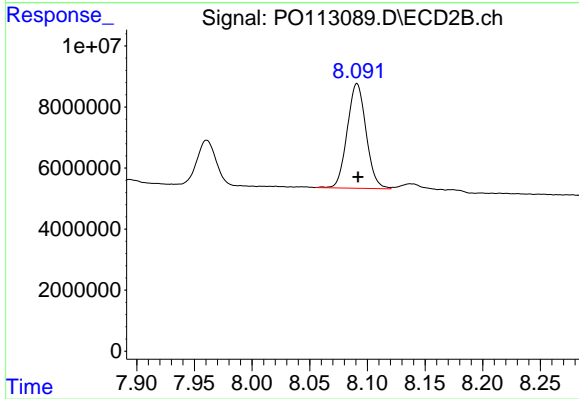
#43 AR-1268-3

R.T.: 7.802 min
 Delta R.T.: -0.003 min
 Response: 1764073
 Conc: 5.40 ng/ml



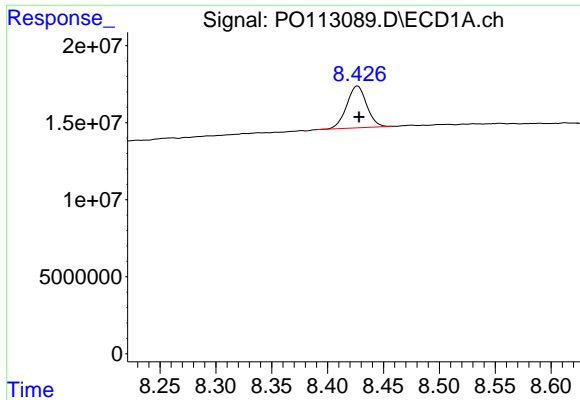
#44 AR-1268-4

R.T.: 8.134 min
 Delta R.T.: -0.003 min
 Response: 134936266
 Conc: 292.92 ng/ml



#44 AR-1268-4

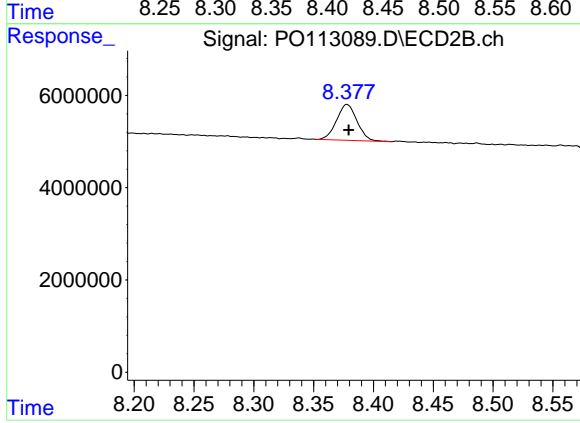
R.T.: 8.091 min
 Delta R.T.: 0.000 min
 Response: 38909166
 Conc: 323.08 ng/ml



#45 AR-1268-5

R.T.: 8.427 min
 Delta R.T.: -0.001 min
 Response: 33730563
 Conc: 10.58 ng/ml

Instrument :
 ECD_O
 ClientSampleId :
 AR1660CCC500



#45 AR-1268-5

R.T.: 8.378 min
 Delta R.T.: -0.001 min
 Response: 9274171
 Conc: 11.88 ng/ml