

Data Path : Z:\pestpcbsrv\HPCHEM1\ECD\_O\Data\P0082025\  
 Data File : PO113090.D  
 Signal(s) : Signal #1: ECD1A.ch Signal #2: ECD2B.ch  
 Acq On : 20 Aug 2025 15:57  
 Operator : YP/AJ  
 Sample : AR1242CCC500  
 Misc :  
 ALS Vial : 4 Sample Multiplier: 1

Instrument :  
 ECD\_O  
 ClientSampleId :  
 AR1242CCC500

Integration File signal 1: autoint1.e  
 Integration File signal 2: autoint2.e  
 Quant Time: Aug 21 01:40:21 2025  
 Quant Method : Z:\pestpcbsrv\HPCHEM1\ECD\_O\methods\P0081825.M  
 Quant Title : GC EXTRACTABLES  
 QLast Update : Tue Aug 19 06:08:32 2025  
 Response via : Initial Calibration  
 Integrator: ChemStation

Volume Inj. : 2 µl  
 Signal #1 Phase : ZB-MR1 Signal #2 Phase: ZB-MR2  
 Signal #1 Info : 30Mx0.32mmx 0.50µ Signal #2 Info : 30M x 0.32mm x 0.25µm

Compound	RT#1	RT#2	Resp#1	Resp#2	ng/ml	ng/ml
System Monitoring Compounds						
1) SA Tetrachlo...	3.664	3.656	453.7E6	271.1E6	55.416	53.579
2) SA Decachlor...	8.683	8.628	387.8E6	100.9E6	55.954	53.265
Target Compounds						
3) L1 AR-1016-1	4.748	4.729	126.8E6	78613222	474.755	460.875
4) L1 AR-1016-2	4.767	4.747	193.8E6	117.4E6	482.724	455.798
5) L1 AR-1016-3	4.824	4.922	122.6E6	62407157	480.888	446.997
6) L1 AR-1016-4	4.943	4.965	97006367	48086506	444.845	412.056
7) L1 AR-1016-5	5.200	5.176	114.8E6	68454546	517.984	480.282
8) L2 AR-1221-1	3.874	3.863	11051313	8626644	118.103	136.668
9) L2 AR-1221-2	3.961	3.950	17158639	12802243	254.011	274.295
10) L2 AR-1221-3	4.036	4.024	65723474	44453683	296.920	299.402
11) L3 AR-1232-1	4.036	4.024	65723474	44453683	377.707	378.643
12) L3 AR-1232-2	4.527	4.747	95003757	117.4E6	951.441	958.335
13) L3 AR-1232-3	4.767	4.922	193.8E6	62407157	1022.722	985.185
14) L3 AR-1232-4	4.943	5.006	97006367	61863837	1030.125	1100.365
15) L3 AR-1232-5	4.986	5.176	68977843	68454546	1113.570	1143.510
16) L4 AR-1242-1	4.748	4.729	126.8E6	78613222	551.260	544.020
17) L4 AR-1242-2	4.767	4.747	193.8E6	117.4E6	563.931	541.416
18) L4 AR-1242-3	4.824	4.922	122.6E6	62407157	552.708	533.557
19) L4 AR-1242-4	4.943	5.006	97006367	61863837	559.235	525.886
20) L4 AR-1242-5	5.594	5.525	112.7E6	81810621	563.164	548.575
21) L5 AR-1248-1	4.748	4.729	126.8E6	78613222	726.514	704.976
22) L5 AR-1248-2	4.986	4.965	68977843	48086506	285.191	299.233
23) L5 AR-1248-3	5.200	5.006	114.8E6	61863837	360.027	364.633
24) L5 AR-1248-4	5.552	5.176	139.9E6	68454546	280.046	343.613
25) L5 AR-1248-5	5.594	5.566	112.7E6	69403946	330.094	326.920
26) L6 AR-1254-1	5.552	5.525	139.9E6	81810621	259.107	259.425
27) L6 AR-1254-2	5.702	5.673	43422093	25942387	87.996	92.539
28) L6 AR-1254-3	6.106	6.074	44830000	27766249	60.673	66.598
29) L6 AR-1254-4	6.333	6.300	34475784	14347249	61.896	52.203
30) L6 AR-1254-5	6.753	6.717	12359969	5131513	17.633	14.354
31) L7 AR-1260-1	6.224	6.217	20061621	9835772	44.983	38.561
32) L7 AR-1260-2	6.424	6.391	6189897	2308877	9.014	6.679 #
33) L7 AR-1260-3	6.825	6.541	933128	3420317	1.511	11.499 #
34) L7 AR-1260-4	7.059	7.007	1672883	399351	3.735	1.927 #
35) L7 AR-1260-5	7.292	7.255	1968862	456872	1.626	0.975 #
36) L8 AR-1262-1	6.825	6.740	933128	1577516	1.019	3.805 #
37) L8 AR-1262-2	7.292	7.255	1968862	456872	1.302	0.883 #
38) L8 AR-1262-3	7.597	7.538	489992	699263	0.884	3.894 #
39) L8 AR-1262-4	7.636	7.596	1238933	1106837	1.267	3.818 #
40) L8 AR-1262-5	8.143	8.085	152139	120980	0.365	1.117 #
41) L9 AR-1268-1	7.597	7.538	489992	699263	0.285	1.373 #

Data Path : Z:\pestpcbsrv\HPCHEM1\ECD\_0\Data\P0082025\  
 Data File : P0113090.D  
 Signal(s) : Signal #1: ECD1A.ch Signal #2: ECD2B.ch  
 Acq On : 20 Aug 2025 15:57  
 Operator : YP/AJ  
 Sample : AR1242CCC500  
 Misc :  
 ALS Vial : 4 Sample Multiplier: 1

Instrument :  
 ECD\_0  
 ClientSampleId :  
 AR1242CCC500

Integration File signal 1: autoint1.e  
 Integration File signal 2: autoint2.e  
 Quant Time: Aug 21 01:40:21 2025  
 Quant Method : Z:\pestpcbsrv\HPCHEM1\ECD\_0\methods\P0081825.M  
 Quant Title : GC EXTRACTABLES  
 QLast Update : Tue Aug 19 06:08:32 2025  
 Response via : Initial Calibration  
 Integrator: ChemStation

Volume Inj. : 2 µl  
 Signal #1 Phase : ZB-MR1 Signal #2 Phase: ZB-MR2  
 Signal #1 Info : 30Mx0.32mmx 0.50µ Signal #2 Info : 30M x 0.32mm x 0.25µm

	Compound	RT#1	RT#2	Resp#1	Resp#2	ng/ml	ng/ml
42)	L9 AR-1268-2	7.636	7.596	1238933	1106837	0.856	2.664 #
43)	L9 AR-1268-3	7.848	7.801	828700	258781	0.687	0.793
44)	L9 AR-1268-4	8.143	8.085	152139	120980	0.330	1.005 #
45)	L9 AR-1268-5	8.434	8.378	2171075	437180	0.681	0.560

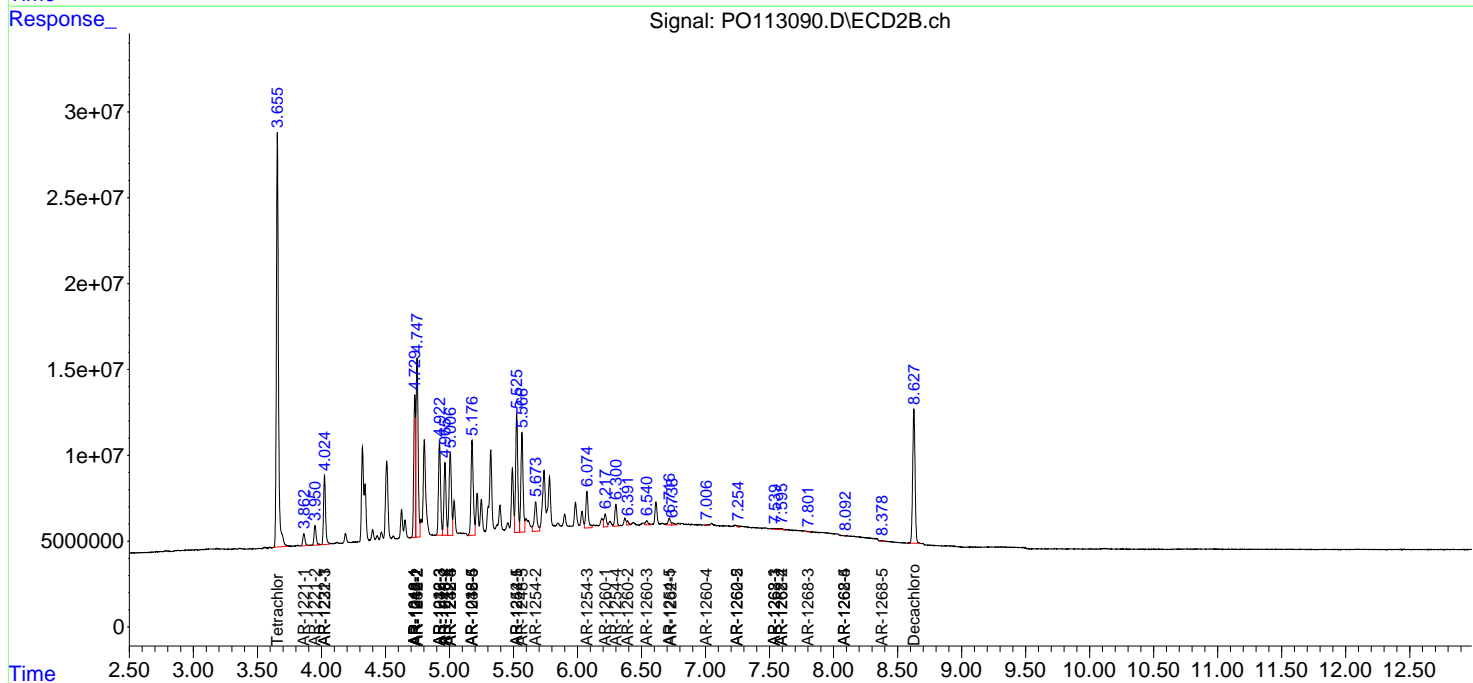
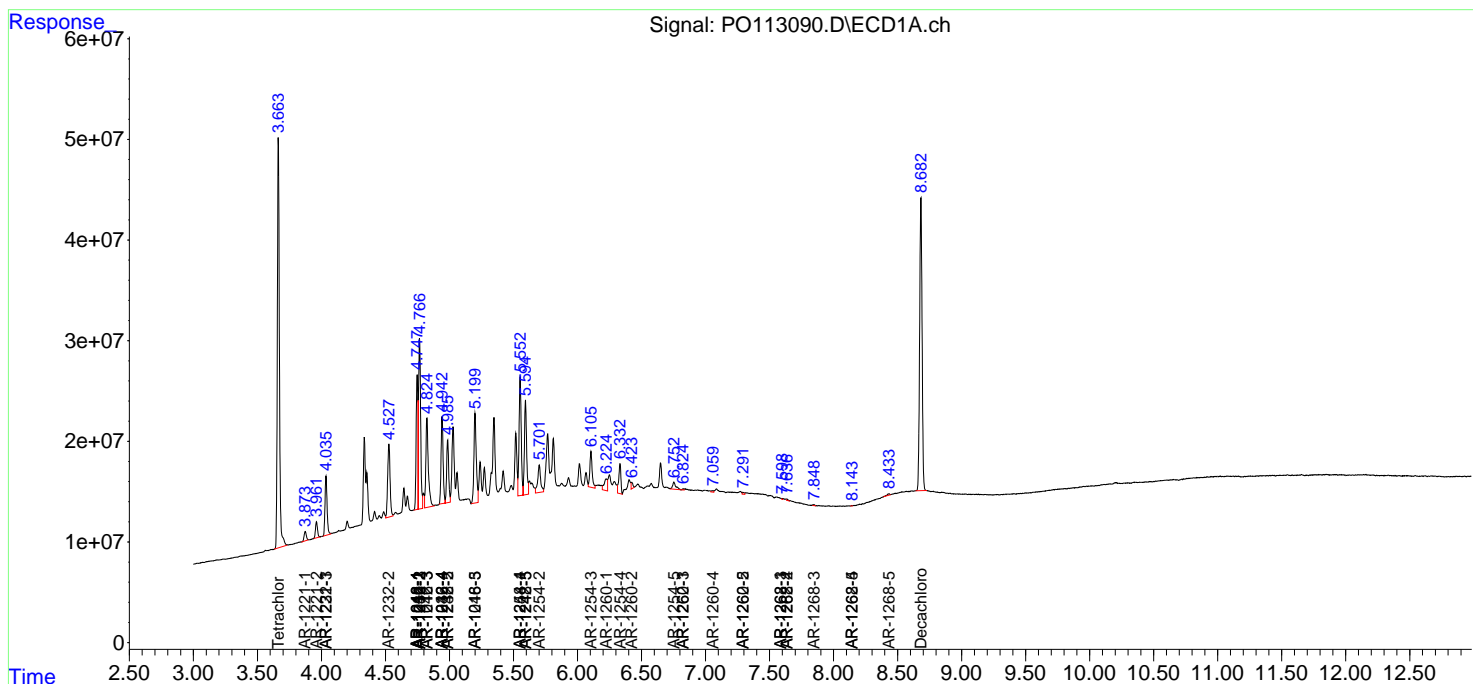
(f)=RT Delta > 1/2 Window (#)=Amounts differ by > 25% (m)=manual int.

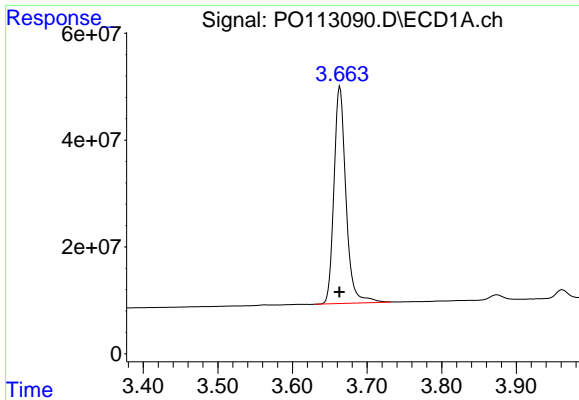
Data Path : Z:\pestpcbsrv\HPCHEM1\ECD\_O\Data\PO082025\  
 Data File : PO113090.D  
 Signal(s) : Signal #1: ECD1A.ch Signal #2: ECD2B.ch  
 Acq On : 20 Aug 2025 15:57  
 Operator : YP/AJ  
 Sample : AR1242CCC500  
 Misc :  
 ALS Vial : 4 Sample Multiplier: 1

Instrument :  
 ECD\_O  
 ClientSampleId :  
 AR1242CCC500

Integration File signal 1: autoint1.e  
 Integration File signal 2: autoint2.e  
 Quant Time: Aug 21 01:40:21 2025  
 Quant Method : Z:\pestpcbsrv\HPCHEM1\ECD\_O\methods\PO081825.M  
 Quant Title : GC EXTRACTABLES  
 QLast Update : Tue Aug 19 06:08:32 2025  
 Response via : Initial Calibration  
 Integrator: ChemStation

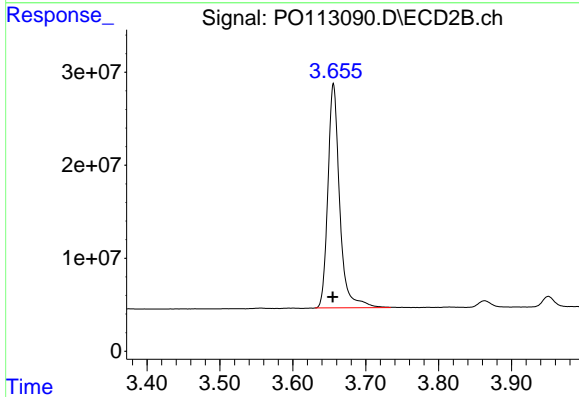
Volume Inj. : 2 µl  
 Signal #1 Phase : ZB-MR1 Signal #2 Phase: ZB-MR2  
 Signal #1 Info : 30Mx0.32mmx 0.50µ Signal #2 Info : 30M x 0.32mm x 0.25µm



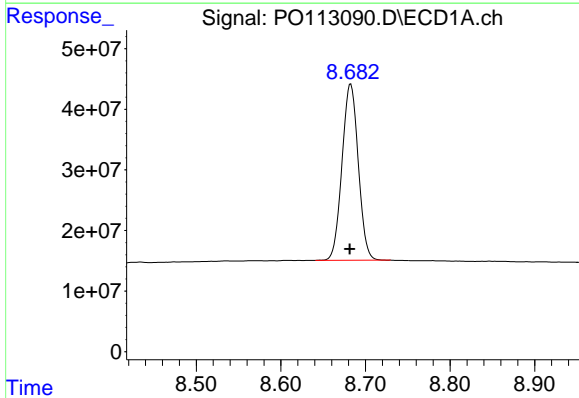


#1 Tetrachloro-m-xylene  
 R.T.: 3.664 min  
 Delta R.T.: 0.000 min  
 Response: 453668023  
 Conc: 55.42 ng/ml

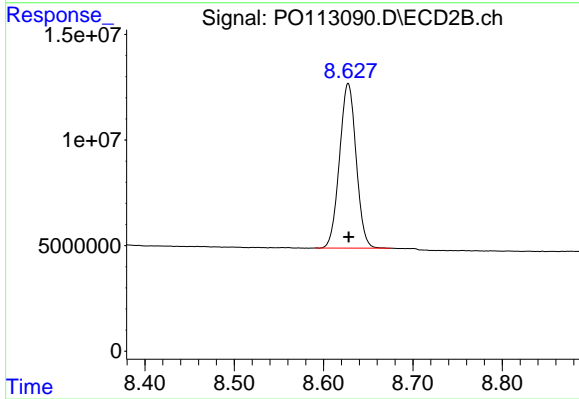
Instrument :  
 ECD\_O  
 ClientSampleId :  
 AR1242CCC500



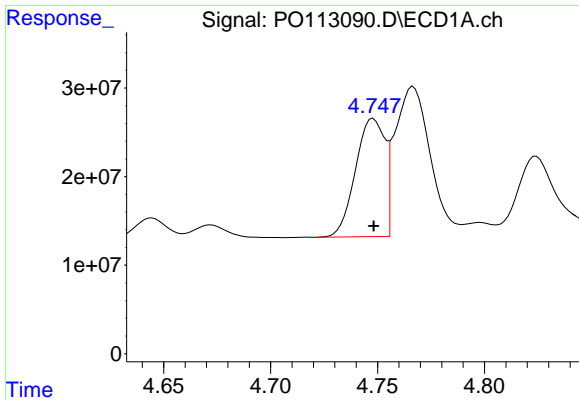
#1 Tetrachloro-m-xylene  
 R.T.: 3.656 min  
 Delta R.T.: 0.000 min  
 Response: 271145321  
 Conc: 53.58 ng/ml



#2 Decachlorobiphenyl  
 R.T.: 8.683 min  
 Delta R.T.: 0.001 min  
 Response: 387841560  
 Conc: 55.95 ng/ml



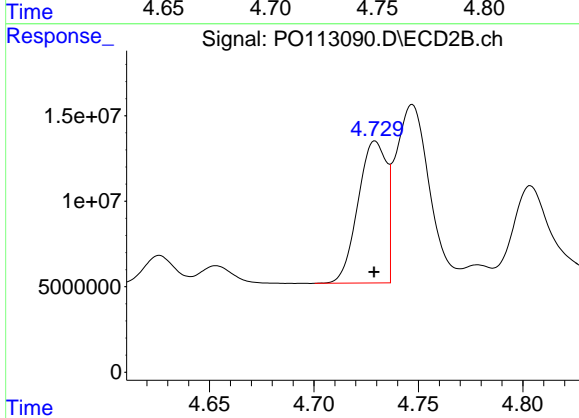
#2 Decachlorobiphenyl  
 R.T.: 8.628 min  
 Delta R.T.: 0.000 min  
 Response: 100929286  
 Conc: 53.27 ng/ml



#3 AR-1016-1

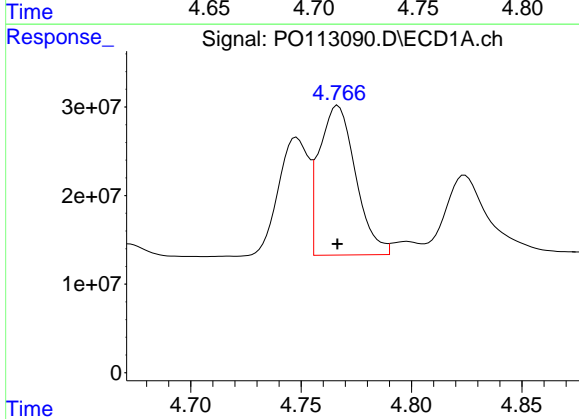
R.T.: 4.748 min  
 Delta R.T.: 0.000 min  
 Response: 126752269  
 Conc: 474.75 ng/ml

Instrument :  
 ECD\_O  
 ClientSampleId :  
 AR1242CCC500



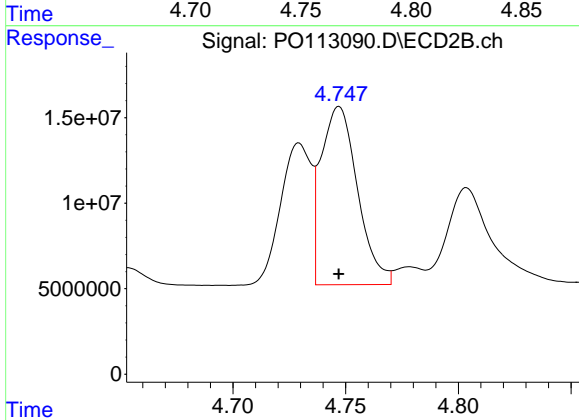
#3 AR-1016-1

R.T.: 4.729 min  
 Delta R.T.: 0.000 min  
 Response: 78613222  
 Conc: 460.88 ng/ml



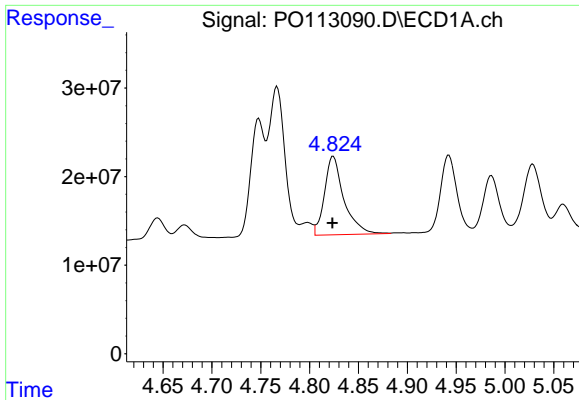
#4 AR-1016-2

R.T.: 4.767 min  
 Delta R.T.: 0.000 min  
 Response: 193780740  
 Conc: 482.72 ng/ml



#4 AR-1016-2

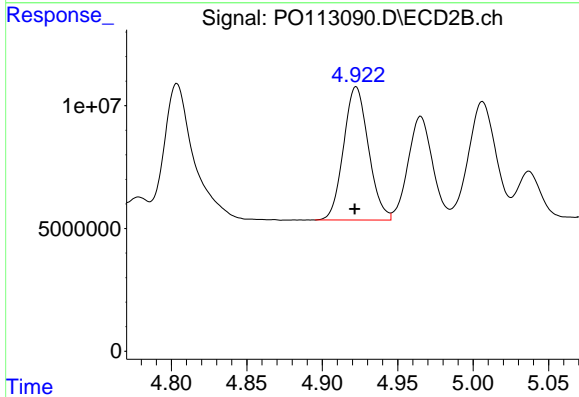
R.T.: 4.747 min  
 Delta R.T.: 0.000 min  
 Response: 117439204  
 Conc: 455.80 ng/ml



#5 AR-1016-3

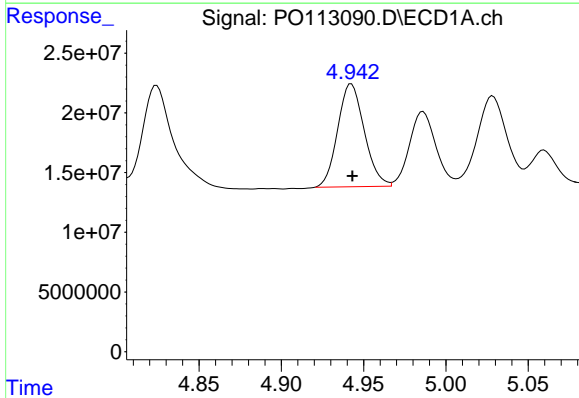
R.T.: 4.824 min  
 Delta R.T.: 0.000 min  
 Response: 122637182  
 Conc: 480.89 ng/ml

Instrument :  
 ECD\_O  
 ClientSampleId :  
 AR1242CCC500



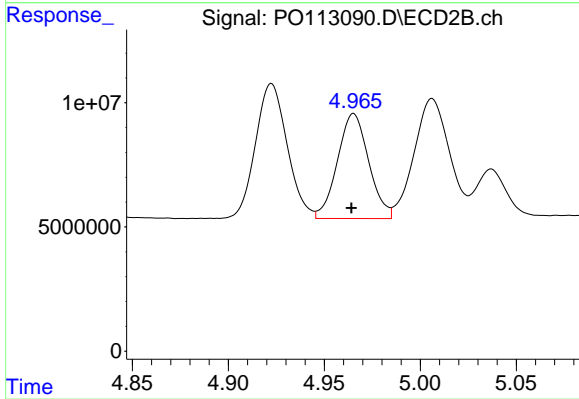
#5 AR-1016-3

R.T.: 4.922 min  
 Delta R.T.: 0.000 min  
 Response: 62407157  
 Conc: 447.00 ng/ml



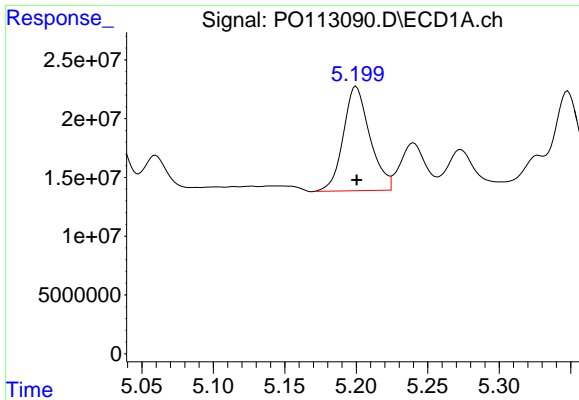
#6 AR-1016-4

R.T.: 4.943 min  
 Delta R.T.: 0.000 min  
 Response: 97006367  
 Conc: 444.84 ng/ml



#6 AR-1016-4

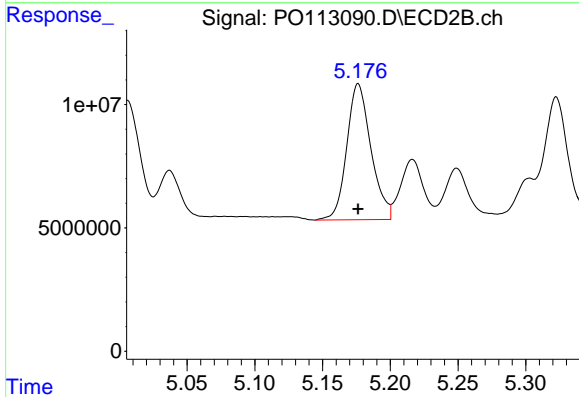
R.T.: 4.965 min  
 Delta R.T.: 0.001 min  
 Response: 48086506  
 Conc: 412.06 ng/ml



#7 AR-1016-5

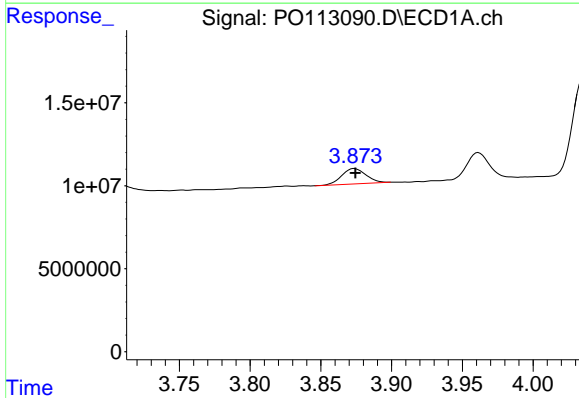
R.T.: 5.200 min  
 Delta R.T.: 0.000 min  
 Response: 114799619  
 Conc: 517.98 ng/ml

Instrument :  
 ECD\_O  
 ClientSampleId :  
 AR1242CCC500



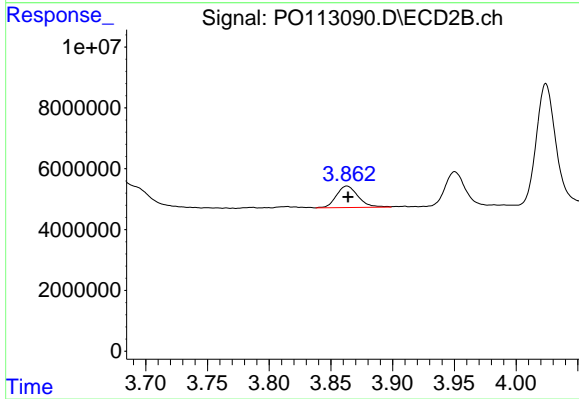
#7 AR-1016-5

R.T.: 5.176 min  
 Delta R.T.: 0.000 min  
 Response: 68454546  
 Conc: 480.28 ng/ml



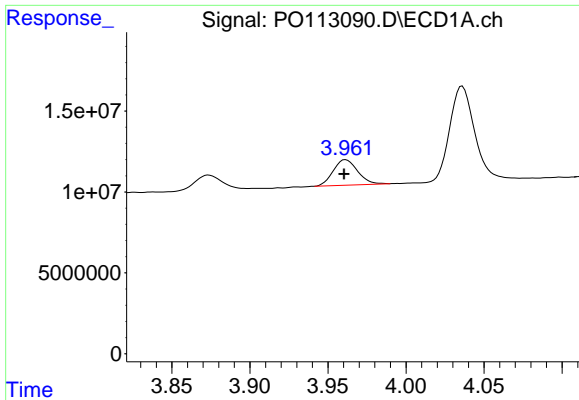
#8 AR-1221-1

R.T.: 3.874 min  
 Delta R.T.: 0.000 min  
 Response: 11051313  
 Conc: 118.10 ng/ml



#8 AR-1221-1

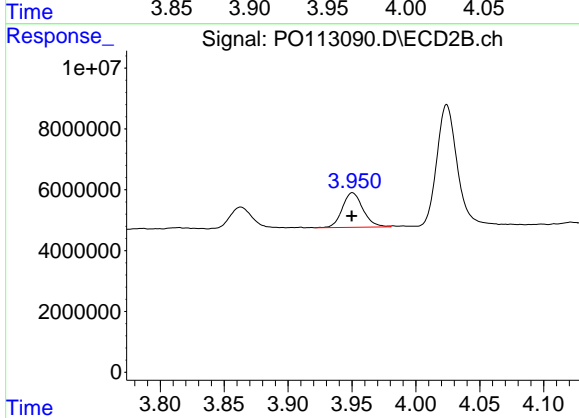
R.T.: 3.863 min  
 Delta R.T.: 0.000 min  
 Response: 8626644  
 Conc: 136.67 ng/ml



#9 AR-1221-2

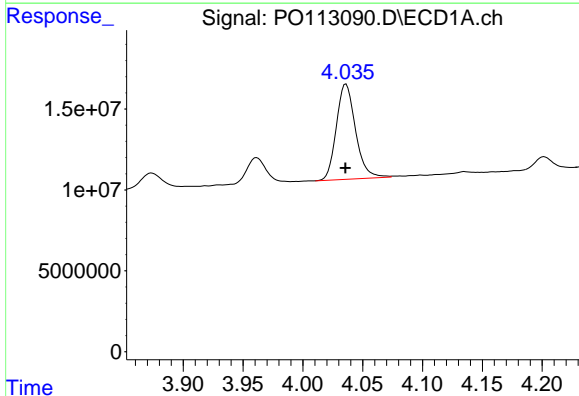
R.T.: 3.961 min  
 Delta R.T.: 0.001 min  
 Response: 17158639  
 Conc: 254.01 ng/ml

Instrument :  
 ECD\_O  
 ClientSampleId :  
 AR1242CCC500



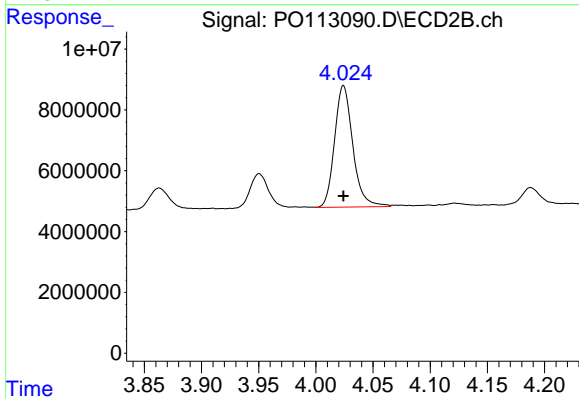
#9 AR-1221-2

R.T.: 3.950 min  
 Delta R.T.: 0.000 min  
 Response: 12802243  
 Conc: 274.30 ng/ml



#10 AR-1221-3

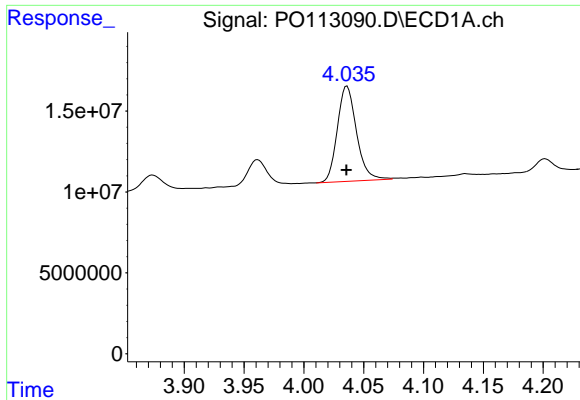
R.T.: 4.036 min  
 Delta R.T.: 0.000 min  
 Response: 65723474  
 Conc: 296.92 ng/ml



#10 AR-1221-3

R.T.: 4.024 min  
 Delta R.T.: 0.000 min  
 Response: 44453683  
 Conc: 299.40 ng/ml

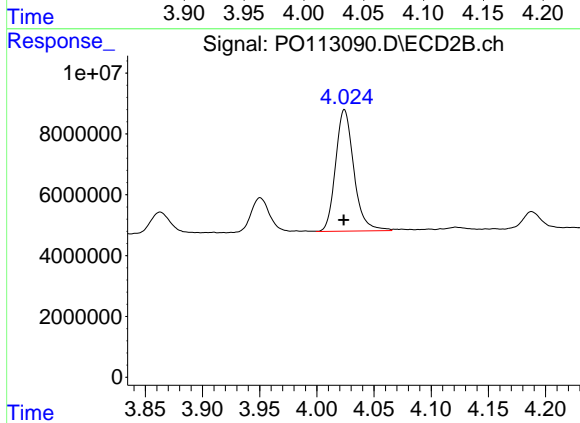




#11 AR-1232-1

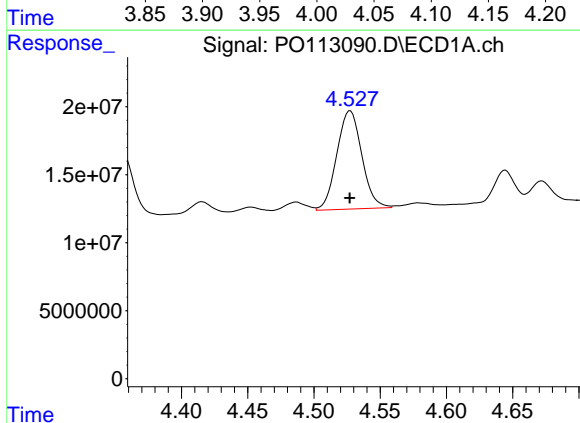
R.T.: 4.036 min  
 Delta R.T.: 0.000 min  
 Response: 65723474  
 Conc: 377.71 ng/ml

Instrument :  
 ECD\_O  
 ClientSampleId :  
 AR1242CCC500



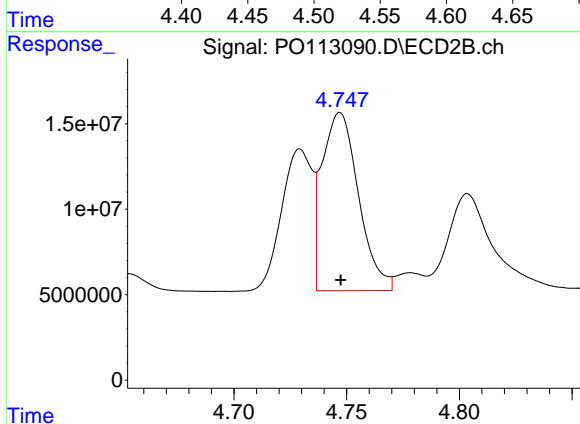
#11 AR-1232-1

R.T.: 4.024 min  
 Delta R.T.: 0.000 min  
 Response: 44453683  
 Conc: 378.64 ng/ml



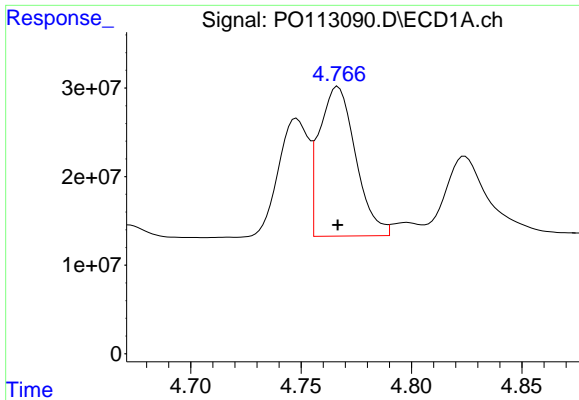
#12 AR-1232-2

R.T.: 4.527 min  
 Delta R.T.: 0.000 min  
 Response: 95003757  
 Conc: 951.44 ng/ml



#12 AR-1232-2

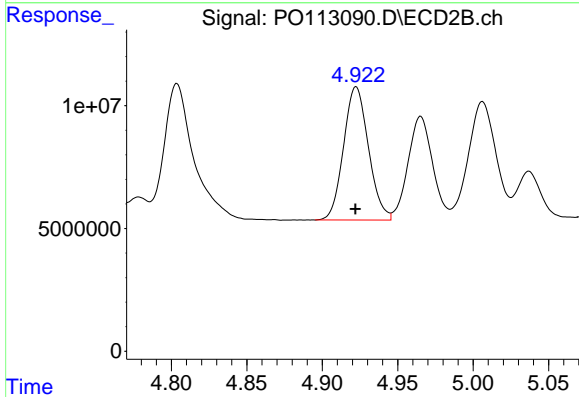
R.T.: 4.747 min  
 Delta R.T.: 0.000 min  
 Response: 117439204  
 Conc: 958.33 ng/ml



#13 AR-1232-3

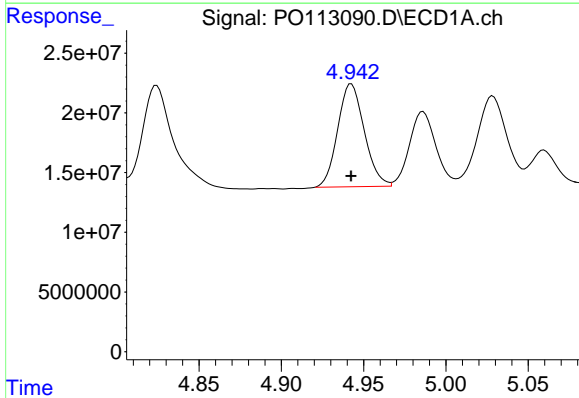
R.T.: 4.767 min  
 Delta R.T.: 0.000 min  
 Response: 193780740  
 Conc: 1022.72 ng/ml

Instrument :  
 ECD\_O  
 ClientSampleId :  
 AR1242CCC500



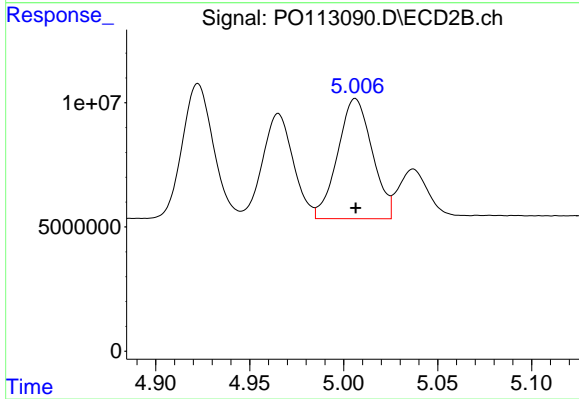
#13 AR-1232-3

R.T.: 4.922 min  
 Delta R.T.: 0.000 min  
 Response: 62407157  
 Conc: 985.18 ng/ml



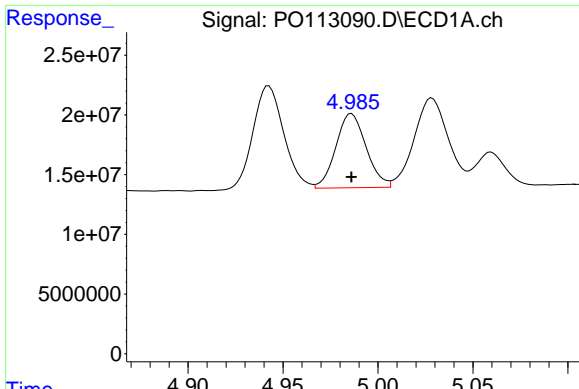
#14 AR-1232-4

R.T.: 4.943 min  
 Delta R.T.: 0.000 min  
 Response: 97006367  
 Conc: 1030.12 ng/ml



#14 AR-1232-4

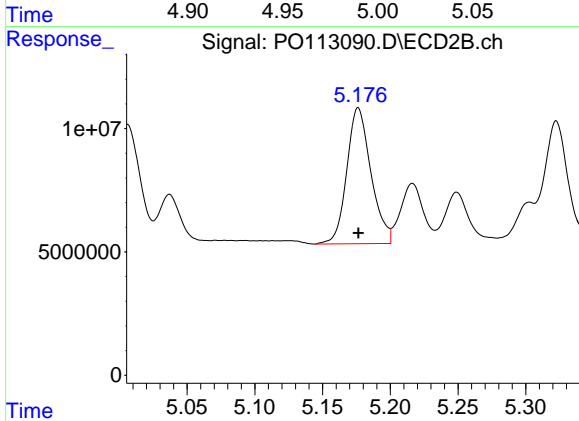
R.T.: 5.006 min  
 Delta R.T.: 0.000 min  
 Response: 61863837  
 Conc: 1100.37 ng/ml



#15 AR-1232-5

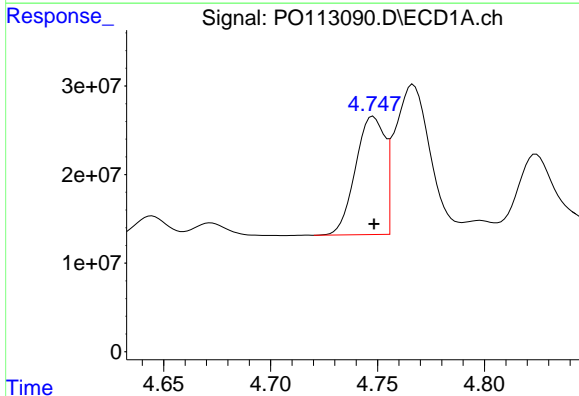
R.T.: 4.986 min  
 Delta R.T.: 0.000 min  
 Response: 68977843  
 Conc: 1113.57 ng/ml

Instrument :  
 ECD\_O  
 ClientSampleId :  
 AR1242CCC500



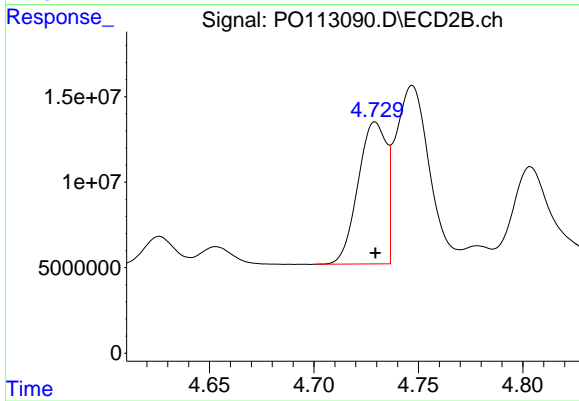
#15 AR-1232-5

R.T.: 5.176 min  
 Delta R.T.: 0.000 min  
 Response: 68454546  
 Conc: 1143.51 ng/ml



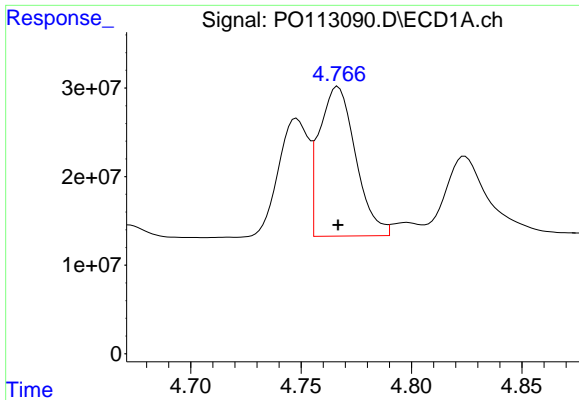
#16 AR-1242-1

R.T.: 4.748 min  
 Delta R.T.: 0.000 min  
 Response: 126752269  
 Conc: 551.26 ng/ml



#16 AR-1242-1

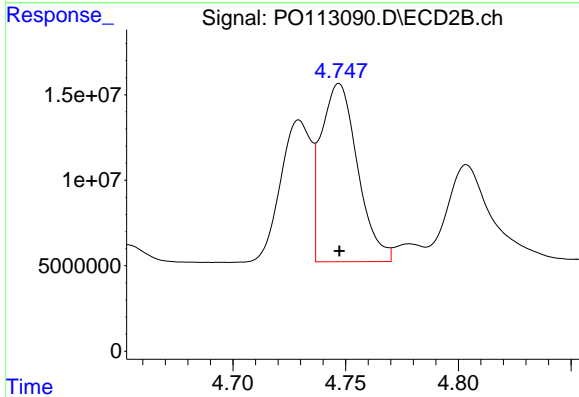
R.T.: 4.729 min  
 Delta R.T.: 0.000 min  
 Response: 78613222  
 Conc: 544.02 ng/ml



#17 AR-1242-2

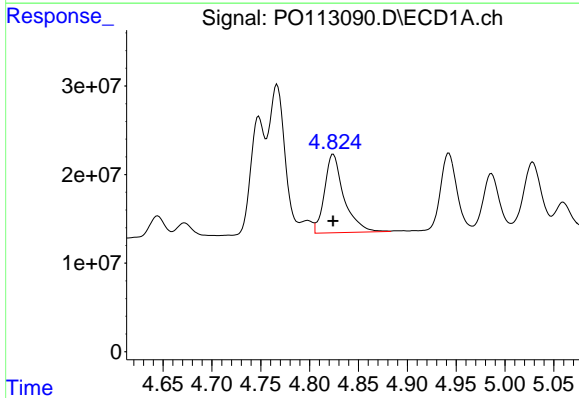
R.T.: 4.767 min  
 Delta R.T.: 0.000 min  
 Response: 193780740  
 Conc: 563.93 ng/ml

Instrument :  
 ECD\_O  
 ClientSampleId :  
 AR1242CCC500



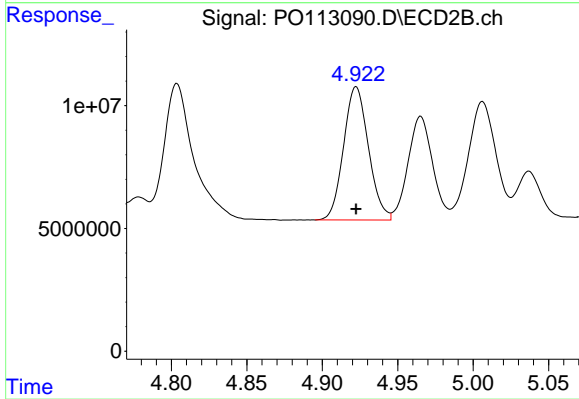
#17 AR-1242-2

R.T.: 4.747 min  
 Delta R.T.: 0.000 min  
 Response: 117439204  
 Conc: 541.42 ng/ml



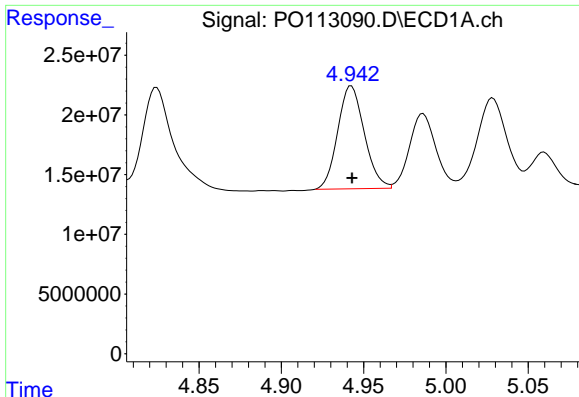
#18 AR-1242-3

R.T.: 4.824 min  
 Delta R.T.: 0.000 min  
 Response: 122637182  
 Conc: 552.71 ng/ml



#18 AR-1242-3

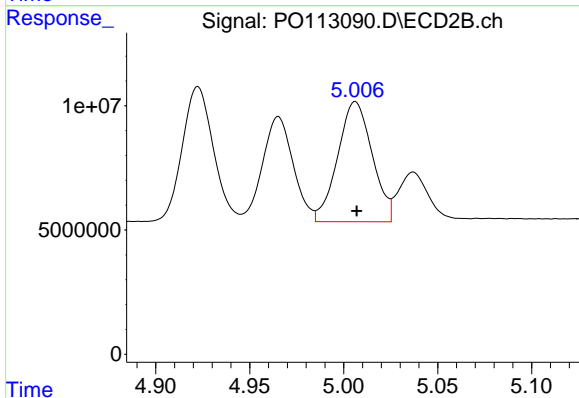
R.T.: 4.922 min  
 Delta R.T.: 0.000 min  
 Response: 62407157  
 Conc: 533.56 ng/ml



#19 AR-1242-4

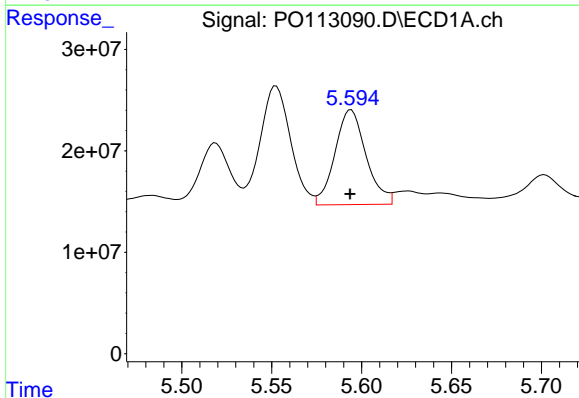
R.T.: 4.943 min  
 Delta R.T.: 0.000 min  
 Response: 97006367  
 Conc: 559.23 ng/ml

Instrument :  
 ECD\_O  
 ClientSampleId :  
 AR1242CCC500



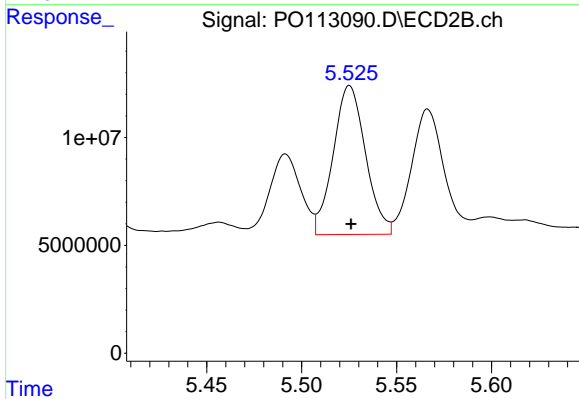
#19 AR-1242-4

R.T.: 5.006 min  
 Delta R.T.: 0.000 min  
 Response: 61863837  
 Conc: 525.89 ng/ml



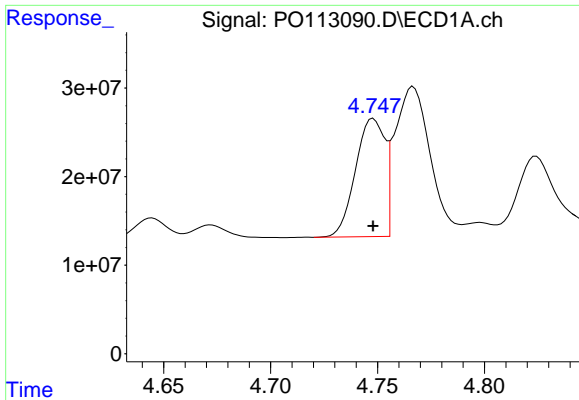
#20 AR-1242-5

R.T.: 5.594 min  
 Delta R.T.: 0.000 min  
 Response: 112724304  
 Conc: 563.16 ng/ml



#20 AR-1242-5

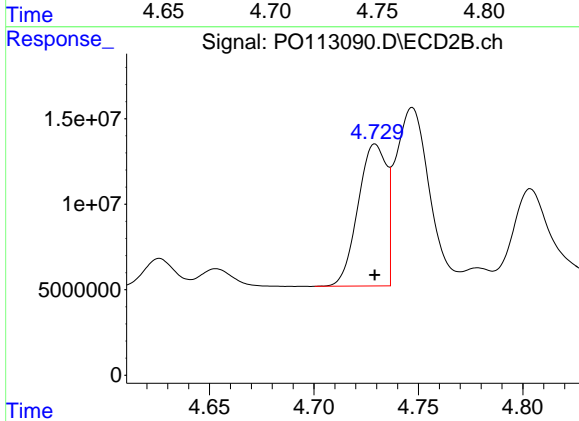
R.T.: 5.525 min  
 Delta R.T.: 0.000 min  
 Response: 81810621  
 Conc: 548.58 ng/ml



#21 AR-1248-1

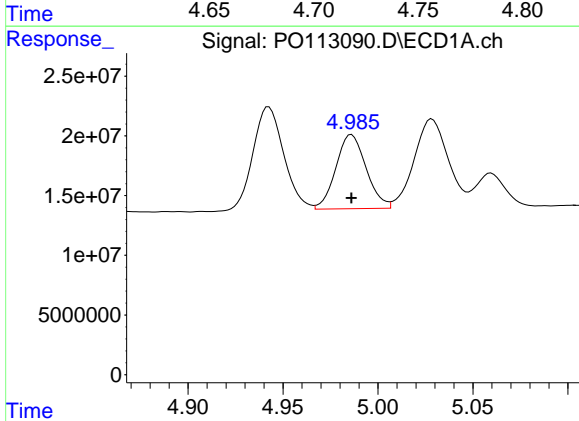
R.T.: 4.748 min  
 Delta R.T.: 0.000 min  
 Response: 126752269  
 Conc: 726.51 ng/ml

Instrument :  
 ECD\_O  
 ClientSampleId :  
 AR1242CCC500



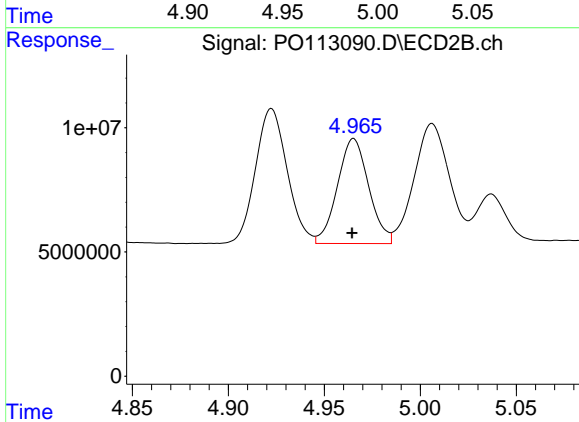
#21 AR-1248-1

R.T.: 4.729 min  
 Delta R.T.: 0.000 min  
 Response: 78613222  
 Conc: 704.98 ng/ml



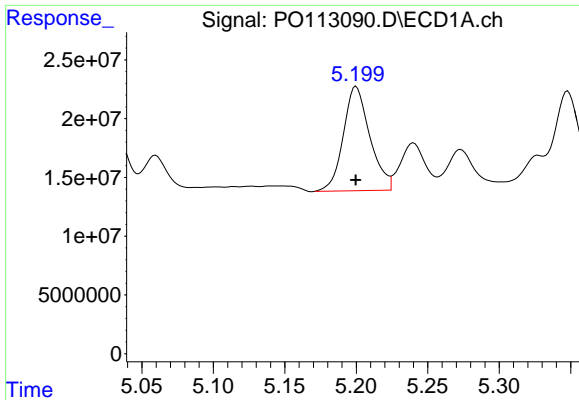
#22 AR-1248-2

R.T.: 4.986 min  
 Delta R.T.: 0.000 min  
 Response: 68977843  
 Conc: 285.19 ng/ml



#22 AR-1248-2

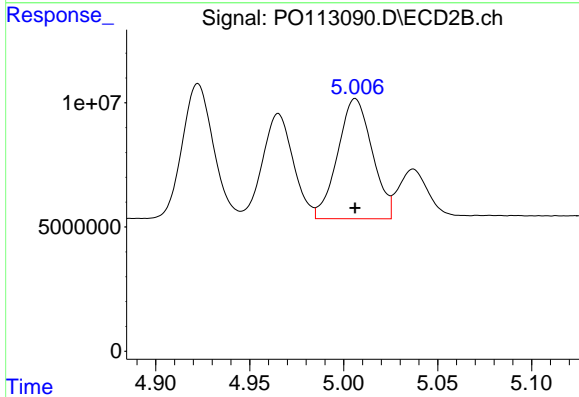
R.T.: 4.965 min  
 Delta R.T.: 0.000 min  
 Response: 48086506  
 Conc: 299.23 ng/ml



#23 AR-1248-3

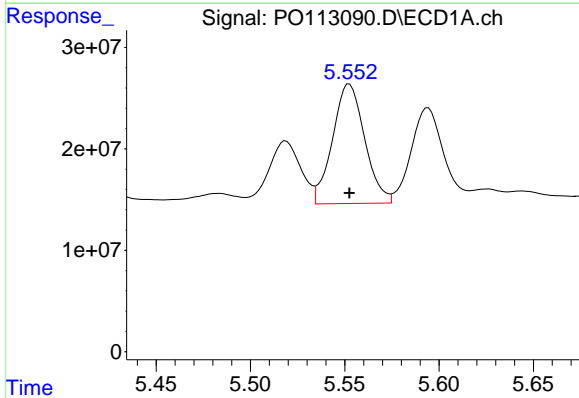
R.T.: 5.200 min  
 Delta R.T.: 0.000 min  
 Response: 114799619  
 Conc: 360.03 ng/ml

Instrument :  
 ECD\_O  
 ClientSampleId :  
 AR1242CCC500



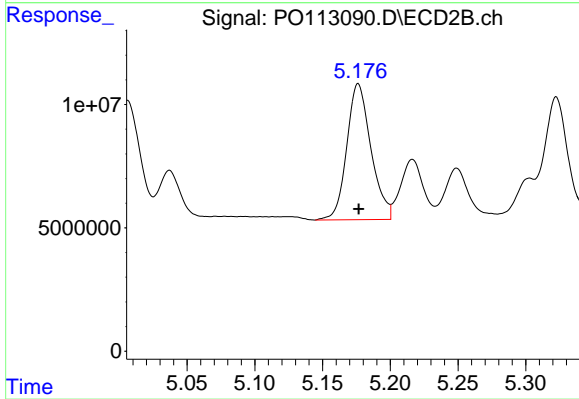
#23 AR-1248-3

R.T.: 5.006 min  
 Delta R.T.: 0.000 min  
 Response: 61863837  
 Conc: 364.63 ng/ml



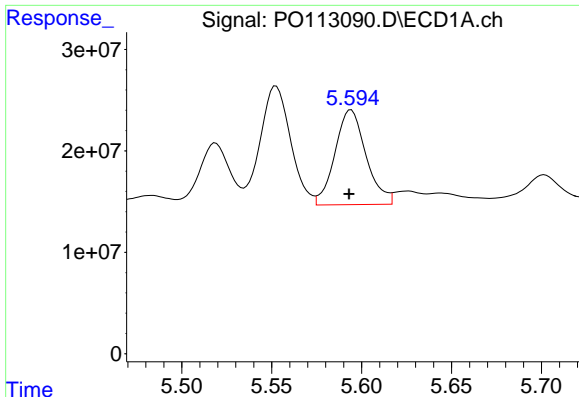
#24 AR-1248-4

R.T.: 5.552 min  
 Delta R.T.: 0.000 min  
 Response: 139912386  
 Conc: 280.05 ng/ml



#24 AR-1248-4

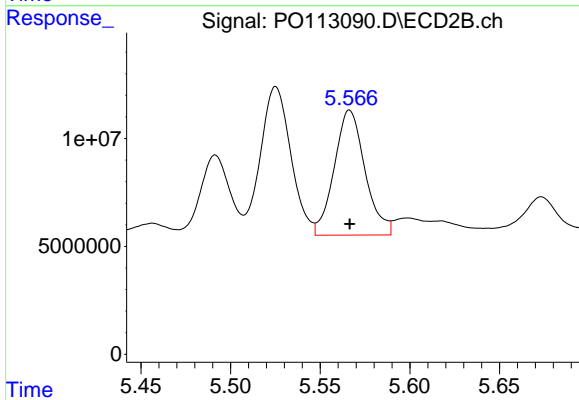
R.T.: 5.176 min  
 Delta R.T.: 0.000 min  
 Response: 68454546  
 Conc: 343.61 ng/ml



#25 AR-1248-5

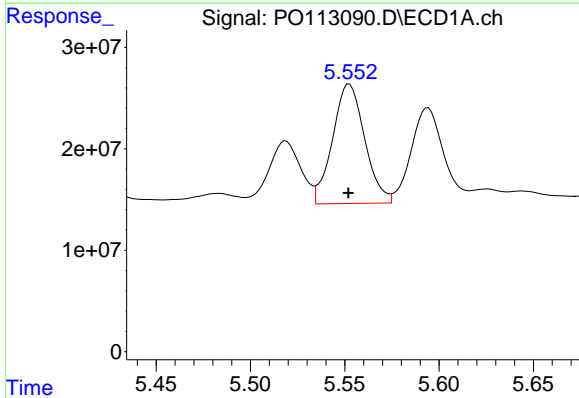
R.T.: 5.594 min  
 Delta R.T.: 0.001 min  
 Response: 112724304  
 Conc: 330.09 ng/ml

Instrument :  
 ECD\_O  
 ClientSampleId :  
 AR1242CCC500



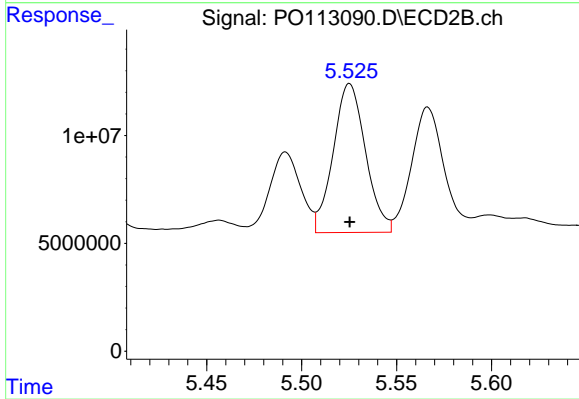
#25 AR-1248-5

R.T.: 5.566 min  
 Delta R.T.: 0.000 min  
 Response: 69403946  
 Conc: 326.92 ng/ml



#26 AR-1254-1

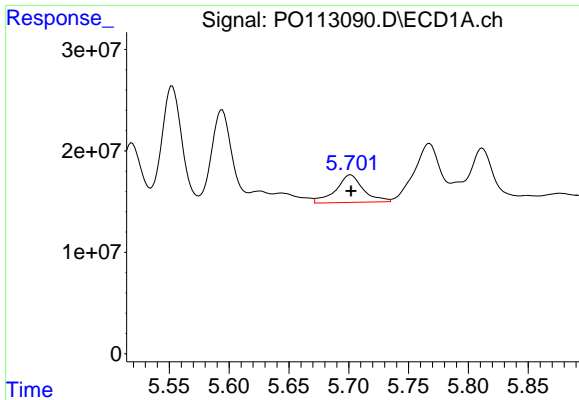
R.T.: 5.552 min  
 Delta R.T.: 0.000 min  
 Response: 139912386  
 Conc: 259.11 ng/ml



#26 AR-1254-1

R.T.: 5.525 min  
 Delta R.T.: 0.000 min  
 Response: 81810621  
 Conc: 259.42 ng/ml

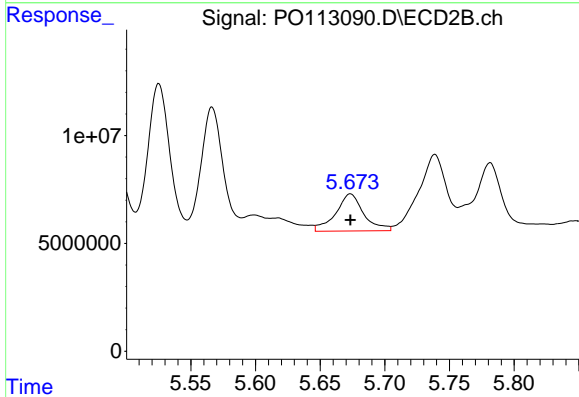




#27 AR-1254-2

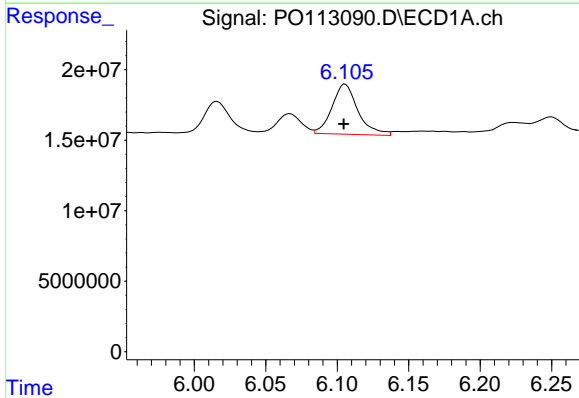
R.T.: 5.702 min  
 Delta R.T.: 0.000 min  
 Response: 43422093  
 Conc: 88.00 ng/ml

Instrument :  
 ECD\_O  
 ClientSampleId :  
 AR1242CCC500



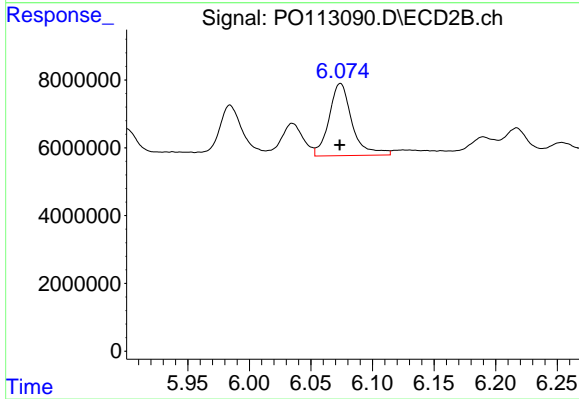
#27 AR-1254-2

R.T.: 5.673 min  
 Delta R.T.: 0.000 min  
 Response: 25942387  
 Conc: 92.54 ng/ml



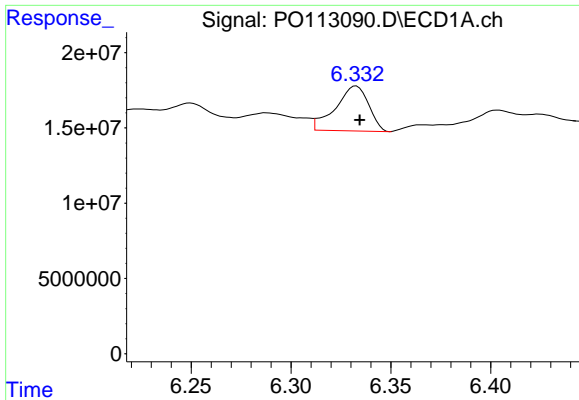
#28 AR-1254-3

R.T.: 6.106 min  
 Delta R.T.: 0.001 min  
 Response: 44830000  
 Conc: 60.67 ng/ml



#28 AR-1254-3

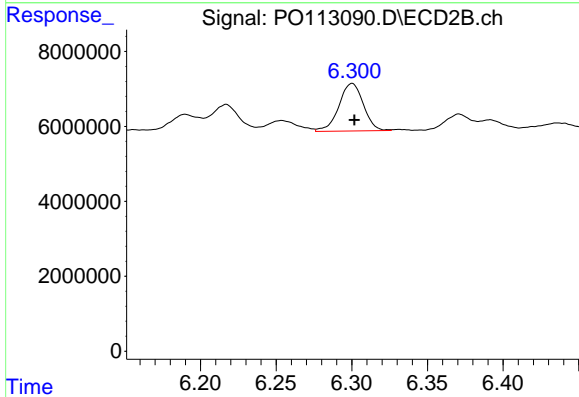
R.T.: 6.074 min  
 Delta R.T.: 0.000 min  
 Response: 27766249  
 Conc: 66.60 ng/ml



#29 AR-1254-4

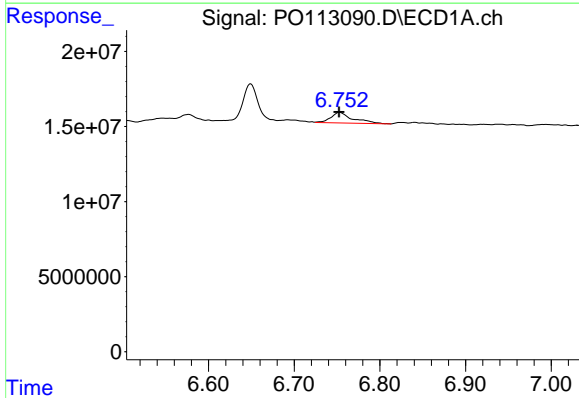
R.T.: 6.333 min  
 Delta R.T.: -0.002 min  
 Response: 34475784  
 Conc: 61.90 ng/ml

Instrument :  
 ECD\_O  
 ClientSampleId :  
 AR1242CCC500



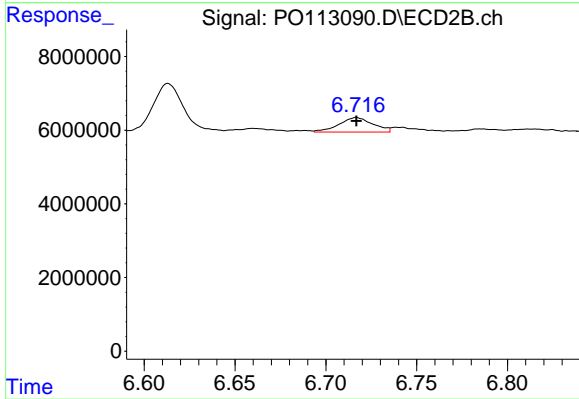
#29 AR-1254-4

R.T.: 6.300 min  
 Delta R.T.: -0.001 min  
 Response: 14347249  
 Conc: 52.20 ng/ml



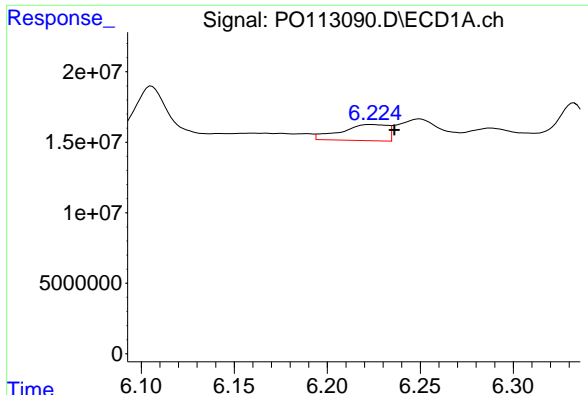
#30 AR-1254-5

R.T.: 6.753 min  
 Delta R.T.: 0.000 min  
 Response: 12359969  
 Conc: 17.63 ng/ml



#30 AR-1254-5

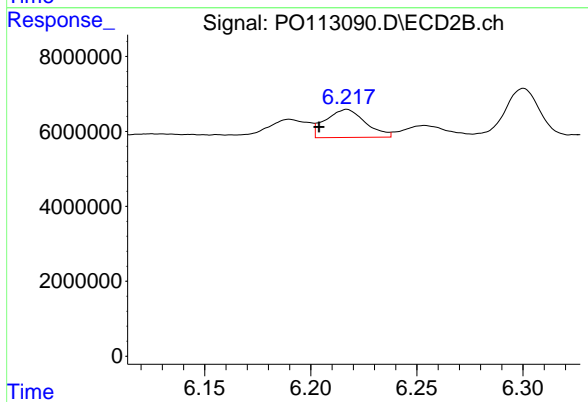
R.T.: 6.717 min  
 Delta R.T.: 0.000 min  
 Response: 5131513  
 Conc: 14.35 ng/ml



#31 AR-1260-1

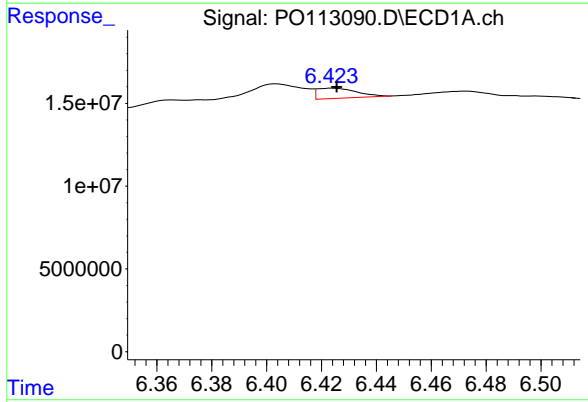
R.T.: 6.224 min  
 Delta R.T.: -0.012 min  
 Response: 20061621  
 Conc: 44.98 ng/ml

Instrument :  
 ECD\_O  
 ClientSampleId :  
 AR1242CCC500



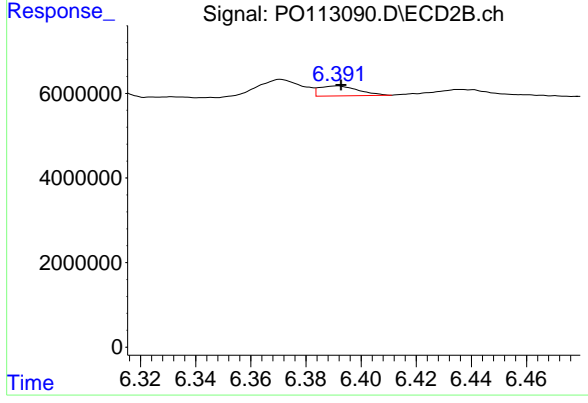
#31 AR-1260-1

R.T.: 6.217 min  
 Delta R.T.: 0.013 min  
 Response: 9835772  
 Conc: 38.56 ng/ml



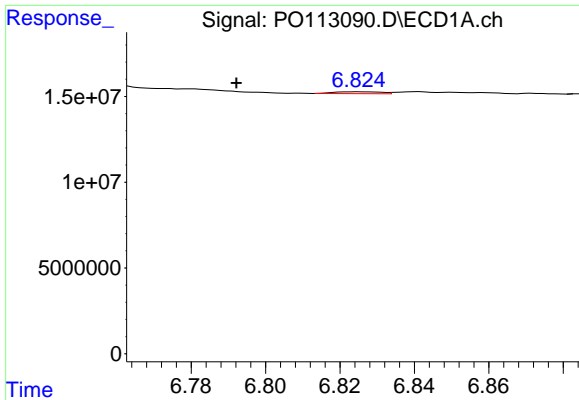
#32 AR-1260-2

R.T.: 6.424 min  
 Delta R.T.: -0.001 min  
 Response: 6189897  
 Conc: 9.01 ng/ml



#32 AR-1260-2

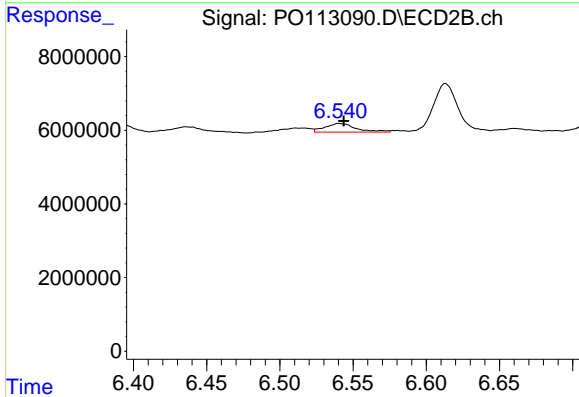
R.T.: 6.391 min  
 Delta R.T.: -0.001 min  
 Response: 2308877  
 Conc: 6.68 ng/ml



#33 AR-1260-3

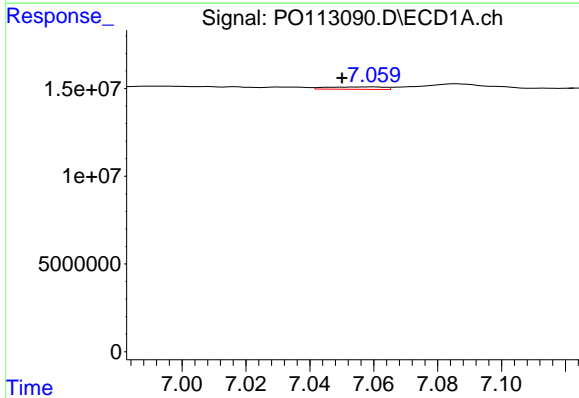
R.T.: 6.825 min  
 Delta R.T.: 0.033 min  
 Response: 933128  
 Conc: 1.51 ng/ml

Instrument :  
 ECD\_O  
 ClientSampleId :  
 AR1242CCC500



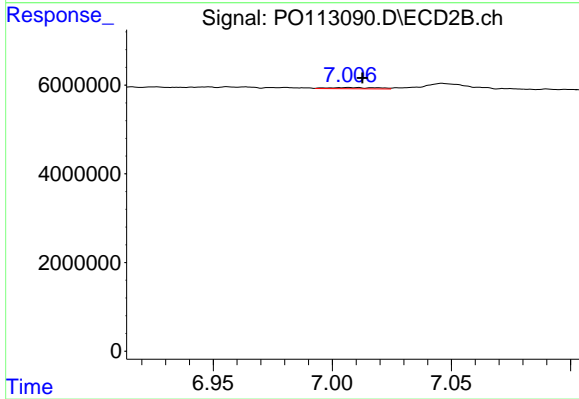
#33 AR-1260-3

R.T.: 6.541 min  
 Delta R.T.: -0.003 min  
 Response: 3420317  
 Conc: 11.50 ng/ml



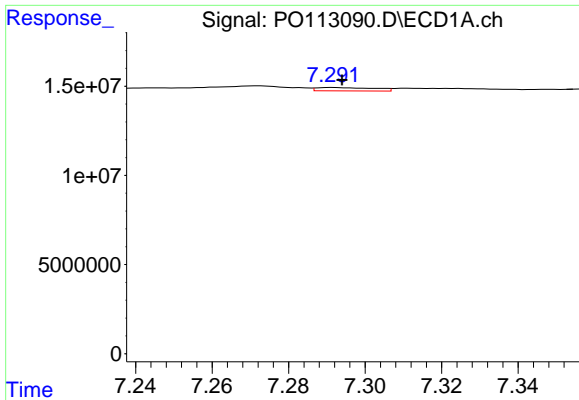
#34 AR-1260-4

R.T.: 7.059 min  
 Delta R.T.: 0.009 min  
 Response: 1672883  
 Conc: 3.74 ng/ml



#34 AR-1260-4

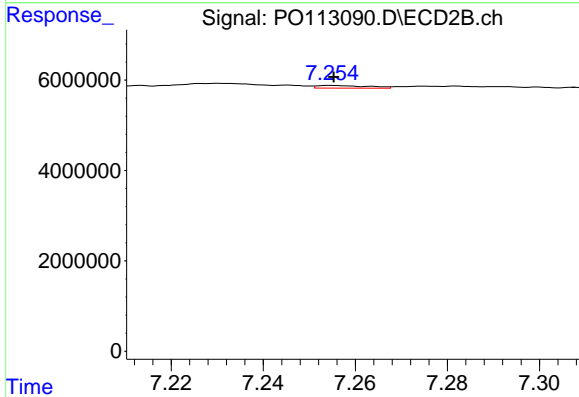
R.T.: 7.007 min  
 Delta R.T.: -0.006 min  
 Response: 399351  
 Conc: 1.93 ng/ml



#35 AR-1260-5

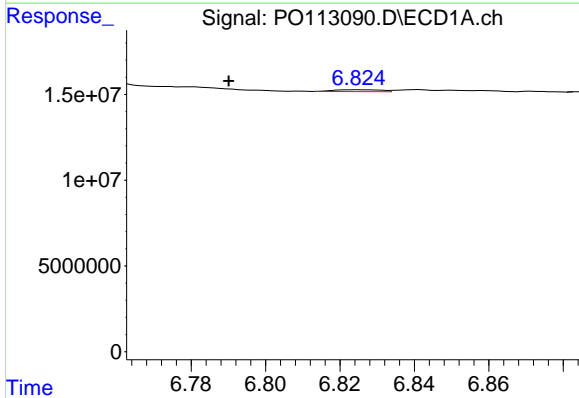
R.T.: 7.292 min  
 Delta R.T.: -0.002 min  
 Response: 1968862  
 Conc: 1.63 ng/ml

Instrument :  
 ECD\_O  
 ClientSampleId :  
 AR1242CCC500



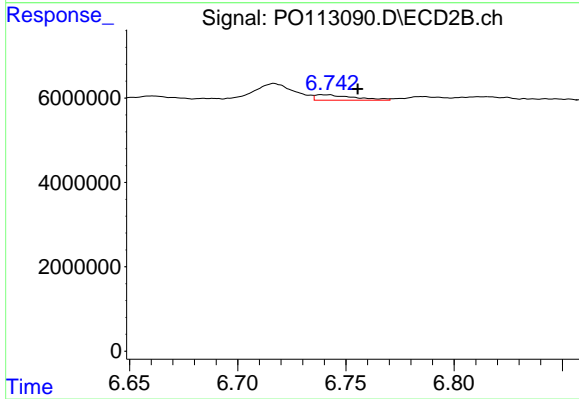
#35 AR-1260-5

R.T.: 7.255 min  
 Delta R.T.: 0.000 min  
 Response: 456872  
 Conc: 0.98 ng/ml



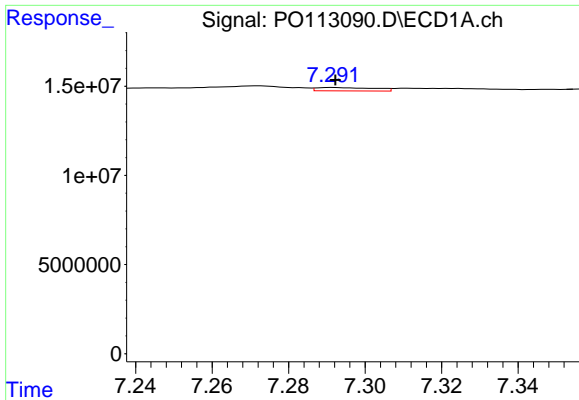
#36 AR-1262-1

R.T.: 6.825 min  
 Delta R.T.: 0.035 min  
 Response: 933128  
 Conc: 1.02 ng/ml



#36 AR-1262-1

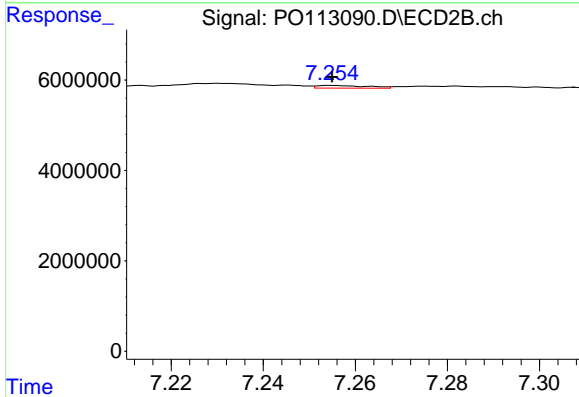
R.T.: 6.740 min  
 Delta R.T.: -0.016 min  
 Response: 1577516  
 Conc: 3.80 ng/ml



#37 AR-1262-2

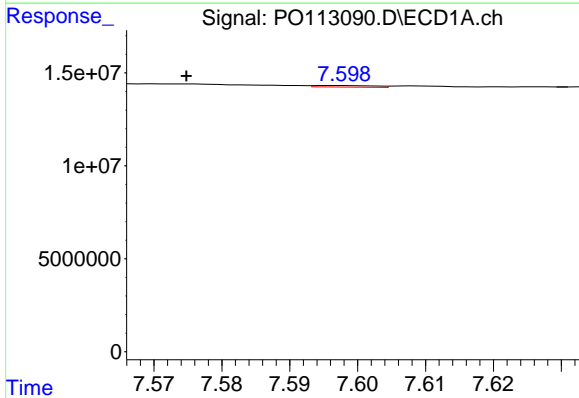
R.T.: 7.292 min  
 Delta R.T.: 0.000 min  
 Response: 1968862  
 Conc: 1.30 ng/ml

Instrument :  
 ECD\_O  
 ClientSampleId :  
 AR1242CCC500



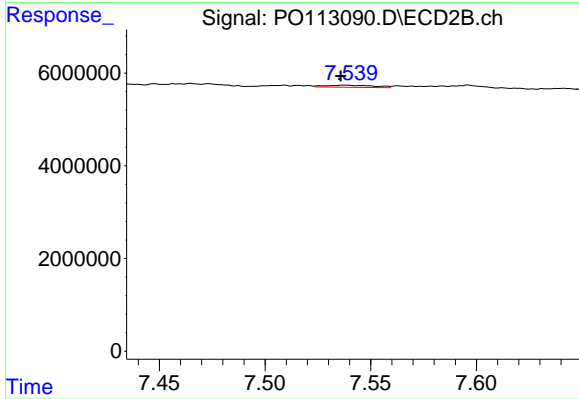
#37 AR-1262-2

R.T.: 7.255 min  
 Delta R.T.: 0.000 min  
 Response: 456872  
 Conc: 0.88 ng/ml



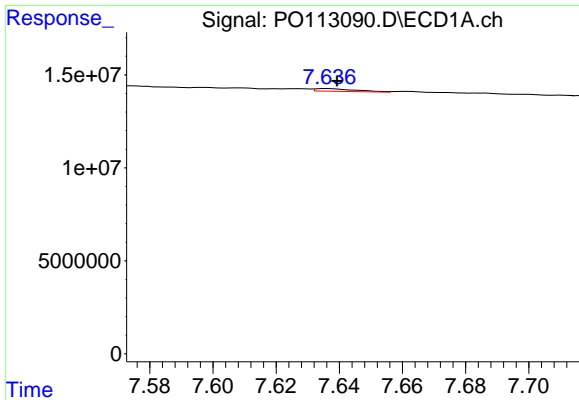
#38 AR-1262-3

R.T.: 7.597 min  
 Delta R.T.: 0.022 min  
 Response: 489992  
 Conc: 0.88 ng/ml



#38 AR-1262-3

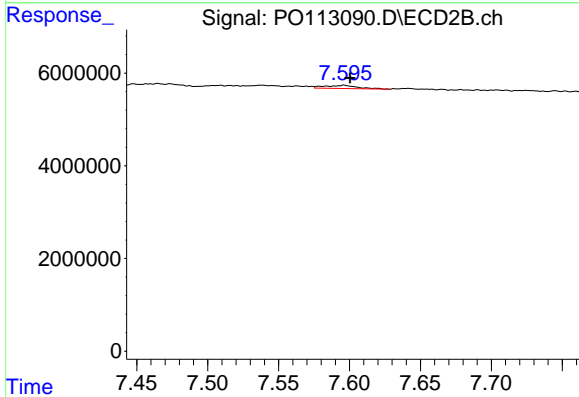
R.T.: 7.538 min  
 Delta R.T.: 0.002 min  
 Response: 699263  
 Conc: 3.89 ng/ml



#39 AR-1262-4

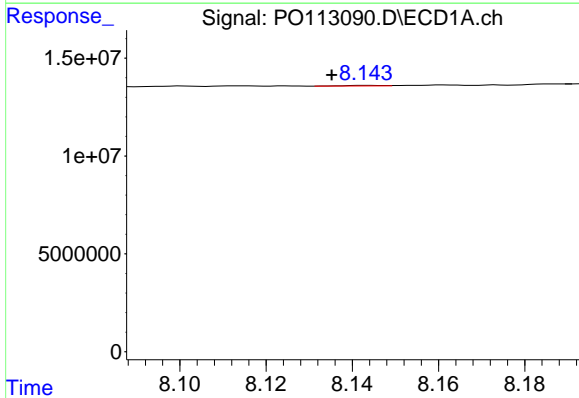
R.T.: 7.636 min  
 Delta R.T.: -0.003 min  
 Response: 1238933  
 Conc: 1.27 ng/ml

Instrument :  
 ECD\_O  
 ClientSampleId :  
 AR1242CCC500



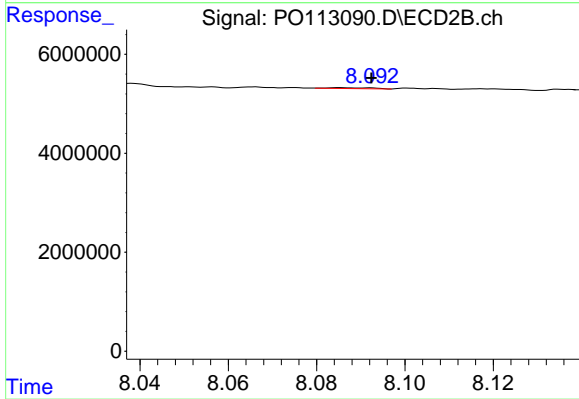
#39 AR-1262-4

R.T.: 7.596 min  
 Delta R.T.: -0.004 min  
 Response: 1106837  
 Conc: 3.82 ng/ml



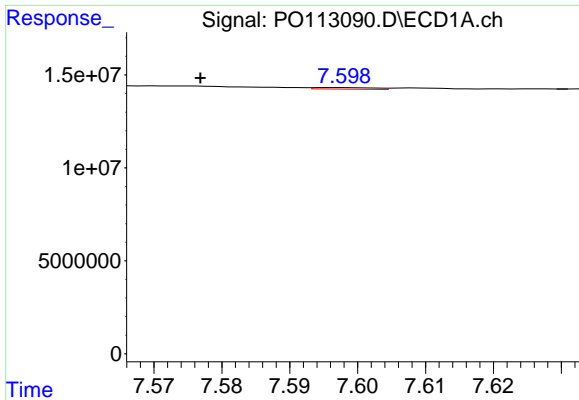
#40 AR-1262-5

R.T.: 8.143 min  
 Delta R.T.: 0.008 min  
 Response: 152139  
 Conc: 0.36 ng/ml



#40 AR-1262-5

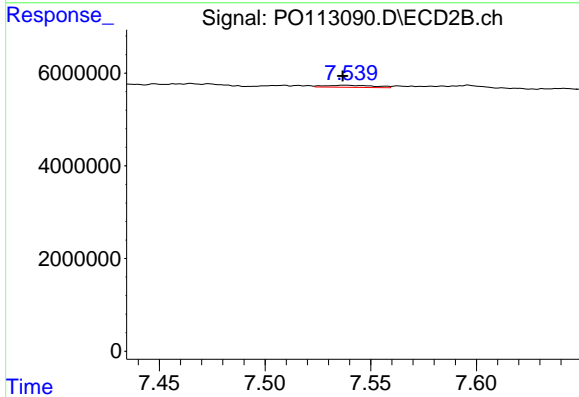
R.T.: 8.085 min  
 Delta R.T.: -0.007 min  
 Response: 120980  
 Conc: 1.12 ng/ml



#41 AR-1268-1

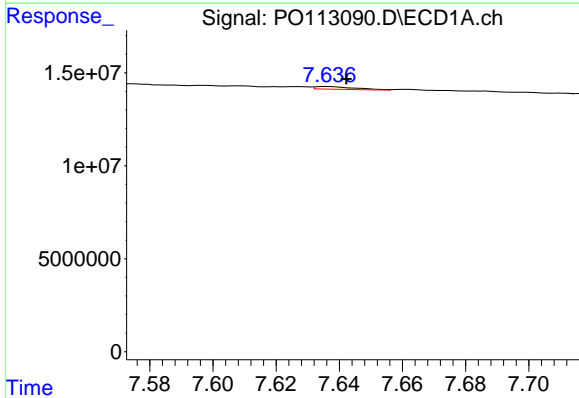
R.T.: 7.597 min  
 Delta R.T.: 0.020 min  
 Response: 489992  
 Conc: 0.28 ng/ml

Instrument :  
 ECD\_O  
 ClientSampleId :  
 AR1242CCC500



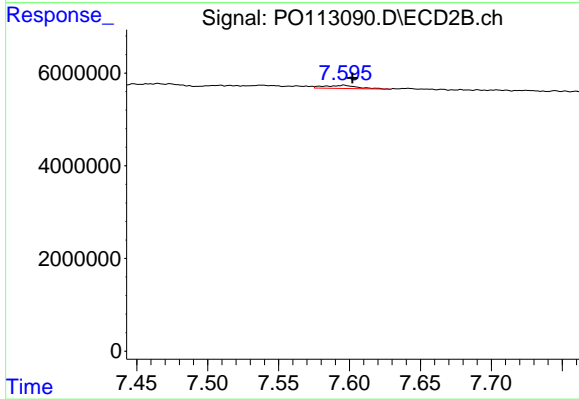
#41 AR-1268-1

R.T.: 7.538 min  
 Delta R.T.: 0.001 min  
 Response: 699263  
 Conc: 1.37 ng/ml



#42 AR-1268-2

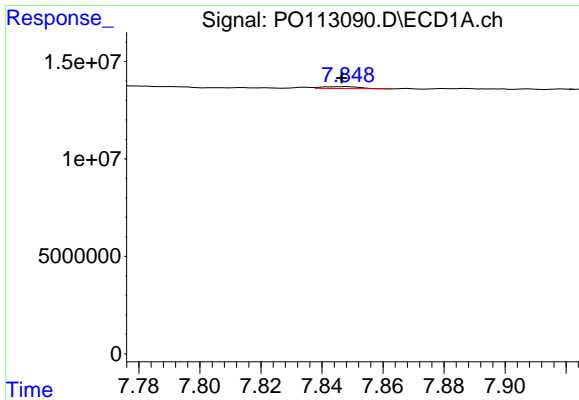
R.T.: 7.636 min  
 Delta R.T.: -0.006 min  
 Response: 1238933  
 Conc: 0.86 ng/ml



#42 AR-1268-2

R.T.: 7.596 min  
 Delta R.T.: -0.006 min  
 Response: 1106837  
 Conc: 2.66 ng/ml

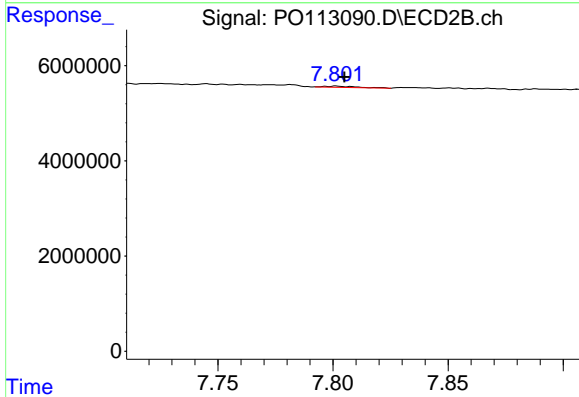




#43 AR-1268-3

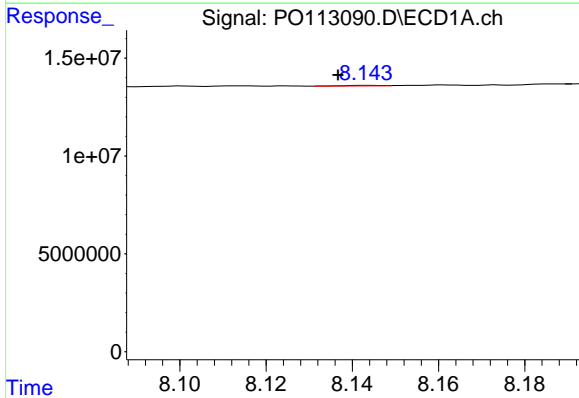
R.T.: 7.848 min  
 Delta R.T.: 0.002 min  
 Response: 828700  
 Conc: 0.69 ng/ml

Instrument :  
 ECD\_O  
 ClientSampleId :  
 AR1242CCC500



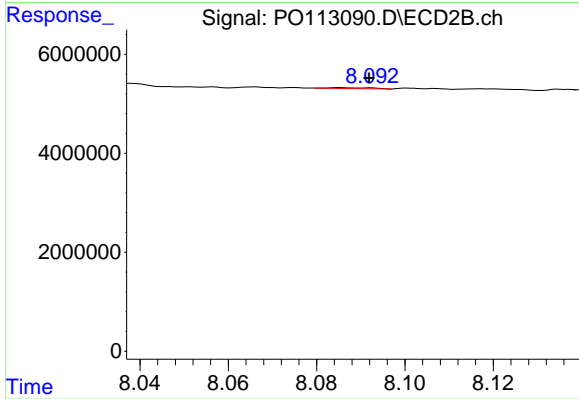
#43 AR-1268-3

R.T.: 7.801 min  
 Delta R.T.: -0.004 min  
 Response: 258781  
 Conc: 0.79 ng/ml



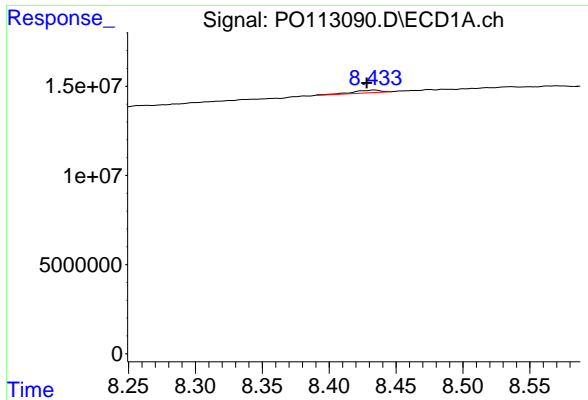
#44 AR-1268-4

R.T.: 8.143 min  
 Delta R.T.: 0.006 min  
 Response: 152139  
 Conc: 0.33 ng/ml



#44 AR-1268-4

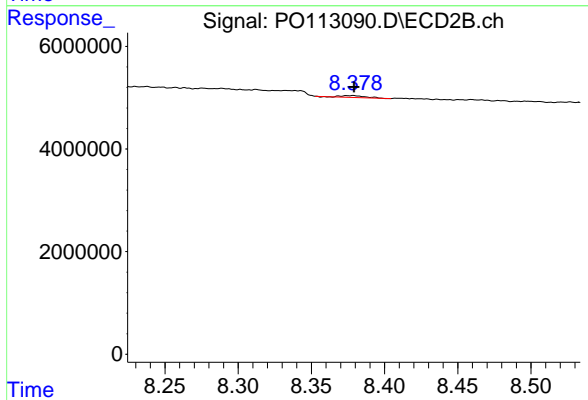
R.T.: 8.085 min  
 Delta R.T.: -0.006 min  
 Response: 120980  
 Conc: 1.00 ng/ml



#45 AR-1268-5

R.T.: 8.434 min  
 Delta R.T.: 0.006 min  
 Response: 2171075  
 Conc: 0.68 ng/ml

Instrument :  
 ECD\_O  
 ClientSampleId :  
 AR1242CCC500



#45 AR-1268-5

R.T.: 8.378 min  
 Delta R.T.: 0.000 min  
 Response: 437180  
 Conc: 0.56 ng/ml