

Data Path : Z:\pestpcbsrv\HPCHEM1\ECD\_O\Data\P0082025\  
 Data File : PO113092.D  
 Signal(s) : Signal #1: ECD1A.ch Signal #2: ECD2B.ch  
 Acq On : 20 Aug 2025 16:32  
 Operator : YP/AJ  
 Sample : AR1254CCC500  
 Misc :  
 ALS Vial : 6 Sample Multiplier: 1

Instrument :  
 ECD\_O  
 ClientSampleId :  
 AR1254CCC500

Integration File signal 1: autoint1.e  
 Integration File signal 2: autoint2.e  
 Quant Time: Aug 21 01:40:49 2025  
 Quant Method : Z:\pestpcbsrv\HPCHEM1\ECD\_O\methods\P0081825.M  
 Quant Title : GC EXTRACTABLES  
 QLast Update : Tue Aug 19 06:08:32 2025  
 Response via : Initial Calibration  
 Integrator: ChemStation

Volume Inj. : 2 µl  
 Signal #1 Phase : ZB-MR1 Signal #2 Phase: ZB-MR2  
 Signal #1 Info : 30Mx0.32mmx 0.50µ Signal #2 Info : 30M x 0.32mm x 0.25µm

Compound	RT#1	RT#2	Resp#1	Resp#2	ng/ml	ng/ml
System Monitoring Compounds						
1) SA Tetrachlo...	3.661	3.655	443.5E6	263.0E6	54.169	51.962
2) SA Decachlor...	8.678	8.625	387.5E6	100.9E6	55.903	53.238
Target Compounds						
3) L1 AR-1016-1	4.744	4.727	3858319	2870200	14.451	16.827
4) L1 AR-1016-2	4.763	4.745	4286315	2697079	10.678	10.468
5) L1 AR-1016-3	4.822	4.924	2841728	1726033	11.143	12.363
6) L1 AR-1016-4	4.944	4.963	2633034	65752198	12.074	563.434 #
7) L1 AR-1016-5	5.196	5.175	67309815	41809794	303.706	293.340
8) L2 AR-1221-1	3.884	3.868	305612	94050	3.266	1.490 #
9) L2 AR-1221-2	3.961	3.951	6074035	4154266	89.918	89.008
10) L2 AR-1221-3	4.033	4.023	1304041	943976	5.891	6.358
11) L3 AR-1232-1	4.033	4.023	1304041	943976	7.494	8.041
12) L3 AR-1232-2	4.525	4.745	3643241	2697079	36.486	22.009 #
13) L3 AR-1232-3	4.763	4.924	4286315	1726033	22.622	27.248
14) L3 AR-1232-4	4.944	5.003	2633034	20948223	27.961	372.604 #
15) L3 AR-1232-5	4.982	5.175	101.8E6	41809794	1642.953	698.418 #
16) L4 AR-1242-1	4.744	4.727	3858319	2870200	16.780	19.862
17) L4 AR-1242-2	4.763	4.745	4286315	2697079	12.474	12.434
18) L4 AR-1242-3	4.822	4.924	2841728	1726033	12.807	14.757
19) L4 AR-1242-4	4.944	5.003	2633034	20948223	15.179	178.075 #
20) L4 AR-1242-5	5.591	5.524	33606774	162.7E6	167.898	1091.112 #
21) L5 AR-1248-1	4.744	4.727	3858319	2870200	22.115	25.739
22) L5 AR-1248-2	4.982	4.963	101.8E6	65752198	420.768	409.164
23) L5 AR-1248-3	5.196	5.003	67309815	20948223	211.093	123.471 #
24) L5 AR-1248-4	5.549	5.175	286.1E6	41809794	572.725	209.867 #
25) L5 AR-1248-5	5.591	5.564	33606774	21138638	98.412	99.571
26) L6 AR-1254-1	5.549	5.524	286.1E6	162.7E6	529.902	515.994
27) L6 AR-1254-2	5.698	5.672	259.7E6	144.2E6	526.246	514.269
28) L6 AR-1254-3	6.102	6.072	395.5E6	216.0E6	535.276	517.993
29) L6 AR-1254-4	6.330	6.299	261.5E6	128.4E6	469.475	467.142
30) L6 AR-1254-5	6.750	6.715	380.2E6	175.6E6	542.401	491.337
31) L7 AR-1260-1	6.233	6.202	185.6E6	101.5E6	416.240	398.034
32) L7 AR-1260-2	6.422	6.390	187.6E6	88841520	273.194	256.981
33) L7 AR-1260-3	6.819	6.540	25371416	81214836	41.089	273.052 #
34) L7 AR-1260-4	7.047	7.010	17124906	7428238	38.236	35.842
35) L7 AR-1260-5	7.289	7.252	48461745	18256447	40.028	38.974
36) L8 AR-1262-1	6.819	6.784	25371416	13961246	27.705	33.673
37) L8 AR-1262-2	7.289	7.252	48461745	18256447	32.048	35.267
38) L8 AR-1262-3	7.571	7.531	4084314	121302	7.371	0.675 #
39) L8 AR-1262-4	7.634	7.594	40398996	12701993	41.309	43.815
40) L8 AR-1262-5	8.132	8.085	1528220	1512844	3.666	13.965 #
41) L9 AR-1268-1	7.571	7.531	4084314	121302	2.373	0.238 #

Data Path : Z:\pestpcbsrv\HPCHEM1\ECD\_0\Data\P0082025\  
 Data File : P0113092.D  
 Signal(s) : Signal #1: ECD1A.ch Signal #2: ECD2B.ch  
 Acq On : 20 Aug 2025 16:32  
 Operator : YP/AJ  
 Sample : AR1254CCC500  
 Misc :  
 ALS Vial : 6 Sample Multiplier: 1

Instrument :  
 ECD\_0  
 ClientSampleId :  
 AR1254CCC500

Integration File signal 1: autoint1.e  
 Integration File signal 2: autoint2.e  
 Quant Time: Aug 21 01:40:49 2025  
 Quant Method : Z:\pestpcbsrv\HPCHEM1\ECD\_0\methods\P0081825.M  
 Quant Title : GC EXTRACTABLES  
 QLast Update : Tue Aug 19 06:08:32 2025  
 Response via : Initial Calibration  
 Integrator: ChemStation

Volume Inj. : 2 µl  
 Signal #1 Phase : ZB-MR1 Signal #2 Phase: ZB-MR2  
 Signal #1 Info : 30Mx0.32mmx 0.50µ Signal #2 Info : 30M x 0.32mm x 0.25µm

	Compound	RT#1	RT#2	Resp#1	Resp#2	ng/ml	ng/ml
42)	L9 AR-1268-2	7.634	7.594	40398996	12701993	27.897	30.578
43)	L9 AR-1268-3	7.843	7.799	944391	203664	0.783	0.624
44)	L9 AR-1268-4	8.132	8.085	1528220	1512844	3.317	12.562 #
45)	L9 AR-1268-5	8.432	8.378	1893087	1176013	0.594	1.506 #

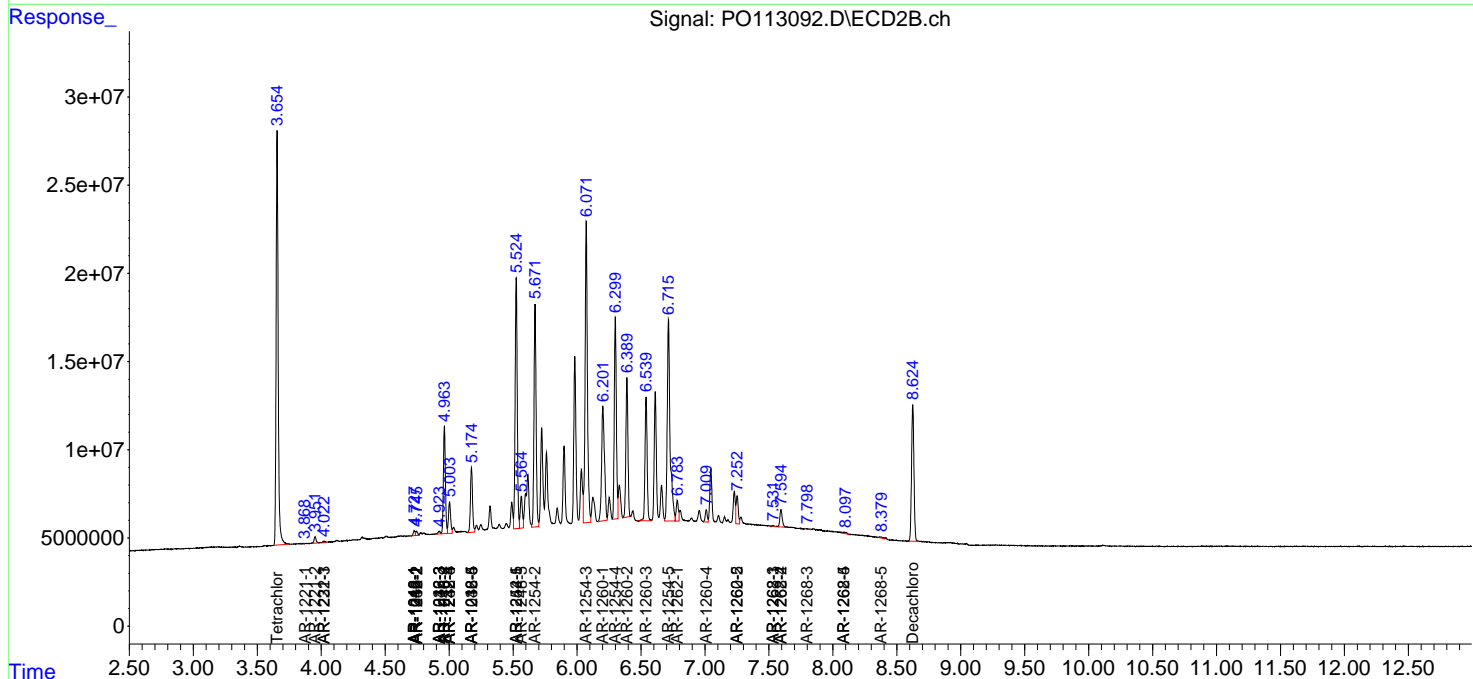
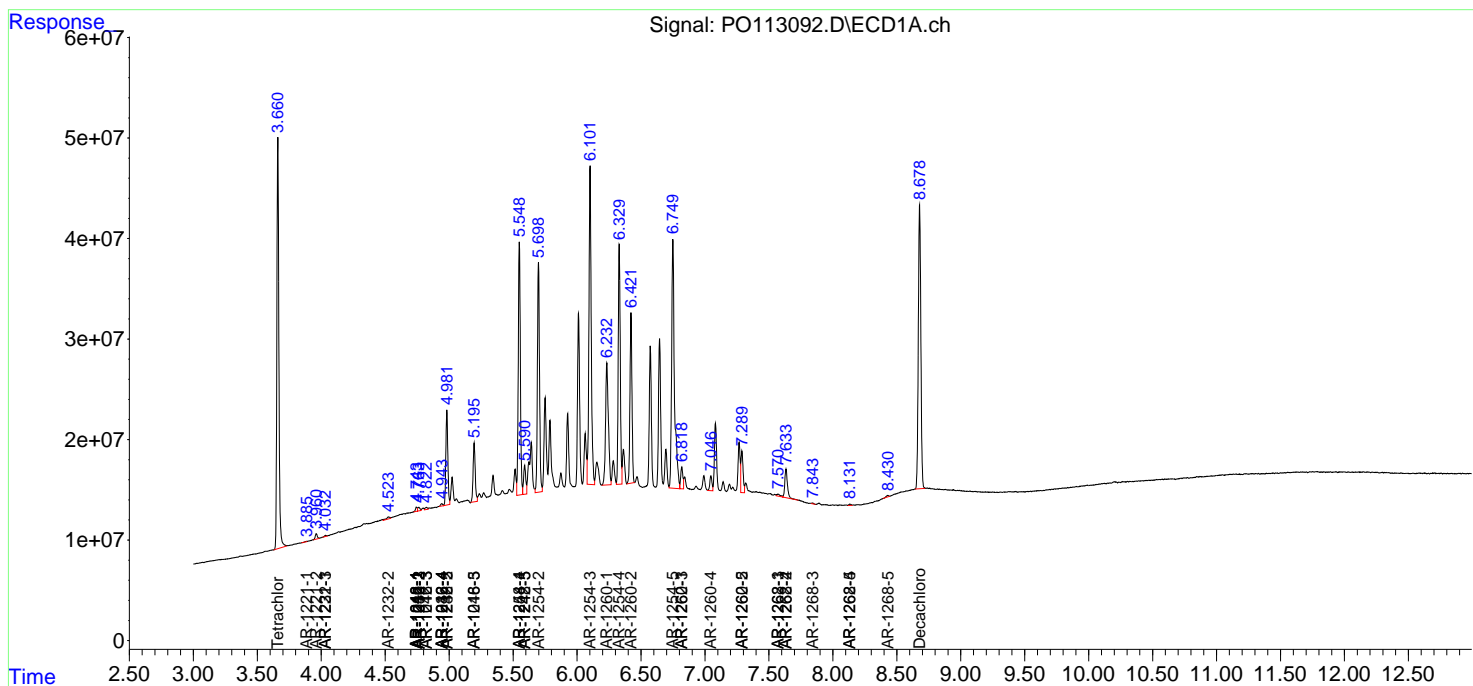
(f)=RT Delta > 1/2 Window (#)=Amounts differ by > 25% (m)=manual int.

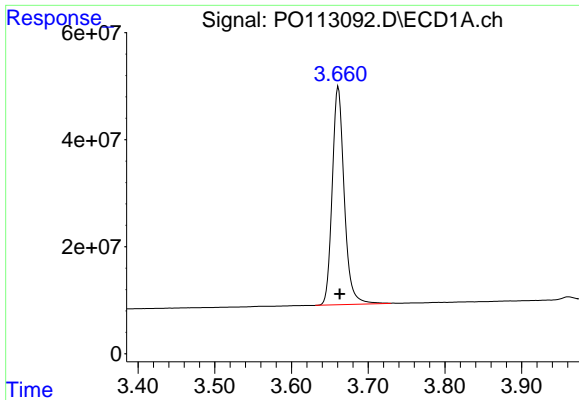
Data Path : Z:\pestpcbsrv\HPCHEM1\ECD\_O\Data\PO082025\  
 Data File : PO113092.D  
 Signal(s) : Signal #1: ECD1A.ch Signal #2: ECD2B.ch  
 Acq On : 20 Aug 2025 16:32  
 Operator : YP/AJ  
 Sample : AR1254CCC500  
 Misc :  
 ALS Vial : 6 Sample Multiplier: 1

Instrument :  
 ECD\_O  
 ClientSampleId :  
 AR1254CCC500

Integration File signal 1: autoint1.e  
 Integration File signal 2: autoint2.e  
 Quant Time: Aug 21 01:40:49 2025  
 Quant Method : Z:\pestpcbsrv\HPCHEM1\ECD\_O\methods\PO081825.M  
 Quant Title : GC EXTRACTABLES  
 QLast Update : Tue Aug 19 06:08:32 2025  
 Response via : Initial Calibration  
 Integrator: ChemStation

Volume Inj. : 2 µl  
 Signal #1 Phase : ZB-MR1 Signal #2 Phase: ZB-MR2  
 Signal #1 Info : 30Mx0.32mmx 0.50µ Signal #2 Info : 30M x 0.32mm x 0.25µm

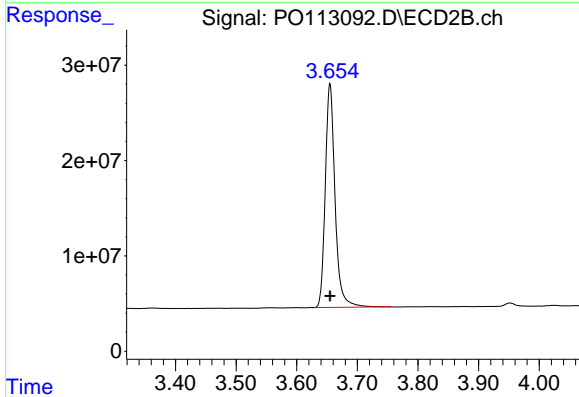




#1 Tetrachloro-m-xylene

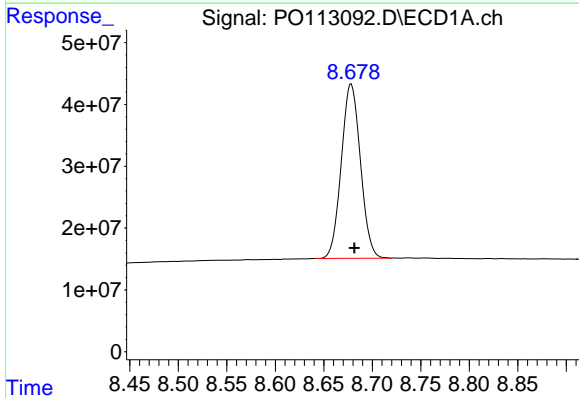
R.T.: 3.661 min  
Delta R.T.: -0.002 min  
Response: 443455471  
Conc: 54.17 ng/ml

Instrument :  
ECD\_O  
ClientSampleId :  
AR1254CCC500



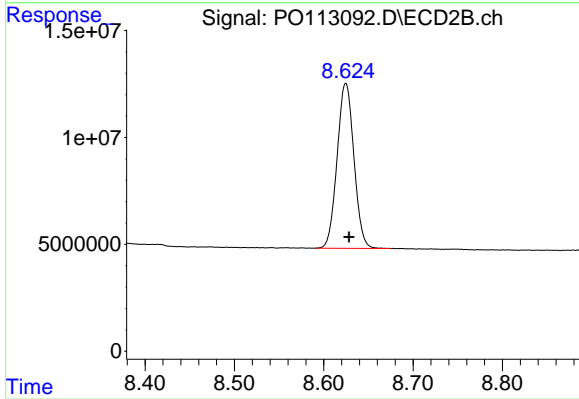
#1 Tetrachloro-m-xylene

R.T.: 3.655 min  
Delta R.T.: 0.000 min  
Response: 262959267  
Conc: 51.96 ng/ml



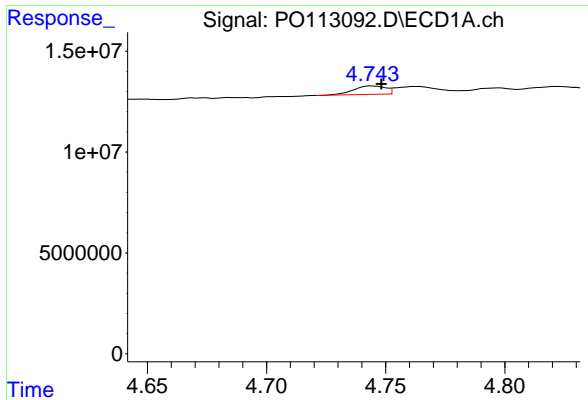
#2 Decachlorobiphenyl

R.T.: 8.678 min  
Delta R.T.: -0.003 min  
Response: 387487860  
Conc: 55.90 ng/ml



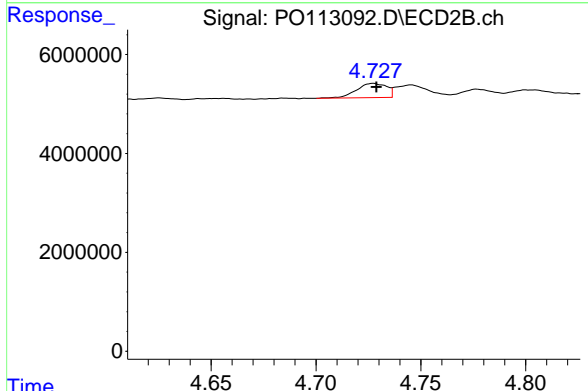
#2 Decachlorobiphenyl

R.T.: 8.625 min  
Delta R.T.: -0.004 min  
Response: 100878504  
Conc: 53.24 ng/ml

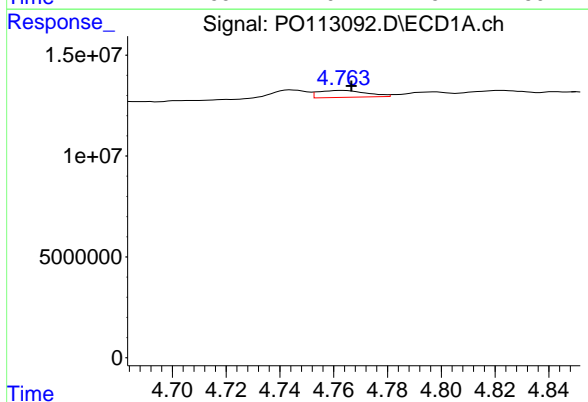


#3 AR-1016-1  
 R.T.: 4.744 min  
 Delta R.T.: -0.004 min  
 Response: 3858319  
 Conc: 14.45 ng/ml

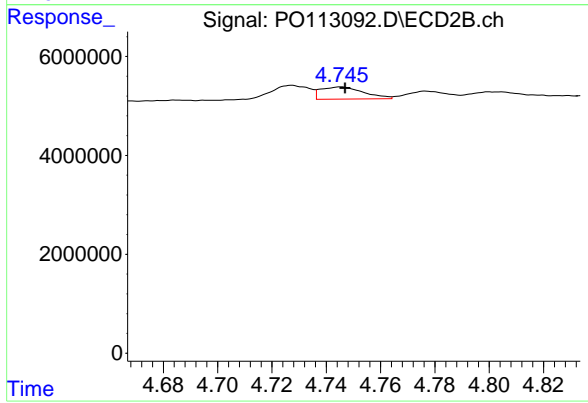
Instrument :  
 ECD\_O  
 ClientSampleId :  
 AR1254CCC500



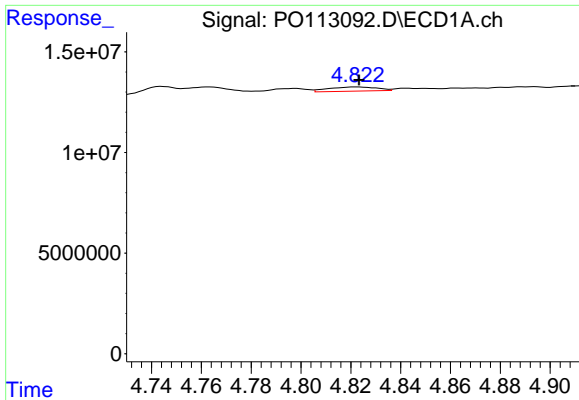
#3 AR-1016-1  
 R.T.: 4.727 min  
 Delta R.T.: -0.001 min  
 Response: 2870200  
 Conc: 16.83 ng/ml



#4 AR-1016-2  
 R.T.: 4.763 min  
 Delta R.T.: -0.003 min  
 Response: 4286315  
 Conc: 10.68 ng/ml



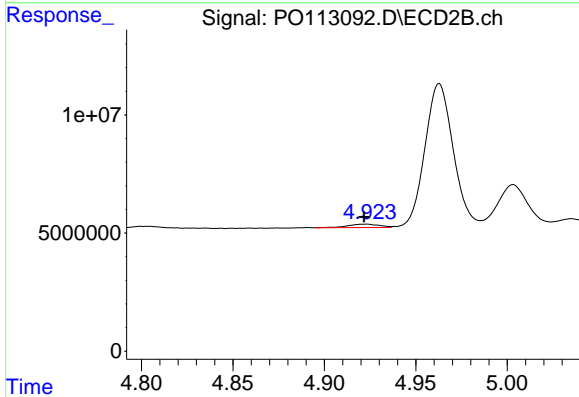
#4 AR-1016-2  
 R.T.: 4.745 min  
 Delta R.T.: -0.002 min  
 Response: 2697079  
 Conc: 10.47 ng/ml



#5 AR-1016-3

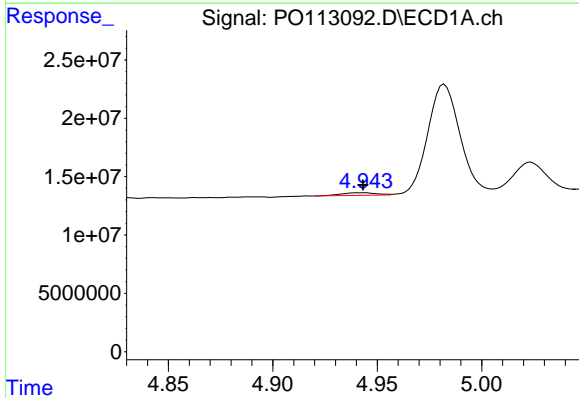
R.T.: 4.822 min  
 Delta R.T.: 0.000 min  
 Response: 2841728  
 Conc: 11.14 ng/ml

Instrument :  
 ECD\_O  
 ClientSampleId :  
 AR1254CCC500



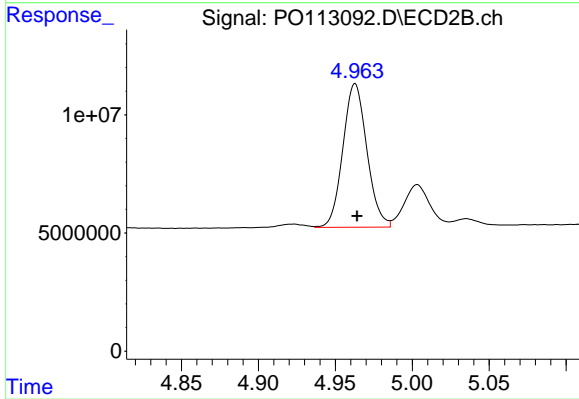
#5 AR-1016-3

R.T.: 4.924 min  
 Delta R.T.: 0.002 min  
 Response: 1726033  
 Conc: 12.36 ng/ml



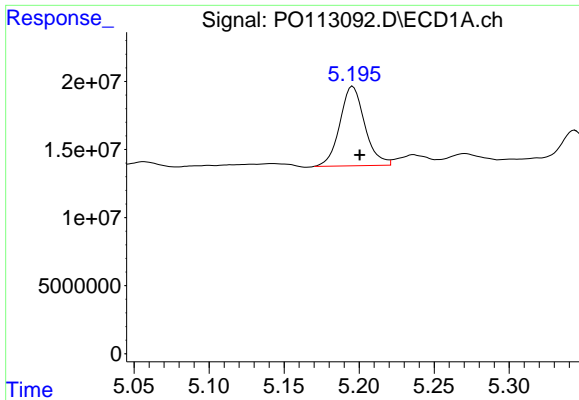
#6 AR-1016-4

R.T.: 4.944 min  
 Delta R.T.: 0.000 min  
 Response: 2633034  
 Conc: 12.07 ng/ml



#6 AR-1016-4

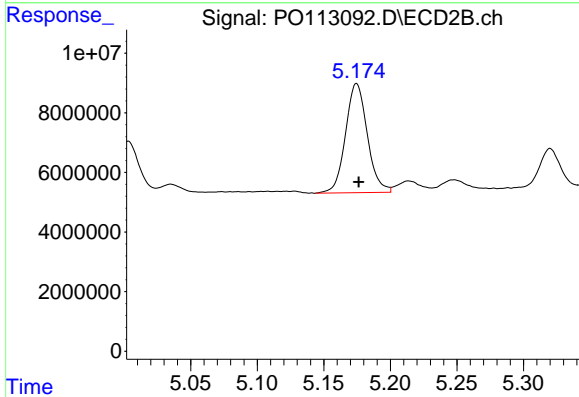
R.T.: 4.963 min  
 Delta R.T.: -0.001 min  
 Response: 65752198  
 Conc: 563.43 ng/ml



#7 AR-1016-5

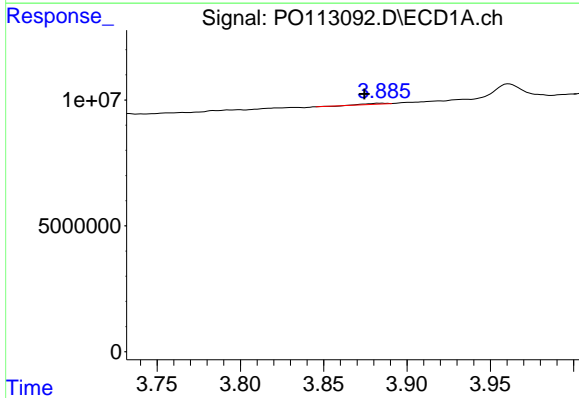
R.T.: 5.196 min  
 Delta R.T.: -0.005 min  
 Response: 67309815  
 Conc: 303.71 ng/ml

Instrument :  
 ECD\_O  
 ClientSampleId :  
 AR1254CCC500



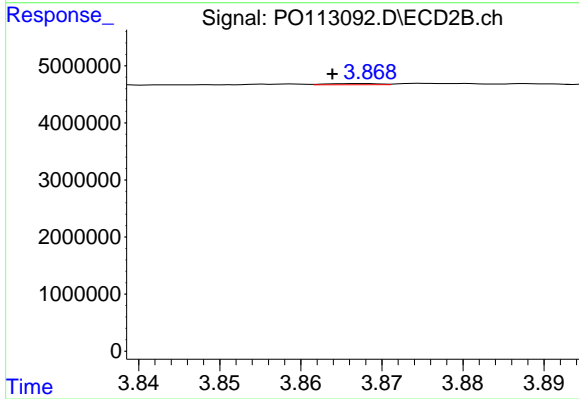
#7 AR-1016-5

R.T.: 5.175 min  
 Delta R.T.: -0.002 min  
 Response: 41809794  
 Conc: 293.34 ng/ml



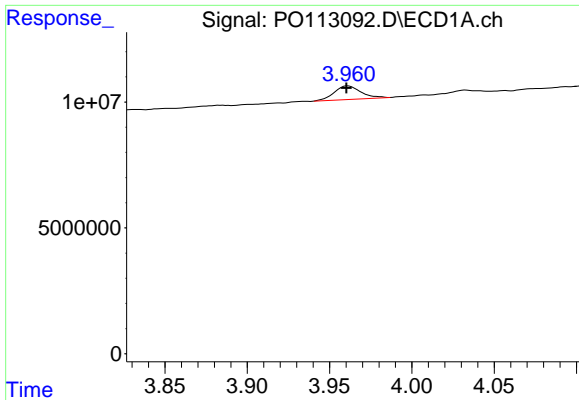
#8 AR-1221-1

R.T.: 3.884 min  
 Delta R.T.: 0.010 min  
 Response: 305612  
 Conc: 3.27 ng/ml



#8 AR-1221-1

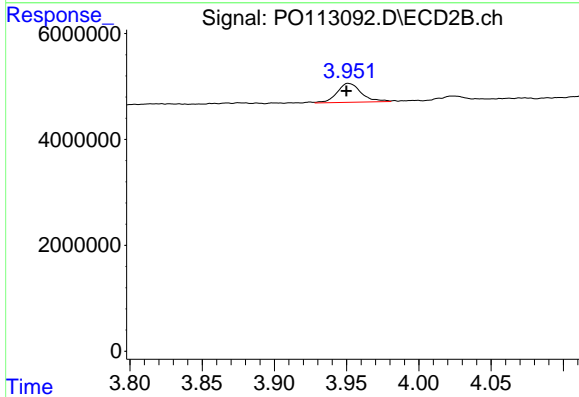
R.T.: 3.868 min  
 Delta R.T.: 0.004 min  
 Response: 94050  
 Conc: 1.49 ng/ml



#9 AR-1221-2

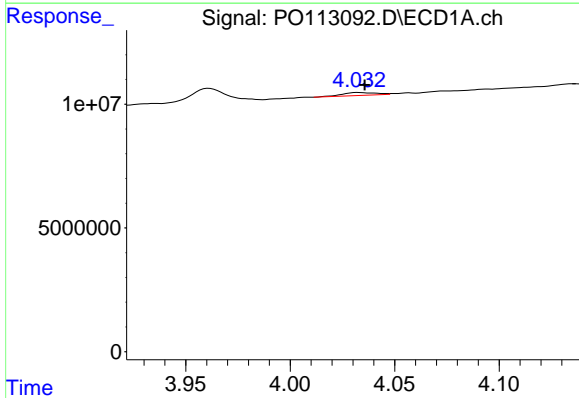
R.T.: 3.961 min  
 Delta R.T.: 0.000 min  
 Response: 6074035  
 Conc: 89.92 ng/ml

Instrument :  
 ECD\_O  
 ClientSampleId :  
 AR1254CCC500



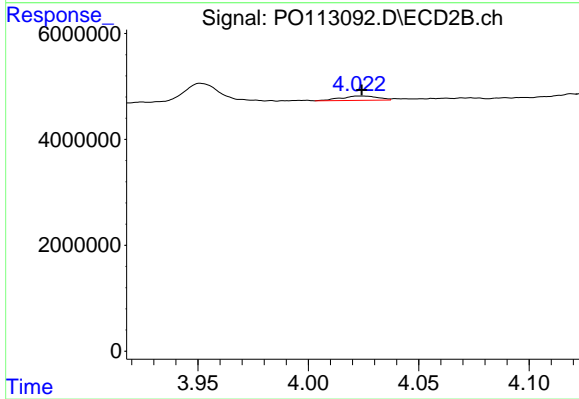
#9 AR-1221-2

R.T.: 3.951 min  
 Delta R.T.: 0.001 min  
 Response: 4154266  
 Conc: 89.01 ng/ml



#10 AR-1221-3

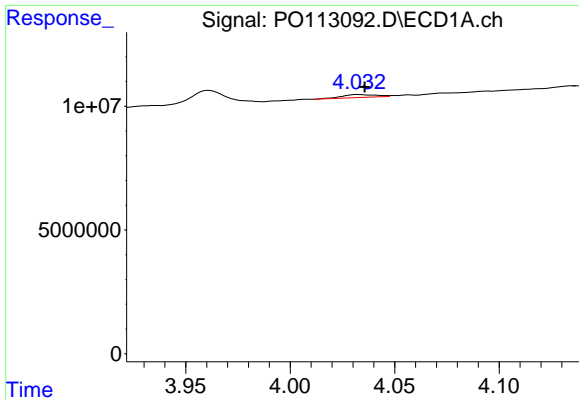
R.T.: 4.033 min  
 Delta R.T.: -0.003 min  
 Response: 1304041  
 Conc: 5.89 ng/ml



#10 AR-1221-3

R.T.: 4.023 min  
 Delta R.T.: -0.001 min  
 Response: 943976  
 Conc: 6.36 ng/ml

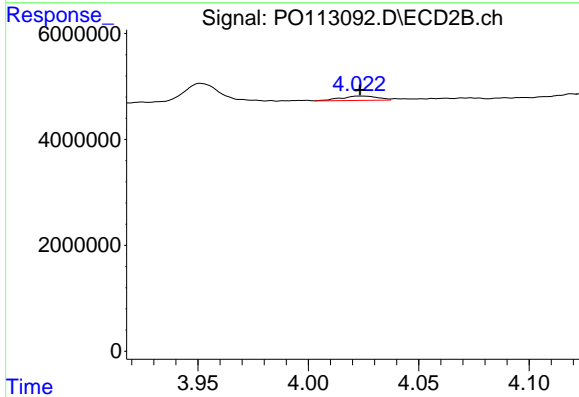




#11 AR-1232-1

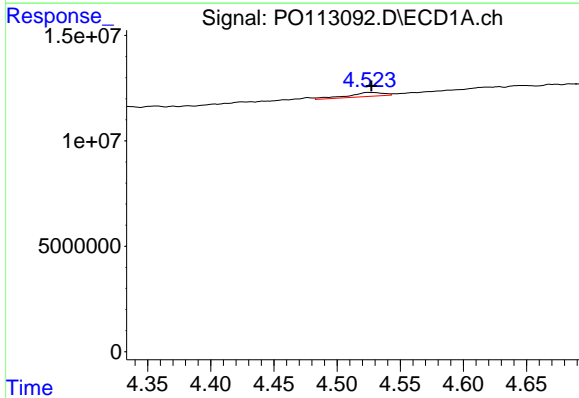
R.T.: 4.033 min  
 Delta R.T.: -0.003 min  
 Response: 1304041  
 Conc: 7.49 ng/ml

Instrument :  
 ECD\_O  
 ClientSampleId :  
 AR1254CCC500



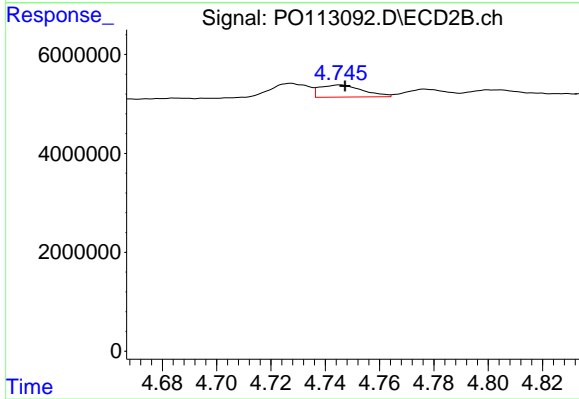
#11 AR-1232-1

R.T.: 4.023 min  
 Delta R.T.: 0.000 min  
 Response: 943976  
 Conc: 8.04 ng/ml



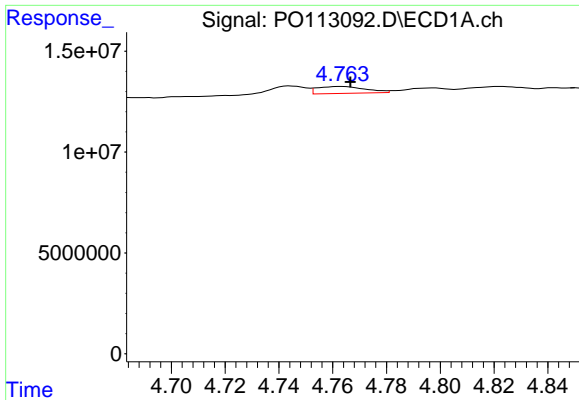
#12 AR-1232-2

R.T.: 4.525 min  
 Delta R.T.: -0.002 min  
 Response: 3643241  
 Conc: 36.49 ng/ml



#12 AR-1232-2

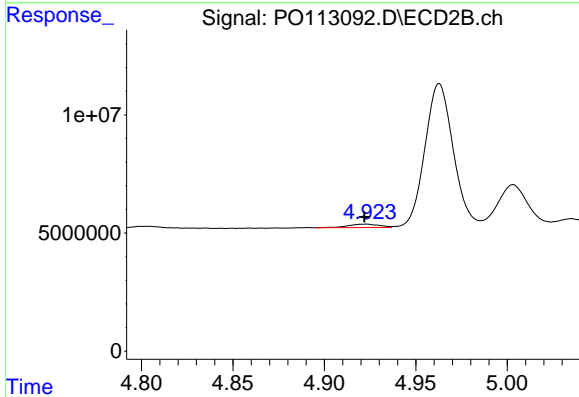
R.T.: 4.745 min  
 Delta R.T.: -0.002 min  
 Response: 2697079  
 Conc: 22.01 ng/ml



#13 AR-1232-3

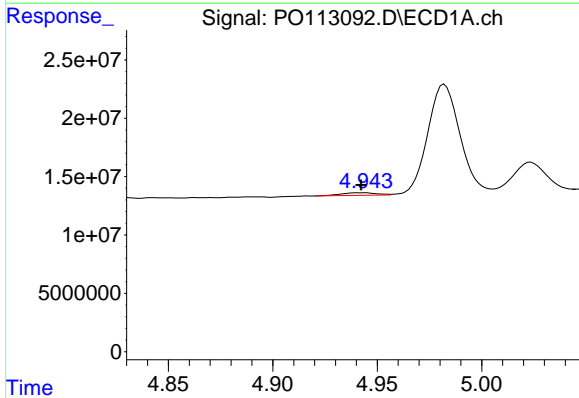
R.T.: 4.763 min  
 Delta R.T.: -0.003 min  
 Response: 4286315  
 Conc: 22.62 ng/ml

Instrument :  
 ECD\_O  
 ClientSampleId :  
 AR1254CCC500



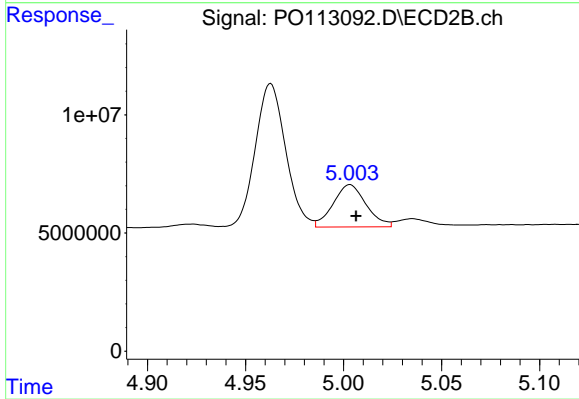
#13 AR-1232-3

R.T.: 4.924 min  
 Delta R.T.: 0.002 min  
 Response: 1726033  
 Conc: 27.25 ng/ml



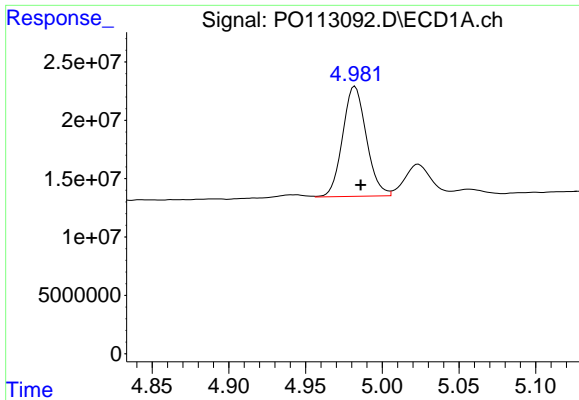
#14 AR-1232-4

R.T.: 4.944 min  
 Delta R.T.: 0.001 min  
 Response: 2633034  
 Conc: 27.96 ng/ml



#14 AR-1232-4

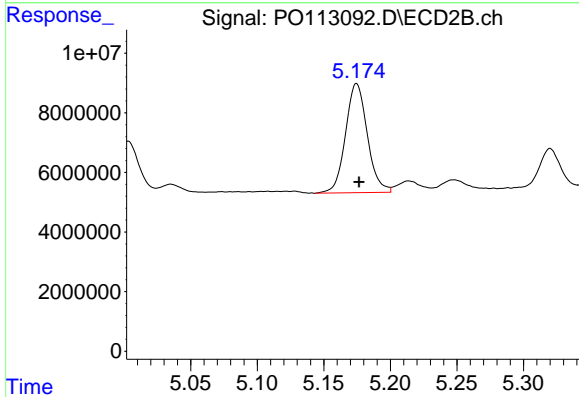
R.T.: 5.003 min  
 Delta R.T.: -0.003 min  
 Response: 20948223  
 Conc: 372.60 ng/ml



#15 AR-1232-5

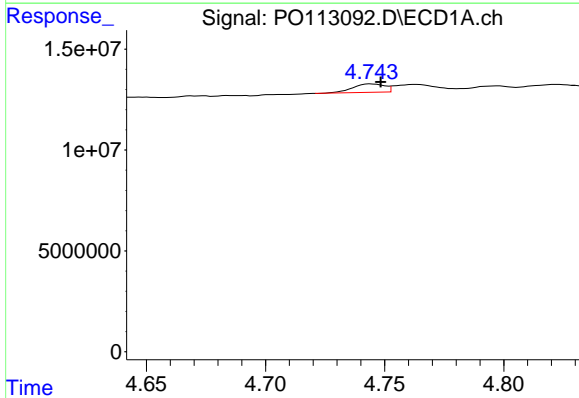
R.T.: 4.982 min  
 Delta R.T.: -0.004 min  
 Response: 101769385  
 Conc: 1642.95 ng/ml

Instrument :  
 ECD\_O  
 ClientSampleId :  
 AR1254CCC500



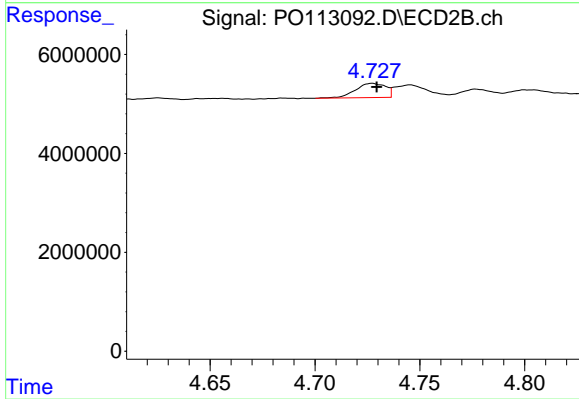
#15 AR-1232-5

R.T.: 5.175 min  
 Delta R.T.: -0.002 min  
 Response: 41809794  
 Conc: 698.42 ng/ml



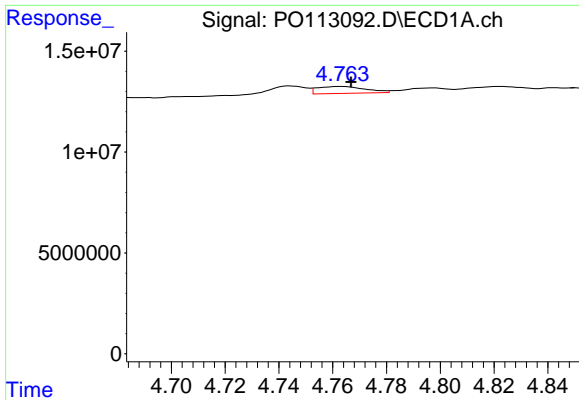
#16 AR-1242-1

R.T.: 4.744 min  
 Delta R.T.: -0.004 min  
 Response: 3858319  
 Conc: 16.78 ng/ml



#16 AR-1242-1

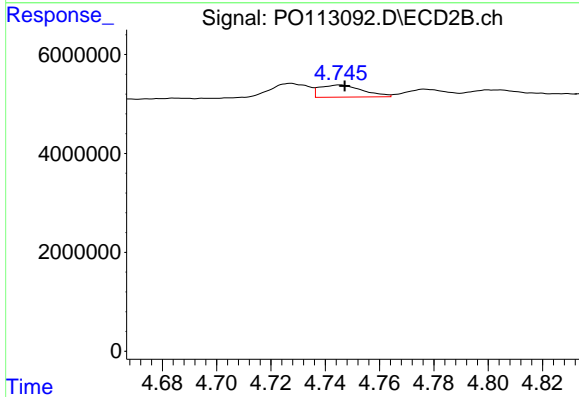
R.T.: 4.727 min  
 Delta R.T.: -0.002 min  
 Response: 2870200  
 Conc: 19.86 ng/ml



#17 AR-1242-2

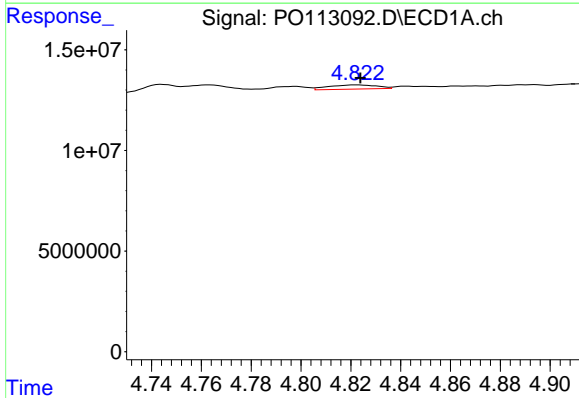
R.T.: 4.763 min  
 Delta R.T.: -0.004 min  
 Response: 4286315  
 Conc: 12.47 ng/ml

Instrument :  
 ECD\_O  
 ClientSampleId :  
 AR1254CCC500



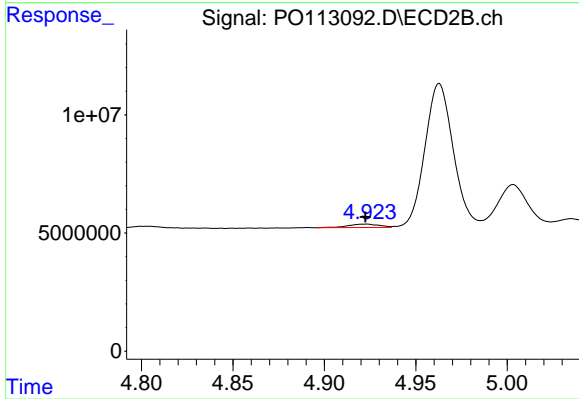
#17 AR-1242-2

R.T.: 4.745 min  
 Delta R.T.: -0.002 min  
 Response: 2697079  
 Conc: 12.43 ng/ml



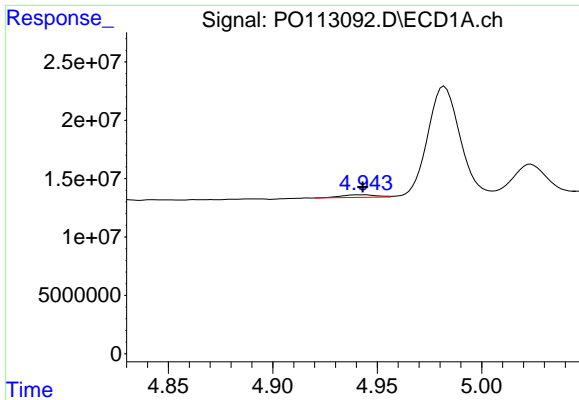
#18 AR-1242-3

R.T.: 4.822 min  
 Delta R.T.: -0.002 min  
 Response: 2841728  
 Conc: 12.81 ng/ml



#18 AR-1242-3

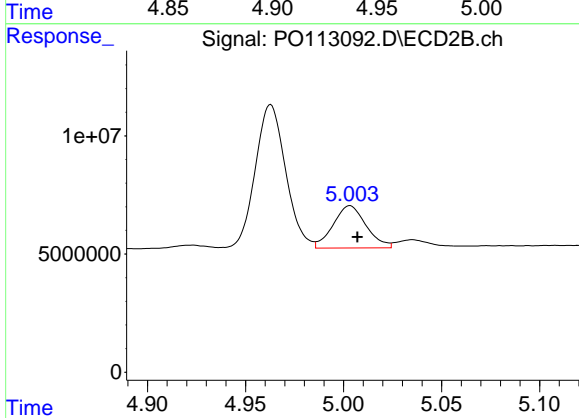
R.T.: 4.924 min  
 Delta R.T.: 0.001 min  
 Response: 1726033  
 Conc: 14.76 ng/ml



#19 AR-1242-4

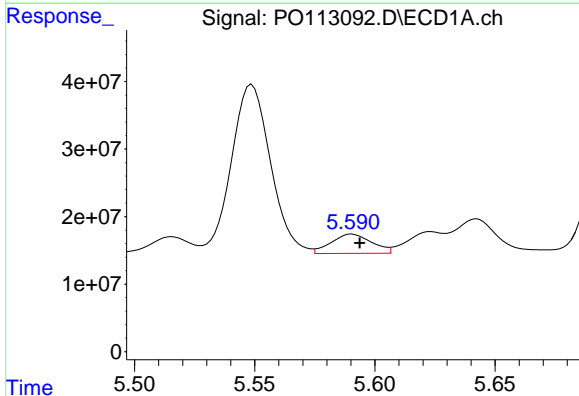
R.T.: 4.944 min  
 Delta R.T.: 0.000 min  
 Response: 2633034  
 Conc: 15.18 ng/ml

Instrument :  
 ECD\_O  
 ClientSampleId :  
 AR1254CCC500



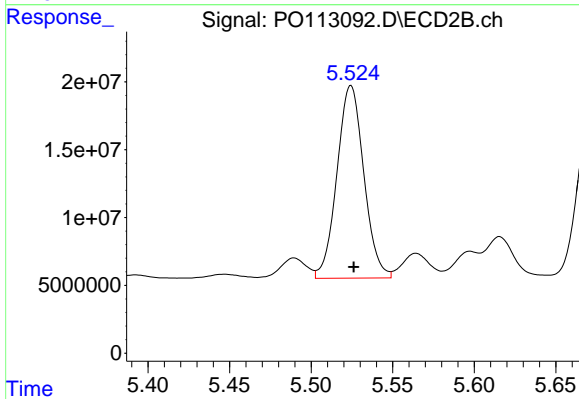
#19 AR-1242-4

R.T.: 5.003 min  
 Delta R.T.: -0.004 min  
 Response: 20948223  
 Conc: 178.07 ng/ml



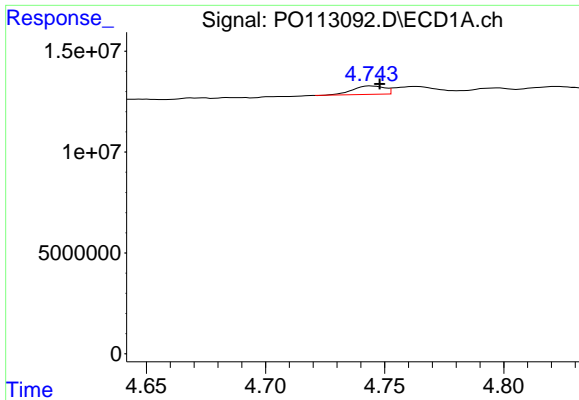
#20 AR-1242-5

R.T.: 5.591 min  
 Delta R.T.: -0.003 min  
 Response: 33606774  
 Conc: 167.90 ng/ml



#20 AR-1242-5

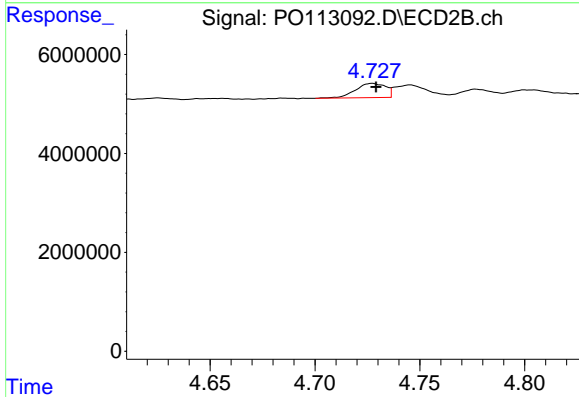
R.T.: 5.524 min  
 Delta R.T.: -0.002 min  
 Response: 162720711  
 Conc: 1091.11 ng/ml



#21 AR-1248-1

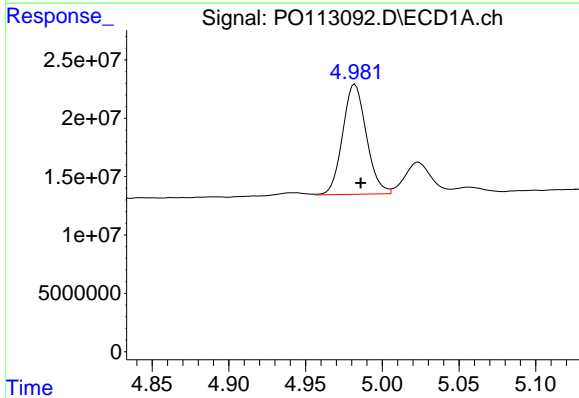
R.T.: 4.744 min  
 Delta R.T.: -0.004 min  
 Response: 3858319  
 Conc: 22.11 ng/ml

Instrument :  
 ECD\_O  
 ClientSampleId :  
 AR1254CCC500



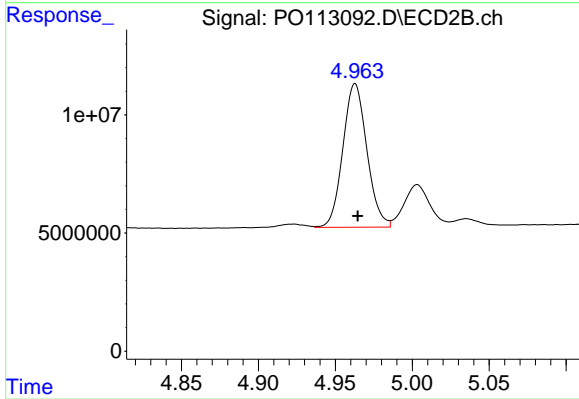
#21 AR-1248-1

R.T.: 4.727 min  
 Delta R.T.: -0.002 min  
 Response: 2870200  
 Conc: 25.74 ng/ml



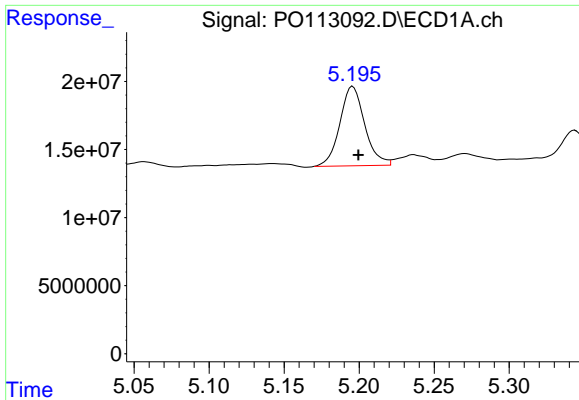
#22 AR-1248-2

R.T.: 4.982 min  
 Delta R.T.: -0.004 min  
 Response: 101769385  
 Conc: 420.77 ng/ml



#22 AR-1248-2

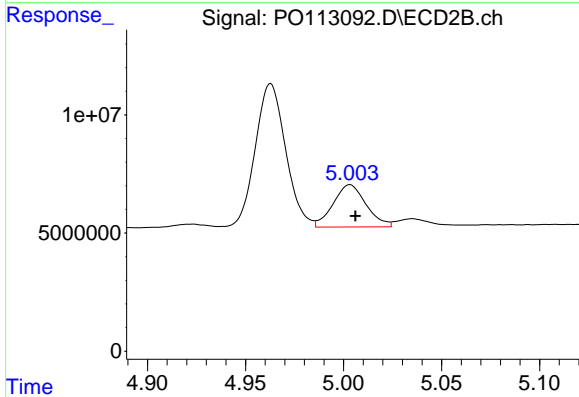
R.T.: 4.963 min  
 Delta R.T.: -0.002 min  
 Response: 65752198  
 Conc: 409.16 ng/ml



#23 AR-1248-3

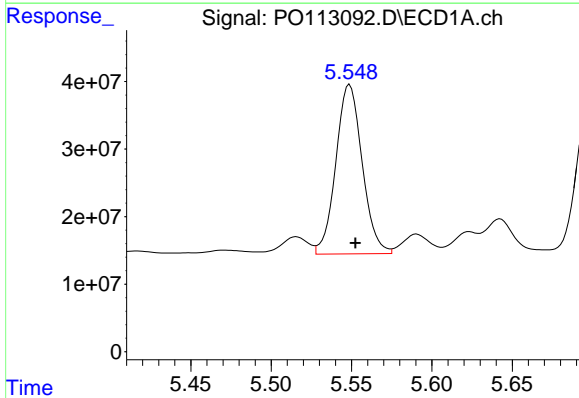
R.T.: 5.196 min  
 Delta R.T.: -0.004 min  
 Response: 67309815  
 Conc: 211.09 ng/ml

Instrument :  
 ECD\_O  
 ClientSampleId :  
 AR1254CCC500



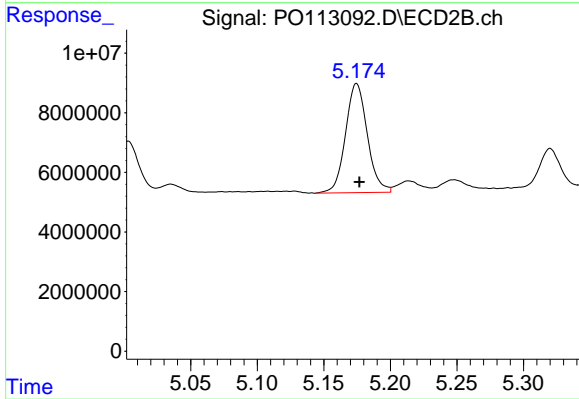
#23 AR-1248-3

R.T.: 5.003 min  
 Delta R.T.: -0.003 min  
 Response: 20948223  
 Conc: 123.47 ng/ml



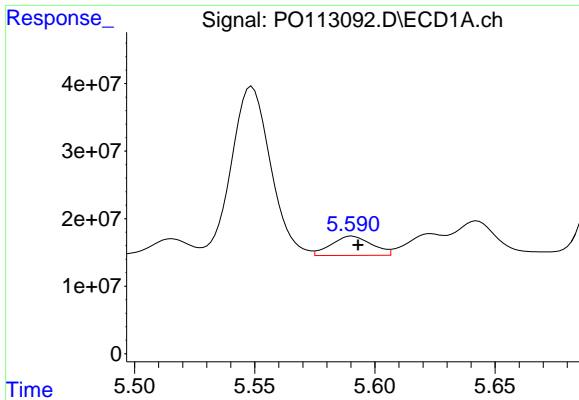
#24 AR-1248-4

R.T.: 5.549 min  
 Delta R.T.: -0.004 min  
 Response: 286135802  
 Conc: 572.72 ng/ml



#24 AR-1248-4

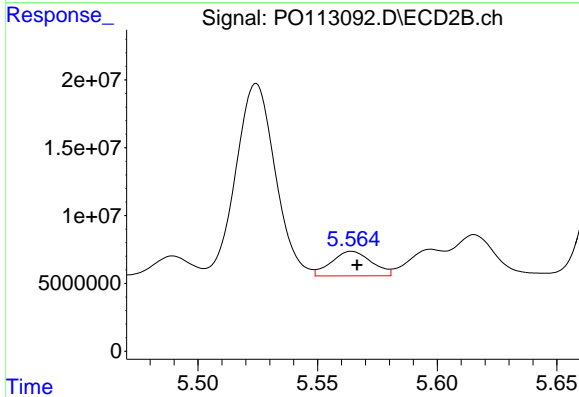
R.T.: 5.175 min  
 Delta R.T.: -0.002 min  
 Response: 41809794  
 Conc: 209.87 ng/ml



#25 AR-1248-5

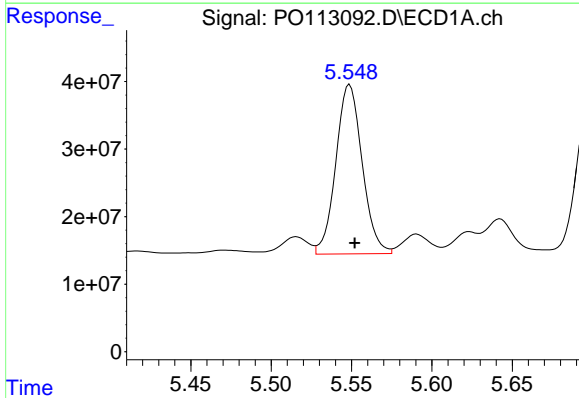
R.T.: 5.591 min  
 Delta R.T.: -0.002 min  
 Response: 33606774  
 Conc: 98.41 ng/ml

Instrument :  
 ECD\_O  
 ClientSampleId :  
 AR1254CCC500



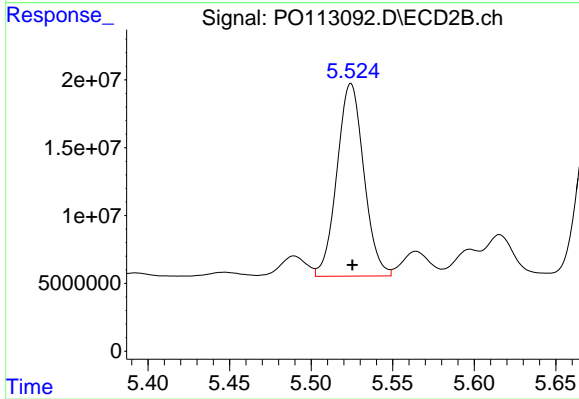
#25 AR-1248-5

R.T.: 5.564 min  
 Delta R.T.: -0.002 min  
 Response: 21138638  
 Conc: 99.57 ng/ml



#26 AR-1254-1

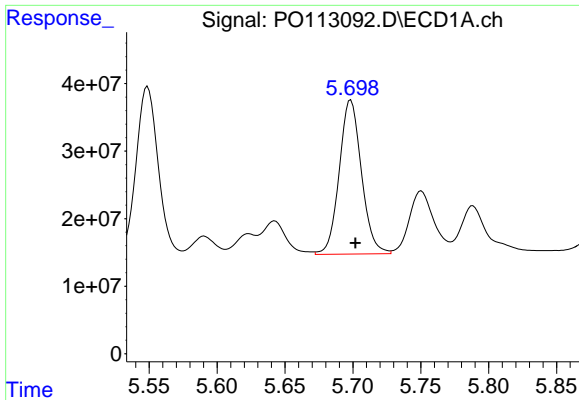
R.T.: 5.549 min  
 Delta R.T.: -0.003 min  
 Response: 286135802  
 Conc: 529.90 ng/ml



#26 AR-1254-1

R.T.: 5.524 min  
 Delta R.T.: 0.000 min  
 Response: 162720711  
 Conc: 515.99 ng/ml

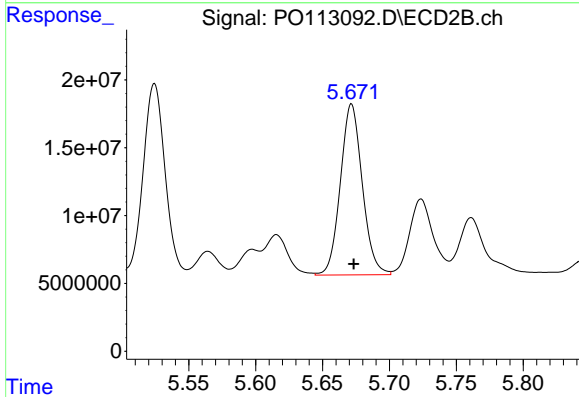




#27 AR-1254-2

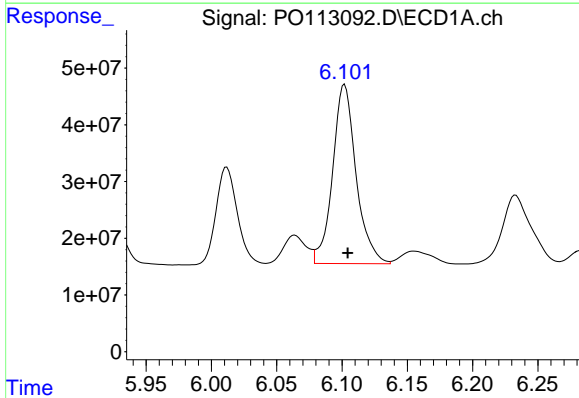
R.T.: 5.698 min  
 Delta R.T.: -0.003 min  
 Response: 259678146  
 Conc: 526.25 ng/ml

Instrument :  
 ECD\_O  
 ClientSampleId :  
 AR1254CCC500



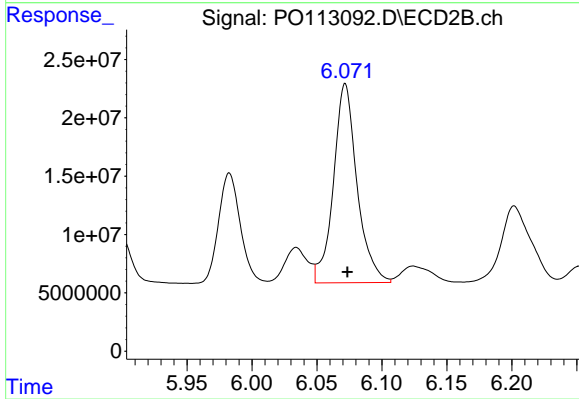
#27 AR-1254-2

R.T.: 5.672 min  
 Delta R.T.: -0.002 min  
 Response: 144169688  
 Conc: 514.27 ng/ml



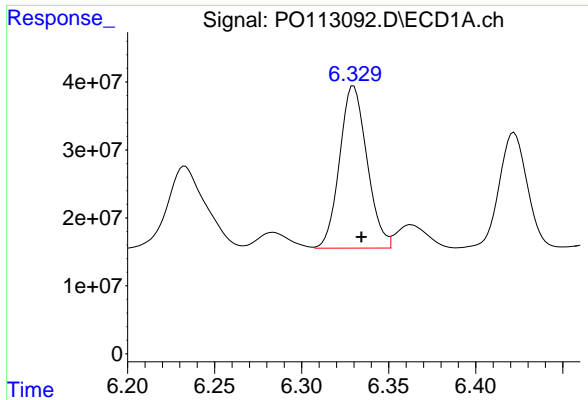
#28 AR-1254-3

R.T.: 6.102 min  
 Delta R.T.: -0.002 min  
 Response: 395503222  
 Conc: 535.28 ng/ml



#28 AR-1254-3

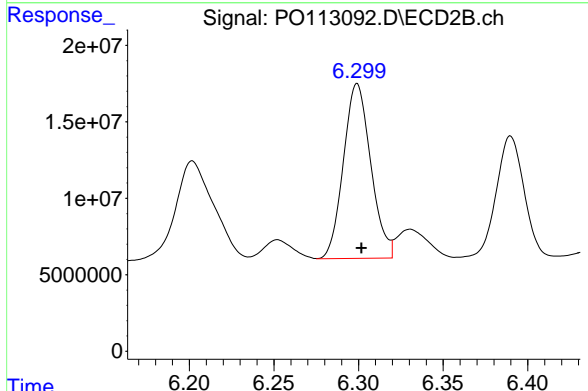
R.T.: 6.072 min  
 Delta R.T.: -0.002 min  
 Response: 215962831  
 Conc: 517.99 ng/ml



#29 AR-1254-4

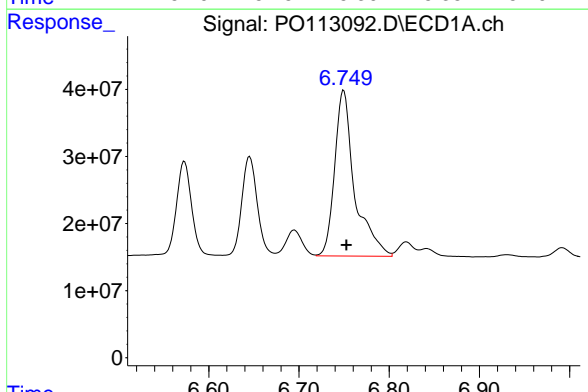
R.T.: 6.330 min  
 Delta R.T.: -0.004 min  
 Response: 261497253  
 Conc: 469.47 ng/ml

Instrument :  
 ECD\_O  
 ClientSampleId :  
 AR1254CCC500



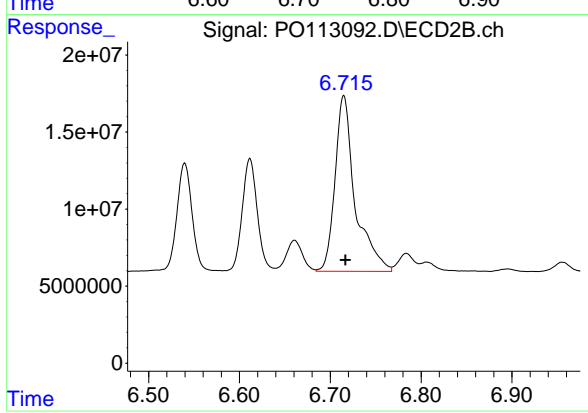
#29 AR-1254-4

R.T.: 6.299 min  
 Delta R.T.: -0.002 min  
 Response: 128387294  
 Conc: 467.14 ng/ml



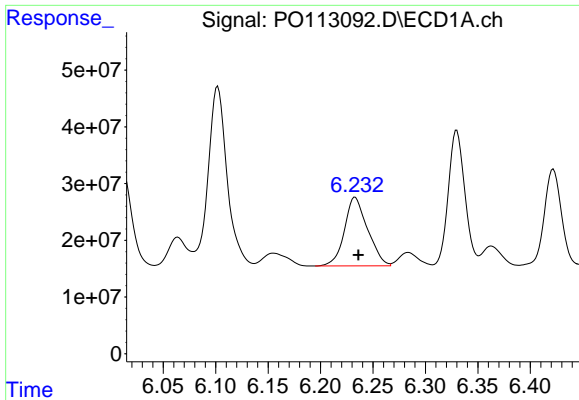
#30 AR-1254-5

R.T.: 6.750 min  
 Delta R.T.: -0.003 min  
 Response: 380208794  
 Conc: 542.40 ng/ml



#30 AR-1254-5

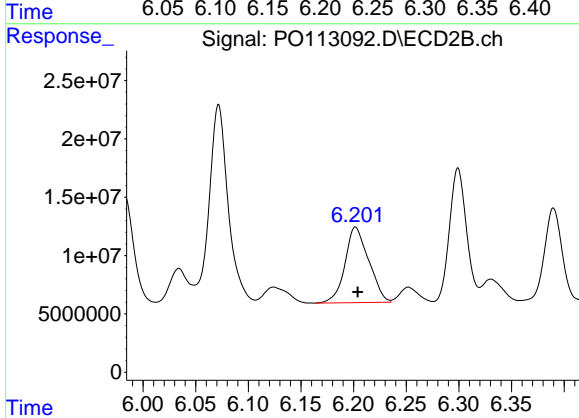
R.T.: 6.715 min  
 Delta R.T.: -0.002 min  
 Response: 175648285  
 Conc: 491.34 ng/ml



#31 AR-1260-1

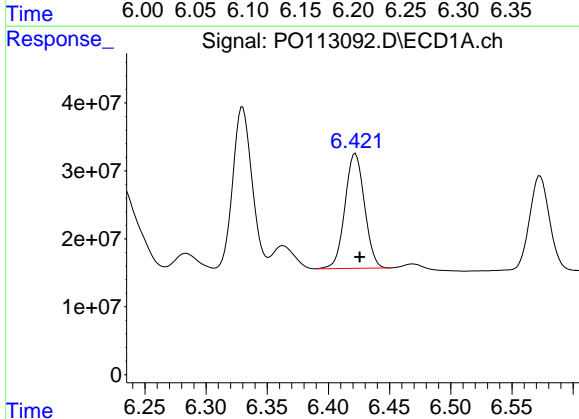
R.T.: 6.233 min  
 Delta R.T.: -0.003 min  
 Response: 185634802  
 Conc: 416.24 ng/ml

Instrument :  
 ECD\_O  
 ClientSampleId :  
 AR1254CCC500



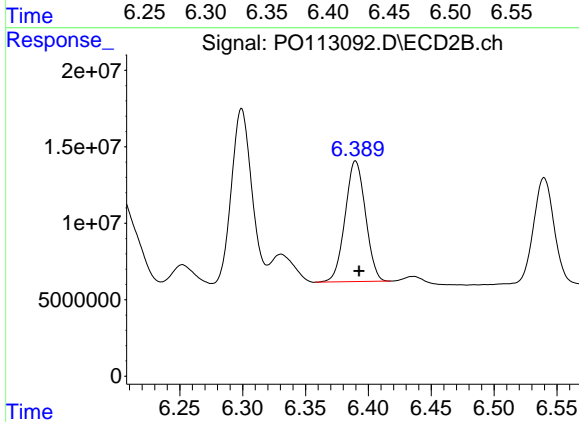
#31 AR-1260-1

R.T.: 6.202 min  
 Delta R.T.: -0.002 min  
 Response: 101526190  
 Conc: 398.03 ng/ml



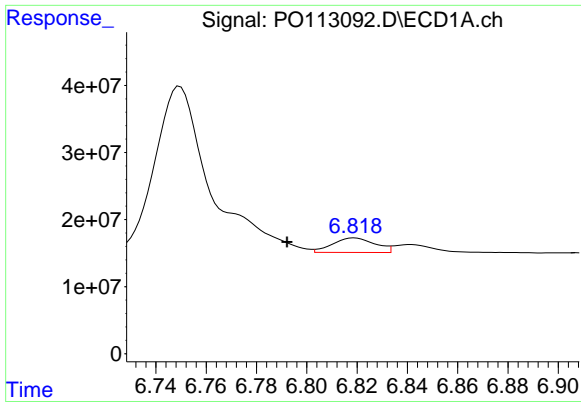
#32 AR-1260-2

R.T.: 6.422 min  
 Delta R.T.: -0.003 min  
 Response: 187608179  
 Conc: 273.19 ng/ml



#32 AR-1260-2

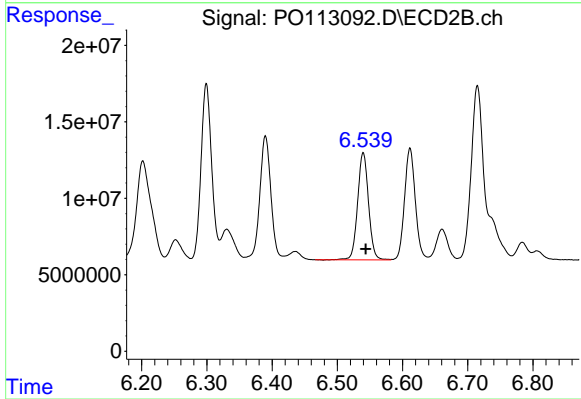
R.T.: 6.390 min  
 Delta R.T.: -0.003 min  
 Response: 88841520  
 Conc: 256.98 ng/ml



#33 AR-1260-3

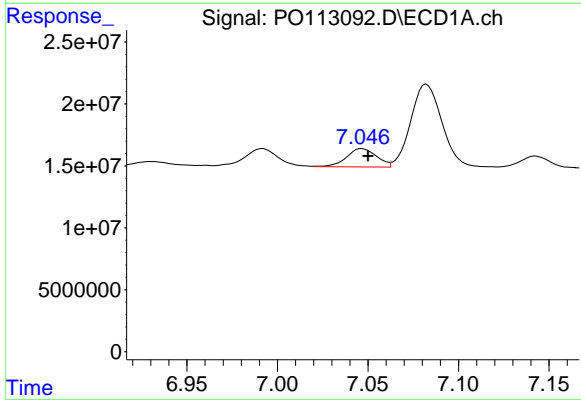
R.T.: 6.819 min  
 Delta R.T.: 0.027 min  
 Response: 25371416  
 Conc: 41.09 ng/ml

Instrument :  
 ECD\_O  
 ClientSampleId :  
 AR1254CCC500



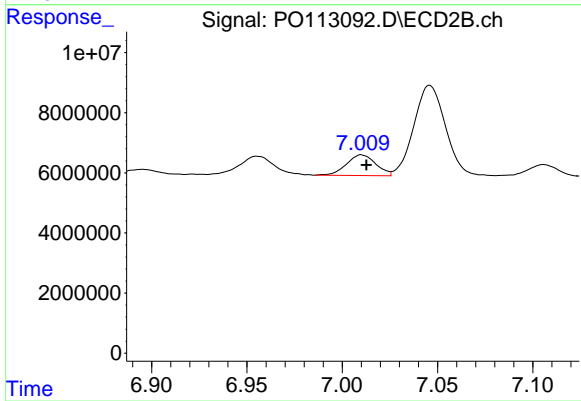
#33 AR-1260-3

R.T.: 6.540 min  
 Delta R.T.: -0.004 min  
 Response: 81214836  
 Conc: 273.05 ng/ml



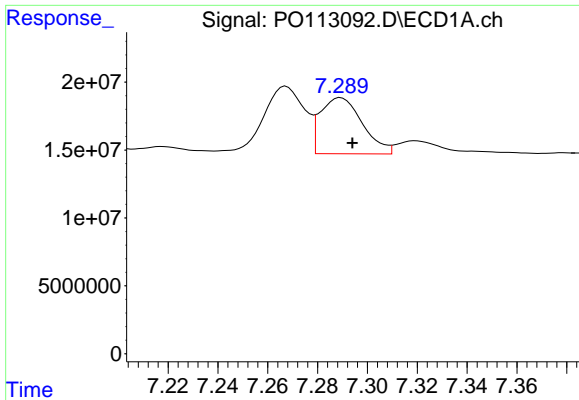
#34 AR-1260-4

R.T.: 7.047 min  
 Delta R.T.: -0.004 min  
 Response: 17124906  
 Conc: 38.24 ng/ml



#34 AR-1260-4

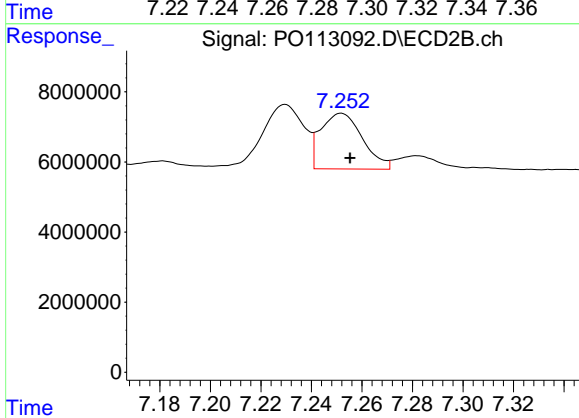
R.T.: 7.010 min  
 Delta R.T.: -0.002 min  
 Response: 7428238  
 Conc: 35.84 ng/ml



#35 AR-1260-5

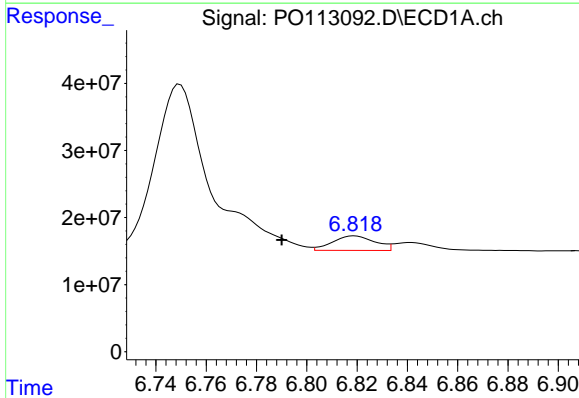
R.T.: 7.289 min  
 Delta R.T.: -0.005 min  
 Response: 48461745  
 Conc: 40.03 ng/ml

Instrument :  
 ECD\_O  
 ClientSampleId :  
 AR1254CCC500



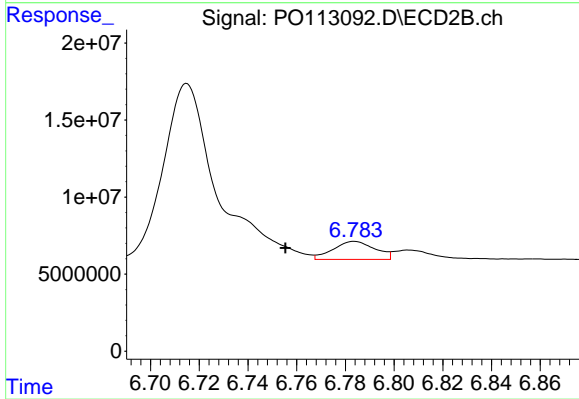
#35 AR-1260-5

R.T.: 7.252 min  
 Delta R.T.: -0.003 min  
 Response: 18256447  
 Conc: 38.97 ng/ml



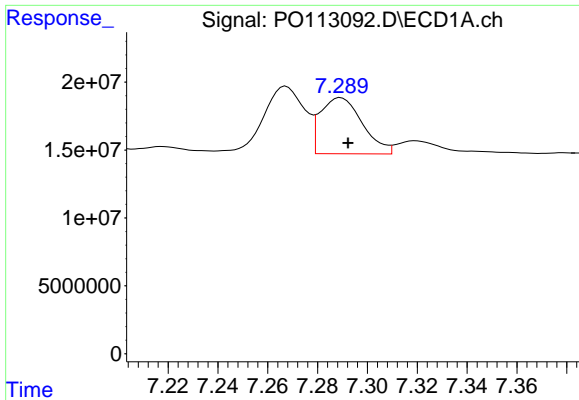
#36 AR-1262-1

R.T.: 6.819 min  
 Delta R.T.: 0.029 min  
 Response: 25371416  
 Conc: 27.71 ng/ml



#36 AR-1262-1

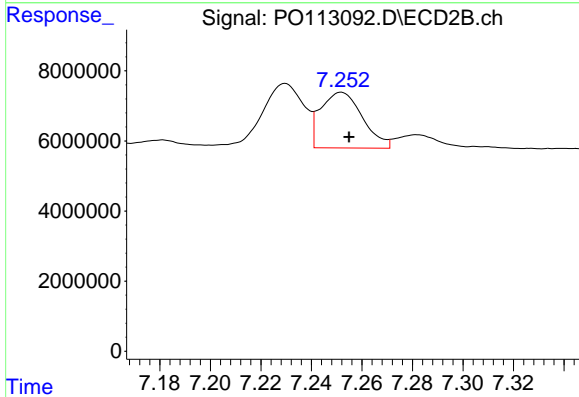
R.T.: 6.784 min  
 Delta R.T.: 0.028 min  
 Response: 13961246  
 Conc: 33.67 ng/ml



#37 AR-1262-2

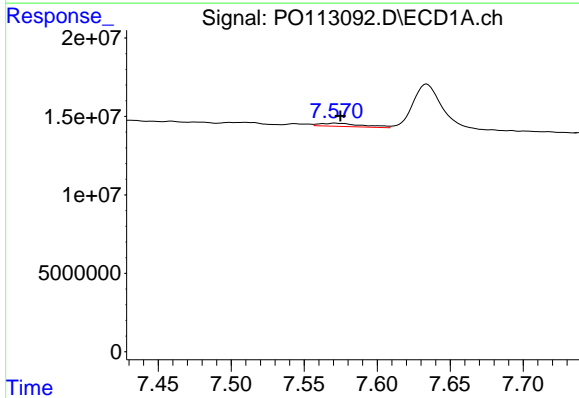
R.T.: 7.289 min  
 Delta R.T.: -0.003 min  
 Response: 48461745  
 Conc: 32.05 ng/ml

Instrument :  
 ECD\_O  
 ClientSampleId :  
 AR1254CCC500



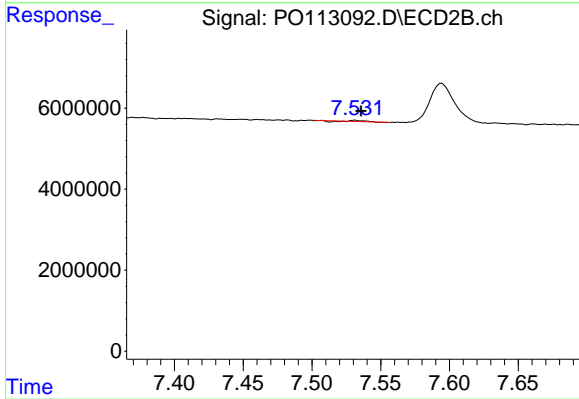
#37 AR-1262-2

R.T.: 7.252 min  
 Delta R.T.: -0.003 min  
 Response: 18256447  
 Conc: 35.27 ng/ml



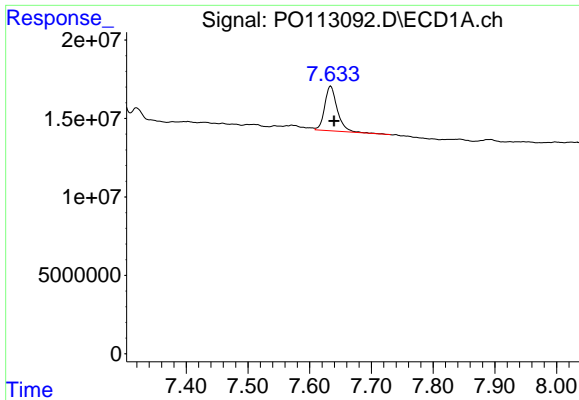
#38 AR-1262-3

R.T.: 7.571 min  
 Delta R.T.: -0.004 min  
 Response: 4084314  
 Conc: 7.37 ng/ml



#38 AR-1262-3

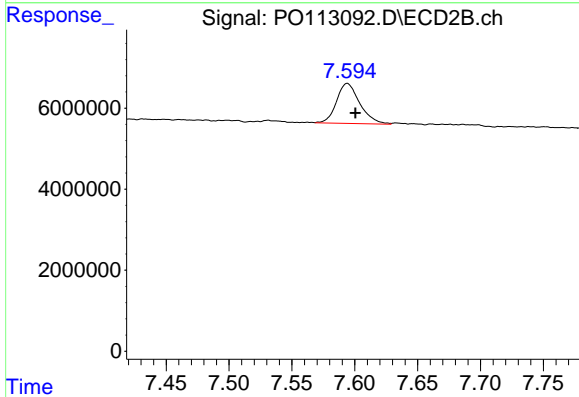
R.T.: 7.531 min  
 Delta R.T.: -0.005 min  
 Response: 121302  
 Conc: 0.68 ng/ml



#39 AR-1262-4

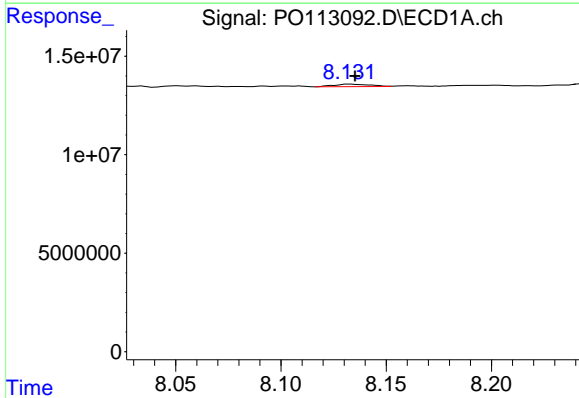
R.T.: 7.634 min  
 Delta R.T.: -0.005 min  
 Response: 40398996  
 Conc: 41.31 ng/ml

Instrument :  
 ECD\_O  
 ClientSampleId :  
 AR1254CCC500



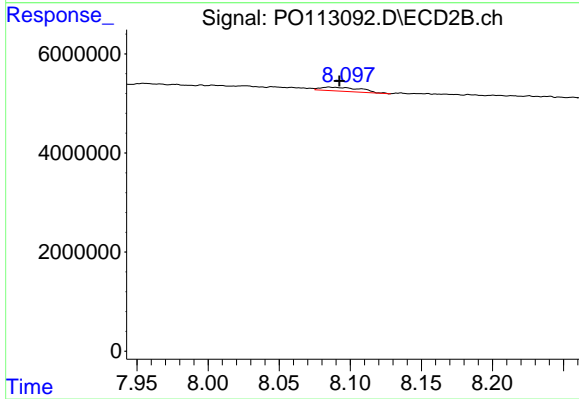
#39 AR-1262-4

R.T.: 7.594 min  
 Delta R.T.: -0.006 min  
 Response: 12701993  
 Conc: 43.81 ng/ml



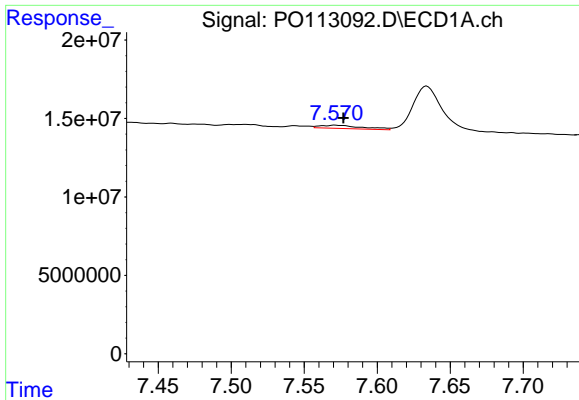
#40 AR-1262-5

R.T.: 8.132 min  
 Delta R.T.: -0.003 min  
 Response: 1528220  
 Conc: 3.67 ng/ml



#40 AR-1262-5

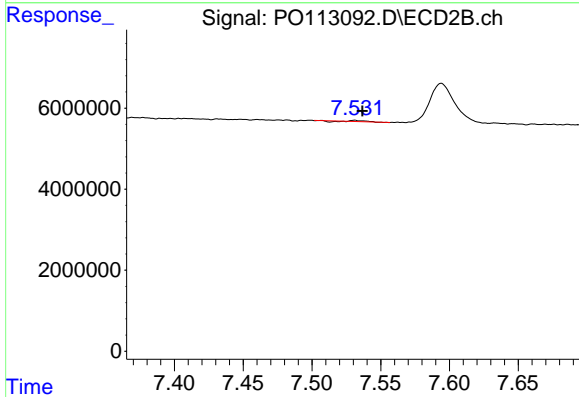
R.T.: 8.085 min  
 Delta R.T.: -0.007 min  
 Response: 1512844  
 Conc: 13.96 ng/ml



#41 AR-1268-1

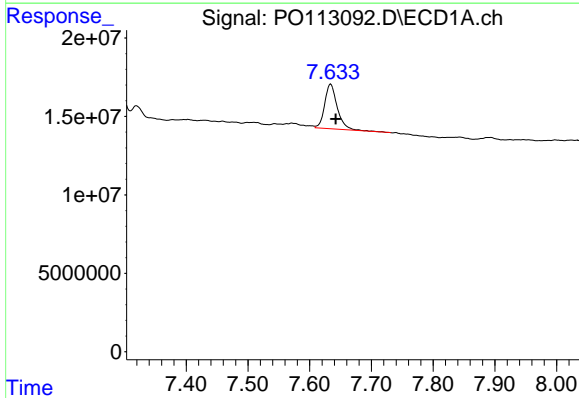
R.T.: 7.571 min  
 Delta R.T.: -0.006 min  
 Response: 4084314  
 Conc: 2.37 ng/ml

Instrument :  
 ECD\_O  
 ClientSampleId :  
 AR1254CCC500



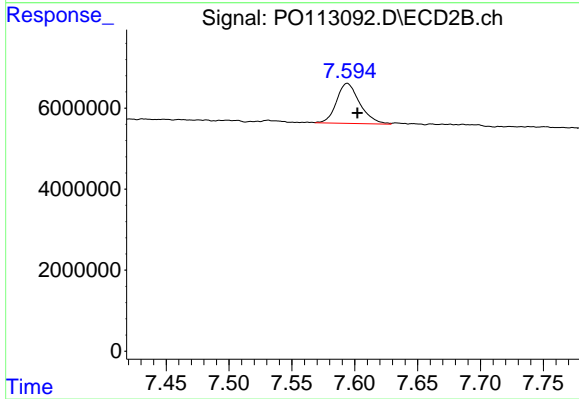
#41 AR-1268-1

R.T.: 7.531 min  
 Delta R.T.: -0.006 min  
 Response: 121302  
 Conc: 0.24 ng/ml



#42 AR-1268-2

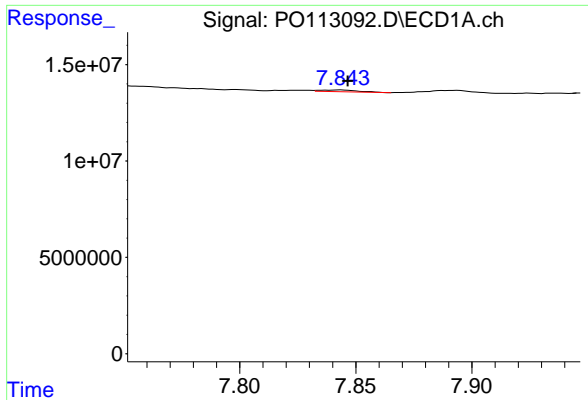
R.T.: 7.634 min  
 Delta R.T.: -0.008 min  
 Response: 40398996  
 Conc: 27.90 ng/ml



#42 AR-1268-2

R.T.: 7.594 min  
 Delta R.T.: -0.008 min  
 Response: 12701993  
 Conc: 30.58 ng/ml

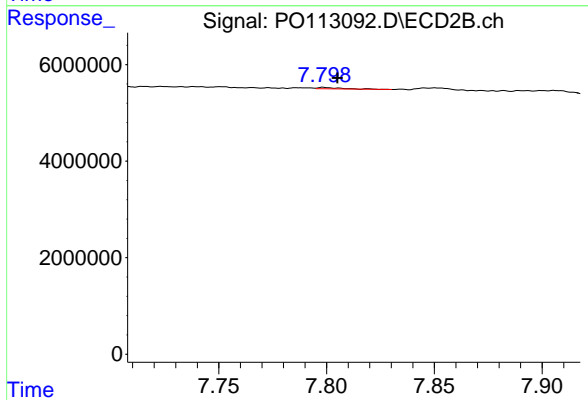




#43 AR-1268-3

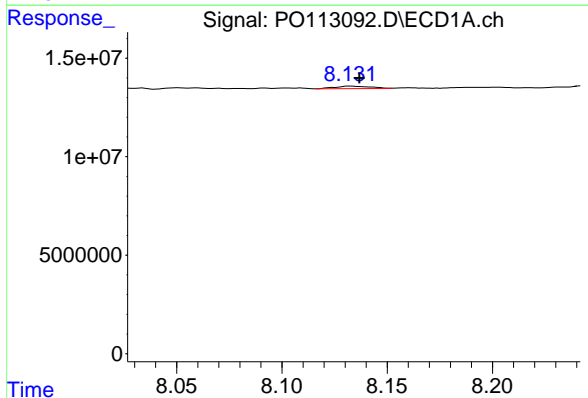
R.T.: 7.843 min  
 Delta R.T.: -0.003 min  
 Response: 944391  
 Conc: 0.78 ng/ml

Instrument :  
 ECD\_O  
 ClientSampleId :  
 AR1254CCC500



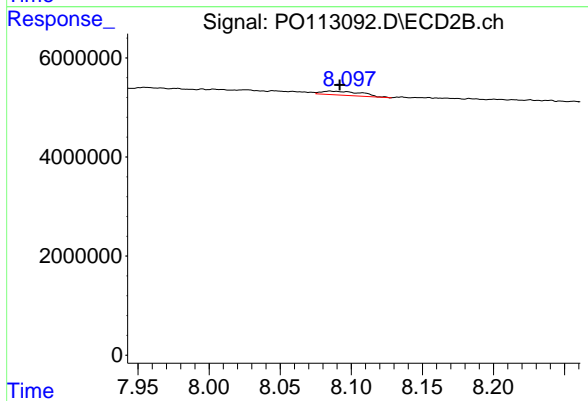
#43 AR-1268-3

R.T.: 7.799 min  
 Delta R.T.: -0.006 min  
 Response: 203664  
 Conc: 0.62 ng/ml



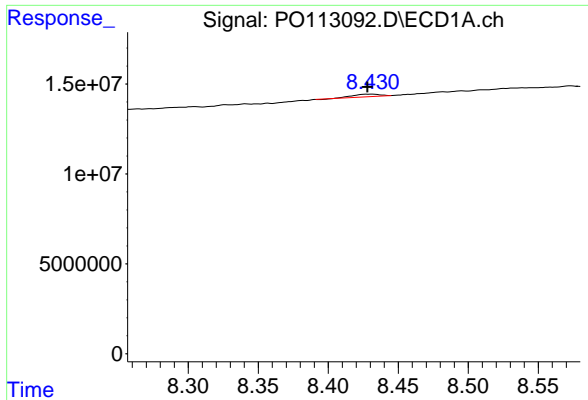
#44 AR-1268-4

R.T.: 8.132 min  
 Delta R.T.: -0.004 min  
 Response: 1528220  
 Conc: 3.32 ng/ml



#44 AR-1268-4

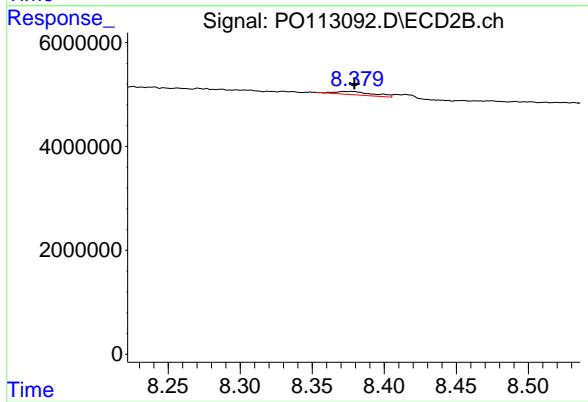
R.T.: 8.085 min  
 Delta R.T.: -0.007 min  
 Response: 1512844  
 Conc: 12.56 ng/ml



#45 AR-1268-5

R.T.: 8.432 min  
 Delta R.T.: 0.004 min  
 Response: 1893087  
 Conc: 0.59 ng/ml

Instrument :  
 ECD\_O  
 ClientSampleId :  
 AR1254CCC500



#45 AR-1268-5

R.T.: 8.378 min  
 Delta R.T.: -0.001 min  
 Response: 1176013  
 Conc: 1.51 ng/ml