

Data Path : Z:\pestpcbsrv\HPCHEM1\ECD_0\Data\P0082025\
 Data File : PO113098.D
 Signal(s) : Signal #1: ECD1A.ch Signal #2: ECD2B.ch
 Acq On : 20 Aug 2025 18:21
 Operator : YP/AJ
 Sample : Q2907-01 10X
 Misc :
 ALS Vial : 19 Sample Multiplier: 1

Instrument :
 ECD_0
 ClientSampleId :
 JEI0237-1-1

Integration File signal 1: autoint1.e
 Integration File signal 2: autoint2.e
 Quant Time: Aug 21 01:42:12 2025
 Quant Method : Z:\pestpcbsrv\HPCHEM1\ECD_0\methods\P0081825.M
 Quant Title : GC EXTRACTABLES
 QLast Update : Tue Aug 19 06:08:32 2025
 Response via : Initial Calibration
 Integrator: ChemStation

Volume Inj. : 2 µl
 Signal #1 Phase : ZB-MR1 Signal #2 Phase: ZB-MR2
 Signal #1 Info : 30Mx0.32mmx 0.50µ Signal #2 Info : 30M x 0.32mm x 0.25µm

Compound	RT#1	RT#2	Resp#1	Resp#2	ng/ml	ng/ml
System Monitoring Compounds						
1) SA Tetrachlo...	3.665	3.655	8036296	5754427	0.982	1.137
2) SA Decachlor...	8.683	8.627	6175068	1332362	0.891	0.703
Target Compounds						
3) L1 AR-1016-1	4.733	4.722	18059	44960	0.068	0.264 #
4) L1 AR-1016-2	4.768	4.747	1095601	230490	2.729	0.895 #
5) L1 AR-1016-3	4.821	4.919	686068	89508	2.690	0.641 #
6) L1 AR-1016-4	4.945	4.979	138074	252019	0.633	2.160 #
7) L1 AR-1016-5	5.206	5.180	1260617	364036	5.688	2.554 #
8) L2 AR-1221-1	3.866	3.860	39026	98268	0.417	1.557 #
9) L2 AR-1221-2	3.966	3.953	190942	96335	2.827	2.064 #
10) L2 AR-1221-3	4.032	4.025	149016	107539	0.673	0.724
11) L3 AR-1232-1	4.032	4.025	149016	107539	0.856	0.916
12) L3 AR-1232-2	4.527	4.747	2680818	230490	26.848	1.881 #
13) L3 AR-1232-3	4.768	4.919	1095601	89508	5.782	1.413 #
14) L3 AR-1232-4	4.945	5.008	138074	113414	1.466	2.017 #
15) L3 AR-1232-5	4.976	5.180	524457	364036	8.467	6.081 #
16) L4 AR-1242-1	4.733	4.722	18059	44960	0.079	0.311 #
17) L4 AR-1242-2	4.768	4.747	1095601	230490	3.188	1.063 #
18) L4 AR-1242-3	4.821	4.919	686068	89508	3.092	0.765 #
19) L4 AR-1242-4	4.945	5.008	138074	113414	0.796	0.964
20) L4 AR-1242-5	5.603	5.526	5814692	366189	29.050	2.455 #
21) L5 AR-1248-1	4.733	4.722	18059	44960	0.104	0.403 #
22) L5 AR-1248-2	4.976	4.979	524457	252019	2.168	1.568 #
23) L5 AR-1248-3	5.206	5.008	1260617	113414	3.953	0.668 #
24) L5 AR-1248-4	5.547	5.180	1035250	364036	2.072	1.827
25) L5 AR-1248-5	5.603	5.568	5814692	2220541	17.027	10.460 #
26) L6 AR-1254-1	5.547	5.526	1035250	366189	1.917	1.161 #
27) L6 AR-1254-2	5.690	5.663	3579279	701142	7.254	2.501 #
28) L6 AR-1254-3	6.107	6.073	736520	699465	0.997	1.678 #
29) L6 AR-1254-4	6.323	6.289	3509286	1202607	6.300	4.376 #
30) L6 AR-1254-5	6.760	6.708	724871	73070	1.034	0.204 #
31) L7 AR-1260-1	6.235	6.198	4197509	1321341	9.412	5.180 #
32) L7 AR-1260-2	6.405	6.391	7174521	77097	10.448	0.223 #
33) L7 AR-1260-3	6.785	6.540	1461840	403102	2.367	1.355 #
34) L7 AR-1260-4	7.051	7.010	3185141	714089	7.112	3.446 #
35) L7 AR-1260-5	7.316	7.257	3158016	545817	2.608	1.165 #
36) L8 AR-1262-1	6.785	6.758	1461840	176952	1.596	0.427 #
37) L8 AR-1262-2	7.316	7.257	3158016	545817	2.088	1.054 #
38) L8 AR-1262-3	7.572	7.512	538272	19281	0.971	0.107 #
39) L8 AR-1262-4	7.635	7.602	1882700	98541	1.925	0.340 #
40) L8 AR-1262-5	8.145	8.086	2414478	184609	5.792	1.704 #
41) L9 AR-1268-1	7.572	7.512	538272	19281	0.313	0.038 #

Data Path : Z:\pestpcbsrv\HPCHEM1\ECD_0\Data\P0082025\
 Data File : P0113098.D
 Signal(s) : Signal #1: ECD1A.ch Signal #2: ECD2B.ch
 Acq On : 20 Aug 2025 18:21
 Operator : YP/AJ
 Sample : Q2907-01 10X
 Misc :
 ALS Vial : 19 Sample Multiplier: 1

Instrument :
 ECD_0
 ClientSampleId :
 JEI0237-1-1

Integration File signal 1: autoint1.e
 Integration File signal 2: autoint2.e
 Quant Time: Aug 21 01:42:12 2025
 Quant Method : Z:\pestpcbsrv\HPCHEM1\ECD_0\methods\P0081825.M
 Quant Title : GC EXTRACTABLES
 QLast Update : Tue Aug 19 06:08:32 2025
 Response via : Initial Calibration
 Integrator: ChemStation

Volume Inj. : 2 µl
 Signal #1 Phase : ZB-MR1 Signal #2 Phase: ZB-MR2
 Signal #1 Info : 30Mx0.32mmx 0.50µ Signal #2 Info : 30M x 0.32mm x 0.25µm

	Compound	RT#1	RT#2	Resp#1	Resp#2	ng/ml	ng/ml
42)	L9 AR-1268-2	7.635	7.602	1882700	98541	1.300	0.237 #
43)	L9 AR-1268-3	7.850	7.793	340023	578536	0.282	1.772 #
44)	L9 AR-1268-4	8.145	8.086	2414478	184609	5.241	1.533 #
45)	L9 AR-1268-5	8.429	8.384	-232063	2426146	N.D.	3.107 #

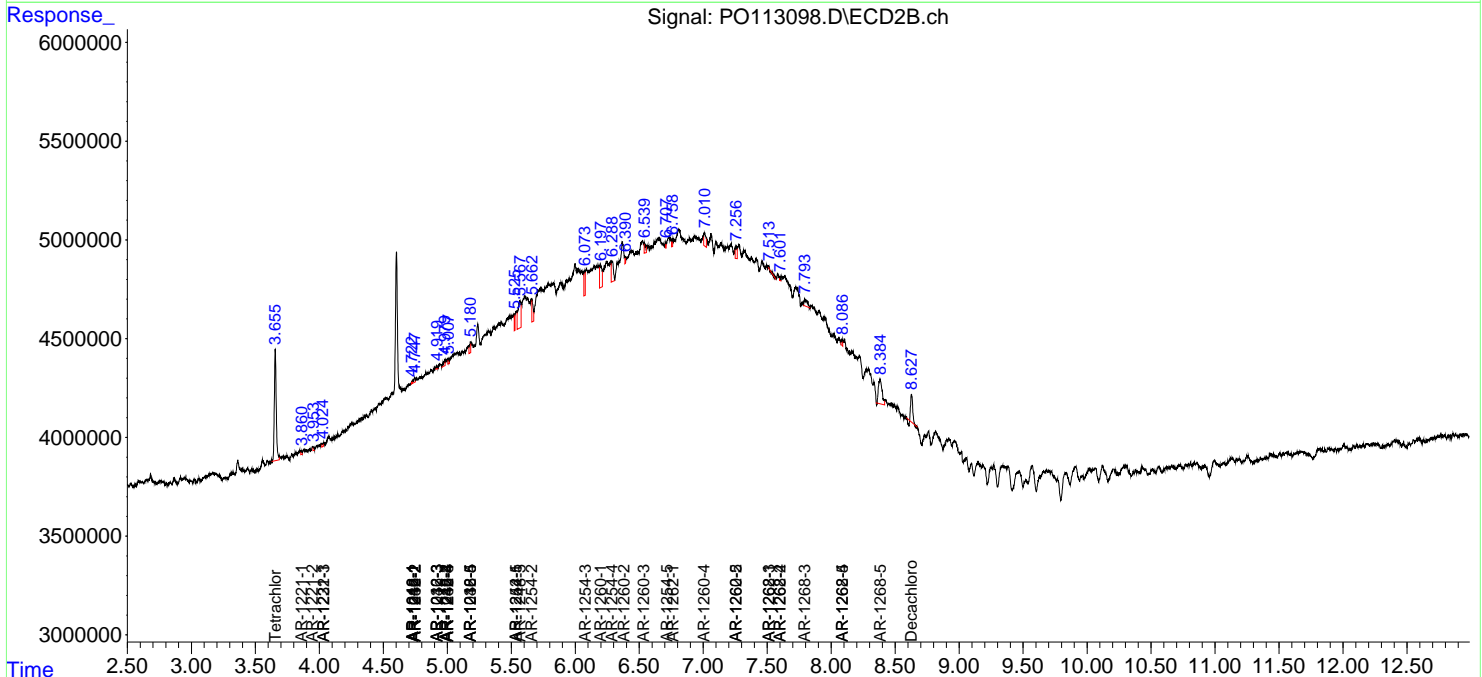
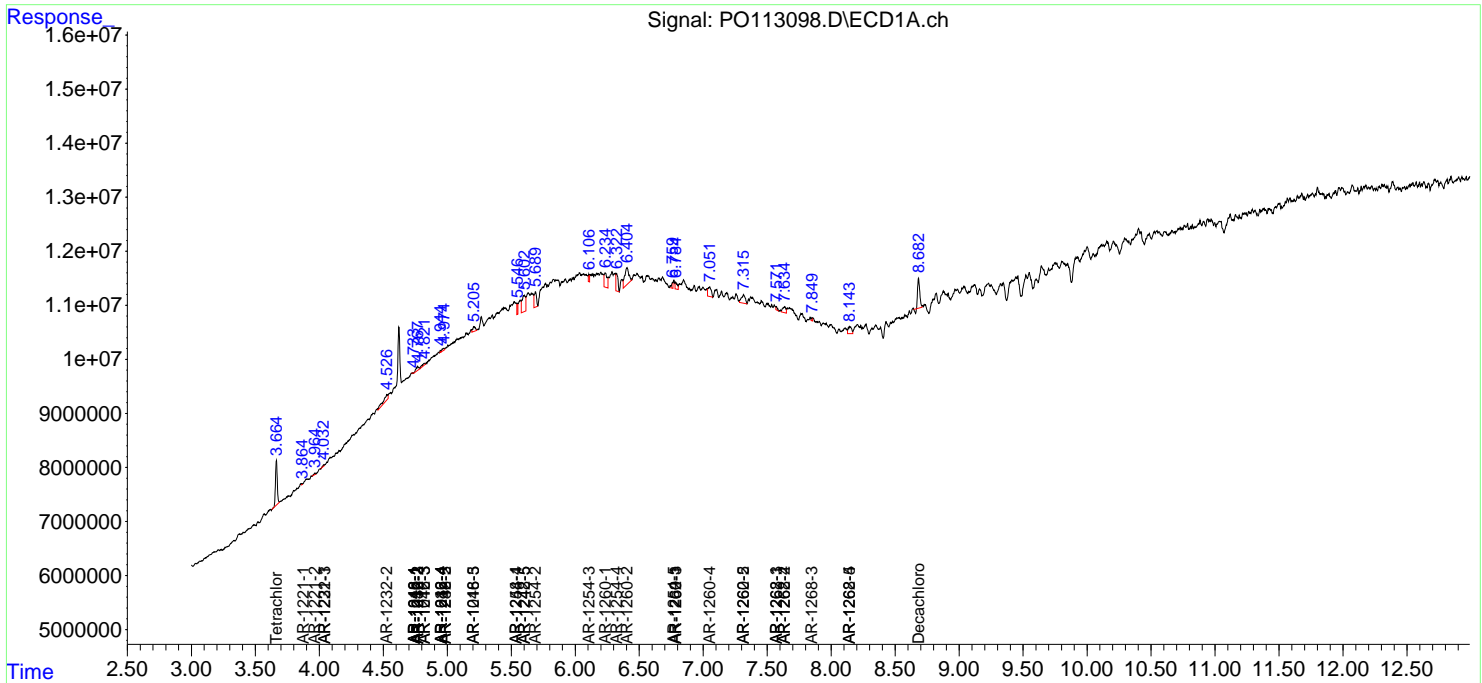
(f)=RT Delta > 1/2 Window (#)=Amounts differ by > 25% (m)=manual int.

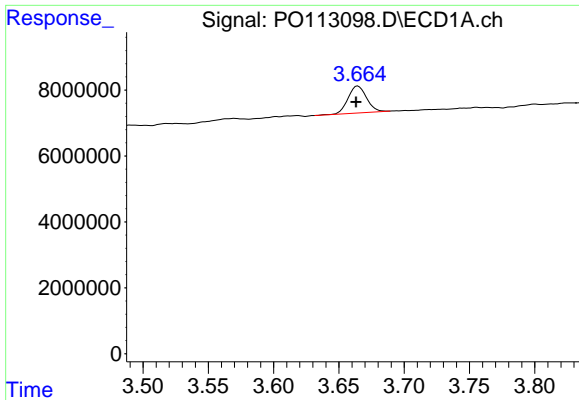
Data Path : Z:\pestpcbsrv\HPCHEM1\ECD_O\Data\PO082025\
 Data File : PO113098.D
 Signal(s) : Signal #1: ECD1A.ch Signal #2: ECD2B.ch
 Acq On : 20 Aug 2025 18:21
 Operator : YP/AJ
 Sample : Q2907-01 10X
 Misc :
 ALS Vial : 19 Sample Multiplier: 1

Instrument :
 ECD_O
 ClientSampleId :
 JEI0237-1-1

Integration File signal 1: autoint1.e
 Integration File signal 2: autoint2.e
 Quant Time: Aug 21 01:42:12 2025
 Quant Method : Z:\pestpcbsrv\HPCHEM1\ECD_O\methods\PO081825.M
 Quant Title : GC EXTRACTABLES
 QLast Update : Tue Aug 19 06:08:32 2025
 Response via : Initial Calibration
 Integrator: ChemStation

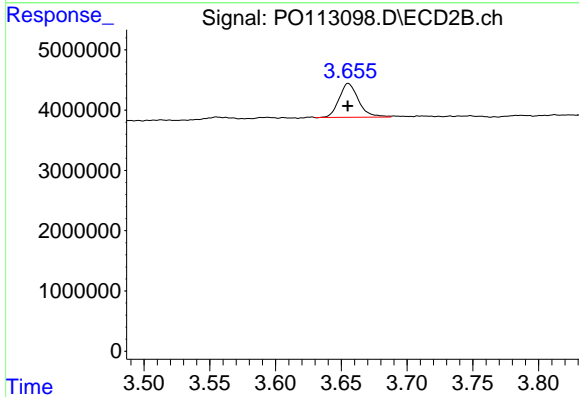
Volume Inj. : 2 µl
 Signal #1 Phase : ZB-MR1 Signal #2 Phase: ZB-MR2
 Signal #1 Info : 30Mx0.32mmx 0.50µ Signal #2 Info : 30M x 0.32mm x 0.25µm



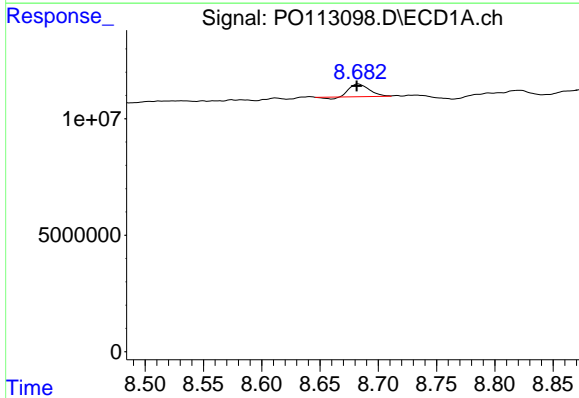


#1 Tetrachloro-m-xylene
 R.T.: 3.665 min
 Delta R.T.: 0.002 min
 Response: 8036296
 Conc: 0.98 ng/ml

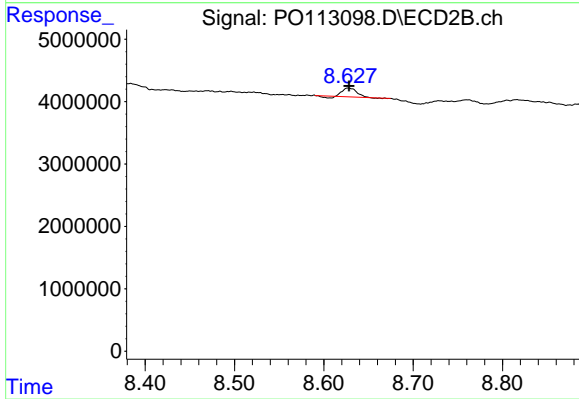
Instrument :
 ECD_O
 ClientSampleId :
 JEI0237-1-1



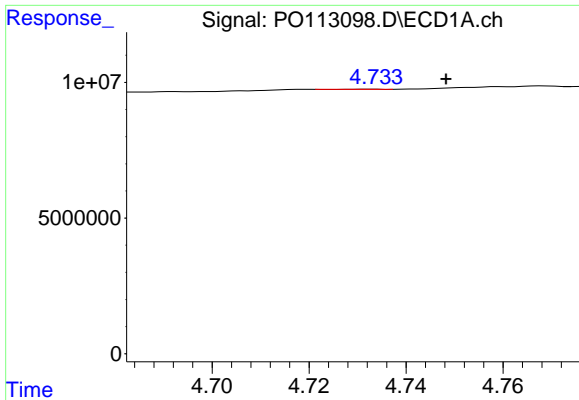
#1 Tetrachloro-m-xylene
 R.T.: 3.655 min
 Delta R.T.: 0.000 min
 Response: 5754427
 Conc: 1.14 ng/ml



#2 Decachlorobiphenyl
 R.T.: 8.683 min
 Delta R.T.: 0.001 min
 Response: 6175068
 Conc: 0.89 ng/ml



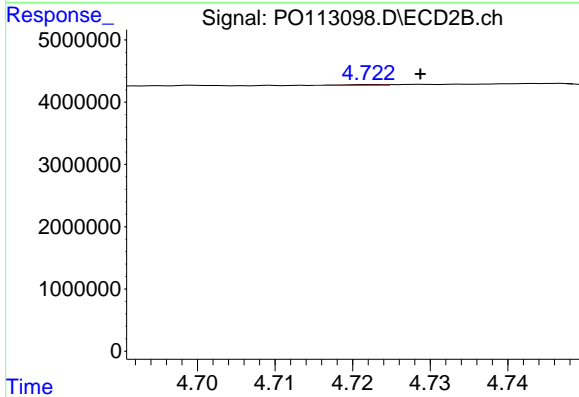
#2 Decachlorobiphenyl
 R.T.: 8.627 min
 Delta R.T.: -0.001 min
 Response: 1332362
 Conc: 0.70 ng/ml



#3 AR-1016-1

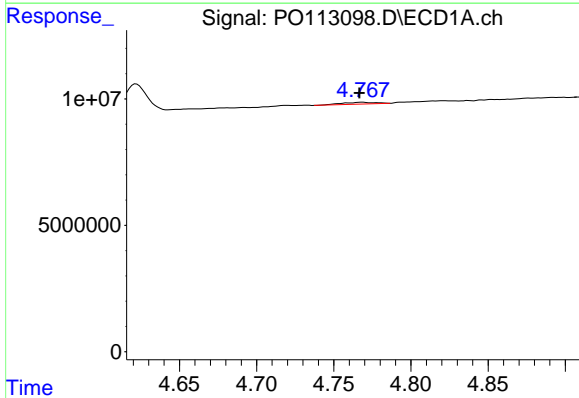
R.T.: 4.733 min
 Delta R.T.: -0.015 min
 Response: 18059
 Conc: 0.07 ng/ml

Instrument :
 ECD_O
 ClientSampleId :
 JEI0237-1-1



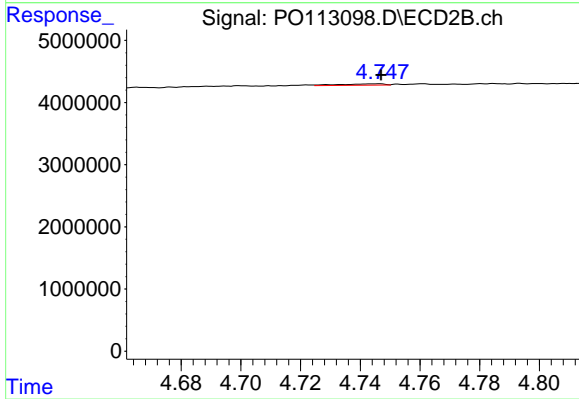
#3 AR-1016-1

R.T.: 4.722 min
 Delta R.T.: -0.006 min
 Response: 44960
 Conc: 0.26 ng/ml



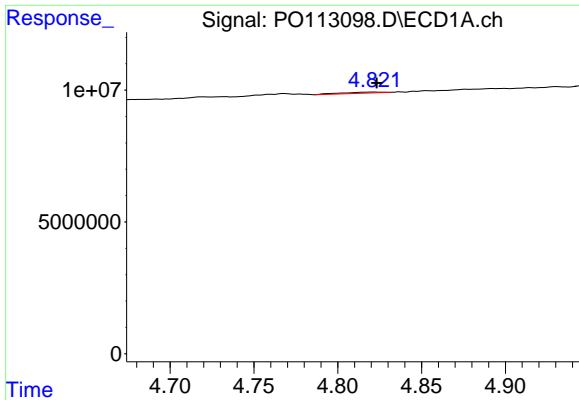
#4 AR-1016-2

R.T.: 4.768 min
 Delta R.T.: 0.002 min
 Response: 1095601
 Conc: 2.73 ng/ml



#4 AR-1016-2

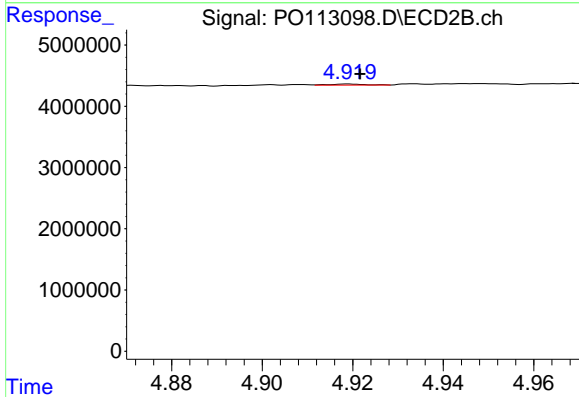
R.T.: 4.747 min
 Delta R.T.: 0.000 min
 Response: 230490
 Conc: 0.89 ng/ml



#5 AR-1016-3

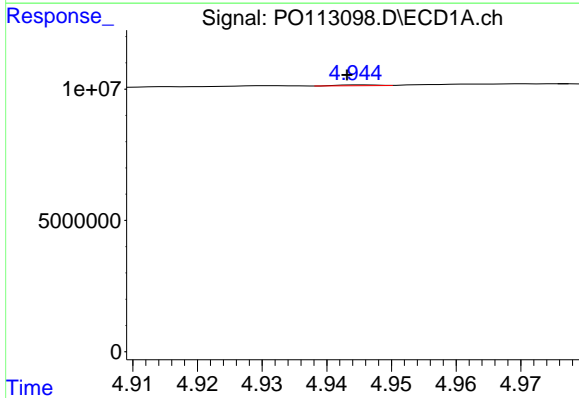
R.T.: 4.821 min
 Delta R.T.: -0.002 min
 Response: 686068
 Conc: 2.69 ng/ml

Instrument :
 ECD_O
 ClientSampleId :
 JEI0237-1-1



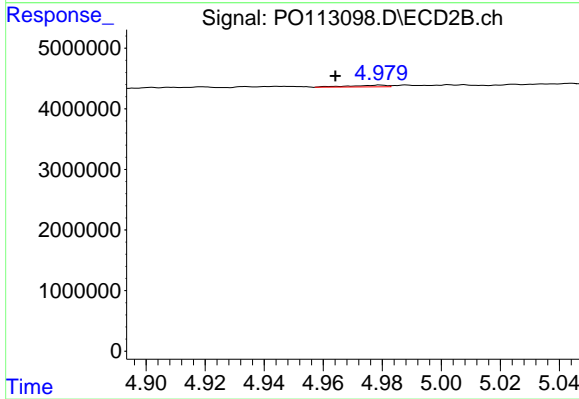
#5 AR-1016-3

R.T.: 4.919 min
 Delta R.T.: -0.003 min
 Response: 89508
 Conc: 0.64 ng/ml



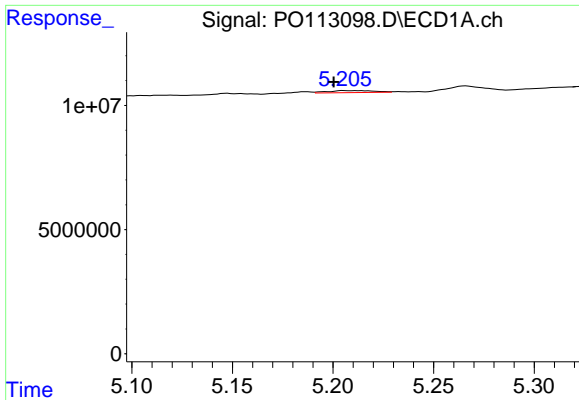
#6 AR-1016-4

R.T.: 4.945 min
 Delta R.T.: 0.002 min
 Response: 138074
 Conc: 0.63 ng/ml



#6 AR-1016-4

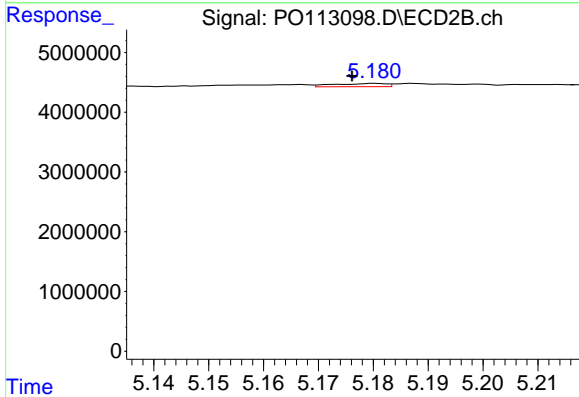
R.T.: 4.979 min
 Delta R.T.: 0.015 min
 Response: 252019
 Conc: 2.16 ng/ml



#7 AR-1016-5

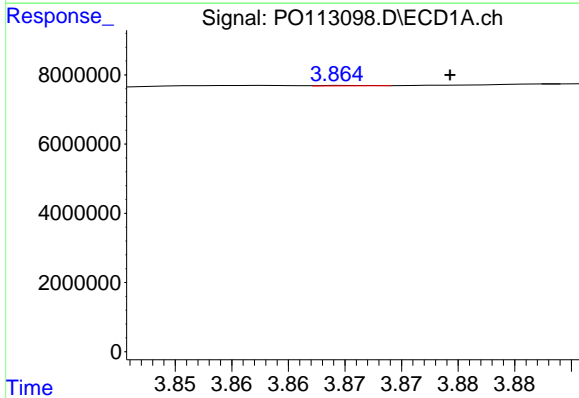
R.T.: 5.206 min
 Delta R.T.: 0.005 min
 Response: 1260617
 Conc: 5.69 ng/ml

Instrument :
 ECD_O
 ClientSampleId :
 JEI0237-1-1



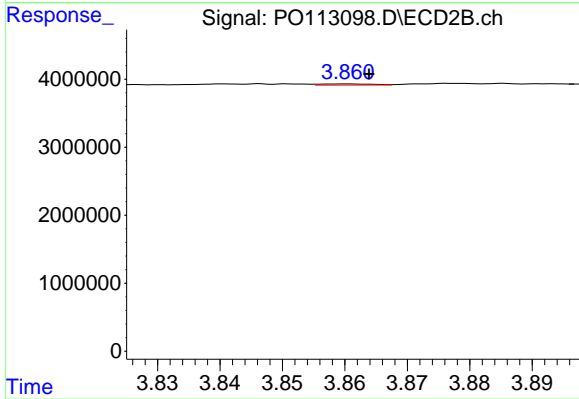
#7 AR-1016-5

R.T.: 5.180 min
 Delta R.T.: 0.004 min
 Response: 364036
 Conc: 2.55 ng/ml



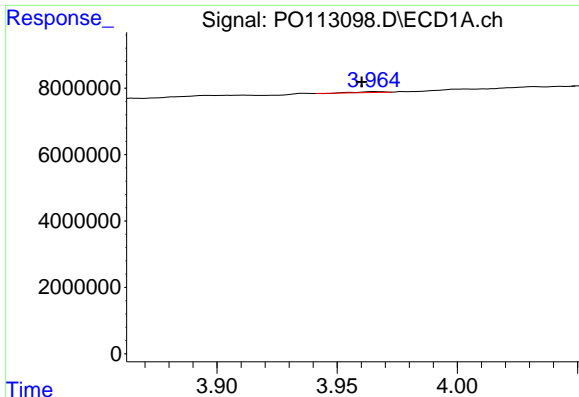
#8 AR-1221-1

R.T.: 3.866 min
 Delta R.T.: -0.009 min
 Response: 39026
 Conc: 0.42 ng/ml



#8 AR-1221-1

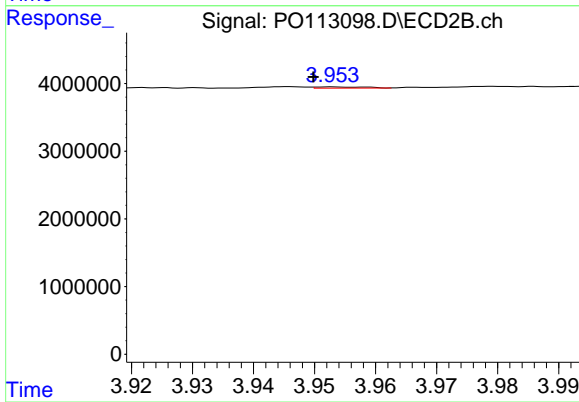
R.T.: 3.860 min
 Delta R.T.: -0.004 min
 Response: 98268
 Conc: 1.56 ng/ml



#9 AR-1221-2

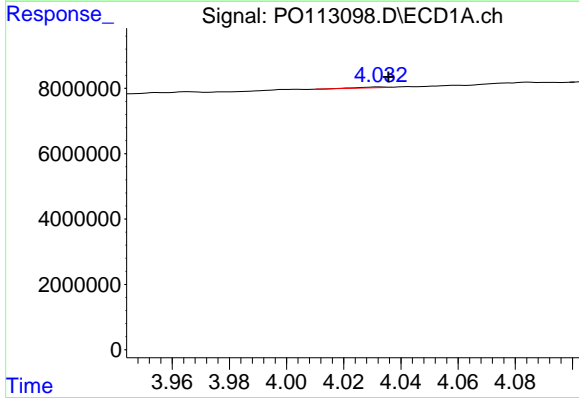
R.T.: 3.966 min
 Delta R.T.: 0.005 min
 Response: 190942
 Conc: 2.83 ng/ml

Instrument :
 ECD_O
 ClientSampleId :
 JEI0237-1-1



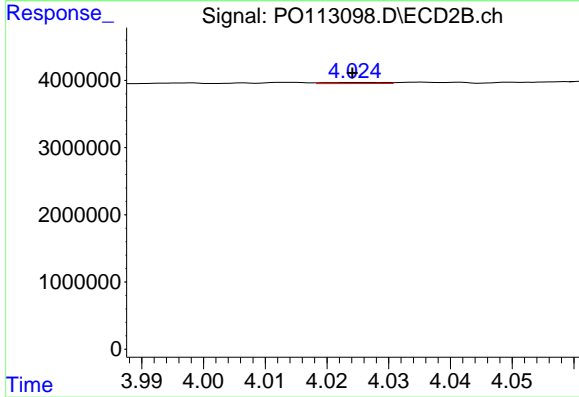
#9 AR-1221-2

R.T.: 3.953 min
 Delta R.T.: 0.003 min
 Response: 96335
 Conc: 2.06 ng/ml



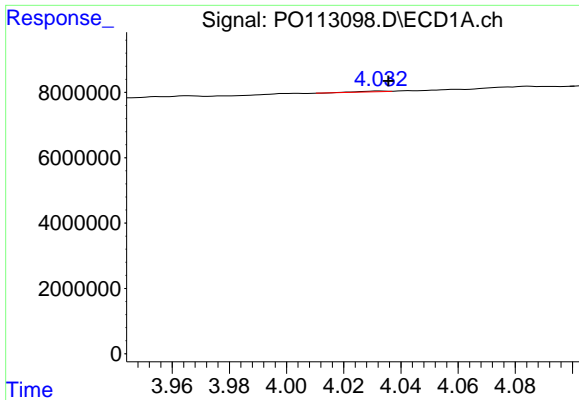
#10 AR-1221-3

R.T.: 4.032 min
 Delta R.T.: -0.003 min
 Response: 149016
 Conc: 0.67 ng/ml



#10 AR-1221-3

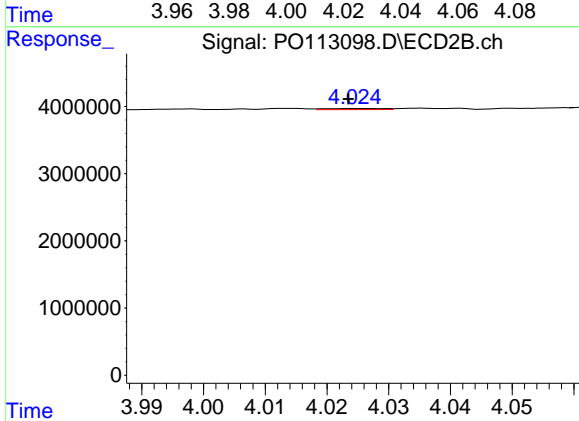
R.T.: 4.025 min
 Delta R.T.: 0.000 min
 Response: 107539
 Conc: 0.72 ng/ml



#11 AR-1232-1

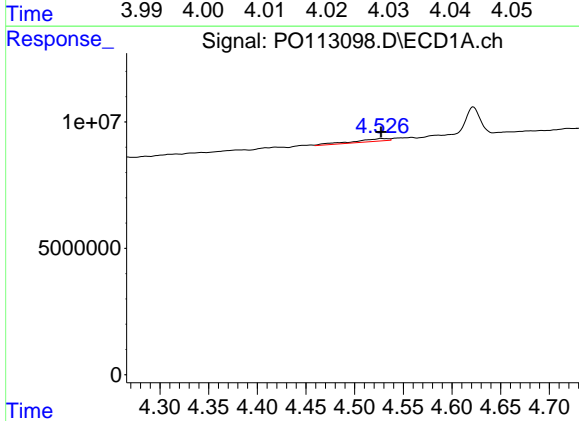
R.T.: 4.032 min
 Delta R.T.: -0.003 min
 Response: 149016
 Conc: 0.86 ng/ml

Instrument :
 ECD_O
 ClientSampleId :
 JEI0237-1-1



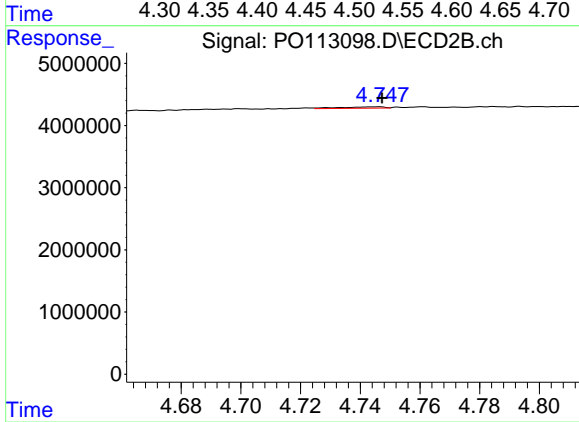
#11 AR-1232-1

R.T.: 4.025 min
 Delta R.T.: 0.001 min
 Response: 107539
 Conc: 0.92 ng/ml



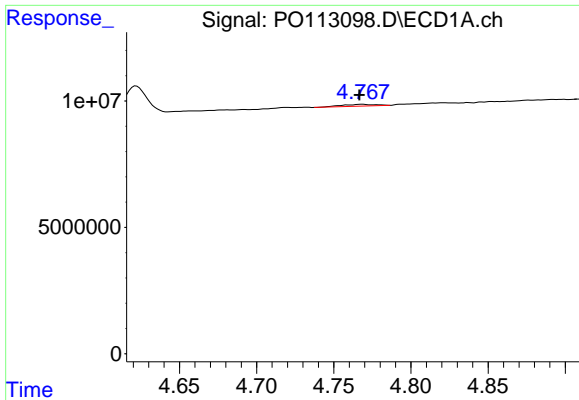
#12 AR-1232-2

R.T.: 4.527 min
 Delta R.T.: 0.000 min
 Response: 2680818
 Conc: 26.85 ng/ml



#12 AR-1232-2

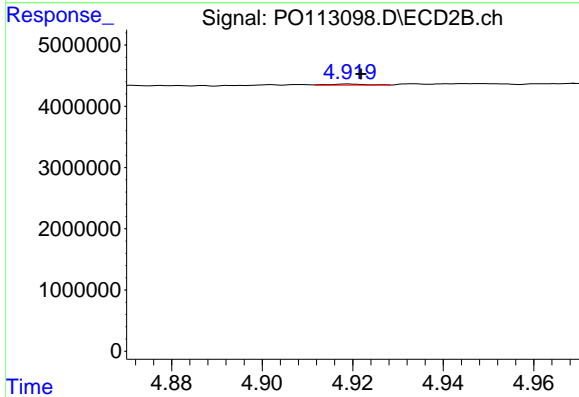
R.T.: 4.747 min
 Delta R.T.: 0.000 min
 Response: 230490
 Conc: 1.88 ng/ml



#13 AR-1232-3

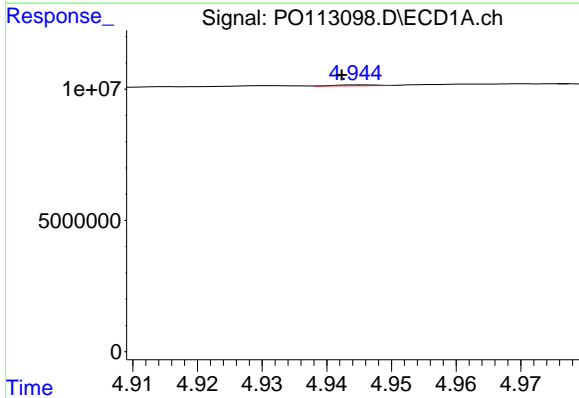
R.T.: 4.768 min
 Delta R.T.: 0.002 min
 Response: 1095601
 Conc: 5.78 ng/ml

Instrument :
 ECD_O
 ClientSampleId :
 JEI0237-1-1



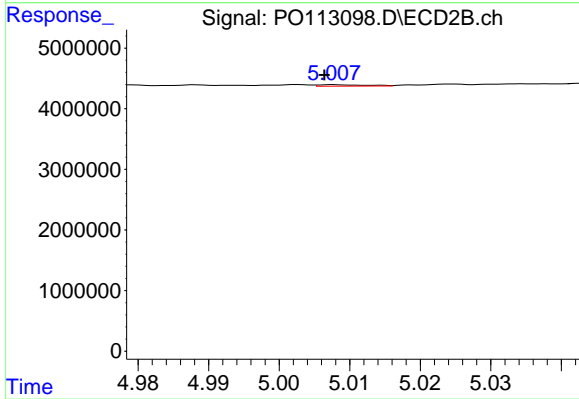
#13 AR-1232-3

R.T.: 4.919 min
 Delta R.T.: -0.003 min
 Response: 89508
 Conc: 1.41 ng/ml



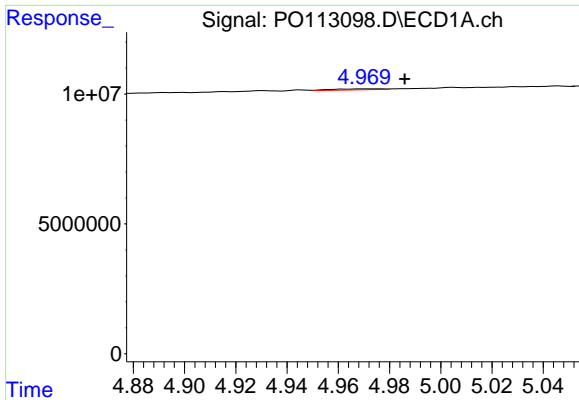
#14 AR-1232-4

R.T.: 4.945 min
 Delta R.T.: 0.003 min
 Response: 138074
 Conc: 1.47 ng/ml



#14 AR-1232-4

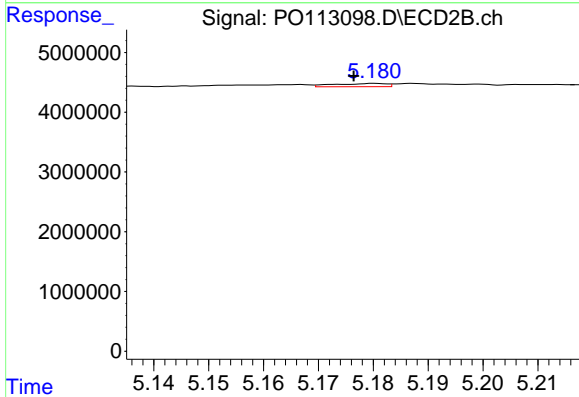
R.T.: 5.008 min
 Delta R.T.: 0.001 min
 Response: 113414
 Conc: 2.02 ng/ml



#15 AR-1232-5

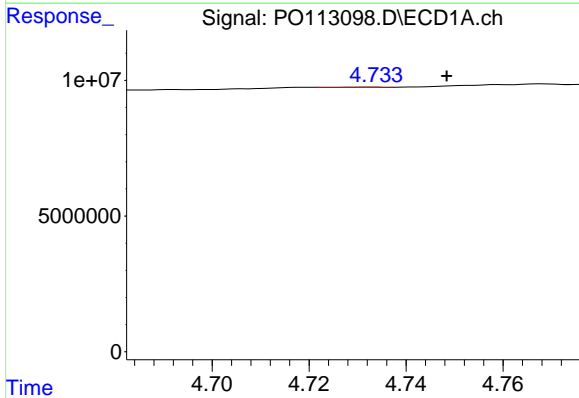
R.T.: 4.976 min
 Delta R.T.: -0.010 min
 Response: 524457
 Conc: 8.47 ng/ml

Instrument :
 ECD_O
 ClientSampleId :
 JEI0237-1-1



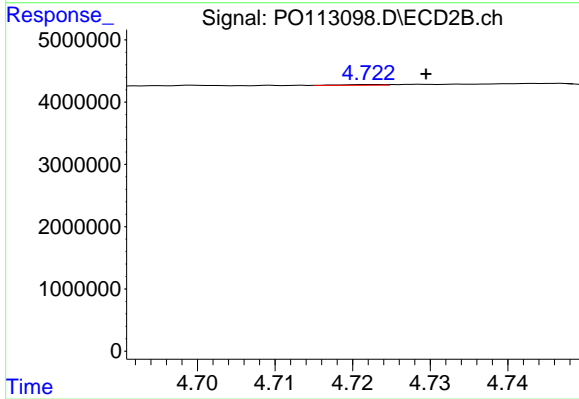
#15 AR-1232-5

R.T.: 5.180 min
 Delta R.T.: 0.004 min
 Response: 364036
 Conc: 6.08 ng/ml



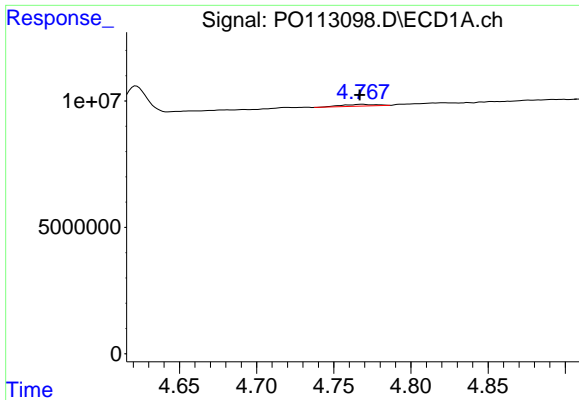
#16 AR-1242-1

R.T.: 4.733 min
 Delta R.T.: -0.016 min
 Response: 18059
 Conc: 0.08 ng/ml



#16 AR-1242-1

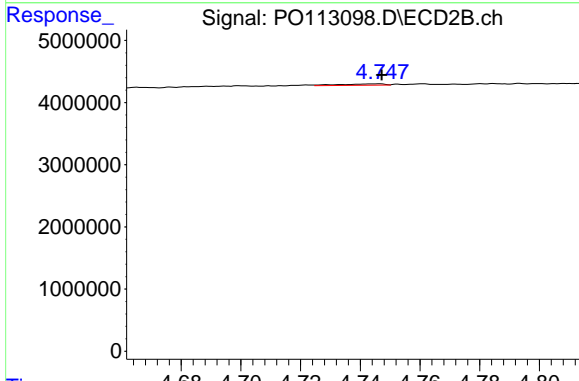
R.T.: 4.722 min
 Delta R.T.: -0.007 min
 Response: 44960
 Conc: 0.31 ng/ml



#17 AR-1242-2

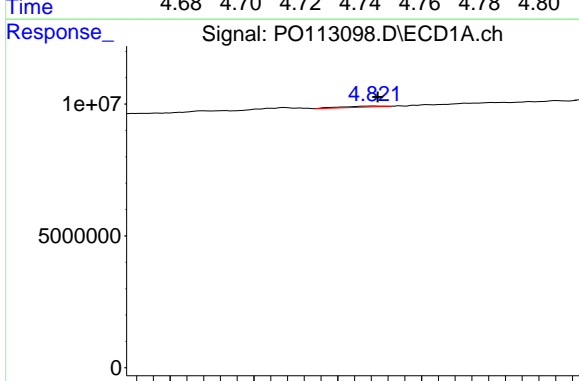
R.T.: 4.768 min
 Delta R.T.: 0.001 min
 Response: 1095601
 Conc: 3.19 ng/ml

Instrument :
 ECD_O
 ClientSampleId :
 JEI0237-1-1



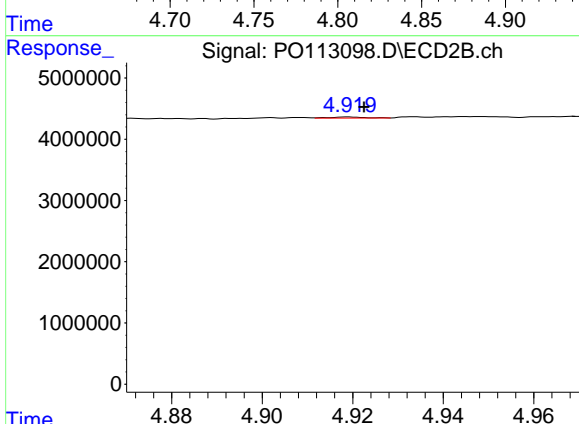
#17 AR-1242-2

R.T.: 4.747 min
 Delta R.T.: 0.000 min
 Response: 230490
 Conc: 1.06 ng/ml



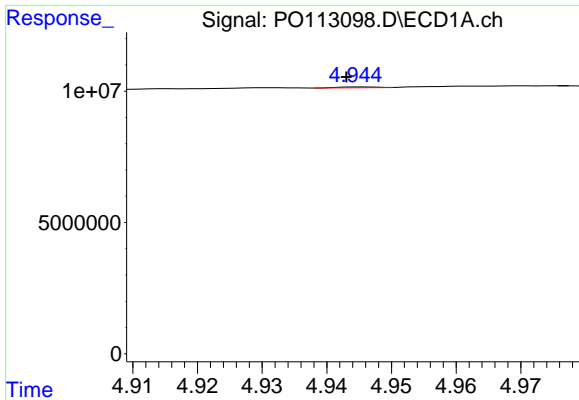
#18 AR-1242-3

R.T.: 4.821 min
 Delta R.T.: -0.003 min
 Response: 686068
 Conc: 3.09 ng/ml



#18 AR-1242-3

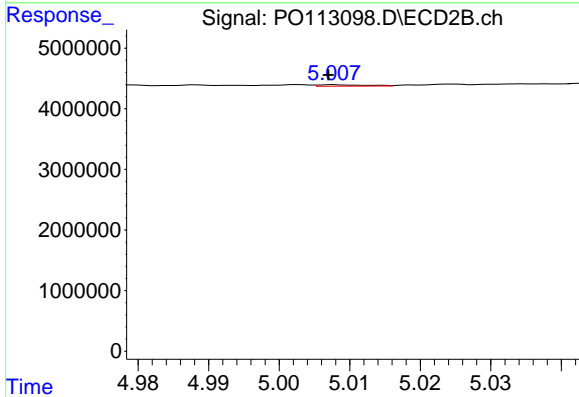
R.T.: 4.919 min
 Delta R.T.: -0.004 min
 Response: 89508
 Conc: 0.77 ng/ml



#19 AR-1242-4

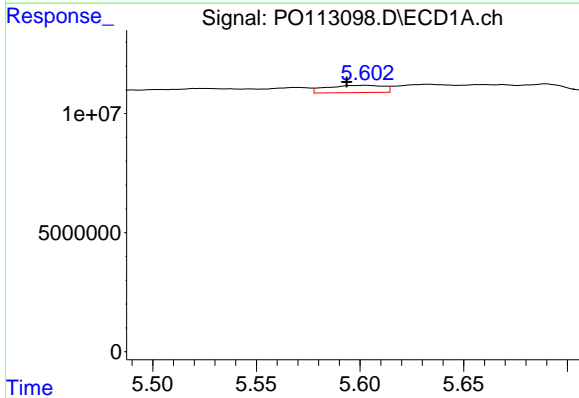
R.T.: 4.945 min
 Delta R.T.: 0.002 min
 Response: 138074
 Conc: 0.80 ng/ml

Instrument :
 ECD_O
 ClientSampleId :
 JEI0237-1-1



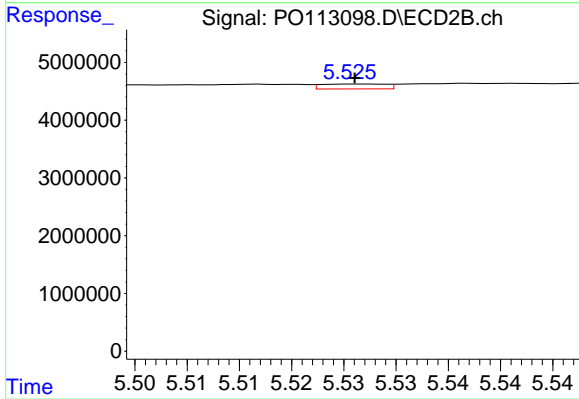
#19 AR-1242-4

R.T.: 5.008 min
 Delta R.T.: 0.000 min
 Response: 113414
 Conc: 0.96 ng/ml



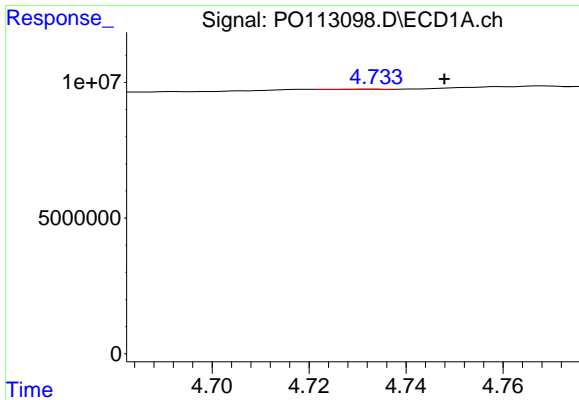
#20 AR-1242-5

R.T.: 5.603 min
 Delta R.T.: 0.009 min
 Response: 5814692
 Conc: 29.05 ng/ml



#20 AR-1242-5

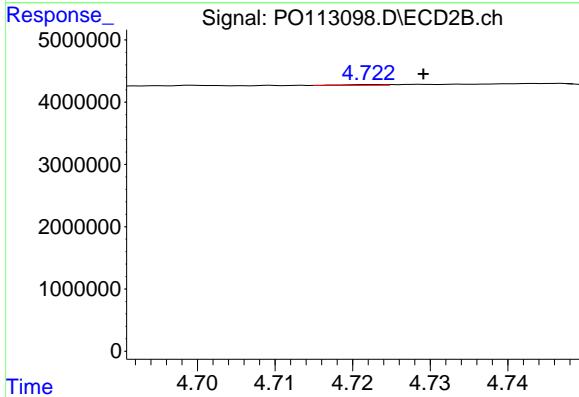
R.T.: 5.526 min
 Delta R.T.: 0.000 min
 Response: 366189
 Conc: 2.46 ng/ml



#21 AR-1248-1

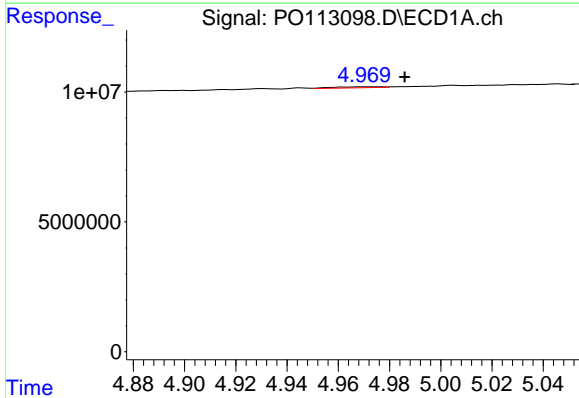
R.T.: 4.733 min
 Delta R.T.: -0.015 min
 Response: 18059
 Conc: 0.10 ng/ml

Instrument :
 ECD_O
 ClientSampleId :
 JEI0237-1-1



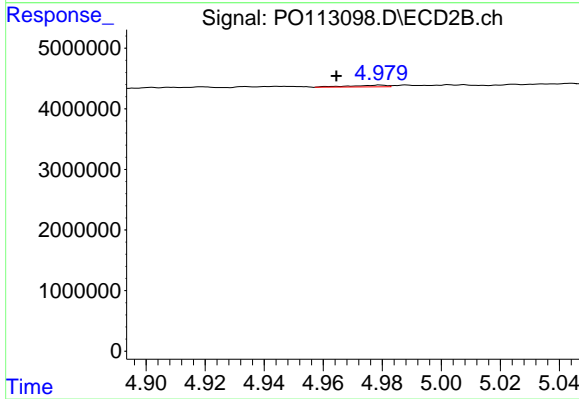
#21 AR-1248-1

R.T.: 4.722 min
 Delta R.T.: -0.007 min
 Response: 44960
 Conc: 0.40 ng/ml



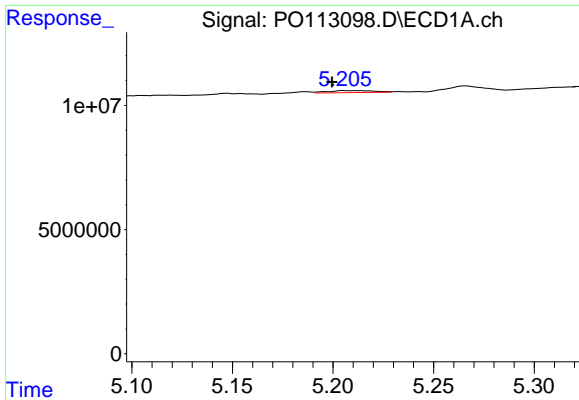
#22 AR-1248-2

R.T.: 4.976 min
 Delta R.T.: -0.010 min
 Response: 524457
 Conc: 2.17 ng/ml



#22 AR-1248-2

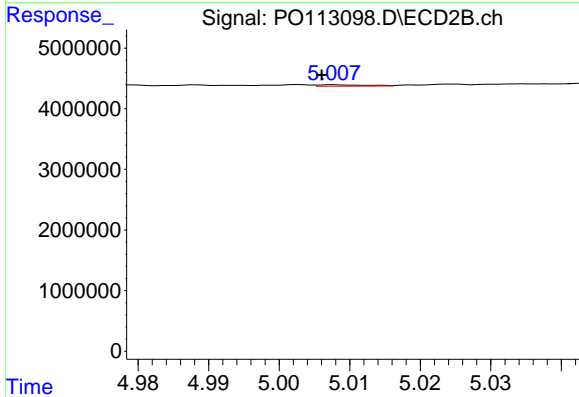
R.T.: 4.979 min
 Delta R.T.: 0.015 min
 Response: 252019
 Conc: 1.57 ng/ml



#23 AR-1248-3

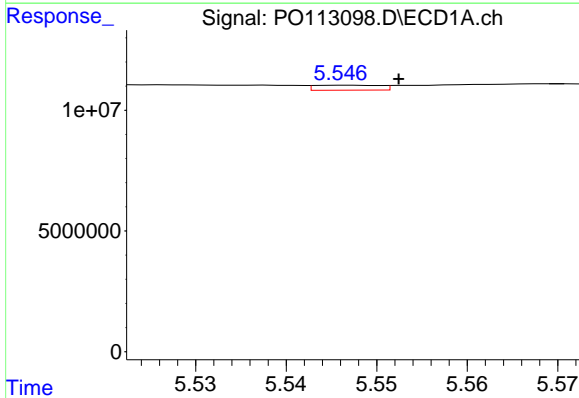
R.T.: 5.206 min
 Delta R.T.: 0.006 min
 Response: 1260617
 Conc: 3.95 ng/ml

Instrument :
 ECD_O
 ClientSampleId :
 JEI0237-1-1



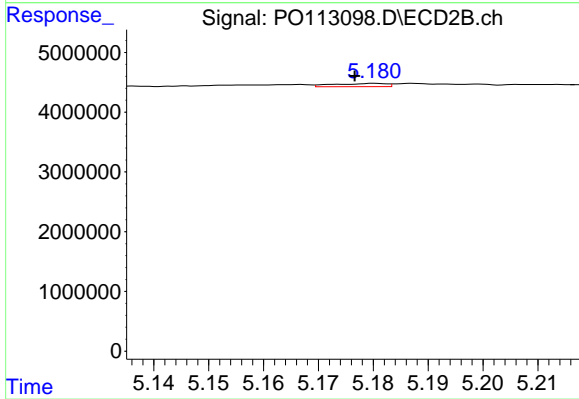
#23 AR-1248-3

R.T.: 5.008 min
 Delta R.T.: 0.002 min
 Response: 113414
 Conc: 0.67 ng/ml



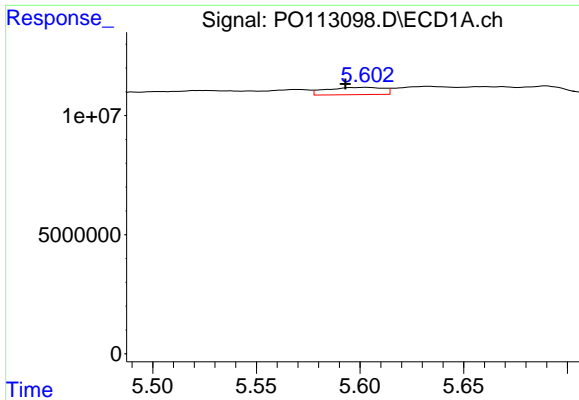
#24 AR-1248-4

R.T.: 5.547 min
 Delta R.T.: -0.006 min
 Response: 1035250
 Conc: 2.07 ng/ml



#24 AR-1248-4

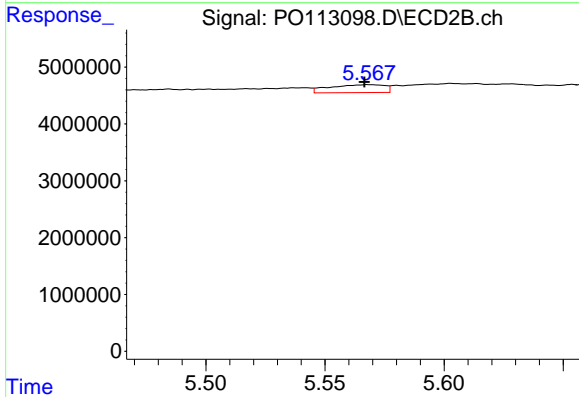
R.T.: 5.180 min
 Delta R.T.: 0.004 min
 Response: 364036
 Conc: 1.83 ng/ml



#25 AR-1248-5

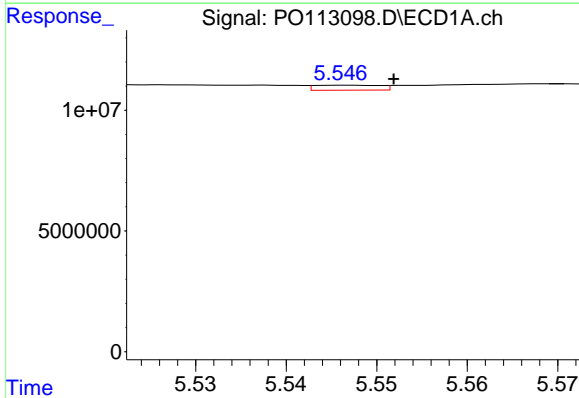
R.T.: 5.603 min
 Delta R.T.: 0.010 min
 Response: 5814692
 Conc: 17.03 ng/ml

Instrument :
 ECD_O
 ClientSampleId :
 JEI0237-1-1



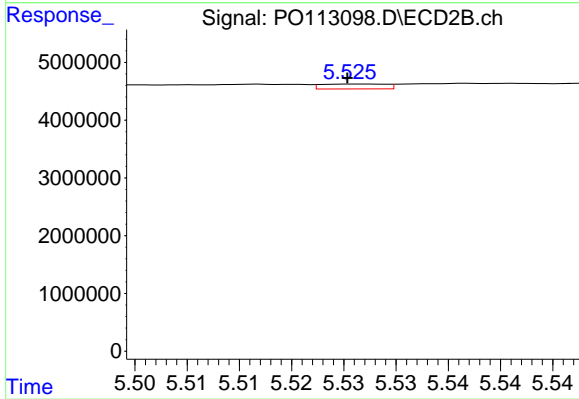
#25 AR-1248-5

R.T.: 5.568 min
 Delta R.T.: 0.001 min
 Response: 2220541
 Conc: 10.46 ng/ml



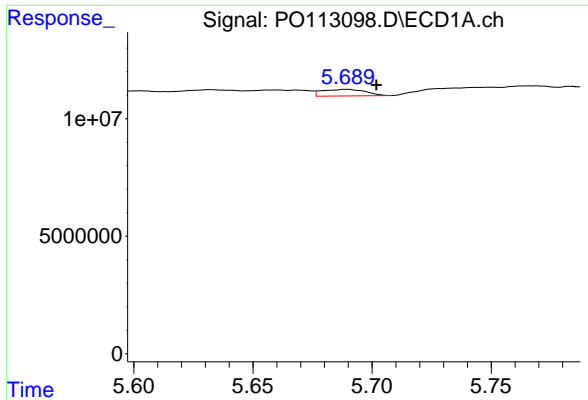
#26 AR-1254-1

R.T.: 5.547 min
 Delta R.T.: -0.005 min
 Response: 1035250
 Conc: 1.92 ng/ml



#26 AR-1254-1

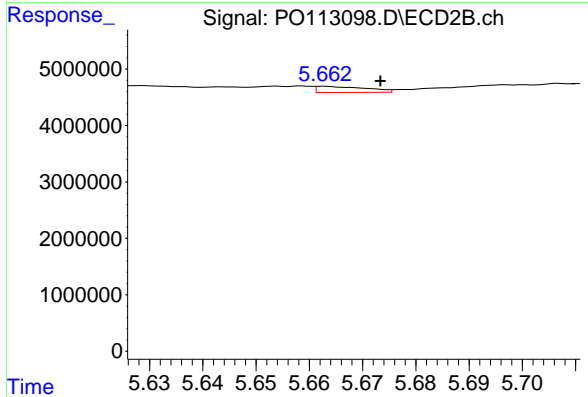
R.T.: 5.526 min
 Delta R.T.: 0.000 min
 Response: 366189
 Conc: 1.16 ng/ml



#27 AR-1254-2

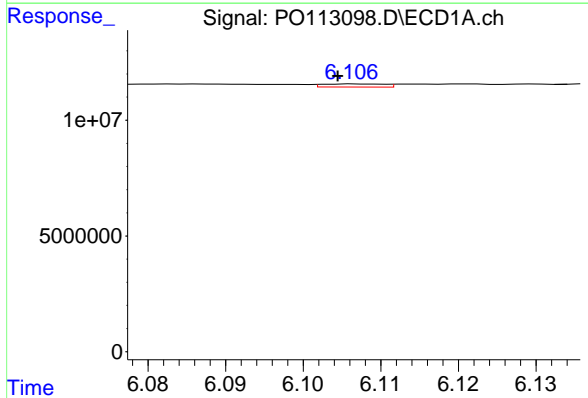
R.T.: 5.690 min
 Delta R.T.: -0.012 min
 Response: 3579279
 Conc: 7.25 ng/ml

Instrument :
 ECD_O
 ClientSampleId :
 JEI0237-1-1



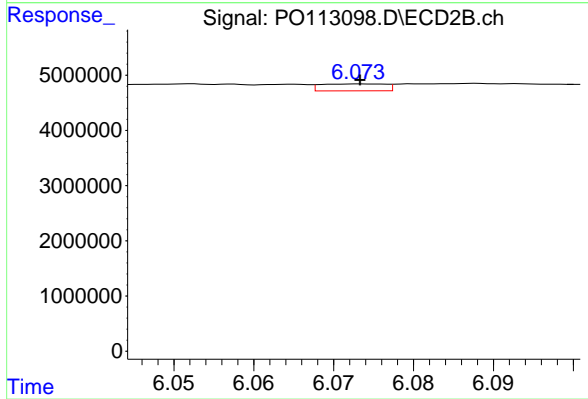
#27 AR-1254-2

R.T.: 5.663 min
 Delta R.T.: -0.011 min
 Response: 701142
 Conc: 2.50 ng/ml



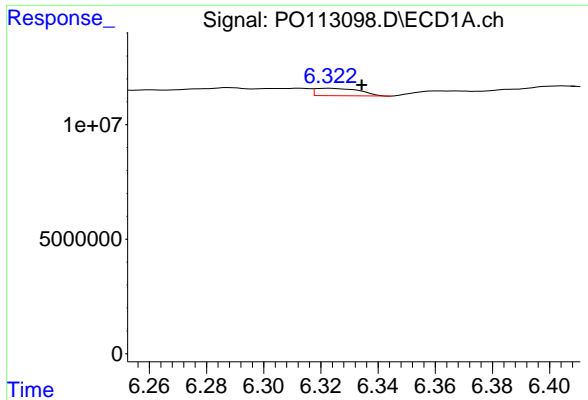
#28 AR-1254-3

R.T.: 6.107 min
 Delta R.T.: 0.003 min
 Response: 736520
 Conc: 1.00 ng/ml



#28 AR-1254-3

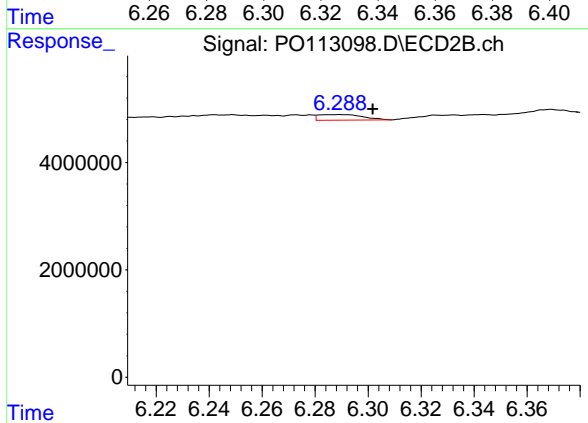
R.T.: 6.073 min
 Delta R.T.: 0.000 min
 Response: 699465
 Conc: 1.68 ng/ml



#29 AR-1254-4

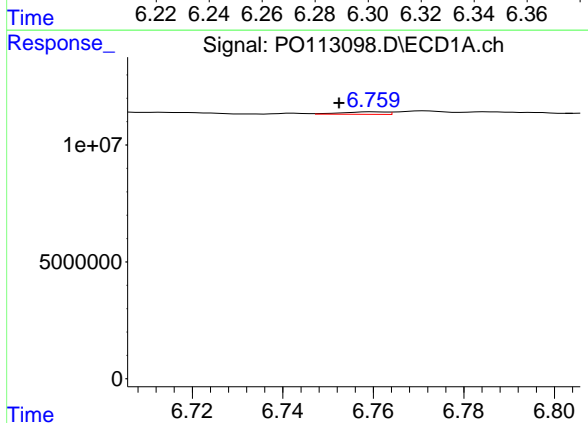
R.T.: 6.323 min
 Delta R.T.: -0.012 min
 Response: 3509286
 Conc: 6.30 ng/ml

Instrument :
 ECD_O
 ClientSampleId :
 JEI0237-1-1



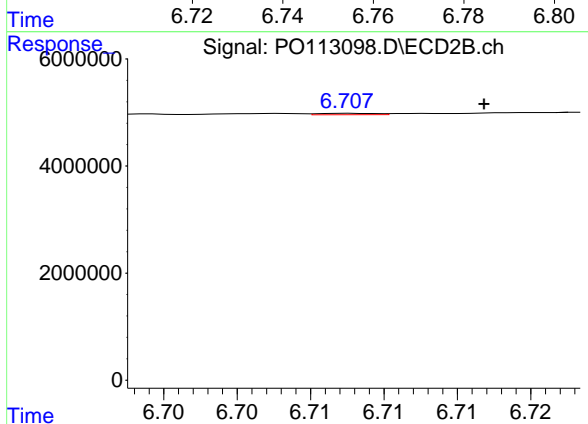
#29 AR-1254-4

R.T.: 6.289 min
 Delta R.T.: -0.013 min
 Response: 1202607
 Conc: 4.38 ng/ml



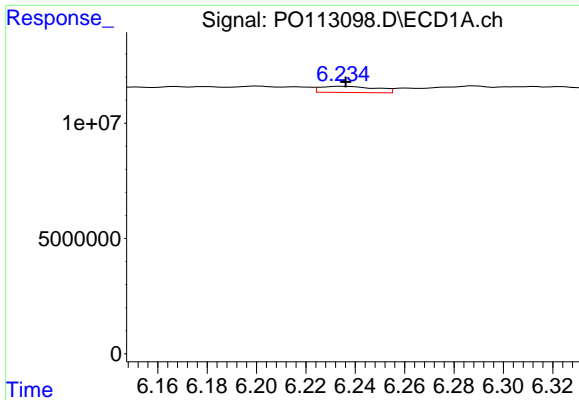
#30 AR-1254-5

R.T.: 6.760 min
 Delta R.T.: 0.008 min
 Response: 724871
 Conc: 1.03 ng/ml



#30 AR-1254-5

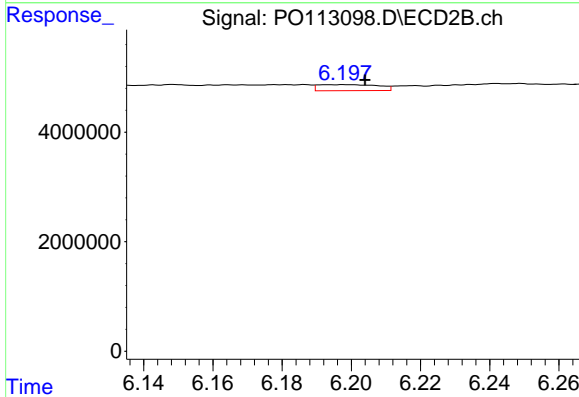
R.T.: 6.708 min
 Delta R.T.: -0.009 min
 Response: 73070
 Conc: 0.20 ng/ml



#31 AR-1260-1

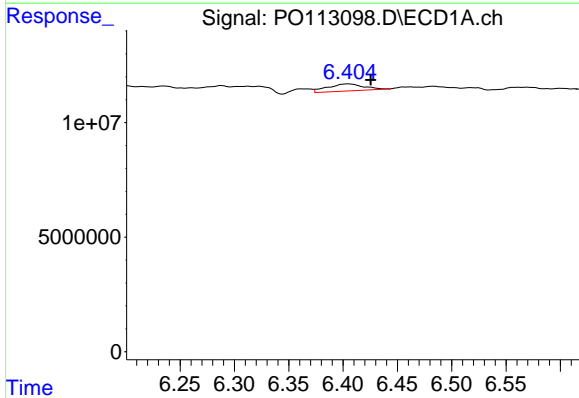
R.T.: 6.235 min
 Delta R.T.: -0.002 min
 Response: 4197509
 Conc: 9.41 ng/ml

Instrument :
 ECD_O
 ClientSampleId :
 JEI0237-1-1



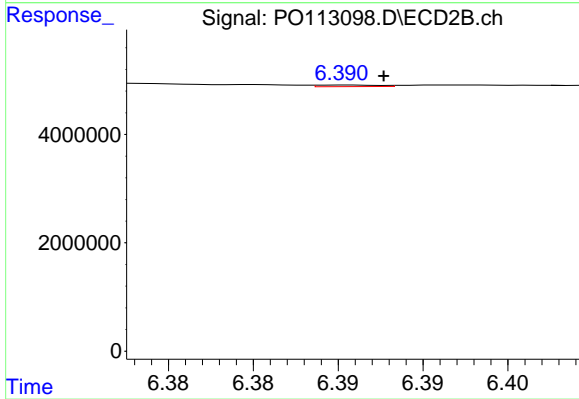
#31 AR-1260-1

R.T.: 6.198 min
 Delta R.T.: -0.006 min
 Response: 1321341
 Conc: 5.18 ng/ml



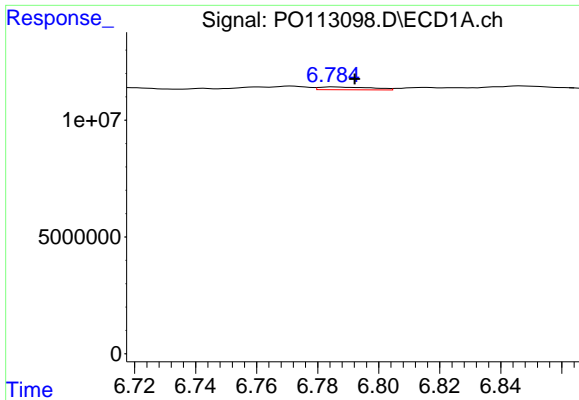
#32 AR-1260-2

R.T.: 6.405 min
 Delta R.T.: -0.021 min
 Response: 7174521
 Conc: 10.45 ng/ml



#32 AR-1260-2

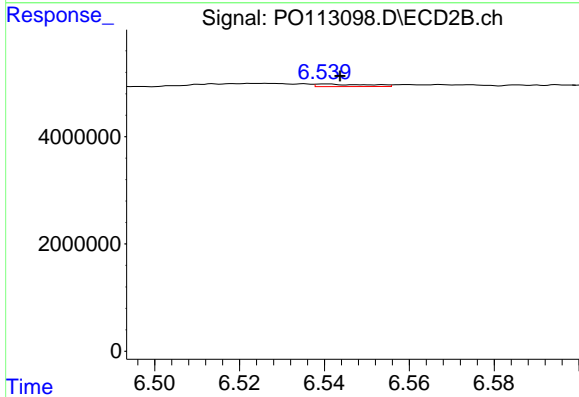
R.T.: 6.391 min
 Delta R.T.: -0.002 min
 Response: 77097
 Conc: 0.22 ng/ml



#33 AR-1260-3

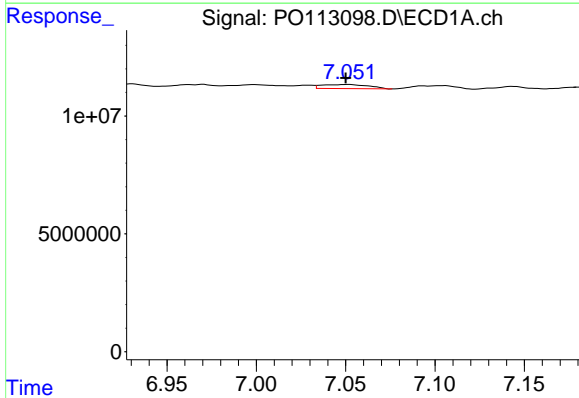
R.T.: 6.785 min
 Delta R.T.: -0.007 min
 Response: 1461840
 Conc: 2.37 ng/ml

Instrument :
 ECD_O
 ClientSampleId :
 JEI0237-1-1



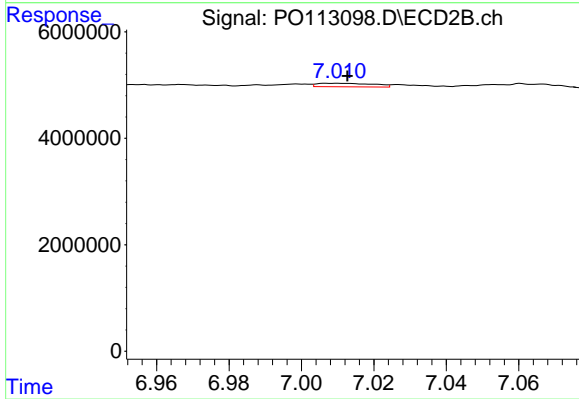
#33 AR-1260-3

R.T.: 6.540 min
 Delta R.T.: -0.003 min
 Response: 403102
 Conc: 1.36 ng/ml



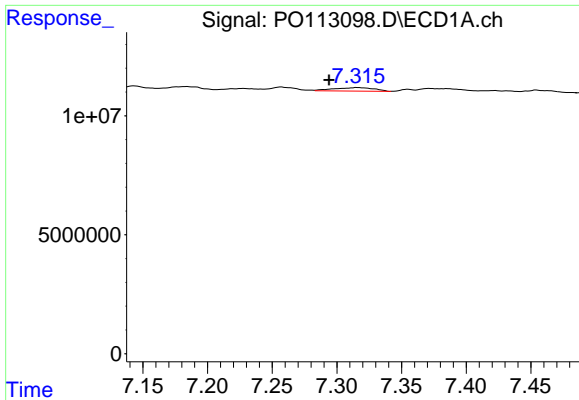
#34 AR-1260-4

R.T.: 7.051 min
 Delta R.T.: 0.001 min
 Response: 3185141
 Conc: 7.11 ng/ml



#34 AR-1260-4

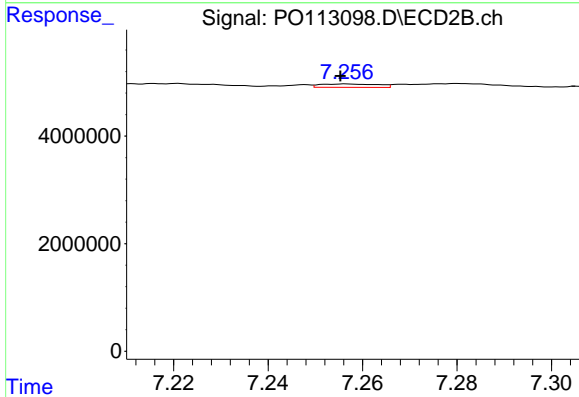
R.T.: 7.010 min
 Delta R.T.: -0.002 min
 Response: 714089
 Conc: 3.45 ng/ml



#35 AR-1260-5

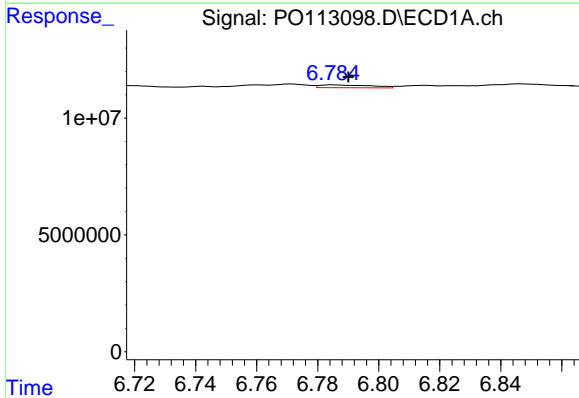
R.T.: 7.316 min
 Delta R.T.: 0.022 min
 Response: 3158016
 Conc: 2.61 ng/ml

Instrument :
 ECD_O
 ClientSampleId :
 JEI0237-1-1



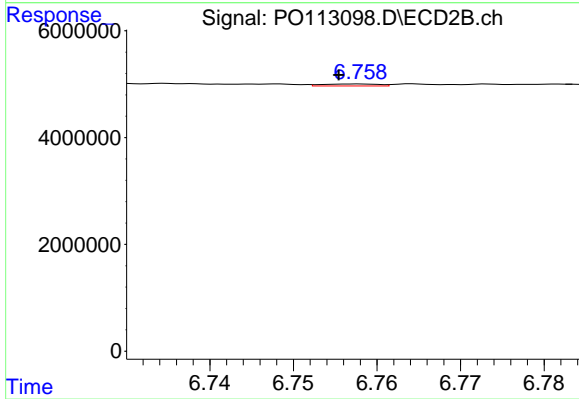
#35 AR-1260-5

R.T.: 7.257 min
 Delta R.T.: 0.001 min
 Response: 545817
 Conc: 1.17 ng/ml



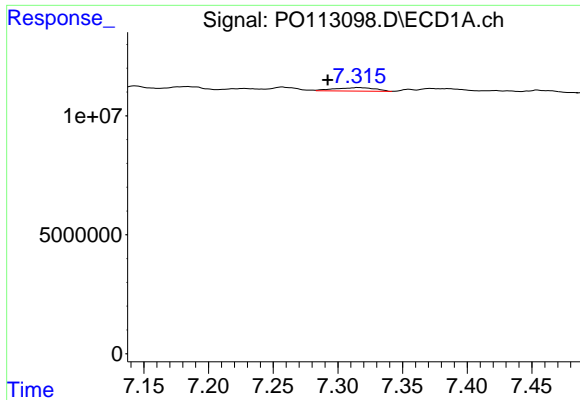
#36 AR-1262-1

R.T.: 6.785 min
 Delta R.T.: -0.005 min
 Response: 1461840
 Conc: 1.60 ng/ml



#36 AR-1262-1

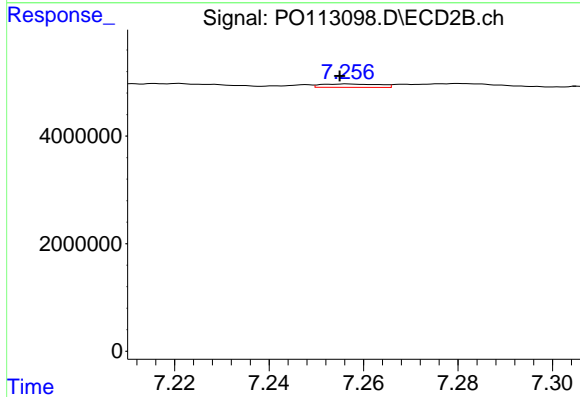
R.T.: 6.758 min
 Delta R.T.: 0.002 min
 Response: 176952
 Conc: 0.43 ng/ml



#37 AR-1262-2

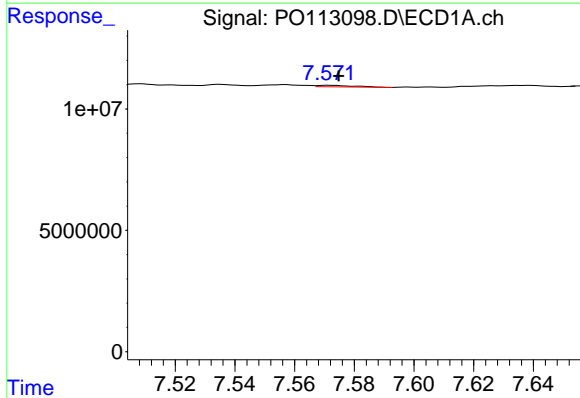
R.T.: 7.316 min
 Delta R.T.: 0.024 min
 Response: 3158016
 Conc: 2.09 ng/ml

Instrument :
 ECD_O
 ClientSampleId :
 JEI0237-1-1



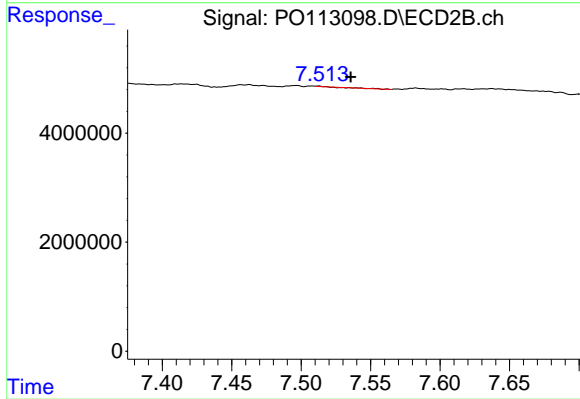
#37 AR-1262-2

R.T.: 7.257 min
 Delta R.T.: 0.002 min
 Response: 545817
 Conc: 1.05 ng/ml



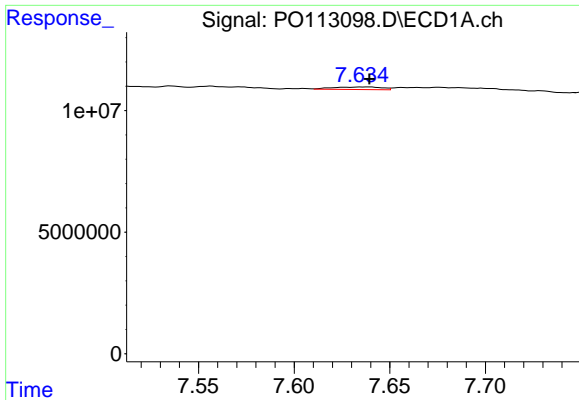
#38 AR-1262-3

R.T.: 7.572 min
 Delta R.T.: -0.003 min
 Response: 538272
 Conc: 0.97 ng/ml



#38 AR-1262-3

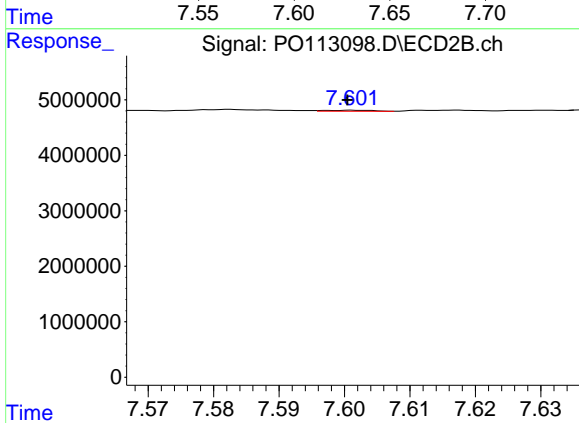
R.T.: 7.512 min
 Delta R.T.: -0.024 min
 Response: 19281
 Conc: 0.11 ng/ml



#39 AR-1262-4

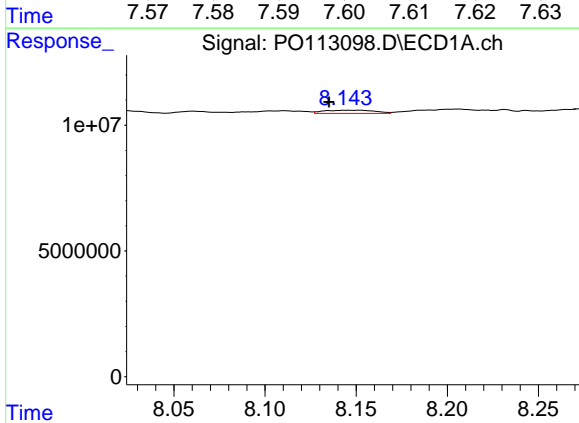
R.T.: 7.635 min
 Delta R.T.: -0.004 min
 Response: 1882700
 Conc: 1.93 ng/ml

Instrument :
 ECD_O
 ClientSampleId :
 JEI0237-1-1



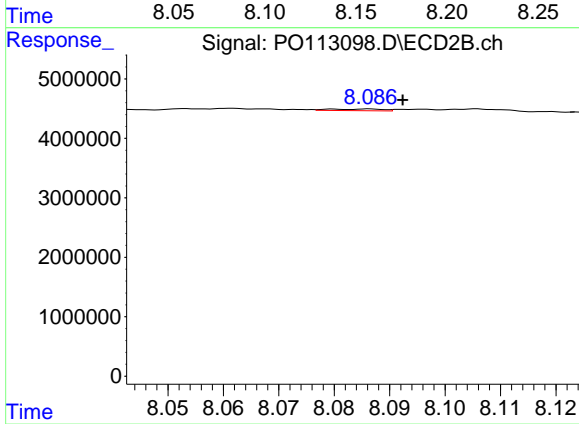
#39 AR-1262-4

R.T.: 7.602 min
 Delta R.T.: 0.001 min
 Response: 98541
 Conc: 0.34 ng/ml



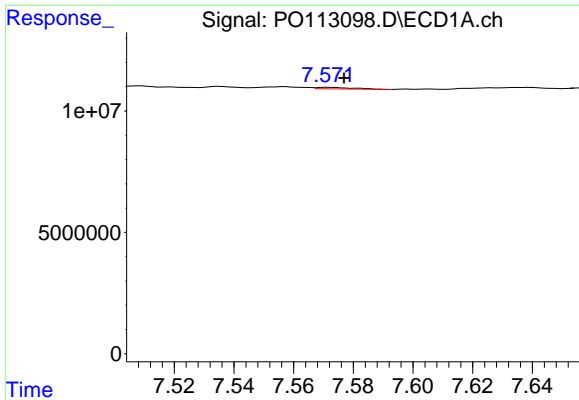
#40 AR-1262-5

R.T.: 8.145 min
 Delta R.T.: 0.010 min
 Response: 2414478
 Conc: 5.79 ng/ml



#40 AR-1262-5

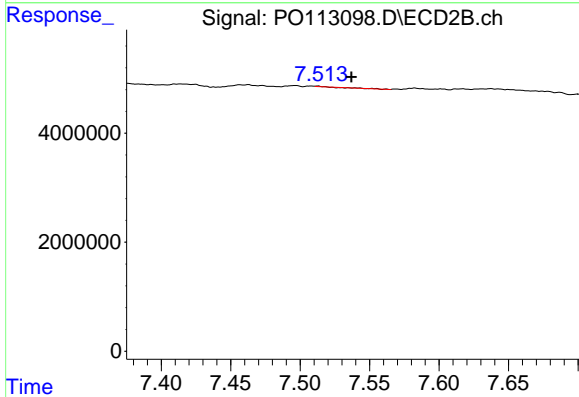
R.T.: 8.086 min
 Delta R.T.: -0.006 min
 Response: 184609
 Conc: 1.70 ng/ml



#41 AR-1268-1

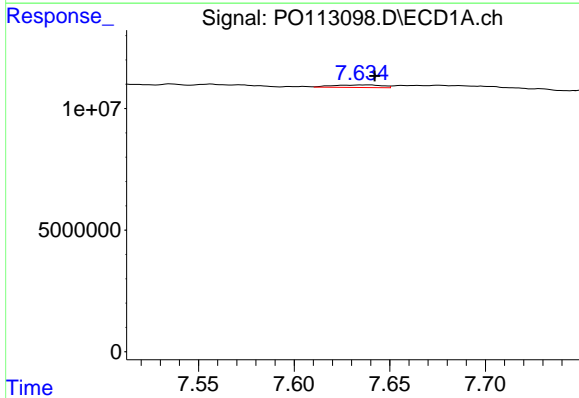
R.T.: 7.572 min
 Delta R.T.: -0.005 min
 Response: 538272
 Conc: 0.31 ng/ml

Instrument :
 ECD_O
 ClientSampleId :
 JEI0237-1-1



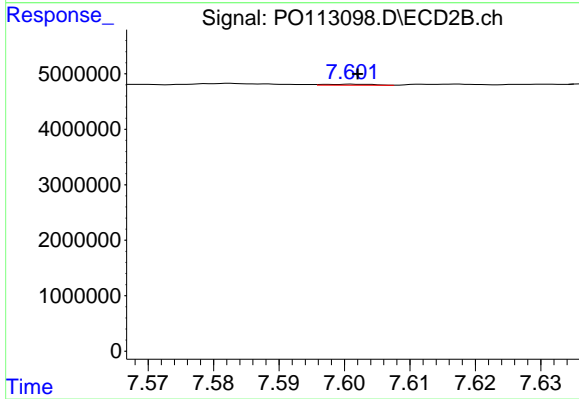
#41 AR-1268-1

R.T.: 7.512 min
 Delta R.T.: -0.025 min
 Response: 19281
 Conc: 0.04 ng/ml



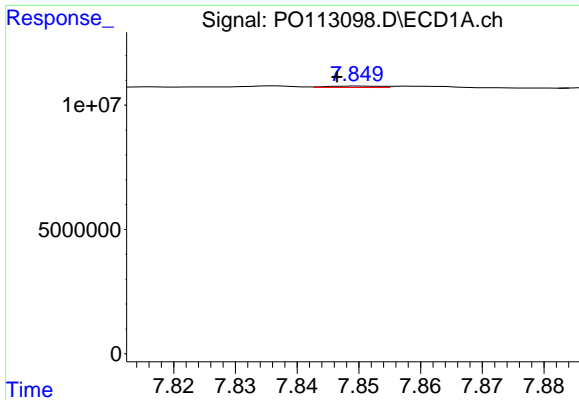
#42 AR-1268-2

R.T.: 7.635 min
 Delta R.T.: -0.007 min
 Response: 1882700
 Conc: 1.30 ng/ml



#42 AR-1268-2

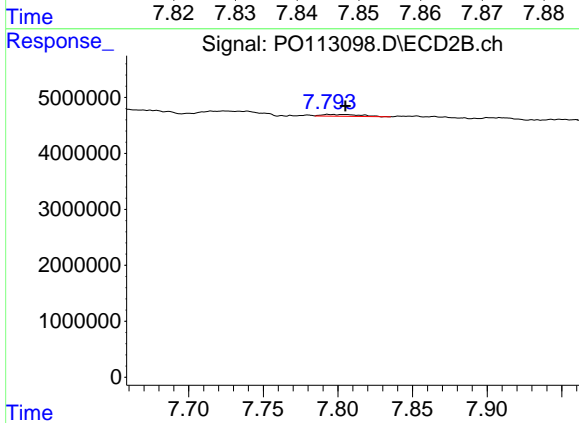
R.T.: 7.602 min
 Delta R.T.: 0.000 min
 Response: 98541
 Conc: 0.24 ng/ml



#43 AR-1268-3

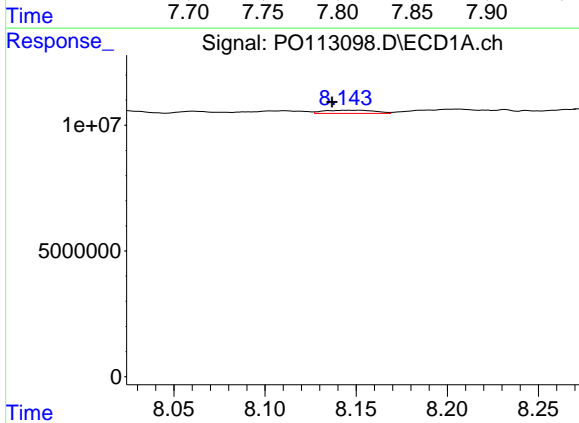
R.T.: 7.850 min
 Delta R.T.: 0.004 min
 Response: 340023
 Conc: 0.28 ng/ml

Instrument :
 ECD_O
 ClientSampleId :
 JEI0237-1-1



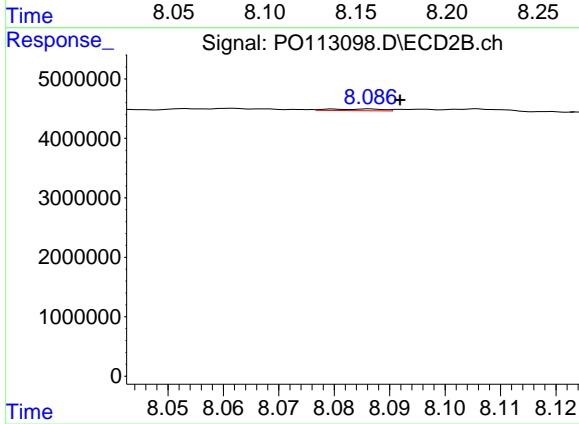
#43 AR-1268-3

R.T.: 7.793 min
 Delta R.T.: -0.012 min
 Response: 578536
 Conc: 1.77 ng/ml



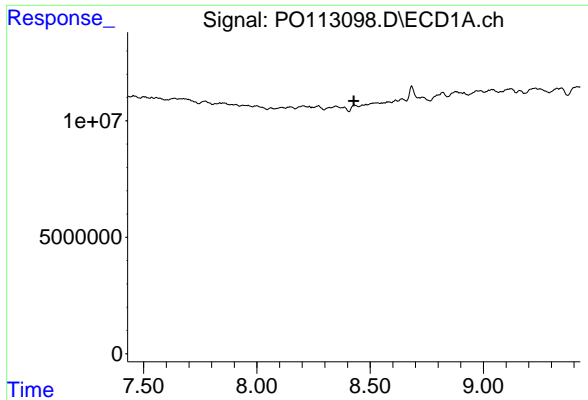
#44 AR-1268-4

R.T.: 8.145 min
 Delta R.T.: 0.008 min
 Response: 2414478
 Conc: 5.24 ng/ml



#44 AR-1268-4

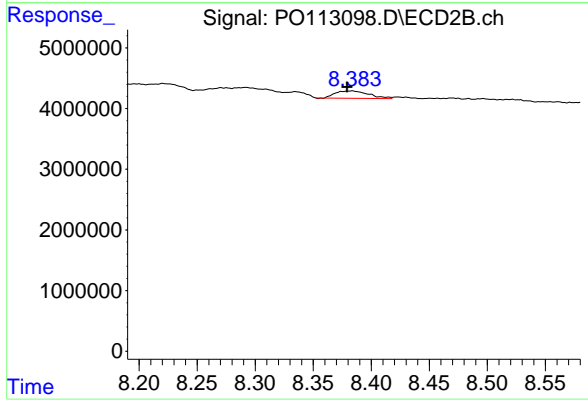
R.T.: 8.086 min
 Delta R.T.: -0.006 min
 Response: 184609
 Conc: 1.53 ng/ml



#45 AR-1268-5

R.T.: 8.429 min
 Delta R.T.: 0.001 min
 Response: -232063
 Conc: N.D.

Instrument :
 ECD_O
 ClientSampleId :
 JEI0237-1-1



#45 AR-1268-5

R.T.: 8.384 min
 Delta R.T.: 0.004 min
 Response: 2426146
 Conc: 3.11 ng/ml