

Data Path : Z:\pestpcbsrv\HPCHEM1\ECD_0\Data\P0082025\
 Data File : PO113101.D
 Signal(s) : Signal #1: ECD1A.ch Signal #2: ECD2B.ch
 Acq On : 20 Aug 2025 19:16
 Operator : YP/AJ
 Sample : Q2907-04 10X
 Misc :
 ALS Vial : 22 Sample Multiplier: 1

Instrument :
 ECD_0
 ClientSampleId :
 BC271336-1-2

Integration File signal 1: autoint1.e
 Integration File signal 2: autoint2.e
 Quant Time: Aug 21 01:42:54 2025
 Quant Method : Z:\pestpcbsrv\HPCHEM1\ECD_0\methods\P0081825.M
 Quant Title : GC EXTRACTABLES
 QLast Update : Tue Aug 19 06:08:32 2025
 Response via : Initial Calibration
 Integrator: ChemStation

Volume Inj. : 2 µl
 Signal #1 Phase : ZB-MR1 Signal #2 Phase: ZB-MR2
 Signal #1 Info : 30Mx0.32mmx 0.50µ Signal #2 Info : 30M x 0.32mm x 0.25µm

Compound	RT#1	RT#2	Resp#1	Resp#2	ng/ml	ng/ml
System Monitoring Compounds						
1) SA Tetrachlo...	3.664	3.655	8278302	4969794	1.011	0.982
2) SA Decachlor...	8.683	8.627	4120071	2504705	0.594	1.322 #
Target Compounds						
4) L1 AR-1016-2	4.771	4.750	115949	77047	0.289	0.299
5) L1 AR-1016-3	4.837	4.923	396066	310260	1.553	2.222 #
6) L1 AR-1016-4	4.971	4.965	2777674	1550934	12.738	13.290
7) L1 AR-1016-5	5.202	5.177	3324401	2716696	15.000	19.061 #
8) L2 AR-1221-1	3.886	3.862	163078	22592	1.743	0.358 #
9) L2 AR-1221-2	3.993	3.948	506376	52707	7.496	1.129 #
10) L2 AR-1221-3	4.040	4.021	308665	53053	1.394	0.357 #
11) L3 AR-1232-1	4.040	4.021	308665	53053	1.774	0.452 #
12) L3 AR-1232-2	4.536	4.750	1401769	77047	14.038	0.629 #
13) L3 AR-1232-3	4.771	4.923	115949	310260	0.612	4.898 #
14) L3 AR-1232-4	4.971	5.003	2777674	1115600	29.497	19.843 #
15) L3 AR-1232-5	4.971	5.177	2777674	2716696	44.842	45.381
17) L4 AR-1242-2	4.771	4.750	115949	77047	0.337	0.355
18) L4 AR-1242-3	4.837	4.923	396066	310260	1.785	2.653 #
19) L4 AR-1242-4	4.971	5.003	2777674	1115600	16.013	9.483 #
20) L4 AR-1242-5	5.606	5.527	13990501	4334789	69.896	29.067 #
22) L5 AR-1248-2	4.971	4.965	2777674	1550934	11.484	9.651
23) L5 AR-1248-3	5.202	5.003	3324401	1115600	10.426	6.575 #
24) L5 AR-1248-4	5.552	5.177	26623069	2716696	53.288	13.637 #
25) L5 AR-1248-5	5.606	5.527	13990501	4334789	40.969	20.419 #
26) L6 AR-1254-1	5.552	5.527	26623069	4334789	49.304	13.746 #
27) L6 AR-1254-2	5.700	5.672	31402642	6682186	63.638	23.836 #
28) L6 AR-1254-3	6.101	6.073	5557662	7869944	7.522	18.876 #
29) L6 AR-1254-4	6.329	6.300	3197513	2999429	5.741	10.914 #
30) L6 AR-1254-5	6.753	6.717	8311436	5616100	11.857	15.710 #
31) L7 AR-1260-1	6.251	6.201	5892676	4525456	13.213	17.742 #
32) L7 AR-1260-2	6.405	6.392	8060060	621557	11.737	1.798 #
33) L7 AR-1260-3	6.804	6.540	7152748	2722314	11.584	9.153
34) L7 AR-1260-4	7.048	7.002	6012501	585904	13.425	2.827 #
35) L7 AR-1260-5	7.297	7.251	2688893	604583	2.221	1.291 #
36) L8 AR-1262-1	6.804	6.781	7152748	447401	7.811	1.079 #
37) L8 AR-1262-2	7.297	7.251	2688893	604583	1.778	1.168 #
38) L8 AR-1262-3	7.575	7.507	5502786	271353	9.931	1.511 #
39) L8 AR-1262-4	7.622	7.587	5263415	544131	5.382	1.877 #
40) L8 AR-1262-5	8.149	8.087	1441020	994396	3.457	9.179 #
41) L9 AR-1268-1	7.575	7.507	5502786	271353	3.198	0.533 #
42) L9 AR-1268-2	7.658	7.587	1897138	544131	1.310	1.310
43) L9 AR-1268-3	7.852	7.793	352355	37580	0.292	0.115 #
44) L9 AR-1268-4	8.149	8.087	1441020	994396	3.128	8.257 #

Data Path : Z:\pestpcbsrv\HPCHEM1\ECD_0\Data\P0082025\
 Data File : P0113101.D
 Signal(s) : Signal #1: ECD1A.ch Signal #2: ECD2B.ch
 Acq On : 20 Aug 2025 19:16
 Operator : YP/AJ
 Sample : Q2907-04 10X
 Misc :
 ALS Vial : 22 Sample Multiplier: 1

Instrument :
 ECD_0
ClientSampleId :
 BC271336-1-2

Integration File signal 1: autoint1.e
 Integration File signal 2: autoint2.e
 Quant Time: Aug 21 01:42:54 2025
 Quant Method : Z:\pestpcbsrv\HPCHEM1\ECD_0\methods\P0081825.M
 Quant Title : GC EXTRACTABLES
 QLast Update : Tue Aug 19 06:08:32 2025
 Response via : Initial Calibration
 Integrator: ChemStation

Volume Inj. : 2 µl
 Signal #1 Phase : ZB-MR1 Signal #2 Phase: ZB-MR2
 Signal #1 Info : 30Mx0.32mmx 0.50µ Signal #2 Info : 30M x 0.32mm x 0.25µm

	Compound	RT#1	RT#2	Resp#1	Resp#2	ng/ml	ng/ml
45)	L9 AR-1268-5	8.434	8.380	107472	1522826	0.034	1.950 #

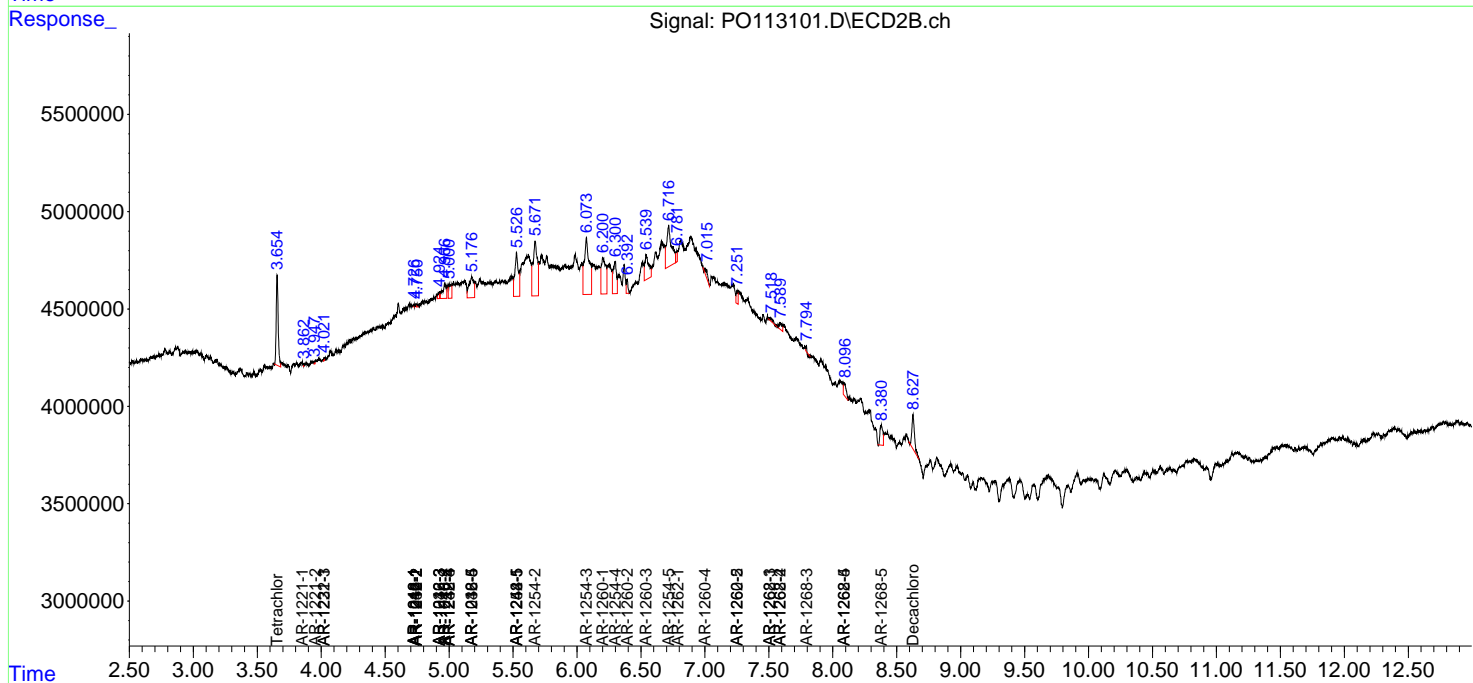
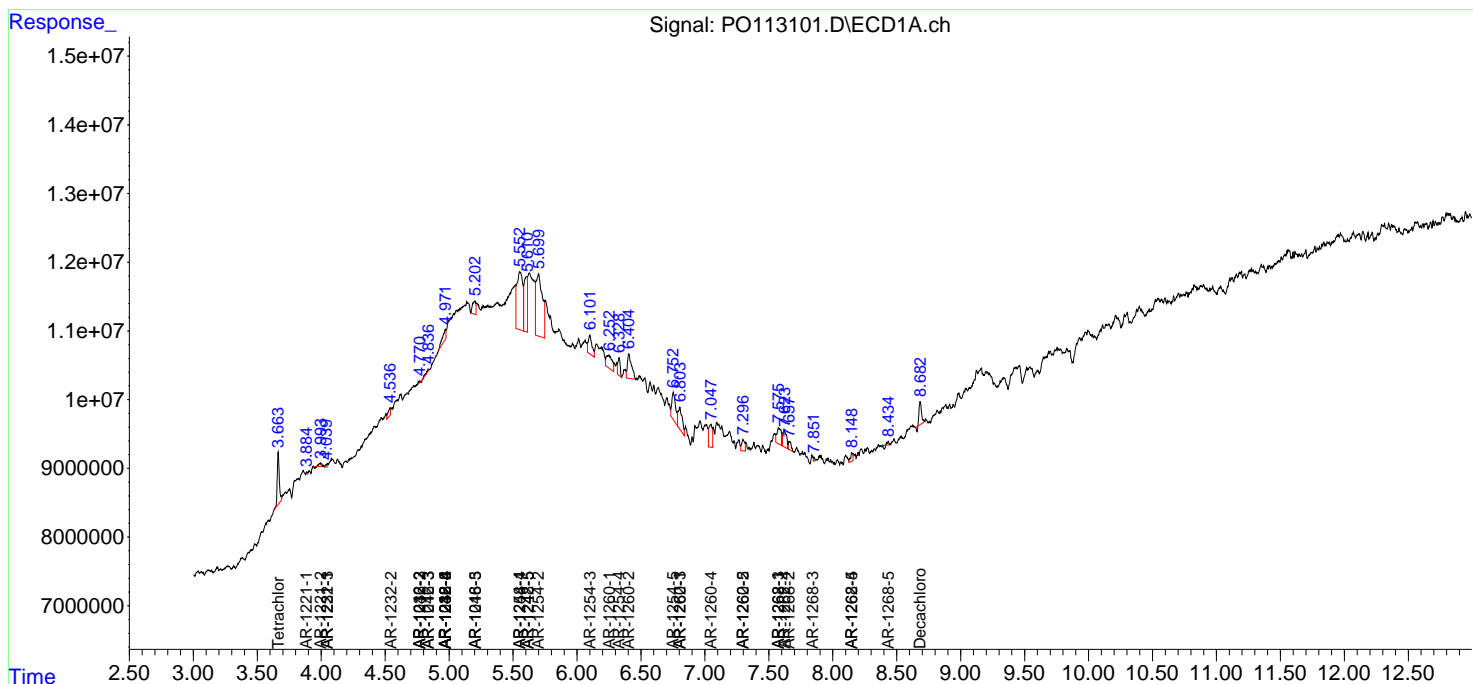
(f)=RT Delta > 1/2 Window (#)=Amounts differ by > 25% (m)=manual int.

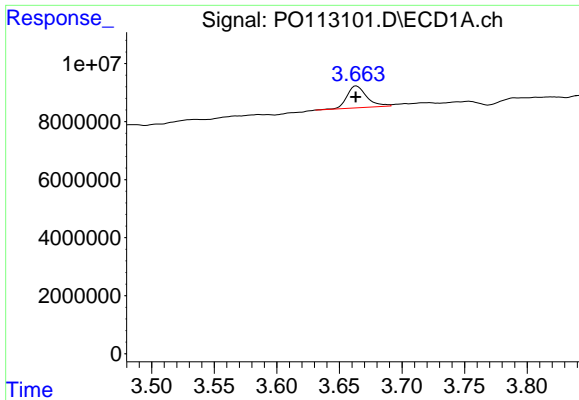
Data Path : Z:\pestpcbsrv\HPCHEM1\ECD_O\Data\PO082025\
 Data File : PO113101.D
 Signal(s) : Signal #1: ECD1A.ch Signal #2: ECD2B.ch
 Acq On : 20 Aug 2025 19:16
 Operator : YP/AJ
 Sample : Q2907-04 10X
 Misc :
 ALS Vial : 22 Sample Multiplier: 1

Instrument :
 ECD_O
 ClientSampleId :
 BC271336-1-2

Integration File signal 1: autoint1.e
 Integration File signal 2: autoint2.e
 Quant Time: Aug 21 01:42:54 2025
 Quant Method : Z:\pestpcbsrv\HPCHEM1\ECD_O\methods\PO081825.M
 Quant Title : GC EXTRACTABLES
 QLast Update : Tue Aug 19 06:08:32 2025
 Response via : Initial Calibration
 Integrator: ChemStation

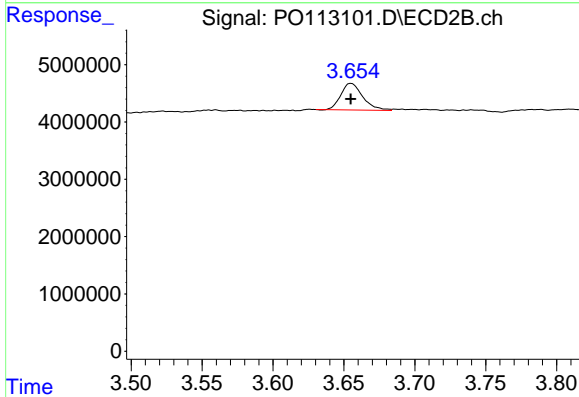
Volume Inj. : 2 µl
 Signal #1 Phase : ZB-MR1 Signal #2 Phase: ZB-MR2
 Signal #1 Info : 30Mx0.32mmx 0.50µ Signal #2 Info : 30M x 0.32mm x 0.25µm



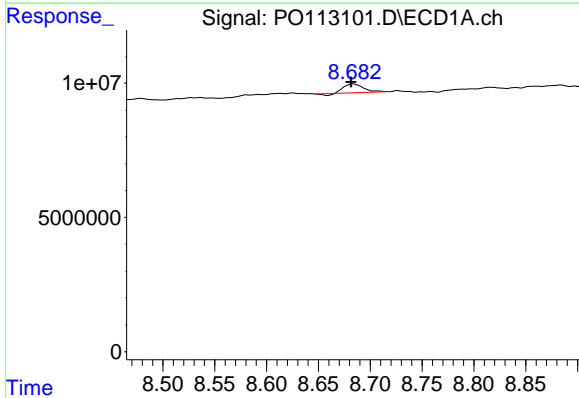


#1 Tetrachloro-m-xylene
 R.T.: 3.664 min
 Delta R.T.: 0.000 min
 Response: 8278302
 Conc: 1.01 ng/ml

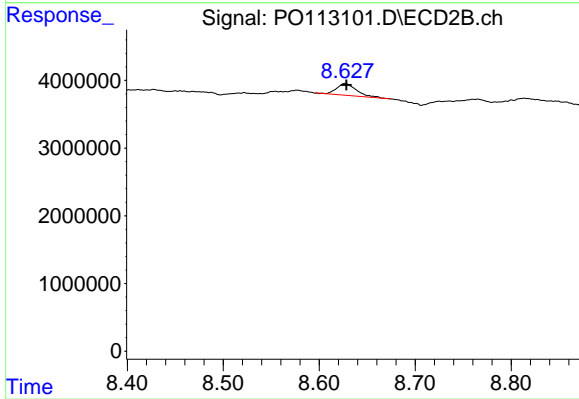
Instrument :
 ECD_O
 ClientSampleId :
 BC271336-1-2



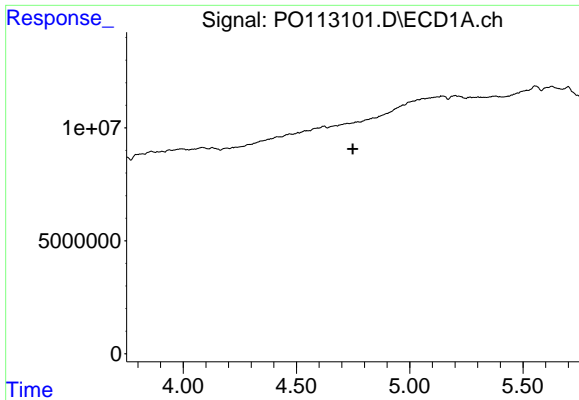
#1 Tetrachloro-m-xylene
 R.T.: 3.655 min
 Delta R.T.: 0.000 min
 Response: 4969794
 Conc: 0.98 ng/ml



#2 Decachlorobiphenyl
 R.T.: 8.683 min
 Delta R.T.: 0.002 min
 Response: 4120071
 Conc: 0.59 ng/ml



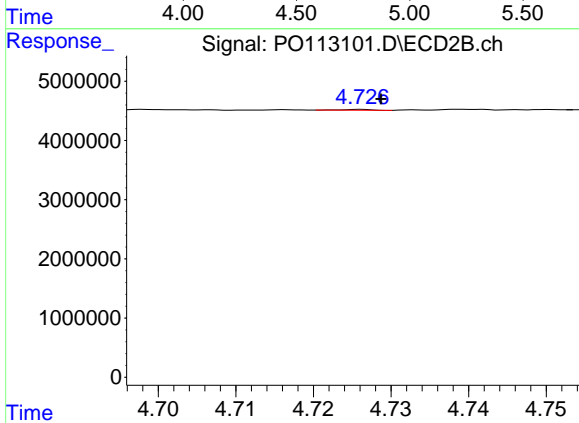
#2 Decachlorobiphenyl
 R.T.: 8.627 min
 Delta R.T.: -0.001 min
 Response: 2504705
 Conc: 1.32 ng/ml



#3 AR-1016-1

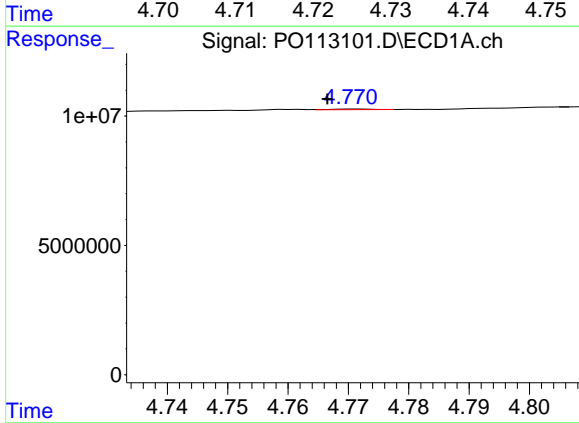
R.T.: 4.760 min
 Delta R.T.: 0.012 min
 Response: -140376
 Conc: N.D.

Instrument :
 ECD_O
 ClientSampleId :
 BC271336-1-2



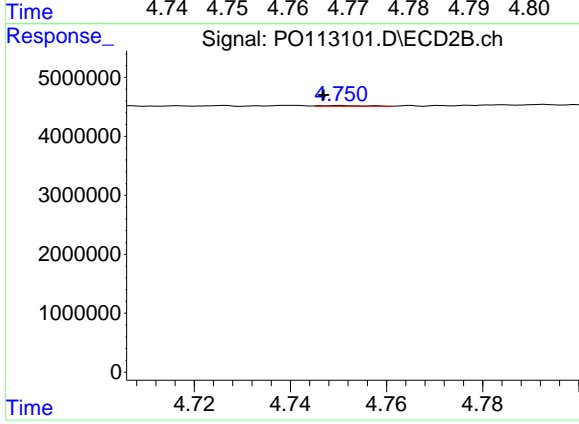
#3 AR-1016-1

R.T.: 4.726 min
 Delta R.T.: -0.003 min
 Response: 38223
 Conc: 0.22 ng/ml



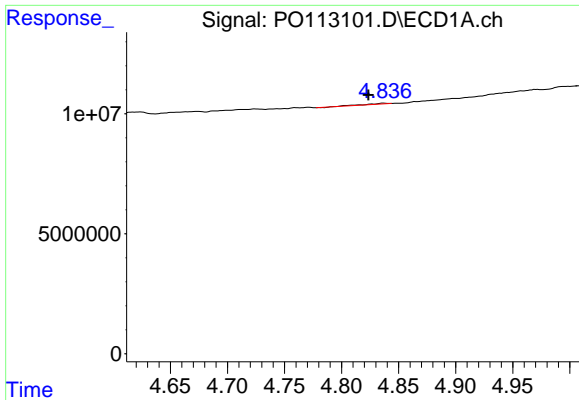
#4 AR-1016-2

R.T.: 4.771 min
 Delta R.T.: 0.005 min
 Response: 115949
 Conc: 0.29 ng/ml



#4 AR-1016-2

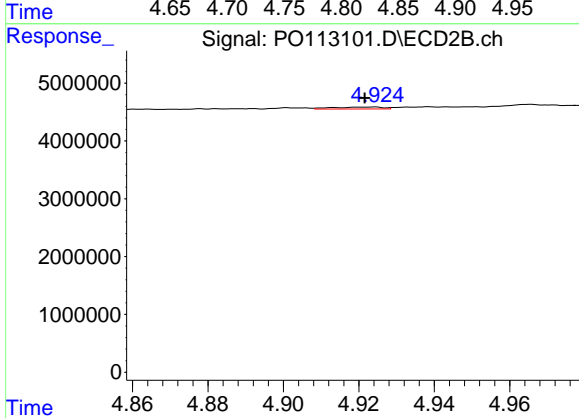
R.T.: 4.750 min
 Delta R.T.: 0.003 min
 Response: 77047
 Conc: 0.30 ng/ml



#5 AR-1016-3

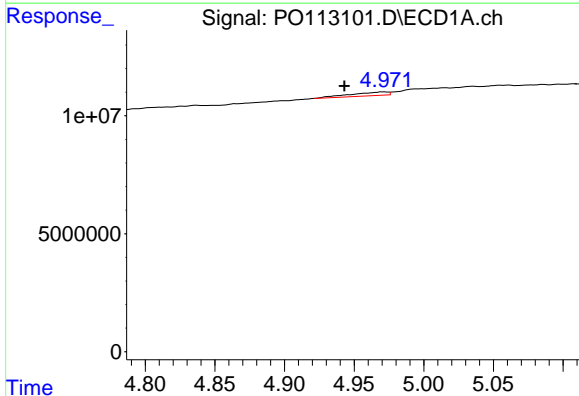
R.T.: 4.837 min
 Delta R.T.: 0.014 min
 Response: 396066
 Conc: 1.55 ng/ml

Instrument :
 ECD_O
 ClientSampleId :
 BC271336-1-2



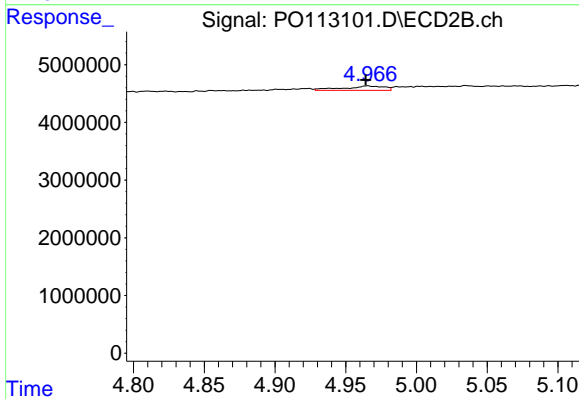
#5 AR-1016-3

R.T.: 4.923 min
 Delta R.T.: 0.002 min
 Response: 310260
 Conc: 2.22 ng/ml



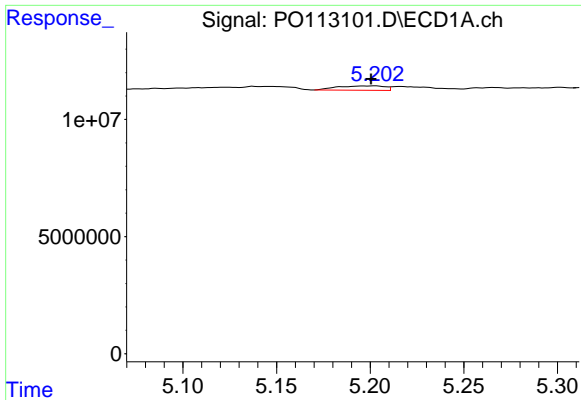
#6 AR-1016-4

R.T.: 4.971 min
 Delta R.T.: 0.028 min
 Response: 2777674
 Conc: 12.74 ng/ml



#6 AR-1016-4

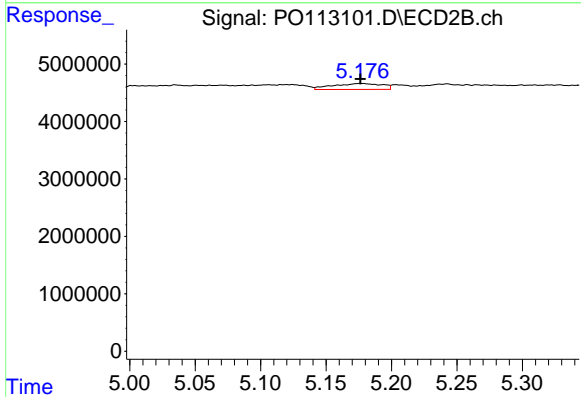
R.T.: 4.965 min
 Delta R.T.: 0.001 min
 Response: 1550934
 Conc: 13.29 ng/ml



#7 AR-1016-5

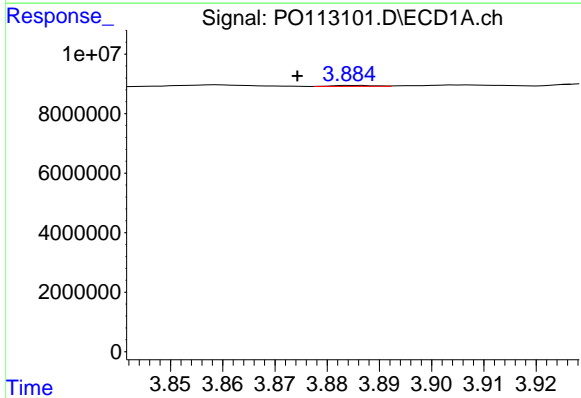
R.T.: 5.202 min
 Delta R.T.: 0.002 min
 Response: 3324401
 Conc: 15.00 ng/ml

Instrument :
 ECD_O
 ClientSampleId :
 BC271336-1-2



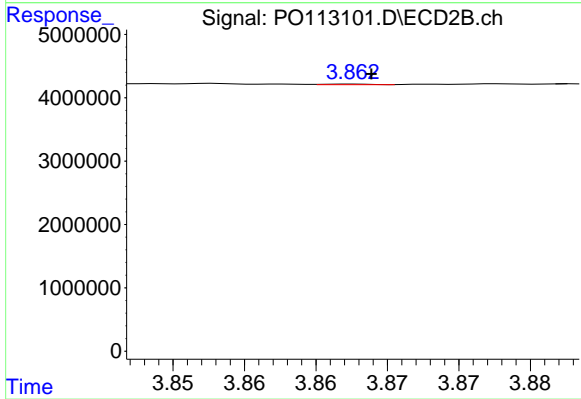
#7 AR-1016-5

R.T.: 5.177 min
 Delta R.T.: 0.000 min
 Response: 2716696
 Conc: 19.06 ng/ml



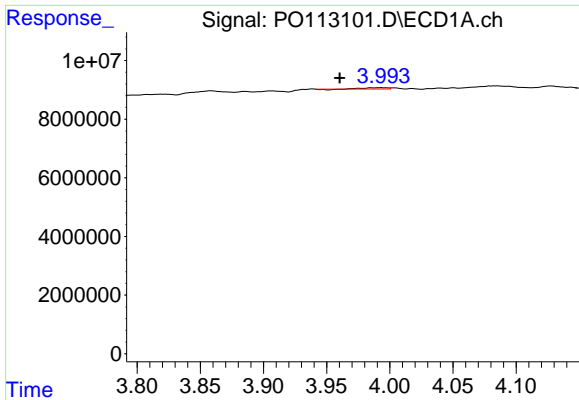
#8 AR-1221-1

R.T.: 3.886 min
 Delta R.T.: 0.011 min
 Response: 163078
 Conc: 1.74 ng/ml



#8 AR-1221-1

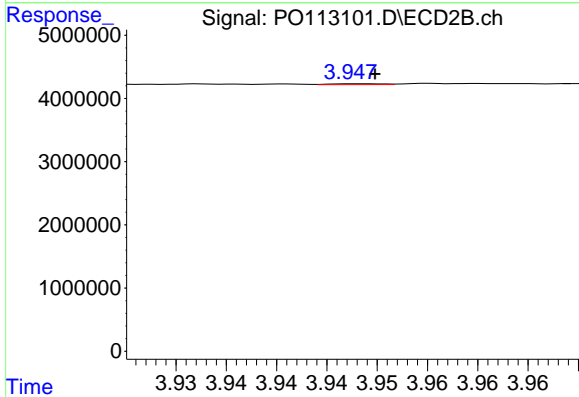
R.T.: 3.862 min
 Delta R.T.: -0.001 min
 Response: 22592
 Conc: 0.36 ng/ml



#9 AR-1221-2

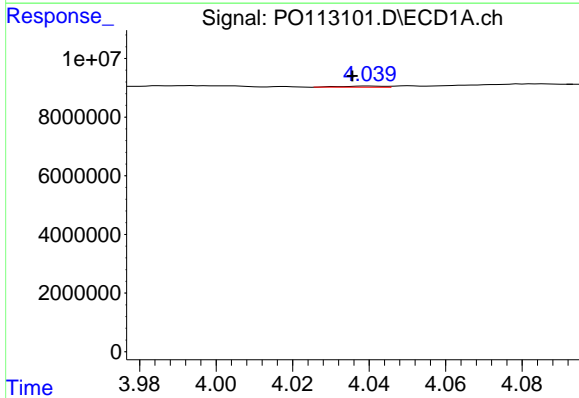
R.T.: 3.993 min
 Delta R.T.: 0.033 min
 Response: 506376
 Conc: 7.50 ng/ml

Instrument :
 ECD_O
 ClientSampleId :
 BC271336-1-2



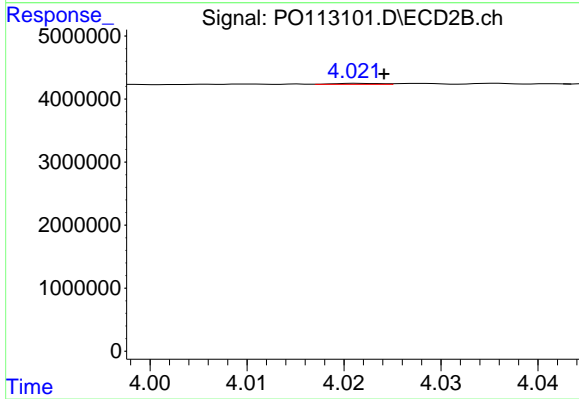
#9 AR-1221-2

R.T.: 3.948 min
 Delta R.T.: -0.002 min
 Response: 52707
 Conc: 1.13 ng/ml



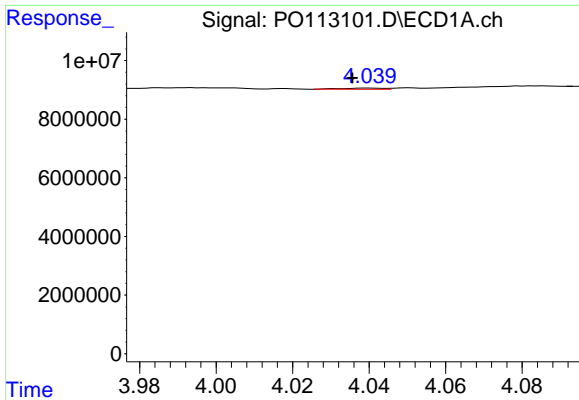
#10 AR-1221-3

R.T.: 4.040 min
 Delta R.T.: 0.004 min
 Response: 308665
 Conc: 1.39 ng/ml



#10 AR-1221-3

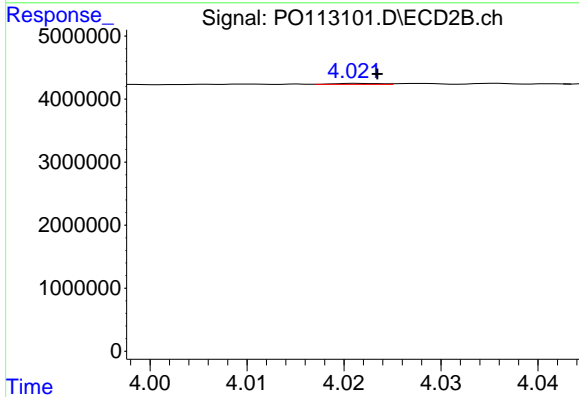
R.T.: 4.021 min
 Delta R.T.: -0.003 min
 Response: 53053
 Conc: 0.36 ng/ml



#11 AR-1232-1

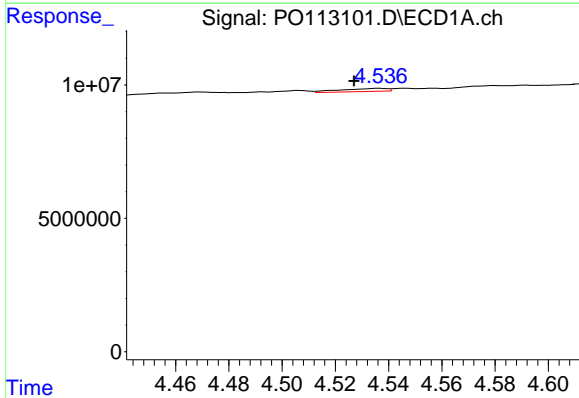
R.T.: 4.040 min
 Delta R.T.: 0.004 min
 Response: 308665
 Conc: 1.77 ng/ml

Instrument :
 ECD_O
 ClientSampleId :
 BC271336-1-2



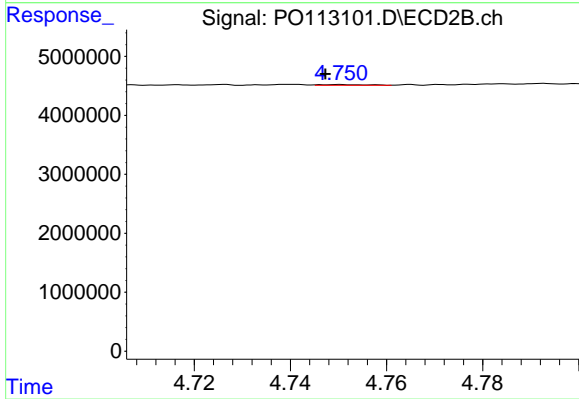
#11 AR-1232-1

R.T.: 4.021 min
 Delta R.T.: -0.002 min
 Response: 53053
 Conc: 0.45 ng/ml



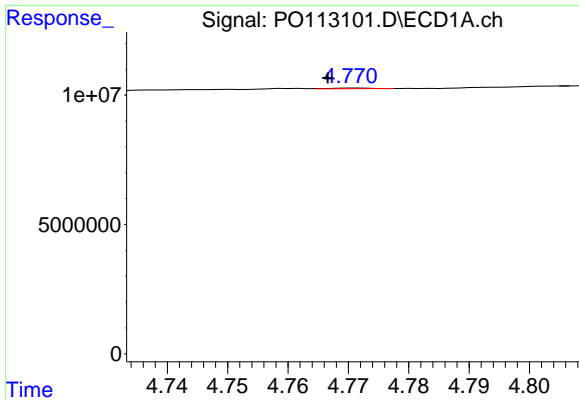
#12 AR-1232-2

R.T.: 4.536 min
 Delta R.T.: 0.009 min
 Response: 1401769
 Conc: 14.04 ng/ml



#12 AR-1232-2

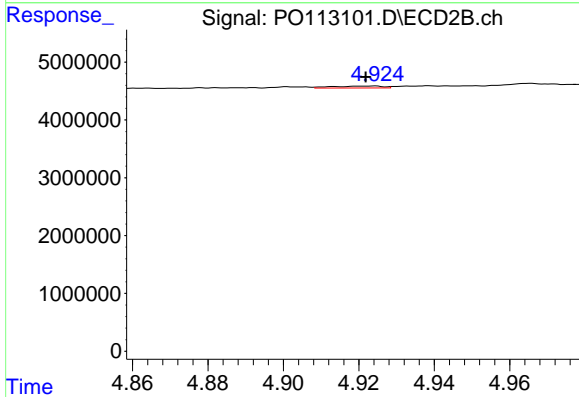
R.T.: 4.750 min
 Delta R.T.: 0.003 min
 Response: 77047
 Conc: 0.63 ng/ml



#13 AR-1232-3

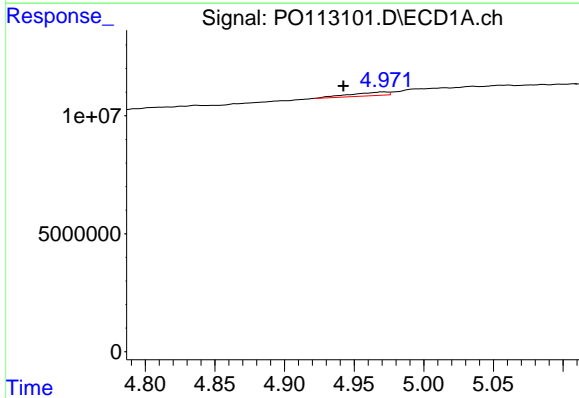
R.T.: 4.771 min
 Delta R.T.: 0.005 min
 Response: 115949
 Conc: 0.61 ng/ml

Instrument :
 ECD_O
 ClientSampleId :
 BC271336-1-2



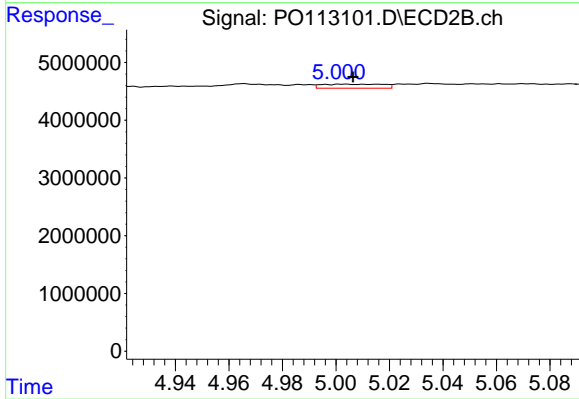
#13 AR-1232-3

R.T.: 4.923 min
 Delta R.T.: 0.002 min
 Response: 310260
 Conc: 4.90 ng/ml



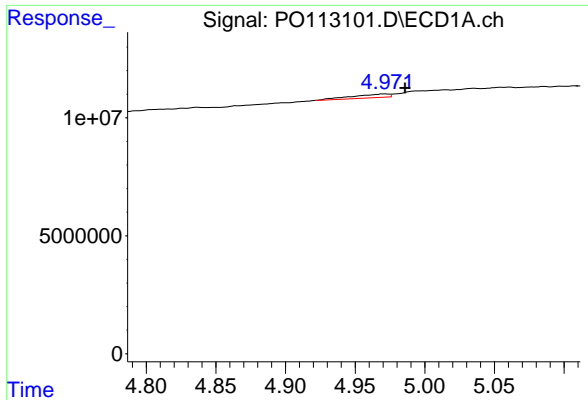
#14 AR-1232-4

R.T.: 4.971 min
 Delta R.T.: 0.029 min
 Response: 2777674
 Conc: 29.50 ng/ml



#14 AR-1232-4

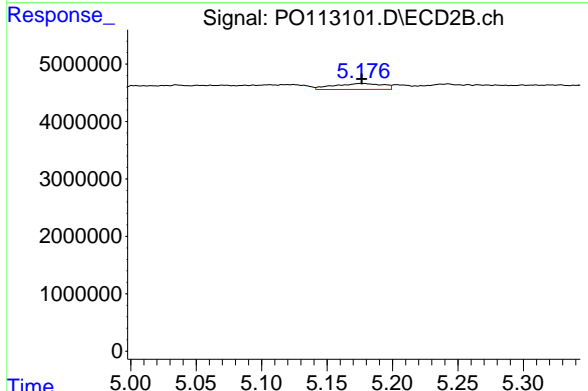
R.T.: 5.003 min
 Delta R.T.: -0.004 min
 Response: 1115600
 Conc: 19.84 ng/ml



#15 AR-1232-5

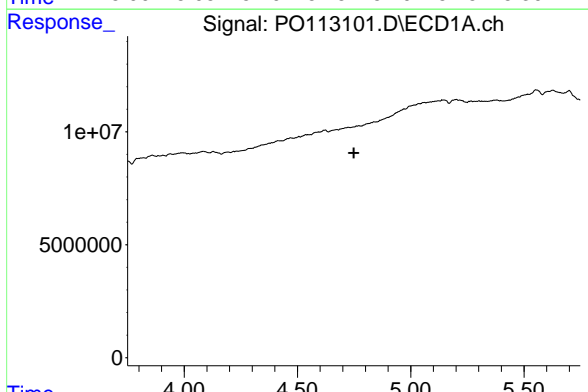
R.T.: 4.971 min
 Delta R.T.: -0.015 min
 Response: 2777674
 Conc: 44.84 ng/ml

Instrument :
 ECD_O
 ClientSampleId :
 BC271336-1-2



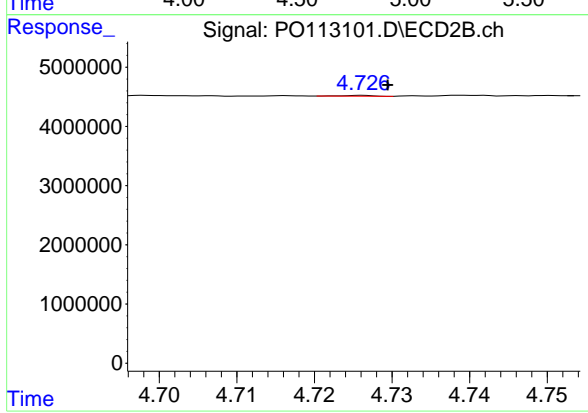
#15 AR-1232-5

R.T.: 5.177 min
 Delta R.T.: 0.000 min
 Response: 2716696
 Conc: 45.38 ng/ml



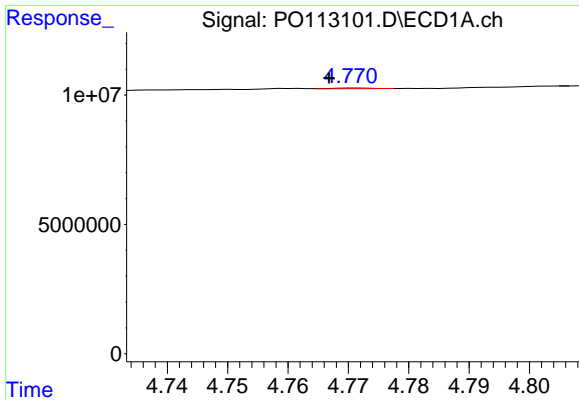
#16 AR-1242-1

R.T.: 4.760 min
 Delta R.T.: 0.012 min
 Response: -140376
 Conc: N.D.



#16 AR-1242-1

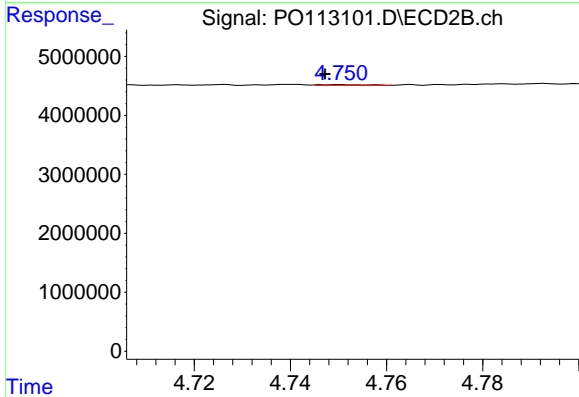
R.T.: 4.726 min
 Delta R.T.: -0.004 min
 Response: 38223
 Conc: 0.26 ng/ml



#17 AR-1242-2

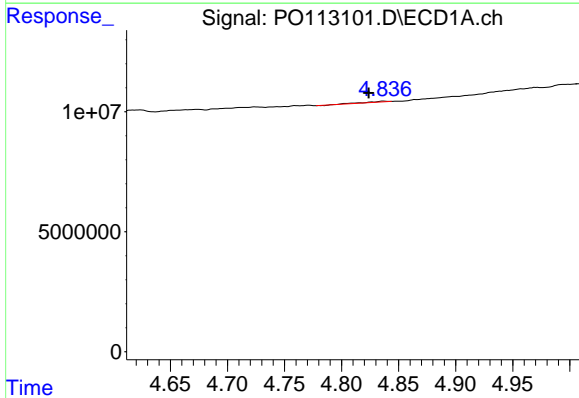
R.T.: 4.771 min
 Delta R.T.: 0.005 min
 Response: 115949
 Conc: 0.34 ng/ml

Instrument :
 ECD_O
 ClientSampleId :
 BC271336-1-2



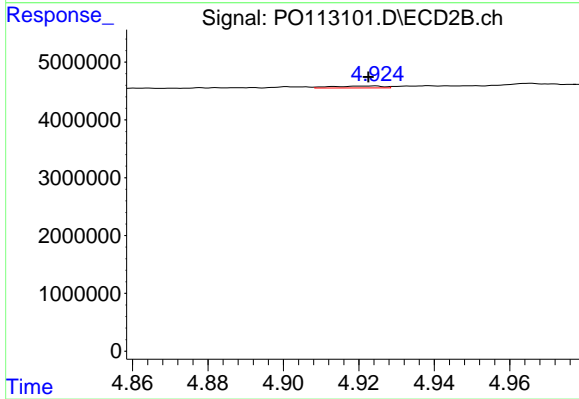
#17 AR-1242-2

R.T.: 4.750 min
 Delta R.T.: 0.003 min
 Response: 77047
 Conc: 0.36 ng/ml



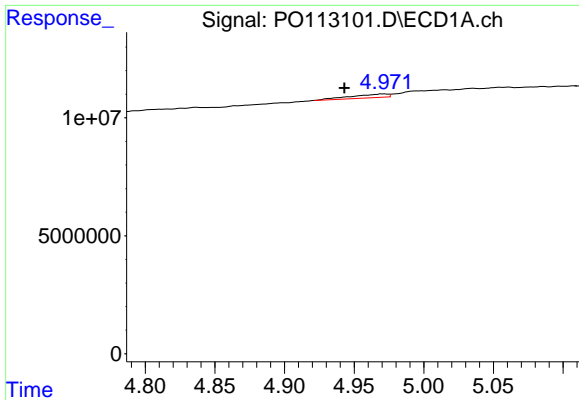
#18 AR-1242-3

R.T.: 4.837 min
 Delta R.T.: 0.013 min
 Response: 396066
 Conc: 1.79 ng/ml



#18 AR-1242-3

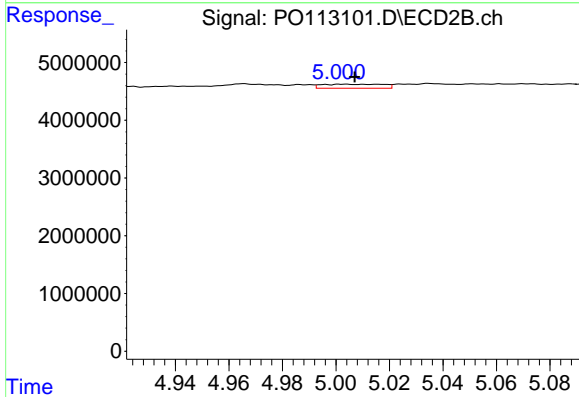
R.T.: 4.923 min
 Delta R.T.: 0.000 min
 Response: 310260
 Conc: 2.65 ng/ml



#19 AR-1242-4

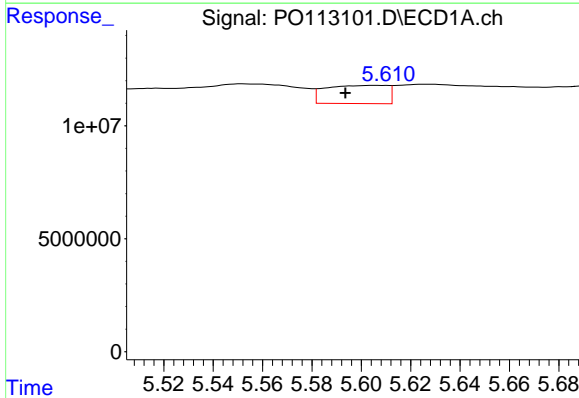
R.T.: 4.971 min
 Delta R.T.: 0.028 min
 Response: 2777674
 Conc: 16.01 ng/ml

Instrument :
 ECD_O
 ClientSampleId :
 BC271336-1-2



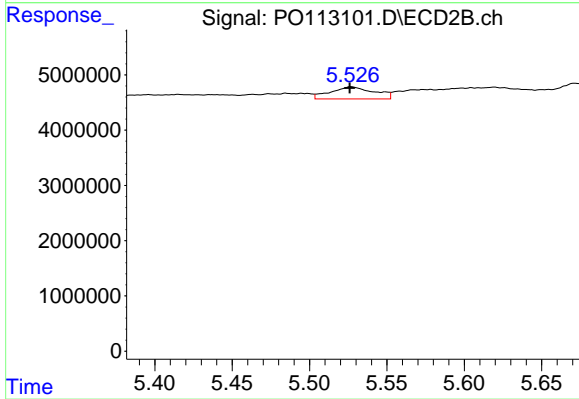
#19 AR-1242-4

R.T.: 5.003 min
 Delta R.T.: -0.004 min
 Response: 1115600
 Conc: 9.48 ng/ml



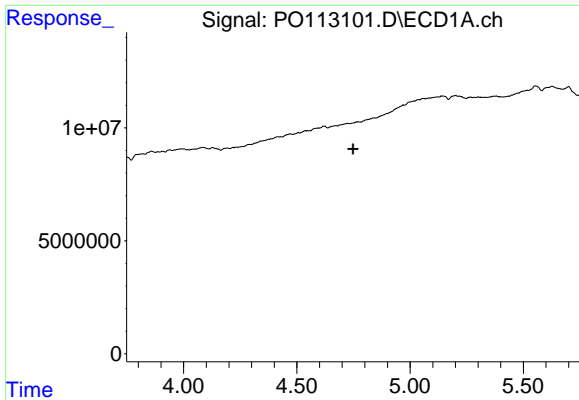
#20 AR-1242-5

R.T.: 5.606 min
 Delta R.T.: 0.013 min
 Response: 13990501
 Conc: 69.90 ng/ml



#20 AR-1242-5

R.T.: 5.527 min
 Delta R.T.: 0.000 min
 Response: 4334789
 Conc: 29.07 ng/ml

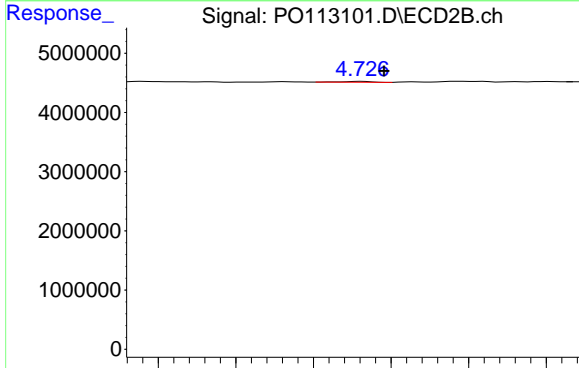


#21 AR-1248-1

R.T.: 4.760 min
 Delta R.T.: 0.012 min
 Response: -140376
 Conc: N.D.

Instrument :
 ECD_O
 ClientSampleId :
 BC271336-1-2

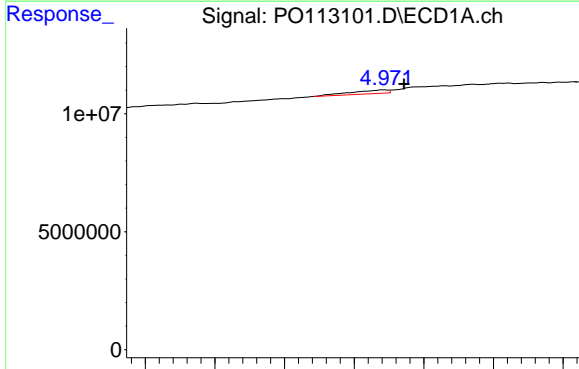
Time



#21 AR-1248-1

R.T.: 4.726 min
 Delta R.T.: -0.003 min
 Response: 38223
 Conc: 0.34 ng/ml

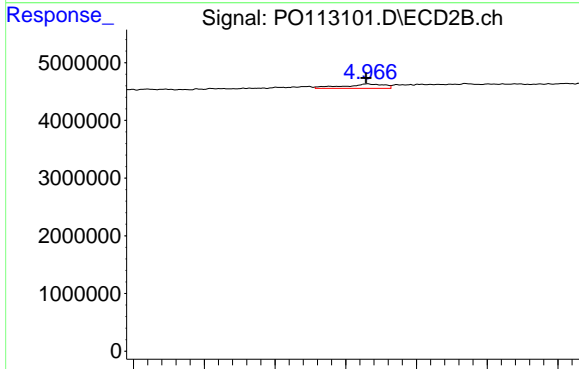
Time



#22 AR-1248-2

R.T.: 4.971 min
 Delta R.T.: -0.015 min
 Response: 2777674
 Conc: 11.48 ng/ml

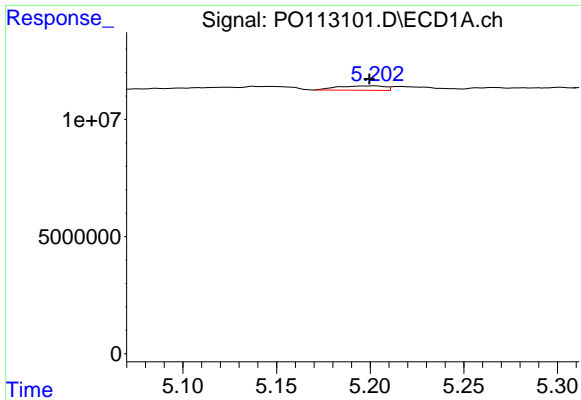
Time



#22 AR-1248-2

R.T.: 4.965 min
 Delta R.T.: 0.000 min
 Response: 1550934
 Conc: 9.65 ng/ml

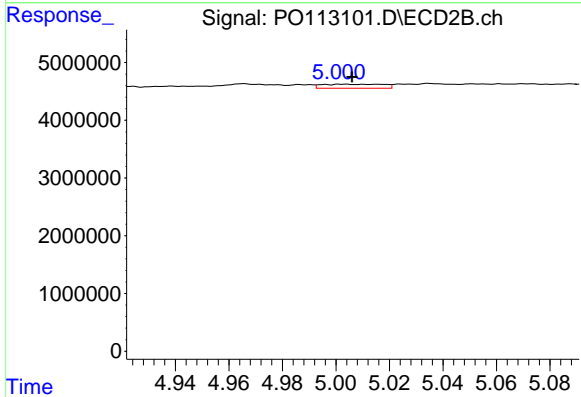
Time



#23 AR-1248-3

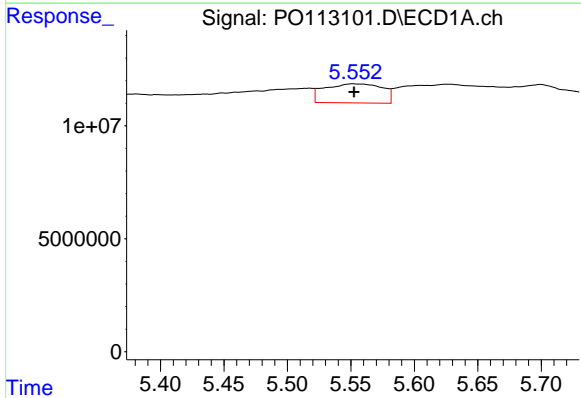
R.T.: 5.202 min
 Delta R.T.: 0.003 min
 Response: 3324401
 Conc: 10.43 ng/ml

Instrument :
 ECD_O
 ClientSampleId :
 BC271336-1-2



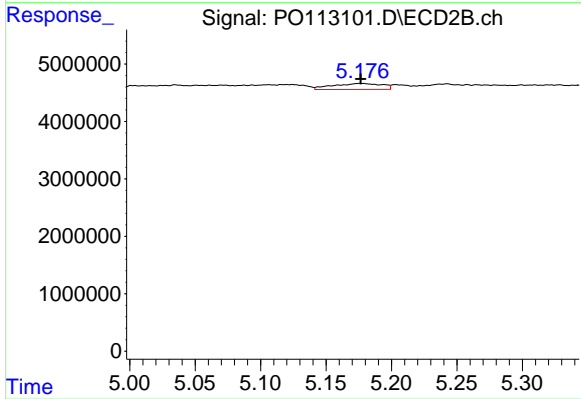
#23 AR-1248-3

R.T.: 5.003 min
 Delta R.T.: -0.003 min
 Response: 1115600
 Conc: 6.58 ng/ml



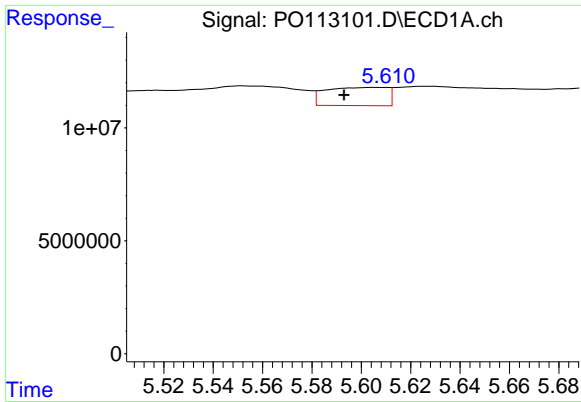
#24 AR-1248-4

R.T.: 5.552 min
 Delta R.T.: 0.000 min
 Response: 26623069
 Conc: 53.29 ng/ml



#24 AR-1248-4

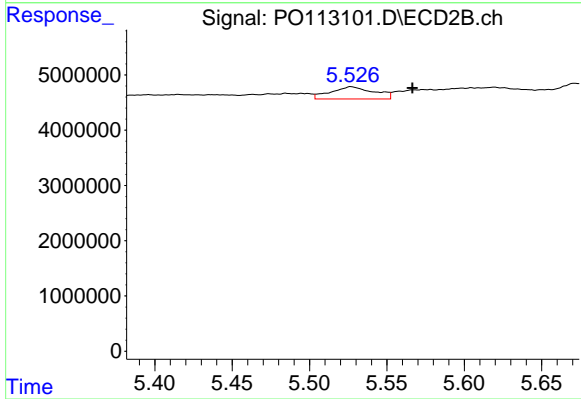
R.T.: 5.177 min
 Delta R.T.: 0.000 min
 Response: 2716696
 Conc: 13.64 ng/ml



#25 AR-1248-5

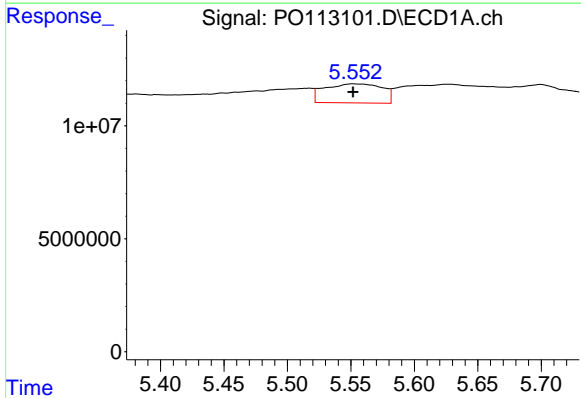
R.T.: 5.606 min
 Delta R.T.: 0.013 min
 Response: 13990501
 Conc: 40.97 ng/ml

Instrument :
 ECD_O
 ClientSampleId :
 BC271336-1-2



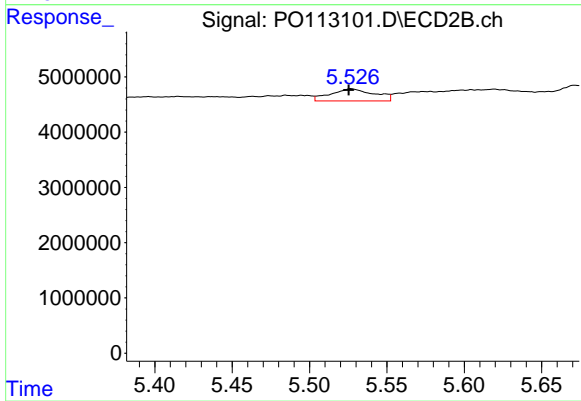
#25 AR-1248-5

R.T.: 5.527 min
 Delta R.T.: -0.040 min
 Response: 4334789
 Conc: 20.42 ng/ml



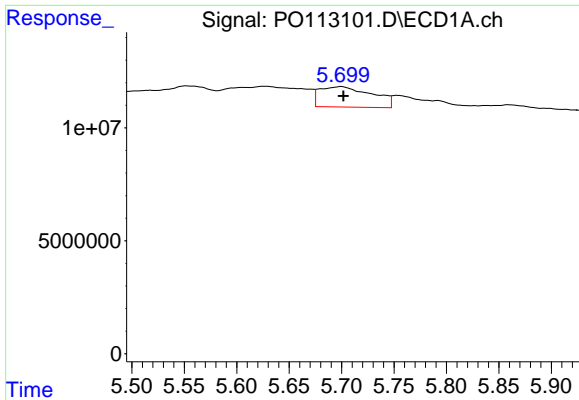
#26 AR-1254-1

R.T.: 5.552 min
 Delta R.T.: 0.000 min
 Response: 26623069
 Conc: 49.30 ng/ml



#26 AR-1254-1

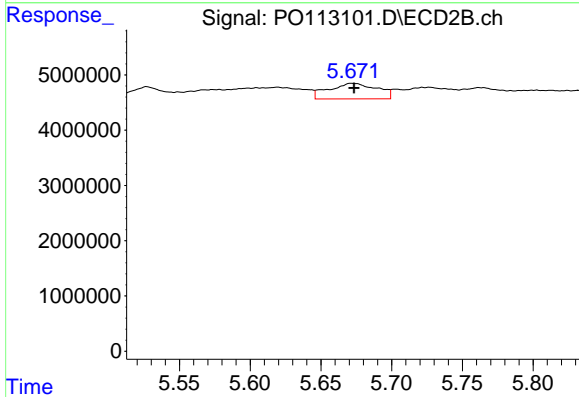
R.T.: 5.527 min
 Delta R.T.: 0.002 min
 Response: 4334789
 Conc: 13.75 ng/ml



#27 AR-1254-2

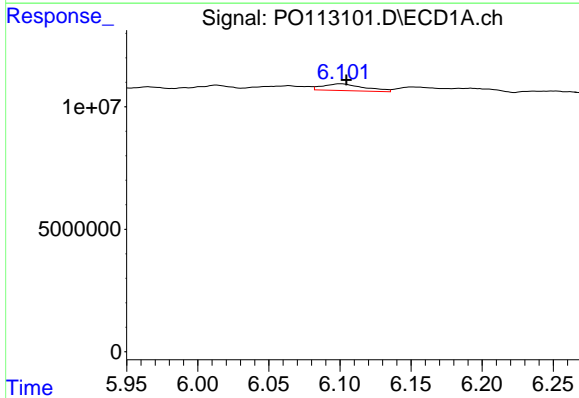
R.T.: 5.700 min
 Delta R.T.: -0.002 min
 Response: 31402642
 Conc: 63.64 ng/ml

Instrument :
 ECD_O
 ClientSampleId :
 BC271336-1-2



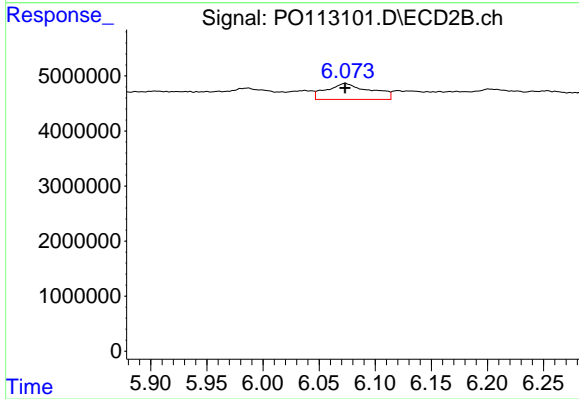
#27 AR-1254-2

R.T.: 5.672 min
 Delta R.T.: -0.001 min
 Response: 6682186
 Conc: 23.84 ng/ml



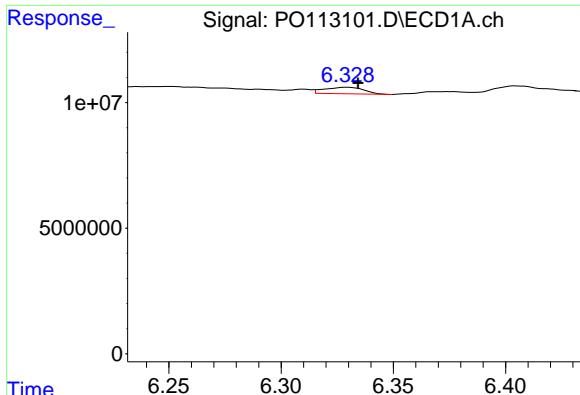
#28 AR-1254-3

R.T.: 6.101 min
 Delta R.T.: -0.004 min
 Response: 5557662
 Conc: 7.52 ng/ml



#28 AR-1254-3

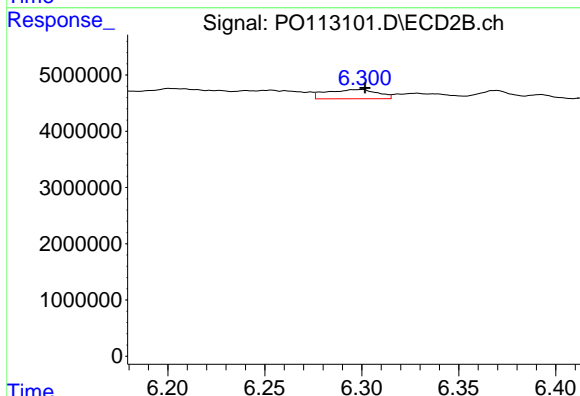
R.T.: 6.073 min
 Delta R.T.: 0.000 min
 Response: 7869944
 Conc: 18.88 ng/ml



#29 AR-1254-4

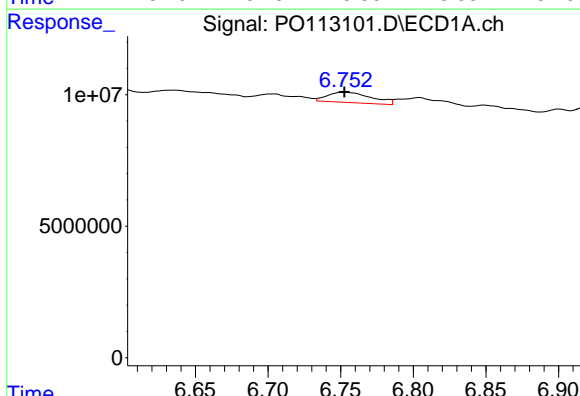
R.T.: 6.329 min
 Delta R.T.: -0.005 min
 Response: 3197513
 Conc: 5.74 ng/ml

Instrument :
 ECD_O
 ClientSampleId :
 BC271336-1-2



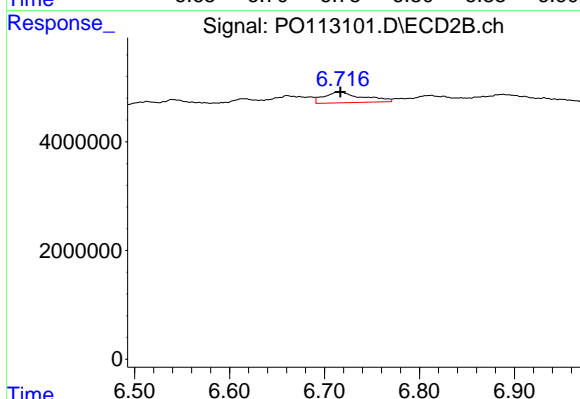
#29 AR-1254-4

R.T.: 6.300 min
 Delta R.T.: -0.002 min
 Response: 2999429
 Conc: 10.91 ng/ml



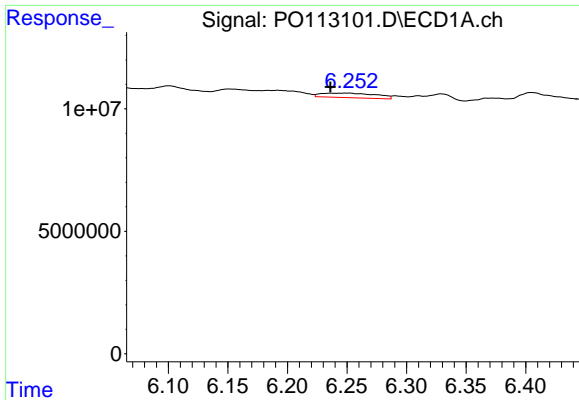
#30 AR-1254-5

R.T.: 6.753 min
 Delta R.T.: 0.000 min
 Response: 8311436
 Conc: 11.86 ng/ml



#30 AR-1254-5

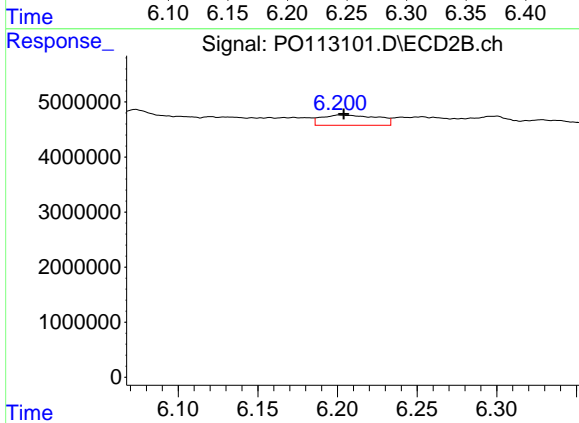
R.T.: 6.717 min
 Delta R.T.: 0.000 min
 Response: 5616100
 Conc: 15.71 ng/ml



#31 AR-1260-1

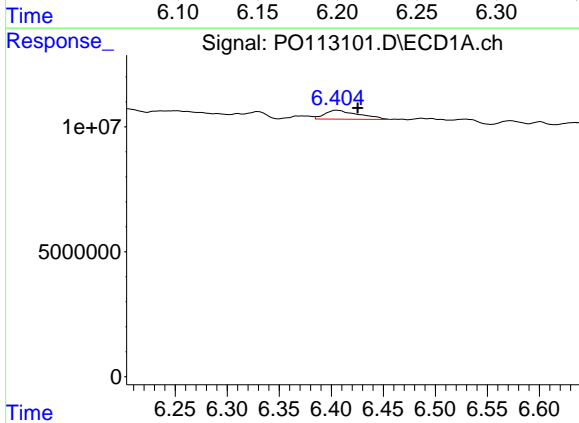
R.T.: 6.251 min
 Delta R.T.: 0.015 min
 Response: 5892676
 Conc: 13.21 ng/ml

Instrument :
 ECD_O
 ClientSampleId :
 BC271336-1-2



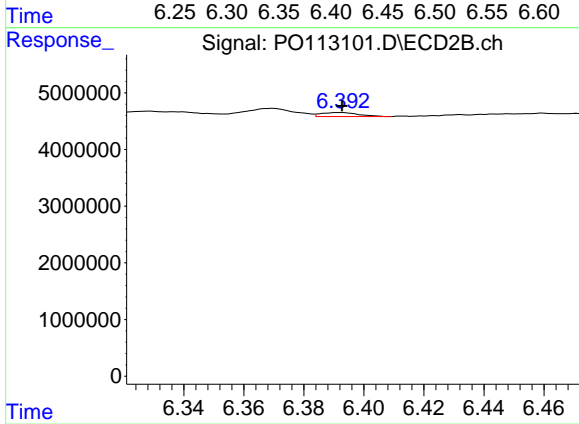
#31 AR-1260-1

R.T.: 6.201 min
 Delta R.T.: -0.003 min
 Response: 4525456
 Conc: 17.74 ng/ml



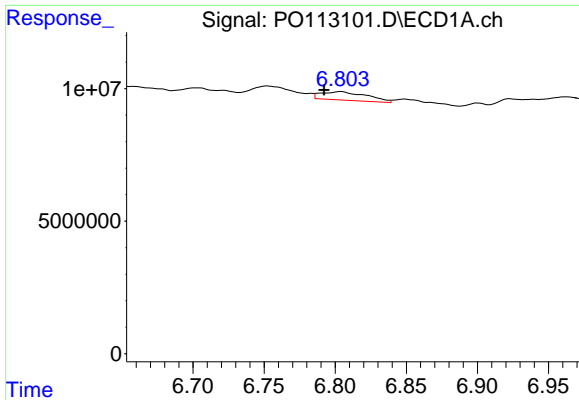
#32 AR-1260-2

R.T.: 6.405 min
 Delta R.T.: -0.021 min
 Response: 8060060
 Conc: 11.74 ng/ml



#32 AR-1260-2

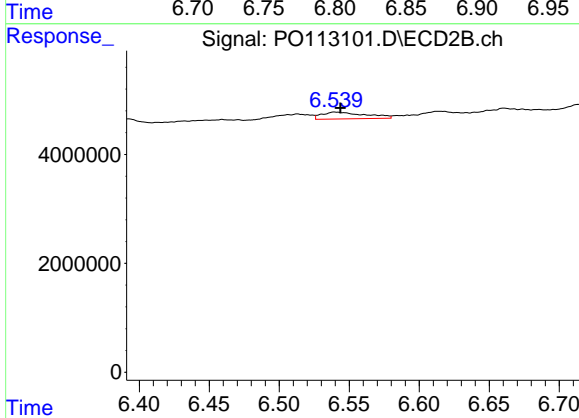
R.T.: 6.392 min
 Delta R.T.: 0.000 min
 Response: 621557
 Conc: 1.80 ng/ml



#33 AR-1260-3

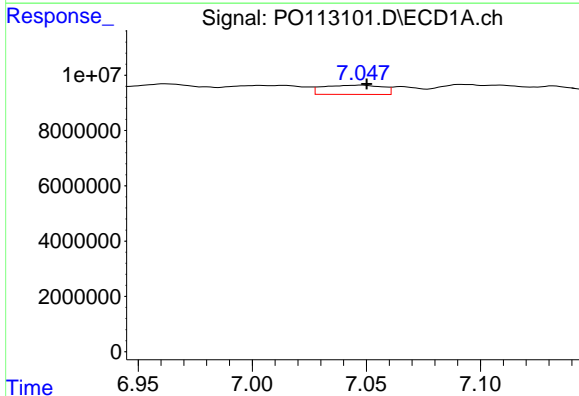
R.T.: 6.804 min
 Delta R.T.: 0.012 min
 Response: 7152748
 Conc: 11.58 ng/ml

Instrument :
 ECD_O
 ClientSampleId :
 BC271336-1-2



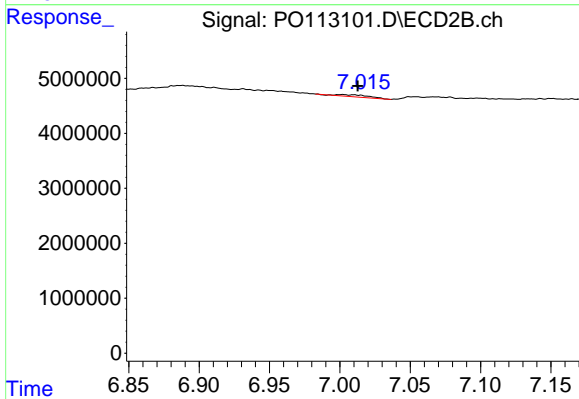
#33 AR-1260-3

R.T.: 6.540 min
 Delta R.T.: -0.004 min
 Response: 2722314
 Conc: 9.15 ng/ml



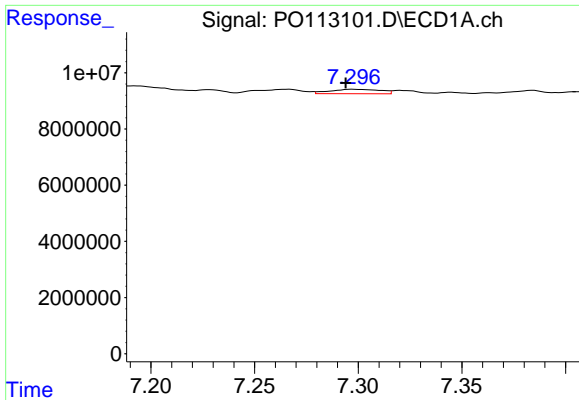
#34 AR-1260-4

R.T.: 7.048 min
 Delta R.T.: -0.002 min
 Response: 6012501
 Conc: 13.42 ng/ml



#34 AR-1260-4

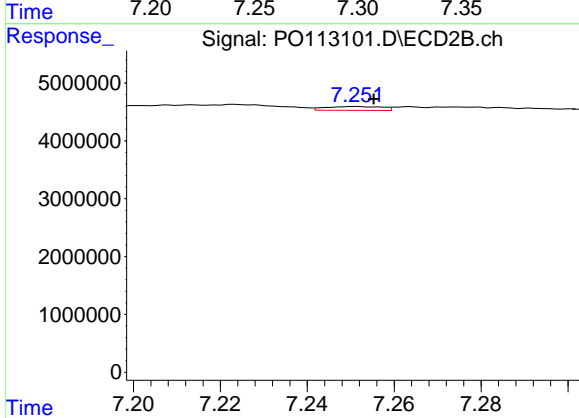
R.T.: 7.002 min
 Delta R.T.: -0.011 min
 Response: 585904
 Conc: 2.83 ng/ml



#35 AR-1260-5

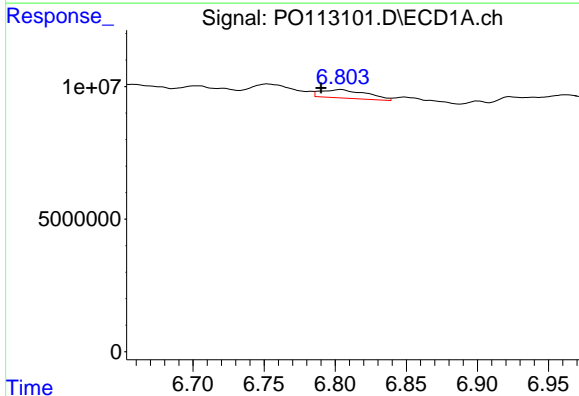
R.T.: 7.297 min
 Delta R.T.: 0.003 min
 Response: 2688893
 Conc: 2.22 ng/ml

Instrument :
 ECD_O
 ClientSampleId :
 BC271336-1-2



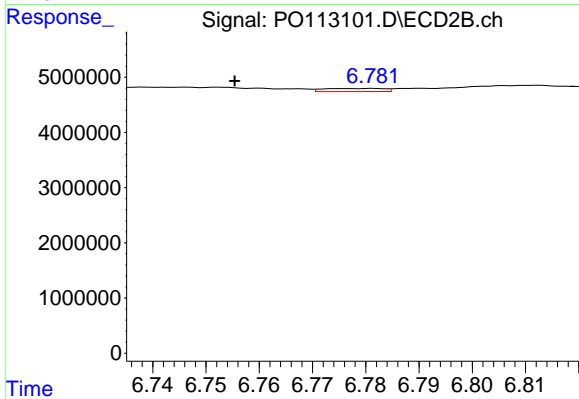
#35 AR-1260-5

R.T.: 7.251 min
 Delta R.T.: -0.004 min
 Response: 604583
 Conc: 1.29 ng/ml



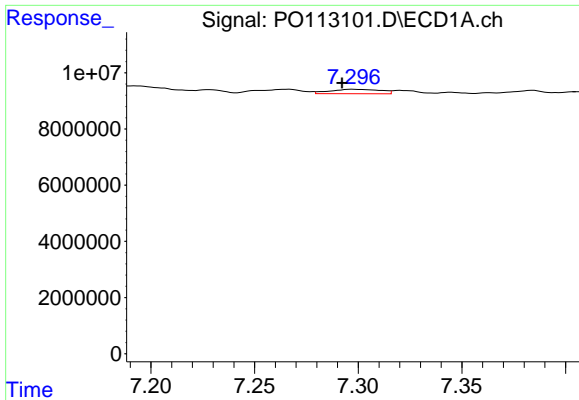
#36 AR-1262-1

R.T.: 6.804 min
 Delta R.T.: 0.014 min
 Response: 7152748
 Conc: 7.81 ng/ml



#36 AR-1262-1

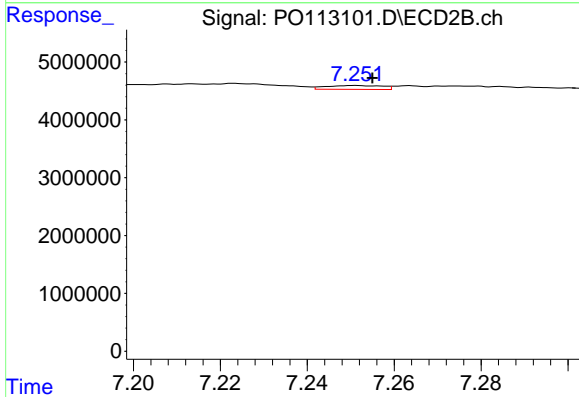
R.T.: 6.781 min
 Delta R.T.: 0.026 min
 Response: 447401
 Conc: 1.08 ng/ml



#37 AR-1262-2

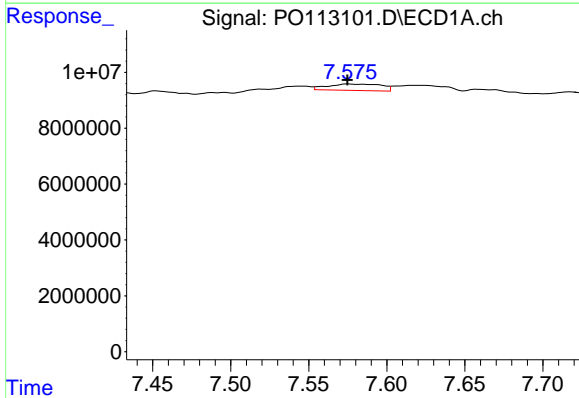
R.T.: 7.297 min
 Delta R.T.: 0.005 min
 Response: 2688893
 Conc: 1.78 ng/ml

Instrument :
 ECD_O
 ClientSampleId :
 BC271336-1-2



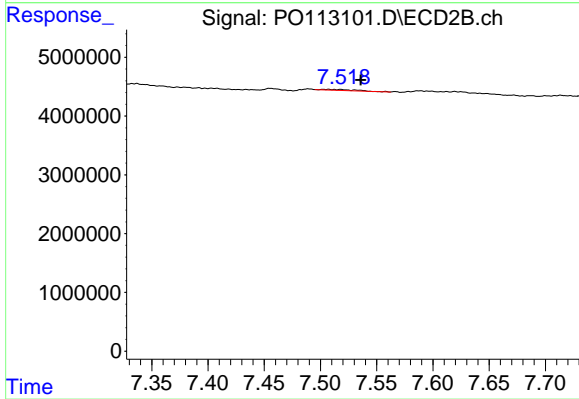
#37 AR-1262-2

R.T.: 7.251 min
 Delta R.T.: -0.004 min
 Response: 604583
 Conc: 1.17 ng/ml



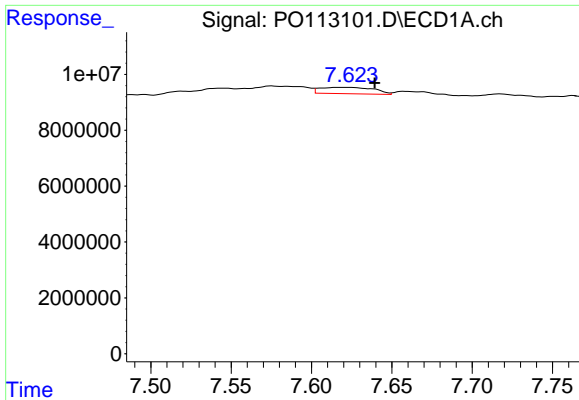
#38 AR-1262-3

R.T.: 7.575 min
 Delta R.T.: 0.000 min
 Response: 5502786
 Conc: 9.93 ng/ml



#38 AR-1262-3

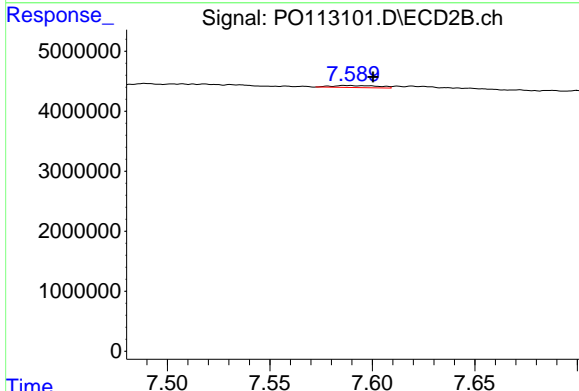
R.T.: 7.507 min
 Delta R.T.: -0.029 min
 Response: 271353
 Conc: 1.51 ng/ml



#39 AR-1262-4

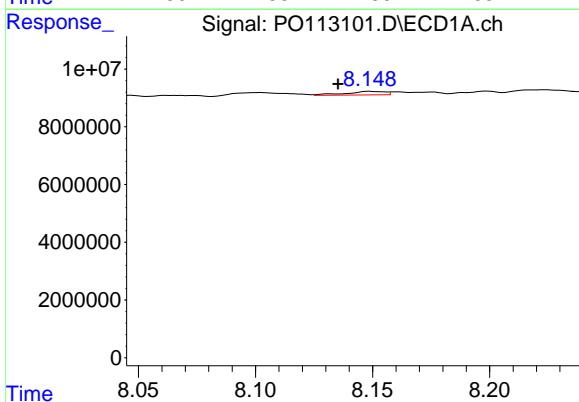
R.T.: 7.622 min
 Delta R.T.: -0.017 min
 Response: 5263415
 Conc: 5.38 ng/ml

Instrument :
 ECD_O
 ClientSampleId :
 BC271336-1-2



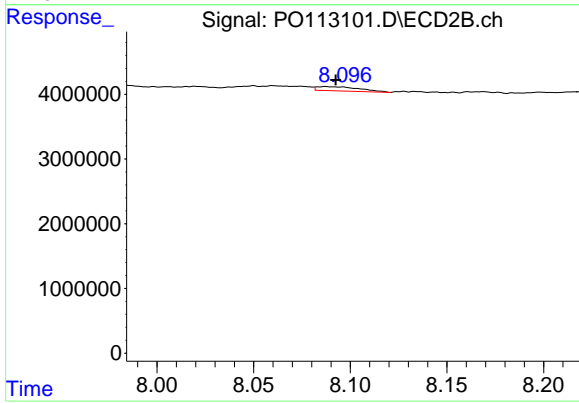
#39 AR-1262-4

R.T.: 7.587 min
 Delta R.T.: -0.013 min
 Response: 544131
 Conc: 1.88 ng/ml



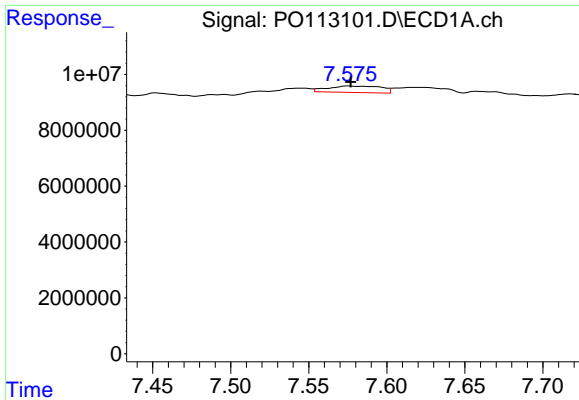
#40 AR-1262-5

R.T.: 8.149 min
 Delta R.T.: 0.013 min
 Response: 1441020
 Conc: 3.46 ng/ml



#40 AR-1262-5

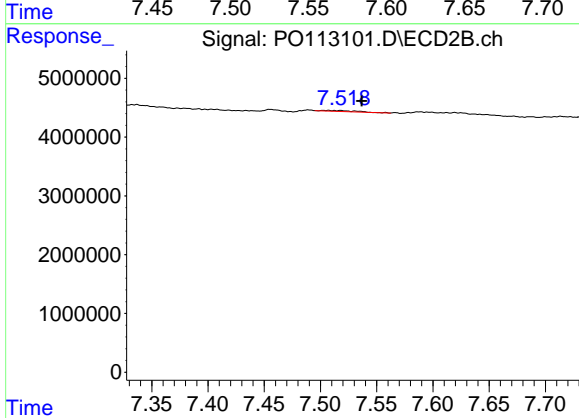
R.T.: 8.087 min
 Delta R.T.: -0.005 min
 Response: 994396
 Conc: 9.18 ng/ml



#41 AR-1268-1

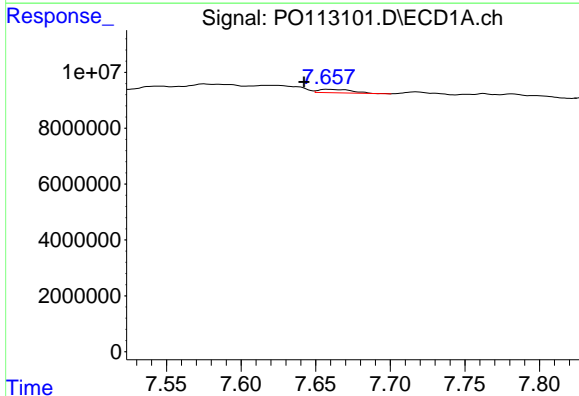
R.T.: 7.575 min
 Delta R.T.: -0.002 min
 Response: 5502786
 Conc: 3.20 ng/ml

Instrument :
 ECD_O
 ClientSampleId :
 BC271336-1-2



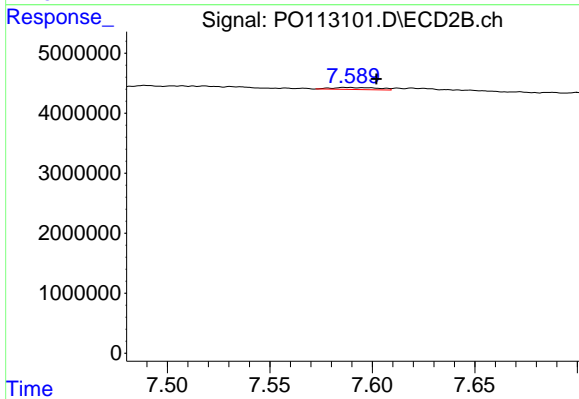
#41 AR-1268-1

R.T.: 7.507 min
 Delta R.T.: -0.030 min
 Response: 271353
 Conc: 0.53 ng/ml



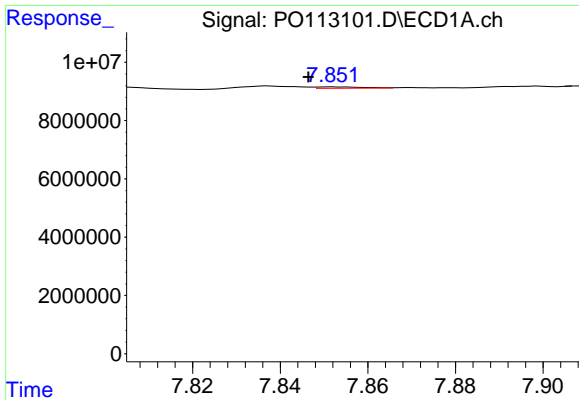
#42 AR-1268-2

R.T.: 7.658 min
 Delta R.T.: 0.016 min
 Response: 1897138
 Conc: 1.31 ng/ml



#42 AR-1268-2

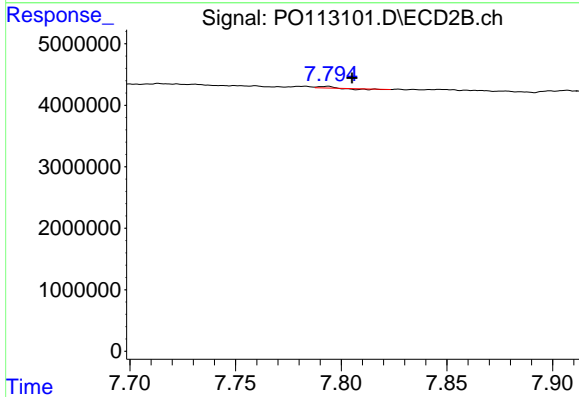
R.T.: 7.587 min
 Delta R.T.: -0.015 min
 Response: 544131
 Conc: 1.31 ng/ml



#43 AR-1268-3

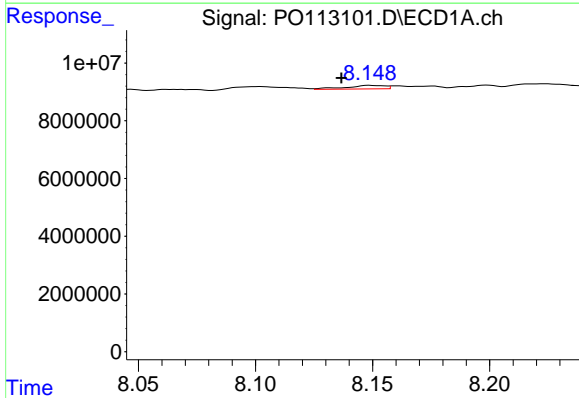
R.T.: 7.852 min
 Delta R.T.: 0.006 min
 Response: 352355
 Conc: 0.29 ng/ml

Instrument :
 ECD_O
 ClientSampleId :
 BC271336-1-2



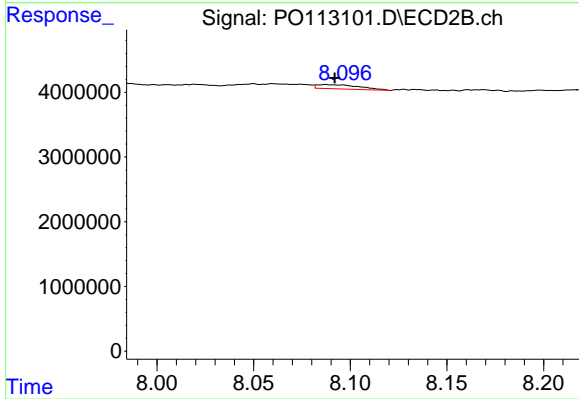
#43 AR-1268-3

R.T.: 7.793 min
 Delta R.T.: -0.012 min
 Response: 37580
 Conc: 0.12 ng/ml



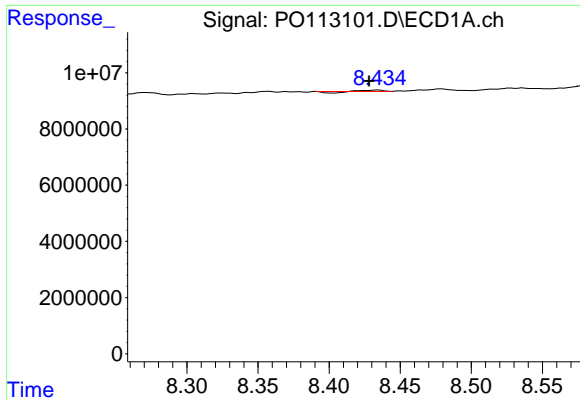
#44 AR-1268-4

R.T.: 8.149 min
 Delta R.T.: 0.012 min
 Response: 1441020
 Conc: 3.13 ng/ml



#44 AR-1268-4

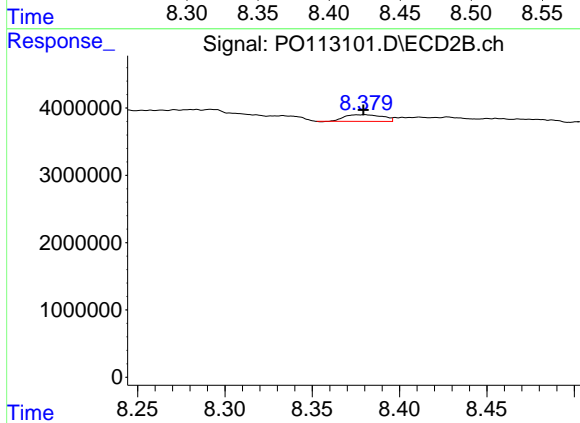
R.T.: 8.087 min
 Delta R.T.: -0.004 min
 Response: 994396
 Conc: 8.26 ng/ml



#45 AR-1268-5

R.T.: 8.434 min
Delta R.T.: 0.006 min
Response: 107472
Conc: 0.03 ng/ml

Instrument :
ECD_O
ClientSampleId :
BC271336-1-2



#45 AR-1268-5

R.T.: 8.380 min
Delta R.T.: 0.000 min
Response: 1522826
Conc: 1.95 ng/ml