

Data Path : Z:\pestpcbsrv\HPCHEM1\ECD_0\Data\P0082025\
 Data File : PO113103.D
 Signal(s) : Signal #1: ECD1A.ch Signal #2: ECD2B.ch
 Acq On : 20 Aug 2025 19:51
 Operator : YP/AJ
 Sample : Q2908-02 10X
 Misc :
 ALS Vial : 24 Sample Multiplier: 1

Instrument :
 ECD_0
 ClientSampleId :
 GHA571Y-1-2

Integration File signal 1: autoint1.e
 Integration File signal 2: autoint2.e
 Quant Time: Aug 21 01:43:23 2025
 Quant Method : Z:\pestpcbsrv\HPCHEM1\ECD_0\methods\P0081825.M
 Quant Title : GC EXTRACTABLES
 QLast Update : Tue Aug 19 06:08:32 2025
 Response via : Initial Calibration
 Integrator: ChemStation

Volume Inj. : 2 µl
 Signal #1 Phase : ZB-MR1 Signal #2 Phase: ZB-MR2
 Signal #1 Info : 30Mx0.32mmx 0.50µ Signal #2 Info : 30M x 0.32mm x 0.25µm

Compound	RT#1	RT#2	Resp#1	Resp#2	ng/ml	ng/ml
System Monitoring Compounds						
1) SA Tetrachlo...	3.663	3.654	10324872	6481427	1.261	1.281
2) SA Decachlor...	8.682	8.627	7331210	2037668	1.058	1.075
Target Compounds						
3) L1 AR-1016-1	4.731	4.731	89045	24476	0.334	0.143 #
4) L1 AR-1016-2	4.731f	4.742	89045	80635	0.222	0.313 #
5) L1 AR-1016-3	4.862f	4.923	1452104	25771	5.694	0.185 #
6) L1 AR-1016-4	4.946	4.960	227181	170792	1.042	1.464 #
7) L1 AR-1016-5	5.184	5.179	626781	414667	2.828	2.909
8) L2 AR-1221-1	3.881	3.871	147465	122313	1.576	1.938
9) L2 AR-1221-2	3.953	3.948	167295	124989	2.477	2.678
10) L2 AR-1221-3	4.028	4.017	190315	82037	0.860	0.553 #
11) L3 AR-1232-1	4.028	4.017	190315	82037	1.094	0.699 #
12) L3 AR-1232-2	4.536	4.742	2084290	80635	20.874	0.658 #
13) L3 AR-1232-3	4.731f	4.923	89045	25771	0.470	0.407
14) L3 AR-1232-4	4.946	5.011	227181	517981	2.412	9.213 #
15) L3 AR-1232-5	4.987	5.179	382923	414667	6.182	6.927
16) L4 AR-1242-1	4.731	4.731	89045	24476	0.387	0.169 #
17) L4 AR-1242-2	4.731f	4.742	89045	80635	0.259	0.372 #
18) L4 AR-1242-3	4.862f	4.923	1452104	25771	6.544	0.220 #
19) L4 AR-1242-4	4.946	5.011	227181	517981	1.310	4.403 #
20) L4 AR-1242-5	5.565	5.528	4547831	511770	22.721	3.432 #
21) L5 AR-1248-1	4.731	4.731	89045	24476	0.510	0.219 #
22) L5 AR-1248-2	4.987	4.960	382923	170792	1.583	1.063 #
23) L5 AR-1248-3	5.184	5.011	626781	517981	1.966	3.053 #
24) L5 AR-1248-4	5.565	5.179	4547831	414667	9.103	2.081 #
25) L5 AR-1248-5	5.565	5.568	4547831	818542	13.318	3.856 #
26) L6 AR-1254-1	5.565	5.528	4547831	511770	8.422	1.623 #
27) L6 AR-1254-2	5.699	5.672	7318039	493823	14.830	1.762 #
28) L6 AR-1254-3	6.096	6.073	3045626	2432551	4.122	5.835 #
29) L6 AR-1254-4	6.314	6.284	2262923	1979933	4.063	7.204 #
30) L6 AR-1254-5	6.745	6.708	2903997	3544476	4.143	9.915 #
31) L7 AR-1260-1	6.244	6.221	1561637	2308263	3.502	9.050 #
32) L7 AR-1260-2	6.432	6.400	1200801	64595	1.749	0.187 #
33) L7 AR-1260-3	6.790	6.547	2764255	395713	4.477	1.330 #
34) L7 AR-1260-4	7.046	7.015	3662209	307011	8.177	1.481 #
35) L7 AR-1260-5	7.291	7.253	1924369	321212	1.589	0.686 #
36) L8 AR-1262-1	6.790	6.754	2764255	504335	3.019	1.216 #
37) L8 AR-1262-2	7.291	7.253	1924369	321212	1.273	0.620 #
38) L8 AR-1262-3	7.584	7.524	438886	255707	0.792	1.424 #
39) L8 AR-1262-4	7.635	7.594	685445	171977	0.701	0.593
40) L8 AR-1262-5	8.141	8.089	641039	537529	1.538	4.962 #
41) L9 AR-1268-1	7.584	7.524	438886	255707	0.255	0.502 #

Data Path : Z:\pestpcbsrv\HPCHEM1\ECD_0\Data\P0082025\
 Data File : P0113103.D
 Signal(s) : Signal #1: ECD1A.ch Signal #2: ECD2B.ch
 Acq On : 20 Aug 2025 19:51
 Operator : YP/AJ
 Sample : Q2908-02 10X
 Misc :
 ALS Vial : 24 Sample Multiplier: 1

Instrument :
 ECD_0
ClientSampleId :
 GHA571Y-1-2

Integration File signal 1: autoint1.e
 Integration File signal 2: autoint2.e
 Quant Time: Aug 21 01:43:23 2025
 Quant Method : Z:\pestpcbsrv\HPCHEM1\ECD_0\methods\P0081825.M
 Quant Title : GC EXTRACTABLES
 QLast Update : Tue Aug 19 06:08:32 2025
 Response via : Initial Calibration
 Integrator: ChemStation

Volume Inj. : 2 µl
 Signal #1 Phase : ZB-MR1 Signal #2 Phase: ZB-MR2
 Signal #1 Info : 30Mx0.32mmx 0.50µ Signal #2 Info : 30M x 0.32mm x 0.25µm

	Compound	RT#1	RT#2	Resp#1	Resp#2	ng/ml	ng/ml
42)	L9 AR-1268-2	7.635	7.594	685445	171977	0.473	0.414
43)	L9 AR-1268-3	7.847	7.805	641124	323425	0.531	0.991 #
44)	L9 AR-1268-4	8.141	8.089	641039	537529	1.392	4.463 #
45)	L9 AR-1268-5	8.427	8.380	598203	1817770	0.188	2.328 #

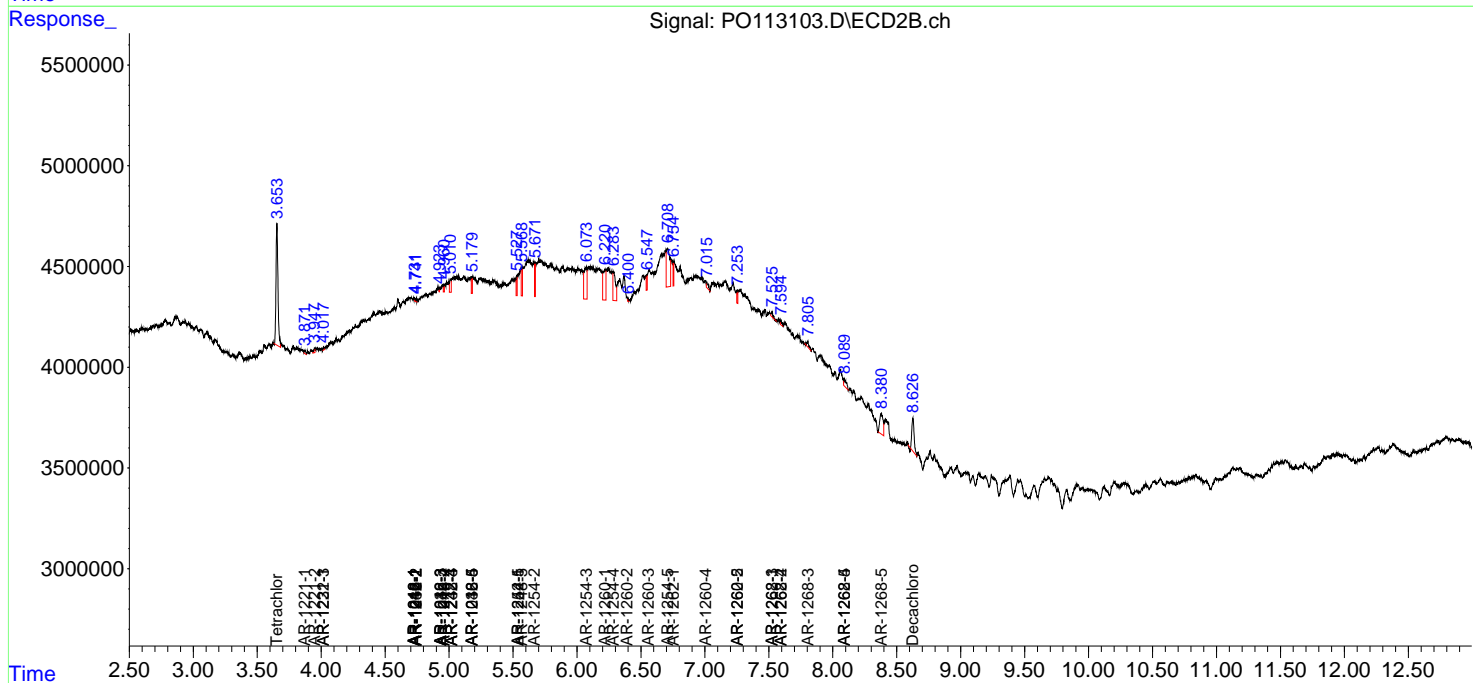
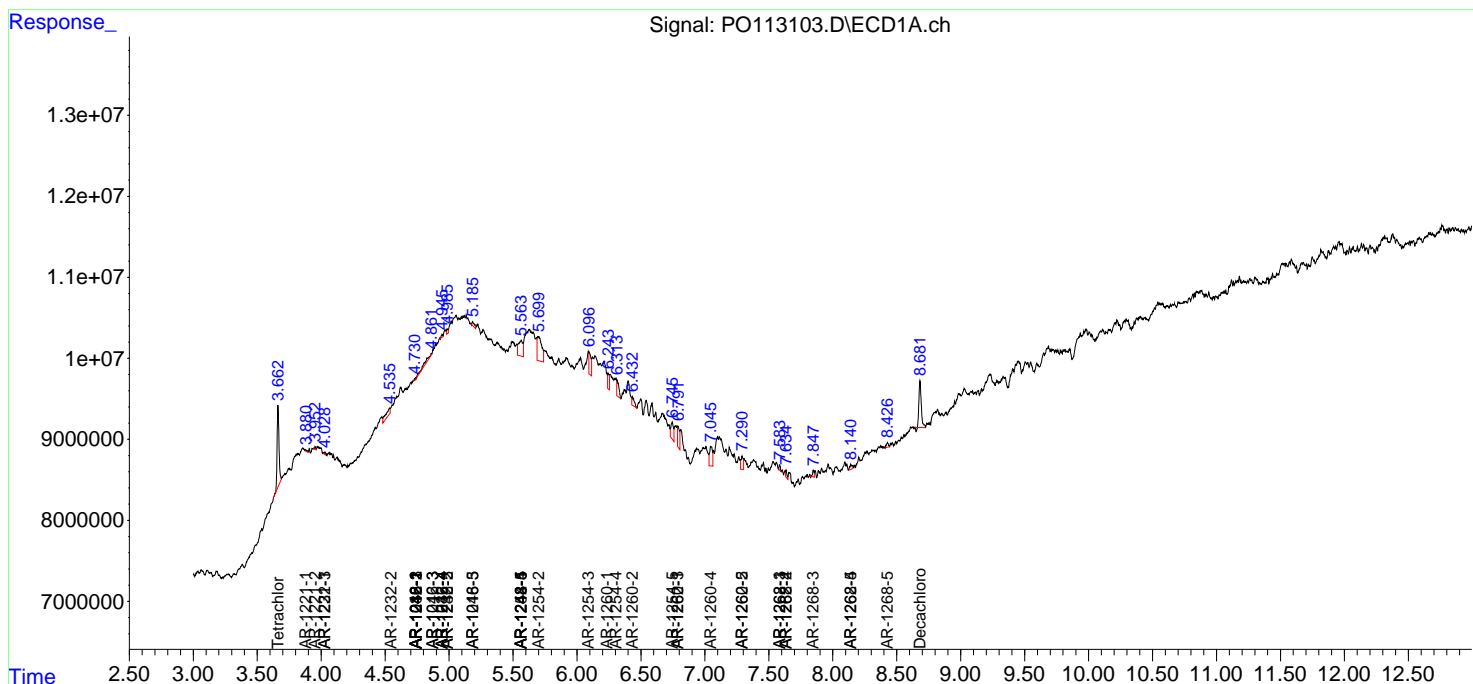
(f)=RT Delta > 1/2 Window (#)=Amounts differ by > 25% (m)=manual int.

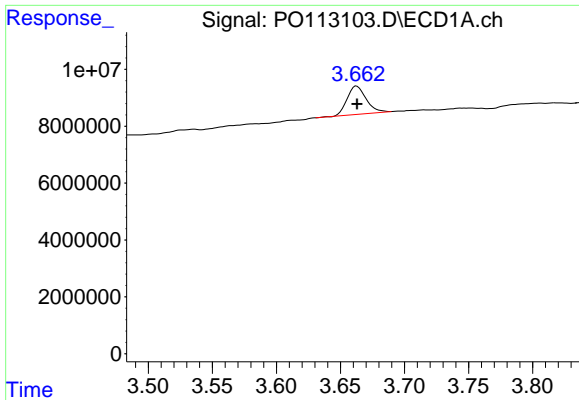
Data Path : Z:\pestpcbsrv\HPCHEM1\ECD_O\Data\PO082025\
 Data File : PO113103.D
 Signal(s) : Signal #1: ECD1A.ch Signal #2: ECD2B.ch
 Acq On : 20 Aug 2025 19:51
 Operator : YP/AJ
 Sample : Q2908-02 10X
 Misc :
 ALS Vial : 24 Sample Multiplier: 1

Instrument :
 ECD_O
 ClientSampleId :
 GHA571Y-1-2

Integration File signal 1: autoint1.e
 Integration File signal 2: autoint2.e
 Quant Time: Aug 21 01:43:23 2025
 Quant Method : Z:\pestpcbsrv\HPCHEM1\ECD_O\methods\PO081825.M
 Quant Title : GC EXTRACTABLES
 QLast Update : Tue Aug 19 06:08:32 2025
 Response via : Initial Calibration
 Integrator: ChemStation

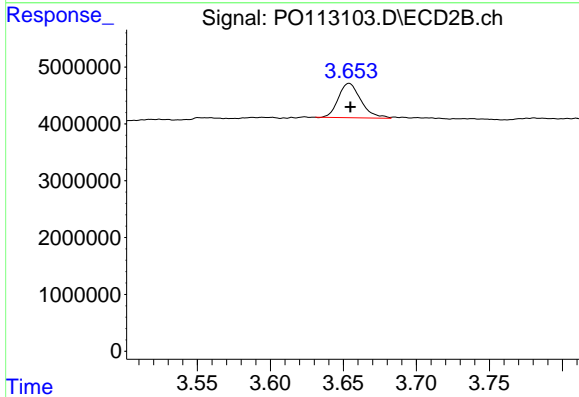
Volume Inj. : 2 µl
 Signal #1 Phase : ZB-MR1 Signal #2 Phase: ZB-MR2
 Signal #1 Info : 30Mx0.32mmx 0.50µ Signal #2 Info : 30M x 0.32mm x 0.25µm



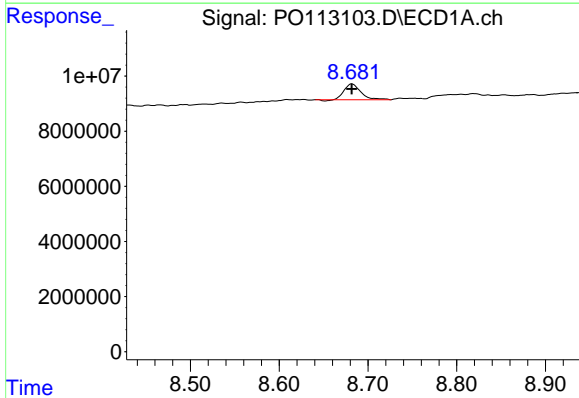


#1 Tetrachloro-m-xylene
 R.T.: 3.663 min
 Delta R.T.: 0.000 min
 Response: 10324872
 Conc: 1.26 ng/ml

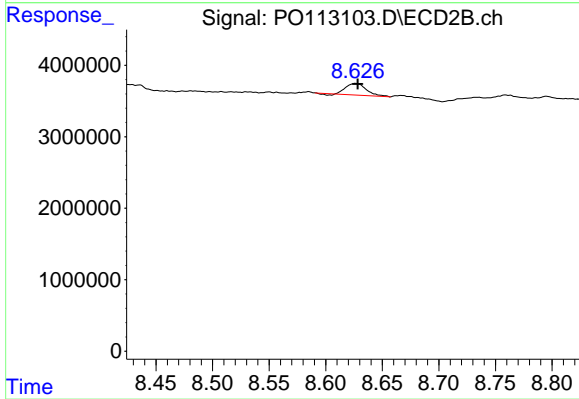
Instrument :
 ECD_O
 ClientSampleId :
 GHA571Y-1-2



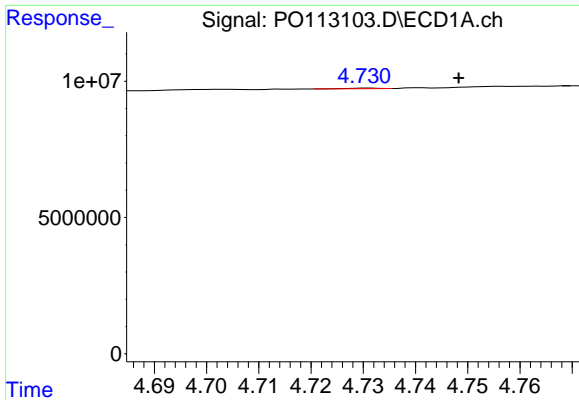
#1 Tetrachloro-m-xylene
 R.T.: 3.654 min
 Delta R.T.: 0.000 min
 Response: 6481427
 Conc: 1.28 ng/ml



#2 Decachlorobiphenyl
 R.T.: 8.682 min
 Delta R.T.: 0.000 min
 Response: 7331210
 Conc: 1.06 ng/ml



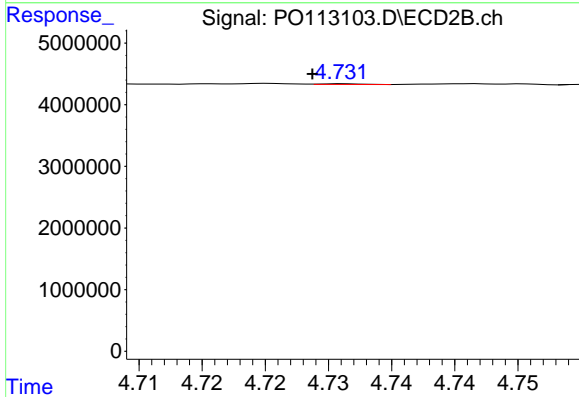
#2 Decachlorobiphenyl
 R.T.: 8.627 min
 Delta R.T.: -0.002 min
 Response: 2037668
 Conc: 1.08 ng/ml



#3 AR-1016-1

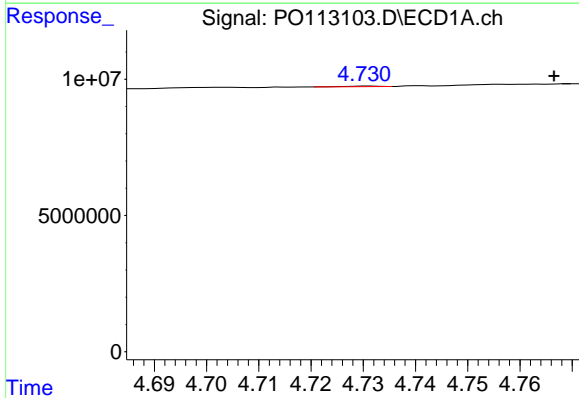
R.T.: 4.731 min
 Delta R.T.: -0.017 min
 Response: 89045
 Conc: 0.33 ng/ml

Instrument :
 ECD_O
 ClientSampleId :
 GHA571Y-1-2



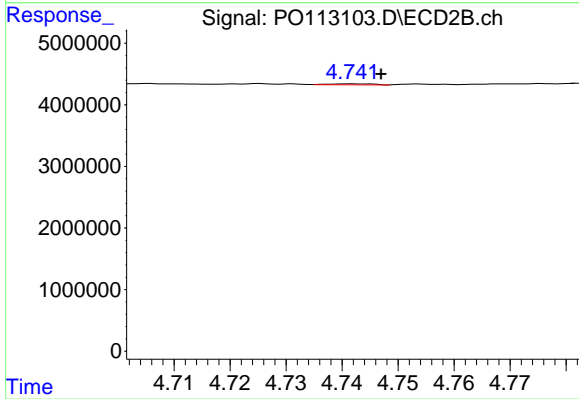
#3 AR-1016-1

R.T.: 4.731 min
 Delta R.T.: 0.002 min
 Response: 24476
 Conc: 0.14 ng/ml



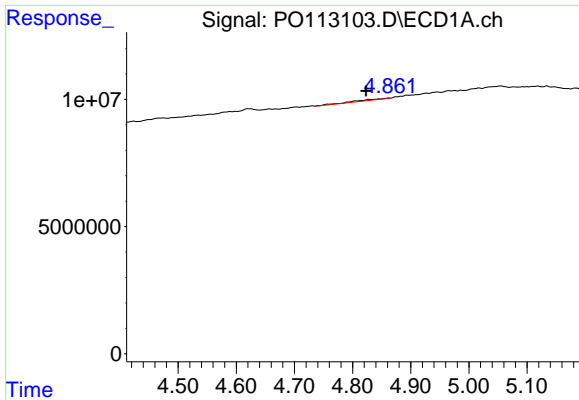
#4 AR-1016-2

R.T.: 4.731 min
 Delta R.T.: -0.035 min
 Response: 89045
 Conc: 0.22 ng/ml



#4 AR-1016-2

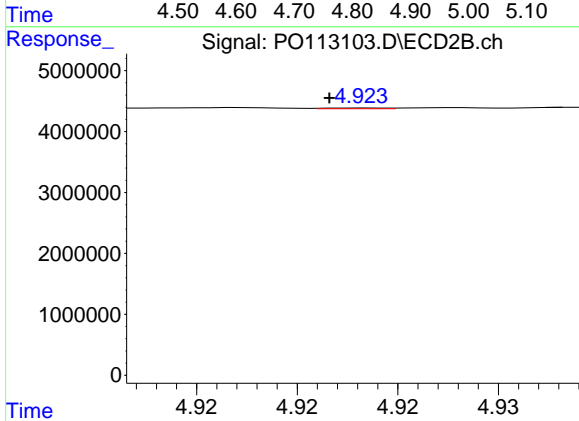
R.T.: 4.742 min
 Delta R.T.: -0.005 min
 Response: 80635
 Conc: 0.31 ng/ml



#5 AR-1016-3

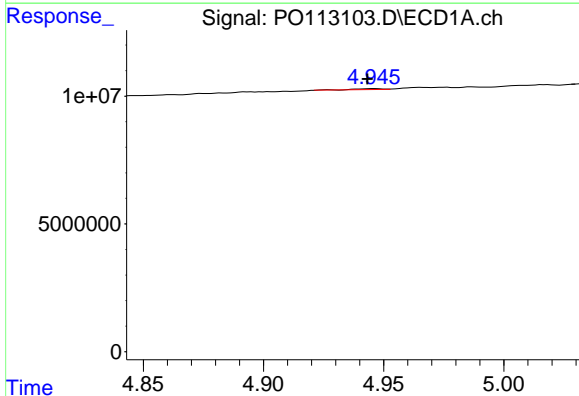
R.T.: 4.862 min
 Delta R.T.: 0.039 min
 Response: 1452104
 Conc: 5.69 ng/ml

Instrument :
 ECD_O
 ClientSampleId :
 GHA571Y-1-2



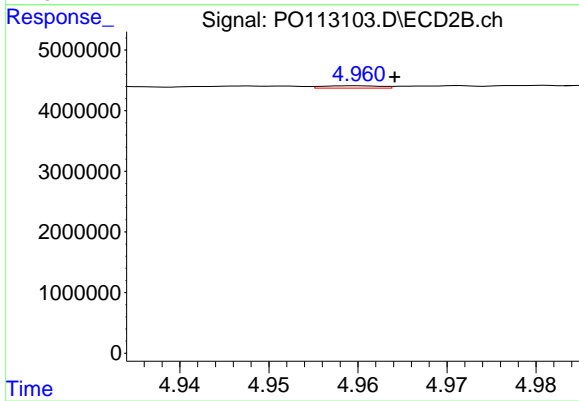
#5 AR-1016-3

R.T.: 4.923 min
 Delta R.T.: 0.002 min
 Response: 25771
 Conc: 0.18 ng/ml



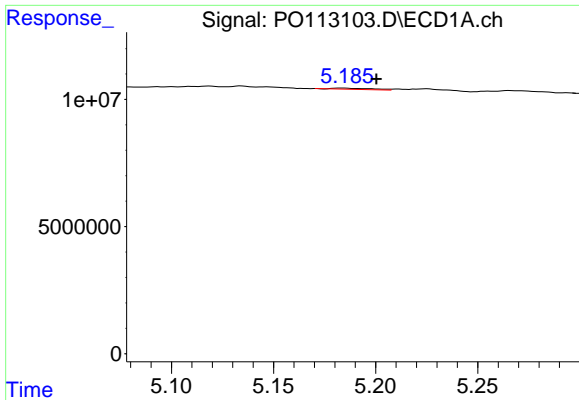
#6 AR-1016-4

R.T.: 4.946 min
 Delta R.T.: 0.003 min
 Response: 227181
 Conc: 1.04 ng/ml



#6 AR-1016-4

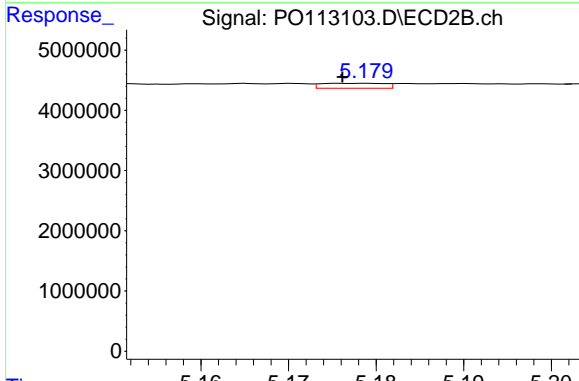
R.T.: 4.960 min
 Delta R.T.: -0.004 min
 Response: 170792
 Conc: 1.46 ng/ml



#7 AR-1016-5

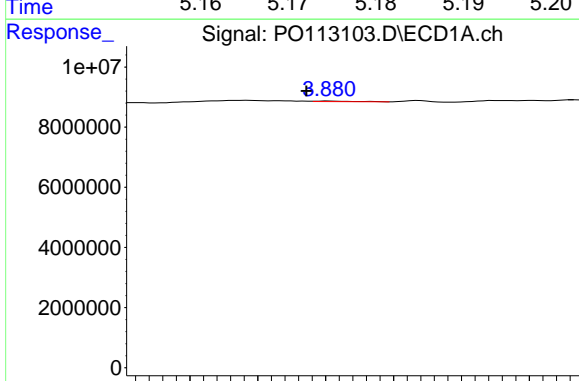
R.T.: 5.184 min
 Delta R.T.: -0.016 min
 Response: 626781
 Conc: 2.83 ng/ml

Instrument :
 ECD_O
 ClientSampleId :
 GHA571Y-1-2



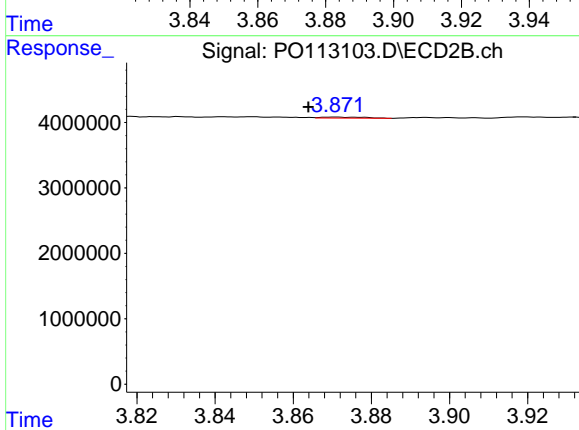
#7 AR-1016-5

R.T.: 5.179 min
 Delta R.T.: 0.003 min
 Response: 414667
 Conc: 2.91 ng/ml



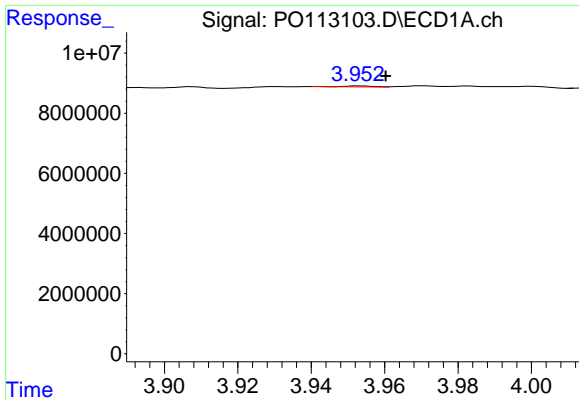
#8 AR-1221-1

R.T.: 3.881 min
 Delta R.T.: 0.007 min
 Response: 147465
 Conc: 1.58 ng/ml



#8 AR-1221-1

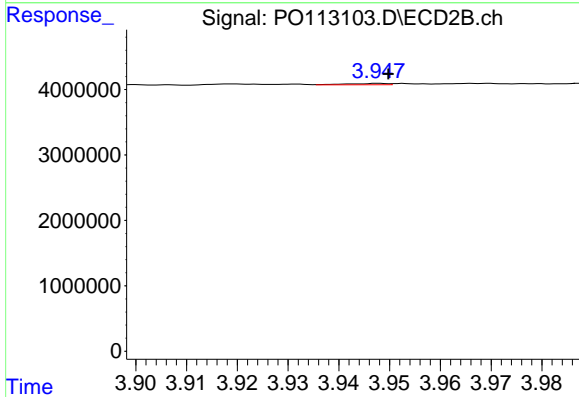
R.T.: 3.871 min
 Delta R.T.: 0.007 min
 Response: 122313
 Conc: 1.94 ng/ml



#9 AR-1221-2

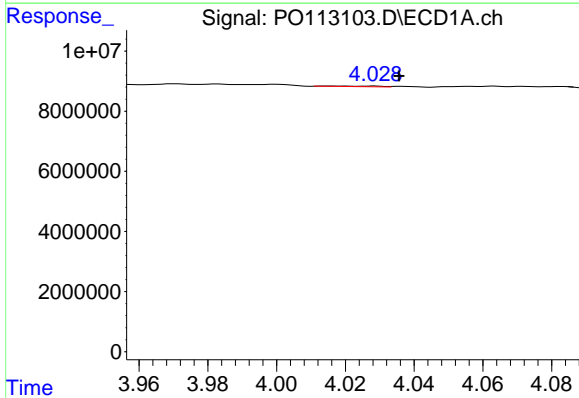
R.T.: 3.953 min
 Delta R.T.: -0.007 min
 Response: 167295
 Conc: 2.48 ng/ml

Instrument :
 ECD_O
 ClientSampleId :
 GHA571Y-1-2



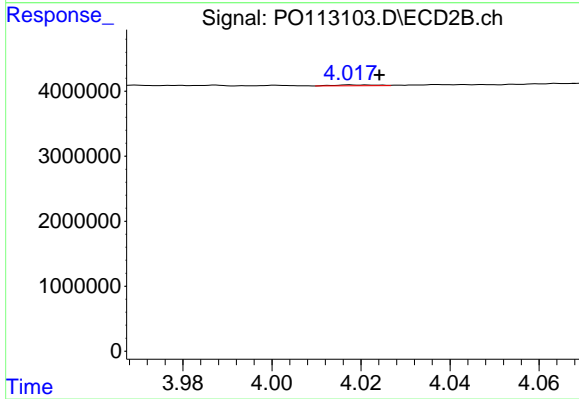
#9 AR-1221-2

R.T.: 3.948 min
 Delta R.T.: -0.002 min
 Response: 124989
 Conc: 2.68 ng/ml



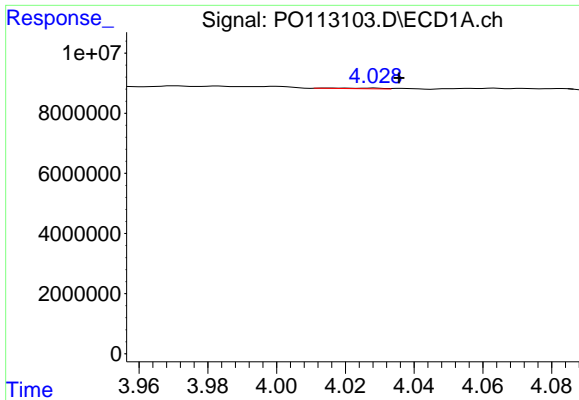
#10 AR-1221-3

R.T.: 4.028 min
 Delta R.T.: -0.007 min
 Response: 190315
 Conc: 0.86 ng/ml



#10 AR-1221-3

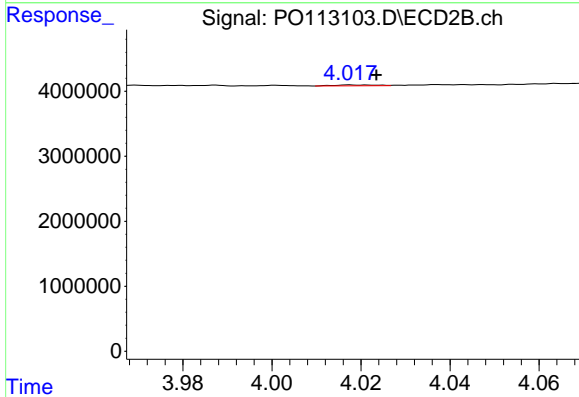
R.T.: 4.017 min
 Delta R.T.: -0.007 min
 Response: 82037
 Conc: 0.55 ng/ml



#11 AR-1232-1

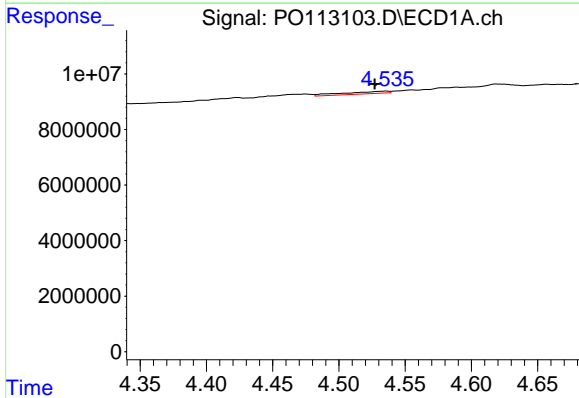
R.T.: 4.028 min
 Delta R.T.: -0.007 min
 Response: 190315
 Conc: 1.09 ng/ml

Instrument :
 ECD_O
 ClientSampleId :
 GHA571Y-1-2



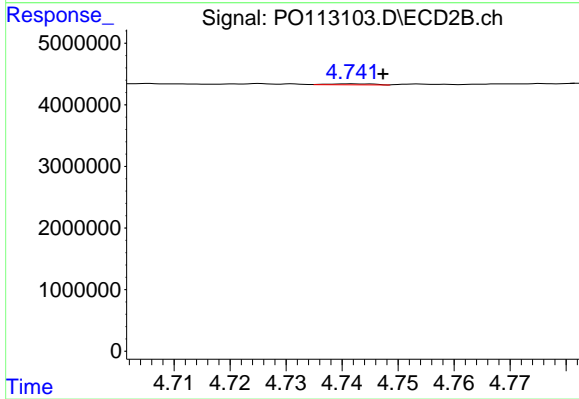
#11 AR-1232-1

R.T.: 4.017 min
 Delta R.T.: -0.006 min
 Response: 82037
 Conc: 0.70 ng/ml



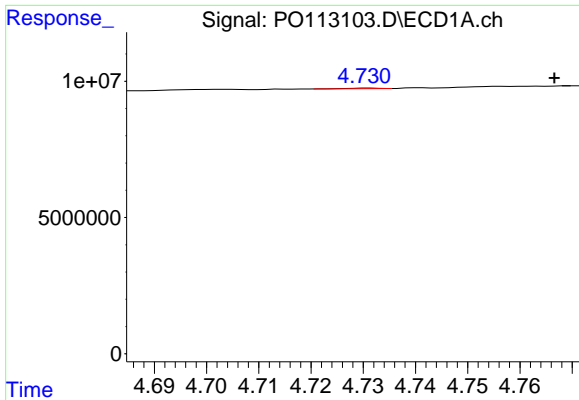
#12 AR-1232-2

R.T.: 4.536 min
 Delta R.T.: 0.008 min
 Response: 2084290
 Conc: 20.87 ng/ml



#12 AR-1232-2

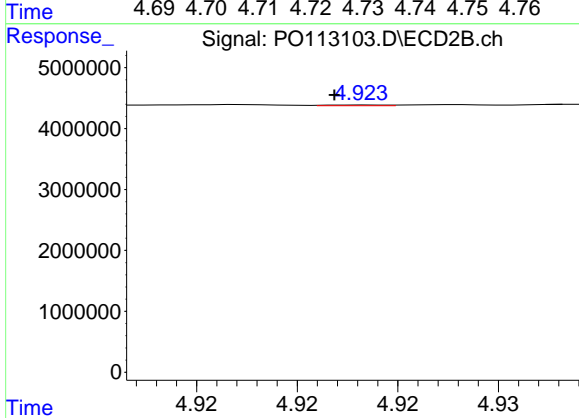
R.T.: 4.742 min
 Delta R.T.: -0.006 min
 Response: 80635
 Conc: 0.66 ng/ml



#13 AR-1232-3

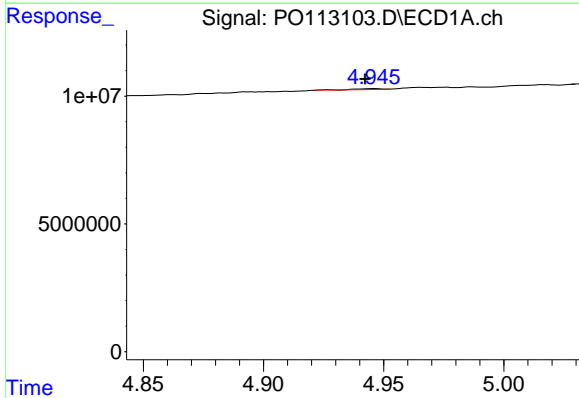
R.T.: 4.731 min
 Delta R.T.: -0.035 min
 Response: 89045
 Conc: 0.47 ng/ml

Instrument :
 ECD_O
 ClientSampleId :
 GHA571Y-1-2



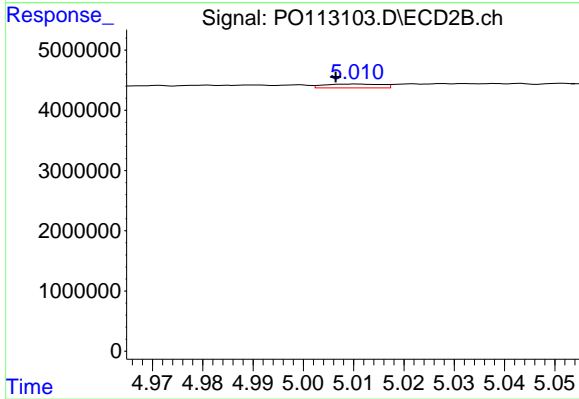
#13 AR-1232-3

R.T.: 4.923 min
 Delta R.T.: 0.002 min
 Response: 25771
 Conc: 0.41 ng/ml



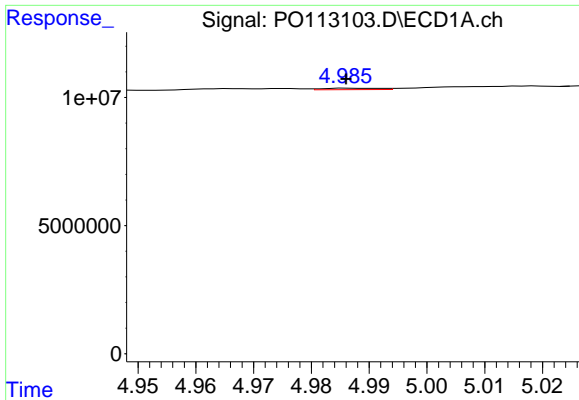
#14 AR-1232-4

R.T.: 4.946 min
 Delta R.T.: 0.004 min
 Response: 227181
 Conc: 2.41 ng/ml



#14 AR-1232-4

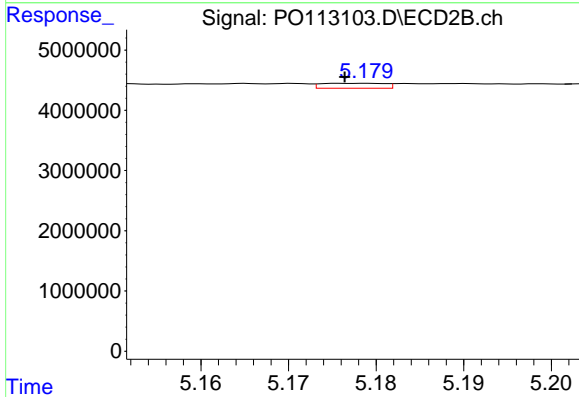
R.T.: 5.011 min
 Delta R.T.: 0.004 min
 Response: 517981
 Conc: 9.21 ng/ml



#15 AR-1232-5

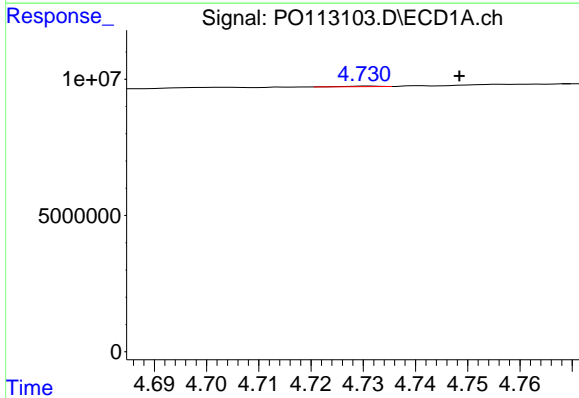
R.T.: 4.987 min
 Delta R.T.: 0.000 min
 Response: 382923
 Conc: 6.18 ng/ml

Instrument :
 ECD_O
 ClientSampleId :
 GHA571Y-1-2



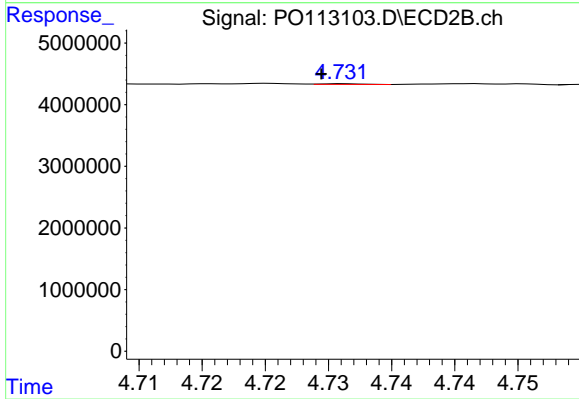
#15 AR-1232-5

R.T.: 5.179 min
 Delta R.T.: 0.002 min
 Response: 414667
 Conc: 6.93 ng/ml



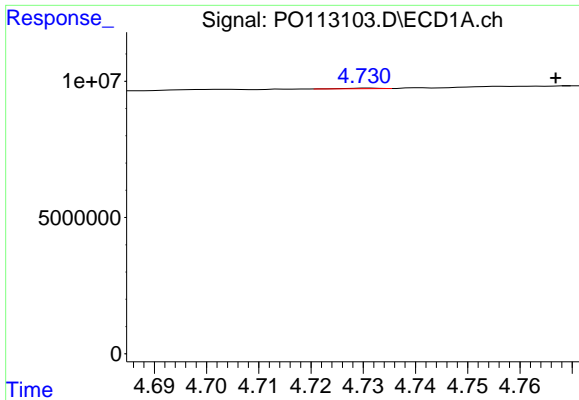
#16 AR-1242-1

R.T.: 4.731 min
 Delta R.T.: -0.017 min
 Response: 89045
 Conc: 0.39 ng/ml



#16 AR-1242-1

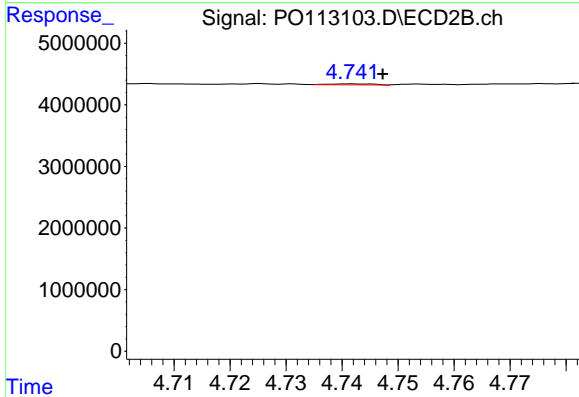
R.T.: 4.731 min
 Delta R.T.: 0.002 min
 Response: 24476
 Conc: 0.17 ng/ml



#17 AR-1242-2

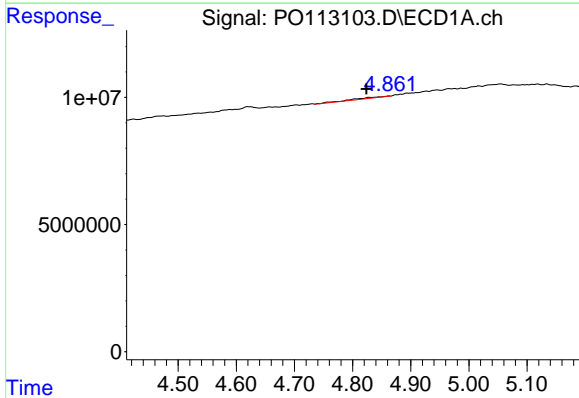
R.T.: 4.731 min
 Delta R.T.: -0.036 min
 Response: 89045
 Conc: 0.26 ng/ml

Instrument :
 ECD_O
 ClientSampleId :
 GHA571Y-1-2



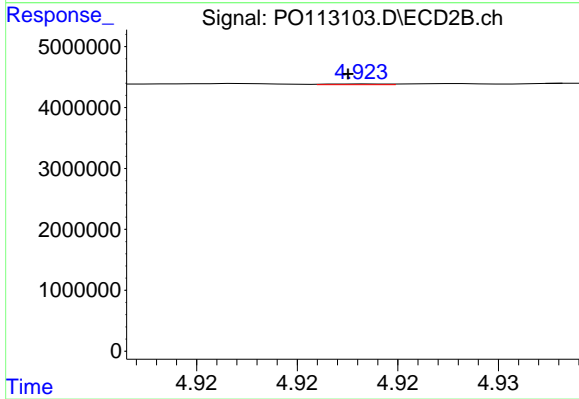
#17 AR-1242-2

R.T.: 4.742 min
 Delta R.T.: -0.006 min
 Response: 80635
 Conc: 0.37 ng/ml



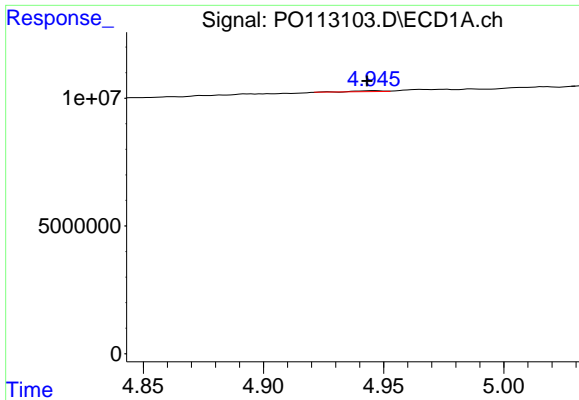
#18 AR-1242-3

R.T.: 4.862 min
 Delta R.T.: 0.038 min
 Response: 1452104
 Conc: 6.54 ng/ml



#18 AR-1242-3

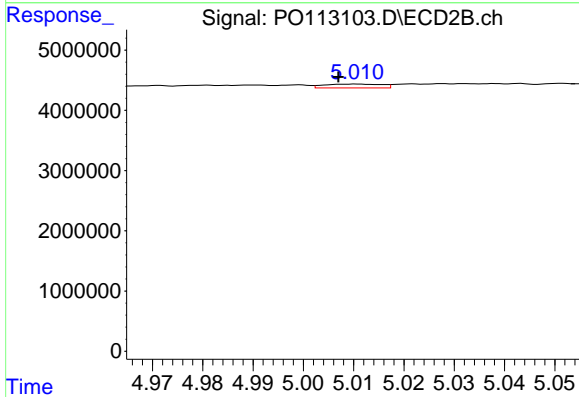
R.T.: 4.923 min
 Delta R.T.: 0.000 min
 Response: 25771
 Conc: 0.22 ng/ml



#19 AR-1242-4

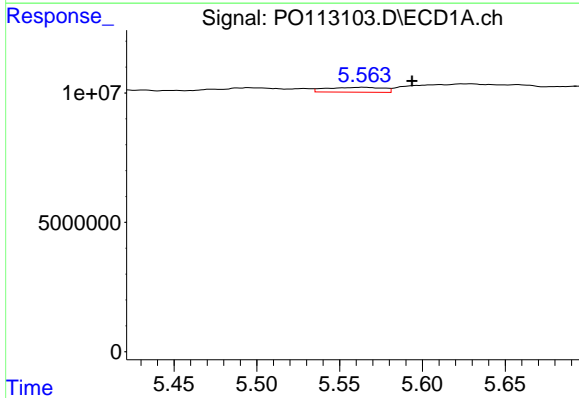
R.T.: 4.946 min
 Delta R.T.: 0.003 min
 Response: 227181
 Conc: 1.31 ng/ml

Instrument :
 ECD_O
 ClientSampleId :
 GHA571Y-1-2



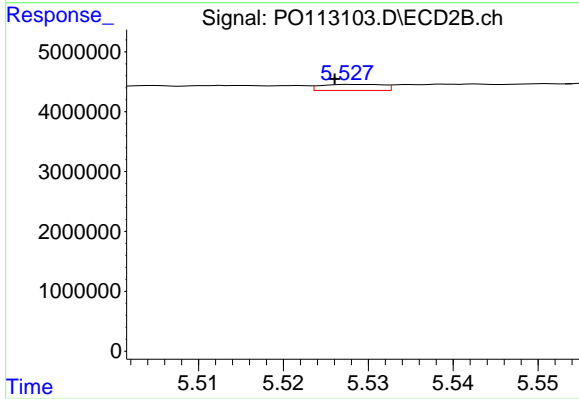
#19 AR-1242-4

R.T.: 5.011 min
 Delta R.T.: 0.004 min
 Response: 517981
 Conc: 4.40 ng/ml



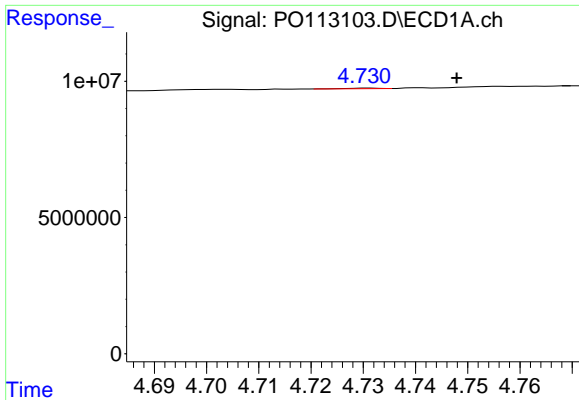
#20 AR-1242-5

R.T.: 5.565 min
 Delta R.T.: -0.029 min
 Response: 4547831
 Conc: 22.72 ng/ml



#20 AR-1242-5

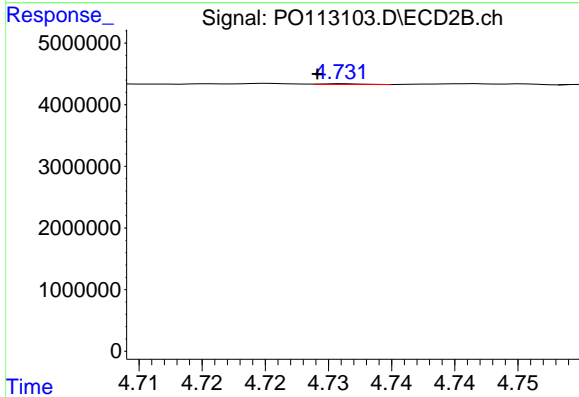
R.T.: 5.528 min
 Delta R.T.: 0.002 min
 Response: 511770
 Conc: 3.43 ng/ml



#21 AR-1248-1

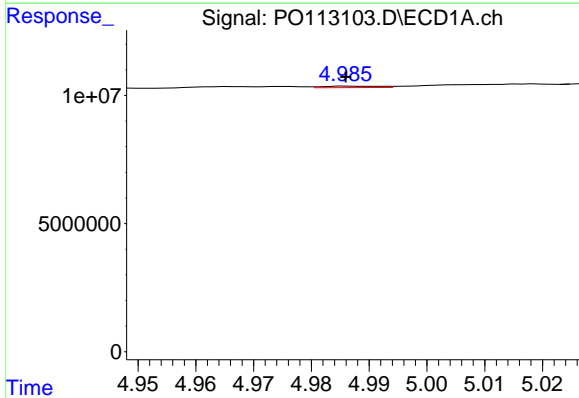
R.T.: 4.731 min
 Delta R.T.: -0.017 min
 Response: 89045
 Conc: 0.51 ng/ml

Instrument :
 ECD_O
 ClientSampleId :
 GHA571Y-1-2



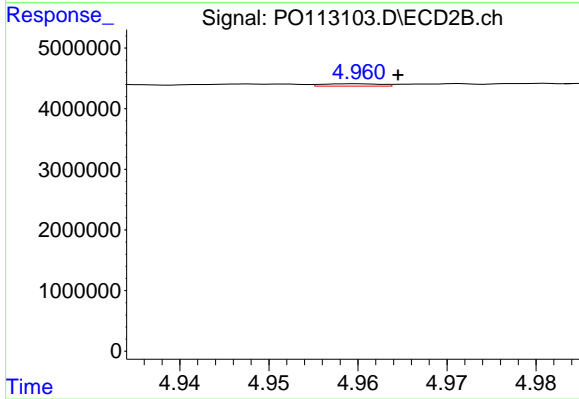
#21 AR-1248-1

R.T.: 4.731 min
 Delta R.T.: 0.002 min
 Response: 24476
 Conc: 0.22 ng/ml



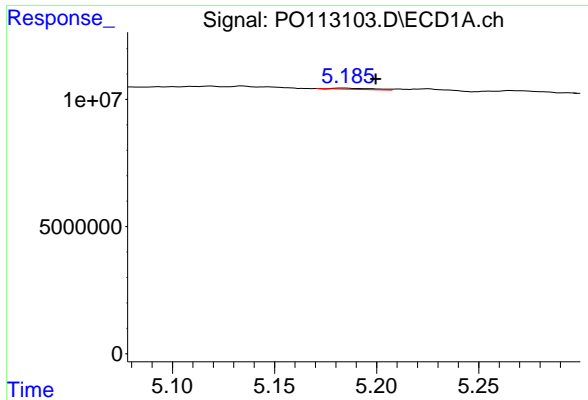
#22 AR-1248-2

R.T.: 4.987 min
 Delta R.T.: 0.000 min
 Response: 382923
 Conc: 1.58 ng/ml



#22 AR-1248-2

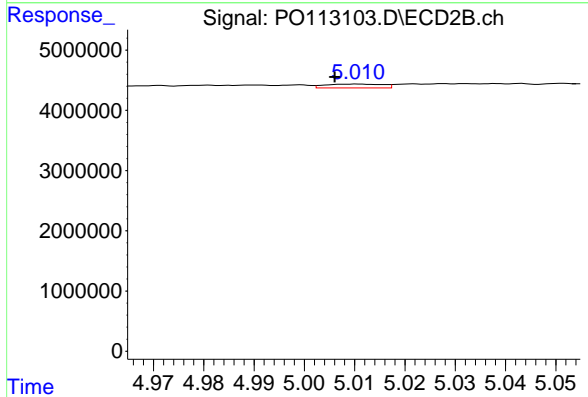
R.T.: 4.960 min
 Delta R.T.: -0.005 min
 Response: 170792
 Conc: 1.06 ng/ml



#23 AR-1248-3

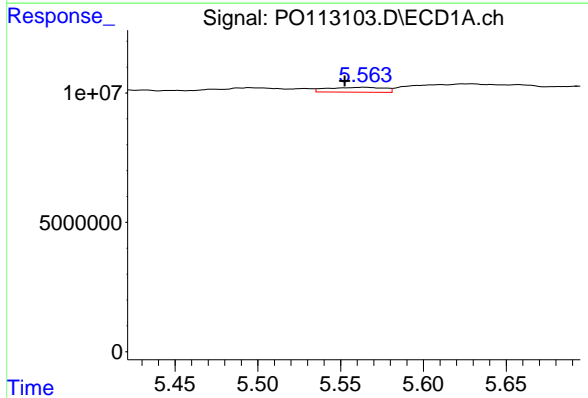
R.T.: 5.184 min
 Delta R.T.: -0.015 min
 Response: 626781
 Conc: 1.97 ng/ml

Instrument :
 ECD_O
 ClientSampleId :
 GHA571Y-1-2



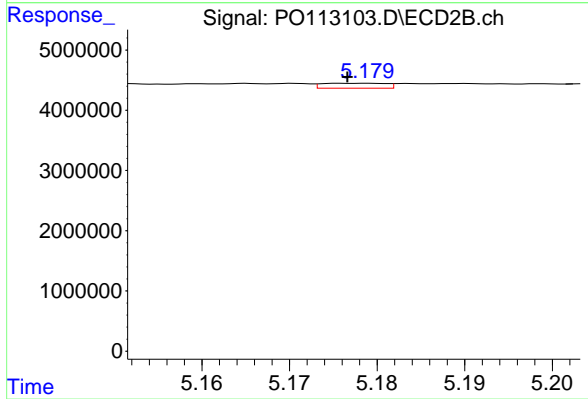
#23 AR-1248-3

R.T.: 5.011 min
 Delta R.T.: 0.005 min
 Response: 517981
 Conc: 3.05 ng/ml



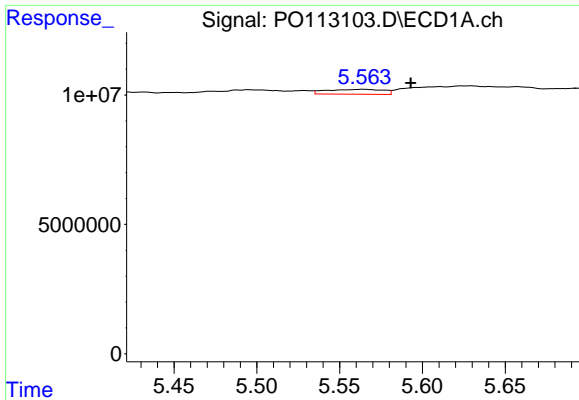
#24 AR-1248-4

R.T.: 5.565 min
 Delta R.T.: 0.012 min
 Response: 4547831
 Conc: 9.10 ng/ml



#24 AR-1248-4

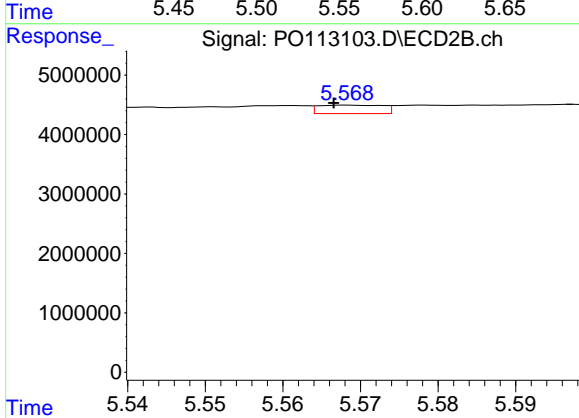
R.T.: 5.179 min
 Delta R.T.: 0.002 min
 Response: 414667
 Conc: 2.08 ng/ml



#25 AR-1248-5

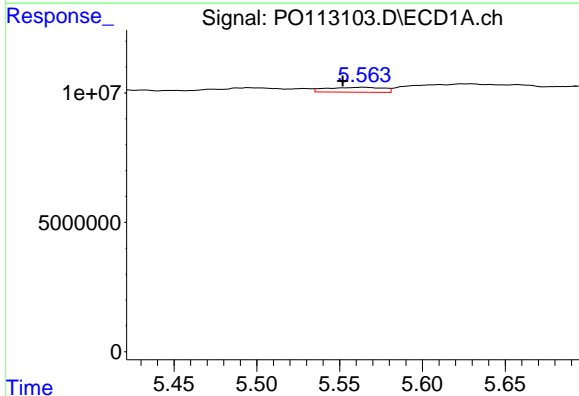
R.T.: 5.565 min
 Delta R.T.: -0.028 min
 Response: 4547831
 Conc: 13.32 ng/ml

Instrument :
 ECD_O
 ClientSampleId :
 GHA571Y-1-2



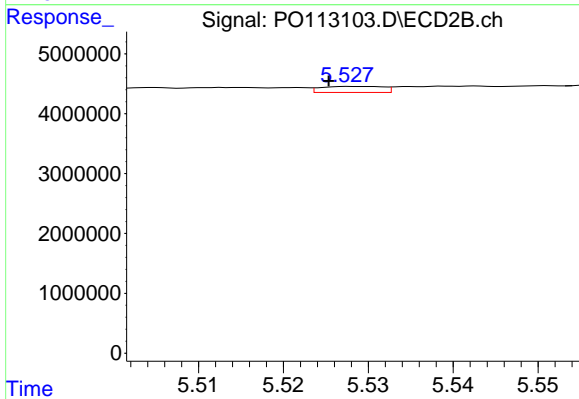
#25 AR-1248-5

R.T.: 5.568 min
 Delta R.T.: 0.002 min
 Response: 818542
 Conc: 3.86 ng/ml



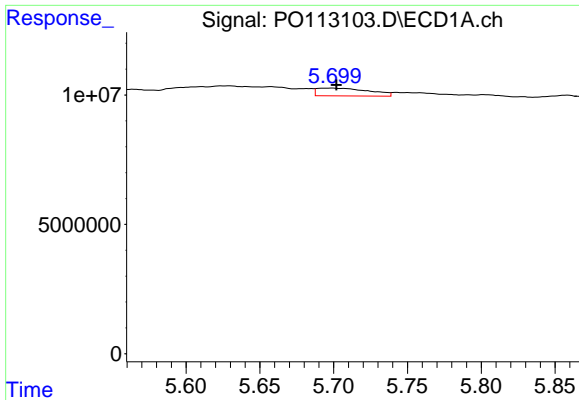
#26 AR-1254-1

R.T.: 5.565 min
 Delta R.T.: 0.013 min
 Response: 4547831
 Conc: 8.42 ng/ml



#26 AR-1254-1

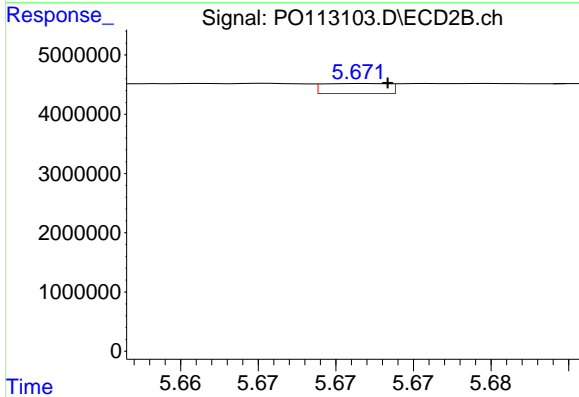
R.T.: 5.528 min
 Delta R.T.: 0.003 min
 Response: 511770
 Conc: 1.62 ng/ml



#27 AR-1254-2

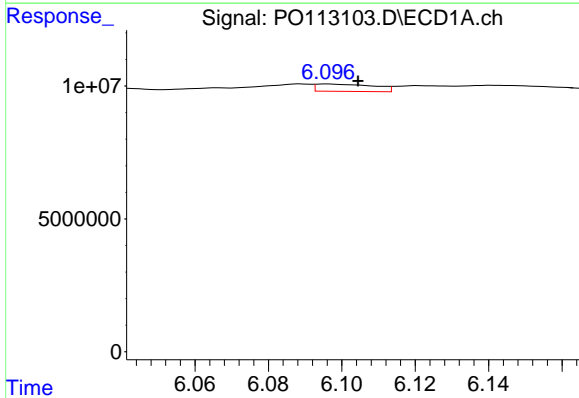
R.T.: 5.699 min
 Delta R.T.: -0.003 min
 Response: 7318039
 Conc: 14.83 ng/ml

Instrument :
 ECD_O
 ClientSampleId :
 GHA571Y-1-2



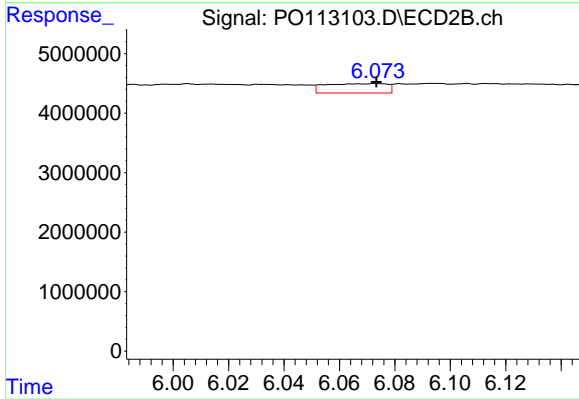
#27 AR-1254-2

R.T.: 5.672 min
 Delta R.T.: -0.002 min
 Response: 493823
 Conc: 1.76 ng/ml



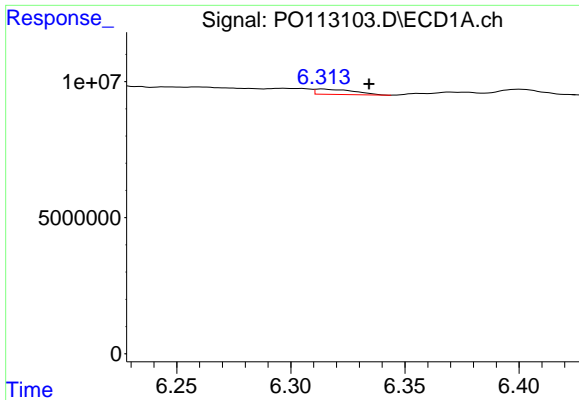
#28 AR-1254-3

R.T.: 6.096 min
 Delta R.T.: -0.008 min
 Response: 3045626
 Conc: 4.12 ng/ml



#28 AR-1254-3

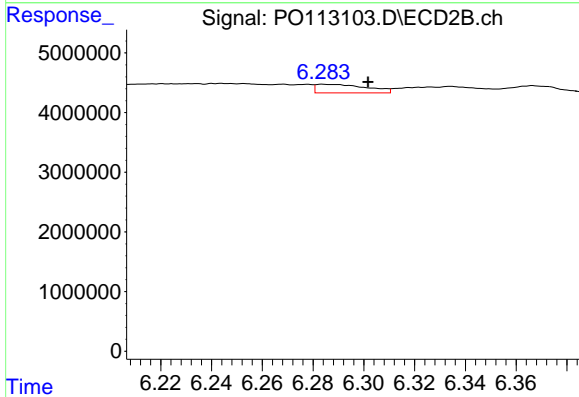
R.T.: 6.073 min
 Delta R.T.: 0.000 min
 Response: 2432551
 Conc: 5.83 ng/ml



#29 AR-1254-4

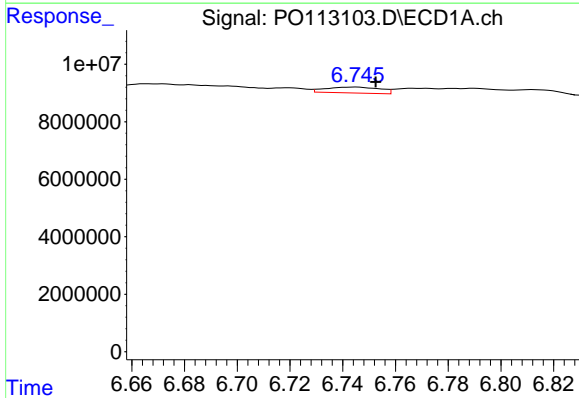
R.T.: 6.314 min
 Delta R.T.: -0.020 min
 Response: 2262923
 Conc: 4.06 ng/ml

Instrument :
 ECD_O
 ClientSampleId :
 GHA571Y-1-2



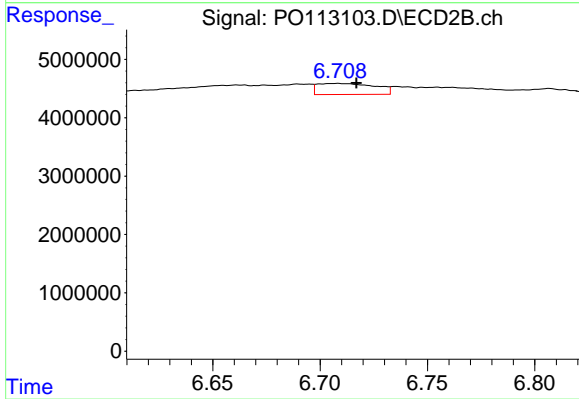
#29 AR-1254-4

R.T.: 6.284 min
 Delta R.T.: -0.018 min
 Response: 1979933
 Conc: 7.20 ng/ml



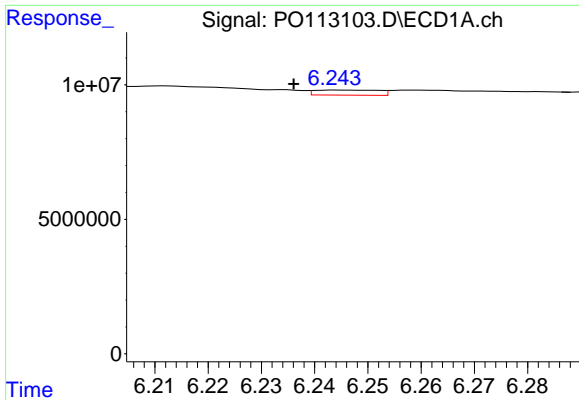
#30 AR-1254-5

R.T.: 6.745 min
 Delta R.T.: -0.007 min
 Response: 2903997
 Conc: 4.14 ng/ml



#30 AR-1254-5

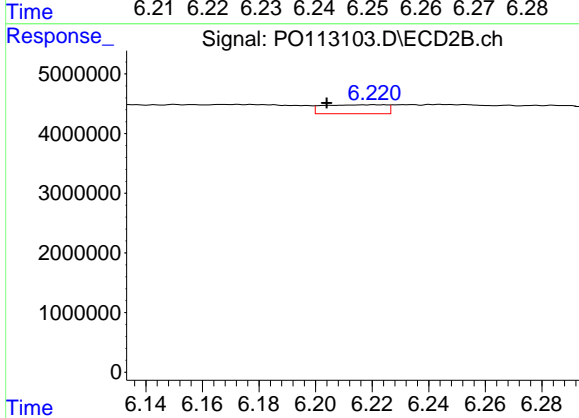
R.T.: 6.708 min
 Delta R.T.: -0.009 min
 Response: 3544476
 Conc: 9.91 ng/ml



#31 AR-1260-1

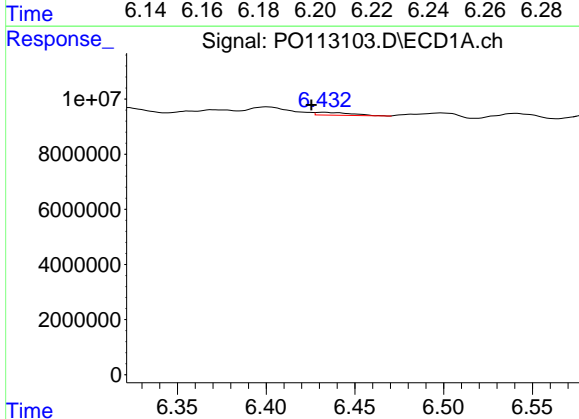
R.T.: 6.244 min
 Delta R.T.: 0.008 min
 Response: 1561637
 Conc: 3.50 ng/ml

Instrument :
 ECD_O
 ClientSampleId :
 GHA571Y-1-2



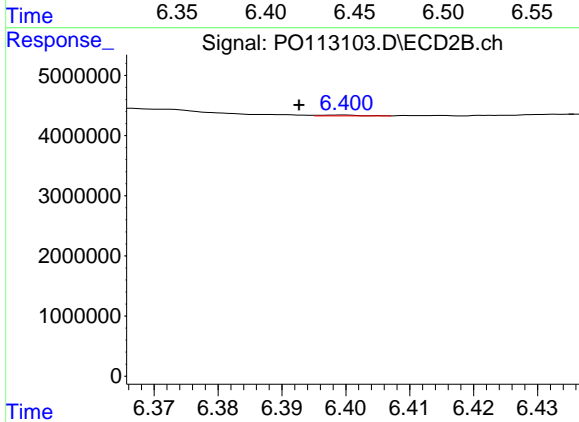
#31 AR-1260-1

R.T.: 6.221 min
 Delta R.T.: 0.017 min
 Response: 2308263
 Conc: 9.05 ng/ml



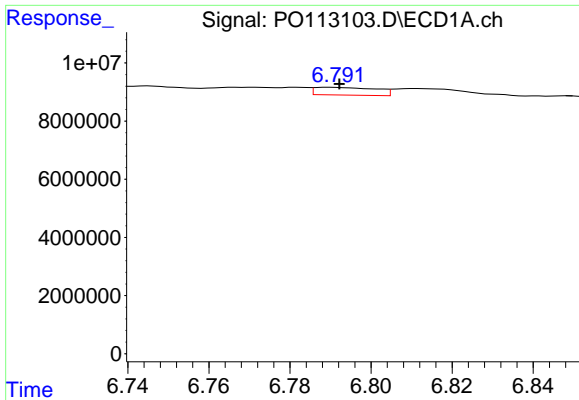
#32 AR-1260-2

R.T.: 6.432 min
 Delta R.T.: 0.007 min
 Response: 1200801
 Conc: 1.75 ng/ml



#32 AR-1260-2

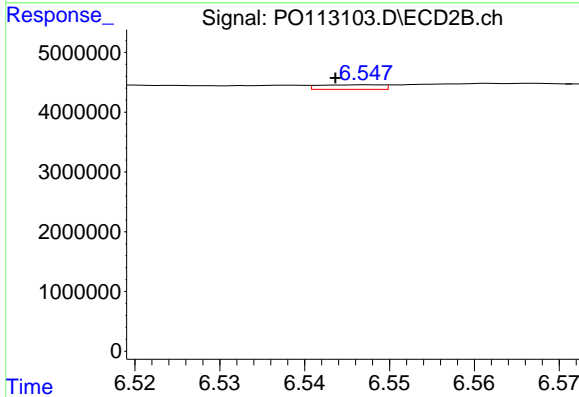
R.T.: 6.400 min
 Delta R.T.: 0.007 min
 Response: 64595
 Conc: 0.19 ng/ml



#33 AR-1260-3

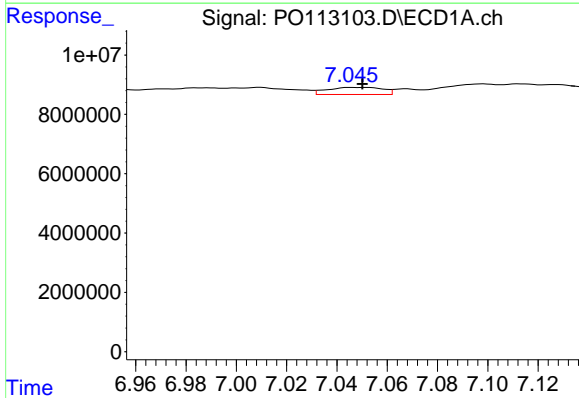
R.T.: 6.790 min
 Delta R.T.: -0.002 min
 Response: 2764255
 Conc: 4.48 ng/ml

Instrument :
 ECD_O
 ClientSampleId :
 GHA571Y-1-2



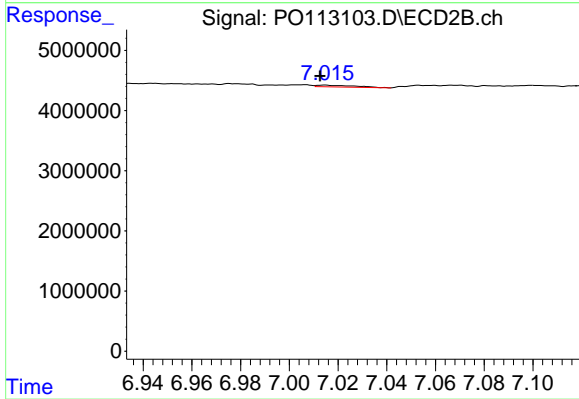
#33 AR-1260-3

R.T.: 6.547 min
 Delta R.T.: 0.004 min
 Response: 395713
 Conc: 1.33 ng/ml



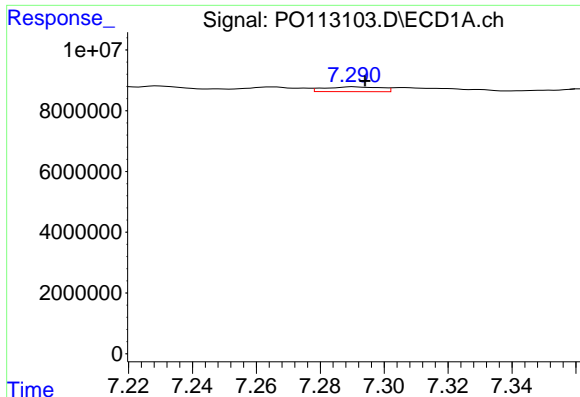
#34 AR-1260-4

R.T.: 7.046 min
 Delta R.T.: -0.004 min
 Response: 3662209
 Conc: 8.18 ng/ml



#34 AR-1260-4

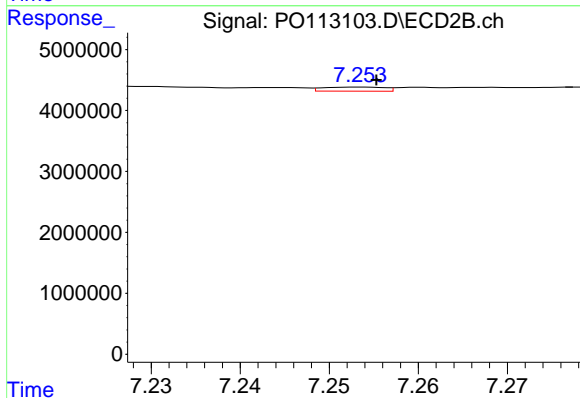
R.T.: 7.015 min
 Delta R.T.: 0.002 min
 Response: 307011
 Conc: 1.48 ng/ml



#35 AR-1260-5

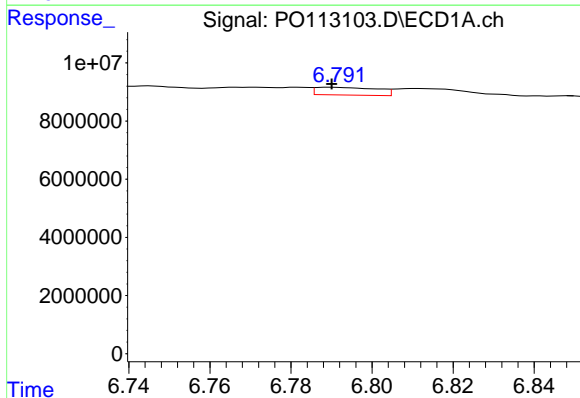
R.T.: 7.291 min
 Delta R.T.: -0.003 min
 Response: 1924369
 Conc: 1.59 ng/ml

Instrument :
 ECD_O
 ClientSampleId :
 GHA571Y-1-2



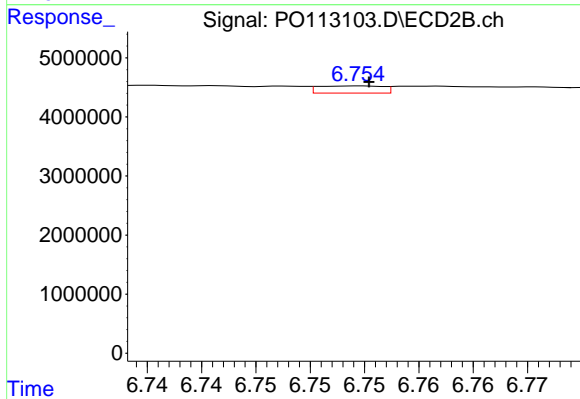
#35 AR-1260-5

R.T.: 7.253 min
 Delta R.T.: -0.002 min
 Response: 321212
 Conc: 0.69 ng/ml



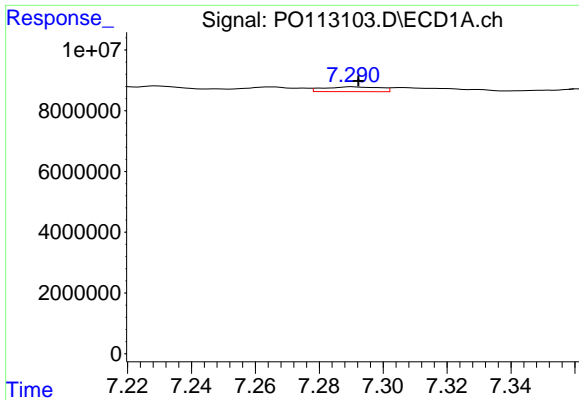
#36 AR-1262-1

R.T.: 6.790 min
 Delta R.T.: 0.000 min
 Response: 2764255
 Conc: 3.02 ng/ml



#36 AR-1262-1

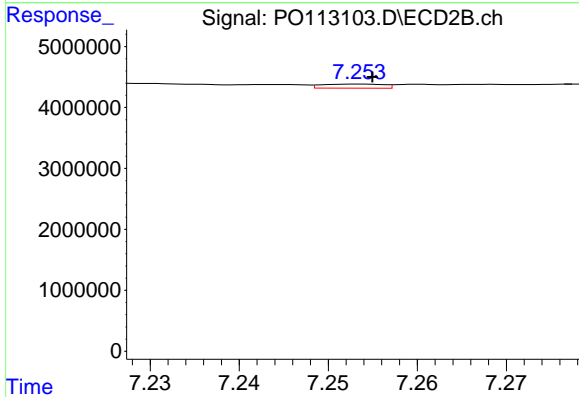
R.T.: 6.754 min
 Delta R.T.: 0.000 min
 Response: 504335
 Conc: 1.22 ng/ml



#37 AR-1262-2

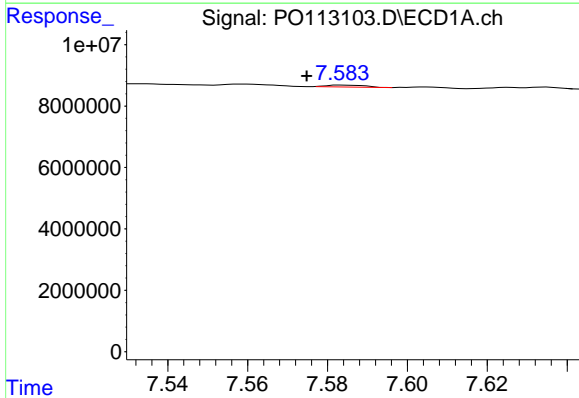
R.T.: 7.291 min
 Delta R.T.: -0.002 min
 Response: 1924369
 Conc: 1.27 ng/ml

Instrument :
 ECD_O
 ClientSampleId :
 GHA571Y-1-2



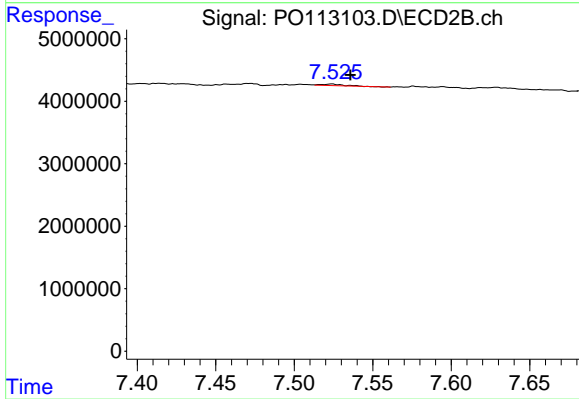
#37 AR-1262-2

R.T.: 7.253 min
 Delta R.T.: -0.002 min
 Response: 321212
 Conc: 0.62 ng/ml



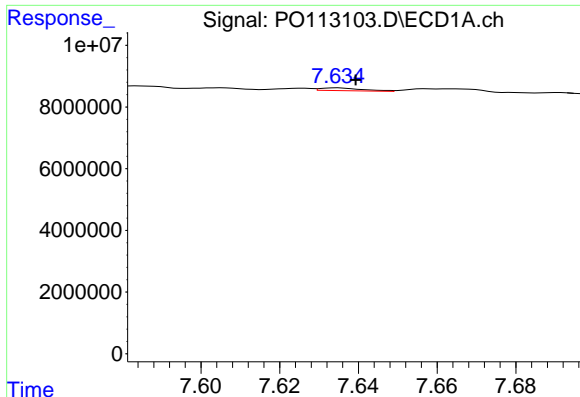
#38 AR-1262-3

R.T.: 7.584 min
 Delta R.T.: 0.009 min
 Response: 438886
 Conc: 0.79 ng/ml



#38 AR-1262-3

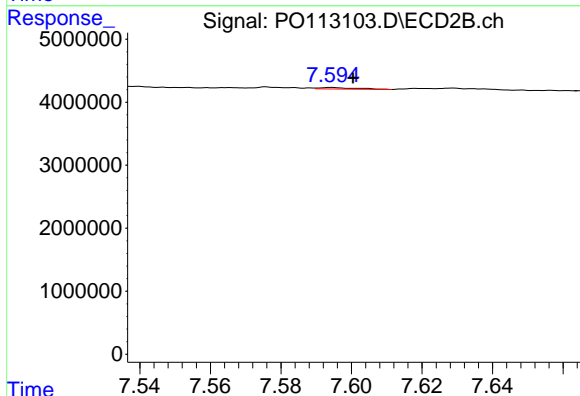
R.T.: 7.524 min
 Delta R.T.: -0.012 min
 Response: 255707
 Conc: 1.42 ng/ml



#39 AR-1262-4

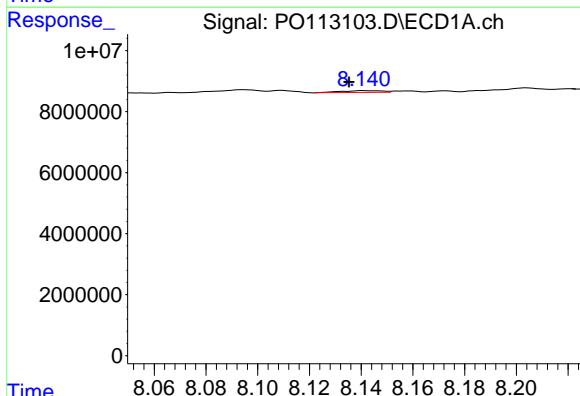
R.T.: 7.635 min
 Delta R.T.: -0.005 min
 Response: 685445
 Conc: 0.70 ng/ml

Instrument :
 ECD_O
 ClientSampleId :
 GHA571Y-1-2



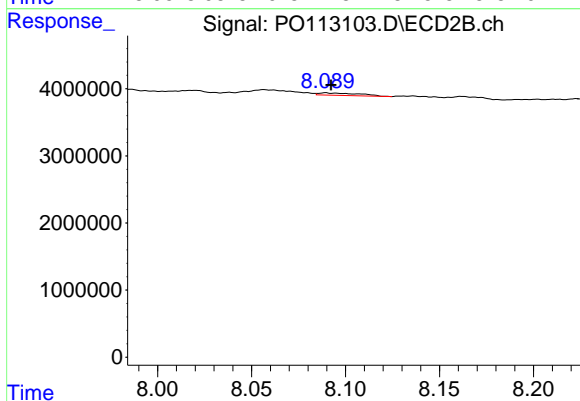
#39 AR-1262-4

R.T.: 7.594 min
 Delta R.T.: -0.006 min
 Response: 171977
 Conc: 0.59 ng/ml



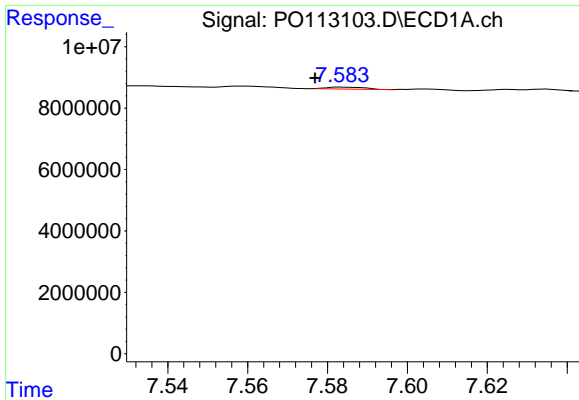
#40 AR-1262-5

R.T.: 8.141 min
 Delta R.T.: 0.006 min
 Response: 641039
 Conc: 1.54 ng/ml



#40 AR-1262-5

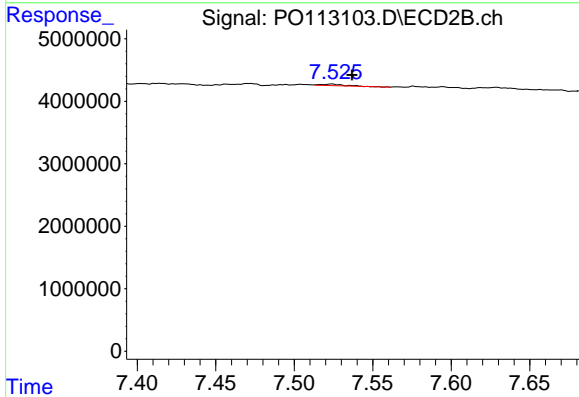
R.T.: 8.089 min
 Delta R.T.: -0.003 min
 Response: 537529
 Conc: 4.96 ng/ml



#41 AR-1268-1

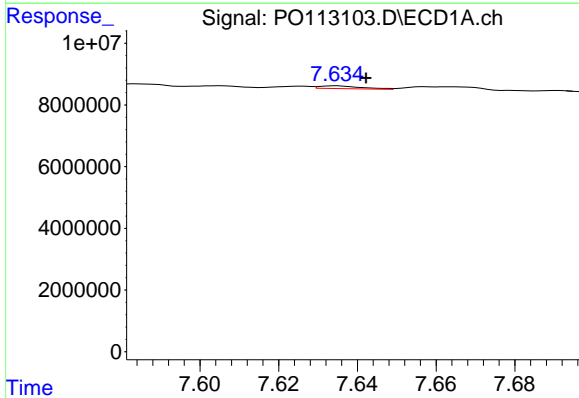
R.T.: 7.584 min
 Delta R.T.: 0.007 min
 Response: 438886
 Conc: 0.26 ng/ml

Instrument :
 ECD_O
 ClientSampleId :
 GHA571Y-1-2



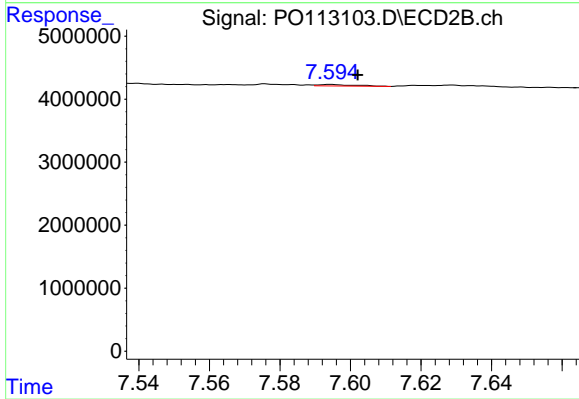
#41 AR-1268-1

R.T.: 7.524 min
 Delta R.T.: -0.013 min
 Response: 255707
 Conc: 0.50 ng/ml



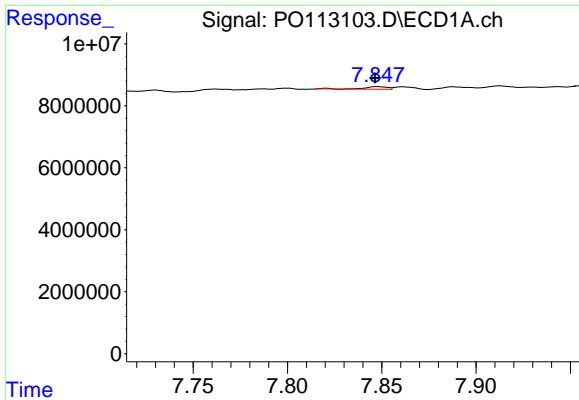
#42 AR-1268-2

R.T.: 7.635 min
 Delta R.T.: -0.008 min
 Response: 685445
 Conc: 0.47 ng/ml



#42 AR-1268-2

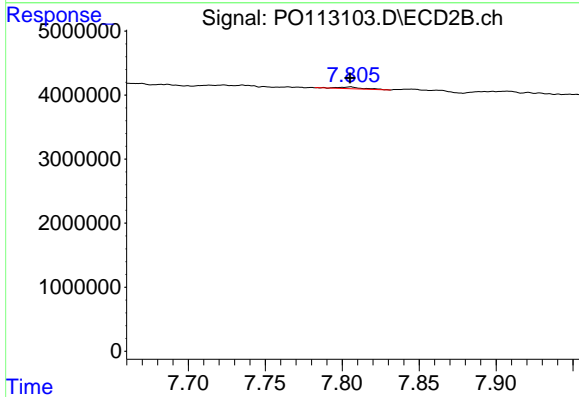
R.T.: 7.594 min
 Delta R.T.: -0.008 min
 Response: 171977
 Conc: 0.41 ng/ml



#43 AR-1268-3

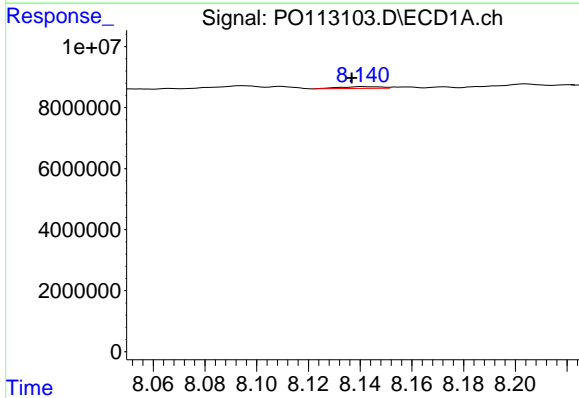
R.T.: 7.847 min
 Delta R.T.: 0.000 min
 Response: 641124
 Conc: 0.53 ng/ml

Instrument :
 ECD_O
 ClientSampleId :
 GHA571Y-1-2



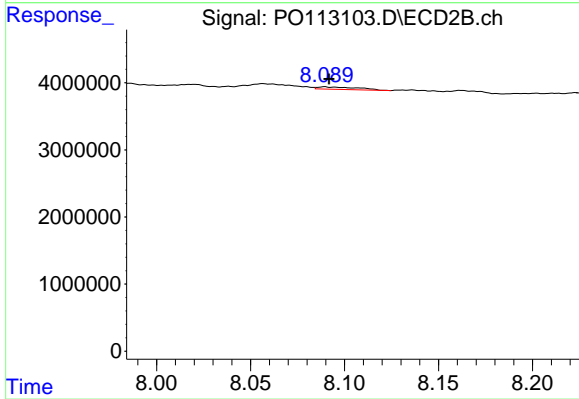
#43 AR-1268-3

R.T.: 7.805 min
 Delta R.T.: 0.000 min
 Response: 323425
 Conc: 0.99 ng/ml



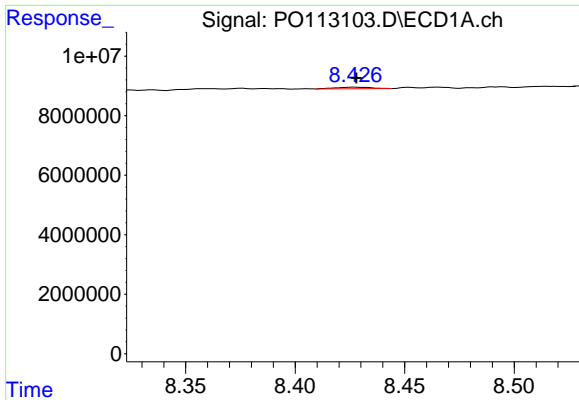
#44 AR-1268-4

R.T.: 8.141 min
 Delta R.T.: 0.004 min
 Response: 641039
 Conc: 1.39 ng/ml



#44 AR-1268-4

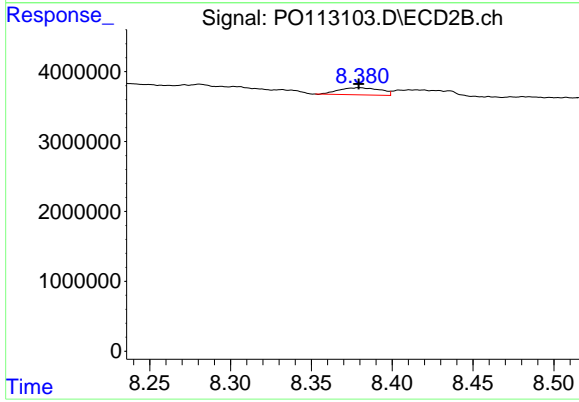
R.T.: 8.089 min
 Delta R.T.: -0.003 min
 Response: 537529
 Conc: 4.46 ng/ml



#45 AR-1268-5

R.T.: 8.427 min
Delta R.T.: 0.000 min
Response: 598203
Conc: 0.19 ng/ml

Instrument :
ECD_O
ClientSampleId :
GHA571Y-1-2



#45 AR-1268-5

R.T.: 8.380 min
Delta R.T.: 0.000 min
Response: 1817770
Conc: 2.33 ng/ml