

Data Path : Z:\pestpcbsrv\HPCHEM1\ECD_O\Data\P0082025\
 Data File : PO113105.D
 Signal(s) : Signal #1: ECD1A.ch Signal #2: ECD2B.ch
 Acq On : 20 Aug 2025 21:42
 Operator : YP/AJ
 Sample : AR1242CCC500
 Misc :
 ALS Vial : 4 Sample Multiplier: 1

Instrument :
 ECD_O
 ClientSampleId :
 AR1242CCC500

Integration File signal 1: autoint1.e
 Integration File signal 2: autoint2.e
 Quant Time: Aug 21 01:43:50 2025
 Quant Method : Z:\pestpcbsrv\HPCHEM1\ECD_O\methods\P0081825.M
 Quant Title : GC EXTRACTABLES
 QLast Update : Tue Aug 19 06:08:32 2025
 Response via : Initial Calibration
 Integrator: ChemStation

Volume Inj. : 2 µl
 Signal #1 Phase : ZB-MR1 Signal #2 Phase: ZB-MR2
 Signal #1 Info : 30Mx0.32mmx 0.50µ Signal #2 Info : 30M x 0.32mm x 0.25µm

Compound	RT#1	RT#2	Resp#1	Resp#2	ng/ml	ng/ml
System Monitoring Compounds						
1) SA Tetrachlo...	3.663	3.655	466.1E6	276.7E6	56.938	54.685
2) SA Decachlor...	8.680	8.625	357.4E6	102.2E6	51.567	53.944
Target Compounds						
3) L1 AR-1016-1	4.747	4.728	131.0E6	79754139	490.658	467.564
4) L1 AR-1016-2	4.765	4.746	197.3E6	118.8E6	491.560	460.910
5) L1 AR-1016-3	4.822	4.921	125.7E6	62944308	492.776	450.844
6) L1 AR-1016-4	4.942	4.963	99050280	48267970	454.217	413.611
7) L1 AR-1016-5	5.199	5.175	117.3E6	69453302	529.233	487.289
8) L2 AR-1221-1	3.873	3.862	11532722	8541555	123.248	135.320
9) L2 AR-1221-2	3.961	3.949	17936341	13050586	265.524	279.616
10) L2 AR-1221-3	4.035	4.023	67572529	45352420	305.273	305.455
11) L3 AR-1232-1	4.035	4.023	67572529	45352420	388.334	386.298
12) L3 AR-1232-2	4.526	4.746	97009303	118.8E6	971.526	969.082
13) L3 AR-1232-3	4.765	4.921	197.3E6	62944308	1041.443	993.665
14) L3 AR-1232-4	4.942	5.005	99050280	62542505	1051.829	1112.437
15) L3 AR-1232-5	4.985	5.175	70502485	69453302	1138.184	1160.193
16) L4 AR-1242-1	4.747	4.728	131.0E6	79754139	569.726	551.915
17) L4 AR-1242-2	4.765	4.746	197.3E6	118.8E6	574.253	547.488
18) L4 AR-1242-3	4.822	4.921	125.7E6	62944308	566.372	538.150
19) L4 AR-1242-4	4.942	5.005	99050280	62542505	571.018	531.655
20) L4 AR-1242-5	5.592	5.524	114.1E6	82487326	569.925	553.113
21) L5 AR-1248-1	4.747	4.728	131.0E6	79754139	750.851	715.208
22) L5 AR-1248-2	4.985	4.963	70502485	48267970	291.494	300.363
23) L5 AR-1248-3	5.199	5.005	117.3E6	62542505	367.846	368.633
24) L5 AR-1248-4	5.551	5.175	142.7E6	69453302	285.684	348.626
25) L5 AR-1248-5	5.592	5.565	114.1E6	69722061	334.057	328.418
26) L6 AR-1254-1	5.551	5.524	142.7E6	82487326	264.324	261.571
27) L6 AR-1254-2	5.700	5.672	44097932	27319209	89.366	97.451
28) L6 AR-1254-3	6.104	6.072	44610737	28522016	60.376	68.411
29) L6 AR-1254-4	6.331	6.299	34952509	14959687	62.751	54.431
30) L6 AR-1254-5	6.752	6.716	11435481	7103921	16.314	19.872
31) L7 AR-1260-1	6.248	6.215	25038548	10329607	56.143	40.497 #
32) L7 AR-1260-2	6.423	6.390	6377024	2331511	9.286	6.744 #
33) L7 AR-1260-3	6.823	6.539	1324998	3748673	2.146	12.603 #
34) L7 AR-1260-4	7.048	7.006	550227	580238	1.229	2.800 #
35) L7 AR-1260-5	7.270	7.281	4107366	920648	3.393	1.965 #
36) L8 AR-1262-1	6.823	6.784	1324998	1172667	1.447	2.828 #
37) L8 AR-1262-2	7.270	7.229	4107366	2590700	2.716	5.005 #
38) L8 AR-1262-3	7.578	7.524	473720	156037	0.855	0.869
39) L8 AR-1262-4	7.642	7.595	1007544	221681	1.030	0.765 #
40) L8 AR-1262-5	8.138	8.098	306133	83576	0.734	0.771
41) L9 AR-1268-1	7.578	7.524	473720	156037	0.275	0.306

Data Path : Z:\pestpcbsrv\HPCHEM1\ECD_0\Data\P0082025\
 Data File : P0113105.D
 Signal(s) : Signal #1: ECD1A.ch Signal #2: ECD2B.ch
 Acq On : 20 Aug 2025 21:42
 Operator : YP/AJ
 Sample : AR1242CCC500
 Misc :
 ALS Vial : 4 Sample Multiplier: 1

Instrument :
 ECD_0
ClientSampleId :
 AR1242CCC500

Integration File signal 1: autoint1.e
 Integration File signal 2: autoint2.e
 Quant Time: Aug 21 01:43:50 2025
 Quant Method : Z:\pestpcbsrv\HPCHEM1\ECD_0\methods\P0081825.M
 Quant Title : GC EXTRACTABLES
 QLast Update : Tue Aug 19 06:08:32 2025
 Response via : Initial Calibration
 Integrator: ChemStation

Volume Inj. : 2 µl
 Signal #1 Phase : ZB-MR1 Signal #2 Phase: ZB-MR2
 Signal #1 Info : 30Mx0.32mmx 0.50µ Signal #2 Info : 30M x 0.32mm x 0.25µm

	Compound	RT#1	RT#2	Resp#1	Resp#2	ng/ml	ng/ml
42)	L9 AR-1268-2	7.642	7.595	1007544	221681	0.696	0.534
43)	L9 AR-1268-3	7.845	7.799	1133412	351036	0.940	1.075
44)	L9 AR-1268-4	8.138	8.098	306133	83576	0.665	0.694
45)	L9 AR-1268-5	8.426	8.370	2059519	406869	0.646	0.521

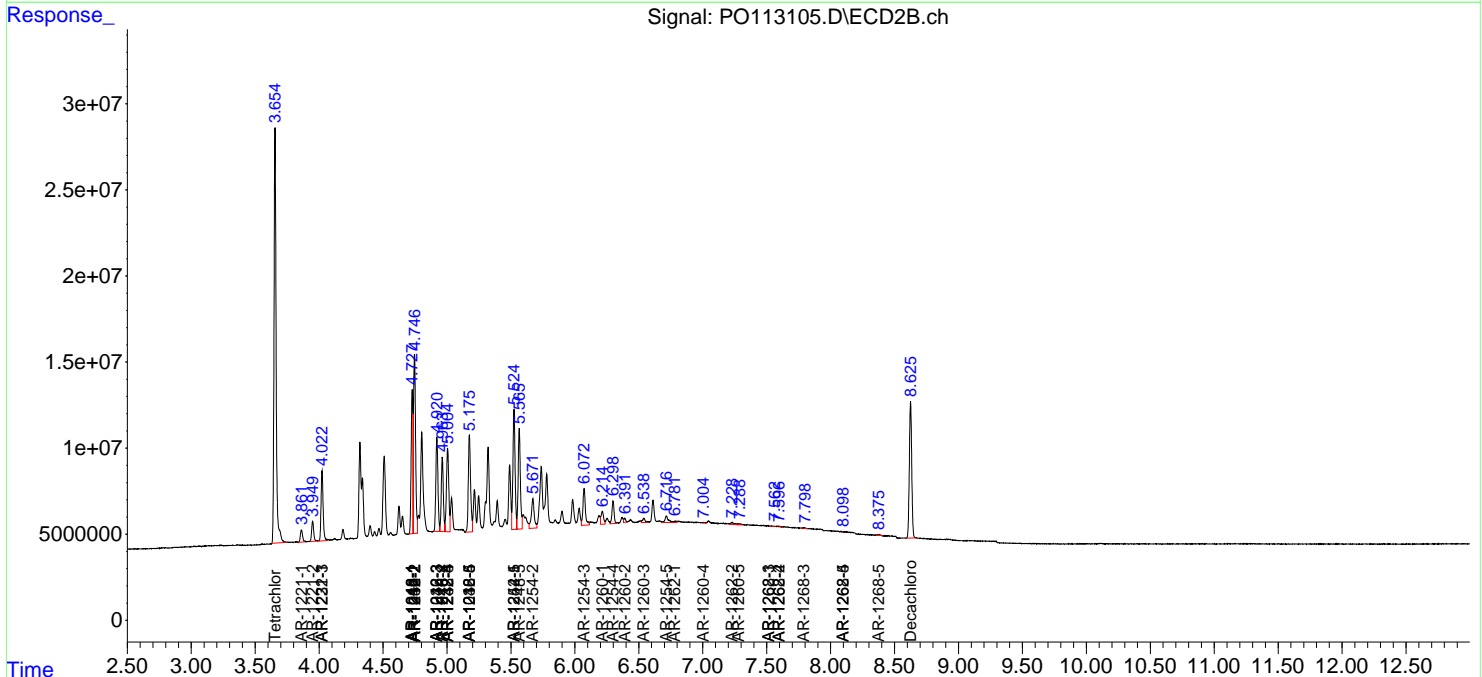
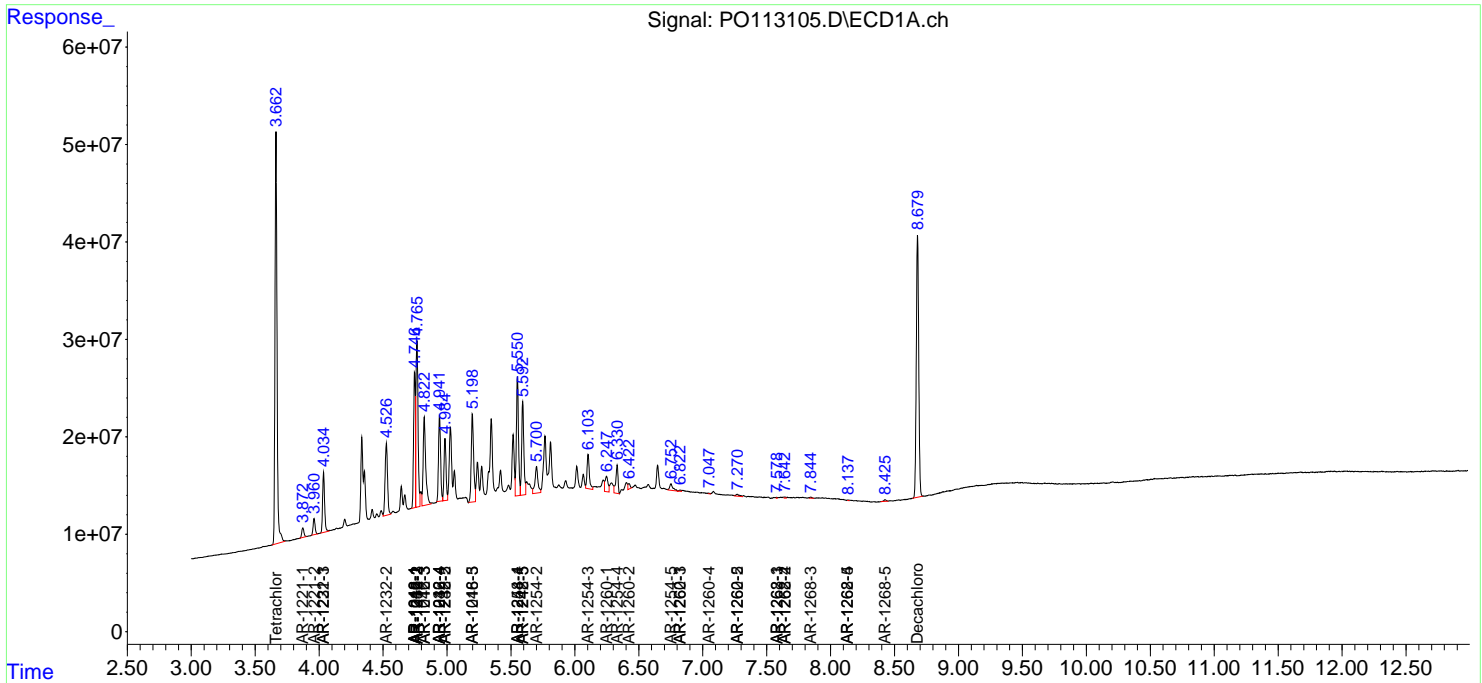
(f)=RT Delta > 1/2 Window (#)=Amounts differ by > 25% (m)=manual int.

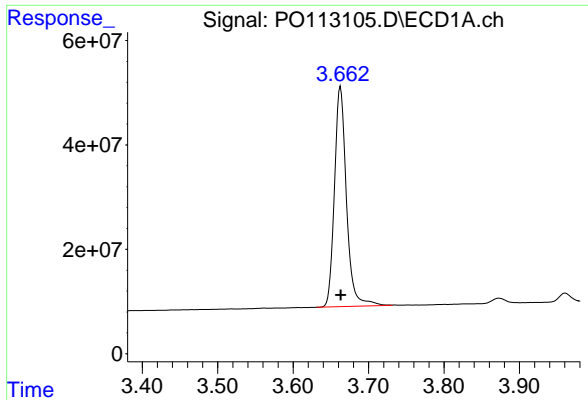
Data Path : Z:\pestpcbsrv\HPCHEM1\ECD_O\Data\PO082025\
 Data File : PO113105.D
 Signal(s) : Signal #1: ECD1A.ch Signal #2: ECD2B.ch
 Acq On : 20 Aug 2025 21:42
 Operator : YP/AJ
 Sample : AR1242CCC500
 Misc :
 ALS Vial : 4 Sample Multiplier: 1

Instrument :
 ECD_O
 ClientSampleId :
 AR1242CCC500

Integration File signal 1: autoint1.e
 Integration File signal 2: autoint2.e
 Quant Time: Aug 21 01:43:50 2025
 Quant Method : Z:\pestpcbsrv\HPCHEM1\ECD_O\methods\PO081825.M
 Quant Title : GC EXTRACTABLES
 QLast Update : Tue Aug 19 06:08:32 2025
 Response via : Initial Calibration
 Integrator: ChemStation

Volume Inj. : 2 µl
 Signal #1 Phase : ZB-MR1 Signal #2 Phase: ZB-MR2
 Signal #1 Info : 30Mx0.32mmx 0.50µ Signal #2 Info : 30M x 0.32mm x 0.25µm

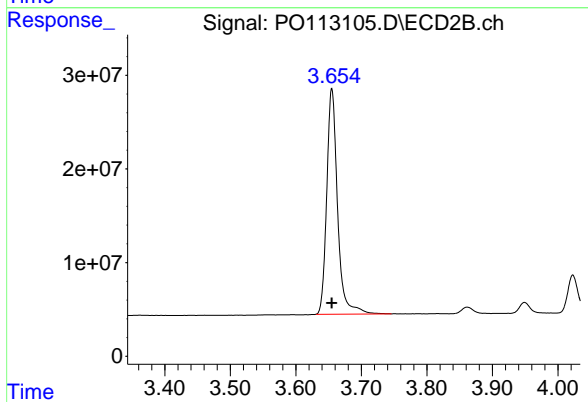




#1 Tetrachloro-m-xylene

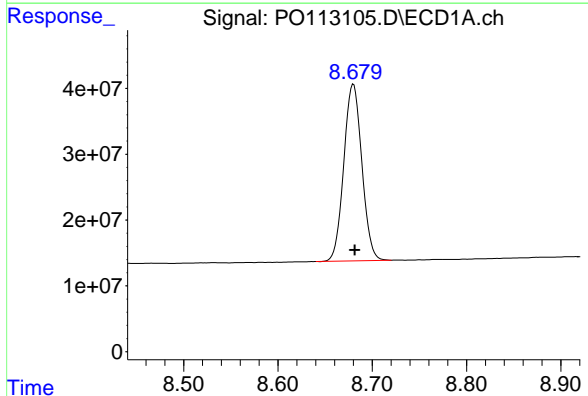
R.T.: 3.663 min
 Delta R.T.: 0.000 min
 Response: 466124572
 Conc: 56.94 ng/ml

Instrument :
 ECD_O
 ClientSampleId :
 AR1242CCC500



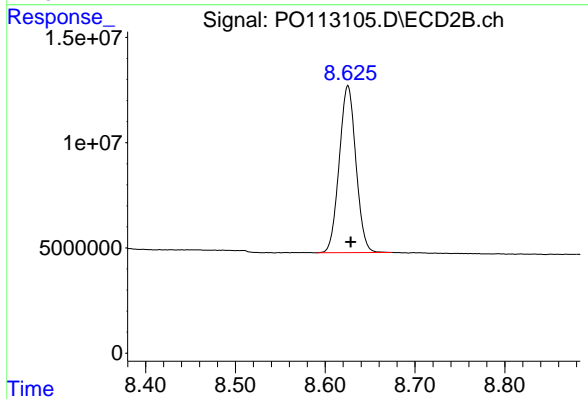
#1 Tetrachloro-m-xylene

R.T.: 3.655 min
 Delta R.T.: 0.000 min
 Response: 276743579
 Conc: 54.69 ng/ml



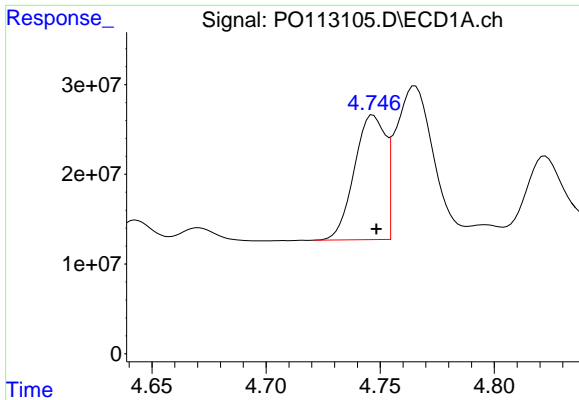
#2 Decachlorobiphenyl

R.T.: 8.680 min
 Delta R.T.: -0.002 min
 Response: 357436052
 Conc: 51.57 ng/ml



#2 Decachlorobiphenyl

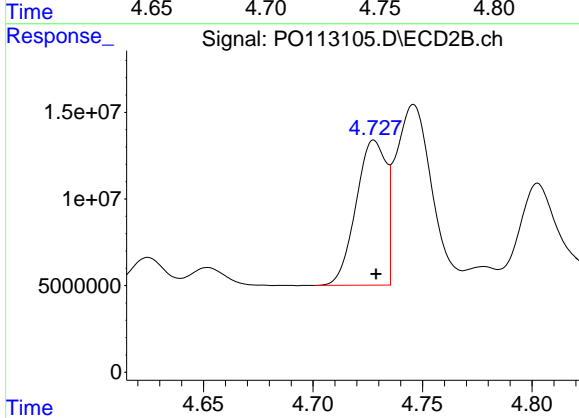
R.T.: 8.625 min
 Delta R.T.: -0.003 min
 Response: 102215211
 Conc: 53.94 ng/ml



#3 AR-1016-1

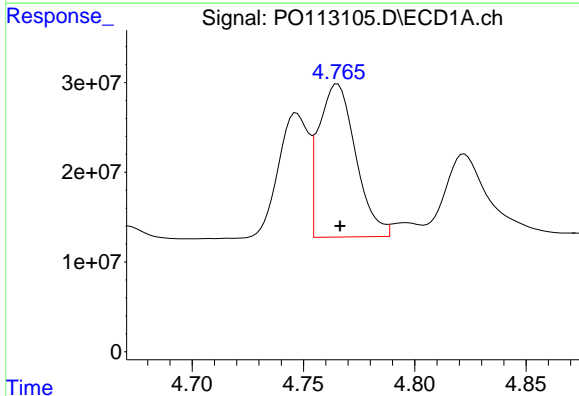
R.T.: 4.747 min
 Delta R.T.: -0.001 min
 Response: 130998185
 Conc: 490.66 ng/ml

Instrument :
 ECD_O
 ClientSampleId :
 AR1242CCC500



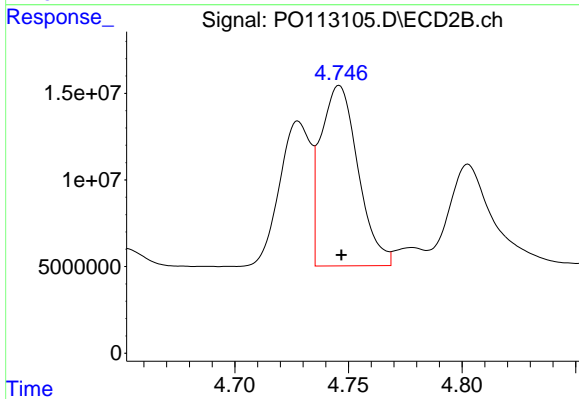
#3 AR-1016-1

R.T.: 4.728 min
 Delta R.T.: 0.000 min
 Response: 79754139
 Conc: 467.56 ng/ml



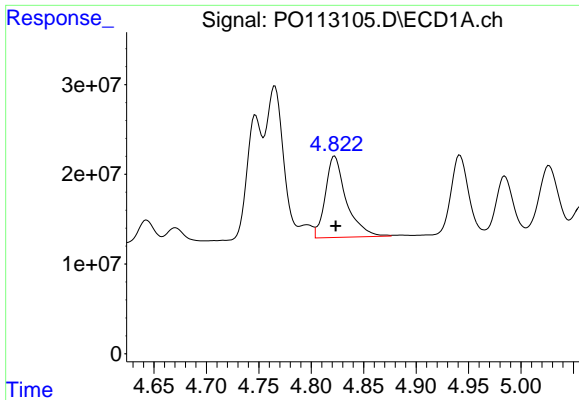
#4 AR-1016-2

R.T.: 4.765 min
 Delta R.T.: -0.001 min
 Response: 197327841
 Conc: 491.56 ng/ml



#4 AR-1016-2

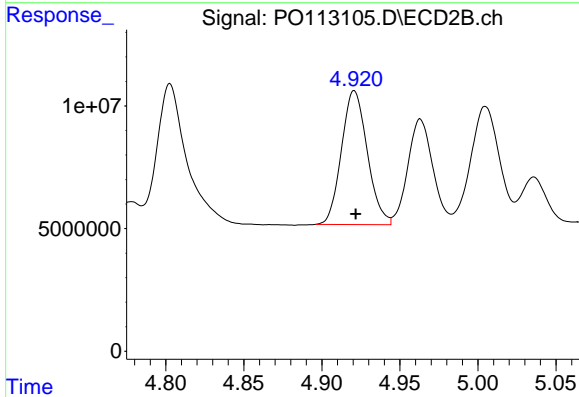
R.T.: 4.746 min
 Delta R.T.: 0.000 min
 Response: 118756238
 Conc: 460.91 ng/ml



#5 AR-1016-3

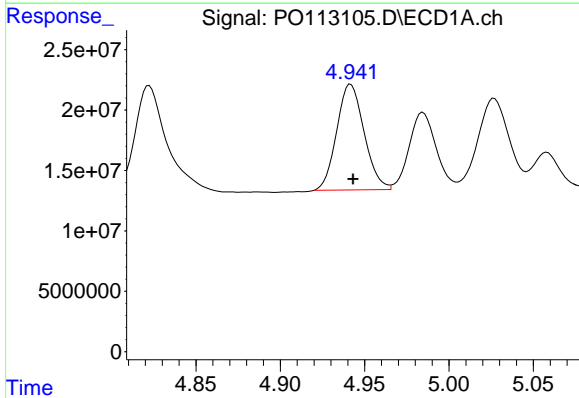
R.T.: 4.822 min
 Delta R.T.: -0.001 min
 Response: 125669041
 Conc: 492.78 ng/ml

Instrument :
 ECD_O
 ClientSampleId :
 AR1242CCC500



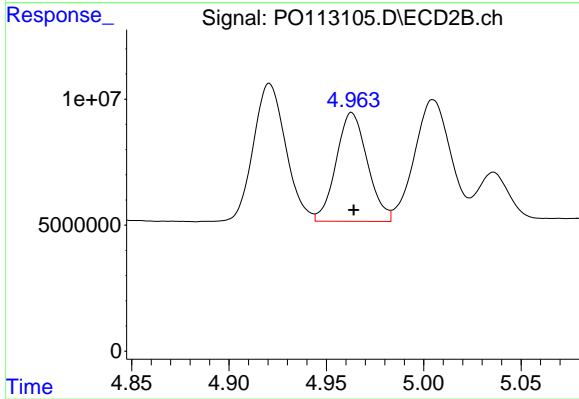
#5 AR-1016-3

R.T.: 4.921 min
 Delta R.T.: 0.000 min
 Response: 62944308
 Conc: 450.84 ng/ml



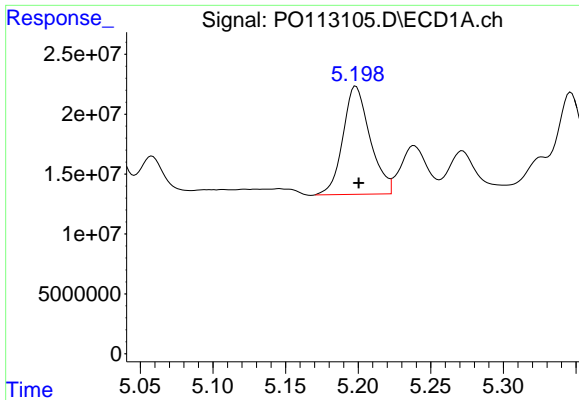
#6 AR-1016-4

R.T.: 4.942 min
 Delta R.T.: -0.001 min
 Response: 99050280
 Conc: 454.22 ng/ml



#6 AR-1016-4

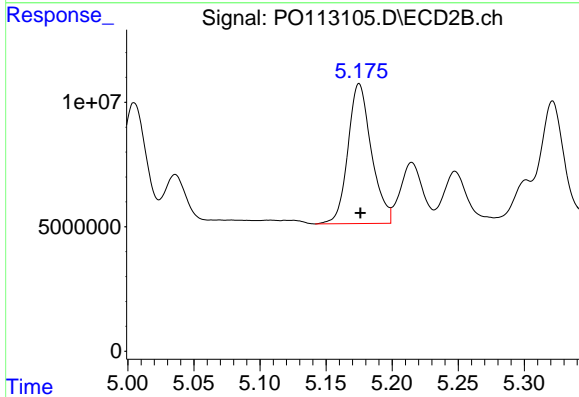
R.T.: 4.963 min
 Delta R.T.: -0.001 min
 Response: 48267970
 Conc: 413.61 ng/ml



#7 AR-1016-5

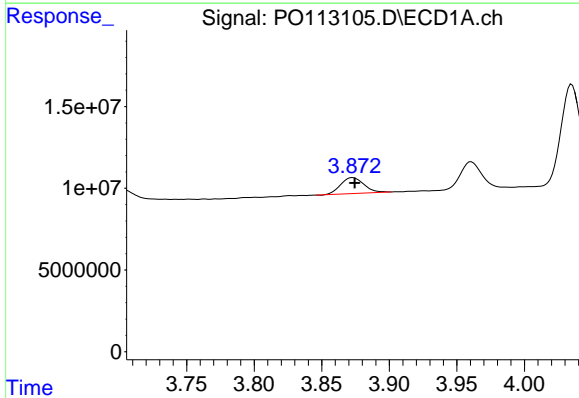
R.T.: 5.199 min
 Delta R.T.: -0.002 min
 Response: 117292835
 Conc: 529.23 ng/ml

Instrument :
 ECD_O
 ClientSampleId :
 AR1242CCC500



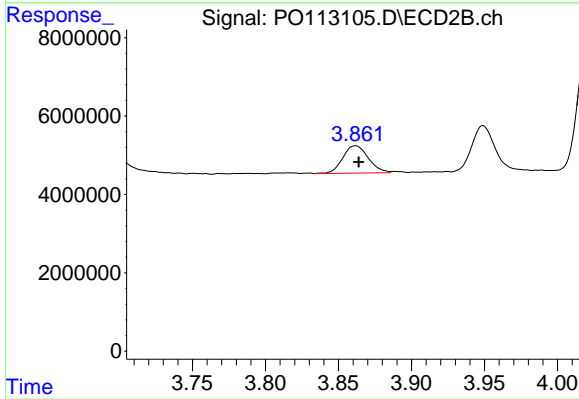
#7 AR-1016-5

R.T.: 5.175 min
 Delta R.T.: -0.001 min
 Response: 69453302
 Conc: 487.29 ng/ml



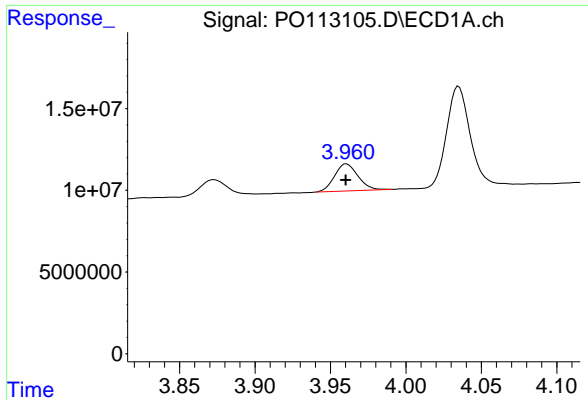
#8 AR-1221-1

R.T.: 3.873 min
 Delta R.T.: -0.001 min
 Response: 11532722
 Conc: 123.25 ng/ml



#8 AR-1221-1

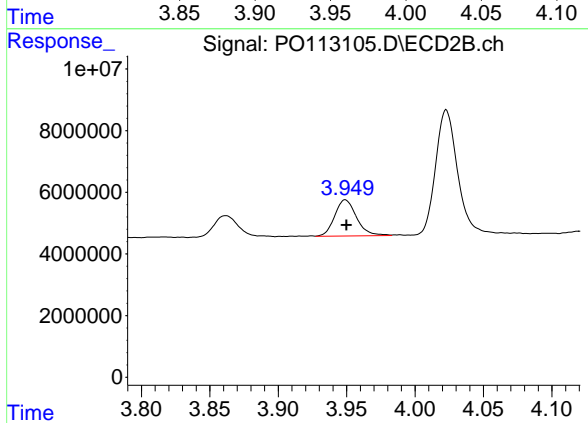
R.T.: 3.862 min
 Delta R.T.: -0.002 min
 Response: 8541555
 Conc: 135.32 ng/ml



#9 AR-1221-2

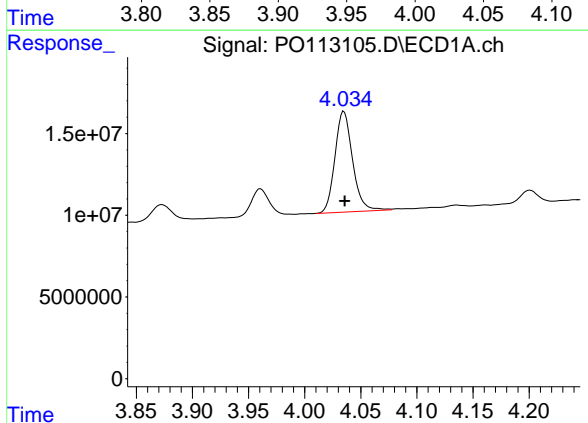
R.T.: 3.961 min
 Delta R.T.: 0.000 min
 Response: 17936341
 Conc: 265.52 ng/ml

Instrument :
 ECD_O
 ClientSampleId :
 AR1242CCC500



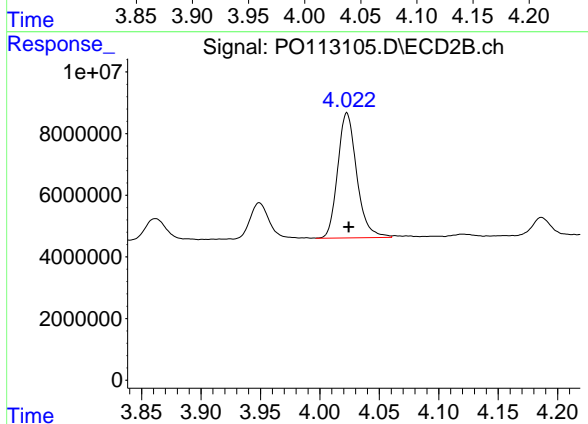
#9 AR-1221-2

R.T.: 3.949 min
 Delta R.T.: 0.000 min
 Response: 13050586
 Conc: 279.62 ng/ml



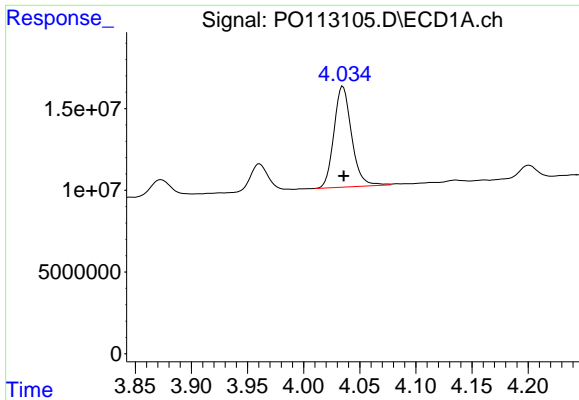
#10 AR-1221-3

R.T.: 4.035 min
 Delta R.T.: 0.000 min
 Response: 67572529
 Conc: 305.27 ng/ml



#10 AR-1221-3

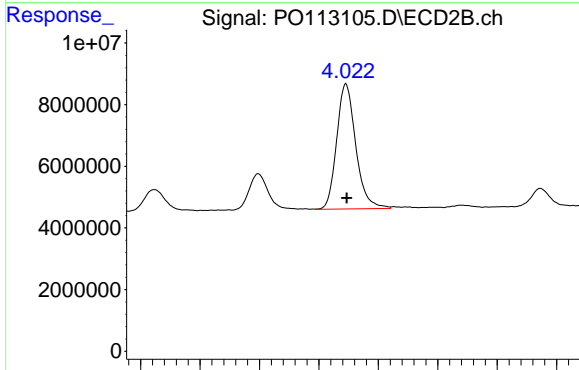
R.T.: 4.023 min
 Delta R.T.: -0.001 min
 Response: 45352420
 Conc: 305.45 ng/ml



#11 AR-1232-1

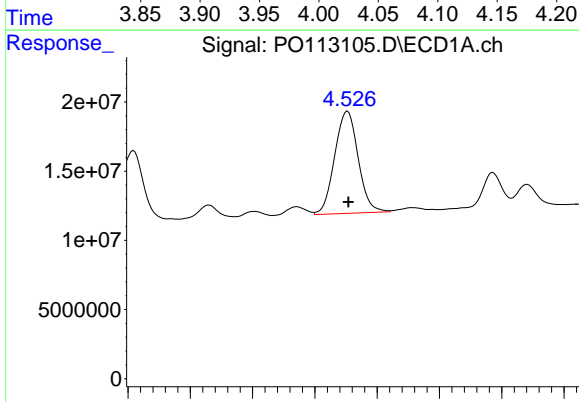
R.T.: 4.035 min
 Delta R.T.: 0.000 min
 Response: 67572529
 Conc: 388.33 ng/ml

Instrument :
 ECD_O
 ClientSampleId :
 AR1242CCC500



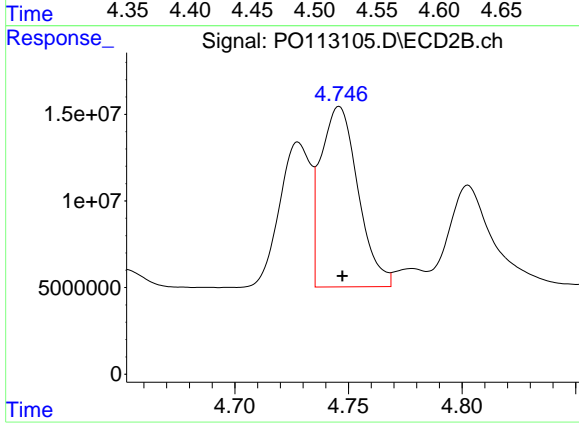
#11 AR-1232-1

R.T.: 4.023 min
 Delta R.T.: 0.000 min
 Response: 45352420
 Conc: 386.30 ng/ml



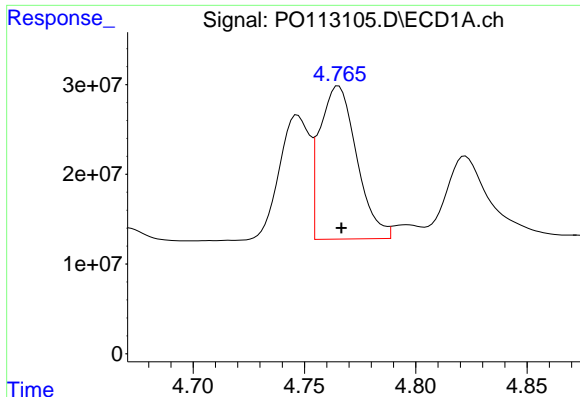
#12 AR-1232-2

R.T.: 4.526 min
 Delta R.T.: 0.000 min
 Response: 97009303
 Conc: 971.53 ng/ml



#12 AR-1232-2

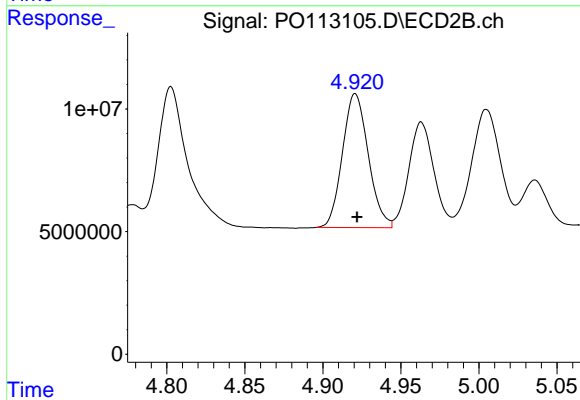
R.T.: 4.746 min
 Delta R.T.: -0.001 min
 Response: 118756238
 Conc: 969.08 ng/ml



#13 AR-1232-3

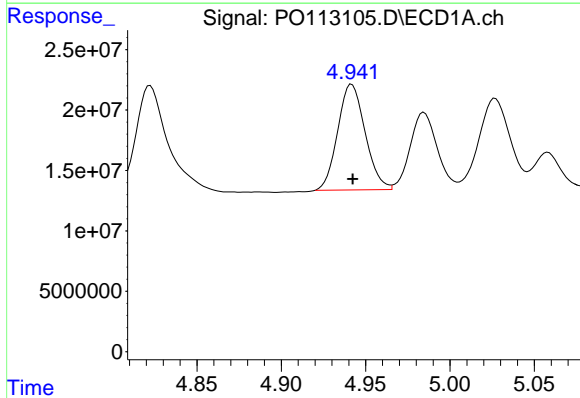
R.T.: 4.765 min
 Delta R.T.: -0.001 min
 Response: 197327841
 Conc: 1041.44 ng/ml

Instrument :
 ECD_O
 ClientSampleId :
 AR1242CCC500



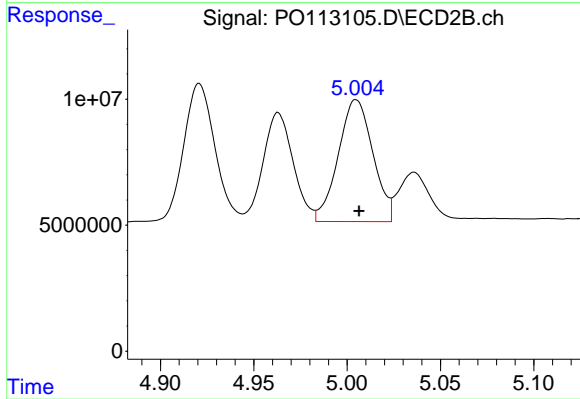
#13 AR-1232-3

R.T.: 4.921 min
 Delta R.T.: -0.001 min
 Response: 62944308
 Conc: 993.66 ng/ml



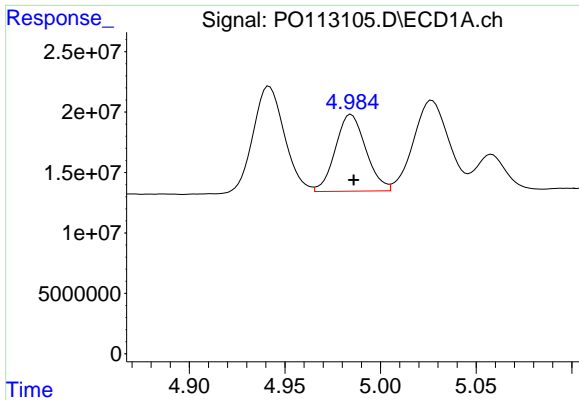
#14 AR-1232-4

R.T.: 4.942 min
 Delta R.T.: 0.000 min
 Response: 99050280
 Conc: 1051.83 ng/ml



#14 AR-1232-4

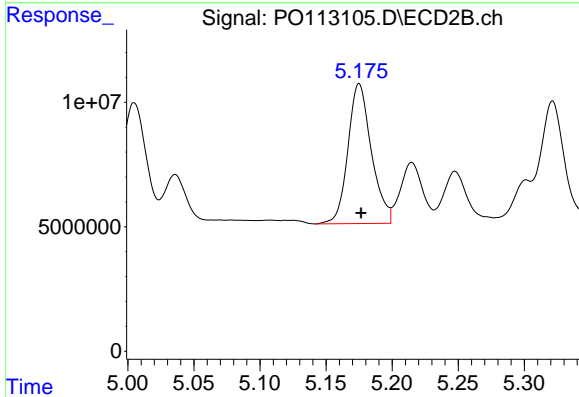
R.T.: 5.005 min
 Delta R.T.: -0.002 min
 Response: 62542505
 Conc: 1112.44 ng/ml



#15 AR-1232-5

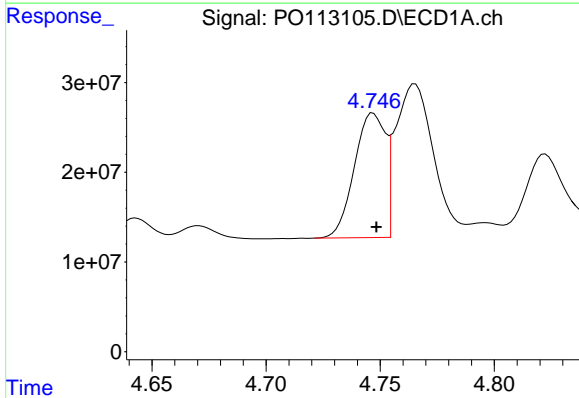
R.T.: 4.985 min
 Delta R.T.: -0.001 min
 Response: 70502485
 Conc: 1138.18 ng/ml

Instrument :
 ECD_O
 ClientSampleId :
 AR1242CCC500



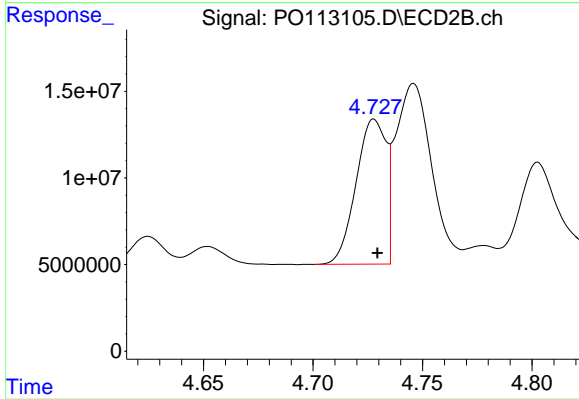
#15 AR-1232-5

R.T.: 5.175 min
 Delta R.T.: -0.001 min
 Response: 69453302
 Conc: 1160.19 ng/ml



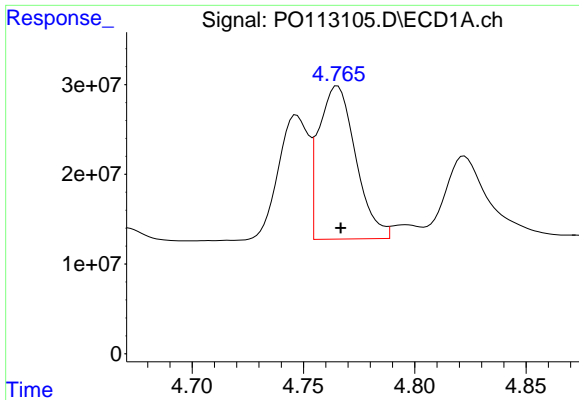
#16 AR-1242-1

R.T.: 4.747 min
 Delta R.T.: -0.001 min
 Response: 130998185
 Conc: 569.73 ng/ml



#16 AR-1242-1

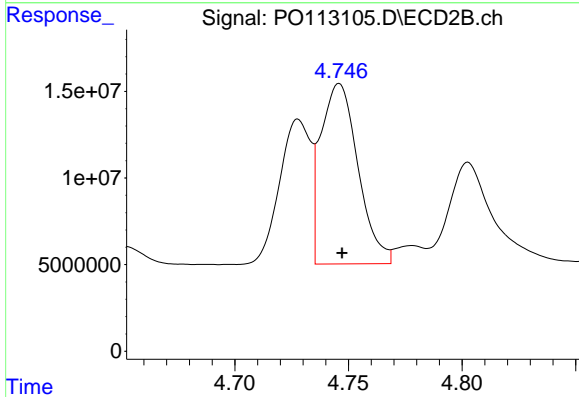
R.T.: 4.728 min
 Delta R.T.: -0.002 min
 Response: 79754139
 Conc: 551.92 ng/ml



#17 AR-1242-2

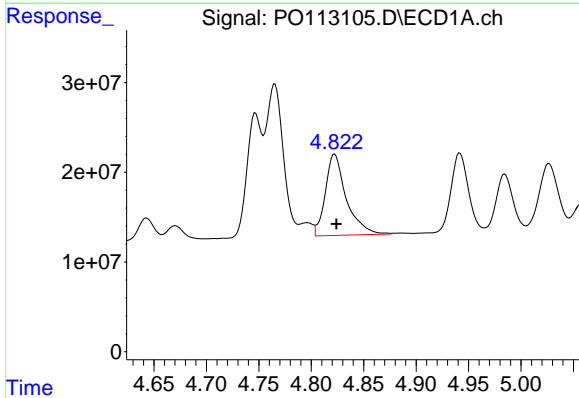
R.T.: 4.765 min
 Delta R.T.: -0.001 min
 Response: 197327841
 Conc: 574.25 ng/ml

Instrument :
 ECD_O
 ClientSampleId :
 AR1242CCC500



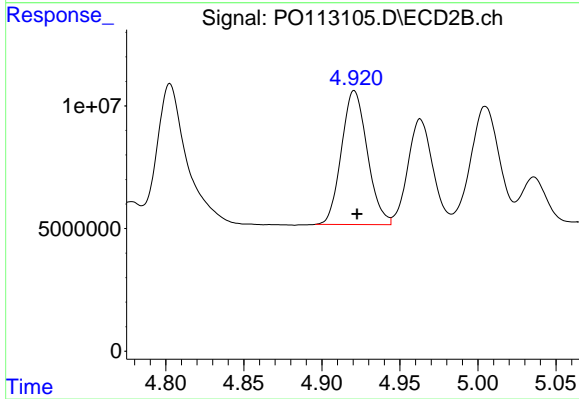
#17 AR-1242-2

R.T.: 4.746 min
 Delta R.T.: -0.001 min
 Response: 118756238
 Conc: 547.49 ng/ml



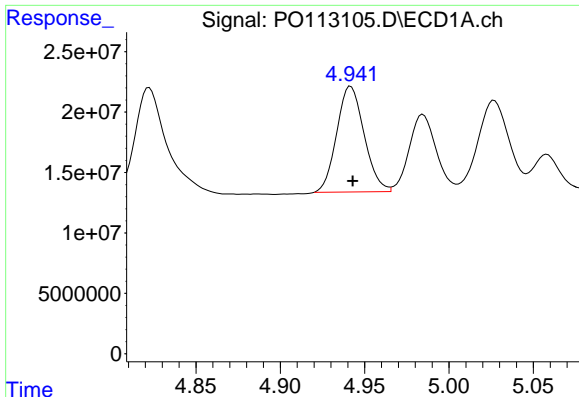
#18 AR-1242-3

R.T.: 4.822 min
 Delta R.T.: -0.002 min
 Response: 125669041
 Conc: 566.37 ng/ml



#18 AR-1242-3

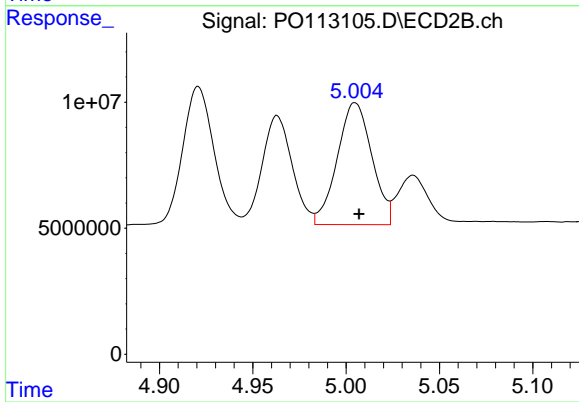
R.T.: 4.921 min
 Delta R.T.: -0.002 min
 Response: 62944308
 Conc: 538.15 ng/ml



#19 AR-1242-4

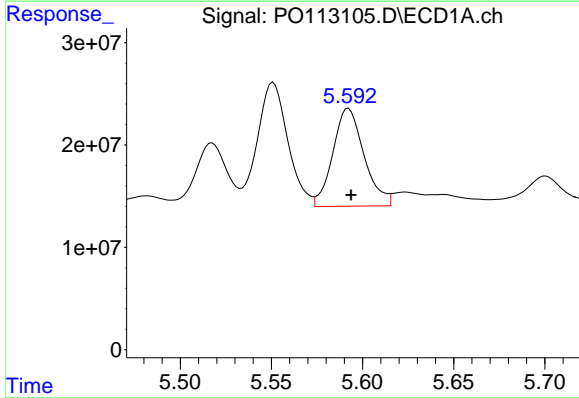
R.T.: 4.942 min
 Delta R.T.: -0.001 min
 Response: 99050280
 Conc: 571.02 ng/ml

Instrument :
 ECD_O
 ClientSampleId :
 AR1242CCC500



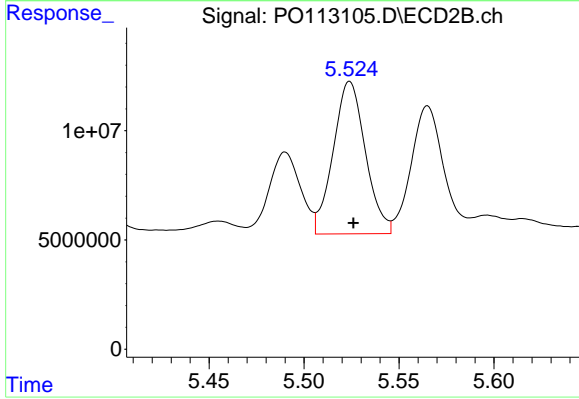
#19 AR-1242-4

R.T.: 5.005 min
 Delta R.T.: -0.002 min
 Response: 62542505
 Conc: 531.66 ng/ml



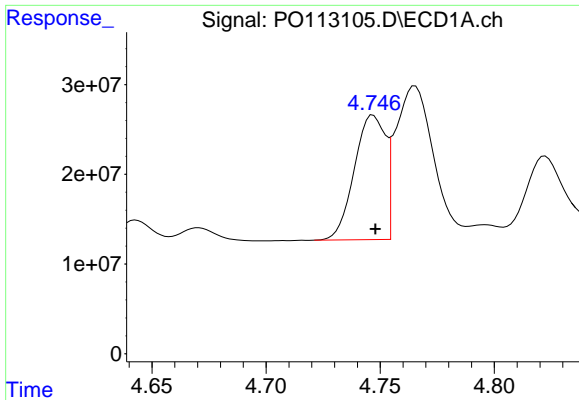
#20 AR-1242-5

R.T.: 5.592 min
 Delta R.T.: -0.001 min
 Response: 114077521
 Conc: 569.93 ng/ml



#20 AR-1242-5

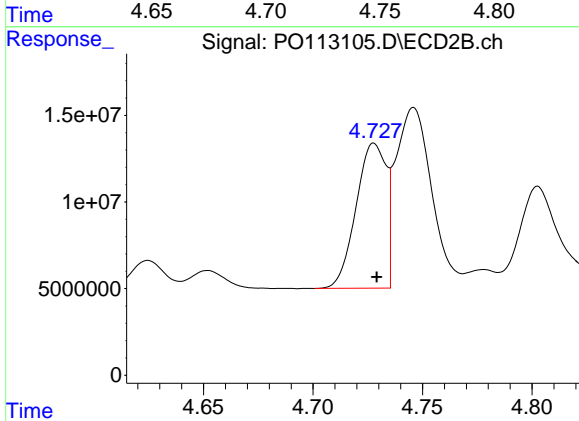
R.T.: 5.524 min
 Delta R.T.: -0.002 min
 Response: 82487326
 Conc: 553.11 ng/ml



#21 AR-1248-1

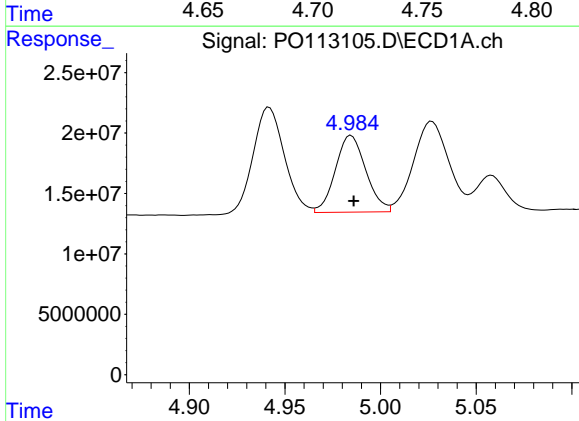
R.T.: 4.747 min
 Delta R.T.: 0.000 min
 Response: 130998185
 Conc: 750.85 ng/ml

Instrument :
 ECD_O
 ClientSampleId :
 AR1242CCC500



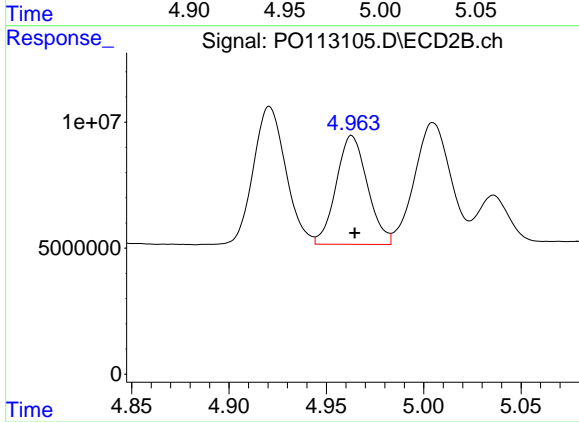
#21 AR-1248-1

R.T.: 4.728 min
 Delta R.T.: -0.001 min
 Response: 79754139
 Conc: 715.21 ng/ml



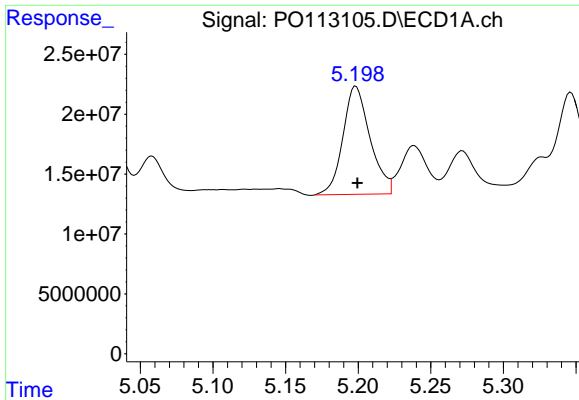
#22 AR-1248-2

R.T.: 4.985 min
 Delta R.T.: -0.001 min
 Response: 70502485
 Conc: 291.49 ng/ml



#22 AR-1248-2

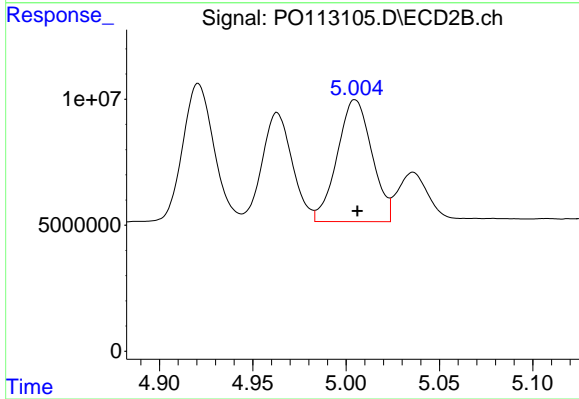
R.T.: 4.963 min
 Delta R.T.: -0.001 min
 Response: 48267970
 Conc: 300.36 ng/ml



#23 AR-1248-3

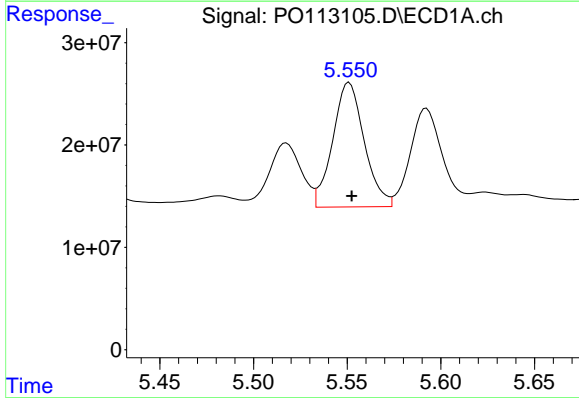
R.T.: 5.199 min
 Delta R.T.: -0.001 min
 Response: 117292835
 Conc: 367.85 ng/ml

Instrument :
 ECD_O
 ClientSampleId :
 AR1242CCC500



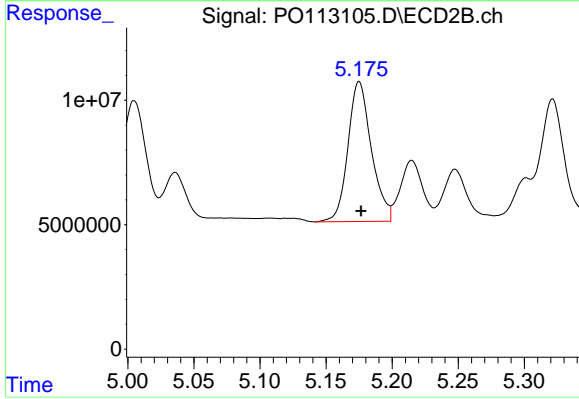
#23 AR-1248-3

R.T.: 5.005 min
 Delta R.T.: -0.001 min
 Response: 62542505
 Conc: 368.63 ng/ml



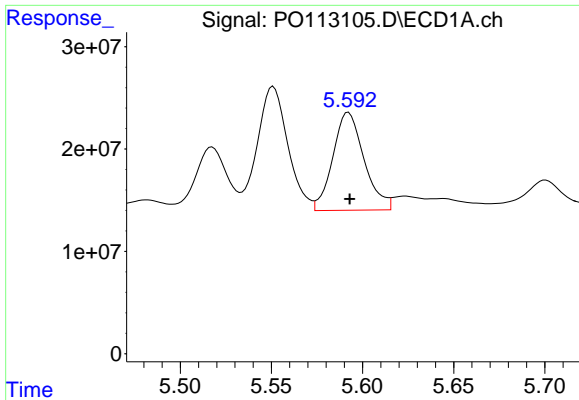
#24 AR-1248-4

R.T.: 5.551 min
 Delta R.T.: -0.001 min
 Response: 142729207
 Conc: 285.68 ng/ml



#24 AR-1248-4

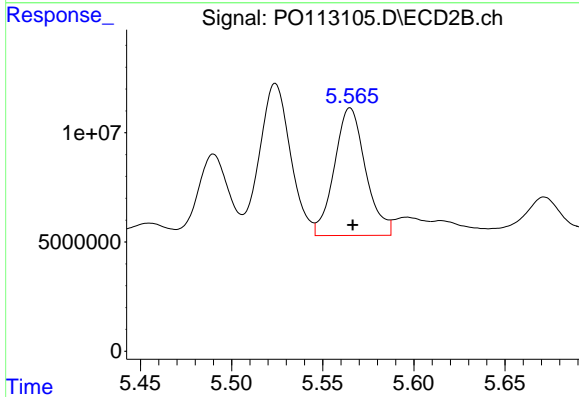
R.T.: 5.175 min
 Delta R.T.: -0.002 min
 Response: 69453302
 Conc: 348.63 ng/ml



#25 AR-1248-5

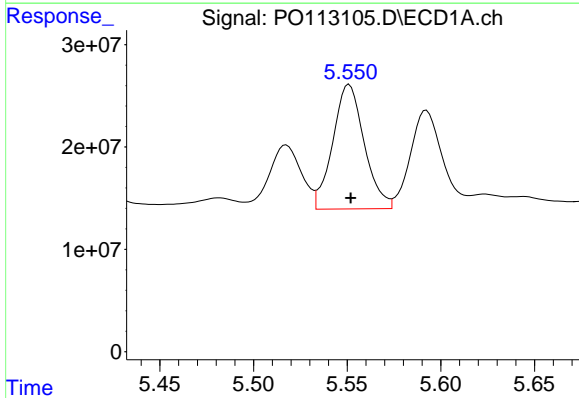
R.T.: 5.592 min
 Delta R.T.: 0.000 min
 Response: 114077521
 Conc: 334.06 ng/ml

Instrument :
 ECD_O
 ClientSampleId :
 AR1242CCC500



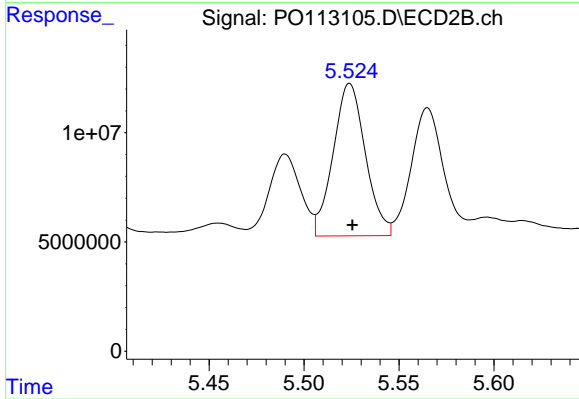
#25 AR-1248-5

R.T.: 5.565 min
 Delta R.T.: -0.002 min
 Response: 69722061
 Conc: 328.42 ng/ml



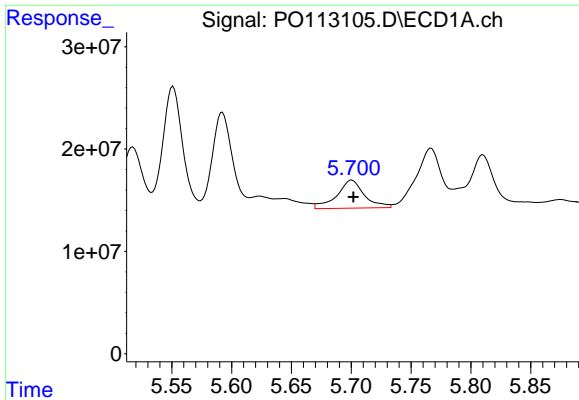
#26 AR-1254-1

R.T.: 5.551 min
 Delta R.T.: 0.000 min
 Response: 142729207
 Conc: 264.32 ng/ml



#26 AR-1254-1

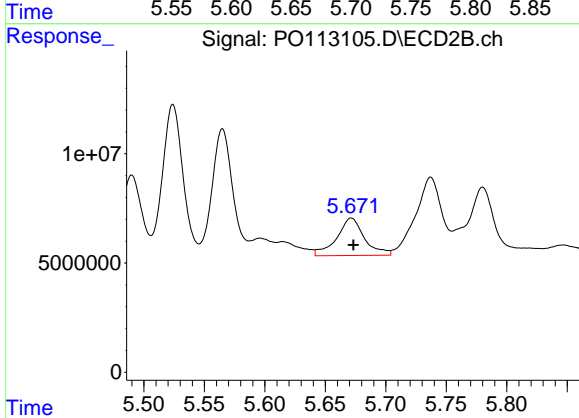
R.T.: 5.524 min
 Delta R.T.: -0.001 min
 Response: 82487326
 Conc: 261.57 ng/ml



#27 AR-1254-2

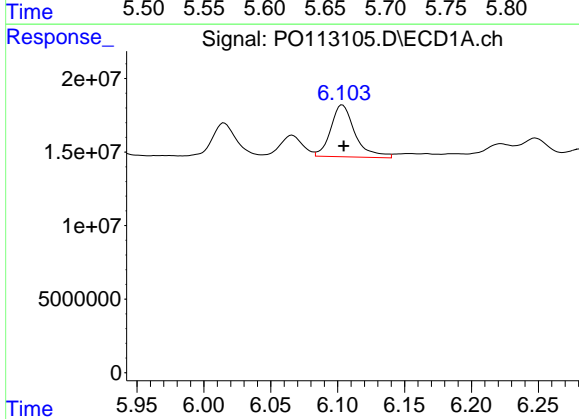
R.T.: 5.700 min
 Delta R.T.: -0.001 min
 Response: 44097932
 Conc: 89.37 ng/ml

Instrument :
 ECD_O
 ClientSampleId :
 AR1242CCC500



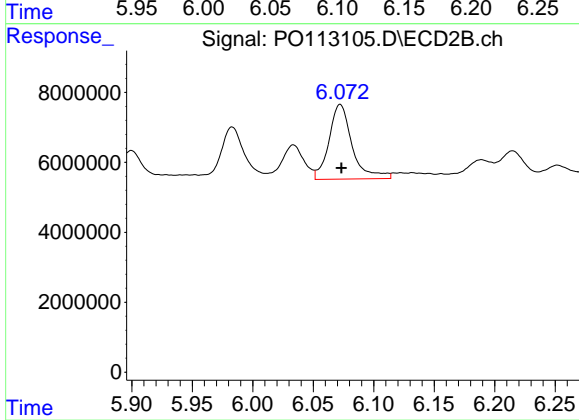
#27 AR-1254-2

R.T.: 5.672 min
 Delta R.T.: -0.002 min
 Response: 27319209
 Conc: 97.45 ng/ml



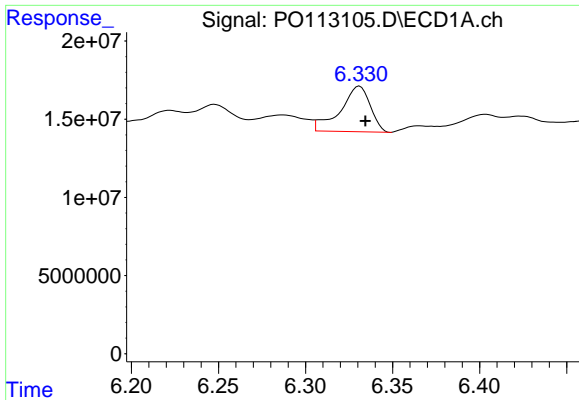
#28 AR-1254-3

R.T.: 6.104 min
 Delta R.T.: 0.000 min
 Response: 44610737
 Conc: 60.38 ng/ml



#28 AR-1254-3

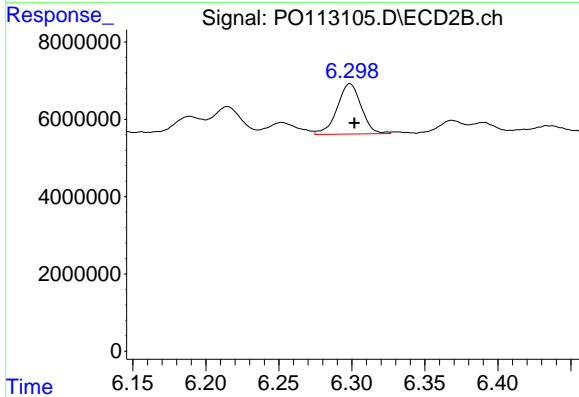
R.T.: 6.072 min
 Delta R.T.: 0.000 min
 Response: 28522016
 Conc: 68.41 ng/ml



#29 AR-1254-4

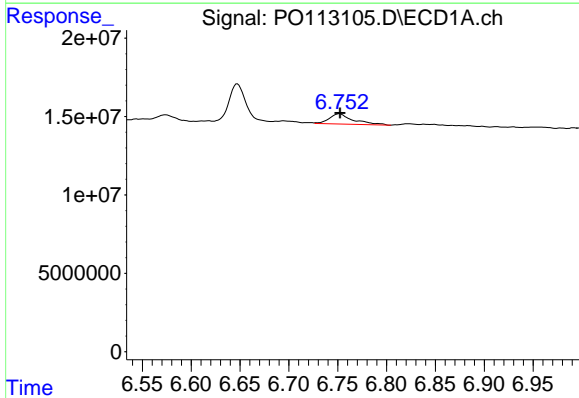
R.T.: 6.331 min
 Delta R.T.: -0.003 min
 Response: 34952509
 Conc: 62.75 ng/ml

Instrument :
 ECD_O
 ClientSampleId :
 AR1242CCC500



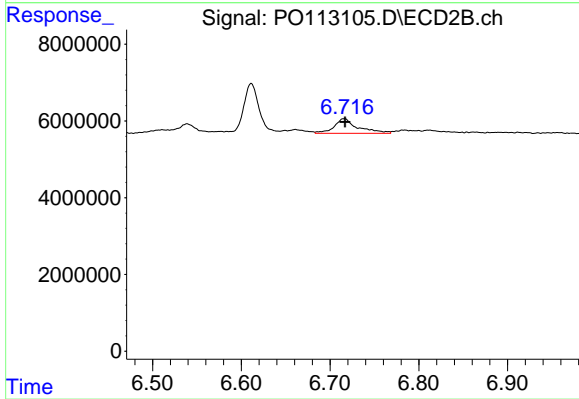
#29 AR-1254-4

R.T.: 6.299 min
 Delta R.T.: -0.003 min
 Response: 14959687
 Conc: 54.43 ng/ml



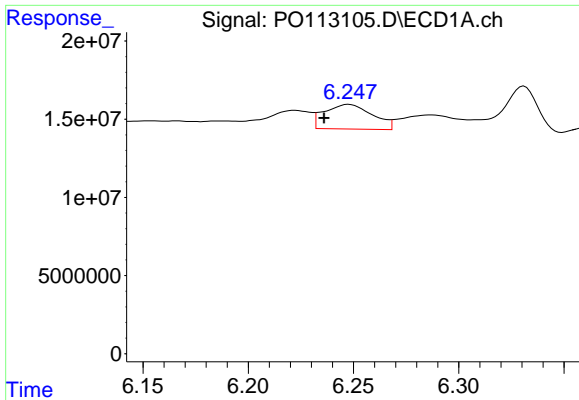
#30 AR-1254-5

R.T.: 6.752 min
 Delta R.T.: 0.000 min
 Response: 11435481
 Conc: 16.31 ng/ml



#30 AR-1254-5

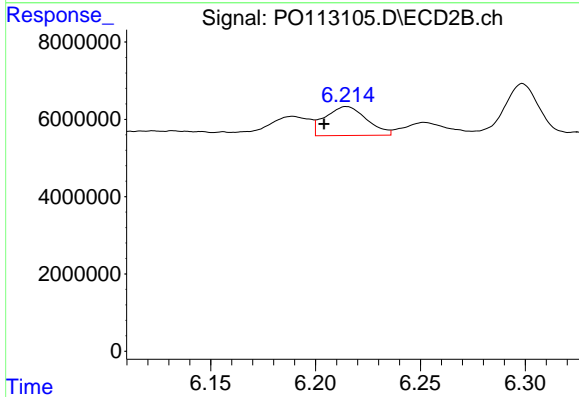
R.T.: 6.716 min
 Delta R.T.: 0.000 min
 Response: 7103921
 Conc: 19.87 ng/ml



#31 AR-1260-1

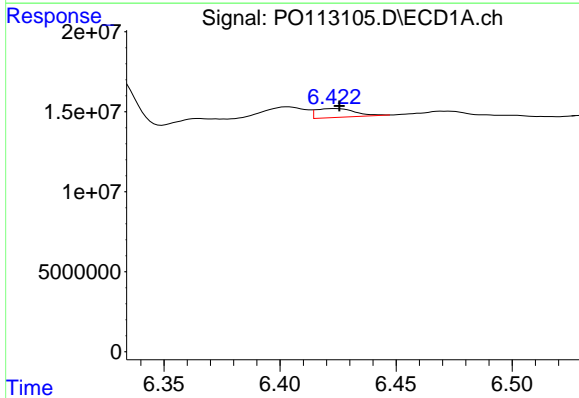
R.T.: 6.248 min
 Delta R.T.: 0.012 min
 Response: 25038548
 Conc: 56.14 ng/ml

Instrument :
 ECD_O
 ClientSampleId :
 AR1242CCC500



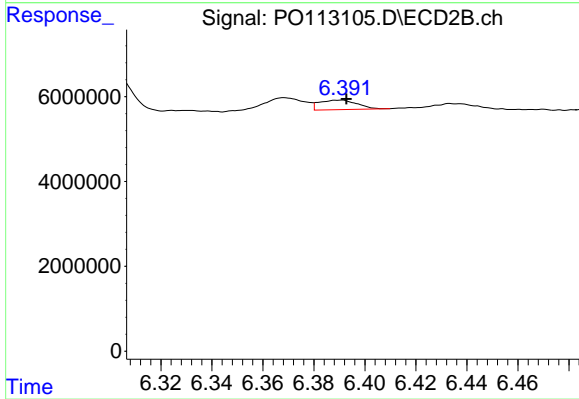
#31 AR-1260-1

R.T.: 6.215 min
 Delta R.T.: 0.011 min
 Response: 10329607
 Conc: 40.50 ng/ml



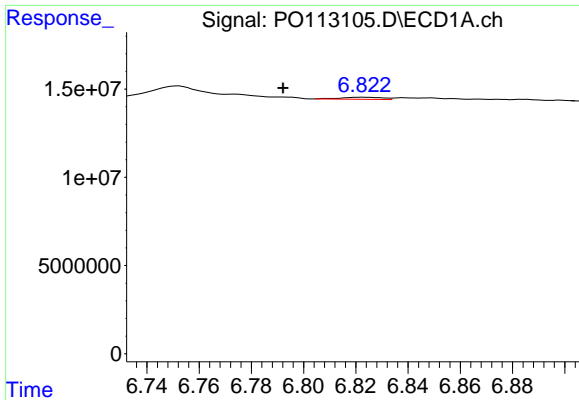
#32 AR-1260-2

R.T.: 6.423 min
 Delta R.T.: -0.002 min
 Response: 6377024
 Conc: 9.29 ng/ml



#32 AR-1260-2

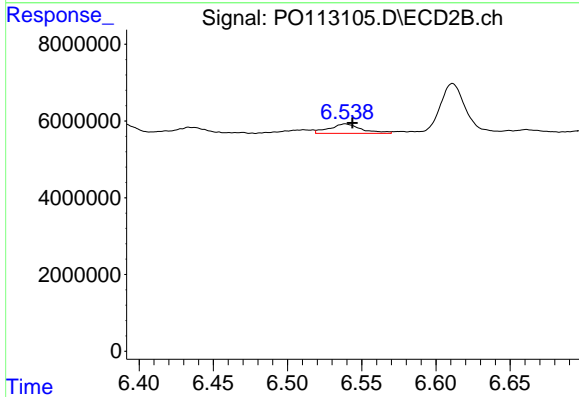
R.T.: 6.390 min
 Delta R.T.: -0.003 min
 Response: 2331511
 Conc: 6.74 ng/ml



#33 AR-1260-3

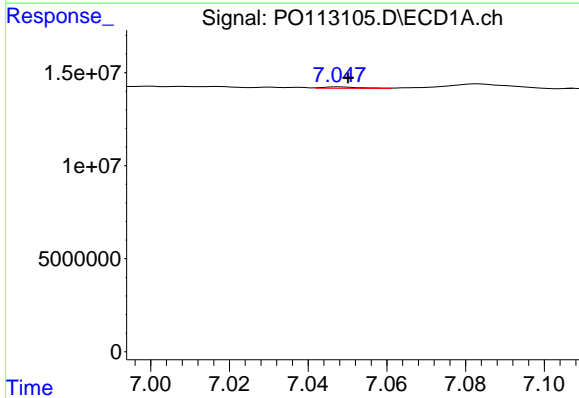
R.T.: 6.823 min
 Delta R.T.: 0.031 min
 Response: 1324998
 Conc: 2.15 ng/ml

Instrument :
 ECD_O
 ClientSampleId :
 AR1242CCC500



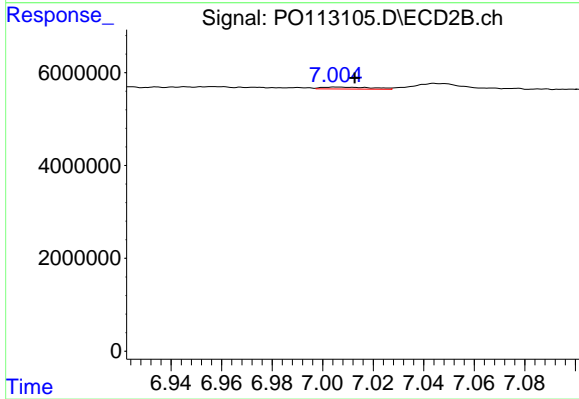
#33 AR-1260-3

R.T.: 6.539 min
 Delta R.T.: -0.005 min
 Response: 3748673
 Conc: 12.60 ng/ml



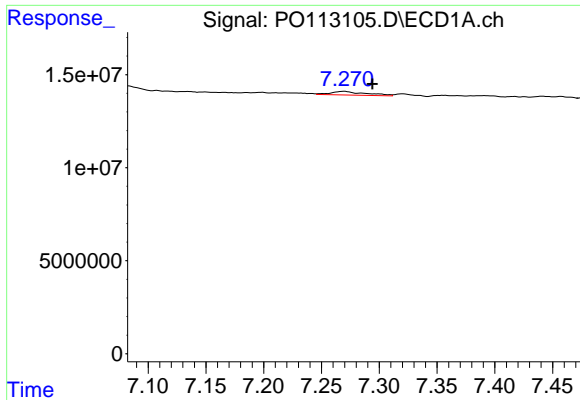
#34 AR-1260-4

R.T.: 7.048 min
 Delta R.T.: -0.002 min
 Response: 550227
 Conc: 1.23 ng/ml



#34 AR-1260-4

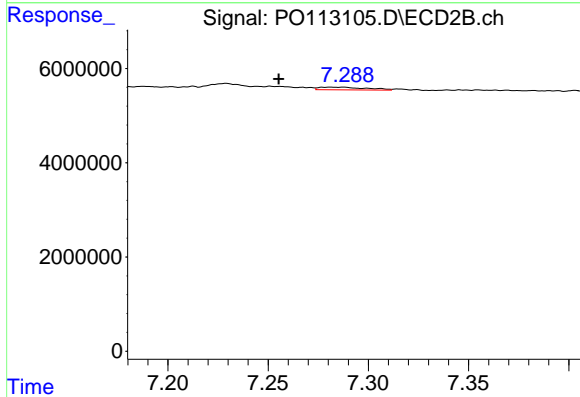
R.T.: 7.006 min
 Delta R.T.: -0.007 min
 Response: 580238
 Conc: 2.80 ng/ml



#35 AR-1260-5

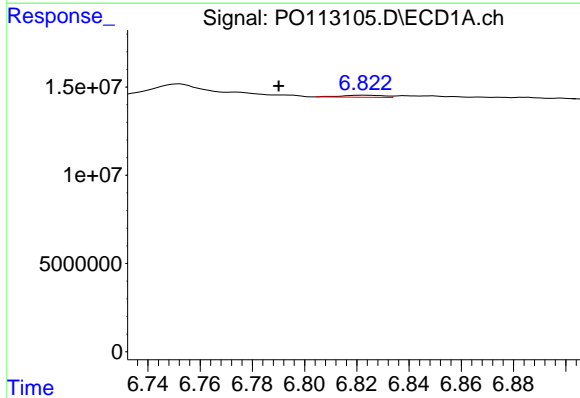
R.T.: 7.270 min
 Delta R.T.: -0.024 min
 Response: 4107366
 Conc: 3.39 ng/ml

Instrument :
 ECD_O
 ClientSampleId :
 AR1242CCC500



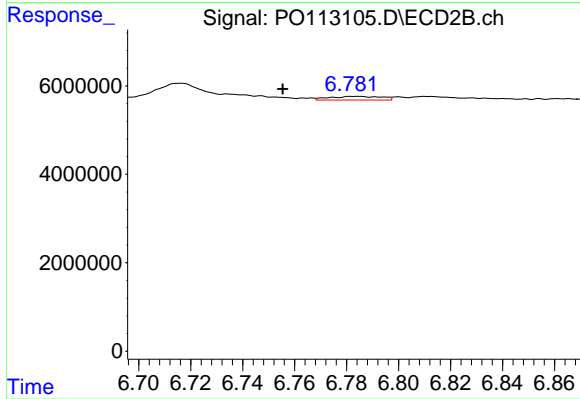
#35 AR-1260-5

R.T.: 7.281 min
 Delta R.T.: 0.026 min
 Response: 920648
 Conc: 1.97 ng/ml



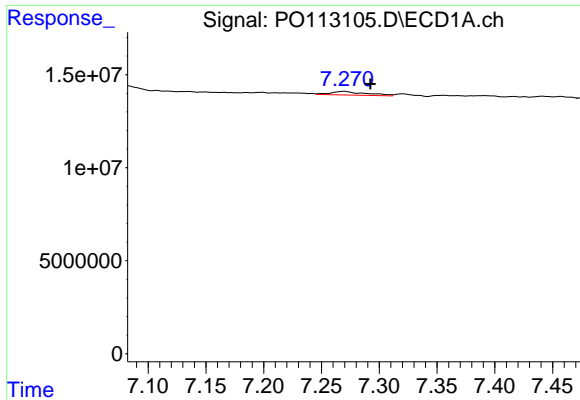
#36 AR-1262-1

R.T.: 6.823 min
 Delta R.T.: 0.033 min
 Response: 1324998
 Conc: 1.45 ng/ml



#36 AR-1262-1

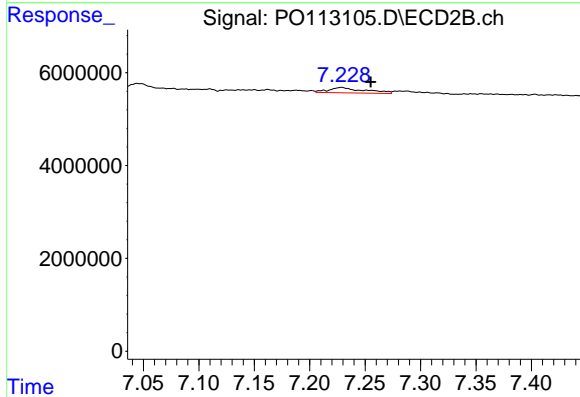
R.T.: 6.784 min
 Delta R.T.: 0.028 min
 Response: 1172667
 Conc: 2.83 ng/ml



#37 AR-1262-2

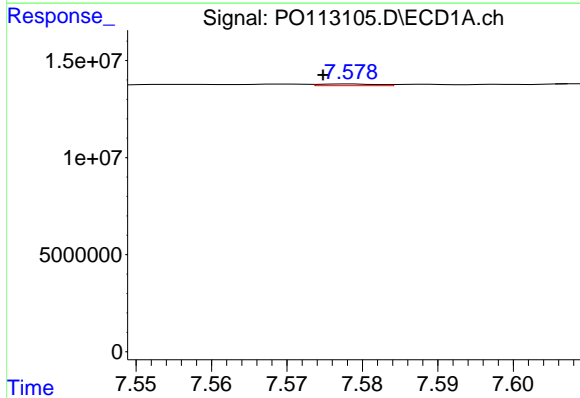
R.T.: 7.270 min
 Delta R.T.: -0.023 min
 Response: 4107366
 Conc: 2.72 ng/ml

Instrument :
 ECD_O
 ClientSampleId :
 AR1242CCC500



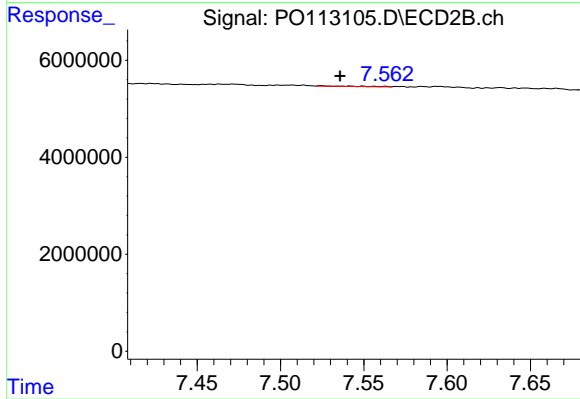
#37 AR-1262-2

R.T.: 7.229 min
 Delta R.T.: -0.026 min
 Response: 2590700
 Conc: 5.00 ng/ml



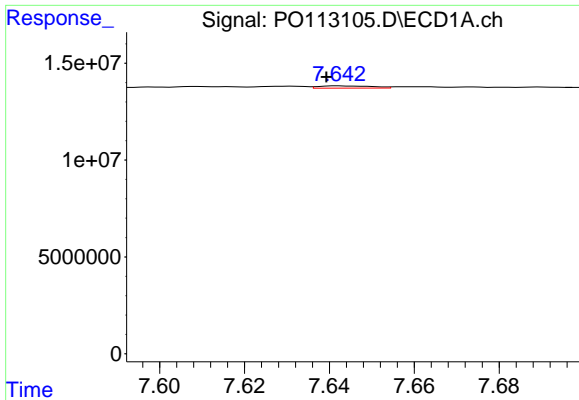
#38 AR-1262-3

R.T.: 7.578 min
 Delta R.T.: 0.003 min
 Response: 473720
 Conc: 0.85 ng/ml



#38 AR-1262-3

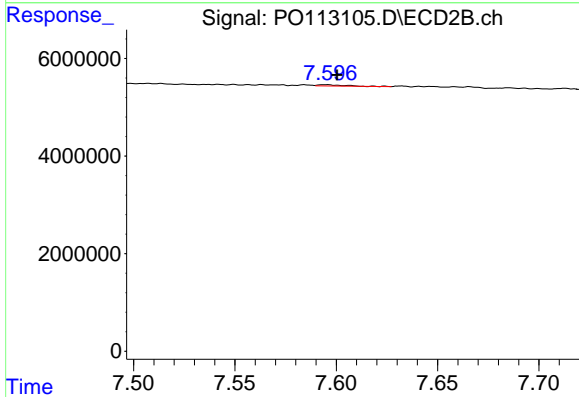
R.T.: 7.524 min
 Delta R.T.: -0.011 min
 Response: 156037
 Conc: 0.87 ng/ml



#39 AR-1262-4

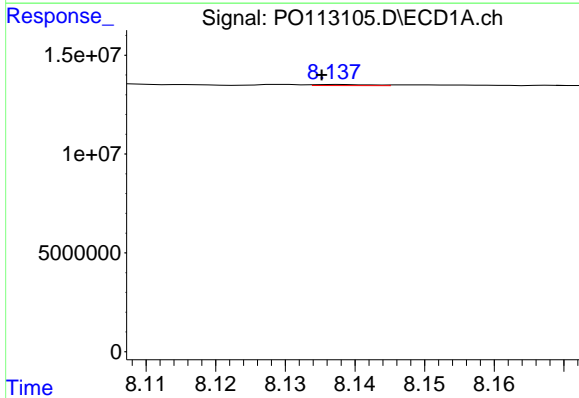
R.T.: 7.642 min
 Delta R.T.: 0.003 min
 Response: 1007544
 Conc: 1.03 ng/ml

Instrument :
 ECD_O
 ClientSampleId :
 AR1242CCC500



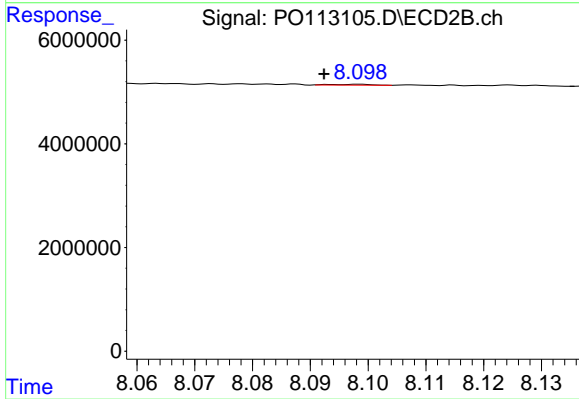
#39 AR-1262-4

R.T.: 7.595 min
 Delta R.T.: -0.006 min
 Response: 221681
 Conc: 0.76 ng/ml



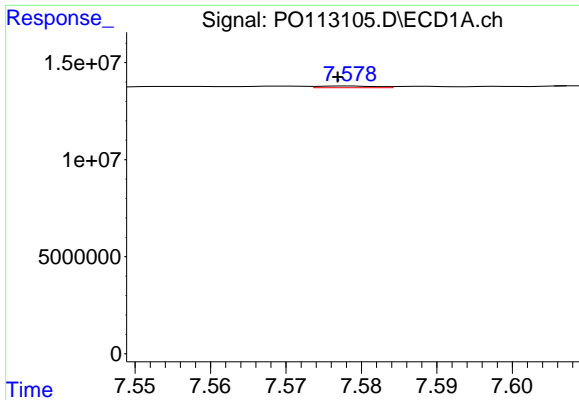
#40 AR-1262-5

R.T.: 8.138 min
 Delta R.T.: 0.002 min
 Response: 306133
 Conc: 0.73 ng/ml



#40 AR-1262-5

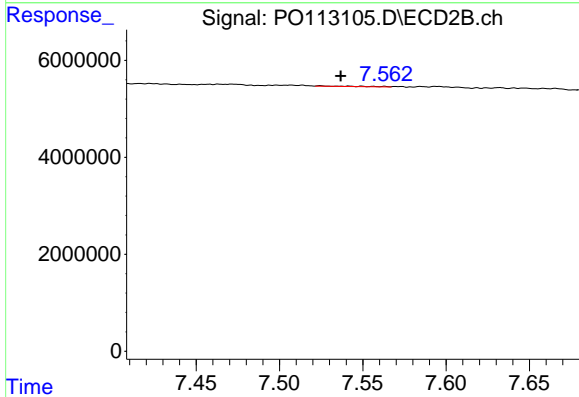
R.T.: 8.098 min
 Delta R.T.: 0.006 min
 Response: 83576
 Conc: 0.77 ng/ml



#41 AR-1268-1

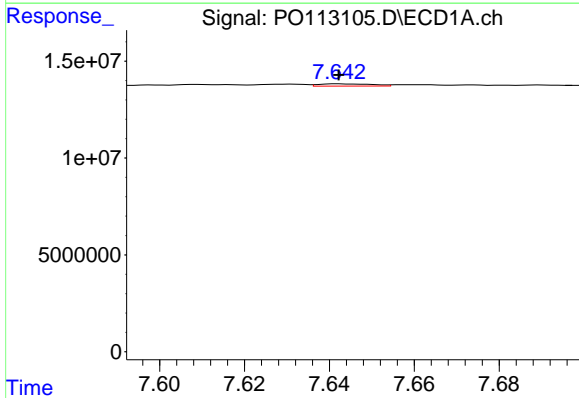
R.T.: 7.578 min
 Delta R.T.: 0.001 min
 Response: 473720
 Conc: 0.28 ng/ml

Instrument :
 ECD_O
 ClientSampleId :
 AR1242CCC500



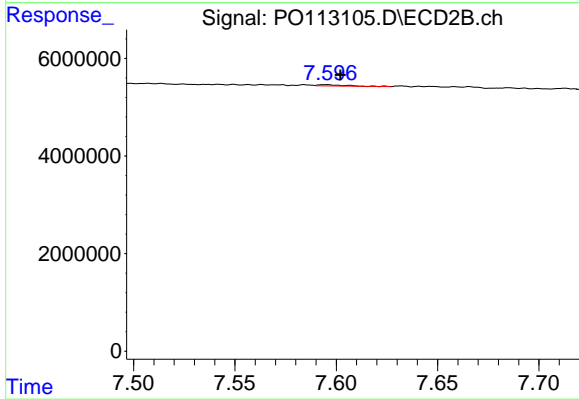
#41 AR-1268-1

R.T.: 7.524 min
 Delta R.T.: -0.012 min
 Response: 156037
 Conc: 0.31 ng/ml



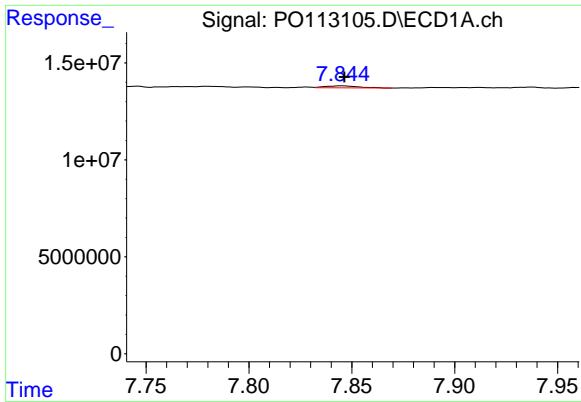
#42 AR-1268-2

R.T.: 7.642 min
 Delta R.T.: 0.000 min
 Response: 1007544
 Conc: 0.70 ng/ml



#42 AR-1268-2

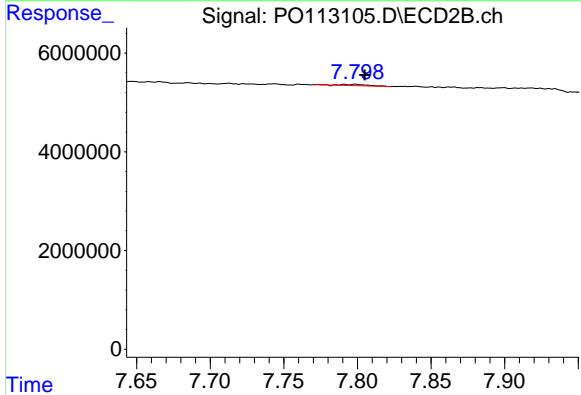
R.T.: 7.595 min
 Delta R.T.: -0.007 min
 Response: 221681
 Conc: 0.53 ng/ml



#43 AR-1268-3

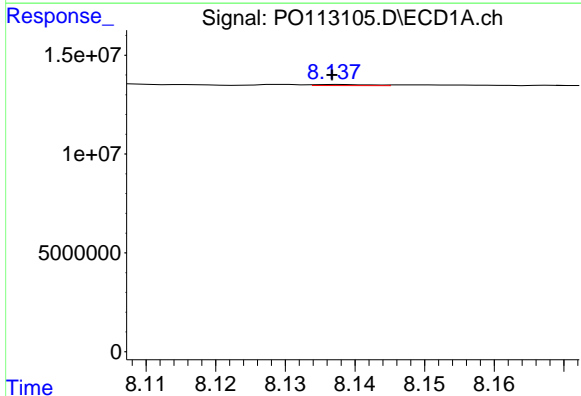
R.T.: 7.845 min
 Delta R.T.: -0.001 min
 Response: 1133412
 Conc: 0.94 ng/ml

Instrument :
 ECD_O
 ClientSampleId :
 AR1242CCC500



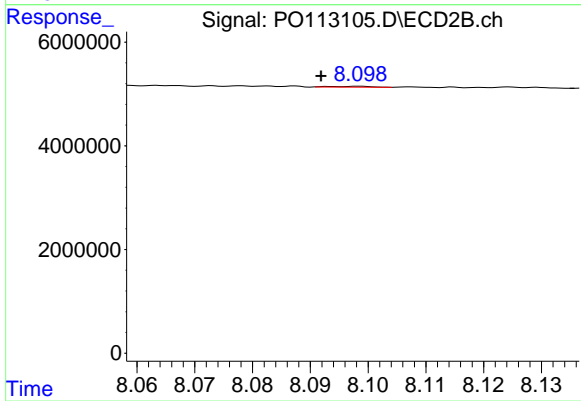
#43 AR-1268-3

R.T.: 7.799 min
 Delta R.T.: -0.006 min
 Response: 351036
 Conc: 1.08 ng/ml



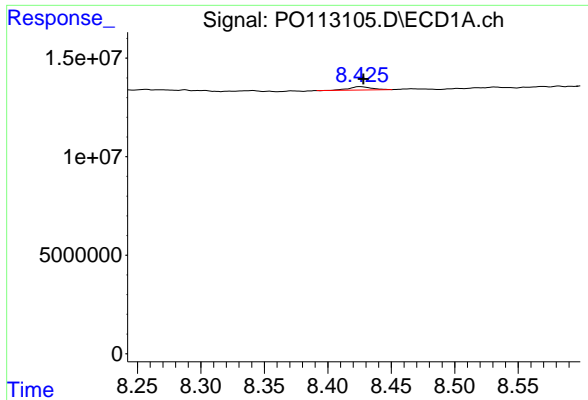
#44 AR-1268-4

R.T.: 8.138 min
 Delta R.T.: 0.000 min
 Response: 306133
 Conc: 0.66 ng/ml



#44 AR-1268-4

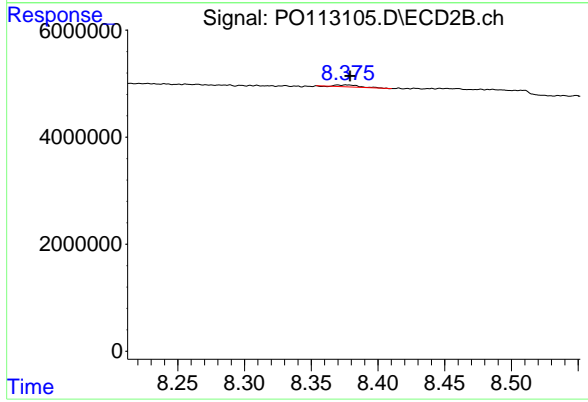
R.T.: 8.098 min
 Delta R.T.: 0.006 min
 Response: 83576
 Conc: 0.69 ng/ml



#45 AR-1268-5

R.T.: 8.426 min
Delta R.T.: -0.003 min
Response: 2059519
Conc: 0.65 ng/ml

Instrument :
ECD_O
ClientSampleId :
AR1242CCC500



#45 AR-1268-5

R.T.: 8.370 min
Delta R.T.: -0.009 min
Response: 406869
Conc: 0.52 ng/ml