

Data Path : Z:\pestpcbsrv\HPCHEM1\ECD\_0\Data\P0082025\  
 Data File : PO113108.D  
 Signal(s) : Signal #1: ECD1A.ch Signal #2: ECD2B.ch  
 Acq On : 20 Aug 2025 22:37  
 Operator : YP/AJ  
 Sample : I.BLK  
 Misc :  
 ALS Vial : 2 Sample Multiplier: 1

Instrument :  
 ECD\_0  
 ClientSampleId :  
 I.BLK

Integration File signal 1: autoint1.e  
 Integration File signal 2: autoint2.e  
 Quant Time: Aug 21 01:44:32 2025  
 Quant Method : Z:\pestpcbsrv\HPCHEM1\ECD\_0\methods\P0081825.M  
 Quant Title : GC EXTRACTABLES  
 QLast Update : Tue Aug 19 06:08:32 2025  
 Response via : Initial Calibration  
 Integrator: ChemStation

Volume Inj. : 2 µl  
 Signal #1 Phase : ZB-MR1 Signal #2 Phase: ZB-MR2  
 Signal #1 Info : 30Mx0.32mmx 0.50µ Signal #2 Info : 30M x 0.32mm x 0.25µm

Compound	RT#1	RT#2	Resp#1	Resp#2	ng/ml	ng/ml
System Monitoring Compounds						
1) SA Tetrachlo...	3.662	3.655	146.9E6	88590318	17.939	17.506
2) SA Decachlor...	8.681	8.626	122.9E6	36029884	17.738	19.015
Target Compounds						
3) L1 AR-1016-1	4.738	4.727	25879	77564	0.097	0.455 #
4) L1 AR-1016-2	4.781	4.748	404101	39149	1.007	0.152 #
5) L1 AR-1016-3	4.781f	4.924	404101	100382	1.585	0.719 #
6) L1 AR-1016-4	4.936	4.974	859284	832037	3.940	7.130 #
7) L1 AR-1016-5	5.253f	5.168	37902853	649931	171.020	4.560 #
8) L2 AR-1221-1	0.000	3.865	0	144961	N.D.	2.297 #
9) L2 AR-1221-2	3.964	3.952	1879464	1582347	27.823	33.903
10) L2 AR-1221-3	0.000	4.021	0	98667	N.D.	0.665 #
11) L3 AR-1232-1	0.000	4.021	0	98667	N.D.	0.840 #
12) L3 AR-1232-2	4.536	4.748	218943	39149	2.193	0.319 #
13) L3 AR-1232-3	4.781	4.924	404101	100382	2.133	1.585 #
14) L3 AR-1232-4	4.936	5.005	859284	925770	9.125	16.467 #
15) L3 AR-1232-5	4.955	5.168	3462841	649931	55.904	10.857 #
16) L4 AR-1242-1	4.738	4.727	25879	77564	0.113	0.537 #
17) L4 AR-1242-2	4.781	4.748	404101	39149	1.176	0.180 #
18) L4 AR-1242-3	4.781f	4.924	404101	100382	1.821	0.858 #
19) L4 AR-1242-4	4.936	5.005	859284	925770	4.954	7.870 #
20) L4 AR-1242-5	5.603	5.528	11989144	1479267	59.897	9.919 #
21) L5 AR-1248-1	4.738	4.727	25879	77564	0.148	0.696 #
22) L5 AR-1248-2	4.955	4.974	3462841	832037	14.317	5.178 #
23) L5 AR-1248-3	5.253f	5.005	37902853	925770	118.868	5.457 #
24) L5 AR-1248-4	5.555	5.168	23402469	649931	46.842	3.262 #
25) L5 AR-1248-5	5.603	5.563	11989144	1945912	35.108	9.166 #
26) L6 AR-1254-1	5.555	5.528	23402469	1479267	43.340	4.691 #
27) L6 AR-1254-2	5.707	5.674	13616372	2703501	27.594	9.644 #
28) L6 AR-1254-3	6.096	6.072	2450812	918772	3.317	2.204 #
29) L6 AR-1254-4	6.317	6.286	12298001	1520675	22.079	5.533 #
30) L6 AR-1254-5	6.753	6.711	688523	534599	0.982	1.495 #
31) L7 AR-1260-1	6.231	6.206	5641020	814576	12.649	3.194 #
32) L7 AR-1260-2	6.437	6.401	460369	206855	0.670	0.598
33) L7 AR-1260-3	6.811	6.545	56998	281009	0.092	0.945 #
34) L7 AR-1260-4	7.049	7.010	719984	54958	1.608	0.265 #
35) L7 AR-1260-5	7.292	7.257	1413336	168365	1.167	0.359 #
36) L8 AR-1262-1	6.811	6.762	56998	263551	0.062	0.636 #
37) L8 AR-1262-2	7.292	7.257	1413336	168365	0.935	0.325 #
38) L8 AR-1262-3	7.574	7.537	8183749	188782	14.769	1.051 #
39) L8 AR-1262-4	7.627	7.606	2702550	71525	2.763	0.247 #
40) L8 AR-1262-5	8.136	8.090	1055939	261743	2.533	2.416
41) L9 AR-1268-1	7.574	7.537	8183749	188782	4.756	0.371 #

Data Path : Z:\pestpcbsrv\HPCHEM1\ECD\_0\Data\P0082025\  
 Data File : P0113108.D  
 Signal(s) : Signal #1: ECD1A.ch Signal #2: ECD2B.ch  
 Acq On : 20 Aug 2025 22:37  
 Operator : YP/AJ  
 Sample : I.BLK  
 Misc :  
 ALS Vial : 2 Sample Multiplier: 1

Instrument :  
 ECD\_0  
 ClientSampleId :  
 I.BLK

Integration File signal 1: autoint1.e  
 Integration File signal 2: autoint2.e  
 Quant Time: Aug 21 01:44:32 2025  
 Quant Method : Z:\pestpcbsrv\HPCHEM1\ECD\_0\methods\P0081825.M  
 Quant Title : GC EXTRACTABLES  
 QLast Update : Tue Aug 19 06:08:32 2025  
 Response via : Initial Calibration  
 Integrator: ChemStation

Volume Inj. : 2 µl  
 Signal #1 Phase : ZB-MR1 Signal #2 Phase: ZB-MR2  
 Signal #1 Info : 30Mx0.32mmx 0.50µ Signal #2 Info : 30M x 0.32mm x 0.25µm

	Compound	RT#1	RT#2	Resp#1	Resp#2	ng/ml	ng/ml
42)	L9 AR-1268-2	7.652	7.606	1292267	71525	0.892	0.172 #
43)	L9 AR-1268-3	7.847	7.790	263948	587802	0.219	1.800 #
44)	L9 AR-1268-4	8.136	8.090	1055939	261743	2.292	2.173
45)	L9 AR-1268-5	8.430	8.377	1025366	286206	0.322	0.366

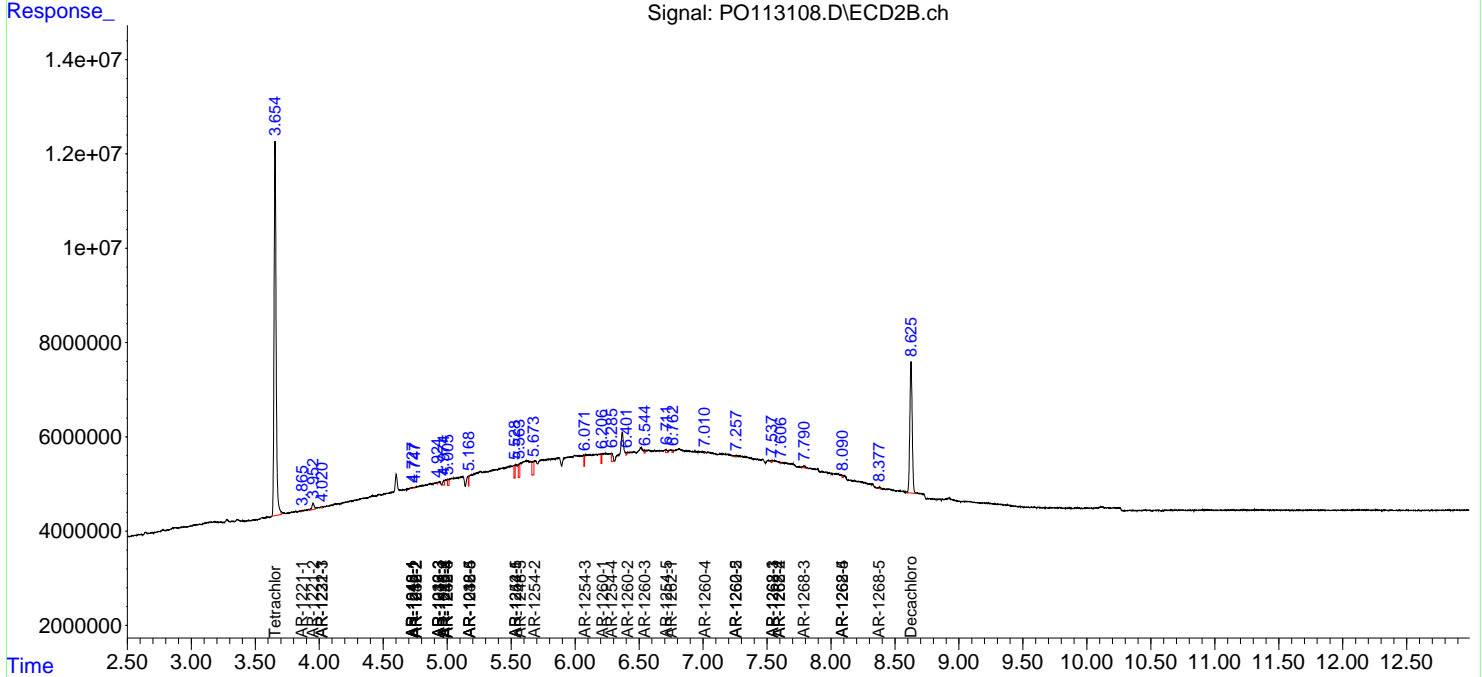
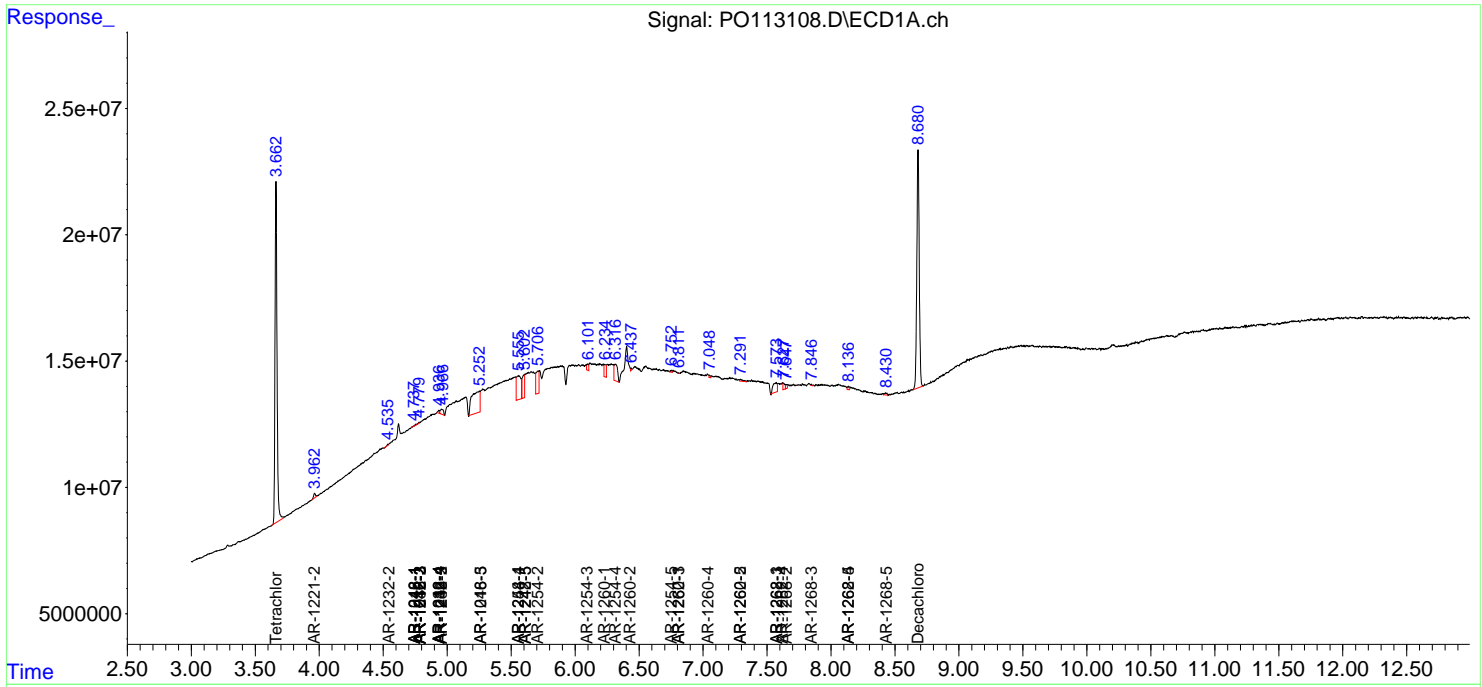
(f)=RT Delta > 1/2 Window (#)=Amounts differ by > 25% (m)=manual int.

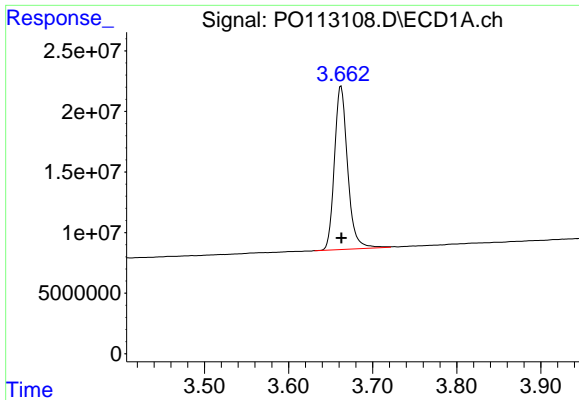
Data Path : Z:\pestpcbsrv\HPCHEM1\ECD\_O\Data\PO082025\  
 Data File : PO113108.D  
 Signal(s) : Signal #1: ECD1A.ch Signal #2: ECD2B.ch  
 Acq On : 20 Aug 2025 22:37  
 Operator : YP/AJ  
 Sample : I.BLK  
 Misc :  
 ALS Vial : 2 Sample Multiplier: 1

Instrument :  
 ECD\_O  
 ClientSampleId :  
 I.BLK

Integration File signal 1: autoint1.e  
 Integration File signal 2: autoint2.e  
 Quant Time: Aug 21 01:44:32 2025  
 Quant Method : Z:\pestpcbsrv\HPCHEM1\ECD\_O\methods\PO081825.M  
 Quant Title : GC EXTRACTABLES  
 QLast Update : Tue Aug 19 06:08:32 2025  
 Response via : Initial Calibration  
 Integrator: ChemStation

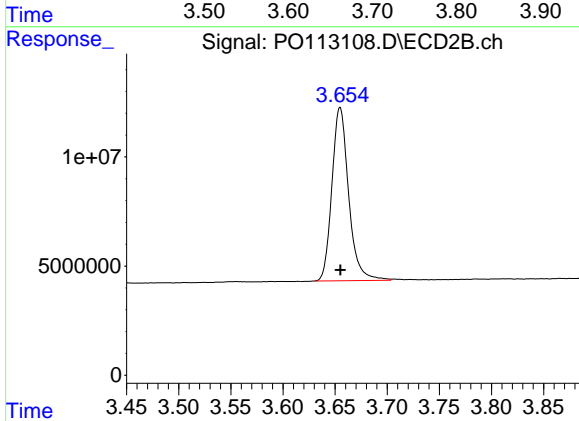
Volume Inj. : 2 µl  
 Signal #1 Phase : ZB-MR1 Signal #2 Phase: ZB-MR2  
 Signal #1 Info : 30Mx0.32mmx 0.50µ Signal #2 Info : 30M x 0.32mm x 0.25µm



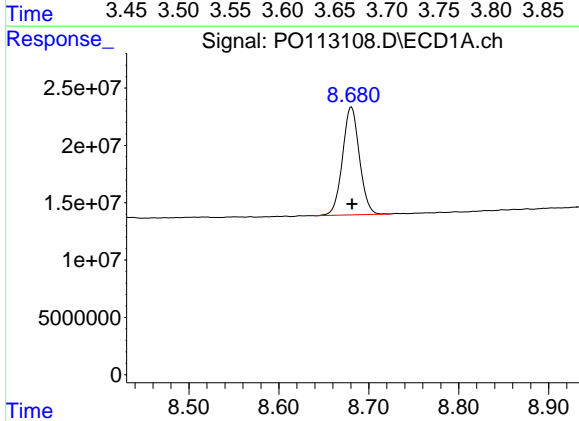


#1 Tetrachloro-m-xylene  
 R.T.: 3.662 min  
 Delta R.T.: 0.000 min  
 Response: 146857474  
 Conc: 17.94 ng/ml

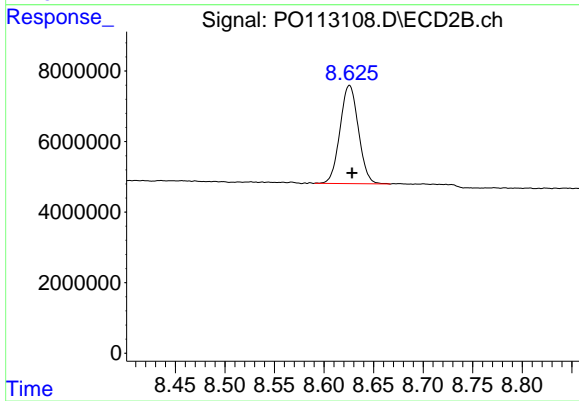
Instrument :  
 ECD\_O  
 ClientSampleId :  
 I.BLK



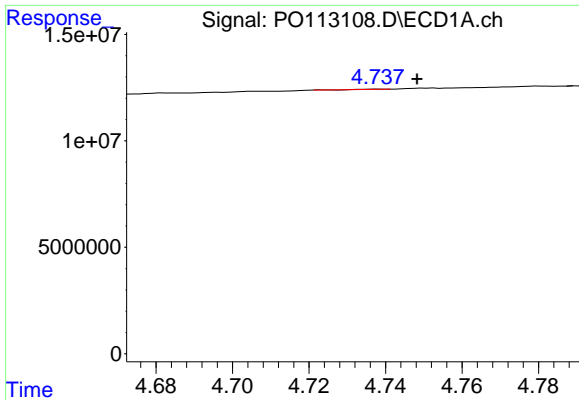
#1 Tetrachloro-m-xylene  
 R.T.: 3.655 min  
 Delta R.T.: 0.000 min  
 Response: 88590318  
 Conc: 17.51 ng/ml



#2 Decachlorobiphenyl  
 R.T.: 8.681 min  
 Delta R.T.: 0.000 min  
 Response: 122948042  
 Conc: 17.74 ng/ml



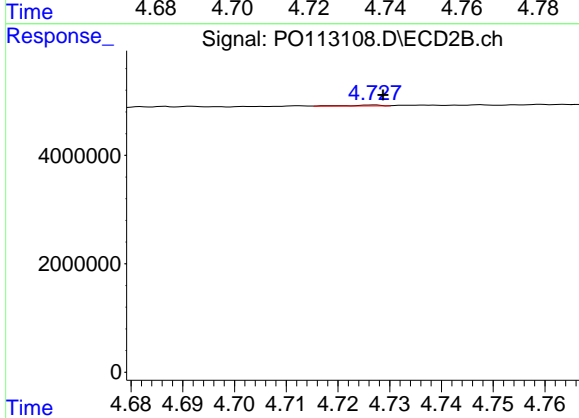
#2 Decachlorobiphenyl  
 R.T.: 8.626 min  
 Delta R.T.: -0.003 min  
 Response: 36029884  
 Conc: 19.01 ng/ml



#3 AR-1016-1

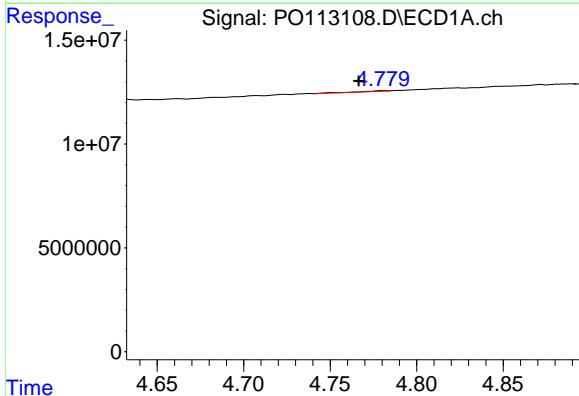
R.T.: 4.738 min  
 Delta R.T.: -0.010 min  
 Response: 25879  
 Conc: 0.10 ng/ml

Instrument :  
 ECD\_O  
 ClientSampleId :  
 I.BLK



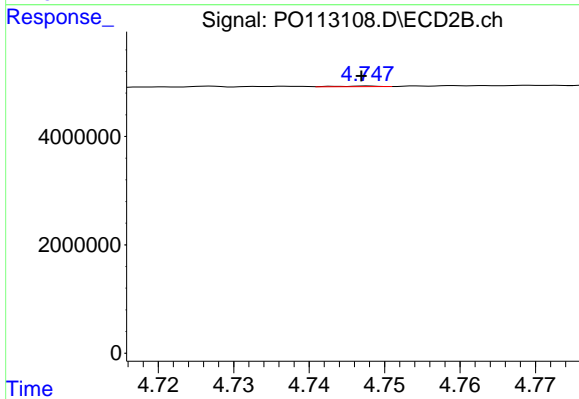
#3 AR-1016-1

R.T.: 4.727 min  
 Delta R.T.: -0.002 min  
 Response: 77564  
 Conc: 0.45 ng/ml



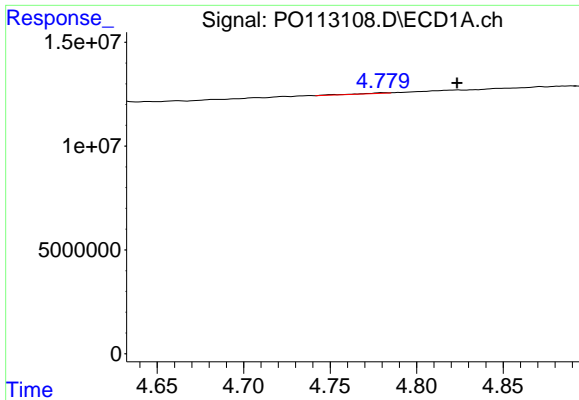
#4 AR-1016-2

R.T.: 4.781 min  
 Delta R.T.: 0.015 min  
 Response: 404101  
 Conc: 1.01 ng/ml



#4 AR-1016-2

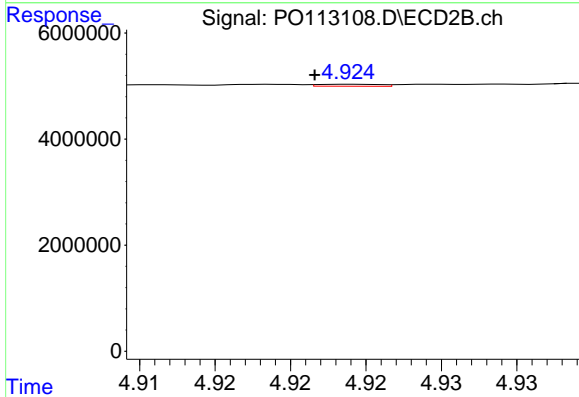
R.T.: 4.748 min  
 Delta R.T.: 0.000 min  
 Response: 39149  
 Conc: 0.15 ng/ml



#5 AR-1016-3

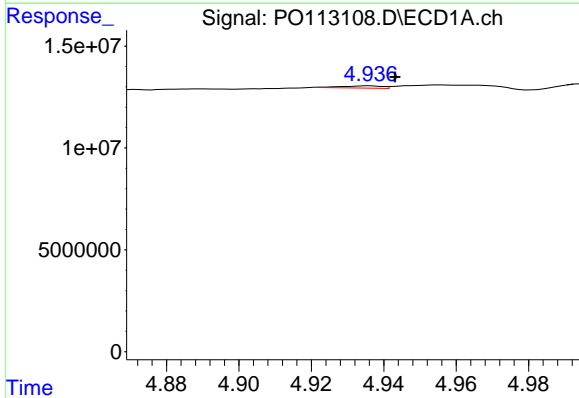
R.T.: 4.781 min  
 Delta R.T.: -0.042 min  
 Response: 404101  
 Conc: 1.58 ng/ml

Instrument :  
 ECD\_O  
 ClientSampleId :  
 I.BLK



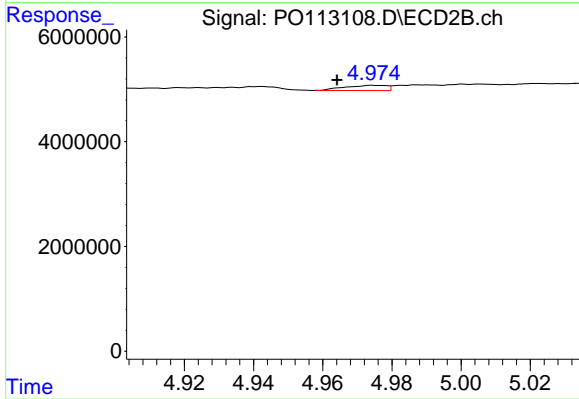
#5 AR-1016-3

R.T.: 4.924 min  
 Delta R.T.: 0.002 min  
 Response: 100382  
 Conc: 0.72 ng/ml



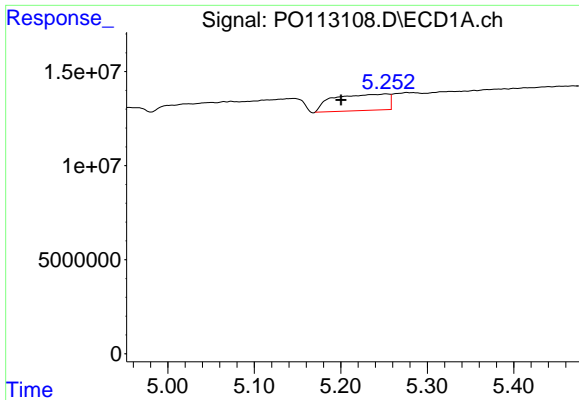
#6 AR-1016-4

R.T.: 4.936 min  
 Delta R.T.: -0.007 min  
 Response: 859284  
 Conc: 3.94 ng/ml



#6 AR-1016-4

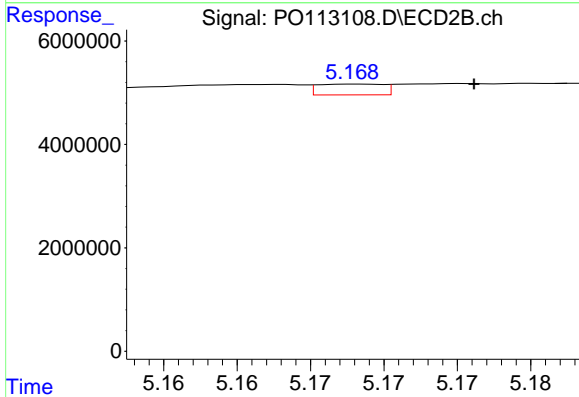
R.T.: 4.974 min  
 Delta R.T.: 0.010 min  
 Response: 832037  
 Conc: 7.13 ng/ml



#7 AR-1016-5

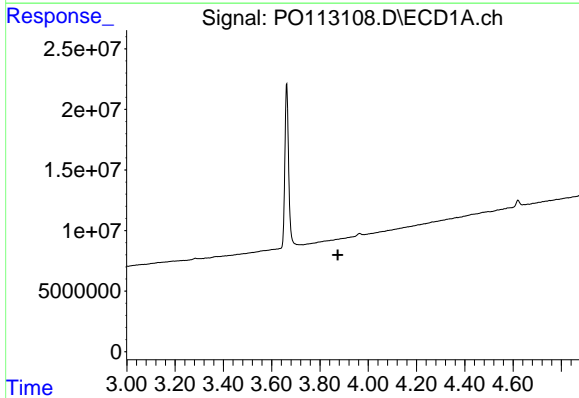
R.T.: 5.253 min  
 Delta R.T.: 0.052 min  
 Response: 37902853  
 Conc: 171.02 ng/ml

Instrument :  
 ECD\_O  
 ClientSampleId :  
 I.BLK



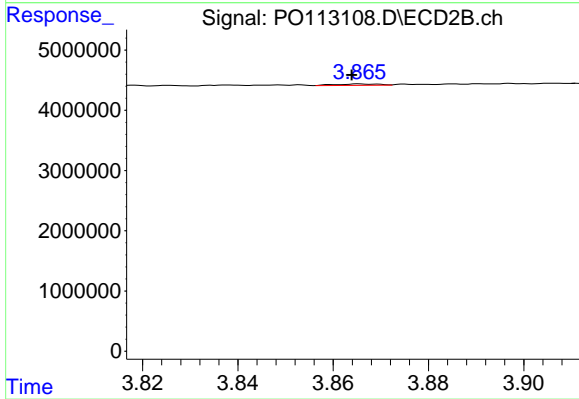
#7 AR-1016-5

R.T.: 5.168 min  
 Delta R.T.: -0.008 min  
 Response: 649931  
 Conc: 4.56 ng/ml



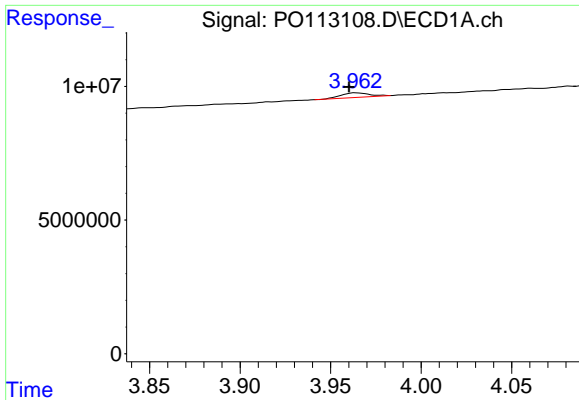
#8 AR-1221-1

R.T.: 0.000 min  
 Exp R.T. : 3.874 min  
 Response: 0  
 Conc: N.D.



#8 AR-1221-1

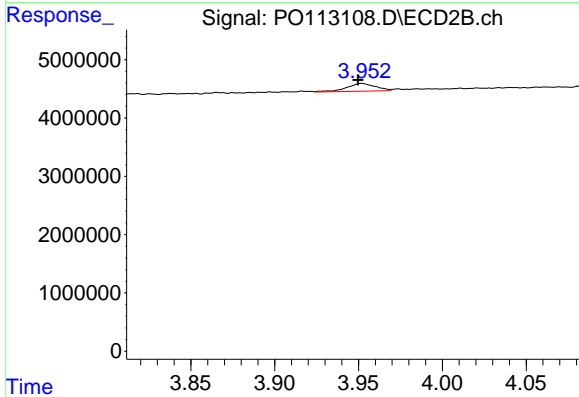
R.T.: 3.865 min  
 Delta R.T.: 0.002 min  
 Response: 144961  
 Conc: 2.30 ng/ml



#9 AR-1221-2

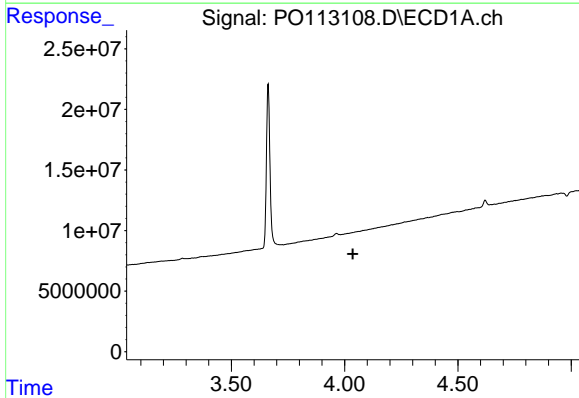
R.T.: 3.964 min  
 Delta R.T.: 0.004 min  
 Response: 1879464  
 Conc: 27.82 ng/ml

Instrument :  
 ECD\_O  
 ClientSampleId :  
 I.BLK



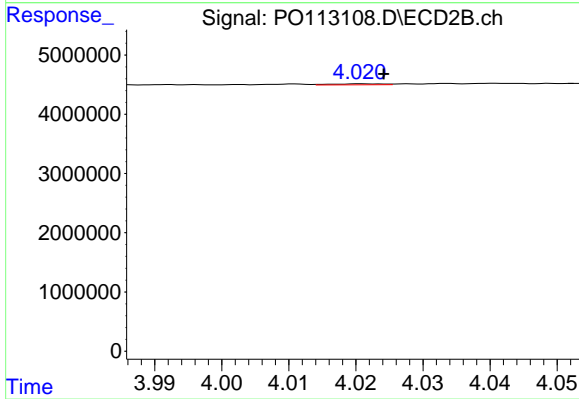
#9 AR-1221-2

R.T.: 3.952 min  
 Delta R.T.: 0.002 min  
 Response: 1582347  
 Conc: 33.90 ng/ml



#10 AR-1221-3

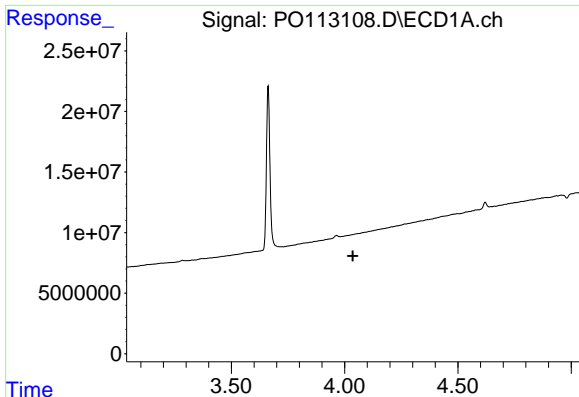
R.T.: 0.000 min  
 Exp R.T. : 4.036 min  
 Response: 0  
 Conc: N.D.



#10 AR-1221-3

R.T.: 4.021 min  
 Delta R.T.: -0.003 min  
 Response: 98667  
 Conc: 0.66 ng/ml

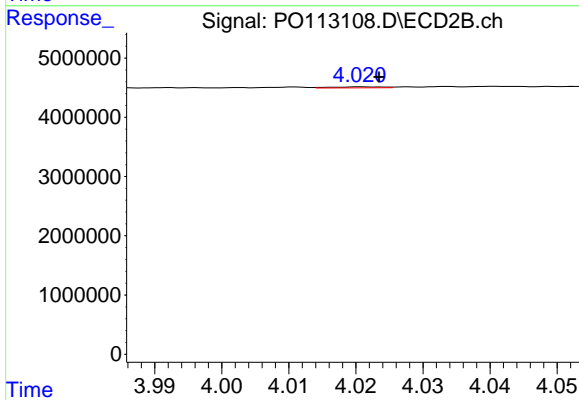




#11 AR-1232-1

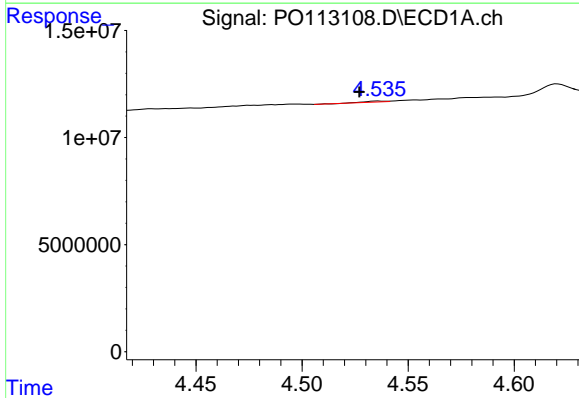
R.T.: 0.000 min  
 Exp R.T.: 4.036 min  
 Response: 0  
 Conc: N.D.

Instrument :  
 ECD\_O  
 ClientSampleId :  
 I.BLK



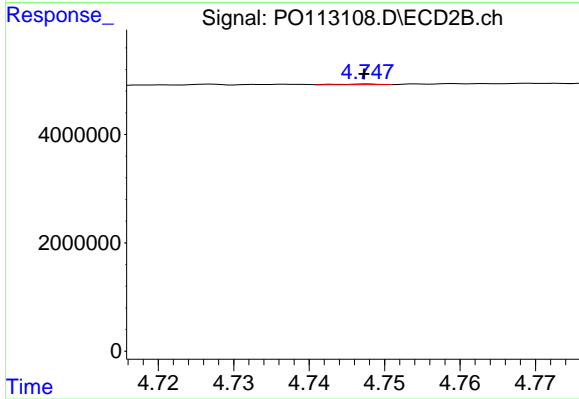
#11 AR-1232-1

R.T.: 4.021 min  
 Delta R.T.: -0.003 min  
 Response: 98667  
 Conc: 0.84 ng/ml



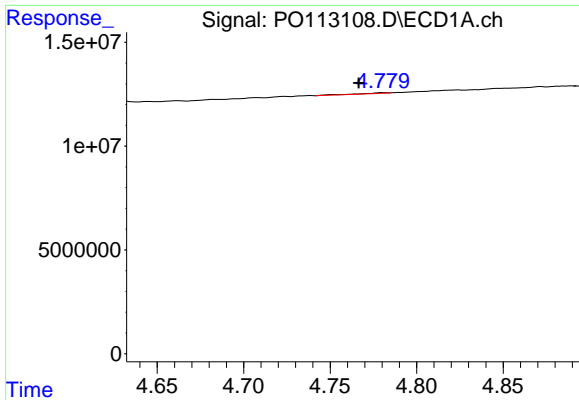
#12 AR-1232-2

R.T.: 4.536 min  
 Delta R.T.: 0.009 min  
 Response: 218943  
 Conc: 2.19 ng/ml



#12 AR-1232-2

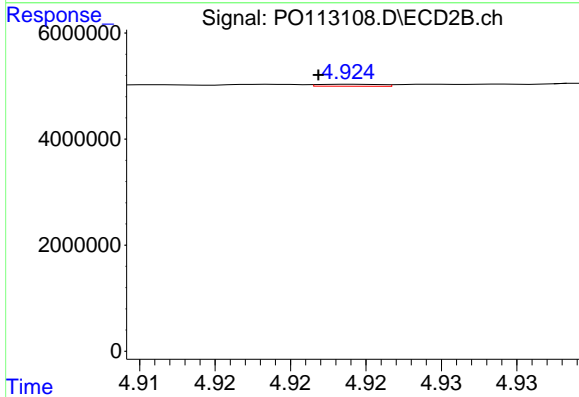
R.T.: 4.748 min  
 Delta R.T.: 0.000 min  
 Response: 39149  
 Conc: 0.32 ng/ml



#13 AR-1232-3

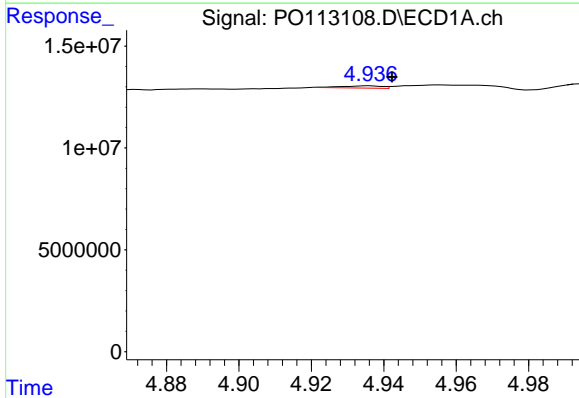
R.T.: 4.781 min  
 Delta R.T.: 0.014 min  
 Response: 404101  
 Conc: 2.13 ng/ml

Instrument :  
 ECD\_O  
 ClientSampleId :  
 I.BLK



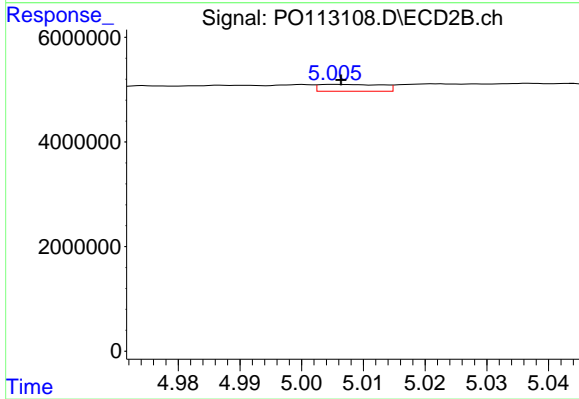
#13 AR-1232-3

R.T.: 4.924 min  
 Delta R.T.: 0.002 min  
 Response: 100382  
 Conc: 1.58 ng/ml



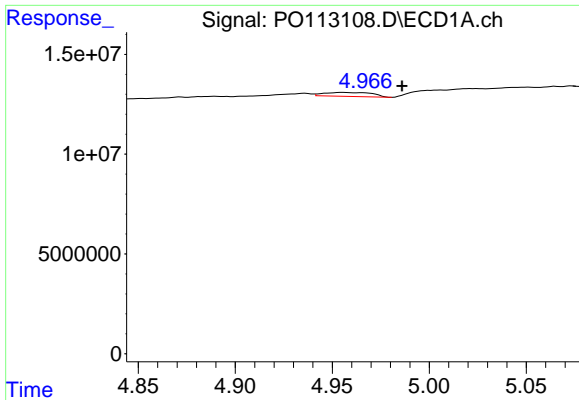
#14 AR-1232-4

R.T.: 4.936 min  
 Delta R.T.: -0.006 min  
 Response: 859284  
 Conc: 9.12 ng/ml



#14 AR-1232-4

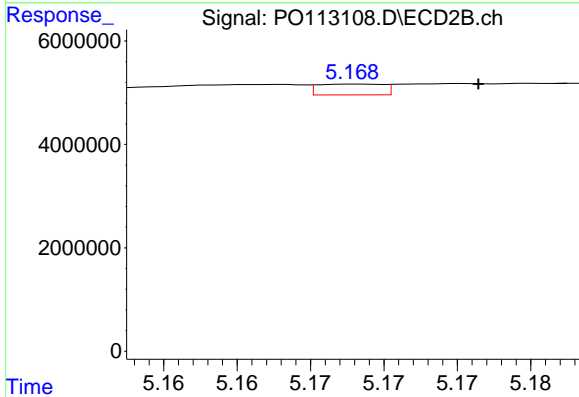
R.T.: 5.005 min  
 Delta R.T.: -0.001 min  
 Response: 925770  
 Conc: 16.47 ng/ml



#15 AR-1232-5

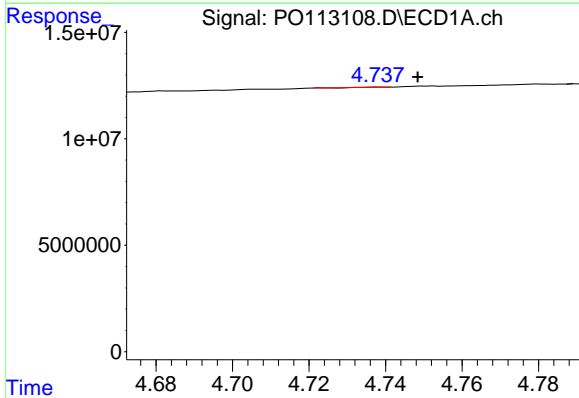
R.T.: 4.955 min  
 Delta R.T.: -0.031 min  
 Response: 3462841  
 Conc: 55.90 ng/ml

Instrument :  
 ECD\_O  
 ClientSampleId :  
 I.BLK



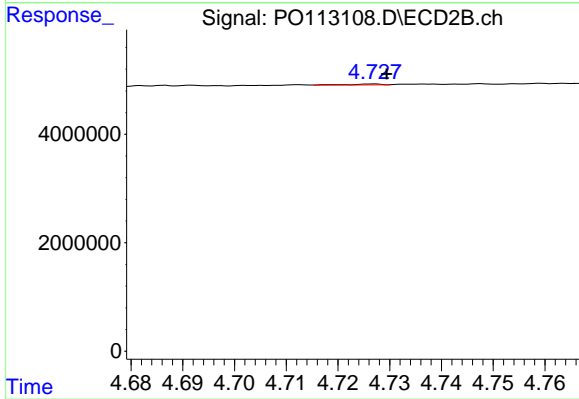
#15 AR-1232-5

R.T.: 5.168 min  
 Delta R.T.: -0.008 min  
 Response: 649931  
 Conc: 10.86 ng/ml



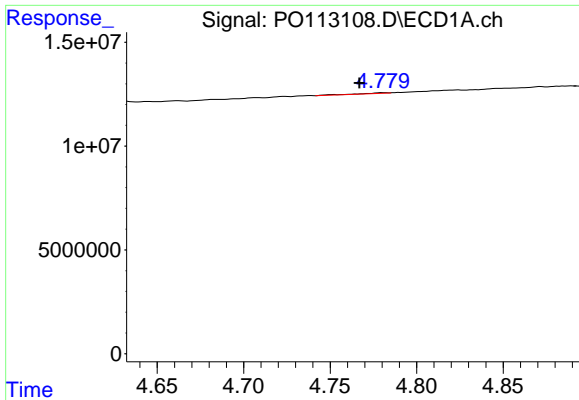
#16 AR-1242-1

R.T.: 4.738 min  
 Delta R.T.: -0.010 min  
 Response: 25879  
 Conc: 0.11 ng/ml



#16 AR-1242-1

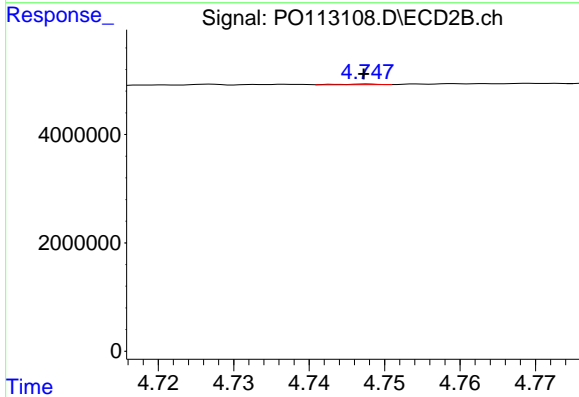
R.T.: 4.727 min  
 Delta R.T.: -0.002 min  
 Response: 77564  
 Conc: 0.54 ng/ml



#17 AR-1242-2

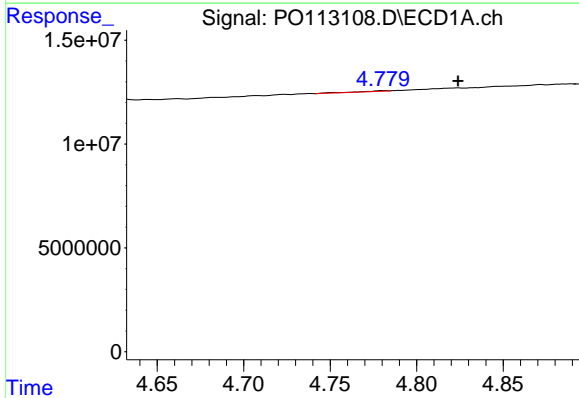
R.T.: 4.781 min  
 Delta R.T.: 0.014 min  
 Response: 404101  
 Conc: 1.18 ng/ml

Instrument :  
 ECD\_O  
 ClientSampleId :  
 I.BLK



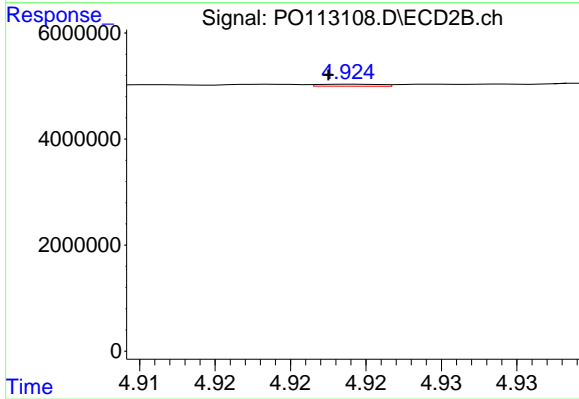
#17 AR-1242-2

R.T.: 4.748 min  
 Delta R.T.: 0.000 min  
 Response: 39149  
 Conc: 0.18 ng/ml



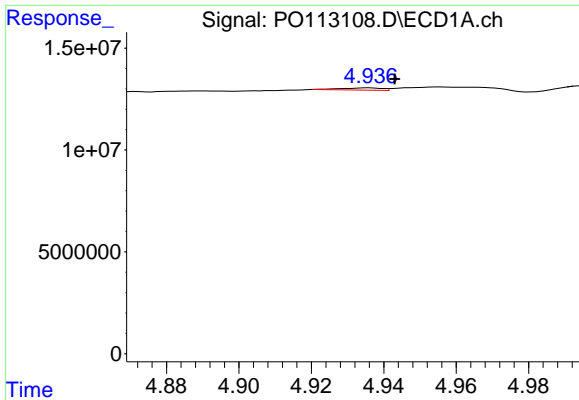
#18 AR-1242-3

R.T.: 4.781 min  
 Delta R.T.: -0.043 min  
 Response: 404101  
 Conc: 1.82 ng/ml



#18 AR-1242-3

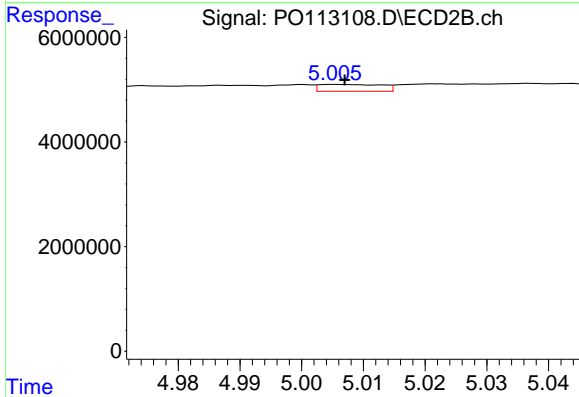
R.T.: 4.924 min  
 Delta R.T.: 0.002 min  
 Response: 100382  
 Conc: 0.86 ng/ml



#19 AR-1242-4

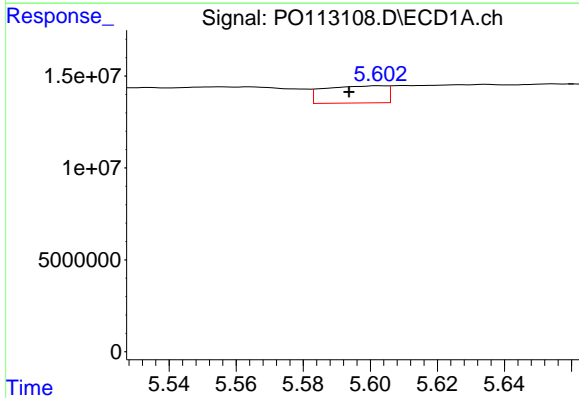
R.T.: 4.936 min  
 Delta R.T.: -0.007 min  
 Response: 859284  
 Conc: 4.95 ng/ml

Instrument :  
 ECD\_O  
 ClientSampleId :  
 I.BLK



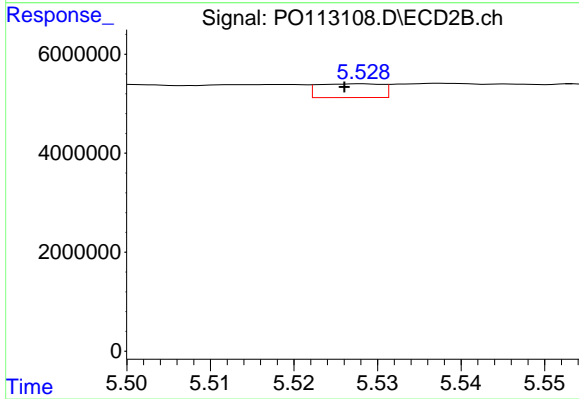
#19 AR-1242-4

R.T.: 5.005 min  
 Delta R.T.: -0.002 min  
 Response: 925770  
 Conc: 7.87 ng/ml



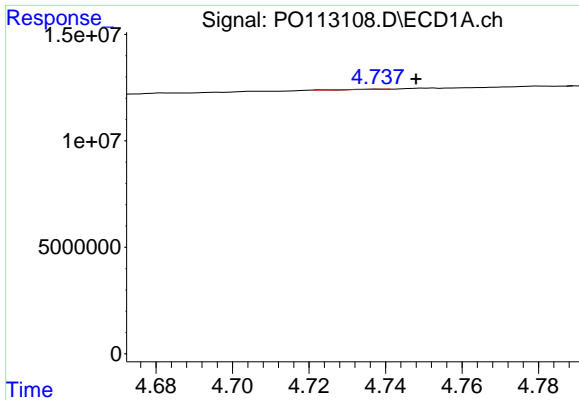
#20 AR-1242-5

R.T.: 5.603 min  
 Delta R.T.: 0.009 min  
 Response: 11989144  
 Conc: 59.90 ng/ml



#20 AR-1242-5

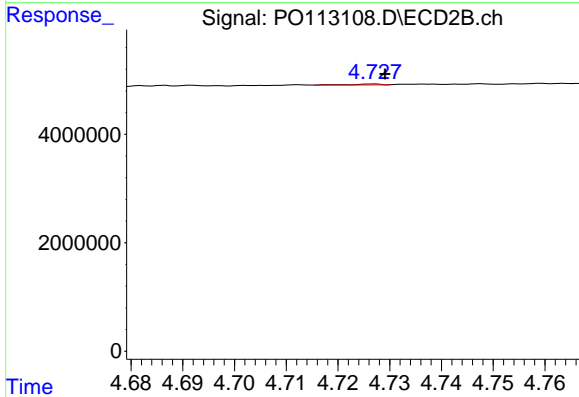
R.T.: 5.528 min  
 Delta R.T.: 0.002 min  
 Response: 1479267  
 Conc: 9.92 ng/ml



#21 AR-1248-1

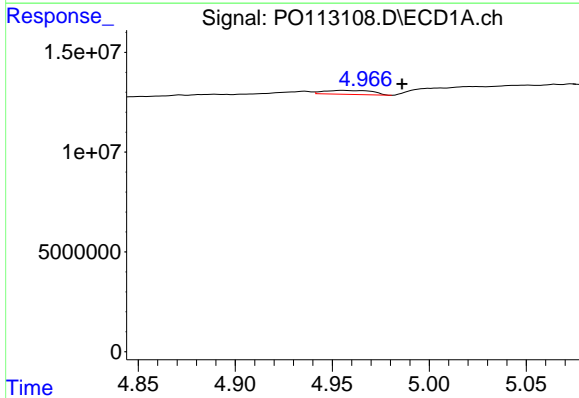
R.T.: 4.738 min  
 Delta R.T.: -0.009 min  
 Response: 25879  
 Conc: 0.15 ng/ml

Instrument :  
 ECD\_O  
 ClientSampleId :  
 I.BLK



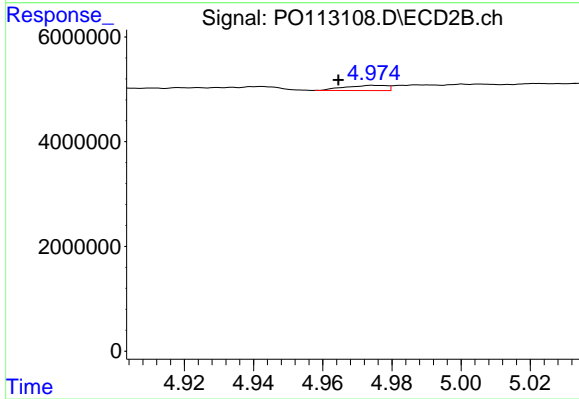
#21 AR-1248-1

R.T.: 4.727 min  
 Delta R.T.: -0.002 min  
 Response: 77564  
 Conc: 0.70 ng/ml



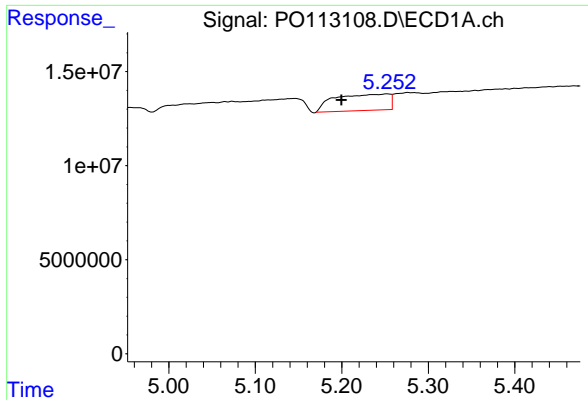
#22 AR-1248-2

R.T.: 4.955 min  
 Delta R.T.: -0.031 min  
 Response: 3462841  
 Conc: 14.32 ng/ml



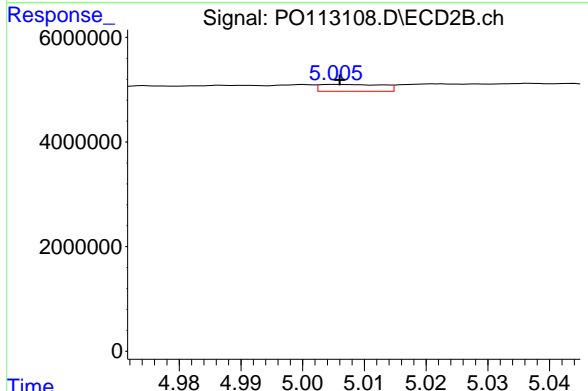
#22 AR-1248-2

R.T.: 4.974 min  
 Delta R.T.: 0.010 min  
 Response: 832037  
 Conc: 5.18 ng/ml

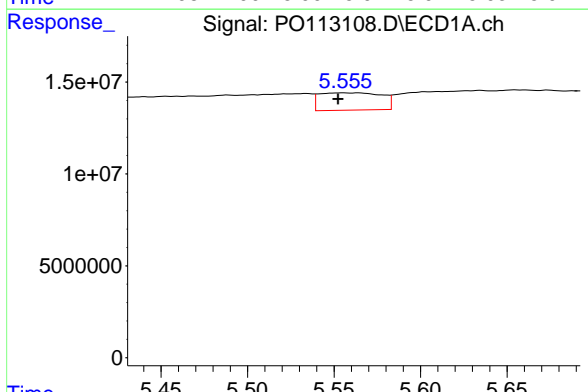


#23 AR-1248-3  
 R.T.: 5.253 min  
 Delta R.T.: 0.053 min  
 Response: 37902853  
 Conc: 118.87 ng/ml

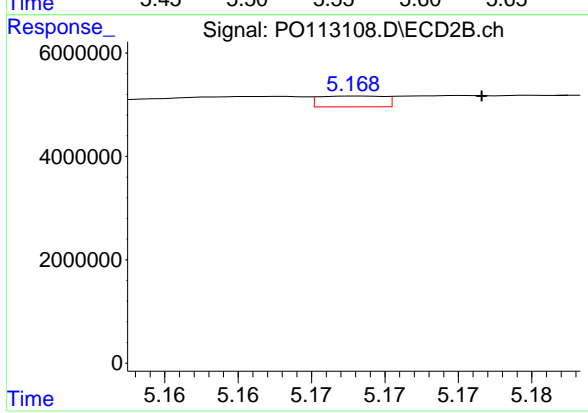
Instrument :  
 ECD\_O  
 ClientSampleId :  
 I.BLK



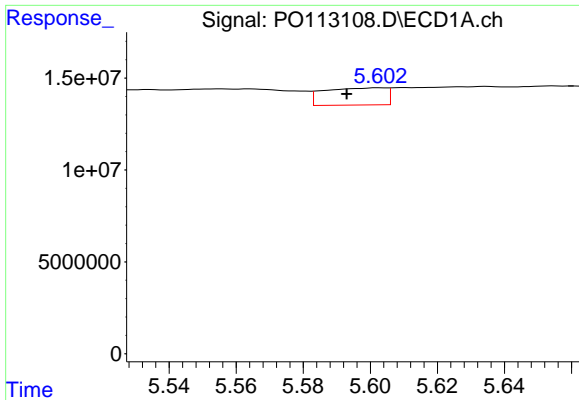
#23 AR-1248-3  
 R.T.: 5.005 min  
 Delta R.T.: 0.000 min  
 Response: 925770  
 Conc: 5.46 ng/ml



#24 AR-1248-4  
 R.T.: 5.555 min  
 Delta R.T.: 0.003 min  
 Response: 23402469  
 Conc: 46.84 ng/ml



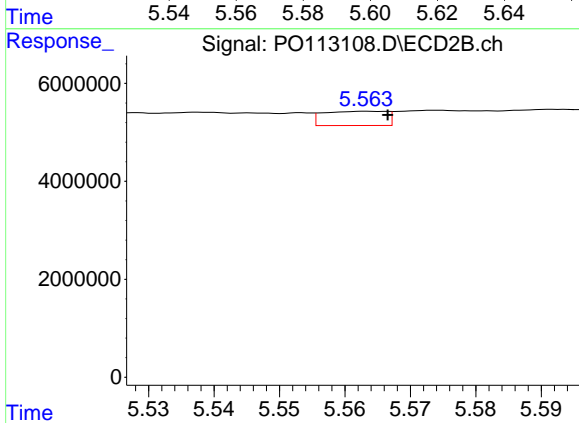
#24 AR-1248-4  
 R.T.: 5.168 min  
 Delta R.T.: -0.008 min  
 Response: 649931  
 Conc: 3.26 ng/ml



#25 AR-1248-5

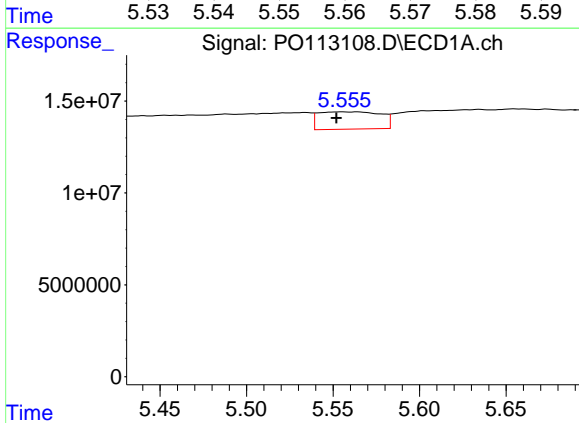
R.T.: 5.603 min  
 Delta R.T.: 0.010 min  
 Response: 11989144  
 Conc: 35.11 ng/ml

Instrument :  
 ECD\_O  
 ClientSampleId :  
 I.BLK



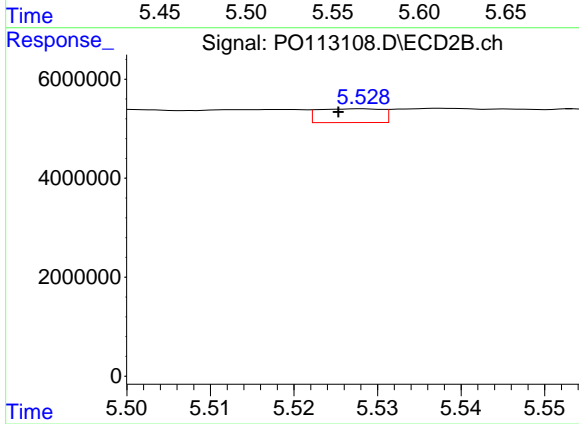
#25 AR-1248-5

R.T.: 5.563 min  
 Delta R.T.: -0.003 min  
 Response: 1945912  
 Conc: 9.17 ng/ml



#26 AR-1254-1

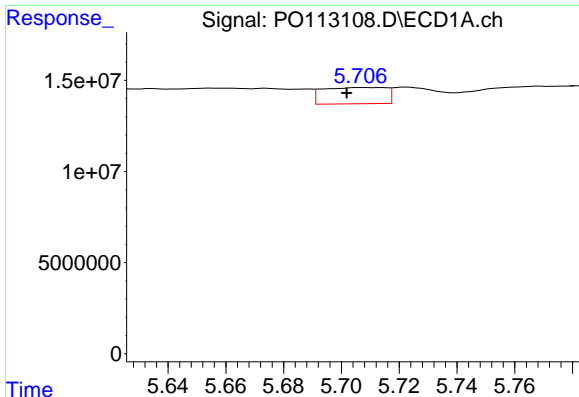
R.T.: 5.555 min  
 Delta R.T.: 0.004 min  
 Response: 23402469  
 Conc: 43.34 ng/ml



#26 AR-1254-1

R.T.: 5.528 min  
 Delta R.T.: 0.003 min  
 Response: 1479267  
 Conc: 4.69 ng/ml

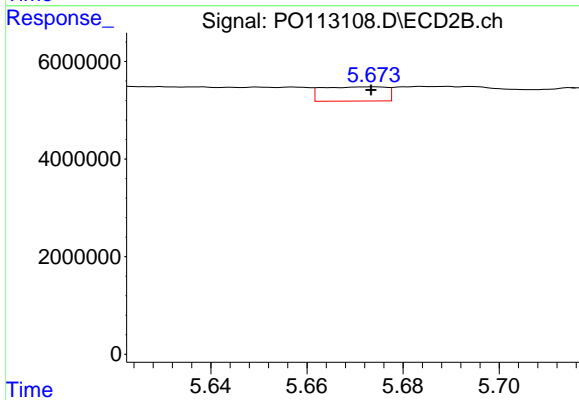




#27 AR-1254-2

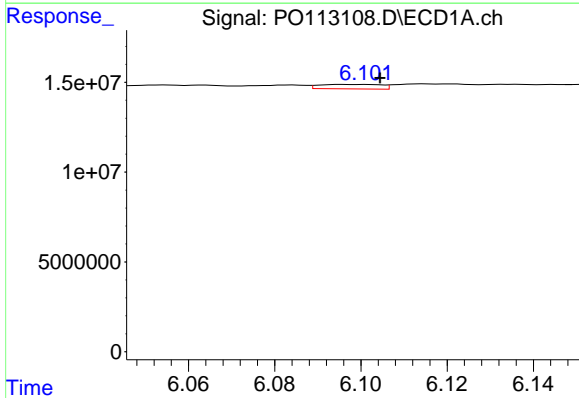
R.T.: 5.707 min  
 Delta R.T.: 0.006 min  
 Response: 13616372  
 Conc: 27.59 ng/ml

Instrument :  
 ECD\_O  
 ClientSampleId :  
 I.BLK



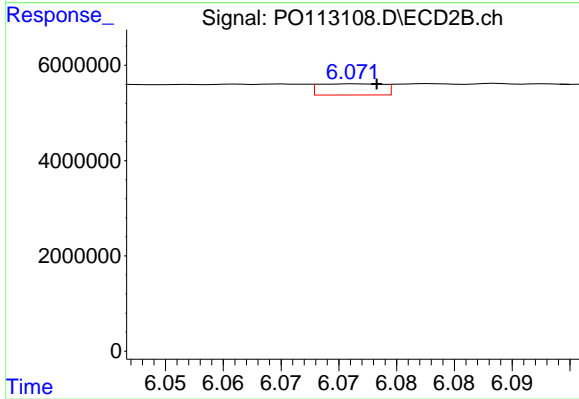
#27 AR-1254-2

R.T.: 5.674 min  
 Delta R.T.: 0.000 min  
 Response: 2703501  
 Conc: 9.64 ng/ml



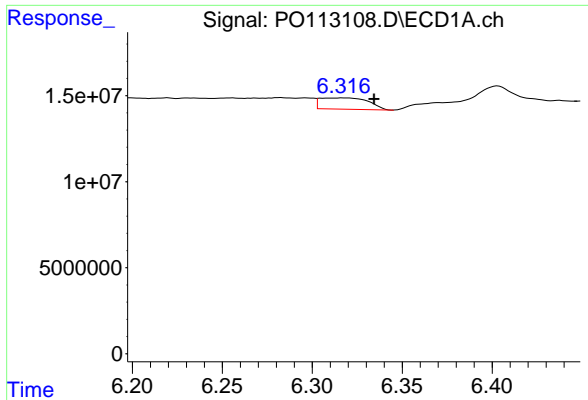
#28 AR-1254-3

R.T.: 6.096 min  
 Delta R.T.: -0.008 min  
 Response: 2450812  
 Conc: 3.32 ng/ml



#28 AR-1254-3

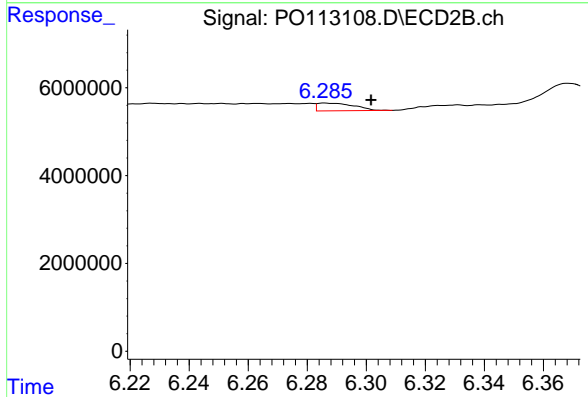
R.T.: 6.072 min  
 Delta R.T.: -0.002 min  
 Response: 918772  
 Conc: 2.20 ng/ml



#29 AR-1254-4

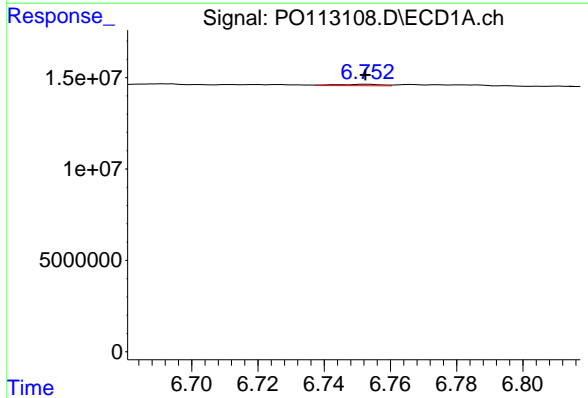
R.T.: 6.317 min  
 Delta R.T.: -0.017 min  
 Response: 12298001  
 Conc: 22.08 ng/ml

Instrument :  
 ECD\_O  
 ClientSampleId :  
 I.BLK



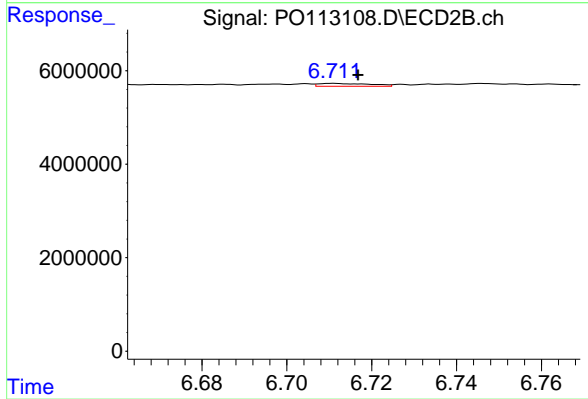
#29 AR-1254-4

R.T.: 6.286 min  
 Delta R.T.: -0.016 min  
 Response: 1520675  
 Conc: 5.53 ng/ml



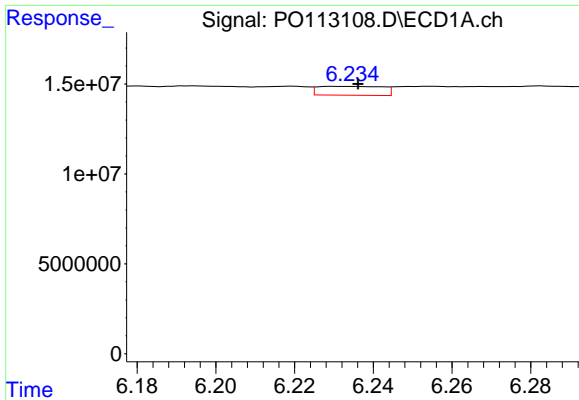
#30 AR-1254-5

R.T.: 6.753 min  
 Delta R.T.: 0.000 min  
 Response: 688523  
 Conc: 0.98 ng/ml



#30 AR-1254-5

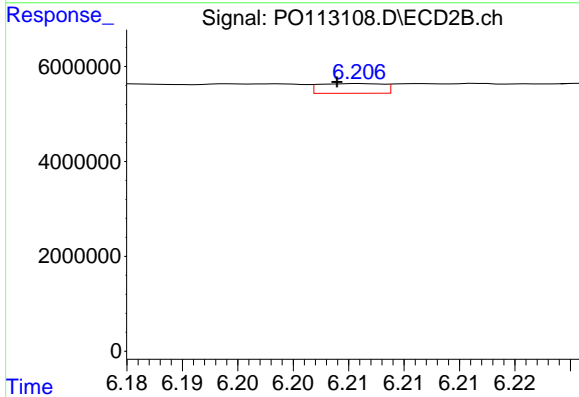
R.T.: 6.711 min  
 Delta R.T.: -0.006 min  
 Response: 534599  
 Conc: 1.50 ng/ml



#31 AR-1260-1

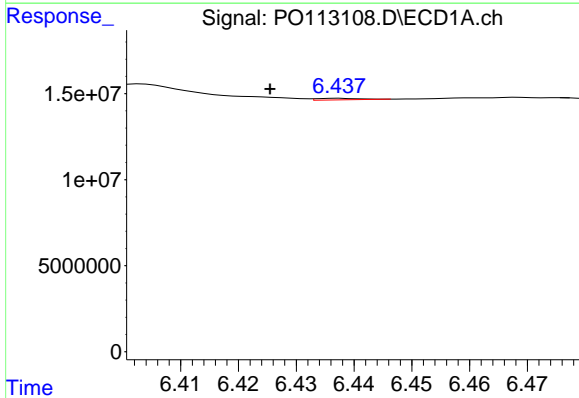
R.T.: 6.231 min  
 Delta R.T.: -0.005 min  
 Response: 5641020  
 Conc: 12.65 ng/ml

Instrument :  
 ECD\_O  
 ClientSampleId :  
 I.BLK



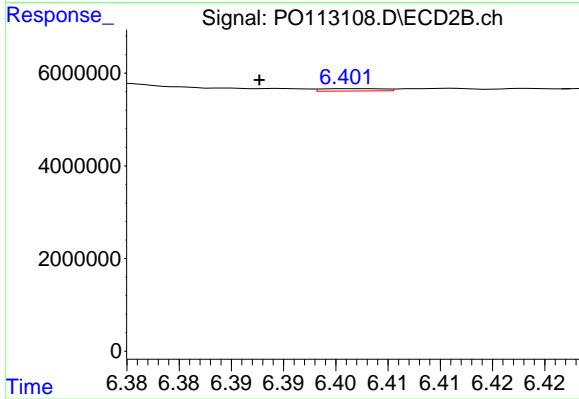
#31 AR-1260-1

R.T.: 6.206 min  
 Delta R.T.: 0.002 min  
 Response: 814576  
 Conc: 3.19 ng/ml



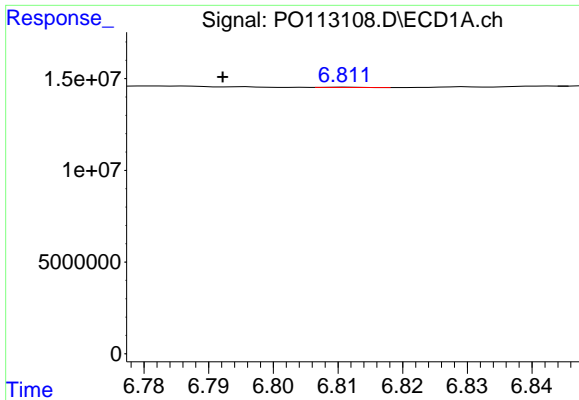
#32 AR-1260-2

R.T.: 6.437 min  
 Delta R.T.: 0.012 min  
 Response: 460369  
 Conc: 0.67 ng/ml



#32 AR-1260-2

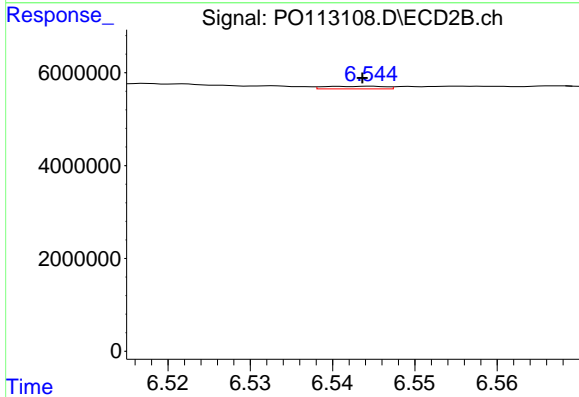
R.T.: 6.401 min  
 Delta R.T.: 0.009 min  
 Response: 206855  
 Conc: 0.60 ng/ml



#33 AR-1260-3

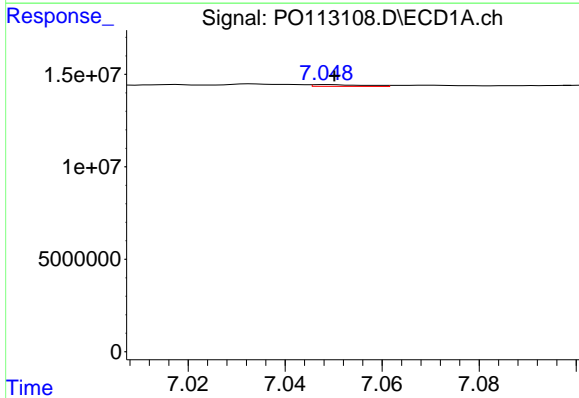
R.T.: 6.811 min  
 Delta R.T.: 0.019 min  
 Response: 56998  
 Conc: 0.09 ng/ml

Instrument :  
 ECD\_O  
 ClientSampleId :  
 I.BLK



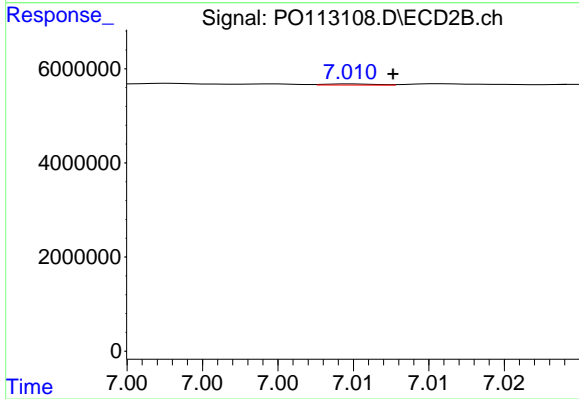
#33 AR-1260-3

R.T.: 6.545 min  
 Delta R.T.: 0.001 min  
 Response: 281009  
 Conc: 0.94 ng/ml



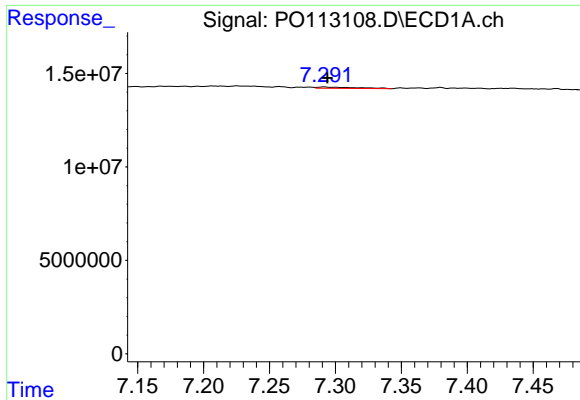
#34 AR-1260-4

R.T.: 7.049 min  
 Delta R.T.: -0.001 min  
 Response: 719984  
 Conc: 1.61 ng/ml



#34 AR-1260-4

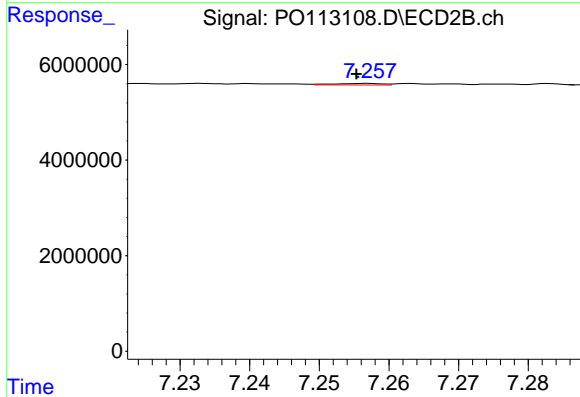
R.T.: 7.010 min  
 Delta R.T.: -0.003 min  
 Response: 54958  
 Conc: 0.27 ng/ml



#35 AR-1260-5

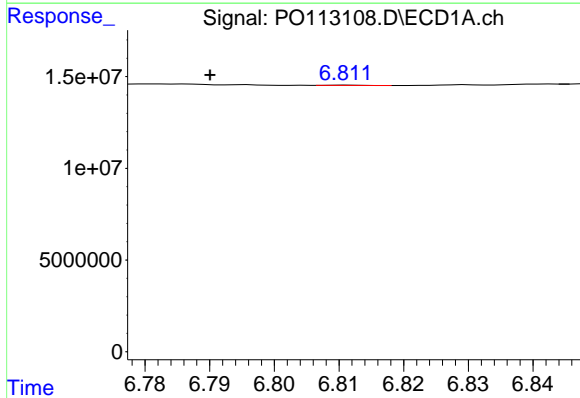
R.T.: 7.292 min  
 Delta R.T.: -0.002 min  
 Response: 1413336  
 Conc: 1.17 ng/ml

Instrument :  
 ECD\_O  
 ClientSampleId :  
 I.BLK



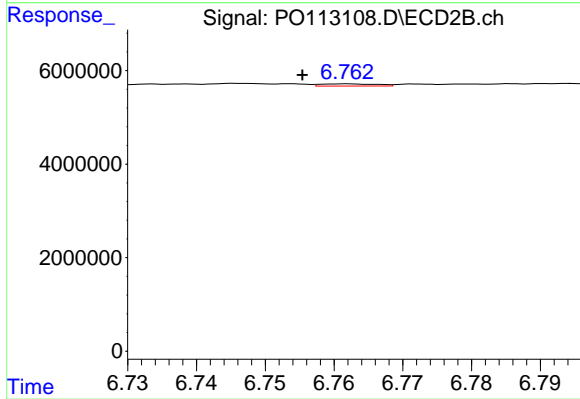
#35 AR-1260-5

R.T.: 7.257 min  
 Delta R.T.: 0.002 min  
 Response: 168365  
 Conc: 0.36 ng/ml



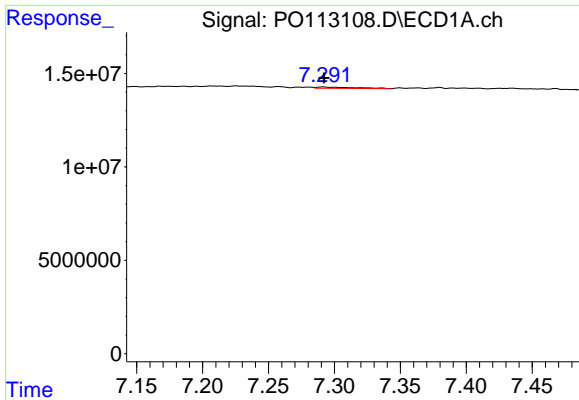
#36 AR-1262-1

R.T.: 6.811 min  
 Delta R.T.: 0.021 min  
 Response: 56998  
 Conc: 0.06 ng/ml



#36 AR-1262-1

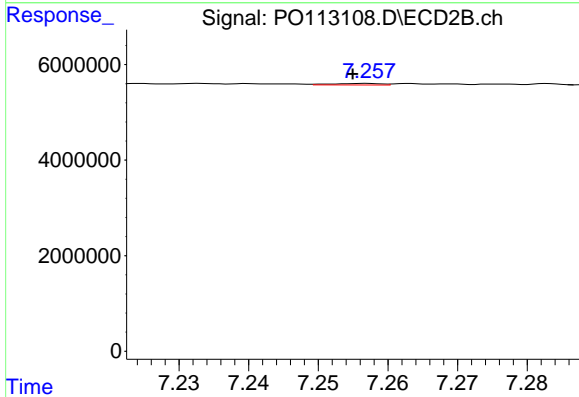
R.T.: 6.762 min  
 Delta R.T.: 0.006 min  
 Response: 263551  
 Conc: 0.64 ng/ml



#37 AR-1262-2

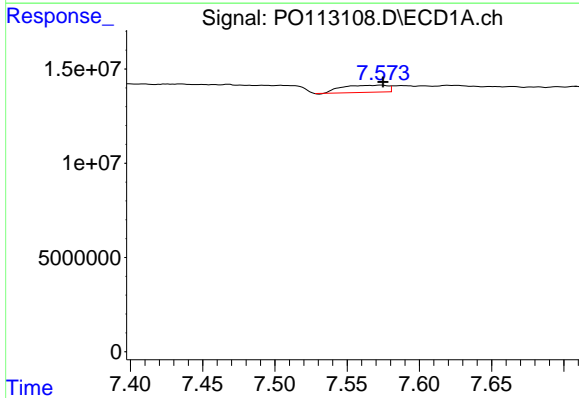
R.T.: 7.292 min  
 Delta R.T.: 0.000 min  
 Response: 1413336  
 Conc: 0.93 ng/ml

Instrument :  
 ECD\_O  
 ClientSampleId :  
 I.BLK



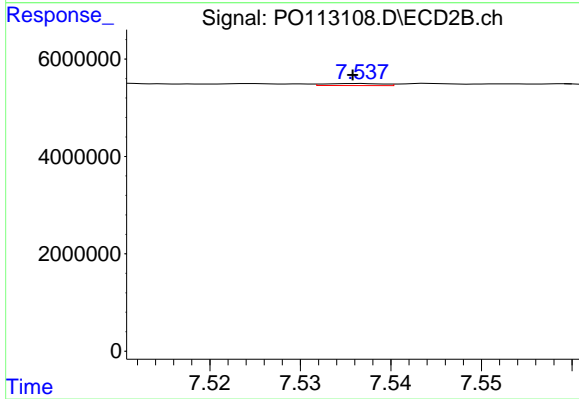
#37 AR-1262-2

R.T.: 7.257 min  
 Delta R.T.: 0.002 min  
 Response: 168365  
 Conc: 0.33 ng/ml



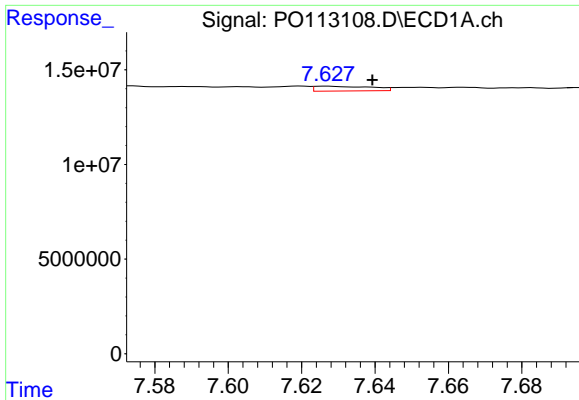
#38 AR-1262-3

R.T.: 7.574 min  
 Delta R.T.: -0.001 min  
 Response: 8183749  
 Conc: 14.77 ng/ml



#38 AR-1262-3

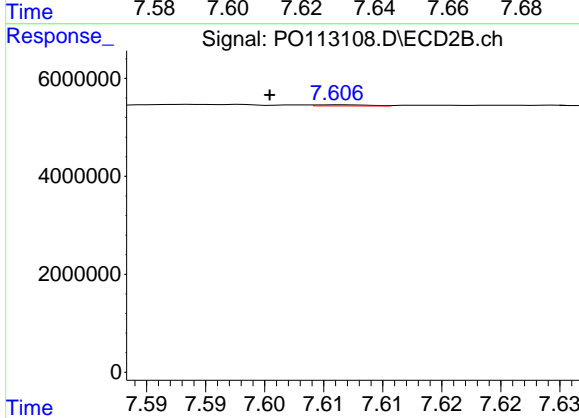
R.T.: 7.537 min  
 Delta R.T.: 0.000 min  
 Response: 188782  
 Conc: 1.05 ng/ml



#39 AR-1262-4

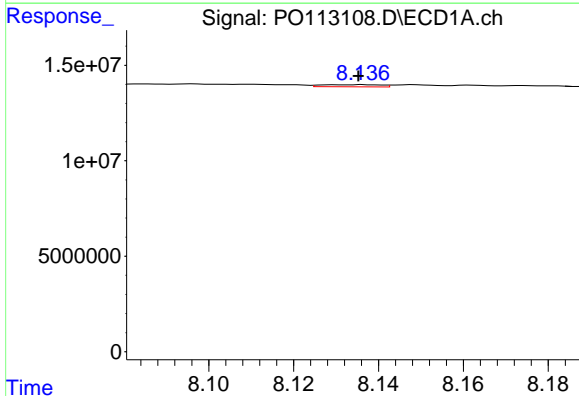
R.T.: 7.627 min  
 Delta R.T.: -0.013 min  
 Response: 2702550  
 Conc: 2.76 ng/ml

Instrument :  
 ECD\_O  
 ClientSampleId :  
 I.BLK



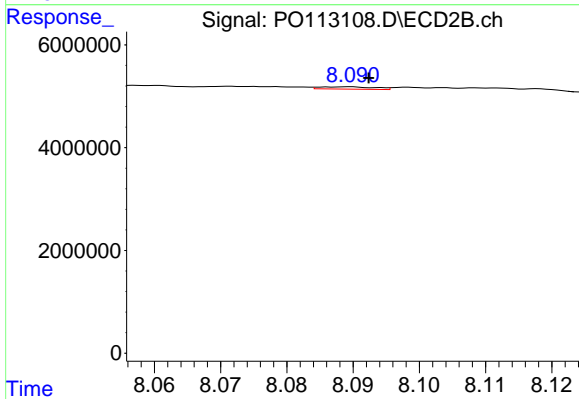
#39 AR-1262-4

R.T.: 7.606 min  
 Delta R.T.: 0.006 min  
 Response: 71525  
 Conc: 0.25 ng/ml



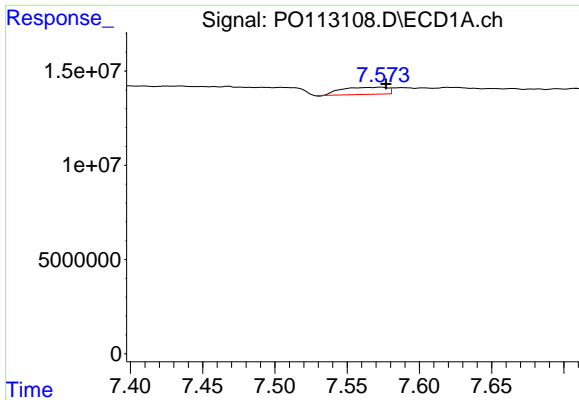
#40 AR-1262-5

R.T.: 8.136 min  
 Delta R.T.: 0.001 min  
 Response: 1055939  
 Conc: 2.53 ng/ml



#40 AR-1262-5

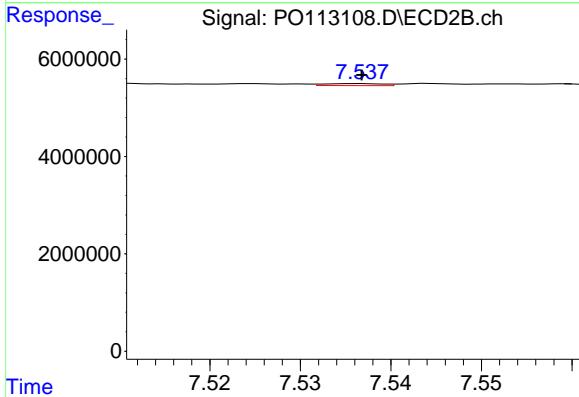
R.T.: 8.090 min  
 Delta R.T.: -0.003 min  
 Response: 261743  
 Conc: 2.42 ng/ml



#41 AR-1268-1

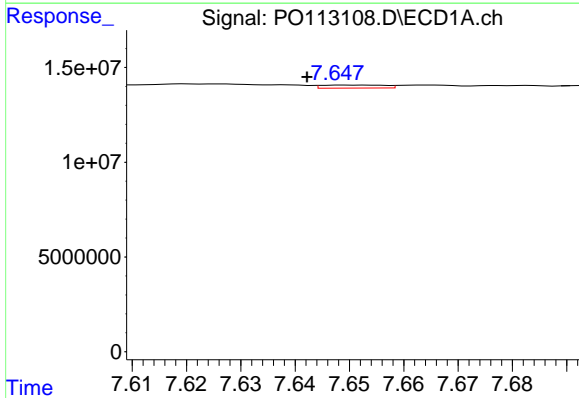
R.T.: 7.574 min  
 Delta R.T.: -0.003 min  
 Response: 8183749  
 Conc: 4.76 ng/ml

Instrument :  
 ECD\_O  
 ClientSampleId :  
 I.BLK



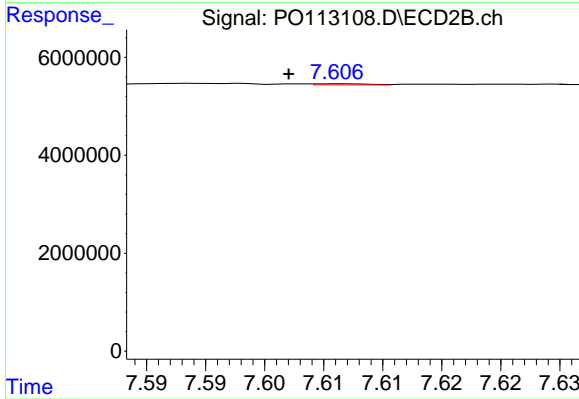
#41 AR-1268-1

R.T.: 7.537 min  
 Delta R.T.: 0.000 min  
 Response: 188782  
 Conc: 0.37 ng/ml



#42 AR-1268-2

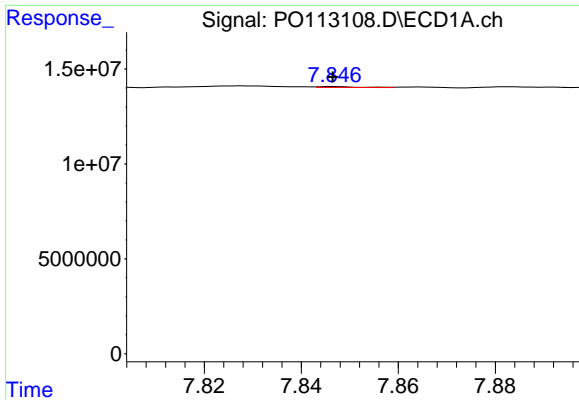
R.T.: 7.652 min  
 Delta R.T.: 0.010 min  
 Response: 1292267  
 Conc: 0.89 ng/ml



#42 AR-1268-2

R.T.: 7.606 min  
 Delta R.T.: 0.004 min  
 Response: 71525  
 Conc: 0.17 ng/ml

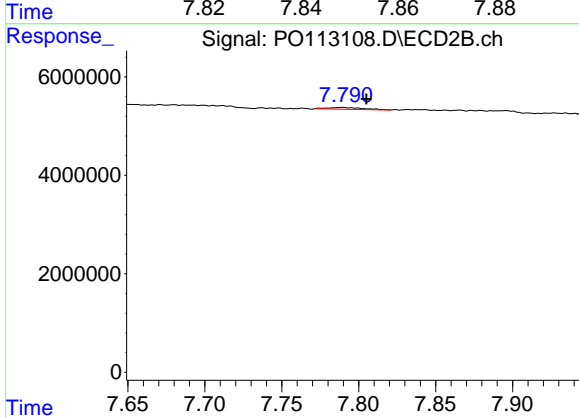




#43 AR-1268-3

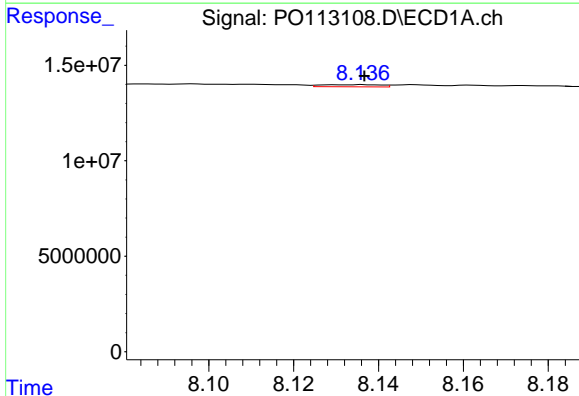
R.T.: 7.847 min  
 Delta R.T.: 0.000 min  
 Response: 263948  
 Conc: 0.22 ng/ml

Instrument :  
 ECD\_O  
 ClientSampleId :  
 I.BLK



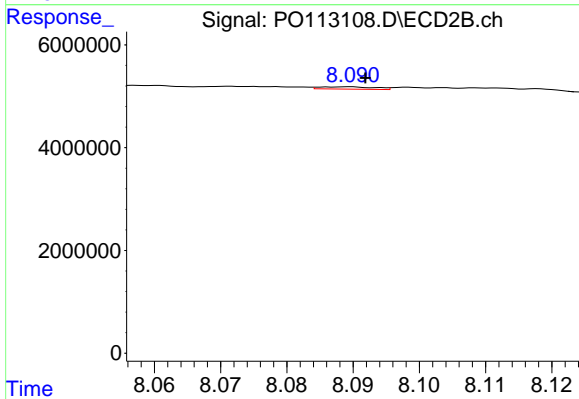
#43 AR-1268-3

R.T.: 7.790 min  
 Delta R.T.: -0.015 min  
 Response: 587802  
 Conc: 1.80 ng/ml



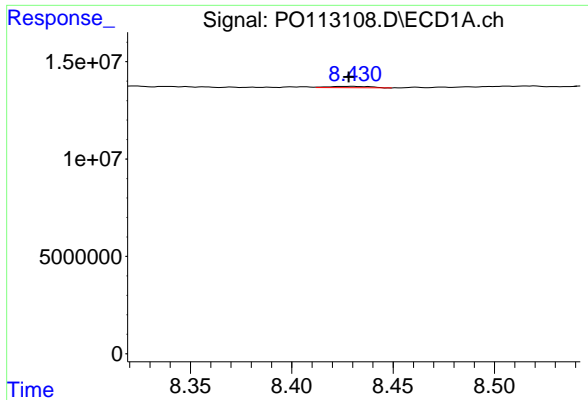
#44 AR-1268-4

R.T.: 8.136 min  
 Delta R.T.: 0.000 min  
 Response: 1055939  
 Conc: 2.29 ng/ml



#44 AR-1268-4

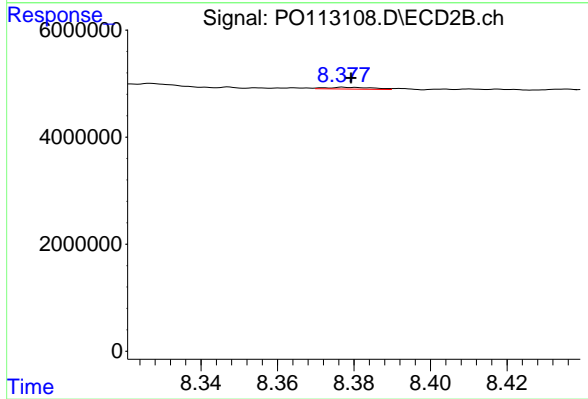
R.T.: 8.090 min  
 Delta R.T.: -0.002 min  
 Response: 261743  
 Conc: 2.17 ng/ml



#45 AR-1268-5

R.T.: 8.430 min  
 Delta R.T.: 0.002 min  
 Response: 1025366  
 Conc: 0.32 ng/ml

Instrument :  
 ECD\_O  
 ClientSampleId :  
 I.BLK



#45 AR-1268-5

R.T.: 8.377 min  
 Delta R.T.: -0.002 min  
 Response: 286206  
 Conc: 0.37 ng/ml