

Data Path : Z:\pestpcbsrv\HPCHEM1\ECD\_0\Data\P0082025\  
 Data File : PO113109.D  
 Signal(s) : Signal #1: ECD1A.ch Signal #2: ECD2B.ch  
 Acq On : 20 Aug 2025 22:55  
 Operator : YP/AJ  
 Sample : Q2901-01DL 5X  
 Misc :  
 ALS Vial : 25 Sample Multiplier: 1

Instrument :  
 ECD\_0  
 ClientSampleId :  
 HVAC DUCT SEALANTDL

Integration File signal 1: autoint1.e  
 Integration File signal 2: autoint2.e  
 Quant Time: Aug 21 01:44:46 2025  
 Quant Method : Z:\pestpcbsrv\HPCHEM1\ECD\_0\methods\P0081825.M  
 Quant Title : GC EXTRACTABLES  
 QLast Update : Tue Aug 19 06:08:32 2025  
 Response via : Initial Calibration  
 Integrator: ChemStation

Volume Inj. : 2 µl  
 Signal #1 Phase : ZB-MR1 Signal #2 Phase: ZB-MR2  
 Signal #1 Info : 30Mx0.32mmx 0.50µ Signal #2 Info : 30M x 0.32mm x 0.25µm

Compound	RT#1	RT#2	Resp#1	Resp#2	ng/ml	ng/ml
-----						
System Monitoring Compounds						
1) SA Tetrachlo...	3.662	3.653	25968704	16094505	3.172	3.180
2) SA Decachlor...	8.681	8.626	21081195	6213264	3.041	3.279
Target Compounds						
3) L1 AR-1016-1	4.748	4.727	9802271	6674253	36.715	39.128
4) L1 AR-1016-2	4.766	4.746	13885755	9401821	34.591	36.490
5) L1 AR-1016-3	4.823	4.921	10467303	6193059	41.045	44.358
6) L1 AR-1016-4	4.943	4.964	8327198	37734931	38.186	323.353 #
7) L1 AR-1016-5	5.198	5.175	53309968	31362173	240.538	220.039
8) L2 AR-1221-1	3.864	3.863	10921	31121	0.117	0.493 #
9) L2 AR-1221-2	3.966	3.953	307718	836331	4.555	17.919 #
10) L2 AR-1221-3	4.036	4.021	785546	1219373	3.549	8.213 #
11) L3 AR-1232-1	4.036	4.021	785546	1219373	4.514	10.386 #
12) L3 AR-1232-2	4.527	4.746	4245522	9401821	42.518	76.721 #
13) L3 AR-1232-3	4.766	4.921	13885755	6193059	73.285	97.766 #
14) L3 AR-1232-4	4.943	5.004	8327198	17473767	88.428	310.804 #
15) L3 AR-1232-5	4.984	5.175	54410416	31362173	878.395	523.894 #
16) L4 AR-1242-1	4.748	4.727	9802271	6674253	42.631	46.187
17) L4 AR-1242-2	4.766	4.746	13885755	9401821	40.410	43.344
18) L4 AR-1242-3	4.823	4.921	10467303	6193059	47.175	52.948
19) L4 AR-1242-4	4.943	5.004	8327198	17473767	48.006	148.539 #
20) L4 AR-1242-5	5.593	5.525	36496069	111.3E6	182.332	746.144 #
21) L5 AR-1248-1	4.748	4.727	9802271	6674253	56.184	59.852
22) L5 AR-1248-2	4.984	4.964	54410416	37734931	224.961	234.817
23) L5 AR-1248-3	5.198	5.004	53309968	17473767	167.187	102.992 #
24) L5 AR-1248-4	5.551	5.175	190.4E6	31362173	381.024	157.425 #
25) L5 AR-1248-5	5.593	5.565	36496069	24028404	106.873	113.183
26) L6 AR-1254-1	5.551	5.525	190.4E6	111.3E6	352.535	352.856
27) L6 AR-1254-2	5.701	5.672	158.2E6	91476947	320.551	326.308
28) L6 AR-1254-3	6.104	6.072	192.9E6	113.0E6	261.091	270.999
29) L6 AR-1254-4	6.332	6.300	76933925	42240494	138.122	153.694
30) L6 AR-1254-5	6.751	6.716	85938804	43646545	122.599	122.091
31) L7 AR-1260-1	6.236	6.203	99140380	57561088	222.298	225.669
32) L7 AR-1260-2	6.425	6.390	88703871	44918021	129.170	129.929
33) L7 AR-1260-3	6.789	6.541	39929823	38622084	64.666	129.851 #
34) L7 AR-1260-4	7.049	7.011	22453544	10363171	50.134	50.003
35) L7 AR-1260-5	7.292	7.253	39460992	16811018	32.594	35.888
36) L8 AR-1262-1	6.789	6.753	39929823	19573709	43.603	47.209
37) L8 AR-1262-2	7.292	7.253	39460992	16811018	26.096	32.474
38) L8 AR-1262-3	7.575	7.534	8172895	2184841	14.750	12.166
39) L8 AR-1262-4	7.638	7.597	20171121	6420788	20.626	22.148
40) L8 AR-1262-5	8.136	8.090	4686628	1019101	11.242	9.407
41) L9 AR-1268-1	7.575	7.534	8172895	2184841	4.749	4.289

Data Path : Z:\pestpcbsrv\HPCHEM1\ECD\_0\Data\P0082025\  
 Data File : P0113109.D  
 Signal(s) : Signal #1: ECD1A.ch Signal #2: ECD2B.ch  
 Acq On : 20 Aug 2025 22:55  
 Operator : YP/AJ  
 Sample : Q2901-01DL 5X  
 Misc :  
 ALS Vial : 25 Sample Multiplier: 1

**Instrument :**  
 ECD\_0  
**ClientSampleId :**  
 HVAC DUCT SEALANTDL

Integration File signal 1: autoint1.e  
 Integration File signal 2: autoint2.e  
 Quant Time: Aug 21 01:44:46 2025  
 Quant Method : Z:\pestpcbsrv\HPCHEM1\ECD\_0\methods\P0081825.M  
 Quant Title : GC EXTRACTABLES  
 QLast Update : Tue Aug 19 06:08:32 2025  
 Response via : Initial Calibration  
 Integrator: ChemStation

Volume Inj. : 2 µl  
 Signal #1 Phase : ZB-MR1 Signal #2 Phase: ZB-MR2  
 Signal #1 Info : 30Mx0.32mmx 0.50µ Signal #2 Info : 30M x 0.32mm x 0.25µm

	Compound	RT#1	RT#2	Resp#1	Resp#2	ng/ml	ng/ml
42)	L9 AR-1268-2	7.638	7.597	20171121	6420788	13.929	15.457
43)	L9 AR-1268-3	7.848	7.802	1429849	316149	1.185	0.968
44)	L9 AR-1268-4	8.136	8.090	4686628	1019101	10.174	8.462
45)	L9 AR-1268-5	8.429	8.423f	890709	316309	0.279	0.405 #

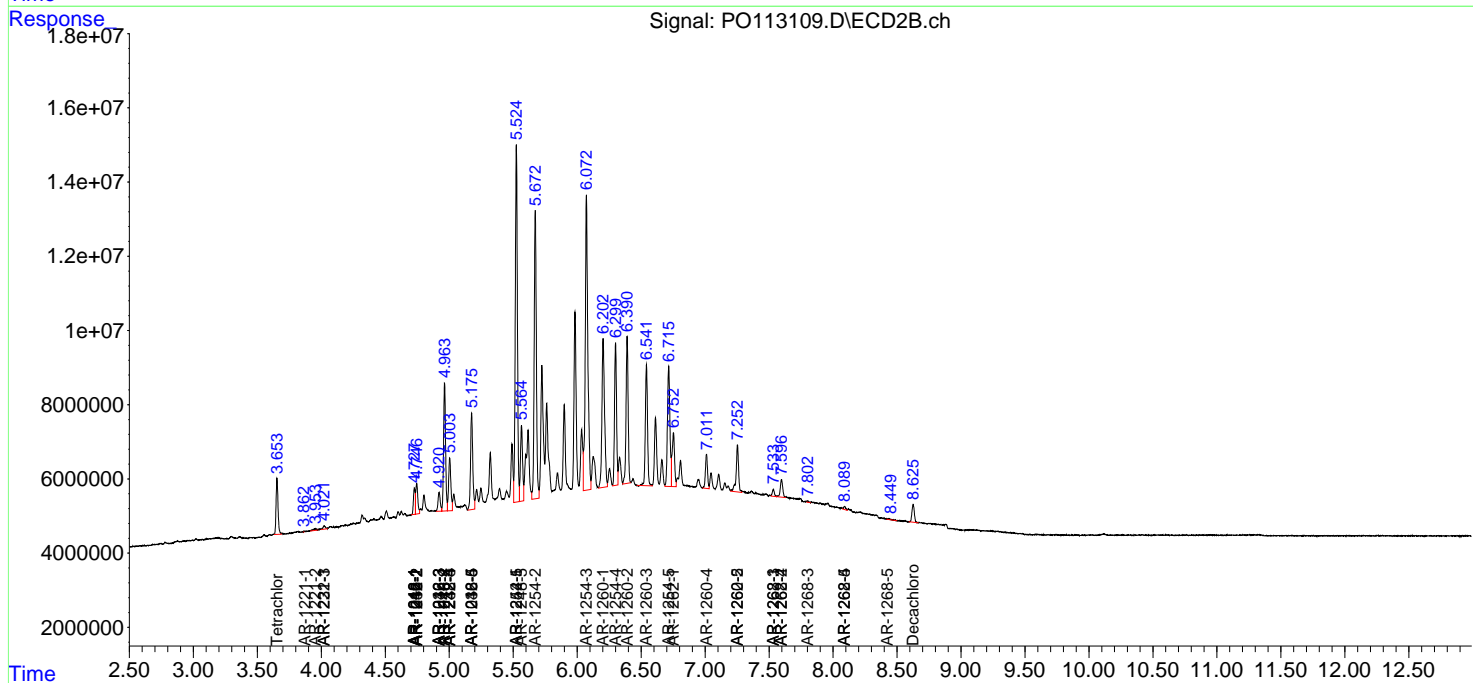
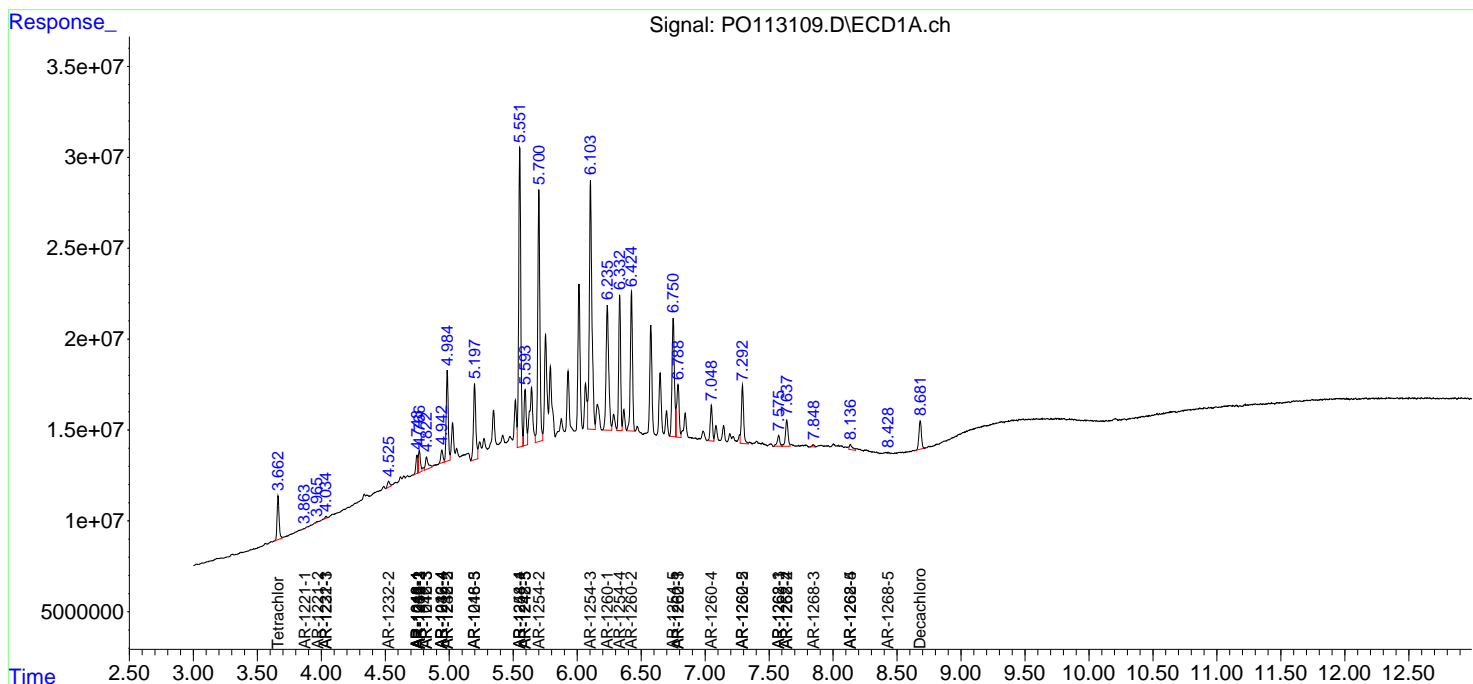
(f)=RT Delta > 1/2 Window (#)=Amounts differ by > 25% (m)=manual int.

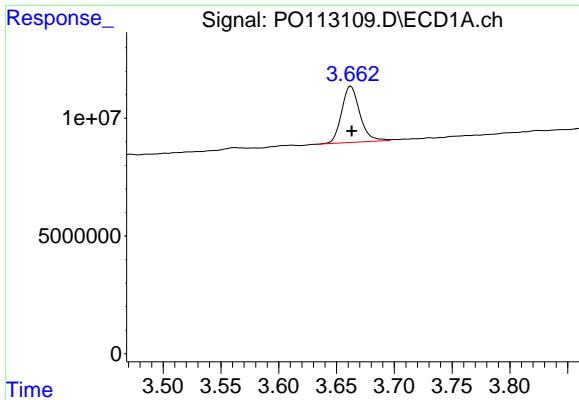
Data Path : Z:\pestpcbsrv\HPCHEM1\ECD\_O\Data\PO082025\  
 Data File : PO113109.D  
 Signal(s) : Signal #1: ECD1A.ch Signal #2: ECD2B.ch  
 Acq On : 20 Aug 2025 22:55  
 Operator : YP/AJ  
 Sample : Q2901-01DL 5X  
 Misc :  
 ALS Vial : 25 Sample Multiplier: 1

Instrument :  
 ECD\_O  
 ClientSampleId :  
 HVAC DUCT SEALANTDL

Integration File signal 1: autoint1.e  
 Integration File signal 2: autoint2.e  
 Quant Time: Aug 21 01:44:46 2025  
 Quant Method : Z:\pestpcbsrv\HPCHEM1\ECD\_O\methods\PO081825.M  
 Quant Title : GC EXTRACTABLES  
 QLast Update : Tue Aug 19 06:08:32 2025  
 Response via : Initial Calibration  
 Integrator: ChemStation

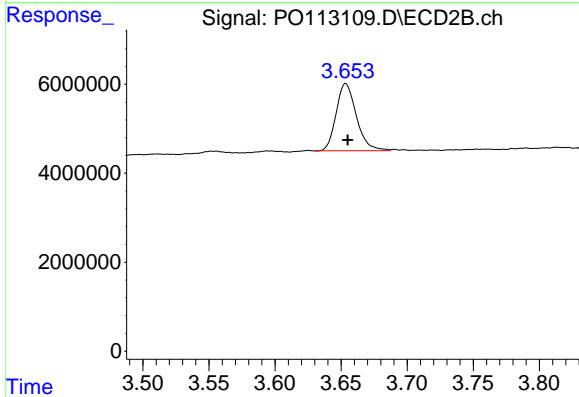
Volume Inj. : 2 µl  
 Signal #1 Phase : ZB-MR1 Signal #2 Phase: ZB-MR2  
 Signal #1 Info : 30Mx0.32mmx 0.50µ Signal #2 Info : 30M x 0.32mm x 0.25µm



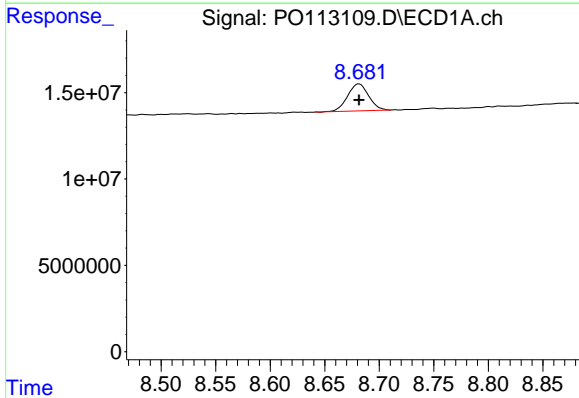


#1 Tetrachloro-m-xylene  
 R.T.: 3.662 min  
 Delta R.T.: 0.000 min  
 Response: 25968704  
 Conc: 3.17 ng/ml

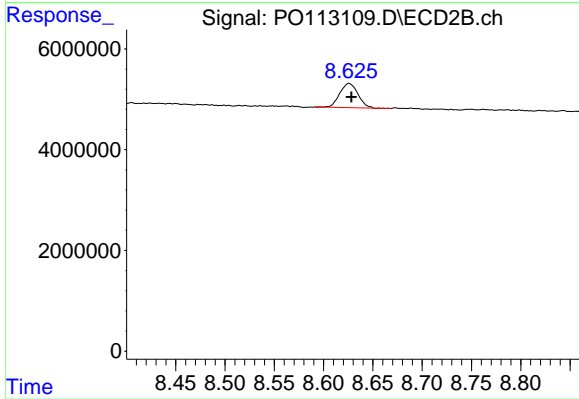
Instrument :  
 ECD\_O  
 ClientSampleId :  
 HVAC DUCT SEALANTDL



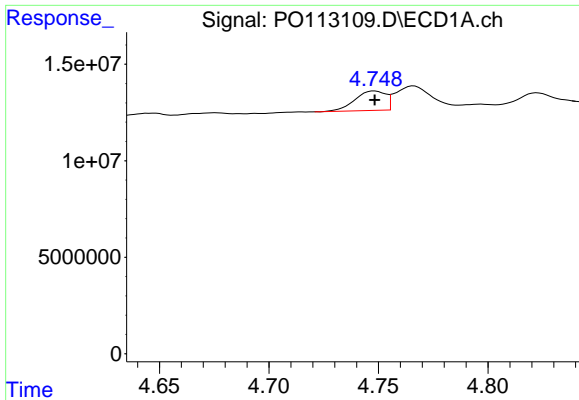
#1 Tetrachloro-m-xylene  
 R.T.: 3.653 min  
 Delta R.T.: -0.001 min  
 Response: 16094505  
 Conc: 3.18 ng/ml



#2 Decachlorobiphenyl  
 R.T.: 8.681 min  
 Delta R.T.: 0.000 min  
 Response: 21081195  
 Conc: 3.04 ng/ml



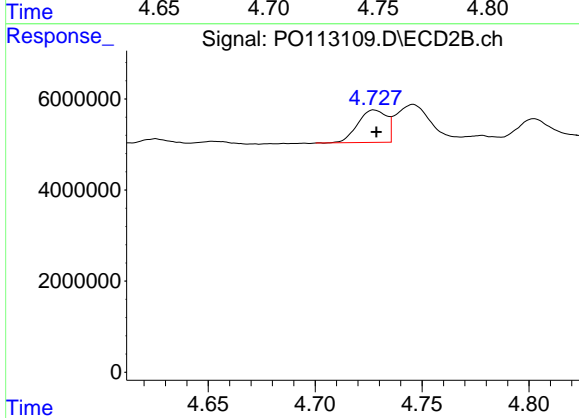
#2 Decachlorobiphenyl  
 R.T.: 8.626 min  
 Delta R.T.: -0.002 min  
 Response: 6213264  
 Conc: 3.28 ng/ml



#3 AR-1016-1

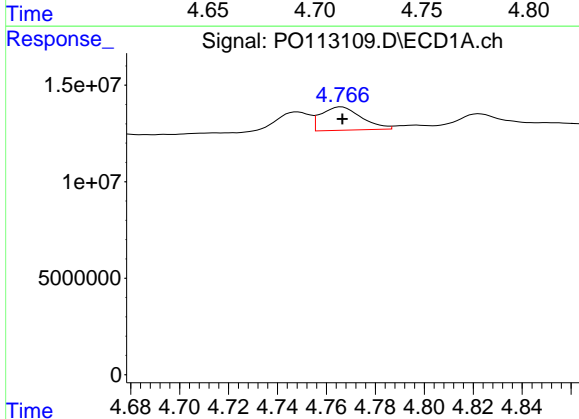
R.T.: 4.748 min  
 Delta R.T.: 0.000 min  
 Response: 9802271  
 Conc: 36.71 ng/ml

Instrument :  
 ECD\_O  
 ClientSampleId :  
 HVAC DUCT SEALANTDL



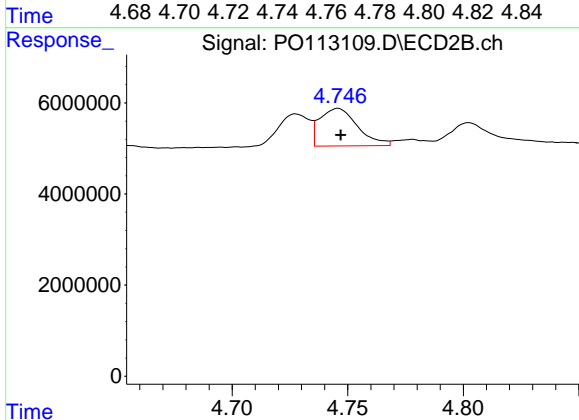
#3 AR-1016-1

R.T.: 4.727 min  
 Delta R.T.: -0.001 min  
 Response: 6674253  
 Conc: 39.13 ng/ml



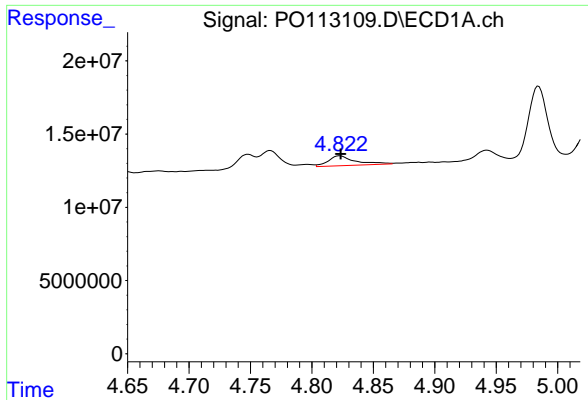
#4 AR-1016-2

R.T.: 4.766 min  
 Delta R.T.: 0.000 min  
 Response: 13885755  
 Conc: 34.59 ng/ml



#4 AR-1016-2

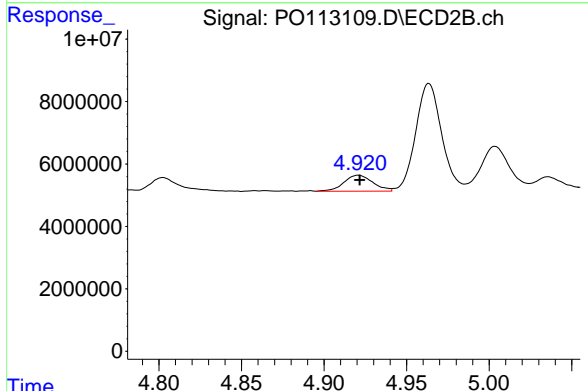
R.T.: 4.746 min  
 Delta R.T.: -0.001 min  
 Response: 9401821  
 Conc: 36.49 ng/ml



#5 AR-1016-3

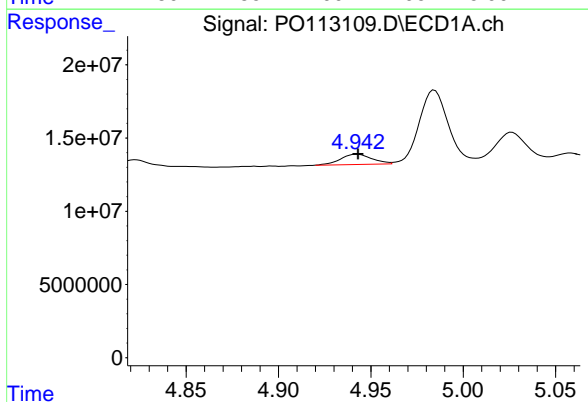
R.T.: 4.823 min  
 Delta R.T.: 0.000 min  
 Response: 10467303  
 Conc: 41.04 ng/ml

Instrument :  
 ECD\_O  
 ClientSampleId :  
 HVAC DUCT SEALANTDL



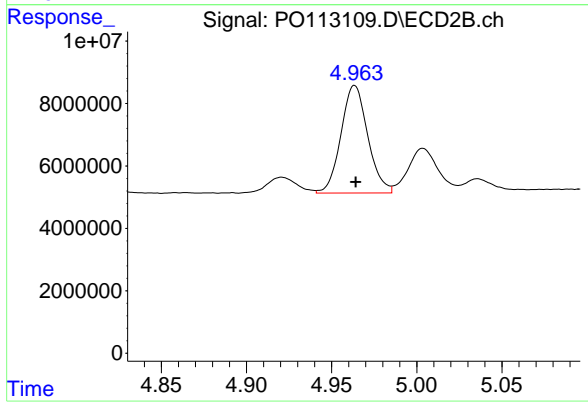
#5 AR-1016-3

R.T.: 4.921 min  
 Delta R.T.: 0.000 min  
 Response: 6193059  
 Conc: 44.36 ng/ml



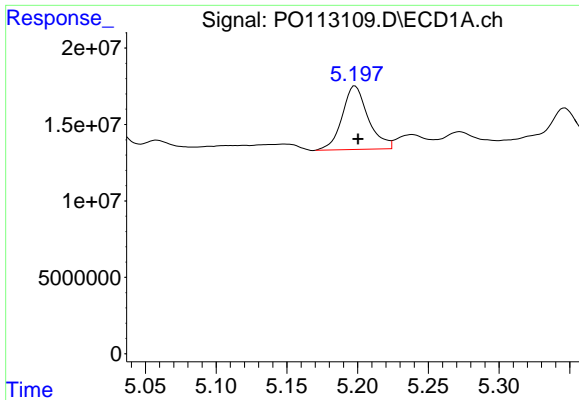
#6 AR-1016-4

R.T.: 4.943 min  
 Delta R.T.: 0.000 min  
 Response: 8327198  
 Conc: 38.19 ng/ml



#6 AR-1016-4

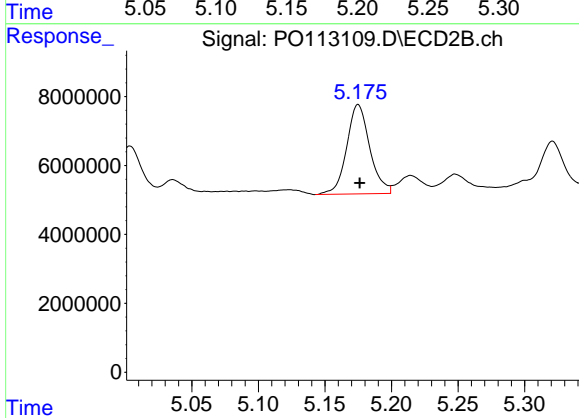
R.T.: 4.964 min  
 Delta R.T.: 0.000 min  
 Response: 37734931  
 Conc: 323.35 ng/ml



#7 AR-1016-5

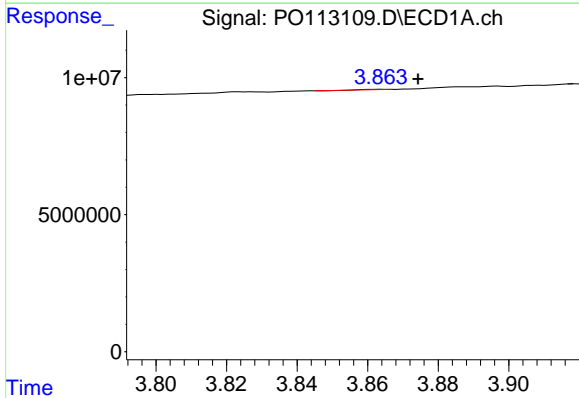
R.T.: 5.198 min  
 Delta R.T.: -0.002 min  
 Response: 53309968  
 Conc: 240.54 ng/ml

Instrument :  
 ECD\_O  
 ClientSampleId :  
 HVAC DUCT SEALANTDL



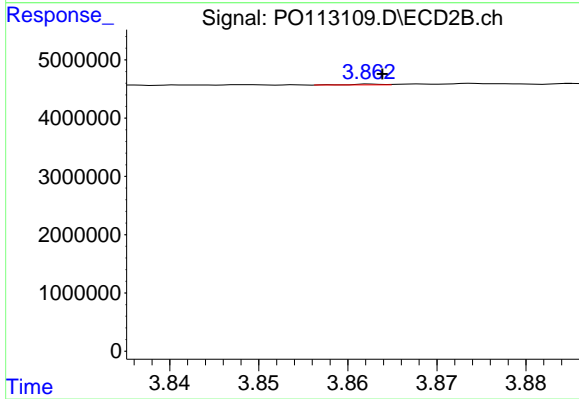
#7 AR-1016-5

R.T.: 5.175 min  
 Delta R.T.: -0.001 min  
 Response: 31362173  
 Conc: 220.04 ng/ml



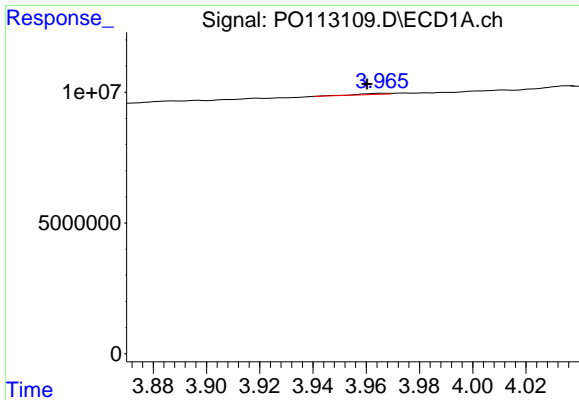
#8 AR-1221-1

R.T.: 3.864 min  
 Delta R.T.: -0.011 min  
 Response: 10921  
 Conc: 0.12 ng/ml



#8 AR-1221-1

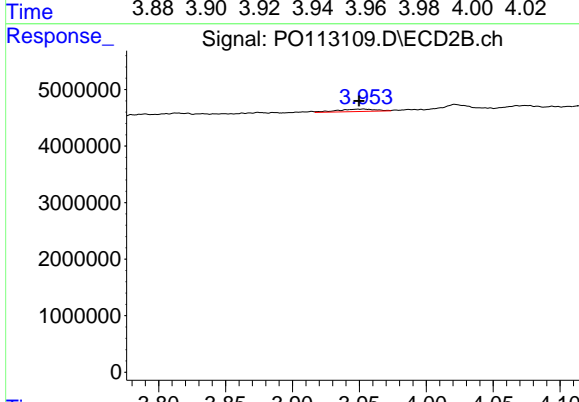
R.T.: 3.863 min  
 Delta R.T.: -0.001 min  
 Response: 31121  
 Conc: 0.49 ng/ml



#9 AR-1221-2

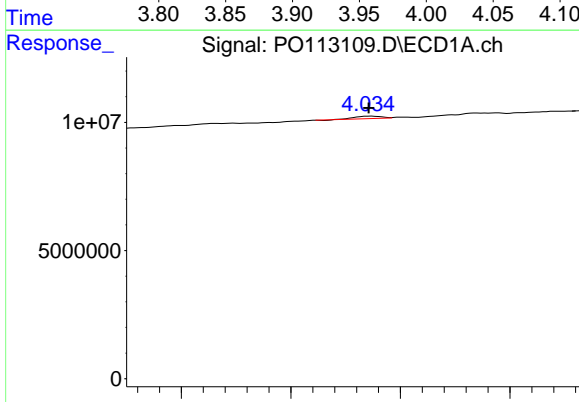
R.T.: 3.966 min  
 Delta R.T.: 0.006 min  
 Response: 307718  
 Conc: 4.56 ng/ml

Instrument :  
 ECD\_O  
 ClientSampleId :  
 HVAC DUCT SEALANTDL



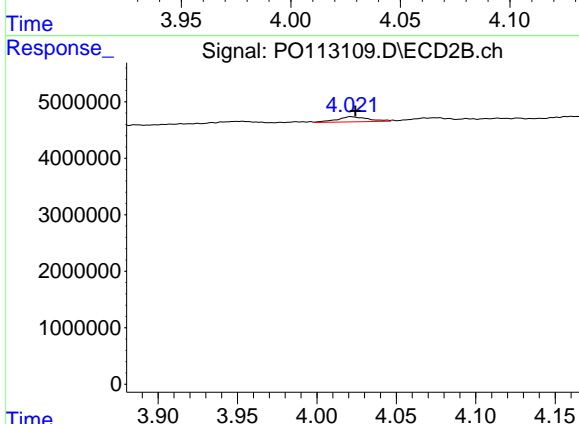
#9 AR-1221-2

R.T.: 3.953 min  
 Delta R.T.: 0.004 min  
 Response: 836331  
 Conc: 17.92 ng/ml



#10 AR-1221-3

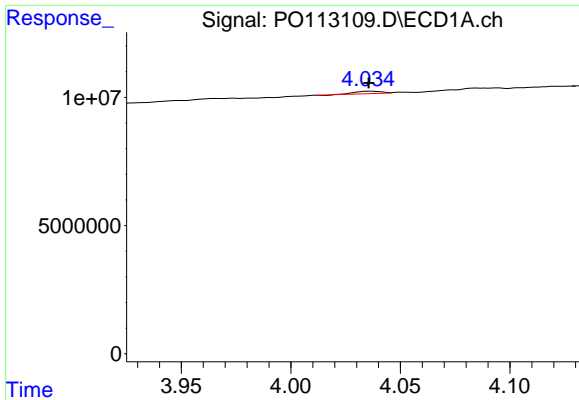
R.T.: 4.036 min  
 Delta R.T.: 0.000 min  
 Response: 785546  
 Conc: 3.55 ng/ml



#10 AR-1221-3

R.T.: 4.021 min  
 Delta R.T.: -0.003 min  
 Response: 1219373  
 Conc: 8.21 ng/ml

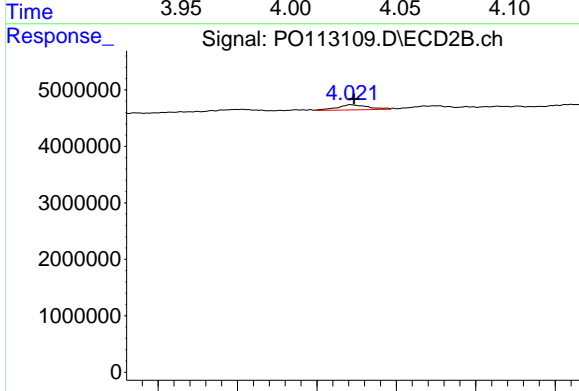




#11 AR-1232-1

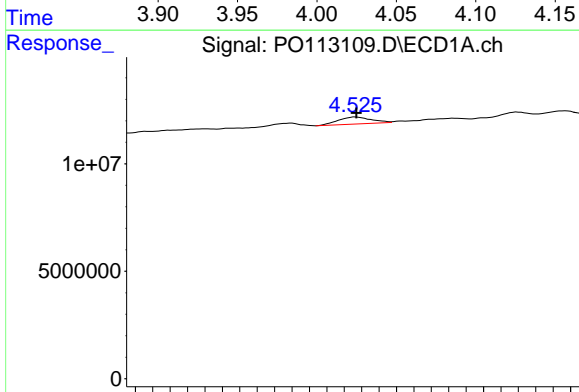
R.T.: 4.036 min  
 Delta R.T.: 0.000 min  
 Response: 785546  
 Conc: 4.51 ng/ml

Instrument :  
 ECD\_O  
 ClientSampleId :  
 HVAC DUCT SEALANTDL



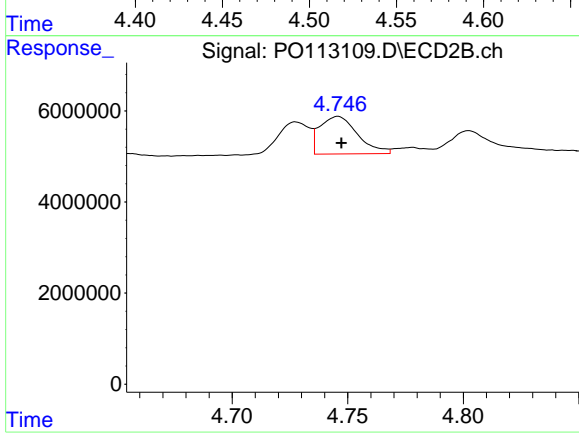
#11 AR-1232-1

R.T.: 4.021 min  
 Delta R.T.: -0.002 min  
 Response: 1219373  
 Conc: 10.39 ng/ml



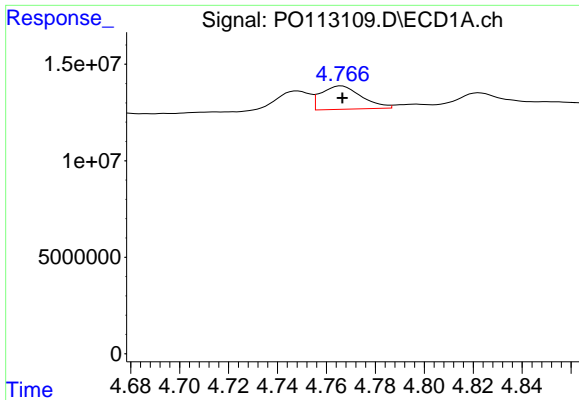
#12 AR-1232-2

R.T.: 4.527 min  
 Delta R.T.: 0.000 min  
 Response: 4245522  
 Conc: 42.52 ng/ml



#12 AR-1232-2

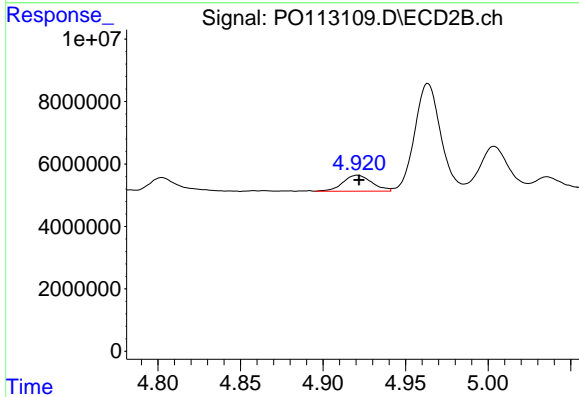
R.T.: 4.746 min  
 Delta R.T.: -0.001 min  
 Response: 9401821  
 Conc: 76.72 ng/ml



#13 AR-1232-3

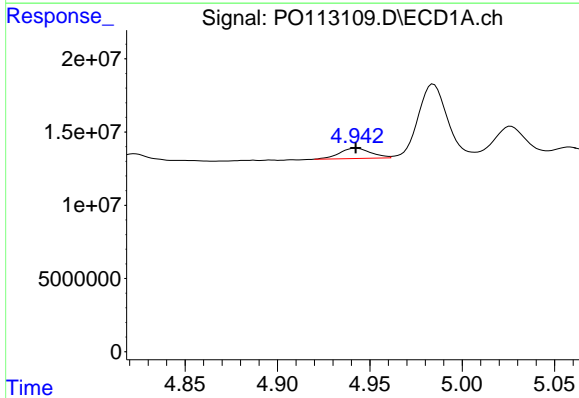
R.T.: 4.766 min  
 Delta R.T.: 0.000 min  
 Response: 13885755  
 Conc: 73.29 ng/ml

Instrument :  
 ECD\_O  
 ClientSampleId :  
 HVAC DUCT SEALANTDL



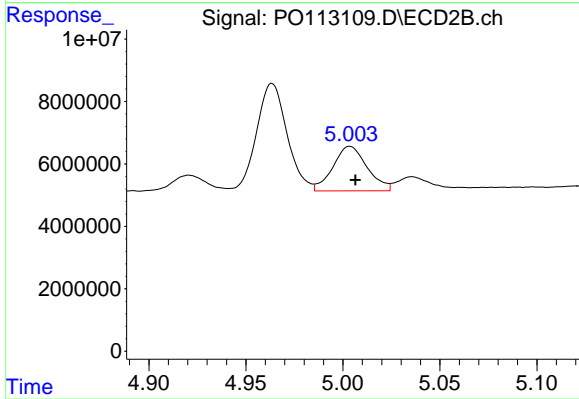
#13 AR-1232-3

R.T.: 4.921 min  
 Delta R.T.: -0.001 min  
 Response: 6193059  
 Conc: 97.77 ng/ml



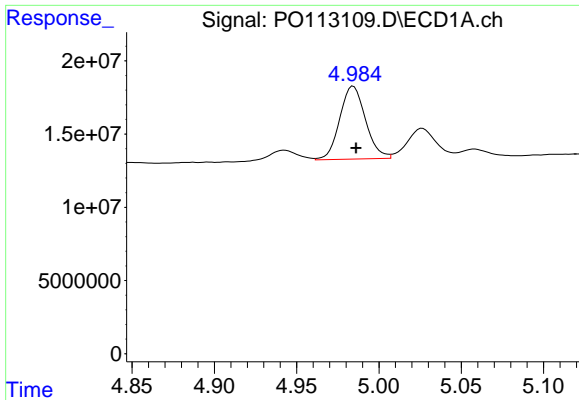
#14 AR-1232-4

R.T.: 4.943 min  
 Delta R.T.: 0.000 min  
 Response: 8327198  
 Conc: 88.43 ng/ml



#14 AR-1232-4

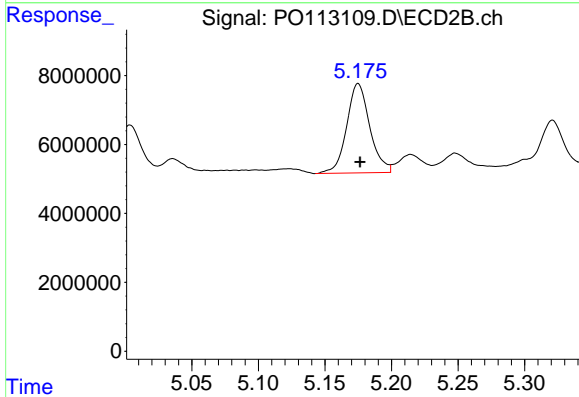
R.T.: 5.004 min  
 Delta R.T.: -0.003 min  
 Response: 17473767  
 Conc: 310.80 ng/ml



#15 AR-1232-5

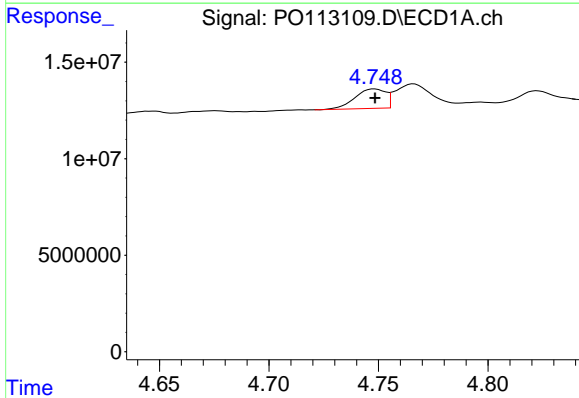
R.T.: 4.984 min  
 Delta R.T.: -0.002 min  
 Response: 54410416  
 Conc: 878.40 ng/ml

Instrument :  
 ECD\_O  
 ClientSampleId :  
 HVAC DUCT SEALANTDL



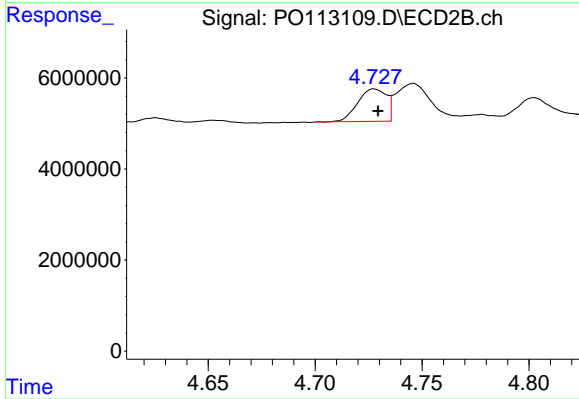
#15 AR-1232-5

R.T.: 5.175 min  
 Delta R.T.: -0.001 min  
 Response: 31362173  
 Conc: 523.89 ng/ml



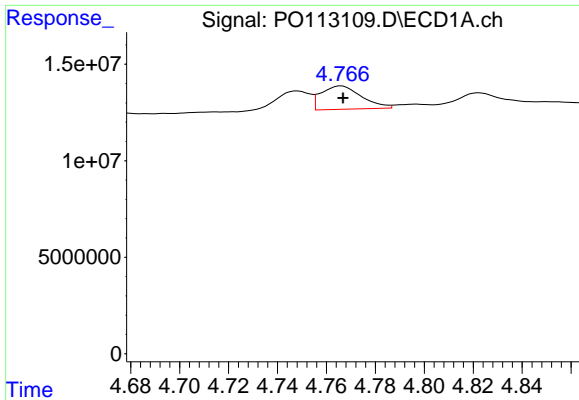
#16 AR-1242-1

R.T.: 4.748 min  
 Delta R.T.: 0.000 min  
 Response: 9802271  
 Conc: 42.63 ng/ml



#16 AR-1242-1

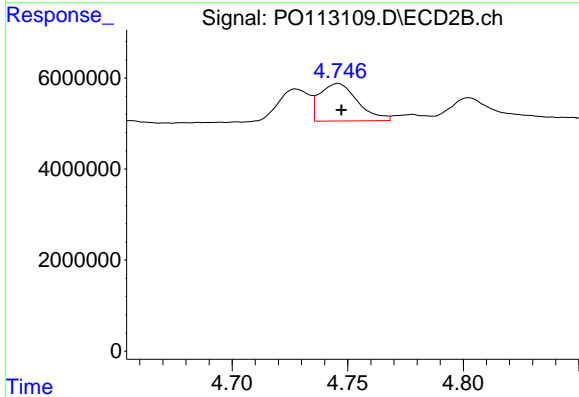
R.T.: 4.727 min  
 Delta R.T.: -0.002 min  
 Response: 6674253  
 Conc: 46.19 ng/ml



#17 AR-1242-2

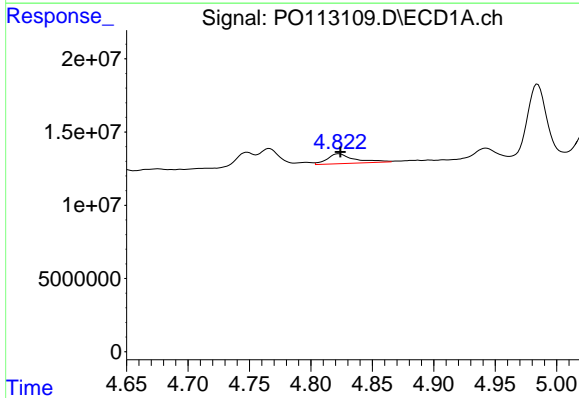
R.T.: 4.766 min  
 Delta R.T.: 0.000 min  
 Response: 13885755  
 Conc: 40.41 ng/ml

Instrument :  
 ECD\_O  
 ClientSampleId :  
 HVAC DUCT SEALANTDL



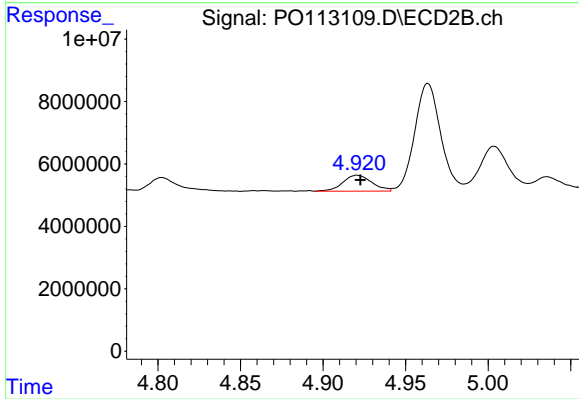
#17 AR-1242-2

R.T.: 4.746 min  
 Delta R.T.: -0.001 min  
 Response: 9401821  
 Conc: 43.34 ng/ml



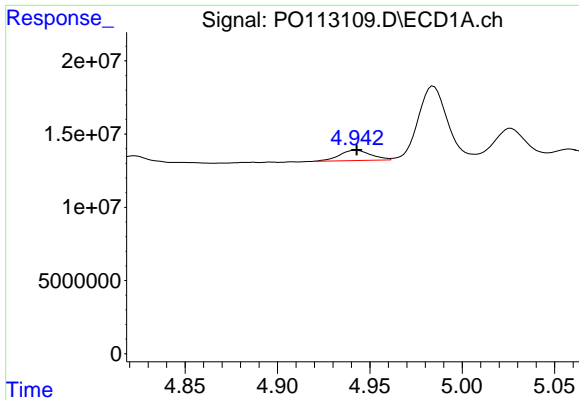
#18 AR-1242-3

R.T.: 4.823 min  
 Delta R.T.: -0.001 min  
 Response: 10467303  
 Conc: 47.17 ng/ml



#18 AR-1242-3

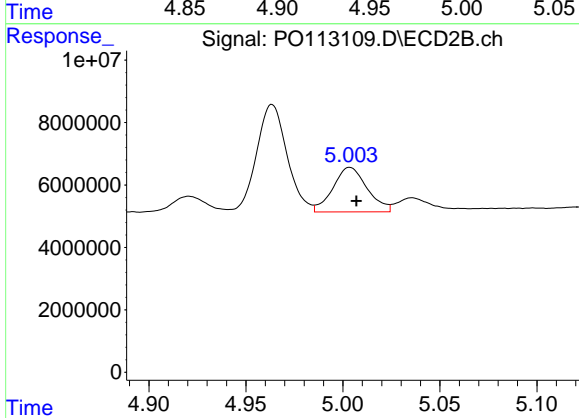
R.T.: 4.921 min  
 Delta R.T.: -0.002 min  
 Response: 6193059  
 Conc: 52.95 ng/ml



#19 AR-1242-4

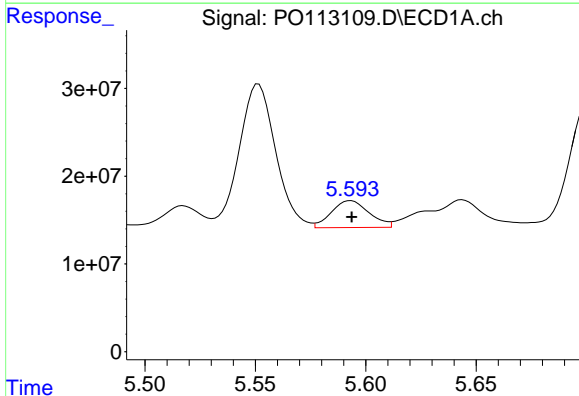
R.T.: 4.943 min  
 Delta R.T.: 0.000 min  
 Response: 8327198  
 Conc: 48.01 ng/ml

Instrument :  
 ECD\_O  
 ClientSampleId :  
 HVAC DUCT SEALANTDL



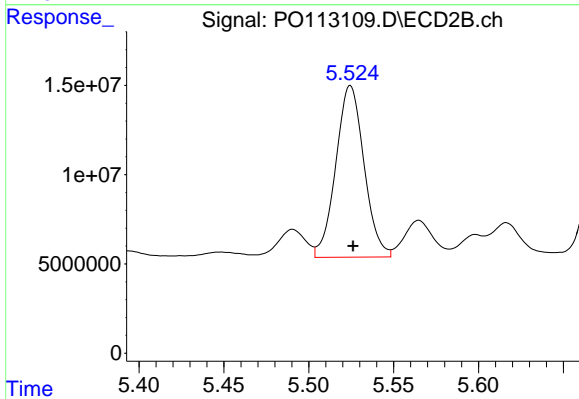
#19 AR-1242-4

R.T.: 5.004 min  
 Delta R.T.: -0.003 min  
 Response: 17473767  
 Conc: 148.54 ng/ml



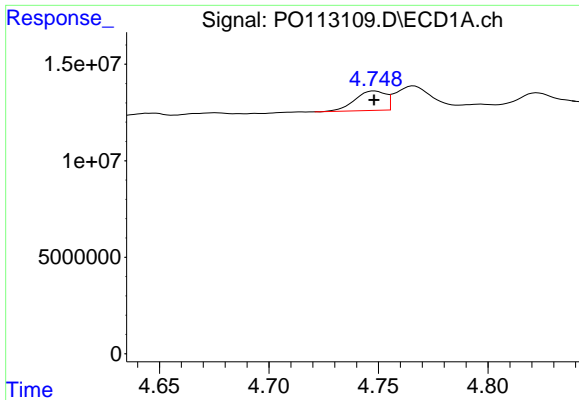
#20 AR-1242-5

R.T.: 5.593 min  
 Delta R.T.: 0.000 min  
 Response: 36496069  
 Conc: 182.33 ng/ml



#20 AR-1242-5

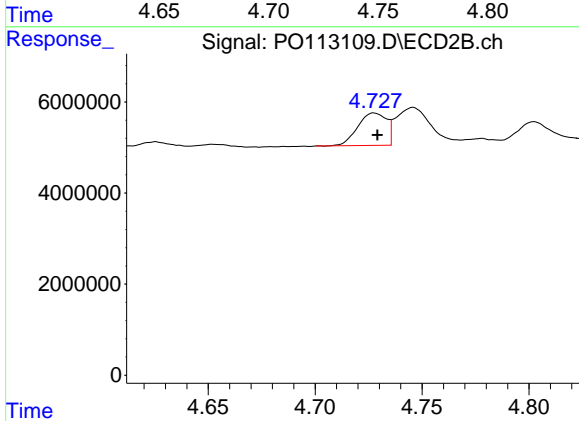
R.T.: 5.525 min  
 Delta R.T.: -0.001 min  
 Response: 111274594  
 Conc: 746.14 ng/ml



#21 AR-1248-1

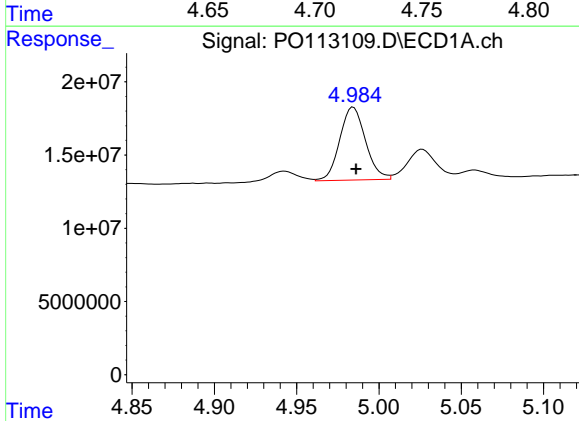
R.T.: 4.748 min  
 Delta R.T.: 0.000 min  
 Response: 9802271  
 Conc: 56.18 ng/ml

Instrument :  
 ECD\_O  
 ClientSampleId :  
 HVAC DUCT SEALANTDL



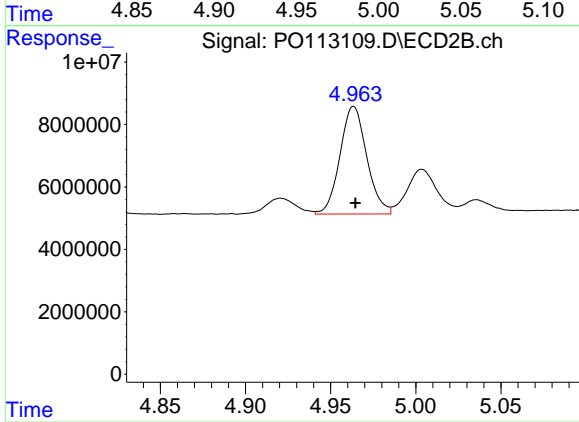
#21 AR-1248-1

R.T.: 4.727 min  
 Delta R.T.: -0.002 min  
 Response: 6674253  
 Conc: 59.85 ng/ml



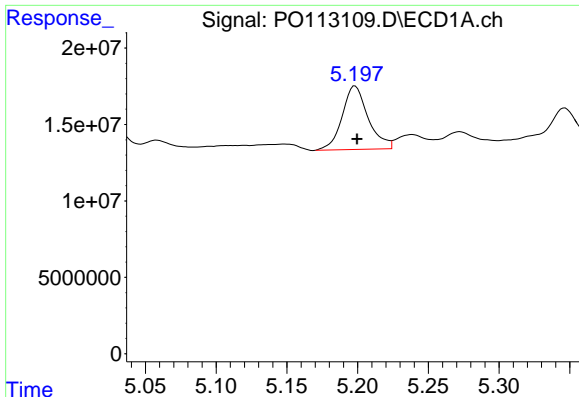
#22 AR-1248-2

R.T.: 4.984 min  
 Delta R.T.: -0.002 min  
 Response: 54410416  
 Conc: 224.96 ng/ml



#22 AR-1248-2

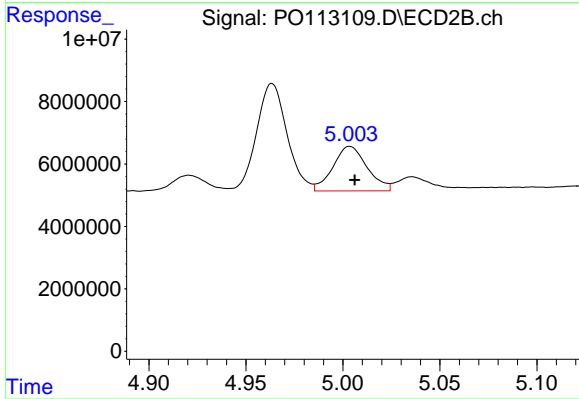
R.T.: 4.964 min  
 Delta R.T.: 0.000 min  
 Response: 37734931  
 Conc: 234.82 ng/ml



#23 AR-1248-3

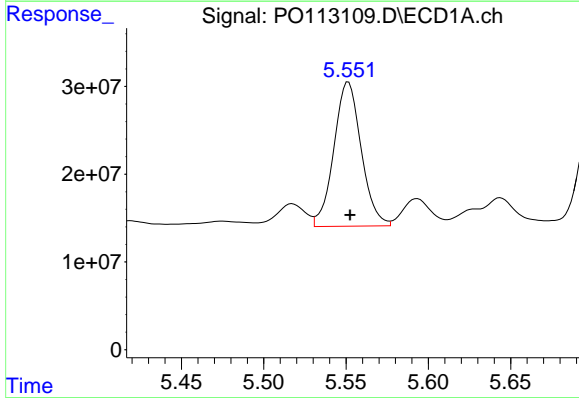
R.T.: 5.198 min  
 Delta R.T.: -0.001 min  
 Response: 53309968  
 Conc: 167.19 ng/ml

Instrument :  
 ECD\_O  
 ClientSampleId :  
 HVAC DUCT SEALANTDL



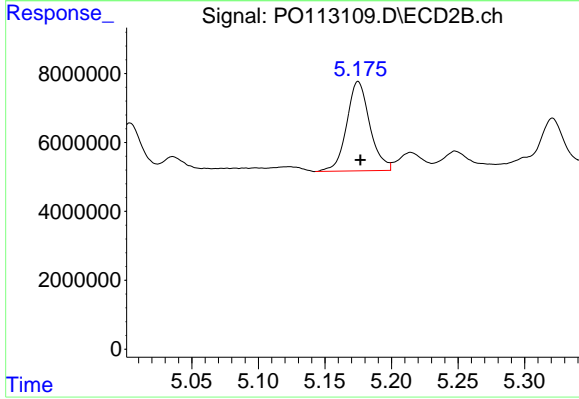
#23 AR-1248-3

R.T.: 5.004 min  
 Delta R.T.: -0.002 min  
 Response: 17473767  
 Conc: 102.99 ng/ml



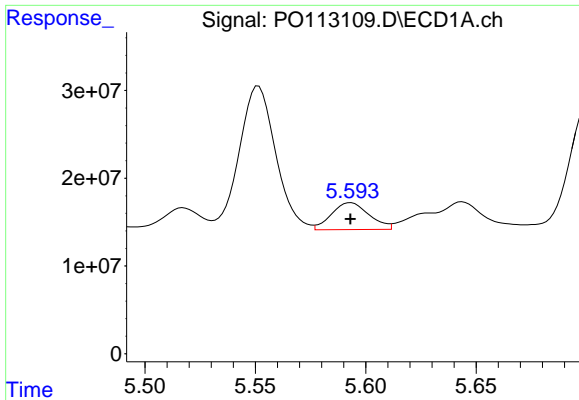
#24 AR-1248-4

R.T.: 5.551 min  
 Delta R.T.: 0.000 min  
 Response: 190361051  
 Conc: 381.02 ng/ml



#24 AR-1248-4

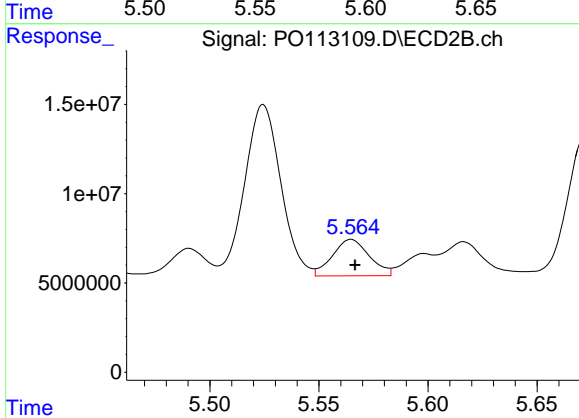
R.T.: 5.175 min  
 Delta R.T.: -0.002 min  
 Response: 31362173  
 Conc: 157.42 ng/ml



#25 AR-1248-5

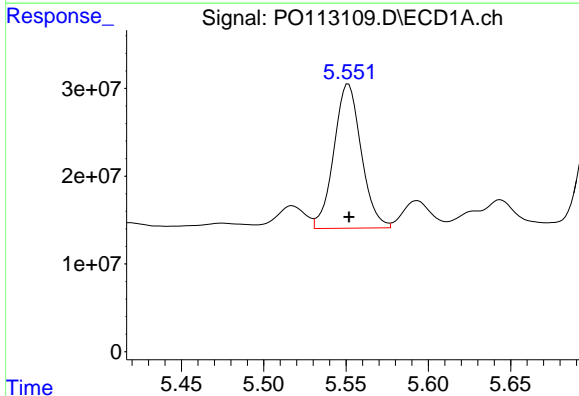
R.T.: 5.593 min  
 Delta R.T.: 0.000 min  
 Response: 36496069  
 Conc: 106.87 ng/ml

Instrument :  
 ECD\_O  
 ClientSampleId :  
 HVAC DUCT SEALANTDL



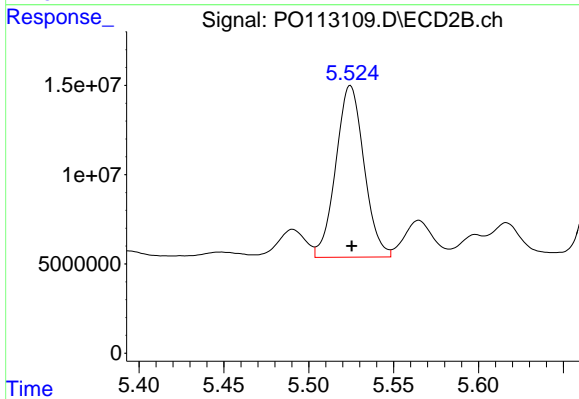
#25 AR-1248-5

R.T.: 5.565 min  
 Delta R.T.: -0.002 min  
 Response: 24028404  
 Conc: 113.18 ng/ml



#26 AR-1254-1

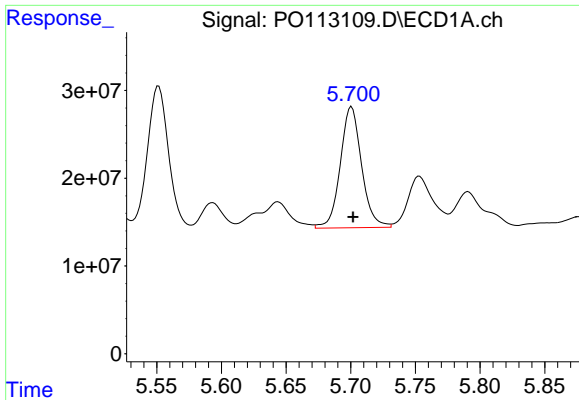
R.T.: 5.551 min  
 Delta R.T.: 0.000 min  
 Response: 190361051  
 Conc: 352.53 ng/ml



#26 AR-1254-1

R.T.: 5.525 min  
 Delta R.T.: 0.000 min  
 Response: 111274594  
 Conc: 352.86 ng/ml

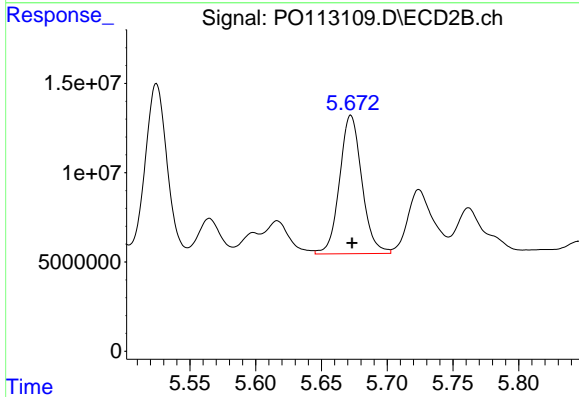




#27 AR-1254-2

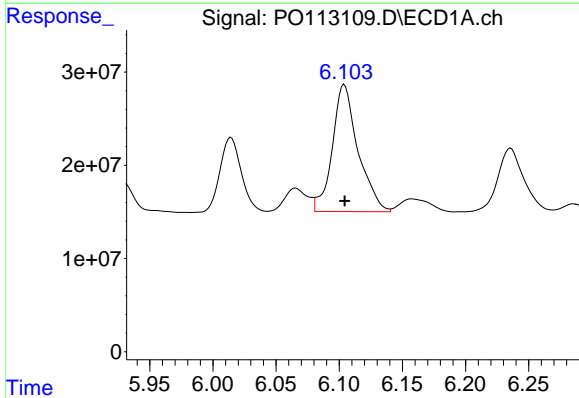
R.T.: 5.701 min  
 Delta R.T.: -0.001 min  
 Response: 158177399  
 Conc: 320.55 ng/ml

Instrument :  
 ECD\_O  
 ClientSampleId :  
 HVAC DUCT SEALANTDL



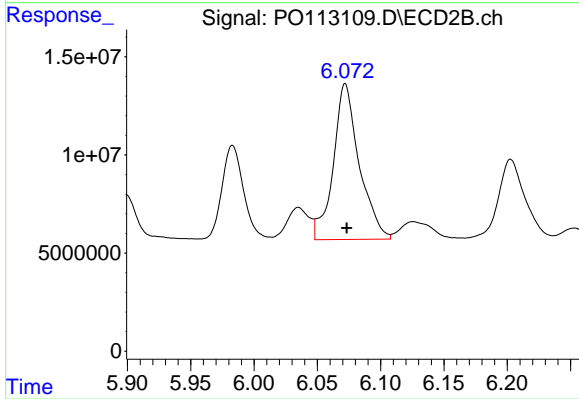
#27 AR-1254-2

R.T.: 5.672 min  
 Delta R.T.: 0.000 min  
 Response: 91476947  
 Conc: 326.31 ng/ml



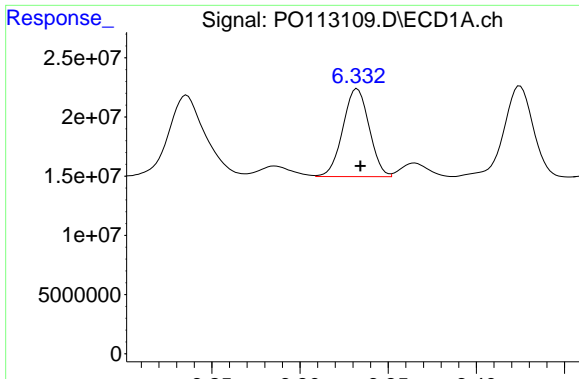
#28 AR-1254-3

R.T.: 6.104 min  
 Delta R.T.: 0.000 min  
 Response: 192914354  
 Conc: 261.09 ng/ml



#28 AR-1254-3

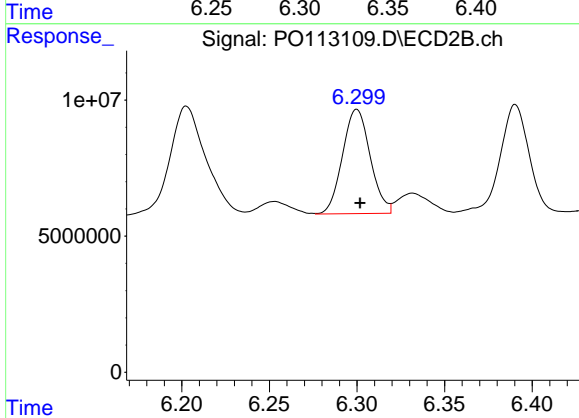
R.T.: 6.072 min  
 Delta R.T.: -0.001 min  
 Response: 112985679  
 Conc: 271.00 ng/ml



#29 AR-1254-4

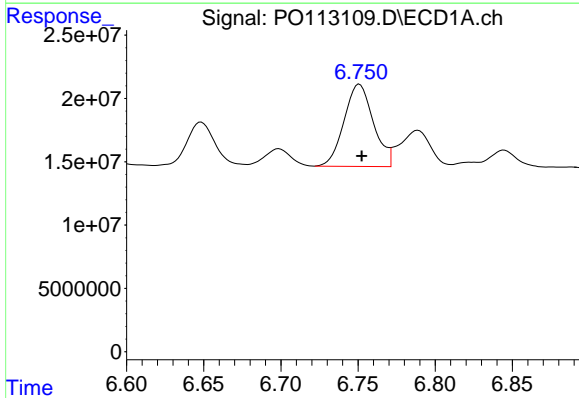
R.T.: 6.332 min  
 Delta R.T.: -0.002 min  
 Response: 76933925  
 Conc: 138.12 ng/ml

Instrument :  
 ECD\_O  
 ClientSampleId :  
 HVAC DUCT SEALANTDL



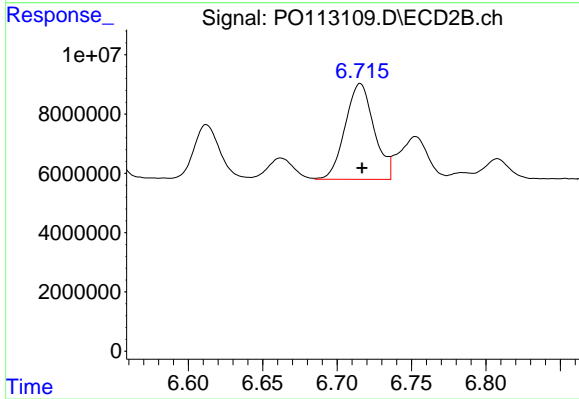
#29 AR-1254-4

R.T.: 6.300 min  
 Delta R.T.: -0.002 min  
 Response: 42240494  
 Conc: 153.69 ng/ml



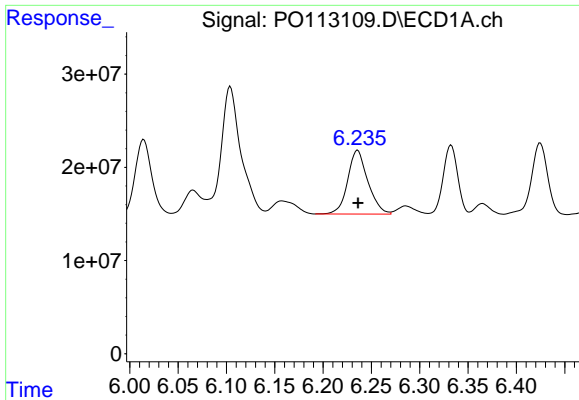
#30 AR-1254-5

R.T.: 6.751 min  
 Delta R.T.: -0.002 min  
 Response: 85938804  
 Conc: 122.60 ng/ml



#30 AR-1254-5

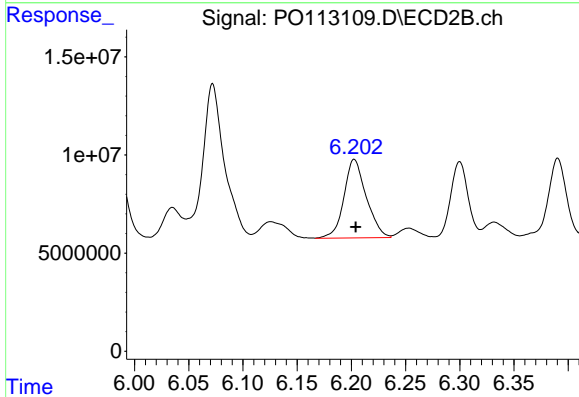
R.T.: 6.716 min  
 Delta R.T.: -0.001 min  
 Response: 43646545  
 Conc: 122.09 ng/ml



#31 AR-1260-1

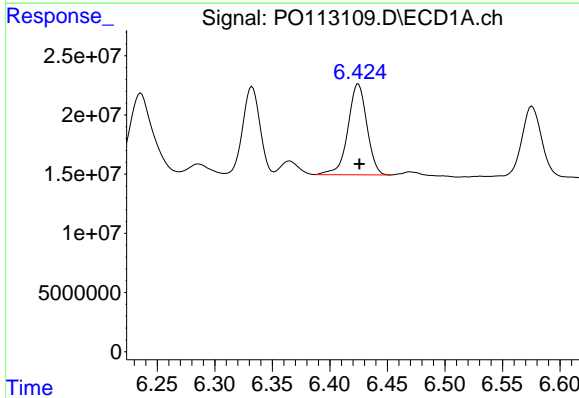
R.T.: 6.236 min  
 Delta R.T.: 0.000 min  
 Response: 99140380  
 Conc: 222.30 ng/ml

Instrument :  
 ECD\_O  
 ClientSampleId :  
 HVAC DUCT SEALANTDL



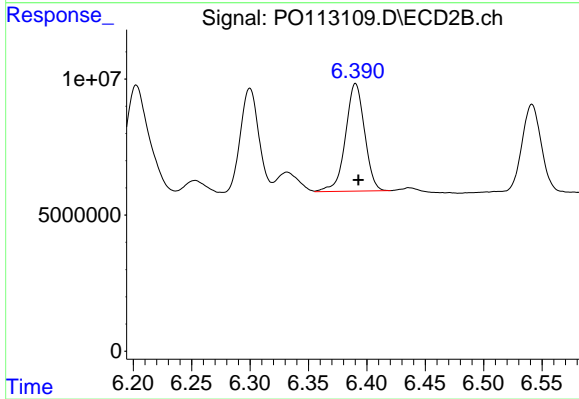
#31 AR-1260-1

R.T.: 6.203 min  
 Delta R.T.: -0.001 min  
 Response: 57561088  
 Conc: 225.67 ng/ml



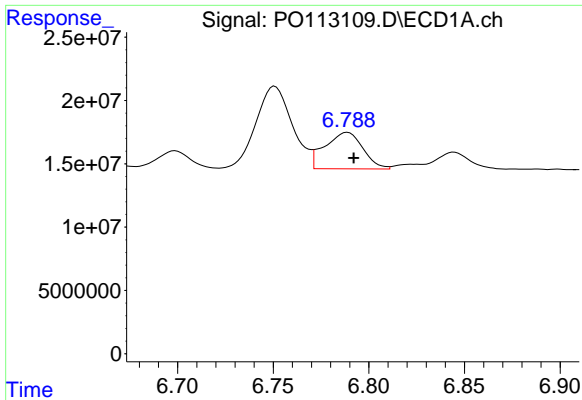
#32 AR-1260-2

R.T.: 6.425 min  
 Delta R.T.: 0.000 min  
 Response: 88703871  
 Conc: 129.17 ng/ml



#32 AR-1260-2

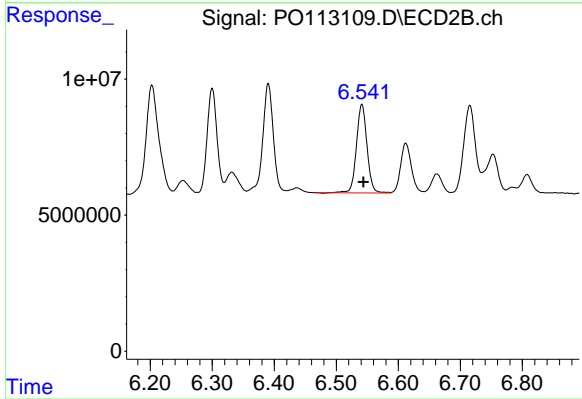
R.T.: 6.390 min  
 Delta R.T.: -0.002 min  
 Response: 44918021  
 Conc: 129.93 ng/ml



#33 AR-1260-3

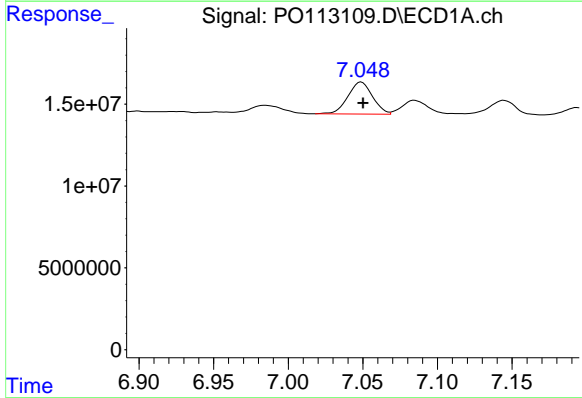
R.T.: 6.789 min  
 Delta R.T.: -0.003 min  
 Response: 39929823  
 Conc: 64.67 ng/ml

Instrument :  
 ECD\_O  
 ClientSampleId :  
 HVAC DUCT SEALANTDL



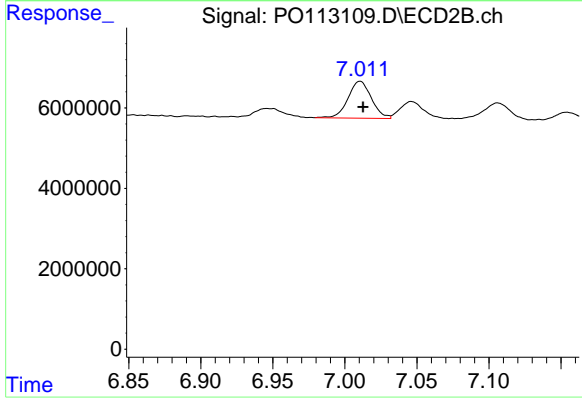
#33 AR-1260-3

R.T.: 6.541 min  
 Delta R.T.: -0.002 min  
 Response: 38622084  
 Conc: 129.85 ng/ml



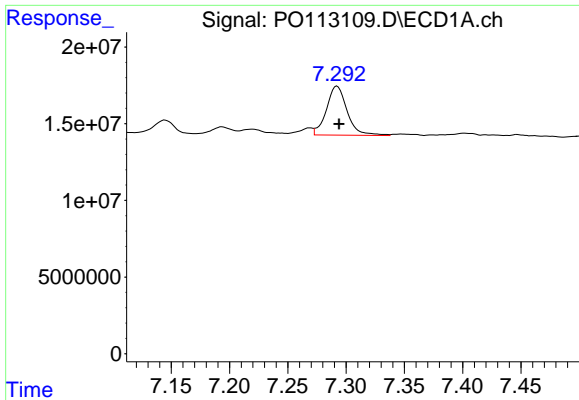
#34 AR-1260-4

R.T.: 7.049 min  
 Delta R.T.: -0.001 min  
 Response: 22453544  
 Conc: 50.13 ng/ml



#34 AR-1260-4

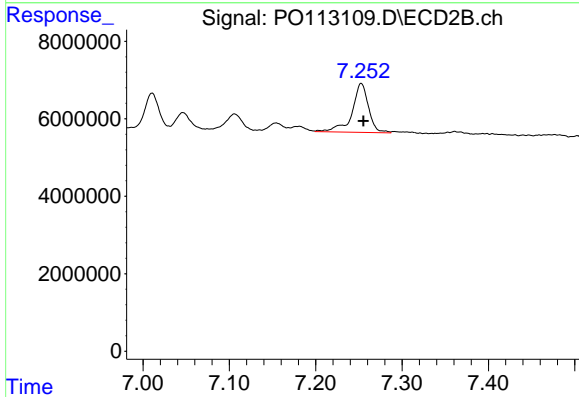
R.T.: 7.011 min  
 Delta R.T.: -0.002 min  
 Response: 10363171  
 Conc: 50.00 ng/ml



#35 AR-1260-5

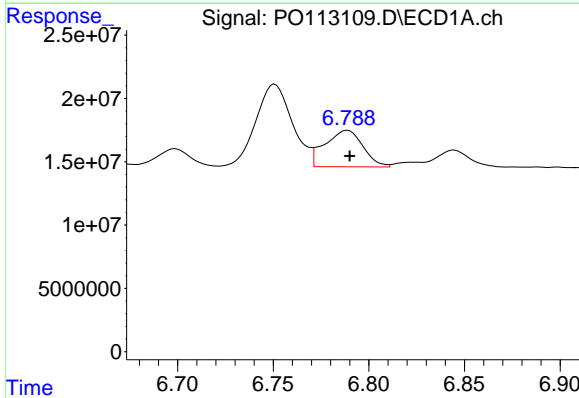
R.T.: 7.292 min  
 Delta R.T.: -0.002 min  
 Response: 39460992  
 Conc: 32.59 ng/ml

Instrument :  
 ECD\_O  
 ClientSampleId :  
 HVAC DUCT SEALANTDL



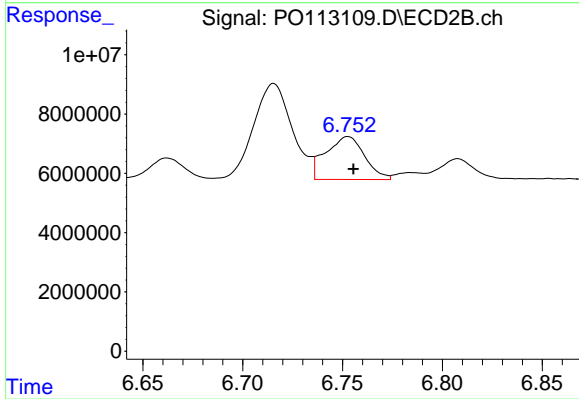
#35 AR-1260-5

R.T.: 7.253 min  
 Delta R.T.: -0.002 min  
 Response: 16811018  
 Conc: 35.89 ng/ml



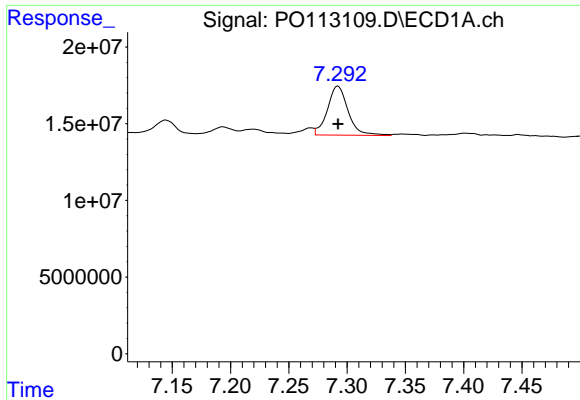
#36 AR-1262-1

R.T.: 6.789 min  
 Delta R.T.: -0.001 min  
 Response: 39929823  
 Conc: 43.60 ng/ml



#36 AR-1262-1

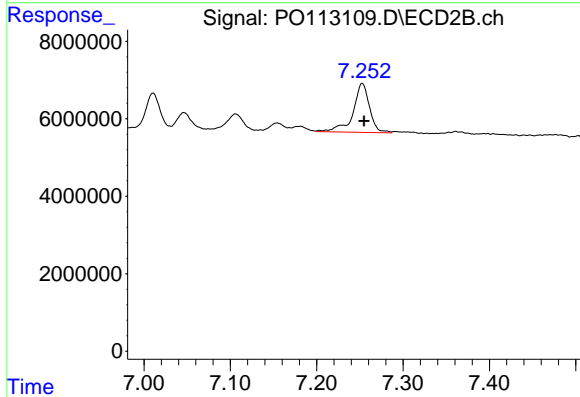
R.T.: 6.753 min  
 Delta R.T.: -0.003 min  
 Response: 19573709  
 Conc: 47.21 ng/ml



#37 AR-1262-2

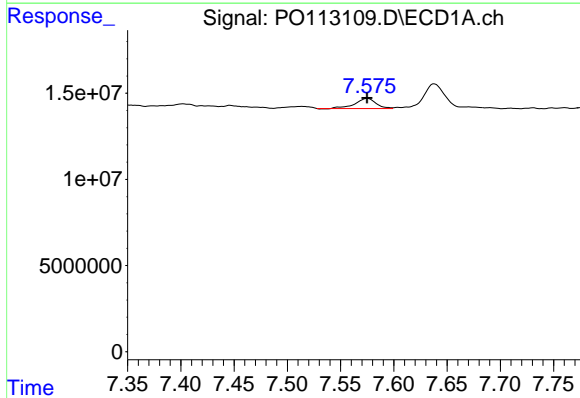
R.T.: 7.292 min  
 Delta R.T.: 0.000 min  
 Response: 39460992  
 Conc: 26.10 ng/ml

Instrument :  
 ECD\_O  
 ClientSampleId :  
 HVAC DUCT SEALANTDL



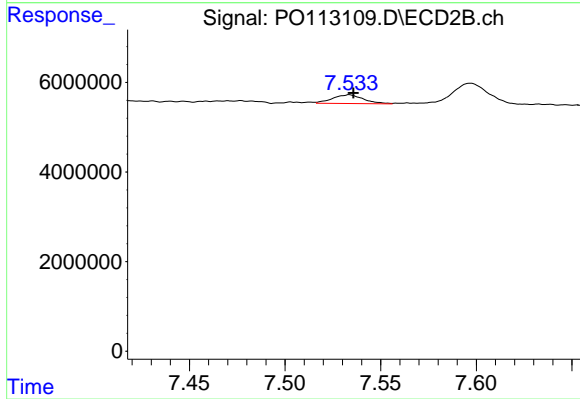
#37 AR-1262-2

R.T.: 7.253 min  
 Delta R.T.: -0.002 min  
 Response: 16811018  
 Conc: 32.47 ng/ml



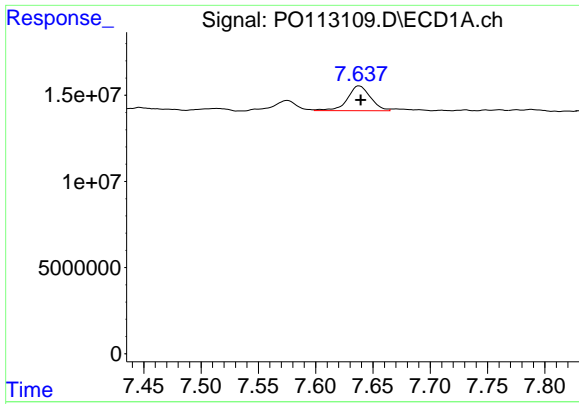
#38 AR-1262-3

R.T.: 7.575 min  
 Delta R.T.: 0.000 min  
 Response: 8172895  
 Conc: 14.75 ng/ml



#38 AR-1262-3

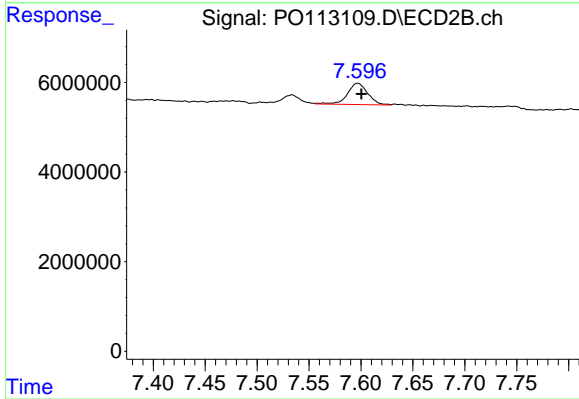
R.T.: 7.534 min  
 Delta R.T.: -0.002 min  
 Response: 2184841  
 Conc: 12.17 ng/ml



#39 AR-1262-4

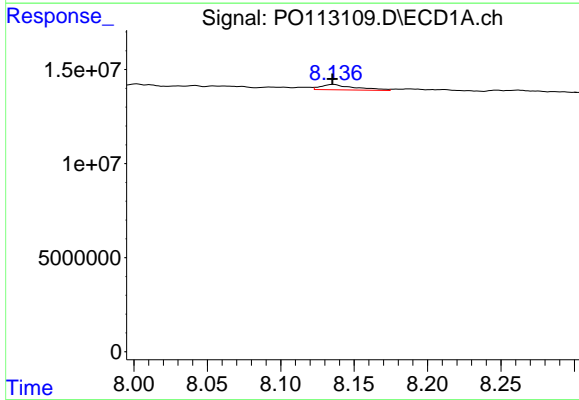
R.T.: 7.638 min  
 Delta R.T.: -0.001 min  
 Response: 20171121  
 Conc: 20.63 ng/ml

Instrument :  
 ECD\_O  
 ClientSampleId :  
 HVAC DUCT SEALANTDL



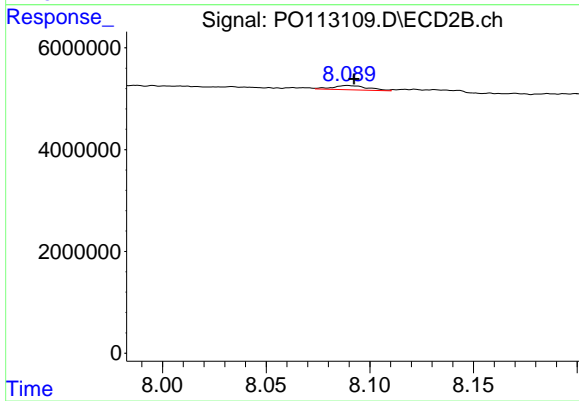
#39 AR-1262-4

R.T.: 7.597 min  
 Delta R.T.: -0.004 min  
 Response: 6420788  
 Conc: 22.15 ng/ml



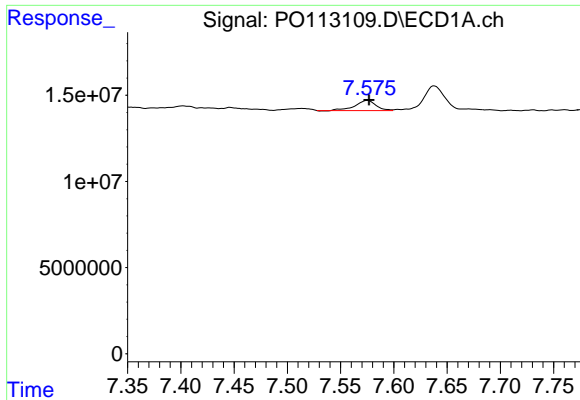
#40 AR-1262-5

R.T.: 8.136 min  
 Delta R.T.: 0.000 min  
 Response: 4686628  
 Conc: 11.24 ng/ml



#40 AR-1262-5

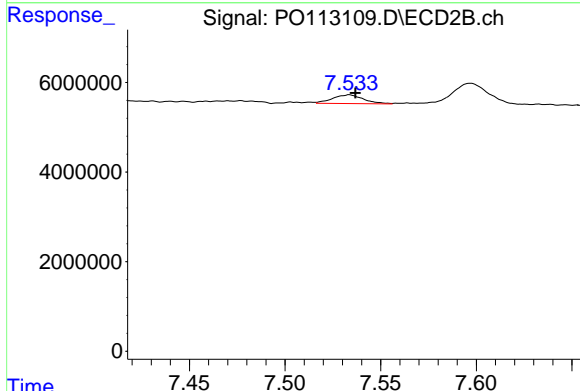
R.T.: 8.090 min  
 Delta R.T.: -0.002 min  
 Response: 1019101  
 Conc: 9.41 ng/ml



#41 AR-1268-1

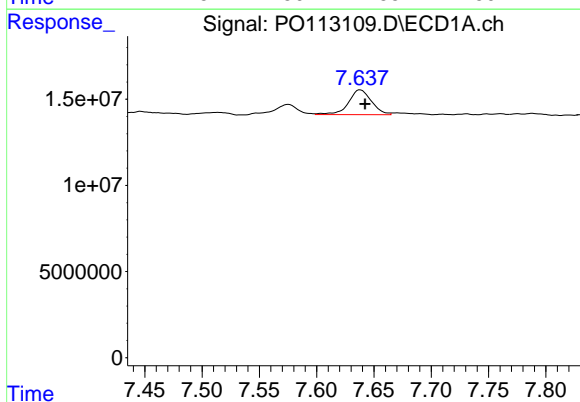
R.T.: 7.575 min  
 Delta R.T.: -0.002 min  
 Response: 8172895  
 Conc: 4.75 ng/ml

Instrument :  
 ECD\_O  
 ClientSampleId :  
 HVAC DUCT SEALANTDL



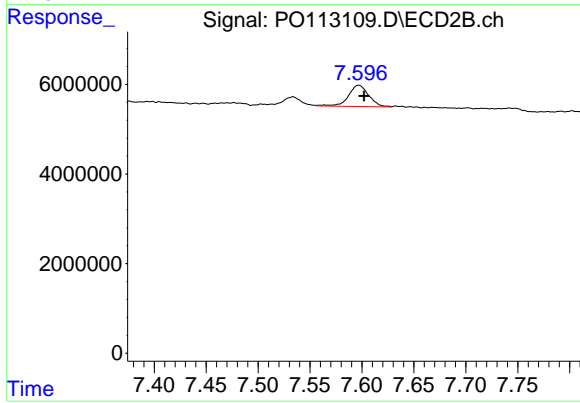
#41 AR-1268-1

R.T.: 7.534 min  
 Delta R.T.: -0.003 min  
 Response: 2184841  
 Conc: 4.29 ng/ml



#42 AR-1268-2

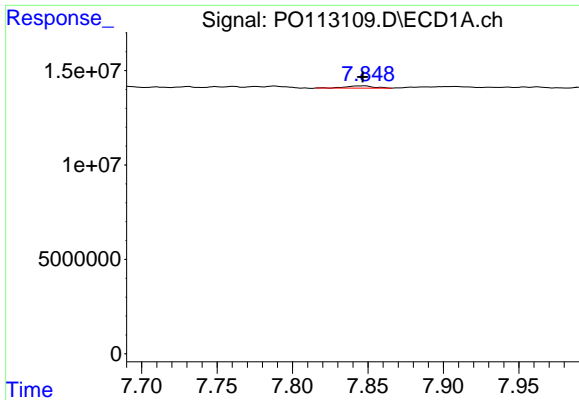
R.T.: 7.638 min  
 Delta R.T.: -0.004 min  
 Response: 20171121  
 Conc: 13.93 ng/ml



#42 AR-1268-2

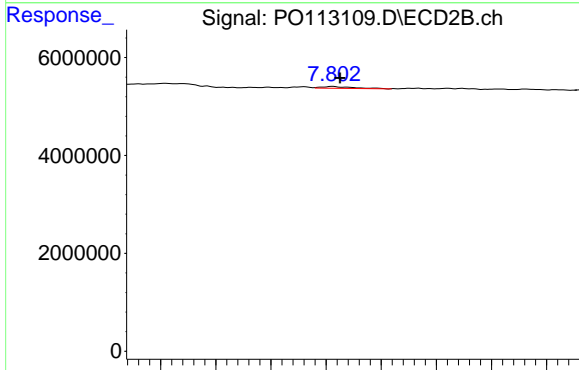
R.T.: 7.597 min  
 Delta R.T.: -0.005 min  
 Response: 6420788  
 Conc: 15.46 ng/ml



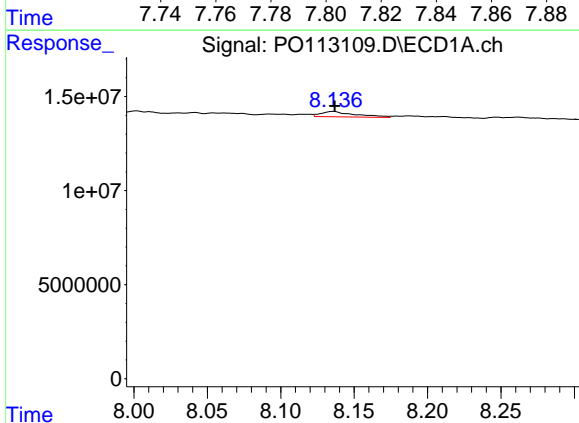


#43 AR-1268-3  
 R.T.: 7.848 min  
 Delta R.T.: 0.001 min  
 Response: 1429849  
 Conc: 1.19 ng/ml

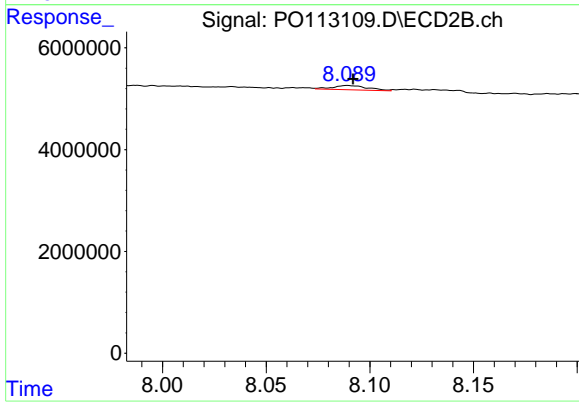
Instrument : ECD\_O  
 ClientSampleId : HVAC DUCT SEALANTDL



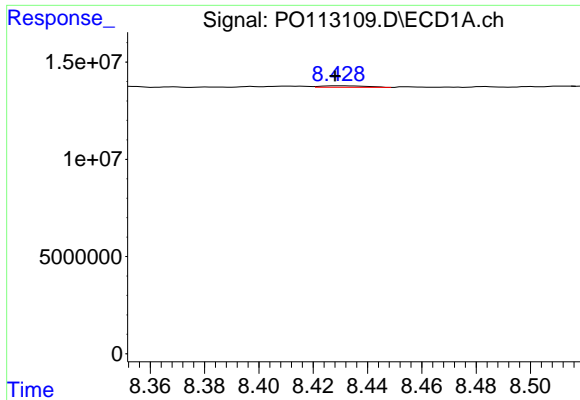
#43 AR-1268-3  
 R.T.: 7.802 min  
 Delta R.T.: -0.003 min  
 Response: 316149  
 Conc: 0.97 ng/ml



#44 AR-1268-4  
 R.T.: 8.136 min  
 Delta R.T.: 0.000 min  
 Response: 4686628  
 Conc: 10.17 ng/ml



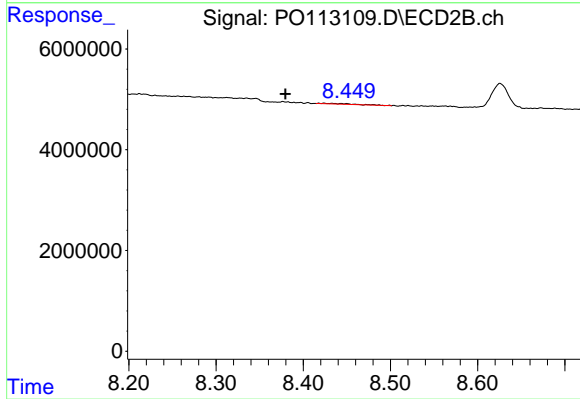
#44 AR-1268-4  
 R.T.: 8.090 min  
 Delta R.T.: -0.002 min  
 Response: 1019101  
 Conc: 8.46 ng/ml



#45 AR-1268-5

R.T.: 8.429 min  
 Delta R.T.: 0.000 min  
 Response: 890709  
 Conc: 0.28 ng/ml

Instrument :  
 ECD\_O  
 ClientSampleId :  
 HVAC DUCT SEALANTDL



#45 AR-1268-5

R.T.: 8.423 min  
 Delta R.T.: 0.043 min  
 Response: 316309  
 Conc: 0.41 ng/ml