

Data Path : Z:\pestpcbsrv\HPCHEM1\ECD_0\Data\P0082025\
 Data File : P0113111.D
 Signal(s) : Signal #1: ECD1A.ch Signal #2: ECD2B.ch
 Acq On : 21 Aug 2025 00:27
 Operator : YP/AJ
 Sample : AR1660CCC500
 Misc :
 ALS Vial : 3 Sample Multiplier: 1

Instrument :
 ECD_0
 ClientSampleId :
 AR1660CCC500

Integration File signal 1: autoint1.e
 Integration File signal 2: autoint2.e
 Quant Time: Aug 21 01:45:13 2025
 Quant Method : Z:\pestpcbsrv\HPCHEM1\ECD_0\methods\P0081825.M
 Quant Title : GC EXTRACTABLES
 QLast Update : Tue Aug 19 06:08:32 2025
 Response via : Initial Calibration
 Integrator: ChemStation

Volume Inj. : 2 µl
 Signal #1 Phase : ZB-MR1 Signal #2 Phase: ZB-MR2
 Signal #1 Info : 30Mx0.32mmx 0.50µ Signal #2 Info : 30M x 0.32mm x 0.25µm

Compound	RT#1	RT#2	Resp#1	Resp#2	ng/ml	ng/ml
System Monitoring Compounds						
1) SA Tetrachlo...	3.662	3.654	445.0E6	266.3E6	54.358	52.617
2) SA Decachlor...	8.681	8.626	355.0E6	100.3E6	51.218	52.953
Target Compounds						
3) L1 AR-1016-1	4.747	4.727	145.6E6	89067653	545.419	522.165
4) L1 AR-1016-2	4.765	4.745	220.7E6	134.1E6	549.895	520.481
5) L1 AR-1016-3	4.822	4.920	141.8E6	71732146	556.097	513.788
6) L1 AR-1016-4	4.942	4.963	110.4E6	57618680	506.222	493.738
7) L1 AR-1016-5	5.199	5.175	143.7E6	82874642	648.430	581.454
8) L2 AR-1221-1	3.872	3.861	12602510	9052401	134.681	143.413
9) L2 AR-1221-2	3.960	3.948	18603942	13568469	275.407	290.712
10) L2 AR-1221-3	4.035	4.022	73044515	49998657	329.994	336.748
11) L3 AR-1232-1	4.035	4.022	73044515	49998657	419.781	425.873
12) L3 AR-1232-2	4.526	4.745	107.0E6	134.1E6	1071.339	1094.332
13) L3 AR-1232-3	4.765	4.920	220.7E6	71732146	1165.032	1132.393
14) L3 AR-1232-4	4.942	5.005	110.4E6	71877508	1172.257	1278.477
15) L3 AR-1232-5	4.985	5.175	80211811	82874642	1294.930	1384.392
16) L4 AR-1242-1	4.747	4.727	145.6E6	89067653	633.311	616.367
17) L4 AR-1242-2	4.765	4.745	220.7E6	134.1E6	642.401	618.248
18) L4 AR-1242-3	4.822	4.920	141.8E6	71732146	639.150	613.282
19) L4 AR-1242-4	4.942	5.005	110.4E6	71877508	636.396	611.009
20) L4 AR-1242-5	5.593	5.524	43246651	80502060	216.058	539.801 #
21) L5 AR-1248-1	4.747	4.727	145.6E6	89067653	834.651	798.728
22) L5 AR-1248-2	4.985	4.963	80211811	57618680	331.638	358.550
23) L5 AR-1248-3	5.199	5.005	143.7E6	71877508	450.694	423.654
24) L5 AR-1248-4	5.551	5.175	144.8E6	82874642	289.820	415.995 #
25) L5 AR-1248-5	5.593	5.565	43246651	24096930	126.640	113.506
26) L6 AR-1254-1	5.551	5.524	144.8E6	80502060	268.150	255.275
27) L6 AR-1254-2	5.701	5.672	118.2E6	60959036	239.527	217.447
28) L6 AR-1254-3	6.120	6.088	195.6E6	104.8E6	264.752	251.445
29) L6 AR-1254-4	6.331	6.298	26243945	9489169	47.117	34.527 #
30) L6 AR-1254-5	6.751	6.714	337.5E6	157.2E6	481.429	439.666
31) L7 AR-1260-1	6.235	6.202	259.1E6	130.3E6	581.070	510.897
32) L7 AR-1260-2	6.425	6.390	381.6E6	176.6E6	555.715	510.864
33) L7 AR-1260-3	6.790	6.542	332.2E6	140.4E6	538.020	472.196
34) L7 AR-1260-4	7.049	7.011	240.7E6	102.3E6	537.515	493.834
35) L7 AR-1260-5	7.294	7.253	661.3E6	228.8E6	546.249	488.538
36) L8 AR-1262-1	6.790	6.754	332.2E6	149.6E6	362.772	360.841
37) L8 AR-1262-2	7.294	7.253	661.3E6	228.8E6	437.346	442.068
38) L8 AR-1262-3	7.575	7.534	146.9E6	45371714	265.185	252.640
39) L8 AR-1262-4	7.639	7.597	430.8E6	127.0E6	440.544	438.164
40) L8 AR-1262-5	8.135	8.091	151.4E6	38561461	363.254	355.959
41) L9 AR-1268-1	7.575	7.534	146.9E6	45371714	85.387	89.058

Data Path : Z:\pestpcbsrv\HPCHEM1\ECD_0\Data\P0082025\
 Data File : P0113111.D
 Signal(s) : Signal #1: ECD1A.ch Signal #2: ECD2B.ch
 Acq On : 21 Aug 2025 00:27
 Operator : YP/AJ
 Sample : AR1660CCC500
 Misc :
 ALS Vial : 3 Sample Multiplier: 1

Instrument :
 ECD_0
 ClientSampleId :
 AR1660CCC500

Integration File signal 1: autoint1.e
 Integration File signal 2: autoint2.e
 Quant Time: Aug 21 01:45:13 2025
 Quant Method : Z:\pestpcbsrv\HPCHEM1\ECD_0\methods\P0081825.M
 Quant Title : GC EXTRACTABLES
 QLast Update : Tue Aug 19 06:08:32 2025
 Response via : Initial Calibration
 Integrator: ChemStation

Volume Inj. : 2 µl
 Signal #1 Phase : ZB-MR1 Signal #2 Phase: ZB-MR2
 Signal #1 Info : 30Mx0.32mmx 0.50µ Signal #2 Info : 30M x 0.32mm x 0.25µm

	Compound	RT#1	RT#2	Resp#1	Resp#2	ng/ml	ng/ml
42)	L9 AR-1268-2	7.639	7.597	430.8E6	127.0E6	297.510	305.786
43)	L9 AR-1268-3	7.846	7.800	6630114	2499066	5.496	7.654 #
44)	L9 AR-1268-4	8.135	8.091	151.4E6	38561461	328.727	320.191
45)	L9 AR-1268-5	8.427	8.378	32533602	9424584	10.204	12.068

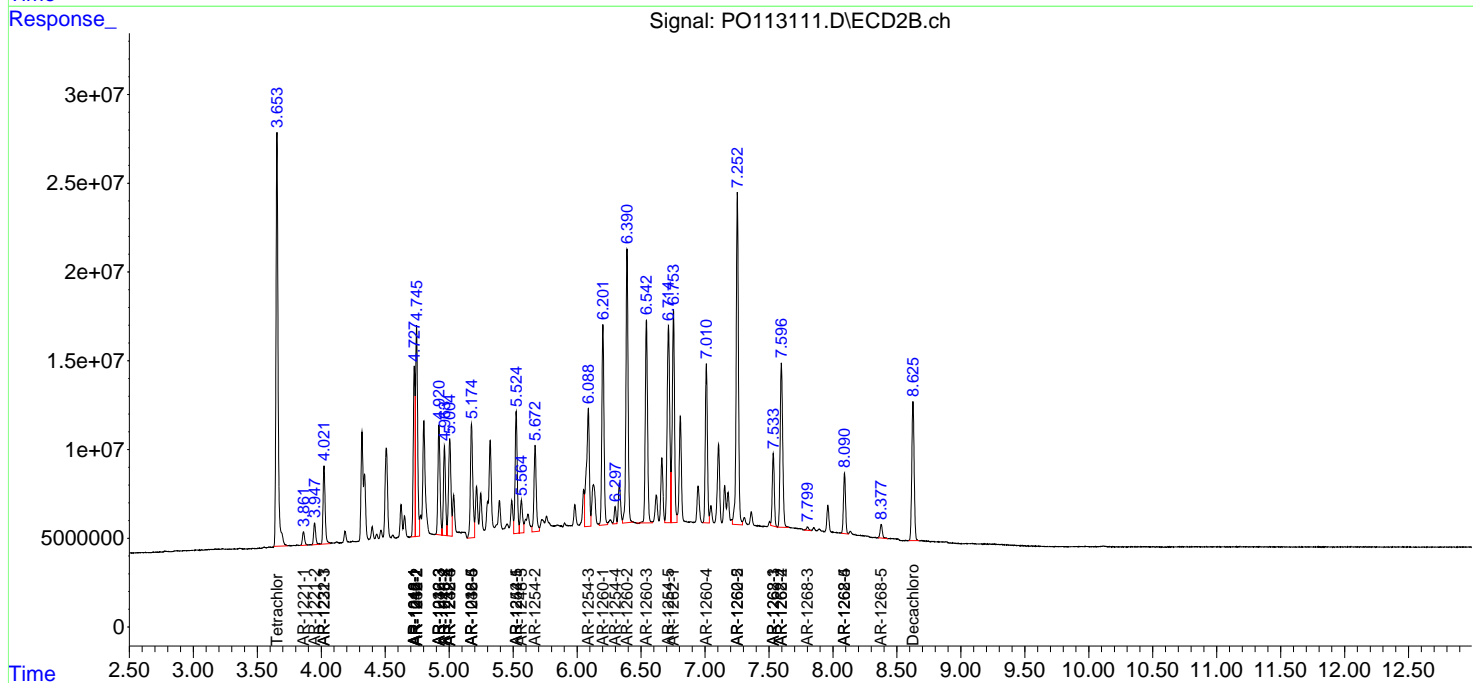
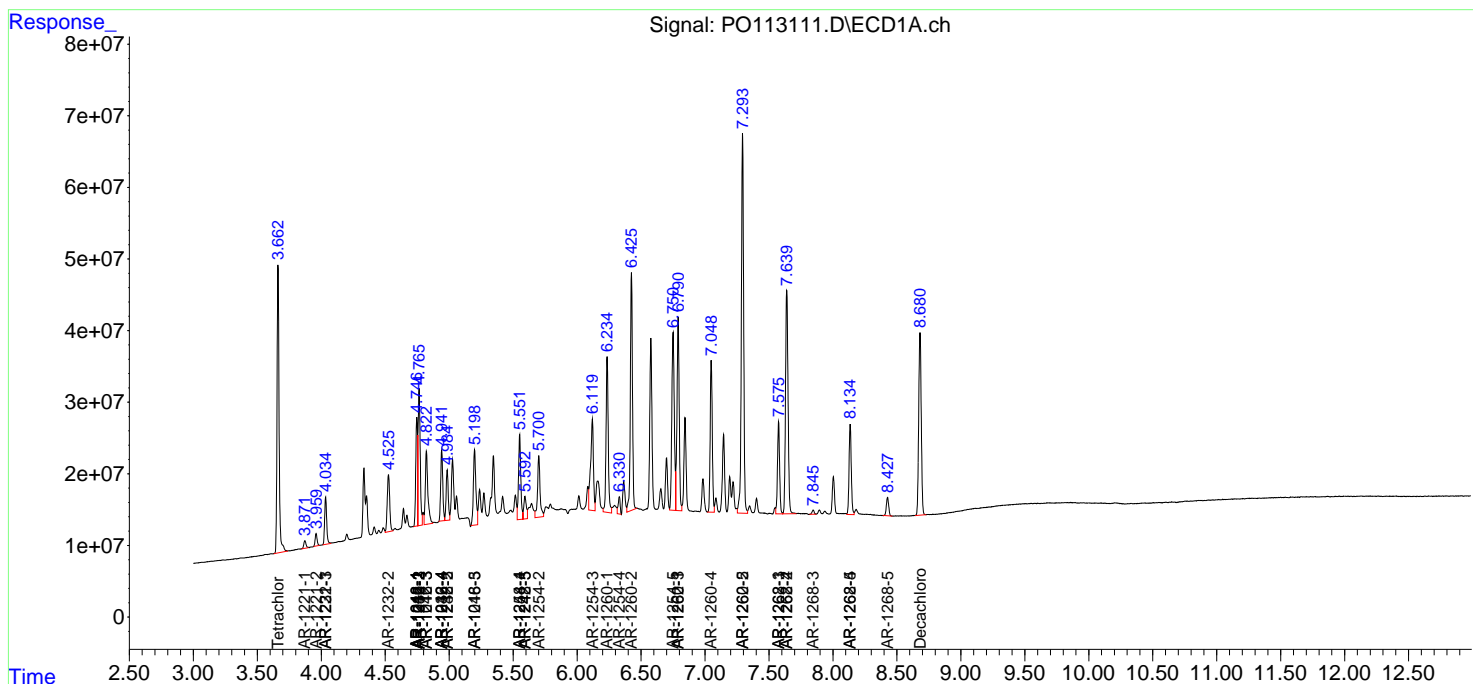
(f)=RT Delta > 1/2 Window (#)=Amounts differ by > 25% (m)=manual int.

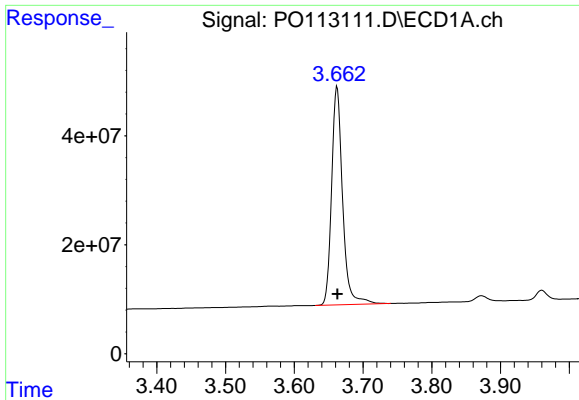
Data Path : Z:\pestpcbsrv\HPCHEM1\ECD_O\Data\P0082025\
 Data File : P0113111.D
 Signal(s) : Signal #1: ECD1A.ch Signal #2: ECD2B.ch
 Acq On : 21 Aug 2025 00:27
 Operator : YP/AJ
 Sample : AR1660CCC500
 Misc :
 ALS Vial : 3 Sample Multiplier: 1

Instrument :
 ECD_O
 ClientSampleId :
 AR1660CCC500

Integration File signal 1: autoint1.e
 Integration File signal 2: autoint2.e
 Quant Time: Aug 21 01:45:13 2025
 Quant Method : Z:\pestpcbsrv\HPCHEM1\ECD_O\methods\P0081825.M
 Quant Title : GC EXTRACTABLES
 QLast Update : Tue Aug 19 06:08:32 2025
 Response via : Initial Calibration
 Integrator: ChemStation

Volume Inj. : 2 µl
 Signal #1 Phase : ZB-MR1 Signal #2 Phase: ZB-MR2
 Signal #1 Info : 30Mx0.32mmx 0.50µ Signal #2 Info : 30M x 0.32mm x 0.25µm

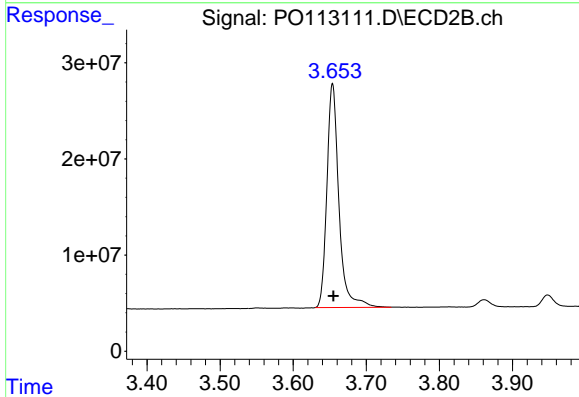




#1 Tetrachloro-m-xylene

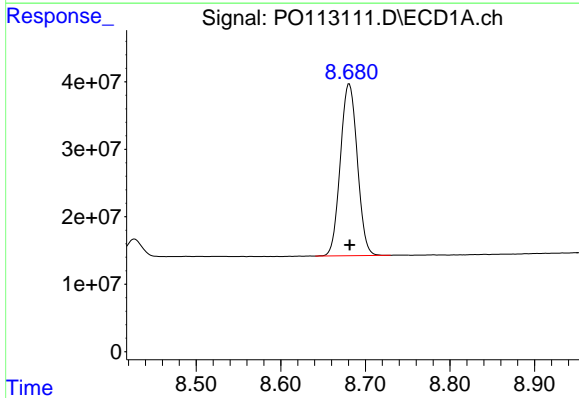
R.T.: 3.662 min
 Delta R.T.: 0.000 min
 Response: 445005272
 Conc: 54.36 ng/ml

Instrument :
 ECD_O
 ClientSampleId :
 AR1660CCC500



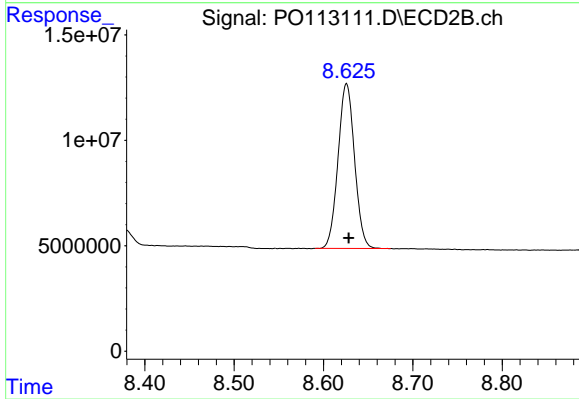
#1 Tetrachloro-m-xylene

R.T.: 3.654 min
 Delta R.T.: 0.000 min
 Response: 266275648
 Conc: 52.62 ng/ml



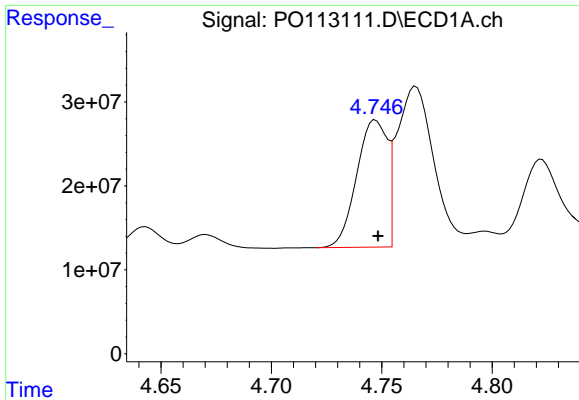
#2 Decachlorobiphenyl

R.T.: 8.681 min
 Delta R.T.: 0.000 min
 Response: 355017564
 Conc: 51.22 ng/ml



#2 Decachlorobiphenyl

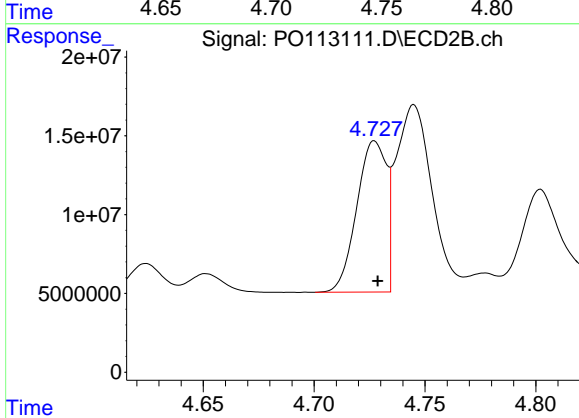
R.T.: 8.626 min
 Delta R.T.: -0.003 min
 Response: 100337576
 Conc: 52.95 ng/ml



#3 AR-1016-1

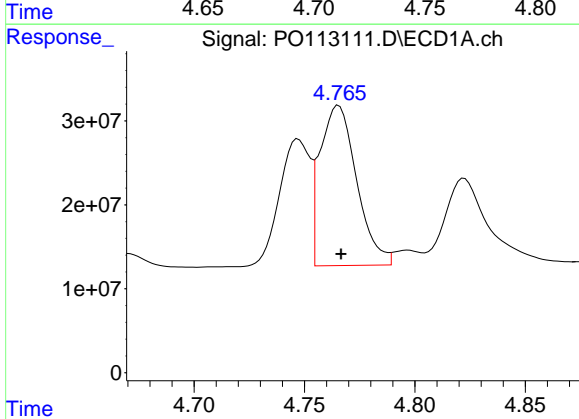
R.T.: 4.747 min
 Delta R.T.: -0.001 min
 Response: 145618461
 Conc: 545.42 ng/ml

Instrument :
 ECD_O
 ClientSampleId :
 AR1660CCC500



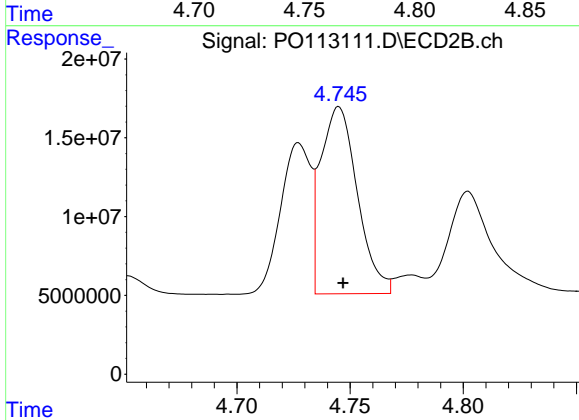
#3 AR-1016-1

R.T.: 4.727 min
 Delta R.T.: -0.001 min
 Response: 89067653
 Conc: 522.17 ng/ml



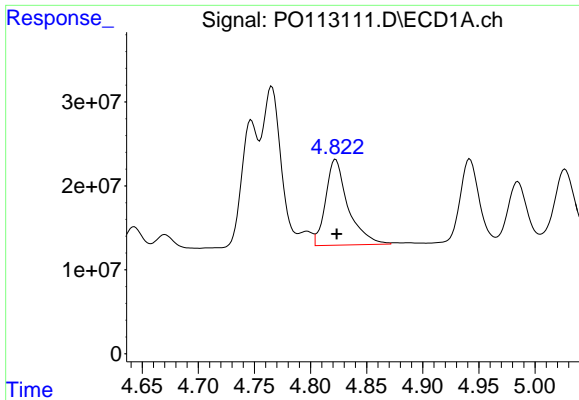
#4 AR-1016-2

R.T.: 4.765 min
 Delta R.T.: -0.001 min
 Response: 220745066
 Conc: 549.89 ng/ml



#4 AR-1016-2

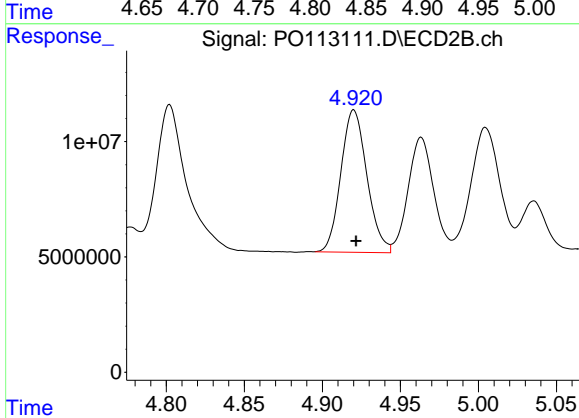
R.T.: 4.745 min
 Delta R.T.: -0.002 min
 Response: 134104997
 Conc: 520.48 ng/ml



#5 AR-1016-3

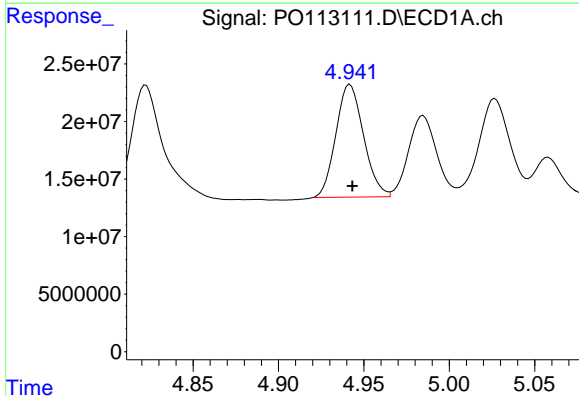
R.T.: 4.822 min
 Delta R.T.: 0.000 min
 Response: 141817239
 Conc: 556.10 ng/ml

Instrument :
 ECD_O
 ClientSampleId :
 AR1660CCC500



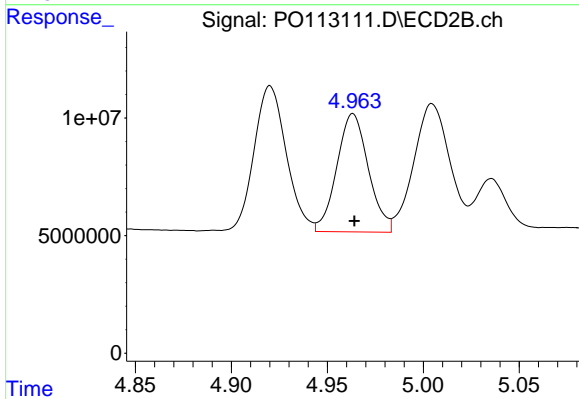
#5 AR-1016-3

R.T.: 4.920 min
 Delta R.T.: -0.001 min
 Response: 71732146
 Conc: 513.79 ng/ml



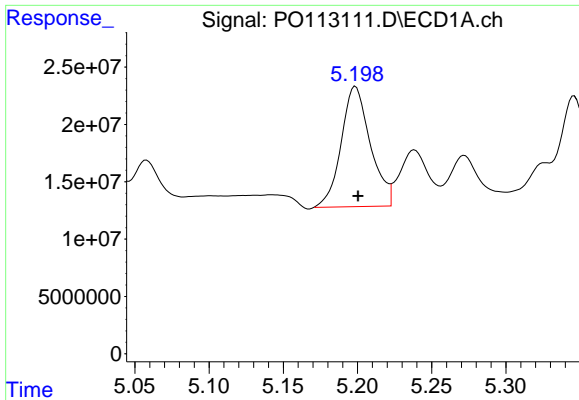
#6 AR-1016-4

R.T.: 4.942 min
 Delta R.T.: -0.001 min
 Response: 110390878
 Conc: 506.22 ng/ml



#6 AR-1016-4

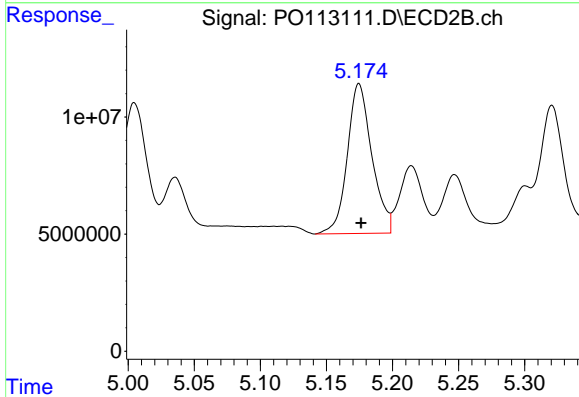
R.T.: 4.963 min
 Delta R.T.: 0.000 min
 Response: 57618680
 Conc: 493.74 ng/ml



#7 AR-1016-5

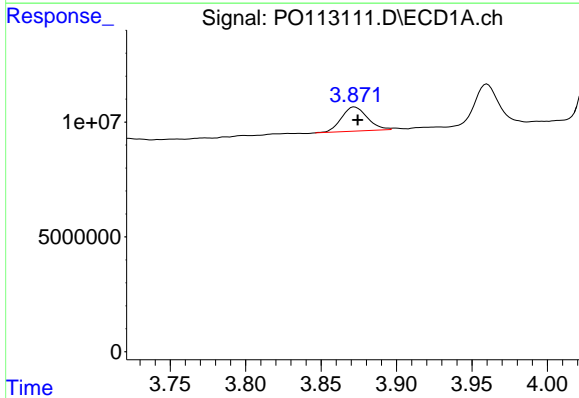
R.T.: 5.199 min
 Delta R.T.: -0.002 min
 Response: 143710135
 Conc: 648.43 ng/ml

Instrument :
 ECD_O
 ClientSampleId :
 AR1660CCC500



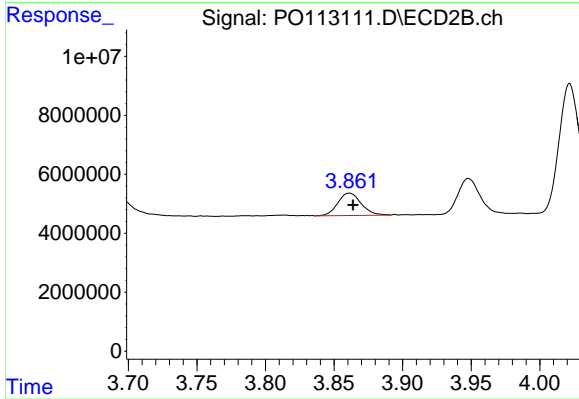
#7 AR-1016-5

R.T.: 5.175 min
 Delta R.T.: -0.002 min
 Response: 82874642
 Conc: 581.45 ng/ml



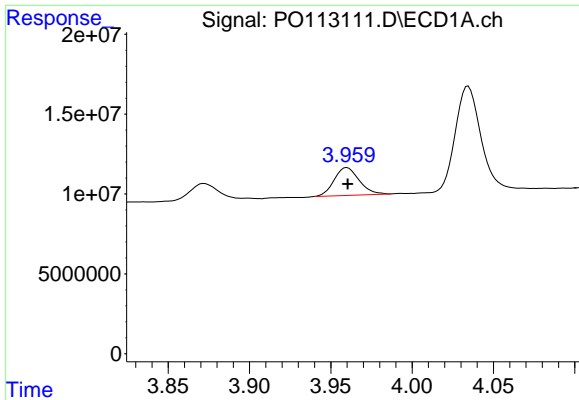
#8 AR-1221-1

R.T.: 3.872 min
 Delta R.T.: -0.002 min
 Response: 12602510
 Conc: 134.68 ng/ml



#8 AR-1221-1

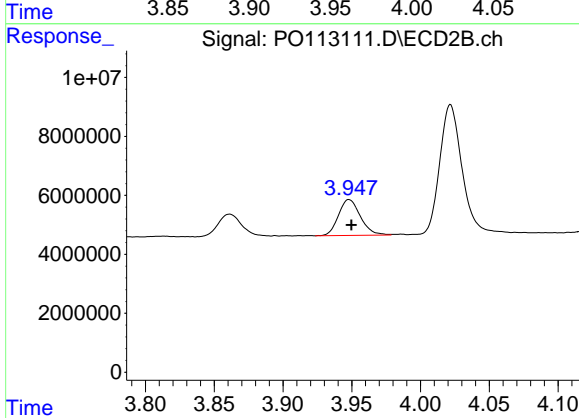
R.T.: 3.861 min
 Delta R.T.: -0.003 min
 Response: 9052401
 Conc: 143.41 ng/ml



#9 AR-1221-2

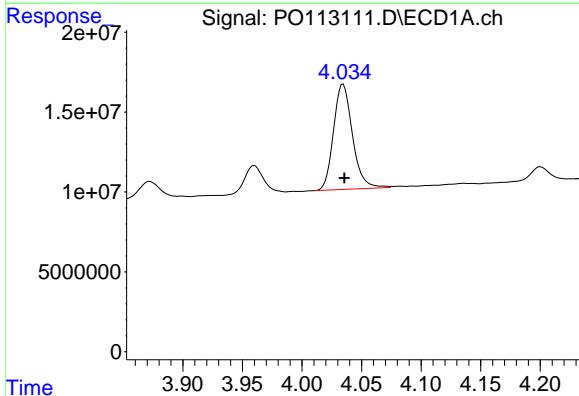
R.T.: 3.960 min
 Delta R.T.: 0.000 min
 Response: 18603942
 Conc: 275.41 ng/ml

Instrument :
 ECD_O
 ClientSampleId :
 AR1660CCC500



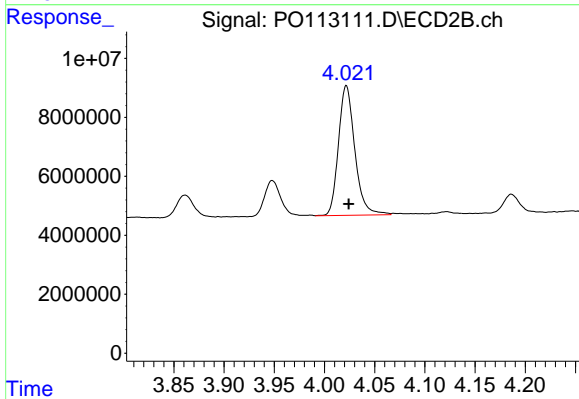
#9 AR-1221-2

R.T.: 3.948 min
 Delta R.T.: -0.002 min
 Response: 13568469
 Conc: 290.71 ng/ml



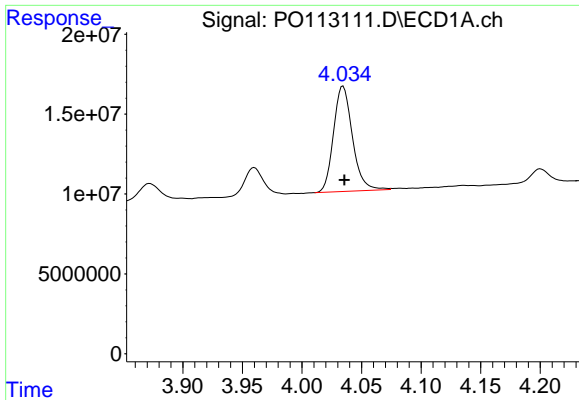
#10 AR-1221-3

R.T.: 4.035 min
 Delta R.T.: -0.001 min
 Response: 73044515
 Conc: 329.99 ng/ml



#10 AR-1221-3

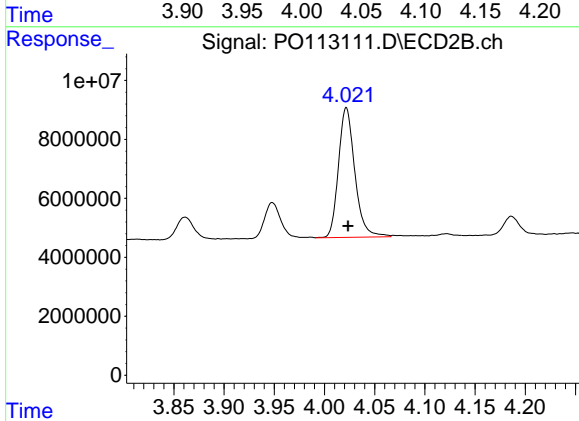
R.T.: 4.022 min
 Delta R.T.: -0.002 min
 Response: 49998657
 Conc: 336.75 ng/ml



#11 AR-1232-1

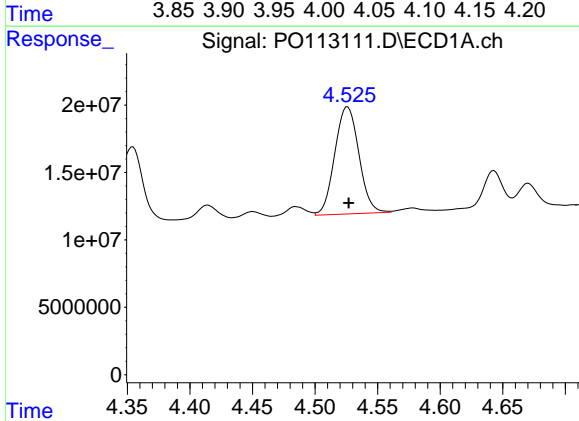
R.T.: 4.035 min
 Delta R.T.: -0.001 min
 Response: 73044515
 Conc: 419.78 ng/ml

Instrument :
 ECD_O
 ClientSampleId :
 AR1660CCC500



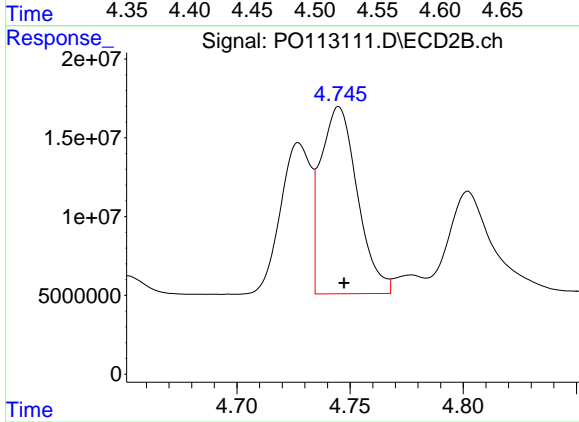
#11 AR-1232-1

R.T.: 4.022 min
 Delta R.T.: -0.002 min
 Response: 49998657
 Conc: 425.87 ng/ml



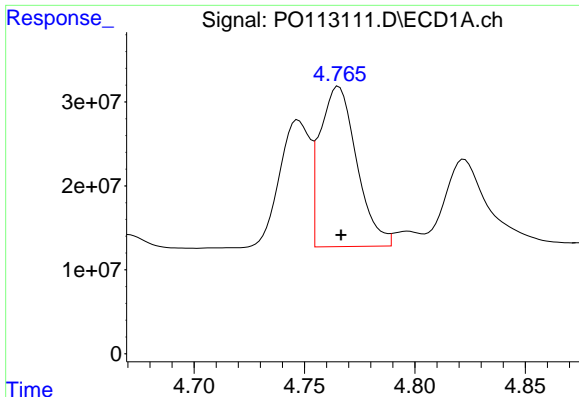
#12 AR-1232-2

R.T.: 4.526 min
 Delta R.T.: -0.001 min
 Response: 106975835
 Conc: 1071.34 ng/ml



#12 AR-1232-2

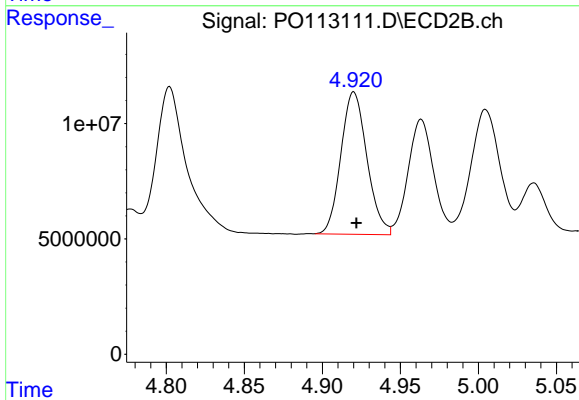
R.T.: 4.745 min
 Delta R.T.: -0.002 min
 Response: 134104997
 Conc: 1094.33 ng/ml



#13 AR-1232-3

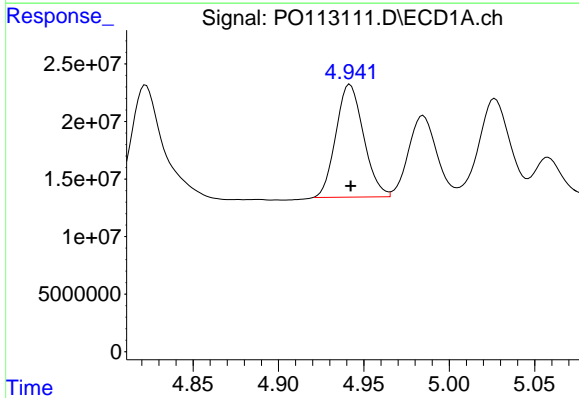
R.T.: 4.765 min
 Delta R.T.: -0.001 min
 Response: 220745066
 Conc: 1165.03 ng/ml

Instrument :
 ECD_O
 ClientSampleId :
 AR1660CCC500



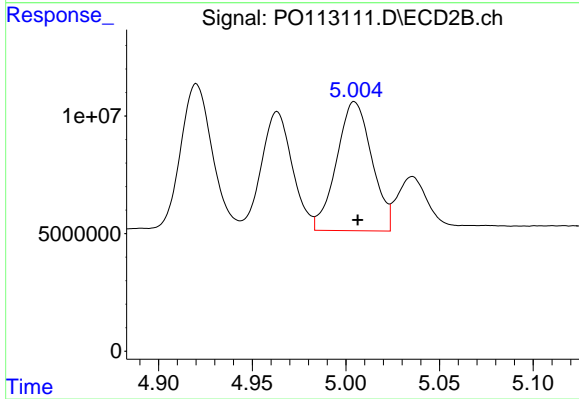
#13 AR-1232-3

R.T.: 4.920 min
 Delta R.T.: -0.002 min
 Response: 71732146
 Conc: 1132.39 ng/ml



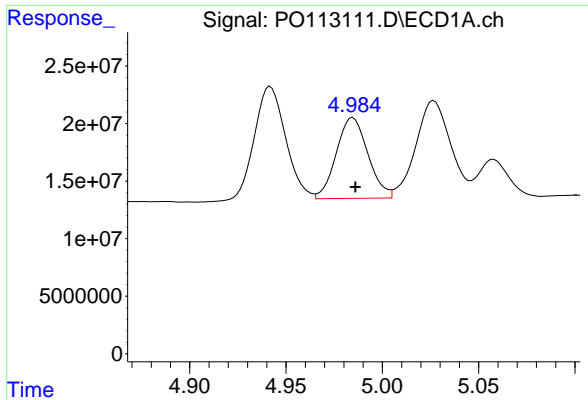
#14 AR-1232-4

R.T.: 4.942 min
 Delta R.T.: 0.000 min
 Response: 110390878
 Conc: 1172.26 ng/ml



#14 AR-1232-4

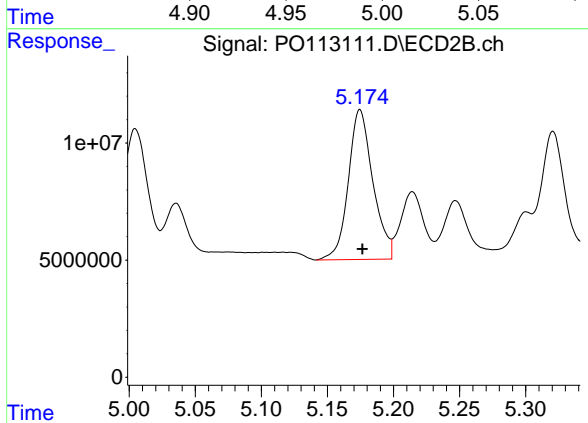
R.T.: 5.005 min
 Delta R.T.: -0.002 min
 Response: 71877508
 Conc: 1278.48 ng/ml



#15 AR-1232-5

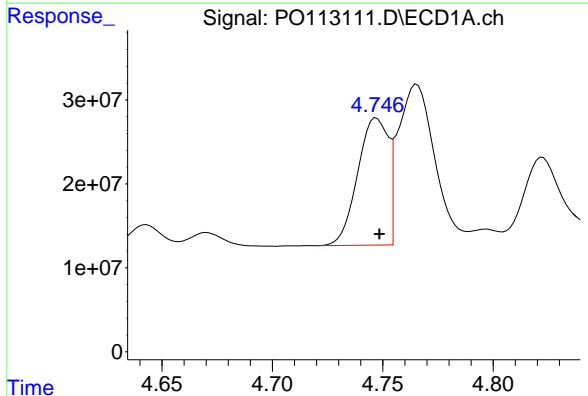
R.T.: 4.985 min
 Delta R.T.: -0.001 min
 Response: 80211811
 Conc: 1294.93 ng/ml

Instrument :
 ECD_O
 ClientSampleId :
 AR1660CCC500



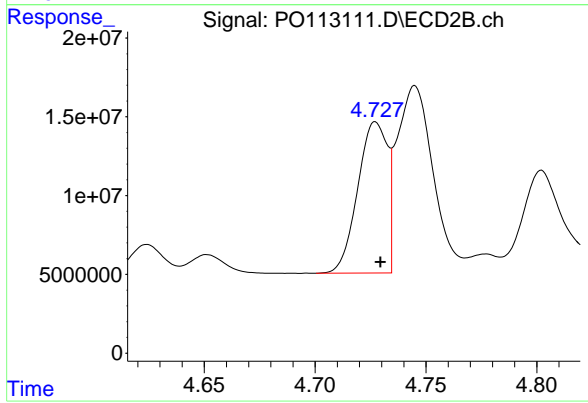
#15 AR-1232-5

R.T.: 5.175 min
 Delta R.T.: -0.002 min
 Response: 82874642
 Conc: 1384.39 ng/ml



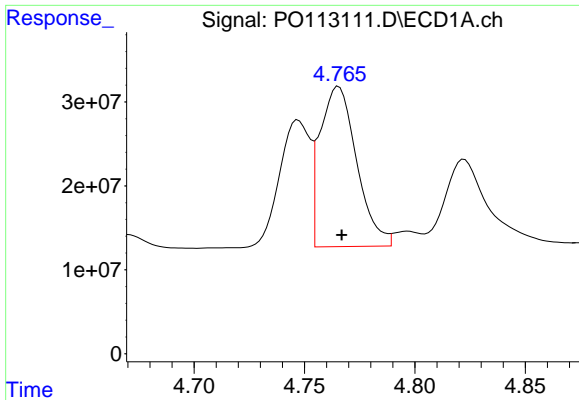
#16 AR-1242-1

R.T.: 4.747 min
 Delta R.T.: -0.001 min
 Response: 145618461
 Conc: 633.31 ng/ml



#16 AR-1242-1

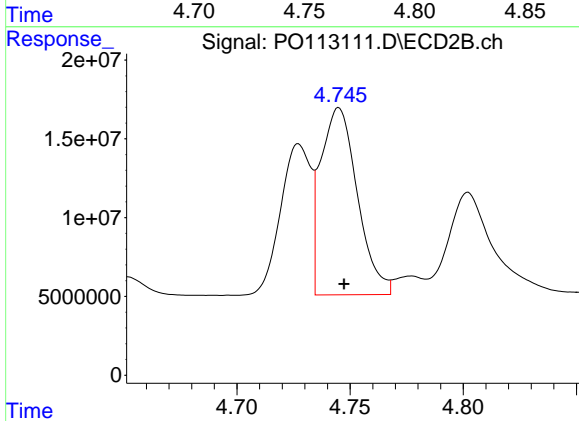
R.T.: 4.727 min
 Delta R.T.: -0.002 min
 Response: 89067653
 Conc: 616.37 ng/ml



#17 AR-1242-2

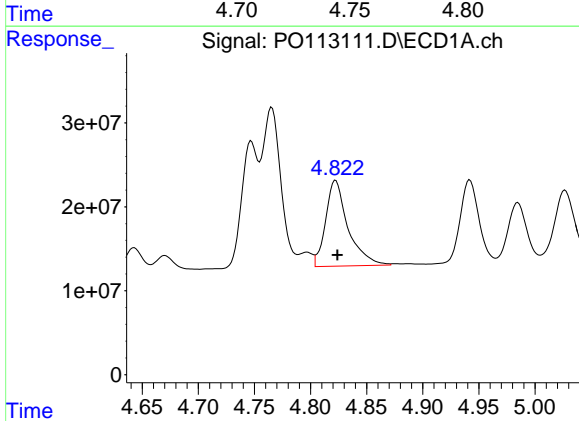
R.T.: 4.765 min
 Delta R.T.: -0.001 min
 Response: 220745066
 Conc: 642.40 ng/ml

Instrument :
 ECD_O
 ClientSampleId :
 AR1660CCC500



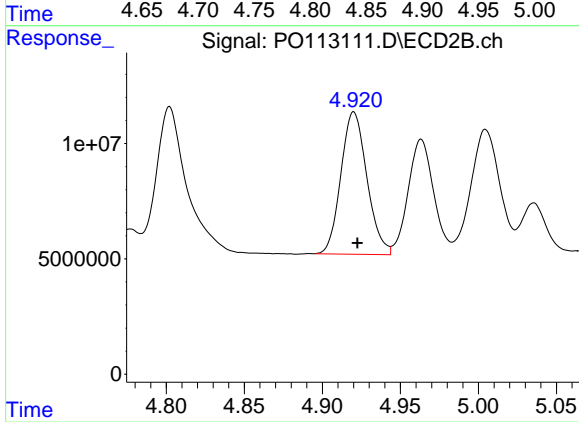
#17 AR-1242-2

R.T.: 4.745 min
 Delta R.T.: -0.002 min
 Response: 134104997
 Conc: 618.25 ng/ml



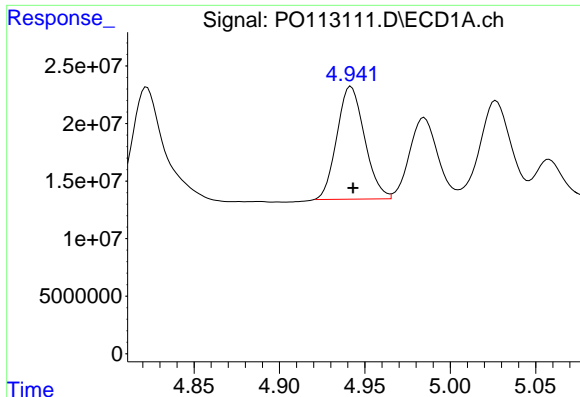
#18 AR-1242-3

R.T.: 4.822 min
 Delta R.T.: -0.002 min
 Response: 141817239
 Conc: 639.15 ng/ml



#18 AR-1242-3

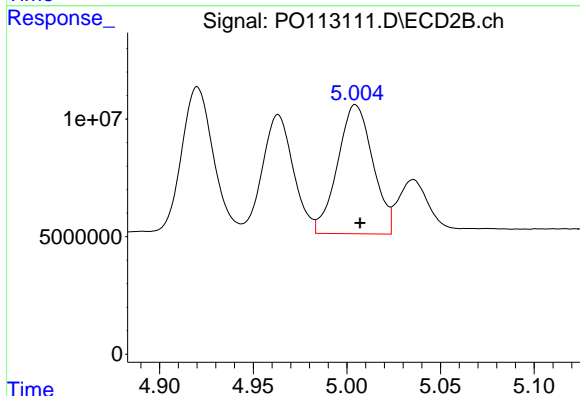
R.T.: 4.920 min
 Delta R.T.: -0.002 min
 Response: 71732146
 Conc: 613.28 ng/ml



#19 AR-1242-4

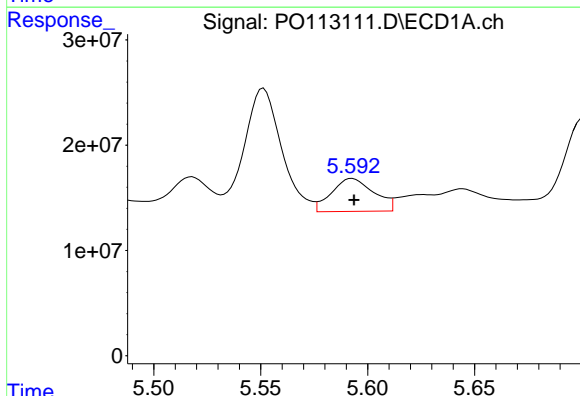
R.T.: 4.942 min
 Delta R.T.: -0.001 min
 Response: 110390878
 Conc: 636.40 ng/ml

Instrument :
 ECD_O
 ClientSampleId :
 AR1660CCC500



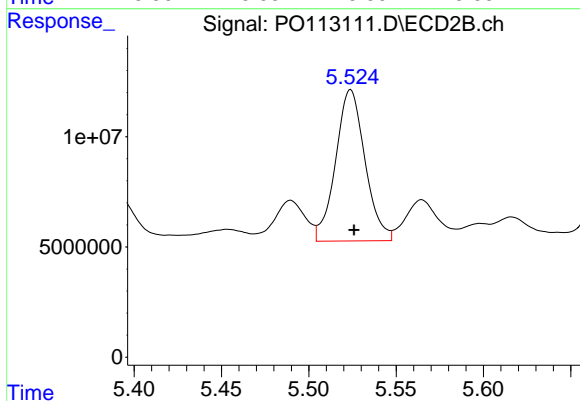
#19 AR-1242-4

R.T.: 5.005 min
 Delta R.T.: -0.002 min
 Response: 71877508
 Conc: 611.01 ng/ml



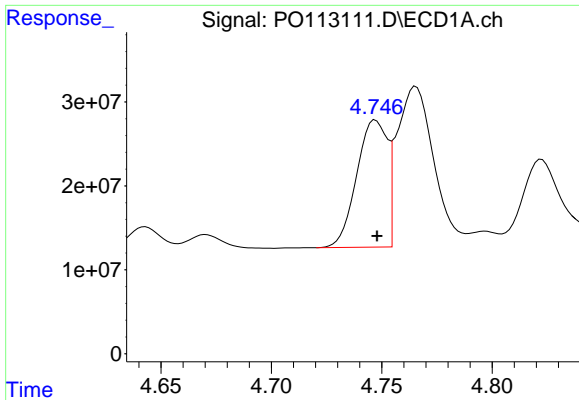
#20 AR-1242-5

R.T.: 5.593 min
 Delta R.T.: 0.000 min
 Response: 43246651
 Conc: 216.06 ng/ml



#20 AR-1242-5

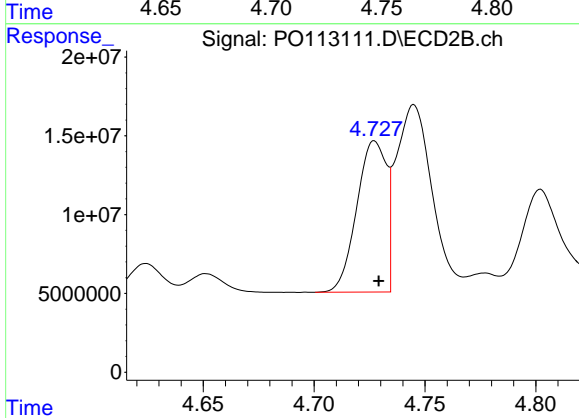
R.T.: 5.524 min
 Delta R.T.: -0.002 min
 Response: 80502060
 Conc: 539.80 ng/ml



#21 AR-1248-1

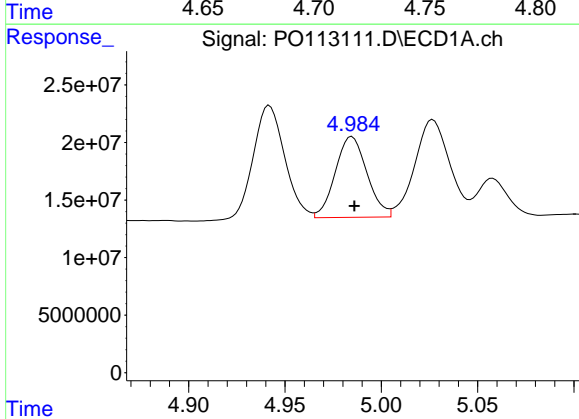
R.T.: 4.747 min
 Delta R.T.: 0.000 min
 Response: 145618461
 Conc: 834.65 ng/ml

Instrument :
 ECD_O
 ClientSampleId :
 AR1660CCC500



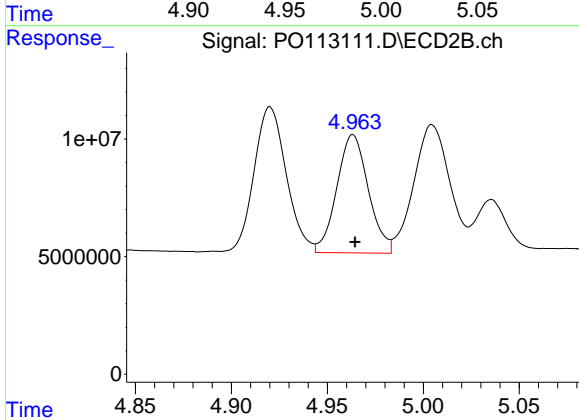
#21 AR-1248-1

R.T.: 4.727 min
 Delta R.T.: -0.002 min
 Response: 89067653
 Conc: 798.73 ng/ml



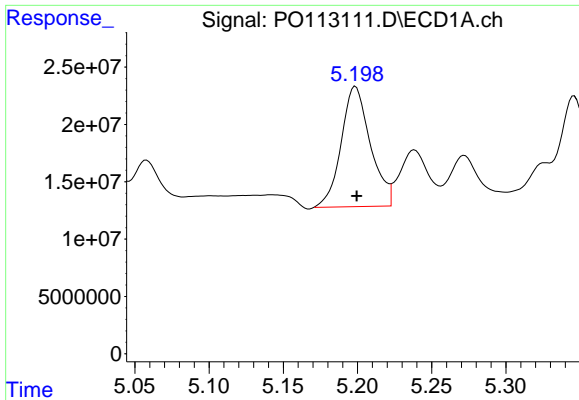
#22 AR-1248-2

R.T.: 4.985 min
 Delta R.T.: -0.001 min
 Response: 80211811
 Conc: 331.64 ng/ml



#22 AR-1248-2

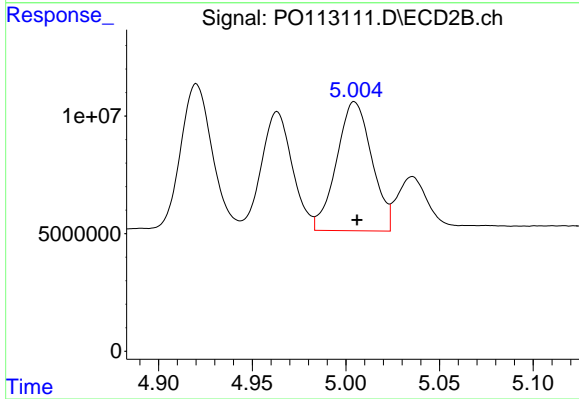
R.T.: 4.963 min
 Delta R.T.: -0.001 min
 Response: 57618680
 Conc: 358.55 ng/ml



#23 AR-1248-3

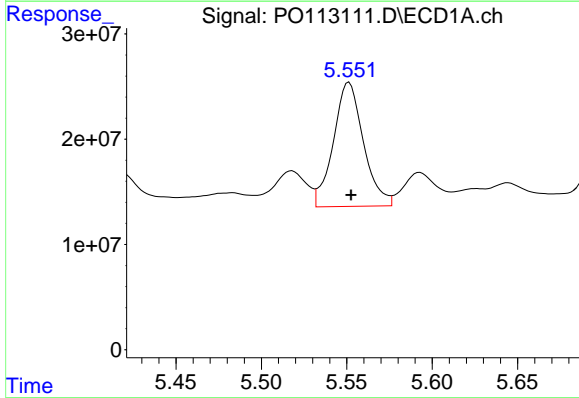
R.T.: 5.199 min
 Delta R.T.: 0.000 min
 Response: 143710135
 Conc: 450.69 ng/ml

Instrument :
 ECD_O
 ClientSampleId :
 AR1660CCC500



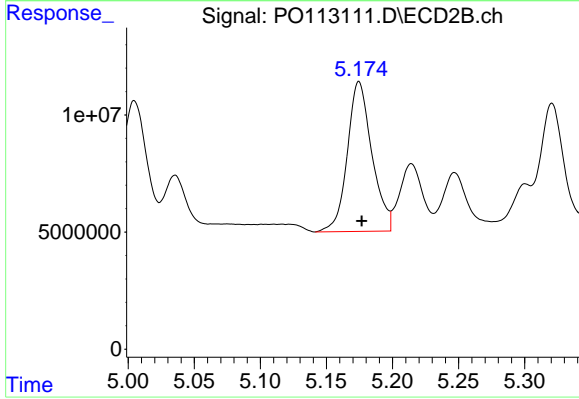
#23 AR-1248-3

R.T.: 5.005 min
 Delta R.T.: -0.001 min
 Response: 71877508
 Conc: 423.65 ng/ml



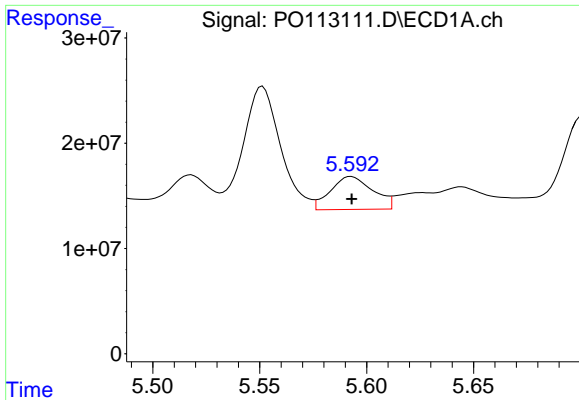
#24 AR-1248-4

R.T.: 5.551 min
 Delta R.T.: -0.001 min
 Response: 144795327
 Conc: 289.82 ng/ml



#24 AR-1248-4

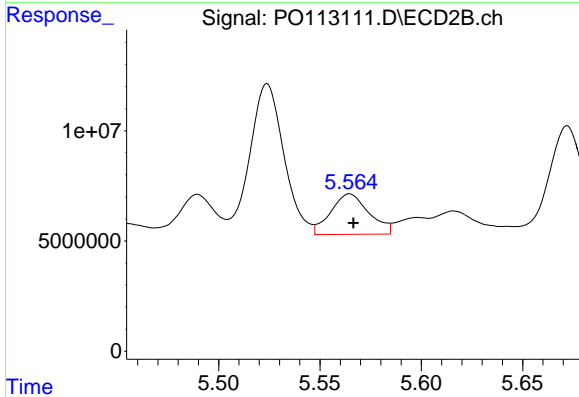
R.T.: 5.175 min
 Delta R.T.: -0.002 min
 Response: 82874642
 Conc: 416.00 ng/ml



#25 AR-1248-5

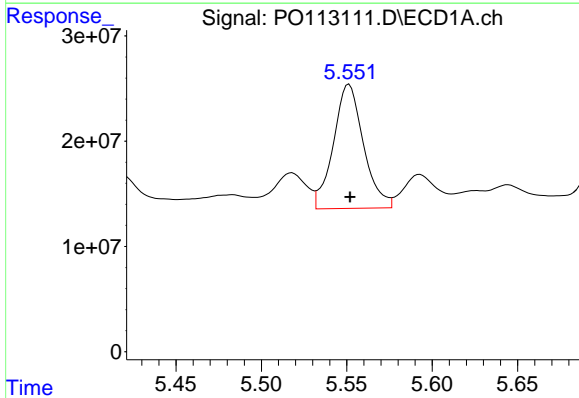
R.T.: 5.593 min
 Delta R.T.: 0.000 min
 Response: 43246651
 Conc: 126.64 ng/ml

Instrument :
 ECD_O
 ClientSampleId :
 AR1660CCC500



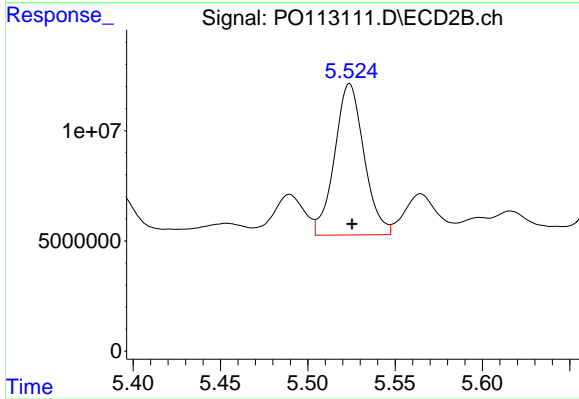
#25 AR-1248-5

R.T.: 5.565 min
 Delta R.T.: -0.002 min
 Response: 24096930
 Conc: 113.51 ng/ml



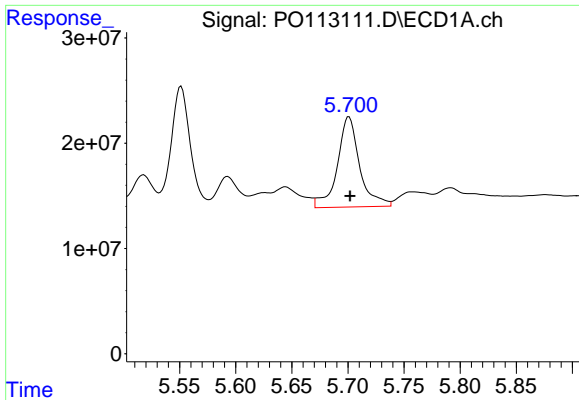
#26 AR-1254-1

R.T.: 5.551 min
 Delta R.T.: 0.000 min
 Response: 144795327
 Conc: 268.15 ng/ml



#26 AR-1254-1

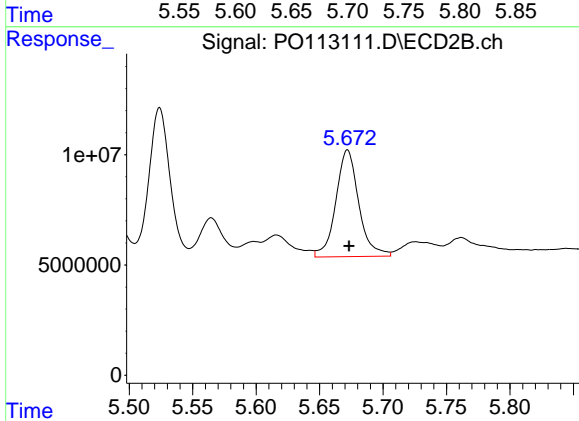
R.T.: 5.524 min
 Delta R.T.: -0.001 min
 Response: 80502060
 Conc: 255.28 ng/ml



#27 AR-1254-2

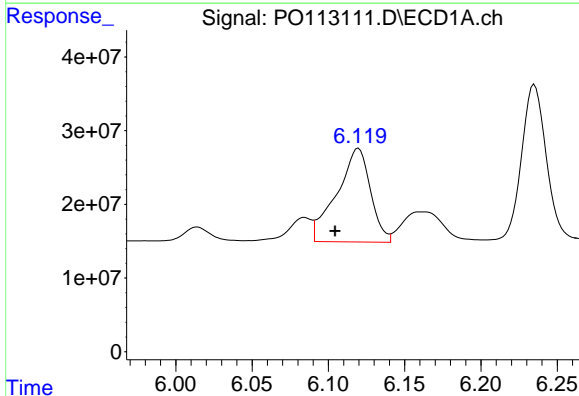
R.T.: 5.701 min
 Delta R.T.: 0.000 min
 Response: 118195685
 Conc: 239.53 ng/ml

Instrument :
 ECD_O
 ClientSampleId :
 AR1660CCC500



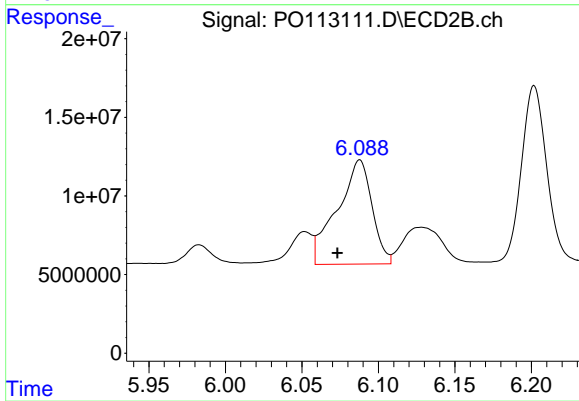
#27 AR-1254-2

R.T.: 5.672 min
 Delta R.T.: -0.001 min
 Response: 60959036
 Conc: 217.45 ng/ml



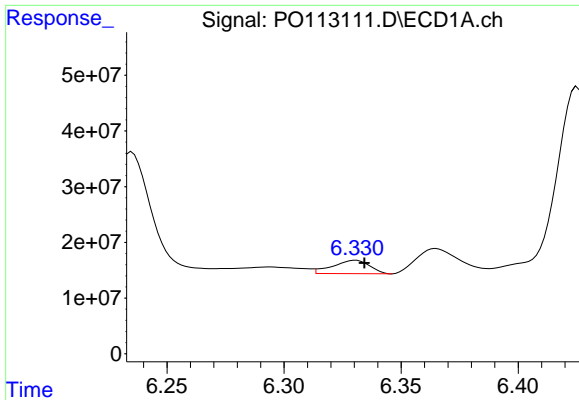
#28 AR-1254-3

R.T.: 6.120 min
 Delta R.T.: 0.015 min
 Response: 195619072
 Conc: 264.75 ng/ml



#28 AR-1254-3

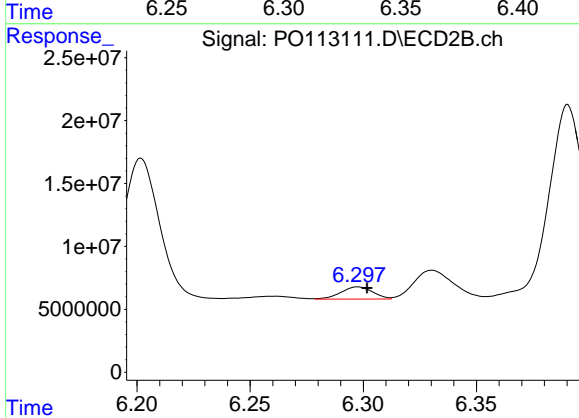
R.T.: 6.088 min
 Delta R.T.: 0.015 min
 Response: 104832990
 Conc: 251.44 ng/ml



#29 AR-1254-4

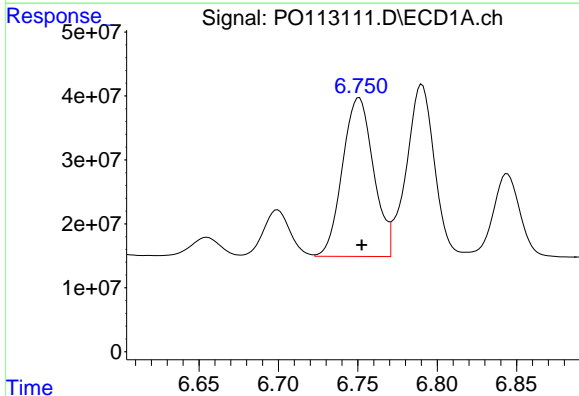
R.T.: 6.331 min
 Delta R.T.: -0.004 min
 Response: 26243945
 Conc: 47.12 ng/ml

Instrument :
 ECD_O
 ClientSampleId :
 AR1660CCC500



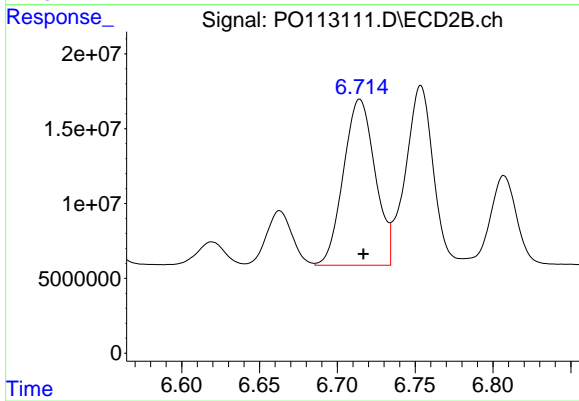
#29 AR-1254-4

R.T.: 6.298 min
 Delta R.T.: -0.004 min
 Response: 9489169
 Conc: 34.53 ng/ml



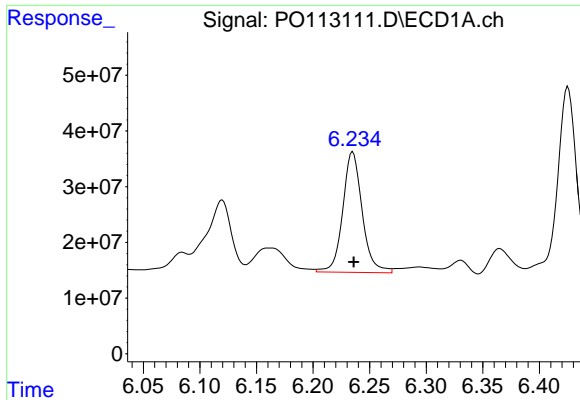
#30 AR-1254-5

R.T.: 6.751 min
 Delta R.T.: -0.002 min
 Response: 337469150
 Conc: 481.43 ng/ml



#30 AR-1254-5

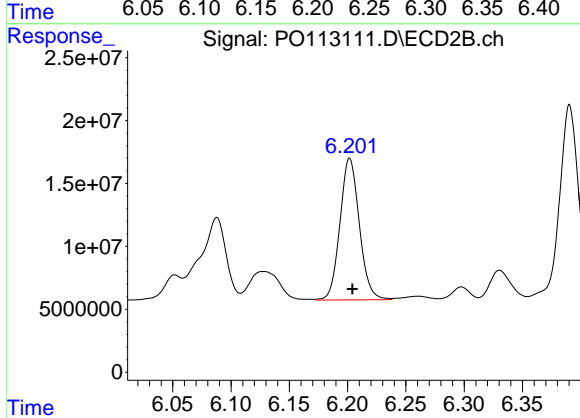
R.T.: 6.714 min
 Delta R.T.: -0.002 min
 Response: 157176407
 Conc: 439.67 ng/ml



#31 AR-1260-1

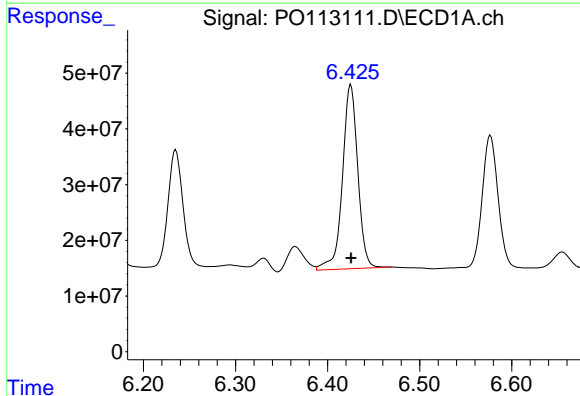
R.T.: 6.235 min
 Delta R.T.: -0.001 min
 Response: 259145917
 Conc: 581.07 ng/ml

Instrument :
 ECD_O
 ClientSampleId :
 AR1660CCC500



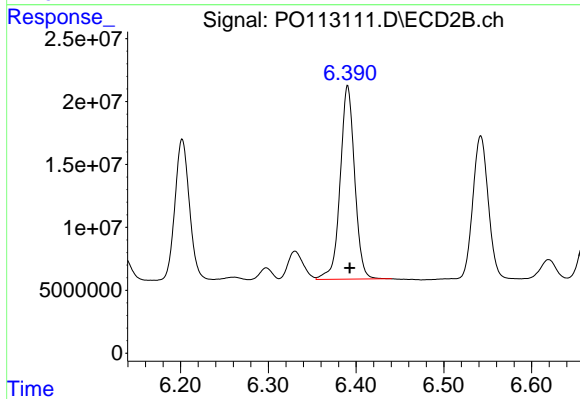
#31 AR-1260-1

R.T.: 6.202 min
 Delta R.T.: -0.002 min
 Response: 130313956
 Conc: 510.90 ng/ml



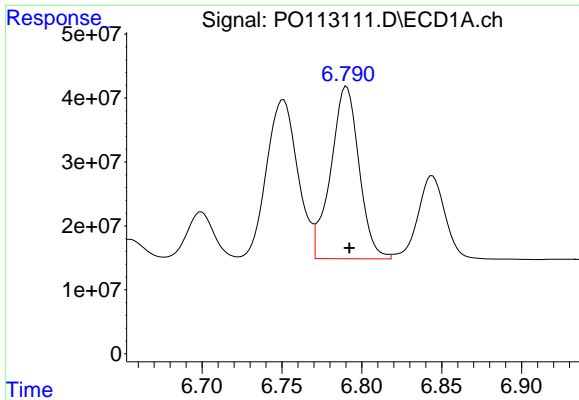
#32 AR-1260-2

R.T.: 6.425 min
 Delta R.T.: 0.000 min
 Response: 381621632
 Conc: 555.72 ng/ml



#32 AR-1260-2

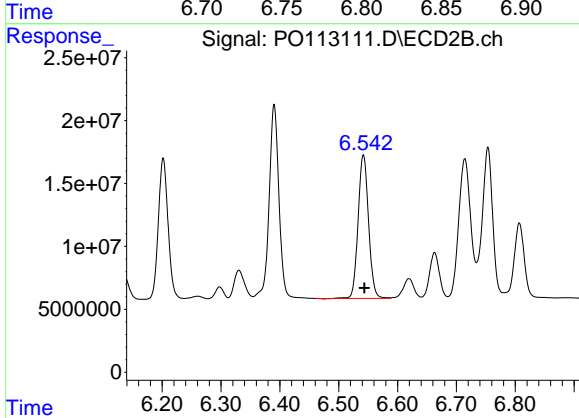
R.T.: 6.390 min
 Delta R.T.: -0.002 min
 Response: 176611632
 Conc: 510.86 ng/ml



#33 AR-1260-3

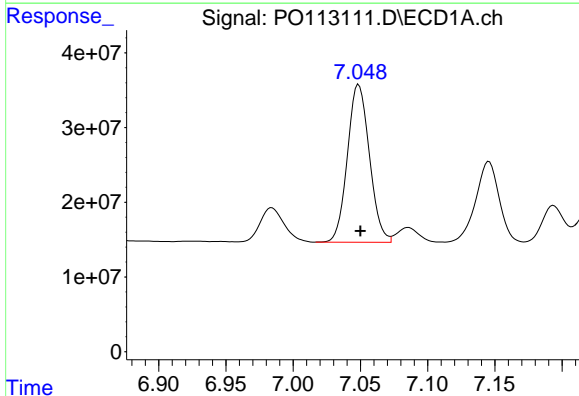
R.T.: 6.790 min
 Delta R.T.: -0.002 min
 Response: 332213203
 Conc: 538.02 ng/ml

Instrument :
 ECD_O
 ClientSampleId :
 AR1660CCC500



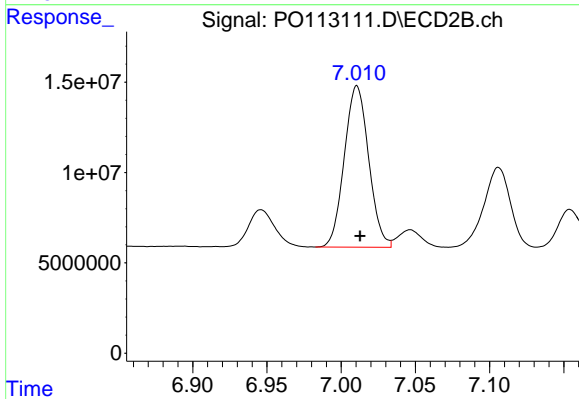
#33 AR-1260-3

R.T.: 6.542 min
 Delta R.T.: -0.002 min
 Response: 140446958
 Conc: 472.20 ng/ml



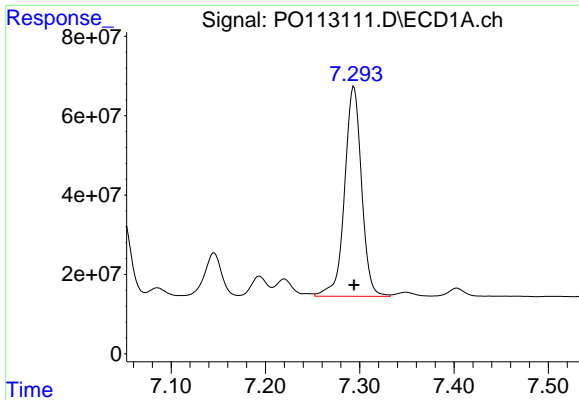
#34 AR-1260-4

R.T.: 7.049 min
 Delta R.T.: -0.001 min
 Response: 240739247
 Conc: 537.52 ng/ml



#34 AR-1260-4

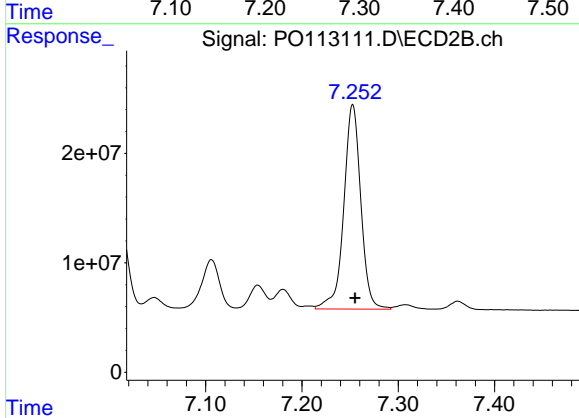
R.T.: 7.011 min
 Delta R.T.: -0.002 min
 Response: 102346847
 Conc: 493.83 ng/ml



#35 AR-1260-5

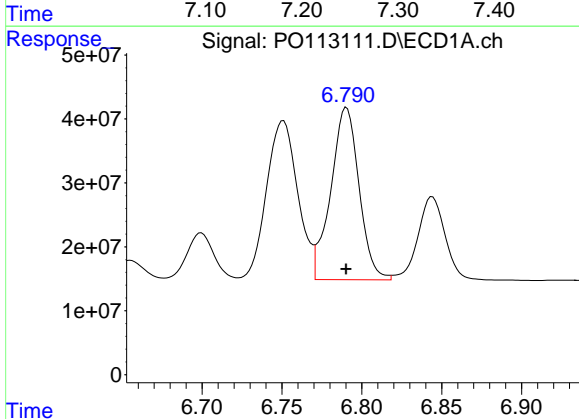
R.T.: 7.294 min
Delta R.T.: 0.000 min
Response: 661334863
Conc: 546.25 ng/ml

Instrument :
ECD_O
ClientSampleId :
AR1660CCC500



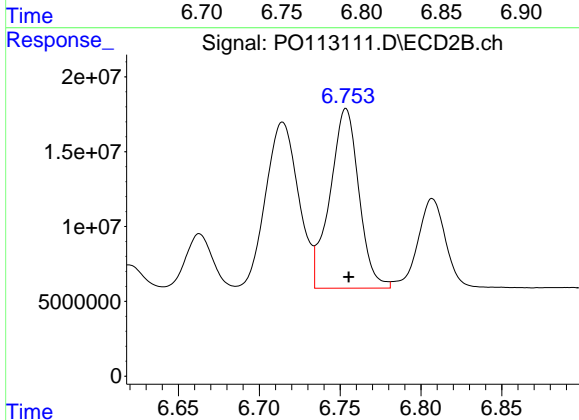
#35 AR-1260-5

R.T.: 7.253 min
Delta R.T.: -0.003 min
Response: 228845512
Conc: 488.54 ng/ml



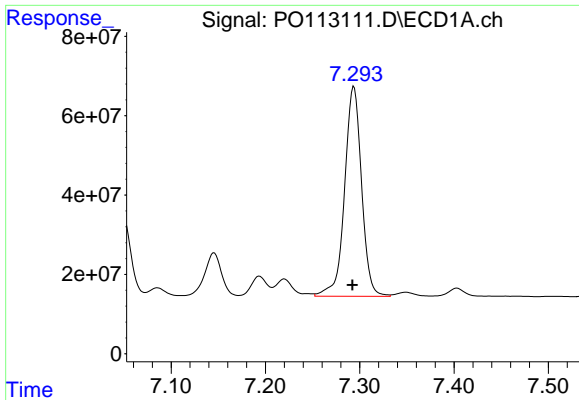
#36 AR-1262-1

R.T.: 6.790 min
Delta R.T.: 0.000 min
Response: 332213203
Conc: 362.77 ng/ml



#36 AR-1262-1

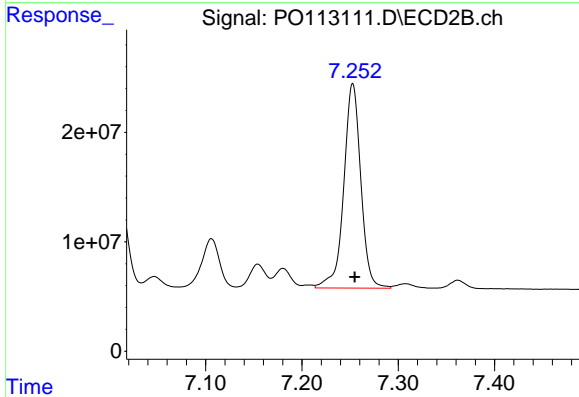
R.T.: 6.754 min
Delta R.T.: -0.002 min
Response: 149609758
Conc: 360.84 ng/ml



#37 AR-1262-2

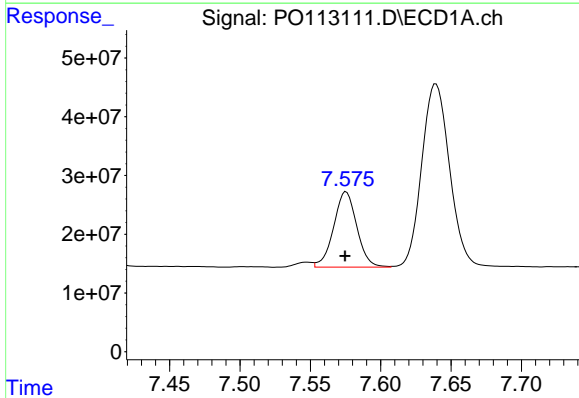
R.T.: 7.294 min
 Delta R.T.: 0.002 min
 Response: 661334863
 Conc: 437.35 ng/ml

Instrument :
 ECD_O
 ClientSampleId :
 AR1660CCC500



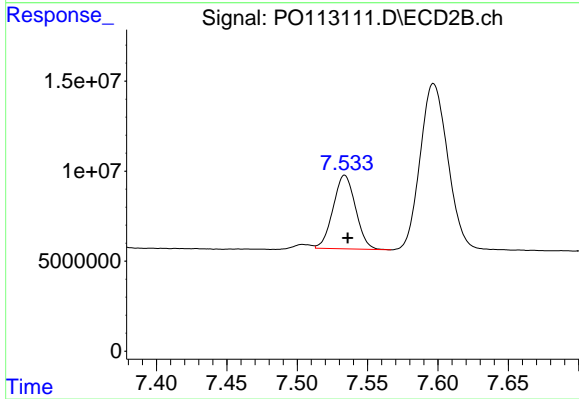
#37 AR-1262-2

R.T.: 7.253 min
 Delta R.T.: -0.002 min
 Response: 228845512
 Conc: 442.07 ng/ml



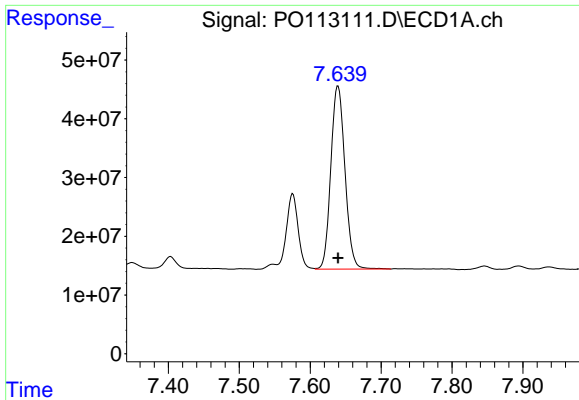
#38 AR-1262-3

R.T.: 7.575 min
 Delta R.T.: 0.000 min
 Response: 146941071
 Conc: 265.19 ng/ml



#38 AR-1262-3

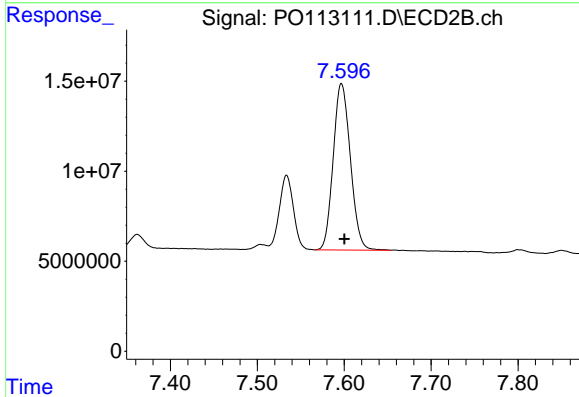
R.T.: 7.534 min
 Delta R.T.: -0.002 min
 Response: 45371714
 Conc: 252.64 ng/ml



#39 AR-1262-4

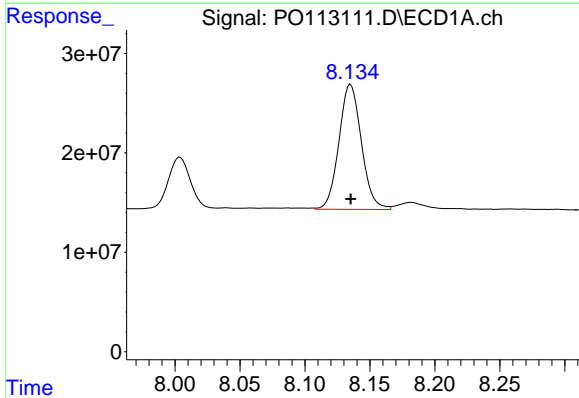
R.T.: 7.639 min
 Delta R.T.: 0.000 min
 Response: 430838270
 Conc: 440.54 ng/ml

Instrument :
 ECD_O
 ClientSampleId :
 AR1660CCC500



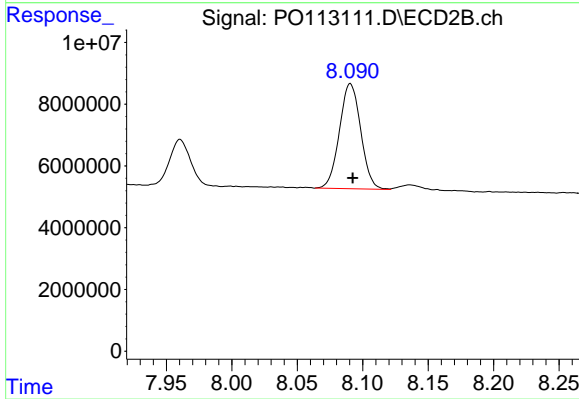
#39 AR-1262-4

R.T.: 7.597 min
 Delta R.T.: -0.004 min
 Response: 127024426
 Conc: 438.16 ng/ml



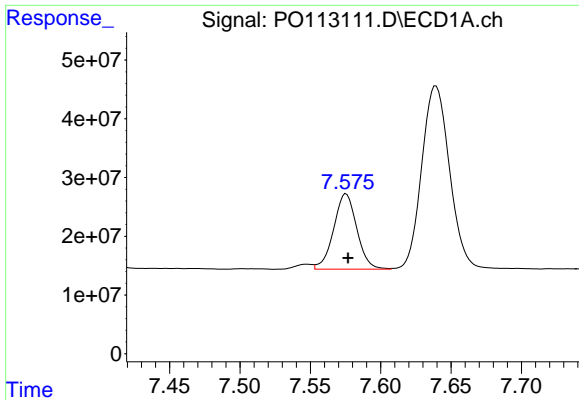
#40 AR-1262-5

R.T.: 8.135 min
 Delta R.T.: 0.000 min
 Response: 151432916
 Conc: 363.25 ng/ml



#40 AR-1262-5

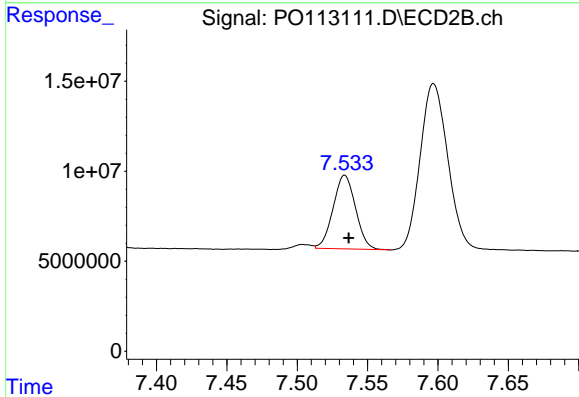
R.T.: 8.091 min
 Delta R.T.: -0.002 min
 Response: 38561461
 Conc: 355.96 ng/ml



#41 AR-1268-1

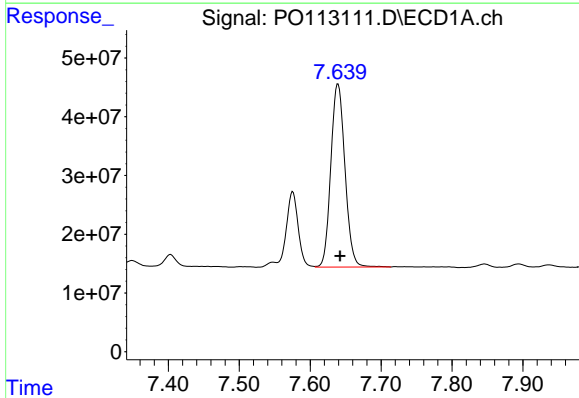
R.T.: 7.575 min
 Delta R.T.: -0.001 min
 Response: 146941071
 Conc: 85.39 ng/ml

Instrument :
 ECD_O
 ClientSampleId :
 AR1660CCC500



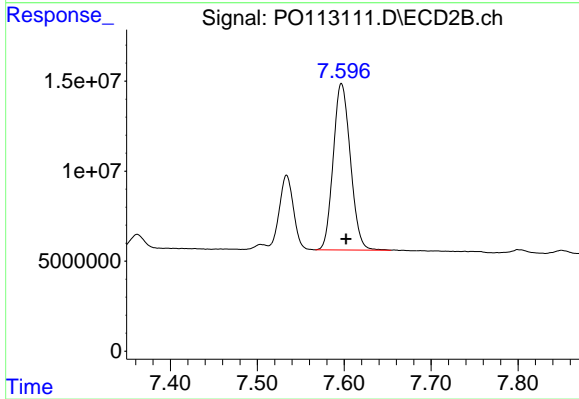
#41 AR-1268-1

R.T.: 7.534 min
 Delta R.T.: -0.003 min
 Response: 45371714
 Conc: 89.06 ng/ml



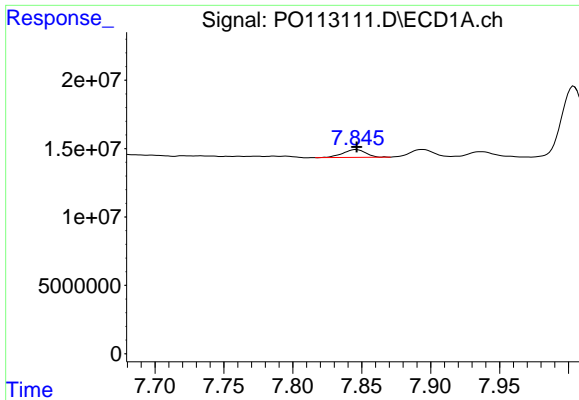
#42 AR-1268-2

R.T.: 7.639 min
 Delta R.T.: -0.003 min
 Response: 430838270
 Conc: 297.51 ng/ml



#42 AR-1268-2

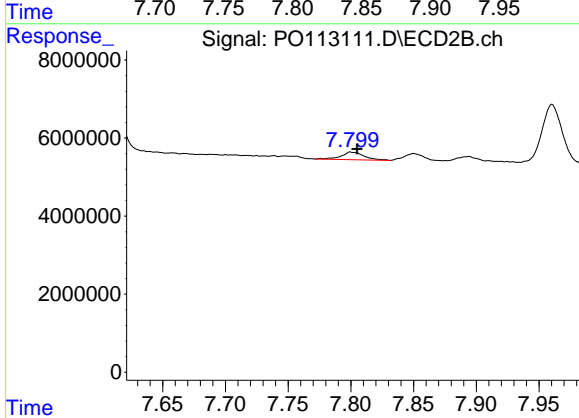
R.T.: 7.597 min
 Delta R.T.: -0.005 min
 Response: 127024426
 Conc: 305.79 ng/ml



#43 AR-1268-3

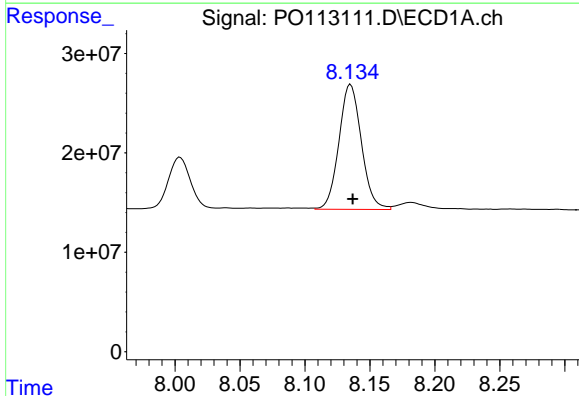
R.T.: 7.846 min
 Delta R.T.: 0.000 min
 Response: 6630114
 Conc: 5.50 ng/ml

Instrument :
 ECD_O
 ClientSampleId :
 AR1660CCC500



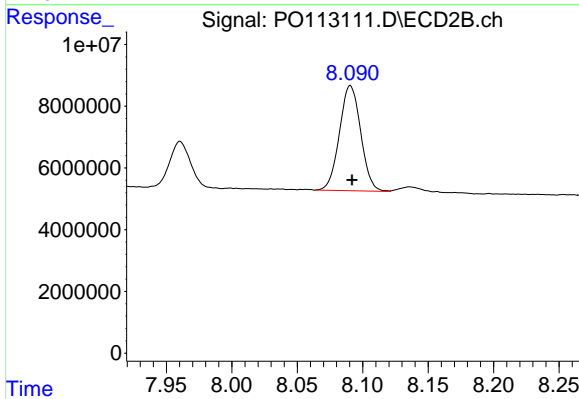
#43 AR-1268-3

R.T.: 7.800 min
 Delta R.T.: -0.005 min
 Response: 2499066
 Conc: 7.65 ng/ml



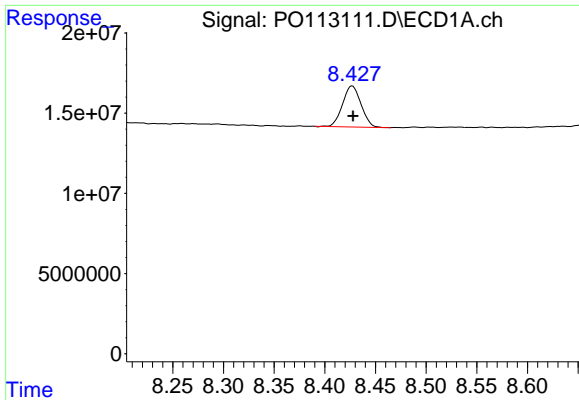
#44 AR-1268-4

R.T.: 8.135 min
 Delta R.T.: -0.002 min
 Response: 151432916
 Conc: 328.73 ng/ml



#44 AR-1268-4

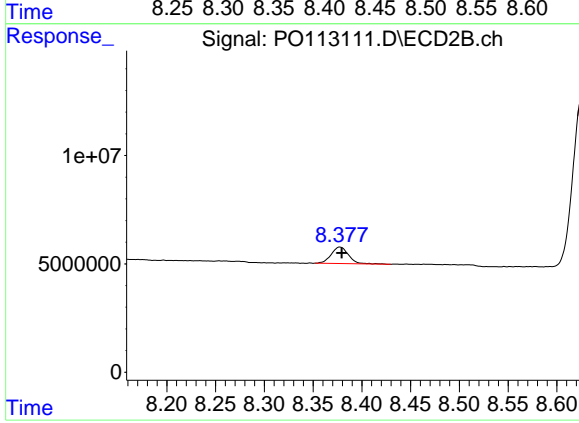
R.T.: 8.091 min
 Delta R.T.: -0.001 min
 Response: 38561461
 Conc: 320.19 ng/ml



#45 AR-1268-5

R.T.: 8.427 min
 Delta R.T.: 0.000 min
 Response: 32533602
 Conc: 10.20 ng/ml

Instrument :
 ECD_O
 ClientSampleId :
 AR1660CCC500



#45 AR-1268-5

R.T.: 8.378 min
 Delta R.T.: -0.002 min
 Response: 9424584
 Conc: 12.07 ng/ml