

Data Path : Z:\pestpcbsrv\HPCHEM1\ECD_O\Data\P0082025\
 Data File : PO113112.D
 Signal(s) : Signal #1: ECD1A.ch Signal #2: ECD2B.ch
 Acq On : 21 Aug 2025 01:04
 Operator : YP/AJ
 Sample : AR1242CCC500
 Misc :
 ALS Vial : 4 Sample Multiplier: 1

Instrument :
 ECD_O
 ClientSampleId :
 AR1242CCC500

Integration File signal 1: autoint1.e
 Integration File signal 2: autoint2.e
 Quant Time: Aug 21 01:51:38 2025
 Quant Method : Z:\pestpcbsrv\HPCHEM1\ECD_O\methods\P0081825.M
 Quant Title : GC EXTRACTABLES
 QLast Update : Tue Aug 19 06:08:32 2025
 Response via : Initial Calibration
 Integrator: ChemStation

Volume Inj. : 2 µl
 Signal #1 Phase : ZB-MR1 Signal #2 Phase: ZB-MR2
 Signal #1 Info : 30Mx0.32mmx 0.50µ Signal #2 Info : 30M x 0.32mm x 0.25µm

Compound	RT#1	RT#2	Resp#1	Resp#2	ng/ml	ng/ml
System Monitoring Compounds						
1) SA Tetrachlo...	3.662	3.654	465.5E6	279.7E6	56.860	55.267
2) SA Decachlor...	8.680	8.626	372.9E6	105.0E6	53.803	55.427
Target Compounds						
3) L1 AR-1016-1	4.747	4.728	130.1E6	80140418	487.455	469.829
4) L1 AR-1016-2	4.766	4.746	196.4E6	120.2E6	489.129	466.615
5) L1 AR-1016-3	4.823	4.920	127.1E6	63893550	498.425	457.643
6) L1 AR-1016-4	4.942	4.963	98563294	48694154	451.984	417.263
7) L1 AR-1016-5	5.199	5.175	127.2E6	73178002	573.983	513.422
8) L2 AR-1221-1	3.873	3.862	11537022	8501912	123.294	134.692
9) L2 AR-1221-2	3.960	3.948	17969198	12980960	266.011	278.124
10) L2 AR-1221-3	4.035	4.022	67495093	46201332	304.923	311.172
11) L3 AR-1232-1	4.035	4.022	67495093	46201332	387.889	393.529
12) L3 AR-1232-2	4.526	4.746	95702086	120.2E6	958.435	981.077
13) L3 AR-1232-3	4.766	4.920	196.4E6	63893550	1036.291	1008.650
14) L3 AR-1232-4	4.942	5.005	98563294	64203107	1046.658	1141.974
15) L3 AR-1232-5	4.985	5.175	67931071	73178002	1096.671	1222.413
16) L4 AR-1242-1	4.747	4.728	130.1E6	80140418	566.007	554.588
17) L4 AR-1242-2	4.766	4.746	196.4E6	120.2E6	571.412	554.265
18) L4 AR-1242-3	4.823	4.920	127.1E6	63893550	572.865	546.265
19) L4 AR-1242-4	4.942	5.005	98563294	64203107	568.210	545.771
20) L4 AR-1242-5	5.592	5.524	118.5E6	85048655	591.968	570.288
21) L5 AR-1248-1	4.747	4.728	130.1E6	80140418	745.949	718.672
22) L5 AR-1248-2	4.985	4.963	67931071	48694154	280.863	303.015
23) L5 AR-1248-3	5.199	5.005	127.2E6	64203107	398.950	378.421
24) L5 AR-1248-4	5.551	5.175	147.6E6	73178002	295.363	367.322
25) L5 AR-1248-5	5.592	5.564	118.5E6	72049558	346.977	339.382
26) L6 AR-1254-1	5.551	5.524	147.6E6	85048655	273.279	269.693
27) L6 AR-1254-2	5.701	5.672	49700192	29094335	100.719	103.783
28) L6 AR-1254-3	6.104	6.072	46045849	28932889	62.319	69.396
29) L6 AR-1254-4	6.331	6.298	33869150	15198047	60.806	55.299
30) L6 AR-1254-5	6.751	6.716	11807193	6983133	16.844	19.534
31) L7 AR-1260-1	6.248	6.216	25981105	11047440	58.256	43.312 #
32) L7 AR-1260-2	6.424	6.390	6213503	2196036	9.048	6.352 #
33) L7 AR-1260-3	6.831f	6.540	2213308	3185226	3.584	10.709 #
34) L7 AR-1260-4	7.040	7.009	1805435	537071	4.031	2.591 #
35) L7 AR-1260-5	7.289	7.278	1322463	695339	1.092	1.484 #
36) L8 AR-1262-1	6.751f	6.786	11807193	1150723	12.893	2.775 #
37) L8 AR-1262-2	7.289	7.278	1322463	695339	0.875	1.343 #
38) L8 AR-1262-3	7.574	7.530	1511919	426091	2.729	2.373
39) L8 AR-1262-4	7.631	7.584	2482271	1131175	2.538	3.902 #
40) L8 AR-1262-5	8.143	8.100	2859708	272676	6.860	2.517 #
41) L9 AR-1268-1	7.574	7.530	1511919	426091	0.879	0.836

Data Path : Z:\pestpcbsrv\HPCHEM1\ECD_0\Data\P0082025\
 Data File : P0113112.D
 Signal(s) : Signal #1: ECD1A.ch Signal #2: ECD2B.ch
 Acq On : 21 Aug 2025 01:04
 Operator : YP/AJ
 Sample : AR1242CCC500
 Misc :
 ALS Vial : 4 Sample Multiplier: 1

Instrument :
 ECD_0
ClientSampleId :
 AR1242CCC500

Integration File signal 1: autoint1.e
 Integration File signal 2: autoint2.e
 Quant Time: Aug 21 01:51:38 2025
 Quant Method : Z:\pestpcbsrv\HPCHEM1\ECD_0\methods\P0081825.M
 Quant Title : GC EXTRACTABLES
 QLast Update : Tue Aug 19 06:08:32 2025
 Response via : Initial Calibration
 Integrator: ChemStation

Volume Inj. : 2 µl
 Signal #1 Phase : ZB-MR1 Signal #2 Phase: ZB-MR2
 Signal #1 Info : 30Mx0.32mmx 0.50µ Signal #2 Info : 30M x 0.32mm x 0.25µm

	Compound	RT#1	RT#2	Resp#1	Resp#2	ng/ml	ng/ml
42)	L9 AR-1268-2	7.631	7.584	2482271	1131175	1.714	2.723 #
43)	L9 AR-1268-3	7.845	7.805	1463722	918620	1.213	2.813 #
44)	L9 AR-1268-4	8.143	8.100	2859708	272676	6.208	2.264 #
45)	L9 AR-1268-5	8.428	8.371	2252477	994430	0.706	1.273 #

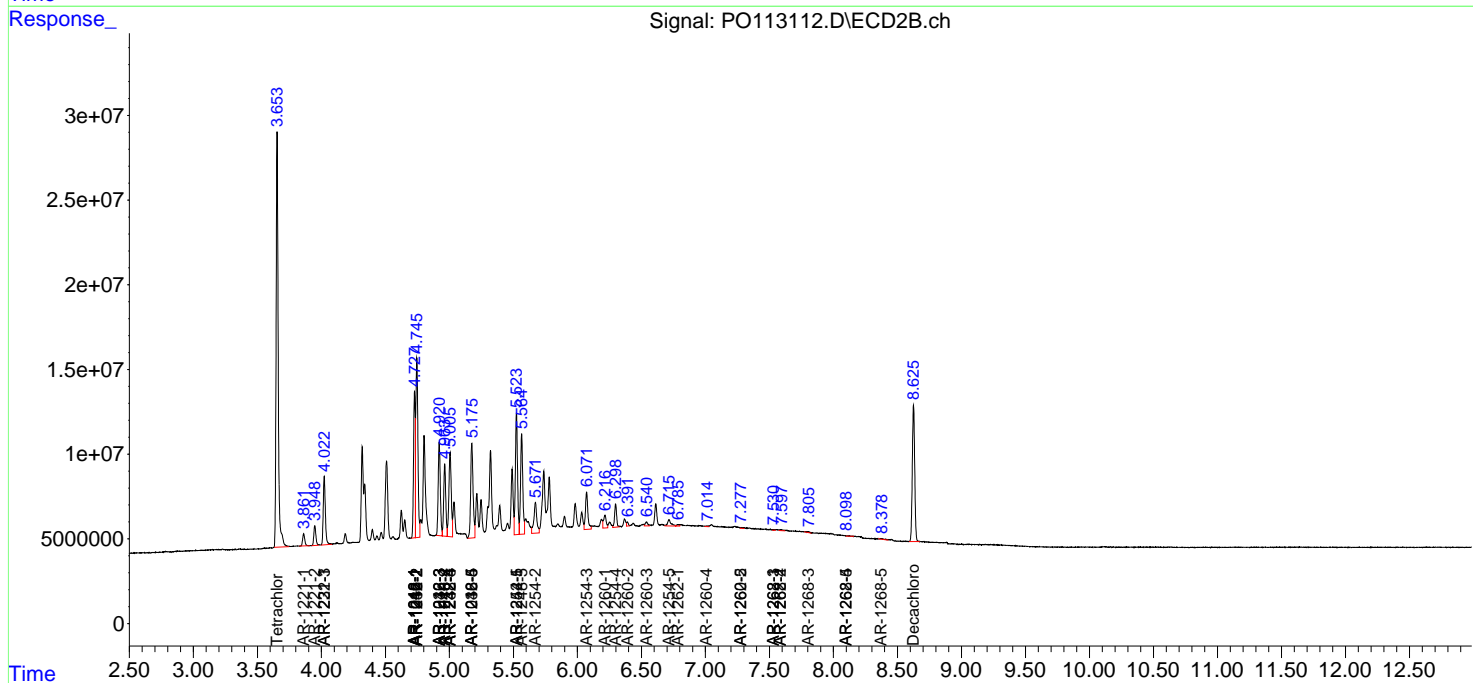
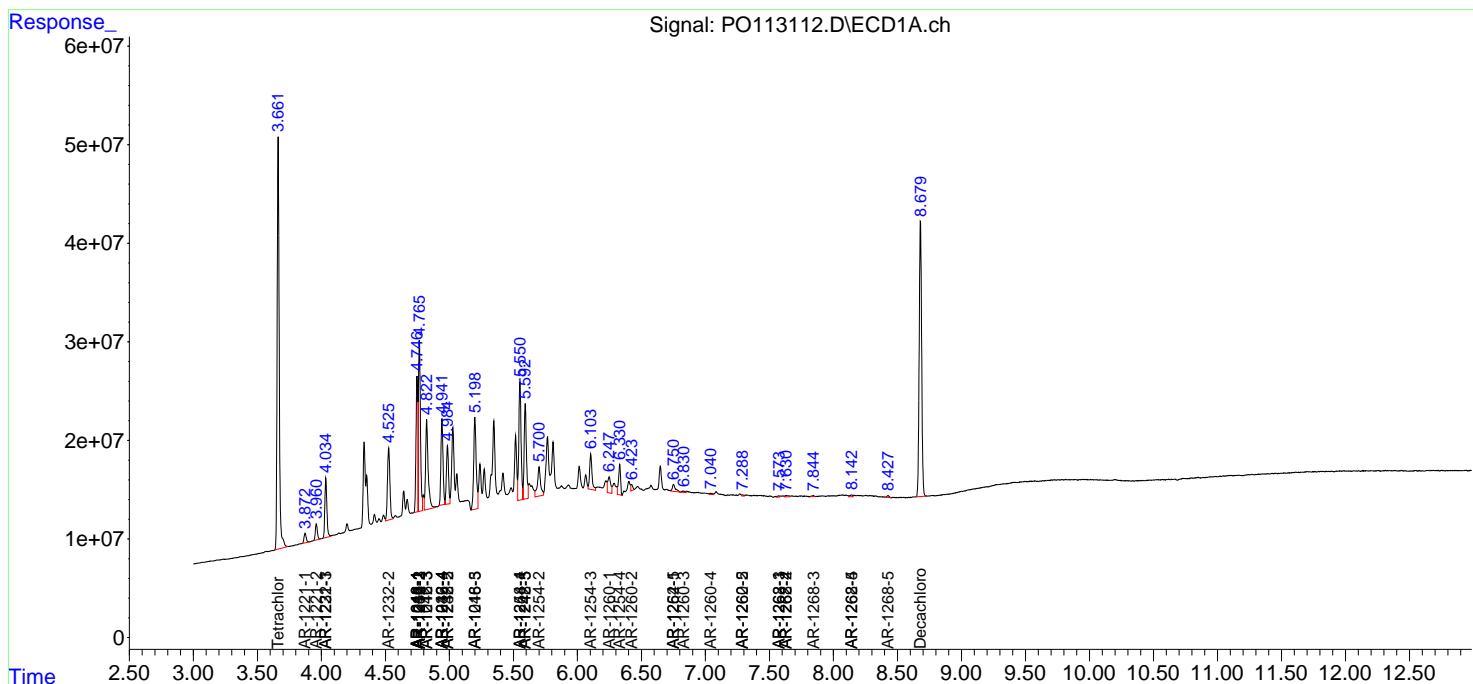
(f)=RT Delta > 1/2 Window (#)=Amounts differ by > 25% (m)=manual int.

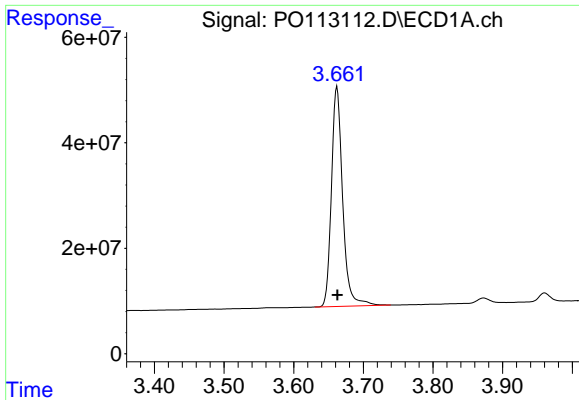
Data Path : Z:\pestpcbsrv\HPCHEM1\ECD_O\Data\PO082025\
 Data File : PO113112.D
 Signal(s) : Signal #1: ECD1A.ch Signal #2: ECD2B.ch
 Acq On : 21 Aug 2025 01:04
 Operator : YP/AJ
 Sample : AR1242CCC500
 Misc :
 ALS Vial : 4 Sample Multiplier: 1

Instrument :
 ECD_O
 ClientSampleId :
 AR1242CCC500

Integration File signal 1: autoint1.e
 Integration File signal 2: autoint2.e
 Quant Time: Aug 21 01:51:38 2025
 Quant Method : Z:\pestpcbsrv\HPCHEM1\ECD_O\methods\PO081825.M
 Quant Title : GC EXTRACTABLES
 QLast Update : Tue Aug 19 06:08:32 2025
 Response via : Initial Calibration
 Integrator: ChemStation

Volume Inj. : 2 µl
 Signal #1 Phase : ZB-MR1 Signal #2 Phase: ZB-MR2
 Signal #1 Info : 30Mx0.32mmx 0.50µ Signal #2 Info : 30M x 0.32mm x 0.25µm

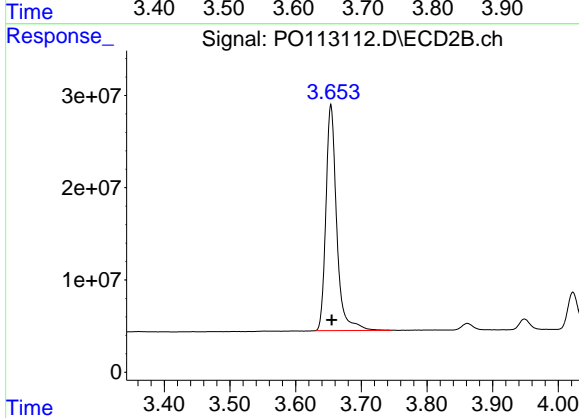




#1 Tetrachloro-m-xylene

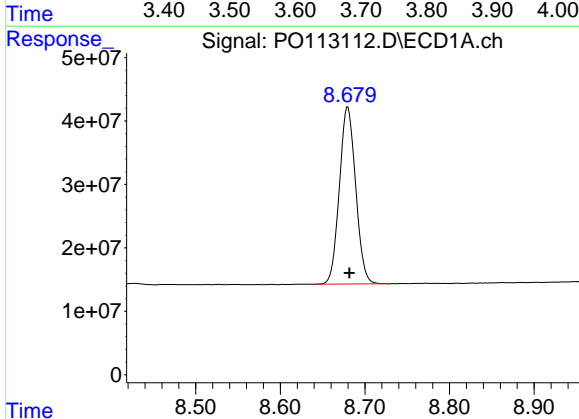
R.T.: 3.662 min
 Delta R.T.: 0.000 min
 Response: 465492754
 Conc: 56.86 ng/ml

Instrument :
 ECD_O
 ClientSampleId :
 AR1242CCC500



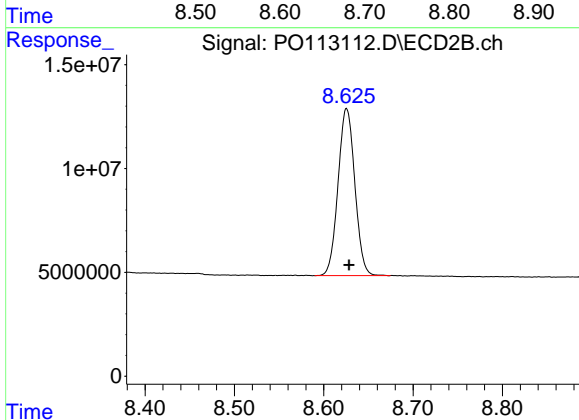
#1 Tetrachloro-m-xylene

R.T.: 3.654 min
 Delta R.T.: -0.001 min
 Response: 279686608
 Conc: 55.27 ng/ml



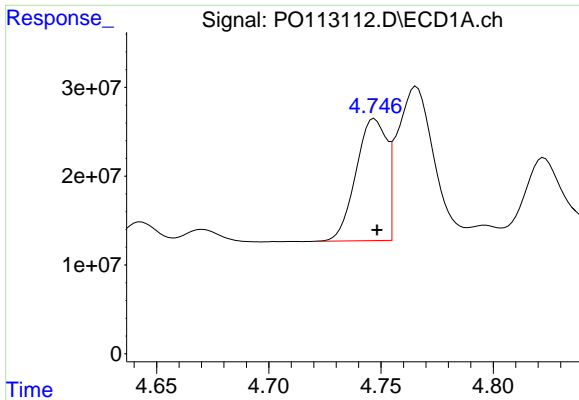
#2 Decachlorobiphenyl

R.T.: 8.680 min
 Delta R.T.: -0.002 min
 Response: 372929158
 Conc: 53.80 ng/ml



#2 Decachlorobiphenyl

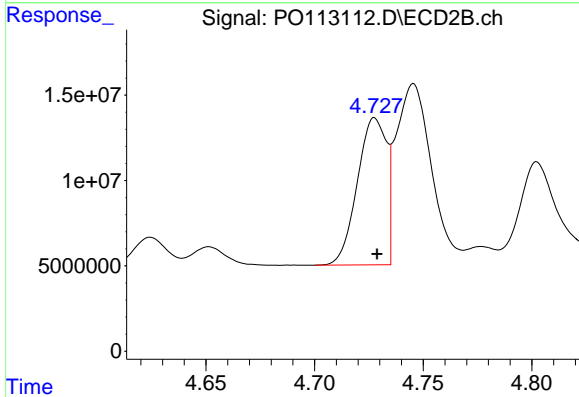
R.T.: 8.626 min
 Delta R.T.: -0.003 min
 Response: 105025072
 Conc: 55.43 ng/ml



#3 AR-1016-1

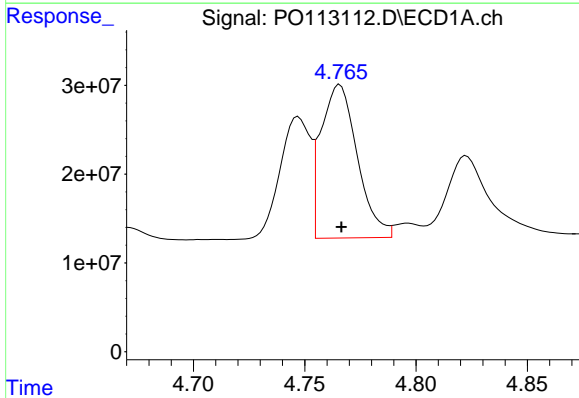
R.T.: 4.747 min
 Delta R.T.: -0.001 min
 Response: 130142971
 Conc: 487.45 ng/ml

Instrument :
 ECD_O
 ClientSampleId :
 AR1242CCC500



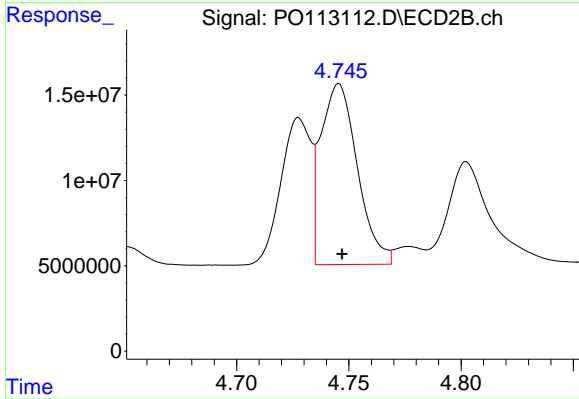
#3 AR-1016-1

R.T.: 4.728 min
 Delta R.T.: -0.001 min
 Response: 80140418
 Conc: 469.83 ng/ml



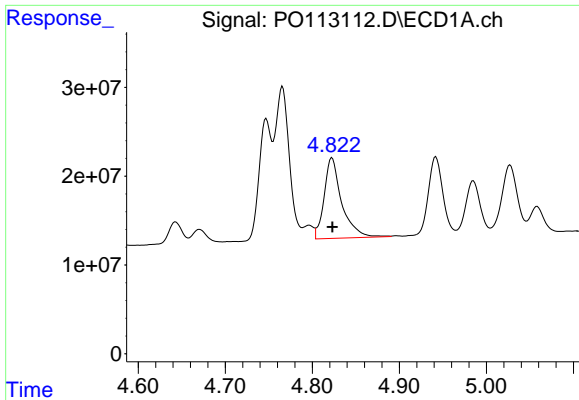
#4 AR-1016-2

R.T.: 4.766 min
 Delta R.T.: 0.000 min
 Response: 196351663
 Conc: 489.13 ng/ml



#4 AR-1016-2

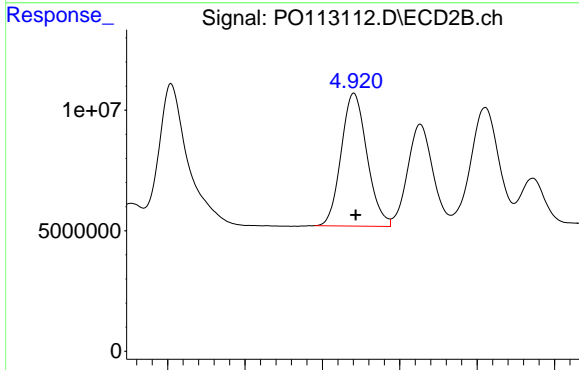
R.T.: 4.746 min
 Delta R.T.: -0.001 min
 Response: 120226205
 Conc: 466.62 ng/ml



#5 AR-1016-3

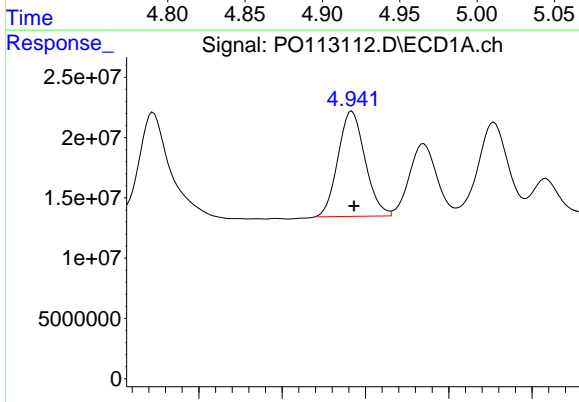
R.T.: 4.823 min
 Delta R.T.: 0.000 min
 Response: 127109673
 Conc: 498.43 ng/ml

Instrument :
 ECD_O
 ClientSampleId :
 AR1242CCC500



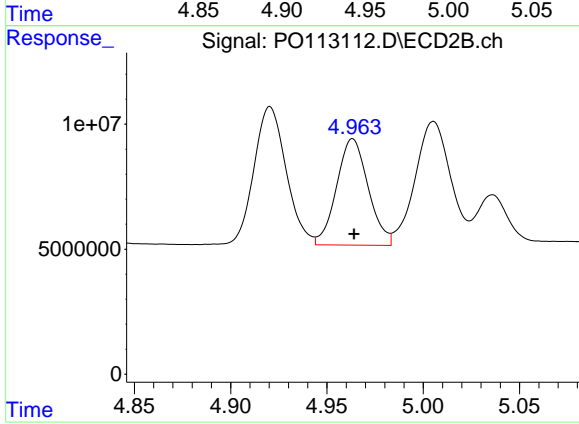
#5 AR-1016-3

R.T.: 4.920 min
 Delta R.T.: -0.001 min
 Response: 63893550
 Conc: 457.64 ng/ml



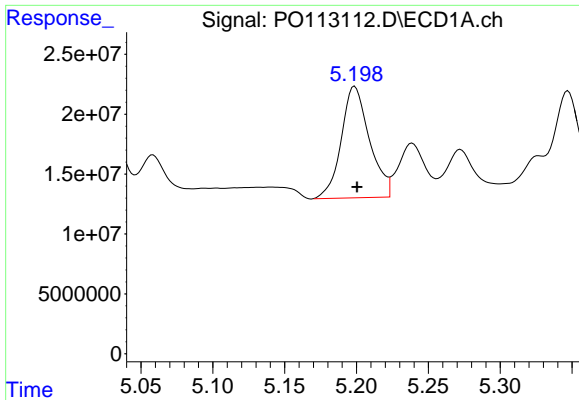
#6 AR-1016-4

R.T.: 4.942 min
 Delta R.T.: -0.001 min
 Response: 98563294
 Conc: 451.98 ng/ml



#6 AR-1016-4

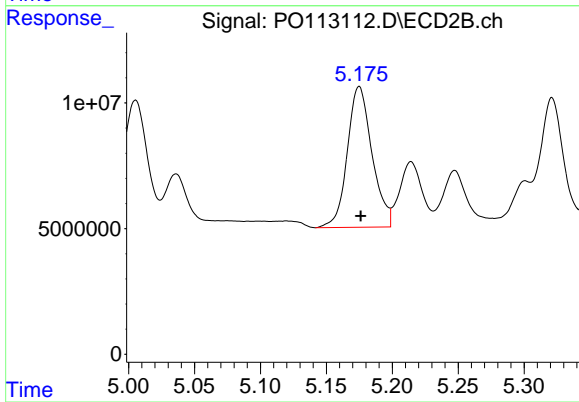
R.T.: 4.963 min
 Delta R.T.: 0.000 min
 Response: 48694154
 Conc: 417.26 ng/ml



#7 AR-1016-5

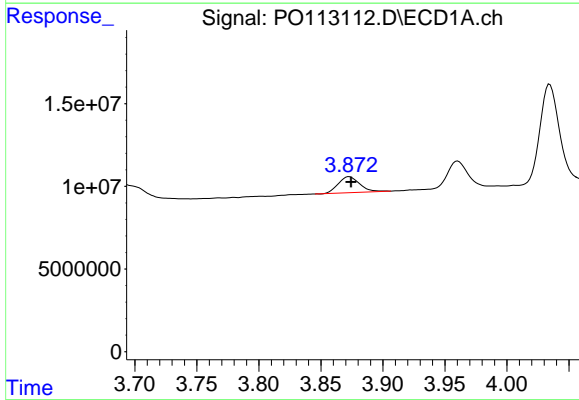
R.T.: 5.199 min
Delta R.T.: -0.002 min
Response: 127210607
Conc: 573.98 ng/ml

Instrument :
ECD_O
ClientSampleId :
AR1242CCC500



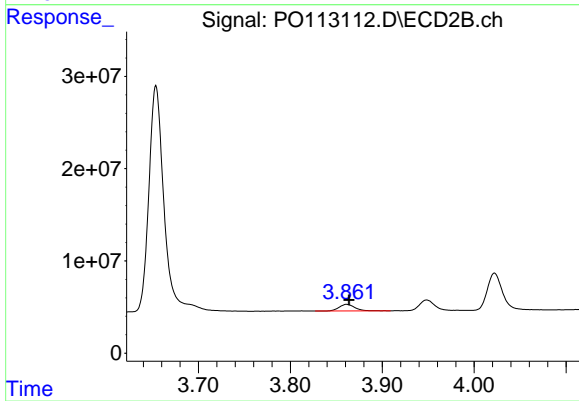
#7 AR-1016-5

R.T.: 5.175 min
Delta R.T.: -0.001 min
Response: 73178002
Conc: 513.42 ng/ml



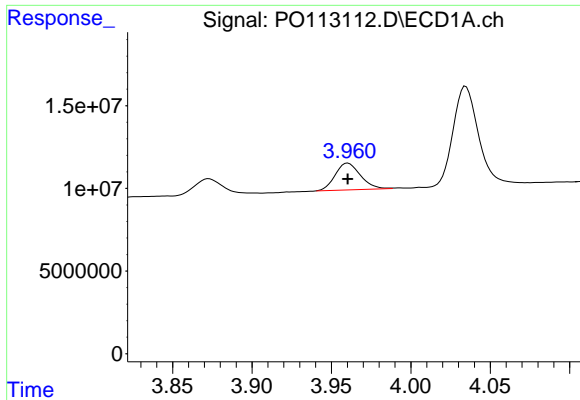
#8 AR-1221-1

R.T.: 3.873 min
Delta R.T.: -0.001 min
Response: 11537022
Conc: 123.29 ng/ml



#8 AR-1221-1

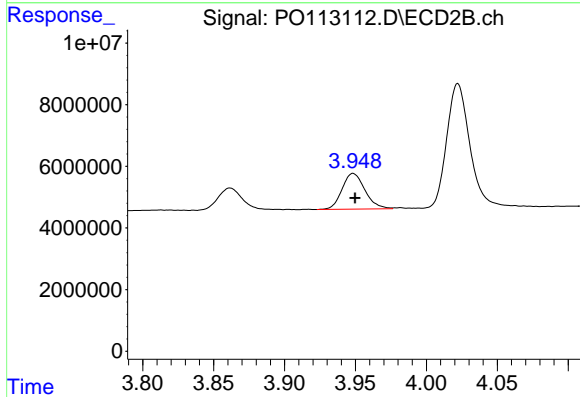
R.T.: 3.862 min
Delta R.T.: -0.002 min
Response: 8501912
Conc: 134.69 ng/ml



#9 AR-1221-2

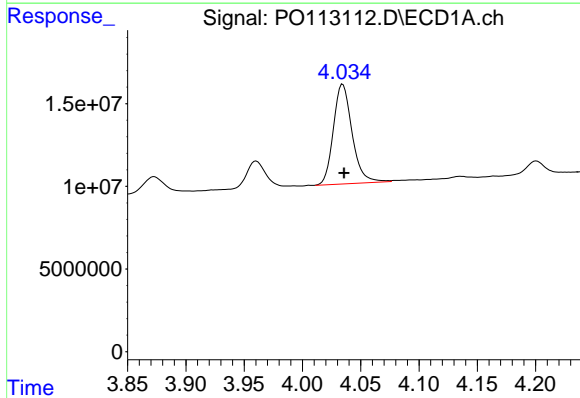
R.T.: 3.960 min
 Delta R.T.: 0.000 min
 Response: 17969198
 Conc: 266.01 ng/ml

Instrument :
 ECD_O
 ClientSampleId :
 AR1242CCC500



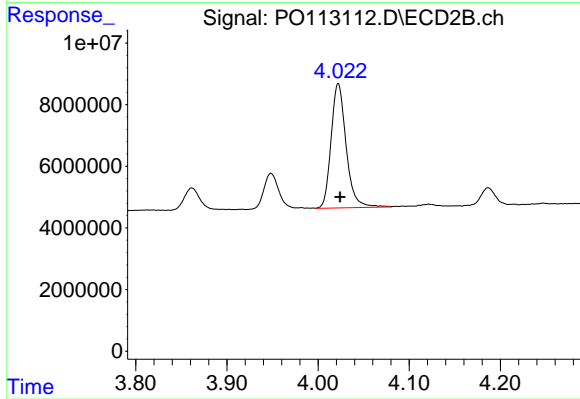
#9 AR-1221-2

R.T.: 3.948 min
 Delta R.T.: -0.001 min
 Response: 12980960
 Conc: 278.12 ng/ml



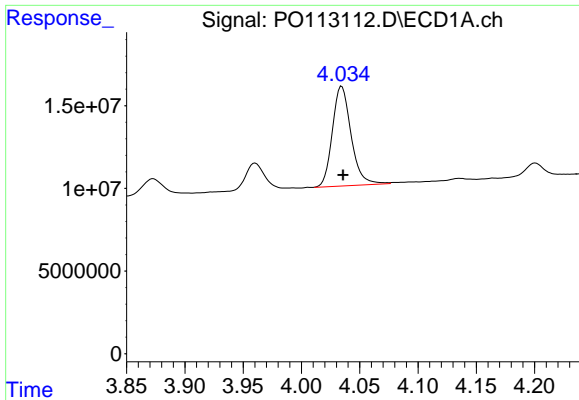
#10 AR-1221-3

R.T.: 4.035 min
 Delta R.T.: -0.001 min
 Response: 67495093
 Conc: 304.92 ng/ml



#10 AR-1221-3

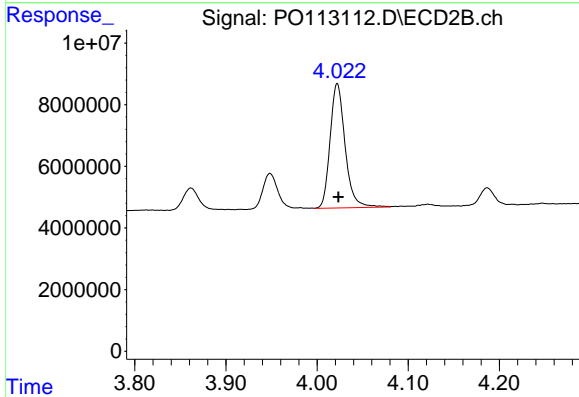
R.T.: 4.022 min
 Delta R.T.: -0.002 min
 Response: 46201332
 Conc: 311.17 ng/ml



#11 AR-1232-1

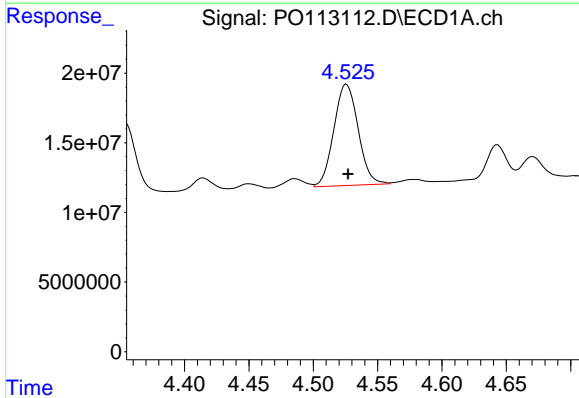
R.T.: 4.035 min
 Delta R.T.: -0.001 min
 Response: 67495093
 Conc: 387.89 ng/ml

Instrument :
 ECD_O
 ClientSampleId :
 AR1242CCC500



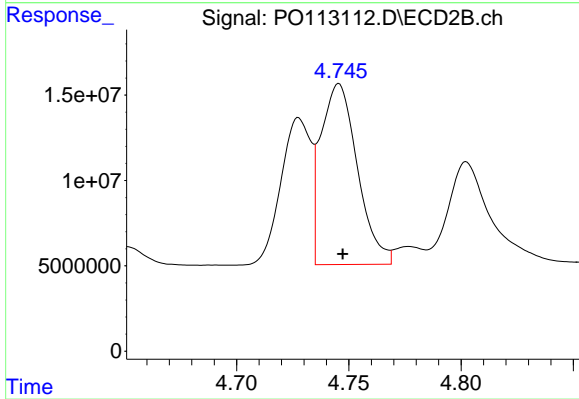
#11 AR-1232-1

R.T.: 4.022 min
 Delta R.T.: -0.001 min
 Response: 46201332
 Conc: 393.53 ng/ml



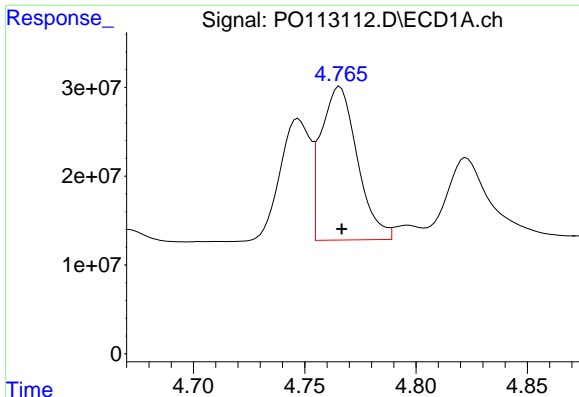
#12 AR-1232-2

R.T.: 4.526 min
 Delta R.T.: -0.001 min
 Response: 95702086
 Conc: 958.43 ng/ml



#12 AR-1232-2

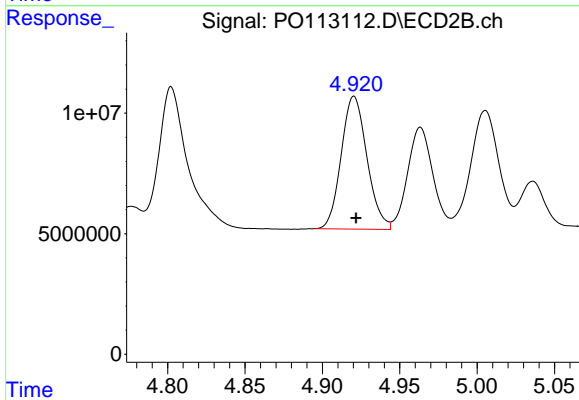
R.T.: 4.746 min
 Delta R.T.: -0.002 min
 Response: 120226205
 Conc: 981.08 ng/ml



#13 AR-1232-3

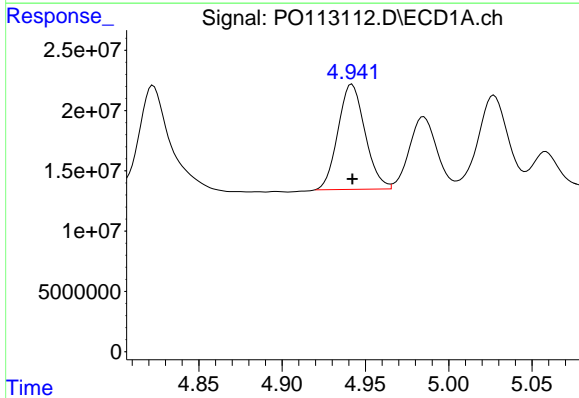
R.T.: 4.766 min
 Delta R.T.: 0.000 min
 Response: 196351663
 Conc: 1036.29 ng/ml

Instrument :
 ECD_O
 ClientSampleId :
 AR1242CCC500



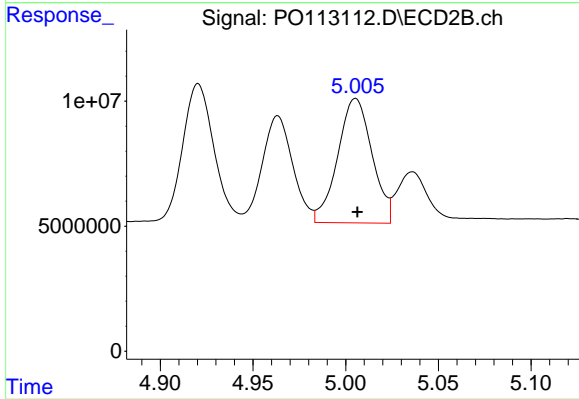
#13 AR-1232-3

R.T.: 4.920 min
 Delta R.T.: -0.001 min
 Response: 63893550
 Conc: 1008.65 ng/ml



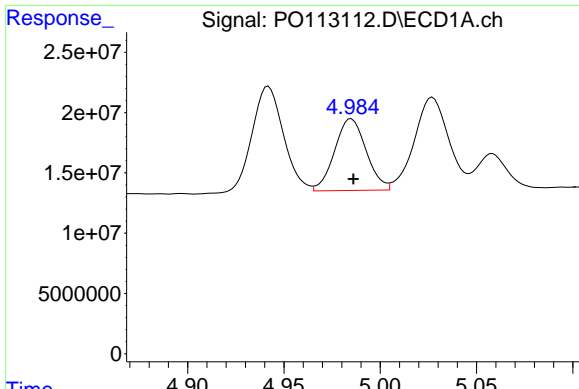
#14 AR-1232-4

R.T.: 4.942 min
 Delta R.T.: 0.000 min
 Response: 98563294
 Conc: 1046.66 ng/ml



#14 AR-1232-4

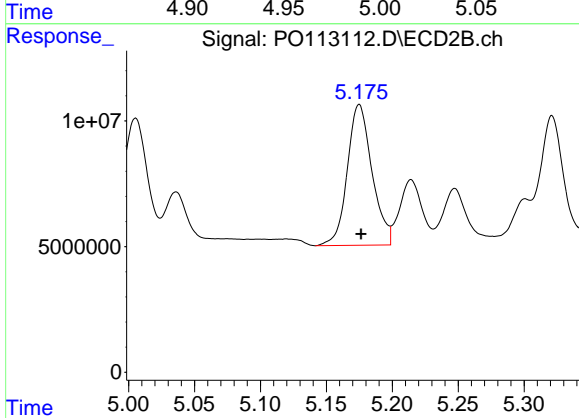
R.T.: 5.005 min
 Delta R.T.: -0.001 min
 Response: 64203107
 Conc: 1141.97 ng/ml



#15 AR-1232-5

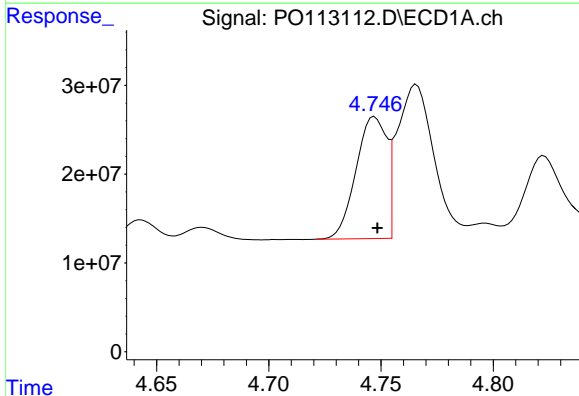
R.T.: 4.985 min
 Delta R.T.: -0.001 min
 Response: 67931071
 Conc: 1096.67 ng/ml

Instrument :
 ECD_O
 ClientSampleId :
 AR1242CCC500



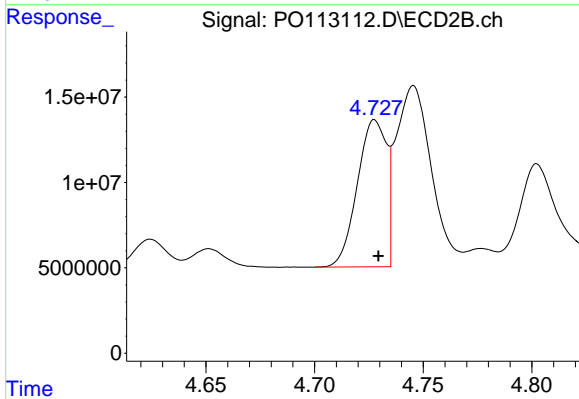
#15 AR-1232-5

R.T.: 5.175 min
 Delta R.T.: -0.001 min
 Response: 73178002
 Conc: 1222.41 ng/ml



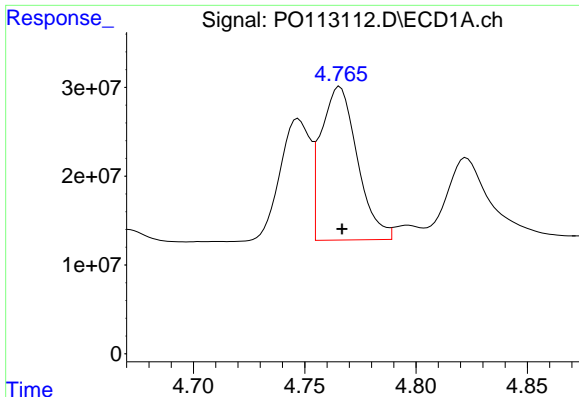
#16 AR-1242-1

R.T.: 4.747 min
 Delta R.T.: -0.001 min
 Response: 130142971
 Conc: 566.01 ng/ml



#16 AR-1242-1

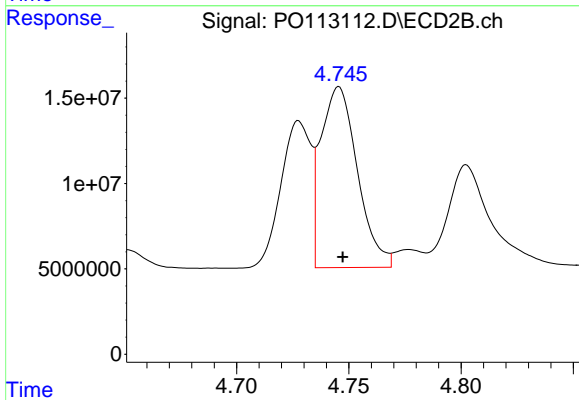
R.T.: 4.728 min
 Delta R.T.: -0.002 min
 Response: 80140418
 Conc: 554.59 ng/ml



#17 AR-1242-2

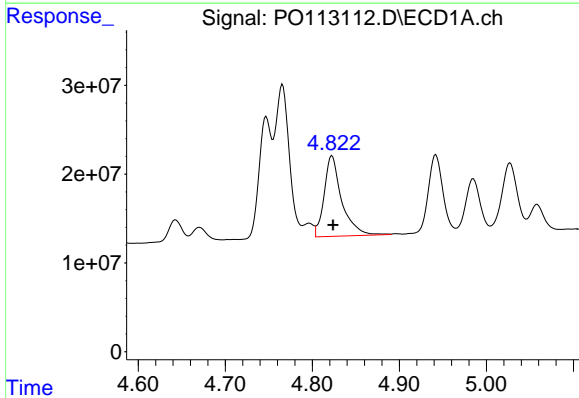
R.T.: 4.766 min
Delta R.T.: -0.001 min
Response: 196351663
Conc: 571.41 ng/ml

Instrument :
ECD_O
ClientSampleId :
AR1242CCC500



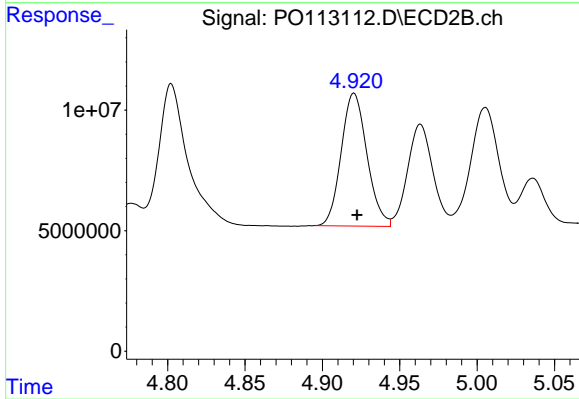
#17 AR-1242-2

R.T.: 4.746 min
Delta R.T.: -0.002 min
Response: 120226205
Conc: 554.26 ng/ml



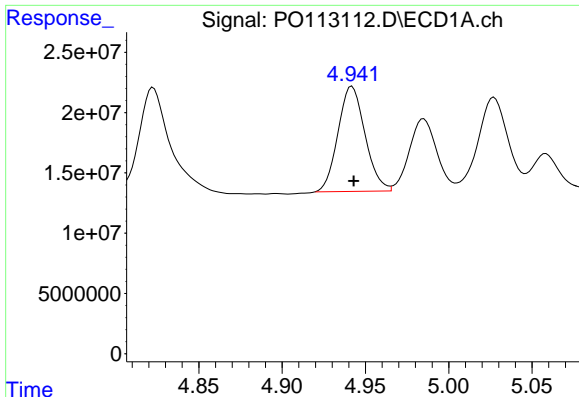
#18 AR-1242-3

R.T.: 4.823 min
Delta R.T.: -0.001 min
Response: 127109673
Conc: 572.86 ng/ml



#18 AR-1242-3

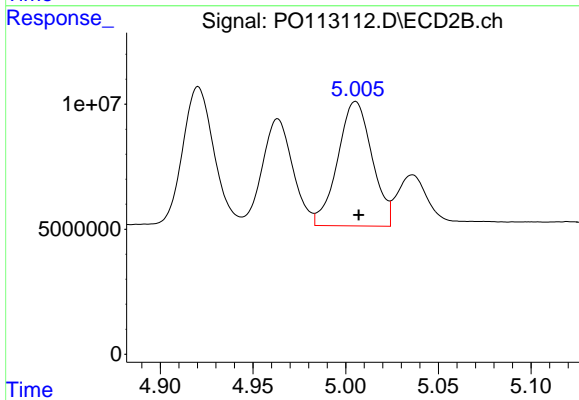
R.T.: 4.920 min
Delta R.T.: -0.002 min
Response: 63893550
Conc: 546.27 ng/ml



#19 AR-1242-4

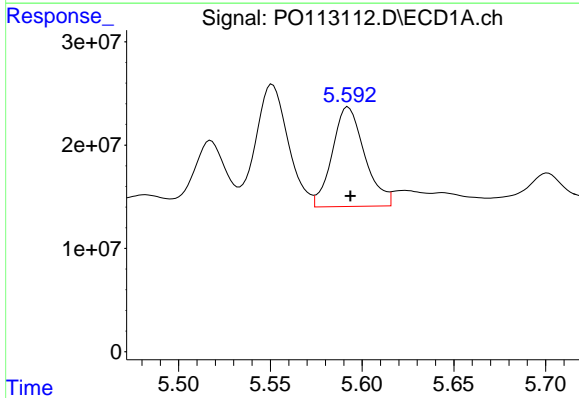
R.T.: 4.942 min
 Delta R.T.: -0.001 min
 Response: 98563294
 Conc: 568.21 ng/ml

Instrument :
 ECD_O
 ClientSampleId :
 AR1242CCC500



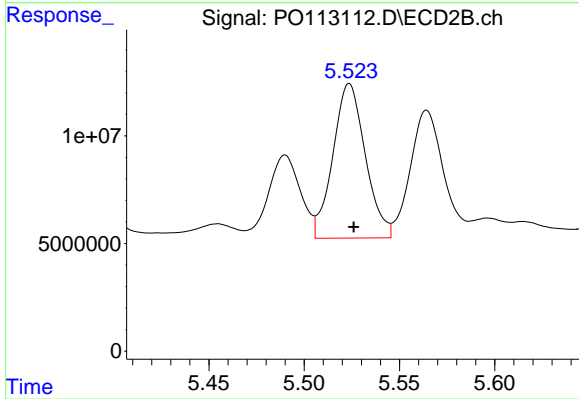
#19 AR-1242-4

R.T.: 5.005 min
 Delta R.T.: -0.002 min
 Response: 64203107
 Conc: 545.77 ng/ml



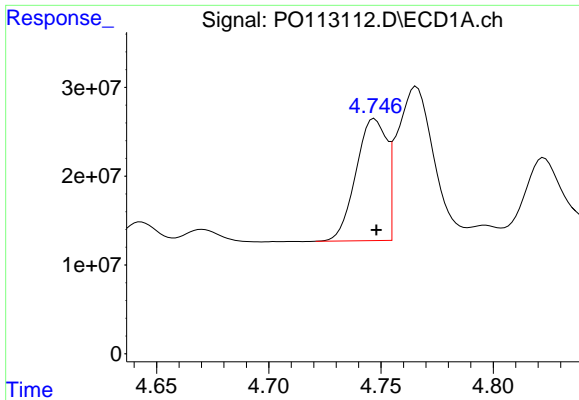
#20 AR-1242-5

R.T.: 5.592 min
 Delta R.T.: -0.001 min
 Response: 118489736
 Conc: 591.97 ng/ml



#20 AR-1242-5

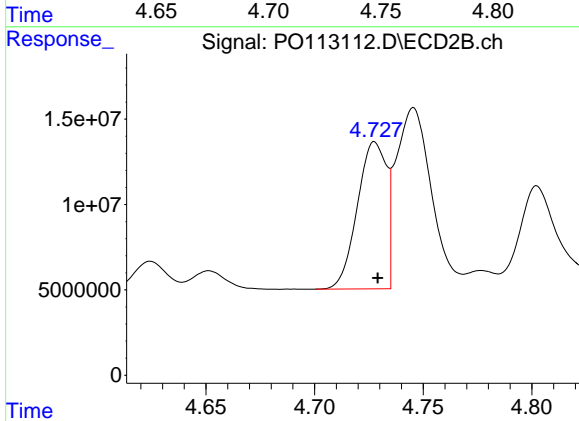
R.T.: 5.524 min
 Delta R.T.: -0.002 min
 Response: 85048655
 Conc: 570.29 ng/ml



#21 AR-1248-1

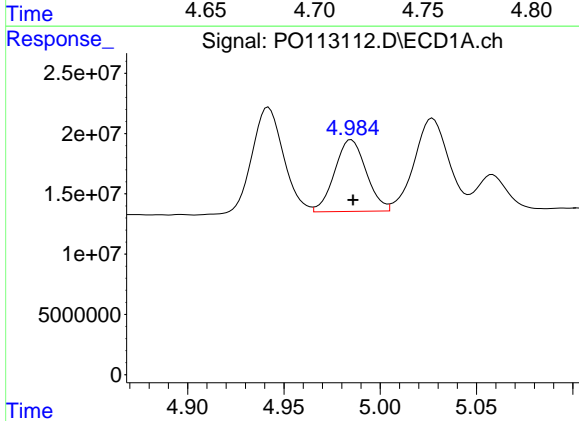
R.T.: 4.747 min
 Delta R.T.: 0.000 min
 Response: 130142971
 Conc: 745.95 ng/ml

Instrument :
 ECD_O
 ClientSampleId :
 AR1242CCC500



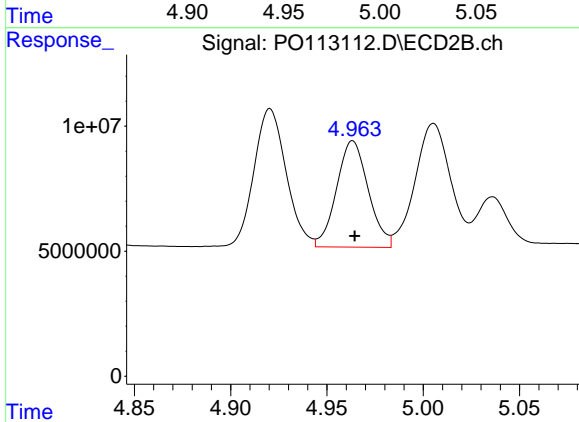
#21 AR-1248-1

R.T.: 4.728 min
 Delta R.T.: -0.001 min
 Response: 80140418
 Conc: 718.67 ng/ml



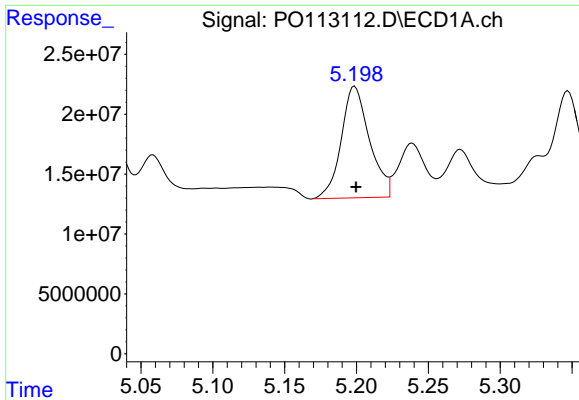
#22 AR-1248-2

R.T.: 4.985 min
 Delta R.T.: 0.000 min
 Response: 67931071
 Conc: 280.86 ng/ml



#22 AR-1248-2

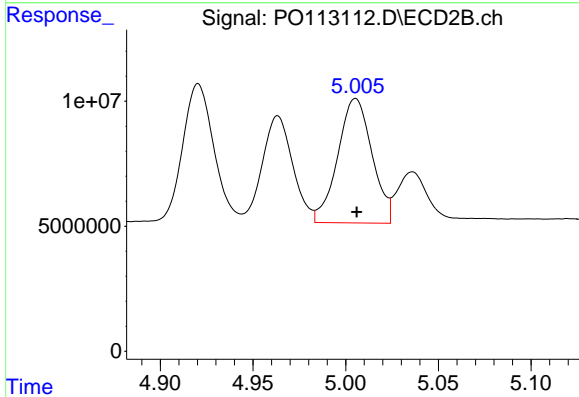
R.T.: 4.963 min
 Delta R.T.: -0.001 min
 Response: 48694154
 Conc: 303.01 ng/ml



#23 AR-1248-3

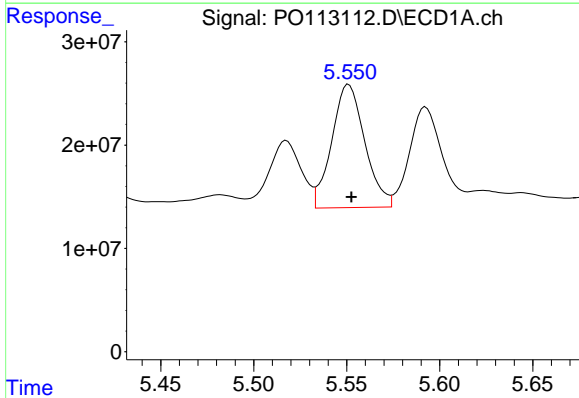
R.T.: 5.199 min
 Delta R.T.: 0.000 min
 Response: 127210607
 Conc: 398.95 ng/ml

Instrument :
 ECD_O
 ClientSampleId :
 AR1242CCC500



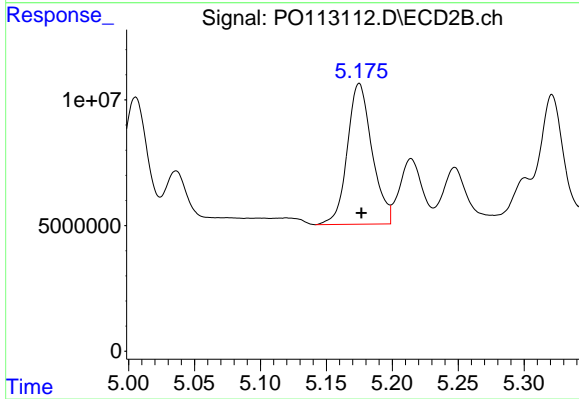
#23 AR-1248-3

R.T.: 5.005 min
 Delta R.T.: 0.000 min
 Response: 64203107
 Conc: 378.42 ng/ml



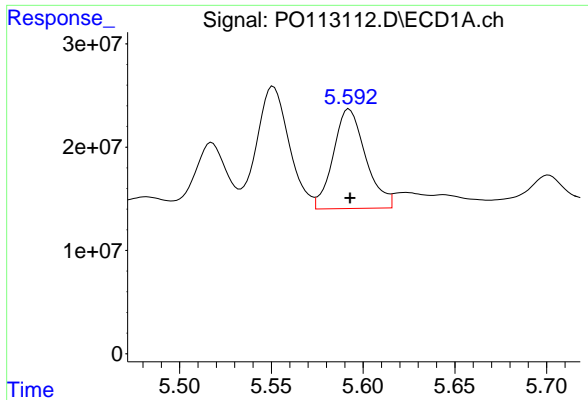
#24 AR-1248-4

R.T.: 5.551 min
 Delta R.T.: -0.001 min
 Response: 147564650
 Conc: 295.36 ng/ml



#24 AR-1248-4

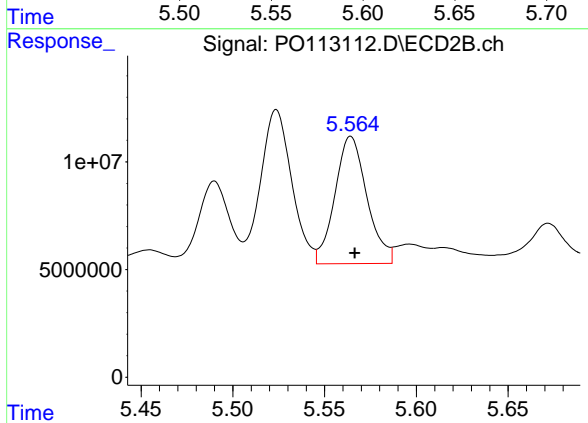
R.T.: 5.175 min
 Delta R.T.: -0.002 min
 Response: 73178002
 Conc: 367.32 ng/ml



#25 AR-1248-5

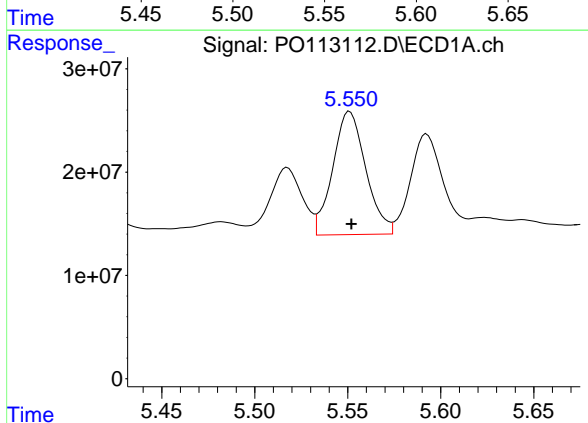
R.T.: 5.592 min
 Delta R.T.: 0.000 min
 Response: 118489736
 Conc: 346.98 ng/ml

Instrument :
 ECD_O
 ClientSampleId :
 AR1242CCC500



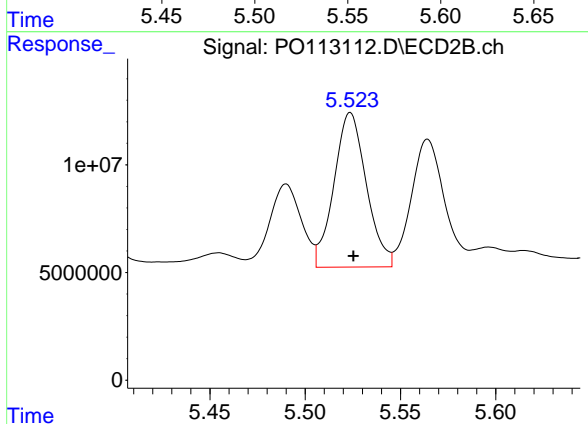
#25 AR-1248-5

R.T.: 5.564 min
 Delta R.T.: -0.002 min
 Response: 72049558
 Conc: 339.38 ng/ml



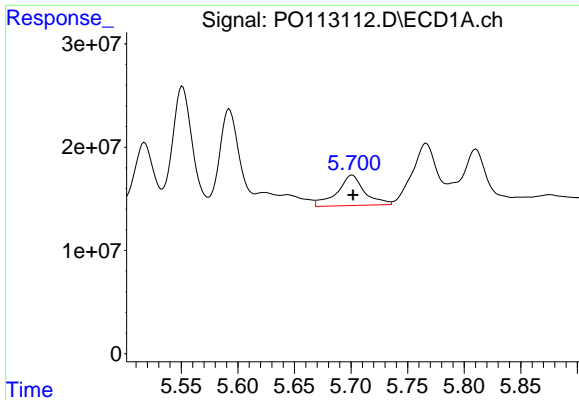
#26 AR-1254-1

R.T.: 5.551 min
 Delta R.T.: 0.000 min
 Response: 147564650
 Conc: 273.28 ng/ml



#26 AR-1254-1

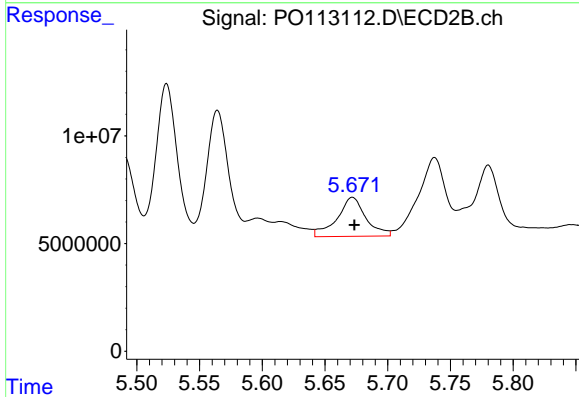
R.T.: 5.524 min
 Delta R.T.: -0.002 min
 Response: 85048655
 Conc: 269.69 ng/ml



#27 AR-1254-2

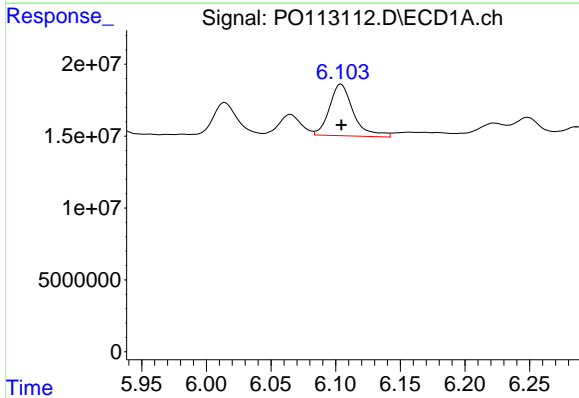
R.T.: 5.701 min
 Delta R.T.: 0.000 min
 Response: 49700192
 Conc: 100.72 ng/ml

Instrument :
 ECD_O
 ClientSampleId :
 AR1242CCC500



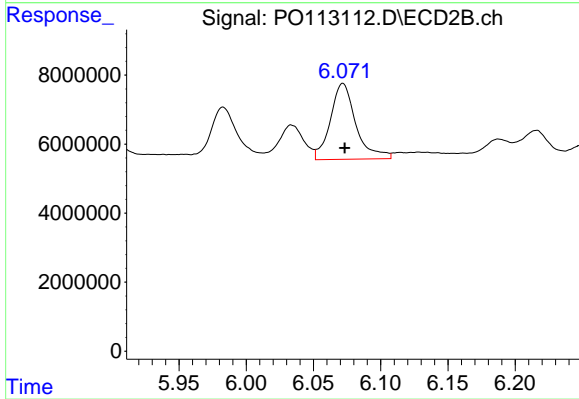
#27 AR-1254-2

R.T.: 5.672 min
 Delta R.T.: -0.001 min
 Response: 29094335
 Conc: 103.78 ng/ml



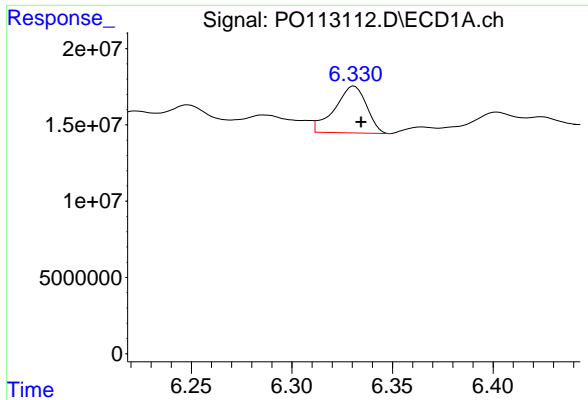
#28 AR-1254-3

R.T.: 6.104 min
 Delta R.T.: 0.000 min
 Response: 46045849
 Conc: 62.32 ng/ml



#28 AR-1254-3

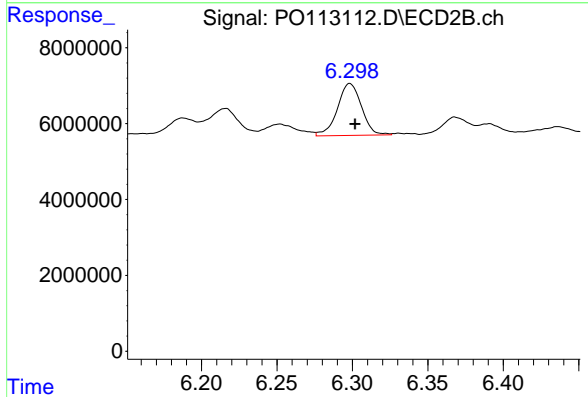
R.T.: 6.072 min
 Delta R.T.: -0.001 min
 Response: 28932889
 Conc: 69.40 ng/ml



#29 AR-1254-4

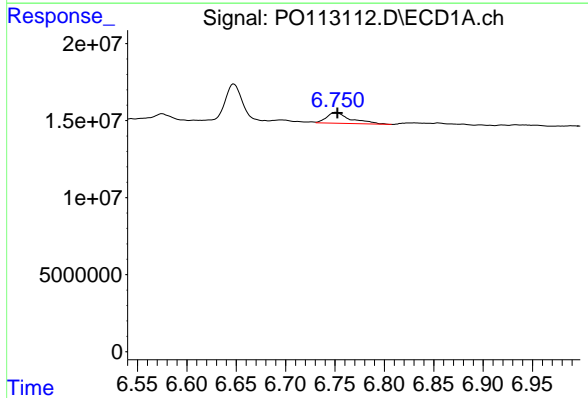
R.T.: 6.331 min
 Delta R.T.: -0.003 min
 Response: 33869150
 Conc: 60.81 ng/ml

Instrument :
 ECD_O
 ClientSampleId :
 AR1242CCC500



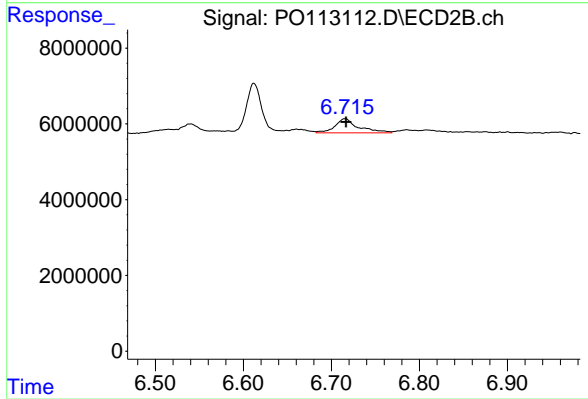
#29 AR-1254-4

R.T.: 6.298 min
 Delta R.T.: -0.003 min
 Response: 15198047
 Conc: 55.30 ng/ml



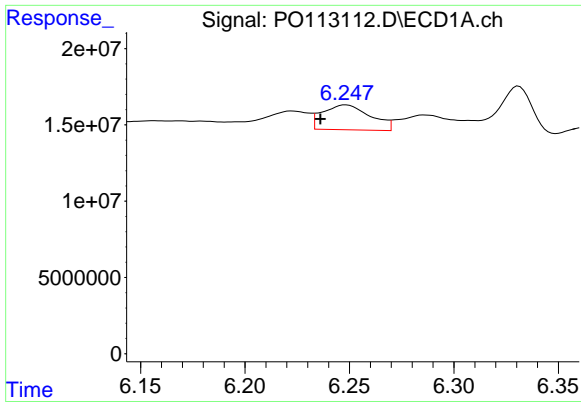
#30 AR-1254-5

R.T.: 6.751 min
 Delta R.T.: -0.002 min
 Response: 11807193
 Conc: 16.84 ng/ml



#30 AR-1254-5

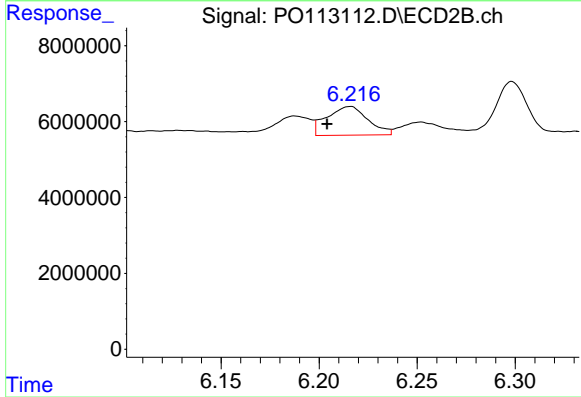
R.T.: 6.716 min
 Delta R.T.: -0.001 min
 Response: 6983133
 Conc: 19.53 ng/ml



#31 AR-1260-1

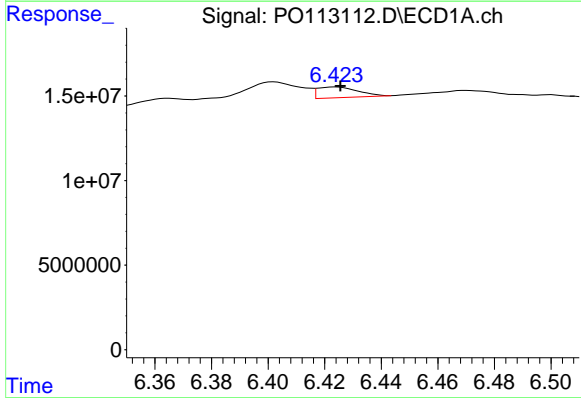
R.T.: 6.248 min
 Delta R.T.: 0.012 min
 Response: 25981105
 Conc: 58.26 ng/ml

Instrument :
 ECD_O
 ClientSampleId :
 AR1242CCC500



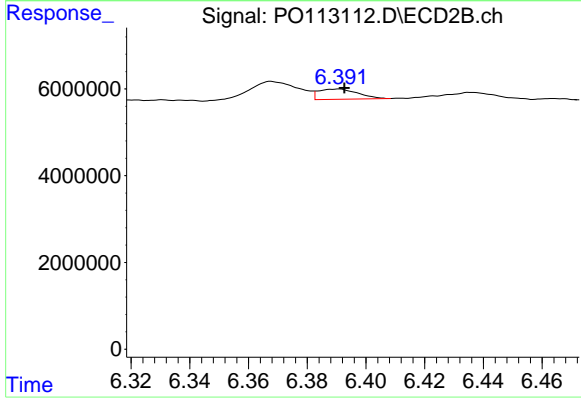
#31 AR-1260-1

R.T.: 6.216 min
 Delta R.T.: 0.012 min
 Response: 11047440
 Conc: 43.31 ng/ml



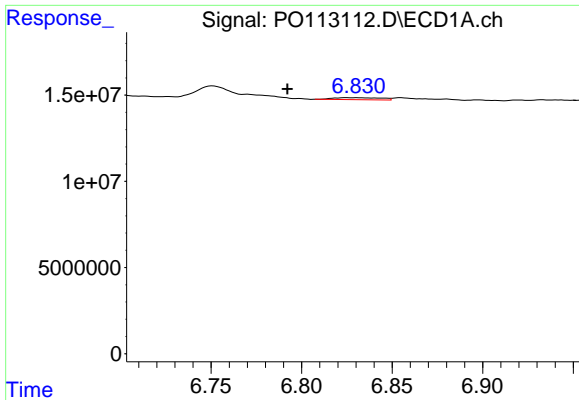
#32 AR-1260-2

R.T.: 6.424 min
 Delta R.T.: -0.002 min
 Response: 6213503
 Conc: 9.05 ng/ml



#32 AR-1260-2

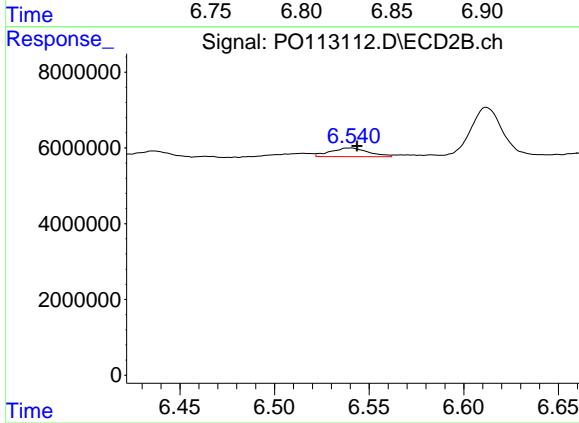
R.T.: 6.390 min
 Delta R.T.: -0.002 min
 Response: 2196036
 Conc: 6.35 ng/ml



#33 AR-1260-3

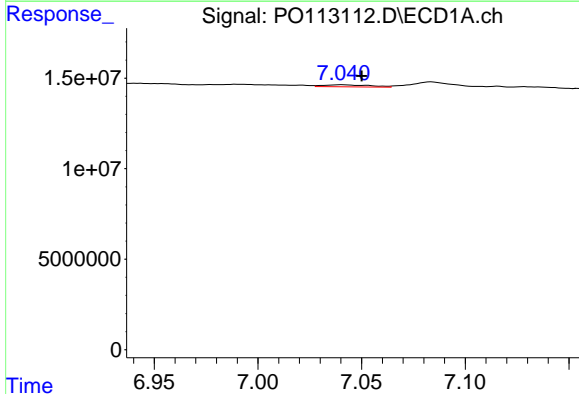
R.T.: 6.831 min
 Delta R.T.: 0.039 min
 Response: 2213308
 Conc: 3.58 ng/ml

Instrument :
 ECD_O
 ClientSampleId :
 AR1242CCC500



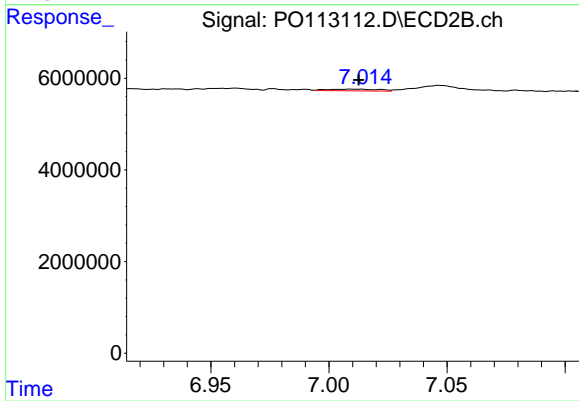
#33 AR-1260-3

R.T.: 6.540 min
 Delta R.T.: -0.004 min
 Response: 3185226
 Conc: 10.71 ng/ml



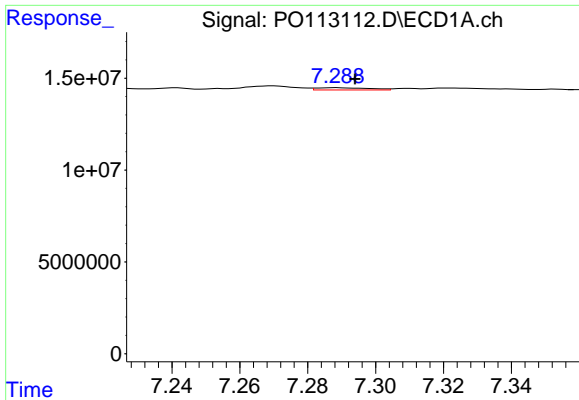
#34 AR-1260-4

R.T.: 7.040 min
 Delta R.T.: -0.010 min
 Response: 1805435
 Conc: 4.03 ng/ml



#34 AR-1260-4

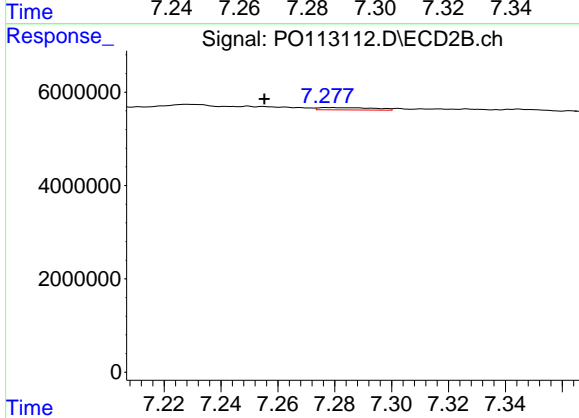
R.T.: 7.009 min
 Delta R.T.: -0.003 min
 Response: 537071
 Conc: 2.59 ng/ml



#35 AR-1260-5

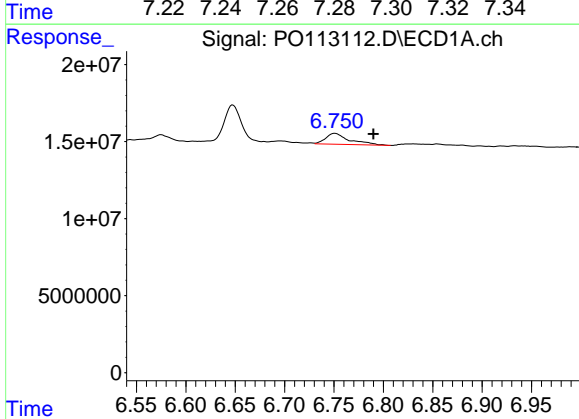
R.T.: 7.289 min
 Delta R.T.: -0.005 min
 Response: 1322463
 Conc: 1.09 ng/ml

Instrument :
 ECD_O
 ClientSampleId :
 AR1242CCC500



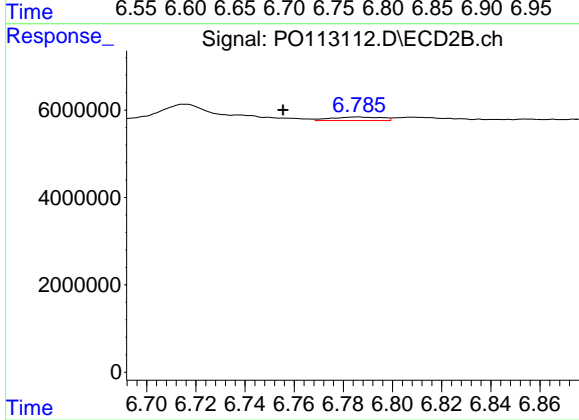
#35 AR-1260-5

R.T.: 7.278 min
 Delta R.T.: 0.023 min
 Response: 695339
 Conc: 1.48 ng/ml



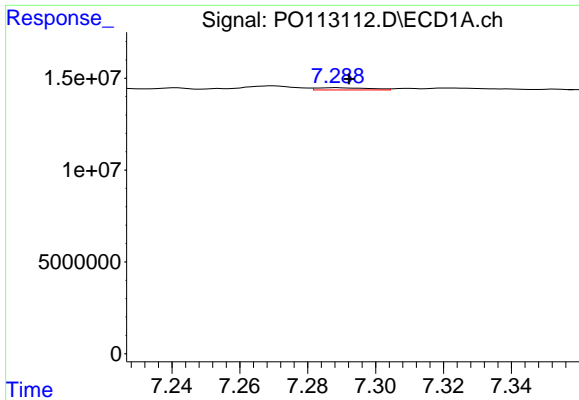
#36 AR-1262-1

R.T.: 6.751 min
 Delta R.T.: -0.039 min
 Response: 11807193
 Conc: 12.89 ng/ml



#36 AR-1262-1

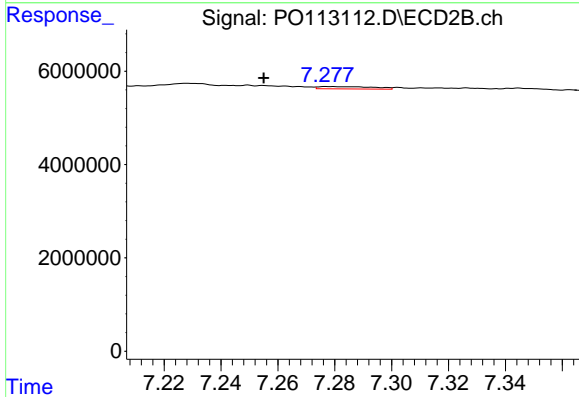
R.T.: 6.786 min
 Delta R.T.: 0.030 min
 Response: 1150723
 Conc: 2.78 ng/ml



#37 AR-1262-2

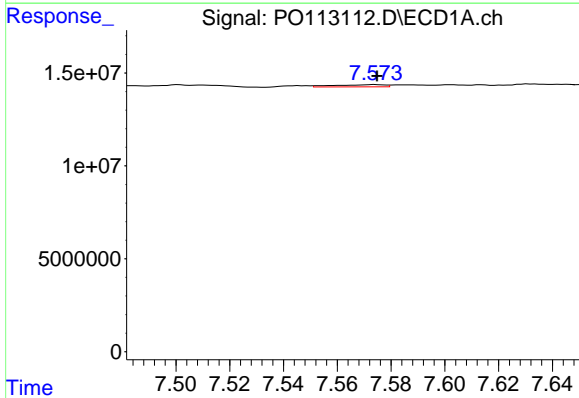
R.T.: 7.289 min
 Delta R.T.: -0.004 min
 Response: 1322463
 Conc: 0.87 ng/ml

Instrument :
 ECD_O
 ClientSampleId :
 AR1242CCC500



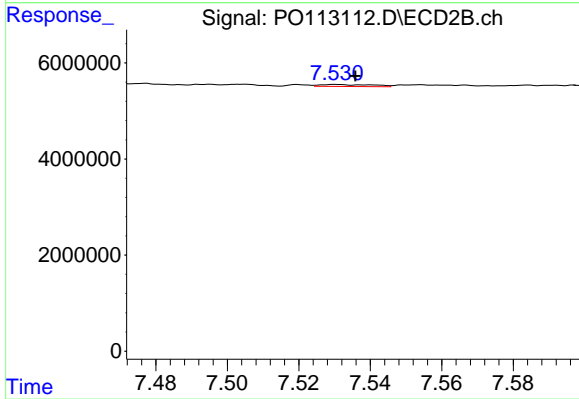
#37 AR-1262-2

R.T.: 7.278 min
 Delta R.T.: 0.023 min
 Response: 695339
 Conc: 1.34 ng/ml



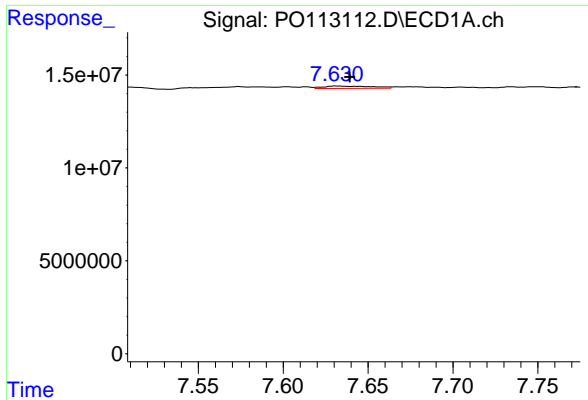
#38 AR-1262-3

R.T.: 7.574 min
 Delta R.T.: 0.000 min
 Response: 1511919
 Conc: 2.73 ng/ml



#38 AR-1262-3

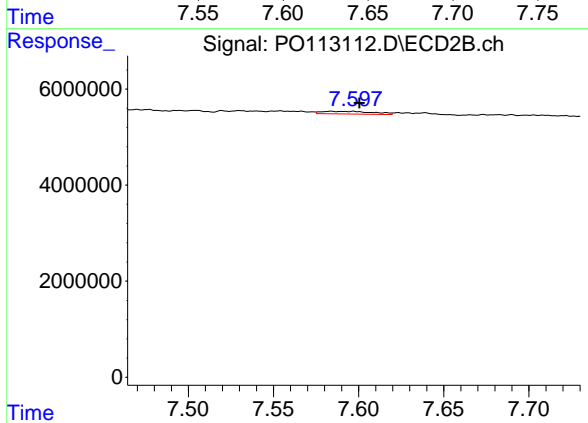
R.T.: 7.530 min
 Delta R.T.: -0.005 min
 Response: 426091
 Conc: 2.37 ng/ml



#39 AR-1262-4

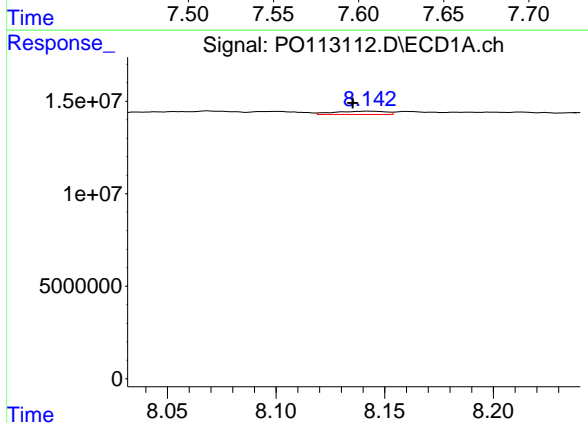
R.T.: 7.631 min
 Delta R.T.: -0.008 min
 Response: 2482271
 Conc: 2.54 ng/ml

Instrument :
 ECD_O
 ClientSampleId :
 AR1242CCC500



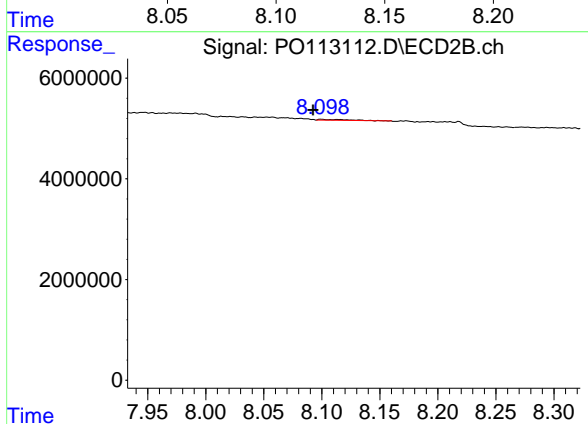
#39 AR-1262-4

R.T.: 7.584 min
 Delta R.T.: -0.016 min
 Response: 1131175
 Conc: 3.90 ng/ml



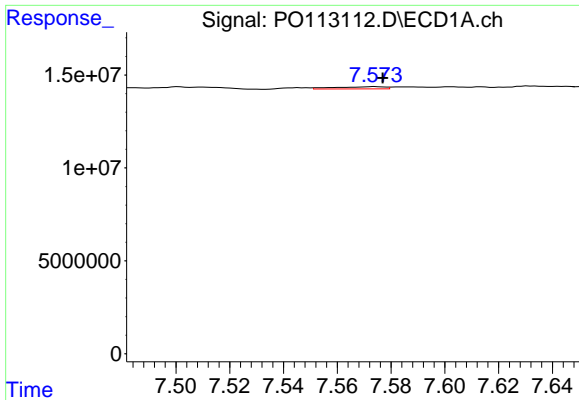
#40 AR-1262-5

R.T.: 8.143 min
 Delta R.T.: 0.008 min
 Response: 2859708
 Conc: 6.86 ng/ml



#40 AR-1262-5

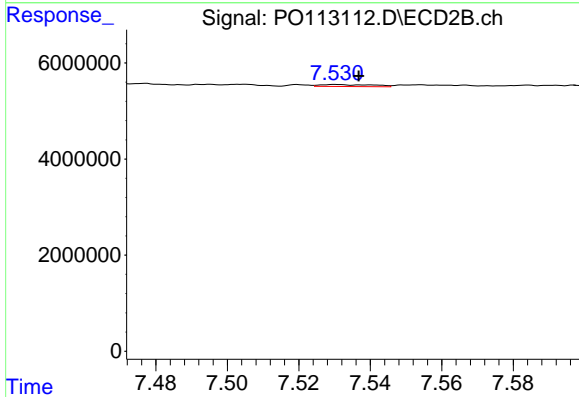
R.T.: 8.100 min
 Delta R.T.: 0.007 min
 Response: 272676
 Conc: 2.52 ng/ml



#41 AR-1268-1

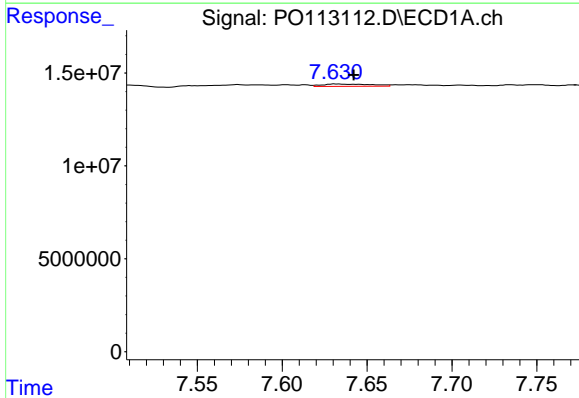
R.T.: 7.574 min
 Delta R.T.: -0.003 min
 Response: 1511919
 Conc: 0.88 ng/ml

Instrument :
 ECD_O
 ClientSampleId :
 AR1242CCC500



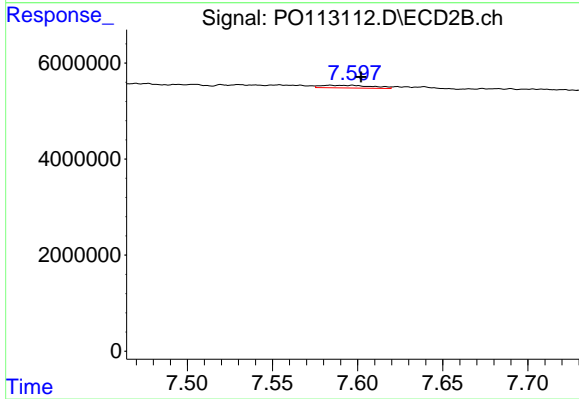
#41 AR-1268-1

R.T.: 7.530 min
 Delta R.T.: -0.006 min
 Response: 426091
 Conc: 0.84 ng/ml



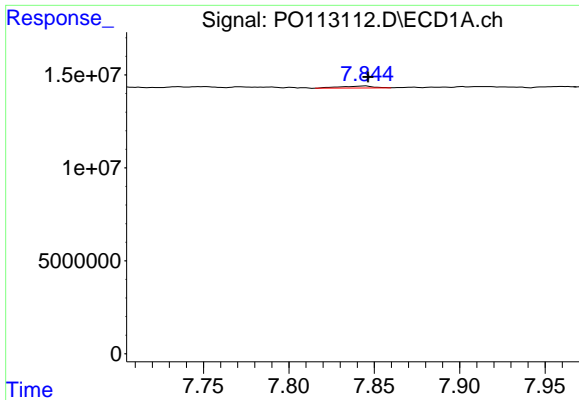
#42 AR-1268-2

R.T.: 7.631 min
 Delta R.T.: -0.011 min
 Response: 2482271
 Conc: 1.71 ng/ml



#42 AR-1268-2

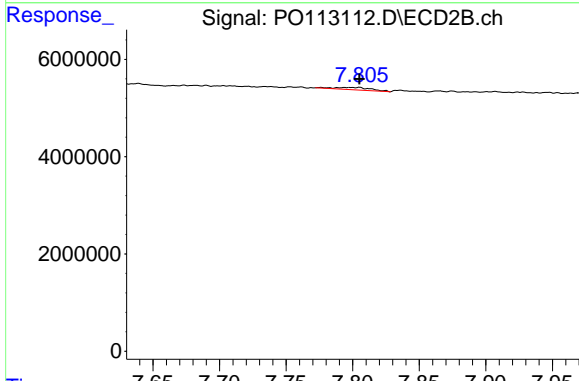
R.T.: 7.584 min
 Delta R.T.: -0.018 min
 Response: 1131175
 Conc: 2.72 ng/ml



#43 AR-1268-3

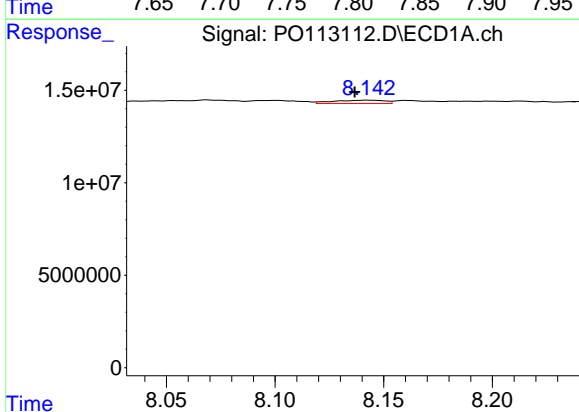
R.T.: 7.845 min
 Delta R.T.: -0.002 min
 Response: 1463722
 Conc: 1.21 ng/ml

Instrument :
 ECD_O
 ClientSampleId :
 AR1242CCC500



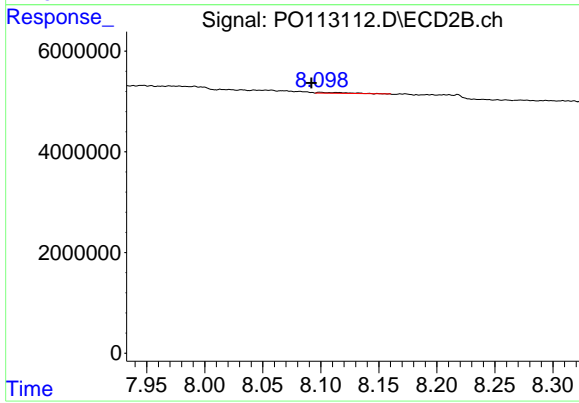
#43 AR-1268-3

R.T.: 7.805 min
 Delta R.T.: 0.000 min
 Response: 918620
 Conc: 2.81 ng/ml



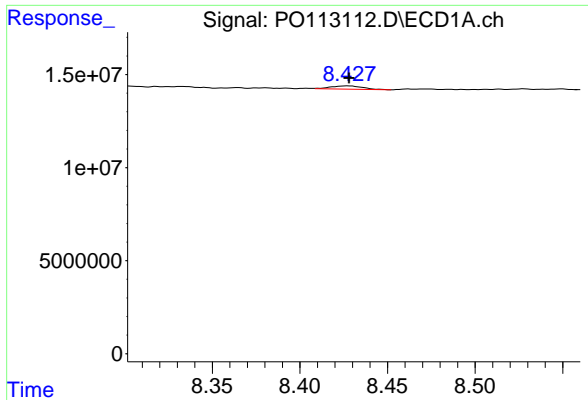
#44 AR-1268-4

R.T.: 8.143 min
 Delta R.T.: 0.006 min
 Response: 2859708
 Conc: 6.21 ng/ml



#44 AR-1268-4

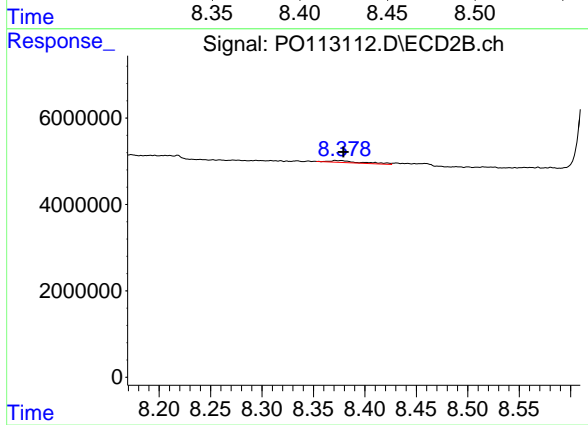
R.T.: 8.100 min
 Delta R.T.: 0.008 min
 Response: 272676
 Conc: 2.26 ng/ml



#45 AR-1268-5

R.T.: 8.428 min
 Delta R.T.: 0.000 min
 Response: 2252477
 Conc: 0.71 ng/ml

Instrument :
 ECD_O
 ClientSampleId :
 AR1242CCC500



#45 AR-1268-5

R.T.: 8.371 min
 Delta R.T.: -0.008 min
 Response: 994430
 Conc: 1.27 ng/ml