

Data Path : Z:\pestpcbsrv\HPCHEM1\ECD_O\Data\P0082025\
 Data File : PO113113.D
 Signal(s) : Signal #1: ECD1A.ch Signal #2: ECD2B.ch
 Acq On : 21 Aug 2025 01:22
 Operator : YP/AJ
 Sample : AR1248CCC500
 Misc :
 ALS Vial : 5 Sample Multiplier: 1

Instrument :
 ECD_O
 ClientSampleId :
 AR1248CCC500

Integration File signal 1: autoint1.e
 Integration File signal 2: autoint2.e
 Quant Time: Aug 21 01:51:52 2025
 Quant Method : Z:\pestpcbsrv\HPCHEM1\ECD_O\methods\P0081825.M
 Quant Title : GC EXTRACTABLES
 QLast Update : Tue Aug 19 06:08:32 2025
 Response via : Initial Calibration
 Integrator: ChemStation

Volume Inj. : 2 µl
 Signal #1 Phase : ZB-MR1 Signal #2 Phase: ZB-MR2
 Signal #1 Info : 30Mx0.32mmx 0.50µ Signal #2 Info : 30M x 0.32mm x 0.25µm

| Compound | RT#1 | RT#2 | Resp#1 | Resp#2 | ng/ml | ng/ml |
|-----------------------------|-------|-------|----------|----------|----------|------------|
| System Monitoring Compounds | | | | | | |
| 1) SA Tetrachlo... | 3.663 | 3.655 | 441.8E6 | 260.7E6 | 53.968 | 51.509 |
| 2) SA Decachlor... | 8.681 | 8.625 | 358.6E6 | 99826300 | 51.730 | 52.683 |
| Target Compounds | | | | | | |
| 3) L1 AR-1016-1 | 4.748 | 4.728 | 93004353 | 58045901 | 348.351 | 340.298 |
| 4) L1 AR-1016-2 | 4.766 | 4.746 | 102.6E6 | 62509993 | 255.566 | 242.610 |
| 5) L1 AR-1016-3 | 4.824 | 4.923 | 58387860 | 40596293 | 228.952 | 290.774 # |
| 6) L1 AR-1016-4 | 4.944 | 4.964 | 62012862 | 80928613 | 284.374 | 693.482 # |
| 7) L1 AR-1016-5 | 5.199 | 5.175 | 180.6E6 | 105.5E6 | 814.842 | 740.394 |
| 8) L2 AR-1221-1 | 3.880 | 3.862 | 473430 | 380458 | 5.059 | 6.027 |
| 9) L2 AR-1221-2 | 3.964 | 3.952 | 5949357 | 4344748 | 88.073 | 93.089 |
| 10) L2 AR-1221-3 | 4.036 | 4.023 | 5828636 | 4780282 | 26.332 | 32.196 |
| 11) L3 AR-1232-1 | 4.036 | 4.023 | 5828636 | 4780282 | 33.497 | 40.717 |
| 12) L3 AR-1232-2 | 4.526 | 4.746 | 39512074 | 62509993 | 395.705 | 510.098 # |
| 13) L3 AR-1232-3 | 4.766 | 4.923 | 102.6E6 | 40596293 | 541.453 | 640.870 |
| 14) L3 AR-1232-4 | 4.944 | 5.005 | 62012862 | 87239865 | 658.524 | 1551.726 # |
| 15) L3 AR-1232-5 | 4.985 | 5.175 | 123.0E6 | 105.5E6 | 1985.618 | 1762.815 |
| 16) L4 AR-1242-1 | 4.748 | 4.728 | 93004353 | 58045901 | 404.487 | 401.690 |
| 17) L4 AR-1242-2 | 4.766 | 4.746 | 102.6E6 | 62509993 | 298.558 | 288.182 |
| 18) L4 AR-1242-3 | 4.824 | 4.923 | 58387860 | 40596293 | 263.146 | 347.083 # |
| 19) L4 AR-1242-4 | 4.944 | 5.005 | 62012862 | 87239865 | 357.500 | 741.600 # |
| 20) L4 AR-1242-5 | 5.593 | 5.524 | 175.8E6 | 148.5E6 | 878.243 | 995.552 |
| 21) L5 AR-1248-1 | 4.748 | 4.728 | 93004353 | 58045901 | 533.079 | 520.536 |
| 22) L5 AR-1248-2 | 4.985 | 4.964 | 123.0E6 | 80928613 | 508.527 | 503.604 |
| 23) L5 AR-1248-3 | 5.199 | 5.005 | 180.6E6 | 87239865 | 566.360 | 514.202 |
| 24) L5 AR-1248-4 | 5.552 | 5.175 | 261.7E6 | 105.5E6 | 523.724 | 529.707 |
| 25) L5 AR-1248-5 | 5.593 | 5.565 | 175.8E6 | 105.0E6 | 514.775 | 494.617 |
| 26) L6 AR-1254-1 | 5.552 | 5.524 | 261.7E6 | 148.5E6 | 484.566 | 470.803 |
| 27) L6 AR-1254-2 | 5.702 | 5.673 | 81860842 | 50182446 | 165.894 | 179.006 |
| 28) L6 AR-1254-3 | 6.104 | 6.072 | 108.3E6 | 65581996 | 146.567 | 157.300 |
| 29) L6 AR-1254-4 | 6.332 | 6.299 | 71575074 | 37560336 | 128.501 | 136.665 |
| 30) L6 AR-1254-5 | 6.752 | 6.716 | 29355443 | 12991724 | 41.878 | 36.341 |
| 31) L7 AR-1260-1 | 6.249 | 6.216 | 61711720 | 32466804 | 138.373 | 127.286 |
| 32) L7 AR-1260-2 | 6.424 | 6.391 | 14774484 | 5426186 | 21.515 | 15.696 # |
| 33) L7 AR-1260-3 | 6.824 | 6.540 | 2273283 | 7442479 | 3.682 | 25.022 # |
| 34) L7 AR-1260-4 | 7.048 | 7.009 | 4128901 | 764195 | 9.219 | 3.687 # |
| 35) L7 AR-1260-5 | 7.294 | 7.254 | 6284952 | 2094260 | 5.191 | 4.471 |
| 36) L8 AR-1262-1 | 6.824 | 6.785 | 2273283 | 1547148 | 2.482 | 3.732 # |
| 37) L8 AR-1262-2 | 7.294 | 7.254 | 6284952 | 2094260 | 4.156 | 4.046 |
| 38) L8 AR-1262-3 | 7.576 | 7.532 | 3885881 | 1369500 | 7.013 | 7.626 |
| 39) L8 AR-1262-4 | 7.638 | 7.594 | 5482252 | 1850602 | 5.606 | 6.384 |
| 40) L8 AR-1262-5 | 8.142 | 8.091 | 3167842 | 862155 | 7.599 | 7.959 |
| 41) L9 AR-1268-1 | 7.576 | 7.532 | 3885881 | 1369500 | 2.258 | 2.688 |

Data Path : Z:\pestpcbsrv\HPCHEM1\ECD_0\Data\P0082025\
 Data File : P0113113.D
 Signal(s) : Signal #1: ECD1A.ch Signal #2: ECD2B.ch
 Acq On : 21 Aug 2025 01:22
 Operator : YP/AJ
 Sample : AR1248CCC500
 Misc :
 ALS Vial : 5 Sample Multiplier: 1

Instrument :
 ECD_0
 ClientSampleId :
 AR1248CCC500

Integration File signal 1: autoint1.e
 Integration File signal 2: autoint2.e
 Quant Time: Aug 21 01:51:52 2025
 Quant Method : Z:\pestpcbsrv\HPCHEM1\ECD_0\methods\P0081825.M
 Quant Title : GC EXTRACTABLES
 QLast Update : Tue Aug 19 06:08:32 2025
 Response via : Initial Calibration
 Integrator: ChemStation

Volume Inj. : 2 µl
 Signal #1 Phase : ZB-MR1 Signal #2 Phase: ZB-MR2
 Signal #1 Info : 30Mx0.32mmx 0.50µ Signal #2 Info : 30M x 0.32mm x 0.25µm

| | Compound | RT#1 | RT#2 | Resp#1 | Resp#2 | ng/ml | ng/ml |
|-----|--------------|-------|-------|---------|---------|-------|---------|
| 42) | L9 AR-1268-2 | 7.638 | 7.594 | 5482252 | 1850602 | 3.786 | 4.455 |
| 43) | L9 AR-1268-3 | 7.844 | 7.819 | 1233539 | 40352 | 1.023 | 0.124 # |
| 44) | L9 AR-1268-4 | 8.142 | 8.091 | 3167842 | 862155 | 6.877 | 7.159 |
| 45) | L9 AR-1268-5 | 8.428 | 8.366 | 1772150 | 174104 | 0.556 | 0.223 # |

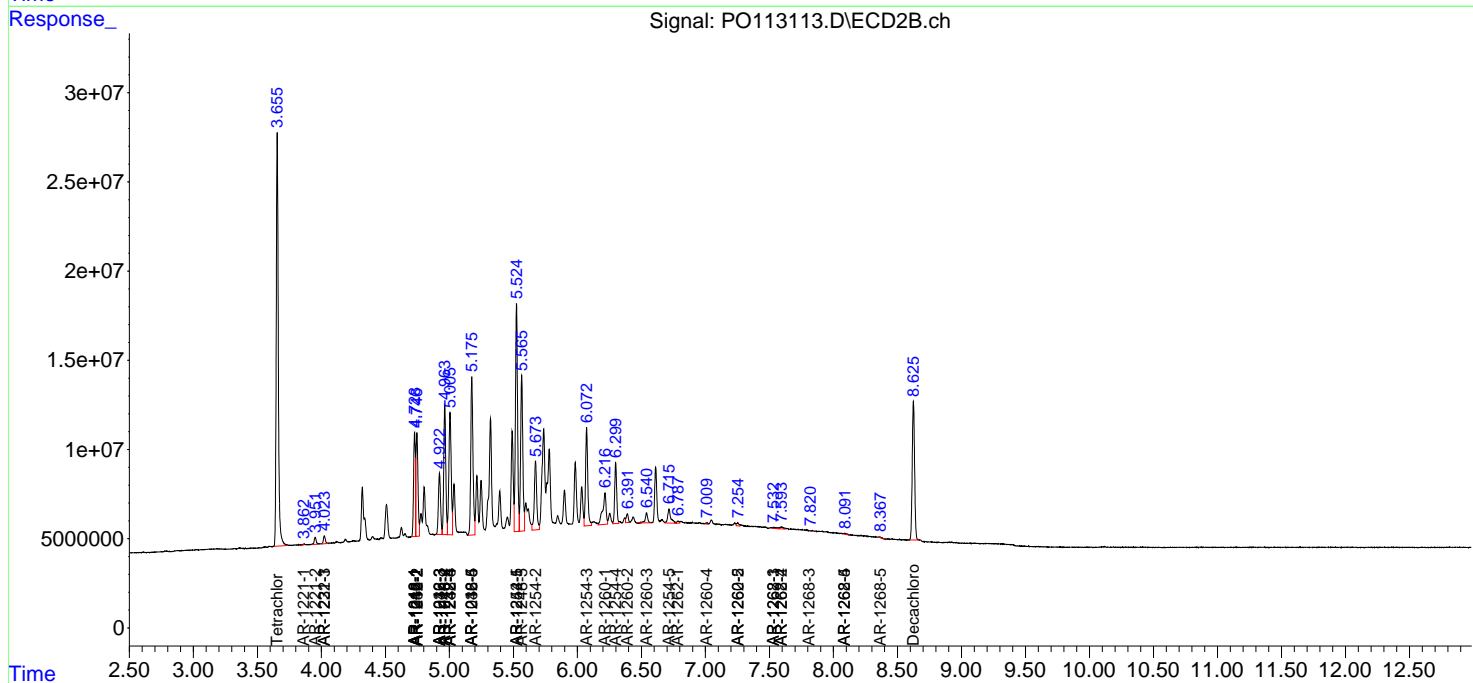
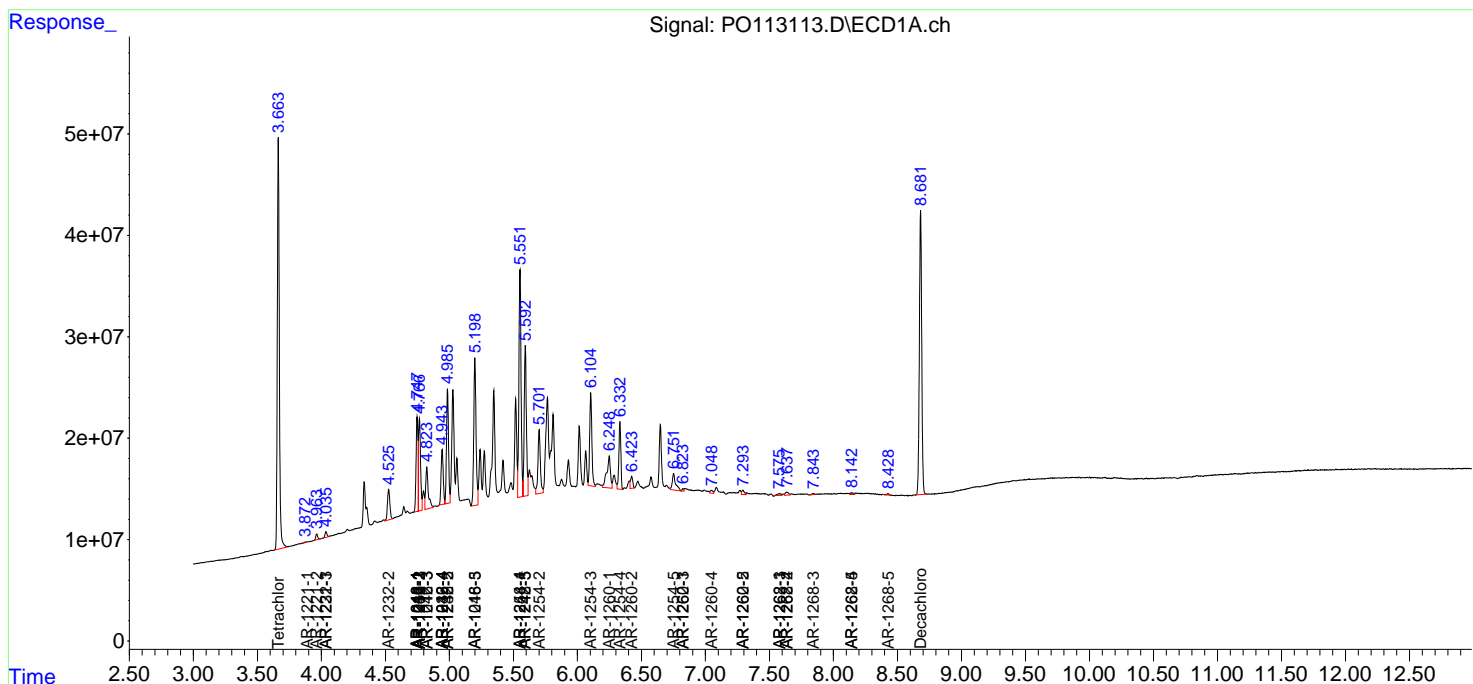
(f)=RT Delta > 1/2 Window (#)=Amounts differ by > 25% (m)=manual int.

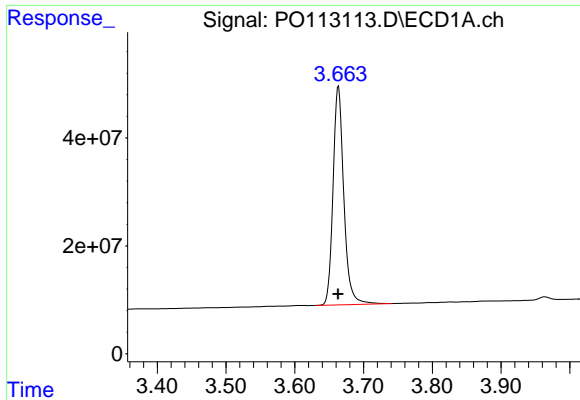
Data Path : Z:\pestpcbsrv\HPCHEM1\ECD_O\Data\P0082025\
 Data File : P0113113.D
 Signal(s) : Signal #1: ECD1A.ch Signal #2: ECD2B.ch
 Acq On : 21 Aug 2025 01:22
 Operator : YP/AJ
 Sample : AR1248CCC500
 Misc :
 ALS Vial : 5 Sample Multiplier: 1

Instrument :
 ECD_O
 ClientSampleId :
 AR1248CCC500

Integration File signal 1: autoint1.e
 Integration File signal 2: autoint2.e
 Quant Time: Aug 21 01:51:52 2025
 Quant Method : Z:\pestpcbsrv\HPCHEM1\ECD_O\methods\P0081825.M
 Quant Title : GC EXTRACTABLES
 QLast Update : Tue Aug 19 06:08:32 2025
 Response via : Initial Calibration
 Integrator: ChemStation

Volume Inj. : 2 µl
 Signal #1 Phase : ZB-MR1 Signal #2 Phase: ZB-MR2
 Signal #1 Info : 30Mx0.32mmx 0.50µ Signal #2 Info : 30M x 0.32mm x 0.25µm

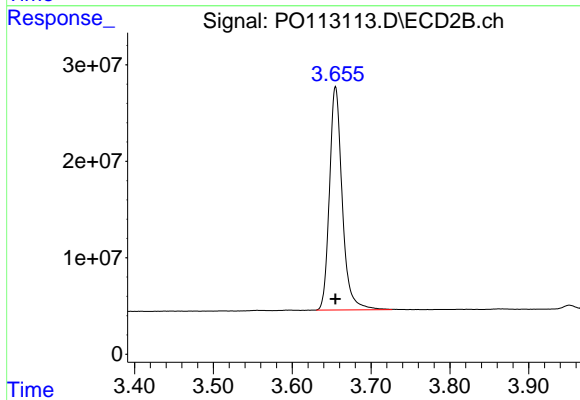




#1 Tetrachloro-m-xylene

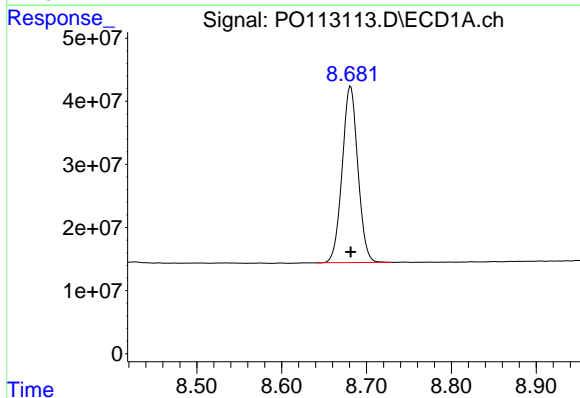
R.T.: 3.663 min
 Delta R.T.: 0.000 min
 Response: 441814576
 Conc: 53.97 ng/ml

Instrument :
 ECD_O
 ClientSampleId :
 AR1248CCC500



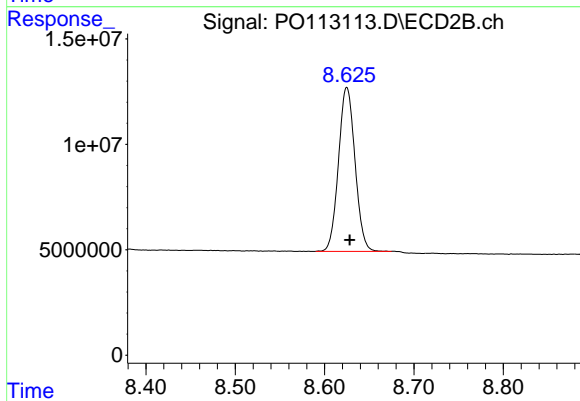
#1 Tetrachloro-m-xylene

R.T.: 3.655 min
 Delta R.T.: 0.000 min
 Response: 260669548
 Conc: 51.51 ng/ml



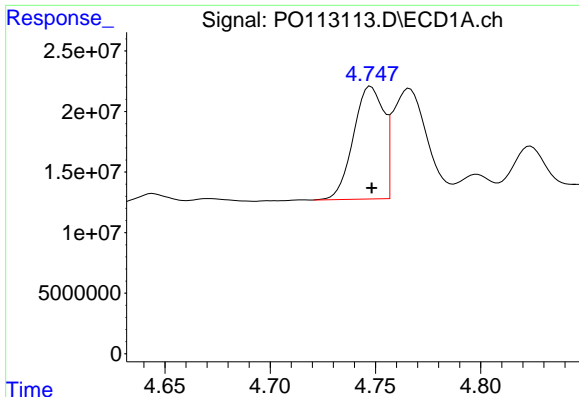
#2 Decachlorobiphenyl

R.T.: 8.681 min
 Delta R.T.: 0.000 min
 Response: 358560083
 Conc: 51.73 ng/ml



#2 Decachlorobiphenyl

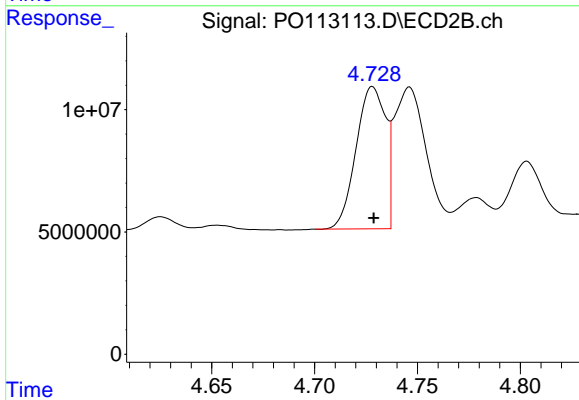
R.T.: 8.625 min
 Delta R.T.: -0.003 min
 Response: 99826300
 Conc: 52.68 ng/ml



#3 AR-1016-1

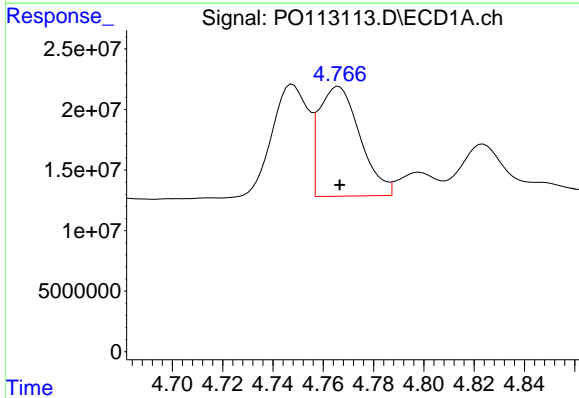
R.T.: 4.748 min
 Delta R.T.: 0.000 min
 Response: 93004353
 Conc: 348.35 ng/ml

Instrument :
 ECD_O
 ClientSampleId :
 AR1248CCC500



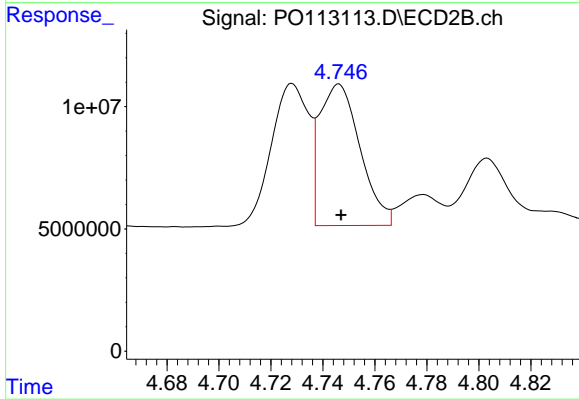
#3 AR-1016-1

R.T.: 4.728 min
 Delta R.T.: 0.000 min
 Response: 58045901
 Conc: 340.30 ng/ml



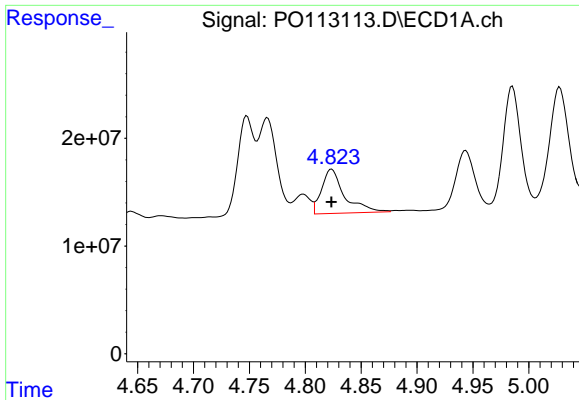
#4 AR-1016-2

R.T.: 4.766 min
 Delta R.T.: 0.000 min
 Response: 102592096
 Conc: 255.57 ng/ml



#4 AR-1016-2

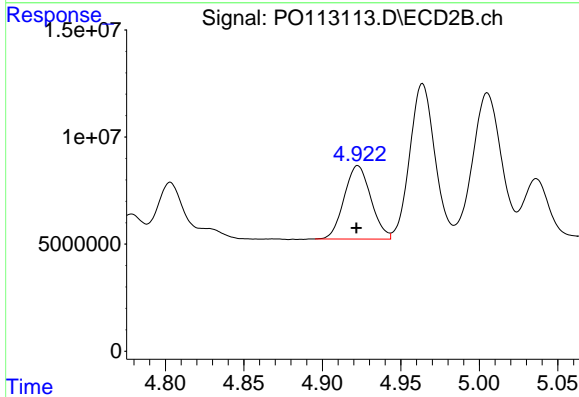
R.T.: 4.746 min
 Delta R.T.: 0.000 min
 Response: 62509993
 Conc: 242.61 ng/ml



#5 AR-1016-3

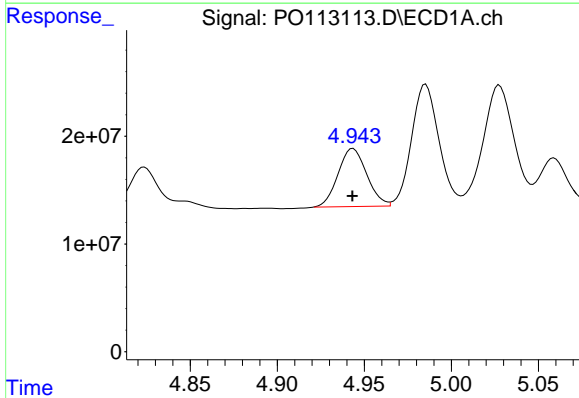
R.T.: 4.824 min
 Delta R.T.: 0.000 min
 Response: 58387860
 Conc: 228.95 ng/ml

Instrument :
 ECD_O
 ClientSampleId :
 AR1248CCC500



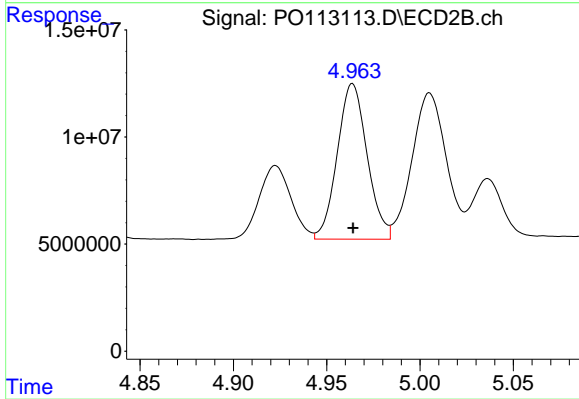
#5 AR-1016-3

R.T.: 4.923 min
 Delta R.T.: 0.000 min
 Response: 40596293
 Conc: 290.77 ng/ml



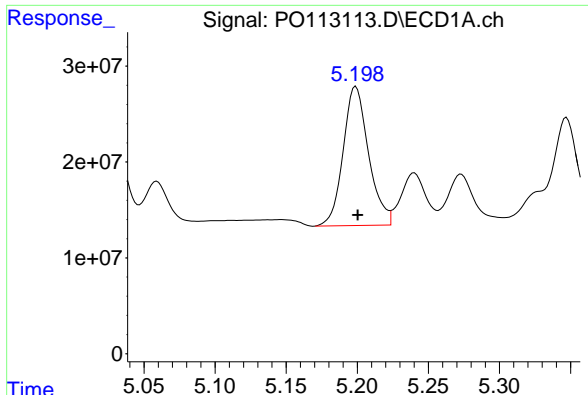
#6 AR-1016-4

R.T.: 4.944 min
 Delta R.T.: 0.000 min
 Response: 62012862
 Conc: 284.37 ng/ml



#6 AR-1016-4

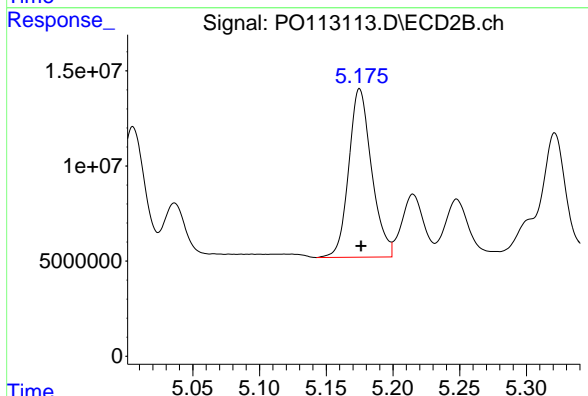
R.T.: 4.964 min
 Delta R.T.: 0.000 min
 Response: 80928613
 Conc: 693.48 ng/ml



#7 AR-1016-5

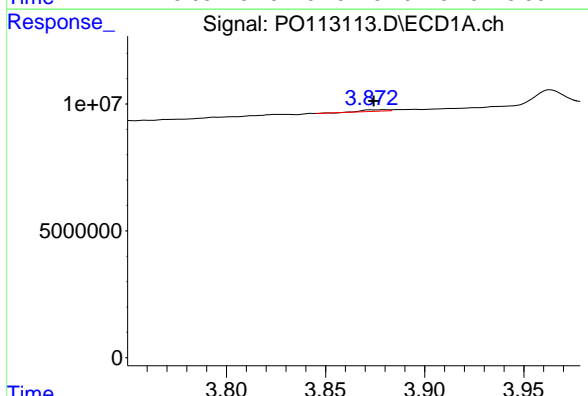
R.T.: 5.199 min
 Delta R.T.: -0.001 min
 Response: 180591823
 Conc: 814.84 ng/ml

Instrument :
 ECD_O
 ClientSampleId :
 AR1248CCC500



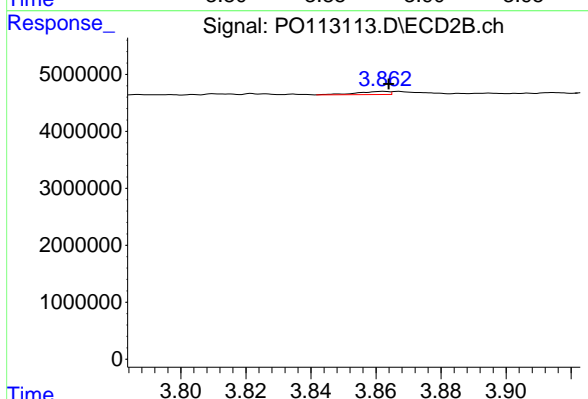
#7 AR-1016-5

R.T.: 5.175 min
 Delta R.T.: -0.001 min
 Response: 105528367
 Conc: 740.39 ng/ml



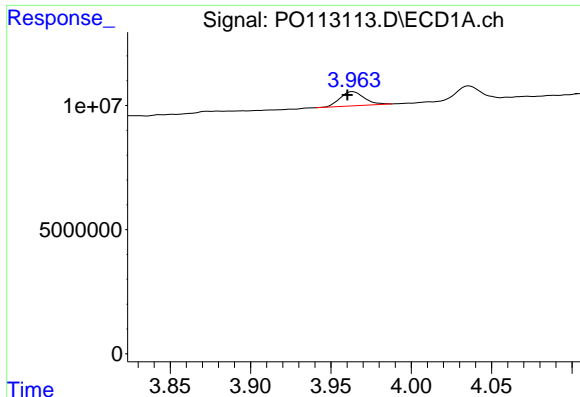
#8 AR-1221-1

R.T.: 3.880 min
 Delta R.T.: 0.006 min
 Response: 473430
 Conc: 5.06 ng/ml



#8 AR-1221-1

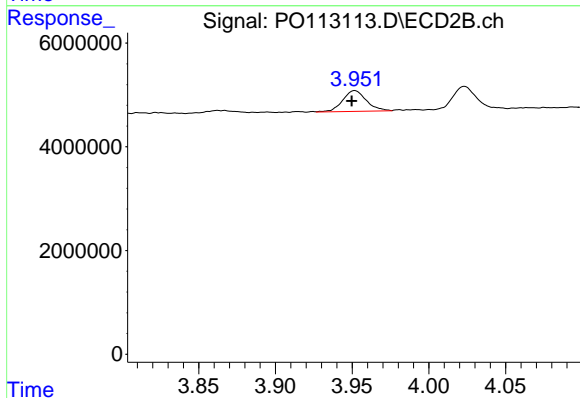
R.T.: 3.862 min
 Delta R.T.: -0.002 min
 Response: 380458
 Conc: 6.03 ng/ml



#9 AR-1221-2

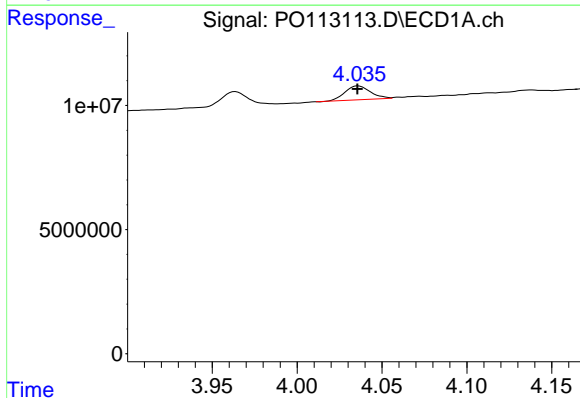
R.T.: 3.964 min
 Delta R.T.: 0.003 min
 Response: 5949357
 Conc: 88.07 ng/ml

Instrument :
 ECD_O
 ClientSampleId :
 AR1248CCC500



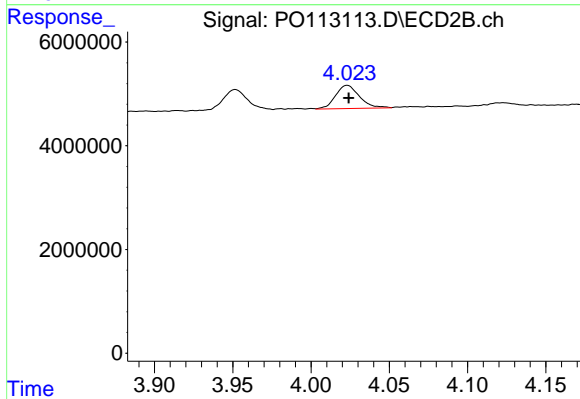
#9 AR-1221-2

R.T.: 3.952 min
 Delta R.T.: 0.002 min
 Response: 4344748
 Conc: 93.09 ng/ml



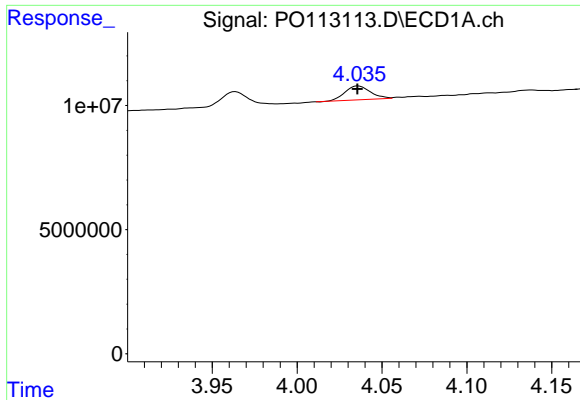
#10 AR-1221-3

R.T.: 4.036 min
 Delta R.T.: 0.000 min
 Response: 5828636
 Conc: 26.33 ng/ml



#10 AR-1221-3

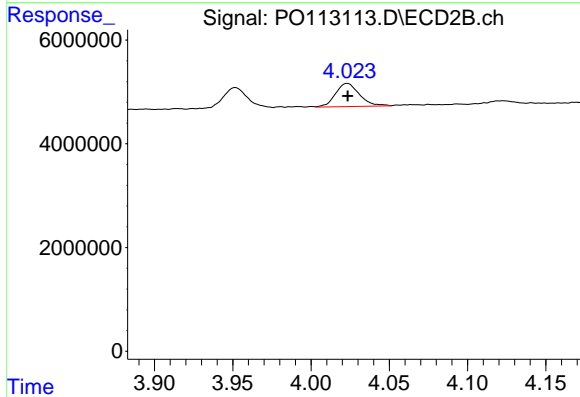
R.T.: 4.023 min
 Delta R.T.: 0.000 min
 Response: 4780282
 Conc: 32.20 ng/ml



#11 AR-1232-1

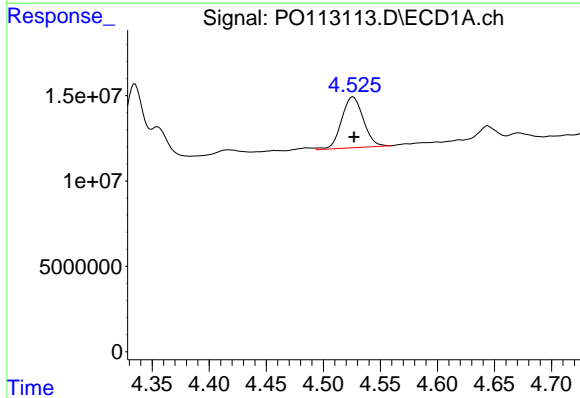
R.T.: 4.036 min
 Delta R.T.: 0.000 min
 Response: 5828636
 Conc: 33.50 ng/ml

Instrument :
 ECD_O
 ClientSampleId :
 AR1248CCC500



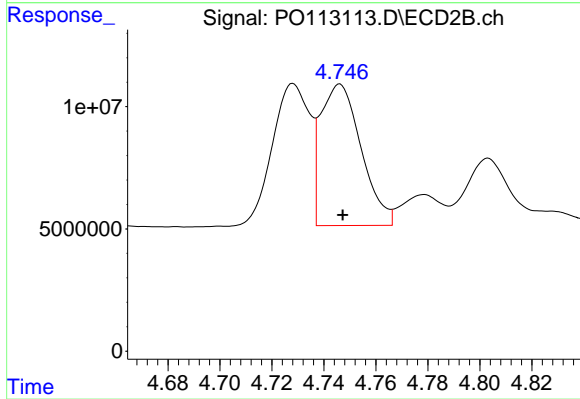
#11 AR-1232-1

R.T.: 4.023 min
 Delta R.T.: 0.000 min
 Response: 4780282
 Conc: 40.72 ng/ml



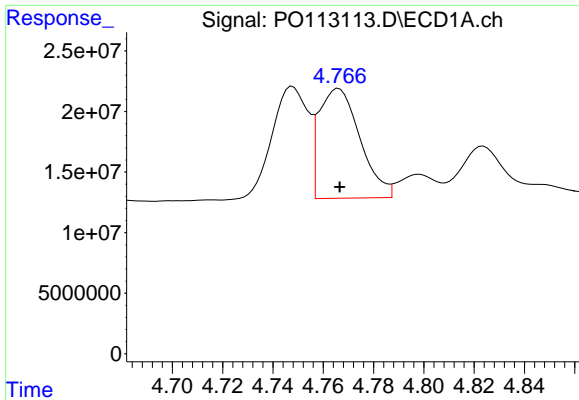
#12 AR-1232-2

R.T.: 4.526 min
 Delta R.T.: -0.001 min
 Response: 39512074
 Conc: 395.70 ng/ml



#12 AR-1232-2

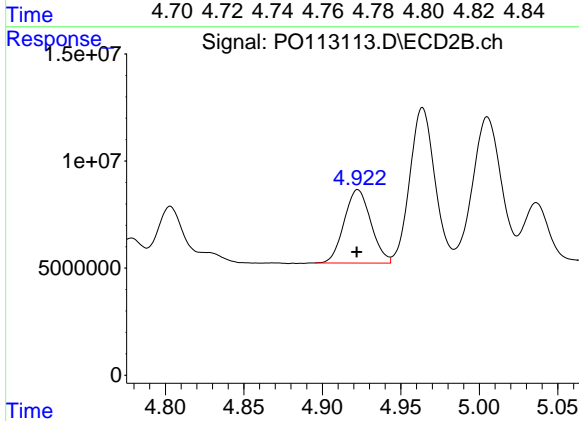
R.T.: 4.746 min
 Delta R.T.: -0.001 min
 Response: 62509993
 Conc: 510.10 ng/ml



#13 AR-1232-3

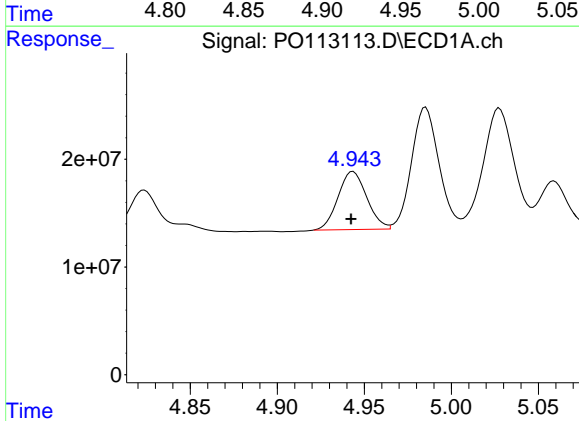
R.T.: 4.766 min
 Delta R.T.: 0.000 min
 Response: 102592096
 Conc: 541.45 ng/ml

Instrument :
 ECD_O
 ClientSampleId :
 AR1248CCC500



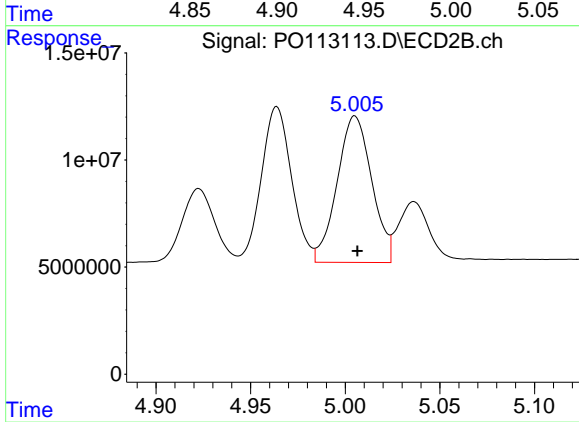
#13 AR-1232-3

R.T.: 4.923 min
 Delta R.T.: 0.000 min
 Response: 40596293
 Conc: 640.87 ng/ml



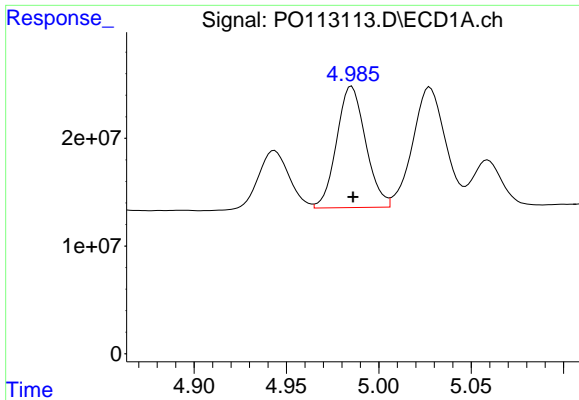
#14 AR-1232-4

R.T.: 4.944 min
 Delta R.T.: 0.001 min
 Response: 62012862
 Conc: 658.52 ng/ml



#14 AR-1232-4

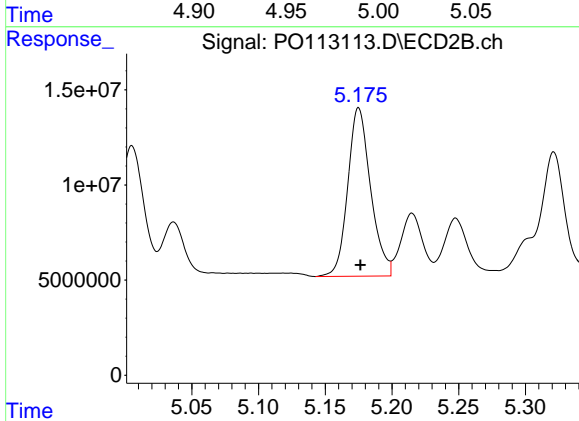
R.T.: 5.005 min
 Delta R.T.: -0.001 min
 Response: 87239865
 Conc: 1551.73 ng/ml



#15 AR-1232-5

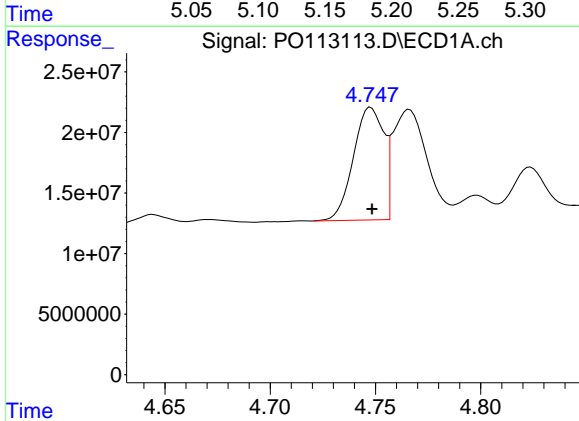
R.T.: 4.985 min
 Delta R.T.: 0.000 min
 Response: 122995101
 Conc: 1985.62 ng/ml

Instrument :
 ECD_O
 ClientSampleId :
 AR1248CCC500



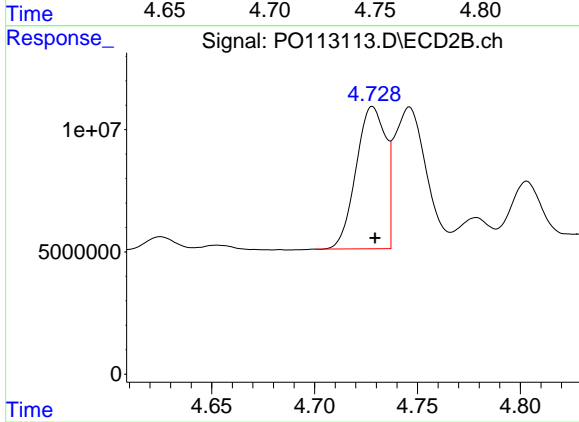
#15 AR-1232-5

R.T.: 5.175 min
 Delta R.T.: -0.001 min
 Response: 105528367
 Conc: 1762.82 ng/ml



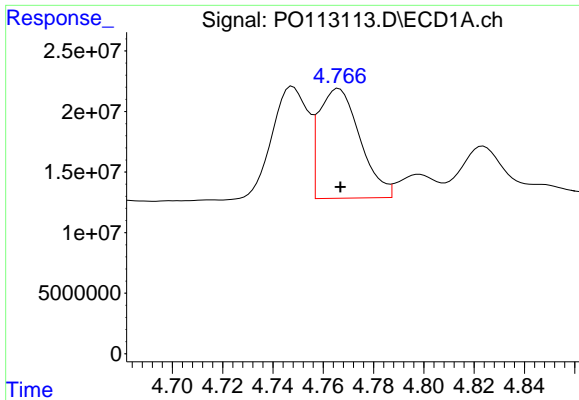
#16 AR-1242-1

R.T.: 4.748 min
 Delta R.T.: 0.000 min
 Response: 93004353
 Conc: 404.49 ng/ml



#16 AR-1242-1

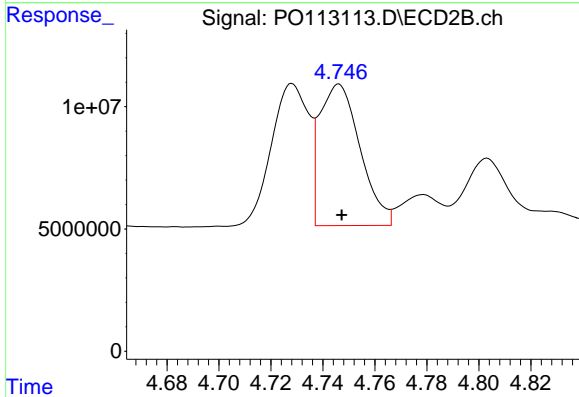
R.T.: 4.728 min
 Delta R.T.: -0.001 min
 Response: 58045901
 Conc: 401.69 ng/ml



#17 AR-1242-2

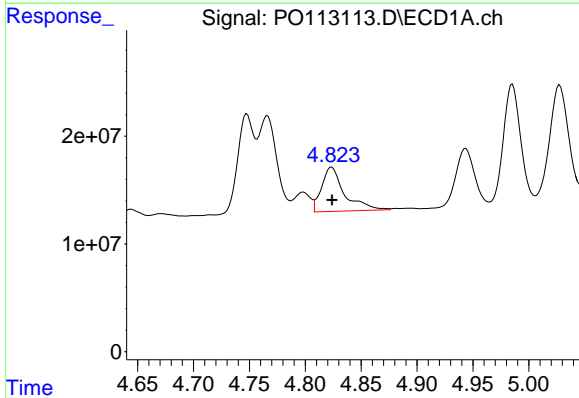
R.T.: 4.766 min
 Delta R.T.: 0.000 min
 Response: 102592096
 Conc: 298.56 ng/ml

Instrument :
 ECD_O
 ClientSampleId :
 AR1248CCC500



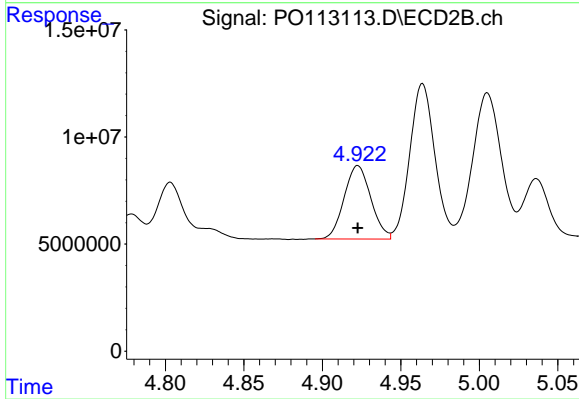
#17 AR-1242-2

R.T.: 4.746 min
 Delta R.T.: -0.001 min
 Response: 62509993
 Conc: 288.18 ng/ml



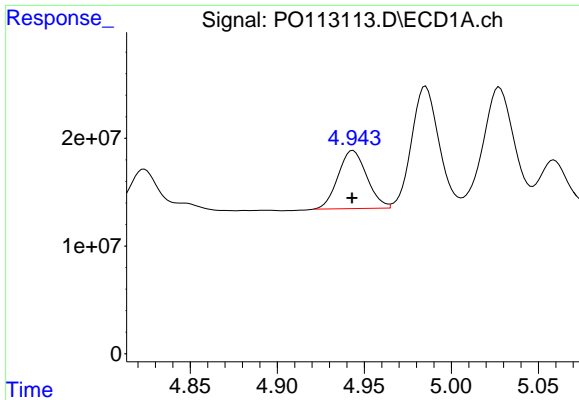
#18 AR-1242-3

R.T.: 4.824 min
 Delta R.T.: 0.000 min
 Response: 58387860
 Conc: 263.15 ng/ml



#18 AR-1242-3

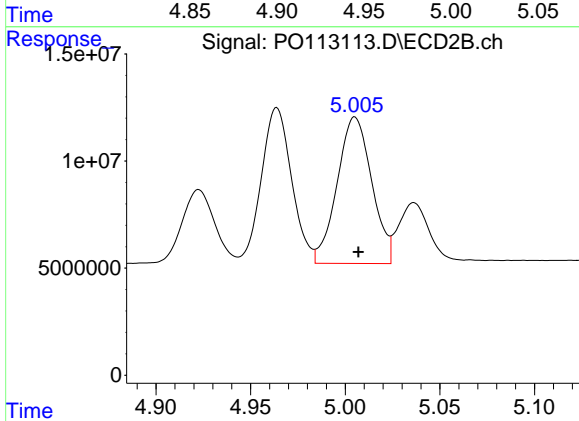
R.T.: 4.923 min
 Delta R.T.: 0.000 min
 Response: 40596293
 Conc: 347.08 ng/ml



#19 AR-1242-4

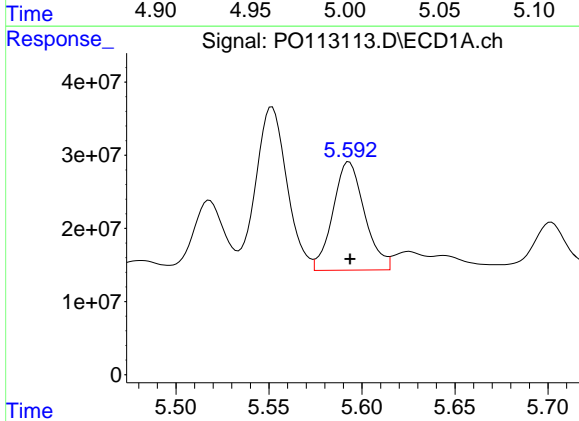
R.T.: 4.944 min
 Delta R.T.: 0.000 min
 Response: 62012862
 Conc: 357.50 ng/ml

Instrument :
 ECD_O
 ClientSampleId :
 AR1248CCC500



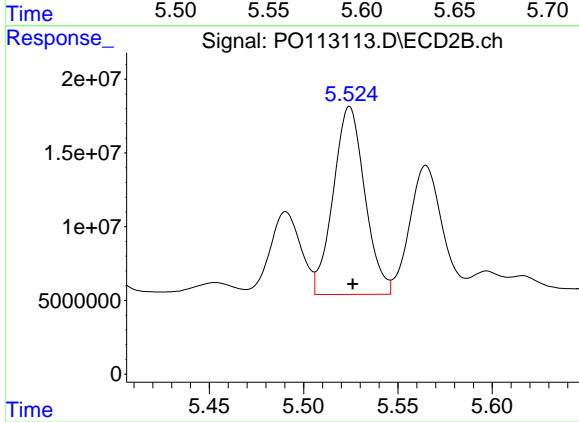
#19 AR-1242-4

R.T.: 5.005 min
 Delta R.T.: -0.002 min
 Response: 87239865
 Conc: 741.60 ng/ml



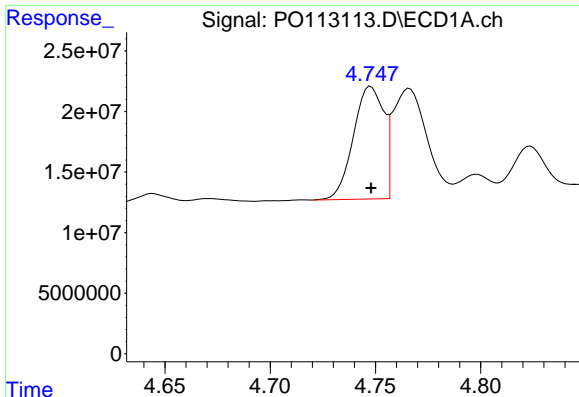
#20 AR-1242-5

R.T.: 5.593 min
 Delta R.T.: 0.000 min
 Response: 175791257
 Conc: 878.24 ng/ml



#20 AR-1242-5

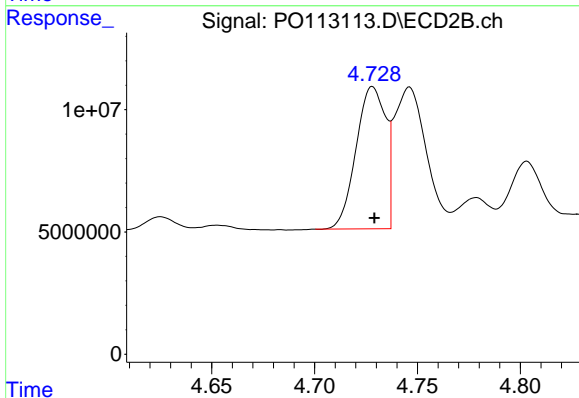
R.T.: 5.524 min
 Delta R.T.: -0.002 min
 Response: 148469662
 Conc: 995.55 ng/ml



#21 AR-1248-1

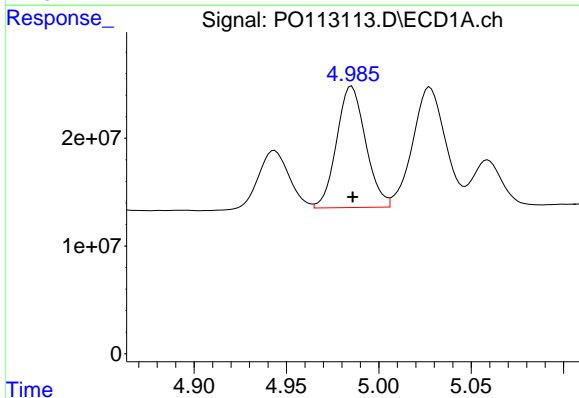
R.T.: 4.748 min
 Delta R.T.: 0.000 min
 Response: 93004353
 Conc: 533.08 ng/ml

Instrument :
 ECD_O
 ClientSampleId :
 AR1248CCC500



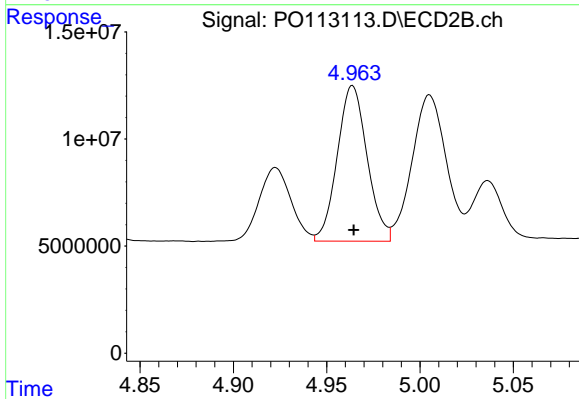
#21 AR-1248-1

R.T.: 4.728 min
 Delta R.T.: 0.000 min
 Response: 58045901
 Conc: 520.54 ng/ml



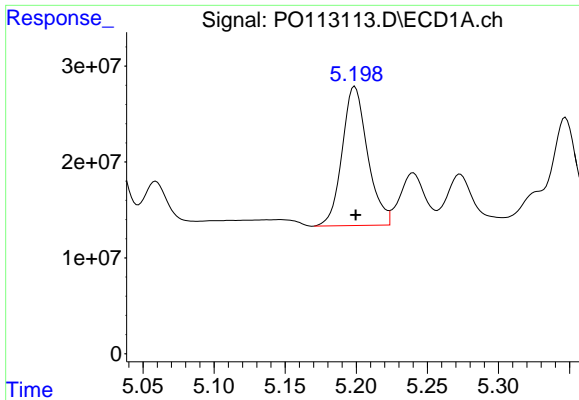
#22 AR-1248-2

R.T.: 4.985 min
 Delta R.T.: 0.000 min
 Response: 122995101
 Conc: 508.53 ng/ml



#22 AR-1248-2

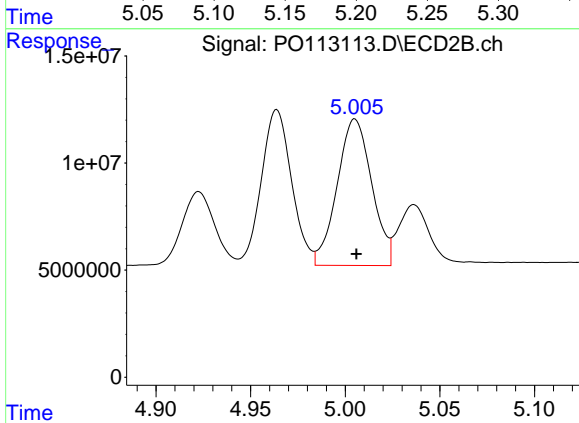
R.T.: 4.964 min
 Delta R.T.: 0.000 min
 Response: 80928613
 Conc: 503.60 ng/ml



#23 AR-1248-3

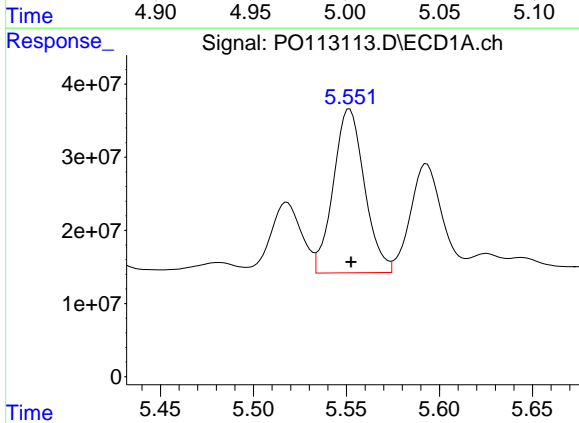
R.T.: 5.199 min
 Delta R.T.: 0.000 min
 Response: 180591823
 Conc: 566.36 ng/ml

Instrument :
 ECD_O
 ClientSampleId :
 AR1248CCC500



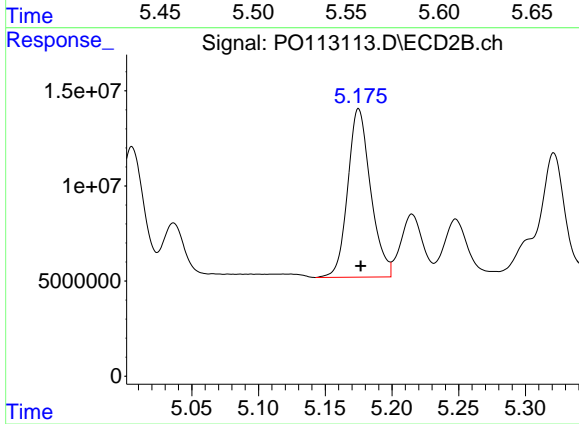
#23 AR-1248-3

R.T.: 5.005 min
 Delta R.T.: 0.000 min
 Response: 87239865
 Conc: 514.20 ng/ml



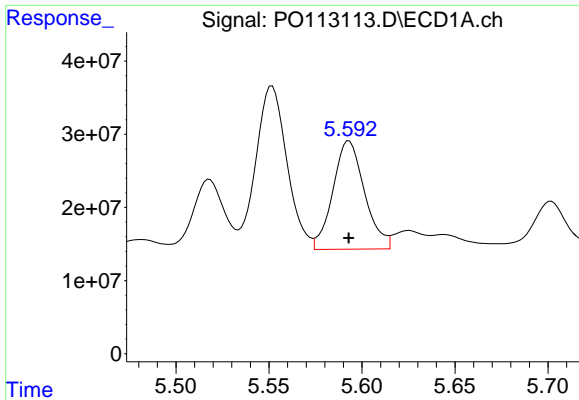
#24 AR-1248-4

R.T.: 5.552 min
 Delta R.T.: 0.000 min
 Response: 261654862
 Conc: 523.72 ng/ml



#24 AR-1248-4

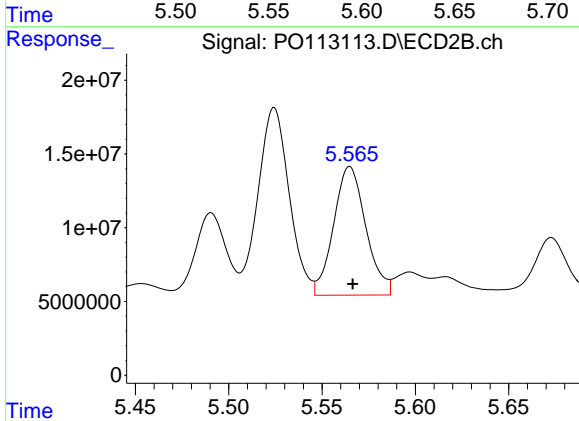
R.T.: 5.175 min
 Delta R.T.: -0.002 min
 Response: 105528367
 Conc: 529.71 ng/ml



#25 AR-1248-5

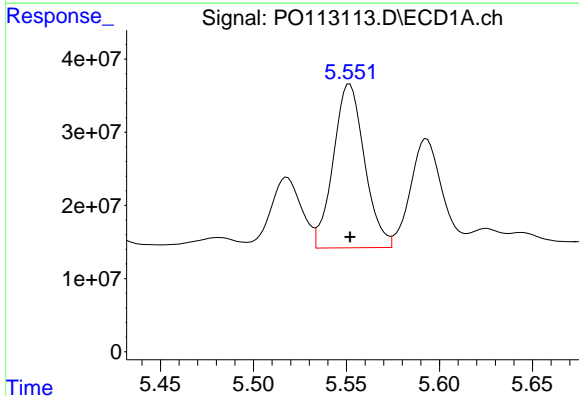
R.T.: 5.593 min
 Delta R.T.: 0.000 min
 Response: 175791257
 Conc: 514.77 ng/ml

Instrument :
 ECD_O
 ClientSampleId :
 AR1248CCC500



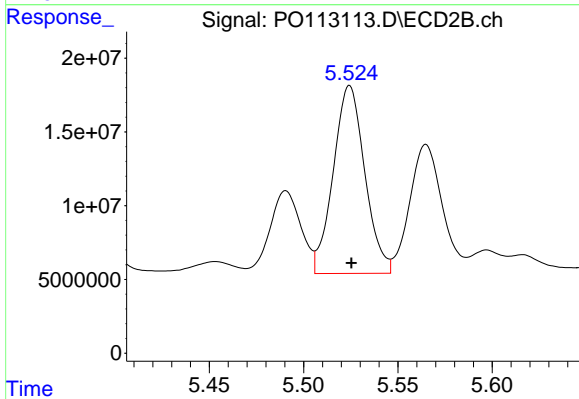
#25 AR-1248-5

R.T.: 5.565 min
 Delta R.T.: -0.002 min
 Response: 105005472
 Conc: 494.62 ng/ml



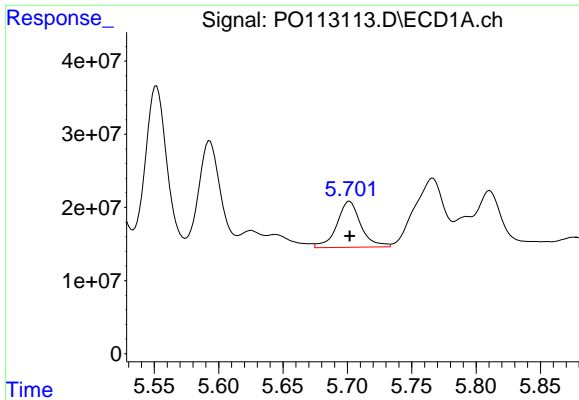
#26 AR-1254-1

R.T.: 5.552 min
 Delta R.T.: 0.000 min
 Response: 261654862
 Conc: 484.57 ng/ml



#26 AR-1254-1

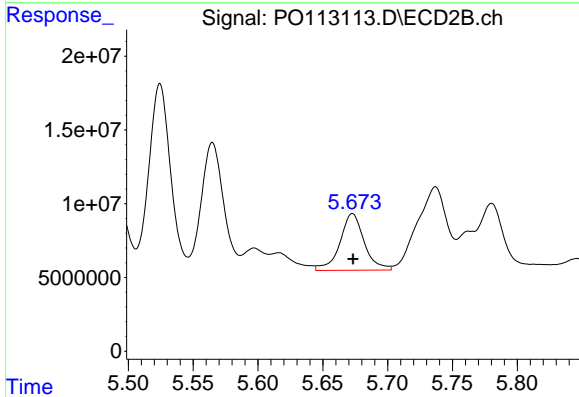
R.T.: 5.524 min
 Delta R.T.: 0.000 min
 Response: 148469662
 Conc: 470.80 ng/ml



#27 AR-1254-2

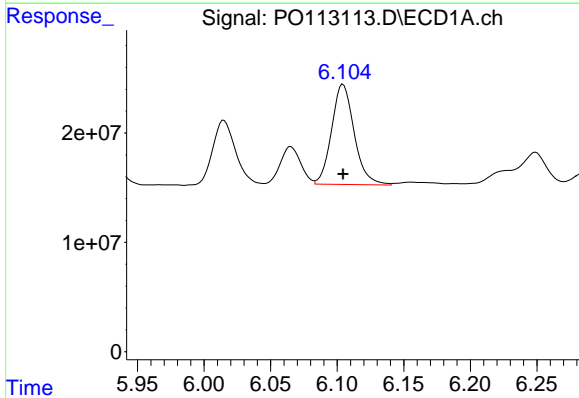
R.T.: 5.702 min
 Delta R.T.: 0.000 min
 Response: 81860842
 Conc: 165.89 ng/ml

Instrument :
 ECD_O
 ClientSampleId :
 AR1248CCC500



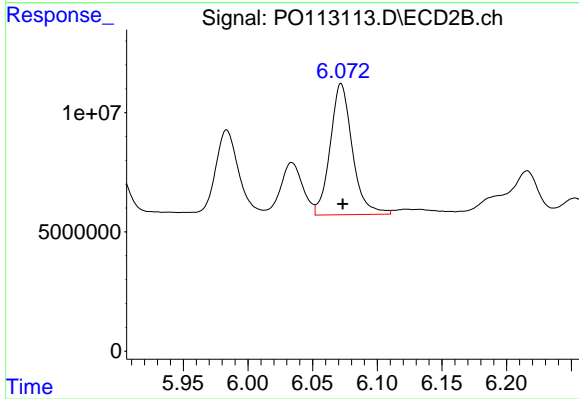
#27 AR-1254-2

R.T.: 5.673 min
 Delta R.T.: 0.000 min
 Response: 50182446
 Conc: 179.01 ng/ml



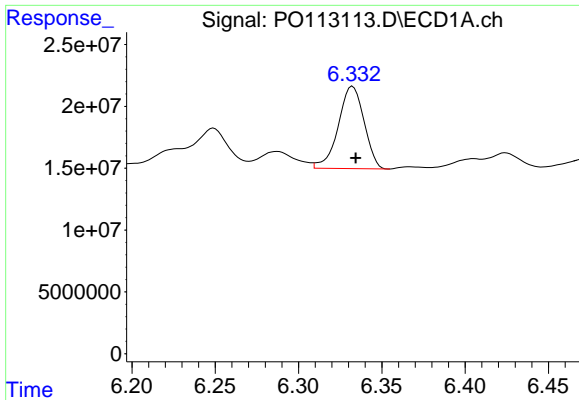
#28 AR-1254-3

R.T.: 6.104 min
 Delta R.T.: 0.000 min
 Response: 108295249
 Conc: 146.57 ng/ml



#28 AR-1254-3

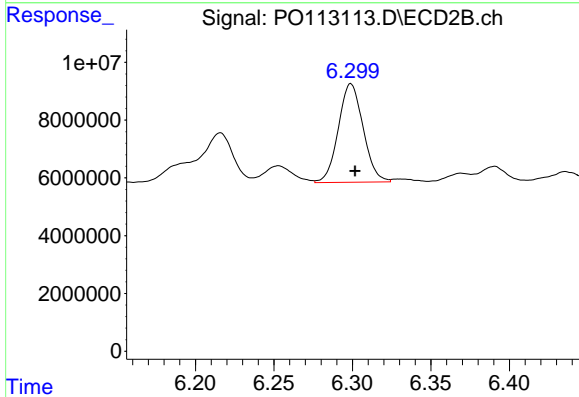
R.T.: 6.072 min
 Delta R.T.: -0.001 min
 Response: 65581996
 Conc: 157.30 ng/ml



#29 AR-1254-4

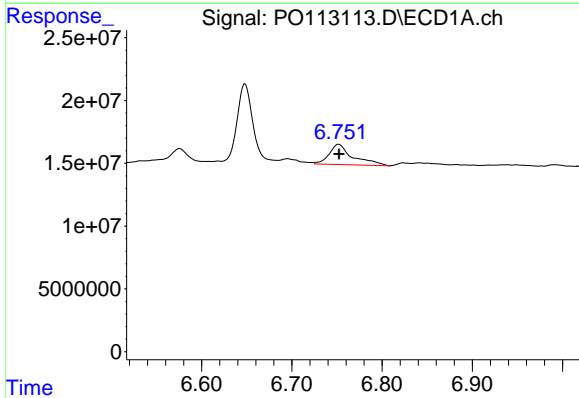
R.T.: 6.332 min
 Delta R.T.: -0.002 min
 Response: 71575074
 Conc: 128.50 ng/ml

Instrument :
 ECD_O
 ClientSampleId :
 AR1248CCC500



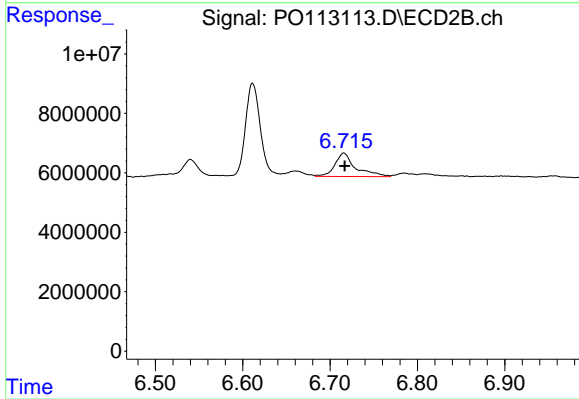
#29 AR-1254-4

R.T.: 6.299 min
 Delta R.T.: -0.003 min
 Response: 37560336
 Conc: 136.66 ng/ml



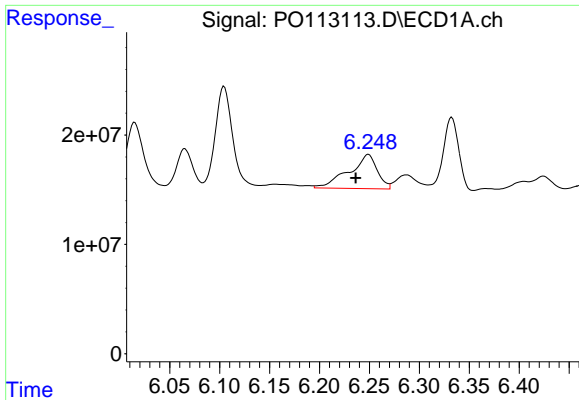
#30 AR-1254-5

R.T.: 6.752 min
 Delta R.T.: 0.000 min
 Response: 29355443
 Conc: 41.88 ng/ml



#30 AR-1254-5

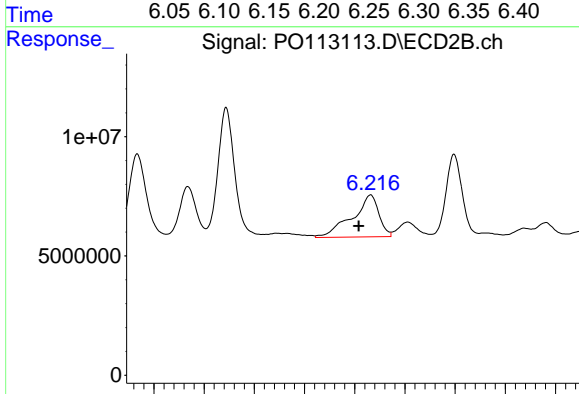
R.T.: 6.716 min
 Delta R.T.: -0.001 min
 Response: 12991724
 Conc: 36.34 ng/ml



#31 AR-1260-1

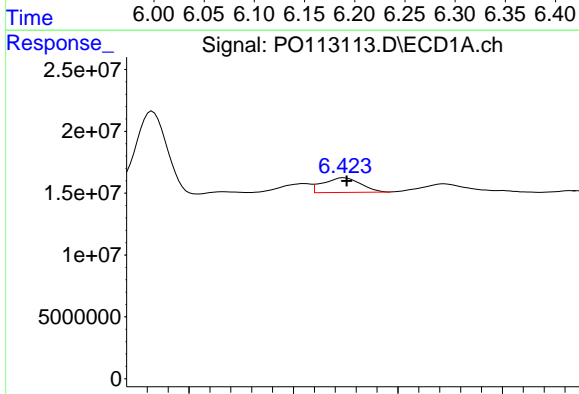
R.T.: 6.249 min
 Delta R.T.: 0.013 min
 Response: 61711720
 Conc: 138.37 ng/ml

Instrument :
 ECD_O
 ClientSampleId :
 AR1248CCC500



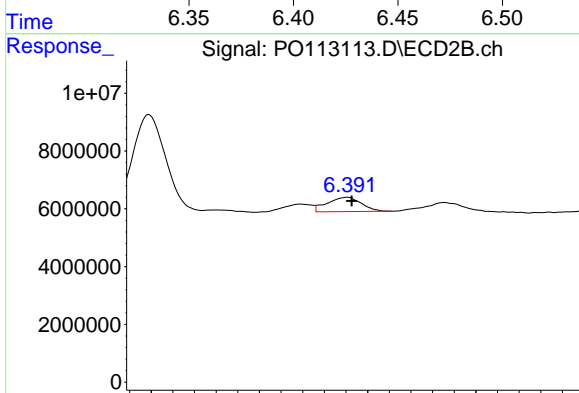
#31 AR-1260-1

R.T.: 6.216 min
 Delta R.T.: 0.012 min
 Response: 32466804
 Conc: 127.29 ng/ml



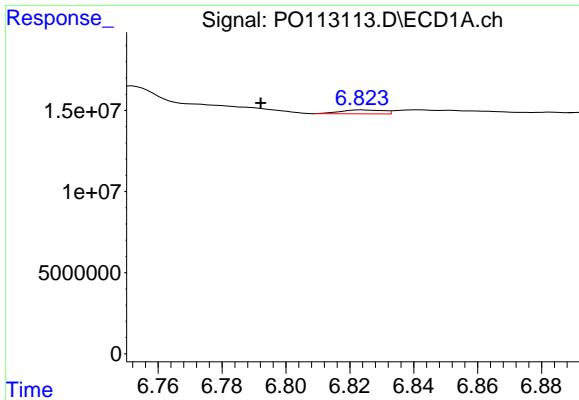
#32 AR-1260-2

R.T.: 6.424 min
 Delta R.T.: -0.001 min
 Response: 14774484
 Conc: 21.51 ng/ml



#32 AR-1260-2

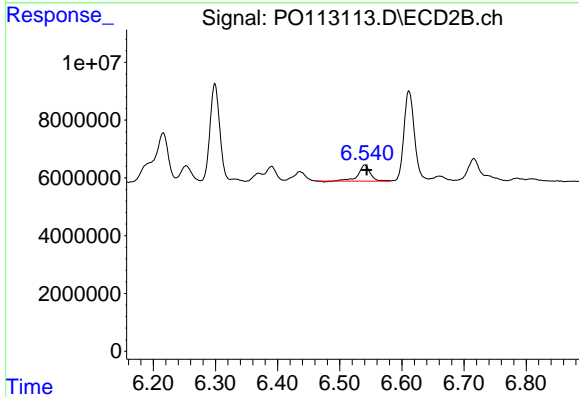
R.T.: 6.391 min
 Delta R.T.: -0.002 min
 Response: 5426186
 Conc: 15.70 ng/ml



#33 AR-1260-3

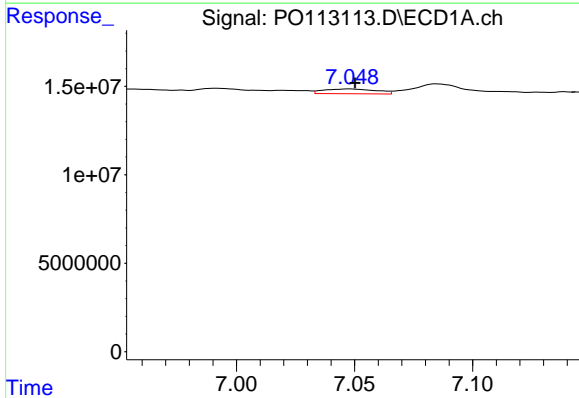
R.T.: 6.824 min
 Delta R.T.: 0.031 min
 Response: 2273283
 Conc: 3.68 ng/ml

Instrument :
 ECD_O
 ClientSampleId :
 AR1248CCC500



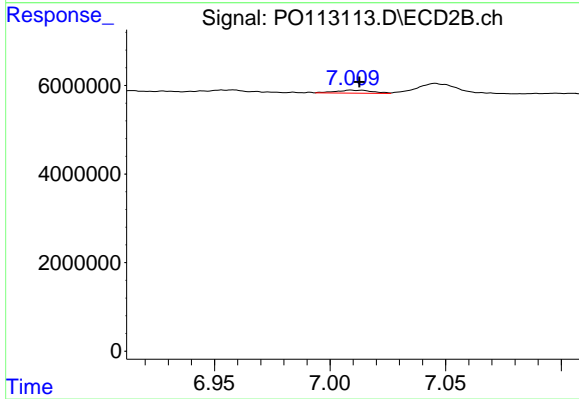
#33 AR-1260-3

R.T.: 6.540 min
 Delta R.T.: -0.003 min
 Response: 7442479
 Conc: 25.02 ng/ml



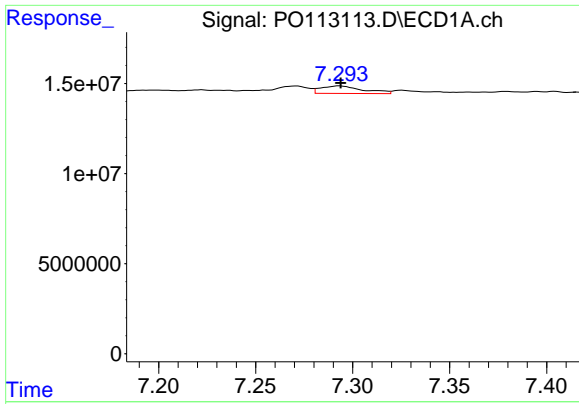
#34 AR-1260-4

R.T.: 7.048 min
 Delta R.T.: -0.002 min
 Response: 4128901
 Conc: 9.22 ng/ml



#34 AR-1260-4

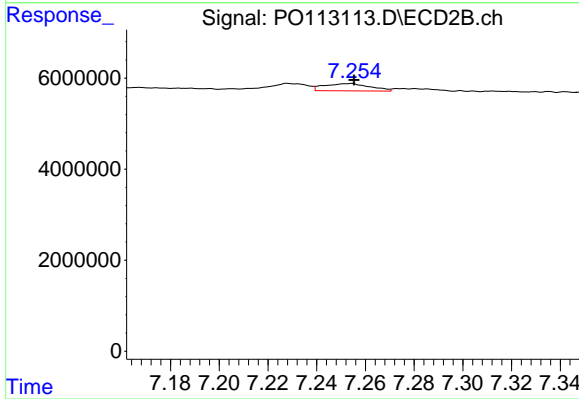
R.T.: 7.009 min
 Delta R.T.: -0.003 min
 Response: 764195
 Conc: 3.69 ng/ml



#35 AR-1260-5

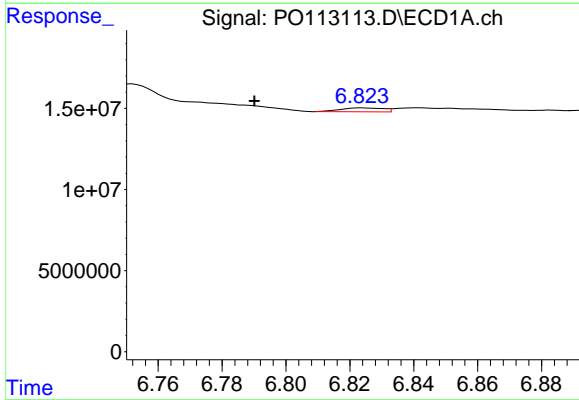
R.T.: 7.294 min
 Delta R.T.: 0.000 min
 Response: 6284952
 Conc: 5.19 ng/ml

Instrument :
 ECD_O
 ClientSampleId :
 AR1248CCC500



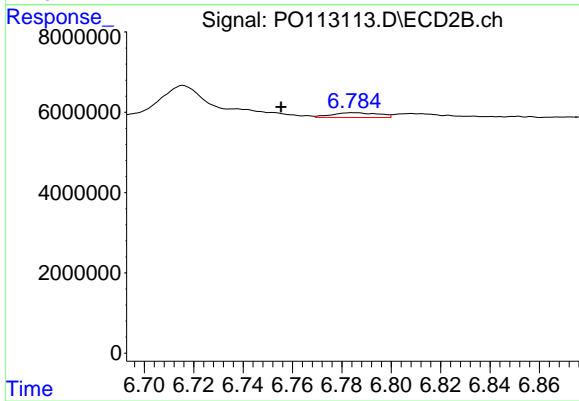
#35 AR-1260-5

R.T.: 7.254 min
 Delta R.T.: -0.002 min
 Response: 2094260
 Conc: 4.47 ng/ml



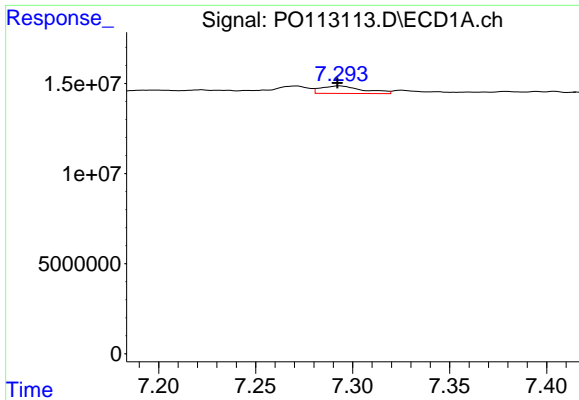
#36 AR-1262-1

R.T.: 6.824 min
 Delta R.T.: 0.034 min
 Response: 2273283
 Conc: 2.48 ng/ml



#36 AR-1262-1

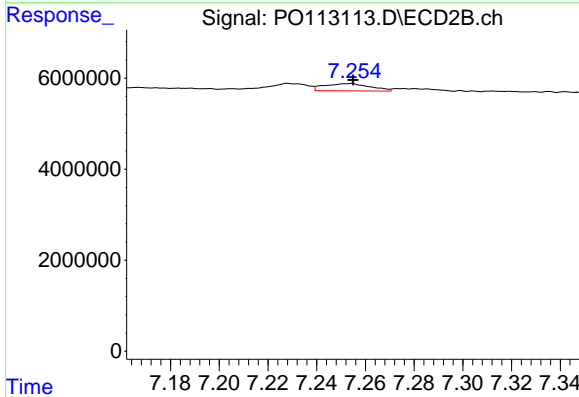
R.T.: 6.785 min
 Delta R.T.: 0.030 min
 Response: 1547148
 Conc: 3.73 ng/ml



#37 AR-1262-2

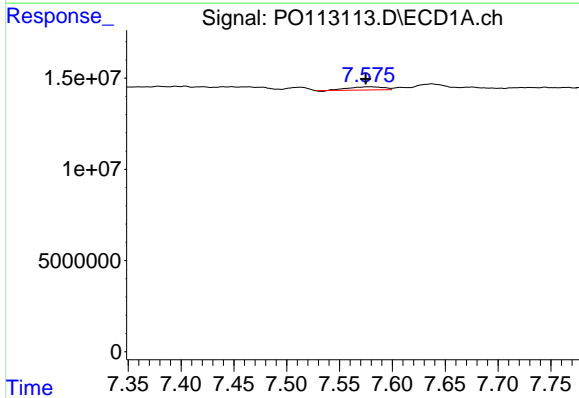
R.T.: 7.294 min
 Delta R.T.: 0.001 min
 Response: 6284952
 Conc: 4.16 ng/ml

Instrument :
 ECD_O
 ClientSampleId :
 AR1248CCC500



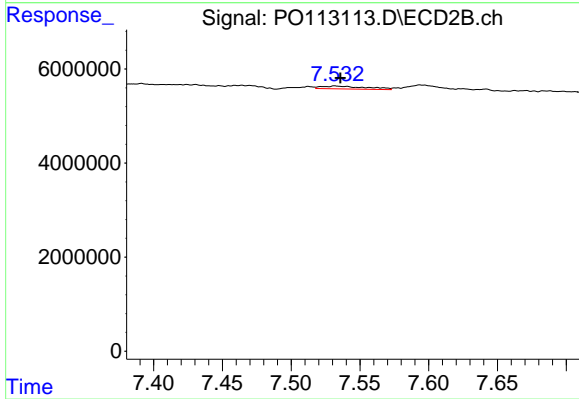
#37 AR-1262-2

R.T.: 7.254 min
 Delta R.T.: -0.001 min
 Response: 2094260
 Conc: 4.05 ng/ml



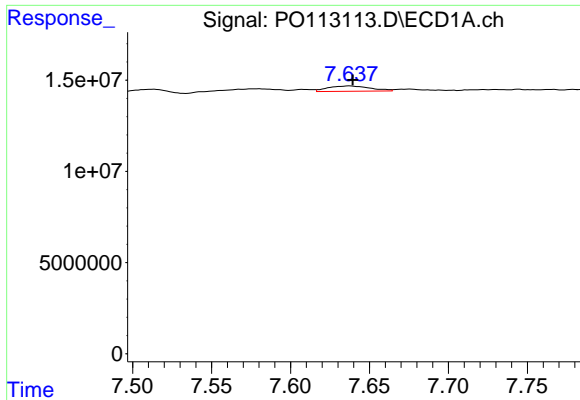
#38 AR-1262-3

R.T.: 7.576 min
 Delta R.T.: 0.001 min
 Response: 3885881
 Conc: 7.01 ng/ml



#38 AR-1262-3

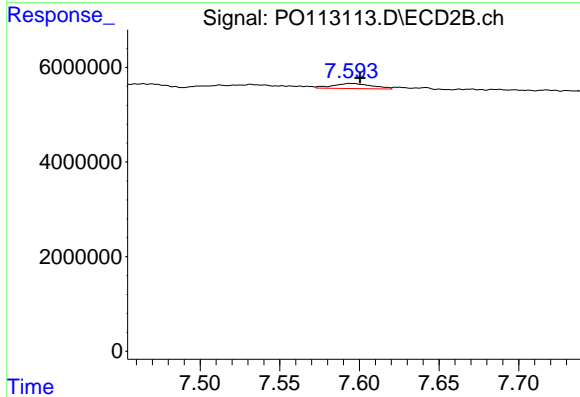
R.T.: 7.532 min
 Delta R.T.: -0.004 min
 Response: 1369500
 Conc: 7.63 ng/ml



#39 AR-1262-4

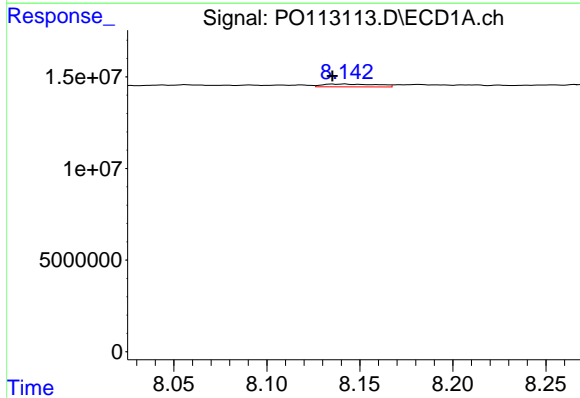
R.T.: 7.638 min
 Delta R.T.: -0.002 min
 Response: 5482252
 Conc: 5.61 ng/ml

Instrument :
 ECD_O
 ClientSampleId :
 AR1248CCC500



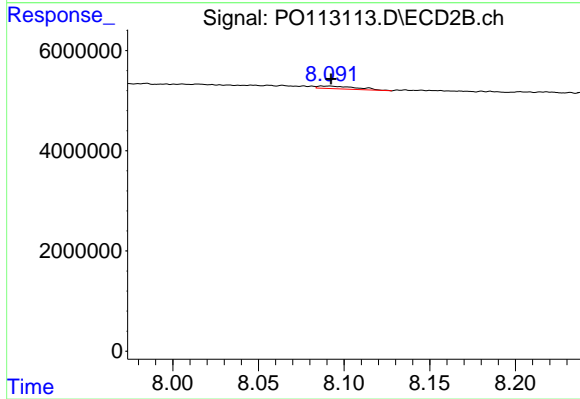
#39 AR-1262-4

R.T.: 7.594 min
 Delta R.T.: -0.006 min
 Response: 1850602
 Conc: 6.38 ng/ml



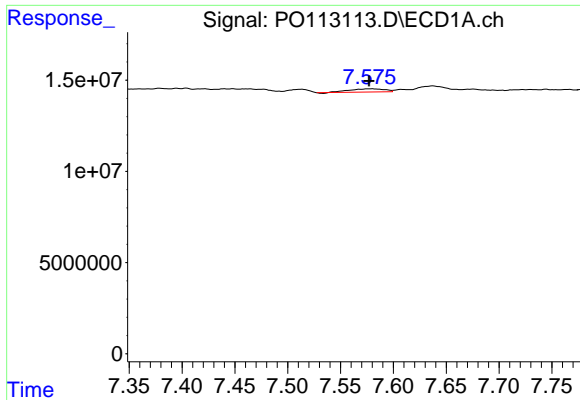
#40 AR-1262-5

R.T.: 8.142 min
 Delta R.T.: 0.007 min
 Response: 3167842
 Conc: 7.60 ng/ml



#40 AR-1262-5

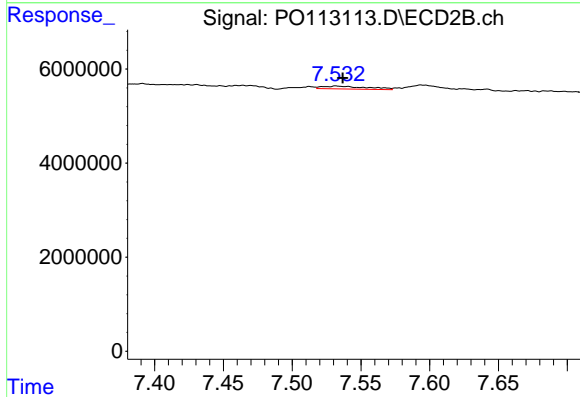
R.T.: 8.091 min
 Delta R.T.: 0.000 min
 Response: 862155
 Conc: 7.96 ng/ml



#41 AR-1268-1

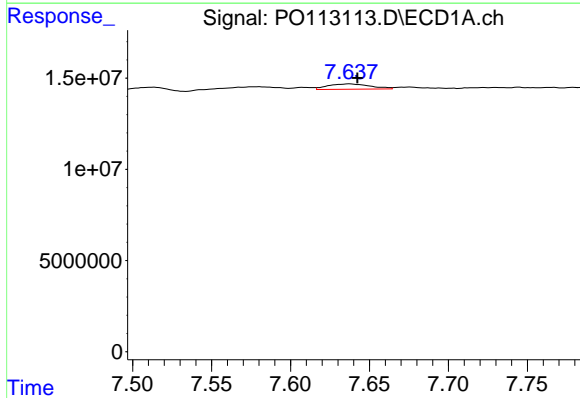
R.T.: 7.576 min
 Delta R.T.: 0.000 min
 Response: 3885881
 Conc: 2.26 ng/ml

Instrument :
 ECD_O
 ClientSampleId :
 AR1248CCC500



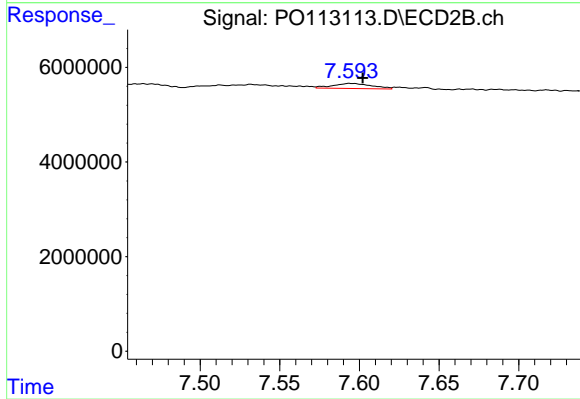
#41 AR-1268-1

R.T.: 7.532 min
 Delta R.T.: -0.005 min
 Response: 1369500
 Conc: 2.69 ng/ml



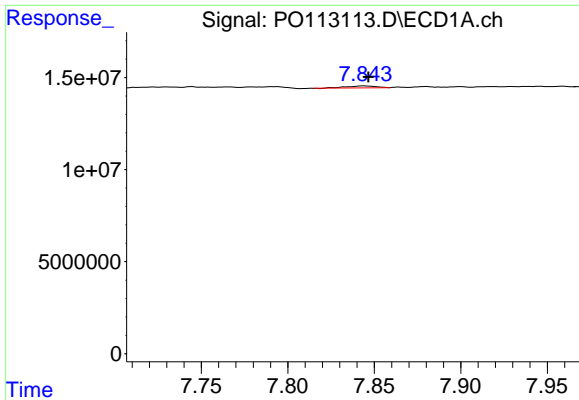
#42 AR-1268-2

R.T.: 7.638 min
 Delta R.T.: -0.005 min
 Response: 5482252
 Conc: 3.79 ng/ml



#42 AR-1268-2

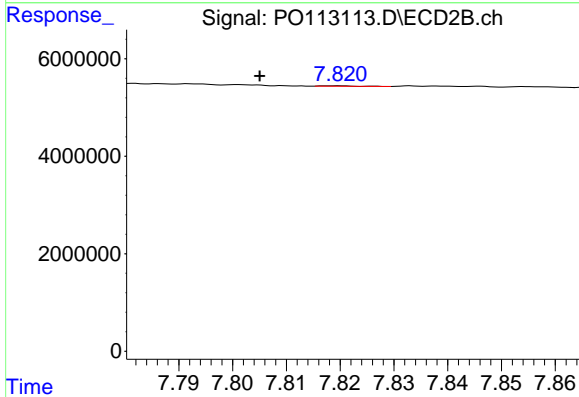
R.T.: 7.594 min
 Delta R.T.: -0.008 min
 Response: 1850602
 Conc: 4.45 ng/ml



#43 AR-1268-3

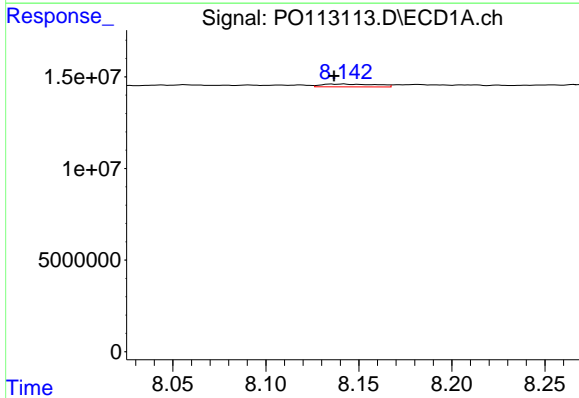
R.T.: 7.844 min
 Delta R.T.: -0.003 min
 Response: 1233539
 Conc: 1.02 ng/ml

Instrument :
 ECD_O
 ClientSampleId :
 AR1248CCC500



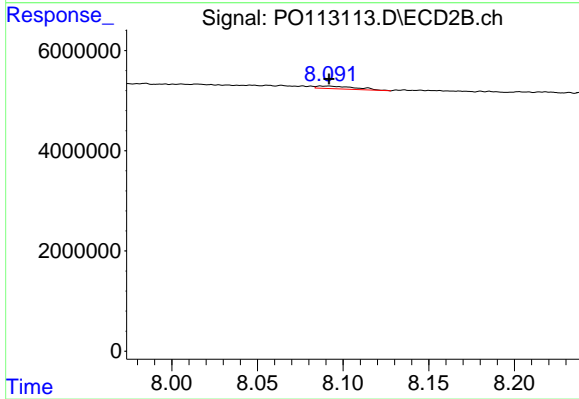
#43 AR-1268-3

R.T.: 7.819 min
 Delta R.T.: 0.014 min
 Response: 40352
 Conc: 0.12 ng/ml



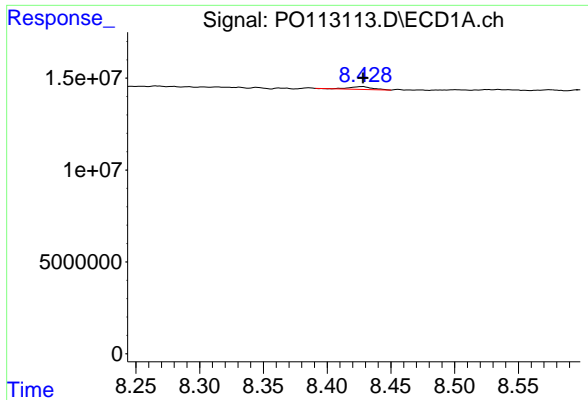
#44 AR-1268-4

R.T.: 8.142 min
 Delta R.T.: 0.005 min
 Response: 3167842
 Conc: 6.88 ng/ml



#44 AR-1268-4

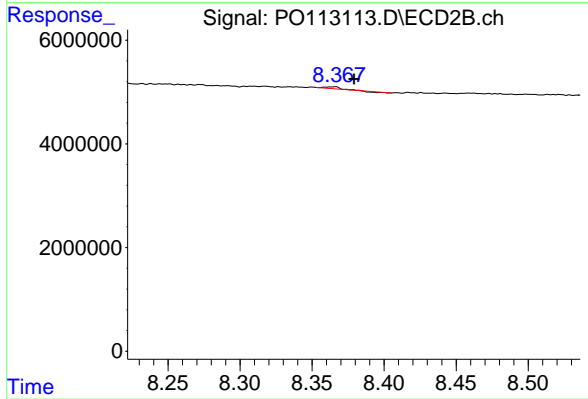
R.T.: 8.091 min
 Delta R.T.: 0.000 min
 Response: 862155
 Conc: 7.16 ng/ml



#45 AR-1268-5

R.T.: 8.428 min
 Delta R.T.: 0.000 min
 Response: 1772150
 Conc: 0.56 ng/ml

Instrument :
 ECD_O
 ClientSampleId :
 AR1248CCC500



#45 AR-1268-5

R.T.: 8.366 min
 Delta R.T.: -0.014 min
 Response: 174104
 Conc: 0.22 ng/ml