

Data Path : Z:\pestpcbsrv\HPCHEM1\ECD O\Data\PO082118\
 Data File : PO048359.D
 Signal(s) : Signal #1: ECD1A.CH Signal #2: ECD2B.CH
 Acq On : 21 Aug 2018 13:19
 Operator : SM/SJ
 Sample : AR1660CCC500
 Misc :
 ALS Vial : 3 Sample Multiplier: 1

Instrument :
 ECD_O
ClientSampleId :
 AR1660CCC500

Manual Integrations
APPROVED
 Sohil
 8/22/2018 5:07:33 PM

Integration File signal 1: autoint1.e
 Integration File signal 2: autoint2.e
 Quant Time: Aug 22 01:16:37 2018
 Quant Method : Z:\pestpcbsrv\HPCHEM1\ECD_O\methods\PO072718.M
 Quant Title : GC EXTRACTABLES
 QLast Update : Fri Jul 27 02:33:29 2018
 Response via : Initial Calibration
 Integrator: ChemStation 6890 Scale Mode: Small noise peaks clipped

Volume Inj. : 2 µl
 Signal #1 Phase : ZB-MR1 Signal #2 Phase: ZB-MR2
 Signal #1 Info : 30Mx0.32mmx 0.50µ Signal #2 Info : 30M x 0.32mm x 0.25µm

Compound	RT#1	RT#2	Resp#1	Resp#2	ng/ml	ng/ml

System Monitoring Compounds						
1) SA Tetrachlo...	4.388	3.630	9562961	15207167	47.365	61.889 #
2) SA Decachlor...	10.074	8.610	7437161	7307619	45.599	46.488
Target Compounds						
3) L1 AR-1016-1	5.290	4.492	2190727	3211266	458.649	561.701m
4) L1 AR-1016-2	5.641	4.905	2720319	3322973	462.086	632.884m#
5) L1 AR-1016-3	5.740	4.945	2240649	2547773	451.810	580.245m#
6) L1 AR-1016-4	6.032	4.988	2187415	3055632	470.275	589.270m#
7) L1 AR-1016-5	6.174	5.158	2287103	3216923	438.731	548.443m#
31) L7 AR-1260-1	7.154	6.187	4046174	5792223	431.496	524.180
32) L7 AR-1260-2	7.410	6.373	4809753	7068449	431.322	527.180
33) L7 AR-1260-3	7.692	6.700	5509958	7367661	428.254	506.792m
34) L7 AR-1260-4	8.307	7.237	7628270	11194993	428.848	508.778
35) L7 AR-1260-5	8.628	7.583	4930942	7434856	431.803	476.604

(f)=RT Delta > 1/2 Window (#)=Amounts differ by > 25% (m)=manual int.

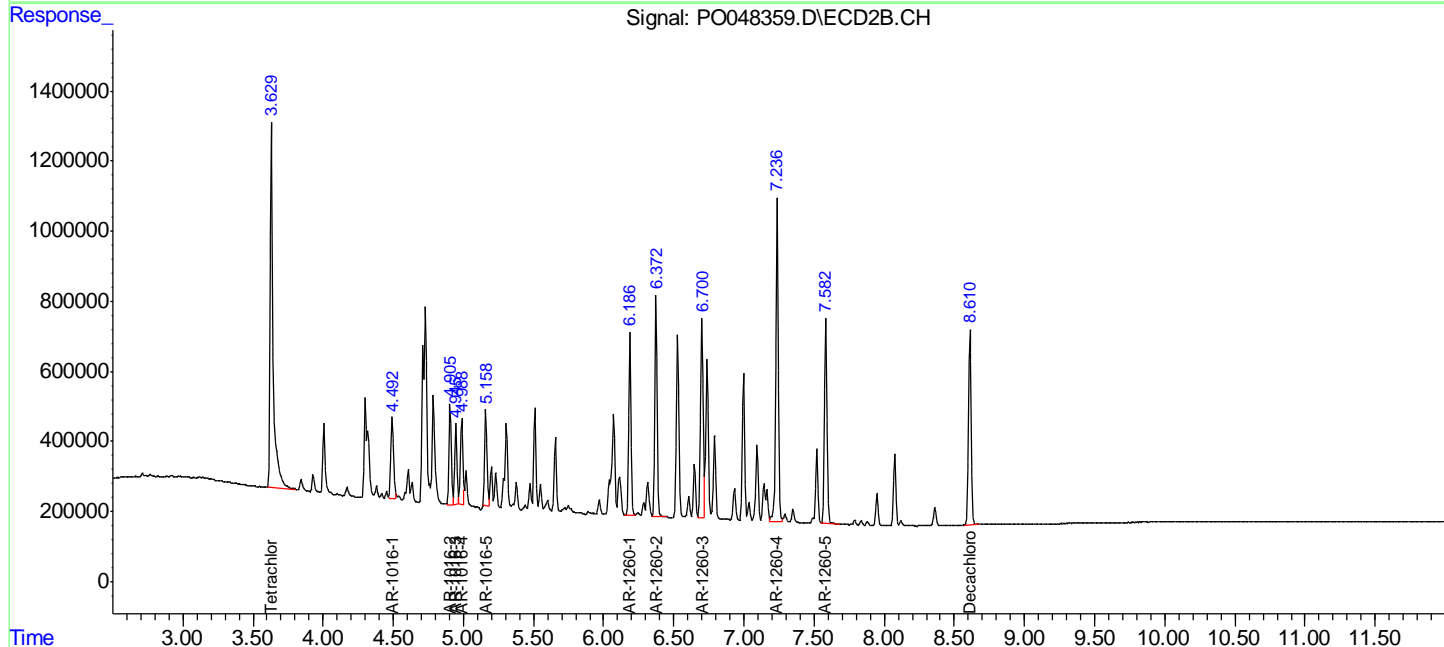
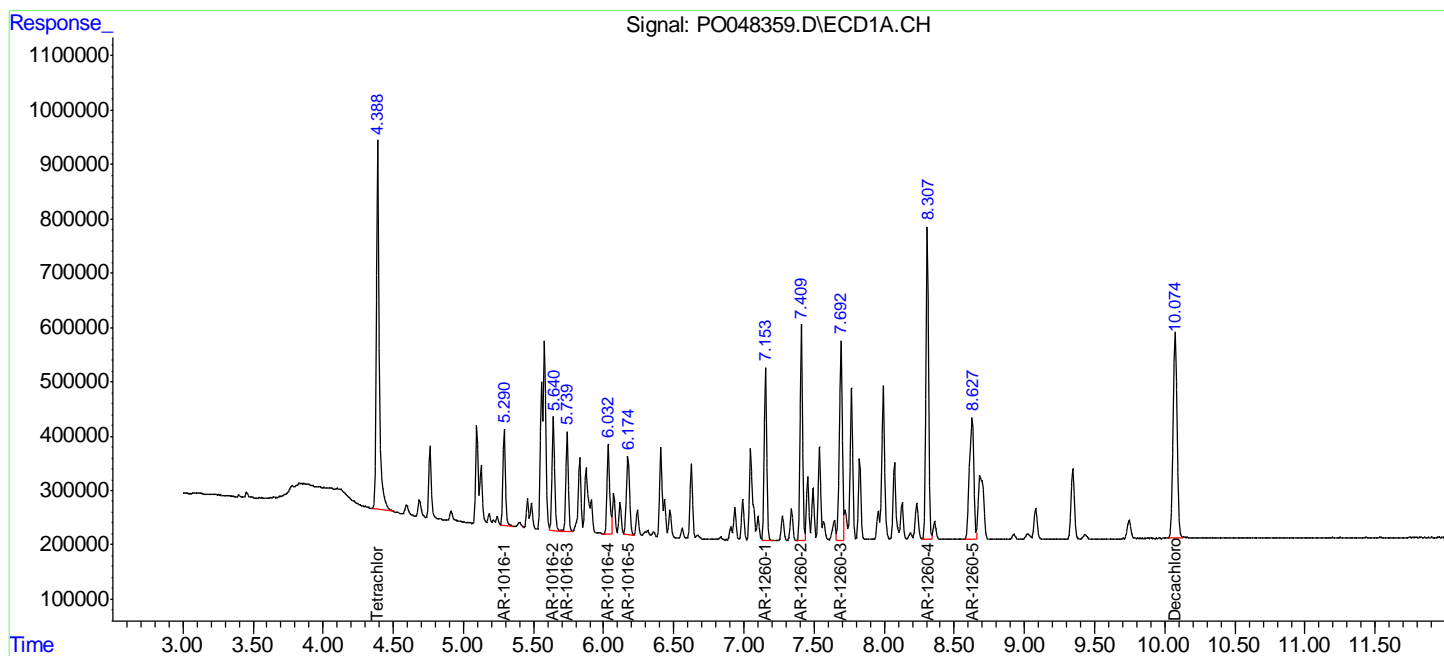
Data Path : Z:\pestpcbsrv\HPCHEM1\ECD O\Data\PO082118\
 Data File : PO048359.D
 Signal(s) : Signal #1: ECD1A.CH Signal #2: ECD2B.CH
 Acq On : 21 Aug 2018 13:19
 Operator : SM/SJ
 Sample : AR1660CCC500
 Misc :
 ALS Vial : 3 Sample Multiplier: 1

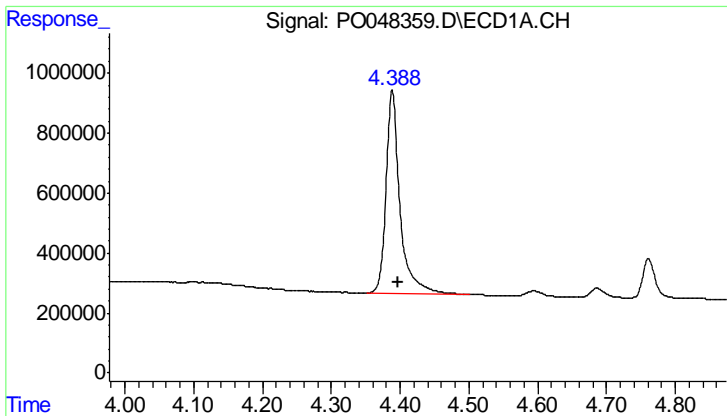
Instrument :
 ECD_O
Client Sampled :
 AR1660CCC500

Manual Integrations
APPROVED
 Sohil
 8/22/2018 5:07:33 PM

Integration File signal 1: autoint1.e
 Integration File signal 2: autoint2.e
 Quant Time: Aug 22 01:16:37 2018
 Quant Method : Z:\pestpcbsrv\HPCHEM1\ECD_O\methods\PO072718.M
 Quant Title : GC EXTRACTABLES
 QLast Update : Fri Jul 27 02:33:29 2018
 Response via : Initial Calibration
 Integrator: ChemStation 6890 Scale Mode: Small noise peaks clipped

Volume Inj. : 2 µl
 Signal #1 Phase : ZB-MR1 Signal #2 Phase: ZB-MR2
 Signal #1 Info : 30Mx0.32mmx 0.50µ Signal #2 Info : 30M x 0.32mm x 0.25µm





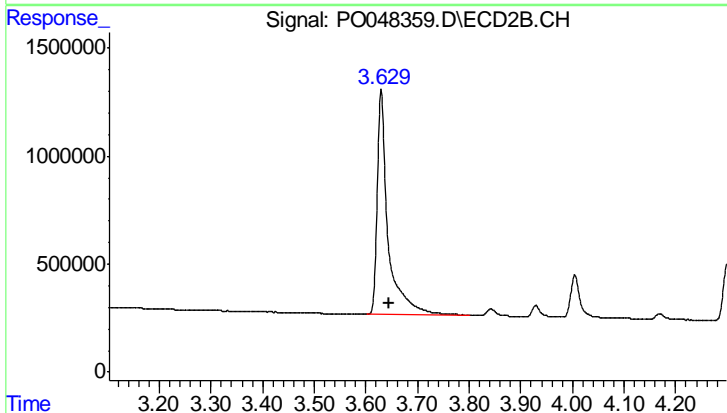
#1 Tetrachloro-m-xylene

R.T.: 4.388 min
 Delta R.T.: -0.009 min
 Response: 9562961
 Conc: 47.37 ng/ml

Instrument :
 ECD_O
 ClientSampled :
 AR1660CCC500

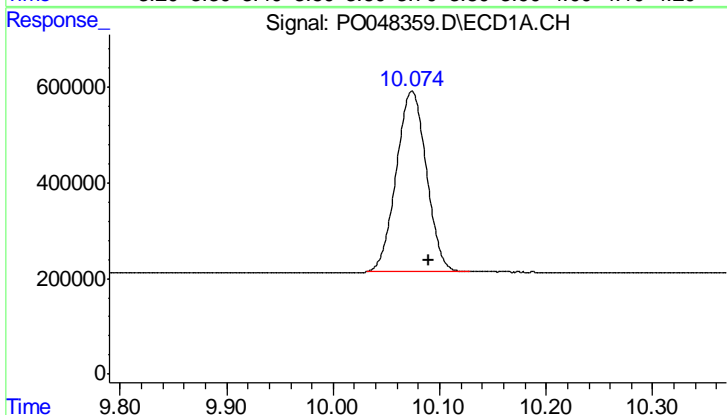
Manual Integrations
 APPROVED

Sohil
 8/22/2018 5:07:33 PM



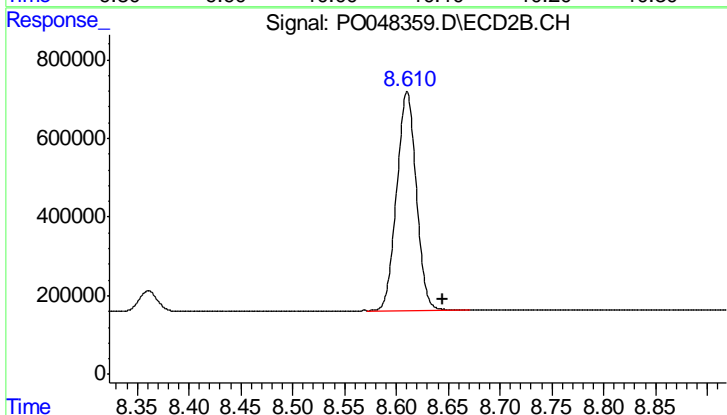
#1 Tetrachloro-m-xylene

R.T.: 3.630 min
 Delta R.T.: -0.016 min
 Response: 15207167
 Conc: 61.89 ng/ml



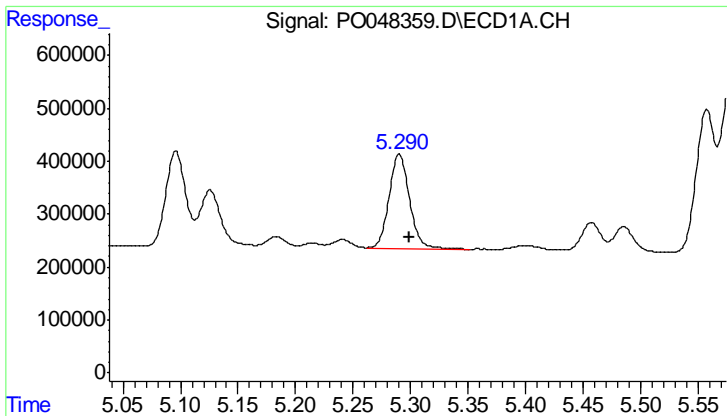
#2 Decachlorobiphenyl

R.T.: 10.074 min
 Delta R.T.: -0.016 min
 Response: 7437161
 Conc: 45.60 ng/ml



#2 Decachlorobiphenyl

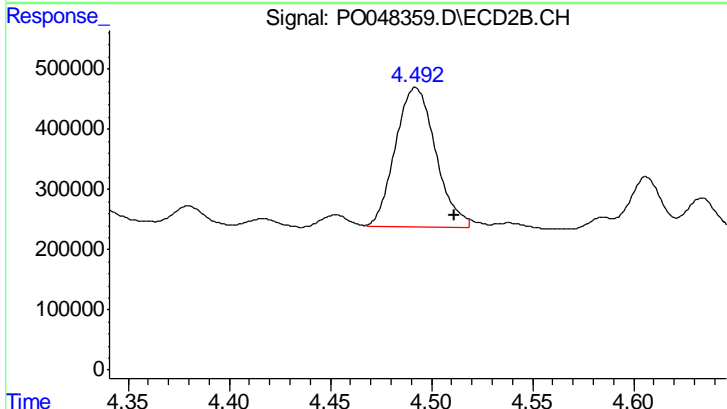
R.T.: 8.610 min
 Delta R.T.: -0.034 min
 Response: 7307619
 Conc: 46.49 ng/ml



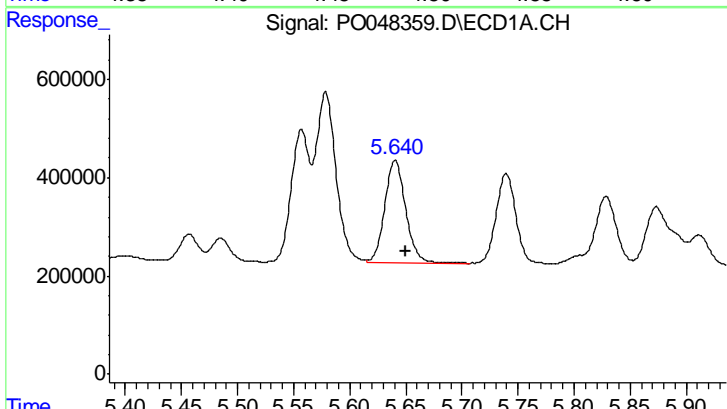
#3 AR-1016-1
 R.T.: 5.290 min
 Delta R.T.: -0.009 min
 Response: 2190727
 Conc: 458.65 ng/ml

Instrument :
 ECD_O
ClientSampled :
 AR1660CCC500

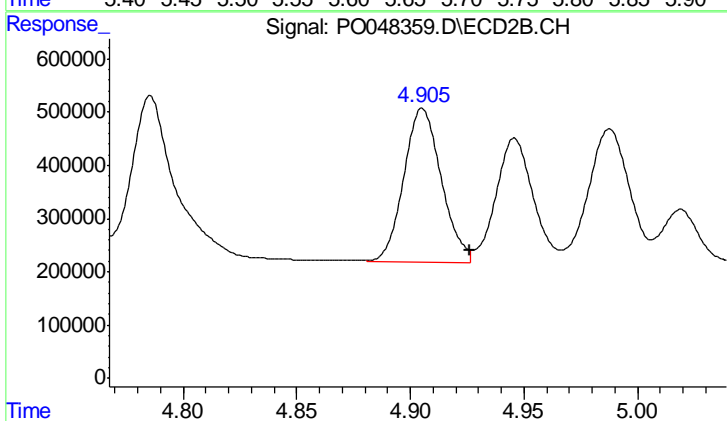
Manual Integrations
APPROVED
 Sohil
 8/22/2018 5:07:33 PM



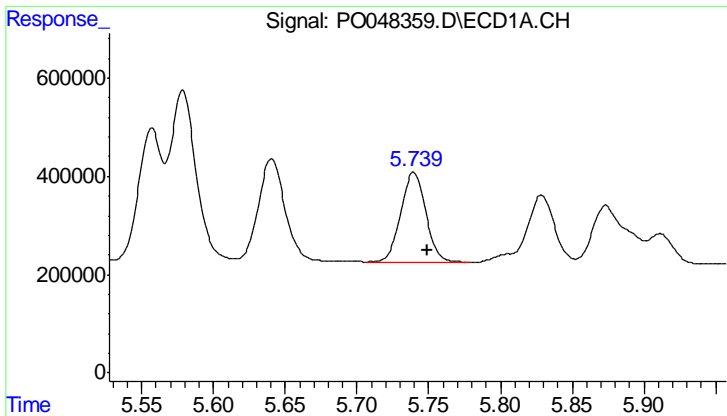
#3 AR-1016-1
 R.T.: 4.492 min
 Delta R.T.: -0.019 min
 Response: 3211266
 Conc: 561.70 ng/ml m



#4 AR-1016-2
 R.T.: 5.641 min
 Delta R.T.: -0.010 min
 Response: 2720319
 Conc: 462.09 ng/ml



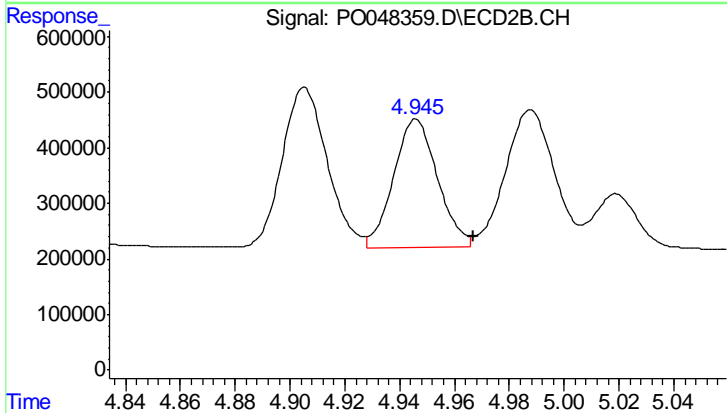
#4 AR-1016-2
 R.T.: 4.905 min
 Delta R.T.: -0.021 min
 Response: 3322973
 Conc: 632.88 ng/ml m



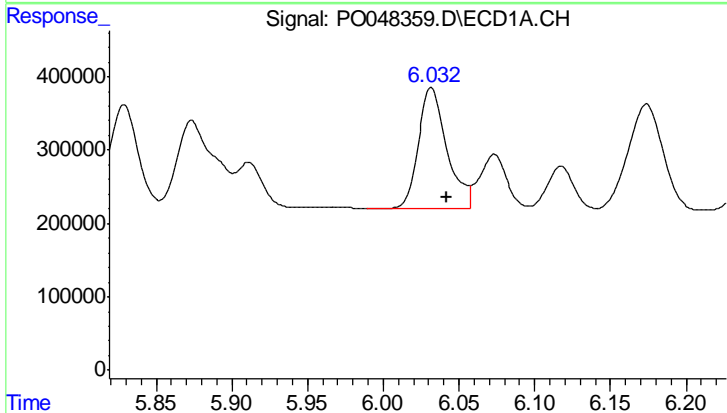
#5 AR-1016-3
 R.T.: 5.740 min
 Delta R.T.: -0.009 min
 Response: 2240649
 Conc: 451.81 ng/ml

Instrument :
 ECD_O
ClientSampled :
 AR1660CCC500

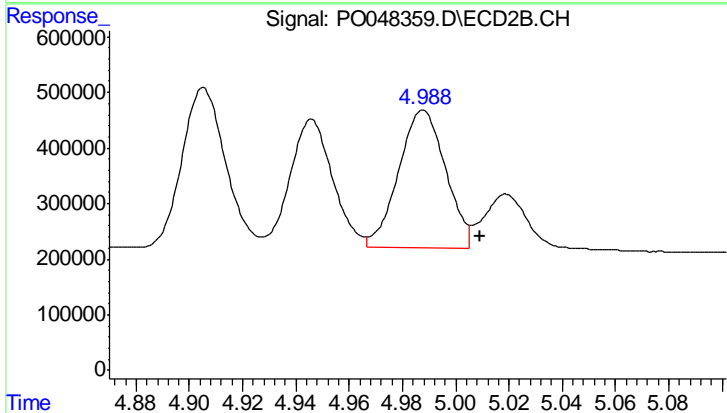
Manual Integrations
APPROVED
 Sohil
 8/22/2018 5:07:33 PM



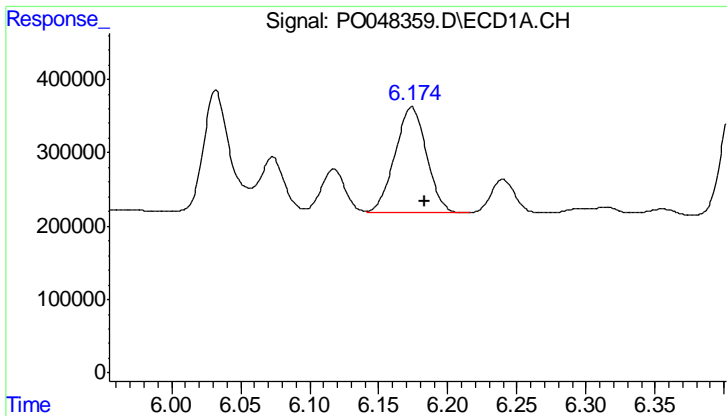
#5 AR-1016-3
 R.T.: 4.945 min
 Delta R.T.: -0.022 min
 Response: 2547773
 Conc: 580.25 ng/ml m



#6 AR-1016-4
 R.T.: 6.032 min
 Delta R.T.: -0.010 min
 Response: 2187415
 Conc: 470.27 ng/ml



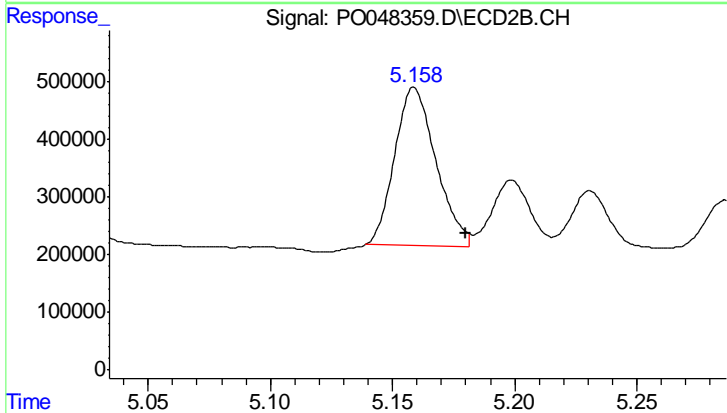
#6 AR-1016-4
 R.T.: 4.988 min
 Delta R.T.: -0.021 min
 Response: 3055632
 Conc: 589.27 ng/ml m



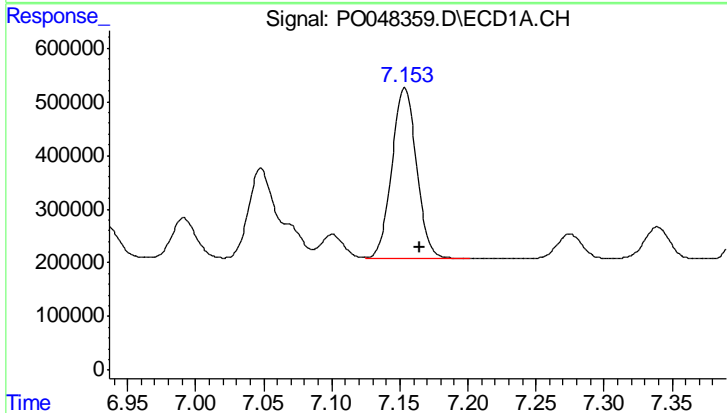
#7 AR-1016-5
 R.T.: 6.174 min
 Delta R.T.: -0.010 min
 Response: 2287103
 Conc: 438.73 ng/ml

Instrument :
 ECD_O
ClientSampled :
 AR1660CCC500

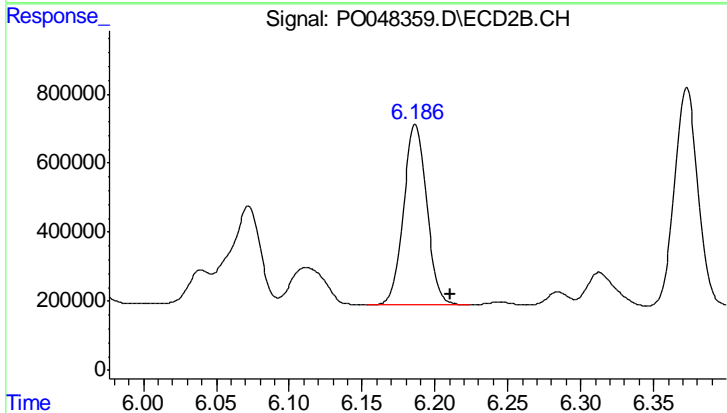
Manual Integrations
APPROVED
 Sohil
 8/22/2018 5:07:33 PM



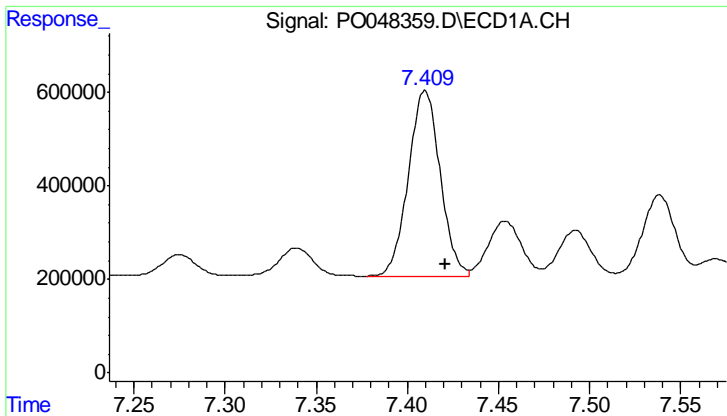
#7 AR-1016-5
 R.T.: 5.158 min
 Delta R.T.: -0.022 min
 Response: 3216923
 Conc: 548.44 ng/ml m



#31 AR-1260-1
 R.T.: 7.154 min
 Delta R.T.: -0.011 min
 Response: 4046174
 Conc: 431.50 ng/ml



#31 AR-1260-1
 R.T.: 6.187 min
 Delta R.T.: -0.024 min
 Response: 5792223
 Conc: 524.18 ng/ml



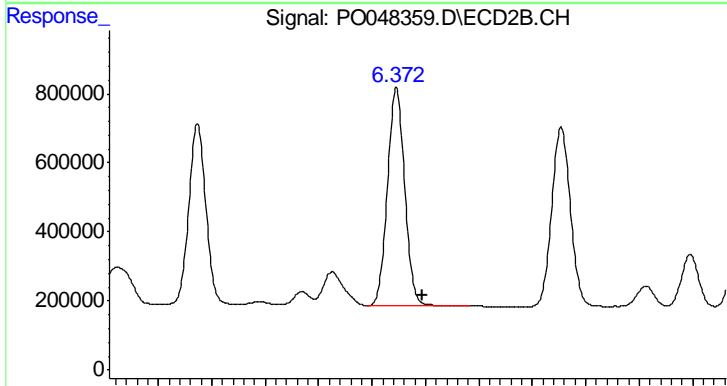
#32 AR-1260-2

R.T.: 7.410 min
 Delta R.T.: -0.011 min
 Response: 4809753
 Conc: 431.32 ng/ml

Instrument :
 ECD_O
 ClientSampleId :
 AR1660CCC500

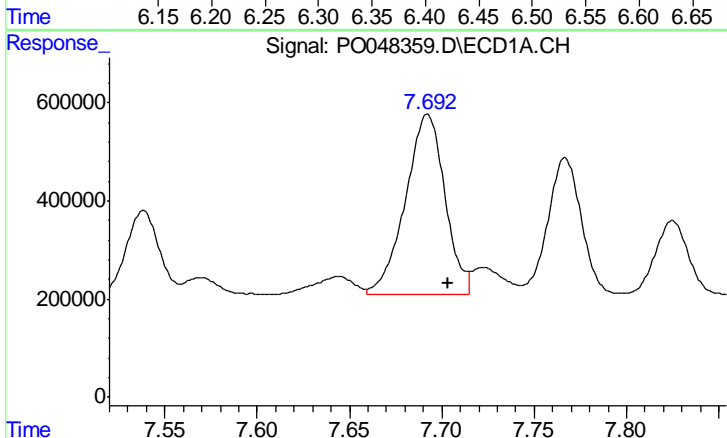
Manual Integrations
 APPROVED

Sohil
 8/22/2018 5:07:33 PM



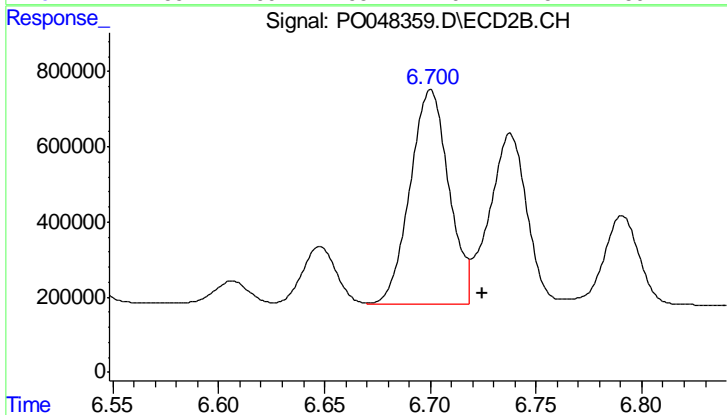
#32 AR-1260-2

R.T.: 6.373 min
 Delta R.T.: -0.024 min
 Response: 7068449
 Conc: 527.18 ng/ml



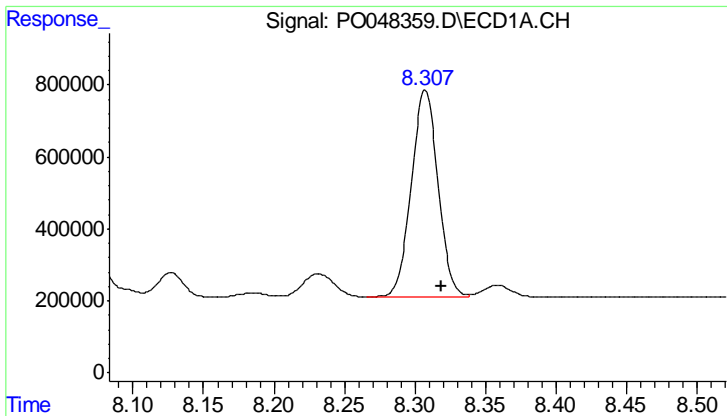
#33 AR-1260-3

R.T.: 7.692 min
 Delta R.T.: -0.011 min
 Response: 5509958
 Conc: 428.25 ng/ml



#33 AR-1260-3

R.T.: 6.700 min
 Delta R.T.: -0.025 min
 Response: 7367661
 Conc: 506.79 ng/ml m



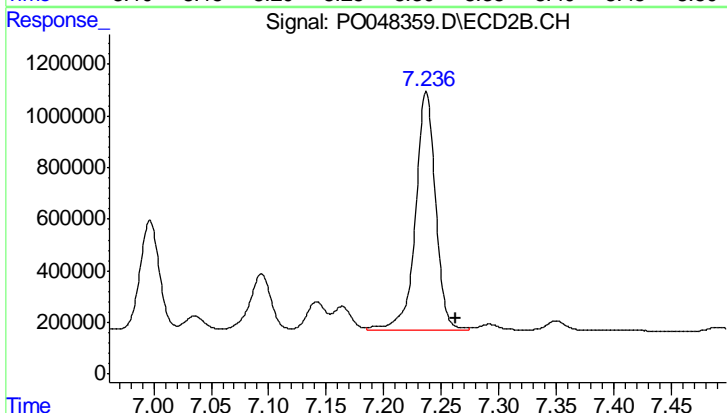
#34 AR-1260-4

R.T.: 8.307 min
 Delta R.T.: -0.011 min
 Response: 7628270
 Conc: 428.85 ng/ml

Instrument :
 ECD_O
 ClientSampled :
 AR1660CCC500

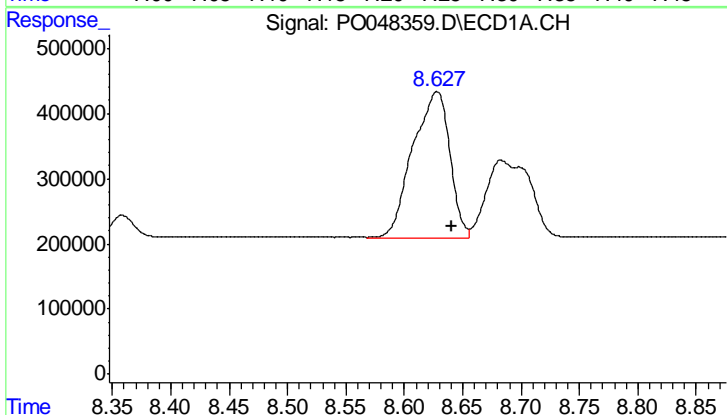
Manual Integrations
 APPROVED

Sohil
 8/22/2018 5:07:33 PM



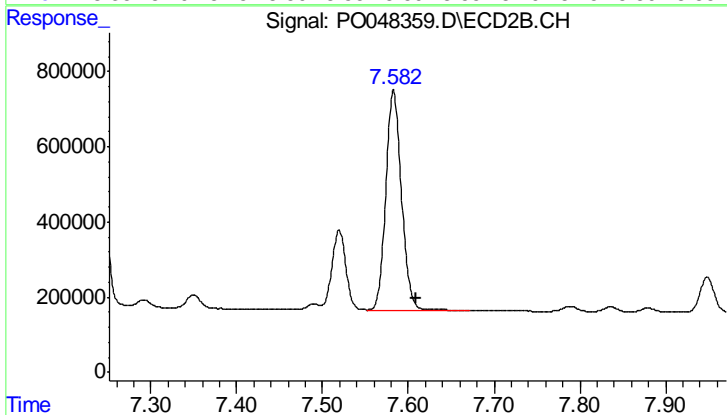
#34 AR-1260-4

R.T.: 7.237 min
 Delta R.T.: -0.025 min
 Response: 11194993
 Conc: 508.78 ng/ml



#35 AR-1260-5

R.T.: 8.628 min
 Delta R.T.: -0.012 min
 Response: 4930942
 Conc: 431.80 ng/ml



#35 AR-1260-5

R.T.: 7.583 min
 Delta R.T.: -0.026 min
 Response: 7434856
 Conc: 476.60 ng/ml