

Data Path : Z:\pestpcbsrv\HPCHEM1\ECD O\Data\PO082118\
 Data File : PO048381.D
 Signal(s) : Signal #1: ECD1A.CH Signal #2: ECD2B.CH
 Acq On : 21 Aug 2018 20:03
 Operator : SM/SJ
 Sample : J4543-02
 Misc :
 ALS Vial : 16 Sample Multiplier: 1

Instrument :
 ECD_O
ClientSampled :
 C0B15

Manual Integrations
APPROVED
 Sohil
 8/22/2018 5:08:12 PM

Integration File signal 1: autoint1.e
 Integration File signal 2: autoint2.e
 Quant Time: Aug 22 05:05:31 2018
 Quant Method : Z:\pestpcbsrv\HPCHEM1\ECD_O\methods\PO072718.M
 Quant Title : GC EXTRACTABLES
 QLast Update : Fri Jul 27 02:33:29 2018
 Response via : Initial Calibration
 Integrator: ChemStation 6890 Scale Mode: Small noise peaks clipped

Volume Inj. : 2 ul
 Signal #1 Phase : ZB-MR1 Signal #2 Phase: ZB-MR2
 Signal #1 Info : 30Mx0.32mmx 0.50µ Signal #2 Info : 30M x 0.32mm x 0.25µm

Compound	RT#1	RT#2	Resp#1	Resp#2	nq/ml	nq/ml

System Monitoring Compounds						
1) SA Tetrachlo...	4.391	3.636	2145003	1615419	10.624	6.574m#
2) SA Decachlor...	10.071	8.608	5329946	4905908	32.679	31.210m
Target Compounds						
31) L7 AR-1260-1	7.157	6.191	2762.5E6	2502.8E6	294604.480	226493.600
32) L7 AR-1260-2	7.413	6.378	3023.5E6	2711.6E6	271134.400	202234.463 #
33) L7 AR-1260-3	7.700	6.709	3930.2E6	3499.0E6	305468.509	240684.213m
34) L7 AR-1260-4	8.320	7.245	4326.3E6	4410.7E6	243217.176	200451.825
35) L7 AR-1260-5	8.630	7.590	4091.7E6	3838.5E6	358313.626	246062.788 #

(f)=RT Delta > 1/2 Window (#)=Amounts differ by > 25% (m)=manual int.

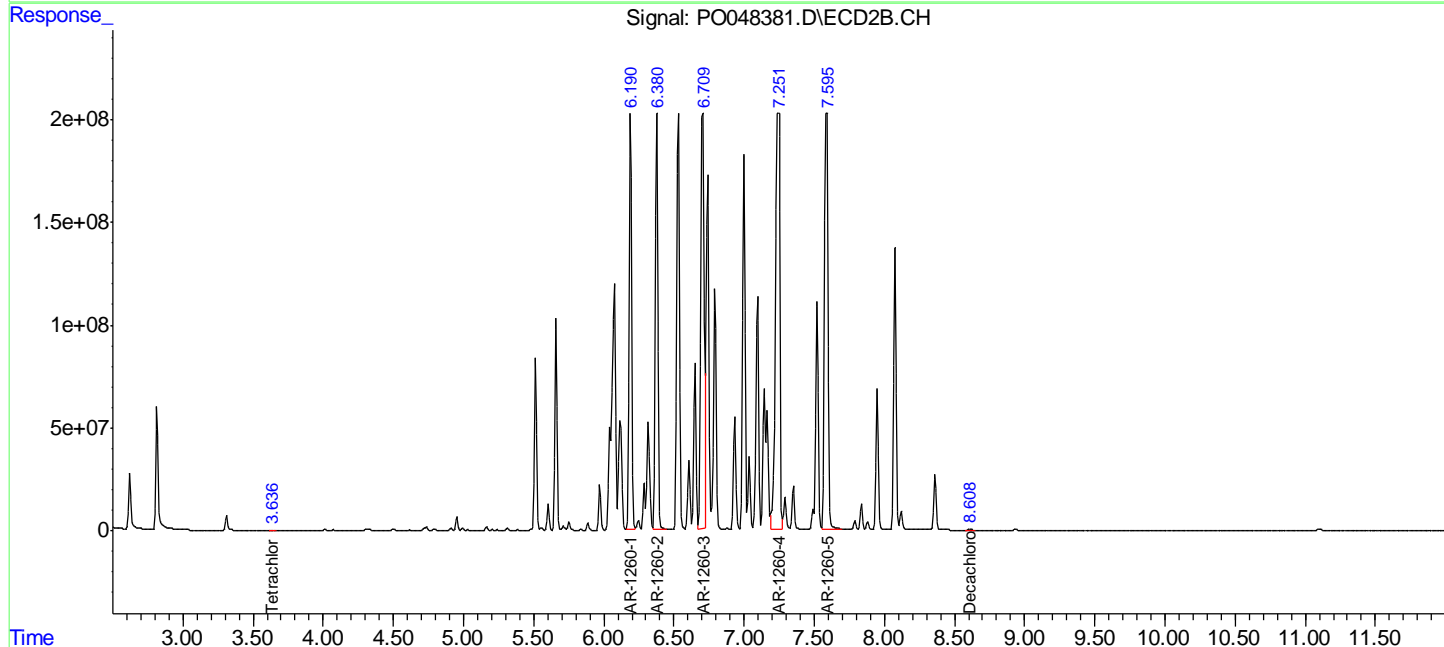
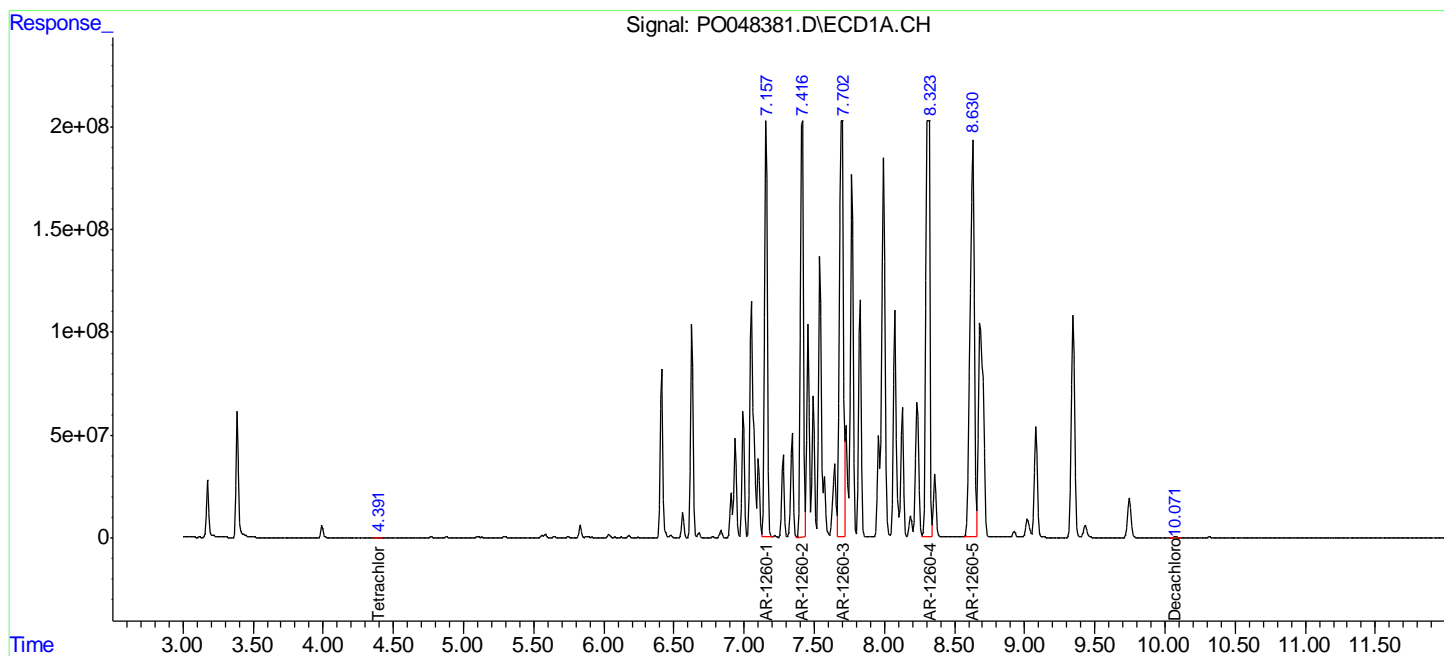
Data Path : Z:\pestpcbsrv\HPCHEM1\ECD O\Data\PO082118\
 Data File : PO048381.D
 Signal(s) : Signal #1: ECD1A.CH Signal #2: ECD2B.CH
 Acq On : 21 Aug 2018 20:03
 Operator : SM/SJ
 Sample : J4543-02
 Misc :
 ALS Vial : 16 Sample Multiplier: 1

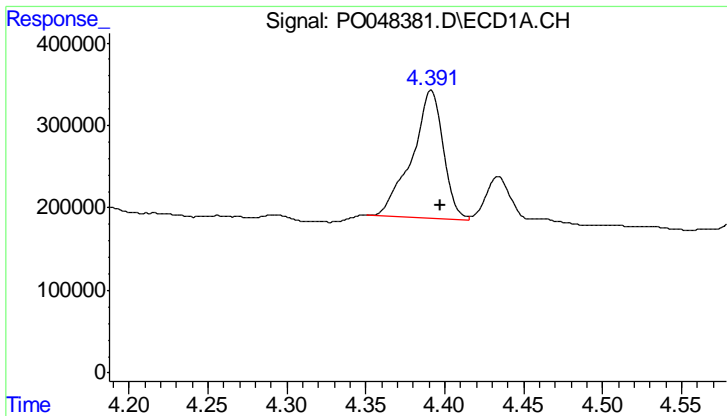
Instrument :
 ECD_O
Client Sampled :
 C0B15

Manual Integrations
APPROVED
 Sohil
 8/22/2018 5:08:12 PM

Integration File signal 1: autoint1.e
 Integration File signal 2: autoint2.e
 Quant Time: Aug 22 05:05:31 2018
 Quant Method : Z:\pestpcbsrv\HPCHEM1\ECD_O\methods\PO072718.M
 Quant Title : GC EXTRACTABLES
 QLast Update : Fri Jul 27 02:33:29 2018
 Response via : Initial Calibration
 Integrator: ChemStation 6890 Scale Mode: Small noise peaks clipped

Volume Inj. : 2 ul
 Signal #1 Phase : ZB-MR1 Signal #2 Phase: ZB-MR2
 Signal #1 Info : 30Mx0.32mmx 0.50µ Signal #2 Info : 30M x 0.32mm x 0.25µm





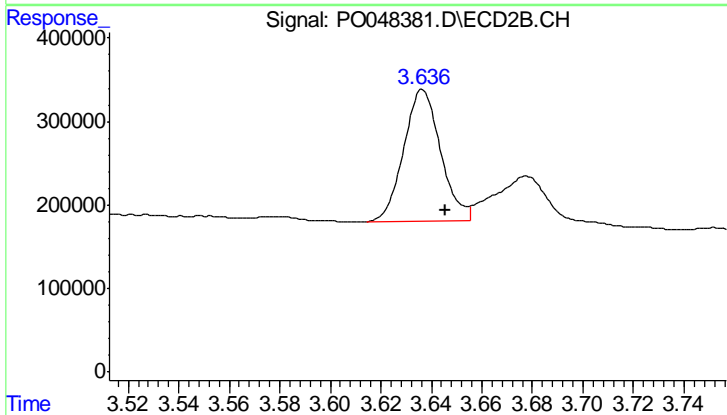
#1 Tetrachloro-m-xylene

R.T.: 4.391 min
 Delta R.T.: -0.006 min
 Response: 2145003
 Conc: 10.62 ng/ml

Instrument :
 ECD_O
 ClientSampled :
 C0B15

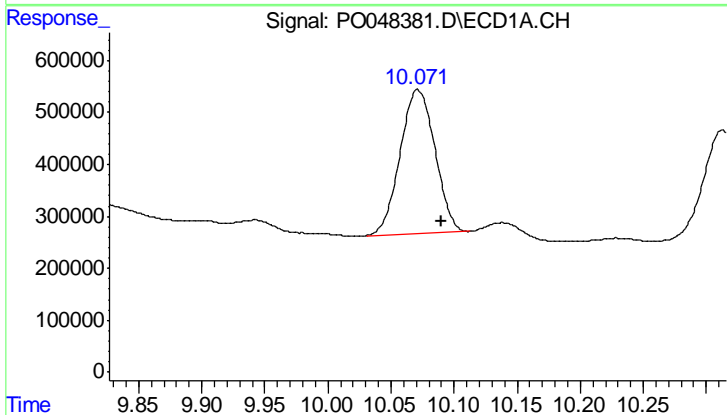
Manual Integrations
 APPROVED

Sohil
 8/22/2018 5:08:12 PM



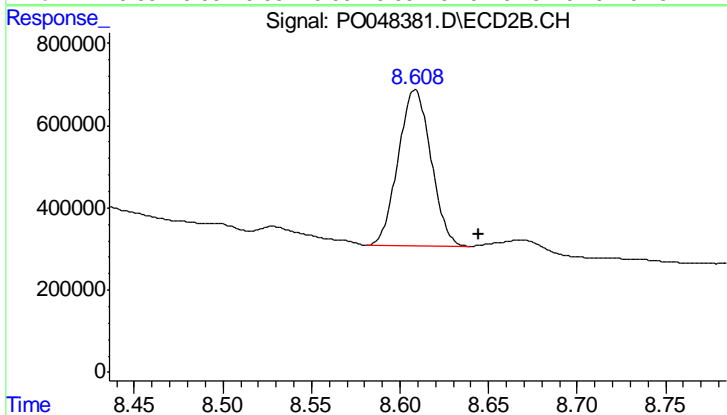
#1 Tetrachloro-m-xylene

R.T.: 3.636 min
 Delta R.T.: -0.009 min
 Response: 1615419
 Conc: 6.57 ng/ml m



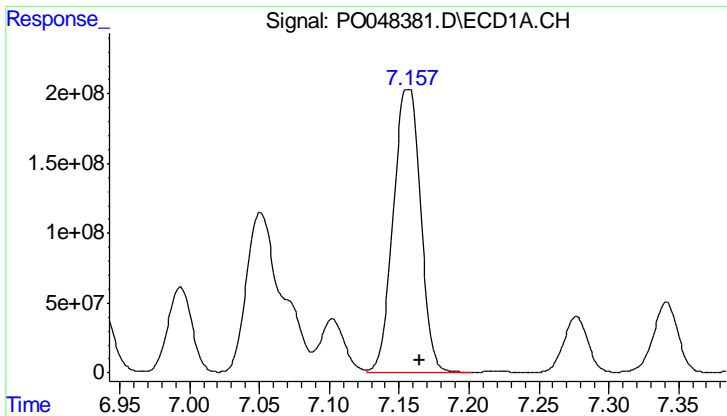
#2 Decachlorobiphenyl

R.T.: 10.071 min
 Delta R.T.: -0.019 min
 Response: 5329946
 Conc: 32.68 ng/ml



#2 Decachlorobiphenyl

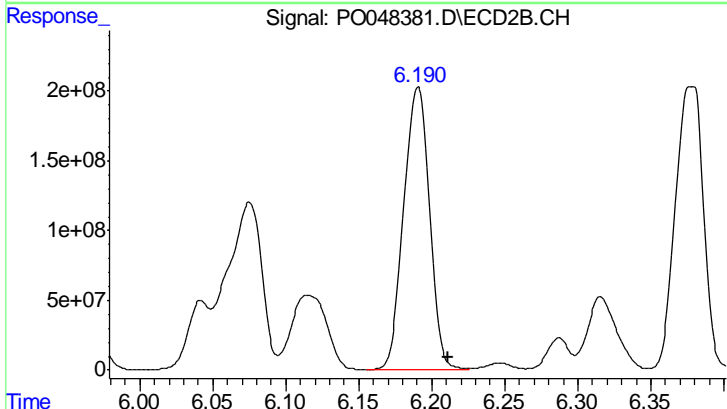
R.T.: 8.608 min
 Delta R.T.: -0.036 min
 Response: 4905908
 Conc: 31.21 ng/ml m



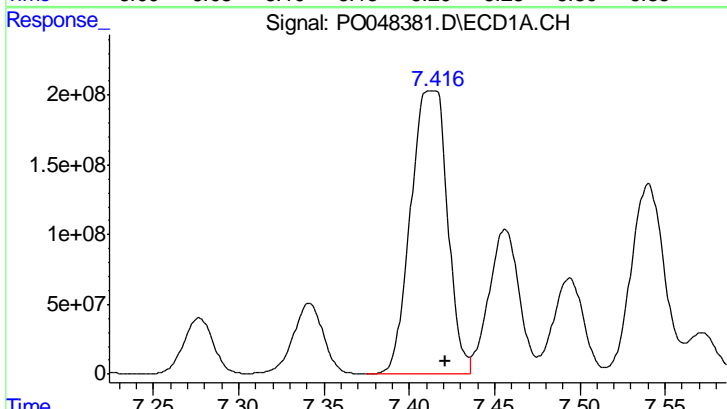
#31 AR-1260-1
 R.T.: 7.157 min
 Delta R.T.: -0.008 min
 Response: 2762529458
 Conc: 294604.48 ng/ml

Instrument :
 ECD_O
 ClientSampled :
 C0B15

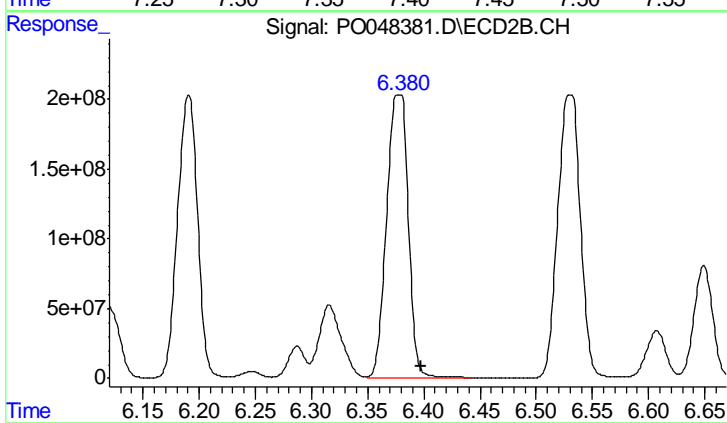
Manual Integrations
 APPROVED
 Sohil
 8/22/2018 5:08:12 PM



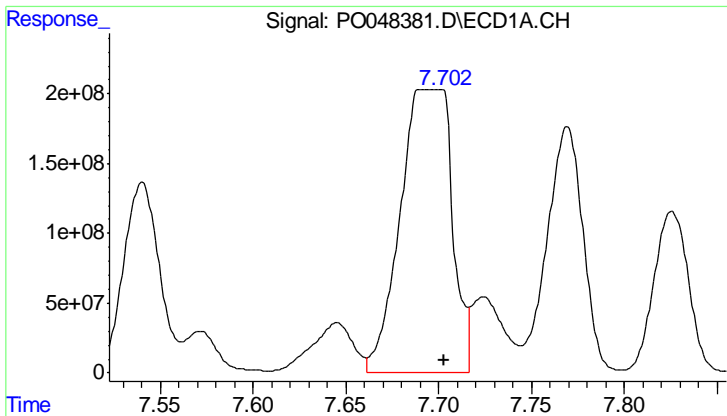
#31 AR-1260-1
 R.T.: 6.191 min
 Delta R.T.: -0.021 min
 Response: 2502767462
 Conc: 226493.60 ng/ml



#32 AR-1260-2
 R.T.: 7.413 min
 Delta R.T.: -0.008 min
 Response: 3023473190
 Conc: 271134.40 ng/ml



#32 AR-1260-2
 R.T.: 6.378 min
 Delta R.T.: -0.019 min
 Response: 2711568947
 Conc: 202234.46 ng/ml



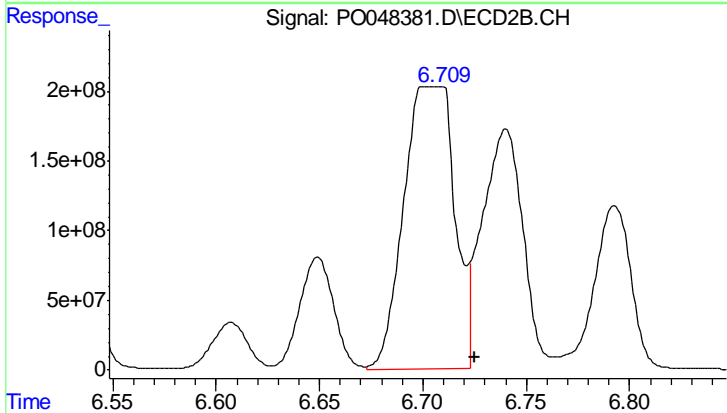
#33 AR-1260-3

R.T.: 7.700 min
 Delta R.T.: -0.004 min
 Response: 3930186006
 Conc: 305468.51 ng/ml

Instrument :
 ECD_O
 ClientSampled :
 C0B15

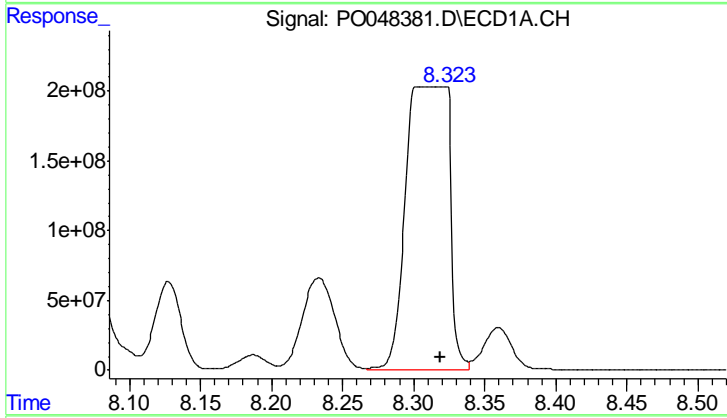
Manual Integrations
 APPROVED

Sohil
 8/22/2018 5:08:12 PM



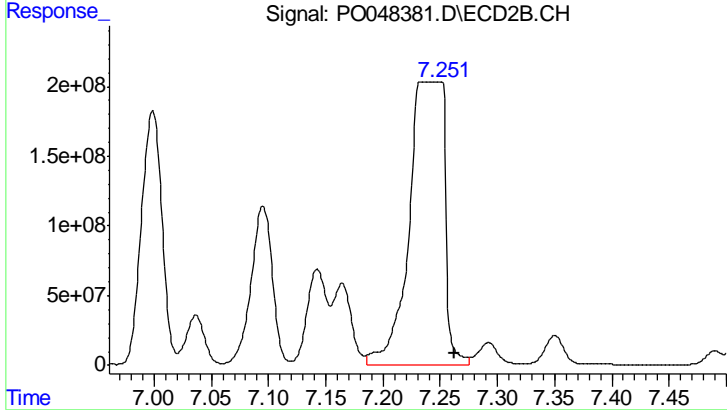
#33 AR-1260-3

R.T.: 6.709 min
 Delta R.T.: -0.016 min
 Response: 3499029638
 Conc: 240684.21 ng/ml m



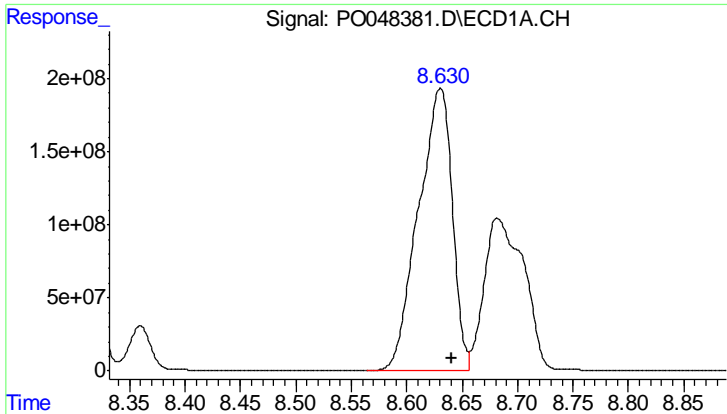
#34 AR-1260-4

R.T.: 8.320 min
 Delta R.T.: 0.002 min
 Response: 4326303813
 Conc: 243217.18 ng/ml



#34 AR-1260-4

R.T.: 7.245 min
 Delta R.T.: -0.016 min
 Response: 4410679561
 Conc: 200451.83 ng/ml



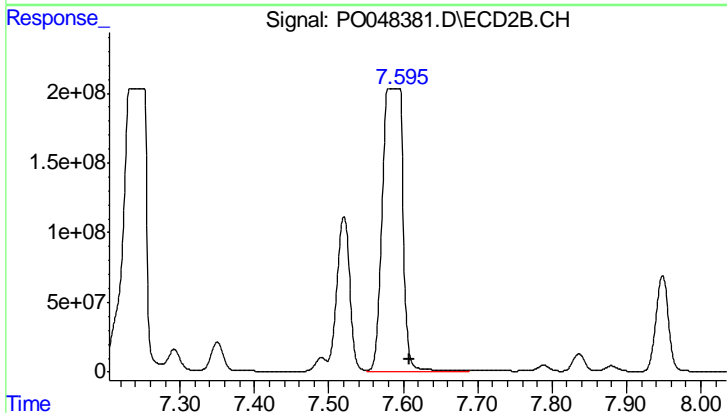
#35 AR-1260-5

R.T.: 8.630 min
 Delta R.T.: -0.010 min
 Response: 4091734252
 Conc: 358313.63 ng/

Instrument :
 ECD_O
 ClientSampled :
 C0B15

Manual Integrations
 APPROVED

Sohil
 8/22/2018 5:08:12 PM



#35 AR-1260-5

R.T.: 7.590 min
 Delta R.T.: -0.020 min
 Response: 3838493304
 Conc: 246062.79 ng/ml