

Data Path : Z:\pestpcbsrv\HPCHEM1\ECD_O\Data\P0082123\
 Data File : P0097318.D
 Signal(s) : Signal #1: ECD1A.ch Signal #2: ECD2B.ch
 Acq On : 21 Aug 2023 12:25
 Operator : YP/AJ
 Sample : 04071-10DL 100X
 Misc :
 ALS Vial : 16 Sample Multiplier: 1

Instrument :
 ECD_O
 ClientSampleId :

Integration File signal 1: autoint1.e
 Integration File signal 2: autoint2.e
 Quant Time: Aug 22 01:46:06 2023
 Quant Method : Z:\pestpcbsrv\HPCHEM1\ECD_O\methods\P0080723.M
 Quant Title : GC EXTRACTABLES
 QLast Update : Tue Aug 08 04:34:41 2023
 Response via : Initial Calibration
 Integrator: ChemStation

Volume Inj. : 2 µl
 Signal #1 Phase : ZB-MR2 Signal #2 Phase: ZB-MR2
 Signal #1 Info : 30Mx0.32mmx 0.50µ Signal #2 Info : 30M x 0.32mm x 0.25µm

Compound	RT#1	RT#2	Resp#1	Resp#2	ng/ml	ng/ml

System Monitoring Compounds						
1) SA Tetrachlo...	4.388	3.659f	3963962	1180459	1.198	0.892 #
2) SA Decachlor...	10.336	8.626	334208	272013	0.153	0.235 #
Target Compounds						
3) L1 AR-1016-1	5.595	4.716	57760541	34560363	613.276	779.510 #
4) L1 AR-1016-2	5.618	4.716	82161463	34560363	614.179	564.982
5) L1 AR-1016-3	5.681	4.892	54368248	20320400	624.771	622.019
6) L1 AR-1016-4	5.782	4.935	45673532	16548003	679.965	578.877
7) L1 AR-1016-5	6.083	5.148	54484631	24618133	780.392	640.323
8) L2 AR-1221-1	4.611	3.825	8150243	2165821	199.981	124.780 #
9) L2 AR-1221-2	4.707	3.913	7213523	2431771	237.444	188.207
10) L2 AR-1221-3	4.785	3.988	24957037	11914483	285.120	300.158
11) L3 AR-1232-1	4.785	3.988	24957037	11914483	342.189	368.332
12) L3 AR-1232-2	5.322	4.716	42088206	34560363	1061.602	1197.827
13) L3 AR-1232-3	5.618	4.892	82161463	20320400	1343.108	1340.231
14) L3 AR-1232-4	5.782	4.977	45673532	20212373	1496.814	1352.481
15) L3 AR-1232-5	5.875	5.148	36405993	24618133	1300.995	1505.993
16) L4 AR-1242-1	5.595	4.716	57760541	34560363	689.127	876.611 #
17) L4 AR-1242-2	5.618	4.716	82161463	34560363	697.692	634.241
18) L4 AR-1242-3	5.681	4.892	54368248	20320400	735.975	687.230
19) L4 AR-1242-4	5.782	4.977	45673532	20212373	767.231	641.380
20) L4 AR-1242-5	6.535	5.500	47221719	27740496	858.269	761.345
21) L5 AR-1248-1	5.595	4.716	57760541	34560363	985.774	1231.549
22) L5 AR-1248-2	5.875	4.935	36405993	16548003	387.225	390.458
23) L5 AR-1248-3	6.083	4.977	54484631	20212373	557.052	460.785
24) L5 AR-1248-4	6.496	5.148	46102400	24618133	507.493	482.237
25) L5 AR-1248-5	6.535	5.542	47221719	21959706	536.086	469.708
26) L6 AR-1254-1	6.467	5.500	34992780	27740496	320.181	375.907
27) L6 AR-1254-2	6.697	5.649	40320663	7134110	250.085	108.289 #
28) L6 AR-1254-3	7.070	6.053	13489370	7776846	86.086	76.951
29) L6 AR-1254-4	7.364	6.282	7822304	3554090	77.588	61.410
30) L6 AR-1254-5	7.794	6.701	2026522	1230812	18.059	14.000
31) L7 AR-1260-1	7.238	6.197	2146128	4033653	17.075	57.322 #
32) L7 AR-1260-2	7.503	6.390	2120451	932516	15.738	11.173 #
33) L7 AR-1260-3	7.883	6.524	1115718	895063	10.751	11.591
34) L7 AR-1260-4	8.105	7.000	1623130	236334	14.518	3.688 #
35) L7 AR-1260-5	8.437	7.242	948869	619301	4.519	4.467
36) L8 AR-1262-1	7.883	6.812	1115718	653705	7.512	16.605 #
37) L8 AR-1262-2	8.437	7.000	948869	236334	4.099	2.914 #
38) L8 AR-1262-3	8.767	7.526	543524	182719	3.259	2.847
39) L8 AR-1262-4	8.852	7.591	110822	404481	1.520	3.561 #
40) L8 AR-1262-5	9.538	0.000	109365	0	1.313	N.D. #
41) L9 AR-1268-1	8.767	7.526	543524	182719	1.768	0.986 #

Data Path : Z:\pestpcbsrv\HPCHEM1\ECD_0\Data\P0082123\
 Data File : P0097318.D
 Signal(s) : Signal #1: ECD1A.ch Signal #2: ECD2B.ch
 Acq On : 21 Aug 2023 12:25
 Operator : YP/AJ
 Sample : 04071-10DL 100X
 Misc :
 ALS Vial : 16 Sample Multiplier: 1

Instrument :
 ECD_0
 ClientSampleId :

Integration File signal 1: autoint1.e
 Integration File signal 2: autoint2.e
 Quant Time: Aug 22 01:46:06 2023
 Quant Method : Z:\pestpcbsrv\HPCHEM1\ECD_0\methods\P0080723.M
 Quant Title : GC EXTRACTABLES
 QLast Update : Tue Aug 08 04:34:41 2023
 Response via : Initial Calibration
 Integrator: ChemStation

Volume Inj. : 2 µl
 Signal #1 Phase : ZB-MR1 Signal #2 Phase: ZB-MR2
 Signal #1 Info : 30Mx0.32mmx 0.50µ Signal #2 Info : 30M x 0.32mm x 0.25µm

	Compound	RT#1	RT#2	Resp#1	Resp#2	ng/ml	ng/ml
42)	L9 AR-1268-2	8.852	7.591	110822	404481	0.404	2.412 #
43)	L9 AR-1268-3	9.087	7.859f	244152	192568	0.956	1.333 #
44)	L9 AR-1268-4	9.538	0.000	109365	0	1.180	N.D. #
45)	L9 AR-1268-5	9.980	8.334f	54337	259868	0.067	0.625 #

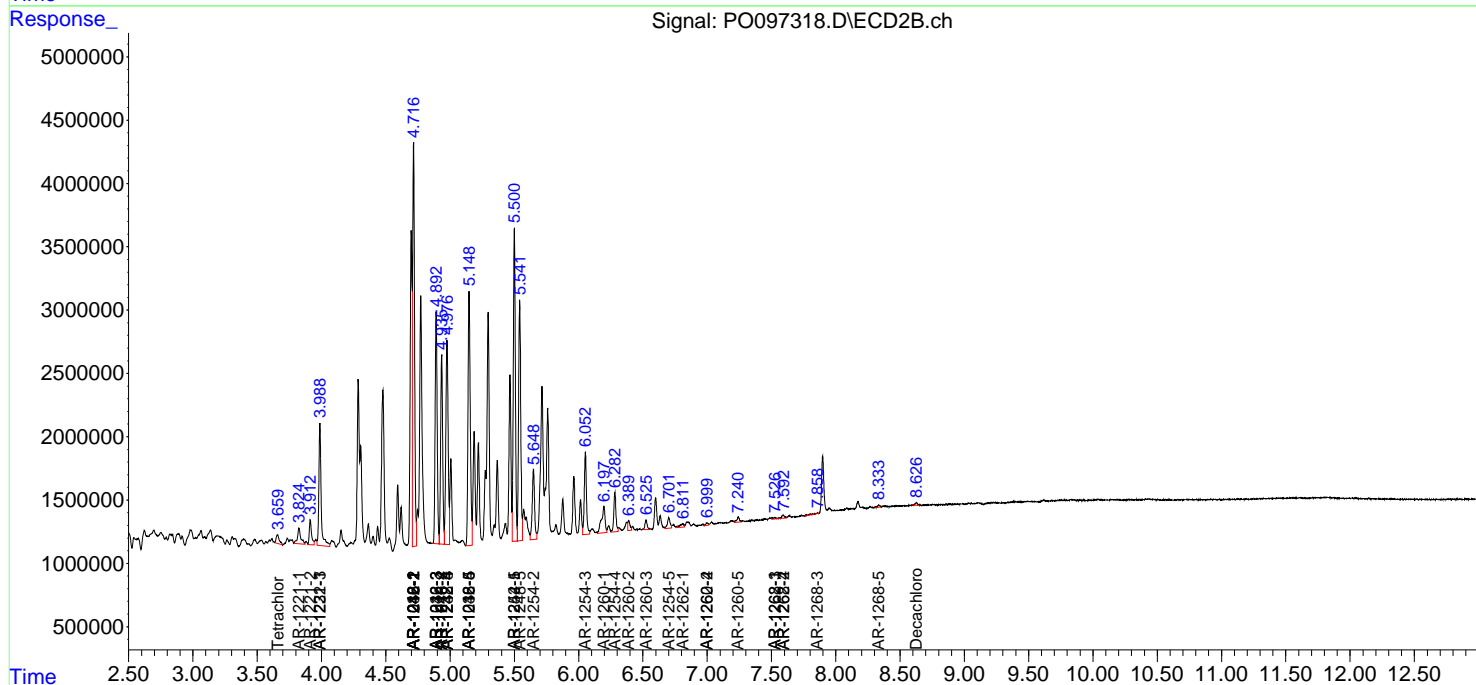
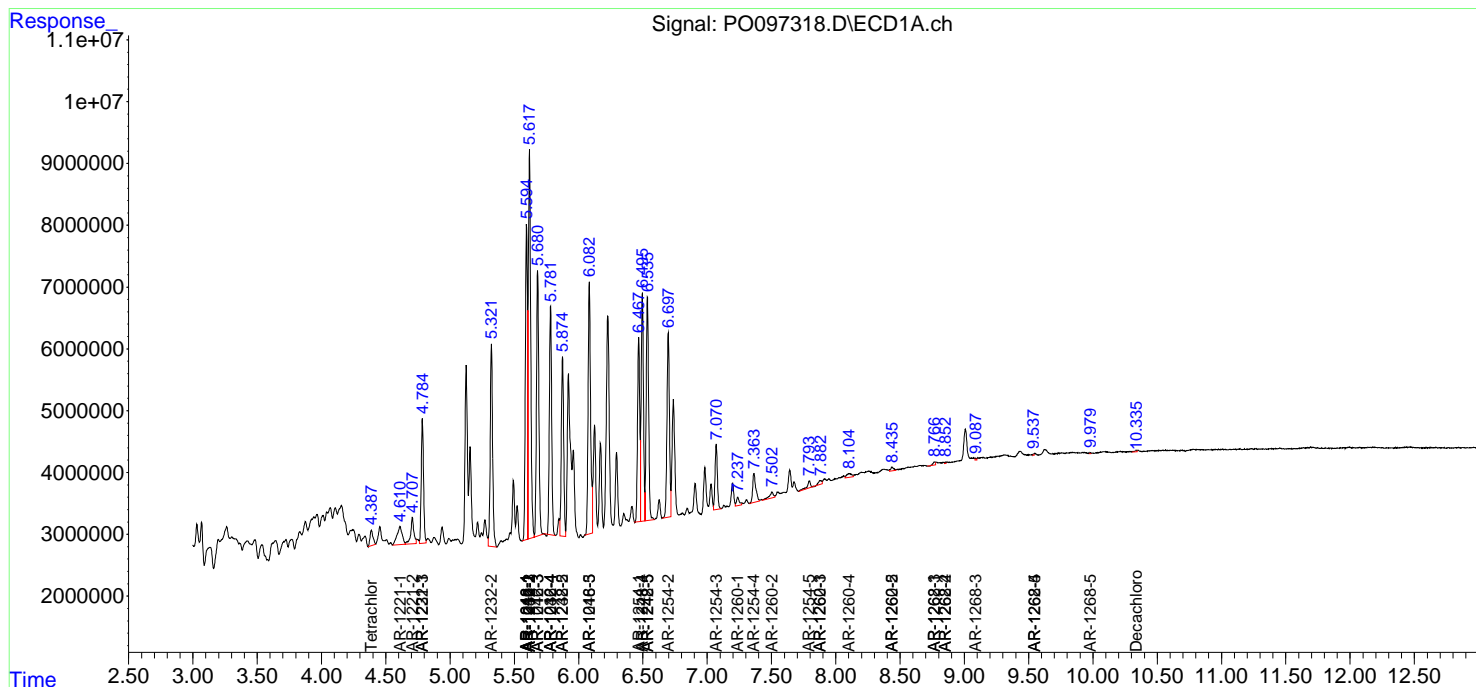
(f)=RT Delta > 1/2 Window (#)=Amounts differ by > 25% (m)=manual int.

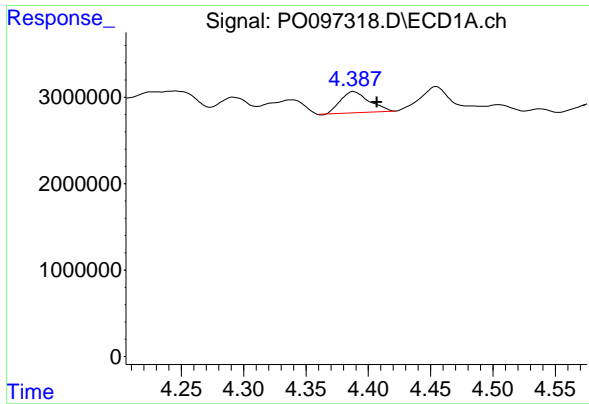
Data Path : Z:\pestpcbsrv\HPCHEM1\ECD_O\Data\PO082123\
 Data File : PO097318.D
 Signal(s) : Signal #1: ECD1A.ch Signal #2: ECD2B.ch
 Acq On : 21 Aug 2023 12:25
 Operator : YP/AJ
 Sample : 04071-10DL 100X
 Misc :
 ALS Vial : 16 Sample Multiplier: 1

Instrument :
 ECD_O
 ClientSampleId :

Integration File signal 1: autoint1.e
 Integration File signal 2: autoint2.e
 Quant Time: Aug 22 01:46:06 2023
 Quant Method : Z:\pestpcbsrv\HPCHEM1\ECD_O\methods\PO080723.M
 Quant Title : GC EXTRACTABLES
 QLast Update : Tue Aug 08 04:34:41 2023
 Response via : Initial Calibration
 Integrator: ChemStation

Volume Inj. : 2 µl
 Signal #1 Phase : ZB-MR1 Signal #2 Phase: ZB-MR2
 Signal #1 Info : 30Mx0.32mmx 0.50µm Signal #2 Info : 30M x 0.32mm x 0.25µm

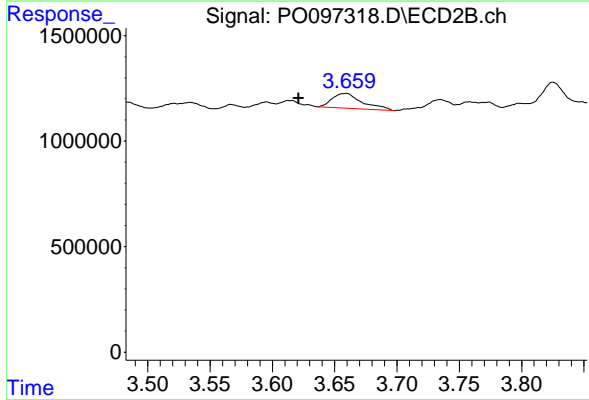




#1 Tetrachloro-m-xylene

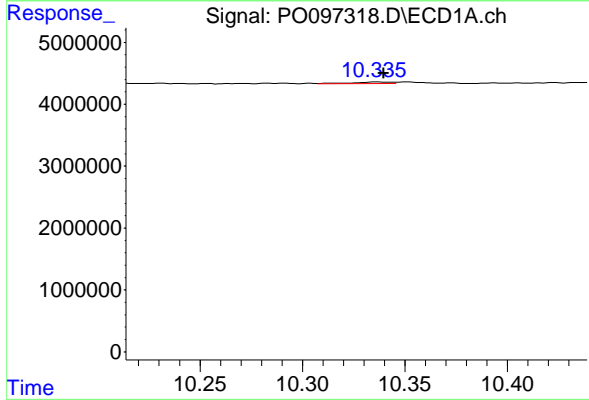
R.T.: 4.388 min
 Delta R.T.: -0.019 min
 Response: 3963962
 Conc: 1.20 ng/ml

Instrument :
 ECD_O
 ClientSampleId :



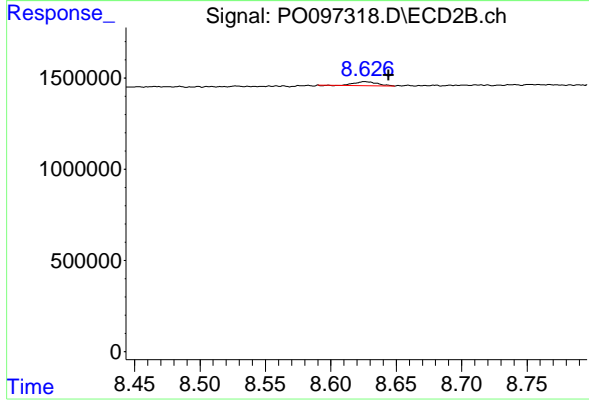
#1 Tetrachloro-m-xylene

R.T.: 3.659 min
 Delta R.T.: 0.038 min
 Response: 1180459
 Conc: 0.89 ng/ml



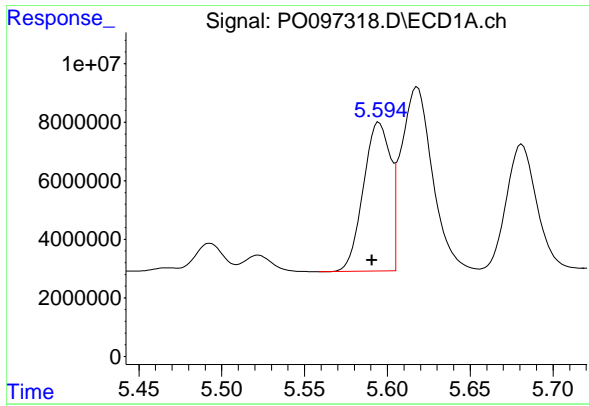
#2 Decachlorobiphenyl

R.T.: 10.336 min
 Delta R.T.: -0.004 min
 Response: 334208
 Conc: 0.15 ng/ml



#2 Decachlorobiphenyl

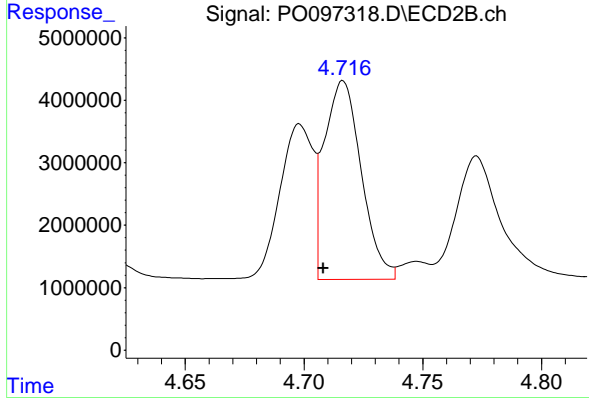
R.T.: 8.626 min
 Delta R.T.: -0.018 min
 Response: 272013
 Conc: 0.24 ng/ml



#3 AR-1016-1

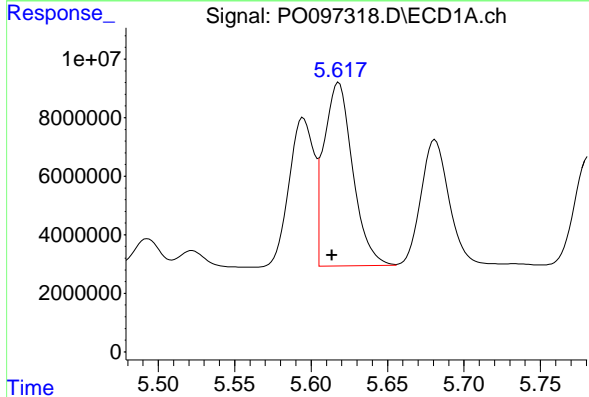
R.T.: 5.595 min
 Delta R.T.: 0.004 min
 Response: 57760541
 Conc: 613.28 ng/ml

Instrument :
 ECD_O
 ClientSampleId :



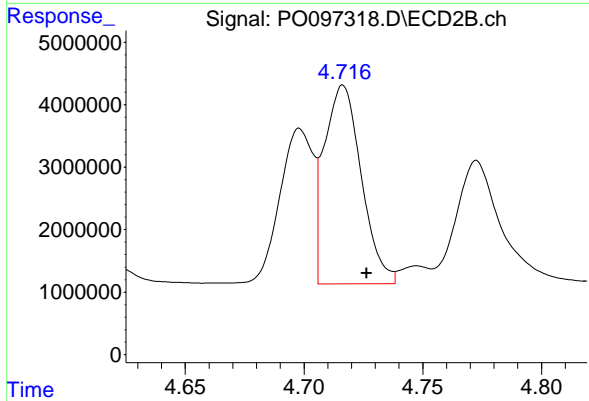
#3 AR-1016-1

R.T.: 4.716 min
 Delta R.T.: 0.008 min
 Response: 34560363
 Conc: 779.51 ng/ml



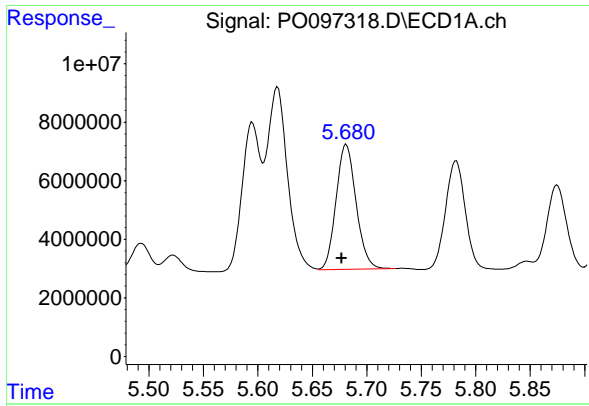
#4 AR-1016-2

R.T.: 5.618 min
 Delta R.T.: 0.005 min
 Response: 82161463
 Conc: 614.18 ng/ml



#4 AR-1016-2

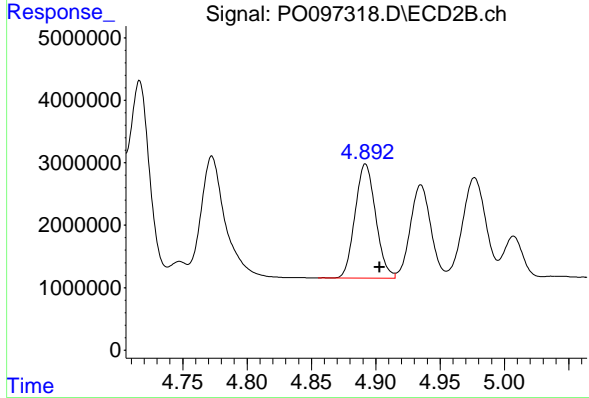
R.T.: 4.716 min
 Delta R.T.: -0.010 min
 Response: 34560363
 Conc: 564.98 ng/ml



#5 AR-1016-3

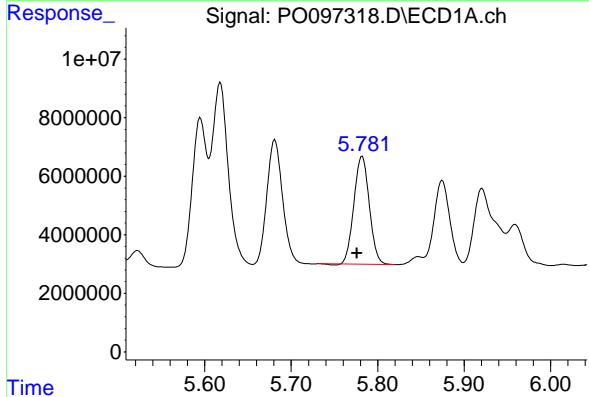
R.T.: 5.681 min
 Delta R.T.: 0.004 min
 Response: 54368248
 Conc: 624.77 ng/ml

Instrument :
 ECD_O
 ClientSampleId :



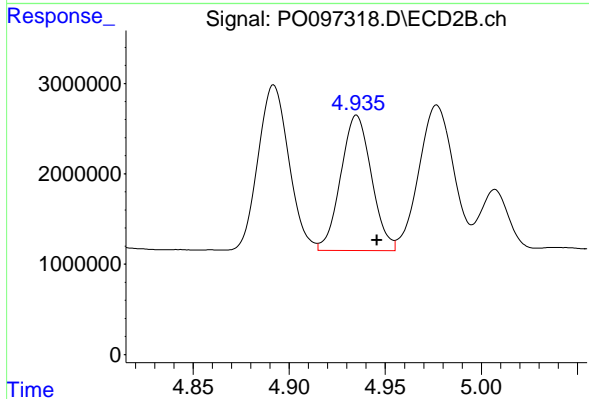
#5 AR-1016-3

R.T.: 4.892 min
 Delta R.T.: -0.011 min
 Response: 20320400
 Conc: 622.02 ng/ml



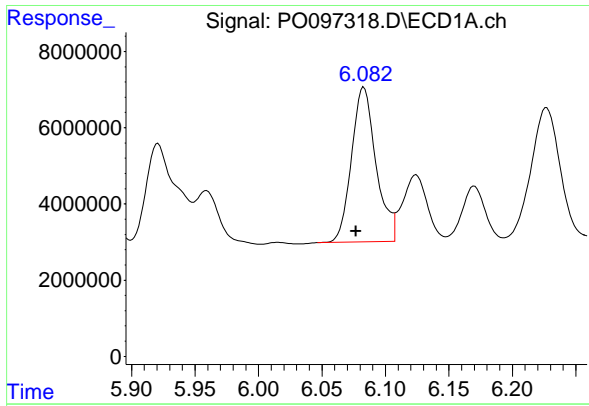
#6 AR-1016-4

R.T.: 5.782 min
 Delta R.T.: 0.006 min
 Response: 45673532
 Conc: 679.97 ng/ml



#6 AR-1016-4

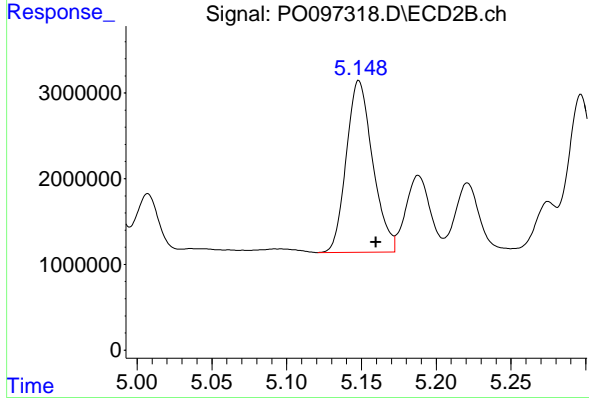
R.T.: 4.935 min
 Delta R.T.: -0.011 min
 Response: 16548003
 Conc: 578.88 ng/ml



#7 AR-1016-5

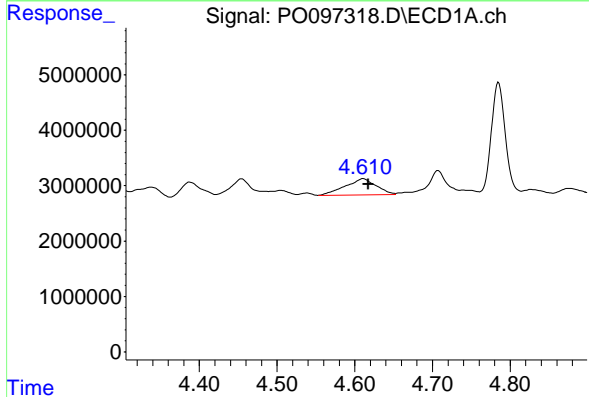
R.T.: 6.083 min
 Delta R.T.: 0.006 min
 Response: 54484631
 Conc: 780.39 ng/ml

Instrument :
 ECD_O
 ClientSampleId :



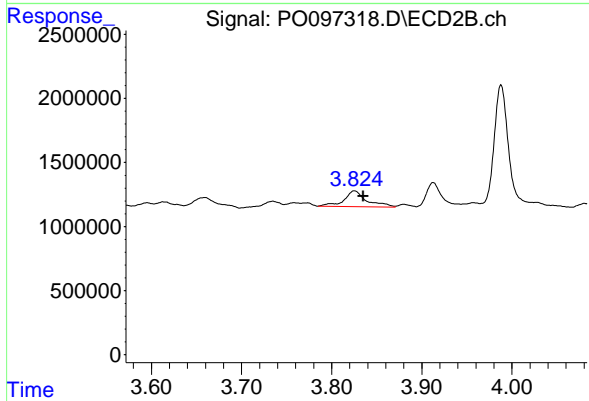
#7 AR-1016-5

R.T.: 5.148 min
 Delta R.T.: -0.012 min
 Response: 24618133
 Conc: 640.32 ng/ml



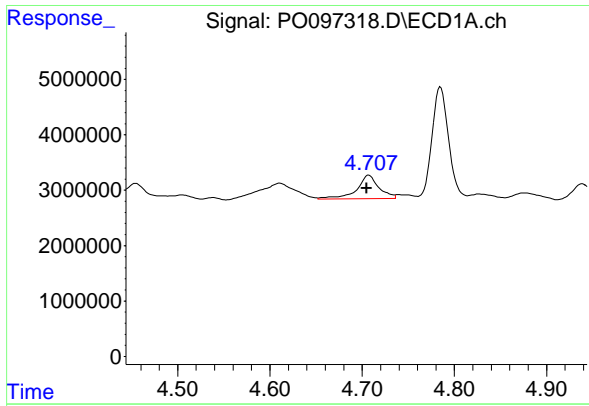
#8 AR-1221-1

R.T.: 4.611 min
 Delta R.T.: -0.007 min
 Response: 8150243
 Conc: 199.98 ng/ml



#8 AR-1221-1

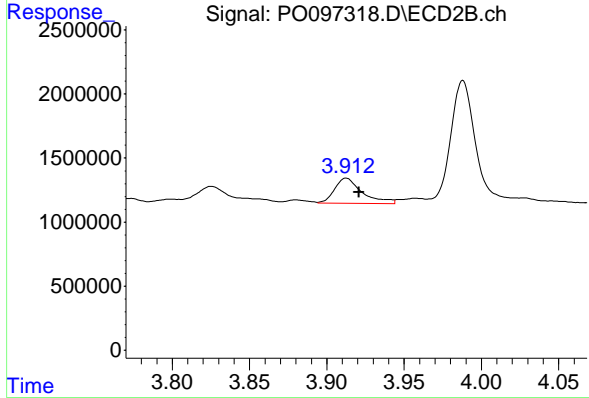
R.T.: 3.825 min
 Delta R.T.: -0.010 min
 Response: 2165821
 Conc: 124.78 ng/ml



#9 AR-1221-2

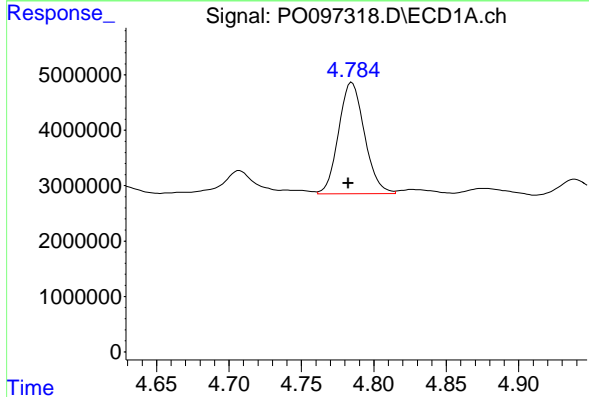
R.T.: 4.707 min
 Delta R.T.: 0.002 min
 Response: 7213523
 Conc: 237.44 ng/ml

Instrument :
 ECD_O
 ClientSampleId :



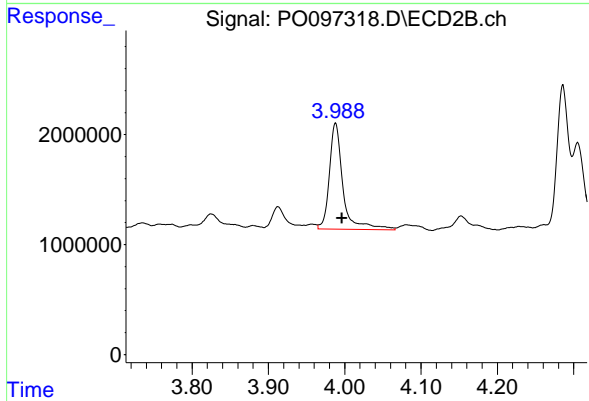
#9 AR-1221-2

R.T.: 3.913 min
 Delta R.T.: -0.008 min
 Response: 2431771
 Conc: 188.21 ng/ml



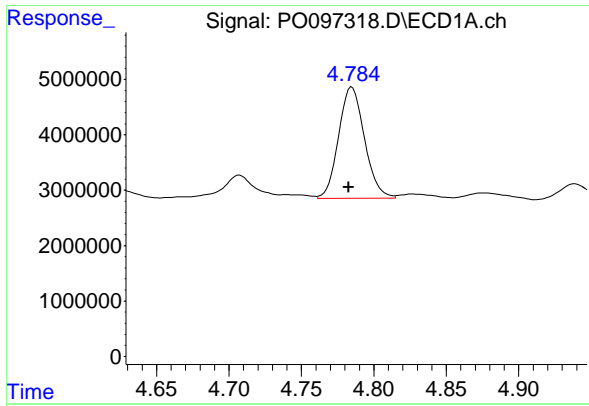
#10 AR-1221-3

R.T.: 4.785 min
 Delta R.T.: 0.003 min
 Response: 24957037
 Conc: 285.12 ng/ml



#10 AR-1221-3

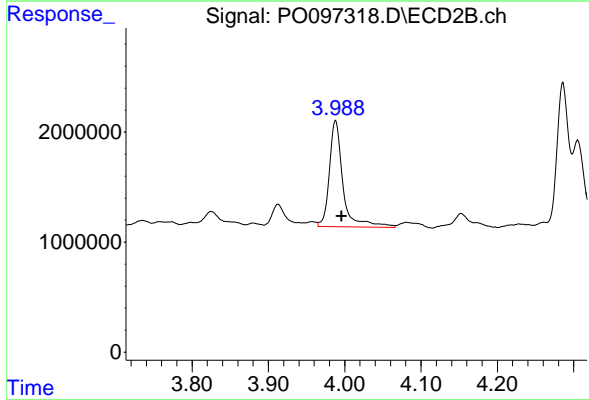
R.T.: 3.988 min
 Delta R.T.: -0.009 min
 Response: 11914483
 Conc: 300.16 ng/ml



#11 AR-1232-1

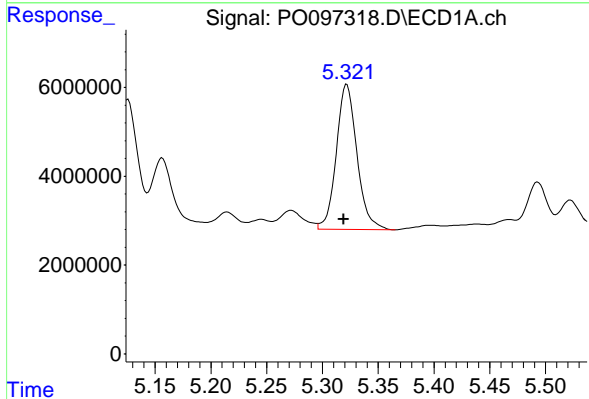
R.T.: 4.785 min
 Delta R.T.: 0.002 min
 Response: 24957037
 Conc: 342.19 ng/ml

Instrument :
 ECD_O
 ClientSampleId :



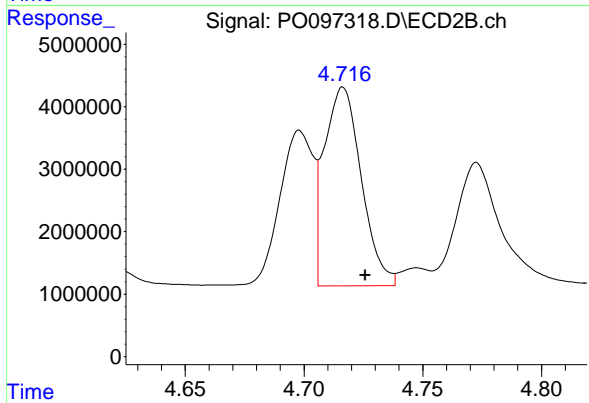
#11 AR-1232-1

R.T.: 3.988 min
 Delta R.T.: -0.008 min
 Response: 11914483
 Conc: 368.33 ng/ml



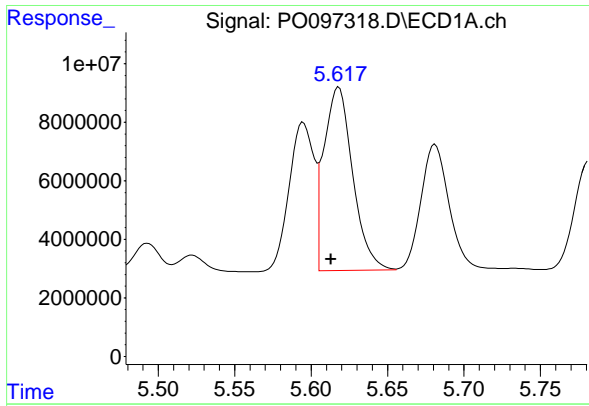
#12 AR-1232-2

R.T.: 5.322 min
 Delta R.T.: 0.003 min
 Response: 42088206
 Conc: 1061.60 ng/ml



#12 AR-1232-2

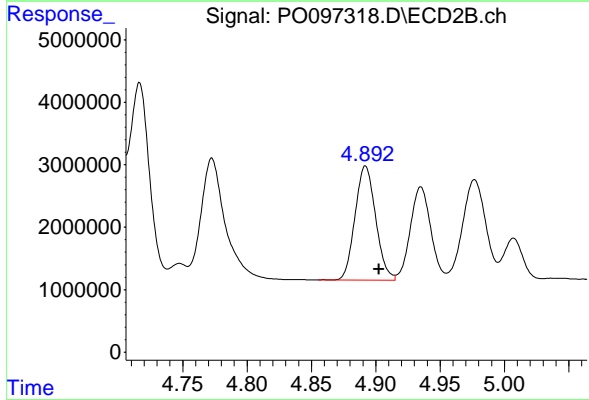
R.T.: 4.716 min
 Delta R.T.: -0.009 min
 Response: 34560363
 Conc: 1197.83 ng/ml



#13 AR-1232-3

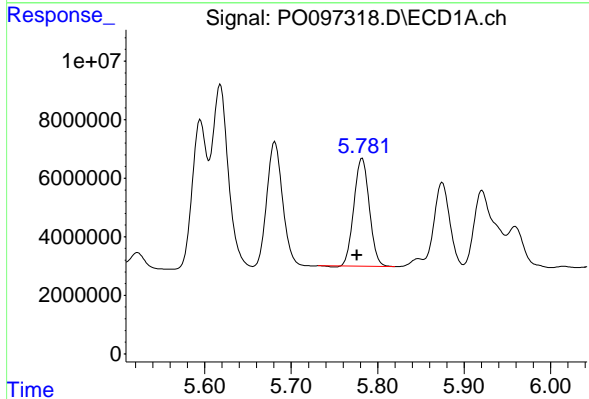
R.T.: 5.618 min
 Delta R.T.: 0.005 min
 Response: 82161463
 Conc: 1343.11 ng/ml

Instrument :
 ECD_O
 ClientSampleId :



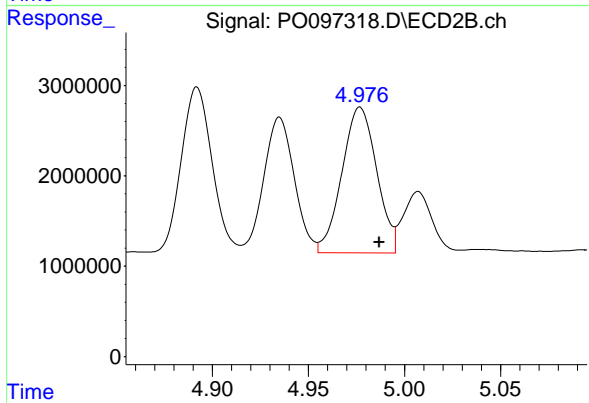
#13 AR-1232-3

R.T.: 4.892 min
 Delta R.T.: -0.010 min
 Response: 20320400
 Conc: 1340.23 ng/ml



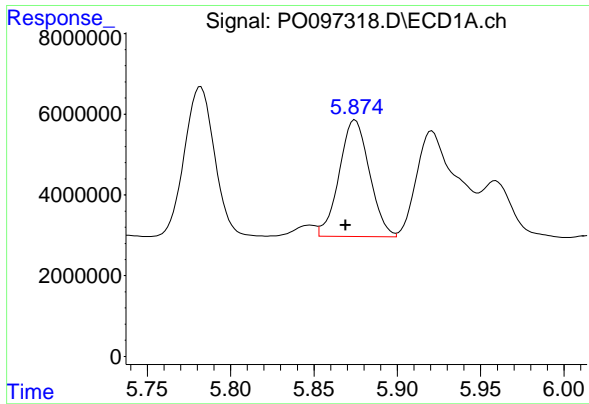
#14 AR-1232-4

R.T.: 5.782 min
 Delta R.T.: 0.006 min
 Response: 45673532
 Conc: 1496.81 ng/ml



#14 AR-1232-4

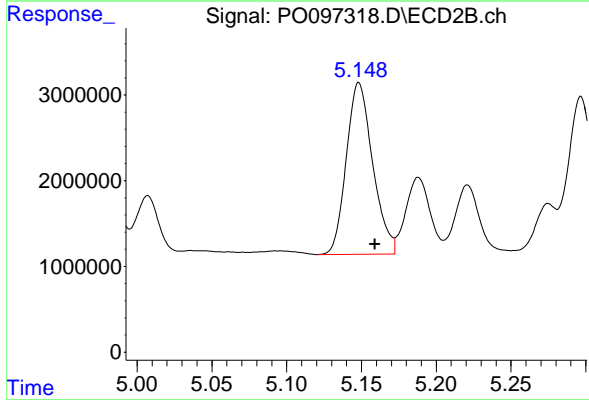
R.T.: 4.977 min
 Delta R.T.: -0.010 min
 Response: 20212373
 Conc: 1352.48 ng/ml



#15 AR-1232-5

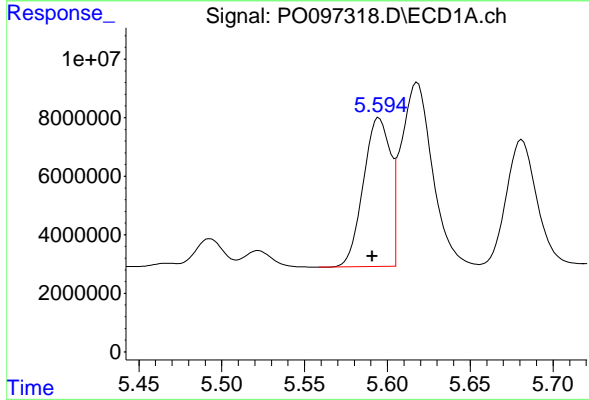
R.T.: 5.875 min
 Delta R.T.: 0.006 min
 Response: 36405993
 Conc: 1301.00 ng/ml

Instrument :
 ECD_O
 ClientSampleId :



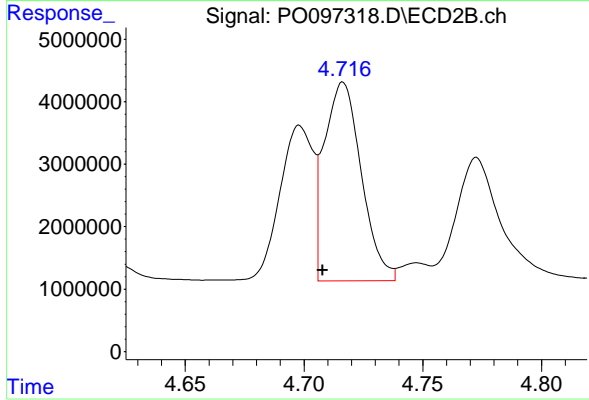
#15 AR-1232-5

R.T.: 5.148 min
 Delta R.T.: -0.011 min
 Response: 24618133
 Conc: 1505.99 ng/ml



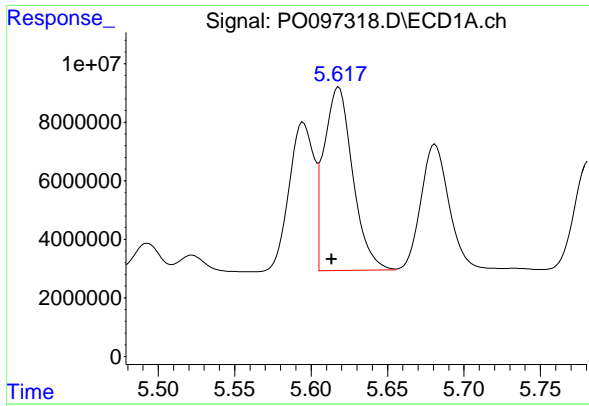
#16 AR-1242-1

R.T.: 5.595 min
 Delta R.T.: 0.004 min
 Response: 57760541
 Conc: 689.13 ng/ml



#16 AR-1242-1

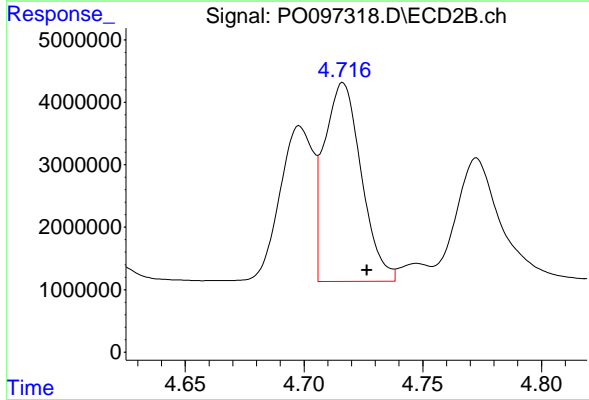
R.T.: 4.716 min
 Delta R.T.: 0.009 min
 Response: 34560363
 Conc: 876.61 ng/ml



#17 AR-1242-2

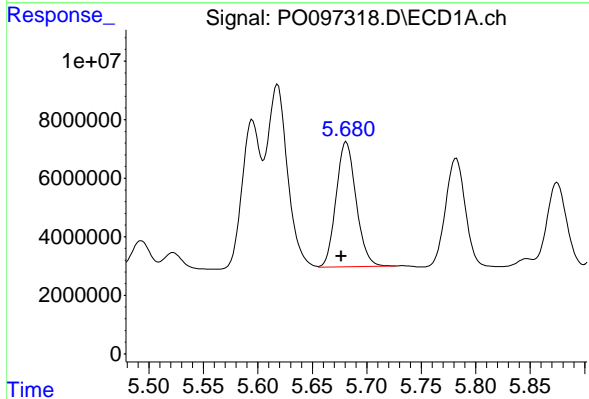
R.T.: 5.618 min
Delta R.T.: 0.005 min
Response: 82161463
Conc: 697.69 ng/ml

Instrument :
ECD_O
ClientSampleId :



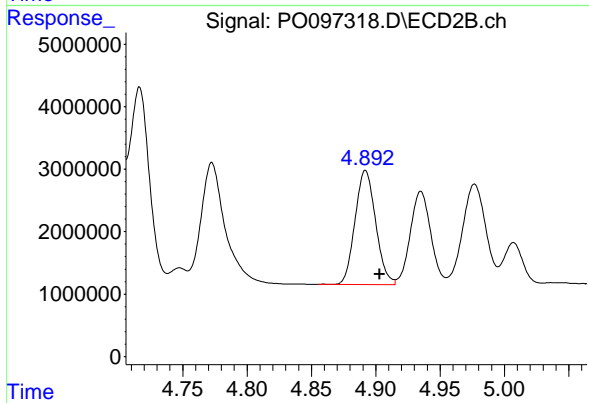
#17 AR-1242-2

R.T.: 4.716 min
Delta R.T.: -0.010 min
Response: 34560363
Conc: 634.24 ng/ml



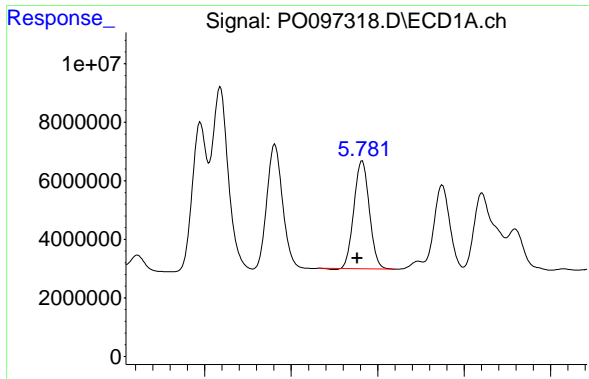
#18 AR-1242-3

R.T.: 5.681 min
Delta R.T.: 0.004 min
Response: 54368248
Conc: 735.97 ng/ml



#18 AR-1242-3

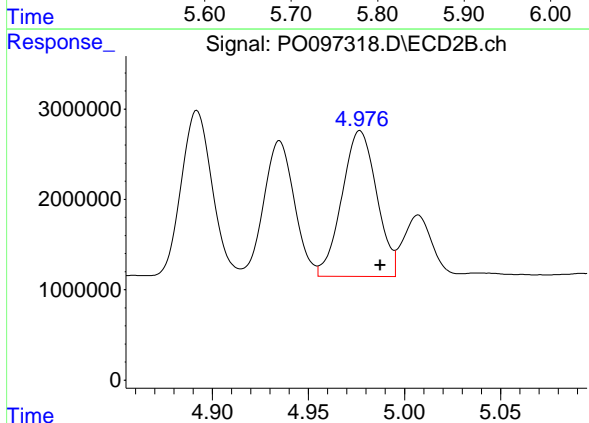
R.T.: 4.892 min
Delta R.T.: -0.011 min
Response: 20320400
Conc: 687.23 ng/ml



#19 AR-1242-4

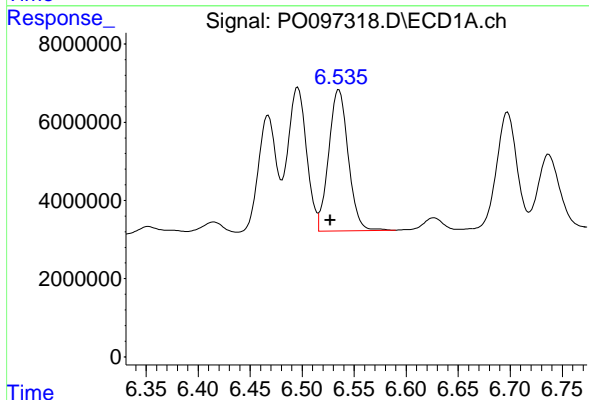
R.T.: 5.782 min
 Delta R.T.: 0.005 min
 Response: 45673532
 Conc: 767.23 ng/ml

Instrument :
 ECD_O
 ClientSampleId :



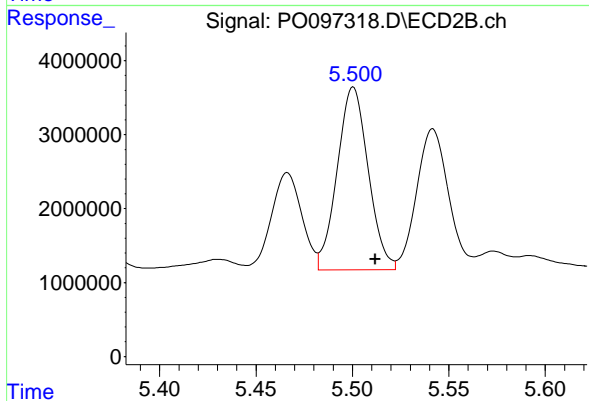
#19 AR-1242-4

R.T.: 4.977 min
 Delta R.T.: -0.010 min
 Response: 20212373
 Conc: 641.38 ng/ml



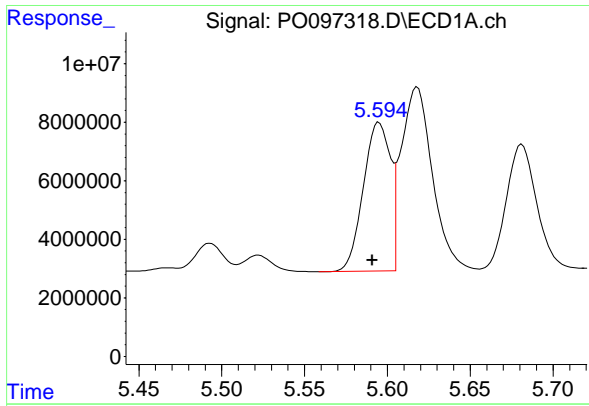
#20 AR-1242-5

R.T.: 6.535 min
 Delta R.T.: 0.008 min
 Response: 47221719
 Conc: 858.27 ng/ml



#20 AR-1242-5

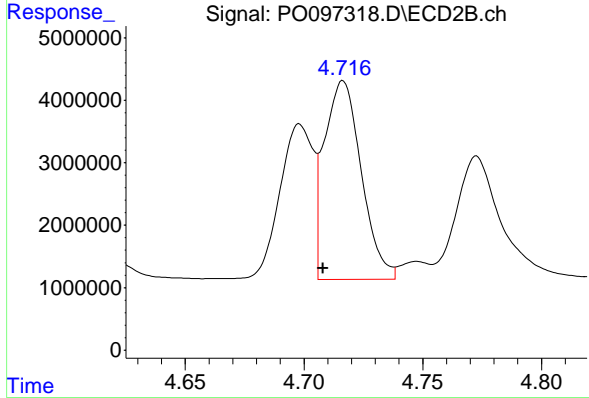
R.T.: 5.500 min
 Delta R.T.: -0.011 min
 Response: 27740496
 Conc: 761.34 ng/ml



#21 AR-1248-1

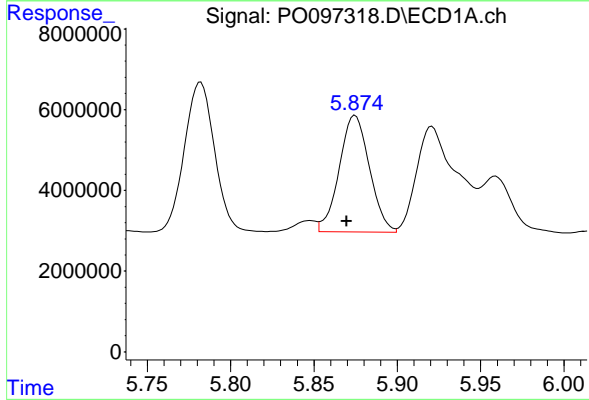
R.T.: 5.595 min
 Delta R.T.: 0.004 min
 Response: 57760541
 Conc: 985.77 ng/ml

Instrument :
 ECD_O
 ClientSampleId :



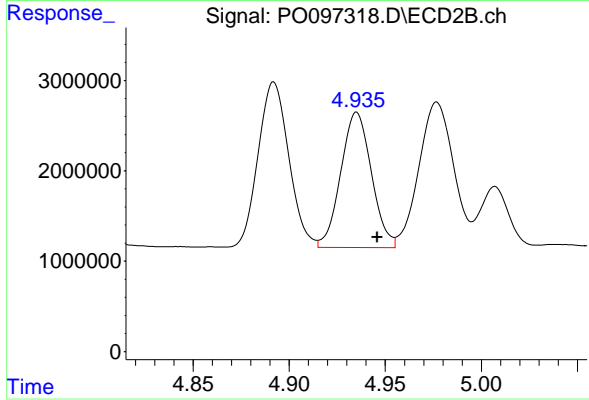
#21 AR-1248-1

R.T.: 4.716 min
 Delta R.T.: 0.008 min
 Response: 34560363
 Conc: 1231.55 ng/ml



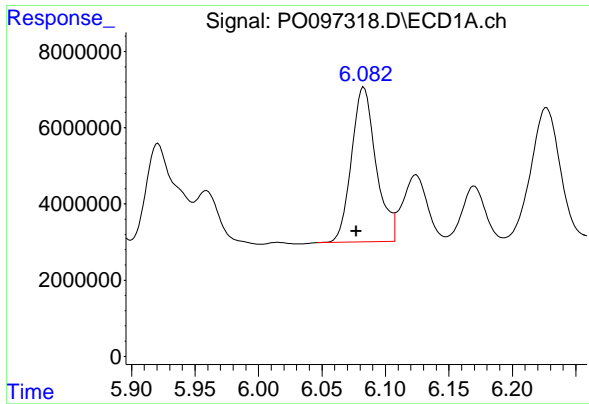
#22 AR-1248-2

R.T.: 5.875 min
 Delta R.T.: 0.005 min
 Response: 36405993
 Conc: 387.23 ng/ml



#22 AR-1248-2

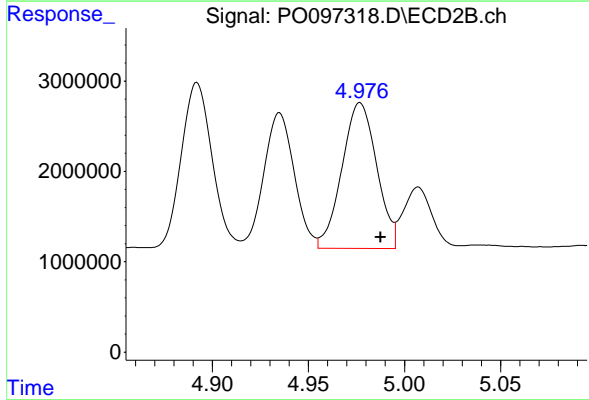
R.T.: 4.935 min
 Delta R.T.: -0.011 min
 Response: 16548003
 Conc: 390.46 ng/ml



#23 AR-1248-3

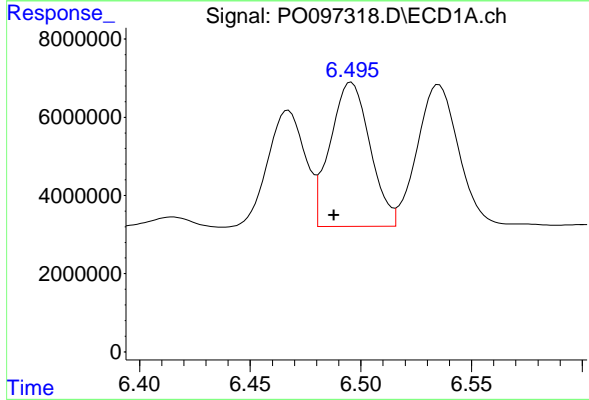
R.T.: 6.083 min
 Delta R.T.: 0.006 min
 Response: 54484631
 Conc: 557.05 ng/ml

Instrument :
 ECD_O
 ClientSampleId :



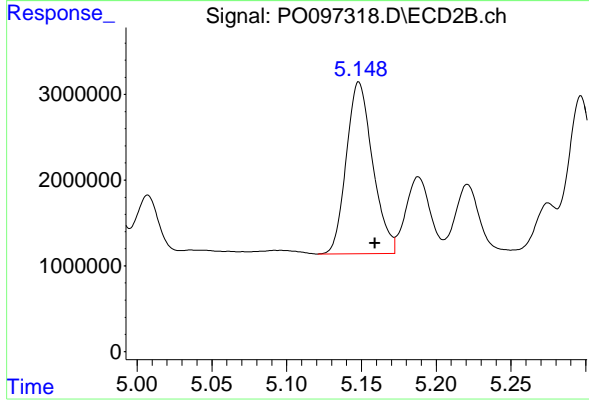
#23 AR-1248-3

R.T.: 4.977 min
 Delta R.T.: -0.011 min
 Response: 20212373
 Conc: 460.79 ng/ml



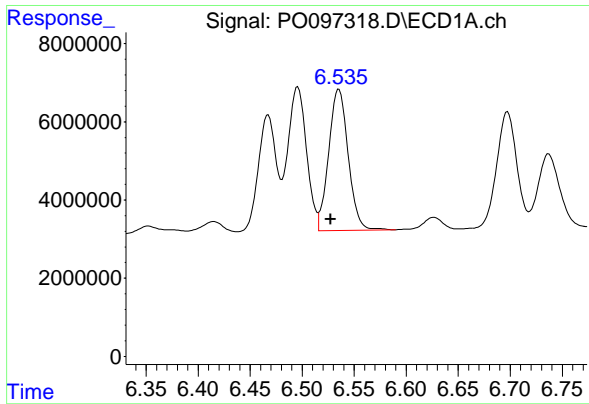
#24 AR-1248-4

R.T.: 6.496 min
 Delta R.T.: 0.008 min
 Response: 46102400
 Conc: 507.49 ng/ml



#24 AR-1248-4

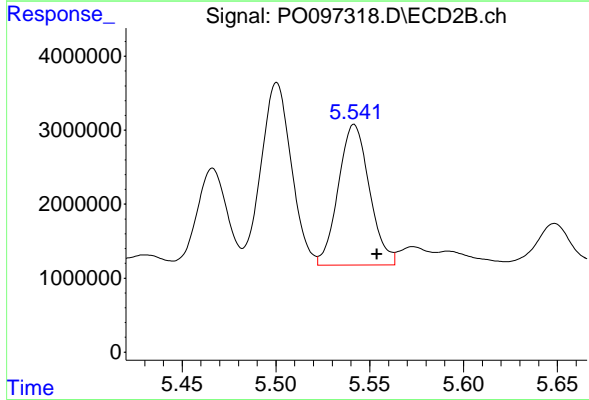
R.T.: 5.148 min
 Delta R.T.: -0.011 min
 Response: 24618133
 Conc: 482.24 ng/ml



#25 AR-1248-5

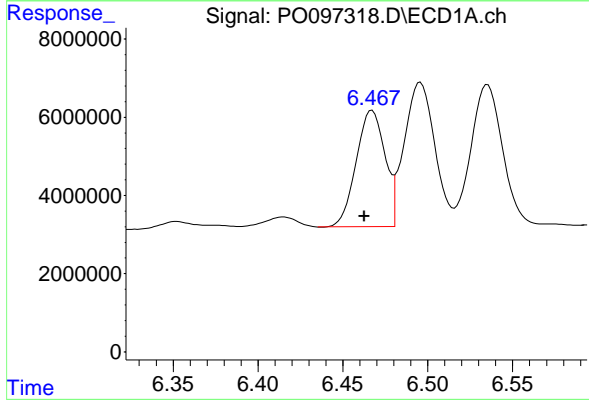
R.T.: 6.535 min
 Delta R.T.: 0.008 min
 Response: 47221719
 Conc: 536.09 ng/ml

Instrument :
 ECD_O
 ClientSampleId :



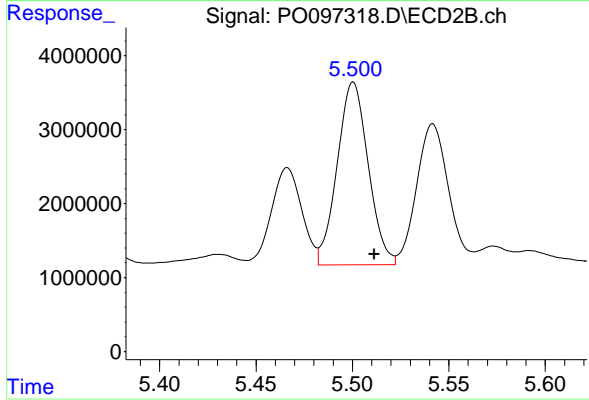
#25 AR-1248-5

R.T.: 5.542 min
 Delta R.T.: -0.012 min
 Response: 21959706
 Conc: 469.71 ng/ml



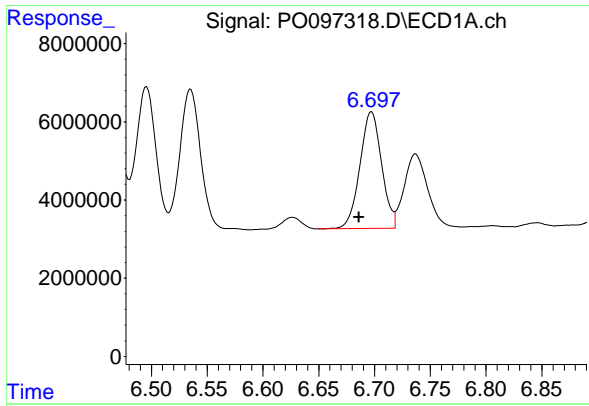
#26 AR-1254-1

R.T.: 6.467 min
 Delta R.T.: 0.005 min
 Response: 34992780
 Conc: 320.18 ng/ml



#26 AR-1254-1

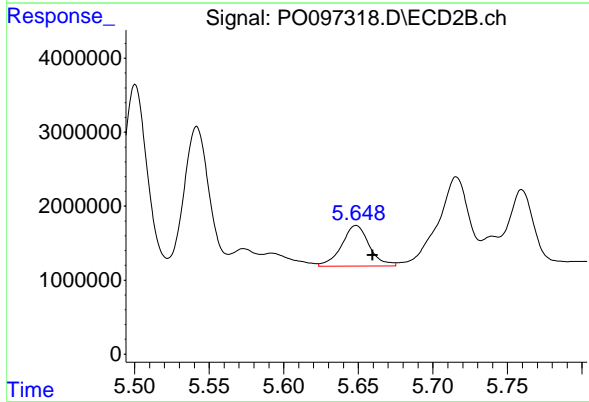
R.T.: 5.500 min
 Delta R.T.: -0.011 min
 Response: 27740496
 Conc: 375.91 ng/ml



#27 AR-1254-2

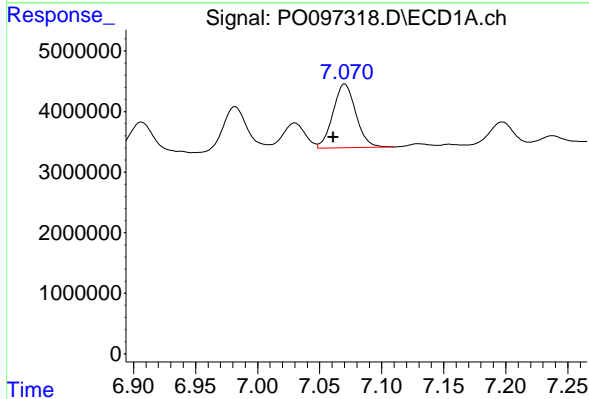
R.T.: 6.697 min
 Delta R.T.: 0.011 min
 Response: 40320663
 Conc: 250.09 ng/ml

Instrument :
 ECD_O
 ClientSampleId :



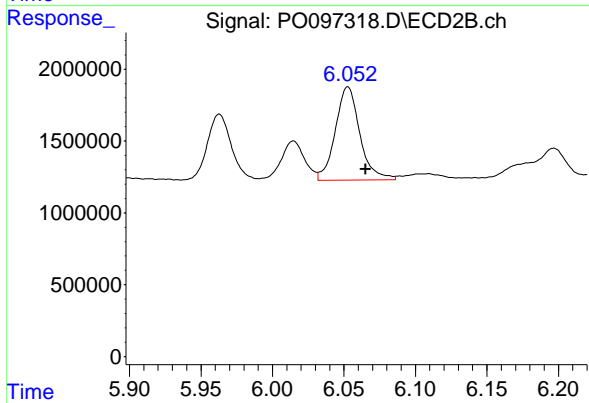
#27 AR-1254-2

R.T.: 5.649 min
 Delta R.T.: -0.011 min
 Response: 7134110
 Conc: 108.29 ng/ml



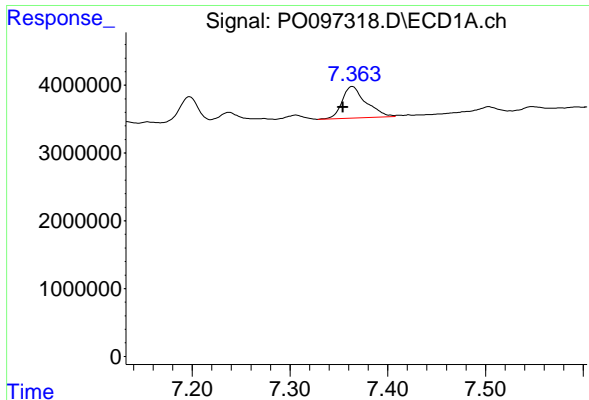
#28 AR-1254-3

R.T.: 7.070 min
 Delta R.T.: 0.009 min
 Response: 13489370
 Conc: 86.09 ng/ml



#28 AR-1254-3

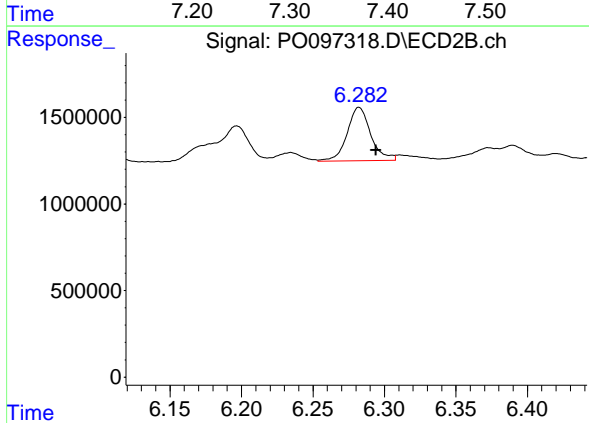
R.T.: 6.053 min
 Delta R.T.: -0.012 min
 Response: 7776846
 Conc: 76.95 ng/ml



#29 AR-1254-4

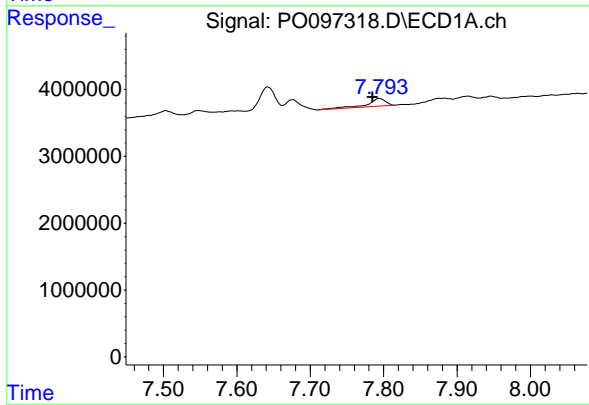
R.T.: 7.364 min
Delta R.T.: 0.010 min
Response: 7822304
Conc: 77.59 ng/ml

Instrument :
ECD_O
ClientSampleId :



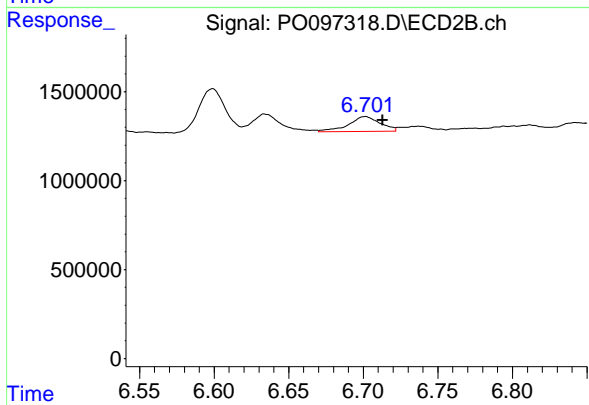
#29 AR-1254-4

R.T.: 6.282 min
Delta R.T.: -0.012 min
Response: 3554090
Conc: 61.41 ng/ml



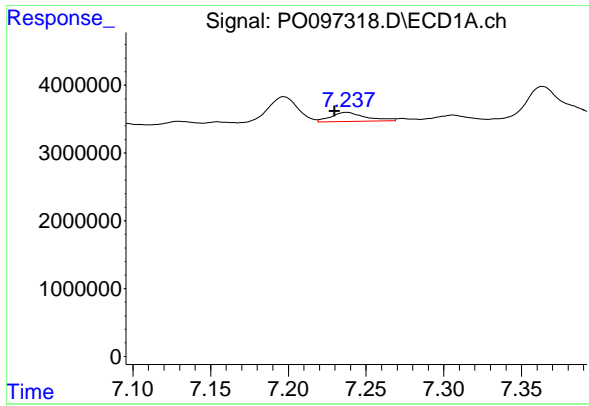
#30 AR-1254-5

R.T.: 7.794 min
Delta R.T.: 0.009 min
Response: 2026522
Conc: 18.06 ng/ml



#30 AR-1254-5

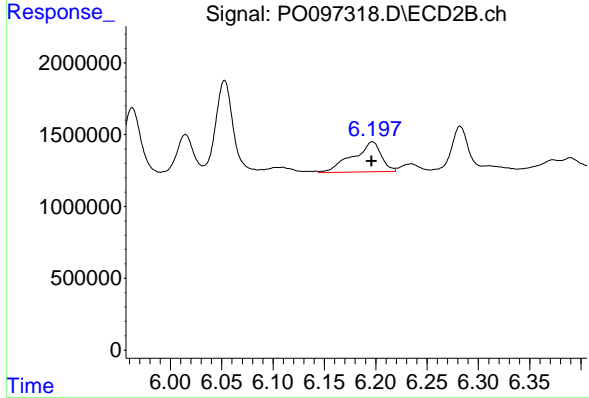
R.T.: 6.701 min
Delta R.T.: -0.012 min
Response: 1230812
Conc: 14.00 ng/ml



#31 AR-1260-1

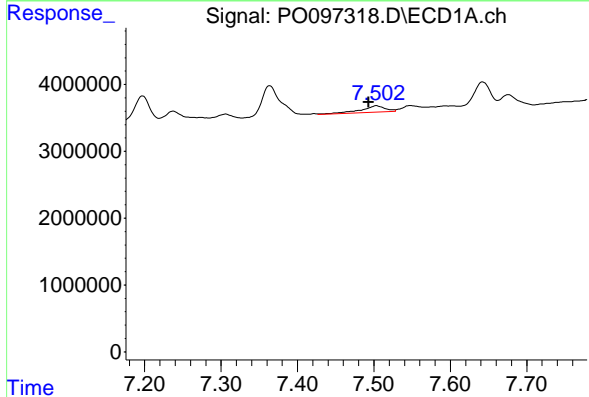
R.T.: 7.238 min
 Delta R.T.: 0.008 min
 Response: 2146128
 Conc: 17.08 ng/ml

Instrument :
 ECD_O
 ClientSampleId :



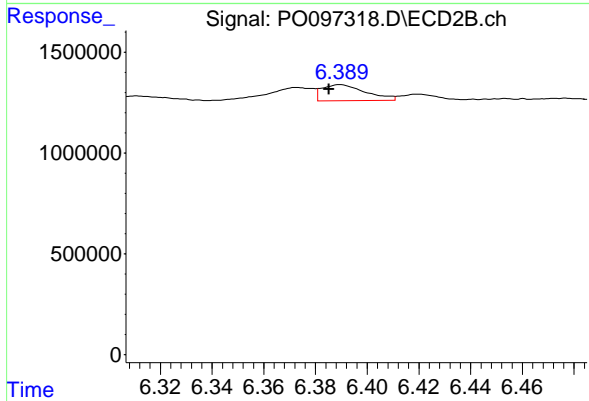
#31 AR-1260-1

R.T.: 6.197 min
 Delta R.T.: 0.000 min
 Response: 4033653
 Conc: 57.32 ng/ml



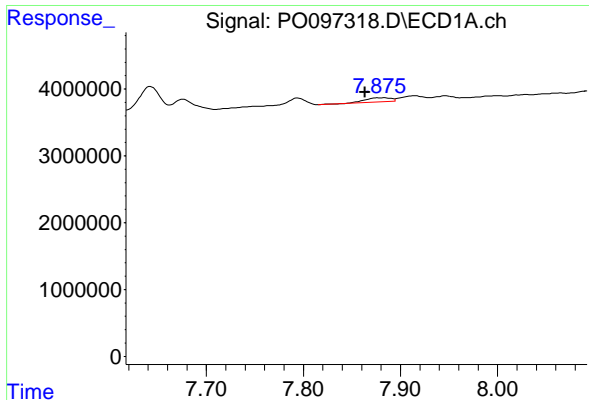
#32 AR-1260-2

R.T.: 7.503 min
 Delta R.T.: 0.010 min
 Response: 2120451
 Conc: 15.74 ng/ml



#32 AR-1260-2

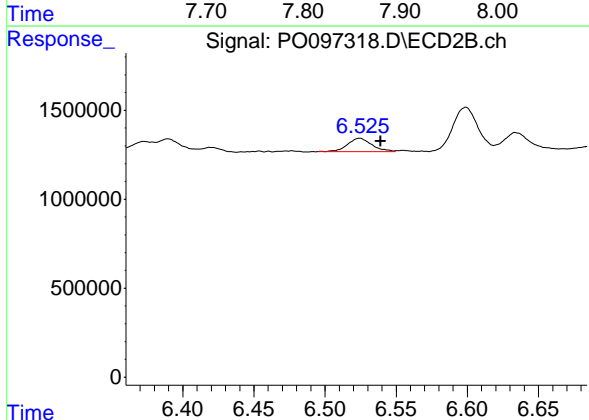
R.T.: 6.390 min
 Delta R.T.: 0.004 min
 Response: 932516
 Conc: 11.17 ng/ml



#33 AR-1260-3

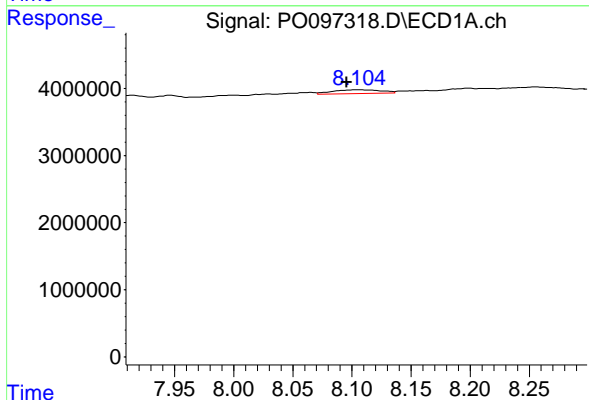
R.T.: 7.883 min
 Delta R.T.: 0.020 min
 Response: 1115718
 Conc: 10.75 ng/ml

Instrument :
 ECD_O
 ClientSampleId :



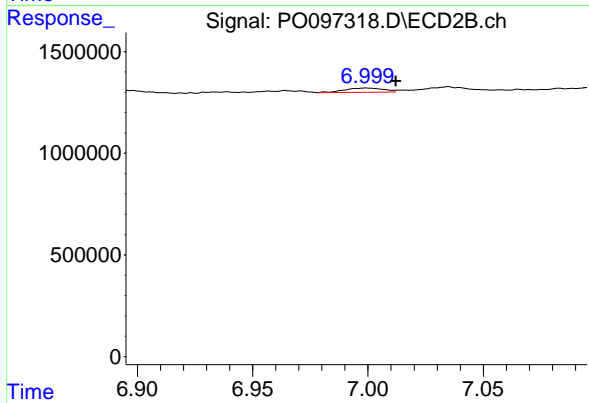
#33 AR-1260-3

R.T.: 6.524 min
 Delta R.T.: -0.015 min
 Response: 895063
 Conc: 11.59 ng/ml



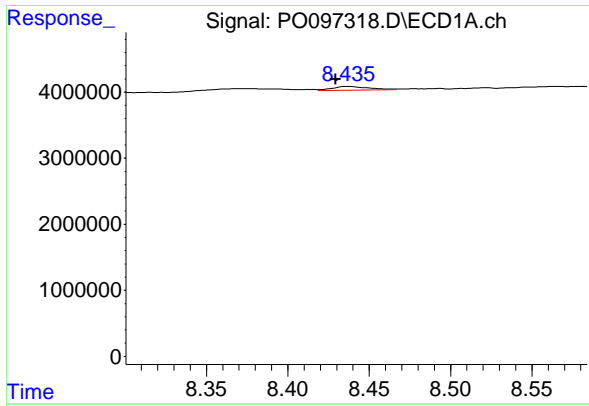
#34 AR-1260-4

R.T.: 8.105 min
 Delta R.T.: 0.009 min
 Response: 1623130
 Conc: 14.52 ng/ml



#34 AR-1260-4

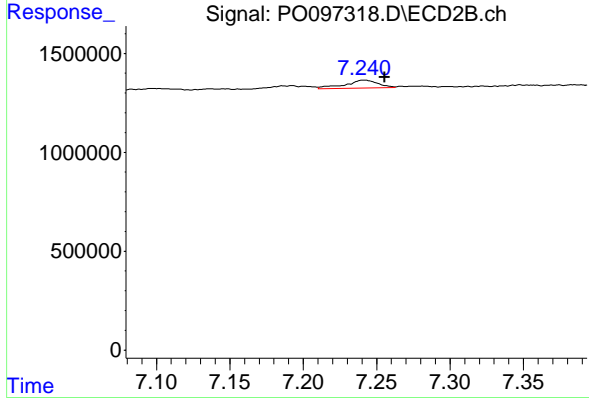
R.T.: 7.000 min
 Delta R.T.: -0.013 min
 Response: 236334
 Conc: 3.69 ng/ml



#35 AR-1260-5

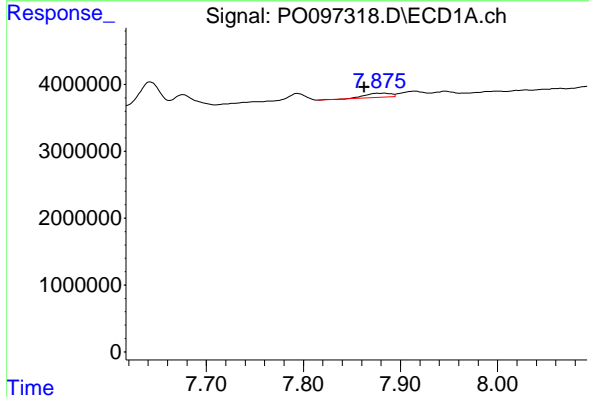
R.T.: 8.437 min
 Delta R.T.: 0.007 min
 Response: 948869
 Conc: 4.52 ng/ml

Instrument :
 ECD_O
 ClientSampleId :



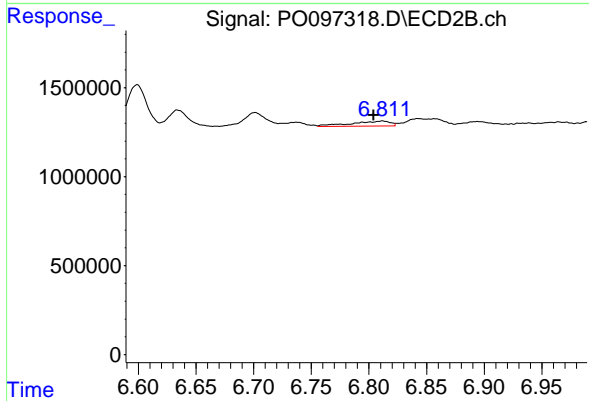
#35 AR-1260-5

R.T.: 7.242 min
 Delta R.T.: -0.014 min
 Response: 619301
 Conc: 4.47 ng/ml



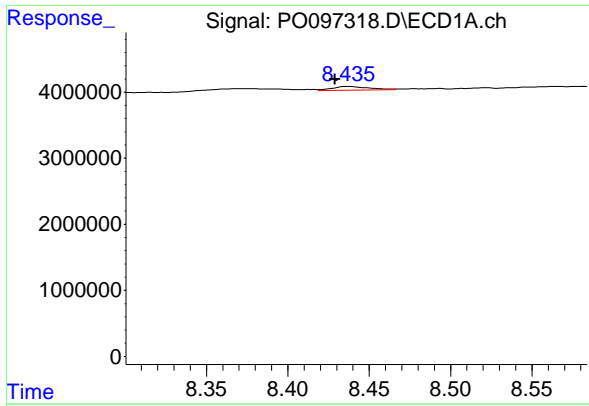
#36 AR-1262-1

R.T.: 7.883 min
 Delta R.T.: 0.021 min
 Response: 1115718
 Conc: 7.51 ng/ml



#36 AR-1262-1

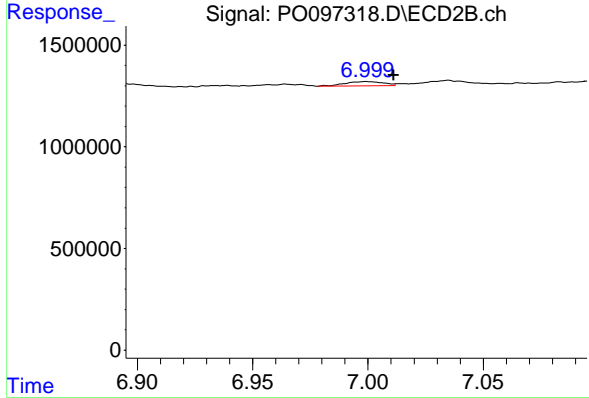
R.T.: 6.812 min
 Delta R.T.: 0.007 min
 Response: 653705
 Conc: 16.60 ng/ml



#37 AR-1262-2

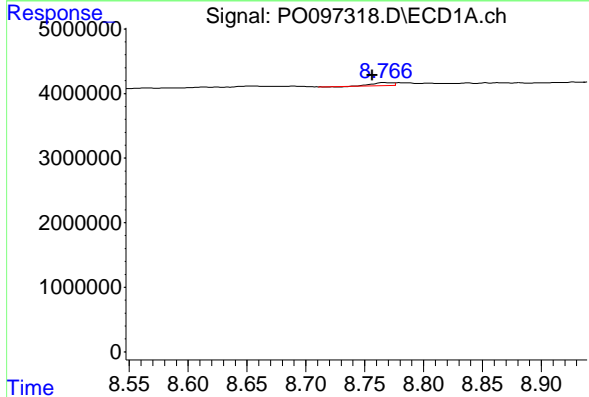
R.T.: 8.437 min
 Delta R.T.: 0.008 min
 Response: 948869
 Conc: 4.10 ng/ml

Instrument :
 ECD_O
 ClientSampleId :



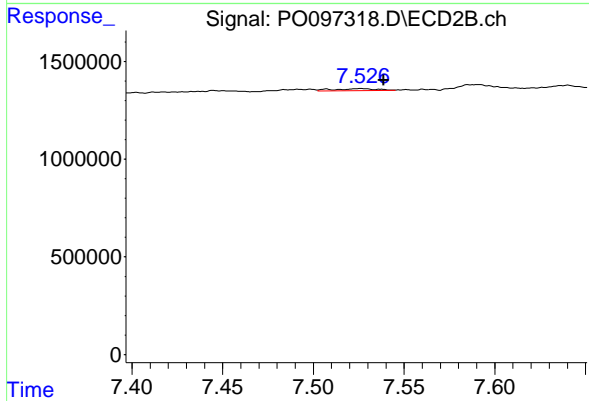
#37 AR-1262-2

R.T.: 7.000 min
 Delta R.T.: -0.012 min
 Response: 236334
 Conc: 2.91 ng/ml



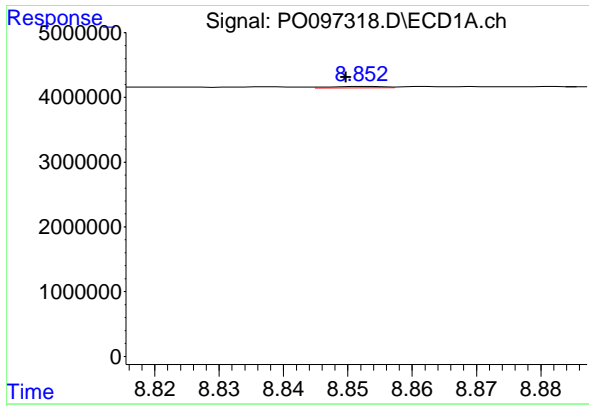
#38 AR-1262-3

R.T.: 8.767 min
 Delta R.T.: 0.010 min
 Response: 543524
 Conc: 3.26 ng/ml



#38 AR-1262-3

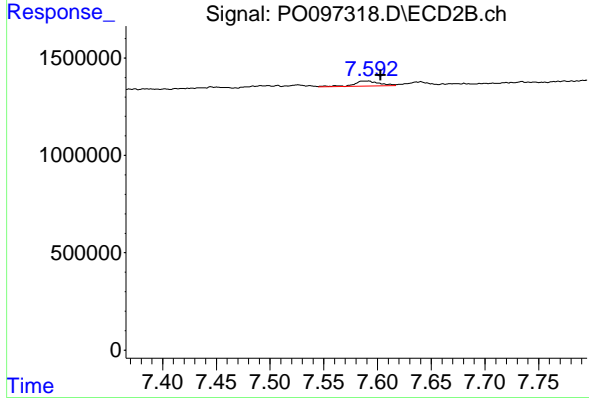
R.T.: 7.526 min
 Delta R.T.: -0.013 min
 Response: 182719
 Conc: 2.85 ng/ml



#39 AR-1262-4

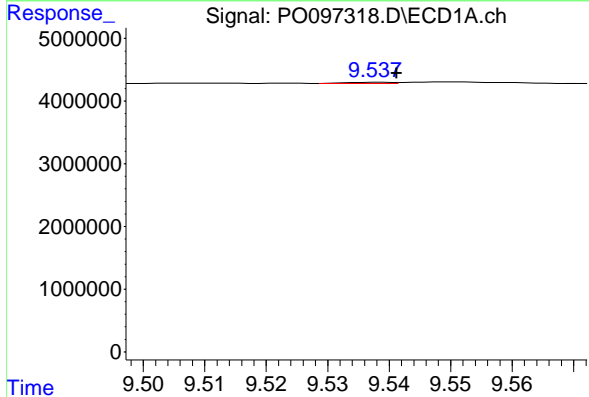
R.T.: 8.852 min
 Delta R.T.: 0.003 min
 Response: 110822
 Conc: 1.52 ng/ml

Instrument :
 ECD_O
 ClientSampleId :



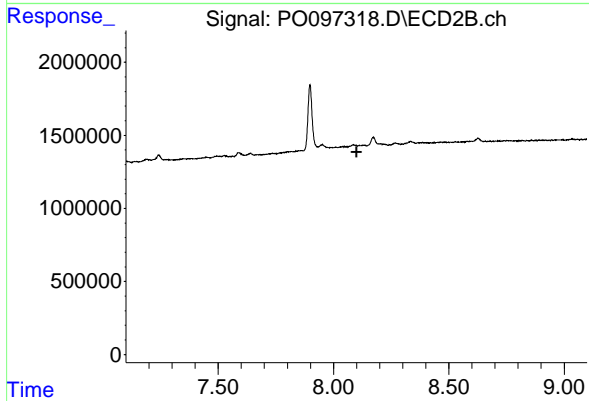
#39 AR-1262-4

R.T.: 7.591 min
 Delta R.T.: -0.012 min
 Response: 404481
 Conc: 3.56 ng/ml



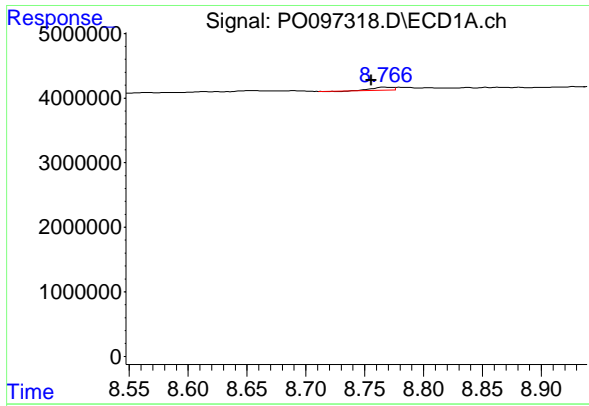
#40 AR-1262-5

R.T.: 9.538 min
 Delta R.T.: -0.003 min
 Response: 109365
 Conc: 1.31 ng/ml



#40 AR-1262-5

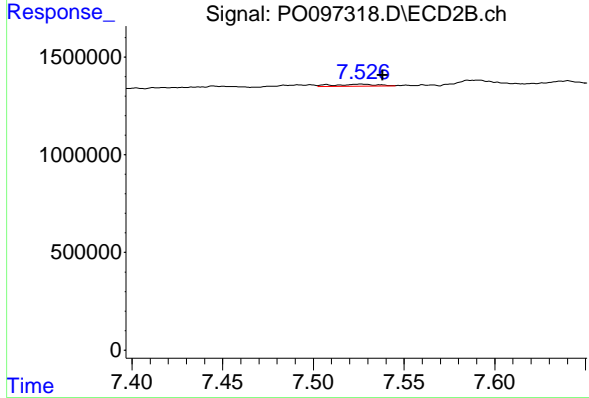
R.T.: 0.000 min
 Exp R.T. : 8.099 min
 Response: 0
 Conc: N.D.



#41 AR-1268-1

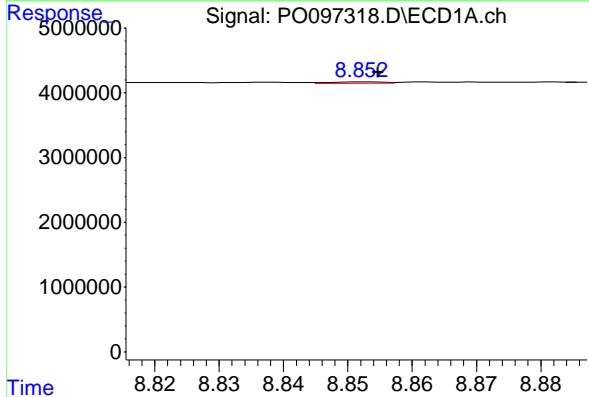
R.T.: 8.767 min
 Delta R.T.: 0.011 min
 Response: 543524
 Conc: 1.77 ng/ml

Instrument :
 ECD_O
 ClientSampleId :



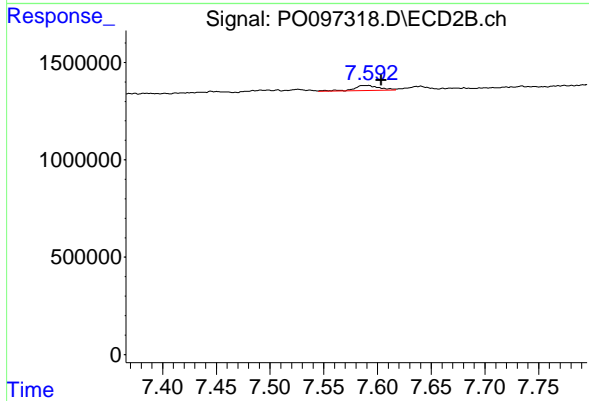
#41 AR-1268-1

R.T.: 7.526 min
 Delta R.T.: -0.012 min
 Response: 182719
 Conc: 0.99 ng/ml



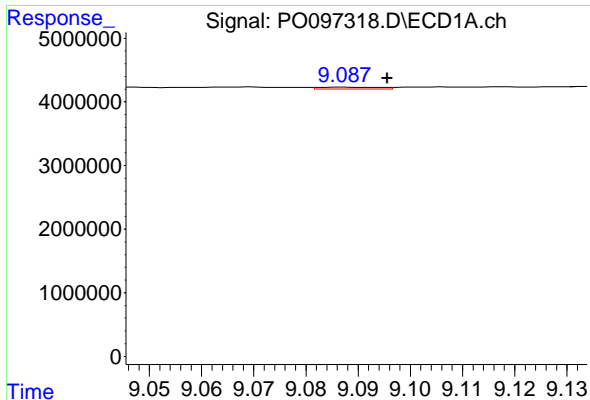
#42 AR-1268-2

R.T.: 8.852 min
 Delta R.T.: -0.002 min
 Response: 110822
 Conc: 0.40 ng/ml



#42 AR-1268-2

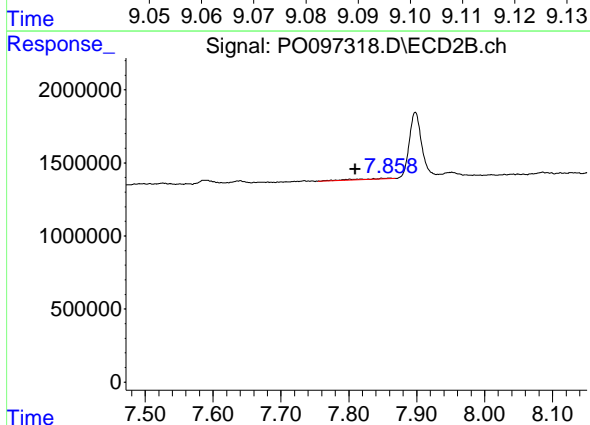
R.T.: 7.591 min
 Delta R.T.: -0.013 min
 Response: 404481
 Conc: 2.41 ng/ml



#43 AR-1268-3

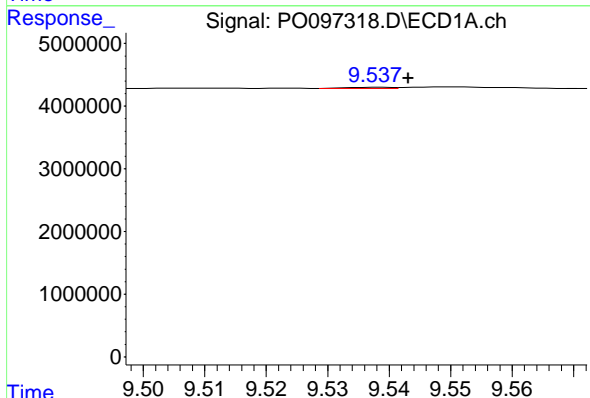
R.T.: 9.087 min
 Delta R.T.: -0.008 min
 Response: 244152
 Conc: 0.96 ng/ml

Instrument :
 ECD_O
 ClientSampleId :



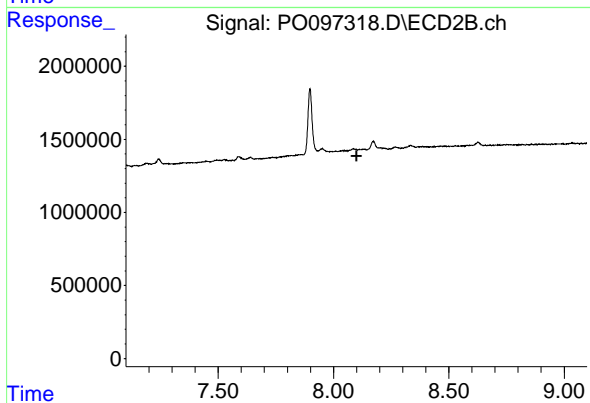
#43 AR-1268-3

R.T.: 7.859 min
 Delta R.T.: 0.050 min
 Response: 192568
 Conc: 1.33 ng/ml



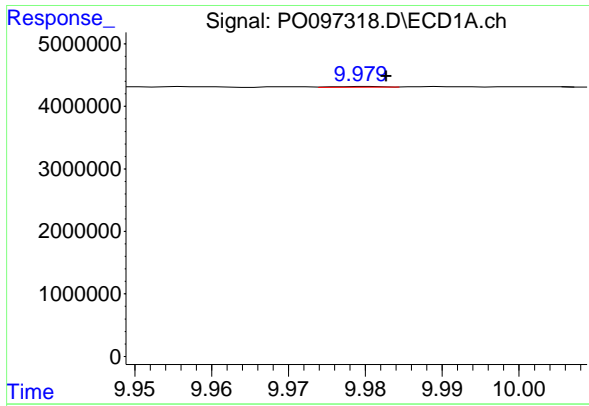
#44 AR-1268-4

R.T.: 9.538 min
 Delta R.T.: -0.005 min
 Response: 109365
 Conc: 1.18 ng/ml



#44 AR-1268-4

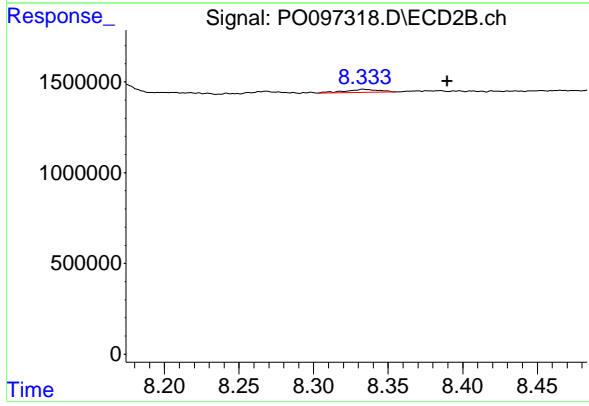
R.T.: 0.000 min
 Exp R.T. : 8.100 min
 Response: 0
 Conc: N.D.



#45 AR-1268-5

R.T.: 9.980 min
 Delta R.T.: -0.003 min
 Response: 54337
 Conc: 0.07 ng/ml

Instrument :
 ECD_O
 ClientSampleId :



#45 AR-1268-5

R.T.: 8.334 min
 Delta R.T.: -0.056 min
 Response: 259868
 Conc: 0.62 ng/ml